



Full wwPDB X-ray Structure Validation Report ⓘ

Oct 15, 2024 – 12:56 PM JST

PDB ID : 8Z9G
Title : Crystal structure of glyoxylate reductase from *Acetobacter aceti* in complex with NADPH
Authors : Majumder, T.R.; Yoshizawa, T.; Inoue, M.; Aono, R.; Matsumura, H.; Mihara, H.
Deposited on : 2024-04-23
Resolution : 1.68 Å(reported)

This is a Full wwPDB X-ray Structure Validation Report for a publicly released PDB entry.

We welcome your comments at validation@mail.wwpdb.org

A user guide is available at

<https://www.wwpdb.org/validation/2017/XrayValidationReportHelp>

with specific help available everywhere you see the ⓘ symbol.

The types of validation reports are described at

<http://www.wwpdb.org/validation/2017/FAQs#types>.

The following versions of software and data (see [references ⓘ](#)) were used in the production of this report:

MolProbity : 4.02b-467
Mogul : 1.8.5 (274361), CSD as541be (2020)
Xtriage (Phenix) : 1.13
EDS : 3.0
buster-report : 1.1.7 (2018)
Percentile statistics : 20231227.v01 (using entries in the PDB archive December 27th 2023)
CCP4 : 9.0.003 (Gargrove)
Density-Fitness : 1.0.11
Ideal geometry (proteins) : Engh & Huber (2001)
Ideal geometry (DNA, RNA) : Parkinson et al. (1996)
Validation Pipeline (wwPDB-VP) : 2.39

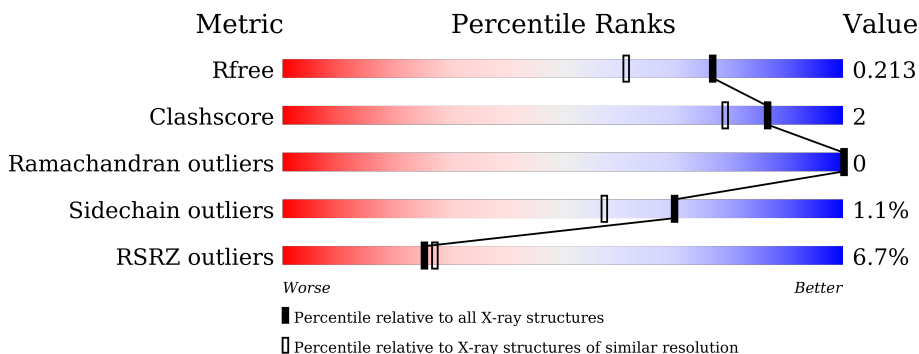
1 Overall quality at a glance

The following experimental techniques were used to determine the structure:

X-RAY DIFFRACTION

The reported resolution of this entry is 1.68 Å.

Percentile scores (ranging between 0-100) for global validation metrics of the entry are shown in the following graphic. The table shows the number of entries on which the scores are based.



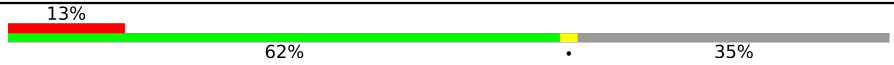
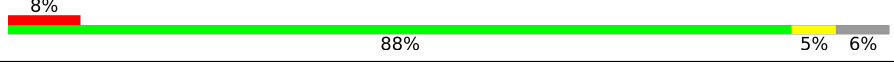
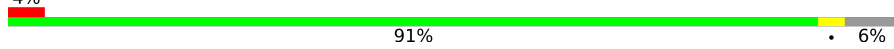
Metric	Whole archive (#Entries)	Similar resolution (#Entries, resolution range(Å))
R_{free}	164625	8422 (1.70-1.66)
Clashscore	180529	1005 (1.68-1.68)
Ramachandran outliers	177936	9065 (1.70-1.66)
Sidechain outliers	177891	9064 (1.70-1.66)
RSRZ outliers	164620	8421 (1.70-1.66)

The table below summarises the geometric issues observed across the polymeric chains and their fit to the electron density. The red, orange, yellow and green segments of the lower bar indicate the fraction of residues that contain outliers for ≥ 3 , 2, 1 and 0 types of geometric quality criteria respectively. A grey segment represents the fraction of residues that are not modelled. The numeric value for each fraction is indicated below the corresponding segment, with a dot representing fractions $\leq 5\%$. The upper red bar (where present) indicates the fraction of residues that have poor fit to the electron density. The numeric value is given above the bar.

Mol	Chain	Length	Quality of chain
1	A	313	<p>4% 90% 7%</p>
1	B	313	<p>6% 88% 5% 6%</p>
1	C	313	<p>7% 89% 8%</p>
1	D	313	<p>5% 88% 5% 6%</p>
1	E	313	<p>% 90% 7%</p>

Continued on next page...

Continued from previous page...

Mol	Chain	Length	Quality of chain
1	F	313	 <p>13% 62% 35%</p>
1	G	313	 <p>8% 88% 5% 6%</p>
1	H	313	 <p>4% 91% 6%</p>

2 Entry composition [i](#)

There are 3 unique types of molecules in this entry. The entry contains 17538 atoms, of which 0 are hydrogens and 0 are deuteriums.

In the tables below, the ZeroOcc column contains the number of atoms modelled with zero occupancy, the AltConf column contains the number of residues with at least one atom in alternate conformation and the Trace column contains the number of residues modelled with at most 2 atoms.

- Molecule 1 is a protein called 3-hydroxyisobutyrate dehydrogenase.

Mol	Chain	Residues	Atoms					ZeroOcc	AltConf	Trace
			Total	C	N	O	S			
1	A	291	Total 2110	C 1327	N 366	O 406	S 11	0	0	0
1	B	293	Total 2127	C 1336	N 370	O 410	S 11	0	0	0
1	C	287	Total 2084	C 1311	N 361	O 401	S 11	0	0	0
1	D	293	Total 2127	C 1336	N 370	O 410	S 11	0	0	0
1	E	291	Total 2110	C 1327	N 366	O 406	S 11	0	0	0
1	F	202	Total 1476	C 925	N 260	O 284	S 7	0	0	0
1	G	293	Total 2126	C 1335	N 369	O 411	S 11	0	0	0
1	H	293	Total 2127	C 1336	N 370	O 410	S 11	0	0	0

There are 136 discrepancies between the modelled and reference sequences:

Chain	Residue	Modelled	Actual	Comment	Reference
A	-15	MET	-	initiating methionine	UNP A0A6S6PLJ6
A	-14	ASN	-	expression tag	UNP A0A6S6PLJ6
A	-13	HIS	-	expression tag	UNP A0A6S6PLJ6
A	-12	LYS	-	expression tag	UNP A0A6S6PLJ6
A	-11	VAL	-	expression tag	UNP A0A6S6PLJ6
A	-10	HIS	-	expression tag	UNP A0A6S6PLJ6
A	-9	HIS	-	expression tag	UNP A0A6S6PLJ6
A	-8	HIS	-	expression tag	UNP A0A6S6PLJ6
A	-7	HIS	-	expression tag	UNP A0A6S6PLJ6
A	-6	HIS	-	expression tag	UNP A0A6S6PLJ6
A	-5	HIS	-	expression tag	UNP A0A6S6PLJ6
A	-4	ILE	-	expression tag	UNP A0A6S6PLJ6
A	-3	GLU	-	expression tag	UNP A0A6S6PLJ6

Continued on next page...

Continued from previous page...

Chain	Residue	Modelled	Actual	Comment	Reference
A	-2	GLY	-	expression tag	UNP A0A6S6PLJ6
A	-1	ARG	-	expression tag	UNP A0A6S6PLJ6
A	0	HIS	-	expression tag	UNP A0A6S6PLJ6
A	297	TYR	-	expression tag	UNP A0A6S6PLJ6
B	-15	MET	-	initiating methionine	UNP A0A6S6PLJ6
B	-14	ASN	-	expression tag	UNP A0A6S6PLJ6
B	-13	HIS	-	expression tag	UNP A0A6S6PLJ6
B	-12	LYS	-	expression tag	UNP A0A6S6PLJ6
B	-11	VAL	-	expression tag	UNP A0A6S6PLJ6
B	-10	HIS	-	expression tag	UNP A0A6S6PLJ6
B	-9	HIS	-	expression tag	UNP A0A6S6PLJ6
B	-8	HIS	-	expression tag	UNP A0A6S6PLJ6
B	-7	HIS	-	expression tag	UNP A0A6S6PLJ6
B	-6	HIS	-	expression tag	UNP A0A6S6PLJ6
B	-5	HIS	-	expression tag	UNP A0A6S6PLJ6
B	-4	ILE	-	expression tag	UNP A0A6S6PLJ6
B	-3	GLU	-	expression tag	UNP A0A6S6PLJ6
B	-2	GLY	-	expression tag	UNP A0A6S6PLJ6
B	-1	ARG	-	expression tag	UNP A0A6S6PLJ6
B	0	HIS	-	expression tag	UNP A0A6S6PLJ6
B	297	TYR	-	expression tag	UNP A0A6S6PLJ6
C	-15	MET	-	initiating methionine	UNP A0A6S6PLJ6
C	-14	ASN	-	expression tag	UNP A0A6S6PLJ6
C	-13	HIS	-	expression tag	UNP A0A6S6PLJ6
C	-12	LYS	-	expression tag	UNP A0A6S6PLJ6
C	-11	VAL	-	expression tag	UNP A0A6S6PLJ6
C	-10	HIS	-	expression tag	UNP A0A6S6PLJ6
C	-9	HIS	-	expression tag	UNP A0A6S6PLJ6
C	-8	HIS	-	expression tag	UNP A0A6S6PLJ6
C	-7	HIS	-	expression tag	UNP A0A6S6PLJ6
C	-6	HIS	-	expression tag	UNP A0A6S6PLJ6
C	-5	HIS	-	expression tag	UNP A0A6S6PLJ6
C	-4	ILE	-	expression tag	UNP A0A6S6PLJ6
C	-3	GLU	-	expression tag	UNP A0A6S6PLJ6
C	-2	GLY	-	expression tag	UNP A0A6S6PLJ6
C	-1	ARG	-	expression tag	UNP A0A6S6PLJ6
C	0	HIS	-	expression tag	UNP A0A6S6PLJ6
C	297	TYR	-	expression tag	UNP A0A6S6PLJ6
D	-15	MET	-	initiating methionine	UNP A0A6S6PLJ6
D	-14	ASN	-	expression tag	UNP A0A6S6PLJ6
D	-13	HIS	-	expression tag	UNP A0A6S6PLJ6
D	-12	LYS	-	expression tag	UNP A0A6S6PLJ6

Continued on next page...

Continued from previous page...

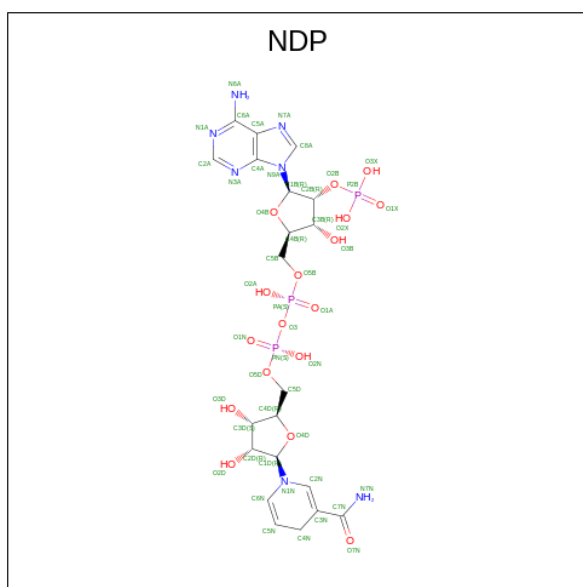
Chain	Residue	Modelled	Actual	Comment	Reference
D	-11	VAL	-	expression tag	UNP A0A6S6PLJ6
D	-10	HIS	-	expression tag	UNP A0A6S6PLJ6
D	-9	HIS	-	expression tag	UNP A0A6S6PLJ6
D	-8	HIS	-	expression tag	UNP A0A6S6PLJ6
D	-7	HIS	-	expression tag	UNP A0A6S6PLJ6
D	-6	HIS	-	expression tag	UNP A0A6S6PLJ6
D	-5	HIS	-	expression tag	UNP A0A6S6PLJ6
D	-4	ILE	-	expression tag	UNP A0A6S6PLJ6
D	-3	GLU	-	expression tag	UNP A0A6S6PLJ6
D	-2	GLY	-	expression tag	UNP A0A6S6PLJ6
D	-1	ARG	-	expression tag	UNP A0A6S6PLJ6
D	0	HIS	-	expression tag	UNP A0A6S6PLJ6
D	297	TYR	-	expression tag	UNP A0A6S6PLJ6
E	-15	MET	-	initiating methionine	UNP A0A6S6PLJ6
E	-14	ASN	-	expression tag	UNP A0A6S6PLJ6
E	-13	HIS	-	expression tag	UNP A0A6S6PLJ6
E	-12	LYS	-	expression tag	UNP A0A6S6PLJ6
E	-11	VAL	-	expression tag	UNP A0A6S6PLJ6
E	-10	HIS	-	expression tag	UNP A0A6S6PLJ6
E	-9	HIS	-	expression tag	UNP A0A6S6PLJ6
E	-8	HIS	-	expression tag	UNP A0A6S6PLJ6
E	-7	HIS	-	expression tag	UNP A0A6S6PLJ6
E	-6	HIS	-	expression tag	UNP A0A6S6PLJ6
E	-5	HIS	-	expression tag	UNP A0A6S6PLJ6
E	-4	ILE	-	expression tag	UNP A0A6S6PLJ6
E	-3	GLU	-	expression tag	UNP A0A6S6PLJ6
E	-2	GLY	-	expression tag	UNP A0A6S6PLJ6
E	-1	ARG	-	expression tag	UNP A0A6S6PLJ6
E	0	HIS	-	expression tag	UNP A0A6S6PLJ6
E	297	TYR	-	expression tag	UNP A0A6S6PLJ6
F	-15	MET	-	initiating methionine	UNP A0A6S6PLJ6
F	-14	ASN	-	expression tag	UNP A0A6S6PLJ6
F	-13	HIS	-	expression tag	UNP A0A6S6PLJ6
F	-12	LYS	-	expression tag	UNP A0A6S6PLJ6
F	-11	VAL	-	expression tag	UNP A0A6S6PLJ6
F	-10	HIS	-	expression tag	UNP A0A6S6PLJ6
F	-9	HIS	-	expression tag	UNP A0A6S6PLJ6
F	-8	HIS	-	expression tag	UNP A0A6S6PLJ6
F	-7	HIS	-	expression tag	UNP A0A6S6PLJ6
F	-6	HIS	-	expression tag	UNP A0A6S6PLJ6
F	-5	HIS	-	expression tag	UNP A0A6S6PLJ6
F	-4	ILE	-	expression tag	UNP A0A6S6PLJ6

Continued on next page...

Continued from previous page...

Chain	Residue	Modelled	Actual	Comment	Reference
F	-3	GLU	-	expression tag	UNP A0A6S6PLJ6
F	-2	GLY	-	expression tag	UNP A0A6S6PLJ6
F	-1	ARG	-	expression tag	UNP A0A6S6PLJ6
F	0	HIS	-	expression tag	UNP A0A6S6PLJ6
F	297	TYR	-	expression tag	UNP A0A6S6PLJ6
G	-15	MET	-	initiating methionine	UNP A0A6S6PLJ6
G	-14	ASN	-	expression tag	UNP A0A6S6PLJ6
G	-13	HIS	-	expression tag	UNP A0A6S6PLJ6
G	-12	LYS	-	expression tag	UNP A0A6S6PLJ6
G	-11	VAL	-	expression tag	UNP A0A6S6PLJ6
G	-10	HIS	-	expression tag	UNP A0A6S6PLJ6
G	-9	HIS	-	expression tag	UNP A0A6S6PLJ6
G	-8	HIS	-	expression tag	UNP A0A6S6PLJ6
G	-7	HIS	-	expression tag	UNP A0A6S6PLJ6
G	-6	HIS	-	expression tag	UNP A0A6S6PLJ6
G	-5	HIS	-	expression tag	UNP A0A6S6PLJ6
G	-4	ILE	-	expression tag	UNP A0A6S6PLJ6
G	-3	GLU	-	expression tag	UNP A0A6S6PLJ6
G	-2	GLY	-	expression tag	UNP A0A6S6PLJ6
G	-1	ARG	-	expression tag	UNP A0A6S6PLJ6
G	0	HIS	-	expression tag	UNP A0A6S6PLJ6
G	297	TYR	-	expression tag	UNP A0A6S6PLJ6
H	-15	MET	-	initiating methionine	UNP A0A6S6PLJ6
H	-14	ASN	-	expression tag	UNP A0A6S6PLJ6
H	-13	HIS	-	expression tag	UNP A0A6S6PLJ6
H	-12	LYS	-	expression tag	UNP A0A6S6PLJ6
H	-11	VAL	-	expression tag	UNP A0A6S6PLJ6
H	-10	HIS	-	expression tag	UNP A0A6S6PLJ6
H	-9	HIS	-	expression tag	UNP A0A6S6PLJ6
H	-8	HIS	-	expression tag	UNP A0A6S6PLJ6
H	-7	HIS	-	expression tag	UNP A0A6S6PLJ6
H	-6	HIS	-	expression tag	UNP A0A6S6PLJ6
H	-5	HIS	-	expression tag	UNP A0A6S6PLJ6
H	-4	ILE	-	expression tag	UNP A0A6S6PLJ6
H	-3	GLU	-	expression tag	UNP A0A6S6PLJ6
H	-2	GLY	-	expression tag	UNP A0A6S6PLJ6
H	-1	ARG	-	expression tag	UNP A0A6S6PLJ6
H	0	HIS	-	expression tag	UNP A0A6S6PLJ6
H	297	TYR	-	expression tag	UNP A0A6S6PLJ6

- Molecule 2 is NADPH DIHYDRO-NICOTINAMIDE-ADENINE-DINUCLEOTIDE PHOSPHATE (three-letter code: NDP) (formula: C₂₁H₃₀N₇O₁₇P₃) (labeled as "Ligand of Interest" by depositor).



Mol	Chain	Residues	Atoms					ZeroOcc	AltConf
			Total	C	N	O	P		
2	A	1	Total 48	C 21	N 7	O 17	P 3	0	0
2	B	1	Total 48	C 21	N 7	O 17	P 3	0	0
2	C	1	Total 48	C 21	N 7	O 17	P 3	0	0
2	D	1	Total 48	C 21	N 7	O 17	P 3	0	0
2	E	1	Total 48	C 21	N 7	O 17	P 3	0	0
2	G	1	Total 48	C 21	N 7	O 17	P 3	0	0
2	H	1	Total 48	C 21	N 7	O 17	P 3	0	0

- Molecule 3 is water.

Mol	Chain	Residues	Atoms		ZeroOcc	AltConf
3	A	113	Total 113	O 113	0	0
3	B	109	Total 109	O 109	0	0
3	C	110	Total 110	O 110	0	0
3	D	113	Total 113	O 113	0	0
3	E	121	Total 121	O 121	0	0

Continued on next page...

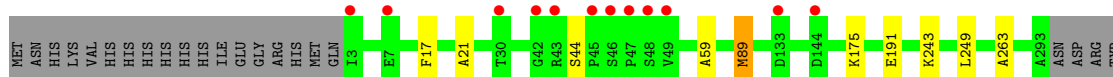
Continued from previous page...

Mol	Chain	Residues	Atoms	ZeroOcc	AltConf
3	F	89	Total O 89 89	0	0
3	G	121	Total O 121 121	0	0
3	H	139	Total O 139 139	0	0

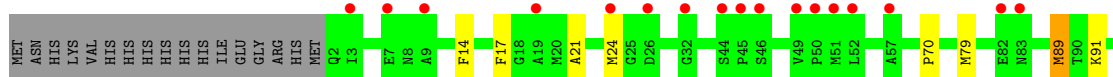
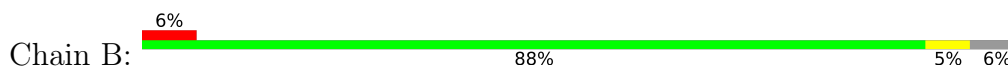
3 Residue-property plots [i](#)

These plots are drawn for all protein, RNA, DNA and oligosaccharide chains in the entry. The first graphic for a chain summarises the proportions of the various outlier classes displayed in the second graphic. The second graphic shows the sequence view annotated by issues in geometry and electron density. Residues are color-coded according to the number of geometric quality criteria for which they contain at least one outlier: green = 0, yellow = 1, orange = 2 and red = 3 or more. A red dot above a residue indicates a poor fit to the electron density ($RSRZ > 2$). Stretches of 2 or more consecutive residues without any outlier are shown as a green connector. Residues present in the sample, but not in the model, are shown in grey.

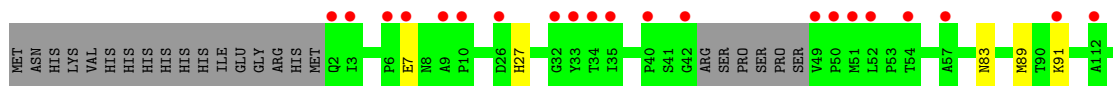
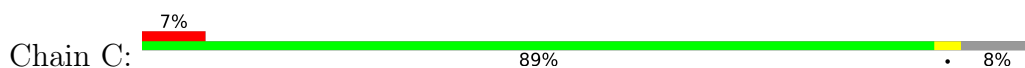
- Molecule 1: 3-hydroxyisobutyrate dehydrogenase



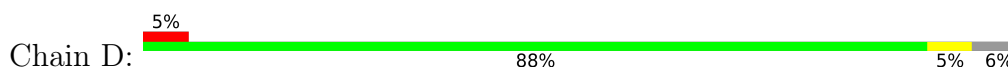
- Molecule 1: 3-hydroxyisobutyrate dehydrogenase



- Molecule 1: 3-hydroxyisobutyrate dehydrogenase



- Molecule 1: 3-hydroxyisobutyrate dehydrogenase



4 Data and refinement statistics

Property	Value	Source
Space group	P 1 21 1	Depositor
Cell constants a, b, c, α , β , γ	57.51Å 191.75Å 117.72Å 90.00° 95.09° 90.00°	Depositor
Resolution (Å)	49.16 – 1.68 49.16 – 1.68	Depositor EDS
% Data completeness (in resolution range)	99.8 (49.16-1.68) 99.8 (49.16-1.68)	Depositor EDS
R_{merge}	0.23	Depositor
R_{sym}	(Not available)	Depositor
$\langle I/\sigma(I) \rangle$ ¹	1.99 (at 1.68Å)	Xtrriage
Refinement program	PHENIX 1.19.2_4158	Depositor
R, R_{free}	0.199 , 0.214 0.198 , 0.213	Depositor DCC
R_{free} test set	285481 reflections (0.70%)	wwPDB-VP
Wilson B-factor (Å ²)	17.6	Xtrriage
Anisotropy	0.320	Xtrriage
Bulk solvent k_{sol} (e/Å ³), B_{sol} (Å ²)	0.37 , 33.3	EDS
L-test for twinning ²	$\langle L \rangle = 0.49$, $\langle L^2 \rangle = 0.32$	Xtrriage
Estimated twinning fraction	No twinning to report.	Xtrriage
F_o, F_c correlation	0.95	EDS
Total number of atoms	17538	wwPDB-VP
Average B, all atoms (Å ²)	22.0	wwPDB-VP

Xtrriage's analysis on translational NCS is as follows: *The largest off-origin peak in the Patterson function is 18.94% of the height of the origin peak. No significant pseudotranslation is detected.*

¹Intensities estimated from amplitudes.

²Theoretical values of $\langle |L| \rangle$, $\langle L^2 \rangle$ for acentric reflections are 0.5, 0.333 respectively for untwinned datasets, and 0.375, 0.2 for perfectly twinned datasets.

5 Model quality [i](#)

5.1 Standard geometry [i](#)

Bond lengths and bond angles in the following residue types are not validated in this section: NDP

The Z score for a bond length (or angle) is the number of standard deviations the observed value is removed from the expected value. A bond length (or angle) with $|Z| > 5$ is considered an outlier worth inspection. RMSZ is the root-mean-square of all Z scores of the bond lengths (or angles).

Mol	Chain	Bond lengths		Bond angles	
		RMSZ	# Z >5	RMSZ	# Z >5
1	A	0.36	0/2146	0.61	0/2918
1	B	0.36	0/2163	0.59	0/2941
1	C	0.35	0/2117	0.60	0/2876
1	D	0.36	0/2163	0.61	0/2941
1	E	0.38	0/2146	0.61	0/2918
1	F	0.33	0/1492	0.58	0/2020
1	G	0.35	0/2162	0.58	0/2940
1	H	0.36	0/2163	0.59	0/2941
All	All	0.36	0/16552	0.60	0/22495

There are no bond length outliers.

There are no bond angle outliers.

There are no chirality outliers.

There are no planarity outliers.

5.2 Too-close contacts [i](#)

In the following table, the Non-H and H(model) columns list the number of non-hydrogen atoms and hydrogen atoms in the chain respectively. The H(added) column lists the number of hydrogen atoms added and optimized by MolProbity. The Clashes column lists the number of clashes within the asymmetric unit, whereas Symm-Clashes lists symmetry-related clashes.

Mol	Chain	Non-H	H(model)	H(added)	Clashes	Symm-Clashes
1	A	2110	0	2164	6	0
1	B	2127	0	2178	11	0
1	C	2084	0	2135	7	0
1	D	2127	0	2178	13	0
1	E	2110	0	2164	9	0

Continued on next page...

Continued from previous page...

Mol	Chain	Non-H	H(model)	H(added)	Clashes	Symm-Clashes
1	F	1476	0	1515	5	0
1	G	2126	0	2174	10	0
1	H	2127	0	2178	7	0
2	A	48	0	26	2	0
2	B	48	0	26	2	0
2	C	48	0	26	2	0
2	D	48	0	26	5	0
2	E	48	0	26	2	0
2	G	48	0	26	1	0
2	H	48	0	26	3	0
3	A	113	0	0	0	0
3	B	109	0	0	2	0
3	C	110	0	0	1	0
3	D	113	0	0	1	0
3	E	121	0	0	1	0
3	F	89	0	0	0	0
3	G	121	0	0	1	0
3	H	139	0	0	0	0
All	All	17538	0	16868	66	0

The all-atom clashscore is defined as the number of clashes found per 1000 atoms (including hydrogen atoms). The all-atom clashscore for this structure is 2.

All (66) close contacts within the same asymmetric unit are listed below, sorted by their clash magnitude.

Atom-1	Atom-2	Interatomic distance (Å)	Clash overlap (Å)
1:E:290:LYS:NZ	3:E:401:HOH:O	1.76	1.17
1:G:91:LYS:HD2	1:G:91:LYS:H	1.37	0.88
1:E:175:LYS:HZ1	2:E:301:NDP:H5N	1.43	0.82
1:E:175:LYS:NZ	2:E:301:NDP:H5N	1.96	0.81
1:A:175:LYS:HZ1	2:A:301:NDP:H5N	1.44	0.80
1:H:175:LYS:NZ	2:H:301:NDP:H5N	1.97	0.78
1:C:175:LYS:HZ1	2:C:301:NDP:H5N	1.51	0.76
1:H:175:LYS:HZ1	2:H:301:NDP:H5N	1.51	0.74
1:A:175:LYS:NZ	2:A:301:NDP:H5N	2.03	0.73
1:D:175:LYS:NZ	2:D:301:NDP:H5N	2.06	0.70
1:C:175:LYS:NZ	2:C:301:NDP:H5N	2.10	0.67
1:F:175:LYS:HE3	1:F:179:ASN:HD21	1.61	0.64
1:F:191:GLU:HB3	1:H:259:VAL:HG12	1.86	0.58
1:E:286:ARG:O	1:E:290:LYS:HD3	2.04	0.57
1:B:91:LYS:HG2	1:B:117:GLY:HA3	1.87	0.55

Continued on next page...

Continued from previous page...

Atom-1	Atom-2	Interatomic distance (Å)	Clash overlap (Å)
1:G:91:LYS:HD2	1:G:91:LYS:N	2.15	0.55
1:D:175:LYS:HZ1	2:D:301:NDP:H5N	1.71	0.55
1:E:286:ARG:HG2	1:E:290:LYS:HD2	1.89	0.54
1:B:14:PHE:HE2	1:B:24:MET:CE	2.21	0.54
1:C:83:ASN:ND2	3:C:402:HOH:O	2.38	0.54
1:G:91:LYS:H	1:G:91:LYS:CD	2.11	0.54
2:G:301:NDP:H6N	3:G:425:HOH:O	2.09	0.53
1:A:59:ALA:HB1	1:A:89:MET:HG2	1.92	0.51
1:D:145:LYS:HD3	1:D:164:HIS:CE1	2.46	0.50
1:D:145:LYS:HD3	1:D:164:HIS:ND1	2.26	0.50
1:E:95:LEU:HD23	1:E:120:VAL:HG22	1.94	0.49
1:G:44:SER:HB3	1:G:51:MET:SD	2.51	0.49
1:E:85:ALA:O	1:E:89:MET:HG3	2.11	0.49
1:B:191:GLU:HB3	1:D:259:VAL:HG12	1.94	0.49
1:A:249:LEU:HD11	1:A:263:ALA:HA	1.94	0.48
1:B:79:MET:HG3	1:B:109:LEU:HD13	1.95	0.48
1:D:175:LYS:HZ3	2:D:301:NDP:H5N	1.79	0.48
1:G:17:PHE:HA	1:G:21:ALA:HB3	1.96	0.47
1:B:248:LEU:HD21	1:B:262:LEU:HD13	1.96	0.46
1:F:79:MET:HE2	1:F:79:MET:HA	1.97	0.46
1:B:17:PHE:HA	1:B:21:ALA:HB3	1.97	0.46
1:D:290:LYS:HD3	3:D:507:HOH:O	2.16	0.46
1:B:94:LEU:HD12	1:B:119:VAL:HB	1.98	0.45
1:A:17:PHE:HA	1:A:21:ALA:HB3	1.97	0.45
1:C:243:LYS:HE3	1:C:243:LYS:HB3	1.87	0.45
1:G:248:LEU:HD21	1:G:262:LEU:HD13	1.99	0.45
2:B:301:NDP:H6N	3:B:414:HOH:O	2.16	0.45
1:C:27:HIS:NE2	1:C:133:ASP:O	2.44	0.44
1:F:175:LYS:HE3	1:F:179:ASN:ND2	2.31	0.44
1:H:248:LEU:HD21	1:H:262:LEU:HD13	1.99	0.44
1:A:191:GLU:HB3	1:C:259:VAL:HG12	1.99	0.44
1:B:70:PRO:HA	2:B:301:NDP:H3D	2.00	0.43
1:D:18:GLY:HA3	2:D:301:NDP:O5B	2.18	0.43
1:E:259:VAL:HG12	1:G:191:GLU:HB3	2.00	0.43
1:G:194:ALA:HB2	1:G:288:MET:HB3	2.00	0.43
1:H:94:LEU:HD12	1:H:119:VAL:HB	2.00	0.43
1:B:194:ALA:HB2	1:B:288:MET:HB3	2.01	0.43
1:B:24:MET:HE2	1:B:24:MET:HB2	1.72	0.43
1:F:243:LYS:HE3	1:F:243:LYS:HB3	1.83	0.42
1:G:38:TYR:CE2	1:G:55:PRO:HG3	2.54	0.42
1:H:286:ARG:O	1:H:290:LYS:HG3	2.19	0.42

Continued on next page...

Continued from previous page...

Atom-1	Atom-2	Interatomic distance (Å)	Clash overlap (Å)
1:D:17:PHE:HA	1:D:21:ALA:HB3	2.01	0.42
1:E:243:LYS:HE3	1:E:243:LYS:HB3	1.94	0.42
1:D:248:LEU:HD21	1:D:262:LEU:HD13	2.02	0.42
1:C:7:GLU:H	1:C:7:GLU:HG3	1.61	0.42
1:D:54:THR:HG21	1:D:83:ASN:ND2	2.35	0.41
1:D:128:SER:OG	2:D:301:NDP:N7N	2.54	0.41
1:G:28:LEU:HD21	1:G:154:ILE:HG23	2.01	0.41
1:H:175:LYS:HZ3	2:H:301:NDP:H5N	1.81	0.41
1:B:89:MET:HB3	3:B:481:HOH:O	2.20	0.40
1:D:6:PRO:O	1:D:10:PRO:HD3	2.22	0.40

There are no symmetry-related clashes.

5.3 Torsion angles [i](#)

5.3.1 Protein backbone [i](#)

In the following table, the Percentiles column shows the percent Ramachandran outliers of the chain as a percentile score with respect to all X-ray entries followed by that with respect to entries of similar resolution.

The Analysed column shows the number of residues for which the backbone conformation was analysed, and the total number of residues.

Mol	Chain	Analysed	Favoured	Allowed	Outliers	Percentiles	
1	A	289/313 (92%)	285 (99%)	4 (1%)	0	100	100
1	B	291/313 (93%)	288 (99%)	3 (1%)	0	100	100
1	C	283/313 (90%)	278 (98%)	5 (2%)	0	100	100
1	D	291/313 (93%)	287 (99%)	4 (1%)	0	100	100
1	E	289/313 (92%)	286 (99%)	3 (1%)	0	100	100
1	F	192/313 (61%)	189 (98%)	3 (2%)	0	100	100
1	G	291/313 (93%)	287 (99%)	4 (1%)	0	100	100
1	H	291/313 (93%)	287 (99%)	4 (1%)	0	100	100
All	All	2217/2504 (88%)	2187 (99%)	30 (1%)	0	100	100

There are no Ramachandran outliers to report.

5.3.2 Protein sidechains [i](#)

In the following table, the Percentiles column shows the percent sidechain outliers of the chain as a percentile score with respect to all X-ray entries followed by that with respect to entries of similar resolution.

The Analysed column shows the number of residues for which the sidechain conformation was analysed, and the total number of residues.

Mol	Chain	Analysed	Rotameric	Outliers	Percentiles	
1	A	223/244 (91%)	220 (99%)	3 (1%)	65	50
1	B	225/244 (92%)	223 (99%)	2 (1%)	75	66
1	C	219/244 (90%)	216 (99%)	3 (1%)	62	47
1	D	225/244 (92%)	224 (100%)	1 (0%)	89	85
1	E	223/244 (91%)	221 (99%)	2 (1%)	75	66
1	F	156/244 (64%)	153 (98%)	3 (2%)	52	34
1	G	225/244 (92%)	221 (98%)	4 (2%)	54	36
1	H	225/244 (92%)	224 (100%)	1 (0%)	89	85
All	All	1721/1952 (88%)	1702 (99%)	19 (1%)	70	57

All (19) residues with a non-rotameric sidechain are listed below:

Mol	Chain	Res	Type
1	A	44	SER
1	A	89	MET
1	A	243	LYS
1	B	89	MET
1	B	243	LYS
1	C	89	MET
1	C	91	LYS
1	C	243	LYS
1	D	243	LYS
1	E	182	MET
1	E	243	LYS
1	F	145	LYS
1	F	182	MET
1	F	243	LYS
1	G	26	ASP
1	G	91	LYS
1	G	212	GLN
1	G	243	LYS
1	H	243	LYS

Sometimes sidechains can be flipped to improve hydrogen bonding and reduce clashes. All (6) such sidechains are listed below:

Mol	Chain	Res	Type
1	A	212	GLN
1	B	2	GLN
1	B	8	ASN
1	B	83	ASN
1	F	179	ASN
1	G	212	GLN

5.3.3 RNA [i](#)

There are no RNA molecules in this entry.

5.4 Non-standard residues in protein, DNA, RNA chains [i](#)

There are no non-standard protein/DNA/RNA residues in this entry.

5.5 Carbohydrates [i](#)

There are no oligosaccharides in this entry.

5.6 Ligand geometry [i](#)

7 ligands are modelled in this entry.

In the following table, the Counts columns list the number of bonds (or angles) for which Mogul statistics could be retrieved, the number of bonds (or angles) that are observed in the model and the number of bonds (or angles) that are defined in the Chemical Component Dictionary. The Link column lists molecule types, if any, to which the group is linked. The Z score for a bond length (or angle) is the number of standard deviations the observed value is removed from the expected value. A bond length (or angle) with $|Z| > 2$ is considered an outlier worth inspection. RMSZ is the root-mean-square of all Z scores of the bond lengths (or angles).

Mol	Type	Chain	Res	Link	Bond lengths			Bond angles		
					Counts	RMSZ	# Z > 2	Counts	RMSZ	# Z > 2
2	NDP	C	301	-	45,52,52	2.28	5 (11%)	53,80,80	1.66	9 (16%)
2	NDP	E	301	-	45,52,52	2.01	3 (6%)	53,80,80	1.59	11 (20%)
2	NDP	H	301	-	45,52,52	2.07	3 (6%)	53,80,80	1.60	11 (20%)
2	NDP	D	301	-	45,52,52	2.17	4 (8%)	53,80,80	1.62	11 (20%)
2	NDP	A	301	-	45,52,52	2.08	4 (8%)	53,80,80	1.70	11 (20%)

Mol	Type	Chain	Res	Link	Bond lengths			Bond angles		
					Counts	RMSZ	# Z > 2	Counts	RMSZ	# Z > 2
2	NDP	B	301	-	45,52,52	2.18	5 (11%)	53,80,80	1.65	10 (18%)
2	NDP	G	301	-	45,52,52	2.21	4 (8%)	53,80,80	1.68	10 (18%)

In the following table, the Chirals column lists the number of chiral outliers, the number of chiral centers analysed, the number of these observed in the model and the number defined in the Chemical Component Dictionary. Similar counts are reported in the Torsion and Rings columns. '-' means no outliers of that kind were identified.

Mol	Type	Chain	Res	Link	Chirals	Torsions	Rings
2	NDP	C	301	-	-	6/30/77/77	0/5/5/5
2	NDP	E	301	-	-	5/30/77/77	0/5/5/5
2	NDP	H	301	-	-	4/30/77/77	0/5/5/5
2	NDP	D	301	-	-	4/30/77/77	0/5/5/5
2	NDP	A	301	-	-	6/30/77/77	0/5/5/5
2	NDP	B	301	-	-	9/30/77/77	0/5/5/5
2	NDP	G	301	-	-	9/30/77/77	0/5/5/5

All (28) bond length outliers are listed below:

Mol	Chain	Res	Type	Atoms	Z	Observed(Å)	Ideal(Å)
2	C	301	NDP	P2B-O2B	13.00	1.83	1.59
2	D	301	NDP	P2B-O2B	12.47	1.82	1.59
2	G	301	NDP	P2B-O2B	12.18	1.82	1.59
2	B	301	NDP	P2B-O2B	12.08	1.82	1.59
2	E	301	NDP	P2B-O2B	11.43	1.80	1.59
2	A	301	NDP	P2B-O2B	11.36	1.80	1.59
2	H	301	NDP	P2B-O2B	11.27	1.80	1.59
2	B	301	NDP	PN-O5D	3.73	1.74	1.59
2	H	301	NDP	PN-O5D	3.56	1.73	1.59
2	G	301	NDP	PN-O5D	3.52	1.73	1.59
2	A	301	NDP	PN-O5D	3.43	1.73	1.59
2	C	301	NDP	PN-O5D	3.39	1.73	1.59
2	B	301	NDP	O2B-C2B	-3.12	1.32	1.44
2	E	301	NDP	PN-O5D	3.08	1.71	1.59
2	D	301	NDP	PN-O5D	3.01	1.71	1.59
2	C	301	NDP	O2B-C2B	-2.99	1.33	1.44
2	G	301	NDP	O2B-C2B	-2.95	1.33	1.44
2	A	301	NDP	O2B-C2B	-2.75	1.34	1.44
2	E	301	NDP	O2B-C2B	-2.68	1.34	1.44
2	D	301	NDP	O2B-C2B	-2.60	1.34	1.44

Continued on next page...

Continued from previous page...

Mol	Chain	Res	Type	Atoms	Z	Observed(Å)	Ideal(Å)
2	H	301	NDP	O2B-C2B	-2.57	1.34	1.44
2	B	301	NDP	C2A-N1A	2.10	1.37	1.33
2	B	301	NDP	PA-O5B	2.06	1.67	1.59
2	D	301	NDP	C3B-C4B	2.05	1.58	1.53
2	C	301	NDP	C4A-N3A	2.04	1.38	1.35
2	G	301	NDP	C3B-C4B	2.04	1.58	1.53
2	A	301	NDP	C7N-N7N	2.02	1.38	1.33
2	C	301	NDP	C2A-N1A	2.00	1.37	1.33

All (73) bond angle outliers are listed below:

Mol	Chain	Res	Type	Atoms	Z	Observed(°)	Ideal(°)
2	B	301	NDP	PN-O3-PA	-5.93	112.48	132.83
2	G	301	NDP	PN-O3-PA	-5.88	112.66	132.83
2	A	301	NDP	PN-O3-PA	-5.49	114.00	132.83
2	C	301	NDP	PN-O3-PA	-5.42	114.22	132.83
2	H	301	NDP	PN-O3-PA	-4.91	115.99	132.83
2	D	301	NDP	PN-O3-PA	-4.74	116.55	132.83
2	E	301	NDP	PN-O3-PA	-4.49	117.41	132.83
2	H	301	NDP	C3B-C2B-C1B	-3.41	96.49	102.89
2	D	301	NDP	O7N-C7N-C3N	3.36	127.23	120.90
2	A	301	NDP	O7N-C7N-C3N	3.33	127.16	120.90
2	H	301	NDP	O7N-C7N-C3N	3.31	127.13	120.90
2	E	301	NDP	O7N-C7N-C3N	3.25	127.03	120.90
2	C	301	NDP	O7N-C7N-C3N	3.12	126.78	120.90
2	E	301	NDP	C1B-N9A-C4A	-3.05	121.28	126.64
2	E	301	NDP	C3B-C2B-C1B	-3.04	97.18	102.89
2	G	301	NDP	C3B-C2B-C1B	-2.95	97.35	102.89
2	B	301	NDP	O2B-P2B-O1X	-2.90	98.20	109.39
2	A	301	NDP	C1B-N9A-C4A	-2.87	121.60	126.64
2	G	301	NDP	O2B-P2B-O1X	-2.86	98.35	109.39
2	C	301	NDP	O2B-P2B-O1X	-2.86	98.37	109.39
2	C	301	NDP	O5D-PN-O1N	-2.81	98.09	109.07
2	G	301	NDP	O5D-PN-O1N	-2.79	98.17	109.07
2	B	301	NDP	O7N-C7N-C3N	2.78	126.14	120.90
2	A	301	NDP	C3N-C2N-N1N	-2.76	119.16	123.10
2	A	301	NDP	C3B-C2B-C1B	-2.76	97.70	102.89
2	D	301	NDP	O2B-P2B-O1X	-2.74	98.83	109.39
2	D	301	NDP	O5D-PN-O1N	-2.72	98.43	109.07
2	D	301	NDP	C3B-C2B-C1B	-2.71	97.79	102.89
2	B	301	NDP	O3X-P2B-O2X	2.66	117.81	107.64
2	C	301	NDP	C3B-C2B-C1B	-2.66	97.89	102.89

Continued on next page...

Continued from previous page...

Mol	Chain	Res	Type	Atoms	Z	Observed(°)	Ideal(°)
2	G	301	NDP	O7N-C7N-C3N	2.65	125.90	120.90
2	D	301	NDP	O3X-P2B-O2X	2.62	117.64	107.64
2	G	301	NDP	O3X-P2B-O2X	2.62	117.64	107.64
2	A	301	NDP	O2B-P2B-O1X	-2.61	99.31	109.39
2	C	301	NDP	O3X-P2B-O2X	2.61	117.61	107.64
2	G	301	NDP	PA-O5B-C5B	-2.59	106.52	121.68
2	B	301	NDP	O5D-PN-O1N	-2.55	99.08	109.07
2	D	301	NDP	C1B-N9A-C4A	-2.55	122.15	126.64
2	H	301	NDP	O5D-PN-O1N	-2.54	99.14	109.07
2	H	301	NDP	O3X-P2B-O2X	2.52	117.26	107.64
2	A	301	NDP	O3X-P2B-O2X	2.52	117.25	107.64
2	A	301	NDP	O5D-PN-O1N	-2.48	99.38	109.07
2	B	301	NDP	PA-O5B-C5B	-2.47	107.21	121.68
2	E	301	NDP	O5D-PN-O1N	-2.47	99.43	109.07
2	C	301	NDP	PA-O5B-C5B	-2.45	107.31	121.68
2	A	301	NDP	PA-O5B-C5B	-2.45	107.33	121.68
2	E	301	NDP	O2B-P2B-O1X	-2.44	99.96	109.39
2	G	301	NDP	PN-O5D-C5D	-2.43	107.46	121.68
2	H	301	NDP	C3N-C7N-N7N	-2.42	113.37	117.67
2	E	301	NDP	O3X-P2B-O2X	2.41	116.85	107.64
2	H	301	NDP	C1B-N9A-C4A	-2.41	122.41	126.64
2	A	301	NDP	C3N-C7N-N7N	-2.41	113.39	117.67
2	D	301	NDP	C3N-C7N-N7N	-2.40	113.40	117.67
2	B	301	NDP	C3B-C2B-C1B	-2.39	98.39	102.89
2	C	301	NDP	O2N-PN-O1N	2.36	123.90	112.24
2	H	301	NDP	O2B-P2B-O1X	-2.33	100.40	109.39
2	G	301	NDP	O2N-PN-O1N	2.29	123.58	112.24
2	B	301	NDP	O2N-PN-O1N	2.27	123.44	112.24
2	D	301	NDP	PA-O5B-C5B	-2.24	108.55	121.68
2	B	301	NDP	PN-O5D-C5D	-2.22	108.65	121.68
2	C	301	NDP	PN-O5D-C5D	-2.22	108.68	121.68
2	H	301	NDP	PA-O5B-C5B	-2.22	108.69	121.68
2	A	301	NDP	O2N-PN-O1N	2.21	123.16	112.24
2	H	301	NDP	C3N-C2N-N1N	-2.19	119.97	123.10
2	E	301	NDP	PA-O5B-C5B	-2.17	108.96	121.68
2	H	301	NDP	O2N-PN-O1N	2.16	122.92	112.24
2	G	301	NDP	C1B-N9A-C4A	-2.13	122.89	126.64
2	D	301	NDP	C3N-C2N-N1N	-2.12	120.07	123.10
2	E	301	NDP	O2N-PN-O1N	2.10	122.61	112.24
2	D	301	NDP	O2N-PN-O1N	2.08	122.55	112.24
2	E	301	NDP	C3N-C7N-N7N	-2.08	113.97	117.67
2	E	301	NDP	C3N-C2N-N1N	-2.05	120.17	123.10

Continued on next page...

Continued from previous page...

Mol	Chain	Res	Type	Atoms	Z	Observed(°)	Ideal(°)
2	B	301	NDP	O4B-C4B-C3B	2.02	109.11	105.11

There are no chirality outliers.

All (43) torsion outliers are listed below:

Mol	Chain	Res	Type	Atoms
2	A	301	NDP	C2B-O2B-P2B-O3X
2	B	301	NDP	C2B-O2B-P2B-O3X
2	D	301	NDP	C2B-O2B-P2B-O3X
2	G	301	NDP	C2B-O2B-P2B-O3X
2	H	301	NDP	C2B-O2B-P2B-O3X
2	A	301	NDP	O4B-C4B-C5B-O5B
2	C	301	NDP	O4D-C4D-C5D-O5D
2	G	301	NDP	O4D-C4D-C5D-O5D
2	G	301	NDP	C2D-C1D-N1N-C6N
2	A	301	NDP	C3B-C4B-C5B-O5B
2	B	301	NDP	O4D-C4D-C5D-O5D
2	C	301	NDP	O4D-C1D-N1N-C6N
2	G	301	NDP	C2D-C1D-N1N-C2N
2	B	301	NDP	C2D-C1D-N1N-C6N
2	C	301	NDP	O4B-C4B-C5B-O5B
2	A	301	NDP	O4D-C1D-N1N-C6N
2	B	301	NDP	O4B-C4B-C5B-O5B
2	E	301	NDP	C2B-O2B-P2B-O3X
2	G	301	NDP	O4B-C4B-C5B-O5B
2	D	301	NDP	O4D-C1D-N1N-C6N
2	E	301	NDP	O4D-C1D-N1N-C6N
2	G	301	NDP	O4D-C1D-N1N-C6N
2	H	301	NDP	O4D-C1D-N1N-C6N
2	A	301	NDP	C5B-O5B-PA-O1A
2	C	301	NDP	C3D-C4D-C5D-O5D
2	B	301	NDP	O4D-C1D-N1N-C6N
2	H	301	NDP	O4D-C4D-C5D-O5D
2	B	301	NDP	C2D-C1D-N1N-C2N
2	G	301	NDP	C3D-C4D-C5D-O5D
2	G	301	NDP	O4D-C1D-N1N-C2N
2	D	301	NDP	O4B-C4B-C5B-O5B
2	A	301	NDP	O4D-C4D-C5D-O5D
2	B	301	NDP	C3D-C4D-C5D-O5D
2	E	301	NDP	O4B-C4B-C5B-O5B
2	E	301	NDP	O4D-C4D-C5D-O5D
2	B	301	NDP	O4D-C1D-N1N-C2N

Continued on next page...

Continued from previous page...

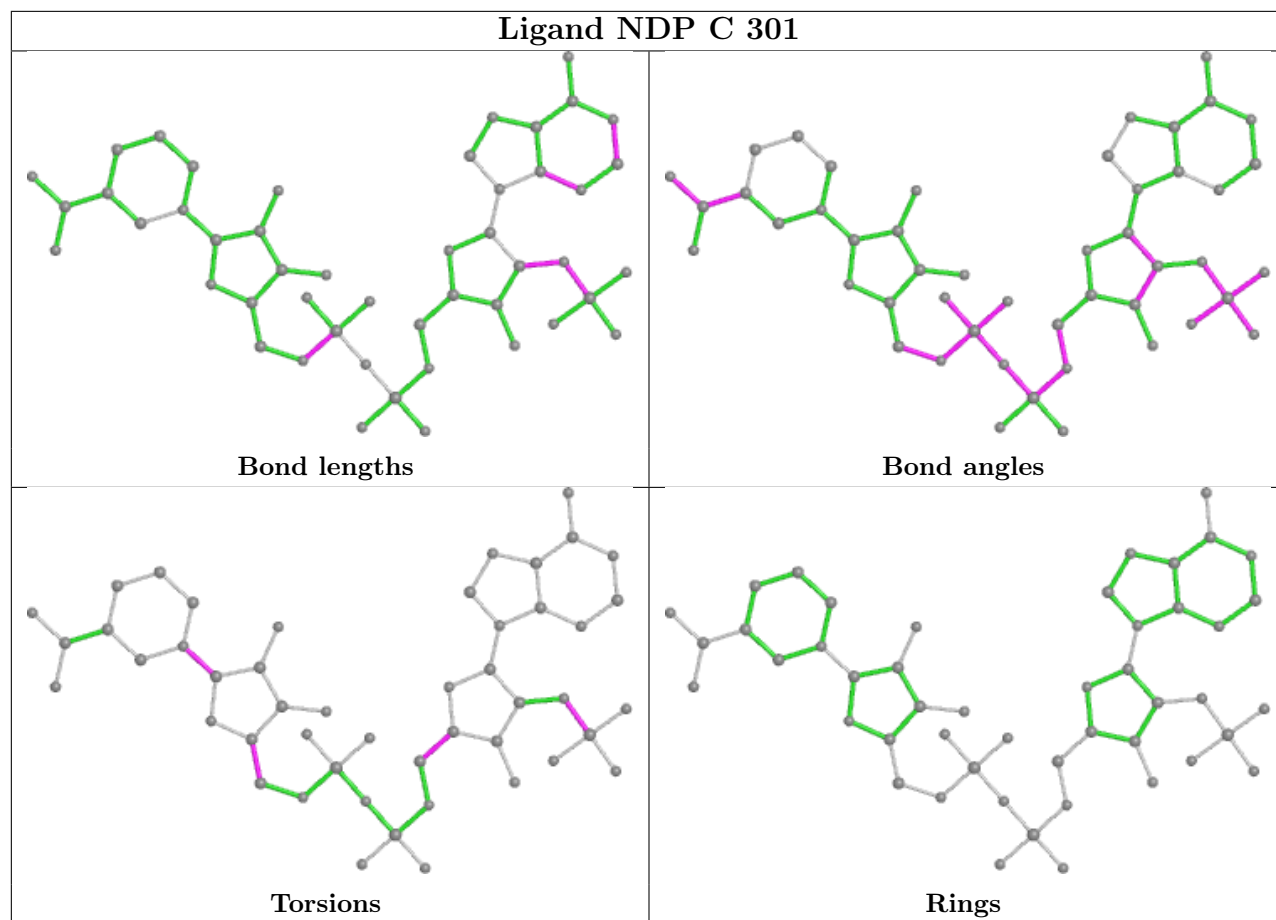
Mol	Chain	Res	Type	Atoms
2	C	301	NDP	C2B-O2B-P2B-O2X
2	D	301	NDP	C2B-O2B-P2B-O2X
2	E	301	NDP	C2B-O2B-P2B-O2X
2	G	301	NDP	C2N-C3N-C7N-N7N
2	B	301	NDP	C3B-C4B-C5B-O5B
2	C	301	NDP	C3B-C4B-C5B-O5B
2	H	301	NDP	O4B-C4B-C5B-O5B

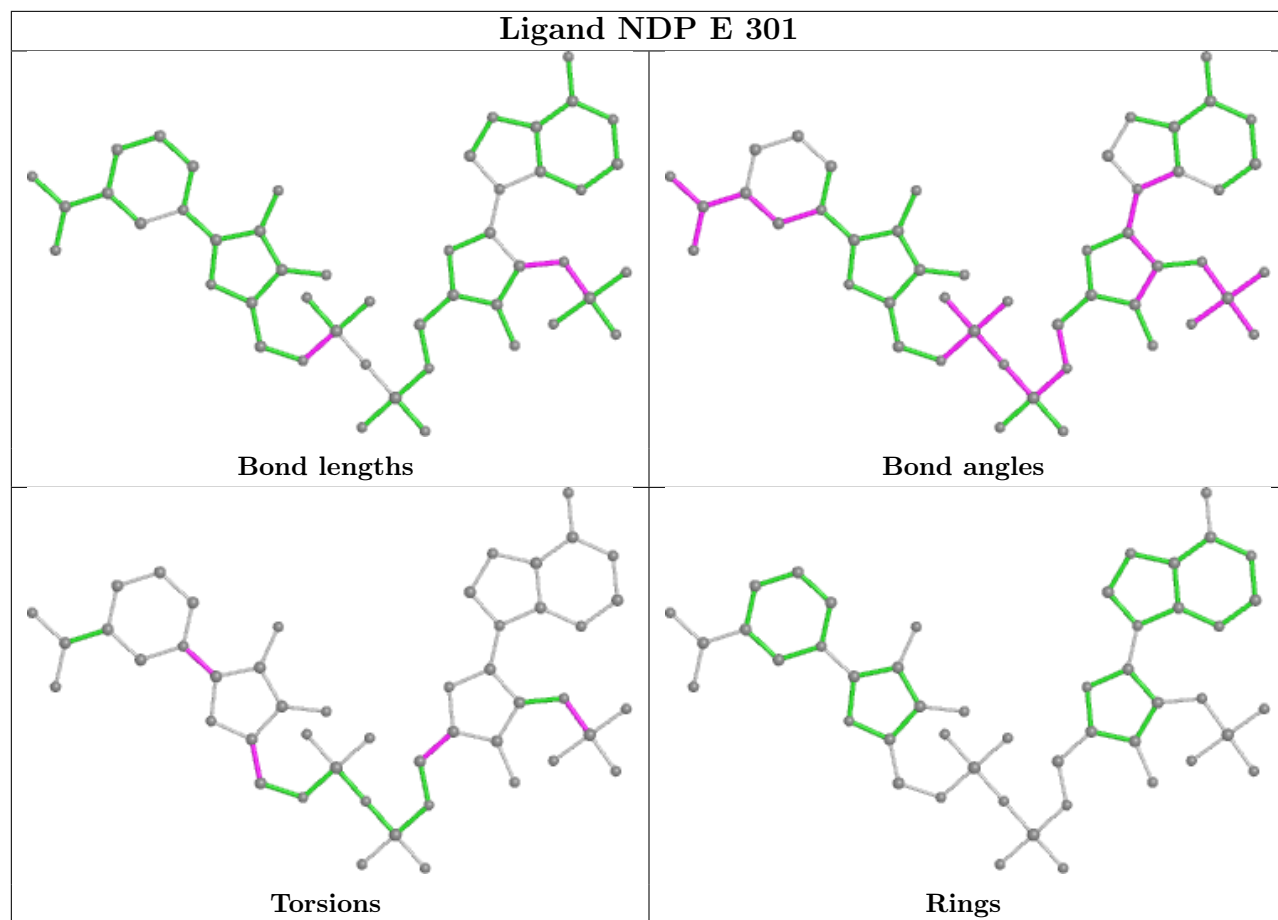
There are no ring outliers.

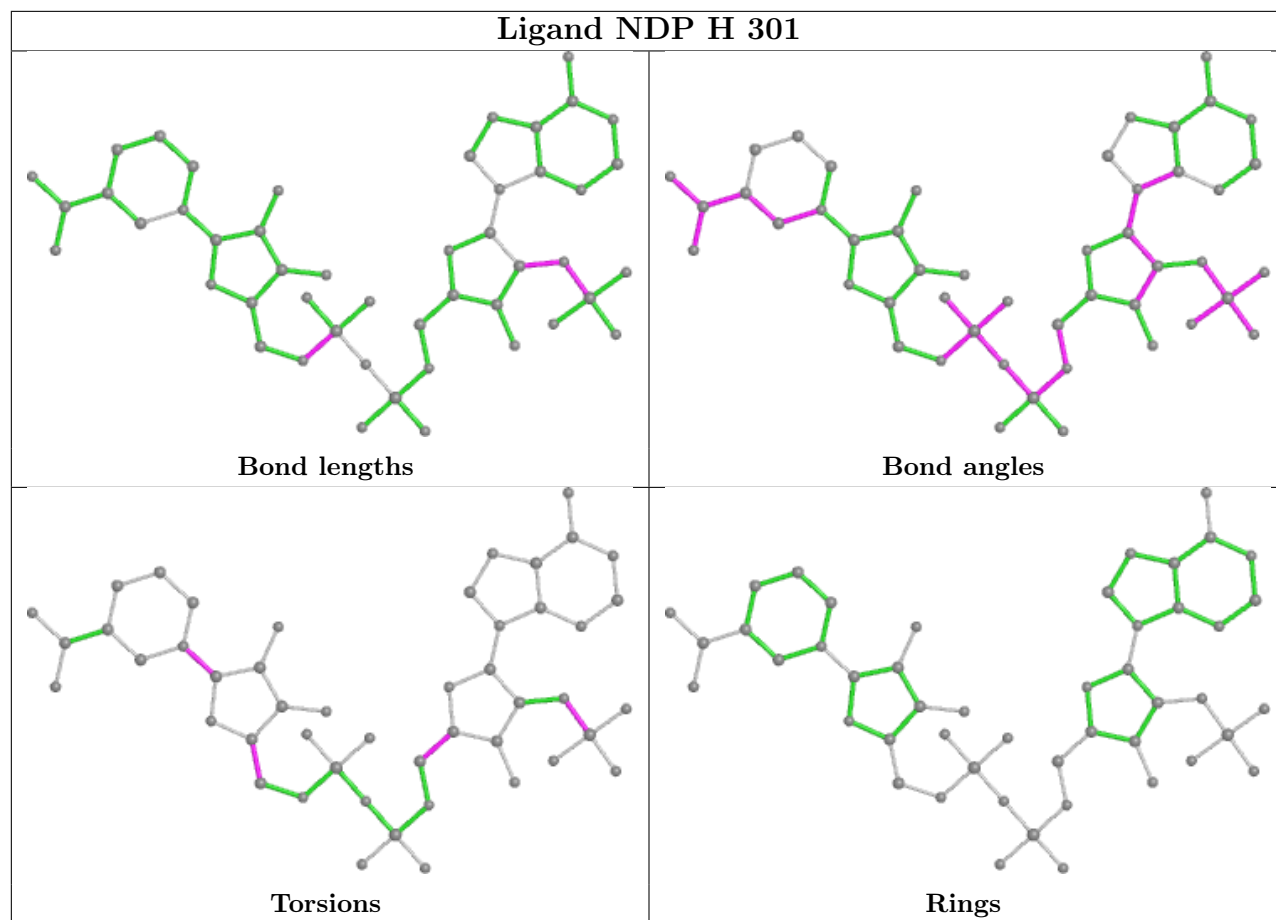
7 monomers are involved in 17 short contacts:

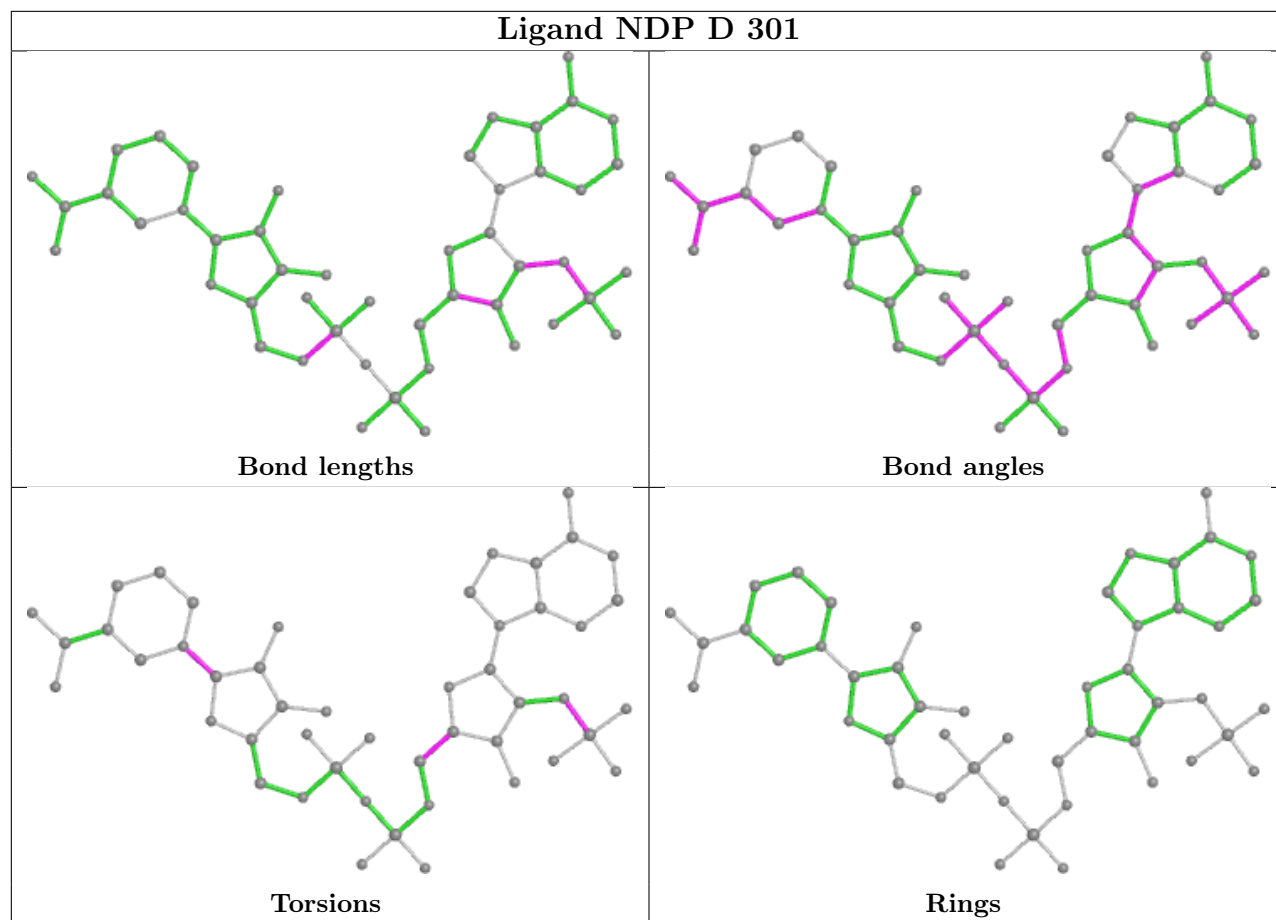
Mol	Chain	Res	Type	Clashes	Symm-Clashes
2	C	301	NDP	2	0
2	E	301	NDP	2	0
2	H	301	NDP	3	0
2	D	301	NDP	5	0
2	A	301	NDP	2	0
2	B	301	NDP	2	0
2	G	301	NDP	1	0

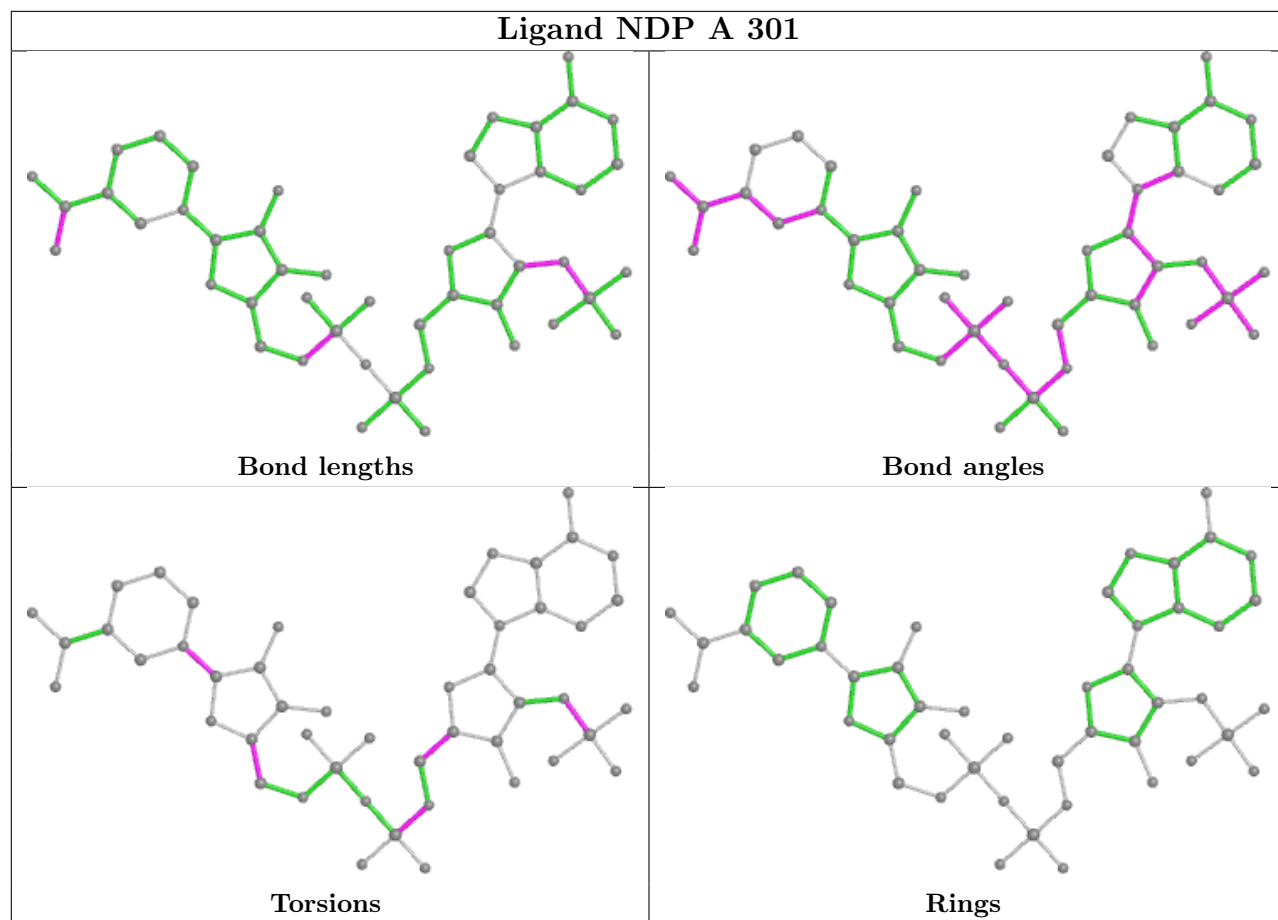
The following is a two-dimensional graphical depiction of Mogul quality analysis of bond lengths, bond angles, torsion angles, and ring geometry for all instances of the Ligand of Interest. In addition, ligands with molecular weight > 250 and outliers as shown on the validation Tables will also be included. For torsion angles, if less than 5% of the Mogul distribution of torsion angles is within 10 degrees of the torsion angle in question, then that torsion angle is considered an outlier. Any bond that is central to one or more torsion angles identified as an outlier by Mogul will be highlighted in the graph. For rings, the root-mean-square deviation (RMSD) between the ring in question and similar rings identified by Mogul is calculated over all ring torsion angles. If the average RMSD is greater than 60 degrees and the minimal RMSD between the ring in question and any Mogul-identified rings is also greater than 60 degrees, then that ring is considered an outlier. The outliers are highlighted in purple. The color gray indicates Mogul did not find sufficient equivalents in the CSD to analyse the geometry.

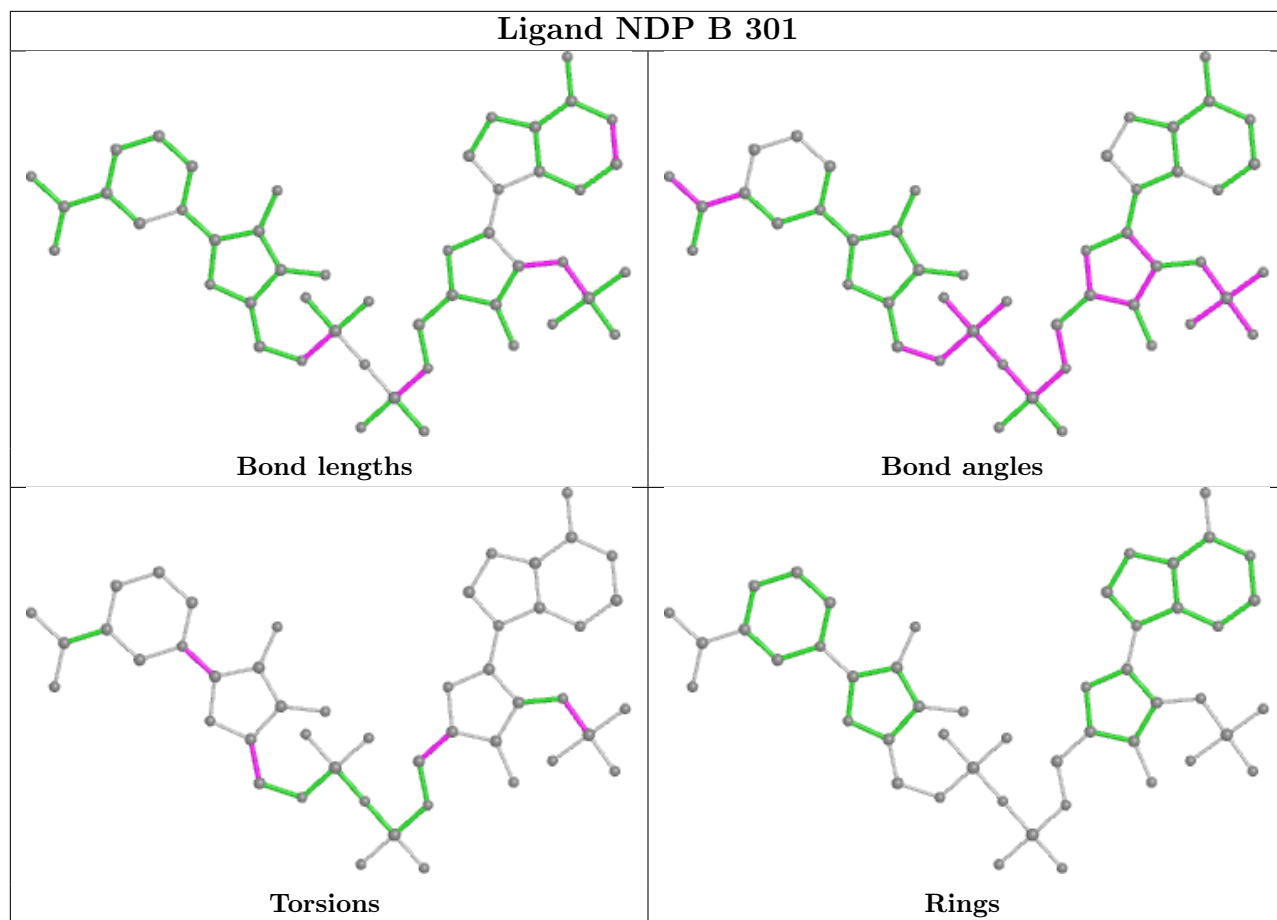


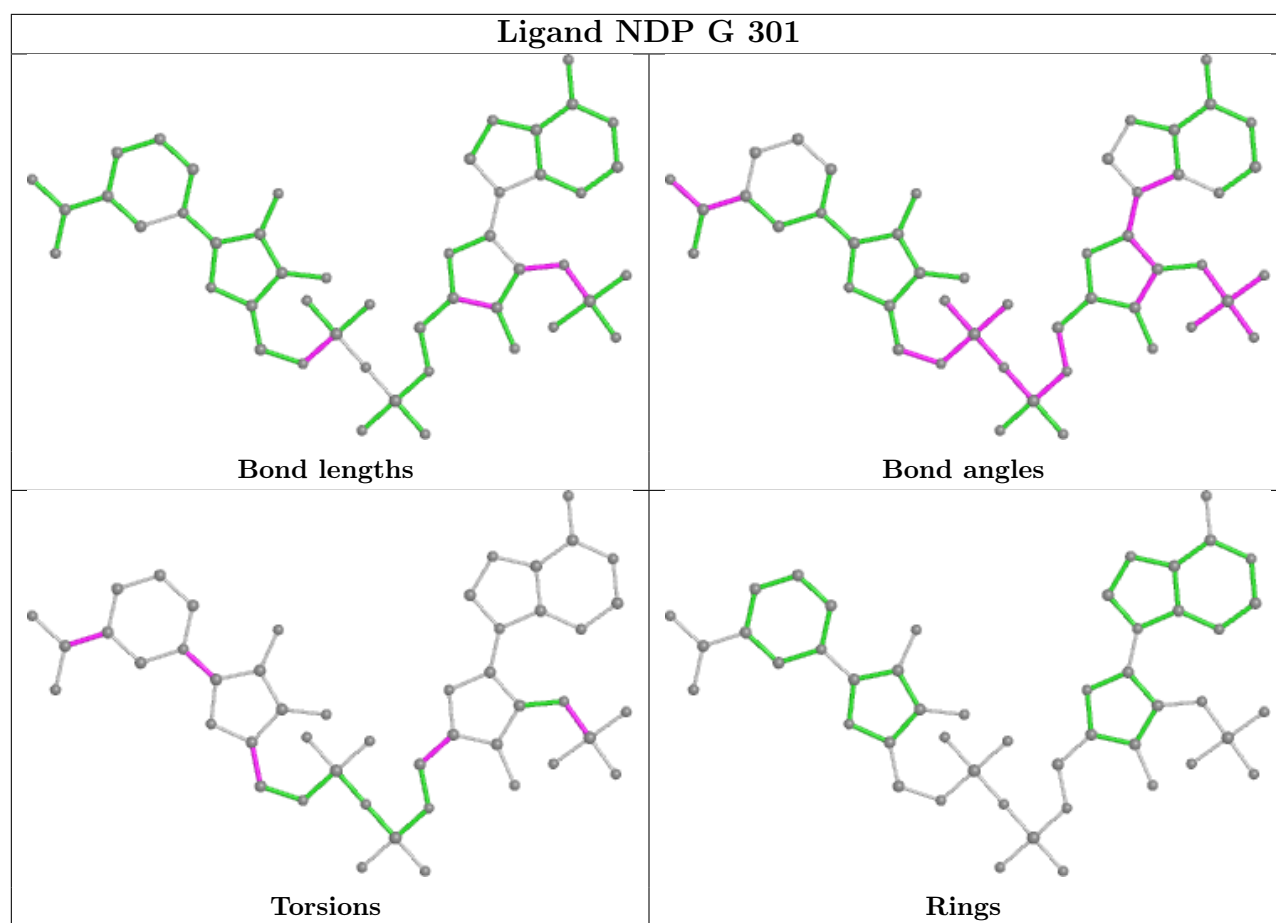












5.7 Other polymers [i](#)

There are no such residues in this entry.

5.8 Polymer linkage issues [i](#)

There are no chain breaks in this entry.

6 Fit of model and data

6.1 Protein, DNA and RNA chains

In the following table, the column labelled ‘#RSRZ > 2’ contains the number (and percentage) of RSRZ outliers, followed by percent RSRZ outliers for the chain as percentile scores relative to all X-ray entries and entries of similar resolution. The OWAB column contains the minimum, median, 95th percentile and maximum values of the occupancy-weighted average B-factor per residue. The column labelled ‘Q < 0.9’ lists the number of (and percentage) of residues with an average occupancy less than 0.9.

Mol	Chain	Analysed	<RSRZ>	#RSRZ>2	OWAB(Å ²)	Q<0.9
1	A	291/313 (92%)	0.29	12 (4%) 42 45	10, 20, 35, 47	0
1	B	293/313 (93%)	0.35	19 (6%) 26 28	10, 21, 37, 49	0
1	C	287/313 (91%)	0.47	22 (7%) 21 22	12, 22, 38, 45	0
1	D	293/313 (93%)	0.23	16 (5%) 32 34	11, 20, 36, 48	0
1	E	291/313 (92%)	-0.11	3 (1%) 79 82	10, 18, 28, 38	0
1	F	202/313 (64%)	0.59	41 (20%) 3 3	11, 19, 45, 52	0
1	G	293/313 (93%)	0.49	26 (8%) 17 17	10, 23, 41, 52	0
1	H	293/313 (93%)	0.12	11 (3%) 44 48	10, 19, 32, 46	0
All	All	2243/2504 (89%)	0.29	150 (6%) 25 27	10, 20, 38, 52	0

All (150) RSRZ outliers are listed below:

Mol	Chain	Res	Type	RSRZ
1	A	3	ILE	6.7
1	F	151	ALA	5.7
1	G	45	PRO	5.1
1	F	149	ALA	4.9
1	B	45	PRO	4.8
1	F	92	GLY	4.7
1	F	94	LEU	4.4
1	F	162	THR	4.3
1	F	85	ALA	4.1
1	F	67	VAL	4.1
1	C	42	GLY	4.1
1	H	48	SER	4.0
1	G	3	ILE	4.0
1	A	47	PRO	3.9
1	F	66	VAL	3.9
1	F	125	VAL	3.9

Continued on next page...

Continued from previous page...

Mol	Chain	Res	Type	RSRZ
1	B	9	ALA	3.8
1	F	148	VAL	3.7
1	C	3	ILE	3.7
1	F	86	LEU	3.7
1	F	68	CYS	3.7
1	F	80	TYR	3.6
1	E	47	PRO	3.6
1	D	47	PRO	3.6
1	F	70	PRO	3.6
1	C	49	VAL	3.5
1	G	44	SER	3.5
1	F	65	VAL	3.5
1	G	295	ASP	3.3
1	F	84	GLY	3.3
1	H	47	PRO	3.3
1	G	48	SER	3.3
1	A	46	SER	3.2
1	A	48	SER	3.2
1	D	43	ARG	3.2
1	G	10	PRO	3.2
1	G	32	GLY	3.1
1	F	116	HIS	3.1
1	F	74	ALA	3.1
1	G	49	VAL	3.1
1	B	44	SER	3.1
1	F	127	GLY	3.0
1	F	77	ALA	3.0
1	F	69	VAL	3.0
1	F	96	ILE	2.9
1	C	91	LYS	2.9
1	C	9	ALA	2.9
1	F	139	ILE	2.8
1	G	47	PRO	2.8
1	B	46	SER	2.7
1	F	118	VAL	2.7
1	C	51	MET	2.7
1	C	2	GLN	2.7
1	F	99	SER	2.7
1	D	3	ILE	2.7
1	C	52	LEU	2.6
1	F	163	ILE	2.6
1	C	7	GLU	2.6

Continued on next page...

Continued from previous page...

Mol	Chain	Res	Type	RSRZ
1	B	83	ASN	2.6
1	G	46	SER	2.6
1	H	294	ASN	2.6
1	A	133	ASP	2.5
1	F	119	VAL	2.5
1	G	51	MET	2.5
1	F	93	SER	2.5
1	C	6	PRO	2.5
1	B	26	ASP	2.5
1	D	46	SER	2.5
1	B	294	ASN	2.5
1	D	52	LEU	2.4
1	F	145	LYS	2.4
1	F	76	ALA	2.4
1	G	57	ALA	2.4
1	G	43	ARG	2.4
1	C	32	GLY	2.4
1	G	6	PRO	2.4
1	H	43	ARG	2.4
1	B	52	LEU	2.4
1	F	295	ASP	2.4
1	B	50	PRO	2.4
1	C	50	PRO	2.4
1	B	49	VAL	2.4
1	C	33	TYR	2.4
1	B	24	MET	2.3
1	D	34	THR	2.3
1	G	30	THR	2.3
1	G	91	LYS	2.3
1	A	7	GLU	2.3
1	F	147	ASP	2.3
1	G	33	TYR	2.3
1	B	7	GLU	2.3
1	C	10	PRO	2.3
1	G	50	PRO	2.3
1	B	19	ALA	2.3
1	F	123	ALA	2.3
1	F	79	MET	2.3
1	H	82	GLU	2.3
1	B	3	ILE	2.3
1	E	3	ILE	2.3
1	D	82	GLU	2.3

Continued on next page...

Continued from previous page...

Mol	Chain	Res	Type	RSRZ
1	D	48	SER	2.3
1	A	43	ARG	2.2
1	E	43	ARG	2.2
1	G	9	ALA	2.2
1	C	34	THR	2.2
1	F	98	THR	2.2
1	H	46	SER	2.2
1	D	45	PRO	2.2
1	F	146	ASP	2.2
1	G	7	GLU	2.2
1	H	45	PRO	2.2
1	H	42	GLY	2.2
1	D	31	ALA	2.2
1	F	100	SER	2.2
1	A	30	THR	2.2
1	H	26	ASP	2.2
1	B	32	GLY	2.2
1	G	5	SER	2.1
1	B	94	LEU	2.1
1	D	49	VAL	2.1
1	F	95	LEU	2.1
1	D	11	ARG	2.1
1	B	82	GLU	2.1
1	A	144	ASP	2.1
1	C	26	ASP	2.1
1	D	26	ASP	2.1
1	H	212	GLN	2.1
1	G	19	ALA	2.1
1	C	35	ILE	2.1
1	A	42	GLY	2.1
1	B	51	MET	2.1
1	C	40	PRO	2.1
1	D	51	MET	2.1
1	H	40	PRO	2.1
1	A	49	VAL	2.1
1	F	120	VAL	2.1
1	C	57	ALA	2.1
1	C	112	ALA	2.1
1	G	34	THR	2.1
1	F	150	ARG	2.1
1	B	57	ALA	2.0
1	D	41	SER	2.0

Continued on next page...

Continued from previous page...

Mol	Chain	Res	Type	RSRZ
1	G	78	SER	2.0
1	A	45	PRO	2.0
1	G	52	LEU	2.0
1	D	111	GLU	2.0
1	C	54	THR	2.0
1	C	146	ASP	2.0
1	F	144	ASP	2.0
1	G	13	GLY	2.0

6.2 Non-standard residues in protein, DNA, RNA chains [i](#)

There are no non-standard protein/DNA/RNA residues in this entry.

6.3 Carbohydrates [i](#)

There are no monosaccharides in this entry.

6.4 Ligands [i](#)

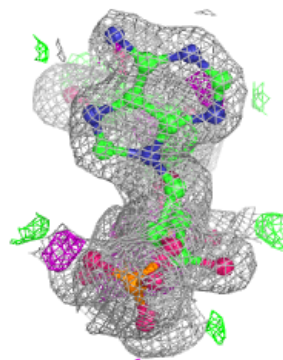
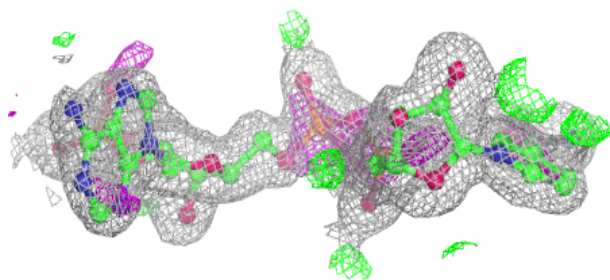
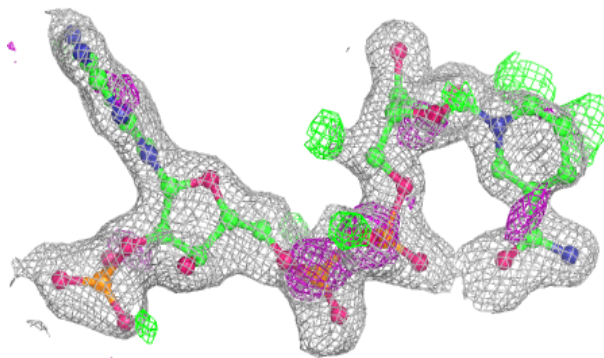
In the following table, the Atoms column lists the number of modelled atoms in the group and the number defined in the chemical component dictionary. The B-factors column lists the minimum, median, 95th percentile and maximum values of B factors of atoms in the group. The column labelled 'Q< 0.9' lists the number of atoms with occupancy less than 0.9.

Mol	Type	Chain	Res	Atoms	RSCC	RSR	B-factors(Å ²)	Q<0.9
2	NDP	B	301	48/48	0.88	0.12	21,31,38,41	0
2	NDP	G	301	48/48	0.89	0.11	24,31,39,43	0
2	NDP	C	301	48/48	0.90	0.10	23,30,42,44	0
2	NDP	A	301	48/48	0.92	0.10	20,26,33,36	0
2	NDP	D	301	48/48	0.94	0.08	20,24,31,35	0
2	NDP	H	301	48/48	0.94	0.08	16,23,29,33	0
2	NDP	E	301	48/48	0.95	0.07	15,20,27,30	0

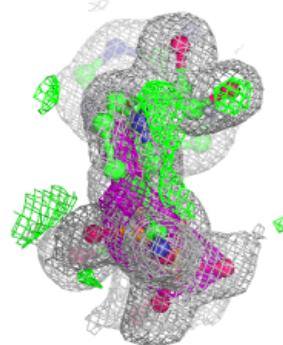
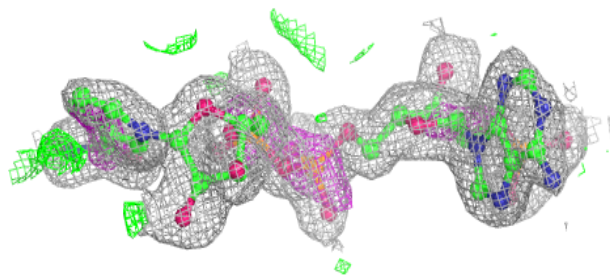
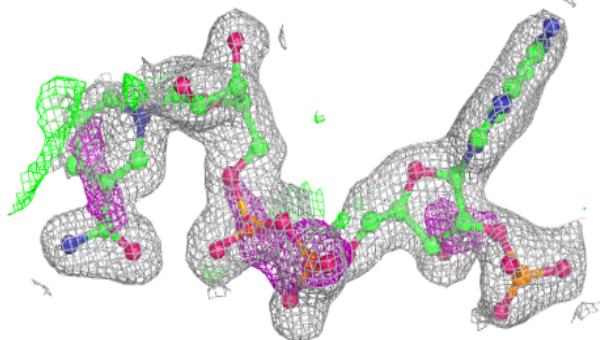
The following is a graphical depiction of the model fit to experimental electron density of all instances of the Ligand of Interest. In addition, ligands with molecular weight > 250 and outliers as shown on the geometry validation Tables will also be included. Each fit is shown from different orientation to approximate a three-dimensional view.

Electron density around NDP B 301:

$2mF_o-DF_c$ (at 0.7 rnsd) in gray
 mF_o-DF_c (at 3 rnsd) in purple (negative)
and green (positive)

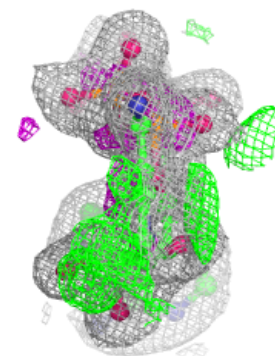
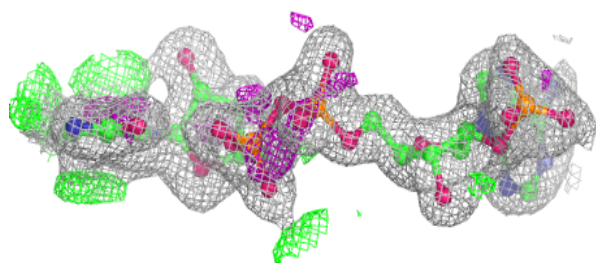
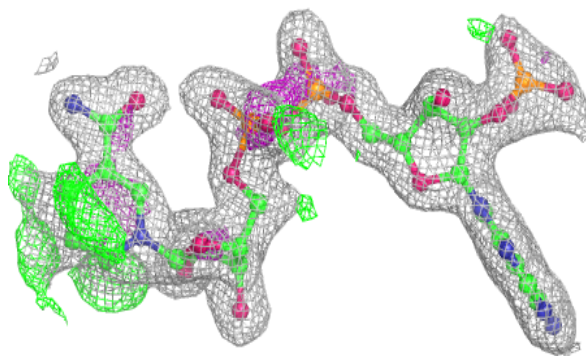
**Electron density around NDP G 301:**

$2mF_o-DF_c$ (at 0.7 rnsd) in gray
 mF_o-DF_c (at 3 rnsd) in purple (negative)
and green (positive)

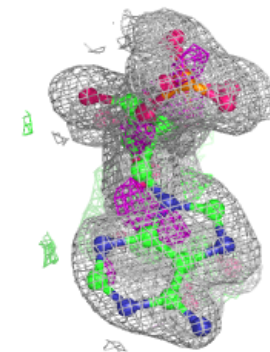
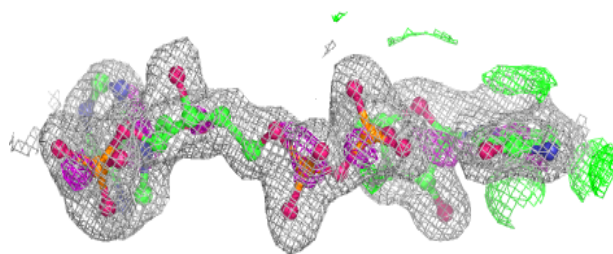
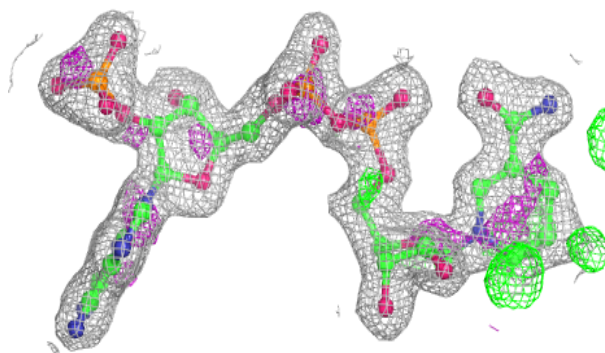


Electron density around NDP C 301:

$2mF_o-DF_c$ (at 0.7 rmsd) in gray
 mF_o-DF_c (at 3 rmsd) in purple (negative)
and green (positive)

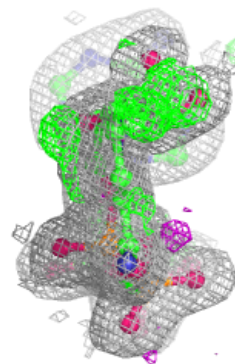
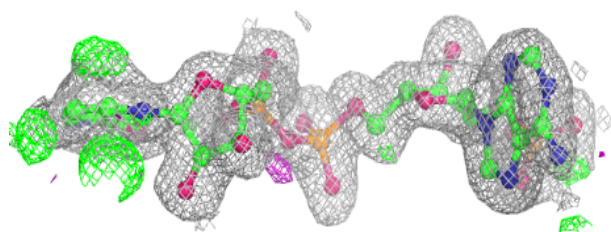
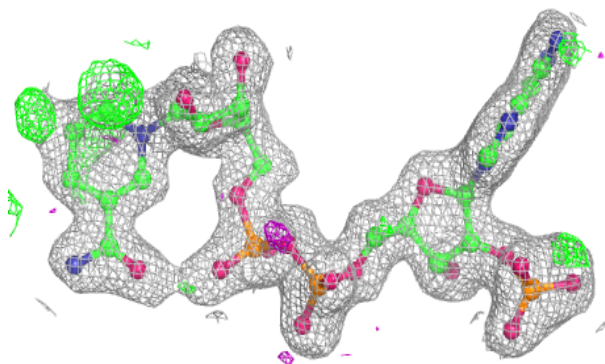
**Electron density around NDP A 301:**

$2mF_o-DF_c$ (at 0.7 rmsd) in gray
 mF_o-DF_c (at 3 rmsd) in purple (negative)
and green (positive)

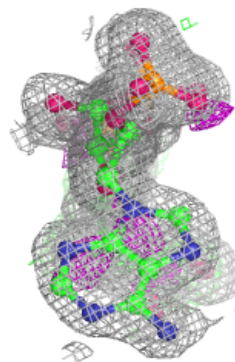
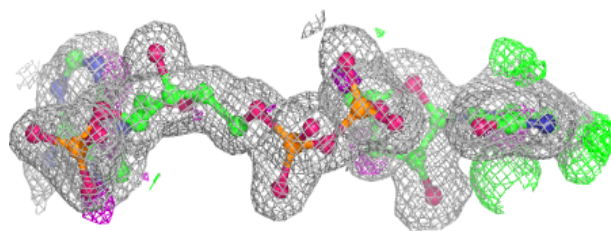
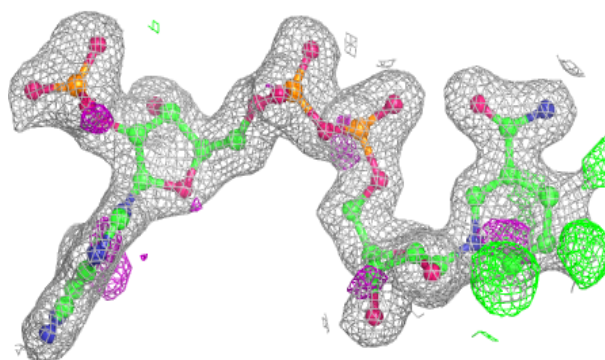


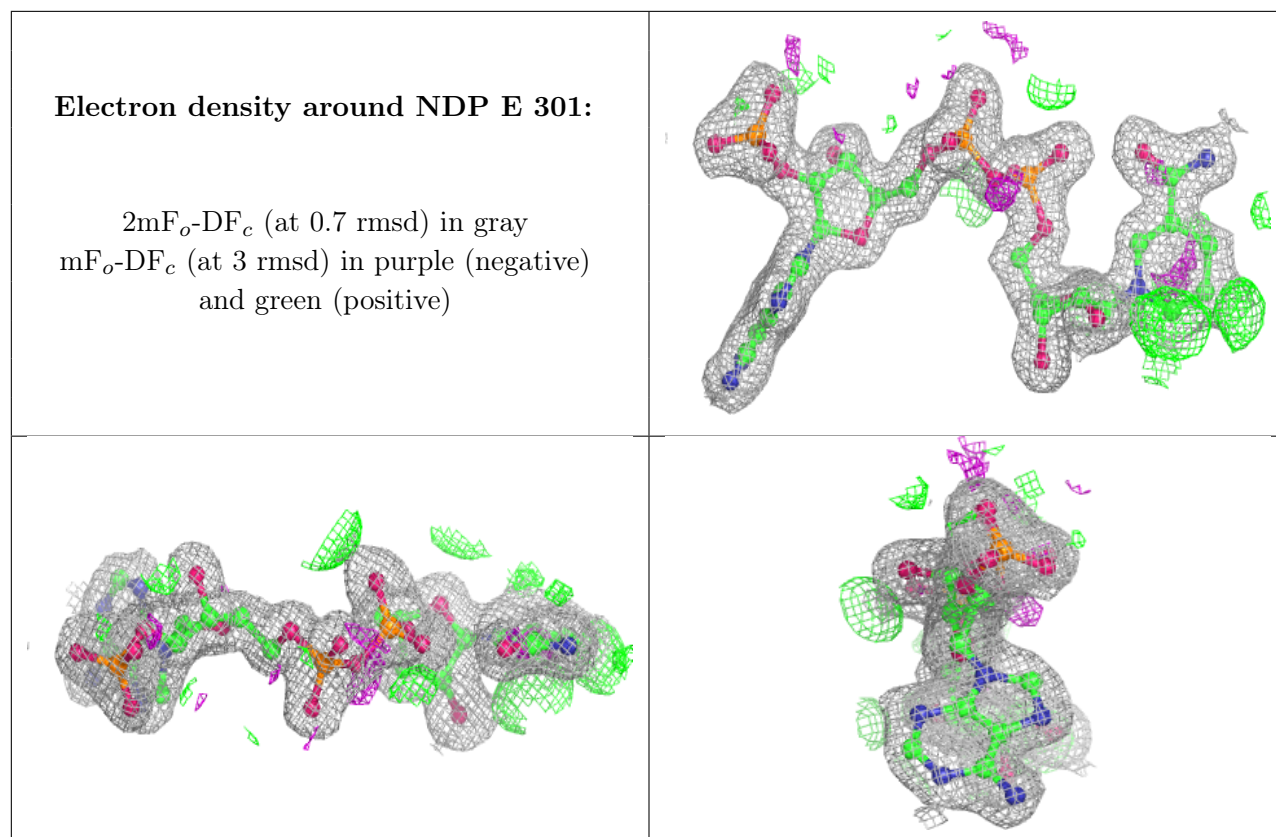
Electron density around NDP D 301:

$2mF_o-DF_c$ (at 0.7 rmsd) in gray
 mF_o-DF_c (at 3 rmsd) in purple (negative)
and green (positive)

**Electron density around NDP H 301:**

$2mF_o-DF_c$ (at 0.7 rmsd) in gray
 mF_o-DF_c (at 3 rmsd) in purple (negative)
and green (positive)





6.5 Other polymers [i](#)

There are no such residues in this entry.