



Full wwPDB EM Validation Report ⓘ

Oct 16, 2024 – 12:33 AM JST

PDB ID : 8WY0
EMDB ID : EMD-37914
Title : T cell receptor delta 2 gamma 9 with F283A, F290A, and F291A
Authors : Xin, W.; Huang, B.; Chi, X.; Liu, Y.; Xu, M.; Zhang, Y.; Li, X.; Su, Q.; Zhou, Q.
Deposited on : 2023-10-30
Resolution : 3.80 Å(reported)

This is a Full wwPDB EM Validation Report for a publicly released PDB entry.

We welcome your comments at validation@mail.wwpdb.org

A user guide is available at

<https://www.wwpdb.org/validation/2017/EMValidationReportHelp>

with specific help available everywhere you see the ⓘ symbol.

The types of validation reports are described at

<http://www.wwpdb.org/validation/2017/FAQs#types>.

The following versions of software and data (see [references ⓘ](#)) were used in the production of this report:

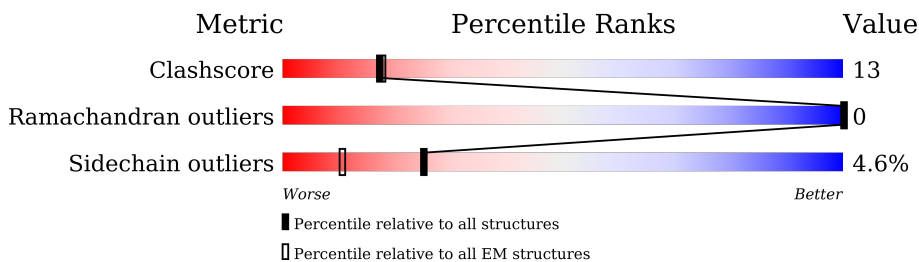
EMDB validation analysis : **FAILED**
Mogul : 1.8.5 (274361), CSD as541be (2020)
MolProbity : 4.02b-467
buster-report : 1.1.7 (2018)
Percentile statistics : 20231227.v01 (using entries in the PDB archive December 27th 2023)
MapQ : **FAILED**
Ideal geometry (proteins) : Engh & Huber (2001)
Ideal geometry (DNA, RNA) : Parkinson et al. (1996)
Validation Pipeline (wwPDB-VP) : 2.39

1 Overall quality at a glance

The following experimental techniques were used to determine the structure:
ELECTRON MICROSCOPY

The reported resolution of this entry is 3.80 Å.

Percentile scores (ranging between 0-100) for global validation metrics of the entry are shown in the following graphic. The table shows the number of entries on which the scores are based.



Metric	Whole archive (#Entries)	EM structures (#Entries)
Clashscore	210492	15764
Ramachandran outliers	207382	16835
Sidechain outliers	206894	16415

The table below summarises the geometric issues observed across the polymeric chains and their fit to the map. The red, orange, yellow and green segments of the bar indicate the fraction of residues that contain outliers for ≥ 3 , 2, 1 and 0 types of geometric quality criteria respectively. A grey segment represents the fraction of residues that are not modelled. The numeric value for each fraction is indicated below the corresponding segment, with a dot representing fractions $\leq 5\%$.

Mol	Chain	Length	Quality of chain
1	a	195	14% . 85%
1	b	195	15% . 85%
2	d	171	60% . 39%
3	e	207	57% . 42%
3	f	207	53% . 43%
4	g	182	59% . 38%
5	m	310	11% . 89%
6	n	332	11% . 89%

2 Entry composition i

There are 7 unique types of molecules in this entry. The entry contains 4656 atoms, of which 0 are hydrogens and 0 are deuteriums.

In the tables below, the AltConf column contains the number of residues with at least one atom in alternate conformation and the Trace column contains the number of residues modelled with at most 2 atoms.

- Molecule 1 is a protein called T-cell surface glycoprotein CD3 zeta chain.

Mol	Chain	Residues	Atoms					AltConf	Trace
			Total	C	N	O	S		
1	a	29	234	163	34	36	1	0	0
1	b	30	243	169	35	38	1	0	0

There are 62 discrepancies between the modelled and reference sequences:

Chain	Residue	Modelled	Actual	Comment	Reference
a	165	ALA	-	expression tag	UNP P20963
a	166	ALA	-	expression tag	UNP P20963
a	167	ALA	-	expression tag	UNP P20963
a	168	TRP	-	expression tag	UNP P20963
a	169	SER	-	expression tag	UNP P20963
a	170	HIS	-	expression tag	UNP P20963
a	171	PRO	-	expression tag	UNP P20963
a	172	GLN	-	expression tag	UNP P20963
a	173	PHE	-	expression tag	UNP P20963
a	174	GLU	-	expression tag	UNP P20963
a	175	LYS	-	expression tag	UNP P20963
a	176	GLY	-	expression tag	UNP P20963
a	177	GLY	-	expression tag	UNP P20963
a	178	GLY	-	expression tag	UNP P20963
a	179	SER	-	expression tag	UNP P20963
a	180	GLY	-	expression tag	UNP P20963
a	181	GLY	-	expression tag	UNP P20963
a	182	GLY	-	expression tag	UNP P20963
a	183	SER	-	expression tag	UNP P20963
a	184	GLY	-	expression tag	UNP P20963
a	185	GLY	-	expression tag	UNP P20963
a	186	SER	-	expression tag	UNP P20963
a	187	ALA	-	expression tag	UNP P20963
a	188	TRP	-	expression tag	UNP P20963
a	189	SER	-	expression tag	UNP P20963
a	190	HIS	-	expression tag	UNP P20963

Continued on next page...

Continued from previous page...

Chain	Residue	Modelled	Actual	Comment	Reference
a	191	PRO	-	expression tag	UNP P20963
a	192	GLN	-	expression tag	UNP P20963
a	193	PHE	-	expression tag	UNP P20963
a	194	GLU	-	expression tag	UNP P20963
a	195	LYS	-	expression tag	UNP P20963
b	165	ALA	-	expression tag	UNP P20963
b	166	ALA	-	expression tag	UNP P20963
b	167	ALA	-	expression tag	UNP P20963
b	168	TRP	-	expression tag	UNP P20963
b	169	SER	-	expression tag	UNP P20963
b	170	HIS	-	expression tag	UNP P20963
b	171	PRO	-	expression tag	UNP P20963
b	172	GLN	-	expression tag	UNP P20963
b	173	PHE	-	expression tag	UNP P20963
b	174	GLU	-	expression tag	UNP P20963
b	175	LYS	-	expression tag	UNP P20963
b	176	GLY	-	expression tag	UNP P20963
b	177	GLY	-	expression tag	UNP P20963
b	178	GLY	-	expression tag	UNP P20963
b	179	SER	-	expression tag	UNP P20963
b	180	GLY	-	expression tag	UNP P20963
b	181	GLY	-	expression tag	UNP P20963
b	182	GLY	-	expression tag	UNP P20963
b	183	SER	-	expression tag	UNP P20963
b	184	GLY	-	expression tag	UNP P20963
b	185	GLY	-	expression tag	UNP P20963
b	186	SER	-	expression tag	UNP P20963
b	187	ALA	-	expression tag	UNP P20963
b	188	TRP	-	expression tag	UNP P20963
b	189	SER	-	expression tag	UNP P20963
b	190	HIS	-	expression tag	UNP P20963
b	191	PRO	-	expression tag	UNP P20963
b	192	GLN	-	expression tag	UNP P20963
b	193	PHE	-	expression tag	UNP P20963
b	194	GLU	-	expression tag	UNP P20963
b	195	LYS	-	expression tag	UNP P20963

- Molecule 2 is a protein called T-cell surface glycoprotein CD3 delta chain.

Mol	Chain	Residues	Atoms					AltConf	Trace
			Total	C	N	O	S		
2	d	105	817	521	135	155	6	0	0

- Molecule 3 is a protein called T-cell surface glycoprotein CD3 epsilon chain.

Mol	Chain	Residues	Atoms					AltConf	Trace
			Total	C	N	O	S		
3	e	121	Total	C	N	O	S	0	0
			959	609	151	191	8		
3	f	118	Total	C	N	O	S	0	0
			933	594	148	183	8		

- Molecule 4 is a protein called T-cell surface glycoprotein CD3 gamma chain.

Mol	Chain	Residues	Atoms					AltConf	Trace
			Total	C	N	O	S		
4	g	113	Total	C	N	O	S	0	0
			890	573	147	163	7		

- Molecule 5 is a protein called Signal peptide,flag tag,T cell receptor delta variable 2,T cell receptor delta constant.

Mol	Chain	Residues	Atoms					AltConf	Trace
			Total	C	N	O	S		
5	m	34	Total	C	N	O	S	0	0
			250	162	42	43	3		

There are 27 discrepancies between the modelled and reference sequences:

Chain	Residue	Modelled	Actual	Comment	Reference
m	116	LEU	-	linker	UNP A0JD36
m	117	GLY	-	linker	UNP A0JD36
m	118	MET	-	linker	UNP A0JD36
m	119	GLY	-	linker	UNP A0JD36
m	120	GLY	-	linker	UNP A0JD36
m	121	GLU	-	linker	UNP A0JD36
m	122	TYR	-	linker	UNP A0JD36
m	123	THR	-	linker	UNP A0JD36
m	124	ASP	-	linker	UNP A0JD36
m	125	LYS	-	linker	UNP A0JD36
m	126	LEU	-	linker	UNP A0JD36
m	127	ILE	-	linker	UNP A0JD36
m	128	PHE	-	linker	UNP A0JD36
m	129	GLY	-	linker	UNP A0JD36
m	130	LYS	-	linker	UNP A0JD36
m	131	GLY	-	linker	UNP A0JD36
m	132	THR	-	linker	UNP A0JD36
m	133	ARG	-	linker	UNP A0JD36
m	134	VAL	-	linker	UNP A0JD36
m	135	THR	-	linker	UNP A0JD36

Continued on next page...

Continued from previous page...

Chain	Residue	Modelled	Actual	Comment	Reference
m	136	VAL	-	linker	UNP A0JD36
m	137	GLU	-	linker	UNP A0JD36
m	138	PRO	-	linker	UNP A0JD36
m	139	ARG	-	linker	UNP A0JD36
m	283	ALA	PHE	engineered mutation	UNP B7Z8K6
m	290	ALA	PHE	engineered mutation	UNP B7Z8K6
m	291	ALA	PHE	engineered mutation	UNP B7Z8K6

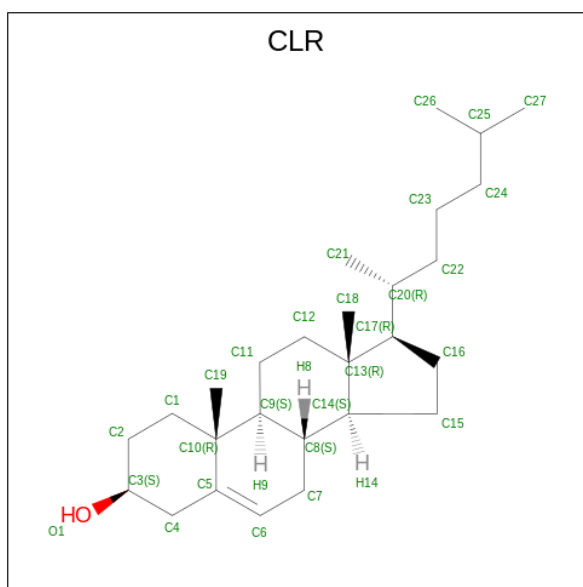
- Molecule 6 is a protein called Signal peptide,flag tag,T cell receptor gamma variable 9,T cell receptor gamma constant 1.

Mol	Chain	Residues	Atoms					AltConf	Trace
			Total	C	N	O	S		
6	n	37	302	203	46	50	3	0	0

There are 21 discrepancies between the modelled and reference sequences:

Chain	Residue	Modelled	Actual	Comment	Reference
n	123	ALA	-	linker	UNP Q99603
n	124	GLN	-	linker	UNP Q99603
n	125	GLN	-	linker	UNP Q99603
n	126	GLU	-	linker	UNP Q99603
n	127	LEU	-	linker	UNP Q99603
n	128	GLY	-	linker	UNP Q99603
n	129	LYS	-	linker	UNP Q99603
n	130	LYS	-	linker	UNP Q99603
n	131	ILE	-	linker	UNP Q99603
n	132	LYS	-	linker	UNP Q99603
n	133	VAL	-	linker	UNP Q99603
n	134	PHE	-	linker	UNP Q99603
n	135	GLY	-	linker	UNP Q99603
n	136	PRO	-	linker	UNP Q99603
n	137	GLY	-	linker	UNP Q99603
n	138	THR	-	linker	UNP Q99603
n	139	LYS	-	linker	UNP Q99603
n	140	LEU	-	linker	UNP Q99603
n	141	ILE	-	linker	UNP Q99603
n	142	ILE	-	linker	UNP Q99603
n	143	THR	-	linker	UNP Q99603

- Molecule 7 is CHOLESTEROL (three-letter code: CLR) (formula: C₂₇H₄₆O) (labeled as "Ligand of Interest" by depositor).



Mol	Chain	Residues	Atoms			AltConf
7	b	1	Total	C	O	0
			28	27	1	

ILE
HIS
LYS
LEU
ASN
VAL
GLN
GLY
GLU
LYS
ALA
GLN
ASP
THR
TYR
ILE
ALA
LEU
THR
CYS
THR
TYR
LYS
CYS
ALA
GLN
GLU
VAL
ASP
ALA
GLN
GLN
ILE
GLU
GLY
ILE
LEU
GLY
GLY
LYS
LYS
ILE
ILE
VAL
PHE
SER
ASP
GLY
PRO
THR
ILE
GLY
LEU
THR
LYS
LYS
LEU
SER
ILE
ILE
THR
ASN
GLY
PRO
THR
ILE
ILE
LEU
GLY
LYS
SER
GLN
GLN
LEU
THR
ASP
ALA
ASP
VAL
THR
SER
TYR
THR
SER
VAL
LYS
LYS
PRO
MET
LYS
MET
LYS
PHE
THR
THR
SER
PHE
LYS
PRO
MET
PRO
LYS
PRO
THR
THR
SER
THR
ILE
TRP
TRP
PHE
ILE
PHE
LEU
THR
VAL
PRO
SER
SER
ILE
GLU
ALA
GLU

THR
LYS
LEU
GLN
GLY
GLU
LYS
ALA
GLN
ASP
THR
TYR
ILE
ALA
LEU
THR
CYS
THR
TYR
LYS
CYS
ALA
GLN
GLU
VAL
ASP
ALA
GLN
GLN
ILE
GLU
GLY
ILE
LEU
GLY
GLY
LYS
LYS
ILE
ILE
VAL
PHE
SER
ASP
GLY
PRO
THR
ILE
GLY
LEU
THR
LYS
LYS
LEU
SER
ILE
ILE
THR
ASN
GLY
PRO
THR
ILE
ILE
LEU
GLY
LYS
SER
GLN
GLN
LEU
THR
ASP
ALA
ASP
VAL
THR
SER
TYR
THR
SER
VAL
LYS
LYS
PRO
MET
LYS
MET
LYS
PHE
THR
THR
SER
PHE
LYS
PRO
MET
PRO
LYS
PRO
THR
THR
SER
PHE
LEU
THR
VAL
PRO
SER
SER
ILE
GLU
ALA
GLU

LEU
ASP
LYS
GLU
HIS
ARG
CYS
ILE
VAL
ARG
HIS
GLU
ASN
ASN
LYS
ASN
GLY
VAL
ASP
GLN
GLU
ILE
ILE
PHE
PRO
ILE
LYS
THR
VAL
ILE
THR
MET
ASP
PRO
LYS
ASP
ASN
CYS
SER
LYS
ASP
ALA
ASN
ASP
T271
K291
F296
T307
ALA
PHE
CYS
CYS
ASN
GLY
GLU

LYS
SER

4 Experimental information

Property	Value	Source
EM reconstruction method	SINGLE PARTICLE	Depositor
Imposed symmetry	POINT, Not provided	
Number of particles used	294780	Depositor
Resolution determination method	FSC 0.143 CUT-OFF	Depositor
CTF correction method	PHASE FLIPPING AND AMPLITUDE CORRECTION	Depositor
Microscope	FEI TITAN KRIOS	Depositor
Voltage (kV)	300	Depositor
Electron dose ($e^-/\text{\AA}^2$)	50	Depositor
Minimum defocus (nm)	1000	Depositor
Maximum defocus (nm)	2000	Depositor
Magnification	Not provided	
Image detector	GATAN K3 BIOQUANTUM (6k x 4k)	Depositor

5 Model quality [i](#)

5.1 Standard geometry [i](#)

Bond lengths and bond angles in the following residue types are not validated in this section: CLR

The Z score for a bond length (or angle) is the number of standard deviations the observed value is removed from the expected value. A bond length (or angle) with $|Z| > 5$ is considered an outlier worth inspection. RMSZ is the root-mean-square of all Z scores of the bond lengths (or angles).

Mol	Chain	Bond lengths		Bond angles	
		RMSZ	# Z >5	RMSZ	# Z >5
1	a	0.27	0/238	0.44	0/322
1	b	0.27	0/248	0.44	0/335
2	d	0.26	0/829	0.57	0/1127
3	e	0.26	0/980	0.54	0/1331
3	f	0.27	0/953	0.56	0/1294
4	g	0.26	0/908	0.53	0/1221
5	m	0.24	0/250	0.51	0/336
6	n	0.25	0/306	0.45	0/416
All	All	0.26	0/4712	0.53	0/6382

There are no bond length outliers.

There are no bond angle outliers.

There are no chirality outliers.

There are no planarity outliers.

5.2 Too-close contacts [i](#)

In the following table, the Non-H and H(model) columns list the number of non-hydrogen atoms and hydrogen atoms in the chain respectively. The H(added) column lists the number of hydrogen atoms added and optimized by MolProbity. The Clashes column lists the number of clashes within the asymmetric unit, whereas Symm-Clashes lists symmetry-related clashes.

Mol	Chain	Non-H	H(model)	H(added)	Clashes	Symm-Clashes
1	a	234	0	261	0	0
1	b	243	0	264	0	0
2	d	817	0	828	0	0
3	e	959	0	919	0	0
3	f	933	0	897	0	0

Continued on next page...

Continued from previous page...

Mol	Chain	Non-H	H(model)	H(added)	Clashes	Symm-Clashes
4	g	890	0	885	0	0
5	m	250	0	284	0	0
6	n	302	0	332	0	0
7	b	28	0	46	0	0
All	All	4656	0	4716	0	0

The all-atom clashscore is defined as the number of clashes found per 1000 atoms (including hydrogen atoms). The all-atom clashscore for this structure is 13.

There are no clashes within the asymmetric unit.

There are no symmetry-related clashes.

5.3 Torsion angles [i](#)

5.3.1 Protein backbone [i](#)

In the following table, the Percentiles column shows the percent Ramachandran outliers of the chain as a percentile score with respect to all PDB entries followed by that with respect to all EM entries.

The Analysed column shows the number of residues for which the backbone conformation was analysed, and the total number of residues.

Mol	Chain	Analysed	Favoured	Allowed	Outliers	Percentiles	
1	a	27/195 (14%)	27 (100%)	0	0	100	100
1	b	28/195 (14%)	26 (93%)	2 (7%)	0	100	100
2	d	103/171 (60%)	95 (92%)	8 (8%)	0	100	100
3	e	119/207 (58%)	105 (88%)	14 (12%)	0	100	100
3	f	114/207 (55%)	107 (94%)	7 (6%)	0	100	100
4	g	111/182 (61%)	97 (87%)	14 (13%)	0	100	100
5	m	32/310 (10%)	32 (100%)	0	0	100	100
6	n	35/332 (10%)	35 (100%)	0	0	100	100
All	All	569/1799 (32%)	524 (92%)	45 (8%)	0	100	100

There are no Ramachandran outliers to report.

5.3.2 Protein sidechains [i](#)

In the following table, the Percentiles column shows the percent sidechain outliers of the chain as a percentile score with respect to all PDB entries followed by that with respect to all EM entries.

The Analysed column shows the number of residues for which the sidechain conformation was analysed, and the total number of residues.

Mol	Chain	Analysed	Rotameric	Outliers	Percentiles	
1	a	26/154 (17%)	24 (92%)	2 (8%)	10	34
1	b	27/154 (18%)	26 (96%)	1 (4%)	29	53
2	d	93/147 (63%)	90 (97%)	3 (3%)	34	56
3	e	109/177 (62%)	106 (97%)	3 (3%)	38	59
3	f	106/177 (60%)	98 (92%)	8 (8%)	11	35
4	g	95/155 (61%)	90 (95%)	5 (5%)	19	44
5	m	27/269 (10%)	27 (100%)	0	100	100
6	n	35/298 (12%)	33 (94%)	2 (6%)	17	43
All	All	518/1531 (34%)	494 (95%)	24 (5%)	25	47

All (24) residues with a non-rotameric sidechain are listed below:

Mol	Chain	Res	Type
1	a	42	TYR
1	a	54	LYS
1	b	55	PHE
2	d	59	ASP
2	d	79	TYR
2	d	100	ASP
3	e	39	SER
3	e	86	GLU
3	e	121	ASN
3	f	39	SER
3	f	60	GLN
3	f	62	ASN
3	f	64	LYS
3	f	69	ASP
3	f	79	GLU
3	f	122	CYS
3	f	149	TYR
4	g	43	LEU
4	g	58	ASP

Continued on next page...

Continued from previous page...

Mol	Chain	Res	Type
4	g	61	MET
4	g	69	LYS
4	g	79	LYS
6	n	291	LYS
6	n	296	PHE

Sometimes sidechains can be flipped to improve hydrogen bonding and reduce clashes. All (4) such sidechains are listed below:

Mol	Chain	Res	Type
3	e	62	ASN
3	e	92	GLN
3	f	61	HIS
3	f	74	ASN

5.3.3 RNA [i](#)

There are no RNA molecules in this entry.

5.4 Non-standard residues in protein, DNA, RNA chains [i](#)

There are no non-standard protein/DNA/RNA residues in this entry.

5.5 Carbohydrates [i](#)

There are no oligosaccharides in this entry.

5.6 Ligand geometry [i](#)

1 ligand is modelled in this entry.

In the following table, the Counts columns list the number of bonds (or angles) for which Mogul statistics could be retrieved, the number of bonds (or angles) that are observed in the model and the number of bonds (or angles) that are defined in the Chemical Component Dictionary. The Link column lists molecule types, if any, to which the group is linked. The Z score for a bond length (or angle) is the number of standard deviations the observed value is removed from the expected value. A bond length (or angle) with $|Z| > 2$ is considered an outlier worth inspection. RMSZ is the root-mean-square of all Z scores of the bond lengths (or angles).

Mol	Type	Chain	Res	Link	Bond lengths			Bond angles		
					Counts	RMSZ	# Z > 2	Counts	RMSZ	# Z > 2
7	CLR	b	201	-	31,31,31	0.31	0	48,48,48	0.43	0

In the following table, the Chirals column lists the number of chiral outliers, the number of chiral centers analysed, the number of these observed in the model and the number defined in the Chemical Component Dictionary. Similar counts are reported in the Torsion and Rings columns. '-' means no outliers of that kind were identified.

Mol	Type	Chain	Res	Link	Chirals	Torsions	Rings
7	CLR	b	201	-	-	0/10/68/68	0/4/4/4

There are no bond length outliers.

There are no bond angle outliers.

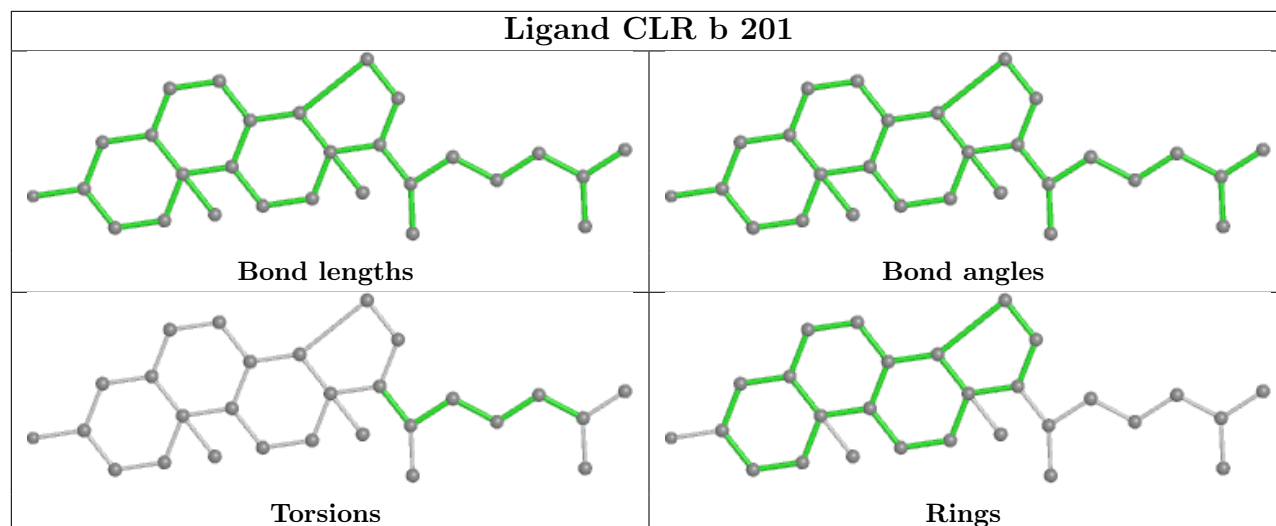
There are no chirality outliers.

There are no torsion outliers.

There are no ring outliers.

No monomer is involved in short contacts.

The following is a two-dimensional graphical depiction of Mogul quality analysis of bond lengths, bond angles, torsion angles, and ring geometry for all instances of the Ligand of Interest. In addition, ligands with molecular weight > 250 and outliers as shown on the validation Tables will also be included. For torsion angles, if less than 5% of the Mogul distribution of torsion angles is within 10 degrees of the torsion angle in question, then that torsion angle is considered an outlier. Any bond that is central to one or more torsion angles identified as an outlier by Mogul will be highlighted in the graph. For rings, the root-mean-square deviation (RMSD) between the ring in question and similar rings identified by Mogul is calculated over all ring torsion angles. If the average RMSD is greater than 60 degrees and the minimal RMSD between the ring in question and any Mogul-identified rings is also greater than 60 degrees, then that ring is considered an outlier. The outliers are highlighted in purple. The color gray indicates Mogul did not find sufficient equivalents in the CSD to analyse the geometry.



5.7 Other polymers [i](#)

There are no such residues in this entry.

5.8 Polymer linkage issues [i](#)

There are no chain breaks in this entry.