



Full wwPDB X-ray Structure Validation Report ⓘ

Sep 7, 2023 – 04:05 PM EDT

PDB ID : 8U2W
Title : Glucose-6-phosphate 1-dehydrogenase (G6PDH) from *Crithidia fasciculata* (NADP bound)
Authors : Seattle Structural Genomics Center for Infectious Disease; Seattle Structural Genomics Center for Infectious Disease (SSGCID)
Deposited on : 2023-09-06
Resolution : 2.35 Å(reported)

This is a Full wwPDB X-ray Structure Validation Report for a publicly released PDB entry.

We welcome your comments at validation@mail.wwpdb.org

A user guide is available at

<https://www.wwpdb.org/validation/2017/XrayValidationReportHelp>

with specific help available everywhere you see the ⓘ symbol.

The types of validation reports are described at

<http://www.wwpdb.org/validation/2017/FAQs#types>.

The following versions of software and data (see [references ⓘ](#)) were used in the production of this report:

MolProbity : 4.02b-467
Mogul : 1.8.5 (274361), CSD as541be (2020)
Xtriage (Phenix) : 1.13
EDS : 2.35
buster-report : 1.1.7 (2018)
Percentile statistics : 20191225.v01 (using entries in the PDB archive December 25th 2019)
Refmac : 5.8.0158
CCP4 : 7.0.044 (Gargrove)
Ideal geometry (proteins) : Engh & Huber (2001)
Ideal geometry (DNA, RNA) : Parkinson et al. (1996)
Validation Pipeline (wwPDB-VP) : 2.35

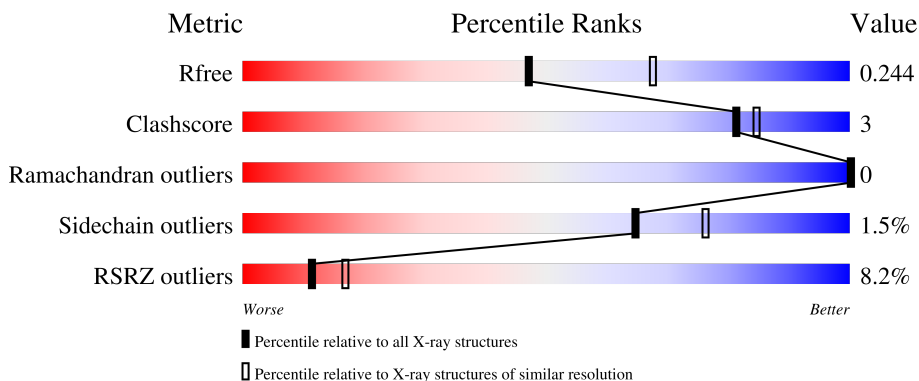
1 Overall quality at a glance

The following experimental techniques were used to determine the structure:

X-RAY DIFFRACTION


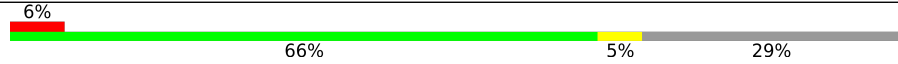
The reported resolution of this entry is 2.35 Å.

Percentile scores (ranging between 0-100) for global validation metrics of the entry are shown in the following graphic. The table shows the number of entries on which the scores are based.



Metric	Whole archive (#Entries)	Similar resolution (#Entries, resolution range(Å))
R_{free}	130704	1164 (2.36-2.36)
Clashscore	141614	1232 (2.36-2.36)
Ramachandran outliers	138981	1211 (2.36-2.36)
Sidechain outliers	138945	1212 (2.36-2.36)
RSRZ outliers	127900	1150 (2.36-2.36)

The table below summarises the geometric issues observed across the polymeric chains and their fit to the electron density. The red, orange, yellow and green segments of the lower bar indicate the fraction of residues that contain outliers for ≥ 3 , 2, 1 and 0 types of geometric quality criteria respectively. A grey segment represents the fraction of residues that are not modelled. The numeric value for each fraction is indicated below the corresponding segment, with a dot representing fractions $\leq 5\%$. The upper red bar (where present) indicates the fraction of residues that have poor fit to the electron density. The numeric value is given above the bar.

Mol	Chain	Length	Quality of chain
1	A	679	 6% 66% 5% 29%
1	B	679	 6% 66% 5% 29%

The following table lists non-polymeric compounds, carbohydrate monomers and non-standard residues in protein, DNA, RNA chains that are outliers for geometric or electron-density-fit criteria:

Mol	Type	Chain	Res	Chirality	Geometry	Clashes	Electron density
2	NAP	A	601	-	-	-	X

2 Entry composition [i](#)

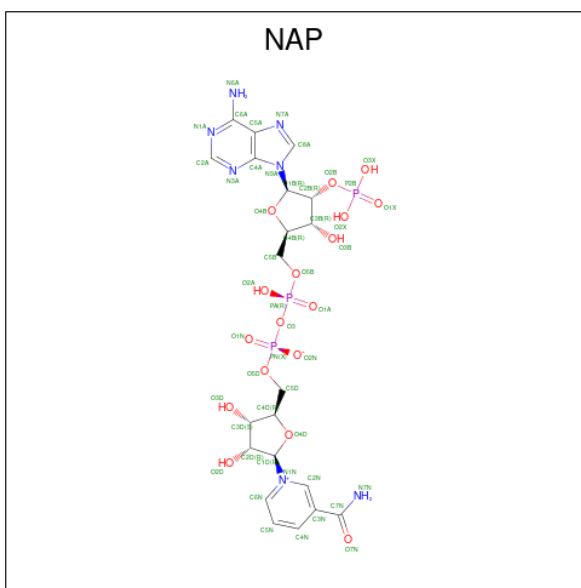
There are 3 unique types of molecules in this entry. The entry contains 7642 atoms, of which 0 are hydrogens and 0 are deuteriums.

In the tables below, the ZeroOcc column contains the number of atoms modelled with zero occupancy, the AltConf column contains the number of residues with at least one atom in alternate conformation and the Trace column contains the number of residues modelled with at most 2 atoms.

- Molecule 1 is a protein called Acetyl-coenzyme A synthetase.

Mol	Chain	Residues	Atoms					ZeroOcc	AltConf	Trace
			Total	C	N	O	S			
1	A	482	Total 3778	2403	647	713	15	0	0	0
1	B	481	Total 3747	2388	642	702	15	0	0	0

- Molecule 2 is NADP NICOTINAMIDE-ADENINE-DINUCLEOTIDE PHOSPHATE (three-letter code: NAP) (formula: $C_{21}H_{28}N_7O_{17}P_3$) (labeled as "Ligand of Interest" by depositor).



Mol	Chain	Residues	Atoms					ZeroOcc	AltConf
			Total	C	N	O	P		
2	A	1	Total 31	10	5	13	3	0	0
2	B	1	Total 31	10	5	13	3	0	0

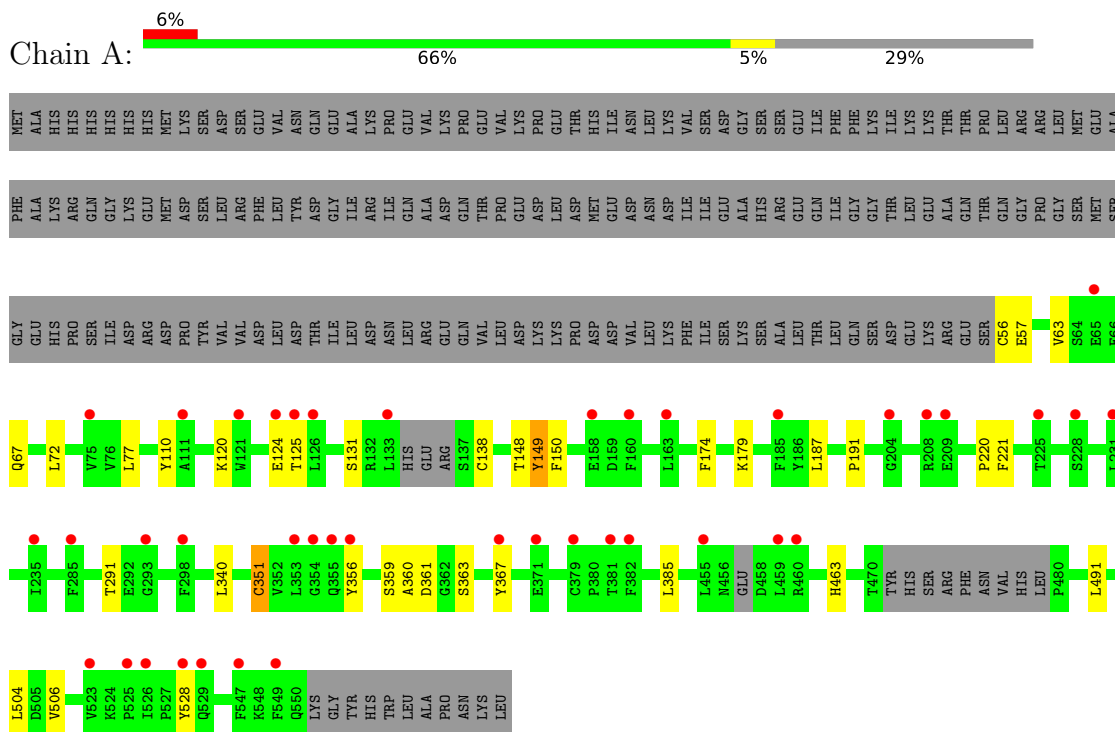
- Molecule 3 is water.

Mol	Chain	Residues	Atoms		ZeroOcc	AltConf
3	A	26	Total 26	O 26	0	0
3	B	29	Total 29	O 29	0	0

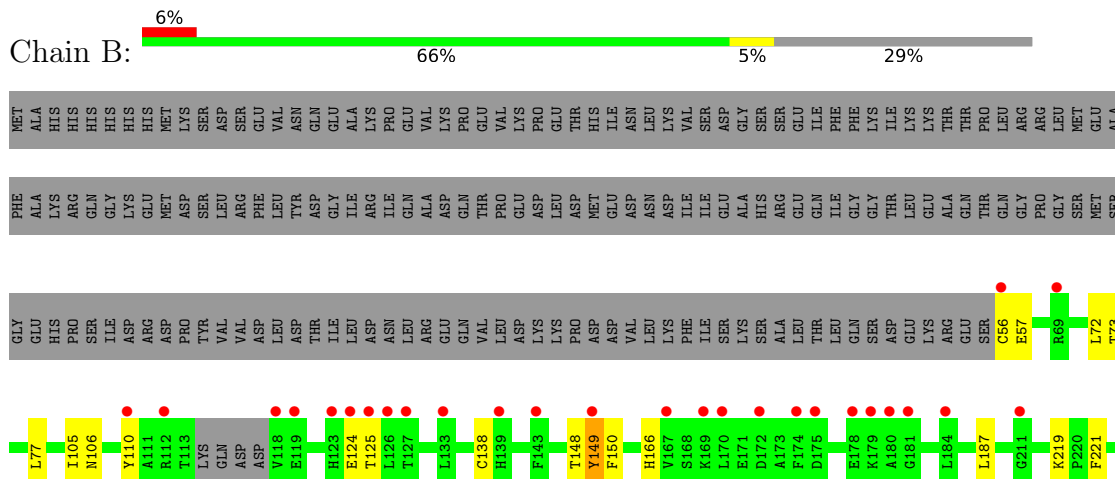
3 Residue-property plots [i](#)

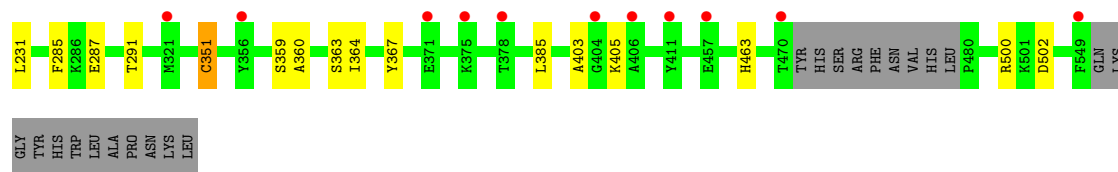
These plots are drawn for all protein, RNA, DNA and oligosaccharide chains in the entry. The first graphic for a chain summarises the proportions of the various outlier classes displayed in the second graphic. The second graphic shows the sequence view annotated by issues in geometry and electron density. Residues are color-coded according to the number of geometric quality criteria for which they contain at least one outlier: green = 0, yellow = 1, orange = 2 and red = 3 or more. A red dot above a residue indicates a poor fit to the electron density ($RSRZ > 2$). Stretches of 2 or more consecutive residues without any outlier are shown as a green connector. Residues present in the sample, but not in the model, are shown in grey.

- Molecule 1: Acetyl-coenzyme A synthetase



- Molecule 1: Acetyl-coenzyme A synthetase





4 Data and refinement statistics i

Property	Value	Source
Space group	C 2 2 21	Depositor
Cell constants a, b, c, α , β , γ	121.33Å 123.26Å 162.17Å 90.00° 90.00° 90.00°	Depositor
Resolution (Å)	33.87 – 2.35 86.47 – 2.35	Depositor EDS
% Data completeness (in resolution range)	99.9 (33.87-2.35) 100.0 (86.47-2.35)	Depositor EDS
R_{merge}	0.12	Depositor
R_{sym}	(Not available)	Depositor
$\langle I/\sigma(I) \rangle$ ¹	1.89 (at 2.34Å)	Xtrriage
Refinement program	PHENIX (1.21rc1_4933: ???)	Depositor
R, R_{free}	0.215 , 0.248 0.214 , 0.244	Depositor DCC
R_{free} test set	2529 reflections (4.97%)	wwPDB-VP
Wilson B-factor (Å ²)	55.7	Xtrriage
Anisotropy	0.355	Xtrriage
Bulk solvent k_{sol} (e/Å ³), B_{sol} (Å ²)	0.33 , 53.6	EDS
L-test for twinning ²	$\langle L \rangle = 0.50$, $\langle L^2 \rangle = 0.34$	Xtrriage
Estimated twinning fraction	0.020 for -k,-h,-l	Xtrriage
F_o, F_c correlation	0.94	EDS
Total number of atoms	7642	wwPDB-VP
Average B, all atoms (Å ²)	80.0	wwPDB-VP

Xtrriage's analysis on translational NCS is as follows: *The largest off-origin peak in the Patterson function is 3.29% of the height of the origin peak. No significant pseudotranslation is detected.*

¹Intensities estimated from amplitudes.

²Theoretical values of $\langle |L| \rangle$, $\langle L^2 \rangle$ for acentric reflections are 0.5, 0.333 respectively for untwinned datasets, and 0.375, 0.2 for perfectly twinned datasets.

5 Model quality

5.1 Standard geometry

Bond lengths and bond angles in the following residue types are not validated in this section: NAP

The Z score for a bond length (or angle) is the number of standard deviations the observed value is removed from the expected value. A bond length (or angle) with $|Z| > 5$ is considered an outlier worth inspection. RMSZ is the root-mean-square of all Z scores of the bond lengths (or angles).

Mol	Chain	Bond lengths		Bond angles	
		RMSZ	# Z >5	RMSZ	# Z >5
1	A	0.29	0/3858	0.55	0/5217
1	B	0.30	0/3828	0.54	0/5182
All	All	0.30	0/7686	0.55	0/10399

There are no bond length outliers.

There are no bond angle outliers.

There are no chirality outliers.

There are no planarity outliers.

5.2 Too-close contacts

In the following table, the Non-H and H(model) columns list the number of non-hydrogen atoms and hydrogen atoms in the chain respectively. The H(added) column lists the number of hydrogen atoms added and optimized by MolProbity. The Clashes column lists the number of clashes within the asymmetric unit, whereas Symm-Clashes lists symmetry-related clashes.

Mol	Chain	Non-H	H(model)	H(added)	Clashes	Symm-Clashes
1	A	3778	0	3706	19	0
1	B	3747	0	3670	20	0
2	A	31	0	11	0	0
2	B	31	0	11	0	0
3	A	26	0	0	0	0
3	B	29	0	0	0	0
All	All	7642	0	7398	39	0

The all-atom clashscore is defined as the number of clashes found per 1000 atoms (including hydrogen atoms). The all-atom clashscore for this structure is 3.

All (39) close contacts within the same asymmetric unit are listed below, sorted by their clash

magnitude.

Atom-1	Atom-2	Interatomic distance (Å)	Clash overlap (Å)
1:A:221:PHE:HB2	1:A:504:LEU:HD21	1.79	0.63
1:B:148:THR:HG21	1:B:166:HIS:CE1	2.35	0.61
1:A:291:THR:HG21	1:A:367:TYR:HE1	1.69	0.58
1:B:56:CYS:SG	1:B:57:GLU:N	2.76	0.58
1:A:56:CYS:SG	1:A:57:GLU:N	2.77	0.57
1:B:500:ARG:HD2	1:B:502:ASP:OD1	2.05	0.56
1:B:124:GLU:HG3	1:B:125:THR:HG23	1.87	0.56
1:B:351:CYS:HB2	1:B:385:LEU:HD23	1.89	0.54
1:B:148:THR:HG21	1:B:166:HIS:NE2	2.24	0.52
1:B:148:THR:HG22	1:B:149:TYR:N	2.23	0.52
1:A:72:LEU:HD21	1:A:491:LEU:HD22	1.91	0.51
1:B:221:PHE:HB3	1:B:231:LEU:HD23	1.92	0.51
1:B:291:THR:HG21	1:B:367:TYR:CE1	2.47	0.50
1:B:287:GLU:OE1	1:B:405:LYS:NZ	2.44	0.50
1:B:291:THR:HG21	1:B:367:TYR:HE1	1.77	0.49
1:B:77:LEU:HD12	1:B:187:LEU:HD22	1.94	0.49
1:A:191:PRO:HG3	1:A:220:PRO:HD2	1.95	0.49
1:A:221:PHE:CB	1:A:504:LEU:HD21	2.43	0.49
1:B:359:SER:O	1:B:360:ALA:HB3	2.13	0.48
1:A:124:GLU:HG3	1:A:125:THR:HG23	1.96	0.48
1:B:351:CYS:HB2	1:B:385:LEU:CD2	2.44	0.47
1:A:291:THR:HG21	1:A:367:TYR:CE1	2.49	0.47
1:A:359:SER:O	1:A:360:ALA:HB3	2.15	0.46
1:A:149:TYR:HD1	1:A:150:PHE:N	2.14	0.46
1:A:174:PHE:O	1:A:179:LYS:NZ	2.49	0.46
1:A:63:VAL:CG1	1:A:67:GLN:HB2	2.47	0.45
1:A:361:ASP:OD1	1:A:363:SER:N	2.37	0.45
1:B:285:PHE:O	1:B:403:ALA:HA	2.17	0.45
1:B:363:SER:HB2	1:B:364:ILE:HD12	1.99	0.44
1:A:120:LYS:O	1:A:124:GLU:HG2	2.18	0.44
1:B:219:LYS:HG2	1:B:221:PHE:CE2	2.52	0.43
1:B:149:TYR:HD1	1:B:150:PHE:N	2.16	0.43
1:A:351:CYS:HB2	1:A:385:LEU:HD23	2.01	0.43
1:A:77:LEU:HD12	1:A:187:LEU:HD22	2.01	0.43
1:A:340:LEU:HB3	1:A:506:VAL:HG12	2.00	0.42
1:B:72:LEU:HD23	1:B:105:ILE:HD12	2.01	0.42
1:A:356:TYR:HA	1:A:528:TYR:O	2.19	0.42
1:A:356:TYR:HB3	1:A:528:TYR:CZ	2.56	0.41
1:B:73:THR:HA	1:B:106:ASN:O	2.21	0.41

There are no symmetry-related clashes.

5.3 Torsion angles [i](#)

5.3.1 Protein backbone [i](#)

In the following table, the Percentiles column shows the percent Ramachandran outliers of the chain as a percentile score with respect to all X-ray entries followed by that with respect to entries of similar resolution.

The Analysed column shows the number of residues for which the backbone conformation was analysed, and the total number of residues.

Mol	Chain	Analysed	Favoured	Allowed	Outliers	Percentiles	
1	A	474/679 (70%)	461 (97%)	13 (3%)	0	100	100
1	B	475/679 (70%)	462 (97%)	13 (3%)	0	100	100
All	All	949/1358 (70%)	923 (97%)	26 (3%)	0	100	100

There are no Ramachandran outliers to report.

5.3.2 Protein sidechains [i](#)

In the following table, the Percentiles column shows the percent sidechain outliers of the chain as a percentile score with respect to all X-ray entries followed by that with respect to entries of similar resolution.

The Analysed column shows the number of residues for which the sidechain conformation was analysed, and the total number of residues.

Mol	Chain	Analysed	Rotameric	Outliers	Percentiles	
1	A	400/591 (68%)	393 (98%)	7 (2%)	59	70
1	B	393/591 (66%)	388 (99%)	5 (1%)	69	80
All	All	793/1182 (67%)	781 (98%)	12 (2%)	65	76

All (12) residues with a non-rotameric sidechain are listed below:

Mol	Chain	Res	Type
1	A	110	TYR
1	A	131	SER
1	A	138	CYS
1	A	148	THR
1	A	149	TYR
1	A	351	CYS
1	A	463	HIS
1	B	110	TYR

Continued on next page...

Continued from previous page...

Mol	Chain	Res	Type
1	B	138	CYS
1	B	149	TYR
1	B	351	CYS
1	B	463	HIS

Sometimes sidechains can be flipped to improve hydrogen bonding and reduce clashes. There are no such sidechains identified.

5.3.3 RNA [i](#)

There are no RNA molecules in this entry.

5.4 Non-standard residues in protein, DNA, RNA chains [i](#)

There are no non-standard protein/DNA/RNA residues in this entry.

5.5 Carbohydrates [i](#)

There are no monosaccharides in this entry.

5.6 Ligand geometry [i](#)

2 ligands are modelled in this entry.

In the following table, the Counts columns list the number of bonds (or angles) for which Mogul statistics could be retrieved, the number of bonds (or angles) that are observed in the model and the number of bonds (or angles) that are defined in the Chemical Component Dictionary. The Link column lists molecule types, if any, to which the group is linked. The Z score for a bond length (or angle) is the number of standard deviations the observed value is removed from the expected value. A bond length (or angle) with $|Z| > 2$ is considered an outlier worth inspection. RMSZ is the root-mean-square of all Z scores of the bond lengths (or angles).

Mol	Type	Chain	Res	Link	Bond lengths			Bond angles		
					Counts	RMSZ	# $ Z > 2$	Counts	RMSZ	# $ Z > 2$
2	NAP	A	601	-	27,33,52	1.89	3 (11%)	35,52,80	1.03	1 (2%)
2	NAP	B	601	-	27,33,52	1.82	3 (11%)	35,52,80	1.22	3 (8%)

In the following table, the Chirals column lists the number of chiral outliers, the number of chiral centers analysed, the number of these observed in the model and the number defined in the Chemical Component Dictionary. Similar counts are reported in the Torsion and Rings columns.

'-' means no outliers of that kind were identified.

Mol	Type	Chain	Res	Link	Chirals	Torsions	Rings
2	NAP	A	601	-	-	9/17/37/67	0/3/3/5
2	NAP	B	601	-	-	4/17/37/67	0/3/3/5

All (6) bond length outliers are listed below:

Mol	Chain	Res	Type	Atoms	Z	Observed(Å)	Ideal(Å)
2	A	601	NAP	P2B-O2B	8.19	1.74	1.59
2	B	601	NAP	P2B-O2B	7.68	1.73	1.59
2	A	601	NAP	PN-O5D	2.77	1.65	1.54
2	B	601	NAP	PN-O5D	2.73	1.65	1.54
2	A	601	NAP	C8A-N7A	-2.31	1.30	1.34
2	B	601	NAP	C8A-N7A	-2.29	1.30	1.34

All (4) bond angle outliers are listed below:

Mol	Chain	Res	Type	Atoms	Z	Observed(°)	Ideal(°)
2	B	601	NAP	O2N-PN-O1N	3.15	123.02	110.68
2	A	601	NAP	O2N-PN-O1N	3.00	122.44	110.68
2	B	601	NAP	C2B-C3B-C4B	-2.45	96.68	101.99
2	B	601	NAP	O2B-P2B-O1X	-2.26	100.66	109.39

There are no chirality outliers.

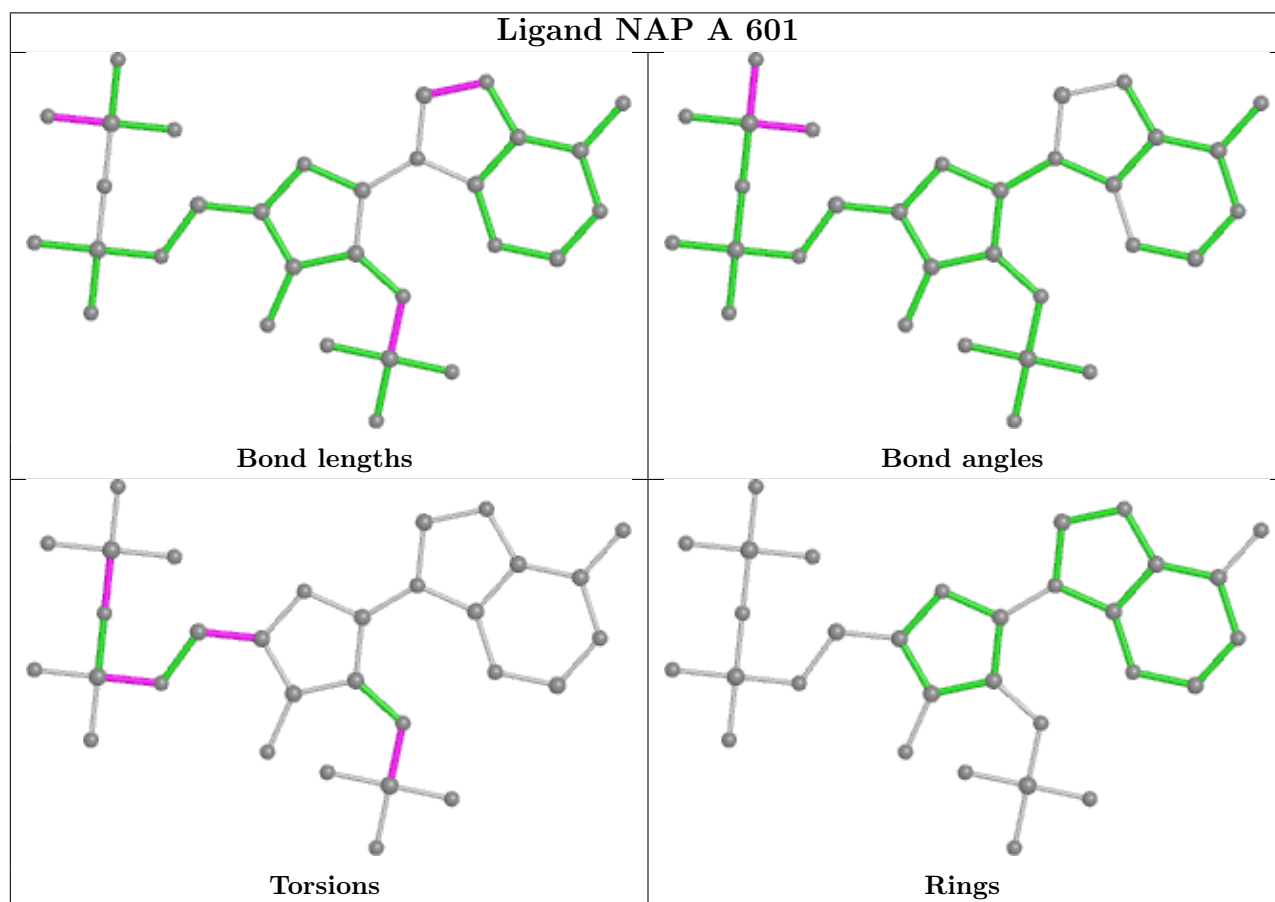
All (13) torsion outliers are listed below:

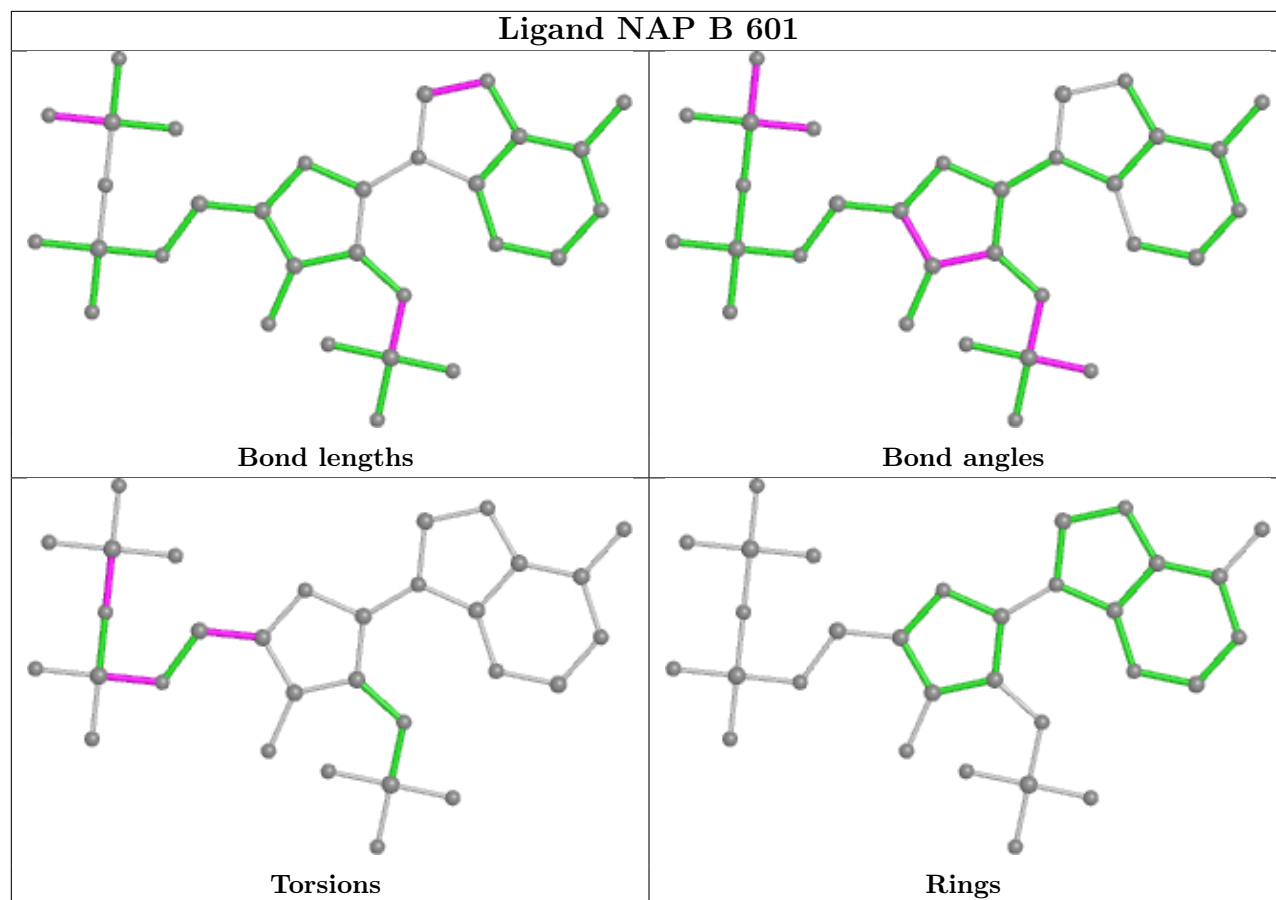
Mol	Chain	Res	Type	Atoms
2	A	601	NAP	C5B-O5B-PA-O1A
2	A	601	NAP	C5B-O5B-PA-O2A
2	A	601	NAP	C2B-O2B-P2B-O2X
2	B	601	NAP	C3B-C4B-C5B-O5B
2	B	601	NAP	PA-O3-PN-O5D
2	A	601	NAP	C3B-C4B-C5B-O5B
2	B	601	NAP	O4B-C4B-C5B-O5B
2	A	601	NAP	O4B-C4B-C5B-O5B
2	A	601	NAP	C2B-O2B-P2B-O1X
2	A	601	NAP	PA-O3-PN-O2N
2	A	601	NAP	PA-O3-PN-O1N
2	A	601	NAP	C5B-O5B-PA-O3
2	B	601	NAP	C5B-O5B-PA-O1A

There are no ring outliers.

No monomer is involved in short contacts.

The following is a two-dimensional graphical depiction of Mogul quality analysis of bond lengths, bond angles, torsion angles, and ring geometry for all instances of the Ligand of Interest. In addition, ligands with molecular weight > 250 and outliers as shown on the validation Tables will also be included. For torsion angles, if less than 5% of the Mogul distribution of torsion angles is within 10 degrees of the torsion angle in question, then that torsion angle is considered an outlier. Any bond that is central to one or more torsion angles identified as an outlier by Mogul will be highlighted in the graph. For rings, the root-mean-square deviation (RMSD) between the ring in question and similar rings identified by Mogul is calculated over all ring torsion angles. If the average RMSD is greater than 60 degrees and the minimal RMSD between the ring in question and any Mogul-identified rings is also greater than 60 degrees, then that ring is considered an outlier. The outliers are highlighted in purple. The color gray indicates Mogul did not find sufficient equivalents in the CSD to analyse the geometry.





5.7 Other polymers [i](#)

There are no such residues in this entry.

5.8 Polymer linkage issues [i](#)

There are no chain breaks in this entry.

6 Fit of model and data

6.1 Protein, DNA and RNA chains

In the following table, the column labelled ‘#RSRZ > 2’ contains the number (and percentage) of RSRZ outliers, followed by percent RSRZ outliers for the chain as percentile scores relative to all X-ray entries and entries of similar resolution. The OWAB column contains the minimum, median, 95th percentile and maximum values of the occupancy-weighted average B-factor per residue. The column labelled ‘Q < 0.9’ lists the number of (and percentage) of residues with an average occupancy less than 0.9.

Mol	Chain	Analysed	<RSRZ>	#RSRZ>2	OWAB(Å ²)	Q<0.9
1	A	482/679 (70%)	0.62	41 (8%) 10 16	41, 77, 137, 216	0
1	B	481/679 (70%)	0.69	38 (7%) 12 19	41, 75, 134, 173	0
All	All	963/1358 (70%)	0.65	79 (8%) 11 17	41, 76, 134, 216	0

All (79) RSRZ outliers are listed below:

Mol	Chain	Res	Type	RSRZ
1	A	356	TYR	6.1
1	A	459	LEU	5.5
1	B	118	VAL	4.8
1	A	526	ILE	4.7
1	B	180	ALA	4.7
1	B	127	THR	4.4
1	B	179	LYS	4.3
1	B	174	PHE	4.3
1	A	124	GLU	4.2
1	B	211	GLY	3.9
1	B	375	LYS	3.9
1	A	121	TRP	3.8
1	B	175	ASP	3.8
1	B	169	LYS	3.7
1	B	178	GLU	3.6
1	A	525	PRO	3.6
1	A	455	LEU	3.5
1	A	231	LEU	3.5
1	B	549	PHE	3.5
1	A	367	TYR	3.5
1	B	56	CYS	3.4
1	B	124	GLU	3.3
1	B	123	HIS	3.2
1	B	457	GLU	3.2

Continued on next page...

Continued from previous page...

Mol	Chain	Res	Type	RSRZ
1	B	167	VAL	3.2
1	A	355	GLN	3.2
1	A	353	LEU	3.2
1	A	529	GLN	3.1
1	B	356	TYR	3.0
1	A	158	GLU	3.0
1	A	160	PHE	2.9
1	B	139	HIS	2.9
1	A	549	PHE	2.9
1	A	75	VAL	2.8
1	A	225	THR	2.8
1	B	371	GLU	2.7
1	B	181	GLY	2.7
1	B	406	ALA	2.7
1	A	523	VAL	2.7
1	B	126	LEU	2.7
1	A	125	THR	2.7
1	A	126	LEU	2.7
1	B	170	LEU	2.7
1	A	298	PHE	2.7
1	A	547	PHE	2.6
1	A	371	GLU	2.6
1	B	112	ARG	2.6
1	B	411	TYR	2.6
1	A	235	ILE	2.6
1	B	143	PHE	2.6
1	A	528	TYR	2.5
1	A	228	SER	2.5
1	A	133	LEU	2.5
1	A	209	GLU	2.5
1	B	119	GLU	2.4
1	B	125	THR	2.4
1	A	293	GLY	2.4
1	B	172	ASP	2.4
1	B	321	MET	2.4
1	A	460	ARG	2.4
1	A	285	PHE	2.3
1	B	149	TYR	2.2
1	A	204	GLY	2.2
1	B	184	LEU	2.2
1	A	379	CYS	2.2
1	B	378	THR	2.2

Continued on next page...

Continued from previous page...

Mol	Chain	Res	Type	RSRZ
1	B	470	THR	2.2
1	A	65	GLU	2.2
1	A	111	ALA	2.1
1	A	381	THR	2.1
1	A	354	GLY	2.1
1	B	110	TYR	2.1
1	B	404	GLY	2.1
1	B	133	LEU	2.1
1	A	185	PHE	2.1
1	A	163	LEU	2.0
1	A	208	ARG	2.0
1	A	382	PHE	2.0
1	B	69	ARG	2.0

6.2 Non-standard residues in protein, DNA, RNA chains [i](#)

There are no non-standard protein/DNA/RNA residues in this entry.

6.3 Carbohydrates [i](#)

There are no monosaccharides in this entry.

6.4 Ligands [i](#)

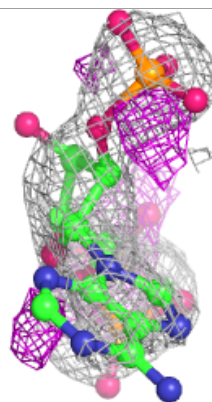
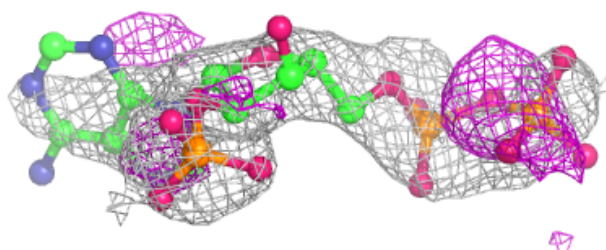
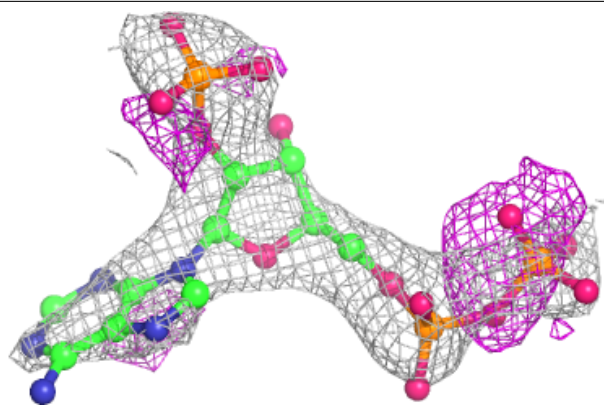
In the following table, the Atoms column lists the number of modelled atoms in the group and the number defined in the chemical component dictionary. The B-factors column lists the minimum, median, 95th percentile and maximum values of B factors of atoms in the group. The column labelled 'Q< 0.9' lists the number of atoms with occupancy less than 0.9.

Mol	Type	Chain	Res	Atoms	RSCC	RSR	B-factors(Å ²)	Q<0.9
2	NAP	A	601	31/48	0.78	0.43	97,126,140,147	0
2	NAP	B	601	31/48	0.85	0.29	90,103,135,140	0

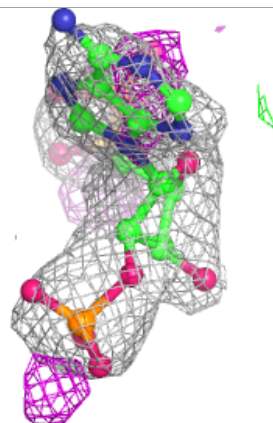
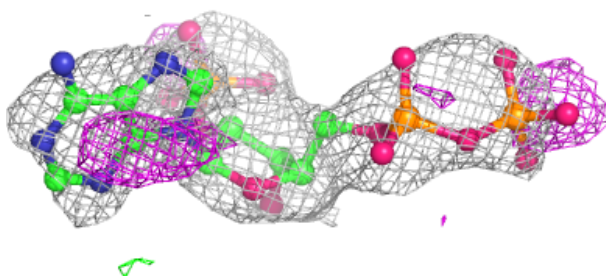
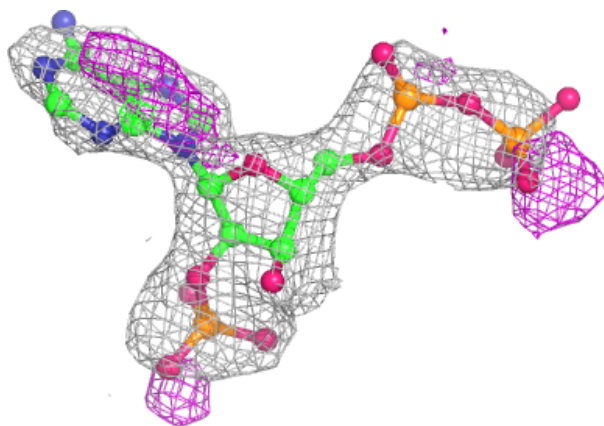
The following is a graphical depiction of the model fit to experimental electron density of all instances of the Ligand of Interest. In addition, ligands with molecular weight > 250 and outliers as shown on the geometry validation Tables will also be included. Each fit is shown from different orientation to approximate a three-dimensional view.

Electron density around NAP A 601:

$2mF_o-DF_c$ (at 0.7 rmsd) in gray
 mF_o-DF_c (at 3 rmsd) in purple (negative)
and green (positive)

**Electron density around NAP B 601:**

$2mF_o-DF_c$ (at 0.7 rmsd) in gray
 mF_o-DF_c (at 3 rmsd) in purple (negative)
and green (positive)



6.5 Other polymers [i](#)

There are no such residues in this entry.