



Full wwPDB X-ray Structure Validation Report ⓘ

Aug 19, 2024 – 01:33 PM EDT

PDB ID : 8TO4
Title : EGFR(T790M/V948R) in complex with the allosteric inhibitor FRF-06-057
Authors : Chitnis, S.P.; Deng, M.Q.; Pham, C.P.; Heppner, D.E.
Deposited on : 2023-08-02
Resolution : 2.99 Å(reported)

This is a Full wwPDB X-ray Structure Validation Report for a publicly released PDB entry.

We welcome your comments at validation@mail.wwpdb.org

A user guide is available at

<https://www.wwpdb.org/validation/2017/XrayValidationReportHelp>

with specific help available everywhere you see the ⓘ symbol.

The types of validation reports are described at

<http://www.wwpdb.org/validation/2017/FAQs#types>.

The following versions of software and data (see [references ⓘ](#)) were used in the production of this report:

MolProbity : 4.02b-467
Mogul : 1.8.5 (274361), CSD as541be (2020)
Xtriage (Phenix) : 1.13
EDS : 2.37.1
buster-report : 1.1.7 (2018)
Percentile statistics : 20191225.v01 (using entries in the PDB archive December 25th 2019)
Refmac : 5.8.0158
CCP4 : 7.0.044 (Gargrove)
Ideal geometry (proteins) : Engh & Huber (2001)
Ideal geometry (DNA, RNA) : Parkinson et al. (1996)
Validation Pipeline (wwPDB-VP) : 2.37.1

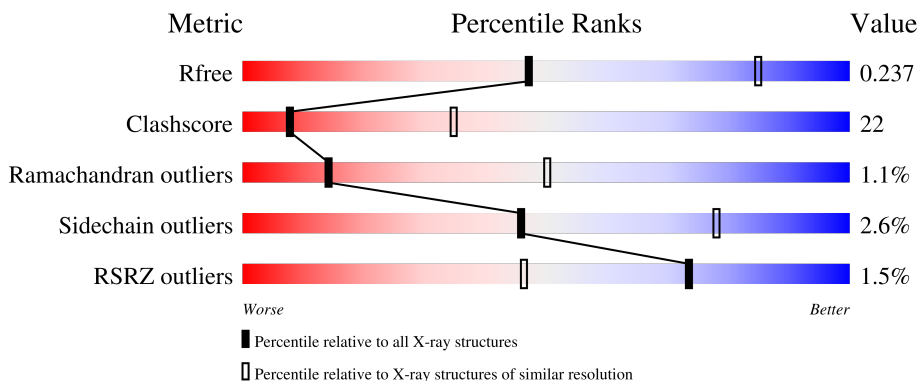
1 Overall quality at a glance

The following experimental techniques were used to determine the structure:

X-RAY DIFFRACTION

The reported resolution of this entry is 2.99 Å.

Percentile scores (ranging between 0-100) for global validation metrics of the entry are shown in the following graphic. The table shows the number of entries on which the scores are based.



Metric	Whole archive (#Entries)	Similar resolution (#Entries, resolution range(Å))
R_{free}	130704	2092 (3.00-3.00)
Clashscore	141614	2416 (3.00-3.00)
Ramachandran outliers	138981	2333 (3.00-3.00)
Sidechain outliers	138945	2336 (3.00-3.00)
RSRZ outliers	127900	1990 (3.00-3.00)

The table below summarises the geometric issues observed across the polymeric chains and their fit to the electron density. The red, orange, yellow and green segments of the lower bar indicate the fraction of residues that contain outliers for ≥ 3 , 2, 1 and 0 types of geometric quality criteria respectively. A grey segment represents the fraction of residues that are not modelled. The numeric value for each fraction is indicated below the corresponding segment, with a dot representing fractions $\leq 5\%$. The upper red bar (where present) indicates the fraction of residues that have poor fit to the electron density. The numeric value is given above the bar.

Mol	Chain	Length	Quality of chain
1	A	328	 2% 56% 33% 9%
1	B	328	 2% 53% 36% 12%
1	C	328	 2% 54% 32% 12%
1	D	328	 % 57% 29% 14%

2 Entry composition [i](#)

There are 5 unique types of molecules in this entry. The entry contains 9523 atoms, of which 52 are hydrogens and 0 are deuteriums.

In the tables below, the ZeroOcc column contains the number of atoms modelled with zero occupancy, the AltConf column contains the number of residues with at least one atom in alternate conformation and the Trace column contains the number of residues modelled with at most 2 atoms.

- Molecule 1 is a protein called Epidermal growth factor receptor.

Mol	Chain	Residues	Atoms					ZeroOcc	AltConf	Trace
			Total	C	N	O	S			
1	D	283	2227	1439	370	400	18	0	0	0
1	A	300	2390	1540	400	431	19	0	0	0
1	B	290	2307	1486	386	417	18	0	1	0
1	C	289	2297	1478	385	416	18	0	1	0

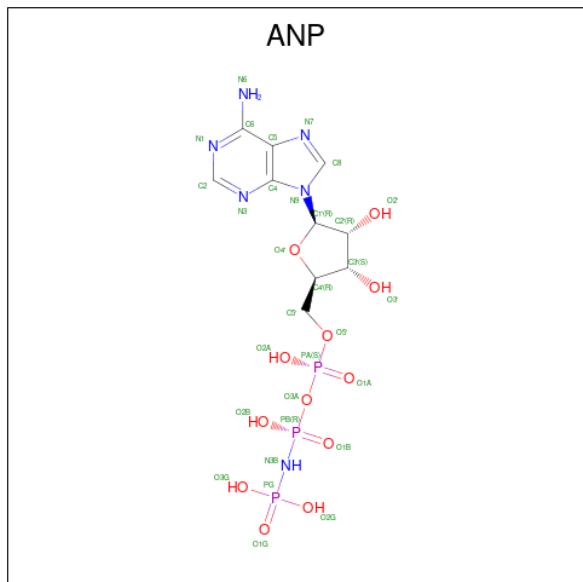
There are 8 discrepancies between the modelled and reference sequences:

Chain	Residue	Modelled	Actual	Comment	Reference
D	790	MET	THR	engineered mutation	UNP P00533
D	948	ARG	VAL	engineered mutation	UNP P00533
A	790	MET	THR	engineered mutation	UNP P00533
A	948	ARG	VAL	engineered mutation	UNP P00533
B	790	MET	THR	engineered mutation	UNP P00533
B	948	ARG	VAL	engineered mutation	UNP P00533
C	790	MET	THR	engineered mutation	UNP P00533
C	948	ARG	VAL	engineered mutation	UNP P00533

- Molecule 2 is MAGNESIUM ION (three-letter code: MG) (formula: Mg).

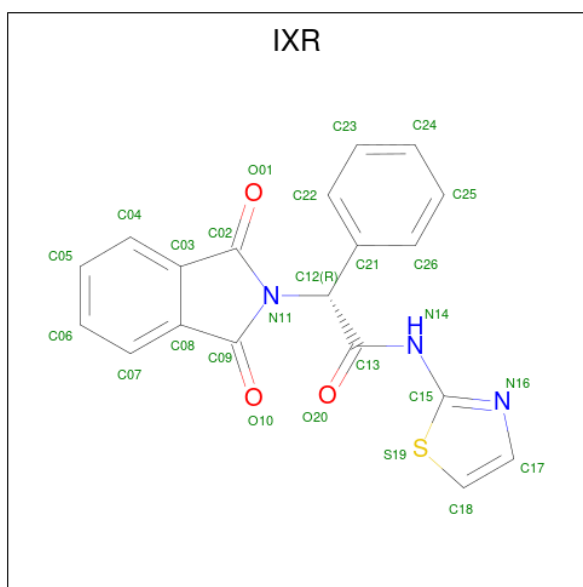
Mol	Chain	Residues	Atoms		ZeroOcc	AltConf
2	D	1	Total 1	Mg 1	0	0
2	A	1	Total 1	Mg 1	0	0
2	B	1	Total 1	Mg 1	0	0
2	C	1	Total 1	Mg 1	0	0

- Molecule 3 is PHOSPHOAMINOPHOSPHONIC ACID-ADENYLATE ESTER (three-letter code: ANP) (formula: C₁₀H₁₇N₆O₁₂P₃).



Mol	Chain	Residues	Atoms					ZeroOcc	AltConf	
			Total	C	H	N	O			P
3	D	1	Total	C	H	N	O	P	0	0
			44	10	13	6	12	3		
3	A	1	Total	C	H	N	O	P	0	0
			44	10	13	6	12	3		
3	B	1	Total	C	H	N	O	P	0	0
			44	10	13	6	12	3		
3	C	1	Total	C	H	N	O	P	0	0
			44	10	13	6	12	3		

- Molecule 4 is (2R)-2-(1,3-dioxo-1,3-dihydro-2H-isoindol-2-yl)-2-phenyl-N-(1,3-thiazol-2-yl)acetamide (three-letter code: IXR) (formula: C₁₉H₁₃N₃O₃S) (labeled as "Ligand of Interest" by depositor).



Mol	Chain	Residues	Atoms					ZeroOcc	AltConf
4	D	1	Total	C	N	O	S	0	0
			26	19	3	3	1		
4	C	1	Total	C	N	O	S	0	0
			26	19	3	3	1		

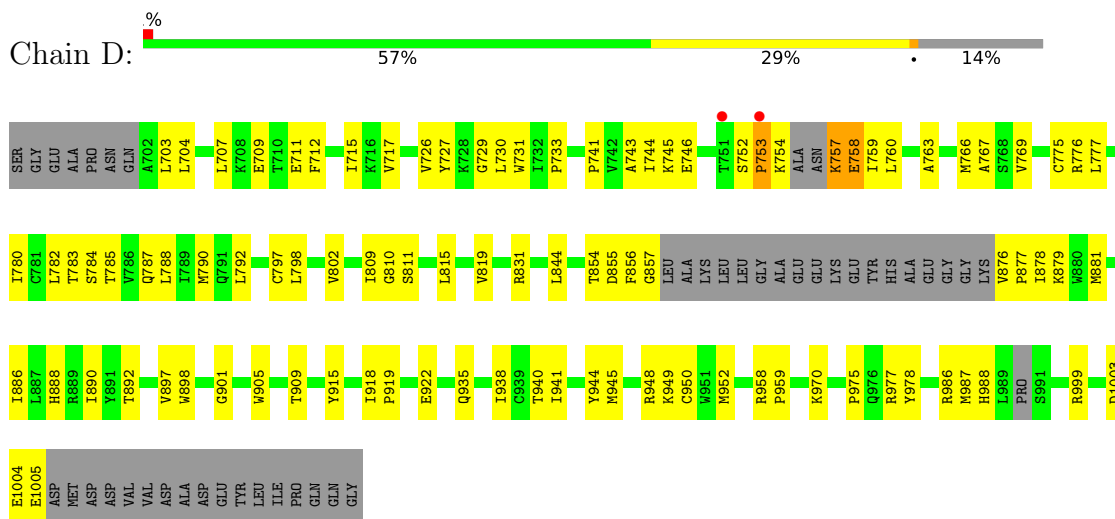
- Molecule 5 is water.

Mol	Chain	Residues	Atoms		ZeroOcc	AltConf
5	D	18	Total	O	0	0
			18	18		
5	A	18	Total	O	0	0
			18	18		
5	B	11	Total	O	0	0
			11	11		
5	C	23	Total	O	0	0
			23	23		

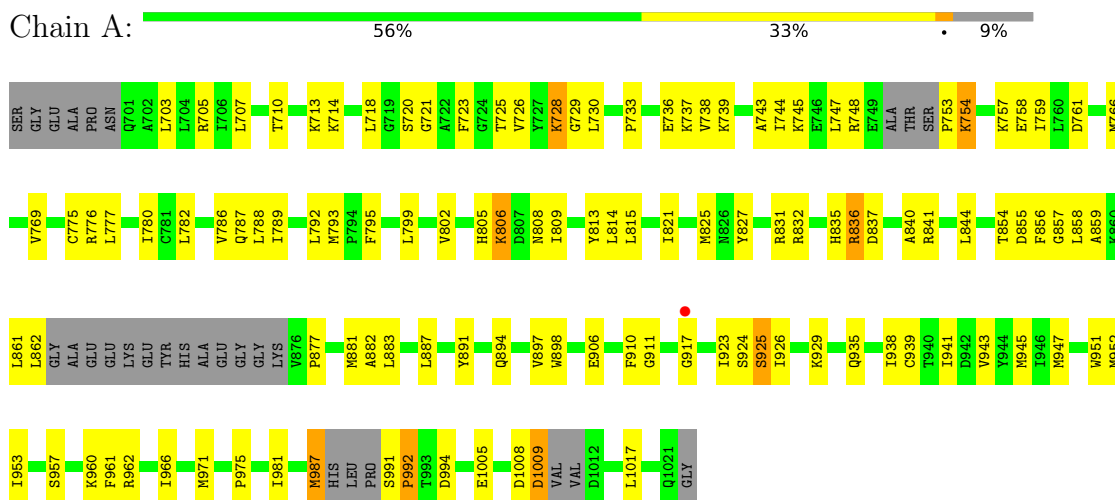
3 Residue-property plots [i](#)

These plots are drawn for all protein, RNA, DNA and oligosaccharide chains in the entry. The first graphic for a chain summarises the proportions of the various outlier classes displayed in the second graphic. The second graphic shows the sequence view annotated by issues in geometry and electron density. Residues are color-coded according to the number of geometric quality criteria for which they contain at least one outlier: green = 0, yellow = 1, orange = 2 and red = 3 or more. A red dot above a residue indicates a poor fit to the electron density ($RSRZ > 2$). Stretches of 2 or more consecutive residues without any outlier are shown as a green connector. Residues present in the sample, but not in the model, are shown in grey.

- Molecule 1: Epidermal growth factor receptor

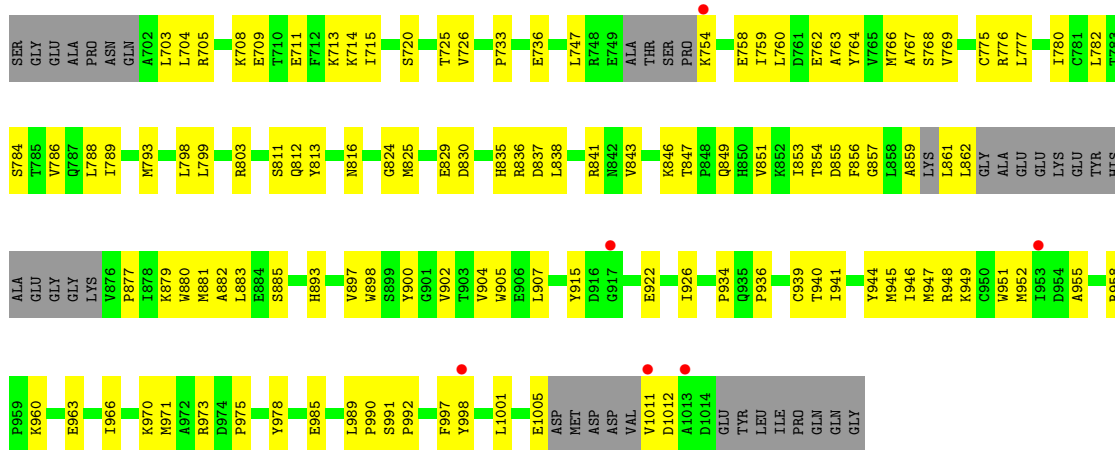


- Molecule 1: Epidermal growth factor receptor

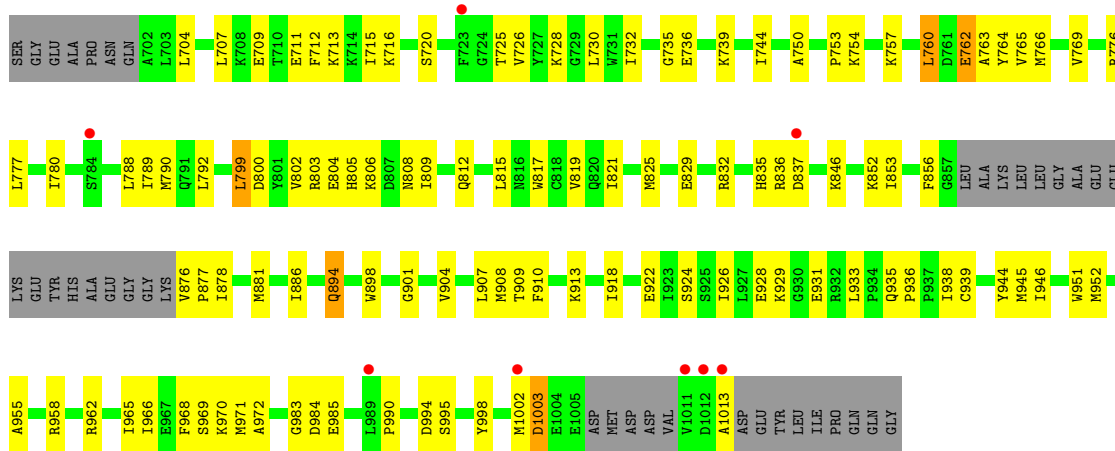


- Molecule 1: Epidermal growth factor receptor





● Molecule 1: Epidermal growth factor receptor



4 Data and refinement statistics

Property	Value	Source
Space group	P 1 21 1	Depositor
Cell constants a, b, c, α , β , γ	72.35Å 103.11Å 86.87Å 90.00° 101.24° 90.00°	Depositor
Resolution (Å)	70.96 – 2.99 70.96 – 2.99	Depositor EDS
% Data completeness (in resolution range)	99.0 (70.96-2.99) 92.2 (70.96-2.99)	Depositor EDS
R_{merge}	0.20	Depositor
R_{sym}	(Not available)	Depositor
$\langle I/\sigma(I) \rangle$ ¹	0.90 (at 3.01Å)	Xtrriage
Refinement program	PHENIX 1.19_4092	Depositor
R, R_{free}	0.171 , 0.231 0.178 , 0.237	Depositor DCC
R_{free} test set	1997 reflections (7.91%)	wwPDB-VP
Wilson B-factor (Å ²)	39.2	Xtrriage
Anisotropy	0.524	Xtrriage
Bulk solvent k_{sol} (e/Å ³), B_{sol} (Å ²)	0.32 , 49.2	EDS
L-test for twinning ²	$\langle L \rangle = 0.49$, $\langle L^2 \rangle = 0.32$	Xtrriage
Estimated twinning fraction	No twinning to report.	Xtrriage
F_o, F_c correlation	0.90	EDS
Total number of atoms	9523	wwPDB-VP
Average B, all atoms (Å ²)	41.0	wwPDB-VP

Xtrriage's analysis on translational NCS is as follows: *The largest off-origin peak in the Patterson function is 13.38% of the height of the origin peak. No significant pseudotranslation is detected.*

¹Intensities estimated from amplitudes.

²Theoretical values of $\langle |L| \rangle$, $\langle L^2 \rangle$ for acentric reflections are 0.5, 0.333 respectively for untwinned datasets, and 0.375, 0.2 for perfectly twinned datasets.

5 Model quality [i](#)

5.1 Standard geometry [i](#)

Bond lengths and bond angles in the following residue types are not validated in this section: MG, IXR, ANP

The Z score for a bond length (or angle) is the number of standard deviations the observed value is removed from the expected value. A bond length (or angle) with $|Z| > 5$ is considered an outlier worth inspection. RMSZ is the root-mean-square of all Z scores of the bond lengths (or angles).

Mol	Chain	Bond lengths		Bond angles	
		RMSZ	# Z >5	RMSZ	# Z >5
1	A	0.52	0/2439	0.69	0/3297
1	B	0.48	0/2354	0.68	0/3184
1	C	0.47	0/2347	0.69	0/3179
1	D	0.52	0/2275	0.71	0/3082
All	All	0.50	0/9415	0.69	0/12742

There are no bond length outliers.

There are no bond angle outliers.

There are no chirality outliers.

There are no planarity outliers.

5.2 Too-close contacts [i](#)

In the following table, the Non-H and H(model) columns list the number of non-hydrogen atoms and hydrogen atoms in the chain respectively. The H(added) column lists the number of hydrogen atoms added and optimized by MolProbity. The Clashes column lists the number of clashes within the asymmetric unit, whereas Symm-Clashes lists symmetry-related clashes.

Mol	Chain	Non-H	H(model)	H(added)	Clashes	Symm-Clashes
1	A	2390	0	2406	124	0
1	B	2307	0	2319	104	0
1	C	2297	0	2307	90	0
1	D	2227	0	2233	100	0
2	A	1	0	0	0	0
2	B	1	0	0	0	0
2	C	1	0	0	0	0
2	D	1	0	0	0	0
3	A	31	13	13	4	0

Continued on next page...

Continued from previous page...

Mol	Chain	Non-H	H(model)	H(added)	Clashes	Symm-Clashes
3	B	31	13	13	3	0
3	C	31	13	13	0	0
3	D	31	13	13	1	0
4	C	26	0	0	3	0
4	D	26	0	0	2	0
5	A	18	0	0	7	0
5	B	11	0	0	6	0
5	C	23	0	0	7	0
5	D	18	0	0	6	0
All	All	9471	52	9317	406	0

The all-atom clashscore is defined as the number of clashes found per 1000 atoms (including hydrogen atoms). The all-atom clashscore for this structure is 22.

All (406) close contacts within the same asymmetric unit are listed below, sorted by their clash magnitude.

Atom-1	Atom-2	Interatomic distance (Å)	Clash overlap (Å)
1:A:941:ILE:HD13	1:C:922[B]:GLU:HG2	1.45	0.96
1:A:877:PRO:O	1:A:881:MET:HG3	1.74	0.87
1:B:816:ASN:HD21	1:B:1011:VAL:N	1.73	0.86
1:C:817:TRP:O	1:C:821:ILE:HG13	1.76	0.86
1:B:708:LYS:O	1:B:711:GLU:HG2	1.77	0.84
1:A:723:PHE:HB2	3:A:1102:ANP:O1B	1.76	0.83
1:C:1002:MET:O	1:C:1003:ASP:HB2	1.76	0.83
1:C:966:ILE:HG23	1:C:970:LYS:HE3	1.62	0.79
1:B:811:SER:OG	1:B:975:PRO:HB2	1.83	0.79
1:A:703:LEU:HB2	5:A:1214:HOH:O	1.84	0.77
1:C:803:ARG:HH22	1:C:913:LYS:NZ	1.83	0.77
1:D:854:THR:CG2	5:D:1209:HOH:O	2.31	0.77
1:D:999:ARG:HD2	1:D:1003:ASP:O	1.86	0.76
1:A:721:GLY:HA3	3:A:1102:ANP:N3B	2.01	0.76
1:B:989:LEU:HB3	1:B:990:PRO:HD2	1.68	0.75
1:A:723:PHE:CD2	1:A:858:LEU:HD23	2.22	0.75
1:B:762:GLU:O	1:B:766:MET:HG2	1.87	0.74
1:D:1004:GLU:HG2	5:D:1211:HOH:O	1.87	0.74
1:B:905:TRP:CD1	1:B:947:MET:HE1	2.23	0.74
1:C:715:ILE:HG13	1:C:716:LYS:H	1.53	0.73
1:C:966:ILE:CG2	1:C:970:LYS:HE3	2.17	0.73
1:B:905:TRP:HD1	1:B:947:MET:HE1	1.53	0.73
1:D:854:THR:HG21	5:D:1209:HOH:O	1.87	0.73
1:D:811:SER:OG	1:D:975:PRO:HB2	1.88	0.72

Continued on next page...

Continued from previous page...

Atom-1	Atom-2	Interatomic distance (Å)	Clash overlap (Å)
1:C:715:ILE:HG12	1:C:728:LYS:O	1.90	0.72
1:D:922:GLU:HG2	1:B:941:ILE:HB	1.72	0.72
1:D:940:THR:HG23	1:D:978:TYR:O	1.88	0.72
1:A:747:LEU:HD12	1:A:786:VAL:HG11	1.69	0.72
1:A:943:VAL:HG22	1:A:971:MET:CE	2.19	0.72
1:A:861:LEU:HG	1:A:862:LEU:CD1	2.20	0.72
1:A:720:SER:HB3	1:A:725:THR:HG23	1.71	0.71
1:D:769:VAL:HG21	1:D:856:PHE:HZ	1.55	0.70
1:B:775:CYS:HA	5:B:1204:HOH:O	1.91	0.70
1:A:726:VAL:HG22	1:A:745:LYS:HE3	1.73	0.70
1:B:879:LYS:HD3	1:B:915:TYR:HB2	1.73	0.70
1:D:707:LEU:HD12	1:D:711:GLU:CD	2.12	0.70
1:A:943:VAL:HG22	1:A:971:MET:HE1	1.73	0.70
1:A:883:LEU:HD22	1:A:953:ILE:HD12	1.74	0.70
1:D:922:GLU:OE1	1:B:941:ILE:HD13	1.92	0.70
1:C:886:ILE:HG21	1:C:924:SER:HB3	1.73	0.69
1:D:726:VAL:CG2	1:D:745:LYS:HG3	2.21	0.69
1:C:962:ARG:HA	1:C:965:ILE:HD12	1.74	0.69
1:A:861:LEU:O	1:A:862:LEU:HD12	1.92	0.69
1:A:747:LEU:HD11	1:A:788:LEU:HD11	1.73	0.69
1:D:881:MET:HE2	1:D:886:ILE:CG1	2.22	0.69
1:C:805:HIS:O	1:C:809:ILE:HG13	1.93	0.69
1:A:726:VAL:CG2	1:A:745:LYS:HE3	2.22	0.69
1:D:876:VAL:HG12	1:D:878:ILE:HG12	1.75	0.69
1:C:812:GLN:HE22	1:C:1013:ALA:H	1.38	0.68
1:C:757:LYS:HD2	1:C:757:LYS:N	2.07	0.68
1:D:815:LEU:HD12	1:D:975:PRO:HB3	1.76	0.67
1:A:805:HIS:O	1:A:809:ILE:HG13	1.94	0.67
1:A:945:MET:HE3	5:C:1219:HOH:O	1.93	0.67
1:D:879:LYS:HG2	1:D:915:TYR:HD2	1.57	0.67
1:A:723:PHE:HZ	1:A:859:ALA:HB2	1.58	0.67
1:A:835:HIS:O	1:A:836:ARG:HB3	1.93	0.67
1:D:726:VAL:HG22	1:D:745:LYS:HG3	1.76	0.67
1:A:962:ARG:O	1:A:966:ILE:HD12	1.95	0.67
1:A:836:ARG:HG3	1:A:891:TYR:CD2	2.30	0.67
1:B:835:HIS:O	1:B:836:ARG:HB2	1.95	0.66
1:A:861:LEU:HG	1:A:862:LEU:HD12	1.78	0.66
1:A:733:PRO:HB2	1:A:736:GLU:HG3	1.78	0.66
1:C:918:ILE:HD11	5:C:1215:HOH:O	1.94	0.66
1:B:720:SER:HB3	1:B:725:THR:HG23	1.77	0.66
1:C:762:GLU:O	1:C:764:TYR:N	2.28	0.66

Continued on next page...

Continued from previous page...

Atom-1	Atom-2	Interatomic distance (Å)	Clash overlap (Å)
1:A:747:LEU:HD12	1:A:786:VAL:CG1	2.24	0.66
1:B:966:ILE:HG22	1:B:970:LYS:HE3	1.78	0.66
1:C:735:GLY:O	1:C:736:GLU:HG2	1.96	0.66
1:A:782:LEU:CD2	1:A:786:VAL:HG22	2.26	0.65
1:C:835:HIS:O	1:C:836:ARG:HB2	1.95	0.65
1:D:790:MET:HG2	4:D:1103:IXR:S19	2.36	0.65
1:A:1008:ASP:O	1:A:1009:ASP:C	2.36	0.64
1:C:829:GLU:O	1:C:832:ARG:N	2.27	0.64
1:A:757:LYS:NZ	1:A:761:ASP:OD1	2.21	0.64
1:C:815:LEU:O	1:C:819:VAL:HG23	1.98	0.64
1:C:728:LYS:HG3	1:C:792:LEU:HD22	1.81	0.63
1:C:803:ARG:HH22	1:C:913:LYS:HZ1	1.46	0.63
1:D:775:CYS:HB3	1:D:790:MET:CE	2.29	0.63
1:D:769:VAL:HG21	1:D:856:PHE:CZ	2.33	0.63
1:A:882:ALA:HA	1:A:898:TRP:CD2	2.34	0.62
1:D:746:GLU:HG3	1:D:787:GLN:HG3	1.81	0.62
1:A:941:ILE:HD13	1:C:922[B]:GLU:CG	2.27	0.62
1:C:846:LYS:HG2	1:C:1002:MET:HE3	1.83	0.61
1:D:881:MET:HE2	1:D:886:ILE:HG13	1.81	0.61
1:A:883:LEU:CD2	1:A:953:ILE:HD12	2.30	0.61
1:B:714:LYS:C	1:B:715:ILE:HD13	2.21	0.61
1:C:966:ILE:O	1:C:970:LYS:HG3	2.01	0.61
1:B:788:LEU:HD11	5:B:1211:HOH:O	2.01	0.60
1:A:837:ASP:OD1	1:A:877:PRO:HG3	2.00	0.60
1:A:730:LEU:HD13	1:A:739:LYS:HB3	1.84	0.60
1:B:798:LEU:CD2	1:B:907:LEU:HD21	2.32	0.60
1:A:714:LYS:NZ	1:A:787:GLN:OE1	2.35	0.60
1:D:877:PRO:O	1:D:881:MET:HG3	2.01	0.59
1:A:780:ILE:HG13	1:A:788:LEU:HD23	1.85	0.59
1:A:938:ILE:HG23	5:A:1205:HOH:O	2.02	0.59
1:A:802:VAL:HA	1:A:809:ILE:HD11	1.84	0.59
1:B:944:TYR:CZ	1:B:948:ARG:HD3	2.38	0.59
1:D:881:MET:HE2	1:D:886:ILE:HG12	1.84	0.58
1:D:938:ILE:HG12	5:D:1204:HOH:O	2.03	0.58
1:A:723:PHE:HZ	1:A:859:ALA:CB	2.15	0.58
1:A:725:THR:OG1	1:B:830:ASP:OD2	2.22	0.58
1:D:767:ALA:O	1:D:776:ARG:NH1	2.29	0.58
1:C:790:MET:HG2	4:C:1103:IXR:C18	2.34	0.58
1:B:769:VAL:HG21	1:B:856:PHE:HZ	1.68	0.58
1:D:715:ILE:HG13	1:D:730:LEU:HG	1.85	0.57
1:A:898:TRP:CE3	1:A:951:TRP:HA	2.39	0.57

Continued on next page...

Continued from previous page...

Atom-1	Atom-2	Interatomic distance (Å)	Clash overlap (Å)
1:C:909:THR:HG22	1:C:936:PRO:HB3	1.86	0.57
1:B:754:LYS:HG3	1:B:758:GLU:OE1	2.04	0.57
1:A:832:ARG:NH1	5:A:1202:HOH:O	2.38	0.57
1:C:715:ILE:HG13	1:C:716:LYS:N	2.18	0.57
1:B:946:ILE:HD11	1:B:971:MET:HE2	1.86	0.57
1:A:941:ILE:HG12	1:C:926:ILE:HG22	1.87	0.56
1:A:806:LYS:HE3	1:A:910:PHE:O	2.06	0.56
1:C:1002:MET:HB3	5:C:1217:HOH:O	2.05	0.56
1:D:949:LYS:HB3	1:D:959:PRO:HD3	1.85	0.56
1:D:918:ILE:HG23	1:B:941:ILE:HD11	1.86	0.56
1:B:777:LEU:CD1	1:B:788:LEU:HB3	2.35	0.56
1:C:803:ARG:HH22	1:C:913:LYS:HZ2	1.54	0.56
1:C:799:LEU:O	1:C:802:VAL:HG22	2.06	0.56
1:C:1002:MET:O	1:C:1003:ASP:CB	2.52	0.56
1:C:846:LYS:HD2	1:C:852:LYS:HD2	1.86	0.56
1:C:715:ILE:CG1	1:C:716:LYS:H	2.17	0.55
1:B:922[A]:GLU:O	1:B:926:ILE:HG23	2.06	0.55
1:B:922[B]:GLU:O	1:B:926:ILE:HG23	2.07	0.55
1:B:1011:VAL:HG12	1:B:1012:ASP:H	1.71	0.55
1:D:766:MET:HE1	1:D:857:GLY:CA	2.37	0.55
1:B:936:PRO:HB2	1:B:939:CYS:SG	2.47	0.55
1:B:762:GLU:OE1	1:B:861:LEU:HB3	2.06	0.55
1:C:983:GLY:C	1:C:985:GLU:H	2.10	0.55
1:A:947:MET:HE3	1:A:951:TRP:HH2	1.72	0.54
1:B:960:LYS:HB2	1:B:963:GLU:HG3	1.88	0.54
1:A:748:ARG:HG3	1:B:830:ASP:HA	1.89	0.54
1:C:931:GLU:HG3	5:C:1219:HOH:O	2.07	0.54
1:D:766:MET:O	1:D:769:VAL:HG22	2.08	0.54
1:A:858:LEU:HA	1:A:861:LEU:CD2	2.38	0.54
1:A:943:VAL:HG22	1:A:971:MET:HE3	1.90	0.54
1:B:893:HIS:O	1:B:897:VAL:HG23	2.08	0.54
1:C:908:MET:HG3	1:C:939:CYS:SG	2.48	0.53
1:D:717:VAL:HG22	1:D:727:TYR:CE2	2.43	0.53
1:B:782:LEU:CD2	1:B:786:VAL:HG13	2.39	0.53
1:B:948:ARG:HG3	5:B:1207:HOH:O	2.07	0.53
1:B:877:PRO:HB2	1:B:880:TRP:HB2	1.90	0.53
1:B:997:PHE:CE2	1:B:1001:LEU:HD12	2.44	0.53
1:C:878:ILE:CD1	1:C:886:ILE:HG12	2.38	0.53
1:C:898:TRP:CE3	1:C:951:TRP:HA	2.44	0.53
1:A:782:LEU:HD23	1:A:786:VAL:HG22	1.89	0.53
1:C:762:GLU:O	1:C:763:ALA:HB3	2.09	0.53

Continued on next page...

Continued from previous page...

Atom-1	Atom-2	Interatomic distance (Å)	Clash overlap (Å)
1:D:754:LYS:HB2	1:D:757:LYS:HB3	1.91	0.53
1:B:777:LEU:HD11	1:B:788:LEU:HB3	1.91	0.52
1:C:800:ASP:O	1:C:804:GLU:HG3	2.10	0.52
1:D:729:GLY:HA3	1:D:744:ILE:CD1	2.39	0.52
1:B:703:LEU:O	1:B:776:ARG:NH1	2.39	0.52
1:B:824:GLY:HA3	1:B:853:ILE:HD12	1.91	0.52
1:A:877:PRO:O	1:A:881:MET:CG	2.53	0.52
1:B:949:LYS:O	1:B:952:MET:HG3	2.09	0.52
1:D:743:ALA:HB2	1:D:792:LEU:HD12	1.92	0.52
1:A:906:GLU:O	1:A:911:GLY:N	2.36	0.52
1:D:888:HIS:O	1:D:890:ILE:HG13	2.09	0.51
1:D:760:LEU:HG	1:D:782:LEU:HD21	1.92	0.51
1:A:952:MET:HE3	1:A:957:SER:HB2	1.93	0.51
1:B:733:PRO:HB2	1:B:736:GLU:HB2	1.91	0.51
1:D:766:MET:CE	1:D:857:GLY:HA3	2.40	0.51
1:B:769:VAL:HG21	1:B:856:PHE:CZ	2.45	0.51
1:D:952:MET:O	1:D:958:ARG:NH2	2.40	0.51
1:A:721:GLY:HA3	3:A:1102:ANP:PB	2.51	0.51
1:D:730:LEU:HD23	1:D:741:PRO:HA	1.93	0.51
1:D:879:LYS:HG2	1:D:915:TYR:CD2	2.43	0.51
1:B:798:LEU:HD21	1:B:907:LEU:HD21	1.92	0.51
1:B:946:ILE:CD1	1:B:971:MET:HE2	2.41	0.51
1:B:714:LYS:O	1:B:715:ILE:HD13	2.11	0.51
1:C:776:ARG:HD3	5:C:1202:HOH:O	2.11	0.51
1:A:802:VAL:HA	1:A:809:ILE:CD1	2.41	0.51
1:C:728:LYS:HE2	1:C:792:LEU:CD2	2.40	0.51
1:A:723:PHE:CZ	1:A:859:ALA:HA	2.45	0.50
1:A:835:HIS:O	1:A:836:ARG:CB	2.59	0.50
1:A:723:PHE:CZ	1:A:859:ALA:HB2	2.43	0.50
1:A:703:LEU:O	1:A:776:ARG:NH1	2.41	0.50
1:A:713:LYS:HE2	1:A:730:LEU:HD12	1.92	0.50
1:B:747:LEU:HD12	1:B:786:VAL:HB	1.93	0.50
1:C:910:PHE:CZ	1:C:938:ILE:HD13	2.46	0.50
1:A:737:LYS:HD3	5:A:1218:HOH:O	2.11	0.50
1:C:709:GLU:HA	1:C:712:PHE:CE1	2.47	0.50
1:A:707:LEU:HG	1:A:789:ILE:HG13	1.94	0.49
1:A:766:MET:CE	1:A:856:PHE:O	2.59	0.49
1:B:726:VAL:HB	3:B:1102:ANP:H5'1	1.94	0.49
1:C:762:GLU:HG3	1:C:766:MET:HG2	1.94	0.49
1:D:919:PRO:HD2	1:D:922:GLU:OE1	2.12	0.49
1:B:934:PRO:O	1:B:936:PRO:HD3	2.12	0.49

Continued on next page...

Continued from previous page...

Atom-1	Atom-2	Interatomic distance (Å)	Clash overlap (Å)
1:D:731:TRP:CH2	1:D:733:PRO:HG3	2.47	0.49
1:A:856:PHE:CG	1:A:857:GLY:N	2.80	0.49
1:B:812:GLN:O	1:B:816:ASN:HB2	2.13	0.49
1:A:844:LEU:HG	1:A:854:THR:HG21	1.94	0.49
1:D:854:THR:HG23	5:D:1209:HOH:O	2.03	0.49
1:A:935:GLN:NE2	1:A:939:CYS:O	2.34	0.49
1:A:775:CYS:SG	1:A:854:THR:HB	2.52	0.49
1:B:905:TRP:HB2	1:B:947:MET:CE	2.42	0.49
1:C:789:ILE:HD12	1:C:789:ILE:N	2.28	0.49
1:D:731:TRP:CZ3	1:D:733:PRO:HG3	2.48	0.49
1:A:799:LEU:HB2	1:A:840:ALA:C	2.34	0.49
1:D:775:CYS:HB3	1:D:790:MET:HE1	1.94	0.49
1:D:940:THR:HG21	1:D:978:TYR:HA	1.94	0.49
1:A:753:PRO:O	1:A:754:LYS:O	2.31	0.49
1:A:766:MET:O	1:A:769:VAL:HG22	2.13	0.49
1:A:941:ILE:O	1:A:945:MET:HG3	2.13	0.49
1:D:881:MET:CE	1:D:886:ILE:HG13	2.41	0.48
1:B:782:LEU:HD21	1:B:786:VAL:HG13	1.95	0.48
1:C:878:ILE:HD13	1:C:881:MET:HE2	1.95	0.48
1:C:904:VAL:O	1:C:907:LEU:N	2.46	0.48
1:D:809:ILE:C	1:D:987:MET:HE3	2.33	0.48
1:A:941:ILE:HG13	1:A:945:MET:HG3	1.95	0.48
1:B:825:MET:HE3	1:B:825:MET:HA	1.95	0.48
1:D:949:LYS:O	1:D:958:ARG:HG2	2.13	0.48
1:B:760:LEU:HD13	1:B:782:LEU:CD1	2.43	0.48
1:B:944:TYR:O	1:B:948:ARG:HG2	2.13	0.48
1:D:815:LEU:O	1:D:819:VAL:HG23	2.12	0.48
1:A:861:LEU:HD23	1:A:861:LEU:H	1.79	0.48
1:A:882:ALA:HB2	1:A:898:TRP:CB	2.44	0.48
1:B:971:MET:HA	1:B:978:TYR:CE2	2.49	0.48
1:C:769:VAL:HG21	1:C:856:PHE:HZ	1.77	0.48
1:D:704:LEU:HD21	1:D:780:ILE:CG2	2.44	0.48
1:D:757:LYS:O	1:D:758:GLU:C	2.52	0.48
1:D:775:CYS:HB3	1:D:790:MET:HE3	1.95	0.48
1:A:754:LYS:HA	1:A:758:GLU:OE1	2.13	0.48
1:B:882:ALA:HA	1:B:898:TRP:CD2	2.48	0.48
1:D:752:SER:O	1:D:753:PRO:C	2.53	0.48
1:B:898:TRP:CE3	1:B:951:TRP:HA	2.49	0.48
1:C:983:GLY:O	1:C:985:GLU:N	2.46	0.48
1:A:825:MET:HB3	1:A:961:PHE:CE1	2.48	0.47
1:A:854:THR:OG1	1:A:855:ASP:N	2.46	0.47

Continued on next page...

Continued from previous page...

Atom-1	Atom-2	Interatomic distance (Å)	Clash overlap (Å)
1:A:744:ILE:HG12	1:A:789:ILE:CD1	2.44	0.47
1:D:717:VAL:HG22	1:D:727:TYR:CD2	2.50	0.47
1:D:905:TRP:CE2	1:D:909:THR:HG21	2.50	0.47
1:D:704:LEU:HD21	1:D:780:ILE:HG21	1.95	0.47
1:B:788:LEU:C	1:B:789:ILE:HD12	2.35	0.47
1:D:831:ARG:NE	5:D:1203:HOH:O	2.48	0.47
1:A:992:PRO:C	1:A:994:ASP:H	2.18	0.47
1:B:708:LYS:O	1:B:711:GLU:N	2.45	0.47
1:A:718:LEU:HD21	1:A:728:LYS:HB2	1.96	0.47
1:D:746:GLU:HG2	1:D:785:THR:CG2	2.45	0.46
1:A:923:ILE:HD13	1:A:926:ILE:HD11	1.97	0.46
1:D:945:MET:SD	1:A:929:LYS:NZ	2.87	0.46
1:B:793:MET:H	3:B:1102:ANP:H2	1.81	0.46
1:B:843:VAL:HG12	1:B:851:VAL:HB	1.96	0.46
1:A:836:ARG:HG3	1:A:891:TYR:CE2	2.51	0.46
1:A:766:MET:HE2	1:A:856:PHE:O	2.15	0.46
1:D:729:GLY:HA3	1:D:744:ILE:HD11	1.98	0.46
1:D:780:ILE:HD12	1:D:788:LEU:HD21	1.98	0.46
1:A:777:LEU:HD11	1:A:788:LEU:HB3	1.97	0.46
1:A:952:MET:HE3	1:A:957:SER:CB	2.45	0.46
1:C:935:GLN:HA	1:C:944:TYR:CD1	2.50	0.46
1:D:948:ARG:NH2	1:A:917:GLY:O	2.49	0.46
1:A:856:PHE:CD1	1:A:857:GLY:N	2.83	0.46
1:C:790:MET:HG2	4:C:1103:IXR:S19	2.55	0.46
1:C:878:ILE:HD12	1:C:886:ILE:HG12	1.98	0.46
1:D:726:VAL:HG23	1:D:745:LYS:HG3	1.98	0.46
1:D:810:GLY:HA2	1:D:987:MET:CE	2.45	0.46
1:B:704:LEU:HD23	1:B:764:TYR:CE1	2.51	0.46
1:D:905:TRP:CZ2	1:D:909:THR:HG21	2.52	0.45
1:A:808:ASN:C	1:A:987:MET:HG3	2.37	0.45
1:A:841:ARG:HG2	1:A:841:ARG:HH11	1.82	0.45
1:B:973:ARG:CG	1:B:1011:VAL:HG11	2.47	0.45
1:C:846:LYS:HG3	1:C:1002:MET:HE1	1.97	0.45
1:D:941:ILE:CD1	5:A:1209:HOH:O	2.65	0.45
1:C:765:VAL:HG12	1:C:766:MET:HE3	1.98	0.45
1:D:783:THR:O	1:D:784:SER:C	2.54	0.45
1:C:769:VAL:HG23	1:C:769:VAL:O	2.16	0.45
1:B:813:TYR:OH	1:B:990:PRO:HD3	2.15	0.45
1:B:881:MET:HB3	1:B:885:SER:HB2	1.99	0.45
1:B:793:MET:H	3:B:1102:ANP:C2	2.29	0.45
1:A:861:LEU:HG	1:A:862:LEU:HD13	1.96	0.45

Continued on next page...

Continued from previous page...

Atom-1	Atom-2	Interatomic distance (Å)	Clash overlap (Å)
1:B:713:LYS:HG3	1:B:715:ILE:HD11	1.99	0.45
1:B:714:LYS:HE2	1:B:714:LYS:HB2	1.72	0.45
1:C:924:SER:O	1:C:928:GLU:HG3	2.17	0.45
1:D:746:GLU:HG2	1:D:785:THR:HG22	1.99	0.44
1:A:723:PHE:CZ	1:A:859:ALA:CA	3.00	0.44
1:A:815:LEU:HD12	1:A:975:PRO:HB3	1.99	0.44
1:B:837:ASP:HA	5:B:1206:HOH:O	2.17	0.44
1:A:882:ALA:HA	1:A:898:TRP:CG	2.52	0.44
1:D:941:ILE:HD11	5:A:1209:HOH:O	2.18	0.44
1:A:799:LEU:O	1:A:802:VAL:HG22	2.17	0.44
1:B:857:GLY:O	1:B:861:LEU:HB2	2.18	0.44
1:B:1011:VAL:HG12	1:B:1012:ASP:N	2.32	0.44
1:C:898:TRP:O	1:C:901:GLY:N	2.50	0.44
1:A:723:PHE:HZ	1:A:859:ALA:CA	2.31	0.44
1:B:812:GLN:HG2	1:B:975:PRO:HG3	1.99	0.44
1:B:846:LYS:NZ	1:B:1005:GLU:OE2	2.50	0.44
1:D:898:TRP:O	1:D:901:GLY:N	2.51	0.44
1:D:986:ARG:O	1:D:987:MET:HG2	2.18	0.44
1:B:788:LEU:CD1	5:B:1211:HOH:O	2.64	0.44
1:B:989:LEU:HB3	1:B:990:PRO:CD	2.44	0.44
1:C:946:ILE:HD12	1:C:971:MET:HE1	1.99	0.44
1:B:945:MET:O	1:B:949:LYS:HG3	2.18	0.43
1:B:991:SER:HB2	1:B:992:PRO:HD2	2.00	0.43
1:C:894:GLN:HB3	1:C:955:ALA:HB1	1.99	0.43
1:A:844:LEU:HG	1:A:854:THR:CG2	2.48	0.43
1:B:709:GLU:OE2	1:B:784:SER:OG	2.29	0.43
1:B:829:GLU:HA	1:B:893:HIS:NE2	2.33	0.43
1:B:955:ALA:HA	1:B:958:ARG:NH1	2.33	0.43
1:B:760:LEU:HD13	1:B:782:LEU:HD12	2.00	0.43
1:A:806:LYS:HG3	1:A:910:PHE:HB3	2.00	0.43
1:B:838:LEU:HD12	1:B:838:LEU:HA	1.75	0.43
1:D:922:GLU:CG	1:B:941:ILE:HB	2.46	0.43
1:A:858:LEU:HA	1:A:861:LEU:HD21	2.01	0.43
1:B:766:MET:HB2	1:B:777:LEU:CB	2.49	0.43
1:B:788:LEU:HD21	5:B:1211:HOH:O	2.18	0.43
1:C:969:SER:O	1:C:972:ALA:HB3	2.18	0.43
1:D:757:LYS:HB2	1:D:757:LYS:HE3	1.45	0.43
1:B:767:ALA:O	1:B:776:ARG:HD2	2.18	0.43
1:D:783:THR:HG22	1:D:784:SER:N	2.32	0.43
1:D:810:GLY:HA2	1:D:987:MET:HE2	2.01	0.43
1:D:815:LEU:HD23	1:D:815:LEU:HA	1.79	0.43

Continued on next page...

Continued from previous page...

Atom-1	Atom-2	Interatomic distance (Å)	Clash overlap (Å)
1:D:798:LEU:O	1:D:802:VAL:HG22	2.19	0.43
1:A:894:GLN:O	1:A:897:VAL:HB	2.18	0.43
1:B:859:ALA:O	1:B:861:LEU:N	2.52	0.43
1:D:759:ILE:HG23	4:D:1103:IXR:C05	2.49	0.43
1:B:760:LEU:HD12	1:B:760:LEU:HA	1.84	0.43
1:C:990:PRO:HB2	1:C:994:ASP:HB2	2.01	0.43
1:B:766:MET:HG2	1:B:766:MET:H	1.58	0.42
1:C:968:PHE:CD1	1:C:971:MET:HE3	2.53	0.42
1:A:991:SER:O	1:A:992:PRO:O	2.37	0.42
1:C:707:LEU:HA	1:C:711:GLU:OE2	2.19	0.42
1:C:776:ARG:NH1	5:C:1202:HOH:O	2.29	0.42
1:A:952:MET:CE	1:A:957:SER:HB3	2.49	0.42
1:B:900:TYR:O	1:B:904:VAL:HG23	2.19	0.42
1:C:780:ILE:O	1:C:780:ILE:HG23	2.18	0.42
1:D:703:LEU:HD23	1:D:703:LEU:HA	1.56	0.42
1:D:890:ILE:HG22	1:D:892:THR:HG23	2.00	0.42
1:A:808:ASN:HB2	5:A:1211:HOH:O	2.19	0.42
1:A:814:LEU:HD12	1:A:981:ILE:HD11	2.00	0.42
1:C:945:MET:HE2	1:C:945:MET:HB3	1.90	0.42
1:B:759:ILE:HG21	1:B:782:LEU:HD21	2.02	0.42
1:D:712:PHE:HA	1:D:730:LEU:O	2.19	0.42
1:D:948:ARG:HA	1:D:948:ARG:HD2	1.83	0.42
1:A:743:ALA:HB2	1:A:792:LEU:HA	2.01	0.42
1:A:821:ILE:O	1:A:825:MET:HG2	2.19	0.42
1:A:827:TYR:OH	1:A:831:ARG:NH1	2.50	0.42
1:D:935:GLN:HB2	1:D:944:TYR:CD2	2.54	0.42
1:B:841:ARG:HH22	1:B:877:PRO:HB3	1.84	0.42
1:C:725:THR:HG22	1:C:726:VAL:N	2.35	0.42
1:C:825:MET:SD	1:C:853:ILE:HD13	2.59	0.42
1:C:876:VAL:HA	1:C:877:PRO:HD3	1.92	0.42
1:D:970:LYS:HB3	1:D:970:LYS:HE2	1.83	0.42
1:A:729:GLY:HA3	1:A:744:ILE:HD12	2.02	0.42
1:B:847:THR:C	1:B:849:GLN:H	2.23	0.42
1:A:733:PRO:HD2	1:A:738:VAL:HG23	2.02	0.42
1:A:808:ASN:O	1:A:987:MET:HG3	2.20	0.42
1:A:887:LEU:HD21	1:A:924:SER:HB2	2.02	0.42
1:A:992:PRO:C	1:A:994:ASP:N	2.73	0.42
1:C:790:MET:HE1	4:C:1103:IXR:C26	2.50	0.42
1:A:858:LEU:O	1:A:861:LEU:HD23	2.20	0.41
1:B:955:ALA:O	1:B:958:ARG:HB2	2.20	0.41
1:A:710:THR:H	1:A:710:THR:HG23	1.61	0.41

Continued on next page...

Continued from previous page...

Atom-1	Atom-2	Interatomic distance (Å)	Clash overlap (Å)
1:A:793:MET:O	1:A:795:PHE:N	2.53	0.41
3:A:1102:ANP:N3B	3:A:1102:ANP:O2A	2.53	0.41
1:B:799:LEU:HD21	1:B:803:ARG:NH2	2.34	0.41
1:C:713:LYS:HE3	1:C:732:ILE:HD11	2.03	0.41
1:C:946:ILE:HD12	1:C:971:MET:CE	2.50	0.41
1:D:767:ALA:HA	1:D:777:LEU:O	2.20	0.41
1:B:763:ALA:HB2	1:B:780:ILE:HD12	2.02	0.41
1:A:802:VAL:O	1:A:806:LYS:N	2.54	0.41
1:B:837:ASP:OD1	1:B:877:PRO:HG3	2.21	0.41
1:B:947:MET:HE2	1:B:951:TRP:HH2	1.84	0.41
1:D:797:CYS:HA	1:D:844:LEU:HA	2.02	0.41
1:D:986:ARG:C	1:D:987:MET:HG2	2.41	0.41
1:A:759:ILE:HG21	1:A:782:LEU:HD21	2.02	0.41
1:B:854:THR:HG23	1:B:855:ASP:OD2	2.20	0.41
1:C:744:ILE:HA	1:C:788:LEU:O	2.21	0.41
1:C:933:LEU:HD12	1:C:951:TRP:CZ2	2.55	0.41
1:A:883:LEU:HD23	1:A:953:ILE:HG23	2.02	0.41
1:C:728:LYS:HG3	1:C:792:LEU:CD2	2.48	0.41
1:C:946:ILE:CD1	1:C:971:MET:HE2	2.51	0.41
1:D:949:LYS:HA	1:D:952:MET:HG3	2.02	0.41
1:B:883:LEU:HA	1:B:883:LEU:HD12	1.86	0.41
1:B:940:THR:OG1	1:B:978:TYR:HA	2.21	0.41
1:D:945:MET:HE1	1:A:925:SER:HB2	2.02	0.41
1:D:1004:GLU:O	1:D:1005:GLU:C	2.59	0.41
1:C:846:LYS:HG2	1:C:1002:MET:CE	2.49	0.41
1:D:879:LYS:HE2	1:D:915:TYR:HB2	2.03	0.41
1:A:753:PRO:O	1:A:754:LYS:C	2.59	0.41
1:C:704:LEU:HD13	1:C:777:LEU:HD23	2.02	0.41
1:D:815:LEU:HD12	1:D:975:PRO:CB	2.49	0.41
1:A:733:PRO:O	1:A:736:GLU:HB2	2.20	0.41
1:C:715:ILE:CG1	1:C:716:LYS:N	2.79	0.41
1:C:878:ILE:HD13	1:C:886:ILE:HG12	2.02	0.41
1:D:745:LYS:HE3	3:D:1102:ANP:O1A	2.21	0.40
1:D:854:THR:O	1:D:855:ASP:HB2	2.21	0.40
1:D:876:VAL:CG1	1:D:878:ILE:HG12	2.49	0.40
1:A:757:LYS:HA	1:A:757:LYS:HD2	1.83	0.40
1:A:808:ASN:HA	1:A:987:MET:SD	2.61	0.40
1:C:730:LEU:HD13	1:C:739:LYS:HB3	2.01	0.40
1:C:952:MET:O	1:C:958:ARG:NH2	2.48	0.40
1:D:783:THR:CG2	1:D:784:SER:N	2.84	0.40
1:A:813:TYR:HH	1:A:991:SER:N	2.19	0.40

Continued on next page...

Continued from previous page...

Atom-1	Atom-2	Interatomic distance (Å)	Clash overlap (Å)
1:B:902:VAL:HG23	1:B:951:TRP:HE1	1.86	0.40
1:C:735:GLY:C	1:C:736:GLU:HG2	2.41	0.40
1:A:947:MET:HE3	1:A:951:TRP:CH2	2.56	0.40
1:B:905:TRP:HB2	1:B:947:MET:HE3	2.01	0.40
1:C:757:LYS:HA	1:C:757:LYS:HE3	2.03	0.40
1:C:760:LEU:HD23	1:C:760:LEU:HA	1.86	0.40
1:D:897:VAL:O	1:D:950:CYS:HB3	2.21	0.40
1:C:709:GLU:HG2	5:C:1213:HOH:O	2.19	0.40
1:D:763:ALA:HB1	1:D:777:LEU:CD2	2.52	0.40
1:D:766:MET:CE	1:D:857:GLY:CA	2.99	0.40
1:A:941:ILE:CG1	1:C:926:ILE:HG22	2.50	0.40
1:B:703:LEU:HD13	1:B:768:SER:HA	2.03	0.40
1:C:966:ILE:HG22	1:C:970:LYS:HE3	2.00	0.40

There are no symmetry-related clashes.

5.3 Torsion angles [i](#)

5.3.1 Protein backbone [i](#)

In the following table, the Percentiles column shows the percent Ramachandran outliers of the chain as a percentile score with respect to all X-ray entries followed by that with respect to entries of similar resolution.

The Analysed column shows the number of residues for which the backbone conformation was analysed, and the total number of residues.

Mol	Chain	Analysed	Favoured	Allowed	Outliers	Percentiles	
1	A	290/328 (88%)	265 (91%)	22 (8%)	3 (1%)	15	53
1	B	281/328 (86%)	263 (94%)	18 (6%)	0	100	100
1	C	284/328 (87%)	249 (88%)	28 (10%)	7 (2%)	5	28
1	D	275/328 (84%)	239 (87%)	34 (12%)	2 (1%)	22	60
All	All	1130/1312 (86%)	1016 (90%)	102 (9%)	12 (1%)	14	50

All (12) Ramachandran outliers are listed below:

Mol	Chain	Res	Type
1	D	753	PRO
1	A	754	LYS

Continued on next page...

Continued from previous page...

Mol	Chain	Res	Type
1	C	806	LYS
1	C	984	ASP
1	C	1003	ASP
1	A	992	PRO
1	C	750	ALA
1	A	836	ARG
1	C	808	ASN
1	C	837	ASP
1	D	758	GLU
1	C	799	LEU

5.3.2 Protein sidechains [i](#)

In the following table, the Percentiles column shows the percent sidechain outliers of the chain as a percentile score with respect to all X-ray entries followed by that with respect to entries of similar resolution.

The Analysed column shows the number of residues for which the sidechain conformation was analysed, and the total number of residues.

Mol	Chain	Analysed	Rotameric	Outliers	Percentiles
1	A	260/288 (90%)	251 (96%)	9 (4%)	36 71
1	B	251/288 (87%)	247 (98%)	4 (2%)	62 86
1	C	250/288 (87%)	241 (96%)	9 (4%)	35 70
1	D	241/288 (84%)	237 (98%)	4 (2%)	60 85
All	All	1002/1152 (87%)	976 (97%)	26 (3%)	46 78

All (26) residues with a non-rotameric sidechain are listed below:

Mol	Chain	Res	Type
1	D	709	GLU
1	D	757	LYS
1	D	977	ARG
1	D	988	HIS
1	A	705	ARG
1	A	728	LYS
1	A	806	LYS
1	A	925	SER
1	A	960	LYS
1	A	987	MET
1	A	1005	GLU

Continued on next page...

Continued from previous page...

Mol	Chain	Res	Type
1	A	1009	ASP
1	A	1017	LEU
1	B	705	ARG
1	B	862	LEU
1	B	985	GLU
1	B	998	TYR
1	C	720	SER
1	C	753	PRO
1	C	754	LYS
1	C	760	LEU
1	C	762	GLU
1	C	894	GLN
1	C	929	LYS
1	C	995	SER
1	C	998	TYR

Sometimes sidechains can be flipped to improve hydrogen bonding and reduce clashes. There are no such sidechains identified.

5.3.3 RNA [i](#)

There are no RNA molecules in this entry.

5.4 Non-standard residues in protein, DNA, RNA chains [i](#)

There are no non-standard protein/DNA/RNA residues in this entry.

5.5 Carbohydrates [i](#)

There are no monosaccharides in this entry.

5.6 Ligand geometry [i](#)

Of 10 ligands modelled in this entry, 4 are monoatomic - leaving 6 for Mogul analysis.

In the following table, the Counts columns list the number of bonds (or angles) for which Mogul statistics could be retrieved, the number of bonds (or angles) that are observed in the model and the number of bonds (or angles) that are defined in the Chemical Component Dictionary. The Link column lists molecule types, if any, to which the group is linked. The Z score for a bond length (or angle) is the number of standard deviations the observed value is removed from the

expected value. A bond length (or angle) with $|Z| > 2$ is considered an outlier worth inspection. RMSZ is the root-mean-square of all Z scores of the bond lengths (or angles).

Mol	Type	Chain	Res	Link	Bond lengths			Bond angles		
					Counts	RMSZ	# $ Z > 2$	Counts	RMSZ	# $ Z > 2$
3	ANP	B	1102	2	29,33,33	1.27	4 (13%)	31,52,52	1.46	4 (12%)
3	ANP	D	1102	2	29,33,33	1.09	3 (10%)	31,52,52	1.45	7 (22%)
3	ANP	C	1102	2	29,33,33	1.01	3 (10%)	31,52,52	1.30	5 (16%)
4	IXR	C	1103	-	27,29,29	2.14	9 (33%)	31,41,41	1.66	6 (19%)
4	IXR	D	1103	-	27,29,29	2.07	9 (33%)	31,41,41	1.68	9 (29%)
3	ANP	A	1102	2	29,33,33	1.05	3 (10%)	31,52,52	1.43	7 (22%)

In the following table, the Chirals column lists the number of chiral outliers, the number of chiral centers analysed, the number of these observed in the model and the number defined in the Chemical Component Dictionary. Similar counts are reported in the Torsion and Rings columns. '-' means no outliers of that kind were identified.

Mol	Type	Chain	Res	Link	Chirals	Torsions	Rings
3	ANP	B	1102	2	-	5/14/38/38	0/3/3/3
3	ANP	D	1102	2	-	3/14/38/38	0/3/3/3
3	ANP	C	1102	2	-	8/14/38/38	0/3/3/3
4	IXR	C	1103	-	-	1/14/32/32	0/4/4/4
4	IXR	D	1103	-	-	1/14/32/32	0/4/4/4
3	ANP	A	1102	2	-	7/14/38/38	0/3/3/3

All (31) bond length outliers are listed below:

Mol	Chain	Res	Type	Atoms	Z	Observed(Å)	Ideal(Å)
4	C	1103	IXR	C15-N14	5.66	1.46	1.36
4	D	1103	IXR	C08-C09	4.66	1.56	1.48
4	C	1103	IXR	C13-N14	4.58	1.46	1.35
4	D	1103	IXR	C15-N14	4.52	1.44	1.36
4	D	1103	IXR	C13-N14	4.08	1.44	1.35
4	C	1103	IXR	C09-N11	3.81	1.47	1.40
4	C	1103	IXR	C03-C02	3.72	1.54	1.48
4	D	1103	IXR	C02-N11	3.63	1.47	1.40
3	B	1102	ANP	PG-O1G	3.63	1.51	1.46
4	C	1103	IXR	C08-C09	3.43	1.54	1.48
4	D	1103	IXR	C03-C02	3.36	1.54	1.48
3	A	1102	ANP	PG-O1G	3.22	1.51	1.46
3	B	1102	ANP	PG-N3B	3.00	1.71	1.63
3	C	1102	ANP	PG-O1G	2.99	1.50	1.46

Continued on next page...

Continued from previous page...

Mol	Chain	Res	Type	Atoms	Z	Observed(Å)	Ideal(Å)
3	D	1102	ANP	PG-N3B	2.74	1.70	1.63
3	A	1102	ANP	PG-N3B	2.62	1.70	1.63
4	C	1103	IXR	C02-N11	2.60	1.45	1.40
3	A	1102	ANP	PB-N3B	2.55	1.70	1.63
4	D	1103	IXR	C09-N11	2.53	1.45	1.40
3	B	1102	ANP	PB-N3B	2.32	1.69	1.63
3	B	1102	ANP	PB-O1B	2.31	1.49	1.46
3	C	1102	ANP	PG-N3B	2.30	1.69	1.63
3	C	1102	ANP	PB-O1B	2.27	1.49	1.46
4	D	1103	IXR	C18-S19	-2.25	1.60	1.71
3	D	1102	ANP	PB-O1B	2.24	1.49	1.46
4	C	1103	IXR	C18-S19	-2.21	1.60	1.71
3	D	1102	ANP	PG-O1G	2.19	1.49	1.46
4	D	1103	IXR	O01-C02	-2.17	1.18	1.22
4	D	1103	IXR	C17-N16	2.16	1.47	1.37
4	C	1103	IXR	O20-C13	-2.05	1.19	1.23
4	C	1103	IXR	C17-N16	2.02	1.46	1.37

All (38) bond angle outliers are listed below:

Mol	Chain	Res	Type	Atoms	Z	Observed(°)	Ideal(°)
3	B	1102	ANP	O1G-PG-N3B	-4.60	105.00	111.77
4	D	1103	IXR	C15-N14-C13	-4.21	119.66	129.02
4	C	1103	IXR	C15-N14-C13	-4.19	119.70	129.02
4	C	1103	IXR	C21-C12-N11	-3.93	108.33	112.77
3	A	1102	ANP	O1B-PB-N3B	-3.82	106.15	111.77
4	D	1103	IXR	C09-N11-C02	-3.76	107.21	111.53
3	D	1102	ANP	O1G-PG-N3B	-3.56	106.52	111.77
4	C	1103	IXR	C09-N11-C02	-3.54	107.46	111.53
3	D	1102	ANP	O2G-PG-O1G	-3.37	104.99	113.45
3	B	1102	ANP	PB-O3A-PA	-3.27	121.10	132.62
3	C	1102	ANP	O2B-PB-O3A	3.04	114.78	104.64
4	D	1103	IXR	O01-C02-C03	-2.97	122.90	128.68
3	D	1102	ANP	O2G-PG-O3G	2.92	115.41	107.64
3	C	1102	ANP	O2B-PB-O1B	-2.85	103.94	109.92
3	A	1102	ANP	O2G-PG-O1G	-2.74	106.57	113.45
4	C	1103	IXR	O10-C09-N11	2.70	128.82	124.97
3	C	1102	ANP	O3G-PG-O1G	-2.69	106.69	113.45
4	D	1103	IXR	O01-C02-N11	2.64	128.73	124.97
4	C	1103	IXR	O10-C09-C08	-2.64	123.55	128.68
3	D	1102	ANP	O3G-PG-O1G	-2.62	106.88	113.45
3	B	1102	ANP	O2B-PB-O3A	2.45	112.83	104.64

Continued on next page...

Continued from previous page...

Mol	Chain	Res	Type	Atoms	Z	Observed(°)	Ideal(°)
3	A	1102	ANP	PB-O3A-PA	-2.43	124.07	132.62
4	D	1103	IXR	O20-C13-N14	-2.40	118.76	123.93
3	A	1102	ANP	C5-C6-N6	2.39	123.98	120.35
3	B	1102	ANP	C5-C6-N6	2.37	123.95	120.35
3	D	1102	ANP	O1B-PB-N3B	-2.31	108.37	111.77
3	A	1102	ANP	O1G-PG-N3B	-2.23	108.49	111.77
4	D	1103	IXR	C08-C09-N11	2.22	108.38	105.96
4	D	1103	IXR	C03-C02-N11	2.22	108.37	105.96
4	D	1103	IXR	C21-C12-C13	-2.18	107.79	112.06
3	A	1102	ANP	O2B-PB-O1B	-2.17	105.38	109.92
3	D	1102	ANP	C5-C6-N6	2.16	123.64	120.35
3	D	1102	ANP	PB-O3A-PA	-2.15	125.05	132.62
3	C	1102	ANP	C5-C6-N6	2.11	123.55	120.35
3	A	1102	ANP	O3A-PB-N3B	2.08	112.36	106.59
4	C	1103	IXR	C03-C02-N11	2.06	108.20	105.96
4	D	1103	IXR	C07-C08-C09	2.05	132.97	129.63
3	C	1102	ANP	PB-O3A-PA	-2.04	125.44	132.62

There are no chirality outliers.

All (25) torsion outliers are listed below:

Mol	Chain	Res	Type	Atoms
3	A	1102	ANP	PB-N3B-PG-O1G
3	A	1102	ANP	C5'-O5'-PA-O1A
3	A	1102	ANP	C5'-O5'-PA-O2A
3	B	1102	ANP	PB-N3B-PG-O1G
3	B	1102	ANP	PG-N3B-PB-O1B
3	C	1102	ANP	PB-N3B-PG-O1G
3	C	1102	ANP	PG-N3B-PB-O1B
3	C	1102	ANP	PG-N3B-PB-O3A
3	C	1102	ANP	PB-O3A-PA-O5'
4	D	1103	IXR	C21-C12-N11-C02
3	B	1102	ANP	O4'-C4'-C5'-O5'
3	C	1102	ANP	O4'-C4'-C5'-O5'
3	B	1102	ANP	C3'-C4'-C5'-O5'
3	A	1102	ANP	C4'-C5'-O5'-PA
3	B	1102	ANP	PB-O3A-PA-O5'
3	C	1102	ANP	C3'-C4'-C5'-O5'
4	C	1103	IXR	C21-C12-N11-C09
3	A	1102	ANP	PG-N3B-PB-O1B
3	D	1102	ANP	PB-O3A-PA-O1A
3	D	1102	ANP	PB-O3A-PA-O2A

Continued on next page...

Continued from previous page...

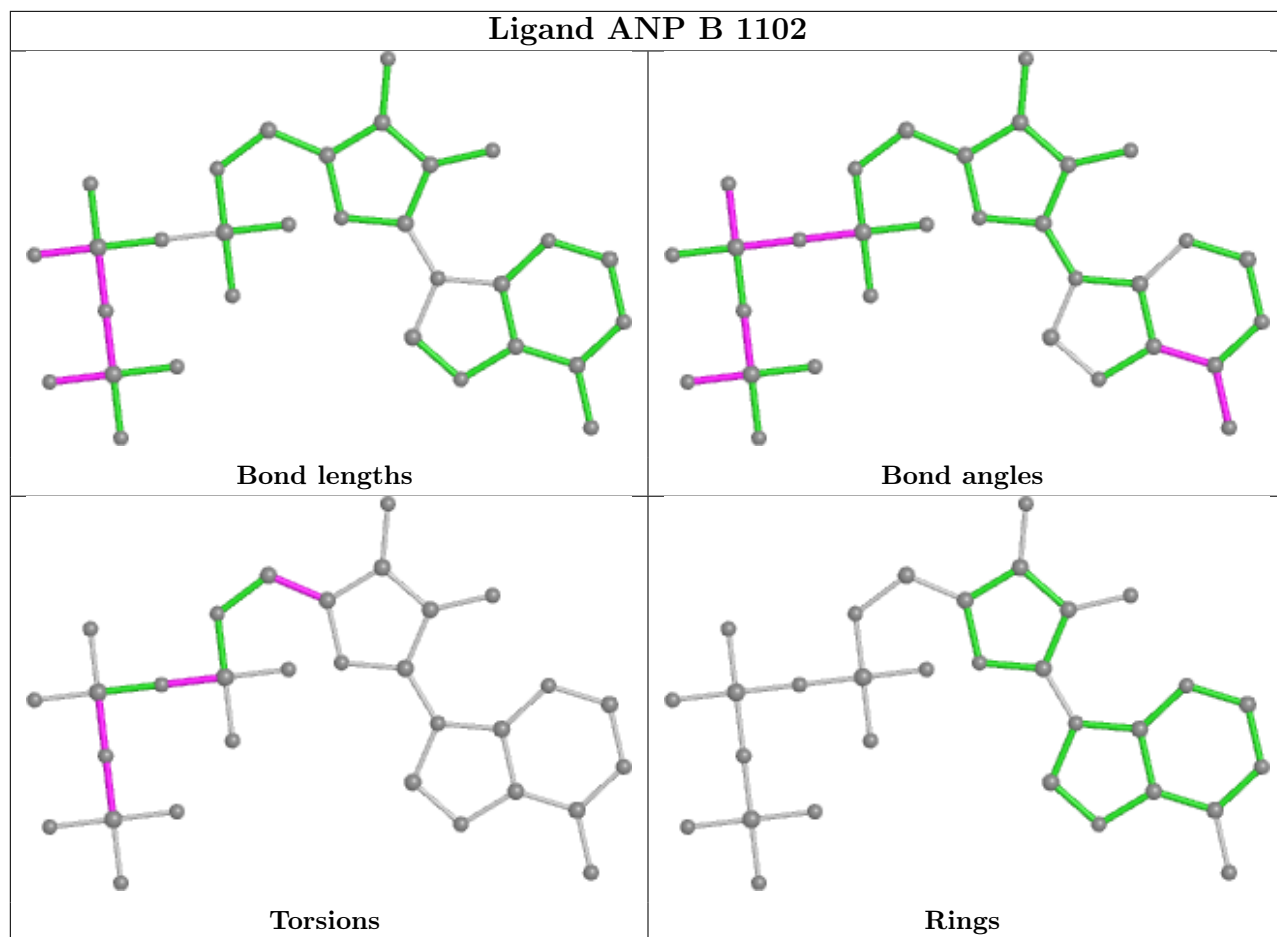
Mol	Chain	Res	Type	Atoms
3	C	1102	ANP	PB-O3A-PA-O2A
3	A	1102	ANP	C5'-O5'-PA-O3A
3	C	1102	ANP	C5'-O5'-PA-O1A
3	A	1102	ANP	O4'-C4'-C5'-O5'
3	D	1102	ANP	PB-N3B-PG-O1G

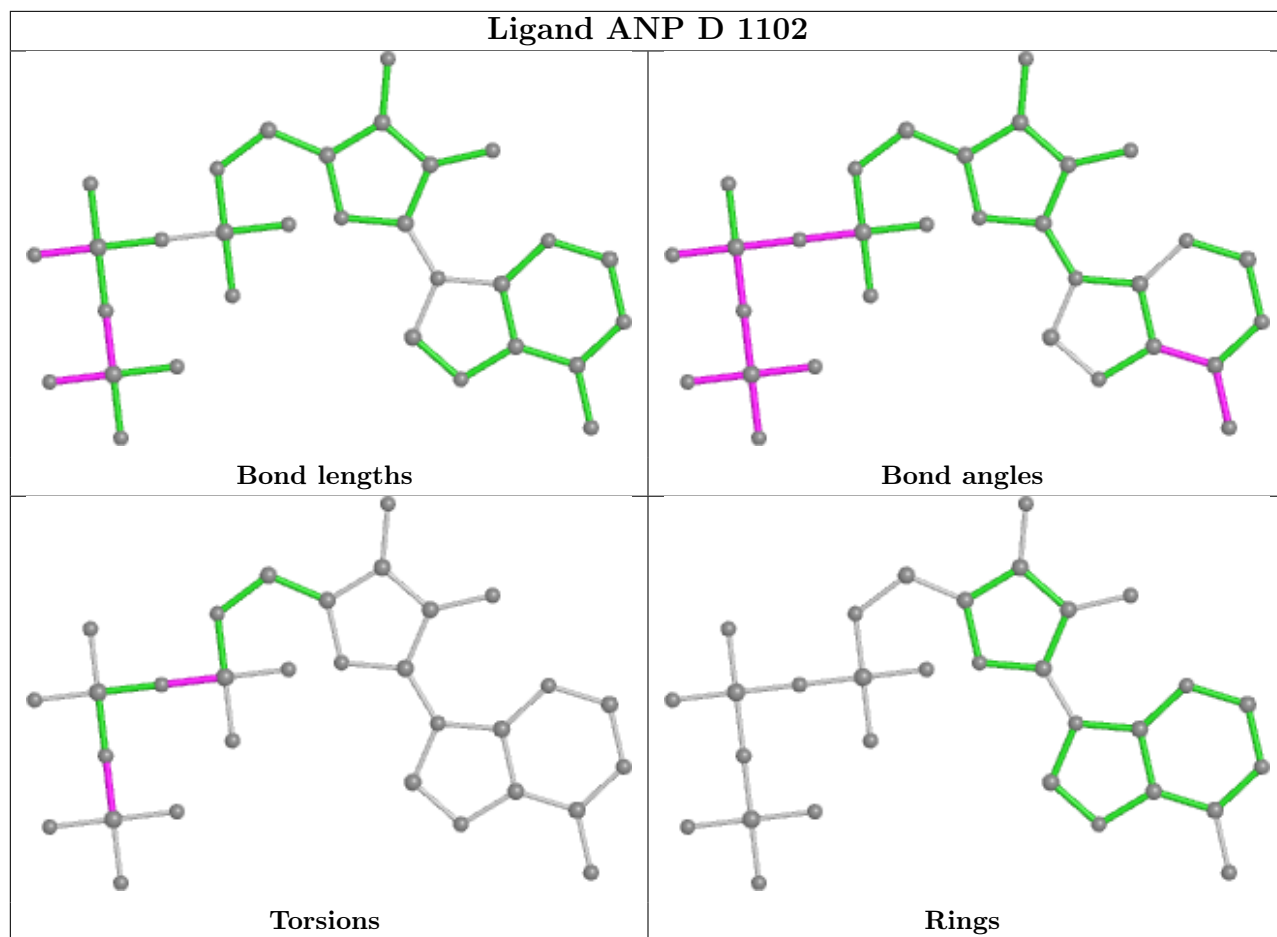
There are no ring outliers.

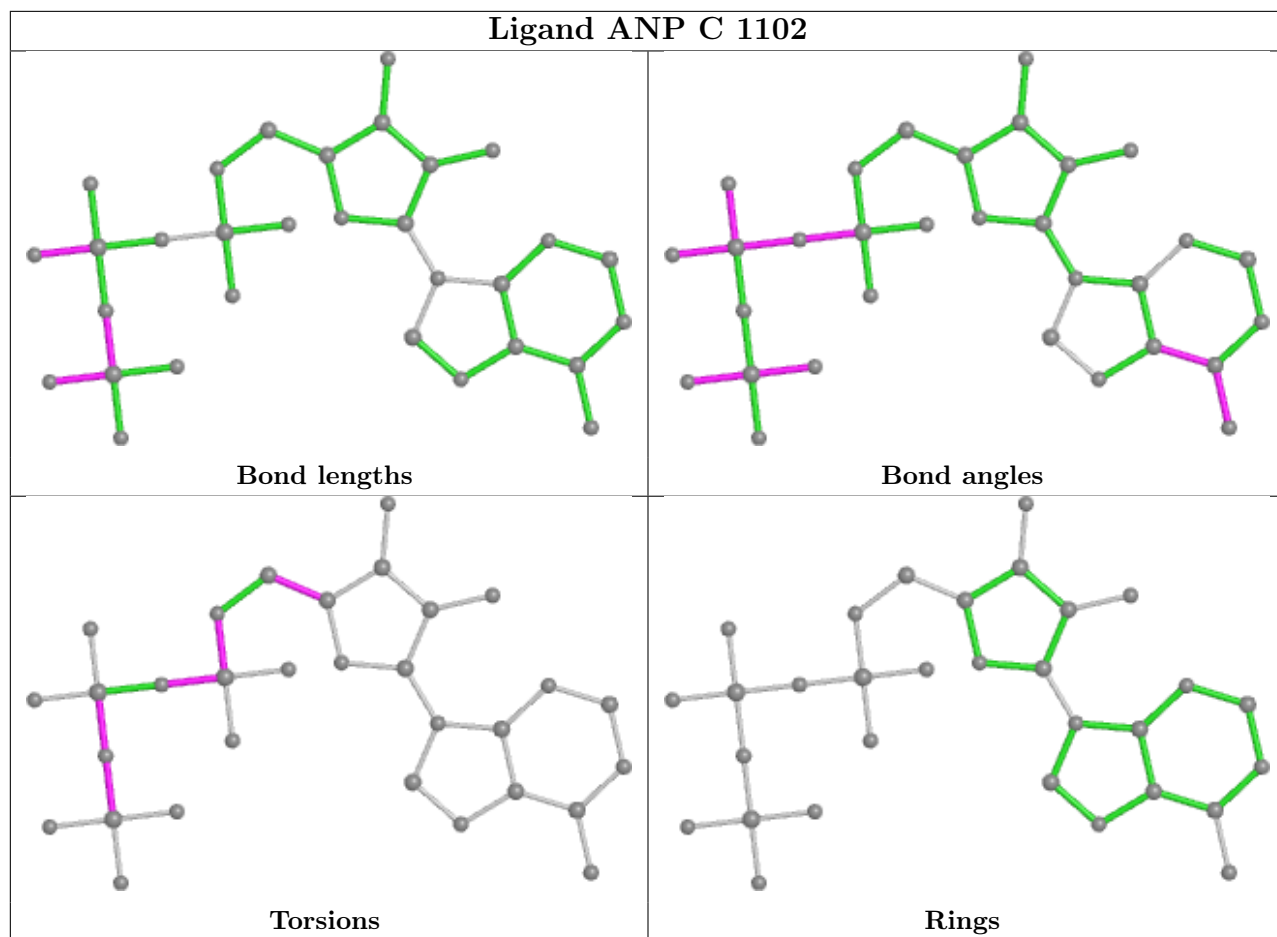
5 monomers are involved in 13 short contacts:

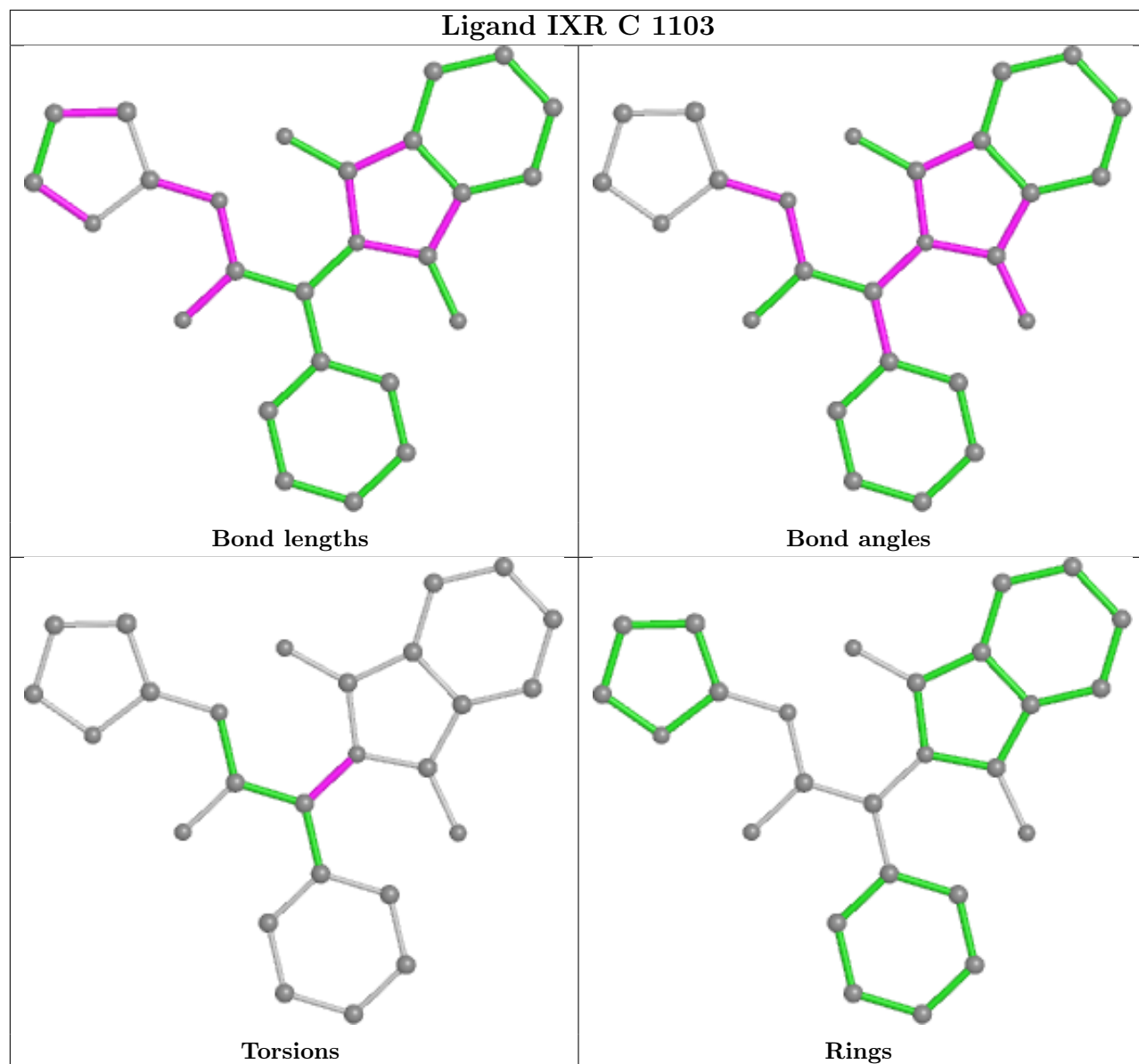
Mol	Chain	Res	Type	Clashes	Symm-Clashes
3	B	1102	ANP	3	0
3	D	1102	ANP	1	0
4	C	1103	IXR	3	0
4	D	1103	IXR	2	0
3	A	1102	ANP	4	0

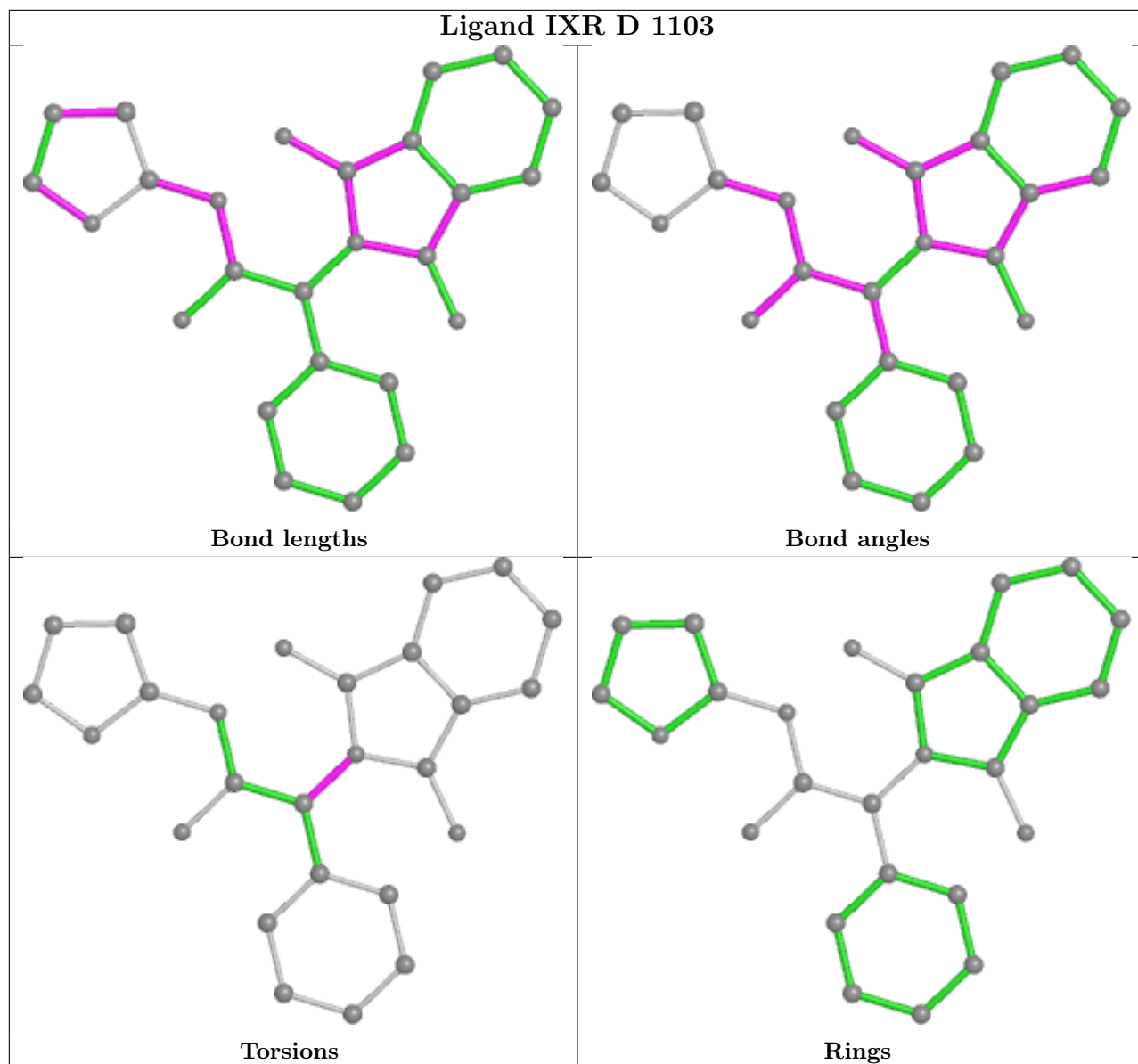
The following is a two-dimensional graphical depiction of Mogul quality analysis of bond lengths, bond angles, torsion angles, and ring geometry for all instances of the Ligand of Interest. In addition, ligands with molecular weight > 250 and outliers as shown on the validation Tables will also be included. For torsion angles, if less than 5% of the Mogul distribution of torsion angles is within 10 degrees of the torsion angle in question, then that torsion angle is considered an outlier. Any bond that is central to one or more torsion angles identified as an outlier by Mogul will be highlighted in the graph. For rings, the root-mean-square deviation (RMSD) between the ring in question and similar rings identified by Mogul is calculated over all ring torsion angles. If the average RMSD is greater than 60 degrees and the minimal RMSD between the ring in question and any Mogul-identified rings is also greater than 60 degrees, then that ring is considered an outlier. The outliers are highlighted in purple. The color gray indicates Mogul did not find sufficient equivalents in the CSD to analyse the geometry.

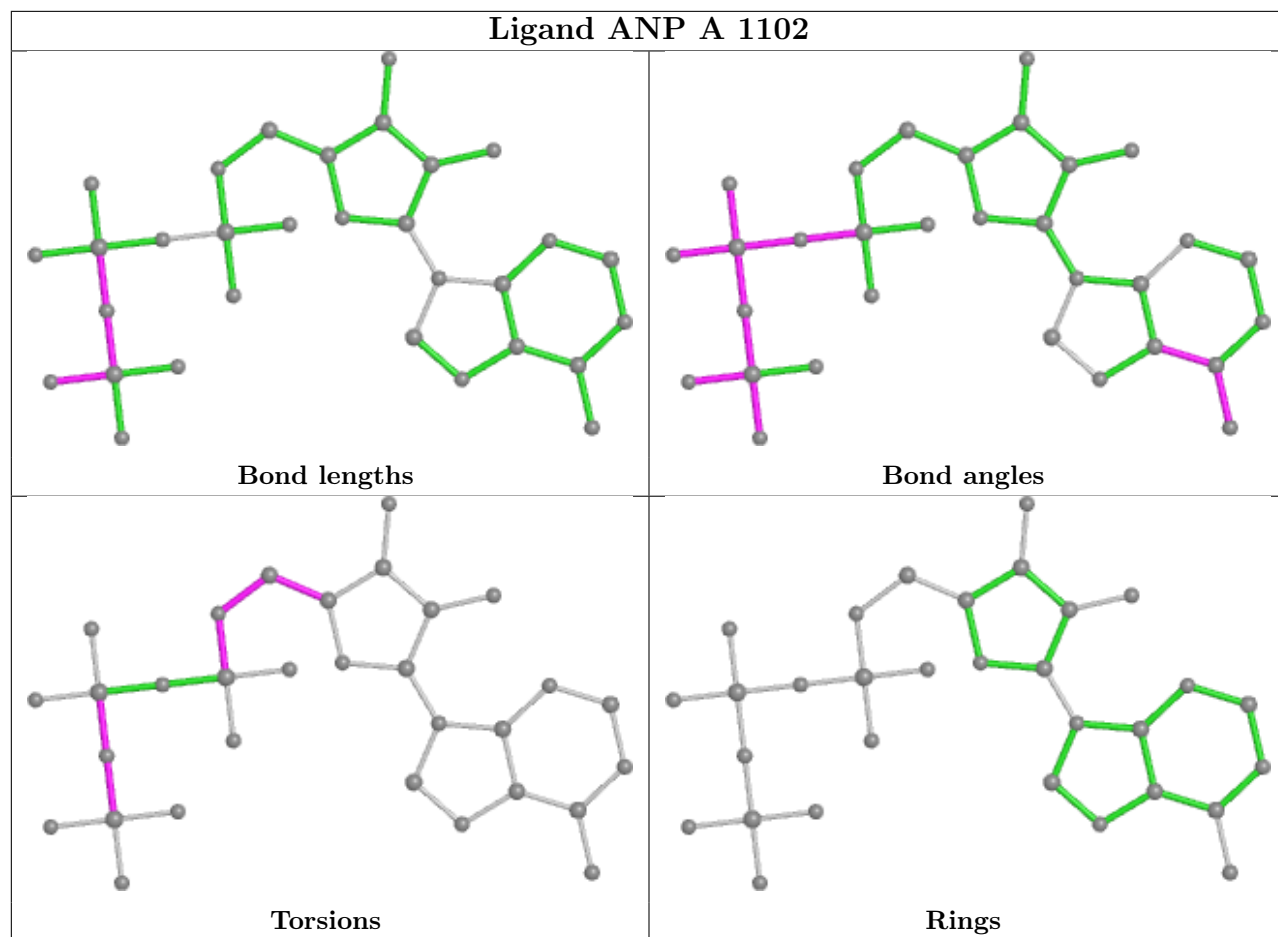












5.7 Other polymers [i](#)

There are no such residues in this entry.

5.8 Polymer linkage issues [i](#)

There are no chain breaks in this entry.

6 Fit of model and data [i](#)

6.1 Protein, DNA and RNA chains [i](#)

In the following table, the column labelled ‘#RSRZ> 2’ contains the number (and percentage) of RSRZ outliers, followed by percent RSRZ outliers for the chain as percentile scores relative to all X-ray entries and entries of similar resolution. The OWAB column contains the minimum, median, 95th percentile and maximum values of the occupancy-weighted average B-factor per residue. The column labelled ‘Q< 0.9’ lists the number of (and percentage) of residues with an average occupancy less than 0.9.

Mol	Chain	Analysed	<RSRZ>	#RSRZ>2	OWAB(Å ²)	Q<0.9
1	A	300/328 (91%)	-0.14	1 (0%) 94 84	19, 38, 59, 84	0
1	B	290/328 (88%)	-0.00	6 (2%) 63 34	24, 43, 67, 85	0
1	C	289/328 (88%)	0.06	8 (2%) 53 25	25, 40, 64, 92	0
1	D	283/328 (86%)	-0.02	2 (0%) 87 69	19, 38, 72, 98	0
All	All	1162/1312 (88%)	-0.02	17 (1%) 73 46	19, 40, 65, 98	0

All (17) RSRZ outliers are listed below:

Mol	Chain	Res	Type	RSRZ
1	C	1013	ALA	3.2
1	B	917	GLY	2.9
1	C	1011	VAL	2.8
1	B	998	TYR	2.6
1	D	751	THR	2.6
1	C	837	ASP	2.5
1	C	1002	MET	2.4
1	B	1013	ALA	2.4
1	C	1012	ASP	2.3
1	B	953	ILE	2.3
1	C	784	SER	2.3
1	B	754	LYS	2.3
1	A	917	GLY	2.2
1	D	753	PRO	2.2
1	C	723	PHE	2.1
1	C	989	LEU	2.0
1	B	1011	VAL	2.0

6.2 Non-standard residues in protein, DNA, RNA chains [i](#)

There are no non-standard protein/DNA/RNA residues in this entry.

6.3 Carbohydrates [i](#)

There are no monosaccharides in this entry.

6.4 Ligands [i](#)

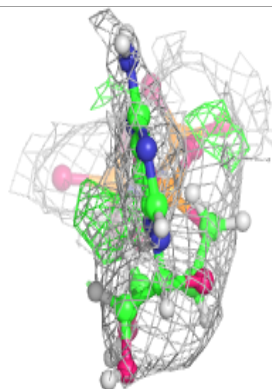
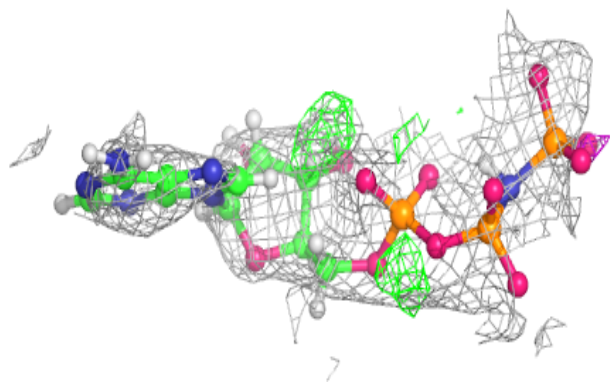
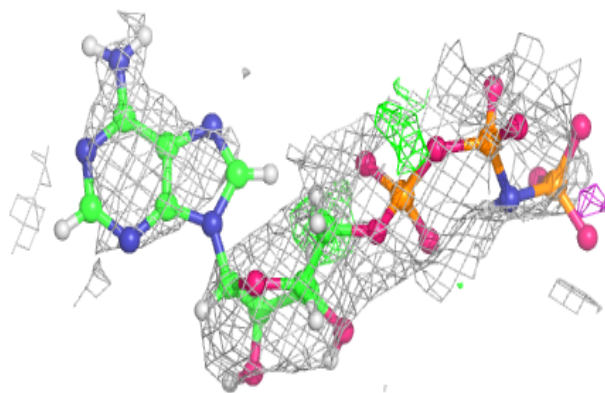
In the following table, the Atoms column lists the number of modelled atoms in the group and the number defined in the chemical component dictionary. The B-factors column lists the minimum, median, 95th percentile and maximum values of B factors of atoms in the group. The column labelled 'Q< 0.9' lists the number of atoms with occupancy less than 0.9.

Mol	Type	Chain	Res	Atoms	RSCC	RSR	B-factors(\AA^2)	Q<0.9
2	MG	A	1101	1/1	0.58	0.20	46,46,46,46	0
2	MG	B	1101	1/1	0.78	0.17	40,40,40,40	0
3	ANP	A	1102	31/31	0.80	0.28	32,49,65,72	44
2	MG	D	1101	1/1	0.87	0.25	22,22,22,22	0
3	ANP	B	1102	31/31	0.88	0.23	34,60,72,76	0
3	ANP	D	1102	31/31	0.91	0.22	27,43,59,69	0
3	ANP	C	1102	31/31	0.92	0.19	31,61,77,87	0
4	IXR	D	1103	26/26	0.92	0.29	37,46,54,64	0
4	IXR	C	1103	26/26	0.93	0.28	31,52,64,66	0
2	MG	C	1101	1/1	0.95	0.07	39,39,39,39	0

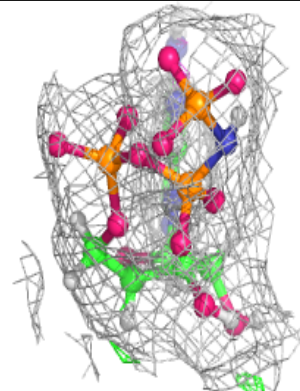
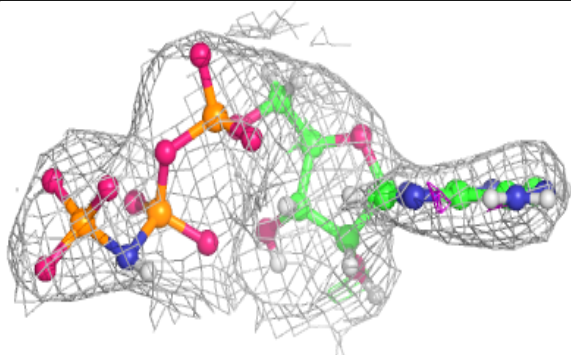
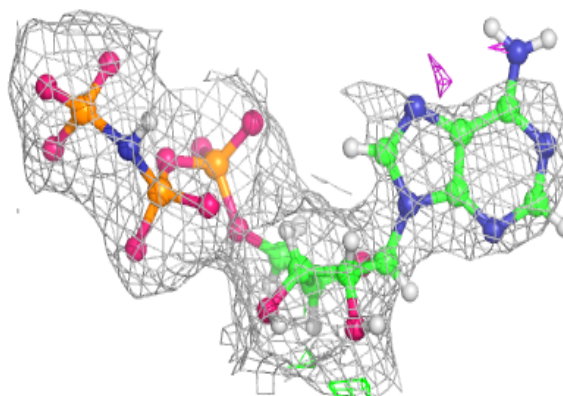
The following is a graphical depiction of the model fit to experimental electron density of all instances of the Ligand of Interest. In addition, ligands with molecular weight > 250 and outliers as shown on the geometry validation Tables will also be included. Each fit is shown from different orientation to approximate a three-dimensional view.

Electron density around ANP A 1102:

$2mF_o-DF_c$ (at 0.7 rmsd) in gray
 mF_o-DF_c (at 3 rmsd) in purple (negative)
and green (positive)

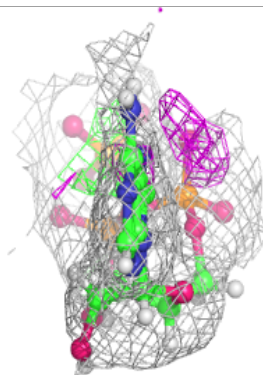
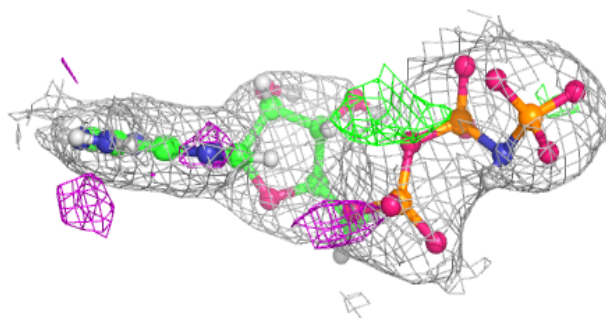
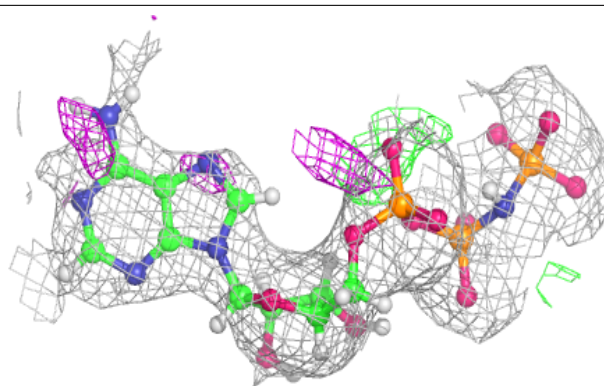
**Electron density around ANP B 1102:**

$2mF_o-DF_c$ (at 0.7 rmsd) in gray
 mF_o-DF_c (at 3 rmsd) in purple (negative)
and green (positive)

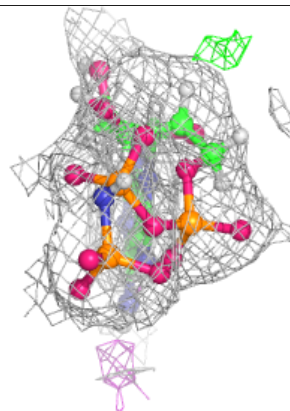
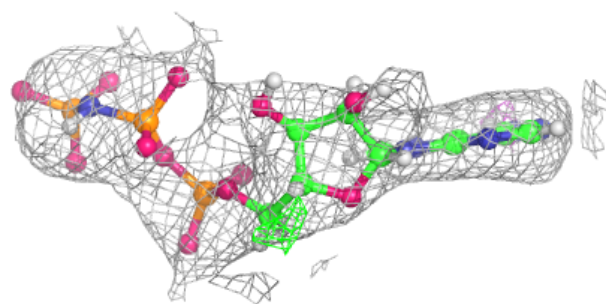
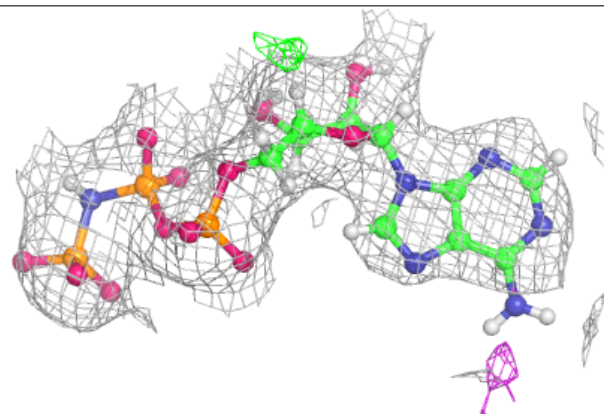


Electron density around ANP D 1102:

$2mF_o-DF_c$ (at 0.7 rmsd) in gray
 mF_o-DF_c (at 3 rmsd) in purple (negative)
and green (positive)

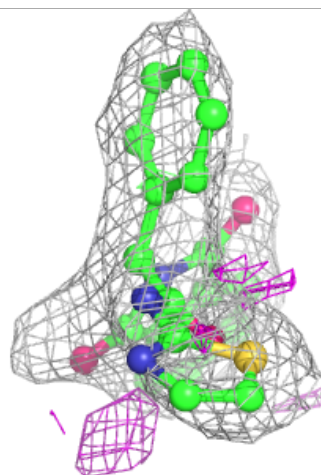
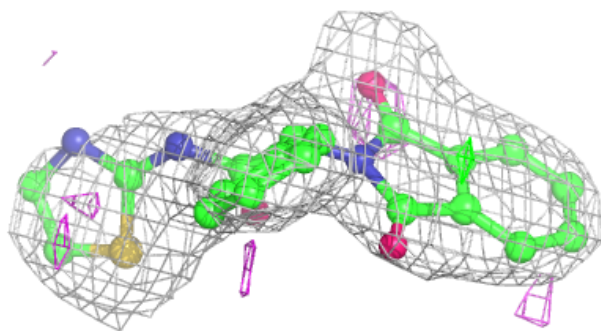
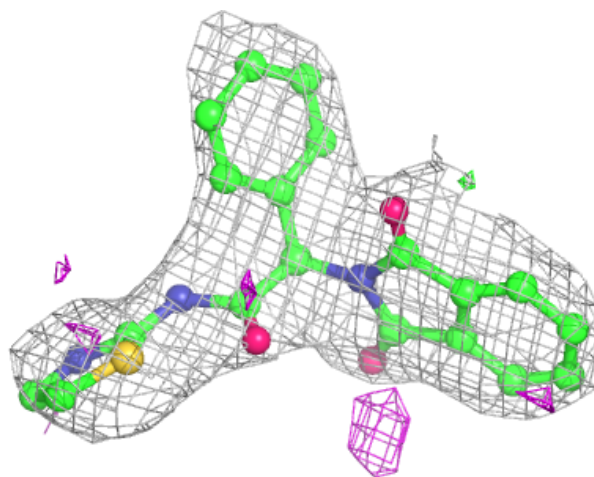
**Electron density around ANP C 1102:**

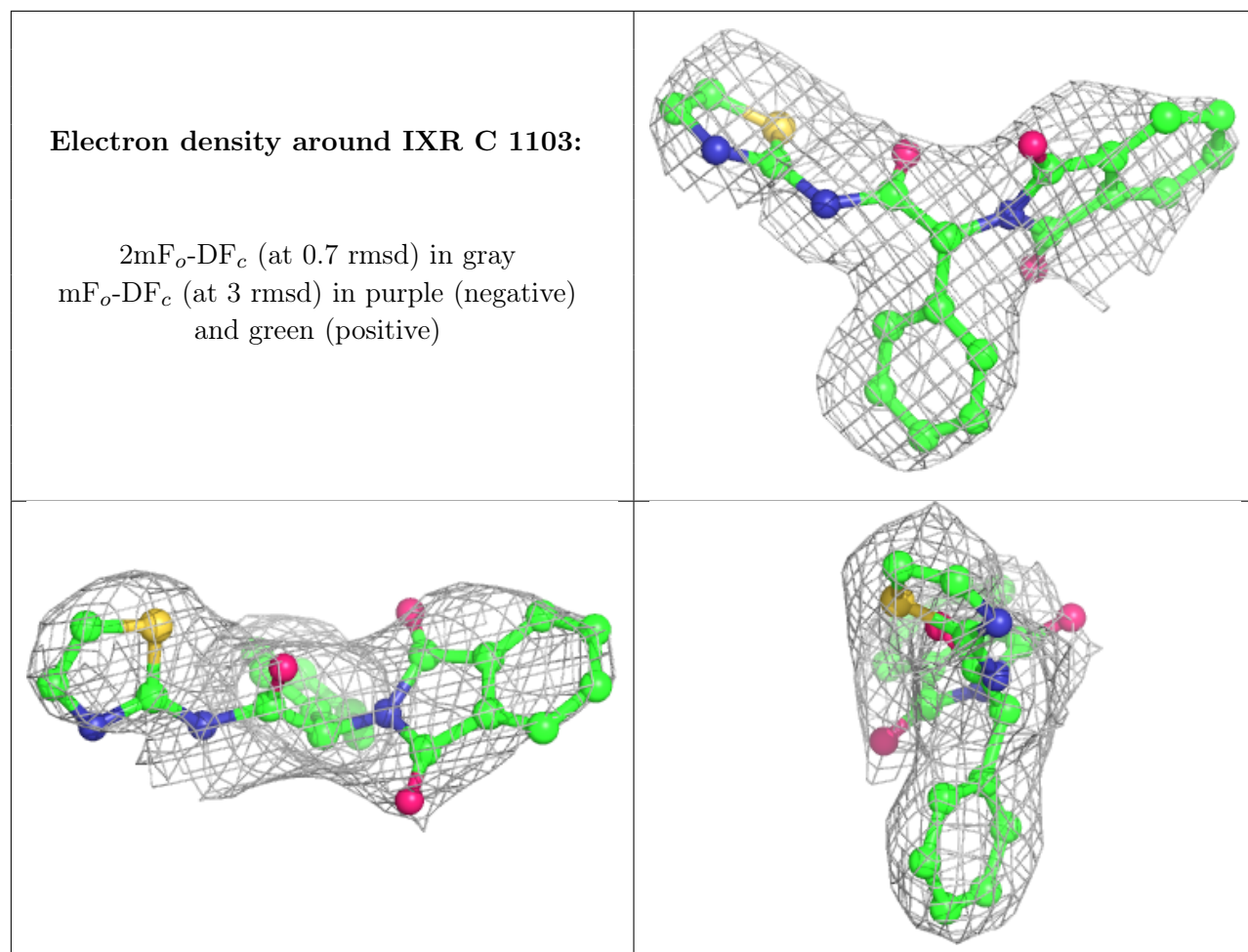
$2mF_o-DF_c$ (at 0.7 rmsd) in gray
 mF_o-DF_c (at 3 rmsd) in purple (negative)
and green (positive)



Electron density around IXR D 1103:

$2mF_o-DF_c$ (at 0.7 rmsd) in gray
 mF_o-DF_c (at 3 rmsd) in purple (negative)
and green (positive)





6.5 Other polymers [i](#)

There are no such residues in this entry.