



Full wwPDB X-ray Structure Validation Report ⓘ

Jan 29, 2024 – 02:21 PM EST

PDB ID : 8SYC
Title : Crystal structure of PDE3B in complex with GSK4394835A
Authors : Concha, N.O.; Nolte, R.
Deposited on : 2023-05-25
Resolution : 2.70 Å(reported)

This is a Full wwPDB X-ray Structure Validation Report for a publicly released PDB entry.

We welcome your comments at validation@mail.wwpdb.org

A user guide is available at

<https://www.wwpdb.org/validation/2017/XrayValidationReportHelp>

with specific help available everywhere you see the ⓘ symbol.

The types of validation reports are described at

<http://www.wwpdb.org/validation/2017/FAQs#types>.

The following versions of software and data (see [references ⓘ](#)) were used in the production of this report:

MolProbity : 4.02b-467
Mogul : 1.8.5 (274361), CSD as541be (2020)
Xtriage (Phenix) : 1.13
EDS : 2.36
buster-report : 1.1.7 (2018)
Percentile statistics : 20191225.v01 (using entries in the PDB archive December 25th 2019)
Refmac : 5.8.0158
CCP4 : 7.0.044 (Gargrove)
Ideal geometry (proteins) : Engh & Huber (2001)
Ideal geometry (DNA, RNA) : Parkinson et al. (1996)
Validation Pipeline (wwPDB-VP) : 2.36

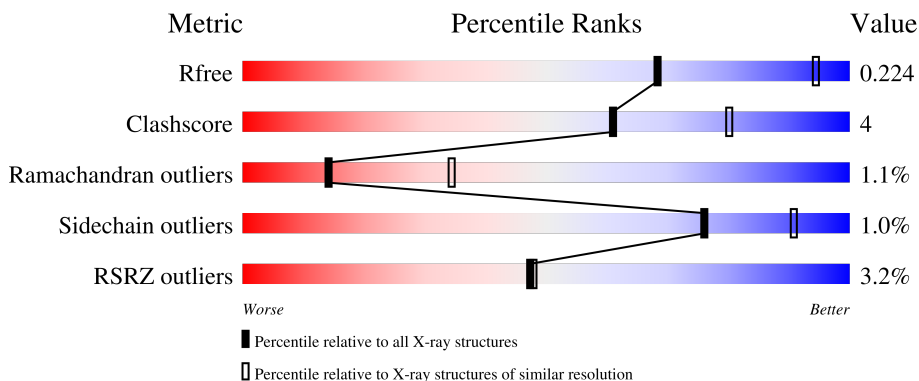
1 Overall quality at a glance

The following experimental techniques were used to determine the structure:

X-RAY DIFFRACTION

The reported resolution of this entry is 2.70 Å.

Percentile scores (ranging between 0-100) for global validation metrics of the entry are shown in the following graphic. The table shows the number of entries on which the scores are based.



Metric	Whole archive (#Entries)	Similar resolution (#Entries, resolution range(Å))
R_{free}	130704	2808 (2.70-2.70)
Clashscore	141614	3122 (2.70-2.70)
Ramachandran outliers	138981	3069 (2.70-2.70)
Sidechain outliers	138945	3069 (2.70-2.70)
RSRZ outliers	127900	2737 (2.70-2.70)

The table below summarises the geometric issues observed across the polymeric chains and their fit to the electron density. The red, orange, yellow and green segments of the lower bar indicate the fraction of residues that contain outliers for ≥ 3 , 2, 1 and 0 types of geometric quality criteria respectively. A grey segment represents the fraction of residues that are not modelled. The numeric value for each fraction is indicated below the corresponding segment, with a dot representing fractions $\leq 5\%$. The upper red bar (where present) indicates the fraction of residues that have poor fit to the electron density. The numeric value is given above the bar.

Mol	Chain	Length	Quality of chain
1	A	443	 4% 70% 10% 20%
1	D	443	 % 69% 11% 20%

2 Entry composition [i](#)

There are 4 unique types of molecules in this entry. The entry contains 5876 atoms, of which 0 are hydrogens and 0 are deuteriums.

In the tables below, the ZeroOcc column contains the number of atoms modelled with zero occupancy, the AltConf column contains the number of residues with at least one atom in alternate conformation and the Trace column contains the number of residues modelled with at most 2 atoms.

- Molecule 1 is a protein called cGMP-inhibited 3',5'-cyclic phosphodiesterase 3B.

Mol	Chain	Residues	Atoms					ZeroOcc	AltConf	Trace
			Total	C	N	O	S			
1	A	355	2855	1840	479	522	14	0	0	0
1	D	355	2861	1842	479	526	14	0	0	0

There are 54 discrepancies between the modelled and reference sequences:

Chain	Residue	Modelled	Actual	Comment	Reference
A	653	MET	-	initiating methionine	UNP Q13370
A	691	ASP	LYS	engineered mutation	UNP Q13370
A	783	ASP	ARG	engineered mutation	UNP Q13370
A	831	GLU	ALA	engineered mutation	UNP Q13370
A	880	GLU	LYS	engineered mutation	UNP Q13370
A	981	ASP	SER	engineered mutation	UNP Q13370
A	1075	ASN	-	expression tag	UNP Q13370
A	1076	LEU	-	expression tag	UNP Q13370
A	1077	TYR	-	expression tag	UNP Q13370
A	1078	PHE	-	expression tag	UNP Q13370
A	1079	GLN	-	expression tag	UNP Q13370
A	1080	GLY	-	expression tag	UNP Q13370
A	1081	ASP	-	expression tag	UNP Q13370
A	1082	TYR	-	expression tag	UNP Q13370
A	1083	LYS	-	expression tag	UNP Q13370
A	1084	ASP	-	expression tag	UNP Q13370
A	1085	ASP	-	expression tag	UNP Q13370
A	1086	ASP	-	expression tag	UNP Q13370
A	1087	ASP	-	expression tag	UNP Q13370
A	1088	LYS	-	expression tag	UNP Q13370
A	1089	GLY	-	expression tag	UNP Q13370
A	1090	HIS	-	expression tag	UNP Q13370
A	1091	HIS	-	expression tag	UNP Q13370
A	1092	HIS	-	expression tag	UNP Q13370
A	1093	HIS	-	expression tag	UNP Q13370

Continued on next page...

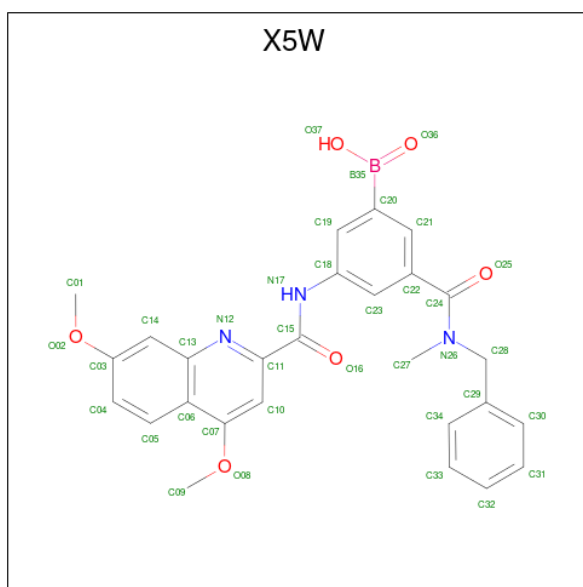
Continued from previous page...

Chain	Residue	Modelled	Actual	Comment	Reference
A	1094	HIS	-	expression tag	UNP Q13370
A	1095	HIS	-	expression tag	UNP Q13370
D	653	MET	-	initiating methionine	UNP Q13370
D	691	ASP	LYS	engineered mutation	UNP Q13370
D	783	ASP	ARG	engineered mutation	UNP Q13370
D	831	GLU	ALA	engineered mutation	UNP Q13370
D	880	GLU	LYS	engineered mutation	UNP Q13370
D	981	ASP	SER	engineered mutation	UNP Q13370
D	1075	ASN	-	expression tag	UNP Q13370
D	1076	LEU	-	expression tag	UNP Q13370
D	1077	TYR	-	expression tag	UNP Q13370
D	1078	PHE	-	expression tag	UNP Q13370
D	1079	GLN	-	expression tag	UNP Q13370
D	1080	GLY	-	expression tag	UNP Q13370
D	1081	ASP	-	expression tag	UNP Q13370
D	1082	TYR	-	expression tag	UNP Q13370
D	1083	LYS	-	expression tag	UNP Q13370
D	1084	ASP	-	expression tag	UNP Q13370
D	1085	ASP	-	expression tag	UNP Q13370
D	1086	ASP	-	expression tag	UNP Q13370
D	1087	ASP	-	expression tag	UNP Q13370
D	1088	LYS	-	expression tag	UNP Q13370
D	1089	GLY	-	expression tag	UNP Q13370
D	1090	HIS	-	expression tag	UNP Q13370
D	1091	HIS	-	expression tag	UNP Q13370
D	1092	HIS	-	expression tag	UNP Q13370
D	1093	HIS	-	expression tag	UNP Q13370
D	1094	HIS	-	expression tag	UNP Q13370
D	1095	HIS	-	expression tag	UNP Q13370

- Molecule 2 is MAGNESIUM ION (three-letter code: MG) (formula: Mg).

Mol	Chain	Residues	Atoms	ZeroOcc	AltConf
2	A	2	Total Mg 2 2	0	0
2	D	2	Total Mg 2 2	0	0

- Molecule 3 is [3-[(4,7-dimethoxyquinolin-2-yl)carbonylamino]-5-[methyl-(phenylmethyl)carbamoyl]phenyl]-oxidanyl-oxidanylidene-boron (three-letter code: X5W) (formula: C₂₇H₂₅BN₃O₆).



Mol	Chain	Residues	Atoms				ZeroOcc	AltConf	
			Total	B	C	N			O
3	A	1	37	1	27	3	6	0	0
3	D	1	37	1	27	3	6	0	0

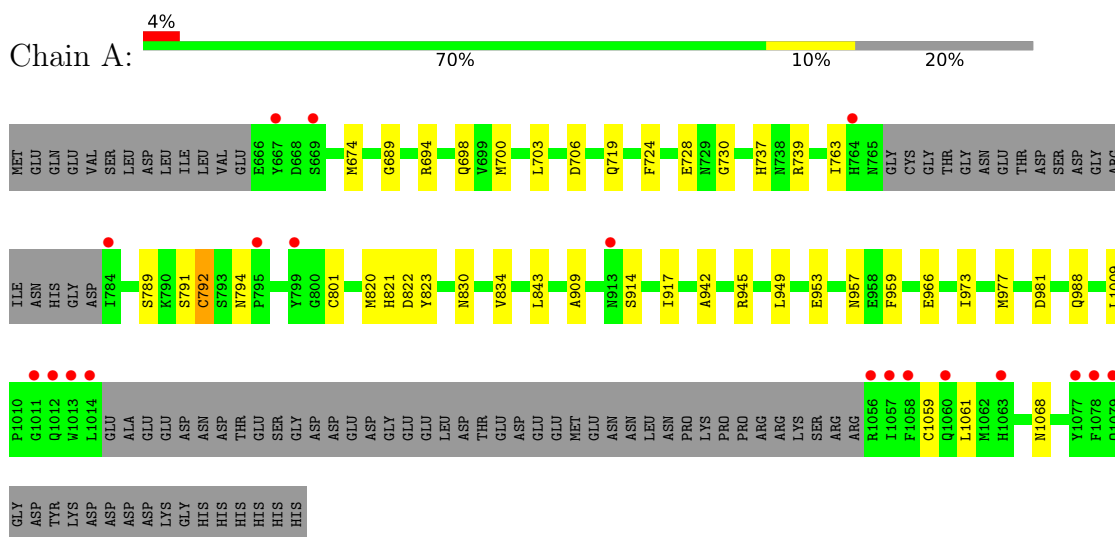
- Molecule 4 is water.

Mol	Chain	Residues	Atoms		ZeroOcc	AltConf
			Total	O		
4	A	39	39	39	0	0
4	D	43	43	43	0	0

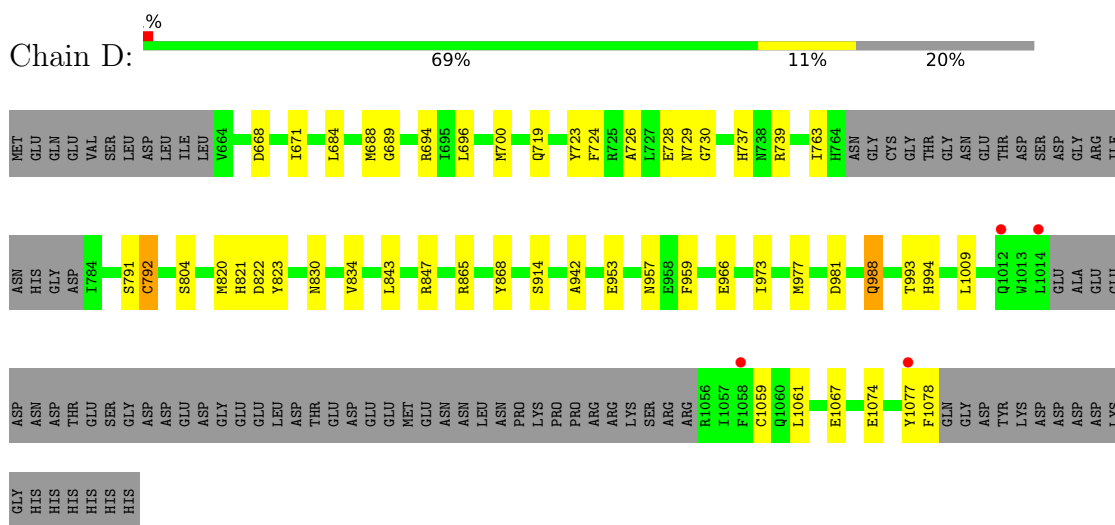
3 Residue-property plots [i](#)

These plots are drawn for all protein, RNA, DNA and oligosaccharide chains in the entry. The first graphic for a chain summarises the proportions of the various outlier classes displayed in the second graphic. The second graphic shows the sequence view annotated by issues in geometry and electron density. Residues are color-coded according to the number of geometric quality criteria for which they contain at least one outlier: green = 0, yellow = 1, orange = 2 and red = 3 or more. A red dot above a residue indicates a poor fit to the electron density ($RSRZ > 2$). Stretches of 2 or more consecutive residues without any outlier are shown as a green connector. Residues present in the sample, but not in the model, are shown in grey.

- Molecule 1: cGMP-inhibited 3',5'-cyclic phosphodiesterase 3B



- Molecule 1: cGMP-inhibited 3',5'-cyclic phosphodiesterase 3B



4 Data and refinement statistics i

Property	Value	Source
Space group	P 41	Depositor
Cell constants a, b, c, α , β , γ	78.59Å 78.59Å 166.34Å 90.00° 90.00° 90.00°	Depositor
Resolution (Å)	71.16 – 2.70 71.06 – 2.70	Depositor EDS
% Data completeness (in resolution range)	65.7 (71.16-2.70) 65.7 (71.06-2.70)	Depositor EDS
R_{merge}	0.34	Depositor
R_{sym}	(Not available)	Depositor
$\langle I/\sigma(I) \rangle$ ¹	1.92 (at 2.69Å)	Xtrriage
Refinement program	REFMAC 5.8.0267	Depositor
R, R_{free}	0.177 , 0.224 0.180 , 0.224	Depositor DCC
R_{free} test set	841 reflections (4.63%)	wwPDB-VP
Wilson B-factor (Å ²)	55.3	Xtrriage
Anisotropy	0.002	Xtrriage
Bulk solvent k_{sol} (e/Å ³), B_{sol} (Å ²)	0.33 , 36.3	EDS
L-test for twinning ²	$\langle L \rangle = 0.48$, $\langle L^2 \rangle = 0.30$	Xtrriage
Estimated twinning fraction	0.063 for h,-k,-l	Xtrriage
F_o, F_c correlation	0.94	EDS
Total number of atoms	5876	wwPDB-VP
Average B, all atoms (Å ²)	54.0	wwPDB-VP

Xtrriage's analysis on translational NCS is as follows: *The largest off-origin peak in the Patterson function is 2.86% of the height of the origin peak. No significant pseudotranslation is detected.*

¹Intensities estimated from amplitudes.

²Theoretical values of $\langle |L| \rangle$, $\langle L^2 \rangle$ for acentric reflections are 0.5, 0.333 respectively for untwinned datasets, and 0.375, 0.2 for perfectly twinned datasets.

5 Model quality [i](#)

5.1 Standard geometry [i](#)

Bond lengths and bond angles in the following residue types are not validated in this section: MG, X5W

The Z score for a bond length (or angle) is the number of standard deviations the observed value is removed from the expected value. A bond length (or angle) with $|Z| > 5$ is considered an outlier worth inspection. RMSZ is the root-mean-square of all Z scores of the bond lengths (or angles).

Mol	Chain	Bond lengths		Bond angles	
		RMSZ	# Z >5	RMSZ	# Z >5
1	A	0.63	0/2933	0.74	0/3991
1	D	0.61	0/2938	0.73	0/3997
All	All	0.62	0/5871	0.74	0/7988

Chiral center outliers are detected by calculating the chiral volume of a chiral center and verifying if the center is modelled as a planar moiety or with the opposite hand. A planarity outlier is detected by checking planarity of atoms in a peptide group, atoms in a mainchain group or atoms of a sidechain that are expected to be planar.

Mol	Chain	#Chirality outliers	#Planarity outliers
1	A	0	1
1	D	0	1
All	All	0	2

There are no bond length outliers.

There are no bond angle outliers.

There are no chirality outliers.

All (2) planarity outliers are listed below:

Mol	Chain	Res	Type	Group
1	A	820	MET	Peptide
1	D	820	MET	Peptide

5.2 Too-close contacts [i](#)

In the following table, the Non-H and H(model) columns list the number of non-hydrogen atoms and hydrogen atoms in the chain respectively. The H(added) column lists the number of hydrogen atoms added and optimized by MolProbity. The Clashes column lists the number of clashes within the asymmetric unit, whereas Symm-Clashes lists symmetry-related clashes.

Mol	Chain	Non-H	H(model)	H(added)	Clashes	Symm-Clashes
1	A	2855	0	2715	26	0
1	D	2861	0	2723	26	0
2	A	2	0	0	0	0
2	D	2	0	0	0	0
3	A	37	0	0	2	0
3	D	37	0	0	2	0
4	A	39	0	0	0	0
4	D	43	0	0	1	0
All	All	5876	0	5438	50	0

The all-atom clashscore is defined as the number of clashes found per 1000 atoms (including hydrogen atoms). The all-atom clashscore for this structure is 4.

All (50) close contacts within the same asymmetric unit are listed below, sorted by their clash magnitude.

Atom-1	Atom-2	Interatomic distance (Å)	Clash overlap (Å)
1:A:737:HIS:NE2	3:A:1103:X5W:O36	1.87	1.06
1:D:1067:GLU:OE2	4:D:1201:HOH:O	1.95	0.84
1:A:706:ASP:OD2	1:A:789:SER:OG	1.99	0.80
1:A:730:GLY:HA3	1:A:823:TYR:CE1	2.22	0.73
1:D:730:GLY:HA3	1:D:823:TYR:CE1	2.23	0.73
1:A:737:HIS:CD2	3:A:1103:X5W:O36	2.44	0.71
1:D:737:HIS:NE2	3:D:1103:X5W:O37	2.26	0.68
1:A:794:ASN:OD1	1:A:801:CYS:SG	2.55	0.64
1:D:988:GLN:HE21	1:D:988:GLN:HA	1.62	0.63
1:A:942:ALA:HB1	1:A:1061:LEU:HB2	1.84	0.59
1:D:942:ALA:HB1	1:D:1061:LEU:HB2	1.85	0.58
1:D:737:HIS:CD2	3:D:1103:X5W:O37	2.56	0.58
1:A:719:GLN:N	1:A:719:GLN:OE1	2.37	0.58
1:D:719:GLN:N	1:D:719:GLN:OE1	2.37	0.57
1:D:966:GLU:OE1	1:D:973:ILE:HA	2.07	0.55
1:A:945:ARG:O	1:A:949:LEU:HG	2.07	0.54
1:A:966:GLU:OE1	1:A:973:ILE:HA	2.08	0.54
1:D:684:LEU:O	1:D:688:MET:HG3	2.08	0.53
1:D:1009:LEU:HB3	1:D:1059:CYS:SG	2.49	0.53
1:D:865:ARG:HG3	1:D:868:TYR:CD2	2.45	0.52
1:A:988:GLN:HE21	1:A:988:GLN:HA	1.74	0.51
1:A:843:LEU:HD21	1:D:843:LEU:HD11	1.92	0.51
1:A:843:LEU:HD11	1:D:843:LEU:HD21	1.94	0.49
1:D:959:PHE:HB3	1:D:977:MET:HG2	1.95	0.49
1:D:1074:GLU:O	1:D:1078:PHE:HD2	1.96	0.49
1:D:791:SER:O	1:D:792:CYS:HB3	2.12	0.49

Continued on next page...

Continued from previous page...

Atom-1	Atom-2	Interatomic distance (Å)	Clash overlap (Å)
1:A:791:SER:O	1:A:792:CYS:HB3	2.12	0.48
1:A:953:GLU:O	1:A:957:ASN:ND2	2.46	0.48
1:A:739:ARG:HH11	1:A:739:ARG:HG3	1.80	0.47
1:A:959:PHE:HB3	1:A:977:MET:HG2	1.96	0.46
1:D:953:GLU:O	1:D:957:ASN:ND2	2.48	0.46
1:A:1009:LEU:HB3	1:A:1059:CYS:SG	2.56	0.45
1:D:729:ASN:HA	1:D:739:ARG:HH12	1.82	0.45
1:D:696:LEU:HB3	1:D:728:GLU:HG2	1.99	0.44
1:A:945:ARG:NH1	1:A:1068:ASN:OD1	2.51	0.44
1:D:993:THR:HG22	1:D:994:HIS:CD2	2.53	0.44
1:A:700:MET:HE2	1:A:724:PHE:CZ	2.53	0.44
1:A:674:MET:HE3	1:A:703:LEU:HD21	2.01	0.43
1:A:830:ASN:O	1:A:834:VAL:HG23	2.19	0.43
1:D:694:ARG:HA	1:D:728:GLU:OE2	2.18	0.43
1:A:909:ALA:HB2	1:A:917:ILE:HD11	2.01	0.42
1:D:668:ASP:HA	1:D:671:ILE:HG22	2.01	0.42
1:D:821:HIS:NE2	1:D:822:ASP:OD2	2.53	0.41
1:A:821:HIS:NE2	1:A:822:ASP:OD2	2.53	0.41
1:D:830:ASN:O	1:D:834:VAL:HG23	2.20	0.41
1:A:694:ARG:O	1:A:698:GLN:HG2	2.21	0.41
1:D:723:TYR:O	1:D:726:ALA:HB3	2.20	0.41
1:A:694:ARG:HA	1:A:728:GLU:OE2	2.20	0.40
1:D:700:MET:HE2	1:D:724:PHE:CE1	2.56	0.40
1:A:700:MET:HE2	1:A:724:PHE:CE1	2.56	0.40

There are no symmetry-related clashes.

5.3 Torsion angles [\(i\)](#)

5.3.1 Protein backbone [\(i\)](#)

In the following table, the Percentiles column shows the percent Ramachandran outliers of the chain as a percentile score with respect to all X-ray entries followed by that with respect to entries of similar resolution.

The Analysed column shows the number of residues for which the backbone conformation was analysed, and the total number of residues.

Mol	Chain	Analysed	Favoured	Allowed	Outliers	Percentiles
1	A	349/443 (79%)	328 (94%)	17 (5%)	4 (1%)	14 34

Continued on next page...

Continued from previous page...

Mol	Chain	Analysed	Favoured	Allowed	Outliers	Percentiles	
1	D	349/443 (79%)	329 (94%)	16 (5%)	4 (1%)	14	34
All	All	698/886 (79%)	657 (94%)	33 (5%)	8 (1%)	14	34

All (8) Ramachandran outliers are listed below:

Mol	Chain	Res	Type
1	D	792	CYS
1	A	792	CYS
1	D	689	GLY
1	D	763	ILE
1	D	981	ASP
1	A	689	GLY
1	A	763	ILE
1	A	981	ASP

5.3.2 Protein sidechains [i](#)

In the following table, the Percentiles column shows the percent sidechain outliers of the chain as a percentile score with respect to all X-ray entries followed by that with respect to entries of similar resolution.

The Analysed column shows the number of residues for which the sidechain conformation was analysed, and the total number of residues.

Mol	Chain	Analysed	Rotameric	Outliers	Percentiles	
1	A	301/392 (77%)	300 (100%)	1 (0%)	92	98
1	D	303/392 (77%)	298 (98%)	5 (2%)	60	84
All	All	604/784 (77%)	598 (99%)	6 (1%)	76	91

All (6) residues with a non-rotameric sidechain are listed below:

Mol	Chain	Res	Type
1	A	914	SER
1	D	804	SER
1	D	847	ARG
1	D	914	SER
1	D	988	GLN
1	D	1077	TYR

Sometimes sidechains can be flipped to improve hydrogen bonding and reduce clashes. All (2) such sidechains are listed below:

Mol	Chain	Res	Type
1	D	805	ASN
1	D	994	HIS

5.3.3 RNA [i](#)

There are no RNA molecules in this entry.

5.4 Non-standard residues in protein, DNA, RNA chains [i](#)

There are no non-standard protein/DNA/RNA residues in this entry.

5.5 Carbohydrates [i](#)

There are no monosaccharides in this entry.

5.6 Ligand geometry [i](#)

Of 6 ligands modelled in this entry, 4 are monoatomic - leaving 2 for Mogul analysis.

In the following table, the Counts columns list the number of bonds (or angles) for which Mogul statistics could be retrieved, the number of bonds (or angles) that are observed in the model and the number of bonds (or angles) that are defined in the Chemical Component Dictionary. The Link column lists molecule types, if any, to which the group is linked. The Z score for a bond length (or angle) is the number of standard deviations the observed value is removed from the expected value. A bond length (or angle) with $|Z| > 2$ is considered an outlier worth inspection. RMSZ is the root-mean-square of all Z scores of the bond lengths (or angles).

Mol	Type	Chain	Res	Link	Bond lengths			Bond angles		
					Counts	RMSZ	# Z > 2	Counts	RMSZ	# Z > 2
3	X5W	D	1103	2	37,40,40	1.93	9 (24%)	51,56,56	1.93	10 (19%)
3	X5W	A	1103	2	37,40,40	1.97	9 (24%)	51,56,56	1.53	8 (15%)

In the following table, the Chirals column lists the number of chiral outliers, the number of chiral centers analysed, the number of these observed in the model and the number defined in the Chemical Component Dictionary. Similar counts are reported in the Torsion and Rings columns. '-' means no outliers of that kind were identified.

Mol	Type	Chain	Res	Link	Chirals	Torsions	Rings
3	X5W	D	1103	2	-	1/26/28/28	0/4/4/4
3	X5W	A	1103	2	-	0/26/28/28	0/4/4/4

All (18) bond length outliers are listed below:

Mol	Chain	Res	Type	Atoms	Z	Observed(Å)	Ideal(Å)
3	D	1103	X5W	C24-N26	7.50	1.47	1.34
3	A	1103	X5W	C24-N26	7.05	1.46	1.34
3	A	1103	X5W	C15-N17	4.54	1.47	1.35
3	D	1103	X5W	C15-N17	3.44	1.44	1.35
3	D	1103	X5W	C06-C13	-3.01	1.37	1.42
3	D	1103	X5W	O25-C24	-2.74	1.17	1.22
3	A	1103	X5W	C06-C13	-2.71	1.38	1.42
3	A	1103	X5W	C18-N17	2.62	1.47	1.41
3	A	1103	X5W	O08-C07	2.62	1.41	1.36
3	A	1103	X5W	O02-C03	2.55	1.42	1.37
3	D	1103	X5W	C21-C20	2.49	1.43	1.40
3	D	1103	X5W	O16-C15	-2.46	1.18	1.23
3	D	1103	X5W	C19-C20	-2.44	1.37	1.40
3	A	1103	X5W	C28-C29	2.39	1.55	1.51
3	A	1103	X5W	C22-C24	2.39	1.54	1.50
3	D	1103	X5W	O02-C03	2.30	1.42	1.37
3	D	1103	X5W	C21-C22	2.24	1.42	1.39
3	A	1103	X5W	C04-C03	2.10	1.42	1.38

All (18) bond angle outliers are listed below:

Mol	Chain	Res	Type	Atoms	Z	Observed(°)	Ideal(°)
3	D	1103	X5W	C22-C24-N26	8.20	131.36	118.54
3	D	1103	X5W	O25-C24-N26	-5.41	115.89	122.41
3	A	1103	X5W	O08-C07-C06	4.71	119.06	114.46
3	D	1103	X5W	O25-C24-C22	-4.27	111.92	120.23
3	A	1103	X5W	C11-N12-C13	3.93	123.29	117.51
3	A	1103	X5W	C22-C24-N26	3.31	123.71	118.54
3	D	1103	X5W	O08-C07-C06	3.29	117.67	114.46
3	A	1103	X5W	O25-C24-N26	-3.06	118.72	122.41
3	A	1103	X5W	C29-C28-N26	-3.05	107.10	112.98
3	D	1103	X5W	C21-C22-C24	2.64	126.03	120.14
3	D	1103	X5W	C11-N12-C13	2.44	121.10	117.51
3	D	1103	X5W	C23-C22-C24	-2.44	114.69	120.14
3	A	1103	X5W	C11-C15-N17	2.42	119.92	114.04
3	D	1103	X5W	C06-C13-N12	-2.36	120.31	122.81
3	D	1103	X5W	C14-C13-C06	2.31	122.31	119.65
3	A	1103	X5W	C03-C14-C13	2.25	121.63	119.27
3	A	1103	X5W	C10-C11-N12	-2.20	119.15	124.50
3	D	1103	X5W	C04-C03-C14	-2.02	118.10	120.81

There are no chirality outliers.

All (1) torsion outliers are listed below:

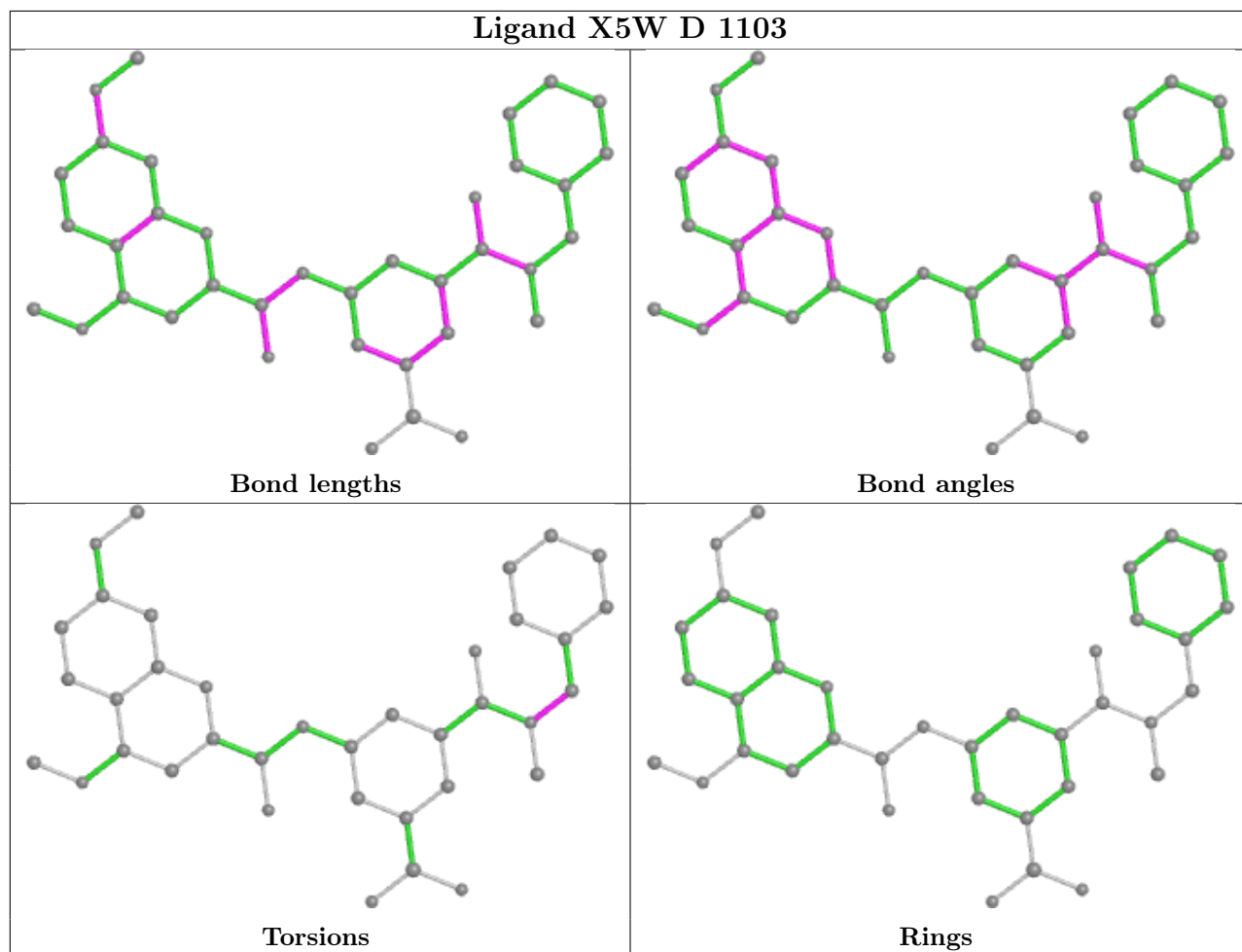
Mol	Chain	Res	Type	Atoms
3	D	1103	X5W	C29-C28-N26-C24

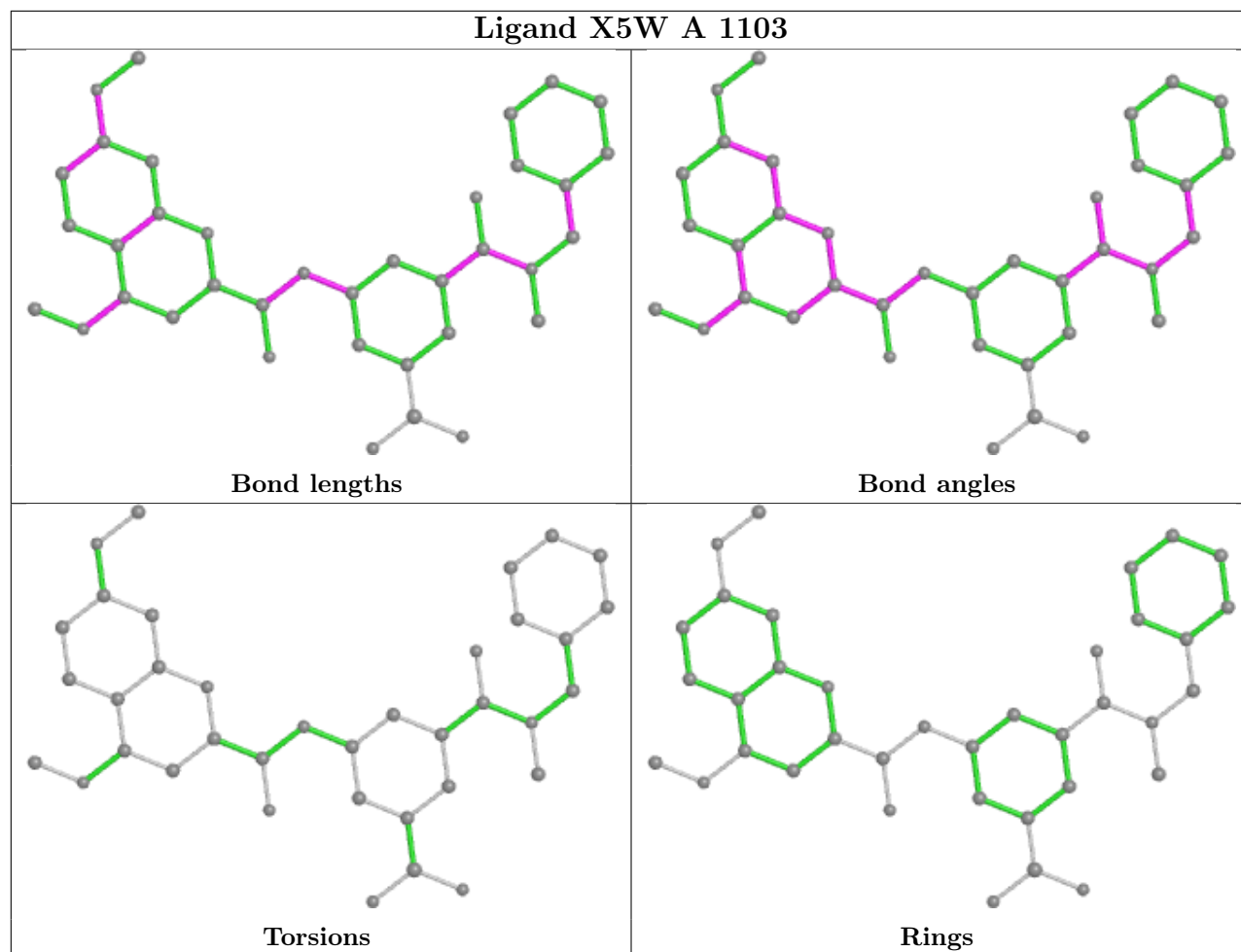
There are no ring outliers.

2 monomers are involved in 4 short contacts:

Mol	Chain	Res	Type	Clashes	Symm-Clashes
3	D	1103	X5W	2	0
3	A	1103	X5W	2	0

The following is a two-dimensional graphical depiction of Mogul quality analysis of bond lengths, bond angles, torsion angles, and ring geometry for all instances of the Ligand of Interest. In addition, ligands with molecular weight > 250 and outliers as shown on the validation Tables will also be included. For torsion angles, if less than 5% of the Mogul distribution of torsion angles is within 10 degrees of the torsion angle in question, then that torsion angle is considered an outlier. Any bond that is central to one or more torsion angles identified as an outlier by Mogul will be highlighted in the graph. For rings, the root-mean-square deviation (RMSD) between the ring in question and similar rings identified by Mogul is calculated over all ring torsion angles. If the average RMSD is greater than 60 degrees and the minimal RMSD between the ring in question and any Mogul-identified rings is also greater than 60 degrees, then that ring is considered an outlier. The outliers are highlighted in purple. The color gray indicates Mogul did not find sufficient equivalents in the CSD to analyse the geometry.





5.7 Other polymers [i](#)

There are no such residues in this entry.

5.8 Polymer linkage issues [i](#)

There are no chain breaks in this entry.

6 Fit of model and data

6.1 Protein, DNA and RNA chains

In the following table, the column labelled ‘#RSRZ > 2’ contains the number (and percentage) of RSRZ outliers, followed by percent RSRZ outliers for the chain as percentile scores relative to all X-ray entries and entries of similar resolution. The OWAB column contains the minimum, median, 95th percentile and maximum values of the occupancy-weighted average B-factor per residue. The column labelled ‘Q < 0.9’ lists the number of (and percentage) of residues with an average occupancy less than 0.9.

Mol	Chain	Analysed	<RSRZ>	#RSRZ>2	OWAB(Å ²)	Q<0.9
1	A	355/443 (80%)	0.20	19 (5%) 25 24	29, 52, 95, 121	0
1	D	355/443 (80%)	0.03	4 (1%) 80 82	30, 49, 77, 106	0
All	All	710/886 (80%)	0.11	23 (3%) 47 48	29, 50, 88, 121	0

All (23) RSRZ outliers are listed below:

Mol	Chain	Res	Type	RSRZ
1	A	1077	TYR	6.9
1	A	1078	PHE	5.9
1	A	1014	LEU	5.3
1	A	1058	PHE	4.3
1	A	1013	TRP	3.6
1	A	1012	GLN	3.0
1	A	1011	GLY	2.9
1	A	1079	GLN	2.7
1	A	667	TYR	2.7
1	A	799	TYR	2.6
1	A	1057	ILE	2.6
1	D	1014	LEU	2.5
1	A	795	PRO	2.5
1	D	1077	TYR	2.5
1	A	1056	ARG	2.3
1	A	1063	HIS	2.2
1	A	913	ASN	2.1
1	D	1012	GLN	2.1
1	D	1058	PHE	2.1
1	A	669	SER	2.1
1	A	784	ILE	2.1
1	A	1060	GLN	2.0
1	A	764	HIS	2.0

6.2 Non-standard residues in protein, DNA, RNA chains [i](#)

There are no non-standard protein/DNA/RNA residues in this entry.

6.3 Carbohydrates [i](#)

There are no monosaccharides in this entry.

6.4 Ligands [i](#)

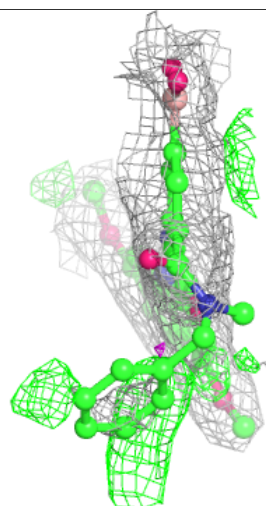
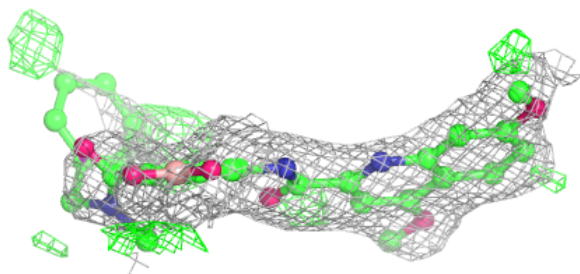
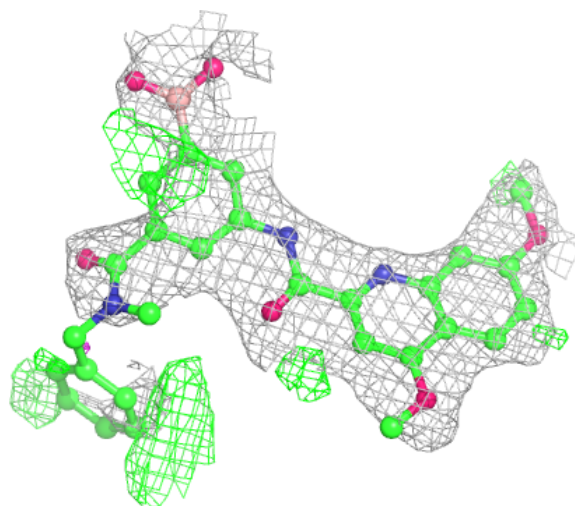
In the following table, the Atoms column lists the number of modelled atoms in the group and the number defined in the chemical component dictionary. The B-factors column lists the minimum, median, 95th percentile and maximum values of B factors of atoms in the group. The column labelled 'Q< 0.9' lists the number of atoms with occupancy less than 0.9.

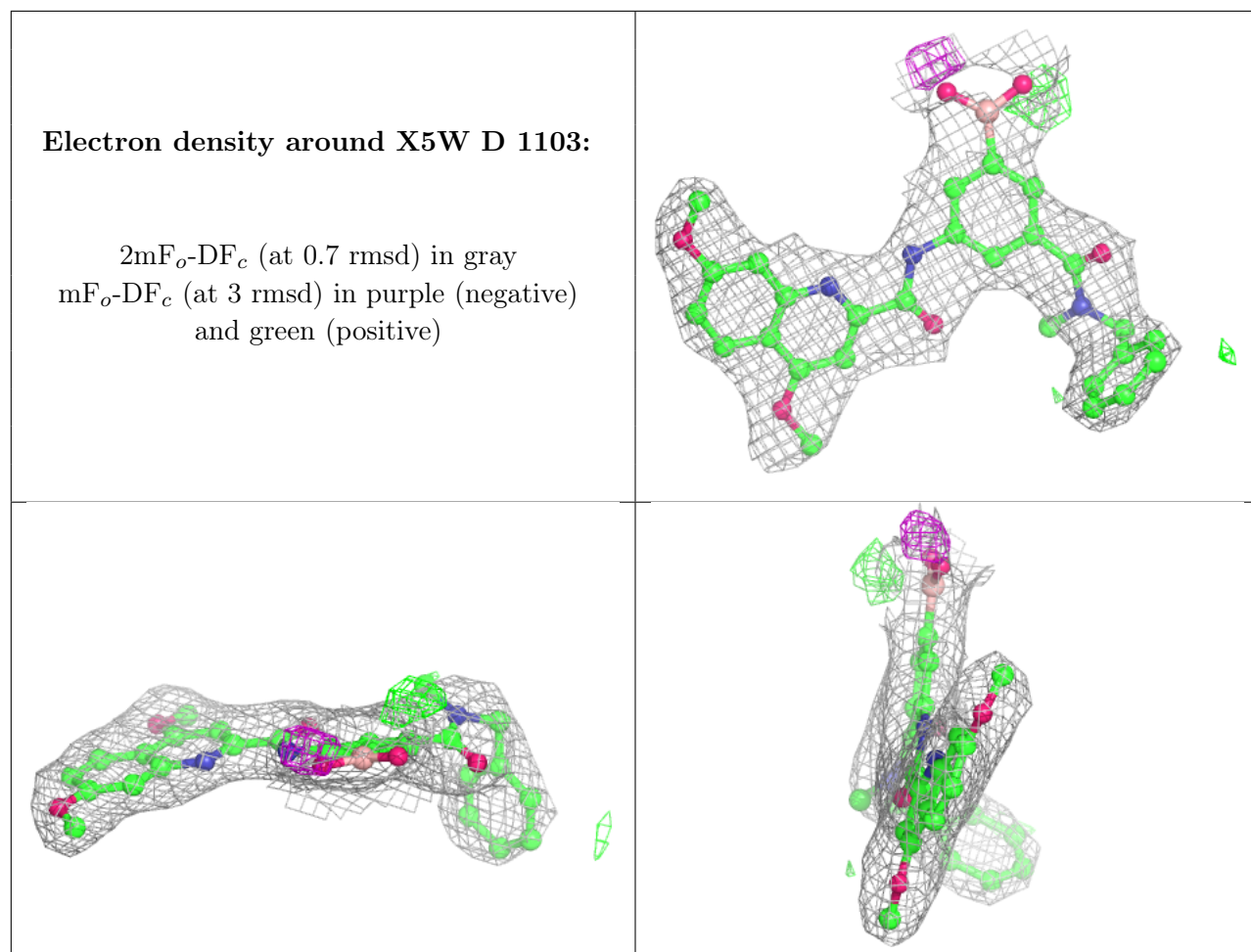
Mol	Type	Chain	Res	Atoms	RSCC	RSR	B-factors(\AA^2)	Q<0.9
3	X5W	A	1103	37/37	0.85	0.28	73,90,150,159	0
2	MG	D	1101	1/1	0.93	0.13	32,32,32,32	0
3	X5W	D	1103	37/37	0.96	0.21	41,50,74,75	0
2	MG	D	1102	1/1	0.98	0.12	36,36,36,36	0
2	MG	A	1101	1/1	0.99	0.12	23,23,23,23	0
2	MG	A	1102	1/1	0.99	0.08	40,40,40,40	0

The following is a graphical depiction of the model fit to experimental electron density of all instances of the Ligand of Interest. In addition, ligands with molecular weight > 250 and outliers as shown on the geometry validation Tables will also be included. Each fit is shown from different orientation to approximate a three-dimensional view.

Electron density around X5W A 1103:

$2mF_o-DF_c$ (at 0.7 rmsd) in gray
 mF_o-DF_c (at 3 rmsd) in purple (negative)
and green (positive)





6.5 Other polymers [i](#)

There are no such residues in this entry.