



## Full wwPDB EM Validation Report ⓘ

Nov 18, 2024 – 06:30 PM EST

PDB ID : 8SQ0  
EMDB ID : EMD-40692  
Title : Cleaved Ycf1p Dimer in the IFwide-beta conformation  
Authors : Bickers, S.C.; Benlekbir, S.; Rubinstein, J.L.; Kanelis, V.  
Deposited on : 2023-05-04  
Resolution : 3.20 Å (reported)

This is a Full wwPDB EM Validation Report for a publicly released PDB entry.

We welcome your comments at [validation@mail.wwpdb.org](mailto:validation@mail.wwpdb.org)

A user guide is available at

<https://www.wwpdb.org/validation/2017/EMValidationReportHelp>

with specific help available everywhere you see the ⓘ symbol.

The types of validation reports are described at

<http://www.wwpdb.org/validation/2017/FAQs#types>.

---

The following versions of software and data (see [references ⓘ](#)) were used in the production of this report:

EMDB validation analysis : 0.0.1.dev113  
Mogul : 2022.3.0, CSD as543be (2022)  
MolProbity : 4.02b-467  
buster-report : 1.1.7 (2018)  
Percentile statistics : 20231227.v01 (using entries in the PDB archive December 27th 2023)  
MapQ : 1.9.13  
Ideal geometry (proteins) : Engh & Huber (2001)  
Ideal geometry (DNA, RNA) : Parkinson et al. (1996)  
Validation Pipeline (wwPDB-VP) : 2.39

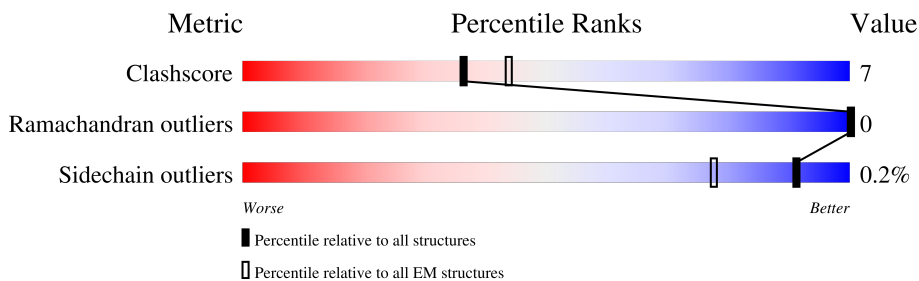
# 1 Overall quality at a glance

The following experimental techniques were used to determine the structure:

*ELECTRON MICROSCOPY*

The reported resolution of this entry is 3.20 Å.

Percentile scores (ranging between 0-100) for global validation metrics of the entry are shown in the following graphic. The table shows the number of entries on which the scores are based.



Metric	Whole archive (#Entries)	EM structures (#Entries)
Clashscore	210492	15764
Ramachandran outliers	207382	16835
Sidechain outliers	206894	16415

The table below summarises the geometric issues observed across the polymeric chains and their fit to the map. The red, orange, yellow and green segments of the bar indicate the fraction of residues that contain outliers for  $\geq 3$ , 2, 1 and 0 types of geometric quality criteria respectively. A grey segment represents the fraction of residues that are not modelled. The numeric value for each fraction is indicated below the corresponding segment, with a dot representing fractions  $\leq 5\%$ . The upper red bar (where present) indicates the fraction of residues that have poor fit to the EM map (all-atom inclusion  $< 40\%$ ). The numeric value is given above the bar.

Mol	Chain	Length	Quality of chain
1	A	1537	 10% 78% 13% 9%
1	B	1537	 10% 78% 13% 9%
2	C	13	 15% 92% 8%
2	D	13	 15% 92% 8%

## 2 Entry composition i

There are 5 unique types of molecules in this entry. The entry contains 19948 atoms, of which 0 are hydrogens and 0 are deuteriums.

In the tables below, the AltConf column contains the number of residues with at least one atom in alternate conformation and the Trace column contains the number of residues modelled with at most 2 atoms.

- Molecule 1 is a protein called Metal resistance protein YCF1.

Mol	Chain	Residues	Atoms					AltConf	Trace
			Total	C	N	O	S		
1	A	1402	9769	6259	1700	1770	40	0	0
1	B	1402	9769	6259	1700	1770	40	0	0

There are 44 discrepancies between the modelled and reference sequences:

Chain	Residue	Modelled	Actual	Comment	Reference
A	1516	ASP	-	expression tag	UNP P39109
A	1517	TYR	-	expression tag	UNP P39109
A	1518	LYS	-	expression tag	UNP P39109
A	1519	ASP	-	expression tag	UNP P39109
A	1520	HIS	-	expression tag	UNP P39109
A	1521	ASP	-	expression tag	UNP P39109
A	1522	GLY	-	expression tag	UNP P39109
A	1523	ASP	-	expression tag	UNP P39109
A	1524	TYR	-	expression tag	UNP P39109
A	1525	LYS	-	expression tag	UNP P39109
A	1526	ASP	-	expression tag	UNP P39109
A	1527	HIS	-	expression tag	UNP P39109
A	1528	ASP	-	expression tag	UNP P39109
A	1529	ILE	-	expression tag	UNP P39109
A	1530	ASP	-	expression tag	UNP P39109
A	1531	TYR	-	expression tag	UNP P39109
A	1532	LYS	-	expression tag	UNP P39109
A	1533	ASP	-	expression tag	UNP P39109
A	1534	ASP	-	expression tag	UNP P39109
A	1535	ASP	-	expression tag	UNP P39109
A	1536	ASP	-	expression tag	UNP P39109
A	1537	LYS	-	expression tag	UNP P39109
B	1516	ASP	-	expression tag	UNP P39109
B	1517	TYR	-	expression tag	UNP P39109
B	1518	LYS	-	expression tag	UNP P39109
B	1519	ASP	-	expression tag	UNP P39109

*Continued on next page...*

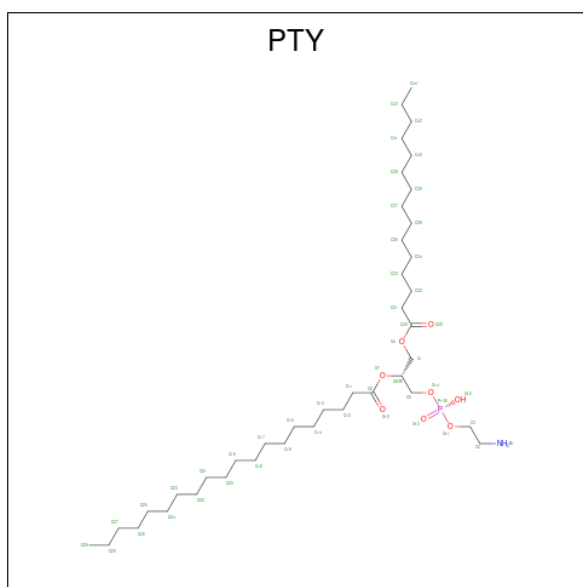
*Continued from previous page...*

Chain	Residue	Modelled	Actual	Comment	Reference
B	1520	HIS	-	expression tag	UNP P39109
B	1521	ASP	-	expression tag	UNP P39109
B	1522	GLY	-	expression tag	UNP P39109
B	1523	ASP	-	expression tag	UNP P39109
B	1524	TYR	-	expression tag	UNP P39109
B	1525	LYS	-	expression tag	UNP P39109
B	1526	ASP	-	expression tag	UNP P39109
B	1527	HIS	-	expression tag	UNP P39109
B	1528	ASP	-	expression tag	UNP P39109
B	1529	ILE	-	expression tag	UNP P39109
B	1530	ASP	-	expression tag	UNP P39109
B	1531	TYR	-	expression tag	UNP P39109
B	1532	LYS	-	expression tag	UNP P39109
B	1533	ASP	-	expression tag	UNP P39109
B	1534	ASP	-	expression tag	UNP P39109
B	1535	ASP	-	expression tag	UNP P39109
B	1536	ASP	-	expression tag	UNP P39109
B	1537	LYS	-	expression tag	UNP P39109

- Molecule 2 is a protein called Unknown peptide.

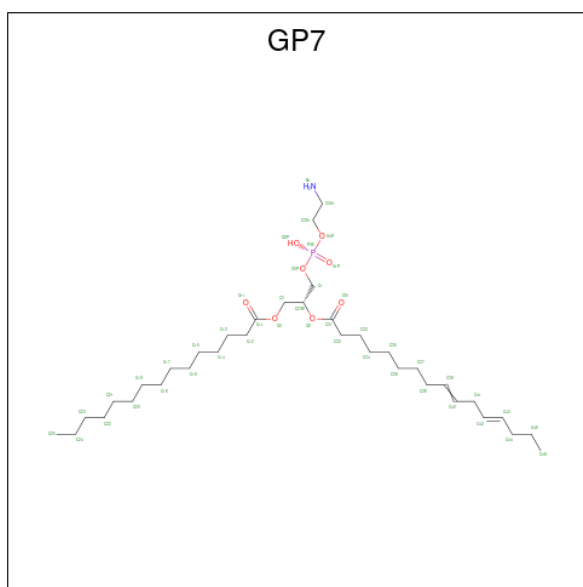
Mol	Chain	Residues	Atoms				AltConf	Trace
2	C	13	Total	C	N	O	0	0
			65	39	13	13		
2	D	13	Total	C	N	O	0	0
			65	39	13	13		

- Molecule 3 is PHOSPHATIDYLETHANOLAMINE (three-letter code: PTY) (formula: C<sub>40</sub>H<sub>80</sub>NO<sub>8</sub>P) (labeled as "Ligand of Interest" by depositor).



Mol	Chain	Residues	Atoms					AltConf
			Total	C	N	O	P	
3	A	1	50	40	1	8	1	0
3	B	1	50	40	1	8	1	0

- Molecule 4 is (1R)-2-[[[S)-(2-aminoethoxy)(hydroxy)phosphoryl]oxy]-1-[(pentadecanoyloxy)methyl]ethyl (12E)-hexadeca-9,12-dienoate (three-letter code: GP7) (formula: C<sub>36</sub>H<sub>68</sub>NO<sub>8</sub>P).



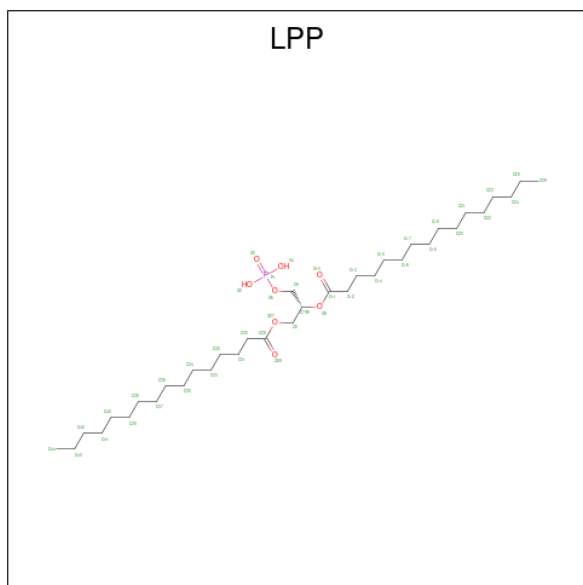
Mol	Chain	Residues	Atoms					AltConf
			Total	C	N	O	P	
4	A	1	46	36	1	8	1	0

*Continued on next page...*

Continued from previous page...

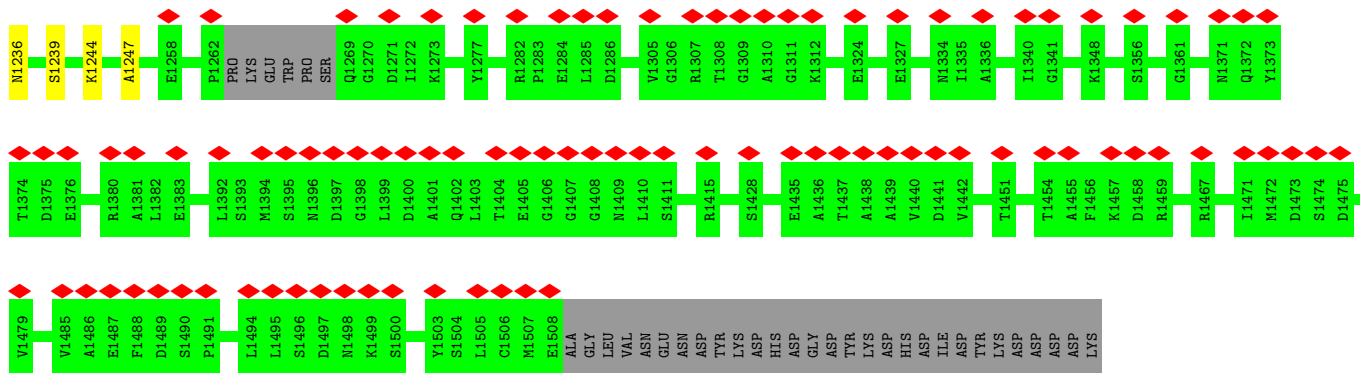
Mol	Chain	Residues	Atoms				AltConf	
			Total	C	N	O		P
4	B	1	46	36	1	8	1	0

- Molecule 5 is 2-(HEXADECANOYLOXY)-1-[(PHOSPHONOXY)METHYL]ETHYL HEXADECANOATE (three-letter code: LPP) (formula: C<sub>35</sub>H<sub>69</sub>O<sub>8</sub>P).

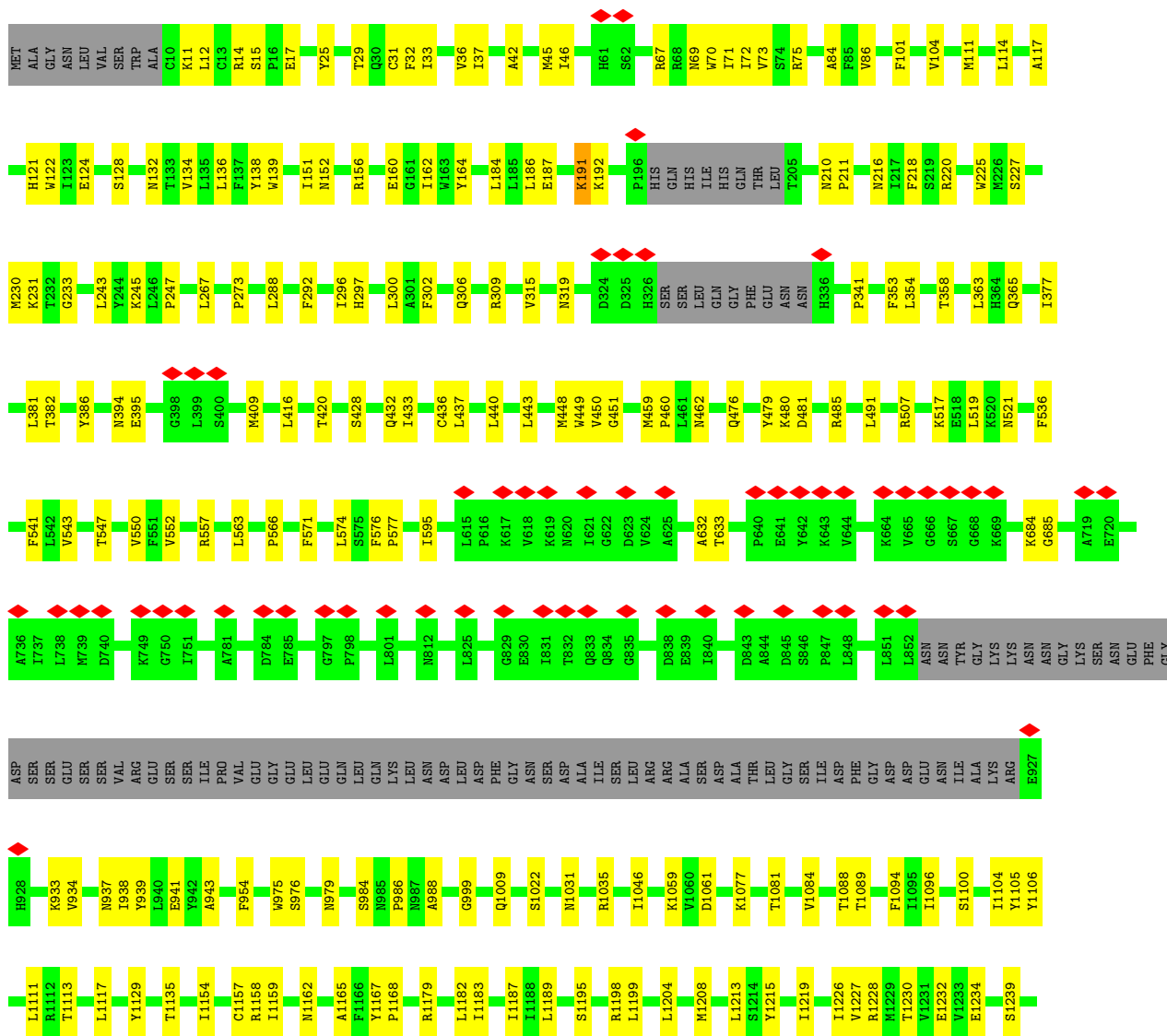
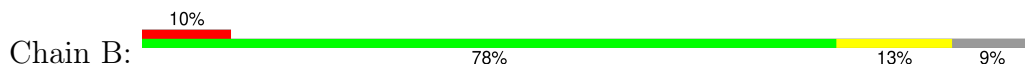


Mol	Chain	Residues	Atoms				AltConf
			Total	C	O	P	
5	A	1	44	35	8	1	0
5	B	1	44	35	8	1	0

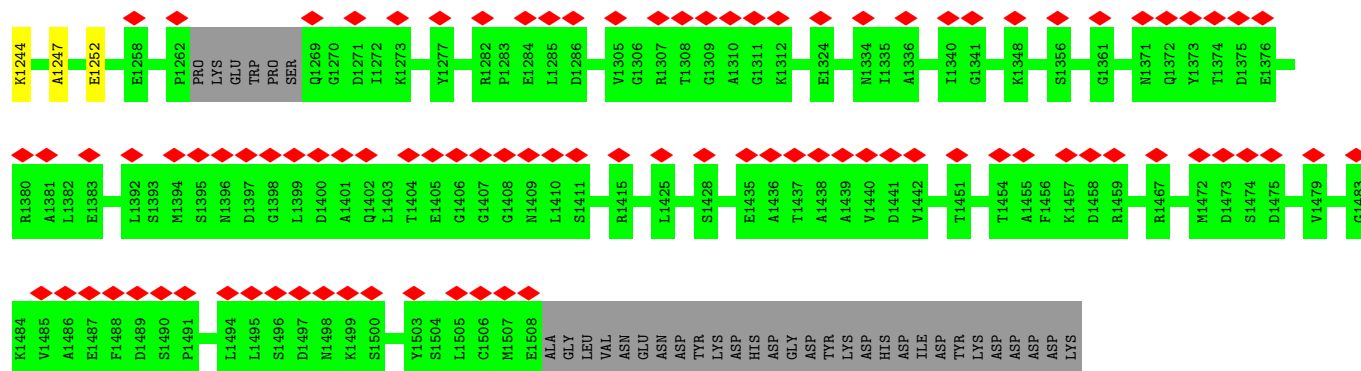




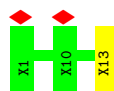
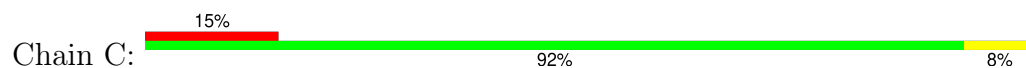
• Molecule 1: Metal resistance protein YCF1



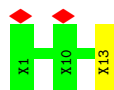
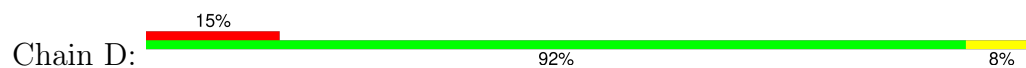




- Molecule 2: Unknown peptide



- Molecule 2: Unknown peptide



## 4 Experimental information

Property	Value	Source
EM reconstruction method	SINGLE PARTICLE	Depositor
Imposed symmetry	POINT, Not provided	
Number of particles used	71014	Depositor
Resolution determination method	FSC 0.143 CUT-OFF	Depositor
CTF correction method	PHASE FLIPPING AND AMPLITUDE CORRECTION	Depositor
Microscope	FEI TITAN KRIOS	Depositor
Voltage (kV)	300	Depositor
Electron dose ( $e^-/\text{\AA}^2$ )	46	Depositor
Minimum defocus (nm)	1000	Depositor
Maximum defocus (nm)	4000	Depositor
Magnification	Not provided	
Image detector	FEI FALCON IV (4k x 4k)	Depositor
Maximum map value	5.977	Depositor
Minimum map value	-3.661	Depositor
Average map value	0.000	Depositor
Map value standard deviation	0.132	Depositor
Recommended contour level	0.71	Depositor
Map size ( $\text{\AA}$ )	360.5, 360.5, 360.5	wwPDB
Map dimensions	350, 350, 350	wwPDB
Map angles ( $^\circ$ )	90.0, 90.0, 90.0	wwPDB
Pixel spacing ( $\text{\AA}$ )	1.03, 1.03, 1.03	Depositor

## 5 Model quality [i](#)

### 5.1 Standard geometry [i](#)

Bond lengths and bond angles in the following residue types are not validated in this section: PTY, LPP, GP7

The Z score for a bond length (or angle) is the number of standard deviations the observed value is removed from the expected value. A bond length (or angle) with  $|Z| > 5$  is considered an outlier worth inspection. RMSZ is the root-mean-square of all Z scores of the bond lengths (or angles).

Mol	Chain	Bond lengths		Bond angles	
		RMSZ	# Z  >5	RMSZ	# Z  >5
1	A	0.56	0/9940	0.54	0/13560
1	B	0.56	0/9940	0.54	0/13560
All	All	0.56	0/19880	0.54	0/27120

There are no bond length outliers.

There are no bond angle outliers.

There are no chirality outliers.

There are no planarity outliers.

### 5.2 Too-close contacts [i](#)

In the following table, the Non-H and H(model) columns list the number of non-hydrogen atoms and hydrogen atoms in the chain respectively. The H(added) column lists the number of hydrogen atoms added and optimized by MolProbity. The Clashes column lists the number of clashes within the asymmetric unit, whereas Symm-Clashes lists symmetry-related clashes.

Mol	Chain	Non-H	H(model)	H(added)	Clashes	Symm-Clashes
1	A	9769	0	8619	137	0
1	B	9769	0	8619	136	0
2	C	65	0	16	1	0
2	D	65	0	16	1	0
3	A	50	0	79	6	0
3	B	50	0	79	6	0
4	A	46	0	67	7	0
4	B	46	0	67	7	0
5	A	44	0	67	3	0
5	B	44	0	67	4	0
All	All	19948	0	17696	281	0

The all-atom clashscore is defined as the number of clashes found per 1000 atoms (including hydrogen atoms). The all-atom clashscore for this structure is 7.

All (281) close contacts within the same asymmetric unit are listed below, sorted by their clash magnitude.

Atom-1	Atom-2	Interatomic distance (Å)	Clash overlap (Å)
1:A:67:ARG:HD3	1:B:231:LYS:HD3	1.50	0.93
1:A:231:LYS:HD3	1:B:67:ARG:HD3	1.49	0.90
1:B:491:LEU:HB3	1:B:1046:ILE:HD11	1.58	0.85
1:A:491:LEU:HB3	1:A:1046:ILE:HD11	1.58	0.84
1:B:450:VAL:HG21	1:B:550:VAL:HG21	1.59	0.84
1:A:450:VAL:HG21	1:A:550:VAL:HG21	1.59	0.82
1:A:937:ASN:O	1:A:941:GLU:HG2	1.88	0.74
1:B:937:ASN:O	1:B:941:GLU:HG2	1.88	0.73
1:B:233:GLY:HA3	1:B:1113:THR:HG22	1.75	0.69
1:A:233:GLY:HA3	1:A:1113:THR:HG22	1.74	0.68
1:A:409:MET:HE3	1:A:1129:TYR:HD1	1.58	0.68
1:B:1167:TYR:HB3	1:B:1168:PRO:HD3	1.76	0.67
1:B:409:MET:HE3	1:B:1129:TYR:HD1	1.59	0.66
1:A:1077:LYS:O	1:A:1081:THR:HG23	1.96	0.66
3:A:1601:PTY:H192	3:A:1601:PTY:H411	1.78	0.66
1:B:1077:LYS:O	1:B:1081:THR:HG23	1.96	0.65
1:A:1111:LEU:HD11	1:A:1234:GLU:HG3	1.79	0.65
1:A:1167:TYR:HB3	1:A:1168:PRO:HD3	1.77	0.65
1:B:632:ALA:HA	1:B:685:GLY:HA3	1.78	0.65
3:B:1601:PTY:H192	3:B:1601:PTY:H411	1.78	0.65
1:A:632:ALA:HA	1:A:685:GLY:HA3	1.78	0.65
1:B:1111:LEU:HD11	1:B:1234:GLU:HG3	1.79	0.65
1:A:184:LEU:HD11	1:A:218:PHE:HE2	1.62	0.64
1:B:184:LEU:HD11	1:B:218:PHE:HE2	1.62	0.63
1:A:386:TYR:HH	1:A:1135:THR:HG1	1.44	0.63
1:A:1094:PHE:HB3	1:B:84:ALA:HB1	1.80	0.62
1:A:69:ASN:HB3	1:A:71:ILE:HG12	1.82	0.62
1:A:84:ALA:HB1	1:B:1094:PHE:HB3	1.82	0.62
1:B:69:ASN:H	1:B:72:ILE:HG22	1.65	0.62
1:A:69:ASN:H	1:A:72:ILE:HG22	1.65	0.61
1:A:230:MET:HA	1:A:1113:THR:HG21	1.83	0.61
1:A:541:PHE:CZ	1:A:999:GLY:HA3	2.36	0.61
1:B:1226:ILE:HG21	4:B:1602:GP7:H36A	1.82	0.61
1:A:1226:ILE:HG21	4:A:1602:GP7:H36A	1.82	0.61
1:B:69:ASN:HB3	1:B:71:ILE:HG12	1.82	0.60
1:B:541:PHE:CZ	1:B:999:GLY:HA3	2.36	0.60
1:A:1059:LYS:HE3	1:A:1239:SER:HB3	1.84	0.60

*Continued on next page...*

*Continued from previous page...*

Atom-1	Atom-2	Interatomic distance (Å)	Clash overlap (Å)
1:B:230:MET:HA	1:B:1113:THR:HG21	1.83	0.60
1:B:1059:LYS:HE3	1:B:1239:SER:HB3	1.84	0.60
1:B:230:MET:SD	1:B:1113:THR:OG1	2.57	0.60
1:B:75:ARG:NH2	1:B:186:LEU:O	2.36	0.59
1:A:633:THR:N	1:A:684:LYS:O	2.35	0.59
1:A:124:GLU:HG3	1:A:132:ASN:HB2	1.84	0.59
1:A:210:ASN:HB2	1:A:245:LYS:O	2.02	0.59
1:B:210:ASN:HB2	1:B:245:LYS:O	2.02	0.59
1:B:302:PHE:HE2	1:B:432:GLN:HG3	1.68	0.58
1:A:302:PHE:HE2	1:A:432:GLN:HG3	1.68	0.58
1:B:11:LYS:O	1:B:14:ARG:NH1	2.33	0.58
1:B:394:ASN:OD1	1:B:395:GLU:N	2.36	0.58
1:B:386:TYR:OH	1:B:1135:THR:OG1	2.22	0.57
1:A:230:MET:SD	1:A:1113:THR:OG1	2.57	0.57
1:B:124:GLU:HG3	1:B:132:ASN:HB2	1.84	0.57
1:A:75:ARG:NH2	1:A:186:LEU:O	2.36	0.57
1:A:1198:ARG:NH2	1:A:1208:MET:SD	2.77	0.57
1:A:394:ASN:OD1	1:A:395:GLU:N	2.36	0.57
1:B:1198:ARG:NH2	1:B:1208:MET:SD	2.77	0.57
1:A:11:LYS:O	1:A:14:ARG:NH1	2.33	0.56
1:A:191:LYS:HE3	1:A:191:LYS:HA	1.87	0.56
1:A:1088:THR:HG22	1:A:1089:THR:HG23	1.87	0.56
1:B:633:THR:N	1:B:684:LYS:O	2.35	0.56
1:A:15:SER:HB3	1:A:31:CYS:SG	2.46	0.56
1:B:306:GLN:OE1	1:B:309:ARG:NH1	2.30	0.56
1:A:33:ILE:HD13	1:A:37:ILE:HD12	1.88	0.55
1:A:306:GLN:OE1	1:A:309:ARG:NH1	2.30	0.55
1:B:15:SER:HB3	1:B:31:CYS:SG	2.46	0.55
1:B:33:ILE:HD13	1:B:37:ILE:HD12	1.88	0.55
1:B:1088:THR:HG22	1:B:1089:THR:HG23	1.87	0.55
1:B:191:LYS:HE3	1:B:191:LYS:HA	1.87	0.55
1:B:479:TYR:CD1	1:B:517:LYS:HB3	2.42	0.55
1:A:42:ALA:O	1:A:46:ILE:HG12	2.07	0.55
1:A:1022:SER:OG	1:A:1061:ASP:OD1	2.15	0.55
1:A:479:TYR:CD1	1:A:517:LYS:HB3	2.42	0.54
1:B:1228:ARG:O	1:B:1232:GLU:HG2	2.07	0.54
1:A:1228:ARG:O	1:A:1232:GLU:HG2	2.07	0.54
1:B:42:ALA:O	1:B:46:ILE:HG12	2.07	0.54
1:B:507:ARG:NH2	1:B:1031:ASN:OD1	2.41	0.54
1:A:117:ALA:O	1:A:121:HIS:ND1	2.37	0.54
1:A:17:GLU:HG2	1:A:29:THR:HG22	1.90	0.53

*Continued on next page...*

*Continued from previous page...*

Atom-1	Atom-2	Interatomic distance (Å)	Clash overlap (Å)
1:A:507:ARG:NH2	1:A:1031:ASN:OD1	2.41	0.53
1:B:436:CYS:SG	1:B:574:LEU:HB2	2.48	0.53
1:B:1157:CYS:HB3	2:D:13:UNK:CB	2.38	0.53
1:B:17:GLU:HG2	1:B:29:THR:HG22	1.90	0.53
1:A:436:CYS:SG	1:A:574:LEU:HB2	2.48	0.53
1:A:1157:CYS:HB3	2:C:13:UNK:CB	2.39	0.53
1:B:437:LEU:HD22	1:B:448:MET:HE1	1.90	0.53
1:A:1105:TYR:CD1	1:B:73:VAL:HG21	2.44	0.52
1:B:353:PHE:HB2	1:B:1189:LEU:HB2	1.91	0.52
1:B:975:TRP:O	1:B:979:ASN:ND2	2.42	0.52
1:A:353:PHE:HB2	1:A:1189:LEU:HB2	1.91	0.52
1:B:25:TYR:HD1	1:B:341:PRO:HG3	1.75	0.52
1:A:25:TYR:HD1	1:A:341:PRO:HG3	1.75	0.52
1:A:437:LEU:HD22	1:A:448:MET:HE1	1.92	0.52
1:A:937:ASN:OD1	1:A:938:ILE:N	2.43	0.52
1:B:1022:SER:OG	1:B:1061:ASP:OD1	2.15	0.52
1:B:300:LEU:HD13	1:B:358:THR:HG23	1.93	0.51
1:A:416:LEU:HD21	1:A:595:ILE:HD11	1.92	0.51
1:A:73:VAL:HG21	1:B:1105:TYR:CD1	2.46	0.51
1:B:1227:VAL:O	1:B:1230:THR:OG1	2.24	0.51
1:A:975:TRP:O	1:A:979:ASN:ND2	2.42	0.51
1:A:300:LEU:HD13	1:A:358:THR:HG23	1.93	0.51
1:B:937:ASN:OD1	1:B:938:ILE:N	2.43	0.51
1:A:984:SER:O	1:A:986:PRO:HD3	2.11	0.51
1:B:416:LEU:HD21	1:B:595:ILE:HD11	1.92	0.51
1:B:117:ALA:O	1:B:121:HIS:ND1	2.37	0.50
1:A:160:GLU:OE1	1:A:164:TYR:OH	2.30	0.50
1:A:1227:VAL:O	1:A:1230:THR:OG1	2.24	0.50
1:B:315:VAL:HG22	1:B:1199:LEU:HD22	1.94	0.50
1:A:440:LEU:HD21	1:A:571:PHE:CE1	2.47	0.50
1:A:1096:ILE:HD11	4:A:1602:GP7:H45A	1.94	0.49
1:A:315:VAL:HG22	1:A:1199:LEU:HD22	1.94	0.49
1:B:984:SER:O	1:B:986:PRO:HD3	2.11	0.49
1:B:1084:VAL:HG11	1:B:1215:TYR:CD2	2.48	0.49
1:A:1084:VAL:HG11	1:A:1215:TYR:CD2	2.48	0.49
1:B:576:PHE:HB3	1:B:577:PRO:HD3	1.95	0.49
1:B:1195:SER:O	1:B:1204:LEU:HD22	2.13	0.49
1:A:211:PRO:HB2	1:A:225:TRP:HB2	1.95	0.49
1:A:1195:SER:O	1:A:1204:LEU:HD22	2.13	0.49
1:B:440:LEU:HD21	1:B:571:PHE:CE1	2.47	0.49
1:B:462:ASN:HD21	1:B:536:PHE:HE1	1.60	0.49

*Continued on next page...*

*Continued from previous page...*

Atom-1	Atom-2	Interatomic distance (Å)	Clash overlap (Å)
1:B:233:GLY:CA	1:B:1113:THR:HG22	2.43	0.48
1:B:1096:ILE:HD11	4:B:1602:GP7:H45A	1.94	0.48
1:A:576:PHE:HB3	1:A:577:PRO:HD3	1.95	0.48
1:A:1117:LEU:HD22	1:A:1168:PRO:HB2	1.96	0.48
1:A:462:ASN:HD21	1:A:536:PHE:HE1	1.60	0.48
1:B:433:ILE:O	1:B:437:LEU:HG	2.14	0.48
1:B:1117:LEU:HD22	1:B:1168:PRO:HB2	1.96	0.48
1:A:71:ILE:O	1:A:75:ARG:HG3	2.14	0.48
1:A:354:LEU:O	1:A:358:THR:HG22	2.14	0.48
1:B:382:THR:HG23	1:B:409:MET:SD	2.54	0.48
1:B:71:ILE:O	1:B:75:ARG:HG3	2.14	0.47
1:B:101:PHE:HA	1:B:104:VAL:HG22	1.96	0.47
1:B:160:GLU:OE1	1:B:164:TYR:OH	2.30	0.47
1:A:220:ARG:O	1:A:365:GLN:NE2	2.47	0.47
1:A:377:ILE:HD12	1:A:420:THR:HG21	1.97	0.47
1:A:382:THR:HG23	1:A:409:MET:SD	2.54	0.47
1:A:433:ILE:O	1:A:437:LEU:HG	2.14	0.47
1:B:136:LEU:HD11	1:B:216:ASN:HB2	1.96	0.47
1:A:233:GLY:CA	1:A:1113:THR:HG22	2.42	0.47
3:B:1601:PTY:H221	3:B:1601:PTY:H252	1.52	0.47
1:A:1100:SER:O	1:A:1104:ILE:HG12	2.15	0.47
1:A:297:HIS:CD2	1:A:363:LEU:HB2	2.50	0.47
1:A:943:ALA:HB2	4:A:1602:GP7:H20	1.96	0.47
1:B:220:ARG:O	1:B:365:GLN:NE2	2.47	0.47
1:B:377:ILE:HD12	1:B:420:THR:HG21	1.96	0.47
5:B:1603:LPP:H392	5:B:1603:LPP:H422	1.66	0.47
1:A:101:PHE:HA	1:A:104:VAL:HG22	1.96	0.47
1:B:547:THR:HG21	1:B:571:PHE:CE2	2.50	0.47
1:B:943:ALA:HB2	4:B:1602:GP7:H20	1.96	0.47
1:B:297:HIS:CD2	1:B:363:LEU:HB2	2.50	0.47
1:A:552:VAL:HG11	1:A:988:ALA:HB1	1.97	0.47
1:B:1100:SER:O	1:B:1104:ILE:HG12	2.15	0.47
1:A:481:ASP:O	1:A:485:ARG:HG2	2.15	0.46
1:B:12:LEU:HD23	1:B:101:PHE:CD2	2.50	0.46
1:B:121:HIS:CE1	1:B:139:TRP:HE1	2.33	0.46
1:B:354:LEU:O	1:B:358:THR:HG22	2.14	0.46
1:B:211:PRO:HB2	1:B:225:TRP:HB2	1.95	0.46
1:B:481:ASP:O	1:B:485:ARG:HG2	2.15	0.46
1:A:547:THR:HG21	1:A:571:PHE:CE2	2.50	0.46
5:A:1603:LPP:H192	1:B:70:TRP:HE3	1.80	0.46
1:A:136:LEU:HD11	1:A:216:ASN:HB2	1.96	0.46

*Continued on next page...*

*Continued from previous page...*

Atom-1	Atom-2	Interatomic distance (Å)	Clash overlap (Å)
1:B:1179:ARG:O	1:B:1183:ILE:HG12	2.16	0.46
1:A:12:LEU:HD23	1:A:101:PHE:CD2	2.50	0.46
1:A:1187:ILE:HD13	1:A:1219:ILE:HD13	1.98	0.46
1:A:70:TRP:HE3	5:B:1603:LPP:H192	1.80	0.46
1:A:541:PHE:CE2	1:A:999:GLY:HA3	2.50	0.46
1:B:1154:ILE:O	1:B:1158:ARG:HG2	2.16	0.46
1:B:1213:LEU:HD12	1:B:1213:LEU:HA	1.69	0.46
1:A:121:HIS:CE1	1:A:139:TRP:HE1	2.33	0.45
1:B:128:SER:O	1:B:192:LYS:NZ	2.36	0.45
1:B:132:ASN:OD1	1:B:134:VAL:HG12	2.17	0.45
1:B:443:LEU:HD21	1:B:566:PRO:HB2	1.98	0.45
1:B:541:PHE:CE2	1:B:999:GLY:HA3	2.51	0.45
1:B:69:ASN:OD1	1:B:70:TRP:N	2.49	0.45
1:B:491:LEU:CB	1:B:1046:ILE:HD11	2.40	0.45
1:B:552:VAL:HG11	1:B:988:ALA:HB1	1.97	0.45
1:A:1154:ILE:O	1:A:1158:ARG:HG2	2.16	0.45
1:A:69:ASN:OD1	1:A:70:TRP:N	2.49	0.45
1:A:132:ASN:OD1	1:A:134:VAL:HG12	2.17	0.45
1:A:443:LEU:HD21	1:A:566:PRO:HB2	1.98	0.45
1:B:243:LEU:HD13	1:B:1165:ALA:HA	1.99	0.45
3:B:1601:PTY:H341	3:B:1601:PTY:H122	1.99	0.45
3:B:1601:PTY:H311	3:B:1601:PTY:H342	1.60	0.45
1:A:292:PHE:CZ	1:A:296:ILE:HD11	2.52	0.45
1:A:448:MET:HG3	1:A:449:TRP:N	2.31	0.45
1:A:459:MET:HB3	1:A:460:PRO:HD3	1.99	0.45
1:A:243:LEU:HD13	1:A:1165:ALA:HA	1.99	0.45
1:A:1159:ILE:O	1:A:1162:ASN:N	2.50	0.45
1:B:1159:ILE:O	1:B:1162:ASN:N	2.50	0.45
1:A:1179:ARG:O	1:A:1183:ILE:HG12	2.16	0.44
1:B:292:PHE:CZ	1:B:296:ILE:HD11	2.51	0.44
1:B:448:MET:HG3	1:B:449:TRP:N	2.31	0.44
1:A:975:TRP:CD1	1:A:979:ASN:ND2	2.81	0.44
1:B:111:MET:HE2	1:B:111:MET:HB2	1.90	0.44
1:B:416:LEU:HD21	1:B:595:ILE:CD1	2.48	0.44
1:B:151:ILE:HD12	3:B:1601:PTY:H352	2.00	0.44
1:B:459:MET:HB3	1:B:460:PRO:HD3	1.99	0.44
1:A:934:VAL:HG21	4:A:1602:GP7:H1	2.00	0.44
1:A:1106:TYR:CZ	1:A:1179:ARG:HG2	2.53	0.44
1:B:975:TRP:CD1	1:B:979:ASN:ND2	2.81	0.44
1:B:1106:TYR:CZ	1:B:1179:ARG:HG2	2.53	0.44
1:B:1187:ILE:HD13	1:B:1219:ILE:HD13	1.98	0.44

*Continued on next page...*



*Continued from previous page...*

Atom-1	Atom-2	Interatomic distance (Å)	Clash overlap (Å)
3:A:1601:PTY:H341	3:A:1601:PTY:H122	1.99	0.43
1:B:45:MET:HB2	1:B:138:TYR:CD1	2.53	0.43
1:B:1035:ARG:O	1:B:1252:GLU:N	2.43	0.43
1:A:416:LEU:HD21	1:A:595:ILE:CD1	2.48	0.43
1:B:381:LEU:HA	1:B:381:LEU:HD23	1.84	0.43
1:A:1244:LYS:HD3	1:A:1247:ALA:HB3	2.00	0.43
1:B:476:GLN:HB2	1:B:521:ASN:OD1	2.18	0.43
1:A:210:ASN:HD22	1:A:247:PRO:HD3	1.83	0.43
1:A:347:LEU:HD23	1:A:347:LEU:HA	1.69	0.43
1:A:557:ARG:NH1	1:A:563:LEU:HD21	2.34	0.43
1:B:32:PHE:CE1	1:B:36:VAL:HG21	2.54	0.43
1:A:122:TRP:CE3	1:A:122:TRP:HA	2.53	0.43
1:A:941:GLU:HB3	1:A:1244:LYS:NZ	2.34	0.43
1:B:86:VAL:HG21	1:B:114:LEU:HD11	2.00	0.43
1:B:319:ASN:ND2	1:B:1204:LEU:O	2.48	0.43
1:B:941:GLU:HB3	1:B:1244:LYS:NZ	2.34	0.43
1:A:152:ASN:O	1:A:156:ARG:HG2	2.19	0.43
3:A:1601:PTY:H361	3:A:1601:PTY:H391	1.85	0.43
1:B:122:TRP:HA	1:B:122:TRP:CE3	2.53	0.43
1:B:557:ARG:NH1	1:B:563:LEU:HD21	2.34	0.43
1:A:45:MET:HB2	1:A:138:TYR:CD1	2.53	0.43
1:A:151:ILE:HD12	3:A:1601:PTY:H352	2.00	0.43
1:B:934:VAL:HG21	4:B:1602:GP7:H1	2.00	0.43
1:A:1019:ILE:HD13	1:A:1019:ILE:HA	1.80	0.43
1:A:428:SER:O	1:A:428:SER:OG	2.37	0.42
1:A:210:ASN:ND2	1:A:247:PRO:HG3	2.34	0.42
1:A:933:LYS:HE2	4:A:1602:GP7:H67	1.85	0.42
1:B:210:ASN:ND2	1:B:247:PRO:HG3	2.34	0.42
1:B:939:TYR:OH	1:B:1234:GLU:OE2	2.34	0.42
1:A:32:PHE:CE1	1:A:36:VAL:HG21	2.54	0.42
3:A:1601:PTY:H221	3:A:1601:PTY:H252	1.52	0.42
1:A:476:GLN:HB2	1:A:521:ASN:OD1	2.18	0.42
1:B:152:ASN:O	1:B:156:ARG:HG2	2.19	0.42
1:A:86:VAL:HG21	1:A:114:LEU:HD11	2.00	0.42
1:A:121:HIS:CD2	1:A:187:GLU:OE2	2.73	0.42
1:A:939:TYR:OH	1:A:1234:GLU:OE2	2.34	0.42
1:A:954:PHE:HE1	1:A:1009:GLN:HE21	1.66	0.42
1:B:121:HIS:CD2	1:B:187:GLU:OE2	2.73	0.42
1:B:451:GLY:HA2	1:B:543:VAL:HG23	2.01	0.42
5:A:1603:LPP:H392	5:A:1603:LPP:H422	1.66	0.42
1:B:162:ILE:HD11	1:B:164:TYR:HE1	1.85	0.42

*Continued on next page...*

*Continued from previous page...*

Atom-1	Atom-2	Interatomic distance (Å)	Clash overlap (Å)
1:B:954:PHE:HE1	1:B:1009:GLN:HE21	1.66	0.42
3:B:1601:PTY:H172	3:B:1601:PTY:H392	2.02	0.42
1:A:1244:LYS:HA	1:A:1247:ALA:HB3	2.02	0.42
1:B:210:ASN:HD22	1:B:247:PRO:HD3	1.84	0.42
1:B:933:LYS:HE2	4:B:1602:GP7:H67	1.84	0.42
1:B:934:VAL:CG2	4:B:1602:GP7:H1	2.50	0.42
1:B:1244:LYS:HD3	1:B:1247:ALA:HB3	2.00	0.42
1:A:93:ILE:HD13	1:A:93:ILE:HA	1.86	0.42
1:A:451:GLY:HA2	1:A:543:VAL:HG23	2.01	0.41
1:A:1213:LEU:HD12	1:A:1213:LEU:HA	1.69	0.41
1:B:428:SER:O	1:B:428:SER:OG	2.37	0.41
1:A:162:ILE:HD11	1:A:164:TYR:HE1	1.85	0.41
1:A:319:ASN:ND2	1:A:1204:LEU:O	2.48	0.41
1:B:519:LEU:HD23	1:B:519:LEU:HA	1.81	0.41
1:B:934:VAL:HG23	4:B:1602:GP7:O2P	2.21	0.41
1:B:227:SER:O	1:B:231:LYS:HG3	2.21	0.41
1:B:184:LEU:HD11	1:B:218:PHE:CE2	2.49	0.41
1:A:210:ASN:HD22	1:A:247:PRO:CD	2.34	0.41
1:A:227:SER:O	1:A:231:LYS:HG3	2.21	0.41
1:A:934:VAL:CG2	4:A:1602:GP7:H1	2.50	0.41
3:A:1601:PTY:H172	3:A:1601:PTY:H392	2.02	0.41
5:A:1603:LPP:O10	5:A:1603:LPP:HC61	2.20	0.41
1:A:186:LEU:HD23	1:A:186:LEU:HA	1.84	0.41
1:A:934:VAL:HG23	4:A:1602:GP7:O2P	2.21	0.41
1:B:1182:LEU:HD23	1:B:1182:LEU:HA	1.90	0.41
1:A:78:LEU:HD23	1:A:78:LEU:HA	1.81	0.41
1:B:210:ASN:HD22	1:B:247:PRO:CD	2.34	0.41
1:A:976:SER:HA	1:A:979:ASN:HD22	1.86	0.40
1:B:1244:LYS:HA	1:B:1247:ALA:HB3	2.02	0.40
1:A:70:TRP:CE3	5:B:1603:LPP:H192	2.56	0.40
1:A:1013:LEU:HD22	1:A:1069:SER:HB2	2.04	0.40
1:B:267:LEU:HD23	1:B:273:PRO:HG3	2.04	0.40
1:B:288:LEU:HD13	1:B:288:LEU:HA	1.91	0.40
1:A:288:LEU:HD13	1:A:288:LEU:HA	1.91	0.40
1:A:1000:ILE:HD13	1:A:1000:ILE:HA	1.88	0.40
5:B:1603:LPP:O10	5:B:1603:LPP:HC61	2.20	0.40
1:A:479:TYR:CE1	1:A:517:LYS:HB3	2.57	0.40
1:A:1063:LEU:HB3	1:A:1236:ASN:ND2	2.37	0.40
1:B:976:SER:HA	1:B:979:ASN:HD22	1.86	0.40

There are no symmetry-related clashes.

## 5.3 Torsion angles [i](#)

### 5.3.1 Protein backbone [i](#)

In the following table, the Percentiles column shows the percent Ramachandran outliers of the chain as a percentile score with respect to all PDB entries followed by that with respect to all EM entries.

The Analysed column shows the number of residues for which the backbone conformation was analysed, and the total number of residues.

Mol	Chain	Analysed	Favoured	Allowed	Outliers	Percentiles	
1	A	1392/1537 (91%)	1361 (98%)	31 (2%)	0	100	100
1	B	1392/1537 (91%)	1361 (98%)	31 (2%)	0	100	100
All	All	2784/3074 (91%)	2722 (98%)	62 (2%)	0	100	100

There are no Ramachandran outliers to report.

### 5.3.2 Protein sidechains [i](#)

In the following table, the Percentiles column shows the percent sidechain outliers of the chain as a percentile score with respect to all PDB entries followed by that with respect to all EM entries.

The Analysed column shows the number of residues for which the sidechain conformation was analysed, and the total number of residues.

Mol	Chain	Analysed	Rotameric	Outliers	Percentiles	
1	A	808/1353 (60%)	806 (100%)	2 (0%)	92	97
1	B	808/1353 (60%)	806 (100%)	2 (0%)	92	97
All	All	1616/2706 (60%)	1612 (100%)	4 (0%)	91	97

All (4) residues with a non-rotameric sidechain are listed below:

Mol	Chain	Res	Type
1	A	191	LYS
1	A	480	LYS
1	B	191	LYS
1	B	480	LYS

Sometimes sidechains can be flipped to improve hydrogen bonding and reduce clashes. All (1) such sidechains are listed below:

Mol	Chain	Res	Type
1	A	469	GLN

### 5.3.3 RNA [i](#)

There are no RNA molecules in this entry.

### 5.4 Non-standard residues in protein, DNA, RNA chains [i](#)

There are no non-standard protein/DNA/RNA residues in this entry.

### 5.5 Carbohydrates [i](#)

There are no oligosaccharides in this entry.

### 5.6 Ligand geometry [i](#)

6 ligands are modelled in this entry.

In the following table, the Counts columns list the number of bonds (or angles) for which Mogul statistics could be retrieved, the number of bonds (or angles) that are observed in the model and the number of bonds (or angles) that are defined in the Chemical Component Dictionary. The Link column lists molecule types, if any, to which the group is linked. The Z score for a bond length (or angle) is the number of standard deviations the observed value is removed from the expected value. A bond length (or angle) with  $|Z| > 2$  is considered an outlier worth inspection. RMSZ is the root-mean-square of all Z scores of the bond lengths (or angles).

Mol	Type	Chain	Res	Link	Bond lengths			Bond angles		
					Counts	RMSZ	# Z  > 2	Counts	RMSZ	# Z  > 2
3	PTY	A	1601	-	49,49,49	0.90	4 (8%)	52,54,54	1.24	2 (3%)
5	LPP	B	1603	-	43,43,43	1.05	4 (9%)	46,48,48	1.23	2 (4%)
5	LPP	A	1603	-	43,43,43	1.05	4 (9%)	46,48,48	1.23	2 (4%)
3	PTY	B	1601	-	49,49,49	0.90	4 (8%)	52,54,54	1.24	2 (3%)
4	GP7	B	1602	-	45,45,45	0.91	3 (6%)	48,50,50	1.20	2 (4%)
4	GP7	A	1602	-	45,45,45	0.92	2 (4%)	48,50,50	1.20	2 (4%)

In the following table, the Chirals column lists the number of chiral outliers, the number of chiral centers analysed, the number of these observed in the model and the number defined in the Chemical Component Dictionary. Similar counts are reported in the Torsion and Rings columns. '2' means no outliers of that kind were identified.

Mol	Type	Chain	Res	Link	Chirals	Torsions	Rings
3	PTY	A	1601	-	-	28/53/53/53	-
5	LPP	B	1603	-	-	31/45/45/45	-
5	LPP	A	1603	-	-	31/45/45/45	-
3	PTY	B	1601	-	-	28/53/53/53	-
4	GP7	B	1602	-	-	22/49/49/49	-
4	GP7	A	1602	-	-	22/49/49/49	-

All (21) bond length outliers are listed below:

Mol	Chain	Res	Type	Atoms	Z	Observed(Å)	Ideal(Å)
4	A	1602	GP7	O2-C2	-2.94	1.39	1.46
4	B	1602	GP7	O2-C2	-2.90	1.39	1.46
3	B	1601	PTY	O4-C1	-2.68	1.39	1.45
3	A	1601	PTY	O4-C1	-2.65	1.39	1.45
3	B	1601	PTY	O7-C6	-2.64	1.40	1.46
3	A	1601	PTY	O7-C6	-2.62	1.40	1.46
5	B	1603	LPP	O9-C11	2.60	1.41	1.34
5	B	1603	LPP	O9-C7	-2.60	1.40	1.46
5	A	1603	LPP	O27-C29	2.59	1.40	1.33
5	B	1603	LPP	O27-C29	2.59	1.40	1.33
5	A	1603	LPP	O9-C11	2.57	1.41	1.34
5	A	1603	LPP	O9-C7	-2.56	1.40	1.46
5	B	1603	LPP	P1-O5	2.42	1.68	1.60
5	A	1603	LPP	P1-O5	2.41	1.67	1.60
4	A	1602	GP7	O3-C11	2.35	1.40	1.33
4	B	1602	GP7	O3-C11	2.35	1.40	1.33
3	B	1601	PTY	O7-C8	2.15	1.40	1.34
3	A	1601	PTY	O7-C8	2.13	1.40	1.34
3	B	1601	PTY	O4-C30	2.06	1.39	1.33
3	A	1601	PTY	O4-C30	2.06	1.39	1.33
4	B	1602	GP7	O3-C3	-2.01	1.40	1.45

All (12) bond angle outliers are listed below:

Mol	Chain	Res	Type	Atoms	Z	Observed(°)	Ideal(°)
3	A	1601	PTY	O7-C8-C11	5.04	122.38	111.48
3	B	1601	PTY	O7-C8-C11	5.03	122.36	111.48
5	B	1603	LPP	O9-C11-C12	4.34	120.86	111.48
5	A	1603	LPP	O9-C11-C12	4.33	120.85	111.48
4	A	1602	GP7	O2-C31-C32	4.33	120.85	111.48
4	B	1602	GP7	O2-C31-C32	4.32	120.82	111.48
3	B	1601	PTY	O4-C30-C31	3.17	121.50	111.83

*Continued on next page...*

*Continued from previous page...*

Mol	Chain	Res	Type	Atoms	Z	Observed(°)	Ideal(°)
4	B	1602	GP7	O3-C11-C12	3.15	121.45	111.83
3	A	1601	PTY	O4-C30-C31	3.15	121.43	111.83
4	A	1602	GP7	O3-C11-C12	3.15	121.43	111.83
5	A	1603	LPP	O27-C29-C30	3.05	121.13	111.83
5	B	1603	LPP	O27-C29-C30	3.04	121.11	111.83

There are no chirality outliers.

All (162) torsion outliers are listed below:

Mol	Chain	Res	Type	Atoms
3	A	1601	PTY	C1-C6-O7-C8
3	A	1601	PTY	C11-C8-O7-C6
3	A	1601	PTY	C3-O11-P1-O13
3	A	1601	PTY	C3-O11-P1-O14
3	A	1601	PTY	C5-O14-P1-O11
3	A	1601	PTY	C5-O14-P1-O12
3	A	1601	PTY	C5-O14-P1-O13
3	B	1601	PTY	C1-C6-O7-C8
3	B	1601	PTY	C11-C8-O7-C6
3	B	1601	PTY	C3-O11-P1-O13
3	B	1601	PTY	C3-O11-P1-O14
3	B	1601	PTY	C5-O14-P1-O11
3	B	1601	PTY	C5-O14-P1-O12
3	B	1601	PTY	C5-O14-P1-O13
4	A	1602	GP7	C1-O3P-P-O1P
4	A	1602	GP7	C1-O3P-P-O2P
4	A	1602	GP7	C1-O3P-P-O4P
4	A	1602	GP7	C351-O4P-P-O1P
4	A	1602	GP7	C351-O4P-P-O2P
4	A	1602	GP7	C351-O4P-P-O3P
4	A	1602	GP7	O4P-C351-C361-N1
4	B	1602	GP7	C1-O3P-P-O1P
4	B	1602	GP7	C1-O3P-P-O2P
4	B	1602	GP7	C1-O3P-P-O4P
4	B	1602	GP7	C351-O4P-P-O1P
4	B	1602	GP7	C351-O4P-P-O2P
4	B	1602	GP7	C351-O4P-P-O3P
4	B	1602	GP7	O4P-C351-C361-N1
5	A	1603	LPP	C6-O5-P1-O2
5	A	1603	LPP	C6-O5-P1-O3
5	A	1603	LPP	C6-O5-P1-O4
5	A	1603	LPP	C12-C11-O9-C7

*Continued on next page...*

*Continued from previous page...*

Mol	Chain	Res	Type	Atoms
5	B	1603	LPP	C6-O5-P1-O2
5	B	1603	LPP	C6-O5-P1-O3
5	B	1603	LPP	C6-O5-P1-O4
5	B	1603	LPP	C12-C11-O9-C7
3	A	1601	PTY	O30-C30-O4-C1
3	B	1601	PTY	O30-C30-O4-C1
3	A	1601	PTY	C31-C30-O4-C1
3	B	1601	PTY	C31-C30-O4-C1
3	A	1601	PTY	O10-C8-O7-C6
3	B	1601	PTY	O10-C8-O7-C6
5	A	1603	LPP	O10-C11-O9-C7
5	B	1603	LPP	O10-C11-O9-C7
5	A	1603	LPP	C39-C40-C41-C42
5	B	1603	LPP	C39-C40-C41-C42
5	A	1603	LPP	C11-C12-C13-C14
5	B	1603	LPP	C11-C12-C13-C14
3	A	1601	PTY	C22-C23-C24-C25
3	B	1601	PTY	C22-C23-C24-C25
3	B	1601	PTY	C31-C32-C33-C34
3	A	1601	PTY	C31-C32-C33-C34
3	A	1601	PTY	C33-C34-C35-C36
3	B	1601	PTY	C33-C34-C35-C36
5	A	1603	LPP	C32-C33-C34-C35
5	B	1603	LPP	C32-C33-C34-C35
4	A	1602	GP7	C36-C37-C38-C39
4	B	1602	GP7	C36-C37-C38-C39
3	A	1601	PTY	C14-C15-C16-C17
3	B	1601	PTY	C14-C15-C16-C17
5	A	1603	LPP	C40-C41-C42-C43
5	B	1603	LPP	C40-C41-C42-C43
5	B	1603	LPP	C19-C20-C21-C22
5	A	1603	LPP	C19-C20-C21-C22
4	A	1602	GP7	C21-C22-C23-C24
4	B	1602	GP7	C21-C22-C23-C24
3	A	1601	PTY	C38-C39-C40-C41
3	B	1601	PTY	C38-C39-C40-C41
5	A	1603	LPP	C13-C14-C15-C16
5	B	1603	LPP	C13-C14-C15-C16
5	A	1603	LPP	C14-C15-C16-C17
5	B	1603	LPP	C14-C15-C16-C17
4	B	1602	GP7	C19-C20-C21-C22
5	A	1603	LPP	C31-C32-C33-C34

*Continued on next page...*

*Continued from previous page...*

Mol	Chain	Res	Type	Atoms
5	B	1603	LPP	C31-C32-C33-C34
3	A	1601	PTY	C37-C38-C39-C40
3	B	1601	PTY	C37-C38-C39-C40
4	A	1602	GP7	C19-C20-C21-C22
5	A	1603	LPP	C36-C37-C38-C39
5	B	1603	LPP	C36-C37-C38-C39
5	A	1603	LPP	C33-C34-C35-C36
5	B	1603	LPP	C33-C34-C35-C36
3	B	1601	PTY	C15-C16-C17-C18
3	A	1601	PTY	C15-C16-C17-C18
5	A	1603	LPP	C37-C38-C39-C40
5	B	1603	LPP	C37-C38-C39-C40
3	A	1601	PTY	C21-C22-C23-C24
3	B	1601	PTY	C21-C22-C23-C24
4	A	1602	GP7	C37-C38-C39-C40
4	B	1602	GP7	C37-C38-C39-C40
4	A	1602	GP7	C35-C36-C37-C38
4	B	1602	GP7	C35-C36-C37-C38
4	A	1602	GP7	C32-C33-C34-C35
4	B	1602	GP7	C32-C33-C34-C35
3	A	1601	PTY	C40-C41-C42-C43
3	B	1601	PTY	C40-C41-C42-C43
3	A	1601	PTY	C19-C20-C21-C22
3	B	1601	PTY	C19-C20-C21-C22
3	A	1601	PTY	C24-C25-C26-C27
3	B	1601	PTY	C24-C25-C26-C27
5	A	1603	LPP	C21-C22-C23-C24
5	B	1603	LPP	C21-C22-C23-C24
5	A	1603	LPP	C6-C7-C8-O27
5	B	1603	LPP	C6-C7-C8-O27
5	A	1603	LPP	O9-C7-C8-O27
5	B	1603	LPP	O9-C7-C8-O27
4	A	1602	GP7	C39-C40-C41-C42
4	B	1602	GP7	C39-C40-C41-C42
3	B	1601	PTY	C26-C27-C28-C29
3	A	1601	PTY	C26-C27-C28-C29
4	A	1602	GP7	C20-C21-C22-C23
4	B	1602	GP7	C20-C21-C22-C23
5	A	1603	LPP	C30-C31-C32-C33
5	B	1603	LPP	C30-C31-C32-C33
3	B	1601	PTY	C25-C26-C27-C28
3	A	1601	PTY	C25-C26-C27-C28

*Continued on next page...*



*Continued from previous page...*

Mol	Chain	Res	Type	Atoms
5	A	1603	LPP	O5-C6-C7-O9
3	A	1601	PTY	C17-C18-C19-C20
3	B	1601	PTY	C17-C18-C19-C20
5	A	1603	LPP	C15-C16-C17-C18
5	B	1603	LPP	C15-C16-C17-C18
4	A	1602	GP7	C18-C19-C20-C21
4	B	1602	GP7	C18-C19-C20-C21
5	A	1603	LPP	C35-C36-C37-C38
5	B	1603	LPP	C35-C36-C37-C38
3	A	1601	PTY	C13-C14-C15-C16
3	B	1601	PTY	C13-C14-C15-C16
4	A	1602	GP7	C34-C35-C36-C37
5	A	1603	LPP	C20-C21-C22-C23
5	B	1603	LPP	C20-C21-C22-C23
5	A	1603	LPP	C18-C19-C20-C21
5	B	1603	LPP	C18-C19-C20-C21
5	A	1603	LPP	C7-C6-O5-P1
5	B	1603	LPP	C7-C6-O5-P1
4	B	1602	GP7	C34-C35-C36-C37
5	B	1603	LPP	O5-C6-C7-O9
4	A	1602	GP7	C32-C31-O2-C2
4	B	1602	GP7	C32-C31-O2-C2
5	A	1603	LPP	O9-C11-C12-C13
5	B	1603	LPP	O9-C11-C12-C13
4	A	1602	GP7	O31-C31-O2-C2
4	B	1602	GP7	O31-C31-O2-C2
3	A	1601	PTY	C8-C11-C12-C13
5	A	1603	LPP	C12-C13-C14-C15
5	B	1603	LPP	C12-C13-C14-C15
4	B	1602	GP7	C14-C15-C16-C17
4	A	1602	GP7	C14-C15-C16-C17
3	B	1601	PTY	C8-C11-C12-C13
5	A	1603	LPP	C6-C7-O9-C11
5	B	1603	LPP	C6-C7-O9-C11
3	B	1601	PTY	C32-C33-C34-C35
3	A	1601	PTY	C32-C33-C34-C35
4	A	1602	GP7	O3-C11-C12-C13
4	B	1602	GP7	O3-C11-C12-C13
5	A	1603	LPP	O5-C6-C7-C8
5	B	1603	LPP	O5-C6-C7-C8
4	A	1602	GP7	C42-C43-C44-C45
4	B	1602	GP7	C42-C43-C44-C45

*Continued on next page...*

*Continued from previous page...*

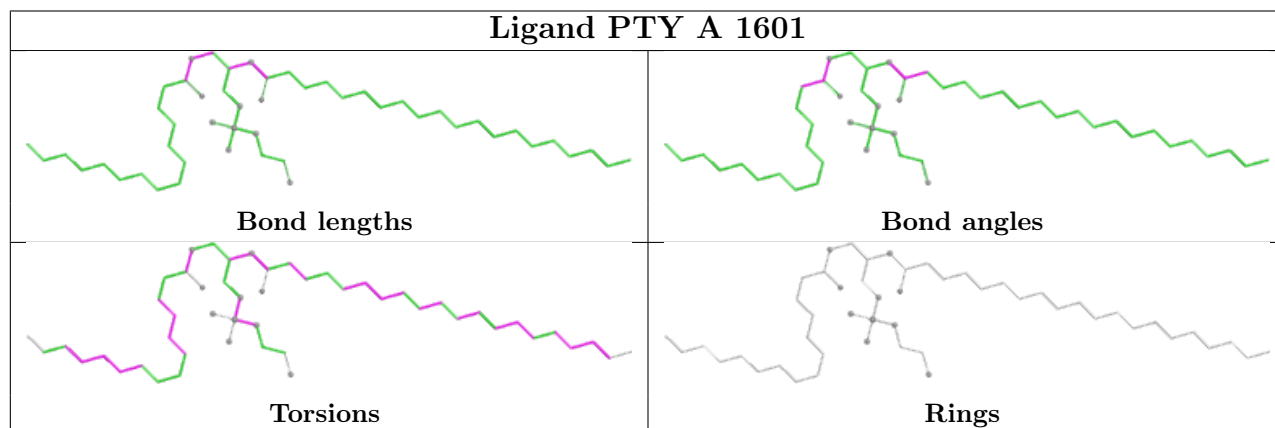
Mol	Chain	Res	Type	Atoms
5	A	1603	LPP	C34-C35-C36-C37
5	B	1603	LPP	C34-C35-C36-C37
3	A	1601	PTY	C39-C40-C41-C42
3	B	1601	PTY	C39-C40-C41-C42

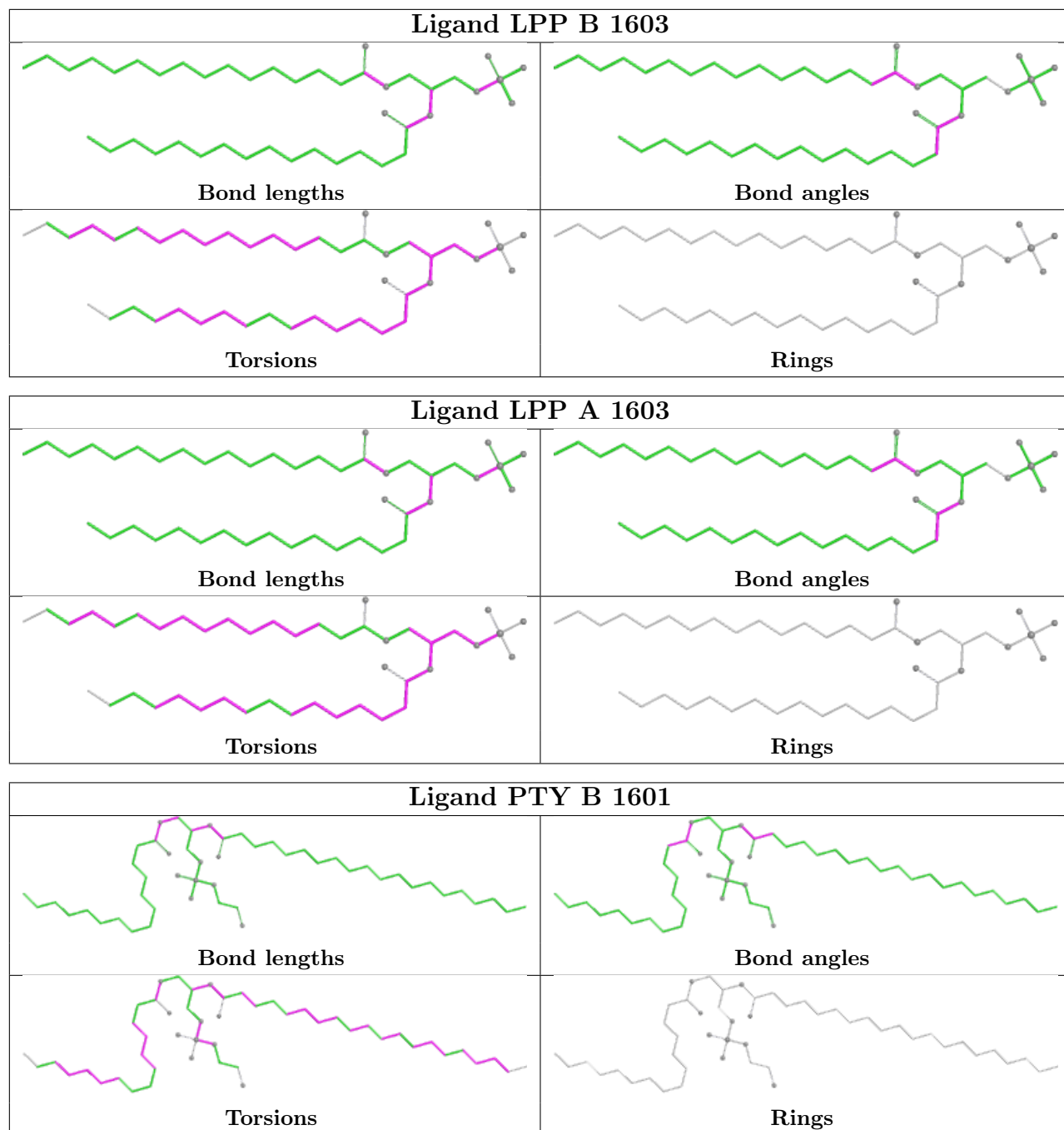
There are no ring outliers.

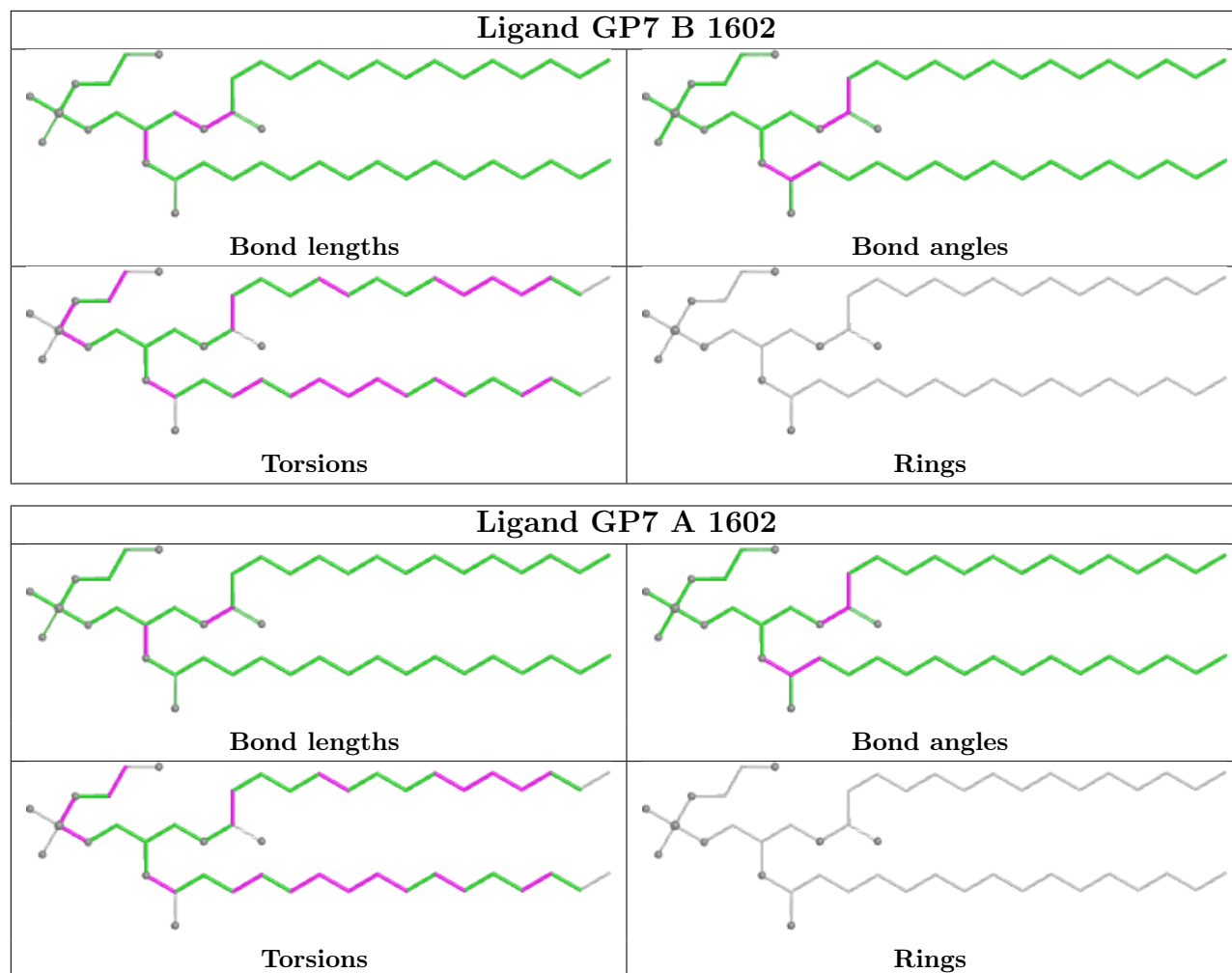
6 monomers are involved in 33 short contacts:

Mol	Chain	Res	Type	Clashes	Symm-Clashes
3	A	1601	PTY	6	0
5	B	1603	LPP	4	0
5	A	1603	LPP	3	0
3	B	1601	PTY	6	0
4	B	1602	GP7	7	0
4	A	1602	GP7	7	0

The following is a two-dimensional graphical depiction of Mogul quality analysis of bond lengths, bond angles, torsion angles, and ring geometry for all instances of the Ligand of Interest. In addition, ligands with molecular weight > 250 and outliers as shown on the validation Tables will also be included. For torsion angles, if less than 5% of the Mogul distribution of torsion angles is within 10 degrees of the torsion angle in question, then that torsion angle is considered an outlier. Any bond that is central to one or more torsion angles identified as an outlier by Mogul will be highlighted in the graph. For rings, the root-mean-square deviation (RMSD) between the ring in question and similar rings identified by Mogul is calculated over all ring torsion angles. If the average RMSD is greater than 60 degrees and the minimal RMSD between the ring in question and any Mogul-identified rings is also greater than 60 degrees, then that ring is considered an outlier. The outliers are highlighted in purple. The color gray indicates Mogul did not find sufficient equivalents in the CSD to analyse the geometry.







## 5.7 Other polymers [i](#)

There are no such residues in this entry.

## 5.8 Polymer linkage issues [i](#)

There are no chain breaks in this entry.

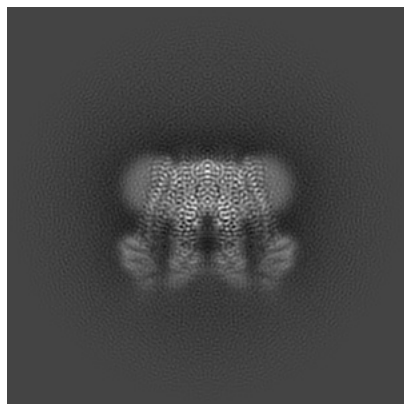
## 6 Map visualisation [i](#)

This section contains visualisations of the EMDB entry EMD-40692. These allow visual inspection of the internal detail of the map and identification of artifacts.

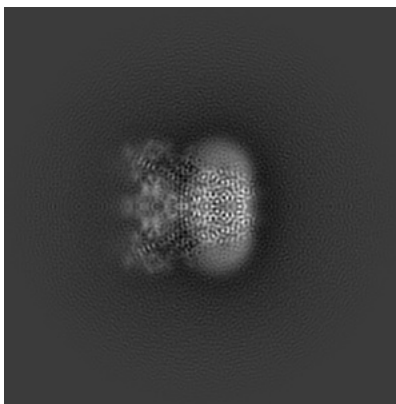
Images derived from a raw map, generated by summing the deposited half-maps, are presented below the corresponding image components of the primary map to allow further visual inspection and comparison with those of the primary map.

### 6.1 Orthogonal projections [i](#)

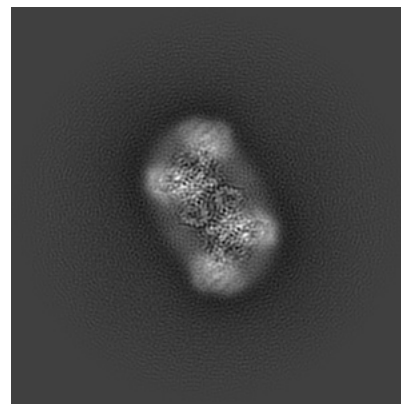
#### 6.1.1 Primary map



X

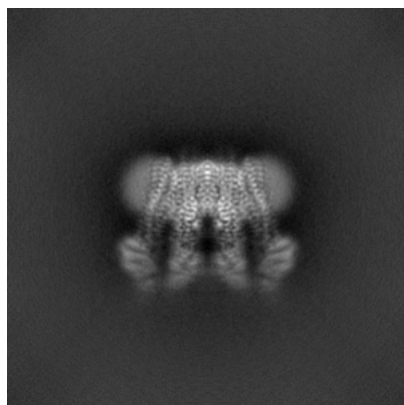


Y

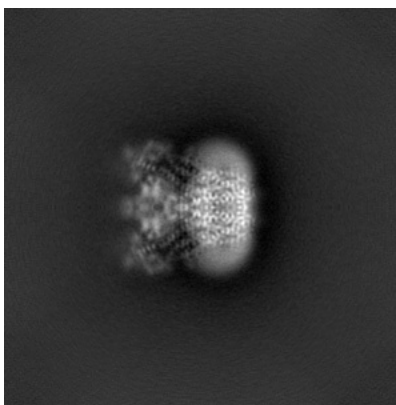


Z

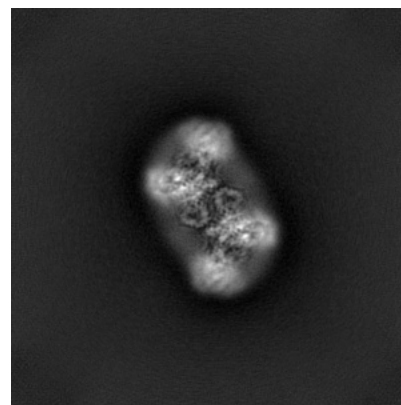
#### 6.1.2 Raw map



X



Y

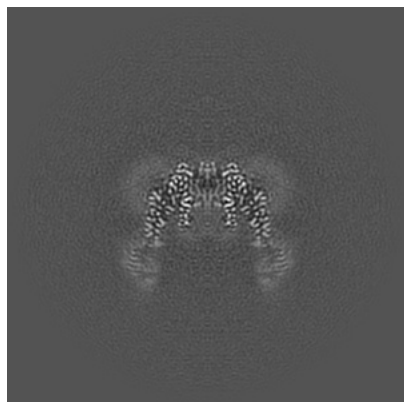


Z

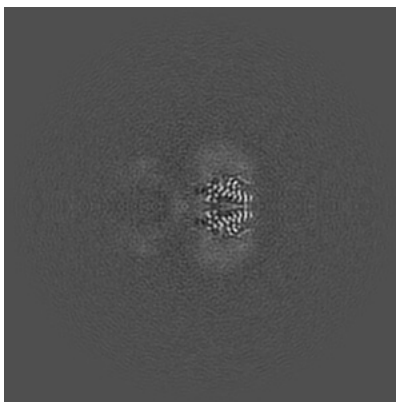
The images above show the map projected in three orthogonal directions.

## 6.2 Central slices [i](#)

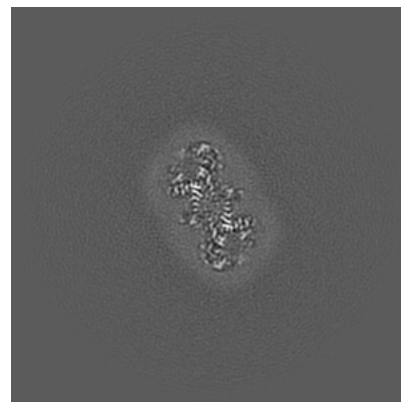
### 6.2.1 Primary map



X Index: 175

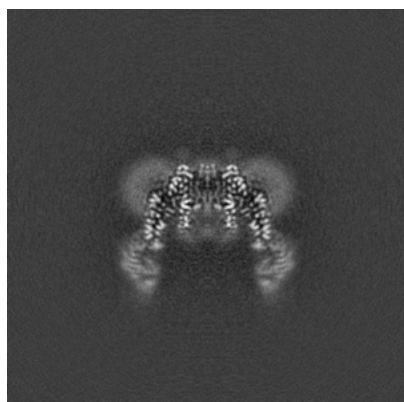


Y Index: 175

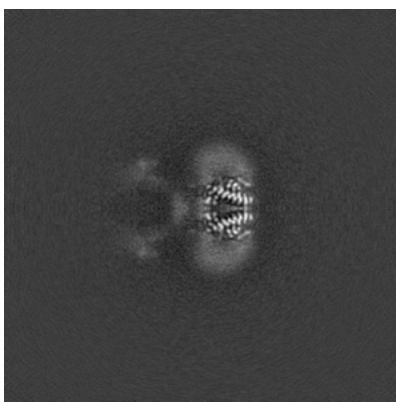


Z Index: 175

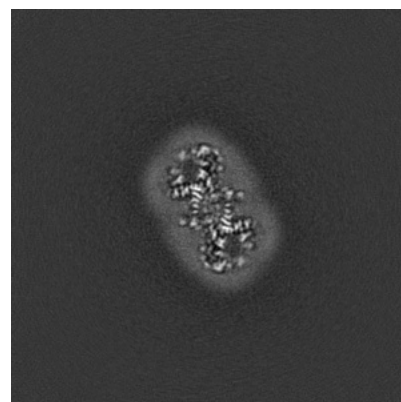
### 6.2.2 Raw map



X Index: 175



Y Index: 175

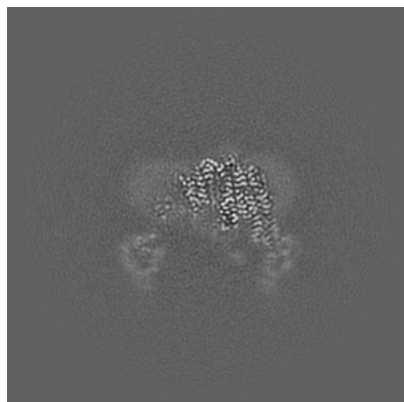


Z Index: 175

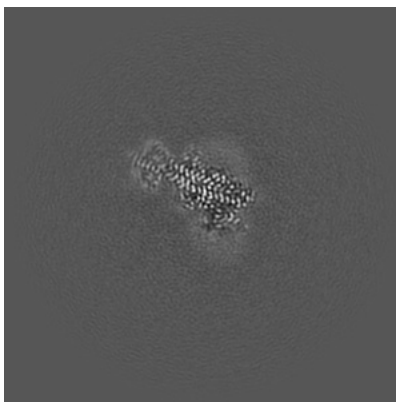
The images above show central slices of the map in three orthogonal directions.

## 6.3 Largest variance slices [i](#)

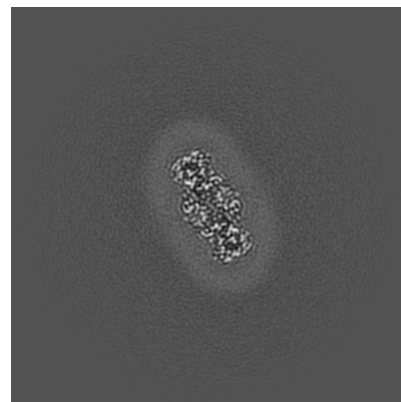
### 6.3.1 Primary map



X Index: 167

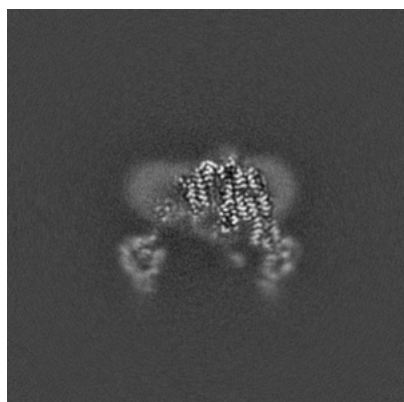


Y Index: 158

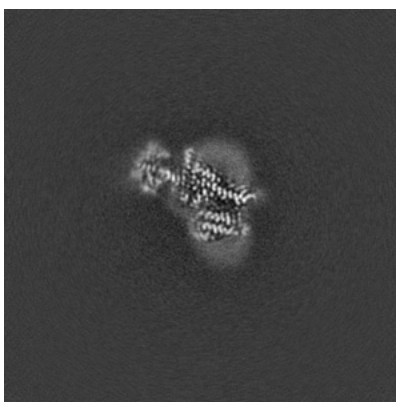


Z Index: 200

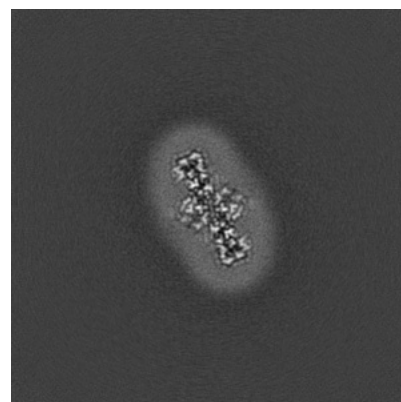
### 6.3.2 Raw map



X Index: 167



Y Index: 162

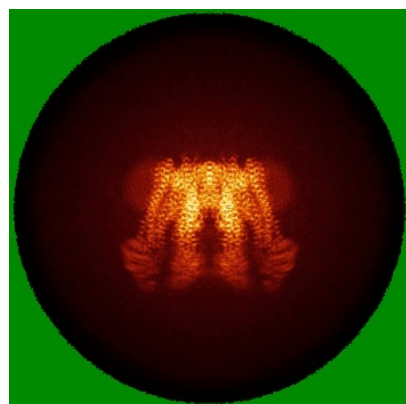


Z Index: 205

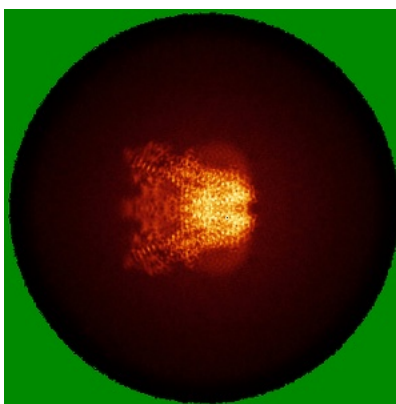
The images above show the largest variance slices of the map in three orthogonal directions.

## 6.4 Orthogonal standard-deviation projections (False-color) [i](#)

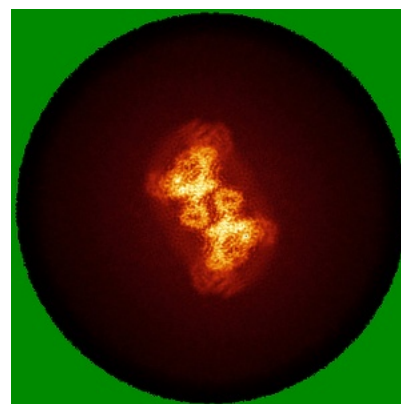
### 6.4.1 Primary map



X



Y

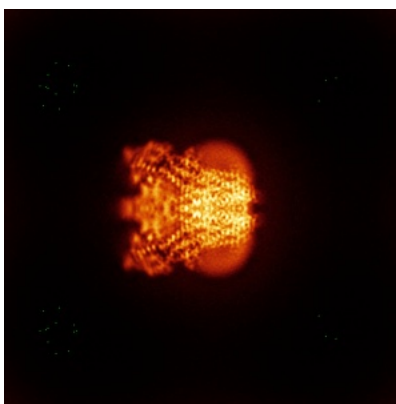


Z

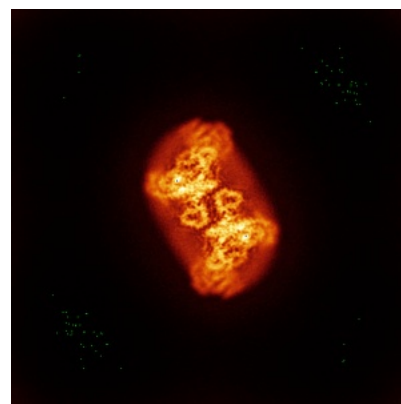
### 6.4.2 Raw map



X



Y



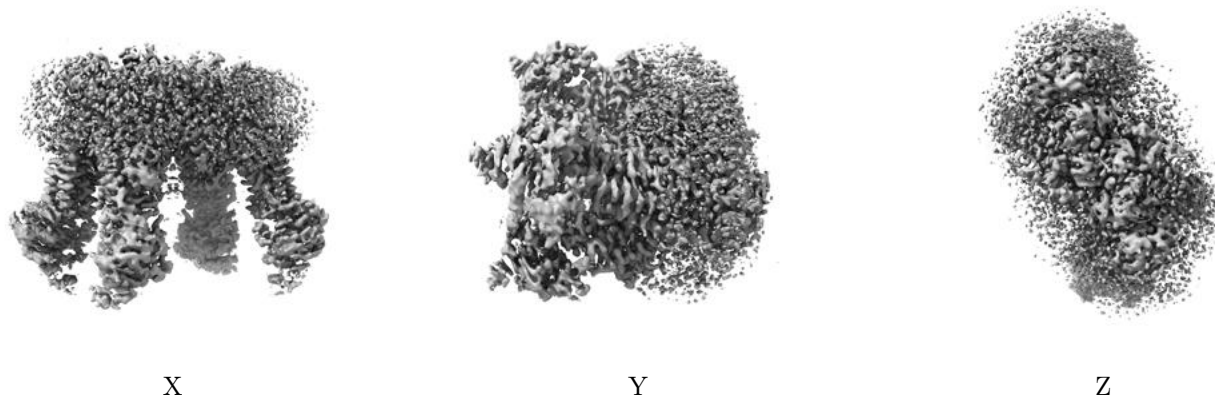
Z

The images above show the map standard deviation projections with false color in three orthogonal directions. Minimum values are shown in green, max in blue, and dark to light orange shades represent small to large values respectively.



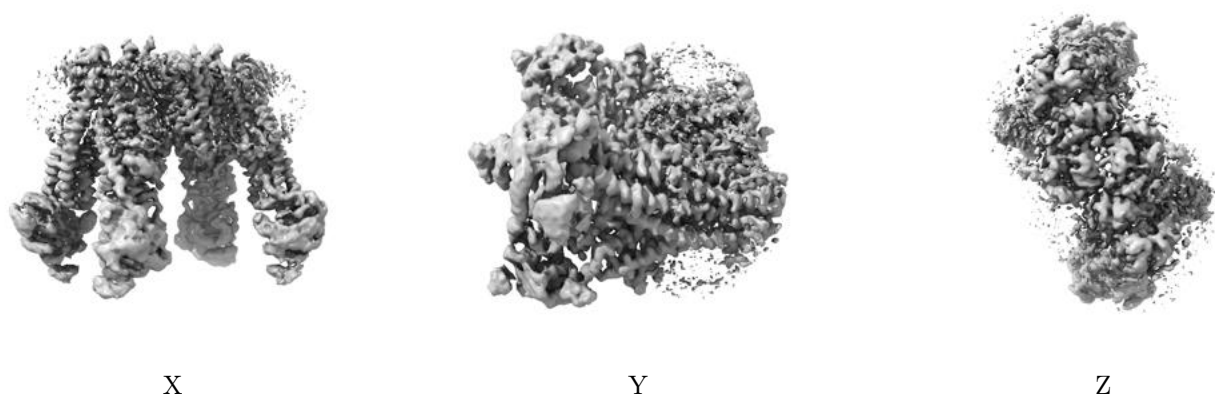
## 6.5 Orthogonal surface views [i](#)

### 6.5.1 Primary map



The images above show the 3D surface view of the map at the recommended contour level 0.71. These images, in conjunction with the slice images, may facilitate assessment of whether an appropriate contour level has been provided.

### 6.5.2 Raw map



These images show the 3D surface of the raw map. The raw map's contour level was selected so that its surface encloses the same volume as the primary map does at its recommended contour level.

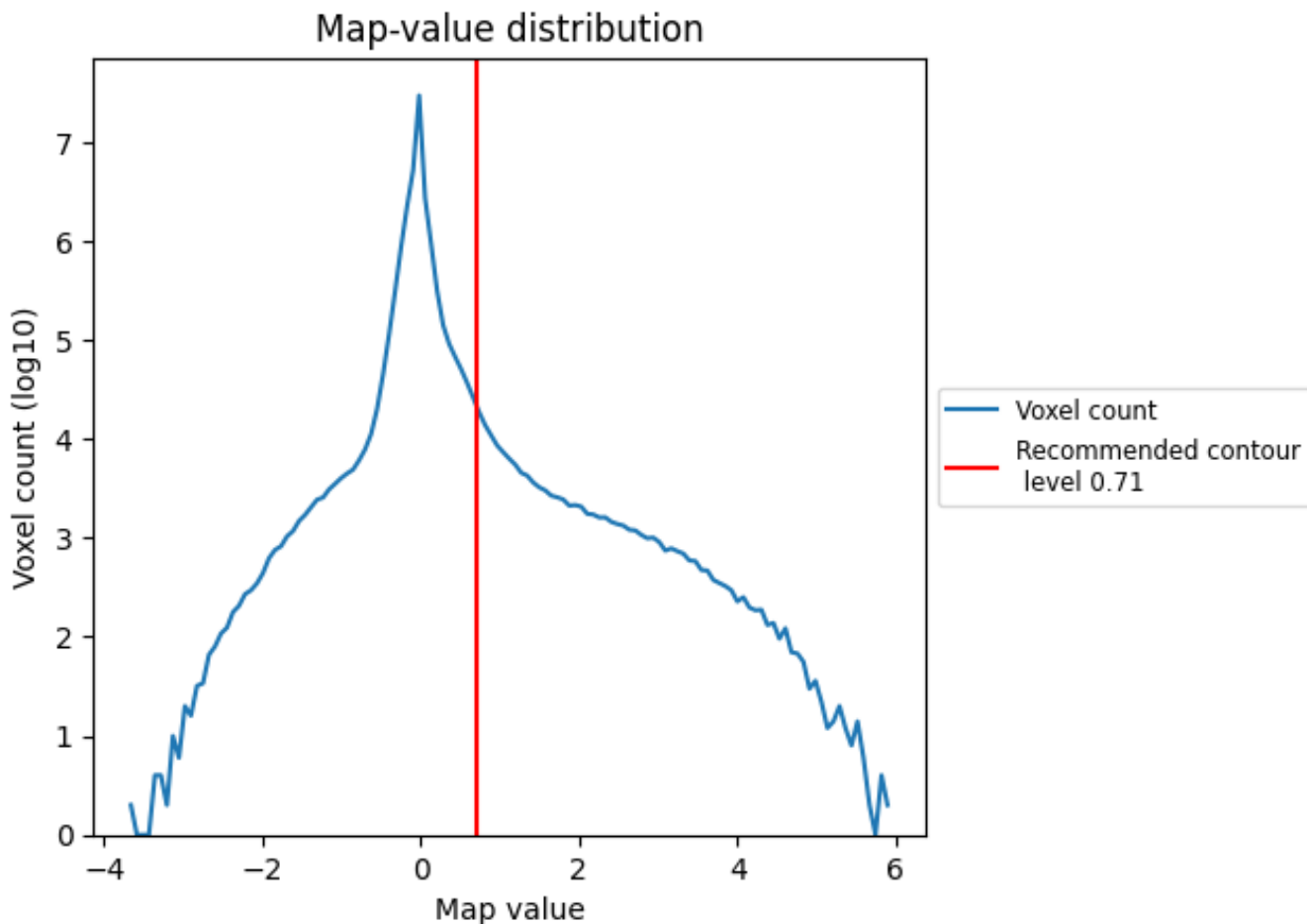
## 6.6 Mask visualisation [i](#)

This section was not generated. No masks/segmentation were deposited.

## 7 Map analysis [i](#)

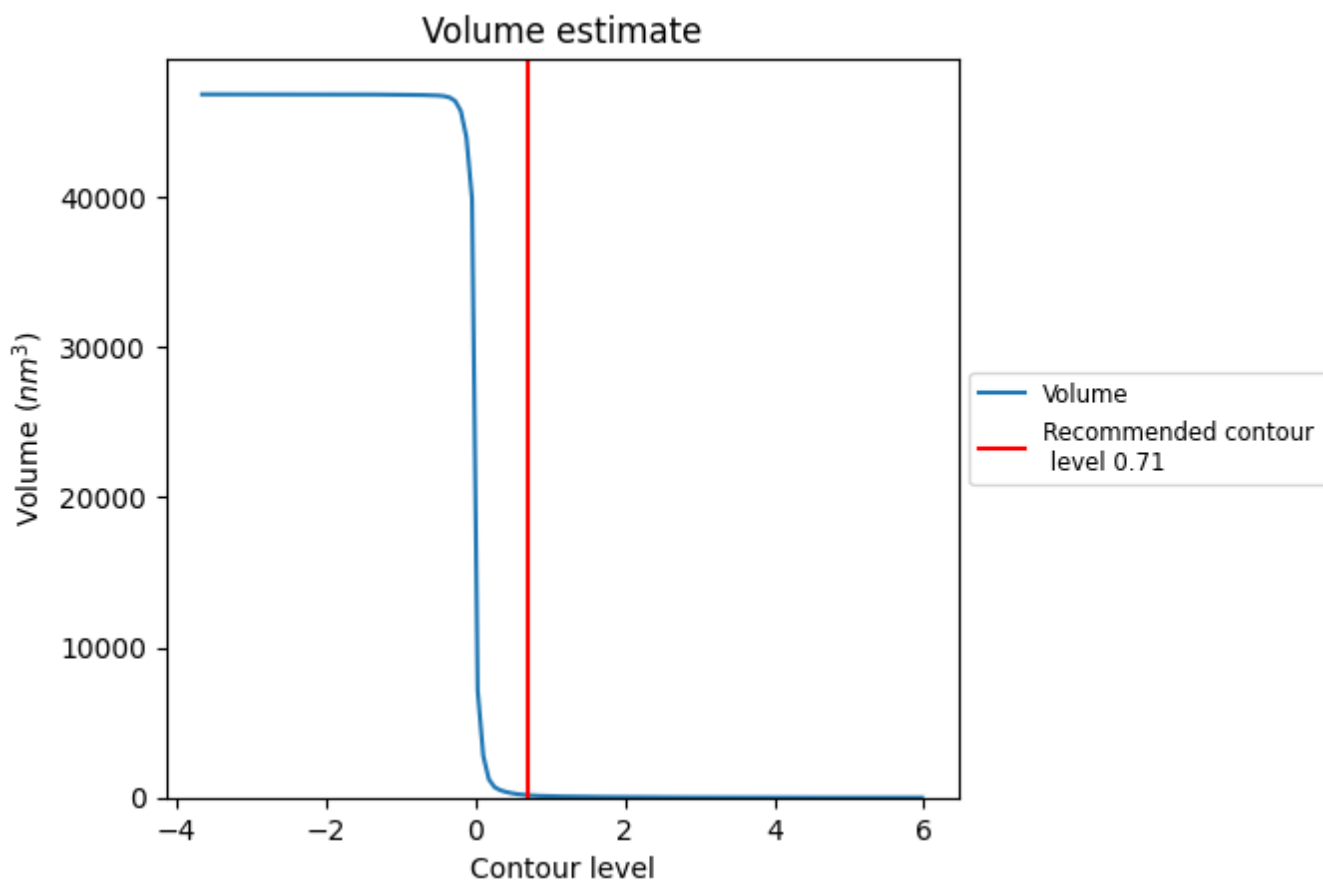
This section contains the results of statistical analysis of the map.

### 7.1 Map-value distribution [i](#)



The map-value distribution is plotted in 128 intervals along the x-axis. The y-axis is logarithmic. A spike in this graph at zero usually indicates that the volume has been masked.

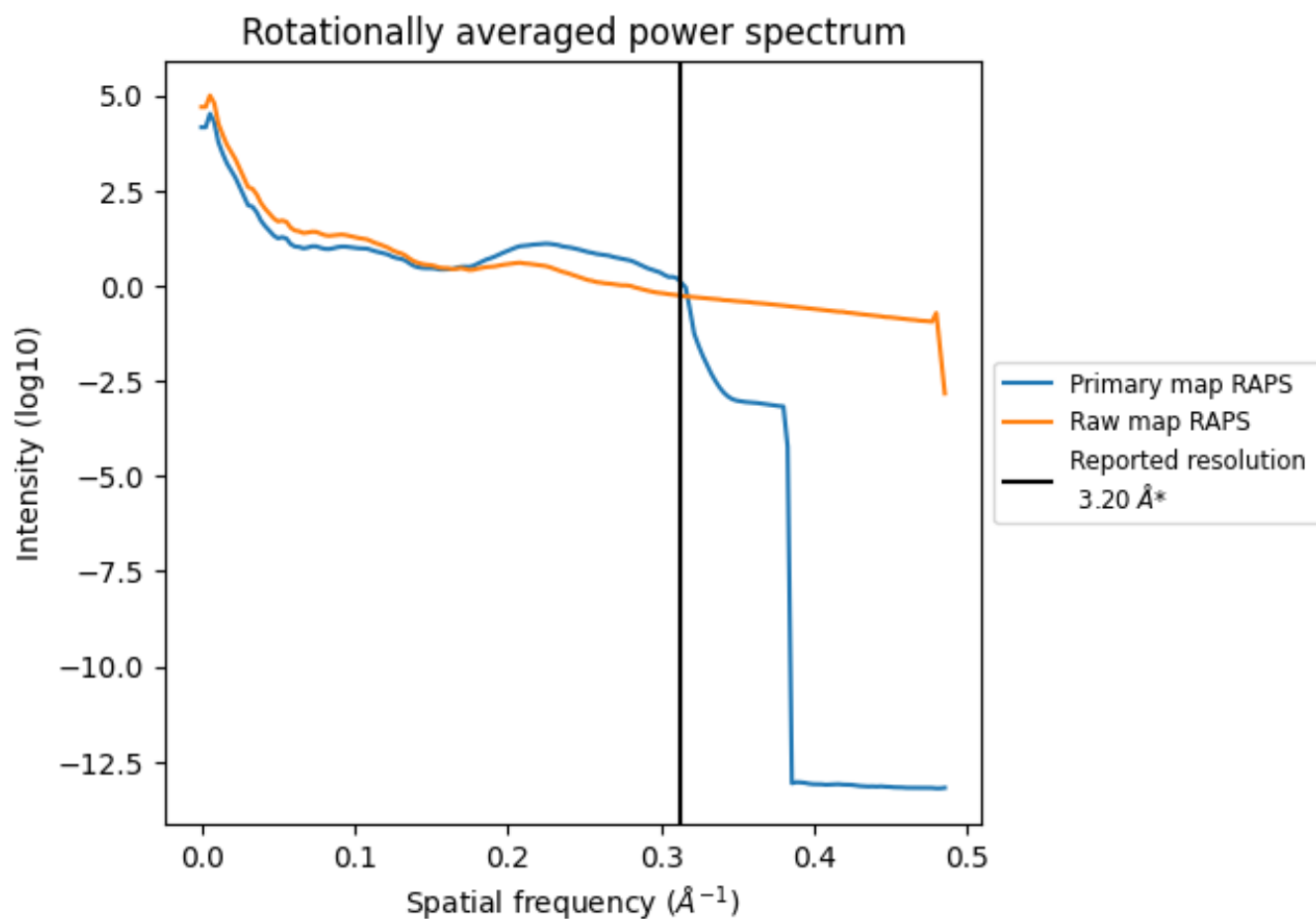
## 7.2 Volume estimate [i](#)



The volume at the recommended contour level is 152 nm<sup>3</sup>; this corresponds to an approximate mass of 137 kDa.

The volume estimate graph shows how the enclosed volume varies with the contour level. The recommended contour level is shown as a vertical line and the intersection between the line and the curve gives the volume of the enclosed surface at the given level.

### 7.3 Rotationally averaged power spectrum i

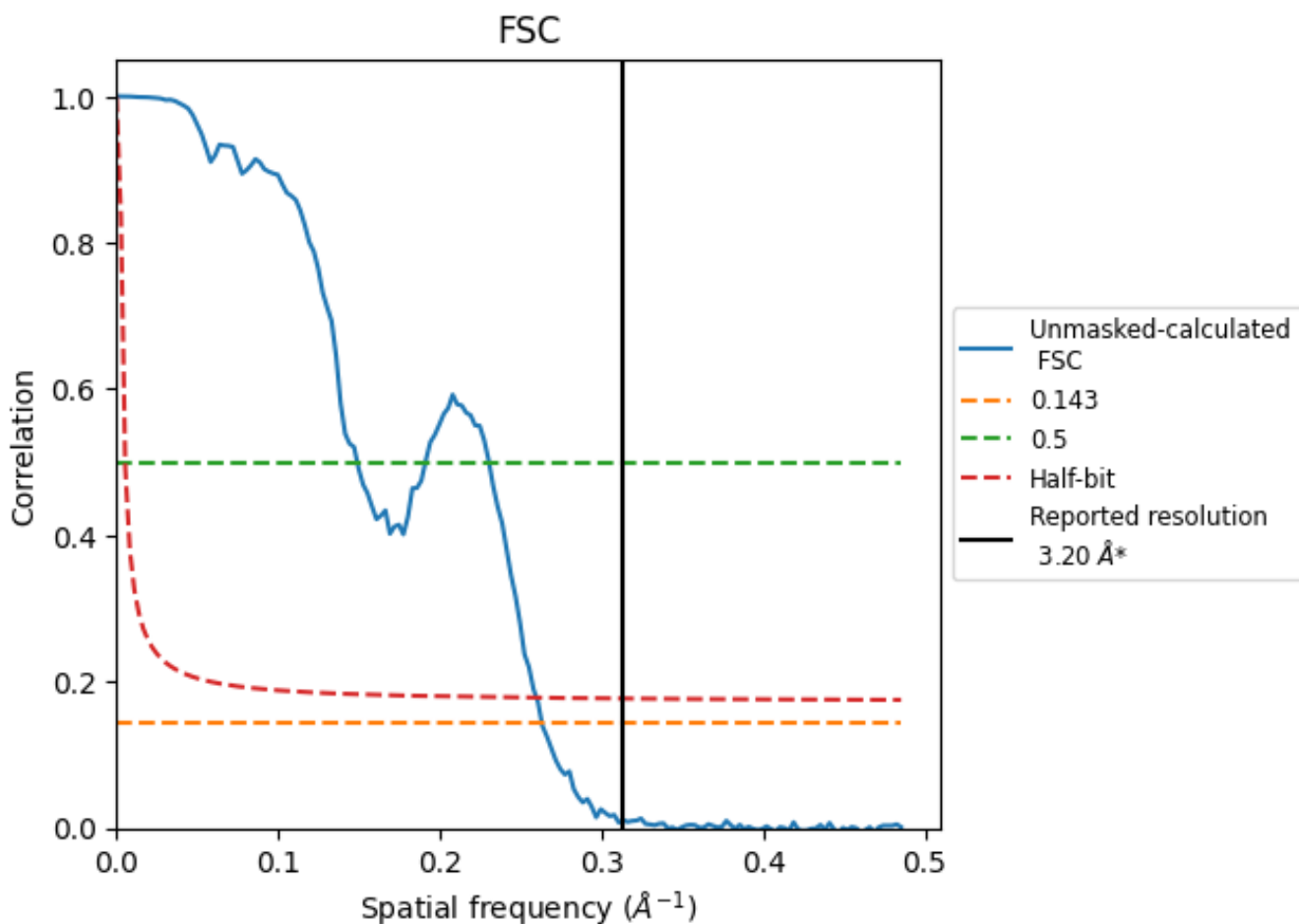


\*Reported resolution corresponds to spatial frequency of  $0.312 \text{ \AA}^{-1}$

## 8 Fourier-Shell correlation [i](#)

Fourier-Shell Correlation (FSC) is the most commonly used method to estimate the resolution of single-particle and subtomogram-averaged maps. The shape of the curve depends on the imposed symmetry, mask and whether or not the two 3D reconstructions used were processed from a common reference. The reported resolution is shown as a black line. A curve is displayed for the half-bit criterion in addition to lines showing the 0.143 gold standard cut-off and 0.5 cut-off.

### 8.1 FSC [i](#)



\*Reported resolution corresponds to spatial frequency of 0.312 Å<sup>-1</sup>

## 8.2 Resolution estimates [i](#)

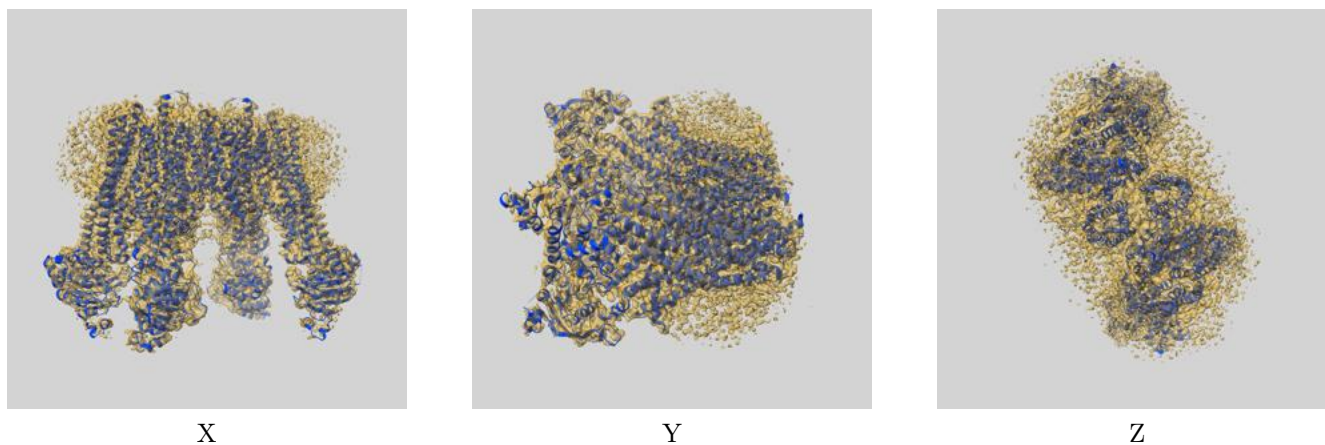
Resolution estimate (Å)	Estimation criterion (FSC cut-off)		
	0.143	0.5	Half-bit
Reported by author	3.20	-	-
Author-provided FSC curve	-	-	-
Unmasked-calculated*	3.80	6.71	3.85

\*Resolution estimate based on FSC curve calculated by comparison of deposited half-maps. The value from deposited half-maps intersecting FSC 0.143 CUT-OFF 3.80 differs from the reported value 3.2 by more than 10 %

## 9 Map-model fit [i](#)

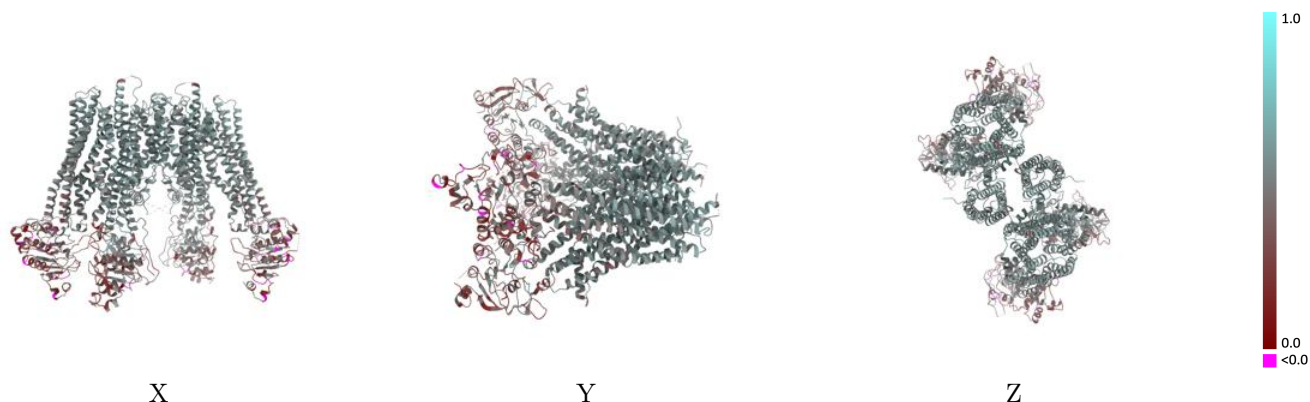
This section contains information regarding the fit between EMDB map EMD-40692 and PDB model 8SQ0. Per-residue inclusion information can be found in section 3 on page 7.

### 9.1 Map-model overlay [i](#)



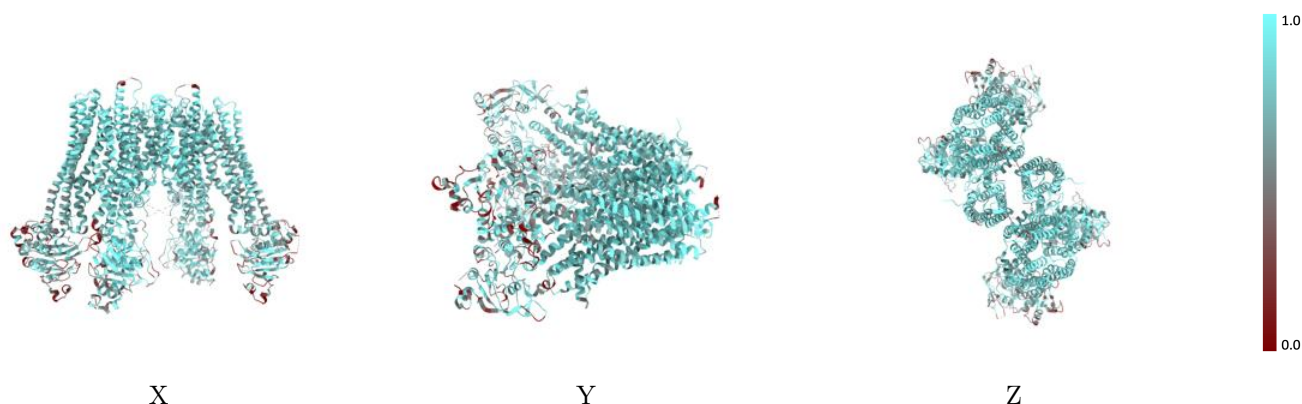
The images above show the 3D surface view of the map at the recommended contour level 0.71 at 50% transparency in yellow overlaid with a ribbon representation of the model coloured in blue. These images allow for the visual assessment of the quality of fit between the atomic model and the map.

## 9.2 Q-score mapped to coordinate model [i](#)



The images above show the model with each residue coloured according to its Q-score. This shows their resolvability in the map with higher Q-score values reflecting better resolvability. Please note: Q-score is calculating the resolvability of atoms, and thus high values are only expected at resolutions at which atoms can be resolved. Low Q-score values may therefore be expected for many entries.

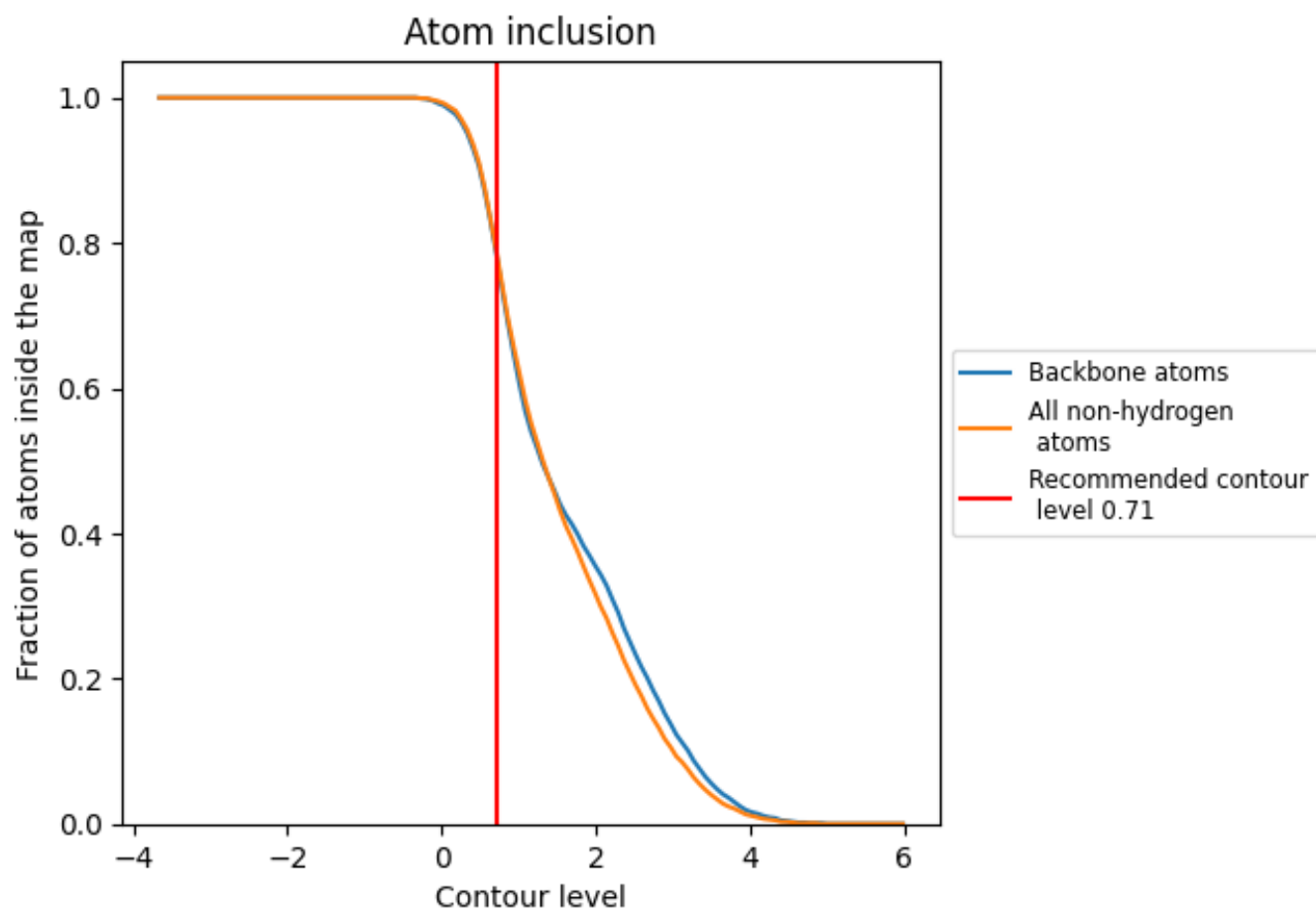
## 9.3 Atom inclusion mapped to coordinate model [i](#)



The images above show the model with each residue coloured according to its atom inclusion. This shows to what extent they are inside the map at the recommended contour level (0.71).













## 9.4 Atom inclusion [i](#)



At the recommended contour level, 78% of all backbone atoms, 79% of all non-hydrogen atoms, are inside the map.

## 9.5 Map-model fit summary [i](#)

The table lists the average atom inclusion at the recommended contour level (0.71) and Q-score for the entire model and for each chain.

Chain	Atom inclusion	Q-score
All	 0.7870	 0.4860
A	 0.7870	 0.4870
B	 0.7870	 0.4870
C	 0.6770	 0.4000
D	 0.6770	 0.4120

