



Full wwPDB EM Validation Report ⓘ

Nov 20, 2023 – 03:15 pm GMT

PDB ID : 8ODV
EMDB ID : EMD-16819
Title : Chaetomium thermophilum Get1/Get2 heterotetramer in complex with a Get3 dimer (nanodisc)
Authors : McDowell, M.A.; Wild, K.; Sinning, I.
Deposited on : 2023-03-09
Resolution : 4.70 Å(reported)

This is a Full wwPDB EM Validation Report for a publicly released PDB entry.

We welcome your comments at validation@mail.wwpdb.org

A user guide is available at

<https://www.wwpdb.org/validation/2017/EMValidationReportHelp>

with specific help available everywhere you see the ⓘ symbol.

The types of validation reports are described at

<http://www.wwpdb.org/validation/2017/FAQs#types>.

The following versions of software and data (see [references ⓘ](#)) were used in the production of this report:

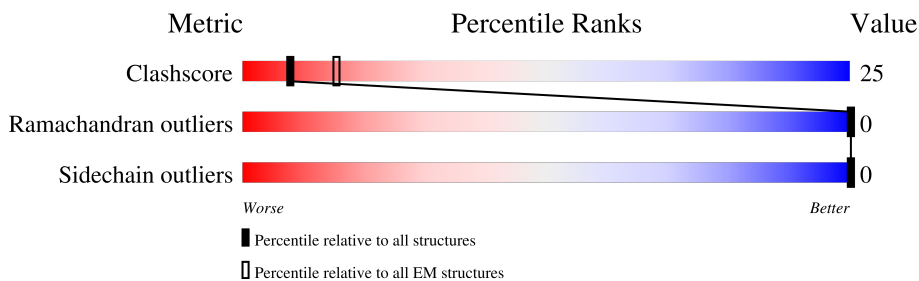
EMDB validation analysis : 0.0.1.dev70
MolProbity : 4.02b-467
Percentile statistics : 20191225.v01 (using entries in the PDB archive December 25th 2019)
MapQ : 1.9.9
Ideal geometry (proteins) : Engh & Huber (2001)
Ideal geometry (DNA, RNA) : Parkinson et al. (1996)
Validation Pipeline (wwPDB-VP) : 2.36

1 Overall quality at a glance

The following experimental techniques were used to determine the structure:
ELECTRON MICROSCOPY

The reported resolution of this entry is 4.70 Å.

Percentile scores (ranging between 0-100) for global validation metrics of the entry are shown in the following graphic. The table shows the number of entries on which the scores are based.



Metric	Whole archive (#Entries)	EM structures (#Entries)
Clashscore	158937	4297
Ramachandran outliers	154571	4023
Sidechain outliers	154315	3826

The table below summarises the geometric issues observed across the polymeric chains and their fit to the map. The red, orange, yellow and green segments of the bar indicate the fraction of residues that contain outliers for ≥ 3 , 2, 1 and 0 types of geometric quality criteria respectively. A grey segment represents the fraction of residues that are not modelled. The numeric value for each fraction is indicated below the corresponding segment, with a dot representing fractions $\leq 5\%$. The upper red bar (where present) indicates the fraction of residues that have poor fit to the EM map (all-atom inclusion $< 40\%$). The numeric value is given above the bar.

Mol	Chain	Length	Quality of chain
1	A	334	
1	B	334	
2	C	409	
2	D	409	

2 Entry composition i

There are 3 unique types of molecules in this entry. The entry contains 8233 atoms, of which 0 are hydrogens and 0 are deuteriums.

In the tables below, the AltConf column contains the number of residues with at least one atom in alternate conformation and the Trace column contains the number of residues modelled with at most 2 atoms.

- Molecule 1 is a protein called ATPase GET3.

Mol	Chain	Residues	Atoms					AltConf	Trace
			Total	C	N	O	S		
1	A	293	2317	1473	383	445	16	0	0
1	B	293	2317	1473	383	445	16	0	0

There are 16 discrepancies between the modelled and reference sequences:

Chain	Residue	Modelled	Actual	Comment	Reference
A	340	TRP	-	expression tag	UNP G0SFE0
A	341	SER	-	expression tag	UNP G0SFE0
A	342	HIS	-	expression tag	UNP G0SFE0
A	343	PRO	-	expression tag	UNP G0SFE0
A	344	GLN	-	expression tag	UNP G0SFE0
A	345	PHE	-	expression tag	UNP G0SFE0
A	346	GLU	-	expression tag	UNP G0SFE0
A	347	LYS	-	expression tag	UNP G0SFE0
B	340	TRP	-	expression tag	UNP G0SFE0
B	341	SER	-	expression tag	UNP G0SFE0
B	342	HIS	-	expression tag	UNP G0SFE0
B	343	PRO	-	expression tag	UNP G0SFE0
B	344	GLN	-	expression tag	UNP G0SFE0
B	345	PHE	-	expression tag	UNP G0SFE0
B	346	GLU	-	expression tag	UNP G0SFE0
B	347	LYS	-	expression tag	UNP G0SFE0

- Molecule 2 is a protein called Protein GET2,Protein GET1.

Mol	Chain	Residues	Atoms					AltConf	Trace
			Total	C	N	O	S		
2	C	218	1799	1192	300	297	10	0	0
2	D	218	1799	1192	300	297	10	0	0

There are 54 discrepancies between the modelled and reference sequences:

Chain	Residue	Modelled	Actual	Comment	Reference
C	183	MET	-	initiating methionine	UNP G0RZE4
C	184	GLY	-	expression tag	UNP G0RZE4
C	358	GLY	-	linker	UNP G0RZE4
C	359	SER	-	linker	UNP G0RZE4
C	360	GLY	-	linker	UNP G0RZE4
C	361	SER	-	linker	UNP G0RZE4
C	362	GLU	-	linker	UNP G0RZE4
C	363	ASN	-	linker	UNP G0RZE4
C	364	LEU	-	linker	UNP G0RZE4
C	365	TYR	-	linker	UNP G0RZE4
C	366	PHE	-	linker	UNP G0RZE4
C	367	GLN	-	linker	UNP G0RZE4
C	368	SER	-	linker	UNP G0RZE4
C	369	GLY	-	linker	UNP G0RZE4
C	370	SER	-	linker	UNP G0RZE4
C	371	GLY	-	linker	UNP G0RZE4
C	372	SER	-	linker	UNP G0RZE4
C	1210	GLY	-	expression tag	UNP G0S1H2
C	1211	SER	-	expression tag	UNP G0S1H2
C	1212	GLY	-	expression tag	UNP G0S1H2
C	1213	SER	-	expression tag	UNP G0S1H2
C	1214	LEU	-	expression tag	UNP G0S1H2
C	1215	GLU	-	expression tag	UNP G0S1H2
C	1216	VAL	-	expression tag	UNP G0S1H2
C	1217	LEU	-	expression tag	UNP G0S1H2
C	1218	PHE	-	expression tag	UNP G0S1H2
C	1219	GLN	-	expression tag	UNP G0S1H2
D	183	MET	-	initiating methionine	UNP G0RZE4
D	184	GLY	-	expression tag	UNP G0RZE4
D	358	GLY	-	linker	UNP G0RZE4
D	359	SER	-	linker	UNP G0RZE4
D	360	GLY	-	linker	UNP G0RZE4
D	361	SER	-	linker	UNP G0RZE4
D	362	GLU	-	linker	UNP G0RZE4
D	363	ASN	-	linker	UNP G0RZE4
D	364	LEU	-	linker	UNP G0RZE4
D	365	TYR	-	linker	UNP G0RZE4
D	366	PHE	-	linker	UNP G0RZE4
D	367	GLN	-	linker	UNP G0RZE4
D	368	SER	-	linker	UNP G0RZE4
D	369	GLY	-	linker	UNP G0RZE4
D	370	SER	-	linker	UNP G0RZE4

Continued on next page...

Continued from previous page...

Chain	Residue	Modelled	Actual	Comment	Reference
D	371	GLY	-	linker	UNP G0RZE4
D	372	SER	-	linker	UNP G0RZE4
D	1210	GLY	-	expression tag	UNP G0S1H2
D	1211	SER	-	expression tag	UNP G0S1H2
D	1212	GLY	-	expression tag	UNP G0S1H2
D	1213	SER	-	expression tag	UNP G0S1H2
D	1214	LEU	-	expression tag	UNP G0S1H2
D	1215	GLU	-	expression tag	UNP G0S1H2
D	1216	VAL	-	expression tag	UNP G0S1H2
D	1217	LEU	-	expression tag	UNP G0S1H2
D	1218	PHE	-	expression tag	UNP G0S1H2
D	1219	GLN	-	expression tag	UNP G0S1H2

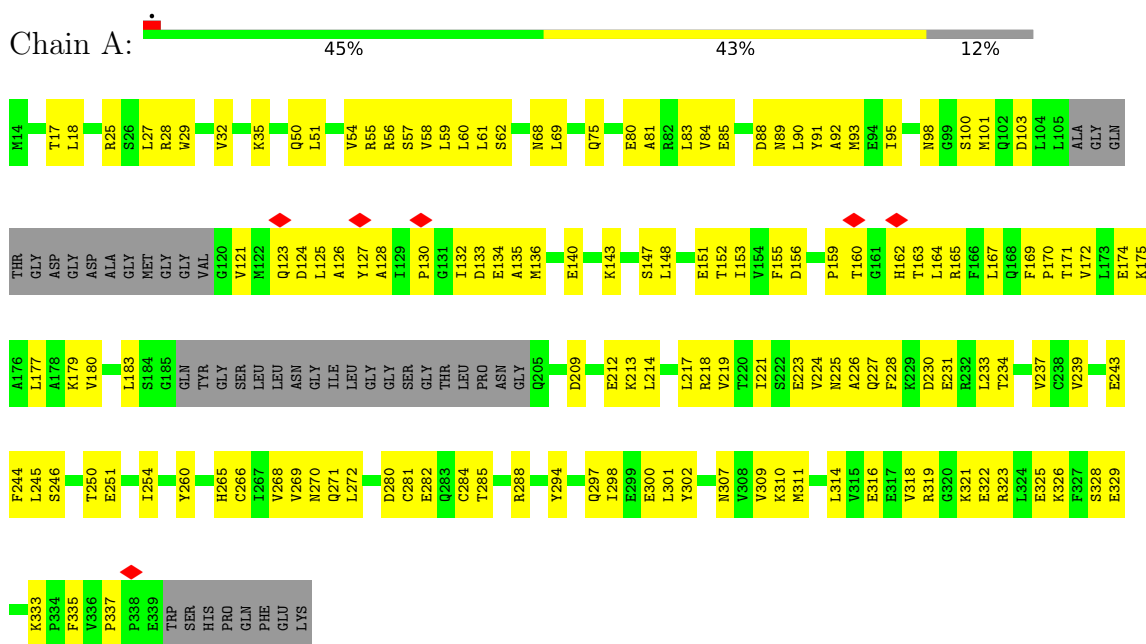
- Molecule 3 is ZINC ION (three-letter code: ZN) (formula: Zn).

Mol	Chain	Residues	Atoms		AltConf
3	A	1	Total	Zn	0
			1	1	

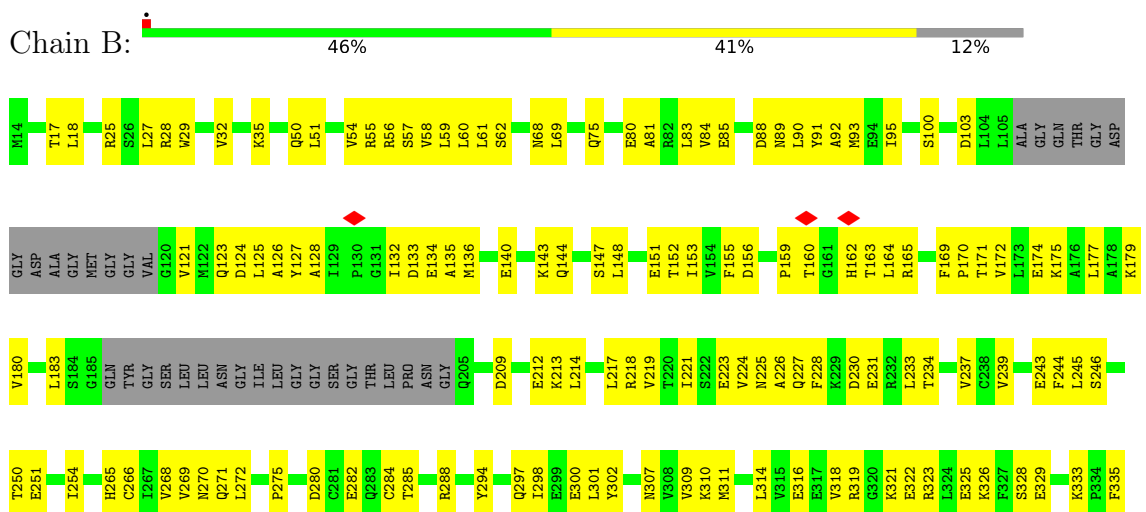
3 Residue-property plots

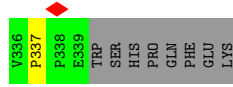
These plots are drawn for all protein, RNA, DNA and oligosaccharide chains in the entry. The first graphic for a chain summarises the proportions of the various outlier classes displayed in the second graphic. The second graphic shows the sequence view annotated by issues in geometry and atom inclusion in map density. Residues are color-coded according to the number of geometric quality criteria for which they contain at least one outlier: green = 0, yellow = 1, orange = 2 and red = 3 or more. A red diamond above a residue indicates a poor fit to the EM map for this residue (all-atom inclusion < 40%). Stretches of 2 or more consecutive residues without any outlier are shown as a green connector. Residues present in the sample, but not in the model, are shown in grey.

• Molecule 1: ATPase GET3

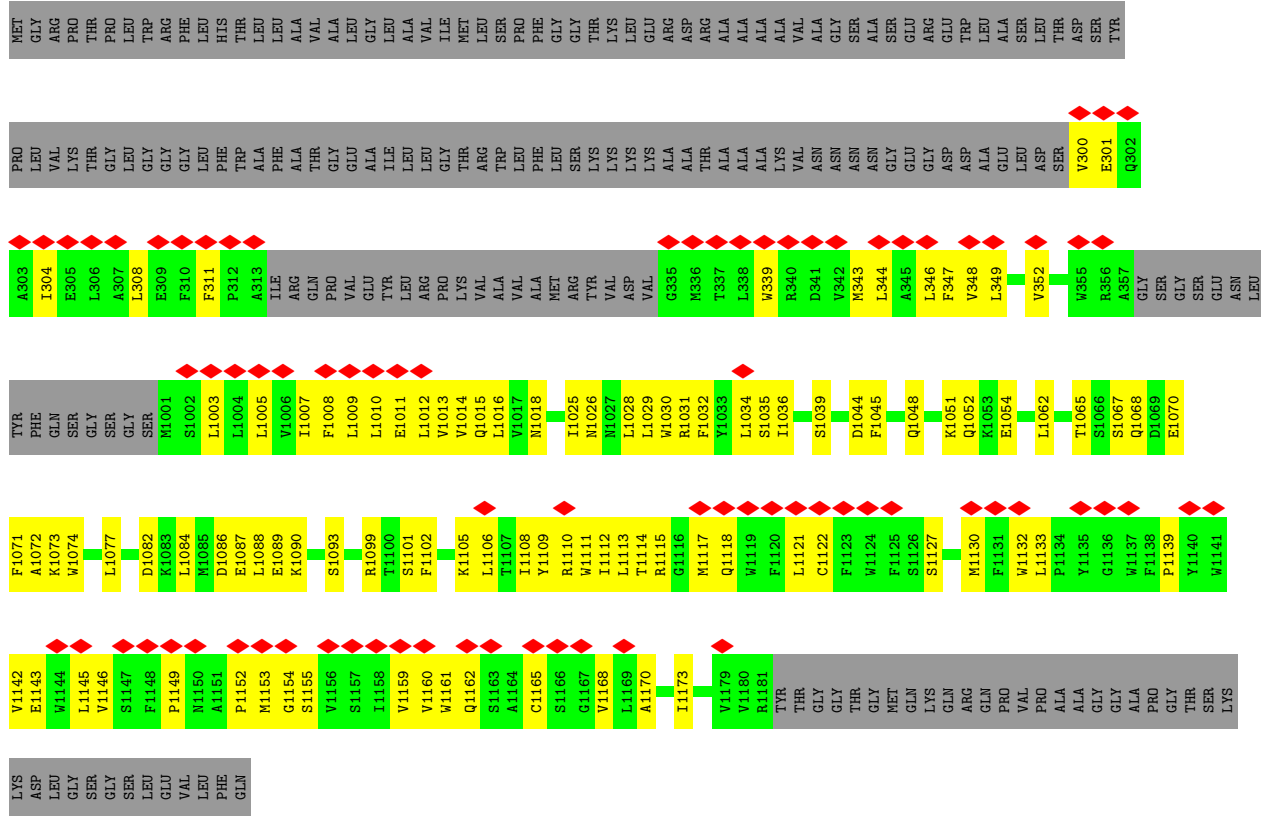
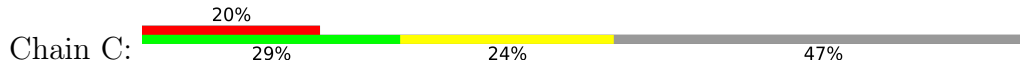


• Molecule 1: ATPase GET3

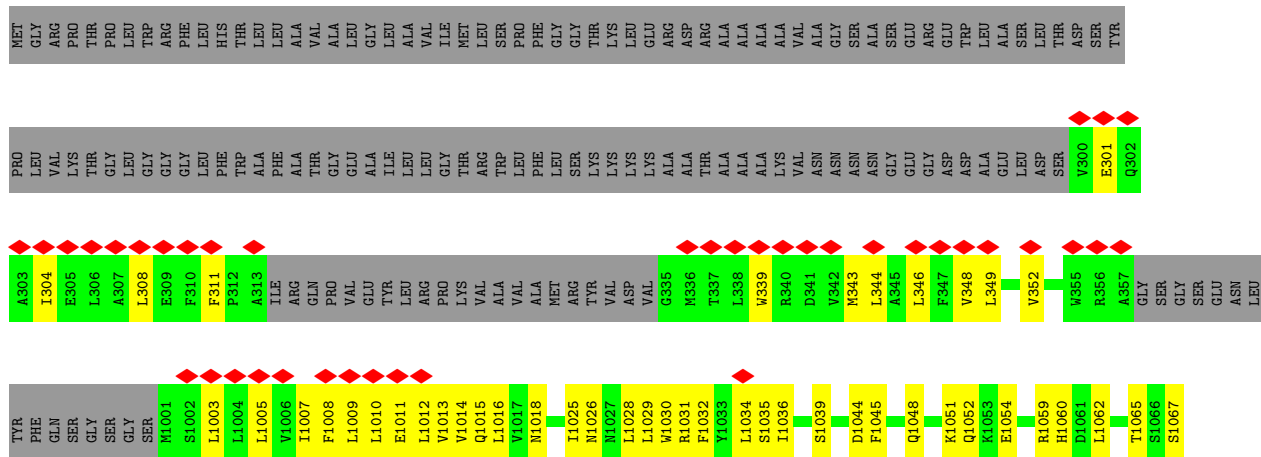
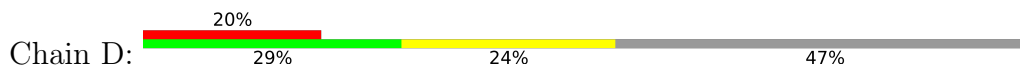




Molecule 2: Protein GET2,Protein GET1



Molecule 2: Protein GET2,Protein GET1



Q1068	P1139	GLY
D1069	Y1140	THR
E1070	W1141	SER
	W1142	LYS
K1073	V1143	LYS
W1074	E1143	ASP
	W1144	LEU
L1077	L1145	GLY
	V1146	SER
D1082	S1147	GLY
K1083	F1148	SER
L1084	P1149	LEU
W1085	N1150	GLU
D1086	A1151	VAL
E1087	P1152	LEU
L1088	M1153	PHE
E1089	G1154	GLN
K1090	S1155	
	V1156	
S1093	S1157	
	I1158	
R1099	V1159	
T1100	V1160	
S1101	W1161	
F1102	Q1162	
S1103	S1163	
R1104	A1164	
K1105	C1165	
L1106	S1166	
T1107	G1167	
I1108	V1168	
Y1109	L1169	
R1110	A1170	
W1111	L1171	
I1112	V1172	
L1113	I1173	
T1114		
R1115		
G1116		
M1117		
Q1118		
W1119	V1179	
F1120	V1180	
L1121	R1181	
C1122	THR	
F1123	GLY	
W1124	GLY	
F1125	THR	
S1126	GLY	
S1127	MET	
	GLN	
M1130	LYS	
F1131	GLN	
W1132	ARG	
L1133	GLN	
P1134	PRO	
Y1135	VAL	
G1136	PRO	
W1137	ALA	
F1138	ALA	
	GLY	
	ALA	
	PRO	

4 Experimental information

Property	Value	Source
EM reconstruction method	SINGLE PARTICLE	Depositor
Imposed symmetry	POINT, C2	Depositor
Number of particles used	259692	Depositor
Resolution determination method	FSC 0.143 CUT-OFF	Depositor
CTF correction method	PHASE FLIPPING AND AMPLITUDE CORRECTION	Depositor
Microscope	FEI TITAN KRIOS	Depositor
Voltage (kV)	300	Depositor
Electron dose ($e^-/\text{\AA}^2$)	60.8	Depositor
Minimum defocus (nm)	1200	Depositor
Maximum defocus (nm)	2400	Depositor
Magnification	Not provided	
Image detector	GATAN K3 (6k x 4k)	Depositor
Maximum map value	0.785	Depositor
Minimum map value	-0.417	Depositor
Average map value	0.000	Depositor
Map value standard deviation	0.021	Depositor
Recommended contour level	0.138	Depositor
Map size (Å)	284.16, 284.16, 284.16	wwPDB
Map dimensions	256, 256, 256	wwPDB
Map angles (°)	90.0, 90.0, 90.0	wwPDB
Pixel spacing (Å)	1.11, 1.11, 1.11	Depositor

5 Model quality [i](#)

5.1 Standard geometry [i](#)

Bond lengths and bond angles in the following residue types are not validated in this section:
ZN

The Z score for a bond length (or angle) is the number of standard deviations the observed value is removed from the expected value. A bond length (or angle) with $|Z| > 5$ is considered an outlier worth inspection. RMSZ is the root-mean-square of all Z scores of the bond lengths (or angles).

Mol	Chain	Bond lengths		Bond angles	
		RMSZ	# Z >5	RMSZ	# Z >5
1	A	0.41	0/2354	0.61	0/3177
1	B	0.41	0/2354	0.61	0/3177
2	C	0.33	0/1852	0.61	0/2515
2	D	0.33	0/1852	0.61	0/2515
All	All	0.38	0/8412	0.61	0/11384

There are no bond length outliers.

There are no bond angle outliers.

There are no chirality outliers.

There are no planarity outliers.

5.2 Too-close contacts [i](#)

In the following table, the Non-H and H(model) columns list the number of non-hydrogen atoms and hydrogen atoms in the chain respectively. The H(added) column lists the number of hydrogen atoms added and optimized by MolProbity. The Clashes column lists the number of clashes within the asymmetric unit, whereas Symm-Clashes lists symmetry-related clashes.

Mol	Chain	Non-H	H(model)	H(added)	Clashes	Symm-Clashes
1	A	2317	0	2335	127	0
1	B	2317	0	2335	118	0
2	C	1799	0	1816	93	0
2	D	1799	0	1816	95	0
3	A	1	0	0	0	0
All	All	8233	0	8302	416	0

The all-atom clashscore is defined as the number of clashes found per 1000 atoms (including hydrogen atoms). The all-atom clashscore for this structure is 25.

All (416) close contacts within the same asymmetric unit are listed below, sorted by their clash magnitude.

Atom-1	Atom-2	Interatomic distance (Å)	Clash overlap (Å)
2:C:301:GLU:OE1	2:C:304:ILE:HD13	1.65	0.95
2:D:301:GLU:OE1	2:D:304:ILE:HD13	1.65	0.94
1:A:124:ASP:HA	2:D:1052:GLN:HE22	1.33	0.94
2:C:300:VAL:HG22	2:D:1104:ARG:HH22	1.36	0.91
2:C:308:LEU:HD11	2:D:1105:LYS:HE2	1.64	0.80
1:A:61:LEU:HD23	1:A:155:PHE:HE1	1.49	0.78
1:B:35:LYS:HZ3	1:B:160:THR:H	1.32	0.78
1:A:27:LEU:HA	1:A:233:LEU:HA	1.66	0.77
1:B:61:LEU:HD23	1:B:155:PHE:HE1	1.49	0.77
1:B:314:LEU:HD23	1:B:316:GLU:H	1.50	0.77
1:A:314:LEU:HD23	1:A:316:GLU:H	1.50	0.77
1:B:230:ASP:O	1:B:231:GLU:HG3	1.85	0.76
1:A:268:VAL:HG13	1:A:309:VAL:HB	1.68	0.76
1:B:268:VAL:HG13	1:B:309:VAL:HB	1.68	0.76
1:B:27:LEU:HA	1:B:233:LEU:HA	1.66	0.76
1:A:230:ASP:O	1:A:231:GLU:HG3	1.85	0.75
1:A:25:ARG:HA	1:A:55:ARG:HH22	1.52	0.75
1:B:25:ARG:HA	1:B:55:ARG:HH22	1.52	0.73
2:D:1070:GLU:HB3	2:D:1073:LYS:HB2	1.71	0.73
2:D:1051:LYS:HE2	2:D:1088:LEU:HD23	1.71	0.73
1:A:265:HIS:O	1:A:307:ASN:ND2	2.22	0.73
2:C:1070:GLU:HB3	2:C:1073:LYS:HB2	1.71	0.72
2:C:1051:LYS:HE2	2:C:1088:LEU:HD23	1.71	0.72
2:C:300:VAL:HG22	2:D:1104:ARG:NH2	2.04	0.72
1:B:265:HIS:O	1:B:307:ASN:ND2	2.22	0.72
1:A:75:GLN:NE2	1:A:85:GLU:OE1	2.23	0.72
1:B:75:GLN:NE2	1:B:85:GLU:OE1	2.23	0.71
2:D:1005:LEU:HD23	2:D:1008:PHE:HD2	1.54	0.71
1:A:35:LYS:HZ3	1:A:160:THR:H	1.39	0.70
2:C:1005:LEU:HD23	2:C:1008:PHE:HD2	1.54	0.70
1:B:243:GLU:OE2	1:B:246:SER:N	2.24	0.70
1:A:243:GLU:OE2	1:A:246:SER:N	2.24	0.69
2:D:1101:SER:O	2:D:1105:LYS:HG3	1.92	0.69
2:C:1101:SER:O	2:C:1105:LYS:HG3	1.92	0.69
2:D:1005:LEU:HD23	2:D:1008:PHE:CD2	2.28	0.69
1:A:221:ILE:HA	1:A:224:VAL:HG22	1.76	0.68
1:B:56:ARG:HH21	1:B:57:SER:HG	1.40	0.68
2:C:1005:LEU:HD23	2:C:1008:PHE:CD2	2.28	0.68
2:C:1067:SER:OG	2:C:1068:GLN:NE2	2.27	0.68
1:B:221:ILE:HA	1:B:224:VAL:HG22	1.76	0.68

Continued on next page...

Continued from previous page...

Atom-1	Atom-2	Interatomic distance (Å)	Clash overlap (Å)
2:D:1015:GLN:HA	2:D:1018:ASN:HD22	1.59	0.67
1:B:321:LYS:NZ	1:B:325:GLU:OE2	2.25	0.67
1:B:219:VAL:O	1:B:223:GLU:HG3	1.95	0.67
2:D:1067:SER:OG	2:D:1068:GLN:NE2	2.27	0.67
1:A:219:VAL:O	1:A:223:GLU:HG3	1.94	0.67
1:B:57:SER:OG	1:B:151:GLU:N	2.28	0.66
2:C:1015:GLN:HA	2:C:1018:ASN:HD22	1.59	0.66
1:A:140:GLU:HA	1:A:143:LYS:HG2	1.77	0.66
1:B:140:GLU:HA	1:B:143:LYS:HG2	1.77	0.66
1:B:56:ARG:NH2	1:B:57:SER:HG	1.94	0.65
1:A:98:ASN:HB2	2:D:1060:HIS:NE2	2.11	0.65
1:A:124:ASP:HA	2:D:1052:GLN:NE2	2.10	0.65
1:A:57:SER:OG	1:A:151:GLU:N	2.28	0.65
1:A:59:LEU:HB3	1:A:153:ILE:HG22	1.79	0.65
1:A:25:ARG:HG3	1:A:55:ARG:NH1	2.13	0.64
2:D:339:TRP:O	2:D:343:MET:HG2	1.97	0.64
1:A:321:LYS:NZ	1:A:325:GLU:OE2	2.25	0.64
1:A:56:ARG:NH2	1:A:57:SER:OG	2.31	0.64
1:B:59:LEU:HB3	1:B:153:ILE:HG22	1.79	0.63
1:B:56:ARG:NH2	1:B:57:SER:OG	2.31	0.63
2:C:339:TRP:O	2:C:343:MET:HG2	1.97	0.63
1:A:228:PHE:HA	1:A:234:THR:HG21	1.81	0.63
1:B:25:ARG:HH12	1:B:54:VAL:HG12	1.63	0.63
1:B:25:ARG:HG3	1:B:55:ARG:NH1	2.13	0.63
1:A:25:ARG:HH12	1:A:54:VAL:HG12	1.63	0.62
2:C:1070:GLU:O	2:C:1074:TRP:N	2.29	0.62
1:A:29:TRP:CE2	1:A:153:ILE:HD11	2.34	0.62
1:B:29:TRP:CE2	1:B:153:ILE:HD11	2.34	0.62
1:B:128:ALA:HB3	1:B:179:LYS:NZ	2.15	0.62
1:B:272:LEU:HD22	1:B:310:LYS:HG3	1.81	0.62
1:A:128:ALA:HB3	1:A:179:LYS:NZ	2.14	0.62
2:D:1146:VAL:O	2:D:1149:PRO:HD2	2.00	0.62
2:C:1159:VAL:HG23	2:C:1160:VAL:H	1.65	0.61
1:A:83:LEU:HD21	1:A:88:ASP:HA	1.81	0.61
1:A:162:HIS:HA	1:A:165:ARG:NH1	2.15	0.61
1:B:35:LYS:NZ	1:B:160:THR:H	1.99	0.61
1:B:228:PHE:HA	1:B:234:THR:HG21	1.81	0.61
2:D:1159:VAL:HG23	2:D:1160:VAL:H	1.66	0.61
2:D:1070:GLU:O	2:D:1074:TRP:N	2.29	0.61
1:A:272:LEU:HD22	1:A:310:LYS:HG3	1.81	0.61
1:A:319:ARG:H	1:A:323:ARG:HH21	1.48	0.61

Continued on next page...

Continued from previous page...

Atom-1	Atom-2	Interatomic distance (Å)	Clash overlap (Å)
1:A:169:PHE:HA	1:A:172:VAL:HG12	1.83	0.61
1:B:224:VAL:HA	1:B:227:GLN:OE1	2.01	0.61
1:A:35:LYS:NZ	1:A:160:THR:H	1.99	0.61
1:B:83:LEU:HD21	1:B:88:ASP:HA	1.82	0.61
1:A:224:VAL:HA	1:A:227:GLN:OE1	2.01	0.61
2:C:1146:VAL:O	2:C:1149:PRO:HD2	2.00	0.60
2:D:1003:LEU:O	2:D:1007:ILE:HG13	2.01	0.60
1:B:159:PRO:HB2	1:B:162:HIS:HD2	1.66	0.60
2:C:1032:PHE:O	2:C:1035:SER:OG	2.19	0.60
1:B:162:HIS:HA	1:B:165:ARG:NH1	2.15	0.60
2:D:349:LEU:HA	2:D:352:VAL:HG12	1.84	0.60
1:B:124:ASP:HA	2:C:1052:GLN:HE22	1.67	0.60
1:A:243:GLU:OE1	1:A:244:PHE:N	2.35	0.60
2:C:1003:LEU:O	2:C:1007:ILE:HG13	2.01	0.60
1:A:159:PRO:HB2	1:A:162:HIS:HD2	1.66	0.59
1:A:301:LEU:HD23	1:A:302:TYR:CZ	2.37	0.59
1:B:128:ALA:HB3	1:B:179:LYS:HZ2	1.67	0.59
1:B:169:PHE:HA	1:B:172:VAL:HG12	1.83	0.59
1:B:319:ARG:H	1:B:323:ARG:HH21	1.48	0.59
2:D:301:GLU:OE1	2:D:304:ILE:CD1	2.47	0.59
2:C:349:LEU:HA	2:C:352:VAL:HG12	1.84	0.59
1:B:301:LEU:HD23	1:B:302:TYR:CZ	2.37	0.59
1:B:269:VAL:HG23	1:B:272:LEU:HD11	1.85	0.58
2:C:301:GLU:OE1	2:C:304:ILE:CD1	2.47	0.58
1:B:243:GLU:OE1	1:B:244:PHE:N	2.35	0.58
2:C:1062:LEU:O	2:C:1065:THR:HG22	2.04	0.58
2:C:1029:LEU:HG	2:C:1099:ARG:HH12	1.69	0.58
2:D:1062:LEU:O	2:D:1065:THR:HG22	2.04	0.58
2:C:1084:LEU:O	2:C:1088:LEU:HG	2.03	0.57
2:D:1084:LEU:O	2:D:1088:LEU:HG	2.04	0.57
2:D:1031:ARG:HA	2:D:1034:LEU:HB2	1.87	0.57
2:D:1032:PHE:O	2:D:1035:SER:OG	2.19	0.57
2:D:1110:ARG:O	2:D:1114:THR:HG23	2.04	0.57
2:D:1029:LEU:HG	2:D:1099:ARG:HH12	1.69	0.57
2:C:1031:ARG:HA	2:C:1034:LEU:HB2	1.87	0.57
1:A:269:VAL:HG23	1:A:272:LEU:HD11	1.85	0.57
1:A:29:TRP:HB2	1:A:234:THR:HG22	1.87	0.57
1:A:297:GLN:NE2	2:C:1072:ALA:H	2.02	0.57
2:C:1110:ARG:O	2:C:1114:THR:HG23	2.05	0.56
2:D:1007:ILE:HD13	2:D:1161:TRP:HB3	1.86	0.56
1:A:25:ARG:HG3	1:A:55:ARG:HH12	1.70	0.56

Continued on next page...

Continued from previous page...

Atom-1	Atom-2	Interatomic distance (Å)	Clash overlap (Å)
2:C:1007:ILE:HD13	2:C:1161:TRP:HB3	1.86	0.56
2:C:1036:ILE:HG23	2:C:1039:SER:HB2	1.88	0.56
1:A:251:GLU:OE1	1:A:302:TYR:OH	2.23	0.56
1:B:29:TRP:HB2	1:B:234:THR:HG22	1.87	0.56
1:A:57:SER:HG	1:A:151:GLU:HB2	1.71	0.55
2:D:1067:SER:HA	2:D:1074:TRP:CD1	2.41	0.55
1:A:123:GLN:OE1	1:A:123:GLN:N	2.30	0.55
1:A:171:THR:O	1:A:175:LYS:HG2	2.07	0.55
1:B:123:GLN:OE1	1:B:123:GLN:N	2.30	0.55
1:B:171:THR:O	1:B:175:LYS:HG2	2.07	0.55
1:B:329:GLU:HB3	1:B:333:LYS:HE3	1.88	0.55
1:B:25:ARG:HG3	1:B:55:ARG:HH12	1.70	0.55
2:D:1036:ILE:HG23	2:D:1039:SER:HB2	1.88	0.55
1:B:159:PRO:O	1:B:163:THR:HG23	2.07	0.55
1:B:251:GLU:OE1	1:B:302:TYR:OH	2.23	0.55
1:A:133:ASP:HA	1:A:136:MET:HG2	1.89	0.55
2:C:1067:SER:HA	2:C:1074:TRP:CD1	2.41	0.55
1:A:329:GLU:HB3	1:A:333:LYS:HE3	1.88	0.55
1:A:159:PRO:O	1:A:163:THR:HG23	2.07	0.54
1:B:133:ASP:HA	1:B:136:MET:HG2	1.89	0.54
1:A:35:LYS:HZ1	1:A:160:THR:HG22	1.73	0.54
1:B:59:LEU:HD12	1:B:91:TYR:O	2.08	0.54
1:A:59:LEU:HD12	1:A:91:TYR:O	2.08	0.54
2:C:344:LEU:O	2:C:348:VAL:HG23	2.08	0.54
1:B:297:GLN:HA	1:B:300:GLU:OE2	2.08	0.53
2:C:1102:PHE:HD1	2:C:1105:LYS:HD2	1.74	0.53
1:A:297:GLN:HA	1:A:300:GLU:OE2	2.08	0.53
2:C:1028:LEU:HG	2:C:1032:PHE:CE2	2.44	0.53
2:D:1028:LEU:HG	2:D:1032:PHE:CE2	2.44	0.53
2:D:1102:PHE:HD1	2:D:1105:LYS:HD2	1.74	0.52
1:B:213:LYS:O	1:B:217:LEU:HG	2.10	0.52
1:A:250:THR:O	1:A:254:ILE:HG13	2.10	0.52
1:B:163:THR:OG1	1:B:164:LEU:N	2.43	0.52
1:B:239:VAL:HG12	1:B:268:VAL:HB	1.91	0.52
1:B:250:THR:O	1:B:254:ILE:HG13	2.10	0.52
2:C:1007:ILE:HG21	2:C:1161:TRP:HB3	1.91	0.52
1:B:294:TYR:O	1:B:298:ILE:HG13	2.10	0.52
1:A:128:ALA:HB3	1:A:179:LYS:HZ1	1.74	0.52
1:A:297:GLN:HE21	2:C:1072:ALA:H	1.58	0.52
1:A:294:TYR:O	1:A:298:ILE:HG13	2.10	0.51
2:C:1009:LEU:O	2:C:1012:LEU:HG	2.09	0.51

Continued on next page...

Continued from previous page...

Atom-1	Atom-2	Interatomic distance (Å)	Clash overlap (Å)
1:A:213:LYS:O	1:A:217:LEU:HG	2.10	0.51
2:D:1009:LEU:O	2:D:1012:LEU:HG	2.09	0.51
1:A:163:THR:OG1	1:A:164:LEU:N	2.43	0.51
2:D:1007:ILE:HG21	2:D:1161:TRP:HB3	1.91	0.51
2:D:344:LEU:O	2:D:348:VAL:HG23	2.08	0.51
2:C:347:PHE:CZ	2:C:1160:VAL:HG22	2.46	0.51
2:D:1013:VAL:O	2:D:1016:LEU:HG	2.11	0.51
2:D:1143:GLU:HB3	2:D:1153:MET:HE1	1.91	0.51
1:A:225:ASN:HA	1:A:228:PHE:CD2	2.46	0.51
2:C:1005:LEU:O	2:C:1009:LEU:HD12	2.11	0.51
2:D:1159:VAL:O	2:D:1162:GLN:N	2.44	0.51
1:B:29:TRP:N	1:B:233:LEU:O	2.26	0.51
2:D:1110:ARG:HH11	2:D:1114:THR:HG21	1.76	0.51
1:B:225:ASN:HA	1:B:228:PHE:CD2	2.46	0.50
2:C:1110:ARG:HH11	2:C:1114:THR:HG21	1.76	0.50
1:A:56:ARG:C	1:A:89:ASN:HD21	2.14	0.50
1:B:56:ARG:C	1:B:89:ASN:HD21	2.14	0.50
2:D:343:MET:HA	2:D:346:LEU:HG	1.93	0.50
2:C:1013:VAL:O	2:C:1016:LEU:HG	2.11	0.50
1:A:239:VAL:HG12	1:A:268:VAL:HB	1.91	0.50
1:B:282:GLU:O	1:B:285:THR:OG1	2.29	0.50
1:A:100:SER:O	1:A:103:ASP:HB3	2.12	0.50
1:A:130:PRO:O	2:D:1059:ARG:NH1	2.44	0.50
1:B:121:VAL:O	1:B:125:LEU:HG	2.11	0.50
1:A:121:VAL:O	1:A:125:LEU:HG	2.11	0.50
2:D:1005:LEU:O	2:D:1009:LEU:HD12	2.11	0.50
1:B:100:SER:O	1:B:103:ASP:HB3	2.12	0.49
2:C:343:MET:HA	2:C:346:LEU:HG	1.93	0.49
1:A:282:GLU:O	1:A:285:THR:OG1	2.29	0.49
1:B:80:GLU:OE2	1:B:81:ALA:N	2.43	0.49
2:C:1009:LEU:O	2:C:1013:VAL:HG23	2.13	0.49
1:A:28:ARG:C	1:A:29:TRP:HD1	2.16	0.49
2:C:1089:GLU:H	2:C:1089:GLU:CD	2.16	0.49
2:C:1121:LEU:HD23	2:C:1122:CYS:H	1.78	0.49
2:D:1009:LEU:O	2:D:1013:VAL:HG23	2.13	0.49
2:D:1030:TRP:HA	2:D:1099:ARG:NH2	2.28	0.49
1:A:80:GLU:OE2	1:A:81:ALA:N	2.43	0.49
1:B:28:ARG:C	1:B:29:TRP:HD1	2.15	0.49
2:C:1030:TRP:HA	2:C:1099:ARG:NH2	2.28	0.49
2:D:1133:LEU:N	2:D:1154:GLY:O	2.45	0.49
1:A:318:VAL:HG23	1:A:323:ARG:HB3	1.95	0.48

Continued on next page...

Continued from previous page...

Atom-1	Atom-2	Interatomic distance (Å)	Clash overlap (Å)
2:D:1089:GLU:CD	2:D:1089:GLU:H	2.16	0.48
1:A:29:TRP:N	1:A:233:LEU:O	2.25	0.48
1:A:162:HIS:HA	1:A:165:ARG:HH12	1.78	0.48
2:C:1145:LEU:O	2:C:1149:PRO:HD3	2.13	0.48
1:A:174:GLU:O	1:A:177:LEU:HG	2.13	0.48
1:B:32:VAL:HA	1:B:237:VAL:O	2.13	0.48
2:C:1029:LEU:HD21	2:C:1102:PHE:CD2	2.49	0.48
2:D:1029:LEU:HD21	2:D:1102:PHE:CD2	2.48	0.48
2:D:1121:LEU:HD23	2:D:1122:CYS:H	1.78	0.48
2:D:1145:LEU:O	2:D:1149:PRO:HD3	2.13	0.48
2:C:1090:LYS:O	2:C:1093:SER:OG	2.29	0.48
2:C:1159:VAL:O	2:C:1162:GLN:N	2.44	0.48
1:A:56:ARG:N	1:A:151:GLU:OE2	2.39	0.48
1:A:325:GLU:O	1:A:329:GLU:HG3	2.14	0.48
2:C:1105:LYS:HG2	2:D:308:LEU:HD21	1.94	0.48
2:C:1010:LEU:O	2:C:1014:VAL:HG13	2.14	0.48
1:B:25:ARG:HA	1:B:55:ARG:NH2	2.26	0.48
1:B:325:GLU:O	1:B:329:GLU:HG3	2.14	0.48
2:D:1130:MET:SD	2:D:1130:MET:N	2.87	0.48
2:D:1010:LEU:O	2:D:1014:VAL:HG13	2.14	0.47
1:A:321:LYS:HG2	1:A:325:GLU:OE2	2.14	0.47
2:C:1015:GLN:HA	2:C:1018:ASN:ND2	2.27	0.47
2:D:1139:PRO:HG2	2:D:1142:VAL:HG23	1.96	0.47
1:A:32:VAL:HA	1:A:237:VAL:O	2.13	0.47
1:B:243:GLU:OE1	1:B:245:LEU:N	2.45	0.47
2:C:1130:MET:SD	2:C:1130:MET:N	2.87	0.47
1:A:28:ARG:HA	1:A:152:THR:HG22	1.97	0.47
1:B:321:LYS:HG2	1:B:325:GLU:OE2	2.14	0.47
1:A:169:PHE:O	1:A:172:VAL:HG12	2.15	0.47
2:C:1115:ARG:NH1	2:C:1118:GLN:OE1	2.48	0.47
2:C:1139:PRO:HG2	2:C:1142:VAL:HG23	1.96	0.47
1:B:56:ARG:N	1:B:151:GLU:OE2	2.39	0.47
1:B:17:THR:OG1	1:B:18:LEU:N	2.48	0.47
1:B:162:HIS:HA	1:B:165:ARG:HH12	1.78	0.47
1:B:174:GLU:O	1:B:177:LEU:HG	2.13	0.47
1:B:318:VAL:HG23	1:B:323:ARG:HB3	1.95	0.47
2:C:1048:GLN:O	2:C:1051:LYS:HG2	2.15	0.47
1:A:50:GLN:HG2	1:A:328:SER:HB2	1.97	0.46
1:B:35:LYS:HZ1	1:B:160:THR:HG22	1.79	0.46
1:B:170:PRO:HG3	1:B:225:ASN:HD22	1.80	0.46
2:D:1159:VAL:HG23	2:D:1160:VAL:N	2.30	0.46

Continued on next page...

Continued from previous page...

Atom-1	Atom-2	Interatomic distance (Å)	Clash overlap (Å)
2:C:1014:VAL:O	2:C:1018:ASN:ND2	2.49	0.46
2:D:1014:VAL:O	2:D:1018:ASN:ND2	2.49	0.46
2:D:1048:GLN:O	2:D:1051:LYS:HG2	2.15	0.46
1:B:60:LEU:HB3	1:B:92:ALA:HB2	1.97	0.46
1:B:159:PRO:HB2	1:B:162:HIS:CD2	2.50	0.46
1:A:60:LEU:HB3	1:A:92:ALA:HB2	1.97	0.46
2:D:1073:LYS:O	2:D:1077:LEU:HG	2.16	0.46
2:C:1114:THR:O	2:C:1118:GLN:HG3	2.16	0.46
1:B:50:GLN:HG2	1:B:328:SER:HB2	1.97	0.46
2:C:1073:LYS:O	2:C:1077:LEU:HG	2.16	0.46
1:B:32:VAL:HG22	1:B:237:VAL:HB	1.98	0.46
1:B:169:PHE:O	1:B:172:VAL:HG12	2.15	0.46
2:D:1115:ARG:NH1	2:D:1118:GLN:OE1	2.48	0.46
1:A:17:THR:OG1	1:A:18:LEU:N	2.48	0.46
1:B:144:GLN:O	1:B:147:SER:OG	2.24	0.46
1:A:170:PRO:HG3	1:A:225:ASN:HD22	1.80	0.45
1:B:284:CYS:O	1:B:288:ARG:HG3	2.16	0.45
2:D:1170:ALA:O	2:D:1173:ILE:HB	2.16	0.45
1:A:25:ARG:HA	1:A:55:ARG:NH2	2.26	0.45
1:A:68:ASN:OD1	1:A:69:LEU:HD22	2.17	0.45
1:B:322:GLU:HA	1:B:325:GLU:CD	2.37	0.45
2:D:1030:TRP:O	2:D:1034:LEU:HG	2.17	0.45
1:A:159:PRO:HB2	1:A:162:HIS:CD2	2.50	0.45
1:A:225:ASN:OD1	1:A:226:ALA:N	2.50	0.45
1:A:322:GLU:HA	1:A:325:GLU:CD	2.37	0.45
1:B:28:ARG:HA	1:B:152:THR:HG22	1.97	0.45
2:C:1117:MET:O	2:C:1121:LEU:HD22	2.17	0.45
2:D:1132:TRP:HA	2:D:1155:SER:HA	1.98	0.45
1:A:25:ARG:CA	1:A:55:ARG:HH22	2.27	0.45
1:B:68:ASN:OD1	1:B:69:LEU:HD22	2.17	0.45
2:C:1003:LEU:HD12	2:C:1130:MET:HG3	1.98	0.45
1:A:147:SER:OG	1:A:148:LEU:HD22	2.17	0.45
1:A:284:CYS:O	1:A:288:ARG:HG3	2.16	0.45
1:B:51:LEU:HD12	1:B:51:LEU:HA	1.78	0.45
1:B:225:ASN:OD1	1:B:226:ALA:N	2.50	0.45
2:D:1117:MET:O	2:D:1121:LEU:HD22	2.17	0.45
2:D:1143:GLU:HB3	2:D:1153:MET:CE	2.47	0.45
1:A:225:ASN:O	1:A:228:PHE:HB2	2.17	0.45
1:A:322:GLU:HG2	1:A:323:ARG:N	2.32	0.45
2:C:1108:ILE:O	2:C:1112:ILE:HG12	2.17	0.45
2:C:1109:TYR:O	2:C:1113:LEU:HD23	2.17	0.45

Continued on next page...

Continued from previous page...

Atom-1	Atom-2	Interatomic distance (Å)	Clash overlap (Å)
2:D:1108:ILE:O	2:D:1112:ILE:HG12	2.17	0.45
1:A:243:GLU:OE1	1:A:245:LEU:N	2.45	0.45
2:D:1029:LEU:HD11	2:D:1102:PHE:HE2	1.82	0.45
2:D:1102:PHE:O	2:D:1106:LEU:HD23	2.17	0.45
2:D:1114:THR:O	2:D:1118:GLN:HG3	2.16	0.45
2:C:1051:LYS:HA	2:C:1054:GLU:OE1	2.17	0.44
2:D:1115:ARG:HA	2:D:1118:GLN:HB2	1.98	0.44
2:D:1127:SER:O	2:D:1152:PRO:HD3	2.17	0.44
1:A:127:TYR:HE1	2:D:1088:LEU:HD13	1.82	0.44
2:C:1030:TRP:O	2:C:1034:LEU:HG	2.17	0.44
2:C:1127:SER:O	2:C:1152:PRO:HD3	2.17	0.44
2:C:1170:ALA:O	2:C:1173:ILE:HB	2.16	0.44
2:D:1051:LYS:HA	2:D:1054:GLU:OE1	2.17	0.44
1:A:32:VAL:HG22	1:A:237:VAL:HB	1.98	0.44
1:A:58:VAL:HG12	1:A:152:THR:OG1	2.18	0.44
2:C:1007:ILE:HD13	2:C:1161:TRP:CB	2.48	0.44
2:C:1102:PHE:O	2:C:1106:LEU:HD23	2.17	0.44
2:C:1132:TRP:HA	2:C:1155:SER:HA	1.98	0.44
2:C:1143:GLU:HB3	2:C:1153:MET:CE	2.47	0.44
1:B:272:LEU:HD13	1:B:311:MET:H	1.83	0.44
2:C:1115:ARG:HA	2:C:1118:GLN:HB2	1.98	0.44
2:D:1109:TYR:O	2:D:1113:LEU:HD23	2.17	0.44
1:B:225:ASN:O	1:B:228:PHE:HB2	2.17	0.44
1:B:322:GLU:HG2	1:B:323:ARG:N	2.32	0.44
1:A:180:VAL:O	1:A:183:LEU:HG	2.18	0.44
1:B:301:LEU:HA	1:B:301:LEU:HD12	1.64	0.44
2:D:1015:GLN:HA	2:D:1018:ASN:ND2	2.27	0.44
2:D:1165:CYS:HA	2:D:1168:VAL:HG23	1.98	0.44
1:A:272:LEU:HD13	1:A:311:MET:H	1.83	0.44
1:A:281:CYS:HB3	1:A:284:CYS:SG	2.57	0.44
1:B:147:SER:OG	1:B:148:LEU:HD22	2.17	0.44
1:B:177:LEU:HA	1:B:180:VAL:HG12	2.00	0.44
1:A:177:LEU:HA	1:A:180:VAL:HG12	2.00	0.44
2:C:1086:ASP:OD1	2:C:1087:GLU:N	2.51	0.44
1:A:209:ASP:O	1:A:212:GLU:HG3	2.17	0.43
1:A:297:GLN:CG	2:C:1071:PHE:HB3	2.47	0.43
1:B:209:ASP:O	1:B:212:GLU:HG3	2.18	0.43
2:C:1165:CYS:HA	2:C:1168:VAL:HG23	1.98	0.43
2:D:1003:LEU:HD12	2:D:1130:MET:HG3	1.98	0.43
2:D:1086:ASP:OD1	2:D:1087:GLU:N	2.51	0.43
2:D:1026:ASN:O	2:D:1030:TRP:CD1	2.72	0.43

Continued on next page...

Continued from previous page...

Atom-1	Atom-2	Interatomic distance (Å)	Clash overlap (Å)
2:D:1029:LEU:HA	2:D:1032:PHE:HB2	1.99	0.43
1:A:62:SER:HA	1:A:156:ASP:OD1	2.19	0.43
2:C:1029:LEU:HD11	2:C:1102:PHE:HE2	1.82	0.43
1:B:180:VAL:O	1:B:183:LEU:HG	2.18	0.43
1:A:126:ALA:HA	1:A:132:ILE:HD12	2.00	0.43
1:A:335:PHE:CE2	1:A:337:PRO:HD3	2.53	0.43
1:B:214:LEU:HA	1:B:217:LEU:HD12	1.99	0.43
2:D:308:LEU:HA	2:D:311:PHE:CD1	2.53	0.43
2:D:1090:LYS:O	2:D:1093:SER:OG	2.29	0.43
2:C:308:LEU:HA	2:C:311:PHE:CD1	2.53	0.43
2:C:1029:LEU:HA	2:C:1032:PHE:HB2	1.99	0.43
1:A:285:THR:HG22	1:A:288:ARG:NH2	2.33	0.43
1:B:126:ALA:HA	1:B:132:ILE:HD12	2.00	0.43
1:B:127:TYR:HB2	2:C:1052:GLN:NE2	2.33	0.43
1:A:98:ASN:HB2	2:D:1060:HIS:CD2	2.53	0.43
1:B:58:VAL:HG12	1:B:152:THR:OG1	2.18	0.43
2:C:1008:PHE:HA	2:C:1011:GLU:OE1	2.19	0.43
2:C:1159:VAL:HG23	2:C:1160:VAL:N	2.30	0.43
1:A:280:ASP:OD1	1:A:280:ASP:N	2.52	0.43
1:B:335:PHE:CE2	1:B:337:PRO:HD3	2.53	0.43
2:C:1133:LEU:N	2:C:1154:GLY:O	2.45	0.43
1:A:214:LEU:HA	1:A:217:LEU:HD12	1.99	0.43
1:B:35:LYS:NZ	1:B:160:THR:HG22	2.34	0.43
1:B:75:GLN:NE2	1:B:84:VAL:HG13	2.34	0.43
2:D:1007:ILE:HD13	2:D:1161:TRP:CB	2.48	0.43
1:B:84:VAL:HB	1:B:90:LEU:HD22	2.00	0.42
2:C:1026:ASN:O	2:C:1030:TRP:CD1	2.72	0.42
1:B:280:ASP:OD1	1:B:280:ASP:N	2.52	0.42
1:B:285:THR:HG22	1:B:288:ARG:NH2	2.33	0.42
2:D:1008:PHE:HA	2:D:1011:GLU:OE1	2.19	0.42
2:D:1084:LEU:HA	2:D:1087:GLU:OE1	2.19	0.42
1:A:35:LYS:HZ3	1:A:160:THR:N	2.13	0.42
1:B:62:SER:HA	1:B:156:ASP:OD1	2.19	0.42
1:B:134:GLU:HG2	1:B:135:ALA:N	2.34	0.42
2:D:1082:ASP:N	2:D:1082:ASP:OD1	2.52	0.42
1:A:84:VAL:HB	1:A:90:LEU:HD22	2.00	0.42
1:B:29:TRP:CE3	1:B:228:PHE:HE1	2.38	0.42
1:A:75:GLN:NE2	1:A:84:VAL:HG13	2.34	0.42
1:A:134:GLU:HG2	1:A:135:ALA:N	2.34	0.42
2:C:1106:LEU:HA	2:C:1109:TYR:HB3	2.01	0.42
1:A:174:GLU:OE1	1:A:218:ARG:NH1	2.53	0.42

Continued on next page...

Continued from previous page...

Atom-1	Atom-2	Interatomic distance (Å)	Clash overlap (Å)
1:B:319:ARG:O	1:B:323:ARG:HB2	2.20	0.42
1:A:29:TRP:CE3	1:A:228:PHE:HE1	2.38	0.42
2:C:1084:LEU:HA	2:C:1087:GLU:OE1	2.19	0.42
1:B:174:GLU:OE1	1:B:218:ARG:NH1	2.53	0.41
1:B:266:CYS:SG	1:B:307:ASN:ND2	2.93	0.41
1:A:322:GLU:O	1:A:326:LYS:HG3	2.20	0.41
2:D:346:LEU:HA	2:D:349:LEU:HG	2.02	0.41
2:D:1111:TRP:CZ2	2:D:1115:ARG:HD2	2.55	0.41
1:B:93:MET:O	1:B:95:ILE:HG23	2.20	0.41
1:B:270:ASN:CG	1:B:271:GLN:HG3	2.41	0.41
2:D:1106:LEU:HA	2:D:1109:TYR:HB3	2.01	0.41
1:B:55:ARG:HD3	1:B:55:ARG:HA	1.83	0.41
1:B:163:THR:OG1	1:B:164:LEU:HG	2.21	0.41
2:C:1143:GLU:HB3	2:C:1153:MET:HE1	2.01	0.41
1:A:35:LYS:NZ	1:A:160:THR:HG22	2.34	0.41
2:D:1025:ILE:HG13	2:D:1026:ASN:N	2.36	0.41
1:A:93:MET:O	1:A:95:ILE:HG23	2.20	0.41
1:A:163:THR:OG1	1:A:164:LEU:HG	2.21	0.41
2:C:1025:ILE:HG13	2:C:1026:ASN:N	2.36	0.41
1:A:28:ARG:CB	1:A:233:LEU:HB2	2.51	0.41
1:A:101:MET:HE2	2:D:1060:HIS:HB2	2.03	0.41
1:A:270:ASN:CG	1:A:271:GLN:HG3	2.41	0.41
1:B:319:ARG:O	1:B:323:ARG:NE	2.42	0.41
2:C:1111:TRP:CZ2	2:C:1115:ARG:HD2	2.55	0.41
1:A:51:LEU:HA	1:A:51:LEU:HD12	1.78	0.41
1:A:167:LEU:HD22	1:A:260:TYR:CD2	2.56	0.41
1:A:266:CYS:SG	1:A:307:ASN:ND2	2.93	0.41
1:A:319:ARG:O	1:A:323:ARG:HB2	2.20	0.41
1:B:28:ARG:CB	1:B:233:LEU:HB2	2.51	0.41
1:B:160:THR:HA	1:B:163:THR:HG23	2.03	0.41
1:B:169:PHE:N	1:B:170:PRO:HD2	2.36	0.41
2:C:346:LEU:HD11	2:C:1160:VAL:HG21	2.03	0.41
2:C:346:LEU:HA	2:C:349:LEU:HG	2.02	0.41
2:C:1030:TRP:O	2:C:1034:LEU:N	2.54	0.41
2:D:1102:PHE:CD1	2:D:1105:LYS:HD2	2.54	0.41
1:A:160:THR:HA	1:A:163:THR:HG23	2.03	0.41
1:A:29:TRP:CD2	1:A:153:ILE:HD11	2.56	0.40
1:B:322:GLU:O	1:B:326:LYS:HG3	2.20	0.40
2:C:1082:ASP:OD1	2:C:1082:ASP:N	2.52	0.40
2:D:1044:ASP:OD1	2:D:1045:PHE:N	2.55	0.40
1:B:275:PRO:HG3	1:B:288:ARG:NE	2.36	0.40

Continued on next page...

Continued from previous page...

Atom-1	Atom-2	Interatomic distance (Å)	Clash overlap (Å)
2:C:1044:ASP:OD1	2:C:1045:PHE:N	2.55	0.40
2:D:1030:TRP:O	2:D:1034:LEU:N	2.54	0.40
1:A:56:ARG:NH2	1:A:57:SER:HG	2.18	0.40
1:A:127:TYR:CE1	2:D:1088:LEU:HB3	2.56	0.40
1:A:169:PHE:N	1:A:170:PRO:HD2	2.36	0.40
2:C:1011:GLU:O	2:C:1014:VAL:HG22	2.22	0.40
2:D:1007:ILE:HA	2:D:1010:LEU:HG	2.04	0.40

There are no symmetry-related clashes.

5.3 Torsion angles [i](#)

5.3.1 Protein backbone [i](#)

In the following table, the Percentiles column shows the percent Ramachandran outliers of the chain as a percentile score with respect to all PDB entries followed by that with respect to all EM entries.

The Analysed column shows the number of residues for which the backbone conformation was analysed, and the total number of residues.

Mol	Chain	Analysed	Favoured	Allowed	Outliers	Percentiles	
1	A	287/334 (86%)	272 (95%)	15 (5%)	0	100	100
1	B	287/334 (86%)	272 (95%)	15 (5%)	0	100	100
2	C	212/409 (52%)	204 (96%)	8 (4%)	0	100	100
2	D	212/409 (52%)	204 (96%)	8 (4%)	0	100	100
All	All	998/1486 (67%)	952 (95%)	46 (5%)	0	100	100

There are no Ramachandran outliers to report.

5.3.2 Protein sidechains [i](#)

In the following table, the Percentiles column shows the percent sidechain outliers of the chain as a percentile score with respect to all PDB entries followed by that with respect to all EM entries.

The Analysed column shows the number of residues for which the sidechain conformation was analysed, and the total number of residues.

Mol	Chain	Analysed	Rotameric	Outliers	Percentiles	
1	A	262/289 (91%)	262 (100%)	0	100	100
1	B	262/289 (91%)	262 (100%)	0	100	100
2	C	190/332 (57%)	190 (100%)	0	100	100
2	D	190/332 (57%)	190 (100%)	0	100	100
All	All	904/1242 (73%)	904 (100%)	0	100	100

There are no protein residues with a non-rotameric sidechain to report.

Sometimes sidechains can be flipped to improve hydrogen bonding and reduce clashes. All (18) such sidechains are listed below:

Mol	Chain	Res	Type
1	A	162	HIS
1	A	168	GLN
1	A	265	HIS
1	A	271	GLN
1	A	297	GLN
1	A	307	ASN
1	B	162	HIS
1	B	168	GLN
1	B	265	HIS
1	B	271	GLN
1	B	297	GLN
1	B	307	ASN
2	C	1018	ASN
2	C	1052	GLN
2	C	1068	GLN
2	D	1018	ASN
2	D	1052	GLN
2	D	1068	GLN

5.3.3 RNA [i](#)

There are no RNA molecules in this entry.

5.4 Non-standard residues in protein, DNA, RNA chains [i](#)

There are no non-standard protein/DNA/RNA residues in this entry.

5.5 Carbohydrates [i](#)

There are no monosaccharides in this entry.

5.6 Ligand geometry [i](#)

Of 1 ligands modelled in this entry, 1 is monoatomic - leaving 0 for Mogul analysis.

There are no bond length outliers.

There are no bond angle outliers.

There are no chirality outliers.

There are no torsion outliers.

There are no ring outliers.

No monomer is involved in short contacts.

5.7 Other polymers [i](#)

There are no such residues in this entry.

5.8 Polymer linkage issues [i](#)

There are no chain breaks in this entry.

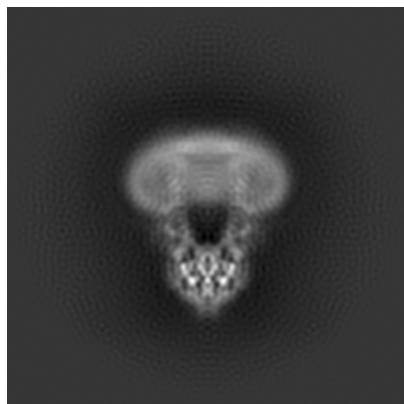
6 Map visualisation [i](#)

This section contains visualisations of the EMDB entry EMD-16819. These allow visual inspection of the internal detail of the map and identification of artifacts.

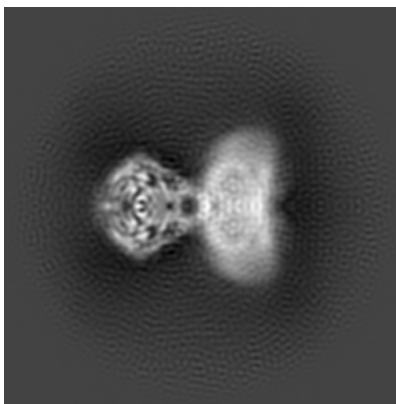
Images derived from a raw map, generated by summing the deposited half-maps, are presented below the corresponding image components of the primary map to allow further visual inspection and comparison with those of the primary map.

6.1 Orthogonal projections [i](#)

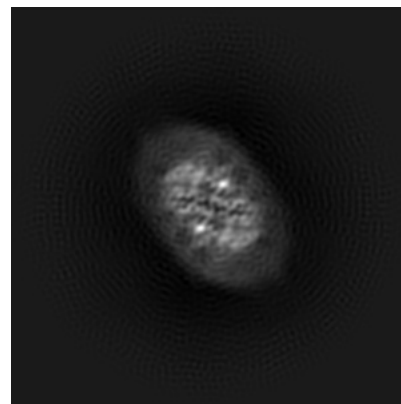
6.1.1 Primary map



X

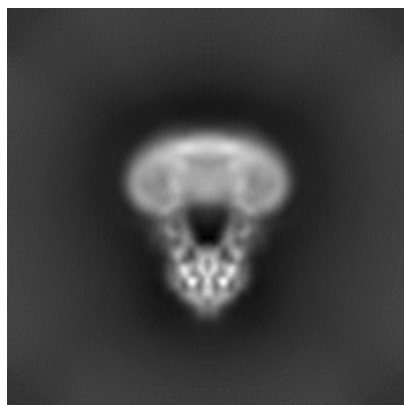


Y

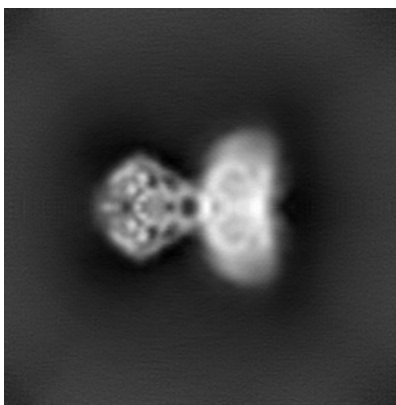


Z

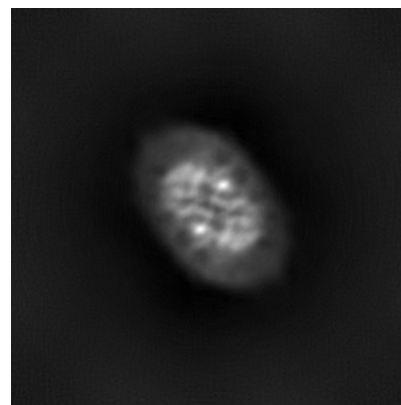
6.1.2 Raw map



X



Y

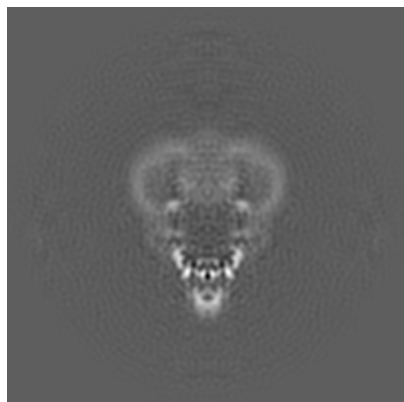


Z

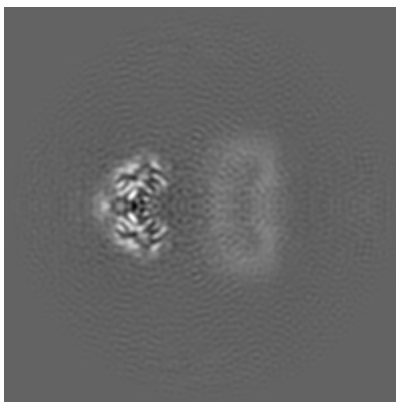
The images above show the map projected in three orthogonal directions.

6.2 Central slices [i](#)

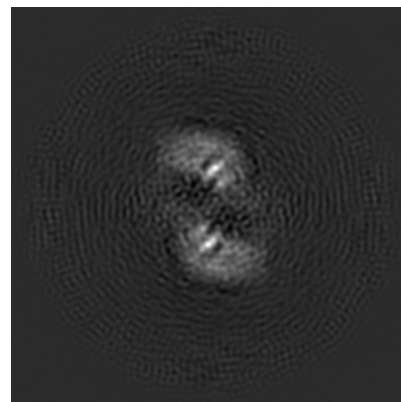
6.2.1 Primary map



X Index: 128

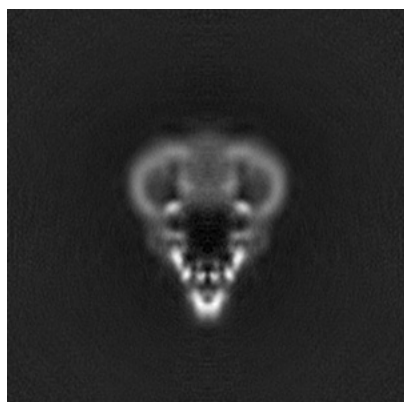


Y Index: 128

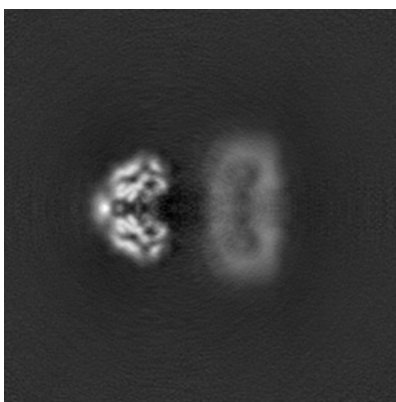


Z Index: 128

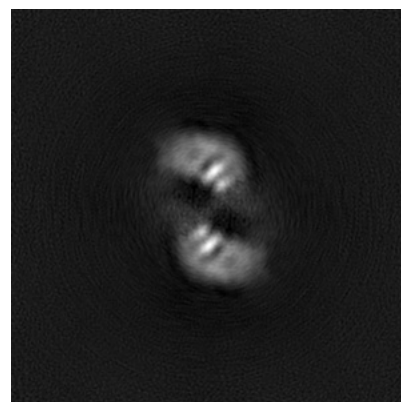
6.2.2 Raw map



X Index: 128



Y Index: 128

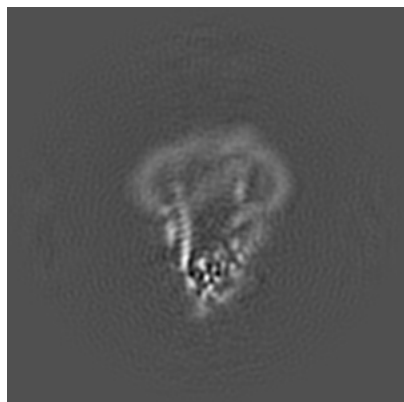


Z Index: 128

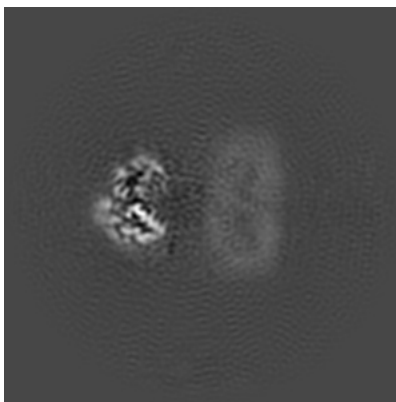
The images above show central slices of the map in three orthogonal directions.

6.3 Largest variance slices [i](#)

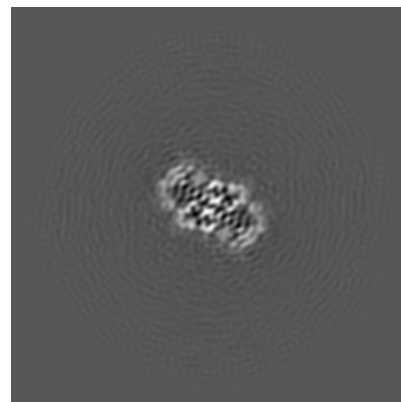
6.3.1 Primary map



X Index: 120

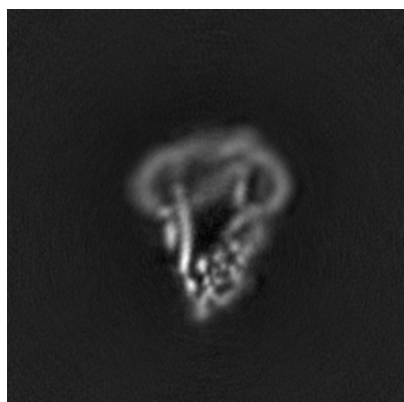


Y Index: 125

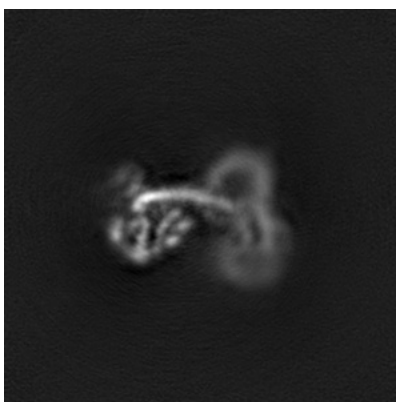


Z Index: 85

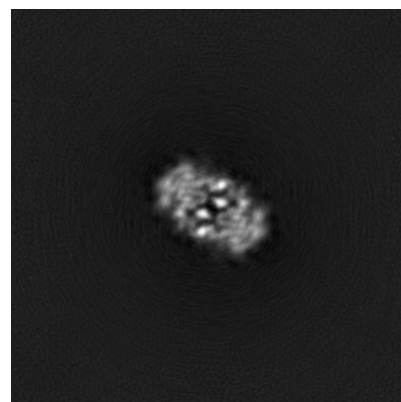
6.3.2 Raw map



X Index: 120



Y Index: 143

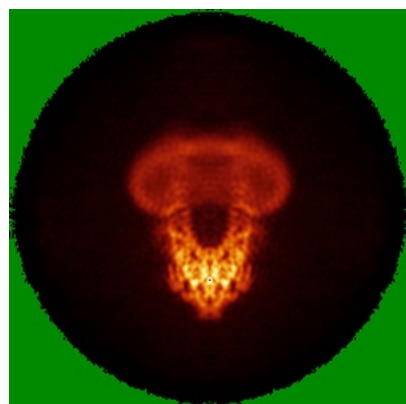


Z Index: 89

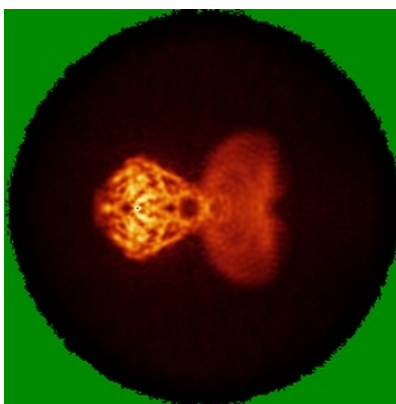
The images above show the largest variance slices of the map in three orthogonal directions.

6.4 Orthogonal standard-deviation projections (False-color) [i](#)

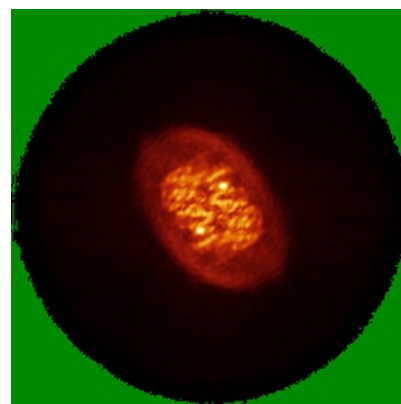
6.4.1 Primary map



X

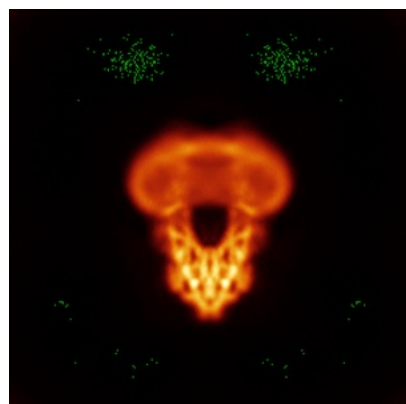


Y

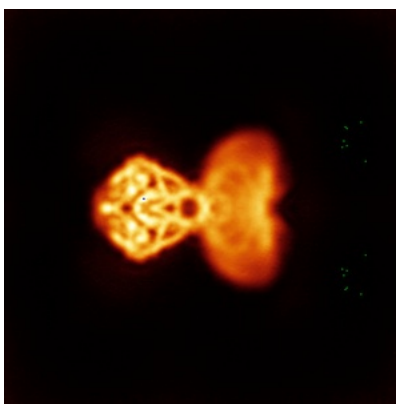


Z

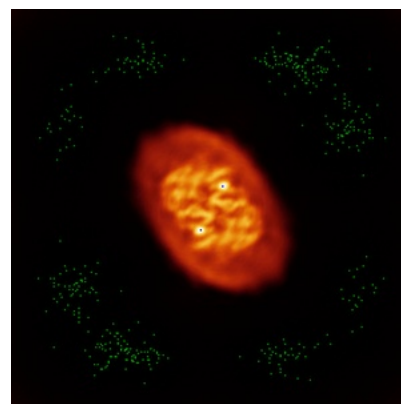
6.4.2 Raw map



X



Y

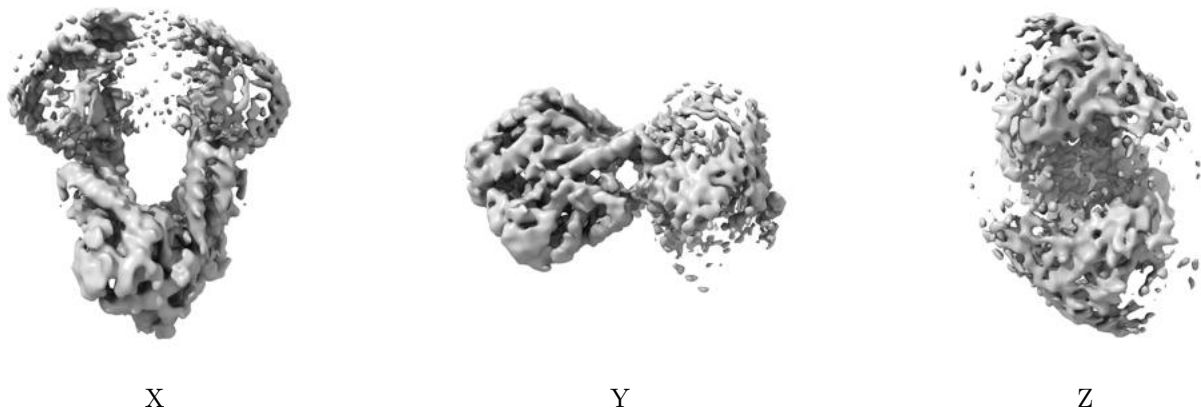


Z

The images above show the map standard deviation projections with false color in three orthogonal directions. Minimum values are shown in green, max in blue, and dark to light orange shades represent small to large values respectively.

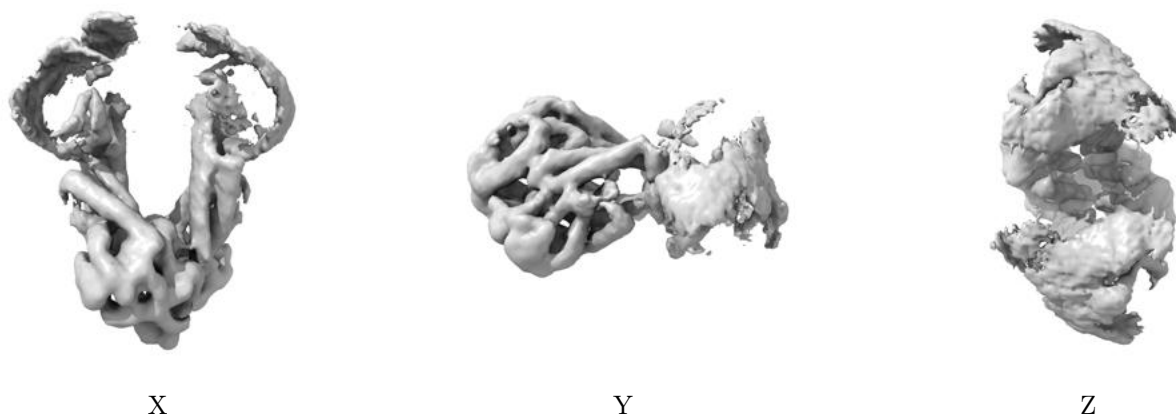
6.5 Orthogonal surface views [i](#)

6.5.1 Primary map



The images above show the 3D surface view of the map at the recommended contour level 0.138. These images, in conjunction with the slice images, may facilitate assessment of whether an appropriate contour level has been provided.

6.5.2 Raw map



These images show the 3D surface of the raw map. The raw map's contour level was selected so that its surface encloses the same volume as the primary map does at its recommended contour level.

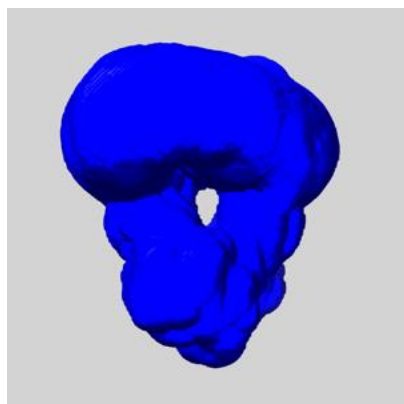
6.6 Mask visualisation [i](#)

This section shows the 3D surface view of the primary map at 50% transparency overlaid with the specified mask at 0% transparency

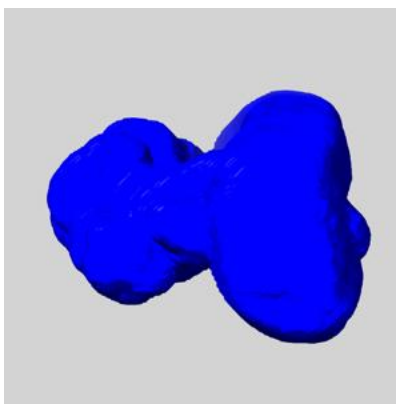
A mask typically either:

- Encompasses the whole structure
- Separates out a domain, a functional unit, a monomer or an area of interest from a larger structure

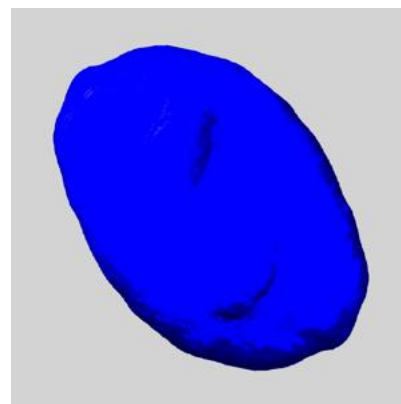
6.6.1 emd_16819_msk_1.map [i](#)



X



Y

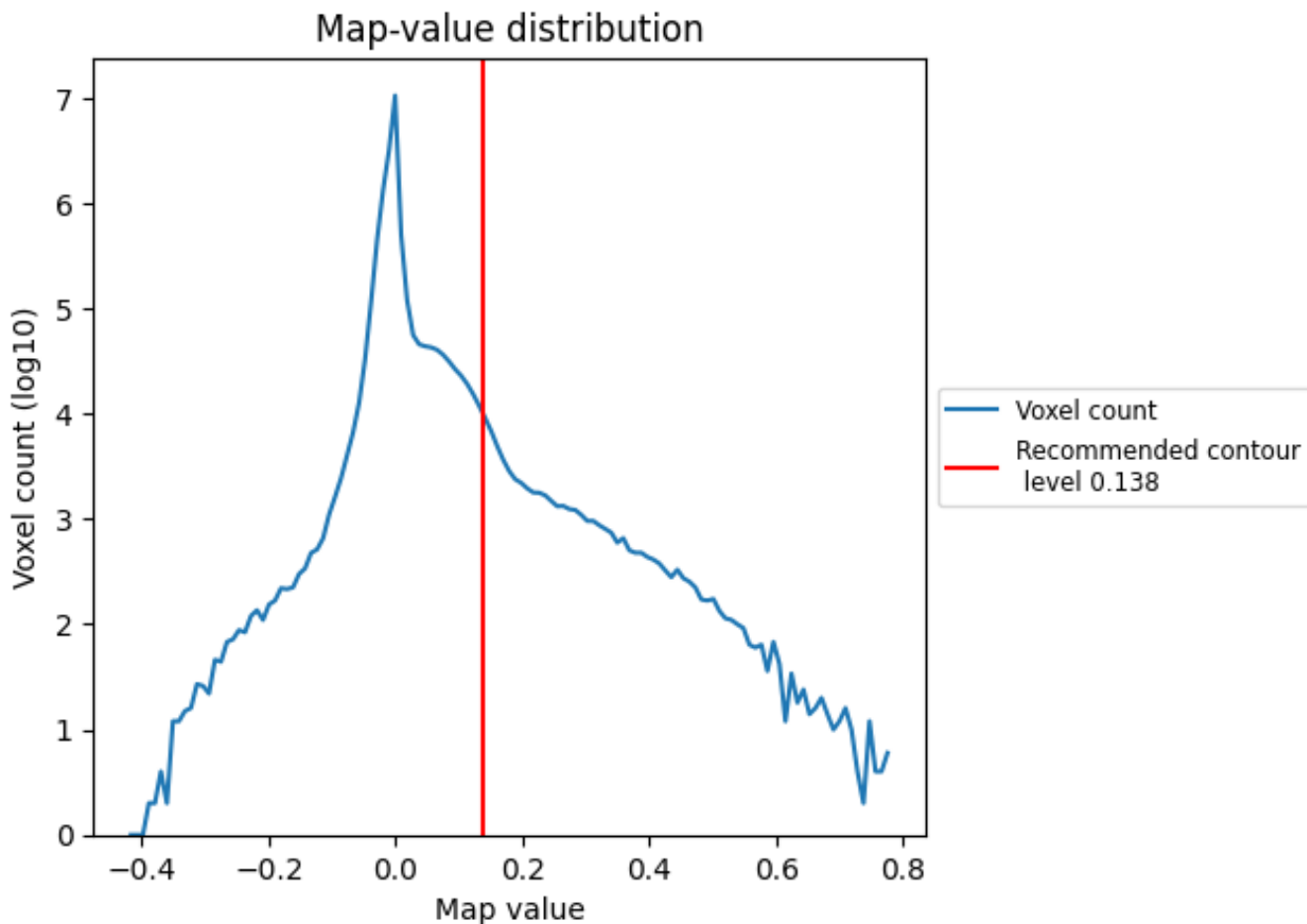


Z

7 Map analysis [i](#)

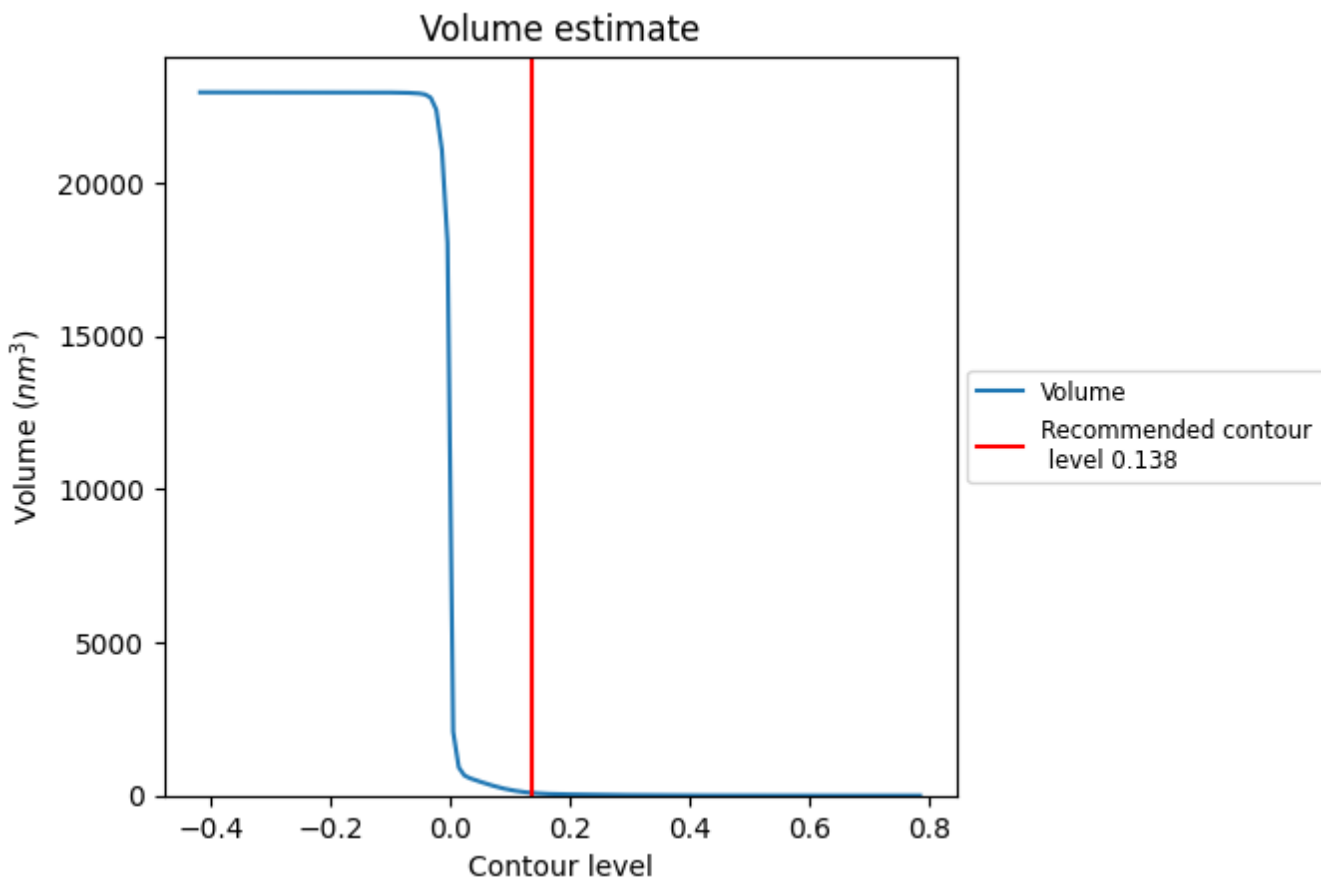
This section contains the results of statistical analysis of the map.

7.1 Map-value distribution [i](#)



The map-value distribution is plotted in 128 intervals along the x-axis. The y-axis is logarithmic. A spike in this graph at zero usually indicates that the volume has been masked.

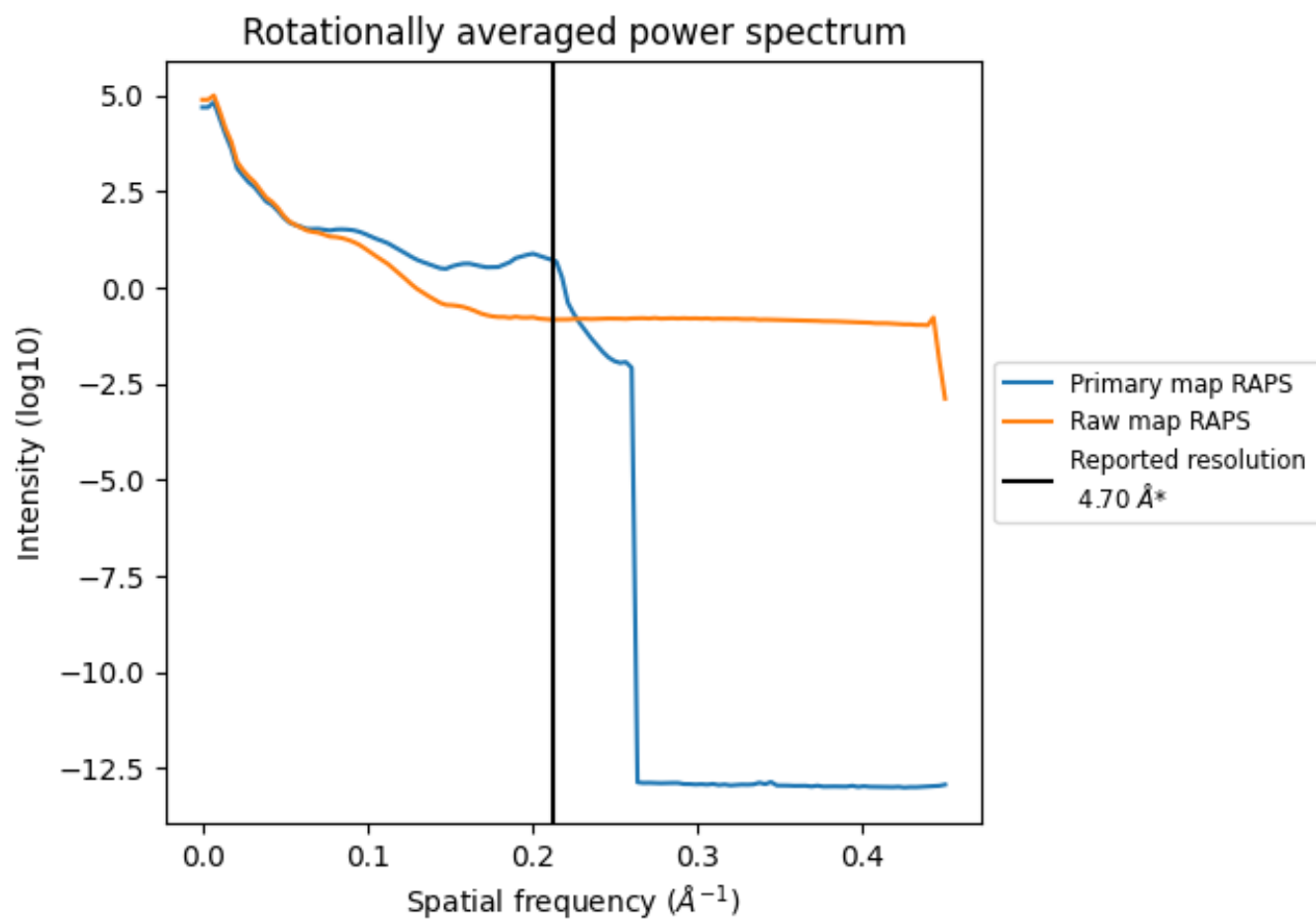
7.2 Volume estimate [i](#)



The volume at the recommended contour level is 86 nm³; this corresponds to an approximate mass of 77 kDa.

The volume estimate graph shows how the enclosed volume varies with the contour level. The recommended contour level is shown as a vertical line and the intersection between the line and the curve gives the volume of the enclosed surface at the given level.

7.3 Rotationally averaged power spectrum [i](#)

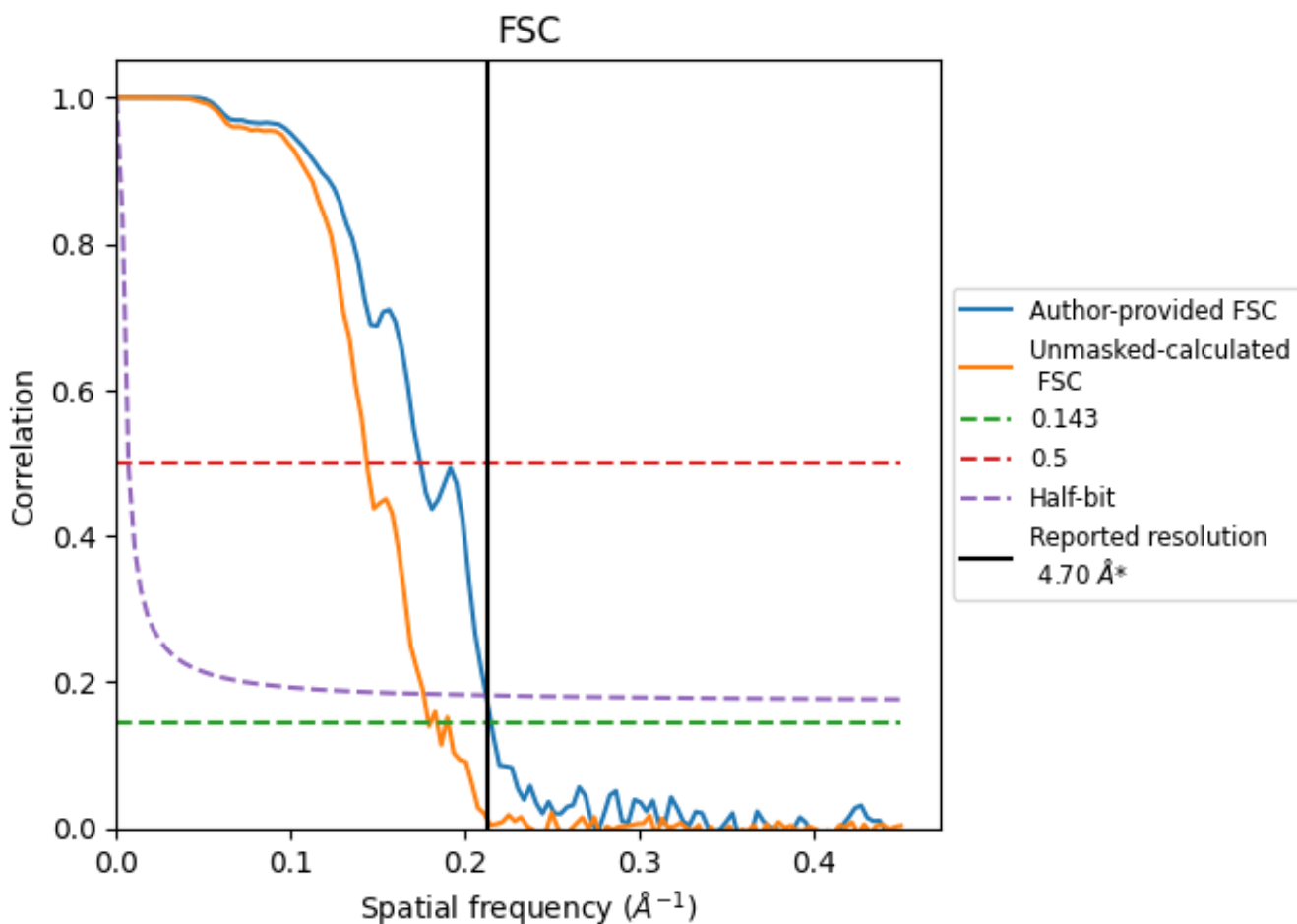


*Reported resolution corresponds to spatial frequency of 0.213 Å⁻¹

8 Fourier-Shell correlation [i](#)

Fourier-Shell Correlation (FSC) is the most commonly used method to estimate the resolution of single-particle and subtomogram-averaged maps. The shape of the curve depends on the imposed symmetry, mask and whether or not the two 3D reconstructions used were processed from a common reference. The reported resolution is shown as a black line. A curve is displayed for the half-bit criterion in addition to lines showing the 0.143 gold standard cut-off and 0.5 cut-off.

8.1 FSC [i](#)



*Reported resolution corresponds to spatial frequency of 0.213 Å⁻¹

8.2 Resolution estimates [i](#)

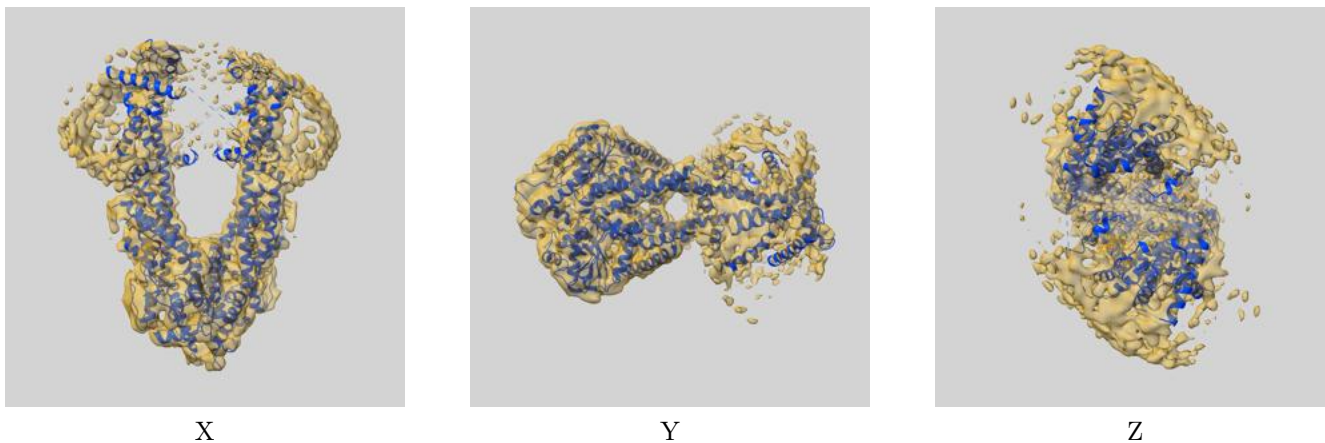
Resolution estimate (Å)	Estimation criterion (FSC cut-off)		
	0.143	0.5	Half-bit
Reported by author	4.70	-	-
Author-provided FSC curve	4.65	5.73	4.71
Unmasked-calculated*	5.58	6.95	5.67

*Resolution estimate based on FSC curve calculated by comparison of deposited half-maps. The value from deposited half-maps intersecting FSC 0.143 CUT-OFF 5.58 differs from the reported value 4.7 by more than 10 %

9 Map-model fit [i](#)

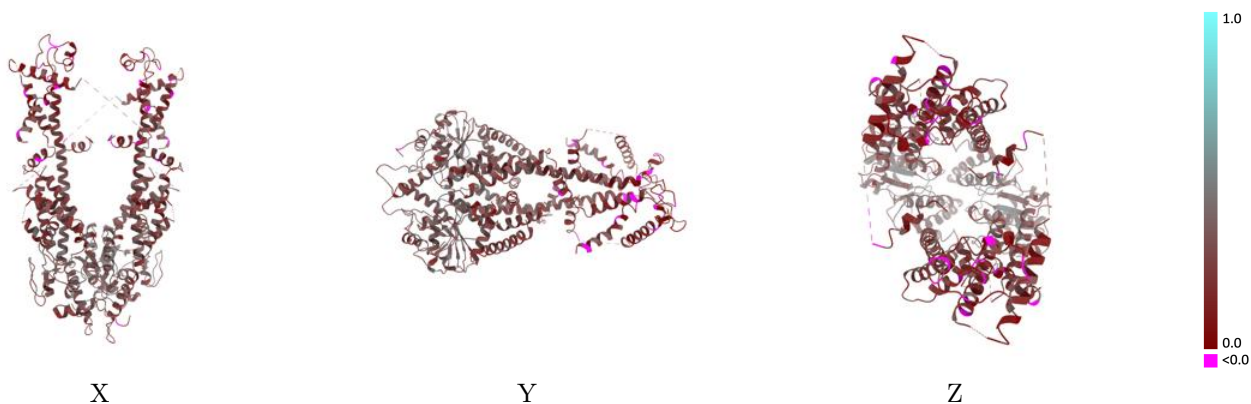
This section contains information regarding the fit between EMDB map EMD-16819 and PDB model 8ODV. Per-residue inclusion information can be found in section 3 on page 6.

9.1 Map-model overlay [i](#)



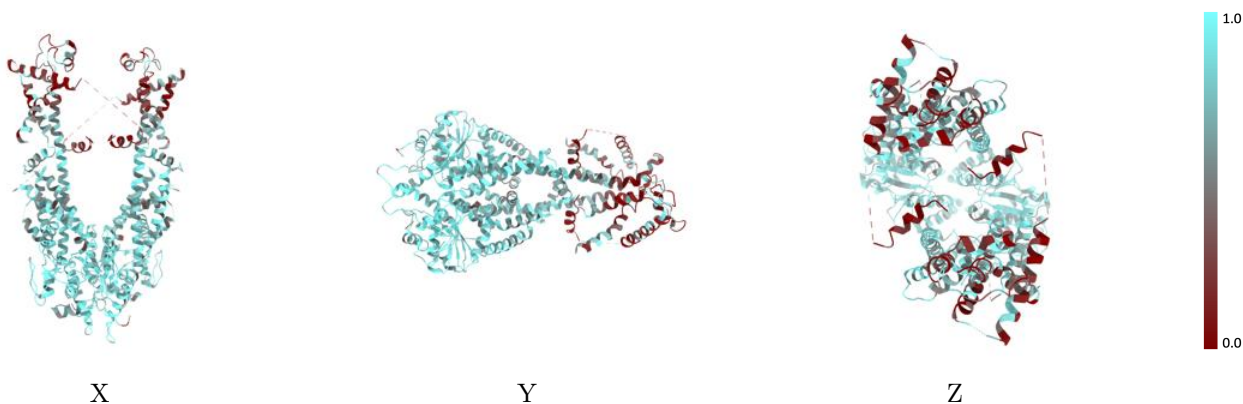
The images above show the 3D surface view of the map at the recommended contour level 0.138 at 50% transparency in yellow overlaid with a ribbon representation of the model coloured in blue. These images allow for the visual assessment of the quality of fit between the atomic model and the map.

9.2 Q-score mapped to coordinate model [\(i\)](#)



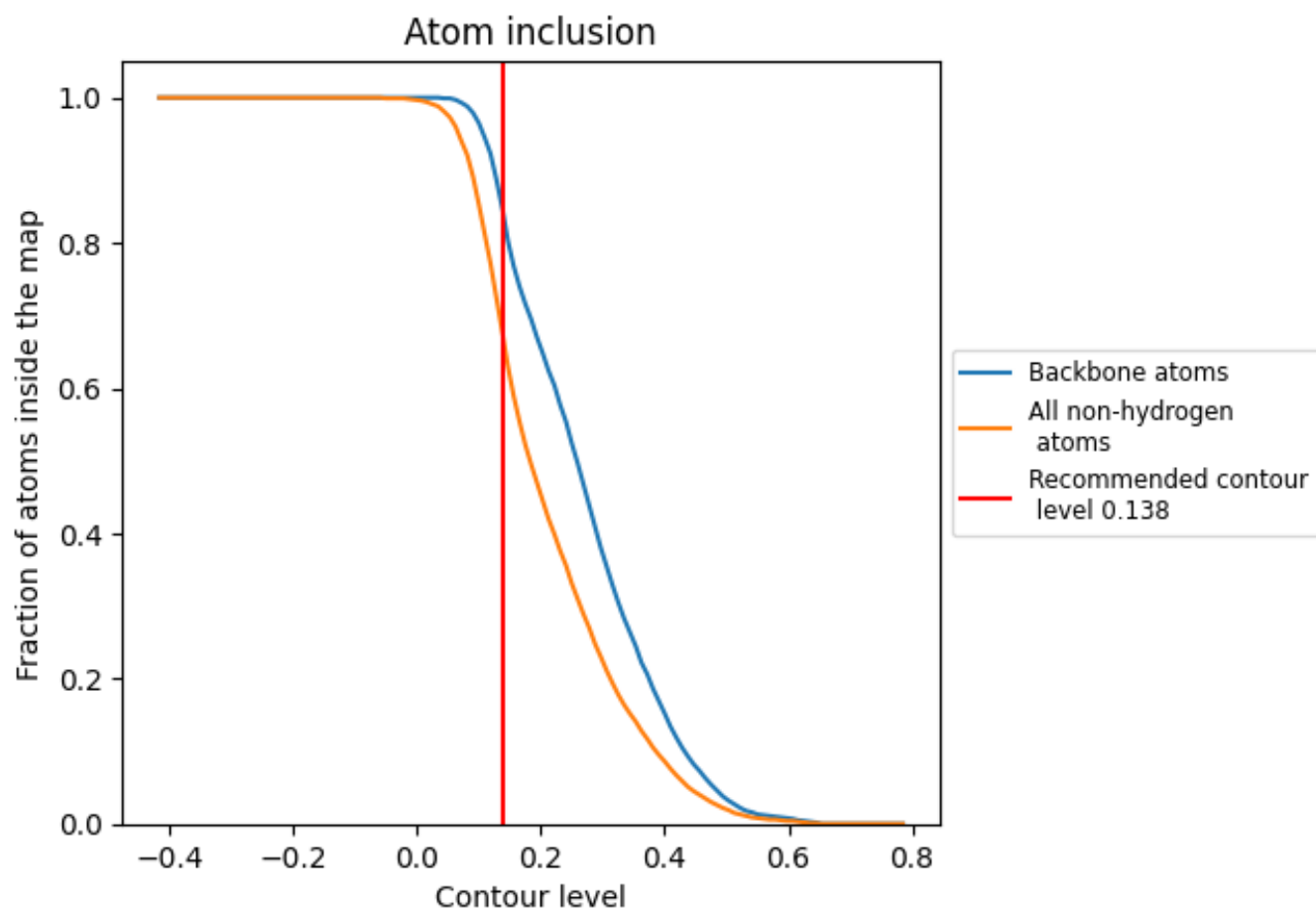
The images above show the model with each residue coloured according to its Q-score. This shows their resolvability in the map with higher Q-score values reflecting better resolvability. Please note: Q-score is calculating the resolvability of atoms, and thus high values are only expected at resolutions at which atoms can be resolved. Low Q-score values may therefore be expected for many entries.

9.3 Atom inclusion mapped to coordinate model [\(i\)](#)



The images above show the model with each residue coloured according to its atom inclusion. This shows to what extent they are inside the map at the recommended contour level (0.138).











9.4 Atom inclusion [i](#)



At the recommended contour level, 84% of all backbone atoms, 67% of all non-hydrogen atoms, are inside the map.

9.5 Map-model fit summary [i](#)

The table lists the average atom inclusion at the recommended contour level (0.138) and Q-score for the entire model and for each chain.

Chain	Atom inclusion	Q-score
All	 0.6740	 0.2680
A	 0.8050	 0.3140
B	 0.8030	 0.3150
C	 0.5070	 0.2090
D	 0.5040	 0.2090

