



# Full wwPDB X-ray Structure Validation Report ⓘ

Jan 17, 2024 – 04:10 PM JST

PDB ID : 8JBR  
Title : Structure of McyA2-CAPCP  
Authors : Peng, Y.J.  
Deposited on : 2023-05-09  
Resolution : 2.50 Å(reported)

This is a Full wwPDB X-ray Structure Validation Report for a publicly released PDB entry.

We welcome your comments at [validation@mail.wwpdb.org](mailto:validation@mail.wwpdb.org)

A user guide is available at

<https://www.wwpdb.org/validation/2017/XrayValidationReportHelp>

with specific help available everywhere you see the ⓘ symbol.

The types of validation reports are described at

<http://www.wwpdb.org/validation/2017/FAQs#types>.

---

The following versions of software and data (see [references ⓘ](#)) were used in the production of this report:

MolProbity : 4.02b-467  
Mogul : 1.8.5 (274361), CSD as541be (2020)  
Xtriage (Phenix) : 1.13  
EDS : 2.36  
buster-report : 1.1.7 (2018)  
Percentile statistics : 20191225.v01 (using entries in the PDB archive December 25th 2019)  
Refmac : 5.8.0158  
CCP4 : 7.0.044 (Gargrove)  
Ideal geometry (proteins) : Engh & Huber (2001)  
Ideal geometry (DNA, RNA) : Parkinson et al. (1996)  
Validation Pipeline (wwPDB-VP) : 2.36

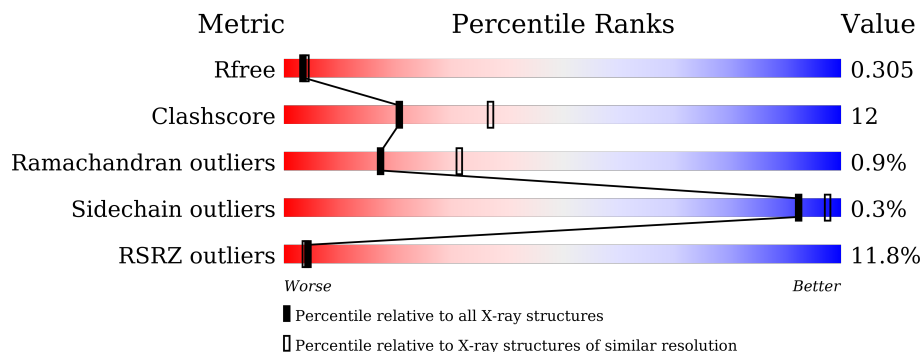
# 1 Overall quality at a glance

The following experimental techniques were used to determine the structure:

*X-RAY DIFFRACTION*

The reported resolution of this entry is 2.50 Å.

Percentile scores (ranging between 0-100) for global validation metrics of the entry are shown in the following graphic. The table shows the number of entries on which the scores are based.



Metric	Whole archive (#Entries)	Similar resolution (#Entries, resolution range(Å))
$R_{free}$	130704	4661 (2.50-2.50)
Clashscore	141614	5346 (2.50-2.50)
Ramachandran outliers	138981	5231 (2.50-2.50)
Sidechain outliers	138945	5233 (2.50-2.50)
RSRZ outliers	127900	4559 (2.50-2.50)

The table below summarises the geometric issues observed across the polymeric chains and their fit to the electron density. The red, orange, yellow and green segments of the lower bar indicate the fraction of residues that contain outliers for  $\geq 3$ , 2, 1 and 0 types of geometric quality criteria respectively. A grey segment represents the fraction of residues that are not modelled. The numeric value for each fraction is indicated below the corresponding segment, with a dot representing fractions  $\leq 5\%$ . The upper red bar (where present) indicates the fraction of residues that have poor fit to the electron density. The numeric value is given above the bar.

Mol	Chain	Length	Quality of chain
1	A	1041	

## 2 Entry composition [i](#)

There are 4 unique types of molecules in this entry. The entry contains 8230 atoms, of which 0 are hydrogens and 0 are deuteriums.

In the tables below, the ZeroOcc column contains the number of atoms modelled with zero occupancy, the AltConf column contains the number of residues with at least one atom in alternate conformation and the Trace column contains the number of residues modelled with at most 2 atoms.

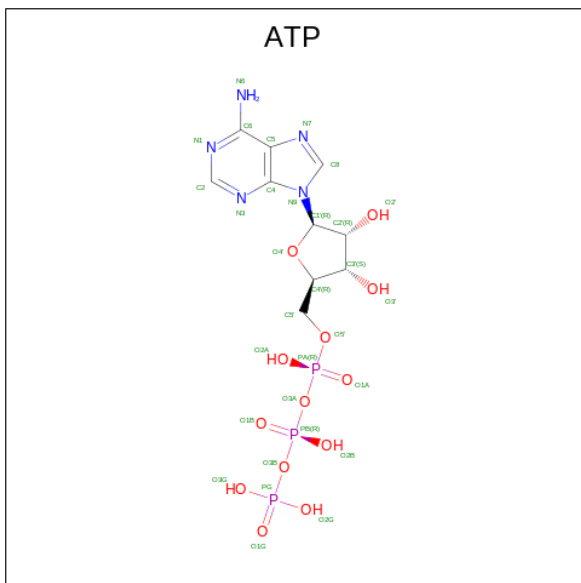
- Molecule 1 is a protein called McyA protein.

Mol	Chain	Residues	Atoms					ZeroOcc	AltConf	Trace
			Total	C	N	O	S			
1	A	1023	8146	5227	1366	1540	13	0	0	0

There is a discrepancy between the modelled and reference sequences:

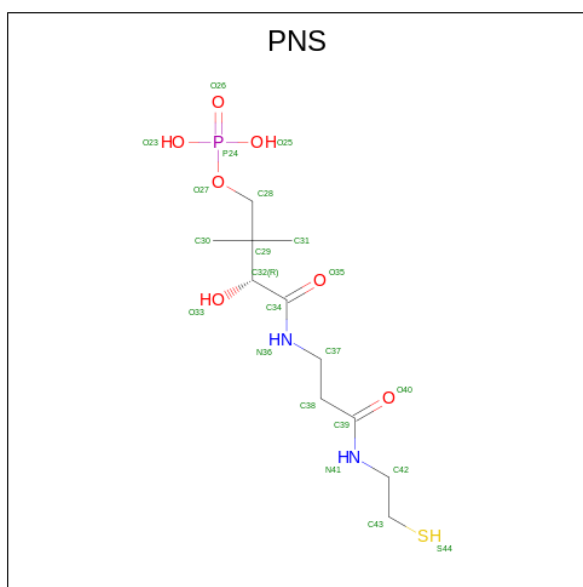
Chain	Residue	Modelled	Actual	Comment	Reference
A	1266	MET	-	initiating methionine	UNP A8YJV7

- Molecule 2 is ADENOSINE-5'-TRIPHOSPHATE (three-letter code: ATP) (formula:  $C_{10}H_{16}N_5O_{13}P_3$ ) (labeled as "Ligand of Interest" by depositor).



Mol	Chain	Residues	Atoms					ZeroOcc	AltConf
			Total	C	N	O	P		
2	A	1	31	10	5	13	3	0	0

- Molecule 3 is 4'-PHOSPHOPANTETHEINE (three-letter code: PNS) (formula:  $C_{11}H_{23}N_2O_7PS$ ) (labeled as "Ligand of Interest" by depositor).



Mol	Chain	Residues	Atoms					ZeroOcc	AltConf	
			Total	C	N	O	P			S
3	A	1	21	11	2	6	1	1	0	0

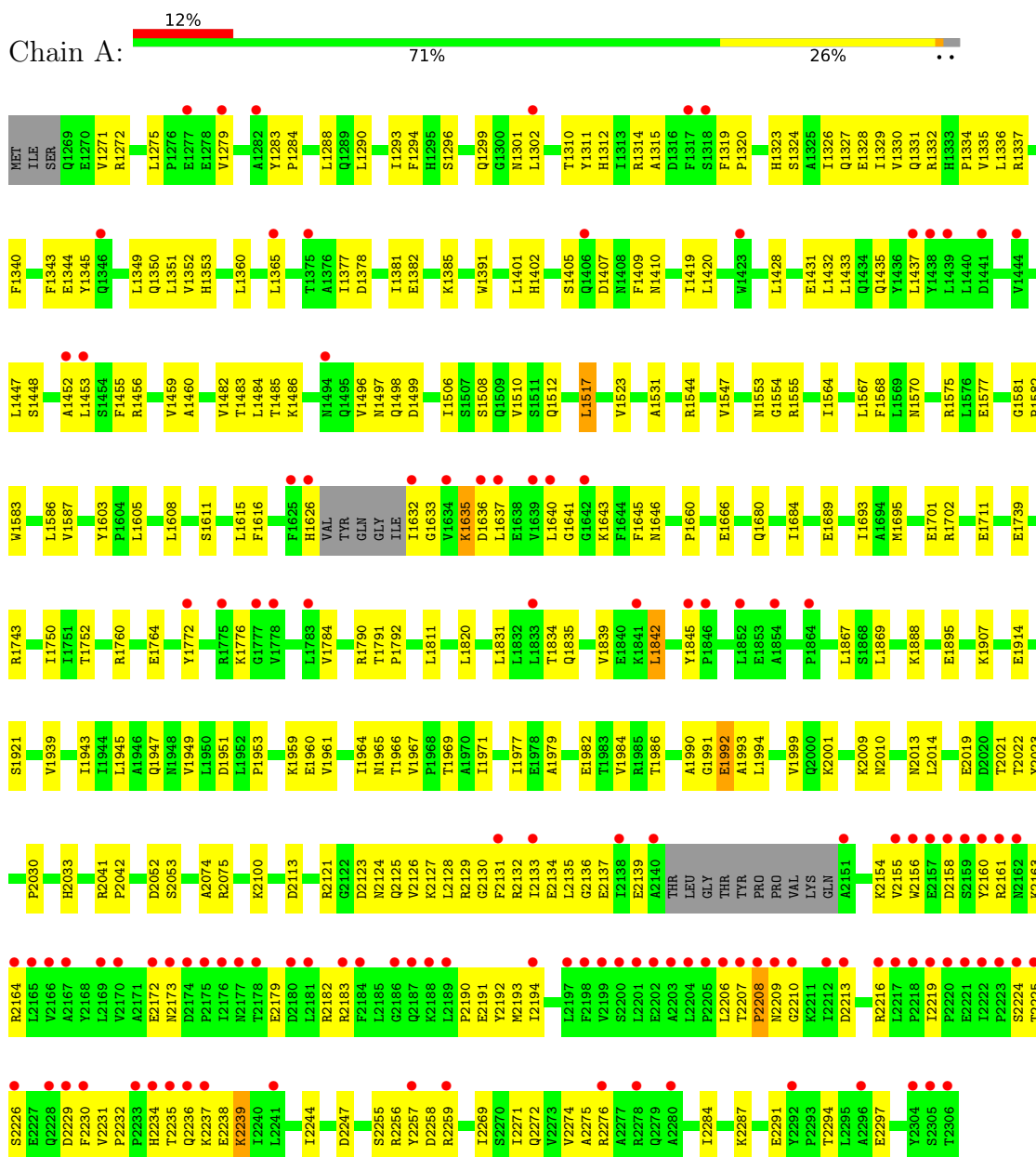
- Molecule 4 is water.

Mol	Chain	Residues	Atoms		ZeroOcc	AltConf
4	A	32	Total	O	0	0
			32	32		

### 3 Residue-property plots

These plots are drawn for all protein, RNA, DNA and oligosaccharide chains in the entry. The first graphic for a chain summarises the proportions of the various outlier classes displayed in the second graphic. The second graphic shows the sequence view annotated by issues in geometry and electron density. Residues are color-coded according to the number of geometric quality criteria for which they contain at least one outlier: green = 0, yellow = 1, orange = 2 and red = 3 or more. A red dot above a residue indicates a poor fit to the electron density ( $RSRZ > 2$ ). Stretches of 2 or more consecutive residues without any outlier are shown as a green connector. Residues present in the sample, but not in the model, are shown in grey.

- Molecule 1: McyA protein



## 4 Data and refinement statistics i

Property	Value	Source
Space group	I 41	Depositor
Cell constants a, b, c, $\alpha$ , $\beta$ , $\gamma$	173.99Å 173.99Å 78.03Å 90.00° 90.00° 90.00°	Depositor
Resolution (Å)	46.55 – 2.50 46.55 – 2.50	Depositor EDS
% Data completeness (in resolution range)	99.7 (46.55-2.50) 99.7 (46.55-2.50)	Depositor EDS
$R_{merge}$	(Not available)	Depositor
$R_{sym}$	0.12	Depositor
$\langle I/\sigma(I) \rangle$ <sup>1</sup>	6.19 (at 2.51Å)	Xtrriage
Refinement program	PHENIX (1.18.2_3874: ???)	Depositor
R, $R_{free}$	0.265 , 0.305 0.265 , 0.305	Depositor DCC
$R_{free}$ test set	1900 reflections (4.70%)	wwPDB-VP
Wilson B-factor (Å <sup>2</sup> )	29.6	Xtrriage
Anisotropy	0.026	Xtrriage
Bulk solvent $k_{sol}$ (e/Å <sup>3</sup> ), $B_{sol}$ (Å <sup>2</sup> )	0.30 , 48.5	EDS
L-test for twinning <sup>2</sup>	$\langle  L  \rangle = 0.44$ , $\langle L^2 \rangle = 0.27$	Xtrriage
Estimated twinning fraction	0.039 for -k,-h,-l	Xtrriage
$F_o, F_c$ correlation	0.86	EDS
Total number of atoms	8230	wwPDB-VP
Average B, all atoms (Å <sup>2</sup> )	43.0	wwPDB-VP

Xtrriage's analysis on translational NCS is as follows: *The largest off-origin peak in the Patterson function is 2.99% of the height of the origin peak. No significant pseudotranslation is detected.*

<sup>1</sup>Intensities estimated from amplitudes.

<sup>2</sup>Theoretical values of  $\langle |L| \rangle$ ,  $\langle L^2 \rangle$  for acentric reflections are 0.5, 0.333 respectively for untwinned datasets, and 0.375, 0.2 for perfectly twinned datasets.

## 5 Model quality [i](#)

### 5.1 Standard geometry [i](#)

Bond lengths and bond angles in the following residue types are not validated in this section: ATP, PNS

The Z score for a bond length (or angle) is the number of standard deviations the observed value is removed from the expected value. A bond length (or angle) with  $|Z| > 5$  is considered an outlier worth inspection. RMSZ is the root-mean-square of all Z scores of the bond lengths (or angles).

Mol	Chain	Bond lengths		Bond angles	
		RMSZ	# Z  >5	RMSZ	# Z  >5
1	A	0.30	1/8327 (0.0%)	0.54	3/11325 (0.0%)

All (1) bond length outliers are listed below:

Mol	Chain	Res	Type	Atoms	Z	Observed(Å)	Ideal(Å)
1	A	2001	LYS	CE-NZ	5.50	1.62	1.49

All (3) bond angle outliers are listed below:

Mol	Chain	Res	Type	Atoms	Z	Observed(°)	Ideal(°)
1	A	1842	LEU	CB-CG-CD2	-6.51	99.93	111.00
1	A	1992	GLU	CA-CB-CG	5.20	124.84	113.40
1	A	1517	LEU	CB-CG-CD2	5.15	119.76	111.00

There are no chirality outliers.

There are no planarity outliers.

### 5.2 Too-close contacts [i](#)

In the following table, the Non-H and H(model) columns list the number of non-hydrogen atoms and hydrogen atoms in the chain respectively. The H(added) column lists the number of hydrogen atoms added and optimized by MolProbity. The Clashes column lists the number of clashes within the asymmetric unit, whereas Symm-Clashes lists symmetry-related clashes.

Mol	Chain	Non-H	H(model)	H(added)	Clashes	Symm-Clashes
1	A	8146	0	8154	202	2
2	A	31	0	12	5	0
3	A	21	0	21	1	0
4	A	32	0	0	1	0

*Continued on next page...*

*Continued from previous page...*

Mol	Chain	Non-H	H(model)	H(added)	Clashes	Symm-Clashes
All	All	8230	0	8187	202	2

The all-atom clashscore is defined as the number of clashes found per 1000 atoms (including hydrogen atoms). The all-atom clashscore for this structure is 12.

All (202) close contacts within the same asymmetric unit are listed below, sorted by their clash magnitude.

Atom-1	Atom-2	Interatomic distance (Å)	Clash overlap (Å)
1:A:1842:LEU:HD21	1:A:1845:TYR:H	1.25	0.98
1:A:1294:PHE:HB2	1:A:2271:ILE:HD11	1.51	0.92
1:A:1605:LEU:HA	1:A:1608:LEU:HD12	1.55	0.86
1:A:1340:PHE:HB2	1:A:1391:TRP:HB3	1.57	0.86
1:A:1435:GLN:HE21	1:A:1447:LEU:HB2	1.42	0.84
1:A:1953:PRO:HG3	1:A:1979:ALA:HB1	1.67	0.76
1:A:1272:ARG:NH2	4:A:2501:HOH:O	2.20	0.74
1:A:1544:ARG:NH2	1:A:2053:SER:H	1.85	0.73
1:A:1485:THR:HA	1:A:2131:PHE:CD1	2.24	0.72
1:A:1484:LEU:HD12	1:A:2130:GLY:H	1.54	0.71
1:A:1752:THR:HG21	1:A:1792:PRO:HD3	1.71	0.71
1:A:1432:LEU:HD22	1:A:1433:LEU:HD22	1.73	0.70
1:A:2244:ILE:HG12	1:A:2276:ARG:HG2	1.73	0.69
1:A:1555:ARG:NH2	1:A:1564:ILE:O	2.25	0.69
1:A:1750:ILE:HG12	1:A:1943:ILE:HB	1.75	0.69
1:A:1284:PRO:HA	1:A:1349:LEU:HA	1.76	0.68
1:A:1335:VAL:HG22	1:A:1419:ILE:HG23	1.75	0.68
1:A:1544:ARG:HH22	1:A:2052:ASP:HB2	1.58	0.67
1:A:1435:GLN:HG3	1:A:1447:LEU:HD22	1.75	0.67
1:A:2156:TRP:O	1:A:2163:LYS:NZ	2.28	0.67
1:A:1632:ILE:HG13	1:A:1633:GLY:H	1.60	0.67
1:A:2163:LYS:HD3	1:A:2164:ARG:H	1.60	0.66
1:A:1301:ASN:OD1	1:A:1302:LEU:N	2.29	0.65
1:A:2192:TYR:CE2	1:A:2193:MET:HG3	2.31	0.65
1:A:2041:ARG:NH2	1:A:2113:ASP:O	2.30	0.65
1:A:1405:SER:OG	1:A:1407:ASP:OD1	2.08	0.65
1:A:1453:LEU:HB2	1:A:1564:ILE:HD12	1.79	0.64
1:A:1531:ALA:HB1	1:A:1586:LEU:HG	1.80	0.63
1:A:1283:TYR:HB2	1:A:1456:ARG:HD3	1.82	0.62
1:A:2014:LEU:O	2:A:2401:ATP:O3'	2.12	0.61
1:A:1991:GLY:H	2:A:2401:ATP:H3'	1.66	0.61
1:A:1553:ASN:O	1:A:1555:ARG:N	2.34	0.61
1:A:1964:ILE:HD11	1:A:1971:ILE:HD13	1.84	0.59

*Continued on next page...*



*Continued from previous page...*

Atom-1	Atom-2	Interatomic distance (Å)	Clash overlap (Å)
1:A:1319:PHE:CD1	1:A:1360:LEU:HD23	2.37	0.59
1:A:2128:LEU:HD23	1:A:2129:ARG:H	1.68	0.59
1:A:1483:THR:HA	1:A:2132:ARG:HD3	1.83	0.59
1:A:2135:LEU:HD12	1:A:2136:GLY:H	1.67	0.59
1:A:1969:THR:OG1	1:A:1992:GLU:OE2	2.10	0.58
1:A:1283:TYR:CB	1:A:1456:ARG:HD3	2.34	0.58
1:A:1315:ALA:O	1:A:1407:ASP:HA	2.03	0.58
1:A:1324:SER:O	1:A:1328:GLU:HG3	2.04	0.57
1:A:1680:GLN:O	1:A:1684:ILE:HG12	2.04	0.57
1:A:1360:LEU:HD11	1:A:1401:LEU:HD23	1.86	0.57
1:A:1842:LEU:HD11	1:A:1845:TYR:HB2	1.88	0.56
1:A:2041:ARG:HB2	1:A:2042:PRO:HD2	1.88	0.56
1:A:1377:ILE:HD13	1:A:1410:ASN:ND2	2.21	0.56
1:A:1772:TYR:O	1:A:1776:LYS:HG2	2.06	0.55
1:A:1312:HIS:HB3	1:A:1640:LEU:HB2	1.87	0.55
1:A:1811:LEU:HB3	1:A:1820:LEU:CD1	2.37	0.55
1:A:2128:LEU:HD23	1:A:2129:ARG:N	2.22	0.55
1:A:1506:ILE:HD12	1:A:1666:GLU:HA	1.89	0.54
1:A:2121:ARG:O	1:A:2125:GLN:NE2	2.41	0.54
1:A:1582:PRO:HA	1:A:1701:GLU:O	2.08	0.54
1:A:2224:SER:O	1:A:2225:THR:OG1	2.17	0.54
1:A:2182:ARG:HG3	1:A:2194:ILE:HG21	1.90	0.53
1:A:2274:VAL:HG22	1:A:2284:ILE:HG13	1.89	0.53
1:A:1790:ARG:HB2	1:A:1947:GLN:OE1	2.07	0.53
1:A:1498:GLN:HB3	1:A:1645:PHE:HE1	1.73	0.53
1:A:1711:GLU:H	1:A:1711:GLU:CD	2.12	0.53
1:A:2172:GLU:N	1:A:2172:GLU:OE1	2.41	0.53
1:A:1544:ARG:NH2	1:A:2052:ASP:HB2	2.22	0.53
1:A:2135:LEU:CD1	1:A:2136:GLY:H	2.22	0.53
1:A:2156:TRP:CD1	1:A:2219:ILE:HD12	2.44	0.52
1:A:1311:TYR:O	1:A:1410:ASN:HA	2.09	0.52
1:A:1544:ARG:HH22	1:A:2053:SER:H	1.58	0.52
1:A:1553:ASN:O	1:A:1553:ASN:OD1	2.26	0.52
1:A:2269:ILE:HA	1:A:2272:GLN:NE2	2.24	0.52
1:A:1336:LEU:HD21	1:A:1428:LEU:HD11	1.91	0.52
1:A:1967:VAL:HG23	1:A:1990:ALA:O	2.10	0.52
1:A:2294:THR:HG21	1:A:2297:GLU:HG3	1.91	0.52
1:A:1508:SER:O	1:A:1512:GLN:HG2	2.10	0.51
1:A:1485:THR:HA	1:A:2131:PHE:CE1	2.46	0.51
1:A:1288:LEU:HG	1:A:1567:LEU:HD21	1.93	0.51
1:A:1689:GLU:O	1:A:1693:ILE:HG12	2.11	0.50

*Continued on next page...*

*Continued from previous page...*

Atom-1	Atom-2	Interatomic distance (Å)	Clash overlap (Å)
1:A:2183:ARG:HG3	1:A:2291:GLU:HB3	1.91	0.50
1:A:1433:LEU:O	1:A:1437:LEU:HG	2.10	0.50
1:A:1967:VAL:HG22	1:A:1992:GLU:OE1	2.11	0.50
1:A:1482:VAL:HG12	1:A:1575:ARG:HD2	1.92	0.50
1:A:1517:LEU:HD12	1:A:1695:MET:O	2.11	0.50
1:A:1635:LYS:O	1:A:1637:LEU:N	2.42	0.50
1:A:2131:PHE:HD2	1:A:2192:TYR:HH	1.59	0.50
1:A:2206:LEU:HD21	1:A:2209:ASN:HA	1.94	0.50
1:A:1455:PHE:O	1:A:1459:VAL:HG23	2.11	0.50
1:A:1977:ILE:HG13	1:A:1979:ALA:HB2	1.93	0.50
1:A:2191:GLU:HA	1:A:2194:ILE:HD12	1.94	0.50
1:A:1419:ILE:HG22	1:A:1420:LEU:HG	1.94	0.50
1:A:1581:GLY:HA2	1:A:1702:ARG:CZ	2.41	0.50
1:A:1867:LEU:HD22	1:A:1869:LEU:HD21	1.94	0.49
1:A:1967:VAL:HG23	1:A:1991:GLY:HA3	1.94	0.49
1:A:1914:GLU:OE1	1:A:1986:THR:OG1	2.25	0.49
1:A:1332:ARG:NH2	1:A:1448:SER:O	2.40	0.49
1:A:1959:LYS:HG3	1:A:1960:GLU:HG2	1.95	0.49
1:A:1385:LYS:HE2	1:A:1498:GLN:HG3	1.95	0.49
1:A:2232:PRO:HD2	1:A:2255:SER:OG	2.13	0.49
1:A:2235:THR:O	1:A:2239:LYS:HE2	2.13	0.49
1:A:2207:THR:HG22	1:A:2208:PRO:HD3	1.94	0.48
1:A:1271:VAL:O	1:A:1275:LEU:HG	2.13	0.48
1:A:2131:PHE:HB3	1:A:2192:TYR:CZ	2.48	0.48
1:A:1319:PHE:HD1	1:A:1360:LEU:HD23	1.77	0.48
1:A:1949:VAL:HG21	1:A:1966:THR:HG21	1.94	0.48
1:A:1739:GLU:HG3	1:A:1743:ARG:CZ	2.43	0.48
1:A:1435:GLN:HE21	1:A:1447:LEU:CB	2.22	0.48
1:A:2158:ASP:OD1	1:A:2160:TYR:HB2	2.14	0.48
1:A:2123:ASP:OD1	1:A:2124:ASN:N	2.46	0.48
1:A:1337:ARG:NH1	1:A:1353:HIS:O	2.39	0.47
1:A:2156:TRP:O	1:A:2156:TRP:CG	2.66	0.47
1:A:2236:GLN:HG3	1:A:2238:GLU:OE1	2.15	0.47
1:A:1310:THR:HG22	1:A:1643:LYS:HB3	1.96	0.47
1:A:1486:LYS:HG3	1:A:2192:TYR:HE1	1.79	0.47
1:A:2154:LYS:HG2	1:A:2155:VAL:N	2.29	0.47
1:A:2172:GLU:HG2	1:A:2173:ASN:N	2.30	0.47
1:A:2135:LEU:HD12	1:A:2136:GLY:N	2.29	0.47
1:A:1319:PHE:CE1	1:A:1360:LEU:HD23	2.50	0.47
1:A:2256:ARG:HG3	1:A:2257:TYR:CD1	2.50	0.47
1:A:2074:ALA:O	1:A:2100:LYS:NZ	2.49	0.46

*Continued on next page...*

*Continued from previous page...*

Atom-1	Atom-2	Interatomic distance (Å)	Clash overlap (Å)
1:A:1314:ARG:HA	1:A:1407:ASP:O	2.15	0.46
1:A:1329:ILE:HD11	1:A:1431:GLU:HB3	1.96	0.46
1:A:1547:VAL:HG12	1:A:1616:PHE:HB3	1.96	0.46
1:A:2207:THR:CG2	1:A:2208:PRO:HD3	2.45	0.46
1:A:1315:ALA:HB3	1:A:1409:PHE:CE2	2.51	0.46
1:A:1497:ASN:O	1:A:1498:GLN:NE2	2.46	0.46
1:A:2163:LYS:HA	1:A:2163:LYS:HE2	1.97	0.46
1:A:1784:VAL:HG23	1:A:1831:LEU:O	2.16	0.46
1:A:1311:TYR:HA	1:A:1641:GLY:HA2	1.98	0.46
1:A:1544:ARG:O	1:A:1577:GLU:HA	2.15	0.46
1:A:1377:ILE:HD13	1:A:1410:ASN:HD22	1.80	0.46
1:A:1965:ASN:OD1	1:A:2023:TYR:OH	2.32	0.46
1:A:2258:ASP:O	1:A:2294:THR:HA	2.16	0.46
1:A:1299:GLN:HG2	1:A:2287:LYS:HD2	1.98	0.45
1:A:2234:HIS:HB2	1:A:2238:GLU:HB2	1.97	0.45
1:A:1791:THR:HB	1:A:1792:PRO:HD2	1.97	0.45
1:A:1964:ILE:CD1	1:A:1971:ILE:HD13	2.46	0.45
1:A:1323:HIS:HA	1:A:1326:ILE:HD12	1.97	0.45
1:A:1296:SER:O	1:A:1302:LEU:HD23	2.16	0.45
1:A:1343:PHE:CD2	1:A:2275:ALA:HB1	2.52	0.45
1:A:1456:ARG:O	1:A:1460:ALA:N	2.32	0.45
1:A:1921:SER:HB2	1:A:1949:VAL:N	2.31	0.45
1:A:1982:GLU:H	1:A:1982:GLU:CD	2.20	0.45
1:A:1334:PRO:HB3	1:A:1352:VAL:HG11	1.98	0.45
1:A:2125:GLN:O	1:A:2134:GLU:HA	2.17	0.45
1:A:2137:GLU:HA	1:A:2139:GLU:OE1	2.16	0.44
1:A:1327:GLN:HA	1:A:1330:VAL:HG22	2.00	0.44
1:A:1344:GLU:H	1:A:1344:GLU:CD	2.20	0.44
1:A:1510:VAL:HG21	1:A:1693:ILE:CD1	2.46	0.44
1:A:1523:VAL:HG21	1:A:1587:VAL:HG12	2.00	0.44
1:A:1992:GLU:O	2:A:2401:ATP:H2'	2.16	0.44
1:A:1279:VAL:HG21	1:A:1351:LEU:HD23	2.00	0.44
1:A:1553:ASN:O	1:A:1555:ARG:HG2	2.17	0.44
1:A:1331:GLN:HA	1:A:1337:ARG:HE	1.83	0.44
1:A:1842:LEU:CD2	1:A:1845:TYR:H	2.13	0.44
1:A:1570:ASN:ND2	1:A:1603:TYR:O	2.44	0.43
1:A:2229:ASP:O	1:A:2231:VAL:HG12	2.17	0.43
1:A:1907:LYS:HE3	1:A:1939:VAL:HG12	1.98	0.43
1:A:1497:ASN:C	1:A:1498:GLN:HE21	2.22	0.43
1:A:2013:ASN:OD1	2:A:2401:ATP:O2'	2.32	0.43
1:A:2213:ASP:OD2	1:A:2216:ARG:HB2	2.19	0.43

*Continued on next page...*

*Continued from previous page...*

Atom-1	Atom-2	Interatomic distance (Å)	Clash overlap (Å)
1:A:1486:LYS:HG3	1:A:2192:TYR:CE1	2.54	0.43
1:A:1611:SER:HA	3:A:2402:PNS:O23	2.18	0.43
1:A:2009:LYS:HE3	1:A:2010:ASN:OD1	2.18	0.43
1:A:2137:GLU:O	1:A:2137:GLU:HG2	2.19	0.43
1:A:2294:THR:HG23	1:A:2297:GLU:H	1.82	0.43
1:A:1947:GLN:HB2	1:A:1951:ASP:OD2	2.19	0.43
1:A:2190:PRO:HB2	1:A:2192:TYR:CE1	2.53	0.43
1:A:1283:TYR:O	1:A:1350:GLN:N	2.36	0.43
1:A:1290:LEU:HD23	1:A:1293:ILE:HD11	2.01	0.43
1:A:1453:LEU:CB	1:A:1564:ILE:HD12	2.46	0.43
1:A:2019:GLU:OE1	1:A:2019:GLU:N	2.52	0.43
1:A:1319:PHE:HB3	1:A:1320:PRO:HD3	2.02	0.42
1:A:1343:PHE:O	1:A:2276:ARG:NH1	2.51	0.42
1:A:1583:TRP:O	1:A:1587:VAL:HG23	2.19	0.42
1:A:1310:THR:HB	1:A:1381:ILE:HD11	2.00	0.42
1:A:1344:GLU:HG2	1:A:1345:TYR:HD2	1.85	0.42
1:A:1839:VAL:O	1:A:1842:LEU:HB3	2.20	0.42
1:A:1378:ASP:O	1:A:1382:GLU:HG2	2.19	0.42
1:A:2158:ASP:CG	1:A:2163:LYS:HZ1	2.22	0.42
1:A:1993:ALA:HA	2:A:2401:ATP:C5	2.54	0.42
1:A:1365:LEU:HD21	1:A:1402:HIS:HB3	2.02	0.42
1:A:1752:THR:HG22	1:A:1945:LEU:HD23	2.02	0.42
1:A:1510:VAL:HG21	1:A:1693:ILE:HD13	2.02	0.41
1:A:2131:PHE:HB3	1:A:2192:TYR:CE2	2.55	0.41
1:A:1496:VAL:CG1	1:A:1499:ASP:HB3	2.50	0.41
1:A:1961:VAL:HG12	1:A:1984:VAL:HG22	2.02	0.41
1:A:2172:GLU:HG2	1:A:2173:ASN:H	1.86	0.41
1:A:2225:THR:O	1:A:2226:SER:OG	2.36	0.41
1:A:1431:GLU:HG2	1:A:1447:LEU:HD11	2.03	0.41
1:A:1498:GLN:HB3	1:A:1645:PHE:CE1	2.54	0.41
1:A:2131:PHE:CE1	1:A:2133:ILE:HG23	2.54	0.41
1:A:1626:HIS:HA	1:A:1660:PRO:HB3	2.02	0.41
1:A:1646:ASN:OD1	1:A:1646:ASN:N	2.53	0.41
1:A:2131:PHE:HD2	1:A:2192:TYR:OH	2.03	0.41
1:A:1555:ARG:NH1	1:A:1568:PHE:HD2	2.19	0.41
1:A:1760:ARG:O	1:A:1764:GLU:HG3	2.21	0.41
1:A:2030:PRO:HB2	1:A:2033:HIS:HB2	2.03	0.41
1:A:1343:PHE:HD2	1:A:2275:ALA:HB1	1.84	0.41
1:A:1484:LEU:HD22	1:A:1615:LEU:O	2.20	0.41
1:A:1484:LEU:O	1:A:2131:PHE:HD1	2.04	0.41
1:A:2021:THR:HG22	1:A:2022:THR:H	1.86	0.41

*Continued on next page...*

Continued from previous page...

Atom-1	Atom-2	Interatomic distance (Å)	Clash overlap (Å)
1:A:2163:LYS:CD	1:A:2164:ARG:H	2.31	0.41
1:A:1834:THR:HG22	1:A:1835:GLN:N	2.36	0.41
1:A:1895:GLU:OE1	1:A:2075:ARG:HD2	2.21	0.41
1:A:2179:GLU:HG3	1:A:2259:ARG:HH22	1.86	0.40
1:A:1994:LEU:CD2	1:A:1999:VAL:HG13	2.52	0.40

All (2) symmetry-related close contacts are listed below. The label for Atom-2 includes the symmetry operator and encoded unit-cell translations to be applied.

Atom-1	Atom-2	Interatomic distance (Å)	Clash overlap (Å)
1:A:1701:GLU:OE1	1:A:1888:LYS:NZ[6_555]	1.99	0.21
1:A:2219:ILE:O	1:A:2237:LYS:NZ[8_545]	2.08	0.12

## 5.3 Torsion angles [i](#)

### 5.3.1 Protein backbone [i](#)

In the following table, the Percentiles column shows the percent Ramachandran outliers of the chain as a percentile score with respect to all X-ray entries followed by that with respect to entries of similar resolution.

The Analysed column shows the number of residues for which the backbone conformation was analysed, and the total number of residues.

Mol	Chain	Analysed	Favoured	Allowed	Outliers	Percentiles
1	A	1017/1041 (98%)	932 (92%)	76 (8%)	9 (1%)	<b>17</b> <b>31</b>

All (9) Ramachandran outliers are listed below:

Mol	Chain	Res	Type
1	A	1554	GLY
1	A	2126	VAL
1	A	2208	PRO
1	A	1452	ALA
1	A	2239	LYS
1	A	1636	ASP
1	A	1635	LYS
1	A	2230	PHE
1	A	2210	GLY

### 5.3.2 Protein sidechains [i](#)

In the following table, the Percentiles column shows the percent sidechain outliers of the chain as a percentile score with respect to all X-ray entries followed by that with respect to entries of similar resolution.

The Analysed column shows the number of residues for which the sidechain conformation was analysed, and the total number of residues.

Mol	Chain	Analysed	Rotameric	Outliers	Percentiles
1	A	903/919 (98%)	900 (100%)	3 (0%)	<a href="#">92</a> <a href="#">97</a>

All (3) residues with a non-rotameric sidechain are listed below:

Mol	Chain	Res	Type
1	A	2127	LYS
1	A	2161	ARG
1	A	2247	ASP

Sometimes sidechains can be flipped to improve hydrogen bonding and reduce clashes. All (4) such sidechains are listed below:

Mol	Chain	Res	Type
1	A	1434	GLN
1	A	1435	GLN
1	A	1553	ASN
1	A	1712	GLN

### 5.3.3 RNA [i](#)

There are no RNA molecules in this entry.

## 5.4 Non-standard residues in protein, DNA, RNA chains [i](#)

There are no non-standard protein/DNA/RNA residues in this entry.

## 5.5 Carbohydrates [i](#)

There are no monosaccharides in this entry.

## 5.6 Ligand geometry

2 ligands are modelled in this entry.

In the following table, the Counts columns list the number of bonds (or angles) for which Mogul statistics could be retrieved, the number of bonds (or angles) that are observed in the model and the number of bonds (or angles) that are defined in the Chemical Component Dictionary. The Link column lists molecule types, if any, to which the group is linked. The Z score for a bond length (or angle) is the number of standard deviations the observed value is removed from the expected value. A bond length (or angle) with  $|Z| > 2$  is considered an outlier worth inspection. RMSZ is the root-mean-square of all Z scores of the bond lengths (or angles).

Mol	Type	Chain	Res	Link	Bond lengths			Bond angles		
					Counts	RMSZ	# Z  > 2	Counts	RMSZ	# Z  > 2
2	ATP	A	2401	-	26,33,33	0.94	1 (3%)	31,52,52	1.47	4 (12%)
3	PNS	A	2402	1	13,20,21	2.42	4 (30%)	18,26,29	1.44	3 (16%)

In the following table, the Chirals column lists the number of chiral outliers, the number of chiral centers analysed, the number of these observed in the model and the number defined in the Chemical Component Dictionary. Similar counts are reported in the Torsion and Rings columns. '-' means no outliers of that kind were identified.

Mol	Type	Chain	Res	Link	Chirals	Torsions	Rings
2	ATP	A	2401	-	-	6/18/38/38	0/3/3/3
3	PNS	A	2402	1	-	8/24/26/27	-

All (5) bond length outliers are listed below:

Mol	Chain	Res	Type	Atoms	Z	Observed(Å)	Ideal(Å)
3	A	2402	PNS	C39-N41	5.52	1.45	1.33
3	A	2402	PNS	C34-N36	5.49	1.45	1.33
2	A	2401	ATP	C5-C4	2.49	1.47	1.40
3	A	2402	PNS	O40-C39	-2.21	1.18	1.23
3	A	2402	PNS	O35-C34	-2.11	1.19	1.23

All (7) bond angle outliers are listed below:

Mol	Chain	Res	Type	Atoms	Z	Observed(°)	Ideal(°)
3	A	2402	PNS	C37-C38-C39	-3.62	106.32	112.36
2	A	2401	ATP	N3-C2-N1	-3.25	123.60	128.68
2	A	2401	ATP	PA-O3A-PB	-3.13	122.08	132.83
2	A	2401	ATP	C4-C5-N7	-2.76	106.52	109.40
2	A	2401	ATP	PB-O3B-PG	-2.73	123.47	132.83
3	A	2402	PNS	C38-C39-N41	2.23	120.18	116.42

*Continued on next page...*

*Continued from previous page...*

Mol	Chain	Res	Type	Atoms	Z	Observed(°)	Ideal(°)
3	A	2402	PNS	O40-C39-C38	-2.14	118.10	122.02

There are no chirality outliers.

All (14) torsion outliers are listed below:

Mol	Chain	Res	Type	Atoms
2	A	2401	ATP	C5'-O5'-PA-O1A
2	A	2401	ATP	O4'-C4'-C5'-O5'
2	A	2401	ATP	C3'-C4'-C5'-O5'
3	A	2402	PNS	C28-C29-C32-O33
3	A	2402	PNS	C28-C29-C32-C34
3	A	2402	PNS	C30-C29-C32-O33
3	A	2402	PNS	C30-C29-C32-C34
3	A	2402	PNS	C31-C29-C32-O33
3	A	2402	PNS	C31-C29-C32-C34
3	A	2402	PNS	C43-C42-N41-C39
2	A	2401	ATP	C4'-C5'-O5'-PA
2	A	2401	ATP	C5'-O5'-PA-O3A
3	A	2402	PNS	N36-C37-C38-C39
2	A	2401	ATP	PA-O3A-PB-O2B

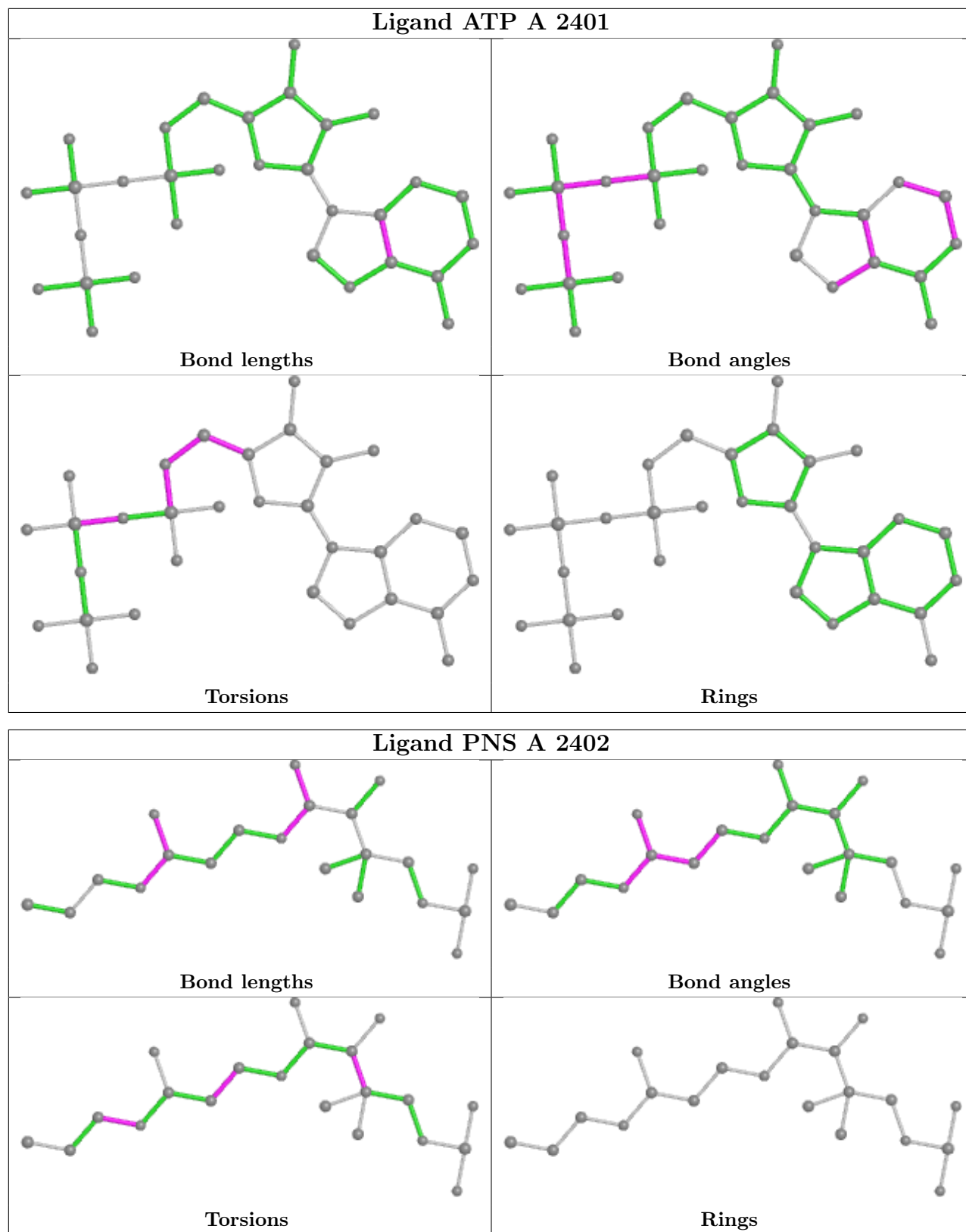
There are no ring outliers.

2 monomers are involved in 6 short contacts:

Mol	Chain	Res	Type	Clashes	Symm-Clashes
2	A	2401	ATP	5	0
3	A	2402	PNS	1	0

The following is a two-dimensional graphical depiction of Mogul quality analysis of bond lengths, bond angles, torsion angles, and ring geometry for all instances of the Ligand of Interest. In addition, ligands with molecular weight > 250 and outliers as shown on the validation Tables will also be included. For torsion angles, if less than 5% of the Mogul distribution of torsion angles is within 10 degrees of the torsion angle in question, then that torsion angle is considered an outlier. Any bond that is central to one or more torsion angles identified as an outlier by Mogul will be highlighted in the graph. For rings, the root-mean-square deviation (RMSD) between the ring in question and similar rings identified by Mogul is calculated over all ring torsion angles. If the average RMSD is greater than 60 degrees and the minimal RMSD between the ring in question and any Mogul-identified rings is also greater than 60 degrees, then that ring is considered an outlier. The outliers are highlighted in purple. The color gray indicates Mogul did not find sufficient equivalents in the CSD to analyse the geometry.





## 5.7 Other polymers [\(i\)](#)

There are no such residues in this entry.

## 5.8 Polymer linkage issues

There are no chain breaks in this entry.

## 6 Fit of model and data

### 6.1 Protein, DNA and RNA chains

In the following table, the column labelled ‘#RSRZ > 2’ contains the number (and percentage) of RSRZ outliers, followed by percent RSRZ outliers for the chain as percentile scores relative to all X-ray entries and entries of similar resolution. The OWAB column contains the minimum, median, 95<sup>th</sup> percentile and maximum values of the occupancy-weighted average B-factor per residue. The column labelled ‘Q < 0.9’ lists the number of (and percentage) of residues with an average occupancy less than 0.9.

Mol	Chain	Analysed	<RSRZ>	#RSRZ>2	OWAB(Å <sup>2</sup> )	Q<0.9
1	A	1023/1041 (98%)	0.70	121 (11%) <b>4</b> <b>4</b>	9, 39, 101, 133	0

All (121) RSRZ outliers are listed below:

Mol	Chain	Res	Type	RSRZ
1	A	2176	ILE	14.6
1	A	2207	THR	10.5
1	A	2169	LEU	8.7
1	A	2222	ILE	8.4
1	A	2209	ASN	8.3
1	A	2187	GLN	8.1
1	A	2131	PHE	8.0
1	A	2225	THR	8.0
1	A	2220	PRO	7.8
1	A	2198	PHE	7.7
1	A	2200	SER	7.5
1	A	2160	TYR	7.4
1	A	2186	GLY	7.0
1	A	2226	SER	6.9
1	A	2223	PRO	6.4
1	A	2156	TRP	6.2
1	A	1637	LEU	6.2
1	A	2158	ASP	6.0
1	A	2199	VAL	5.9
1	A	1854	ALA	5.9
1	A	2159	SER	5.7
1	A	2217	LEU	5.6
1	A	2234	HIS	5.5
1	A	2175	PRO	5.5
1	A	2235	THR	5.5
1	A	2184	PHE	5.3
1	A	2167	ALA	5.2

*Continued on next page...*

*Continued from previous page...*

<b>Mol</b>	<b>Chain</b>	<b>Res</b>	<b>Type</b>	<b>RSRZ</b>
1	A	2212	ILE	5.2
1	A	2177	ASN	5.0
1	A	2157	GLU	5.0
1	A	2165	LEU	5.0
1	A	2233	PRO	5.0
1	A	2304	TYR	4.9
1	A	1346	GLN	4.9
1	A	2189	LEU	4.8
1	A	2201	LEU	4.8
1	A	2170	VAL	4.7
1	A	2188	LYS	4.6
1	A	2204	LEU	4.5
1	A	1444	VAL	4.5
1	A	1441	ASP	4.4
1	A	2221	GLU	4.2
1	A	1639	VAL	4.2
1	A	1846	PRO	4.2
1	A	1632	ILE	4.2
1	A	2208	PRO	4.2
1	A	2306	THR	4.1
1	A	2183	ARG	4.1
1	A	2224	SER	3.9
1	A	2228	GLN	3.9
1	A	2164	ARG	3.9
1	A	2229	ASP	3.8
1	A	2155	VAL	3.7
1	A	2162	ASN	3.7
1	A	1282	ALA	3.7
1	A	2174	ASP	3.6
1	A	1452	ALA	3.6
1	A	2166	VAL	3.5
1	A	1279	VAL	3.5
1	A	2173	ASN	3.5
1	A	2206	LEU	3.5
1	A	2259	ARG	3.4
1	A	1841	LYS	3.3
1	A	2241	LEU	3.3
1	A	1626	HIS	3.3
1	A	2138	ILE	3.3
1	A	2216	ARG	3.2
1	A	1777	GLY	3.2
1	A	2180	ASP	3.2

*Continued on next page...*

*Continued from previous page...*

<b>Mol</b>	<b>Chain</b>	<b>Res</b>	<b>Type</b>	<b>RSRZ</b>
1	A	2219	ILE	3.2
1	A	2202	GLU	3.2
1	A	1636	ASP	3.2
1	A	1406	GLN	3.2
1	A	1778	VAL	3.0
1	A	2230	PHE	3.0
1	A	1845	TYR	3.0
1	A	2205	PRO	2.9
1	A	2257	TYR	2.9
1	A	2181	LEU	2.8
1	A	2203	ALA	2.8
1	A	1775	ARG	2.8
1	A	2305	SER	2.8
1	A	1453	LEU	2.7
1	A	1439	LEU	2.7
1	A	1375	THR	2.6
1	A	1864	PRO	2.6
1	A	2236	GLN	2.6
1	A	2237	LYS	2.6
1	A	1634	VAL	2.5
1	A	2161	ARG	2.5
1	A	2276	ARG	2.5
1	A	1494	ASN	2.5
1	A	1852	LEU	2.4
1	A	2292	TYR	2.4
1	A	2194	ILE	2.4
1	A	1277	GLU	2.4
1	A	1438	TYR	2.4
1	A	1642	GLY	2.4
1	A	2296	ALA	2.4
1	A	1625	PHE	2.3
1	A	2172	GLU	2.3
1	A	1833	LEU	2.3
1	A	1423	TRP	2.3
1	A	1302	LEU	2.3
1	A	1640	LEU	2.3
1	A	2210	GLY	2.3
1	A	2197	LEU	2.3
1	A	2178	THR	2.2
1	A	1437	LEU	2.2
1	A	1772	TYR	2.2
1	A	2218	PRO	2.2

*Continued on next page...*

*Continued from previous page...*

Mol	Chain	Res	Type	RSRZ
1	A	2280	ALA	2.2
1	A	2151	ALA	2.2
1	A	2133	ILE	2.1
1	A	1318	SER	2.1
1	A	2140	ALA	2.1
1	A	1365	LEU	2.1
1	A	1783	LEU	2.1
1	A	2278	ARG	2.1
1	A	1317	PHE	2.0
1	A	2213	ASP	2.0

## 6.2 Non-standard residues in protein, DNA, RNA chains [i](#)

There are no non-standard protein/DNA/RNA residues in this entry.

## 6.3 Carbohydrates [i](#)

There are no monosaccharides in this entry.

## 6.4 Ligands [i](#)

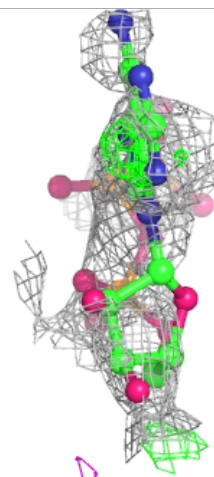
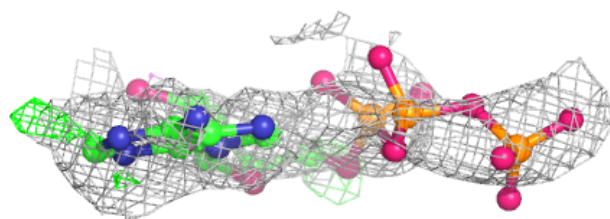
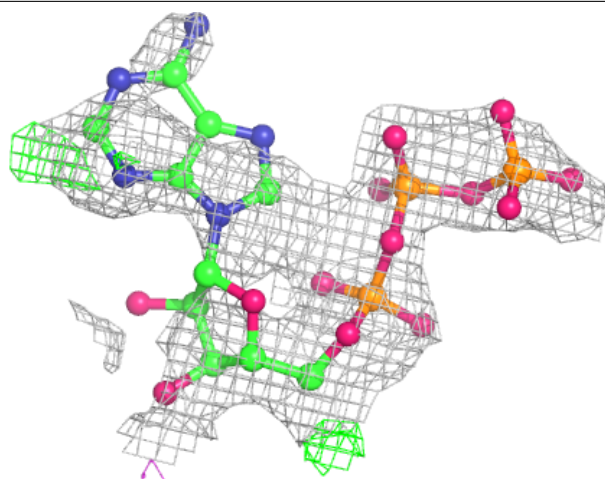
In the following table, the Atoms column lists the number of modelled atoms in the group and the number defined in the chemical component dictionary. The B-factors column lists the minimum, median, 95<sup>th</sup> percentile and maximum values of B factors of atoms in the group. The column labelled 'Q< 0.9' lists the number of atoms with occupancy less than 0.9.

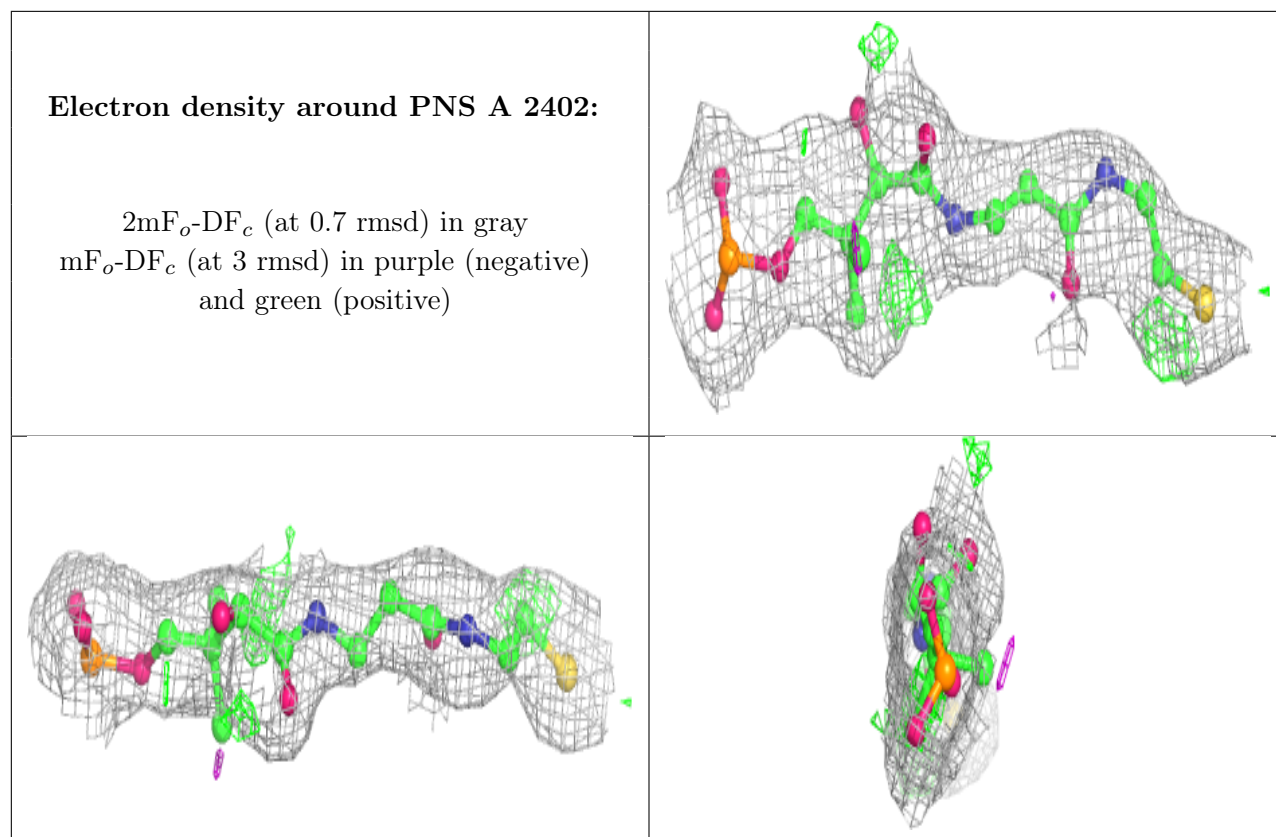
Mol	Type	Chain	Res	Atoms	RSCC	RSR	B-factors( $\text{\AA}^2$ )	Q<0.9
2	ATP	A	2401	31/31	0.70	0.39	28,38,51,55	31
3	PNS	A	2402	21/22	0.91	0.20	19,36,44,55	0

The following is a graphical depiction of the model fit to experimental electron density of all instances of the Ligand of Interest. In addition, ligands with molecular weight > 250 and outliers as shown on the geometry validation Tables will also be included. Each fit is shown from different orientation to approximate a three-dimensional view.

**Electron density around ATP A 2401:**

$2mF_o-DF_c$  (at 0.7 rmsd) in gray  
 $mF_o-DF_c$  (at 3 rmsd) in purple (negative)  
and green (positive)





## 6.5 Other polymers [i](#)

There are no such residues in this entry.