



Full wwPDB X-ray Structure Validation Report ⓘ

Aug 21, 2023 – 03:12 PM EDT

PDB ID : 8GK8
Title : R21A Staphylococcus aureus pyruvate carboxylase
Authors : Laseke, A.J.; St.Maurice, M.
Deposited on : 2023-03-17
Resolution : 2.68 Å(reported)

This is a Full wwPDB X-ray Structure Validation Report for a publicly released PDB entry.

We welcome your comments at validation@mail.wwpdb.org

A user guide is available at

<https://www.wwpdb.org/validation/2017/XrayValidationReportHelp>

with specific help available everywhere you see the ⓘ symbol.

The types of validation reports are described at

<http://www.wwpdb.org/validation/2017/FAQs#types>.

The following versions of software and data (see [references ⓘ](#)) were used in the production of this report:

MolProbity : 4.02b-467
Mogul : 1.8.5 (274361), CSD as541be (2020)
Xtriage (Phenix) : 1.13
EDS : 2.35
buster-report : 1.1.7 (2018)
Percentile statistics : 20191225.v01 (using entries in the PDB archive December 25th 2019)
Refmac : 5.8.0158
CCP4 : 7.0.044 (Gargrove)
Ideal geometry (proteins) : Engh & Huber (2001)
Ideal geometry (DNA, RNA) : Parkinson et al. (1996)
Validation Pipeline (wwPDB-VP) : 2.35

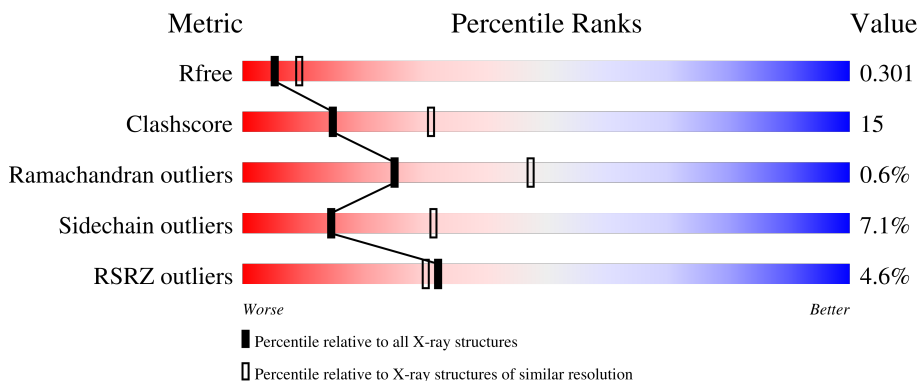
1 Overall quality at a glance

The following experimental techniques were used to determine the structure:

X-RAY DIFFRACTION

The reported resolution of this entry is 2.68 Å.

Percentile scores (ranging between 0-100) for global validation metrics of the entry are shown in the following graphic. The table shows the number of entries on which the scores are based.



Metric	Whole archive (#Entries)	Similar resolution (#Entries, resolution range(Å))
R_{free}	130704	3863 (2.70-2.66)
Clashscore	141614	4210 (2.70-2.66)
Ramachandran outliers	138981	4141 (2.70-2.66)
Sidechain outliers	138945	4141 (2.70-2.66)
RSRZ outliers	127900	3780 (2.70-2.66)

The table below summarises the geometric issues observed across the polymeric chains and their fit to the electron density. The red, orange, yellow and green segments of the lower bar indicate the fraction of residues that contain outliers for ≥ 3 , 2, 1 and 0 types of geometric quality criteria respectively. A grey segment represents the fraction of residues that are not modelled. The numeric value for each fraction is indicated below the corresponding segment, with a dot representing fractions $\leq 5\%$. The upper red bar (where present) indicates the fraction of residues that have poor fit to the electron density. The numeric value is given above the bar.

Mol	Chain	Length	Quality of chain
1	A	1151	 6% (poor fit), 62% (0 outliers), 26% (1 outlier), 10% (2+ outliers)
1	B	1151	 3% (poor fit), 63% (0 outliers), 26% (1 outlier), 9% (2+ outliers)
1	C	1151	 2% (poor fit), 56% (0 outliers), 29% (1 outlier), 14% (2+ outliers)
1	D	1151	 6% (poor fit), 53% (0 outliers), 26% (1 outlier), 17% (2+ outliers)

The following table lists non-polymeric compounds, carbohydrate monomers and non-standard

residues in protein, DNA, RNA chains that are outliers for geometric or electron-density-fit criteria:

Mol	Type	Chain	Res	Chirality	Geometry	Clashes	Electron density
2	BTI	C	1204	-	-	X	-

2 Entry composition

There are 6 unique types of molecules in this entry. The entry contains 31053 atoms, of which 0 are hydrogens and 0 are deuteriums.

In the tables below, the ZeroOcc column contains the number of atoms modelled with zero occupancy, the AltConf column contains the number of residues with at least one atom in alternate conformation and the Trace column contains the number of residues modelled with at most 2 atoms.

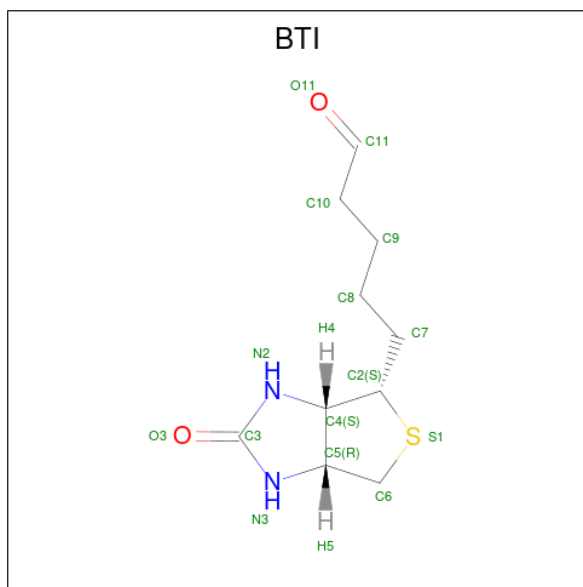
- Molecule 1 is a protein called Pyruvate carboxylase.

Mol	Chain	Residues	Atoms					ZeroOcc	AltConf	Trace
			Total	C	N	O	S			
1	C	993	7687	4881	1290	1488	28	0	2	0
1	B	1053	8029	5102	1348	1551	28	0	0	0
1	D	950	7205	4585	1213	1381	26	0	0	0
1	A	1041	7691	4883	1298	1484	26	0	0	0

There are 12 discrepancies between the modelled and reference sequences:

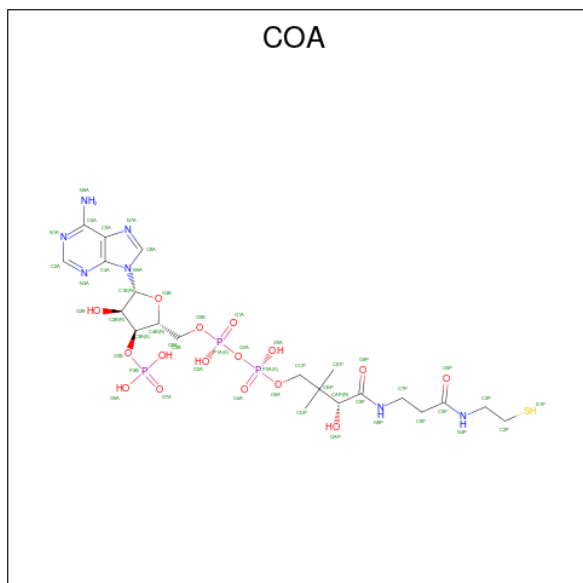
Chain	Residue	Modelled	Actual	Comment	Reference
C	21	ALA	ARG	engineered mutation	UNP A0A3A5LTU8
C	1150	ASN	-	expression tag	UNP A0A3A5LTU8
C	1151	CYS	-	expression tag	UNP A0A3A5LTU8
B	21	ALA	ARG	engineered mutation	UNP A0A3A5LTU8
B	1150	ASN	-	expression tag	UNP A0A3A5LTU8
B	1151	CYS	-	expression tag	UNP A0A3A5LTU8
D	21	ALA	ARG	engineered mutation	UNP A0A3A5LTU8
D	1150	ASN	-	expression tag	UNP A0A3A5LTU8
D	1151	CYS	-	expression tag	UNP A0A3A5LTU8
A	21	ALA	ARG	engineered mutation	UNP A0A3A5LTU8
A	1150	ASN	-	expression tag	UNP A0A3A5LTU8
A	1151	CYS	-	expression tag	UNP A0A3A5LTU8

- Molecule 2 is 5-(HEXAHYDRO-2-OXO-1H-THIENO[3,4-D]IMIDAZOL-6-YL)PENTANAL (three-letter code: BTI) (formula: C₁₀H₁₆N₂O₂S).



Mol	Chain	Residues	Atoms					ZeroOcc	AltConf
			Total	C	N	O	S		
2	C	1	Total	C	N	O	S	0	0
			15	10	2	2	1		
2	C	1	Total	C	N	O	S	0	0
			15	10	2	2	1		
2	B	1	Total	C	N	O	S	0	0
			15	10	2	2	1		
2	A	1	Total	C	N	O	S	0	0
			15	10	2	2	1		

- Molecule 3 is COENZYME A (three-letter code: COA) (formula: $C_{21}H_{36}N_7O_{16}P_3S$).

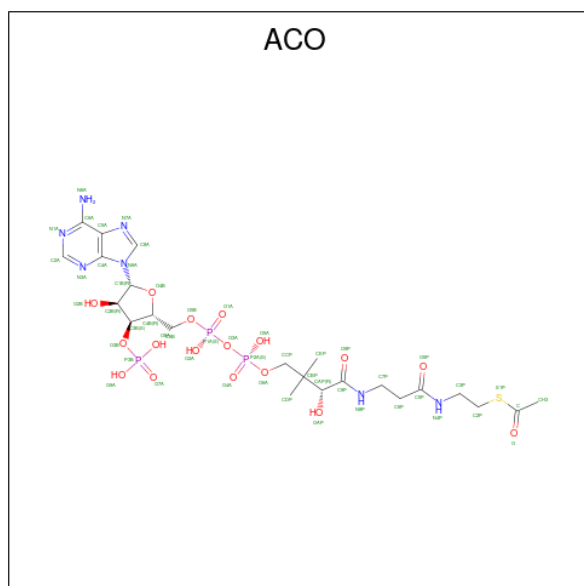


Mol	Chain	Residues	Atoms					ZeroOcc	AltConf	
			Total	C	N	O	P			S
3	C	1	48	21	7	16	3	1	0	0

- Molecule 4 is MANGANESE (II) ION (three-letter code: MN) (formula: Mn).

Mol	Chain	Residues	Atoms		ZeroOcc	AltConf
4	C	1	Total	Mn	0	0
			1	1		
4	B	1	Total	Mn	0	0
			1	1		
4	D	1	Total	Mn	0	0
			1	1		
4	A	1	Total	Mn	0	0
			1	1		

- Molecule 5 is ACETYL COENZYME *A (three-letter code: ACO) (formula: C₂₃H₃₈N₇O₁₇P₃S) (labeled as "Ligand of Interest" by depositor).



Mol	Chain	Residues	Atoms					ZeroOcc	AltConf	
			Total	C	N	O	P			S
5	A	1	51	23	7	17	3	1	0	0

- Molecule 6 is water.

Mol	Chain	Residues	Atoms		ZeroOcc	AltConf
6	C	85	Total	O	0	0
			85	85		

Continued on next page...

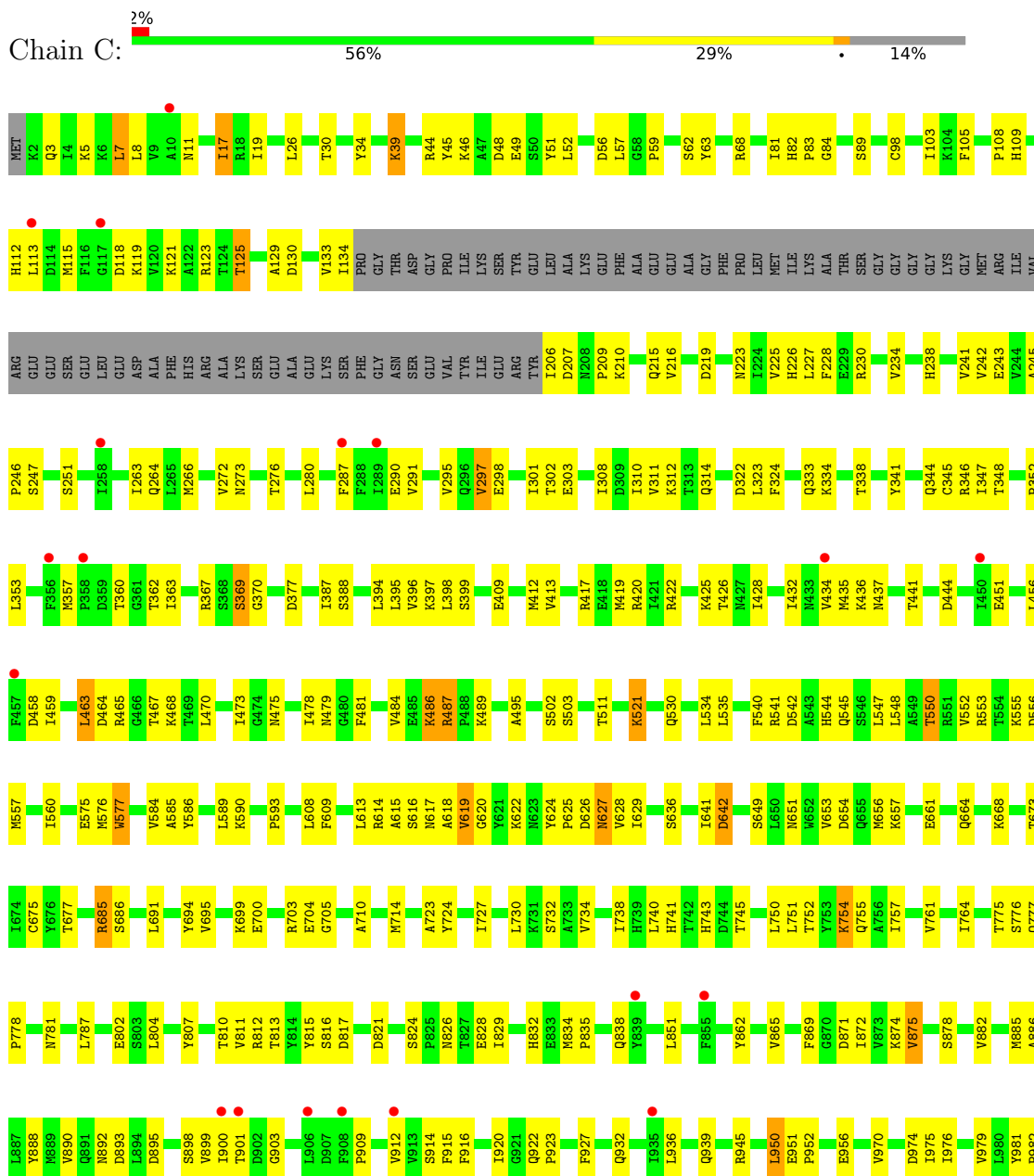
Continued from previous page...

Mol	Chain	Residues	Atoms	ZeroOcc	AltConf
6	B	89	Total O 89 89	0	0
6	D	44	Total O 44 44	0	0
6	A	60	Total O 60 60	0	0

3 Residue-property plots i

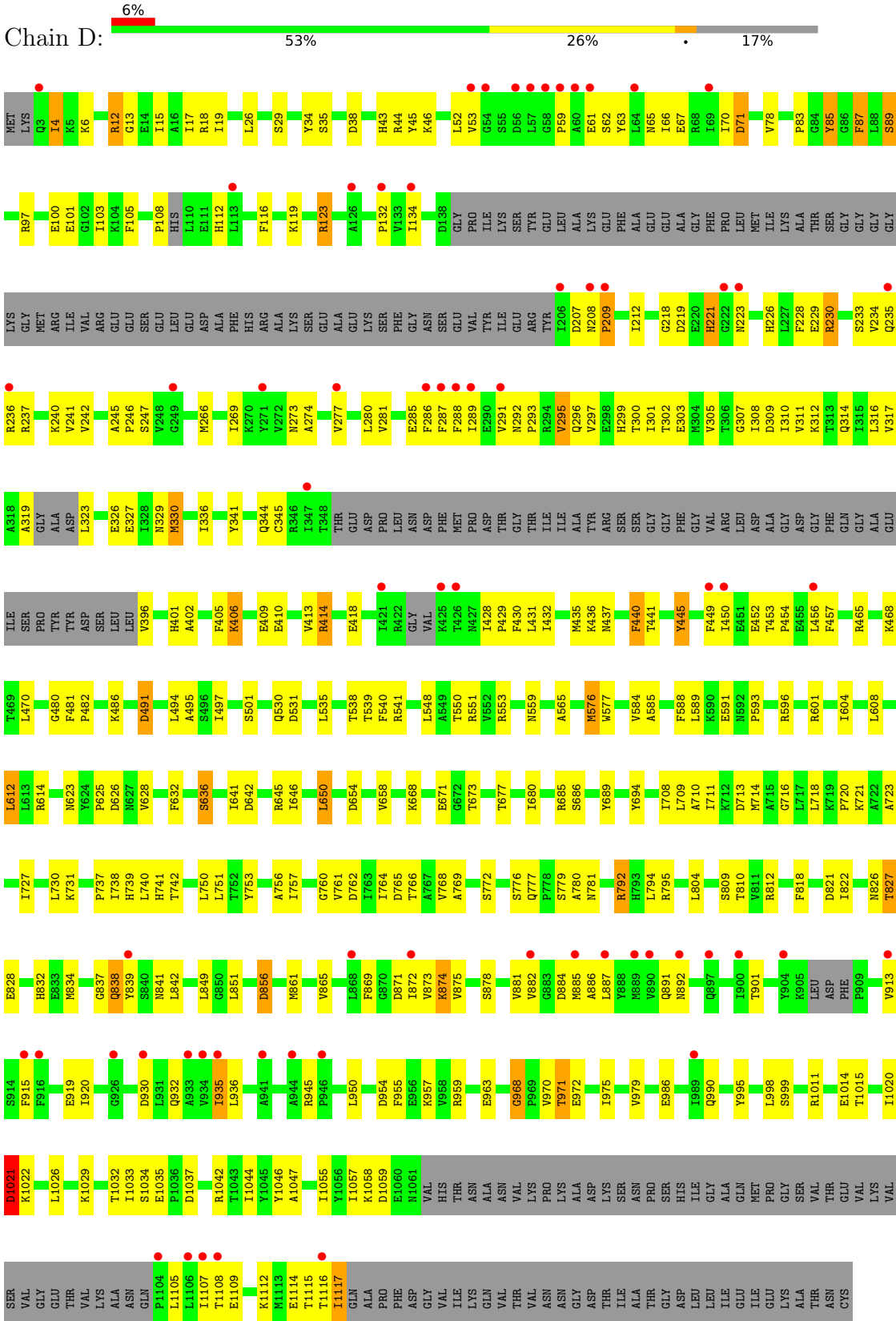
These plots are drawn for all protein, RNA, DNA and oligosaccharide chains in the entry. The first graphic for a chain summarises the proportions of the various outlier classes displayed in the second graphic. The second graphic shows the sequence view annotated by issues in geometry and electron density. Residues are color-coded according to the number of geometric quality criteria for which they contain at least one outlier: green = 0, yellow = 1, orange = 2 and red = 3 or more. A red dot above a residue indicates a poor fit to the electron density ($RSRZ > 2$). Stretches of 2 or more consecutive residues without any outlier are shown as a green connector. Residues present in the sample, but not in the model, are shown in grey.

- Molecule 1: Pyruvate carboxylase

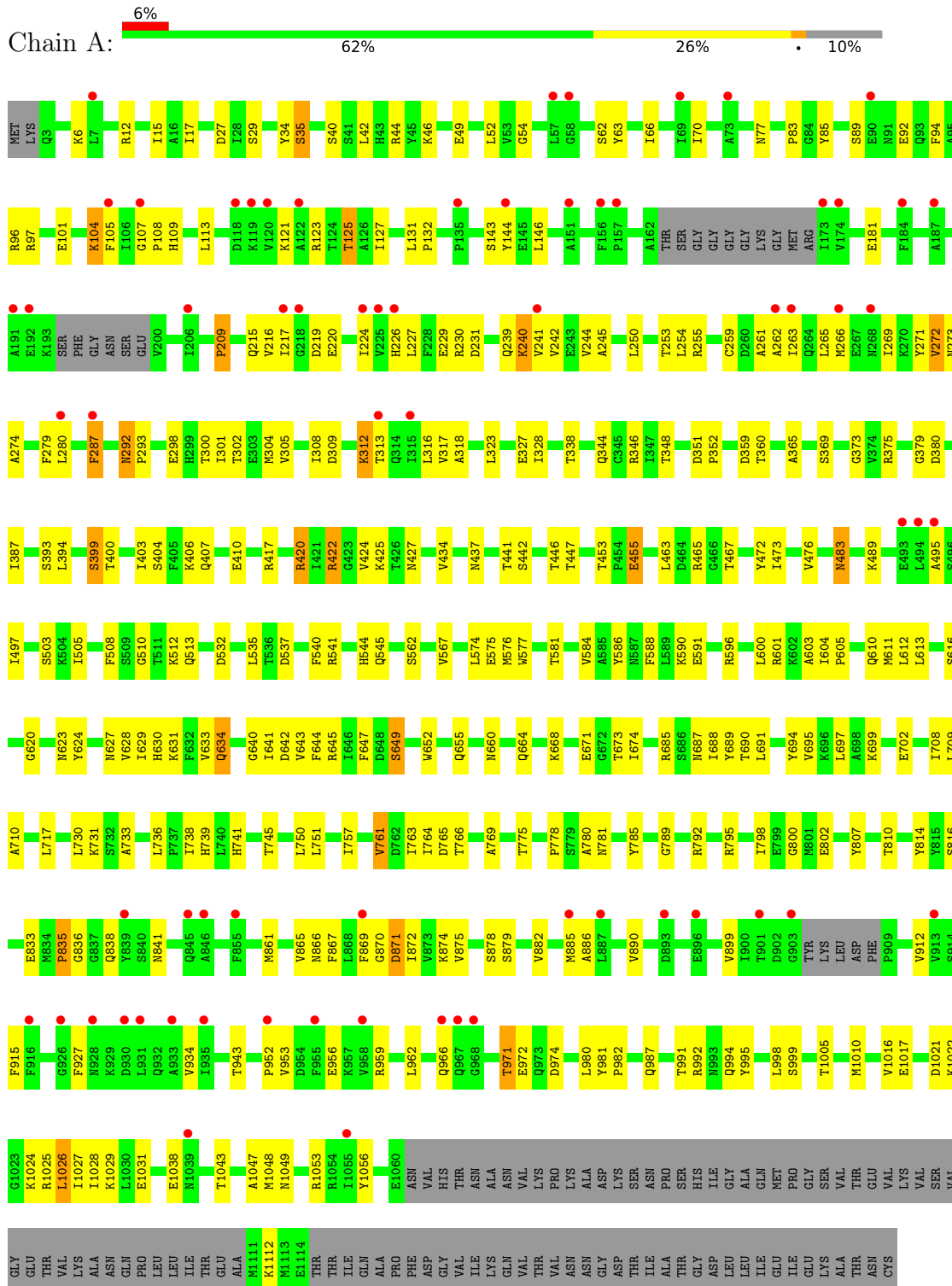


GLU
ILE
GLU
LYS
ALA
THR
ASN
CYS

● Molecule 1: Pyruvate carboxylase



● Molecule 1: Pyruvate carboxylase



4 Data and refinement statistics i

Property	Value	Source
Space group	P 1 21 1	Depositor
Cell constants a, b, c, α , β , γ	93.98Å 253.67Å 125.66Å 90.00° 110.99° 90.00°	Depositor
Resolution (Å)	60.62 – 2.68 60.62 – 2.68	Depositor EDS
% Data completeness (in resolution range)	70.7 (60.62-2.68) 70.7 (60.62-2.68)	Depositor EDS
R_{merge}	0.17	Depositor
R_{sym}	(Not available)	Depositor
$\langle I/\sigma(I) \rangle$ ¹	1.55 (at 2.69Å)	Xtrriage
Refinement program	PHENIX (1.20.1_4487: ???)	Depositor
R, R_{free}	0.248 , 0.301 0.250 , 0.301	Depositor DCC
R_{free} test set	5560 reflections (5.10%)	wwPDB-VP
Wilson B-factor (Å ²)	50.4	Xtrriage
Anisotropy	0.016	Xtrriage
Bulk solvent k_{sol} (e/Å ³), B_{sol} (Å ²)	0.31 , 44.8	EDS
L-test for twinning ²	$\langle L \rangle = 0.49$, $\langle L^2 \rangle = 0.32$	Xtrriage
Estimated twinning fraction	0.020 for h,-k,-h-l	Xtrriage
F_o, F_c correlation	0.87	EDS
Total number of atoms	31053	wwPDB-VP
Average B, all atoms (Å ²)	48.0	wwPDB-VP

Xtrriage's analysis on translational NCS is as follows: *The largest off-origin peak in the Patterson function is 7.54% of the height of the origin peak. No significant pseudotranslation is detected.*

¹Intensities estimated from amplitudes.

²Theoretical values of $\langle |L| \rangle$, $\langle L^2 \rangle$ for acentric reflections are 0.5, 0.333 respectively for untwinned datasets, and 0.375, 0.2 for perfectly twinned datasets.

5 Model quality

5.1 Standard geometry

Bond lengths and bond angles in the following residue types are not validated in this section: COA, BTI, MN, ACO

The Z score for a bond length (or angle) is the number of standard deviations the observed value is removed from the expected value. A bond length (or angle) with $|Z| > 5$ is considered an outlier worth inspection. RMSZ is the root-mean-square of all Z scores of the bond lengths (or angles).

Mol	Chain	Bond lengths		Bond angles	
		RMSZ	# Z >5	RMSZ	# Z >5
1	A	0.27	0/7839	0.52	0/10674
1	B	0.27	0/8183	0.54	3/11110 (0.0%)
1	C	0.28	0/7842	0.55	3/10633 (0.0%)
1	D	0.29	0/7339	0.55	2/9966 (0.0%)
All	All	0.28	0/31203	0.54	8/42383 (0.0%)

There are no bond length outliers.

All (8) bond angle outliers are listed below:

Mol	Chain	Res	Type	Atoms	Z	Observed(°)	Ideal(°)
1	D	1021	ASP	CB-CA-C	8.26	126.91	110.40
1	B	86	GLY	N-CA-C	8.06	133.26	113.10
1	C	458	ASP	CB-CG-OD2	7.60	125.14	118.30
1	C	458	ASP	CB-CG-OD1	-6.81	112.17	118.30
1	B	1037	ASP	CB-CG-OD2	6.09	123.78	118.30
1	B	566	ASP	CB-CG-OD1	5.83	123.55	118.30
1	C	7	LEU	CA-CB-CG	5.23	127.34	115.30
1	D	1026	LEU	CA-CB-CG	5.21	127.29	115.30

There are no chirality outliers.

There are no planarity outliers.

5.2 Too-close contacts

In the following table, the Non-H and H(model) columns list the number of non-hydrogen atoms and hydrogen atoms in the chain respectively. The H(added) column lists the number of hydrogen atoms added and optimized by MolProbity. The Clashes column lists the number of clashes within the asymmetric unit, whereas Symm-Clashes lists symmetry-related clashes.

Mol	Chain	Non-H	H(model)	H(added)	Clashes	Symm-Clashes
1	A	7691	0	7118	217	0
1	B	8029	0	7697	224	0
1	C	7687	0	7443	245	0
1	D	7205	0	6868	248	0
2	A	15	0	16	6	0
2	B	15	0	15	2	0
2	C	30	0	31	11	0
3	C	48	0	32	6	0
4	A	1	0	0	0	0
4	B	1	0	0	0	0
4	C	1	0	0	0	0
4	D	1	0	0	0	0
5	A	51	0	34	4	0
6	A	60	0	0	5	0
6	B	89	0	0	12	0
6	C	85	0	0	23	0
6	D	44	0	0	3	0
All	All	31053	0	29254	914	0

The all-atom clashscore is defined as the number of clashes found per 1000 atoms (including hydrogen atoms). The all-atom clashscore for this structure is 15.

All (914) close contacts within the same asymmetric unit are listed below, sorted by their clash magnitude.

Atom-1	Atom-2	Interatomic distance (Å)	Clash overlap (Å)
1:A:1112:LYS:HZ3	2:A:1201:BTI:C11	1.08	1.60
2:C:1204:BTI:H11	1:D:1112:LYS:NZ	1.02	1.33
2:C:1204:BTI:C11	1:D:1112:LYS:NZ	1.98	1.27
1:A:1112:LYS:NZ	2:A:1201:BTI:H11	0.86	1.19
1:D:288:PHE:CZ	1:D:291:VAL:HG23	1.84	1.11
1:A:1112:LYS:NZ	2:A:1201:BTI:C11	1.81	1.08
1:D:288:PHE:CE1	1:D:291:VAL:HG23	1.89	1.07
1:D:626:ASP:OD2	1:D:945:ARG:NH2	1.90	1.05
1:D:266:MET:HE1	1:D:291:VAL:HG11	1.43	1.01
2:C:1204:BTI:C11	1:D:1112:LYS:HZ1	1.61	1.00
1:C:609:PHE:HB3	6:C:1342:HOH:O	1.60	1.00
2:C:1204:BTI:C11	1:D:1112:LYS:HZ2	1.67	0.97
1:A:689:TYR:HE2	1:A:871:ASP:HB3	1.33	0.94
1:A:216:VAL:HG21	1:A:266:MET:HG3	1.51	0.91
1:D:288:PHE:CE1	1:D:291:VAL:CG2	2.55	0.90
1:C:754:LYS:NZ	6:C:1302:HOH:O	2.05	0.89
1:C:216:VAL:HG21	1:C:266:MET:HG3	1.55	0.89

Continued on next page...

Continued from previous page...

Atom-1	Atom-2	Interatomic distance (Å)	Clash overlap (Å)
1:C:345:CYS:SG	6:C:1375:HOH:O	2.32	0.88
1:A:1112:LYS:HZ2	2:A:1201:BTI:H11	1.33	0.87
1:C:1019:GLU:HG3	1:C:1025:ARG:HG2	1.58	0.86
1:D:591:GLU:OE2	1:D:596:ARG:NH2	2.08	0.86
1:A:1112:LYS:HZ1	2:A:1201:BTI:H11	1.37	0.85
1:D:266:MET:CE	1:D:291:VAL:HG11	2.08	0.84
1:A:689:TYR:OH	1:A:871:ASP:O	1.95	0.83
1:A:83:PRO:HB2	1:A:89:SER:HA	1.60	0.83
1:C:243:GLU:OE2	1:C:346:ARG:NH2	2.13	0.82
1:D:491:ASP:OD1	6:D:1301:HOH:O	1.98	0.81
1:D:230:ARG:HD3	1:D:301:ILE:HD11	1.60	0.81
1:B:673:THR:HG22	1:B:710:ALA:HB3	1.63	0.81
1:C:82:HIS:HD2	1:C:84:GLY:H	1.30	0.80
1:D:288:PHE:HE1	1:D:291:VAL:CG2	1.95	0.80
1:A:838:GLN:NE2	1:A:879:SER:OG	2.15	0.80
1:C:226:HIS:HB3	1:C:263:ILE:HD11	1.63	0.80
1:D:731:LYS:NZ	1:D:760:GLY:O	2.14	0.80
1:A:584:VAL:HG13	1:A:588:PHE:HD2	1.46	0.80
1:B:548:LEU:HD11	1:B:812:ARG:HG3	1.63	0.79
1:C:302:THR:OG1	6:C:1301:HOH:O	2.01	0.79
1:C:39:LYS:HG3	1:A:1027:ILE:HD13	1.64	0.79
1:A:241:VAL:HG23	1:A:242:VAL:HG23	1.62	0.79
1:D:277:VAL:HG13	1:D:291:VAL:HG22	1.63	0.79
1:C:553:ARG:NH2	1:C:1001:LEU:O	2.16	0.78
1:B:541:ARG:NH1	1:B:545:GLN:OE1	2.16	0.78
1:A:673:THR:HG22	1:A:710:ALA:HB3	1.64	0.78
1:D:1022:LYS:O	1:D:1022:LYS:HD3	1.83	0.78
1:B:895:ASP:H	1:B:898:SER:HB3	1.48	0.78
1:A:143:SER:HB3	1:A:146:LEU:HD12	1.65	0.78
1:C:463:LEU:HD12	1:C:465:ARG:HG3	1.68	0.75
1:D:531:ASP:O	1:D:792:ARG:NH1	2.19	0.75
1:A:645:ARG:HG3	1:A:673:THR:HG21	1.69	0.74
1:C:81:ILE:HG13	1:C:103:ILE:HG21	1.69	0.74
1:D:235:GLN:HB3	1:D:240:LYS:HA	1.70	0.74
1:C:129:ALA:O	1:C:264:GLN:NE2	2.20	0.74
1:C:241:VAL:HG23	1:C:242:VAL:HG23	1.69	0.74
1:B:1111:MET:HG3	1:A:483:ASN:HA	1.70	0.74
1:D:209:PRO:HB2	1:D:280:LEU:HD22	1.70	0.74
2:C:1204:BTI:H11	1:D:1112:LYS:HZ2	0.91	0.74
1:D:288:PHE:CZ	1:D:291:VAL:CG2	2.68	0.73
1:C:426:THR:HG22	1:C:428:ILE:H	1.52	0.73

Continued on next page...

Continued from previous page...

Atom-1	Atom-2	Interatomic distance (Å)	Clash overlap (Å)
1:A:1112:LYS:CE	2:A:1201:BTI:H11	2.12	0.73
1:C:641:ILE:HD13	6:C:1342:HOH:O	1.87	0.72
1:B:892:ASN:HB2	1:B:894:LEU:HD11	1.70	0.72
1:C:745:THR:HG22	1:C:775:THR:HA	1.70	0.72
1:C:420:ARG:NH2	3:C:1202:COA:O5P	2.22	0.72
1:D:673:THR:HG22	1:D:710:ALA:HB3	1.73	0.71
1:C:694:TYR:OH	6:C:1303:HOH:O	2.08	0.71
1:B:592:ASN:HB3	1:B:595:GLU:HB2	1.72	0.71
1:A:699:LYS:HE2	1:A:733:ALA:HB1	1.71	0.71
1:D:1035:GLU:OE2	1:D:1035:GLU:N	2.17	0.70
1:B:212:ILE:HD12	1:B:281:VAL:HG21	1.73	0.70
1:D:236:ARG:HH12	1:D:457:PHE:HE1	1.40	0.70
1:A:717:LEU:HD11	1:A:833:GLU:HB3	1.72	0.69
1:D:235:GLN:HA	1:D:241:VAL:HG22	1.73	0.69
1:C:123:ARG:HH11	1:C:133:VAL:HG13	1.57	0.69
1:B:866:ASN:ND2	1:B:871:ASP:HA	2.07	0.69
3:C:1202:COA:HN8	3:C:1202:COA:H132	1.58	0.69
1:D:327:GLU:N	1:D:327:GLU:OE1	2.25	0.69
1:C:82:HIS:CD2	1:C:84:GLY:H	2.10	0.69
1:C:495:ALA:HB2	1:C:810:THR:HG21	1.75	0.69
1:A:645:ARG:HA	1:A:671:GLU:HB2	1.74	0.69
1:B:259:CYS:SG	6:B:1316:HOH:O	2.50	0.69
1:D:108:PRO:HG2	1:D:293:PRO:HB2	1.73	0.69
1:D:708:ILE:HG23	1:D:737:PRO:HG2	1.73	0.69
1:B:500:VAL:H	1:B:562:SER:HB2	1.59	0.69
1:C:451:GLU:N	1:C:451:GLU:OE1	2.26	0.68
1:B:876:THR:O	6:B:1301:HOH:O	2.10	0.68
1:C:219:ASP:OD2	1:C:323:LEU:HB2	1.94	0.68
2:C:1204:BTI:H11	1:D:1112:LYS:HZ1	0.85	0.68
1:A:689:TYR:CE2	1:A:871:ASP:HB3	2.23	0.68
1:C:530:GLN:HG3	1:C:534:LEU:HD11	1.76	0.68
1:C:1042:ARG:NH1	1:C:1059:ASP:OD2	2.27	0.68
1:B:829:ILE:HD12	1:B:832:HIS:HE1	1.58	0.67
1:B:834:MET:HB3	1:B:838:GLN:HB3	1.74	0.67
1:B:514:LEU:HD23	1:B:523:VAL:HG22	1.75	0.67
1:B:740:LEU:HD12	1:B:741:HIS:H	1.58	0.67
1:B:1042:ARG:NH1	1:B:1059:ASP:OD2	2.27	0.67
1:C:654:ASP:OD1	1:C:657:LYS:NZ	2.27	0.67
1:D:288:PHE:HZ	1:D:291:VAL:HG23	1.53	0.67
1:B:829:ILE:HD12	1:B:832:HIS:CE1	2.29	0.67
1:A:453:THR:HG23	1:A:455:GLU:OE2	1.93	0.67

Continued on next page...

Continued from previous page...

Atom-1	Atom-2	Interatomic distance (Å)	Clash overlap (Å)
1:A:505:ILE:HA	1:A:508:PHE:HD2	1.59	0.67
1:B:467:THR:OG1	1:B:1053:ARG:NH2	2.19	0.66
1:A:262:ALA:HB2	1:A:279:PHE:HE2	1.61	0.66
1:C:83:PRO:HB2	1:C:89:SER:HA	1.75	0.66
1:C:754:LYS:HD3	1:B:751:LEU:HD21	1.78	0.66
1:B:230:ARG:HE	1:B:298:GLU:HG3	1.61	0.66
1:B:14:GLU:OE2	1:B:397:LYS:NZ	2.27	0.66
1:B:34:TYR:CD1	1:B:44:ARG:HG3	2.31	0.66
1:D:623:ASN:ND2	1:D:919:GLU:O	2.29	0.66
1:C:297:VAL:HG12	1:C:397:LYS:HE2	1.78	0.66
1:B:417:ARG:NH2	6:B:1305:HOH:O	2.28	0.66
1:D:645:ARG:HA	1:D:671:GLU:HB2	1.77	0.66
1:D:913:VAL:HG12	1:D:935:ILE:HG22	1.78	0.66
1:B:835:PRO:HD2	1:B:838:GLN:HG2	1.78	0.66
1:C:303:GLU:HG3	1:C:310:ILE:HG13	1.78	0.65
1:A:365:ALA:HB3	1:A:422:ARG:HB2	1.78	0.65
1:C:781:ASN:HB3	1:B:827:THR:HG21	1.78	0.65
1:D:301:ILE:O	1:D:305:VAL:HG23	1.97	0.65
1:B:449:PHE:O	1:B:453:THR:OG1	2.08	0.65
1:A:685:ARG:NH2	1:A:833:GLU:OE2	2.26	0.65
1:A:674:ILE:HG23	1:A:697:LEU:HD23	1.79	0.65
1:B:450:ILE:H	1:B:450:ILE:HD12	1.62	0.64
1:B:923:PRO:HD3	1:B:927:PHE:CZ	2.32	0.64
1:D:872:ILE:O	1:D:874:LYS:NZ	2.30	0.64
1:D:495:ALA:HB2	1:D:810:THR:HG21	1.80	0.64
1:D:1108:THR:N	1:D:1115:THR:O	2.29	0.64
1:C:677:THR:O	6:C:1303:HOH:O	2.14	0.64
1:D:1042:ARG:HD2	1:D:1059:ASP:OD2	1.98	0.64
1:A:15:ILE:HG12	6:A:1323:HOH:O	1.97	0.64
1:C:895:ASP:H	1:C:898:SER:HB3	1.62	0.64
1:D:409:GLU:OE2	1:D:441:THR:OG1	2.16	0.64
1:A:647:PHE:HE2	1:A:875:VAL:HG21	1.63	0.64
1:C:548:LEU:HD11	1:C:812:ARG:HG3	1.80	0.64
1:A:866:ASN:O	1:A:870:GLY:O	2.16	0.63
1:B:211:HIS:H	1:B:233:SER:HB3	1.64	0.63
1:B:904:TYR:HA	1:B:934:VAL:HG23	1.80	0.63
1:D:741:HIS:ND1	1:D:765:ASP:OD2	2.25	0.63
1:C:834:MET:HG2	1:C:862:TYR:CE2	2.33	0.63
1:D:277:VAL:HG13	1:D:291:VAL:CG2	2.28	0.63
1:B:553:ARG:HD3	1:B:1003:THR:HG23	1.81	0.63
1:A:541:ARG:NH2	1:A:575:GLU:OE1	2.22	0.63

Continued on next page...

Continued from previous page...

Atom-1	Atom-2	Interatomic distance (Å)	Clash overlap (Å)
1:B:470:LEU:HD13	1:B:1046:TYR:CD2	2.34	0.63
1:A:627:ASN:HD22	1:A:953:VAL:H	1.47	0.63
1:D:437:ASN:HD22	1:D:456:LEU:HD21	1.64	0.62
1:D:626:ASP:HB3	1:D:658:VAL:HG21	1.81	0.62
1:A:17:ILE:HG23	1:A:46:LYS:HG3	1.81	0.62
1:C:627[B]:ASN:ND2	1:C:952:PRO:HA	2.14	0.62
1:C:548:LEU:HB2	6:C:1367:HOH:O	1.99	0.62
1:C:951:GLU:HG3	1:C:952:PRO:HD2	1.80	0.62
1:A:866:ASN:ND2	1:A:871:ASP:OD2	2.27	0.62
1:A:1029:LYS:HB3	1:A:1047:ALA:HB3	1.81	0.62
1:C:17:ILE:HG23	1:C:46:LYS:HG3	1.81	0.62
1:D:881:VAL:HG21	1:D:915:PHE:HB2	1.80	0.62
1:C:17:ILE:HD13	1:C:46:LYS:HG3	1.81	0.62
1:C:115:MET:HG2	1:C:125:THR:HG21	1.82	0.62
1:C:922:GLN:HG3	1:C:927:PHE:HE1	1.64	0.62
1:A:104:LYS:HG2	1:A:318:ALA:HB1	1.80	0.62
1:B:478:ILE:HD11	1:B:1044:ILE:HD11	1.82	0.61
1:C:585:ALA:HB3	1:C:593:PRO:HG3	1.82	0.61
1:D:266:MET:CE	1:D:291:VAL:CG1	2.77	0.61
1:C:422:ARG:HG3	1:C:1053:ARG:HH21	1.65	0.61
1:A:417:ARG:O	1:A:420:ARG:NH1	2.33	0.61
1:C:832:HIS:HD2	1:C:834:MET:HG3	1.65	0.61
1:B:235:GLN:HA	1:B:241:VAL:HG22	1.82	0.61
1:B:436:LYS:NZ	6:B:1305:HOH:O	2.33	0.61
1:A:273:ASN:ND2	6:A:1306:HOH:O	2.32	0.61
1:C:363:ILE:HD12	1:C:387:ILE:HD11	1.83	0.61
1:C:685:ARG:HH21	1:C:686:SER:HB2	1.64	0.61
1:B:415:SER:O	1:B:419:MET:HG3	2.00	0.61
1:A:750:LEU:HD12	1:A:778:PRO:HB3	1.81	0.61
1:A:230:ARG:HD2	1:A:298:GLU:HG3	1.82	0.61
1:C:550:THR:HB	1:C:584:VAL:HG11	1.83	0.61
1:D:614:ARG:NH2	6:D:1306:HOH:O	2.33	0.61
1:C:821:ASP:OD2	1:C:821:ASP:N	2.33	0.61
1:B:923:PRO:HD2	1:B:926:GLY:HA2	1.83	0.61
1:B:553:ARG:NH2	1:B:1001:LEU:O	2.33	0.60
1:D:832:HIS:HD2	1:D:834:MET:H	1.48	0.60
1:B:434:VAL:HA	1:B:456:LEU:HD22	1.83	0.60
1:D:535:LEU:HD23	1:D:794:LEU:HD11	1.84	0.60
1:C:487:ARG:HH22	1:C:817:ASP:CG	2.05	0.60
1:B:497:ILE:HG12	1:B:807:TYR:HE1	1.66	0.59
1:B:909:PRO:HB2	1:B:912:VAL:HG23	1.82	0.59

Continued on next page...

Continued from previous page...

Atom-1	Atom-2	Interatomic distance (Å)	Clash overlap (Å)
1:A:348:THR:HG22	1:A:394:LEU:HA	1.84	0.59
1:D:601:ARG:NH2	1:D:642:ASP:OD2	2.34	0.59
1:A:12:ARG:HH22	1:A:380:ASP:CG	2.05	0.59
1:A:590:LYS:HG2	1:A:991:THR:HG21	1.83	0.59
1:C:560:ILE:HG12	1:C:807:TYR:CE2	2.37	0.59
1:C:727:ILE:HD12	1:C:738:ILE:HG21	1.84	0.59
1:B:339:LEU:HD21	1:D:307:GLY:HA3	1.84	0.59
1:B:613:LEU:HD23	1:B:646:ILE:HG12	1.84	0.59
1:C:787:LEU:O	6:C:1304:HOH:O	2.16	0.59
1:C:750:LEU:HD22	1:C:778:PRO:HB3	1.85	0.59
1:A:1053:ARG:NH2	5:A:1202:ACO:O9A	2.36	0.59
1:C:541:ARG:NH1	1:C:545:GLN:OE1	2.36	0.59
1:D:440:PHE:CD1	1:D:445:TYR:HE2	2.20	0.59
1:B:829:ILE:HD11	1:B:834:MET:O	2.03	0.59
1:B:861:MET:O	1:B:865:VAL:HG23	2.03	0.59
1:D:35:SER:HB2	1:D:63:TYR:CE2	2.38	0.59
1:B:212:ILE:CD1	1:B:250:LEU:HD21	2.32	0.59
1:C:475:ASN:OD1	1:C:479:ASN:ND2	2.35	0.59
1:D:85:TYR:CE2	1:D:297:VAL:HG22	2.38	0.59
1:C:219:ASP:OD2	1:C:223:ASN:HB2	2.03	0.58
1:C:872:ILE:HG22	1:C:923:PRO:HB3	1.85	0.58
1:C:367:ARG:NH2	6:C:1317:HOH:O	2.35	0.58
1:C:388:SER:OG	6:C:1305:HOH:O	2.17	0.58
1:C:434:VAL:HG22	1:C:456:LEU:HD13	1.85	0.58
1:D:762:ASP:OD2	6:D:1302:HOH:O	2.16	0.58
1:D:83:PRO:HG2	1:D:105:PHE:CE1	2.38	0.58
1:D:856:ASP:OD1	1:D:856:ASP:N	2.36	0.58
1:C:377:ASP:HB2	1:C:397:LYS:HB2	1.85	0.58
1:D:680:ILE:HD11	1:D:694:TYR:CE2	2.39	0.58
1:A:541:ARG:NH1	1:A:545:GLN:OE1	2.35	0.58
1:A:591:GLU:HB2	1:A:999:SER:HB3	1.86	0.58
1:B:134:ILE:HD11	1:B:289:ILE:HD13	1.85	0.58
1:B:300:THR:O	1:B:304:MET:HG3	2.04	0.58
1:B:369:SER:OG	1:B:370:GLY:N	2.35	0.58
1:A:422:ARG:HE	5:A:1202:ACO:P3B	2.26	0.58
1:C:1035:GLU:HG3	1:C:1036:PRO:HD2	1.86	0.58
1:A:219:ASP:HB3	1:A:323:LEU:HD13	1.84	0.58
2:C:1201:BTI:H5	1:D:481:PHE:CZ	2.38	0.58
1:D:308:ILE:HG21	1:D:330:MET:HE1	1.86	0.57
1:C:227:LEU:HD22	1:C:308:ILE:HD13	1.85	0.57
1:B:212:ILE:HD11	1:B:250:LEU:HD21	1.85	0.57

Continued on next page...

Continued from previous page...

Atom-1	Atom-2	Interatomic distance (Å)	Clash overlap (Å)
1:B:1054:ARG:O	6:B:1302:HOH:O	2.17	0.57
1:B:625:PRO:HD3	1:B:950:LEU:HD22	1.86	0.57
1:B:916:PHE:HD2	1:B:932:GLN:HB2	1.68	0.57
1:B:1033:ILE:HG12	1:B:1044:ILE:HG12	1.86	0.57
1:A:833:GLU:OE1	1:A:874:LYS:NZ	2.36	0.57
1:D:828:GLU:HB3	1:A:802:GLU:OE2	2.04	0.57
1:C:108:PRO:HA	1:C:272:VAL:HG13	1.87	0.57
1:B:210:LYS:HE2	1:B:231:ASP:OD2	2.04	0.57
1:C:577:TRP:HZ3	1:C:636:SER:HG	1.52	0.57
1:B:894:LEU:HD22	1:B:899:VAL:HG23	1.85	0.57
1:C:544:HIS:HB2	6:C:1367:HOH:O	2.05	0.57
1:A:66:ILE:H	1:A:66:ILE:HD12	1.70	0.57
1:A:671:GLU:HG2	1:A:708:ILE:HB	1.87	0.57
1:C:541:ARG:HD2	1:C:541:ARG:O	2.05	0.56
1:D:288:PHE:O	1:D:289:ILE:HD13	2.05	0.56
1:D:826:ASN:OD1	1:D:828:GLU:HG2	2.05	0.56
1:C:426:THR:CG2	1:C:428:ILE:HG13	2.36	0.56
1:D:565:ALA:HB2	1:D:604:ILE:HG12	1.87	0.56
1:D:642:ASP:OD1	1:D:668:LYS:NZ	2.31	0.56
1:A:107:GLY:O	1:A:273:ASN:ND2	2.38	0.56
1:A:316:LEU:HD22	1:A:327:GLU:HB3	1.87	0.56
1:B:643:VAL:HG22	1:B:669:ILE:HB	1.86	0.56
1:C:552:VAL:HG23	6:C:1367:HOH:O	2.05	0.56
1:B:231:ASP:OD1	1:B:233:SER:OG	2.21	0.56
1:B:251:SER:HB2	1:B:252:PRO:HD2	1.88	0.56
1:A:630:HIS:O	1:A:634:GLN:HG2	2.06	0.56
1:C:826:ASN:OD1	1:C:828:GLU:N	2.39	0.56
1:B:6:LYS:HG3	1:B:29:SER:HB2	1.87	0.56
1:A:875:VAL:O	1:A:879:SER:N	2.38	0.56
1:A:601:ARG:NH2	1:A:604:ILE:O	2.38	0.56
1:C:468:LYS:NZ	1:C:993:ASN:O	2.39	0.56
1:A:242:VAL:HG21	1:A:434:VAL:HG11	1.87	0.56
1:C:1029:LYS:HB3	1:C:1047:ALA:HB3	1.86	0.56
1:D:646:ILE:O	1:D:673:THR:OG1	2.22	0.56
1:C:981:TYR:HB3	1:C:984:VAL:HB	1.87	0.55
1:D:6:LYS:HG2	1:D:78:VAL:HG12	1.88	0.55
1:C:1112:LYS:HE3	1:D:482:PRO:HD3	1.88	0.55
1:D:226:HIS:CD2	1:D:228:PHE:H	2.25	0.55
1:A:123:ARG:O	1:A:127:ILE:HG13	2.07	0.55
1:A:872:ILE:HD11	1:A:882:VAL:HG22	1.87	0.55
1:C:829:ILE:HA	1:C:832:HIS:CE1	2.42	0.55

Continued on next page...

Continued from previous page...

Atom-1	Atom-2	Interatomic distance (Å)	Clash overlap (Å)
1:B:25:GLU:HG3	1:D:414:ARG:HG2	1.88	0.55
1:B:273:ASN:OD1	1:B:314:GLN:HG2	2.06	0.55
1:D:83:PRO:HB2	1:D:89:SER:OG	2.06	0.55
1:A:437:ASN:HD21	1:A:453:THR:HG21	1.71	0.55
1:B:511:THR:OG1	1:B:608:LEU:HG	2.07	0.55
1:D:1033:ILE:HG13	1:D:1044:ILE:HG23	1.88	0.55
1:A:83:PRO:HG3	1:A:105:PHE:CE2	2.42	0.55
1:A:865:VAL:HG21	1:A:886:ALA:HA	1.88	0.55
1:B:66:ILE:HG23	1:B:94:PHE:HD1	1.71	0.55
1:B:661:GLU:O	1:B:665:GLU:HB2	2.07	0.55
1:D:959:ARG:HA	1:D:975:ILE:HD11	1.88	0.55
1:B:866:ASN:HD21	1:B:871:ASP:HA	1.69	0.55
1:D:230:ARG:NH1	1:D:302:THR:OG1	2.39	0.55
1:D:769:ALA:HB2	1:D:781:ASN:HB2	1.89	0.55
1:D:861:MET:O	1:D:865:VAL:HG23	2.06	0.55
1:C:832:HIS:CD2	1:C:834:MET:HG3	2.42	0.55
1:C:541:ARG:NH2	1:C:575:GLU:OE1	2.39	0.54
1:C:614:ARG:HB3	1:C:617:ASN:O	2.07	0.54
1:B:414:ARG:HG3	1:B:415:SER:N	2.22	0.54
1:B:601:ARG:NH2	1:B:604:ILE:O	2.35	0.54
1:B:866:ASN:HD21	1:B:872:ILE:H	1.55	0.54
1:D:832:HIS:CD2	1:D:834:MET:H	2.24	0.54
1:D:686:SER:HB2	1:D:871:ASP:OD2	2.08	0.54
1:D:1022:LYS:O	1:D:1022:LYS:CD	2.54	0.54
1:B:247:SER:HB3	1:B:250:LEU:HD22	1.90	0.54
1:D:295:VAL:HG22	1:D:314:GLN:HE22	1.72	0.54
1:A:959:ARG:NH1	1:A:972:GLU:OE2	2.40	0.54
1:B:578:GLY:O	1:B:581:THR:OG1	2.25	0.54
1:B:720:PRO:HA	1:B:752:THR:HA	1.88	0.54
1:A:131:LEU:HD21	1:A:261:ALA:HB1	1.89	0.54
1:D:1108:THR:HG23	1:D:1115:THR:HB	1.88	0.54
1:D:405:PHE:HE2	1:D:441:THR:HA	1.73	0.54
1:D:776:SER:OG	1:D:777:GLN:N	2.40	0.54
1:C:108:PRO:HG2	1:C:113:LEU:HD21	1.89	0.54
1:A:92:GLU:O	1:A:96:ARG:N	2.36	0.54
1:C:473:ILE:HG21	1:C:1010:MET:HE2	1.89	0.54
1:D:34:TYR:CD2	1:D:44:ARG:HD2	2.44	0.53
1:C:230:ARG:HD3	6:C:1301:HOH:O	2.08	0.53
1:C:541:ARG:HD2	1:C:541:ARG:C	2.28	0.53
1:C:776:SER:OG	1:C:777:GLN:N	2.41	0.53
1:A:610:GLN:HB2	1:A:643:VAL:HB	1.89	0.53

Continued on next page...

Continued from previous page...

Atom-1	Atom-2	Interatomic distance (Å)	Clash overlap (Å)
1:D:246:PRO:HD2	1:D:341:TYR:CD1	2.43	0.53
1:A:12:ARG:NH2	1:A:380:ASP:OD1	2.35	0.53
1:A:601:ARG:HH21	1:A:605:PRO:HA	1.74	0.53
1:A:446:THR:OG1	1:A:447:THR:N	2.41	0.53
1:C:344:GLN:OE1	1:C:346:ARG:NH1	2.42	0.53
1:B:17:ILE:HG12	1:B:46:LYS:HG3	1.91	0.53
1:B:398:LEU:HD21	1:B:415:SER:HB3	1.91	0.53
1:D:494:LEU:HD23	1:D:494:LEU:H	1.74	0.53
1:D:584:VAL:HG13	1:D:588:PHE:HD2	1.74	0.53
1:D:642:ASP:HA	1:D:668:LYS:HD2	1.91	0.53
1:C:348:THR:HG22	1:C:394:LEU:HA	1.91	0.52
1:C:865:VAL:HG11	1:C:885:MET:HB3	1.90	0.52
1:B:720:PRO:HG3	1:B:751:LEU:HB3	1.91	0.52
1:A:437:ASN:ND2	1:A:453:THR:HG21	2.24	0.52
1:B:560:ILE:HD13	1:B:807:TYR:CE2	2.44	0.52
1:B:975:ILE:O	1:B:979:VAL:HG23	2.09	0.52
1:A:885:MET:HE2	1:A:912:VAL:HG21	1.89	0.52
1:C:109:HIS:HB2	1:C:112:HIS:ND1	2.24	0.52
1:B:866:ASN:C	1:B:866:ASN:HD22	2.11	0.52
1:A:674:ILE:HG21	1:A:694:TYR:HD1	1.73	0.52
1:D:671:GLU:OE2	1:D:739:HIS:CD2	2.62	0.52
1:D:26:LEU:HD22	1:D:316:LEU:HD21	1.90	0.52
1:B:529:LYS:HD3	1:B:530:GLN:NE2	2.25	0.52
1:D:266:MET:HE1	1:D:291:VAL:CG1	2.27	0.52
1:D:865:VAL:HG11	1:D:885:MET:HB3	1.91	0.52
1:C:56:ASP:OD1	1:C:68:ARG:NH2	2.37	0.52
1:C:298:GLU:HA	1:C:344:GLN:NE2	2.24	0.52
1:B:670:SER:HB3	1:B:707:HIS:HD2	1.75	0.52
1:B:684:GLU:O	1:B:684:GLU:HG2	2.10	0.52
1:D:228:PHE:HE2	1:D:336:ILE:HG22	1.75	0.52
1:D:245:ALA:HB2	1:D:301:ILE:HD12	1.92	0.52
1:A:596:ARG:NH1	6:A:1310:HOH:O	2.43	0.52
1:C:553:ARG:NH1	6:C:1310:HOH:O	2.28	0.52
1:D:650:LEU:HD11	1:D:920:ILE:HG13	1.91	0.52
1:B:111:GLU:O	1:B:115:MET:HG3	2.10	0.51
1:B:120:VAL:O	1:B:124:THR:HG22	2.09	0.51
1:B:1058:LYS:H	1:B:1058:LYS:HD3	1.75	0.51
1:D:764:ILE:HG13	1:D:766:THR:HG23	1.93	0.51
1:A:833:GLU:HB2	1:A:874:LYS:HZ2	1.75	0.51
1:D:539:THR:OG1	1:D:768:VAL:HG23	2.11	0.51
1:D:713:ASP:OD2	1:D:718:LEU:HB3	2.10	0.51

Continued on next page...

Continued from previous page...

Atom-1	Atom-2	Interatomic distance (Å)	Clash overlap (Å)
1:C:464:ASP:CG	1:C:467:THR:HB	2.30	0.51
1:D:470:LEU:HD13	1:D:1046:TYR:CD2	2.44	0.51
1:A:540:PHE:O	1:A:544:HIS:NE2	2.37	0.51
1:C:463:LEU:HD23	1:C:463:LEU:H	1.76	0.51
1:B:916:PHE:HA	1:B:927:PHE:CD1	2.46	0.51
1:B:916:PHE:HA	1:B:927:PHE:CE1	2.46	0.51
1:D:309:ASP:OD2	1:D:312:LYS:HB2	2.11	0.51
1:A:596:ARG:O	1:A:600:LEU:HB2	2.11	0.51
1:A:709:LEU:HB2	1:A:736:LEU:HD12	1.91	0.51
1:B:434:VAL:HG22	1:B:456:LEU:HD13	1.93	0.51
1:D:274:ALA:HB3	1:D:314:GLN:HE21	1.76	0.51
1:D:873:VAL:HG12	1:D:875:VAL:HG12	1.92	0.51
1:C:975:ILE:O	1:C:979:VAL:HG23	2.10	0.51
1:D:869:PHE:CZ	1:D:885:MET:HG2	2.46	0.51
1:A:360:THR:OG1	1:A:387:ILE:O	2.17	0.51
1:B:753:TYR:O	1:B:757:ILE:HG13	2.10	0.51
1:A:673:THR:HA	1:A:710:ALA:O	2.11	0.51
1:B:530:GLN:OE1	1:B:795:ARG:NH2	2.43	0.51
1:D:273:ASN:HA	1:D:317:VAL:HG11	1.93	0.51
1:D:414:ARG:HH11	1:D:418:GLU:HG2	1.75	0.51
1:D:963:GLU:HG2	1:D:968:GLY:O	2.11	0.51
1:C:57:LEU:HD13	1:C:62:SER:HA	1.92	0.50
1:C:301:ILE:HG13	6:C:1301:HOH:O	2.11	0.50
1:C:369:SER:OG	1:C:370:GLY:N	2.43	0.50
1:C:654:ASP:HA	1:C:657:LYS:HD2	1.93	0.50
1:A:313:THR:HG23	1:A:328:ILE:HD13	1.92	0.50
1:B:1017:GLU:HG3	1:B:1027:ILE:HD12	1.92	0.50
1:A:642:ASP:O	1:A:668:LYS:HB3	2.11	0.50
1:B:877:PRO:HG2	1:B:920:ILE:HG23	1.93	0.50
1:D:218:GLY:HA2	1:D:223:ASN:O	2.11	0.50
1:A:861:MET:O	1:A:865:VAL:N	2.29	0.50
1:A:874:LYS:HD3	1:A:882:VAL:HG21	1.92	0.50
1:A:1043:THR:HG1	1:A:1056:TYR:HE1	1.58	0.50
1:C:34:TYR:O	1:C:52:LEU:HD12	2.12	0.50
1:C:899:VAL:O	1:C:903:GLY:HA3	2.12	0.50
1:D:418:GLU:N	1:D:418:GLU:OE1	2.44	0.50
1:A:1005:THR:HG23	6:A:1312:HOH:O	2.11	0.50
1:C:909:PRO:HB2	1:C:912:VAL:HG23	1.94	0.50
1:A:109:HIS:HE1	1:A:220:GLU:OE2	1.94	0.50
1:C:834:MET:HB3	1:C:838:GLN:HB2	1.93	0.50
1:B:869:PHE:HZ	1:B:885:MET:HG2	1.76	0.50

Continued on next page...

Continued from previous page...

Atom-1	Atom-2	Interatomic distance (Å)	Clash overlap (Å)
1:D:34:TYR:HD1	1:D:35:SER:O	1.94	0.50
1:D:553:ARG:NH2	1:D:998:LEU:O	2.45	0.50
1:A:739:HIS:CD2	1:A:763:ILE:HB	2.46	0.50
1:C:45:TYR:CE2	1:A:1049:ASN:HB3	2.46	0.50
1:B:52:LEU:HD21	1:B:55:SER:N	2.27	0.50
1:B:387:ILE:O	1:B:387:ILE:HG13	2.11	0.50
1:C:1055:ILE:HD12	1:C:1056:TYR:H	1.77	0.50
1:D:718:LEU:HD21	1:D:723:ALA:HB2	1.94	0.50
1:A:512:LYS:HE2	1:A:601:ARG:NH1	2.27	0.50
1:A:627:ASN:ND2	1:A:952:PRO:HB3	2.27	0.50
1:C:409:GLU:O	1:C:413:VAL:HG22	2.12	0.49
1:A:271:TYR:OH	1:A:293:PRO:HA	2.12	0.49
1:A:346:ARG:HB3	1:A:394:LEU:HD13	1.93	0.49
1:A:642:ASP:HA	1:A:668:LYS:HD2	1.93	0.49
1:D:761:VAL:O	1:D:792:ARG:NH2	2.44	0.49
1:A:301:ILE:O	1:A:305:VAL:HG22	2.13	0.49
1:A:652:TRP:CE3	1:A:655:GLN:HG3	2.47	0.49
1:A:956:GLU:HA	1:A:959:ARG:HB3	1.94	0.49
1:C:26:LEU:HD11	1:C:312:LYS:HG3	1.95	0.49
1:B:323:LEU:HD22	1:B:330:MET:HE3	1.94	0.49
1:D:233:SER:HB2	1:D:445:TYR:CE1	2.48	0.49
1:D:738:ILE:HG22	1:D:761:VAL:HG23	1.94	0.49
1:D:932:GLN:O	1:D:936:LEU:HD23	2.12	0.49
1:B:614:ARG:NH2	6:B:1315:HOH:O	2.45	0.49
1:D:291:VAL:O	1:D:291:VAL:HG12	2.12	0.49
1:D:406:LYS:O	1:D:410:GLU:HG3	2.12	0.49
1:C:664:GLN:NE2	1:C:705:GLY:O	2.46	0.49
1:A:144:TYR:HE1	1:A:181:GLU:HA	1.77	0.49
1:A:227:LEU:HD21	1:A:308:ILE:HG21	1.95	0.49
1:C:3:GLN:HG2	1:C:5:LYS:HG2	1.94	0.49
1:C:541:ARG:NE	1:C:575:GLU:OE1	2.44	0.49
1:B:345:CYS:SG	1:B:431:LEU:HD13	2.52	0.49
1:B:971:THR:O	1:B:975:ILE:HG13	2.13	0.49
1:B:482:PRO:HD3	1:A:1112:LYS:NZ	2.27	0.49
1:B:590:LYS:HG3	1:B:991:THR:HG21	1.94	0.49
1:B:620:GLY:HA2	1:B:981:TYR:CE1	2.48	0.49
1:A:351:ASP:OD2	1:A:425:LYS:HG3	2.13	0.49
1:C:834:MET:HG2	1:C:862:TYR:CZ	2.48	0.49
1:C:992[B]:ARG:HH21	1:C:997:ASN:HD22	1.59	0.49
1:B:118:ASP:HB3	1:B:121:LYS:HB2	1.95	0.49
1:B:349:THR:HG21	1:B:387:ILE:HD13	1.94	0.49

Continued on next page...

Continued from previous page...

Atom-1	Atom-2	Interatomic distance (Å)	Clash overlap (Å)
1:D:18:ARG:NH2	1:D:309:ASP:OD1	2.46	0.49
1:C:322:ASP:OD2	1:C:323:LEU:N	2.45	0.49
1:B:433:ASN:HB3	1:B:456:LEU:HA	1.95	0.49
1:A:741:HIS:HB2	1:A:765:ASP:OD2	2.13	0.49
1:C:1041:ASN:HA	1:C:1058:LYS:HA	1.95	0.48
1:B:359:ASP:OD2	1:B:425:LYS:HG3	2.12	0.48
1:B:497:ILE:HG12	1:B:807:TYR:CE1	2.46	0.48
1:D:548:LEU:HD11	1:D:812:ARG:HG3	1.94	0.48
1:C:360:THR:OG1	1:C:387:ILE:O	2.30	0.48
1:C:869:PHE:CE1	1:C:916:PHE:HE2	2.31	0.48
1:B:807:TYR:CZ	1:B:811:VAL:HG21	2.48	0.48
1:D:954:ASP:HB3	1:D:957:LYS:HD3	1.94	0.48
1:A:292:ASN:ND2	6:A:1301:HOH:O	2.21	0.48
1:B:670:SER:HB3	1:B:707:HIS:CD2	2.48	0.48
1:A:406:LYS:O	1:A:410:GLU:HG3	2.12	0.48
1:B:235:GLN:HB2	1:B:240:LYS:HA	1.94	0.48
1:B:708:ILE:N	6:B:1303:HOH:O	2.44	0.48
1:D:470:LEU:HB3	1:D:1055:ILE:HG13	1.94	0.48
1:D:842:LEU:HD21	1:D:887:LEU:HD21	1.95	0.48
1:D:887:LEU:O	1:D:891:GLN:N	2.46	0.48
1:A:229:GLU:OE2	1:A:255:ARG:NH1	2.47	0.48
1:A:652:TRP:HE3	1:A:655:GLN:HG3	1.78	0.48
1:A:1021:ASP:HB3	1:A:1024:LYS:HB2	1.96	0.48
1:A:1021:ASP:OD1	1:A:1022:LYS:N	2.44	0.48
1:C:627[B]:ASN:HD21	1:C:952:PRO:HA	1.79	0.48
1:C:723:ALA:HB2	1:C:752:THR:HG23	1.95	0.48
1:C:754:LYS:NZ	1:B:751:LEU:HD21	2.29	0.48
1:D:465:ARG:O	1:D:468:LYS:N	2.45	0.48
1:C:333:GLN:NE2	6:C:1325:HOH:O	2.46	0.48
1:C:419:MET:HA	6:C:1334:HOH:O	2.14	0.48
1:C:624:TYR:HB3	1:C:628:VAL:HG21	1.95	0.48
1:B:1044:ILE:HB	1:B:1055:ILE:HG22	1.96	0.48
1:D:208:ASN:N	1:D:209:PRO:HD3	2.29	0.48
1:A:465:ARG:NE	5:A:1202:ACO:O1A	2.46	0.48
1:C:685:ARG:NH2	1:C:686:SER:HB2	2.28	0.48
1:C:886:ALA:O	1:C:890:VAL:HG23	2.14	0.48
1:B:174:VAL:HG11	1:B:180:LEU:HA	1.95	0.48
1:B:349:THR:HB	1:B:359:ASP:HB3	1.95	0.48
1:D:827:THR:HG23	1:A:785:TYR:HE2	1.77	0.48
1:A:660:ASN:O	1:A:664:GLN:HG2	2.13	0.48
1:A:869:PHE:N	1:A:869:PHE:CD2	2.82	0.48

Continued on next page...

Continued from previous page...

Atom-1	Atom-2	Interatomic distance (Å)	Clash overlap (Å)
1:C:807:TYR:O	1:C:811:VAL:HG23	2.13	0.48
1:D:625:PRO:HD3	1:D:950:LEU:HD13	1.96	0.48
1:D:720:PRO:HG3	1:D:751:LEU:HB3	1.95	0.48
1:D:837:GLY:O	1:D:841:ASN:HB2	2.13	0.48
1:A:52:LEU:HG	1:A:54:GLY:H	1.78	0.48
1:C:322:ASP:OD2	1:C:324:PHE:N	2.44	0.48
2:C:1201:BTI:H5	1:D:481:PHE:CE2	2.49	0.48
1:B:565:ALA:HB2	1:B:604:ILE:HG12	1.95	0.48
1:D:13:GLY:O	1:D:17:ILE:HG12	2.14	0.48
1:D:15:ILE:HG13	1:D:19:ILE:CD1	2.44	0.48
1:C:642:ASP:OD2	1:C:668:LYS:NZ	2.46	0.47
1:C:875:VAL:O	1:C:878:SER:N	2.46	0.47
1:C:1025:ARG:O	1:A:44:ARG:NH2	2.36	0.47
1:B:610:GLN:HG3	1:B:643:VAL:HB	1.96	0.47
1:B:832:HIS:ND1	1:B:834:MET:HG3	2.29	0.47
1:D:242:VAL:HA	1:D:344:GLN:O	2.14	0.47
1:C:1031:GLU:OE2	1:C:1047:ALA:HB2	2.13	0.47
1:C:409:GLU:OE1	1:C:436:LYS:HA	2.14	0.47
1:B:459:ILE:HG13	1:B:459:ILE:O	2.15	0.47
1:B:874:LYS:NZ	6:B:1312:HOH:O	2.47	0.47
1:D:986:GLU:O	1:D:990:GLN:HG2	2.13	0.47
1:A:265:LEU:O	1:A:269:ILE:HG13	2.14	0.47
1:A:745:THR:HG22	1:A:775:THR:HA	1.97	0.47
1:A:757:ILE:HA	1:A:761:VAL:HG12	1.96	0.47
1:C:246:PRO:HD2	1:C:341:TYR:CE1	2.49	0.47
1:C:703:ARG:HG2	1:C:703:ARG:HH11	1.78	0.47
1:B:642:ASP:O	1:B:668:LYS:HB3	2.15	0.47
1:D:229:GLU:OE1	1:D:229:GLU:N	2.43	0.47
1:D:709:LEU:O	1:D:738:ILE:HA	2.15	0.47
1:A:971:THR:HG23	1:A:974:ASP:OD2	2.15	0.47
2:C:1204:BTI:H11	1:D:1112:LYS:CE	2.23	0.47
1:B:66:ILE:HG23	1:B:94:PHE:CD1	2.49	0.47
1:D:12:ARG:HD3	1:D:38:ASP:OD2	2.15	0.47
1:C:295:VAL:HG23	1:C:314:GLN:NE2	2.30	0.47
1:C:653:VAL:HG21	1:C:700:GLU:HG2	1.96	0.47
1:C:810:THR:O	1:C:813:THR:HB	2.15	0.47
1:B:472:TYR:OH	1:B:1006:PHE:O	2.32	0.47
1:D:15:ILE:HB	1:D:85:TYR:CE2	2.50	0.47
1:D:19:ILE:HD12	1:D:19:ILE:H	1.80	0.47
1:D:551:ARG:HG3	1:D:818:PHE:CD2	2.50	0.47
1:A:6:LYS:HG3	1:A:29:SER:HB3	1.97	0.47

Continued on next page...

Continued from previous page...

Atom-1	Atom-2	Interatomic distance (Å)	Clash overlap (Å)
1:C:521:LYS:HB2	1:C:521:LYS:HE2	1.57	0.47
1:B:869:PHE:CZ	1:B:885:MET:HG2	2.49	0.47
1:A:231:ASP:N	1:A:244:VAL:O	2.46	0.47
1:A:352:PRO:HG3	1:A:427:ASN:HA	1.97	0.47
1:C:626:ASP:OD1	1:C:945:ARG:NH2	2.48	0.47
1:C:807:TYR:CZ	1:C:811:VAL:HG21	2.49	0.47
1:B:664:GLN:NE2	1:B:705:GLY:O	2.48	0.47
1:D:576:MET:HE1	1:D:641:ILE:HD13	1.96	0.47
1:A:577:TRP:CE3	1:A:641:ILE:HG13	2.49	0.47
1:C:34:TYR:HA	1:C:63:TYR:OH	2.15	0.47
1:D:821:ASP:N	1:D:821:ASP:OD2	2.36	0.47
1:C:548:LEU:HD13	1:C:815:TYR:HB2	1.97	0.46
1:C:657:LYS:O	1:C:661:GLU:HG3	2.13	0.46
6:C:1302:HOH:O	1:B:754:LYS:HB3	2.14	0.46
1:B:709:LEU:O	1:B:738:ILE:HA	2.14	0.46
1:D:721:LYS:HG2	1:A:789:GLY:HA3	1.97	0.46
1:C:426:THR:HG21	1:C:428:ILE:HG13	1.98	0.46
1:C:865:VAL:HG12	1:C:882:VAL:HG13	1.97	0.46
1:B:689:TYR:OH	1:B:871:ASP:O	2.15	0.46
1:D:15:ILE:HB	1:D:85:TYR:CZ	2.50	0.46
1:D:234:VAL:HG22	1:D:449:PHE:HD2	1.80	0.46
1:D:406:LYS:HE2	1:D:406:LYS:HB2	1.75	0.46
1:C:541:ARG:NH1	1:C:542:ASP:OD1	2.48	0.46
1:C:486:LYS:HA	1:C:486:LYS:HD2	1.76	0.46
1:B:365:ALA:HB3	1:B:422:ARG:HB2	1.97	0.46
1:B:761:VAL:O	1:B:792:ARG:NH2	2.40	0.46
1:A:209:PRO:HB2	1:A:280:LEU:HG	1.96	0.46
1:A:962:LEU:O	1:A:966:GLN:HG3	2.16	0.46
1:B:83:PRO:HG3	1:B:105:PHE:CZ	2.50	0.46
1:B:470:LEU:HA	6:B:1330:HOH:O	2.15	0.46
1:B:1030:LEU:HD21	1:B:1033:ILE:HG13	1.96	0.46
1:D:281:VAL:HG22	1:D:286:PHE:HB3	1.96	0.46
1:D:303:GLU:OE1	1:D:310:ILE:HB	2.15	0.46
1:A:121:LYS:O	1:A:125:THR:HG23	2.15	0.46
1:A:624:TYR:OH	1:A:980:LEU:O	2.32	0.46
1:C:428:ILE:O	1:C:432:ILE:HG13	2.16	0.46
1:B:146:LEU:HD12	1:B:146:LEU:HA	1.78	0.46
1:D:235:GLN:CB	1:D:240:LYS:HA	2.42	0.46
1:D:753:TYR:O	1:D:757:ILE:HD12	2.15	0.46
1:C:437:ASN:O	1:C:441:THR:HG23	2.16	0.46
1:C:1036:PRO:HD3	1:C:1042:ARG:CZ	2.46	0.46

Continued on next page...

Continued from previous page...

Atom-1	Atom-2	Interatomic distance (Å)	Clash overlap (Å)
1:B:815:TYR:CZ	1:B:1003:THR:HG21	2.50	0.46
1:B:928:ASN:OD1	1:B:930:ASP:N	2.48	0.46
1:C:49:GLU:OE1	1:C:51:TYR:OH	2.26	0.46
1:B:433:ASN:CB	1:B:456:LEU:HA	2.45	0.46
1:D:228:PHE:CE2	1:D:336:ILE:HG22	2.50	0.46
1:A:66:ILE:HG23	1:A:94:PHE:HD1	1.81	0.46
1:A:97:ARG:HA	1:A:97:ARG:HD2	1.68	0.46
1:A:387:ILE:HD12	1:A:387:ILE:H	1.80	0.46
1:A:869:PHE:N	1:A:869:PHE:HD2	2.13	0.46
1:D:123:ARG:NH2	1:D:134:ILE:O	2.45	0.46
1:D:959:ARG:NH1	1:D:970:VAL:O	2.49	0.46
1:C:478:ILE:HD12	1:C:1057:ILE:HB	1.98	0.46
1:B:560:ILE:HD11	1:B:808:TRP:CZ2	2.51	0.46
1:D:66:ILE:O	1:D:70:ILE:HD12	2.16	0.46
1:D:345:CYS:HB3	1:D:431:LEU:HD13	1.98	0.46
1:A:403:ILE:HG22	1:A:407:GLN:OE1	2.14	0.46
1:A:532:ASP:HB2	1:A:795:ARG:HH21	1.81	0.46
1:A:620:GLY:HA2	1:A:981:TYR:CE2	2.51	0.46
1:C:435:MET:HE3	6:C:1375:HOH:O	2.16	0.45
1:C:625:PRO:HB3	1:C:950:LEU:HB3	1.97	0.45
1:C:916:PHE:HA	1:C:927:PHE:CE2	2.51	0.45
1:B:211:HIS:ND1	1:B:232:CYS:HB2	2.31	0.45
1:B:590:LYS:HA	1:B:590:LYS:HD3	1.71	0.45
1:B:646:ILE:O	1:B:673:THR:OG1	2.32	0.45
1:B:942:LEU:HB2	1:B:949:TYR:CZ	2.52	0.45
1:B:1032:THR:HG21	1:D:1034:SER:HB2	1.98	0.45
1:D:4:ILE:HG13	1:D:319:ALA:HB2	1.98	0.45
1:A:766:THR:OG1	1:A:780:ALA:HB2	2.15	0.45
1:B:711:ILE:HB	1:B:740:LEU:HD13	1.98	0.45
1:B:715:ALA:HB3	1:B:717:LEU:HG	1.98	0.45
1:D:234:VAL:HB	1:D:242:VAL:HB	1.97	0.45
1:A:92:GLU:HA	1:A:113:LEU:HD12	1.98	0.45
1:C:206:ILE:HG22	1:C:207:ASP:H	1.82	0.45
1:C:625:PRO:O	1:C:628:VAL:HG22	2.16	0.45
1:B:833:GLU:HB2	1:B:874:LYS:HE2	1.98	0.45
1:D:530:GLN:HG3	1:D:795:ARG:HH22	1.81	0.45
1:A:108:PRO:HA	1:A:272:VAL:HG23	1.97	0.45
1:A:312:LYS:O	1:A:316:LEU:HD12	2.16	0.45
1:C:673:THR:HA	1:C:710:ALA:O	2.16	0.45
1:C:807:TYR:CE2	1:C:811:VAL:HG21	2.51	0.45
1:B:344:GLN:HE21	1:B:346:ARG:HH11	1.64	0.45

Continued on next page...

Continued from previous page...

Atom-1	Atom-2	Interatomic distance (Å)	Clash overlap (Å)
1:B:473:ILE:HB	6:B:1330:HOH:O	2.15	0.45
1:D:15:ILE:HD13	1:D:85:TYR:CD2	2.50	0.45
1:B:116:PHE:CZ	1:B:269:ILE:HD11	2.52	0.45
1:B:487:ARG:NH2	1:B:817:ASP:OD2	2.49	0.45
1:D:292:ASN:HA	1:D:293:PRO:HD3	1.56	0.45
1:D:822:ILE:HD13	1:D:839:TYR:CZ	2.51	0.45
1:B:116:PHE:HA	1:B:122:ALA:HB2	1.98	0.45
1:D:116:PHE:HZ	1:D:269:ILE:CD1	2.30	0.45
1:D:658:VAL:HG12	1:D:945:ARG:HH12	1.82	0.45
1:D:1058:LYS:HB3	1:D:1058:LYS:HE3	1.72	0.45
1:A:611:MET:HG3	1:A:612:LEU:N	2.32	0.45
1:C:695:VAL:HG22	1:C:730:LEU:HD23	1.99	0.45
1:D:12:ARG:HB2	1:D:43:HIS:CE1	2.51	0.45
1:D:673:THR:CG2	1:D:710:ALA:HB3	2.46	0.45
1:A:46:LYS:HD2	1:A:46:LYS:HA	1.74	0.45
1:A:473:ILE:HG21	1:A:1010:MET:CE	2.47	0.45
1:A:687:ASN:OD1	1:A:687:ASN:N	2.41	0.45
1:A:1017:GLU:OE1	1:A:1025:ARG:HD3	2.17	0.45
1:C:615:ALA:HB1	1:C:656:MET:HA	1.99	0.45
1:C:624:TYR:HB3	1:C:628:VAL:CG2	2.47	0.45
1:C:932:GLN:HG2	1:C:936:LEU:HD11	1.98	0.45
1:B:742:THR:HG22	1:B:753:TYR:CE1	2.52	0.45
1:C:225:VAL:HG22	1:C:323:LEU:HD21	1.98	0.45
1:C:547:LEU:HD22	1:C:812:ARG:HH22	1.81	0.45
1:C:804:LEU:HD23	1:C:804:LEU:HA	1.86	0.45
1:D:409:GLU:OE2	1:D:435:MET:O	2.35	0.45
1:A:131:LEU:HD23	1:A:131:LEU:HA	1.78	0.45
1:C:34:TYR:HE2	1:C:39:LYS:HD3	1.81	0.44
1:C:312:LYS:HB2	1:C:312:LYS:HE3	1.59	0.44
1:C:540:PHE:CD1	1:C:557:MET:HG2	2.52	0.44
1:C:751:LEU:HD11	1:B:750:LEU:HB3	1.98	0.44
3:C:1202:COA:H2A	1:A:44:ARG:NH2	2.32	0.44
1:D:430:PHE:HZ	1:D:450:ILE:HD12	1.82	0.44
1:D:709:LEU:HD23	1:D:738:ILE:HG12	1.98	0.44
1:D:1107:ILE:HA	1:D:1116:THR:HA	1.99	0.44
1:A:42:LEU:HD23	1:A:379:GLY:O	2.17	0.44
1:A:108:PRO:HG2	1:A:293:PRO:HB2	1.99	0.44
1:A:473:ILE:HG21	1:A:1010:MET:HE2	2.00	0.44
1:A:645:ARG:CG	1:A:673:THR:HG21	2.44	0.44
1:A:710:ALA:HB2	1:A:739:HIS:HB3	1.99	0.44
1:C:420:ARG:HA	1:C:420:ARG:HD3	1.64	0.44

Continued on next page...

Continued from previous page...

Atom-1	Atom-2	Interatomic distance (Å)	Clash overlap (Å)
1:B:681:LEU:O	1:B:683:PRO:HD3	2.18	0.44
1:D:219:ASP:OD1	1:D:223:ASN:N	2.48	0.44
1:D:753:TYR:O	1:D:756:ALA:N	2.51	0.44
1:A:537:ASP:HB3	1:A:574:LEU:HD22	1.99	0.44
1:C:234:VAL:HG12	1:C:241:VAL:HG22	2.00	0.44
1:C:362:THR:HG21	1:C:1056:TYR:OH	2.18	0.44
1:C:555:LYS:HG2	1:C:1002:ASP:HA	1.99	0.44
1:B:350:GLU:O	1:B:352:PRO:HD3	2.17	0.44
1:B:587:ASN:O	1:B:590:LYS:HE3	2.17	0.44
1:B:1027:ILE:HG12	1:D:45:TYR:OH	2.17	0.44
1:D:52:LEU:HD12	1:D:53:VAL:N	2.32	0.44
1:D:108:PRO:HB2	1:D:112:HIS:HB2	1.98	0.44
1:D:838:GLN:O	1:D:842:LEU:HB2	2.16	0.44
1:A:603:ALA:O	1:A:605:PRO:HD3	2.17	0.44
1:A:731:LYS:HD2	1:A:731:LYS:HA	1.85	0.44
1:A:833:GLU:HB2	1:A:874:LYS:NZ	2.32	0.44
1:C:298:GLU:HA	1:C:344:GLN:HE22	1.81	0.44
1:C:481:PHE:HB3	1:C:484:VAL:HB	1.99	0.44
1:B:955:PHE:HE1	1:B:979:VAL:HG21	1.82	0.44
1:D:230:ARG:NH2	1:D:296:GLN:OE1	2.51	0.44
1:A:35:SER:HB2	1:A:62:SER:HB2	1.99	0.44
1:A:245:ALA:O	1:A:305:VAL:HG11	2.17	0.44
1:D:601:ARG:HA	1:D:601:ARG:HD3	1.81	0.44
1:D:632:PHE:O	1:D:636:SER:OG	2.36	0.44
1:D:1057:ILE:HD13	1:D:1057:ILE:HA	1.82	0.44
1:A:131:LEU:HD22	1:A:132:PRO:HD2	1.99	0.44
1:D:97:ARG:NH1	1:D:100:GLU:OE1	2.50	0.44
1:D:713:ASP:OD1	1:D:716:GLY:N	2.51	0.44
1:D:1020:ILE:O	1:D:1021:ASP:HB2	2.17	0.44
1:A:645:ARG:HG3	1:A:673:THR:CG2	2.45	0.44
1:A:702:GLU:HG3	1:A:736:LEU:HD21	1.99	0.44
1:C:835:PRO:HG3	1:C:874:LYS:O	2.18	0.44
1:B:691:LEU:HD21	1:B:729:GLU:HG3	1.99	0.44
1:A:497:ILE:HG12	1:A:807:TYR:HE1	1.81	0.44
1:C:590:LYS:HG3	1:C:991:THR:HG21	2.00	0.44
1:C:1021:ASP:OD1	1:C:1024:LYS:NZ	2.46	0.44
1:B:1041:ASN:HA	1:B:1058:LYS:HA	1.99	0.44
1:A:34:TYR:HA	1:A:63:TYR:OH	2.16	0.44
1:A:216:VAL:HA	1:A:226:HIS:HA	2.00	0.44
1:B:234:VAL:HG22	1:B:445:TYR:CE1	2.52	0.44
1:B:575:GLU:HA	1:B:610:GLN:O	2.17	0.44

Continued on next page...

Continued from previous page...

Atom-1	Atom-2	Interatomic distance (Å)	Clash overlap (Å)
1:B:740:LEU:HD12	1:B:741:HIS:N	2.31	0.44
1:D:132:PRO:HB2	1:D:287:PHE:HA	1.98	0.44
1:D:995:TYR:HB3	1:D:998:LEU:HD21	2.00	0.44
1:A:437:ASN:O	1:A:441:THR:HG23	2.18	0.44
1:C:641:ILE:HA	6:C:1342:HOH:O	2.18	0.43
1:C:699:LYS:HG2	1:C:734:VAL:HG13	1.99	0.43
1:C:900:ILE:HG13	1:C:901:THR:H	1.82	0.43
1:B:470:LEU:HD23	1:B:1028:ILE:HD13	1.99	0.43
1:B:822:ILE:HD12	1:B:822:ILE:H	1.83	0.43
1:B:875:VAL:O	1:B:878:SER:N	2.51	0.43
1:D:428:ILE:HB	1:D:429:PRO:HD3	1.99	0.43
1:D:1014:GLU:HG2	1:D:1015:THR:N	2.33	0.43
1:D:1109:GLU:HG2	1:D:1114:GLU:HA	1.99	0.43
1:C:44:ARG:NH1	1:A:1027:ILE:HD12	2.33	0.43
1:C:741:HIS:CE1	1:C:777:GLN:HE21	2.36	0.43
1:D:975:ILE:HD13	1:D:975:ILE:HA	1.81	0.43
1:A:495:ALA:HB2	1:A:810:THR:HG21	1.99	0.43
1:B:904:TYR:CA	1:B:934:VAL:HG23	2.46	0.43
1:B:1037:ASP:OD2	1:B:1039:ASN:N	2.51	0.43
1:D:326:GLU:HA	1:D:329:ASN:OD1	2.17	0.43
1:D:453:THR:CG2	1:D:456:LEU:HG	2.47	0.43
1:D:541:ARG:HB2	1:D:576:MET:HA	2.00	0.43
1:A:224:ILE:CD1	1:A:271:TYR:HB3	2.49	0.43
1:A:915:PHE:CE2	1:A:927:PHE:HE1	2.36	0.43
1:C:547:LEU:C	1:C:548:LEU:HD23	2.39	0.43
2:C:1204:BTI:C10	1:D:1112:LYS:HZ2	2.28	0.43
1:B:34:TYR:CE2	1:B:52:LEU:HB2	2.53	0.43
1:B:373:GLY:HA3	1:B:411:LYS:HD3	2.00	0.43
1:D:1029:LYS:HB3	1:D:1047:ALA:HB3	2.01	0.43
1:A:70:ILE:HD13	1:A:70:ILE:HA	1.90	0.43
1:A:867:PHE:HA	1:A:870:GLY:O	2.18	0.43
1:C:553:ARG:HG2	1:C:589:LEU:HD22	1.99	0.43
1:C:556:ASP:HB3	1:C:811:VAL:HG11	1.99	0.43
1:B:206:ILE:HD13	1:B:206:ILE:HA	1.79	0.43
1:D:401:HIS:CD2	1:D:402:ALA:N	2.87	0.43
1:A:97:ARG:NH1	1:A:101:GLU:OE2	2.34	0.43
1:A:298:GLU:HA	1:A:344:GLN:NE2	2.33	0.43
1:A:691:LEU:O	1:A:695:VAL:HG23	2.18	0.43
1:A:872:ILE:HD11	1:A:882:VAL:CG2	2.48	0.43
1:C:295:VAL:HG23	1:C:314:GLN:HE22	1.84	0.43
1:C:347:ILE:HD12	1:C:347:ILE:N	2.34	0.43

Continued on next page...

Continued from previous page...

Atom-1	Atom-2	Interatomic distance (Å)	Clash overlap (Å)
1:C:367:ARG:NH1	1:C:420:ARG:HG2	2.34	0.43
1:C:511:THR:HB	1:C:608:LEU:HG	1.99	0.43
1:C:757:ILE:HA	1:C:761:VAL:HG12	2.01	0.43
1:B:487:ARG:HG3	1:B:488:PRO:O	2.19	0.43
1:D:221:HIS:ND1	1:D:221:HIS:N	2.66	0.43
1:D:585:ALA:HB3	1:D:593:PRO:HG3	2.00	0.43
1:A:1026:LEU:HD13	1:A:1028:ILE:HD11	2.00	0.43
1:C:470:LEU:HD23	1:C:470:LEU:HA	1.84	0.43
1:C:651:ASN:OD1	1:C:675:CYS:HB2	2.18	0.43
1:B:85:TYR:CZ	1:B:297:VAL:HG22	2.53	0.43
1:B:219:ASP:OD1	1:B:223:ASN:HB2	2.19	0.43
1:A:219:ASP:HA	1:A:317:VAL:HG13	2.00	0.43
1:C:547:LEU:HD22	1:C:812:ARG:NH2	2.34	0.43
1:C:1112:LYS:HE2	1:D:480:GLY:O	2.18	0.43
1:B:12:ARG:HA	1:B:43:HIS:CD2	2.53	0.43
1:B:316:LEU:HD22	1:B:327:GLU:HB3	1.99	0.43
1:B:836:GLY:HA3	6:B:1327:HOH:O	2.19	0.43
1:D:288:PHE:HE1	1:D:291:VAL:HG21	1.81	0.43
1:D:589:LEU:H	1:D:589:LEU:HG	1.68	0.43
1:C:134:ILE:HD11	1:C:280:LEU:HD12	2.00	0.43
1:C:398:LEU:HG	1:C:412:MET:HE1	2.01	0.43
1:C:619:VAL:O	1:C:981:TYR:OH	2.22	0.43
1:B:739:HIS:NE2	1:B:765:ASP:OD1	2.52	0.43
1:D:1105:LEU:HD12	1:D:1117:ILE:HG22	2.01	0.43
1:A:1024:LYS:HE3	5:A:1202:ACO:OAP	2.19	0.43
1:B:708:ILE:HG23	1:B:737:PRO:HG2	2.01	0.43
1:D:17:ILE:CD1	1:D:46:LYS:HG3	2.49	0.43
1:D:409:GLU:O	1:D:413:VAL:HG23	2.19	0.43
1:D:990:GLN:HG2	1:D:990:GLN:H	1.68	0.43
1:A:229:GLU:HG2	1:A:230:ARG:N	2.34	0.43
1:A:359:ASP:OD1	1:A:424:VAL:HB	2.19	0.43
1:C:19:ILE:HD13	1:C:82:HIS:CG	2.54	0.42
1:C:422:ARG:HH21	3:C:1202:COA:P3B	2.42	0.42
1:B:140:PRO:HB2	1:B:199:GLU:CB	2.49	0.42
1:B:751:LEU:HD23	1:B:751:LEU:HA	1.61	0.42
1:D:804:LEU:HD23	1:D:804:LEU:HA	1.77	0.42
1:A:240:LYS:H	1:A:240:LYS:HG3	1.59	0.42
1:C:83:PRO:HG3	1:C:105:PHE:CZ	2.54	0.42
1:C:347:ILE:HG22	1:C:395:LEU:HD12	2.01	0.42
1:B:188:LYS:HG2	1:B:198:SER:O	2.19	0.42
1:B:717:LEU:HD11	1:B:833:GLU:HB3	2.01	0.42

Continued on next page...

Continued from previous page...

Atom-1	Atom-2	Interatomic distance (Å)	Clash overlap (Å)
1:B:116:PHE:HZ	1:B:269:ILE:HD11	1.84	0.42
1:B:230:ARG:HD3	1:B:302:THR:OG1	2.19	0.42
1:B:936:LEU:HD23	1:B:936:LEU:HA	1.91	0.42
1:D:296:GLN:O	1:D:299:HIS:ND1	2.51	0.42
1:A:259:CYS:O	1:A:263:ILE:HG22	2.19	0.42
1:A:472:TYR:CD2	1:A:998:LEU:HD21	2.53	0.42
1:B:645:ARG:HG3	1:B:673:THR:HG21	2.02	0.42
1:B:866:ASN:HD21	1:B:872:ILE:N	2.18	0.42
1:A:309:ASP:HB3	1:A:312:LYS:HB3	2.00	0.42
1:C:936:LEU:O	1:C:939:GLN:HB2	2.20	0.42
3:C:1202:COA:H132	3:C:1202:COA:N8P	2.31	0.42
1:D:212:ILE:HD12	1:D:281:VAL:HG21	2.01	0.42
1:D:608:LEU:HD22	1:D:642:ASP:HB2	2.01	0.42
1:A:472:TYR:HD2	1:A:995:TYR:CD2	2.36	0.42
1:C:228:PHE:CD2	1:C:338:THR:HG23	2.55	0.42
1:B:520:PRO:HB2	1:B:707:HIS:CE1	2.54	0.42
1:D:87:PHE:H	1:D:87:PHE:HD1	1.65	0.42
1:D:288:PHE:CE1	1:D:291:VAL:HG21	2.51	0.42
1:D:727:ILE:HD11	1:D:740:LEU:HD22	2.00	0.42
1:D:842:LEU:CD2	1:D:887:LEU:HD21	2.50	0.42
1:D:875:VAL:O	1:D:878:SER:OG	2.38	0.42
1:A:215:GLN:O	1:A:227:LEU:N	2.52	0.42
1:C:121:LYS:O	1:C:125:THR:HG23	2.19	0.42
1:C:298:GLU:O	1:C:301:ILE:HG12	2.19	0.42
1:A:613:LEU:HD22	1:A:644:PHE:HD2	1.83	0.42
1:C:475:ASN:CG	2:C:1204:BTI:H103	2.40	0.42
1:B:7:LEU:O	1:B:30:THR:HA	2.20	0.42
1:A:273:ASN:HB3	1:A:274:ALA:H	1.59	0.42
1:A:567:VAL:HG22	1:A:800:GLY:HA3	2.00	0.42
1:A:861:MET:HG3	1:A:890:VAL:CG2	2.49	0.42
1:C:352:PRO:HG2	1:C:459:ILE:CD1	2.49	0.42
1:B:620:GLY:HA3	1:B:624:TYR:CE1	2.54	0.42
1:B:942:LEU:HD12	1:B:943:THR:N	2.35	0.42
1:A:262:ALA:HB2	1:A:279:PHE:CE2	2.49	0.42
1:A:300:THR:HB	1:A:375:ARG:CZ	2.50	0.42
1:A:577:TRP:CZ3	1:A:641:ILE:HG13	2.54	0.42
1:C:276:THR:O	1:C:291:VAL:HG13	2.19	0.42
1:B:344:GLN:HE21	1:B:346:ARG:NH1	2.17	0.42
1:B:892:ASN:HB2	1:B:894:LEU:CD1	2.44	0.42
1:B:962:LEU:HD23	1:B:962:LEU:HA	1.84	0.42
1:A:798:ILE:O	1:A:802:GLU:HG2	2.19	0.42

Continued on next page...

Continued from previous page...

Atom-1	Atom-2	Interatomic distance (Å)	Clash overlap (Å)
1:C:724:TYR:HB2	1:C:755:GLN:HB3	2.02	0.41
1:C:888:TYR:CG	1:C:909:PRO:HG3	2.54	0.41
1:C:970:VAL:HG13	1:C:974:ASP:HB2	2.02	0.41
1:B:118:ASP:OD2	1:B:119:LYS:N	2.53	0.41
1:B:545:GLN:HG3	1:B:550:THR:OG1	2.20	0.41
1:D:428:ILE:O	1:D:432:ILE:HG13	2.20	0.41
1:D:497:ILE:HG21	1:D:559:ASN:O	2.20	0.41
1:C:657:LYS:HE3	1:C:704:GLU:OE1	2.19	0.41
1:B:36:ASN:OD1	1:B:36:ASN:N	2.44	0.41
1:B:157:PRO:O	1:B:158:LEU:HD23	2.21	0.41
1:B:219:ASP:OD2	1:B:221:HIS:N	2.45	0.41
1:B:548:LEU:HD22	1:B:815:TYR:HB2	2.02	0.41
1:B:727:ILE:O	1:B:731:LYS:HB2	2.20	0.41
1:D:61:GLU:O	1:D:65:ASN:ND2	2.44	0.41
1:D:207:ASP:OD1	1:D:208:ASN:N	2.51	0.41
1:A:489:LYS:HB2	1:A:489:LYS:HE3	1.78	0.41
1:C:48:ASP:O	1:A:1024:LYS:NZ	2.53	0.41
1:C:468:LYS:HG2	1:C:994:GLN:O	2.20	0.41
1:C:552:VAL:HA	1:C:815:TYR:CE2	2.55	0.41
1:C:835:PRO:O	1:C:838:GLN:HG2	2.20	0.41
1:C:1024:LYS:HZ2	1:C:1024:LYS:HG3	1.76	0.41
1:B:131:LEU:HD11	1:B:261:ALA:O	2.20	0.41
1:B:330:MET:HE2	1:B:330:MET:HB2	2.00	0.41
1:B:576:MET:SD	1:B:577:TRP:HB2	2.60	0.41
1:D:959:ARG:HD2	1:D:963:GLU:OE1	2.21	0.41
1:A:510:GLY:N	1:A:513:GLN:OE1	2.48	0.41
1:C:242:VAL:HG22	6:C:1375:HOH:O	2.20	0.41
1:C:246:PRO:HD2	1:C:341:TYR:CD1	2.55	0.41
1:D:541:ARG:HH22	1:D:612:LEU:HD13	1.85	0.41
1:D:673:THR:HA	1:D:710:ALA:O	2.20	0.41
1:A:304:MET:CE	1:A:399:SER:HB2	2.50	0.41
1:A:373:GLY:O	1:A:400:THR:HA	2.21	0.41
1:C:927:PHE:CD1	1:C:927:PHE:N	2.88	0.41
1:D:861:MET:HB3	1:D:886:ALA:HB1	2.03	0.41
1:A:230:ARG:NH1	1:A:302:THR:OG1	2.52	0.41
1:A:761:VAL:O	1:A:792:ARG:NH1	2.41	0.41
1:C:118:ASP:C	1:C:118:ASP:OD1	2.59	0.41
1:C:832:HIS:HD2	1:C:834:MET:CG	2.32	0.41
1:B:188:LYS:HB3	1:B:188:LYS:HE3	1.77	0.41
1:B:577:TRP:CE3	1:B:641:ILE:HG13	2.56	0.41
1:C:547:LEU:O	1:C:548:LEU:HD23	2.20	0.41

Continued on next page...

Continued from previous page...

Atom-1	Atom-2	Interatomic distance (Å)	Clash overlap (Å)
1:C:754:LYS:CD	1:B:751:LEU:HD21	2.47	0.41
1:D:266:MET:HE3	1:D:291:VAL:CG1	2.50	0.41
1:D:452:GLU:OE2	1:D:452:GLU:C	2.59	0.41
1:D:711:ILE:HD11	1:D:730:LEU:HD13	2.02	0.41
1:C:489:LYS:HB3	1:C:1011:ARG:NH2	2.35	0.41
1:C:869:PHE:CE1	1:C:916:PHE:CE2	3.08	0.41
1:B:1044:ILE:HD12	1:B:1057:ILE:HD12	2.03	0.41
1:D:101:GLU:HB2	1:D:103:ILE:HD12	2.03	0.41
1:D:772:SER:OG	1:D:779:SER:HB2	2.20	0.41
1:C:215:GLN:NE2	6:C:1307:HOH:O	2.25	0.41
1:C:353:LEU:HD23	1:C:353:LEU:HA	1.73	0.41
1:C:920:ILE:O	1:C:920:ILE:HG12	2.19	0.41
1:C:1003:THR:HB	1:C:1004:PRO:HD3	2.03	0.41
1:B:404:SER:OG	1:B:407:GLN:HG3	2.21	0.41
1:B:537:ASP:HB3	1:B:574:LEU:CD2	2.51	0.41
1:B:834:MET:HE1	6:B:1355:HOH:O	2.20	0.41
2:B:1201:BTI:H82	1:A:476:VAL:HG22	2.03	0.41
1:D:53:VAL:HG11	1:D:62:SER:HA	2.03	0.41
1:D:540:PHE:HB2	1:D:576:MET:HB3	2.02	0.41
1:D:710:ALA:HB2	1:D:739:HIS:HB3	2.03	0.41
1:D:872:ILE:HD11	1:D:882:VAL:CG2	2.50	0.41
1:D:975:ILE:O	1:D:979:VAL:HG23	2.20	0.41
1:A:215:GLN:HB2	1:A:230:ARG:HH12	1.86	0.41
1:A:279:PHE:HD1	1:A:287:PHE:O	2.03	0.41
1:A:629:ILE:O	1:A:633:VAL:HG23	2.21	0.41
1:A:769:ALA:HB2	1:A:781:ASN:HB2	2.02	0.41
1:C:915:PHE:HA	1:C:920:ILE:HG22	2.02	0.41
1:B:552:VAL:HA	1:B:815:TYR:CZ	2.56	0.41
1:B:714:MET:SD	1:B:714:MET:N	2.92	0.41
1:B:931:LEU:HA	1:B:934:VAL:CG1	2.51	0.41
1:D:67:GLU:O	1:D:71:ASP:HB2	2.21	0.41
1:D:614:ARG:HE	1:D:614:ARG:HB2	1.55	0.41
1:D:713:ASP:HB3	1:D:742:THR:HA	2.03	0.41
1:D:971:THR:OG1	1:D:972:GLU:N	2.54	0.41
1:A:467:THR:OG1	1:A:1053:ARG:NH1	2.54	0.41
1:C:118:ASP:OD1	1:C:119:LYS:N	2.54	0.40
1:B:258:ILE:HG23	1:B:279:PHE:CD1	2.56	0.40
1:B:444:ASP:OD1	1:B:444:ASP:N	2.54	0.40
1:D:689:TYR:HE2	1:D:871:ASP:HB3	1.85	0.40
1:D:750:LEU:HB3	1:A:751:LEU:HD11	2.01	0.40
1:D:950:LEU:HD23	1:D:950:LEU:HA	1.97	0.40

Continued on next page...

Continued from previous page...

Atom-1	Atom-2	Interatomic distance (Å)	Clash overlap (Å)
1:A:709:LEU:HD12	1:A:738:ILE:HD13	2.03	0.40
1:A:835:PRO:HD2	1:A:838:GLN:HB2	2.03	0.40
1:C:616:SER:O	1:C:629:ILE:HD11	2.21	0.40
1:C:620:GLY:HA2	1:C:981:TYR:CE1	2.56	0.40
1:C:740:LEU:O	1:C:764:ILE:HA	2.21	0.40
1:B:525:GLU:HA	1:B:528:LYS:HE3	2.04	0.40
1:B:1058:LYS:H	1:B:1058:LYS:CD	2.35	0.40
1:A:217:ILE:O	1:A:224:ILE:HA	2.20	0.40
1:A:226:HIS:HB3	1:A:263:ILE:HB	2.03	0.40
1:A:688:ILE:O	1:A:690:THR:N	2.54	0.40
1:C:245:ALA:HA	1:C:246:PRO:HA	1.95	0.40
1:C:422:ARG:NE	3:C:1202:COA:O8A	2.45	0.40
1:B:206:ILE:CG2	1:B:209:PRO:HB3	2.52	0.40
1:B:714:MET:HG3	1:B:875:VAL:HB	2.02	0.40
1:B:931:LEU:HA	1:B:934:VAL:HG12	2.02	0.40
2:B:1201:BTI:HN3	1:A:590:LYS:HD3	1.86	0.40
1:D:406:LYS:O	1:D:409:GLU:HB3	2.21	0.40
1:D:431:LEU:O	1:D:435:MET:HG2	2.21	0.40
1:A:649:SER:HB2	1:A:878:SER:HB3	2.03	0.40
1:C:311:VAL:O	1:C:314:GLN:HB2	2.21	0.40
1:C:413:VAL:O	1:C:417:ARG:HG3	2.21	0.40
1:C:577:TRP:CE3	1:C:641:ILE:HD11	2.56	0.40
1:C:613:LEU:HD11	1:C:618:ALA:HB1	2.03	0.40
1:C:802:GLU:H	1:C:802:GLU:HG2	1.74	0.40
1:B:492:TYR:CE1	1:B:1004:PRO:HB3	2.55	0.40
1:D:34:TYR:CE2	1:D:44:ARG:HD2	2.56	0.40
1:D:288:PHE:HZ	1:D:291:VAL:CG2	2.23	0.40
1:D:766:THR:HB	1:D:780:ALA:HB2	2.02	0.40
1:D:955:PHE:CE1	1:D:979:VAL:HG21	2.56	0.40
1:A:541:ARG:HG2	1:A:581:THR:HG21	2.03	0.40
1:A:1031:GLU:OE2	1:A:1047:ALA:HB2	2.21	0.40
1:C:223:ASN:O	1:C:323:LEU:HD22	2.22	0.40
1:B:1034:SER:OG	1:B:1035:GLU:N	2.55	0.40
1:D:18:ARG:HG2	1:D:311:VAL:HG21	2.02	0.40
1:D:849:LEU:HB2	1:D:851:LEU:HD13	2.03	0.40
1:A:671:GLU:OE2	1:A:708:ILE:HG21	2.22	0.40

There are no symmetry-related clashes.

5.3 Torsion angles

5.3.1 Protein backbone

In the following table, the Percentiles column shows the percent Ramachandran outliers of the chain as a percentile score with respect to all X-ray entries followed by that with respect to entries of similar resolution.

The Analysed column shows the number of residues for which the backbone conformation was analysed, and the total number of residues.

Mol	Chain	Analysed	Favoured	Allowed	Outliers	Percentiles	
1	A	1031/1151 (90%)	958 (93%)	66 (6%)	7 (1%)	22	44
1	B	1045/1151 (91%)	972 (93%)	68 (6%)	5 (0%)	29	52
1	C	989/1151 (86%)	928 (94%)	56 (6%)	5 (0%)	29	52
1	D	934/1151 (81%)	872 (93%)	54 (6%)	8 (1%)	17	37
All	All	3999/4604 (87%)	3730 (93%)	244 (6%)	25 (1%)	25	47

All (25) Ramachandran outliers are listed below:

Mol	Chain	Res	Type
1	B	59	PRO
1	D	87	PHE
1	D	1021	ASP
1	C	1112	LYS
1	A	239	GLN
1	C	209	PRO
1	D	59	PRO
1	D	486	LYS
1	A	77	ASN
1	B	115	MET
1	D	209	PRO
1	D	1037	ASP
1	C	982	PRO
1	D	454	PRO
1	A	835	PRO
1	B	835	PRO
1	A	836	GLY
1	C	619	VAL
1	B	791	PRO
1	C	59	PRO
1	B	945	ARG
1	A	209	PRO

Continued on next page...

Continued from previous page...

Mol	Chain	Res	Type
1	A	982	PRO
1	D	968	GLY
1	A	640	GLY

5.3.2 Protein sidechains [i](#)

In the following table, the Percentiles column shows the percent sidechain outliers of the chain as a percentile score with respect to all X-ray entries followed by that with respect to entries of similar resolution.

The Analysed column shows the number of residues for which the sidechain conformation was analysed, and the total number of residues.

Mol	Chain	Analysed	Rotameric	Outliers	Percentiles	
1	A	745/987 (76%)	690 (93%)	55 (7%)	13	29
1	B	828/987 (84%)	772 (93%)	56 (7%)	16	33
1	C	810/987 (82%)	752 (93%)	58 (7%)	14	31
1	D	732/987 (74%)	678 (93%)	54 (7%)	13	29
All	All	3115/3948 (79%)	2892 (93%)	223 (7%)	14	31

All (223) residues with a non-rotameric sidechain are listed below:

Mol	Chain	Res	Type
1	C	7	LEU
1	C	8	LEU
1	C	11	ASN
1	C	17	ILE
1	C	30	THR
1	C	39	LYS
1	C	98	CYS
1	C	125	THR
1	C	130	ASP
1	C	210	LYS
1	C	238	HIS
1	C	247	SER
1	C	251	SER
1	C	273	ASN
1	C	287	PHE
1	C	290	GLU
1	C	297	VAL
1	C	334	LYS

Continued on next page...

Continued from previous page...

Mol	Chain	Res	Type
1	C	357	MET
1	C	369	SER
1	C	396	VAL
1	C	399	SER
1	C	425	LYS
1	C	444	ASP
1	C	463	LEU
1	C	486	LYS
1	C	487	ARG
1	C	502	SER
1	C	503	SER
1	C	521	LYS
1	C	535	LEU
1	C	550	THR
1	C	576	MET
1	C	577	TRP
1	C	586	TYR
1	C	622	LYS
1	C	627[A]	ASN
1	C	627[B]	ASN
1	C	642	ASP
1	C	649	SER
1	C	685	ARG
1	C	691	LEU
1	C	714	MET
1	C	732	SER
1	C	743	HIS
1	C	754	LYS
1	C	816	SER
1	C	824	SER
1	C	851	LEU
1	C	871	ASP
1	C	875	VAL
1	C	892	ASN
1	C	893	ASP
1	C	914	SER
1	C	950	LEU
1	C	956	GLU
1	C	976	ILE
1	C	1112	LYS
1	B	36	ASN
1	B	44	ARG

Continued on next page...

Continued from previous page...

Mol	Chain	Res	Type
1	B	56	ASP
1	B	62	SER
1	B	124	THR
1	B	138	ASP
1	B	143	SER
1	B	194	SER
1	B	234	VAL
1	B	250	LEU
1	B	264	GLN
1	B	270	LYS
1	B	339	LEU
1	B	353	LEU
1	B	362	THR
1	B	367	ARG
1	B	396	VAL
1	B	397	LYS
1	B	399	SER
1	B	414	ARG
1	B	415	SER
1	B	435	MET
1	B	445	TYR
1	B	458	ASP
1	B	483	ASN
1	B	507	SER
1	B	517	GLU
1	B	533	VAL
1	B	535	LEU
1	B	541	ARG
1	B	550	THR
1	B	577	TRP
1	B	627	ASN
1	B	628	VAL
1	B	649	SER
1	B	677	THR
1	B	685	ARG
1	B	693	TYR
1	B	699	LYS
1	B	714	MET
1	B	735	ASP
1	B	751	LEU
1	B	754	LYS
1	B	788	ASN

Continued on next page...

Continued from previous page...

Mol	Chain	Res	Type
1	B	793	HIS
1	B	866	ASN
1	B	902	ASP
1	B	924	VAL
1	B	927	PHE
1	B	945	ARG
1	B	950	LEU
1	B	999	SER
1	B	1002	ASP
1	B	1034	SER
1	B	1039	ASN
1	B	1058	LYS
1	D	4	ILE
1	D	12	ARG
1	D	29	SER
1	D	71	ASP
1	D	85	TYR
1	D	89	SER
1	D	119	LYS
1	D	123	ARG
1	D	221	HIS
1	D	230	ARG
1	D	237	ARG
1	D	247	SER
1	D	285	GLU
1	D	295	VAL
1	D	300	THR
1	D	323	LEU
1	D	330	MET
1	D	396	VAL
1	D	406	LYS
1	D	414	ARG
1	D	436	LYS
1	D	440	PHE
1	D	445	TYR
1	D	491	ASP
1	D	501	SER
1	D	538	THR
1	D	550	THR
1	D	576	MET
1	D	577	TRP
1	D	612	LEU

Continued on next page...

Continued from previous page...

Mol	Chain	Res	Type
1	D	628	VAL
1	D	636	SER
1	D	650	LEU
1	D	654	ASP
1	D	677	THR
1	D	685	ARG
1	D	714	MET
1	D	792	ARG
1	D	809	SER
1	D	827	THR
1	D	838	GLN
1	D	856	ASP
1	D	874	LYS
1	D	884	ASP
1	D	892	ASN
1	D	901	THR
1	D	930	ASP
1	D	935	ILE
1	D	971	THR
1	D	999	SER
1	D	1011	ARG
1	D	1021	ASP
1	D	1032	THR
1	D	1117	ILE
1	A	27	ASP
1	A	35	SER
1	A	40	SER
1	A	49	GLU
1	A	85	TYR
1	A	104	LYS
1	A	125	THR
1	A	240	LYS
1	A	250	LEU
1	A	253	THR
1	A	254	LEU
1	A	272	VAL
1	A	287	PHE
1	A	292	ASN
1	A	312	LYS
1	A	338	THR
1	A	369	SER
1	A	393	SER

Continued on next page...

Continued from previous page...

Mol	Chain	Res	Type
1	A	399	SER
1	A	404	SER
1	A	420	ARG
1	A	422	ARG
1	A	442	SER
1	A	455	GLU
1	A	463	LEU
1	A	483	ASN
1	A	503	SER
1	A	535	LEU
1	A	562	SER
1	A	576	MET
1	A	586	TYR
1	A	616	SER
1	A	623	ASN
1	A	628	VAL
1	A	631	LYS
1	A	634	GLN
1	A	649	SER
1	A	730	LEU
1	A	761	VAL
1	A	764	ILE
1	A	814	TYR
1	A	816	SER
1	A	841	ASN
1	A	871	ASP
1	A	899	VAL
1	A	934	VAL
1	A	943	THR
1	A	971	THR
1	A	987	GLN
1	A	992	ARG
1	A	994	GLN
1	A	1016	VAL
1	A	1026	LEU
1	A	1038	GLU
1	A	1048	MET

Sometimes sidechains can be flipped to improve hydrogen bonding and reduce clashes. All (19) such sidechains are listed below:

Mol	Chain	Res	Type
1	C	82	HIS

Continued on next page...

Continued from previous page...

Mol	Chain	Res	Type
1	C	223	ASN
1	C	587	ASN
1	C	832	HIS
1	B	221	HIS
1	B	407	GLN
1	B	651	ASN
1	B	707	HIS
1	B	793	HIS
1	D	292	ASN
1	D	427	ASN
1	D	623	ASN
1	D	743	HIS
1	D	806	HIS
1	D	832	HIS
1	D	932	GLN
1	A	109	HIS
1	A	292	ASN
1	A	627	ASN

5.3.3 RNA [i](#)

There are no RNA molecules in this entry.

5.4 Non-standard residues in protein, DNA, RNA chains [i](#)

There are no non-standard protein/DNA/RNA residues in this entry.

5.5 Carbohydrates [i](#)

There are no monosaccharides in this entry.

5.6 Ligand geometry [i](#)

Of 10 ligands modelled in this entry, 4 are monoatomic - leaving 6 for Mogul analysis.

In the following table, the Counts columns list the number of bonds (or angles) for which Mogul statistics could be retrieved, the number of bonds (or angles) that are observed in the model and the number of bonds (or angles) that are defined in the Chemical Component Dictionary. The Link column lists molecule types, if any, to which the group is linked. The Z score for a bond length (or angle) is the number of standard deviations the observed value is removed from the

expected value. A bond length (or angle) with $|Z| > 2$ is considered an outlier worth inspection. RMSZ is the root-mean-square of all Z scores of the bond lengths (or angles).

Mol	Type	Chain	Res	Link	Bond lengths			Bond angles		
					Counts	RMSZ	# Z > 2	Counts	RMSZ	# Z > 2
5	ACO	A	1202	-	45,53,53	2.44	10 (22%)	56,79,79	1.43	12 (21%)
2	BTI	A	1201	-	16,16,16	1.29	2 (12%)	21,21,21	1.75	4 (19%)
3	COA	C	1202	-	41,50,50	2.53	11 (26%)	52,75,75	1.62	11 (21%)
2	BTI	B	1201	1	16,16,16	1.18	2 (12%)	21,21,21	1.09	2 (9%)
2	BTI	C	1201	1	16,16,16	1.17	2 (12%)	21,21,21	1.36	3 (14%)
2	BTI	C	1204	-	16,16,16	1.14	2 (12%)	21,21,21	1.17	3 (14%)

In the following table, the Chirals column lists the number of chiral outliers, the number of chiral centers analysed, the number of these observed in the model and the number defined in the Chemical Component Dictionary. Similar counts are reported in the Torsion and Rings columns. '-' means no outliers of that kind were identified.

Mol	Type	Chain	Res	Link	Chirals	Torsions	Rings
5	ACO	A	1202	-	-	16/47/67/67	0/3/3/3
2	BTI	A	1201	-	-	5/5/27/27	0/2/2/2
3	COA	C	1202	-	-	15/44/64/64	0/3/3/3
2	BTI	B	1201	1	-	3/5/27/27	0/2/2/2
2	BTI	C	1201	1	-	4/5/27/27	0/2/2/2
2	BTI	C	1204	-	-	4/5/27/27	0/2/2/2

All (29) bond length outliers are listed below:

Mol	Chain	Res	Type	Atoms	Z	Observed(Å)	Ideal(Å)
5	A	1202	ACO	P3B-O3B	12.68	1.83	1.59
3	C	1202	COA	P3B-O3B	11.76	1.81	1.59
3	C	1202	COA	P2A-O6A	4.60	1.77	1.59
3	C	1202	COA	C2B-C1B	3.94	1.59	1.53
3	C	1202	COA	C2B-C3B	3.60	1.61	1.52
5	A	1202	ACO	P2A-O6A	3.55	1.73	1.59
5	A	1202	ACO	C9P-N8P	3.42	1.41	1.33
2	C	1201	BTI	C3-N2	3.20	1.40	1.35
3	C	1202	COA	C5P-N4P	3.17	1.40	1.33
2	A	1201	BTI	C3-N2	3.16	1.40	1.35
2	A	1201	BTI	C3-N3	3.06	1.40	1.35
3	C	1202	COA	C9P-N8P	3.04	1.40	1.33
2	B	1201	BTI	C3-N2	3.02	1.40	1.35
2	C	1204	BTI	C3-N2	2.98	1.40	1.35

Continued on next page...

Continued from previous page...

Mol	Chain	Res	Type	Atoms	Z	Observed(Å)	Ideal(Å)
2	B	1201	BTI	C3-N3	2.91	1.40	1.35
2	C	1204	BTI	C3-N3	2.90	1.40	1.35
5	A	1202	ACO	C5P-N4P	2.85	1.39	1.33
2	C	1201	BTI	C3-N3	2.83	1.40	1.35
3	C	1202	COA	C2A-N1A	2.83	1.39	1.33
5	A	1202	ACO	C2A-N1A	2.71	1.38	1.33
5	A	1202	ACO	C2B-C3B	2.62	1.58	1.52
5	A	1202	ACO	O3B-C3B	-2.54	1.34	1.44
3	C	1202	COA	O3B-C3B	-2.52	1.34	1.44
3	C	1202	COA	O6A-CCP	-2.43	1.36	1.43
3	C	1202	COA	C4A-N3A	2.38	1.38	1.35
5	A	1202	ACO	C4A-N3A	2.38	1.38	1.35
5	A	1202	ACO	C2B-C1B	2.35	1.57	1.53
5	A	1202	ACO	O5B-C5B	-2.26	1.36	1.44
3	C	1202	COA	O4B-C4B	-2.02	1.40	1.45

All (35) bond angle outliers are listed below:

Mol	Chain	Res	Type	Atoms	Z	Observed(°)	Ideal(°)
2	A	1201	BTI	C5-C6-S1	4.43	110.10	106.31
3	C	1202	COA	C6P-C7P-N8P	-4.17	103.48	111.90
2	A	1201	BTI	C4-C2-S1	4.04	109.05	105.20
3	C	1202	COA	O3B-P3B-O7A	-3.64	95.34	109.39
2	C	1201	BTI	C5-C6-S1	2.96	108.84	106.31
3	C	1202	COA	O2A-P1A-O1A	2.92	126.65	112.24
3	C	1202	COA	O6A-CCP-CBP	-2.85	105.97	110.55
5	A	1202	ACO	C7P-C6P-C5P	-2.77	107.74	112.36
3	C	1202	COA	O9A-P3B-O7A	2.77	121.53	110.68
2	C	1204	BTI	C8-C7-C2	-2.60	108.59	113.86
2	A	1201	BTI	C6-C5-C4	2.56	110.88	108.66
2	C	1201	BTI	C4-C5-N3	2.54	105.13	102.43
5	A	1202	ACO	O2A-P1A-O1A	2.53	124.77	112.24
5	A	1202	ACO	O4B-C1B-C2B	2.48	110.55	106.93
5	A	1202	ACO	O3B-P3B-O7A	-2.46	99.88	109.39
3	C	1202	COA	O9P-C9P-N8P	-2.44	117.76	122.99
3	C	1202	COA	CDP-CBP-CCP	2.39	112.13	108.23
5	A	1202	ACO	CEP-CBP-CAP	2.34	112.88	108.82
5	A	1202	ACO	O2B-C2B-C3B	2.32	117.76	111.17
5	A	1202	ACO	O5A-P2A-O4A	2.25	123.37	112.24
5	A	1202	ACO	O6A-CCP-CBP	-2.24	106.94	110.55
5	A	1202	ACO	C2A-N1A-C6A	-2.22	114.96	118.75
2	C	1201	BTI	C4-C2-S1	2.19	107.29	105.20

Continued on next page...

Continued from previous page...

Mol	Chain	Res	Type	Atoms	Z	Observed(°)	Ideal(°)
3	C	1202	COA	O5P-C5P-C6P	2.17	125.99	122.02
3	C	1202	COA	O5A-P2A-O4A	2.16	122.94	112.24
2	A	1201	BTI	C4-C5-N3	2.16	104.72	102.43
2	B	1201	BTI	C4-N2-C3	-2.15	110.62	112.62
5	A	1202	ACO	C6P-C7P-N8P	-2.14	107.57	111.90
2	C	1204	BTI	C4-N2-C3	-2.10	110.66	112.62
3	C	1202	COA	O6A-P2A-O4A	-2.10	100.88	109.07
3	C	1202	COA	O4B-C1B-C2B	2.07	109.95	106.93
2	C	1204	BTI	C4-C5-N3	2.05	104.62	102.43
5	A	1202	ACO	P2A-O3A-P1A	2.04	139.82	132.83
5	A	1202	ACO	O6A-P2A-O4A	-2.01	101.20	109.07
2	B	1201	BTI	C4-C5-N3	2.01	104.57	102.43

There are no chirality outliers.

All (47) torsion outliers are listed below:

Mol	Chain	Res	Type	Atoms
2	C	1201	BTI	S1-C2-C7-C8
2	C	1201	BTI	C4-C2-C7-C8
2	C	1204	BTI	S1-C2-C7-C8
2	C	1204	BTI	C4-C2-C7-C8
2	B	1201	BTI	S1-C2-C7-C8
2	B	1201	BTI	C4-C2-C7-C8
2	A	1201	BTI	S1-C2-C7-C8
2	A	1201	BTI	C4-C2-C7-C8
3	C	1202	COA	O4B-C4B-C5B-O5B
3	C	1202	COA	CCP-O6A-P2A-O3A
3	C	1202	COA	CCP-O6A-P2A-O4A
3	C	1202	COA	CCP-O6A-P2A-O5A
3	C	1202	COA	CAP-CBP-CCP-O6A
3	C	1202	COA	O9P-C9P-CAP-CBP
3	C	1202	COA	N8P-C9P-CAP-CBP
5	A	1202	ACO	C5B-O5B-P1A-O1A
5	A	1202	ACO	C5B-O5B-P1A-O2A
5	A	1202	ACO	C5B-O5B-P1A-O3A
5	A	1202	ACO	CCP-O6A-P2A-O4A
3	C	1202	COA	C3B-C4B-C5B-O5B
2	B	1201	BTI	C7-C8-C9-C10
5	A	1202	ACO	C4B-C3B-O3B-P3B
3	C	1202	COA	CDP-CBP-CCP-O6A
3	C	1202	COA	CEP-CBP-CCP-O6A
2	A	1201	BTI	C2-C7-C8-C9

Continued on next page...

Continued from previous page...

Mol	Chain	Res	Type	Atoms
2	C	1201	BTI	C7-C8-C9-C10
2	C	1204	BTI	C7-C8-C9-C10
5	A	1202	ACO	C2B-C3B-O3B-P3B
5	A	1202	ACO	S1P-C2P-C3P-N4P
3	C	1202	COA	O9P-C9P-CAP-OAP
3	C	1202	COA	N8P-C9P-CAP-OAP
5	A	1202	ACO	CCP-O6A-P2A-O3A
3	C	1202	COA	P1A-O3A-P2A-O5A
5	A	1202	ACO	CCP-O6A-P2A-O5A
2	C	1201	BTI	C11-C10-C9-C8
2	A	1201	BTI	C11-C10-C9-C8
2	A	1201	BTI	C7-C8-C9-C10
5	A	1202	ACO	C3B-C4B-C5B-O5B
5	A	1202	ACO	O4B-C4B-C5B-O5B
2	C	1204	BTI	C2-C7-C8-C9
5	A	1202	ACO	O5P-C5P-C6P-C7P
3	C	1202	COA	C3B-O3B-P3B-O7A
5	A	1202	ACO	C3B-O3B-P3B-O7A
5	A	1202	ACO	CEP-CBP-CCP-O6A
3	C	1202	COA	C3B-O3B-P3B-O9A
5	A	1202	ACO	C3B-O3B-P3B-O8A
5	A	1202	ACO	N4P-C5P-C6P-C7P

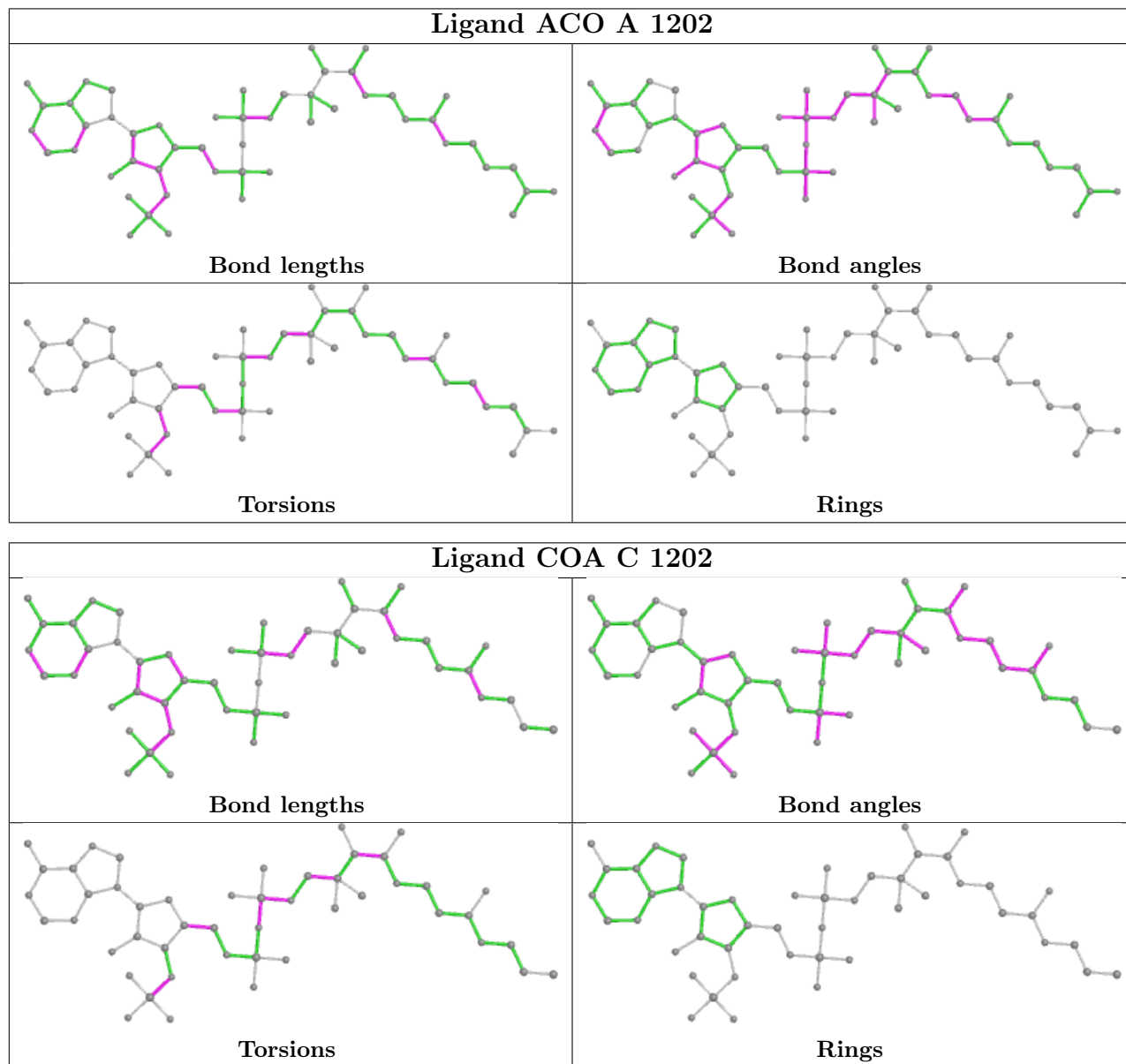
There are no ring outliers.

6 monomers are involved in 29 short contacts:

Mol	Chain	Res	Type	Clashes	Symm-Clashes
5	A	1202	ACO	4	0
2	A	1201	BTI	6	0
3	C	1202	COA	6	0
2	B	1201	BTI	2	0
2	C	1201	BTI	2	0
2	C	1204	BTI	9	0

The following is a two-dimensional graphical depiction of Mogul quality analysis of bond lengths, bond angles, torsion angles, and ring geometry for all instances of the Ligand of Interest. In addition, ligands with molecular weight > 250 and outliers as shown on the validation Tables will also be included. For torsion angles, if less than 5% of the Mogul distribution of torsion angles is within 10 degrees of the torsion angle in question, then that torsion angle is considered an outlier. Any bond that is central to one or more torsion angles identified as an outlier by Mogul will be highlighted in the graph. For rings, the root-mean-square deviation (RMSD) between the ring in question and similar rings identified by Mogul is calculated over all ring torsion angles. If the

average RMSD is greater than 60 degrees and the minimal RMSD between the ring in question and any Mogul-identified rings is also greater than 60 degrees, then that ring is considered an outlier. The outliers are highlighted in purple. The color gray indicates Mogul did not find sufficient equivalents in the CSD to analyse the geometry.



5.7 Other polymers [i](#)

There are no such residues in this entry.

5.8 Polymer linkage issues [i](#)

There are no chain breaks in this entry.

6 Fit of model and data

6.1 Protein, DNA and RNA chains

In the following table, the column labelled ‘#RSRZ > 2’ contains the number (and percentage) of RSRZ outliers, followed by percent RSRZ outliers for the chain as percentile scores relative to all X-ray entries and entries of similar resolution. The OWAB column contains the minimum, median, 95th percentile and maximum values of the occupancy-weighted average B-factor per residue. The column labelled ‘Q < 0.9’ lists the number of (and percentage) of residues with an average occupancy less than 0.9.

Mol	Chain	Analysed	<RSRZ>	#RSRZ>2	OWAB(Å ²)	Q<0.9
1	A	1041/1151 (90%)	0.30	68 (6%) 18 16	25, 52, 86, 122	0
1	B	1053/1151 (91%)	0.15	32 (3%) 50 49	23, 43, 79, 141	0
1	C	993/1151 (86%)	0.14	19 (1%) 66 67	19, 41, 74, 140	0
1	D	950/1151 (82%)	0.30	66 (6%) 16 14	25, 50, 88, 130	0
All	All	4037/4604 (87%)	0.22	185 (4%) 32 30	19, 46, 83, 141	0

All (185) RSRZ outliers are listed below:

Mol	Chain	Res	Type	RSRZ
1	D	222	GLY	7.5
1	D	56	ASP	6.3
1	A	224	ILE	5.8
1	D	450	ILE	5.7
1	B	885	MET	5.6
1	A	494	LEU	5.4
1	A	893	ASP	5.4
1	D	59	PRO	5.2
1	A	846	ALA	5.2
1	D	935	ILE	5.0
1	A	151	ALA	5.0
1	C	906	LEU	4.8
1	A	263	ILE	4.7
1	C	457	PHE	4.6
1	B	455	GLU	4.4
1	B	456	LEU	4.4
1	B	1040	GLY	4.3
1	A	839	TYR	4.3
1	A	968	GLY	4.2
1	A	262	ALA	4.2
1	A	118	ASP	4.1

Continued on next page...

Continued from previous page...

Mol	Chain	Res	Type	RSRZ
1	C	901	THR	4.1
1	C	839	TYR	4.0
1	D	271	TYR	3.9
1	D	288	PHE	3.8
1	A	218	GLY	3.7
1	D	449	PHE	3.7
1	A	845	GLN	3.7
1	D	60	ALA	3.6
1	D	53	VAL	3.6
1	D	904	TYR	3.6
1	A	268	ASN	3.6
1	A	226	HIS	3.5
1	A	174	VAL	3.5
1	D	347	ILE	3.5
1	A	7	LEU	3.5
1	A	493	GLU	3.4
1	A	280	LEU	3.4
1	D	933	ALA	3.4
1	A	156	PHE	3.4
1	A	887	LEU	3.4
1	A	916	PHE	3.3
1	A	191	ALA	3.3
1	D	887	LEU	3.3
1	D	1108	THR	3.3
1	D	1116	THR	3.3
1	A	287	PHE	3.3
1	D	1107	ILE	3.3
1	A	955	PHE	3.3
1	A	495	ALA	3.3
1	B	621	TYR	3.3
1	B	839	TYR	3.3
1	A	206	ILE	3.2
1	D	900	ILE	3.2
1	A	73	ALA	3.2
1	A	187	ALA	3.2
1	D	913	VAL	3.1
1	D	868	LEU	3.1
1	D	425	LYS	3.1
1	D	132	PRO	3.1
1	D	421	ILE	3.1
1	D	249	GLY	3.1
1	C	117	GLY	3.1

Continued on next page...

Continued from previous page...

Mol	Chain	Res	Type	RSRZ
1	A	58	GLY	3.1
1	D	287	PHE	3.0
1	A	122	ALA	3.0
1	A	184	PHE	3.0
1	D	839	TYR	3.0
1	A	57	LEU	3.0
1	B	628	VAL	3.0
1	C	258	ILE	2.9
1	B	899	VAL	2.9
1	A	935	ILE	2.9
1	C	908	PHE	2.9
1	D	291	VAL	2.9
1	B	849	LEU	2.9
1	C	900	ILE	2.9
1	B	900	ILE	2.9
1	D	69	ILE	2.9
1	D	456	LEU	2.9
1	D	235	GLN	2.8
1	D	54	GLY	2.8
1	B	450	ILE	2.8
1	A	90	GLU	2.8
1	D	64	LEU	2.8
1	A	157	PRO	2.8
1	B	907	ASP	2.8
1	A	120	VAL	2.8
1	D	890	VAL	2.8
1	A	135	PRO	2.8
1	C	855	PHE	2.7
1	A	119	LYS	2.7
1	A	105	PHE	2.7
1	C	358	PRO	2.7
1	B	846	ALA	2.7
1	D	113	LEU	2.7
1	C	450	ILE	2.7
1	C	434	VAL	2.7
1	A	315	ILE	2.7
1	A	192	GLU	2.7
1	D	1106	LEU	2.7
1	A	903	GLY	2.6
1	D	885	MET	2.6
1	B	901	THR	2.6
1	D	989	ILE	2.6

Continued on next page...

Continued from previous page...

Mol	Chain	Res	Type	RSRZ
1	B	912	VAL	2.6
1	A	901	THR	2.6
1	B	248	VAL	2.6
1	D	1104	PRO	2.5
1	D	915	PHE	2.5
1	C	289	ILE	2.5
1	A	885	MET	2.5
1	D	58	GLY	2.5
1	A	69	ILE	2.4
1	A	931	LEU	2.4
1	B	908	PHE	2.4
1	D	934	VAL	2.4
1	A	958	VAL	2.4
1	A	241	VAL	2.4
1	A	913	VAL	2.4
1	B	430	PHE	2.4
1	A	144	TYR	2.4
1	D	946	PRO	2.4
1	B	962	LEU	2.3
1	A	217	ILE	2.3
1	A	930	ASP	2.3
1	B	870	GLY	2.3
1	A	173	ILE	2.3
1	A	107	GLY	2.3
1	D	57	LEU	2.3
1	A	933	ALA	2.3
1	D	126	ALA	2.3
1	B	888	TYR	2.2
1	A	1055	ILE	2.2
1	B	53	VAL	2.2
1	D	892	ASN	2.2
1	D	61	GLU	2.2
1	D	926	GLY	2.2
1	C	287	PHE	2.2
1	D	426	THR	2.2
1	A	926	GLY	2.2
1	B	496	SER	2.2
1	A	952	PRO	2.2
1	D	897	GLN	2.2
1	D	930	ASP	2.2
1	B	1057	ILE	2.2
1	D	134	ILE	2.2

Continued on next page...

Continued from previous page...

Mol	Chain	Res	Type	RSRZ
1	A	896	GLU	2.2
1	C	10	ALA	2.2
1	A	266	MET	2.2
1	D	223	ASN	2.1
1	D	286	PHE	2.1
1	A	966	GLN	2.1
1	D	944	ALA	2.1
1	C	356	PHE	2.1
1	B	916	PHE	2.1
1	B	494	LEU	2.1
1	D	882	VAL	2.1
1	D	209	PRO	2.1
1	A	1039	ASN	2.1
1	C	113	LEU	2.1
1	C	912	VAL	2.1
1	B	881	VAL	2.1
1	A	967	GLN	2.1
1	D	916	PHE	2.1
1	A	855	PHE	2.1
1	C	935	ILE	2.1
1	D	206	ILE	2.1
1	D	872	ILE	2.1
1	B	624	TYR	2.1
1	B	1039	ASN	2.1
1	D	208	ASN	2.1
1	D	236	ARG	2.1
1	D	889	MET	2.1
1	D	277	VAL	2.0
1	A	225	VAL	2.0
1	D	289	ILE	2.0
1	A	313	THR	2.0
1	B	205	TYR	2.0
1	B	904	TYR	2.0
1	D	941	ALA	2.0
1	A	928	ASN	2.0
1	D	3	GLN	2.0
1	A	869	PHE	2.0
1	B	234	VAL	2.0

6.2 Non-standard residues in protein, DNA, RNA chains

There are no non-standard protein/DNA/RNA residues in this entry.

6.3 Carbohydrates [i](#)

There are no monosaccharides in this entry.

6.4 Ligands [i](#)

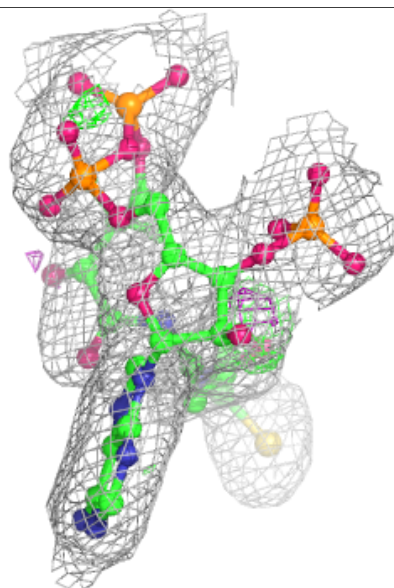
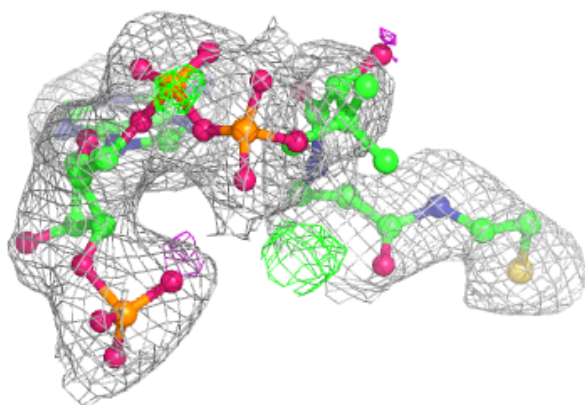
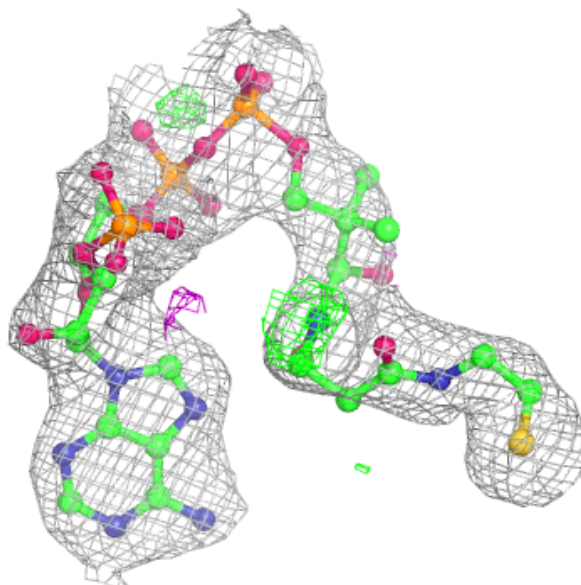
In the following table, the Atoms column lists the number of modelled atoms in the group and the number defined in the chemical component dictionary. The B-factors column lists the minimum, median, 95th percentile and maximum values of B factors of atoms in the group. The column labelled 'Q < 0.9' lists the number of atoms with occupancy less than 0.9.

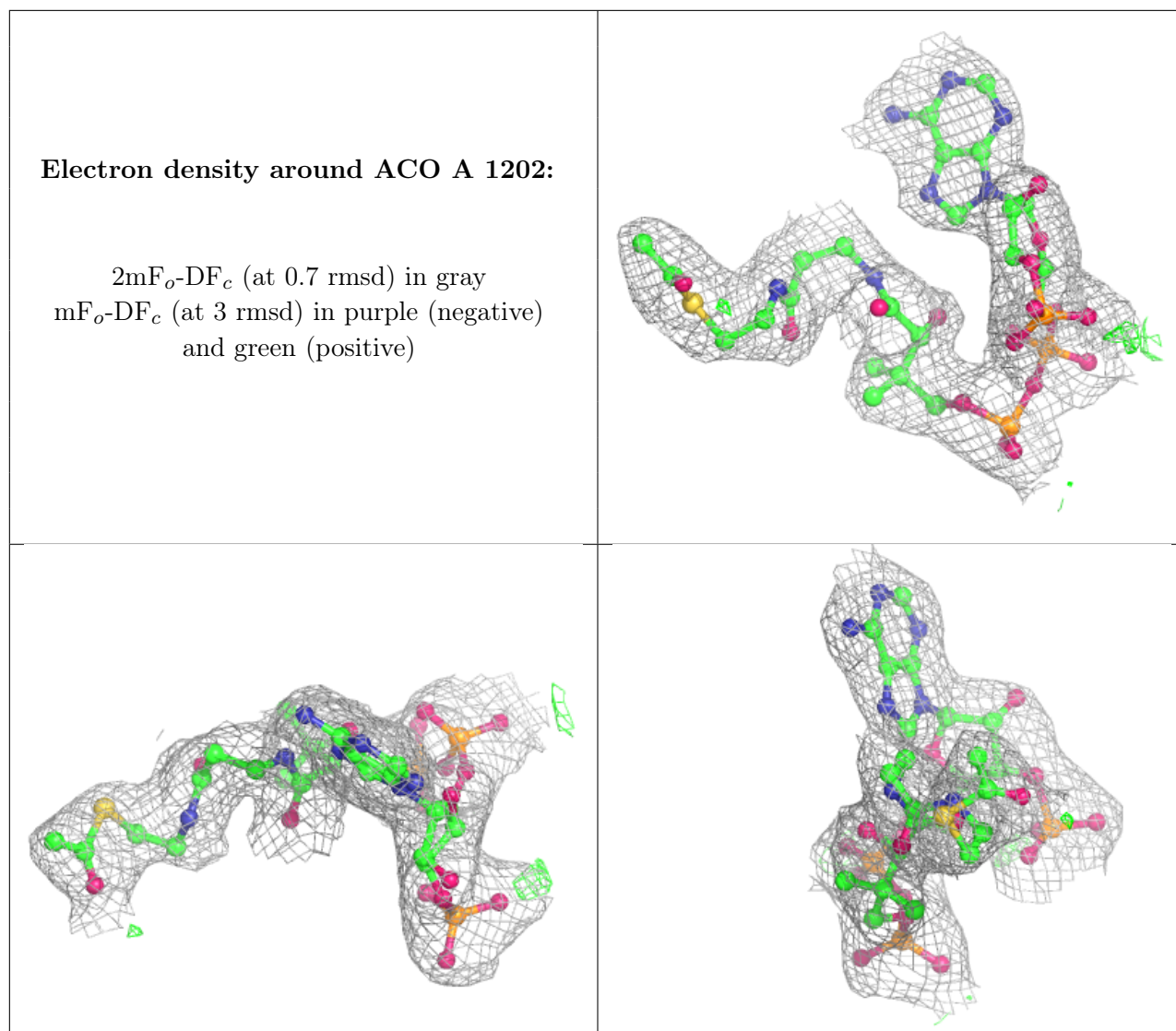
Mol	Type	Chain	Res	Atoms	RSCC	RSR	B-factors(Å ²)	Q<0.9
4	MN	D	1201	1/1	0.64	0.21	130,130,130,130	0
4	MN	C	1203	1/1	0.90	0.19	129,129,129,129	0
4	MN	B	1202	1/1	0.90	0.14	74,74,74,74	0
2	BTI	C	1201	15/15	0.90	0.22	32,37,41,43	0
4	MN	A	1203	1/1	0.92	0.11	102,102,102,102	0
2	BTI	B	1201	15/15	0.94	0.23	44,45,50,51	0
3	COA	C	1202	48/48	0.94	0.18	37,45,53,55	0
2	BTI	A	1201	15/15	0.95	0.24	48,49,52,54	0
2	BTI	C	1204	15/15	0.95	0.15	29,30,33,40	0
5	ACO	A	1202	51/51	0.95	0.15	33,38,51,52	0

The following is a graphical depiction of the model fit to experimental electron density of all instances of the Ligand of Interest. In addition, ligands with molecular weight > 250 and outliers as shown on the geometry validation Tables will also be included. Each fit is shown from different orientation to approximate a three-dimensional view.

Electron density around COA C 1202:

$2mF_o-DF_c$ (at 0.7 rmsd) in gray
 mF_o-DF_c (at 3 rmsd) in purple (negative)
and green (positive)





6.5 Other polymers [i](#)

There are no such residues in this entry.