



Full wwPDB X-ray Structure Validation Report ⓘ

Feb 5, 2024 – 06:05 PM EST

PDB ID : 8GEN
Title : E. eligans beta-glucuronidase bound to UNC10201652-glucuronide
Authors : Simpson, J.B.; Redinbo, M.R.
Deposited on : 2023-03-07
Resolution : 2.94 Å(reported)

This is a Full wwPDB X-ray Structure Validation Report for a publicly released PDB entry.

We welcome your comments at validation@mail.wwpdb.org

A user guide is available at

<https://www.wwpdb.org/validation/2017/XrayValidationReportHelp>

with specific help available everywhere you see the ⓘ symbol.

The types of validation reports are described at

<http://www.wwpdb.org/validation/2017/FAQs#types>.

The following versions of software and data (see [references ⓘ](#)) were used in the production of this report:

MolProbity : 4.02b-467
Mogul : 1.8.5 (274361), CSD as541be (2020)
Xtriage (Phenix) : 1.13
EDS : 2.36
buster-report : 1.1.7 (2018)
Percentile statistics : 20191225.v01 (using entries in the PDB archive December 25th 2019)
Refmac : 5.8.0158
CCP4 : 7.0.044 (Gargrove)
Ideal geometry (proteins) : Engh & Huber (2001)
Ideal geometry (DNA, RNA) : Parkinson et al. (1996)
Validation Pipeline (wwPDB-VP) : 2.36

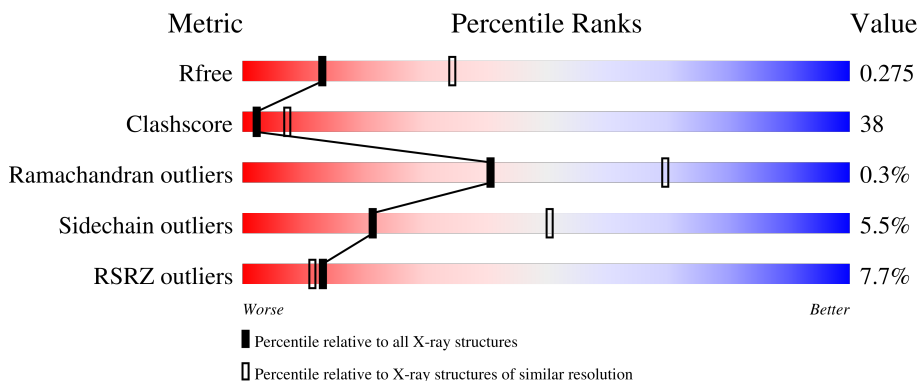
1 Overall quality at a glance

The following experimental techniques were used to determine the structure:

X-RAY DIFFRACTION

The reported resolution of this entry is 2.94 Å.

Percentile scores (ranging between 0-100) for global validation metrics of the entry are shown in the following graphic. The table shows the number of entries on which the scores are based.



Metric	Whole archive (#Entries)	Similar resolution (#Entries, resolution range(Å))
R_{free}	130704	2969 (2.98-2.90)
Clashscore	141614	3218 (2.98-2.90)
Ramachandran outliers	138981	3122 (2.98-2.90)
Sidechain outliers	138945	3124 (2.98-2.90)
RSRZ outliers	127900	2902 (2.98-2.90)

The table below summarises the geometric issues observed across the polymeric chains and their fit to the electron density. The red, orange, yellow and green segments of the lower bar indicate the fraction of residues that contain outliers for ≥ 3 , 2, 1 and 0 types of geometric quality criteria respectively. A grey segment represents the fraction of residues that are not modelled. The numeric value for each fraction is indicated below the corresponding segment, with a dot representing fractions $\leq 5\%$. The upper red bar (where present) indicates the fraction of residues that have poor fit to the electron density. The numeric value is given above the bar.

Mol	Chain	Length	Quality of chain
1	A	614	

2 Entry composition [i](#)

There are 2 unique types of molecules in this entry. The entry contains 4681 atoms, of which 32 are hydrogens and 0 are deuteriums.

In the tables below, the ZeroOcc column contains the number of atoms modelled with zero occupancy, the AltConf column contains the number of residues with at least one atom in alternate conformation and the Trace column contains the number of residues modelled with at most 2 atoms.

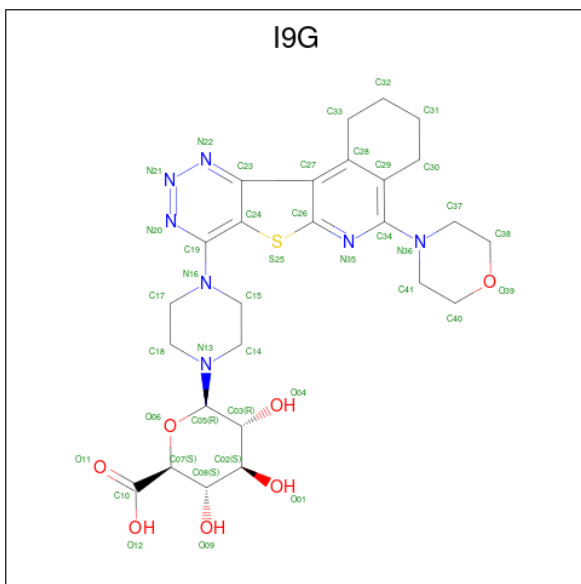
- Molecule 1 is a protein called Beta-glucuronidase.

Mol	Chain	Residues	Atoms					ZeroOcc	AltConf	Trace
			Total	C	N	O	S			
1	A	582	4608	2934	763	890	21	0	0	0

There are 4 discrepancies between the modelled and reference sequences:

Chain	Residue	Modelled	Actual	Comment	Reference
A	-2	SER	-	expression tag	UNP A0A174ZZA3
A	-1	ASN	-	expression tag	UNP A0A174ZZA3
A	0	ALA	-	expression tag	UNP A0A174ZZA3
A	120	ASP	HIS	conflict	UNP A0A174ZZA3

- Molecule 2 is 8-(4-beta-D-glucopyranuronosylpiperazin-1-yl)-5-(morpholin-4-yl)-1,2,3,4-tetrahydro[1,2,3]triazino[4',5':4,5]thieno[2,3-c]isoquinoline (three-letter code: I9G) (formula: $C_{26}H_{33}N_7O_7S$) (labeled as "Ligand of Interest" by depositor).



Mol	Chain	Residues	Atoms					ZeroOcc	AltConf	
			Total	C	H	N	O			S
2	A	1	73	26	32	7	7	1	0	0

4 Data and refinement statistics

Property	Value	Source
Space group	P 64 2 2	Depositor
Cell constants a, b, c, α , β , γ	180.30Å 180.30Å 133.57Å 90.00° 90.00° 120.00°	Depositor
Resolution (Å)	48.50 – 2.94 48.50 – 2.94	Depositor EDS
% Data completeness (in resolution range)	93.5 (48.50-2.94) 93.5 (48.50-2.94)	Depositor EDS
R_{merge}	0.15	Depositor
R_{sym}	(Not available)	Depositor
$\langle I/\sigma(I) \rangle$ ¹	1.21 (at 2.96Å)	Xtrriage
Refinement program	PHENIX 1.19.2_4158	Depositor
R, R_{free}	0.248 , 0.277 0.244 , 0.275	Depositor DCC
R_{free} test set	2000 reflections (7.71%)	wwPDB-VP
Wilson B-factor (Å ²)	86.8	Xtrriage
Anisotropy	0.162	Xtrriage
Bulk solvent k_{sol} (e/Å ³), B_{sol} (Å ²)	0.36 , 69.8	EDS
L-test for twinning ²	$\langle L \rangle = 0.47$, $\langle L^2 \rangle = 0.30$	Xtrriage
Estimated twinning fraction	No twinning to report.	Xtrriage
F_o, F_c correlation	0.92	EDS
Total number of atoms	4681	wwPDB-VP
Average B, all atoms (Å ²)	79.0	wwPDB-VP

Xtrriage's analysis on translational NCS is as follows: *The largest off-origin peak in the Patterson function is 3.20% of the height of the origin peak. No significant pseudotranslation is detected.*

¹Intensities estimated from amplitudes.

²Theoretical values of $\langle |L| \rangle$, $\langle L^2 \rangle$ for acentric reflections are 0.5, 0.333 respectively for untwinned datasets, and 0.375, 0.2 for perfectly twinned datasets.

5 Model quality [i](#)

5.1 Standard geometry [i](#)

Bond lengths and bond angles in the following residue types are not validated in this section: I9G

The Z score for a bond length (or angle) is the number of standard deviations the observed value is removed from the expected value. A bond length (or angle) with $|Z| > 5$ is considered an outlier worth inspection. RMSZ is the root-mean-square of all Z scores of the bond lengths (or angles).

Mol	Chain	Bond lengths		Bond angles	
		RMSZ	# Z >5	RMSZ	# Z >5
1	A	0.30	0/4724	0.51	0/6422

There are no bond length outliers.

There are no bond angle outliers.

There are no chirality outliers.

There are no planarity outliers.

5.2 Too-close contacts [i](#)

In the following table, the Non-H and H(model) columns list the number of non-hydrogen atoms and hydrogen atoms in the chain respectively. The H(added) column lists the number of hydrogen atoms added and optimized by MolProbity. The Clashes column lists the number of clashes within the asymmetric unit, whereas Symm-Clashes lists symmetry-related clashes.

Mol	Chain	Non-H	H(model)	H(added)	Clashes	Symm-Clashes
1	A	4608	0	4307	343	0
2	A	41	32	0	1	0
All	All	4649	32	4307	343	0

The all-atom clashscore is defined as the number of clashes found per 1000 atoms (including hydrogen atoms). The all-atom clashscore for this structure is 38.

All (343) close contacts within the same asymmetric unit are listed below, sorted by their clash magnitude.

Atom-1	Atom-2	Interatomic distance (Å)	Clash overlap (Å)
1:A:521:THR:HG21	1:A:538:GLN:HB2	1.13	1.11
1:A:202:ILE:HA	1:A:211:ALA:HB2	1.43	1.00

Continued on next page...

Continued from previous page...

Atom-1	Atom-2	Interatomic distance (Å)	Clash overlap (Å)
1:A:14:ASP:HA	1:A:184:LYS:HG2	1.46	0.96
1:A:23:LEU:HD23	1:A:66:VAL:HG12	1.49	0.94
1:A:74:VAL:HG11	1:A:78:VAL:HG21	1.50	0.93
1:A:91:THR:HA	1:A:109:GLY:HA3	1.51	0.90
1:A:225:ASN:O	1:A:226:ASN:ND2	2.05	0.88
1:A:191:THR:HG21	1:A:225:ASN:HB2	1.55	0.86
1:A:429:ALA:HB1	1:A:466:THR:HG22	1.55	0.86
1:A:334:GLN:HA	1:A:597:ARG:HG3	1.59	0.84
1:A:38:LEU:HG	1:A:69:GLN:OE1	1.77	0.84
1:A:231:VAL:HG12	1:A:271:VAL:HA	1.60	0.84
1:A:219:ILE:HG22	1:A:220:LYS:H	1.42	0.83
1:A:202:ILE:HA	1:A:211:ALA:CB	2.09	0.83
1:A:412:LYS:HD2	1:A:449:PRO:HG2	1.60	0.82
1:A:470:SER:HB3	1:A:508:LEU:HD11	1.63	0.80
1:A:234:PHE:CZ	1:A:270:LYS:HE2	2.17	0.79
1:A:477:CYS:HB3	1:A:515:THR:HG23	1.65	0.78
1:A:32:LYS:HA	1:A:34:TYR:CE1	2.19	0.77
1:A:345:PRO:HG3	1:A:407:LEU:HD12	1.67	0.77
1:A:200:ALA:HB2	1:A:213:LEU:HD23	1.65	0.77
1:A:74:VAL:CG1	1:A:78:VAL:HG21	2.14	0.76
1:A:401:LYS:HG2	1:A:440:LEU:HD23	1.65	0.76
1:A:434:TYR:CE1	1:A:472:LEU:HD21	2.20	0.76
1:A:401:LYS:HG2	1:A:440:LEU:CD2	2.16	0.76
1:A:91:THR:HA	1:A:109:GLY:CA	2.17	0.75
1:A:212:VAL:HG23	1:A:252:GLU:HA	1.68	0.75
1:A:477:CYS:HB3	1:A:515:THR:CG2	2.17	0.74
1:A:598:ASN:O	1:A:601:SER:HB3	1.88	0.74
1:A:82:ARG:O	1:A:187:THR:HB	1.87	0.74
1:A:84:VAL:HG12	1:A:186:TYR:O	1.88	0.74
1:A:90:VAL:CG1	1:A:94:ALA:HB2	2.17	0.74
1:A:90:VAL:HG13	1:A:94:ALA:HB2	1.70	0.74
1:A:342:SER:HB3	1:A:346:TYR:HE1	1.52	0.73
1:A:291:GLY:O	1:A:510:LYS:HA	1.88	0.73
1:A:244:THR:HG22	1:A:251:PHE:CE1	2.24	0.73
1:A:0:ALA:HA	1:A:409:SER:OG	1.90	0.72
1:A:385:ILE:HD12	1:A:392:HIS:O	1.90	0.72
1:A:244:THR:HG22	1:A:251:PHE:HE1	1.54	0.72
1:A:234:PHE:HZ	1:A:270:LYS:HE2	1.53	0.71
1:A:266:LEU:HD11	1:A:355:ASP:HB3	1.70	0.71
1:A:201:ASP:O	1:A:211:ALA:HB1	1.90	0.70
1:A:429:ALA:CB	1:A:466:THR:HG22	2.21	0.70

Continued on next page...

Continued from previous page...

Atom-1	Atom-2	Interatomic distance (Å)	Clash overlap (Å)
1:A:422:ILE:HD12	1:A:422:ILE:H	1.56	0.70
1:A:244:THR:CG2	1:A:251:PHE:HE1	2.04	0.69
1:A:90:VAL:HG21	1:A:132:VAL:HG22	1.75	0.69
1:A:91:THR:HG23	1:A:180:THR:OG1	1.93	0.69
1:A:185:ILE:O	1:A:185:ILE:HD12	1.93	0.69
1:A:306:TYR:HE1	1:A:331:MET:HG2	1.59	0.68
1:A:48:ALA:HA	1:A:318:GLY:HA3	1.76	0.68
1:A:233:LEU:HD12	1:A:234:PHE:H	1.59	0.68
1:A:15:LEU:HB2	1:A:183:VAL:HG12	1.75	0.68
1:A:250:THR:O	1:A:251:PHE:HD1	1.76	0.68
1:A:85:LEU:HB2	1:A:117:LEU:HD11	1.75	0.67
1:A:181:ARG:HB3	1:A:182:PRO:CD	2.25	0.67
1:A:342:SER:HB2	1:A:346:TYR:OH	1.95	0.67
1:A:212:VAL:HG23	1:A:252:GLU:CA	2.24	0.67
1:A:422:ILE:HD12	1:A:455:THR:O	1.95	0.67
1:A:192:TYR:O	1:A:219:ILE:HG23	1.95	0.66
1:A:303:PHE:HB2	1:A:557:GLY:HA3	1.76	0.66
1:A:219:ILE:HG22	1:A:220:LYS:N	2.10	0.66
1:A:349:GLU:OE1	1:A:349:GLU:N	2.25	0.66
1:A:459:VAL:O	1:A:462:THR:HG23	1.96	0.66
1:A:84:VAL:HG11	1:A:186:TYR:CE2	2.31	0.65
1:A:165:PRO:O	1:A:166:GLN:HG2	1.96	0.65
1:A:13:SER:HB3	1:A:185:ILE:HD11	1.77	0.65
1:A:218:GLU:HA	1:A:219:ILE:HD12	1.78	0.65
1:A:230:LYS:CB	1:A:245:GLU:HA	2.27	0.65
1:A:476:ILE:O	1:A:512:VAL:HA	1.97	0.65
1:A:240:LYS:HD2	1:A:241:LEU:N	2.12	0.65
1:A:491:LEU:HA	1:A:494:SER:OG	1.97	0.65
1:A:231:VAL:CG1	1:A:271:VAL:HG12	2.27	0.64
1:A:521:THR:CG2	1:A:538:GLN:HB2	2.08	0.64
1:A:212:VAL:HG23	1:A:252:GLU:N	2.12	0.64
1:A:23:LEU:CD2	1:A:66:VAL:HG12	2.25	0.64
1:A:328:ILE:CD1	1:A:353:LEU:HG	2.27	0.64
1:A:562:ASN:OD1	1:A:563:PHE:N	2.31	0.64
1:A:84:VAL:HG11	1:A:186:TYR:CZ	2.33	0.64
1:A:447:LEU:HD23	1:A:447:LEU:O	1.98	0.64
1:A:91:THR:OG1	1:A:177:CYS:HB3	1.98	0.64
1:A:271:VAL:HG23	1:A:271:VAL:O	1.96	0.63
1:A:9:SER:CB	1:A:277:VAL:H	2.12	0.63
1:A:260:GLN:HG2	1:A:297:ASN:ND2	2.13	0.63
1:A:181:ARG:HB3	1:A:182:PRO:HD3	1.81	0.63

Continued on next page...

Continued from previous page...

Atom-1	Atom-2	Interatomic distance (Å)	Clash overlap (Å)
1:A:498:LEU:HD21	1:A:549:PHE:HE1	1.64	0.63
1:A:60:ARG:HD2	1:A:61:ASP:OD1	1.98	0.62
1:A:36:LYS:HB2	1:A:37:PRO:HD2	1.81	0.62
1:A:200:ALA:CB	1:A:213:LEU:HD23	2.28	0.62
1:A:203:ASP:OD2	1:A:205:THR:HG21	1.99	0.62
1:A:82:ARG:HD3	1:A:188:THR:OG1	1.99	0.62
1:A:421:SER:HA	1:A:455:THR:O	1.99	0.62
1:A:326:LYS:O	1:A:330:ILE:HG13	1.99	0.62
1:A:342:SER:OG	1:A:343:HIS:N	2.32	0.62
1:A:257:ARG:HD2	1:A:265:TYR:HB2	1.82	0.61
1:A:10:ARG:HG2	1:A:10:ARG:HH11	1.65	0.61
1:A:200:ALA:HB2	1:A:213:LEU:CD2	2.30	0.61
1:A:244:THR:CG2	1:A:251:PHE:CE1	2.83	0.61
1:A:308:LYS:O	1:A:342:SER:HA	2.00	0.61
1:A:342:SER:HB3	1:A:346:TYR:CE1	2.35	0.61
1:A:202:ILE:HD11	1:A:284:VAL:HG12	1.83	0.61
1:A:212:VAL:HG23	1:A:251:PHE:C	2.20	0.61
1:A:345:PRO:CG	1:A:407:LEU:HD12	2.30	0.61
1:A:78:VAL:HG23	1:A:83:ILE:HD11	1.83	0.61
1:A:85:LEU:CB	1:A:117:LEU:HD11	2.31	0.60
1:A:127:LEU:O	1:A:127:LEU:HD23	2.01	0.60
1:A:233:LEU:HD12	1:A:234:PHE:N	2.16	0.60
1:A:411:ASP:HB3	1:A:414:HIS:HD2	1.66	0.60
1:A:196:ILE:HD12	1:A:196:ILE:N	2.16	0.60
1:A:260:GLN:HG2	1:A:297:ASN:HD22	1.67	0.60
1:A:484:TRP:CZ2	1:A:520:ASP:HB2	2.37	0.60
1:A:169:PRO:HB3	1:A:171:PHE:CZ	2.37	0.59
1:A:348:GLU:O	1:A:352:ARG:HG3	2.02	0.59
1:A:92:HIS:H	1:A:109:GLY:HA3	1.67	0.59
1:A:210:SER:HB3	1:A:255:ASN:H	1.67	0.59
1:A:280:LEU:HD13	1:A:281:PRO:O	2.02	0.59
1:A:306:TYR:CE1	1:A:331:MET:HG2	2.36	0.59
1:A:286:SER:O	1:A:296:ILE:HA	2.03	0.59
1:A:321:LEU:HD21	1:A:349:GLU:HB3	1.84	0.59
1:A:575:VAL:O	1:A:579:LYS:HE2	2.02	0.59
1:A:231:VAL:HG12	1:A:271:VAL:CA	2.33	0.58
1:A:10:ARG:HG2	1:A:10:ARG:NH1	2.19	0.58
1:A:397:GLN:O	1:A:401:LYS:HG3	2.03	0.58
1:A:400:HIS:NE2	1:A:422:ILE:HG22	2.18	0.58
1:A:434:TYR:CE1	1:A:438:LYS:HB2	2.40	0.57
1:A:404:ILE:O	1:A:408:ILE:HG13	2.05	0.57

Continued on next page...

Continued from previous page...

Atom-1	Atom-2	Interatomic distance (Å)	Clash overlap (Å)
1:A:447:LEU:O	1:A:449:PRO:HD3	2.04	0.57
1:A:193:ILE:CD1	1:A:271:VAL:HG23	2.35	0.57
1:A:477:CYS:HA	1:A:513:MET:O	2.04	0.57
1:A:90:VAL:CG2	1:A:132:VAL:HG22	2.35	0.56
1:A:202:ILE:HD13	1:A:258:LEU:HD22	1.87	0.56
1:A:459:VAL:HG22	1:A:460:GLN:H	1.70	0.56
1:A:114:GLU:OE1	1:A:186:TYR:OH	2.21	0.56
1:A:203:ASP:C	1:A:205:THR:H	2.06	0.56
1:A:353:LEU:HD12	1:A:353:LEU:O	2.05	0.56
1:A:98:LEU:HD11	1:A:126:ASN:HB3	1.87	0.56
1:A:2:LEU:O	1:A:86:ARG:NH2	2.31	0.56
1:A:10:ARG:HA	1:A:187:THR:O	2.06	0.56
1:A:304:LYS:HD3	1:A:603:ILE:CG2	2.36	0.56
1:A:84:VAL:HG11	1:A:186:TYR:CD2	2.41	0.56
1:A:111:LEU:HD21	1:A:345:PRO:HG2	1.86	0.56
1:A:231:VAL:HG12	1:A:271:VAL:HG12	1.87	0.56
1:A:16:SER:HB3	1:A:46:VAL:O	2.05	0.55
1:A:257:ARG:HD2	1:A:265:TYR:CB	2.36	0.55
1:A:210:SER:CB	1:A:255:ASN:H	2.19	0.55
1:A:1:MET:HE2	1:A:114:GLU:HG2	1.88	0.55
1:A:133:ASN:OD1	1:A:135:VAL:HG23	2.07	0.55
1:A:219:ILE:HD12	1:A:219:ILE:N	2.22	0.55
1:A:489:PRO:HA	1:A:537:TYR:OH	2.07	0.55
1:A:96:ILE:HG23	1:A:128:LEU:HD11	1.89	0.54
1:A:219:ILE:CG2	1:A:220:LYS:H	2.18	0.54
1:A:250:THR:O	1:A:251:PHE:CD1	2.60	0.54
1:A:90:VAL:HG11	1:A:94:ALA:HB2	1.90	0.54
1:A:205:THR:OG1	1:A:206:LYS:N	2.39	0.54
1:A:9:SER:HB3	1:A:277:VAL:H	1.72	0.54
1:A:513:MET:O	1:A:513:MET:HG3	2.08	0.54
1:A:3:TYR:HD2	1:A:352:ARG:CZ	2.21	0.54
1:A:295:LEU:HA	1:A:299:LYS:O	2.08	0.54
1:A:10:ARG:HB3	1:A:187:THR:O	2.08	0.53
1:A:72:ILE:HG23	1:A:126:ASN:HB2	1.90	0.53
1:A:295:LEU:CD2	1:A:300:PRO:HA	2.39	0.53
1:A:397:GLN:HB2	1:A:436:TYR:CE1	2.44	0.53
1:A:517:TYR:CZ	1:A:542:TYR:HD1	2.27	0.53
1:A:342:SER:O	1:A:343:HIS:ND1	2.41	0.53
1:A:74:VAL:CG1	1:A:75:PRO:HD2	2.38	0.53
1:A:295:LEU:HD23	1:A:300:PRO:HA	1.91	0.53
1:A:295:LEU:HD22	1:A:299:LYS:C	2.29	0.53

Continued on next page...

Continued from previous page...

Atom-1	Atom-2	Interatomic distance (Å)	Clash overlap (Å)
1:A:231:VAL:HG23	1:A:251:PHE:CZ	2.43	0.53
1:A:244:THR:HG23	1:A:245:GLU:N	2.23	0.53
1:A:98:LEU:HD12	1:A:99:ASN:N	2.23	0.52
1:A:586:ASP:O	1:A:587:ARG:HB2	2.09	0.52
1:A:117:LEU:HD12	1:A:117:LEU:N	2.24	0.52
1:A:203:ASP:C	1:A:205:THR:N	2.61	0.52
1:A:231:VAL:HG12	1:A:271:VAL:CB	2.39	0.52
1:A:212:VAL:CG2	1:A:252:GLU:HA	2.39	0.52
1:A:19:TRP:CE3	1:A:70:ARG:HB2	2.44	0.52
1:A:338:SER:HA	1:A:360:VAL:O	2.10	0.52
1:A:340:ARG:NH2	1:A:516:GLU:HG3	2.25	0.52
1:A:463:THR:HB	1:A:466:THR:OG1	2.10	0.52
1:A:522:VAL:HB	1:A:525:LEU:HD12	1.91	0.52
1:A:453:PRO:HA	1:A:474:ASP:OD2	2.10	0.52
1:A:504:ASP:O	1:A:507:LYS:HG2	2.10	0.52
1:A:90:VAL:HG11	1:A:94:ALA:CB	2.40	0.51
1:A:196:ILE:HG22	1:A:197:THR:N	2.24	0.51
1:A:9:SER:HB2	1:A:276:ASP:HA	1.91	0.51
1:A:269:ILE:O	1:A:279:THR:HA	2.11	0.51
1:A:463:THR:HG22	1:A:465:ASP:H	1.76	0.51
1:A:455:THR:OG1	1:A:475:VAL:O	2.21	0.51
1:A:519:ALA:O	1:A:521:THR:HG23	2.11	0.51
1:A:512:VAL:HG12	1:A:554:PHE:HD2	1.76	0.51
1:A:203:ASP:CG	1:A:205:THR:CG2	2.79	0.50
1:A:345:PRO:HG3	1:A:407:LEU:CD1	2.39	0.50
1:A:448:ASP:OD2	1:A:452:ARG:HB2	2.11	0.50
1:A:296:ILE:HD12	1:A:301:PHE:CG	2.46	0.50
1:A:512:VAL:O	1:A:555:VAL:HA	2.11	0.50
1:A:88:ALA:O	1:A:89:ALA:HB2	2.11	0.50
1:A:38:LEU:HD21	1:A:69:GLN:NE2	2.26	0.50
1:A:328:ILE:HD12	1:A:353:LEU:HG	1.92	0.50
1:A:288:ARG:HD3	1:A:298:GLU:OE2	2.11	0.50
1:A:271:VAL:O	1:A:271:VAL:CG2	2.60	0.50
1:A:342:SER:CB	1:A:346:TYR:HE1	2.22	0.50
1:A:429:ALA:HB1	1:A:466:THR:CG2	2.34	0.50
1:A:84:VAL:HG11	1:A:186:TYR:CE1	2.47	0.49
1:A:231:VAL:HG11	1:A:271:VAL:HG12	1.93	0.49
1:A:404:ILE:CD1	1:A:440:LEU:HB3	2.43	0.49
1:A:443:LEU:HD12	1:A:443:LEU:O	2.12	0.49
1:A:96:ILE:O	1:A:102:LEU:HA	2.13	0.49
1:A:490:ASP:HB3	1:A:493:VAL:HG12	1.94	0.49

Continued on next page...

Continued from previous page...

Atom-1	Atom-2	Interatomic distance (Å)	Clash overlap (Å)
1:A:143:VAL:HB	1:A:369:GLY:HA3	1.94	0.49
1:A:14:ASP:HA	1:A:184:LYS:CG	2.30	0.49
1:A:202:ILE:HD13	1:A:258:LEU:CD2	2.42	0.49
1:A:521:THR:HG21	1:A:538:GLN:CB	2.09	0.49
1:A:3:TYR:O	1:A:5:VAL:HG13	2.13	0.49
1:A:438:LYS:N	1:A:439:PRO:HD2	2.28	0.48
1:A:422:ILE:HD12	1:A:422:ILE:N	2.27	0.48
1:A:342:SER:CB	1:A:346:TYR:CE1	2.95	0.48
1:A:90:VAL:CG1	1:A:94:ALA:CB	2.91	0.48
1:A:408:ILE:O	1:A:412:LYS:HB3	2.14	0.48
1:A:310:GLU:O	1:A:317:ARG:HG3	2.14	0.48
1:A:340:ARG:HH21	1:A:516:GLU:HG3	1.79	0.48
1:A:230:LYS:CB	1:A:244:THR:O	2.61	0.48
1:A:498:LEU:HD21	1:A:549:PHE:CE1	2.47	0.48
1:A:520:ASP:N	1:A:580:LYS:HG2	2.29	0.47
1:A:404:ILE:HD11	1:A:422:ILE:CG2	2.44	0.47
1:A:16:SER:HB3	1:A:47:PRO:HD3	1.96	0.47
1:A:0:ALA:HA	1:A:409:SER:HG	1.76	0.47
1:A:84:VAL:CG1	1:A:186:TYR:CD1	2.98	0.47
1:A:434:TYR:HE1	1:A:472:LEU:HD21	1.76	0.47
1:A:111:LEU:HD21	1:A:345:PRO:CG	2.45	0.47
1:A:265:TYR:O	1:A:266:LEU:HD23	2.14	0.47
1:A:407:LEU:CD2	1:A:420:TRP:HZ3	2.28	0.47
1:A:50:TYR:HA	1:A:53:LEU:HD12	1.96	0.47
1:A:508:LEU:O	1:A:510:LYS:HG3	2.15	0.47
1:A:74:VAL:HG13	1:A:75:PRO:HD2	1.97	0.47
1:A:240:LYS:HD2	1:A:240:LYS:C	2.35	0.47
1:A:117:LEU:O	1:A:121:LEU:HB2	2.16	0.46
1:A:244:THR:CB	1:A:251:PHE:HE1	2.28	0.46
1:A:82:ARG:HB3	1:A:188:THR:H	1.80	0.46
1:A:359:ILE:O	1:A:361:VAL:HG23	2.15	0.46
1:A:477:CYS:HB3	1:A:515:THR:HG21	1.97	0.46
1:A:193:ILE:HD13	1:A:271:VAL:HG23	1.97	0.46
1:A:259:TRP:CZ2	1:A:358:GLY:HA2	2.51	0.46
1:A:217:VAL:HG12	1:A:218:GLU:N	2.30	0.46
1:A:10:ARG:NH1	1:A:188:THR:CG2	2.79	0.46
1:A:91:THR:CG2	1:A:180:THR:OG1	2.63	0.46
1:A:121:LEU:HD12	1:A:126:ASN:ND2	2.31	0.46
1:A:234:PHE:CE1	1:A:270:LYS:HB2	2.51	0.46
1:A:69:GLN:HG3	1:A:129:THR:OG1	2.16	0.45
1:A:210:SER:CB	1:A:255:ASN:N	2.79	0.45

Continued on next page...

Continued from previous page...

Atom-1	Atom-2	Interatomic distance (Å)	Clash overlap (Å)
1:A:285:ARG:HA	1:A:297:ASN:OD1	2.16	0.45
1:A:292:THR:O	1:A:293:LYS:HE2	2.17	0.45
1:A:210:SER:HB2	1:A:255:ASN:N	2.30	0.45
1:A:364:GLU:OE2	1:A:424:ASN:HB2	2.17	0.45
1:A:10:ARG:HE	1:A:278:TYR:HB2	1.81	0.45
1:A:98:LEU:HG	1:A:99:ASN:OD1	2.16	0.45
1:A:470:SER:HB3	1:A:508:LEU:CD1	2.41	0.45
1:A:516:GLU:HG2	1:A:561:TRP:HB2	1.98	0.45
1:A:561:TRP:HA	1:A:562:ASN:HA	1.63	0.45
1:A:90:VAL:HG22	1:A:132:VAL:HG13	1.99	0.45
1:A:486:PHE:HB2	2:A:701:I9G:C38	2.47	0.45
1:A:586:ASP:OD1	1:A:586:ASP:N	2.46	0.45
1:A:38:LEU:HD11	1:A:69:GLN:HB2	1.99	0.45
1:A:119:ASP:OD1	1:A:119:ASP:N	2.42	0.45
1:A:11:LEU:O	1:A:186:TYR:HB2	2.16	0.45
1:A:75:PRO:O	1:A:78:VAL:HG22	2.17	0.45
1:A:463:THR:HG22	1:A:464:ALA:N	2.32	0.45
1:A:1:MET:HE2	1:A:113:PHE:HA	1.99	0.44
1:A:82:ARG:HB3	1:A:188:THR:O	2.18	0.44
1:A:91:THR:CA	1:A:109:GLY:HA3	2.35	0.44
1:A:397:GLN:HB2	1:A:436:TYR:HE1	1.81	0.44
1:A:92:HIS:N	1:A:109:GLY:HA3	2.32	0.44
1:A:191:THR:CG2	1:A:225:ASN:HB2	2.39	0.44
1:A:213:LEU:HD21	1:A:284:VAL:HG22	2.00	0.44
1:A:334:GLN:O	1:A:335:HIS:HB2	2.17	0.44
1:A:257:ARG:HB3	1:A:265:TYR:CG	2.52	0.44
1:A:338:SER:O	1:A:339:PHE:HB3	2.16	0.44
1:A:425:GLU:N	1:A:426:PRO:HD3	2.33	0.44
1:A:82:ARG:HD3	1:A:188:THR:HG1	1.83	0.43
1:A:98:LEU:C	1:A:100:GLY:H	2.21	0.43
1:A:10:ARG:HH11	1:A:188:THR:HG22	1.82	0.43
1:A:203:ASP:CG	1:A:205:THR:HG21	2.39	0.43
1:A:419:MET:HG3	1:A:420:TRP:N	2.33	0.43
1:A:234:PHE:HE1	1:A:270:LYS:HB2	1.84	0.43
1:A:34:TYR:CD2	1:A:97:TYR:CD2	3.06	0.43
1:A:37:PRO:HA	1:A:69:GLN:OE1	2.19	0.43
1:A:9:SER:HB2	1:A:277:VAL:H	1.84	0.43
1:A:96:ILE:HD12	1:A:96:ILE:N	2.33	0.43
1:A:404:ILE:HD11	1:A:422:ILE:HG23	2.00	0.43
1:A:407:LEU:C	1:A:407:LEU:HD23	2.39	0.43
1:A:84:VAL:HG13	1:A:186:TYR:CD1	2.54	0.43

Continued on next page...

Continued from previous page...

Atom-1	Atom-2	Interatomic distance (Å)	Clash overlap (Å)
1:A:34:TYR:O	1:A:127:LEU:HD21	2.19	0.43
1:A:34:TYR:CD1	1:A:34:TYR:N	2.85	0.43
1:A:69:GLN:NE2	1:A:127:LEU:HD11	2.34	0.43
1:A:240:LYS:HD3	1:A:242:SER:O	2.18	0.43
1:A:257:ARG:HG3	1:A:265:TYR:CD2	2.54	0.43
1:A:576:GLN:O	1:A:576:GLN:HG2	2.18	0.43
1:A:185:ILE:HD12	1:A:185:ILE:C	2.39	0.42
1:A:10:ARG:CA	1:A:187:THR:O	2.67	0.42
1:A:517:TYR:CZ	1:A:542:TYR:CD1	3.06	0.42
1:A:15:LEU:HD11	1:A:185:ILE:HG23	2.02	0.42
1:A:90:VAL:CG2	1:A:132:VAL:CG2	2.97	0.42
1:A:231:VAL:HG12	1:A:271:VAL:CG1	2.49	0.42
1:A:334:GLN:NE2	1:A:593:ALA:O	2.51	0.42
1:A:340:ARG:HD2	1:A:364:GLU:OE1	2.19	0.42
1:A:81:GLN:OE1	1:A:189:PRO:HA	2.19	0.42
1:A:484:TRP:HZ2	1:A:520:ASP:HB2	1.84	0.42
1:A:390:LYS:HD3	1:A:390:LYS:HA	1.87	0.42
1:A:1:MET:CE	1:A:114:GLU:HG2	2.50	0.42
1:A:339:PHE:CE2	1:A:361:VAL:HG22	2.54	0.42
1:A:498:LEU:HD11	1:A:514:PHE:CZ	2.55	0.42
1:A:10:ARG:NH1	1:A:188:THR:HG22	2.35	0.42
1:A:84:VAL:HG11	1:A:186:TYR:CG	2.55	0.42
1:A:85:LEU:O	1:A:114:GLU:HA	2.20	0.42
1:A:463:THR:CG2	1:A:464:ALA:N	2.83	0.42
1:A:78:VAL:HG23	1:A:83:ILE:CD1	2.50	0.42
1:A:241:LEU:N	1:A:241:LEU:HD12	2.35	0.42
1:A:388:PHE:CE2	1:A:433:ALA:HA	2.54	0.42
1:A:116:GLU:H	1:A:116:GLU:CD	2.20	0.41
1:A:607:GLY:C	1:A:609:LYS:H	2.22	0.41
1:A:19:TRP:HH2	1:A:183:VAL:HG11	1.84	0.41
1:A:203:ASP:CG	1:A:205:THR:HG23	2.40	0.41
1:A:337:ASN:ND2	1:A:605:GLU:OE1	2.27	0.41
1:A:532:MET:O	1:A:533:TYR:HB2	2.19	0.41
1:A:459:VAL:HG13	1:A:460:GLN:O	2.21	0.41
1:A:49:SER:OG	1:A:317:ARG:N	2.53	0.41
1:A:271:VAL:HG22	1:A:278:TYR:O	2.20	0.41
1:A:288:ARG:NH1	1:A:298:GLU:OE1	2.53	0.41
1:A:302:TYR:CE1	1:A:557:GLY:HA2	2.55	0.41
1:A:372:LEU:N	1:A:372:LEU:HD23	2.35	0.41
1:A:82:ARG:CB	1:A:188:THR:O	2.69	0.41
1:A:212:VAL:HG21	1:A:250:THR:OG1	2.20	0.41

Continued on next page...

Continued from previous page...

Atom-1	Atom-2	Interatomic distance (Å)	Clash overlap (Å)
1:A:448:ASP:O	1:A:451:LYS:HD3	2.21	0.41
1:A:91:THR:O	1:A:92:HIS:HB2	2.21	0.41
1:A:189:PRO:HG3	1:A:276:ASP:HB2	2.02	0.41
1:A:352:ARG:O	1:A:355:ASP:HB2	2.20	0.41
1:A:434:TYR:HE1	1:A:438:LYS:HD2	1.85	0.41
1:A:457:VAL:O	1:A:457:VAL:HG23	2.20	0.41
1:A:38:LEU:HG	1:A:69:GLN:CD	2.41	0.41
1:A:86:ARG:HD2	1:A:112:PRO:HB2	2.02	0.40
1:A:209:PRO:O	1:A:255:ASN:HA	2.21	0.40
1:A:84:VAL:CG1	1:A:186:TYR:CG	3.04	0.40
1:A:217:VAL:CG1	1:A:218:GLU:N	2.84	0.40
1:A:92:HIS:CE1	1:A:136:ILE:HG23	2.56	0.40
1:A:28:GLY:HA2	1:A:33:TRP:CE2	2.57	0.40

There are no symmetry-related clashes.

5.3 Torsion angles [i](#)

5.3.1 Protein backbone [i](#)

In the following table, the Percentiles column shows the percent Ramachandran outliers of the chain as a percentile score with respect to all X-ray entries followed by that with respect to entries of similar resolution.

The Analysed column shows the number of residues for which the backbone conformation was analysed, and the total number of residues.

Mol	Chain	Analysed	Favoured	Allowed	Outliers	Percentiles
1	A	572/614 (93%)	498 (87%)	72 (13%)	2 (0%)	41 69

All (2) Ramachandran outliers are listed below:

Mol	Chain	Res	Type
1	A	89	ALA
1	A	370	VAL

5.3.2 Protein sidechains [i](#)

In the following table, the Percentiles column shows the percent sidechain outliers of the chain as a percentile score with respect to all X-ray entries followed by that with respect to entries of similar

resolution.

The Analysed column shows the number of residues for which the sidechain conformation was analysed, and the total number of residues.

Mol	Chain	Analysed	Rotameric	Outliers	Percentiles
1	A	489/533 (92%)	462 (94%)	27 (6%)	21 50

All (27) residues with a non-rotameric sidechain are listed below:

Mol	Chain	Res	Type
1	A	6	LEU
1	A	10	ARG
1	A	13	SER
1	A	70	ARG
1	A	116	GLU
1	A	210	SER
1	A	229	CYS
1	A	247	SER
1	A	251	PHE
1	A	257	ARG
1	A	272	THR
1	A	285	ARG
1	A	288	ARG
1	A	304	LYS
1	A	306	TYR
1	A	311	ASP
1	A	363	ASP
1	A	370	VAL
1	A	438	LYS
1	A	445	ARG
1	A	458	SER
1	A	465	ASP
1	A	503	SER
1	A	517	TYR
1	A	527	ASP
1	A	571	SER
1	A	574	ARG

Sometimes sidechains can be flipped to improve hydrogen bonding and reduce clashes. There are no such sidechains identified.

5.3.3 RNA [i](#)

There are no RNA molecules in this entry.

5.4 Non-standard residues in protein, DNA, RNA chains [i](#)

There are no non-standard protein/DNA/RNA residues in this entry.

5.5 Carbohydrates [i](#)

There are no monosaccharides in this entry.

5.6 Ligand geometry [i](#)

1 ligand is modelled in this entry.

In the following table, the Counts columns list the number of bonds (or angles) for which Mogul statistics could be retrieved, the number of bonds (or angles) that are observed in the model and the number of bonds (or angles) that are defined in the Chemical Component Dictionary. The Link column lists molecule types, if any, to which the group is linked. The Z score for a bond length (or angle) is the number of standard deviations the observed value is removed from the expected value. A bond length (or angle) with $|Z| > 2$ is considered an outlier worth inspection. RMSZ is the root-mean-square of all Z scores of the bond lengths (or angles).

Mol	Type	Chain	Res	Link	Bond lengths			Bond angles		
					Counts	RMSZ	# Z > 2	Counts	RMSZ	# Z > 2
2	I9G	A	701	-	41,47,47	2.19	9 (21%)	45,70,70	1.63	7 (15%)

In the following table, the Chirals column lists the number of chiral outliers, the number of chiral centers analysed, the number of these observed in the model and the number defined in the Chemical Component Dictionary. Similar counts are reported in the Torsion and Rings columns. '-' means no outliers of that kind were identified.

Mol	Type	Chain	Res	Link	Chirals	Torsions	Rings
2	I9G	A	701	-	-	0/16/61/61	0/7/7/7

All (9) bond length outliers are listed below:

Mol	Chain	Res	Type	Atoms	Z	Observed(Å)	Ideal(Å)
2	A	701	I9G	O06-C05	6.99	1.53	1.42
2	A	701	I9G	C18-N13	-5.34	1.36	1.47
2	A	701	I9G	C14-N13	-5.13	1.37	1.47
2	A	701	I9G	C19-N16	4.66	1.50	1.37

Continued on next page...

Continued from previous page...

Mol	Chain	Res	Type	Atoms	Z	Observed(Å)	Ideal(Å)
2	A	701	I9G	C34-N36	3.99	1.47	1.37
2	A	701	I9G	C03-C05	2.97	1.56	1.52
2	A	701	I9G	C03-C02	-2.24	1.46	1.52
2	A	701	I9G	C07-C10	-2.19	1.48	1.53
2	A	701	I9G	C26-C27	-2.18	1.39	1.42

All (7) bond angle outliers are listed below:

Mol	Chain	Res	Type	Atoms	Z	Observed(°)	Ideal(°)
2	A	701	I9G	O06-C05-C03	5.60	118.81	110.15
2	A	701	I9G	C02-C03-C05	4.26	115.23	108.98
2	A	701	I9G	C41-N36-C37	-3.73	103.29	111.52
2	A	701	I9G	C34-N35-C26	2.98	122.12	116.74
2	A	701	I9G	C33-C28-C27	-2.54	117.92	122.37
2	A	701	I9G	C17-N16-C15	-2.46	106.08	111.52
2	A	701	I9G	N35-C34-N36	-2.00	116.20	117.62

There are no chirality outliers.

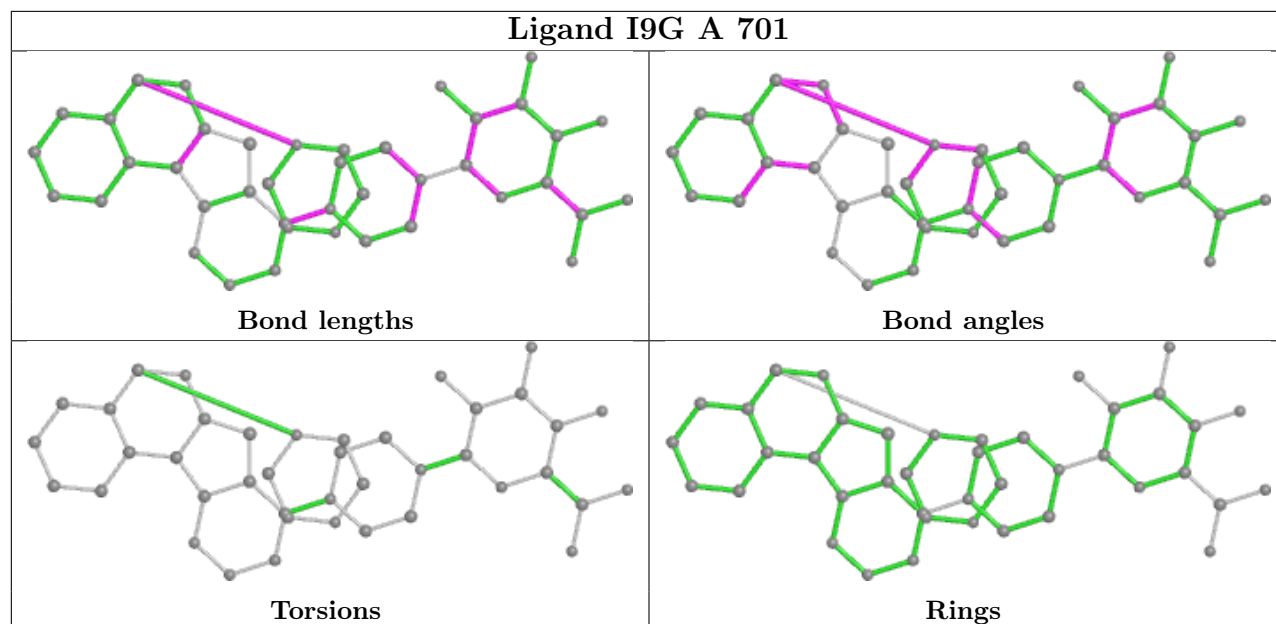
There are no torsion outliers.

There are no ring outliers.

1 monomer is involved in 1 short contact:

Mol	Chain	Res	Type	Clashes	Symm-Clashes
2	A	701	I9G	1	0

The following is a two-dimensional graphical depiction of Mogul quality analysis of bond lengths, bond angles, torsion angles, and ring geometry for all instances of the Ligand of Interest. In addition, ligands with molecular weight > 250 and outliers as shown on the validation Tables will also be included. For torsion angles, if less than 5% of the Mogul distribution of torsion angles is within 10 degrees of the torsion angle in question, then that torsion angle is considered an outlier. Any bond that is central to one or more torsion angles identified as an outlier by Mogul will be highlighted in the graph. For rings, the root-mean-square deviation (RMSD) between the ring in question and similar rings identified by Mogul is calculated over all ring torsion angles. If the average RMSD is greater than 60 degrees and the minimal RMSD between the ring in question and any Mogul-identified rings is also greater than 60 degrees, then that ring is considered an outlier. The outliers are highlighted in purple. The color gray indicates Mogul did not find sufficient equivalents in the CSD to analyse the geometry.



5.7 Other polymers [i](#)

There are no such residues in this entry.

5.8 Polymer linkage issues [i](#)

There are no chain breaks in this entry.

6 Fit of model and data

6.1 Protein, DNA and RNA chains

In the following table, the column labelled ‘#RSRZ> 2’ contains the number (and percentage) of RSRZ outliers, followed by percent RSRZ outliers for the chain as percentile scores relative to all X-ray entries and entries of similar resolution. The OWAB column contains the minimum, median, 95th percentile and maximum values of the occupancy-weighted average B-factor per residue. The column labelled ‘Q< 0.9’ lists the number of (and percentage) of residues with an average occupancy less than 0.9.

Mol	Chain	Analysed	<RSRZ>	#RSRZ>2	OWAB(Å ²)	Q<0.9
1	A	582/614 (94%)	0.49	45 (7%) 13 11	30, 76, 115, 133	0

All (45) RSRZ outliers are listed below:

Mol	Chain	Res	Type	RSRZ
1	A	202	ILE	4.9
1	A	251	PHE	4.6
1	A	229	CYS	4.3
1	A	392	HIS	4.1
1	A	248	GLU	3.9
1	A	219	ILE	3.8
1	A	250	THR	3.6
1	A	213	LEU	3.5
1	A	240	LYS	3.4
1	A	385	ILE	3.4
1	A	77	TYR	3.4
1	A	196	ILE	3.2
1	A	83	ILE	3.1
1	A	233	LEU	3.1
1	A	391	GLU	3.1
1	A	163	ASP	3.1
1	A	204	PHE	3.0
1	A	241	LEU	3.0
1	A	121	LEU	3.0
1	A	97	TYR	2.9
1	A	273	ALA	2.7
1	A	231	VAL	2.7
1	A	201	ASP	2.6
1	A	271	VAL	2.6
1	A	258	LEU	2.6
1	A	16	SER	2.6
1	A	247	SER	2.5

Continued on next page...

Continued from previous page...

Mol	Chain	Res	Type	RSRZ
1	A	47	PRO	2.5
1	A	284	VAL	2.5
1	A	270	LYS	2.5
1	A	252	GLU	2.4
1	A	244	THR	2.4
1	A	312	THR	2.3
1	A	162	SER	2.3
1	A	217	VAL	2.2
1	A	316	GLY	2.2
1	A	116	GLU	2.1
1	A	256	VAL	2.1
1	A	95	MET	2.1
1	A	191	THR	2.1
1	A	320	ASN	2.1
1	A	207	GLU	2.1
1	A	29	PHE	2.0
1	A	322	PRO	2.0
1	A	390	LYS	2.0

6.2 Non-standard residues in protein, DNA, RNA chains [i](#)

There are no non-standard protein/DNA/RNA residues in this entry.

6.3 Carbohydrates [i](#)

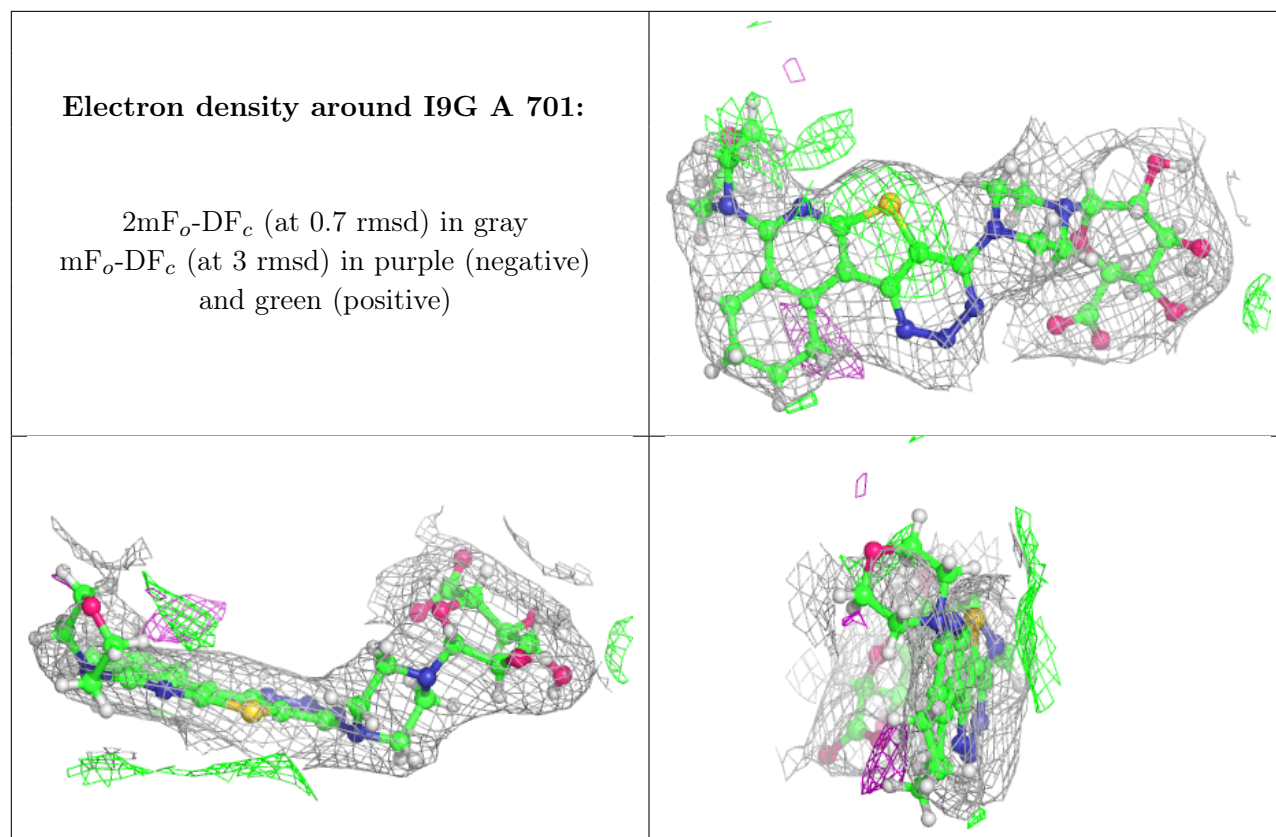
There are no monosaccharides in this entry.

6.4 Ligands [i](#)

In the following table, the Atoms column lists the number of modelled atoms in the group and the number defined in the chemical component dictionary. The B-factors column lists the minimum, median, 95th percentile and maximum values of B factors of atoms in the group. The column labelled 'Q< 0.9' lists the number of atoms with occupancy less than 0.9.

Mol	Type	Chain	Res	Atoms	RSCC	RSR	B-factors(Å ²)	Q<0.9
2	I9G	A	701	41/41	0.87	0.25	53,77,125,147	0

The following is a graphical depiction of the model fit to experimental electron density of all instances of the Ligand of Interest. In addition, ligands with molecular weight > 250 and outliers as shown on the geometry validation Tables will also be included. Each fit is shown from different orientation to approximate a three-dimensional view.



6.5 Other polymers [i](#)

There are no such residues in this entry.