



Full wwPDB X-ray Structure Validation Report ⓘ

Oct 14, 2023 – 10:58 PM EDT

PDB ID : 8EZ1
Title : Human Ornithine Aminotransferase (hOAT) co-crystallized with its inactivator 3-Amino-4-fluorocyclopentenecarboxylic Acid
Authors : Butrin, A.; Shen, S.; Silverman, R.; Liu, D.
Deposited on : 2022-10-30
Resolution : 1.91 Å(reported)

This is a Full wwPDB X-ray Structure Validation Report for a publicly released PDB entry.

We welcome your comments at validation@mail.wwpdb.org

A user guide is available at

<https://www.wwpdb.org/validation/2017/XrayValidationReportHelp>

with specific help available everywhere you see the ⓘ symbol.

The types of validation reports are described at

<http://www.wwpdb.org/validation/2017/FAQs#types>.

The following versions of software and data (see [references ⓘ](#)) were used in the production of this report:

MolProbity : 4.02b-467
Mogul : 1.8.5 (274361), CSD as541be (2020)
Xtriage (Phenix) : 1.13
EDS : 2.36
buster-report : 1.1.7 (2018)
Percentile statistics : 20191225.v01 (using entries in the PDB archive December 25th 2019)
Refmac : 5.8.0158
CCP4 : 7.0.044 (Gargrove)
Ideal geometry (proteins) : Engh & Huber (2001)
Ideal geometry (DNA, RNA) : Parkinson et al. (1996)
Validation Pipeline (wwPDB-VP) : 2.36

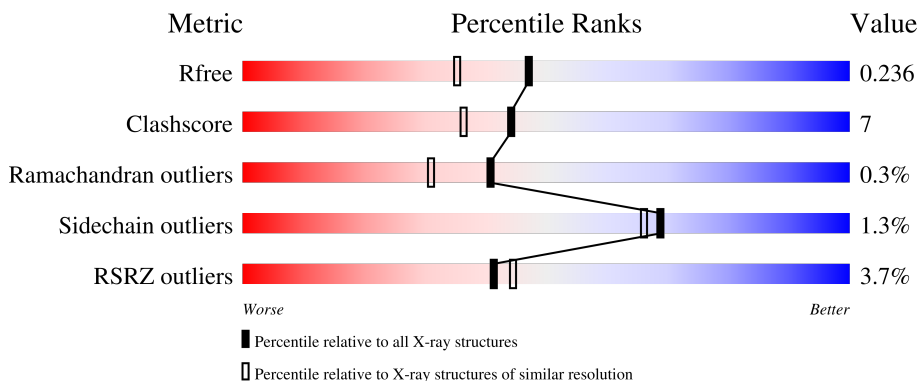
1 Overall quality at a glance

The following experimental techniques were used to determine the structure:

X-RAY DIFFRACTION

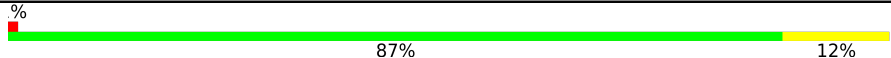
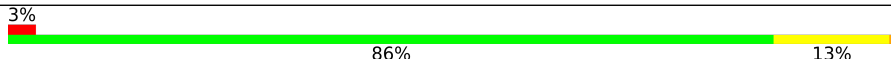
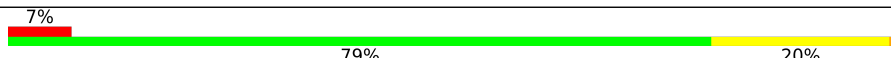
The reported resolution of this entry is 1.91 Å.

Percentile scores (ranging between 0-100) for global validation metrics of the entry are shown in the following graphic. The table shows the number of entries on which the scores are based.



Metric	Whole archive (#Entries)	Similar resolution (#Entries, resolution range(Å))
R_{free}	130704	7937 (1.94-1.90)
Clashscore	141614	8644 (1.94-1.90)
Ramachandran outliers	138981	8530 (1.94-1.90)
Sidechain outliers	138945	8530 (1.94-1.90)
RSRZ outliers	127900	7793 (1.94-1.90)

The table below summarises the geometric issues observed across the polymeric chains and their fit to the electron density. The red, orange, yellow and green segments of the lower bar indicate the fraction of residues that contain outliers for ≥ 3 , 2, 1 and 0 types of geometric quality criteria respectively. A grey segment represents the fraction of residues that are not modelled. The numeric value for each fraction is indicated below the corresponding segment, with a dot representing fractions $\leq 5\%$. The upper red bar (where present) indicates the fraction of residues that have poor fit to the electron density. The numeric value is given above the bar.

Mol	Chain	Length	Quality of chain
1	A	404	
1	B	404	
1	C	404	

2 Entry composition [i](#)

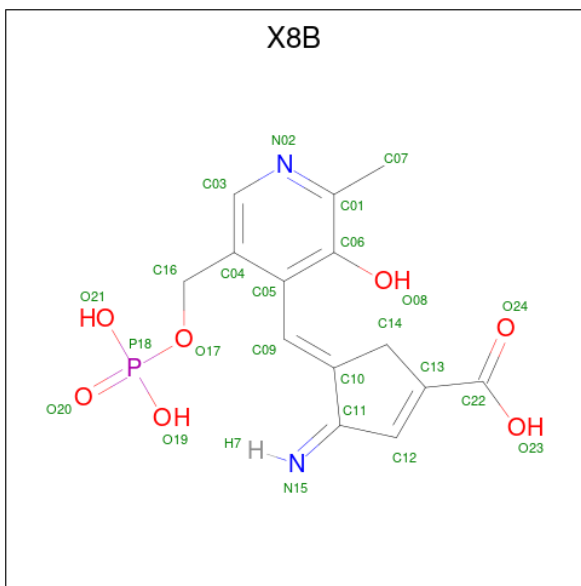
There are 4 unique types of molecules in this entry. The entry contains 10213 atoms, of which 0 are hydrogens and 0 are deuteriums.

In the tables below, the ZeroOcc column contains the number of atoms modelled with zero occupancy, the AltConf column contains the number of residues with at least one atom in alternate conformation and the Trace column contains the number of residues modelled with at most 2 atoms.

- Molecule 1 is a protein called Ornithine aminotransferase, mitochondrial.

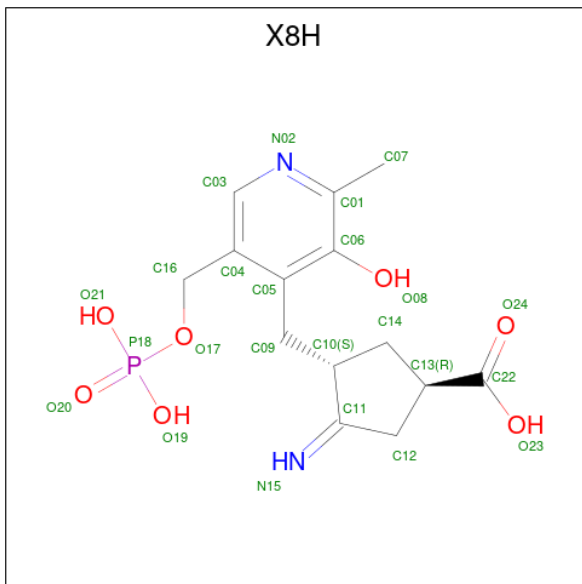
Mol	Chain	Residues	Atoms					ZeroOcc	AltConf	Trace
			Total	C	N	O	S			
1	A	402	Total 3149	C 2023	N 531	O 583	S 12	0	0	0
1	B	402	Total 3150	C 2023	N 531	O 584	S 12	0	0	0
1	C	402	Total 3135	C 2015	N 527	O 581	S 12	0	0	0

- Molecule 2 is (3E,4E)-4-({3-hydroxy-2-methyl-5-[(phosphonoxy)methyl]pyridin-4-yl}methylidene)-3-iminocyclopent-1-ene-1-carboxylic acid (three-letter code: X8B) (formula: C₁₄H₁₅N₂O₇P) (labeled as "Ligand of Interest" by depositor).



Mol	Chain	Residues	Atoms					ZeroOcc	AltConf
			Total	C	N	O	P		
2	A	1	Total 24	C 14	N 2	O 7	P 1	0	0
2	C	1	Total 24	C 14	N 2	O 7	P 1	0	0

- Molecule 3 is (1R,3S,4Z)-3-({3-hydroxy-2-methyl-5-[(phosphonoxy)methyl]pyridin-4-yl}methyl)-4-iminocyclopentane-1-carboxylic acid (three-letter code: X8H) (formula: C₁₄H₁₉N₂O₇P) (labeled as "Ligand of Interest" by depositor).



Mol	Chain	Residues	Atoms					ZeroOcc	AltConf
			Total	C	N	O	P		
3	B	1	24	14	2	7	1	0	0

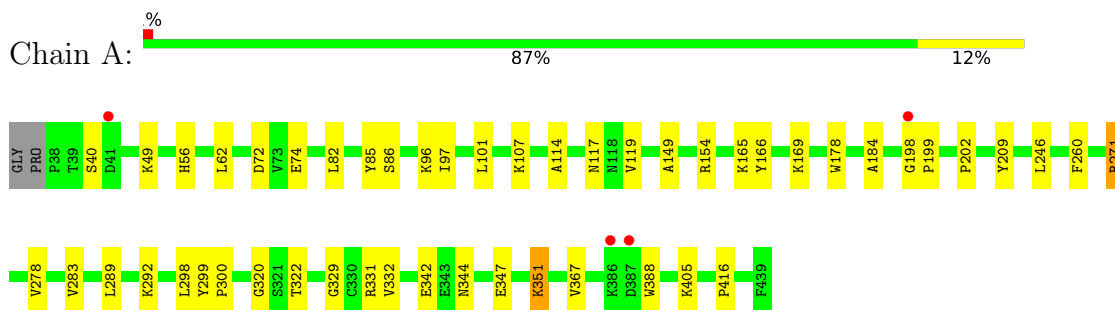
- Molecule 4 is water.

Mol	Chain	Residues	Atoms		ZeroOcc	AltConf
4	A	247	Total	O	0	0
			247	247		
4	B	277	Total	O	0	0
			277	277		
4	C	183	Total	O	0	0
			183	183		

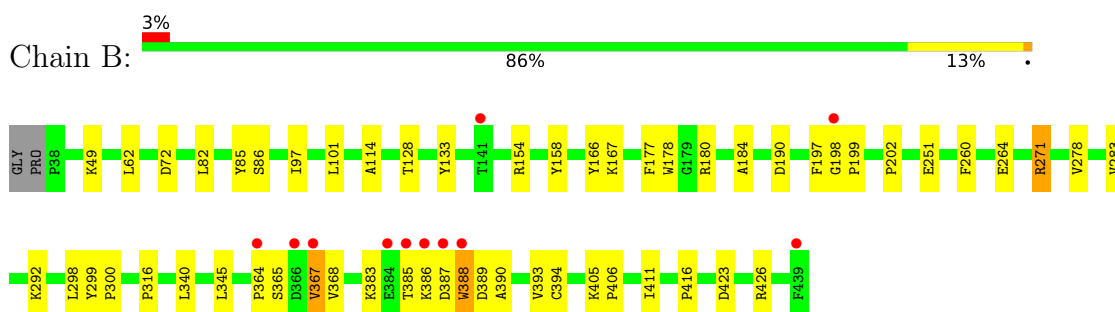
3 Residue-property plots [i](#)

These plots are drawn for all protein, RNA, DNA and oligosaccharide chains in the entry. The first graphic for a chain summarises the proportions of the various outlier classes displayed in the second graphic. The second graphic shows the sequence view annotated by issues in geometry and electron density. Residues are color-coded according to the number of geometric quality criteria for which they contain at least one outlier: green = 0, yellow = 1, orange = 2 and red = 3 or more. A red dot above a residue indicates a poor fit to the electron density ($RSRZ > 2$). Stretches of 2 or more consecutive residues without any outlier are shown as a green connector. Residues present in the sample, but not in the model, are shown in grey.

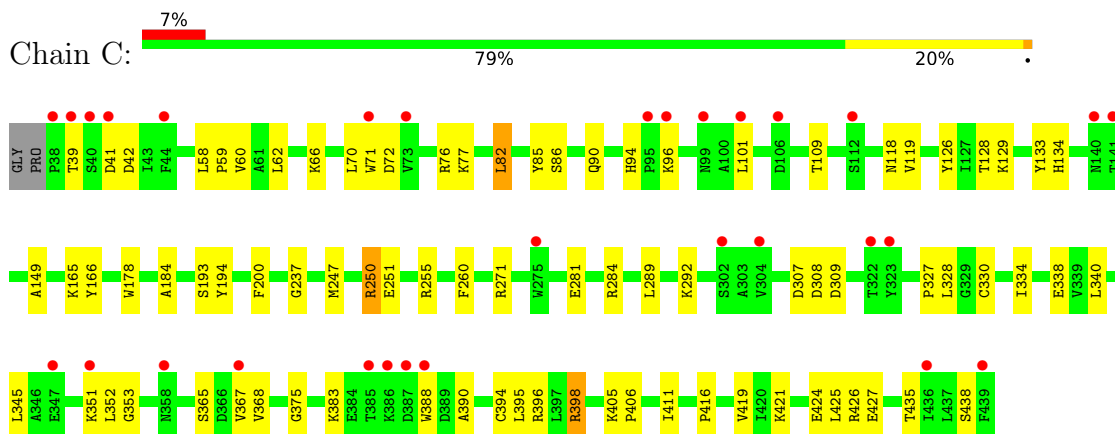
- Molecule 1: Ornithine aminotransferase, mitochondrial



- Molecule 1: Ornithine aminotransferase, mitochondrial



- Molecule 1: Ornithine aminotransferase, mitochondrial



4 Data and refinement statistics i

Property	Value	Source
Space group	C 1 2 1	Depositor
Cell constants a, b, c, α , β , γ	202.17Å 110.29Å 57.12Å 90.00° 103.72° 90.00°	Depositor
Resolution (Å)	36.02 – 1.91 36.02 – 1.91	Depositor EDS
% Data completeness (in resolution range)	97.9 (36.02-1.91) 97.9 (36.02-1.91)	Depositor EDS
R_{merge}	(Not available)	Depositor
R_{sym}	(Not available)	Depositor
$\langle I/\sigma(I) \rangle$ ¹	1.42 (at 1.91Å)	Xtrriage
Refinement program	PHENIX 1.17.1_3660	Depositor
R, R_{free}	0.189 , 0.237 0.188 , 0.236	Depositor DCC
R_{free} test set	4596 reflections (4.99%)	wwPDB-VP
Wilson B-factor (Å ²)	27.0	Xtrriage
Anisotropy	0.557	Xtrriage
Bulk solvent k_{sol} (e/Å ³), B_{sol} (Å ²)	0.36 , 52.7	EDS
L-test for twinning ²	$\langle L \rangle = 0.50$, $\langle L^2 \rangle = 0.33$	Xtrriage
Estimated twinning fraction	0.024 for -h-2*1,-k,l	Xtrriage
F_o, F_c correlation	0.96	EDS
Total number of atoms	10213	wwPDB-VP
Average B, all atoms (Å ²)	37.0	wwPDB-VP

Xtrriage's analysis on translational NCS is as follows: *The largest off-origin peak in the Patterson function is 6.09% of the height of the origin peak. No significant pseudotranslation is detected.*

¹Intensities estimated from amplitudes.

²Theoretical values of $\langle |L| \rangle$, $\langle L^2 \rangle$ for acentric reflections are 0.5, 0.333 respectively for untwinned datasets, and 0.375, 0.2 for perfectly twinned datasets.

5 Model quality [i](#)

5.1 Standard geometry [i](#)

Bond lengths and bond angles in the following residue types are not validated in this section: X8H, X8B

The Z score for a bond length (or angle) is the number of standard deviations the observed value is removed from the expected value. A bond length (or angle) with $|Z| > 5$ is considered an outlier worth inspection. RMSZ is the root-mean-square of all Z scores of the bond lengths (or angles).

Mol	Chain	Bond lengths		Bond angles	
		RMSZ	# Z >5	RMSZ	# Z >5
1	A	0.62	0/3222	0.71	2/4375 (0.0%)
1	B	0.61	0/3223	0.70	2/4375 (0.0%)
1	C	0.51	0/3208	0.65	3/4359 (0.1%)
All	All	0.58	0/9653	0.69	7/13109 (0.1%)

Chiral center outliers are detected by calculating the chiral volume of a chiral center and verifying if the center is modelled as a planar moiety or with the opposite hand. A planarity outlier is detected by checking planarity of atoms in a peptide group, atoms in a mainchain group or atoms of a sidechain that are expected to be planar.

Mol	Chain	#Chirality outliers	#Planarity outliers
1	B	0	1

There are no bond length outliers.

All (7) bond angle outliers are listed below:

Mol	Chain	Res	Type	Atoms	Z	Observed(°)	Ideal(°)
1	A	271	ARG	NE-CZ-NH2	-9.96	115.32	120.30
1	C	250	ARG	NE-CZ-NH2	-7.36	116.62	120.30
1	A	271	ARG	NE-CZ-NH1	7.24	123.92	120.30
1	C	250	ARG	NE-CZ-NH1	6.59	123.60	120.30
1	B	271	ARG	NE-CZ-NH2	-6.59	117.00	120.30
1	C	82	LEU	CA-CB-CG	5.70	128.42	115.30
1	B	190	ASP	CB-CG-OD1	5.61	123.35	118.30

There are no chirality outliers.

All (1) planarity outliers are listed below:

Mol	Chain	Res	Type	Group
1	B	197	PHE	Peptide

5.2 Too-close contacts [i](#)

In the following table, the Non-H and H(model) columns list the number of non-hydrogen atoms and hydrogen atoms in the chain respectively. The H(added) column lists the number of hydrogen atoms added and optimized by MolProbity. The Clashes column lists the number of clashes within the asymmetric unit, whereas Symm-Clashes lists symmetry-related clashes.

Mol	Chain	Non-H	H(model)	H(added)	Clashes	Symm-Clashes
1	A	3149	0	3156	43	0
1	B	3150	0	3155	51	0
1	C	3135	0	3130	51	0
2	A	24	0	0	0	0
2	C	24	0	0	0	0
3	B	24	0	0	0	0
4	A	247	0	0	4	0
4	B	277	0	0	2	3
4	C	183	0	0	6	2
All	All	10213	0	9441	125	3

The all-atom clashscore is defined as the number of clashes found per 1000 atoms (including hydrogen atoms). The all-atom clashscore for this structure is 7.

All (125) close contacts within the same asymmetric unit are listed below, sorted by their clash magnitude.

Atom-1	Atom-2	Interatomic distance (Å)	Clash overlap (Å)
1:B:385:THR:HG1	1:B:388:TRP:HD1	1.16	0.93
1:C:340:LEU:HD23	1:C:345:LEU:HD12	1.61	0.83
1:C:94:HIS:HE1	1:C:96:LYS:HD2	1.47	0.79
1:C:134:HIS:HB2	1:C:307:ASP:HA	1.69	0.74
1:C:59:PRO:HG2	1:C:398:ARG:HH12	1.55	0.71
1:C:77:LYS:O	4:C:601:HOH:O	2.08	0.71
1:A:344:ASN:HB3	1:A:347:GLU:OE1	1.91	0.70
1:A:198:GLY:HA3	1:B:154:ARG:HD3	1.75	0.69
1:C:284:ARG:NH2	4:C:604:HOH:O	2.12	0.69
1:A:117:ASN:ND2	4:A:603:HOH:O	2.25	0.68
1:C:390:ALA:O	4:C:602:HOH:O	2.10	0.68
1:C:308:ASP:OD2	4:C:603:HOH:O	2.11	0.67
1:A:198:GLY:HA2	1:B:158:TYR:OH	1.95	0.66
1:A:82:LEU:HD23	1:A:85:TYR:H	1.60	0.66

Continued on next page...

Continued from previous page...

Atom-1	Atom-2	Interatomic distance (Å)	Clash overlap (Å)
1:B:271:ARG:NH2	1:B:416:PRO:O	2.28	0.65
1:C:82:LEU:HD13	1:C:85:TYR:H	1.62	0.65
1:A:86:SER:OG	1:A:271:ARG:HD3	1.97	0.65
1:C:118:ASN:OD1	1:C:119:VAL:HG23	1.97	0.64
1:B:364:PRO:HG2	1:B:367:VAL:HG11	1.80	0.64
1:C:42:ASP:OD2	4:C:605:HOH:O	2.15	0.64
1:A:154:ARG:HD3	1:B:198:GLY:HA3	1.80	0.63
1:C:271:ARG:NH2	1:C:416:PRO:O	2.32	0.62
1:B:367:VAL:HG23	1:B:388:TRP:CH2	2.34	0.62
1:B:86:SER:HB2	1:B:271:ARG:HD3	1.83	0.60
1:A:169:LYS:NZ	4:A:609:HOH:O	2.35	0.60
1:C:250:ARG:O	1:C:250:ARG:HD3	2.02	0.59
1:A:154:ARG:CZ	1:B:199:PRO:HD2	2.32	0.59
1:A:202:PRO:HG2	1:B:199:PRO:HB2	1.85	0.58
1:A:97:ILE:HG22	1:A:298:LEU:HD22	1.86	0.57
1:C:126:TYR:OH	1:C:338:GLU:HG2	2.06	0.56
1:B:86:SER:CB	1:B:271:ARG:HD3	2.36	0.56
1:A:114:ALA:HB1	1:B:405:LYS:HD3	1.88	0.56
1:A:96:LYS:HE3	1:A:342:GLU:OE1	2.06	0.55
1:C:94:HIS:CE1	1:C:96:LYS:HD2	2.36	0.55
1:A:199:PRO:HB2	1:B:202:PRO:HG2	1.88	0.54
1:A:101:LEU:HD21	1:B:101:LEU:HD22	1.88	0.54
1:C:86:SER:OG	1:C:271:ARG:HD3	2.09	0.53
1:A:198:GLY:HA2	1:B:158:TYR:HH	1.73	0.53
1:A:300:PRO:HD3	1:B:299:TYR:CZ	2.44	0.53
1:B:62:LEU:HA	1:B:72:ASP:HA	1.90	0.53
1:B:158:TYR:OH	1:B:166:TYR:HA	2.08	0.52
1:B:385:THR:OG1	1:B:387:ASP:HB3	2.10	0.52
1:C:367:VAL:HG23	1:C:368:VAL:HG23	1.92	0.52
1:A:101:LEU:HD21	1:B:101:LEU:CD2	2.41	0.51
1:C:395:LEU:O	1:C:398:ARG:HG3	2.10	0.51
1:C:149:ALA:HB2	1:C:289:LEU:HD21	1.92	0.51
1:C:250:ARG:HD3	1:C:250:ARG:C	2.32	0.51
1:A:278:VAL:HB	1:A:283:VAL:HG22	1.93	0.50
1:B:177:PHE:CZ	1:B:180:ARG:HD3	2.47	0.50
1:C:330:CYS:O	1:C:334:ILE:HG13	2.11	0.50
1:A:271:ARG:NH2	1:A:416:PRO:O	2.41	0.50
1:C:405:LYS:HG2	1:C:406:PRO:HD2	1.95	0.49
1:A:209:TYR:O	4:A:601:HOH:O	2.17	0.49
1:B:340:LEU:HD23	1:B:345:LEU:HD12	1.95	0.48
1:B:264:GLU:OE2	1:B:278:VAL:HG13	2.13	0.48

Continued on next page...

Continued from previous page...

Atom-1	Atom-2	Interatomic distance (Å)	Clash overlap (Å)
1:C:129:LYS:HD3	1:C:129:LYS:HA	1.69	0.48
1:A:320:GLY:H	1:B:180:ARG:HG3	1.78	0.48
1:A:119:VAL:HG11	1:A:331:ARG:HG2	1.96	0.48
1:A:149:ALA:HB2	1:A:289:LEU:HD21	1.96	0.48
1:B:85:TYR:O	1:B:86:SER:HB3	2.14	0.48
1:B:251:GLU:HG2	4:B:767:HOH:O	2.14	0.47
1:C:247:MET:HG3	1:C:281:GLU:HB3	1.95	0.47
1:B:394:CYS:SG	1:B:406:PRO:HD3	2.54	0.47
1:C:352:LEU:HB3	1:C:425:LEU:HD22	1.97	0.47
1:C:394:CYS:SG	1:C:406:PRO:HD3	2.54	0.47
1:C:62:LEU:HA	1:C:72:ASP:HA	1.96	0.47
1:A:178:TRP:CZ2	1:A:184:ALA:HA	2.50	0.47
1:C:426:ARG:HG3	1:C:426:ARG:NH1	2.30	0.46
1:C:72:ASP:OD2	1:C:76:ARG:NH1	2.49	0.46
1:C:90:GLN:OE1	1:C:90:GLN:N	2.40	0.46
1:C:255:ARG:NH1	4:C:616:HOH:O	2.42	0.46
1:B:390:ALA:HB1	1:B:406:PRO:HB3	1.97	0.46
1:B:278:VAL:HB	1:B:283:VAL:HG22	1.96	0.46
1:A:246:LEU:HD13	1:A:278:VAL:HG12	1.98	0.46
1:A:322:THR:OG1	1:B:292:LYS:HE2	2.15	0.46
1:C:165:LYS:HA	1:C:166:TYR:HA	1.70	0.45
1:A:62:LEU:HA	1:A:72:ASP:HA	1.98	0.45
1:B:406:PRO:HA	1:B:411:ILE:O	2.16	0.45
1:C:101:LEU:HD12	1:C:328:LEU:HD11	1.98	0.45
1:C:396:ARG:NH1	1:C:438:SER:OG	2.46	0.45
1:A:405:LYS:HG3	1:B:114:ALA:HB1	1.98	0.44
1:A:165:LYS:HA	1:A:166:TYR:HA	1.75	0.44
1:C:194:TYR:HB2	1:C:200:PHE:CE1	2.53	0.44
1:C:62:LEU:HD12	1:C:70:LEU:HB3	1.99	0.44
1:B:167:LYS:NZ	4:B:607:HOH:O	2.38	0.43
1:B:97:ILE:HG22	1:B:298:LEU:HD22	2.01	0.43
1:C:71:TRP:NE1	1:C:77:LYS:HD3	2.33	0.43
1:A:56:HIS:HB2	1:B:316:PRO:HB3	2.00	0.43
1:A:107:LYS:HD2	4:A:634:HOH:O	2.17	0.43
1:C:309:ASP:N	1:C:309:ASP:OD1	2.52	0.43
1:A:86:SER:HG	1:A:271:ARG:HD3	1.82	0.43
1:A:198:GLY:HA3	1:B:154:ARG:CD	2.45	0.43
1:C:39:THR:HG22	1:C:41:ASP:H	1.82	0.43
1:C:237:GLY:HA3	1:C:411:ILE:HD13	2.01	0.43
1:B:367:VAL:HG13	1:B:368:VAL:H	1.84	0.42
1:C:419:VAL:O	1:C:421:LYS:HE2	2.19	0.42

Continued on next page...

Continued from previous page...

Atom-1	Atom-2	Interatomic distance (Å)	Clash overlap (Å)
1:C:178:TRP:CZ2	1:C:184:ALA:HA	2.54	0.42
1:A:40:SER:OG	1:A:74:GLU:OE1	2.34	0.42
1:C:426:ARG:HG3	1:C:426:ARG:HH11	1.84	0.42
1:B:423:ASP:OD1	1:B:423:ASP:N	2.53	0.42
1:A:49:LYS:HE2	1:A:49:LYS:HB3	1.89	0.42
1:B:49:LYS:HD2	1:B:49:LYS:HA	1.64	0.42
1:C:109:THR:O	1:C:327:PRO:HD2	2.19	0.42
1:B:86:SER:OG	1:B:271:ARG:HD3	2.19	0.42
1:B:82:LEU:HD13	1:B:85:TYR:H	1.83	0.42
1:C:367:VAL:HB	1:C:388:TRP:CH2	2.55	0.42
1:C:435:THR:O	1:C:438:SER:HB3	2.20	0.42
1:A:299:TYR:CZ	1:B:300:PRO:HD3	2.54	0.42
1:C:66:LYS:HD2	1:C:66:LYS:HA	1.90	0.42
1:C:128:THR:HB	1:C:133:TYR:O	2.19	0.42
1:B:386:LYS:HD2	1:B:386:LYS:N	2.35	0.41
1:B:389:ASP:O	1:B:393:VAL:HG23	2.20	0.41
1:B:365:SER:HA	1:B:368:VAL:O	2.19	0.41
1:A:367:VAL:HG12	1:A:388:TRP:CZ2	2.56	0.41
1:A:198:GLY:HA2	1:B:158:TYR:CE2	2.55	0.41
1:A:329:GLY:O	1:A:332:VAL:HG22	2.20	0.41
1:B:128:THR:HB	1:B:133:TYR:O	2.20	0.41
1:A:198:GLY:H	1:B:158:TYR:HE2	1.68	0.41
1:C:353:GLY:HA3	1:C:375:GLY:O	2.20	0.41
1:B:367:VAL:HG23	1:B:388:TRP:CZ2	2.56	0.41
1:B:178:TRP:CZ2	1:B:184:ALA:HA	2.56	0.40
1:A:198:GLY:HA2	1:B:158:TYR:CZ	2.56	0.40
1:C:58:LEU:O	1:C:60:VAL:N	2.54	0.40
1:C:424:GLU:H	1:C:424:GLU:HG2	1.60	0.40
1:A:351:LYS:HA	1:A:351:LYS:HD2	1.70	0.40

All (3) symmetry-related close contacts are listed below. The label for Atom-2 includes the symmetry operator and encoded unit-cell translations to be applied.

Atom-1	Atom-2	Interatomic distance (Å)	Clash overlap (Å)
4:B:793:HOH:O	4:B:793:HOH:O[2_554]	1.97	0.23
4:B:827:HOH:O	4:C:739:HOH:O[2_554]	2.00	0.20
4:B:850:HOH:O	4:C:759:HOH:O[2_554]	2.02	0.18

5.3 Torsion angles [i](#)

5.3.1 Protein backbone [i](#)

In the following table, the Percentiles column shows the percent Ramachandran outliers of the chain as a percentile score with respect to all X-ray entries followed by that with respect to entries of similar resolution.

The Analysed column shows the number of residues for which the backbone conformation was analysed, and the total number of residues.

Mol	Chain	Analysed	Favoured	Allowed	Outliers	Percentiles	
1	A	400/404 (99%)	378 (94%)	21 (5%)	1 (0%)	41	31
1	B	400/404 (99%)	382 (96%)	16 (4%)	2 (0%)	29	18
1	C	400/404 (99%)	380 (95%)	19 (5%)	1 (0%)	41	31
All	All	1200/1212 (99%)	1140 (95%)	56 (5%)	4 (0%)	41	31

All (4) Ramachandran outliers are listed below:

Mol	Chain	Res	Type
1	A	292	LYS
1	B	367	VAL
1	C	292	LYS
1	B	383	LYS

5.3.2 Protein sidechains [i](#)

In the following table, the Percentiles column shows the percent sidechain outliers of the chain as a percentile score with respect to all X-ray entries followed by that with respect to entries of similar resolution.

The Analysed column shows the number of residues for which the sidechain conformation was analysed, and the total number of residues.

Mol	Chain	Analysed	Rotameric	Outliers	Percentiles	
1	A	336/337 (100%)	334 (99%)	2 (1%)	86	86
1	B	336/337 (100%)	333 (99%)	3 (1%)	78	78
1	C	333/337 (99%)	325 (98%)	8 (2%)	49	41
All	All	1005/1011 (99%)	992 (99%)	13 (1%)	69	66

All (13) residues with a non-rotameric sidechain are listed below:

Mol	Chain	Res	Type
1	A	260	PHE
1	A	351	LYS
1	B	260	PHE
1	B	388	TRP
1	B	426	ARG
1	C	193	SER
1	C	251	GLU
1	C	260	PHE
1	C	351	LYS
1	C	365	SER
1	C	383	LYS
1	C	398	ARG
1	C	427	GLU

Sometimes sidechains can be flipped to improve hydrogen bonding and reduce clashes. All (2) such sidechains are listed below:

Mol	Chain	Res	Type
1	B	344	ASN
1	C	132	ASN

5.3.3 RNA [i](#)

There are no RNA molecules in this entry.

5.4 Non-standard residues in protein, DNA, RNA chains [i](#)

There are no non-standard protein/DNA/RNA residues in this entry.

5.5 Carbohydrates [i](#)

There are no monosaccharides in this entry.

5.6 Ligand geometry [i](#)

3 ligands are modelled in this entry.

In the following table, the Counts columns list the number of bonds (or angles) for which Mogul statistics could be retrieved, the number of bonds (or angles) that are observed in the model and the number of bonds (or angles) that are defined in the Chemical Component Dictionary. The Link column lists molecule types, if any, to which the group is linked. The Z score for a bond

length (or angle) is the number of standard deviations the observed value is removed from the expected value. A bond length (or angle) with $|Z| > 2$ is considered an outlier worth inspection. RMSZ is the root-mean-square of all Z scores of the bond lengths (or angles).

Mol	Type	Chain	Res	Link	Bond lengths			Bond angles		
					Counts	RMSZ	# Z > 2	Counts	RMSZ	# Z > 2
2	X8B	A	501	-	24,25,25	2.46	7 (29%)	28,37,37	1.43	5 (17%)
2	X8B	C	501	-	24,25,25	2.34	7 (29%)	28,37,37	1.41	5 (17%)
3	X8H	B	501	1	25,25,25	2.19	11 (44%)	29,37,37	2.50	8 (27%)

In the following table, the Chirals column lists the number of chiral outliers, the number of chiral centers analysed, the number of these observed in the model and the number defined in the Chemical Component Dictionary. Similar counts are reported in the Torsion and Rings columns. '-' means no outliers of that kind were identified.

Mol	Type	Chain	Res	Link	Chirals	Torsions	Rings
2	X8B	A	501	-	-	5/14/26/26	0/2/2/2
2	X8B	C	501	-	-	5/14/26/26	0/2/2/2
3	X8H	B	501	1	-	4/14/26/26	0/2/2/2

All (25) bond length outliers are listed below:

Mol	Chain	Res	Type	Atoms	Z	Observed(Å)	Ideal(Å)
2	A	501	X8B	C12-C11	6.36	1.51	1.40
2	C	501	X8B	C12-C11	6.13	1.50	1.40
2	A	501	X8B	C12-C13	5.51	1.51	1.36
2	C	501	X8B	C12-C13	5.48	1.51	1.36
2	A	501	X8B	C11-C10	4.35	1.55	1.45
3	B	501	X8H	C07-C01	3.85	1.56	1.50
3	B	501	X8H	P18-O20	3.75	1.62	1.50
3	B	501	X8H	P18-O17	3.70	1.72	1.60
3	B	501	X8H	C10-C11	-3.60	1.44	1.52
3	B	501	X8H	C13-C22	3.52	1.57	1.51
2	A	501	X8B	C05-C09	3.51	1.55	1.47
2	C	501	X8B	C11-C10	3.48	1.53	1.45
2	C	501	X8B	C05-C09	2.91	1.53	1.47
3	B	501	X8H	C14-C10	2.88	1.61	1.54
3	B	501	X8H	C14-C13	2.86	1.61	1.54
2	C	501	X8B	C05-C04	-2.67	1.38	1.42
2	A	501	X8B	P18-O19	-2.58	1.44	1.54
2	A	501	X8B	P18-O20	2.55	1.58	1.50
3	B	501	X8H	C16-C04	2.42	1.57	1.50
3	B	501	X8H	P18-O19	-2.39	1.45	1.54

Continued on next page...

Continued from previous page...

Mol	Chain	Res	Type	Atoms	Z	Observed(Å)	Ideal(Å)
2	C	501	X8B	C07-C01	2.34	1.54	1.50
3	B	501	X8H	O24-C22	2.30	1.29	1.22
3	B	501	X8H	C12-C11	-2.18	1.46	1.50
2	A	501	X8B	O24-C22	2.02	1.28	1.22
2	C	501	X8B	P18-O21	-2.00	1.47	1.54

All (18) bond angle outliers are listed below:

Mol	Chain	Res	Type	Atoms	Z	Observed(°)	Ideal(°)
3	B	501	X8H	C05-C09-C10	9.61	127.59	114.09
3	B	501	X8H	C03-C04-C05	4.66	121.41	118.12
3	B	501	X8H	C06-C05-C04	-3.88	114.99	118.72
2	A	501	X8B	C05-C06-C01	-3.73	117.88	120.19
3	B	501	X8H	C09-C10-C11	3.53	120.67	113.28
2	C	501	X8B	O17-C16-C04	-3.30	103.07	109.35
2	A	501	X8B	O17-C16-C04	-3.08	103.49	109.35
2	C	501	X8B	C14-C10-C09	-2.91	124.79	132.01
3	B	501	X8H	O17-C16-C04	-2.77	104.08	109.35
2	C	501	X8B	C05-C06-C01	-2.48	118.66	120.19
2	C	501	X8B	C04-C03-N02	-2.29	120.00	123.82
2	A	501	X8B	C04-C03-N02	-2.28	120.03	123.82
3	B	501	X8H	C09-C05-C04	2.12	123.55	120.25
3	B	501	X8H	C16-C04-C03	-2.12	115.89	119.37
3	B	501	X8H	C14-C10-C09	2.09	119.29	116.16
2	C	501	X8B	O23-C22-C13	2.06	119.86	115.49
2	A	501	X8B	C14-C13-C12	-2.05	106.86	108.01
2	A	501	X8B	C03-C04-C05	2.05	121.92	118.15

There are no chirality outliers.

All (14) torsion outliers are listed below:

Mol	Chain	Res	Type	Atoms
2	A	501	X8B	C14-C13-C22-O23
2	C	501	X8B	C12-C13-C22-O23
2	C	501	X8B	C12-C13-C22-O24
2	C	501	X8B	C14-C13-C22-O23
2	C	501	X8B	C14-C13-C22-O24
3	B	501	X8H	C04-C05-C09-C10
3	B	501	X8H	C06-C05-C09-C10
3	B	501	X8H	C05-C09-C10-C11
3	B	501	X8H	C05-C09-C10-C14
2	C	501	X8B	C05-C09-C10-C14

Continued on next page...

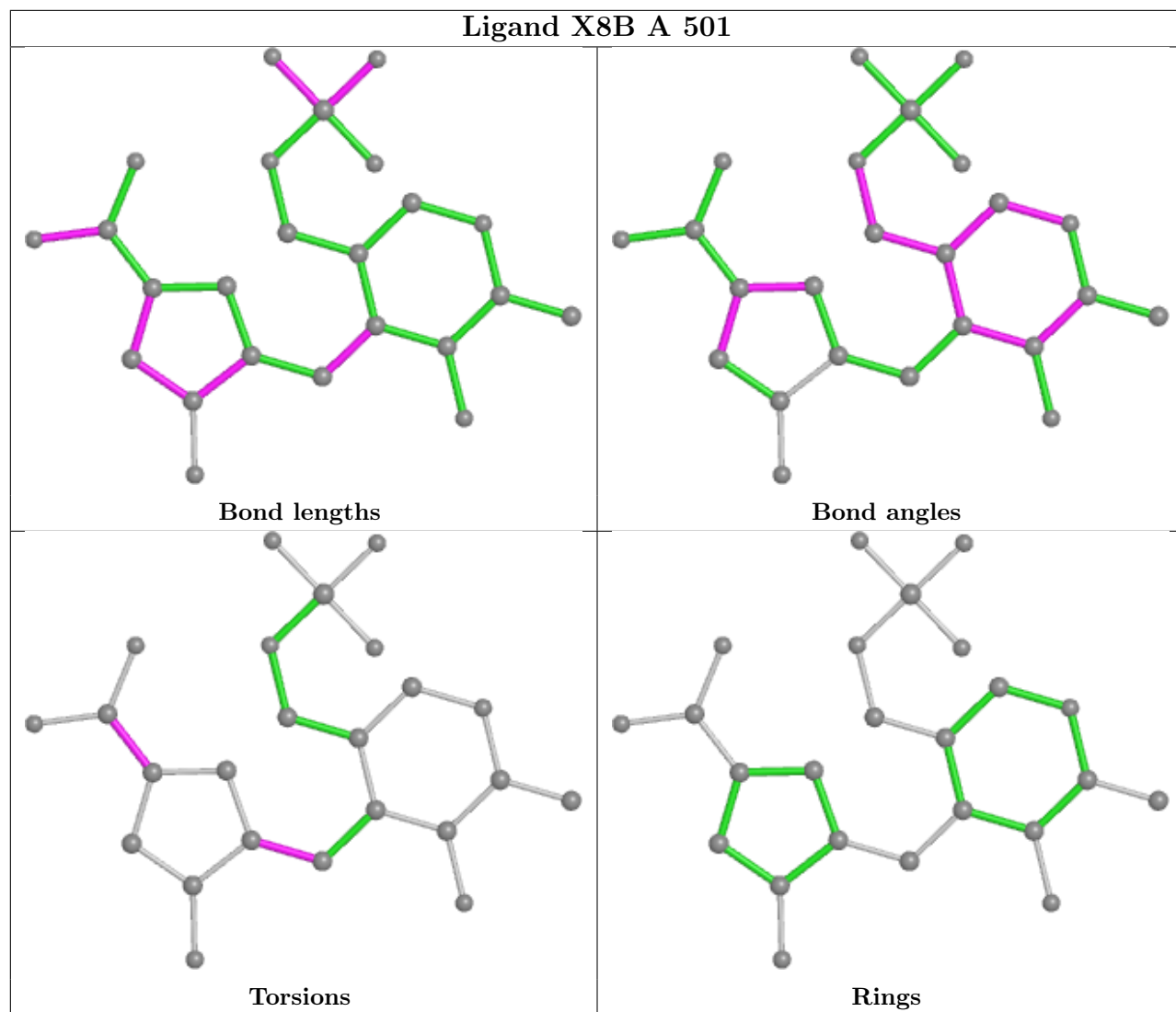
Continued from previous page...

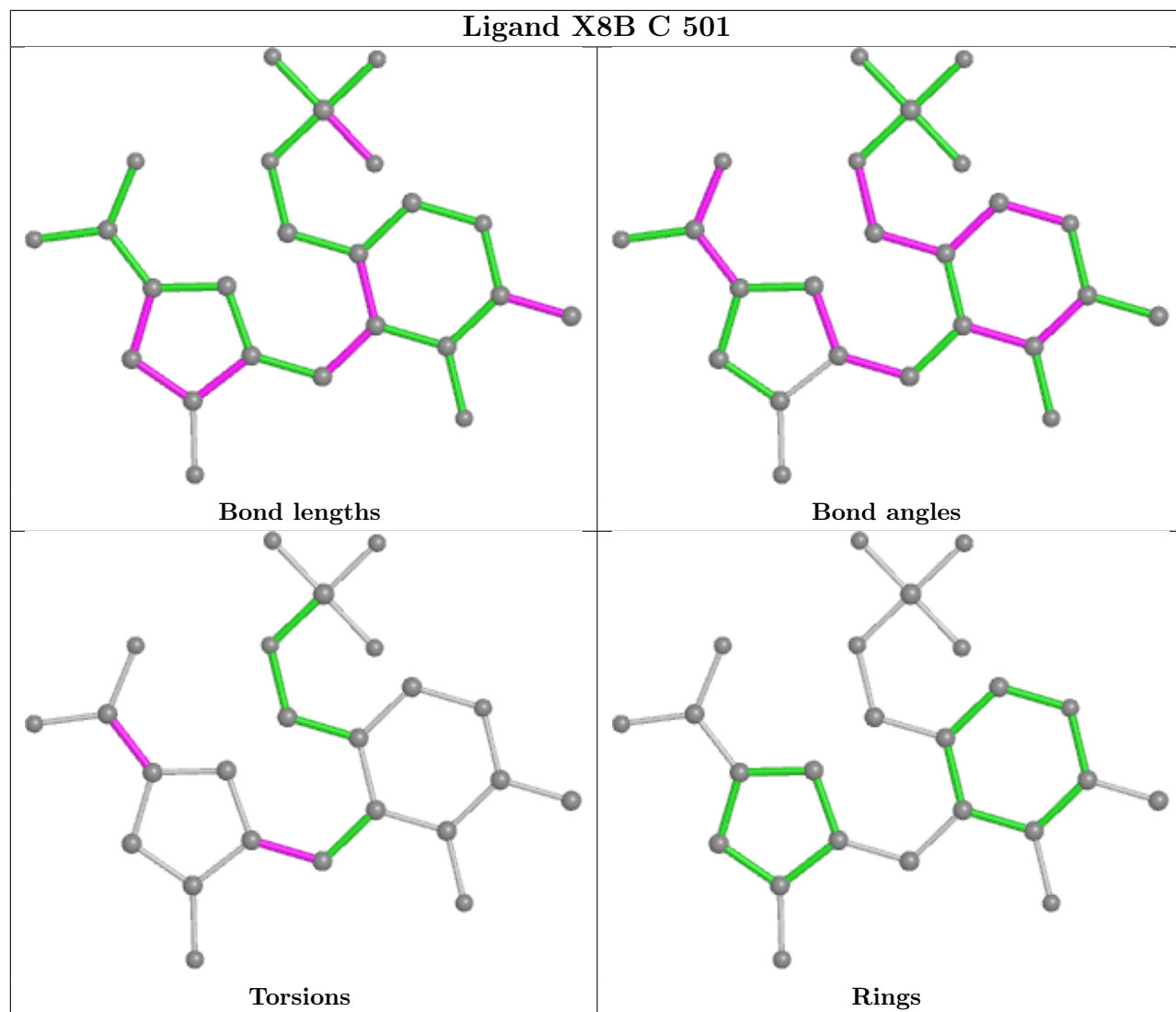
Mol	Chain	Res	Type	Atoms
2	A	501	X8B	C05-C09-C10-C14
2	A	501	X8B	C14-C13-C22-O24
2	A	501	X8B	C12-C13-C22-O23
2	A	501	X8B	C12-C13-C22-O24

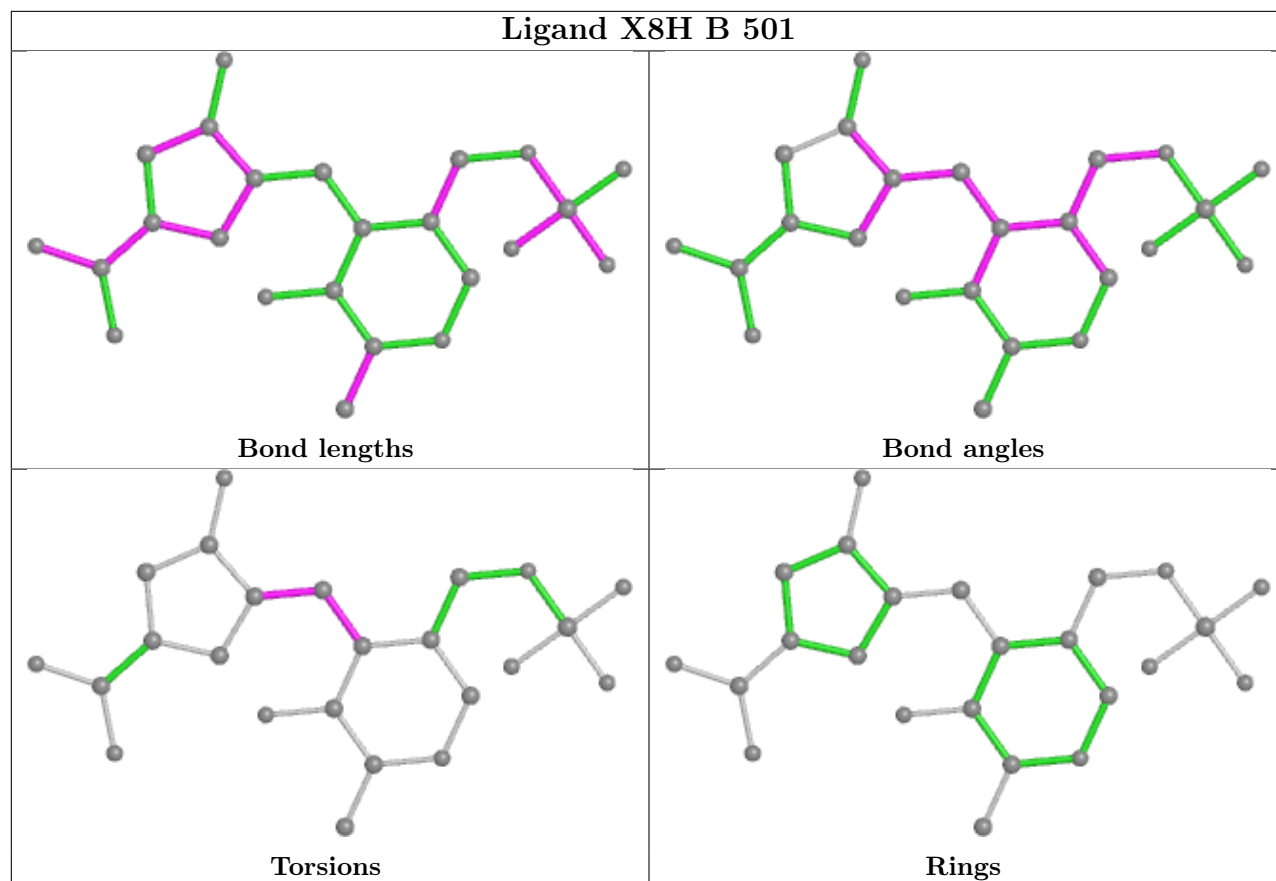
There are no ring outliers.

No monomer is involved in short contacts.

The following is a two-dimensional graphical depiction of Mogul quality analysis of bond lengths, bond angles, torsion angles, and ring geometry for all instances of the Ligand of Interest. In addition, ligands with molecular weight > 250 and outliers as shown on the validation Tables will also be included. For torsion angles, if less than 5% of the Mogul distribution of torsion angles is within 10 degrees of the torsion angle in question, then that torsion angle is considered an outlier. Any bond that is central to one or more torsion angles identified as an outlier by Mogul will be highlighted in the graph. For rings, the root-mean-square deviation (RMSD) between the ring in question and similar rings identified by Mogul is calculated over all ring torsion angles. If the average RMSD is greater than 60 degrees and the minimal RMSD between the ring in question and any Mogul-identified rings is also greater than 60 degrees, then that ring is considered an outlier. The outliers are highlighted in purple. The color gray indicates Mogul did not find sufficient equivalents in the CSD to analyse the geometry.







5.7 Other polymers [i](#)

There are no such residues in this entry.

5.8 Polymer linkage issues [i](#)

There are no chain breaks in this entry.

6 Fit of model and data

6.1 Protein, DNA and RNA chains

In the following table, the column labelled ‘#RSRZ > 2’ contains the number (and percentage) of RSRZ outliers, followed by percent RSRZ outliers for the chain as percentile scores relative to all X-ray entries and entries of similar resolution. The OWAB column contains the minimum, median, 95th percentile and maximum values of the occupancy-weighted average B-factor per residue. The column labelled ‘Q < 0.9’ lists the number of (and percentage) of residues with an average occupancy less than 0.9.

Mol	Chain	Analysed	<RSRZ>	#RSRZ>2	OWAB(Å ²)	Q<0.9
1	A	402/404 (99%)	-0.20	4 (0%) 82 84	19, 28, 45, 90	0
1	B	402/404 (99%)	-0.03	11 (2%) 54 57	20, 29, 54, 104	0
1	C	402/404 (99%)	0.37	30 (7%) 14 16	20, 47, 70, 107	0
All	All	1206/1212 (99%)	0.05	45 (3%) 41 44	19, 31, 63, 107	0

All (45) RSRZ outliers are listed below:

Mol	Chain	Res	Type	RSRZ
1	C	73	VAL	6.6
1	C	388	TRP	5.7
1	B	387	ASP	5.6
1	C	387	ASP	5.1
1	A	387	ASP	4.9
1	C	386	LYS	4.8
1	B	364	PRO	4.3
1	C	44	PHE	4.2
1	C	385	THR	4.1
1	B	386	LYS	4.1
1	B	388	TRP	4.0
1	B	367	VAL	4.0
1	C	39	THR	3.9
1	B	439	PHE	3.7
1	A	198	GLY	3.7
1	A	386	LYS	3.6
1	B	366	ASP	3.6
1	C	322	THR	3.4
1	C	101	LEU	3.4
1	C	40	SER	3.4
1	A	41	ASP	3.4
1	B	385	THR	3.2
1	C	275	TRP	3.1

Continued on next page...

Continued from previous page...

Mol	Chain	Res	Type	RSRZ
1	B	198	GLY	3.0
1	C	358	ASN	3.0
1	C	141	THR	2.9
1	C	140	ASN	2.8
1	C	367	VAL	2.8
1	C	439	PHE	2.7
1	B	141	THR	2.7
1	C	71	TRP	2.6
1	C	347	GLU	2.5
1	C	351	LYS	2.5
1	C	41	ASP	2.4
1	C	323	TYR	2.4
1	C	95	PRO	2.4
1	C	112	SER	2.3
1	C	436	ILE	2.2
1	C	38	PRO	2.2
1	C	304	VAL	2.2
1	B	384	GLU	2.2
1	C	106	ASP	2.2
1	C	99	ASN	2.1
1	C	96	LYS	2.0
1	C	302	SER	2.0

6.2 Non-standard residues in protein, DNA, RNA chains [\(i\)](#)

There are no non-standard protein/DNA/RNA residues in this entry.

6.3 Carbohydrates [\(i\)](#)

There are no monosaccharides in this entry.

6.4 Ligands [\(i\)](#)

In the following table, the Atoms column lists the number of modelled atoms in the group and the number defined in the chemical component dictionary. The B-factors column lists the minimum, median, 95th percentile and maximum values of B factors of atoms in the group. The column labelled 'Q< 0.9' lists the number of atoms with occupancy less than 0.9.

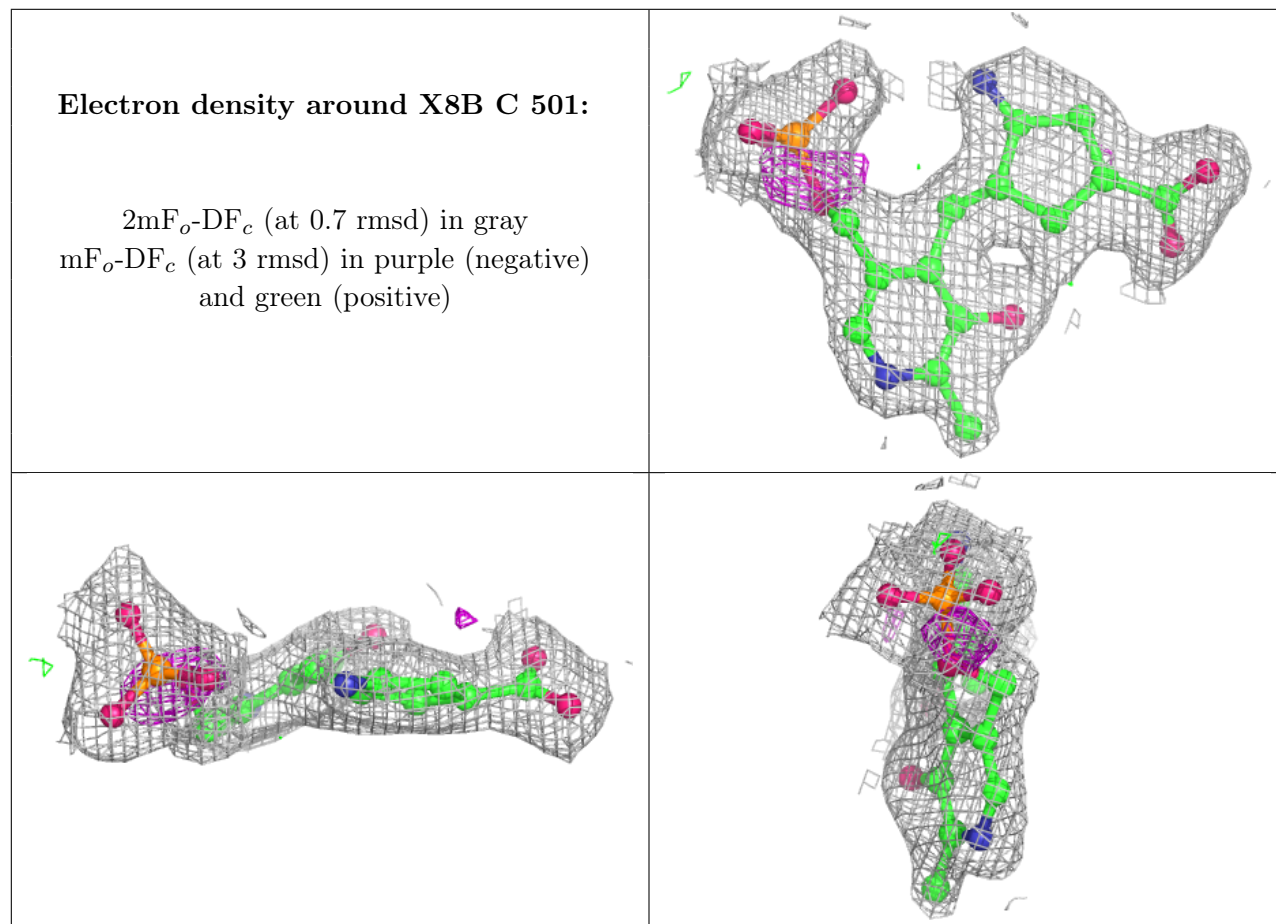
Mol	Type	Chain	Res	Atoms	RSCC	RSR	B-factors(Å ²)	Q<0.9
2	X8B	C	501	24/24	0.95	0.16	27,41,47,53	0

Continued on next page...

Continued from previous page...

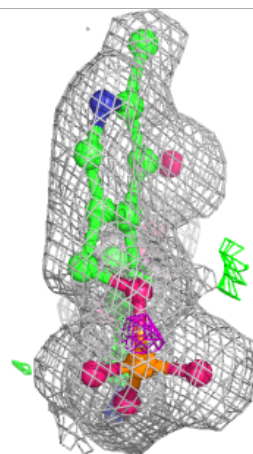
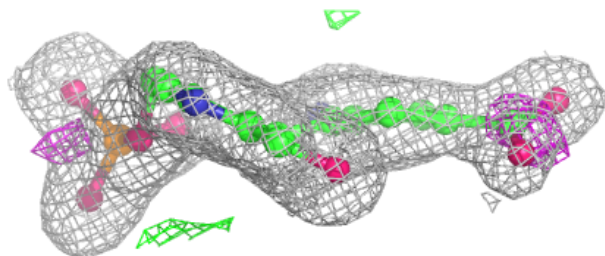
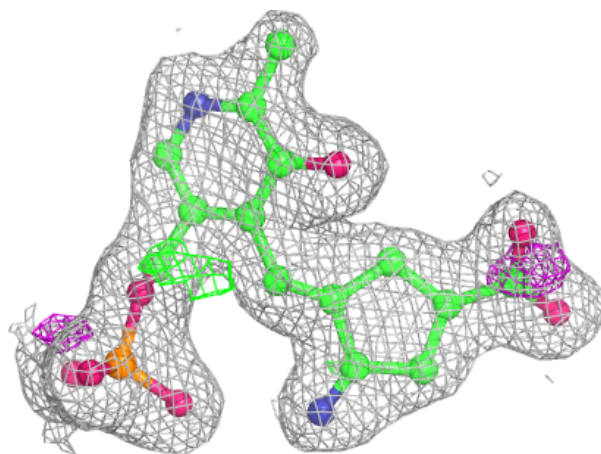
Mol	Type	Chain	Res	Atoms	RSCC	RSR	B-factors(\AA^2)	Q<0.9
2	X8B	A	501	24/24	0.96	0.12	19,24,31,32	0
3	X8H	B	501	24/24	0.96	0.16	22,28,38,39	2

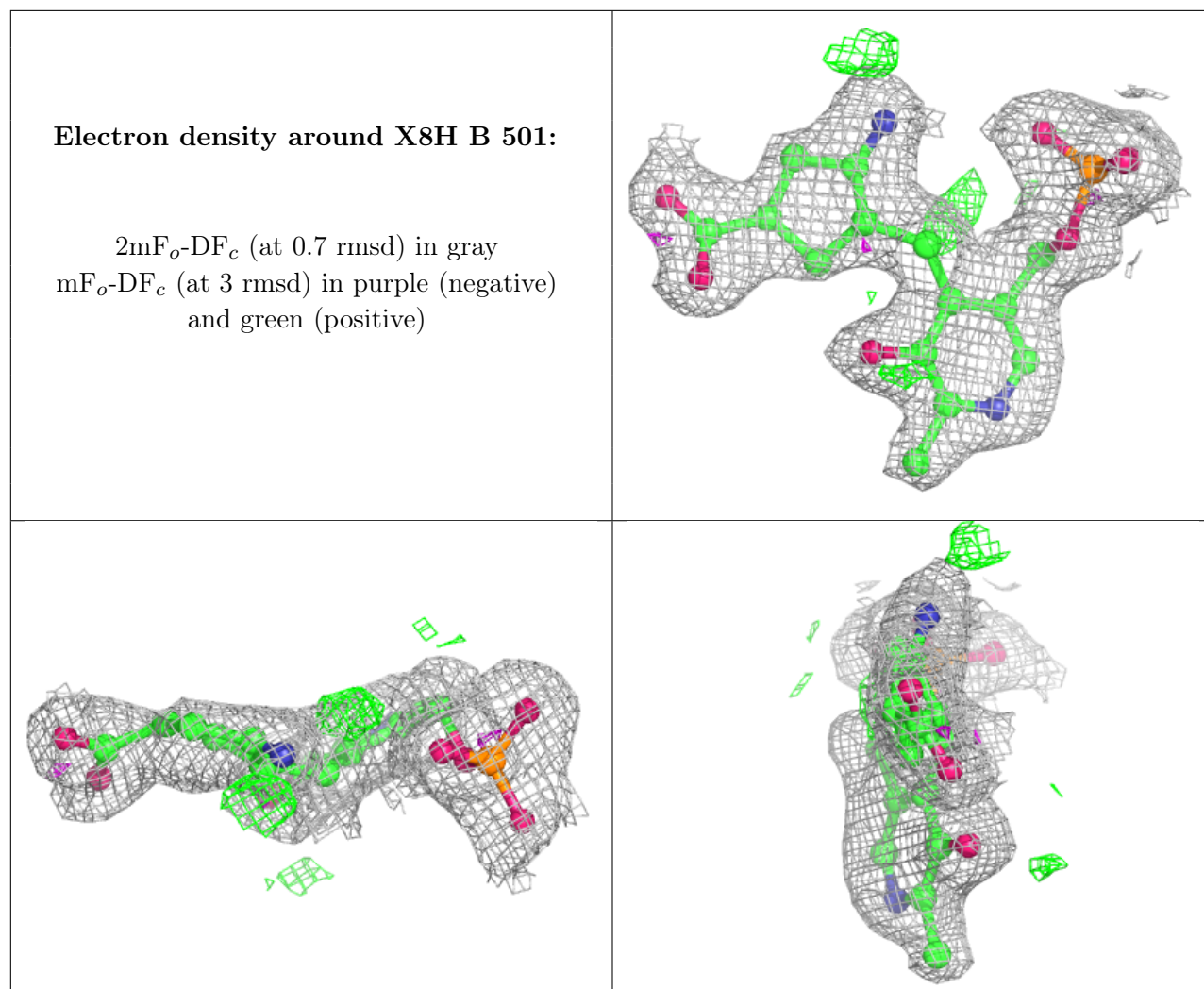
The following is a graphical depiction of the model fit to experimental electron density of all instances of the Ligand of Interest. In addition, ligands with molecular weight > 250 and outliers as shown on the geometry validation Tables will also be included. Each fit is shown from different orientation to approximate a three-dimensional view.



Electron density around X8B A 501:

$2mF_o-DF_c$ (at 0.7 rmsd) in gray
 mF_o-DF_c (at 3 rmsd) in purple (negative)
and green (positive)





6.5 Other polymers [\(i\)](#)

There are no such residues in this entry.