



Full wwPDB EM Validation Report ⓘ

Jun 3, 2024 – 11:56 AM EDT

PDB ID : 8DTG
EMDB ID : EMD-27697
Title : Cryo-EM structure of Arabidopsis SPY alternative conformation 1
Authors : Kumar, S.; Zhou, Y.; Dillard, L.; Borgnia, M.J.; Bartesaghi, A.; Zhou, P.
Deposited on : 2022-07-25
Resolution : 3.90 Å (reported)

This is a Full wwPDB EM Validation Report for a publicly released PDB entry.

We welcome your comments at validation@mail.wwpdb.org

A user guide is available at

<https://www.wwpdb.org/validation/2017/EMValidationReportHelp>

with specific help available everywhere you see the ⓘ symbol.

The types of validation reports are described at

<http://www.wwpdb.org/validation/2017/FAQs#types>.

The following versions of software and data (see [references ⓘ](#)) were used in the production of this report:

EMDB validation analysis : 0.0.1.dev92
MolProbity : 4.02b-467
Percentile statistics : 20191225.v01 (using entries in the PDB archive December 25th 2019)
MapQ : 1.9.13
Ideal geometry (proteins) : Engh & Huber (2001)
Ideal geometry (DNA, RNA) : Parkinson et al. (1996)
Validation Pipeline (wwPDB-VP) : 2.36.2

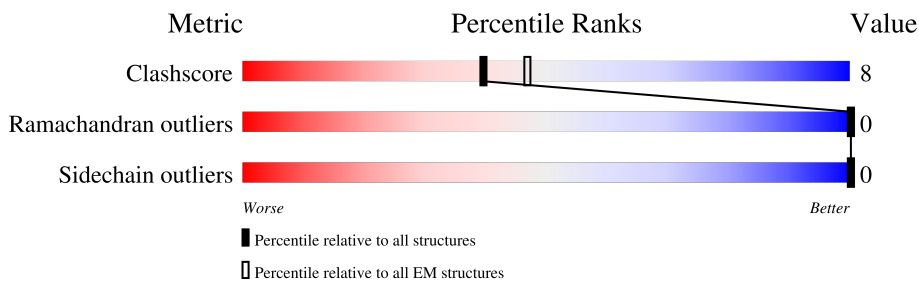
1 Overall quality at a glance

The following experimental techniques were used to determine the structure:

ELECTRON MICROSCOPY

The reported resolution of this entry is 3.90 Å.

Percentile scores (ranging between 0-100) for global validation metrics of the entry are shown in the following graphic. The table shows the number of entries on which the scores are based.



Metric	Whole archive (#Entries)	EM structures (#Entries)
Clashscore	158937	4297
Ramachandran outliers	154571	4023
Sidechain outliers	154315	3826

The table below summarises the geometric issues observed across the polymeric chains and their fit to the map. The red, orange, yellow and green segments of the bar indicate the fraction of residues that contain outliers for ≥ 3 , 2, 1 and 0 types of geometric quality criteria respectively. A grey segment represents the fraction of residues that are not modelled. The numeric value for each fraction is indicated below the corresponding segment, with a dot representing fractions $\leq 5\%$. The upper red bar (where present) indicates the fraction of residues that have poor fit to the EM map (all-atom inclusion $< 40\%$). The numeric value is given above the bar.

Mol	Chain	Length	Quality of chain
1	A	946	
1	B	946	

2 Entry composition [i](#)

There is only 1 type of molecule in this entry. The entry contains 11451 atoms, of which 0 are hydrogens and 0 are deuteriums.

In the tables below, the AltConf column contains the number of residues with at least one atom in alternate conformation and the Trace column contains the number of residues modelled with at most 2 atoms.

- Molecule 1 is a protein called Probable UDP-N-acetylglucosamine--peptide N-acetylglucosaminyltransferase SPINDLY.

Mol	Chain	Residues	Atoms					AltConf	Trace
			Total	C	N	O	S		
1	A	802	5985	3812	1005	1126	42	0	0
1	B	737	5466	3478	930	1020	38	0	0

There are 64 discrepancies between the modelled and reference sequences:

Chain	Residue	Modelled	Actual	Comment	Reference
A	915	GLY	-	expression tag	UNP Q96301
A	916	GLY	-	expression tag	UNP Q96301
A	917	SER	-	expression tag	UNP Q96301
A	918	GLU	-	expression tag	UNP Q96301
A	919	ASN	-	expression tag	UNP Q96301
A	920	LEU	-	expression tag	UNP Q96301
A	921	TYR	-	expression tag	UNP Q96301
A	922	PHE	-	expression tag	UNP Q96301
A	923	GLN	-	expression tag	UNP Q96301
A	924	GLY	-	expression tag	UNP Q96301
A	925	GLY	-	expression tag	UNP Q96301
A	926	SER	-	expression tag	UNP Q96301
A	927	HIS	-	expression tag	UNP Q96301
A	928	HIS	-	expression tag	UNP Q96301
A	929	HIS	-	expression tag	UNP Q96301
A	930	HIS	-	expression tag	UNP Q96301
A	931	HIS	-	expression tag	UNP Q96301
A	932	HIS	-	expression tag	UNP Q96301
A	933	HIS	-	expression tag	UNP Q96301
A	934	HIS	-	expression tag	UNP Q96301
A	935	HIS	-	expression tag	UNP Q96301
A	936	HIS	-	expression tag	UNP Q96301
A	937	GLY	-	expression tag	UNP Q96301
A	938	GLY	-	expression tag	UNP Q96301
A	939	TRP	-	expression tag	UNP Q96301

Continued on next page...

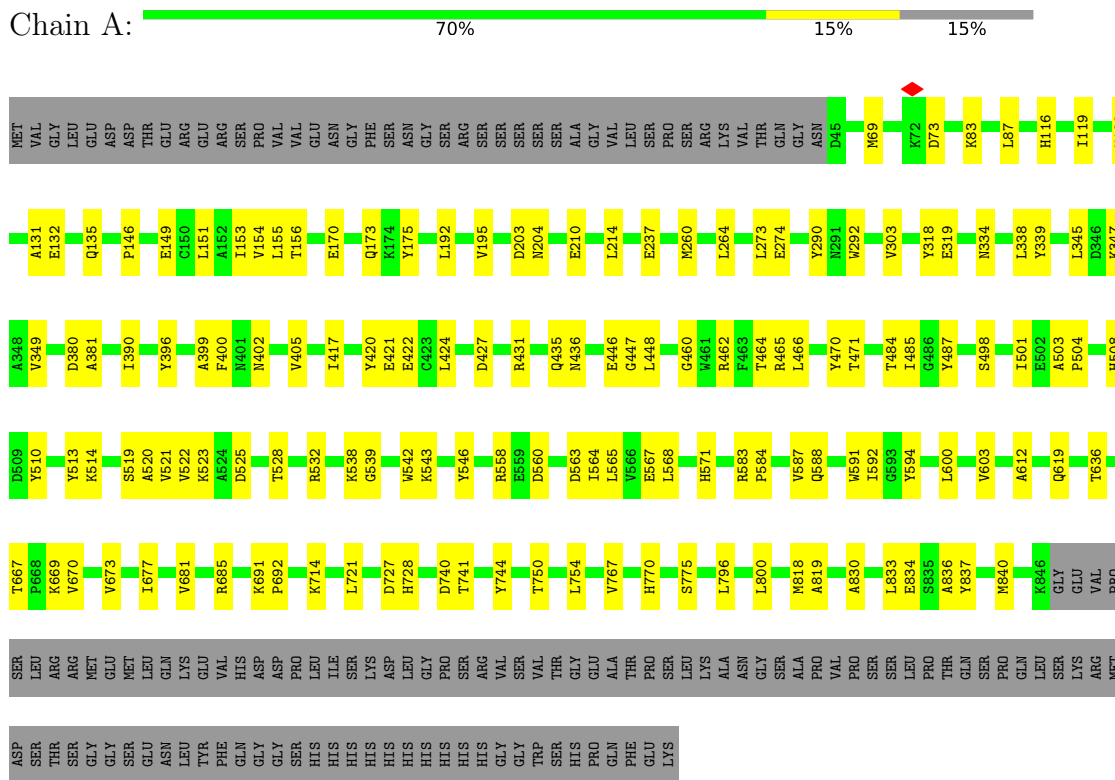
Continued from previous page...

Chain	Residue	Modelled	Actual	Comment	Reference
A	940	SER	-	expression tag	UNP Q96301
A	941	HIS	-	expression tag	UNP Q96301
A	942	PRO	-	expression tag	UNP Q96301
A	943	GLN	-	expression tag	UNP Q96301
A	944	PHE	-	expression tag	UNP Q96301
A	945	GLU	-	expression tag	UNP Q96301
A	946	LYS	-	expression tag	UNP Q96301
B	915	GLY	-	expression tag	UNP Q96301
B	916	GLY	-	expression tag	UNP Q96301
B	917	SER	-	expression tag	UNP Q96301
B	918	GLU	-	expression tag	UNP Q96301
B	919	ASN	-	expression tag	UNP Q96301
B	920	LEU	-	expression tag	UNP Q96301
B	921	TYR	-	expression tag	UNP Q96301
B	922	PHE	-	expression tag	UNP Q96301
B	923	GLN	-	expression tag	UNP Q96301
B	924	GLY	-	expression tag	UNP Q96301
B	925	GLY	-	expression tag	UNP Q96301
B	926	SER	-	expression tag	UNP Q96301
B	927	HIS	-	expression tag	UNP Q96301
B	928	HIS	-	expression tag	UNP Q96301
B	929	HIS	-	expression tag	UNP Q96301
B	930	HIS	-	expression tag	UNP Q96301
B	931	HIS	-	expression tag	UNP Q96301
B	932	HIS	-	expression tag	UNP Q96301
B	933	HIS	-	expression tag	UNP Q96301
B	934	HIS	-	expression tag	UNP Q96301
B	935	HIS	-	expression tag	UNP Q96301
B	936	HIS	-	expression tag	UNP Q96301
B	937	GLY	-	expression tag	UNP Q96301
B	938	GLY	-	expression tag	UNP Q96301
B	939	TRP	-	expression tag	UNP Q96301
B	940	SER	-	expression tag	UNP Q96301
B	941	HIS	-	expression tag	UNP Q96301
B	942	PRO	-	expression tag	UNP Q96301
B	943	GLN	-	expression tag	UNP Q96301
B	944	PHE	-	expression tag	UNP Q96301
B	945	GLU	-	expression tag	UNP Q96301
B	946	LYS	-	expression tag	UNP Q96301

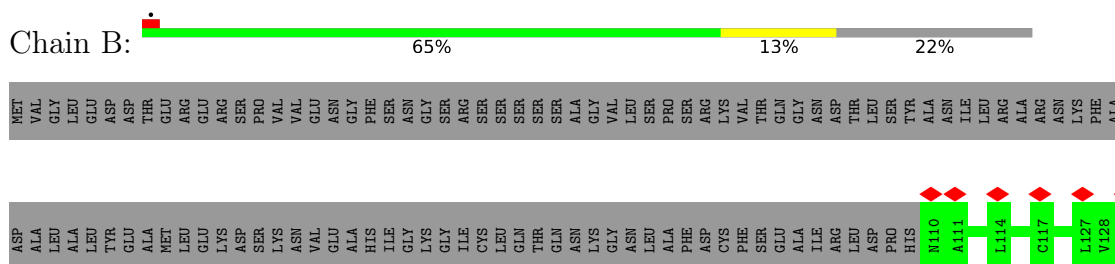
3 Residue-property plots

These plots are drawn for all protein, RNA, DNA and oligosaccharide chains in the entry. The first graphic for a chain summarises the proportions of the various outlier classes displayed in the second graphic. The second graphic shows the sequence view annotated by issues in geometry and atom inclusion in map density. Residues are color-coded according to the number of geometric quality criteria for which they contain at least one outlier: green = 0, yellow = 1, orange = 2 and red = 3 or more. A red diamond above a residue indicates a poor fit to the EM map for this residue (all-atom inclusion < 40%). Stretches of 2 or more consecutive residues without any outlier are shown as a green connector. Residues present in the sample, but not in the model, are shown in grey.

- Molecule 1: Probable UDP-N-acetylglucosamine--peptide N-acetylglucosaminyltransferase SPINDLY



- Molecule 1: Probable UDP-N-acetylglucosamine--peptide N-acetylglucosaminyltransferase SPINDLY



S133	Y134	Q135	K136	M139	A140	D141	A142	S143	Y144	I181	E210	L214	A222	M226	Y230	R233	L236	E237	M238	L240	E254	K257	N258	W259	M260	L264	N291	W292	H293	D296	N300	V303	E319	N325	P326	H327	C328	N333										
M334	L338	L369	V372	M402	V405	L406	D409	I413	A416	I417	D418	E422	G434	L438	K451	E454	A455	H456	R457	D458	G460	F463	T464	R465	L466	Q469	S472	M475	P479	R480	R481	P482	S489	F492	F493	T494	H495											
P604	H608	K514	Y629	R632	V635	L406	G639	I548	K552	R558	E559	D560	K561	I562	D563	E567	L568	T569	T572	A585	Q588	W591	I592	T597	L600	V603	D604	Y605	L611	Q621	V622	E623	E624	L628	P629	D630	Y635	T647										
L650	F657	N662	W674	R685	L686	V687	C680	R691	P692	I722	M729	S738	L739	E752	M756	C760	T778	S808	R811	M812	A813	L814	R815	D816	L817	M818	S821	P822	W823	Y837	R838	W839	M840	K846	GLY	GLU	VAL	PRO	SER	LEU	THR							
ARG	MET	GLU	MET	LEU	ASN	GLN	LYS	GLU	PHE	GLN	HIS	GLY	GLY	SER	HIS	HIS	GLY	TRP	SER	THR	GLY	ALA	ALA	ALA	PRO	VAL	PRO	SER	SER	LEU	PRO	THR	GLN	SER	PRO	PRO	GLN	LEU	SER	LYS	ARG	VAL	PRO	MET	ASP	SER	LEU	THR
SER	GLY	GLY	SER	GLU	ASN	GLN	LEU	TYR	PHE	GLN	HIS	GLY	GLY	SER	HIS	HIS	GLY	TRP	SER	THR	GLY	ALA	ALA	ALA	PRO	VAL	PRO	SER	SER	LEU	PRO	THR	GLN	SER	PRO	PRO	GLN	LEU	SER	LYS	ARG	VAL	PRO	MET	ASP	SER	LEU	THR

4 Experimental information

Property	Value	Source
EM reconstruction method	SINGLE PARTICLE	Depositor
Imposed symmetry	POINT, Not provided	
Number of particles used	80304	Depositor
Resolution determination method	FSC 0.143 CUT-OFF	Depositor
CTF correction method	PHASE FLIPPING AND AMPLITUDE CORRECTION	Depositor
Microscope	FEI TALOS ARCTICA	Depositor
Voltage (kV)	200	Depositor
Electron dose ($e^-/\text{\AA}^2$)	55	Depositor
Minimum defocus (nm)	500	Depositor
Maximum defocus (nm)	2000	Depositor
Magnification	54900	Depositor
Image detector	GATAN K3 (6k x 4k)	Depositor
Maximum map value	56.629	Depositor
Minimum map value	-38.190	Depositor
Average map value	0.001	Depositor
Map value standard deviation	1.000	Depositor
Recommended contour level	4.0	Depositor
Map size (Å)	337.91998, 337.91998, 337.91998	wwPDB
Map dimensions	384, 384, 384	wwPDB
Map angles (°)	90.0, 90.0, 90.0	wwPDB
Pixel spacing (Å)	0.87999994, 0.87999994, 0.87999994	Depositor

5 Model quality [i](#)

5.1 Standard geometry [i](#)

The Z score for a bond length (or angle) is the number of standard deviations the observed value is removed from the expected value. A bond length (or angle) with $|Z| > 5$ is considered an outlier worth inspection. RMSZ is the root-mean-square of all Z scores of the bond lengths (or angles).

Mol	Chain	Bond lengths		Bond angles	
		RMSZ	# Z >5	RMSZ	# Z >5
1	A	0.30	0/6120	0.49	0/8359
1	B	0.29	0/5588	0.49	0/7623
All	All	0.30	0/11708	0.49	0/15982

There are no bond length outliers.

There are no bond angle outliers.

There are no chirality outliers.

There are no planarity outliers.

5.2 Too-close contacts [i](#)

In the following table, the Non-H and H(model) columns list the number of non-hydrogen atoms and hydrogen atoms in the chain respectively. The H(added) column lists the number of hydrogen atoms added and optimized by MolProbity. The Clashes column lists the number of clashes within the asymmetric unit, whereas Symm-Clashes lists symmetry-related clashes.

Mol	Chain	Non-H	H(model)	H(added)	Clashes	Symm-Clashes
1	A	5985	0	5641	99	0
1	B	5466	0	5135	74	0
All	All	11451	0	10776	171	0

The all-atom clashscore is defined as the number of clashes found per 1000 atoms (including hydrogen atoms). The all-atom clashscore for this structure is 8.

All (171) close contacts within the same asymmetric unit are listed below, sorted by their clash magnitude.

Atom-1	Atom-2	Interatomic distance (Å)	Clash overlap (Å)
1:B:635:TYR:OH	1:B:752:GLU:OE2	2.14	0.65
1:A:380:ASP:OD1	1:A:381:ALA:N	2.29	0.64

Continued on next page...

Continued from previous page...

Atom-1	Atom-2	Interatomic distance (Å)	Clash overlap (Å)
1:B:457:ARG:NH1	1:B:458:ASP:OD1	2.29	0.64
1:B:647:THR:OG1	1:B:811:ARG:NE	2.30	0.64
1:A:612:ALA:N	1:A:775:SER:OG	2.32	0.63
1:A:685:ARG:NH1	1:A:714:LYS:O	2.31	0.63
1:A:727:ASP:OD1	1:A:728:HIS:N	2.32	0.62
1:B:623:GLU:OE2	1:B:624:GLU:N	2.33	0.61
1:A:484:THR:N	1:A:563:ASP:OD2	2.32	0.61
1:B:296:ASP:O	1:B:300:ASN:ND2	2.34	0.60
1:A:567:GLU:OE1	1:A:568:LEU:N	2.35	0.60
1:A:446:GLU:OE1	1:A:669:LYS:NZ	2.36	0.59
1:A:504:PRO:O	1:A:508:HIS:CD2	2.55	0.59
1:A:750:THR:O	1:A:754:LEU:HD12	2.04	0.58
1:B:569:THR:OG1	1:B:572:THR:OG1	2.20	0.58
1:B:514:LYS:NZ	1:B:539:GLY:O	2.32	0.58
1:A:740:ASP:OD1	1:A:741:THR:N	2.36	0.57
1:B:258:ASN:OD1	1:B:291:ASN:ND2	2.37	0.57
1:B:585:ALA:O	1:B:588:GLN:NE2	2.37	0.56
1:A:237:GLU:N	1:A:237:GLU:OE1	2.39	0.56
1:A:833:LEU:HG	1:A:837:TYR:CE2	2.40	0.56
1:B:657:PHE:N	1:B:685:ARG:O	2.39	0.56
1:A:203:ASP:OD1	1:A:204:ASN:N	2.38	0.55
1:B:472:SER:O	1:B:558:ARG:NH2	2.37	0.55
1:A:514:LYS:NZ	1:A:539:GLY:O	2.39	0.55
1:B:479:PRO:O	1:B:838:ARG:NH1	2.40	0.54
1:B:756:MET:HE3	1:B:756:MET:HA	1.89	0.54
1:A:69:MET:O	1:A:73:ASP:N	2.39	0.53
1:B:413:ILE:O	1:B:416:ALA:N	2.41	0.53
1:A:558:ARG:NH2	1:A:583:ARG:O	2.42	0.52
1:A:153:ILE:O	1:A:156:THR:HG22	2.09	0.52
1:A:260:MET:HG2	1:A:290:TYR:CE2	2.45	0.52
1:A:339:TYR:HD2	1:A:347:LYS:HB3	1.75	0.51
1:A:830:ALA:O	1:A:834:GLU:HG2	2.10	0.51
1:B:813:SER:O	1:B:816:ASP:OD1	2.28	0.51
1:A:417:ILE:O	1:A:421:GLU:OE1	2.28	0.50
1:B:293:HIS:O	1:B:293:HIS:ND1	2.44	0.50
1:B:567:GLU:OE2	1:B:569:THR:HG22	2.12	0.50
1:A:741:THR:OG1	1:A:744:TYR:O	2.30	0.49
1:A:128:VAL:O	1:A:132:GLU:OE1	2.30	0.49
1:A:485:ILE:HG22	1:A:564:ILE:HD11	1.94	0.49
1:A:588:GLN:HB2	1:A:603:VAL:HA	1.94	0.49
1:A:519:SER:HB2	1:A:542:TRP:CH2	2.47	0.49

Continued on next page...

Continued from previous page...

Atom-1	Atom-2	Interatomic distance (Å)	Clash overlap (Å)
1:B:325:ASN:ND2	1:B:328:CYS:SG	2.86	0.49
1:A:390:ILE:HD12	1:A:400:PHE:CE1	2.49	0.48
1:A:528:THR:O	1:A:532:ARG:HG2	2.14	0.48
1:A:818:MET:SD	1:A:819:ALA:N	2.87	0.48
1:A:591:TRP:CZ3	1:A:592:ILE:HD13	2.49	0.48
1:A:600:LEU:O	1:A:603:VAL:HG12	2.14	0.47
1:A:525:ASP:N	1:A:525:ASP:OD1	2.48	0.47
1:B:438:LEU:HD12	1:B:456:HIS:CE1	2.49	0.47
1:B:722:ILE:HG13	1:B:722:ILE:O	2.15	0.47
1:B:690:CYS:SG	1:B:692:PRO:HD2	2.53	0.47
1:A:564:ILE:HG22	1:A:587:VAL:HB	1.95	0.47
1:A:151:LEU:HD23	1:A:155:LEU:HD13	1.95	0.46
1:A:151:LEU:O	1:A:155:LEU:HD12	2.15	0.46
1:A:462:ARG:HA	1:A:465:ARG:HG2	1.98	0.46
1:A:667:THR:O	1:A:670:VAL:HG12	2.15	0.46
1:A:513:TYR:CE2	1:A:834:GLU:OE1	2.68	0.46
1:A:431:ARG:O	1:A:435:GLN:HG2	2.15	0.46
1:B:418:ASP:O	1:B:422:GLU:OE1	2.33	0.46
1:A:260:MET:HG2	1:A:290:TYR:CD2	2.51	0.46
1:A:522:VAL:HG13	1:A:523:LYS:N	2.31	0.46
1:B:562:ILE:HG22	1:B:563:ASP:N	2.31	0.46
1:A:471:THR:HG22	1:A:471:THR:O	2.16	0.46
1:B:326:PRO:O	1:B:327:HIS:ND1	2.49	0.46
1:B:406:LEU:O	1:B:409:ASP:OD1	2.33	0.46
1:B:463:PHE:HA	1:B:466:LEU:CD2	2.46	0.46
1:B:529:TYR:HA	1:B:532:ARG:HG2	1.96	0.46
1:B:811:ARG:HG3	1:B:812:MET:N	2.30	0.46
1:A:532:ARG:CZ	1:A:542:TRP:CH2	3.00	0.45
1:B:817:LEU:HD12	1:B:818:MET:N	2.32	0.45
1:A:396:TYR:HD2	1:A:399:ALA:HB2	1.81	0.45
1:B:409:ASP:OD1	1:B:409:ASP:N	2.50	0.45
1:A:498:SER:HA	1:A:501:ILE:HG22	1.98	0.45
1:A:420:TYR:CZ	1:A:436:ASN:HB3	2.51	0.45
1:A:273:LEU:HD23	1:A:273:LEU:O	2.17	0.45
1:A:681:VAL:O	1:A:681:VAL:HG13	2.17	0.45
1:A:487:TYR:OH	1:A:837:TYR:OH	2.35	0.45
1:B:230:TYR:O	1:B:233:ARG:HG2	2.17	0.45
1:B:674:TRP:HE1	1:B:739:LEU:HB3	1.81	0.45
1:A:592:ILE:O	1:A:594:TYR:N	2.50	0.45
1:B:300:ASN:O	1:B:303:VAL:HG22	2.16	0.45
1:A:619:GLN:HE22	1:A:767:VAL:HB	1.82	0.44

Continued on next page...

Continued from previous page...

Atom-1	Atom-2	Interatomic distance (Å)	Clash overlap (Å)
1:A:319:GLU:OE2	1:B:292:TRP:NE1	2.50	0.44
1:A:334:ASN:O	1:A:338:LEU:HD23	2.17	0.44
1:A:131:ALA:O	1:A:135:GLN:OE1	2.36	0.44
1:A:435:GLN:OE1	1:A:571:HIS:HD2	1.99	0.44
1:A:485:ILE:O	1:A:485:ILE:HG13	2.18	0.44
1:B:334:ASN:O	1:B:338:LEU:HD23	2.17	0.44
1:B:460:GLY:O	1:B:464:THR:HG23	2.18	0.44
1:A:532:ARG:NE	1:A:532:ARG:HA	2.32	0.44
1:A:510:TYR:HE2	1:A:538:LYS:HB3	1.82	0.44
1:B:369:LEU:O	1:B:372:VAL:HG12	2.17	0.44
1:B:662:ASN:HA	1:B:690:CYS:SG	2.57	0.44
1:A:565:LEU:HB2	1:A:588:GLN:OE1	2.18	0.44
1:A:460:GLY:O	1:A:464:THR:HG23	2.17	0.44
1:A:522:VAL:HG13	1:A:523:LYS:H	1.82	0.44
1:A:192:LEU:O	1:A:195:VAL:HG12	2.17	0.44
1:A:210:GLU:O	1:A:214:LEU:HD23	2.17	0.44
1:A:470:TYR:HB2	1:A:558:ARG:NH2	2.33	0.44
1:A:691:LYS:HB3	1:A:692:PRO:HD3	2.00	0.43
1:A:274:GLU:HA	1:A:274:GLU:OE1	2.18	0.43
1:A:424:LEU:HA	1:A:427:ASP:O	2.17	0.43
1:B:504:PRO:O	1:B:508:HIS:HB2	2.18	0.43
1:B:481:ARG:NH1	1:B:482:PRO:O	2.52	0.43
1:A:116:HIS:HA	1:A:119:ILE:HG22	2.01	0.43
1:A:400:PHE:CE2	1:A:422:GLU:HG3	2.54	0.43
1:B:210:GLU:O	1:B:214:LEU:HD23	2.19	0.43
1:A:591:TRP:CE3	1:A:592:ILE:HG23	2.54	0.43
1:B:402:ASN:O	1:B:405:VAL:HG12	2.18	0.43
1:B:611:LEU:HD13	1:B:778:THR:HG21	2.01	0.43
1:B:628:LEU:HD23	1:B:630:ASP:H	1.84	0.43
1:B:434:GLY:O	1:B:438:LEU:HD23	2.18	0.43
1:A:583:ARG:N	1:A:584:PRO:HD3	2.34	0.42
1:A:836:ALA:O	1:A:840:MET:HG2	2.19	0.42
1:B:469:GLN:OE1	1:B:469:GLN:N	2.50	0.42
1:A:151:LEU:O	1:A:155:LEU:CD1	2.68	0.42
1:B:647:THR:O	1:B:650:LEU:HG	2.19	0.42
1:A:564:ILE:O	1:A:564:ILE:HG13	2.20	0.42
1:B:493:PHE:O	1:B:495:HIS:N	2.52	0.42
1:A:83:LYS:O	1:A:87:LEU:HD23	2.20	0.42
1:A:146:PRO:HA	1:A:149:GLU:OE2	2.19	0.42
1:A:345:LEU:O	1:A:349:VAL:HG23	2.20	0.42
1:A:588:GLN:OE1	1:A:588:GLN:HA	2.18	0.42

Continued on next page...

Continued from previous page...

Atom-1	Atom-2	Interatomic distance (Å)	Clash overlap (Å)
1:B:548:ILE:CG2	1:B:552:LYS:HD2	2.50	0.42
1:A:519:SER:OG	1:A:521:VAL:HG23	2.20	0.42
1:B:222:ALA:O	1:B:226:MET:HG3	2.19	0.42
1:B:475:ASN:ND2	1:B:563:ASP:OD1	2.45	0.42
1:B:611:LEU:HD13	1:B:778:THR:CG2	2.50	0.42
1:A:170:GLU:O	1:A:173:GLN:HG3	2.19	0.42
1:A:685:ARG:NH2	1:A:714:LYS:O	2.51	0.42
1:B:230:TYR:HE2	1:B:238:MET:HE1	1.85	0.42
1:B:451:LYS:O	1:B:454:GLU:HG3	2.19	0.42
1:A:796:LEU:O	1:A:800:LEU:HD13	2.19	0.42
1:B:597:THR:HB	1:B:621:GLN:HG2	2.02	0.42
1:A:175:TYR:HB2	1:A:192:LEU:HD21	2.01	0.42
1:B:236:LEU:O	1:B:240:ILE:HG13	2.20	0.42
1:A:116:HIS:O	1:A:119:ILE:HG22	2.20	0.41
1:A:292:TRP:CD1	1:B:319:GLU:OE1	2.72	0.41
1:A:767:VAL:HG13	1:A:770:HIS:H	1.85	0.41
1:B:333:ASN:OD1	1:B:333:ASN:C	2.57	0.41
1:B:489:SER:HB3	1:B:492:PHE:CE2	2.56	0.41
1:A:151:LEU:HA	1:A:154:VAL:HG22	2.03	0.41
1:B:532:ARG:HA	1:B:535:VAL:HG12	2.01	0.41
1:A:303:VAL:HA	1:A:318:TYR:OH	2.21	0.41
1:B:260:MET:HE3	1:B:264:LEU:HD21	2.01	0.41
1:A:520:ALA:O	1:A:546:TYR:CD1	2.73	0.41
1:B:837:TYR:O	1:B:840:MET:HG2	2.20	0.41
1:B:808:SER:HA	1:B:811:ARG:HG2	2.02	0.41
1:A:402:ASN:O	1:A:405:VAL:HG12	2.21	0.41
1:A:504:PRO:HB2	1:A:508:HIS:CE1	2.55	0.41
1:B:591:TRP:CD1	1:B:592:ILE:HG12	2.56	0.41
1:A:673:VAL:O	1:A:677:ILE:HG12	2.21	0.41
1:B:254:GLU:O	1:B:257:LYS:N	2.54	0.41
1:B:600:LEU:O	1:B:603:VAL:HG12	2.20	0.41
1:B:687:VAL:O	1:B:687:VAL:HG13	2.21	0.41
1:B:729:MET:HE3	1:B:729:MET:HA	2.02	0.41
1:A:447:GLY:O	1:A:448:LEU:HD23	2.20	0.41
1:A:691:LYS:HE2	1:A:721:LEU:HD22	2.03	0.41
1:B:821:SER:OG	1:B:823:VAL:HG12	2.21	0.41
1:A:402:ASN:HA	1:A:405:VAL:HG12	2.03	0.40
1:A:503:ALA:HB2	1:A:636:THR:OG1	2.20	0.40
1:B:815:ARG:O	1:B:818:MET:HG2	2.20	0.40
1:A:466:LEU:HD12	1:A:466:LEU:O	2.20	0.40
1:A:543:LYS:HE2	1:A:560:ASP:OD2	2.22	0.40

Continued on next page...

Continued from previous page...

Atom-1	Atom-2	Interatomic distance (Å)	Clash overlap (Å)
1:B:369:LEU:HA	1:B:372:VAL:HG12	2.02	0.40
1:B:560:ASP:HB3	1:B:562:ILE:HD11	2.04	0.40
1:B:605:TYR:HA	1:B:623:GLU:OE2	2.20	0.40
1:B:738:SER:O	1:B:760:CYS:HA	2.22	0.40
1:A:260:MET:O	1:A:264:LEU:HD23	2.22	0.40

There are no symmetry-related clashes.

5.3 Torsion angles [i](#)

5.3.1 Protein backbone [i](#)

In the following table, the Percentiles column shows the percent Ramachandran outliers of the chain as a percentile score with respect to all PDB entries followed by that with respect to all EM entries.

The Analysed column shows the number of residues for which the backbone conformation was analysed, and the total number of residues.

Mol	Chain	Analysed	Favoured	Allowed	Outliers	Percentiles	
1	A	800/946 (85%)	758 (95%)	42 (5%)	0	100	100
1	B	735/946 (78%)	691 (94%)	44 (6%)	0	100	100
All	All	1535/1892 (81%)	1449 (94%)	86 (6%)	0	100	100

There are no Ramachandran outliers to report.

5.3.2 Protein sidechains [i](#)

In the following table, the Percentiles column shows the percent sidechain outliers of the chain as a percentile score with respect to all PDB entries followed by that with respect to all EM entries.

The Analysed column shows the number of residues for which the sidechain conformation was analysed, and the total number of residues.

Mol	Chain	Analysed	Rotameric	Outliers	Percentiles	
1	A	592/800 (74%)	592 (100%)	0	100	100
1	B	532/800 (66%)	532 (100%)	0	100	100
All	All	1124/1600 (70%)	1124 (100%)	0	100	100

There are no protein residues with a non-rotameric sidechain to report.

Sometimes sidechains can be flipped to improve hydrogen bonding and reduce clashes. All (5) such sidechains are listed below:

Mol	Chain	Res	Type
1	A	204	ASN
1	A	508	HIS
1	A	784	HIS
1	B	325	ASN
1	B	726	HIS

5.3.3 RNA [i](#)

There are no RNA molecules in this entry.

5.4 Non-standard residues in protein, DNA, RNA chains [i](#)

There are no non-standard protein/DNA/RNA residues in this entry.

5.5 Carbohydrates [i](#)

There are no monosaccharides in this entry.

5.6 Ligand geometry [i](#)

There are no ligands in this entry.

5.7 Other polymers [i](#)

There are no such residues in this entry.

5.8 Polymer linkage issues [i](#)

There are no chain breaks in this entry.

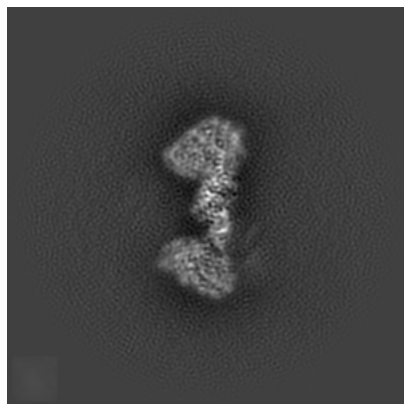
6 Map visualisation [i](#)

This section contains visualisations of the EMDB entry EMD-27697. These allow visual inspection of the internal detail of the map and identification of artifacts.

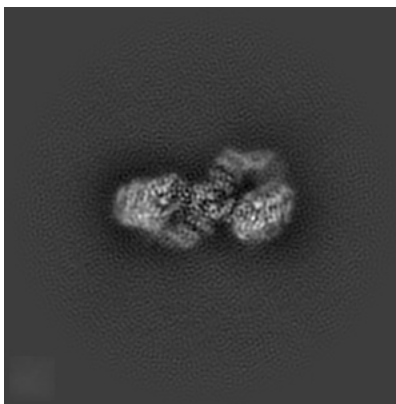
Images derived from a raw map, generated by summing the deposited half-maps, are presented below the corresponding image components of the primary map to allow further visual inspection and comparison with those of the primary map.

6.1 Orthogonal projections [i](#)

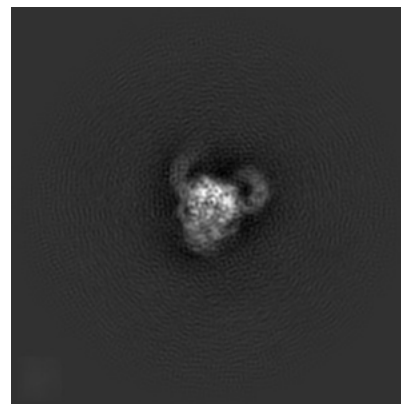
6.1.1 Primary map



X

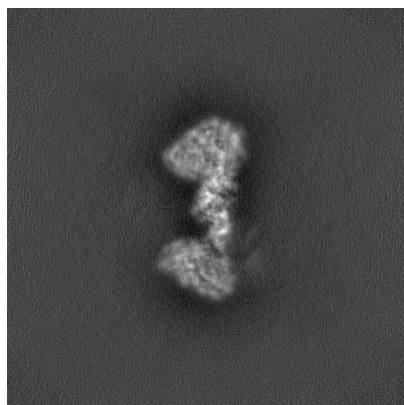


Y

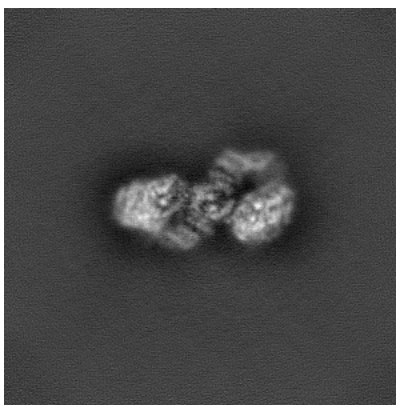


Z

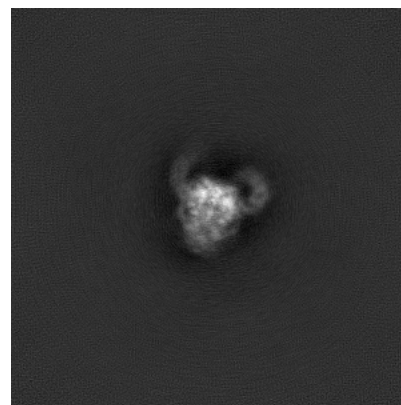
6.1.2 Raw map



X



Y

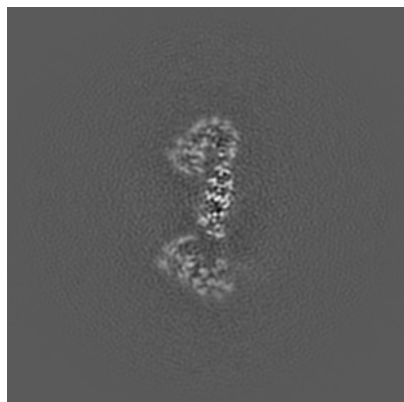


Z

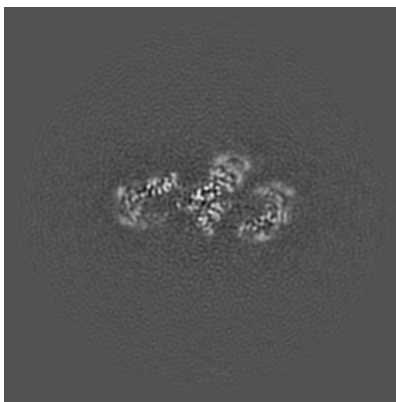
The images above show the map projected in three orthogonal directions.

6.2 Central slices [i](#)

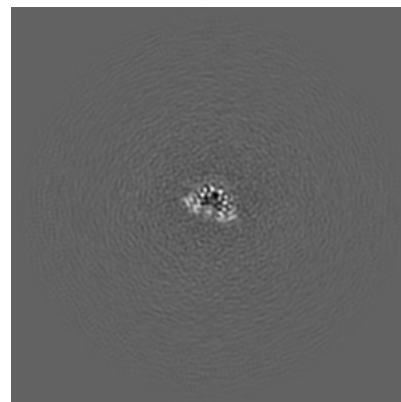
6.2.1 Primary map



X Index: 192

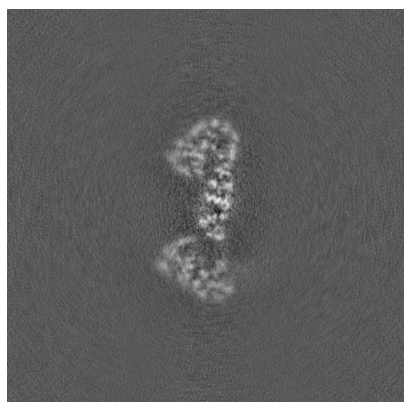


Y Index: 192

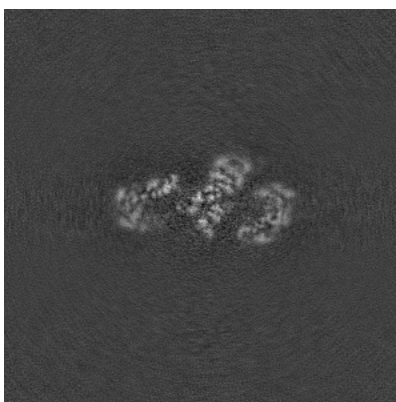


Z Index: 192

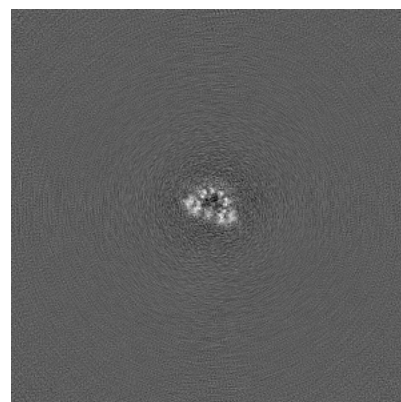
6.2.2 Raw map



X Index: 192



Y Index: 192

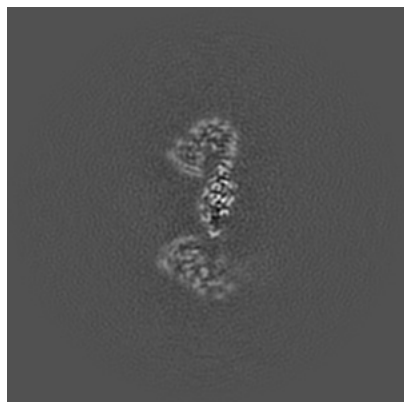


Z Index: 192

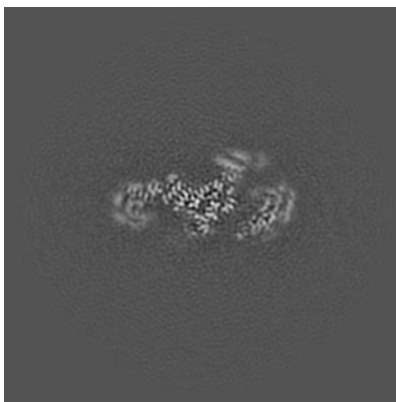
The images above show central slices of the map in three orthogonal directions.

6.3 Largest variance slices [i](#)

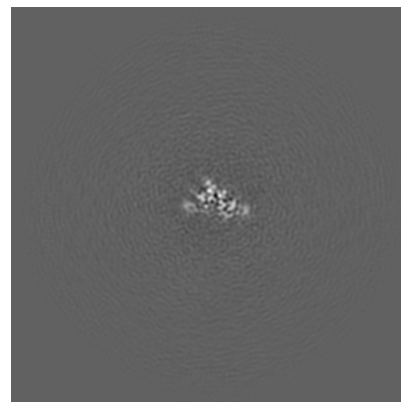
6.3.1 Primary map



X Index: 190

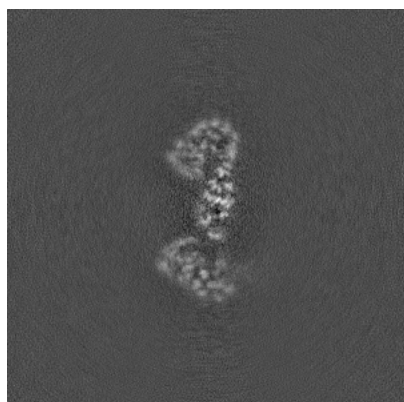


Y Index: 198

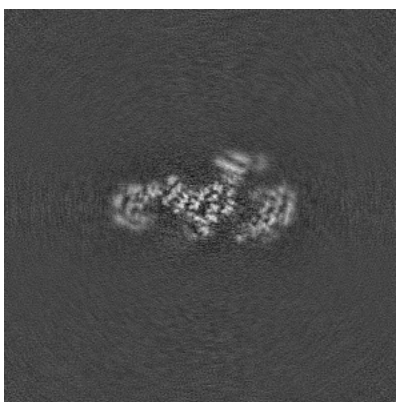


Z Index: 198

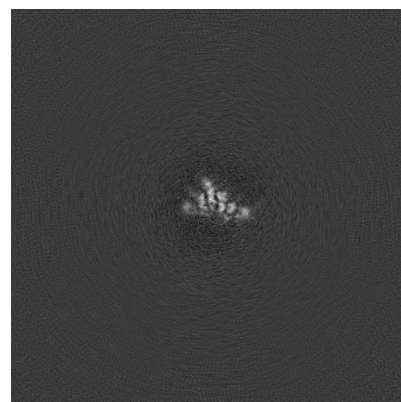
6.3.2 Raw map



X Index: 191



Y Index: 198

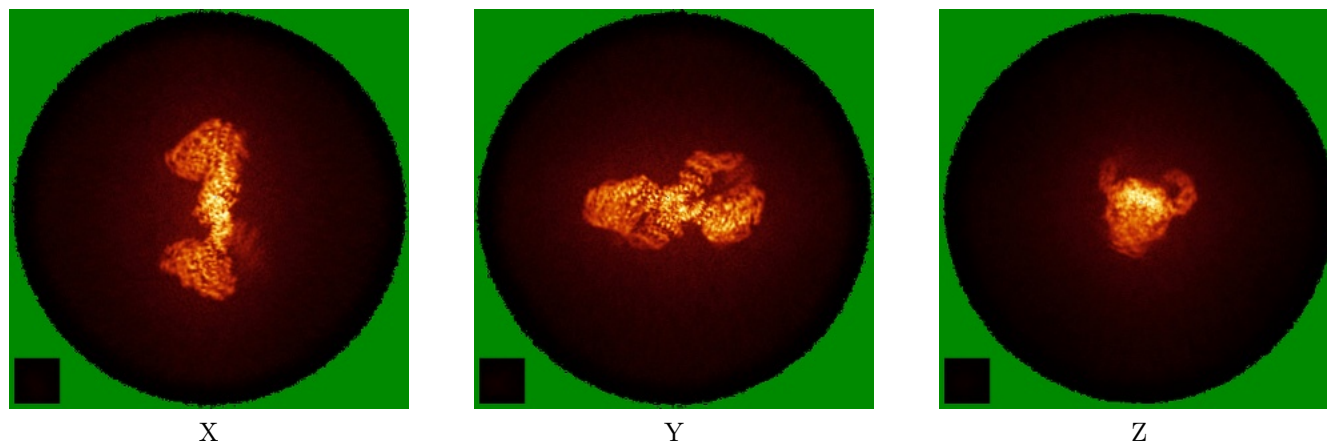


Z Index: 199

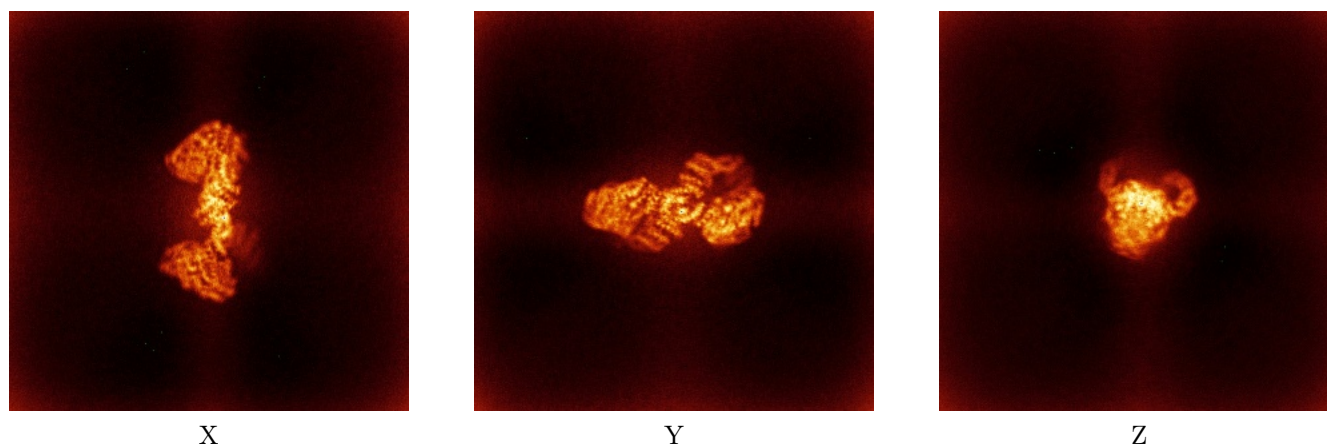
The images above show the largest variance slices of the map in three orthogonal directions.

6.4 Orthogonal standard-deviation projections (False-color) [i](#)

6.4.1 Primary map



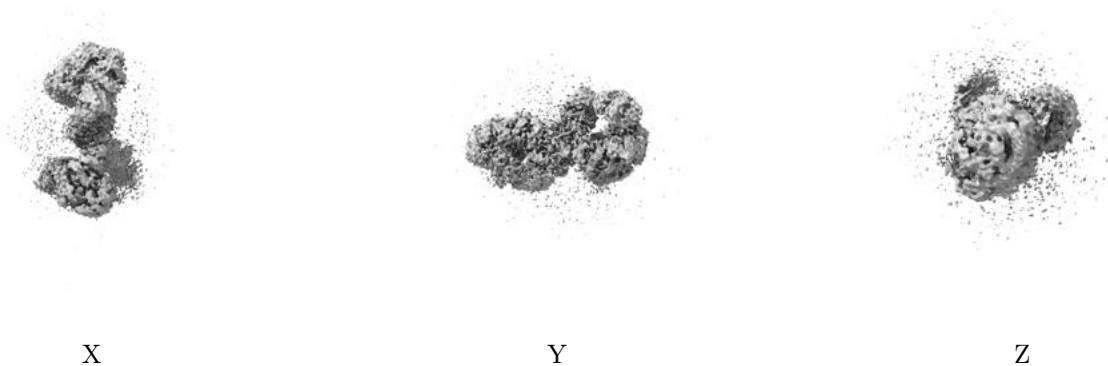
6.4.2 Raw map



The images above show the map standard deviation projections with false color in three orthogonal directions. Minimum values are shown in green, max in blue, and dark to light orange shades represent small to large values respectively.

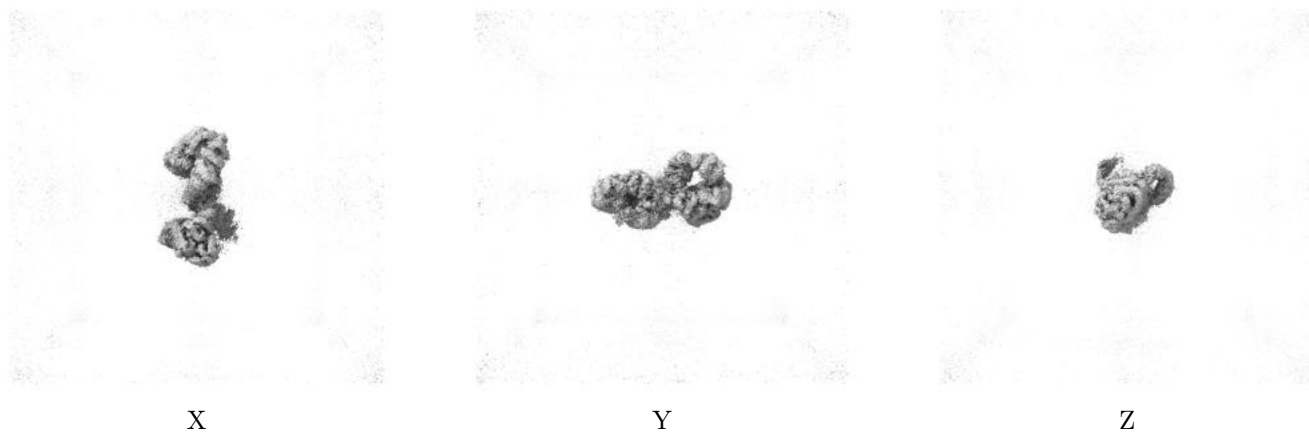
6.5 Orthogonal surface views [i](#)

6.5.1 Primary map



The images above show the 3D surface view of the map at the recommended contour level 4.0. These images, in conjunction with the slice images, may facilitate assessment of whether an appropriate contour level has been provided.

6.5.2 Raw map



These images show the 3D surface of the raw map. The raw map's contour level was selected so that its surface encloses the same volume as the primary map does at its recommended contour level.

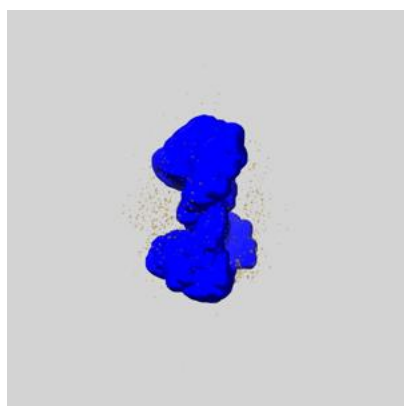
6.6 Mask visualisation [i](#)

This section shows the 3D surface view of the primary map at 50% transparency overlaid with the specified mask at 0% transparency

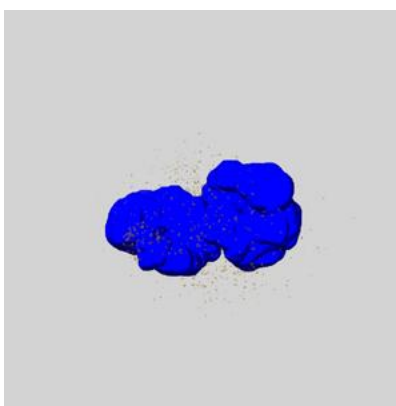
A mask typically either:

- Encompasses the whole structure
- Separates out a domain, a functional unit, a monomer or an area of interest from a larger structure

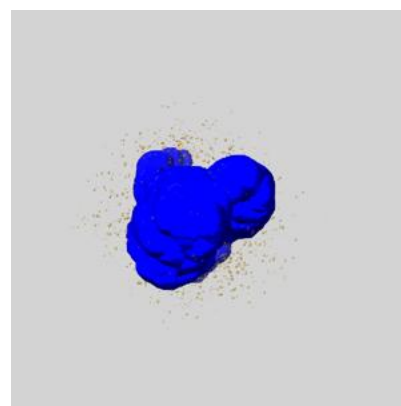
6.6.1 emd_27697_msk_1.map [i](#)



X



Y

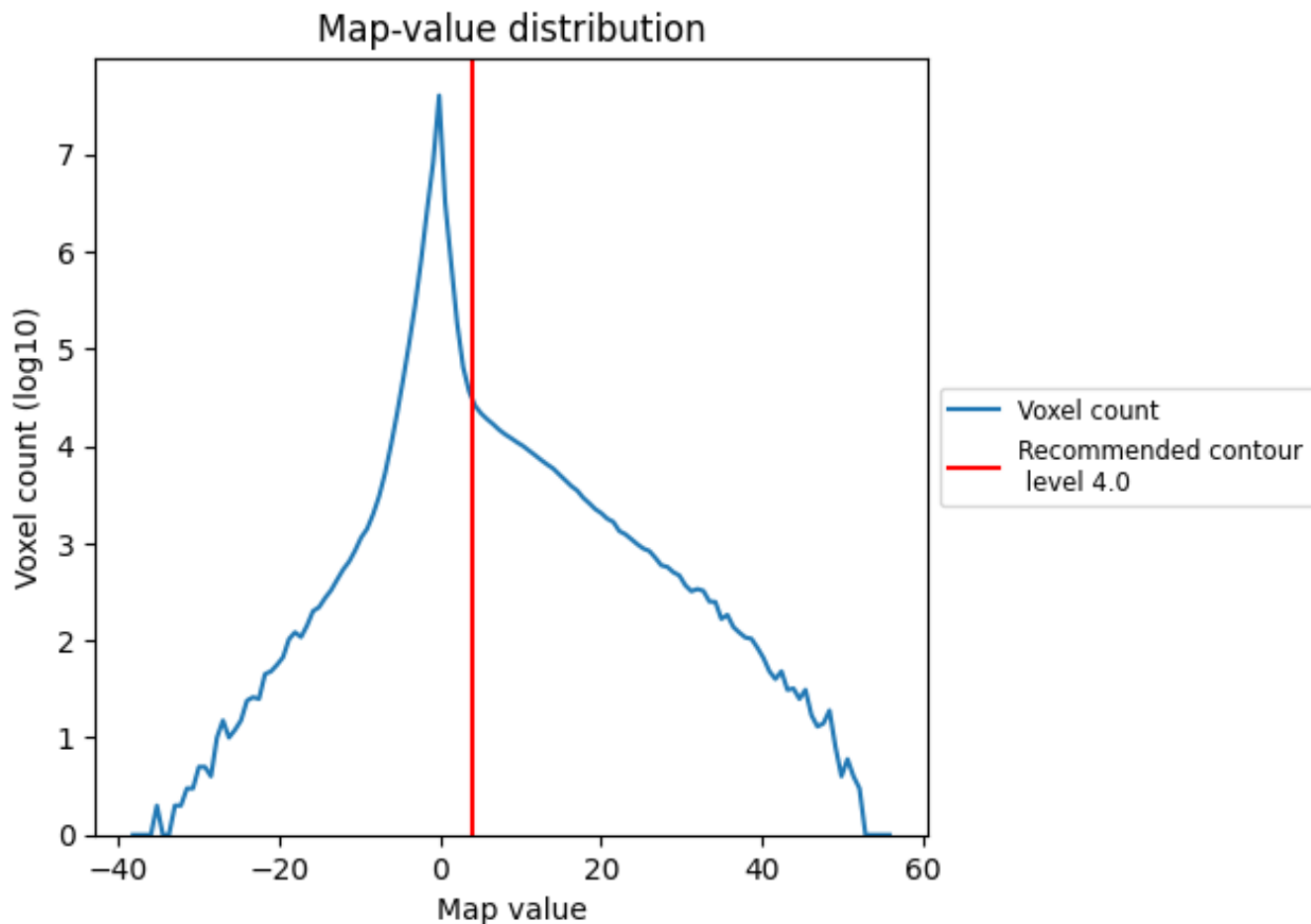


Z

7 Map analysis [i](#)

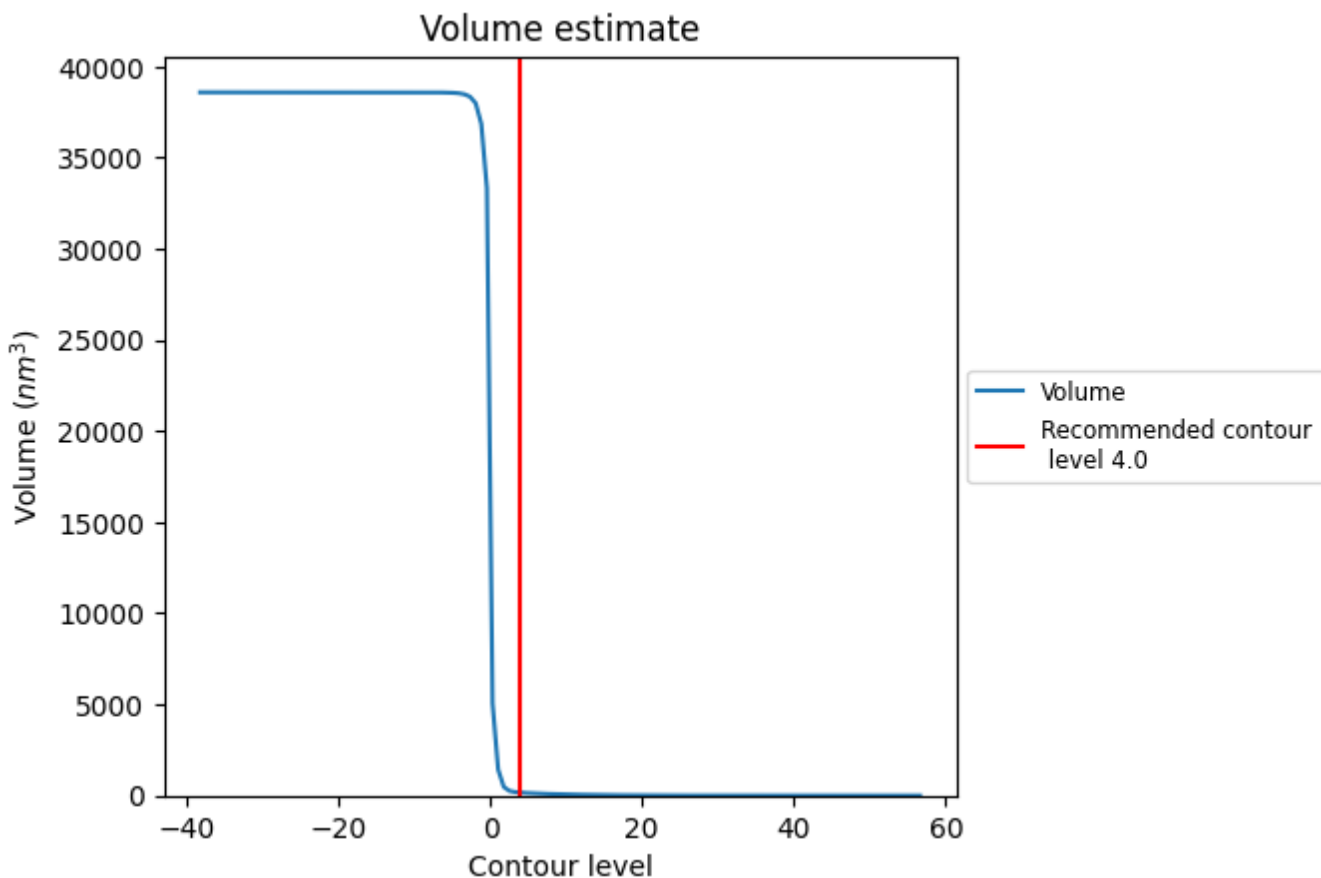
This section contains the results of statistical analysis of the map.

7.1 Map-value distribution [i](#)



The map-value distribution is plotted in 128 intervals along the x-axis. The y-axis is logarithmic. A spike in this graph at zero usually indicates that the volume has been masked.

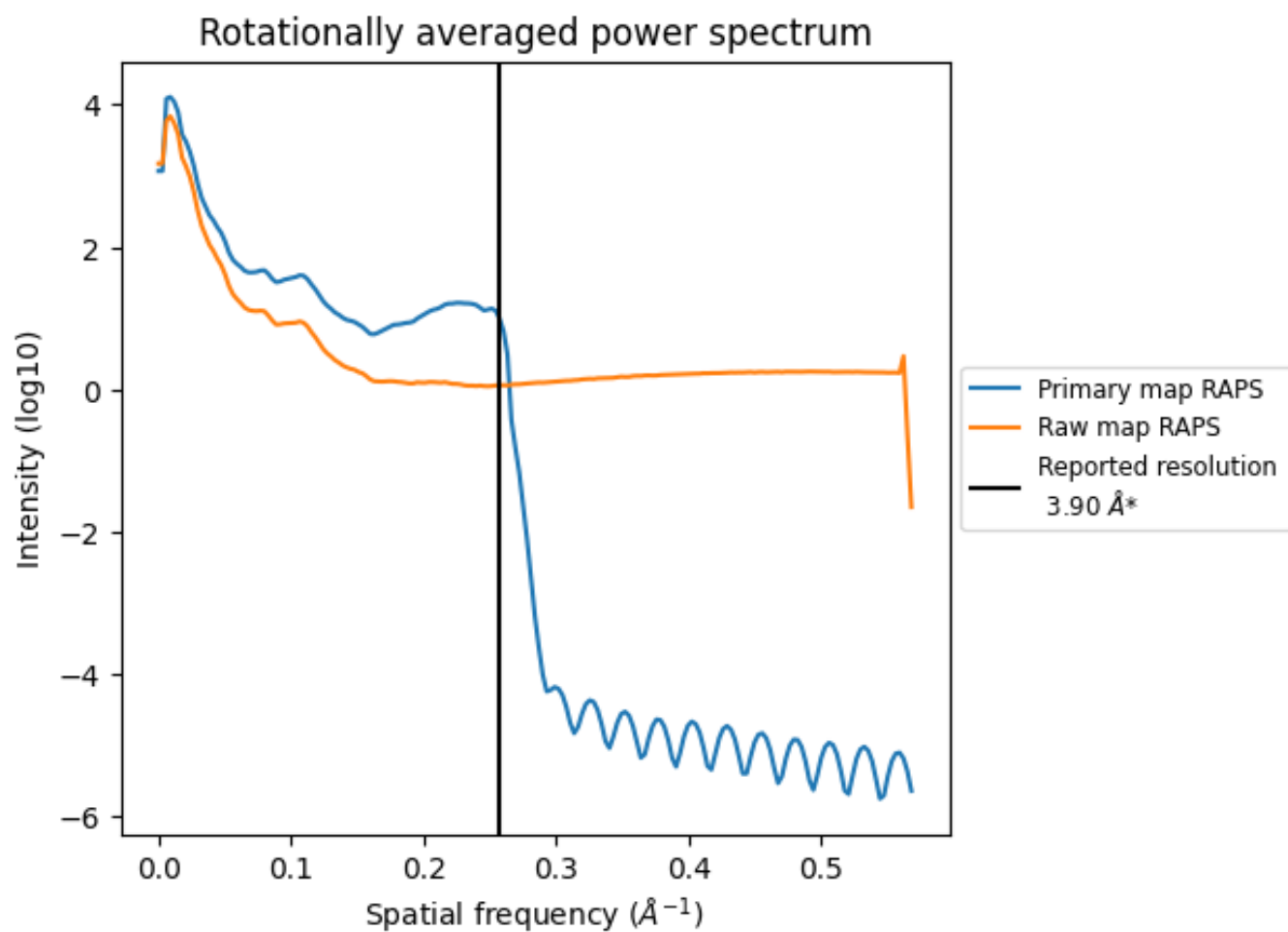
7.2 Volume estimate [i](#)



The volume at the recommended contour level is 162 nm³; this corresponds to an approximate mass of 147 kDa.

The volume estimate graph shows how the enclosed volume varies with the contour level. The recommended contour level is shown as a vertical line and the intersection between the line and the curve gives the volume of the enclosed surface at the given level.

7.3 Rotationally averaged power spectrum i

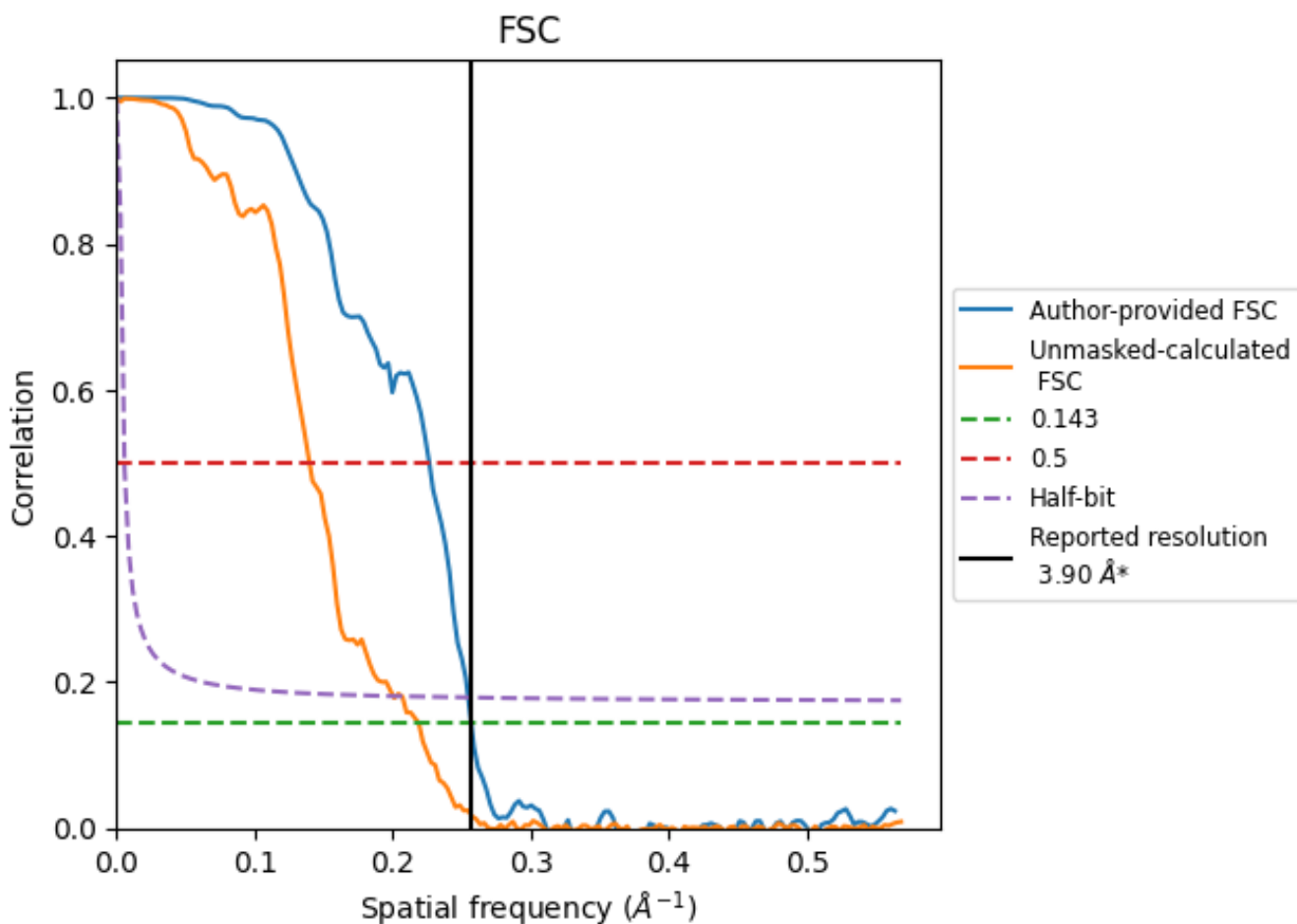


*Reported resolution corresponds to spatial frequency of 0.256 Å⁻¹

8 Fourier-Shell correlation [i](#)

Fourier-Shell Correlation (FSC) is the most commonly used method to estimate the resolution of single-particle and subtomogram-averaged maps. The shape of the curve depends on the imposed symmetry, mask and whether or not the two 3D reconstructions used were processed from a common reference. The reported resolution is shown as a black line. A curve is displayed for the half-bit criterion in addition to lines showing the 0.143 gold standard cut-off and 0.5 cut-off.

8.1 FSC [i](#)



*Reported resolution corresponds to spatial frequency of 0.256\AA^{-1}

8.2 Resolution estimates [i](#)

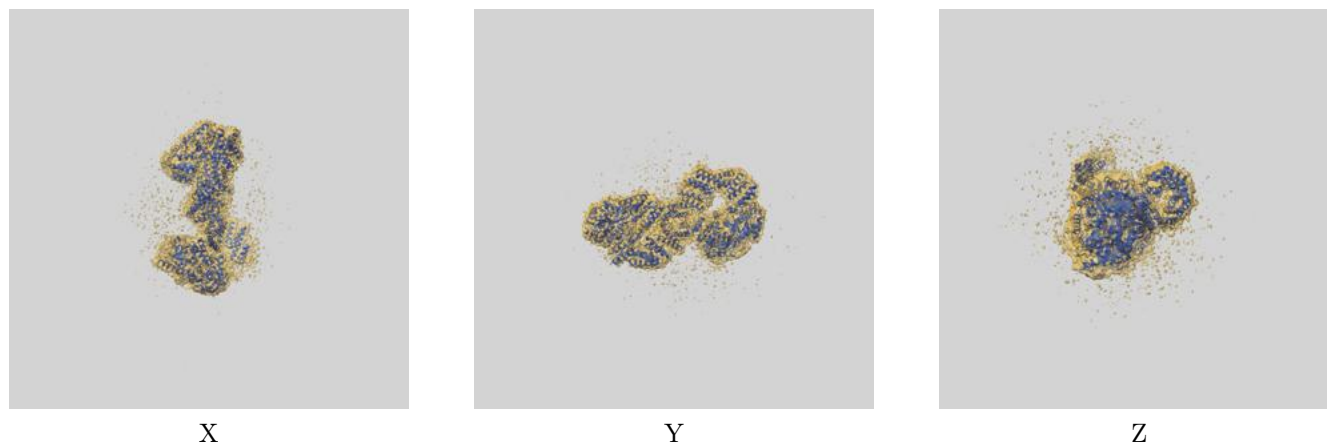
Resolution estimate (Å)	Estimation criterion (FSC cut-off)		
	0.143	0.5	Half-bit
Reported by author	3.90	-	-
Author-provided FSC curve	3.89	4.42	3.93
Unmasked-calculated*	4.57	7.15	4.99

*Resolution estimate based on FSC curve calculated by comparison of deposited half-maps. The value from deposited half-maps intersecting FSC 0.143 CUT-OFF 4.57 differs from the reported value 3.9 by more than 10 %

9 Map-model fit [i](#)

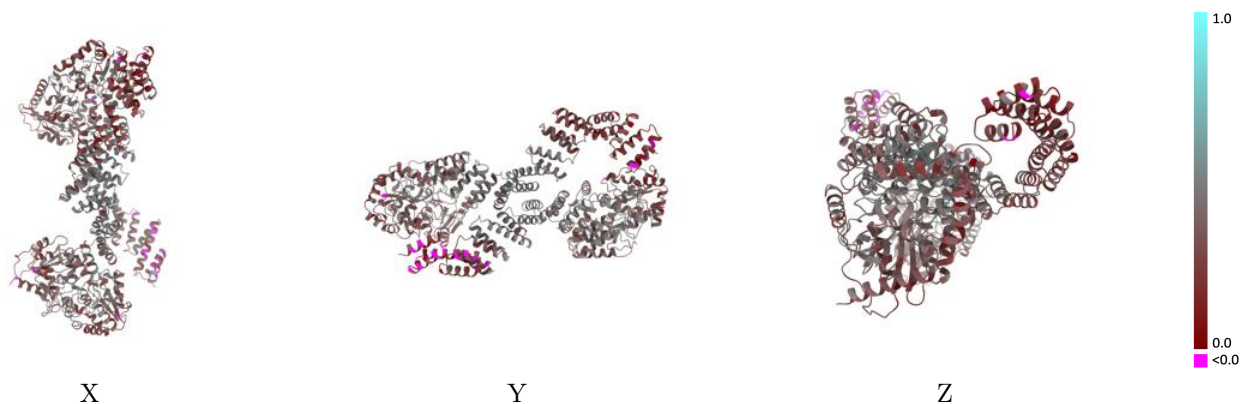
This section contains information regarding the fit between EMDB map EMD-27697 and PDB model 8DTG. Per-residue inclusion information can be found in section [3](#) on page [5](#).

9.1 Map-model overlay [i](#)



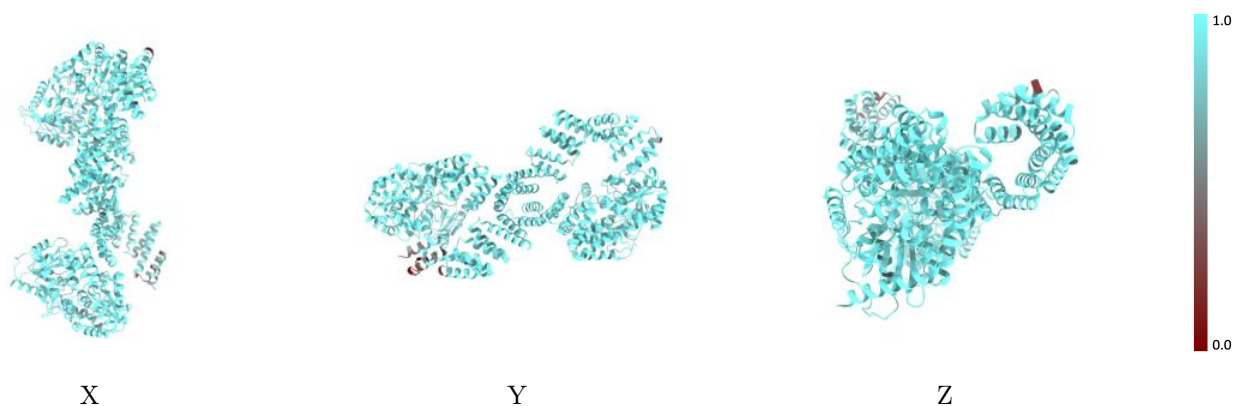
The images above show the 3D surface view of the map at the recommended contour level 4.0 at 50% transparency in yellow overlaid with a ribbon representation of the model coloured in blue. These images allow for the visual assessment of the quality of fit between the atomic model and the map.

9.2 Q-score mapped to coordinate model [i](#)



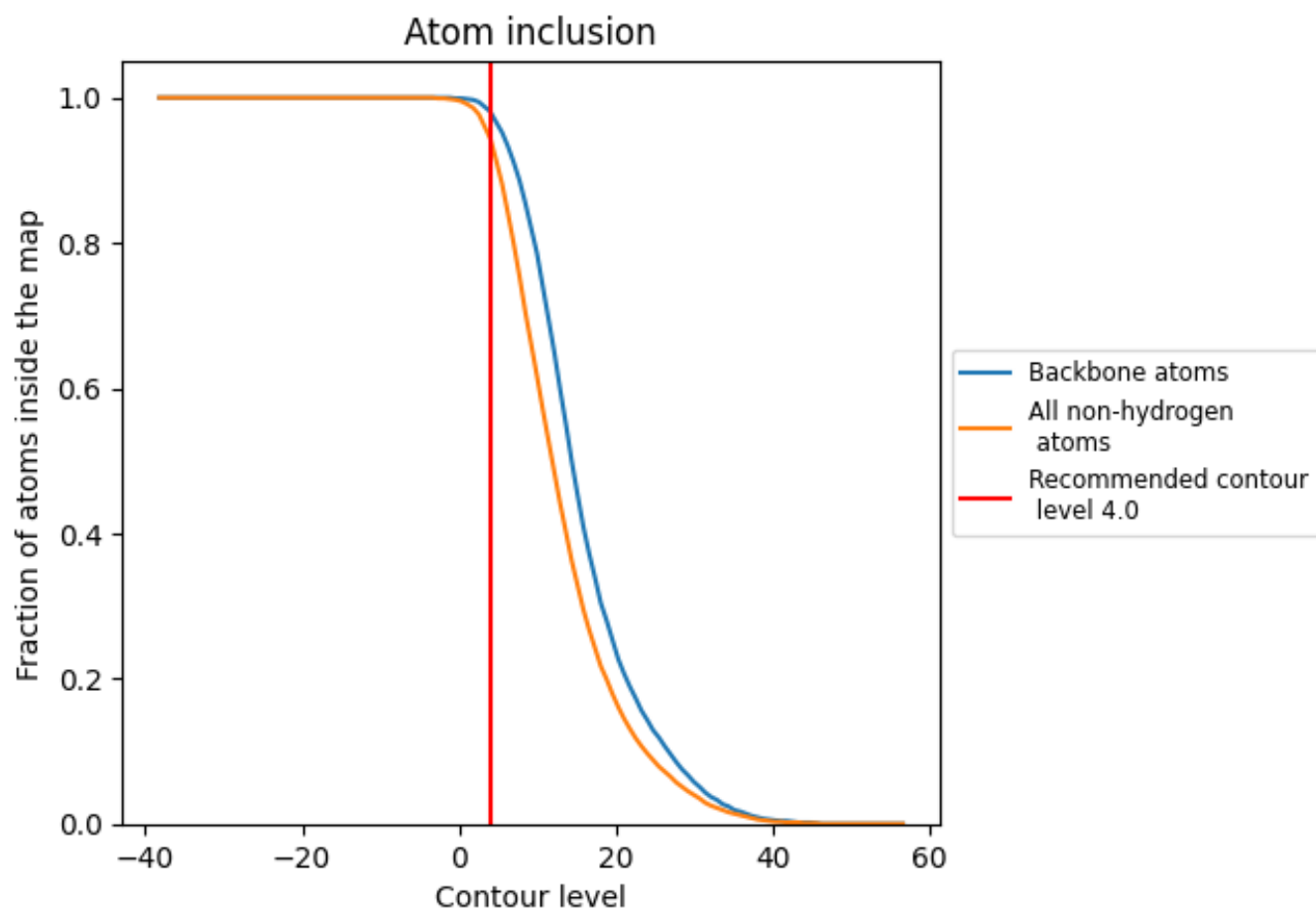
The images above show the model with each residue coloured according to its Q-score. This shows their resolvability in the map with higher Q-score values reflecting better resolvability. Please note: Q-score is calculating the resolvability of atoms, and thus high values are only expected at resolutions at which atoms can be resolved. Low Q-score values may therefore be expected for many entries.

9.3 Atom inclusion mapped to coordinate model [i](#)



The images above show the model with each residue coloured according to its atom inclusion. This shows to what extent they are inside the map at the recommended contour level (4.0).





9.4 Atom inclusion [i](#)



At the recommended contour level, 98% of all backbone atoms, 94% of all non-hydrogen atoms, are inside the map.

9.5 Map-model fit summary [i](#)

The table lists the average atom inclusion at the recommended contour level (4.0) and Q-score for the entire model and for each chain.

Chain	Atom inclusion	Q-score
All	 0.9440	 0.3650
A	 0.9460	 0.3570
B	 0.9430	 0.3730

