



Full wwPDB EM Validation Report ⓘ

Feb 4, 2024 – 01:43 PM EST

PDB ID : 8D1L
EMDB ID : EMD-27134
Title : hBest1 Ca²⁺-bound partially open aperture state
Authors : Owji, A.P.; Kittredge, A.; Hendrickson, W.A.; Tingting, Y.
Deposited on : 2022-05-27
Resolution : 2.12 Å (reported)

This is a Full wwPDB EM Validation Report for a publicly released PDB entry.

We welcome your comments at validation@mail.wwpdb.org

A user guide is available at

<https://www.wwpdb.org/validation/2017/EMValidationReportHelp>

with specific help available everywhere you see the ⓘ symbol.

The types of validation reports are described at

<http://www.wwpdb.org/validation/2017/FAQs#types>.

The following versions of software and data (see [references ⓘ](#)) were used in the production of this report:

EMDB validation analysis : 0.0.1.dev70
Mogul : 1.8.5 (274361), CSD as541be (2020)
MolProbity : 4.02b-467
buster-report : 1.1.7 (2018)
Percentile statistics : 20191225.v01 (using entries in the PDB archive December 25th 2019)
MapQ : 1.9.9
Ideal geometry (proteins) : Engh & Huber (2001)
Ideal geometry (DNA, RNA) : Parkinson et al. (1996)
Validation Pipeline (wwPDB-VP) : 2.36

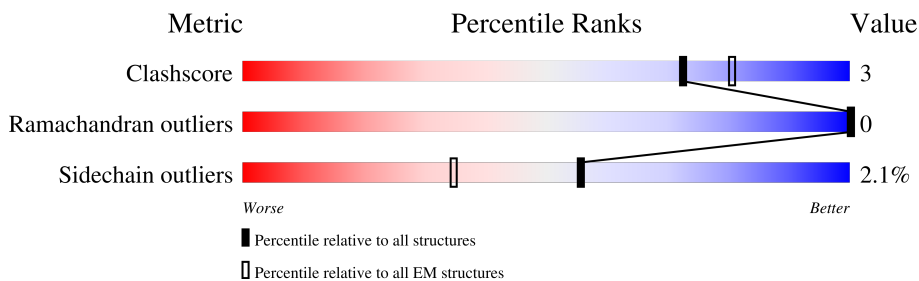
1 Overall quality at a glance

The following experimental techniques were used to determine the structure:

ELECTRON MICROSCOPY

The reported resolution of this entry is 2.12 Å.

Percentile scores (ranging between 0-100) for global validation metrics of the entry are shown in the following graphic. The table shows the number of entries on which the scores are based.



Metric	Whole archive (#Entries)	EM structures (#Entries)
Clashscore	158937	4297
Ramachandran outliers	154571	4023
Sidechain outliers	154315	3826

The table below summarises the geometric issues observed across the polymeric chains and their fit to the map. The red, orange, yellow and green segments of the bar indicate the fraction of residues that contain outliers for ≥ 3 , 2, 1 and 0 types of geometric quality criteria respectively. A grey segment represents the fraction of residues that are not modelled. The numeric value for each fraction is indicated below the corresponding segment, with a dot representing fractions $\leq 5\%$. The upper red bar (where present) indicates the fraction of residues that have poor fit to the EM map (all-atom inclusion $< 40\%$). The numeric value is given above the bar.

Mol	Chain	Length	Quality of chain
1	A	585	
1	B	585	
1	C	585	
1	D	585	
1	E	585	

2 Entry composition [i](#)

There are 4 unique types of molecules in this entry. The entry contains 16306 atoms, of which 0 are hydrogens and 0 are deuteriums.

In the tables below, the AltConf column contains the number of residues with at least one atom in alternate conformation and the Trace column contains the number of residues modelled with at most 2 atoms.

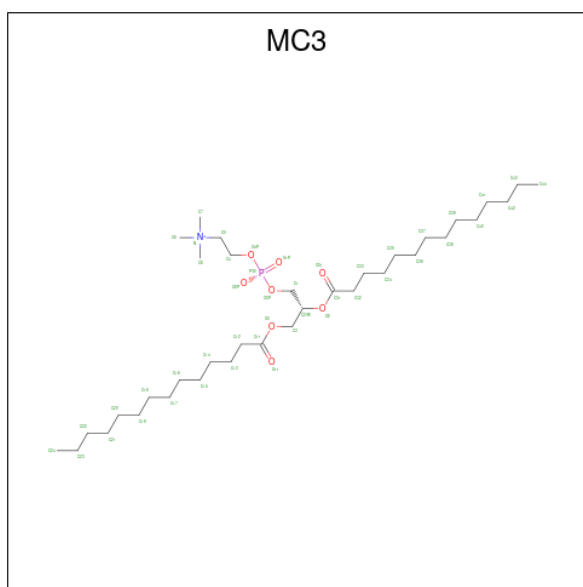
- Molecule 1 is a protein called Bestrophin-1.

Mol	Chain	Residues	Atoms					AltConf	Trace
			Total	C	N	O	S		
1	B	376	3118	2052	510	540	16	0	0
1	C	376	3118	2052	510	540	16	0	0
1	A	376	3118	2052	510	540	16	0	0
1	D	376	3118	2052	510	540	16	0	0
1	E	376	3118	2052	510	540	16	0	0

- Molecule 2 is CALCIUM ION (three-letter code: CA) (formula: Ca) (labeled as "Ligand of Interest" by depositor).

Mol	Chain	Residues	Atoms		AltConf
2	B	1	Total 1	Ca 1	0
2	C	1	Total 1	Ca 1	0
2	A	1	Total 1	Ca 1	0
2	D	1	Total 1	Ca 1	0
2	E	1	Total 1	Ca 1	0

- Molecule 3 is 1,2-DIMYRISTOYL-RAC-GLYCERO-3-PHOSPHOCHOLINE (three-letter code: MC3) (formula: C₃₆H₇₂NO₈P).



Mol	Chain	Residues	Atoms	AltConf
3	B	1	Total C 5 5	0
3	B	1	Total C O P 38 29 8 1	0
3	B	1	Total C 14 14	0
3	B	1	Total C 12 12	0
3	B	1	Total C 14 14	0
3	B	1	Total C 10 10	0
3	B	1	Total C 14 14	0
3	B	1	Total C O 35 31 4	0
3	C	1	Total C 5 5	0
3	C	1	Total C O P 38 29 8 1	0
3	C	1	Total C 14 14	0
3	C	1	Total C 12 12	0
3	C	1	Total C 14 14	0
3	C	1	Total C 10 10	0

Continued on next page...

Continued from previous page...

Mol	Chain	Residues	Atoms	AltConf
3	C	1	Total C 14 14	0
3	C	1	Total C O 35 31 4	0
3	A	1	Total C O 35 31 4	0
3	A	1	Total C 5 5	0
3	A	1	Total C O P 38 29 8 1	0
3	A	1	Total C 14 14	0
3	A	1	Total C 12 12	0
3	A	1	Total C 14 14	0
3	A	1	Total C 10 10	0
3	A	1	Total C 14 14	0
3	D	1	Total C 5 5	0
3	D	1	Total C O P 38 29 8 1	0
3	D	1	Total C 14 14	0
3	D	1	Total C 12 12	0
3	D	1	Total C 14 14	0
3	D	1	Total C 10 10	0
3	D	1	Total C 14 14	0
3	D	1	Total C O 35 31 4	0
3	E	1	Total C O 35 31 4	0
3	E	1	Total C 5 5	0
3	E	1	Total C O P 38 29 8 1	0

Continued on next page...

Continued from previous page...

Mol	Chain	Residues	Atoms	AltConf
3	E	1	Total C 14 14	0
3	E	1	Total C 12 12	0
3	E	1	Total C 14 14	0
3	E	1	Total C 10 10	0
3	E	1	Total C 14 14	0

- Molecule 4 is CHLORIDE ION (three-letter code: CL) (formula: Cl) (labeled as "Ligand of Interest" by depositor).

Mol	Chain	Residues	Atoms	AltConf
4	A	1	Total Cl 1 1	0



MET	T2	L32	L40	R51	E56	E57	M61	F62	E63	L67	D70	S71	Y72	L75	I76	F80	Y97	D104	M107	N136	I139	H178	W185	Q208	S209	R218	A226	P233	L234	V235	Y236	F248	N259	P260	A261	Y264							
ARG	GLU	SER	LEU	HIS	GLU	GLY	LEU	PRO	ASN	LYS	HIS	ASN	VAL	ASP	ARG	GLN	GLU	ASP	ASP	ASP	ASP	ASP	PHE	LEU	SER	GLY	ARG	PRO	TYR	ARG	ALA	ASN	ARG	GLN	THR	SER	LEU	LEU	TRP	PRO	LYS		
ARG	GLU	LEU	LEU	HIS	GLU	GLY	LEU	PRO	ASN	LYS	HIS	ASN	VAL	ASP	ARG	GLN	GLU	ASP	ASP	ASP	ASP	PHE	LEU	SER	GLY	ARG	PRO	TYR	ARG	ALA	ASN	ARG	GLN	THR	SER	LEU	LEU	TRP	PRO	LYS			
MET	PHE	PHE	PRO	LEU	GLU	PRO	SER	LEU	LEU	ASN	HIS	SER	VAL	THR	GLY	LEU	VAL	TRP	THR	LYS	VAL	THR	LYS	THR	GLY	ALA	ALA	ALA	GLY	ALA	ALA	ALA	GLY	HIS	PRO	THR	VAL	GLN	THR	ARG	ARG	THR	THR
VAL	GLU	PHE	ASN	THR	THR	ASP	MET	PRO	GLU	ILE	PRO	GLU	ASN	HIS	VAL	GLY	LEU	VAL	THR	THR	THR	VAL	SER	LEU	LEU	ASP	ASP	ALA	ALA	HIS	SER	VAL	VAL	GLN	THR	THR	VAL	GLN	THR	ARG	ARG	THR	THR

Molecule 1: Bestrophin-1



MET	T2	L32	L40	R51	E56	E57	M61	F62	E63	L67	D70	S71	Y72	L75	I76	F80	Y97	D104	M107	N136	I139	H178	W185	Q208	S209	R218	A226	P233	L234	V235	Y236	F248	N259	P260	A261	L269								
SER	LEU	LEU	HIS	GLU	GLY	LEU	PRO	ASN	LYS	ALA	ALA	ASP	GLN	GLU	GLY	GLY	ALA	TRP	LYS	LYS	VAL	THR	THR	VAL	GLY	ALA	ALA	VAL	ASP	GLN	PRO	THR	THR	VAL	THR	LEU	LEU	TRP	PRO	THR	PHE	GLU		
SER	LEU	LEU	HIS	GLU	GLY	LEU	PRO	ASN	LYS	ALA	ALA	ASP	GLN	GLU	GLY	GLY	ALA	TRP	LYS	LYS	VAL	THR	THR	VAL	GLY	ALA	ALA	VAL	ASP	GLN	PRO	THR	THR	VAL	THR	LEU	LEU	TRP	PRO	THR	PHE	GLU		
PHE	PRO	LEU	THR	ASP	PRO	ALA	PRO	SER	LEU	VAL	THR	THR	LYS	ASP	THR	THR	THR	SER	SER	SER	ALA	LYS	VAL	SER	LEU	LEU	LEU	ALA	GLY	ALA	GLY	HIS	PRO	GLY	ARG	PRO	THR	THR	VAL	VAL	GLU	THR	GLY	
PHE	ASN	LEU	THR	MET	PRO	GLU	GLU	ILE	PRO	GLU	GLU	ASN	HIS	LEU	VAL	THR	THR	THR	LYS	LYS	ASP	MET	GLY	LEU	LEU	LEU	SER	GLY	ALA	ALA	GLY	HIS	PRO	GLY	ARG	PRO	THR	THR	VAL	VAL	GLN	THR	GLY	

Molecule 1: Bestrophin-1



MET	T2	L32	L40	R51	E56	E57	M61	F62	E63	L67	D70	S71	Y72	L75	I76	F80	Y97	D104	M107	N136	I139	H178	W185	Q208	S209	R218	A226	P233	L234	V235	Y236	F248	N259	P260	A261	K262	A263									
GLU	SER	LEU	HIS	GLY	LEU	LEU	ASN	LYS	HIS	ALA	ALA	ASP	GLN	GLU	GLY	GLY	ALA	TRP	LYS	LYS	VAL	THR	THR	VAL	GLY	ALA	ALA	VAL	ASP	GLN	PRO	THR	THR	VAL	THR	LEU	LEU	TRP	PRO	THR	MET	ARG				
GLU	SER	LEU	HIS	GLY	LEU	LEU	ASN	LYS	HIS	ALA	ALA	ASP	GLN	GLU	GLY	GLY	ALA	TRP	LYS	LYS	VAL	THR	THR	VAL	GLY	ALA	ALA	VAL	ASP	GLN	PRO	THR	THR	VAL	THR	LEU	LEU	TRP	PRO	THR	MET	ARG				
SER	LEU	LEU	HIS	GLY	LEU	LEU	ASN	LYS	HIS	ALA	ALA	ASP	GLN	GLU	GLY	GLY	ALA	TRP	LYS	LYS	VAL	THR	THR	VAL	GLY	ALA	ALA	VAL	ASP	GLN	PRO	THR	THR	VAL	THR	LEU	LEU	TRP	PRO	THR	MET	ARG				
GLU	SER	LEU	HIS	GLY	LEU	LEU	ASN	LYS	HIS	ALA	ALA	ASP	GLN	GLU	GLY	GLY	ALA	TRP	LYS	LYS	VAL	THR	THR	VAL	GLY	ALA	ALA	VAL	ASP	GLN	PRO	THR	THR	VAL	THR	LEU	LEU	TRP	PRO	THR	MET	ARG				

PHE
PHE
PRO
LEU
GLU
THR
PRO
SER
ALA
PRO
SER
ILE
PRO
LYS
LEU
HIS
SER
SER
VAL
GLY
THR
ILE
ASP
THR
LYS
SER
LYS
SER
LEU
LYS
THR
VAL
SER
SER
LEU
GLY
ALA
LYS
LYS
SER
PHE
GLU
TYR
TRP
LEU
LEU
SER
GLU
ASN
SER
ASP
GLY
ALA
LEU
MET
HIS
GLU
HIS
PRO
GLU
VAL
SER
GLN
VAL
VAL
ARG
ARG
LYS
THR
VAL

GLU
PHE
ASN
LEU
THR
ASP
MET
PRO
GLU
ILE
PRO
GLU
ASN
HIS
LEU
LYS
THR
GLY
PRO
LEU
GLU
GLN
SER
PRO
THR
ASN
ILE
HIS
THR
THR
LEU
LYS
ASP
HIS
MET
ASP
PRO
TYR
TRP
ALA
LEU
SER
GLU
ASN
ARG
ASP
GLU
ALA
HIS
SER

4 Experimental information

Property	Value	Source
EM reconstruction method	SINGLE PARTICLE	Depositor
Imposed symmetry	POINT, C5	Depositor
Number of particles used	26551	Depositor
Resolution determination method	FSC 0.143 CUT-OFF	Depositor
CTF correction method	NONE	Depositor
Microscope	TFS KRIOS	Depositor
Voltage (kV)	300	Depositor
Electron dose ($e^-/\text{\AA}^2$)	58	Depositor
Minimum defocus (nm)	1000	Depositor
Maximum defocus (nm)	2000	Depositor
Magnification	Not provided	
Image detector	GATAN K3 BIOQUANTUM (6k x 4k)	Depositor
Maximum map value	44.226	Depositor
Minimum map value	-18.599	Depositor
Average map value	-0.000	Depositor
Map value standard deviation	1.000	Depositor
Recommended contour level	7.0	Depositor
Map size (\AA)	332.0, 332.0, 332.0	wwPDB
Map dimensions	400, 400, 400	wwPDB
Map angles ($^\circ$)	90.0, 90.0, 90.0	wwPDB
Pixel spacing (\AA)	0.83, 0.83, 0.83	Depositor

5 Model quality [i](#)

5.1 Standard geometry [i](#)

Bond lengths and bond angles in the following residue types are not validated in this section: CA, CL, MC3

The Z score for a bond length (or angle) is the number of standard deviations the observed value is removed from the expected value. A bond length (or angle) with $|Z| > 5$ is considered an outlier worth inspection. RMSZ is the root-mean-square of all Z scores of the bond lengths (or angles).

Mol	Chain	Bond lengths		Bond angles	
		RMSZ	# Z >5	RMSZ	# Z >5
1	A	0.29	0/3213	0.48	0/4377
1	B	0.29	0/3213	0.48	0/4377
1	C	0.29	0/3213	0.48	0/4377
1	D	0.29	0/3213	0.48	0/4377
1	E	0.29	0/3213	0.48	0/4377
All	All	0.29	0/16065	0.48	0/21885

There are no bond length outliers.

There are no bond angle outliers.

There are no chirality outliers.

There are no planarity outliers.

5.2 Too-close contacts [i](#)

In the following table, the Non-H and H(model) columns list the number of non-hydrogen atoms and hydrogen atoms in the chain respectively. The H(added) column lists the number of hydrogen atoms added and optimized by MolProbity. The Clashes column lists the number of clashes within the asymmetric unit, whereas Symm-Clashes lists symmetry-related clashes.

Mol	Chain	Non-H	H(model)	H(added)	Clashes	Symm-Clashes
1	A	3118	0	3089	35	0
1	B	3118	0	3089	33	0
1	C	3118	0	3089	33	0
1	D	3118	0	3089	35	0
1	E	3118	0	3089	35	0
2	A	1	0	0	0	0
2	B	1	0	0	0	0
2	C	1	0	0	0	0

Continued on next page...

Continued from previous page...

Mol	Chain	Non-H	H(model)	H(added)	Clashes	Symm-Clashes
2	D	1	0	0	0	0
2	E	1	0	0	0	0
3	A	142	0	235	0	0
3	B	142	0	235	0	0
3	C	142	0	235	0	0
3	D	142	0	235	0	0
3	E	142	0	235	0	0
4	A	1	0	0	0	0
All	All	16306	0	16620	113	0

The all-atom clashscore is defined as the number of clashes found per 1000 atoms (including hydrogen atoms). The all-atom clashscore for this structure is 3.

All (113) close contacts within the same asymmetric unit are listed below, sorted by their clash magnitude.

Atom-1	Atom-2	Interatomic distance (Å)	Clash overlap (Å)
1:C:276:PHE:CD2	1:D:72:TYR:HD1	1.72	1.08
1:B:276:PHE:CD2	1:C:72:TYR:HD1	1.72	1.07
1:D:276:PHE:CD2	1:E:72:TYR:HD1	1.71	1.07
1:B:72:TYR:HD1	1:A:276:PHE:CD2	1.71	1.05
1:A:72:TYR:HD1	1:E:276:PHE:CD2	1.72	1.05
1:B:72:TYR:CD1	1:A:276:PHE:CD2	2.56	0.94
1:B:276:PHE:CD2	1:C:72:TYR:CD1	2.56	0.93
1:C:276:PHE:CD2	1:D:72:TYR:CD1	2.57	0.93
1:D:276:PHE:CD2	1:E:72:TYR:CD1	2.56	0.93
1:A:72:TYR:CD1	1:E:276:PHE:CD2	2.56	0.93
1:C:51:ARG:NH2	1:C:270:ASP:OD2	2.22	0.72
1:B:51:ARG:NH2	1:B:270:ASP:OD2	2.22	0.72
1:A:51:ARG:NH2	1:A:270:ASP:OD2	2.22	0.72
1:D:51:ARG:NH2	1:D:270:ASP:OD2	2.22	0.71
1:E:51:ARG:NH2	1:E:270:ASP:OD2	2.22	0.71
1:A:63:GLU:O	1:A:67:LEU:HD23	1.99	0.63
1:B:63:GLU:O	1:B:67:LEU:HD23	1.99	0.62
1:D:63:GLU:O	1:D:67:LEU:HD23	1.99	0.62
1:E:63:GLU:O	1:E:67:LEU:HD23	1.99	0.62
1:C:63:GLU:O	1:C:67:LEU:HD23	1.99	0.61
1:A:72:TYR:CD1	1:E:276:PHE:HD2	2.18	0.61
1:A:76:ILE:HG21	1:E:76:ILE:HD12	1.84	0.60
1:B:76:ILE:HG21	1:A:76:ILE:HD12	1.83	0.59
1:B:76:ILE:HD12	1:C:76:ILE:HG21	1.84	0.59
1:B:72:TYR:CD1	1:A:276:PHE:HD2	2.17	0.59

Continued on next page...

Continued from previous page...

Atom-1	Atom-2	Interatomic distance (Å)	Clash overlap (Å)
1:D:276:PHE:HD2	1:E:72:TYR:CD1	2.18	0.59
1:D:276:PHE:CG	1:E:72:TYR:HD1	2.21	0.58
1:D:76:ILE:HD12	1:E:76:ILE:HG21	1.84	0.58
1:C:76:ILE:HD12	1:D:76:ILE:HG21	1.84	0.57
1:C:276:PHE:CG	1:D:72:TYR:HD1	2.21	0.57
1:A:233:PRO:HG2	1:E:294:LEU:HD21	1.87	0.57
1:B:233:PRO:HG2	1:A:294:LEU:HD21	1.87	0.57
1:A:72:TYR:HD1	1:E:276:PHE:CG	2.21	0.57
1:B:76:ILE:HG21	1:A:76:ILE:CD1	2.35	0.57
1:D:76:ILE:CD1	1:E:76:ILE:HG21	2.35	0.56
1:B:294:LEU:HD21	1:C:233:PRO:HG2	1.87	0.56
1:C:76:ILE:CD1	1:D:76:ILE:HG21	2.35	0.56
1:D:294:LEU:HD21	1:E:233:PRO:HG2	1.87	0.56
1:B:76:ILE:CD1	1:C:76:ILE:HG21	2.35	0.56
1:B:276:PHE:CG	1:C:72:TYR:HD1	2.21	0.56
1:B:72:TYR:HD1	1:A:276:PHE:CG	2.21	0.56
1:A:76:ILE:HG21	1:E:76:ILE:CD1	2.35	0.56
1:C:276:PHE:HD2	1:D:72:TYR:CD1	2.18	0.55
1:C:294:LEU:HD21	1:D:233:PRO:HG2	1.88	0.55
1:B:40:LEU:HD12	1:B:278:PHE:CZ	2.42	0.55
1:B:276:PHE:HD2	1:C:72:TYR:CD1	2.18	0.55
1:C:40:LEU:HD12	1:C:278:PHE:CZ	2.42	0.55
1:E:40:LEU:HD12	1:E:278:PHE:CZ	2.42	0.55
1:A:40:LEU:HD12	1:A:278:PHE:CZ	2.42	0.54
1:D:40:LEU:HD12	1:D:278:PHE:CZ	2.42	0.54
1:D:104:ASP:OD2	1:E:218:ARG:NH2	2.41	0.53
1:B:218:ARG:NH2	1:A:104:ASP:OD2	2.42	0.53
1:C:104:ASP:OD2	1:D:218:ARG:NH2	2.42	0.52
1:A:218:ARG:NH2	1:E:104:ASP:OD2	2.42	0.52
1:D:290:VAL:HG22	1:E:235:VAL:HG13	1.92	0.52
1:A:235:VAL:HG13	1:E:290:VAL:HG22	1.92	0.52
1:B:104:ASP:OD2	1:C:218:ARG:NH2	2.42	0.51
1:C:290:VAL:HG22	1:D:235:VAL:HG13	1.92	0.51
1:B:235:VAL:HG13	1:A:290:VAL:HG22	1.92	0.50
1:B:290:VAL:HG22	1:C:235:VAL:HG13	1.92	0.50
1:D:136:ASN:O	1:D:139:ILE:HG22	2.13	0.48
1:C:136:ASN:O	1:C:139:ILE:HG22	2.13	0.48
1:B:208:GLN:HG3	1:A:209:SER:OG	2.14	0.48
1:A:136:ASN:O	1:A:139:ILE:HG22	2.13	0.48
1:B:136:ASN:O	1:B:139:ILE:HG22	2.13	0.47
1:D:209:SER:OG	1:E:208:GLN:HG3	2.14	0.47

Continued on next page...

Continued from previous page...

Atom-1	Atom-2	Interatomic distance (Å)	Clash overlap (Å)
1:E:136:ASN:O	1:E:139:ILE:HG22	2.13	0.47
1:A:208:GLN:HG3	1:E:209:SER:OG	2.15	0.47
1:B:209:SER:OG	1:C:208:GLN:HG3	2.14	0.46
1:C:209:SER:OG	1:D:208:GLN:HG3	2.14	0.46
1:A:259:ASN:OD1	1:A:261:ALA:HB3	2.16	0.45
1:C:259:ASN:OD1	1:C:261:ALA:HB3	2.16	0.45
1:E:104:ASP:HA	1:E:107:MET:SD	2.57	0.45
1:B:259:ASN:OD1	1:B:261:ALA:HB3	2.16	0.45
1:B:104:ASP:HA	1:B:107:MET:SD	2.57	0.45
1:A:63:GLU:OE1	1:A:264:TYR:OH	2.26	0.45
1:A:104:ASP:HA	1:A:107:MET:SD	2.57	0.45
1:E:259:ASN:OD1	1:E:261:ALA:HB3	2.16	0.45
1:D:104:ASP:HA	1:D:107:MET:SD	2.57	0.45
1:B:226:ALA:HB1	1:A:97:TYR:CE2	2.52	0.45
1:D:75:LEU:HD12	1:D:76:ILE:HD13	1.99	0.45
1:B:97:TYR:CE2	1:C:226:ALA:HB1	2.53	0.44
1:C:75:LEU:HD12	1:C:76:ILE:HD13	1.99	0.44
1:C:104:ASP:HA	1:C:107:MET:SD	2.57	0.44
1:D:259:ASN:OD1	1:D:261:ALA:HB3	2.16	0.44
1:E:75:LEU:HD12	1:E:76:ILE:HD13	2.00	0.44
1:A:75:LEU:HD12	1:A:76:ILE:HD13	1.99	0.44
1:A:226:ALA:HB1	1:E:97:TYR:CE2	2.52	0.44
1:B:75:LEU:HD12	1:B:76:ILE:HD13	1.99	0.44
1:C:97:TYR:CE2	1:D:226:ALA:HB1	2.53	0.44
1:D:97:TYR:CE2	1:E:226:ALA:HB1	2.52	0.43
1:B:248:PHE:CZ	1:B:281:PHE:HA	2.55	0.42
1:C:248:PHE:CZ	1:C:281:PHE:HA	2.55	0.42
1:D:185:TRP:CD1	1:D:218:ARG:HB2	2.55	0.42
1:D:248:PHE:CZ	1:D:281:PHE:HA	2.55	0.42
1:A:248:PHE:CZ	1:A:281:PHE:HA	2.55	0.41
1:B:185:TRP:CD1	1:B:218:ARG:HB2	2.55	0.41
1:E:185:TRP:CD1	1:E:218:ARG:HB2	2.55	0.41
1:C:185:TRP:CD1	1:C:218:ARG:HB2	2.55	0.41
1:A:61:MET:CE	1:E:269:LEU:HD21	2.50	0.41
1:D:76:ILE:HG22	1:D:80:PHE:CE2	2.56	0.41
1:D:269:LEU:HD21	1:E:61:MET:CE	2.51	0.41
1:E:76:ILE:HG22	1:E:80:PHE:CE2	2.56	0.41
1:E:248:PHE:CZ	1:E:281:PHE:HA	2.55	0.41
1:A:185:TRP:CD1	1:A:218:ARG:HB2	2.55	0.41
1:D:286:GLY:O	1:D:290:VAL:HG23	2.21	0.40
1:C:269:LEU:HD21	1:D:61:MET:CE	2.52	0.40

Continued on next page...

Continued from previous page...

Atom-1	Atom-2	Interatomic distance (Å)	Clash overlap (Å)
1:A:76:ILE:HG22	1:A:80:PHE:CE2	2.56	0.40
1:B:76:ILE:HG22	1:B:80:PHE:CE2	2.56	0.40
1:B:286:GLY:O	1:B:290:VAL:HG23	2.22	0.40
1:A:286:GLY:O	1:A:290:VAL:HG23	2.22	0.40
1:E:63:GLU:OE1	1:E:264:TYR:OH	2.26	0.40
1:C:76:ILE:HG22	1:C:80:PHE:CE2	2.56	0.40

There are no symmetry-related clashes.

5.3 Torsion angles [i](#)

5.3.1 Protein backbone [i](#)

In the following table, the Percentiles column shows the percent Ramachandran outliers of the chain as a percentile score with respect to all PDB entries followed by that with respect to all EM entries.

The Analysed column shows the number of residues for which the backbone conformation was analysed, and the total number of residues.

Mol	Chain	Analysed	Favoured	Allowed	Outliers	Percentiles	
1	A	374/585 (64%)	368 (98%)	6 (2%)	0	100	100
1	B	374/585 (64%)	368 (98%)	6 (2%)	0	100	100
1	C	374/585 (64%)	368 (98%)	6 (2%)	0	100	100
1	D	374/585 (64%)	368 (98%)	6 (2%)	0	100	100
1	E	374/585 (64%)	368 (98%)	6 (2%)	0	100	100
All	All	1870/2925 (64%)	1840 (98%)	30 (2%)	0	100	100

There are no Ramachandran outliers to report.

5.3.2 Protein sidechains [i](#)

In the following table, the Percentiles column shows the percent sidechain outliers of the chain as a percentile score with respect to all PDB entries followed by that with respect to all EM entries.

The Analysed column shows the number of residues for which the sidechain conformation was analysed, and the total number of residues.

Mol	Chain	Analysed	Rotameric	Outliers	Percentiles	
1	A	339/524 (65%)	332 (98%)	7 (2%)	53	57
1	B	339/524 (65%)	332 (98%)	7 (2%)	53	57
1	C	339/524 (65%)	332 (98%)	7 (2%)	53	57
1	D	339/524 (65%)	332 (98%)	7 (2%)	53	57
1	E	339/524 (65%)	332 (98%)	7 (2%)	53	57
All	All	1695/2620 (65%)	1660 (98%)	35 (2%)	56	57

All (35) residues with a non-rotameric sidechain are listed below:

Mol	Chain	Res	Type
1	B	32	LEU
1	B	61	MET
1	B	75	LEU
1	B	178	HIS
1	B	236	TYR
1	B	303	ASP
1	B	313	ARG
1	C	32	LEU
1	C	61	MET
1	C	75	LEU
1	C	178	HIS
1	C	236	TYR
1	C	303	ASP
1	C	313	ARG
1	A	32	LEU
1	A	61	MET
1	A	75	LEU
1	A	178	HIS
1	A	236	TYR
1	A	303	ASP
1	A	313	ARG
1	D	32	LEU
1	D	61	MET
1	D	75	LEU
1	D	178	HIS
1	D	236	TYR
1	D	303	ASP
1	D	313	ARG
1	E	32	LEU
1	E	61	MET
1	E	75	LEU

Continued on next page...

Continued from previous page...

Mol	Chain	Res	Type
1	E	178	HIS
1	E	236	TYR
1	E	303	ASP
1	E	313	ARG

Sometimes sidechains can be flipped to improve hydrogen bonding and reduce clashes. All (5) such sidechains are listed below:

Mol	Chain	Res	Type
1	B	208	GLN
1	C	208	GLN
1	A	208	GLN
1	D	208	GLN
1	E	208	GLN

5.3.3 RNA [i](#)

There are no RNA molecules in this entry.

5.4 Non-standard residues in protein, DNA, RNA chains [i](#)

There are no non-standard protein/DNA/RNA residues in this entry.

5.5 Carbohydrates [i](#)

There are no monosaccharides in this entry.

5.6 Ligand geometry [i](#)

Of 46 ligands modelled in this entry, 6 are monoatomic - leaving 40 for Mogul analysis.

In the following table, the Counts columns list the number of bonds (or angles) for which Mogul statistics could be retrieved, the number of bonds (or angles) that are observed in the model and the number of bonds (or angles) that are defined in the Chemical Component Dictionary. The Link column lists molecule types, if any, to which the group is linked. The Z score for a bond length (or angle) is the number of standard deviations the observed value is removed from the expected value. A bond length (or angle) with $|Z| > 2$ is considered an outlier worth inspection. RMSZ is the root-mean-square of all Z scores of the bond lengths (or angles).

Mol	Type	Chain	Res	Link	Bond lengths			Bond angles		
					Counts	RMSZ	# Z > 2	Counts	RMSZ	# Z > 2
3	MC3	C	607	-	9,9,45	0.29	0	8,8,53	0.76	0
3	MC3	D	605	-	11,11,45	0.32	0	10,10,53	1.15	1 (10%)
3	MC3	A	608	-	9,9,45	0.29	0	8,8,53	0.75	0
3	MC3	D	603	-	37,37,45	1.03	5 (13%)	41,42,53	1.11	2 (4%)
3	MC3	E	605	-	13,13,45	0.30	0	12,12,53	0.73	0
3	MC3	B	608	-	13,13,45	0.29	0	12,12,53	0.79	0
3	MC3	A	604	-	37,37,45	1.04	5 (13%)	41,42,53	1.11	2 (4%)
3	MC3	D	606	-	13,13,45	0.28	0	12,12,53	0.83	0
3	MC3	E	606	-	11,11,45	0.32	0	10,10,53	1.16	1 (10%)
3	MC3	A	606	-	11,11,45	0.32	0	10,10,53	1.15	1 (10%)
3	MC3	C	608	-	13,13,45	0.29	0	12,12,53	0.79	0
3	MC3	B	607	-	9,9,45	0.29	0	8,8,53	0.75	0
3	MC3	E	601	-	34,34,45	1.04	4 (11%)	36,36,53	1.23	3 (8%)
3	MC3	E	607	-	13,13,45	0.28	0	12,12,53	0.83	0
3	MC3	B	609	-	34,34,45	1.04	4 (11%)	36,36,53	1.23	3 (8%)
3	MC3	C	604	-	13,13,45	0.30	0	12,12,53	0.73	0
3	MC3	A	601	-	34,34,45	1.04	4 (11%)	36,36,53	1.23	3 (8%)
3	MC3	C	602	-	4,4,45	0.31	0	3,3,53	0.52	0
3	MC3	E	604	-	37,37,45	1.04	5 (13%)	41,42,53	1.11	2 (4%)
3	MC3	C	606	-	13,13,45	0.28	0	12,12,53	0.83	0
3	MC3	C	603	-	37,37,45	1.04	5 (13%)	41,42,53	1.11	2 (4%)
3	MC3	A	605	-	13,13,45	0.30	0	12,12,53	0.73	0
3	MC3	A	603	-	4,4,45	0.30	0	3,3,53	0.52	0
3	MC3	E	603	-	4,4,45	0.30	0	3,3,53	0.52	0
3	MC3	B	602	-	4,4,45	0.30	0	3,3,53	0.52	0
3	MC3	B	606	-	13,13,45	0.28	0	12,12,53	0.83	0
3	MC3	D	608	-	13,13,45	0.29	0	12,12,53	0.79	0
3	MC3	D	607	-	9,9,45	0.29	0	8,8,53	0.75	0
3	MC3	E	608	-	9,9,45	0.29	0	8,8,53	0.76	0
3	MC3	B	604	-	13,13,45	0.30	0	12,12,53	0.73	0
3	MC3	A	607	-	13,13,45	0.28	0	12,12,53	0.82	0
3	MC3	D	604	-	13,13,45	0.30	0	12,12,53	0.73	0
3	MC3	A	609	-	13,13,45	0.29	0	12,12,53	0.79	0
3	MC3	D	602	-	4,4,45	0.30	0	3,3,53	0.52	0
3	MC3	B	605	-	11,11,45	0.32	0	10,10,53	1.15	1 (10%)
3	MC3	C	605	-	11,11,45	0.31	0	10,10,53	1.15	1 (10%)
3	MC3	B	603	-	37,37,45	1.04	5 (13%)	41,42,53	1.11	2 (4%)
3	MC3	C	609	-	34,34,45	1.04	4 (11%)	36,36,53	1.23	3 (8%)
3	MC3	D	609	-	34,34,45	1.04	4 (11%)	36,36,53	1.24	3 (8%)

Mol	Type	Chain	Res	Link	Bond lengths			Bond angles		
					Counts	RMSZ	# Z > 2	Counts	RMSZ	# Z > 2
3	MC3	E	609	-	13,13,45	0.29	0	12,12,53	0.79	0

In the following table, the Chirals column lists the number of chiral outliers, the number of chiral centers analysed, the number of these observed in the model and the number defined in the Chemical Component Dictionary. Similar counts are reported in the Torsion and Rings columns. '-' means no outliers of that kind were identified.

Mol	Type	Chain	Res	Link	Chirals	Torsions	Rings
3	MC3	C	607	-	-	2/7/7/49	-
3	MC3	D	605	-	-	4/9/9/49	-
3	MC3	A	608	-	-	2/7/7/49	-
3	MC3	D	603	-	-	18/39/39/49	-
3	MC3	E	605	-	-	6/11/11/49	-
3	MC3	B	608	-	-	6/11/11/49	-
3	MC3	A	604	-	-	18/39/39/49	-
3	MC3	D	606	-	-	3/11/11/49	-
3	MC3	E	606	-	-	4/9/9/49	-
3	MC3	A	606	-	-	4/9/9/49	-
3	MC3	C	608	-	-	6/11/11/49	-
3	MC3	B	607	-	-	2/7/7/49	-
3	MC3	E	601	-	-	13/35/35/49	-
3	MC3	E	607	-	-	3/11/11/49	-
3	MC3	B	609	-	-	13/35/35/49	-
3	MC3	C	604	-	-	6/11/11/49	-
3	MC3	A	601	-	-	13/35/35/49	-
3	MC3	C	602	-	-	0/2/2/49	-
3	MC3	E	604	-	-	18/39/39/49	-
3	MC3	C	606	-	-	3/11/11/49	-
3	MC3	C	603	-	-	18/39/39/49	-
3	MC3	A	605	-	-	6/11/11/49	-
3	MC3	A	603	-	-	0/2/2/49	-
3	MC3	E	603	-	-	0/2/2/49	-
3	MC3	B	602	-	-	0/2/2/49	-
3	MC3	B	606	-	-	3/11/11/49	-
3	MC3	D	608	-	-	6/11/11/49	-
3	MC3	D	607	-	-	2/7/7/49	-
3	MC3	E	608	-	-	2/7/7/49	-

Continued on next page...

Continued from previous page...

Mol	Type	Chain	Res	Link	Chirals	Torsions	Rings
3	MC3	B	604	-	-	6/11/11/49	-
3	MC3	A	607	-	-	3/11/11/49	-
3	MC3	D	604	-	-	6/11/11/49	-
3	MC3	A	609	-	-	6/11/11/49	-
3	MC3	D	602	-	-	0/2/2/49	-
3	MC3	B	605	-	-	4/9/9/49	-
3	MC3	C	605	-	-	4/9/9/49	-
3	MC3	B	603	-	-	18/39/39/49	-
3	MC3	C	609	-	-	13/35/35/49	-
3	MC3	D	609	-	-	13/35/35/49	-
3	MC3	E	609	-	-	6/11/11/49	-

All (45) bond length outliers are listed below:

Mol	Chain	Res	Type	Atoms	Z	Observed(Å)	Ideal(Å)
3	A	601	MC3	O2-C2	-3.85	1.40	1.47
3	E	601	MC3	O2-C2	-3.85	1.40	1.47
3	D	609	MC3	O2-C2	-3.85	1.40	1.47
3	B	609	MC3	O2-C2	-3.83	1.40	1.47
3	C	609	MC3	O2-C2	-3.82	1.40	1.47
3	C	603	MC3	P-O4P	2.63	1.65	1.54
3	D	603	MC3	P-O4P	2.63	1.65	1.54
3	E	604	MC3	P-O4P	2.63	1.65	1.54
3	B	603	MC3	P-O4P	2.63	1.65	1.54
3	A	604	MC3	P-O4P	2.63	1.65	1.54
3	D	603	MC3	O2-C2	-2.55	1.40	1.46
3	B	603	MC3	O2-C2	-2.53	1.40	1.46
3	C	603	MC3	O2-C2	-2.53	1.40	1.46
3	E	604	MC3	O2-C2	-2.52	1.40	1.46
3	A	604	MC3	O2-C2	-2.52	1.40	1.46
3	A	604	MC3	O3-C11	2.38	1.40	1.33
3	B	603	MC3	O3-C11	2.38	1.40	1.33
3	C	603	MC3	O3-C11	2.37	1.40	1.33
3	E	604	MC3	O3-C11	2.37	1.40	1.33
3	D	603	MC3	O3-C11	2.37	1.40	1.33
3	B	609	MC3	O3-C11	2.32	1.40	1.33
3	A	601	MC3	O3-C11	2.31	1.40	1.33
3	C	609	MC3	O3-C11	2.30	1.40	1.33
3	D	609	MC3	O3-C11	2.29	1.40	1.33
3	E	601	MC3	O3-C11	2.28	1.40	1.33

Continued on next page...

Continued from previous page...

Mol	Chain	Res	Type	Atoms	Z	Observed(Å)	Ideal(Å)
3	B	609	MC3	O3-C3	-2.20	1.40	1.45
3	C	609	MC3	O3-C3	-2.19	1.40	1.45
3	D	609	MC3	O3-C3	-2.19	1.40	1.45
3	A	601	MC3	O3-C3	-2.18	1.40	1.45
3	E	601	MC3	O3-C3	-2.17	1.40	1.45
3	A	604	MC3	O3-C3	-2.16	1.40	1.45
3	E	604	MC3	O3-C3	-2.16	1.40	1.45
3	D	603	MC3	O3-C3	-2.16	1.40	1.45
3	B	603	MC3	O3-C3	-2.16	1.40	1.45
3	C	603	MC3	O3-C3	-2.16	1.40	1.45
3	E	601	MC3	O2-C31	2.13	1.40	1.34
3	B	609	MC3	O2-C31	2.12	1.40	1.34
3	D	609	MC3	O2-C31	2.12	1.40	1.34
3	A	601	MC3	O2-C31	2.12	1.40	1.34
3	C	609	MC3	O2-C31	2.11	1.40	1.34
3	E	604	MC3	O2-C31	2.10	1.40	1.34
3	A	604	MC3	O2-C31	2.09	1.40	1.34
3	C	603	MC3	O2-C31	2.08	1.40	1.34
3	B	603	MC3	O2-C31	2.07	1.40	1.34
3	D	603	MC3	O2-C31	2.07	1.40	1.34

All (30) bond angle outliers are listed below:

Mol	Chain	Res	Type	Atoms	Z	Observed(°)	Ideal(°)
3	D	609	MC3	O2-C31-C32	4.02	120.16	111.50
3	B	609	MC3	O2-C31-C32	4.01	120.15	111.50
3	A	601	MC3	O2-C31-C32	4.01	120.15	111.50
3	E	601	MC3	O2-C31-C32	4.01	120.15	111.50
3	C	609	MC3	O2-C31-C32	4.00	120.13	111.50
3	D	603	MC3	O2-C31-C32	3.72	119.52	111.50
3	E	604	MC3	O2-C31-C32	3.70	119.48	111.50
3	B	603	MC3	O2-C31-C32	3.70	119.47	111.50
3	C	603	MC3	O2-C31-C32	3.69	119.46	111.50
3	A	604	MC3	O2-C31-C32	3.69	119.45	111.50
3	E	604	MC3	O3-C11-C12	2.62	120.12	111.91
3	A	604	MC3	O3-C11-C12	2.61	120.09	111.91
3	D	603	MC3	O3-C11-C12	2.60	120.08	111.91
3	B	603	MC3	O3-C11-C12	2.60	120.07	111.91
3	C	603	MC3	O3-C11-C12	2.59	120.05	111.91
3	E	606	MC3	C43-C42-C41	-2.57	91.40	115.30
3	A	606	MC3	C43-C42-C41	-2.57	91.40	115.30
3	B	605	MC3	C43-C42-C41	-2.57	91.42	115.30

Continued on next page...

Continued from previous page...

Mol	Chain	Res	Type	Atoms	Z	Observed(°)	Ideal(°)
3	D	605	MC3	C43-C42-C41	-2.57	91.42	115.30
3	C	605	MC3	C43-C42-C41	-2.57	91.43	115.30
3	C	609	MC3	O3-C11-C12	2.32	119.17	111.91
3	E	601	MC3	O3-C11-C12	2.30	119.14	111.91
3	A	601	MC3	O3-C11-C12	2.30	119.13	111.91
3	D	609	MC3	O3-C11-C12	2.29	119.10	111.91
3	B	609	MC3	O3-C11-C12	2.29	119.10	111.91
3	C	609	MC3	C2-O2-C31	-2.09	115.19	117.88
3	B	609	MC3	C2-O2-C31	-2.06	115.23	117.88
3	A	601	MC3	C2-O2-C31	-2.06	115.23	117.88
3	D	609	MC3	C2-O2-C31	-2.06	115.23	117.88
3	E	601	MC3	C2-O2-C31	-2.05	115.24	117.88

There are no chirality outliers.

All (260) torsion outliers are listed below:

Mol	Chain	Res	Type	Atoms
3	B	609	MC3	C12-C11-O3-C3
3	C	609	MC3	C12-C11-O3-C3
3	A	601	MC3	C12-C11-O3-C3
3	D	609	MC3	C12-C11-O3-C3
3	E	601	MC3	C12-C11-O3-C3
3	B	603	MC3	C11-C12-C13-C14
3	C	603	MC3	C11-C12-C13-C14
3	A	604	MC3	C11-C12-C13-C14
3	D	603	MC3	C11-C12-C13-C14
3	E	604	MC3	C11-C12-C13-C14
3	B	609	MC3	O11-C11-O3-C3
3	C	609	MC3	O11-C11-O3-C3
3	A	601	MC3	O11-C11-O3-C3
3	D	609	MC3	O11-C11-O3-C3
3	E	601	MC3	O11-C11-O3-C3
3	B	606	MC3	C33-C34-C35-C36
3	C	606	MC3	C33-C34-C35-C36
3	A	607	MC3	C33-C34-C35-C36
3	D	606	MC3	C33-C34-C35-C36
3	E	607	MC3	C33-C34-C35-C36
3	B	609	MC3	C17-C18-C19-C20
3	B	609	MC3	C40-C41-C42-C43
3	C	609	MC3	C40-C41-C42-C43
3	A	601	MC3	C17-C18-C19-C20
3	A	601	MC3	C40-C41-C42-C43

Continued on next page...

Continued from previous page...

Mol	Chain	Res	Type	Atoms
3	D	609	MC3	C17-C18-C19-C20
3	D	609	MC3	C40-C41-C42-C43
3	E	601	MC3	C17-C18-C19-C20
3	E	601	MC3	C40-C41-C42-C43
3	B	609	MC3	C36-C37-C38-C39
3	C	609	MC3	C17-C18-C19-C20
3	C	609	MC3	C36-C37-C38-C39
3	A	601	MC3	C36-C37-C38-C39
3	D	609	MC3	C36-C37-C38-C39
3	E	601	MC3	C36-C37-C38-C39
3	B	603	MC3	C18-C19-C20-C21
3	C	603	MC3	C18-C19-C20-C21
3	A	604	MC3	C18-C19-C20-C21
3	D	603	MC3	C18-C19-C20-C21
3	E	604	MC3	C18-C19-C20-C21
3	B	609	MC3	C19-C20-C21-C22
3	D	609	MC3	C19-C20-C21-C22
3	E	601	MC3	C19-C20-C21-C22
3	B	608	MC3	C32-C33-C34-C35
3	C	608	MC3	C32-C33-C34-C35
3	C	609	MC3	C19-C20-C21-C22
3	A	601	MC3	C19-C20-C21-C22
3	A	609	MC3	C32-C33-C34-C35
3	D	608	MC3	C32-C33-C34-C35
3	E	609	MC3	C32-C33-C34-C35
3	B	606	MC3	C36-C37-C38-C39
3	C	606	MC3	C36-C37-C38-C39
3	A	607	MC3	C36-C37-C38-C39
3	D	606	MC3	C36-C37-C38-C39
3	E	607	MC3	C36-C37-C38-C39
3	B	605	MC3	C34-C35-C36-C37
3	C	605	MC3	C34-C35-C36-C37
3	A	606	MC3	C34-C35-C36-C37
3	D	605	MC3	C34-C35-C36-C37
3	E	606	MC3	C34-C35-C36-C37
3	B	603	MC3	C32-C31-O2-C2
3	C	603	MC3	C32-C31-O2-C2
3	A	604	MC3	C32-C31-O2-C2
3	D	603	MC3	C32-C31-O2-C2
3	E	604	MC3	C32-C31-O2-C2
3	B	603	MC3	O31-C31-O2-C2
3	C	603	MC3	O31-C31-O2-C2

Continued on next page...

Continued from previous page...

Mol	Chain	Res	Type	Atoms
3	A	604	MC3	O31-C31-O2-C2
3	D	603	MC3	O31-C31-O2-C2
3	E	604	MC3	O31-C31-O2-C2
3	B	608	MC3	C36-C37-C38-C39
3	C	608	MC3	C36-C37-C38-C39
3	A	609	MC3	C36-C37-C38-C39
3	D	608	MC3	C36-C37-C38-C39
3	B	609	MC3	C33-C34-C35-C36
3	A	601	MC3	C33-C34-C35-C36
3	D	609	MC3	C33-C34-C35-C36
3	E	601	MC3	C33-C34-C35-C36
3	E	609	MC3	C36-C37-C38-C39
3	C	609	MC3	C33-C34-C35-C36
3	B	607	MC3	C34-C35-C36-C37
3	C	607	MC3	C34-C35-C36-C37
3	A	608	MC3	C34-C35-C36-C37
3	D	607	MC3	C34-C35-C36-C37
3	E	608	MC3	C34-C35-C36-C37
3	B	605	MC3	C40-C41-C42-C43
3	C	605	MC3	C40-C41-C42-C43
3	A	606	MC3	C40-C41-C42-C43
3	D	605	MC3	C40-C41-C42-C43
3	E	606	MC3	C40-C41-C42-C43
3	B	603	MC3	C33-C34-C35-C36
3	C	603	MC3	C33-C34-C35-C36
3	A	604	MC3	C33-C34-C35-C36
3	D	603	MC3	C33-C34-C35-C36
3	E	604	MC3	C33-C34-C35-C36
3	C	603	MC3	C13-C14-C15-C16
3	A	604	MC3	C13-C14-C15-C16
3	D	603	MC3	C13-C14-C15-C16
3	B	603	MC3	C13-C14-C15-C16
3	E	604	MC3	C13-C14-C15-C16
3	C	608	MC3	C39-C40-C41-C42
3	A	609	MC3	C39-C40-C41-C42
3	B	608	MC3	C39-C40-C41-C42
3	D	608	MC3	C39-C40-C41-C42
3	E	609	MC3	C39-C40-C41-C42
3	B	604	MC3	C36-C37-C38-C39
3	C	604	MC3	C36-C37-C38-C39
3	A	605	MC3	C36-C37-C38-C39
3	D	604	MC3	C36-C37-C38-C39

Continued on next page...

Continued from previous page...

Mol	Chain	Res	Type	Atoms
3	E	605	MC3	C36-C37-C38-C39
3	B	603	MC3	C1-C2-C3-O3
3	C	603	MC3	C1-C2-C3-O3
3	A	604	MC3	C1-C2-C3-O3
3	D	603	MC3	C1-C2-C3-O3
3	E	604	MC3	C1-C2-C3-O3
3	B	603	MC3	O3P-C1-C2-O2
3	C	603	MC3	O3P-C1-C2-O2
3	A	604	MC3	O3P-C1-C2-O2
3	D	603	MC3	O3P-C1-C2-O2
3	E	604	MC3	O3P-C1-C2-O2
3	B	604	MC3	C31-C32-C33-C34
3	C	604	MC3	C31-C32-C33-C34
3	A	605	MC3	C31-C32-C33-C34
3	D	604	MC3	C31-C32-C33-C34
3	E	605	MC3	C31-C32-C33-C34
3	B	603	MC3	O2-C2-C3-O3
3	C	603	MC3	O2-C2-C3-O3
3	A	604	MC3	O2-C2-C3-O3
3	D	603	MC3	O2-C2-C3-O3
3	E	604	MC3	O2-C2-C3-O3
3	B	609	MC3	C14-C15-C16-C17
3	C	609	MC3	C14-C15-C16-C17
3	A	601	MC3	C14-C15-C16-C17
3	D	609	MC3	C14-C15-C16-C17
3	E	601	MC3	C14-C15-C16-C17
3	A	607	MC3	C32-C33-C34-C35
3	D	606	MC3	C32-C33-C34-C35
3	B	606	MC3	C32-C33-C34-C35
3	E	607	MC3	C32-C33-C34-C35
3	C	606	MC3	C32-C33-C34-C35
3	B	605	MC3	C38-C39-C40-C41
3	A	606	MC3	C38-C39-C40-C41
3	D	605	MC3	C38-C39-C40-C41
3	E	606	MC3	C38-C39-C40-C41
3	C	605	MC3	C38-C39-C40-C41
3	B	604	MC3	C38-C39-C40-C41
3	C	604	MC3	C38-C39-C40-C41
3	D	604	MC3	C38-C39-C40-C41
3	E	605	MC3	C38-C39-C40-C41
3	A	605	MC3	C38-C39-C40-C41
3	E	608	MC3	C37-C38-C39-C40

Continued on next page...

Continued from previous page...

Mol	Chain	Res	Type	Atoms
3	B	607	MC3	C37-C38-C39-C40
3	C	607	MC3	C37-C38-C39-C40
3	A	608	MC3	C37-C38-C39-C40
3	D	607	MC3	C37-C38-C39-C40
3	B	609	MC3	C12-C13-C14-C15
3	A	601	MC3	C12-C13-C14-C15
3	A	605	MC3	C34-C35-C36-C37
3	D	609	MC3	C12-C13-C14-C15
3	E	601	MC3	C12-C13-C14-C15
3	B	603	MC3	C20-C21-C22-C23
3	B	604	MC3	C34-C35-C36-C37
3	C	603	MC3	C20-C21-C22-C23
3	C	609	MC3	C12-C13-C14-C15
3	E	604	MC3	C20-C21-C22-C23
3	E	605	MC3	C34-C35-C36-C37
3	A	604	MC3	C20-C21-C22-C23
3	D	603	MC3	C20-C21-C22-C23
3	D	604	MC3	C34-C35-C36-C37
3	C	604	MC3	C34-C35-C36-C37
3	A	604	MC3	C36-C37-C38-C39
3	B	603	MC3	C36-C37-C38-C39
3	C	603	MC3	C36-C37-C38-C39
3	D	603	MC3	C36-C37-C38-C39
3	E	604	MC3	C36-C37-C38-C39
3	B	603	MC3	O3P-C1-C2-C3
3	C	603	MC3	O3P-C1-C2-C3
3	A	604	MC3	O3P-C1-C2-C3
3	D	603	MC3	O3P-C1-C2-C3
3	E	604	MC3	O3P-C1-C2-C3
3	B	603	MC3	C31-C32-C33-C34
3	C	603	MC3	C31-C32-C33-C34
3	A	604	MC3	C31-C32-C33-C34
3	D	603	MC3	C31-C32-C33-C34
3	E	604	MC3	C31-C32-C33-C34
3	C	603	MC3	C37-C38-C39-C40
3	E	604	MC3	C37-C38-C39-C40
3	B	603	MC3	C37-C38-C39-C40
3	A	604	MC3	C37-C38-C39-C40
3	D	603	MC3	C37-C38-C39-C40
3	B	603	MC3	C21-C22-C23-C24
3	A	604	MC3	C21-C22-C23-C24
3	C	603	MC3	C21-C22-C23-C24

Continued on next page...

Continued from previous page...

Mol	Chain	Res	Type	Atoms
3	D	603	MC3	C21-C22-C23-C24
3	E	604	MC3	C21-C22-C23-C24
3	D	603	MC3	C12-C13-C14-C15
3	B	603	MC3	C12-C13-C14-C15
3	C	603	MC3	C12-C13-C14-C15
3	A	604	MC3	C12-C13-C14-C15
3	E	604	MC3	C12-C13-C14-C15
3	E	606	MC3	C36-C37-C38-C39
3	B	605	MC3	C36-C37-C38-C39
3	C	605	MC3	C36-C37-C38-C39
3	A	606	MC3	C36-C37-C38-C39
3	D	605	MC3	C36-C37-C38-C39
3	B	608	MC3	C33-C34-C35-C36
3	C	608	MC3	C33-C34-C35-C36
3	A	609	MC3	C33-C34-C35-C36
3	D	608	MC3	C33-C34-C35-C36
3	E	609	MC3	C33-C34-C35-C36
3	B	608	MC3	C31-C32-C33-C34
3	C	608	MC3	C31-C32-C33-C34
3	A	609	MC3	C31-C32-C33-C34
3	D	608	MC3	C31-C32-C33-C34
3	E	609	MC3	C31-C32-C33-C34
3	E	604	MC3	C14-C15-C16-C17
3	C	603	MC3	C14-C15-C16-C17
3	B	603	MC3	C14-C15-C16-C17
3	A	604	MC3	C14-C15-C16-C17
3	D	603	MC3	C14-C15-C16-C17
3	B	609	MC3	O3-C11-C12-C13
3	C	609	MC3	O3-C11-C12-C13
3	A	601	MC3	O3-C11-C12-C13
3	D	609	MC3	O3-C11-C12-C13
3	E	601	MC3	O3-C11-C12-C13
3	C	609	MC3	C34-C35-C36-C37
3	B	604	MC3	C33-C34-C35-C36
3	B	609	MC3	C34-C35-C36-C37
3	C	604	MC3	C33-C34-C35-C36
3	A	601	MC3	C34-C35-C36-C37
3	A	605	MC3	C33-C34-C35-C36
3	D	604	MC3	C33-C34-C35-C36
3	E	605	MC3	C33-C34-C35-C36
3	E	601	MC3	C34-C35-C36-C37
3	D	609	MC3	C34-C35-C36-C37

Continued on next page...

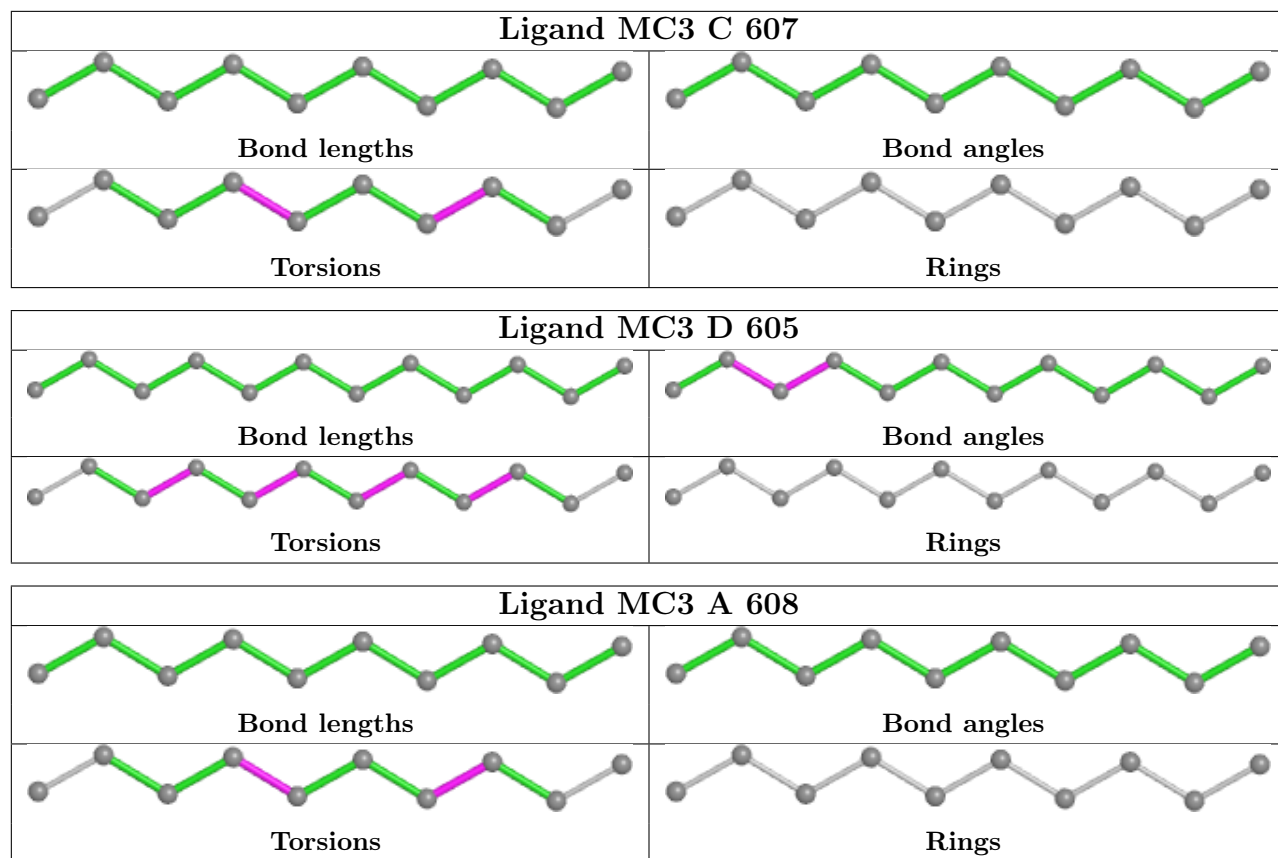
Continued from previous page...

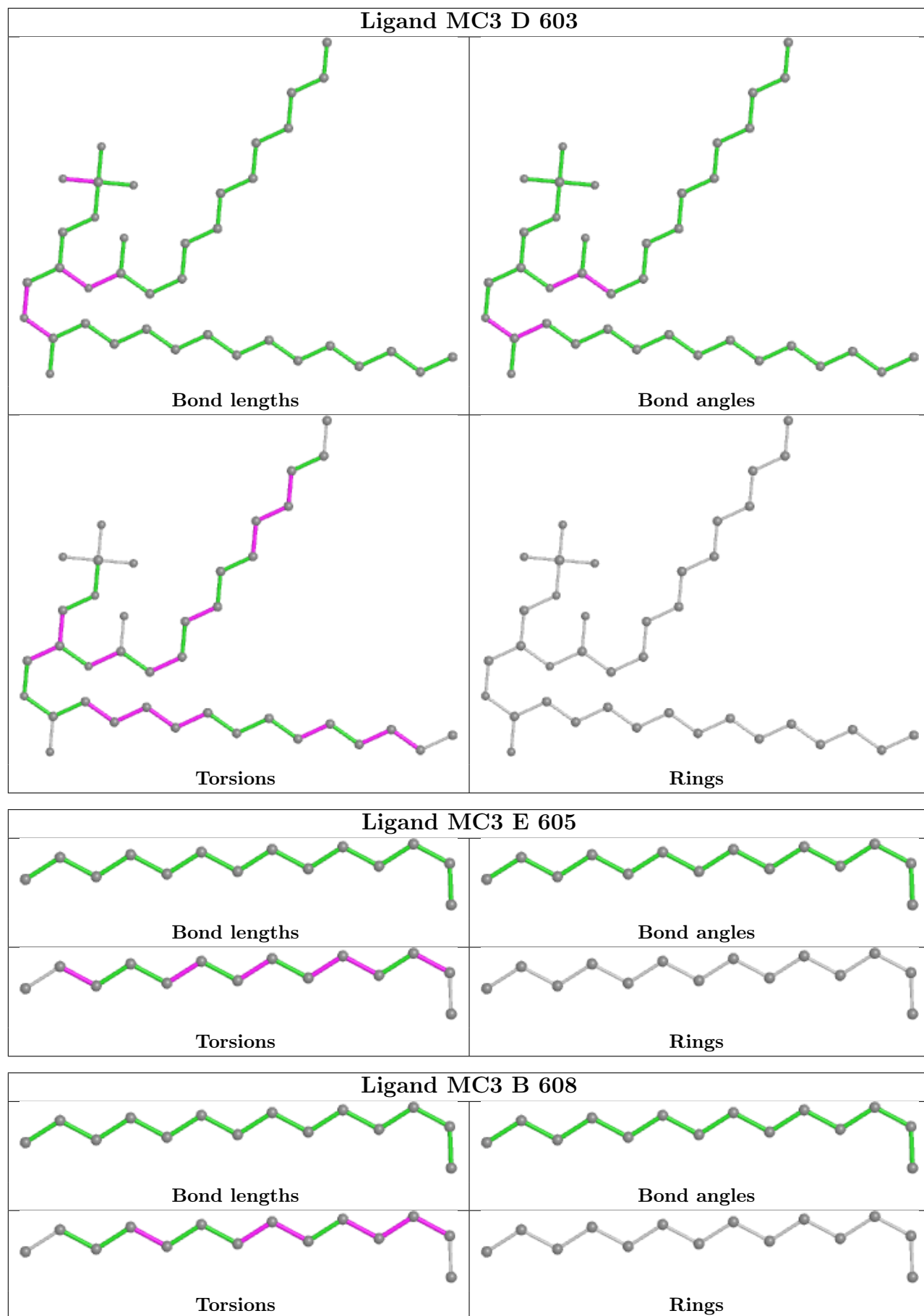
Mol	Chain	Res	Type	Atoms
3	B	609	MC3	C38-C39-C40-C41
3	C	609	MC3	C38-C39-C40-C41
3	A	601	MC3	C38-C39-C40-C41
3	D	609	MC3	C38-C39-C40-C41
3	E	601	MC3	C38-C39-C40-C41
3	C	604	MC3	C41-C42-C43-C44
3	A	605	MC3	C41-C42-C43-C44
3	E	605	MC3	C41-C42-C43-C44
3	B	604	MC3	C41-C42-C43-C44
3	B	609	MC3	O11-C11-C12-C13
3	C	609	MC3	O11-C11-C12-C13
3	A	601	MC3	O11-C11-C12-C13
3	D	609	MC3	O11-C11-C12-C13
3	E	601	MC3	O11-C11-C12-C13
3	D	603	MC3	C38-C39-C40-C41
3	D	604	MC3	C41-C42-C43-C44
3	E	604	MC3	C38-C39-C40-C41
3	B	603	MC3	C38-C39-C40-C41
3	C	603	MC3	C38-C39-C40-C41
3	A	604	MC3	C38-C39-C40-C41
3	E	609	MC3	C35-C36-C37-C38
3	B	608	MC3	C35-C36-C37-C38
3	A	609	MC3	C35-C36-C37-C38
3	C	608	MC3	C35-C36-C37-C38
3	D	608	MC3	C35-C36-C37-C38

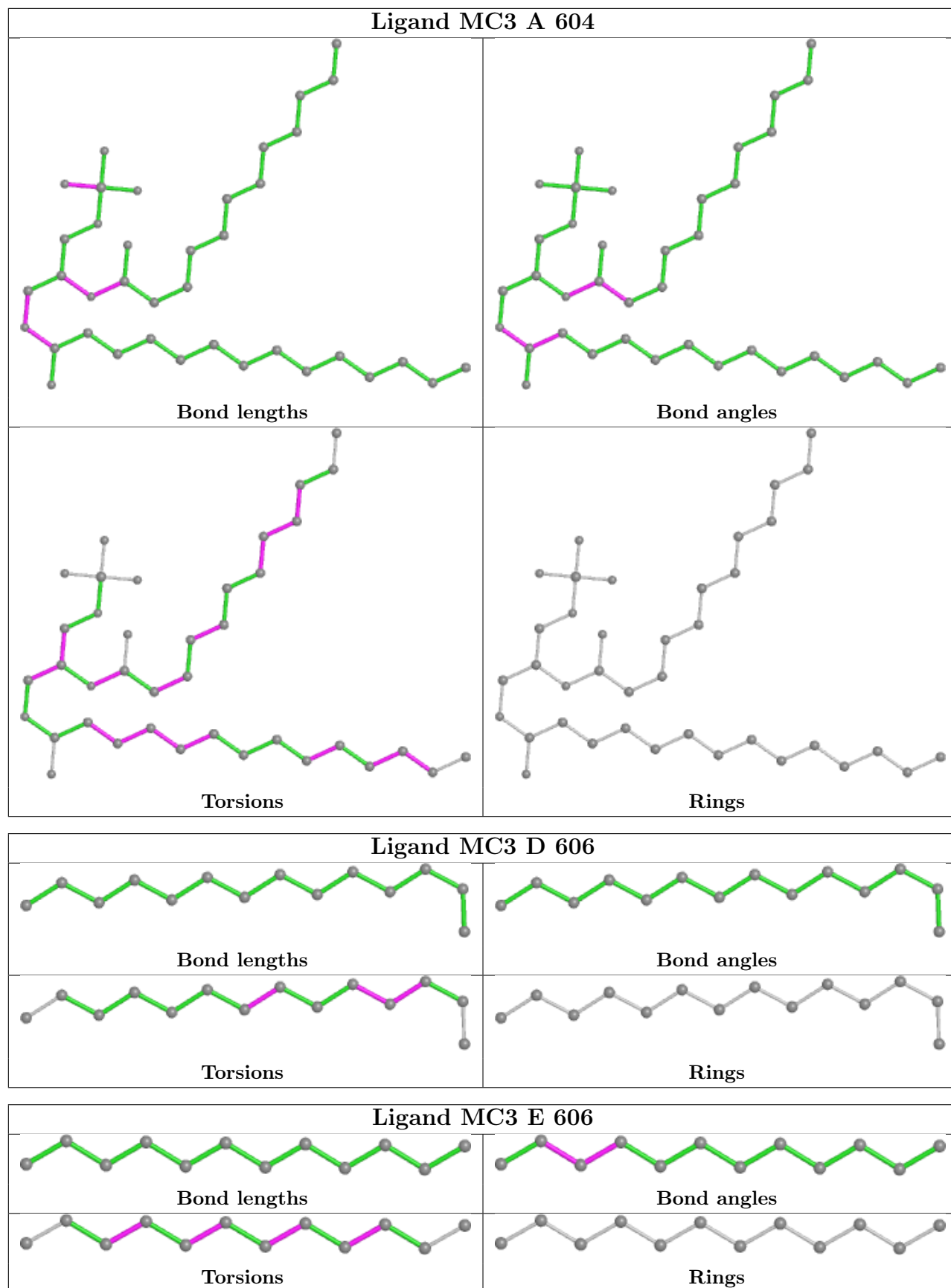
There are no ring outliers.

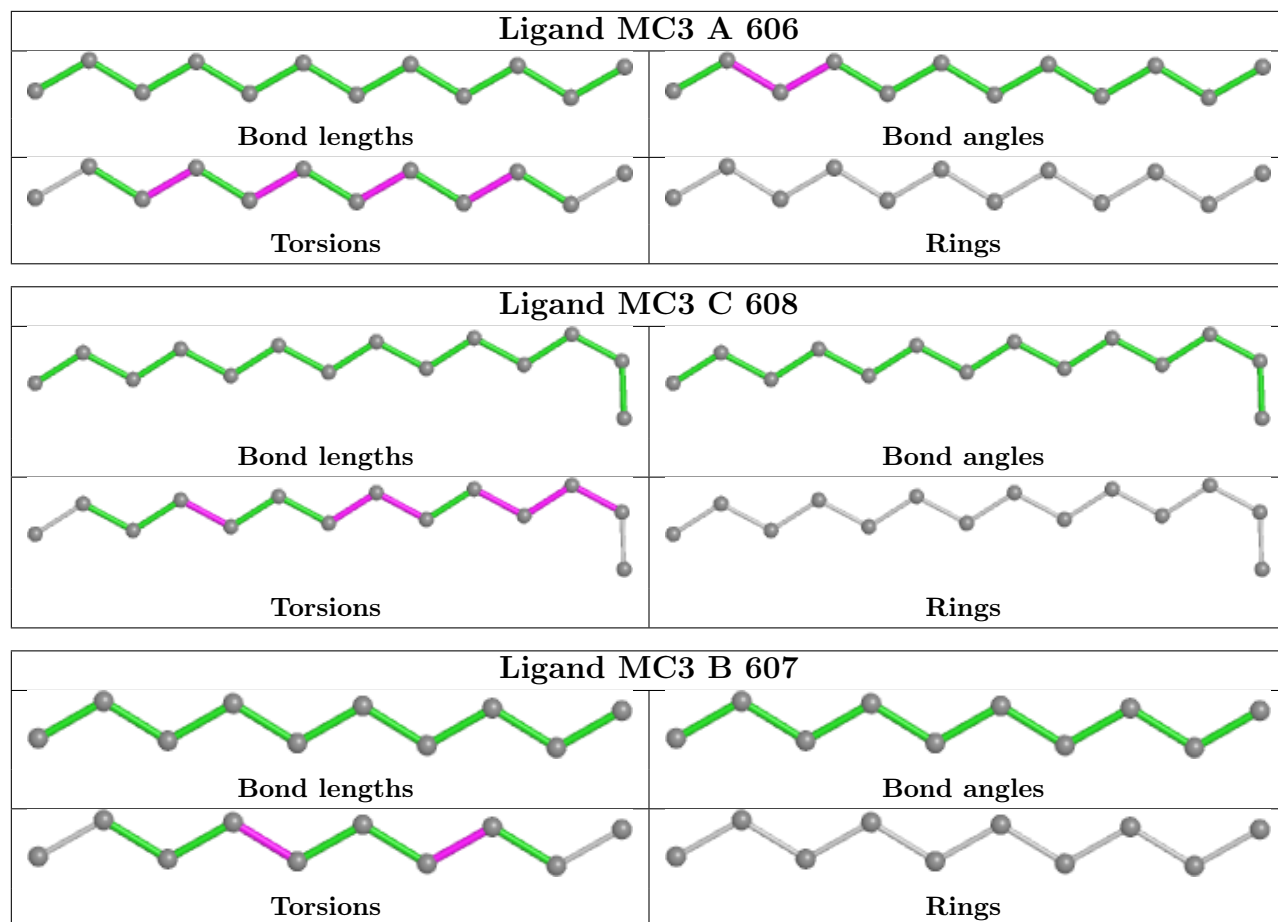
No monomer is involved in short contacts.

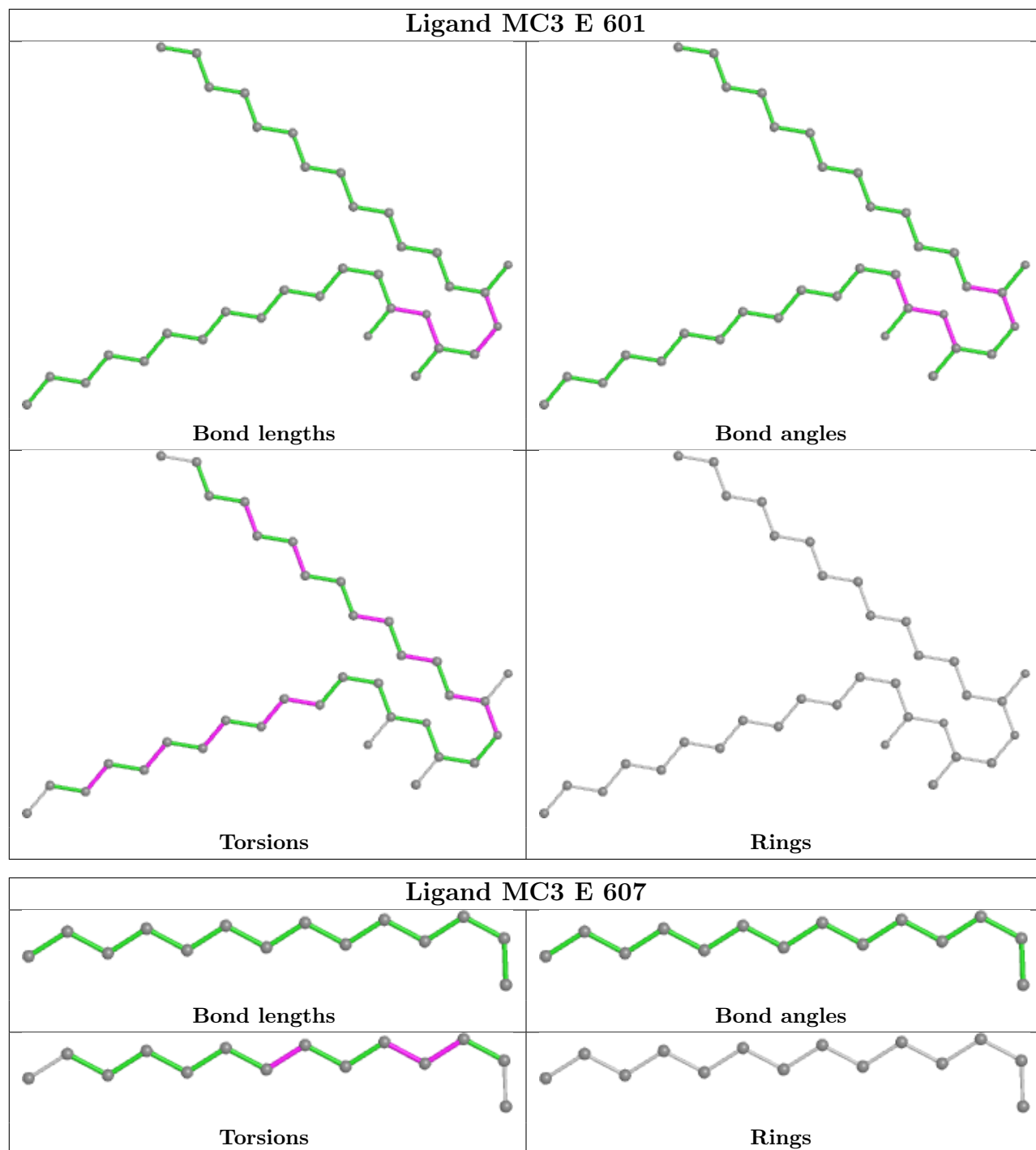
The following is a two-dimensional graphical depiction of Mogul quality analysis of bond lengths, bond angles, torsion angles, and ring geometry for all instances of the Ligand of Interest. In addition, ligands with molecular weight > 250 and outliers as shown on the validation Tables will also be included. For torsion angles, if less than 5% of the Mogul distribution of torsion angles is within 10 degrees of the torsion angle in question, then that torsion angle is considered an outlier. Any bond that is central to one or more torsion angles identified as an outlier by Mogul will be highlighted in the graph. For rings, the root-mean-square deviation (RMSD) between the ring in question and similar rings identified by Mogul is calculated over all ring torsion angles. If the average RMSD is greater than 60 degrees and the minimal RMSD between the ring in question and any Mogul-identified rings is also greater than 60 degrees, then that ring is considered an outlier. The outliers are highlighted in purple. The color gray indicates Mogul did not find sufficient equivalents in the CSD to analyse the geometry.

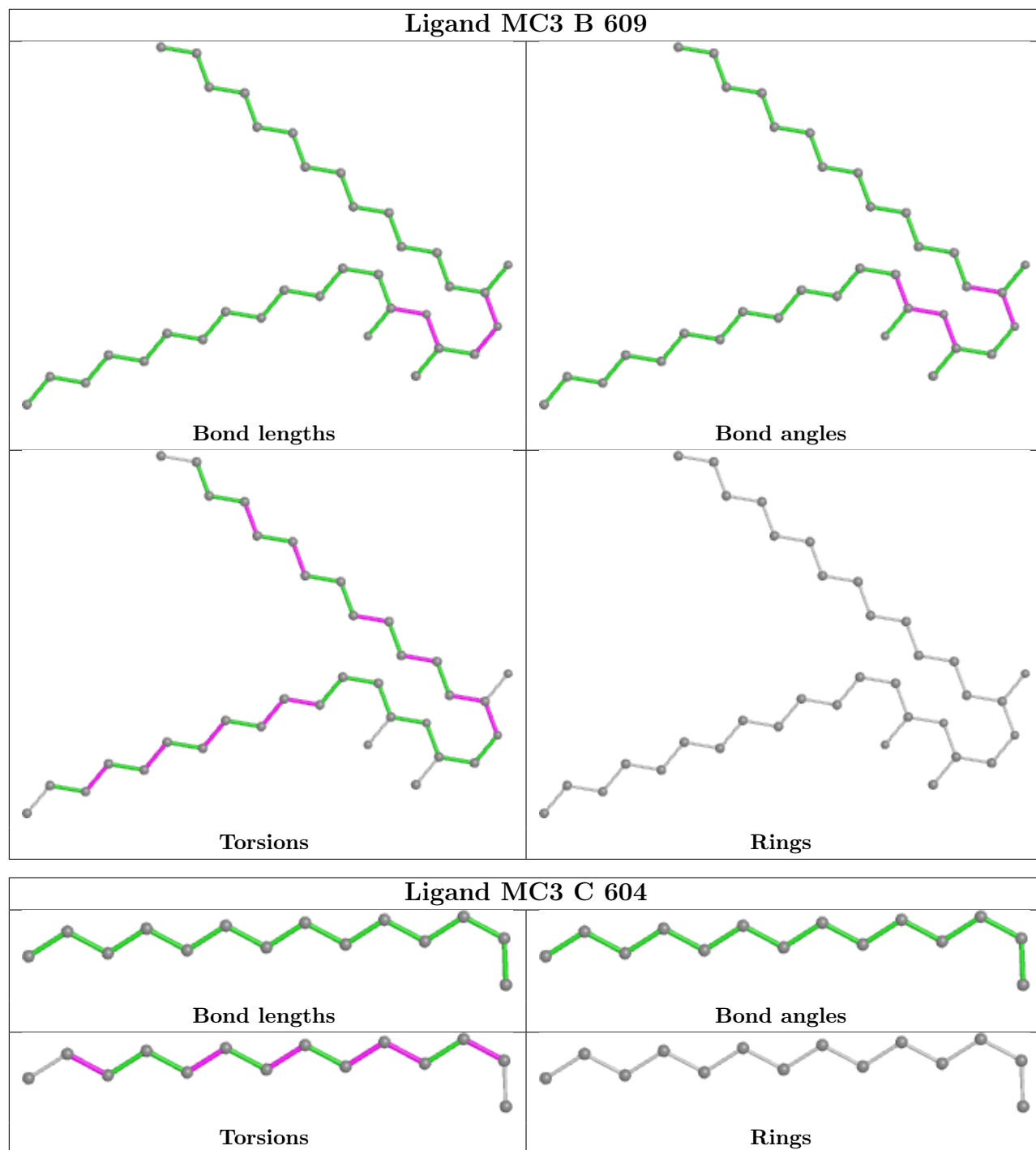


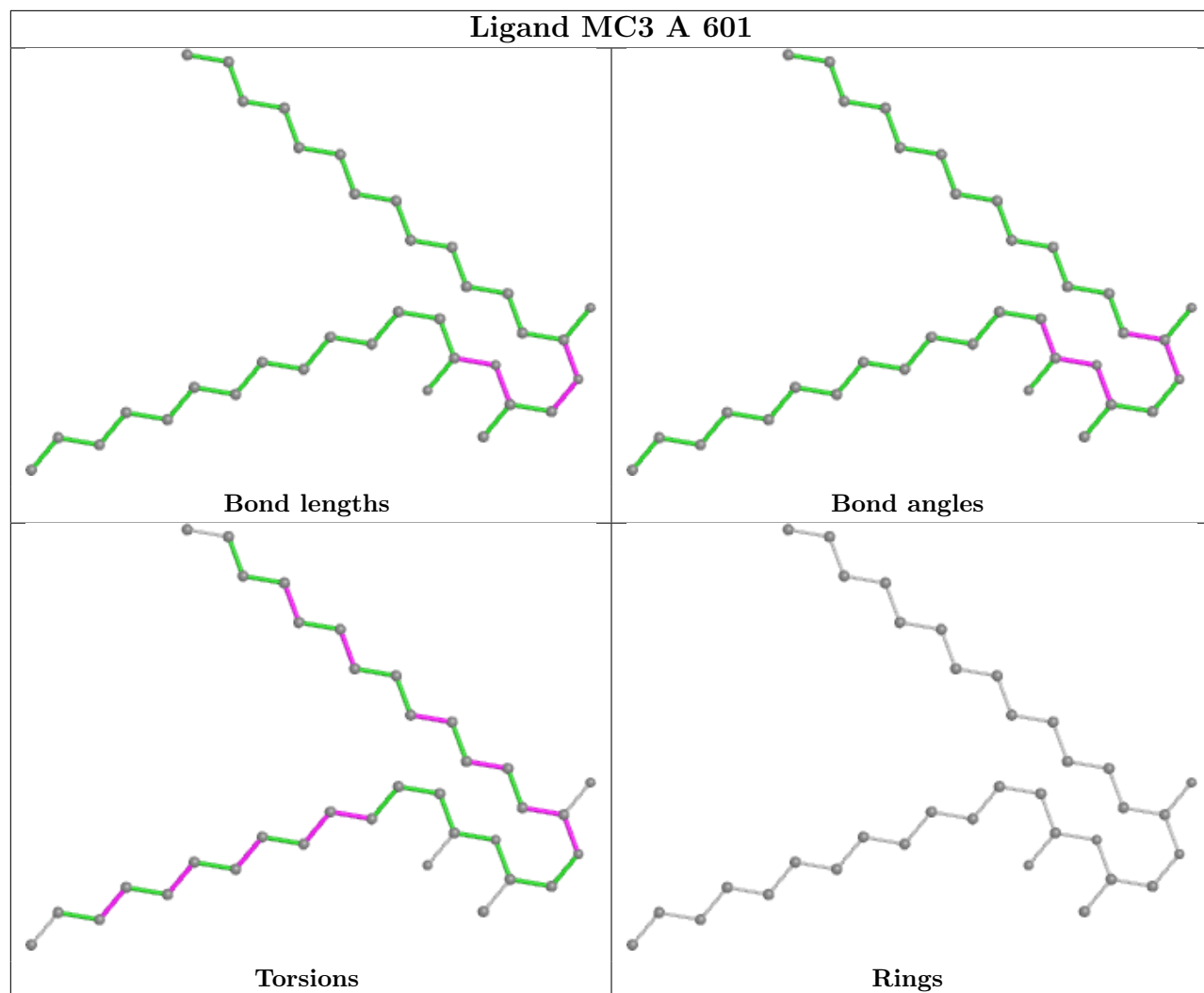


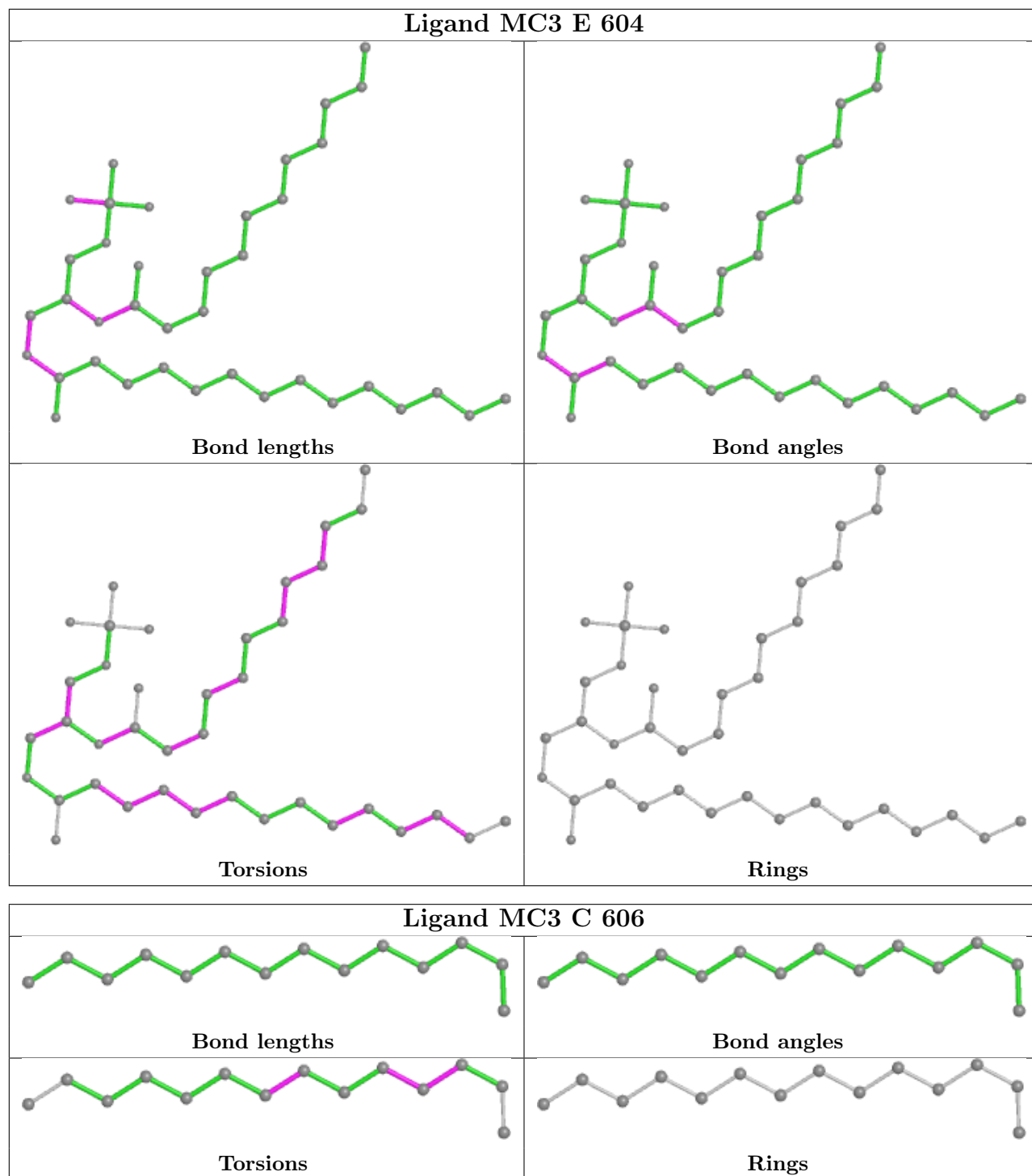


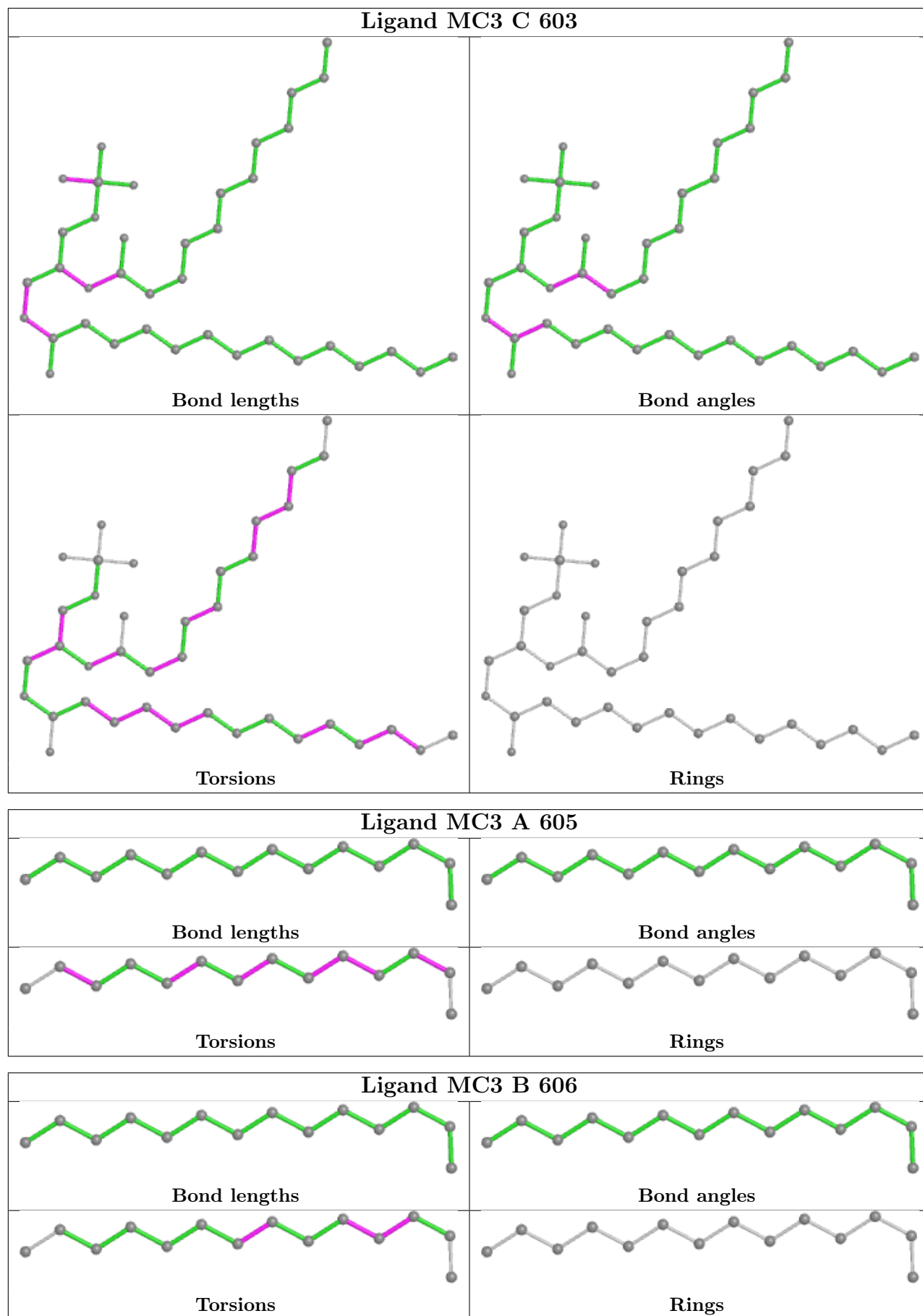


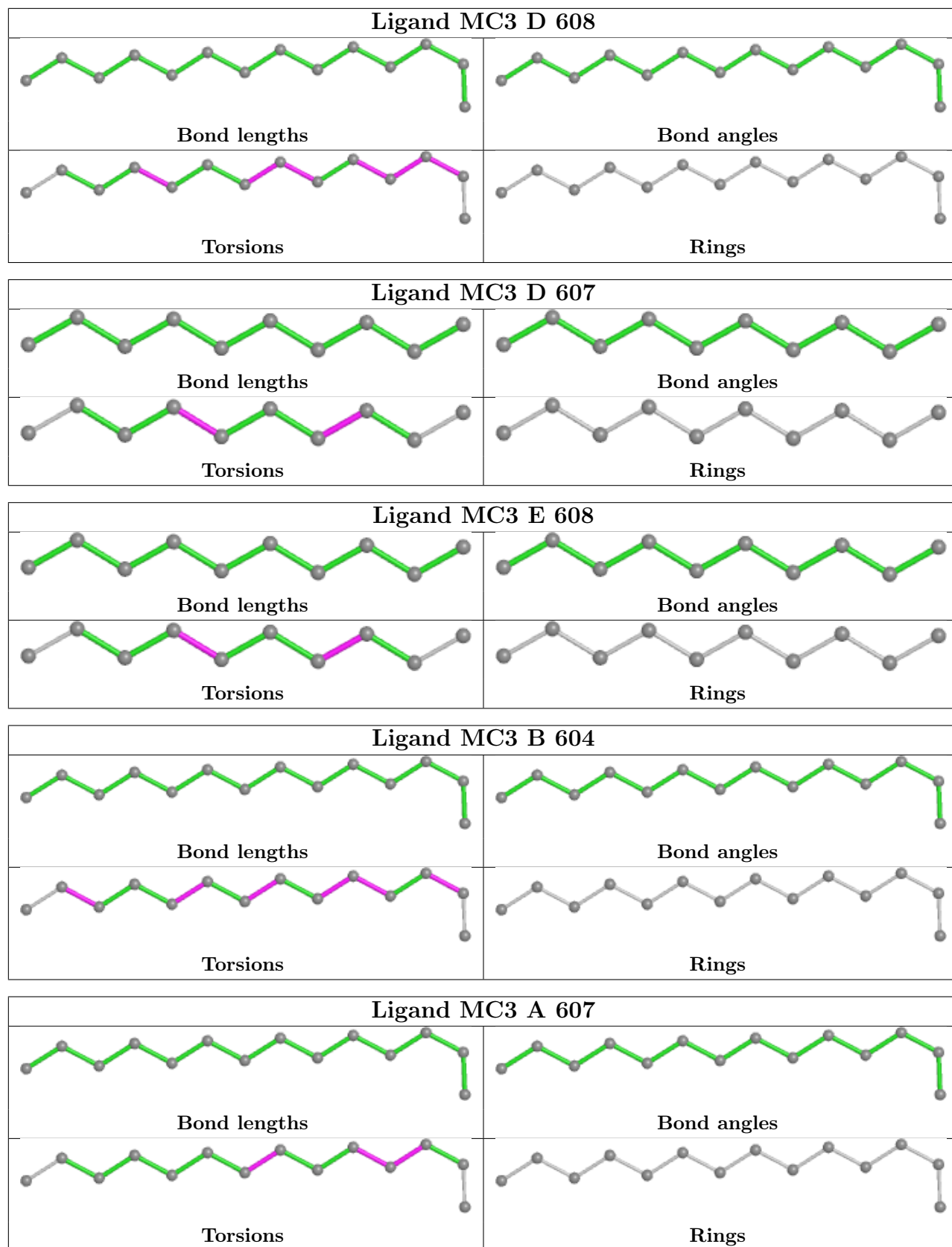


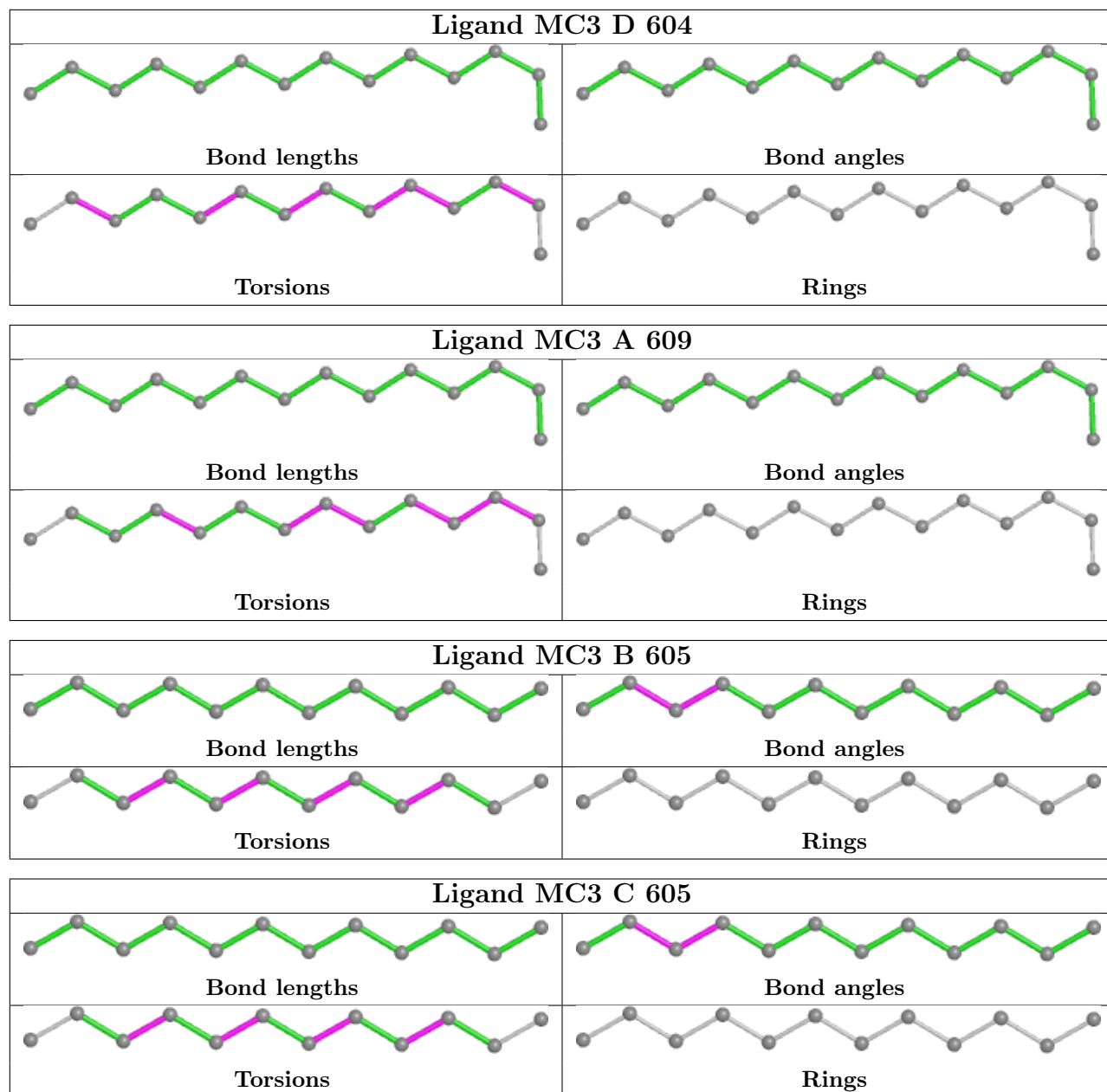


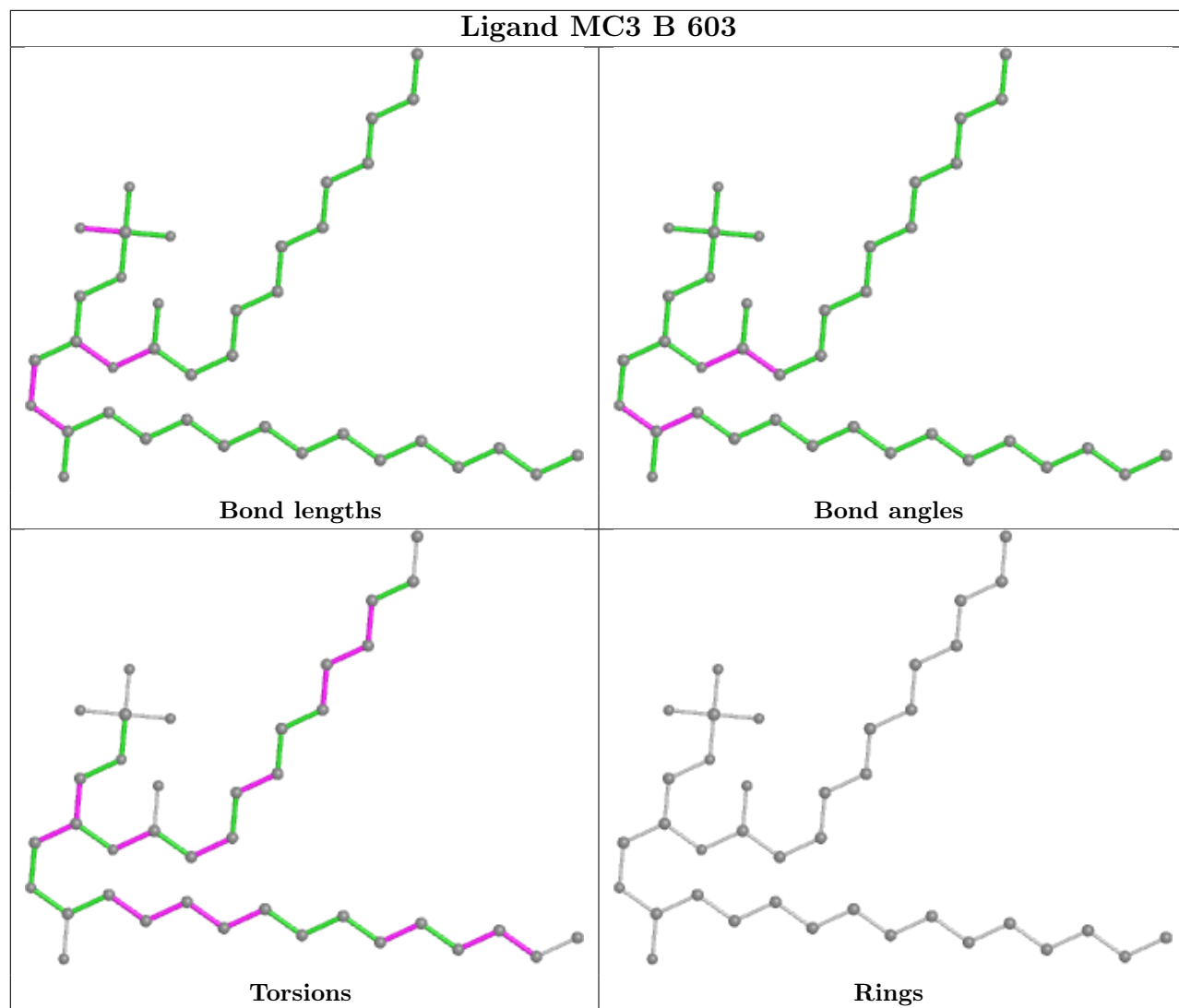


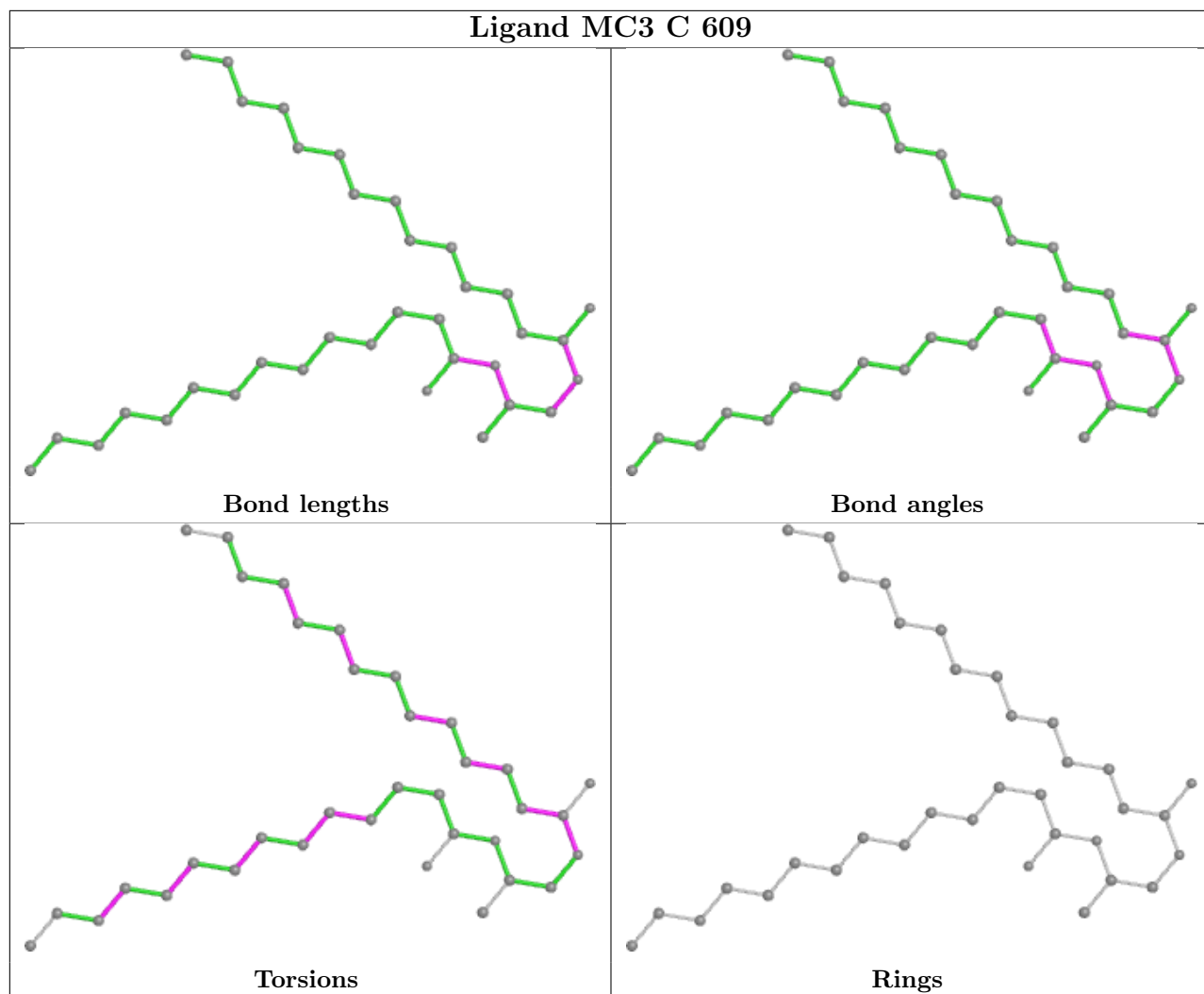


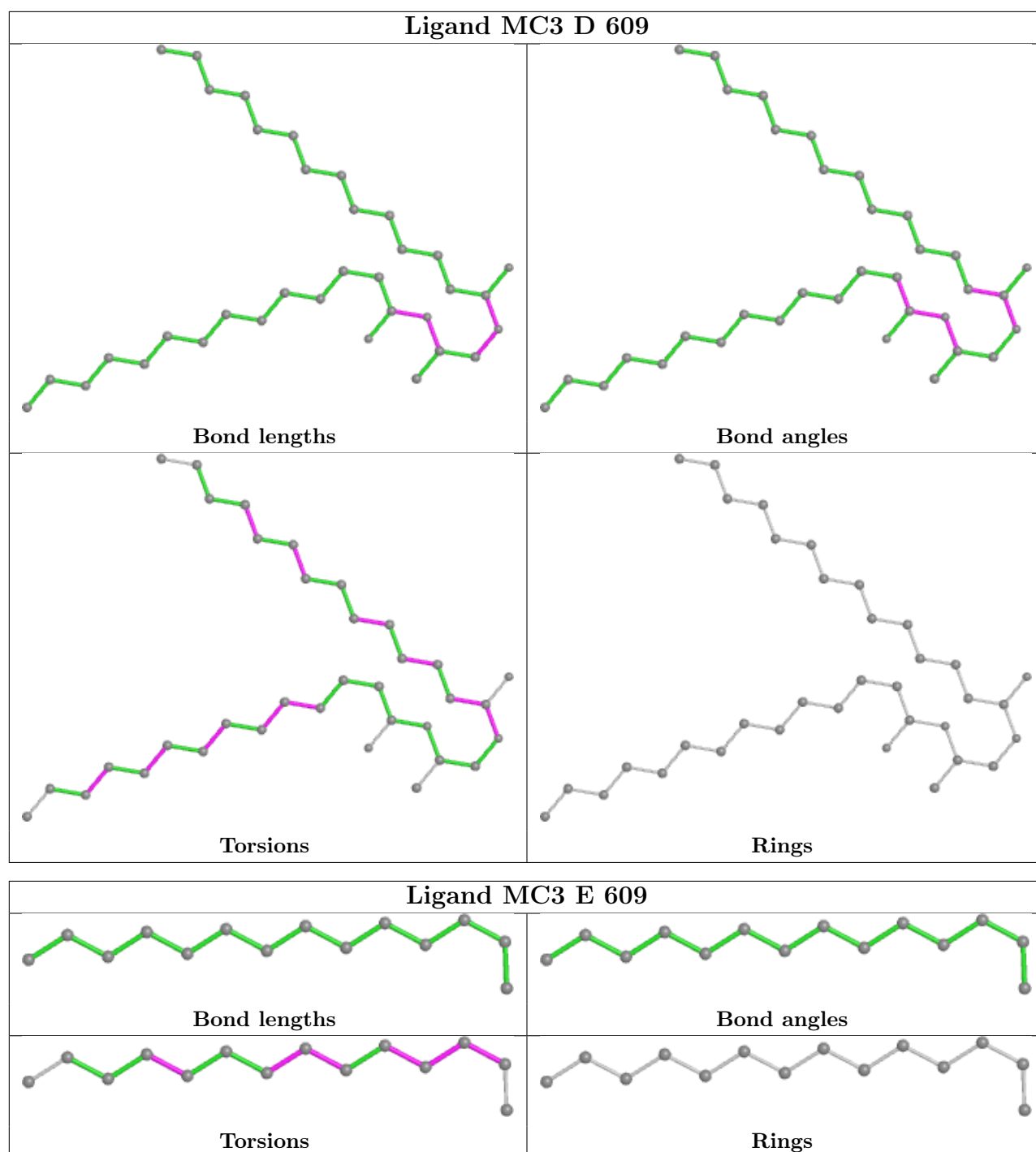












5.7 Other polymers [i](#)

There are no such residues in this entry.

5.8 Polymer linkage issues [i](#)

There are no chain breaks in this entry.

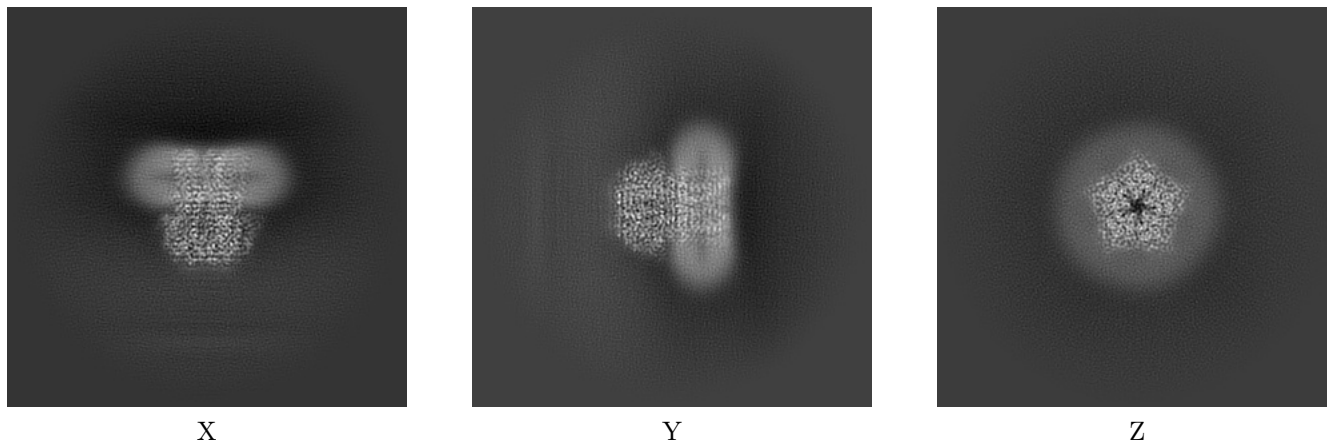
6 Map visualisation [i](#)

This section contains visualisations of the EMDB entry EMD-27134. These allow visual inspection of the internal detail of the map and identification of artifacts.

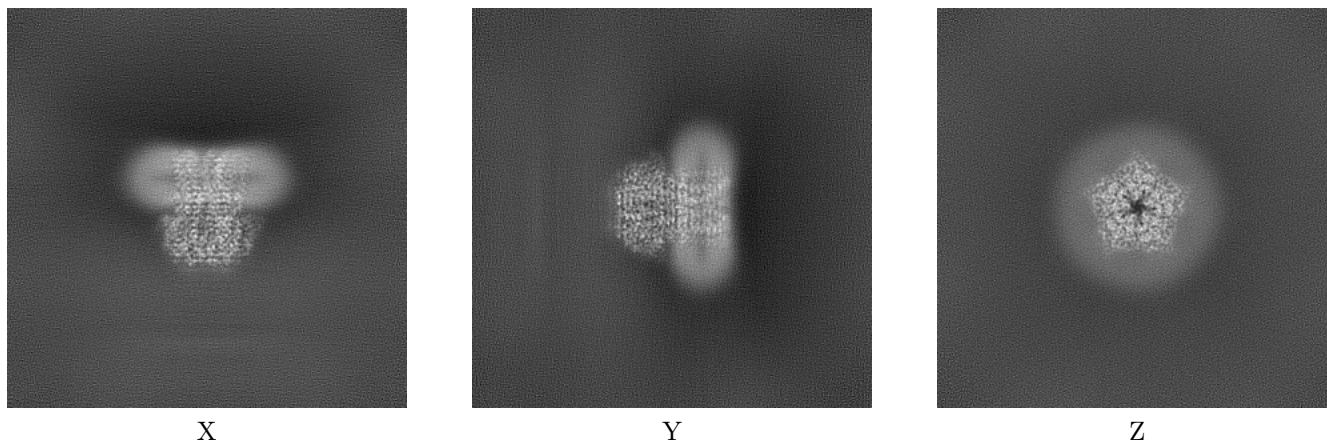
Images derived from a raw map, generated by summing the deposited half-maps, are presented below the corresponding image components of the primary map to allow further visual inspection and comparison with those of the primary map.

6.1 Orthogonal projections [i](#)

6.1.1 Primary map



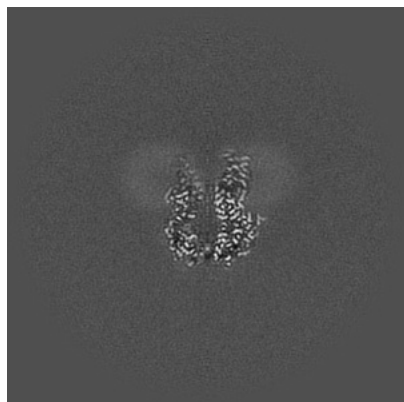
6.1.2 Raw map



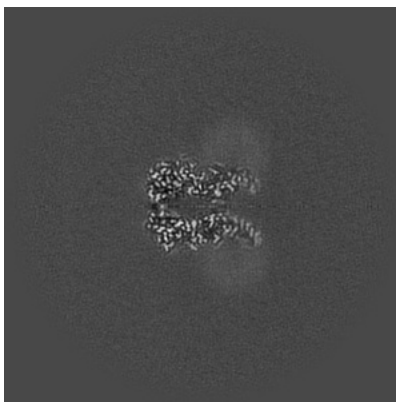
The images above show the map projected in three orthogonal directions.

6.2 Central slices [i](#)

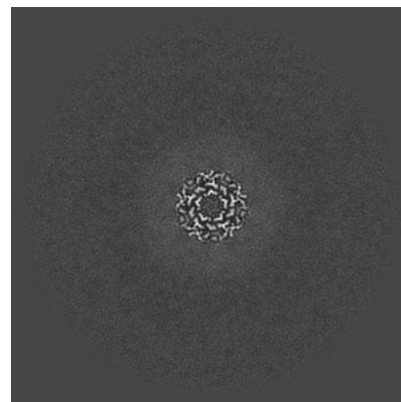
6.2.1 Primary map



X Index: 200

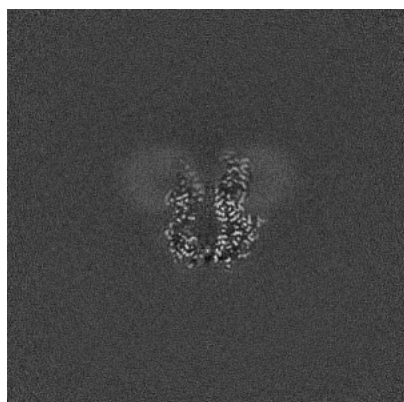


Y Index: 200

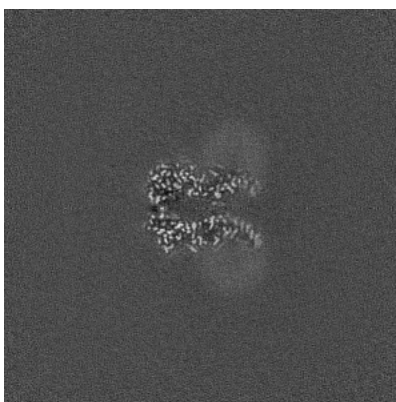


Z Index: 200

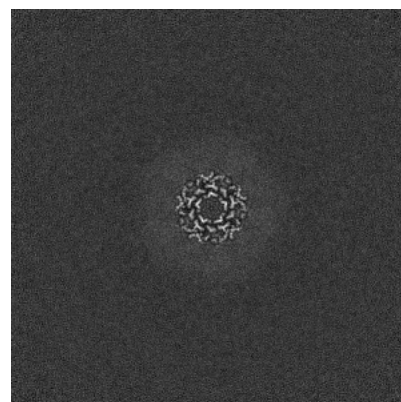
6.2.2 Raw map



X Index: 200



Y Index: 200

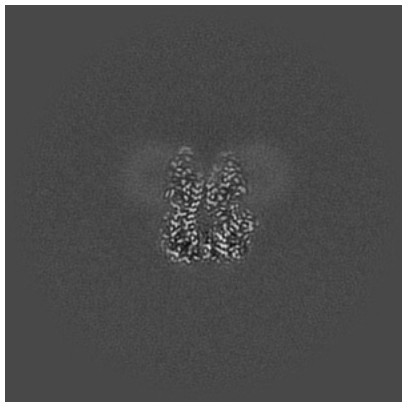


Z Index: 200

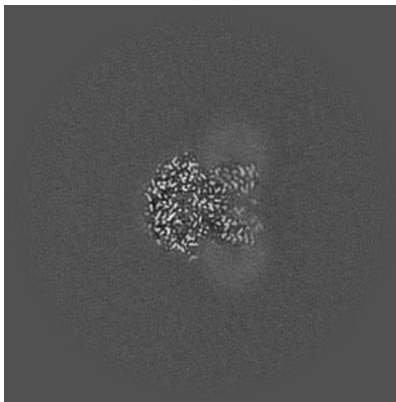
The images above show central slices of the map in three orthogonal directions.

6.3 Largest variance slices [i](#)

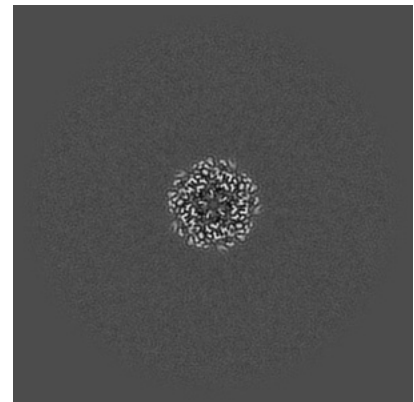
6.3.1 Primary map



X Index: 209

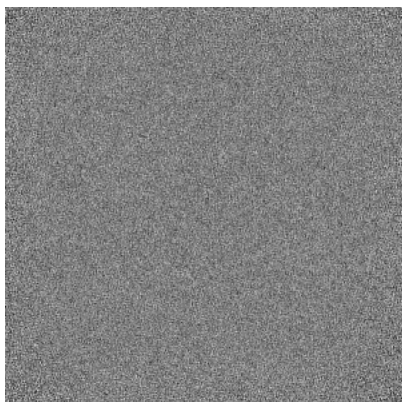


Y Index: 213

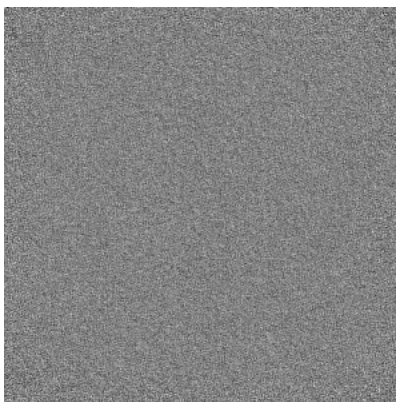


Z Index: 163

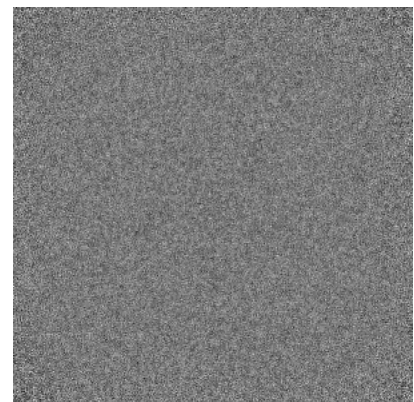
6.3.2 Raw map



X Index: 0



Y Index: 0

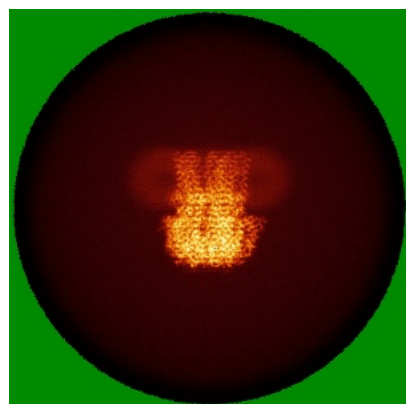


Z Index: 0

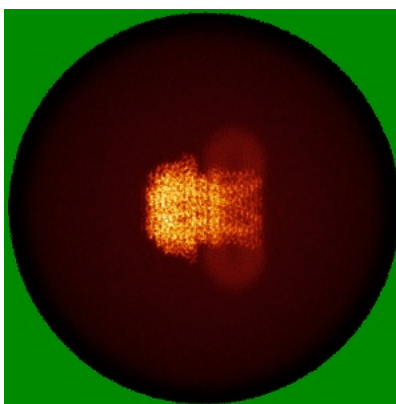
The images above show the largest variance slices of the map in three orthogonal directions.

6.4 Orthogonal standard-deviation projections (False-color) [i](#)

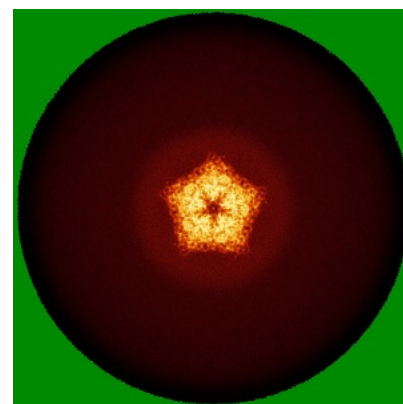
6.4.1 Primary map



X

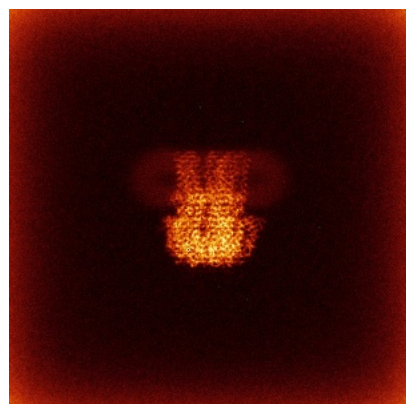


Y

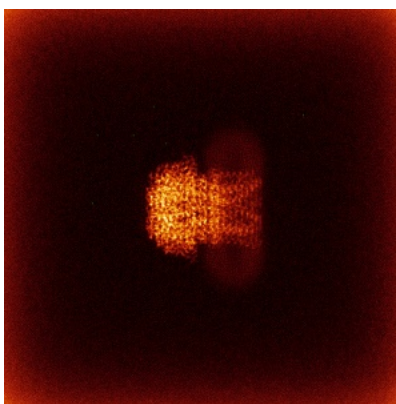


Z

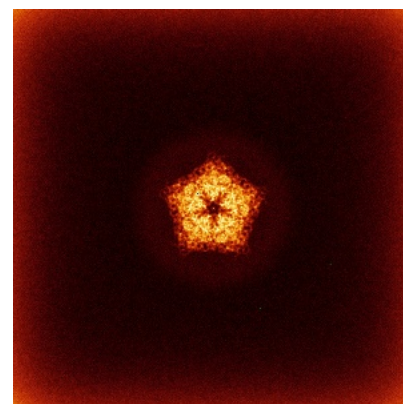
6.4.2 Raw map



X



Y

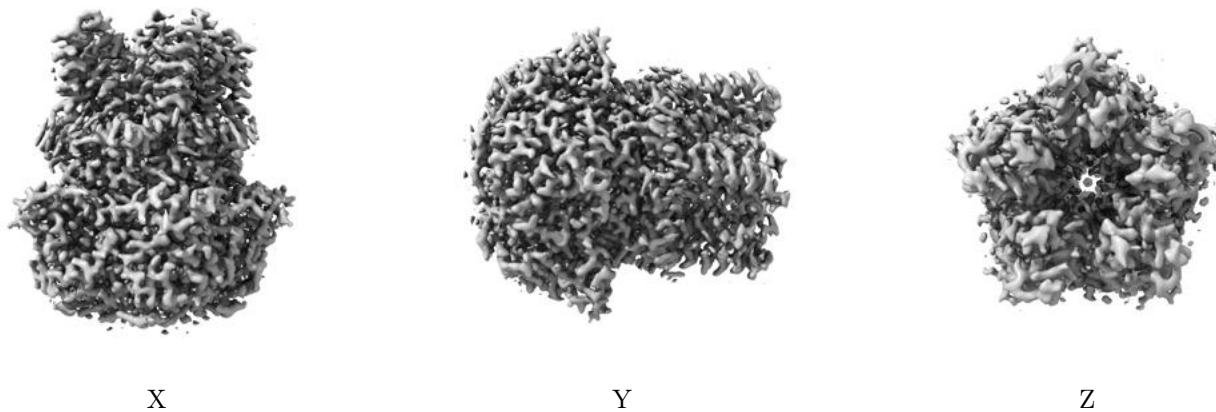


Z

The images above show the map standard deviation projections with false color in three orthogonal directions. Minimum values are shown in green, max in blue, and dark to light orange shades represent small to large values respectively.

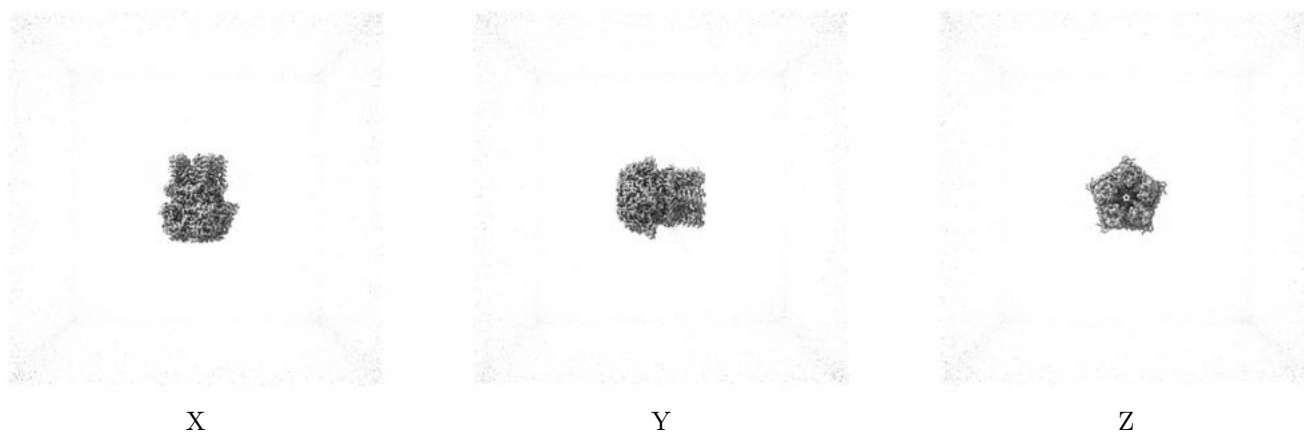
6.5 Orthogonal surface views [i](#)

6.5.1 Primary map



The images above show the 3D surface view of the map at the recommended contour level 7.0. These images, in conjunction with the slice images, may facilitate assessment of whether an appropriate contour level has been provided.

6.5.2 Raw map



These images show the 3D surface of the raw map. The raw map's contour level was selected so that its surface encloses the same volume as the primary map does at its recommended contour level.

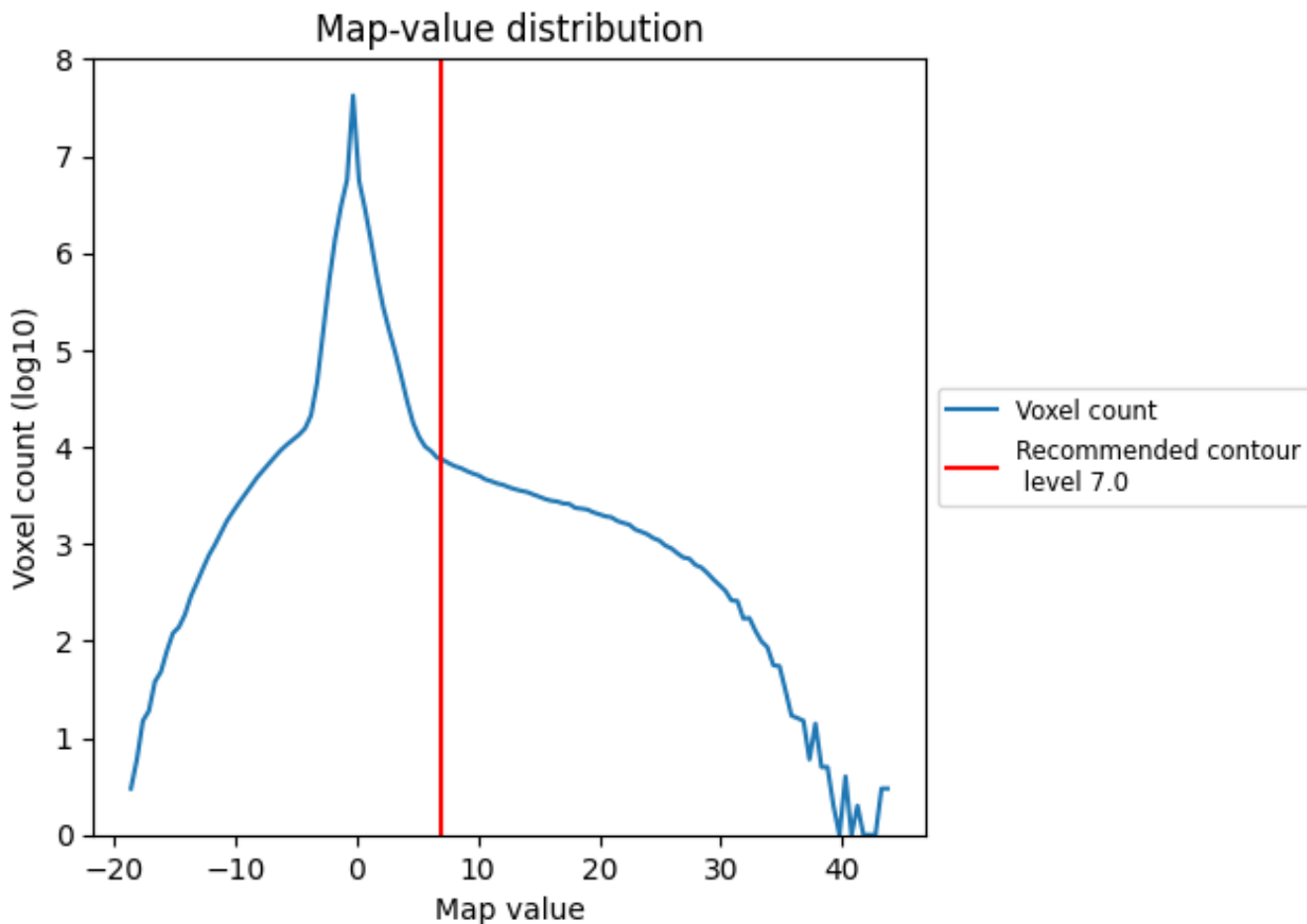
6.6 Mask visualisation [i](#)

This section was not generated. No masks/segmentation were deposited.

7 Map analysis [i](#)

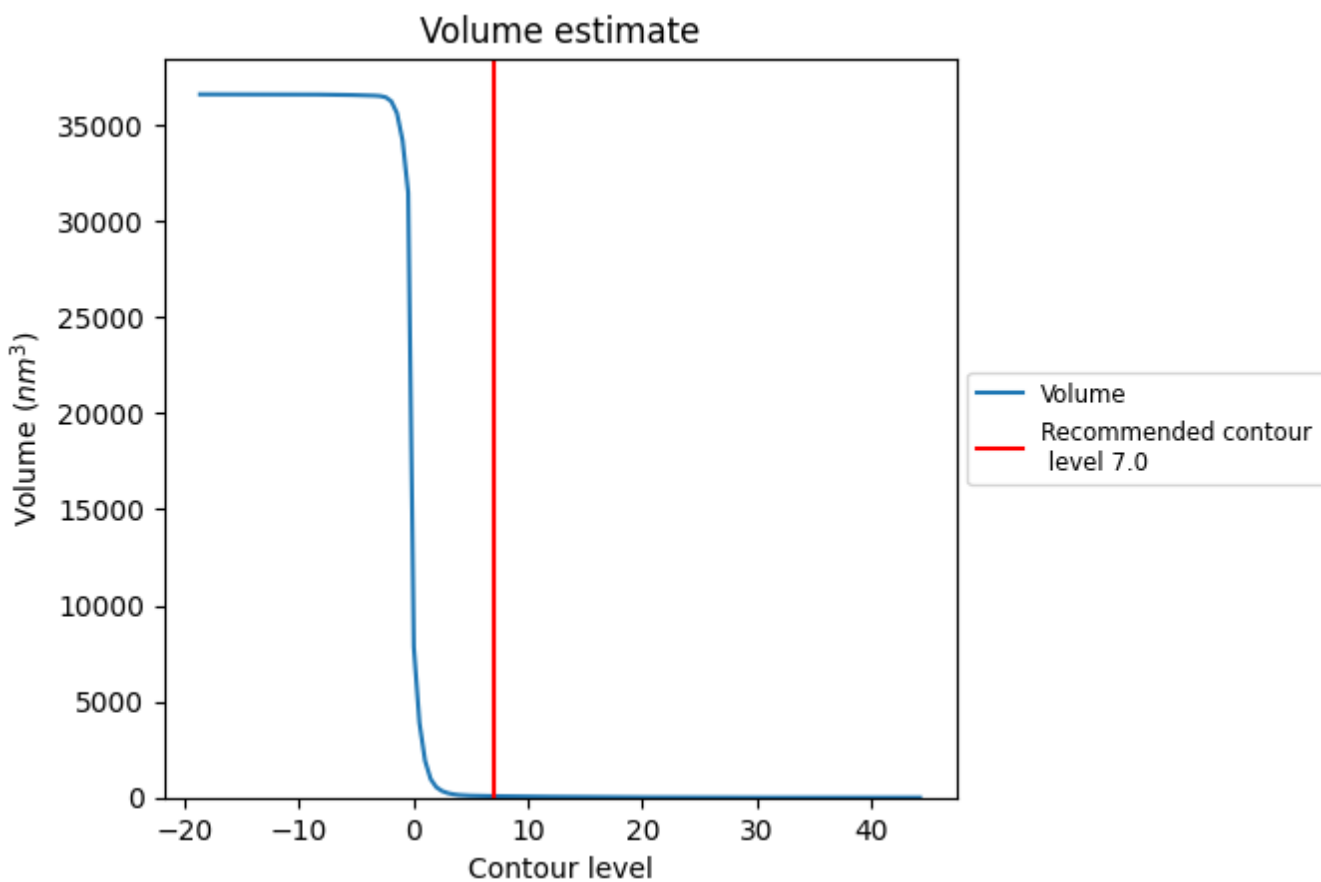
This section contains the results of statistical analysis of the map.

7.1 Map-value distribution [i](#)



The map-value distribution is plotted in 128 intervals along the x-axis. The y-axis is logarithmic. A spike in this graph at zero usually indicates that the volume has been masked.

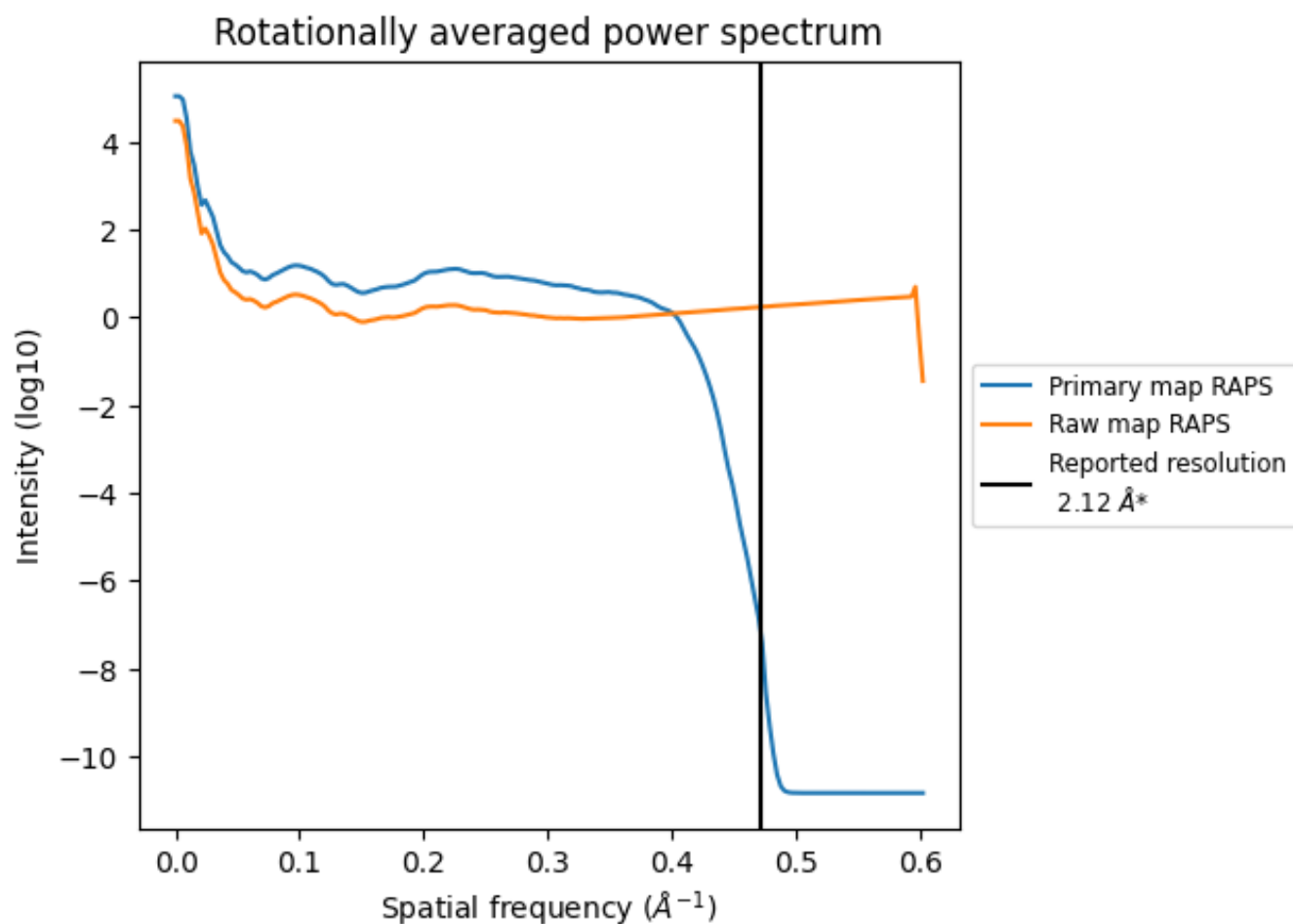
7.2 Volume estimate [i](#)



The volume at the recommended contour level is 75 nm³; this corresponds to an approximate mass of 67 kDa.

The volume estimate graph shows how the enclosed volume varies with the contour level. The recommended contour level is shown as a vertical line and the intersection between the line and the curve gives the volume of the enclosed surface at the given level.

7.3 Rotationally averaged power spectrum [i](#)

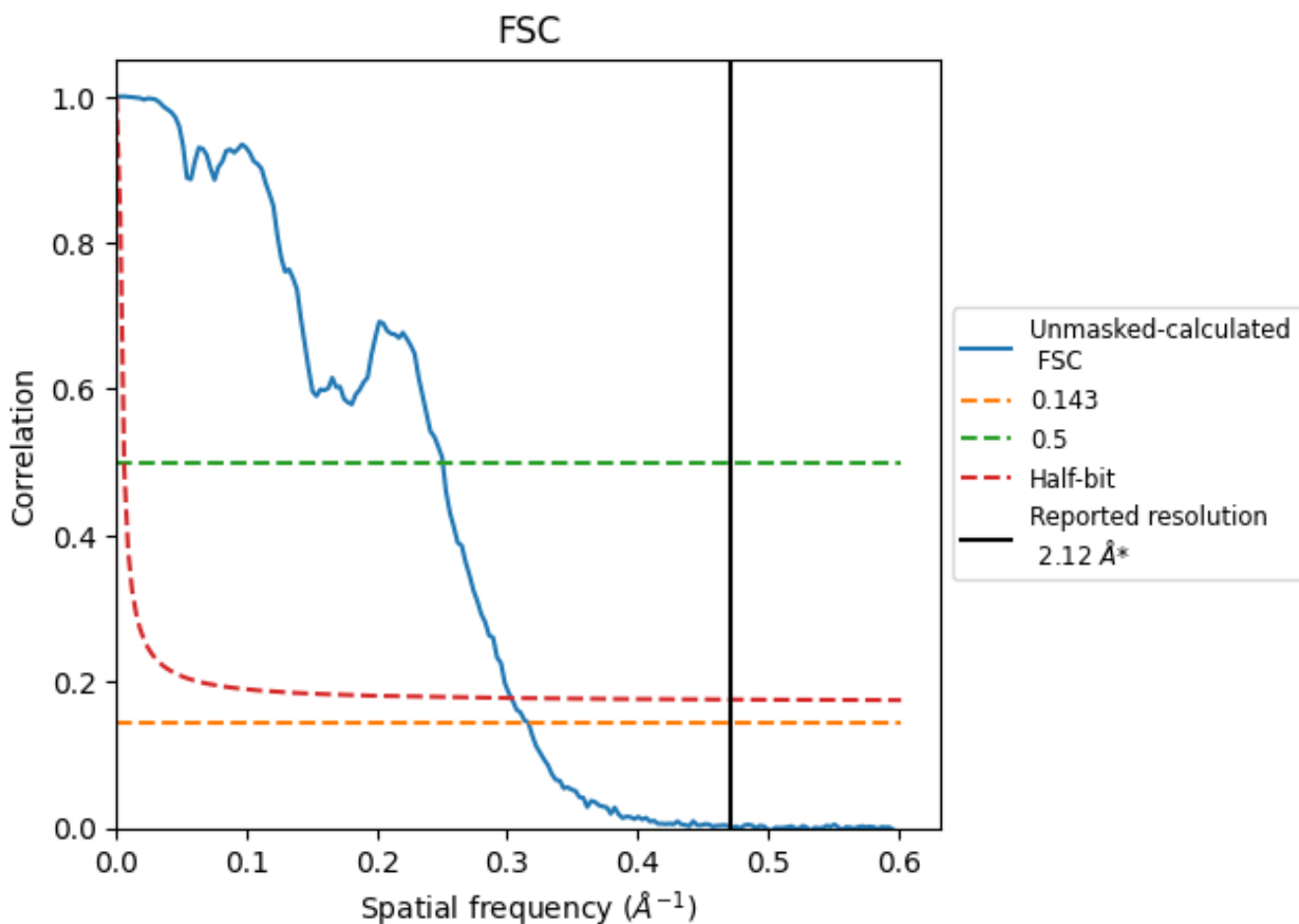


*Reported resolution corresponds to spatial frequency of 0.472 Å⁻¹

8 Fourier-Shell correlation [i](#)

Fourier-Shell Correlation (FSC) is the most commonly used method to estimate the resolution of single-particle and subtomogram-averaged maps. The shape of the curve depends on the imposed symmetry, mask and whether or not the two 3D reconstructions used were processed from a common reference. The reported resolution is shown as a black line. A curve is displayed for the half-bit criterion in addition to lines showing the 0.143 gold standard cut-off and 0.5 cut-off.

8.1 FSC [i](#)



*Reported resolution corresponds to spatial frequency of 0.472 Å⁻¹

8.2 Resolution estimates [i](#)

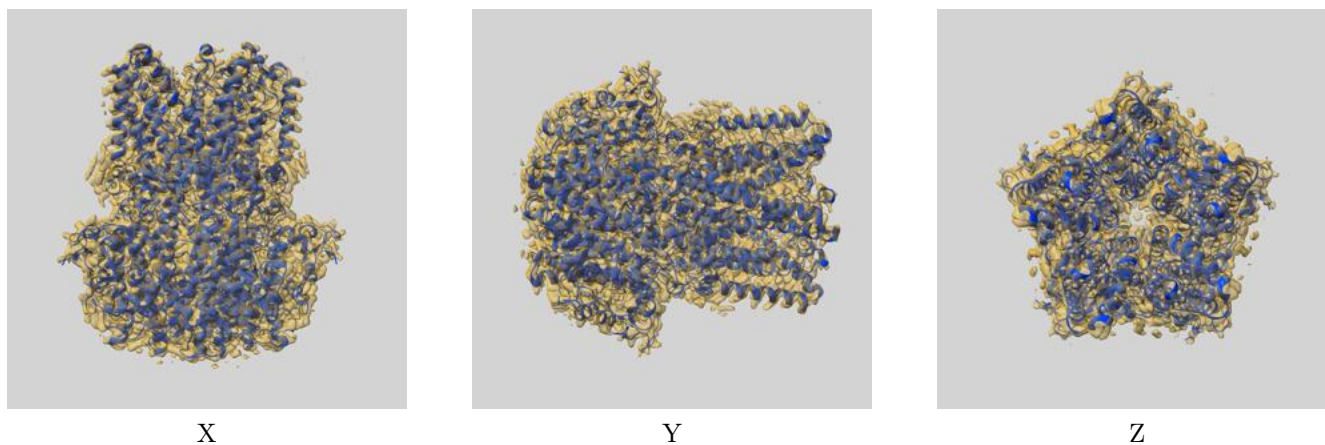
Resolution estimate (Å)	Estimation criterion (FSC cut-off)		
	0.143	0.5	Half-bit
Reported by author	2.12	-	-
Author-provided FSC curve	-	-	-
Unmasked-calculated*	3.16	3.99	3.30

*Resolution estimate based on FSC curve calculated by comparison of deposited half-maps. The value from deposited half-maps intersecting FSC 0.143 CUT-OFF 3.16 differs from the reported value 2.12 by more than 10 %

9 Map-model fit [i](#)

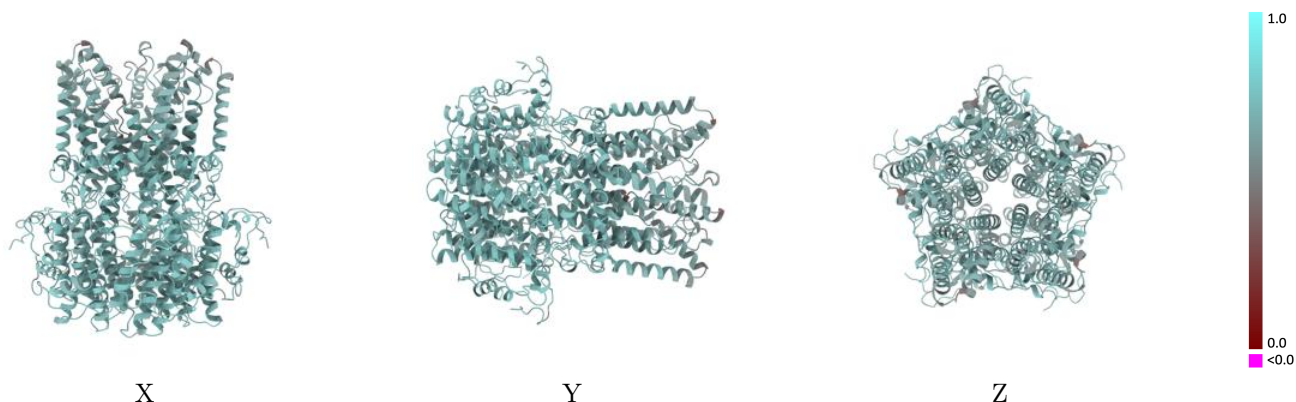
This section contains information regarding the fit between EMDB map EMD-27134 and PDB model 8D1L. Per-residue inclusion information can be found in section [3](#) on page [7](#).

9.1 Map-model overlay [i](#)



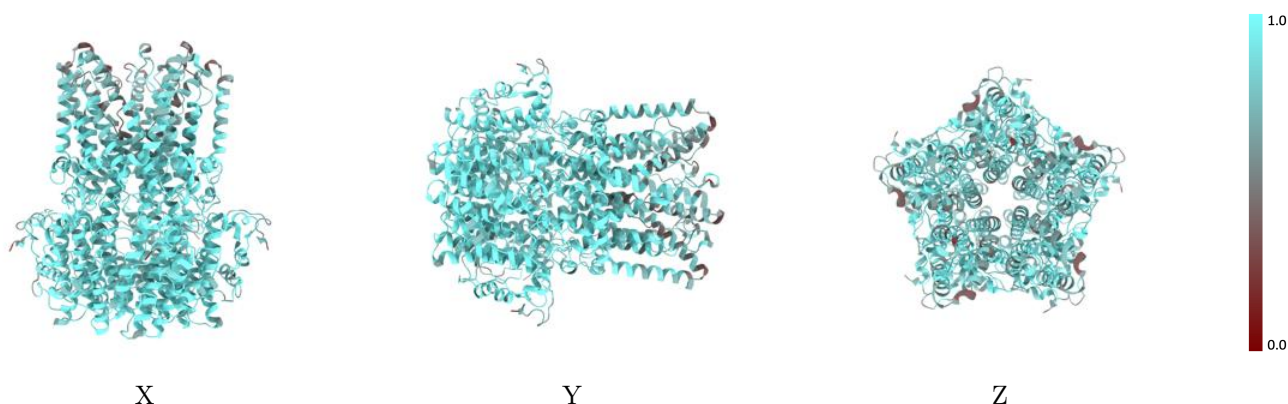
The images above show the 3D surface view of the map at the recommended contour level 7.0 at 50% transparency in yellow overlaid with a ribbon representation of the model coloured in blue. These images allow for the visual assessment of the quality of fit between the atomic model and the map.

9.2 Q-score mapped to coordinate model [i](#)



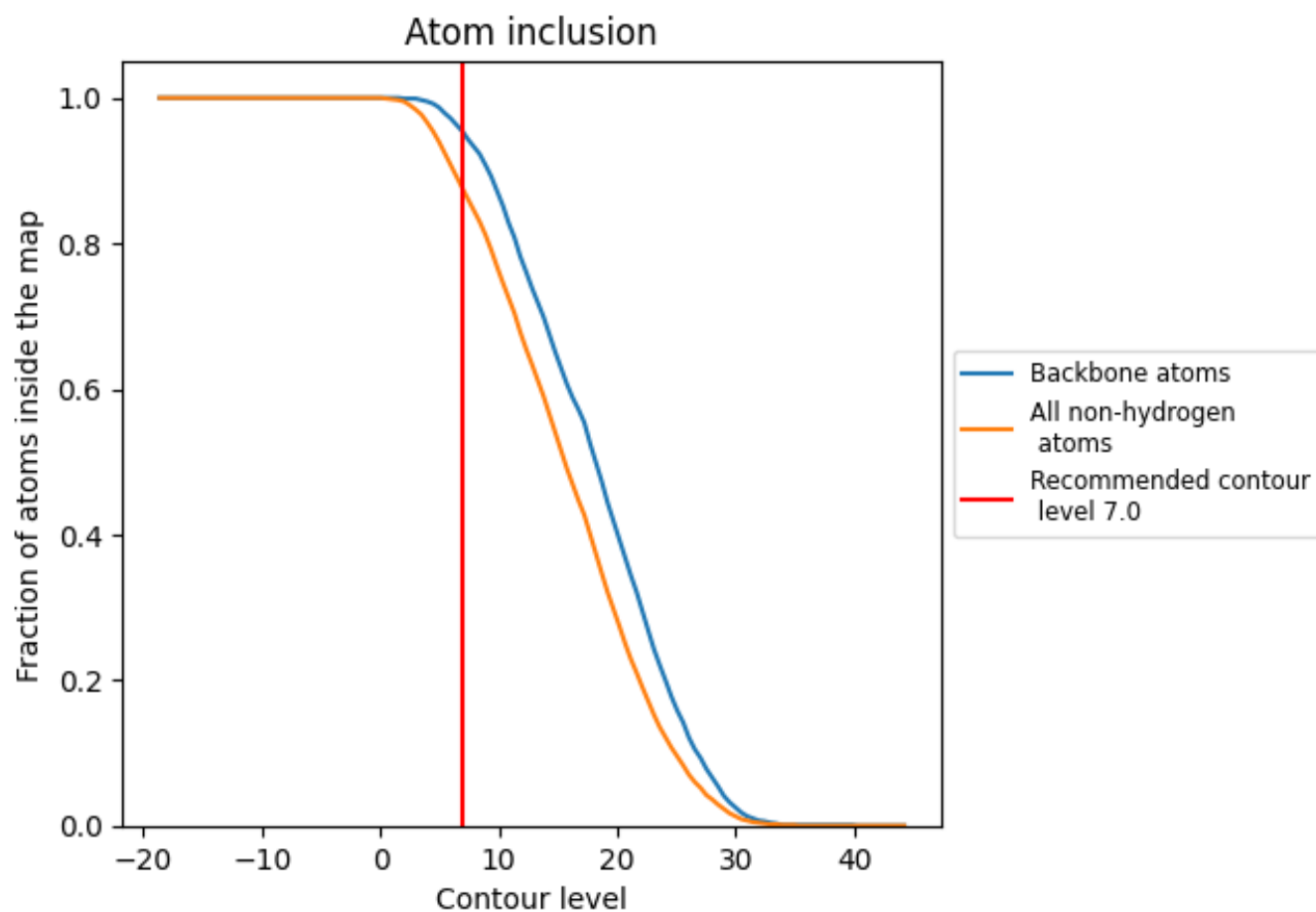
The images above show the model with each residue coloured according to its Q-score. This shows their resolvability in the map with higher Q-score values reflecting better resolvability. Please note: Q-score is calculating the resolvability of atoms, and thus high values are only expected at resolutions at which atoms can be resolved. Low Q-score values may therefore be expected for many entries.

9.3 Atom inclusion mapped to coordinate model [i](#)



The images above show the model with each residue coloured according to its atom inclusion. This shows to what extent they are inside the map at the recommended contour level (7.0).













9.4 Atom inclusion [i](#)



At the recommended contour level, 95% of all backbone atoms, 87% of all non-hydrogen atoms, are inside the map.

9.5 Map-model fit summary

The table lists the average atom inclusion at the recommended contour level (7.0) and Q-score for the entire model and for each chain.

Chain	Atom inclusion	Q-score
All	 0.8740	 0.6640
A	 0.8750	 0.6640
B	 0.8740	 0.6630
C	 0.8740	 0.6650
D	 0.8750	 0.6640
E	 0.8730	 0.6640

