



Full wwPDB X-ray Structure Validation Report ⓘ

Feb 12, 2024 – 01:26 pm GMT

PDB ID : 8CFJ
Title : Crystal structure of S-adenosyl-L-homocysteine hydrolase from *P. aeruginosa* in complex with F2X-Entry library fragment D10
Authors : Malecki, P.H.; Gawel, M.; Stepniewska, M.; Brzezinski, K.
Deposited on : 2023-02-03
Resolution : 1.64 Å(reported)

This is a Full wwPDB X-ray Structure Validation Report for a publicly released PDB entry.

We welcome your comments at validation@mail.wwpdb.org

A user guide is available at

<https://www.wwpdb.org/validation/2017/XrayValidationReportHelp>

with specific help available everywhere you see the ⓘ symbol.

The types of validation reports are described at

<http://www.wwpdb.org/validation/2017/FAQs#types>.

The following versions of software and data (see [references ⓘ](#)) were used in the production of this report:

MolProbity : 4.02b-467
Mogul : 1.8.4, CSD as541be (2020)
Xtriage (Phenix) : 1.13
EDS : 2.36
buster-report : 1.1.7 (2018)
Percentile statistics : 20191225.v01 (using entries in the PDB archive December 25th 2019)
Refmac : 5.8.0158
CCP4 : 7.0.044 (Gargrove)
Ideal geometry (proteins) : Engh & Huber (2001)
Ideal geometry (DNA, RNA) : Parkinson et al. (1996)
Validation Pipeline (wwPDB-VP) : 2.36

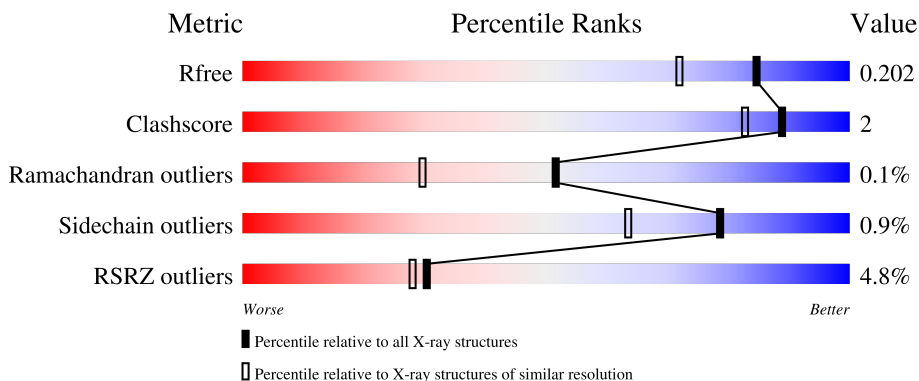
1 Overall quality at a glance

The following experimental techniques were used to determine the structure:

X-RAY DIFFRACTION

The reported resolution of this entry is 1.64 Å.

Percentile scores (ranging between 0-100) for global validation metrics of the entry are shown in the following graphic. The table shows the number of entries on which the scores are based.



Metric	Whole archive (#Entries)	Similar resolution (#Entries, resolution range(Å))
R_{free}	130704	3122 (1.66-1.62)
Clashscore	141614	3268 (1.66-1.62)
Ramachandran outliers	138981	3215 (1.66-1.62)
Sidechain outliers	138945	3215 (1.66-1.62)
RSRZ outliers	127900	3079 (1.66-1.62)

The table below summarises the geometric issues observed across the polymeric chains and their fit to the electron density. The red, orange, yellow and green segments of the lower bar indicate the fraction of residues that contain outliers for ≥ 3 , 2, 1 and 0 types of geometric quality criteria respectively. A grey segment represents the fraction of residues that are not modelled. The numeric value for each fraction is indicated below the corresponding segment, with a dot representing fractions $\leq 5\%$. The upper red bar (where present) indicates the fraction of residues that have poor fit to the electron density. The numeric value is given above the bar.

Mol	Chain	Length	Quality of chain
1	A	472	
1	B	472	
1	C	472	
1	D	472	

2 Entry composition

There are 9 unique types of molecules in this entry. The entry contains 16356 atoms, of which 0 are hydrogens and 0 are deuteriums.

In the tables below, the ZeroOcc column contains the number of atoms modelled with zero occupancy, the AltConf column contains the number of residues with at least one atom in alternate conformation and the Trace column contains the number of residues modelled with at most 2 atoms.

- Molecule 1 is a protein called Adenosylhomocysteinase.

Mol	Chain	Residues	Atoms					ZeroOcc	AltConf	Trace
			Total	C	N	O	S			
1	A	464	3612	2279	623	687	23	0	7	0
1	B	461	3597	2270	624	681	22	0	7	0
1	C	460	3588	2262	620	683	23	0	6	0
1	D	462	3596	2266	623	684	23	0	6	0

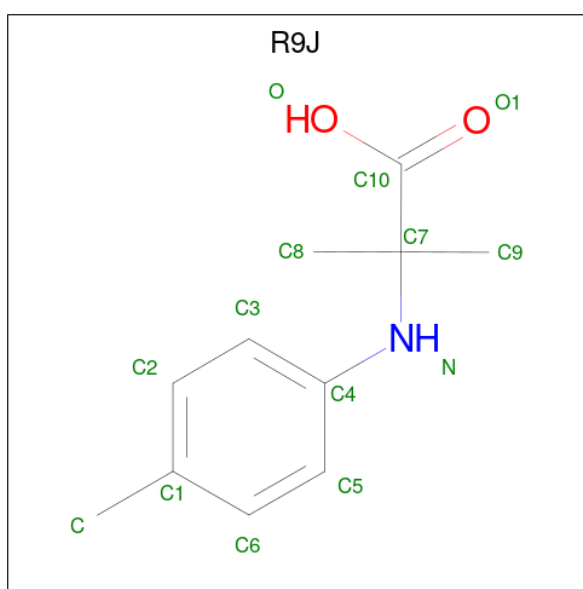
There are 12 discrepancies between the modelled and reference sequences:

Chain	Residue	Modelled	Actual	Comment	Reference
A	-2	SER	-	expression tag	UNP Q9I685
A	-1	ASN	-	expression tag	UNP Q9I685
A	0	ALA	-	expression tag	UNP Q9I685
B	-2	SER	-	expression tag	UNP Q9I685
B	-1	ASN	-	expression tag	UNP Q9I685
B	0	ALA	-	expression tag	UNP Q9I685
C	-2	SER	-	expression tag	UNP Q9I685
C	-1	ASN	-	expression tag	UNP Q9I685
C	0	ALA	-	expression tag	UNP Q9I685
D	-2	SER	-	expression tag	UNP Q9I685
D	-1	ASN	-	expression tag	UNP Q9I685
D	0	ALA	-	expression tag	UNP Q9I685

- Molecule 2 is NICOTINAMIDE-ADENINE-DINUCLEOTIDE (three-letter code: NAD) (formula: C₂₁H₂₇N₇O₁₄P₂).

Mol	Chain	Residues	Atoms			ZeroOcc	AltConf
3	A	1	Total	C	N	0	0
			10	5	5		
3	B	1	Total	C	N	0	0
			10	5	5		
3	C	1	Total	C	N	0	0
			10	5	5		
3	D	1	Total	C	N	0	0
			10	5	5		

- Molecule 4 is 2-methyl-N-(4-methylphenyl)-L-alanine (three-letter code: R9J) (formula: $C_{11}H_{15}NO_2$) (labeled as "Ligand of Interest" by depositor).



Mol	Chain	Residues	Atoms				ZeroOcc	AltConf
4	A	1	Total	C	N	O	0	0
			14	11	1	2		

- Molecule 5 is GLYCEROL (three-letter code: GOL) (formula: $C_3H_8O_3$).



Mol	Chain	Residues	Atoms	ZeroOcc	AltConf
5	A	1	Total C O 6 3 3	0	0
5	B	1	Total C O 6 3 3	0	0
5	B	1	Total C O 6 3 3	0	0
5	B	1	Total C O 6 3 3	0	0

- Molecule 6 is POTASSIUM ION (three-letter code: K) (formula: K).

Mol	Chain	Residues	Atoms	ZeroOcc	AltConf
6	A	1	Total K 1 1	0	0
6	B	1	Total K 1 1	0	0
6	C	1	Total K 1 1	0	0
6	D	1	Total K 1 1	0	0

- Molecule 7 is PHOSPHATE ION (three-letter code: PO4) (formula: O₄P).



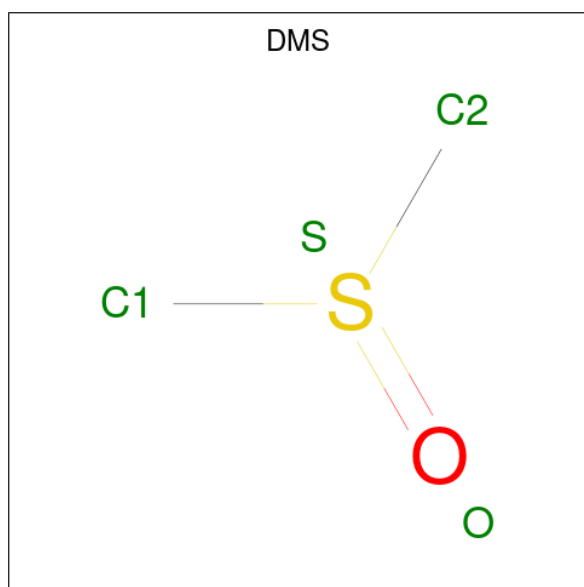
Mol	Chain	Residues	Atoms	ZeroOcc	AltConf
7	A	1	Total O P 5 4 1	0	0
7	A	1	Total O P 5 4 1	0	0
7	A	1	Total O P 5 4 1	0	0
7	A	1	Total O P 5 4 1	0	0
7	B	1	Total O P 5 4 1	0	0
7	B	1	Total O P 5 4 1	0	0
7	B	1	Total O P 5 4 1	0	0
7	B	1	Total O P 5 4 1	0	0
7	C	1	Total O P 5 4 1	0	0
7	C	1	Total O P 5 4 1	0	0
7	C	1	Total O P 5 4 1	0	0
7	C	1	Total O P 5 4 1	0	0
7	C	1	Total O P 5 4 1	0	0
7	D	1	Total O P 5 4 1	0	0

Continued on next page...

Continued from previous page...

Mol	Chain	Residues	Atoms			ZeroOcc	AltConf
7	D	1	Total	O	P	0	0
			5	4	1		
7	D	1	Total	O	P	0	0
			5	4	1		
7	D	1	Total	O	P	0	0
			5	4	1		

- Molecule 8 is DIMETHYL SULFOXIDE (three-letter code: DMS) (formula: C₂H₆OS).



Mol	Chain	Residues	Atoms				ZeroOcc	AltConf
8	D	1	Total	C	O	S	0	0
			4	2	1	1		

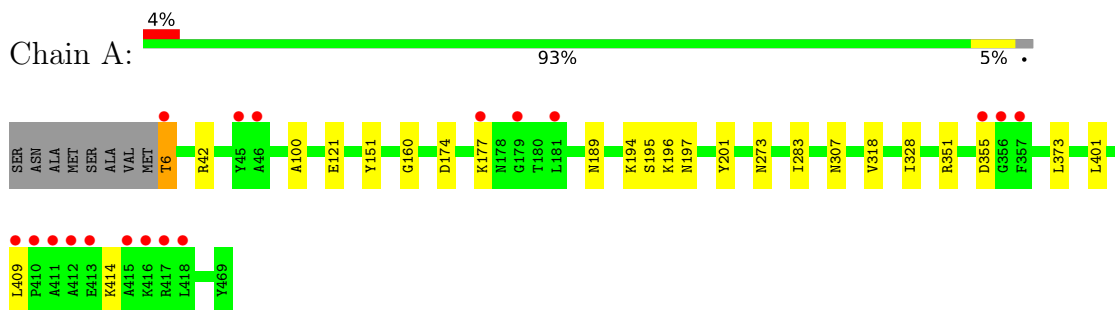
- Molecule 9 is water.

Mol	Chain	Residues	Atoms		ZeroOcc	AltConf
9	A	385	Total	O	0	16
			400	400		
9	B	420	Total	O	0	14
			433	433		
9	C	349	Total	O	0	9
			358	358		
9	D	410	Total	O	0	16
			425	425		

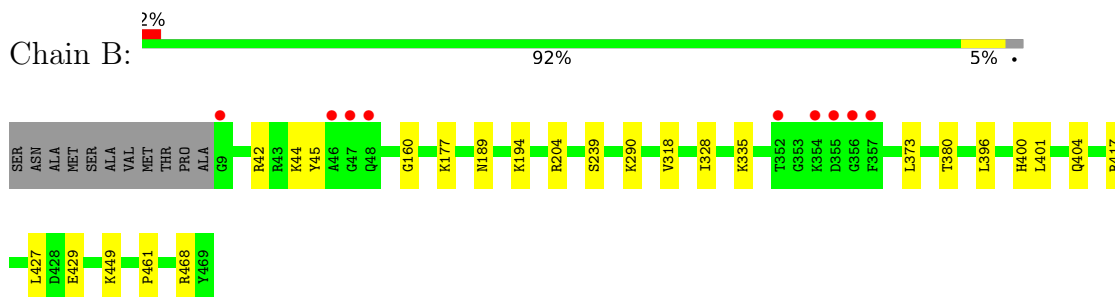
3 Residue-property plots [i](#)

These plots are drawn for all protein, RNA, DNA and oligosaccharide chains in the entry. The first graphic for a chain summarises the proportions of the various outlier classes displayed in the second graphic. The second graphic shows the sequence view annotated by issues in geometry and electron density. Residues are color-coded according to the number of geometric quality criteria for which they contain at least one outlier: green = 0, yellow = 1, orange = 2 and red = 3 or more. A red dot above a residue indicates a poor fit to the electron density ($RSRZ > 2$). Stretches of 2 or more consecutive residues without any outlier are shown as a green connector. Residues present in the sample, but not in the model, are shown in grey.

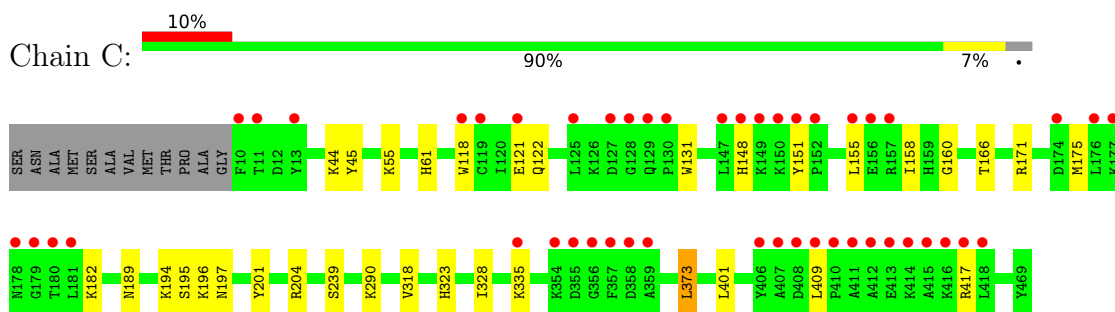
- Molecule 1: Adenosylhomocysteinase



- Molecule 1: Adenosylhomocysteinase

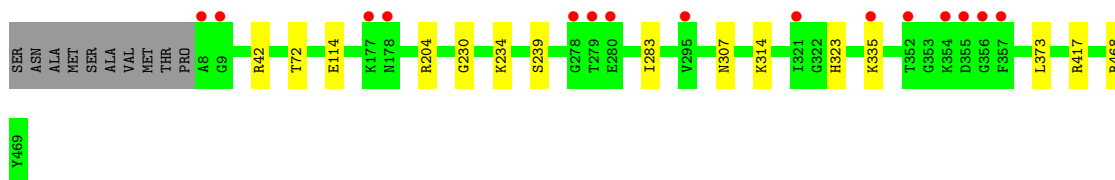


- Molecule 1: Adenosylhomocysteinase



- Molecule 1: Adenosylhomocysteinase





4 Data and refinement statistics

Property	Value	Source
Space group	P 1 21 1	Depositor
Cell constants a, b, c, α , β , γ	74.11Å 132.72Å 99.03Å 90.00° 101.41° 90.00°	Depositor
Resolution (Å)	27.39 – 1.64 36.47 – 1.64	Depositor EDS
% Data completeness (in resolution range)	97.2 (27.39-1.64) 97.2 (36.47-1.64)	Depositor EDS
R_{merge}	0.11	Depositor
R_{sym}	(Not available)	Depositor
$\langle I/\sigma(I) \rangle$ ¹	1.11 (at 1.64Å)	Xtrriage
Refinement program	PHENIX 1.19.2-4158	Depositor
R, R_{free}	0.168 , 0.201 0.168 , 0.202	Depositor DCC
R_{free} test set	2341 reflections (1.05%)	wwPDB-VP
Wilson B-factor (Å ²)	23.7	Xtrriage
Anisotropy	0.165	Xtrriage
Bulk solvent k_{sol} (e/Å ³), B_{sol} (Å ²)	0.36 , 47.9	EDS
L-test for twinning ²	$\langle L \rangle = 0.51$, $\langle L^2 \rangle = 0.34$	Xtrriage
Estimated twinning fraction	No twinning to report.	Xtrriage
F_o, F_c correlation	0.98	EDS
Total number of atoms	16356	wwPDB-VP
Average B, all atoms (Å ²)	31.0	wwPDB-VP

Xtrriage's analysis on translational NCS is as follows: *The largest off-origin peak in the Patterson function is 4.02% of the height of the origin peak. No significant pseudotranslation is detected.*

¹Intensities estimated from amplitudes.

²Theoretical values of $\langle |L| \rangle$, $\langle L^2 \rangle$ for acentric reflections are 0.5, 0.333 respectively for untwinned datasets, and 0.375, 0.2 for perfectly twinned datasets.

5 Model quality [i](#)

5.1 Standard geometry [i](#)

Bond lengths and bond angles in the following residue types are not validated in this section: PO4, ADE, R9J, NAD, K, DMS, GOL

The Z score for a bond length (or angle) is the number of standard deviations the observed value is removed from the expected value. A bond length (or angle) with $|Z| > 5$ is considered an outlier worth inspection. RMSZ is the root-mean-square of all Z scores of the bond lengths (or angles).

Mol	Chain	Bond lengths		Bond angles	
		RMSZ	# Z >5	RMSZ	# Z >5
1	A	0.34	0/3691	0.55	0/4989
1	B	0.35	0/3678	0.57	0/4969
1	C	0.34	0/3663	0.53	0/4951
1	D	0.34	0/3668	0.55	0/4957
All	All	0.34	0/14700	0.55	0/19866

There are no bond length outliers.

There are no bond angle outliers.

There are no chirality outliers.

There are no planarity outliers.

5.2 Too-close contacts [i](#)

In the following table, the Non-H and H(model) columns list the number of non-hydrogen atoms and hydrogen atoms in the chain respectively. The H(added) column lists the number of hydrogen atoms added and optimized by MolProbity. The Clashes column lists the number of clashes within the asymmetric unit, whereas Symm-Clashes lists symmetry-related clashes.

Mol	Chain	Non-H	H(model)	H(added)	Clashes	Symm-Clashes
1	A	3612	0	3633	15	0
1	B	3597	0	3626	13	0
1	C	3588	0	3599	20	0
1	D	3596	0	3605	9	0
2	A	44	0	26	1	0
2	B	44	0	26	1	0
2	C	44	0	26	0	0
2	D	44	0	26	1	0
3	A	10	0	4	0	0

Continued on next page...

Continued from previous page...

Mol	Chain	Non-H	H(model)	H(added)	Clashes	Symm-Clashes
3	B	10	0	4	0	0
3	C	10	0	4	0	0
3	D	10	0	4	0	0
4	A	14	0	0	1	0
5	A	6	0	8	0	0
5	B	18	0	24	1	0
6	A	1	0	0	0	0
6	B	1	0	0	0	0
6	C	1	0	0	0	0
6	D	1	0	0	0	0
7	A	20	0	0	1	0
7	B	20	0	0	0	0
7	C	25	0	0	0	0
7	D	20	0	0	1	0
8	D	4	0	6	0	0
9	A	400	0	0	1	0
9	B	433	0	0	0	0
9	C	358	0	0	1	0
9	D	425	0	0	0	0
All	All	16356	0	14621	55	0

The all-atom clashscore is defined as the number of clashes found per 1000 atoms (including hydrogen atoms). The all-atom clashscore for this structure is 2.

All (55) close contacts within the same asymmetric unit are listed below, sorted by their clash magnitude.

Atom-1	Atom-2	Interatomic distance (Å)	Clash overlap (Å)
1:C:189:ASN:HA	1:C:194:LYS:HD2	1.72	0.71
1:B:396:LEU:HD13	1:B:427:LEU:HD22	1.78	0.66
1:A:351:ARG:NH2	7:A:506:PO4:O4	2.31	0.63
1:C:409:LEU:HD11	1:C:417:ARG:HH11	1.69	0.57
1:B:373:LEU:HD22	2:B:502:NAD:N7N	2.19	0.57
1:A:6:THR:N	1:A:100:ALA:O	2.38	0.56
1:A:273:ASN:ND2	4:A:503:R9J:O1	2.36	0.56
1:C:121[B]:GLU:OE1	1:C:151:TYR:OH	2.25	0.53
1:C:197:ASN:HA	1:C:201:TYR:HD2	1.74	0.52
1:C:160:GLY:HA3	1:C:401:LEU:HD13	1.92	0.52
1:B:400:HIS:O	1:B:404[B]:GLN:HG2	2.09	0.51
1:D:373:LEU:HD22	2:D:502:NAD:N7N	2.26	0.51
1:A:160:GLY:HA3	1:A:401:LEU:HD13	1.93	0.51
1:D:314:LYS:HG3	7:D:505:PO4:O3	2.10	0.51

Continued on next page...

Continued from previous page...

Atom-1	Atom-2	Interatomic distance (Å)	Clash overlap (Å)
1:C:204[B]:ARG:HA	1:C:239:SER:HB2	1.93	0.51
1:D:204[B]:ARG:HA	1:D:239:SER:HB2	1.93	0.51
1:C:148:HIS:CD2	1:C:182:LYS:HG2	2.46	0.50
1:A:121:GLU:OE1	1:A:151:TYR:OH	2.26	0.50
1:A:189:ASN:HA	1:A:194:LYS:HD2	1.93	0.50
1:C:204[A]:ARG:HA	1:C:239:SER:HB2	1.94	0.49
1:D:204[A]:ARG:HA	1:D:239:SER:HB2	1.94	0.49
1:B:44:LYS:HD3	1:B:45:TYR:CE2	2.47	0.49
1:A:174[B]:ASP:OD1	1:A:177:LYS:NZ	2.46	0.48
1:C:44:LYS:HE2	1:C:45:TYR:CE2	2.49	0.47
1:D:42:ARG:HG3	1:D:72:THR:HG23	1.97	0.47
1:C:171:ARG:O	1:C:175:MET:HG3	2.14	0.46
1:A:409:LEU:O	1:A:414:LYS:HE3	2.15	0.46
1:B:160:GLY:HA3	1:B:401:LEU:HD13	1.98	0.45
1:A:373:LEU:HD23	2:A:501:NAD:N7N	2.32	0.45
1:B:449:LYS:HD3	9:C:875:HOH:O	2.15	0.45
1:C:318:VAL:HG12	1:C:328:ILE:HD13	1.99	0.44
1:B:318:VAL:HG12	1:B:328:ILE:HD13	2.00	0.44
1:C:197:ASN:O	1:C:201:TYR:HB2	2.18	0.44
1:A:283:ILE:HG13	1:A:307:ASN:HB3	2.00	0.44
1:D:283:ILE:HG13	1:D:307:ASN:HB3	2.00	0.43
1:A:189:ASN:O	1:A:195:SER:HB3	2.18	0.43
1:B:189:ASN:HA	1:B:194:LYS:HD2	1.99	0.43
1:C:194:LYS:C	1:C:194:LYS:HD3	2.39	0.43
1:B:290:LYS:HB3	1:B:290:LYS:HE3	1.75	0.43
1:A:197:ASN:HA	1:A:201:TYR:HD2	1.83	0.43
1:C:155:LEU:HD23	1:C:158:ILE:HD12	2.00	0.43
1:C:323:HIS:HA	1:C:373:LEU:HD21	1.99	0.43
1:A:196[A]:LYS:HE3	1:D:468:ARG:HB2	2.00	0.43
1:C:118:TRP:O	1:C:122:GLN:HG2	2.19	0.43
1:A:373:LEU:HD12	9:A:695:HOH:O	2.18	0.43
1:C:189:ASN:O	1:C:195:SER:HB3	2.19	0.42
1:D:230:GLY:O	1:D:234:LYS:HG3	2.20	0.42
1:C:197:ASN:HA	1:C:201:TYR:CD2	2.54	0.41
1:B:468:ARG:HB2	1:C:196:LYS:HE3	2.03	0.41
1:C:55:LYS:HB3	1:C:131:TRP:CH2	2.55	0.41
1:A:318:VAL:HG12	1:A:328:ILE:HD13	2.02	0.41
1:B:380:THR:HG22	5:B:501:GOL:H32	2.02	0.41
1:B:204[B]:ARG:HA	1:B:239:SER:HB2	2.03	0.41
1:D:323:HIS:HA	1:D:373:LEU:HD21	2.03	0.40
1:B:429:GLU:OE1	1:B:461:PRO:HA	2.22	0.40

There are no symmetry-related clashes.

5.3 Torsion angles [i](#)

5.3.1 Protein backbone [i](#)

In the following table, the Percentiles column shows the percent Ramachandran outliers of the chain as a percentile score with respect to all X-ray entries followed by that with respect to entries of similar resolution.

The Analysed column shows the number of residues for which the backbone conformation was analysed, and the total number of residues.

Mol	Chain	Analysed	Favoured	Allowed	Outliers	Percentiles
1	A	469/472 (99%)	454 (97%)	14 (3%)	1 (0%)	47 26
1	B	466/472 (99%)	454 (97%)	12 (3%)	0	100 100
1	C	464/472 (98%)	453 (98%)	10 (2%)	1 (0%)	47 26
1	D	466/472 (99%)	457 (98%)	9 (2%)	0	100 100
All	All	1865/1888 (99%)	1818 (98%)	45 (2%)	2 (0%)	51 29

All (2) Ramachandran outliers are listed below:

Mol	Chain	Res	Type
1	C	61	HIS
1	A	355	ASP

5.3.2 Protein sidechains [i](#)

In the following table, the Percentiles column shows the percent sidechain outliers of the chain as a percentile score with respect to all X-ray entries followed by that with respect to entries of similar resolution.

The Analysed column shows the number of residues for which the sidechain conformation was analysed, and the total number of residues.

Mol	Chain	Analysed	Rotameric	Outliers	Percentiles
1	A	386/385 (100%)	384 (100%)	2 (0%)	88 80
1	B	384/385 (100%)	380 (99%)	4 (1%)	76 59
1	C	383/385 (100%)	379 (99%)	4 (1%)	76 59
1	D	382/385 (99%)	379 (99%)	3 (1%)	81 68
All	All	1535/1540 (100%)	1522 (99%)	13 (1%)	78 68

All (13) residues with a non-rotameric sidechain are listed below:

Mol	Chain	Res	Type
1	A	6	THR
1	A	42	ARG
1	B	42	ARG
1	B	177	LYS
1	B	335	LYS
1	B	417	ARG
1	C	166	THR
1	C	290	LYS
1	C	335	LYS
1	C	373	LEU
1	D	114	GLU
1	D	335	LYS
1	D	417	ARG

Sometimes sidechains can be flipped to improve hydrogen bonding and reduce clashes. There are no such sidechains identified.

5.3.3 RNA [i](#)

There are no RNA molecules in this entry.

5.4 Non-standard residues in protein, DNA, RNA chains [i](#)

There are no non-standard protein/DNA/RNA residues in this entry.

5.5 Carbohydrates [i](#)

There are no monosaccharides in this entry.

5.6 Ligand geometry [i](#)

Of 35 ligands modelled in this entry, 4 are monoatomic - leaving 31 for Mogul analysis.

In the following table, the Counts columns list the number of bonds (or angles) for which Mogul statistics could be retrieved, the number of bonds (or angles) that are observed in the model and the number of bonds (or angles) that are defined in the Chemical Component Dictionary. The Link column lists molecule types, if any, to which the group is linked. The Z score for a bond length (or angle) is the number of standard deviations the observed value is removed from the expected value. A bond length (or angle) with $|Z| > 2$ is considered an outlier worth inspection. RMSZ is the root-mean-square of all Z scores of the bond lengths (or angles).

Mol	Type	Chain	Res	Link	Bond lengths			Bond angles		
					Counts	RMSZ	# Z > 2	Counts	RMSZ	# Z > 2
7	PO4	C	506	-	4,4,4	0.93	0	6,6,6	0.54	0
3	ADE	D	503	-	9,11,11	1.10	1 (11%)	7,15,15	1.10	1 (14%)
5	GOL	B	504	-	5,5,5	1.22	1 (20%)	5,5,5	0.99	0
7	PO4	D	507	-	4,4,4	0.94	0	6,6,6	0.62	0
7	PO4	C	507	-	4,4,4	0.89	0	6,6,6	0.68	0
5	GOL	B	505	-	5,5,5	1.04	0	5,5,5	0.87	0
7	PO4	D	505	-	4,4,4	1.04	0	6,6,6	0.53	0
2	NAD	A	501	-	42,48,48	0.57	0	50,73,73	0.71	1 (2%)
3	ADE	C	502	-	9,11,11	1.08	1 (11%)	7,15,15	1.06	0
7	PO4	D	508	-	4,4,4	0.86	0	6,6,6	0.51	0
5	GOL	B	501	-	5,5,5	1.16	0	5,5,5	0.79	0
7	PO4	D	506	-	4,4,4	0.93	0	6,6,6	0.45	0
2	NAD	D	502	-	42,48,48	0.53	0	50,73,73	0.74	1 (2%)
2	NAD	B	502	-	42,48,48	0.51	0	50,73,73	0.71	1 (2%)
2	NAD	C	501	-	42,48,48	0.58	0	50,73,73	0.74	2 (4%)
7	PO4	C	505	-	4,4,4	0.93	0	6,6,6	0.46	0
7	PO4	C	504	-	4,4,4	0.94	0	6,6,6	0.60	0
4	R9J	A	503	-	14,14,14	1.16	1 (7%)	20,20,20	0.97	1 (5%)
7	PO4	B	508	-	4,4,4	0.80	0	6,6,6	1.07	0
3	ADE	A	502	-	9,11,11	1.15	2 (22%)	7,15,15	1.11	1 (14%)
7	PO4	A	507	-	4,4,4	0.98	0	6,6,6	0.50	0
7	PO4	B	509	-	4,4,4	0.86	0	6,6,6	0.50	0
8	DMS	D	501	-	3,3,3	0.70	0	3,3,3	0.73	0
7	PO4	B	510	-	4,4,4	0.76	0	6,6,6	0.48	0
7	PO4	A	508	-	4,4,4	1.00	0	6,6,6	0.34	0
7	PO4	B	507	-	4,4,4	1.00	0	6,6,6	0.44	0
3	ADE	B	503	-	9,11,11	0.93	0	7,15,15	1.09	1 (14%)
5	GOL	A	504	-	5,5,5	0.84	0	5,5,5	1.08	0
7	PO4	A	509	-	4,4,4	1.00	0	6,6,6	0.52	0
7	PO4	C	508	-	4,4,4	0.80	0	6,6,6	0.83	0
7	PO4	A	506	-	4,4,4	0.97	0	6,6,6	0.73	0

In the following table, the Chirals column lists the number of chiral outliers, the number of chiral centers analysed, the number of these observed in the model and the number defined in the Chemical Component Dictionary. Similar counts are reported in the Torsion and Rings columns. '-' means no outliers of that kind were identified.

Mol	Type	Chain	Res	Link	Chirals	Torsions	Rings
3	ADE	C	502	-	-	-	0/2/2/2
5	GOL	B	501	-	-	0/4/4/4	-

Continued on next page...

Continued from previous page...

Mol	Type	Chain	Res	Link	Chirals	Torsions	Rings
4	R9J	A	503	-	-	7/11/11/11	0/1/1/1
3	ADE	D	503	-	-	-	0/2/2/2
5	GOL	B	504	-	-	3/4/4/4	-
3	ADE	A	502	-	-	-	0/2/2/2
2	NAD	D	502	-	-	5/26/62/62	0/5/5/5
2	NAD	B	502	-	-	5/26/62/62	0/5/5/5
5	GOL	B	505	-	-	0/4/4/4	-
3	ADE	B	503	-	-	-	0/2/2/2
5	GOL	A	504	-	-	2/4/4/4	-
2	NAD	C	501	-	-	5/26/62/62	0/5/5/5
2	NAD	A	501	-	-	5/26/62/62	0/5/5/5

All (6) bond length outliers are listed below:

Mol	Chain	Res	Type	Atoms	Z	Observed(Å)	Ideal(Å)
4	A	503	R9J	C4-N	3.64	1.45	1.40
3	A	502	ADE	C4-N3	-2.28	1.33	1.37
3	A	502	ADE	C4-N9	2.27	1.39	1.34
3	C	502	ADE	C4-N9	2.15	1.38	1.34
3	D	503	ADE	C4-N9	2.12	1.38	1.34
5	B	504	GOL	O2-C2	-2.05	1.37	1.43

All (9) bond angle outliers are listed below:

Mol	Chain	Res	Type	Atoms	Z	Observed(°)	Ideal(°)
2	D	502	NAD	C5A-C6A-N6A	2.42	124.03	120.35
2	A	501	NAD	C5A-C6A-N6A	2.40	124.00	120.35
2	C	501	NAD	C5A-C6A-N6A	2.28	123.82	120.35
3	A	502	ADE	C5-C6-N6	2.21	123.71	120.35
2	B	502	NAD	C5A-C6A-N6A	2.20	123.69	120.35
4	A	503	R9J	C9-C7-N	2.13	113.49	109.11
2	C	501	NAD	PN-O3-PA	-2.07	125.71	132.83
3	D	503	ADE	C5-C6-N6	2.07	123.50	120.35
3	B	503	ADE	C5-C6-N6	2.00	123.39	120.35

There are no chirality outliers.

All (32) torsion outliers are listed below:

Mol	Chain	Res	Type	Atoms
2	A	501	NAD	O4D-C1D-N1N-C2N

Continued on next page...

Continued from previous page...

Mol	Chain	Res	Type	Atoms
2	A	501	NAD	O4D-C1D-N1N-C6N
2	A	501	NAD	C2D-C1D-N1N-C2N
2	A	501	NAD	C2D-C1D-N1N-C6N
2	B	502	NAD	O4D-C1D-N1N-C2N
2	B	502	NAD	O4D-C1D-N1N-C6N
2	B	502	NAD	C2D-C1D-N1N-C2N
2	B	502	NAD	C2D-C1D-N1N-C6N
2	C	501	NAD	O4D-C1D-N1N-C2N
2	C	501	NAD	O4D-C1D-N1N-C6N
2	C	501	NAD	C2D-C1D-N1N-C2N
2	C	501	NAD	C2D-C1D-N1N-C6N
2	D	502	NAD	O4D-C1D-N1N-C2N
2	D	502	NAD	O4D-C1D-N1N-C6N
2	D	502	NAD	C2D-C1D-N1N-C2N
2	D	502	NAD	C2D-C1D-N1N-C6N
4	A	503	R9J	C8-C7-N-C4
5	A	504	GOL	O1-C1-C2-C3
4	A	503	R9J	C10-C7-N-C4
5	A	504	GOL	O1-C1-C2-O2
5	B	504	GOL	O1-C1-C2-C3
5	B	504	GOL	O1-C1-C2-O2
4	A	503	R9J	O1-C10-C7-C9
4	A	503	R9J	C5-C4-N-C7
4	A	503	R9J	C3-C4-N-C7
4	A	503	R9J	O-C10-C7-C9
4	A	503	R9J	O1-C10-C7-N
2	C	501	NAD	O4B-C4B-C5B-O5B
5	B	504	GOL	O2-C2-C3-O3
2	D	502	NAD	O4B-C4B-C5B-O5B
2	A	501	NAD	O4B-C4B-C5B-O5B
2	B	502	NAD	O4B-C4B-C5B-O5B

There are no ring outliers.

7 monomers are involved in 7 short contacts:

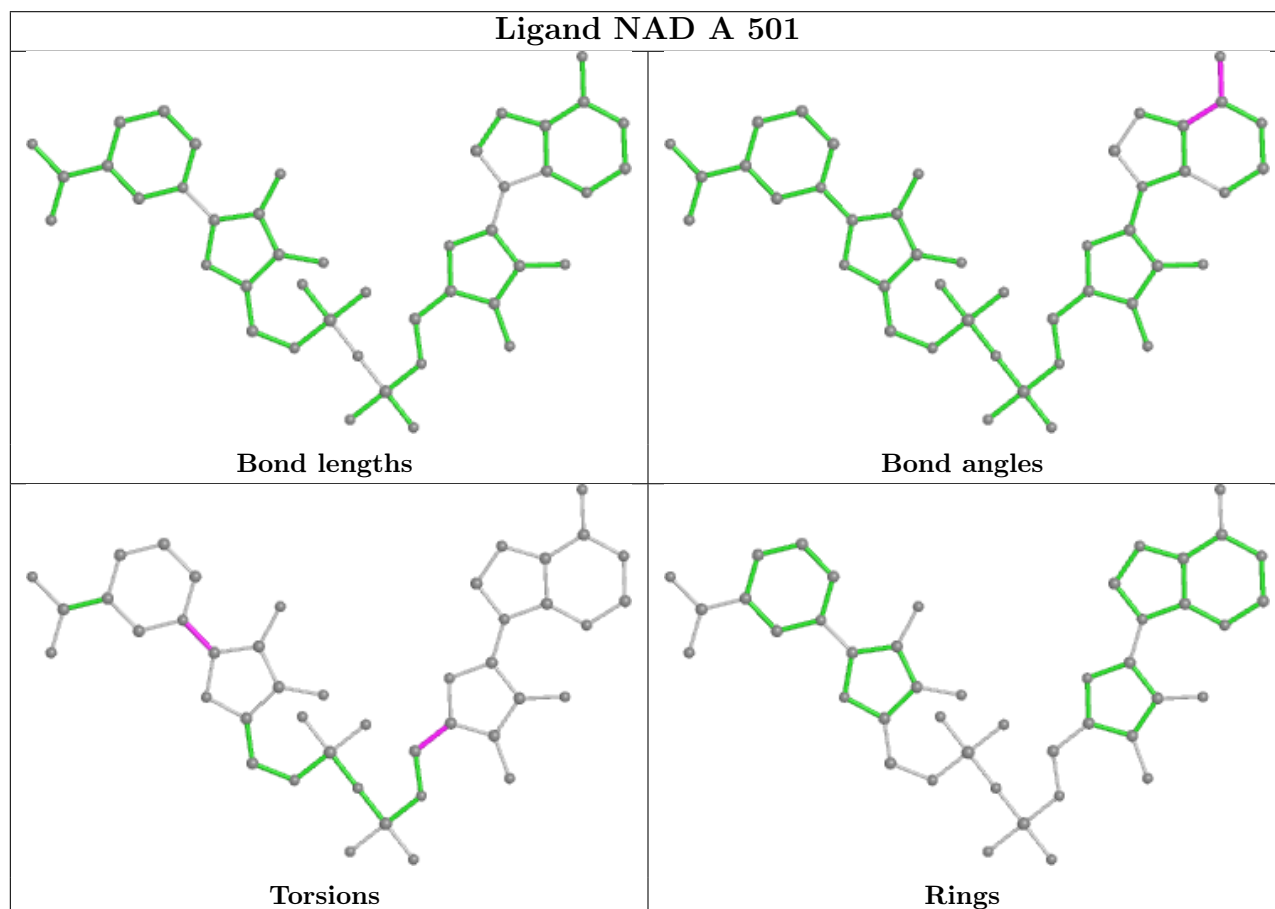
Mol	Chain	Res	Type	Clashes	Symm-Clashes
7	D	505	PO4	1	0
2	A	501	NAD	1	0
5	B	501	GOL	1	0
2	D	502	NAD	1	0
2	B	502	NAD	1	0
4	A	503	R9J	1	0

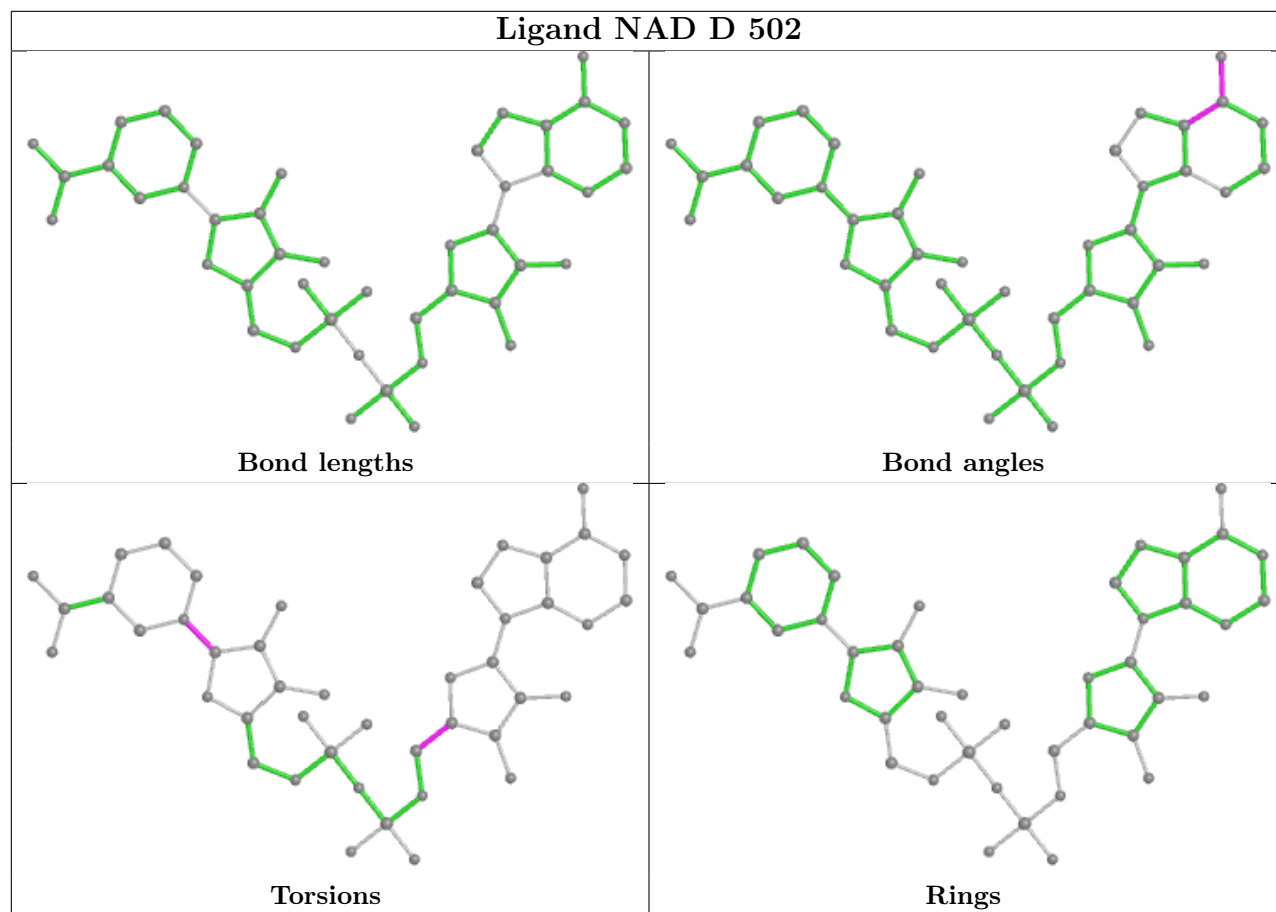
Continued on next page...

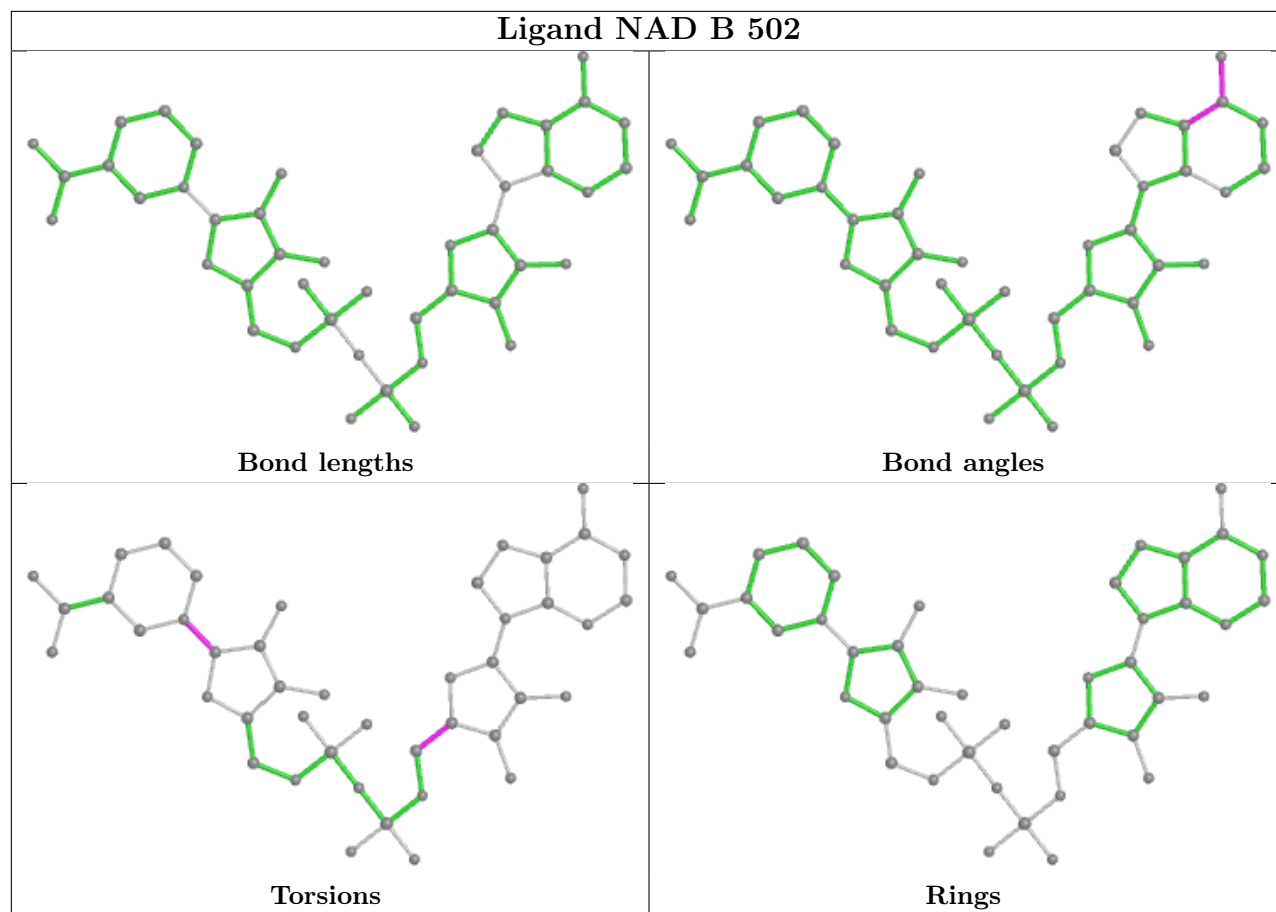
Continued from previous page...

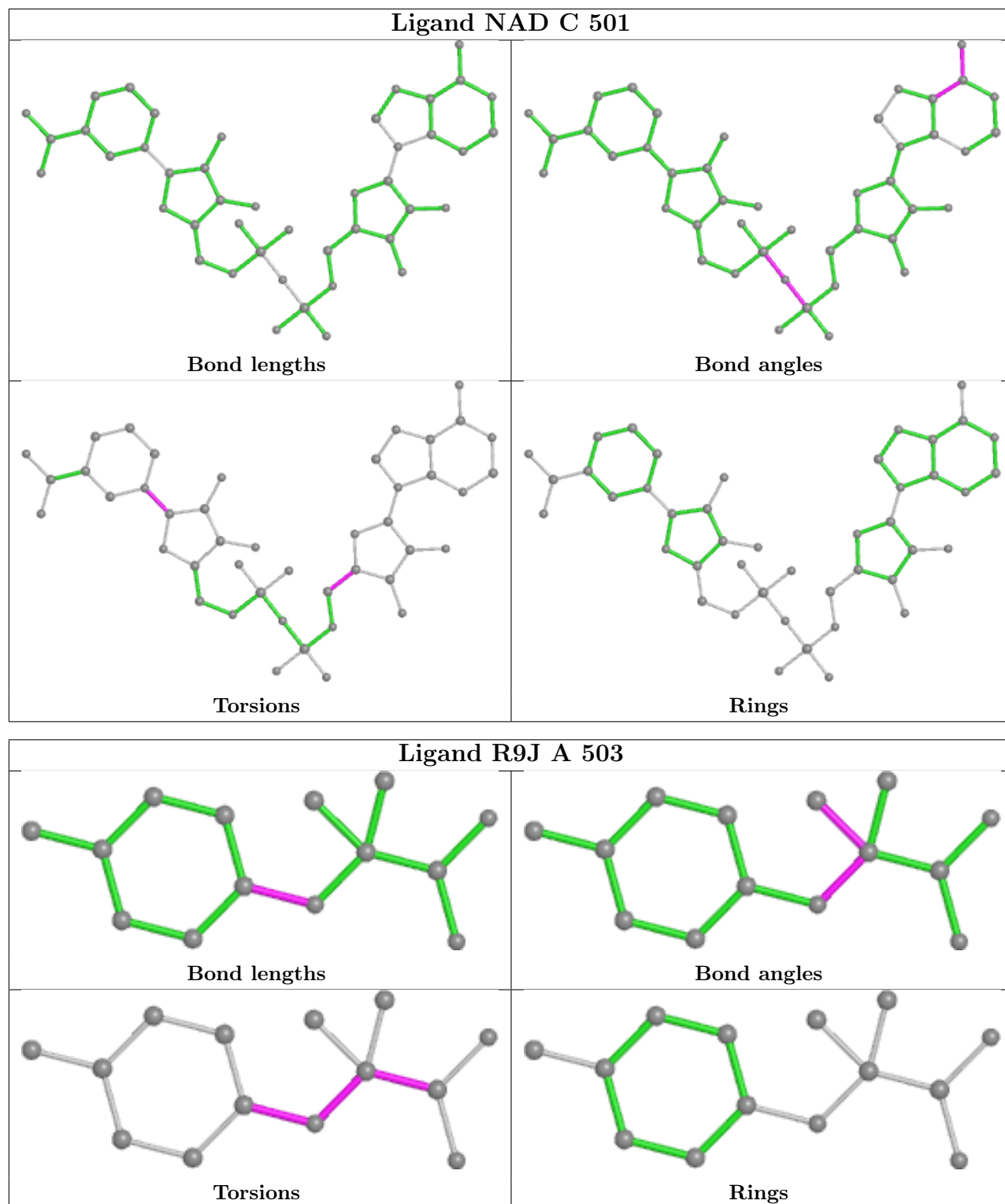
Mol	Chain	Res	Type	Clashes	Symm-Clashes
7	A	506	PO4	1	0

The following is a two-dimensional graphical depiction of Mogul quality analysis of bond lengths, bond angles, torsion angles, and ring geometry for all instances of the Ligand of Interest. In addition, ligands with molecular weight > 250 and outliers as shown on the validation Tables will also be included. For torsion angles, if less than 5% of the Mogul distribution of torsion angles is within 10 degrees of the torsion angle in question, then that torsion angle is considered an outlier. Any bond that is central to one or more torsion angles identified as an outlier by Mogul will be highlighted in the graph. For rings, the root-mean-square deviation (RMSD) between the ring in question and similar rings identified by Mogul is calculated over all ring torsion angles. If the average RMSD is greater than 60 degrees and the minimal RMSD between the ring in question and any Mogul-identified rings is also greater than 60 degrees, then that ring is considered an outlier. The outliers are highlighted in purple. The color gray indicates Mogul did not find sufficient equivalents in the CSD to analyse the geometry.









5.7 Other polymers [\(i\)](#)

There are no such residues in this entry.

5.8 Polymer linkage issues

There are no chain breaks in this entry.

6 Fit of model and data [i](#)

6.1 Protein, DNA and RNA chains [i](#)

In the following table, the column labelled ‘#RSRZ > 2’ contains the number (and percentage) of RSRZ outliers, followed by percent RSRZ outliers for the chain as percentile scores relative to all X-ray entries and entries of similar resolution. The OWAB column contains the minimum, median, 95th percentile and maximum values of the occupancy-weighted average B-factor per residue. The column labelled ‘Q < 0.9’ lists the number of (and percentage) of residues with an average occupancy less than 0.9.

Mol	Chain	Analysed	<RSRZ>	#RSRZ>2	OWAB(Å ²)	Q<0.9
1	A	464/472 (98%)	-0.06	18 (3%) 39 37	18, 28, 52, 97	0
1	B	461/472 (97%)	-0.25	9 (1%) 65 65	18, 26, 44, 70	0
1	C	460/472 (97%)	0.34	47 (10%) 6 5	17, 32, 63, 100	0
1	D	462/472 (97%)	-0.10	15 (3%) 47 46	20, 28, 45, 71	0
All	All	1847/1888 (97%)	-0.02	89 (4%) 30 28	17, 28, 52, 100	0

All (89) RSRZ outliers are listed below:

Mol	Chain	Res	Type	RSRZ
1	C	411	ALA	10.0
1	A	412	ALA	9.9
1	C	415	ALA	8.7
1	C	412	ALA	7.9
1	C	410	PRO	7.4
1	C	416	LYS	6.5
1	D	8	ALA	6.0
1	A	415	ALA	5.9
1	C	413	GLU	5.6
1	C	152	PRO	5.5
1	C	409	LEU	5.5
1	B	355	ASP	5.4
1	A	411	ALA	5.4
1	C	417	ARG	5.1
1	C	125	LEU	4.9
1	C	418	LEU	4.8
1	A	416	LYS	4.8
1	C	176	LEU	4.6
1	C	414	LYS	4.4
1	C	130	PRO	4.3
1	A	417	ARG	4.2

Continued on next page...

Continued from previous page...

Mol	Chain	Res	Type	RSRZ
1	C	11	THR	4.2
1	D	9	GLY	4.1
1	A	355	ASP	4.1
1	C	180	THR	4.0
1	C	355	ASP	4.0
1	C	149	LYS	4.0
1	C	155	LEU	4.0
1	C	181	LEU	4.0
1	C	354	LYS	4.0
1	B	354	LYS	3.9
1	A	413	GLU	3.8
1	C	151	TYR	3.8
1	A	181	LEU	3.7
1	C	178	ASN	3.6
1	C	10	PHE	3.6
1	C	129	GLN	3.6
1	B	9	GLY	3.5
1	C	157	ARG	3.5
1	C	406	TYR	3.5
1	D	279	THR	3.4
1	C	150	LYS	3.4
1	C	179	GLY	3.4
1	C	128	GLY	3.3
1	D	177	LYS	3.3
1	A	418	LEU	3.2
1	A	410	PRO	3.2
1	B	356	GLY	3.1
1	C	407	ALA	3.1
1	A	177	LYS	3.1
1	C	127	ASP	3.1
1	A	6	THR	3.0
1	B	357	PHE	3.0
1	A	409	LEU	3.0
1	D	352	THR	2.9
1	A	46	ALA	2.9
1	C	356	GLY	2.9
1	C	357	PHE	2.8
1	A	45	TYR	2.8
1	D	355	ASP	2.8
1	B	46	ALA	2.8
1	C	156	GLU	2.8
1	D	356	GLY	2.7

Continued on next page...

Continued from previous page...

Mol	Chain	Res	Type	RSRZ
1	C	177	LYS	2.7
1	B	47	GLY	2.6
1	C	335	LYS	2.6
1	D	335	LYS	2.6
1	C	359	ALA	2.6
1	C	13	TYR	2.6
1	C	118	TRP	2.5
1	D	354	LYS	2.5
1	A	356	GLY	2.5
1	C	148	HIS	2.4
1	B	48	GLN	2.4
1	C	174[A]	ASP	2.3
1	C	121[A]	GLU	2.3
1	C	358	ASP	2.3
1	D	278	GLY	2.3
1	A	357	PHE	2.2
1	D	357	PHE	2.1
1	B	352	THR	2.1
1	D	178	ASN	2.1
1	D	280	GLU	2.1
1	C	119	CYS	2.1
1	C	147	LEU	2.1
1	D	295	VAL	2.1
1	A	179	GLY	2.1
1	C	408	ASP	2.1
1	D	321	ILE	2.1

6.2 Non-standard residues in protein, DNA, RNA chains [\(i\)](#)

There are no non-standard protein/DNA/RNA residues in this entry.

6.3 Carbohydrates [\(i\)](#)

There are no monosaccharides in this entry.

6.4 Ligands [\(i\)](#)

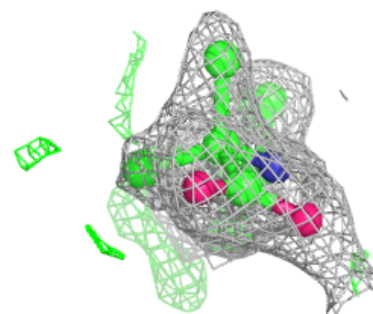
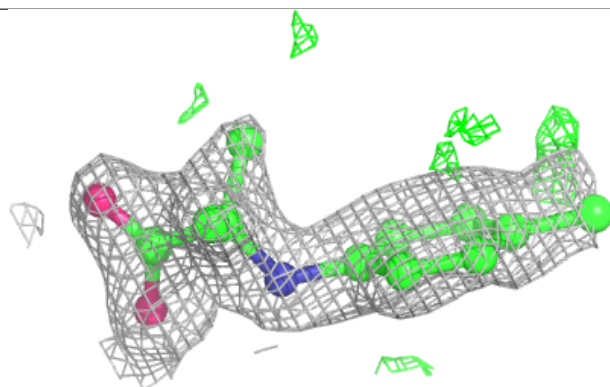
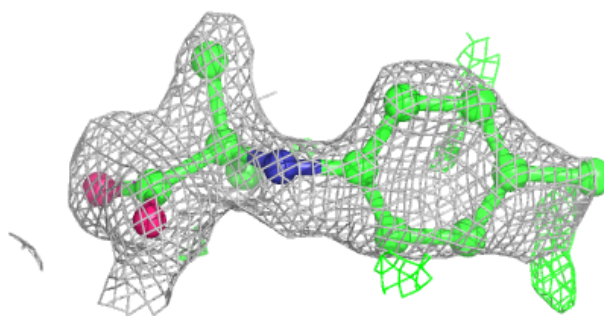
In the following table, the Atoms column lists the number of modelled atoms in the group and the number defined in the chemical component dictionary. The B-factors column lists the minimum, median, 95th percentile and maximum values of B factors of atoms in the group. The column labelled 'Q< 0.9' lists the number of atoms with occupancy less than 0.9.

Mol	Type	Chain	Res	Atoms	RSCC	RSR	B-factors(\AA^2)	Q<0.9
8	DMS	D	501	4/4	0.74	0.20	34,35,54,75	0
4	R9J	A	503	14/14	0.84	0.15	36,39,43,44	14
7	PO4	C	508	5/5	0.88	0.14	26,30,38,40	5
5	GOL	B	504	6/6	0.88	0.14	37,39,44,44	0
7	PO4	C	505	5/5	0.89	0.12	42,43,45,61	0
7	PO4	C	506	5/5	0.90	0.17	38,40,43,46	5
5	GOL	B	501	6/6	0.91	0.11	30,35,38,42	0
7	PO4	D	505	5/5	0.93	0.16	34,37,39,40	5
5	GOL	B	505	6/6	0.93	0.25	33,40,41,41	0
5	GOL	A	504	6/6	0.94	0.21	35,37,40,41	0
7	PO4	A	509	5/5	0.94	0.11	36,39,43,46	5
7	PO4	B	507	5/5	0.94	0.14	37,38,41,46	5
7	PO4	B	508	5/5	0.94	0.10	22,25,27,31	5
7	PO4	D	506	5/5	0.94	0.09	25,27,33,40	0
7	PO4	D	507	5/5	0.94	0.15	39,39,40,42	5
7	PO4	C	504	5/5	0.94	0.12	34,36,39,41	5
7	PO4	B	509	5/5	0.95	0.13	33,34,40,44	5
7	PO4	A	508	5/5	0.95	0.10	32,34,37,45	0
7	PO4	A	506	5/5	0.95	0.12	34,34,37,41	5
3	ADE	B	503	10/10	0.96	0.09	21,22,24,24	0
3	ADE	D	503	10/10	0.97	0.12	21,24,25,25	0
3	ADE	A	502	10/10	0.97	0.11	20,21,24,24	0
2	NAD	D	502	44/44	0.97	0.07	21,23,26,31	0
3	ADE	C	502	10/10	0.97	0.13	25,28,30,32	0
7	PO4	B	510	5/5	0.98	0.08	22,26,28,29	5
2	NAD	B	502	44/44	0.98	0.06	18,22,26,30	0
2	NAD	C	501	44/44	0.98	0.07	19,23,28,29	0
2	NAD	A	501	44/44	0.98	0.06	19,21,24,24	0
7	PO4	C	507	5/5	0.98	0.15	31,38,40,44	0
6	K	C	503	1/1	0.99	0.05	25,25,25,25	0
6	K	A	505	1/1	0.99	0.07	21,21,21,21	0
7	PO4	D	508	5/5	0.99	0.14	28,31,33,34	0
7	PO4	A	507	5/5	0.99	0.08	28,33,35,36	5
6	K	B	506	1/1	1.00	0.05	20,20,20,20	0
6	K	D	504	1/1	1.00	0.08	23,23,23,23	0

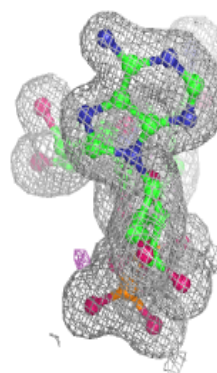
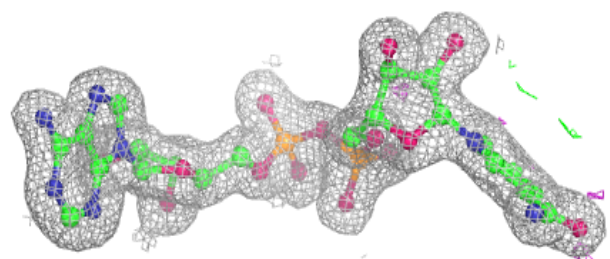
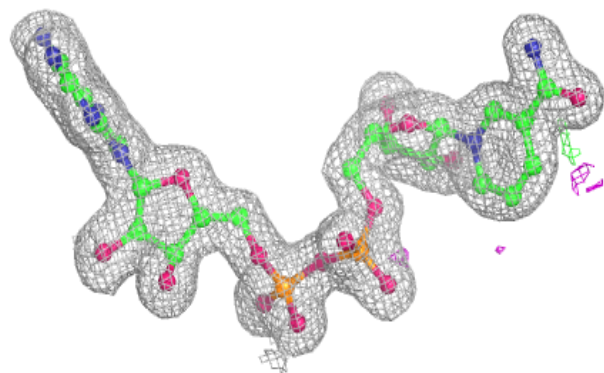
The following is a graphical depiction of the model fit to experimental electron density of all instances of the Ligand of Interest. In addition, ligands with molecular weight > 250 and outliers as shown on the geometry validation Tables will also be included. Each fit is shown from different orientation to approximate a three-dimensional view.

Electron density around R9J A 503:

$2mF_o-DF_c$ (at 0.7 rmsd) in gray
 mF_o-DF_c (at 3 rmsd) in purple (negative)
and green (positive)

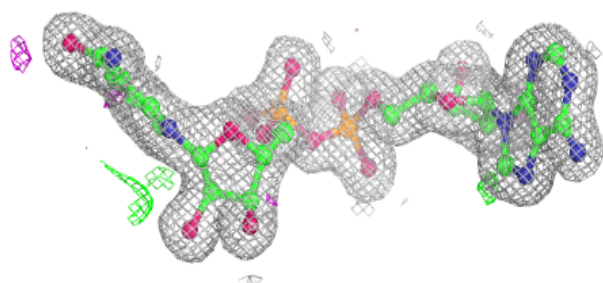
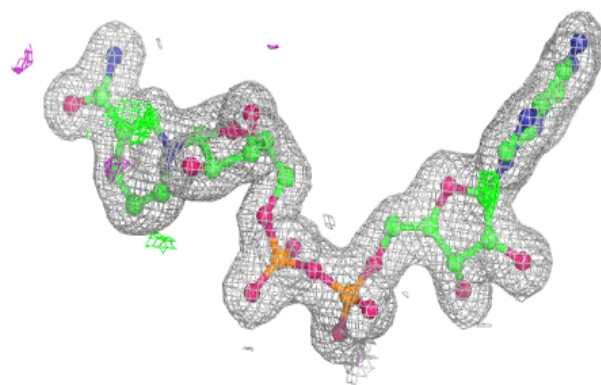
**Electron density around NAD D 502:**

$2mF_o-DF_c$ (at 0.7 rmsd) in gray
 mF_o-DF_c (at 3 rmsd) in purple (negative)
and green (positive)

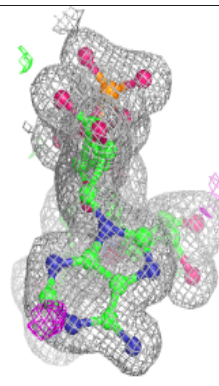
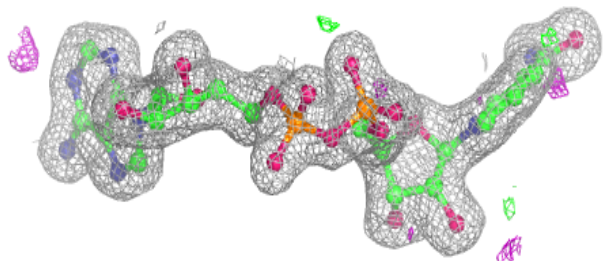
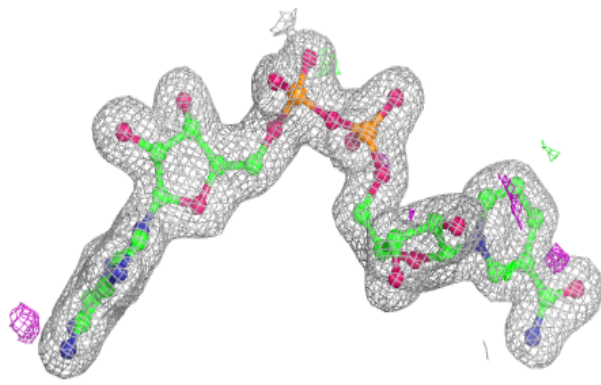


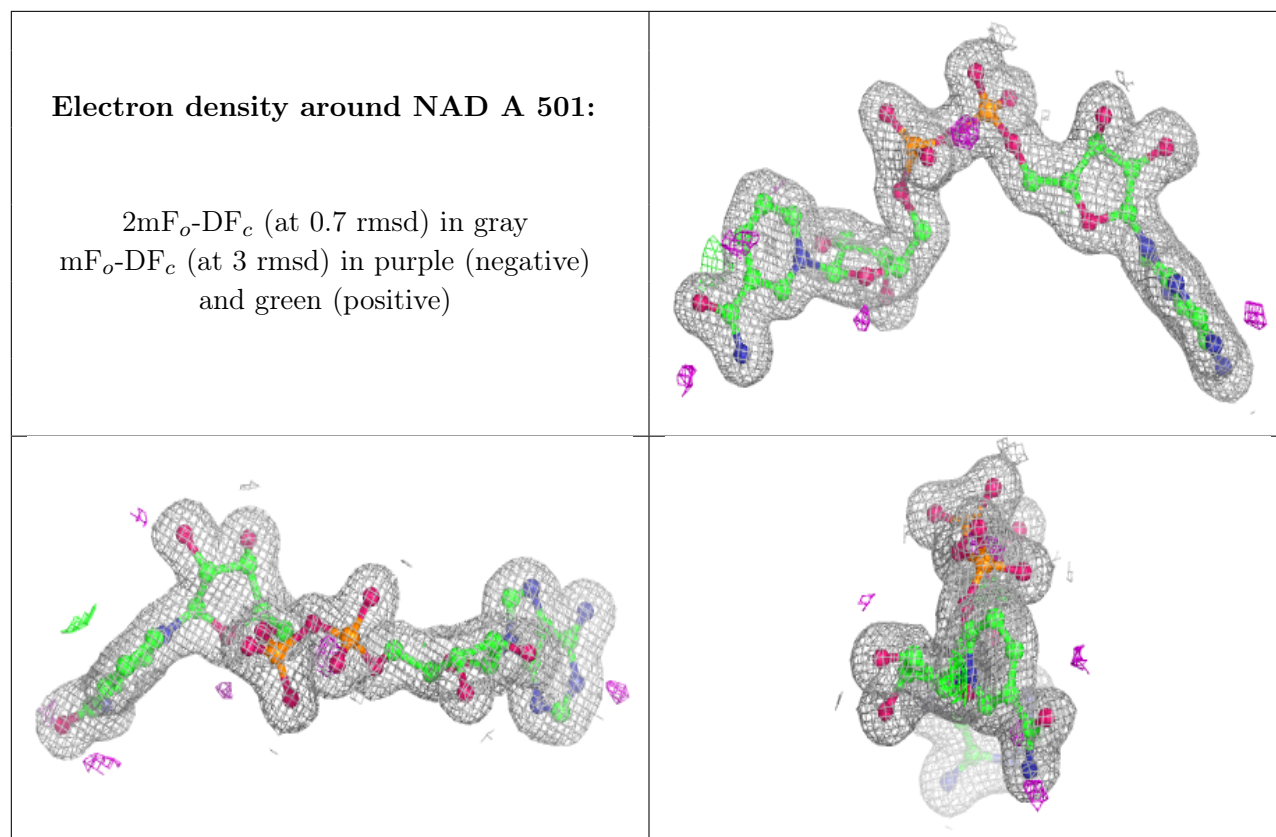
Electron density around NAD B 502:

$2mF_o-DF_c$ (at 0.7 rmsd) in gray
 mF_o-DF_c (at 3 rmsd) in purple (negative)
and green (positive)

**Electron density around NAD C 501:**

$2mF_o-DF_c$ (at 0.7 rmsd) in gray
 mF_o-DF_c (at 3 rmsd) in purple (negative)
and green (positive)





6.5 Other polymers [i](#)

There are no such residues in this entry.