



Full wwPDB X-ray Structure Validation Report ⓘ

Aug 14, 2023 – 07:16 am BST

PDB ID : 8BGJ
Title : Crystal structure of Reverse Transcriptase domain from *Caloramator australicus* CART-CAPP
Authors : Li, A.W.H.; Doherty, A.J.
Deposited on : 2022-10-27
Resolution : 1.63 Å (reported)

This is a Full wwPDB X-ray Structure Validation Report for a publicly released PDB entry.

We welcome your comments at validation@mail.wwpdb.org

A user guide is available at

<https://www.wwpdb.org/validation/2017/XrayValidationReportHelp>

with specific help available everywhere you see the ⓘ symbol.

The types of validation reports are described at

<http://www.wwpdb.org/validation/2017/FAQs#types>.

The following versions of software and data (see [references ⓘ](#)) were used in the production of this report:

MolProbity : 4.02b-467
Mogul : 1.8.4, CSD as541be (2020)
Xtriage (Phenix) : 1.13
EDS : 2.35
Percentile statistics : 20191225.v01 (using entries in the PDB archive December 25th 2019)
Refmac : 5.8.0158
CCP4 : 7.0.044 (Gargrove)
Ideal geometry (proteins) : Engh & Huber (2001)
Ideal geometry (DNA, RNA) : Parkinson et al. (1996)
Validation Pipeline (wwPDB-VP) : 2.35

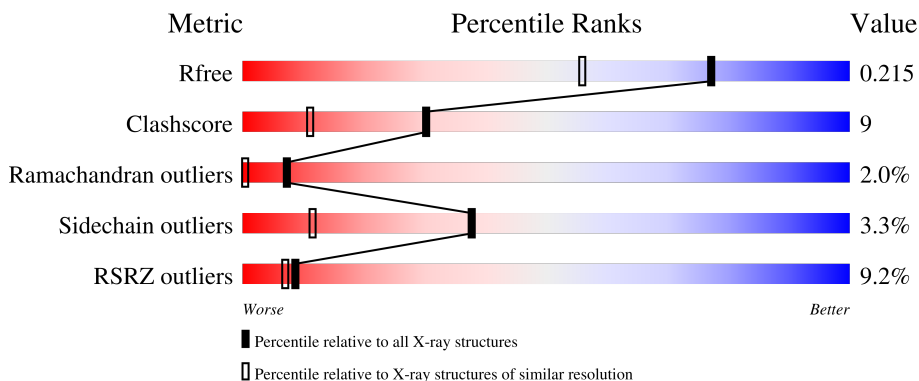
1 Overall quality at a glance i

The following experimental techniques were used to determine the structure:

X-RAY DIFFRACTION

The reported resolution of this entry is 1.63 Å.

Percentile scores (ranging between 0-100) for global validation metrics of the entry are shown in the following graphic. The table shows the number of entries on which the scores are based.



Metric	Whole archive (#Entries)	Similar resolution (#Entries, resolution range(Å))
R_{free}	130704	3122 (1.66-1.62)
Clashscore	141614	3268 (1.66-1.62)
Ramachandran outliers	138981	3215 (1.66-1.62)
Sidechain outliers	138945	3215 (1.66-1.62)
RSRZ outliers	127900	3079 (1.66-1.62)

The table below summarises the geometric issues observed across the polymeric chains and their fit to the electron density. The red, orange, yellow and green segments of the lower bar indicate the fraction of residues that contain outliers for ≥ 3 , 2, 1 and 0 types of geometric quality criteria respectively. A grey segment represents the fraction of residues that are not modelled. The numeric value for each fraction is indicated below the corresponding segment, with a dot representing fractions $\leq 5\%$. The upper red bar (where present) indicates the fraction of residues that have poor fit to the electron density. The numeric value is given above the bar.

Mol	Chain	Length	Quality of chain
1	A	224	<div style="display: flex; align-items: center;"> <div style="width: 8%; height: 10px; background-color: red; margin-right: 5px;"></div> <div style="width: 67%; height: 10px; background-color: green; margin-right: 5px;"></div> <div style="width: 19%; height: 10px; background-color: yellow; margin-right: 5px;"></div> <div style="width: 9%; height: 10px; background-color: grey; margin-right: 5px;"></div> </div> <p style="margin-left: 10px;">8% 67% 19% • 9%</p>
1	B	224	<div style="display: flex; align-items: center;"> <div style="width: 3%; height: 10px; background-color: red; margin-right: 5px;"></div> <div style="width: 71%; height: 10px; background-color: green; margin-right: 5px;"></div> <div style="width: 14%; height: 10px; background-color: yellow; margin-right: 5px;"></div> <div style="width: 14%; height: 10px; background-color: grey; margin-right: 5px;"></div> </div> <p style="margin-left: 10px;">3% 71% 14% • 14%</p>
1	C	224	<div style="display: flex; align-items: center;"> <div style="width: 14%; height: 10px; background-color: red; margin-right: 5px;"></div> <div style="width: 69%; height: 10px; background-color: green; margin-right: 5px;"></div> <div style="width: 18%; height: 10px; background-color: yellow; margin-right: 5px;"></div> <div style="width: 9%; height: 10px; background-color: grey; margin-right: 5px;"></div> </div> <p style="margin-left: 10px;">14% 69% 18% • 9%</p>

2 Entry composition i

There are 6 unique types of molecules in this entry. The entry contains 5503 atoms, of which 0 are hydrogens and 0 are deuteriums.

In the tables below, the ZeroOcc column contains the number of atoms modelled with zero occupancy, the AltConf column contains the number of residues with at least one atom in alternate conformation and the Trace column contains the number of residues modelled with at most 2 atoms.

- Molecule 1 is a protein called RNA-directed DNA polymerase.

Mol	Chain	Residues	Atoms					ZeroOcc	AltConf	Trace
			Total	C	N	O	S			
1	A	203	Total 1732	C 1144	N 279	O 305	S 4	0	7	0
1	B	192	Total 1659	C 1097	N 263	O 295	S 4	8	9	0
1	C	203	Total 1669	C 1098	N 267	O 299	S 5	0	0	0

There are 60 discrepancies between the modelled and reference sequences:

Chain	Residue	Modelled	Actual	Comment	Reference
A	-19	MET	-	initiating methionine	UNP I7LG99
A	-18	GLY	-	expression tag	UNP I7LG99
A	-17	SER	-	expression tag	UNP I7LG99
A	-16	SER	-	expression tag	UNP I7LG99
A	-15	HIS	-	expression tag	UNP I7LG99
A	-14	HIS	-	expression tag	UNP I7LG99
A	-13	HIS	-	expression tag	UNP I7LG99
A	-12	HIS	-	expression tag	UNP I7LG99
A	-11	HIS	-	expression tag	UNP I7LG99
A	-10	HIS	-	expression tag	UNP I7LG99
A	-9	SER	-	expression tag	UNP I7LG99
A	-8	SER	-	expression tag	UNP I7LG99
A	-7	GLY	-	expression tag	UNP I7LG99
A	-6	LEU	-	expression tag	UNP I7LG99
A	-5	VAL	-	expression tag	UNP I7LG99
A	-4	PRO	-	expression tag	UNP I7LG99
A	-3	ARG	-	expression tag	UNP I7LG99
A	-2	GLY	-	expression tag	UNP I7LG99
A	-1	SER	-	expression tag	UNP I7LG99
A	0	HIS	-	expression tag	UNP I7LG99
B	-19	MET	-	initiating methionine	UNP I7LG99
B	-18	GLY	-	expression tag	UNP I7LG99
B	-17	SER	-	expression tag	UNP I7LG99

Continued on next page...

Continued from previous page...

Chain	Residue	Modelled	Actual	Comment	Reference
B	-16	SER	-	expression tag	UNP I7LG99
B	-15	HIS	-	expression tag	UNP I7LG99
B	-14	HIS	-	expression tag	UNP I7LG99
B	-13	HIS	-	expression tag	UNP I7LG99
B	-12	HIS	-	expression tag	UNP I7LG99
B	-11	HIS	-	expression tag	UNP I7LG99
B	-10	HIS	-	expression tag	UNP I7LG99
B	-9	SER	-	expression tag	UNP I7LG99
B	-8	SER	-	expression tag	UNP I7LG99
B	-7	GLY	-	expression tag	UNP I7LG99
B	-6	LEU	-	expression tag	UNP I7LG99
B	-5	VAL	-	expression tag	UNP I7LG99
B	-4	PRO	-	expression tag	UNP I7LG99
B	-3	ARG	-	expression tag	UNP I7LG99
B	-2	GLY	-	expression tag	UNP I7LG99
B	-1	SER	-	expression tag	UNP I7LG99
B	0	HIS	-	expression tag	UNP I7LG99
C	-19	MET	-	initiating methionine	UNP I7LG99
C	-18	GLY	-	expression tag	UNP I7LG99
C	-17	SER	-	expression tag	UNP I7LG99
C	-16	SER	-	expression tag	UNP I7LG99
C	-15	HIS	-	expression tag	UNP I7LG99
C	-14	HIS	-	expression tag	UNP I7LG99
C	-13	HIS	-	expression tag	UNP I7LG99
C	-12	HIS	-	expression tag	UNP I7LG99
C	-11	HIS	-	expression tag	UNP I7LG99
C	-10	HIS	-	expression tag	UNP I7LG99
C	-9	SER	-	expression tag	UNP I7LG99
C	-8	SER	-	expression tag	UNP I7LG99
C	-7	GLY	-	expression tag	UNP I7LG99
C	-6	LEU	-	expression tag	UNP I7LG99
C	-5	VAL	-	expression tag	UNP I7LG99
C	-4	PRO	-	expression tag	UNP I7LG99
C	-3	ARG	-	expression tag	UNP I7LG99
C	-2	GLY	-	expression tag	UNP I7LG99
C	-1	SER	-	expression tag	UNP I7LG99
C	0	HIS	-	expression tag	UNP I7LG99

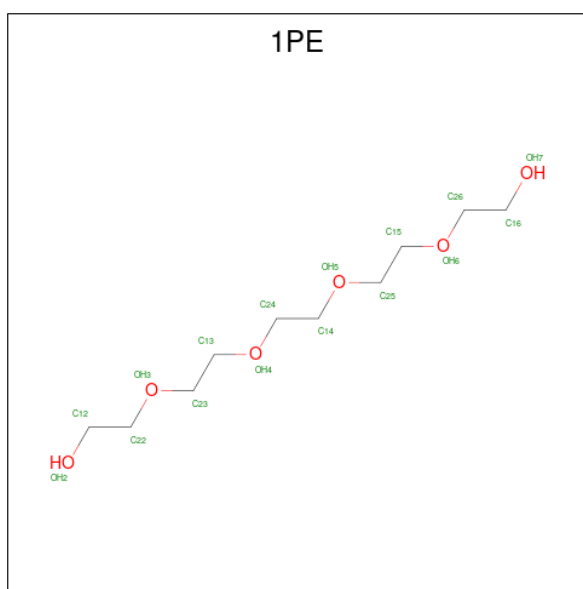
- Molecule 2 is MAGNESIUM ION (three-letter code: MG) (formula: Mg).

Continued on next page...

Continued from previous page...

Mol	Chain	Residues	Atoms	ZeroOcc	AltConf
2	A	1	Total Mg 1 1	0	0
2	B	1	Total Mg 1 1	0	0
2	C	1	Total Mg 1 1	0	0

- Molecule 3 is PENTAETHYLENE GLYCOL (three-letter code: 1PE) (formula: C₁₀H₂₂O₆).

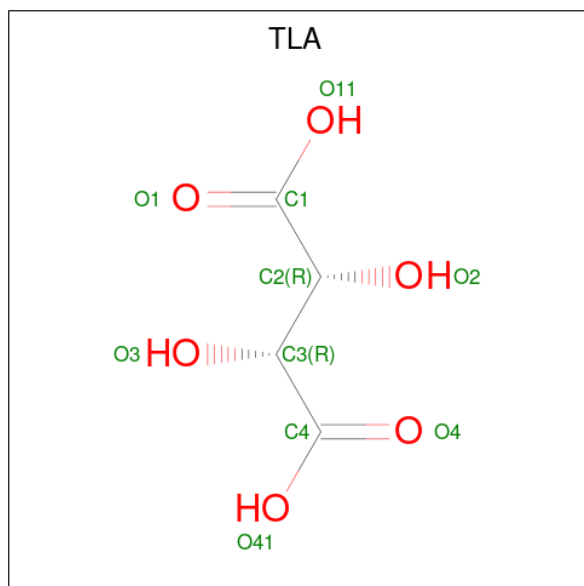


Mol	Chain	Residues	Atoms	ZeroOcc	AltConf
3	A	1	Total C O 16 10 6	0	0
3	A	1	Total C O 16 10 6	0	0
3	A	1	Total C O 16 10 6	0	0
3	B	1	Total C O 16 10 6	0	0
3	B	1	Total C O 16 10 6	0	0
3	C	1	Total C O 16 10 6	0	0

- Molecule 4 is SODIUM ION (three-letter code: NA) (formula: Na).

Mol	Chain	Residues	Atoms	ZeroOcc	AltConf
4	A	1	Total Na 1 1	0	0
4	B	1	Total Na 1 1	0	0
4	C	1	Total Na 1 1	0	0

- Molecule 5 is L(+)-TARTARIC ACID (three-letter code: TLA) (formula: C₄H₆O₆).



Mol	Chain	Residues	Atoms	ZeroOcc	AltConf
5	B	1	Total C O 10 4 6	0	0

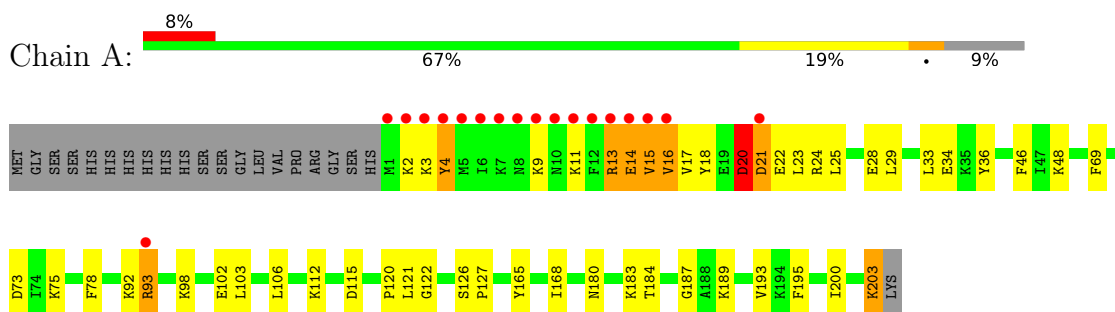
- Molecule 6 is water.

Mol	Chain	Residues	Atoms	ZeroOcc	AltConf
6	A	121	Total O 121 121	0	0
6	B	110	Total O 110 110	0	0
6	C	100	Total O 100 100	0	0

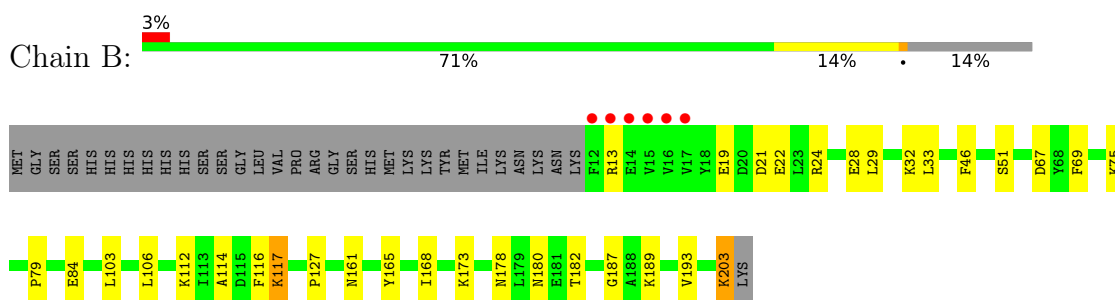
3 Residue-property plots [i](#)

These plots are drawn for all protein, RNA, DNA and oligosaccharide chains in the entry. The first graphic for a chain summarises the proportions of the various outlier classes displayed in the second graphic. The second graphic shows the sequence view annotated by issues in geometry and electron density. Residues are color-coded according to the number of geometric quality criteria for which they contain at least one outlier: green = 0, yellow = 1, orange = 2 and red = 3 or more. A red dot above a residue indicates a poor fit to the electron density ($RSRZ > 2$). Stretches of 2 or more consecutive residues without any outlier are shown as a green connector. Residues present in the sample, but not in the model, are shown in grey.

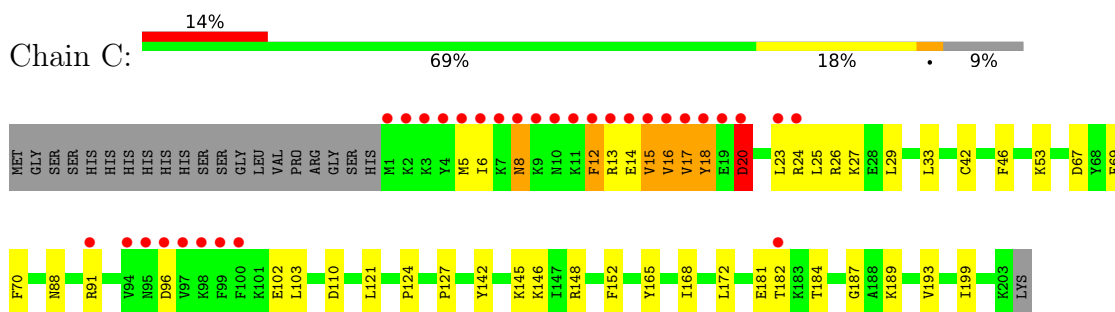
- Molecule 1: RNA-directed DNA polymerase



- Molecule 1: RNA-directed DNA polymerase



- Molecule 1: RNA-directed DNA polymerase



4 Data and refinement statistics i

Property	Value	Source
Space group	P 32	Depositor
Cell constants a, b, c, α , β , γ	96.92Å 96.92Å 65.40Å 90.00° 90.00° 120.00°	Depositor
Resolution (Å)	48.46 – 1.63 48.46 – 1.63	Depositor EDS
% Data completeness (in resolution range)	99.5 (48.46-1.63) 99.4 (48.46-1.63)	Depositor EDS
R_{merge}	0.08	Depositor
R_{sym}	(Not available)	Depositor
$\langle I/\sigma(I) \rangle$ ¹	1.05 (at 1.63Å)	Xtrriage
Refinement program	PHENIX 1.20.1_4487	Depositor
R, R_{free}	0.183 , 0.219 0.180 , 0.215	Depositor DCC
R_{free} test set	4182 reflections (4.90%)	wwPDB-VP
Wilson B-factor (Å ²)	25.7	Xtrriage
Anisotropy	0.163	Xtrriage
Bulk solvent k_{sol} (e/Å ³), B_{sol} (Å ²)	0.39 , 49.6	EDS
L-test for twinning ²	$\langle L \rangle = 0.47$, $\langle L^2 \rangle = 0.30$	Xtrriage
Estimated twinning fraction	0.029 for -h,-k,l 0.043 for h,-h-k,-l 0.069 for -k,-h,-l	Xtrriage
F_o, F_c correlation	0.97	EDS
Total number of atoms	5503	wwPDB-VP
Average B, all atoms (Å ²)	41.0	wwPDB-VP

Xtrriage's analysis on translational NCS is as follows: *The largest off-origin peak in the Patterson function is 8.22% of the height of the origin peak. No significant pseudotranslation is detected.*

¹Intensities estimated from amplitudes.

²Theoretical values of $\langle |L| \rangle$, $\langle L^2 \rangle$ for acentric reflections are 0.5, 0.333 respectively for untwinned datasets, and 0.375, 0.2 for perfectly twinned datasets.

5 Model quality [i](#)

5.1 Standard geometry [i](#)

Bond lengths and bond angles in the following residue types are not validated in this section: MG, NA, 1PE, TLA

The Z score for a bond length (or angle) is the number of standard deviations the observed value is removed from the expected value. A bond length (or angle) with $|Z| > 5$ is considered an outlier worth inspection. RMSZ is the root-mean-square of all Z scores of the bond lengths (or angles).

Mol	Chain	Bond lengths		Bond angles	
		RMSZ	# Z >5	RMSZ	# Z >5
1	A	0.42	0/1782	0.64	0/2388
1	B	0.40	0/1711	0.61	0/2296
1	C	0.38	0/1702	0.58	0/2286
All	All	0.40	0/5195	0.61	0/6970

There are no bond length outliers.

There are no bond angle outliers.

There are no chirality outliers.

There are no planarity outliers.

5.2 Too-close contacts [i](#)

In the following table, the Non-H and H(model) columns list the number of non-hydrogen atoms and hydrogen atoms in the chain respectively. The H(added) column lists the number of hydrogen atoms added and optimized by MolProbity. The Clashes column lists the number of clashes within the asymmetric unit, whereas Symm-Clashes lists symmetry-related clashes.

Mol	Chain	Non-H	H(model)	H(added)	Clashes	Symm-Clashes
1	A	1732	0	1783	43	0
1	B	1659	0	1701	27	0
1	C	1669	0	1687	30	0
2	A	1	0	0	0	0
2	B	1	0	0	0	0
2	C	1	0	0	0	0
3	A	48	0	66	6	0
3	B	32	0	44	3	0
3	C	16	0	22	2	0
4	A	1	0	0	0	0

Continued on next page...

Continued from previous page...

Mol	Chain	Non-H	H(model)	H(added)	Clashes	Symm-Clashes
4	B	1	0	0	0	0
4	C	1	0	0	0	0
5	B	10	0	4	1	0
6	A	121	0	0	6	0
6	B	110	0	0	1	0
6	C	100	0	0	0	0
All	All	5503	0	5307	97	0

The all-atom clashscore is defined as the number of clashes found per 1000 atoms (including hydrogen atoms). The all-atom clashscore for this structure is 9.

All (97) close contacts within the same asymmetric unit are listed below, sorted by their clash magnitude.

Atom-1	Atom-2	Interatomic distance (Å)	Clash overlap (Å)
1:C:29:LEU:HD21	1:C:102:GLU:HG2	1.57	0.87
1:B:19[B]:GLU:HG2	1:B:22:GLU:HG3	1.58	0.85
1:C:6:ILE:HG12	1:C:16:VAL:HG21	1.64	0.79
1:A:15:VAL:HG22	1:A:16:VAL:H	1.49	0.77
1:A:18:TYR:HB3	1:A:23:LEU:HD21	1.66	0.76
3:A:304:1PE:H121	1:B:84:GLU:HB2	1.69	0.75
1:C:165:TYR:HA	1:C:168:ILE:HD12	1.74	0.70
1:B:114:ALA:O	1:B:117[A]:LYS:HG3	1.93	0.68
1:B:79:PRO:HB3	1:B:117[A]:LYS:HD2	1.76	0.66
1:A:17:VAL:HG21	1:C:53:LYS:HG3	1.80	0.63
1:C:181:GLU:H	1:C:181:GLU:CD	2.01	0.63
1:A:14:GLU:HG3	1:A:122:GLY:N	2.13	0.62
1:A:98:LYS:O	1:A:102:GLU:HG3	2.00	0.61
1:A:14:GLU:HG3	1:A:122:GLY:H	1.68	0.59
1:B:46:PHE:CG	1:B:127:PRO:HB3	2.37	0.59
1:A:20:ASP:O	1:A:22:GLU:N	2.37	0.58
1:A:183:LYS:HB3	6:A:406:HOH:O	2.04	0.58
1:A:115:ASP:OD2	6:A:401:HOH:O	2.18	0.56
1:C:26:ARG:HD3	1:C:124:PRO:HD2	1.89	0.55
1:C:33:LEU:HD22	1:C:103:LEU:HD21	1.89	0.54
1:C:25:LEU:O	1:C:29:LEU:HD12	2.08	0.54
1:B:75:LYS:HG3	1:B:180:ASN:OD1	2.08	0.53
1:A:33:LEU:HD13	1:A:103:LEU:HD21	1.90	0.53
1:A:13:ARG:NE	1:A:120:PRO:HA	2.24	0.53
1:B:69:PHE:CZ	1:B:187:GLY:HA3	2.44	0.53
1:B:28:GLU:O	1:B:32:LYS:HG3	2.10	0.52
1:B:189:LYS:HE3	3:B:303:1PE:H252	1.92	0.52

Continued on next page...

Continued from previous page...

Atom-1	Atom-2	Interatomic distance (Å)	Clash overlap (Å)
1:A:165:TYR:HA	1:A:168:ILE:HD12	1.92	0.52
1:B:173:LYS:HB3	1:C:8:ASN:HD21	1.75	0.51
1:C:12:PHE:O	1:C:14:GLU:N	2.44	0.51
1:B:67:ASP:HA	1:B:189:LYS:HB2	1.94	0.50
1:C:46:PHE:CG	1:C:127:PRO:HB3	2.45	0.50
1:C:18:TYR:OH	1:C:110:ASP:OD1	2.27	0.50
1:A:24:ARG:HD2	1:A:28:GLU:HG3	1.94	0.50
1:A:69:PHE:CZ	1:A:187:GLY:HA3	2.47	0.49
1:A:75:LYS:HD3	1:A:180:ASN:OD1	2.14	0.48
1:B:203:LYS:N	1:B:203:LYS:HD2	2.29	0.48
1:A:3:LYS:O	1:A:15:VAL:HG21	2.14	0.48
1:A:29:LEU:HD22	1:A:106:LEU:HD22	1.96	0.48
1:A:195:PHE:HB3	1:A:200:ILE:HD12	1.96	0.47
1:C:12:PHE:O	1:C:14:GLU:HG3	2.15	0.47
1:C:15:VAL:CG2	1:C:121:LEU:HD13	2.45	0.47
1:C:27:LYS:HD3	1:C:124:PRO:HB3	1.97	0.47
1:A:46:PHE:CG	1:A:127:PRO:HB3	2.50	0.47
1:A:189:LYS:HD3	3:A:303:1PE:H241	1.97	0.47
1:A:15:VAL:HG22	1:A:16:VAL:N	2.25	0.46
1:C:146:LYS:HE3	1:C:146:LYS:HA	1.97	0.46
1:B:165:TYR:HA	1:B:168:ILE:HD12	1.98	0.46
1:A:15:VAL:C	1:A:17:VAL:H	2.19	0.46
1:B:112:LYS:HD2	1:B:112:LYS:C	2.35	0.46
1:B:19[B]:GLU:HG3	1:B:21:ASP:H	1.81	0.45
1:B:24:ARG:O	1:B:28:GLU:HG3	2.15	0.45
1:B:33:LEU:HD13	1:B:103:LEU:HD11	1.99	0.45
1:A:21:ASP:HB3	1:C:199:ILE:HG13	1.98	0.45
1:A:36:TYR:HA	3:A:304:1PE:H251	1.98	0.45
1:A:69:PHE:CE1	1:A:193:VAL:HB	2.51	0.45
1:A:34:GLU:OE2	1:A:48:LYS:HE2	2.17	0.45
1:A:112:LYS:HD3	1:C:152:PHE:CE1	2.52	0.45
3:A:304:1PE:H241	3:A:304:1PE:H232	1.65	0.45
1:C:69:PHE:CZ	1:C:187:GLY:HA3	2.51	0.45
1:C:42:CYS:SG	1:C:142:TYR:HB2	2.57	0.44
1:A:203:LYS:NZ	6:A:405:HOH:O	2.40	0.44
1:A:184:THR:HG22	6:A:506:HOH:O	2.17	0.44
1:A:126:SER:HB2	1:A:127:PRO:HD3	2.00	0.44
1:B:178[A]:ASN:ND2	6:B:406:HOH:O	2.50	0.44
1:A:25:LEU:CD1	1:A:106:LEU:HD21	2.48	0.43
1:B:161:ASN:OD1	3:B:303:1PE:H221	2.18	0.43
1:C:18:TYR:C	1:C:20:ASP:H	2.22	0.43

Continued on next page...

Continued from previous page...

Atom-1	Atom-2	Interatomic distance (Å)	Clash overlap (Å)
1:A:14:GLU:HG3	1:A:122:GLY:HA3	2.00	0.43
1:A:36:TYR:CD2	3:A:304:1PE:H141	2.53	0.43
1:A:11:LYS:CB	1:A:121:LEU:HD12	2.48	0.43
3:A:304:1PE:H152	1:B:116:PHE:HB3	2.00	0.43
1:C:16:VAL:O	1:C:17:VAL:HB	2.18	0.43
1:A:14:GLU:HG3	1:A:122:GLY:CA	2.48	0.43
1:A:112:LYS:HE2	6:A:510:HOH:O	2.18	0.43
1:B:29:LEU:HD12	1:B:106:LEU:HD22	2.00	0.43
1:B:29:LEU:HD12	1:B:106:LEU:CD2	2.49	0.43
1:B:69:PHE:CE1	1:B:193:VAL:HB	2.54	0.42
1:C:69:PHE:CE1	1:C:193:VAL:HB	2.54	0.42
1:A:25:LEU:HD13	1:A:106:LEU:HD21	2.02	0.42
1:A:73:ASP:OD1	1:A:183:LYS:HE3	2.20	0.42
1:B:67:ASP:CG	3:B:303:1PE:H222	2.40	0.42
1:A:92:LYS:HE2	1:A:93[A]:ARG:HH21	1.85	0.42
1:C:148:ARG:HH12	3:C:302:1PE:H122	1.84	0.42
1:C:27:LYS:NZ	1:C:124:PRO:HB3	2.34	0.42
1:C:88:ASN:HA	1:C:91:ARG:HD2	2.00	0.42
1:C:145:LYS:HA	3:C:302:1PE:H131	2.02	0.42
1:B:46:PHE:CD1	1:B:127:PRO:HB3	2.55	0.41
1:C:67:ASP:HA	1:C:189:LYS:HB2	2.01	0.41
1:A:78:PHE:CD2	1:A:121:LEU:HD23	2.56	0.41
1:C:70:PHE:CE1	1:C:184:THR:HG23	2.56	0.41
1:B:182:THR:HG22	5:B:304:TLA:O1	2.22	0.40
1:C:172:LEU:HD23	1:C:172:LEU:HA	1.95	0.40
1:A:48:LYS:HG3	6:A:463:HOH:O	2.22	0.40
1:B:106:LEU:HD12	1:B:106:LEU:HA	1.79	0.40
1:A:14:GLU:HG2	1:A:15:VAL:N	2.36	0.40
1:A:4:TYR:HA	1:A:15:VAL:HG23	2.02	0.40

There are no symmetry-related clashes.

5.3 Torsion angles [i](#)

5.3.1 Protein backbone [i](#)

In the following table, the Percentiles column shows the percent Ramachandran outliers of the chain as a percentile score with respect to all X-ray entries followed by that with respect to entries of similar resolution.

The Analysed column shows the number of residues for which the backbone conformation was analysed, and the total number of residues.

Mol	Chain	Analysed	Favoured	Allowed	Outliers	Percentiles	
1	A	208/224 (93%)	191 (92%)	11 (5%)	6 (3%)	4	0
1	B	199/224 (89%)	195 (98%)	4 (2%)	0	100	100
1	C	201/224 (90%)	185 (92%)	10 (5%)	6 (3%)	4	0
All	All	608/672 (90%)	571 (94%)	25 (4%)	12 (2%)	7	0

All (12) Ramachandran outliers are listed below:

Mol	Chain	Res	Type
1	A	15	VAL
1	A	21	ASP
1	C	13	ARG
1	C	20	ASP
1	C	23	LEU
1	A	2	LYS
1	C	17	VAL
1	C	96	ASP
1	A	20	ASP
1	C	12	PHE
1	A	16	VAL
1	A	9	LYS

5.3.2 Protein sidechains [i](#)

In the following table, the Percentiles column shows the percent sidechain outliers of the chain as a percentile score with respect to all X-ray entries followed by that with respect to entries of similar resolution.

The Analysed column shows the number of residues for which the sidechain conformation was analysed, and the total number of residues.

Mol	Chain	Analysed	Rotameric	Outliers	Percentiles	
1	A	190/208 (91%)	183 (96%)	7 (4%)	34	9
1	B	184/208 (88%)	179 (97%)	5 (3%)	44	18
1	C	180/208 (86%)	172 (96%)	8 (4%)	28	6
All	All	554/624 (89%)	534 (96%)	20 (4%)	38	10

All (20) residues with a non-rotameric sidechain are listed below:

Mol	Chain	Res	Type
1	A	4	TYR

Continued on next page...

Continued from previous page...

Mol	Chain	Res	Type
1	A	13	ARG
1	A	14	GLU
1	A	20	ASP
1	A	93[A]	ARG
1	A	93[B]	ARG
1	A	203	LYS
1	B	13	ARG
1	B	51	SER
1	B	117[A]	LYS
1	B	117[B]	LYS
1	B	203	LYS
1	C	5	MET
1	C	8	ASN
1	C	15	VAL
1	C	16	VAL
1	C	18	TYR
1	C	20	ASP
1	C	24	ARG
1	C	182	THR

Sometimes sidechains can be flipped to improve hydrogen bonding and reduce clashes. All (1) such sidechains are listed below:

Mol	Chain	Res	Type
1	C	88	ASN

5.3.3 RNA [i](#)

There are no RNA molecules in this entry.

5.4 Non-standard residues in protein, DNA, RNA chains [i](#)

There are no non-standard protein/DNA/RNA residues in this entry.

5.5 Carbohydrates [i](#)

There are no monosaccharides in this entry.

5.6 Ligand geometry

Of 13 ligands modelled in this entry, 6 are monoatomic - leaving 7 for Mogul analysis.

In the following table, the Counts columns list the number of bonds (or angles) for which Mogul statistics could be retrieved, the number of bonds (or angles) that are observed in the model and the number of bonds (or angles) that are defined in the Chemical Component Dictionary. The Link column lists molecule types, if any, to which the group is linked. The Z score for a bond length (or angle) is the number of standard deviations the observed value is removed from the expected value. A bond length (or angle) with $|Z| > 2$ is considered an outlier worth inspection. RMSZ is the root-mean-square of all Z scores of the bond lengths (or angles).

Mol	Type	Chain	Res	Link	Bond lengths			Bond angles		
					Counts	RMSZ	# Z > 2	Counts	RMSZ	# Z > 2
3	1PE	B	303	-	15,15,15	0.18	0	14,14,14	0.12	0
3	1PE	A	304	-	15,15,15	0.15	0	14,14,14	0.15	0
5	TLA	B	304	-	9,9,9	1.18	0	12,12,12	1.52	1 (8%)
3	1PE	A	302	-	15,15,15	0.30	0	14,14,14	0.15	0
3	1PE	B	302	-	15,15,15	0.23	0	14,14,14	0.15	0
3	1PE	A	303	-	15,15,15	0.14	0	14,14,14	0.19	0
3	1PE	C	302	-	15,15,15	0.15	0	14,14,14	0.22	0

In the following table, the Chirals column lists the number of chiral outliers, the number of chiral centers analysed, the number of these observed in the model and the number defined in the Chemical Component Dictionary. Similar counts are reported in the Torsion and Rings columns. '-' means no outliers of that kind were identified.

Mol	Type	Chain	Res	Link	Chirals	Torsions	Rings
3	1PE	B	303	-	-	6/13/13/13	-
3	1PE	A	304	-	-	5/13/13/13	-
5	TLA	B	304	-	-	4/12/12/12	-
3	1PE	A	302	-	-	4/13/13/13	-
3	1PE	B	302	-	-	7/13/13/13	-
3	1PE	A	303	-	-	8/13/13/13	-
3	1PE	C	302	-	-	8/13/13/13	-

There are no bond length outliers.

All (1) bond angle outliers are listed below:

Mol	Chain	Res	Type	Atoms	Z	Observed(°)	Ideal(°)
5	B	304	TLA	O4-C4-C3	-2.95	113.89	121.63

There are no chirality outliers.

All (42) torsion outliers are listed below:

Mol	Chain	Res	Type	Atoms
3	A	304	1PE	C23-C13-OH4-C24
5	B	304	TLA	C2-C3-C4-O4
5	B	304	TLA	C2-C3-C4-O41
3	A	302	1PE	OH5-C14-C24-OH4
5	B	304	TLA	O3-C3-C4-O4
5	B	304	TLA	O3-C3-C4-O41
3	A	302	1PE	OH6-C15-C25-OH5
3	A	303	1PE	C16-C26-OH6-C15
3	B	303	1PE	OH4-C13-C23-OH3
3	B	302	1PE	C24-C14-OH5-C25
3	A	303	1PE	OH7-C16-C26-OH6
3	A	304	1PE	OH2-C12-C22-OH3
3	C	302	1PE	C15-C25-OH5-C14
3	B	303	1PE	OH6-C15-C25-OH5
3	A	303	1PE	OH6-C15-C25-OH5
3	B	303	1PE	OH7-C16-C26-OH6
3	A	303	1PE	OH4-C13-C23-OH3
3	B	302	1PE	OH4-C13-C23-OH3
3	A	303	1PE	OH5-C14-C24-OH4
3	B	303	1PE	OH5-C14-C24-OH4
3	C	302	1PE	OH6-C15-C25-OH5
3	A	304	1PE	OH6-C15-C25-OH5
3	A	303	1PE	C12-C22-OH3-C23
3	C	302	1PE	C25-C15-OH6-C26
3	A	303	1PE	C23-C13-OH4-C24
3	B	302	1PE	C12-C22-OH3-C23
3	A	304	1PE	C12-C22-OH3-C23
3	A	302	1PE	OH2-C12-C22-OH3
3	B	303	1PE	C24-C14-OH5-C25
3	C	302	1PE	C16-C26-OH6-C15
3	B	302	1PE	C14-C24-OH4-C13
3	C	302	1PE	C23-C13-OH4-C24
3	A	303	1PE	OH2-C12-C22-OH3
3	B	302	1PE	C13-C23-OH3-C22
3	A	304	1PE	C14-C24-OH4-C13
3	B	303	1PE	C15-C25-OH5-C14
3	B	302	1PE	C25-C15-OH6-C26
3	C	302	1PE	C12-C22-OH3-C23
3	B	302	1PE	OH5-C14-C24-OH4
3	C	302	1PE	OH2-C12-C22-OH3
3	C	302	1PE	OH4-C13-C23-OH3
3	A	302	1PE	OH4-C13-C23-OH3

There are no ring outliers.

5 monomers are involved in 12 short contacts:

Mol	Chain	Res	Type	Clashes	Symm-Clashes
3	B	303	1PE	3	0
3	A	304	1PE	5	0
5	B	304	TLA	1	0
3	A	303	1PE	1	0
3	C	302	1PE	2	0

5.7 Other polymers [i](#)

There are no such residues in this entry.

5.8 Polymer linkage issues [i](#)

There are no chain breaks in this entry.

6 Fit of model and data

6.1 Protein, DNA and RNA chains

In the following table, the column labelled ‘#RSRZ> 2’ contains the number (and percentage) of RSRZ outliers, followed by percent RSRZ outliers for the chain as percentile scores relative to all X-ray entries and entries of similar resolution. The OWAB column contains the minimum, median, 95th percentile and maximum values of the occupancy-weighted average B-factor per residue. The column labelled ‘Q< 0.9’ lists the number of (and percentage) of residues with an average occupancy less than 0.9.

Mol	Chain	Analysed	<RSRZ>	#RSRZ>2	OWAB(Å ²)	Q<0.9
1	A	203/224 (90%)	0.35	18 (8%) 9 8	16, 31, 111, 166	0
1	B	192/224 (85%)	-0.29	6 (3%) 49 47	18, 29, 54, 131	0
1	C	203/224 (90%)	0.91	31 (15%) 2 1	19, 35, 156, 202	0
All	All	598/672 (88%)	0.33	55 (9%) 9 7	16, 32, 125, 202	0

All (55) RSRZ outliers are listed below:

Mol	Chain	Res	Type	RSRZ
1	C	9	LYS	26.1
1	C	12	PHE	23.0
1	A	12	PHE	19.2
1	A	4	TYR	17.4
1	C	6	ILE	12.1
1	A	5	MET	12.1
1	C	15	VAL	11.9
1	A	10	ASN	11.1
1	C	16	VAL	10.9
1	C	19	GLU	10.9
1	A	6	ILE	10.6
1	C	4	TYR	10.4
1	C	11	LYS	10.0
1	B	12	PHE	9.3
1	C	17	VAL	8.9
1	C	13	ARG	8.9
1	C	10	ASN	8.9
1	A	3	LYS	8.8
1	C	8	ASN	8.3
1	C	5	MET	7.9
1	C	1	MET	7.6
1	B	16	VAL	7.2
1	A	1	MET	6.7

Continued on next page...

Continued from previous page...

Mol	Chain	Res	Type	RSRZ
1	C	14	GLU	6.5
1	A	14	GLU	6.3
1	A	8	ASN	5.7
1	A	13	ARG	5.6
1	A	9	LYS	5.4
1	A	7	LYS	5.3
1	A	11	LYS	5.1
1	B	13	ARG	5.1
1	C	20	ASP	5.0
1	A	2	LYS	5.0
1	B	15	VAL	4.8
1	C	3	LYS	4.5
1	C	18	TYR	4.5
1	A	15	VAL	3.9
1	C	24	ARG	3.9
1	B	14	GLU	3.9
1	A	21	ASP	3.8
1	A	16	VAL	3.4
1	B	17	VAL	3.4
1	C	94	VAL	3.1
1	C	97	VAL	3.1
1	C	7	LYS	3.0
1	C	23	LEU	3.0
1	C	91	ARG	2.6
1	C	100	PHE	2.5
1	C	99	PHE	2.5
1	C	96	ASP	2.5
1	A	93[A]	ARG	2.4
1	C	182	THR	2.4
1	C	2	LYS	2.3
1	C	98	LYS	2.2
1	C	95	ASN	2.2

6.2 Non-standard residues in protein, DNA, RNA chains [i](#)

There are no non-standard protein/DNA/RNA residues in this entry.

6.3 Carbohydrates [i](#)

There are no monosaccharides in this entry.

6.4 Ligands [i](#)

In the following table, the Atoms column lists the number of modelled atoms in the group and the number defined in the chemical component dictionary. The B-factors column lists the minimum, median, 95th percentile and maximum values of B factors of atoms in the group. The column labelled 'Q< 0.9' lists the number of atoms with occupancy less than 0.9.

Mol	Type	Chain	Res	Atoms	RSCC	RSR	B-factors(Å ²)	Q<0.9
3	1PE	B	302	16/16	0.77	0.23	38,43,49,51	0
3	1PE	A	302	16/16	0.83	0.14	27,35,42,43	0
3	1PE	C	302	16/16	0.85	0.24	30,42,55,56	0
3	1PE	B	303	16/16	0.86	0.26	33,48,59,60	0
3	1PE	A	304	16/16	0.89	0.17	40,46,55,57	0
2	MG	C	301	1/1	0.90	0.13	41,41,41,41	0
2	MG	B	301	1/1	0.91	0.13	44,44,44,44	0
3	1PE	A	303	16/16	0.91	0.15	30,44,51,59	0
5	TLA	B	304	10/10	0.92	0.16	55,59,65,67	0
2	MG	A	301	1/1	0.94	0.17	47,47,47,47	0
4	NA	B	305	1/1	0.99	0.03	24,24,24,24	0
4	NA	C	303	1/1	0.99	0.04	24,24,24,24	0
4	NA	A	305	1/1	0.99	0.06	22,22,22,22	0

6.5 Other polymers [i](#)

There are no such residues in this entry.