



Full wwPDB X-ray Structure Validation Report ⓘ

Nov 6, 2023 – 06:47 AM EST

PDB ID : 7UY0
Title : Crystal structure of human Fgr tyrosine kinase in complex with A-419259
Authors : Du, S.; Alvarado, J.J.; Smithgall, T.E.
Deposited on : 2022-05-06
Resolution : 2.55 Å(reported)

This is a Full wwPDB X-ray Structure Validation Report for a publicly released PDB entry.

We welcome your comments at validation@mail.wwpdb.org

A user guide is available at

<https://www.wwpdb.org/validation/2017/XrayValidationReportHelp>

with specific help available everywhere you see the ⓘ symbol.

The types of validation reports are described at

<http://www.wwpdb.org/validation/2017/FAQs#types>.

The following versions of software and data (see [references ⓘ](#)) were used in the production of this report:

MolProbity : 4.02b-467
Mogul : 1.8.5 (274361), CSD as541be (2020)
Xtriage (Phenix) : 1.13
EDS : 2.36
buster-report : 1.1.7 (2018)
Percentile statistics : 20191225.v01 (using entries in the PDB archive December 25th 2019)
Refmac : 5.8.0158
CCP4 : 7.0.044 (Gargrove)
Ideal geometry (proteins) : Engh & Huber (2001)
Ideal geometry (DNA, RNA) : Parkinson et al. (1996)
Validation Pipeline (wwPDB-VP) : 2.36

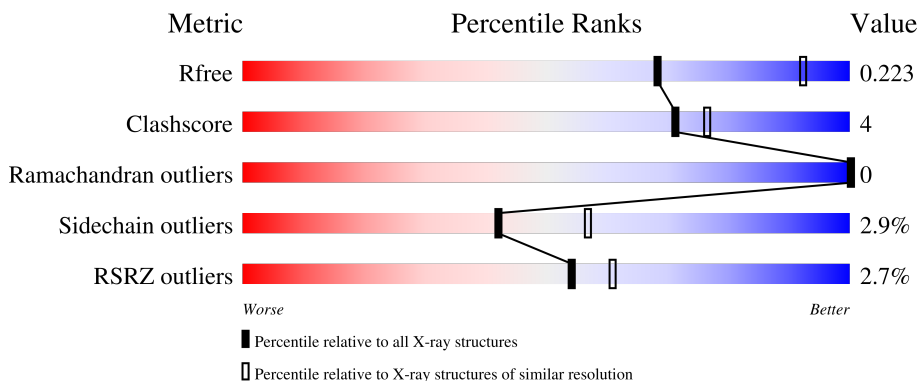
1 Overall quality at a glance

The following experimental techniques were used to determine the structure:

X-RAY DIFFRACTION

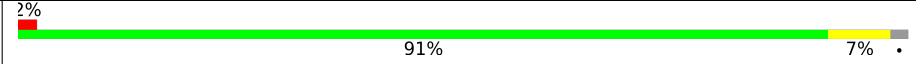
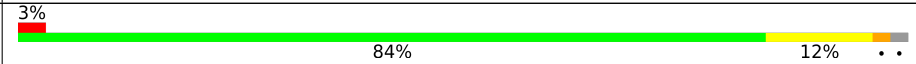
The reported resolution of this entry is 2.55 Å.

Percentile scores (ranging between 0-100) for global validation metrics of the entry are shown in the following graphic. The table shows the number of entries on which the scores are based.



Metric	Whole archive (#Entries)	Similar resolution (#Entries, resolution range(Å))
R_{free}	130704	1284 (2.56-2.52)
Clashscore	141614	1332 (2.56-2.52)
Ramachandran outliers	138981	1315 (2.56-2.52)
Sidechain outliers	138945	1315 (2.56-2.52)
RSRZ outliers	127900	1272 (2.56-2.52)

The table below summarises the geometric issues observed across the polymeric chains and their fit to the electron density. The red, orange, yellow and green segments of the lower bar indicate the fraction of residues that contain outliers for ≥ 3 , 2, 1 and 0 types of geometric quality criteria respectively. A grey segment represents the fraction of residues that are not modelled. The numeric value for each fraction is indicated below the corresponding segment, with a dot representing fractions $\leq 5\%$. The upper red bar (where present) indicates the fraction of residues that have poor fit to the electron density. The numeric value is given above the bar.

Mol	Chain	Length	Quality of chain
1	A	456	
2	B	456	

The following table lists non-polymeric compounds, carbohydrate monomers and non-standard residues in protein, DNA, RNA chains that are outliers for geometric or electron-density-fit criteria:

Mol	Type	Chain	Res	Chirality	Geometry	Clashes	Electron density
3	GOL	B	601	-	-	-	X

2 Entry composition [i](#)

There are 7 unique types of molecules in this entry. The entry contains 7349 atoms, of which 0 are hydrogens and 0 are deuteriums.

In the tables below, the ZeroOcc column contains the number of atoms modelled with zero occupancy, the AltConf column contains the number of residues with at least one atom in alternate conformation and the Trace column contains the number of residues modelled with at most 2 atoms.

- Molecule 1 is a protein called Tyrosine-protein kinase Fgr.

Mol	Chain	Residues	Atoms						ZeroOcc	AltConf	Trace
			Total	C	N	O	P	S			
1	A	448	3584	2287	601	673	1	22	0	1	0

There are 12 discrepancies between the modelled and reference sequences:

Chain	Residue	Modelled	Actual	Comment	Reference
A	76	MET	-	initiating methionine	UNP P09769
A	77	GLY	-	expression tag	UNP P09769
A	78	HIS	-	expression tag	UNP P09769
A	79	HIS	-	expression tag	UNP P09769
A	80	HIS	-	expression tag	UNP P09769
A	81	HIS	-	expression tag	UNP P09769
A	82	HIS	-	expression tag	UNP P09769
A	83	HIS	-	expression tag	UNP P09769
A	528	GLU	GLN	engineered mutation	UNP P09769
A	529	GLU	PRO	engineered mutation	UNP P09769
A	530	ILE	GLY	engineered mutation	UNP P09769
A	531	PRO	ASP	engineered mutation	UNP P09769

- Molecule 2 is a protein called Tyrosine-protein kinase Fgr.

Mol	Chain	Residues	Atoms						ZeroOcc	AltConf	Trace
			Total	C	N	O	P	S			
2	B	448	3611	2303	609	675	1	23	0	2	0

There are 12 discrepancies between the modelled and reference sequences:

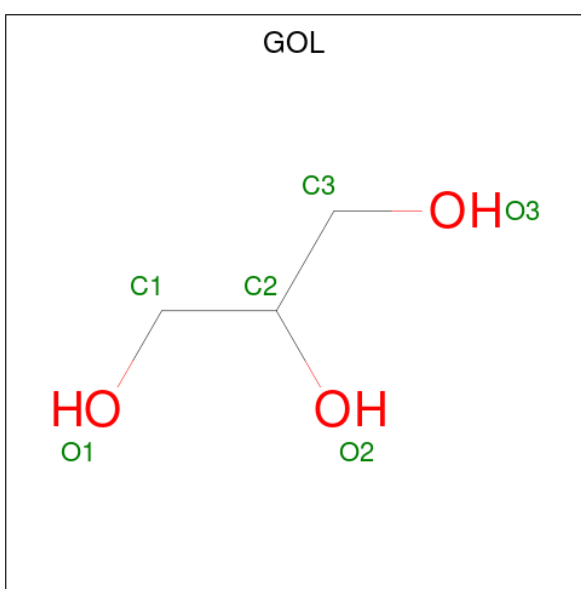
Chain	Residue	Modelled	Actual	Comment	Reference
B	76	MET	-	initiating methionine	UNP P09769
B	77	GLY	-	expression tag	UNP P09769
B	78	HIS	-	expression tag	UNP P09769
B	79	HIS	-	expression tag	UNP P09769

Continued on next page...

Continued from previous page...

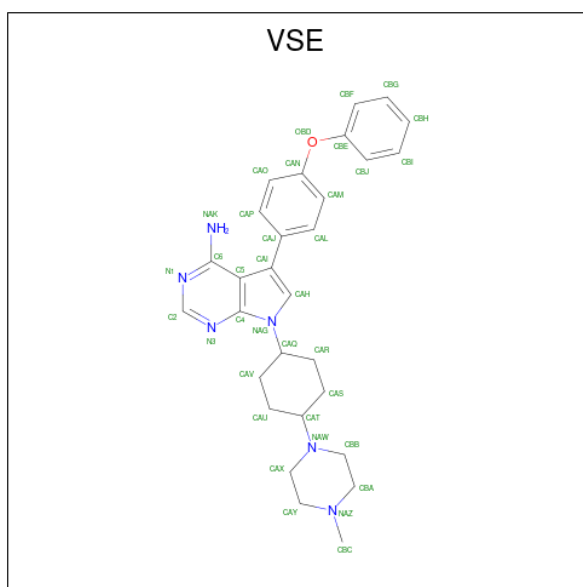
Chain	Residue	Modelled	Actual	Comment	Reference
B	80	HIS	-	expression tag	UNP P09769
B	81	HIS	-	expression tag	UNP P09769
B	82	HIS	-	expression tag	UNP P09769
B	83	HIS	-	expression tag	UNP P09769
B	528	GLU	GLN	engineered mutation	UNP P09769
B	529	GLU	PRO	engineered mutation	UNP P09769
B	530	ILE	GLY	engineered mutation	UNP P09769
B	531	PRO	ASP	engineered mutation	UNP P09769

- Molecule 3 is GLYCEROL (three-letter code: GOL) (formula: C₃H₈O₃).



Mol	Chain	Residues	Atoms			ZeroOcc	AltConf
3	A	1	Total	C	O	0	0
			6	3	3		
3	A	1	Total	C	O	0	0
			6	3	3		
3	B	1	Total	C	O	0	0
			6	3	3		

- Molecule 4 is 7-[trans-4-(4-methylpiperazin-1-yl)cyclohexyl]-5-(4-phenoxyphenyl)-7H-pyrrolo[2,3-d]pyrimidin-4-amine (three-letter code: VSE) (formula: C₂₉H₃₄N₆O) (labeled as "Ligand of Interest" by depositor).



Mol	Chain	Residues	Atoms				ZeroOcc	AltConf
4	A	1	Total	C	N	O	0	0
			36	29	6	1		
4	B	1	Total	C	N	O	0	0
			36	29	6	1		

- Molecule 5 is CHLORIDE ION (three-letter code: CL) (formula: Cl).

Mol	Chain	Residues	Atoms		ZeroOcc	AltConf
5	A	1	Total	Cl	0	0
			1	1		
5	B	3	Total	Cl	0	0
			3	3		

- Molecule 6 is PHOSPHATE ION (three-letter code: PO4) (formula: O₄P).



Mol	Chain	Residues	Atoms		ZeroOcc	AltConf
6	B	1	Total	O P	0	0
			5	4 1		
6	B	1	Total	O P	0	0
			5	4 1		

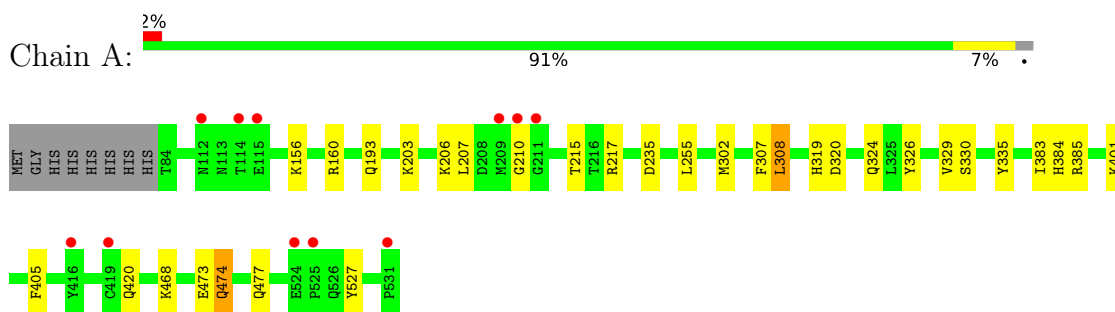
- Molecule 7 is water.

Mol	Chain	Residues	Atoms		ZeroOcc	AltConf
7	A	30	Total	O	0	0
			30	30		
7	B	20	Total	O	0	0
			20	20		

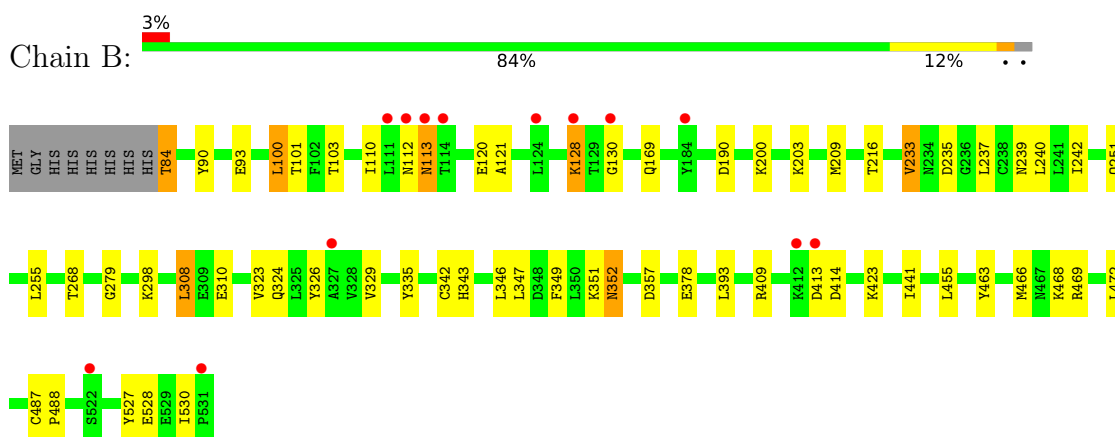
3 Residue-property plots [i](#)

These plots are drawn for all protein, RNA, DNA and oligosaccharide chains in the entry. The first graphic for a chain summarises the proportions of the various outlier classes displayed in the second graphic. The second graphic shows the sequence view annotated by issues in geometry and electron density. Residues are color-coded according to the number of geometric quality criteria for which they contain at least one outlier: green = 0, yellow = 1, orange = 2 and red = 3 or more. A red dot above a residue indicates a poor fit to the electron density ($RSRZ > 2$). Stretches of 2 or more consecutive residues without any outlier are shown as a green connector. Residues present in the sample, but not in the model, are shown in grey.

- Molecule 1: Tyrosine-protein kinase Fgr



- Molecule 2: Tyrosine-protein kinase Fgr



4 Data and refinement statistics

Property	Value	Source
Space group	P 21 21 21	Depositor
Cell constants a, b, c, α , β , γ	49.43Å 112.09Å 213.73Å 90.00° 90.00° 90.00°	Depositor
Resolution (Å)	77.35 – 2.55 77.35 – 2.55	Depositor EDS
% Data completeness (in resolution range)	100.0 (77.35-2.55) 95.1 (77.35-2.55)	Depositor EDS
R_{merge}	0.12	Depositor
R_{sym}	(Not available)	Depositor
$\langle I/\sigma(I) \rangle$ ¹	1.75 (at 2.55Å)	Xtrriage
Refinement program	PHENIX 1.14_3260	Depositor
R, R_{free}	0.186 , 0.223 0.187 , 0.223	Depositor DCC
R_{free} test set	2000 reflections (5.03%)	wwPDB-VP
Wilson B-factor (Å ²)	60.4	Xtrriage
Anisotropy	0.034	Xtrriage
Bulk solvent k_{sol} (e/Å ³), B_{sol} (Å ²)	0.32 , 46.2	EDS
L-test for twinning ²	$\langle L \rangle = 0.49$, $\langle L^2 \rangle = 0.33$	Xtrriage
Estimated twinning fraction	No twinning to report.	Xtrriage
F_o, F_c correlation	0.95	EDS
Total number of atoms	7349	wwPDB-VP
Average B, all atoms (Å ²)	71.0	wwPDB-VP

Xtrriage's analysis on translational NCS is as follows: *The largest off-origin peak in the Patterson function is 3.66% of the height of the origin peak. No significant pseudotranslation is detected.*

¹Intensities estimated from amplitudes.

²Theoretical values of $\langle |L| \rangle$, $\langle L^2 \rangle$ for acentric reflections are 0.5, 0.333 respectively for untwinned datasets, and 0.375, 0.2 for perfectly twinned datasets.

5 Model quality [i](#)

5.1 Standard geometry [i](#)

Bond lengths and bond angles in the following residue types are not validated in this section: PTR, PO4, GOL, VSE, CL, CME

The Z score for a bond length (or angle) is the number of standard deviations the observed value is removed from the expected value. A bond length (or angle) with $|Z| > 5$ is considered an outlier worth inspection. RMSZ is the root-mean-square of all Z scores of the bond lengths (or angles).

Mol	Chain	Bond lengths		Bond angles	
		RMSZ	# Z >5	RMSZ	# Z >5
1	A	0.28	0/3658	0.47	0/4959
2	B	0.31	0/3674	0.48	0/4975
All	All	0.30	0/7332	0.48	0/9934

There are no bond length outliers.

There are no bond angle outliers.

There are no chirality outliers.

There are no planarity outliers.

5.2 Too-close contacts [i](#)

In the following table, the Non-H and H(model) columns list the number of non-hydrogen atoms and hydrogen atoms in the chain respectively. The H(added) column lists the number of hydrogen atoms added and optimized by MolProbity. The Clashes column lists the number of clashes within the asymmetric unit, whereas Symm-Clashes lists symmetry-related clashes.

Mol	Chain	Non-H	H(model)	H(added)	Clashes	Symm-Clashes
1	A	3584	0	3497	17	0
2	B	3611	0	3539	37	0
3	A	12	0	16	3	0
3	B	6	0	8	0	0
4	A	36	0	34	0	0
4	B	36	0	34	0	0
5	A	1	0	0	0	0
5	B	3	0	0	2	0
6	B	10	0	0	0	0
7	A	30	0	0	0	0
7	B	20	0	0	0	0
All	All	7349	0	7128	51	0

The all-atom clashscore is defined as the number of clashes found per 1000 atoms (including hydrogen atoms). The all-atom clashscore for this structure is 4.

All (51) close contacts within the same asymmetric unit are listed below, sorted by their clash magnitude.

Atom-1	Atom-2	Interatomic distance (Å)	Clash overlap (Å)
2:B:237:LEU:HD23	2:B:530:ILE:HD11	1.50	0.91
2:B:128:LYS:NZ	2:B:128:LYS:HB3	1.99	0.77
1:A:319:HIS:H	3:A:602:GOL:H2	1.54	0.73
2:B:237:LEU:CD2	2:B:530:ILE:HD11	2.18	0.73
1:A:324:GLN:HA	3:A:602:GOL:H11	1.72	0.70
2:B:113:ASN:N	2:B:113:ASN:OD1	2.30	0.65
2:B:349:PHE:O	2:B:352:ASN:ND2	2.30	0.61
2:B:128:LYS:HB3	2:B:128:LYS:HZ3	1.65	0.59
2:B:233:VAL:HG22	2:B:235:ASP:HB2	1.83	0.59
1:A:383:ILE:HG22	1:A:385:ARG:HG3	1.83	0.58
2:B:347:LEU:HG	2:B:351:LYS:HE2	1.86	0.56
2:B:255:LEU:HG	2:B:326:TYR:HB3	1.88	0.56
1:A:468:LYS:NZ	2:B:413:ASP:OD1	2.38	0.55
2:B:310:GLU:OE1	2:B:409:ARG:NH2	2.38	0.54
2:B:100:LEU:HD23	2:B:130:GLY:O	2.07	0.53
2:B:169:GLN:NE2	2:B:239:ASN:OD1	2.40	0.53
2:B:128:LYS:HB3	2:B:128:LYS:HZ2	1.73	0.52
1:A:324:GLN:HB2	3:A:602:GOL:H32	1.92	0.52
2:B:112:ASN:HB3	2:B:120:GLU:HB3	1.93	0.51
2:B:93:GLU:HA	2:B:101:THR:HG23	1.92	0.50
2:B:190:ASP:OD2	2:B:200:LYS:NZ	2.41	0.50
2:B:323:VAL:HG11	2:B:393:LEU:HD12	1.93	0.50
1:A:302:MET:HE1	1:A:307:PHE:HD1	1.77	0.49
1:A:308:LEU:HG	1:A:330:SER:OG	2.14	0.48
2:B:110:ILE:HD13	2:B:121:ALA:HB2	1.97	0.47
1:A:255:LEU:HG	1:A:326:TYR:HB3	1.96	0.47
1:A:320:ASP:O	1:A:401:LYS:NZ	2.39	0.47
1:A:206:LYS:NZ	1:A:210:GLY:HA2	2.29	0.47
2:B:251:GLN:HB3	5:B:605:CL:CL	2.51	0.47
2:B:329:VAL:HB	2:B:335:TYR:HB2	1.96	0.47
1:A:468:LYS:NZ	2:B:414:ASP:O	2.49	0.46
2:B:463:TYR:HD1	2:B:466:MET:HE3	1.81	0.46
1:A:329:VAL:HB	1:A:335:TYR:HB2	1.98	0.46
2:B:84:THR:HG22	2:B:110:ILE:HB	1.96	0.46
2:B:346:LEU:HD21	2:B:455:LEU:HD13	1.98	0.45
1:A:474:GLN:OE1	2:B:469[A]:ARG:NH2	2.48	0.45
2:B:128:LYS:NZ	2:B:128:LYS:CB	2.73	0.45

Continued on next page...

Continued from previous page...

Atom-1	Atom-2	Interatomic distance (Å)	Clash overlap (Å)
2:B:279:GLY:HA2	2:B:298:LYS:HG3	1.99	0.45
1:A:384:HIS:CD2	1:A:405:PHE:HB3	2.52	0.45
2:B:240:LEU:O	2:B:242:ILE:HG13	2.17	0.44
2:B:342:CME:HE3	2:B:343:HIS:NE2	2.33	0.44
2:B:472:LEU:HD12	2:B:472:LEU:HA	1.85	0.42
1:A:156:LYS:O	1:A:160:ARG:HG3	2.19	0.42
2:B:423:LYS:HA	2:B:423:LYS:HE2	2.00	0.42
1:A:217:ARG:NH1	1:A:235:ASP:OD1	2.53	0.42
2:B:200:LYS:HD3	2:B:528:GLU:HG3	2.02	0.41
1:A:473:GLU:O	1:A:477:GLN:HG2	2.21	0.41
2:B:308:LEU:HD22	2:B:308:LEU:HA	1.87	0.40
2:B:487:CYS:HA	2:B:488:PRO:HD3	1.95	0.40
2:B:378:GLU:HG3	2:B:441:ILE:HG12	2.04	0.40
2:B:468:LYS:HE2	5:B:603:CL:CL	2.58	0.40

There are no symmetry-related clashes.

5.3 Torsion angles [i](#)

5.3.1 Protein backbone [i](#)

In the following table, the Percentiles column shows the percent Ramachandran outliers of the chain as a percentile score with respect to all X-ray entries followed by that with respect to entries of similar resolution.

The Analysed column shows the number of residues for which the backbone conformation was analysed, and the total number of residues.

Mol	Chain	Analysed	Favoured	Allowed	Outliers	Percentiles	
1	A	446/456 (98%)	439 (98%)	7 (2%)	0	100	100
2	B	446/456 (98%)	430 (96%)	16 (4%)	0	100	100
All	All	892/912 (98%)	869 (97%)	23 (3%)	0	100	100

There are no Ramachandran outliers to report.

5.3.2 Protein sidechains [i](#)

In the following table, the Percentiles column shows the percent sidechain outliers of the chain as a percentile score with respect to all X-ray entries followed by that with respect to entries of similar resolution.

The Analysed column shows the number of residues for which the sidechain conformation was analysed, and the total number of residues.

Mol	Chain	Analysed	Rotameric	Outliers	Percentiles	
1	A	381/392 (97%)	374 (98%)	7 (2%)	59	74
2	B	383/391 (98%)	368 (96%)	15 (4%)	32	44
All	All	764/783 (98%)	742 (97%)	22 (3%)	42	57

All (22) residues with a non-rotameric sidechain are listed below:

Mol	Chain	Res	Type
1	A	193	GLN
1	A	203	LYS
1	A	207	LEU
1	A	215	THR
1	A	308	LEU
1	A	420	GLN
1	A	474	GLN
2	B	84	THR
2	B	90	TYR
2	B	100	LEU
2	B	103	THR
2	B	113	ASN
2	B	128	LYS
2	B	203	LYS
2	B	209	MET
2	B	216	THR
2	B	233	VAL
2	B	268	THR
2	B	308	LEU
2	B	324	GLN
2	B	352	ASN
2	B	357	ASP

Sometimes sidechains can be flipped to improve hydrogen bonding and reduce clashes. All (1) such sidechains are listed below:

Mol	Chain	Res	Type
1	A	251	GLN

5.3.3 RNA

There are no RNA molecules in this entry.

5.4 Non-standard residues in protein, DNA, RNA chains

3 non-standard protein/DNA/RNA residues are modelled in this entry.

In the following table, the Counts columns list the number of bonds (or angles) for which Mogul statistics could be retrieved, the number of bonds (or angles) that are observed in the model and the number of bonds (or angles) that are defined in the Chemical Component Dictionary. The Link column lists molecule types, if any, to which the group is linked. The Z score for a bond length (or angle) is the number of standard deviations the observed value is removed from the expected value. A bond length (or angle) with $|Z| > 2$ is considered an outlier worth inspection. RMSZ is the root-mean-square of all Z scores of the bond lengths (or angles).

Mol	Type	Chain	Res	Link	Bond lengths			Bond angles		
					Counts	RMSZ	# Z > 2	Counts	RMSZ	# Z > 2
2	PTR	B	527	2	15,16,17	1.29	1 (6%)	19,22,24	0.57	0
1	PTR	A	527	1	15,16,17	1.21	1 (6%)	19,22,24	0.50	0
2	CME	B	342	2	8,9,10	0.97	0	5,9,11	0.96	0

In the following table, the Chirals column lists the number of chiral outliers, the number of chiral centers analysed, the number of these observed in the model and the number defined in the Chemical Component Dictionary. Similar counts are reported in the Torsion and Rings columns. '-' means no outliers of that kind were identified.

Mol	Type	Chain	Res	Link	Chirals	Torsions	Rings
2	PTR	B	527	2	-	1/10/11/13	0/1/1/1
1	PTR	A	527	1	-	1/10/11/13	0/1/1/1
2	CME	B	342	2	-	3/5/8/10	-

All (2) bond length outliers are listed below:

Mol	Chain	Res	Type	Atoms	Z	Observed(Å)	Ideal(Å)
2	B	527	PTR	OH-CZ	-4.31	1.30	1.40
1	A	527	PTR	OH-CZ	-4.24	1.31	1.40

There are no bond angle outliers.

There are no chirality outliers.

All (5) torsion outliers are listed below:

Mol	Chain	Res	Type	Atoms
1	A	527	PTR	O-C-CA-CB
2	B	342	CME	CE-SD-SG-CB
2	B	527	PTR	O-C-CA-CB
2	B	342	CME	CA-CB-SG-SD

Continued on next page...

Continued from previous page...

Mol	Chain	Res	Type	Atoms
2	B	342	CME	CZ-CE-SD-SG

There are no ring outliers.

1 monomer is involved in 1 short contact:

Mol	Chain	Res	Type	Clashes	Symm-Clashes
2	B	342	CME	1	0

5.5 Carbohydrates [i](#)

There are no monosaccharides in this entry.

5.6 Ligand geometry [i](#)

Of 11 ligands modelled in this entry, 4 are monoatomic - leaving 7 for Mogul analysis.

In the following table, the Counts columns list the number of bonds (or angles) for which Mogul statistics could be retrieved, the number of bonds (or angles) that are observed in the model and the number of bonds (or angles) that are defined in the Chemical Component Dictionary. The Link column lists molecule types, if any, to which the group is linked. The Z score for a bond length (or angle) is the number of standard deviations the observed value is removed from the expected value. A bond length (or angle) with $|Z| > 2$ is considered an outlier worth inspection. RMSZ is the root-mean-square of all Z scores of the bond lengths (or angles).

Mol	Type	Chain	Res	Link	Bond lengths			Bond angles		
					Counts	RMSZ	# Z > 2	Counts	RMSZ	# Z > 2
3	GOL	A	602	-	5,5,5	1.13	0	5,5,5	0.72	0
6	PO4	B	607	-	4,4,4	0.95	0	6,6,6	0.42	0
3	GOL	A	601	-	5,5,5	1.11	0	5,5,5	0.91	0
4	VSE	B	602	-	39,41,41	2.46	11 (28%)	45,58,58	1.63	9 (20%)
6	PO4	B	606	-	4,4,4	0.92	0	6,6,6	0.42	0
4	VSE	A	603	-	39,41,41	2.44	10 (25%)	45,58,58	1.33	6 (13%)
3	GOL	B	601	-	5,5,5	1.02	0	5,5,5	0.90	0

In the following table, the Chirals column lists the number of chiral outliers, the number of chiral centers analysed, the number of these observed in the model and the number defined in the Chemical Component Dictionary. Similar counts are reported in the Torsion and Rings columns. '-' means no outliers of that kind were identified.

Mol	Type	Chain	Res	Link	Chirals	Torsions	Rings
3	GOL	A	602	-	-	0/4/4/4	-

Continued on next page...

Continued from previous page...

Mol	Type	Chain	Res	Link	Chirals	Torsions	Rings
3	GOL	A	601	-	-	2/4/4/4	-
4	VSE	B	602	-	-	3/12/36/36	0/6/6/6
4	VSE	A	603	-	-	0/12/36/36	0/6/6/6
3	GOL	B	601	-	-	0/4/4/4	-

All (21) bond length outliers are listed below:

Mol	Chain	Res	Type	Atoms	Z	Observed(Å)	Ideal(Å)
4	B	602	VSE	CBC-NAZ	-7.65	1.29	1.46
4	A	603	VSE	CBC-NAZ	-7.57	1.29	1.46
4	A	603	VSE	CAT-NAW	-6.21	1.32	1.48
4	B	602	VSE	CAT-NAW	-6.19	1.32	1.48
4	B	602	VSE	CBB-NAW	-5.81	1.35	1.47
4	A	603	VSE	CBB-NAW	-5.65	1.36	1.47
4	A	603	VSE	CAY-NAZ	-4.41	1.36	1.46
4	B	602	VSE	CAY-NAZ	-4.23	1.37	1.46
4	B	602	VSE	CBA-NAZ	-4.00	1.37	1.46
4	B	602	VSE	CAX-NAW	-3.77	1.39	1.47
4	A	603	VSE	CBA-NAZ	-3.76	1.38	1.46
4	A	603	VSE	CAX-NAW	-3.71	1.39	1.47
4	A	603	VSE	CAI-CAJ	-3.26	1.43	1.49
4	B	602	VSE	CAI-CAJ	-3.25	1.43	1.49
4	B	602	VSE	C6-NAK	2.70	1.43	1.34
4	A	603	VSE	C6-NAK	2.66	1.43	1.34
4	A	603	VSE	CAH-NAG	-2.63	1.34	1.38
4	A	603	VSE	OBD-CAN	2.62	1.45	1.39
4	B	602	VSE	OBD-CAN	2.54	1.45	1.39
4	B	602	VSE	CAH-NAG	-2.48	1.34	1.38
4	B	602	VSE	CAM-CAL	2.01	1.42	1.38

All (15) bond angle outliers are listed below:

Mol	Chain	Res	Type	Atoms	Z	Observed(°)	Ideal(°)
4	B	602	VSE	CBB-NAW-CAX	4.58	117.46	109.08
4	B	602	VSE	N3-C2-N1	-4.35	121.88	128.68
4	A	603	VSE	N3-C2-N1	-4.35	121.88	128.68
4	A	603	VSE	CAS-CAT-NAW	-3.87	102.47	112.52
4	B	602	VSE	CAU-CAT-NAW	3.36	121.25	112.52
4	B	602	VSE	CAP-CAJ-CAI	-2.83	116.10	120.86
4	B	602	VSE	CAX-NAW-CAT	2.74	120.37	112.64
4	A	603	VSE	CAU-CAT-NAW	2.56	119.16	112.52
4	B	602	VSE	CBA-NAZ-CAY	2.48	112.99	109.52

Continued on next page...

Continued from previous page...

Mol	Chain	Res	Type	Atoms	Z	Observed(°)	Ideal(°)
4	B	602	VSE	CAR-CAQ-CAV	2.34	114.62	110.16
4	B	602	VSE	CAS-CAT-NAW	-2.33	106.45	112.52
4	A	603	VSE	CAI-C5-C4	-2.11	105.86	107.54
4	B	602	VSE	CAL-CAJ-CAI	2.10	124.39	120.86
4	A	603	VSE	CAX-NAW-CAT	-2.02	106.94	112.64
4	A	603	VSE	CBA-NAZ-CAY	2.01	112.34	109.52

There are no chirality outliers.

All (5) torsion outliers are listed below:

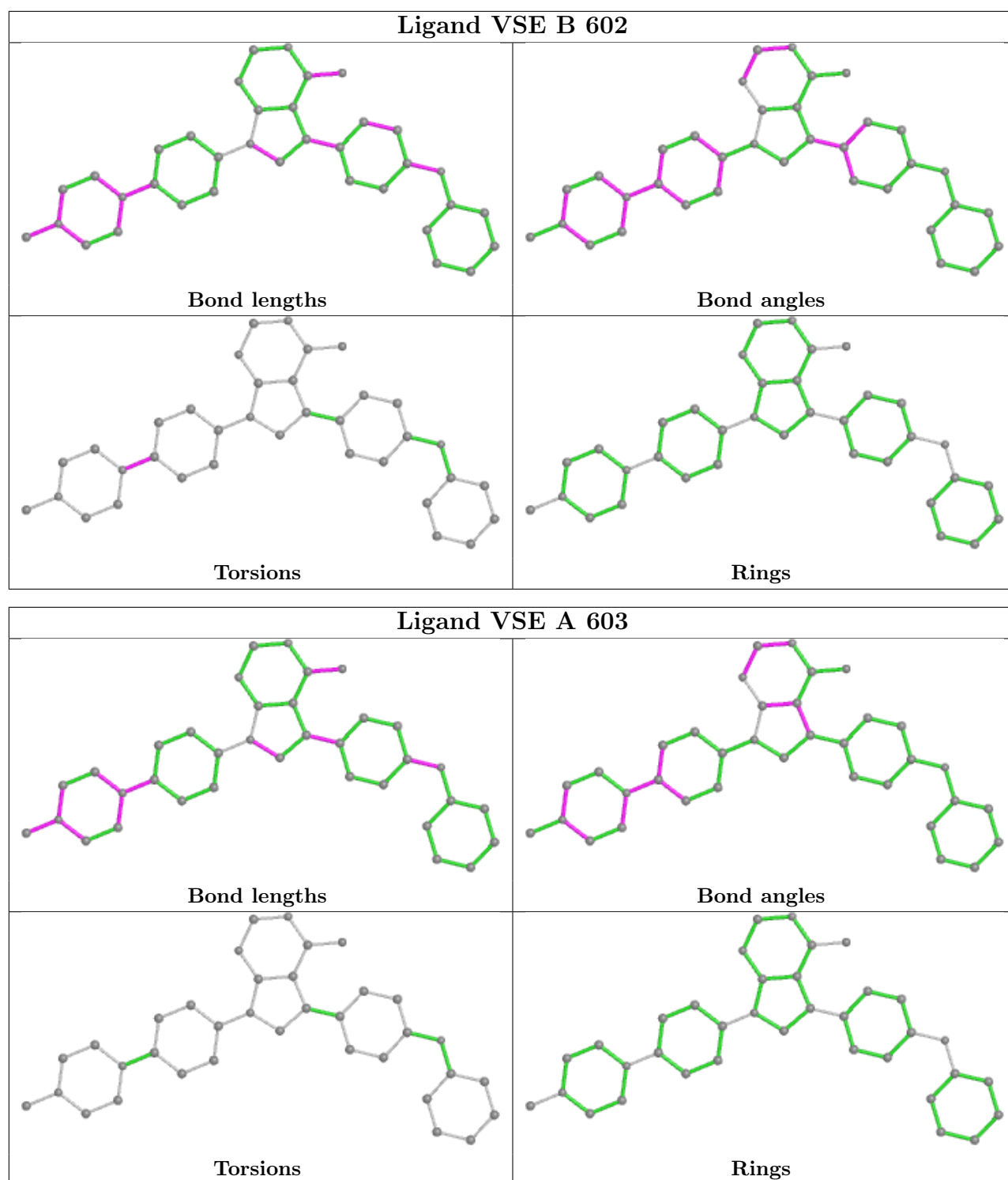
Mol	Chain	Res	Type	Atoms
3	A	601	GOL	O1-C1-C2-C3
4	B	602	VSE	CAS-CAT-NAW-CBB
4	B	602	VSE	CAU-CAT-NAW-CBB
3	A	601	GOL	O1-C1-C2-O2
4	B	602	VSE	CAS-CAT-NAW-CAX

There are no ring outliers.

1 monomer is involved in 3 short contacts:

Mol	Chain	Res	Type	Clashes	Symm-Clashes
3	A	602	GOL	3	0

The following is a two-dimensional graphical depiction of Mogul quality analysis of bond lengths, bond angles, torsion angles, and ring geometry for all instances of the Ligand of Interest. In addition, ligands with molecular weight > 250 and outliers as shown on the validation Tables will also be included. For torsion angles, if less than 5% of the Mogul distribution of torsion angles is within 10 degrees of the torsion angle in question, then that torsion angle is considered an outlier. Any bond that is central to one or more torsion angles identified as an outlier by Mogul will be highlighted in the graph. For rings, the root-mean-square deviation (RMSD) between the ring in question and similar rings identified by Mogul is calculated over all ring torsion angles. If the average RMSD is greater than 60 degrees and the minimal RMSD between the ring in question and any Mogul-identified rings is also greater than 60 degrees, then that ring is considered an outlier. The outliers are highlighted in purple. The color gray indicates Mogul did not find sufficient equivalents in the CSD to analyse the geometry.



5.7 Other polymers [\(i\)](#)

There are no such residues in this entry.

5.8 Polymer linkage issues

There are no chain breaks in this entry.

6 Fit of model and data

6.1 Protein, DNA and RNA chains

In the following table, the column labelled ‘#RSRZ > 2’ contains the number (and percentage) of RSRZ outliers, followed by percent RSRZ outliers for the chain as percentile scores relative to all X-ray entries and entries of similar resolution. The OWAB column contains the minimum, median, 95th percentile and maximum values of the occupancy-weighted average B-factor per residue. The column labelled ‘Q < 0.9’ lists the number of (and percentage) of residues with an average occupancy less than 0.9.

Mol	Chain	Analysed	<RSRZ>	#RSRZ>2	OWAB(Å ²)	Q<0.9
1	A	447/456 (98%)	0.21	11 (2%) 57 63	42, 62, 107, 161	0
2	B	446/456 (97%)	0.30	13 (2%) 51 59	44, 72, 110, 170	0
All	All	893/912 (97%)	0.25	24 (2%) 54 61	42, 66, 110, 170	0

All (24) RSRZ outliers are listed below:

Mol	Chain	Res	Type	RSRZ
1	A	531	PRO	7.2
2	B	114	THR	6.8
2	B	112	ASN	4.1
1	A	112	ASN	3.9
1	A	211	GLY	3.9
1	A	416	TYR	3.6
2	B	113	ASN	3.6
2	B	412	LYS	3.5
2	B	128	LYS	3.4
2	B	130	GLY	3.0
2	B	111	LEU	2.9
1	A	115	GLU	2.9
2	B	413	ASP	2.8
1	A	524	GLU	2.4
2	B	124	LEU	2.4
1	A	114	THR	2.4
2	B	531	PRO	2.3
1	A	210	GLY	2.3
2	B	327	ALA	2.3
1	A	525	PRO	2.2
2	B	522	SER	2.2
2	B	184	TYR	2.1
1	A	419	CYS	2.1
1	A	209	MET	2.1

6.2 Non-standard residues in protein, DNA, RNA chains [i](#)

In the following table, the Atoms column lists the number of modelled atoms in the group and the number defined in the chemical component dictionary. The B-factors column lists the minimum, median, 95th percentile and maximum values of B factors of atoms in the group. The column labelled 'Q< 0.9' lists the number of atoms with occupancy less than 0.9.

Mol	Type	Chain	Res	Atoms	RSCC	RSR	B-factors(Å ²)	Q<0.9
2	CME	B	342	10/11	0.90	0.12	63,70,84,85	0
1	PTR	A	527	16/17	0.95	0.20	74,83,86,90	0
2	PTR	B	527	16/17	0.97	0.16	63,69,79,80	0

6.3 Carbohydrates [i](#)

There are no monosaccharides in this entry.

6.4 Ligands [i](#)

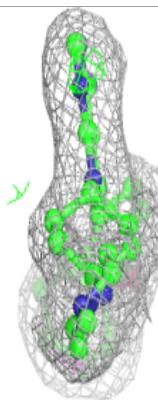
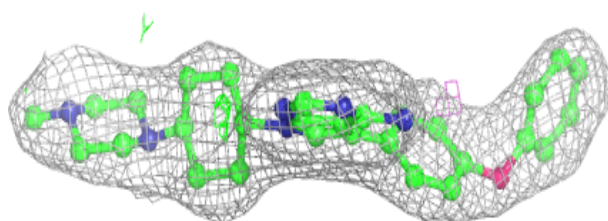
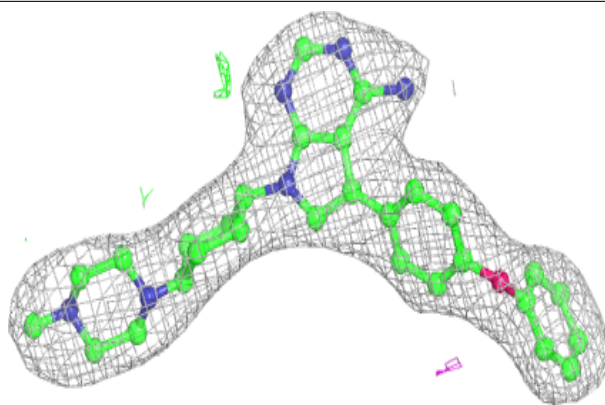
In the following table, the Atoms column lists the number of modelled atoms in the group and the number defined in the chemical component dictionary. The B-factors column lists the minimum, median, 95th percentile and maximum values of B factors of atoms in the group. The column labelled 'Q< 0.9' lists the number of atoms with occupancy less than 0.9.

Mol	Type	Chain	Res	Atoms	RSCC	RSR	B-factors(Å ²)	Q<0.9
3	GOL	A	602	6/6	0.57	0.35	70,83,84,88	0
3	GOL	A	601	6/6	0.58	0.32	75,80,81,82	0
5	CL	B	604	1/1	0.69	0.15	96,96,96,96	0
3	GOL	B	601	6/6	0.71	0.50	89,91,92,93	0
5	CL	B	605	1/1	0.78	0.09	93,93,93,93	0
6	PO4	B	606	5/5	0.81	0.36	164,164,165,165	0
5	CL	A	604	1/1	0.90	0.21	83,83,83,83	0
6	PO4	B	607	5/5	0.90	0.29	139,140,140,142	0
5	CL	B	603	1/1	0.91	0.10	71,71,71,71	0
4	VSE	A	603	36/36	0.97	0.17	40,44,57,61	0
4	VSE	B	602	36/36	0.97	0.18	44,51,60,63	0

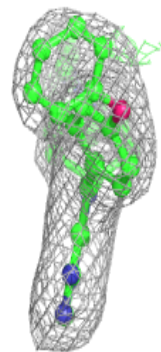
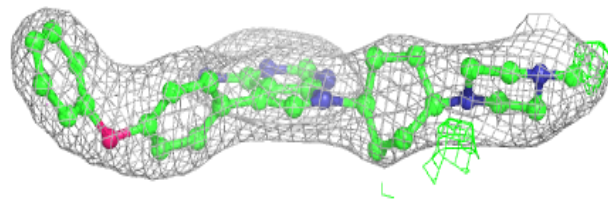
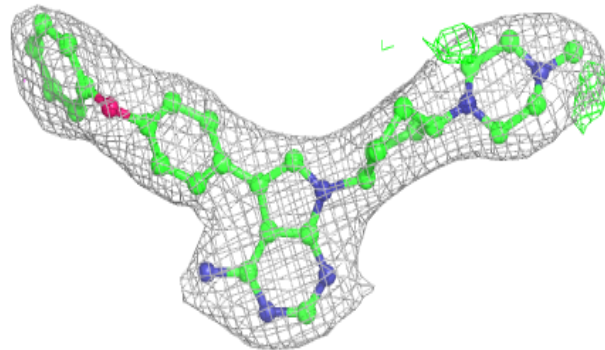
The following is a graphical depiction of the model fit to experimental electron density of all instances of the Ligand of Interest. In addition, ligands with molecular weight > 250 and outliers as shown on the geometry validation Tables will also be included. Each fit is shown from different orientation to approximate a three-dimensional view.

Electron density around VSE A 603:

$2mF_o-DF_c$ (at 0.7 rmsd) in gray
 mF_o-DF_c (at 3 rmsd) in purple (negative)
and green (positive)

**Electron density around VSE B 602:**

$2mF_o-DF_c$ (at 0.7 rmsd) in gray
 mF_o-DF_c (at 3 rmsd) in purple (negative)
and green (positive)



6.5 Other polymers [i](#)

There are no such residues in this entry.