



## Full wwPDB EM Validation Report ⓘ

May 26, 2024 – 10:21 PM EDT

PDB ID : 7TFK  
EMDB ID : EMD-25875  
Title : Atomic model of *S. cerevisiae* clamp loader RFC bound to two DNA molecules, one at the 5'-recessed end and the other at the 3'-recessed end  
Authors : Zheng, F.; Georgescu, R.; Yao, Y.N.; O'Donnell, M.E.; Li, H.  
Deposited on : 2022-01-06  
Resolution : 3.25 Å(reported)

This is a Full wwPDB EM Validation Report for a publicly released PDB entry.

We welcome your comments at [validation@mail.wwpdb.org](mailto:validation@mail.wwpdb.org)

A user guide is available at

<https://www.wwpdb.org/validation/2017/EMValidationReportHelp>

with specific help available everywhere you see the ⓘ symbol.

The types of validation reports are described at

<http://www.wwpdb.org/validation/2017/FAQs#types>.

---

The following versions of software and data (see [references ⓘ](#)) were used in the production of this report:

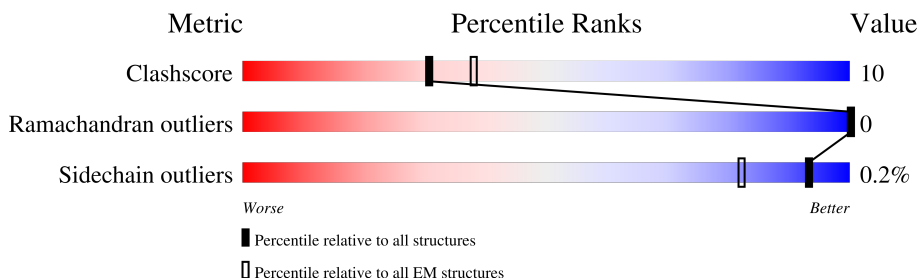
EMDB validation analysis : 0.0.1.dev92  
Mogul : 1.8.5 (274361), CSD as541be (2020)  
MolProbity : 4.02b-467  
buster-report : 1.1.7 (2018)  
Percentile statistics : 20191225.v01 (using entries in the PDB archive December 25th 2019)  
MapQ : 1.9.13  
Ideal geometry (proteins) : Engh & Huber (2001)  
Ideal geometry (DNA, RNA) : Parkinson et al. (1996)  
Validation Pipeline (wwPDB-VP) : 2.36.2

# 1 Overall quality at a glance i

The following experimental techniques were used to determine the structure:  
*ELECTRON MICROSCOPY*

The reported resolution of this entry is 3.25 Å.

Percentile scores (ranging between 0-100) for global validation metrics of the entry are shown in the following graphic. The table shows the number of entries on which the scores are based.



Metric	Whole archive (#Entries)	EM structures (#Entries)
Clashscore	158937	4297
Ramachandran outliers	154571	4023
Sidechain outliers	154315	3826

The table below summarises the geometric issues observed across the polymeric chains and their fit to the map. The red, orange, yellow and green segments of the bar indicate the fraction of residues that contain outliers for  $\geq 3$ , 2, 1 and 0 types of geometric quality criteria respectively. A grey segment represents the fraction of residues that are not modelled. The numeric value for each fraction is indicated below the corresponding segment, with a dot representing fractions  $\leq 5\%$ . The upper red bar (where present) indicates the fraction of residues that have poor fit to the EM map (all-atom inclusion  $< 40\%$ ). The numeric value is given above the bar.

Mol	Chain	Length	Quality of chain
1	A	861	<div style="display: flex; justify-content: space-between; align-items: center;"> <div style="text-align: right;">5%</div> <div style="width: 100%; height: 15px; background: linear-gradient(to right, red 5%, orange 5%, yellow 8%, green 34%, grey 58%);"></div> <div style="text-align: left;">34% 8% 58%</div> </div>
2	B	323	<div style="display: flex; justify-content: space-between; align-items: center;"> <div style="text-align: right;">6%</div> <div style="width: 100%; height: 15px; background: linear-gradient(to right, red 6%, orange 6%, yellow 72%, green 26%, grey 0%);"></div> <div style="text-align: left;">72% 26%</div> </div>
3	C	340	<div style="display: flex; justify-content: space-between; align-items: center;"> <div style="text-align: right;">6%</div> <div style="width: 100%; height: 15px; background: linear-gradient(to right, red 6%, orange 6%, yellow 71%, green 26%, grey 0%);"></div> <div style="text-align: left;">71% 26%</div> </div>
4	D	353	<div style="display: flex; justify-content: space-between; align-items: center;"> <div style="text-align: right;">6%</div> <div style="width: 100%; height: 15px; background: linear-gradient(to right, red 6%, orange 6%, yellow 71%, green 23%, grey 6%);"></div> <div style="text-align: left;">71% 23% 6%</div> </div>
5	E	354	<div style="display: flex; justify-content: space-between; align-items: center;"> <div style="text-align: right;">14%</div> <div style="width: 100%; height: 15px; background: linear-gradient(to right, red 14%, orange 14%, yellow 67%, green 29%, grey 0%);"></div> <div style="text-align: left;">67% 29%</div> </div>
6	I	40	<div style="display: flex; justify-content: space-between; align-items: center;"> <div style="text-align: right;">6%</div> <div style="width: 100%; height: 15px; background: linear-gradient(to right, red 6%, orange 6%, yellow 32%, green 68%, grey 0%);"></div> <div style="text-align: left;">32% 68%</div> </div>
6	K	40	<div style="display: flex; justify-content: space-between; align-items: center;"> <div style="text-align: right;">12%</div> <div style="width: 100%; height: 15px; background: linear-gradient(to right, red 12%, orange 12%, yellow 22%, green 5%, grey 72%);"></div> <div style="text-align: left;">22% 5% 72%</div> </div>
7	J	20	<div style="display: flex; justify-content: space-between; align-items: center;"> <div style="text-align: right;">55%</div> <div style="width: 100%; height: 15px; background: linear-gradient(to right, green 55%, grey 45%);"></div> <div style="text-align: left;">45%</div> </div>

Continued on next page...

*Continued from previous page...*

Mol	Chain	Length	Quality of chain
7	L	20	 <p>A horizontal bar chart representing the quality of chain. The bar is divided into four segments: a small red segment (5%), a green segment (35%), a yellow segment (15%), and a grey segment (45%).</p>

## 2 Entry composition [i](#)

There are 10 unique types of molecules in this entry. The entry contains 14363 atoms, of which 0 are hydrogens and 0 are deuteriums.

In the tables below, the AltConf column contains the number of residues with at least one atom in alternate conformation and the Trace column contains the number of residues modelled with at most 2 atoms.

- Molecule 1 is a protein called Replication factor C subunit 1.

Mol	Chain	Residues	Atoms					AltConf	Trace
			Total	C	N	O	S		
1	A	360	2862	1816	509	523	14	0	0

- Molecule 2 is a protein called Replication factor C subunit 4.

Mol	Chain	Residues	Atoms					AltConf	Trace
			Total	C	N	O	S		
2	B	319	2503	1579	446	465	13	0	0

- Molecule 3 is a protein called Replication factor C subunit 3.

Mol	Chain	Residues	Atoms					AltConf	Trace
			Total	C	N	O	S		
3	C	329	2606	1640	457	501	8	0	0

- Molecule 4 is a protein called Replication factor C subunit 2.

Mol	Chain	Residues	Atoms					AltConf	Trace
			Total	C	N	O	S		
4	D	331	2622	1656	453	503	10	0	0

- Molecule 5 is a protein called Replication factor C subunit 5.

Mol	Chain	Residues	Atoms					AltConf	Trace
			Total	C	N	O	S		
5	E	341	2694	1706	469	500	19	0	0

- Molecule 6 is a DNA chain called Template strand.

Mol	Chain	Residues	Atoms					AltConf	Trace
			Total	C	N	O	P		
6	I	13	264	128	40	83	13	0	0

*Continued on next page...*

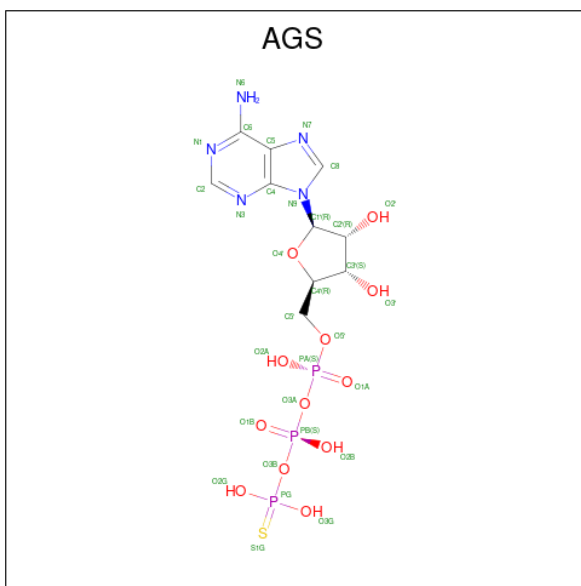
Continued from previous page...

Mol	Chain	Residues	Atoms					AltConf	Trace
			Total	C	N	O	P		
6	K	11	Total 225	C 108	N 36	O 70	P 11	0	0

- Molecule 7 is a DNA chain called Primer strand.

Mol	Chain	Residues	Atoms					AltConf	Trace
			Total	C	N	O	P		
7	J	11	Total 227	C 108	N 45	O 63	P 11	0	0
7	L	10	Total 205	C 97	N 41	O 57	P 10	0	0

- Molecule 8 is PHOSPHOTHIOPHOSPHORIC ACID-ADENYLATE ESTER (three-letter code: AGS) (formula: C<sub>10</sub>H<sub>16</sub>N<sub>5</sub>O<sub>12</sub>P<sub>3</sub>S) (labeled as "Ligand of Interest" by depositor).

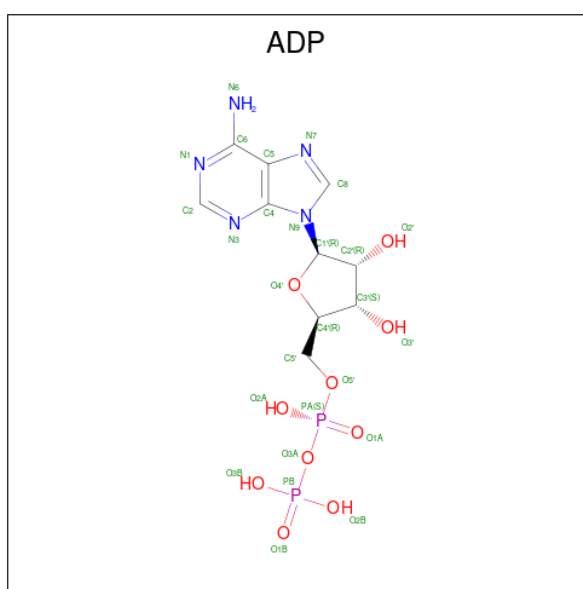


Mol	Chain	Residues	Atoms						AltConf
			Total	C	N	O	P	S	
8	A	1	Total 31	C 10	N 5	O 12	P 3	S 1	0
8	B	1	Total 31	C 10	N 5	O 12	P 3	S 1	0
8	C	1	Total 31	C 10	N 5	O 12	P 3	S 1	0
8	D	1	Total 31	C 10	N 5	O 12	P 3	S 1	0

- Molecule 9 is MAGNESIUM ION (three-letter code: MG) (formula: Mg) (labeled as "Ligand of Interest" by depositor).

Mol	Chain	Residues	Atoms	AltConf
9	A	1	Total Mg 1 1	0
9	B	1	Total Mg 1 1	0
9	C	1	Total Mg 1 1	0
9	D	1	Total Mg 1 1	0

- Molecule 10 is ADENOSINE-5'-DIPHOSPHATE (three-letter code: ADP) (formula:  $C_{10}H_{15}N_5O_{10}P_2$ ) (labeled as "Ligand of Interest" by depositor).

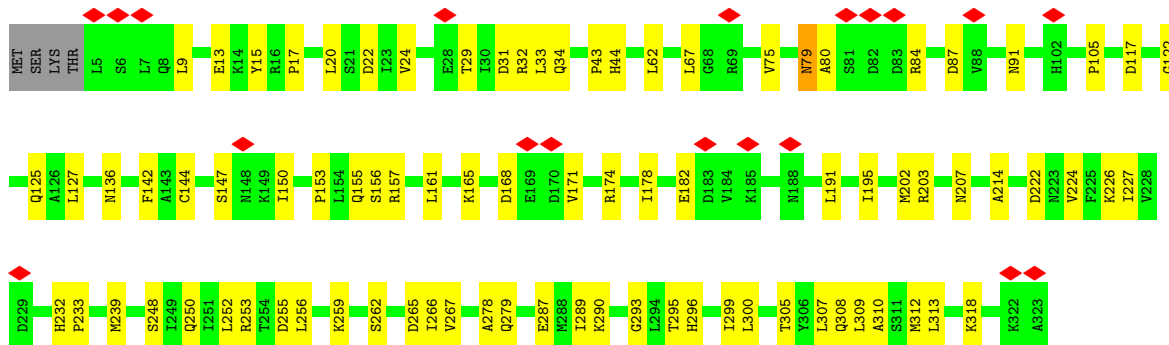
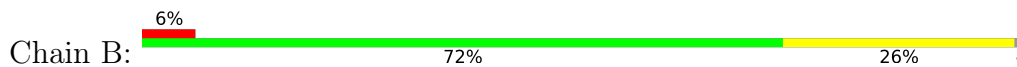


Mol	Chain	Residues	Atoms					AltConf
10	E	1	Total	C	N	O	P	0
			27	10	5	10	2	

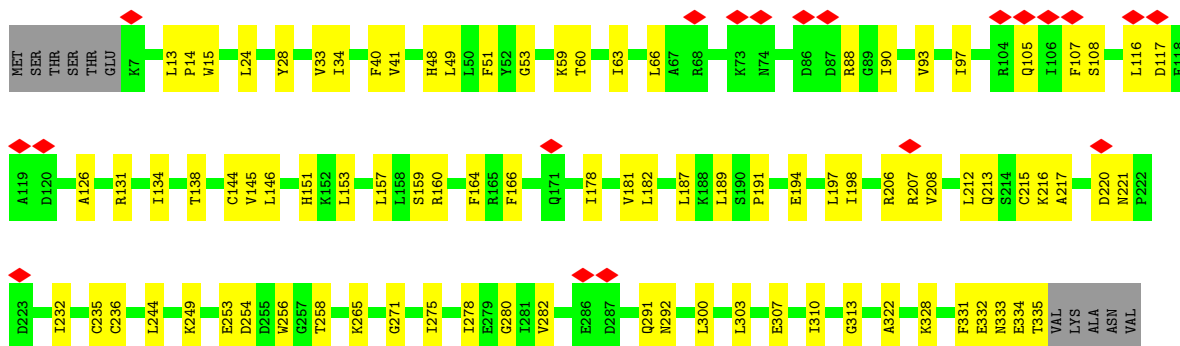


PRO  
GLY  
GLY  
SER  
SER  
LYS  
LYS  
ARG  
LYS  
THR  
LYS  
ALA

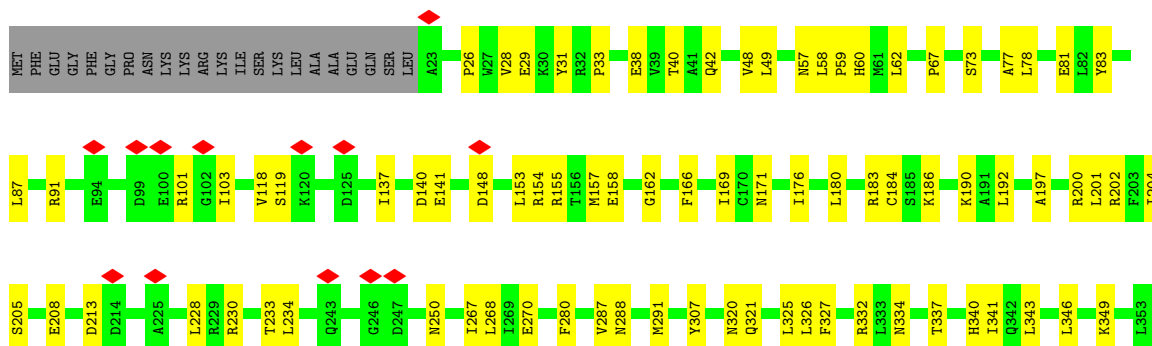
• Molecule 2: Replication factor C subunit 4



• Molecule 3: Replication factor C subunit 3



• Molecule 4: Replication factor C subunit 2



• Molecule 5: Replication factor C subunit 5







## 4 Experimental information

Property	Value	Source
EM reconstruction method	SINGLE PARTICLE	Depositor
Imposed symmetry	POINT, Not provided	
Number of particles used	315619	Depositor
Resolution determination method	FSC 0.143 CUT-OFF	Depositor
CTF correction method	NONE	Depositor
Microscope	FEI TITAN KRIOS	Depositor
Voltage (kV)	300	Depositor
Electron dose ( $e^-/\text{\AA}^2$ )	65	Depositor
Minimum defocus (nm)	1300	Depositor
Maximum defocus (nm)	1900	Depositor
Magnification	Not provided	
Image detector	GATAN K3 (6k x 4k)	Depositor
Maximum map value	1.726	Depositor
Minimum map value	-1.090	Depositor
Average map value	-0.001	Depositor
Map value standard deviation	0.030	Depositor
Recommended contour level	0.2	Depositor
Map size ( $\text{\AA}$ )	331.2, 331.2, 331.2	wwPDB
Map dimensions	400, 400, 400	wwPDB
Map angles ( $^\circ$ )	90.0, 90.0, 90.0	wwPDB
Pixel spacing ( $\text{\AA}$ )	0.828, 0.828, 0.828	Depositor

## 5 Model quality [i](#)

### 5.1 Standard geometry [i](#)

Bond lengths and bond angles in the following residue types are not validated in this section: MG, ADP, AGS

The Z score for a bond length (or angle) is the number of standard deviations the observed value is removed from the expected value. A bond length (or angle) with  $|Z| > 5$  is considered an outlier worth inspection. RMSZ is the root-mean-square of all Z scores of the bond lengths (or angles).

Mol	Chain	Bond lengths		Bond angles	
		RMSZ	# Z  >5	RMSZ	# Z  >5
1	A	0.26	0/2918	0.51	0/3939
2	B	0.24	0/2538	0.49	0/3422
3	C	0.27	0/2646	0.51	0/3577
4	D	0.24	0/2667	0.47	0/3607
5	E	0.26	0/2732	0.52	0/3689
6	I	0.57	0/293	1.07	0/450
6	K	0.50	0/250	1.01	0/384
7	J	0.52	0/255	0.83	0/391
7	L	0.50	0/230	0.75	0/352
All	All	0.28	0/14529	0.55	0/19811

There are no bond length outliers.

There are no bond angle outliers.

There are no chirality outliers.

There are no planarity outliers.

### 5.2 Too-close contacts [i](#)

In the following table, the Non-H and H(model) columns list the number of non-hydrogen atoms and hydrogen atoms in the chain respectively. The H(added) column lists the number of hydrogen atoms added and optimized by MolProbity. The Clashes column lists the number of clashes within the asymmetric unit, whereas Symm-Clashes lists symmetry-related clashes.

Mol	Chain	Non-H	H(model)	H(added)	Clashes	Symm-Clashes
1	A	2862	0	2898	45	0
2	B	2503	0	2599	68	0
3	C	2606	0	2640	69	0
4	D	2622	0	2652	65	0

*Continued on next page...*

Continued from previous page...

Mol	Chain	Non-H	H(model)	H(added)	Clashes	Symm-Clashes
5	E	2694	0	2823	69	0
6	I	264	0	151	0	0
6	K	225	0	127	1	0
7	J	227	0	124	0	0
7	L	205	0	112	2	0
8	A	31	0	12	2	0
8	B	31	0	12	4	0
8	C	31	0	11	4	0
8	D	31	0	12	2	0
9	A	1	0	0	0	0
9	B	1	0	0	0	0
9	C	1	0	0	0	0
9	D	1	0	0	0	0
10	E	27	0	12	1	0
All	All	14363	0	14185	280	0

The all-atom clashscore is defined as the number of clashes found per 1000 atoms (including hydrogen atoms). The all-atom clashscore for this structure is 10.

All (280) close contacts within the same asymmetric unit are listed below, sorted by their clash magnitude.

Atom-1	Atom-2	Interatomic distance (Å)	Clash overlap (Å)
1:A:311:CYS:H	8:A:901:AGS:HN62	1.29	0.80
3:C:334:GLU:HG2	3:C:335:THR:HG23	1.67	0.76
1:A:523:THR:HG23	2:B:32:ARG:HE	1.52	0.74
5:E:139:ILE:HG13	5:E:168:ILE:HB	1.70	0.73
2:B:256:LEU:HD23	2:B:266:ILE:HG12	1.68	0.72
3:C:28:TYR:H	8:C:401:AGS:HN62	1.39	0.69
2:B:305:THR:HG22	2:B:307:LEU:H	1.60	0.66
3:C:105:GLN:HE21	3:C:107:PHE:H	1.44	0.66
2:B:287:GLU:HA	2:B:290:LYS:HD3	1.77	0.65
5:E:85:LEU:HD23	5:E:108:VAL:HG11	1.79	0.64
4:D:325:LEU:HD22	4:D:349:LYS:HD3	1.79	0.64
1:A:443:PHE:O	1:A:447:THR:OG1	2.16	0.64
3:C:249:LYS:NZ	3:C:253:GLU:OE1	2.32	0.63
4:D:158:GLU:OE1	4:D:183:ARG:NH1	2.32	0.62
5:E:87:VAL:HG23	5:E:96:ILE:HB	1.80	0.62
5:E:92:TYR:O	5:E:136:LYS:NZ	2.31	0.62
3:C:131:ARG:HB2	3:C:160:ARG:HE	1.64	0.62
3:C:189:LEU:HD11	3:C:212:LEU:HD21	1.81	0.62
2:B:117:ASP:HB3	2:B:144:CYS:HB3	1.82	0.62

Continued on next page...

*Continued from previous page...*

Atom-1	Atom-2	Interatomic distance (Å)	Clash overlap (Å)
1:A:615:ALA:HB1	5:E:348:LYS:HD2	1.82	0.61
5:E:283:ARG:NH1	5:E:287:TYR:OH	2.33	0.61
3:C:197:LEU:HD22	3:C:208:VAL:HG23	1.82	0.61
3:C:213:GLN:NE2	4:D:57:ASN:O	2.32	0.61
3:C:117:ASP:OD2	4:D:155:ARG:NH1	2.28	0.61
4:D:325:LEU:HD13	4:D:349:LYS:HB3	1.82	0.61
3:C:41:VAL:HG11	3:C:66:LEU:HD11	1.83	0.61
2:B:17:PRO:HB3	2:B:22:ASP:HB2	1.82	0.60
4:D:42:GLN:NE2	4:D:190:LYS:O	2.34	0.60
1:A:523:THR:O	1:A:526:THR:OG1	2.20	0.59
1:A:646:VAL:HG21	2:B:289:ILE:HG21	1.83	0.59
4:D:91:ARG:NH2	4:D:119:SER:O	2.36	0.59
8:B:401:AGS:S1G	3:C:160:ARG:NH2	2.75	0.59
3:C:331:PHE:O	3:C:334:GLU:HB3	2.03	0.59
1:A:420:VAL:HG23	1:A:450:PRO:HB2	1.85	0.59
6:K:29:DG:H2''	6:K:30:DC:H5''	1.84	0.58
5:E:39:LEU:HB2	5:E:168:ILE:HG23	1.84	0.58
4:D:332:ARG:NE	5:E:330:GLU:OE1	2.27	0.58
5:E:174:MET:HB3	5:E:182:LYS:HD2	1.85	0.58
1:A:350:MET:HB2	1:A:453:LEU:HD12	1.86	0.57
1:A:601:PRO:HB2	1:A:604:LEU:HG	1.85	0.57
2:B:79:ASN:N	2:B:79:ASN:HD22	2.01	0.57
3:C:59:LYS:HB3	3:C:146:LEU:HD22	1.86	0.57
5:E:90:SER:OG	5:E:93:HIS:O	2.21	0.57
3:C:48:HIS:NE2	3:C:138:THR:OG1	2.36	0.57
3:C:313:GLY:O	4:D:334:ASN:ND2	2.37	0.57
1:A:428:GLY:O	2:B:125:GLN:NE2	2.38	0.57
3:C:207:ARG:NH2	3:C:236:CYS:SG	2.78	0.56
5:E:239:SER:O	5:E:243:ASN:ND2	2.38	0.56
2:B:147:SER:HA	2:B:150:ILE:HD12	1.87	0.56
5:E:249:LYS:HG3	5:E:251:SER:H	1.71	0.55
3:C:153:LEU:HD22	3:C:157:LEU:HD23	1.89	0.55
3:C:271:GLY:HA3	4:D:190:LYS:HD3	1.87	0.55
5:E:83:LEU:HD12	5:E:107:ILE:HD11	1.88	0.55
2:B:174:ARG:O	2:B:178:ILE:HG12	2.07	0.55
2:B:252:LEU:HD21	2:B:309:LEU:HB3	1.89	0.55
1:A:515:ARG:HD2	2:B:157:ARG:HG3	1.90	0.54
4:D:280:PHE:HZ	5:E:308:LEU:HD13	1.72	0.54
4:D:49:LEU:HB3	4:D:78:LEU:HD13	1.88	0.54
5:E:142:GLU:OE1	5:E:145:SER:OG	2.25	0.54
1:A:681:ARG:NH1	1:A:685:GLU:OE1	2.40	0.54

*Continued on next page...*

*Continued from previous page...*

Atom-1	Atom-2	Interatomic distance (Å)	Clash overlap (Å)
8:D:401:AGS:S1G	5:E:155:ARG:NH2	2.81	0.54
3:C:254:ASP:HB3	3:C:258:THR:HB	1.89	0.54
1:A:378:ASN:C	1:A:378:ASN:HD22	2.11	0.54
3:C:182:LEU:HD22	3:C:187:LEU:HB3	1.89	0.54
2:B:79:ASN:N	2:B:79:ASN:ND2	2.56	0.53
3:C:88:ARG:NH1	3:C:117:ASP:O	2.41	0.53
5:E:26:LEU:HD22	5:E:56:LEU:HD22	1.90	0.53
3:C:13:LEU:HD21	4:D:162:GLY:HA2	1.90	0.53
5:E:265:LYS:HG2	5:E:268:ARG:HH21	1.73	0.53
8:C:401:AGS:O2A	4:D:158:GLU:OE2	2.25	0.53
3:C:28:TYR:N	8:C:401:AGS:HN62	2.06	0.53
1:A:328:GLU:OE2	1:A:415:ASN:ND2	2.41	0.52
2:B:207:ASN:ND2	3:C:160:ARG:O	2.40	0.52
1:A:364:HIS:HD2	1:A:374:ILE:HD13	1.74	0.52
1:A:502:VAL:HG12	1:A:506:LEU:HG	1.91	0.52
5:E:5:VAL:HG21	5:E:231:ARG:HG3	1.91	0.52
3:C:217:ALA:HB3	4:D:48:VAL:HG13	1.91	0.52
3:C:178:ILE:HA	3:C:181:VAL:HG22	1.92	0.52
3:C:220:ASP:OD1	3:C:221:ASN:N	2.43	0.52
2:B:191:LEU:O	2:B:195:ILE:HG12	2.10	0.51
4:D:349:LYS:HZ1	5:E:323:GLU:HG3	1.75	0.51
5:E:40:LEU:HD22	5:E:187:LEU:HD22	1.91	0.51
2:B:15:TYR:O	2:B:174:ARG:NH2	2.43	0.51
4:D:103:ILE:HD12	4:D:148:ASP:HB3	1.93	0.51
2:B:265:ASP:OD1	3:C:151:HIS:ND1	2.42	0.51
4:D:213:ASP:OD1	4:D:250:ASN:ND2	2.43	0.51
3:C:256:TRP:NE1	4:D:320:ASN:OD1	2.40	0.51
5:E:144:ASN:OD1	5:E:145:SER:N	2.43	0.51
3:C:206:ARG:HD2	4:D:183:ARG:HA	1.92	0.51
3:C:303:LEU:O	3:C:307:GLU:HG3	2.10	0.50
4:D:49:LEU:HD13	4:D:78:LEU:HD22	1.93	0.50
1:A:292:ARG:NH1	2:B:105:PRO:O	2.44	0.50
1:A:643:LEU:HD13	2:B:293:GLY:HA3	1.93	0.50
2:B:222:ASP:O	2:B:226:LYS:HG2	2.10	0.50
3:C:291:GLN:HE22	3:C:334:GLU:HB2	1.77	0.50
5:E:42:TYR:CZ	5:E:189:ARG:HB2	2.45	0.50
5:E:144:ASN:ND2	5:E:172:ASP:OD1	2.42	0.50
3:C:49:LEU:HD12	3:C:144:CYS:HB3	1.92	0.50
1:A:520:LEU:HD13	1:A:543:TRP:CD2	2.47	0.50
5:E:257:PRO:HD2	5:E:260:ILE:HD12	1.93	0.50
5:E:75:PHE:HB2	5:E:83:LEU:HB2	1.94	0.50

*Continued on next page...*

*Continued from previous page...*

Atom-1	Atom-2	Interatomic distance (Å)	Clash overlap (Å)
2:B:33:LEU:HD22	2:B:62:LEU:HD22	1.94	0.50
2:B:147:SER:O	2:B:155:GLN:NE2	2.45	0.50
5:E:77:THR:HB	5:E:107:ILE:HD13	1.93	0.49
2:B:29:THR:HG23	2:B:161:LEU:HD13	1.94	0.49
2:B:203:ARG:NH1	3:C:159:SER:OG	2.44	0.49
5:E:259:TRP:O	5:E:263:ILE:HG12	2.12	0.49
1:A:507:ILE:HG23	1:A:512:GLY:HA2	1.95	0.49
2:B:307:LEU:HD22	3:C:282:VAL:HG21	1.95	0.49
3:C:40:PHE:HE2	3:C:164:PHE:HZ	1.61	0.49
3:C:275:ILE:HB	3:C:310:ILE:HG21	1.94	0.49
4:D:83:TYR:HB3	4:D:87:LEU:HB3	1.95	0.49
1:A:298:TRP:HA	1:A:301:LYS:HG2	1.93	0.49
5:E:69:LYS:NZ	5:E:71:ASP:OD1	2.46	0.49
8:C:401:AGS:O3G	4:D:154:ARG:NH2	2.46	0.49
2:B:232:HIS:CD2	2:B:233:PRO:HD3	2.48	0.48
3:C:105:GLN:HG3	3:C:108:SER:H	1.78	0.48
3:C:131:ARG:HB2	3:C:160:ARG:NE	2.28	0.48
5:E:327:VAL:O	5:E:330:GLU:HG2	2.13	0.48
2:B:255:ASP:HA	2:B:259:LYS:HE2	1.95	0.48
5:E:286:LEU:HD11	5:E:346:ILE:HD12	1.96	0.48
5:E:310:VAL:HB	5:E:313:LEU:HD23	1.95	0.48
3:C:53:GLY:HA3	3:C:166:PHE:HB2	1.96	0.48
4:D:91:ARG:HH12	4:D:118:VAL:HB	1.78	0.48
3:C:235:CYS:SG	3:C:236:CYS:N	2.87	0.48
2:B:87:ASP:O	2:B:91:ASN:ND2	2.47	0.48
5:E:58:GLU:OE2	5:E:65:VAL:HB	2.12	0.48
4:D:62:LEU:HD23	4:D:186:LYS:HG2	1.95	0.48
2:B:31:ASP:HA	2:B:34:GLN:HE21	1.79	0.48
3:C:328:LYS:O	3:C:332:GLU:HG3	2.13	0.47
5:E:98:PRO:HD3	5:E:140:ILE:HB	1.96	0.47
1:A:535:ASN:O	1:A:539:ILE:HG12	2.13	0.47
4:D:154:ARG:HE	4:D:183:ARG:HH21	1.61	0.47
5:E:236:MET:O	5:E:240:MET:HG2	2.13	0.47
1:A:562:GLN:O	1:A:565:SER:OG	2.27	0.47
4:D:288:ASN:HD21	5:E:227:ASN:HD21	1.61	0.47
4:D:332:ARG:HG2	4:D:337:THR:HG21	1.97	0.47
2:B:296:HIS:O	2:B:300:LEU:HG	2.15	0.47
5:E:287:TYR:HE1	5:E:339:ILE:HG12	1.79	0.47
5:E:261:ILE:O	5:E:265:LYS:HG3	2.15	0.47
3:C:60:THR:HA	3:C:63:ILE:HG22	1.96	0.47
5:E:113:LEU:HD13	5:E:157:THR:HG21	1.96	0.47

*Continued on next page...*

*Continued from previous page...*

Atom-1	Atom-2	Interatomic distance (Å)	Clash overlap (Å)
3:C:194:GLU:O	3:C:198:ILE:HG12	2.15	0.46
1:A:373:ASP:HB2	1:A:419:PHE:HA	1.98	0.46
4:D:40:THR:O	8:D:401:AGS:N6	2.48	0.46
5:E:277:ASN:HA	5:E:280:ILE:HG12	1.97	0.46
1:A:293:GLU:O	1:A:294:GLU:HG3	2.16	0.46
2:B:248:SER:HB3	2:B:313:LEU:HD23	1.97	0.46
4:D:153:LEU:HD11	4:D:166:PHE:HE2	1.80	0.46
1:A:625:ASP:OD2	5:E:337:LYS:HB2	2.16	0.46
4:D:33:PRO:HD2	4:D:73:SER:HB3	1.98	0.46
1:A:524:ILE:O	1:A:528:THR:N	2.45	0.46
3:C:14:PRO:HA	3:C:213:GLN:HE22	1.81	0.46
3:C:322:ALA:HB2	4:D:327:PHE:HB2	1.98	0.46
4:D:192:LEU:HB3	4:D:197:ALA:HB2	1.97	0.46
5:E:93:HIS:ND1	5:E:137:CYS:O	2.49	0.46
7:L:7:DA:H2''	7:L:8:DC:H5'	1.98	0.46
3:C:24:LEU:HD22	3:C:34:ILE:HD11	1.98	0.45
3:C:278:ILE:HG23	3:C:303:LEU:HD12	1.98	0.45
5:E:229:ASN:HB3	5:E:232:VAL:HB	1.98	0.45
3:C:33:VAL:HG11	3:C:166:PHE:HE1	1.81	0.45
4:D:26:PRO:HD3	5:E:166:ARG:HH22	1.81	0.45
2:B:127:LEU:HD13	2:B:142:PHE:HZ	1.81	0.45
3:C:48:HIS:CE1	3:C:134:ILE:HG23	2.51	0.45
4:D:31:TYR:OH	4:D:208:GLU:OE2	2.34	0.45
4:D:28:VAL:HG23	4:D:29:GLU:HG2	1.97	0.45
1:A:663:ARG:HB2	7:L:1:DG:H21	1.81	0.45
2:B:203:ARG:NH1	3:C:160:ARG:HG2	2.31	0.45
2:B:224:VAL:HA	2:B:227:ILE:HG22	1.98	0.45
3:C:33:VAL:HG11	3:C:166:PHE:CE1	2.52	0.45
2:B:171:VAL:HA	2:B:202:MET:HE1	1.99	0.45
5:E:49:LYS:NZ	10:E:500:ADP:O1B	2.41	0.45
2:B:147:SER:HB2	2:B:155:GLN:HE21	1.81	0.45
2:B:278:ALA:O	2:B:279:GLN:HG3	2.17	0.45
4:D:40:THR:O	4:D:42:GLN:N	2.48	0.45
2:B:250:GLN:HA	2:B:253:ARG:HG2	1.99	0.45
3:C:215:CYS:SG	3:C:232:ILE:HD13	2.57	0.44
4:D:137:ILE:HD13	4:D:166:PHE:HE1	1.81	0.44
4:D:140:ASP:HA	4:D:169:ILE:HB	1.99	0.44
4:D:349:LYS:NZ	5:E:323:GLU:HG3	2.32	0.44
1:A:311:CYS:HB2	1:A:483:ILE:HG13	2.00	0.44
3:C:244:LEU:HD22	3:C:280:GLY:HA3	1.97	0.44
4:D:267:ILE:HA	4:D:270:GLU:HG2	1.99	0.44

*Continued on next page...*



*Continued from previous page...*

Atom-1	Atom-2	Interatomic distance (Å)	Clash overlap (Å)
1:A:610:HIS:CD2	5:E:276:VAL:HG21	2.51	0.44
4:D:197:ALA:HB1	4:D:228:LEU:HD13	2.00	0.44
4:D:202:ARG:O	4:D:205:SER:OG	2.20	0.44
2:B:67:LEU:HD12	2:B:75:VAL:HG23	1.99	0.44
1:A:427:ASP:N	1:A:427:ASP:OD1	2.50	0.44
2:B:80:ALA:HA	2:B:84:ARG:HG2	2.00	0.44
4:D:326:LEU:HD23	4:D:346:LEU:HD21	1.98	0.44
3:C:206:ARG:NH2	4:D:158:GLU:OE1	2.50	0.44
3:C:292:ASN:ND2	3:C:333:ASN:O	2.51	0.44
4:D:280:PHE:CE2	5:E:318:LYS:HD3	2.53	0.44
4:D:291:MET:HE1	4:D:343:LEU:HD23	1.99	0.44
3:C:116:LEU:HD12	3:C:145:VAL:HG22	2.00	0.44
4:D:176:ILE:HG23	4:D:180:LEU:HD23	1.98	0.44
2:B:9:LEU:HD21	2:B:13:GLU:HB2	1.99	0.43
3:C:117:ASP:HA	3:C:146:LEU:HD12	1.99	0.43
5:E:259:TRP:HD1	5:E:289:LEU:HD22	1.83	0.43
2:B:267:VAL:HG21	2:B:299:ILE:HG13	1.99	0.43
3:C:51:PHE:HB2	3:C:146:LEU:HD23	2.01	0.43
5:E:34:ARG:HH12	5:E:133:HIS:HB3	1.83	0.43
2:B:15:TYR:OH	2:B:182:GLU:OE1	2.22	0.43
2:B:84:ARG:HD2	2:B:84:ARG:HA	1.80	0.43
3:C:90:ILE:HG22	3:C:126:ALA:HA	2.01	0.43
3:C:93:VAL:HG13	3:C:97:ILE:HD12	2.01	0.43
4:D:233:THR:HG22	5:E:186:LEU:HD13	2.01	0.43
1:A:471:LEU:HG	1:A:473:ILE:HG13	1.99	0.43
2:B:239:MET:SD	2:B:252:LEU:HD13	2.59	0.43
1:A:549:LEU:N	1:A:549:LEU:HD12	2.33	0.43
2:B:295:THR:HG21	2:B:312:MET:HB2	2.01	0.43
3:C:291:GLN:NE2	3:C:334:GLU:HA	2.34	0.43
4:D:58:LEU:HD12	4:D:59:PRO:HD2	2.00	0.43
5:E:259:TRP:CH2	5:E:302:GLU:HG2	2.53	0.43
1:A:349:ALA:HA	1:A:471:LEU:HB3	2.01	0.43
5:E:150:ALA:O	5:E:154:LEU:HG	2.19	0.43
2:B:262:SER:O	2:B:266:ILE:HG13	2.19	0.43
5:E:300:LEU:O	5:E:304:THR:HG23	2.19	0.43
2:B:168:ASP:OD1	2:B:168:ASP:N	2.51	0.42
4:D:201:LEU:HD23	4:D:201:LEU:HA	1.87	0.42
2:B:153:PRO:HA	2:B:156:SER:HB3	2.01	0.42
5:E:180:PRO:O	5:E:184:ARG:HG2	2.19	0.42
1:A:466:PHE:HA	1:A:469:VAL:HG22	2.01	0.42
4:D:287:VAL:O	4:D:291:MET:HG2	2.20	0.42

*Continued on next page...*

*Continued from previous page...*

Atom-1	Atom-2	Interatomic distance (Å)	Clash overlap (Å)
1:A:620:CYS:HA	1:A:623:LEU:HD12	2.01	0.42
2:B:165:LYS:HE2	2:B:165:LYS:HB3	1.89	0.42
2:B:202:MET:HG2	8:B:401:AGS:C4	2.49	0.42
2:B:318:LYS:HE2	2:B:318:LYS:HB3	1.94	0.42
4:D:192:LEU:HD22	4:D:228:LEU:HB2	2.02	0.42
4:D:268:LEU:HD21	4:D:307:TYR:HB2	2.02	0.42
5:E:258:ASP:N	5:E:258:ASP:OD1	2.53	0.42
1:A:514:ILE:O	1:A:518:ILE:HG12	2.19	0.42
2:B:214:ALA:HB3	3:C:40:PHE:HE1	1.84	0.42
3:C:334:GLU:OE1	3:C:335:THR:N	2.52	0.42
1:A:540:SER:O	1:A:544:GLU:HG3	2.20	0.42
2:B:79:ASN:HD22	2:B:79:ASN:H	1.66	0.42
3:C:15:TRP:HZ2	3:C:216:LYS:HD2	1.83	0.42
4:D:230:ARG:O	4:D:234:LEU:HG	2.19	0.42
5:E:23:THR:O	5:E:27:LYS:HG2	2.20	0.42
5:E:332:LEU:HA	5:E:341:HIS:CD2	2.55	0.42
2:B:305:THR:HB	2:B:308:GLN:HG2	2.02	0.42
4:D:60:HIS:HB2	4:D:184:CYS:HA	2.00	0.42
5:E:241:ALA:HB1	5:E:246:LEU:HD23	2.02	0.42
1:A:364:HIS:CD2	1:A:374:ILE:HG21	2.54	0.42
4:D:101:ARG:NH1	4:D:141:GLU:O	2.53	0.42
5:E:287:TYR:CE1	5:E:339:ILE:HG12	2.54	0.42
2:B:136:ASN:OD1	2:B:136:ASN:N	2.51	0.42
1:A:599:THR:HB	1:A:660:MET:HG2	2.01	0.41
2:B:32:ARG:HH22	2:B:43:PRO:HG2	1.85	0.41
4:D:321:GLN:O	4:D:325:LEU:HG	2.20	0.41
5:E:193:PRO:HG2	5:E:230:LEU:HD21	2.02	0.41
5:E:36:LEU:HD12	5:E:37:PRO:HD2	2.02	0.41
3:C:191:PRO:O	3:C:194:GLU:HG3	2.20	0.41
5:E:155:ARG:HG3	5:E:184:ARG:NH1	2.35	0.41
5:E:93:HIS:CE1	5:E:139:ILE:HD12	2.55	0.41
4:D:67:PRO:HG3	4:D:171:ASN:HD22	1.85	0.41
4:D:200:ARG:O	4:D:204:ILE:HG12	2.20	0.41
5:E:304:THR:HG21	5:E:325:SER:OG	2.20	0.41
3:C:265:LYS:HE2	3:C:265:LYS:HB3	1.89	0.41
5:E:74:GLN:HB3	5:E:82:LYS:HE2	2.03	0.41
1:A:487:LEU:HD22	1:A:521:LEU:HD22	2.01	0.41
2:B:122:GLY:O	2:B:125:GLN:HG2	2.21	0.41
2:B:310:ALA:HB1	3:C:300:LEU:HD13	2.02	0.41
4:D:33:PRO:HB3	4:D:38:GLU:HB2	2.03	0.41
5:E:18:HIS:CG	5:E:52:ARG:HH12	2.39	0.41

*Continued on next page...*

Continued from previous page...

Atom-1	Atom-2	Interatomic distance (Å)	Clash overlap (Å)
5:E:294:ILE:HB	5:E:299:ILE:HD11	2.03	0.41
1:A:637:LEU:HD13	2:B:300:LEU:HB3	2.03	0.40
4:D:157:MET:HG2	4:D:166:PHE:CD2	2.56	0.40
4:D:291:MET:HG3	4:D:340:HIS:CG	2.56	0.40
4:D:341:ILE:HD11	5:E:301:LYS:HA	2.03	0.40
1:A:640:LEU:HD13	2:B:300:LEU:HD11	2.03	0.40
2:B:171:VAL:HG13	2:B:202:MET:HE2	2.04	0.40
2:B:20:LEU:HD21	2:B:62:LEU:HB2	2.04	0.40
2:B:24:VAL:H	8:B:401:AGS:HN62	1.68	0.40
1:A:321:LYS:HG3	1:A:370:LEU:HD11	2.03	0.40
4:D:77:ALA:O	4:D:81:GLU:HG2	2.21	0.40
1:A:299:THR:O	8:A:901:AGS:O2'	2.38	0.40
2:B:24:VAL:O	8:B:401:AGS:N6	2.53	0.40
2:B:44:HIS:HE2	2:B:142:PHE:HD1	1.69	0.40
2:B:307:LEU:HD11	3:C:300:LEU:HD22	2.03	0.40

There are no symmetry-related clashes.

## 5.3 Torsion angles [i](#)

### 5.3.1 Protein backbone [i](#)

In the following table, the Percentiles column shows the percent Ramachandran outliers of the chain as a percentile score with respect to all PDB entries followed by that with respect to all EM entries.

The Analysed column shows the number of residues for which the backbone conformation was analysed, and the total number of residues.

Mol	Chain	Analysed	Favoured	Allowed	Outliers	Percentiles	
1	A	354/861 (41%)	342 (97%)	12 (3%)	0	100	100
2	B	317/323 (98%)	305 (96%)	12 (4%)	0	100	100
3	C	327/340 (96%)	318 (97%)	9 (3%)	0	100	100
4	D	329/353 (93%)	319 (97%)	10 (3%)	0	100	100
5	E	337/354 (95%)	326 (97%)	11 (3%)	0	100	100
All	All	1664/2231 (75%)	1610 (97%)	54 (3%)	0	100	100

There are no Ramachandran outliers to report.

### 5.3.2 Protein sidechains [i](#)

In the following table, the Percentiles column shows the percent sidechain outliers of the chain as a percentile score with respect to all PDB entries followed by that with respect to all EM entries.

The Analysed column shows the number of residues for which the sidechain conformation was analysed, and the total number of residues.

Mol	Chain	Analysed	Rotameric	Outliers	Percentiles	
1	A	313/742 (42%)	311 (99%)	2 (1%)	86	91
2	B	279/283 (99%)	278 (100%)	1 (0%)	91	94
3	C	286/296 (97%)	286 (100%)	0	100	100
4	D	294/312 (94%)	294 (100%)	0	100	100
5	E	313/324 (97%)	313 (100%)	0	100	100
All	All	1485/1957 (76%)	1482 (100%)	3 (0%)	93	96

All (3) residues with a non-rotameric sidechain are listed below:

Mol	Chain	Res	Type
1	A	378	ASN
1	A	681	ARG
2	B	79	ASN

Sometimes sidechains can be flipped to improve hydrogen bonding and reduce clashes. All (3) such sidechains are listed below:

Mol	Chain	Res	Type
1	A	546	ASN
4	D	338	ASN
5	E	227	ASN

### 5.3.3 RNA [i](#)

There are no RNA molecules in this entry.

## 5.4 Non-standard residues in protein, DNA, RNA chains [i](#)

There are no non-standard protein/DNA/RNA residues in this entry.

## 5.5 Carbohydrates [i](#)

There are no monosaccharides in this entry.

## 5.6 Ligand geometry [i](#)

Of 9 ligands modelled in this entry, 4 are monoatomic - leaving 5 for Mogul analysis.

In the following table, the Counts columns list the number of bonds (or angles) for which Mogul statistics could be retrieved, the number of bonds (or angles) that are observed in the model and the number of bonds (or angles) that are defined in the Chemical Component Dictionary. The Link column lists molecule types, if any, to which the group is linked. The Z score for a bond length (or angle) is the number of standard deviations the observed value is removed from the expected value. A bond length (or angle) with  $|Z| > 2$  is considered an outlier worth inspection. RMSZ is the root-mean-square of all Z scores of the bond lengths (or angles).

Mol	Type	Chain	Res	Link	Bond lengths			Bond angles		
					Counts	RMSZ	# Z  > 2	Counts	RMSZ	# Z  > 2
8	AGS	B	401	9	26,33,33	0.70	1 (3%)	26,52,52	1.08	2 (7%)
8	AGS	D	401	9	26,33,33	0.71	1 (3%)	26,52,52	1.08	2 (7%)
8	AGS	C	401	9	26,33,33	0.71	1 (3%)	26,52,52	1.14	3 (11%)
10	ADP	E	500	-	24,29,29	0.95	1 (4%)	29,45,45	1.48	4 (13%)
8	AGS	A	901	9	26,33,33	0.71	1 (3%)	26,52,52	1.04	2 (7%)

In the following table, the Chirals column lists the number of chiral outliers, the number of chiral centers analysed, the number of these observed in the model and the number defined in the Chemical Component Dictionary. Similar counts are reported in the Torsion and Rings columns. '-' means no outliers of that kind were identified.

Mol	Type	Chain	Res	Link	Chirals	Torsions	Rings
8	AGS	B	401	9	-	2/17/38/38	0/3/3/3
8	AGS	D	401	9	-	5/17/38/38	0/3/3/3
8	AGS	C	401	9	-	4/17/38/38	0/3/3/3
10	ADP	E	500	-	-	1/12/32/32	0/3/3/3
8	AGS	A	901	9	-	5/17/38/38	0/3/3/3

All (5) bond length outliers are listed below:

Mol	Chain	Res	Type	Atoms	Z	Observed(Å)	Ideal(Å)
10	E	500	ADP	C5-C4	2.45	1.47	1.40
8	C	401	AGS	PG-S1G	2.15	1.95	1.90
8	A	901	AGS	PG-S1G	2.14	1.95	1.90

*Continued on next page...*

Continued from previous page...

Mol	Chain	Res	Type	Atoms	Z	Observed(Å)	Ideal(Å)
8	D	401	AGS	PG-S1G	2.13	1.95	1.90
8	B	401	AGS	PG-S1G	2.06	1.95	1.90

All (13) bond angle outliers are listed below:

Mol	Chain	Res	Type	Atoms	Z	Observed(°)	Ideal(°)
8	B	401	AGS	PA-O3A-PB	-4.03	119.00	132.83
8	C	401	AGS	PA-O3A-PB	-4.01	119.06	132.83
8	D	401	AGS	PA-O3A-PB	-3.90	119.46	132.83
8	A	901	AGS	PA-O3A-PB	-3.81	119.76	132.83
10	E	500	ADP	PA-O3A-PB	-3.69	120.16	132.83
10	E	500	ADP	N3-C2-N1	-3.28	123.55	128.68
10	E	500	ADP	C3'-C2'-C1'	3.09	105.64	100.98
10	E	500	ADP	C4-C5-N7	-2.75	106.53	109.40
8	D	401	AGS	C5-C6-N6	2.29	123.83	120.35
8	C	401	AGS	C5-C6-N6	2.27	123.81	120.35
8	A	901	AGS	C5-C6-N6	2.26	123.79	120.35
8	B	401	AGS	C5-C6-N6	2.24	123.75	120.35
8	C	401	AGS	C3'-C2'-C1'	2.07	104.10	100.98

There are no chirality outliers.

All (17) torsion outliers are listed below:

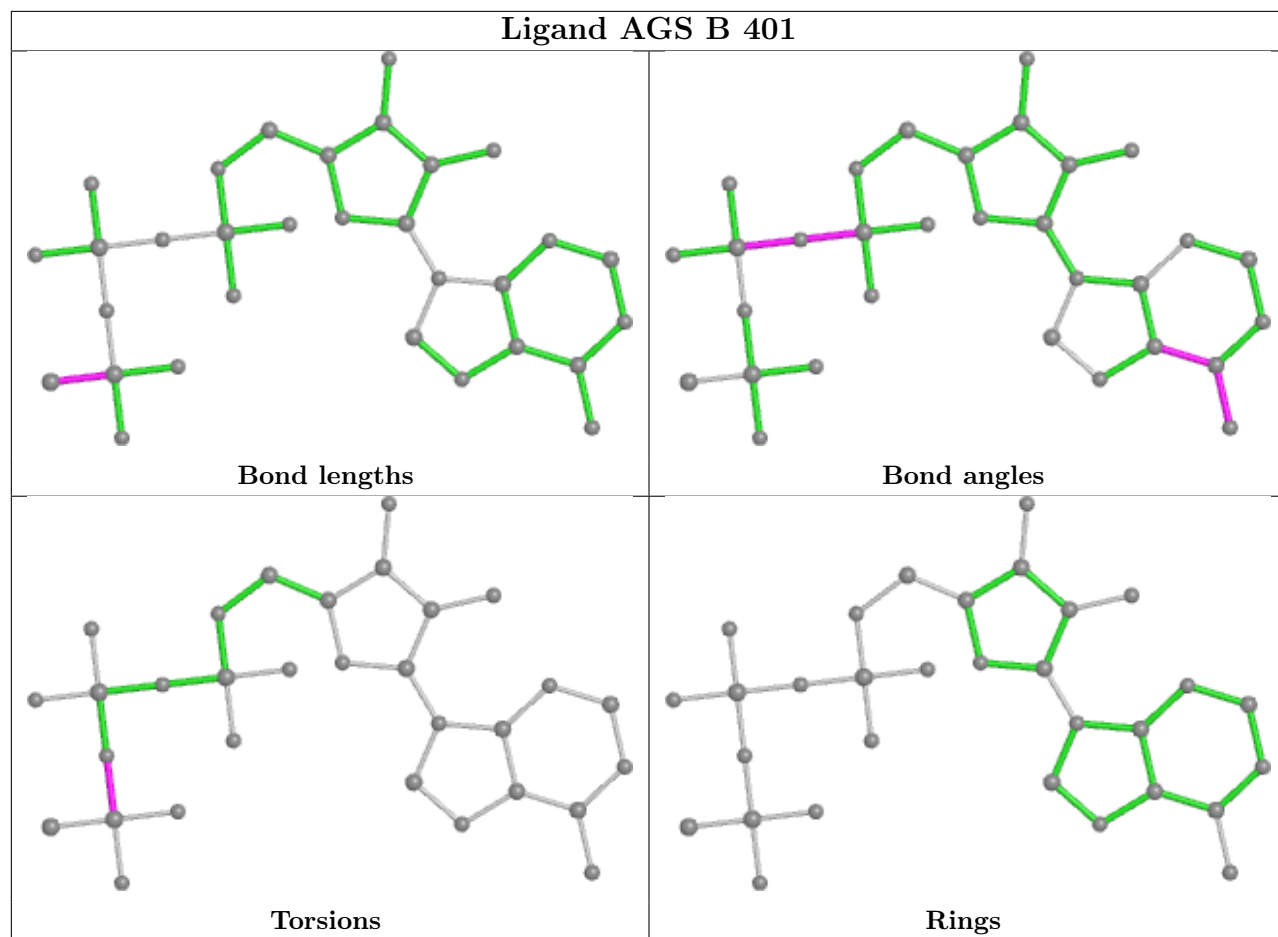
Mol	Chain	Res	Type	Atoms
8	A	901	AGS	C5'-O5'-PA-O1A
8	A	901	AGS	C5'-O5'-PA-O2A
8	A	901	AGS	C5'-O5'-PA-O3A
8	B	401	AGS	PB-O3B-PG-O2G
8	B	401	AGS	PB-O3B-PG-O3G
8	C	401	AGS	C5'-O5'-PA-O2A
8	D	401	AGS	C5'-O5'-PA-O2A
8	A	901	AGS	O4'-C4'-C5'-O5'
8	C	401	AGS	C5'-O5'-PA-O3A
8	D	401	AGS	C5'-O5'-PA-O3A
8	C	401	AGS	C5'-O5'-PA-O1A
8	D	401	AGS	C5'-O5'-PA-O1A
8	A	901	AGS	C3'-C4'-C5'-O5'
8	C	401	AGS	C4'-C5'-O5'-PA
8	D	401	AGS	PA-O3A-PB-O1B
10	E	500	ADP	C3'-C4'-C5'-O5'
8	D	401	AGS	PA-O3A-PB-O2B

There are no ring outliers.

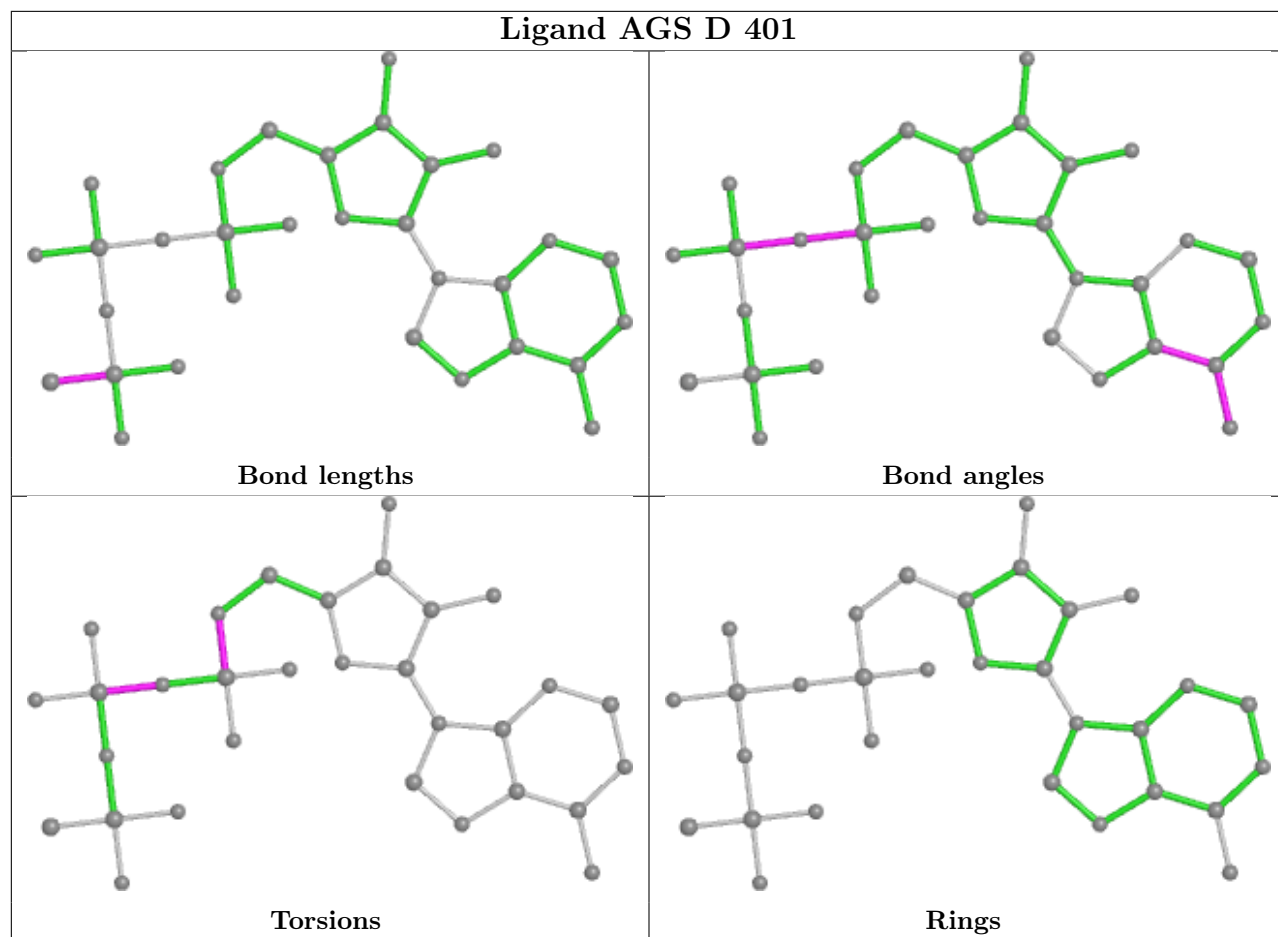
5 monomers are involved in 13 short contacts:

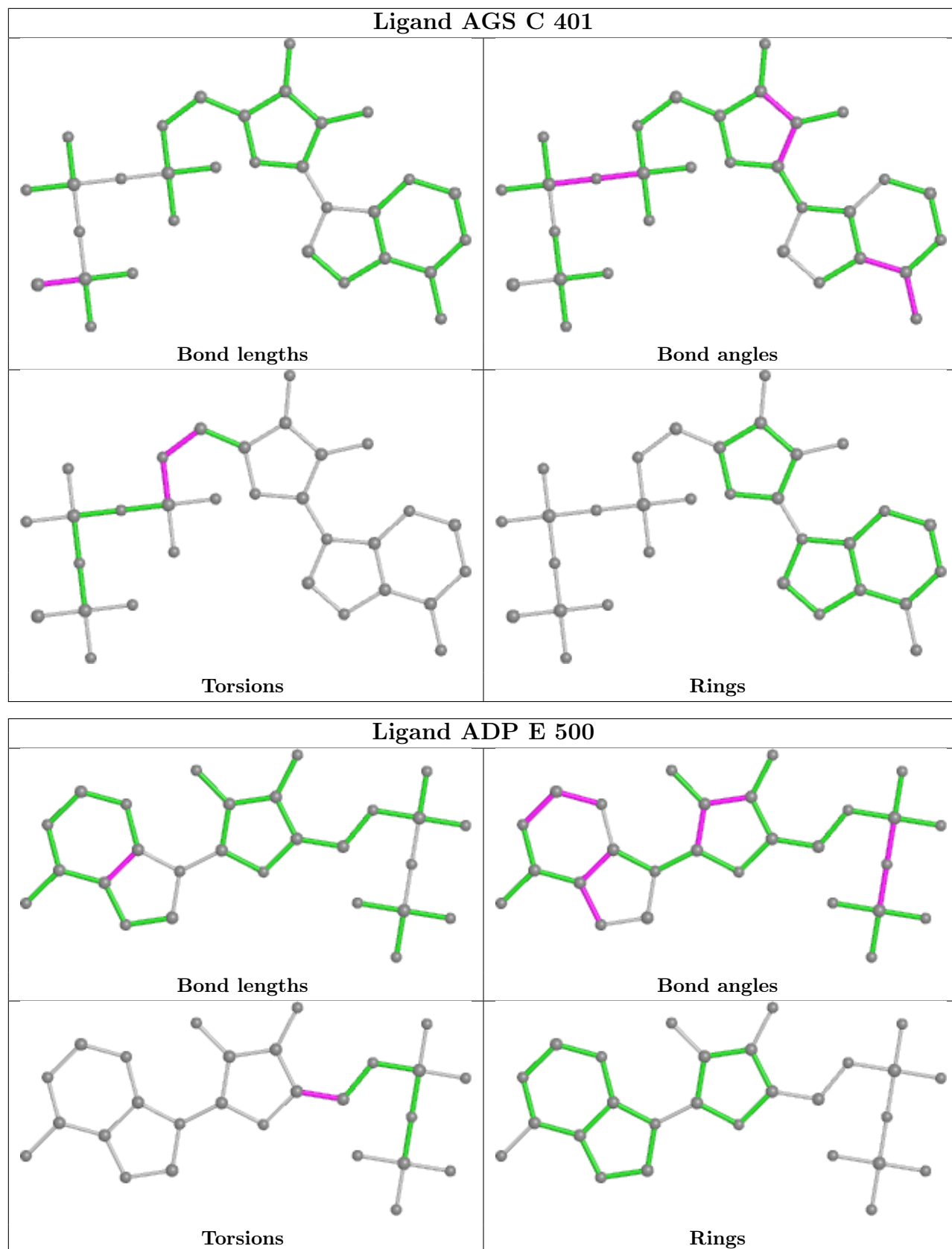
Mol	Chain	Res	Type	Clashes	Symm-Clashes
8	B	401	AGS	4	0
8	D	401	AGS	2	0
8	C	401	AGS	4	0
10	E	500	ADP	1	0
8	A	901	AGS	2	0

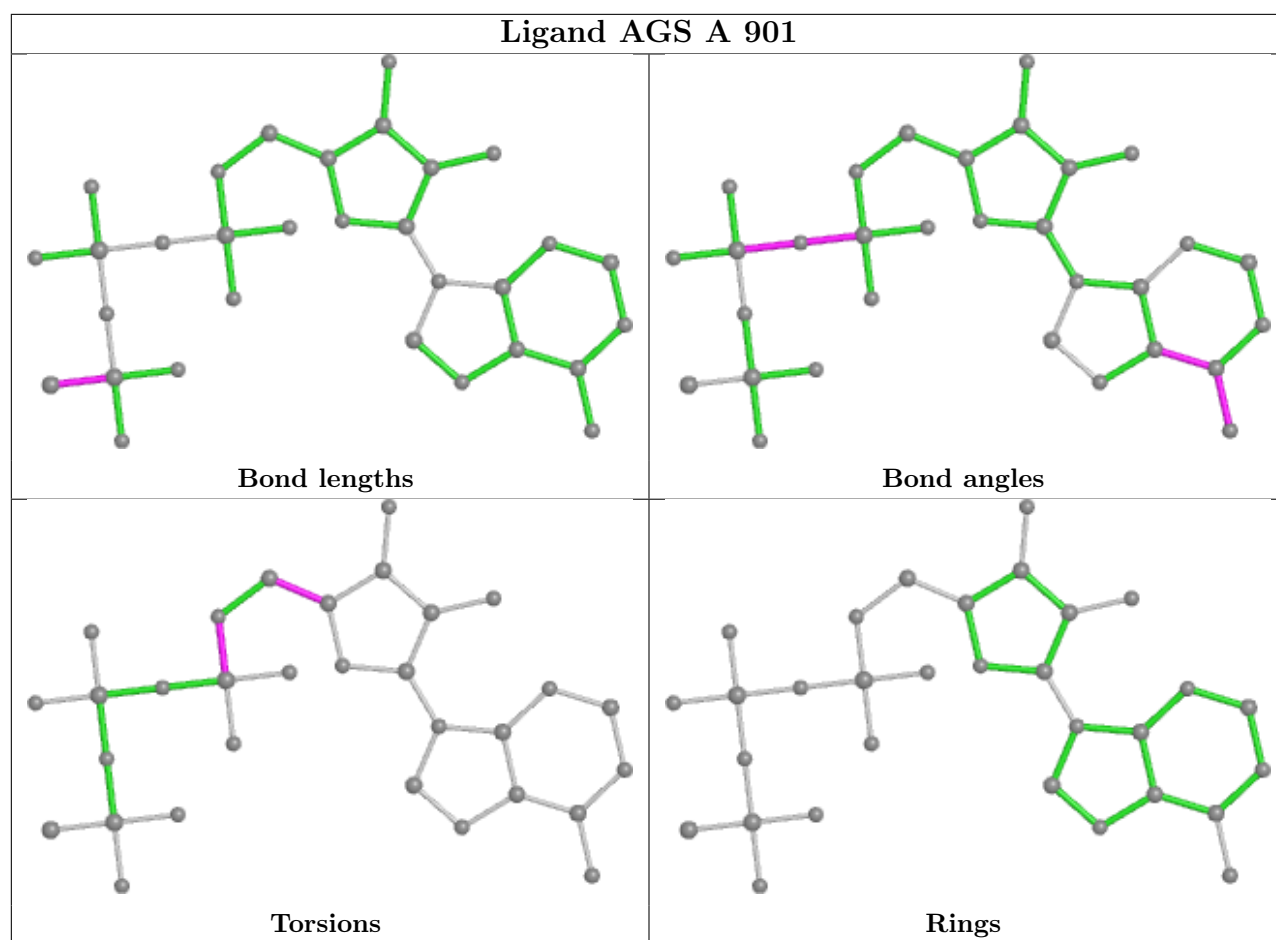
The following is a two-dimensional graphical depiction of Mogul quality analysis of bond lengths, bond angles, torsion angles, and ring geometry for all instances of the Ligand of Interest. In addition, ligands with molecular weight > 250 and outliers as shown on the validation Tables will also be included. For torsion angles, if less than 5% of the Mogul distribution of torsion angles is within 10 degrees of the torsion angle in question, then that torsion angle is considered an outlier. Any bond that is central to one or more torsion angles identified as an outlier by Mogul will be highlighted in the graph. For rings, the root-mean-square deviation (RMSD) between the ring in question and similar rings identified by Mogul is calculated over all ring torsion angles. If the average RMSD is greater than 60 degrees and the minimal RMSD between the ring in question and any Mogul-identified rings is also greater than 60 degrees, then that ring is considered an outlier. The outliers are highlighted in purple. The color gray indicates Mogul did not find sufficient equivalents in the CSD to analyse the geometry.











## 5.7 Other polymers [i](#)

There are no such residues in this entry.

## 5.8 Polymer linkage issues [i](#)

There are no chain breaks in this entry.

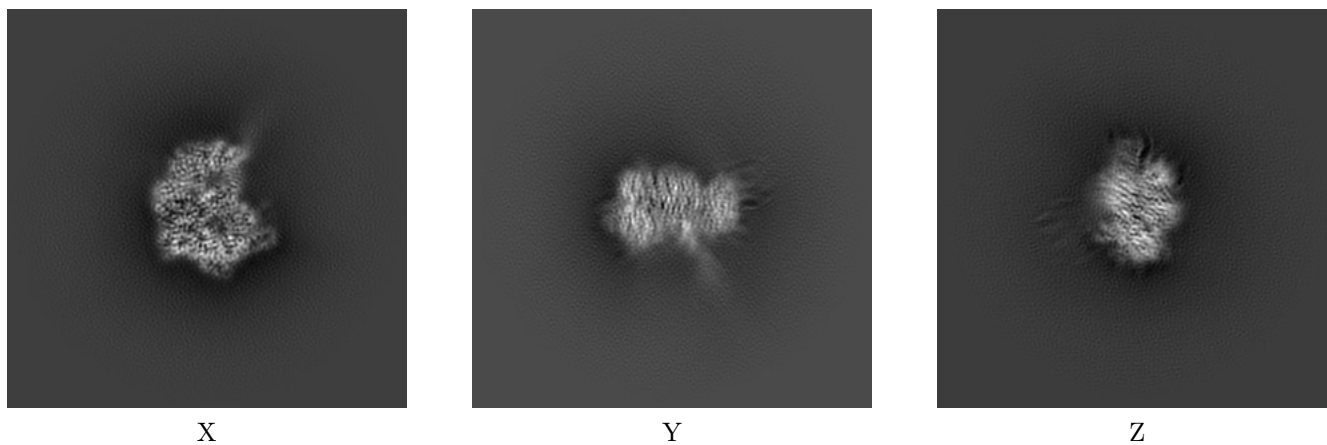
## 6 Map visualisation [i](#)

This section contains visualisations of the EMDB entry EMD-25875. These allow visual inspection of the internal detail of the map and identification of artifacts.

No raw map or half-maps were deposited for this entry and therefore no images, graphs, etc. pertaining to the raw map can be shown.

### 6.1 Orthogonal projections [i](#)

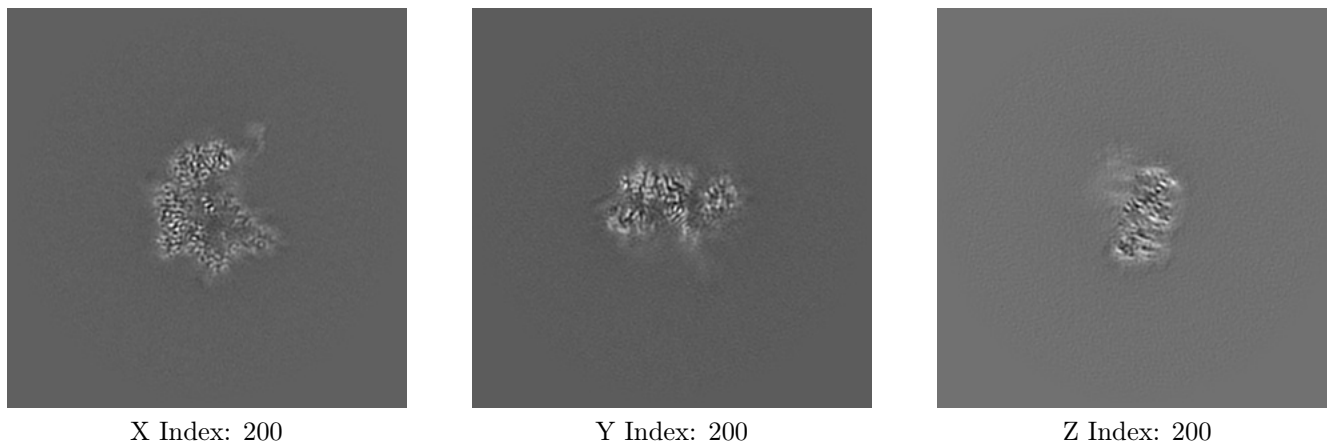
#### 6.1.1 Primary map



The images above show the map projected in three orthogonal directions.

### 6.2 Central slices [i](#)

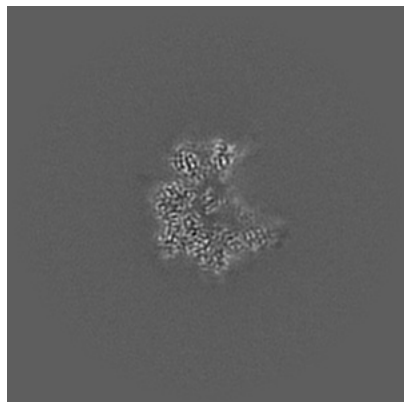
#### 6.2.1 Primary map



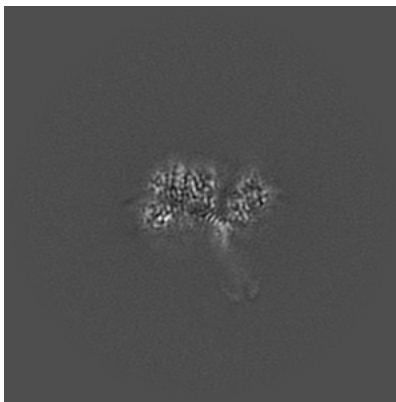
The images above show central slices of the map in three orthogonal directions.

## 6.3 Largest variance slices [i](#)

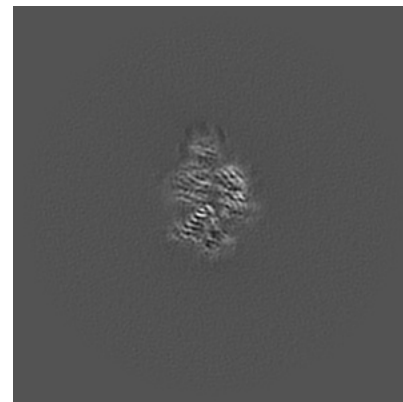
### 6.3.1 Primary map



X Index: 195



Y Index: 196

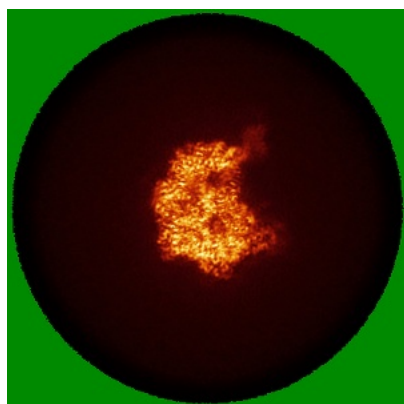


Z Index: 164

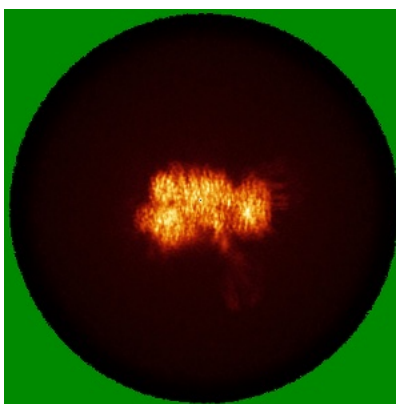
The images above show the largest variance slices of the map in three orthogonal directions.

## 6.4 Orthogonal standard-deviation projections (False-color) [i](#)

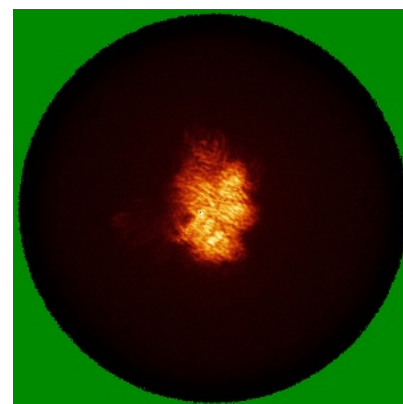
### 6.4.1 Primary map



X



Y



Z

The images above show the map standard deviation projections with false color in three orthogonal directions. Minimum values are shown in green, max in blue, and dark to light orange shades represent small to large values respectively.

## 6.5 Orthogonal surface views [i](#)

### 6.5.1 Primary map



The images above show the 3D surface view of the map at the recommended contour level 0.2. These images, in conjunction with the slice images, may facilitate assessment of whether an appropriate contour level has been provided.

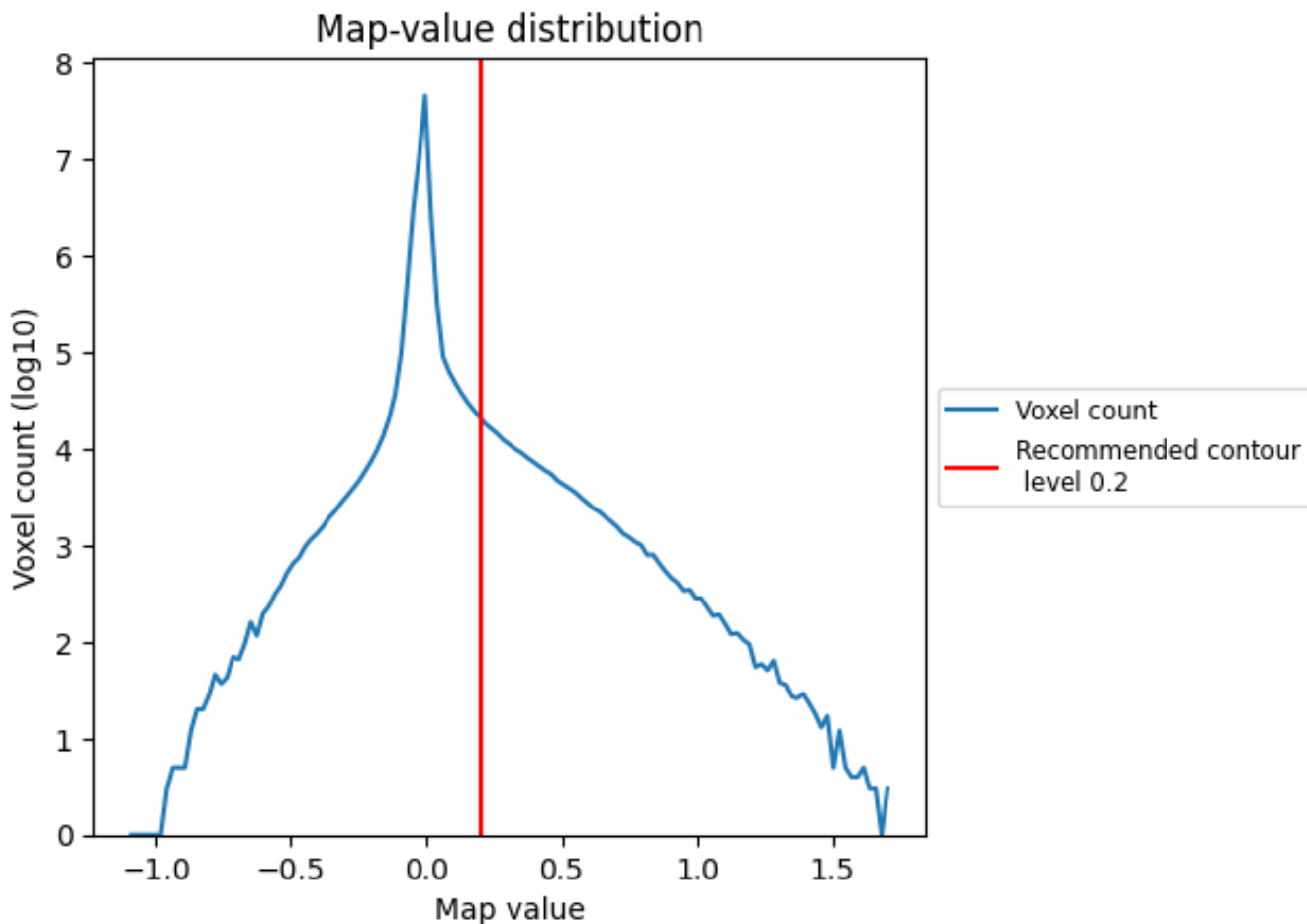
## 6.6 Mask visualisation [i](#)

This section was not generated. No masks/segmentation were deposited.

## 7 Map analysis [i](#)

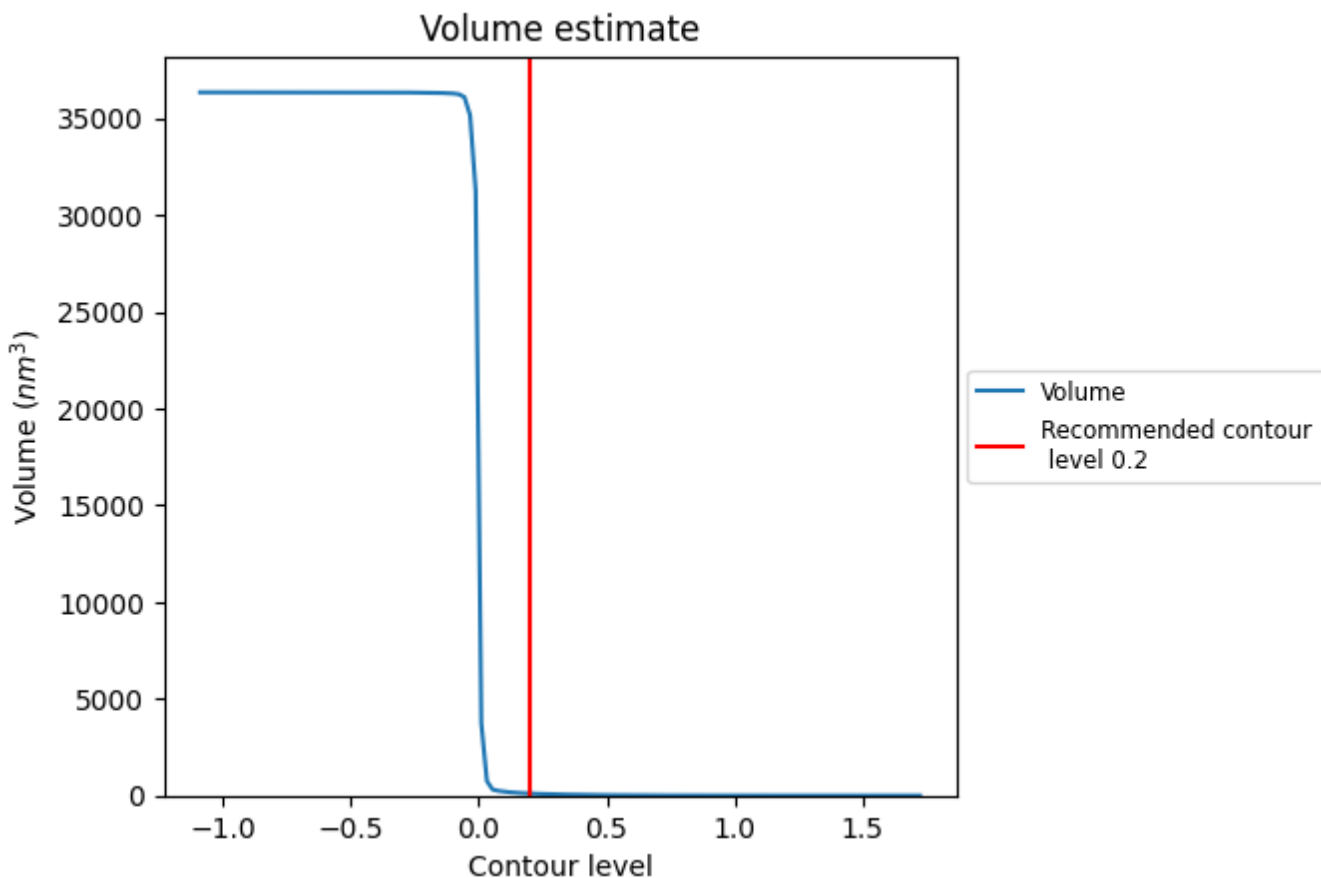
This section contains the results of statistical analysis of the map.

### 7.1 Map-value distribution [i](#)



The map-value distribution is plotted in 128 intervals along the x-axis. The y-axis is logarithmic. A spike in this graph at zero usually indicates that the volume has been masked.

## 7.2 Volume estimate [i](#)

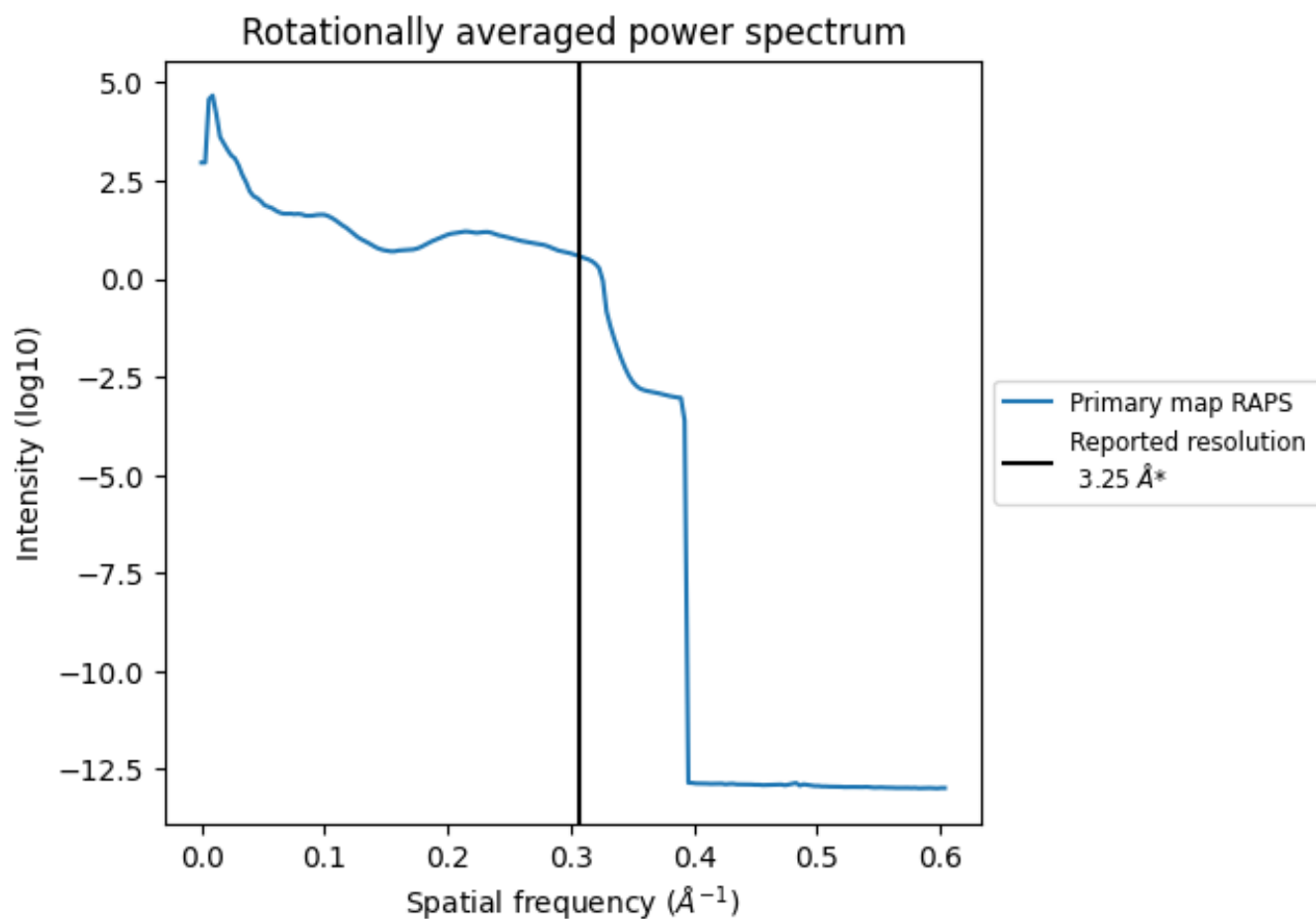


The volume at the recommended contour level is 106 nm<sup>3</sup>; this corresponds to an approximate mass of 96 kDa.

The volume estimate graph shows how the enclosed volume varies with the contour level. The recommended contour level is shown as a vertical line and the intersection between the line and the curve gives the volume of the enclosed surface at the given level.



### 7.3 Rotationally averaged power spectrum [i](#)



\*Reported resolution corresponds to spatial frequency of  $0.308 \text{\AA}^{-1}$

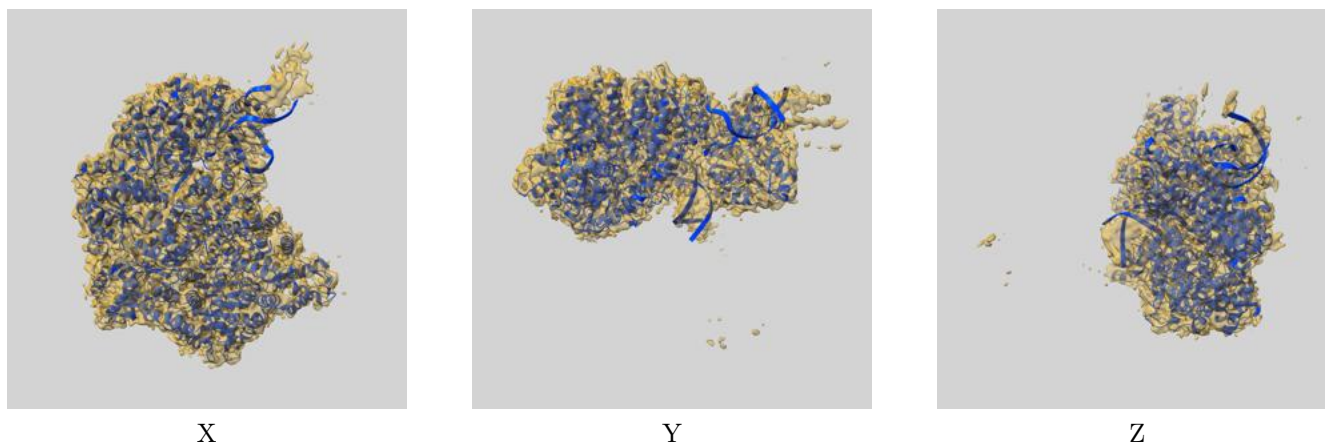
## 8 Fourier-Shell correlation

This section was not generated. No FSC curve or half-maps provided.

## 9 Map-model fit [i](#)

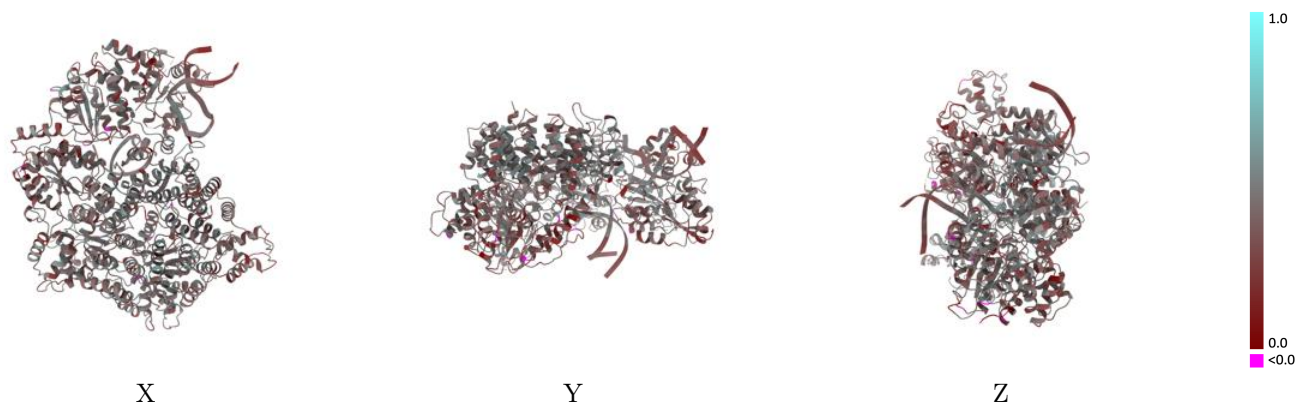
This section contains information regarding the fit between EMDB map EMD-25875 and PDB model 7TFK. Per-residue inclusion information can be found in section 3 on page 7.

### 9.1 Map-model overlay [i](#)



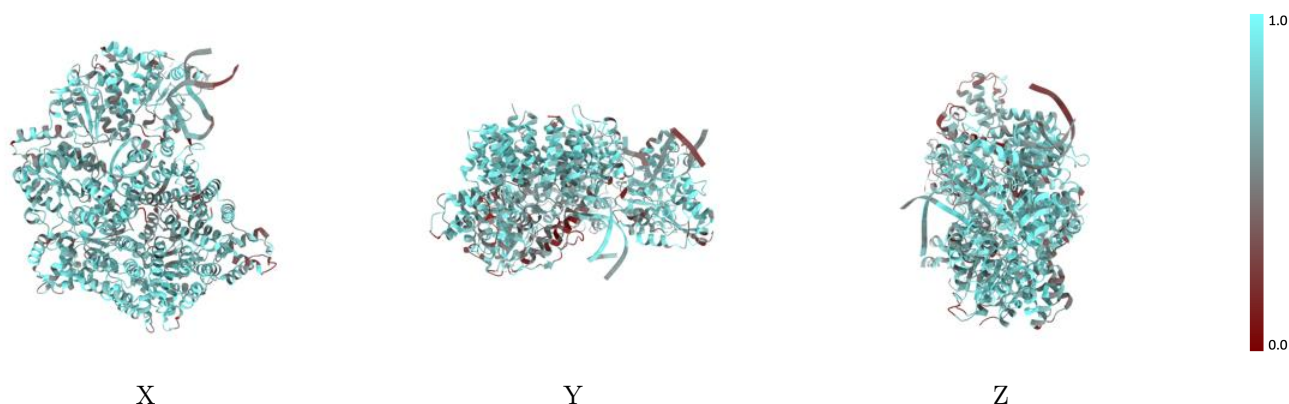
The images above show the 3D surface view of the map at the recommended contour level 0.2 at 50% transparency in yellow overlaid with a ribbon representation of the model coloured in blue. These images allow for the visual assessment of the quality of fit between the atomic model and the map.

## 9.2 Q-score mapped to coordinate model [i](#)



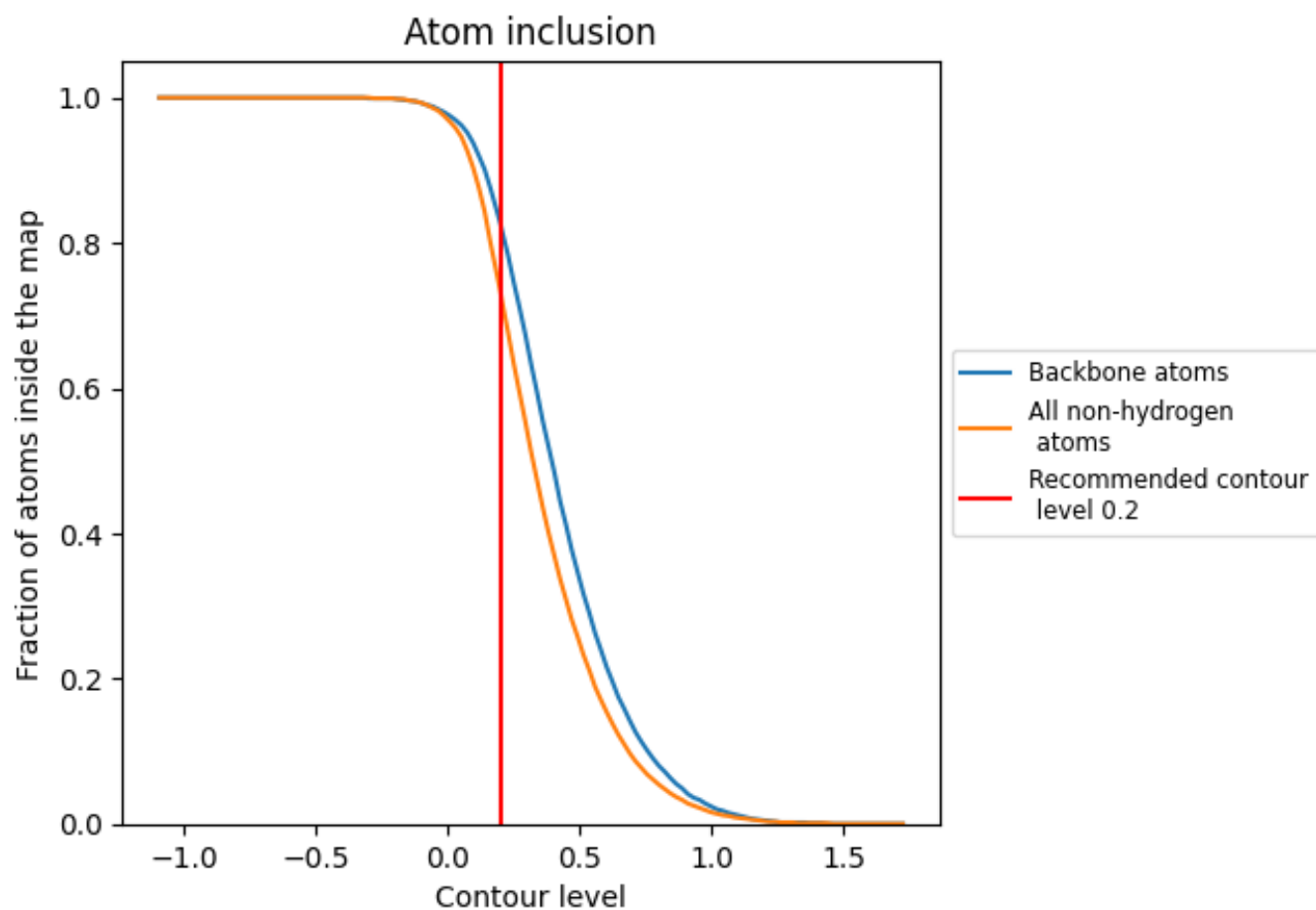
The images above show the model with each residue coloured according to its Q-score. This shows their resolvability in the map with higher Q-score values reflecting better resolvability. Please note: Q-score is calculating the resolvability of atoms, and thus high values are only expected at resolutions at which atoms can be resolved. Low Q-score values may therefore be expected for many entries.

## 9.3 Atom inclusion mapped to coordinate model [i](#)



The images above show the model with each residue coloured according to its atom inclusion. This shows to what extent they are inside the map at the recommended contour level (0.2).





















## 9.4 Atom inclusion [i](#)



At the recommended contour level, 83% of all backbone atoms, 74% of all non-hydrogen atoms, are inside the map.

## 9.5 Map-model fit summary

The table lists the average atom inclusion at the recommended contour level (0.2) and Q-score for the entire model and for each chain.

Chain	Atom inclusion	Q-score
All	 0.7350	 0.3900
A	 0.7210	 0.3880
B	 0.7640	 0.3890
C	 0.7630	 0.3920
D	 0.8040	 0.4260
E	 0.6600	 0.3650
I	 0.7310	 0.3960
J	 0.7880	 0.3710
K	 0.4530	 0.3490
L	 0.5760	 0.3420

