



Full wwPDB EM Validation Report ⓘ

Oct 20, 2024 – 12:42 PM EDT

PDB ID : 7TEQ
EMDB ID : EMD-25849
Title : Cryo-EM structure of GluN1b-2B NMDAR in complex with Fab5 active conformation
Authors : Tajima, N.; Furukawa, H.
Deposited on : 2022-01-05
Resolution : 7.51 Å(reported)

This is a Full wwPDB EM Validation Report for a publicly released PDB entry.

We welcome your comments at validation@mail.wwpdb.org

A user guide is available at

<https://www.wwpdb.org/validation/2017/EMValidationReportHelp>

with specific help available everywhere you see the ⓘ symbol.

The types of validation reports are described at

<http://www.wwpdb.org/validation/2017/FAQs#types>.

The following versions of software and data (see [references ⓘ](#)) were used in the production of this report:

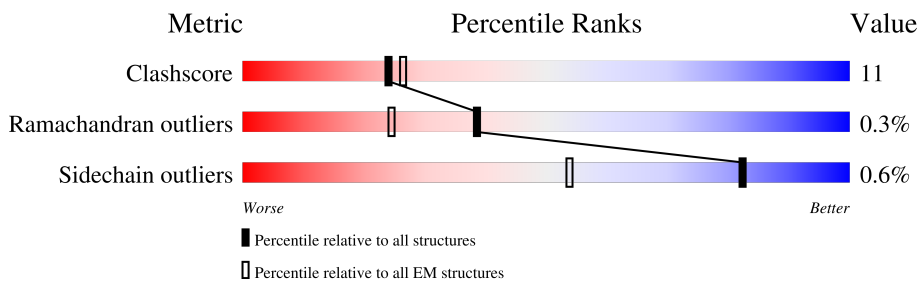
EMDB validation analysis : 0.0.1.dev113
MolProbity : 4.02b-467
Percentile statistics : 20231227.v01 (using entries in the PDB archive December 27th 2023)
MapQ : 1.9.13
Ideal geometry (proteins) : Engh & Huber (2001)
Ideal geometry (DNA, RNA) : Parkinson et al. (1996)
Validation Pipeline (wwPDB-VP) : 2.39

1 Overall quality at a glance i

The following experimental techniques were used to determine the structure:
ELECTRON MICROSCOPY

The reported resolution of this entry is 7.51 Å.

Percentile scores (ranging between 0-100) for global validation metrics of the entry are shown in the following graphic. The table shows the number of entries on which the scores are based.



Metric	Whole archive (#Entries)	EM structures (#Entries)
Clashscore	210492	15764
Ramachandran outliers	207382	16835
Sidechain outliers	206894	16415

The table below summarises the geometric issues observed across the polymeric chains and their fit to the map. The red, orange, yellow and green segments of the bar indicate the fraction of residues that contain outliers for ≥ 3 , 2, 1 and 0 types of geometric quality criteria respectively. A grey segment represents the fraction of residues that are not modelled. The numeric value for each fraction is indicated below the corresponding segment, with a dot representing fractions $\leq 5\%$. The upper red bar (where present) indicates the fraction of residues that have poor fit to the EM map (all-atom inclusion $< 40\%$). The numeric value is given above the bar.

Mol	Chain	Length	Quality of chain
1	A	862	22% (Upper Red) 22% (Red), 63% (Green), 23% (Yellow), 14% (Grey)
1	C	862	22% (Red), 63% (Green), 23% (Yellow), 13% (Grey)
2	B	883	25% (Red), 62% (Green), 22% (Yellow), 15% (Grey)
2	D	883	25% (Red), 60% (Green), 24% (Yellow), 15% (Grey)
3	H	221	31% (Red), 32% (Green), 19% (Yellow), 48% (Grey)
3	M	221	32% (Red), 33% (Green), 19% (Yellow), 48% (Grey)
4	L	209	17% (Red), 35% (Green), 18% (Yellow), 46% (Grey)
4	N	209	15% (Red), 34% (Green), 19% (Yellow), 46% (Grey)

2 Entry composition i

There are 4 unique types of molecules in this entry. The entry contains 27140 atoms, of which 0 are hydrogens and 0 are deuteriums.

In the tables below, the AltConf column contains the number of residues with at least one atom in alternate conformation and the Trace column contains the number of residues modelled with at most 2 atoms.

- Molecule 1 is a protein called Glutamate receptor ionotropic, NMDA 1.

Mol	Chain	Residues	Atoms					AltConf	Trace
			Total	C	N	O	S		
1	A	745	5870	3742	1014	1081	33	0	0
1	C	746	5881	3749	1015	1084	33	0	0

There are 30 discrepancies between the modelled and reference sequences:

Chain	Residue	Modelled	Actual	Comment	Reference
A	22	SER	CYS	conflict	UNP P35439
A	61	GLN	ASN	conflict	UNP P35439
A	260	ASP	ASN	conflict	UNP P35439
A	371	GLN	ASN	conflict	UNP P35439
A	492	GLN	ASN	conflict	UNP P35439
A	512	GLN	ASN	conflict	UNP P35439
A	615	GLN	GLU	conflict	UNP P35439
A	616	SER	GLU	conflict	UNP P35439
A	618	SER	GLU	conflict	UNP P35439
A	619	THR	GLU	conflict	UNP P35439
A	792	GLN	ASN	conflict	UNP P35439
A	831	CYS	PHE	conflict	UNP P35439
A	860	SER	-	expression tag	UNP P35439
A	861	ARG	-	expression tag	UNP P35439
A	862	ALA	-	expression tag	UNP P35439
C	22	SER	CYS	conflict	UNP P35439
C	61	GLN	ASN	conflict	UNP P35439
C	260	ASP	ASN	conflict	UNP P35439
C	371	GLN	ASN	conflict	UNP P35439
C	492	GLN	ASN	conflict	UNP P35439
C	512	GLN	ASN	conflict	UNP P35439
C	615	GLN	GLU	conflict	UNP P35439
C	616	SER	GLU	conflict	UNP P35439
C	618	SER	GLU	conflict	UNP P35439
C	619	THR	GLU	conflict	UNP P35439
C	792	GLN	ASN	conflict	UNP P35439

Continued on next page...

Continued from previous page...

Chain	Residue	Modelled	Actual	Comment	Reference
C	831	CYS	PHE	conflict	UNP P35439
C	860	SER	-	expression tag	UNP P35439
C	861	ARG	-	expression tag	UNP P35439
C	862	ALA	-	expression tag	UNP P35439

- Molecule 2 is a protein called Glutamate receptor ionotropic, NMDA 2B.

Mol	Chain	Residues	Atoms					AltConf	Trace
			Total	C	N	O	S		
2	B	747	Total	C	N	O	S	0	0
			5910	3815	947	1107	41		
2	D	749	Total	C	N	O	S	0	0
			5923	3823	949	1110	41		

There are 126 discrepancies between the modelled and reference sequences:

Chain	Residue	Modelled	Actual	Comment	Reference
B	-30	MET	-	expression tag	UNP Q00960
B	-29	GLY	-	expression tag	UNP Q00960
B	-28	THR	-	expression tag	UNP Q00960
B	-27	MET	-	expression tag	UNP Q00960
B	-26	ARG	-	expression tag	UNP Q00960
B	-25	LEU	-	expression tag	UNP Q00960
B	-24	PHE	-	expression tag	UNP Q00960
B	-23	LEU	-	expression tag	UNP Q00960
B	-22	LEU	-	expression tag	UNP Q00960
B	-21	ALA	-	expression tag	UNP Q00960
B	-20	VAL	-	expression tag	UNP Q00960
B	-19	LEU	-	expression tag	UNP Q00960
B	-18	PHE	-	expression tag	UNP Q00960
B	-17	LEU	-	expression tag	UNP Q00960
B	-16	PHE	-	expression tag	UNP Q00960
B	-15	SER	-	expression tag	UNP Q00960
B	-14	PHE	-	expression tag	UNP Q00960
B	-13	ALA	-	expression tag	UNP Q00960
B	-12	ARG	-	expression tag	UNP Q00960
B	-11	ALA	-	expression tag	UNP Q00960
B	-10	THR	-	expression tag	UNP Q00960
B	-9	GLY	-	expression tag	UNP Q00960
B	-8	TRP	-	expression tag	UNP Q00960
B	-7	SER	-	expression tag	UNP Q00960
B	-6	HIS	-	expression tag	UNP Q00960
B	-5	PRO	-	expression tag	UNP Q00960

Continued on next page...

Continued from previous page...

Chain	Residue	Modelled	Actual	Comment	Reference
B	-4	GLN	-	expression tag	UNP Q00960
B	-3	PHE	-	expression tag	UNP Q00960
B	-2	GLU	-	expression tag	UNP Q00960
B	-1	LYS	-	expression tag	UNP Q00960
B	0	GLY	-	expression tag	UNP Q00960
B	1	GLY	-	expression tag	UNP Q00960
B	2	GLY	-	expression tag	UNP Q00960
B	3	SER	-	expression tag	UNP Q00960
B	4	GLY	-	expression tag	UNP Q00960
B	5	GLY	-	expression tag	UNP Q00960
B	6	GLY	-	expression tag	UNP Q00960
B	7	SER	-	expression tag	UNP Q00960
B	8	GLY	-	expression tag	UNP Q00960
B	9	GLY	-	expression tag	UNP Q00960
B	10	SER	-	expression tag	UNP Q00960
B	11	ALA	-	expression tag	UNP Q00960
B	12	TRP	-	expression tag	UNP Q00960
B	13	SER	-	expression tag	UNP Q00960
B	14	HIS	-	expression tag	UNP Q00960
B	15	PRO	-	expression tag	UNP Q00960
B	16	GLN	-	expression tag	UNP Q00960
B	17	PHE	-	expression tag	UNP Q00960
B	18	GLU	-	expression tag	UNP Q00960
B	19	LYS	-	expression tag	UNP Q00960
B	20	GLY	-	expression tag	UNP Q00960
B	21	ALA	-	expression tag	UNP Q00960
B	22	LEU	-	expression tag	UNP Q00960
B	23	VAL	-	expression tag	UNP Q00960
B	24	PRO	-	expression tag	UNP Q00960
B	25	ARG	-	expression tag	UNP Q00960
B	26	GLY	-	expression tag	UNP Q00960
B	348	ASP	ASN	conflict	UNP Q00960
B	557	CYS	ASP	conflict	UNP Q00960
B	588	SER	CYS	conflict	UNP Q00960
B	600	VAL	PHE	conflict	UNP Q00960
B	838	SER	CYS	conflict	UNP Q00960
B	849	SER	CYS	conflict	UNP Q00960
D	-30	MET	-	expression tag	UNP Q00960
D	-29	GLY	-	expression tag	UNP Q00960
D	-28	THR	-	expression tag	UNP Q00960
D	-27	MET	-	expression tag	UNP Q00960
D	-26	ARG	-	expression tag	UNP Q00960

Continued on next page...

Continued from previous page...

Chain	Residue	Modelled	Actual	Comment	Reference
D	-25	LEU	-	expression tag	UNP Q00960
D	-24	PHE	-	expression tag	UNP Q00960
D	-23	LEU	-	expression tag	UNP Q00960
D	-22	LEU	-	expression tag	UNP Q00960
D	-21	ALA	-	expression tag	UNP Q00960
D	-20	VAL	-	expression tag	UNP Q00960
D	-19	LEU	-	expression tag	UNP Q00960
D	-18	PHE	-	expression tag	UNP Q00960
D	-17	LEU	-	expression tag	UNP Q00960
D	-16	PHE	-	expression tag	UNP Q00960
D	-15	SER	-	expression tag	UNP Q00960
D	-14	PHE	-	expression tag	UNP Q00960
D	-13	ALA	-	expression tag	UNP Q00960
D	-12	ARG	-	expression tag	UNP Q00960
D	-11	ALA	-	expression tag	UNP Q00960
D	-10	THR	-	expression tag	UNP Q00960
D	-9	GLY	-	expression tag	UNP Q00960
D	-8	TRP	-	expression tag	UNP Q00960
D	-7	SER	-	expression tag	UNP Q00960
D	-6	HIS	-	expression tag	UNP Q00960
D	-5	PRO	-	expression tag	UNP Q00960
D	-4	GLN	-	expression tag	UNP Q00960
D	-3	PHE	-	expression tag	UNP Q00960
D	-2	GLU	-	expression tag	UNP Q00960
D	-1	LYS	-	expression tag	UNP Q00960
D	0	GLY	-	expression tag	UNP Q00960
D	1	GLY	-	expression tag	UNP Q00960
D	2	GLY	-	expression tag	UNP Q00960
D	3	SER	-	expression tag	UNP Q00960
D	4	GLY	-	expression tag	UNP Q00960
D	5	GLY	-	expression tag	UNP Q00960
D	6	GLY	-	expression tag	UNP Q00960
D	7	SER	-	expression tag	UNP Q00960
D	8	GLY	-	expression tag	UNP Q00960
D	9	GLY	-	expression tag	UNP Q00960
D	10	SER	-	expression tag	UNP Q00960
D	11	ALA	-	expression tag	UNP Q00960
D	12	TRP	-	expression tag	UNP Q00960
D	13	SER	-	expression tag	UNP Q00960
D	14	HIS	-	expression tag	UNP Q00960
D	15	PRO	-	expression tag	UNP Q00960
D	16	GLN	-	expression tag	UNP Q00960

Continued on next page...

Continued from previous page...

Chain	Residue	Modelled	Actual	Comment	Reference
D	17	PHE	-	expression tag	UNP Q00960
D	18	GLU	-	expression tag	UNP Q00960
D	19	LYS	-	expression tag	UNP Q00960
D	20	GLY	-	expression tag	UNP Q00960
D	21	ALA	-	expression tag	UNP Q00960
D	22	LEU	-	expression tag	UNP Q00960
D	23	VAL	-	expression tag	UNP Q00960
D	24	PRO	-	expression tag	UNP Q00960
D	25	ARG	-	expression tag	UNP Q00960
D	26	GLY	-	expression tag	UNP Q00960
D	348	ASP	ASN	conflict	UNP Q00960
D	557	CYS	ASP	conflict	UNP Q00960
D	588	SER	CYS	conflict	UNP Q00960
D	600	VAL	PHE	conflict	UNP Q00960
D	838	SER	CYS	conflict	UNP Q00960
D	849	SER	CYS	conflict	UNP Q00960

- Molecule 3 is a protein called Fab5 heavy chain.

Mol	Chain	Residues	Atoms					AltConf	Trace
			Total	C	N	O	S		
3	H	115	900	566	151	178	5	0	0
3	M	116	906	569	152	180	5	0	0

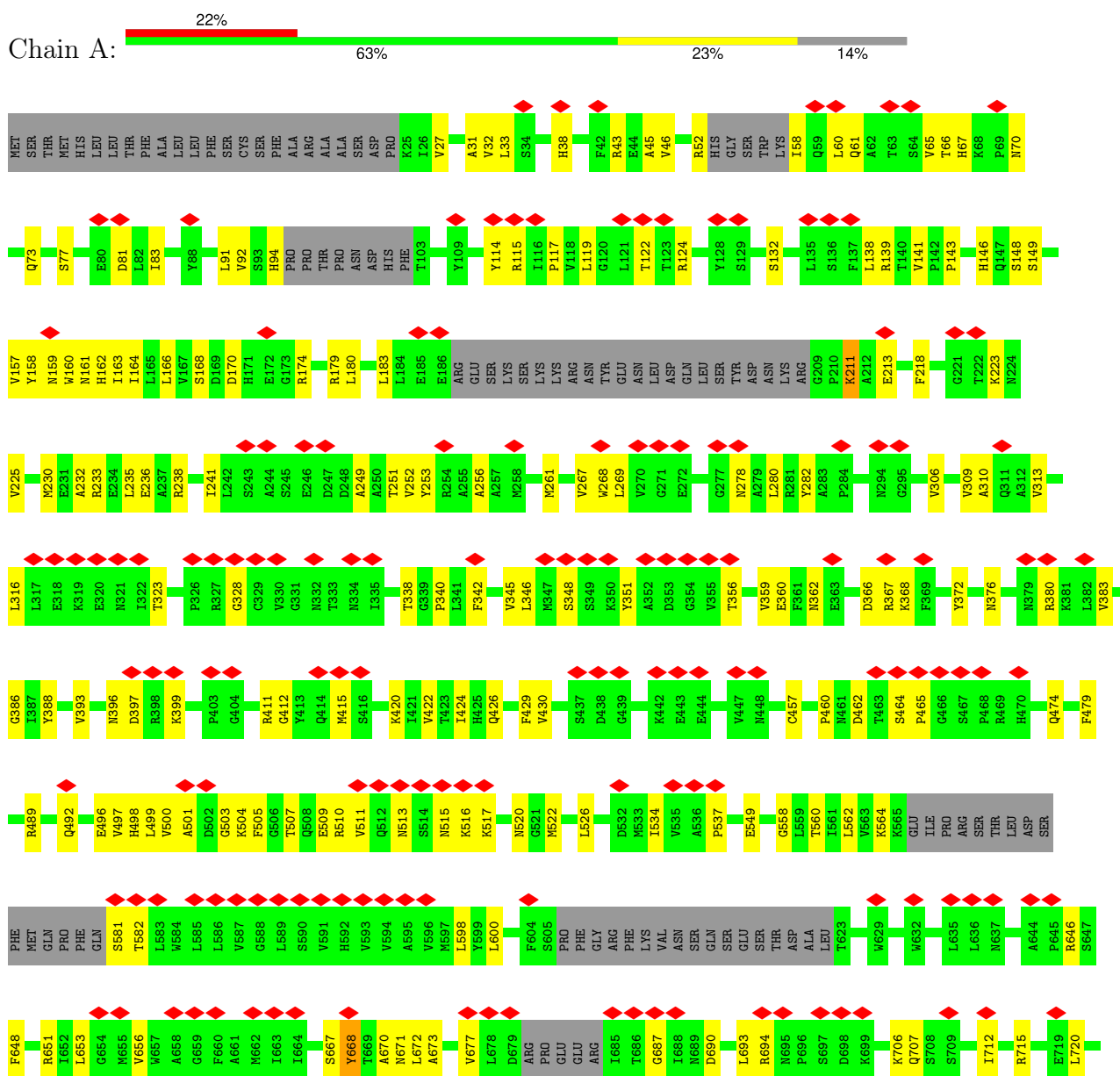
- Molecule 4 is a protein called Fab5 light chain.

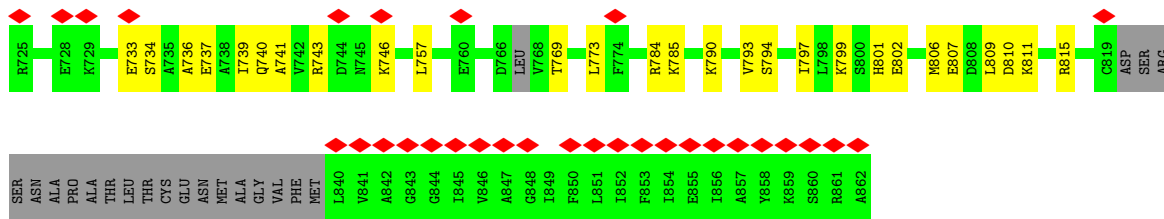
Mol	Chain	Residues	Atoms					AltConf	Trace
			Total	C	N	O	S		
4	L	112	875	549	152	171	3	0	0
4	N	112	875	549	152	171	3	0	0

3 Residue-property plots

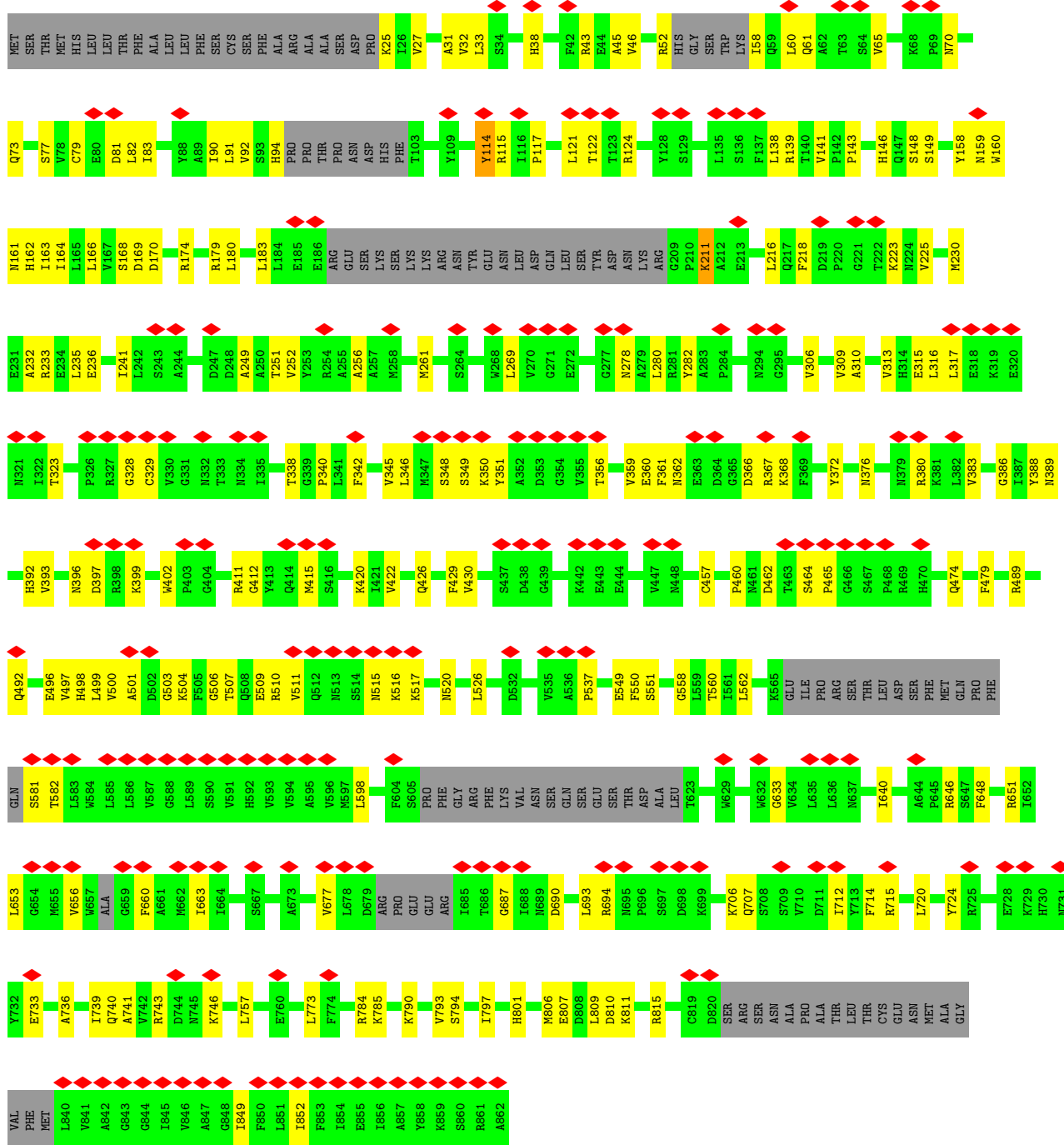
These plots are drawn for all protein, RNA, DNA and oligosaccharide chains in the entry. The first graphic for a chain summarises the proportions of the various outlier classes displayed in the second graphic. The second graphic shows the sequence view annotated by issues in geometry and atom inclusion in map density. Residues are color-coded according to the number of geometric quality criteria for which they contain at least one outlier: green = 0, yellow = 1, orange = 2 and red = 3 or more. A red diamond above a residue indicates a poor fit to the EM map for this residue (all-atom inclusion < 40%). Stretches of 2 or more consecutive residues without any outlier are shown as a green connector. Residues present in the sample, but not in the model, are shown in grey.

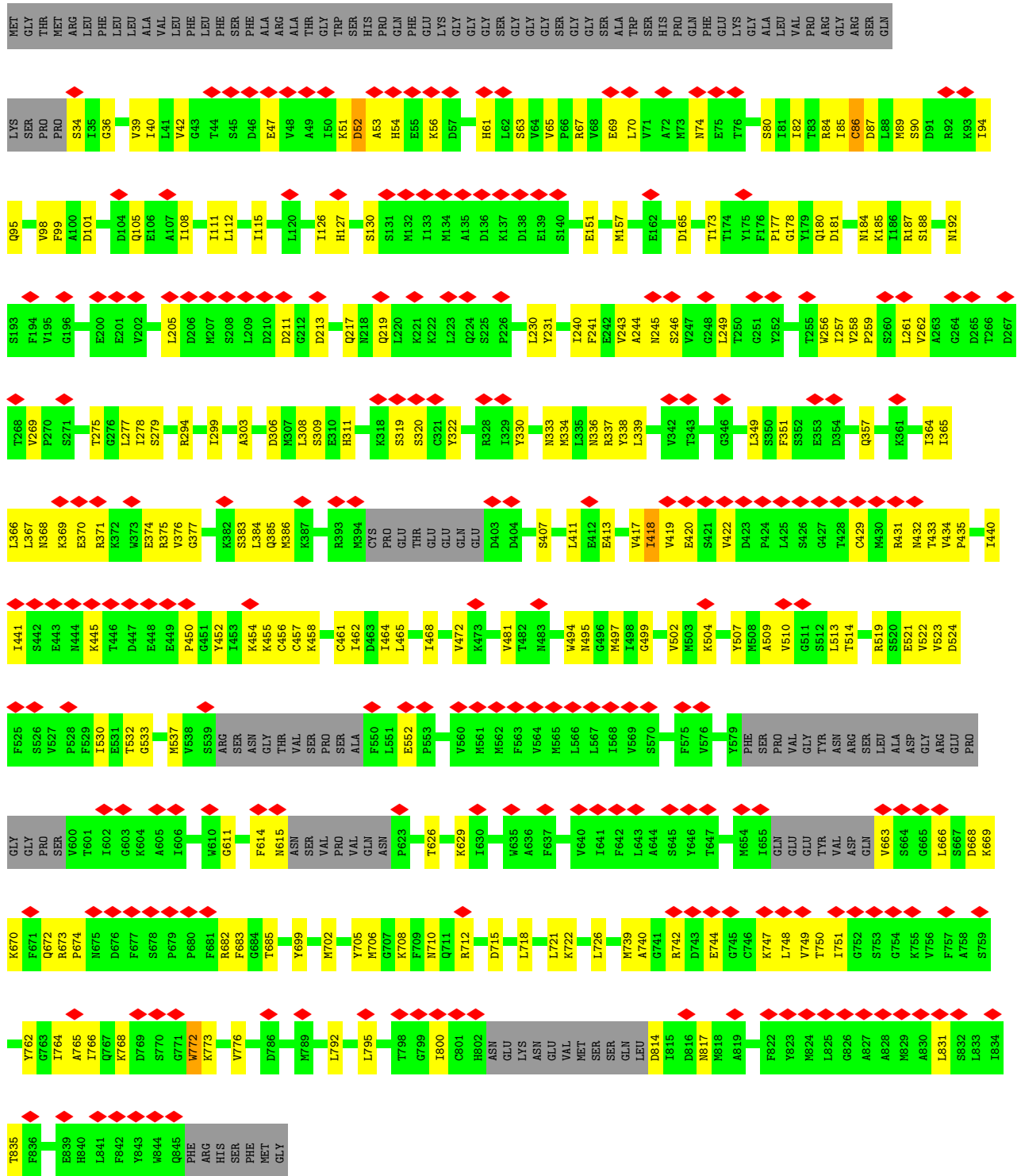
- Molecule 1: Glutamate receptor ionotropic, NMDA 1



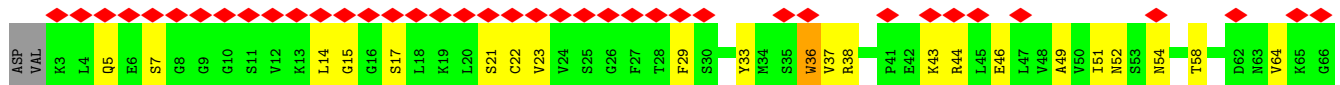
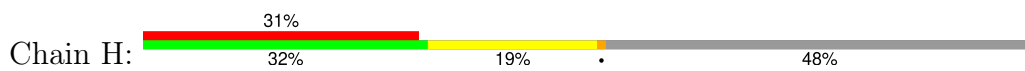


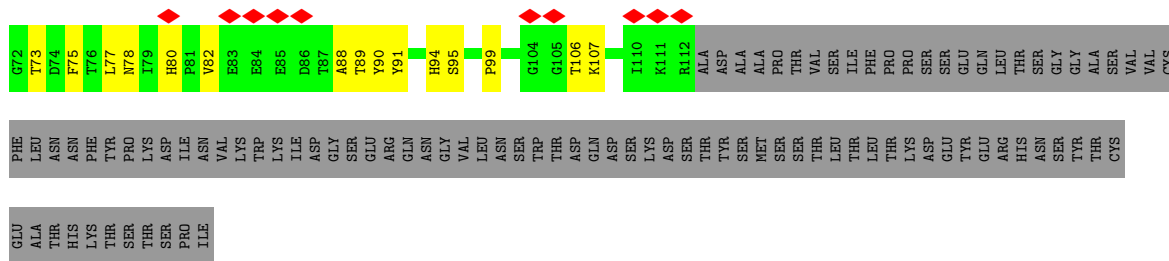
• Molecule 1: Glutamate receptor ionotropic, NMDA 1





• Molecule 3: Fab5 heavy chain





4 Experimental information

Property	Value	Source
EM reconstruction method	SINGLE PARTICLE	Depositor
Imposed symmetry	POINT, Not provided	
Number of particles used	13386	Depositor
Resolution determination method	FSC 0.143 CUT-OFF	Depositor
CTF correction method	PHASE FLIPPING ONLY	Depositor
Microscope	FEI TITAN KRIOS	Depositor
Voltage (kV)	300	Depositor
Electron dose ($e^-/\text{\AA}^2$)	60	Depositor
Minimum defocus (nm)	1500	Depositor
Maximum defocus (nm)	3000	Depositor
Magnification	Not provided	
Image detector	GATAN K3 BIOQUANTUM (6k x 4k)	Depositor
Maximum map value	6.400	Depositor
Minimum map value	-1.186	Depositor
Average map value	0.046	Depositor
Map value standard deviation	0.394	Depositor
Recommended contour level	3	Depositor
Map size (\AA)	350.72, 350.72, 350.72	wwPDB
Map dimensions	256, 256, 256	wwPDB
Map angles ($^\circ$)	90.0, 90.0, 90.0	wwPDB
Pixel spacing (\AA)	1.37, 1.37, 1.37	Depositor

5 Model quality [i](#)

5.1 Standard geometry [i](#)

The Z score for a bond length (or angle) is the number of standard deviations the observed value is removed from the expected value. A bond length (or angle) with $|Z| > 5$ is considered an outlier worth inspection. RMSZ is the root-mean-square of all Z scores of the bond lengths (or angles).

Mol	Chain	Bond lengths		Bond angles	
		RMSZ	# Z >5	RMSZ	# Z >5
1	A	0.31	0/5989	0.54	2/8099 (0.0%)
1	C	0.30	0/6000	0.55	1/8114 (0.0%)
2	B	0.30	0/6040	0.59	3/8173 (0.0%)
2	D	0.30	0/6053	0.59	4/8191 (0.0%)
3	H	0.32	0/918	0.59	0/1240
3	M	0.32	0/924	0.57	0/1248
4	L	0.32	0/899	0.55	0/1221
4	N	0.32	0/899	0.55	0/1221
All	All	0.31	0/27722	0.57	10/37507 (0.0%)

Chiral center outliers are detected by calculating the chiral volume of a chiral center and verifying if the center is modelled as a planar moiety or with the opposite hand. A planarity outlier is detected by checking planarity of atoms in a peptide group, atoms in a mainchain group or atoms of a sidechain that are expected to be planar.

Mol	Chain	#Chirality outliers	#Planarity outliers
1	A	0	3
1	C	0	4
2	B	0	8
2	D	0	8
3	H	0	4
3	M	0	4
All	All	0	31

There are no bond length outliers.

All (10) bond angle outliers are listed below:

Mol	Chain	Res	Type	Atoms	Z	Observed(°)	Ideal(°)
2	D	165	ASP	CB-CG-OD1	7.04	124.63	118.30
2	B	165	ASP	CB-CG-OD1	6.98	124.58	118.30
2	D	261	LEU	CA-CB-CG	6.18	129.51	115.30
2	B	261	LEU	CA-CB-CG	6.18	129.51	115.30

Continued on next page...

Continued from previous page...

Mol	Chain	Res	Type	Atoms	Z	Observed(°)	Ideal(°)
2	B	418	ILE	CG1-CB-CG2	-5.57	99.15	111.40
2	D	418	ILE	CG1-CB-CG2	-5.53	99.23	111.40
1	C	114	TYR	C-N-CA	5.25	134.84	121.70
1	A	668	TYR	CA-CB-CG	5.17	123.23	113.40
1	A	114	TYR	C-N-CA	5.17	134.63	121.70
2	D	320	SER	C-N-CA	5.03	134.27	121.70

There are no chirality outliers.

All (31) planarity outliers are listed below:

Mol	Chain	Res	Type	Group
1	A	211	LYS	Peptide
1	A	464	SER	Peptide
1	A	690	ASP	Peptide
2	B	177	PRO	Peptide
2	B	319	SER	Peptide
2	B	431	ARG	Peptide
2	B	52	ASP	Peptide
2	B	552	GLU	Peptide
2	B	747	LYS	Peptide
2	B	772	TRP	Peptide
2	B	86	CYS	Peptide
1	C	211	LYS	Peptide
1	C	402	TRP	Peptide
1	C	464	SER	Peptide
1	C	690	ASP	Peptide
2	D	177	PRO	Peptide
2	D	319	SER	Peptide
2	D	431	ARG	Peptide
2	D	52	ASP	Peptide
2	D	552	GLU	Peptide
2	D	747	LYS	Peptide
2	D	772	TRP	Peptide
2	D	86	CYS	Peptide
3	H	102	ASP	Peptide
3	H	107	ASP	Peptide
3	H	14	LEU	Peptide
3	H	36	TRP	Peptide
3	M	102	ASP	Peptide
3	M	107	ASP	Peptide
3	M	14	LEU	Peptide
3	M	36	TRP	Peptide

5.2 Too-close contacts [i](#)

In the following table, the Non-H and H(model) columns list the number of non-hydrogen atoms and hydrogen atoms in the chain respectively. The H(added) column lists the number of hydrogen atoms added and optimized by MolProbity. The Clashes column lists the number of clashes within the asymmetric unit, whereas Symm-Clashes lists symmetry-related clashes.

Mol	Chain	Non-H	H(model)	H(added)	Clashes	Symm-Clashes
1	A	5870	0	5873	122	0
1	C	5881	0	5883	123	0
2	B	5910	0	5853	120	0
2	D	5923	0	5867	128	0
3	H	900	0	867	26	0
3	M	906	0	872	24	0
4	L	875	0	839	23	0
4	N	875	0	839	24	0
All	All	27140	0	26893	575	0

The all-atom clashscore is defined as the number of clashes found per 1000 atoms (including hydrogen atoms). The all-atom clashscore for this structure is 11.

All (575) close contacts within the same asymmetric unit are listed below, sorted by their clash magnitude.

Atom-1	Atom-2	Interatomic distance (Å)	Clash overlap (Å)
3:H:33:TYR:H	3:H:99:ARG:HB2	1.50	0.77
3:M:33:TYR:H	3:M:99:ARG:HB2	1.51	0.75
1:A:811:LYS:O	1:A:815:ARG:HB2	1.89	0.72
1:A:667:SER:O	1:A:670:ALA:O	2.11	0.69
1:C:811:LYS:O	1:C:815:ARG:HB2	1.92	0.69
1:C:25:LYS:HB3	1:C:317:LEU:HD21	1.77	0.67
2:D:435:PRO:HA	2:D:456:CYS:HA	1.78	0.66
2:B:435:PRO:HA	2:B:456:CYS:HA	1.78	0.65
4:N:36:TYR:HB3	4:N:94:HIS:HB2	1.78	0.65
2:B:522:VAL:HG12	2:B:523:VAL:HG13	1.79	0.64
4:L:36:TYR:HB3	4:L:94:HIS:HB2	1.79	0.64
1:C:457:CYS:HA	1:C:497:VAL:HG11	1.81	0.62
2:D:522:VAL:HG12	2:D:523:VAL:HG13	1.81	0.62
2:B:530:ILE:HB	2:B:762:TYR:HB2	1.82	0.61
2:D:530:ILE:HB	2:D:762:TYR:HB2	1.82	0.61
1:A:457:CYS:HA	1:A:497:VAL:HG11	1.83	0.61
3:H:51:ILE:HG13	3:H:58:THR:HG22	1.83	0.61
2:B:306:ASP:HB3	2:B:338:TYR:HB3	1.83	0.61
3:M:51:ILE:HG13	3:M:58:THR:HG22	1.84	0.60

Continued on next page...

Continued from previous page...

Atom-1	Atom-2	Interatomic distance (Å)	Clash overlap (Å)
2:D:472:VAL:HG21	2:D:776:VAL:HG12	1.84	0.60
1:C:148:SER:OG	1:C:179:ARG:NH1	2.34	0.60
1:C:526:LEU:O	1:C:784:ARG:NH1	2.35	0.59
4:N:39:TRP:HB3	4:N:51:LEU:HB2	1.84	0.59
1:C:460:PRO:HD3	1:C:499:LEU:HB2	1.84	0.59
2:D:672:GLN:NE2	2:D:702:MET:SD	2.75	0.59
3:H:98:ARG:HB2	3:H:108:TYR:HD2	1.67	0.59
3:M:5:GLN:HB3	3:M:23:VAL:HB	1.84	0.59
1:A:139:ARG:NH1	1:A:141:VAL:O	2.36	0.59
2:B:472:VAL:HG21	2:B:776:VAL:HG12	1.84	0.59
1:A:149:SER:H	1:A:179:ARG:HH12	1.51	0.58
2:B:740:ALA:HA	2:B:748:LEU:HD11	1.85	0.58
1:A:526:LEU:O	1:A:784:ARG:NH1	2.36	0.58
3:M:98:ARG:HB2	3:M:108:TYR:HD2	1.68	0.58
1:C:149:SER:H	1:C:179:ARG:HH12	1.51	0.58
2:D:377:GLY:HA3	2:D:386:MET:HA	1.85	0.58
4:N:23:CYS:HB2	4:N:75:PHE:HB2	1.85	0.58
1:C:164:ILE:HD13	1:C:235:LEU:HD13	1.85	0.58
2:B:672:GLN:NE2	2:B:702:MET:SD	2.76	0.58
1:C:139:ARG:NH1	1:C:141:VAL:O	2.36	0.58
3:H:99:ARG:HG2	3:H:101:TYR:H	1.67	0.58
2:B:240:ILE:HA	2:B:243:VAL:HG22	1.86	0.58
1:A:158:TYR:HB2	1:A:160:TRP:HD1	1.69	0.58
2:D:626:THR:HA	2:D:629:LYS:HD2	1.85	0.58
4:L:39:TRP:HB3	4:L:51:LEU:HB2	1.84	0.58
1:A:148:SER:OG	1:A:179:ARG:NH1	2.35	0.57
1:C:741:ALA:HA	1:C:746:LYS:HE3	1.85	0.57
1:A:549:GLU:HB2	1:A:785:LYS:HA	1.86	0.57
4:N:40:TYR:HB3	4:N:48:PRO:HB2	1.86	0.57
1:A:420:LYS:HA	1:A:496:GLU:HB2	1.86	0.57
3:H:52:ASN:ND2	3:H:54:ASN:OD1	2.38	0.57
1:A:143:PRO:O	1:A:146:HIS:ND1	2.35	0.57
1:A:426:GLN:H	1:A:430:VAL:HB	1.68	0.57
2:B:377:GLY:HA3	2:B:386:MET:HA	1.86	0.57
1:C:249:ALA:HA	1:C:252:VAL:HG22	1.85	0.57
2:D:205:LEU:HD11	2:D:219:GLN:HG2	1.86	0.57
4:L:40:TYR:HB3	4:L:48:PRO:HB2	1.87	0.57
2:D:721:LEU:HD22	2:D:726:LEU:HB3	1.86	0.57
4:L:23:CYS:HB2	4:L:75:PHE:HB2	1.85	0.57
1:A:462:ASP:HB2	1:A:501:ALA:HB1	1.87	0.57
3:M:36:TRP:HB2	3:M:49:ALA:H	1.69	0.57

Continued on next page...

Continued from previous page...

Atom-1	Atom-2	Interatomic distance (Å)	Clash overlap (Å)
3:M:52:ASN:ND2	3:M:54:ASN:OD1	2.38	0.57
2:B:205:LEU:HD11	2:B:219:GLN:HG2	1.86	0.56
1:C:143:PRO:O	1:C:146:HIS:ND1	2.35	0.56
1:A:507:THR:OG1	1:A:715:ARG:NH2	2.38	0.56
2:B:626:THR:HA	2:B:629:LYS:HD2	1.87	0.56
1:C:70:ASN:ND2	2:D:322:TYR:OH	2.38	0.56
1:C:158:TYR:HB2	1:C:160:TRP:HD1	1.69	0.56
1:C:712:ILE:HG12	1:C:715:ARG:HH21	1.70	0.56
2:D:42:VAL:HB	2:D:101:ASP:HA	1.87	0.56
2:D:514:THR:O	2:D:519:ARG:NH1	2.38	0.56
1:A:489:ARG:O	1:A:492:GLN:NE2	2.39	0.56
2:D:240:ILE:HA	2:D:243:VAL:HG22	1.87	0.56
3:H:5:GLN:HB3	3:H:23:VAL:HB	1.86	0.56
2:B:42:VAL:HB	2:B:101:ASP:HA	1.87	0.56
1:C:426:GLN:H	1:C:430:VAL:HB	1.68	0.56
2:D:383:SER:OG	2:D:385:GLN:NE2	2.38	0.56
3:H:15:GLY:HA2	3:H:86:LEU:H	1.71	0.56
1:A:164:ILE:HD13	1:A:235:LEU:HD13	1.88	0.56
1:A:223:LYS:NZ	1:A:251:THR:OG1	2.39	0.56
2:B:98:VAL:HB	2:B:126:ILE:HD11	1.88	0.56
2:B:241:PHE:O	2:B:245:ASN:ND2	2.38	0.56
2:B:256:TRP:HB2	2:B:277:LEU:HG	1.87	0.56
2:B:275:THR:HG23	2:B:369:LYS:HB3	1.88	0.56
1:C:420:LYS:HA	1:C:496:GLU:HB2	1.88	0.56
1:A:376:ASN:HB3	1:A:383:VAL:HB	1.86	0.56
2:B:514:THR:O	2:B:519:ARG:NH1	2.38	0.56
3:H:100:ASP:HB3	3:H:103:GLY:HA2	1.88	0.56
2:B:333:ASN:OD1	4:L:33:ARG:NH2	2.39	0.56
1:C:360:GLU:HB2	1:C:368:LYS:HB2	1.87	0.56
2:D:89:MET:SD	2:D:95:GLN:NE2	2.80	0.55
2:B:383:SER:OG	2:B:385:GLN:NE2	2.39	0.55
2:D:306:ASP:HB3	2:D:338:TYR:HB3	1.87	0.55
2:D:334:MET:O	2:D:337:ARG:NH1	2.40	0.55
3:H:29:PHE:O	3:H:72:ARG:NH2	2.39	0.55
1:A:740:GLN:OE1	1:A:743:ARG:NH1	2.39	0.55
2:B:365:ILE:HA	2:B:375:ARG:HA	1.89	0.55
1:C:633:GLY:HA3	1:C:640:ILE:HD12	1.89	0.55
2:D:256:TRP:HB2	2:D:277:LEU:HG	1.87	0.55
2:B:101:ASP:OD1	2:B:101:ASP:N	2.40	0.55
1:C:489:ARG:O	1:C:492:GLN:NE2	2.39	0.55
2:D:365:ILE:HA	2:D:375:ARG:HA	1.88	0.55

Continued on next page...

Continued from previous page...

Atom-1	Atom-2	Interatomic distance (Å)	Clash overlap (Å)
3:M:38:ARG:NH2	3:M:89:GLU:O	2.40	0.55
1:A:360:GLU:HB2	1:A:368:LYS:HB2	1.89	0.55
1:A:510:ARG:HA	1:A:517:LYS:HA	1.89	0.55
2:B:334:MET:O	2:B:337:ARG:NH1	2.39	0.55
1:C:162:HIS:HD2	1:C:412:GLY:HA3	1.72	0.55
1:C:376:ASN:HB3	1:C:383:VAL:HB	1.87	0.55
2:D:241:PHE:O	2:D:245:ASN:ND2	2.39	0.55
2:D:98:VAL:HB	2:D:126:ILE:HD11	1.89	0.55
3:M:29:PHE:O	3:M:72:ARG:NH2	2.39	0.55
3:M:71:SER:HB2	3:M:80:TYR:HB2	1.89	0.55
2:B:173:THR:HA	2:B:231:TYR:HB3	1.89	0.55
2:D:101:ASP:OD1	2:D:101:ASP:N	2.40	0.55
1:A:388:TYR:HA	1:A:393:VAL:HA	1.89	0.54
2:B:721:LEU:HD22	2:B:726:LEU:HB3	1.88	0.54
1:C:740:GLN:OE1	1:C:743:ARG:NH1	2.41	0.54
2:D:173:THR:HA	2:D:231:TYR:HB3	1.89	0.54
2:D:275:THR:HG23	2:D:369:LYS:HB3	1.88	0.54
1:A:159:ASN:O	1:A:411:ARG:NH2	2.41	0.54
4:L:43:LYS:H	4:L:46:GLN:HB2	1.73	0.54
4:N:43:LYS:H	4:N:46:GLN:HB2	1.73	0.54
1:C:462:ASP:HB2	1:C:501:ALA:HB1	1.89	0.54
1:A:515:ASN:HB3	2:B:192:ASN:HD22	1.73	0.54
1:C:159:ASN:O	1:C:411:ARG:NH2	2.40	0.54
1:A:460:PRO:HD3	1:A:499:LEU:HB2	1.87	0.54
1:C:549:GLU:HB2	1:C:785:LYS:HA	1.88	0.54
3:M:97:ALA:HB1	3:M:108:TYR:H	1.73	0.54
2:B:524:ASP:HB3	2:B:766:ILE:HG13	1.89	0.54
1:A:124:ARG:HH22	1:A:146:HIS:HE1	1.56	0.54
2:B:718:LEU:O	2:B:722:LYS:HB2	2.08	0.54
1:C:124:ARG:HH22	1:C:146:HIS:HE1	1.56	0.54
1:C:388:TYR:HA	1:C:393:VAL:HA	1.89	0.54
3:M:15:GLY:HA2	3:M:86:LEU:H	1.72	0.54
1:A:712:ILE:HG12	1:A:715:ARG:HH21	1.72	0.53
1:C:223:LYS:NZ	1:C:251:THR:OG1	2.40	0.53
2:D:718:LEU:O	2:D:722:LYS:HB2	2.08	0.53
3:H:71:SER:HB2	3:H:80:TYR:HB2	1.90	0.53
1:A:166:LEU:HD11	1:A:218:PHE:HB2	1.90	0.53
1:C:515:ASN:HB3	2:D:192:ASN:HD22	1.73	0.53
2:D:715:ASP:HA	2:D:718:LEU:HB2	1.90	0.53
2:B:509:ALA:HB3	2:B:765:ALA:HB3	1.90	0.53
2:B:715:ASP:HA	2:B:718:LEU:HB2	1.90	0.53

Continued on next page...

Continued from previous page...

Atom-1	Atom-2	Interatomic distance (Å)	Clash overlap (Å)
2:D:440:ILE:HG21	2:D:450:PRO:HD2	1.90	0.53
1:A:115:ARG:HB3	1:A:340:PRO:HD3	1.90	0.53
2:B:440:ILE:HG21	2:B:450:PRO:HD2	1.90	0.53
2:B:495:ASN:N	2:B:495:ASN:OD1	2.42	0.53
1:C:158:TYR:HB2	1:C:160:TRP:CD1	2.44	0.53
1:C:180:LEU:HA	1:C:183:LEU:HD12	1.91	0.53
1:C:422:VAL:HG22	1:C:498:HIS:HB2	1.90	0.53
3:H:22:CYS:HB3	3:H:79:LEU:HB3	1.91	0.53
1:C:52:ARG:HD2	1:C:310:ALA:HB1	1.90	0.53
2:D:524:ASP:HB3	2:D:766:ILE:HG13	1.91	0.53
4:N:90:TYR:HB2	4:N:106:THR:HG23	1.90	0.53
1:A:158:TYR:HB2	1:A:160:TRP:CD1	2.44	0.52
1:A:162:HIS:HD2	1:A:412:GLY:HA3	1.73	0.52
4:L:40:TYR:N	4:L:91:TYR:O	2.40	0.52
3:H:97:ALA:HB1	3:H:108:TYR:H	1.73	0.52
2:B:407:SER:HB2	2:B:507:TYR:HD1	1.74	0.52
2:B:481:VAL:HG21	2:B:497:MET:HG2	1.91	0.52
4:L:68:GLY:HA2	4:L:77:LEU:HA	1.92	0.52
4:L:30:SER:OG	4:L:31:THR:N	2.43	0.52
4:L:95:SER:HB2	4:L:99:PRO:HA	1.91	0.52
4:N:95:SER:HB2	4:N:99:PRO:HA	1.91	0.52
2:D:673:ARG:NH1	2:D:674:PRO:O	2.43	0.52
4:N:70:GLY:HA3	4:N:75:PHE:HA	1.92	0.52
1:C:506:GLY:HA2	1:C:707:GLN:HB3	1.92	0.52
4:L:90:TYR:HB2	4:L:106:THR:HG23	1.90	0.52
1:A:77:SER:O	1:A:81:ASP:HB2	2.10	0.52
1:C:77:SER:O	1:C:81:ASP:HB2	2.10	0.52
2:D:481:VAL:HG21	2:D:497:MET:HG2	1.90	0.52
1:C:166:LEU:HD11	1:C:218:PHE:HB2	1.91	0.51
1:C:115:ARG:HB3	1:C:340:PRO:HD3	1.91	0.51
1:C:558:GLY:HA3	1:C:773:LEU:HB3	1.93	0.51
2:D:407:SER:HB2	2:D:507:TYR:HD1	1.74	0.51
1:A:422:VAL:HG22	1:A:498:HIS:HB2	1.92	0.51
1:C:510:ARG:HA	1:C:517:LYS:HA	1.92	0.51
2:D:54:HIS:HB2	2:D:294:ARG:HE	1.74	0.51
1:A:278:ASN:ND2	1:A:282:TYR:OH	2.43	0.51
1:C:511:VAL:N	1:C:516:LYS:O	2.43	0.51
2:D:509:ALA:HB3	2:D:765:ALA:HB3	1.93	0.51
2:B:54:HIS:HB2	2:B:294:ARG:HE	1.75	0.51
2:B:188:SER:O	2:B:192:ASN:ND2	2.44	0.51
1:C:507:THR:OG1	1:C:715:ARG:NH2	2.42	0.51

Continued on next page...

Continued from previous page...

Atom-1	Atom-2	Interatomic distance (Å)	Clash overlap (Å)
1:C:706:LYS:HB2	1:C:733:GLU:HA	1.92	0.51
2:B:338:TYR:OH	4:L:96:TRP:O	2.29	0.51
2:B:673:ARG:NH1	2:B:674:PRO:O	2.43	0.51
2:D:87:ASP:O	2:D:90:SER:OG	2.28	0.51
4:N:15:LEU:HD23	4:N:82:VAL:HG12	1.93	0.51
4:N:68:GLY:HA2	4:N:77:LEU:HA	1.92	0.51
1:A:52:ARG:HB2	1:A:58:ILE:HB	1.93	0.51
2:B:683:PHE:HB2	2:B:706:MET:HA	1.93	0.50
2:B:814:ASP:OD1	2:B:814:ASP:N	2.43	0.50
4:L:15:LEU:HD23	4:L:82:VAL:HG12	1.93	0.50
1:C:91:LEU:HD11	1:C:121:LEU:HD22	1.94	0.50
4:N:40:TYR:N	4:N:91:TYR:O	2.40	0.50
1:A:249:ALA:HA	1:A:252:VAL:HG22	1.92	0.50
4:L:89:THR:HA	4:L:107:LYS:HA	1.93	0.50
3:M:17:SER:OG	3:M:82:GLN:NE2	2.44	0.50
1:C:256:ALA:HB1	1:C:261:MET:HB2	1.94	0.50
2:D:306:ASP:O	2:D:309:SER:OG	2.28	0.50
1:A:687:GLY:HA2	1:A:693:LEU:HD22	1.92	0.50
1:A:790:LYS:HA	1:A:793:VAL:HB	1.94	0.50
2:B:127:HIS:N	2:B:130:SER:OG	2.45	0.50
1:C:278:ASN:ND2	1:C:282:TYR:OH	2.44	0.50
4:L:70:GLY:HA3	4:L:75:PHE:HA	1.92	0.50
1:A:426:GLN:HG2	1:A:537:PRO:HG2	1.93	0.50
1:A:232:ALA:HA	1:A:235:LEU:HD12	1.92	0.50
1:A:249:ALA:O	1:A:253:TYR:HB2	2.12	0.50
1:A:342:PHE:O	1:A:346:LEU:HB2	2.12	0.50
2:B:434:VAL:HG23	2:B:462:ILE:HG23	1.94	0.50
1:C:225:VAL:HG11	1:C:252:VAL:HG12	1.94	0.50
1:C:687:GLY:HA2	1:C:693:LEU:HD22	1.94	0.50
3:M:43:LYS:O	3:M:44:ARG:NH1	2.39	0.50
2:B:422:VAL:HG22	2:B:429:CYS:HB2	1.93	0.50
1:C:560:THR:HG23	1:C:757:LEU:HD12	1.93	0.50
1:C:790:LYS:HA	1:C:793:VAL:HB	1.94	0.50
2:D:213:ASP:N	2:D:213:ASP:OD1	2.45	0.50
2:D:673:ARG:HD2	2:D:674:PRO:HD2	1.94	0.50
1:A:351:TYR:HB3	1:A:359:VAL:HB	1.94	0.49
2:D:495:ASN:OD1	2:D:495:ASN:N	2.42	0.49
2:B:299:ILE:O	2:B:303:ALA:HB2	2.12	0.49
2:D:336:ASN:OD1	2:D:336:ASN:N	2.44	0.49
2:D:739:MET:HA	2:D:742:ARG:HB3	1.94	0.49
4:N:69:SER:OG	4:N:70:GLY:N	2.46	0.49

Continued on next page...

Continued from previous page...

Atom-1	Atom-2	Interatomic distance (Å)	Clash overlap (Å)
2:B:330:TYR:HE2	3:H:99:ARG:HH22	1.60	0.49
2:D:299:ILE:O	2:D:303:ALA:HB2	2.13	0.49
2:D:524:ASP:HB2	2:D:768:LYS:HG2	1.94	0.49
3:M:93:LEU:HA	3:M:114:SER:HA	1.95	0.49
3:M:99:ARG:HG2	3:M:101:TYR:H	1.76	0.49
1:C:351:TYR:HB3	1:C:359:VAL:HB	1.93	0.49
2:D:422:VAL:HG22	2:D:429:CYS:HB2	1.93	0.49
2:D:434:VAL:HG23	2:D:462:ILE:HG23	1.94	0.49
2:D:814:ASP:N	2:D:814:ASP:OD1	2.46	0.49
1:C:94:HIS:N	1:C:122:THR:OG1	2.45	0.49
1:C:507:THR:HG23	1:C:509:GLU:HG3	1.94	0.49
1:C:551:SER:HG	1:C:794:SER:HG	1.60	0.49
4:N:30:SER:OG	4:N:31:THR:N	2.43	0.49
1:A:94:HIS:N	1:A:122:THR:OG1	2.45	0.49
1:A:225:VAL:HG11	1:A:252:VAL:HG12	1.94	0.49
1:A:46:VAL:HA	1:A:60:LEU:HD23	1.94	0.49
1:A:117:PRO:HB3	1:A:138:LEU:HD23	1.94	0.49
1:A:148:SER:HB2	1:A:180:LEU:HB3	1.95	0.49
1:A:811:LYS:O	1:A:815:ARG:CB	2.60	0.49
2:B:277:LEU:O	2:B:367:LEU:N	2.45	0.49
2:B:673:ARG:HD2	2:B:674:PRO:HD2	1.94	0.49
1:C:117:PRO:HB3	1:C:138:LEU:HD23	1.95	0.49
1:C:457:CYS:N	1:C:474:GLN:O	2.44	0.49
1:A:397:ASP:OD1	1:A:397:ASP:N	2.46	0.49
1:A:558:GLY:HA3	1:A:773:LEU:HB3	1.93	0.49
2:B:244:ALA:HB1	2:B:249:LEU:HB3	1.94	0.49
1:C:648:PHE:HD1	1:C:651:ARG:HD2	1.78	0.49
1:C:694:ARG:HH12	1:C:720:LEU:HD22	1.78	0.49
2:D:108:ILE:HA	2:D:111:ILE:HB	1.94	0.49
2:D:127:HIS:N	2:D:130:SER:OG	2.45	0.49
1:C:653:LEU:HA	1:C:656:VAL:HG22	1.95	0.49
2:D:683:PHE:HB2	2:D:706:MET:HA	1.95	0.49
2:B:494:TRP:HB2	2:B:499:GLY:HA2	1.95	0.48
2:D:330:TYR:HE2	3:M:99:ARG:HH22	1.59	0.48
1:A:362:ASN:OD1	1:A:366:ASP:N	2.46	0.48
2:B:108:ILE:HA	2:B:111:ILE:HB	1.94	0.48
1:C:362:ASN:OD1	1:C:366:ASP:N	2.46	0.48
1:A:457:CYS:N	1:A:474:GLN:O	2.46	0.48
1:C:46:VAL:HA	1:C:60:LEU:HD23	1.94	0.48
2:D:211:ASP:OD1	2:D:211:ASP:N	2.46	0.48
2:D:750:THR:OG1	2:D:751:ILE:N	2.43	0.48

Continued on next page...

Continued from previous page...

Atom-1	Atom-2	Interatomic distance (Å)	Clash overlap (Å)
3:M:91:THR:HG23	3:M:116:THR:HA	1.95	0.48
1:A:507:THR:HG23	1:A:509:GLU:HG3	1.94	0.48
2:B:230:LEU:HD21	2:B:262:VAL:HG11	1.93	0.48
2:B:368:ASN:ND2	2:B:370:GLU:OE1	2.47	0.48
1:C:397:ASP:OD1	1:C:397:ASP:N	2.46	0.48
1:A:794:SER:HA	1:A:797:ILE:HD12	1.96	0.48
2:B:87:ASP:O	2:B:90:SER:OG	2.28	0.48
2:B:336:ASN:N	2:B:336:ASN:OD1	2.47	0.48
2:D:685:THR:HG22	2:D:706:MET:HG2	1.95	0.48
2:B:685:THR:HG22	2:B:706:MET:HG2	1.95	0.48
2:D:230:LEU:HD23	2:D:259:PRO:HD2	1.96	0.48
2:B:89:MET:SD	2:B:95:GLN:NE2	2.86	0.48
1:C:170:ASP:O	1:C:174:ARG:N	2.42	0.48
1:C:426:GLN:HG2	1:C:537:PRO:HG2	1.96	0.48
4:N:89:THR:HA	4:N:107:LYS:HA	1.94	0.48
2:B:524:ASP:HB2	2:B:768:LYS:HG2	1.95	0.48
1:C:509:GLU:OE2	1:C:707:GLN:NE2	2.46	0.48
1:A:241:ILE:HG12	1:A:269:LEU:HB2	1.96	0.48
1:A:356:THR:OG1	1:A:367:ARG:NH1	2.47	0.48
1:A:376:ASN:ND2	1:A:399:LYS:O	2.44	0.48
1:A:694:ARG:HH12	1:A:720:LEU:HD22	1.78	0.48
2:B:36:GLY:HA3	2:B:94:ILE:HA	1.96	0.48
2:B:504:LYS:HA	2:B:504:LYS:HD3	1.62	0.48
1:C:241:ILE:HG12	1:C:269:LEU:HB2	1.95	0.48
1:C:811:LYS:O	1:C:815:ARG:CB	2.59	0.48
2:D:494:TRP:HB2	2:D:499:GLY:HA2	1.96	0.48
1:A:45:ALA:HB1	1:A:306:VAL:HG11	1.96	0.47
1:A:280:LEU:HD13	1:A:380:ARG:HB3	1.95	0.47
2:B:213:ASP:OD1	2:B:213:ASP:N	2.45	0.47
1:A:52:ARG:HD2	1:A:310:ALA:HB1	1.95	0.47
2:D:47:GLU:HB3	2:D:70:LEU:HD21	1.95	0.47
2:D:230:LEU:HD21	2:D:262:VAL:HG11	1.94	0.47
2:D:740:ALA:HA	2:D:748:LEU:HD11	1.95	0.47
2:B:47:GLU:HB3	2:B:70:LEU:HD21	1.96	0.47
2:D:36:GLY:HA3	2:D:94:ILE:HA	1.96	0.47
1:A:429:PHE:HA	1:A:479:PHE:HD2	1.79	0.47
1:A:564:LYS:NZ	1:A:743:ARG:O	2.41	0.47
2:D:666:LEU:HD21	2:D:670:LYS:HD3	1.96	0.47
3:H:17:SER:OG	3:H:82:GLN:NE2	2.45	0.47
1:A:670:ALA:HB2	2:B:650:LEU:HD13	1.95	0.47
2:B:666:LEU:HD21	2:B:670:LYS:HD3	1.96	0.47

Continued on next page...

Continued from previous page...

Atom-1	Atom-2	Interatomic distance (Å)	Clash overlap (Å)
1:C:27:VAL:O	1:C:61:GLN:N	2.46	0.47
1:C:70:ASN:HB3	1:C:73:GLN:HB2	1.96	0.47
2:D:277:LEU:O	2:D:367:LEU:N	2.45	0.47
2:D:368:ASN:ND2	2:D:370:GLU:OE1	2.47	0.47
2:D:411:LEU:HB2	2:D:481:VAL:HB	1.97	0.47
2:B:739:MET:HA	2:B:742:ARG:HB3	1.97	0.47
1:A:648:PHE:HD1	1:A:651:ARG:HD2	1.77	0.47
1:A:706:LYS:HB2	1:A:733:GLU:HA	1.96	0.47
1:C:31:ALA:HB3	1:C:65:VAL:HG22	1.97	0.47
3:H:43:LYS:O	3:H:44:ARG:NH1	2.41	0.47
3:H:91:THR:HG23	3:H:116:THR:HA	1.96	0.47
4:L:69:SER:OG	4:L:70:GLY:N	2.45	0.47
1:C:376:ASN:ND2	1:C:399:LYS:O	2.45	0.47
1:C:794:SER:HA	1:C:797:ILE:HD12	1.96	0.47
2:D:105:GLN:HB3	2:D:108:ILE:HG22	1.97	0.47
2:D:413:GLU:H	2:D:417:VAL:HB	1.80	0.47
2:B:465:LEU:HA	2:B:468:ILE:HG22	1.97	0.47
1:C:429:PHE:HA	1:C:479:PHE:HD2	1.80	0.47
2:B:230:LEU:HD23	2:B:259:PRO:HD2	1.97	0.46
1:C:32:VAL:HB	1:C:92:VAL:HA	1.97	0.46
1:C:280:LEU:HD13	1:C:380:ARG:HB3	1.96	0.46
1:C:741:ALA:O	1:C:746:LYS:N	2.48	0.46
1:A:32:VAL:HB	1:A:92:VAL:HA	1.96	0.46
1:A:33:LEU:HD13	1:A:38:HIS:HB3	1.97	0.46
1:A:180:LEU:HA	1:A:183:LEU:HD12	1.96	0.46
2:B:366:LEU:N	2:B:374:GLU:O	2.44	0.46
2:D:157:MET:HG2	2:D:257:ILE:HG21	1.96	0.46
1:A:386:GLY:HA2	1:A:396:ASN:H	1.80	0.46
2:B:39:VAL:HB	2:B:70:LEU:HA	1.97	0.46
2:B:672:GLN:HE22	2:B:699:TYR:HB3	1.79	0.46
1:A:507:THR:O	1:A:520:ASN:ND2	2.48	0.46
1:A:560:THR:HG23	1:A:757:LEU:HD12	1.97	0.46
2:B:80:SER:O	2:B:84:ARG:HB2	2.16	0.46
1:C:507:THR:O	1:C:520:ASN:ND2	2.48	0.46
3:M:104:PHE:HB2	4:N:95:SER:HB3	1.97	0.46
2:B:217:GLN:NE2	2:D:246:SER:O	2.48	0.46
2:B:413:GLU:H	2:B:417:VAL:HB	1.80	0.46
1:C:479:PHE:HD1	1:C:809:LEU:HB3	1.81	0.46
1:C:646:ARG:HA	1:C:651:ARG:HH21	1.81	0.46
1:A:256:ALA:HB1	1:A:261:MET:HB2	1.98	0.46
2:D:244:ALA:HB1	2:D:249:LEU:HB3	1.97	0.46

Continued on next page...

Continued from previous page...

Atom-1	Atom-2	Interatomic distance (Å)	Clash overlap (Å)
1:C:114:TYR:OH	1:C:329:CYS:SG	2.71	0.46
2:D:52:ASP:HB2	2:D:56:LYS:HE3	1.98	0.46
2:D:682:ARG:HB3	2:D:726:LEU:HD12	1.98	0.46
1:A:70:ASN:HB3	1:A:73:GLN:HB2	1.97	0.46
1:C:306:VAL:HA	1:C:309:VAL:HG12	1.98	0.46
1:C:315:GLU:OE1	1:C:349:SER:OG	2.32	0.46
1:C:386:GLY:HA2	1:C:396:ASN:H	1.81	0.46
3:H:36:TRP:HB2	3:H:49:ALA:H	1.81	0.46
3:M:5:GLN:O	3:M:23:VAL:N	2.48	0.46
2:B:364:ILE:O	2:B:376:VAL:N	2.49	0.46
1:C:148:SER:HB2	1:C:180:LEU:HB3	1.98	0.46
2:D:521:GLU:O	2:D:768:LYS:NZ	2.48	0.46
1:A:479:PHE:HD1	1:A:809:LEU:HB3	1.81	0.45
1:C:168:SER:HA	1:C:218:PHE:HB3	1.97	0.45
1:C:581:SER:OG	1:C:582:THR:N	2.49	0.45
3:H:49:ALA:HB1	3:H:70:ILE:HD11	1.97	0.45
4:N:4:LEU:HA	4:N:25:ALA:HA	1.99	0.45
1:A:31:ALA:HB3	1:A:65:VAL:HG22	1.97	0.45
1:A:161:ASN:HB2	1:A:211:LYS:HB2	1.98	0.45
1:A:168:SER:HA	1:A:218:PHE:HB3	1.98	0.45
2:D:461:CYS:HA	2:D:464:ILE:HB	1.98	0.45
2:D:364:ILE:O	2:D:376:VAL:N	2.49	0.45
2:D:499:GLY:HA2	2:D:502:VAL:HG12	1.98	0.45
2:B:211:ASP:OD1	2:B:211:ASP:N	2.46	0.45
2:B:411:LEU:HB2	2:B:481:VAL:HB	1.99	0.45
2:B:668:ASP:HA	2:B:672:GLN:HB3	1.99	0.45
1:C:801:HIS:HA	1:C:806:MET:HG2	1.98	0.45
2:D:39:VAL:HB	2:D:70:LEU:HA	1.96	0.45
2:B:157:MET:HG2	2:B:257:ILE:HG21	1.97	0.45
1:C:33:LEU:HD13	1:C:38:HIS:HB3	1.98	0.45
2:D:80:SER:O	2:D:84:ARG:HB2	2.17	0.45
2:D:279:SER:N	2:D:365:ILE:O	2.37	0.45
2:B:461:CYS:HA	2:B:464:ILE:HB	1.98	0.45
2:B:792:LEU:HD23	2:B:795:LEU:HD12	1.98	0.45
2:D:663:VAL:HG23	2:D:751:ILE:HG22	1.97	0.45
1:A:500:VAL:HG12	1:A:503:GLY:H	1.82	0.45
2:B:184:ASN:OD1	2:B:187:ARG:NH2	2.35	0.45
1:C:550:PHE:O	1:C:790:LYS:NZ	2.40	0.45
3:H:64:VAL:HG13	3:H:68:PHE:HD2	1.82	0.45
1:A:736:ALA:HA	1:A:739:ILE:HD12	1.99	0.45
2:B:306:ASP:O	2:B:309:SER:OG	2.28	0.45

Continued on next page...

Continued from previous page...

Atom-1	Atom-2	Interatomic distance (Å)	Clash overlap (Å)
2:D:333:ASN:OD1	4:N:33:ARG:NH2	2.50	0.45
2:D:465:LEU:HA	2:D:468:ILE:HG22	1.97	0.45
3:H:5:GLN:O	3:H:23:VAL:N	2.48	0.45
2:B:710:ASN:HB3	2:B:712:ARG:HH22	1.82	0.45
1:C:345:VAL:O	1:C:348:SER:OG	2.34	0.45
1:A:345:VAL:O	1:A:348:SER:OG	2.35	0.45
2:B:615:ASN:N	2:B:615:ASN:OD1	2.50	0.45
2:D:74:ASN:OD1	2:D:74:ASN:N	2.49	0.45
1:C:807:GLU:HA	1:C:810:ASP:HB2	1.99	0.44
2:D:366:LEU:N	2:D:374:GLU:O	2.44	0.44
2:D:513:LEU:HD12	2:D:519:ARG:HD3	1.99	0.44
2:D:615:ASN:N	2:D:615:ASN:OD1	2.49	0.44
1:A:741:ALA:O	1:A:746:LYS:N	2.51	0.44
1:A:807:GLU:HA	1:A:810:ASP:HB2	2.00	0.44
2:B:181:ASP:HA	2:B:184:ASN:HD22	1.83	0.44
1:A:170:ASP:O	1:A:174:ARG:N	2.41	0.44
2:B:52:ASP:HB2	2:B:56:LYS:HE3	2.00	0.44
2:B:180:GLN:O	2:B:184:ASN:ND2	2.51	0.44
4:L:88:ALA:HB3	4:L:90:TYR:HE1	1.82	0.44
2:B:521:GLU:O	2:B:768:LYS:NZ	2.51	0.44
1:A:646:ARG:HA	1:A:651:ARG:HH21	1.83	0.44
2:D:40:ILE:HB	2:D:99:PHE:HA	2.00	0.44
1:A:316:LEU:HD13	1:A:342:PHE:HB2	2.00	0.44
1:A:581:SER:OG	1:A:582:THR:N	2.50	0.44
1:A:668:TYR:O	1:A:672:LEU:HB2	2.17	0.44
1:C:160:TRP:HZ3	1:C:163:ILE:HB	1.82	0.44
2:D:180:GLN:O	2:D:184:ASN:ND2	2.51	0.44
2:D:710:ASN:HB3	2:D:712:ARG:HH22	1.82	0.44
1:A:163:ILE:HD11	1:A:241:ILE:HG13	1.99	0.44
1:C:45:ALA:HB1	1:C:306:VAL:HG11	1.98	0.44
1:C:163:ILE:HD11	1:C:241:ILE:HG13	2.00	0.44
1:C:356:THR:OG1	1:C:367:ARG:NH1	2.50	0.44
1:A:230:MET:HA	1:A:233:ARG:HD2	2.00	0.44
1:C:232:ALA:HA	1:C:235:LEU:HD12	2.00	0.44
1:C:342:PHE:O	1:C:346:LEU:HB2	2.18	0.44
4:N:88:ALA:HB3	4:N:90:TYR:HE1	1.82	0.44
1:A:306:VAL:HA	1:A:309:VAL:HG12	2.00	0.44
2:B:40:ILE:HB	2:B:99:PHE:HA	2.00	0.44
2:D:308:LEU:HD12	2:D:311:HIS:HA	1.99	0.44
2:D:792:LEU:HD23	2:D:795:LEU:HD12	1.98	0.44
1:A:511:VAL:N	1:A:516:LYS:O	2.47	0.43

Continued on next page...

Continued from previous page...

Atom-1	Atom-2	Interatomic distance (Å)	Clash overlap (Å)
2:D:181:ASP:HA	2:D:184:ASN:HD22	1.83	0.43
2:D:532:THR:OG1	2:D:533:GLY:N	2.50	0.43
2:D:611:GLY:HA2	2:D:614:PHE:HB3	2.00	0.43
2:B:494:TRP:HE3	2:B:499:GLY:HA3	1.83	0.43
2:B:499:GLY:HA2	2:B:502:VAL:HG12	1.98	0.43
1:C:161:ASN:HB2	1:C:211:LYS:HB2	1.99	0.43
1:C:350:LYS:HA	1:C:350:LYS:HD3	1.75	0.43
4:L:4:LEU:HA	4:L:25:ALA:HA	1.99	0.43
1:A:27:VAL:O	1:A:61:GLN:N	2.50	0.43
1:C:660:PHE:HA	1:C:663:ILE:HG22	2.01	0.43
2:D:112:LEU:HD23	2:D:115:ILE:HD12	2.01	0.43
3:M:49:ALA:HB1	3:M:70:ILE:HD11	1.99	0.43
2:B:105:GLN:HB3	2:B:108:ILE:HG22	1.99	0.43
1:C:736:ALA:HA	1:C:739:ILE:HD12	2.00	0.43
4:L:37:MET:N	4:L:54:TYR:O	2.49	0.43
1:A:653:LEU:HA	1:A:656:VAL:HG22	1.99	0.43
2:B:682:ARG:HB3	2:B:726:LEU:HD12	1.99	0.43
1:C:316:LEU:HD13	1:C:342:PHE:HB2	2.01	0.43
1:C:562:LEU:HB2	1:C:757:LEU:HD13	2.00	0.43
2:D:510:VAL:HA	2:D:764:ILE:HG23	2.00	0.43
2:B:74:ASN:OD1	2:B:74:ASN:N	2.49	0.43
2:B:420:GLU:HB2	2:B:455:LYS:HB3	2.01	0.43
1:C:310:ALA:HA	1:C:313:VAL:HG12	1.99	0.43
3:M:37:VAL:HG11	3:M:96:CYS:HA	2.00	0.43
2:D:494:TRP:HE3	2:D:499:GLY:HA3	1.83	0.43
3:M:64:VAL:HG13	3:M:68:PHE:HD2	1.83	0.43
1:A:372:TYR:HD2	1:A:388:TYR:HB3	1.84	0.43
1:A:504:LYS:HD2	1:A:707:GLN:HB2	2.00	0.43
1:A:801:HIS:HA	1:A:806:MET:HG2	2.01	0.43
2:D:151:GLU:OE2	2:D:185:LYS:NZ	2.43	0.43
1:C:500:VAL:HG12	1:C:503:GLY:H	1.84	0.43
2:D:668:ASP:HA	2:D:672:GLN:HB3	1.99	0.43
2:B:513:LEU:HD12	2:B:519:ARG:HD3	2.00	0.42
2:B:611:GLY:HA2	2:B:614:PHE:HB3	2.01	0.42
2:D:433:THR:OG1	2:D:457:CYS:O	2.27	0.42
2:B:215:LYS:HE2	2:B:215:LYS:HB3	1.89	0.42
4:N:37:MET:N	4:N:54:TYR:O	2.49	0.42
4:N:53:LYS:HB2	4:N:57:ASN:HB3	2.01	0.42
4:N:53:LYS:N	4:N:57:ASN:O	2.38	0.42
2:B:246:SER:O	2:D:217:GLN:NE2	2.52	0.42
2:B:269:VAL:HG11	2:B:371:ARG:HD2	2.01	0.42

Continued on next page...

Continued from previous page...

Atom-1	Atom-2	Interatomic distance (Å)	Clash overlap (Å)
2:B:441:ILE:HD12	2:B:441:ILE:HA	1.85	0.42
2:B:705:TYR:HA	2:B:708:LYS:HZ2	1.84	0.42
1:A:734:SER:HB3	1:A:737:GLU:HG2	2.02	0.42
2:B:532:THR:OG1	2:B:533:GLY:N	2.52	0.42
1:C:372:TYR:HD2	1:C:388:TYR:HB3	1.83	0.42
1:C:598:LEU:HD21	1:C:653:LEU:HD13	2.01	0.42
1:C:849:ILE:HD12	1:C:852:ILE:HD11	2.02	0.42
2:D:184:ASN:OD1	2:D:187:ARG:NH2	2.35	0.42
2:D:420:GLU:HB2	2:D:455:LYS:HB3	2.00	0.42
2:D:336:ASN:HA	2:D:339:LEU:HD22	2.02	0.42
2:D:705:TYR:HA	2:D:708:LYS:HZ2	1.83	0.42
1:A:562:LEU:HA	1:A:769:THR:HA	2.00	0.42
1:A:598:LEU:HD21	1:A:653:LEU:HD13	2.02	0.42
1:C:323:THR:HB	1:C:338:THR:HB	2.02	0.42
2:D:188:SER:O	2:D:192:ASN:ND2	2.53	0.42
2:D:452:TYR:CZ	2:D:454:LYS:HA	2.55	0.42
3:H:93:LEU:HA	3:H:114:SER:HA	2.01	0.42
1:A:91:LEU:HD13	1:A:119:LEU:HD23	2.02	0.42
2:B:34:SER:N	2:B:65:VAL:O	2.52	0.42
1:C:83:ILE:HG22	1:C:328:GLY:HA3	2.01	0.42
2:D:258:VAL:HB	2:D:279:SER:HA	2.02	0.42
1:A:310:ALA:HA	1:A:313:VAL:HG12	2.01	0.42
1:A:323:THR:HB	1:A:338:THR:HB	2.02	0.42
1:C:216:LEU:HD23	1:C:216:LEU:HA	1.84	0.42
1:C:230:MET:HA	1:C:233:ARG:HD2	2.01	0.42
1:C:350:LYS:HE3	1:C:361:PHE:H	1.84	0.42
2:D:299:ILE:HD11	2:D:349:LEU:HD12	2.02	0.42
4:N:67:SER:OG	4:N:78:ASN:O	2.36	0.42
1:A:236:GLU:HG2	1:A:415:MET:HG2	2.01	0.41
1:C:389:ASN:N	1:C:392:HIS:O	2.47	0.41
1:C:714:PHE:O	1:C:724:TYR:OH	2.26	0.41
3:H:38:ARG:NH1	3:H:46:GLU:OE1	2.53	0.41
2:B:278:ILE:HA	2:B:366:LEU:HA	2.02	0.41
2:B:452:TYR:CZ	2:B:454:LYS:HA	2.55	0.41
2:D:772:TRP:HE3	2:D:773:LYS:HB2	1.85	0.41
4:N:42:HIS:HB2	4:N:46:GLN:HB2	2.02	0.41
1:A:261:MET:O	1:A:268:TRP:NE1	2.53	0.41
2:D:269:VAL:HG11	2:D:371:ARG:HD2	2.01	0.41
2:D:441:ILE:HD12	2:D:441:ILE:HA	1.85	0.41
4:L:42:HIS:HB2	4:L:46:GLN:HB2	2.02	0.41
1:A:162:HIS:CD2	1:A:412:GLY:HA3	2.55	0.41

Continued on next page...

Continued from previous page...

Atom-1	Atom-2	Interatomic distance (Å)	Clash overlap (Å)
2:B:336:ASN:HA	2:B:339:LEU:HD22	2.01	0.41
2:B:627:THR:HA	2:B:630:ILE:HD12	2.01	0.41
2:D:51:LYS:HD2	2:D:51:LYS:HA	1.94	0.41
2:D:61:HIS:O	2:D:63:SER:N	2.50	0.41
2:D:278:ILE:HA	2:D:366:LEU:HA	2.03	0.41
3:H:101:TYR:HD1	3:H:101:TYR:HA	1.78	0.41
1:A:160:TRP:HZ3	1:A:163:ILE:HB	1.85	0.41
1:A:510:ARG:HE	2:B:192:ASN:HB3	1.86	0.41
1:A:522:MET:HB3	1:A:534:ILE:HD12	2.01	0.41
1:A:799:LYS:HA	1:A:802:GLU:HB3	2.02	0.41
1:C:52:ARG:HB2	1:C:58:ILE:HB	2.02	0.41
1:C:236:GLU:HG2	1:C:415:MET:HG2	2.02	0.41
1:C:507:THR:HG22	1:C:707:GLN:HA	2.01	0.41
2:D:418:ILE:HG22	2:D:419:VAL:H	1.86	0.41
1:A:509:GLU:OE2	1:A:707:GLN:NE2	2.53	0.41
2:B:279:SER:N	2:B:365:ILE:O	2.38	0.41
2:D:34:SER:N	2:D:65:VAL:O	2.52	0.41
1:A:132:SER:HB3	2:B:177:PRO:HG2	2.02	0.41
1:A:424:ILE:HG21	1:A:505:PHE:HE1	1.86	0.41
2:B:258:VAL:HB	2:B:279:SER:HA	2.03	0.41
2:B:299:ILE:HD11	2:B:349:LEU:HD12	2.02	0.41
2:B:669:LYS:HE2	2:B:669:LYS:HB3	1.89	0.41
4:L:53:LYS:HB2	4:L:57:ASN:HB3	2.01	0.41
1:A:600:LEU:HD23	1:A:600:LEU:HA	1.95	0.41
2:B:418:ILE:HG22	2:B:419:VAL:H	1.86	0.41
2:D:722:LYS:HB2	2:D:722:LYS:HE3	1.83	0.41
2:D:817:ASN:OD1	2:D:817:ASN:N	2.53	0.41
1:A:164:ILE:HG12	1:A:213:GLU:HB3	2.02	0.41
2:D:458:LYS:HE2	2:D:458:LYS:HB3	1.87	0.41
2:D:744:GLU:HG3	2:D:800:ILE:HG13	2.03	0.41
2:D:831:LEU:O	2:D:835:THR:OG1	2.31	0.41
4:L:53:LYS:N	4:L:57:ASN:O	2.38	0.41
2:B:99:PHE:CE2	2:B:130:SER:HB3	2.55	0.41
1:C:420:LYS:HE2	1:C:420:LYS:HB3	1.82	0.41
2:D:672:GLN:HE22	2:D:699:TYR:HB3	1.86	0.41
2:B:693:ARG:HG3	2:B:696:ARG:HH21	1.85	0.40
2:D:351:PHE:HA	2:D:357:GLN:HA	2.03	0.40
2:B:299:ILE:O	2:B:303:ALA:CB	2.69	0.40
3:M:100:ASP:HB3	3:M:103:GLY:HA2	2.03	0.40
4:N:18:ARG:HA	4:N:80:HIS:HA	2.04	0.40
1:A:66:THR:OG1	1:A:67:HIS:N	2.54	0.40

Continued on next page...

Continued from previous page...

Atom-1	Atom-2	Interatomic distance (Å)	Clash overlap (Å)
1:A:238:ARG:HG2	1:A:267:VAL:HG22	2.03	0.40
2:B:39:VAL:N	2:B:69:GLU:O	2.54	0.40
2:D:82:ILE:HA	2:D:85:ILE:HD12	2.02	0.40
2:D:299:ILE:O	2:D:303:ALA:CB	2.69	0.40
2:D:740:ALA:HB2	2:D:749:VAL:HG21	2.02	0.40
4:L:33:ARG:HG3	4:L:34:TYR:HD1	1.87	0.40
1:A:157:VAL:HG12	1:A:158:TYR:CD1	2.56	0.40
1:A:511:VAL:HG12	1:A:513:ASN:H	1.87	0.40
1:A:673:ALA:HB3	2:B:654:MET:HG3	2.03	0.40
2:B:77:ASP:HA	2:B:78:PRO:HD3	1.88	0.40
2:B:151:GLU:OE2	2:B:185:LYS:NZ	2.44	0.40
1:C:82:LEU:HD21	1:C:90:ILE:HD11	2.03	0.40
1:C:504:LYS:HD2	1:C:707:GLN:HB2	2.04	0.40
2:D:39:VAL:N	2:D:69:GLU:O	2.53	0.40
2:D:384:LEU:HD13	2:D:384:LEU:HA	1.89	0.40
3:H:51:ILE:HD13	3:H:72:ARG:HB2	2.04	0.40
1:A:83:ILE:HG22	1:A:328:GLY:HA3	2.02	0.40
1:C:162:HIS:CD2	1:C:412:GLY:HA3	2.54	0.40
1:C:169:ASP:N	1:C:218:PHE:O	2.55	0.40
2:D:504:LYS:HD3	2:D:504:LYS:HA	1.62	0.40
3:H:7:SER:OG	3:H:21:SER:O	2.36	0.40
3:H:37:VAL:HG11	3:H:96:CYS:HA	2.04	0.40
3:M:12:VAL:HG11	3:M:18:LEU:HD22	2.04	0.40

There are no symmetry-related clashes.

5.3 Torsion angles [i](#)

5.3.1 Protein backbone [i](#)

In the following table, the Percentiles column shows the percent Ramachandran outliers of the chain as a percentile score with respect to all PDB entries followed by that with respect to all EM entries.

The Analysed column shows the number of residues for which the backbone conformation was analysed, and the total number of residues.

Mol	Chain	Analysed	Favoured	Allowed	Outliers	Percentiles
1	A	727/862 (84%)	662 (91%)	62 (8%)	3 (0%)	30 68
1	C	728/862 (84%)	665 (91%)	61 (8%)	2 (0%)	37 73

Continued on next page...

Continued from previous page...

Mol	Chain	Analysed	Favoured	Allowed	Outliers	Percentiles	
2	B	733/883 (83%)	653 (89%)	77 (10%)	3 (0%)	30	68
2	D	735/883 (83%)	657 (89%)	75 (10%)	3 (0%)	30	68
3	H	113/221 (51%)	97 (86%)	16 (14%)	0	100	100
3	M	114/221 (52%)	97 (85%)	17 (15%)	0	100	100
4	L	110/209 (53%)	104 (94%)	6 (6%)	0	100	100
4	N	110/209 (53%)	104 (94%)	6 (6%)	0	100	100
All	All	3370/4350 (78%)	3039 (90%)	320 (10%)	11 (0%)	38	73

All (11) Ramachandran outliers are listed below:

Mol	Chain	Res	Type
1	A	671	ASN
2	B	178	GLY
2	D	178	GLY
1	A	677	VAL
2	B	432	ASN
2	D	432	ASN
2	B	53	ALA
1	C	677	VAL
2	D	53	ALA
1	A	465	PRO
1	C	465	PRO

5.3.2 Protein sidechains [i](#)

In the following table, the Percentiles column shows the percent sidechain outliers of the chain as a percentile score with respect to all PDB entries followed by that with respect to all EM entries.

The Analysed column shows the number of residues for which the sidechain conformation was analysed, and the total number of residues.

Mol	Chain	Analysed	Rotameric	Outliers	Percentiles	
1	A	638/744 (86%)	637 (100%)	1 (0%)	92	94
1	C	640/744 (86%)	638 (100%)	2 (0%)	91	92
2	B	651/762 (85%)	648 (100%)	3 (0%)	86	89
2	D	653/762 (86%)	648 (99%)	5 (1%)	79	85
3	H	98/192 (51%)	97 (99%)	1 (1%)	73	82

Continued on next page...

Continued from previous page...

Mol	Chain	Analysed	Rotameric	Outliers	Percentiles	
3	M	99/192 (52%)	98 (99%)	1 (1%)	73	82
4	L	96/184 (52%)	93 (97%)	3 (3%)	35	54
4	N	96/184 (52%)	93 (97%)	3 (3%)	35	54
All	All	2971/3764 (79%)	2952 (99%)	19 (1%)	82	88

All (19) residues with a non-rotameric sidechain are listed below:

Mol	Chain	Res	Type
1	A	43	ARG
2	B	67	ARG
2	B	445	LYS
2	B	537	MET
1	C	43	ARG
1	C	79	CYS
2	D	67	ARG
2	D	86	CYS
2	D	445	LYS
2	D	537	MET
2	D	669	LYS
3	H	72	ARG
4	L	60	SER
4	L	69	SER
4	L	73	THR
3	M	72	ARG
4	N	60	SER
4	N	69	SER
4	N	73	THR

Sometimes sidechains can be flipped to improve hydrogen bonding and reduce clashes. All (23) such sidechains are listed below:

Mol	Chain	Res	Type
1	A	47	ASN
1	A	70	ASN
1	A	94	HIS
1	A	147	GLN
1	A	217	GLN
1	A	378	GLN
1	A	689	ASN
2	B	192	ASN
2	B	672	GLN

Continued on next page...

Continued from previous page...

Mol	Chain	Res	Type
2	B	840	HIS
1	C	47	ASN
1	C	70	ASN
1	C	94	HIS
1	C	147	GLN
1	C	217	GLN
1	C	294	ASN
1	C	378	GLN
1	C	689	ASN
2	D	192	ASN
2	D	357	GLN
2	D	672	GLN
3	H	82	GLN
3	M	82	GLN

5.3.3 RNA [i](#)

There are no RNA molecules in this entry.

5.4 Non-standard residues in protein, DNA, RNA chains [i](#)

There are no non-standard protein/DNA/RNA residues in this entry.

5.5 Carbohydrates [i](#)

There are no oligosaccharides in this entry.

5.6 Ligand geometry [i](#)

There are no ligands in this entry.

5.7 Other polymers [i](#)

There are no such residues in this entry.

5.8 Polymer linkage issues [i](#)

There are no chain breaks in this entry.

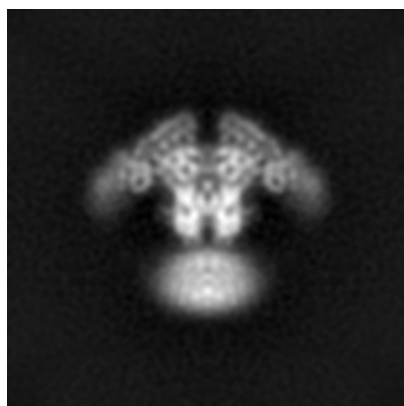
6 Map visualisation [i](#)

This section contains visualisations of the EMDB entry EMD-25849. These allow visual inspection of the internal detail of the map and identification of artifacts.

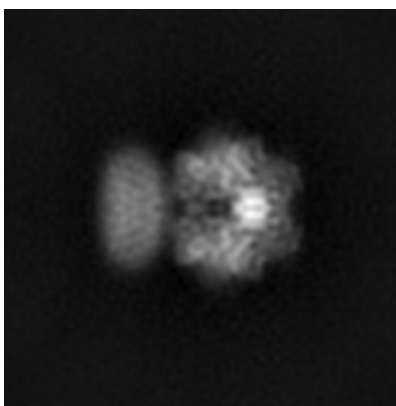
Images derived from a raw map, generated by summing the deposited half-maps, are presented below the corresponding image components of the primary map to allow further visual inspection and comparison with those of the primary map.

6.1 Orthogonal projections [i](#)

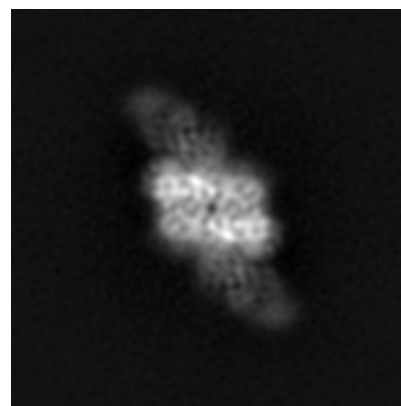
6.1.1 Primary map



X

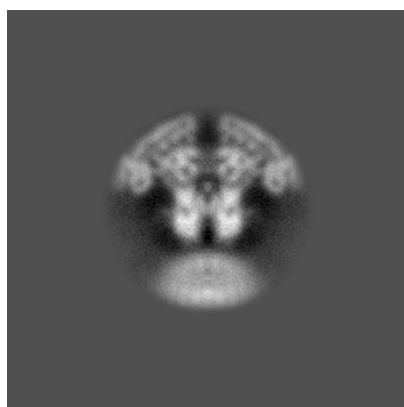


Y

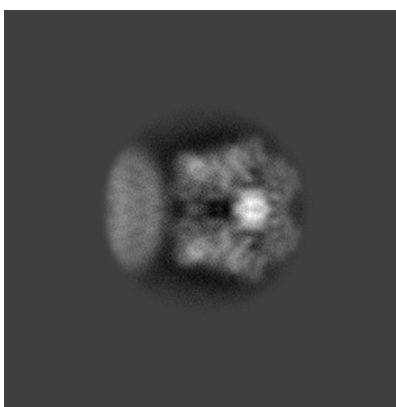


Z

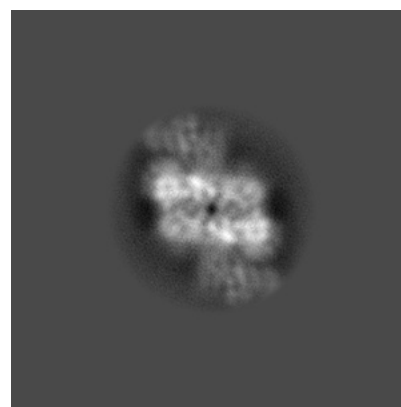
6.1.2 Raw map



X



Y

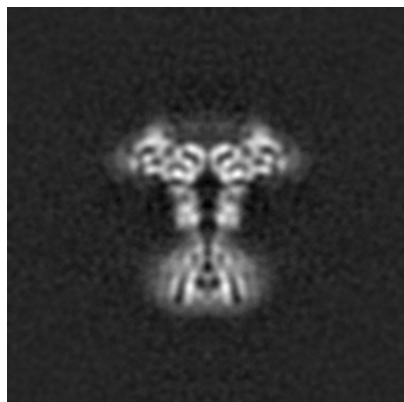


Z

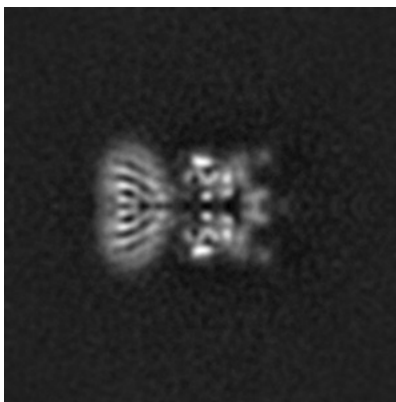
The images above show the map projected in three orthogonal directions.

6.2 Central slices [i](#)

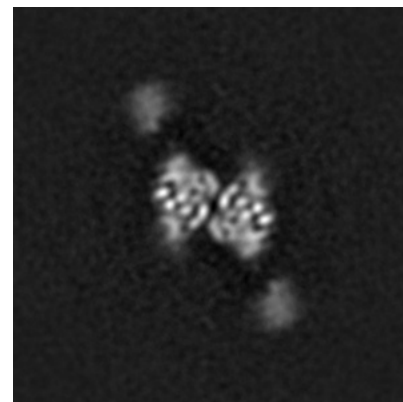
6.2.1 Primary map



X Index: 128

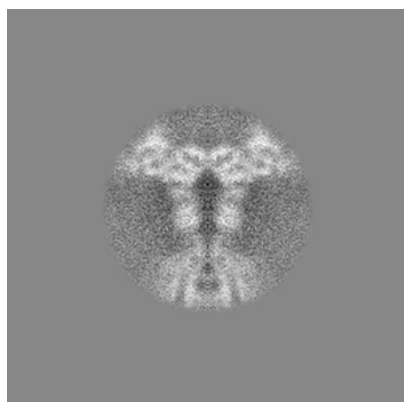


Y Index: 128

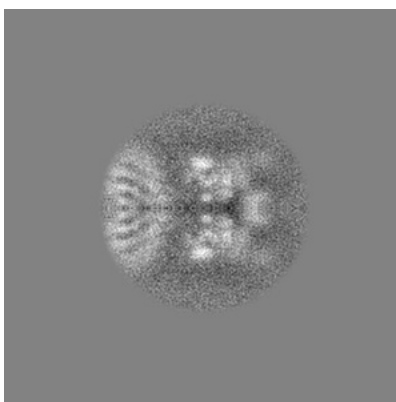


Z Index: 128

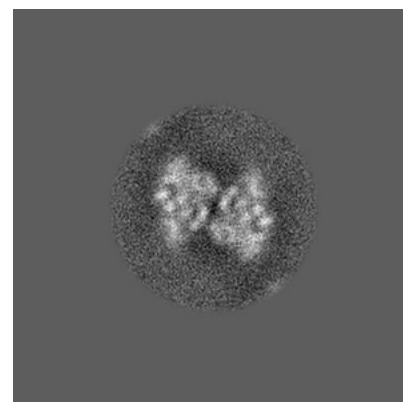
6.2.2 Raw map



X Index: 128



Y Index: 128

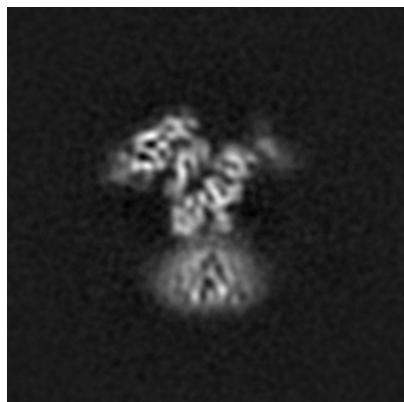


Z Index: 128

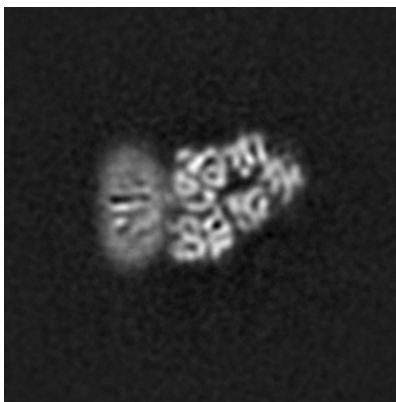
The images above show central slices of the map in three orthogonal directions.

6.3 Largest variance slices [i](#)

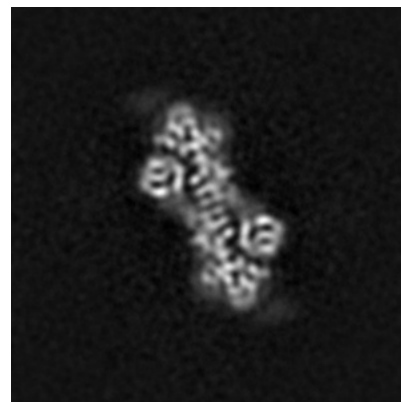
6.3.1 Primary map



X Index: 137

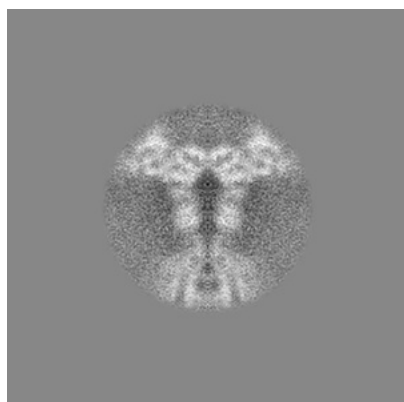


Y Index: 117

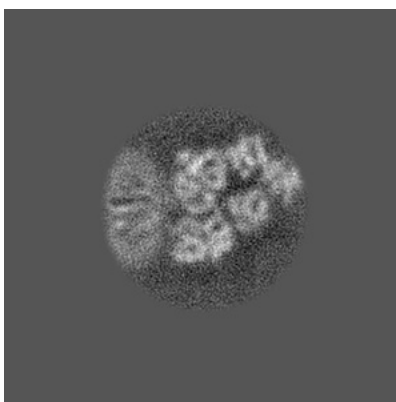


Z Index: 155

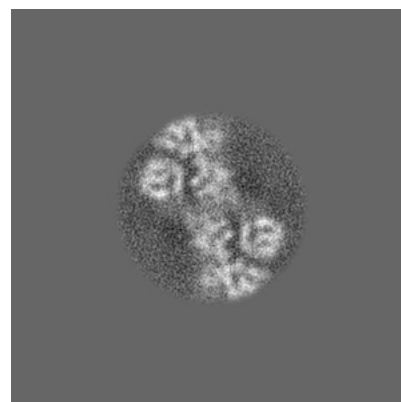
6.3.2 Raw map



X Index: 128



Y Index: 117

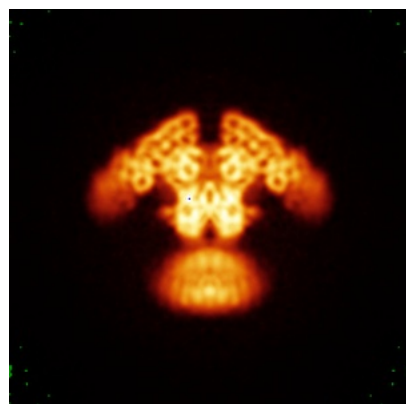


Z Index: 155

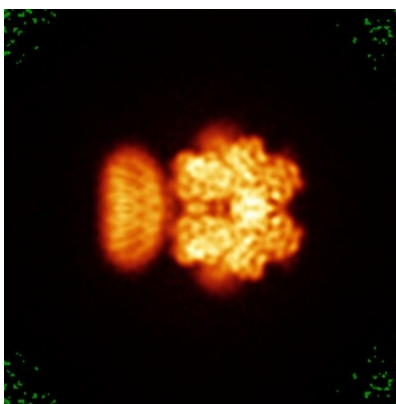
The images above show the largest variance slices of the map in three orthogonal directions.

6.4 Orthogonal standard-deviation projections (False-color) [i](#)

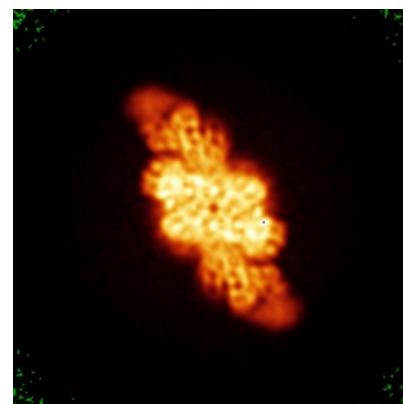
6.4.1 Primary map



X

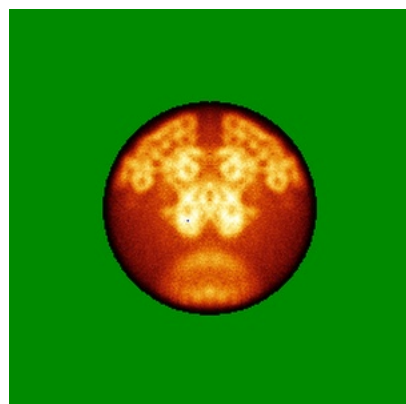


Y

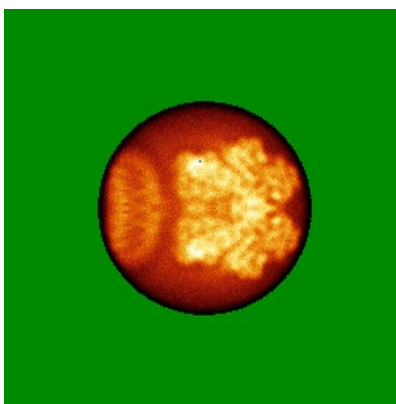


Z

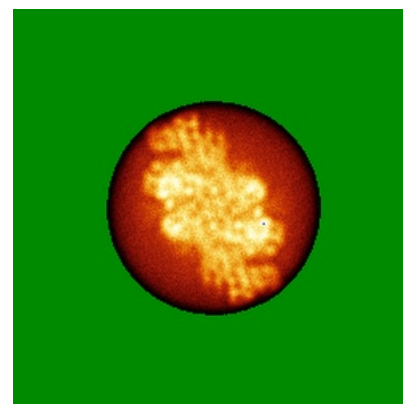
6.4.2 Raw map



X



Y

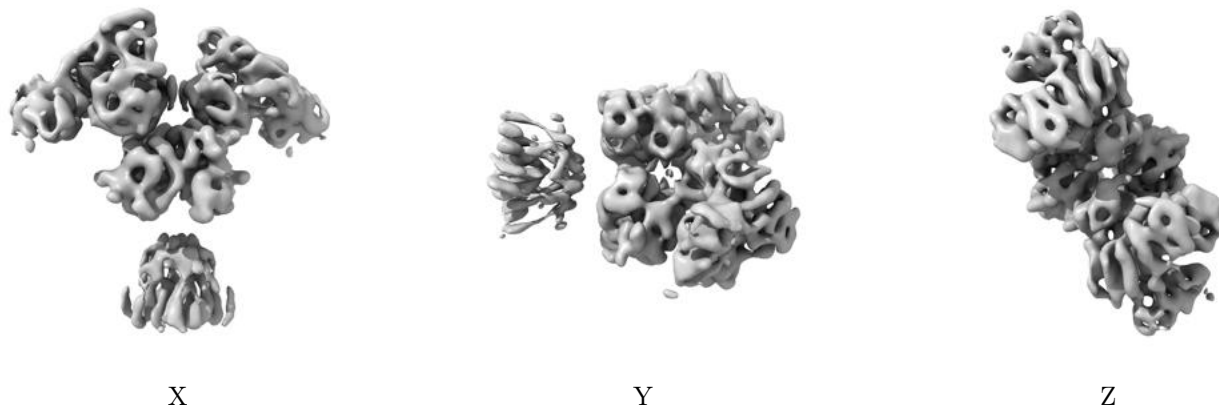


Z

The images above show the map standard deviation projections with false color in three orthogonal directions. Minimum values are shown in green, max in blue, and dark to light orange shades represent small to large values respectively.

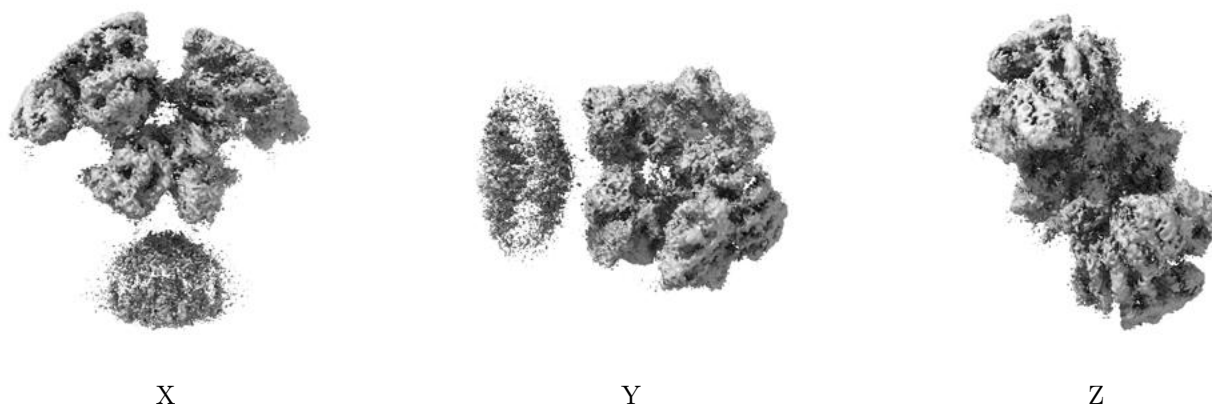
6.5 Orthogonal surface views [i](#)

6.5.1 Primary map



The images above show the 3D surface view of the map at the recommended contour level 3.0. These images, in conjunction with the slice images, may facilitate assessment of whether an appropriate contour level has been provided.

6.5.2 Raw map



These images show the 3D surface of the raw map. The raw map's contour level was selected so that its surface encloses the same volume as the primary map does at its recommended contour level.

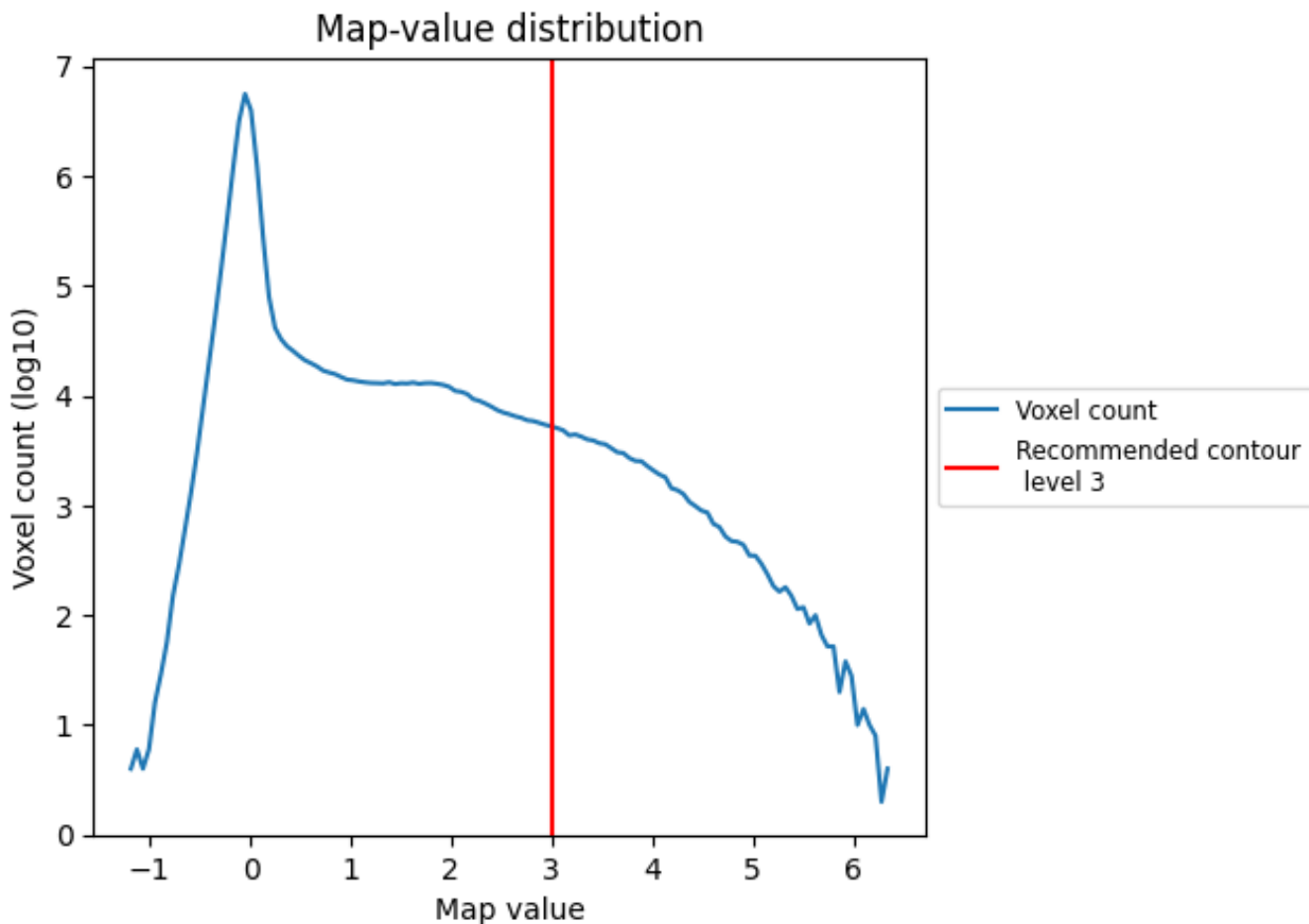
6.6 Mask visualisation [i](#)

This section was not generated. No masks/segmentation were deposited.

7 Map analysis [i](#)

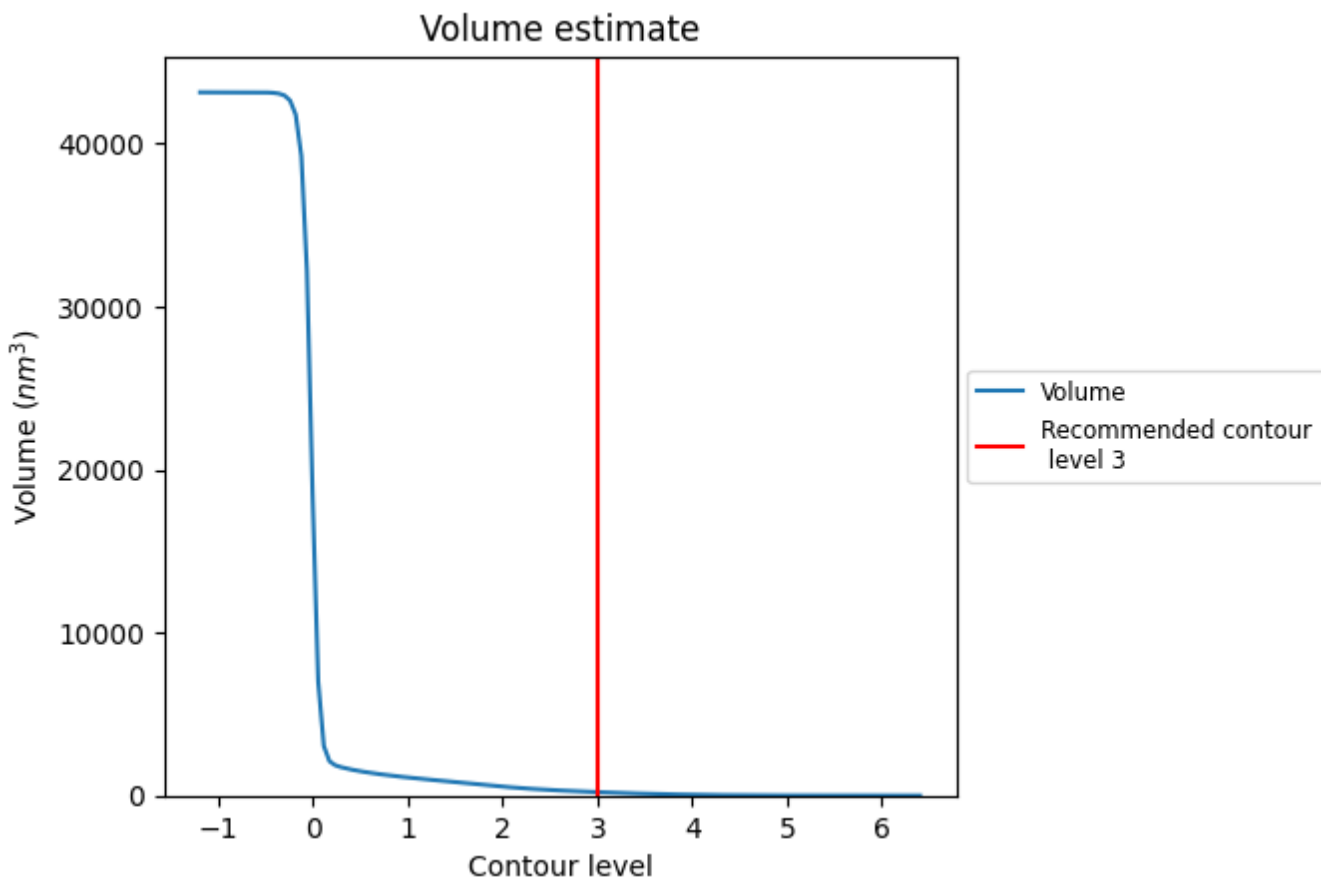
This section contains the results of statistical analysis of the map.

7.1 Map-value distribution [i](#)



The map-value distribution is plotted in 128 intervals along the x-axis. The y-axis is logarithmic. A spike in this graph at zero usually indicates that the volume has been masked.

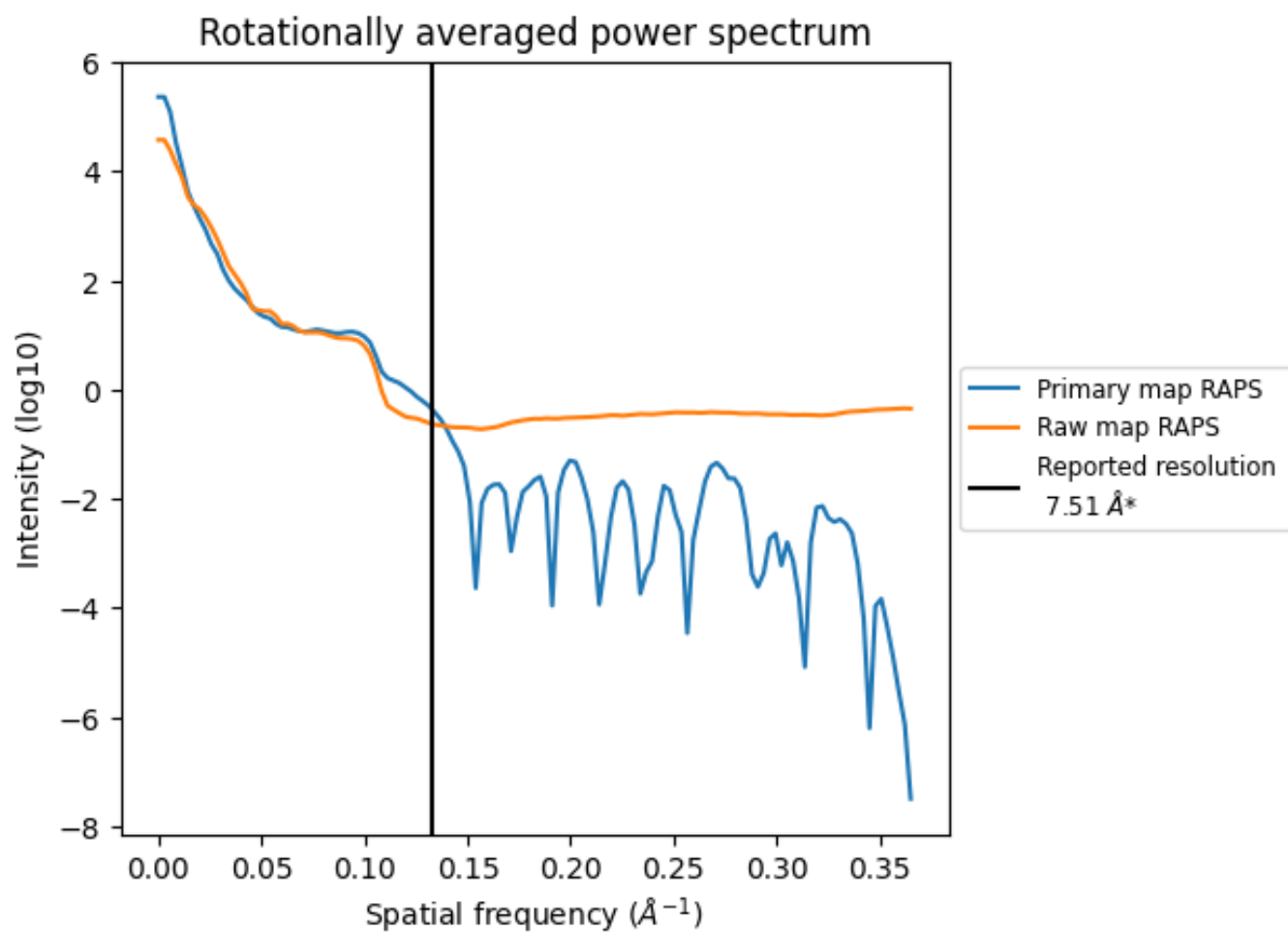
7.2 Volume estimate [i](#)



The volume at the recommended contour level is 211 nm³; this corresponds to an approximate mass of 190 kDa.

The volume estimate graph shows how the enclosed volume varies with the contour level. The recommended contour level is shown as a vertical line and the intersection between the line and the curve gives the volume of the enclosed surface at the given level.

7.3 Rotationally averaged power spectrum i

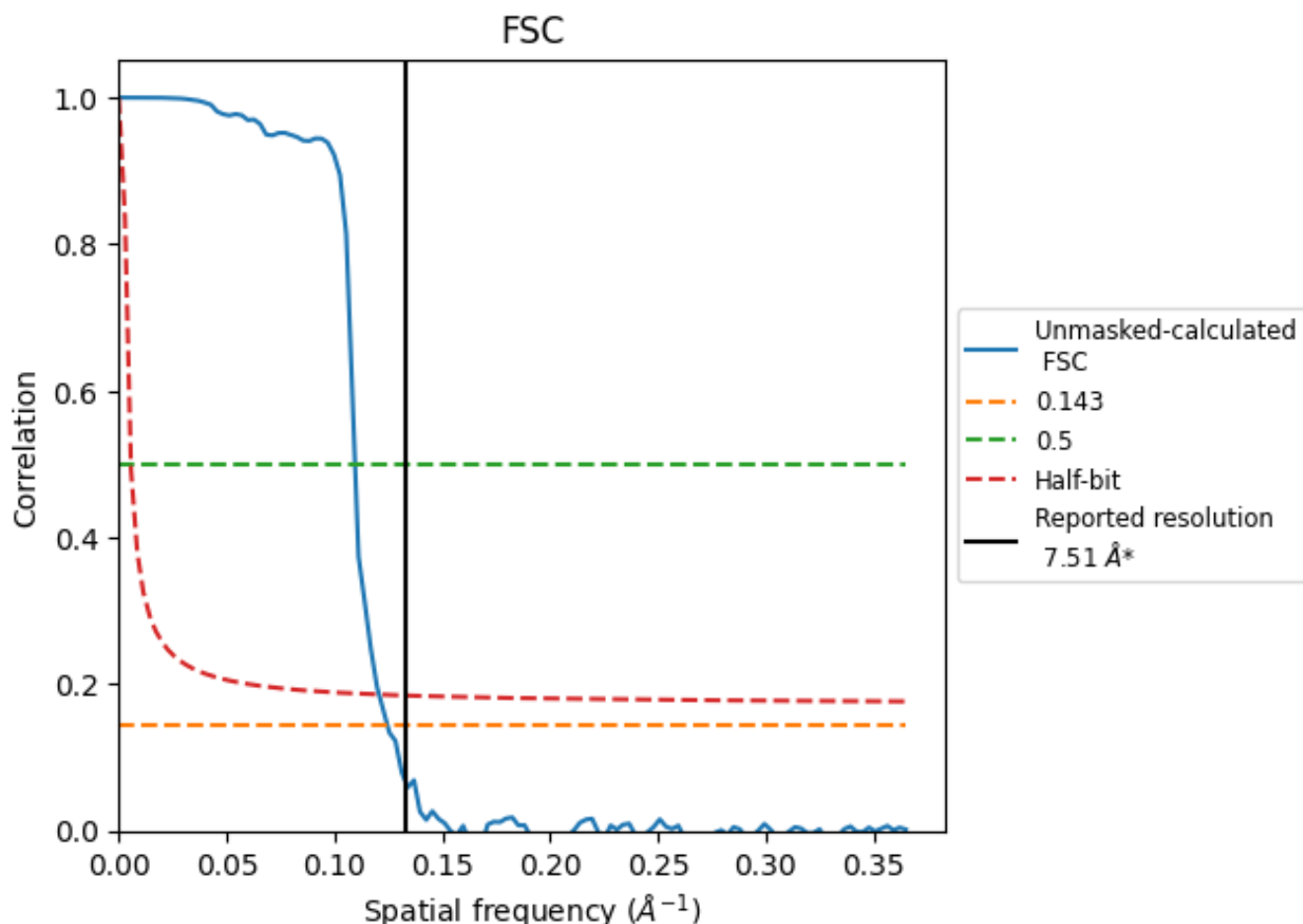


*Reported resolution corresponds to spatial frequency of 0.133 Å⁻¹

8 Fourier-Shell correlation [i](#)

Fourier-Shell Correlation (FSC) is the most commonly used method to estimate the resolution of single-particle and subtomogram-averaged maps. The shape of the curve depends on the imposed symmetry, mask and whether or not the two 3D reconstructions used were processed from a common reference. The reported resolution is shown as a black line. A curve is displayed for the half-bit criterion in addition to lines showing the 0.143 gold standard cut-off and 0.5 cut-off.

8.1 FSC [i](#)



*Reported resolution corresponds to spatial frequency of 0.133 Å⁻¹

8.2 Resolution estimates [i](#)

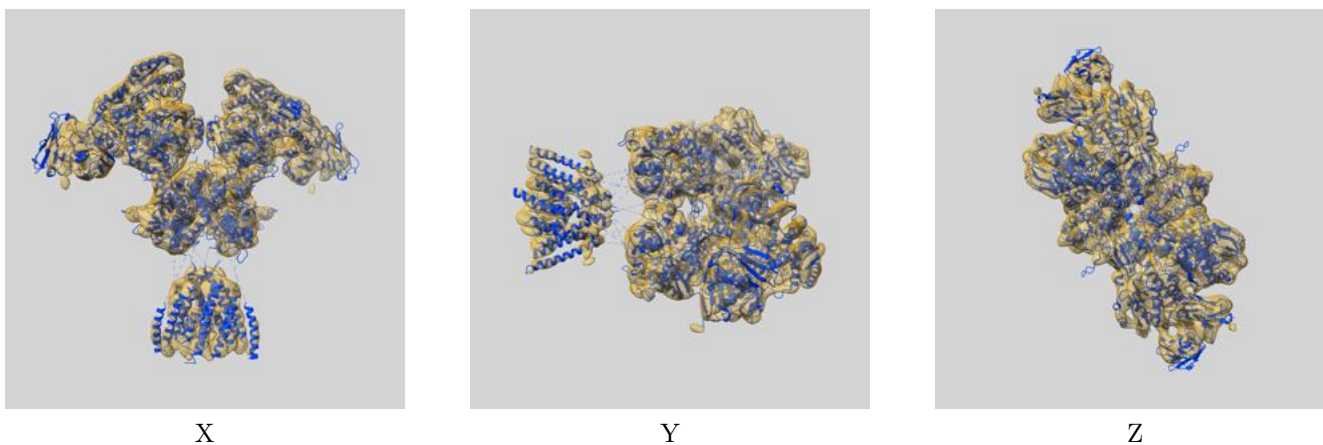
Resolution estimate (Å)	Estimation criterion (FSC cut-off)		
	0.143	0.5	Half-bit
Reported by author	7.51	-	-
Author-provided FSC curve	-	-	-
Unmasked-calculated*	8.03	9.12	8.29

*Resolution estimate based on FSC curve calculated by comparison of deposited half-maps.

9 Map-model fit [i](#)

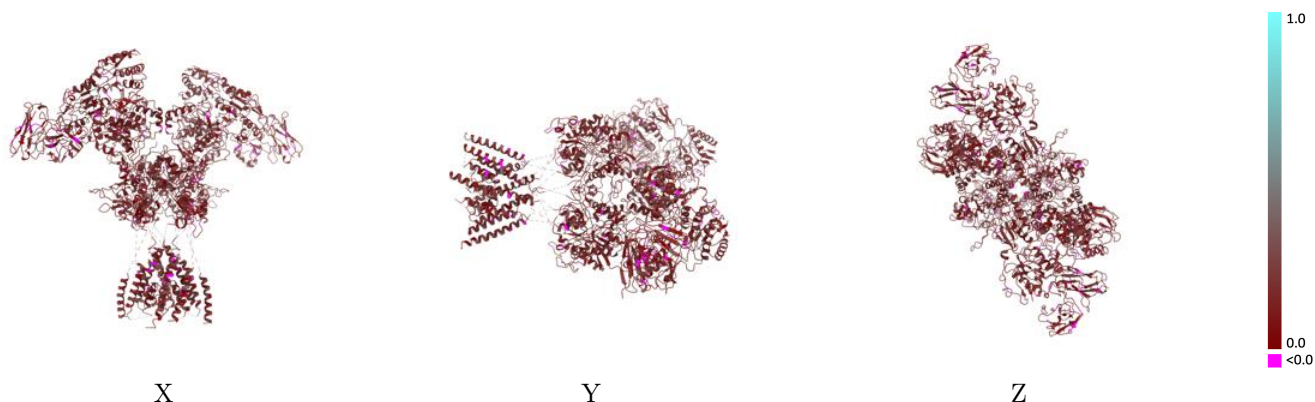
This section contains information regarding the fit between EMDB map EMD-25849 and PDB model 7TEQ. Per-residue inclusion information can be found in section 3 on page 8.

9.1 Map-model overlay [i](#)



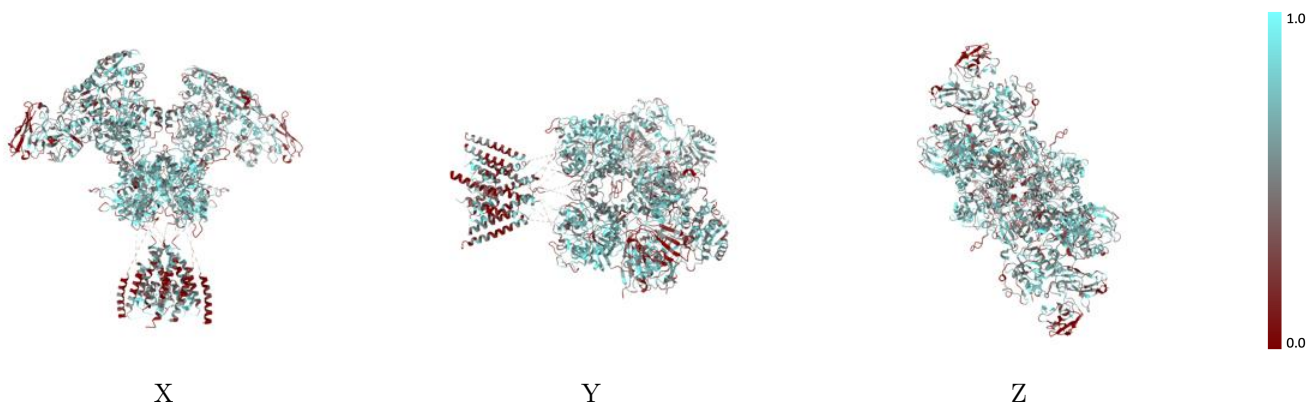
The images above show the 3D surface view of the map at the recommended contour level 3.0 at 50% transparency in yellow overlaid with a ribbon representation of the model coloured in blue. These images allow for the visual assessment of the quality of fit between the atomic model and the map.

9.2 Q-score mapped to coordinate model [\(i\)](#)



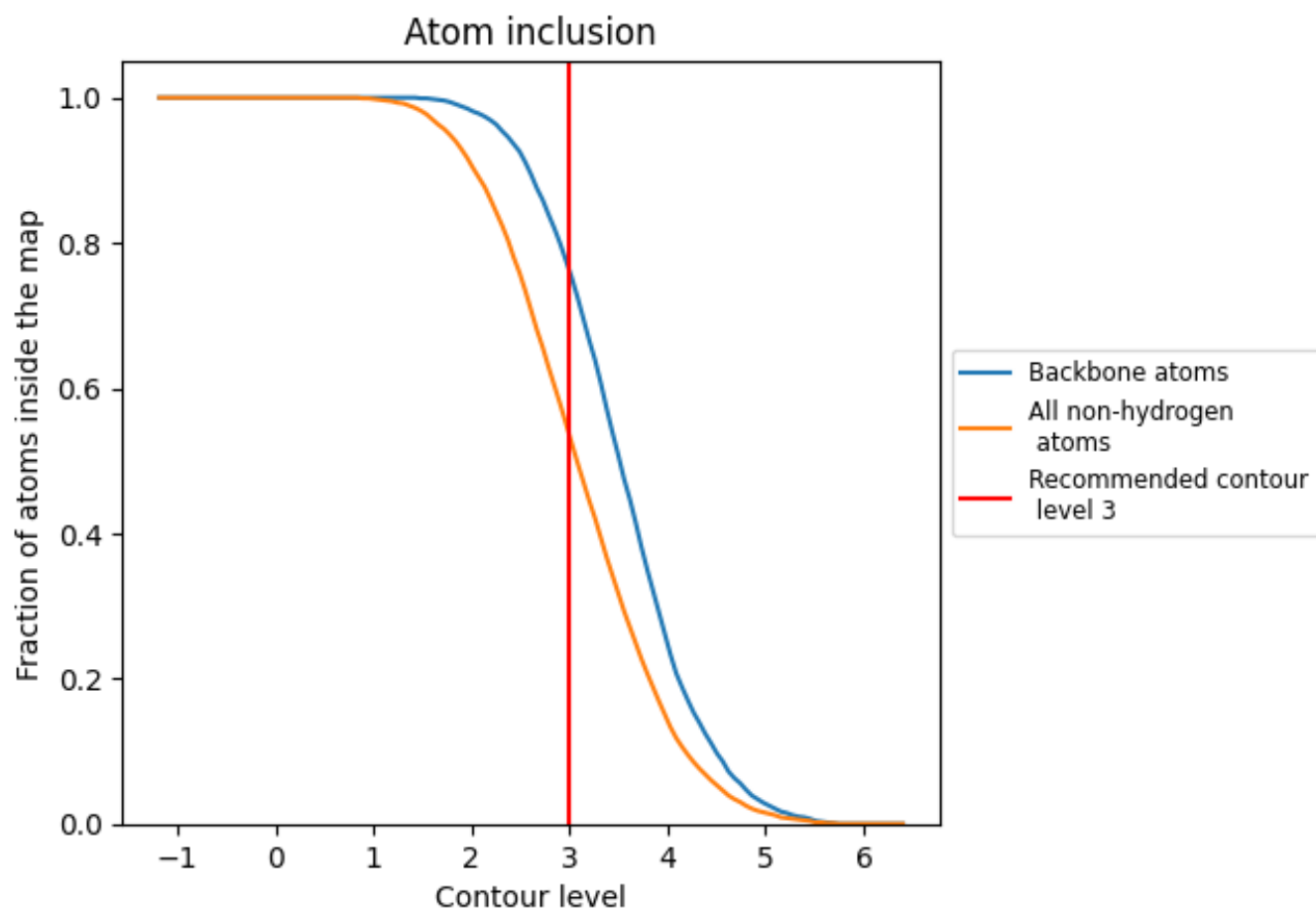
The images above show the model with each residue coloured according to its Q-score. This shows their resolvability in the map with higher Q-score values reflecting better resolvability. Please note: Q-score is calculating the resolvability of atoms, and thus high values are only expected at resolutions at which atoms can be resolved. Low Q-score values may therefore be expected for many entries.

9.3 Atom inclusion mapped to coordinate model [\(i\)](#)



The images above show the model with each residue coloured according to its atom inclusion. This shows to what extent they are inside the map at the recommended contour level (3).



















9.4 Atom inclusion [i](#)



At the recommended contour level, 76% of all backbone atoms, 53% of all non-hydrogen atoms, are inside the map.

9.5 Map-model fit summary [i](#)

The table lists the average atom inclusion at the recommended contour level (3) and Q-score for the entire model and for each chain.

Chain	Atom inclusion	Q-score
All	 0.5340	 0.1690
A	 0.5630	 0.1750
B	 0.5300	 0.1720
C	 0.5620	 0.1720
D	 0.5290	 0.1720
H	 0.3650	 0.1370
L	 0.5420	 0.1560
M	 0.3620	 0.1340
N	 0.5550	 0.1550

