



Full wwPDB X-ray Structure Validation Report ⓘ

Oct 10, 2023 – 05:05 AM EDT

PDB ID : 7T0D
Title : Cryptococcus neoformans protein farnesyltransferase in complex with FPP and inhibitor 2k
Authors : Wang, Y.; Shi, Y.; Beese, L.S.
Deposited on : 2021-11-29
Resolution : 1.91 Å(reported)

This is a Full wwPDB X-ray Structure Validation Report for a publicly released PDB entry.

We welcome your comments at validation@mail.wwpdb.org

A user guide is available at

<https://www.wwpdb.org/validation/2017/XrayValidationReportHelp>

with specific help available everywhere you see the ⓘ symbol.

The types of validation reports are described at

<http://www.wwpdb.org/validation/2017/FAQs#types>.

The following versions of software and data (see [references ⓘ](#)) were used in the production of this report:

MolProbity : 4.02b-467
Mogul : 1.8.5 (274361), CSD as541be (2020)
Xtrriage (Phenix) : 1.13
EDS : 2.35.1
buster-report : 1.1.7 (2018)
Percentile statistics : 20191225.v01 (using entries in the PDB archive December 25th 2019)
Refmac : 5.8.0158
CCP4 : 7.0.044 (Gargrove)
Ideal geometry (proteins) : Engh & Huber (2001)
Ideal geometry (DNA, RNA) : Parkinson et al. (1996)
Validation Pipeline (wwPDB-VP) : 2.35.1

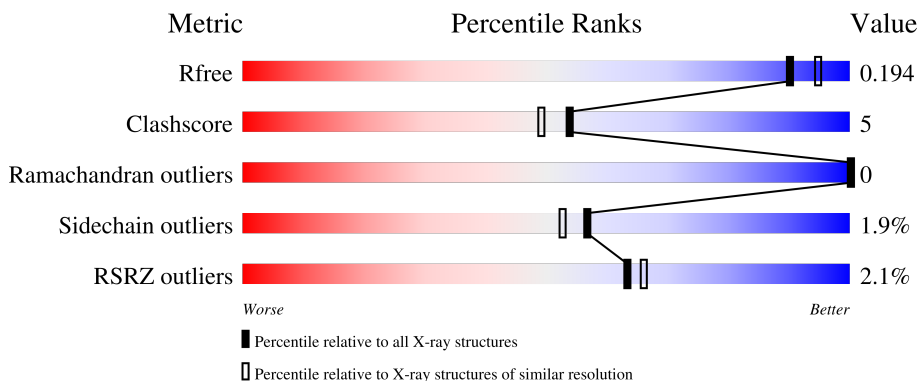
1 Overall quality at a glance

The following experimental techniques were used to determine the structure:

X-RAY DIFFRACTION

The reported resolution of this entry is 1.91 Å.

Percentile scores (ranging between 0-100) for global validation metrics of the entry are shown in the following graphic. The table shows the number of entries on which the scores are based.



Metric	Whole archive (#Entries)	Similar resolution (#Entries, resolution range(Å))
R_{free}	130704	6207 (1.90-1.90)
Clashscore	141614	6847 (1.90-1.90)
Ramachandran outliers	138981	6760 (1.90-1.90)
Sidechain outliers	138945	6760 (1.90-1.90)
RSRZ outliers	127900	6082 (1.90-1.90)

The table below summarises the geometric issues observed across the polymeric chains and their fit to the electron density. The red, orange, yellow and green segments of the lower bar indicate the fraction of residues that contain outliers for ≥ 3 , 2, 1 and 0 types of geometric quality criteria respectively. A grey segment represents the fraction of residues that are not modelled. The numeric value for each fraction is indicated below the corresponding segment, with a dot representing fractions $\leq 5\%$. The upper red bar (where present) indicates the fraction of residues that have poor fit to the electron density. The numeric value is given above the bar.

Mol	Chain	Length	Quality of chain
1	A	349	
2	B	520	

The following table lists non-polymeric compounds, carbohydrate monomers and non-standard residues in protein, DNA, RNA chains that are outliers for geometric or electron-density-fit criteria:

Mol	Type	Chain	Res	Chirality	Geometry	Clashes	Electron density
3	EDO	A	419	-	-	X	-
3	EDO	B	604	-	-	X	-

2 Entry composition [i](#)

There are 9 unique types of molecules in this entry. The entry contains 7363 atoms, of which 0 are hydrogens and 0 are deuteriums.

In the tables below, the ZeroOcc column contains the number of atoms modelled with zero occupancy, the AltConf column contains the number of residues with at least one atom in alternate conformation and the Trace column contains the number of residues modelled with at most 2 atoms.

- Molecule 1 is a protein called Protein farnesyltransferase/geranylgeranyltransferase type-1 subunit alpha.

Mol	Chain	Residues	Atoms					ZeroOcc	AltConf	Trace
			Total	C	N	O	S			
1	A	318	2653	1711	451	480	11	0	1	0

There are 14 discrepancies between the modelled and reference sequences:

Chain	Residue	Modelled	Actual	Comment	Reference
A	-13	MET	-	expression tag	UNP J9VSJ6
A	-12	GLY	-	expression tag	UNP J9VSJ6
A	-11	SER	-	expression tag	UNP J9VSJ6
A	-10	SER	-	expression tag	UNP J9VSJ6
A	-9	HIS	-	expression tag	UNP J9VSJ6
A	-8	HIS	-	expression tag	UNP J9VSJ6
A	-7	HIS	-	expression tag	UNP J9VSJ6
A	-6	HIS	-	expression tag	UNP J9VSJ6
A	-5	HIS	-	expression tag	UNP J9VSJ6
A	-4	HIS	-	expression tag	UNP J9VSJ6
A	-3	SER	-	expression tag	UNP J9VSJ6
A	-2	GLN	-	expression tag	UNP J9VSJ6
A	-1	ASP	-	expression tag	UNP J9VSJ6
A	0	LEU	-	expression tag	UNP J9VSJ6

- Molecule 2 is a protein called Protein farnesyltransferase subunit beta.

Mol	Chain	Residues	Atoms					ZeroOcc	AltConf	Trace
			Total	C	N	O	S			
2	B	486	3742	2372	651	704	15	0	2	0

- Molecule 3 is 1,2-ETHANEDIOL (three-letter code: EDO) (formula: C₂H₆O₂).



Mol	Chain	Residues	Atoms	ZeroOcc	AltConf
3	A	1	Total C O 4 2 2	0	0
3	A	1	Total C O 4 2 2	0	0
3	A	1	Total C O 4 2 2	0	0
3	A	1	Total C O 4 2 2	0	0
3	A	1	Total C O 4 2 2	0	0
3	A	1	Total C O 4 2 2	0	0
3	A	1	Total C O 4 2 2	0	0
3	A	1	Total C O 4 2 2	0	0
3	A	1	Total C O 4 2 2	0	0
3	A	1	Total C O 4 2 2	0	0
3	A	1	Total C O 4 2 2	0	0
3	A	1	Total C O 4 2 2	0	0
3	A	1	Total C O 4 2 2	0	0
3	A	1	Total C O 4 2 2	0	0

Continued on next page...

Continued from previous page...

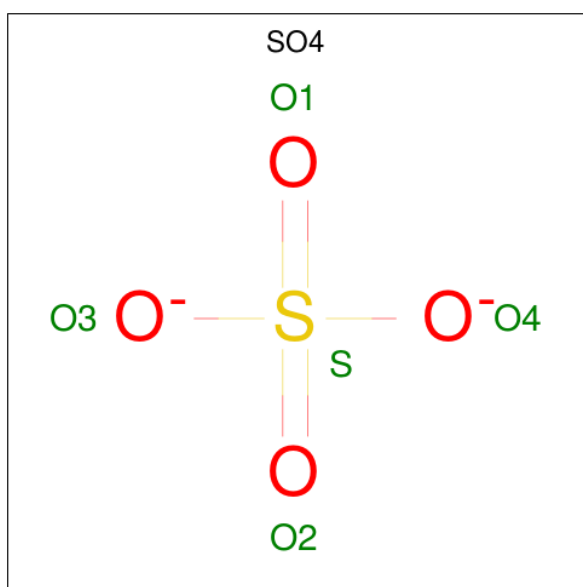
Mol	Chain	Residues	Atoms	ZeroOcc	AltConf
3	A	1	Total C O 4 2 2	0	0
3	A	1	Total C O 4 2 2	0	0
3	A	1	Total C O 4 2 2	0	0
3	A	1	Total C O 4 2 2	0	0
3	A	1	Total C O 4 2 2	0	0
3	A	1	Total C O 4 2 2	0	0
3	A	1	Total C O 4 2 2	0	0
3	A	1	Total C O 4 2 2	0	0
3	A	1	Total C O 4 2 2	0	0
3	A	1	Total C O 4 2 2	0	0
3	A	1	Total C O 4 2 2	0	0
3	A	1	Total C O 4 2 2	0	0
3	A	1	Total C O 4 2 2	0	0
3	A	1	Total C O 4 2 2	0	0
3	B	1	Total C O 4 2 2	0	0
3	B	1	Total C O 4 2 2	0	0
3	B	1	Total C O 4 2 2	0	0
3	B	1	Total C O 4 2 2	0	0
3	B	1	Total C O 4 2 2	0	0
3	B	1	Total C O 4 2 2	0	0
3	B	1	Total C O 4 2 2	0	0

Continued on next page...

Continued from previous page...

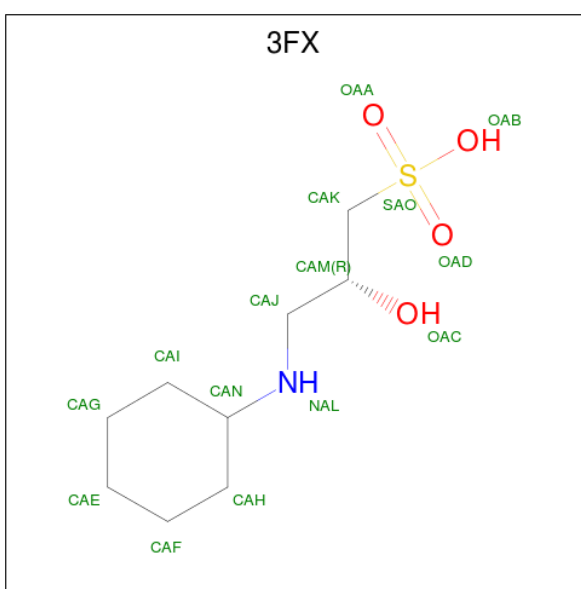
Mol	Chain	Residues	Atoms	ZeroOcc	AltConf
3	B	1	Total C O 4 2 2	0	0
3	B	1	Total C O 4 2 2	0	0
3	B	1	Total C O 4 2 2	0	0
3	B	1	Total C O 4 2 2	0	0
3	B	1	Total C O 4 2 2	0	0
3	B	1	Total C O 4 2 2	0	0
3	B	1	Total C O 4 2 2	0	0
3	B	1	Total C O 4 2 2	0	0
3	B	1	Total C O 4 2 2	0	0
3	B	1	Total C O 4 2 2	0	0
3	B	1	Total C O 4 2 2	0	0
3	B	1	Total C O 4 2 2	0	0
3	B	1	Total C O 4 2 2	0	0

- Molecule 4 is SULFATE ION (three-letter code: SO4) (formula: O₄S).



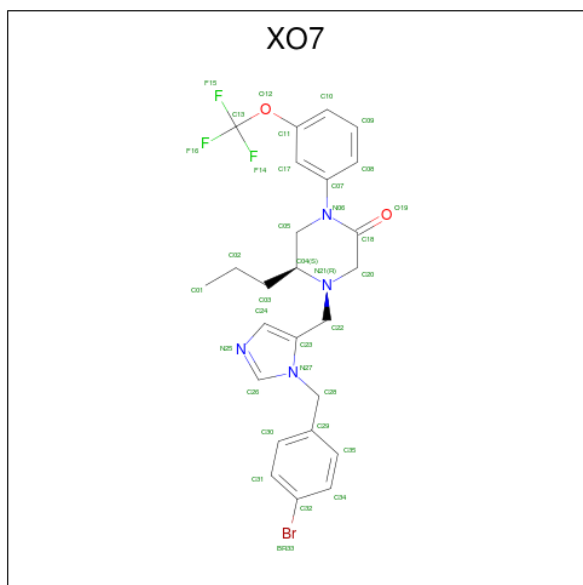
Mol	Chain	Residues	Atoms	ZeroOcc	AltConf
4	A	1	Total O S 5 4 1	0	0
4	A	1	Total O S 5 4 1	0	0
4	B	1	Total O S 5 4 1	0	1
4	B	1	Total O S 5 4 1	0	0

- Molecule 5 is (2R)-3-(cyclohexylamino)-2-hydroxypropane-1-sulfonic acid (three-letter code: 3FX) (formula: C₉H₁₉NO₄S).



Mol	Chain	Residues	Atoms	ZeroOcc	AltConf
5	B	1	Total C N O S 15 9 1 4 1	0	0
5	B	1	Total C N O S 15 9 1 4 1	0	0
5	B	1	Total C N O S 15 9 1 4 1	0	0

- Molecule 6 is (5S)-4-({1-[(4-bromophenyl)methyl]-1H-imidazol-5-yl}methyl)-5-propyl-1-[3-(trifluoromethoxy)phenyl]piperazin-2-one (three-letter code: XO7) (formula: C₂₅H₂₆BrF₃N₄O₂) (labeled as "Ligand of Interest" by depositor).

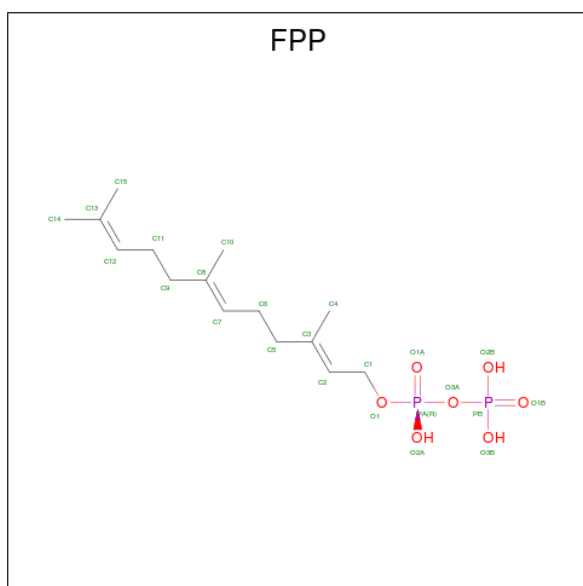


Mol	Chain	Residues	Atoms					ZeroOcc	AltConf	
			Total	Br	C	F	N			O
6	B	1	70	2	50	6	8	4	0	1

- Molecule 7 is ZINC ION (three-letter code: ZN) (formula: Zn).

Mol	Chain	Residues	Atoms		ZeroOcc	AltConf
			Total	Zn		
7	B	1	1	1	0	0

- Molecule 8 is FARNESYL DIPHOSPHATE (three-letter code: FPP) (formula: C₁₅H₂₈O₇P₂).



Mol	Chain	Residues	Atoms				ZeroOcc	AltConf
8	B	1	Total	C	O	P	0	1
			24	15	7	2		

- Molecule 9 is water.

Mol	Chain	Residues	Atoms		ZeroOcc	AltConf
9	A	187	Total	O	0	0
			187	187		
9	B	353	Total	O	0	0
			353	353		

4 Data and refinement statistics

Property	Value	Source
Space group	P 43 21 2	Depositor
Cell constants a, b, c, α , β , γ	141.91Å 141.91Å 130.23Å 90.00° 90.00° 90.00°	Depositor
Resolution (Å)	42.43 – 1.91 95.95 – 1.91	Depositor EDS
% Data completeness (in resolution range)	99.2 (42.43-1.91) 93.6 (95.95-1.91)	Depositor EDS
R_{merge}	0.06	Depositor
R_{sym}	(Not available)	Depositor
$\langle I/\sigma(I) \rangle$ ¹	1.91 (at 1.91Å)	Xtrriage
Refinement program	PHENIX 1.14_3260	Depositor
R, R_{free}	0.173 , 0.195 0.172 , 0.194	Depositor DCC
R_{free} test set	5179 reflections (5.03%)	wwPDB-VP
Wilson B-factor (Å ²)	31.5	Xtrriage
Anisotropy	0.543	Xtrriage
Bulk solvent k_{sol} (e/Å ³), B_{sol} (Å ²)	0.36 , 52.7	EDS
L-test for twinning ²	$\langle L \rangle = 0.49$, $\langle L^2 \rangle = 0.32$	Xtrriage
Estimated twinning fraction	No twinning to report.	Xtrriage
F_o, F_c correlation	0.97	EDS
Total number of atoms	7363	wwPDB-VP
Average B, all atoms (Å ²)	42.0	wwPDB-VP

Xtrriage's analysis on translational NCS is as follows: *The largest off-origin peak in the Patterson function is 3.29% of the height of the origin peak. No significant pseudotranslation is detected.*

¹Intensities estimated from amplitudes.

²Theoretical values of $\langle |L| \rangle$, $\langle L^2 \rangle$ for acentric reflections are 0.5, 0.333 respectively for untwinned datasets, and 0.375, 0.2 for perfectly twinned datasets.

5 Model quality

5.1 Standard geometry

Bond lengths and bond angles in the following residue types are not validated in this section: ZN, XO7, EDO, SO4, FPP, 3FX

The Z score for a bond length (or angle) is the number of standard deviations the observed value is removed from the expected value. A bond length (or angle) with $|Z| > 5$ is considered an outlier worth inspection. RMSZ is the root-mean-square of all Z scores of the bond lengths (or angles).

Mol	Chain	Bond lengths		Bond angles	
		RMSZ	# Z >5	RMSZ	# Z >5
1	A	0.38	0/2737	0.49	0/3728
2	B	0.47	0/3839	0.56	0/5214
All	All	0.43	0/6576	0.53	0/8942

There are no bond length outliers.

There are no bond angle outliers.

There are no chirality outliers.

There are no planarity outliers.

5.2 Too-close contacts

In the following table, the Non-H and H(model) columns list the number of non-hydrogen atoms and hydrogen atoms in the chain respectively. The H(added) column lists the number of hydrogen atoms added and optimized by MolProbity. The Clashes column lists the number of clashes within the asymmetric unit, whereas Symm-Clashes lists symmetry-related clashes.

Mol	Chain	Non-H	H(model)	H(added)	Clashes	Symm-Clashes
1	A	2653	0	2567	21	0
2	B	3742	0	3666	50	0
3	A	112	0	168	16	0
3	B	156	0	234	24	0
4	A	10	0	0	0	0
4	B	10	0	0	0	0
5	B	45	0	57	3	0
6	B	70	0	0	0	0
7	B	1	0	0	0	0
8	B	24	0	25	1	0
9	A	187	0	0	0	0

Continued on next page...

Continued from previous page...

Mol	Chain	Non-H	H(model)	H(added)	Clashes	Symm-Clashes
9	B	353	0	0	6	0
All	All	7363	0	6717	72	0

The all-atom clashscore is defined as the number of clashes found per 1000 atoms (including hydrogen atoms). The all-atom clashscore for this structure is 5.

All (72) close contacts within the same asymmetric unit are listed below, sorted by their clash magnitude.

Atom-1	Atom-2	Interatomic distance (Å)	Clash overlap (Å)
2:B:222:LYS:HE3	3:B:606:EDO:H22	1.49	0.94
1:A:324:GLY:H	3:A:419:EDO:H11	1.36	0.91
2:B:50:LEU:H	2:B:50:LEU:HD22	1.40	0.84
1:A:305:ASP:H	3:A:423:EDO:H21	1.47	0.80
2:B:255:GLU:HB3	2:B:256:PRO:HD2	1.64	0.78
2:B:50:LEU:HD22	2:B:50:LEU:N	2.01	0.76
1:A:145:TYR:H	3:A:402:EDO:H12	1.54	0.73
1:A:143:LYS:HD3	2:B:320:LYS:HD3	1.75	0.69
1:A:78:GLN:HE21	3:A:418:EDO:H12	1.57	0.69
2:B:496:THR:H	3:B:604:EDO:H11	1.56	0.68
2:B:317:ARG:HG3	2:B:320:LYS:HG3	1.77	0.66
2:B:50:LEU:H	2:B:50:LEU:CD2	2.08	0.64
2:B:443:LYS:HA	3:B:611:EDO:H22	1.80	0.64
2:B:295:ASN:ND2	9:B:703:HOH:O	2.31	0.64
2:B:255:GLU:HB3	2:B:256:PRO:CD	2.28	0.64
2:B:335:PRO:HG3	3:B:630:EDO:H21	1.79	0.63
2:B:444:GLY:H	3:B:611:EDO:H11	1.64	0.62
2:B:436:ARG:HD2	3:B:622:EDO:H12	1.80	0.61
2:B:401:LYS:HB2	2:B:402:PRO:HD2	1.84	0.60
1:A:78:GLN:HE21	3:A:418:EDO:C1	2.16	0.58
2:B:463:ARG:HD3	3:B:610:EDO:H21	1.85	0.58
1:A:321:MET:O	3:A:419:EDO:H12	2.03	0.57
2:B:4:GLU:HG3	2:B:5:PHE:CD2	2.39	0.57
1:A:324:GLY:H	3:A:419:EDO:C1	2.15	0.56
2:B:446:PRO:HD3	3:B:624:EDO:H21	1.88	0.56
2:B:401:LYS:HB2	2:B:402:PRO:CD	2.36	0.55
1:A:36:SER:HB3	3:A:422:EDO:H12	1.87	0.55
3:A:422:EDO:H21	2:B:82:VAL:HG11	1.90	0.54
1:A:145:TYR:H	3:A:402:EDO:C1	2.19	0.54
2:B:344:GLU:HG2	3:B:608:EDO:H22	1.90	0.53
1:A:117:LEU:HD21	3:B:633:EDO:H22	1.91	0.53
2:B:413:ASN:OD1	3:B:639:EDO:H21	2.10	0.52

Continued on next page...

Continued from previous page...

Atom-1	Atom-2	Interatomic distance (Å)	Clash overlap (Å)
2:B:429:PRO:HD2	3:B:605:EDO:H21	1.92	0.51
2:B:77:LEU:HB3	2:B:81:PHE:CD2	2.46	0.50
1:A:145:TYR:N	3:A:402:EDO:H12	2.25	0.50
2:B:255:GLU:HA	3:B:616:EDO:H22	1.92	0.50
1:A:273:PRO:HA	3:A:424:EDO:H21	1.93	0.49
2:B:296:ALA:HB1	3:B:614:EDO:H22	1.94	0.49
2:B:496:THR:HB	3:B:604:EDO:H22	1.93	0.49
2:B:491:ASP:OD2	5:B:627:3FX:NAL	2.46	0.49
2:B:39:GLN:O	2:B:43:LEU:HG	2.13	0.48
2:B:444:GLY:HA3	3:B:641:EDO:H11	1.94	0.48
1:A:274:MET:HB2	3:A:424:EDO:H11	1.96	0.48
2:B:139:HIS:HB3	2:B:142:PRO:HD2	1.95	0.48
2:B:344:GLU:HG2	3:B:608:EDO:C2	2.44	0.48
1:A:9:MET:HA	1:A:12:ARG:HG3	1.96	0.48
2:B:496:THR:H	3:B:604:EDO:C1	2.26	0.47
3:A:419:EDO:H21	2:B:375:PHE:C	2.35	0.47
2:B:89:PRO:HG2	2:B:142:PRO:HB3	1.96	0.47
2:B:63:LYS:NZ	9:B:717:HOH:O	2.47	0.47
1:A:87:LEU:HB2	1:A:89:LYS:HG2	1.96	0.47
2:B:181:ARG:HD3	9:B:835:HOH:O	2.14	0.47
2:B:295:ASN:HB3	3:B:621:EDO:H12	1.97	0.47
1:A:178:GLU:OE2	1:A:181:ARG:NH2	2.40	0.47
1:A:77:TRP:CZ2	1:A:111:VAL:HG22	2.51	0.45
2:B:57:ARG:NH1	9:B:718:HOH:O	2.47	0.45
2:B:374:ILE:HD12	2:B:374:ILE:HA	1.67	0.44
2:B:429:PRO:HD2	3:B:605:EDO:C2	2.48	0.44
1:A:12:ARG:NH1	3:A:410:EDO:O1	2.51	0.43
2:B:228:GLN:HG2	3:B:642:EDO:H11	2.00	0.43
2:B:496:THR:N	3:B:604:EDO:H11	2.29	0.43
2:B:94:TRP:HE1	3:B:639:EDO:C1	2.30	0.43
2:B:237:ALA:O	2:B:262[A]:MET:HG3	2.19	0.43
8:B:646[A]:FPP:O2B	8:B:646[A]:FPP:H11	2.19	0.43
2:B:159:THR:C	3:B:607:EDO:H21	2.38	0.43
1:A:143:LYS:CD	2:B:320:LYS:HD3	2.45	0.43
2:B:325:CYS:HB3	2:B:410:HIS:CD2	2.54	0.43
1:A:19:LYS:HB3	3:A:420:EDO:H22	2.01	0.42
5:B:627:3FX:HAJA	9:B:1005:HOH:O	2.20	0.42
2:B:468:ARG:NH2	9:B:728:HOH:O	2.52	0.41
2:B:139:HIS:CE1	2:B:188:VAL:HB	2.55	0.41
5:B:627:3FX:HAHA	5:B:627:3FX:HAJ	1.91	0.41

There are no symmetry-related clashes.

5.3 Torsion angles [i](#)

5.3.1 Protein backbone [i](#)

In the following table, the Percentiles column shows the percent Ramachandran outliers of the chain as a percentile score with respect to all X-ray entries followed by that with respect to entries of similar resolution.

The Analysed column shows the number of residues for which the backbone conformation was analysed, and the total number of residues.

Mol	Chain	Analysed	Favoured	Allowed	Outliers	Percentiles	
1	A	315/349 (90%)	305 (97%)	10 (3%)	0	100	100
2	B	482/520 (93%)	474 (98%)	8 (2%)	0	100	100
All	All	797/869 (92%)	779 (98%)	18 (2%)	0	100	100

There are no Ramachandran outliers to report.

5.3.2 Protein sidechains [i](#)

In the following table, the Percentiles column shows the percent sidechain outliers of the chain as a percentile score with respect to all X-ray entries followed by that with respect to entries of similar resolution.

The Analysed column shows the number of residues for which the sidechain conformation was analysed, and the total number of residues.

Mol	Chain	Analysed	Rotameric	Outliers	Percentiles	
1	A	288/316 (91%)	284 (99%)	4 (1%)	67	65
2	B	406/436 (93%)	397 (98%)	9 (2%)	52	47
All	All	694/752 (92%)	681 (98%)	13 (2%)	57	53

All (13) residues with a non-rotameric sidechain are listed below:

Mol	Chain	Res	Type
1	A	25	ASP
1	A	270	PHE
1	A	276	SER
1	A	277	ASP
2	B	4	GLU
2	B	22	ARG
2	B	50	LEU
2	B	52	SER

Continued on next page...

Continued from previous page...

Mol	Chain	Res	Type
2	B	123	SER
2	B	310	GLU
2	B	320	LYS
2	B	374	ILE
2	B	519	GLU

Sometimes sidechains can be flipped to improve hydrogen bonding and reduce clashes. All (2) such sidechains are listed below:

Mol	Chain	Res	Type
1	A	78	GLN
1	A	113	HIS

5.3.3 RNA [i](#)

There are no RNA molecules in this entry.

5.4 Non-standard residues in protein, DNA, RNA chains [i](#)

There are no non-standard protein/DNA/RNA residues in this entry.

5.5 Carbohydrates [i](#)

There are no monosaccharides in this entry.

5.6 Ligand geometry [i](#)

Of 78 ligands modelled in this entry, 1 is monoatomic - leaving 77 for Mogul analysis.

In the following table, the Counts columns list the number of bonds (or angles) for which Mogul statistics could be retrieved, the number of bonds (or angles) that are observed in the model and the number of bonds (or angles) that are defined in the Chemical Component Dictionary. The Link column lists molecule types, if any, to which the group is linked. The Z score for a bond length (or angle) is the number of standard deviations the observed value is removed from the expected value. A bond length (or angle) with $|Z| > 2$ is considered an outlier worth inspection. RMSZ is the root-mean-square of all Z scores of the bond lengths (or angles).

Mol	Type	Chain	Res	Link	Bond lengths			Bond angles		
					Counts	RMSZ	$\# Z > 2$	Counts	RMSZ	$\# Z > 2$
3	EDO	B	625	-	3,3,3	0.55	0	2,2,2	0.09	0
3	EDO	A	409	-	3,3,3	0.45	0	2,2,2	0.40	0

Mol	Type	Chain	Res	Link	Bond lengths			Bond angles		
					Counts	RMSZ	# Z > 2	Counts	RMSZ	# Z > 2
3	EDO	B	629	-	3,3,3	0.54	0	2,2,2	0.33	0
3	EDO	B	642	-	3,3,3	0.40	0	2,2,2	0.42	0
5	3FX	B	601	-	15,15,15	1.07	2 (13%)	16,20,20	1.77	4 (25%)
3	EDO	B	621	-	3,3,3	0.46	0	2,2,2	0.33	0
3	EDO	A	424	-	3,3,3	0.46	0	2,2,2	0.25	0
3	EDO	A	421	-	3,3,3	0.49	0	2,2,2	0.33	0
3	EDO	B	638	-	3,3,3	0.44	0	2,2,2	0.26	0
3	EDO	A	406	-	3,3,3	0.46	0	2,2,2	0.39	0
3	EDO	B	609	-	3,3,3	0.46	0	2,2,2	0.38	0
3	EDO	A	401	-	3,3,3	0.48	0	2,2,2	0.20	0
3	EDO	A	422	-	3,3,3	0.51	0	2,2,2	0.18	0
3	EDO	B	641	-	3,3,3	0.45	0	2,2,2	0.38	0
3	EDO	A	428	-	3,3,3	0.48	0	2,2,2	0.35	0
3	EDO	A	411	-	3,3,3	0.54	0	2,2,2	0.19	0
3	EDO	B	639	-	3,3,3	0.30	0	2,2,2	0.60	0
3	EDO	A	427	-	3,3,3	0.50	0	2,2,2	0.19	0
3	EDO	A	425	-	3,3,3	0.46	0	2,2,2	0.34	0
3	EDO	A	410	-	3,3,3	0.49	0	2,2,2	0.28	0
3	EDO	B	617	-	3,3,3	0.50	0	2,2,2	0.31	0
3	EDO	B	615	-	3,3,3	0.52	0	2,2,2	0.21	0
4	SO4	B	645[B]	-	4,4,4	0.18	0	6,6,6	0.18	0
3	EDO	A	413	-	3,3,3	0.46	0	2,2,2	0.66	0
3	EDO	B	643	-	3,3,3	0.42	0	2,2,2	0.42	0
3	EDO	A	408	-	3,3,3	0.46	0	2,2,2	0.47	0
3	EDO	B	611	-	3,3,3	0.45	0	2,2,2	0.34	0
3	EDO	B	623	-	3,3,3	0.44	0	2,2,2	0.37	0
3	EDO	A	404	-	3,3,3	0.37	0	2,2,2	0.56	0
3	EDO	A	415	-	3,3,3	0.45	0	2,2,2	0.18	0
3	EDO	B	603	-	3,3,3	0.66	0	2,2,2	0.05	0
6	XO7	B	602[B]	7	35,38,38	2.89	12 (34%)	47,54,54	1.41	7 (14%)
3	EDO	B	620	-	3,3,3	0.50	0	2,2,2	0.35	0
3	EDO	B	616	-	3,3,3	0.48	0	2,2,2	0.34	0
3	EDO	A	405	-	3,3,3	0.50	0	2,2,2	0.44	0
3	EDO	A	417	-	3,3,3	0.53	0	2,2,2	0.08	0
3	EDO	A	407	-	3,3,3	0.45	0	2,2,2	0.22	0
3	EDO	B	604	-	3,3,3	0.44	0	2,2,2	0.57	0
3	EDO	A	412	-	3,3,3	0.45	0	2,2,2	0.24	0
4	SO4	A	430	-	4,4,4	0.14	0	6,6,6	0.13	0
3	EDO	A	414	-	3,3,3	0.45	0	2,2,2	0.35	0
3	EDO	A	402	-	3,3,3	0.36	0	2,2,2	0.42	0
6	XO7	B	602[A]	7	35,38,38	2.79	9 (25%)	47,54,54	1.37	4 (8%)
3	EDO	A	423	-	3,3,3	0.50	0	2,2,2	0.22	0

Mol	Type	Chain	Res	Link	Bond lengths			Bond angles		
					Counts	RMSZ	# Z > 2	Counts	RMSZ	# Z > 2
3	EDO	A	403	-	3,3,3	0.48	0	2,2,2	0.31	0
5	3FX	B	627	-	15,15,15	1.05	1 (6%)	16,20,20	2.46	4 (25%)
3	EDO	B	637	-	3,3,3	0.54	0	2,2,2	0.08	0
3	EDO	B	633	-	3,3,3	0.33	0	2,2,2	0.62	0
3	EDO	B	606	-	3,3,3	0.52	0	2,2,2	0.32	0
3	EDO	B	640	-	3,3,3	0.40	0	2,2,2	0.28	0
3	EDO	B	618	-	3,3,3	0.49	0	2,2,2	0.31	0
3	EDO	B	614	-	3,3,3	0.46	0	2,2,2	0.29	0
3	EDO	A	420	-	3,3,3	0.39	0	2,2,2	0.51	0
4	SO4	A	429	-	4,4,4	0.10	0	6,6,6	0.20	0
3	EDO	B	644	-	3,3,3	0.46	0	2,2,2	0.32	0
3	EDO	B	607	-	3,3,3	0.56	0	2,2,2	0.19	0
3	EDO	B	608	-	3,3,3	0.45	0	2,2,2	0.32	0
3	EDO	B	630	-	3,3,3	0.40	0	2,2,2	0.54	0
5	3FX	B	628	-	15,15,15	1.09	2 (13%)	16,20,20	1.97	3 (18%)
3	EDO	B	624	-	3,3,3	0.48	0	2,2,2	0.31	0
3	EDO	B	631	-	3,3,3	0.46	0	2,2,2	0.11	0
3	EDO	B	613	-	3,3,3	0.50	0	2,2,2	0.22	0
3	EDO	B	612	-	3,3,3	0.48	0	2,2,2	0.28	0
4	SO4	B	647	-	4,4,4	0.13	0	6,6,6	0.10	0
3	EDO	B	622	-	3,3,3	0.46	0	2,2,2	0.32	0
3	EDO	A	418	-	3,3,3	0.52	0	2,2,2	0.12	0
3	EDO	B	635	-	3,3,3	0.54	0	2,2,2	0.13	0
3	EDO	B	610	-	3,3,3	0.60	0	2,2,2	0.09	0
3	EDO	B	605	-	3,3,3	0.41	0	2,2,2	0.37	0
3	EDO	B	619	-	3,3,3	0.50	0	2,2,2	0.33	0
3	EDO	A	416	-	3,3,3	0.54	0	2,2,2	0.27	0
3	EDO	B	632	-	3,3,3	0.46	0	2,2,2	0.26	0
8	FPP	B	646[A]	-	21,23,23	0.97	1 (4%)	27,31,31	1.51	5 (18%)
3	EDO	A	426	-	3,3,3	0.47	0	2,2,2	0.34	0
3	EDO	B	636	-	3,3,3	0.41	0	2,2,2	0.50	0
3	EDO	B	634	-	3,3,3	0.52	0	2,2,2	0.41	0
3	EDO	A	419	-	3,3,3	0.40	0	2,2,2	0.36	0

In the following table, the Chirals column lists the number of chiral outliers, the number of chiral centers analysed, the number of these observed in the model and the number defined in the Chemical Component Dictionary. Similar counts are reported in the Torsion and Rings columns. '-' means no outliers of that kind were identified.

Mol	Type	Chain	Res	Link	Chirals	Torsions	Rings
3	EDO	A	417	-	-	1/1/1/1	-
3	EDO	A	407	-	-	1/1/1/1	-

Continued on next page...

Continued from previous page...

Mol	Type	Chain	Res	Link	Chirals	Torsions	Rings
3	EDO	B	644	-	-	1/1/1/1	-
3	EDO	B	604	-	-	0/1/1/1	-
3	EDO	B	607	-	-	0/1/1/1	-
3	EDO	B	608	-	-	0/1/1/1	-
3	EDO	B	625	-	-	0/1/1/1	-
3	EDO	B	639	-	-	1/1/1/1	-
3	EDO	A	427	-	-	0/1/1/1	-
3	EDO	A	425	-	-	1/1/1/1	-
3	EDO	A	410	-	-	1/1/1/1	-
3	EDO	B	617	-	-	1/1/1/1	-
3	EDO	A	412	-	-	0/1/1/1	-
3	EDO	A	409	-	-	1/1/1/1	-
3	EDO	B	615	-	-	0/1/1/1	-
3	EDO	B	629	-	-	0/1/1/1	-
3	EDO	B	630	-	-	0/1/1/1	-
3	EDO	B	642	-	-	0/1/1/1	-
5	3FX	B	628	-	-	7/10/18/18	0/1/1/1
3	EDO	B	624	-	-	1/1/1/1	-
3	EDO	A	414	-	-	0/1/1/1	-
3	EDO	B	631	-	-	0/1/1/1	-
5	3FX	B	601	-	-	5/10/18/18	0/1/1/1
3	EDO	B	613	-	-	0/1/1/1	-
3	EDO	A	413	-	-	1/1/1/1	-
3	EDO	B	612	-	-	0/1/1/1	-
3	EDO	B	621	-	-	0/1/1/1	-
3	EDO	B	622	-	-	0/1/1/1	-
3	EDO	B	643	-	-	0/1/1/1	-
3	EDO	A	408	-	-	0/1/1/1	-
3	EDO	A	424	-	-	1/1/1/1	-
3	EDO	A	418	-	-	0/1/1/1	-
3	EDO	A	402	-	-	1/1/1/1	-
3	EDO	A	421	-	-	1/1/1/1	-
3	EDO	B	635	-	-	0/1/1/1	-
3	EDO	A	423	-	-	1/1/1/1	-
3	EDO	B	605	-	-	0/1/1/1	-
3	EDO	B	610	-	-	0/1/1/1	-
3	EDO	A	416	-	-	1/1/1/1	-
3	EDO	B	611	-	-	0/1/1/1	-
3	EDO	B	619	-	-	0/1/1/1	-
3	EDO	B	638	-	-	0/1/1/1	-
3	EDO	A	403	-	-	0/1/1/1	-
3	EDO	B	623	-	-	0/1/1/1	-

Continued on next page...

Continued from previous page...

Mol	Type	Chain	Res	Link	Chirals	Torsions	Rings
3	EDO	A	406	-	-	1/1/1/1	-
5	3FX	B	627	-	-	4/10/18/18	0/1/1/1
3	EDO	B	637	-	-	0/1/1/1	-
3	EDO	B	632	-	-	0/1/1/1	-
3	EDO	A	404	-	-	0/1/1/1	-
3	EDO	A	415	-	-	1/1/1/1	-
3	EDO	B	603	-	-	0/1/1/1	-
3	EDO	B	606	-	-	1/1/1/1	-
3	EDO	B	633	-	-	0/1/1/1	-
3	EDO	B	640	-	-	1/1/1/1	-
8	FPP	B	646[A]	-	-	4/25/25/25	-
3	EDO	B	609	-	-	0/1/1/1	-
3	EDO	A	401	-	-	0/1/1/1	-
3	EDO	B	618	-	-	0/1/1/1	-
3	EDO	A	422	-	-	0/1/1/1	-
3	EDO	B	641	-	-	0/1/1/1	-
3	EDO	B	614	-	-	0/1/1/1	-
6	XO7	B	602[B]	7	-	4/20/36/36	0/4/4/4
3	EDO	A	426	-	-	0/1/1/1	-
3	EDO	B	636	-	-	0/1/1/1	-
3	EDO	A	420	-	-	0/1/1/1	-
3	EDO	B	634	-	-	0/1/1/1	-
3	EDO	A	428	-	-	0/1/1/1	-
3	EDO	B	620	-	-	1/1/1/1	-
3	EDO	A	411	-	-	0/1/1/1	-
3	EDO	B	616	-	-	0/1/1/1	-
6	XO7	B	602[A]	7	-	4/20/36/36	0/4/4/4
3	EDO	A	419	-	-	1/1/1/1	-
3	EDO	A	405	-	-	0/1/1/1	-

All (27) bond length outliers are listed below:

Mol	Chain	Res	Type	Atoms	Z	Observed(Å)	Ideal(Å)
6	B	602[B]	XO7	C22-N21	-10.14	1.30	1.47
6	B	602[A]	XO7	C22-N21	-9.91	1.30	1.47
6	B	602[B]	XO7	C18-N06	7.08	1.47	1.36
6	B	602[A]	XO7	C18-N06	6.89	1.47	1.36
6	B	602[B]	XO7	C20-N21	-5.18	1.35	1.47
6	B	602[A]	XO7	C20-N21	-5.18	1.35	1.47
6	B	602[A]	XO7	C20-C18	5.05	1.61	1.51
6	B	602[B]	XO7	C20-C18	4.89	1.60	1.51

Continued on next page...

Continued from previous page...

Mol	Chain	Res	Type	Atoms	Z	Observed(Å)	Ideal(Å)
6	B	602[A]	XO7	C04-N21	-4.45	1.40	1.48
6	B	602[B]	XO7	C04-N21	-4.17	1.41	1.48
6	B	602[B]	XO7	BR33-C32	3.19	1.96	1.90
6	B	602[B]	XO7	O19-C18	-2.99	1.16	1.23
6	B	602[A]	XO7	O19-C18	-2.64	1.17	1.23
6	B	602[A]	XO7	C22-C23	2.58	1.55	1.51
6	B	602[A]	XO7	C03-C04	2.56	1.62	1.52
6	B	602[A]	XO7	C07-N06	2.49	1.48	1.43
6	B	602[B]	XO7	C22-C23	2.40	1.54	1.51
6	B	602[B]	XO7	C03-C04	2.37	1.61	1.52
8	B	646[A]	FPP	O1-C1	-2.33	1.40	1.43
6	B	602[B]	XO7	C07-N06	2.33	1.48	1.43
5	B	627	3FX	OAA-SAO	2.28	1.51	1.45
5	B	601	3FX	OAD-SAO	2.25	1.51	1.45
6	B	602[B]	XO7	C05-C04	-2.25	1.48	1.52
5	B	628	3FX	OAD-SAO	2.23	1.51	1.45
5	B	628	3FX	OAA-SAO	2.23	1.51	1.45
5	B	601	3FX	OAA-SAO	2.19	1.51	1.45
6	B	602[B]	XO7	C31-C32	2.06	1.42	1.38

All (27) bond angle outliers are listed below:

Mol	Chain	Res	Type	Atoms	Z	Observed(°)	Ideal(°)
5	B	627	3FX	OAA-SAO-CAK	7.82	116.23	106.94
5	B	628	3FX	OAD-SAO-CAK	4.61	112.41	106.94
5	B	628	3FX	OAB-SAO-OAD	-4.43	100.46	111.27
8	B	646[A]	FPP	C1-C2-C3	-4.19	118.79	126.04
6	B	602[A]	XO7	C04-C05-N06	4.17	115.49	109.68
6	B	602[B]	XO7	C04-C05-N06	3.90	115.12	109.68
5	B	601	3FX	OAB-SAO-OAD	-3.71	102.20	111.27
5	B	627	3FX	OAD-SAO-OAA	-3.67	101.26	113.95
6	B	602[B]	XO7	C20-N21-C04	3.59	116.14	111.06
5	B	628	3FX	OAA-SAO-CAK	3.50	111.09	106.94
5	B	627	3FX	OAD-SAO-CAK	3.49	111.09	106.94
6	B	602[B]	XO7	C05-N06-C18	-3.40	116.74	122.21
5	B	601	3FX	OAA-SAO-CAK	3.33	110.90	106.94
6	B	602[A]	XO7	C05-N06-C18	-3.31	116.89	122.21
5	B	601	3FX	OAB-SAO-CAK	3.28	110.96	105.74
6	B	602[A]	XO7	C20-N21-C04	2.92	115.19	111.06
5	B	601	3FX	OAD-SAO-CAK	2.75	110.20	106.94
6	B	602[A]	XO7	N25-C26-N27	-2.68	108.28	112.26
8	B	646[A]	FPP	C6-C7-C8	-2.68	121.22	127.66

Continued on next page...

Continued from previous page...

Mol	Chain	Res	Type	Atoms	Z	Observed(°)	Ideal(°)
8	B	646[A]	FPP	C15-C13-C14	2.41	119.92	114.60
6	B	602[B]	XO7	C22-C23-C24	-2.30	126.38	129.46
5	B	627	3FX	OAB-SAO-CAK	2.24	109.31	105.74
8	B	646[A]	FPP	C4-C3-C2	-2.17	118.12	123.68
6	B	602[B]	XO7	N25-C26-N27	-2.13	109.10	112.26
6	B	602[B]	XO7	C23-C22-N21	-2.12	108.10	112.95
8	B	646[A]	FPP	PA-O3A-PB	-2.05	125.79	132.83
6	B	602[B]	XO7	C24-N25-C26	2.02	108.94	105.78

There are no chirality outliers.

All (49) torsion outliers are listed below:

Mol	Chain	Res	Type	Atoms
5	B	601	3FX	NAL-CAJ-CAM-OAC
5	B	601	3FX	NAL-CAJ-CAM-CAK
5	B	601	3FX	SAO-CAK-CAM-OAC
5	B	601	3FX	SAO-CAK-CAM-CAJ
5	B	627	3FX	CAM-CAK-SAO-OAB
5	B	628	3FX	NAL-CAJ-CAM-OAC
5	B	628	3FX	NAL-CAJ-CAM-CAK
5	B	628	3FX	CAM-CAK-SAO-OAA
5	B	628	3FX	CAM-CAK-SAO-OAD
6	B	602[A]	XO7	C02-C03-C04-C05
6	B	602[A]	XO7	C01-C02-C03-C04
3	A	402	EDO	O1-C1-C2-O2
3	A	407	EDO	O1-C1-C2-O2
3	A	416	EDO	O1-C1-C2-O2
3	A	421	EDO	O1-C1-C2-O2
3	A	423	EDO	O1-C1-C2-O2
3	B	606	EDO	O1-C1-C2-O2
3	B	639	EDO	O1-C1-C2-O2
5	B	628	3FX	CAI-CAN-NAL-CAJ
3	A	406	EDO	O1-C1-C2-O2
8	B	646[A]	FPP	PB-O3A-PA-O1A
5	B	601	3FX	CAM-CAJ-NAL-CAN
5	B	627	3FX	SAO-CAK-CAM-OAC
5	B	628	3FX	CAM-CAK-SAO-OAB
3	A	419	EDO	O1-C1-C2-O2
3	A	424	EDO	O1-C1-C2-O2
3	B	620	EDO	O1-C1-C2-O2
3	B	624	EDO	O1-C1-C2-O2
5	B	627	3FX	CAM-CAK-SAO-OAD

Continued on next page...

Continued from previous page...

Mol	Chain	Res	Type	Atoms
6	B	602[B]	XO7	N27-C28-C29-C30
6	B	602[B]	XO7	N27-C28-C29-C35
3	A	415	EDO	O1-C1-C2-O2
3	A	425	EDO	O1-C1-C2-O2
3	B	640	EDO	O1-C1-C2-O2
6	B	602[A]	XO7	N27-C28-C29-C30
6	B	602[A]	XO7	N27-C28-C29-C35
5	B	627	3FX	NAL-CAJ-CAM-OAC
3	B	644	EDO	O1-C1-C2-O2
5	B	628	3FX	CAH-CAN-NAL-CAJ
8	B	646[A]	FPP	C10-C8-C9-C11
3	A	409	EDO	O1-C1-C2-O2
3	A	410	EDO	O1-C1-C2-O2
3	A	417	EDO	O1-C1-C2-O2
6	B	602[B]	XO7	C10-C11-O12-C13
8	B	646[A]	FPP	PB-O3A-PA-O2A
3	A	413	EDO	O1-C1-C2-O2
3	B	617	EDO	O1-C1-C2-O2
8	B	646[A]	FPP	C2-C3-C5-C6
6	B	602[B]	XO7	C17-C11-O12-C13

There are no ring outliers.

27 monomers are involved in 44 short contacts:

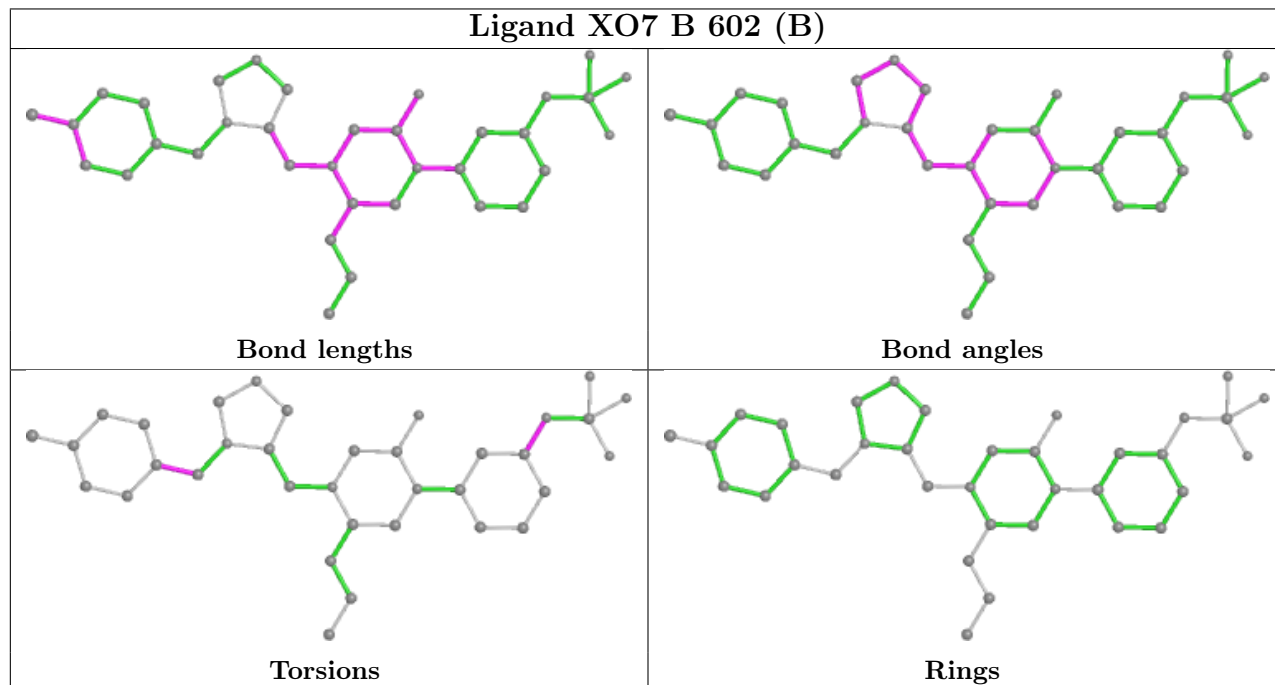
Mol	Chain	Res	Type	Clashes	Symm-Clashes
3	B	642	EDO	1	0
3	B	621	EDO	1	0
3	A	424	EDO	2	0
3	A	422	EDO	2	0
3	B	641	EDO	1	0
3	B	639	EDO	2	0
3	A	410	EDO	1	0
3	B	611	EDO	2	0
3	B	616	EDO	1	0
3	B	604	EDO	4	0
3	A	402	EDO	3	0
3	A	423	EDO	1	0
5	B	627	3FX	3	0
3	B	633	EDO	1	0
3	B	606	EDO	1	0
3	B	614	EDO	1	0
3	A	420	EDO	1	0

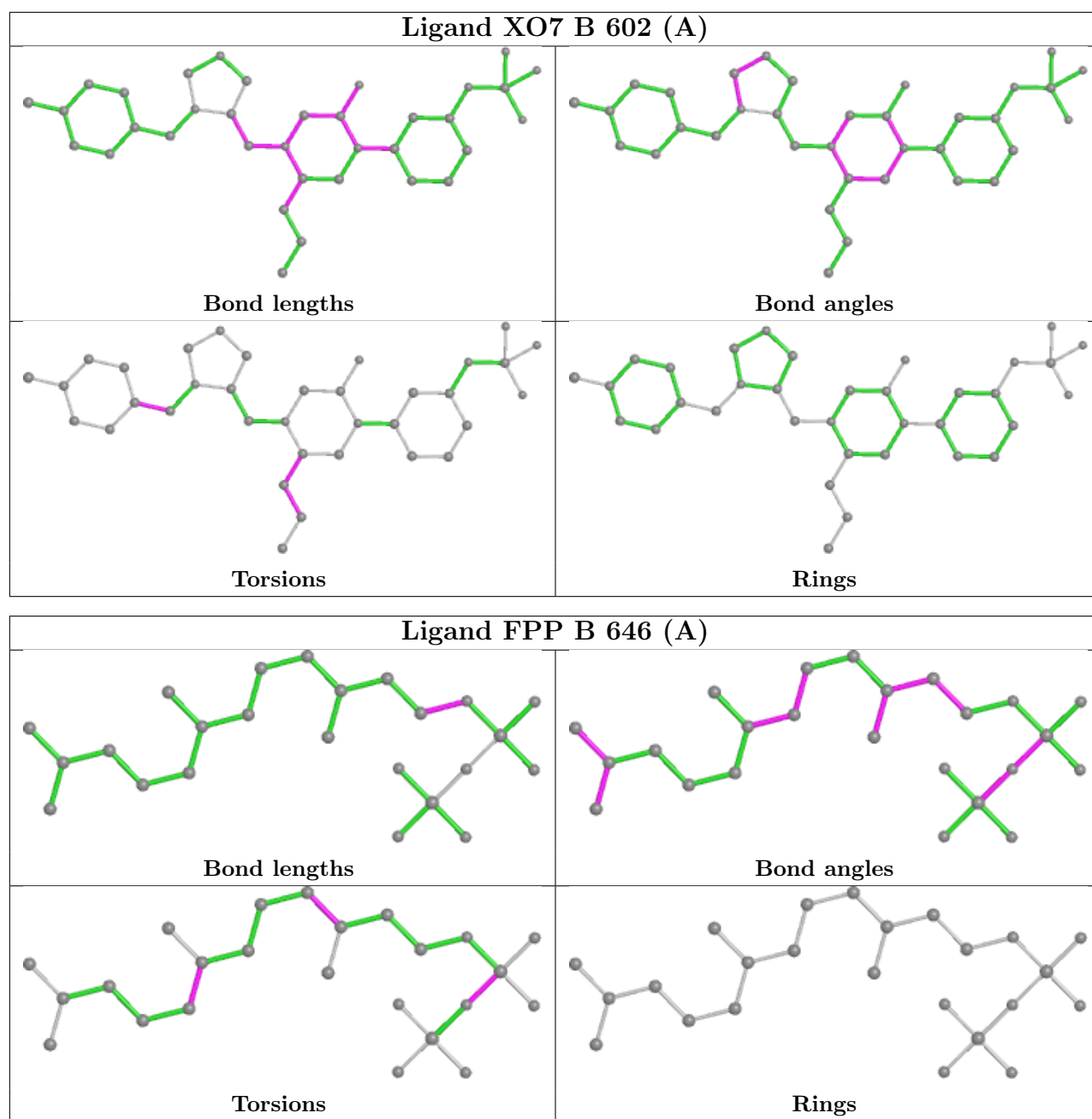
Continued on next page...

Continued from previous page...

Mol	Chain	Res	Type	Clashes	Symm-Clashes
3	B	607	EDO	1	0
3	B	608	EDO	2	0
3	B	630	EDO	1	0
3	B	624	EDO	1	0
3	B	622	EDO	1	0
3	A	418	EDO	2	0
3	B	610	EDO	1	0
3	B	605	EDO	2	0
8	B	646[A]	FPP	1	0
3	A	419	EDO	4	0

The following is a two-dimensional graphical depiction of Mogul quality analysis of bond lengths, bond angles, torsion angles, and ring geometry for all instances of the Ligand of Interest. In addition, ligands with molecular weight > 250 and outliers as shown on the validation Tables will also be included. For torsion angles, if less than 5% of the Mogul distribution of torsion angles is within 10 degrees of the torsion angle in question, then that torsion angle is considered an outlier. Any bond that is central to one or more torsion angles identified as an outlier by Mogul will be highlighted in the graph. For rings, the root-mean-square deviation (RMSD) between the ring in question and similar rings identified by Mogul is calculated over all ring torsion angles. If the average RMSD is greater than 60 degrees and the minimal RMSD between the ring in question and any Mogul-identified rings is also greater than 60 degrees, then that ring is considered an outlier. The outliers are highlighted in purple. The color gray indicates Mogul did not find sufficient equivalents in the CSD to analyse the geometry.





5.7 Other polymers [\(i\)](#)

There are no such residues in this entry.

5.8 Polymer linkage issues [\(i\)](#)

There are no chain breaks in this entry.

6 Fit of model and data [i](#)

6.1 Protein, DNA and RNA chains [i](#)

In the following table, the column labelled ‘#RSRZ> 2’ contains the number (and percentage) of RSRZ outliers, followed by percent RSRZ outliers for the chain as percentile scores relative to all X-ray entries and entries of similar resolution. The OWAB column contains the minimum, median, 95th percentile and maximum values of the occupancy-weighted average B-factor per residue. The column labelled ‘Q< 0.9’ lists the number of (and percentage) of residues with an average occupancy less than 0.9.

Mol	Chain	Analysed	<RSRZ>	#RSRZ>2	OWAB(Å ²)	Q<0.9
1	A	318/349 (91%)	0.13	5 (1%) 72 74	29, 42, 68, 113	0
2	B	486/520 (93%)	0.13	12 (2%) 57 60	25, 34, 62, 99	0
All	All	804/869 (92%)	0.13	17 (2%) 63 66	25, 38, 66, 113	0

All (17) RSRZ outliers are listed below:

Mol	Chain	Res	Type	RSRZ
2	B	2	ALA	8.7
2	B	50	LEU	5.3
2	B	74	PHE	4.6
2	B	75	PHE	4.3
2	B	81	PHE	3.5
1	A	277	ASP	3.5
2	B	371	ILE	3.4
2	B	51	VAL	2.9
2	B	52	SER	2.8
1	A	271	GLY	2.6
1	A	139	LEU	2.6
2	B	347	ARG	2.3
2	B	348	LYS	2.3
1	A	13	ARG	2.3
2	B	481	GLU	2.1
1	A	270	PHE	2.0
2	B	4	GLU	2.0

6.2 Non-standard residues in protein, DNA, RNA chains [i](#)

There are no non-standard protein/DNA/RNA residues in this entry.

6.3 Carbohydrates [i](#)

There are no monosaccharides in this entry.

6.4 Ligands [i](#)

In the following table, the Atoms column lists the number of modelled atoms in the group and the number defined in the chemical component dictionary. The B-factors column lists the minimum, median, 95th percentile and maximum values of B factors of atoms in the group. The column labelled 'Q< 0.9' lists the number of atoms with occupancy less than 0.9.

Mol	Type	Chain	Res	Atoms	RSCC	RSR	B-factors(Å ²)	Q<0.9
3	EDO	B	615	4/4	0.51	0.40	65,74,75,76	0
3	EDO	B	616	4/4	0.65	0.14	69,77,77,78	0
3	EDO	A	424	4/4	0.66	0.38	68,69,71,79	0
3	EDO	B	610	4/4	0.67	0.18	54,55,56,63	0
3	EDO	B	617	4/4	0.68	0.34	65,70,72,74	0
3	EDO	B	624	4/4	0.70	0.26	61,65,66,67	0
3	EDO	A	426	4/4	0.71	0.29	65,66,67,68	0
3	EDO	A	417	4/4	0.72	0.30	67,70,70,71	0
3	EDO	B	619	4/4	0.73	0.29	62,68,70,78	0
3	EDO	A	418	4/4	0.76	0.39	47,53,56,65	0
3	EDO	A	427	4/4	0.76	0.37	65,69,70,75	0
3	EDO	B	625	4/4	0.78	0.29	54,55,57,57	0
3	EDO	B	618	4/4	0.79	0.37	49,52,54,57	0
3	EDO	A	404	4/4	0.79	0.19	46,50,51,54	0
3	EDO	B	641	4/4	0.79	0.19	52,59,63,74	0
3	EDO	A	423	4/4	0.80	0.20	70,71,73,74	0
3	EDO	B	620	4/4	0.81	0.38	72,74,77,79	0
3	EDO	B	644	4/4	0.81	0.35	47,53,54,59	0
3	EDO	B	608	4/4	0.82	0.30	50,54,55,61	0
3	EDO	A	406	4/4	0.82	0.27	57,60,61,64	0
3	EDO	A	422	4/4	0.82	0.24	56,56,62,63	0
3	EDO	B	604	4/4	0.83	0.51	49,50,56,60	0
3	EDO	B	621	4/4	0.83	0.43	68,72,73,74	0
3	EDO	A	414	4/4	0.84	0.24	54,60,61,63	0
3	EDO	B	609	4/4	0.84	0.24	54,54,62,63	0
3	EDO	B	611	4/4	0.85	0.25	55,60,66,66	0
3	EDO	B	606	4/4	0.85	0.20	36,47,47,49	0
3	EDO	B	603	4/4	0.86	0.18	39,42,42,47	0
3	EDO	A	419	4/4	0.86	0.45	47,47,48,49	0
4	SO4	B	647	5/5	0.86	0.38	110,111,115,123	0
3	EDO	B	612	4/4	0.88	0.24	57,59,65,70	0
3	EDO	A	416	4/4	0.88	0.20	45,51,53,60	0

Continued on next page...

Continued from previous page...

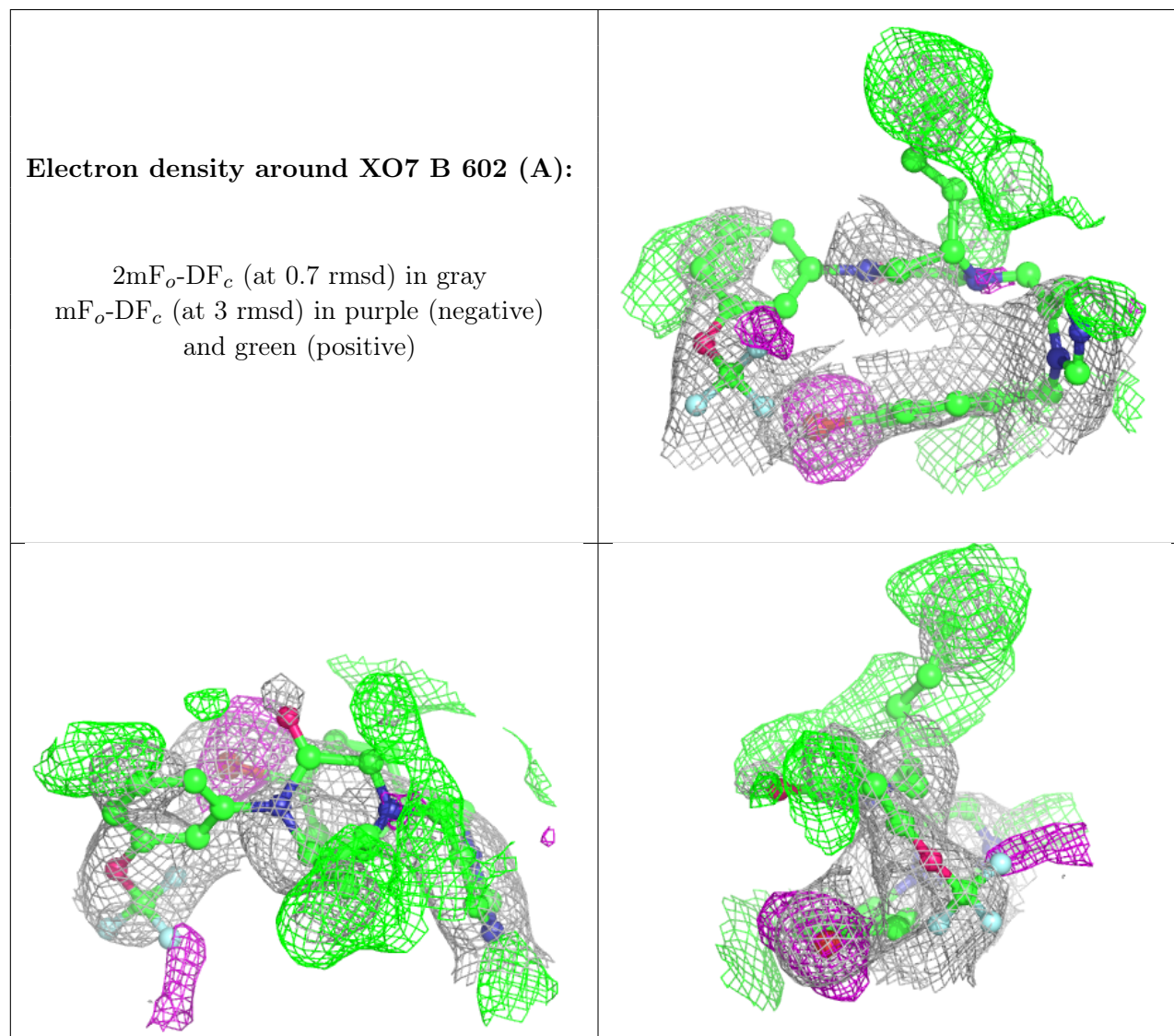
Mol	Type	Chain	Res	Atoms	RSCC	RSR	B-factors(\AA^2)	Q<0.9
3	EDO	B	638	4/4	0.88	0.12	43,44,46,52	0
3	EDO	B	607	4/4	0.88	0.19	51,52,53,54	0
3	EDO	A	425	4/4	0.88	0.10	64,64,66,73	0
3	EDO	B	622	4/4	0.88	0.26	60,60,61,64	0
3	EDO	A	420	4/4	0.89	0.55	55,60,66,71	0
3	EDO	B	613	4/4	0.89	0.34	57,59,65,65	0
3	EDO	B	642	4/4	0.89	0.20	48,49,49,66	0
3	EDO	B	632	4/4	0.89	0.19	46,50,53,57	0
4	SO4	A	430	5/5	0.89	0.29	105,107,107,108	0
3	EDO	B	635	4/4	0.89	0.15	40,44,47,52	0
5	3FX	B	601	15/15	0.90	0.25	46,69,119,121	0
3	EDO	B	614	4/4	0.91	0.23	57,58,61,63	0
3	EDO	A	405	4/4	0.91	0.17	43,45,49,49	0
3	EDO	A	415	4/4	0.91	0.17	41,44,51,56	0
3	EDO	A	402	4/4	0.91	0.25	42,43,47,63	0
3	EDO	B	605	4/4	0.91	0.17	48,53,56,59	0
3	EDO	A	421	4/4	0.92	0.24	51,57,61,66	0
3	EDO	A	410	4/4	0.92	0.14	48,49,58,60	0
3	EDO	A	413	4/4	0.93	0.19	45,47,50,52	0
4	SO4	A	429	5/5	0.93	0.36	100,104,108,115	0
3	EDO	A	408	4/4	0.93	0.16	47,49,55,59	0
3	EDO	B	633	4/4	0.93	0.33	37,51,52,54	0
3	EDO	B	634	4/4	0.93	0.15	41,42,45,46	0
6	XO7	B	602[A]	35/35	0.93	0.24	32,37,39,47	35
6	XO7	B	602[B]	35/35	0.93	0.24	33,37,40,45	35
3	EDO	B	630	4/4	0.94	0.17	37,46,50,58	0
3	EDO	B	631	4/4	0.94	0.15	36,41,41,47	0
3	EDO	A	407	4/4	0.94	0.17	41,43,43,47	0
3	EDO	A	411	4/4	0.94	0.19	44,45,47,48	0
3	EDO	B	643	4/4	0.94	0.14	53,53,57,58	0
3	EDO	A	409	4/4	0.94	0.13	42,44,48,49	0
3	EDO	B	639	4/4	0.95	0.33	42,44,46,47	0
3	EDO	B	640	4/4	0.95	0.21	43,43,48,49	0
5	3FX	B	628	15/15	0.95	0.17	39,65,74,74	0
3	EDO	A	428	4/4	0.95	0.21	45,49,52,53	0
3	EDO	A	412	4/4	0.95	0.11	44,45,49,50	0
8	FPP	B	646[A]	24/24	0.95	0.17	33,37,38,40	24
3	EDO	B	637	4/4	0.96	0.14	40,40,45,47	0
3	EDO	A	403	4/4	0.96	0.15	47,47,48,49	0
3	EDO	A	401	4/4	0.96	0.09	42,42,43,43	0
3	EDO	B	636	4/4	0.96	0.15	38,40,41,48	0
3	EDO	B	629	4/4	0.97	0.11	32,33,34,35	0

Continued on next page...

Continued from previous page...

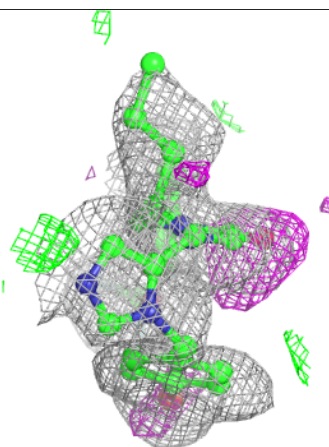
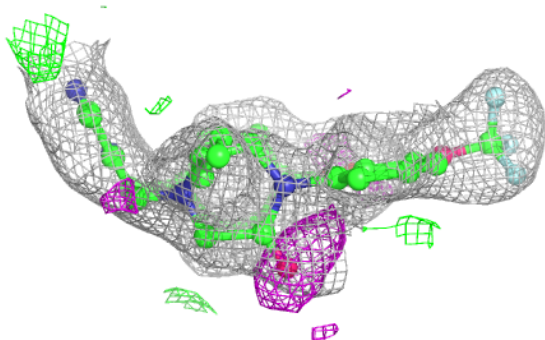
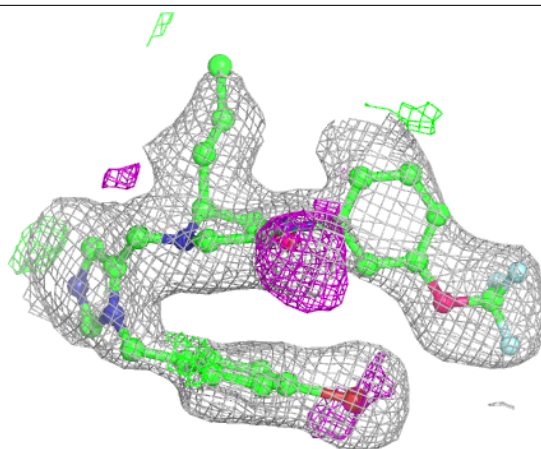
Mol	Type	Chain	Res	Atoms	RSCC	RSR	B-factors(\AA^2)	Q<0.9
3	EDO	B	623	4/4	0.97	0.27	44,45,48,64	0
4	SO4	B	645[B]	5/5	0.98	0.16	34,35,36,37	5
5	3FX	B	627	15/15	0.98	0.14	31,34,41,41	0
7	ZN	B	626	1/1	0.99	0.18	33,33,33,33	0

The following is a graphical depiction of the model fit to experimental electron density of all instances of the Ligand of Interest. In addition, ligands with molecular weight > 250 and outliers as shown on the geometry validation Tables will also be included. Each fit is shown from different orientation to approximate a three-dimensional view.

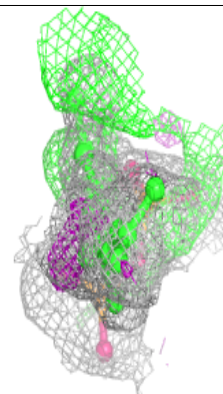
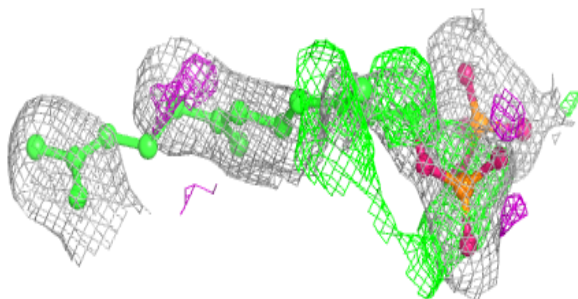
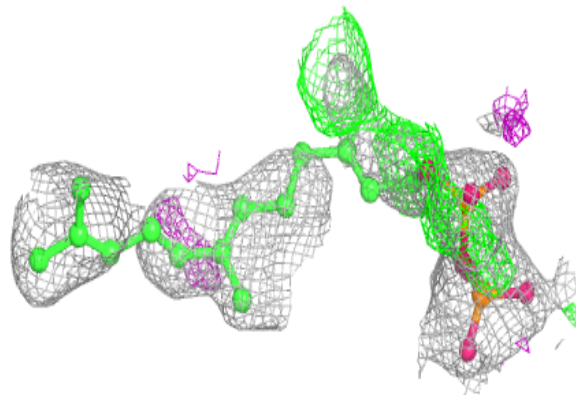


Electron density around XO7 B 602 (B):

$2mF_o-DF_c$ (at 0.7 rmsd) in gray
 mF_o-DF_c (at 3 rmsd) in purple (negative)
and green (positive)

**Electron density around FPP B 646 (A):**

$2mF_o-DF_c$ (at 0.7 rmsd) in gray
 mF_o-DF_c (at 3 rmsd) in purple (negative)
and green (positive)



6.5 Other polymers [i](#)

There are no such residues in this entry.