



# Full wwPDB X-ray Structure Validation Report ⓘ

Oct 11, 2023 – 10:58 PM EDT

PDB ID : 7RMJ  
Title : Disulfide stabilized HIV-1 CA hexamer in complex with capsid inhibitor (S)-N-(1-(3-(4-chloro-3-(methylsulfonamido)-1-(2,2,2-trifluoroethyl)-1H-indazol-7-yl)-6-(3-methyl-3-(methylsulfonyl)but-1-yn-1-yl)pyridin-2-yl)-2-(3,5-difluorophenyl)ethyl)-2-(3-(trifluoromethyl)-4,5,6,7-tetrahydro-1H-indazol-1-yl)acetamide  
Authors : Bester, S.M.; Kvaratskhelia, M.  
Deposited on : 2021-07-27  
Resolution : 2.27 Å(reported)

This is a Full wwPDB X-ray Structure Validation Report for a publicly released PDB entry.

We welcome your comments at [validation@mail.wwpdb.org](mailto:validation@mail.wwpdb.org)

A user guide is available at

<https://www.wwpdb.org/validation/2017/XrayValidationReportHelp>

with specific help available everywhere you see the ⓘ symbol.

The types of validation reports are described at

<http://www.wwpdb.org/validation/2017/FAQs#types>.

---

The following versions of software and data (see [references ⓘ](#)) were used in the production of this report:

MolProbity : 4.02b-467  
Mogul : 1.8.5 (274361), CSD as541be (2020)  
Xtriage (Phenix) : 1.13  
EDS : 2.35.1  
buster-report : 1.1.7 (2018)  
Percentile statistics : 20191225.v01 (using entries in the PDB archive December 25th 2019)  
Refmac : 5.8.0158  
CCP4 : 7.0.044 (Gargrove)  
Ideal geometry (proteins) : Engh & Huber (2001)

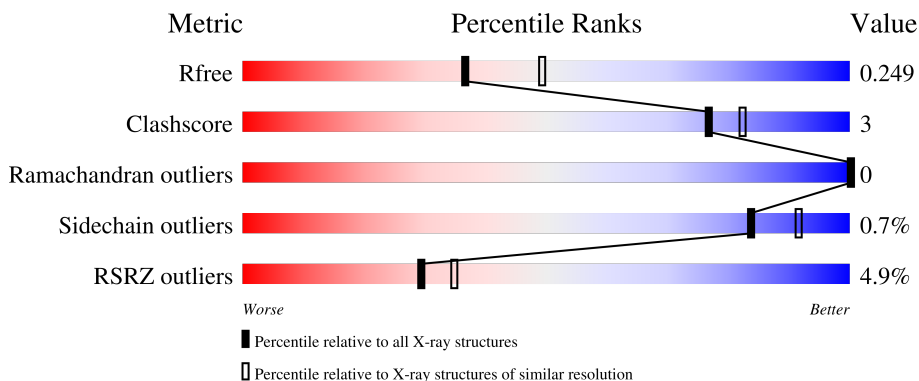
# 1 Overall quality at a glance

The following experimental techniques were used to determine the structure:

*X-RAY DIFFRACTION*

The reported resolution of this entry is 2.27 Å.

Percentile scores (ranging between 0-100) for global validation metrics of the entry are shown in the following graphic. The table shows the number of entries on which the scores are based.



Metric	Whole archive (#Entries)	Similar resolution (#Entries, resolution range(Å))
$R_{free}$	130704	6980 (2.30-2.26)
Clashscore	141614	7711 (2.30-2.26)
Ramachandran outliers	138981	7597 (2.30-2.26)
Sidechain outliers	138945	7598 (2.30-2.26)
RSRZ outliers	127900	6849 (2.30-2.26)

The table below summarises the geometric issues observed across the polymeric chains and their fit to the electron density. The red, orange, yellow and green segments of the lower bar indicate the fraction of residues that contain outliers for  $\geq 3$ , 2, 1 and 0 types of geometric quality criteria respectively. A grey segment represents the fraction of residues that are not modelled. The numeric value for each fraction is indicated below the corresponding segment, with a dot representing fractions  $\leq 5\%$ . The upper red bar (where present) indicates the fraction of residues that have poor fit to the electron density. The numeric value is given above the bar.

Mol	Chain	Length	Quality of chain
1	A	231	 2% 87% 8% 5%
1	B	231	 6% 87% 8% 6%
1	C	231	 5% 90% 6% 5%

Ideal geometry (DNA, RNA) : Parkinson et al. (1996)  
 Validation Pipeline (wwPDB-VP) : 2.35.1

## 2 Entry composition i

There are 5 unique types of molecules in this entry. The entry contains 5698 atoms, of which 0 are hydrogens and 0 are deuteriums.

In the tables below, the ZeroOcc column contains the number of atoms modelled with zero occupancy, the AltConf column contains the number of residues with at least one atom in alternate conformation and the Trace column contains the number of residues modelled with at most 2 atoms.

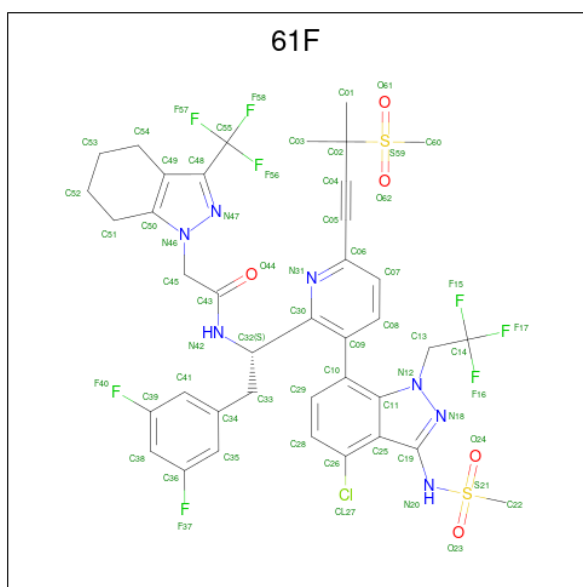
- Molecule 1 is a protein called CAPSID PROTEIN P24.

Mol	Chain	Residues	Atoms					ZeroOcc	AltConf	Trace
			Total	C	N	O	S			
1	A	219	1705	1072	299	320	14	0	1	0
1	B	218	1693	1065	299	315	14	0	2	0
1	C	220	1686	1061	294	317	14	0	0	0

There are 12 discrepancies between the modelled and reference sequences:

Chain	Residue	Modelled	Actual	Comment	Reference
A	14	CYS	ALA	engineered mutation	UNP B6DRA0
A	45	CYS	GLU	engineered mutation	UNP B6DRA0
A	184	ALA	TRP	engineered mutation	UNP B6DRA0
A	185	ALA	MET	engineered mutation	UNP B6DRA0
B	14	CYS	ALA	engineered mutation	UNP B6DRA0
B	45	CYS	GLU	engineered mutation	UNP B6DRA0
B	184	ALA	TRP	engineered mutation	UNP B6DRA0
B	185	ALA	MET	engineered mutation	UNP B6DRA0
C	14	CYS	ALA	engineered mutation	UNP B6DRA0
C	45	CYS	GLU	engineered mutation	UNP B6DRA0
C	184	ALA	TRP	engineered mutation	UNP B6DRA0
C	185	ALA	MET	engineered mutation	UNP B6DRA0

- Molecule 2 is N-[(1S)-1-(3-{4-chloro-3-[(methanesulfonyl)amino]-1-(2,2,2-trifluoroethyl)-1H-indazol-7-yl}-6-[3-(methanesulfonyl)-3-methylbut-1-yn-1-yl]pyridin-2-yl)-2-(3,5-difluorophenyl)ethyl]-2-[3-(trifluoromethyl)-4,5,6,7-tetrahydro-1H-indazol-1-yl]acetamide (three-letter code: 61F) (formula: C<sub>39</sub>H<sub>36</sub>ClF<sub>8</sub>N<sub>7</sub>O<sub>5</sub>S<sub>2</sub>) (labeled as "Ligand of Interest" by depositor).



Mol	Chain	Residues	Atoms						ZeroOcc	AltConf	
			Total	C	Cl	F	N	O			S
2	A	1	Total	C	Cl	F	N	O	S	0	1
			124	78	2	16	14	10	4		
2	B	1	Total	C	Cl	F	N	O	S	0	1
			124	78	2	16	14	10	4		
2	C	1	Total	C	Cl	F	N	O	S	0	1
			124	78	2	16	14	10	4		

- Molecule 3 is IODIDE ION (three-letter code: IOD) (formula: I).

Mol	Chain	Residues	Atoms	ZeroOcc	AltConf
3	A	1	Total 1 1	0	0
3	B	2	Total 2 2	0	0
3	C	2	Total 2 2	0	0

- Molecule 4 is CHLORIDE ION (three-letter code: CL) (formula: Cl).

Mol	Chain	Residues	Atoms	ZeroOcc	AltConf
4	A	5	Total 5 5	0	0
4	B	5	Total 5 5	0	0
4	C	7	Total 7 7	0	0


- Molecule 5 is water.

<b>Mol</b>	<b>Chain</b>	<b>Residues</b>	<b>Atoms</b>		<b>ZeroOcc</b>	<b>AltConf</b>
5	A	66	Total 66	O 66	0	0
5	B	59	Total 59	O 59	0	0
5	C	95	Total 95	O 95	0	0

### 3 Residue-property plots


These plots are drawn for all protein, RNA, DNA and oligosaccharide chains in the entry. The first graphic for a chain summarises the proportions of the various outlier classes displayed in the second graphic. The second graphic shows the sequence view annotated by issues in geometry and electron density. Residues are color-coded according to the number of geometric quality criteria for which they contain at least one outlier: green = 0, yellow = 1, orange = 2 and red = 3 or more. A red dot above a residue indicates a poor fit to the electron density ( $RSRZ > 2$ ). Stretches of 2 or more consecutive residues without any outlier are shown as a green connector. Residues present in the sample, but not in the model, are shown in grey.

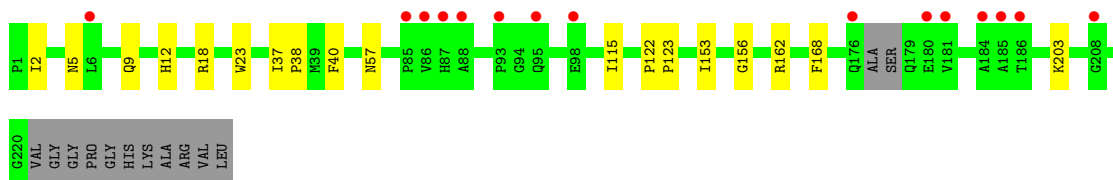
- Molecule 1: CAPSID PROTEIN P24

Chain A: 

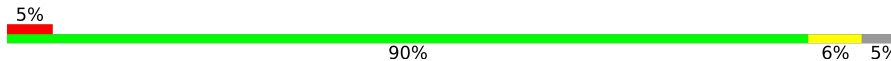


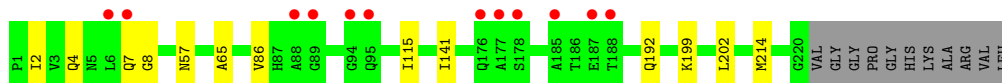
- Molecule 1: CAPSID PROTEIN P24

Chain B: 



- Molecule 1: CAPSID PROTEIN P24

Chain C: 



## 4 Data and refinement statistics i

Property	Value	Source
Space group	P 6	Depositor
Cell constants a, b, c, $\alpha$ , $\beta$ , $\gamma$	160.02Å 160.02Å 57.60Å 90.00° 90.00° 120.00°	Depositor
Resolution (Å)	44.29 – 2.27 44.29 – 2.27	Depositor EDS
% Data completeness (in resolution range)	99.7 (44.29-2.27) 99.7 (44.29-2.27)	Depositor EDS
$R_{merge}$	0.20	Depositor
$R_{sym}$	(Not available)	Depositor
$\langle I/\sigma(I) \rangle$ <sup>1</sup>	1.70 (at 2.27Å)	Xtrriage
Refinement program	PHENIX 1.18.2_3874	Depositor
R, $R_{free}$	0.214 , 0.248 0.216 , 0.249	Depositor DCC
$R_{free}$ test set	1892 reflections (4.84%)	wwPDB-VP
Wilson B-factor (Å <sup>2</sup> )	26.7	Xtrriage
Anisotropy	0.066	Xtrriage
Bulk solvent $k_{sol}$ (e/Å <sup>3</sup> ), $B_{sol}$ (Å <sup>2</sup> )	0.32 , 48.3	EDS
L-test for twinning <sup>2</sup>	$\langle  L  \rangle = 0.50$ , $\langle L^2 \rangle = 0.34$	Xtrriage
Estimated twinning fraction	0.037 for h,-h-k,-l	Xtrriage
$F_o, F_c$ correlation	0.93	EDS
Total number of atoms	5698	wwPDB-VP
Average B, all atoms (Å <sup>2</sup> )	39.0	wwPDB-VP

Xtrriage's analysis on translational NCS is as follows: *The analyses of the Patterson function reveals a significant off-origin peak that is 32.72 % of the origin peak, indicating pseudo-translational symmetry. The chance of finding a peak of this or larger height randomly in a structure without pseudo-translational symmetry is equal to 8.9722e-04. The detected translational NCS is most likely also responsible for the elevated intensity ratio.*

<sup>1</sup>Intensities estimated from amplitudes.

<sup>2</sup>Theoretical values of  $\langle |L| \rangle$ ,  $\langle L^2 \rangle$  for acentric reflections are 0.5, 0.333 respectively for untwinned datasets, and 0.375, 0.2 for perfectly twinned datasets.

## 5 Model quality [i](#)

### 5.1 Standard geometry [i](#)

Bond lengths and bond angles in the following residue types are not validated in this section: 61F, IOD, CL

The Z score for a bond length (or angle) is the number of standard deviations the observed value is removed from the expected value. A bond length (or angle) with  $|Z| > 5$  is considered an outlier worth inspection. RMSZ is the root-mean-square of all Z scores of the bond lengths (or angles).

Mol	Chain	Bond lengths		Bond angles	
		RMSZ	# Z  >5	RMSZ	# Z  >5
1	A	0.25	0/1742	0.41	0/2368
1	B	0.25	0/1729	0.41	0/2350
1	C	0.25	0/1723	0.42	0/2345
All	All	0.25	0/5194	0.41	0/7063

There are no bond length outliers.

There are no bond angle outliers.

There are no chirality outliers.

There are no planarity outliers.

### 5.2 Too-close contacts [i](#)

In the following table, the Non-H and H(model) columns list the number of non-hydrogen atoms and hydrogen atoms in the chain respectively. The H(added) column lists the number of hydrogen atoms added and optimized by MolProbity. The Clashes column lists the number of clashes within the asymmetric unit, whereas Symm-Clashes lists symmetry-related clashes.

Mol	Chain	Non-H	H(model)	H(added)	Clashes	Symm-Clashes
1	A	1705	0	1704	11	0
1	B	1693	0	1681	13	0
1	C	1686	0	1674	8	0
2	A	124	0	0	2	0
2	B	124	0	0	2	0
2	C	124	0	0	2	0
3	A	1	0	0	0	0
3	B	2	0	0	1	0
3	C	2	0	0	0	0
4	A	5	0	0	0	0

*Continued on next page...*



*Continued from previous page...*

Mol	Chain	Non-H	H(model)	H(added)	Clashes	Symm-Clashes
4	B	5	0	0	2	0
4	C	7	0	0	0	0
5	A	66	0	0	0	0
5	B	59	0	0	0	0
5	C	95	0	0	1	0
All	All	5698	0	5059	32	0

The all-atom clashscore is defined as the number of clashes found per 1000 atoms (including hydrogen atoms). The all-atom clashscore for this structure is 3.

All (32) close contacts within the same asymmetric unit are listed below, sorted by their clash magnitude.

Atom-1	Atom-2	Interatomic distance (Å)	Clash overlap (Å)
1:A:192:GLN:HA	1:A:199:LYS:HE3	1.79	0.65
1:B:18:ARG:HG3	4:B:307:CL:CL	2.35	0.63
1:C:7:GLN:NE2	5:C:401:HOH:O	2.34	0.59
1:A:57:ASN:OD1	2:A:301[A]:61F:N42	2.43	0.52
1:C:192:GLN:HA	1:C:199:LYS:HE3	1.90	0.52
1:B:2:ILE:HD11	1:B:115:ILE:HG12	1.92	0.51
1:A:37:ILE:HB	1:A:38:PRO:HD3	1.94	0.49
1:A:65:ALA:HB1	1:A:141:ILE:HD13	1.96	0.47
1:A:211:LEU:HA	1:A:214:MET:HE2	1.96	0.47
1:A:5:ASN:HD21	1:A:9:GLN:HB2	1.80	0.46
1:B:5:ASN:HD21	1:B:9:GLN:HB2	1.80	0.46
1:C:57:ASN:OD1	2:C:301[B]:61F:N42	2.48	0.46
1:A:57:ASN:OD1	2:A:301[B]:61F:N42	2.50	0.45
1:B:162:ARG:NH2	4:B:305:CL:CL	2.80	0.45
1:C:2:ILE:HD11	1:C:115:ILE:HG12	1.99	0.44
1:C:4:GLN:OE1	1:C:8:GLY:HA2	2.18	0.44
1:A:96:MET:SD	1:A:116:GLY:HA3	2.58	0.44
1:C:65:ALA:HB1	1:C:141:ILE:HD13	1.98	0.44
1:B:2:ILE:HD13	1:B:12:HIS:HA	2.00	0.43
1:B:37:ILE:HB	1:B:38:PRO:HD3	1.99	0.43
1:A:79:GLU:OE2	1:A:82:ARG:NH2	2.40	0.43
1:B:156:GLY:HA3	3:B:302:IOD:I	2.89	0.43
1:C:57:ASN:OD1	2:C:301[A]:61F:N42	2.50	0.43
1:B:57:ASN:OD1	2:B:301[A]:61F:N42	2.52	0.43
1:B:23:TRP:CZ3	1:B:40:PHE:HB2	2.54	0.42
1:B:5:ASN:ND2	1:B:9:GLN:HB2	2.34	0.41
1:A:143:ARG:NH1	1:A:176:GLN:O	2.53	0.41
1:A:202:LEU:HD22	1:A:214:MET:HG2	2.03	0.41

*Continued on next page...*

Continued from previous page...

Atom-1	Atom-2	Interatomic distance (Å)	Clash overlap (Å)
1:B:122:PRO:HA	1:B:123:PRO:HD3	1.94	0.40
1:C:202:LEU:HD22	1:C:214:MET:HG2	2.02	0.40
1:B:57:ASN:OD1	2:B:301[B]:61F:N42	2.54	0.40
1:B:153:ILE:HG21	1:B:168:PHE:HA	2.03	0.40

There are no symmetry-related clashes.

## 5.3 Torsion angles [i](#)

### 5.3.1 Protein backbone [i](#)

In the following table, the Percentiles column shows the percent Ramachandran outliers of the chain as a percentile score with respect to all X-ray entries followed by that with respect to entries of similar resolution.

The Analysed column shows the number of residues for which the backbone conformation was analysed, and the total number of residues.

Mol	Chain	Analysed	Favoured	Allowed	Outliers	Percentiles	
1	A	218/231 (94%)	214 (98%)	4 (2%)	0	100	100
1	B	216/231 (94%)	211 (98%)	5 (2%)	0	100	100
1	C	218/231 (94%)	213 (98%)	5 (2%)	0	100	100
All	All	652/693 (94%)	638 (98%)	14 (2%)	0	100	100

There are no Ramachandran outliers to report.

### 5.3.2 Protein sidechains [i](#)

In the following table, the Percentiles column shows the percent sidechain outliers of the chain as a percentile score with respect to all X-ray entries followed by that with respect to entries of similar resolution.

The Analysed column shows the number of residues for which the sidechain conformation was analysed, and the total number of residues.

Mol	Chain	Analysed	Rotameric	Outliers	Percentiles	
1	A	186/193 (96%)	184 (99%)	2 (1%)	73	84
1	B	182/193 (94%)	181 (100%)	1 (0%)	88	94
1	C	182/193 (94%)	181 (100%)	1 (0%)	88	94

Continued on next page...

Continued from previous page...

Mol	Chain	Analysed	Rotameric	Outliers	Percentiles	
All	All	550/579 (95%)	546 (99%)	4 (1%)	84	91

All (4) residues with a non-rotameric sidechain are listed below:

Mol	Chain	Res	Type
1	A	39	MET
1	A	96	MET
1	B	203	LYS
1	C	86	VAL

Sometimes sidechains can be flipped to improve hydrogen bonding and reduce clashes. There are no such sidechains identified.

### 5.3.3 RNA [i](#)

There are no RNA molecules in this entry.

### 5.4 Non-standard residues in protein, DNA, RNA chains [i](#)

There are no non-standard protein/DNA/RNA residues in this entry.

### 5.5 Carbohydrates [i](#)

There are no monosaccharides in this entry.

### 5.6 Ligand geometry [i](#)

Of 28 ligands modelled in this entry, 22 are monoatomic - leaving 6 for Mogul analysis.

In the following table, the Counts columns list the number of bonds (or angles) for which Mogul statistics could be retrieved, the number of bonds (or angles) that are observed in the model and the number of bonds (or angles) that are defined in the Chemical Component Dictionary. The Link column lists molecule types, if any, to which the group is linked. The Z score for a bond length (or angle) is the number of standard deviations the observed value is removed from the expected value. A bond length (or angle) with  $|Z| > 2$  is considered an outlier worth inspection. RMSZ is the root-mean-square of all Z scores of the bond lengths (or angles).

Mol	Type	Chain	Res	Link	Bond lengths			Bond angles		
					Counts	RMSZ	$\# Z  > 2$	Counts	RMSZ	$\# Z  > 2$
2	61F	A	301[A]	-	60,67,67	2.16	16 (26%)	73,105,105	3.44	18 (24%)

Mol	Type	Chain	Res	Link	Bond lengths			Bond angles		
					Counts	RMSZ	# Z  > 2	Counts	RMSZ	# Z  > 2
2	61F	B	301[A]	-	60,67,67	2.16	17 (28%)	73,105,105	3.55	20 (27%)
2	61F	C	301[A]	-	60,67,67	2.14	17 (28%)	73,105,105	3.32	18 (24%)
2	61F	C	301[B]	-	60,67,67	2.19	16 (26%)	73,105,105	3.60	21 (28%)
2	61F	B	301[B]	-	60,67,67	2.11	17 (28%)	73,105,105	3.31	17 (23%)
2	61F	A	301[B]	-	60,67,67	2.13	17 (28%)	73,105,105	3.37	19 (26%)

In the following table, the Chirals column lists the number of chiral outliers, the number of chiral centers analysed, the number of these observed in the model and the number defined in the Chemical Component Dictionary. Similar counts are reported in the Torsion and Rings columns. '-' means no outliers of that kind were identified.

Mol	Type	Chain	Res	Link	Chirals	Torsions	Rings
2	61F	A	301[A]	-	-	7/41/58/58	0/6/6/6
2	61F	B	301[A]	-	-	16/41/58/58	0/6/6/6
2	61F	C	301[A]	-	-	5/41/58/58	0/6/6/6
2	61F	C	301[B]	-	-	10/41/58/58	0/6/6/6
2	61F	B	301[B]	-	-	12/41/58/58	0/6/6/6
2	61F	A	301[B]	-	-	6/41/58/58	0/6/6/6

All (100) bond length outliers are listed below:

Mol	Chain	Res	Type	Atoms	Z	Observed(Å)	Ideal(Å)
2	C	301[B]	61F	C06-C05	6.31	1.54	1.44
2	B	301[A]	61F	C06-C05	6.17	1.54	1.44
2	A	301[A]	61F	C06-C05	6.12	1.54	1.44
2	C	301[B]	61F	S21-N20	5.83	1.71	1.63
2	A	301[B]	61F	C06-C05	5.77	1.54	1.44
2	A	301[A]	61F	S21-N20	5.76	1.71	1.63
2	C	301[A]	61F	S21-N20	5.75	1.71	1.63
2	A	301[B]	61F	S21-N20	5.75	1.71	1.63
2	C	301[A]	61F	C06-C05	5.72	1.53	1.44
2	B	301[A]	61F	C43-N42	5.71	1.46	1.34
2	B	301[B]	61F	C43-N42	5.66	1.46	1.34
2	A	301[B]	61F	C43-N42	5.60	1.46	1.34
2	C	301[A]	61F	C43-N42	5.59	1.45	1.34
2	B	301[B]	61F	C06-C05	5.57	1.53	1.44
2	A	301[A]	61F	C43-N42	5.57	1.45	1.34
2	B	301[A]	61F	S21-N20	5.56	1.70	1.63
2	B	301[B]	61F	S21-N20	5.55	1.70	1.63
2	C	301[B]	61F	C43-N42	5.54	1.45	1.34

*Continued on next page...*

*Continued from previous page...*

Mol	Chain	Res	Type	Atoms	Z	Observed(Å)	Ideal(Å)
2	C	301[B]	61F	C02-C04	5.54	1.54	1.46
2	B	301[A]	61F	C02-C04	5.39	1.54	1.46
2	A	301[A]	61F	C02-C04	5.33	1.54	1.46
2	B	301[A]	61F	C60-S59	4.97	1.82	1.76
2	C	301[B]	61F	C60-S59	4.93	1.82	1.76
2	A	301[B]	61F	C02-C04	4.91	1.53	1.46
2	B	301[B]	61F	C60-S59	4.87	1.82	1.76
2	C	301[A]	61F	C60-S59	4.81	1.82	1.76
2	C	301[A]	61F	C02-C04	4.79	1.53	1.46
2	A	301[B]	61F	C60-S59	4.76	1.82	1.76
2	A	301[A]	61F	C60-S59	4.70	1.82	1.76
2	B	301[B]	61F	C02-C04	4.68	1.53	1.46
2	C	301[A]	61F	O62-S59	3.90	1.46	1.44
2	A	301[A]	61F	O61-S59	3.86	1.46	1.44
2	B	301[B]	61F	O62-S59	3.81	1.46	1.44
2	B	301[A]	61F	O61-S59	3.79	1.46	1.44
2	A	301[B]	61F	O61-S59	3.73	1.46	1.44
2	C	301[A]	61F	O61-S59	3.71	1.46	1.44
2	A	301[B]	61F	O62-S59	3.65	1.46	1.44
2	B	301[B]	61F	O61-S59	3.64	1.46	1.44
2	A	301[A]	61F	O62-S59	3.63	1.46	1.44
2	C	301[B]	61F	O62-S59	3.56	1.46	1.44
2	B	301[A]	61F	O62-S59	3.50	1.46	1.44
2	C	301[B]	61F	O61-S59	3.42	1.46	1.44
2	B	301[B]	61F	C25-C11	-3.20	1.38	1.42
2	C	301[A]	61F	C25-C11	-3.10	1.38	1.42
2	B	301[A]	61F	C25-C11	-3.06	1.38	1.42
2	A	301[B]	61F	C25-C11	-3.04	1.38	1.42
2	C	301[B]	61F	C10-C09	3.01	1.54	1.50
2	A	301[A]	61F	C25-C11	-3.00	1.38	1.42
2	C	301[B]	61F	C25-C11	-2.91	1.39	1.42
2	A	301[A]	61F	C19-N20	2.90	1.46	1.39
2	B	301[A]	61F	C22-S21	2.87	1.82	1.75
2	B	301[B]	61F	C22-S21	2.86	1.82	1.75
2	C	301[A]	61F	C22-S21	2.85	1.82	1.75
2	C	301[B]	61F	C22-S21	2.85	1.82	1.75
2	A	301[A]	61F	C22-S21	2.84	1.82	1.75
2	A	301[B]	61F	C19-N20	2.84	1.45	1.39
2	B	301[A]	61F	C19-N20	2.84	1.45	1.39
2	A	301[B]	61F	C22-S21	2.83	1.82	1.75
2	C	301[B]	61F	C19-N20	2.81	1.45	1.39
2	B	301[B]	61F	C19-N20	2.78	1.45	1.39

*Continued on next page...*

Continued from previous page...

Mol	Chain	Res	Type	Atoms	Z	Observed(Å)	Ideal(Å)
2	C	301[A]	61F	C19-N20	2.77	1.45	1.39
2	A	301[B]	61F	N18-N12	-2.77	1.34	1.37
2	A	301[A]	61F	C10-C09	2.74	1.54	1.50
2	A	301[A]	61F	N18-N12	-2.68	1.34	1.37
2	C	301[A]	61F	N18-N12	-2.65	1.34	1.37
2	B	301[A]	61F	C10-C09	2.65	1.53	1.50
2	C	301[B]	61F	N18-N12	-2.64	1.34	1.37
2	B	301[B]	61F	N18-N12	-2.62	1.34	1.37
2	A	301[B]	61F	C10-C09	2.61	1.53	1.50
2	C	301[A]	61F	C13-C14	2.58	1.53	1.50
2	C	301[A]	61F	C10-C09	2.54	1.53	1.50
2	B	301[A]	61F	N18-N12	-2.41	1.34	1.37
2	C	301[B]	61F	C13-C14	2.41	1.53	1.50
2	B	301[A]	61F	C13-C14	2.39	1.53	1.50
2	B	301[B]	61F	C13-C14	2.39	1.53	1.50
2	C	301[B]	61F	C54-C49	2.39	1.55	1.51
2	B	301[A]	61F	C54-C49	2.38	1.55	1.51
2	A	301[B]	61F	C13-C14	2.38	1.53	1.50
2	C	301[A]	61F	C54-C49	2.37	1.55	1.51
2	A	301[A]	61F	C54-C49	2.36	1.55	1.51
2	B	301[B]	61F	C54-C49	2.35	1.55	1.51
2	A	301[B]	61F	C54-C49	2.35	1.55	1.51
2	B	301[B]	61F	C10-C09	2.33	1.53	1.50
2	A	301[A]	61F	C13-C14	2.31	1.53	1.50
2	C	301[B]	61F	C51-C50	2.26	1.55	1.50
2	C	301[A]	61F	C51-C50	2.25	1.55	1.50
2	A	301[B]	61F	C51-C50	2.23	1.55	1.50
2	A	301[A]	61F	C51-C50	2.20	1.55	1.50
2	B	301[B]	61F	C51-C50	2.18	1.55	1.50
2	B	301[A]	61F	C51-C50	2.16	1.55	1.50
2	B	301[B]	61F	C06-N31	-2.09	1.32	1.35
2	A	301[B]	61F	C06-N31	-2.08	1.32	1.35
2	B	301[B]	61F	O44-C43	-2.07	1.19	1.23
2	A	301[B]	61F	O44-C43	-2.06	1.19	1.23
2	B	301[A]	61F	O44-C43	-2.06	1.19	1.23
2	C	301[A]	61F	C06-N31	-2.06	1.32	1.35
2	A	301[A]	61F	O44-C43	-2.05	1.19	1.23
2	C	301[A]	61F	O44-C43	-2.02	1.19	1.23
2	B	301[A]	61F	O24-S21	2.02	1.47	1.43
2	C	301[B]	61F	C06-N31	-2.02	1.32	1.35

All (113) bond angle outliers are listed below:

Mol	Chain	Res	Type	Atoms	Z	Observed(°)	Ideal(°)
2	C	301[B]	61F	O62-S59-O61	-21.97	99.83	118.10
2	B	301[A]	61F	O62-S59-O61	-21.48	100.24	118.10
2	A	301[A]	61F	O62-S59-O61	-20.73	100.86	118.10
2	A	301[B]	61F	O62-S59-O61	-20.31	101.22	118.10
2	B	301[B]	61F	O62-S59-O61	-19.62	101.79	118.10
2	C	301[A]	61F	O62-S59-O61	-19.50	101.89	118.10
2	A	301[A]	61F	O24-S21-O23	-12.55	100.81	118.85
2	A	301[B]	61F	O24-S21-O23	-12.53	100.84	118.85
2	C	301[A]	61F	O24-S21-O23	-12.50	100.88	118.85
2	B	301[A]	61F	O24-S21-O23	-12.36	101.08	118.85
2	C	301[B]	61F	O24-S21-O23	-12.29	101.18	118.85
2	B	301[B]	61F	O24-S21-O23	-12.29	101.18	118.85
2	B	301[A]	61F	C06-N31-C30	7.17	122.24	117.22
2	C	301[B]	61F	C06-N31-C30	7.08	122.17	117.22
2	A	301[A]	61F	C06-N31-C30	6.97	122.10	117.22
2	B	301[A]	61F	C55-C48-C49	-6.89	125.44	129.54
2	B	301[B]	61F	C55-C48-C49	-6.75	125.53	129.54
2	C	301[A]	61F	C55-C48-C49	-6.37	125.75	129.54
2	C	301[B]	61F	C55-C48-C49	-6.30	125.79	129.54
2	A	301[B]	61F	C06-N31-C30	6.17	121.54	117.22
2	B	301[A]	61F	C55-C48-N47	6.07	126.94	119.69
2	C	301[A]	61F	C06-N31-C30	6.05	121.45	117.22
2	B	301[B]	61F	C55-C48-N47	5.98	126.84	119.69
2	B	301[B]	61F	C06-N31-C30	5.97	121.40	117.22
2	A	301[B]	61F	C55-C48-C49	-5.89	126.04	129.54
2	C	301[A]	61F	C55-C48-N47	5.72	126.53	119.69
2	C	301[B]	61F	C55-C48-N47	5.66	126.45	119.69
2	A	301[A]	61F	C55-C48-C49	-5.63	126.19	129.54
2	A	301[B]	61F	C55-C48-N47	5.58	126.36	119.69
2	A	301[A]	61F	C55-C48-N47	5.42	126.16	119.69
2	C	301[B]	61F	C01-C02-C04	-3.92	106.34	109.96
2	B	301[A]	61F	C13-N12-N18	3.48	123.60	117.08
2	C	301[B]	61F	C22-S21-N20	3.42	110.54	106.63
2	A	301[A]	61F	C13-N12-N18	3.36	123.37	117.08
2	C	301[A]	61F	C22-S21-N20	3.27	110.36	106.63
2	B	301[B]	61F	C13-N12-N18	3.22	123.13	117.08
2	A	301[B]	61F	C13-N12-N18	3.18	123.04	117.08
2	C	301[B]	61F	C07-C06-N31	-3.14	119.67	123.27
2	A	301[A]	61F	C22-S21-N20	3.10	110.17	106.63
2	B	301[A]	61F	C22-S21-N20	3.05	110.11	106.63
2	C	301[B]	61F	C13-N12-N18	3.04	122.78	117.08
2	C	301[A]	61F	C13-N12-N18	3.00	122.71	117.08
2	A	301[B]	61F	C22-S21-N20	2.98	110.03	106.63

*Continued on next page...*

*Continued from previous page...*

Mol	Chain	Res	Type	Atoms	Z	Observed(°)	Ideal(°)
2	B	301[B]	61F	C22-S21-N20	2.85	109.89	106.63
2	C	301[B]	61F	C09-C30-C32	-2.85	119.08	122.91
2	A	301[A]	61F	C38-C36-C35	-2.82	119.95	123.52
2	A	301[B]	61F	C38-C36-C35	-2.82	119.96	123.52
2	B	301[B]	61F	O62-S59-C60	2.80	112.11	108.44
2	B	301[B]	61F	C38-C36-C35	-2.79	119.99	123.52
2	B	301[A]	61F	C38-C36-C35	-2.79	120.00	123.52
2	C	301[A]	61F	C38-C36-C35	-2.75	120.05	123.52
2	C	301[A]	61F	C41-C39-C38	-2.75	120.05	123.52
2	B	301[A]	61F	C07-C06-N31	-2.73	120.14	123.27
2	B	301[A]	61F	C01-C02-C04	-2.73	107.44	109.96
2	C	301[A]	61F	O62-S59-C60	2.72	112.00	108.44
2	C	301[B]	61F	C38-C36-C35	-2.72	120.09	123.52
2	C	301[B]	61F	C41-C39-C38	-2.71	120.09	123.52
2	A	301[B]	61F	C41-C39-C38	-2.70	120.11	123.52
2	B	301[B]	61F	C41-C39-C38	-2.66	120.16	123.52
2	A	301[A]	61F	C07-C06-N31	-2.65	120.22	123.27
2	A	301[A]	61F	C41-C39-C38	-2.65	120.17	123.52
2	B	301[A]	61F	O61-S59-C60	2.64	111.91	108.44
2	A	301[B]	61F	O62-S59-C60	2.64	111.89	108.44
2	B	301[A]	61F	C41-C39-C38	-2.61	120.22	123.52
2	A	301[A]	61F	C09-C30-C32	-2.58	119.45	122.91
2	C	301[A]	61F	O23-S21-N20	2.54	112.29	107.10
2	C	301[A]	61F	C09-C30-C32	-2.52	119.53	122.91
2	A	301[A]	61F	C01-C02-C04	-2.48	107.67	109.96
2	A	301[B]	61F	C39-C38-C36	2.46	119.96	116.13
2	C	301[A]	61F	C39-C38-C36	2.45	119.94	116.13
2	C	301[B]	61F	O23-S21-N20	2.44	112.08	107.10
2	B	301[B]	61F	C39-C38-C36	2.44	119.93	116.13
2	A	301[A]	61F	C39-C38-C36	2.43	119.92	116.13
2	B	301[A]	61F	C45-N46-N47	2.43	124.60	117.77
2	C	301[B]	61F	C39-C38-C36	2.42	119.90	116.13
2	C	301[B]	61F	C08-C09-C10	2.42	123.19	119.27
2	B	301[A]	61F	C39-C38-C36	2.42	119.90	116.13
2	B	301[B]	61F	C45-N46-N47	2.42	124.57	117.77
2	B	301[A]	61F	C09-C30-C32	-2.40	119.69	122.91
2	C	301[B]	61F	O62-S59-C60	2.39	111.58	108.44
2	A	301[B]	61F	C45-N46-N47	2.38	124.47	117.77
2	C	301[A]	61F	C45-N46-N47	2.38	124.46	117.77
2	A	301[A]	61F	C45-N46-N47	2.37	124.44	117.77
2	C	301[B]	61F	C45-N46-N47	2.37	124.42	117.77
2	A	301[A]	61F	O24-S21-N20	2.34	111.87	107.10

*Continued on next page...*



*Continued from previous page...*

Mol	Chain	Res	Type	Atoms	Z	Observed(°)	Ideal(°)
2	B	301[B]	61F	O23-S21-N20	2.31	111.81	107.10
2	A	301[A]	61F	O61-S59-C60	2.30	111.45	108.44
2	B	301[A]	61F	F57-C55-C48	-2.29	108.74	112.32
2	C	301[B]	61F	F58-C55-C48	-2.26	108.78	112.32
2	A	301[B]	61F	O23-S21-N20	2.26	111.71	107.10
2	B	301[A]	61F	O23-S21-N20	2.26	111.70	107.10
2	B	301[A]	61F	O23-S21-C22	2.25	111.89	108.28
2	A	301[B]	61F	O24-S21-N20	2.23	111.65	107.10
2	A	301[B]	61F	C09-C30-C32	-2.22	119.93	122.91
2	B	301[B]	61F	O23-S21-C22	2.18	111.78	108.28
2	C	301[B]	61F	F16-C14-C13	-2.18	108.56	112.12
2	B	301[B]	61F	F57-C55-C48	-2.17	108.92	112.32
2	A	301[B]	61F	O61-S59-C60	2.17	111.28	108.44
2	C	301[B]	61F	O61-S59-C60	2.16	111.27	108.44
2	C	301[A]	61F	F58-C55-C48	-2.15	108.95	112.32
2	A	301[B]	61F	C32-N42-C43	-2.15	119.90	123.33
2	A	301[A]	61F	C32-N42-C43	-2.15	119.91	123.33
2	B	301[B]	61F	C29-C10-C11	2.14	120.54	117.47
2	A	301[A]	61F	O23-S21-N20	2.14	111.46	107.10
2	B	301[A]	61F	C09-C10-C11	2.12	123.53	121.14
2	A	301[B]	61F	C07-C06-N31	-2.10	120.86	123.27
2	C	301[A]	61F	C07-C06-N31	-2.10	120.86	123.27
2	C	301[A]	61F	F16-C14-C13	-2.09	108.71	112.12
2	B	301[A]	61F	O62-S59-C60	2.09	111.17	108.44
2	C	301[B]	61F	C09-C10-C11	2.04	123.44	121.14
2	B	301[B]	61F	C09-C30-C32	-2.02	120.20	122.91
2	A	301[B]	61F	C29-C10-C11	2.02	120.36	117.47
2	C	301[A]	61F	C29-C10-C11	2.00	120.34	117.47

There are no chirality outliers.

All (56) torsion outliers are listed below:

Mol	Chain	Res	Type	Atoms
2	A	301[A]	61F	C19-N20-S21-O24
2	A	301[B]	61F	C19-N20-S21-O24
2	B	301[A]	61F	N12-C13-C14-F16
2	B	301[A]	61F	N12-C13-C14-F17
2	B	301[A]	61F	C01-C02-S59-O61
2	B	301[A]	61F	C03-C02-S59-O62
2	B	301[A]	61F	C04-C02-S59-O61
2	B	301[A]	61F	C04-C02-S59-O62
2	B	301[A]	61F	C02-C04-C05-C06

*Continued on next page...*

*Continued from previous page...*

Mol	Chain	Res	Type	Atoms
2	B	301[A]	61F	N47-C48-C55-F56
2	B	301[B]	61F	N47-C48-C55-F56
2	C	301[A]	61F	C02-C04-C05-C06
2	C	301[B]	61F	C03-C02-S59-O62
2	C	301[B]	61F	C04-C02-S59-O61
2	C	301[B]	61F	C04-C02-S59-O62
2	B	301[B]	61F	C19-N20-S21-O24
2	A	301[A]	61F	C02-C04-C05-C06
2	B	301[B]	61F	C02-C04-C05-C06
2	C	301[B]	61F	C02-C04-C05-C06
2	B	301[A]	61F	C03-C02-S59-O61
2	C	301[B]	61F	C01-C02-S59-O61
2	C	301[B]	61F	C01-C02-S59-O62
2	A	301[A]	61F	N47-C48-C55-F57
2	A	301[B]	61F	N47-C48-C55-F57
2	B	301[B]	61F	N47-C48-C55-F58
2	C	301[A]	61F	N47-C48-C55-F57
2	C	301[B]	61F	N47-C48-C55-F57
2	A	301[A]	61F	C19-N20-S21-O23
2	A	301[B]	61F	C19-N20-S21-O23
2	B	301[B]	61F	C19-N20-S21-O23
2	B	301[A]	61F	N12-C13-C14-F15
2	B	301[B]	61F	N12-C13-C14-F15
2	A	301[A]	61F	N47-C48-C55-F56
2	A	301[A]	61F	N47-C48-C55-F58
2	A	301[B]	61F	N47-C48-C55-F56
2	A	301[B]	61F	N47-C48-C55-F58
2	B	301[A]	61F	N47-C48-C55-F58
2	C	301[A]	61F	N47-C48-C55-F56
2	C	301[A]	61F	N47-C48-C55-F58
2	C	301[B]	61F	N47-C48-C55-F56
2	C	301[B]	61F	N47-C48-C55-F58
2	B	301[A]	61F	C01-C02-S59-O62
2	A	301[B]	61F	C19-N20-S21-C22
2	B	301[A]	61F	C19-N20-S21-O24
2	B	301[A]	61F	N47-C48-C55-F57
2	B	301[B]	61F	N47-C48-C55-F57
2	B	301[A]	61F	C43-C45-N46-N47
2	B	301[B]	61F	C43-C45-N46-N47
2	B	301[A]	61F	C43-C45-N46-C50
2	B	301[B]	61F	C43-C45-N46-C50
2	A	301[A]	61F	C19-N20-S21-C22

*Continued on next page...*

*Continued from previous page...*

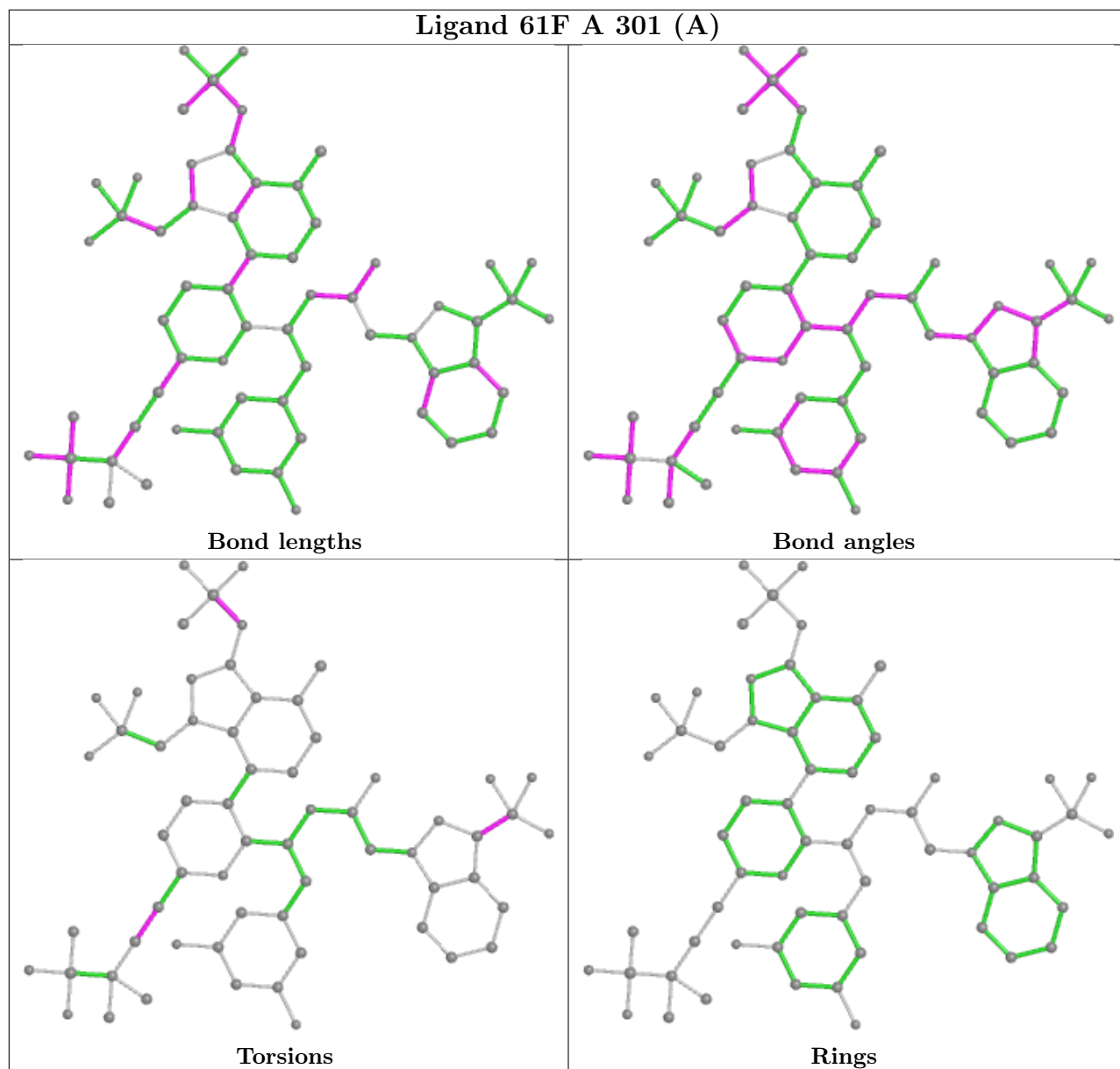
Mol	Chain	Res	Type	Atoms
2	C	301[B]	61F	C03-C02-S59-O61
2	B	301[B]	61F	N12-C13-C14-F16
2	B	301[B]	61F	N12-C13-C14-F17
2	C	301[A]	61F	N12-C13-C14-F17
2	B	301[B]	61F	C19-N20-S21-C22

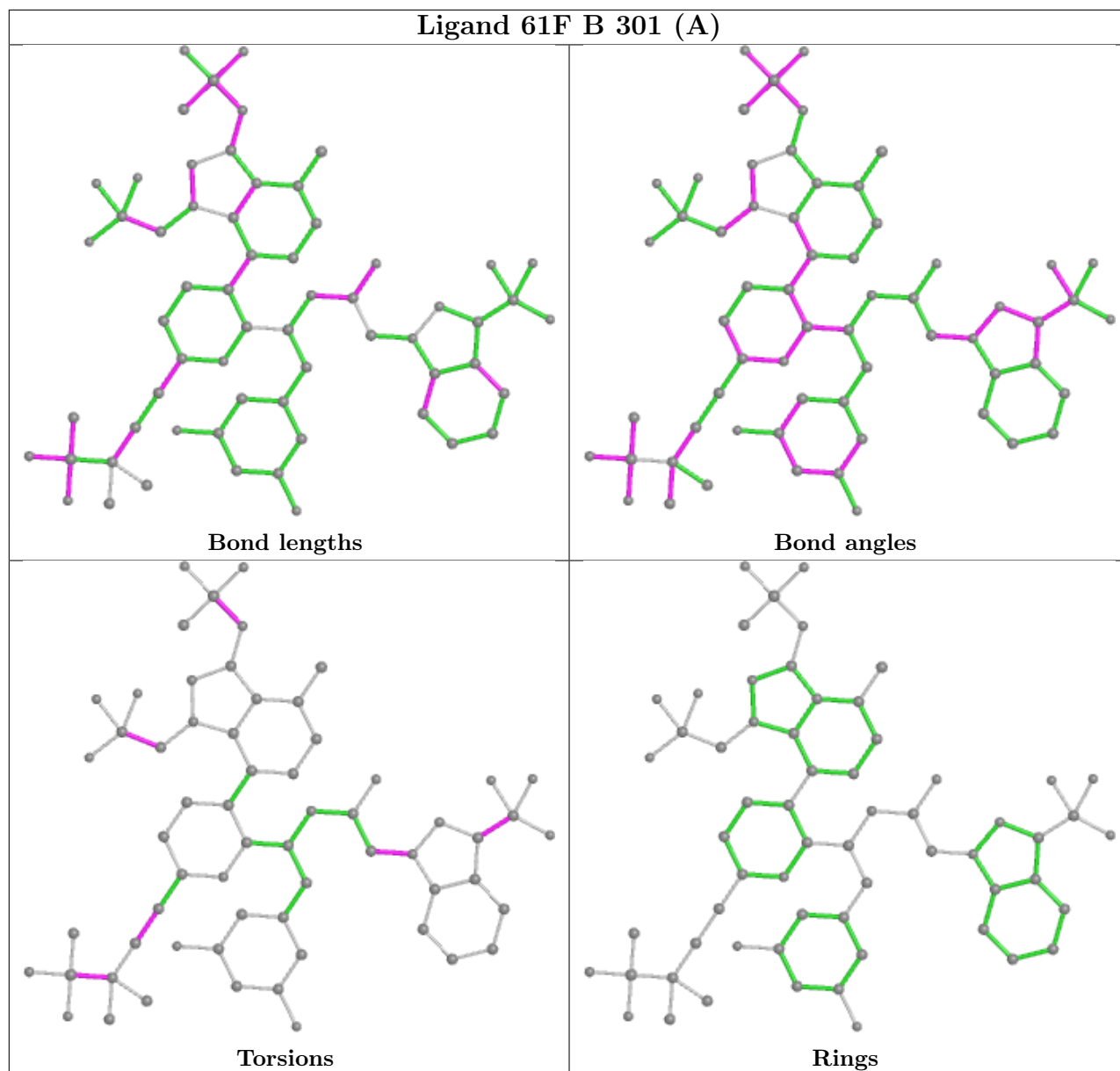
There are no ring outliers.

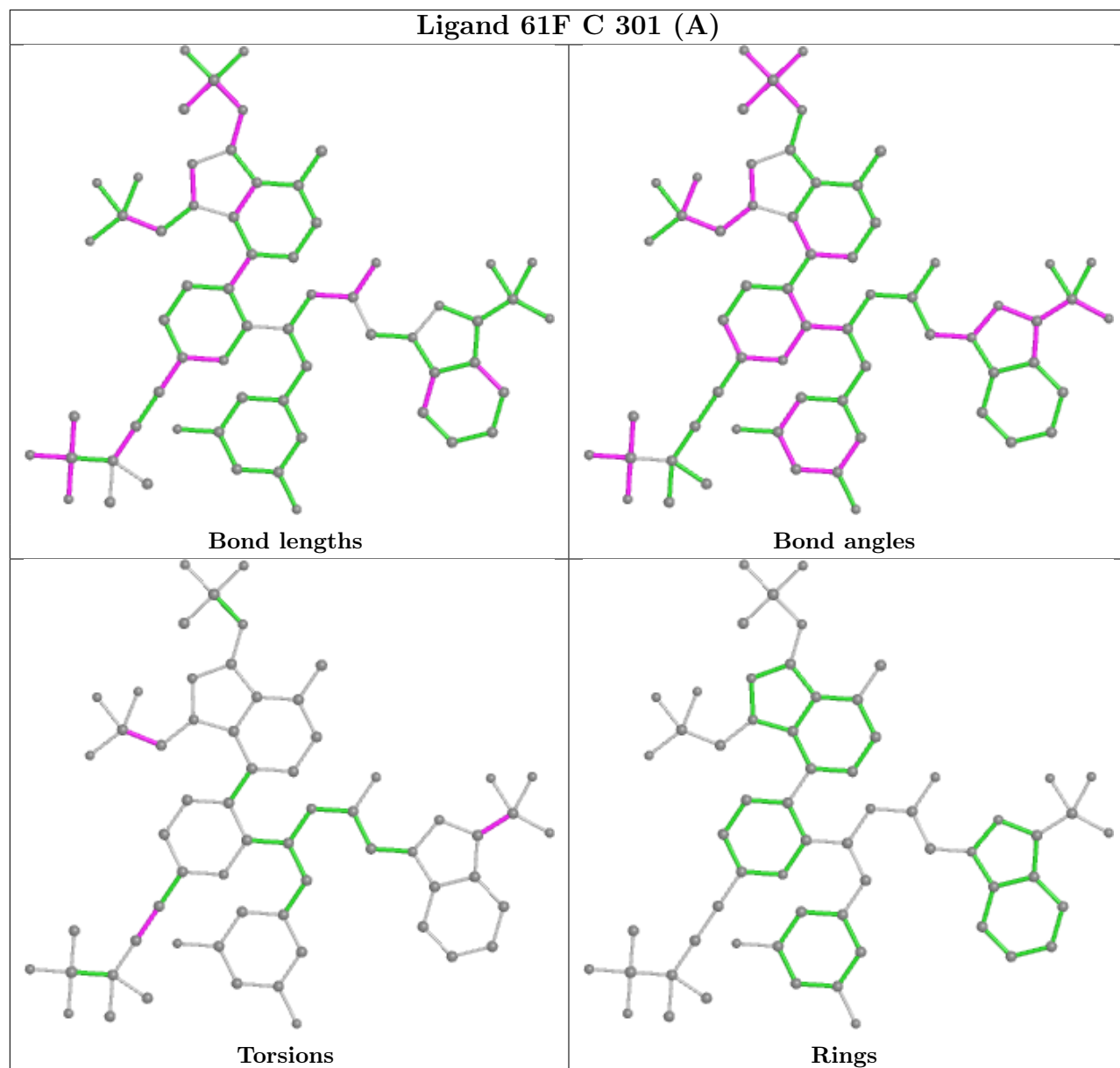
6 monomers are involved in 6 short contacts:

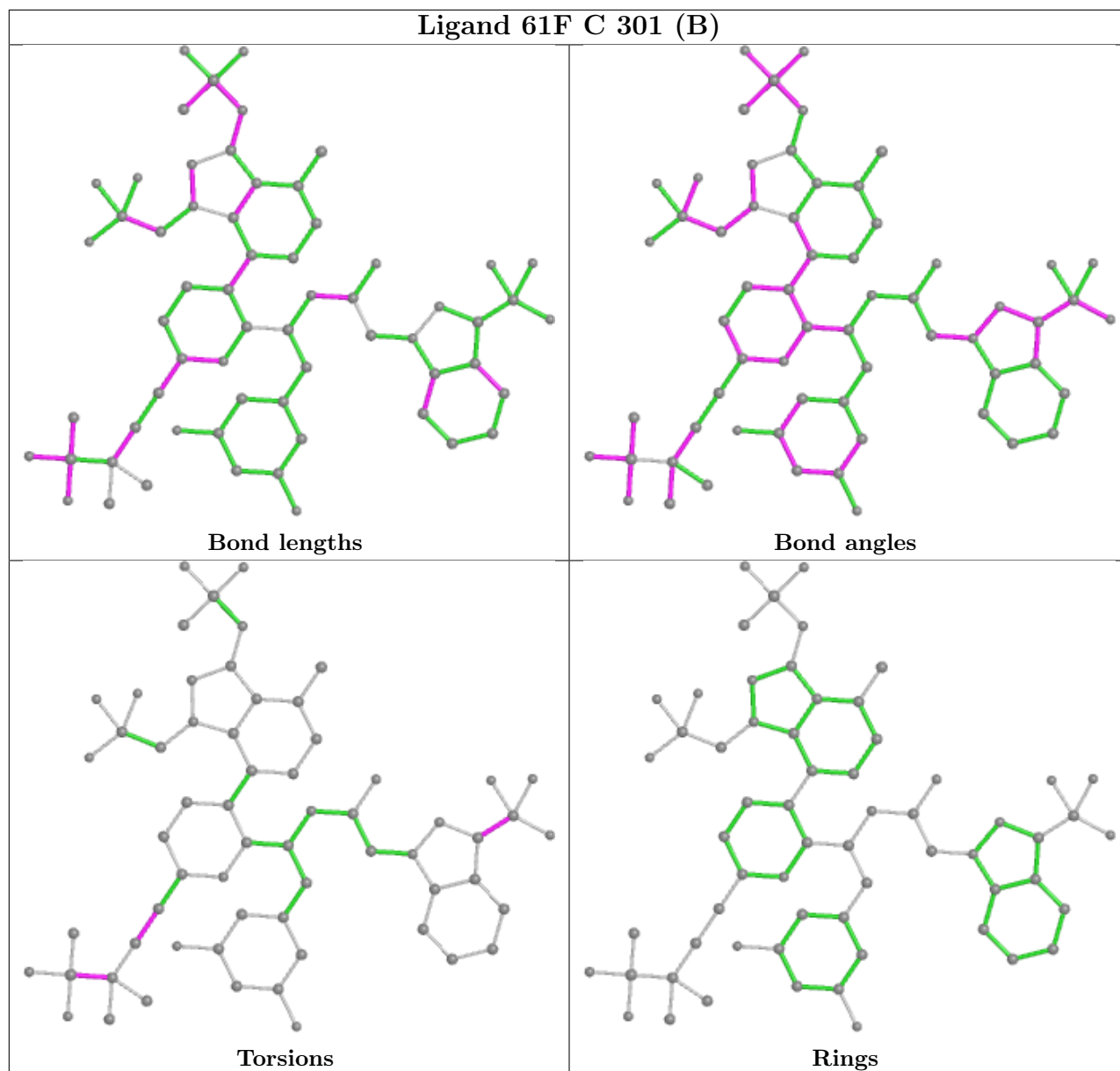
Mol	Chain	Res	Type	Clashes	Symm-Clashes
2	A	301[A]	61F	1	0
2	B	301[A]	61F	1	0
2	C	301[A]	61F	1	0
2	C	301[B]	61F	1	0
2	B	301[B]	61F	1	0
2	A	301[B]	61F	1	0

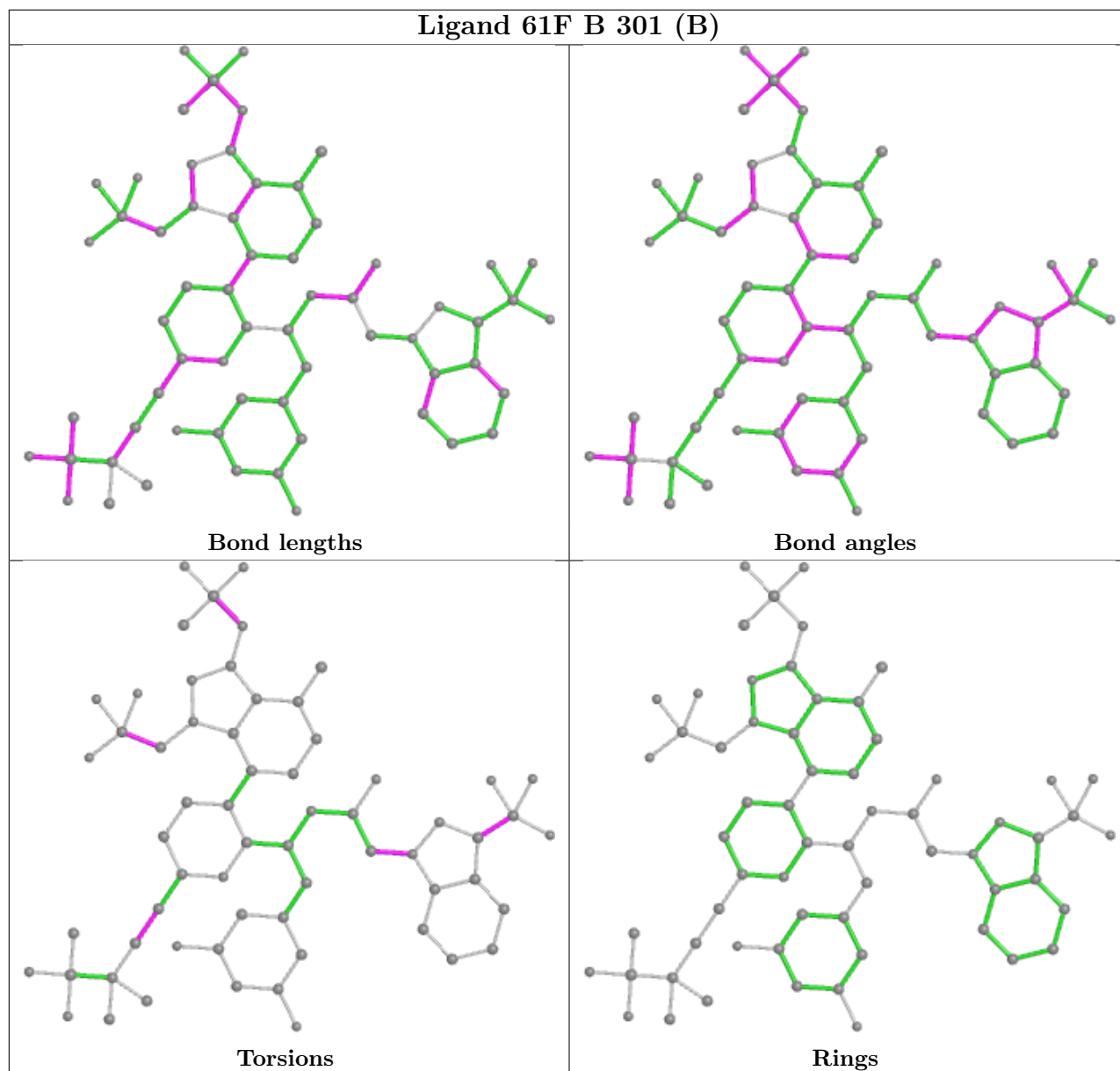
The following is a two-dimensional graphical depiction of Mogul quality analysis of bond lengths, bond angles, torsion angles, and ring geometry for all instances of the Ligand of Interest. In addition, ligands with molecular weight > 250 and outliers as shown on the validation Tables will also be included. For torsion angles, if less than 5% of the Mogul distribution of torsion angles is within 10 degrees of the torsion angle in question, then that torsion angle is considered an outlier. Any bond that is central to one or more torsion angles identified as an outlier by Mogul will be highlighted in the graph. For rings, the root-mean-square deviation (RMSD) between the ring in question and similar rings identified by Mogul is calculated over all ring torsion angles. If the average RMSD is greater than 60 degrees and the minimal RMSD between the ring in question and any Mogul-identified rings is also greater than 60 degrees, then that ring is considered an outlier. The outliers are highlighted in purple. The color gray indicates Mogul did not find sufficient equivalents in the CSD to analyse the geometry.



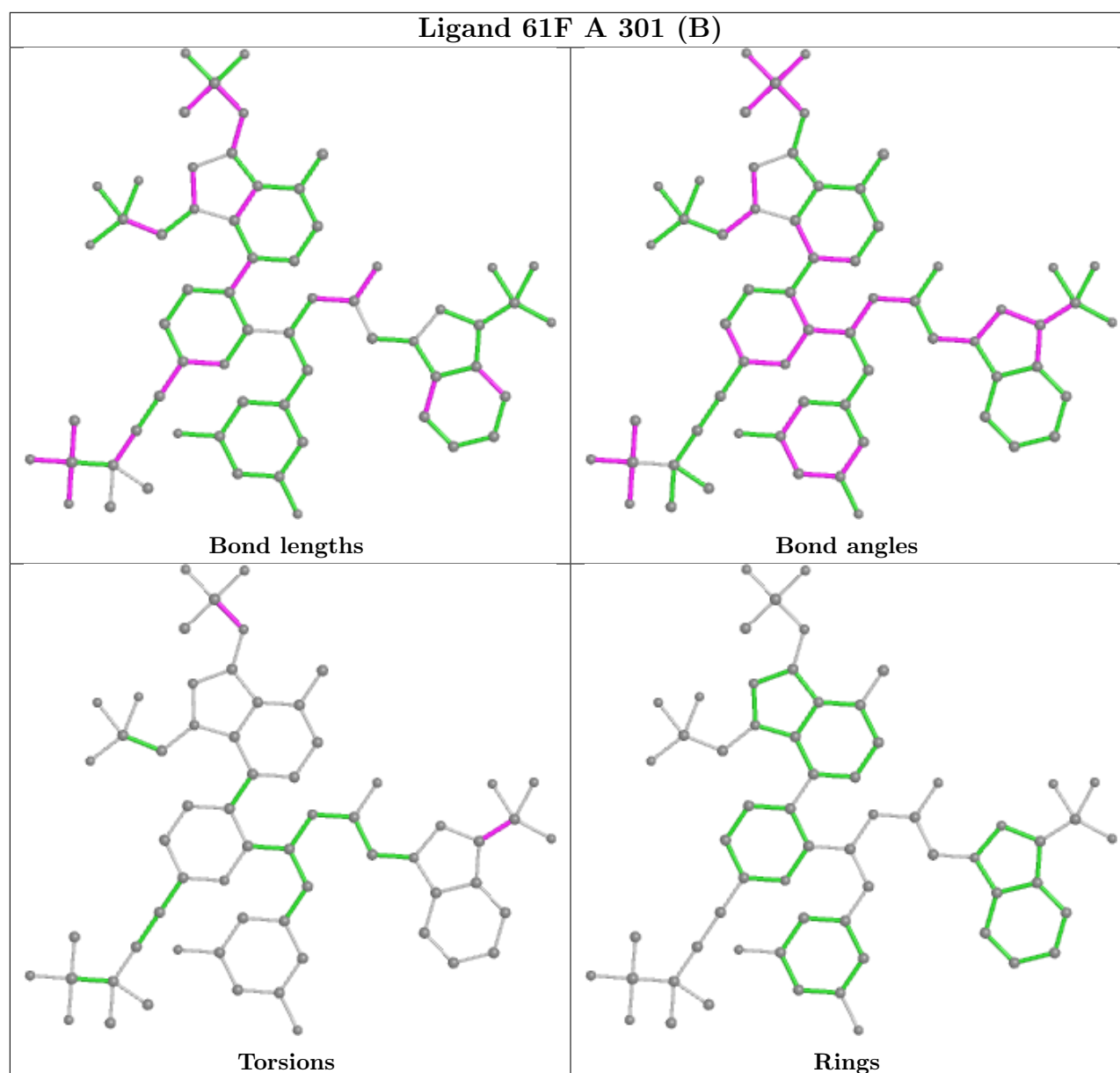












## 5.7 Other polymers [i](#)

There are no such residues in this entry.

## 5.8 Polymer linkage issues [i](#)

There are no chain breaks in this entry.

## 6 Fit of model and data

### 6.1 Protein, DNA and RNA chains

In the following table, the column labelled ‘#RSRZ> 2’ contains the number (and percentage) of RSRZ outliers, followed by percent RSRZ outliers for the chain as percentile scores relative to all X-ray entries and entries of similar resolution. The OWAB column contains the minimum, median, 95<sup>th</sup> percentile and maximum values of the occupancy-weighted average B-factor per residue. The column labelled ‘Q< 0.9’ lists the number of (and percentage) of residues with an average occupancy less than 0.9.

Mol	Chain	Analysed	<RSRZ>	#RSRZ>2	OWAB(Å <sup>2</sup> )	Q<0.9
1	A	219/231 (94%)	0.12	5 (2%) 60 66	23, 35, 67, 82	0
1	B	218/231 (94%)	0.26	15 (6%) 16 21	22, 37, 76, 107	0
1	C	220/231 (95%)	0.22	12 (5%) 25 30	19, 31, 65, 111	0
All	All	657/693 (94%)	0.20	32 (4%) 29 35	19, 34, 70, 111	0

All (32) RSRZ outliers are listed below:

Mol	Chain	Res	Type	RSRZ
1	B	6	LEU	8.3
1	C	188	THR	5.9
1	C	177	ALA	5.7
1	B	184	ALA	4.5
1	C	6	LEU	4.4
1	C	95	GLN	3.9
1	B	95	GLN	3.5
1	B	185	ALA	3.4
1	C	178	SER	3.2
1	A	94	GLY	3.1
1	B	181	VAL	3.0
1	B	87	HIS	3.0
1	B	180	GLU	3.0
1	C	88	ALA	2.9
1	C	7	GLN	2.9
1	B	186	THR	2.8
1	C	187	GLU	2.8
1	C	94	GLY	2.8
1	B	98	GLU	2.8
1	C	176	GLN	2.7
1	B	86	VAL	2.7
1	B	208	GLY	2.6
1	A	87	HIS	2.5

*Continued on next page...*

*Continued from previous page...*

Mol	Chain	Res	Type	RSRZ
1	B	85	PRO	2.3
1	C	185	ALA	2.3
1	B	88	ALA	2.2
1	A	6	LEU	2.2
1	A	93	PRO	2.2
1	A	86	VAL	2.1
1	C	89	GLY	2.1
1	B	93	PRO	2.1
1	B	176	GLN	2.0

## 6.2 Non-standard residues in protein, DNA, RNA chains [i](#)

There are no non-standard protein/DNA/RNA residues in this entry.

## 6.3 Carbohydrates [i](#)

There are no monosaccharides in this entry.

## 6.4 Ligands [i](#)

In the following table, the Atoms column lists the number of modelled atoms in the group and the number defined in the chemical component dictionary. The B-factors column lists the minimum, median, 95<sup>th</sup> percentile and maximum values of B factors of atoms in the group. The column labelled 'Q< 0.9' lists the number of atoms with occupancy less than 0.9.

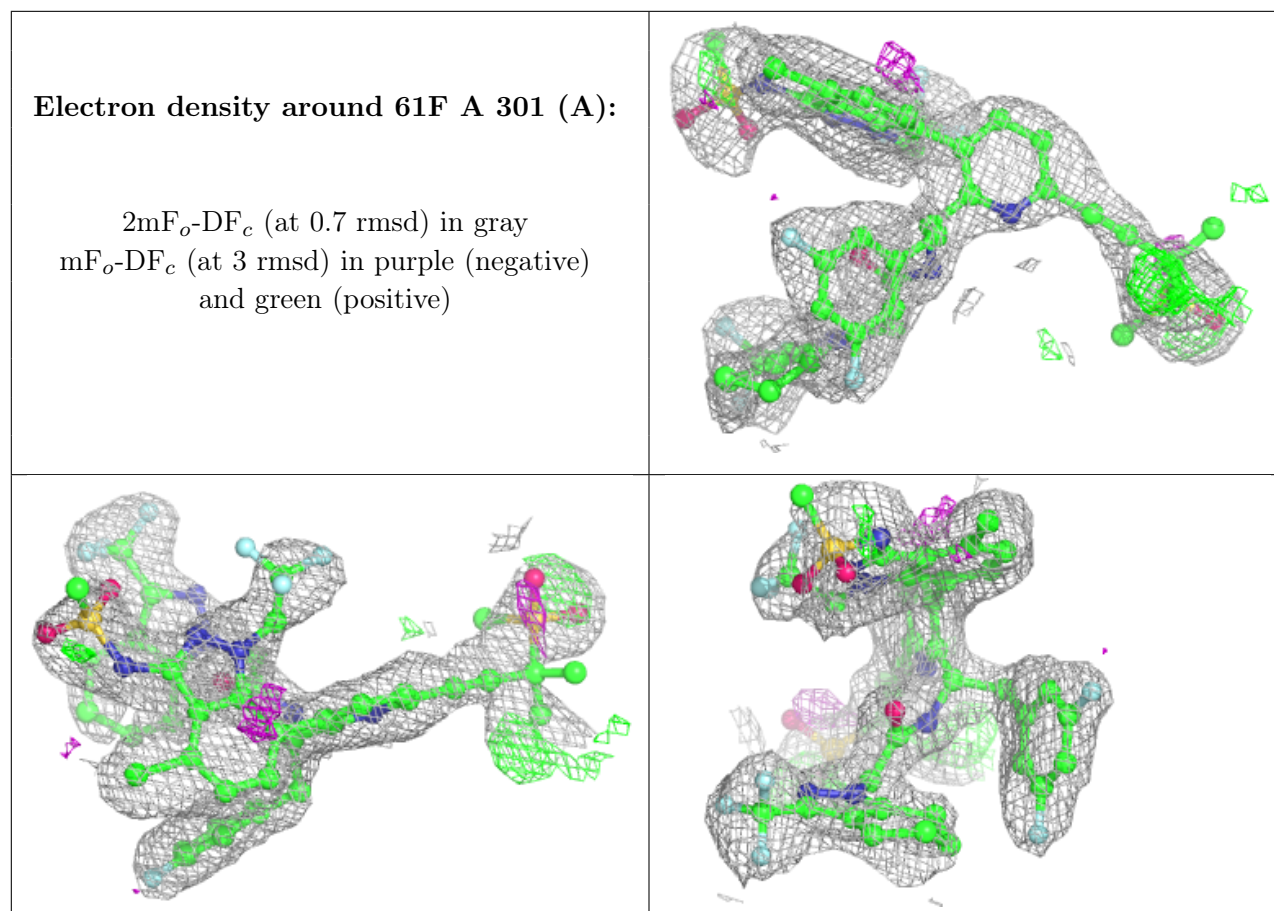
Mol	Type	Chain	Res	Atoms	RSCC	RSR	B-factors(Å <sup>2</sup> )	Q<0.9
2	61F	A	301[A]	62/62	0.77	0.28	50,68,100,113	62
2	61F	A	301[B]	62/62	0.77	0.28	52,69,101,113	62
2	61F	B	301[A]	62/62	0.84	0.30	28,42,55,60	62
2	61F	B	301[B]	62/62	0.84	0.30	31,42,55,60	62
2	61F	C	301[A]	62/62	0.84	0.25	27,39,49,53	62
2	61F	C	301[B]	62/62	0.84	0.25	27,39,49,53	62
3	IOD	C	303	1/1	0.90	0.05	76,76,76,76	0
3	IOD	B	303	1/1	0.95	0.05	80,80,80,80	0
4	CL	A	307	1/1	0.95	0.20	27,27,27,27	0
4	CL	B	304	1/1	0.96	0.18	36,36,36,36	0
4	CL	C	304	1/1	0.96	0.09	42,42,42,42	0
4	CL	B	307	1/1	0.97	0.17	32,32,32,32	0
4	CL	B	308	1/1	0.97	0.05	41,41,41,41	0
4	CL	A	304	1/1	0.97	0.22	27,27,27,27	0

*Continued on next page...*

Continued from previous page...

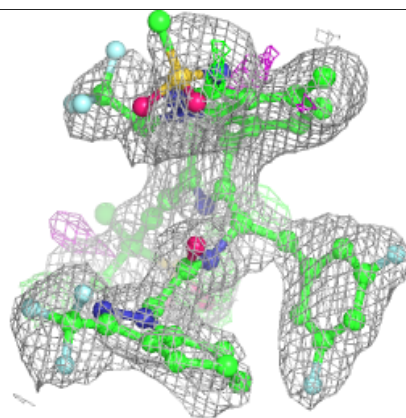
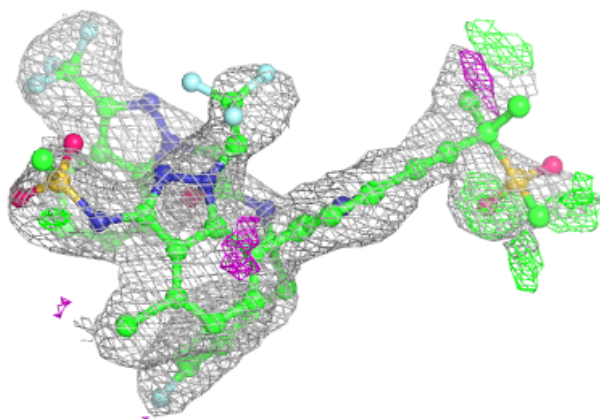
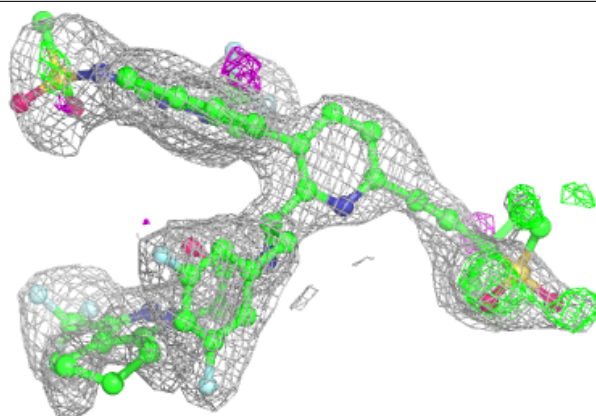
Mol	Type	Chain	Res	Atoms	RSCC	RSR	B-factors( $\text{\AA}^2$ )	Q<0.9
4	CL	C	306	1/1	0.97	0.19	24,24,24,24	0
4	CL	C	309	1/1	0.97	0.05	43,43,43,43	0
4	CL	C	307	1/1	0.98	0.17	34,34,34,34	0
4	CL	A	306	1/1	0.98	0.17	33,33,33,33	0
4	CL	C	310	1/1	0.98	0.15	49,49,49,49	0
4	CL	C	305	1/1	0.99	0.14	28,28,28,28	0
4	CL	B	305	1/1	0.99	0.18	19,19,19,19	0
3	IOD	A	302	1/1	0.99	0.06	41,41,41,41	0
3	IOD	C	302	1/1	0.99	0.08	35,35,35,35	0
4	CL	A	305	1/1	0.99	0.21	23,23,23,23	0
4	CL	B	306	1/1	1.00	0.26	0,0,0,0	0
4	CL	C	308	1/1	1.00	0.24	6,6,6,6	0
3	IOD	B	302	1/1	1.00	0.06	40,40,40,40	0
4	CL	A	303	1/1	1.00	0.20	19,19,19,19	0

The following is a graphical depiction of the model fit to experimental electron density of all instances of the Ligand of Interest. In addition, ligands with molecular weight > 250 and outliers as shown on the geometry validation Tables will also be included. Each fit is shown from different orientation to approximate a three-dimensional view.



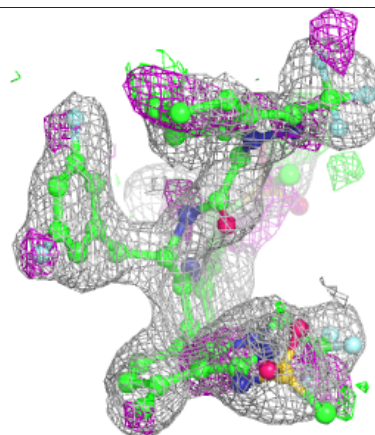
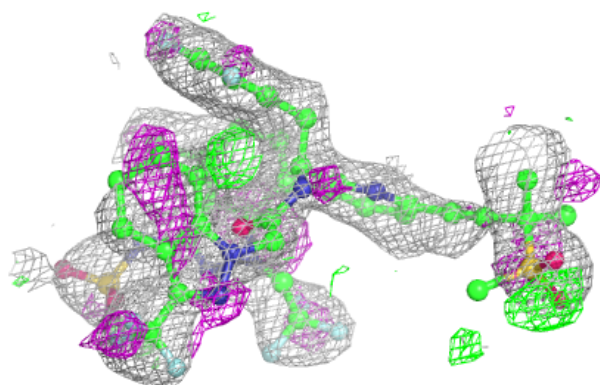
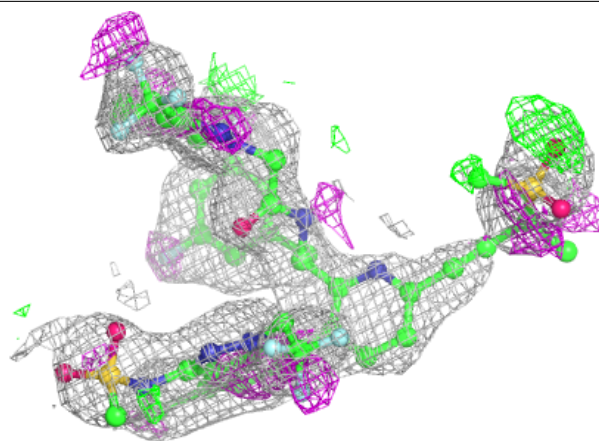
**Electron density around 61F A 301 (B):**

$2mF_o-DF_c$  (at 0.7 rmsd) in gray  
 $mF_o-DF_c$  (at 3 rmsd) in purple (negative)  
and green (positive)



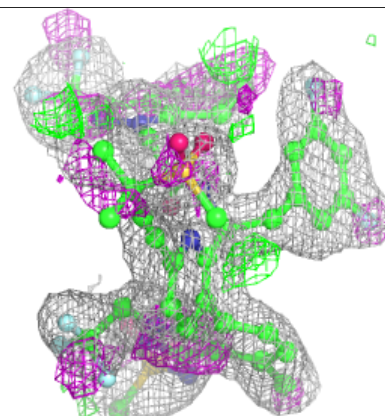
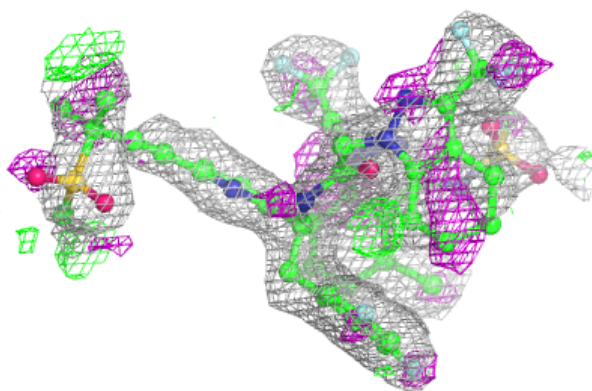
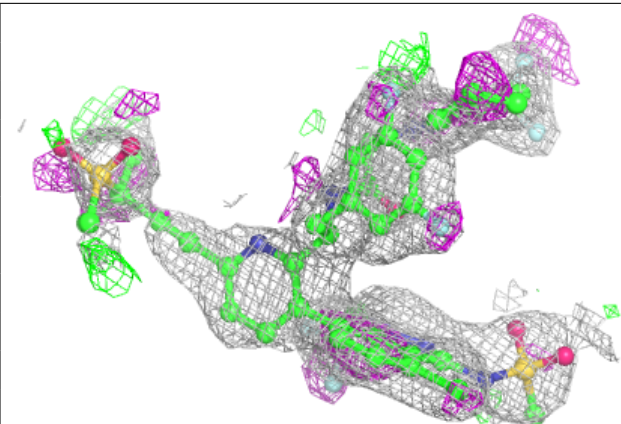
**Electron density around 61F B 301 (A):**

$2mF_o-DF_c$  (at 0.7 rmsd) in gray  
 $mF_o-DF_c$  (at 3 rmsd) in purple (negative)  
and green (positive)

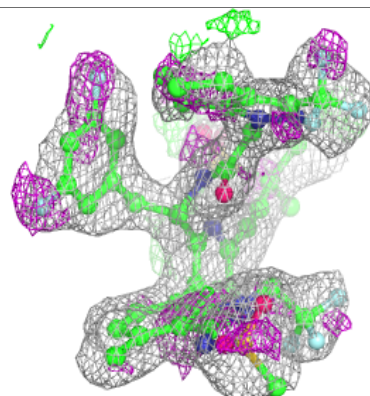
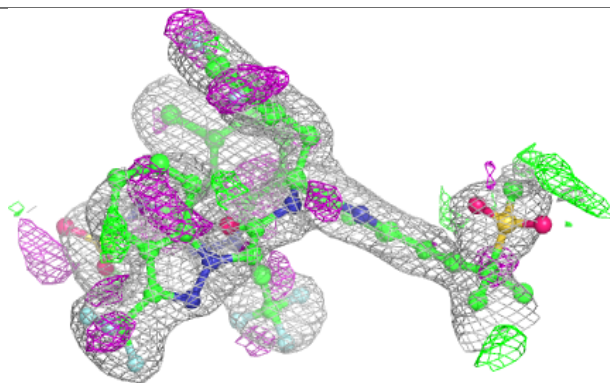
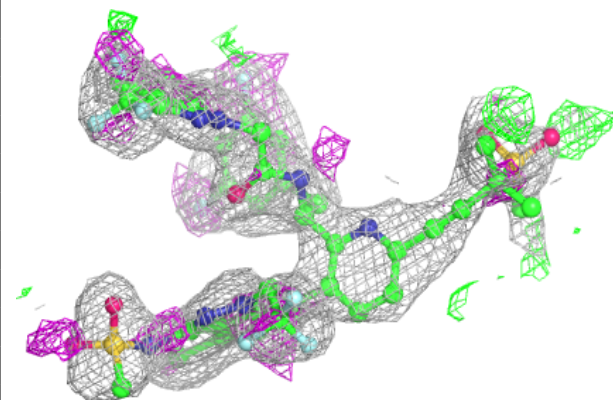


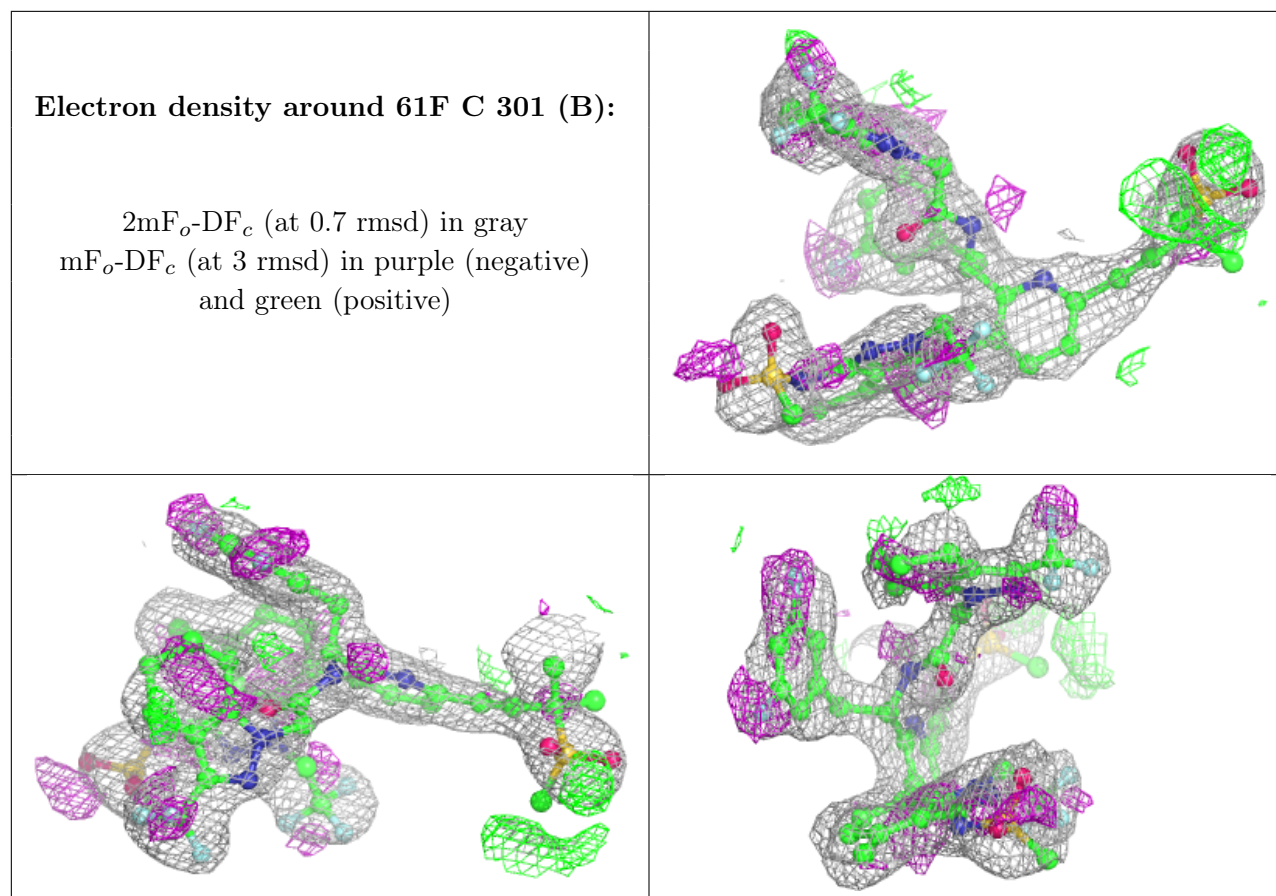
**Electron density around 61F B 301 (B):**

$2mF_o-DF_c$  (at 0.7 rmsd) in gray  
 $mF_o-DF_c$  (at 3 rmsd) in purple (negative)  
and green (positive)

**Electron density around 61F C 301 (A):**

$2mF_o-DF_c$  (at 0.7 rmsd) in gray  
 $mF_o-DF_c$  (at 3 rmsd) in purple (negative)  
and green (positive)





## 6.5 Other polymers [i](#)

There are no such residues in this entry.