



Full wwPDB X-ray Structure Validation Report ⓘ

Oct 14, 2023 – 05:12 PM EDT

PDB ID : 7RLE
Title : Crystal structure of PPAR gamma in complex with CREB-binding protein and agonist GW1929
Authors : Nemetsek, M.D.; Sprang, S.R.; Hughes, T.S.
Deposited on : 2021-07-23
Resolution : 2.50 Å(reported)

This is a Full wwPDB X-ray Structure Validation Report for a publicly released PDB entry.

We welcome your comments at validation@mail.wwpdb.org

A user guide is available at

<https://www.wwpdb.org/validation/2017/XrayValidationReportHelp>

with specific help available everywhere you see the ⓘ symbol.

The types of validation reports are described at

<http://www.wwpdb.org/validation/2017/FAQs#types>.

The following versions of software and data (see [references ⓘ](#)) were used in the production of this report:

MolProbity : 4.02b-467
Mogul : 1.8.5 (274361), CSD as541be (2020)
Xtrriage (Phenix) : 1.13
EDS : 2.36
buster-report : 1.1.7 (2018)
Percentile statistics : 20191225.v01 (using entries in the PDB archive December 25th 2019)
Refmac : 5.8.0158
CCP4 : 7.0.044 (Gargrove)
Ideal geometry (proteins) : Engh & Huber (2001)
Ideal geometry (DNA, RNA) : Parkinson et al. (1996)
Validation Pipeline (wwPDB-VP) : 2.36

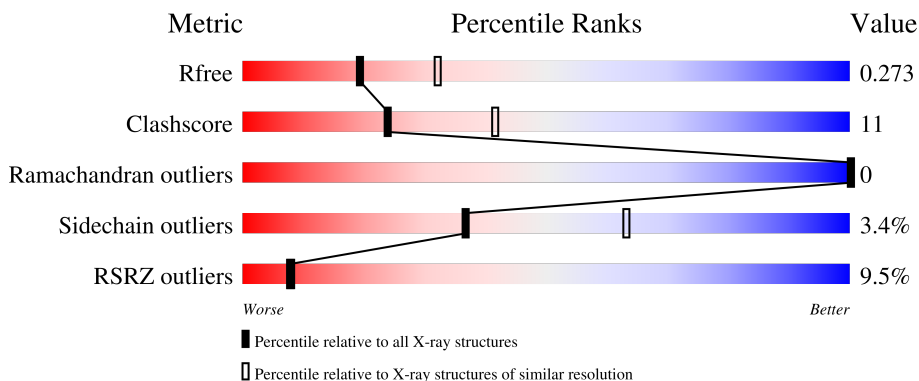
1 Overall quality at a glance

The following experimental techniques were used to determine the structure:

X-RAY DIFFRACTION

The reported resolution of this entry is 2.50 Å.

Percentile scores (ranging between 0-100) for global validation metrics of the entry are shown in the following graphic. The table shows the number of entries on which the scores are based.



Metric	Whole archive (#Entries)	Similar resolution (#Entries, resolution range(Å))
R_{free}	130704	4661 (2.50-2.50)
Clashscore	141614	5346 (2.50-2.50)
Ramachandran outliers	138981	5231 (2.50-2.50)
Sidechain outliers	138945	5233 (2.50-2.50)
RSRZ outliers	127900	4559 (2.50-2.50)

The table below summarises the geometric issues observed across the polymeric chains and their fit to the electron density. The red, orange, yellow and green segments of the lower bar indicate the fraction of residues that contain outliers for ≥ 3 , 2, 1 and 0 types of geometric quality criteria respectively. A grey segment represents the fraction of residues that are not modelled. The numeric value for each fraction is indicated below the corresponding segment, with a dot representing fractions $\leq 5\%$. The upper red bar (where present) indicates the fraction of residues that have poor fit to the electron density. The numeric value is given above the bar.

Mol	Chain	Length	Quality of chain
1	A	276	 14% 73% 22% 5%
1	C	276	 5% 76% 20% 5%
2	B	24	 54% 21% 25%
2	D	24	 38% 17% 42%

2 Entry composition [i](#)

There are 4 unique types of molecules in this entry. The entry contains 4548 atoms, of which 0 are hydrogens and 0 are deuteriums.

In the tables below, the ZeroOcc column contains the number of atoms modelled with zero occupancy, the AltConf column contains the number of residues with at least one atom in alternate conformation and the Trace column contains the number of residues modelled with at most 2 atoms.

- Molecule 1 is a protein called Peroxisome proliferator-activated receptor gamma.

Mol	Chain	Residues	Atoms					ZeroOcc	AltConf	Trace
			Total	C	N	O	S			
1	A	262	2105	1361	343	391	10	0	2	0
1	C	263	2108	1359	343	396	10	0	2	0

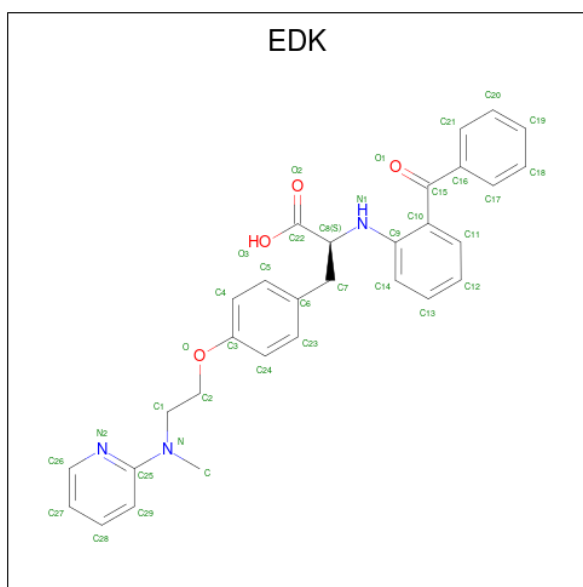
There are 2 discrepancies between the modelled and reference sequences:

Chain	Residue	Modelled	Actual	Comment	Reference
A	202	GLY	-	expression tag	UNP P37231
C	202	GLY	-	expression tag	UNP P37231

- Molecule 2 is a protein called CREB-binding protein.

Mol	Chain	Residues	Atoms				ZeroOcc	AltConf	Trace
			Total	C	N	O			
2	B	18	127	79	23	25	0	0	0
2	D	14	111	68	22	21	0	0	0

- Molecule 3 is (2 {S})-3-[4-[2-[methyl(pyridin-2-yl)amino]ethoxy]phenyl]-2-[[2-(phenylcarbonyl)phenyl]amino]propanoic acid (three-letter code: EDK) (formula: C₃₀H₂₉N₃O₄) (labeled as "Ligand of Interest" by depositor).



Mol	Chain	Residues	Atoms				ZeroOcc	AltConf
			Total	C	N	O		
3	A	1	37	30	3	4	0	0
3	C	1	37	30	3	4	0	0

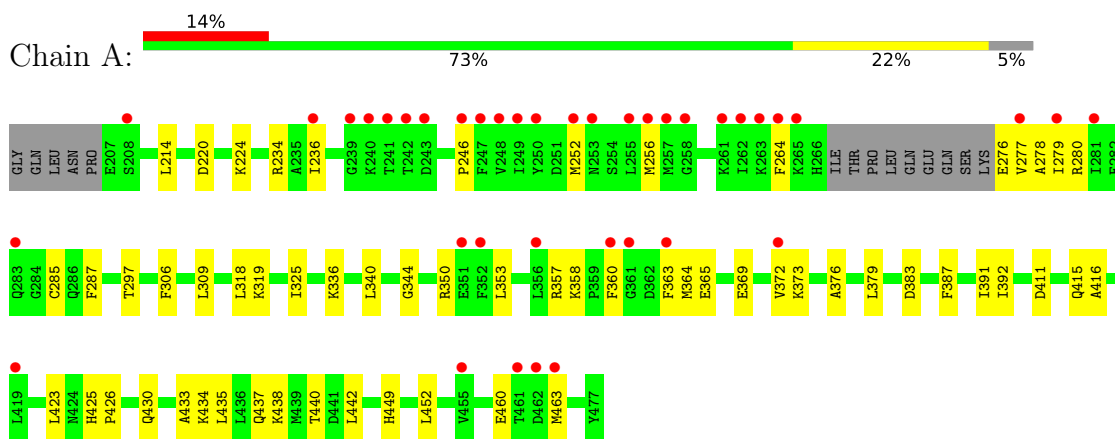
- Molecule 4 is water.

Mol	Chain	Residues	Atoms		ZeroOcc	AltConf
			Total	O		
4	A	7	7	7	0	0
4	C	16	16	16	0	0

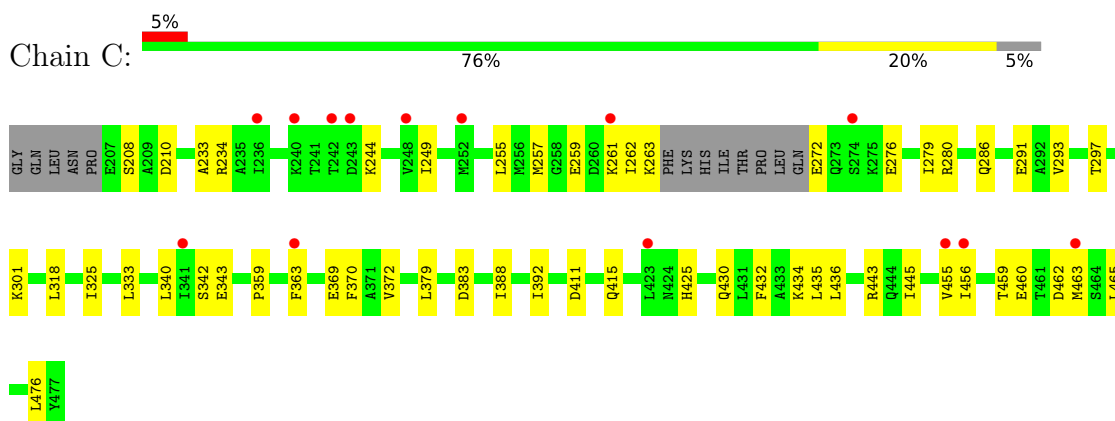
3 Residue-property plots [i](#)

These plots are drawn for all protein, RNA, DNA and oligosaccharide chains in the entry. The first graphic for a chain summarises the proportions of the various outlier classes displayed in the second graphic. The second graphic shows the sequence view annotated by issues in geometry and electron density. Residues are color-coded according to the number of geometric quality criteria for which they contain at least one outlier: green = 0, yellow = 1, orange = 2 and red = 3 or more. A red dot above a residue indicates a poor fit to the electron density ($RSRZ > 2$). Stretches of 2 or more consecutive residues without any outlier are shown as a green connector. Residues present in the sample, but not in the model, are shown in grey.

- Molecule 1: Peroxisome proliferator-activated receptor gamma



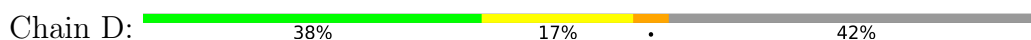
- Molecule 1: Peroxisome proliferator-activated receptor gamma



- Molecule 2: CREB-binding protein



- Molecule 2: CREB-binding protein



GLY	ASN	LEU	VAL	PRO	D62	K66	Q69	L73	L74	R75	GLY	GLY	SER	GLY	SER
-----	-----	-----	-----	-----	-----	-----	-----	-----	-----	-----	-----	-----	-----	-----	-----

4 Data and refinement statistics

Property	Value	Source
Space group	P 21 21 21	Depositor
Cell constants a, b, c, α , β , γ	59.89Å 99.42Å 109.18Å 90.00° 90.00° 90.00°	Depositor
Resolution (Å)	49.71 – 2.50 49.71 – 2.50	Depositor EDS
% Data completeness (in resolution range)	98.2 (49.71-2.50) 98.2 (49.71-2.50)	Depositor EDS
R_{merge}	0.13	Depositor
R_{sym}	(Not available)	Depositor
$\langle I/\sigma(I) \rangle$ ¹	1.82 (at 2.51Å)	Xtrriage
Refinement program	PHENIX 1.19.2_4158	Depositor
R, R_{free}	0.232 , 0.275 0.231 , 0.273	Depositor DCC
R_{free} test set	1594 reflections (6.99%)	wwPDB-VP
Wilson B-factor (Å ²)	57.6	Xtrriage
Anisotropy	0.180	Xtrriage
Bulk solvent k_{sol} (e/Å ³), B_{sol} (Å ²)	0.33 , 49.0	EDS
L-test for twinning ²	$\langle L \rangle = 0.48$, $\langle L^2 \rangle = 0.32$	Xtrriage
Estimated twinning fraction	No twinning to report.	Xtrriage
F_o, F_c correlation	0.93	EDS
Total number of atoms	4548	wwPDB-VP
Average B, all atoms (Å ²)	70.0	wwPDB-VP

Xtrriage's analysis on translational NCS is as follows: *The largest off-origin peak in the Patterson function is 6.17% of the height of the origin peak. No significant pseudotranslation is detected.*

¹Intensities estimated from amplitudes.

²Theoretical values of $\langle |L| \rangle$, $\langle L^2 \rangle$ for acentric reflections are 0.5, 0.333 respectively for untwinned datasets, and 0.375, 0.2 for perfectly twinned datasets.

5 Model quality [i](#)

5.1 Standard geometry [i](#)

Bond lengths and bond angles in the following residue types are not validated in this section: EDK

The Z score for a bond length (or angle) is the number of standard deviations the observed value is removed from the expected value. A bond length (or angle) with $|Z| > 5$ is considered an outlier worth inspection. RMSZ is the root-mean-square of all Z scores of the bond lengths (or angles).

Mol	Chain	Bond lengths		Bond angles	
		RMSZ	# Z >5	RMSZ	# Z >5
1	A	0.38	0/2141	0.69	0/2883
1	C	0.42	0/2142	0.70	0/2884
2	B	0.32	0/128	0.41	0/171
2	D	0.30	0/111	0.53	0/146
All	All	0.40	0/4522	0.69	0/6084

There are no bond length outliers.

There are no bond angle outliers.

There are no chirality outliers.

There are no planarity outliers.

5.2 Too-close contacts [i](#)

In the following table, the Non-H and H(model) columns list the number of non-hydrogen atoms and hydrogen atoms in the chain respectively. The H(added) column lists the number of hydrogen atoms added and optimized by MolProbity. The Clashes column lists the number of clashes within the asymmetric unit, whereas Symm-Clashes lists symmetry-related clashes.

Mol	Chain	Non-H	H(model)	H(added)	Clashes	Symm-Clashes
1	A	2105	0	2164	57	0
1	C	2108	0	2167	38	0
2	B	127	0	127	3	0
2	D	111	0	116	4	0
3	A	37	0	0	8	0
3	C	37	0	0	3	0
4	A	7	0	0	0	0
4	C	16	0	0	1	0
All	All	4548	0	4574	101	0

The all-atom clashscore is defined as the number of clashes found per 1000 atoms (including hydrogen atoms). The all-atom clashscore for this structure is 11.

All (101) close contacts within the same asymmetric unit are listed below, sorted by their clash magnitude.

Atom-1	Atom-2	Interatomic distance (Å)	Clash overlap (Å)
1:C:233:ALA:CB	1:C:333:LEU:HD23	1.84	1.07
1:A:236:ILE:HD12	1:A:340:LEU:CD2	1.90	1.01
1:C:233:ALA:HB2	1:C:333:LEU:HD23	1.49	0.93
1:C:233:ALA:HB2	1:C:333:LEU:CD2	1.97	0.93
1:A:363:PHE:CD2	3:A:501:EDK:C17	2.51	0.92
1:A:236:ILE:HD12	1:A:340:LEU:HD21	1.56	0.84
1:C:233:ALA:HB1	1:C:333:LEU:HD23	1.60	0.82
1:A:236:ILE:CD1	1:A:340:LEU:CD2	2.57	0.82
1:C:233:ALA:CB	1:C:333:LEU:CD2	2.58	0.80
1:A:236:ILE:CD1	1:A:340:LEU:HD23	2.14	0.78
1:A:363:PHE:CD2	3:A:501:EDK:C18	2.68	0.76
1:A:363:PHE:HD2	3:A:501:EDK:C17	1.94	0.75
1:A:236:ILE:HD12	1:A:340:LEU:HD23	1.66	0.75
1:C:359:PRO:HG2	1:C:456:ILE:HD11	1.69	0.74
1:A:460:GLU:HB3	1:A:463:MET:HG3	1.70	0.73
1:A:236:ILE:CD1	1:A:340:LEU:HD21	2.19	0.70
3:C:501:EDK:O1	3:C:501:EDK:N1	2.23	0.68
1:A:350:ARG:NH2	1:A:365:GLU:OE2	2.28	0.66
1:A:363:PHE:CE1	1:A:452:LEU:HB3	2.32	0.65
1:C:276:GLU:O	1:C:280:ARG:HG3	1.99	0.63
1:A:276:GLU:HB3	1:A:279:ILE:HG12	1.80	0.62
1:C:455:VAL:O	1:C:459:THR:HG22	1.98	0.62
1:A:411:ASP:O	1:A:415:GLN:HG3	2.01	0.60
1:A:340:LEU:HD23	1:A:344:GLY:HA2	1.84	0.60
1:C:359:PRO:HG2	1:C:456:ILE:CD1	2.31	0.60
1:A:363:PHE:CE2	3:A:501:EDK:C17	2.85	0.59
1:C:233:ALA:HB2	1:C:333:LEU:HD21	1.82	0.57
1:C:411:ASP:O	1:C:415:GLN:HG3	2.05	0.56
1:C:272:GLU:N	1:C:272:GLU:OE1	2.38	0.56
1:A:336:LYS:NZ	1:A:350:ARG:HH12	2.04	0.56
1:C:379:LEU:HD11	1:C:435:LEU:HD13	1.88	0.55
1:A:264:PHE:HE1	1:A:287:PHE:HB2	1.72	0.55
1:A:363:PHE:HD2	3:A:501:EDK:C16	2.20	0.54
1:A:440:THR:OG1	1:C:443:ARG:HG3	2.07	0.54
1:C:276:GLU:HB2	1:C:279:ILE:HG12	1.90	0.54
2:D:62:ASP:O	2:D:66:LYS:HG3	2.09	0.52
1:A:383:ASP:OD2	1:A:425:HIS:NE2	2.38	0.52

Continued on next page...

Continued from previous page...

Atom-1	Atom-2	Interatomic distance (Å)	Clash overlap (Å)
1:A:430:GLN:O	1:A:434:LYS:HG3	2.08	0.52
1:C:370:PHE:HB2	1:C:445:ILE:HD11	1.92	0.52
1:C:333:LEU:HD22	1:C:340:LEU:HD12	1.92	0.51
1:A:236:ILE:HD13	1:A:340:LEU:HD23	1.90	0.51
1:A:430:GLN:HG3	1:A:433:ALA:HB3	1.94	0.50
1:C:297:THR:HG21	2:D:73:LEU:HB3	1.94	0.50
3:A:501:EDK:C17	3:A:501:EDK:C11	2.86	0.49
1:A:438:LYS:O	1:A:442:LEU:HD22	2.13	0.49
1:A:437:GLN:O	1:A:440:THR:HG22	2.13	0.49
2:D:69:GLN:HE21	2:D:69:GLN:HA	1.79	0.47
1:A:277:VAL:HA	1:A:280:ARG:HD3	1.96	0.47
3:C:501:EDK:C14	3:C:501:EDK:C22	2.91	0.47
1:A:224:LYS:N	1:A:224:LYS:HD2	2.30	0.47
1:C:286:GLN:OE1	1:C:465:LEU:HA	2.14	0.47
1:A:353:LEU:HG	1:A:364:MET:HG3	1.95	0.47
1:C:342:SER:C	1:C:343:GLU:HG2	2.35	0.46
1:C:297:THR:HG23	1:C:318:LEU:HD11	1.98	0.46
1:A:278:ALA:HB1	1:A:360:PHE:CD2	2.51	0.46
1:A:369:GLU:O	1:A:372:VAL:HG22	2.15	0.46
1:C:383:ASP:OD2	1:C:425:HIS:NE2	2.41	0.46
1:A:236:ILE:HD11	1:A:344:GLY:HA3	1.96	0.46
1:A:360:PHE:H	1:A:360:PHE:HD1	1.62	0.46
1:A:279:ILE:HD12	1:A:463:MET:HE1	1.98	0.46
1:A:214:LEU:HD23	1:A:416:ALA:HB2	1.97	0.46
1:A:387:PHE:CE2	1:A:391:ILE:HD11	2.51	0.46
1:A:264:PHE:CE1	1:A:287:PHE:HB2	2.51	0.45
1:A:363:PHE:CE2	3:A:501:EDK:C18	2.99	0.45
1:A:236:ILE:HG21	1:A:246:PRO:HG3	1.98	0.45
1:C:370:PHE:CB	1:C:445:ILE:HD11	2.45	0.45
1:A:306:PHE:HA	1:A:309:LEU:HD12	1.98	0.45
2:B:60:VAL:HB	2:B:61:PRO:HD3	1.99	0.45
1:A:236:ILE:CD1	1:A:344:GLY:HA3	2.48	0.44
1:A:236:ILE:HD13	1:A:340:LEU:CD2	2.46	0.44
1:A:297:THR:HG23	1:A:318:LEU:HD11	2.00	0.44
1:A:325:ILE:HD11	1:A:392:ILE:HG13	1.99	0.44
1:A:449:HIS:NE2	3:A:501:EDK:O2	2.51	0.44
1:A:220:ASP:O	1:A:224:LYS:HD2	2.17	0.44
1:A:379:LEU:HD11	1:A:435:LEU:HD13	1.98	0.44
1:C:325:ILE:HD11	1:C:392:ILE:HG13	2.00	0.44
1:A:336:LYS:HG2	1:A:372:VAL:HG11	2.00	0.43
1:C:325:ILE:HG12	1:C:388:ILE:HB	2.00	0.43

Continued on next page...

Continued from previous page...

Atom-1	Atom-2	Interatomic distance (Å)	Clash overlap (Å)
1:C:363:PHE:CD2	3:C:501:EDK:C21	3.01	0.43
1:C:432:PHE:CZ	1:C:436:LEU:HD11	2.54	0.43
1:C:301:LYS:HE2	2:D:74:LEU:HA	2.01	0.43
1:C:233:ALA:HB1	1:C:333:LEU:CD2	2.38	0.42
1:C:430:GLN:O	1:C:434:LYS:HG3	2.18	0.42
1:C:459:THR:HG23	1:C:460:GLU:HG2	2.00	0.42
1:C:462:ASP:O	1:C:462:ASP:OD1	2.37	0.42
1:A:373:LYS:O	1:A:376:ALA:HB3	2.18	0.42
1:C:276:GLU:HB2	1:C:279:ILE:CG1	2.50	0.42
1:A:252:MET:O	1:A:256:MET:SD	2.77	0.41
1:A:318:LEU:HD23	1:A:318:LEU:HA	1.86	0.41
1:C:369:GLU:O	1:C:372:VAL:HG22	2.21	0.41
1:A:279:ILE:HD12	1:A:463:MET:CE	2.50	0.41
1:A:360:PHE:CD1	1:A:360:PHE:N	2.89	0.41
1:C:318:LEU:HD23	1:C:318:LEU:HA	1.90	0.41
2:B:62:ASP:O	2:B:66:LYS:HG3	2.21	0.41
1:C:249:ILE:HD13	1:C:255:LEU:HD12	2.04	0.40
1:A:319:LYS:HD2	2:B:67:HIS:NE2	2.36	0.40
1:A:387:PHE:O	1:A:391:ILE:HG13	2.21	0.40
1:C:430:GLN:NE2	4:C:605:HOH:O	2.54	0.40
1:A:336:LYS:HD3	1:A:350:ARG:NH1	2.36	0.40
1:A:423:LEU:O	1:A:426:PRO:HD3	2.21	0.40

There are no symmetry-related clashes.

5.3 Torsion angles [i](#)

5.3.1 Protein backbone [i](#)

In the following table, the Percentiles column shows the percent Ramachandran outliers of the chain as a percentile score with respect to all X-ray entries followed by that with respect to entries of similar resolution.

The Analysed column shows the number of residues for which the backbone conformation was analysed, and the total number of residues.

Mol	Chain	Analysed	Favoured	Allowed	Outliers	Percentiles	
1	A	258/276 (94%)	255 (99%)	3 (1%)	0	100	100
1	C	259/276 (94%)	256 (99%)	3 (1%)	0	100	100
2	B	16/24 (67%)	14 (88%)	2 (12%)	0	100	100

Continued on next page...

Continued from previous page...

Mol	Chain	Analysed	Favoured	Allowed	Outliers	Percentiles	
2	D	12/24 (50%)	11 (92%)	1 (8%)	0	100	100
All	All	545/600 (91%)	536 (98%)	9 (2%)	0	100	100

There are no Ramachandran outliers to report.

5.3.2 Protein sidechains [i](#)

In the following table, the Percentiles column shows the percent sidechain outliers of the chain as a percentile score with respect to all X-ray entries followed by that with respect to entries of similar resolution.

The Analysed column shows the number of residues for which the sidechain conformation was analysed, and the total number of residues.

Mol	Chain	Analysed	Rotameric	Outliers	Percentiles	
1	A	235/248 (95%)	231 (98%)	4 (2%)	60	82
1	C	236/248 (95%)	224 (95%)	12 (5%)	24	45
2	B	13/18 (72%)	13 (100%)	0	100	100
2	D	12/18 (67%)	11 (92%)	1 (8%)	11	22
All	All	496/532 (93%)	479 (97%)	17 (3%)	37	63

All (17) residues with a non-rotameric sidechain are listed below:

Mol	Chain	Res	Type
1	A	234	ARG
1	A	285	CYS
1	A	357	ARG
1	A	358	LYS
1	C	208	SER
1	C	210	ASP
1	C	234	ARG
1	C	244	LYS
1	C	257	MET
1	C	259	GLU
1	C	261	LYS
1	C	262	ILE
1	C	263	LYS
1	C	291	GLU
1	C	463	MET
1	C	476	LEU

Continued on next page...

Continued from previous page...

Mol	Chain	Res	Type
2	D	62	ASP

Sometimes sidechains can be flipped to improve hydrogen bonding and reduce clashes. All (2) such sidechains are listed below:

Mol	Chain	Res	Type
1	A	415	GLN
2	D	69	GLN

5.3.3 RNA [i](#)

There are no RNA molecules in this entry.

5.4 Non-standard residues in protein, DNA, RNA chains [i](#)

There are no non-standard protein/DNA/RNA residues in this entry.

5.5 Carbohydrates [i](#)

There are no monosaccharides in this entry.

5.6 Ligand geometry [i](#)

2 ligands are modelled in this entry.

In the following table, the Counts columns list the number of bonds (or angles) for which Mogul statistics could be retrieved, the number of bonds (or angles) that are observed in the model and the number of bonds (or angles) that are defined in the Chemical Component Dictionary. The Link column lists molecule types, if any, to which the group is linked. The Z score for a bond length (or angle) is the number of standard deviations the observed value is removed from the expected value. A bond length (or angle) with $|Z| > 2$ is considered an outlier worth inspection. RMSZ is the root-mean-square of all Z scores of the bond lengths (or angles).

Mol	Type	Chain	Res	Link	Bond lengths			Bond angles		
					Counts	RMSZ	$\# Z > 2$	Counts	RMSZ	$\# Z > 2$
3	EDK	C	501	-	40,40,40	1.44	8 (20%)	52,53,53	1.89	6 (11%)
3	EDK	A	501	-	40,40,40	1.29	4 (10%)	52,53,53	1.37	10 (19%)

In the following table, the Chirals column lists the number of chiral outliers, the number of chiral centers analysed, the number of these observed in the model and the number defined in the

Chemical Component Dictionary. Similar counts are reported in the Torsion and Rings columns. '-' means no outliers of that kind were identified.

Mol	Type	Chain	Res	Link	Chirals	Torsions	Rings
3	EDK	C	501	-	-	1/30/30/30	0/4/4/4
3	EDK	A	501	-	-	2/30/30/30	0/4/4/4

All (12) bond length outliers are listed below:

Mol	Chain	Res	Type	Atoms	Z	Observed(Å)	Ideal(Å)
3	C	501	EDK	C10-C9	-3.73	1.35	1.41
3	A	501	EDK	O1-C15	-3.30	1.16	1.22
3	C	501	EDK	O1-C15	-3.30	1.16	1.22
3	A	501	EDK	C9-N1	3.09	1.44	1.37
3	C	501	EDK	C8-N1	-2.75	1.42	1.45
3	A	501	EDK	C28-C29	-2.69	1.33	1.38
3	C	501	EDK	C9-N1	2.44	1.43	1.37
3	C	501	EDK	C25-N	2.34	1.43	1.37
3	C	501	EDK	C28-C29	-2.29	1.34	1.38
3	C	501	EDK	O3-C22	-2.25	1.23	1.30
3	C	501	EDK	C14-C9	-2.18	1.36	1.39
3	A	501	EDK	C10-C9	-2.13	1.37	1.41

All (16) bond angle outliers are listed below:

Mol	Chain	Res	Type	Atoms	Z	Observed(°)	Ideal(°)
3	C	501	EDK	C9-C10-C15	-9.01	116.08	121.96
3	C	501	EDK	C6-C7-C8	-3.96	102.46	113.39
3	A	501	EDK	C7-C6-C23	-3.61	113.73	120.91
3	C	501	EDK	N2-C25-N	3.24	120.50	116.39
3	C	501	EDK	C7-C8-N1	-3.02	104.44	110.79
3	A	501	EDK	N2-C25-N	2.88	120.04	116.39
3	A	501	EDK	C2-C1-N	-2.66	107.13	112.32
3	A	501	EDK	C-N-C1	2.57	122.43	115.42
3	A	501	EDK	C7-C6-C5	2.23	125.33	120.91
3	A	501	EDK	C27-C26-N2	-2.19	119.85	123.43
3	C	501	EDK	C9-N1-C8	-2.19	120.18	124.51
3	A	501	EDK	O3-C22-O2	-2.16	119.18	124.09
3	A	501	EDK	C29-C25-N	-2.12	118.50	121.97
3	A	501	EDK	C9-N1-C8	-2.11	120.33	124.51
3	C	501	EDK	C1-N-C25	-2.10	118.73	120.94
3	A	501	EDK	O3-C22-C8	2.09	120.34	113.40

There are no chirality outliers.

All (3) torsion outliers are listed below:

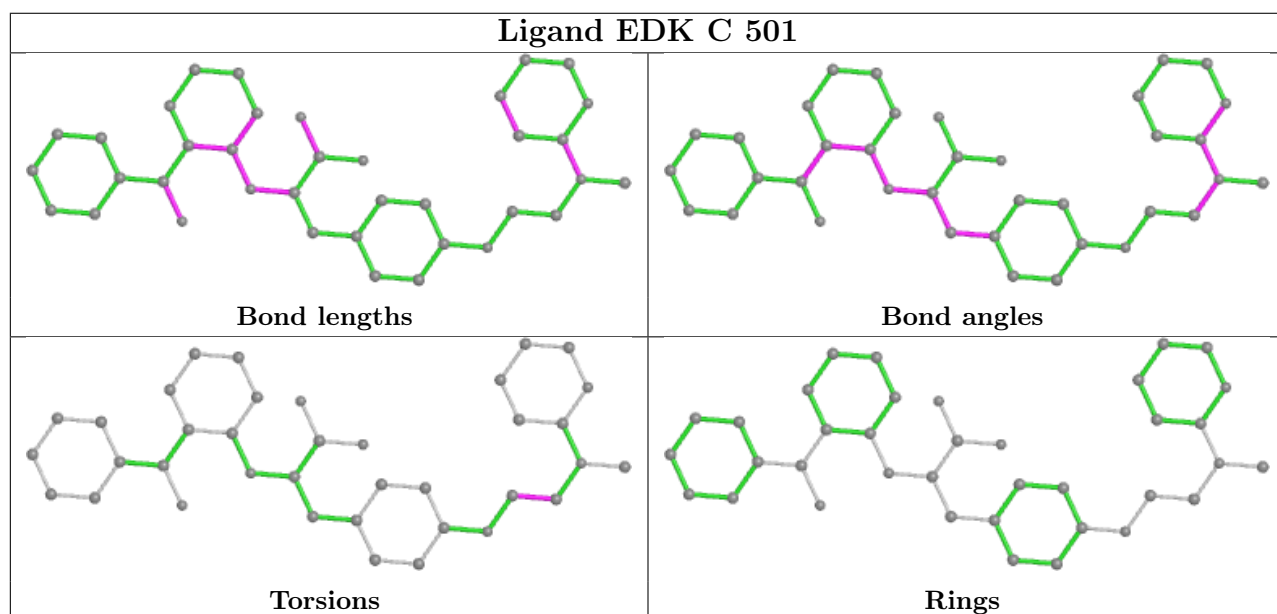
Mol	Chain	Res	Type	Atoms
3	C	501	EDK	N-C1-C2-O
3	A	501	EDK	C24-C3-O-C2
3	A	501	EDK	C4-C3-O-C2

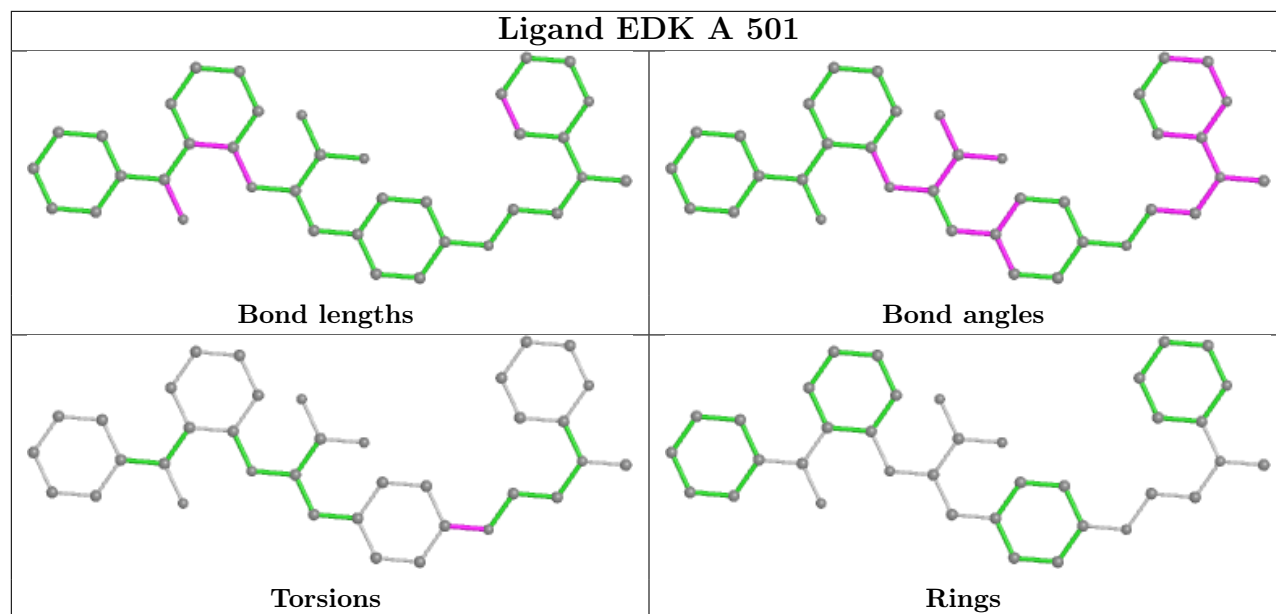
There are no ring outliers.

2 monomers are involved in 11 short contacts:

Mol	Chain	Res	Type	Clashes	Symm-Clashes
3	C	501	EDK	3	0
3	A	501	EDK	8	0

The following is a two-dimensional graphical depiction of Mogul quality analysis of bond lengths, bond angles, torsion angles, and ring geometry for all instances of the Ligand of Interest. In addition, ligands with molecular weight > 250 and outliers as shown on the validation Tables will also be included. For torsion angles, if less than 5% of the Mogul distribution of torsion angles is within 10 degrees of the torsion angle in question, then that torsion angle is considered an outlier. Any bond that is central to one or more torsion angles identified as an outlier by Mogul will be highlighted in the graph. For rings, the root-mean-square deviation (RMSD) between the ring in question and similar rings identified by Mogul is calculated over all ring torsion angles. If the average RMSD is greater than 60 degrees and the minimal RMSD between the ring in question and any Mogul-identified rings is also greater than 60 degrees, then that ring is considered an outlier. The outliers are highlighted in purple. The color gray indicates Mogul did not find sufficient equivalents in the CSD to analyse the geometry.





5.7 Other polymers [i](#)

There are no such residues in this entry.

5.8 Polymer linkage issues [i](#)

There are no chain breaks in this entry.

6 Fit of model and data

6.1 Protein, DNA and RNA chains

In the following table, the column labelled ‘#RSRZ > 2’ contains the number (and percentage) of RSRZ outliers, followed by percent RSRZ outliers for the chain as percentile scores relative to all X-ray entries and entries of similar resolution. The OWAB column contains the minimum, median, 95th percentile and maximum values of the occupancy-weighted average B-factor per residue. The column labelled ‘Q < 0.9’ lists the number of (and percentage) of residues with an average occupancy less than 0.9.

Mol	Chain	Analysed	<RSRZ>	#RSRZ>2	OWAB(Å ²)	Q<0.9
1	A	262/276 (94%)	0.95	39 (14%) 2 2	42, 67, 114, 128	0
1	C	263/276 (95%)	0.50	14 (5%) 26 28	46, 64, 99, 112	0
2	B	18/24 (75%)	0.33	0 100 100	52, 64, 89, 91	0
2	D	14/24 (58%)	0.64	0 100 100	62, 72, 82, 86	0
All	All	557/600 (92%)	0.71	53 (9%) 8 8	42, 65, 108, 128	0

All (53) RSRZ outliers are listed below:

Mol	Chain	Res	Type	RSRZ
1	A	247	PHE	9.3
1	A	236	ILE	7.7
1	A	262	ILE	7.4
1	A	256	MET	6.1
1	A	240	LYS	5.8
1	A	250	TYR	5.7
1	A	246	PRO	5.5
1	A	463	MET	5.5
1	A	248	VAL	5.3
1	A	361	GLY	5.2
1	C	243	ASP	4.9
1	A	277	VAL	4.6
1	A	360	PHE	4.2
1	A	249	ILE	4.2
1	A	351	GLU	4.2
1	C	240	LYS	4.1
1	A	255	LEU	4.1
1	A	242	THR	4.1
1	A	257	MET	4.0
1	C	463	MET	3.9
1	C	261	LYS	3.7

Continued on next page...

Continued from previous page...

Mol	Chain	Res	Type	RSRZ
1	A	281	ILE	3.6
1	A	264	PHE	3.5
1	A	253	ASN	3.5
1	C	456	ILE	3.4
1	A	352	PHE	3.3
1	C	252	MET	3.1
1	A	455	VAL	3.0
1	A	208	SER	2.8
1	C	274	SER	2.6
1	A	462	ASP	2.6
1	C	423	LEU	2.6
1	A	241	THR	2.5
1	A	252	MET	2.5
1	A	363	PHE	2.5
1	A	461	THR	2.4
1	A	356	LEU	2.4
1	A	239	GLY	2.4
1	A	263	LYS	2.4
1	C	242	THR	2.4
1	A	279	ILE	2.4
1	C	363	PHE	2.4
1	C	341	ILE	2.3
1	A	261	LYS	2.3
1	A	265	LYS	2.3
1	A	419	LEU	2.3
1	C	236	ILE	2.2
1	A	258	GLY	2.2
1	A	283	GLN	2.2
1	C	248	VAL	2.1
1	A	243	ASP	2.1
1	C	455	VAL	2.0
1	A	372	VAL	2.0

6.2 Non-standard residues in protein, DNA, RNA chains [i](#)

There are no non-standard protein/DNA/RNA residues in this entry.

6.3 Carbohydrates [i](#)

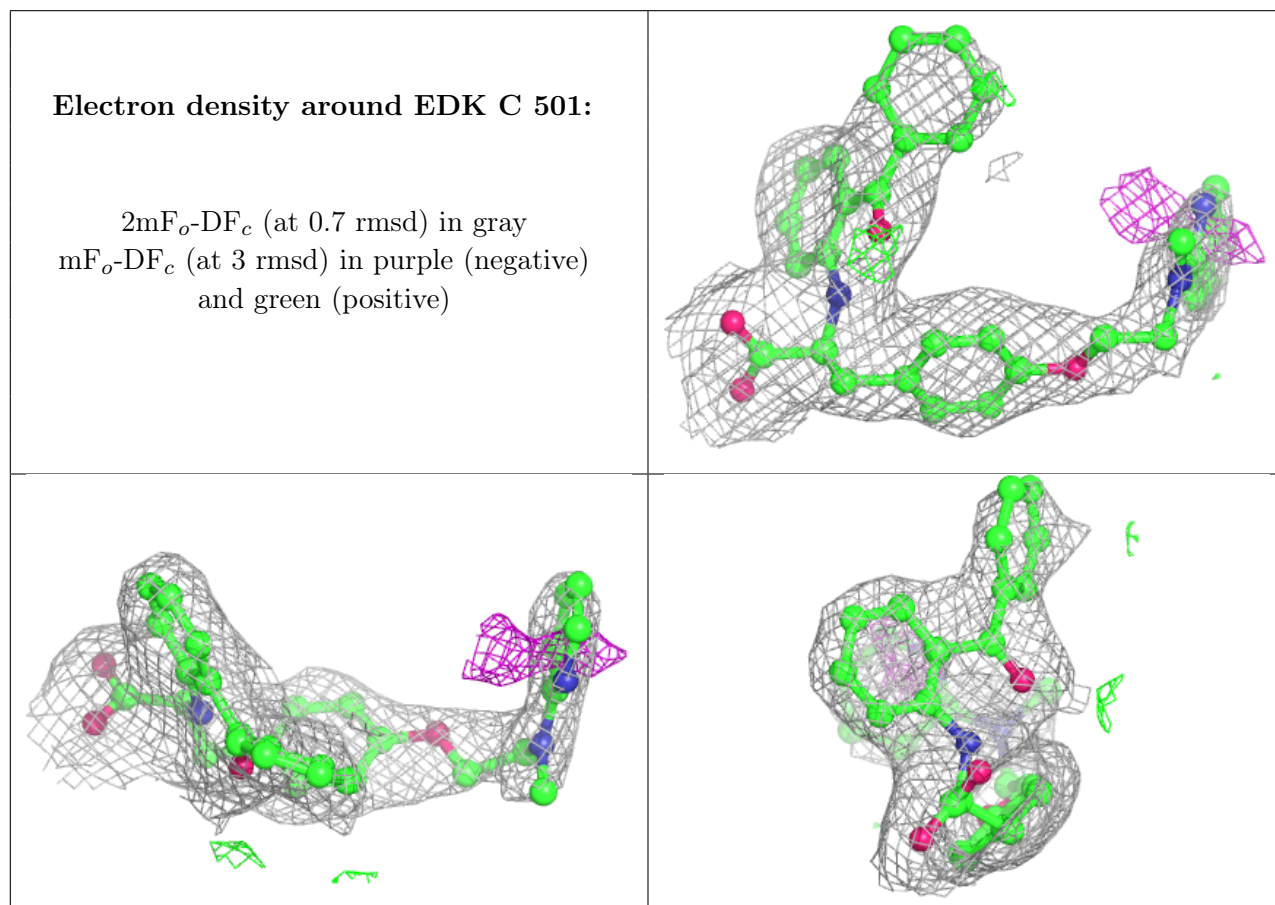
There are no monosaccharides in this entry.

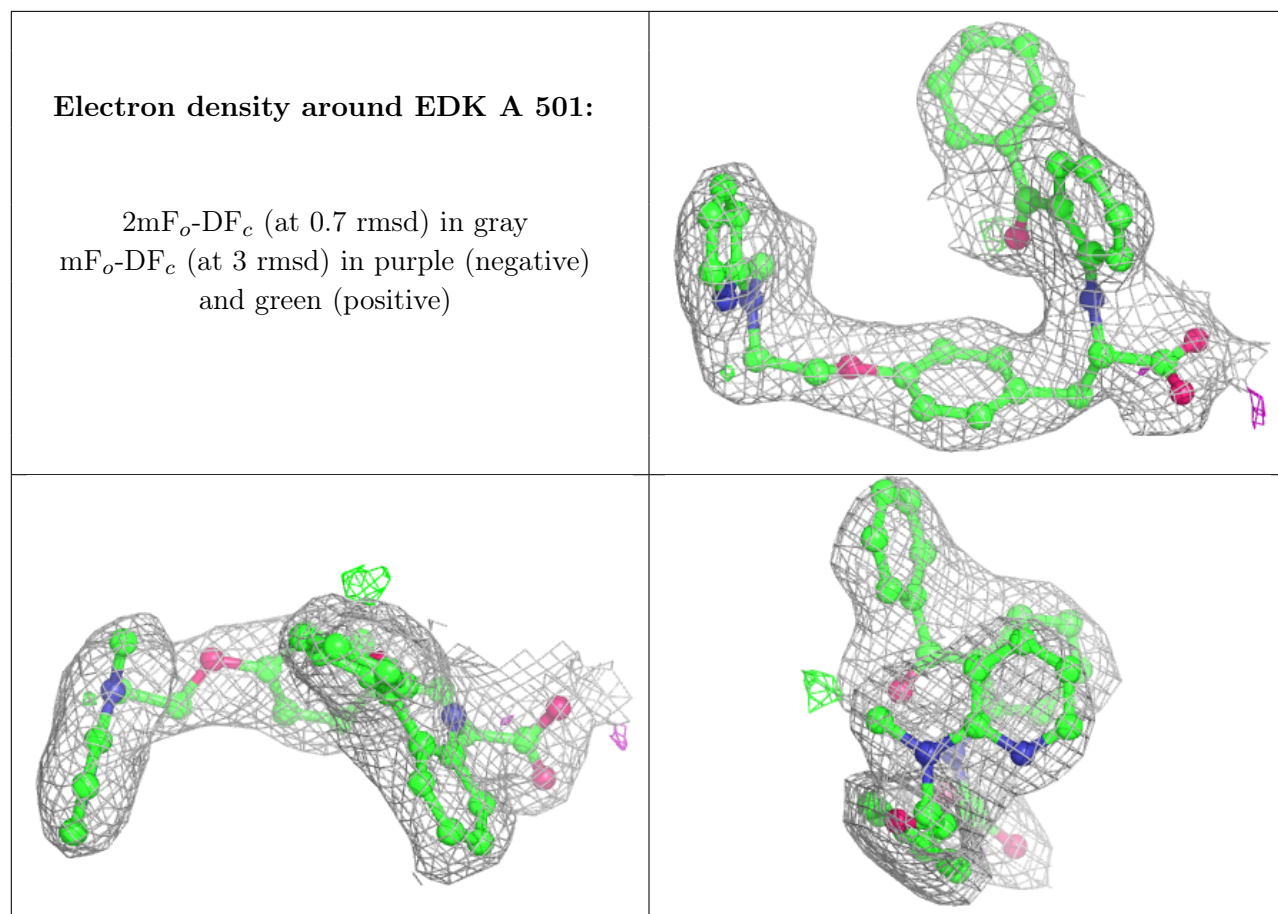
6.4 Ligands [i](#)

In the following table, the Atoms column lists the number of modelled atoms in the group and the number defined in the chemical component dictionary. The B-factors column lists the minimum, median, 95th percentile and maximum values of B factors of atoms in the group. The column labelled 'Q<0.9' lists the number of atoms with occupancy less than 0.9.

Mol	Type	Chain	Res	Atoms	RSCC	RSR	B-factors(Å ²)	Q<0.9
3	EDK	C	501	37/37	0.86	0.26	55,68,83,87	0
3	EDK	A	501	37/37	0.89	0.23	56,69,83,89	0

The following is a graphical depiction of the model fit to experimental electron density of all instances of the Ligand of Interest. In addition, ligands with molecular weight > 250 and outliers as shown on the geometry validation Tables will also be included. Each fit is shown from different orientation to approximate a three-dimensional view.





6.5 Other polymers [i](#)

There are no such residues in this entry.