



Full wwPDB X-ray Structure Validation Report ⓘ

Oct 15, 2023 – 04:46 PM EDT

PDB ID : 7R6J
Title : Co-crystal structure of Chaetomium glucosidase with compound 1
Authors : Karade, S.S.; Mariuzza, R.A.
Deposited on : 2021-06-22
Resolution : 1.91 Å(reported)

This is a Full wwPDB X-ray Structure Validation Report for a publicly released PDB entry.

We welcome your comments at validation@mail.wwpdb.org

A user guide is available at

<https://www.wwpdb.org/validation/2017/XrayValidationReportHelp>

with specific help available everywhere you see the ⓘ symbol.

The types of validation reports are described at

<http://www.wwpdb.org/validation/2017/FAQs#types>.

The following versions of software and data (see [references ⓘ](#)) were used in the production of this report:

MolProbity : 4.02b-467
Mogul : 1.8.5 (274361), CSD as541be (2020)
Xtriage (Phenix) : 1.13
EDS : 2.36
buster-report : 1.1.7 (2018)
Percentile statistics : 20191225.v01 (using entries in the PDB archive December 25th 2019)
Refmac : 5.8.0158
CCP4 : 7.0.044 (Gargrove)
Ideal geometry (proteins) : Engh & Huber (2001)
Ideal geometry (DNA, RNA) : Parkinson et al. (1996)
Validation Pipeline (wwPDB-VP) : 2.36

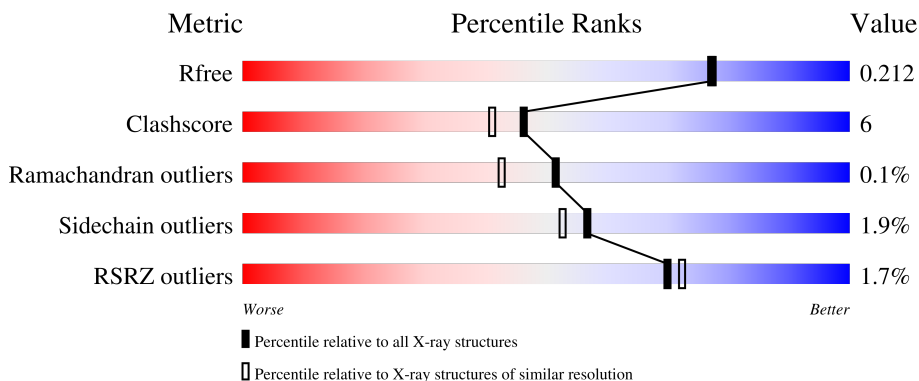
1 Overall quality at a glance

The following experimental techniques were used to determine the structure:

X-RAY DIFFRACTION

The reported resolution of this entry is 1.91 Å.

Percentile scores (ranging between 0-100) for global validation metrics of the entry are shown in the following graphic. The table shows the number of entries on which the scores are based.



Metric	Whole archive (#Entries)	Similar resolution (#Entries, resolution range(Å))
R_{free}	130704	6207 (1.90-1.90)
Clashscore	141614	6847 (1.90-1.90)
Ramachandran outliers	138981	6760 (1.90-1.90)
Sidechain outliers	138945	6760 (1.90-1.90)
RSRZ outliers	127900	6082 (1.90-1.90)

The table below summarises the geometric issues observed across the polymeric chains and their fit to the electron density. The red, orange, yellow and green segments of the lower bar indicate the fraction of residues that contain outliers for ≥ 3 , 2, 1 and 0 types of geometric quality criteria respectively. A grey segment represents the fraction of residues that are not modelled. The numeric value for each fraction is indicated below the corresponding segment, with a dot representing fractions $\leq 5\%$. The upper red bar (where present) indicates the fraction of residues that have poor fit to the electron density. The numeric value is given above the bar.

Mol	Chain	Length	Quality of chain
1	A	819	
1	B	819	
2	C	2	

The following table lists non-polymeric compounds, carbohydrate monomers and non-standard residues in protein, DNA, RNA chains that are outliers for geometric or electron-density-fit criteria:

Mol	Type	Chain	Res	Chirality	Geometry	Clashes	Electron density
4	GOL	A	904	-	-	X	-
4	GOL	A	906	-	-	X	-

2 Entry composition i

There are 7 unique types of molecules in this entry. The entry contains 13657 atoms, of which 0 are hydrogens and 0 are deuteriums.

In the tables below, the ZeroOcc column contains the number of atoms modelled with zero occupancy, the AltConf column contains the number of residues with at least one atom in alternate conformation and the Trace column contains the number of residues modelled with at most 2 atoms.

- Molecule 1 is a protein called Chaetomium alpha glucosidase.

Mol	Chain	Residues	Atoms					ZeroOcc	AltConf	Trace
			Total	C	N	O	S			
1	A	765	6089	3916	1026	1133	14	0	4	0
1	B	764	6087	3905	1022	1146	14	0	2	0

There are 78 discrepancies between the modelled and reference sequences:

Chain	Residue	Modelled	Actual	Comment	Reference
A	-1	MET	-	initiating methionine	UNP G0SFD1
A	0	GLY	-	expression tag	UNP G0SFD1
A	1	ILE	-	expression tag	UNP G0SFD1
A	2	LEU	-	expression tag	UNP G0SFD1
A	3	PRO	-	expression tag	UNP G0SFD1
A	4	SER	-	expression tag	UNP G0SFD1
A	5	PRO	-	expression tag	UNP G0SFD1
A	6	GLY	-	expression tag	UNP G0SFD1
A	7	MET	-	expression tag	UNP G0SFD1
A	8	PRO	-	expression tag	UNP G0SFD1
A	9	ALA	-	expression tag	UNP G0SFD1
A	10	LEU	-	expression tag	UNP G0SFD1
A	11	LEU	-	expression tag	UNP G0SFD1
A	12	SER	-	expression tag	UNP G0SFD1
A	13	LEU	-	expression tag	UNP G0SFD1
A	14	VAL	-	expression tag	UNP G0SFD1
A	15	SER	-	expression tag	UNP G0SFD1
A	16	LEU	-	expression tag	UNP G0SFD1
A	17	LEU	-	expression tag	UNP G0SFD1
A	18	SER	-	expression tag	UNP G0SFD1
A	19	VAL	-	expression tag	UNP G0SFD1
A	20	LEU	-	expression tag	UNP G0SFD1
A	21	LEU	-	expression tag	UNP G0SFD1
A	22	MET	-	expression tag	UNP G0SFD1
A	23	GLY	-	expression tag	UNP G0SFD1

Continued on next page...

Continued from previous page...

Chain	Residue	Modelled	Actual	Comment	Reference
A	24	CYS	-	expression tag	UNP G0SFD1
A	25	VAL	-	expression tag	UNP G0SFD1
A	26	ALA	-	expression tag	UNP G0SFD1
A	27	GLU	-	expression tag	UNP G0SFD1
A	28	THR	-	expression tag	UNP G0SFD1
A	29	GLY	-	expression tag	UNP G0SFD1
A	810	SER	-	expression tag	UNP G0SFD1
A	811	GLY	-	expression tag	UNP G0SFD1
A	812	HIS	-	expression tag	UNP G0SFD1
A	813	HIS	-	expression tag	UNP G0SFD1
A	814	HIS	-	expression tag	UNP G0SFD1
A	815	HIS	-	expression tag	UNP G0SFD1
A	816	HIS	-	expression tag	UNP G0SFD1
A	817	HIS	-	expression tag	UNP G0SFD1
B	-1	MET	-	initiating methionine	UNP G0SFD1
B	0	GLY	-	expression tag	UNP G0SFD1
B	1	ILE	-	expression tag	UNP G0SFD1
B	2	LEU	-	expression tag	UNP G0SFD1
B	3	PRO	-	expression tag	UNP G0SFD1
B	4	SER	-	expression tag	UNP G0SFD1
B	5	PRO	-	expression tag	UNP G0SFD1
B	6	GLY	-	expression tag	UNP G0SFD1
B	7	MET	-	expression tag	UNP G0SFD1
B	8	PRO	-	expression tag	UNP G0SFD1
B	9	ALA	-	expression tag	UNP G0SFD1
B	10	LEU	-	expression tag	UNP G0SFD1
B	11	LEU	-	expression tag	UNP G0SFD1
B	12	SER	-	expression tag	UNP G0SFD1
B	13	LEU	-	expression tag	UNP G0SFD1
B	14	VAL	-	expression tag	UNP G0SFD1
B	15	SER	-	expression tag	UNP G0SFD1
B	16	LEU	-	expression tag	UNP G0SFD1
B	17	LEU	-	expression tag	UNP G0SFD1
B	18	SER	-	expression tag	UNP G0SFD1
B	19	VAL	-	expression tag	UNP G0SFD1
B	20	LEU	-	expression tag	UNP G0SFD1
B	21	LEU	-	expression tag	UNP G0SFD1
B	22	MET	-	expression tag	UNP G0SFD1
B	23	GLY	-	expression tag	UNP G0SFD1
B	24	CYS	-	expression tag	UNP G0SFD1
B	25	VAL	-	expression tag	UNP G0SFD1
B	26	ALA	-	expression tag	UNP G0SFD1

Continued on next page...

Continued from previous page...

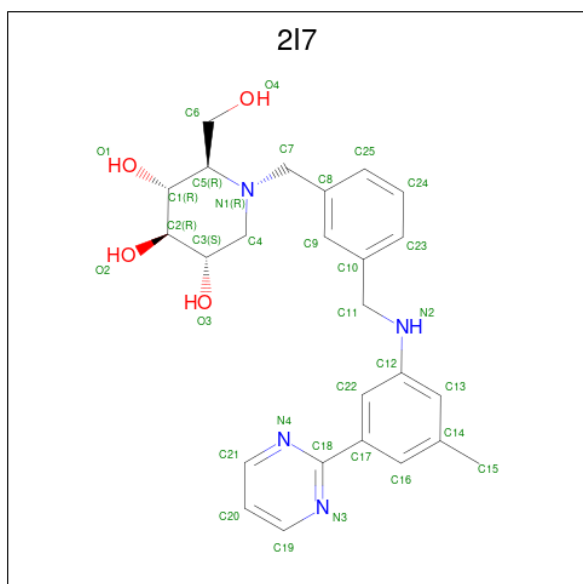
Chain	Residue	Modelled	Actual	Comment	Reference
B	27	GLU	-	expression tag	UNP G0SFD1
B	28	THR	-	expression tag	UNP G0SFD1
B	29	GLY	-	expression tag	UNP G0SFD1
B	810	SER	-	expression tag	UNP G0SFD1
B	811	GLY	-	expression tag	UNP G0SFD1
B	812	HIS	-	expression tag	UNP G0SFD1
B	813	HIS	-	expression tag	UNP G0SFD1
B	814	HIS	-	expression tag	UNP G0SFD1
B	815	HIS	-	expression tag	UNP G0SFD1
B	816	HIS	-	expression tag	UNP G0SFD1
B	817	HIS	-	expression tag	UNP G0SFD1

- Molecule 2 is an oligosaccharide called 2-acetamido-2-deoxy-beta-D-glucopyranose-(1-4)-2-acetamido-2-deoxy-beta-D-glucopyranose.



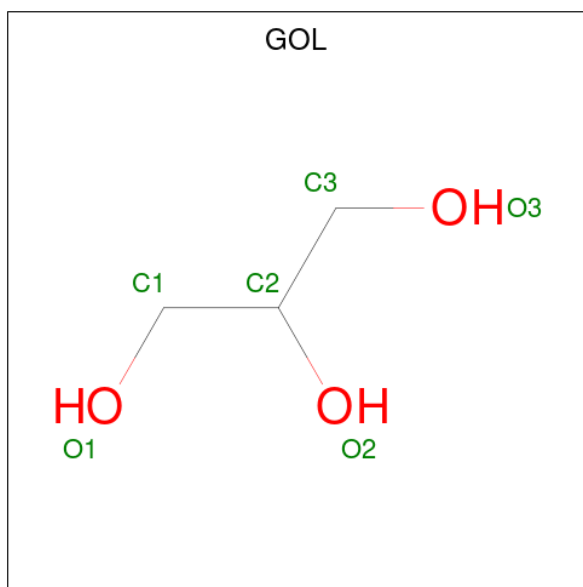
Mol	Chain	Residues	Atoms				ZeroOcc	AltConf	Trace
			Total	C	N	O			
2	C	2	28	16	2	10	0	0	0

- Molecule 3 is (2R,3R,4R,5S)-2-(hydroxymethyl)-1-[(3-{[3-methyl-5-(pyrimidin-2-yl)anilino]methyl}phenyl)methyl]piperidine-3,4,5-triol (three-letter code: 2I7) (formula: C₂₅H₃₀N₄O₄) (labeled as "Ligand of Interest" by depositor).



Mol	Chain	Residues	Atoms				ZeroOcc	AltConf
3	A	1	Total	C	N	O	0	0
			33	25	4	4		
3	B	1	Total	C	N	O	0	0
			33	25	4	4		

- Molecule 4 is GLYCEROL (three-letter code: GOL) (formula: C₃H₈O₃).



Mol	Chain	Residues	Atoms			ZeroOcc	AltConf
4	A	1	Total	C	O	0	0
			6	3	3		
4	A	1	Total	C	O	0	0
			6	3	3		
4	A	1	Total	C	O	0	0
			6	3	3		
4	A	1	Total	C	O	0	0
			6	3	3		
4	A	1	Total	C	O	0	0
			6	3	3		
4	B	1	Total	C	O	0	0
			6	3	3		

- Molecule 5 is SULFATE ION (three-letter code: SO4) (formula: O₄S).



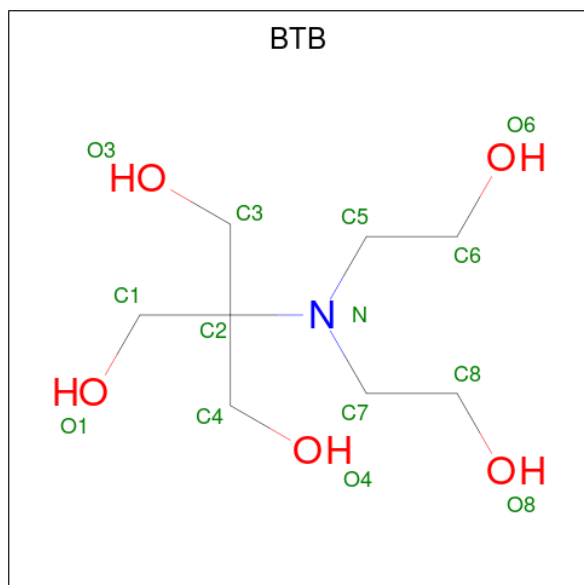
Mol	Chain	Residues	Atoms			ZeroOcc	AltConf
			Total	O	S		
5	A	1	5	4	1	0	0
5	A	1	5	4	1	0	0
5	A	1	5	4	1	0	0
5	A	1	5	4	1	0	0
5	A	1	5	4	1	0	0
5	A	1	5	4	1	0	0
5	A	1	5	4	1	0	0
5	A	1	5	4	1	0	0
5	A	1	5	4	1	0	0
5	A	1	5	4	1	0	0
5	A	1	5	4	1	0	0
5	B	1	5	4	1	0	0
5	B	1	5	4	1	0	0
5	B	1	5	4	1	0	0

Continued on next page...

Continued from previous page...

Mol	Chain	Residues	Atoms			ZeroOcc	AltConf
5	B	1	Total	O	S	0	0
			5	4	1		

- Molecule 6 is 2-[BIS-(2-HYDROXY-ETHYL)-AMINO]-2-HYDROXYMETHYL-PROPAN E-1,3-DIOL (three-letter code: BTB) (formula: C₈H₁₉NO₅).



Mol	Chain	Residues	Atoms				ZeroOcc	AltConf
6	B	1	Total	C	N	O	0	0
			14	8	1	5		

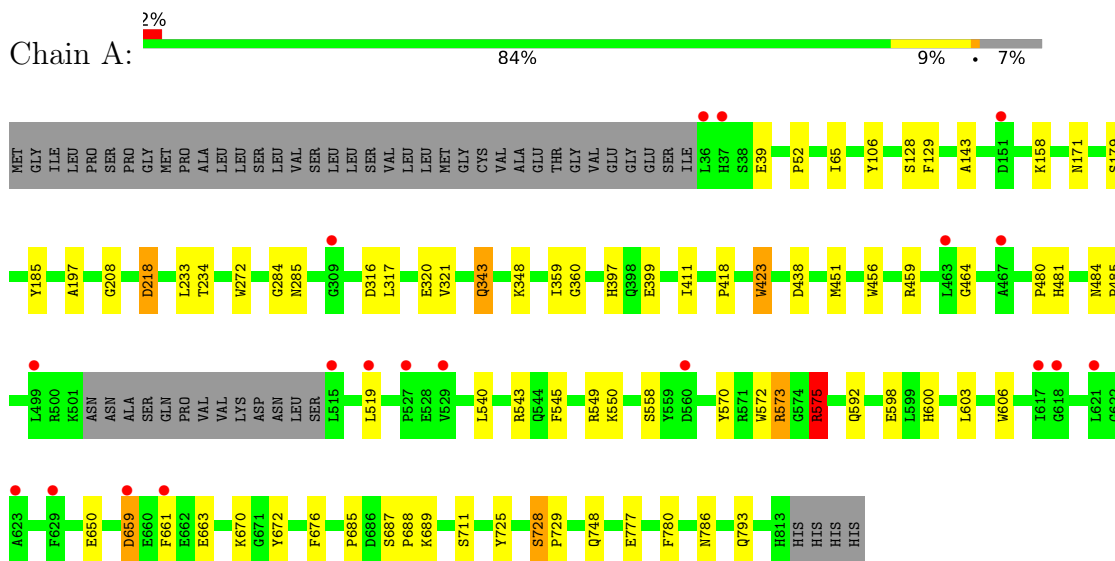
- Molecule 7 is water.

Mol	Chain	Residues	Atoms		ZeroOcc	AltConf
7	A	594	Total	O	0	0
			594	594		
7	B	668	Total	O	0	0
			668	668		

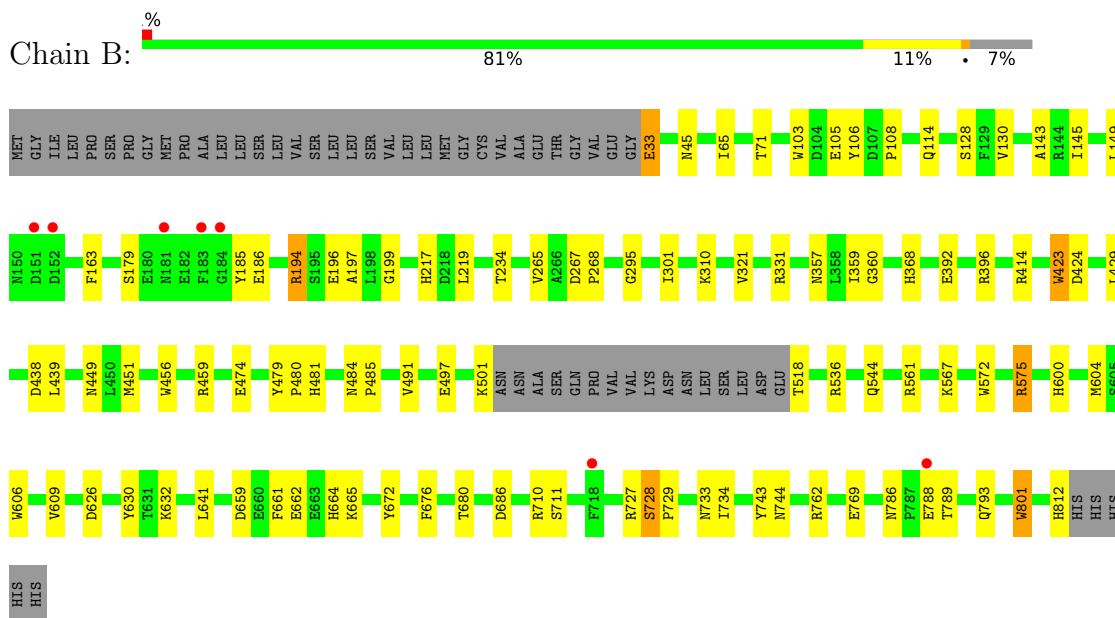
3 Residue-property plots [i](#)

These plots are drawn for all protein, RNA, DNA and oligosaccharide chains in the entry. The first graphic for a chain summarises the proportions of the various outlier classes displayed in the second graphic. The second graphic shows the sequence view annotated by issues in geometry and electron density. Residues are color-coded according to the number of geometric quality criteria for which they contain at least one outlier: green = 0, yellow = 1, orange = 2 and red = 3 or more. A red dot above a residue indicates a poor fit to the electron density ($RSRZ > 2$). Stretches of 2 or more consecutive residues without any outlier are shown as a green connector. Residues present in the sample, but not in the model, are shown in grey.

- Molecule 1: Chaetomium alpha glucosidase



- Molecule 1: Chaetomium alpha glucosidase



- Molecule 2: 2-acetamido-2-deoxy-beta-D-glucopyranose-(1-4)-2-acetamido-2-deoxy-beta-D-glucopyranose

Chain C:  100%

MAG1
MAG2

4 Data and refinement statistics i

Property	Value	Source
Space group	I 2 2 2	Depositor
Cell constants a, b, c, α , β , γ	135.84Å 178.54Å 179.81Å 90.00° 90.00° 90.00°	Depositor
Resolution (Å)	46.77 – 1.91 46.72 – 1.90	Depositor EDS
% Data completeness (in resolution range)	99.4 (46.77-1.91) 99.4 (46.72-1.90)	Depositor EDS
R_{merge}	0.15	Depositor
R_{sym}	(Not available)	Depositor
$\langle I/\sigma(I) \rangle$ ¹	1.31 (at 1.91Å)	Xtrriage
Refinement program	REFMAC 5.8.0258	Depositor
R, R_{free}	0.174 , 0.212 0.174 , 0.212	Depositor DCC
R_{free} test set	8369 reflections (4.96%)	wwPDB-VP
Wilson B-factor (Å ²)	29.8	Xtrriage
Anisotropy	0.353	Xtrriage
Bulk solvent k_{sol} (e/Å ³), B_{sol} (Å ²)	0.36 , 49.4	EDS
L-test for twinning ²	$\langle L \rangle = 0.49$, $\langle L^2 \rangle = 0.32$	Xtrriage
Estimated twinning fraction	0.009 for -h,-l,-k	Xtrriage
F_o, F_c correlation	0.97	EDS
Total number of atoms	13657	wwPDB-VP
Average B, all atoms (Å ²)	34.0	wwPDB-VP

Xtrriage's analysis on translational NCS is as follows: *The largest off-origin peak in the Patterson function is 2.87% of the height of the origin peak. No significant pseudotranslation is detected.*

¹Intensities estimated from amplitudes.

²Theoretical values of $\langle |L| \rangle$, $\langle L^2 \rangle$ for acentric reflections are 0.5, 0.333 respectively for untwinned datasets, and 0.375, 0.2 for perfectly twinned datasets.

5 Model quality [i](#)

5.1 Standard geometry [i](#)

Bond lengths and bond angles in the following residue types are not validated in this section: 2I7, BTB, NAG, GOL, SO4

The Z score for a bond length (or angle) is the number of standard deviations the observed value is removed from the expected value. A bond length (or angle) with $|Z| > 5$ is considered an outlier worth inspection. RMSZ is the root-mean-square of all Z scores of the bond lengths (or angles).

Mol	Chain	Bond lengths		Bond angles	
		RMSZ	# Z >5	RMSZ	# Z >5
1	A	0.40	0/6274	0.74	8/8541 (0.1%)
1	B	0.41	0/6263	0.76	6/8524 (0.1%)
All	All	0.40	0/12537	0.75	14/17065 (0.1%)

There are no bond length outliers.

All (14) bond angle outliers are listed below:

Mol	Chain	Res	Type	Atoms	Z	Observed(°)	Ideal(°)
1	B	459	ARG	NE-CZ-NH2	-12.27	114.17	120.30
1	B	459	ARG	NE-CZ-NH1	10.92	125.76	120.30
1	A	573	ARG	CG-CD-NE	-7.63	95.78	111.80
1	A	575	ARG	CB-CA-C	7.39	125.18	110.40
1	B	459	ARG	CG-CD-NE	-7.15	96.79	111.80
1	A	659	ASP	CB-CA-C	-6.79	96.81	110.40
1	A	573	ARG	NE-CZ-NH2	-6.70	116.95	120.30
1	B	459	ARG	CD-NE-CZ	6.67	132.94	123.60
1	A	573	ARG	NE-CZ-NH1	6.32	123.46	120.30
1	A	459	ARG	NE-CZ-NH2	-6.07	117.27	120.30
1	A	459	ARG	CG-CD-NE	-5.94	99.32	111.80
1	B	710	ARG	NE-CZ-NH1	-5.52	117.54	120.30
1	B	575	ARG	CB-CA-C	5.22	120.83	110.40
1	A	780	PHE	CB-CA-C	-5.08	100.25	110.40

There are no chirality outliers.

There are no planarity outliers.

5.2 Too-close contacts [i](#)

In the following table, the Non-H and H(model) columns list the number of non-hydrogen atoms and hydrogen atoms in the chain respectively. The H(added) column lists the number of hydrogen atoms added and optimized by MolProbity. The Clashes column lists the number of clashes within the asymmetric unit, whereas Symm-Clashes lists symmetry-related clashes.

Mol	Chain	Non-H	H(model)	H(added)	Clashes	Symm-Clashes
1	A	6089	0	5778	67	0
1	B	6087	0	5741	84	0
2	C	28	0	25	0	0
3	A	33	0	0	0	0
3	B	33	0	0	0	0
4	A	30	0	40	14	0
4	B	6	0	8	0	0
5	A	55	0	0	1	0
5	B	20	0	0	2	0
6	B	14	0	19	1	0
7	A	594	0	0	7	2
7	B	668	0	0	19	2
All	All	13657	0	11611	150	2

The all-atom clashscore is defined as the number of clashes found per 1000 atoms (including hydrogen atoms). The all-atom clashscore for this structure is 6.

All (150) close contacts within the same asymmetric unit are listed below, sorted by their clash magnitude.

Atom-1	Atom-2	Interatomic distance (Å)	Clash overlap (Å)
1:B:474:GLU:HG3	7:B:1449:HOH:O	1.32	1.25
1:B:481:HIS:CD2	7:B:1330:HOH:O	1.85	1.22
1:B:45:ASN:HB2	7:B:1064:HOH:O	1.36	1.18
1:A:451:MET:HE1	1:A:540:LEU:HB3	1.28	1.10
1:B:572:TRP:H	1:B:600:HIS:HD2	1.10	0.97
1:B:561:ARG:HE	1:B:664:HIS:HD2	1.13	0.96
1:A:208:GLY:HA2	4:A:903:GOL:H32	1.45	0.96
1:A:343:GLN:HG2	7:A:1504:HOH:O	1.65	0.96
1:A:688:PRO:HD2	4:A:904:GOL:O3	1.67	0.95
1:B:310:LYS:HE2	7:B:1269:HOH:O	1.68	0.93
1:A:171:ASN:N	4:A:906:GOL:O1	2.08	0.85
1:B:481:HIS:HD2	7:B:1330:HOH:O	1.37	0.84
1:A:451:MET:HE1	1:A:540:LEU:CB	2.08	0.80
1:A:659:ASP:HB3	1:A:661:PHE:H	1.47	0.79
1:B:561:ARG:HE	1:B:664:HIS:CD2	2.00	0.79

Continued on next page...

Continued from previous page...

Atom-1	Atom-2	Interatomic distance (Å)	Clash overlap (Å)
1:A:572:TRP:H	1:A:600:HIS:HD2	1.27	0.78
1:B:194:ARG:HG3	1:B:194:ARG:HH11	1.49	0.77
1:B:217:HIS:HE1	1:B:267:ASP:O	1.68	0.76
1:B:572:TRP:H	1:B:600:HIS:CD2	2.02	0.74
1:A:575:ARG:HH22	1:A:592:GLN:HE22	1.34	0.73
1:A:777:GLU:HG2	7:A:1495:HOH:O	1.90	0.71
1:B:217:HIS:HD2	1:B:219:LEU:H	1.39	0.70
1:A:171:ASN:HB2	4:A:906:GOL:O1	1.91	0.70
4:A:906:GOL:H31	7:A:1034:HOH:O	1.90	0.70
1:A:451:MET:CE	1:A:540:LEU:HB3	2.14	0.68
1:B:114:GLN:NE2	1:B:414:ARG:HH12	1.93	0.67
1:B:145:ILE:CD1	1:B:301:ILE:CD1	2.72	0.67
1:A:234[B]:THR:HG22	7:B:1058:HOH:O	1.93	0.67
1:A:688:PRO:CD	4:A:904:GOL:O3	2.43	0.66
1:A:786:ASN:HD22	1:A:793:GLN:HE22	1.42	0.66
1:A:233:LEU:HD22	1:B:265:VAL:HG23	1.76	0.65
1:A:685:PRO:HG3	1:A:748:GLN:HE22	1.61	0.65
1:B:786:ASN:HD22	1:B:789:THR:H	1.45	0.65
1:B:501:LYS:CB	7:B:1603:HOH:O	2.45	0.64
1:B:392:GLU:OE1	7:B:1001:HOH:O	2.15	0.63
1:B:194:ARG:HH11	1:B:194:ARG:CG	2.11	0.63
1:B:604:MET:HE2	1:B:641:LEU:HD23	1.81	0.62
1:B:114:GLN:HE22	1:B:414:ARG:HH22	1.48	0.62
1:B:762:ARG:HD2	5:B:906:SO4:O3	2.00	0.62
1:B:368:HIS:HD2	5:B:904:SO4:O3	1.84	0.61
1:A:234[B]:THR:HG21	1:B:268:PRO:HG3	1.83	0.60
1:B:145:ILE:CD1	1:B:301:ILE:HD12	2.32	0.60
1:B:572:TRP:N	1:B:600:HIS:HD2	1.92	0.60
1:B:728:SER:H	1:B:729:PRO:CD	2.15	0.60
1:B:728:SER:N	1:B:729:PRO:CD	2.65	0.60
1:B:786:ASN:HB2	1:B:793:GLN:NE2	2.17	0.60
1:B:331:ARG:NH1	7:B:1004:HOH:O	2.35	0.59
1:A:575:ARG:HH22	1:A:592:GLN:NE2	2.00	0.58
1:B:561:ARG:NE	1:B:664:HIS:HD2	1.93	0.58
1:A:659:ASP:HB2	1:A:663:GLU:H	1.68	0.58
1:B:145:ILE:HD11	1:B:301:ILE:CD1	2.35	0.57
1:B:103:TRP:H	1:B:357:ASN:ND2	2.02	0.57
1:A:218:ASP:HB3	7:A:1122:HOH:O	2.04	0.57
1:A:573:ARG:HD2	7:A:1040:HOH:O	2.04	0.57
1:A:598:GLU:OE2	1:A:600:HIS:HE1	1.88	0.56
1:A:689:LYS:HG3	4:A:904:GOL:H32	1.86	0.56

Continued on next page...

Continued from previous page...

Atom-1	Atom-2	Interatomic distance (Å)	Clash overlap (Å)
1:B:567:LYS:NZ	7:B:1007:HOH:O	2.39	0.56
1:B:451:MET:CE	1:B:544:GLN:HB2	2.36	0.56
1:B:45:ASN:CB	7:B:1064:HOH:O	2.15	0.56
1:B:769:GLU:HG3	7:B:1411:HOH:O	2.05	0.55
1:B:456:TRP:CE2	1:B:480:PRO:HA	2.42	0.55
1:A:456:TRP:CE2	1:A:480:PRO:HA	2.43	0.54
1:A:106:TYR:CD2	1:A:360:GLY:HA2	2.42	0.54
1:B:194:ARG:HG3	1:B:194:ARG:NH1	2.22	0.54
1:B:728:SER:N	1:B:729:PRO:HD3	2.22	0.54
1:B:145:ILE:CD1	1:B:301:ILE:HD11	2.37	0.53
1:A:728:SER:N	1:A:729:PRO:CD	2.72	0.53
1:B:451:MET:HE1	1:B:544:GLN:HB2	1.90	0.52
1:B:733:ASN:HB3	1:B:801:TRP:CG	2.44	0.52
1:A:208:GLY:CA	4:A:903:GOL:H32	2.30	0.51
1:A:481:HIS:HE1	7:A:1343:HOH:O	1.93	0.51
1:B:604:MET:HE3	1:B:641:LEU:HG	1.92	0.50
1:B:485:PRO:HB3	1:B:606:TRP:CE2	2.46	0.50
1:A:397:HIS:HD2	1:A:399:GLU:OE2	1.95	0.50
1:A:687:SER:HG	4:A:904:GOL:C3	2.25	0.50
1:A:545:PHE:CZ	1:A:549:ARG:HD2	2.47	0.49
1:B:481:HIS:HE1	7:B:1202:HOH:O	1.94	0.49
1:B:128:SER:O	1:B:143:ALA:HA	2.12	0.49
1:A:423:TRP:H	1:A:484:ASN:ND2	2.11	0.49
1:B:396:ARG:HD3	7:B:1195:HOH:O	2.13	0.49
1:A:728:SER:N	1:A:729:PRO:HD3	2.27	0.48
1:A:39:GLU:HA	1:A:39:GLU:OE2	2.14	0.48
1:A:179:SER:HB3	1:A:185:TYR:CD2	2.49	0.48
1:B:103:TRP:H	1:B:357:ASN:HD21	1.62	0.48
1:A:158:LYS:HD3	1:A:272:TRP:CD1	2.48	0.48
1:B:786:ASN:HD21	1:B:788:GLU:HB2	1.79	0.48
1:B:33:GLU:HB3	1:B:536:ARG:NH1	2.29	0.47
1:A:728:SER:H	1:A:729:PRO:CD	2.26	0.47
1:B:217:HIS:CD2	1:B:219:LEU:H	2.26	0.47
1:B:727:ARG:O	1:B:728:SER:HB3	2.15	0.47
1:A:688:PRO:HD2	4:A:904:GOL:HO3	1.77	0.47
1:B:234:THR:O	6:B:902:BTB:H72	2.14	0.47
1:A:451:MET:HE3	1:A:540:LEU:HD22	1.96	0.46
1:A:689:LYS:CG	4:A:904:GOL:H32	2.46	0.46
1:A:128:SER:O	1:A:143:ALA:HA	2.16	0.45
1:B:609:VAL:CG2	1:B:680:THR:HB	2.47	0.45
1:A:171:ASN:CB	4:A:906:GOL:O1	2.63	0.45

Continued on next page...

Continued from previous page...

Atom-1	Atom-2	Interatomic distance (Å)	Clash overlap (Å)
1:A:687:SER:OG	4:A:904:GOL:H31	2.17	0.45
1:B:626:ASP:HB3	1:B:630:TYR:CE2	2.51	0.45
1:B:744:ASN:ND2	7:B:1019:HOH:O	2.50	0.45
1:A:650:GLU:O	1:A:670:LYS:NZ	2.47	0.45
1:B:145:ILE:HD13	1:B:301:ILE:HD11	1.99	0.45
1:A:464:GLY:HA2	5:A:911:SO4:O1	2.16	0.45
1:A:672:TYR:CZ	1:A:711:SER:HA	2.52	0.45
1:B:786:ASN:ND2	1:B:788:GLU:H	2.15	0.45
1:B:71:THR:HB	1:B:163:PHE:CZ	2.53	0.44
1:A:348:LYS:NZ	7:A:1015:HOH:O	2.50	0.44
1:A:481:HIS:H	1:A:481:HIS:CD2	2.35	0.44
1:A:598:GLU:OE2	1:A:600:HIS:CE1	2.68	0.44
1:A:234[A]:THR:HG22	1:A:285:ASN:H	1.82	0.44
1:A:423:TRP:H	1:A:484:ASN:HD22	1.65	0.44
1:A:572:TRP:H	1:A:600:HIS:CD2	2.19	0.44
1:B:659:ASP:HB3	1:B:665:LYS:HD3	1.99	0.43
1:B:786:ASN:HB2	1:B:793:GLN:HE22	1.82	0.43
1:B:106:TYR:HD2	1:B:359:ILE:HG23	1.84	0.43
1:B:33:GLU:HB3	1:B:536:ARG:HH12	1.84	0.43
1:B:65:ILE:HD13	1:B:197:ALA:HB1	2.00	0.43
1:B:743:TYR:CE2	1:B:812:HIS:HB2	2.54	0.42
1:B:130:VAL:CG1	1:B:321:VAL:HG22	2.49	0.42
1:B:149:LEU:CD1	1:B:295:GLY:HA2	2.49	0.42
1:A:519:LEU:HD23	1:A:519:LEU:HA	1.89	0.42
1:B:114:GLN:HE21	1:B:414:ARG:HH12	1.66	0.42
1:B:331:ARG:CZ	7:B:1004:HOH:O	2.65	0.42
1:A:234[A]:THR:HG23	7:B:1058:HOH:O	2.20	0.42
1:A:451:MET:HE3	1:A:451:MET:HB3	1.88	0.42
1:A:570:TYR:HB3	1:A:603:LEU:HG	2.02	0.42
1:B:661:PHE:O	1:B:662:GLU:HB2	2.19	0.42
1:B:672:TYR:CZ	1:B:711:SER:HA	2.55	0.42
1:A:52:PRO:HD3	1:A:129:PHE:CE2	2.55	0.41
1:B:179:SER:HB3	1:B:185:TYR:CD2	2.53	0.41
1:B:497:GLU:OE1	1:B:497:GLU:HA	2.20	0.41
1:B:672:TYR:CE2	1:B:711:SER:HB3	2.55	0.41
1:A:485:PRO:HB3	1:A:606:TRP:CE2	2.55	0.41
1:B:194:ARG:HA	1:B:199:GLY:O	2.20	0.41
1:B:106:TYR:CD2	1:B:360:GLY:HA2	2.56	0.41
1:A:234[A]:THR:CG2	1:A:284:GLY:HA2	2.50	0.41
1:B:331:ARG:NH2	7:B:1004:HOH:O	2.53	0.41
1:B:769:GLU:CG	7:B:1411:HOH:O	2.64	0.41

Continued on next page...

Continued from previous page...

Atom-1	Atom-2	Interatomic distance (Å)	Clash overlap (Å)
1:A:65:ILE:HD13	1:A:197:ALA:HB1	2.02	0.41
1:A:106:TYR:HD2	1:A:359:ILE:HG23	1.86	0.41
1:A:316:ASP:O	1:A:320:GLU:HG2	2.20	0.41
1:B:423:TRP:H	1:B:484:ASN:ND2	2.18	0.41
1:B:479:TYR:HA	1:B:480:PRO:HD3	1.93	0.40
1:B:429:LEU:HB2	1:B:491:VAL:HG21	2.03	0.40
1:A:317:LEU:HD12	1:A:321:VAL:HG23	2.03	0.40
1:B:108:PRO:HG2	1:B:439:LEU:HD22	2.02	0.40
1:B:672:TYR:CG	1:B:734:ILE:HG21	2.56	0.40
1:A:411:ILE:HD12	1:A:418:PRO:HA	2.02	0.40
1:A:543:ARG:HE	4:A:902:GOL:H2	1.86	0.40
1:A:456:TRP:CD2	1:A:480:PRO:HA	2.57	0.40

All (2) symmetry-related close contacts are listed below. The label for Atom-2 includes the symmetry operator and encoded unit-cell translations to be applied.

Atom-1	Atom-2	Interatomic distance (Å)	Clash overlap (Å)
7:A:1467:HOH:O	7:B:1235:HOH:O[7_454]	1.76	0.44
7:A:1466:HOH:O	7:B:1466:HOH:O[8_444]	2.01	0.19

5.3 Torsion angles [i](#)

5.3.1 Protein backbone [i](#)

In the following table, the Percentiles column shows the percent Ramachandran outliers of the chain as a percentile score with respect to all X-ray entries followed by that with respect to entries of similar resolution.

The Analysed column shows the number of residues for which the backbone conformation was analysed, and the total number of residues.

Mol	Chain	Analysed	Favoured	Allowed	Outliers	Percentiles
1	A	765/819 (93%)	749 (98%)	15 (2%)	1 (0%)	51 42
1	B	762/819 (93%)	746 (98%)	15 (2%)	1 (0%)	51 42
All	All	1527/1638 (93%)	1495 (98%)	30 (2%)	2 (0%)	51 42

All (2) Ramachandran outliers are listed below:

Mol	Chain	Res	Type
1	A	728	SER
1	B	728	SER

5.3.2 Protein sidechains [i](#)

In the following table, the Percentiles column shows the percent sidechain outliers of the chain as a percentile score with respect to all X-ray entries followed by that with respect to entries of similar resolution.

The Analysed column shows the number of residues for which the sidechain conformation was analysed, and the total number of residues.

Mol	Chain	Analysed	Rotameric	Outliers	Percentiles	
1	A	632/707 (89%)	623 (99%)	9 (1%)	67	65
1	B	633/707 (90%)	618 (98%)	15 (2%)	49	43
All	All	1265/1414 (90%)	1241 (98%)	24 (2%)	57	53

All (24) residues with a non-rotameric sidechain are listed below:

Mol	Chain	Res	Type
1	A	218	ASP
1	A	343	GLN
1	A	423	TRP
1	A	438	ASP
1	A	550	LYS
1	A	558	SER
1	A	575	ARG
1	A	676	PHE
1	A	725	TYR
1	B	33	GLU
1	B	105	GLU
1	B	186	GLU
1	B	194	ARG
1	B	196	GLU
1	B	423	TRP
1	B	424	ASP
1	B	438	ASP
1	B	449	ASN
1	B	518	THR
1	B	575	ARG
1	B	632	LYS
1	B	676	PHE

Continued on next page...

Continued from previous page...

Mol	Chain	Res	Type
1	B	686	ASP
1	B	801	TRP

Sometimes sidechains can be flipped to improve hydrogen bonding and reduce clashes. All (35) such sidechains are listed below:

Mol	Chain	Res	Type
1	A	85	GLN
1	A	157	GLN
1	A	167	GLN
1	A	231	GLN
1	A	249	GLN
1	A	250	GLN
1	A	323	GLN
1	A	397	HIS
1	A	398	GLN
1	A	461	GLN
1	A	481	HIS
1	A	484	ASN
1	A	592	GLN
1	A	600	HIS
1	A	639	HIS
1	A	748	GLN
1	A	793	GLN
1	B	85	GLN
1	B	114	GLN
1	B	120	GLN
1	B	137	HIS
1	B	167	GLN
1	B	217	HIS
1	B	249	GLN
1	B	357	ASN
1	B	368	HIS
1	B	461	GLN
1	B	481	HIS
1	B	484	ASN
1	B	600	HIS
1	B	639	HIS
1	B	664	HIS
1	B	748	GLN
1	B	786	ASN
1	B	793	GLN

5.3.3 RNA [i](#)

There are no RNA molecules in this entry.

5.4 Non-standard residues in protein, DNA, RNA chains [i](#)

There are no non-standard protein/DNA/RNA residues in this entry.

5.5 Carbohydrates [i](#)

2 monosaccharides are modelled in this entry.

In the following table, the Counts columns list the number of bonds (or angles) for which Mogul statistics could be retrieved, the number of bonds (or angles) that are observed in the model and the number of bonds (or angles) that are defined in the Chemical Component Dictionary. The Link column lists molecule types, if any, to which the group is linked. The Z score for a bond length (or angle) is the number of standard deviations the observed value is removed from the expected value. A bond length (or angle) with $|Z| > 2$ is considered an outlier worth inspection. RMSZ is the root-mean-square of all Z scores of the bond lengths (or angles).

Mol	Type	Chain	Res	Link	Bond lengths			Bond angles		
					Counts	RMSZ	# Z > 2	Counts	RMSZ	# Z > 2
2	NAG	C	1	2,1	14,14,15	0.64	0	17,19,21	1.43	3 (17%)
2	NAG	C	2	2	14,14,15	0.57	0	17,19,21	1.31	2 (11%)

In the following table, the Chirals column lists the number of chiral outliers, the number of chiral centers analysed, the number of these observed in the model and the number defined in the Chemical Component Dictionary. Similar counts are reported in the Torsion and Rings columns. '-' means no outliers of that kind were identified.

Mol	Type	Chain	Res	Link	Chirals	Torsions	Rings
2	NAG	C	1	2,1	-	0/6/23/26	0/1/1/1
2	NAG	C	2	2	-	2/6/23/26	0/1/1/1

There are no bond length outliers.

All (5) bond angle outliers are listed below:

Mol	Chain	Res	Type	Atoms	Z	Observed(°)	Ideal(°)
2	C	1	NAG	C4-C3-C2	3.70	116.44	111.02
2	C	2	NAG	C1-O5-C5	2.97	116.21	112.19
2	C	2	NAG	C4-C3-C2	2.83	115.17	111.02
2	C	1	NAG	C1-O5-C5	2.71	115.86	112.19
2	C	1	NAG	O3-C3-C2	-2.23	104.86	109.47

There are no chirality outliers.

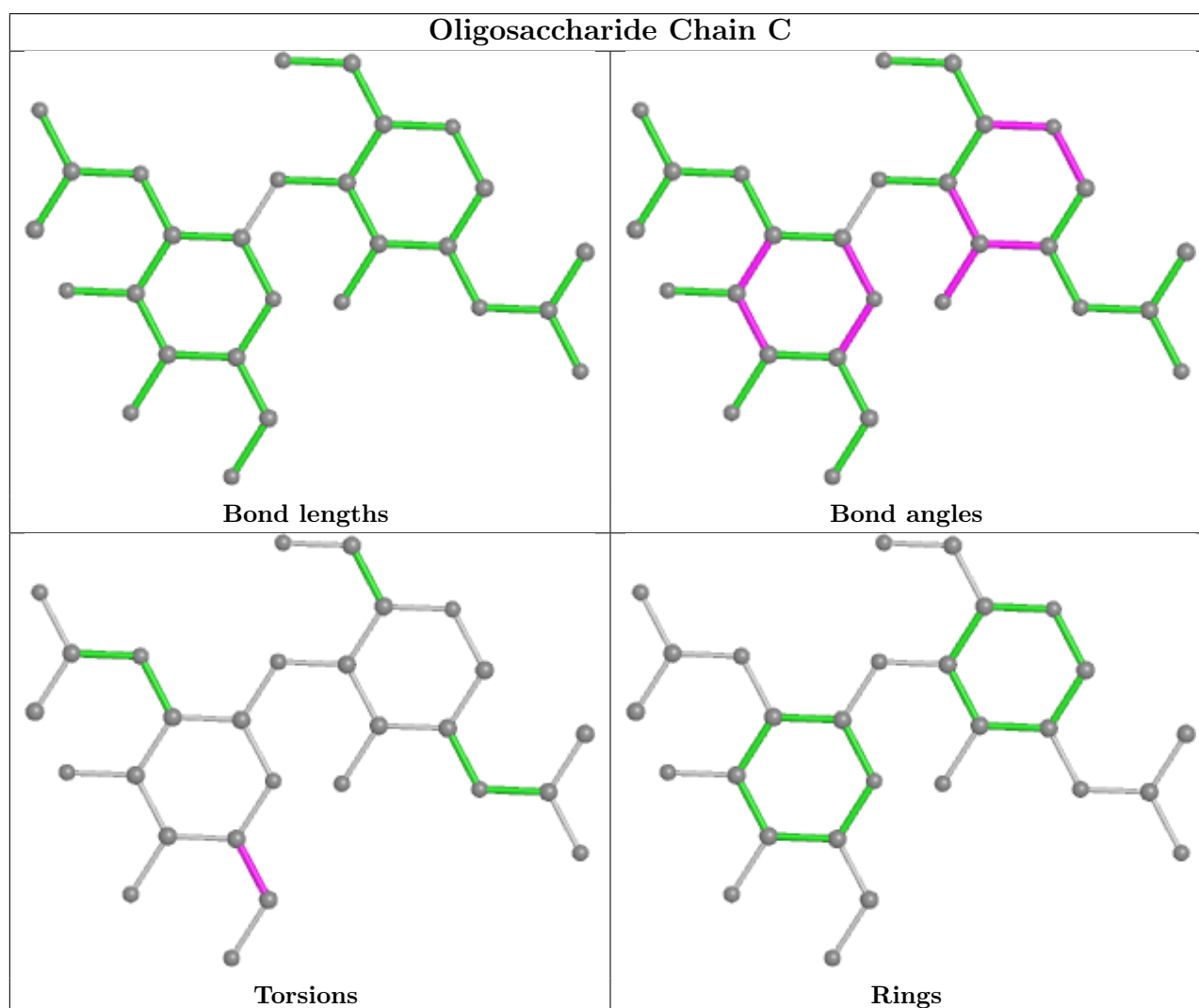
All (2) torsion outliers are listed below:

Mol	Chain	Res	Type	Atoms
2	C	2	NAG	C4-C5-C6-O6
2	C	2	NAG	O5-C5-C6-O6

There are no ring outliers.

No monomer is involved in short contacts.

The following is a two-dimensional graphical depiction of Mogul quality analysis of bond lengths, bond angles, torsion angles, and ring geometry for oligosaccharide.



5.6 Ligand geometry [i](#)

24 ligands are modelled in this entry.

In the following table, the Counts columns list the number of bonds (or angles) for which Mogul statistics could be retrieved, the number of bonds (or angles) that are observed in the model and the number of bonds (or angles) that are defined in the Chemical Component Dictionary. The Link column lists molecule types, if any, to which the group is linked. The Z score for a bond length (or angle) is the number of standard deviations the observed value is removed from the expected value. A bond length (or angle) with $|Z| > 2$ is considered an outlier worth inspection. RMSZ is the root-mean-square of all Z scores of the bond lengths (or angles).

Mol	Type	Chain	Res	Link	Bond lengths			Bond angles		
					Counts	RMSZ	# Z > 2	Counts	RMSZ	# Z > 2
5	SO4	A	909	-	4,4,4	0.39	0	6,6,6	0.07	0
5	SO4	A	915	-	4,4,4	0.35	0	6,6,6	0.04	0
5	SO4	A	907	-	4,4,4	0.36	0	6,6,6	0.06	0
5	SO4	A	914	-	4,4,4	0.38	0	6,6,6	0.10	0
5	SO4	A	912	-	4,4,4	0.31	0	6,6,6	0.18	0
5	SO4	B	904	-	4,4,4	0.63	0	6,6,6	0.19	0
4	GOL	A	906	-	5,5,5	0.12	0	5,5,5	0.37	0
4	GOL	A	903	-	5,5,5	0.07	0	5,5,5	0.24	0
5	SO4	A	917	-	4,4,4	0.30	0	6,6,6	0.06	0
6	BTB	B	902	-	13,13,13	1.04	1 (7%)	7,16,16	0.60	0
4	GOL	A	905	-	5,5,5	0.10	0	5,5,5	0.41	0
5	SO4	A	913	-	4,4,4	0.37	0	6,6,6	0.06	0
3	2I7	A	901	-	36,36,36	2.60	12 (33%)	49,50,50	1.79	10 (20%)
4	GOL	A	904	-	5,5,5	0.08	0	5,5,5	0.26	0
5	SO4	B	905	-	4,4,4	0.30	0	6,6,6	0.06	0
5	SO4	A	910	-	4,4,4	0.36	0	6,6,6	0.05	0
5	SO4	A	911	-	4,4,4	0.48	0	6,6,6	0.30	0
5	SO4	A	916	-	4,4,4	0.34	0	6,6,6	0.07	0
5	SO4	B	907	-	4,4,4	0.25	0	6,6,6	0.19	0
5	SO4	B	906	-	4,4,4	0.37	0	6,6,6	0.09	0
4	GOL	B	903	-	5,5,5	0.26	0	5,5,5	0.48	0
5	SO4	A	908	-	4,4,4	0.26	0	6,6,6	0.14	0
3	2I7	B	901	-	36,36,36	2.70	11 (30%)	49,50,50	2.18	18 (36%)
4	GOL	A	902	-	5,5,5	0.16	0	5,5,5	0.48	0

In the following table, the Chirals column lists the number of chiral outliers, the number of chiral centers analysed, the number of these observed in the model and the number defined in the Chemical Component Dictionary. Similar counts are reported in the Torsion and Rings columns. '-' means no outliers of that kind were identified.

Mol	Type	Chain	Res	Link	Chirals	Torsions	Rings
3	2I7	A	901	-	-	2/15/35/35	0/4/4/4
4	GOL	A	906	-	-	0/4/4/4	-
4	GOL	A	903	-	-	0/4/4/4	-

Continued on next page...

Continued from previous page...

Mol	Type	Chain	Res	Link	Chirals	Torsions	Rings
6	BTB	B	902	-	-	1/21/21/21	-
4	GOL	A	904	-	-	2/4/4/4	-
4	GOL	B	903	-	-	0/4/4/4	-
4	GOL	A	905	-	-	0/4/4/4	-
3	2I7	B	901	-	-	0/15/35/35	0/4/4/4
4	GOL	A	902	-	-	2/4/4/4	-

All (24) bond length outliers are listed below:

Mol	Chain	Res	Type	Atoms	Z	Observed(Å)	Ideal(Å)
3	B	901	2I7	C7-N1	-10.68	1.29	1.47
3	A	901	2I7	C7-N1	-9.30	1.31	1.47
3	A	901	2I7	C7-C8	6.26	1.62	1.51
3	B	901	2I7	C7-C8	5.97	1.62	1.51
3	A	901	2I7	C4-C3	4.55	1.58	1.52
3	B	901	2I7	C6-C5	4.26	1.59	1.52
3	B	901	2I7	C17-C18	3.77	1.58	1.48
3	A	901	2I7	C12-N2	3.72	1.49	1.38
3	A	901	2I7	C3-C2	-3.68	1.47	1.52
3	B	901	2I7	C3-C2	-3.36	1.47	1.52
3	B	901	2I7	C4-C3	2.98	1.56	1.52
3	A	901	2I7	C24-C25	2.98	1.45	1.38
3	B	901	2I7	C9-C10	2.91	1.44	1.39
3	A	901	2I7	C11-C10	2.79	1.57	1.51
3	B	901	2I7	C16-C14	2.77	1.43	1.39
3	A	901	2I7	C9-C10	2.73	1.44	1.39
3	A	901	2I7	C17-C18	2.67	1.55	1.48
3	B	901	2I7	O2-C2	2.63	1.49	1.43
3	A	901	2I7	C6-C5	2.57	1.56	1.52
3	B	901	2I7	C12-N2	2.43	1.45	1.38
3	A	901	2I7	C1-C5	2.39	1.58	1.53
3	A	901	2I7	O2-C2	2.26	1.48	1.43
6	B	902	BTB	C4-C2	2.21	1.56	1.53
3	B	901	2I7	C24-C25	2.21	1.43	1.38

All (28) bond angle outliers are listed below:

Mol	Chain	Res	Type	Atoms	Z	Observed(°)	Ideal(°)
3	A	901	2I7	C19-N3-C18	6.34	122.70	116.08
3	B	901	2I7	C19-N3-C18	6.30	122.67	116.08
3	B	901	2I7	C21-N4-C18	5.63	121.97	116.08
3	B	901	2I7	C17-C18-N4	4.70	122.46	117.41

Continued on next page...

Continued from previous page...

Mol	Chain	Res	Type	Atoms	Z	Observed(°)	Ideal(°)
3	A	901	2I7	C6-C5-C1	-3.80	107.08	112.90
3	B	901	2I7	C6-C5-C1	-3.77	107.12	112.90
3	A	901	2I7	C7-N1-C5	3.60	120.25	112.97
3	A	901	2I7	C20-C19-N3	-3.36	117.94	123.43
3	A	901	2I7	O2-C2-C3	-3.32	103.63	109.99
3	B	901	2I7	C16-C17-C18	3.26	124.85	120.05
3	A	901	2I7	C21-N4-C18	3.25	119.48	116.08
3	B	901	2I7	N4-C18-N3	-3.06	118.95	125.57
3	B	901	2I7	C11-N2-C12	-2.93	114.61	122.15
3	B	901	2I7	C15-C14-C13	-2.91	116.63	120.94
3	B	901	2I7	C11-C10-C23	-2.90	114.90	120.91
3	B	901	2I7	O2-C2-C1	-2.68	104.16	110.35
3	A	901	2I7	O1-C1-C5	2.66	114.51	109.77
3	A	901	2I7	C17-C18-N4	2.64	120.25	117.41
3	B	901	2I7	C4-C3-C2	-2.62	107.26	110.24
3	B	901	2I7	C20-C19-N3	-2.52	119.31	123.43
3	B	901	2I7	C23-C10-C9	2.25	121.69	118.54
3	B	901	2I7	C22-C17-C18	-2.24	116.76	120.05
3	B	901	2I7	C20-C21-N4	-2.23	119.78	123.43
3	B	901	2I7	C10-C9-C8	-2.08	118.67	121.23
3	B	901	2I7	C7-N1-C5	2.07	117.14	112.97
3	A	901	2I7	N4-C18-N3	-2.06	121.13	125.57
3	A	901	2I7	O4-C6-C5	-2.04	107.05	111.42
3	B	901	2I7	C22-C12-C13	2.01	122.27	119.57

There are no chirality outliers.

All (7) torsion outliers are listed below:

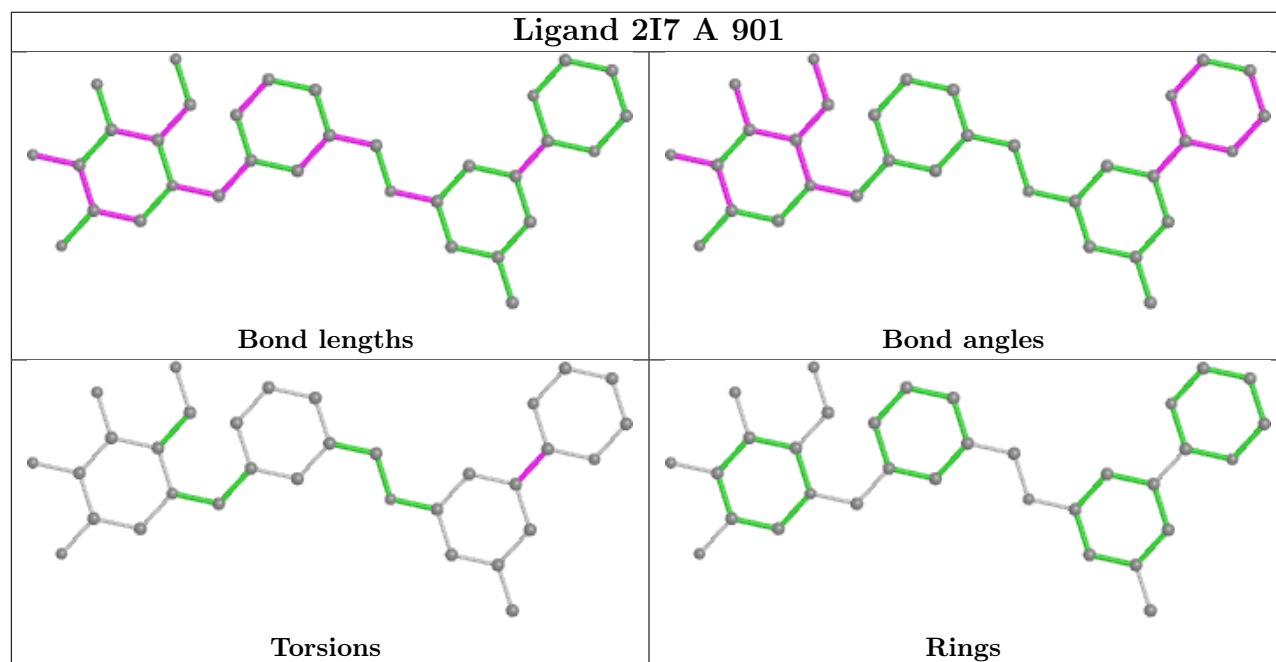
Mol	Chain	Res	Type	Atoms
4	A	902	GOL	O1-C1-C2-C3
4	A	904	GOL	O1-C1-C2-C3
6	B	902	BTB	N-C5-C6-O6
4	A	902	GOL	O1-C1-C2-O2
4	A	904	GOL	O1-C1-C2-O2
3	A	901	2I7	C16-C17-C18-N3
3	A	901	2I7	C16-C17-C18-N4

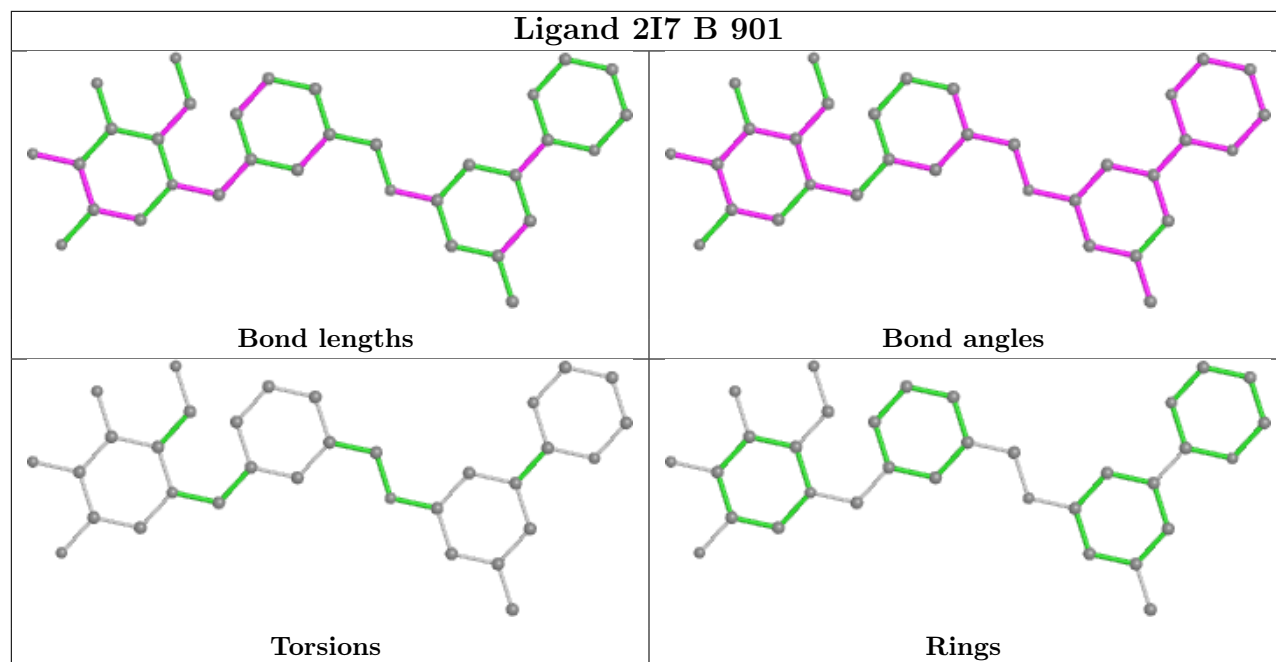
There are no ring outliers.

8 monomers are involved in 18 short contacts:

Mol	Chain	Res	Type	Clashes	Symm-Clashes
5	B	904	SO4	1	0
4	A	906	GOL	4	0
4	A	903	GOL	2	0
6	B	902	BTB	1	0
4	A	904	GOL	7	0
5	A	911	SO4	1	0
5	B	906	SO4	1	0
4	A	902	GOL	1	0

The following is a two-dimensional graphical depiction of Mogul quality analysis of bond lengths, bond angles, torsion angles, and ring geometry for all instances of the Ligand of Interest. In addition, ligands with molecular weight > 250 and outliers as shown on the validation Tables will also be included. For torsion angles, if less than 5% of the Mogul distribution of torsion angles is within 10 degrees of the torsion angle in question, then that torsion angle is considered an outlier. Any bond that is central to one or more torsion angles identified as an outlier by Mogul will be highlighted in the graph. For rings, the root-mean-square deviation (RMSD) between the ring in question and similar rings identified by Mogul is calculated over all ring torsion angles. If the average RMSD is greater than 60 degrees and the minimal RMSD between the ring in question and any Mogul-identified rings is also greater than 60 degrees, then that ring is considered an outlier. The outliers are highlighted in purple. The color gray indicates Mogul did not find sufficient equivalents in the CSD to analyse the geometry.





5.7 Other polymers [i](#)

There are no such residues in this entry.

5.8 Polymer linkage issues [i](#)

There are no chain breaks in this entry.

6 Fit of model and data

6.1 Protein, DNA and RNA chains

In the following table, the column labelled ‘#RSRZ > 2’ contains the number (and percentage) of RSRZ outliers, followed by percent RSRZ outliers for the chain as percentile scores relative to all X-ray entries and entries of similar resolution. The OWAB column contains the minimum, median, 95th percentile and maximum values of the occupancy-weighted average B-factor per residue. The column labelled ‘Q < 0.9’ lists the number of (and percentage) of residues with an average occupancy less than 0.9.

Mol	Chain	Analysed	<RSRZ>	#RSRZ>2	OWAB(Å ²)	Q<0.9
1	A	765/819 (93%)	-0.10	19 (2%) 57 60	20, 31, 52, 65	0
1	B	764/819 (93%)	-0.28	7 (0%) 84 85	20, 31, 48, 82	0
All	All	1529/1638 (93%)	-0.19	26 (1%) 70 72	20, 31, 51, 82	0

All (26) RSRZ outliers are listed below:

Mol	Chain	Res	Type	RSRZ
1	A	560	ASP	3.7
1	A	37	HIS	3.6
1	A	151	ASP	3.4
1	A	529	VAL	3.3
1	A	527	PRO	3.3
1	A	36	LEU	2.9
1	B	184	GLY	2.8
1	A	515	LEU	2.8
1	A	661	PHE	2.8
1	A	618	GLY	2.5
1	A	519	LEU	2.5
1	A	623	ALA	2.5
1	A	617	ILE	2.5
1	A	309	GLY	2.4
1	B	181	ASN	2.4
1	B	151	ASP	2.4
1	A	621	LEU	2.4
1	A	629	PHE	2.3
1	B	183	PHE	2.3
1	A	499	LEU	2.3
1	B	788	GLU	2.3
1	B	718	PHE	2.2
1	A	463	LEU	2.2
1	B	152	ASP	2.2

Continued on next page...

Continued from previous page...

Mol	Chain	Res	Type	RSRZ
1	A	659	ASP	2.2
1	A	467	ALA	2.1

6.2 Non-standard residues in protein, DNA, RNA chains [i](#)

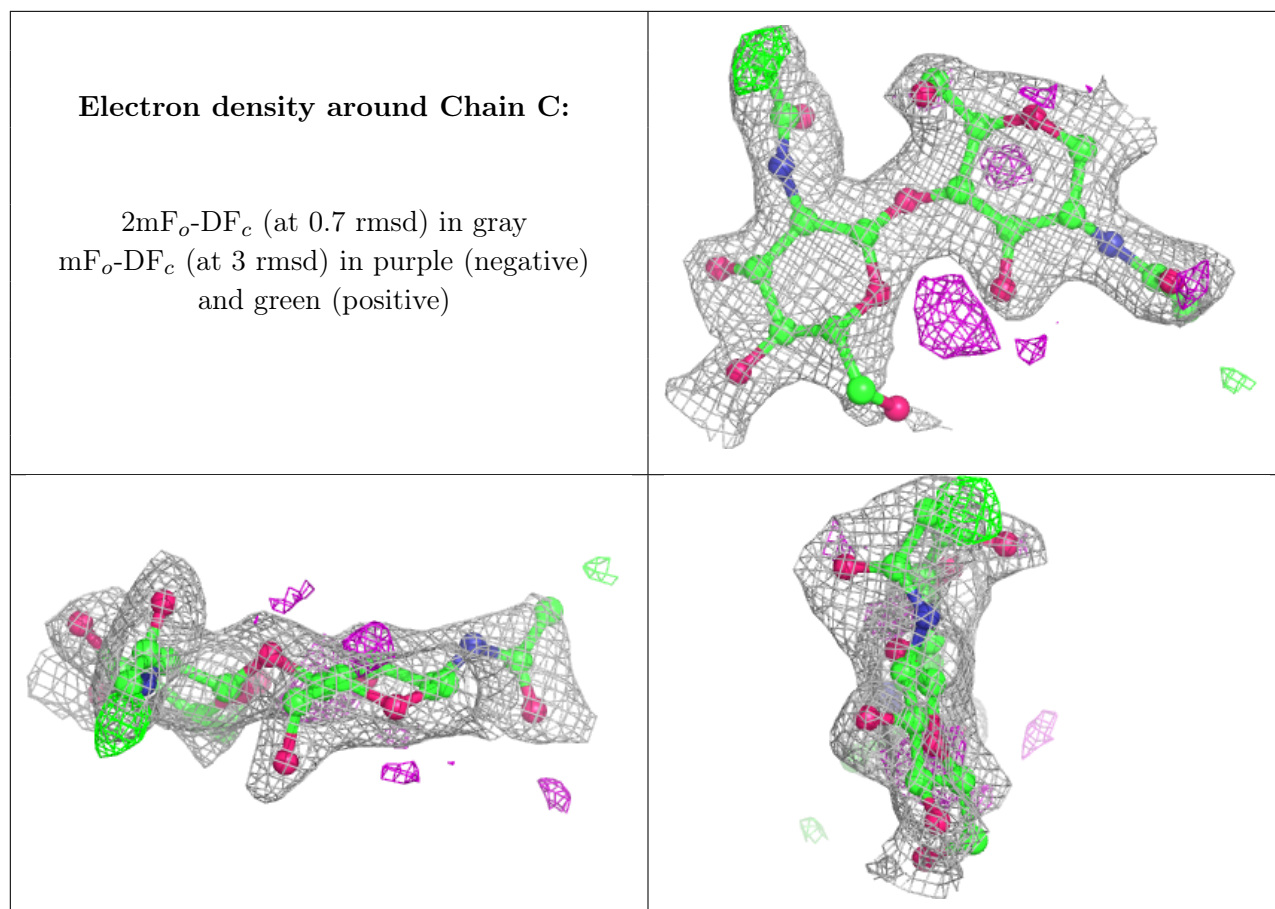
There are no non-standard protein/DNA/RNA residues in this entry.

6.3 Carbohydrates [i](#)

In the following table, the Atoms column lists the number of modelled atoms in the group and the number defined in the chemical component dictionary. The B-factors column lists the minimum, median, 95th percentile and maximum values of B factors of atoms in the group. The column labelled 'Q < 0.9' lists the number of atoms with occupancy less than 0.9.

Mol	Type	Chain	Res	Atoms	RSCC	RSR	B-factors(Å ²)	Q<0.9
2	NAG	C	2	14/15	0.77	0.25	55,82,91,91	0
2	NAG	C	1	14/15	0.92	0.18	47,51,59,61	0

The following is a graphical depiction of the model fit to experimental electron density for oligosaccharide. Each fit is shown from different orientation to approximate a three-dimensional view.



6.4 Ligands [i](#)

In the following table, the Atoms column lists the number of modelled atoms in the group and the number defined in the chemical component dictionary. The B-factors column lists the minimum, median, 95th percentile and maximum values of B factors of atoms in the group. The column labelled 'Q< 0.9' lists the number of atoms with occupancy less than 0.9.

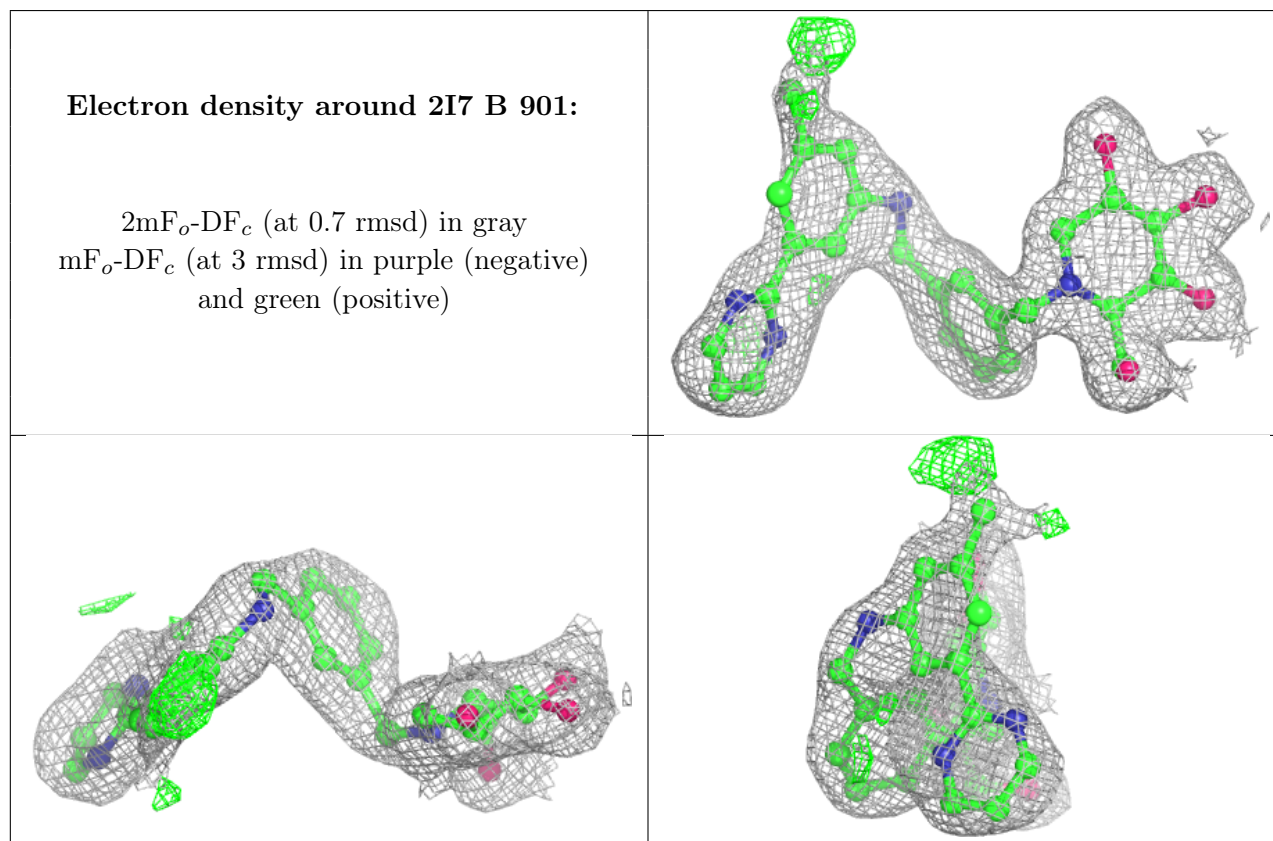
Mol	Type	Chain	Res	Atoms	RSCC	RSR	B-factors(Å ²)	Q<0.9
4	GOL	A	902	6/6	0.69	0.17	53,64,68,68	0
4	GOL	A	904	6/6	0.73	0.25	71,75,79,98	0
5	SO4	A	913	5/5	0.81	0.17	103,105,122,124	0
4	GOL	A	905	6/6	0.82	0.25	49,66,67,68	0
6	BTB	B	902	14/14	0.85	0.16	34,49,58,58	0
4	GOL	A	906	6/6	0.87	0.18	44,48,59,59	0
4	GOL	A	903	6/6	0.89	0.21	52,57,62,70	0
5	SO4	A	907	5/5	0.89	0.27	79,92,102,106	0
5	SO4	A	909	5/5	0.90	0.28	109,110,123,134	0
5	SO4	A	915	5/5	0.90	0.19	97,104,111,112	0
5	SO4	A	910	5/5	0.90	0.23	101,109,113,114	0
5	SO4	A	917	5/5	0.92	0.21	67,79,88,92	0
5	SO4	A	914	5/5	0.94	0.13	75,80,87,96	0

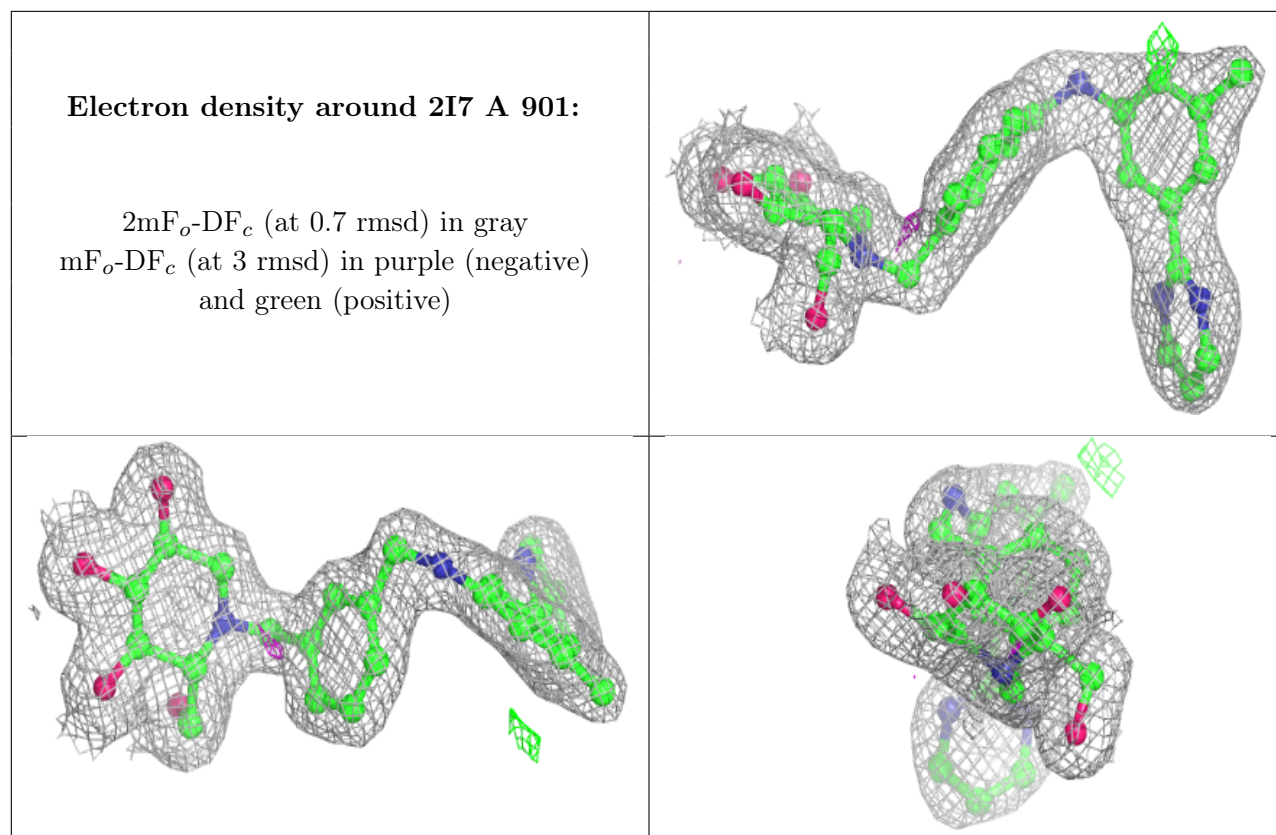
Continued on next page...

Continued from previous page...

Mol	Type	Chain	Res	Atoms	RSCC	RSR	B-factors(\AA^2)	Q<0.9
3	2I7	B	901	33/33	0.95	0.12	20,33,77,79	0
5	SO4	A	912	5/5	0.96	0.16	37,50,55,68	0
5	SO4	A	916	5/5	0.96	0.16	65,73,81,90	0
4	GOL	B	903	6/6	0.96	0.11	24,36,41,43	0
5	SO4	B	907	5/5	0.96	0.17	41,45,58,60	0
3	2I7	A	901	33/33	0.96	0.12	20,32,44,46	0
5	SO4	A	908	5/5	0.97	0.10	47,49,53,57	0
5	SO4	B	905	5/5	0.97	0.10	54,55,65,65	0
5	SO4	B	906	5/5	0.99	0.08	47,51,59,62	0
5	SO4	B	904	5/5	0.99	0.10	32,33,39,47	0
5	SO4	A	911	5/5	0.99	0.14	33,36,41,44	0

The following is a graphical depiction of the model fit to experimental electron density of all instances of the Ligand of Interest. In addition, ligands with molecular weight > 250 and outliers as shown on the geometry validation Tables will also be included. Each fit is shown from different orientation to approximate a three-dimensional view.





6.5 Other polymers [i](#)

There are no such residues in this entry.