



Full wwPDB X-ray Structure Validation Report ⓘ

Aug 25, 2022 – 04:43 pm BST

PDB ID : 7QXC
Title : Recognition of Staphylococcus aureus wall teichoic acid analogue SA533 (compound 1) by Fab4461
Authors : Soriano-Maldonado, P.; van Raaij, M.J.
Deposited on : 2022-01-26
Resolution : 1.45 Å(reported)

This is a Full wwPDB X-ray Structure Validation Report for a publicly released PDB entry.

We welcome your comments at validation@mail.wwpdb.org

A user guide is available at

<https://www.wwpdb.org/validation/2017/XrayValidationReportHelp>

with specific help available everywhere you see the ⓘ symbol.

The types of validation reports are described at <http://www.wwpdb.org/validation/2017/FAQs#types>.

The following versions of software and data (see [references ⓘ](#)) were used in the production of this report:

MolProbity : 4.02b-467
Mogul : 1.8.4, CSD as541be (2020)
Xtrriage (Phenix) : 1.13
EDS : 2.30
buster-report : 1.1.7 (2018)
Percentile statistics : 20191225.v01 (using entries in the PDB archive December 25th 2019)
Refmac : 5.8.0267
CCP4 : 7.1.010 (Gargrove)
Ideal geometry (proteins) : Engh & Huber (2001)
Ideal geometry (DNA, RNA) : Parkinson et al. (1996)
Validation Pipeline (wwPDB-VP) : 2.30

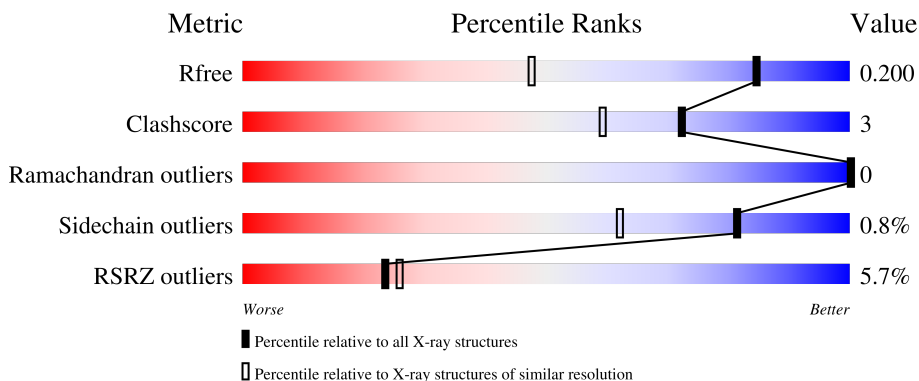
1 Overall quality at a glance

The following experimental techniques were used to determine the structure:

X-RAY DIFFRACTION

The reported resolution of this entry is 1.45 Å.

Percentile scores (ranging between 0-100) for global validation metrics of the entry are shown in the following graphic. The table shows the number of entries on which the scores are based.



Metric	Whole archive (#Entries)	Similar resolution (#Entries, resolution range(Å))
R_{free}	130704	1156 (1.46-1.46)
Clashscore	141614	1202 (1.46-1.46)
Ramachandran outliers	138981	1178 (1.46-1.46)
Sidechain outliers	138945	1178 (1.46-1.46)
RSRZ outliers	127900	1139 (1.46-1.46)

The table below summarises the geometric issues observed across the polymeric chains and their fit to the electron density. The red, orange, yellow and green segments of the lower bar indicate the fraction of residues that contain outliers for ≥ 3 , 2, 1 and 0 types of geometric quality criteria respectively. A grey segment represents the fraction of residues that are not modelled. The numeric value for each fraction is indicated below the corresponding segment, with a dot representing fractions $\leq 5\%$. The upper red bar (where present) indicates the fraction of residues that have poor fit to the electron density. The numeric value is given above the bar.

Mol	Chain	Length	Quality of chain
1	HHH	239	
2	LLL	220	

2 Entry composition [i](#)

There are 6 unique types of molecules in this entry. The entry contains 3835 atoms, of which 0 are hydrogens and 0 are deuteriums.

In the tables below, the ZeroOcc column contains the number of atoms modelled with zero occupancy, the AltConf column contains the number of residues with at least one atom in alternate conformation and the Trace column contains the number of residues modelled with at most 2 atoms.

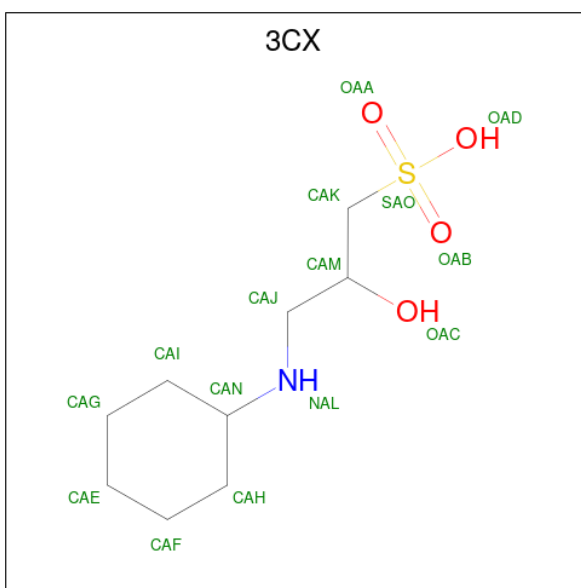
- Molecule 1 is a protein called Fab 4461 heavy chain.

Mol	Chain	Residues	Atoms					ZeroOcc	AltConf	Trace
			Total	C	N	O	S			
1	HHH	216	1609	1013	270	317	9	0	1	0

- Molecule 2 is a protein called Fab 4461 light chain.

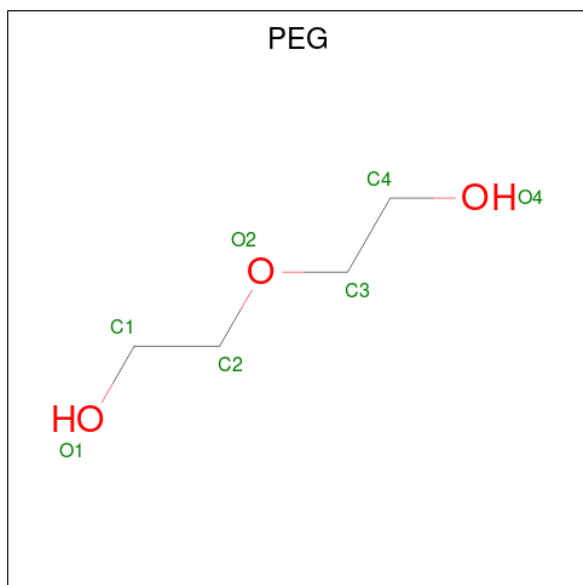
Mol	Chain	Residues	Atoms					ZeroOcc	AltConf	Trace
			Total	C	N	O	S			
2	LLL	219	1714	1072	293	344	5	0	0	0

- Molecule 3 is (2S)-3-(cyclohexylamino)-2-hydroxypropane-1-sulfonic acid (three-letter code: 3CX) (formula: C₉H₁₉NO₄S).



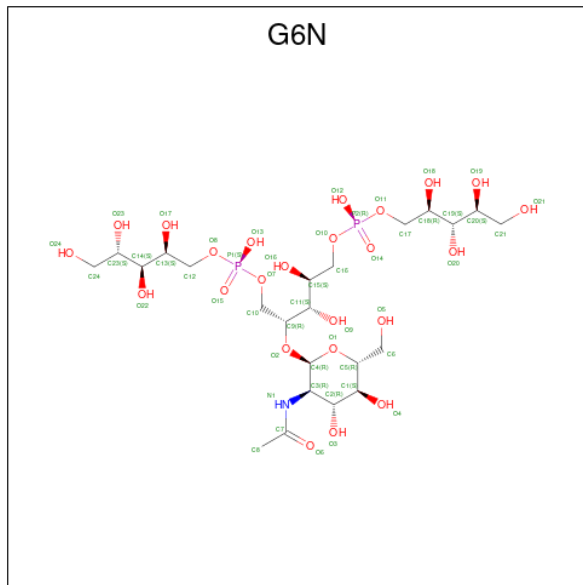
Mol	Chain	Residues	Atoms					ZeroOcc	AltConf
			Total	C	N	O	S		
3	HHH	1	15	9	1	4	1	0	0

- Molecule 4 is DI(HYDROXYETHYL)ETHER (three-letter code: PEG) (formula: C₄H₁₀O₃).



Mol	Chain	Residues	Atoms			ZeroOcc	AltConf
4	HHH	1	Total	C	O	0	0
			7	4	3		
4	LLL	1	Total	C	O	0	0
			7	4	3		
4	LLL	1	Total	C	O	0	0
			7	4	3		
4	LLL	1	Total	C	O	0	0
			7	4	3		

- Molecule 5 is [(2 {S},3 {S},4 {R})-4-[(2 {R},3 {R},4 {R},5 {S},6 {R})-3-acetamido-6-(hydroxymethyl)-4,5-bis(oxidanyl)oxan-2-yl]oxy-2,3-bis(oxidanyl)-5-[oxidanyl-[(2 {R})-2-oxidanylpropoxy]phosphoryl]oxy-pentyl] [(2 {R},3 {S},4 {S})-2,3,4,5-tetrakis(oxidanyl)pentyl] hydrogen phosphate (three-letter code: G6N) (formula: C₂₃H₄₇NO₂₄P₂) (labeled as "Ligand of Interest" by depositor).



Mol	Chain	Residues	Atoms					ZeroOcc	AltConf
			Total	C	N	O	P		
5	LLL	1	45	21	1	21	2	0	0

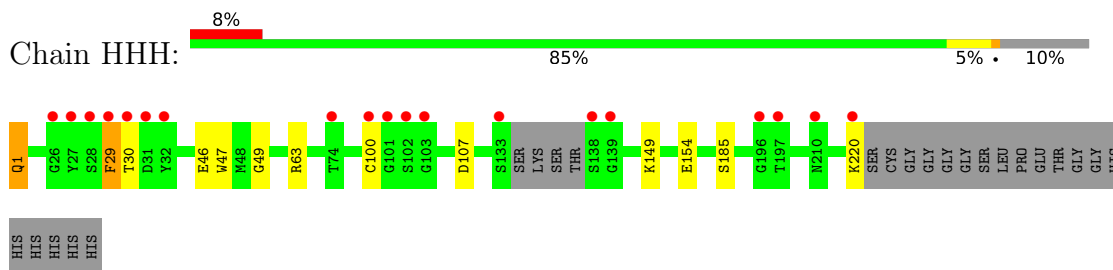
- Molecule 6 is water.

Mol	Chain	Residues	Atoms		ZeroOcc	AltConf
6	HHH	188	Total	O	0	0
			188	188		
6	LLL	236	Total	O	0	0
			236	236		

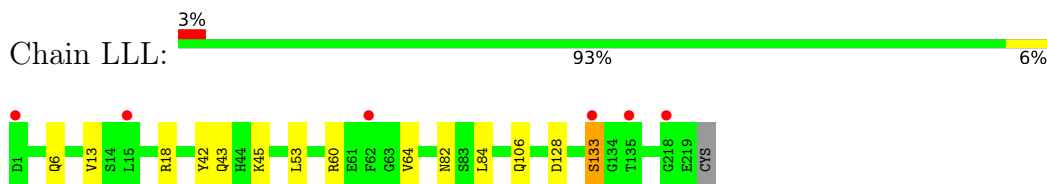
3 Residue-property plots [i](#)

These plots are drawn for all protein, RNA, DNA and oligosaccharide chains in the entry. The first graphic for a chain summarises the proportions of the various outlier classes displayed in the second graphic. The second graphic shows the sequence view annotated by issues in geometry and electron density. Residues are color-coded according to the number of geometric quality criteria for which they contain at least one outlier: green = 0, yellow = 1, orange = 2 and red = 3 or more. A red dot above a residue indicates a poor fit to the electron density ($RSRZ > 2$). Stretches of 2 or more consecutive residues without any outlier are shown as a green connector. Residues present in the sample, but not in the model, are shown in grey.

- Molecule 1: Fab 4461 heavy chain



- Molecule 2: Fab 4461 light chain



4 Data and refinement statistics

Property	Value	Source
Space group	P 1 21 1	Depositor
Cell constants a, b, c, α , β , γ	58.19Å 65.45Å 74.34Å 90.00° 112.90° 90.00°	Depositor
Resolution (Å)	53.51 – 1.45 53.51 – 1.45	Depositor EDS
% Data completeness (in resolution range)	96.5 (53.51-1.45) 96.5 (53.51-1.45)	Depositor EDS
R_{merge}	0.03	Depositor
R_{sym}	(Not available)	Depositor
$\langle I/\sigma(I) \rangle$ ¹	1.52 (at 1.45Å)	Xtrriage
Refinement program	REFMAC 5.8.0267	Depositor
R, R_{free}	0.174 , 0.200 0.174 , 0.200	Depositor DCC
R_{free} test set	4371 reflections (4.99%)	wwPDB-VP
Wilson B-factor (Å ²)	21.0	Xtrriage
Anisotropy	0.149	Xtrriage
Bulk solvent k_{sol} (e/Å ³), B_{sol} (Å ²)	(Not available) , (Not available)	EDS
L-test for twinning ²	$\langle L \rangle = 0.50$, $\langle L^2 \rangle = 0.33$	Xtrriage
Estimated twinning fraction	0.016 for h,-k,-h-l	Xtrriage
F_o, F_c correlation	0.97	EDS
Total number of atoms	3835	wwPDB-VP
Average B, all atoms (Å ²)	25.0	wwPDB-VP

Xtrriage's analysis on translational NCS is as follows: *The largest off-origin peak in the Patterson function is 7.43% of the height of the origin peak. No significant pseudotranslation is detected.*

¹Intensities estimated from amplitudes.

²Theoretical values of $\langle |L| \rangle$, $\langle L^2 \rangle$ for acentric reflections are 0.5, 0.333 respectively for untwinned datasets, and 0.375, 0.2 for perfectly twinned datasets.

5 Model quality

5.1 Standard geometry

Bond lengths and bond angles in the following residue types are not validated in this section: G6N, 3CX, PEG

The Z score for a bond length (or angle) is the number of standard deviations the observed value is removed from the expected value. A bond length (or angle) with $|Z| > 5$ is considered an outlier worth inspection. RMSZ is the root-mean-square of all Z scores of the bond lengths (or angles).

Mol	Chain	Bond lengths		Bond angles	
		RMSZ	# Z >5	RMSZ	# Z >5
1	HHH	0.65	0/1651	0.77	0/2249
2	LLL	0.67	0/1752	0.76	0/2379
All	All	0.66	0/3403	0.77	0/4628

There are no bond length outliers.

There are no bond angle outliers.

There are no chirality outliers.

There are no planarity outliers.

5.2 Too-close contacts

In the following table, the Non-H and H(model) columns list the number of non-hydrogen atoms and hydrogen atoms in the chain respectively. The H(added) column lists the number of hydrogen atoms added and optimized by MolProbity. The Clashes column lists the number of clashes within the asymmetric unit, whereas Symm-Clashes lists symmetry-related clashes.

Mol	Chain	Non-H	H(model)	H(added)	Clashes	Symm-Clashes
1	HHH	1609	0	1562	13	0
2	LLL	1714	0	1654	10	0
3	HHH	15	0	18	0	0
4	HHH	7	0	10	0	0
4	LLL	21	0	30	1	0
5	LLL	45	0	0	0	0
6	HHH	188	0	0	4	0
6	LLL	236	0	0	6	0
All	All	3835	0	3274	23	0

The all-atom clashscore is defined as the number of clashes found per 1000 atoms (including hydrogen atoms). The all-atom clashscore for this structure is 3.

All (23) close contacts within the same asymmetric unit are listed below, sorted by their clash magnitude.

Atom-1	Atom-2	Interatomic distance (Å)	Clash overlap (Å)
2:LLL:106:GLN:OE1	6:LLL:401:HOH:O	1.55	1.21
1:HHH:154[B]:GLU:OE1	6:HHH:401:HOH:O	1.62	1.15
1:HHH:185:SER:OG	6:HHH:402:HOH:O	1.89	0.84
1:HHH:100:CYS:SG	6:HHH:572:HOH:O	2.33	0.84
2:LLL:18:ARG:NH1	2:LLL:82:ASN:OD1	2.12	0.82
2:LLL:42:TYR:OH	6:LLL:402:HOH:O	1.97	0.80
1:HHH:1:GLN:N	1:HHH:1:GLN:OE1	2.15	0.79
1:HHH:1:GLN:NE2	6:HHH:403:HOH:O	1.96	0.75
2:LLL:133:SER:HB2	6:LLL:581:HOH:O	1.93	0.68
2:LLL:45:LYS:HE3	6:LLL:505:HOH:O	1.95	0.66
1:HHH:107:ASP:OD2	6:LLL:402:HOH:O	2.14	0.65
1:HHH:46:GLU:OE2	1:HHH:63:ARG:HD3	2.00	0.62
1:HHH:29:PHE:CE1	1:HHH:30:THR:HG23	2.38	0.59
2:LLL:43:GLN:HB2	2:LLL:53:LEU:HD11	1.88	0.55
2:LLL:6:GLN:O	2:LLL:106:GLN:NE2	2.38	0.54
1:HHH:149:LYS:HE2	6:LLL:431:HOH:O	2.07	0.53
1:HHH:220:LYS:NZ	2:LLL:128:ASP:OD2	2.41	0.52
4:LLL:303:PEG:O4	4:LLL:304:PEG:O4	2.15	0.45
1:HHH:47:TRP:CH2	1:HHH:49:GLY:HA2	2.54	0.43
2:LLL:13:VAL:HB	2:LLL:84:LEU:HD22	2.02	0.41
2:LLL:60:ARG:HG2	2:LLL:64:VAL:HB	2.02	0.41
1:HHH:29:PHE:CD1	1:HHH:30:THR:HG23	2.55	0.40
1:HHH:1:GLN:H3	1:HHH:1:GLN:CD	2.23	0.40

There are no symmetry-related clashes.

5.3 Torsion angles [\(i\)](#)

5.3.1 Protein backbone [\(i\)](#)

In the following table, the Percentiles column shows the percent Ramachandran outliers of the chain as a percentile score with respect to all X-ray entries followed by that with respect to entries of similar resolution.

The Analysed column shows the number of residues for which the backbone conformation was analysed, and the total number of residues.

Mol	Chain	Analysed	Favoured	Allowed	Outliers	Percentiles
1	HHH	213/239 (89%)	206 (97%)	7 (3%)	0	100 100

Continued on next page...

Continued from previous page...

Mol	Chain	Analysed	Favoured	Allowed	Outliers	Percentiles	
2	LLL	217/220 (99%)	215 (99%)	2 (1%)	0	100	100
All	All	430/459 (94%)	421 (98%)	9 (2%)	0	100	100

There are no Ramachandran outliers to report.

5.3.2 Protein sidechains [i](#)

In the following table, the Percentiles column shows the percent sidechain outliers of the chain as a percentile score with respect to all X-ray entries followed by that with respect to entries of similar resolution.

The Analysed column shows the number of residues for which the sidechain conformation was analysed, and the total number of residues.

Mol	Chain	Analysed	Rotameric	Outliers	Percentiles	
1	HHH	178/195 (91%)	176 (99%)	2 (1%)	73	48
2	LLL	193/194 (100%)	192 (100%)	1 (0%)	88	75
All	All	371/389 (95%)	368 (99%)	3 (1%)	81	62

All (3) residues with a non-rotameric sidechain are listed below:

Mol	Chain	Res	Type
1	HHH	1	GLN
1	HHH	29	PHE
2	LLL	133	SER

Sometimes sidechains can be flipped to improve hydrogen bonding and reduce clashes. There are no such sidechains identified.

5.3.3 RNA [i](#)

There are no RNA molecules in this entry.

5.4 Non-standard residues in protein, DNA, RNA chains [i](#)

There are no non-standard protein/DNA/RNA residues in this entry.

5.5 Carbohydrates [i](#)

There are no monosaccharides in this entry.

5.6 Ligand geometry [i](#)

6 ligands are modelled in this entry.

In the following table, the Counts columns list the number of bonds (or angles) for which Mogul statistics could be retrieved, the number of bonds (or angles) that are observed in the model and the number of bonds (or angles) that are defined in the Chemical Component Dictionary. The Link column lists molecule types, if any, to which the group is linked. The Z score for a bond length (or angle) is the number of standard deviations the observed value is removed from the expected value. A bond length (or angle) with $|Z| > 2$ is considered an outlier worth inspection. RMSZ is the root-mean-square of all Z scores of the bond lengths (or angles).

Mol	Type	Chain	Res	Link	Bond lengths			Bond angles		
					Counts	RMSZ	# Z > 2	Counts	RMSZ	# Z > 2
4	PEG	LLL	302	-	6,6,6	0.12	0	5,5,5	0.06	0
4	PEG	HHH	302	-	6,6,6	0.14	0	5,5,5	0.09	0
4	PEG	LLL	304	-	6,6,6	0.18	0	5,5,5	0.10	0
3	3CX	HHH	301	-	15,15,15	0.86	1 (6%)	16,20,20	2.31	2 (12%)
5	G6N	LLL	301	-	44,45,50	0.34	0	59,64,71	0.86	2 (3%)
4	PEG	LLL	303	-	6,6,6	0.17	0	5,5,5	0.10	0

In the following table, the Chirals column lists the number of chiral outliers, the number of chiral centers analysed, the number of these observed in the model and the number defined in the Chemical Component Dictionary. Similar counts are reported in the Torsion and Rings columns. '-' means no outliers of that kind were identified.

Mol	Type	Chain	Res	Link	Chirals	Torsions	Rings
4	PEG	LLL	302	-	-	2/4/4/4	-
4	PEG	HHH	302	-	-	3/4/4/4	-
4	PEG	LLL	304	-	-	3/4/4/4	-
3	3CX	HHH	301	-	-	1/10/18/18	0/1/1/1
5	G6N	LLL	301	-	-	7/52/72/82	0/1/1/1
4	PEG	LLL	303	-	-	3/4/4/4	-

All (1) bond length outliers are listed below:

Mol	Chain	Res	Type	Atoms	Z	Observed(Å)	Ideal(Å)
3	HHH	301	3CX	OAB-SAO	2.97	1.53	1.45

All (4) bond angle outliers are listed below:

Mol	Chain	Res	Type	Atoms	Z	Observed(°)	Ideal(°)
3	HHH	301	3CX	OAB-SAO-CAK	-8.71	96.59	106.94
5	LLL	301	G6N	O19-C20-C19	2.10	114.20	109.10
3	HHH	301	3CX	OAD-SAO-OAA	2.04	116.27	111.27
5	LLL	301	G6N	C2-C3-N1	2.04	114.47	110.62

There are no chirality outliers.

All (19) torsion outliers are listed below:

Mol	Chain	Res	Type	Atoms
3	HHH	301	3CX	SAO-CAK-CAM-OAC
5	LLL	301	G6N	C8-C7-N1-C3
5	LLL	301	G6N	O8-C12-C13-C14
5	LLL	301	G6N	O8-C12-C13-O17
5	LLL	301	G6N	O6-C7-N1-C3
4	HHH	302	PEG	O2-C3-C4-O4
4	HHH	302	PEG	O1-C1-C2-O2
4	LLL	304	PEG	O2-C3-C4-O4
4	LLL	303	PEG	O2-C3-C4-O4
4	HHH	302	PEG	C1-C2-O2-C3
4	LLL	302	PEG	C1-C2-O2-C3
4	LLL	302	PEG	O2-C3-C4-O4
4	LLL	303	PEG	C1-C2-O2-C3
4	LLL	304	PEG	O1-C1-C2-O2
4	LLL	304	PEG	C1-C2-O2-C3
4	LLL	303	PEG	O1-C1-C2-O2
5	LLL	301	G6N	C10-C9-O2-C4
5	LLL	301	G6N	C11-C9-O2-C4
5	LLL	301	G6N	C2-C3-N1-C7

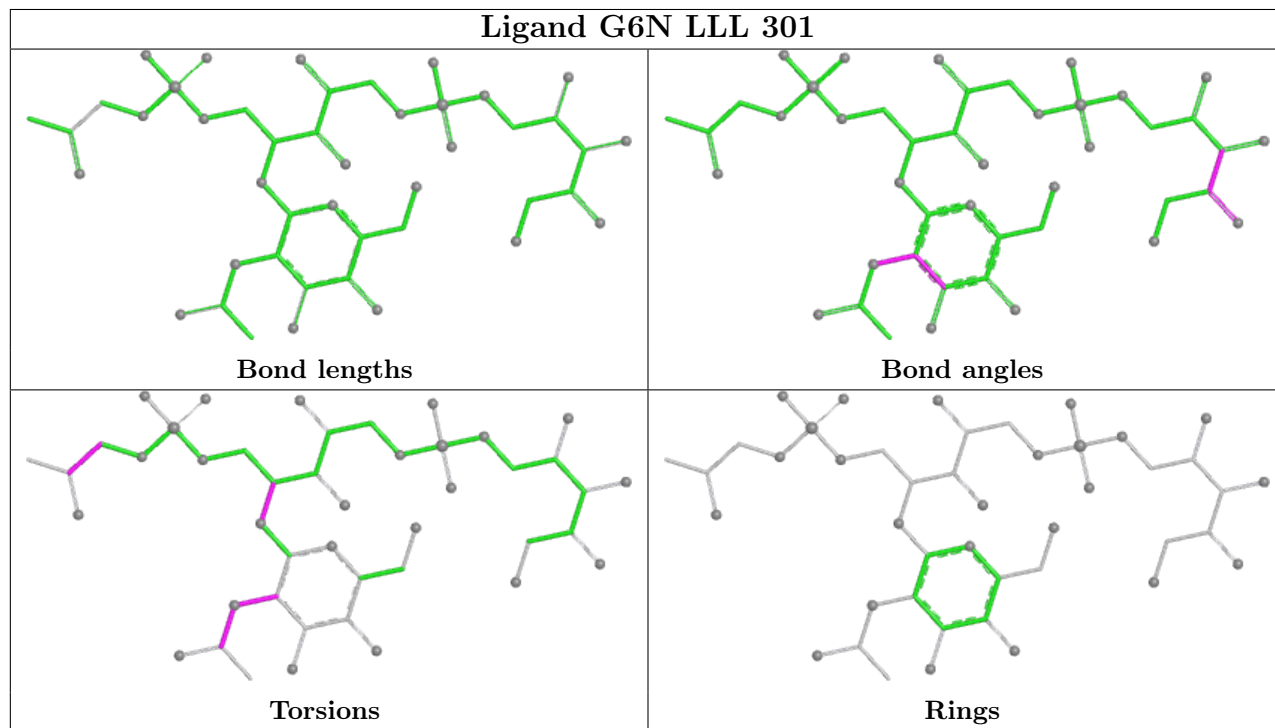
There are no ring outliers.

2 monomers are involved in 1 short contact:

Mol	Chain	Res	Type	Clashes	Symm-Clashes
4	LLL	304	PEG	1	0
4	LLL	303	PEG	1	0

The following is a two-dimensional graphical depiction of Mogul quality analysis of bond lengths, bond angles, torsion angles, and ring geometry for all instances of the Ligand of Interest. In addition, ligands with molecular weight > 250 and outliers as shown on the validation Tables will also be included. For torsion angles, if less than 5% of the Mogul distribution of torsion angles is within 10 degrees of the torsion angle in question, then that torsion angle is considered an outlier.

Any bond that is central to one or more torsion angles identified as an outlier by Mogul will be highlighted in the graph. For rings, the root-mean-square deviation (RMSD) between the ring in question and similar rings identified by Mogul is calculated over all ring torsion angles. If the average RMSD is greater than 60 degrees and the minimal RMSD between the ring in question and any Mogul-identified rings is also greater than 60 degrees, then that ring is considered an outlier. The outliers are highlighted in purple. The color gray indicates Mogul did not find sufficient equivalents in the CSD to analyse the geometry.



5.7 Other polymers [\(i\)](#)

There are no such residues in this entry.

5.8 Polymer linkage issues [\(i\)](#)

There are no chain breaks in this entry.

6 Fit of model and data

6.1 Protein, DNA and RNA chains

In the following table, the column labelled ‘#RSRZ > 2’ contains the number (and percentage) of RSRZ outliers, followed by percent RSRZ outliers for the chain as percentile scores relative to all X-ray entries and entries of similar resolution. The OWAB column contains the minimum, median, 95th percentile and maximum values of the occupancy-weighted average B-factor per residue. The column labelled ‘Q < 0.9’ lists the number of (and percentage) of residues with an average occupancy less than 0.9.

Mol	Chain	Analysed	<RSRZ>	#RSRZ>2	OWAB(Å ²)	Q<0.9
1	HHH	216/239 (90%)	0.46	19 (8%) 10 11	14, 20, 54, 102	0
2	LLL	219/220 (99%)	0.09	6 (2%) 54 56	14, 20, 33, 54	0
All	All	435/459 (94%)	0.28	25 (5%) 23 26	14, 20, 44, 102	0

All (25) RSRZ outliers are listed below:

Mol	Chain	Res	Type	RSRZ
1	HHH	29	PHE	11.7
1	HHH	30	THR	10.7
1	HHH	27	TYR	10.4
1	HHH	28	SER	8.1
1	HHH	139	GLY	7.3
1	HHH	102	SER	6.3
1	HHH	103	GLY	6.1
1	HHH	138	SER	4.3
1	HHH	197	THR	4.2
1	HHH	101	GLY	4.1
1	HHH	100	CYS	3.9
1	HHH	196	GLY	3.7
1	HHH	26	GLY	3.1
2	LLL	133	SER	2.8
1	HHH	31	ASP	2.6
2	LLL	135	THR	2.6
2	LLL	15	LEU	2.6
2	LLL	218	GLY	2.6
1	HHH	220	LYS	2.6
1	HHH	133	SER	2.6
1	HHH	32	TYR	2.5
2	LLL	62	PHE	2.5
1	HHH	210	ASN	2.4
2	LLL	1	ASP	2.4

Continued on next page...

Continued from previous page...

Mol	Chain	Res	Type	RSRZ
1	HHH	74	THR	2.4

6.2 Non-standard residues in protein, DNA, RNA chains [i](#)

There are no non-standard protein/DNA/RNA residues in this entry.

6.3 Carbohydrates [i](#)

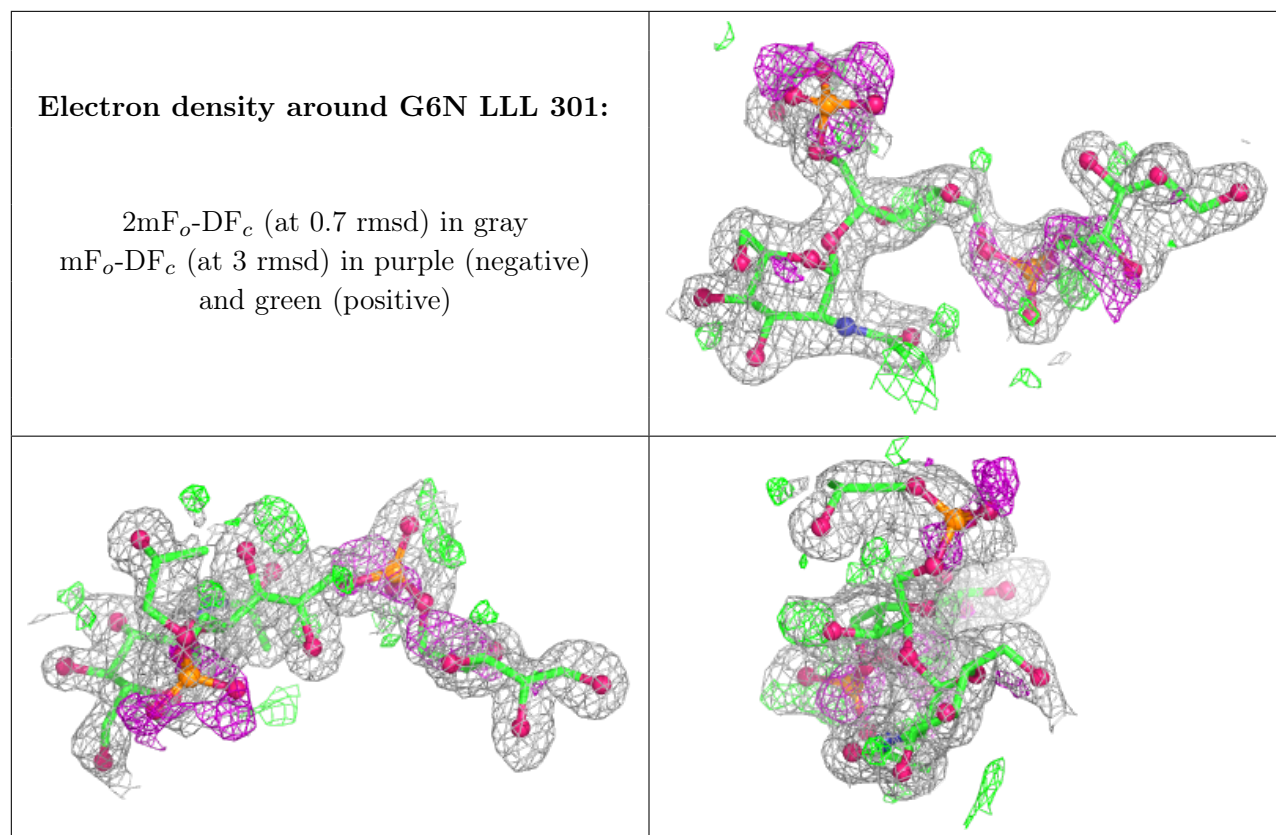
There are no monosaccharides in this entry.

6.4 Ligands [i](#)

In the following table, the Atoms column lists the number of modelled atoms in the group and the number defined in the chemical component dictionary. The B-factors column lists the minimum, median, 95th percentile and maximum values of B factors of atoms in the group. The column labelled 'Q< 0.9' lists the number of atoms with occupancy less than 0.9.

Mol	Type	Chain	Res	Atoms	RSCC	RSR	B-factors(Å ²)	Q<0.9
4	PEG	LLL	304	7/7	0.71	0.17	41,42,43,45	0
4	PEG	HHH	302	7/7	0.78	0.23	61,62,64,64	0
4	PEG	LLL	303	7/7	0.82	0.16	34,43,46,47	0
4	PEG	LLL	302	7/7	0.84	0.13	43,45,48,51	0
5	G6N	LLL	301	45/50	0.87	0.16	25,33,49,58	0
3	3CX	HHH	301	15/15	0.93	0.10	23,25,38,38	0

The following is a graphical depiction of the model fit to experimental electron density of all instances of the Ligand of Interest. In addition, ligands with molecular weight > 250 and outliers as shown on the geometry validation Tables will also be included. Each fit is shown from different orientation to approximate a three-dimensional view.



6.5 Other polymers [i](#)

There are no such residues in this entry.