



Full wwPDB X-ray Structure Validation Report ⓘ

Feb 23, 2022 – 03:24 pm GMT

PDB ID : 7Q86
Title : Crystal structure of human peroxisomal acyl-Co-A oxidase 1a, FAD-bound-form
Authors : Sonani, R.R.; Blat, A.; Dubin, G.
Deposited on : 2021-11-10
Resolution : 2.09 Å(reported)

This is a Full wwPDB X-ray Structure Validation Report for a publicly released PDB entry.

We welcome your comments at validation@mail.wwpdb.org

A user guide is available at

<https://www.wwpdb.org/validation/2017/XrayValidationReportHelp>

with specific help available everywhere you see the ⓘ symbol.

The following versions of software and data (see [references ⓘ](#)) were used in the production of this report:

MolProbity : 4.02b-467
Mogul : 1.8.4, CSD as541be (2020)
Xtriage (Phenix) : 1.13
EDS : 2.26
buster-report : 1.1.7 (2018)
Percentile statistics : 20191225.v01 (using entries in the PDB archive December 25th 2019)
Refmac : 5.8.0267
CCP4 : 7.1.010 (Gargrove)
Ideal geometry (proteins) : Engh & Huber (2001)
Ideal geometry (DNA, RNA) : Parkinson et al. (1996)
Validation Pipeline (wwPDB-VP) : 2.26

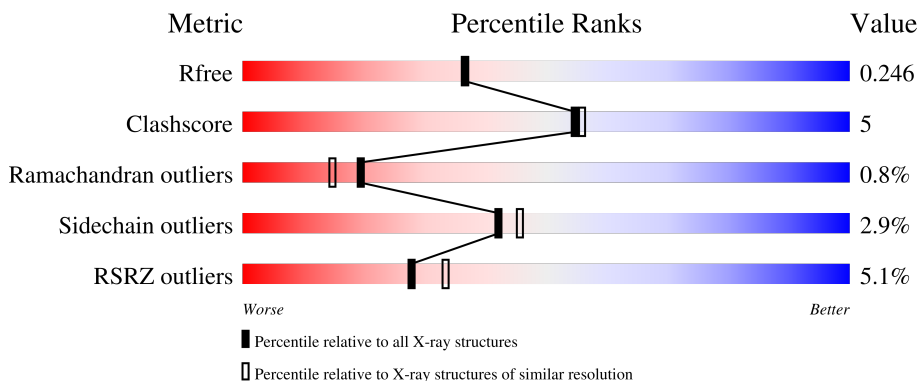
1 Overall quality at a glance

The following experimental techniques were used to determine the structure:

X-RAY DIFFRACTION

The reported resolution of this entry is 2.09 Å.

Percentile scores (ranging between 0-100) for global validation metrics of the entry are shown in the following graphic. The table shows the number of entries on which the scores are based.



Metric	Whole archive (#Entries)	Similar resolution (#Entries, resolution range(Å))
R_{free}	130704	5197 (2.10-2.10)
Clashscore	141614	5710 (2.10-2.10)
Ramachandran outliers	138981	5647 (2.10-2.10)
Sidechain outliers	138945	5648 (2.10-2.10)
RSRZ outliers	127900	5083 (2.10-2.10)

The table below summarises the geometric issues observed across the polymeric chains and their fit to the electron density. The red, orange, yellow and green segments of the lower bar indicate the fraction of residues that contain outliers for ≥ 3 , 2, 1 and 0 types of geometric quality criteria respectively. A grey segment represents the fraction of residues that are not modelled. The numeric value for each fraction is indicated below the corresponding segment, with a dot representing fractions $\leq 5\%$. The upper red bar (where present) indicates the fraction of residues that have poor fit to the electron density. The numeric value is given above the bar.

Mol	Chain	Length	Quality of chain
1	A	667	 8% 78% 13% 8%
1	B	667	 2% 81% 9% 9%

2 Entry composition [i](#)

There are 3 unique types of molecules in this entry. The entry contains 10219 atoms, of which 0 are hydrogens and 0 are deuteriums.

In the tables below, the ZeroOcc column contains the number of atoms modelled with zero occupancy, the AltConf column contains the number of residues with at least one atom in alternate conformation and the Trace column contains the number of residues modelled with at most 2 atoms.

- Molecule 1 is a protein called Isoform 2 of Peroxisomal acyl-coenzyme A oxidase 1.

Mol	Chain	Residues	Atoms					ZeroOcc	AltConf	Trace
			Total	C	N	O	S			
1	A	612	Total 4877	C 3107	N 846	O 895	S 29	0	0	0
1	B	607	Total 4841	C 3086	N 839	O 887	S 29	0	0	0

- Molecule 2 is FLAVIN-ADENINE DINUCLEOTIDE (three-letter code: FAD) (formula: $C_{27}H_{33}N_9O_{15}P_2$) (labeled as "Ligand of Interest" by depositor).



Mol	Chain	Residues	Atoms					ZeroOcc	AltConf
			Total	C	N	O	P		
2	A	1	Total 53	C 27	N 9	O 15	P 2	0	0
2	B	1	Total 53	C 27	N 9	O 15	P 2	0	0

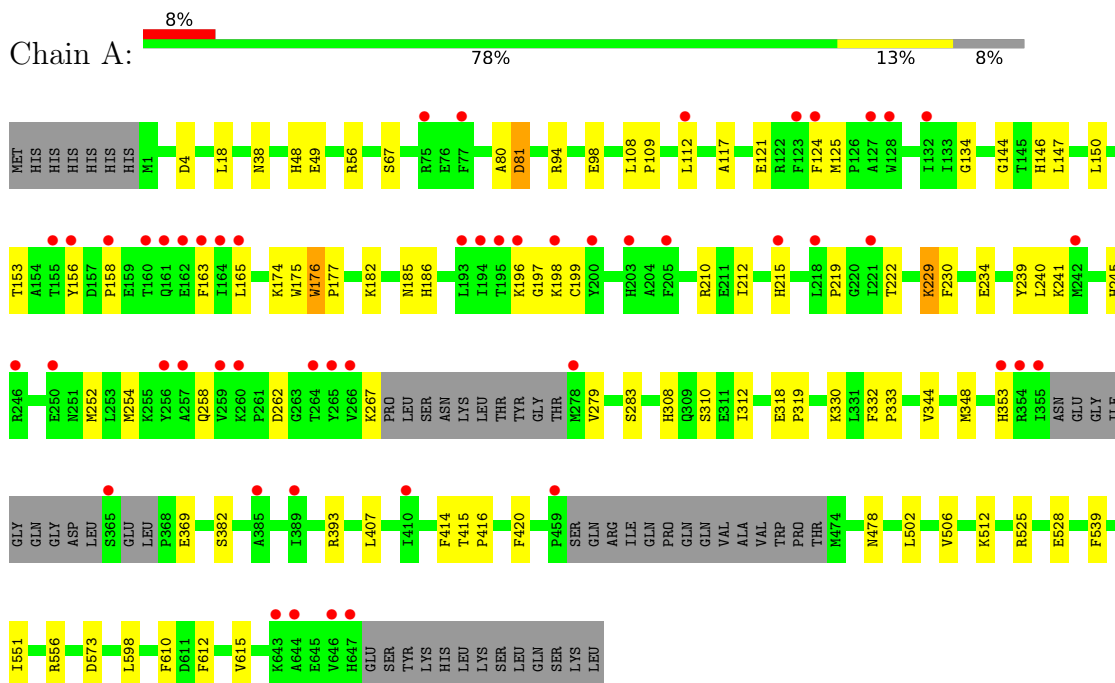
- Molecule 3 is water.

Mol	Chain	Residues	Atoms		ZeroOcc	AltConf
3	A	188	Total 188	O 188	0	0
3	B	207	Total 207	O 207	0	0

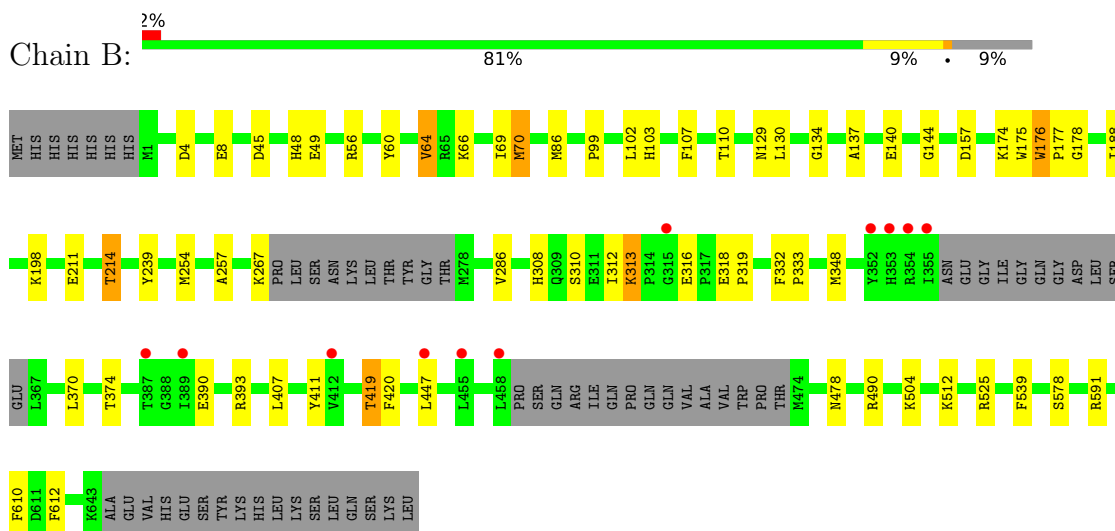
3 Residue-property plots [i](#)

These plots are drawn for all protein, RNA, DNA and oligosaccharide chains in the entry. The first graphic for a chain summarises the proportions of the various outlier classes displayed in the second graphic. The second graphic shows the sequence view annotated by issues in geometry and electron density. Residues are color-coded according to the number of geometric quality criteria for which they contain at least one outlier: green = 0, yellow = 1, orange = 2 and red = 3 or more. A red dot above a residue indicates a poor fit to the electron density ($RSRZ > 2$). Stretches of 2 or more consecutive residues without any outlier are shown as a green connector. Residues present in the sample, but not in the model, are shown in grey.

- Molecule 1: Isoform 2 of Peroxisomal acyl-coenzyme A oxidase 1



- Molecule 1: Isoform 2 of Peroxisomal acyl-coenzyme A oxidase 1



4 Data and refinement statistics

Property	Value	Source
Space group	P 21 21 21	Depositor
Cell constants a, b, c, α , β , γ	74.96Å 124.06Å 142.91Å 90.00° 90.00° 90.00°	Depositor
Resolution (Å)	47.84 – 2.09 47.79 – 2.09	Depositor EDS
% Data completeness (in resolution range)	99.9 (47.84-2.09) 99.9 (47.79-2.09)	Depositor EDS
R_{merge}	0.10	Depositor
R_{sym}	(Not available)	Depositor
$\langle I/\sigma(I) \rangle$ ¹	1.68 (at 2.08Å)	Xtrriage
Refinement program	REFMAC 5.8.0267	Depositor
R, R_{free}	0.187 , 0.240 0.199 , 0.246	Depositor DCC
R_{free} test set	4054 reflections (5.10%)	wwPDB-VP
Wilson B-factor (Å ²)	32.7	Xtrriage
Anisotropy	0.600	Xtrriage
Bulk solvent k_{sol} (e/Å ³), B_{sol} (Å ²)	(Not available) , (Not available)	EDS
L-test for twinning ²	$\langle L \rangle = 0.49$, $\langle L^2 \rangle = 0.32$	Xtrriage
Estimated twinning fraction	No twinning to report.	Xtrriage
F_o, F_c correlation	0.96	EDS
Total number of atoms	10219	wwPDB-VP
Average B, all atoms (Å ²)	49.0	wwPDB-VP

Xtrriage's analysis on translational NCS is as follows: *The largest off-origin peak in the Patterson function is 3.22% of the height of the origin peak. No significant pseudotranslation is detected.*

¹Intensities estimated from amplitudes.

²Theoretical values of $\langle |L| \rangle$, $\langle L^2 \rangle$ for acentric reflections are 0.5, 0.333 respectively for untwinned datasets, and 0.375, 0.2 for perfectly twinned datasets.

5 Model quality [i](#)

5.1 Standard geometry [i](#)

Bond lengths and bond angles in the following residue types are not validated in this section: CSO, FAD

The Z score for a bond length (or angle) is the number of standard deviations the observed value is removed from the expected value. A bond length (or angle) with $|Z| > 5$ is considered an outlier worth inspection. RMSZ is the root-mean-square of all Z scores of the bond lengths (or angles).

Mol	Chain	Bond lengths		Bond angles	
		RMSZ	# Z >5	RMSZ	# Z >5
1	A	0.80	0/4970	0.91	0/6720
1	B	0.84	0/4933	0.96	0/6671
All	All	0.82	0/9903	0.93	0/13391

There are no bond length outliers.

There are no bond angle outliers.

There are no chirality outliers.

There are no planarity outliers.

5.2 Too-close contacts [i](#)

In the following table, the Non-H and H(model) columns list the number of non-hydrogen atoms and hydrogen atoms in the chain respectively. The H(added) column lists the number of hydrogen atoms added and optimized by MolProbity. The Clashes column lists the number of clashes within the asymmetric unit, whereas Symm-Clashes lists symmetry-related clashes.

Mol	Chain	Non-H	H(model)	H(added)	Clashes	Symm-Clashes
1	A	4877	0	4858	62	0
1	B	4841	0	4830	41	0
2	A	53	0	31	0	0
2	B	53	0	31	0	0
3	A	188	0	0	7	0
3	B	207	0	0	2	0
All	All	10219	0	9750	102	0

The all-atom clashscore is defined as the number of clashes found per 1000 atoms (including hydrogen atoms). The all-atom clashscore for this structure is 5.

All (102) close contacts within the same asymmetric unit are listed below, sorted by their clash

magnitude.

Atom-1	Atom-2	Interatomic distance (Å)	Clash overlap (Å)
1:A:156:TYR:CE2	1:A:158:PRO:HA	1.93	1.03
1:A:156:TYR:CE2	1:A:158:PRO:CA	2.58	0.86
1:A:108:LEU:HD22	1:A:124:PHE:CE1	2.16	0.79
1:A:112:LEU:HD21	1:A:124:PHE:CZ	2.21	0.76
1:A:156:TYR:CZ	1:A:158:PRO:HA	2.25	0.71
1:A:156:TYR:HE2	1:A:158:PRO:HA	1.54	0.70
1:A:112:LEU:HD21	1:A:124:PHE:CE2	2.28	0.68
1:A:222:THR:HB	1:A:241:LYS:HB3	1.76	0.67
1:A:156:TYR:HE2	1:A:158:PRO:CA	2.07	0.67
1:B:103:HIS:HD2	1:B:134:GLY:H	1.44	0.65
1:B:103:HIS:CD2	1:B:134:GLY:H	2.14	0.65
1:B:478:ASN:HD21	1:B:591:ARG:HD3	1.62	0.65
1:B:4:ASP:OD2	1:B:308:HIS:HE1	1.81	0.64
1:A:48:HIS:HD2	1:A:49:GLU:O	1.85	0.60
1:A:108:LEU:CD2	1:A:124:PHE:CD1	2.85	0.60
1:B:286:VAL:HB	1:B:348:MET:HE1	1.85	0.59
1:B:102:LEU:HD12	1:B:178:GLY:O	2.02	0.59
1:B:267:LYS:O	1:B:267:LYS:HG3	2.03	0.59
1:A:344:VAL:O	1:A:348:MET:HG2	2.05	0.57
1:A:234:GLU:HG3	3:A:877:HOH:O	2.05	0.56
1:A:108:LEU:HD22	1:A:124:PHE:CD1	2.42	0.55
1:A:94:ARG:HD3	1:A:615:VAL:HG22	1.88	0.55
1:B:308:HIS:HD2	1:B:318:GLU:O	1.90	0.54
1:B:254:MET:HA	1:B:257:ALA:O	2.06	0.54
1:B:478:ASN:ND2	1:B:591:ARG:HD3	2.22	0.54
1:B:175:TRP:O	1:B:176:TRP:HB2	2.06	0.54
1:A:108:LEU:HB2	1:A:109:PRO:HD3	1.90	0.53
1:A:108:LEU:HD23	1:A:124:PHE:CD1	2.44	0.53
1:A:254:MET:HB3	1:A:258:GLN:HG3	1.91	0.53
1:B:4:ASP:O	1:B:8:GLU:HG2	2.08	0.53
1:B:313:LYS:HD3	1:B:316:GLU:OE1	2.09	0.53
1:B:312:ILE:HG13	1:B:319:PRO:HG3	1.90	0.52
1:A:117:ALA:O	1:A:121:GLU:HG3	2.09	0.52
1:A:4:ASP:OD2	1:A:308:HIS:HE1	1.92	0.52
1:A:393:ARG:HA	1:A:407:LEU:HD13	1.93	0.51
3:A:973:HOH:O	1:B:525:ARG:HD2	2.11	0.50
1:B:107:PHE:CG	1:B:134:GLY:HA3	2.47	0.50
1:A:18:LEU:HB2	1:A:551:ILE:HD11	1.94	0.50
1:A:415:THR:N	1:A:416:PRO:HD2	2.26	0.50
1:A:308:HIS:HD2	1:A:318:GLU:O	1.95	0.49
1:A:330:LYS:HE2	3:A:803:HOH:O	2.13	0.49

Continued on next page...

Continued from previous page...

Atom-1	Atom-2	Interatomic distance (Å)	Clash overlap (Å)
1:A:175:TRP:C	1:A:177:PRO:HD3	2.34	0.49
1:A:330:LYS:NZ	3:A:803:HOH:O	2.38	0.49
1:B:60:TYR:O	1:B:64:VAL:HG22	2.12	0.48
1:B:140:GLU:HG2	1:B:174:LYS:HD3	1.94	0.48
1:A:382:SER:HB3	3:A:944:HOH:O	2.14	0.48
1:A:525:ARG:NH2	1:A:573:ASP:OD2	2.37	0.48
1:A:156:TYR:CE2	1:A:158:PRO:N	2.82	0.48
1:A:108:LEU:CD2	1:A:124:PHE:CE1	2.93	0.47
1:B:512:LYS:HG3	3:B:943:HOH:O	2.14	0.47
1:A:134:GLY:HA2	1:A:186:HIS:O	2.14	0.47
1:B:393:ARG:HA	1:B:407:LEU:HD13	1.96	0.47
1:A:414:PHE:C	1:A:416:PRO:HD2	2.35	0.47
1:A:478:ASN:O	1:A:556:ARG:NH2	2.49	0.46
1:A:153:THR:O	1:A:165:LEU:HA	2.16	0.46
1:A:332:PHE:N	1:A:333:PRO:CD	2.78	0.46
1:A:174:LYS:HB2	1:A:240:LEU:HB3	1.97	0.46
1:A:219:PRO:O	1:A:245:HIS:HD2	1.99	0.45
1:A:283:SER:HA	1:A:348:MET:CE	2.47	0.45
1:B:174:LYS:O	1:B:239:TYR:HA	2.17	0.45
1:A:175:TRP:O	1:A:176:TRP:HB2	2.16	0.45
1:A:80:ALA:O	1:A:81:ASP:CB	2.65	0.45
1:B:390:GLU:HG2	1:B:411:TYR:CD1	2.52	0.45
1:A:156:TYR:HE2	1:A:158:PRO:CB	2.30	0.44
1:B:66:LYS:O	1:B:70:MET:HB3	2.17	0.44
1:A:174:LYS:O	1:A:239:TYR:HA	2.17	0.44
3:A:892:HOH:O	1:B:419:THR:HB	2.17	0.44
1:B:370:LEU:O	1:B:374:THR:HG23	2.17	0.44
1:A:330:LYS:CE	3:A:803:HOH:O	2.65	0.44
1:B:267:LYS:O	1:B:267:LYS:CG	2.65	0.44
1:B:175:TRP:C	1:B:177:PRO:HD3	2.38	0.44
1:A:415:THR:N	1:A:416:PRO:CD	2.80	0.43
1:A:176:TRP:N	1:A:177:PRO:CD	2.81	0.43
1:A:182:LYS:O	1:A:215:HIS:HE1	2.00	0.43
1:A:80:ALA:O	1:A:81:ASP:HB3	2.17	0.43
1:B:211:GLU:HB3	1:B:214:THR:OG1	2.18	0.43
1:A:38:ASN:HD22	1:A:38:ASN:HA	1.72	0.43
1:B:157:ASP:C	1:B:157:ASP:OD1	2.56	0.43
1:A:219:PRO:O	1:A:245:HIS:CD2	2.72	0.43
1:B:45:ASP:HB3	1:B:69:ILE:HG21	2.00	0.43
1:B:110:THR:HG21	1:B:188:ILE:HD13	2.01	0.43
1:B:490:ARG:HH11	1:B:490:ARG:HD3	1.72	0.43

Continued on next page...

Continued from previous page...

Atom-1	Atom-2	Interatomic distance (Å)	Clash overlap (Å)
1:A:146:HIS:HD2	3:B:974:HOH:O	2.02	0.42
1:B:48:HIS:HD2	1:B:49:GLU:O	2.03	0.42
1:A:229:LYS:HE3	1:A:229:LYS:HB2	1.80	0.42
1:B:348:MET:HE2	1:B:348:MET:HB2	1.59	0.42
1:B:332:PHE:N	1:B:333:PRO:CD	2.82	0.42
1:A:502:LEU:O	1:A:506:VAL:HG23	2.20	0.41
1:B:64:VAL:HA	1:B:99:PRO:HG2	2.00	0.41
1:A:283:SER:HA	1:A:348:MET:HE2	2.02	0.41
1:B:610:PHE:HB3	1:B:612:PHE:CE2	2.55	0.41
1:A:310:SER:O	1:A:319:PRO:HD2	2.20	0.41
1:A:163:PHE:CE2	1:A:252:MET:HB2	2.55	0.41
1:B:137:ALA:HA	1:B:177:PRO:HG2	2.02	0.41
1:A:108:LEU:HD23	1:A:124:PHE:HD1	1.84	0.41
1:A:147:LEU:O	1:A:150:LEU:HG	2.20	0.41
1:A:185:ASN:HA	1:A:210:ARG:HB2	2.03	0.41
1:A:176:TRP:O	1:A:177:PRO:C	2.59	0.41
1:B:478:ASN:ND2	1:B:591:ARG:HH11	2.17	0.41
1:B:129:ASN:O	1:B:130:LEU:HB2	2.20	0.40
1:A:146:HIS:CG	1:B:310:SER:HA	2.56	0.40
1:A:610:PHE:HB3	1:A:612:PHE:CE2	2.56	0.40

There are no symmetry-related clashes.

5.3 Torsion angles [i](#)

5.3.1 Protein backbone [i](#)

In the following table, the Percentiles column shows the percent Ramachandran outliers of the chain as a percentile score with respect to all X-ray entries followed by that with respect to entries of similar resolution.

The Analysed column shows the number of residues for which the backbone conformation was analysed, and the total number of residues.

Mol	Chain	Analysed	Favoured	Allowed	Outliers	Percentiles
1	A	601/667 (90%)	576 (96%)	18 (3%)	7 (1%)	13 8
1	B	597/667 (90%)	581 (97%)	14 (2%)	2 (0%)	41 41
All	All	1198/1334 (90%)	1157 (97%)	32 (3%)	9 (1%)	19 15

All (9) Ramachandran outliers are listed below:

Mol	Chain	Res	Type
1	A	176	TRP
1	B	176	TRP
1	A	197	GLY
1	A	279	VAL
1	A	81	ASP
1	A	196	LYS
1	A	312	ILE
1	B	144	GLY
1	A	144	GLY

5.3.2 Protein sidechains [i](#)

In the following table, the Percentiles column shows the percent sidechain outliers of the chain as a percentile score with respect to all X-ray entries followed by that with respect to entries of similar resolution.

The Analysed column shows the number of residues for which the sidechain conformation was analysed, and the total number of residues.

Mol	Chain	Analysed	Rotameric	Outliers	Percentiles	
1	A	526/576 (91%)	509 (97%)	17 (3%)	39	41
1	B	522/576 (91%)	509 (98%)	13 (2%)	47	52
All	All	1048/1152 (91%)	1018 (97%)	30 (3%)	42	46

All (30) residues with a non-rotameric sidechain are listed below:

Mol	Chain	Res	Type
1	A	56	ARG
1	A	67	SER
1	A	98	GLU
1	A	125	MET
1	A	198	LYS
1	A	212	ILE
1	A	229	LYS
1	A	230	PHE
1	A	262	ASP
1	A	267	LYS
1	A	353	HIS
1	A	369	GLU
1	A	420	PHE
1	A	512	LYS
1	A	528	GLU

Continued on next page...

Continued from previous page...

Mol	Chain	Res	Type
1	A	539	PHE
1	A	598	LEU
1	B	56	ARG
1	B	64	VAL
1	B	70	MET
1	B	86	MET
1	B	198	LYS
1	B	214	THR
1	B	313	LYS
1	B	419	THR
1	B	420	PHE
1	B	447	LEU
1	B	504	LYS
1	B	539	PHE
1	B	578	SER

Sometimes sidechains can be flipped to improve hydrogen bonding and reduce clashes. All (25) such sidechains are listed below:

Mol	Chain	Res	Type
1	A	38	ASN
1	A	42	ASN
1	A	48	HIS
1	A	90	ASN
1	A	103	HIS
1	A	215	HIS
1	A	245	HIS
1	A	308	HIS
1	A	430	GLN
1	A	503	GLN
1	A	547	GLN
1	A	576	GLN
1	A	613	GLN
1	B	47	GLN
1	B	48	HIS
1	B	90	ASN
1	B	103	HIS
1	B	146	HIS
1	B	203	HIS
1	B	308	HIS
1	B	430	GLN
1	B	478	ASN
1	B	576	GLN

Continued on next page...

Continued from previous page...

Mol	Chain	Res	Type
1	B	613	GLN
1	B	627	ASN

5.3.3 RNA [i](#)

There are no RNA molecules in this entry.

5.4 Non-standard residues in protein, DNA, RNA chains [i](#)

4 non-standard protein/DNA/RNA residues are modelled in this entry.

In the following table, the Counts columns list the number of bonds (or angles) for which Mogul statistics could be retrieved, the number of bonds (or angles) that are observed in the model and the number of bonds (or angles) that are defined in the Chemical Component Dictionary. The Link column lists molecule types, if any, to which the group is linked. The Z score for a bond length (or angle) is the number of standard deviations the observed value is removed from the expected value. A bond length (or angle) with $|Z| > 2$ is considered an outlier worth inspection. RMSZ is the root-mean-square of all Z scores of the bond lengths (or angles).

Mol	Type	Chain	Res	Link	Bond lengths			Bond angles		
					Counts	RMSZ	# Z > 2	Counts	RMSZ	# Z > 2
1	CSO	A	199	1	3,6,7	1.32	1 (33%)	0,6,8	-	-
1	CSO	B	449	1	3,6,7	0.60	0	0,6,8	-	-
1	CSO	A	449	1	3,6,7	0.79	0	0,6,8	-	-
1	CSO	B	199	1	3,6,7	1.12	0	0,6,8	-	-

In the following table, the Chirals column lists the number of chiral outliers, the number of chiral centers analysed, the number of these observed in the model and the number defined in the Chemical Component Dictionary. Similar counts are reported in the Torsion and Rings columns. '-' means no outliers of that kind were identified.

Mol	Type	Chain	Res	Link	Chirals	Torsions	Rings
1	CSO	A	199	1	-	0/1/5/7	-
1	CSO	B	449	1	-	0/1/5/7	-
1	CSO	A	449	1	-	1/1/5/7	-
1	CSO	B	199	1	-	0/1/5/7	-

All (1) bond length outliers are listed below:

Mol	Chain	Res	Type	Atoms	Z	Observed(Å)	Ideal(Å)
1	A	199	CSO	O-C	2.22	1.28	1.19

There are no bond angle outliers.

There are no chirality outliers.

All (1) torsion outliers are listed below:

Mol	Chain	Res	Type	Atoms
1	A	449	CSO	N-CA-CB-SG

There are no ring outliers.

No monomer is involved in short contacts.

5.5 Carbohydrates [i](#)

There are no monosaccharides in this entry.

5.6 Ligand geometry [i](#)

2 ligands are modelled in this entry.

In the following table, the Counts columns list the number of bonds (or angles) for which Mogul statistics could be retrieved, the number of bonds (or angles) that are observed in the model and the number of bonds (or angles) that are defined in the Chemical Component Dictionary. The Link column lists molecule types, if any, to which the group is linked. The Z score for a bond length (or angle) is the number of standard deviations the observed value is removed from the expected value. A bond length (or angle) with $|Z| > 2$ is considered an outlier worth inspection. RMSZ is the root-mean-square of all Z scores of the bond lengths (or angles).

Mol	Type	Chain	Res	Link	Bond lengths			Bond angles		
					Counts	RMSZ	# Z > 2	Counts	RMSZ	# Z > 2
2	FAD	A	701	-	51,58,58	1.16	3 (5%)	60,89,89	1.79	9 (15%)
2	FAD	B	701	-	51,58,58	1.21	4 (7%)	60,89,89	2.09	8 (13%)

In the following table, the Chirals column lists the number of chiral outliers, the number of chiral centers analysed, the number of these observed in the model and the number defined in the Chemical Component Dictionary. Similar counts are reported in the Torsion and Rings columns. '-' means no outliers of that kind were identified.

Mol	Type	Chain	Res	Link	Chirals	Torsions	Rings
2	FAD	A	701	-	-	1/30/50/50	0/6/6/6
2	FAD	B	701	-	-	2/30/50/50	0/6/6/6

All (7) bond length outliers are listed below:

Mol	Chain	Res	Type	Atoms	Z	Observed(Å)	Ideal(Å)
2	A	701	FAD	C4X-C10	5.88	1.44	1.38
2	B	701	FAD	C4X-C10	5.41	1.44	1.38
2	A	701	FAD	C4-N3	2.58	1.37	1.33
2	B	701	FAD	C4X-N5	-2.49	1.29	1.33
2	B	701	FAD	C4-N3	2.44	1.37	1.33
2	A	701	FAD	C4X-C4	2.04	1.44	1.41
2	B	701	FAD	C2A-N3A	2.01	1.35	1.32

All (17) bond angle outliers are listed below:

Mol	Chain	Res	Type	Atoms	Z	Observed(°)	Ideal(°)
2	B	701	FAD	C2-N3-C4	9.66	123.30	115.14
2	A	701	FAD	C2-N3-C4	7.53	121.50	115.14
2	B	701	FAD	C10-C4X-N5	6.20	125.55	121.26
2	A	701	FAD	C10-C4X-C4	-5.20	116.51	119.95
2	B	701	FAD	C4X-C10-N10	-5.09	115.07	120.30
2	A	701	FAD	C10-C4X-N5	5.08	124.77	121.26
2	B	701	FAD	C4X-C4-N3	-4.54	117.22	123.43
2	B	701	FAD	C10-C4X-C4	-4.10	117.23	119.95
2	A	701	FAD	C4X-C4-N3	-4.02	117.94	123.43
2	A	701	FAD	C4X-C10-N10	-3.53	116.67	120.30
2	A	701	FAD	C1'-N10-C9A	3.49	121.04	118.29
2	A	701	FAD	P-O3P-PA	-3.34	121.38	132.83
2	B	701	FAD	P-O3P-PA	-3.23	121.75	132.83
2	B	701	FAD	O3B-C3B-C4B	2.82	119.20	111.05
2	A	701	FAD	O5'-C5'-C4'	2.77	116.77	109.36
2	B	701	FAD	O3B-C3B-C2B	-2.68	103.14	111.82
2	A	701	FAD	C5A-C6A-N6A	2.07	123.49	120.35

There are no chirality outliers.

All (3) torsion outliers are listed below:

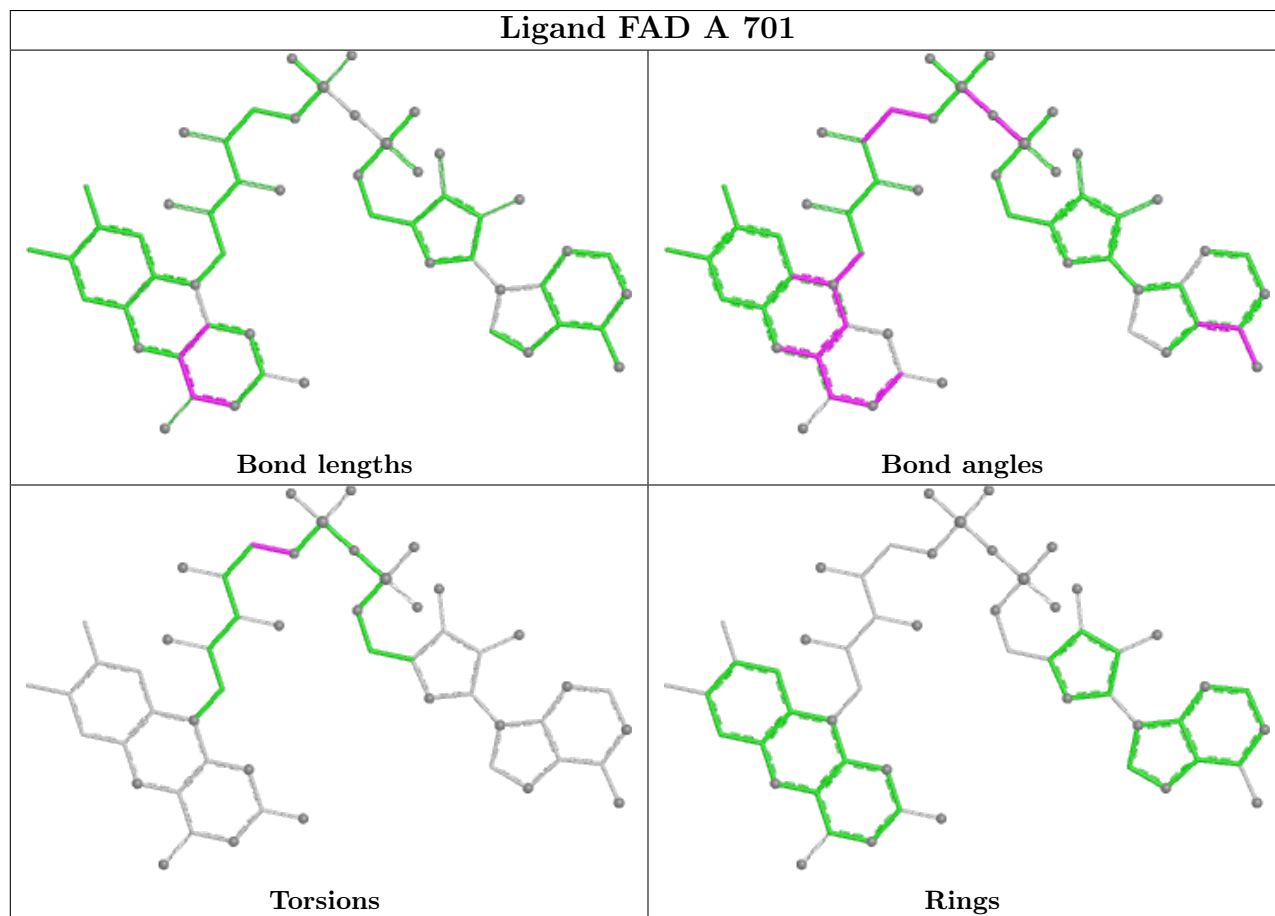
Mol	Chain	Res	Type	Atoms
2	B	701	FAD	O4B-C4B-C5B-O5B
2	A	701	FAD	C4'-C5'-O5'-P
2	B	701	FAD	C3B-C4B-C5B-O5B

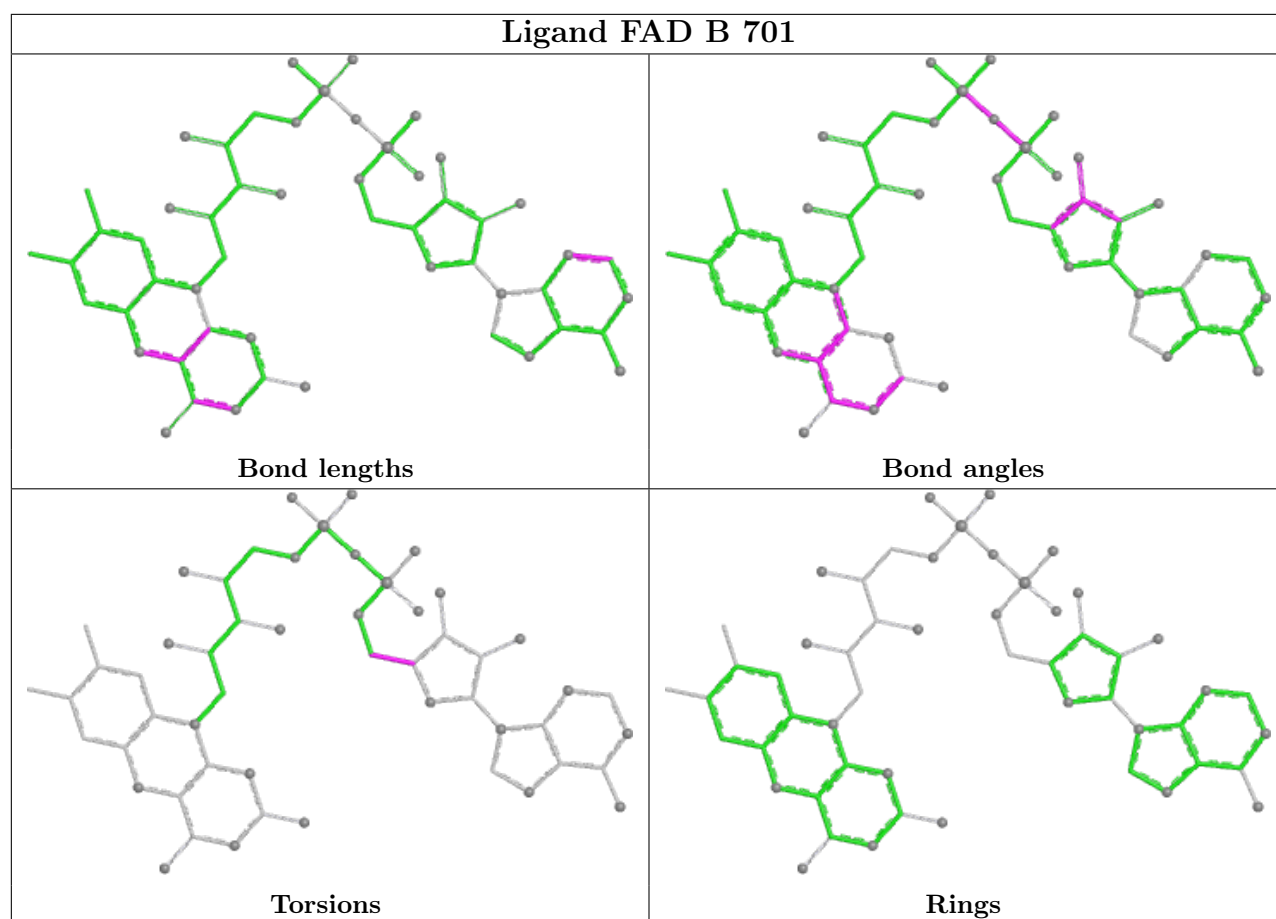
There are no ring outliers.

No monomer is involved in short contacts.

The following is a two-dimensional graphical depiction of Mogul quality analysis of bond lengths, bond angles, torsion angles, and ring geometry for all instances of the Ligand of Interest. In addition, ligands with molecular weight > 250 and outliers as shown on the validation Tables will

also be included. For torsion angles, if less than 5% of the Mogul distribution of torsion angles is within 10 degrees of the torsion angle in question, then that torsion angle is considered an outlier. Any bond that is central to one or more torsion angles identified as an outlier by Mogul will be highlighted in the graph. For rings, the root-mean-square deviation (RMSD) between the ring in question and similar rings identified by Mogul is calculated over all ring torsion angles. If the average RMSD is greater than 60 degrees and the minimal RMSD between the ring in question and any Mogul-identified rings is also greater than 60 degrees, then that ring is considered an outlier. The outliers are highlighted in purple. The color gray indicates Mogul did not find sufficient equivalents in the CSD to analyse the geometry.





5.7 Other polymers [i](#)

There are no such residues in this entry.

5.8 Polymer linkage issues [i](#)

There are no chain breaks in this entry.

6 Fit of model and data

6.1 Protein, DNA and RNA chains

In the following table, the column labelled ‘#RSRZ > 2’ contains the number (and percentage) of RSRZ outliers, followed by percent RSRZ outliers for the chain as percentile scores relative to all X-ray entries and entries of similar resolution. The OWAB column contains the minimum, median, 95th percentile and maximum values of the occupancy-weighted average B-factor per residue. The column labelled ‘Q < 0.9’ lists the number of (and percentage) of residues with an average occupancy less than 0.9.

Mol	Chain	Analysed	<RSRZ>	#RSRZ>2	OWAB(Å ²)	Q<0.9
1	A	610/667 (91%)	0.26	51 (8%) 11 14	22, 48, 101, 135	0
1	B	605/667 (90%)	-0.11	11 (1%) 68 72	21, 41, 73, 133	0
All	All	1215/1334 (91%)	0.08	62 (5%) 28 33	21, 43, 93, 135	0

All (62) RSRZ outliers are listed below:

Mol	Chain	Res	Type	RSRZ
1	A	128	TRP	11.3
1	A	256	TYR	7.7
1	A	156	TYR	6.0
1	A	124	PHE	5.8
1	A	200	TYR	5.6
1	B	354	ARG	5.3
1	A	265	TYR	5.0
1	B	353	HIS	4.8
1	A	127	ALA	4.7
1	A	644	ALA	4.6
1	A	646	VAL	4.4
1	B	447	LEU	4.3
1	A	194	ILE	4.2
1	B	352	TYR	4.2
1	A	198	LYS	4.1
1	A	278	MET	4.0
1	B	355	ILE	3.9
1	A	264	THR	3.9
1	A	260	LYS	3.9
1	A	221	ILE	3.9
1	A	165	LEU	3.8
1	A	161	GLN	3.4
1	A	132	ILE	3.4
1	A	112	LEU	3.3

Continued on next page...

Continued from previous page...

Mol	Chain	Res	Type	RSRZ
1	A	158	PRO	3.2
1	A	193	LEU	3.2
1	A	196	LYS	3.1
1	A	365	SER	3.1
1	A	250	GLU	3.1
1	A	459	PRO	3.1
1	A	259	VAL	2.9
1	B	455	LEU	2.9
1	A	155	THR	2.9
1	A	647	HIS	2.9
1	A	354	ARG	2.8
1	B	458	LEU	2.8
1	A	355	ILE	2.7
1	A	160	THR	2.7
1	B	387	THR	2.7
1	A	164	ILE	2.7
1	B	389	ILE	2.6
1	B	315	GLY	2.6
1	A	257	ALA	2.5
1	A	643	LYS	2.5
1	B	412	VAL	2.5
1	A	218	LEU	2.5
1	A	163	PHE	2.5
1	A	205	PHE	2.4
1	A	77	PHE	2.4
1	A	353	HIS	2.4
1	A	75	ARG	2.3
1	A	123	PHE	2.3
1	A	385	ALA	2.3
1	A	410	ILE	2.3
1	A	162	GLU	2.2
1	A	203	HIS	2.2
1	A	195	THR	2.2
1	A	242	MET	2.1
1	A	266	VAL	2.1
1	A	389	ILE	2.1
1	A	215	HIS	2.1
1	A	246	ARG	2.1

6.2 Non-standard residues in protein, DNA, RNA chains [i](#)

In the following table, the Atoms column lists the number of modelled atoms in the group and the number defined in the chemical component dictionary. The B-factors column lists the minimum, median, 95th percentile and maximum values of B factors of atoms in the group. The column labelled 'Q< 0.9' lists the number of atoms with occupancy less than 0.9.

Mol	Type	Chain	Res	Atoms	RSCC	RSR	B-factors(Å ²)	Q<0.9
1	CSO	A	199	7/8	0.84	0.40	20,20,20,20	0
1	CSO	B	449	7/8	0.84	0.16	63,65,78,82	0
1	CSO	A	449	7/8	0.90	0.11	62,68,77,88	0
1	CSO	B	199	7/8	0.93	0.20	20,20,20,20	0

6.3 Carbohydrates [i](#)

There are no monosaccharides in this entry.

6.4 Ligands [i](#)

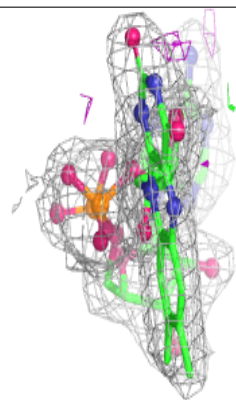
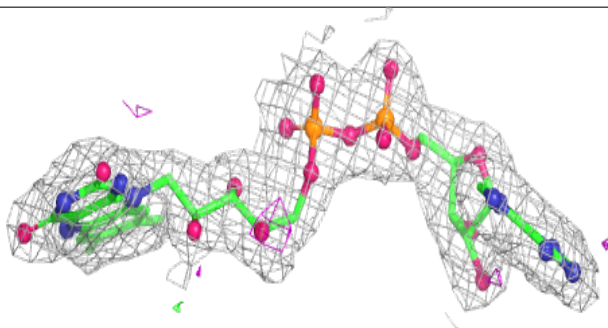
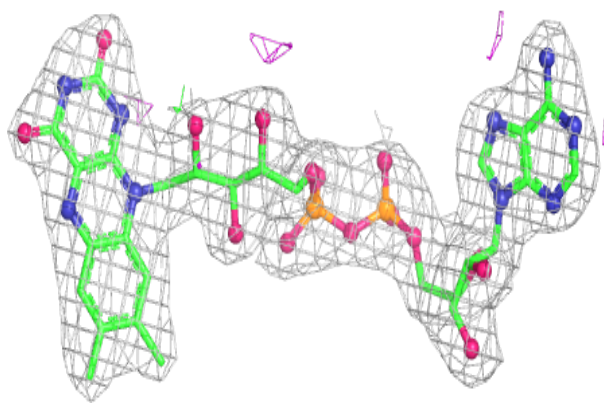
In the following table, the Atoms column lists the number of modelled atoms in the group and the number defined in the chemical component dictionary. The B-factors column lists the minimum, median, 95th percentile and maximum values of B factors of atoms in the group. The column labelled 'Q< 0.9' lists the number of atoms with occupancy less than 0.9.

Mol	Type	Chain	Res	Atoms	RSCC	RSR	B-factors(Å ²)	Q<0.9
2	FAD	A	701	53/53	0.97	0.11	35,42,49,51	0
2	FAD	B	701	53/53	0.98	0.09	22,26,30,33	0

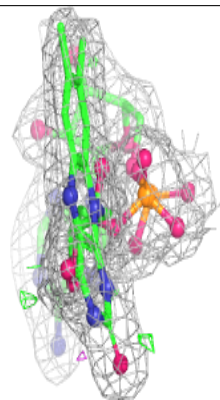
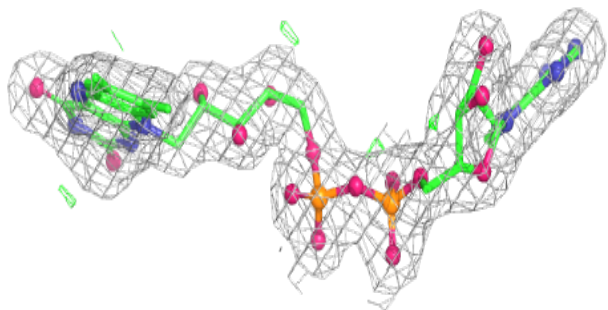
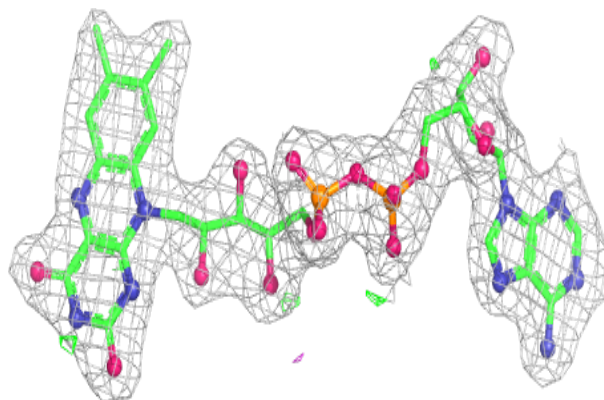
The following is a graphical depiction of the model fit to experimental electron density of all instances of the Ligand of Interest. In addition, ligands with molecular weight > 250 and outliers as shown on the geometry validation Tables will also be included. Each fit is shown from different orientation to approximate a three-dimensional view.

Electron density around FAD A 701:

$2mF_o-DF_c$ (at 0.7 rmsd) in gray
 mF_o-DF_c (at 3 rmsd) in purple (negative)
and green (positive)

**Electron density around FAD B 701:**

$2mF_o-DF_c$ (at 0.7 rmsd) in gray
 mF_o-DF_c (at 3 rmsd) in purple (negative)
and green (positive)



6.5 Other polymers [i](#)

There are no such residues in this entry.