



## Full wwPDB X-ray Structure Validation Report ⓘ

Nov 9, 2022 – 06:18 pm GMT

PDB ID : 7Q7M  
Title : Room temperature structure of the Rhodobacter Sphaeroides Photosynthetic Reaction Center F(M197)H mutant at 100 MPa helium gas pressure in a sapphire capillary  
Authors : Lieske, J.; Guenther, S.; Saouane, S.; Selikhanov, G.K.; Gabdulkhakov, A.G.; Meents, A.  
Deposited on : 2021-11-09  
Resolution : 2.55 Å(reported)

This is a Full wwPDB X-ray Structure Validation Report for a publicly released PDB entry.

We welcome your comments at [validation@mail.wwpdb.org](mailto:validation@mail.wwpdb.org)

A user guide is available at

<https://www.wwpdb.org/validation/2017/XrayValidationReportHelp>

with specific help available everywhere you see the ⓘ symbol.

The types of validation reports are described at

<http://www.wwpdb.org/validation/2017/FAQs#types>.

---

The following versions of software and data (see [references](#) ①) were used in the production of this report:

MolProbity : 4.02b-467  
Mogul : 1.8.4, CSD as541be (2020)  
Xtrriage (Phenix) : 1.13  
EDS : 2.31.2  
buster-report : 1.1.7 (2018)  
Percentile statistics : 20191225.v01 (using entries in the PDB archive December 25th 2019)  
Refmac : 5.8.0267  
CCP4 : 7.1.010 (Gargrove)  
Ideal geometry (proteins) : Engh & Huber (2001)  
Ideal geometry (DNA, RNA) : Parkinson et al. (1996)  
Validation Pipeline (wwPDB-VP) : 2.31.2

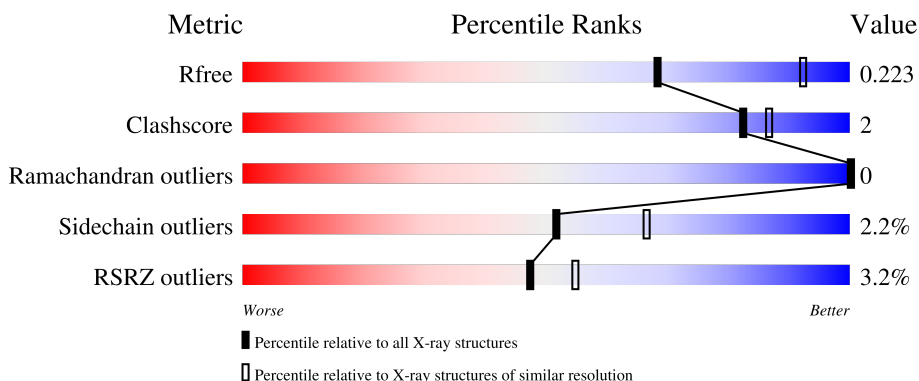
# 1 Overall quality at a glance i

The following experimental techniques were used to determine the structure:

*X-RAY DIFFRACTION*

The reported resolution of this entry is 2.55 Å.

Percentile scores (ranging between 0-100) for global validation metrics of the entry are shown in the following graphic. The table shows the number of entries on which the scores are based.



Metric	Whole archive (#Entries)	Similar resolution (#Entries, resolution range(Å))
$R_{free}$	130704	1284 (2.56-2.52)
Clashscore	141614	1332 (2.56-2.52)
Ramachandran outliers	138981	1315 (2.56-2.52)
Sidechain outliers	138945	1315 (2.56-2.52)
RSRZ outliers	127900	1272 (2.56-2.52)

The table below summarises the geometric issues observed across the polymeric chains and their fit to the electron density. The red, orange, yellow and green segments of the lower bar indicate the fraction of residues that contain outliers for  $\geq 3$ , 2, 1 and 0 types of geometric quality criteria respectively. A grey segment represents the fraction of residues that are not modelled. The numeric value for each fraction is indicated below the corresponding segment, with a dot representing fractions  $\leq 5\%$ . The upper red bar (where present) indicates the fraction of residues that have poor fit to the electron density. The numeric value is given above the bar.

Mol	Chain	Length	Quality of chain
1	H	241	
2	L	281	
3	M	302	

The following table lists non-polymeric compounds, carbohydrate monomers and non-standard residues in protein, DNA, RNA chains that are outliers for geometric or electron-density-fit criteria:

Mol	Type	Chain	Res	Chirality	Geometry	Clashes	Electron density
4	LDA	L	307	-	-	-	X

## 2 Entry composition [i](#)

There are 14 unique types of molecules in this entry. The entry contains 14861 atoms, of which 7386 are hydrogens and 0 are deuteriums.

In the tables below, the ZeroOcc column contains the number of atoms modelled with zero occupancy, the AltConf column contains the number of residues with at least one atom in alternate conformation and the Trace column contains the number of residues modelled with at most 2 atoms.

- Molecule 1 is a protein called Reaction center protein H chain.

Mol	Chain	Residues	Atoms						ZeroOcc	AltConf	Trace
			Total	C	H	N	O	S			
1	H	240	3770	1202	1894	322	342	10	0	6	0

- Molecule 2 is a protein called Reaction center protein L chain.

Mol	Chain	Residues	Atoms						ZeroOcc	AltConf	Trace
			Total	C	H	N	O	S			
2	L	281	4467	1528	2209	358	364	8	0	3	0

There is a discrepancy between the modelled and reference sequences:

Chain	Residue	Modelled	Actual	Comment	Reference
L	178	THR	SER	engineered mutation	UNP P0C0Y8

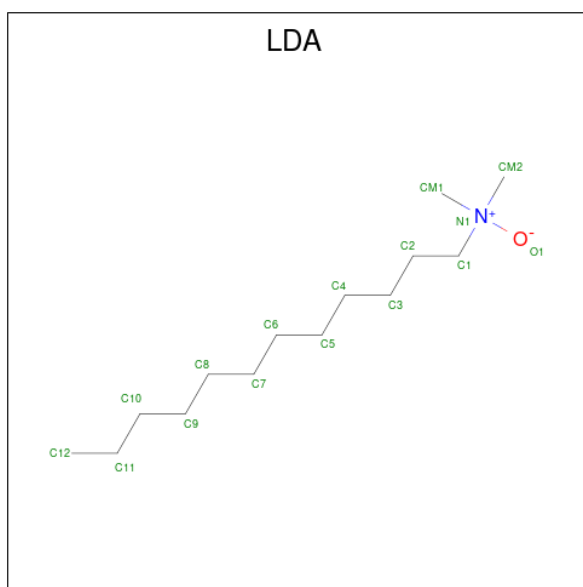
- Molecule 3 is a protein called Reaction center protein M chain.

Mol	Chain	Residues	Atoms						ZeroOcc	AltConf	Trace
			Total	C	H	N	O	S			
3	M	300	4799	1635	2353	402	399	10	0	6	0

There are 2 discrepancies between the modelled and reference sequences:

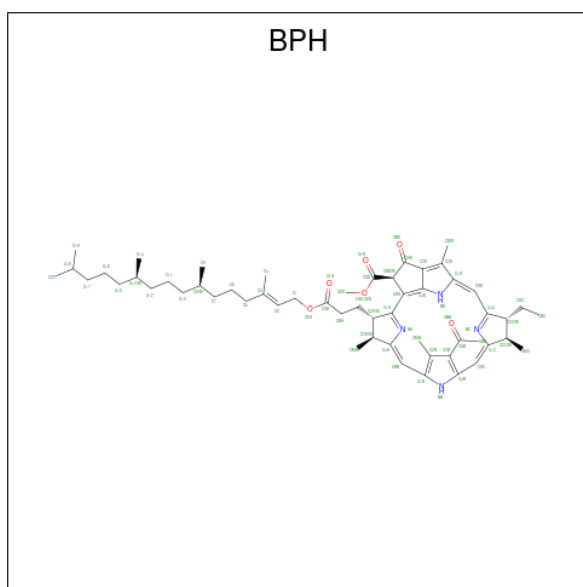
Chain	Residue	Modelled	Actual	Comment	Reference
M	8	THR	SER	engineered mutation	UNP P0C0Y9
M	197	HIS	PHE	engineered mutation	UNP P0C0Y9

- Molecule 4 is LAURYL DIMETHYLAMINE-N-OXIDE (three-letter code: LDA) (formula: C<sub>14</sub>H<sub>31</sub>NO) (labeled as "Ligand of Interest" by depositor).



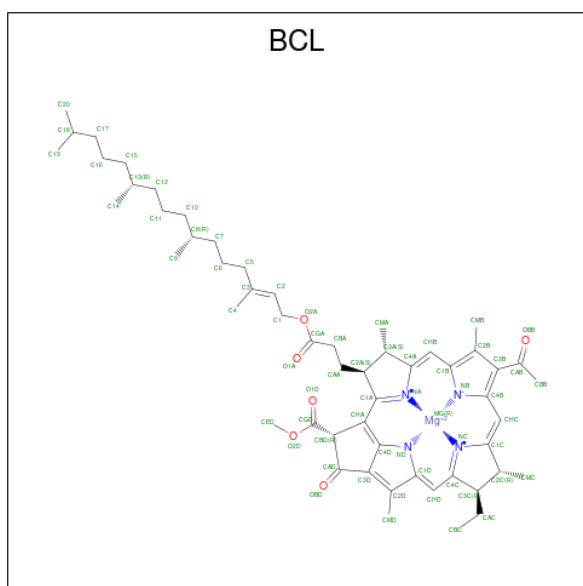
Mol	Chain	Residues	Atoms					ZeroOcc	AltConf
			Total	C	H	N	O		
4	H	1	Total 47	C 14	H 31	N 1	O 1	0	0
4	H	1	Total 47	C 14	H 31	N 1	O 1	0	0
4	H	1	Total 47	C 14	H 31	N 1	O 1	0	0
4	L	1	Total 47	C 14	H 31	N 1	O 1	0	0
4	L	1	Total 47	C 14	H 31	N 1	O 1	0	0
4	L	1	Total 47	C 14	H 31	N 1	O 1	0	0
4	M	1	Total 47	C 14	H 31	N 1	O 1	0	0
4	M	1	Total 47	C 14	H 31	N 1	O 1	0	0
4	M	1	Total 47	C 14	H 31	N 1	O 1	0	0

- Molecule 5 is BACTERIOPHEOPHYTIN A (three-letter code: BPH) (formula: C<sub>55</sub>H<sub>76</sub>N<sub>4</sub>O<sub>6</sub>) (labeled as "Ligand of Interest" by depositor).



Mol	Chain	Residues	Atoms					ZeroOcc	AltConf
			Total	C	H	N	O		
5	L	1	141	55	76	4	6	0	0
5	M	1	95	40	45	4	6	0	0

- Molecule 6 is BACTERIOCHLOROPHYLL A (three-letter code: BCL) (formula:  $C_{55}H_{74}MgN_4O_6$ ) (labeled as "Ligand of Interest" by depositor).



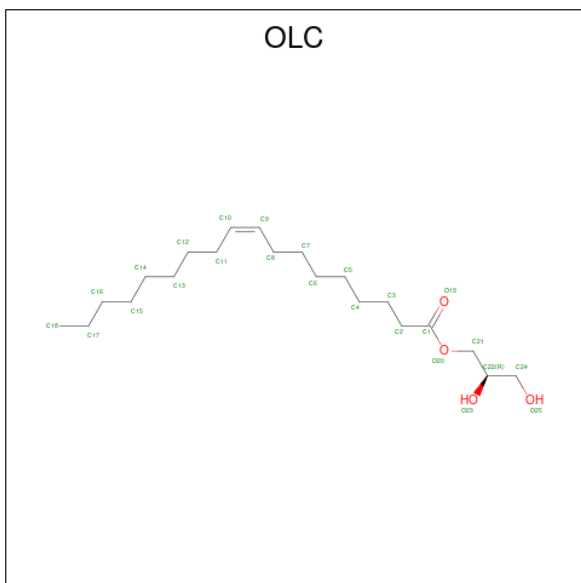
Mol	Chain	Residues	Atoms					ZeroOcc	AltConf	
			Total	C	H	Mg	N			O
6	L	1	140	55	74	1	4	6	0	0

*Continued on next page...*

Continued from previous page...

Mol	Chain	Residues	Atoms					ZeroOcc	AltConf	
			Total	C	H	Mg	N			O
6	L	1	Total	C	H	Mg	N	O	0	0
			140	55	74	1	4	6		
6	M	1	Total	C	H	Mg	N	O	0	0
			140	55	74	1	4	6		
6	M	1	Total	C	H	Mg	N	O	0	0
			97	41	45	1	4	6		

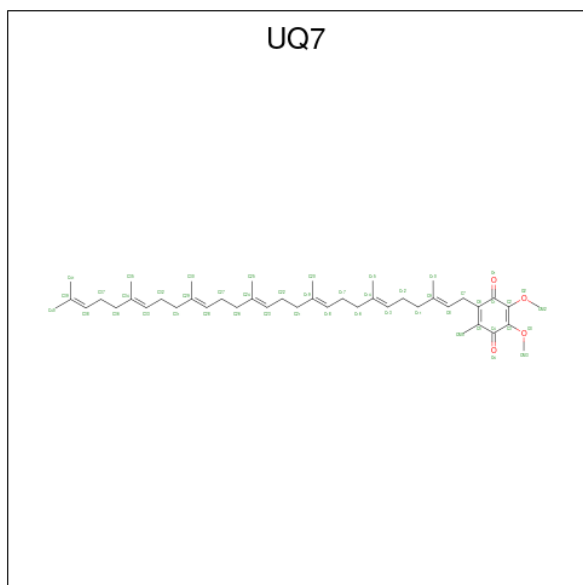
- Molecule 7 is (2R)-2,3-dihydroxypropyl (9Z)-octadec-9-enoate (three-letter code: OLC) (formula: C<sub>21</sub>H<sub>40</sub>O<sub>4</sub>) (labeled as "Ligand of Interest" by depositor).



Mol	Chain	Residues	Atoms			ZeroOcc	AltConf	
			Total	C	H			O
7	L	1	Total	C	H	O	0	1
			130	42	80	8		
7	M	1	Total	C	H	O	0	1
			65	21	40	4		

- Molecule 8 is UBIQUINONE-7 (three-letter code: UQ7) (formula: C<sub>44</sub>H<sub>66</sub>O<sub>4</sub>) (labeled as "Ligand of Interest" by depositor).



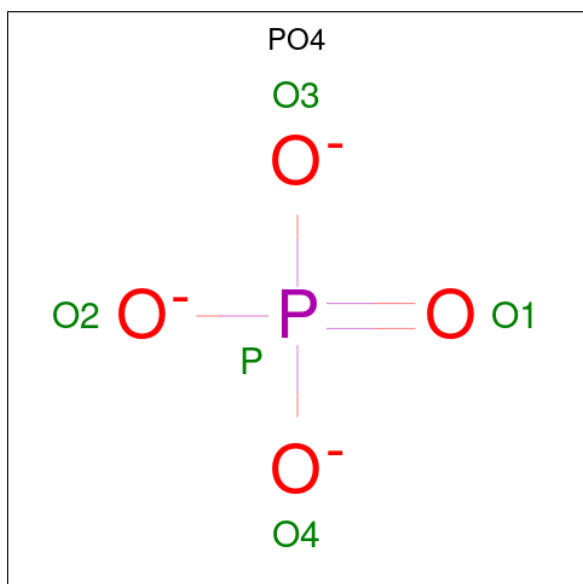


Mol	Chain	Residues	Atoms				ZeroOcc	AltConf
			Total	C	H	O		
8	M	1	113	44	65	4	0	0

- Molecule 9 is FE (III) ION (three-letter code: FE) (formula: Fe) (labeled as "Ligand of Interest" by depositor).

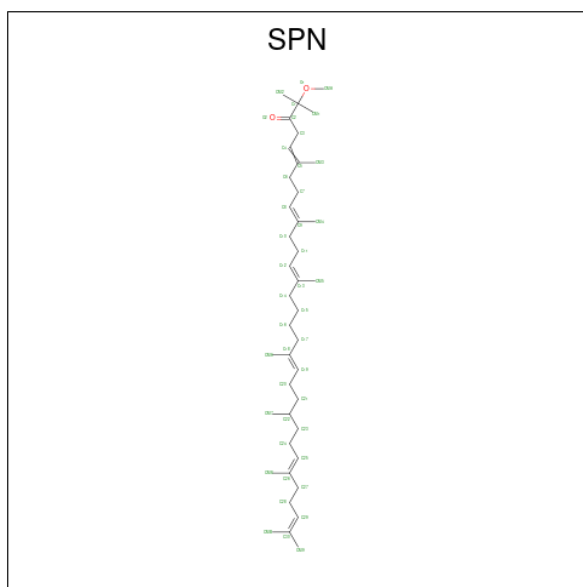
Mol	Chain	Residues	Atoms		ZeroOcc	AltConf
			Total	Fe		
9	M	1	1	1	0	0

- Molecule 10 is PHOSPHATE ION (three-letter code: PO4) (formula: O<sub>4</sub>P) (labeled as "Ligand of Interest" by depositor).



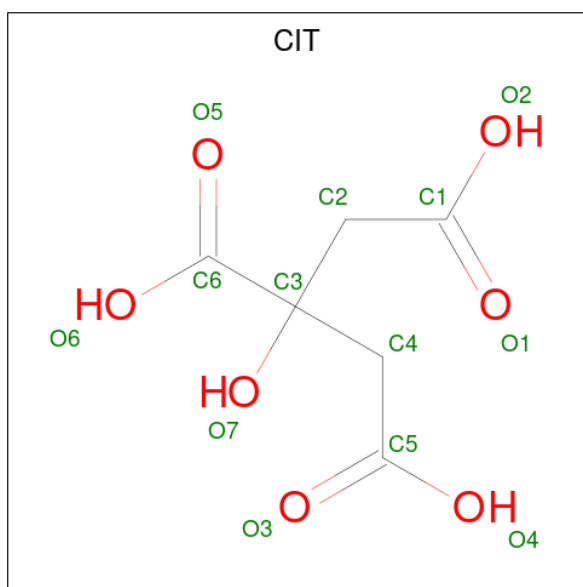
Mol	Chain	Residues	Atoms			ZeroOcc	AltConf
10	M	1	Total	O	P	0	0
			5	4	1		
10	M	1	Total	O	P	0	0
			5	4	1		

- Molecule 11 is SPEROIDENONE (three-letter code: SPN) (formula: C<sub>41</sub>H<sub>70</sub>O<sub>2</sub>) (labeled as "Ligand of Interest" by depositor).



Mol	Chain	Residues	Atoms				ZeroOcc	AltConf
11	M	1	Total	C	H	O	0	1
			113	41	70	2		

- Molecule 12 is CITRIC ACID (three-letter code: CIT) (formula: C<sub>6</sub>H<sub>8</sub>O<sub>7</sub>).



Mol	Chain	Residues	Atoms				ZeroOcc	AltConf
			Total	C	H	O		
12	M	1	21	6	8	7	0	0

- Molecule 13 is CHLORIDE ION (three-letter code: CL) (formula: Cl).

Mol	Chain	Residues	Atoms		ZeroOcc	AltConf
			Total	Cl		
13	M	1	1	1	0	0

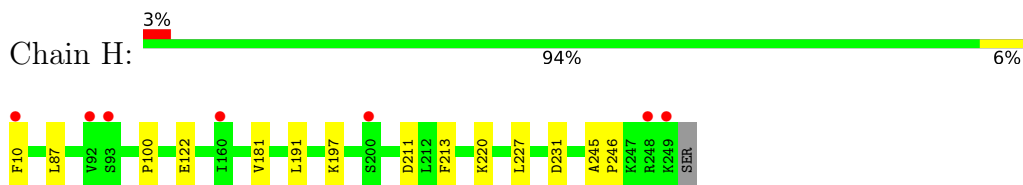
- Molecule 14 is water.

Mol	Chain	Residues	Atoms		ZeroOcc	AltConf
			Total	O		
14	H	87	88	88	0	1
14	L	50	50	50	0	0
14	M	57	57	57	0	0

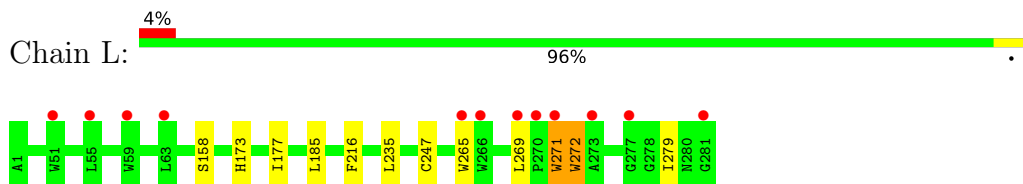
### 3 Residue-property plots [i](#)

These plots are drawn for all protein, RNA, DNA and oligosaccharide chains in the entry. The first graphic for a chain summarises the proportions of the various outlier classes displayed in the second graphic. The second graphic shows the sequence view annotated by issues in geometry and electron density. Residues are color-coded according to the number of geometric quality criteria for which they contain at least one outlier: green = 0, yellow = 1, orange = 2 and red = 3 or more. A red dot above a residue indicates a poor fit to the electron density ( $RSRZ > 2$ ). Stretches of 2 or more consecutive residues without any outlier are shown as a green connector. Residues present in the sample, but not in the model, are shown in grey.

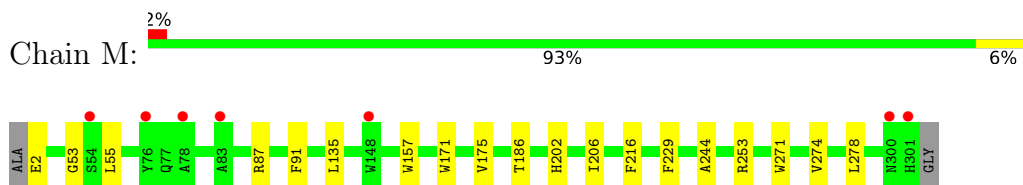
- Molecule 1: Reaction center protein H chain



- Molecule 2: Reaction center protein L chain



- Molecule 3: Reaction center protein M chain



## 4 Data and refinement statistics

Property	Value	Source
Space group	P 42 21 2	Depositor
Cell constants a, b, c, $\alpha$ , $\beta$ , $\gamma$	102.21Å 102.21Å 237.71Å 90.00° 90.00° 90.00°	Depositor
Resolution (Å)	46.95 – 2.55 46.95 – 2.55	Depositor EDS
% Data completeness (in resolution range)	99.9 (46.95-2.55) 89.1 (46.95-2.55)	Depositor EDS
$R_{merge}$	0.51	Depositor
$R_{sym}$	(Not available)	Depositor
$\langle I/\sigma(I) \rangle$ <sup>1</sup>	0.85 (at 2.54Å)	Xtrriage
Refinement program	PHENIX 1.13-2998_9999	Depositor
R, $R_{free}$	0.183 , 0.223 0.183 , 0.223	Depositor DCC
$R_{free}$ test set	1686 reflections (4.02%)	wwPDB-VP
Wilson B-factor (Å <sup>2</sup> )	28.9	Xtrriage
Anisotropy	0.109	Xtrriage
Bulk solvent $k_{sol}$ (e/Å <sup>3</sup> ), $B_{sol}$ (Å <sup>2</sup> )	(Not available) , (Not available)	EDS
L-test for twinning <sup>2</sup>	$\langle  L  \rangle = 0.49$ , $\langle L^2 \rangle = 0.32$	Xtrriage
Estimated twinning fraction	No twinning to report.	Xtrriage
$F_o, F_c$ correlation	0.94	EDS
Total number of atoms	14861	wwPDB-VP
Average B, all atoms (Å <sup>2</sup> )	50.0	wwPDB-VP

Xtrriage's analysis on translational NCS is as follows: *The largest off-origin peak in the Patterson function is 2.69% of the height of the origin peak. No significant pseudotranslation is detected.*

<sup>1</sup>Intensities estimated from amplitudes.

<sup>2</sup>Theoretical values of  $\langle |L| \rangle$ ,  $\langle L^2 \rangle$  for acentric reflections are 0.5, 0.333 respectively for untwinned datasets, and 0.375, 0.2 for perfectly twinned datasets.

## 5 Model quality [i](#)

### 5.1 Standard geometry [i](#)

Bond lengths and bond angles in the following residue types are not validated in this section: FE, LDA, OLC, CIT, UQ7, BCL, SPN, BPH, PO4, CL

The Z score for a bond length (or angle) is the number of standard deviations the observed value is removed from the expected value. A bond length (or angle) with  $|Z| > 5$  is considered an outlier worth inspection. RMSZ is the root-mean-square of all Z scores of the bond lengths (or angles).

Mol	Chain	Bond lengths		Bond angles	
		RMSZ	# Z  >5	RMSZ	# Z  >5
1	H	0.26	0/1936	0.44	0/2630
2	L	0.25	0/2355	0.39	0/3224
3	M	0.25	0/2553	0.39	0/3486
All	All	0.25	0/6844	0.41	0/9340

There are no bond length outliers.

There are no bond angle outliers.

There are no chirality outliers.

There are no planarity outliers.

### 5.2 Too-close contacts [i](#)

In the following table, the Non-H and H(model) columns list the number of non-hydrogen atoms and hydrogen atoms in the chain respectively. The H(added) column lists the number of hydrogen atoms added and optimized by MolProbity. The Clashes column lists the number of clashes within the asymmetric unit, whereas Symm-Clashes lists symmetry-related clashes.

Mol	Chain	Non-H	H(model)	H(added)	Clashes	Symm-Clashes
1	H	1876	1894	1885	7	0
2	L	2258	2209	2202	5	0
3	M	2446	2353	2338	13	0
4	H	48	93	93	1	0
4	L	48	93	93	0	0
4	M	48	93	93	2	0
5	L	65	76	76	0	0
5	M	50	45	43	3	0
6	L	132	148	148	4	0
6	M	118	119	117	6	0

*Continued on next page...*

Continued from previous page...

Mol	Chain	Non-H	H(model)	H(added)	Clashes	Symm-Clashes
7	L	50	80	80	0	0
7	M	25	40	40	0	0
8	M	48	65	66	0	0
9	M	1	0	0	0	0
10	M	10	0	0	0	0
11	M	43	70	70	3	0
12	M	13	8	5	2	0
13	M	1	0	0	0	0
14	H	88	0	0	0	0
14	L	50	0	0	0	0
14	M	57	0	0	0	0
All	All	7475	7386	7349	36	0

The all-atom clashscore is defined as the number of clashes found per 1000 atoms (including hydrogen atoms). The all-atom clashscore for this structure is 2.

All (36) close contacts within the same asymmetric unit are listed below, sorted by their clash magnitude.

Atom-1	Atom-2	Interatomic distance (Å)	Clash overlap (Å)
1:H:181:VAL:HG21	1:H:191:LEU:HD12	1.74	0.68
4:M:411:LDA:HM21	4:M:411:LDA:H32	1.74	0.67
6:L:302:BCL:HMB1	6:L:302:BCL:HBB2	1.79	0.64
1:H:122:GLU:HB2	1:H:227:LEU:HD21	1.84	0.60
2:L:173:HIS:CE1	2:L:177:ILE:HD11	2.37	0.60
6:M:403:BCL:HBB3	6:M:403:BCL:HMB1	1.85	0.57
6:M:402:BCL:HBB3	6:M:402:BCL:HMB1	1.90	0.54
3:M:55:LEU:HD12	3:M:135:LEU:HD12	1.93	0.51
6:L:303:BCL:CBB	6:L:303:BCL:HMB1	2.40	0.51
5:M:404:BPH:HBC2	5:M:404:BPH:HHH	1.93	0.50
6:L:302:BCL:HMB1	6:L:302:BCL:CBB	2.42	0.49
3:M:175:VAL:HB	11:M:410[A]:SPN:HM63	1.96	0.48
6:L:303:BCL:HMB1	6:L:303:BCL:HBB3	1.96	0.47
12:M:413:CIT:H41	12:M:413:CIT:O2	2.16	0.46
3:M:53:GLY:HA3	12:M:413:CIT:C4	2.47	0.45
3:M:186:THR:HG23	6:M:402:BCL:HMD2	1.98	0.45
2:L:272:TRP:O	3:M:87:ARG:NH1	2.48	0.45
2:L:269:LEU:O	2:L:271:TRP:N	2.50	0.44
3:M:157:TRP:CD1	6:M:403:BCL:HBB1	2.53	0.44
1:H:181:VAL:HG21	1:H:191:LEU:CD1	2.46	0.44
3:M:157:TRP:HD1	6:M:403:BCL:HBB1	1.83	0.44
3:M:171:TRP:CZ3	11:M:410[A]:SPN:HM83	2.53	0.44

Continued on next page...

Continued from previous page...

Atom-1	Atom-2	Interatomic distance (Å)	Clash overlap (Å)
3:M:229:PHE:HB2	3:M:244:ALA:HB2	2.00	0.43
1:H:245:ALA:N	1:H:246:PRO:CD	2.83	0.42
4:H:303:LDA:HM11	3:M:278:LEU:HD21	2.01	0.42
2:L:185:LEU:HD13	5:M:404:BPH:ND	2.34	0.42
6:M:403:BCL:HHC	6:M:403:BCL:OBB	2.19	0.42
1:H:191:LEU:HD11	1:H:213:PHE:HE2	1.85	0.41
2:L:279:ILE:HG21	3:M:91:PHE:HB3	2.01	0.41
3:M:271:TRP:HA	3:M:274:VAL:HG22	2.02	0.41
4:M:411:LDA:HM21	4:M:411:LDA:C3	2.46	0.41
11:M:410[A]:SPN:H72	11:M:410[A]:SPN:HM31	1.96	0.41
3:M:202:HIS:CE1	3:M:206:ILE:HD11	2.56	0.40
1:H:211:ASP:OD1	1:H:211:ASP:N	2.55	0.40
5:M:404:BPH:CHD	5:M:404:BPH:CBC	2.99	0.40
1:H:87:LEU:HD23	1:H:100:PRO:HA	2.02	0.40

There are no symmetry-related clashes.

## 5.3 Torsion angles [i](#)

### 5.3.1 Protein backbone [i](#)

In the following table, the Percentiles column shows the percent Ramachandran outliers of the chain as a percentile score with respect to all X-ray entries followed by that with respect to entries of similar resolution.

The Analysed column shows the number of residues for which the backbone conformation was analysed, and the total number of residues.

Mol	Chain	Analysed	Favoured	Allowed	Outliers	Percentiles	
1	H	244/241 (101%)	239 (98%)	5 (2%)	0	100	100
2	L	282/281 (100%)	275 (98%)	7 (2%)	0	100	100
3	M	304/302 (101%)	298 (98%)	6 (2%)	0	100	100
All	All	830/824 (101%)	812 (98%)	18 (2%)	0	100	100

There are no Ramachandran outliers to report.



### 5.3.2 Protein sidechains [i](#)

In the following table, the Percentiles column shows the percent sidechain outliers of the chain as a percentile score with respect to all X-ray entries followed by that with respect to entries of similar resolution.

The Analysed column shows the number of residues for which the sidechain conformation was analysed, and the total number of residues.

Mol	Chain	Analysed	Rotameric	Outliers	Percentiles	
1	H	201/196 (103%)	197 (98%)	4 (2%)	55	70
2	L	223/220 (101%)	216 (97%)	7 (3%)	40	54
3	M	241/236 (102%)	237 (98%)	4 (2%)	60	75
All	All	665/652 (102%)	650 (98%)	15 (2%)	52	65

All (15) residues with a non-rotameric sidechain are listed below:

Mol	Chain	Res	Type
1	H	10	PHE
1	H	197	LYS
1	H	220	LYS
1	H	231	ASP
2	L	158	SER
2	L	216	PHE
2	L	235	LEU
2	L	247	CYS
2	L	265	TRP
2	L	271	TRP
2	L	272	TRP
3	M	2	GLU
3	M	216	PHE
3	M	253[A]	ARG
3	M	253[B]	ARG

Sometimes sidechains can be flipped to improve hydrogen bonding and reduce clashes. There are no such sidechains identified.

### 5.3.3 RNA [i](#)

There are no RNA molecules in this entry.

## 5.4 Non-standard residues in protein, DNA, RNA chains [i](#)

There are no non-standard protein/DNA/RNA residues in this entry.

## 5.5 Carbohydrates [i](#)

There are no monosaccharides in this entry.

## 5.6 Ligand geometry [i](#)

Of 25 ligands modelled in this entry, 2 are monoatomic - leaving 23 for Mogul analysis.

In the following table, the Counts columns list the number of bonds (or angles) for which Mogul statistics could be retrieved, the number of bonds (or angles) that are observed in the model and the number of bonds (or angles) that are defined in the Chemical Component Dictionary. The Link column lists molecule types, if any, to which the group is linked. The Z score for a bond length (or angle) is the number of standard deviations the observed value is removed from the expected value. A bond length (or angle) with  $|Z| > 2$  is considered an outlier worth inspection. RMSZ is the root-mean-square of all Z scores of the bond lengths (or angles).

Mol	Type	Chain	Res	Link	Bond lengths			Bond angles		
					Counts	RMSZ	# Z  > 2	Counts	RMSZ	# Z  > 2
7	OLC	L	304[A]	-	24,24,24	0.21	0	25,25,25	0.20	0
7	OLC	M	409[B]	-	24,24,24	0.17	0	25,25,25	0.18	0
6	BCL	M	403	-	44,60,74	1.38	4 (9%)	52,98,115	1.43	11 (21%)
7	OLC	L	304[B]	-	24,24,24	0.22	0	25,25,25	0.23	0
4	LDA	H	303	-	12,15,15	0.36	0	14,17,17	0.59	0
8	UQ7	M	401	-	48,48,48	0.22	0	58,61,61	0.42	0
4	LDA	L	305	-	12,15,15	0.35	0	14,17,17	0.35	0
6	BCL	L	303	-	58,74,74	1.27	5 (8%)	69,115,115	1.21	8 (11%)
4	LDA	L	306	-	12,15,15	0.34	0	14,17,17	0.46	0
11	SPN	M	410[A]	-	40,42,42	0.16	0	50,52,52	0.60	2 (4%)
4	LDA	H	302	-	12,15,15	0.37	0	14,17,17	0.99	2 (14%)
5	BPH	L	301	-	51,70,70	0.50	0	52,101,101	0.84	3 (5%)
4	LDA	M	411	-	12,15,15	0.35	0	14,17,17	0.34	0
6	BCL	L	302	-	58,74,74	1.22	5 (8%)	69,115,115	1.16	7 (10%)
10	PO4	M	408	-	4,4,4	0.90	0	6,6,6	0.45	0
4	LDA	M	406	-	12,15,15	0.35	0	14,17,17	0.67	0
5	BPH	M	404	-	36,55,70	0.85	1 (2%)	34,83,101	1.21	4 (11%)
4	LDA	H	301	-	12,15,15	0.35	0	14,17,17	0.22	0
10	PO4	M	412	-	4,4,4	0.91	0	6,6,6	0.42	0
4	LDA	L	307	-	12,15,15	0.34	0	14,17,17	0.57	0
6	BCL	M	402	-	58,74,74	1.22	5 (8%)	69,115,115	1.33	10 (14%)

Mol	Type	Chain	Res	Link	Bond lengths			Bond angles		
					Counts	RMSZ	# Z  > 2	Counts	RMSZ	# Z  > 2
4	LDA	M	407	-	12,15,15	0.34	0	14,17,17	0.24	0
12	CIT	M	413	-	12,12,12	0.20	0	17,17,17	0.65	1 (5%)

In the following table, the Chirals column lists the number of chiral outliers, the number of chiral centers analysed, the number of these observed in the model and the number defined in the Chemical Component Dictionary. Similar counts are reported in the Torsion and Rings columns. '-' means no outliers of that kind were identified.

Mol	Type	Chain	Res	Link	Chirals	Torsions	Rings
7	OLC	L	304[A]	-	-	18/24/24/24	-
7	OLC	M	409[B]	-	-	8/24/24/24	-
6	BCL	M	403	-	-	4/21/121/137	-
7	OLC	L	304[B]	-	-	14/24/24/24	-
4	LDA	H	303	-	-	10/13/13/13	-
8	UQ7	M	401	-	-	4/45/69/69	0/1/1/1
4	LDA	L	305	-	-	6/13/13/13	-
6	BCL	L	303	-	-	2/37/137/137	-
4	LDA	L	306	-	-	8/13/13/13	-
11	SPN	M	410[A]	-	-	22/50/51/51	-
4	LDA	H	302	-	-	10/13/13/13	-
5	BPH	L	301	-	-	9/37/105/105	0/5/6/6
4	LDA	M	411	-	-	6/13/13/13	-
6	BCL	L	302	-	-	4/37/137/137	-
4	LDA	M	406	-	-	5/13/13/13	-
5	BPH	M	404	-	-	4/19/87/105	0/5/6/6
4	LDA	H	301	-	-	4/13/13/13	-
4	LDA	L	307	-	-	7/13/13/13	-
6	BCL	M	402	-	-	13/37/137/137	-
4	LDA	M	407	-	-	6/13/13/13	-
12	CIT	M	413	-	-	5/16/16/16	-

All (20) bond length outliers are listed below:

Mol	Chain	Res	Type	Atoms	Z	Observed(Å)	Ideal(Å)
6	L	302	BCL	C1B-NB	5.24	1.39	1.35
6	L	303	BCL	C1B-NB	5.22	1.39	1.35
6	M	403	BCL	C1B-NB	5.20	1.39	1.35

*Continued on next page...*

*Continued from previous page...*

Mol	Chain	Res	Type	Atoms	Z	Observed(Å)	Ideal(Å)
6	M	402	BCL	C1B-NB	4.96	1.39	1.35
6	M	402	BCL	MG-NA	4.71	2.17	2.06
6	L	303	BCL	MG-NA	4.70	2.17	2.06
6	L	302	BCL	MG-NA	4.43	2.16	2.06
6	M	403	BCL	MG-NA	4.39	2.16	2.06
5	M	404	BPH	C2C-C3C	4.05	1.58	1.54
6	L	303	BCL	MG-NC	3.10	2.13	2.06
6	M	403	BCL	MG-NC	2.86	2.13	2.06
6	L	302	BCL	MG-NC	2.85	2.13	2.06
6	M	402	BCL	MG-NC	2.72	2.12	2.06
6	L	303	BCL	C4B-NB	2.44	1.37	1.35
6	L	302	BCL	OBD-CAD	2.43	1.25	1.22
6	L	303	BCL	OBD-CAD	2.29	1.25	1.22
6	M	402	BCL	OBD-CAD	2.24	1.25	1.22
6	M	402	BCL	C4B-NB	2.24	1.37	1.35
6	M	403	BCL	OBD-CAD	2.23	1.25	1.22
6	L	302	BCL	C4B-NB	2.07	1.37	1.35

All (48) bond angle outliers are listed below:

Mol	Chain	Res	Type	Atoms	Z	Observed(°)	Ideal(°)
6	M	402	BCL	C4A-NA-C1A	4.21	108.60	106.71
6	M	402	BCL	CAD-C3D-C4D	-3.97	106.26	108.47
6	L	303	BCL	CAD-C3D-C4D	-3.65	106.44	108.47
6	M	402	BCL	CMB-C2B-C1B	-3.40	123.23	128.46
6	L	302	BCL	OBD-CAD-CBD	-3.37	121.08	125.89
6	L	303	BCL	OBD-CAD-CBD	-3.30	121.18	125.89
6	M	402	BCL	OBD-CAD-CBD	-3.30	121.18	125.89
6	L	303	BCL	CMB-C2B-C1B	-3.27	123.44	128.46
6	M	403	BCL	OBD-CAD-CBD	-3.27	121.23	125.89
5	M	404	BPH	CAC-C3C-C4C	3.24	120.98	113.73
6	M	403	BCL	CMB-C2B-C1B	-3.17	123.58	128.46
6	M	402	BCL	CHA-C1A-NA	-3.09	119.33	126.40
6	M	403	BCL	CAD-C3D-C4D	-2.96	106.82	108.47
6	L	302	BCL	CHA-C1A-NA	-2.95	119.64	126.40
6	L	302	BCL	CAD-C3D-C4D	-2.93	106.83	108.47
6	M	403	BCL	CHA-C1A-NA	-2.89	119.79	126.40
5	M	404	BPH	CMA-C3A-C4A	-2.82	108.19	114.38
6	L	302	BCL	CMB-C2B-C1B	-2.81	124.15	128.46
5	L	301	BPH	C1-C2-C3	-2.80	121.20	126.04
6	L	303	BCL	CHA-C1A-NA	-2.77	120.05	126.40
4	H	302	LDA	CM2-N1-C1	-2.77	104.42	110.23

*Continued on next page...*

Continued from previous page...

Mol	Chain	Res	Type	Atoms	Z	Observed(°)	Ideal(°)
6	M	403	BCL	C1-O2A-CGA	2.76	123.69	116.44
6	L	302	BCL	C2A-C1A-CHA	2.70	128.57	123.86
6	L	303	BCL	C2A-C1A-CHA	2.69	128.56	123.86
6	L	303	BCL	C4A-NA-C1A	2.68	107.91	106.71
6	M	402	BCL	C2A-C1A-CHA	2.65	128.50	123.86
6	M	403	BCL	C2A-C1A-CHA	2.64	128.47	123.86
11	M	410[A]	SPN	C24-C23-C22	-2.63	106.66	115.76
5	L	301	BPH	CMA-C3A-C4A	-2.55	108.79	114.38
5	M	404	BPH	C1-C2-C3	-2.52	122.67	126.75
6	L	302	BCL	CMD-C2D-C3D	2.48	129.32	124.68
6	M	402	BCL	CMD-C2D-C3D	2.48	129.32	124.68
6	M	403	BCL	C1C-NC-C4C	2.42	107.79	106.71
11	M	410[A]	SPN	O1-C1-C2	-2.39	103.87	108.78
6	M	402	BCL	CMB-C2B-C3B	2.38	129.13	124.68
4	H	302	LDA	CM1-N1-C1	2.35	115.17	110.23
6	M	403	BCL	C4A-NA-C1A	2.34	107.76	106.71
6	M	403	BCL	CMD-C2D-C3D	2.31	129.00	124.68
6	L	303	BCL	CMB-C2B-C3B	2.30	128.98	124.68
6	M	403	BCL	CMB-C2B-C3B	2.30	128.97	124.68
6	L	303	BCL	CMD-C2D-C3D	2.26	128.90	124.68
6	L	302	BCL	C4A-NA-C1A	2.23	107.71	106.71
6	M	402	BCL	C4B-C3B-CAB	-2.16	122.97	127.13
5	M	404	BPH	CMB-C2B-C3B	2.11	128.63	124.68
6	M	403	BCL	C4B-C3B-CAB	-2.10	123.06	127.13
5	L	301	BPH	CMB-C2B-C3B	2.08	128.57	124.68
6	M	402	BCL	C1-C2-C3	-2.04	122.52	126.04
12	M	413	CIT	C3-C2-C1	2.01	118.68	113.81

There are no chirality outliers.

All (169) torsion outliers are listed below:

Mol	Chain	Res	Type	Atoms
4	H	302	LDA	C2-C1-N1-CM1
4	H	302	LDA	N1-C1-C2-C3
4	H	303	LDA	C2-C1-N1-O1
4	H	303	LDA	C2-C1-N1-CM1
4	H	303	LDA	N1-C1-C2-C3
4	L	305	LDA	C2-C1-N1-CM1
4	L	305	LDA	C2-C1-N1-CM2
4	L	306	LDA	C2-C1-N1-O1
4	L	306	LDA	C2-C1-N1-CM1
4	L	306	LDA	C2-C1-N1-CM2

Continued on next page...

*Continued from previous page...*

Mol	Chain	Res	Type	Atoms
4	L	307	LDA	C2-C1-N1-O1
4	L	307	LDA	C2-C1-N1-CM1
4	L	307	LDA	C2-C1-N1-CM2
4	M	406	LDA	C2-C1-N1-O1
4	M	406	LDA	C2-C1-N1-CM1
4	M	411	LDA	C2-C1-N1-O1
4	M	411	LDA	C2-C1-N1-CM1
5	M	404	BPH	C4C-C3C-CAC-CBC
6	M	403	BCL	C1A-C2A-CAA-CBA
6	M	403	BCL	C2-C3-C5-C6
6	M	403	BCL	C4-C3-C5-C6
7	L	304[A]	OLC	C21-C22-C24-O25
7	M	409[B]	OLC	C21-C22-C24-O25
7	M	409[B]	OLC	O23-C22-C24-O25
7	M	409[B]	OLC	O20-C21-C22-C24
8	M	401	UQ7	C24-C26-C27-C28
8	M	401	UQ7	C29-C31-C32-C33
11	M	410[A]	SPN	CM1-C1-O1-CMA
11	M	410[A]	SPN	C2-C1-O1-CMA
11	M	410[A]	SPN	C15-C16-C17-C18
6	M	402	BCL	C3-C5-C6-C7
7	L	304[B]	OLC	O20-C21-C22-O23
7	L	304[B]	OLC	C3-C4-C5-C6
11	M	410[A]	SPN	C11-C10-C9-CM4
11	M	410[A]	SPN	C11-C10-C9-C8
11	M	410[A]	SPN	C26-C27-C28-C29
6	M	402	BCL	C14-C13-C15-C16
7	M	409[B]	OLC	O20-C21-C22-O23
6	M	402	BCL	C15-C16-C17-C18
8	M	401	UQ7	C34-C36-C37-C38
7	L	304[A]	OLC	O20-C21-C22-O23
4	L	306	LDA	C7-C8-C9-C10
7	L	304[A]	OLC	C4-C5-C6-C7
4	H	302	LDA	C6-C7-C8-C9
4	H	303	LDA	C4-C5-C6-C7
4	M	407	LDA	C7-C8-C9-C10
4	M	411	LDA	C7-C8-C9-C10
5	L	301	BPH	C13-C15-C16-C17
7	L	304[A]	OLC	C5-C6-C7-C8
11	M	410[A]	SPN	CM2-C1-O1-CMA
4	H	302	LDA	C7-C8-C9-C10
7	L	304[A]	OLC	C14-C15-C16-C17

*Continued on next page...*

*Continued from previous page...*

Mol	Chain	Res	Type	Atoms
7	M	409[B]	OLC	C14-C15-C16-C17
11	M	410[A]	SPN	CM8-C26-C27-C28
4	H	301	LDA	C7-C8-C9-C10
4	M	411	LDA	C5-C6-C7-C8
7	L	304[B]	OLC	C21-C22-C24-O25
7	L	304[A]	OLC	C3-C4-C5-C6
4	M	407	LDA	C11-C10-C9-C8
7	L	304[A]	OLC	C11-C12-C13-C14
11	M	410[A]	SPN	C19-C20-C21-C22
11	M	410[A]	SPN	C13-C14-C15-C16
5	L	301	BPH	C4-C3-C5-C6
11	M	410[A]	SPN	C25-C26-C27-C28
7	L	304[A]	OLC	O23-C22-C24-O25
7	L	304[B]	OLC	O23-C22-C24-O25
4	M	406	LDA	C1-C2-C3-C4
7	L	304[A]	OLC	C13-C14-C15-C16
11	M	410[A]	SPN	CM3-C5-C6-C7
5	L	301	BPH	C2-C3-C5-C6
4	L	305	LDA	C7-C8-C9-C10
6	M	402	BCL	C8-C10-C11-C12
12	M	413	CIT	C6-C3-C4-C5
4	H	301	LDA	C5-C6-C7-C8
11	M	410[A]	SPN	C14-C15-C16-C17
5	M	404	BPH	C2C-C3C-CAC-CBC
4	M	406	LDA	C3-C4-C5-C6
7	M	409[B]	OLC	C4-C5-C6-C7
4	H	302	LDA	C1-C2-C3-C4
4	M	407	LDA	C2-C3-C4-C5
7	L	304[A]	OLC	C12-C13-C14-C15
4	L	307	LDA	C1-C2-C3-C4
4	L	307	LDA	C9-C10-C11-C12
7	L	304[A]	OLC	C6-C7-C8-C9
4	M	407	LDA	C4-C5-C6-C7
4	H	301	LDA	C9-C10-C11-C12
4	H	302	LDA	C5-C6-C7-C8
7	L	304[A]	OLC	C15-C16-C17-C18
7	L	304[A]	OLC	C2-C3-C4-C5
6	M	402	BCL	C6-C7-C8-C10
11	M	410[A]	SPN	C20-C21-C22-C23
6	M	402	BCL	C6-C7-C8-C9
6	M	402	BCL	C11-C10-C8-C9
11	M	410[A]	SPN	C20-C21-C22-CM7

*Continued on next page...*

*Continued from previous page...*

Mol	Chain	Res	Type	Atoms
6	M	403	BCL	C3A-C2A-CAA-CBA
7	L	304[B]	OLC	C15-C16-C17-C18
7	L	304[B]	OLC	O20-C21-C22-C24
11	M	410[A]	SPN	C4-C5-C6-C7
4	H	303	LDA	C7-C8-C9-C10
4	L	306	LDA	C11-C10-C9-C8
6	M	402	BCL	C13-C15-C16-C17
4	L	306	LDA	C2-C3-C4-C5
4	M	411	LDA	C11-C10-C9-C8
5	M	404	BPH	C2-C1-O2A-CGA
6	L	302	BCL	C14-C13-C15-C16
11	M	410[A]	SPN	CM7-C22-C23-C24
6	L	302	BCL	C16-C17-C18-C19
6	M	402	BCL	C4C-C3C-CAC-CBC
6	M	402	BCL	C11-C10-C8-C7
11	M	410[A]	SPN	C21-C22-C23-C24
4	L	305	LDA	C4-C5-C6-C7
4	H	302	LDA	C3-C4-C5-C6
6	L	302	BCL	C16-C17-C18-C20
4	H	303	LDA	C2-C1-N1-CM2
4	M	406	LDA	C2-C1-N1-CM2
4	M	411	LDA	C9-C10-C11-C12
6	M	402	BCL	C11-C12-C13-C14
7	L	304[B]	OLC	C5-C6-C7-C8
4	L	305	LDA	C2-C3-C4-C5
4	L	305	LDA	C2-C1-N1-O1
6	M	402	BCL	C2C-C3C-CAC-CBC
4	H	302	LDA	C2-C3-C4-C5
5	L	301	BPH	C14-C13-C15-C16
4	L	306	LDA	C3-C4-C5-C6
12	M	413	CIT	C1-C2-C3-O7
12	M	413	CIT	O7-C3-C4-C5
4	H	301	LDA	C4-C5-C6-C7
4	L	307	LDA	C11-C10-C9-C8
5	L	301	BPH	C11-C12-C13-C15
4	M	407	LDA	N1-C1-C2-C3
11	M	410[A]	SPN	C27-C28-C29-C30
7	L	304[A]	OLC	C2-C1-O20-C21
4	L	306	LDA	C6-C7-C8-C9
4	H	303	LDA	C5-C6-C7-C8
4	H	302	LDA	C9-C10-C11-C12
7	L	304[A]	OLC	O20-C21-C22-C24

*Continued on next page...*



*Continued from previous page...*

Mol	Chain	Res	Type	Atoms
6	L	302	BCL	C12-C13-C15-C16
7	L	304[A]	OLC	C9-C10-C11-C12
7	L	304[B]	OLC	C9-C10-C11-C12
11	M	410[A]	SPN	C16-C17-C18-CM6
6	M	402	BCL	C11-C12-C13-C15
4	H	303	LDA	C11-C10-C9-C8
7	L	304[A]	OLC	O20-C1-C2-C3
4	L	307	LDA	C2-C3-C4-C5
7	L	304[A]	OLC	O19-C1-O20-C21
7	L	304[B]	OLC	O20-C1-C2-C3
7	M	409[B]	OLC	C7-C8-C9-C10
5	M	404	BPH	CAD-CBD-CGD-O2D
6	L	303	BCL	CAD-CBD-CGD-O2D
4	M	407	LDA	C6-C7-C8-C9
11	M	410[A]	SPN	CM5-C13-C14-C15
7	L	304[B]	OLC	C14-C15-C16-C17
5	L	301	BPH	O2A-C1-C2-C3
4	H	303	LDA	C3-C4-C5-C6
4	H	302	LDA	C2-C1-N1-CM2
4	H	303	LDA	C2-C3-C4-C5
7	M	409[B]	OLC	C9-C10-C11-C12
5	L	301	BPH	CHA-CBD-CGD-O1D
5	L	301	BPH	CHA-CBD-CGD-O2D
7	L	304[B]	OLC	C1-C2-C3-C4
11	M	410[A]	SPN	C16-C17-C18-C19
8	M	401	UQ7	C1-C2-O2-CM2
7	L	304[B]	OLC	C2-C1-O20-C21
6	L	303	BCL	C2A-CAA-CBA-CGA
12	M	413	CIT	O1-C1-C2-C3
12	M	413	CIT	O2-C1-C2-C3
7	L	304[B]	OLC	C7-C8-C9-C10
7	L	304[B]	OLC	C11-C12-C13-C14
5	L	301	BPH	C8-C10-C11-C12

There are no ring outliers.

9 monomers are involved in 21 short contacts:

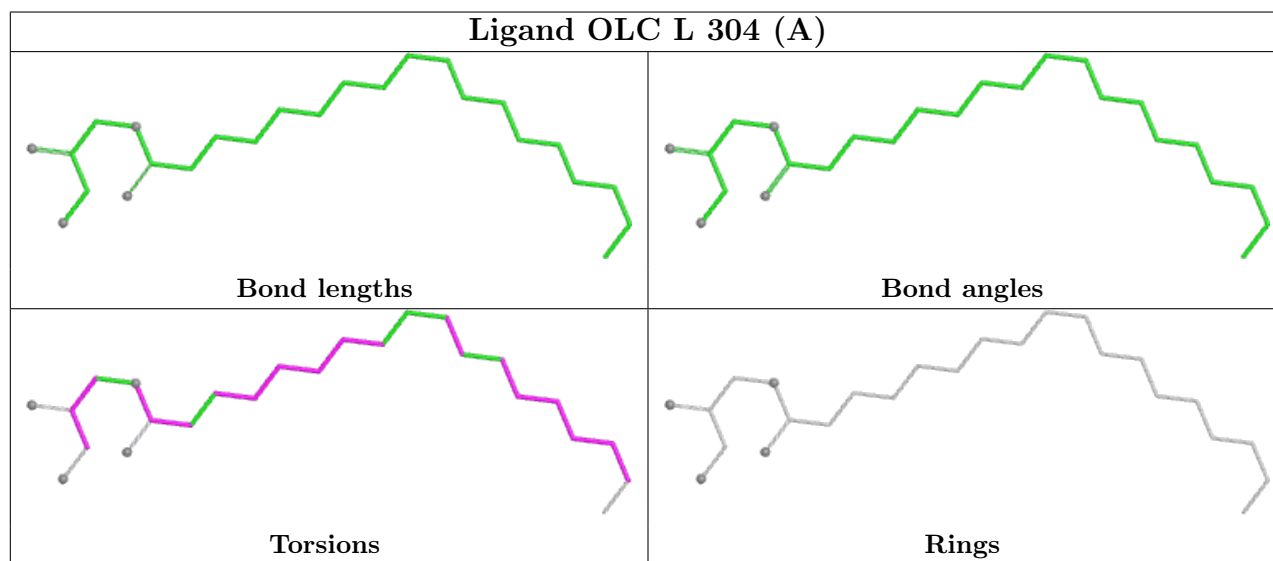
Mol	Chain	Res	Type	Clashes	Symm-Clashes
6	M	403	BCL	4	0
4	H	303	LDA	1	0
6	L	303	BCL	2	0
11	M	410[A]	SPN	3	0

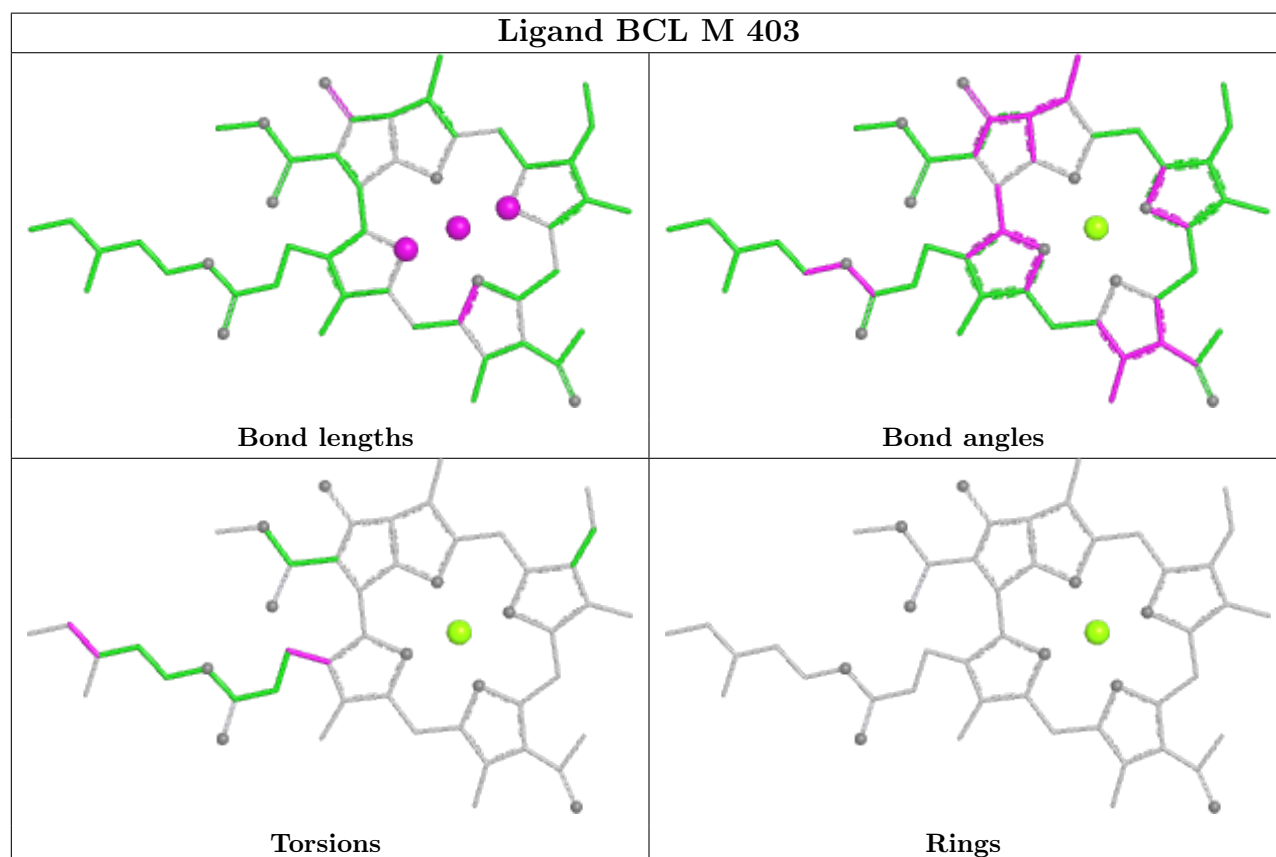
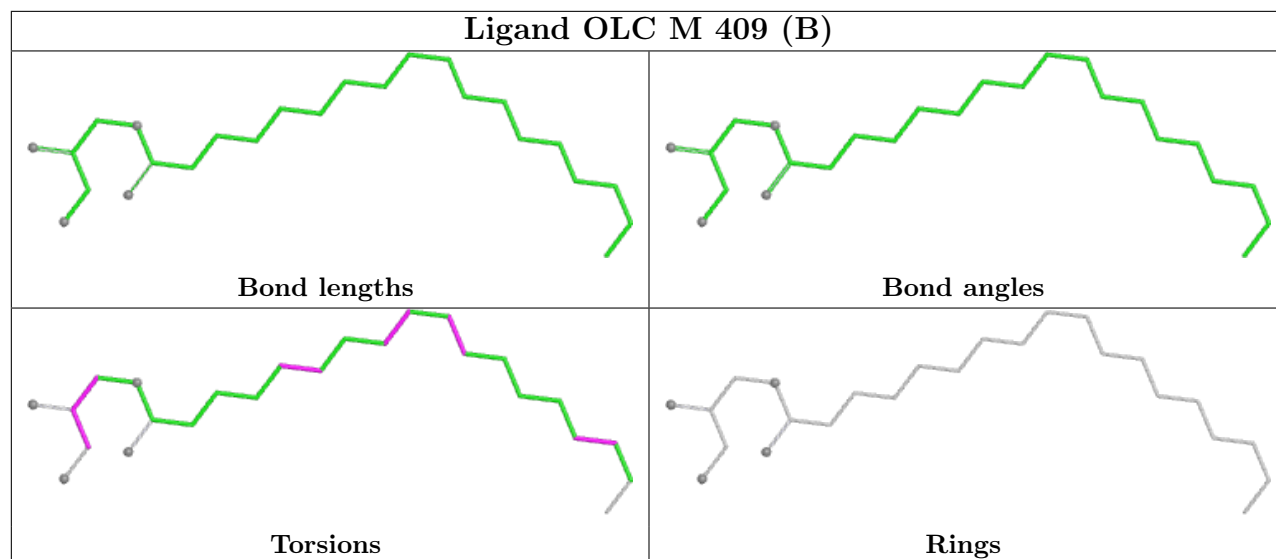
*Continued on next page...*

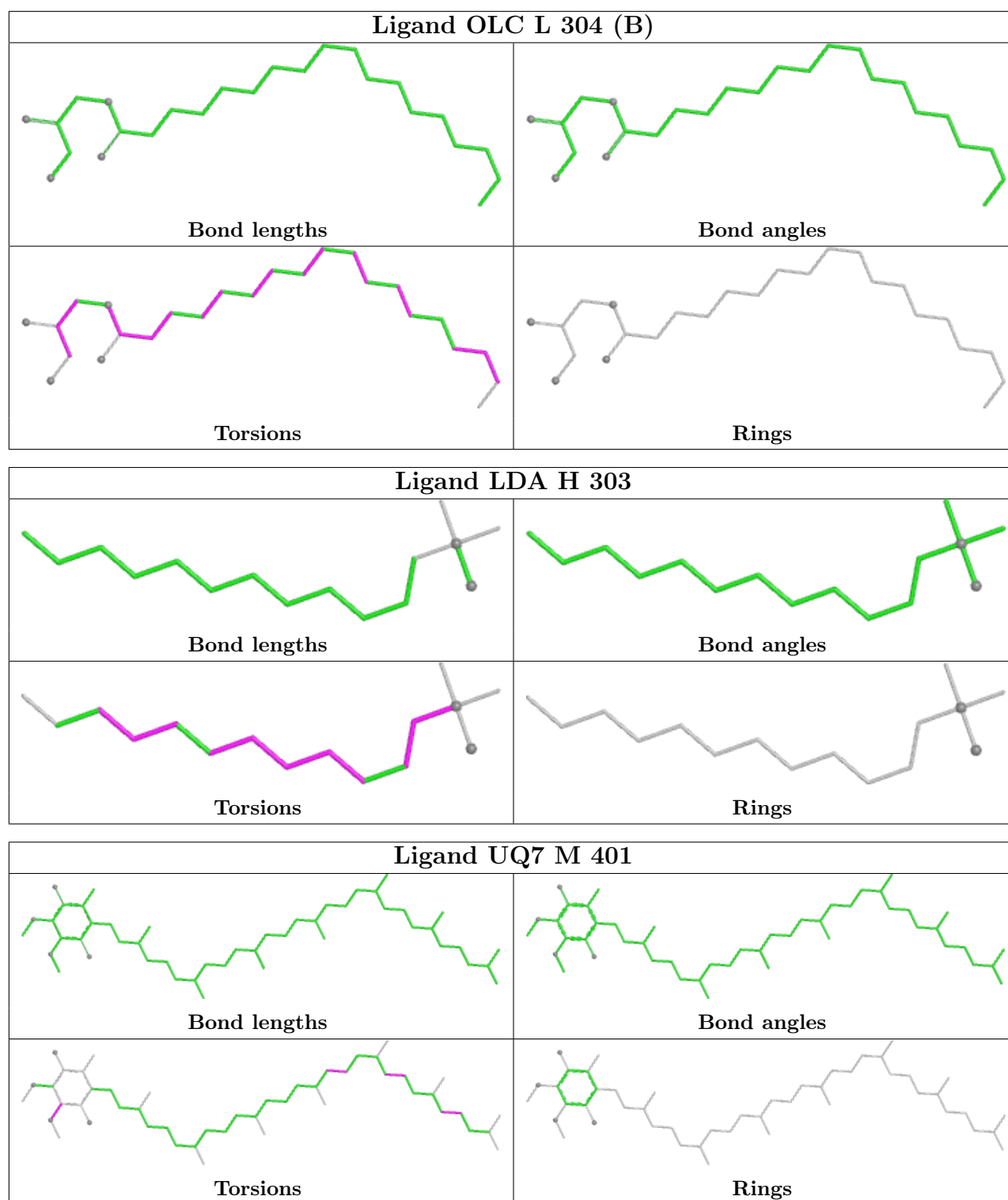
Continued from previous page...

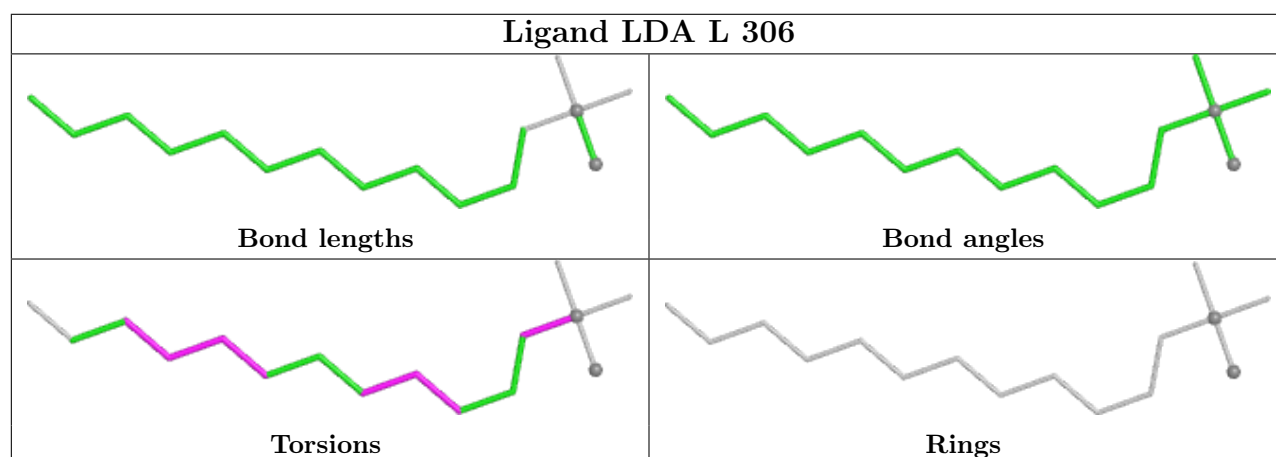
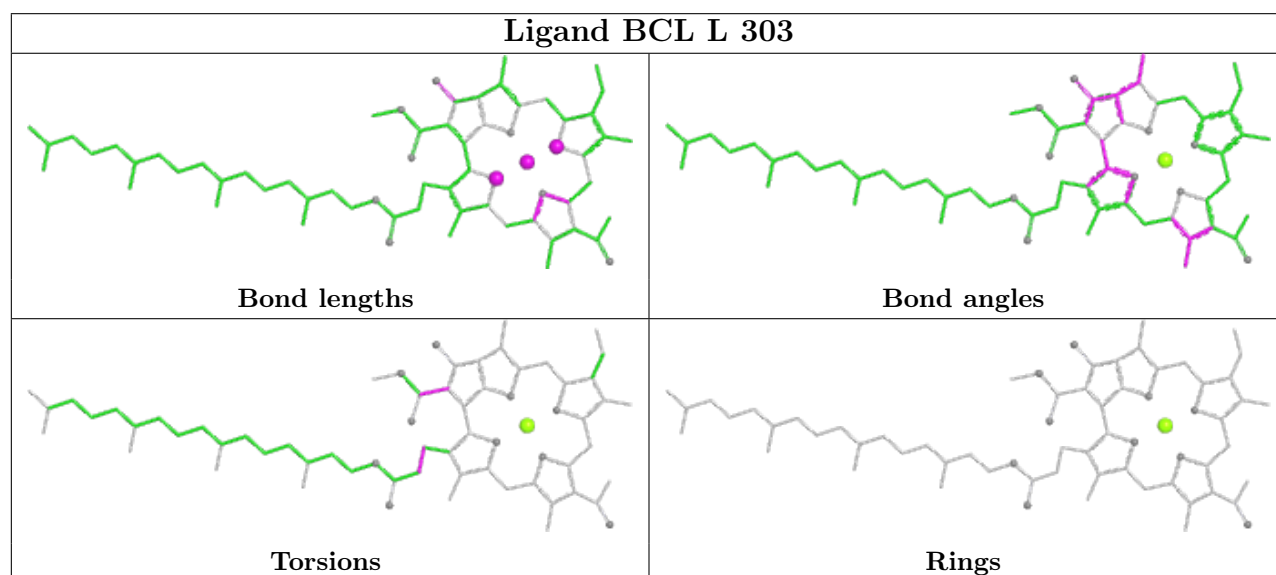
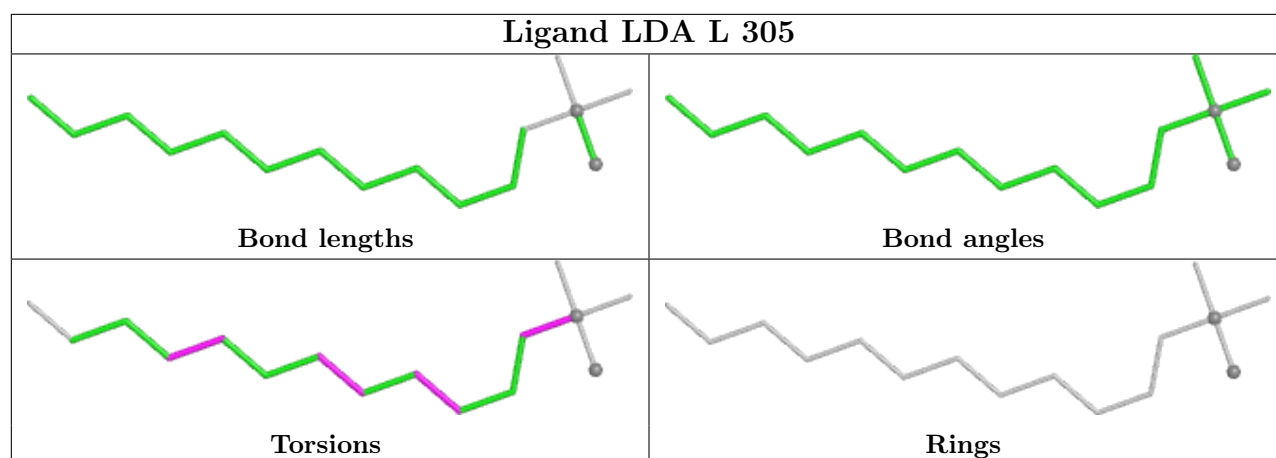
Mol	Chain	Res	Type	Clashes	Symm-Clashes
4	M	411	LDA	2	0
6	L	302	BCL	2	0
5	M	404	BPH	3	0
6	M	402	BCL	2	0
12	M	413	CIT	2	0

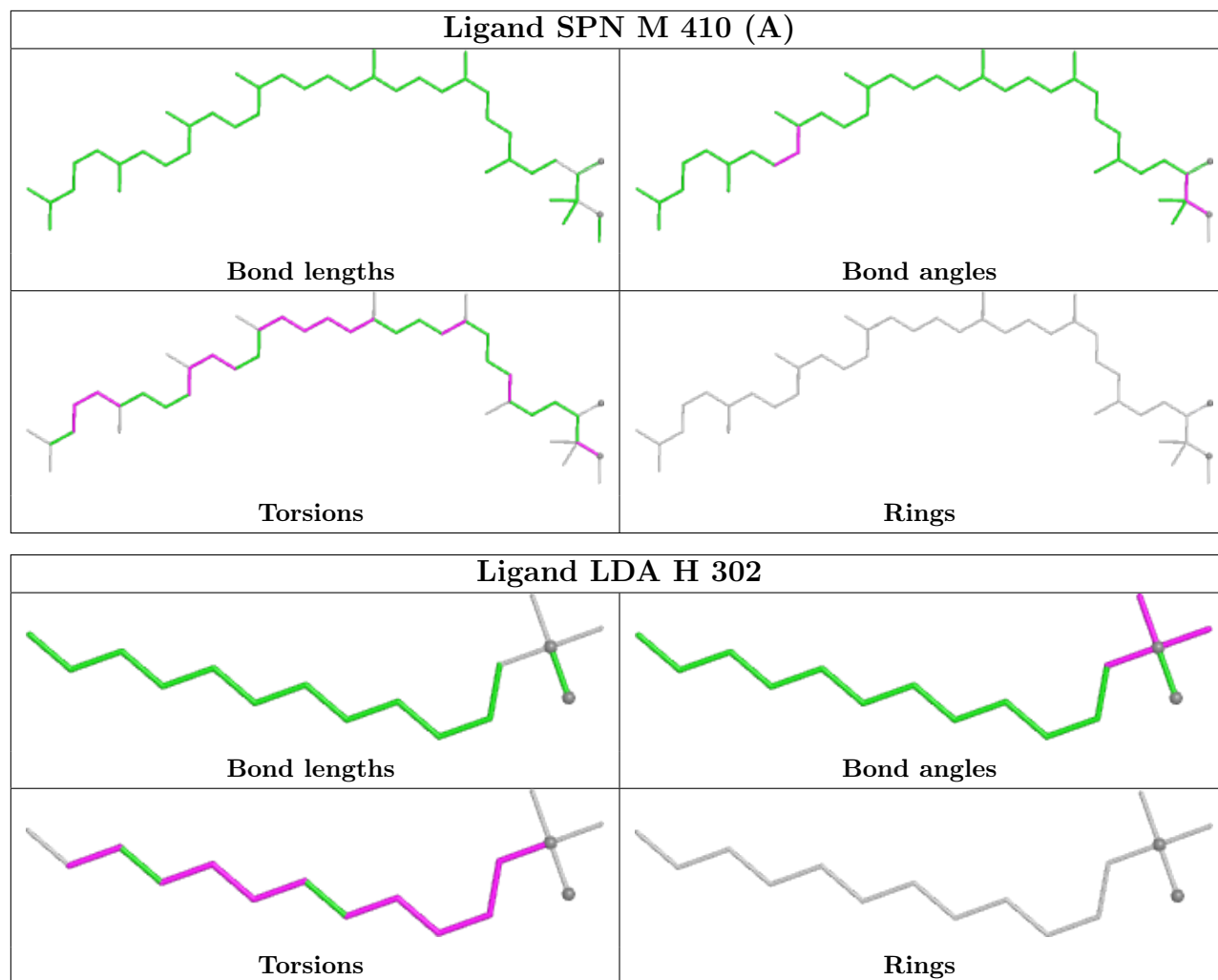
The following is a two-dimensional graphical depiction of Mogul quality analysis of bond lengths, bond angles, torsion angles, and ring geometry for all instances of the Ligand of Interest. In addition, ligands with molecular weight > 250 and outliers as shown on the validation Tables will also be included. For torsion angles, if less than 5% of the Mogul distribution of torsion angles is within 10 degrees of the torsion angle in question, then that torsion angle is considered an outlier. Any bond that is central to one or more torsion angles identified as an outlier by Mogul will be highlighted in the graph. For rings, the root-mean-square deviation (RMSD) between the ring in question and similar rings identified by Mogul is calculated over all ring torsion angles. If the average RMSD is greater than 60 degrees and the minimal RMSD between the ring in question and any Mogul-identified rings is also greater than 60 degrees, then that ring is considered an outlier. The outliers are highlighted in purple. The color gray indicates Mogul did not find sufficient equivalents in the CSD to analyse the geometry.

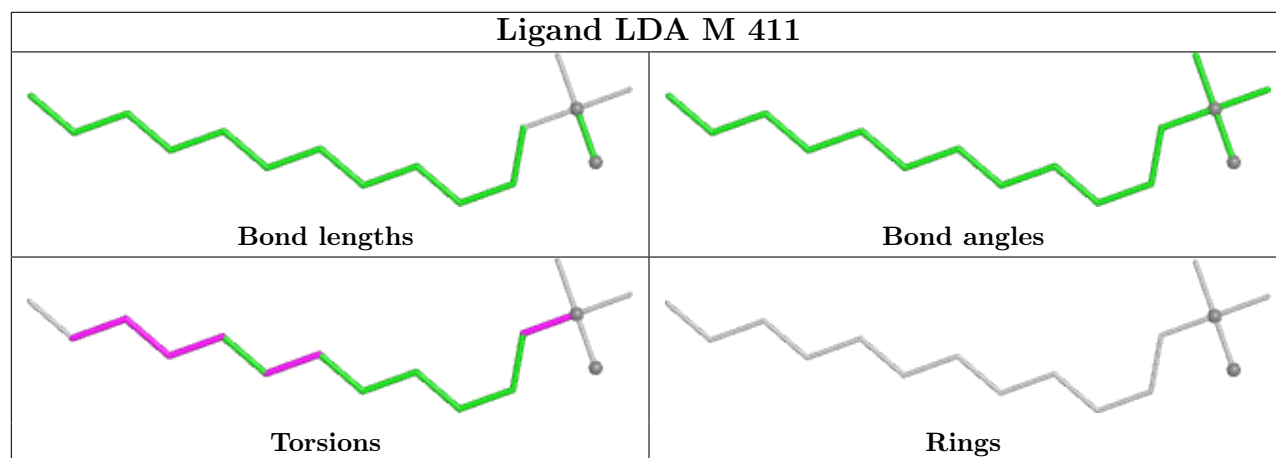
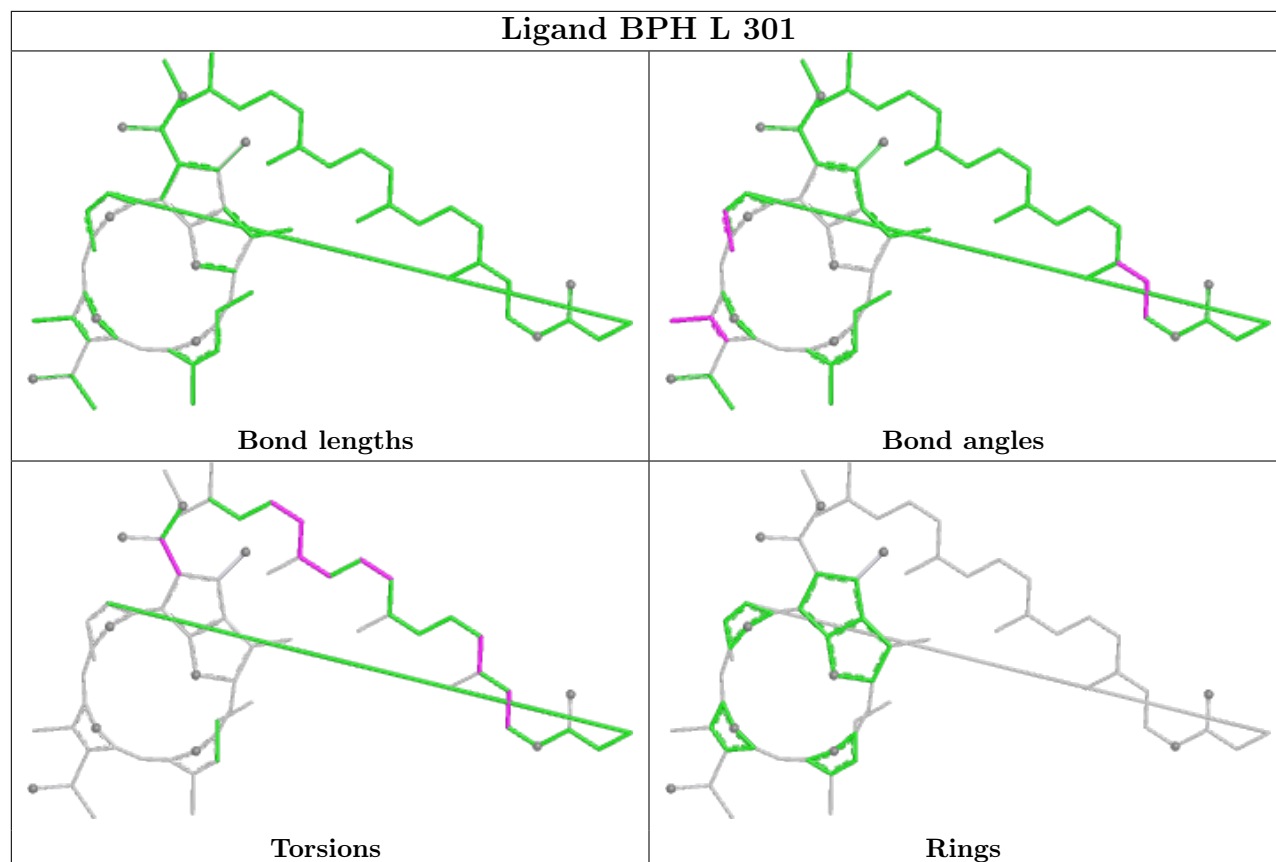


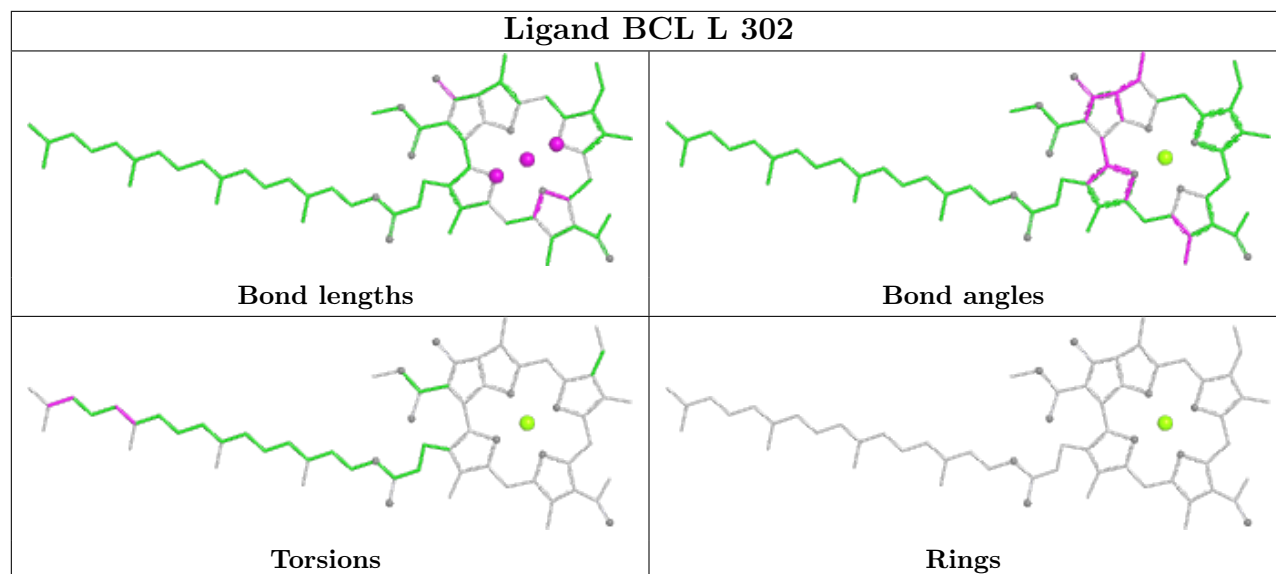




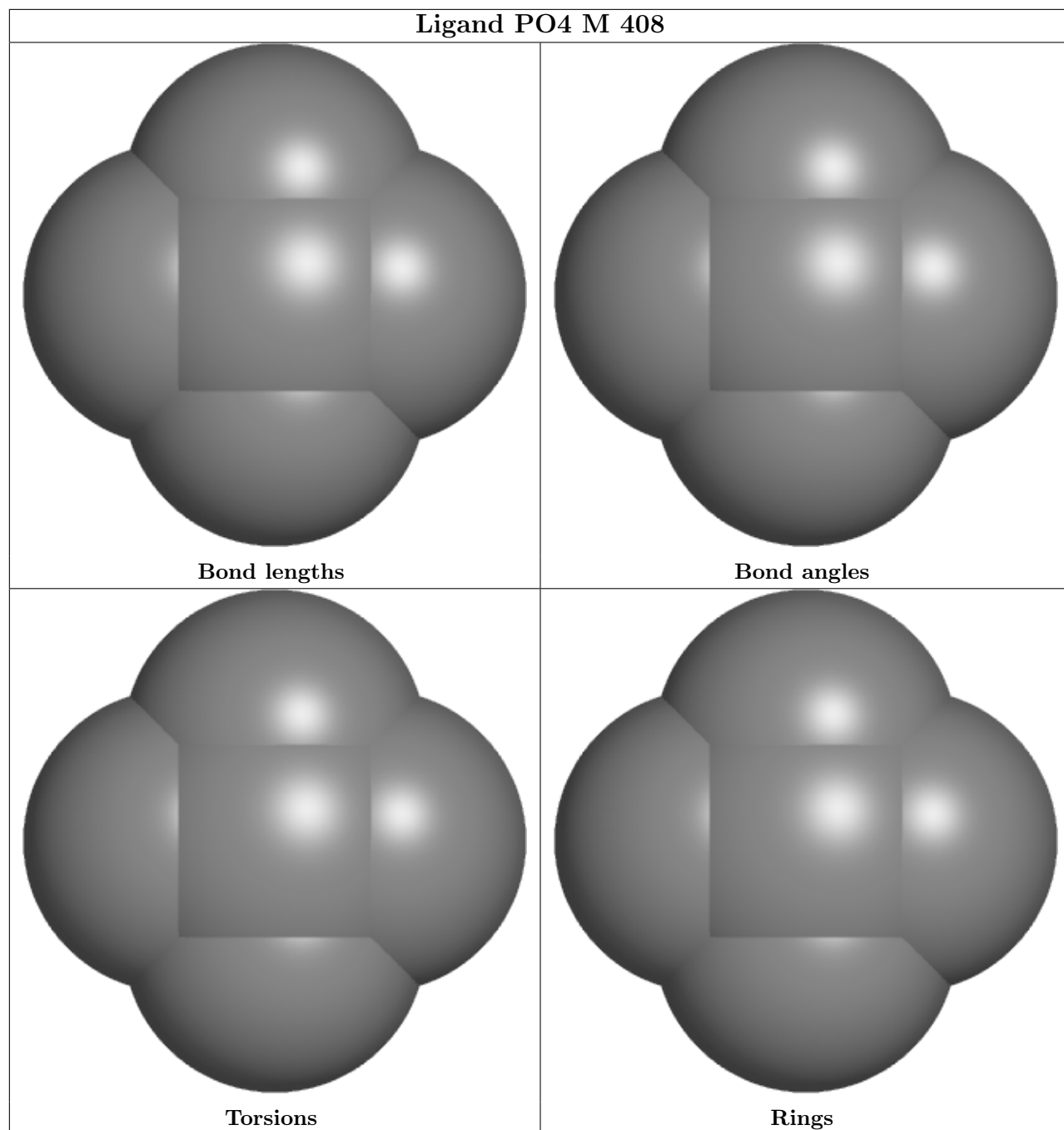


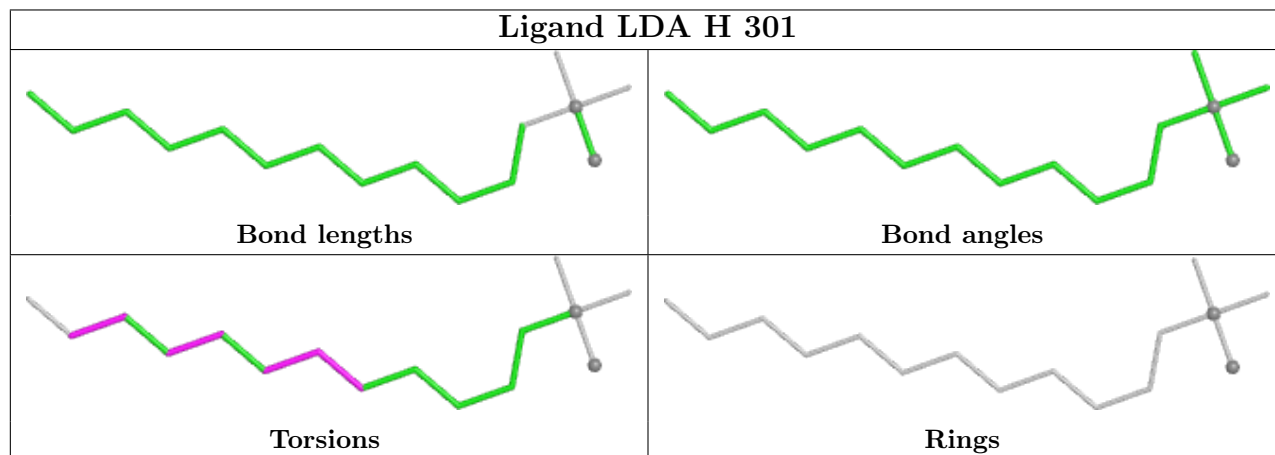
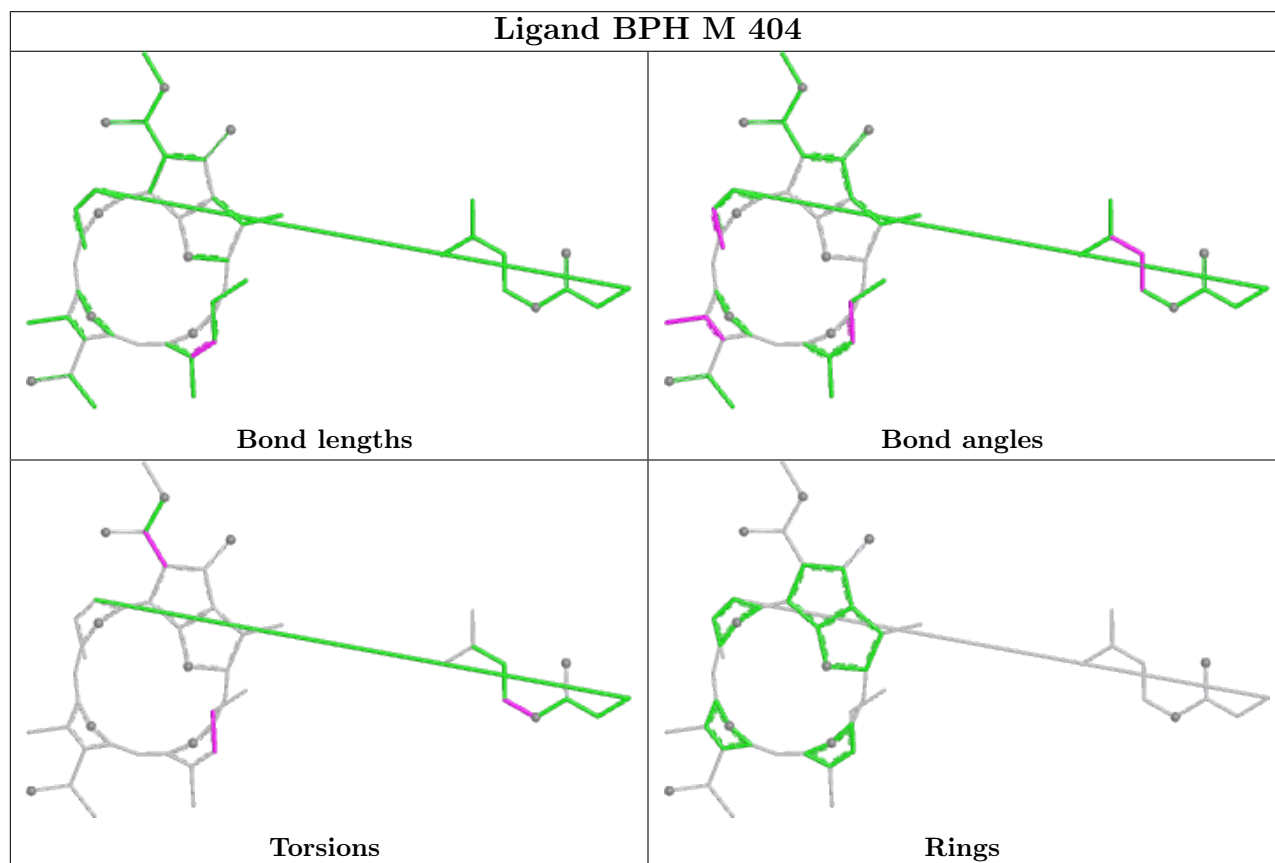
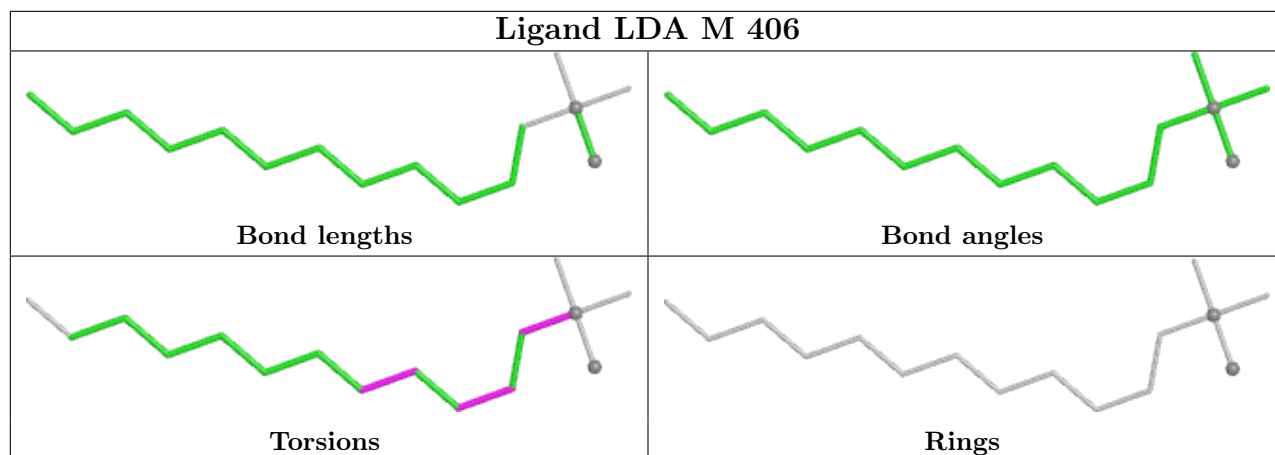


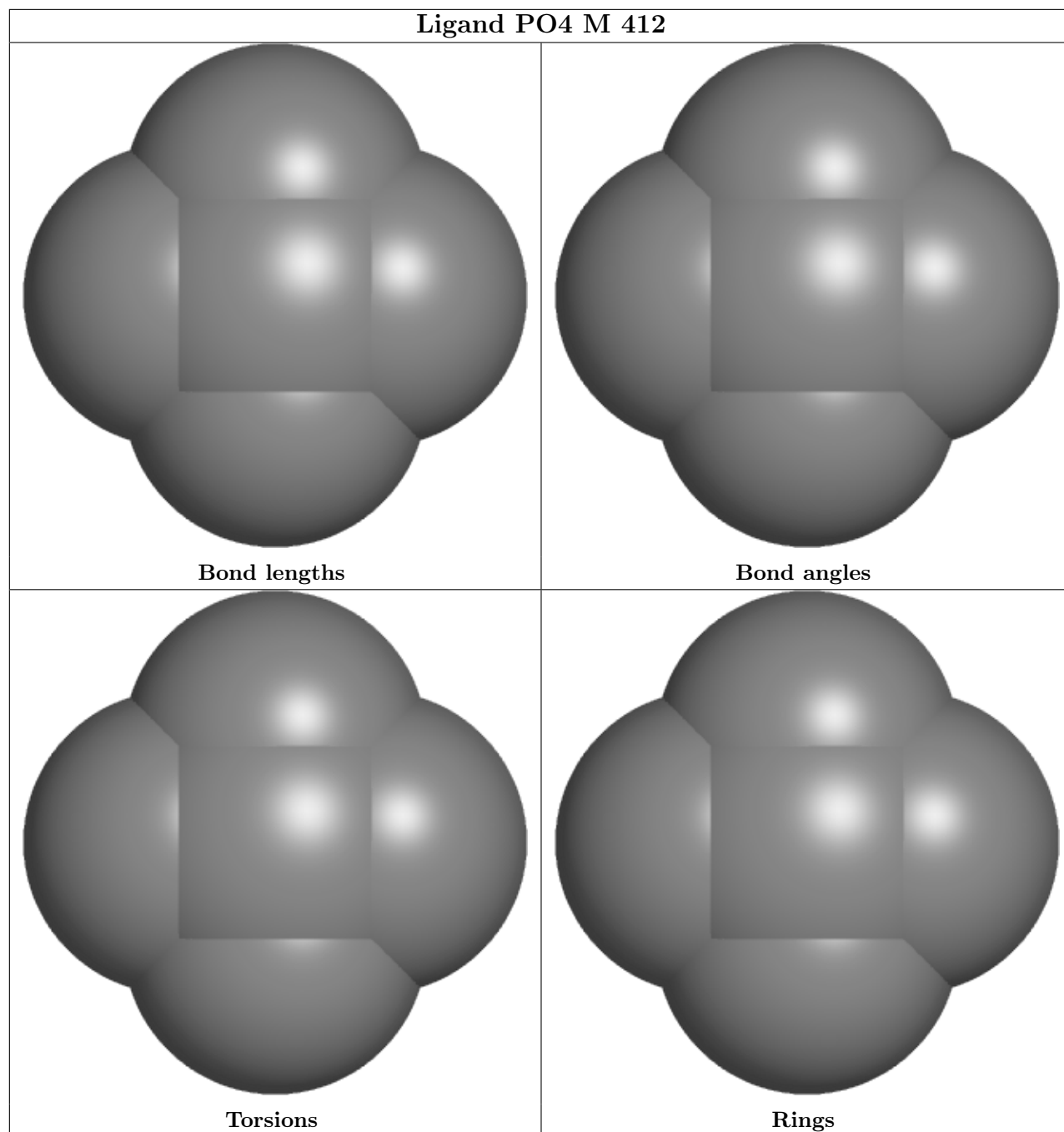


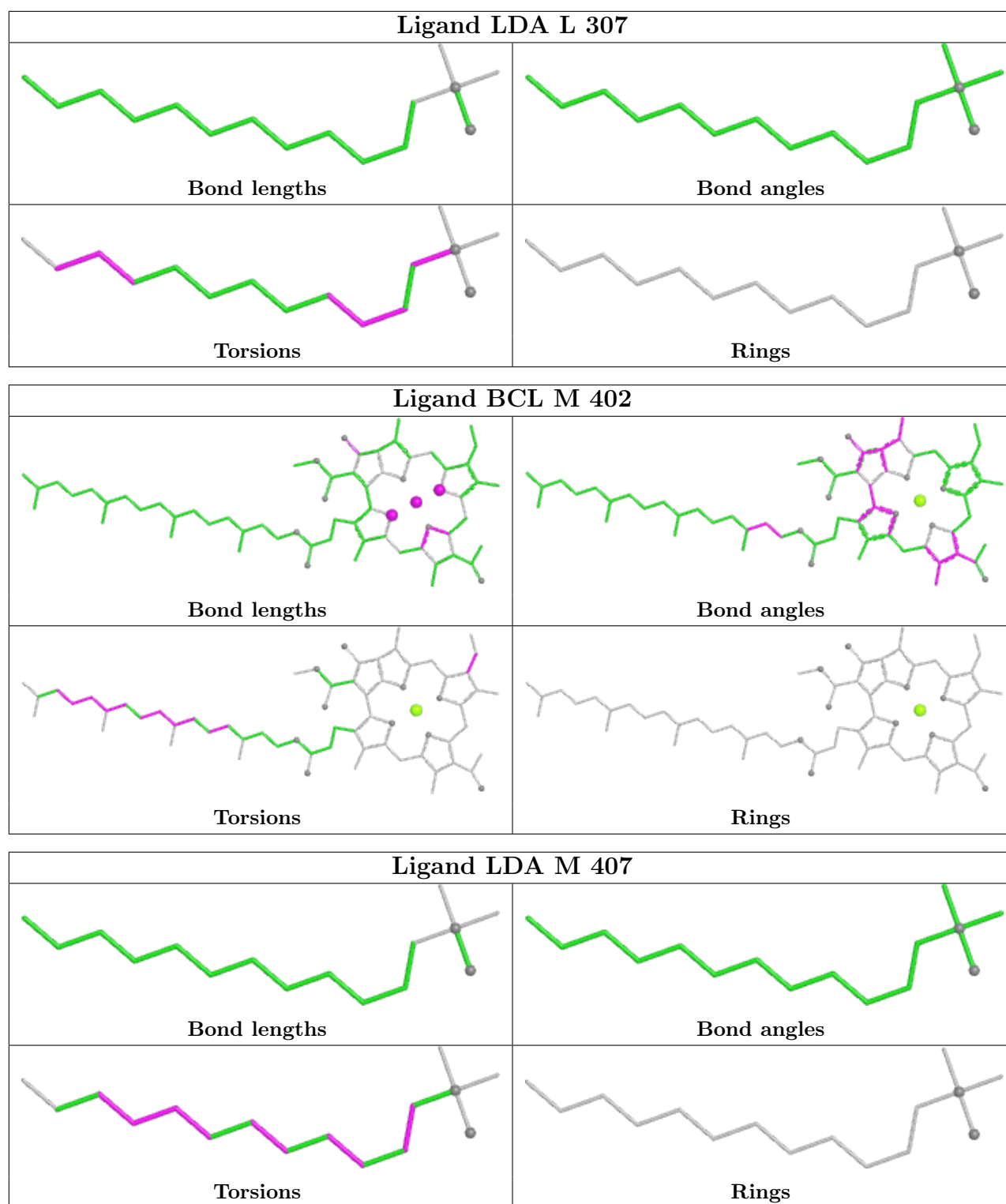












## 5.7 Other polymers [i](#)

There are no such residues in this entry.

## 5.8 Polymer linkage issues

There are no chain breaks in this entry.

## 6 Fit of model and data

### 6.1 Protein, DNA and RNA chains

In the following table, the column labelled ‘#RSRZ > 2’ contains the number (and percentage) of RSRZ outliers, followed by percent RSRZ outliers for the chain as percentile scores relative to all X-ray entries and entries of similar resolution. The OWAB column contains the minimum, median, 95<sup>th</sup> percentile and maximum values of the occupancy-weighted average B-factor per residue. The column labelled ‘Q < 0.9’ lists the number of (and percentage) of residues with an average occupancy less than 0.9.

Mol	Chain	Analysed	<RSRZ>	#RSRZ>2	OWAB(Å <sup>2</sup> )	Q<0.9
1	H	240/241 (99%)	-0.09	7 (2%) 51 59	24, 40, 69, 147	0
2	L	281/281 (100%)	-0.10	12 (4%) 35 42	22, 39, 95, 118	0
3	M	300/302 (99%)	-0.10	7 (2%) 60 67	21, 38, 69, 92	0
All	All	821/824 (99%)	-0.09	26 (3%) 47 55	21, 39, 76, 147	0

All (26) RSRZ outliers are listed below:

Mol	Chain	Res	Type	RSRZ
2	L	277	GLY	6.3
2	L	270	PRO	6.0
2	L	59	TRP	4.4
3	M	301	HIS	4.3
3	M	300	ASN	3.5
1	H	10	PHE	3.5
1	H	248	ARG	3.2
2	L	273	ALA	3.1
2	L	265	TRP	3.1
1	H	92	VAL	3.0
3	M	78	ALA	3.0
2	L	51[A]	TRP	3.0
2	L	281	GLY	2.9
1	H	249	LYS	2.8
2	L	269	LEU	2.6
2	L	266	TRP	2.5
2	L	271	TRP	2.3
3	M	54[A]	SER	2.2
2	L	63	LEU	2.1
1	H	93	SER	2.1
1	H	160	ILE	2.1
3	M	148[A]	TRP	2.1
1	H	200	SER	2.1

*Continued on next page...*

*Continued from previous page...*

Mol	Chain	Res	Type	RSRZ
3	M	76	TYR	2.0
3	M	83	ALA	2.0
2	L	55	LEU	2.0

## 6.2 Non-standard residues in protein, DNA, RNA chains [i](#)

There are no non-standard protein/DNA/RNA residues in this entry.

## 6.3 Carbohydrates [i](#)

There are no monosaccharides in this entry.

## 6.4 Ligands [i](#)

In the following table, the Atoms column lists the number of modelled atoms in the group and the number defined in the chemical component dictionary. The B-factors column lists the minimum, median, 95<sup>th</sup> percentile and maximum values of B factors of atoms in the group. The column labelled 'Q< 0.9' lists the number of atoms with occupancy less than 0.9.

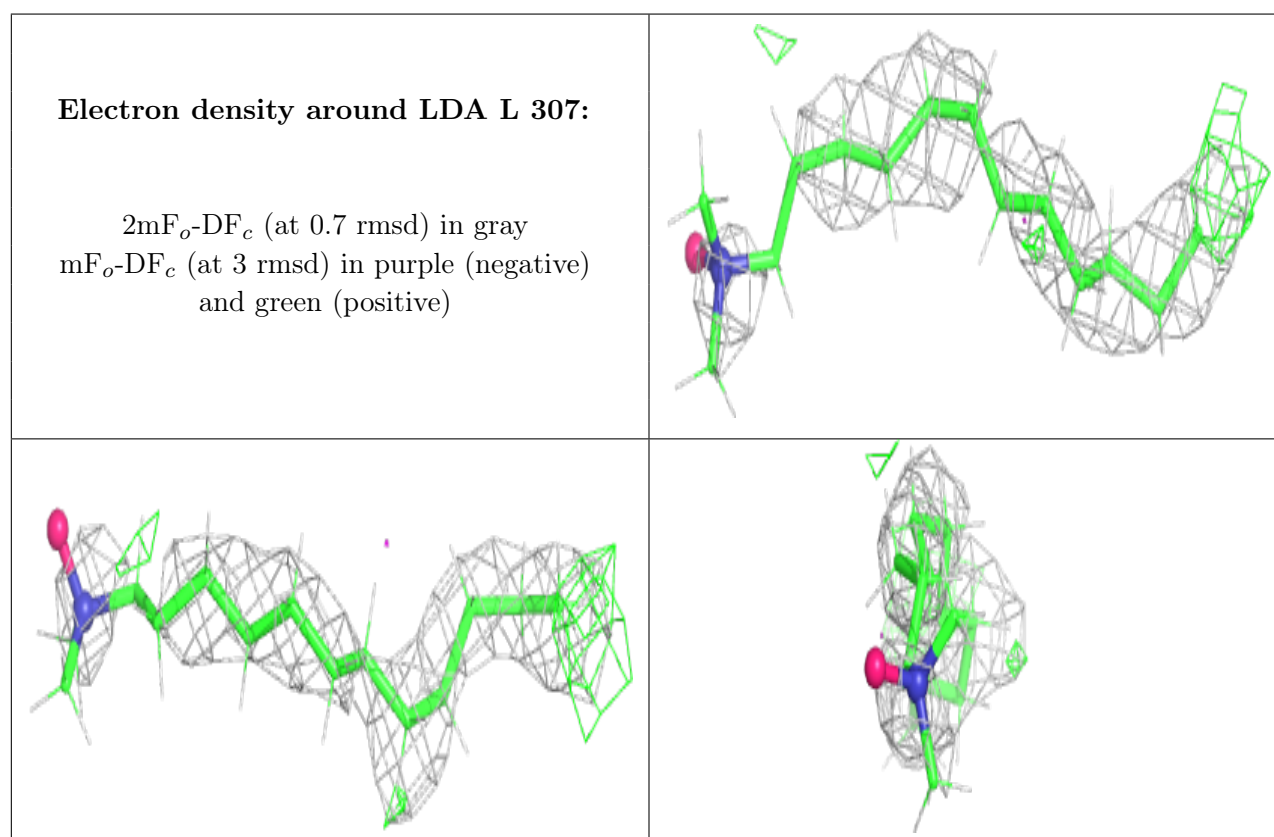
Mol	Type	Chain	Res	Atoms	RSCC	RSR	B-factors(Å <sup>2</sup> )	Q<0.9
4	LDA	L	307	16/16	0.54	0.46	84,103,137,137	0
4	LDA	M	406	16/16	0.72	0.31	61,84,124,127	0
4	LDA	H	302	16/16	0.73	0.31	79,96,105,107	0
7	OLC	M	409[B]	25/25	0.74	0.28	55,72,87,89	65
12	CIT	M	413	13/13	0.74	0.29	147,153,183,186	0
4	LDA	L	305	16/16	0.77	0.29	66,84,125,125	0
4	LDA	L	306	16/16	0.78	0.30	65,84,111,112	0
11	SPN	M	410[A]	43/43	0.79	0.32	52,71,87,88	113
4	LDA	M	411	16/16	0.80	0.23	69,100,147,148	0
10	PO4	M	412	5/5	0.80	0.22	136,136,136,136	0
7	OLC	L	304[A]	25/25	0.81	0.35	47,66,84,85	65
7	OLC	L	304[B]	25/25	0.81	0.35	47,67,84,85	65
4	LDA	H	303	16/16	0.82	0.29	75,97,120,120	0
4	LDA	M	407	16/16	0.88	0.24	45,66,83,85	0
4	LDA	H	301	16/16	0.89	0.21	50,77,126,129	0
8	UQ7	M	401	48/48	0.92	0.24	27,61,107,112	0
10	PO4	M	408	5/5	0.94	0.18	60,61,65,69	0
6	BCL	M	403	52/66	0.95	0.13	26,36,57,62	0
5	BPH	L	301	65/65	0.96	0.16	19,36,56,61	0
6	BCL	L	303	66/66	0.96	0.14	24,36,99,119	0

*Continued on next page...*

Continued from previous page...

Mol	Type	Chain	Res	Atoms	RSCC	RSR	B-factors(Å <sup>2</sup> )	Q<0.9
6	BCL	M	402	66/66	0.96	0.14	29,39,84,87	0
6	BCL	L	302	66/66	0.97	0.16	25,39,80,82	0
5	BPH	M	404	50/65	0.97	0.13	24,36,65,76	0
13	CL	M	414	1/1	0.97	0.09	44,44,44,44	0
9	FE	M	405	1/1	0.98	0.23	36,36,36,36	0

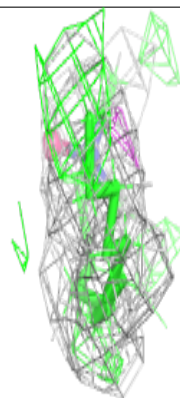
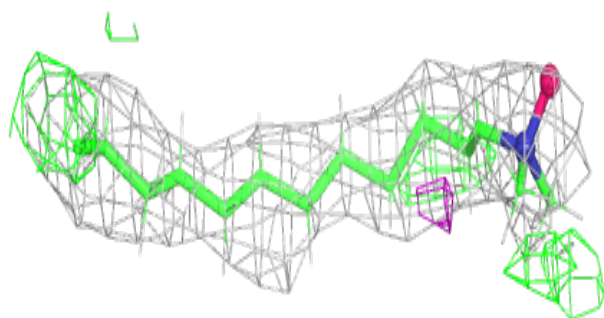
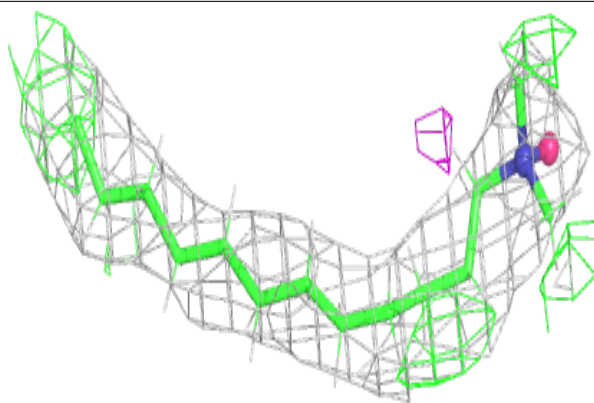
The following is a graphical depiction of the model fit to experimental electron density of all instances of the Ligand of Interest. In addition, ligands with molecular weight > 250 and outliers as shown on the geometry validation Tables will also be included. Each fit is shown from different orientation to approximate a three-dimensional view.



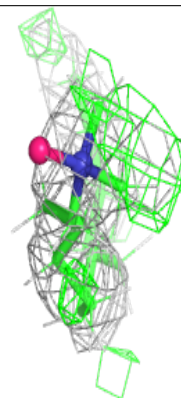
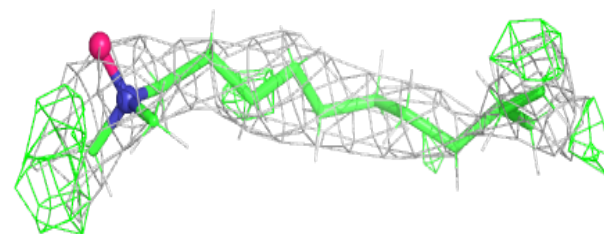
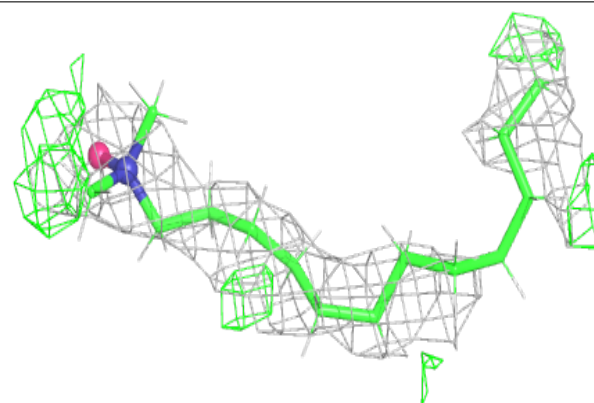


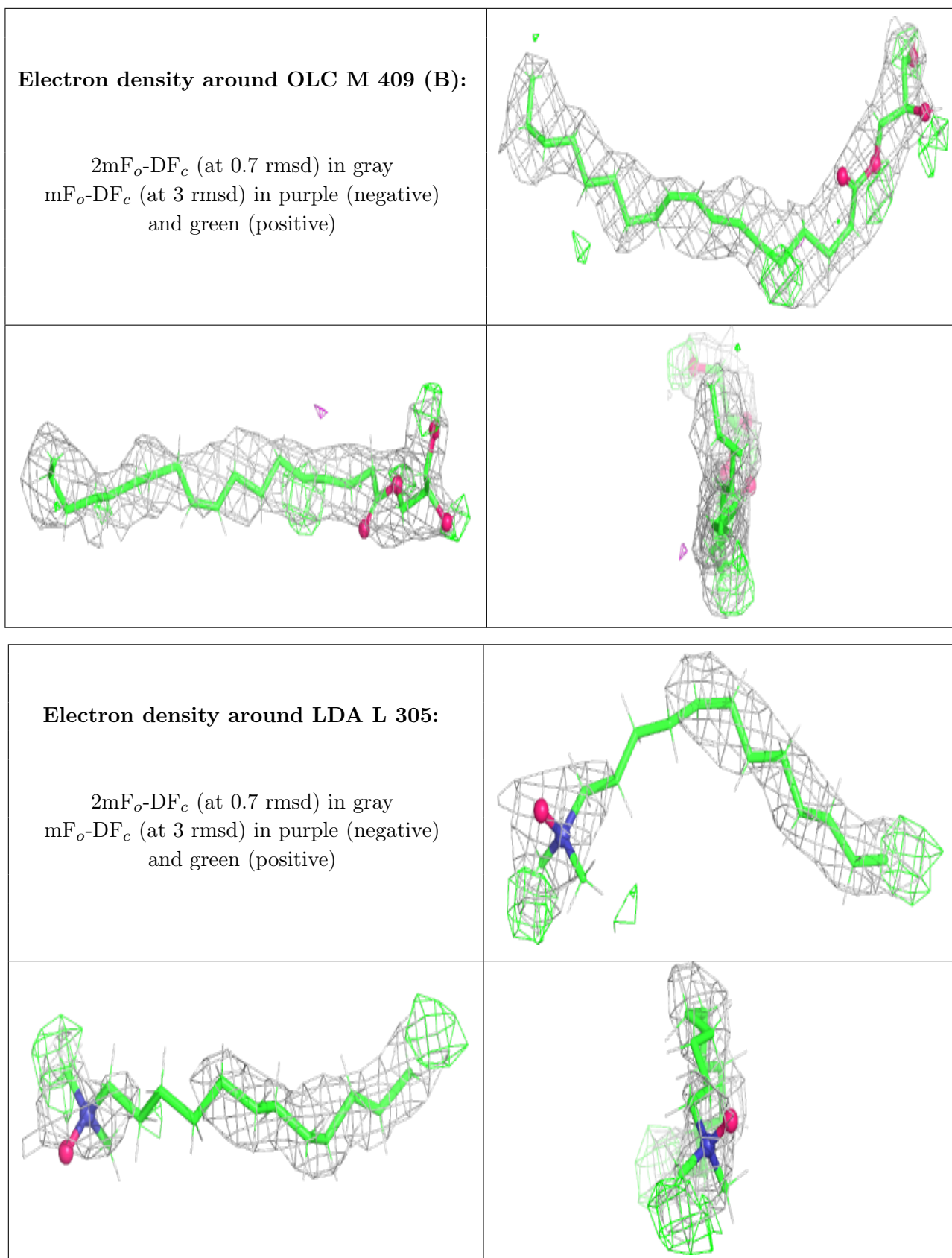
**Electron density around LDA M 406:**

$2mF_o-DF_c$  (at 0.7 rmsd) in gray  
 $mF_o-DF_c$  (at 3 rmsd) in purple (negative)  
and green (positive)

**Electron density around LDA H 302:**

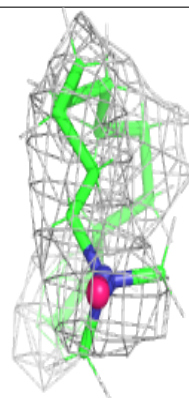
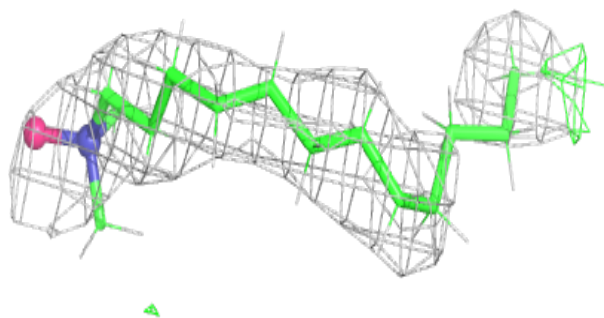
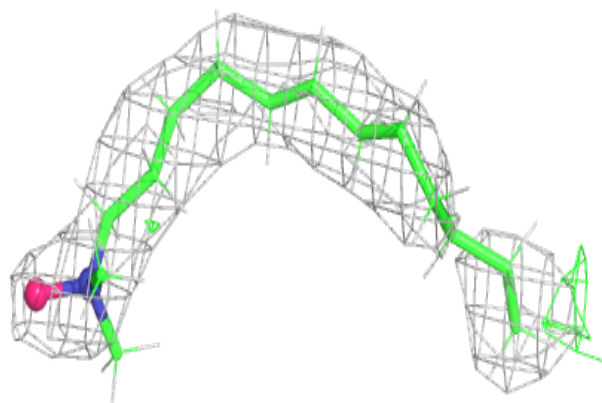
$2mF_o-DF_c$  (at 0.7 rmsd) in gray  
 $mF_o-DF_c$  (at 3 rmsd) in purple (negative)  
and green (positive)



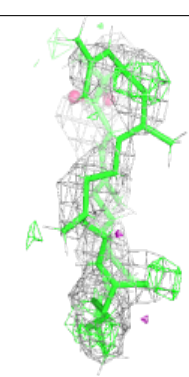
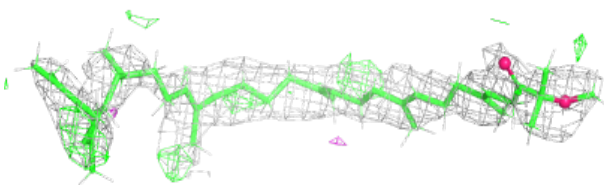
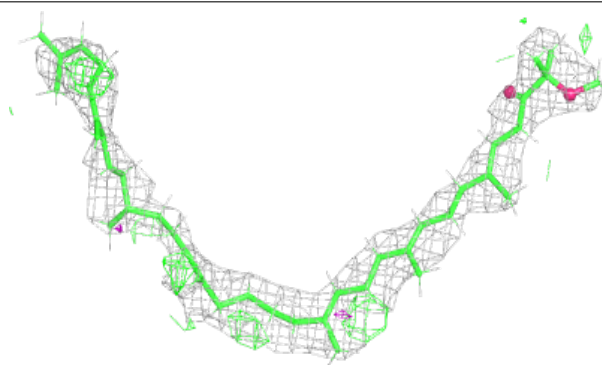


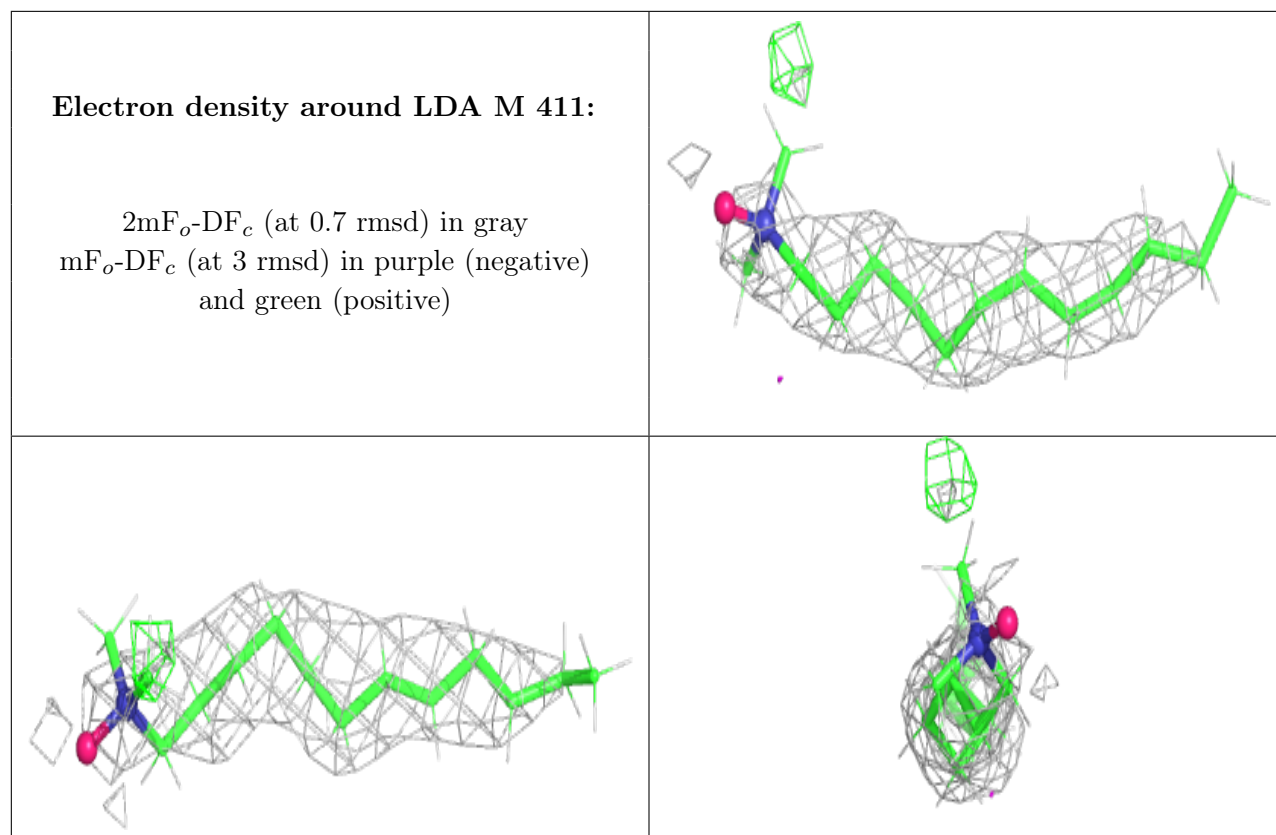
**Electron density around LDA L 306:**

$2mF_o-DF_c$  (at 0.7 rmsd) in gray  
 $mF_o-DF_c$  (at 3 rmsd) in purple (negative)  
and green (positive)

**Electron density around SPN M 410 (A):**

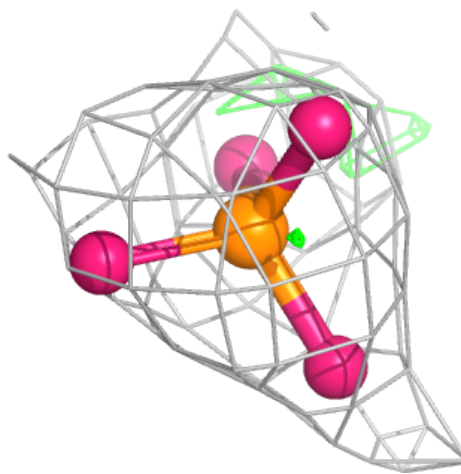
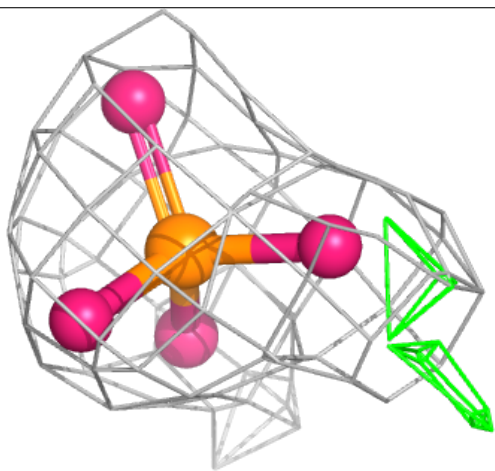
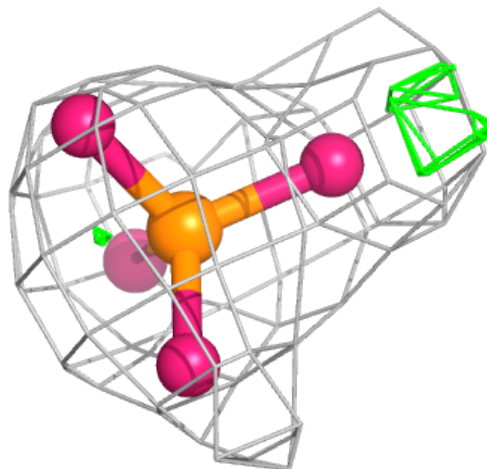
$2mF_o-DF_c$  (at 0.7 rmsd) in gray  
 $mF_o-DF_c$  (at 3 rmsd) in purple (negative)  
and green (positive)





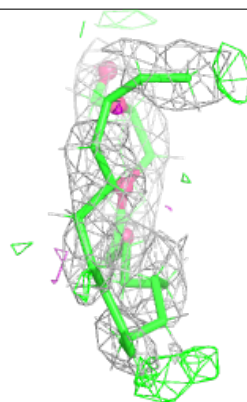
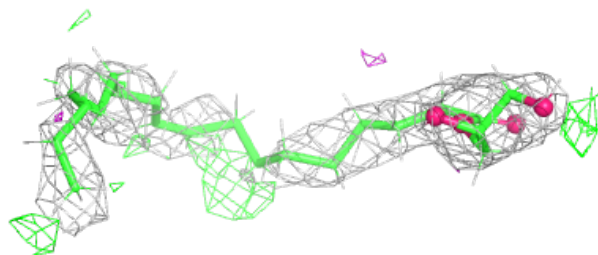
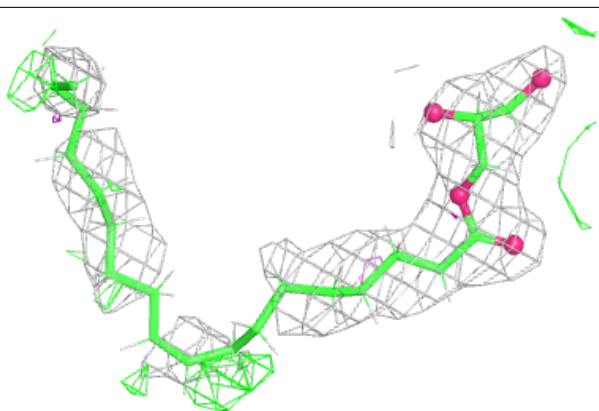
**Electron density around PO4 M 412:**

$2mF_o-DF_c$  (at 0.7 rmsd) in gray  
 $mF_o-DF_c$  (at 3 rmsd) in purple (negative)  
and green (positive)

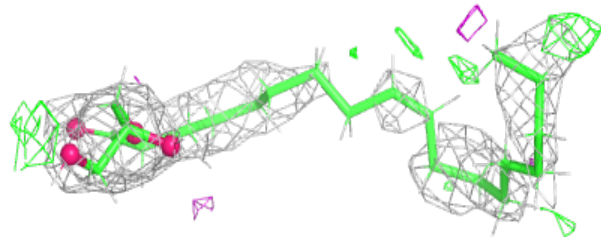
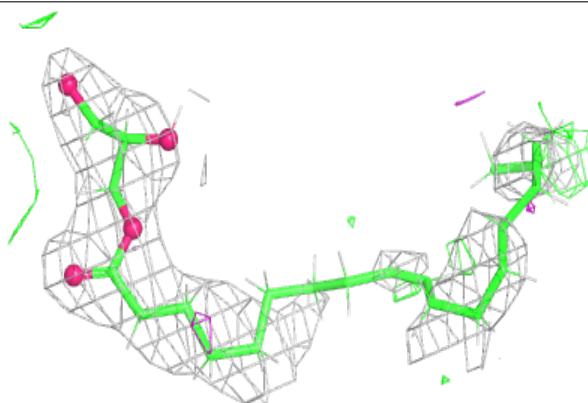


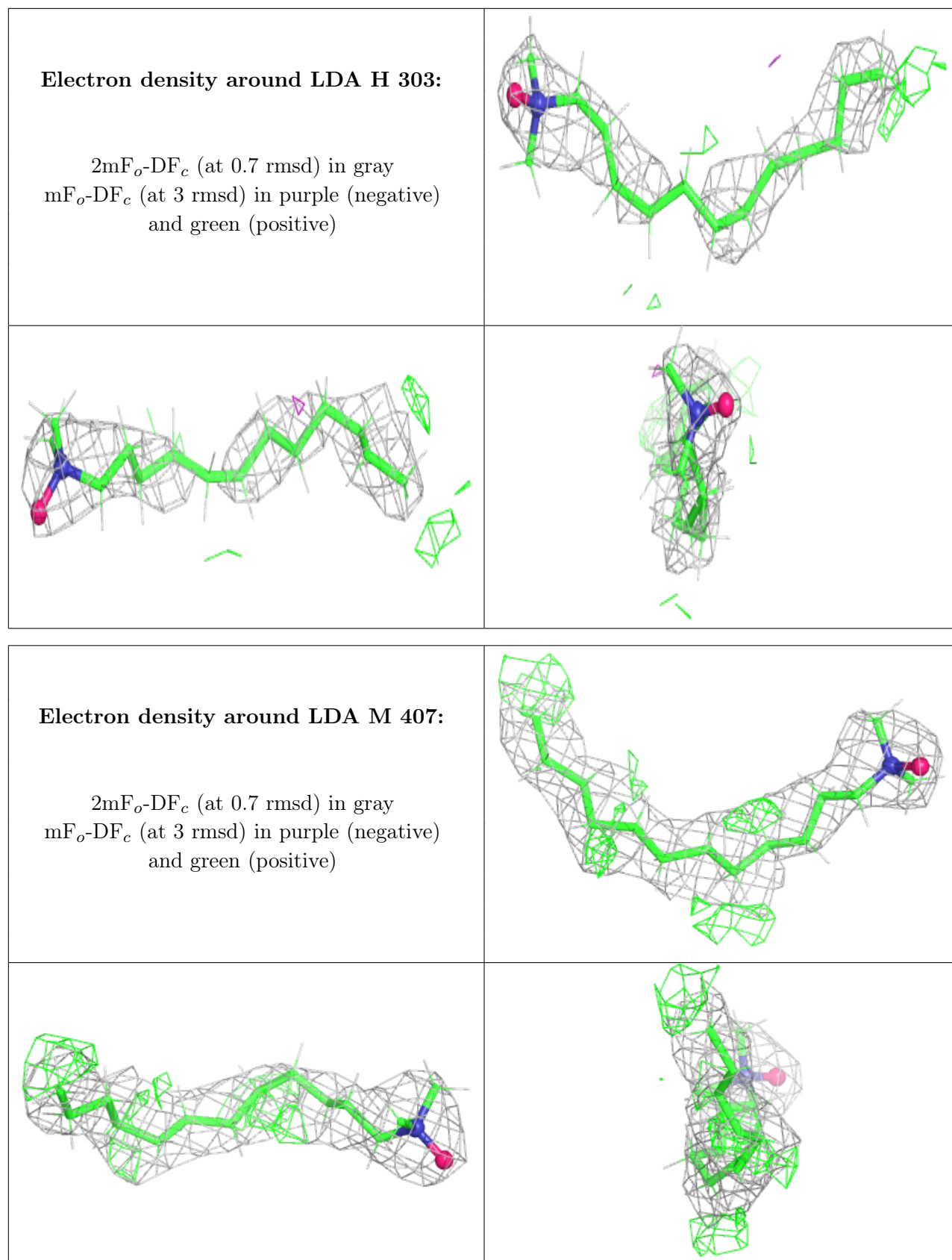
**Electron density around OLC L 304 (A):**

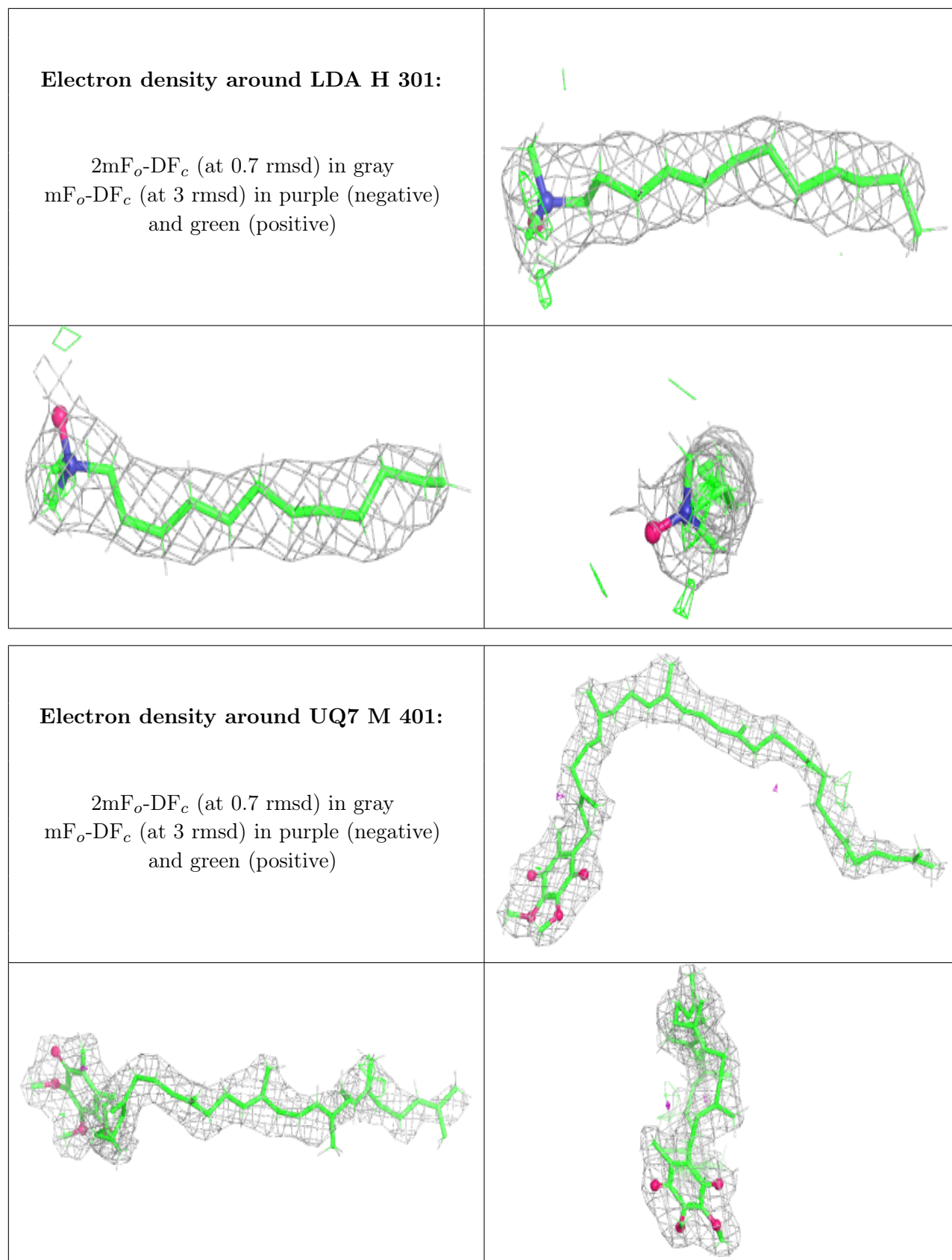
$2mF_o-DF_c$  (at 0.7 rmsd) in gray  
 $mF_o-DF_c$  (at 3 rmsd) in purple (negative)  
and green (positive)

**Electron density around OLC L 304 (B):**

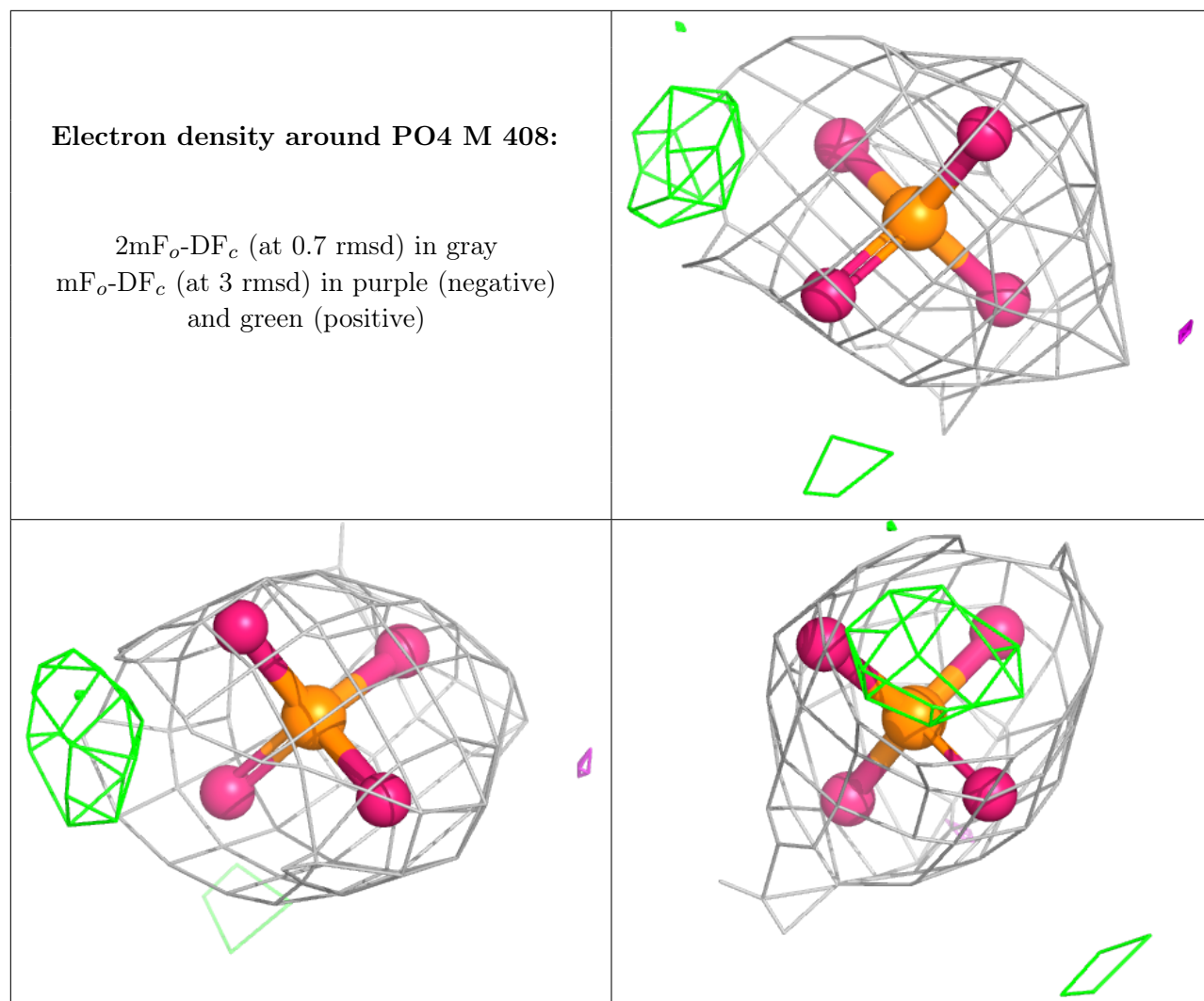
$2mF_o-DF_c$  (at 0.7 rmsd) in gray  
 $mF_o-DF_c$  (at 3 rmsd) in purple (negative)  
and green (positive)





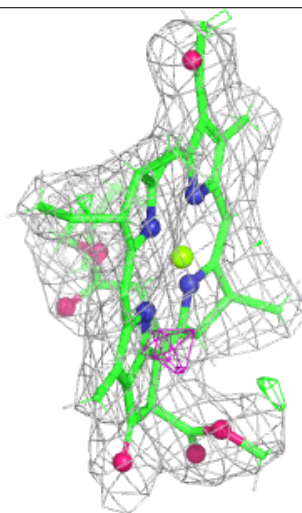
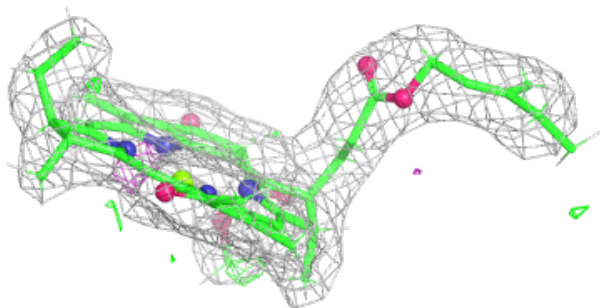
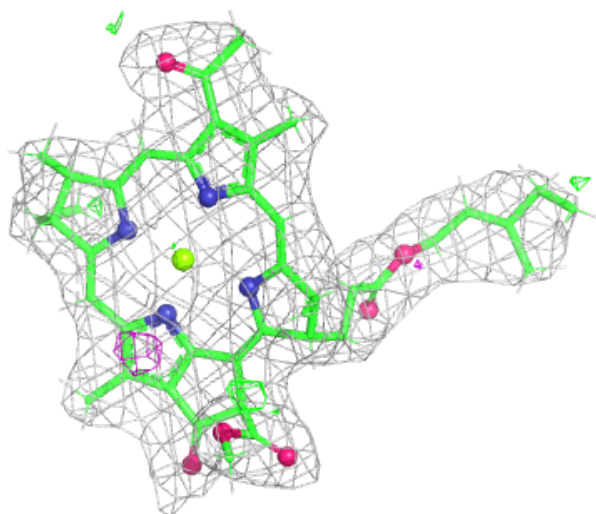






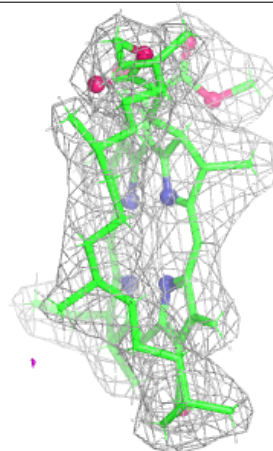
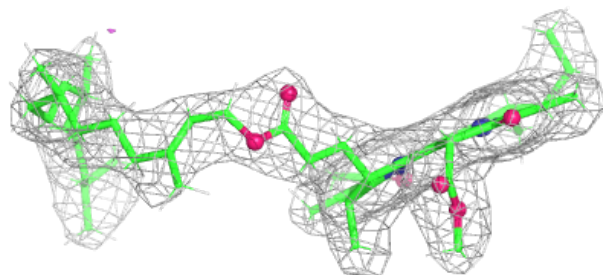
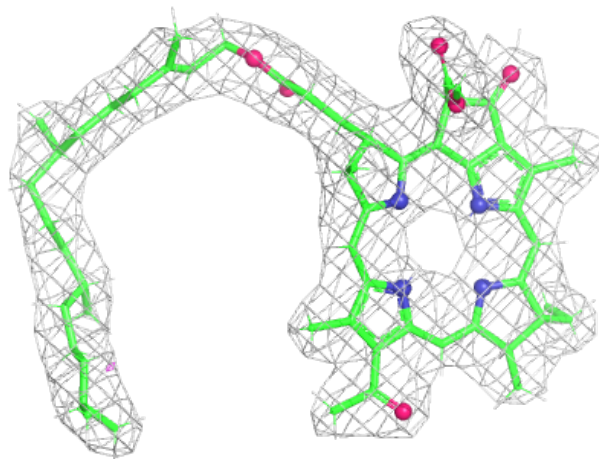
**Electron density around BCL M 403:**

$2mF_o-DF_c$  (at 0.7 rmsd) in gray  
 $mF_o-DF_c$  (at 3 rmsd) in purple (negative)  
and green (positive)



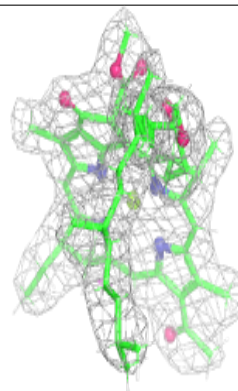
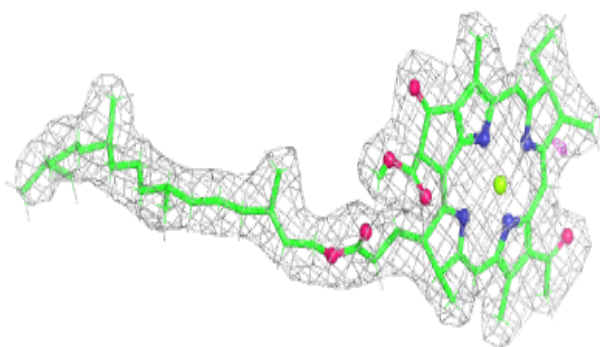
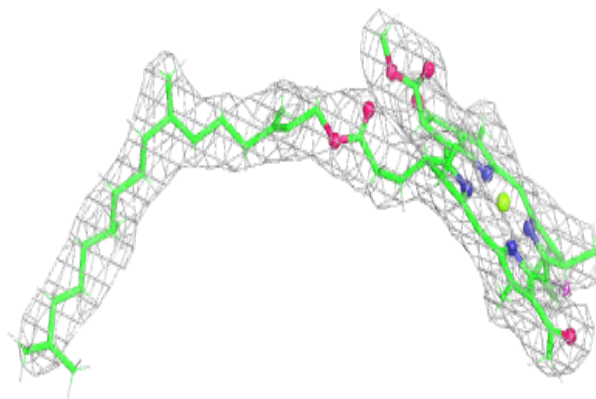
**Electron density around BPH L 301:**

$2mF_o-DF_c$  (at 0.7 rmsd) in gray  
 $mF_o-DF_c$  (at 3 rmsd) in purple (negative)  
and green (positive)

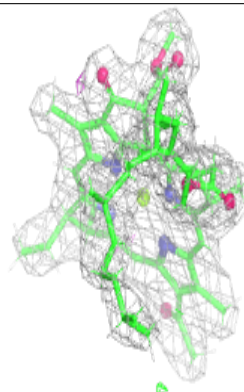
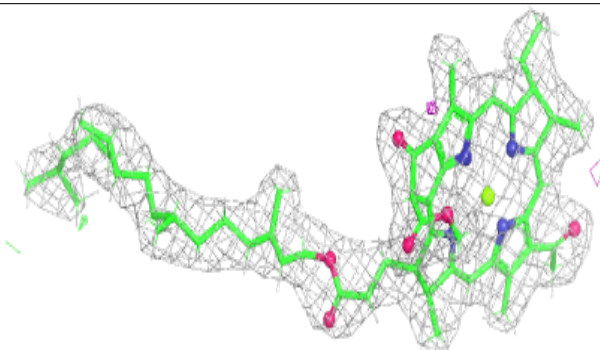
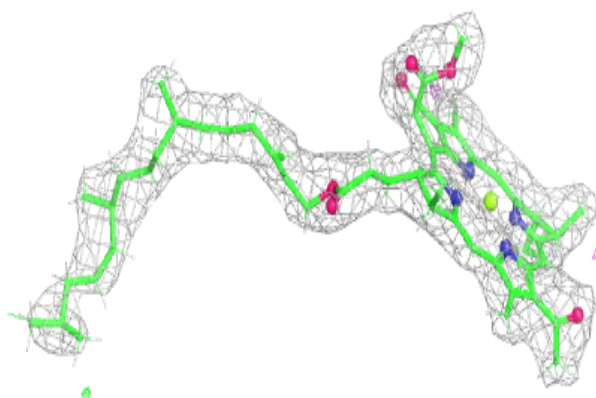


**Electron density around BCL L 303:**

$2mF_o-DF_c$  (at 0.7 rmsd) in gray  
 $mF_o-DF_c$  (at 3 rmsd) in purple (negative)  
and green (positive)

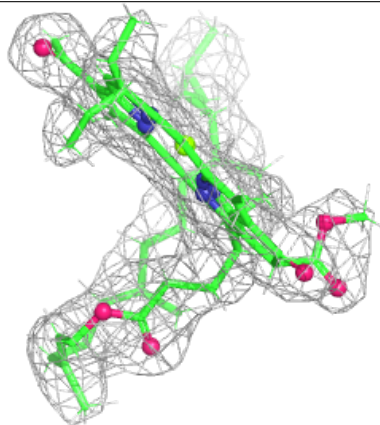
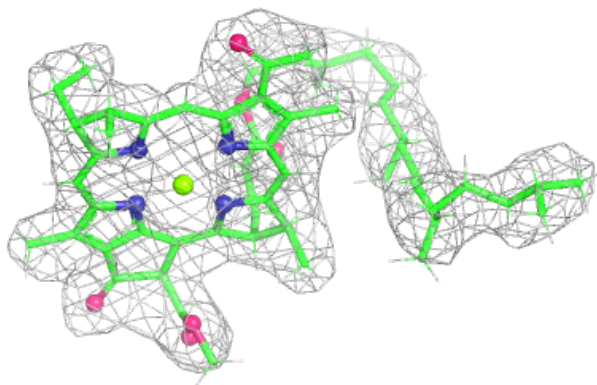
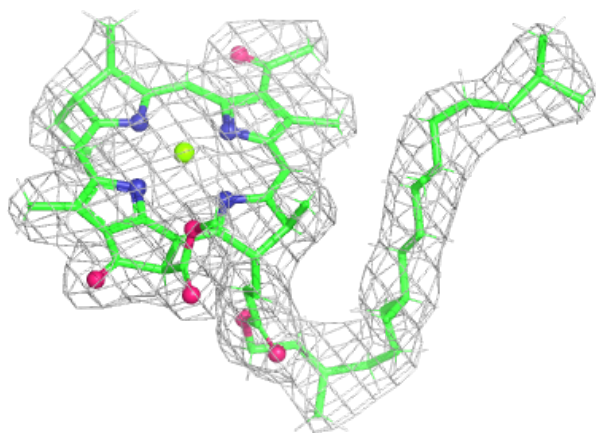
**Electron density around BCL M 402:**

$2mF_o-DF_c$  (at 0.7 rmsd) in gray  
 $mF_o-DF_c$  (at 3 rmsd) in purple (negative)  
and green (positive)



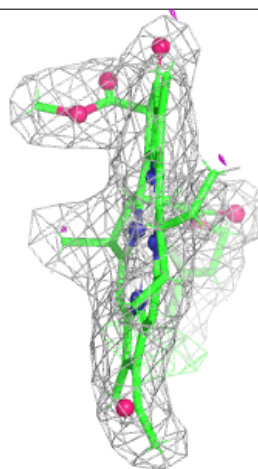
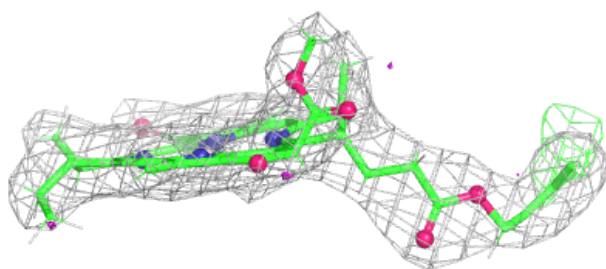
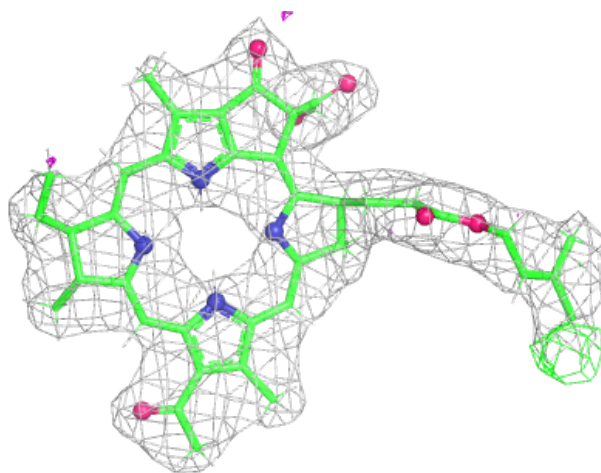
**Electron density around BCL L 302:**

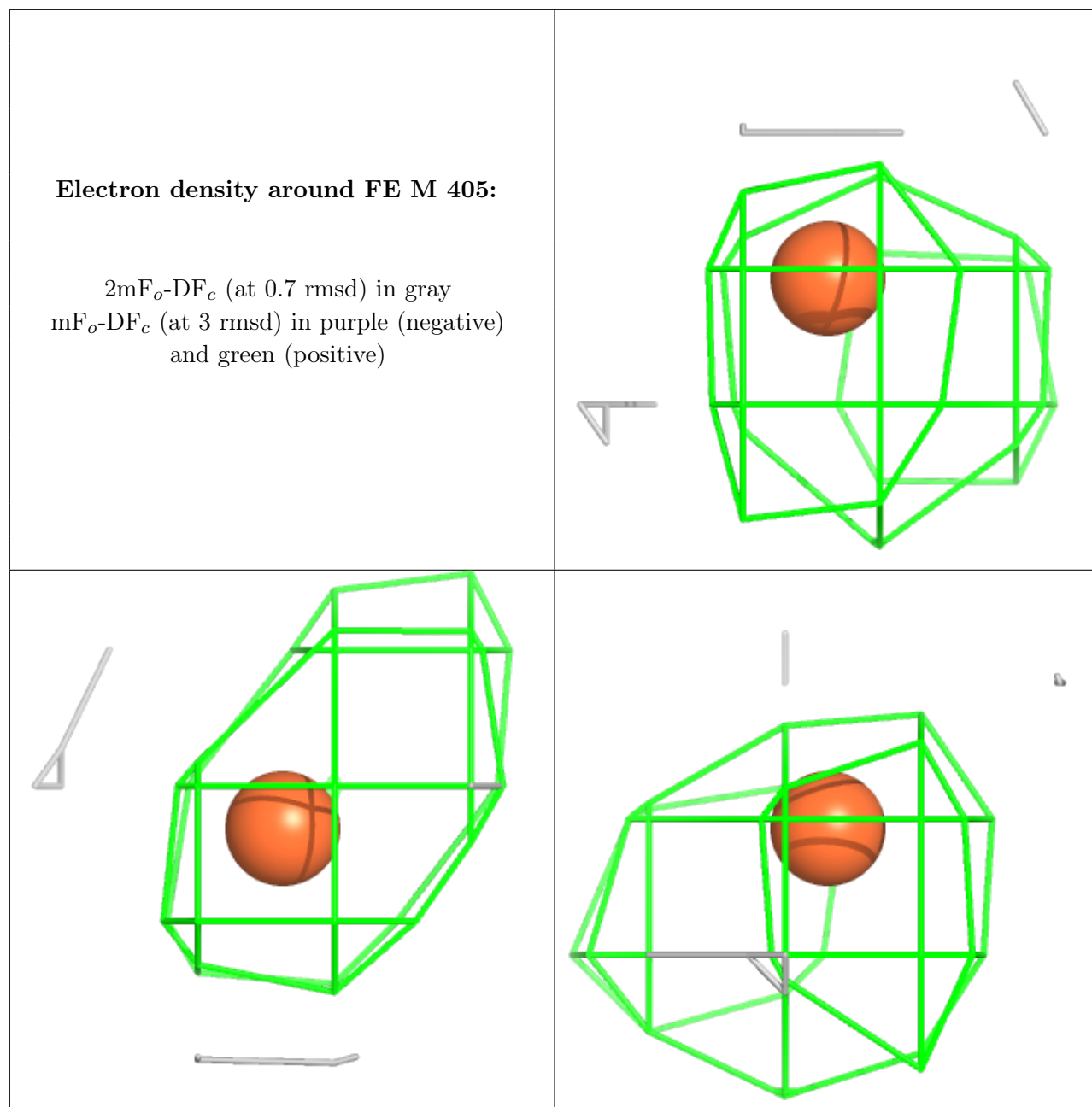
$2mF_o-DF_c$  (at 0.7 rmsd) in gray  
 $mF_o-DF_c$  (at 3 rmsd) in purple (negative)  
and green (positive)



**Electron density around BPH M 404:**

$2mF_o-DF_c$  (at 0.7 rmsd) in gray  
 $mF_o-DF_c$  (at 3 rmsd) in purple (negative)  
and green (positive)





## 6.5 Other polymers [i](#)

There are no such residues in this entry.