



# Full wwPDB X-ray Structure Validation Report ⓘ

May 18, 2022 – 09:12 pm BST

PDB ID : 7OZX  
Title : Structure of human galactokinase 1 bound with azepan-1-yl(2,6-difluorophenyl)methanone  
Authors : Mackinnon, S.R.; Bezerra, G.A.; Zhang, M.; Foster, W.; Krojer, T.; Brandao-Neto, J.; Arrowsmith, C.; Edwards, A.; Bountra, C.; Brennan, P.; Lai, K.; Yue, W.W.  
Deposited on : 2021-06-29  
Resolution : 2.30 Å(reported)

This is a Full wwPDB X-ray Structure Validation Report for a publicly released PDB entry.

We welcome your comments at [validation@mail.wwpdb.org](mailto:validation@mail.wwpdb.org)

A user guide is available at

<https://www.wwpdb.org/validation/2017/XrayValidationReportHelp>

with specific help available everywhere you see the ⓘ symbol.

---

The following versions of software and data (see [references ⓘ](#)) were used in the production of this report:

MolProbity : 4.02b-467  
Mogul : 1.8.4, CSD as541be (2020)  
Xtrriage (Phenix) : 1.13  
EDS : 2.28.1  
buster-report : 1.1.7 (2018)  
Percentile statistics : 20191225.v01 (using entries in the PDB archive December 25th 2019)  
Refmac : 5.8.0267  
CCP4 : 7.1.010 (Gargrove)  
Ideal geometry (proteins) : Engh & Huber (2001)  
Ideal geometry (DNA, RNA) : Parkinson et al. (1996)  
Validation Pipeline (wwPDB-VP) : 2.28.1

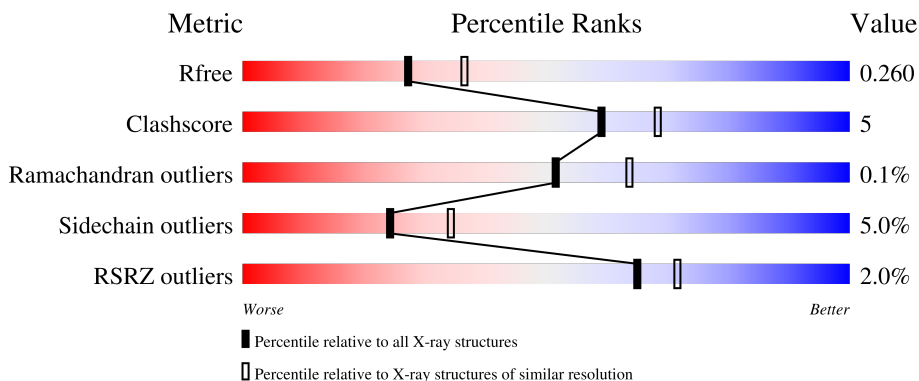
# 1 Overall quality at a glance i

The following experimental techniques were used to determine the structure:

*X-RAY DIFFRACTION*

The reported resolution of this entry is 2.30 Å.

Percentile scores (ranging between 0-100) for global validation metrics of the entry are shown in the following graphic. The table shows the number of entries on which the scores are based.



Metric	Whole archive (#Entries)	Similar resolution (#Entries, resolution range(Å))
$R_{free}$	130704	5042 (2.30-2.30)
Clashscore	141614	5643 (2.30-2.30)
Ramachandran outliers	138981	5575 (2.30-2.30)
Sidechain outliers	138945	5575 (2.30-2.30)
RSRZ outliers	127900	4938 (2.30-2.30)

The table below summarises the geometric issues observed across the polymeric chains and their fit to the electron density. The red, orange, yellow and green segments of the lower bar indicate the fraction of residues that contain outliers for  $\geq 3$ , 2, 1 and 0 types of geometric quality criteria respectively. A grey segment represents the fraction of residues that are not modelled. The numeric value for each fraction is indicated below the corresponding segment, with a dot representing fractions  $\leq 5\%$ . The upper red bar (where present) indicates the fraction of residues that have poor fit to the electron density. The numeric value is given above the bar.

Mol	Chain	Length	Quality of chain
1	A	399	 % 86% 11% ..
1	B	399	 % 86% 11% ..
1	C	399	 2% 84% 13% ..
1	D	399	 4% 78% 12% • 9%

## 2 Entry composition

There are 5 unique types of molecules in this entry. The entry contains 11815 atoms, of which 0 are hydrogens and 0 are deuteriums.

In the tables below, the ZeroOcc column contains the number of atoms modelled with zero occupancy, the AltConf column contains the number of residues with at least one atom in alternate conformation and the Trace column contains the number of residues modelled with at most 2 atoms.

- Molecule 1 is a protein called Galactokinase.

Mol	Chain	Residues	Atoms					ZeroOcc	AltConf	Trace
			Total	C	N	O	S			
1	A	390	2860	1793	510	541	16	0	0	0
1	B	391	2817	1765	504	532	16	0	0	0
1	C	391	2840	1783	499	542	16	0	0	0
1	D	362	2529	1584	447	484	14	0	1	0

There are 40 discrepancies between the modelled and reference sequences:

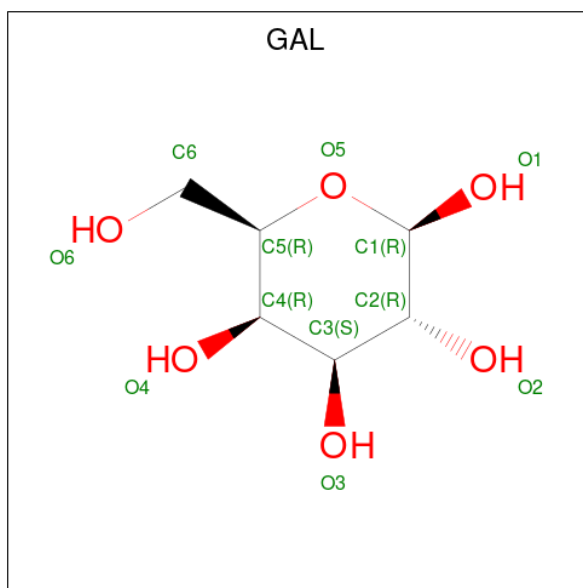
Chain	Residue	Modelled	Actual	Comment	Reference
A	-6	MET	-	initiating methionine	UNP P51570
A	-5	ALA	-	expression tag	UNP P51570
A	-4	HIS	-	expression tag	UNP P51570
A	-3	HIS	-	expression tag	UNP P51570
A	-2	HIS	-	expression tag	UNP P51570
A	-1	HIS	-	expression tag	UNP P51570
A	0	HIS	-	expression tag	UNP P51570
A	1	HIS	-	expression tag	UNP P51570
A	252	ALA	LYS	engineered mutation	UNP P51570
A	253	ALA	GLU	engineered mutation	UNP P51570
B	-6	MET	-	initiating methionine	UNP P51570
B	-5	ALA	-	expression tag	UNP P51570
B	-4	HIS	-	expression tag	UNP P51570
B	-3	HIS	-	expression tag	UNP P51570
B	-2	HIS	-	expression tag	UNP P51570
B	-1	HIS	-	expression tag	UNP P51570
B	0	HIS	-	expression tag	UNP P51570
B	1	HIS	-	expression tag	UNP P51570
B	252	ALA	LYS	engineered mutation	UNP P51570
B	253	ALA	GLU	engineered mutation	UNP P51570
C	-6	MET	-	initiating methionine	UNP P51570

*Continued on next page...*

Continued from previous page...

Chain	Residue	Modelled	Actual	Comment	Reference
C	-5	ALA	-	expression tag	UNP P51570
C	-4	HIS	-	expression tag	UNP P51570
C	-3	HIS	-	expression tag	UNP P51570
C	-2	HIS	-	expression tag	UNP P51570
C	-1	HIS	-	expression tag	UNP P51570
C	0	HIS	-	expression tag	UNP P51570
C	1	HIS	-	expression tag	UNP P51570
C	252	ALA	LYS	engineered mutation	UNP P51570
C	253	ALA	GLU	engineered mutation	UNP P51570
D	-6	MET	-	initiating methionine	UNP P51570
D	-5	ALA	-	expression tag	UNP P51570
D	-4	HIS	-	expression tag	UNP P51570
D	-3	HIS	-	expression tag	UNP P51570
D	-2	HIS	-	expression tag	UNP P51570
D	-1	HIS	-	expression tag	UNP P51570
D	0	HIS	-	expression tag	UNP P51570
D	1	HIS	-	expression tag	UNP P51570
D	252	ALA	LYS	engineered mutation	UNP P51570
D	253	ALA	GLU	engineered mutation	UNP P51570

- Molecule 2 is beta-D-galactopyranose (three-letter code: GAL) (formula: C<sub>6</sub>H<sub>12</sub>O<sub>6</sub>).



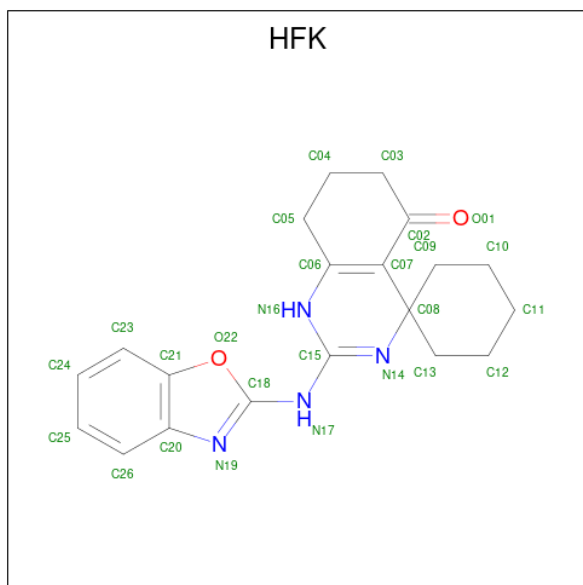
Mol	Chain	Residues	Atoms	ZeroOcc	AltConf		
2	A	1	Total	C	O	0	0
			12	6	6		
2	B	1	Total	C	O	0	0
			12	6	6		

Continued on next page...

Continued from previous page...

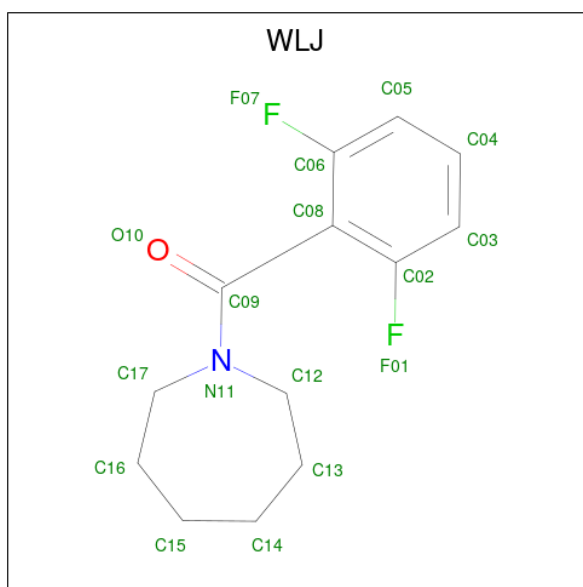
Mol	Chain	Residues	Atoms			ZeroOcc	AltConf
2	C	1	Total	C	O	0	0
			12	6	6		

- Molecule 3 is 2-(1,3-benzoxazol-2-ylamino)spiro[1,6,7,8-tetrahydroquinazoline-4,1'-cyclohexane]-5-one (three-letter code: HFK) (formula: C<sub>20</sub>H<sub>22</sub>N<sub>4</sub>O<sub>2</sub>).



Mol	Chain	Residues	Atoms				ZeroOcc	AltConf
3	A	1	Total	C	N	O	0	0
			26	20	4	2		
3	B	1	Total	C	N	O	0	0
			26	20	4	2		
3	C	1	Total	C	N	O	0	0
			26	20	4	2		

- Molecule 4 is (azepan-1-yl)(2,6-difluorophenyl)methanone (three-letter code: WLJ) (formula: C<sub>13</sub>H<sub>15</sub>F<sub>2</sub>NO) (labeled as "Ligand of Interest" by depositor).



Mol	Chain	Residues	Atoms					ZeroOcc	AltConf
			Total	C	F	N	O		
4	B	1	17	13	2	1	1	0	0
4	C	1	17	13	2	1	1	0	0

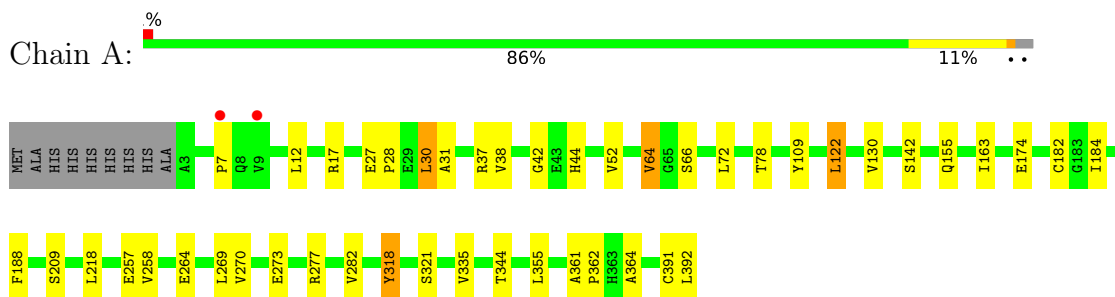
- Molecule 5 is water.

Mol	Chain	Residues	Atoms		ZeroOcc	AltConf
5	A	211	Total	O	0	0
			211	211		
5	B	162	Total	O	0	0
			162	162		
5	C	153	Total	O	0	0
			153	153		
5	D	95	Total	O	0	0
			95	95		

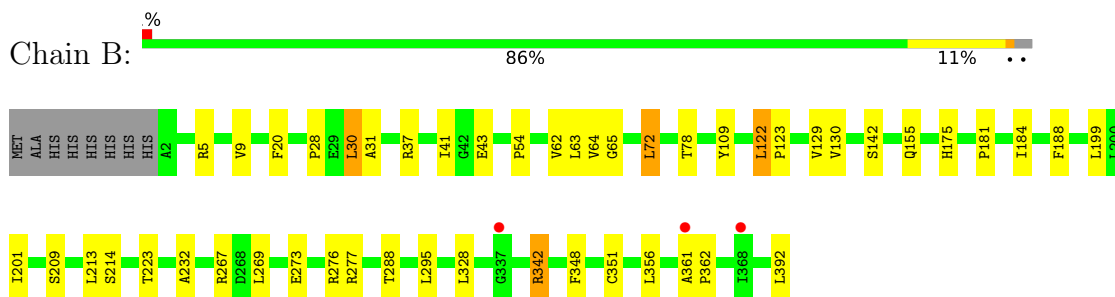
### 3 Residue-property plots [i](#)

These plots are drawn for all protein, RNA, DNA and oligosaccharide chains in the entry. The first graphic for a chain summarises the proportions of the various outlier classes displayed in the second graphic. The second graphic shows the sequence view annotated by issues in geometry and electron density. Residues are color-coded according to the number of geometric quality criteria for which they contain at least one outlier: green = 0, yellow = 1, orange = 2 and red = 3 or more. A red dot above a residue indicates a poor fit to the electron density ( $RSRZ > 2$ ). Stretches of 2 or more consecutive residues without any outlier are shown as a green connector. Residues present in the sample, but not in the model, are shown in grey.

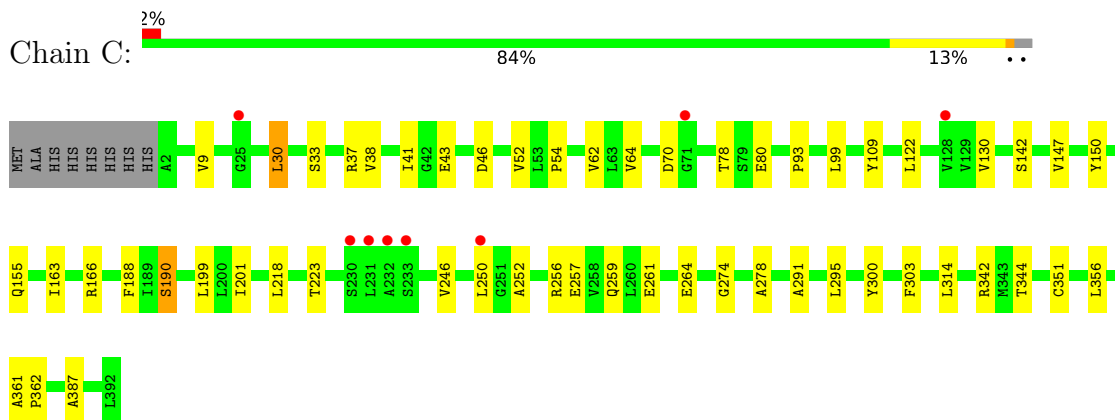
- Molecule 1: Galactokinase



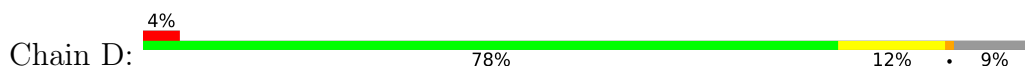
- Molecule 1: Galactokinase

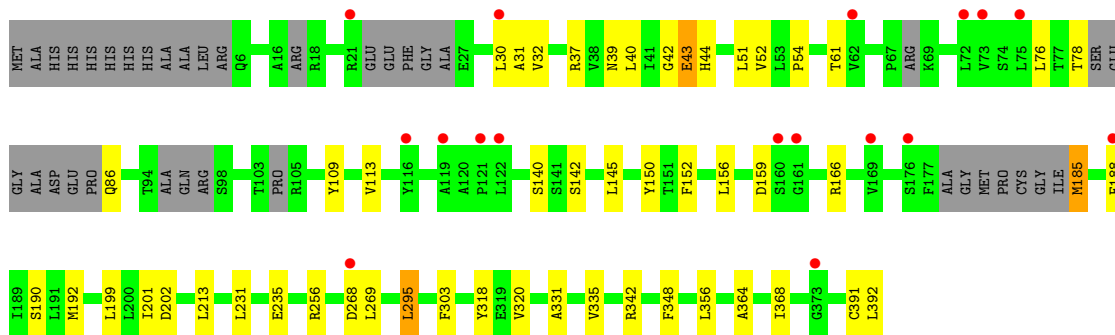


- Molecule 1: Galactokinase



- Molecule 1: Galactokinase







## 4 Data and refinement statistics

Property	Value	Source
Space group	P 1 21 1	Depositor
Cell constants a, b, c, $\alpha$ , $\beta$ , $\gamma$	73.46Å 114.50Å 120.82Å 90.00° 100.57° 90.00°	Depositor
Resolution (Å)	82.57 – 2.30 82.43 – 2.11	Depositor EDS
% Data completeness (in resolution range)	99.7 (82.57-2.30) 99.4 (82.43-2.11)	Depositor EDS
$R_{merge}$	0.09	Depositor
$R_{sym}$	(Not available)	Depositor
$\langle I/\sigma(I) \rangle$ <sup>1</sup>	1.61 (at 2.10Å)	Xtriage
Refinement program	REFMAC 5.8.0267	Depositor
R, $R_{free}$	0.208 , 0.258 0.216 , 0.260	Depositor DCC
$R_{free}$ test set	5589 reflections (4.98%)	wwPDB-VP
Wilson B-factor (Å <sup>2</sup> )	34.6	Xtriage
Anisotropy	0.645	Xtriage
Bulk solvent $k_{sol}$ (e/Å <sup>3</sup> ), $B_{sol}$ (Å <sup>2</sup> )	(Not available) , (Not available)	EDS
L-test for twinning <sup>2</sup>	$\langle  L  \rangle = 0.50$ , $\langle L^2 \rangle = 0.33$	Xtriage
Estimated twinning fraction	No twinning to report.	Xtriage
$F_o, F_c$ correlation	0.95	EDS
Total number of atoms	11815	wwPDB-VP
Average B, all atoms (Å <sup>2</sup> )	53.0	wwPDB-VP

Xtriage's analysis on translational NCS is as follows: *The largest off-origin peak in the Patterson function is 4.38% of the height of the origin peak. No significant pseudotranslation is detected.*

<sup>1</sup>Intensities estimated from amplitudes.

<sup>2</sup>Theoretical values of  $\langle |L| \rangle$ ,  $\langle L^2 \rangle$  for acentric reflections are 0.5, 0.333 respectively for untwinned datasets, and 0.375, 0.2 for perfectly twinned datasets.

## 5 Model quality [i](#)

### 5.1 Standard geometry [i](#)

Bond lengths and bond angles in the following residue types are not validated in this section: WLJ, HFK, GAL

The Z score for a bond length (or angle) is the number of standard deviations the observed value is removed from the expected value. A bond length (or angle) with  $|Z| > 5$  is considered an outlier worth inspection. RMSZ is the root-mean-square of all Z scores of the bond lengths (or angles).

Mol	Chain	Bond lengths		Bond angles	
		RMSZ	# Z  >5	RMSZ	# Z  >5
1	A	0.71	0/2914	0.85	0/3965
1	B	0.76	0/2869	0.84	0/3909
1	C	0.74	0/2893	0.84	0/3940
1	D	0.71	0/2568	0.86	0/3496
All	All	0.73	0/11244	0.84	0/15310

There are no bond length outliers.

There are no bond angle outliers.

There are no chirality outliers.

There are no planarity outliers.

### 5.2 Too-close contacts [i](#)

In the following table, the Non-H and H(model) columns list the number of non-hydrogen atoms and hydrogen atoms in the chain respectively. The H(added) column lists the number of hydrogen atoms added and optimized by MolProbity. The Clashes column lists the number of clashes within the asymmetric unit, whereas Symm-Clashes lists symmetry-related clashes.

Mol	Chain	Non-H	H(model)	H(added)	Clashes	Symm-Clashes
1	A	2860	0	2798	23	1
1	B	2817	0	2718	28	0
1	C	2840	0	2753	30	0
1	D	2529	0	2354	23	1
2	A	12	0	12	0	0
2	B	12	0	12	1	0
2	C	12	0	12	0	0
3	A	26	0	0	0	0
3	B	26	0	0	0	0

*Continued on next page...*

*Continued from previous page...*

Mol	Chain	Non-H	H(model)	H(added)	Clashes	Symm-Clashes
3	C	26	0	0	0	0
4	B	17	0	0	0	0
4	C	17	0	0	0	0
5	A	211	0	0	1	0
5	B	162	0	0	0	0
5	C	153	0	0	1	0
5	D	95	0	0	0	0
All	All	11815	0	10659	103	1

The all-atom clashscore is defined as the number of clashes found per 1000 atoms (including hydrogen atoms). The all-atom clashscore for this structure is 5.

All (103) close contacts within the same asymmetric unit are listed below, sorted by their clash magnitude.

Atom-1	Atom-2	Interatomic distance (Å)	Clash overlap (Å)
1:B:63:LEU:HD11	1:B:129:VAL:HG22	1.47	0.97
1:A:17:ARG:HH21	1:A:27:GLU:HG3	1.47	0.79
1:B:273:GLU:HA	1:B:276:ARG:HD2	1.68	0.75
1:B:63:LEU:CD1	1:B:129:VAL:HG22	2.17	0.73
1:A:218:LEU:HD11	1:A:355:LEU:HG	1.71	0.72
1:D:235:GLU:HG2	1:D:348:PHE:CZ	2.29	0.68
1:A:72:LEU:HD22	1:B:72:LEU:HD21	1.76	0.67
1:B:54:PRO:HD2	1:B:199:LEU:O	1.94	0.67
1:C:80:GLU:HA	5:C:597:HOH:O	1.96	0.65
1:D:39[A]:ASN:HD22	1:D:43:GLU:CD	2.00	0.64
1:C:147:VAL:HG21	1:C:190:SER:HB3	1.79	0.64
1:A:257:GLU:HG3	5:A:645:HOH:O	1.97	0.64
1:B:31:ALA:HB2	1:B:392:LEU:HD11	1.80	0.63
1:A:30:LEU:HD21	1:A:155:GLN:HB3	1.82	0.59
1:B:78:THR:OG1	1:B:130:VAL:HG12	2.02	0.58
1:D:295:LEU:HD13	1:D:303:PHE:CD2	2.38	0.58
1:B:30:LEU:HD21	1:B:155:GLN:HG3	1.86	0.57
1:D:42:GLY:O	1:D:52:VAL:HG12	2.05	0.56
1:A:30:LEU:HD21	1:A:155:GLN:CB	2.35	0.56
1:B:356:LEU:HD11	1:B:361:ALA:HA	1.87	0.56
1:A:174:GLU:HG2	1:A:182:CYS:SG	2.46	0.55
1:B:223:THR:O	1:B:351:CYS:HA	2.06	0.55
1:B:213:LEU:HD13	1:B:295:LEU:HD11	1.88	0.55
1:A:17:ARG:NH2	1:A:27:GLU:HG3	2.20	0.54
1:D:54:PRO:HD2	1:D:199:LEU:O	2.07	0.54
1:C:54:PRO:HD2	1:C:199:LEU:O	2.06	0.54

*Continued on next page...*

Continued from previous page...

Atom-1	Atom-2	Interatomic distance (Å)	Clash overlap (Å)
1:A:273:GLU:O	1:A:277:ARG:HG2	2.10	0.52
1:D:159:ASP:OD1	1:D:159:ASP:C	2.48	0.52
1:A:361:ALA:HB3	1:A:362:PRO:HD3	1.91	0.52
1:C:150:TYR:CZ	1:C:166:ARG:HG2	2.45	0.52
1:C:218:LEU:HD13	1:C:300:TYR:CD2	2.45	0.51
1:D:43:GLU:HB3	1:D:44:HIS:CD2	2.46	0.51
1:C:246:VAL:HG11	1:C:278:ALA:HB2	1.93	0.51
1:A:109:TYR:CE1	1:A:142:SER:HB2	2.46	0.50
1:D:40:LEU:O	1:D:342:ARG:HD3	2.11	0.50
1:D:335:VAL:HG21	1:D:364:ALA:HA	1.94	0.50
1:D:31:ALA:HB2	1:D:392:LEU:HD11	1.94	0.50
1:A:72:LEU:C	1:A:72:LEU:HD12	2.31	0.49
1:C:356:LEU:HD11	1:C:361:ALA:HA	1.94	0.49
1:D:76:LEU:HG	1:D:86:GLN:O	2.12	0.49
1:C:218:LEU:HD22	1:C:300:TYR:CZ	2.47	0.49
1:C:295:LEU:HD13	1:C:303:PHE:CE2	2.48	0.49
1:C:252:ALA:HB1	1:C:257:GLU:HB2	1.95	0.49
1:C:109:TYR:CE1	1:C:142:SER:HB2	2.49	0.48
1:A:28:PRO:CB	1:A:64:VAL:HG13	2.43	0.48
1:D:61:THR:HG21	1:D:145:LEU:HA	1.95	0.48
1:C:361:ALA:N	1:C:362:PRO:CD	2.76	0.48
1:B:62:VAL:HB	1:B:130:VAL:HG23	1.96	0.47
1:C:93:PRO:HB3	1:C:99:LEU:HG	1.97	0.47
1:A:335:VAL:HG21	1:A:364:ALA:HA	1.97	0.47
1:B:43:GLU:HB2	1:B:342:ARG:NH2	2.30	0.46
1:D:32:VAL:HG21	1:D:152:PHE:HB2	1.96	0.46
1:D:109:TYR:O	1:D:113:VAL:HG23	2.15	0.46
1:D:51:LEU:HD23	1:D:202:ASP:HA	1.97	0.46
1:B:28:PRO:CB	1:B:64:VAL:HG13	2.46	0.46
1:C:246:VAL:HG21	1:C:274:GLY:O	2.16	0.46
1:D:39[B]:ASN:OD1	1:D:185:MET:HE1	2.16	0.45
1:B:232:ALA:HA	1:B:348:PHE:CD2	2.51	0.45
1:C:52:VAL:HG22	1:C:201:ILE:HB	1.99	0.45
1:C:218:LEU:HD22	1:C:300:TYR:CE1	2.51	0.45
1:C:62:VAL:HB	1:C:130:VAL:HG23	1.99	0.44
1:B:43:GLU:OE1	2:B:401:GAL:O6	2.33	0.44
1:B:213:LEU:CD1	1:B:295:LEU:HD11	2.47	0.44
1:A:31:ALA:HB2	1:A:392:LEU:HD11	2.00	0.44
1:C:150:TYR:CE1	1:C:166:ARG:HG2	2.53	0.44
1:A:28:PRO:HG3	1:A:64:VAL:CG1	2.48	0.44
1:C:199:LEU:HD23	1:C:201:ILE:HD11	1.99	0.44

Continued on next page...

*Continued from previous page...*

Atom-1	Atom-2	Interatomic distance (Å)	Clash overlap (Å)
1:C:33:SER:O	1:C:387:ALA:HA	2.18	0.43
1:A:218:LEU:HD11	1:A:355:LEU:CG	2.46	0.43
1:B:122:LEU:HD22	1:B:123:PRO:HD2	2.00	0.43
1:B:223:THR:HG21	1:B:328:LEU:HD22	2.01	0.43
1:B:184:ILE:C	1:B:184:ILE:HD12	2.39	0.42
1:D:152:PHE:CE2	1:D:156:LEU:HD11	2.53	0.42
1:B:361:ALA:N	1:B:362:PRO:CD	2.82	0.42
1:C:43:GLU:HB2	1:C:342:ARG:NH2	2.34	0.42
1:C:41:ILE:HG21	1:C:291:ALA:CB	2.50	0.42
1:D:188:PHE:O	1:D:192:MET:HB2	2.19	0.42
1:A:44:HIS:CG	1:A:318:TYR:CE2	3.07	0.42
1:A:78:THR:OG1	1:A:130:VAL:HG12	2.20	0.42
1:D:52:VAL:CG2	1:D:201:ILE:HB	2.49	0.42
1:C:43:GLU:HB3	1:C:314:LEU:HD21	2.02	0.42
1:D:150:TYR:CE2	1:D:166:ARG:HG2	2.54	0.42
1:C:46:ASP:HB3	1:C:52:VAL:HG11	2.02	0.42
1:C:295:LEU:HD12	1:C:295:LEU:HA	1.90	0.42
1:C:30:LEU:HD21	1:C:155:GLN:HG3	2.02	0.41
1:B:41:ILE:HG23	1:B:288:THR:HG23	2.02	0.41
1:B:109:TYR:CE1	1:B:142:SER:HB2	2.54	0.41
1:B:199:LEU:HD23	1:B:201:ILE:HD11	2.03	0.41
1:D:152:PHE:HE2	1:D:156:LEU:HD11	1.85	0.41
1:A:38:VAL:HG23	1:A:344:THR:HG21	2.01	0.41
1:A:42:GLY:O	1:A:52:VAL:HG12	2.21	0.41
1:B:269:LEU:HD12	1:B:269:LEU:HA	1.89	0.41
1:C:38:VAL:HG23	1:C:344:THR:HG21	2.01	0.41
1:C:223:THR:O	1:C:351:CYS:HA	2.20	0.41
1:C:259:GLN:NE2	1:C:261:GLU:HB2	2.36	0.41
1:B:20:PHE:CE2	1:B:65:GLY:HA2	2.55	0.41
1:A:122:LEU:HD23	1:A:122:LEU:HA	1.82	0.41
1:A:258:VAL:O	1:A:282:VAL:HG22	2.20	0.41
1:B:175:HIS:CD2	1:B:181:PRO:HA	2.56	0.41
1:D:331:ALA:HB1	1:D:368:ILE:HA	2.02	0.41
1:C:78:THR:OG1	1:C:130:VAL:HG12	2.21	0.40
1:D:320:VAL:HA	1:D:348:PHE:CZ	2.57	0.40
1:B:273:GLU:O	1:B:277:ARG:HG2	2.21	0.40

All (1) symmetry-related close contacts are listed below. The label for Atom-2 includes the symmetry operator and encoded unit-cell translations to be applied.

Atom-1	Atom-2	Interatomic distance (Å)	Clash overlap (Å)
1:A:391:CYS:SG	1:D:391:CYS:SG[1_455]	0.96	1.24

### 5.3 Torsion angles [i](#)

#### 5.3.1 Protein backbone [i](#)

In the following table, the Percentiles column shows the percent Ramachandran outliers of the chain as a percentile score with respect to all X-ray entries followed by that with respect to entries of similar resolution.

The Analysed column shows the number of residues for which the backbone conformation was analysed, and the total number of residues.

Mol	Chain	Analysed	Favoured	Allowed	Outliers	Percentiles	
1	A	388/399 (97%)	378 (97%)	9 (2%)	1 (0%)	41	50
1	B	389/399 (98%)	374 (96%)	15 (4%)	0	100	100
1	C	389/399 (98%)	380 (98%)	9 (2%)	0	100	100
1	D	347/399 (87%)	337 (97%)	10 (3%)	0	100	100
All	All	1513/1596 (95%)	1469 (97%)	43 (3%)	1 (0%)	51	64

All (1) Ramachandran outliers are listed below:

Mol	Chain	Res	Type
1	A	7	PRO

#### 5.3.2 Protein sidechains [i](#)

In the following table, the Percentiles column shows the percent sidechain outliers of the chain as a percentile score with respect to all X-ray entries followed by that with respect to entries of similar resolution.

The Analysed column shows the number of residues for which the sidechain conformation was analysed, and the total number of residues.

Mol	Chain	Analysed	Rotameric	Outliers	Percentiles	
1	A	288/315 (91%)	273 (95%)	15 (5%)	23	32
1	B	274/315 (87%)	263 (96%)	11 (4%)	31	44
1	C	282/315 (90%)	270 (96%)	12 (4%)	29	40
1	D	235/315 (75%)	219 (93%)	16 (7%)	16	21

*Continued on next page...*

*Continued from previous page...*

Mol	Chain	Analysed	Rotameric	Outliers	Percentiles
All	All	1079/1260 (86%)	1025 (95%)	54 (5%)	24 34

All (54) residues with a non-rotameric sidechain are listed below:

Mol	Chain	Res	Type
1	A	12	LEU
1	A	30	LEU
1	A	37	ARG
1	A	64	VAL
1	A	66	SER
1	A	122	LEU
1	A	163	ILE
1	A	184	ILE
1	A	188	PHE
1	A	209	SER
1	A	264	GLU
1	A	269	LEU
1	A	270	VAL
1	A	318	TYR
1	A	321	SER
1	B	5	ARG
1	B	9	VAL
1	B	30	LEU
1	B	37	ARG
1	B	72	LEU
1	B	122	LEU
1	B	188	PHE
1	B	209	SER
1	B	214	SER
1	B	267	ARG
1	B	342	ARG
1	C	9	VAL
1	C	30	LEU
1	C	37	ARG
1	C	64	VAL
1	C	70	ASP
1	C	122	LEU
1	C	163	ILE
1	C	188	PHE
1	C	190	SER
1	C	250	LEU
1	C	256	ARG

*Continued on next page...*

*Continued from previous page...*

Mol	Chain	Res	Type
1	C	264	GLU
1	D	30	LEU
1	D	37	ARG
1	D	43	GLU
1	D	78	THR
1	D	140	SER
1	D	142	SER
1	D	185	MET
1	D	190	SER
1	D	213	LEU
1	D	231	LEU
1	D	256	ARG
1	D	268	ASP
1	D	269	LEU
1	D	295	LEU
1	D	318	TYR
1	D	356	LEU

Sometimes sidechains can be flipped to improve hydrogen bonding and reduce clashes. All (10) such sidechains are listed below:

Mol	Chain	Res	Type
1	B	172	GLN
1	B	226	ASN
1	B	369	GLN
1	C	172	GLN
1	C	226	ASN
1	C	259	GLN
1	D	44	HIS
1	D	226	ASN
1	D	363	HIS
1	D	367	HIS

### 5.3.3 RNA [i](#)

There are no RNA molecules in this entry.

### 5.4 Non-standard residues in protein, DNA, RNA chains [i](#)

There are no non-standard protein/DNA/RNA residues in this entry.



## 5.5 Carbohydrates [i](#)

There are no monosaccharides in this entry.

## 5.6 Ligand geometry [i](#)

8 ligands are modelled in this entry.

In the following table, the Counts columns list the number of bonds (or angles) for which Mogul statistics could be retrieved, the number of bonds (or angles) that are observed in the model and the number of bonds (or angles) that are defined in the Chemical Component Dictionary. The Link column lists molecule types, if any, to which the group is linked. The Z score for a bond length (or angle) is the number of standard deviations the observed value is removed from the expected value. A bond length (or angle) with  $|Z| > 2$  is considered an outlier worth inspection. RMSZ is the root-mean-square of all Z scores of the bond lengths (or angles).

Mol	Type	Chain	Res	Link	Bond lengths			Bond angles		
					Counts	RMSZ	# Z  > 2	Counts	RMSZ	# Z  > 2
4	WLJ	C	403	-	18,18,18	0.23	0	22,24,24	0.36	0
3	HFK	A	402	-	26,30,30	2.99	8 (30%)	24,44,44	1.52	4 (16%)
3	HFK	B	402	-	26,30,30	2.94	8 (30%)	24,44,44	1.35	5 (20%)
2	GAL	A	401	-	12,12,12	0.48	0	17,17,17	0.95	2 (11%)
3	HFK	C	402	-	26,30,30	2.94	9 (34%)	24,44,44	1.51	5 (20%)
2	GAL	B	401	-	12,12,12	0.74	0	17,17,17	1.85	2 (11%)
4	WLJ	B	403	-	18,18,18	0.21	0	22,24,24	0.37	0
2	GAL	C	401	-	12,12,12	0.62	0	17,17,17	1.99	4 (23%)

In the following table, the Chirals column lists the number of chiral outliers, the number of chiral centers analysed, the number of these observed in the model and the number defined in the Chemical Component Dictionary. Similar counts are reported in the Torsion and Rings columns. '-' means no outliers of that kind were identified.

Mol	Type	Chain	Res	Link	Chirals	Torsions	Rings
4	WLJ	C	403	-	-	0/8/17/17	0/2/2/2
3	HFK	A	402	-	-	2/2/43/43	0/5/5/5
3	HFK	B	402	-	-	2/2/43/43	0/5/5/5
2	GAL	A	401	-	-	1/2/22/22	0/1/1/1
3	HFK	C	402	-	-	2/2/43/43	0/5/5/5
2	GAL	B	401	-	-	2/2/22/22	0/1/1/1
4	WLJ	B	403	-	-	2/8/17/17	0/2/2/2
2	GAL	C	401	-	-	2/2/22/22	0/1/1/1

All (25) bond length outliers are listed below:

Mol	Chain	Res	Type	Atoms	Z	Observed(Å)	Ideal(Å)
3	B	402	HFK	C06-C07	10.39	1.50	1.37
3	A	402	HFK	C06-C07	10.19	1.50	1.37
3	C	402	HFK	C06-C07	9.59	1.49	1.37
3	A	402	HFK	C15-N14	6.26	1.46	1.30
3	B	402	HFK	C15-N14	6.15	1.46	1.30
3	C	402	HFK	C15-N14	6.03	1.46	1.30
3	C	402	HFK	C15-N17	4.94	1.45	1.36
3	C	402	HFK	C18-N17	4.73	1.45	1.36
3	B	402	HFK	C15-N17	4.46	1.44	1.36
3	A	402	HFK	C15-N17	4.33	1.44	1.36
3	A	402	HFK	C15-N16	3.95	1.43	1.36
3	B	402	HFK	C18-N17	3.92	1.43	1.36
3	C	402	HFK	C15-N16	3.46	1.42	1.36
3	A	402	HFK	C18-N17	3.28	1.42	1.36
3	A	402	HFK	C05-C06	3.26	1.55	1.49
3	C	402	HFK	C05-C06	2.98	1.54	1.49
3	B	402	HFK	C05-C06	2.85	1.54	1.49
3	B	402	HFK	C15-N16	2.77	1.41	1.36
3	B	402	HFK	C06-N16	2.51	1.41	1.37
3	A	402	HFK	C06-N16	2.50	1.41	1.37
3	C	402	HFK	C03-C02	2.50	1.54	1.50
3	C	402	HFK	C06-N16	2.46	1.41	1.37
3	A	402	HFK	C03-C02	2.25	1.53	1.50
3	C	402	HFK	C02-C07	2.07	1.52	1.46
3	B	402	HFK	C08-N14	2.05	1.48	1.46

All (22) bond angle outliers are listed below:

Mol	Chain	Res	Type	Atoms	Z	Observed(°)	Ideal(°)
2	C	401	GAL	C1-O5-C5	-5.13	103.98	113.66
2	B	401	GAL	C1-O5-C5	-4.84	104.53	113.66
2	C	401	GAL	C1-C2-C3	-3.83	102.37	110.31
2	B	401	GAL	C1-C2-C3	-3.73	102.58	110.31
3	A	402	HFK	C05-C06-N16	3.62	120.91	115.34
3	A	402	HFK	N17-C15-N14	3.43	123.50	117.81
3	C	402	HFK	C05-C06-C07	-3.08	118.91	122.97
3	C	402	HFK	C02-C07-C06	-3.07	116.25	119.17
3	A	402	HFK	C09-C10-C11	2.97	115.97	111.37
3	C	402	HFK	C05-C06-N16	2.96	119.90	115.34
3	B	402	HFK	N17-C15-N14	2.90	122.62	117.81
3	B	402	HFK	C05-C06-C07	-2.65	119.47	122.97
3	B	402	HFK	C05-C06-N16	2.57	119.29	115.34

*Continued on next page...*

Continued from previous page...

Mol	Chain	Res	Type	Atoms	Z	Observed(°)	Ideal(°)
3	B	402	HFK	C18-N17-C15	-2.31	121.36	126.49
2	C	401	GAL	O2-C2-C3	2.24	115.52	110.35
2	A	401	GAL	O5-C1-C2	-2.24	106.30	110.28
3	C	402	HFK	N17-C15-N14	2.22	121.50	117.81
3	A	402	HFK	C05-C06-C07	-2.21	120.06	122.97
2	C	401	GAL	O5-C1-C2	-2.19	106.38	110.28
3	B	402	HFK	C09-C10-C11	2.14	114.68	111.37
2	A	401	GAL	C1-O5-C5	-2.12	109.67	113.66
3	C	402	HFK	C04-C03-C02	2.05	117.22	113.58

There are no chirality outliers.

All (13) torsion outliers are listed below:

Mol	Chain	Res	Type	Atoms
4	B	403	WLJ	C08-C09-N11-C12
2	C	401	GAL	O5-C5-C6-O6
2	B	401	GAL	O5-C5-C6-O6
2	B	401	GAL	C4-C5-C6-O6
2	C	401	GAL	C4-C5-C6-O6
2	A	401	GAL	O5-C5-C6-O6
3	A	402	HFK	N14-C15-N17-C18
3	A	402	HFK	N16-C15-N17-C18
3	B	402	HFK	N14-C15-N17-C18
3	B	402	HFK	N16-C15-N17-C18
3	C	402	HFK	N14-C15-N17-C18
3	C	402	HFK	N16-C15-N17-C18
4	B	403	WLJ	O10-C09-N11-C12

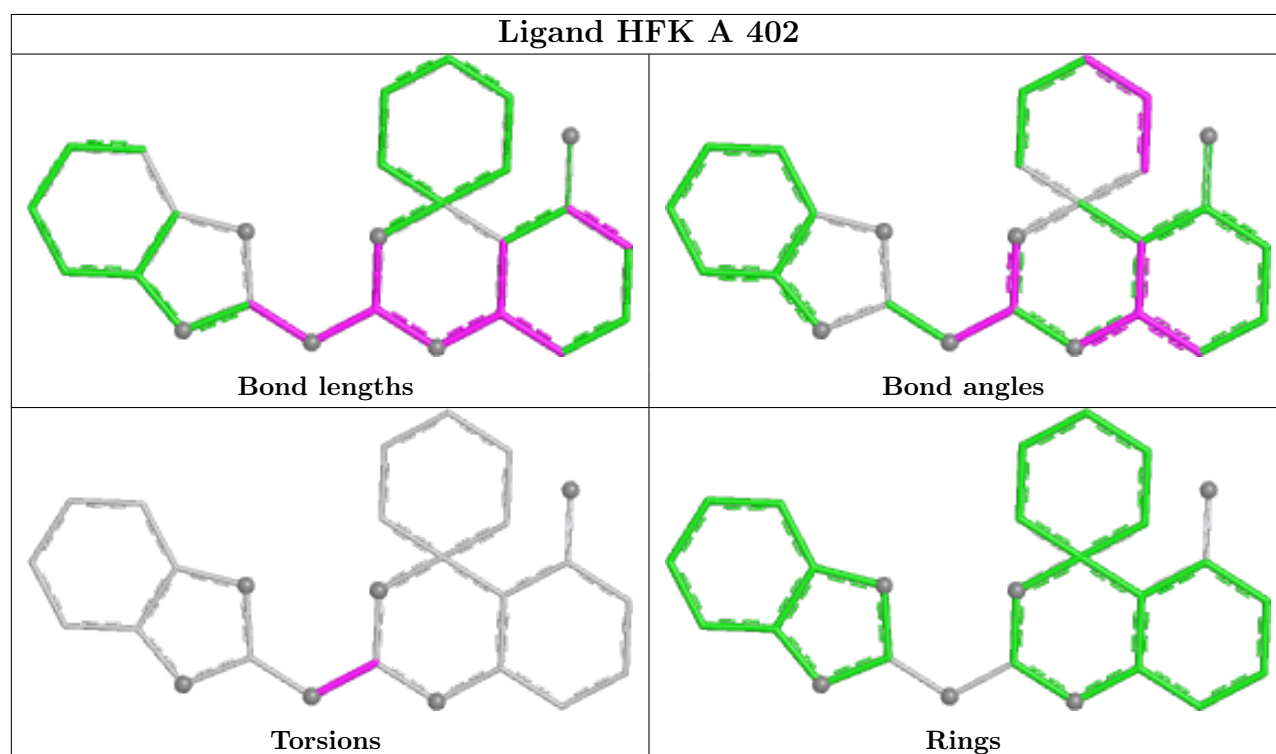
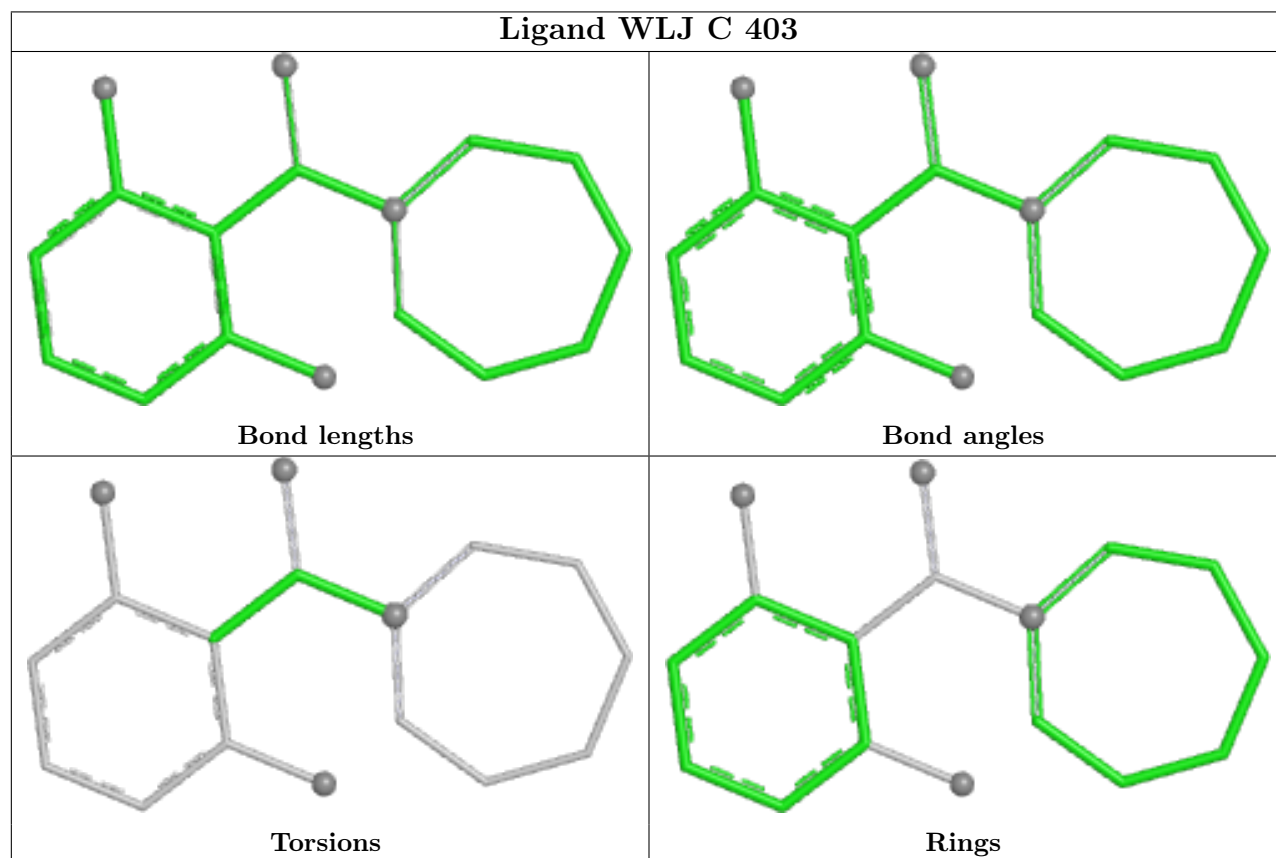
There are no ring outliers.

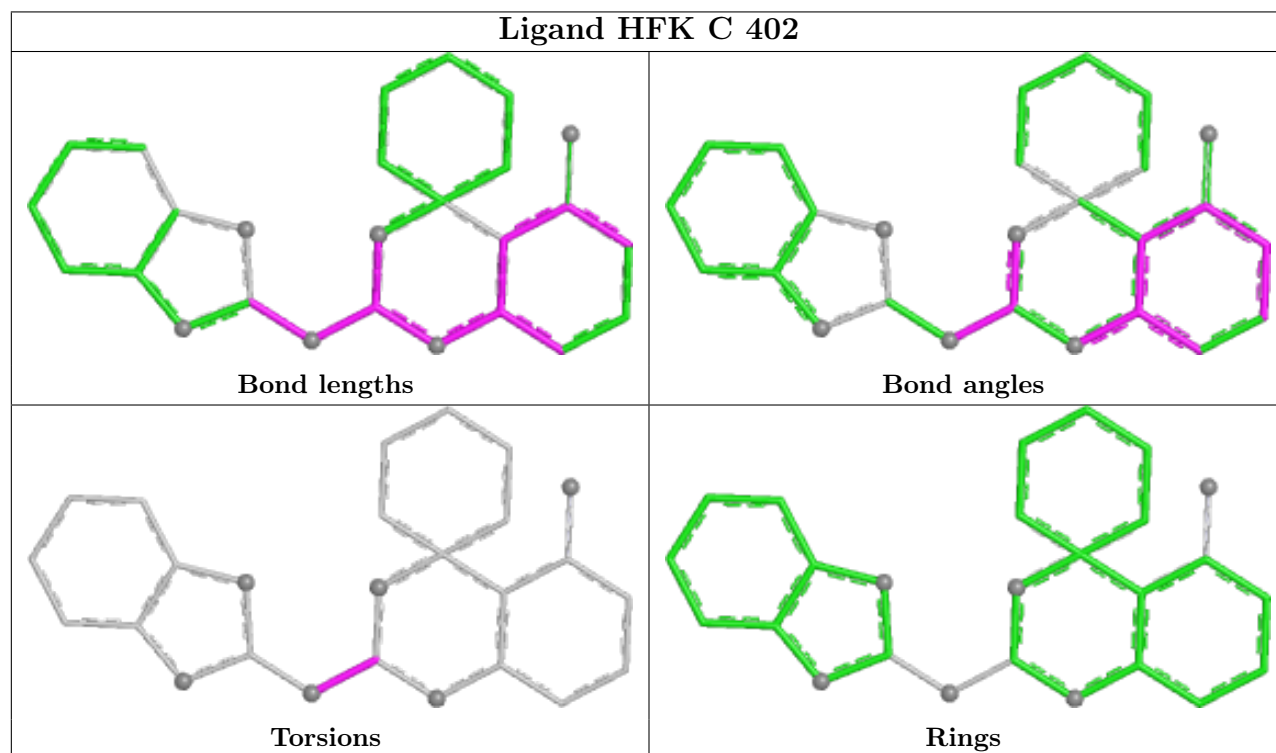
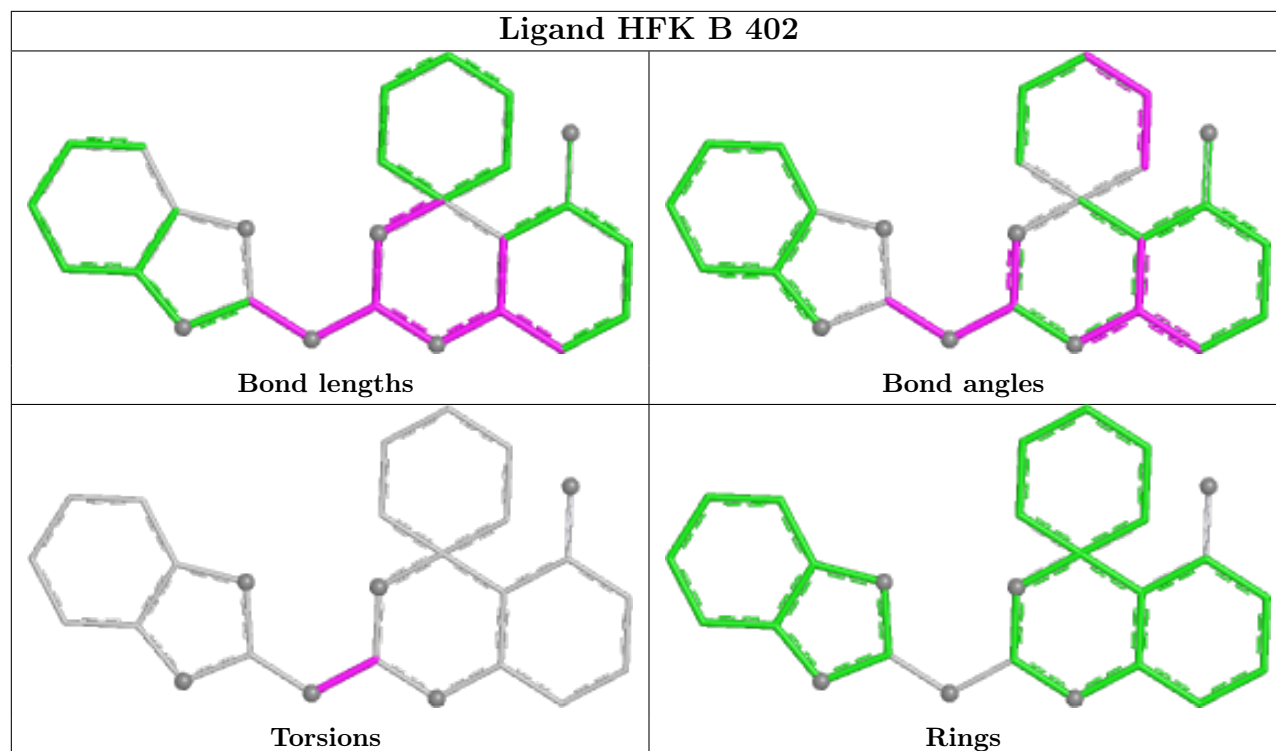
1 monomer is involved in 1 short contact:

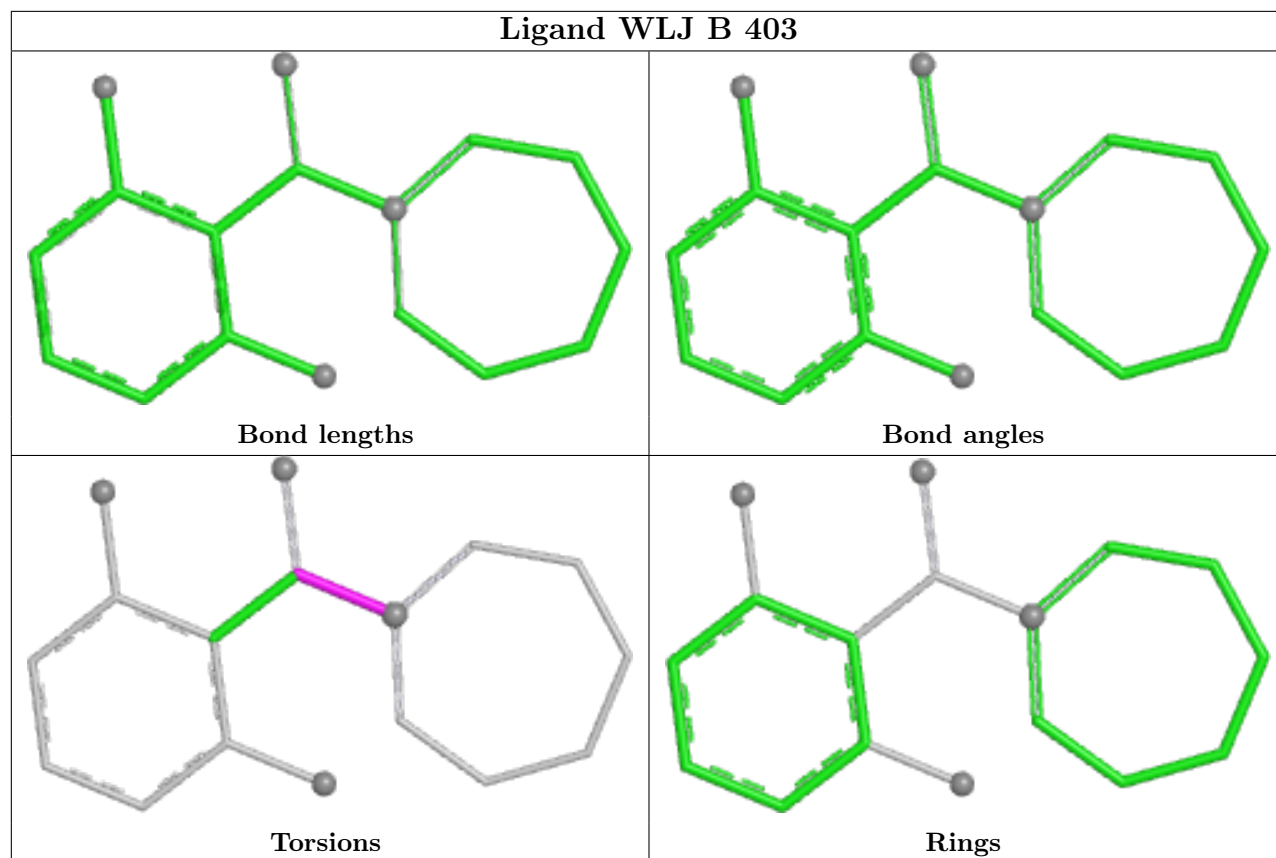
Mol	Chain	Res	Type	Clashes	Symm-Clashes
2	B	401	GAL	1	0

The following is a two-dimensional graphical depiction of Mogul quality analysis of bond lengths, bond angles, torsion angles, and ring geometry for all instances of the Ligand of Interest. In addition, ligands with molecular weight > 250 and outliers as shown on the validation Tables will also be included. For torsion angles, if less than 5% of the Mogul distribution of torsion angles is within 10 degrees of the torsion angle in question, then that torsion angle is considered an outlier. Any bond that is central to one or more torsion angles identified as an outlier by Mogul will be highlighted in the graph. For rings, the root-mean-square deviation (RMSD) between the ring in question and similar rings identified by Mogul is calculated over all ring torsion angles. If the

average RMSD is greater than 60 degrees and the minimal RMSD between the ring in question and any Mogul-identified rings is also greater than 60 degrees, then that ring is considered an outlier. The outliers are highlighted in purple. The color gray indicates Mogul did not find sufficient equivalents in the CSD to analyse the geometry.







## 5.7 Other polymers [i](#)

There are no such residues in this entry.

## 5.8 Polymer linkage issues [i](#)

There are no chain breaks in this entry.

## 6 Fit of model and data

### 6.1 Protein, DNA and RNA chains

In the following table, the column labelled ‘#RSRZ > 2’ contains the number (and percentage) of RSRZ outliers, followed by percent RSRZ outliers for the chain as percentile scores relative to all X-ray entries and entries of similar resolution. The OWAB column contains the minimum, median, 95<sup>th</sup> percentile and maximum values of the occupancy-weighted average B-factor per residue. The column labelled ‘Q < 0.9’ lists the number of (and percentage) of residues with an average occupancy less than 0.9.

Mol	Chain	Analysed	<RSRZ>	#RSRZ>2	OWAB(Å <sup>2</sup> )	Q<0.9
1	A	390/399 (97%)	-0.19	2 (0%) 91 94	22, 40, 65, 80	0
1	B	391/399 (97%)	0.18	3 (0%) 86 89	25, 54, 104, 140	0
1	C	391/399 (97%)	0.01	8 (2%) 65 71	28, 51, 92, 126	0
1	D	362/399 (90%)	0.31	17 (4%) 31 38	24, 55, 116, 150	0
All	All	1534/1596 (96%)	0.08	30 (1%) 65 71	22, 48, 102, 150	0

All (30) RSRZ outliers are listed below:

Mol	Chain	Res	Type	RSRZ
1	D	72	LEU	4.4
1	D	161	GLY	4.2
1	D	116	TYR	3.9
1	B	368	ILE	3.1
1	C	231	LEU	3.1
1	A	7	PRO	3.1
1	C	230	SER	3.0
1	A	9	VAL	2.9
1	D	188	PHE	2.9
1	D	62	VAL	2.8
1	D	176	SER	2.7
1	D	73	VAL	2.7
1	B	337	GLY	2.7
1	C	128	VAL	2.5
1	D	160	SER	2.4
1	D	75	LEU	2.4
1	D	119	ALA	2.4
1	C	71	GLY	2.4
1	C	250	LEU	2.4
1	C	25	GLY	2.4
1	D	373	GLY	2.3

*Continued on next page...*

*Continued from previous page...*

Mol	Chain	Res	Type	RSRZ
1	C	233	SER	2.3
1	D	122	LEU	2.3
1	D	121	PRO	2.2
1	C	232	ALA	2.1
1	D	268	ASP	2.1
1	B	361	ALA	2.0
1	D	30	LEU	2.0
1	D	169	VAL	2.0
1	D	21	ARG	2.0

## 6.2 Non-standard residues in protein, DNA, RNA chains [i](#)

There are no non-standard protein/DNA/RNA residues in this entry.

## 6.3 Carbohydrates [i](#)

There are no monosaccharides in this entry.

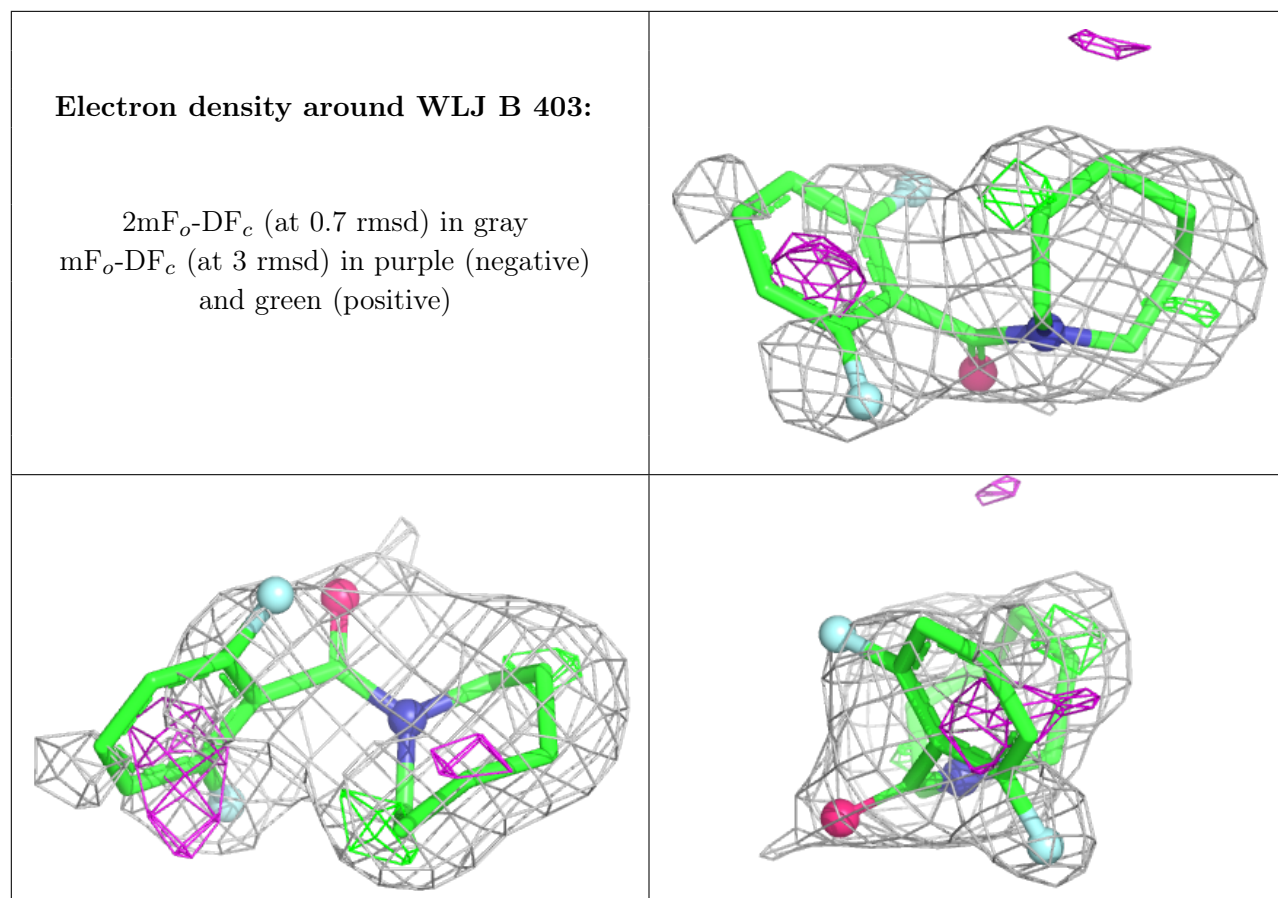
## 6.4 Ligands [i](#)

In the following table, the Atoms column lists the number of modelled atoms in the group and the number defined in the chemical component dictionary. The B-factors column lists the minimum, median, 95<sup>th</sup> percentile and maximum values of B factors of atoms in the group. The column labelled 'Q< 0.9' lists the number of atoms with occupancy less than 0.9.

Mol	Type	Chain	Res	Atoms	RSCC	RSR	B-factors(Å <sup>2</sup> )	Q<0.9
4	WLJ	B	403	17/17	0.66	0.31	69,83,97,97	0
4	WLJ	C	403	17/17	0.80	0.27	67,71,82,83	0
3	HFK	B	402	26/26	0.83	0.19	54,62,65,66	0
3	HFK	C	402	26/26	0.84	0.20	66,72,80,83	0
2	GAL	A	401	12/12	0.89	0.15	22,24,26,27	0
2	GAL	C	401	12/12	0.91	0.15	32,39,43,44	0
3	HFK	A	402	26/26	0.91	0.14	39,44,49,50	0
2	GAL	B	401	12/12	0.96	0.11	32,35,39,39	0

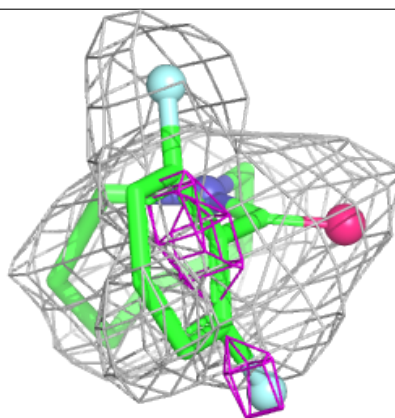
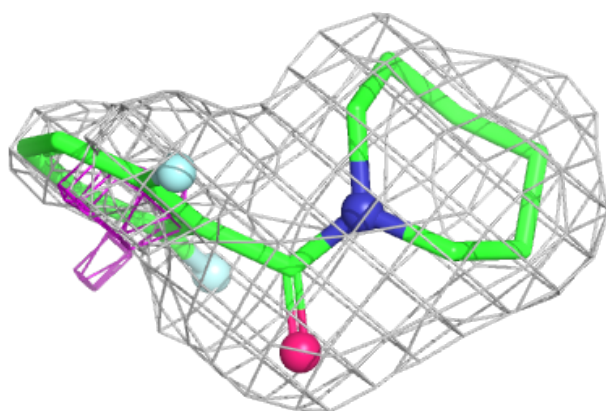
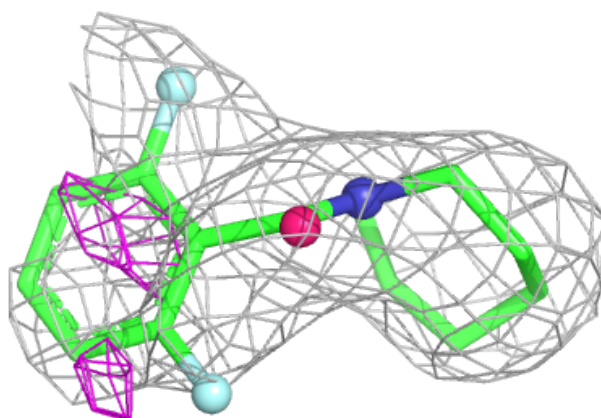
The following is a graphical depiction of the model fit to experimental electron density of all instances of the Ligand of Interest. In addition, ligands with molecular weight > 250 and outliers as shown on the geometry validation Tables will also be included. Each fit is shown from different orientation to approximate a three-dimensional view.

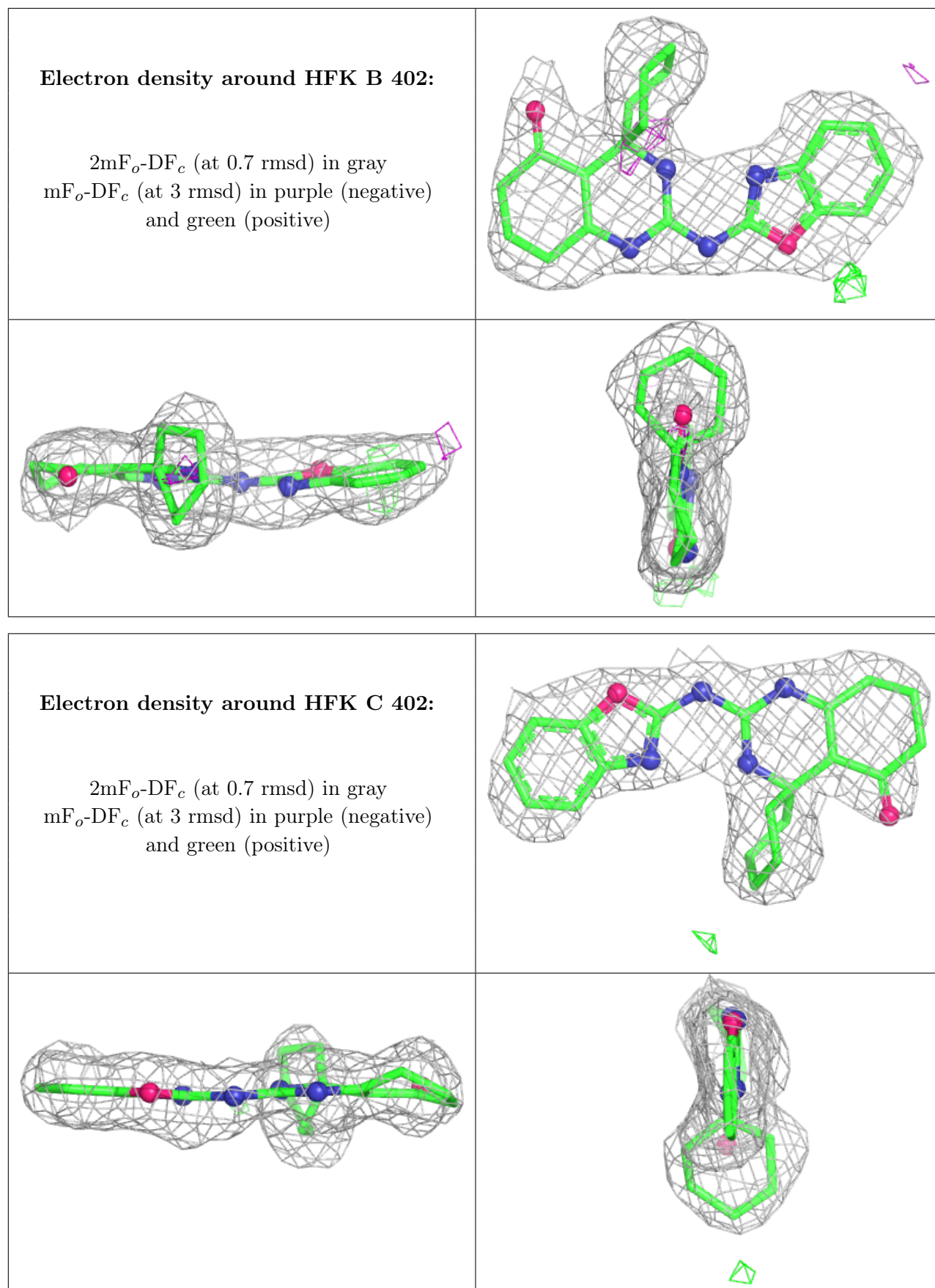


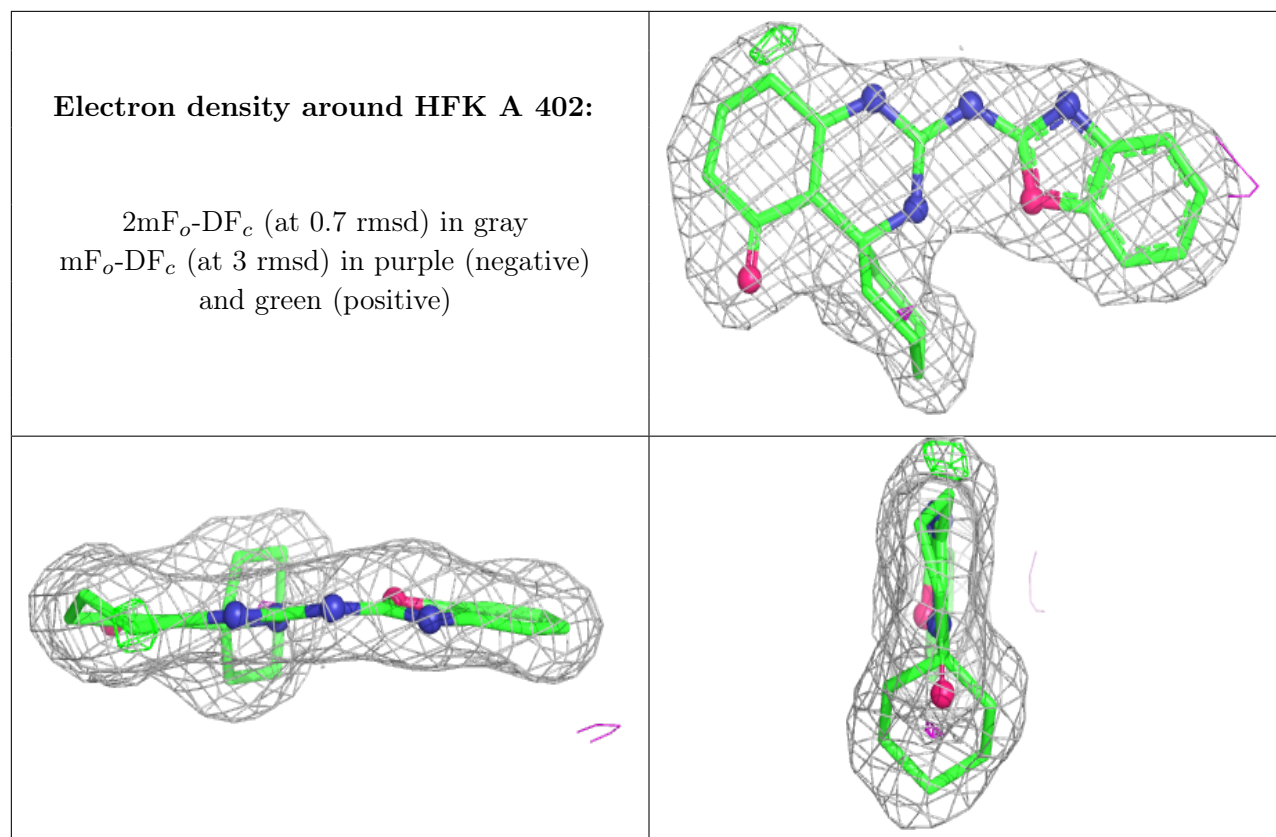


**Electron density around WLJ C 403:**

$2mF_o-DF_c$  (at 0.7 rmsd) in gray  
 $mF_o-DF_c$  (at 3 rmsd) in purple (negative)  
and green (positive)







## 6.5 Other polymers [i](#)

There are no such residues in this entry.