



Full wwPDB EM Validation Report ⓘ

Dec 16, 2024 – 05:14 PM EST

PDB ID : 7MID
EMDB ID : EMD-23847
Title : Sub-complex of Cas4-Cas1-Cas2 bound PAM containing DNA
Authors : Hu, C.Y.; Ke, A.K.
Deposited on : 2021-04-16
Resolution : 3.56 Å (reported)

This is a Full wwPDB EM Validation Report for a publicly released PDB entry.

We welcome your comments at validation@mail.wwpdb.org

A user guide is available at

<https://www.wwpdb.org/validation/2017/EMValidationReportHelp>

with specific help available everywhere you see the ⓘ symbol.

The types of validation reports are described at

<http://www.wwpdb.org/validation/2017/FAQs#types>.

The following versions of software and data (see [references ⓘ](#)) were used in the production of this report:

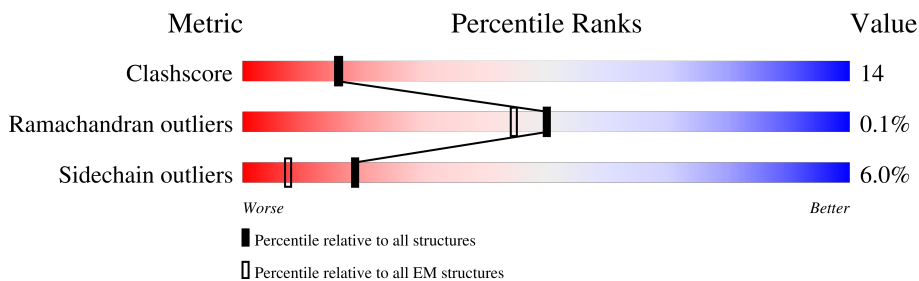
EMDB validation analysis : 0.0.1.dev113
Mogul : 2022.3.0, CSD as543be (2022)
MolProbity : 4.02b-467
buster-report : 1.1.7 (2018)
Percentile statistics : 20231227.v01 (using entries in the PDB archive December 27th 2023)
MapQ : 1.9.13
Ideal geometry (proteins) : Engh & Huber (2001)
Ideal geometry (DNA, RNA) : Parkinson et al. (1996)
Validation Pipeline (wwPDB-VP) : 2.40

1 Overall quality at a glance

The following experimental techniques were used to determine the structure:
ELECTRON MICROSCOPY

The reported resolution of this entry is 3.56 Å.

Percentile scores (ranging between 0-100) for global validation metrics of the entry are shown in the following graphic. The table shows the number of entries on which the scores are based.



Metric	Whole archive (#Entries)	EM structures (#Entries)
Clashscore	210492	15764
Ramachandran outliers	207382	16835
Sidechain outliers	206894	16415

The table below summarises the geometric issues observed across the polymeric chains and their fit to the map. The red, orange, yellow and green segments of the bar indicate the fraction of residues that contain outliers for ≥ 3 , 2, 1 and 0 types of geometric quality criteria respectively. A grey segment represents the fraction of residues that are not modelled. The numeric value for each fraction is indicated below the corresponding segment, with a dot representing fractions $\leq 5\%$. The upper red bar (where present) indicates the fraction of residues that have poor fit to the EM map (all-atom inclusion $< 40\%$). The numeric value is given above the bar.

Mol	Chain	Length	Quality of chain
1	A	559	
1	B	559	
2	C	95	
2	D	95	
3	E	36	
4	F	37	

The following table lists non-polymeric compounds, carbohydrate monomers and non-standard residues in protein, DNA, RNA chains that are outliers for geometric or electron-density-fit criteria:

Mol	Type	Chain	Res	Chirality	Geometry	Clashes	Electron density
5	SF4	A	601	-	-	X	-

2 Entry composition [i](#)

There are 6 unique types of molecules in this entry. The entry contains 9789 atoms, of which 0 are hydrogens and 0 are deuteriums.

In the tables below, the AltConf column contains the number of residues with at least one atom in alternate conformation and the Trace column contains the number of residues modelled with at most 2 atoms.

- Molecule 1 is a protein called CRISPR-associated exonuclease Cas4/endonuclease Cas1 fusion.

Mol	Chain	Residues	Atoms					AltConf	Trace
			Total	C	N	O	S		
1	A	554	Total	C	N	O	S	0	0
			4355	2741	799	790	25		
1	B	340	Total	C	N	O	S	0	0
			2711	1710	503	482	16		

- Molecule 2 is a protein called CRISPR-associated endoribonuclease Cas2.

Mol	Chain	Residues	Atoms					AltConf	Trace
			Total	C	N	O	S		
2	C	95	Total	C	N	O	S	0	0
			786	504	145	132	5		
2	D	91	Total	C	N	O	S	0	0
			758	485	141	127	5		

- Molecule 3 is a DNA chain called DNA (5'-D(P*CP*AP*CP*CP*AP*TP*CP*GP*TP*GP*AP*GP*GP*CP*CP*TP*CP*AP*GP*CP*TP*AP*CP*G)-3').

Mol	Chain	Residues	Atoms					AltConf	Trace
			Total	C	N	O	P		
3	E	24	Total	C	N	O	P	0	0
			488	231	90	143	24		

- Molecule 4 is a DNA chain called DNA (33-MER).

Mol	Chain	Residues	Atoms					AltConf	Trace
			Total	C	N	O	P		
4	F	33	Total	C	N	O	P	0	0
			678	323	121	201	33		

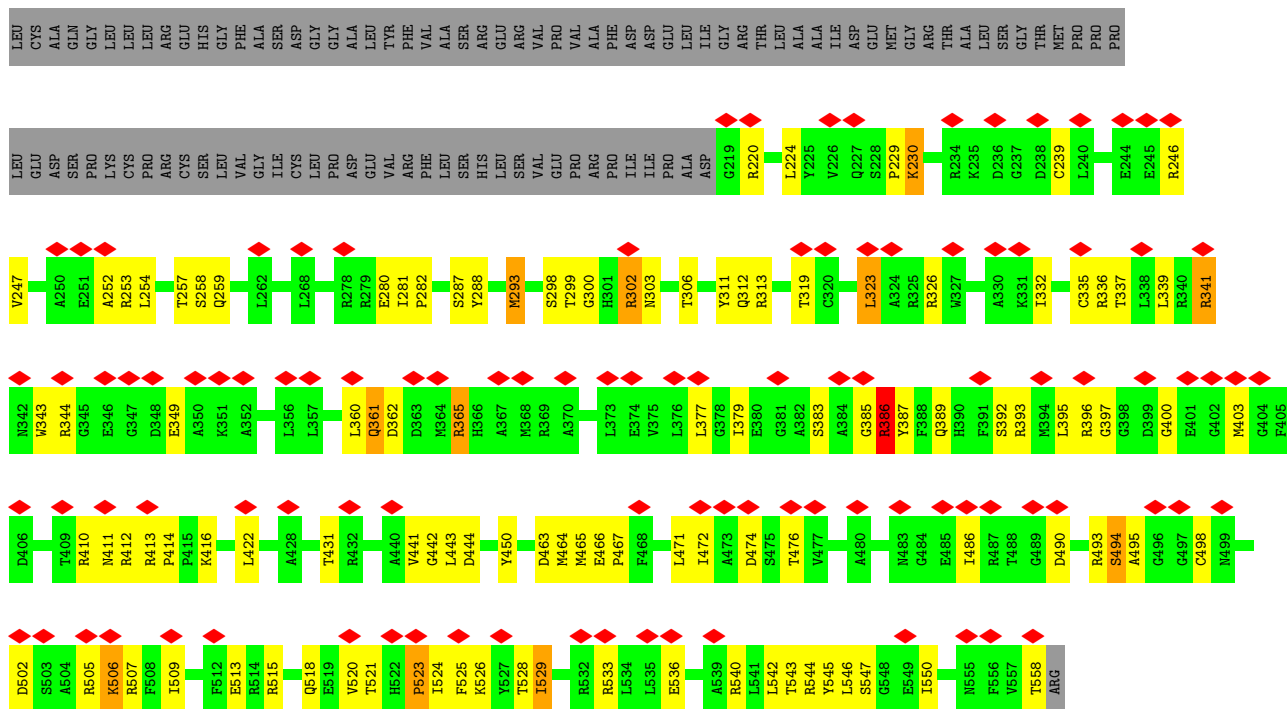
- Molecule 5 is IRON/SULFUR CLUSTER (three-letter code: SF4) (formula: Fe₄S₄) (labeled as "Ligand of Interest" by depositor).



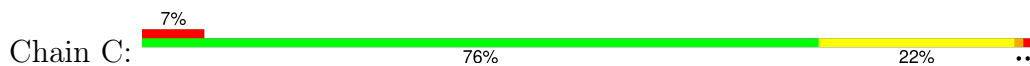
Mol	Chain	Residues	Atoms			AltConf
5	A	1	Total	Fe	S	0
			8	4	4	

- Molecule 6 is MANGANESE (II) ION (three-letter code: MN) (formula: Mn).

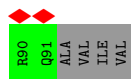
Mol	Chain	Residues	Atoms		AltConf
6	A	1	Total	Mn	0
			1	1	
6	B	1	Total	Mn	0
			1	1	
6	C	1	Total	Mn	0
			1	1	
6	D	1	Total	Mn	0
			1	1	
6	F	1	Total	Mn	0
			1	1	



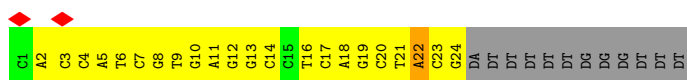
• Molecule 2: CRISPR-associated endoribonuclease Cas2



• Molecule 2: CRISPR-associated endoribonuclease Cas2

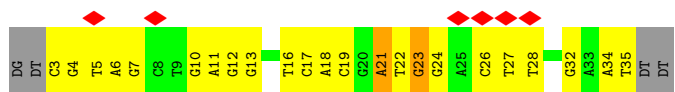


• Molecule 3: DNA (5'-D(P*CP*AP*CP*CP*AP*TP*CP*GP*TP*GP*AP*GP*GP*CP*CP*T P*CP*AP*GP*CP*TP*AP*CP*G)-3')



• Molecule 4: DNA (33-MER)





4 Experimental information

Property	Value	Source
EM reconstruction method	SINGLE PARTICLE	Depositor
Imposed symmetry	POINT, Not provided	
Number of particles used	60000	Depositor
Resolution determination method	FSC 0.143 CUT-OFF	Depositor
CTF correction method	PHASE FLIPPING AND AMPLITUDE CORRECTION	Depositor
Microscope	TFS TALOS	Depositor
Voltage (kV)	200	Depositor
Electron dose ($e^-/\text{\AA}^2$)	50	Depositor
Minimum defocus (nm)	1500	Depositor
Maximum defocus (nm)	Not provided	
Magnification	Not provided	
Image detector	GATAN K3 BIOQUANTUM (6k x 4k)	Depositor
Maximum map value	1.778	Depositor
Minimum map value	-0.351	Depositor
Average map value	-0.001	Depositor
Map value standard deviation	0.027	Depositor
Recommended contour level	0.258	Depositor
Map size (Å)	365.0, 365.0, 365.0	wwPDB
Map dimensions	256, 256, 256	wwPDB
Map angles (°)	90.0, 90.0, 90.0	wwPDB
Pixel spacing (Å)	1.4257812, 1.4257812, 1.4257812	Depositor

5 Model quality i

5.1 Standard geometry i

Bond lengths and bond angles in the following residue types are not validated in this section: MN, SF4

The Z score for a bond length (or angle) is the number of standard deviations the observed value is removed from the expected value. A bond length (or angle) with $|Z| > 5$ is considered an outlier worth inspection. RMSZ is the root-mean-square of all Z scores of the bond lengths (or angles).

Mol	Chain	Bond lengths		Bond angles	
		RMSZ	# Z >5	RMSZ	# Z >5
1	A	0.47	0/4456	0.61	4/6037 (0.1%)
1	B	0.43	0/2774	0.61	5/3752 (0.1%)
2	C	0.53	0/802	0.71	2/1080 (0.2%)
2	D	0.54	0/774	0.69	2/1042 (0.2%)
3	E	0.87	0/546	1.09	2/839 (0.2%)
4	F	0.99	2/759 (0.3%)	0.92	0/1170
All	All	0.55	2/10111 (0.0%)	0.69	15/13920 (0.1%)

Chiral center outliers are detected by calculating the chiral volume of a chiral center and verifying if the center is modelled as a planar moiety or with the opposite hand. A planarity outlier is detected by checking planarity of atoms in a peptide group, atoms in a mainchain group or atoms of a sidechain that are expected to be planar.

Mol	Chain	#Chirality outliers	#Planarity outliers
1	A	0	2

All (2) bond length outliers are listed below:

Mol	Chain	Res	Type	Atoms	Z	Observed(Å)	Ideal(Å)
4	F	23	DG	C1'-N9	-7.93	1.36	1.47
4	F	21	DA	C1'-N9	-6.52	1.38	1.47

All (15) bond angle outliers are listed below:

Mol	Chain	Res	Type	Atoms	Z	Observed(°)	Ideal(°)
1	A	146	ARG	NE-CZ-NH2	-13.72	113.44	120.30
3	E	22	DA	C1'-O4'-C4'	-12.96	97.14	110.10
3	E	22	DA	O4'-C4'-C3'	-10.64	99.62	106.00
1	A	146	ARG	CD-NE-CZ	10.48	138.27	123.60
1	B	386	ARG	CG-CD-NE	9.09	130.89	111.80

Continued on next page...

Continued from previous page...

Mol	Chain	Res	Type	Atoms	Z	Observed(°)	Ideal(°)
1	B	386	ARG	NE-CZ-NH1	7.69	124.14	120.30
2	C	22	LYS	CA-CB-CG	7.37	129.60	113.40
2	D	22	LYS	CA-CB-CG	7.34	129.55	113.40
1	B	386	ARG	CD-NE-CZ	6.16	132.23	123.60
1	A	412	ARG	NE-CZ-NH1	5.92	123.26	120.30
1	B	386	ARG	CB-CG-CD	5.83	126.75	111.60
1	B	361	GLN	CA-CB-CG	5.48	125.46	113.40
1	A	156	GLU	CA-CB-CG	5.33	125.12	113.40
2	D	22	LYS	CB-CG-CD	5.02	124.65	111.60
2	C	22	LYS	CB-CG-CD	5.00	124.61	111.60

There are no chirality outliers.

All (2) planarity outliers are listed below:

Mol	Chain	Res	Type	Group
1	A	146	ARG	Sidechain
1	A	412	ARG	Peptide

5.2 Too-close contacts [i](#)

In the following table, the Non-H and H(model) columns list the number of non-hydrogen atoms and hydrogen atoms in the chain respectively. The H(added) column lists the number of hydrogen atoms added and optimized by MolProbity. The Clashes column lists the number of clashes within the asymmetric unit, whereas Symm-Clashes lists symmetry-related clashes.

Mol	Chain	Non-H	H(model)	H(added)	Clashes	Symm-Clashes
1	A	4355	0	4317	130	0
1	B	2711	0	2692	82	0
2	C	786	0	812	16	0
2	D	758	0	778	16	0
3	E	488	0	265	34	0
4	F	678	0	373	27	0
5	A	8	0	0	3	0
6	A	1	0	0	0	0
6	B	1	0	0	0	0
6	C	1	0	0	0	0
6	D	1	0	0	0	0
6	F	1	0	0	1	0
All	All	9789	0	9237	270	0

The all-atom clashscore is defined as the number of clashes found per 1000 atoms (including

hydrogen atoms). The all-atom clashscore for this structure is 14.

All (270) close contacts within the same asymmetric unit are listed below, sorted by their clash magnitude.

Atom-1	Atom-2	Interatomic distance (Å)	Clash overlap (Å)
3:E:23:DC:O2	4:F:4:DG:N1	1.95	0.97
3:E:3:DC:N4	4:F:23:DG:O6	2.03	0.90
1:B:303:ASN:HB2	1:B:442:GLY:HA3	1.53	0.89
2:C:22:LYS:HA	2:C:22:LYS:HE2	1.53	0.89
3:E:3:DC:H6	3:E:3:DC:H5'	1.37	0.89
1:A:235:LYS:HB3	3:E:5:DA:H5''	1.52	0.89
2:D:22:LYS:HE2	2:D:22:LYS:HA	1.53	0.88
1:B:302:ARG:HE	1:B:302:ARG:HA	1.38	0.87
2:D:17:TRP:NE1	3:E:16:DT:OP2	2.07	0.86
1:B:239:CYS:HA	1:B:253:ARG:HA	1.60	0.84
1:A:271:ALA:CB	3:E:5:DA:H5'	2.07	0.82
1:B:246:ARG:NE	3:E:2:DA:N7	2.27	0.82
1:B:246:ARG:HD3	3:E:2:DA:N7	1.96	0.81
1:B:505:ARG:HH12	4:F:27:DT:H2''	1.45	0.81
1:B:386:ARG:HH11	1:B:386:ARG:CB	1.96	0.79
1:A:230:LYS:NZ	1:A:244:GLU:OE2	2.18	0.77
1:B:246:ARG:CD	3:E:2:DA:N7	2.47	0.77
3:E:10:DG:H2'	3:E:11:DA:C8	2.20	0.76
4:F:10:DG:H2'	4:F:11:DA:C8	2.20	0.76
1:A:48:HIS:NE2	4:F:32:DG:OP1	2.19	0.76
1:A:401:GLU:O	1:A:488:THR:OG1	2.04	0.76
3:E:22:DA:H4'	3:E:22:DA:OP1	1.87	0.75
3:E:7:DC:H1'	3:E:8:DG:H5'	1.69	0.73
1:A:271:ALA:HB3	3:E:5:DA:H5'	1.70	0.73
1:A:196:CYS:HB2	5:A:601:SF4:S4	2.27	0.72
1:A:337:THR:HG22	1:A:341:ARG:HE	1.54	0.72
1:B:229:PRO:HG3	1:B:288:TYR:HE1	1.55	0.72
1:B:393:ARG:NH1	1:B:397:GLY:O	2.23	0.71
1:A:417:ASP:HB2	1:A:420:ASN:HB2	1.73	0.71
1:B:505:ARG:NH2	4:F:27:DT:O2	2.23	0.70
1:B:523:PRO:HG3	1:B:529:ILE:HD11	1.74	0.70
1:A:457:ARG:HB3	1:A:462:LEU:HD11	1.74	0.69
1:B:302:ARG:HA	1:B:302:ARG:NE	2.06	0.69
1:A:196:CYS:CB	5:A:601:SF4:S4	2.81	0.69
3:E:3:DC:H6	3:E:3:DC:C5'	2.05	0.69
3:E:8:DG:H1	4:F:19:DC:H42	1.39	0.68
1:A:141:TYR:CZ	1:A:146:ARG:HB3	2.28	0.68
1:A:58:LEU:HB2	1:B:494:SER:HB3	1.73	0.68

Continued on next page...

Continued from previous page...

Atom-1	Atom-2	Interatomic distance (Å)	Clash overlap (Å)
1:A:295:HIS:NE2	1:A:446:TYR:OH	2.27	0.68
1:A:24:ARG:NH1	1:A:549:GLU:OE2	2.27	0.67
1:B:515:ARG:NH1	1:B:518:GLN:OE1	2.27	0.67
1:B:259:GLN:NE2	1:B:536:GLU:OE1	2.28	0.66
1:B:336:ARG:HA	1:B:339:LEU:HD12	1.78	0.65
1:B:386:ARG:HH11	1:B:386:ARG:HB3	1.61	0.65
1:B:490:ASP:OD2	1:B:507:ARG:NH1	2.30	0.65
1:A:156:GLU:OE1	1:A:157:LEU:N	2.30	0.65
4:F:23:DG:H2'	4:F:24:DG:C8	2.32	0.65
1:A:52:ASP:O	1:A:72:SER:OG	2.15	0.64
1:B:412:ARG:HD2	1:B:416:LYS:HD2	1.78	0.64
3:E:23:DC:C4	4:F:3:DC:N4	2.66	0.64
1:B:344:ARG:NH1	1:B:396:ARG:O	2.32	0.63
1:A:129:ARG:NH1	1:A:136:ASP:OD1	2.33	0.62
1:B:343:TRP:NE1	1:B:349:GLU:O	2.33	0.62
1:B:529:ILE:HG22	1:B:533:ARG:HE	1.65	0.61
1:A:311:TYR:OH	1:A:444:ASP:OD2	2.19	0.61
1:B:280:GLU:HG2	1:B:298:SER:OG	2.01	0.61
1:A:235:LYS:NZ	1:A:237:GLY:O	2.34	0.60
4:F:32:DG:OP1	6:F:801:MN:MN	1.59	0.60
1:B:502:ASP:HA	1:B:505:ARG:HD3	1.85	0.59
2:D:12:ARG:NH2	3:E:14:DC:OP1	2.32	0.59
1:A:189:ARG:NH2	4:F:35:DT:OP1	2.36	0.59
1:B:422:LEU:HD11	1:B:486:ILE:HG21	1.83	0.59
3:E:19:DG:H2''	3:E:20:DC:H5''	1.84	0.58
1:A:220:ARG:NH1	1:A:536:GLU:OE2	2.37	0.58
1:A:313:ARG:HE	1:A:319:THR:HG21	1.68	0.58
1:B:502:ASP:O	1:B:506:LYS:HG3	2.02	0.58
1:A:225:TYR:HB2	2:C:94:ILE:HA	1.85	0.58
1:A:283:VAL:H	1:A:296:THR:HG22	1.70	0.57
1:A:409:THR:OG1	1:A:420:ASN:ND2	2.35	0.57
2:D:4:LEU:HD23	2:D:74:VAL:HG21	1.87	0.57
1:A:423:LEU:HD23	1:A:477:VAL:HG21	1.87	0.57
1:A:322:ASN:O	1:A:326:ARG:HG2	2.04	0.57
1:A:98:PRO:HG3	1:A:128:LEU:HD12	1.86	0.56
1:A:413:ARG:HB3	1:A:414:PRO:HD3	1.87	0.56
2:C:4:LEU:HD23	2:C:74:VAL:HG21	1.87	0.56
1:A:32:GLN:NE2	1:A:305:GLU:OE1	2.38	0.56
1:A:343:TRP:NE1	1:A:349:GLU:O	2.37	0.56
1:A:16:LEU:HA	1:A:168:MET:HE1	1.86	0.56
1:B:306:THR:OG1	1:B:442:GLY:O	2.17	0.56

Continued on next page...

Continued from previous page...

Atom-1	Atom-2	Interatomic distance (Å)	Clash overlap (Å)
1:B:386:ARG:HH11	1:B:386:ARG:HB2	1.69	0.56
1:B:323:LEU:HD11	1:B:545:TYR:HE2	1.72	0.55
1:B:335:CYS:HB3	1:B:387:TYR:CD1	2.41	0.55
1:B:392:SER:HA	1:B:395:LEU:HD23	1.89	0.55
1:B:505:ARG:HE	4:F:28:DT:H72	1.71	0.55
4:F:22:DT:H2'	4:F:23:DG:O4'	2.07	0.54
1:A:341:ARG:HG3	1:A:342:ASN:OD1	2.07	0.54
3:E:6:DT:H1'	3:E:7:DC:H5'	1.89	0.54
1:A:200:GLU:O	1:A:204:LEU:HD12	2.07	0.54
2:D:22:LYS:HE2	2:D:22:LYS:CA	2.30	0.54
2:D:49:GLU:O	2:D:53:ASN:ND2	2.40	0.54
1:B:239:CYS:SG	1:B:253:ARG:HG2	2.48	0.54
1:A:451:HIS:ND1	1:A:463:ASP:OD1	2.41	0.53
1:B:413:ARG:HB2	1:B:414:PRO:HD3	1.91	0.53
1:A:232:TYR:HD1	1:A:267:THR:HG1	1.56	0.53
1:A:291:TRP:HH2	1:A:457:ARG:HH21	1.57	0.53
1:B:472:ILE:O	1:B:476:THR:OG1	2.13	0.53
1:A:214:ILE:HB	1:A:527:TYR:CD1	2.44	0.53
1:A:315:PHE:CZ	1:B:312:GLN:HB2	2.44	0.53
2:C:49:GLU:O	2:C:53:ASN:ND2	2.40	0.52
1:A:75:LEU:HD23	1:A:131:HIS:ND1	2.24	0.52
1:A:393:ARG:CZ	1:A:393:ARG:HA	2.40	0.52
1:B:524:ILE:HG23	1:B:525:PHE:CD1	2.45	0.52
3:E:4:DC:H2''	3:E:5:DA:C8	2.44	0.52
1:A:50:ARG:HG3	1:A:51:VAL:HG13	1.92	0.52
3:E:3:DC:C5'	3:E:3:DC:C6	2.91	0.51
4:F:21:DA:C2	4:F:22:DT:C5	2.99	0.51
1:A:79:ARG:NH1	1:A:130:GLU:OE2	2.36	0.51
1:A:406:ASP:O	1:A:409:THR:OG1	2.27	0.51
1:A:412:ARG:HG2	1:A:412:ARG:HH11	1.74	0.51
1:A:412:ARG:HH11	1:A:412:ARG:CG	2.23	0.51
1:B:302:ARG:HE	1:B:302:ARG:CA	2.18	0.51
1:A:182:GLU:HA	1:A:202:ARG:NH1	2.26	0.51
1:B:313:ARG:HG2	1:B:319:THR:HG21	1.92	0.51
1:A:540:ARG:O	1:A:543:THR:OG1	2.24	0.51
1:B:400:GLY:O	1:B:403:MET:N	2.33	0.51
4:F:12:DG:H2''	4:F:13:DG:H8	1.76	0.51
1:B:303:ASN:O	1:B:306:THR:OG1	2.28	0.50
1:B:311:TYR:OH	1:B:444:ASP:OD2	2.21	0.50
1:A:204:LEU:HD22	1:A:554:PRO:HG3	1.94	0.50
1:A:417:ASP:OD2	1:A:420:ASN:ND2	2.44	0.50

Continued on next page...

Continued from previous page...

Atom-1	Atom-2	Interatomic distance (Å)	Clash overlap (Å)
3:E:12:DG:H2''	3:E:13:DG:H8	1.76	0.50
1:A:202:ARG:HH21	1:A:207:LEU:HB3	1.77	0.50
1:A:396:ARG:NH1	1:A:482:ASN:O	2.45	0.49
1:A:405:PHE:HD1	1:A:419:VAL:HG13	1.75	0.49
4:F:17:DC:H2''	4:F:18:DA:C8	2.46	0.49
1:A:520:VAL:O	1:A:528:THR:HA	2.12	0.49
2:C:22:LYS:HE2	2:C:22:LYS:CA	2.30	0.49
1:A:471:LEU:O	1:A:515:ARG:NH2	2.33	0.49
1:A:517:GLU:OE2	1:A:532:ARG:NH2	2.46	0.49
1:B:523:PRO:HD2	1:B:525:PHE:O	2.13	0.49
1:A:227:GLN:HA	1:A:263:PHE:HB2	1.95	0.49
1:B:280:GLU:OE2	1:B:300:GLY:HA3	2.13	0.48
1:B:550:ILE:O	1:B:550:ILE:HG13	2.13	0.48
1:B:521:THR:O	1:B:526:LYS:HA	2.14	0.48
1:A:88:LEU:CD2	1:A:90:GLU:HG3	2.43	0.48
1:B:450:TYR:N	1:B:463:ASP:OD2	2.34	0.48
1:A:88:LEU:HD23	1:A:89:VAL:N	2.29	0.48
2:D:44:ARG:HH21	2:D:44:ARG:HG2	1.78	0.48
1:A:49:ARG:HG2	1:A:49:ARG:HH11	1.79	0.48
1:A:292:PHE:CE2	1:B:299:THR:HG21	2.49	0.48
1:B:224:LEU:HD22	1:B:252:ALA:HB2	1.96	0.48
1:A:406:ASP:OD1	1:A:408:THR:HG22	2.14	0.48
1:B:505:ARG:HH11	4:F:28:DT:H72	1.78	0.48
4:F:21:DA:H2''	4:F:22:DT:O2	2.14	0.48
2:C:33:LEU:HB2	2:D:10:ASP:OD2	2.14	0.47
2:C:44:ARG:HG2	2:C:44:ARG:HH21	1.78	0.47
3:E:23:DC:H2'	3:E:24:DG:C5	2.50	0.47
1:A:46:ILE:HD12	1:A:49:ARG:HH21	1.79	0.47
1:A:182:GLU:HG3	1:A:202:ARG:HH12	1.79	0.47
1:A:376:LEU:HD12	1:A:376:LEU:HA	1.77	0.47
1:A:61:GLU:HG3	1:B:495:ALA:HA	1.96	0.47
1:B:521:THR:HA	1:B:528:THR:HA	1.96	0.47
1:A:142:PHE:O	1:A:146:ARG:N	2.48	0.46
1:A:217:ALA:HB1	1:A:220:ARG:HD3	1.96	0.46
1:B:337:THR:O	1:B:341:ARG:HG2	2.16	0.46
1:A:490:ASP:HB3	1:A:504:ALA:HB2	1.97	0.46
1:A:190:CYS:CB	5:A:601:SF4:S2	3.03	0.46
1:A:405:PHE:CE2	1:A:407:PHE:HA	2.49	0.46
1:B:287:SER:OG	4:F:26:DC:N4	2.49	0.46
1:A:248:ARG:HH21	1:A:251:GLU:HB3	1.81	0.46
1:A:469:ARG:HB2	1:A:470:PRO:HD3	1.96	0.46

Continued on next page...

Continued from previous page...

Atom-1	Atom-2	Interatomic distance (Å)	Clash overlap (Å)
3:E:5:DA:H2''	3:E:6:DT:H71	1.98	0.46
1:A:389:GLN:HA	1:A:407:PHE:HD2	1.80	0.46
1:B:441:VAL:HG11	1:B:543:THR:HG21	1.98	0.46
2:C:18:ARG:O	2:C:22:LYS:HB2	2.16	0.46
1:A:434:TRP:CZ2	1:A:535:LEU:HD22	2.51	0.46
1:B:431:THR:OG1	1:B:465:MET:SD	2.70	0.46
3:E:8:DG:H2''	3:E:9:DT:H71	1.97	0.46
1:A:14:ARG:O	1:A:18:GLU:HG2	2.16	0.45
1:A:513:GLU:OE1	1:A:532:ARG:NH2	2.47	0.45
1:A:214:ILE:HB	1:A:527:TYR:CE1	2.52	0.45
1:A:314:SER:OG	1:A:447:ARG:NE	2.45	0.45
1:B:385:GLY:O	1:B:389:GLN:HG3	2.16	0.45
4:F:4:DG:H2''	4:F:5:DT:C6	2.50	0.45
1:A:114:TYR:HB3	1:A:116:PRO:HD2	1.99	0.45
1:A:363:ASP:OD2	1:A:386:ARG:NH1	2.39	0.45
1:A:388:PHE:HA	1:A:391:PHE:HB2	1.98	0.45
1:A:391:PHE:O	1:A:394:MET:HG2	2.17	0.45
2:D:18:ARG:O	2:D:22:LYS:HB2	2.16	0.45
1:A:493:ARG:NH2	1:A:498:CYS:SG	2.90	0.45
2:D:51:ALA:O	2:D:55:ILE:HG12	2.16	0.45
1:A:334:ASN:ND2	1:A:558:THR:HG22	2.31	0.45
1:B:362:ASP:HA	1:B:365:ARG:HG3	1.98	0.45
2:C:17:TRP:NE1	4:F:16:DT:OP2	2.47	0.45
1:A:105:LYS:HZ3	1:A:145:SER:HG	1.61	0.45
3:E:2:DA:C8	3:E:2:DA:OP1	2.70	0.45
1:A:515:ARG:NH1	1:A:518:GLN:OE1	2.50	0.44
1:B:546:LEU:O	1:B:547:SER:OG	2.26	0.44
1:B:403:MET:HE1	1:B:486:ILE:HG22	2.00	0.44
2:C:51:ALA:O	2:C:55:ILE:HG12	2.16	0.44
2:D:33:LEU:HD12	2:D:33:LEU:HA	1.81	0.44
3:E:24:DG:C8	3:E:24:DG:O5'	2.70	0.44
1:A:63:GLN:HB3	1:A:93:GLY:O	2.17	0.44
1:A:339:LEU:O	1:A:343:TRP:HB2	2.16	0.44
1:A:227:GLN:HB2	1:A:505:ARG:HH22	1.82	0.44
1:A:237:GLY:HA3	2:C:22:LYS:NZ	2.32	0.44
4:F:6:DA:H1'	4:F:7:DG:H5'	1.98	0.44
1:A:20:VAL:HG21	1:A:116:PRO:HA	1.98	0.44
1:A:182:GLU:HA	1:A:202:ARG:HH12	1.82	0.44
1:A:393:ARG:HA	1:A:393:ARG:NH2	2.33	0.44
1:A:326:ARG:HB3	1:A:555:ASN:ND2	2.33	0.44
2:C:41:ASP:OD1	2:C:41:ASP:N	2.51	0.44

Continued on next page...

Continued from previous page...

Atom-1	Atom-2	Interatomic distance (Å)	Clash overlap (Å)
1:A:500:LEU:HB3	1:A:504:ALA:HB3	1.99	0.44
1:B:464:MET:O	1:B:467:PRO:HD2	2.17	0.44
3:E:21:DT:H2''	3:E:22:DA:C1'	2.47	0.44
3:E:24:DG:C8	3:E:24:DG:OP2	2.70	0.44
1:A:271:ALA:HB1	3:E:5:DA:H5'	1.94	0.43
1:A:407:PHE:N	1:A:407:PHE:CD1	2.86	0.43
1:A:199:ASP:OD2	1:A:212:ARG:NE	2.49	0.43
2:C:16:ARG:NH2	2:C:61:ASP:OD1	2.52	0.43
2:D:41:ASP:OD1	2:D:41:ASP:N	2.51	0.43
1:A:123:ALA:HA	1:A:126:LEU:HD12	2.00	0.43
1:A:316:ASP:HB3	1:A:319:THR:OG1	2.19	0.43
1:B:229:PRO:HG2	1:B:230:LYS:HD3	2.01	0.43
1:A:24:ARG:NE	1:A:196:CYS:SG	2.79	0.43
1:A:337:THR:O	1:A:341:ARG:HG2	2.18	0.43
1:B:506:LYS:HA	1:B:509:ILE:HD12	2.00	0.43
1:A:141:TYR:OH	1:A:146:ARG:HB3	2.18	0.42
1:B:464:MET:HE1	1:B:542:LEU:HB2	2.01	0.42
1:B:466:GLU:HB2	1:B:467:PRO:HD3	2.00	0.42
1:A:227:GLN:HB2	1:A:505:ARG:NH2	2.33	0.42
1:A:446:TYR:OH	1:B:299:THR:HG22	2.20	0.42
2:D:16:ARG:NH2	2:D:61:ASP:OD1	2.52	0.42
3:E:3:DC:H5'	3:E:3:DC:C6	2.30	0.42
1:B:410:ARG:NH1	1:B:411:ASN:H	2.17	0.42
3:E:21:DT:H2''	3:E:22:DA:H1'	2.01	0.42
1:A:553:TYR:HA	1:A:554:PRO:HD3	1.93	0.42
1:B:229:PRO:O	3:E:3:DC:H1'	2.20	0.42
1:B:293:MET:HE2	1:B:293:MET:HB3	1.94	0.42
1:A:323:LEU:HD23	1:A:323:LEU:HA	1.77	0.42
1:A:346:GLU:N	1:A:346:GLU:OE1	2.52	0.42
1:A:48:HIS:CE1	4:F:32:DG:H5''	2.55	0.42
1:B:337:THR:HG21	1:B:558:THR:HG23	2.02	0.42
1:B:536:GLU:OE2	1:B:540:ARG:NH2	2.46	0.42
2:D:21:PHE:CE1	2:D:36:PHE:HZ	2.38	0.42
4:F:22:DT:O2	4:F:22:DT:O4'	2.38	0.42
1:A:5:ASP:OD1	1:A:7:SER:N	2.52	0.42
1:A:103:ARG:NH1	4:F:34:DA:OP1	2.52	0.42
1:A:484:GLY:O	1:A:487:ARG:NH2	2.51	0.42
2:D:4:LEU:HD12	2:D:4:LEU:HA	1.88	0.42
1:A:287:SER:OG	1:A:288:TYR:N	2.53	0.41
1:A:344:ARG:HH11	1:A:397:GLY:N	2.18	0.41
1:A:504:ALA:HA	1:A:507:ARG:HH21	1.84	0.41

Continued on next page...

Continued from previous page...

Atom-1	Atom-2	Interatomic distance (Å)	Clash overlap (Å)
2:C:21:PHE:CE1	2:C:36:PHE:HZ	2.38	0.41
1:A:168:MET:HA	1:A:171:THR:HG22	2.02	0.41
1:B:230:LYS:HD3	1:B:230:LYS:N	2.35	0.41
1:A:96:VAL:O	1:A:135:SER:HA	2.21	0.41
1:B:493:ARG:HG2	1:B:498:CYS:SG	2.61	0.41
1:A:102:LYS:HA	1:A:102:LYS:HD2	1.80	0.41
1:B:280:GLU:HB3	1:B:302:ARG:HG2	2.02	0.41
1:B:383:SER:HA	1:B:386:ARG:HG3	2.03	0.41
3:E:17:DC:H2''	3:E:18:DA:C8	2.56	0.41
1:A:76:SER:HB3	1:A:83:THR:HG23	2.03	0.41
1:A:293:MET:O	1:B:299:THR:OG1	2.37	0.41
1:A:88:LEU:HD21	1:A:90:GLU:HG3	2.02	0.41
1:B:505:ARG:NH1	4:F:27:DT:H2''	2.24	0.41
2:C:42:ARG:O	2:C:45:ILE:HG22	2.20	0.41
1:A:42:VAL:O	1:A:46:ILE:HG12	2.21	0.40
1:A:346:GLU:HG2	1:A:347:GLY:N	2.36	0.40
1:B:281:ILE:HA	1:B:282:PRO:HD3	1.97	0.40
1:B:443:LEU:HD23	1:B:443:LEU:HA	1.86	0.40
1:B:506:LYS:HG3	1:B:506:LYS:H	1.60	0.40
1:B:254:LEU:HD23	1:B:257:THR:HG21	2.02	0.40
2:C:4:LEU:HA	2:C:4:LEU:HD12	1.88	0.40
2:D:42:ARG:O	2:D:45:ILE:HG22	2.20	0.40
1:A:73:VAL:HG12	1:A:75:LEU:CD1	2.52	0.40
1:A:189:ARG:HD3	4:F:34:DA:H4'	2.03	0.40
1:A:534:LEU:HD11	1:A:556:PHE:CE1	2.56	0.40
1:A:122:CYS:O	1:A:126:LEU:HD12	2.21	0.40
1:A:218:ASP:N	1:A:218:ASP:OD1	2.55	0.40

There are no symmetry-related clashes.

5.3 Torsion angles [i](#)

5.3.1 Protein backbone [i](#)

In the following table, the Percentiles column shows the percent Ramachandran outliers of the chain as a percentile score with respect to all PDB entries followed by that with respect to all EM entries.

The Analysed column shows the number of residues for which the backbone conformation was analysed, and the total number of residues.

Mol	Chain	Analysed	Favoured	Allowed	Outliers	Percentiles	
1	A	552/559 (99%)	508 (92%)	44 (8%)	0	100	100
1	B	338/559 (60%)	307 (91%)	30 (9%)	1 (0%)	37	67
2	C	93/95 (98%)	84 (90%)	9 (10%)	0	100	100
2	D	89/95 (94%)	80 (90%)	9 (10%)	0	100	100
All	All	1072/1308 (82%)	979 (91%)	92 (9%)	1 (0%)	50	79

All (1) Ramachandran outliers are listed below:

Mol	Chain	Res	Type
1	B	523	PRO

5.3.2 Protein sidechains [i](#)

In the following table, the Percentiles column shows the percent sidechain outliers of the chain as a percentile score with respect to all PDB entries followed by that with respect to all EM entries.

The Analysed column shows the number of residues for which the sidechain conformation was analysed, and the total number of residues.

Mol	Chain	Analysed	Rotameric	Outliers	Percentiles	
1	A	458/462 (99%)	438 (96%)	20 (4%)	24	53
1	B	280/462 (61%)	256 (91%)	24 (9%)	8	33
2	C	86/86 (100%)	80 (93%)	6 (7%)	12	39
2	D	83/86 (96%)	79 (95%)	4 (5%)	21	51
All	All	907/1096 (83%)	853 (94%)	54 (6%)	18	44

All (54) residues with a non-rotameric sidechain are listed below:

Mol	Chain	Res	Type
1	A	58	LEU
1	A	66	SER
1	A	146	ARG
1	A	156	GLU
1	A	162	LEU
1	A	166	ASP
1	A	183	ASP
1	A	280	GLU
1	A	318	GLU
1	A	358	MET

Continued on next page...

Continued from previous page...

Mol	Chain	Res	Type
1	A	364	MET
1	A	365	ARG
1	A	392	SER
1	A	393	ARG
1	A	395	LEU
1	A	403	MET
1	A	407	PHE
1	A	412	ARG
1	A	503	SER
1	A	547	SER
1	B	220	ARG
1	B	230	LYS
1	B	247	VAL
1	B	258	SER
1	B	293	MET
1	B	302	ARG
1	B	323	LEU
1	B	326	ARG
1	B	332	ILE
1	B	341	ARG
1	B	360	LEU
1	B	361	GLN
1	B	365	ARG
1	B	377	LEU
1	B	379	ILE
1	B	386	ARG
1	B	471	LEU
1	B	474	ASP
1	B	494	SER
1	B	506	LYS
1	B	513	GLU
1	B	520	VAL
1	B	529	ILE
1	B	544	ARG
2	C	19	ARG
2	C	22	LYS
2	C	75	LYS
2	C	84	THR
2	C	93	VAL
2	C	94	ILE
2	D	19	ARG
2	D	22	LYS

Continued on next page...

Continued from previous page...

Mol	Chain	Res	Type
2	D	75	LYS
2	D	84	THR

Sometimes sidechains can be flipped to improve hydrogen bonding and reduce clashes. All (2) such sidechains are listed below:

Mol	Chain	Res	Type
1	A	334	ASN
1	A	420	ASN

5.3.3 RNA [i](#)

There are no RNA molecules in this entry.

5.4 Non-standard residues in protein, DNA, RNA chains [i](#)

There are no non-standard protein/DNA/RNA residues in this entry.

5.5 Carbohydrates [i](#)

There are no oligosaccharides in this entry.

5.6 Ligand geometry [i](#)

Of 6 ligands modelled in this entry, 5 are monoatomic - leaving 1 for Mogul analysis.

In the following table, the Counts columns list the number of bonds (or angles) for which Mogul statistics could be retrieved, the number of bonds (or angles) that are observed in the model and the number of bonds (or angles) that are defined in the Chemical Component Dictionary. The Link column lists molecule types, if any, to which the group is linked. The Z score for a bond length (or angle) is the number of standard deviations the observed value is removed from the expected value. A bond length (or angle) with $|Z| > 2$ is considered an outlier worth inspection. RMSZ is the root-mean-square of all Z scores of the bond lengths (or angles).

Mol	Type	Chain	Res	Link	Bond lengths			Bond angles		
					Counts	RMSZ	$\# Z > 2$	Counts	RMSZ	$\# Z > 2$
5	SF4	A	601	1	0,12,12	-	-	-		

In the following table, the Chirals column lists the number of chiral outliers, the number of chiral centers analysed, the number of these observed in the model and the number defined in the Chemical Component Dictionary. Similar counts are reported in the Torsion and Rings columns.

'-' means no outliers of that kind were identified.

Mol	Type	Chain	Res	Link	Chirals	Torsions	Rings
5	SF4	A	601	1	-	-	0/6/5/5

There are no bond length outliers.

There are no bond angle outliers.

There are no chirality outliers.

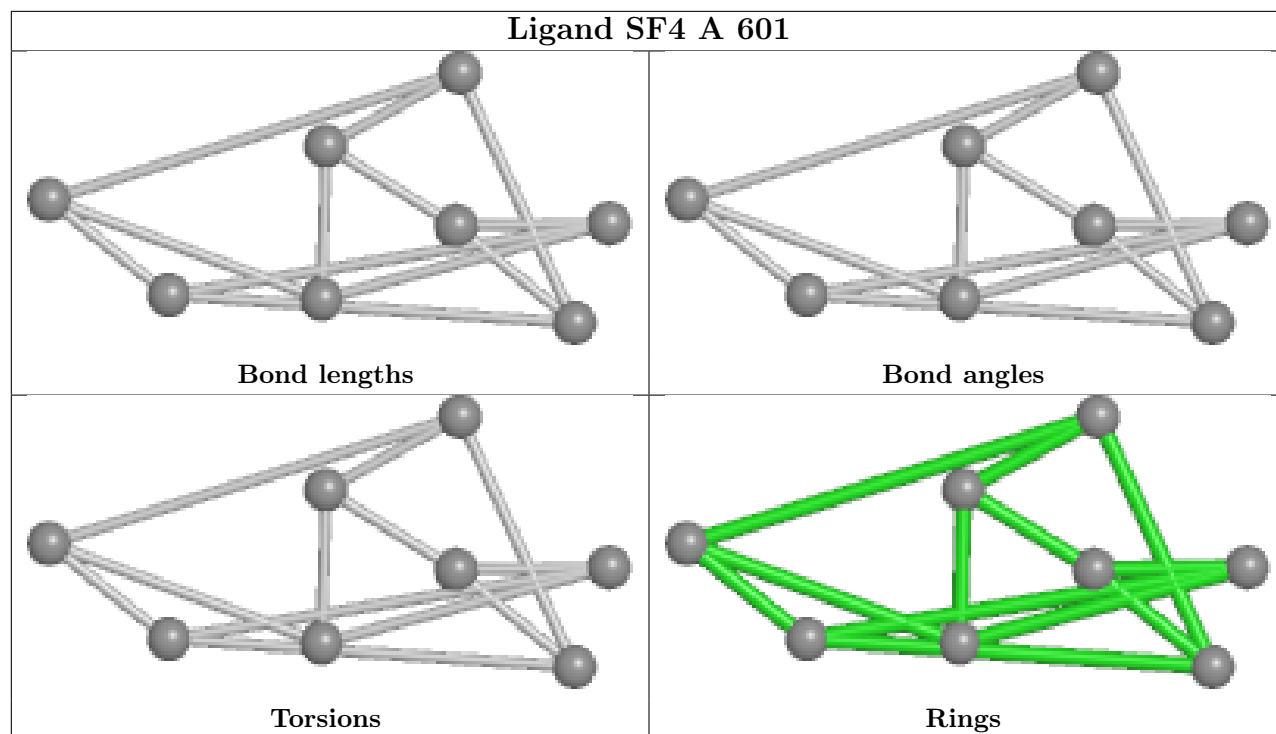
There are no torsion outliers.

There are no ring outliers.

1 monomer is involved in 3 short contacts:

Mol	Chain	Res	Type	Clashes	Symm-Clashes
5	A	601	SF4	3	0

The following is a two-dimensional graphical depiction of Mogul quality analysis of bond lengths, bond angles, torsion angles, and ring geometry for all instances of the Ligand of Interest. In addition, ligands with molecular weight > 250 and outliers as shown on the validation Tables will also be included. For torsion angles, if less than 5% of the Mogul distribution of torsion angles is within 10 degrees of the torsion angle in question, then that torsion angle is considered an outlier. Any bond that is central to one or more torsion angles identified as an outlier by Mogul will be highlighted in the graph. For rings, the root-mean-square deviation (RMSD) between the ring in question and similar rings identified by Mogul is calculated over all ring torsion angles. If the average RMSD is greater than 60 degrees and the minimal RMSD between the ring in question and any Mogul-identified rings is also greater than 60 degrees, then that ring is considered an outlier. The outliers are highlighted in purple. The color gray indicates Mogul did not find sufficient equivalents in the CSD to analyse the geometry.



5.7 Other polymers [i](#)

There are no such residues in this entry.

5.8 Polymer linkage issues [i](#)

There are no chain breaks in this entry.

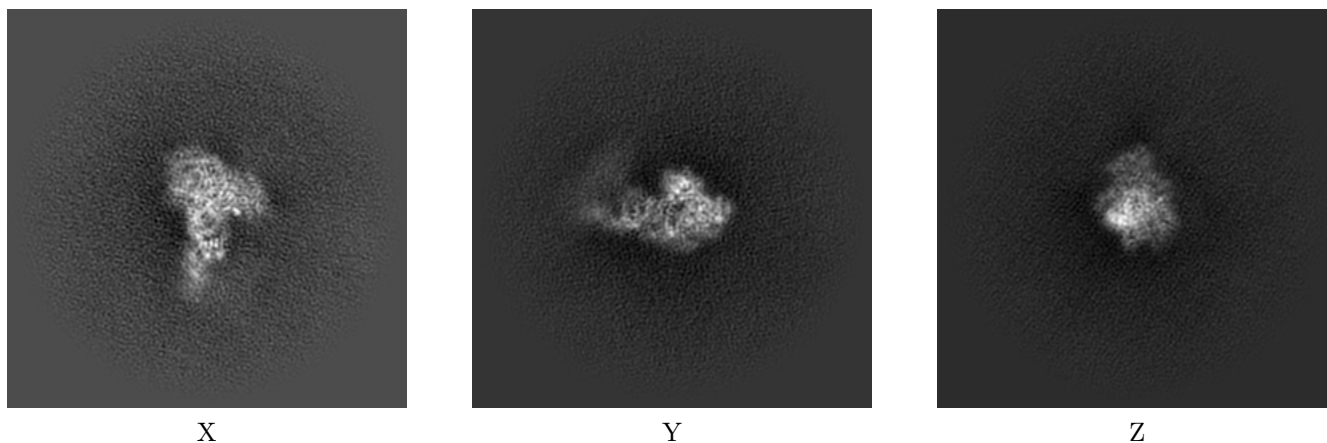
6 Map visualisation [i](#)

This section contains visualisations of the EMDB entry EMD-23847. These allow visual inspection of the internal detail of the map and identification of artifacts.

No raw map or half-maps were deposited for this entry and therefore no images, graphs, etc. pertaining to the raw map can be shown.

6.1 Orthogonal projections [i](#)

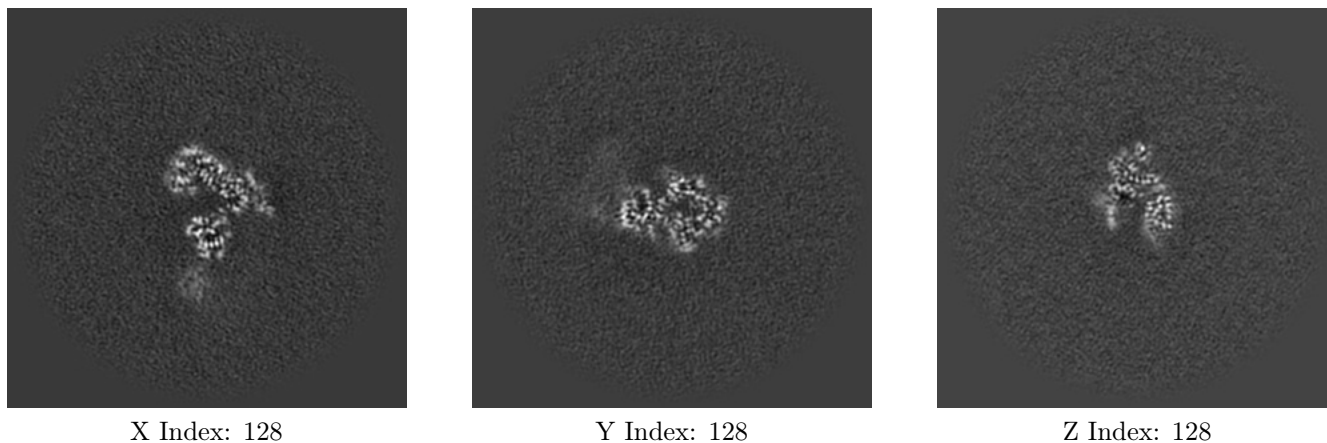
6.1.1 Primary map



The images above show the map projected in three orthogonal directions.

6.2 Central slices [i](#)

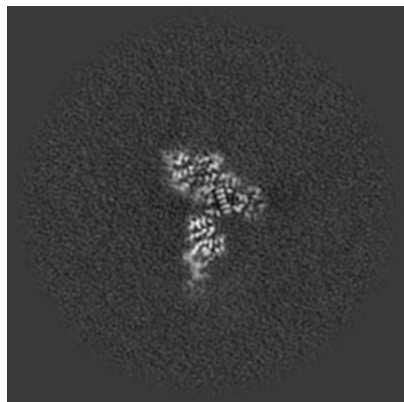
6.2.1 Primary map



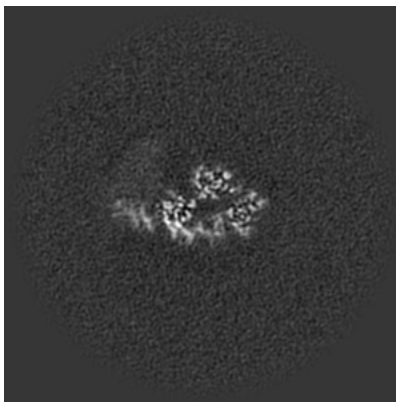
The images above show central slices of the map in three orthogonal directions.

6.3 Largest variance slices [i](#)

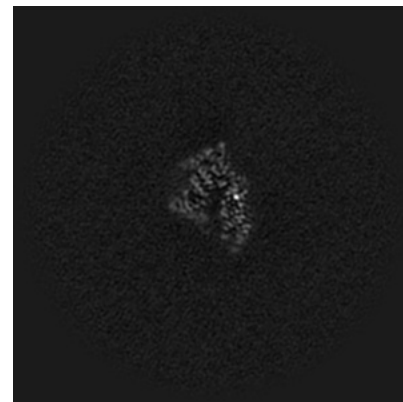
6.3.1 Primary map



X Index: 120



Y Index: 123

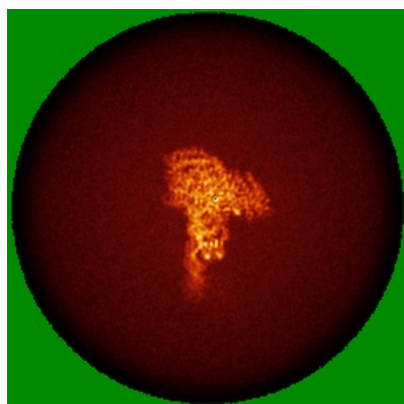


Z Index: 134

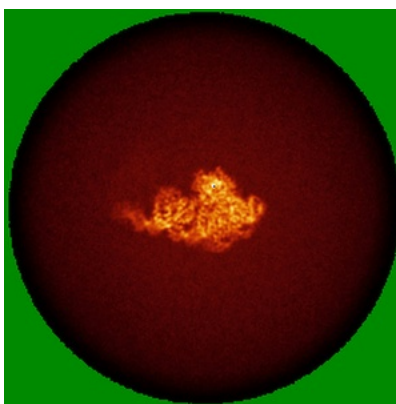
The images above show the largest variance slices of the map in three orthogonal directions.

6.4 Orthogonal standard-deviation projections (False-color) [i](#)

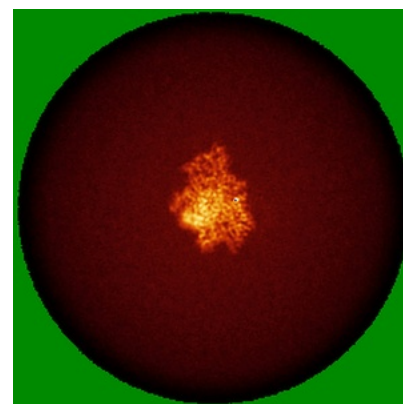
6.4.1 Primary map



X



Y



Z

The images above show the map standard deviation projections with false color in three orthogonal directions. Minimum values are shown in green, max in blue, and dark to light orange shades represent small to large values respectively.

6.5 Orthogonal surface views [i](#)

6.5.1 Primary map



The images above show the 3D surface view of the map at the recommended contour level 0.258. These images, in conjunction with the slice images, may facilitate assessment of whether an appropriate contour level has been provided.

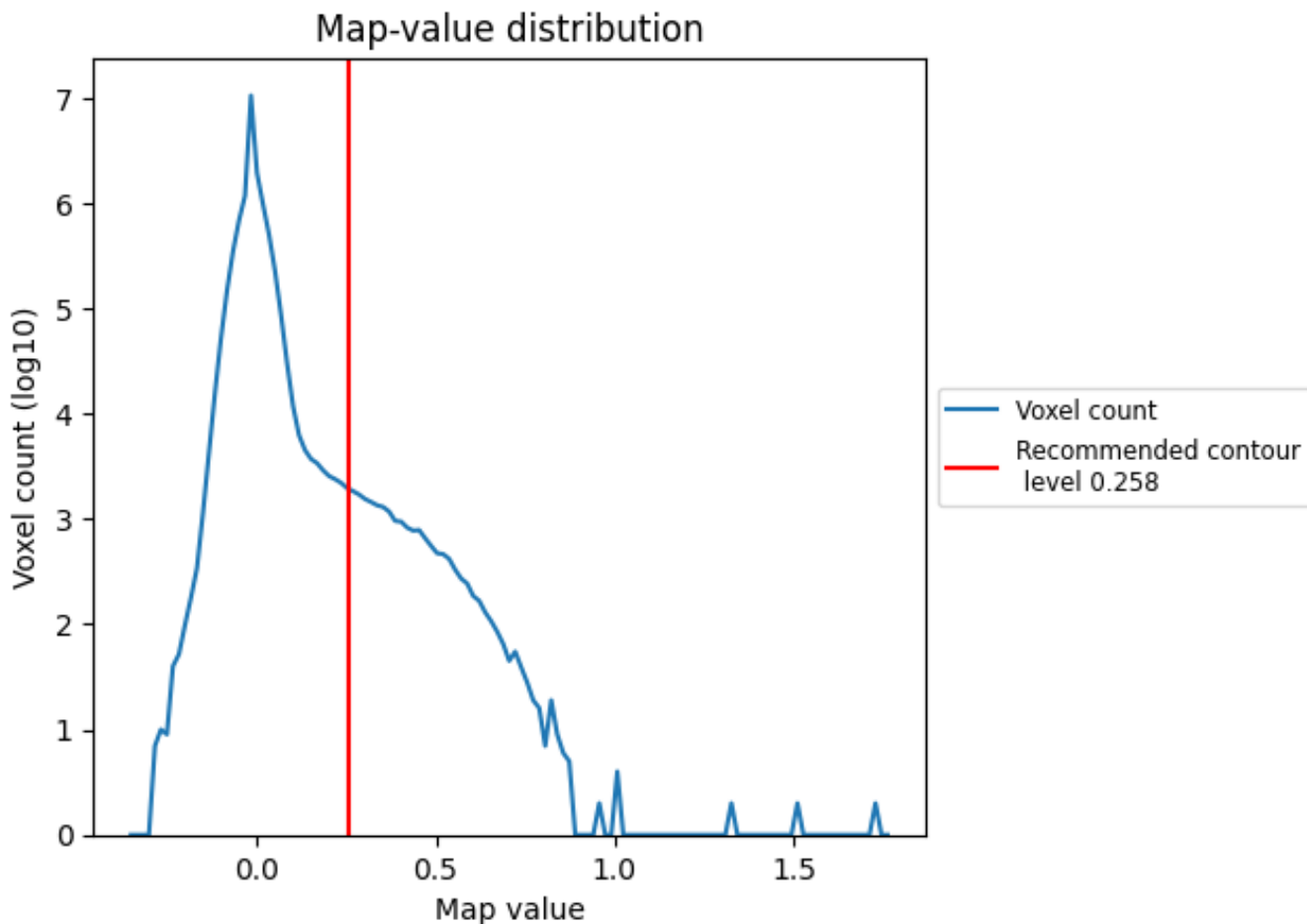
6.6 Mask visualisation [i](#)

This section was not generated. No masks/segmentation were deposited.

7 Map analysis [i](#)

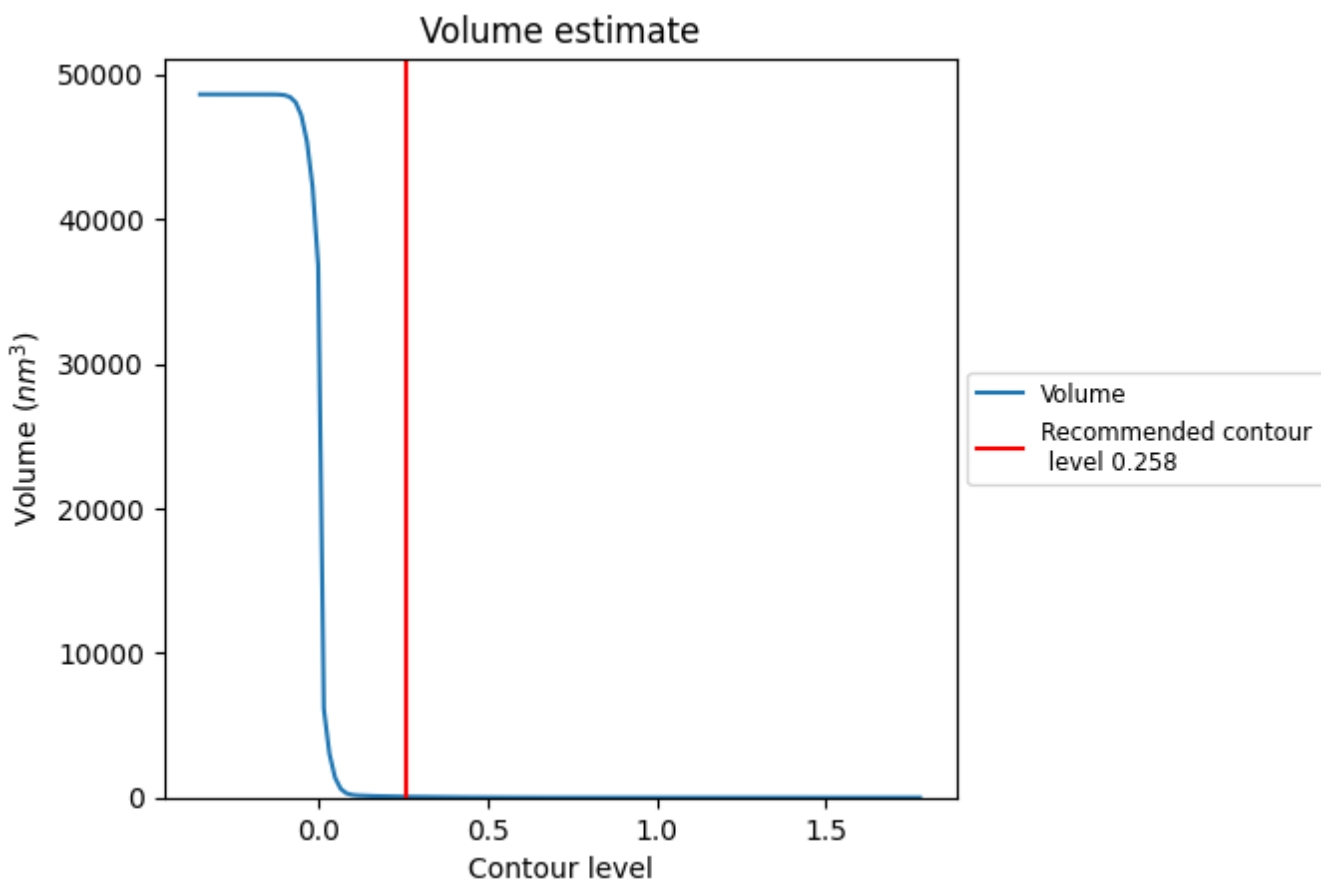
This section contains the results of statistical analysis of the map.

7.1 Map-value distribution [i](#)



The map-value distribution is plotted in 128 intervals along the x-axis. The y-axis is logarithmic. A spike in this graph at zero usually indicates that the volume has been masked.

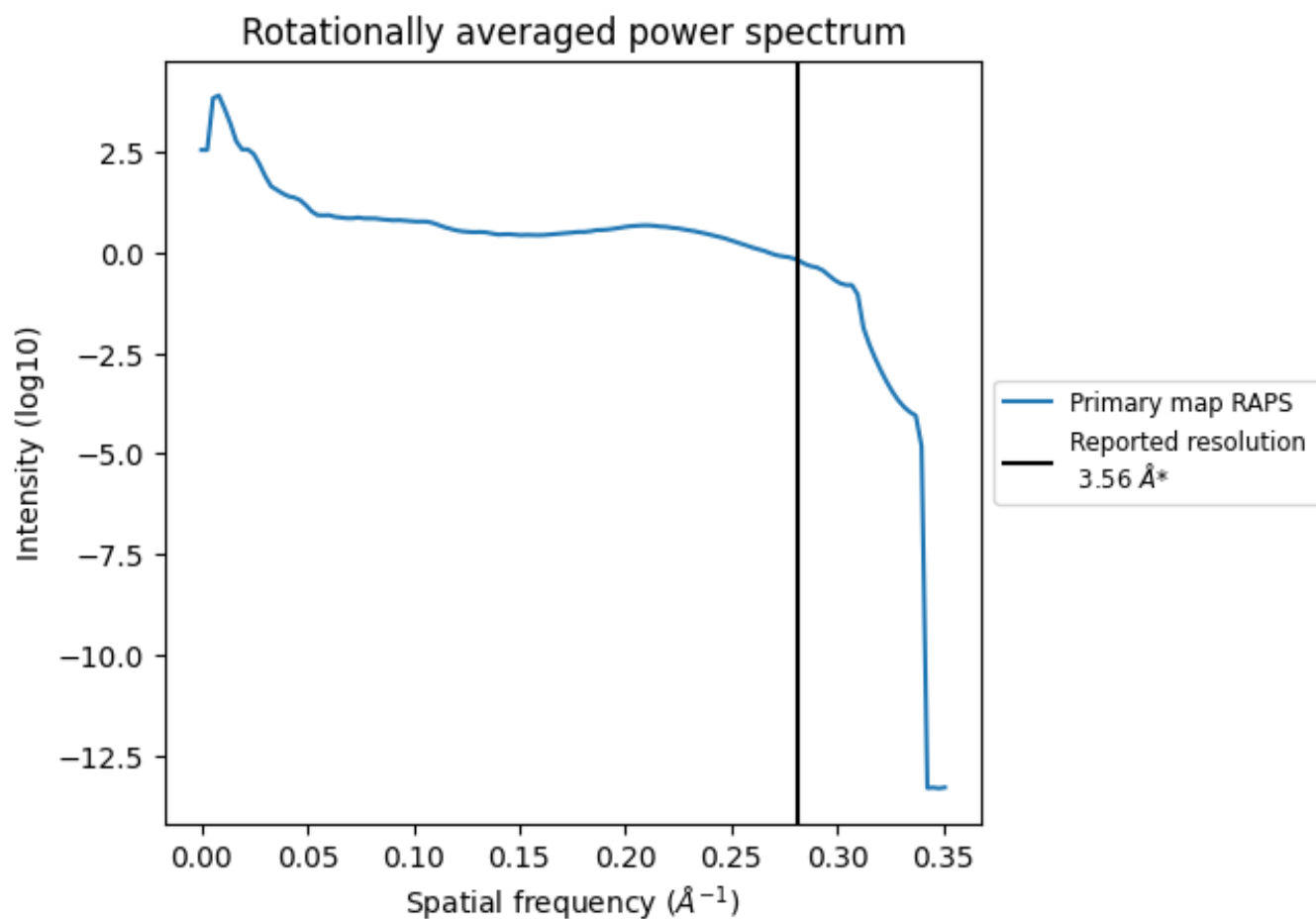
7.2 Volume estimate [\(i\)](#)



The volume at the recommended contour level is 59 nm³; this corresponds to an approximate mass of 53 kDa.

The volume estimate graph shows how the enclosed volume varies with the contour level. The recommended contour level is shown as a vertical line and the intersection between the line and the curve gives the volume of the enclosed surface at the given level.

7.3 Rotationally averaged power spectrum [i](#)



*Reported resolution corresponds to spatial frequency of 0.281\AA^{-1}

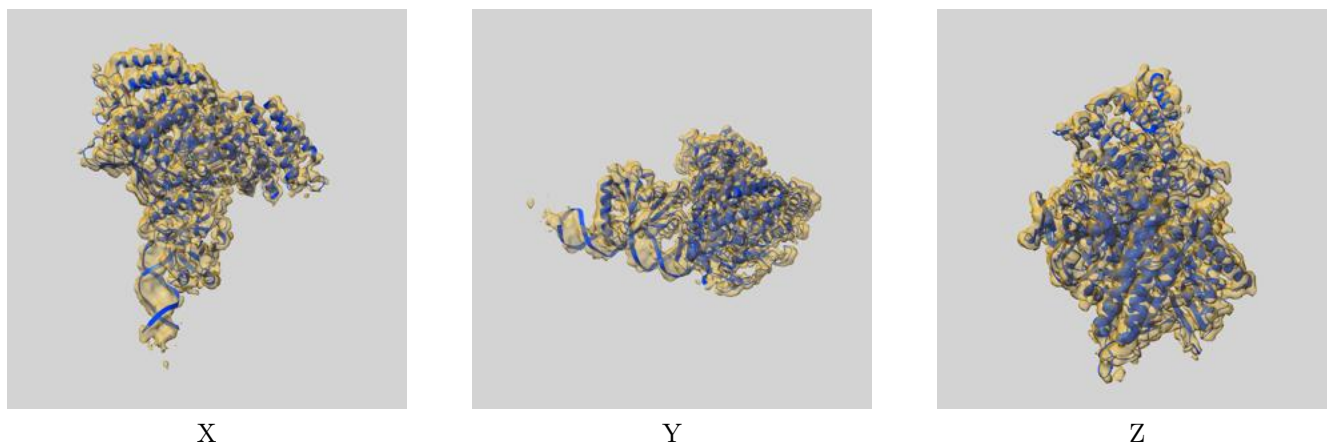
8 Fourier-Shell correlation

This section was not generated. No FSC curve or half-maps provided.

9 Map-model fit [i](#)

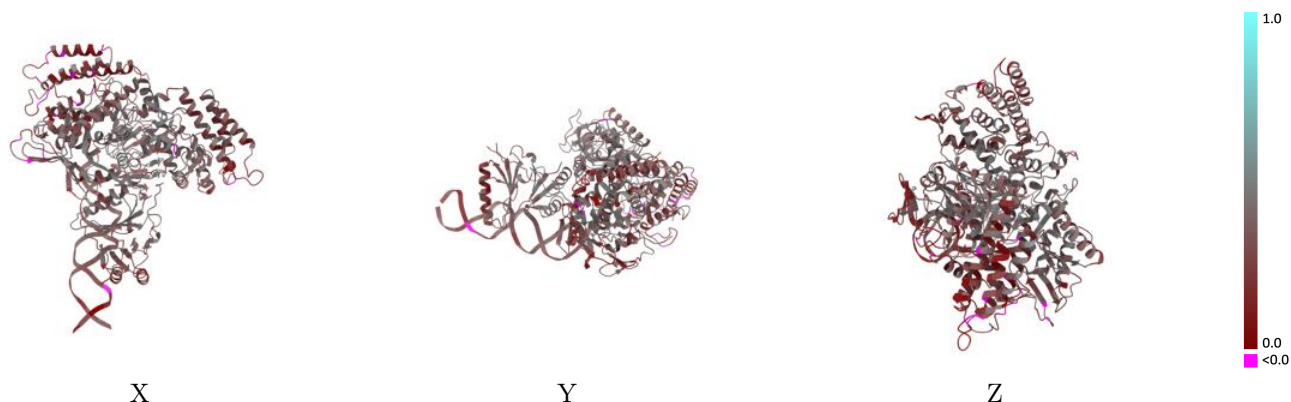
This section contains information regarding the fit between EMDB map EMD-23847 and PDB model 7MID. Per-residue inclusion information can be found in section 3 on page 6.

9.1 Map-model overlay [i](#)



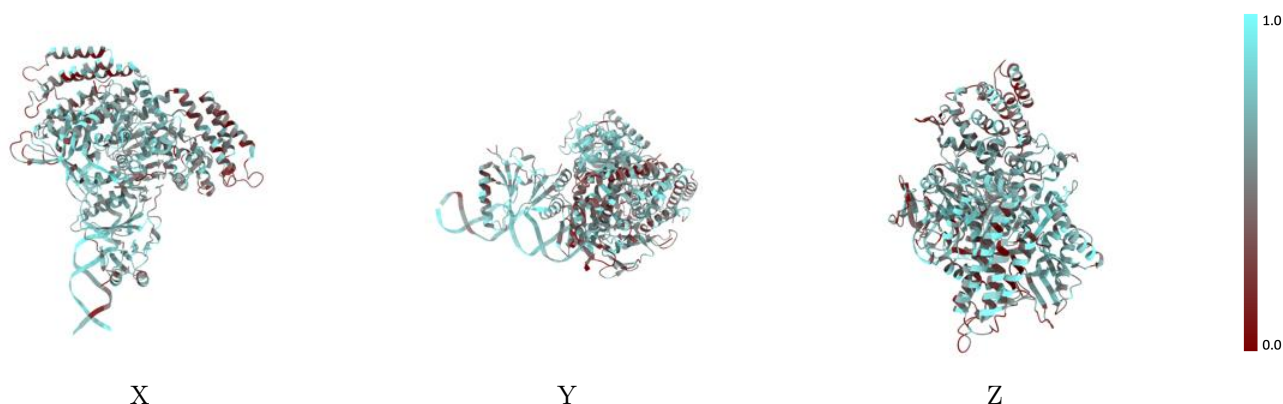
The images above show the 3D surface view of the map at the recommended contour level 0.258 at 50% transparency in yellow overlaid with a ribbon representation of the model coloured in blue. These images allow for the visual assessment of the quality of fit between the atomic model and the map.

9.2 Q-score mapped to coordinate model [i](#)



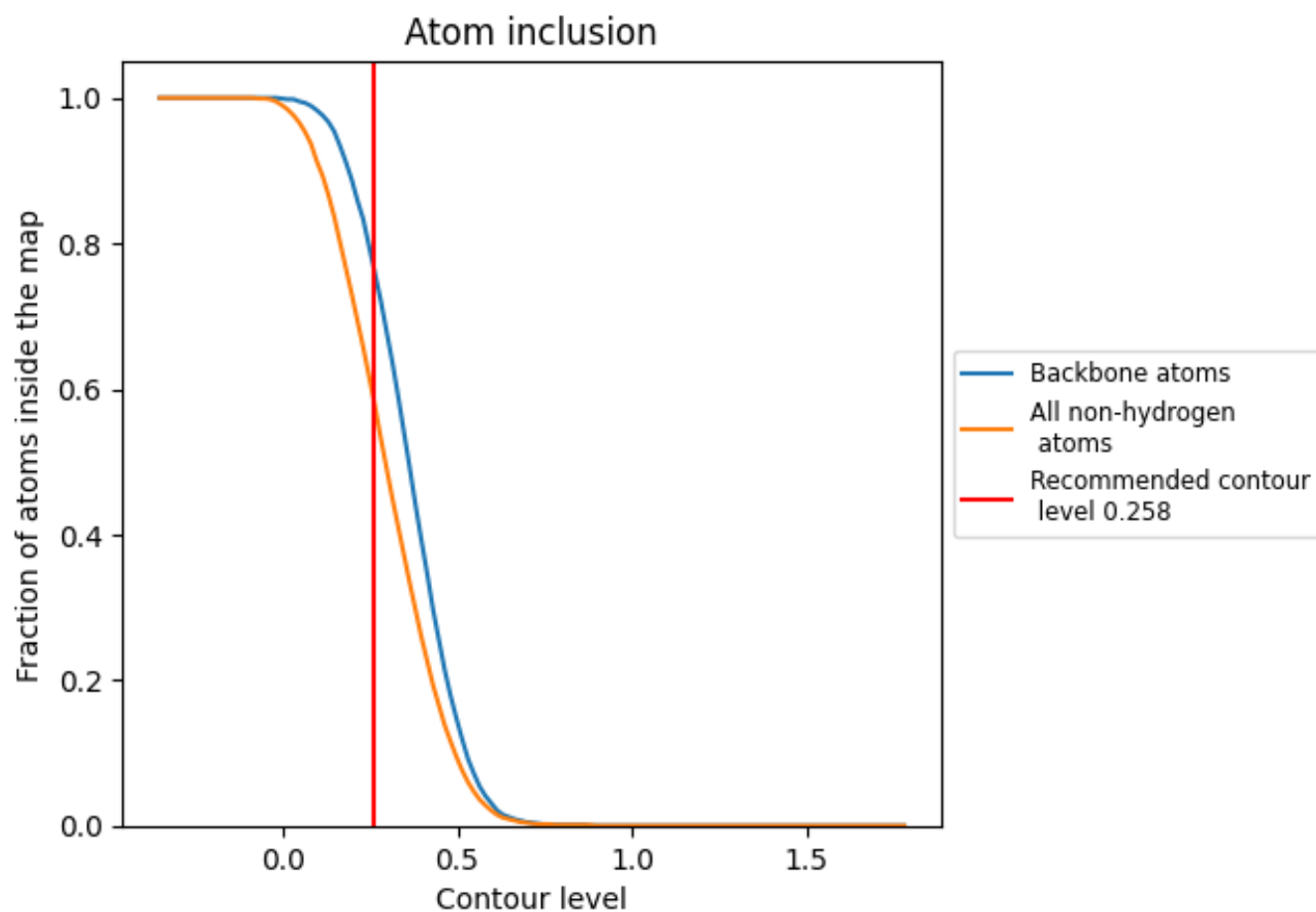
The images above show the model with each residue coloured according to its Q-score. This shows their resolvability in the map with higher Q-score values reflecting better resolvability. Please note: Q-score is calculating the resolvability of atoms, and thus high values are only expected at resolutions at which atoms can be resolved. Low Q-score values may therefore be expected for many entries.

9.3 Atom inclusion mapped to coordinate model [i](#)



The images above show the model with each residue coloured according to its atom inclusion. This shows to what extent they are inside the map at the recommended contour level (0.258).















9.4 Atom inclusion [i](#)



At the recommended contour level, 77% of all backbone atoms, 59% of all non-hydrogen atoms, are inside the map.

9.5 Map-model fit summary [i](#)

The table lists the average atom inclusion at the recommended contour level (0.258) and Q-score for the entire model and for each chain.

Chain	Atom inclusion	Q-score
All	 0.5920	 0.3160
A	 0.5730	 0.3570
B	 0.5530	 0.2690
C	 0.6640	 0.3700
D	 0.6080	 0.2940
E	 0.7500	 0.2390
F	 0.6540	 0.2590

