



Full wwPDB X-ray Structure Validation Report ⓘ

Oct 10, 2023 – 04:37 AM EDT

PDB ID : 7LW3
Title : Structure of SARS-CoV-2 nsp16/nsp10 complex in presence of Cap-1 analog (m7GpppAmU) and SAH
Authors : Gupta, Y.K.; Viswanathan, T.; Misra, A.; Qi, S.
Deposited on : 2021-02-27
Resolution : 2.30 Å (reported)

This is a Full wwPDB X-ray Structure Validation Report for a publicly released PDB entry.

We welcome your comments at validation@mail.wwpdb.org

A user guide is available at

<https://www.wwpdb.org/validation/2017/XrayValidationReportHelp>

with specific help available everywhere you see the ⓘ symbol.

The types of validation reports are described at

<http://www.wwpdb.org/validation/2017/FAQs#types>.

The following versions of software and data (see [references ⓘ](#)) were used in the production of this report:

MolProbity : 4.02b-467
Mogul : 1.8.5 (274361), CSD as541be (2020)
Xtriage (Phenix) : 1.13
EDS : 2.35.1
buster-report : 1.1.7 (2018)
Percentile statistics : 20191225.v01 (using entries in the PDB archive December 25th 2019)
Refmac : 5.8.0158
CCP4 : 7.0.044 (Gargrove)
Ideal geometry (proteins) : Engh & Huber (2001)
Ideal geometry (DNA, RNA) : Parkinson et al. (1996)
Validation Pipeline (wwPDB-VP) : 2.35.1

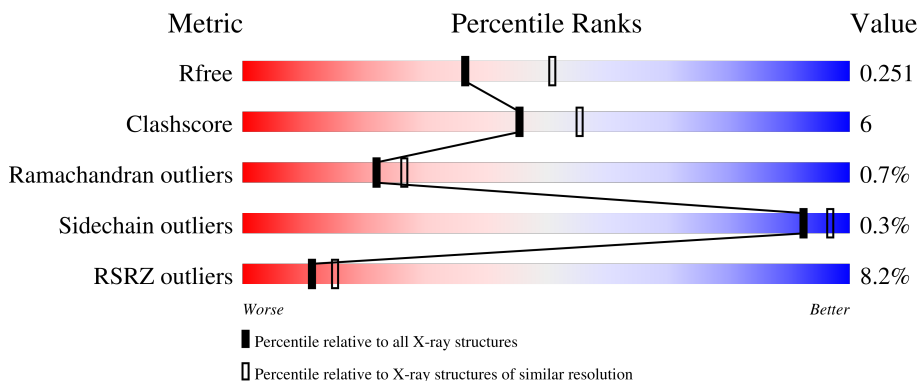
1 Overall quality at a glance

The following experimental techniques were used to determine the structure:

X-RAY DIFFRACTION

The reported resolution of this entry is 2.30 Å.

Percentile scores (ranging between 0-100) for global validation metrics of the entry are shown in the following graphic. The table shows the number of entries on which the scores are based.



Metric	Whole archive (#Entries)	Similar resolution (#Entries, resolution range(Å))
R_{free}	130704	5042 (2.30-2.30)
Clashscore	141614	5643 (2.30-2.30)
Ramachandran outliers	138981	5575 (2.30-2.30)
Sidechain outliers	138945	5575 (2.30-2.30)
RSRZ outliers	127900	4938 (2.30-2.30)

The table below summarises the geometric issues observed across the polymeric chains and their fit to the electron density. The red, orange, yellow and green segments of the lower bar indicate the fraction of residues that contain outliers for ≥ 3 , 2, 1 and 0 types of geometric quality criteria respectively. A grey segment represents the fraction of residues that are not modelled. The numeric value for each fraction is indicated below the corresponding segment, with a dot representing fractions $\leq 5\%$. The upper red bar (where present) indicates the fraction of residues that have poor fit to the electron density. The numeric value is given above the bar.

Mol	Chain	Length	Quality of chain
1	A	298	
2	B	139	

2 Entry composition [i](#)

There are 9 unique types of molecules in this entry. The entry contains 3483 atoms, of which 39 are hydrogens and 0 are deuteriums.

In the tables below, the ZeroOcc column contains the number of atoms modelled with zero occupancy, the AltConf column contains the number of residues with at least one atom in alternate conformation and the Trace column contains the number of residues modelled with at most 2 atoms.

- Molecule 1 is a protein called 2'-O-methyltransferase.

Mol	Chain	Residues	Atoms					ZeroOcc	AltConf	Trace
			Total	C	N	O	S			
1	A	298	2324	1484	389	434	17	0	0	0

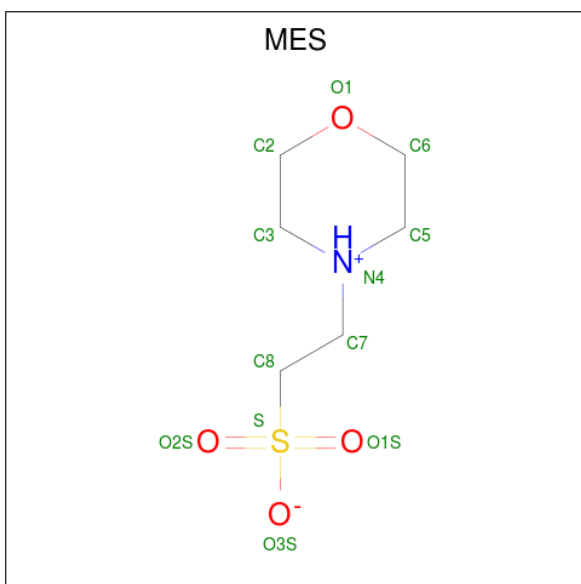
- Molecule 2 is a protein called Non-structural protein 10.

Mol	Chain	Residues	Atoms					ZeroOcc	AltConf	Trace
			Total	C	N	O	S			
2	B	115	842	523	143	161	15	0	0	0

There is a discrepancy between the modelled and reference sequences:

Chain	Residue	Modelled	Actual	Comment	Reference
B	113	ARG	LYS	conflict	UNP P0DTD1

- Molecule 3 is 2-(N-MORPHOLINO)-ETHANESULFONIC ACID (three-letter code: MES) (formula: C₆H₁₃NO₄S).

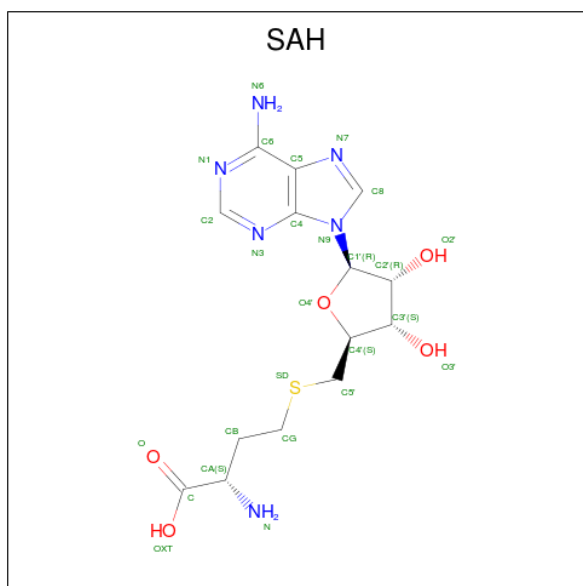


Mol	Chain	Residues	Atoms					ZeroOcc	AltConf
			Total	C	N	O	S		
3	A	1	12	6	1	4	1	0	0

- Molecule 4 is MAGNESIUM ION (three-letter code: MG) (formula: Mg) (labeled as "Ligand of Interest" by depositor).

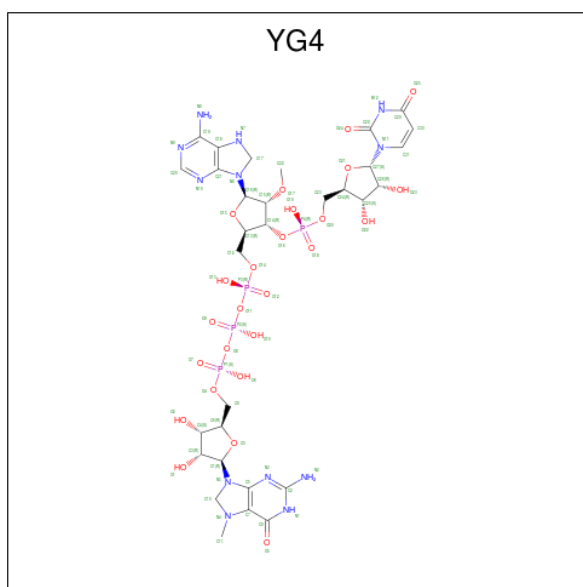
Mol	Chain	Residues	Atoms		ZeroOcc	AltConf
			Total	Mg		
4	A	1	1	1	0	0

- Molecule 5 is S-ADENOSYL-L-HOMOCYSTEINE (three-letter code: SAH) (formula: C₁₄H₂₀N₆O₅S) (labeled as "Ligand of Interest" by depositor).



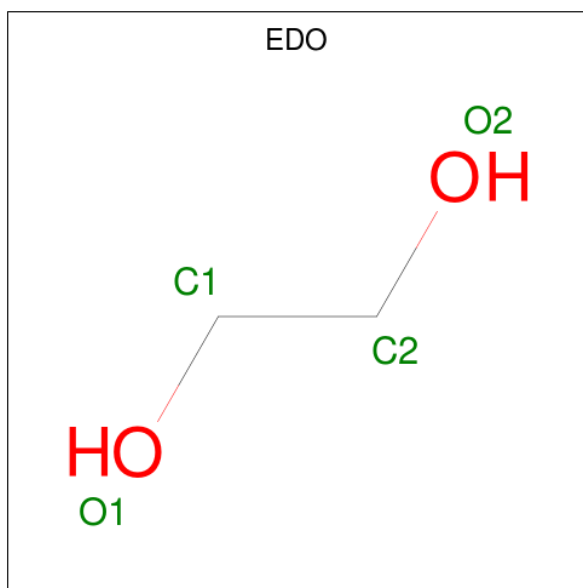
Mol	Chain	Residues	Atoms					ZeroOcc	AltConf
			Total	C	N	O	S		
5	A	1	26	14	6	5	1	0	0

- Molecule 6 is [(2 {R},3 {R},4 {R},5 {R})-5-(6-azanyl-7,8-dihydropurin-9-yl)-2-[[[[[(2 {R},3 {S},4 {R},5 {R})-5-(2-azanyl-7-methyl-6-oxidanylidene-1,8-dihydropurin-9-yl)-3,4-bis(oxidanyl)oxolan-2-yl]methoxy-oxidanyl-phosphoryl]oxy-oxidanyl-phosphoryl]oxy-oxidanyl-phosphoryl]oxymethyl]-4-methoxy-oxolan-3-yl] [(2 {R},3 {S},4 {R},5 {S})-5-[2,4-bis(oxidanylidene)pyrimidin-1-yl]-3,4-bis(oxidanyl)oxolan-2-yl]methyl hydrogen phosphate (three-letter code: YG4) (formula: C₃₁H₄₆N₁₂O₂₅P₄) (labeled as "Ligand of Interest" by depositor).



Mol	Chain	Residues	Atoms					ZeroOcc	AltConf	
			Total	C	H	N	O			P
6	A	1	111	31	39	12	25	4	0	0

- Molecule 7 is 1,2-ETHANEDIOL (three-letter code: EDO) (formula: C₂H₆O₂).



Mol	Chain	Residues	Atoms		ZeroOcc	AltConf	
			Total	C			O
7	B	1	4	2	2	0	0

- Molecule 8 is ZINC ION (three-letter code: ZN) (formula: Zn).

Mol	Chain	Residues	Atoms		ZeroOcc	AltConf
8	B	2	Total 2	Zn 2	0	0

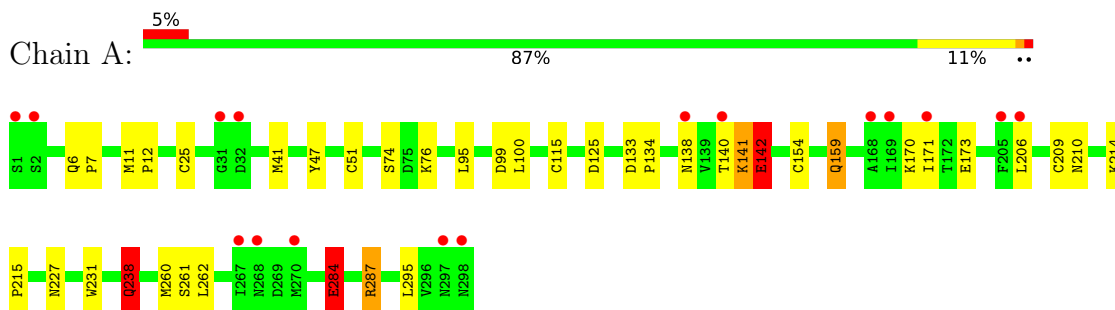
- Molecule 9 is water.

Mol	Chain	Residues	Atoms		ZeroOcc	AltConf
9	A	133	Total 133	O 133	0	0
9	B	28	Total 28	O 28	0	0

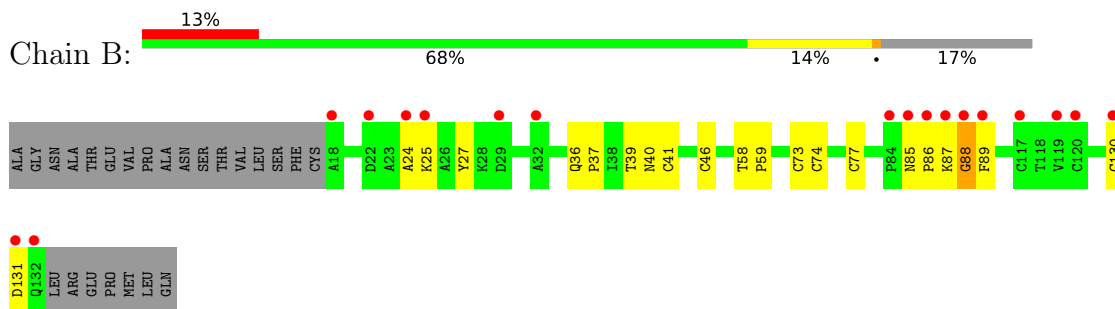
3 Residue-property plots [i](#)

These plots are drawn for all protein, RNA, DNA and oligosaccharide chains in the entry. The first graphic for a chain summarises the proportions of the various outlier classes displayed in the second graphic. The second graphic shows the sequence view annotated by issues in geometry and electron density. Residues are color-coded according to the number of geometric quality criteria for which they contain at least one outlier: green = 0, yellow = 1, orange = 2 and red = 3 or more. A red dot above a residue indicates a poor fit to the electron density ($RSRZ > 2$). Stretches of 2 or more consecutive residues without any outlier are shown as a green connector. Residues present in the sample, but not in the model, are shown in grey.

- Molecule 1: 2'-O-methyltransferase



- Molecule 2: Non-structural protein 10



4 Data and refinement statistics i

Property	Value	Source
Space group	P 31 2 1	Depositor
Cell constants a, b, c, α , β , γ	184.07Å 184.07Å 57.13Å 90.00° 90.00° 120.00°	Depositor
Resolution (Å)	29.71 – 2.30 29.71 – 2.30	Depositor EDS
% Data completeness (in resolution range)	100.0 (29.71-2.30) 100.0 (29.71-2.30)	Depositor EDS
R_{merge}	0.09	Depositor
R_{sym}	(Not available)	Depositor
$\langle I/\sigma(I) \rangle$ ¹	3.29 (at 2.31Å)	Xtrriage
Refinement program	PHENIX 1.18.2_3874	Depositor
R, R_{free}	0.222 , 0.251 0.222 , 0.251	Depositor DCC
R_{free} test set	2517 reflections (5.09%)	wwPDB-VP
Wilson B-factor (Å ²)	44.9	Xtrriage
Anisotropy	0.092	Xtrriage
Bulk solvent k_{sol} (e/Å ³), B_{sol} (Å ²)	0.25 , 100.1	EDS
L-test for twinning ²	$\langle L \rangle = 0.50$, $\langle L^2 \rangle = 0.33$	Xtrriage
Estimated twinning fraction	0.026 for -h,-k,l	Xtrriage
F_o, F_c correlation	0.94	EDS
Total number of atoms	3483	wwPDB-VP
Average B, all atoms (Å ²)	57.0	wwPDB-VP

Xtrriage's analysis on translational NCS is as follows: *The largest off-origin peak in the Patterson function is 3.86% of the height of the origin peak. No significant pseudotranslation is detected.*

¹Intensities estimated from amplitudes.

²Theoretical values of $\langle |L| \rangle$, $\langle L^2 \rangle$ for acentric reflections are 0.5, 0.333 respectively for untwinned datasets, and 0.375, 0.2 for perfectly twinned datasets.

5 Model quality [i](#)

5.1 Standard geometry [i](#)

Bond lengths and bond angles in the following residue types are not validated in this section: ZN, SAH, MG, YG4, MES, EDO

The Z score for a bond length (or angle) is the number of standard deviations the observed value is removed from the expected value. A bond length (or angle) with $|Z| > 5$ is considered an outlier worth inspection. RMSZ is the root-mean-square of all Z scores of the bond lengths (or angles).

Mol	Chain	Bond lengths		Bond angles	
		RMSZ	# Z >5	RMSZ	# Z >5
1	A	1.40	17/2375 (0.7%)	1.30	20/3225 (0.6%)
2	B	0.94	5/861 (0.6%)	0.84	1/1169 (0.1%)
All	All	1.29	22/3236 (0.7%)	1.20	21/4394 (0.5%)

Chiral center outliers are detected by calculating the chiral volume of a chiral center and verifying if the center is modelled as a planar moiety or with the opposite hand. A planarity outlier is detected by checking planarity of atoms in a peptide group, atoms in a mainchain group or atoms of a sidechain that are expected to be planar.

Mol	Chain	#Chirality outliers	#Planarity outliers
1	A	0	5

All (22) bond length outliers are listed below:

Mol	Chain	Res	Type	Atoms	Z	Observed(Å)	Ideal(Å)
1	A	284	GLU	CB-CG	18.15	1.86	1.52
1	A	142	GLU	CB-CG	15.78	1.82	1.52
1	A	284	GLU	CG-CD	12.38	1.70	1.51
2	B	41	CYS	CB-SG	10.37	1.99	1.82
1	A	238	GLN	CB-CG	9.15	1.77	1.52
2	B	73	CYS	CB-SG	9.09	1.97	1.82
1	A	209	CYS	CB-SG	8.96	1.97	1.82
1	A	51	CYS	CB-SG	8.78	1.97	1.82
1	A	154	CYS	CB-SG	8.39	1.96	1.82
1	A	284	GLU	CD-OE1	7.02	1.33	1.25
1	A	159	GLN	CB-CG	6.94	1.71	1.52
1	A	25	CYS	CB-SG	6.76	1.93	1.82
1	A	173	GLU	CG-CD	6.66	1.61	1.51
1	A	115	CYS	CB-SG	6.56	1.93	1.82
2	B	77	CYS	CB-SG	6.35	1.93	1.82
2	B	74	CYS	CB-SG	6.22	1.92	1.82

Continued on next page...

Continued from previous page...

Mol	Chain	Res	Type	Atoms	Z	Observed(Å)	Ideal(Å)
2	B	46	CYS	CB-SG	5.86	1.92	1.82
1	A	173	GLU	CB-CG	5.81	1.63	1.52
1	A	231	TRP	CB-CG	5.76	1.60	1.50
1	A	142	GLU	CG-CD	5.34	1.59	1.51
1	A	47	TYR	CD2-CE2	5.34	1.47	1.39
1	A	142	GLU	CD-OE1	5.31	1.31	1.25

All (21) bond angle outliers are listed below:

Mol	Chain	Res	Type	Atoms	Z	Observed(°)	Ideal(°)
1	A	142	GLU	OE1-CD-OE2	-22.31	96.52	123.30
1	A	284	GLU	OE1-CD-OE2	-19.64	99.73	123.30
1	A	284	GLU	CG-CD-OE2	-13.90	90.49	118.30
1	A	284	GLU	CA-CB-CG	13.46	143.01	113.40
1	A	142	GLU	CG-CD-OE2	-11.88	94.53	118.30
1	A	284	GLU	CG-CD-OE1	11.30	140.89	118.30
1	A	142	GLU	CG-CD-OE1	11.21	140.71	118.30
1	A	287	ARG	NE-CZ-NH1	-11.10	114.75	120.30
1	A	287	ARG	CD-NE-CZ	9.88	137.43	123.60
1	A	295	LEU	CB-CG-CD1	7.29	123.40	111.00
1	A	287	ARG	CG-CD-NE	-6.59	97.96	111.80
1	A	206	LEU	CA-CB-CG	6.28	129.75	115.30
1	A	138	ASN	CB-CA-C	5.83	122.07	110.40
1	A	41	MET	CA-CB-CG	5.71	123.02	113.30
1	A	125	ASP	CB-CG-OD1	5.69	123.42	118.30
1	A	159	GLN	CG-CD-NE2	-5.52	103.45	116.70
1	A	173	GLU	OE1-CD-OE2	-5.35	116.88	123.30
1	A	142	GLU	CB-CA-C	-5.27	99.85	110.40
1	A	209	CYS	CA-CB-SG	5.24	123.44	114.00
1	A	95	LEU	CA-CB-CG	5.23	127.33	115.30
2	B	73	CYS	CA-CB-SG	5.05	123.09	114.00

There are no chirality outliers.

All (5) planarity outliers are listed below:

Mol	Chain	Res	Type	Group
1	A	142	GLU	Sidechain
1	A	159	GLN	Sidechain
1	A	238	GLN	Sidechain
1	A	284	GLU	Sidechain
1	A	287	ARG	Sidechain

5.2 Too-close contacts

In the following table, the Non-H and H(model) columns list the number of non-hydrogen atoms and hydrogen atoms in the chain respectively. The H(added) column lists the number of hydrogen atoms added and optimized by MolProbity. The Clashes column lists the number of clashes within the asymmetric unit, whereas Symm-Clashes lists symmetry-related clashes.

Mol	Chain	Non-H	H(model)	H(added)	Clashes	Symm-Clashes
1	A	2324	0	2300	28	0
2	B	842	0	793	12	0
3	A	12	0	12	0	0
4	A	1	0	0	0	0
5	A	26	0	19	0	0
6	A	72	39	0	1	0
7	B	4	0	6	0	0
8	B	2	0	0	0	0
9	A	133	0	0	3	0
9	B	28	0	0	2	0
All	All	3444	39	3130	41	0

The all-atom clashscore is defined as the number of clashes found per 1000 atoms (including hydrogen atoms). The all-atom clashscore for this structure is 6.

All (41) close contacts within the same asymmetric unit are listed below, sorted by their clash magnitude.

Atom-1	Atom-2	Interatomic distance (Å)	Clash overlap (Å)
1:A:238:GLN:CB	1:A:238:GLN:CG	1.77	1.59
1:A:142:GLU:CB	1:A:142:GLU:CG	1.82	1.54
1:A:284:GLU:CB	1:A:284:GLU:CG	1.86	1.54
6:A:704:YG4:O3	6:A:704:YG4:C1	1.65	1.19
1:A:11:MET:HE1	9:A:847:HOH:O	1.50	1.11
1:A:141:LYS:HG3	1:A:142:GLU:H	1.32	0.94
2:B:27:TYR:N	9:B:301:HOH:O	2.08	0.87
2:B:85:ASN:OD1	2:B:86:PRO:HD2	1.84	0.77
1:A:238:GLN:CB	1:A:238:GLN:CD	2.54	0.75
2:B:24:ALA:O	9:B:301:HOH:O	2.05	0.75
2:B:25:LYS:O	2:B:25:LYS:HG2	1.91	0.71
1:A:227:ASN:HB3	9:A:847:HOH:O	1.91	0.71
1:A:141:LYS:HG3	1:A:142:GLU:N	2.09	0.66
1:A:214:LYS:HB2	1:A:215:PRO:HD2	1.79	0.64
1:A:238:GLN:CG	1:A:238:GLN:CA	2.74	0.63
1:A:141:LYS:CG	1:A:142:GLU:H	2.10	0.62
1:A:142:GLU:CB	1:A:142:GLU:CD	2.66	0.62

Continued on next page...

Continued from previous page...

Atom-1	Atom-2	Interatomic distance (Å)	Clash overlap (Å)
1:A:227:ASN:CB	9:A:847:HOH:O	2.46	0.62
1:A:99:ASP:OD1	1:A:100:LEU:N	2.36	0.57
1:A:141:LYS:NZ	1:A:142:GLU:HG3	2.20	0.57
1:A:140:THR:O	1:A:141:LYS:HB2	2.08	0.53
1:A:284:GLU:CB	1:A:284:GLU:CD	2.77	0.53
1:A:261:SER:O	1:A:262:LEU:HD23	2.10	0.52
1:A:238:GLN:CB	1:A:238:GLN:OE1	2.59	0.51
1:A:260:MET:HE2	1:A:262:LEU:HD11	1.95	0.48
2:B:39:THR:O	2:B:40:ASN:HB2	2.13	0.48
2:B:87:LYS:O	2:B:89:PHE:N	2.47	0.47
2:B:85:ASN:OD1	2:B:86:PRO:CD	2.60	0.46
1:A:141:LYS:CG	1:A:142:GLU:N	2.74	0.46
2:B:58:THR:OG1	2:B:59:PRO:HD2	2.16	0.46
1:A:260:MET:CE	1:A:262:LEU:HD11	2.46	0.46
1:A:142:GLU:CG	1:A:142:GLU:CA	2.84	0.45
1:A:6:GLN:HB3	1:A:7:PRO:HD2	1.99	0.45
2:B:130:CYS:O	2:B:131:ASP:OD2	2.37	0.43
2:B:85:ASN:HB3	2:B:88:GLY:HA2	2.01	0.41
2:B:85:ASN:HD22	2:B:89:PHE:H	1.68	0.41
1:A:74:SER:OG	1:A:76:LYS:HG3	2.20	0.41
1:A:170:LYS:HG2	1:A:171:ILE:N	2.36	0.41
2:B:36:GLN:HA	2:B:37:PRO:HD3	1.91	0.41
1:A:11:MET:HA	1:A:12:PRO:HD3	1.89	0.40
1:A:133:ASP:HA	1:A:134:PRO:HD3	1.89	0.40

There are no symmetry-related clashes.

5.3 Torsion angles [i](#)

5.3.1 Protein backbone [i](#)

In the following table, the Percentiles column shows the percent Ramachandran outliers of the chain as a percentile score with respect to all X-ray entries followed by that with respect to entries of similar resolution.

The Analysed column shows the number of residues for which the backbone conformation was analysed, and the total number of residues.

Mol	Chain	Analysed	Favoured	Allowed	Outliers	Percentiles
1	A	296/298 (99%)	282 (95%)	12 (4%)	2 (1%)	22 26

Continued on next page...

Continued from previous page...

Mol	Chain	Analysed	Favoured	Allowed	Outliers	Percentiles	
2	B	113/139 (81%)	101 (89%)	11 (10%)	1 (1%)	17	20
All	All	409/437 (94%)	383 (94%)	23 (6%)	3 (1%)	22	26

All (3) Ramachandran outliers are listed below:

Mol	Chain	Res	Type
1	A	141	LYS
2	B	88	GLY
1	A	210	ASN

5.3.2 Protein sidechains [i](#)

In the following table, the Percentiles column shows the percent sidechain outliers of the chain as a percentile score with respect to all X-ray entries followed by that with respect to entries of similar resolution.

The Analysed column shows the number of residues for which the sidechain conformation was analysed, and the total number of residues.

Mol	Chain	Analysed	Rotameric	Outliers	Percentiles	
1	A	254/258 (98%)	253 (100%)	1 (0%)	91	96
2	B	91/113 (80%)	91 (100%)	0	100	100
All	All	345/371 (93%)	344 (100%)	1 (0%)	92	97

All (1) residues with a non-rotameric sidechain are listed below:

Mol	Chain	Res	Type
1	A	284	GLU

Sometimes sidechains can be flipped to improve hydrogen bonding and reduce clashes. All (1) such sidechains are listed below:

Mol	Chain	Res	Type
1	A	6	GLN

5.3.3 RNA [i](#)

There are no RNA molecules in this entry.

5.4 Non-standard residues in protein, DNA, RNA chains [i](#)

There are no non-standard protein/DNA/RNA residues in this entry.

5.5 Carbohydrates [i](#)

There are no monosaccharides in this entry.

5.6 Ligand geometry [i](#)

Of 7 ligands modelled in this entry, 3 are monoatomic - leaving 4 for Mogul analysis.

In the following table, the Counts columns list the number of bonds (or angles) for which Mogul statistics could be retrieved, the number of bonds (or angles) that are observed in the model and the number of bonds (or angles) that are defined in the Chemical Component Dictionary. The Link column lists molecule types, if any, to which the group is linked. The Z score for a bond length (or angle) is the number of standard deviations the observed value is removed from the expected value. A bond length (or angle) with $|Z| > 2$ is considered an outlier worth inspection. RMSZ is the root-mean-square of all Z scores of the bond lengths (or angles).

Mol	Type	Chain	Res	Link	Bond lengths			Bond angles		
					Counts	RMSZ	# Z > 2	Counts	RMSZ	# Z > 2
7	EDO	B	201	-	3,3,3	0.49	0	2,2,2	0.47	0
6	YG4	A	704	-	72,79,79	5.95	40 (55%)	97,123,123	3.07	39 (40%)
5	SAH	A	703	-	24,28,28	0.63	1 (4%)	25,40,40	1.01	2 (8%)
3	MES	A	701	-	12,12,12	1.70	1 (8%)	14,16,16	2.62	7 (50%)

In the following table, the Chirals column lists the number of chiral outliers, the number of chiral centers analysed, the number of these observed in the model and the number defined in the Chemical Component Dictionary. Similar counts are reported in the Torsion and Rings columns. '2' means no outliers of that kind were identified.

Mol	Type	Chain	Res	Link	Chirals	Torsions	Rings
7	EDO	B	201	-	-	1/1/1/1	-
6	YG4	A	704	-	-	7/49/118/118	0/8/8/8
5	SAH	A	703	-	-	4/11/31/31	0/3/3/3
3	MES	A	701	-	-	1/6/14/14	0/1/1/1

All (42) bond length outliers are listed below:

Mol	Chain	Res	Type	Atoms	Z	Observed(Å)	Ideal(Å)
6	A	704	YG4	C10-N5	-35.53	1.26	1.46

Continued on next page...

Continued from previous page...

Mol	Chain	Res	Type	Atoms	Z	Observed(Å)	Ideal(Å)
6	A	704	YG4	C7-N4	17.07	1.55	1.35
6	A	704	YG4	C5-N5	13.95	1.53	1.37
6	A	704	YG4	O3-C1	9.86	1.65	1.42
6	A	704	YG4	O5-C9	9.58	1.41	1.23
6	A	704	YG4	C2-N1	8.18	1.57	1.37
6	A	704	YG4	C2-N3	7.55	1.51	1.33
6	A	704	YG4	C2-N2	6.48	1.49	1.34
6	A	704	YG4	O21-C27	5.43	1.54	1.42
3	A	701	MES	C8-S	-5.34	1.69	1.77
6	A	704	YG4	O3-C6	5.08	1.56	1.45
6	A	704	YG4	C31-N11	5.06	1.50	1.38
6	A	704	YG4	C19-N8	4.89	1.46	1.34
6	A	704	YG4	C7-C5	4.83	1.53	1.38
6	A	704	YG4	O15-C16	4.69	1.53	1.42
6	A	704	YG4	P4-O16	4.45	1.72	1.60
6	A	704	YG4	C30-C29	4.39	1.53	1.43
6	A	704	YG4	C28-N11	4.10	1.45	1.38
6	A	704	YG4	O21-C24	4.00	1.53	1.45
6	A	704	YG4	C3-C1	-3.77	1.41	1.53
6	A	704	YG4	C20-N9	-3.68	1.27	1.33
6	A	704	YG4	C4-C3	-3.54	1.43	1.53
6	A	704	YG4	O15-C13	3.52	1.52	1.45
6	A	704	YG4	C1-N5	-3.40	1.40	1.46
6	A	704	YG4	C29-N12	3.32	1.44	1.38
6	A	704	YG4	C19-N9	-3.31	1.26	1.35
6	A	704	YG4	C21-N10	3.30	1.40	1.34
6	A	704	YG4	C28-N12	3.19	1.43	1.38
6	A	704	YG4	C5-N3	3.16	1.41	1.34
6	A	704	YG4	O17-C15	3.05	1.50	1.42
6	A	704	YG4	O25-C29	-2.53	1.19	1.24
6	A	704	YG4	C15-C16	2.47	1.59	1.53
6	A	704	YG4	P4-O20	2.45	1.69	1.59
6	A	704	YG4	O23-C26	2.42	1.48	1.43
6	A	704	YG4	C4-C6	-2.32	1.47	1.53
6	A	704	YG4	P3-O14	2.31	1.68	1.59
6	A	704	YG4	O1-C3	2.18	1.48	1.43
6	A	704	YG4	O24-C28	-2.18	1.19	1.23
5	A	703	SAH	C8-N7	-2.17	1.30	1.34
6	A	704	YG4	O22-C25	2.12	1.48	1.43
6	A	704	YG4	P2-O10	-2.10	1.45	1.55
6	A	704	YG4	O2-C4	2.06	1.47	1.43

All (48) bond angle outliers are listed below:

Mol	Chain	Res	Type	Atoms	Z	Observed(°)	Ideal(°)
6	A	704	YG4	N5-C5-N3	12.58	144.28	125.47
6	A	704	YG4	N10-C21-N6	7.75	136.66	126.87
6	A	704	YG4	O15-C16-C15	-7.35	93.67	106.57
6	A	704	YG4	N10-C20-N9	-7.02	117.62	128.60
6	A	704	YG4	O3-C1-N5	7.01	118.84	109.30
6	A	704	YG4	C7-C5-N3	-6.68	115.39	128.13
6	A	704	YG4	C20-N9-C19	5.72	128.58	118.77
6	A	704	YG4	C3-C4-C6	5.08	112.51	102.64
6	A	704	YG4	C6-O3-C1	-5.04	98.34	109.47
6	A	704	YG4	C5-C7-N4	-5.01	98.57	105.53
6	A	704	YG4	C2-N3-C5	5.00	121.21	112.30
6	A	704	YG4	C14-C15-C16	4.89	115.66	103.56
6	A	704	YG4	C7-C5-N5	-4.64	100.32	106.35
6	A	704	YG4	C7-C9-N1	4.63	119.15	110.99
6	A	704	YG4	O21-C27-N11	4.57	118.80	108.36
6	A	704	YG4	C29-N12-C28	-4.55	120.57	126.58
3	A	701	MES	O1S-S-C8	4.54	112.39	106.92
3	A	701	MES	C5-N4-C3	3.94	117.69	108.83
3	A	701	MES	C7-N4-C5	3.72	120.74	111.23
6	A	704	YG4	C20-N10-C21	3.71	120.51	111.75
6	A	704	YG4	C30-C29-N12	3.69	120.36	114.84
3	A	701	MES	O3S-S-C8	3.63	111.65	105.77
6	A	704	YG4	O25-C29-C30	-3.42	119.14	125.16
6	A	704	YG4	O15-C16-N6	3.35	113.87	109.35
6	A	704	YG4	C24-O21-C27	-3.27	102.25	109.47
6	A	704	YG4	C25-C26-C27	3.18	107.46	101.43
6	A	704	YG4	O17-C15-C16	3.05	115.02	109.08
6	A	704	YG4	N1-C2-N3	-3.03	117.67	123.32
6	A	704	YG4	C27-N11-C28	3.01	123.01	117.57
6	A	704	YG4	C13-O15-C16	2.98	116.05	109.47
3	A	701	MES	C7-N4-C3	2.98	118.86	111.23
6	A	704	YG4	N5-C10-N4	2.95	107.60	103.38
6	A	704	YG4	C2-N1-C9	-2.89	119.82	125.10
5	A	703	SAH	C4'-C5'-SD	-2.83	103.62	113.78
6	A	704	YG4	O16-C14-C15	2.80	120.03	110.07
6	A	704	YG4	O17-C15-C14	-2.77	103.97	111.15
6	A	704	YG4	C27-N11-C31	-2.70	114.95	120.84
6	A	704	YG4	O2-C4-C3	-2.70	103.08	111.82
6	A	704	YG4	O19-P4-O18	-2.66	99.09	112.24
3	A	701	MES	C6-C5-N4	-2.64	106.09	110.10
6	A	704	YG4	N2-C2-N1	2.57	122.19	116.71
3	A	701	MES	O2S-S-C8	2.35	109.75	106.92
6	A	704	YG4	N12-C28-N11	2.31	117.96	114.89

Continued on next page...

Continued from previous page...

Mol	Chain	Res	Type	Atoms	Z	Observed(°)	Ideal(°)
6	A	704	YG4	O10-P2-O9	-2.31	100.81	112.24
6	A	704	YG4	O5-C9-C7	-2.23	122.07	127.54
5	A	703	SAH	C5-C6-N6	2.19	123.67	120.35
6	A	704	YG4	C15-C14-C13	-2.18	98.56	103.72
6	A	704	YG4	O21-C27-C26	-2.15	101.95	106.64

There are no chirality outliers.

All (13) torsion outliers are listed below:

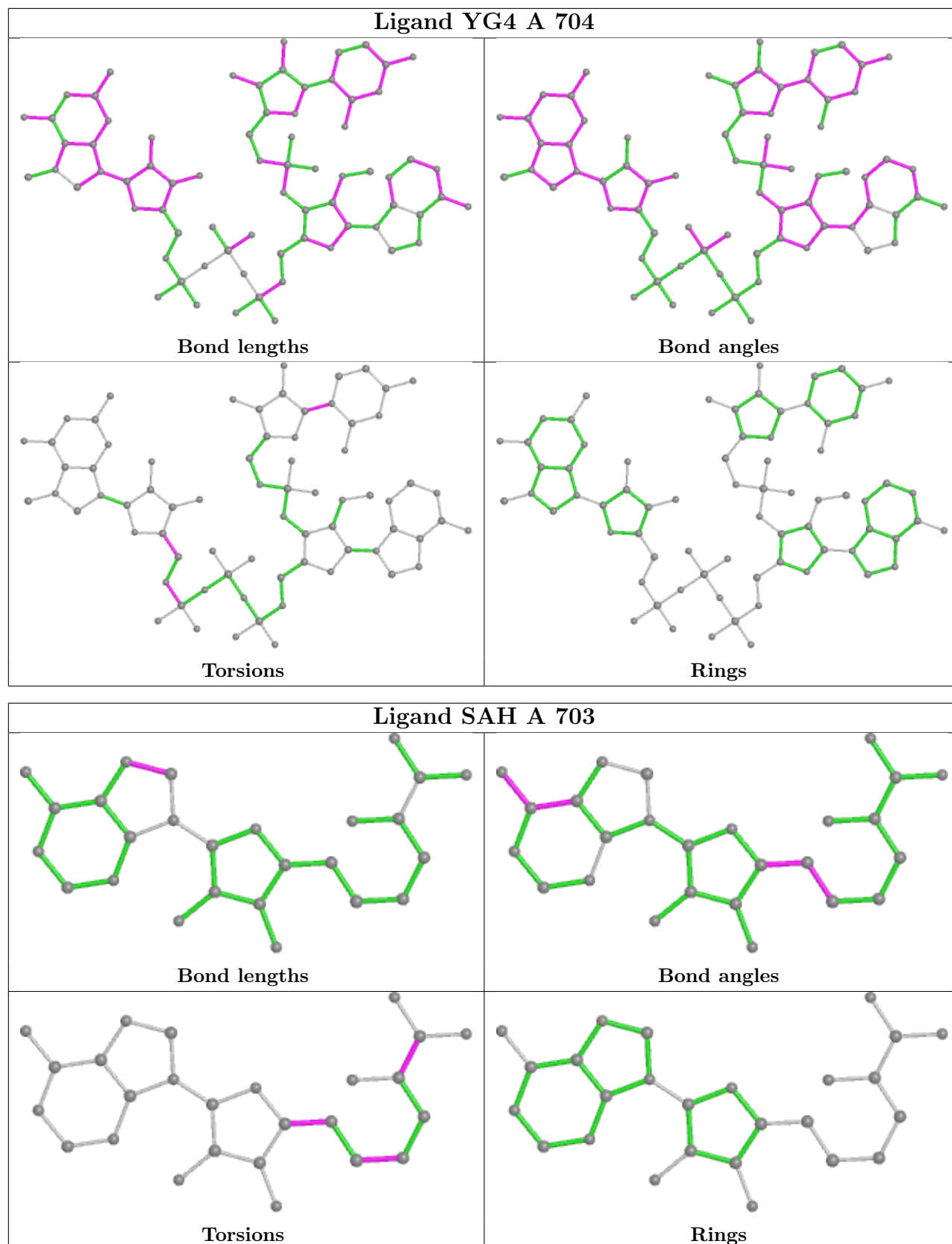
Mol	Chain	Res	Type	Atoms
5	A	703	SAH	O4'-C4'-C5'-SD
6	A	704	YG4	O21-C27-N11-C28
6	A	704	YG4	C8-O4-P1-O6
6	A	704	YG4	C8-O4-P1-O8
6	A	704	YG4	O21-C27-N11-C31
6	A	704	YG4	C4-C6-C8-O4
5	A	703	SAH	CB-CG-SD-C5'
6	A	704	YG4	O3-C6-C8-O4
7	B	201	EDO	O1-C1-C2-O2
5	A	703	SAH	O-C-CA-CB
5	A	703	SAH	OXT-C-CA-CB
6	A	704	YG4	C8-O4-P1-O7
3	A	701	MES	C8-C7-N4-C3

There are no ring outliers.

1 monomer is involved in 1 short contact:

Mol	Chain	Res	Type	Clashes	Symm-Clashes
6	A	704	YG4	1	0

The following is a two-dimensional graphical depiction of Mogul quality analysis of bond lengths, bond angles, torsion angles, and ring geometry for all instances of the Ligand of Interest. In addition, ligands with molecular weight > 250 and outliers as shown on the validation Tables will also be included. For torsion angles, if less than 5% of the Mogul distribution of torsion angles is within 10 degrees of the torsion angle in question, then that torsion angle is considered an outlier. Any bond that is central to one or more torsion angles identified as an outlier by Mogul will be highlighted in the graph. For rings, the root-mean-square deviation (RMSD) between the ring in question and similar rings identified by Mogul is calculated over all ring torsion angles. If the average RMSD is greater than 60 degrees and the minimal RMSD between the ring in question and any Mogul-identified rings is also greater than 60 degrees, then that ring is considered an outlier. The outliers are highlighted in purple. The color gray indicates Mogul did not find sufficient equivalents in the CSD to analyse the geometry.



5.7 Other polymers [i](#)

There are no such residues in this entry.

5.8 Polymer linkage issues [i](#)

There are no chain breaks in this entry.

6 Fit of model and data

6.1 Protein, DNA and RNA chains

In the following table, the column labelled ‘#RSRZ > 2’ contains the number (and percentage) of RSRZ outliers, followed by percent RSRZ outliers for the chain as percentile scores relative to all X-ray entries and entries of similar resolution. The OWAB column contains the minimum, median, 95th percentile and maximum values of the occupancy-weighted average B-factor per residue. The column labelled ‘Q < 0.9’ lists the number of (and percentage) of residues with an average occupancy less than 0.9.

Mol	Chain	Analysed	<RSRZ>	#RSRZ>2	OWAB(Å ²)	Q<0.9
1	A	298/298 (100%)	0.10	16 (5%) 25 32	32, 45, 90, 127	0
2	B	115/139 (82%)	0.53	18 (15%) 2 2	39, 66, 131, 173	0
All	All	413/437 (94%)	0.22	34 (8%) 11 15	32, 51, 105, 173	0

All (34) RSRZ outliers are listed below:

Mol	Chain	Res	Type	RSRZ
2	B	86	PRO	5.3
2	B	130	CYS	4.3
2	B	18	ALA	4.2
2	B	119	VAL	3.8
1	A	138	ASN	3.2
2	B	85	ASN	3.1
2	B	89	PHE	3.0
2	B	22	ASP	2.9
1	A	1	SER	2.9
1	A	31	GLY	2.9
1	A	298	ASN	2.9
1	A	267	ILE	2.9
1	A	140	THR	2.9
2	B	84	PRO	2.8
2	B	87	LYS	2.8
1	A	32	ASP	2.7
2	B	32	ALA	2.7
2	B	117	CYS	2.6
1	A	297	ASN	2.5
1	A	169	ILE	2.4
2	B	120	CYS	2.4
2	B	131	ASP	2.4
2	B	132	GLN	2.4
1	A	270	MET	2.3

Continued on next page...

Continued from previous page...

Mol	Chain	Res	Type	RSRZ
2	B	25	LYS	2.3
1	A	268	ASN	2.2
1	A	168	ALA	2.2
1	A	171	ILE	2.2
2	B	29	ASP	2.2
1	A	206	LEU	2.2
1	A	205	PHE	2.1
2	B	88	GLY	2.1
2	B	24	ALA	2.1
1	A	2	SER	2.0

6.2 Non-standard residues in protein, DNA, RNA chains [i](#)

There are no non-standard protein/DNA/RNA residues in this entry.

6.3 Carbohydrates [i](#)

There are no monosaccharides in this entry.

6.4 Ligands [i](#)

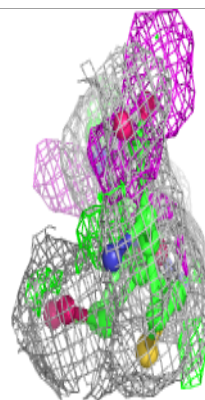
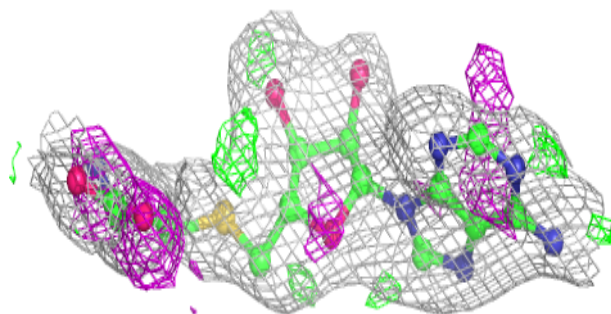
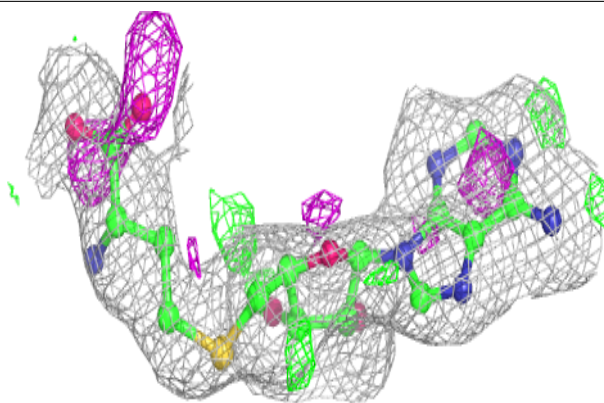
In the following table, the Atoms column lists the number of modelled atoms in the group and the number defined in the chemical component dictionary. The B-factors column lists the minimum, median, 95th percentile and maximum values of B factors of atoms in the group. The column labelled 'Q< 0.9' lists the number of atoms with occupancy less than 0.9.

Mol	Type	Chain	Res	Atoms	RSCC	RSR	B-factors(Å ²)	Q<0.9
5	SAH	A	703	26/26	0.66	0.23	64,82,95,136	0
3	MES	A	701	12/12	0.87	0.13	45,59,86,114	0
6	YG4	A	704	72/72	0.89	0.19	41,68,111,130	0
7	EDO	B	201	4/4	0.90	0.11	56,56,59,76	0
4	MG	A	702	1/1	0.91	0.24	52,52,52,52	0
8	ZN	B	203	1/1	0.95	0.12	85,85,85,85	0
8	ZN	B	202	1/1	0.99	0.06	57,57,57,57	0

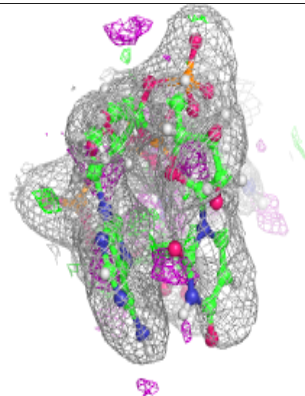
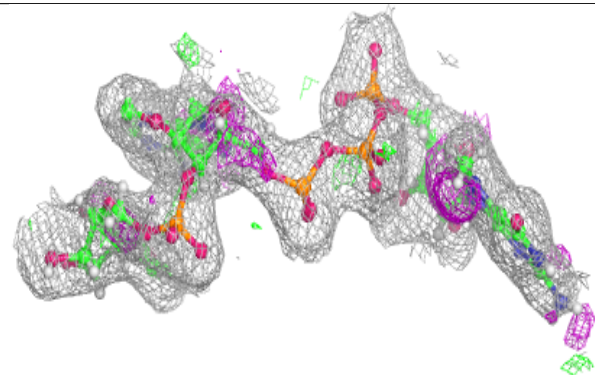
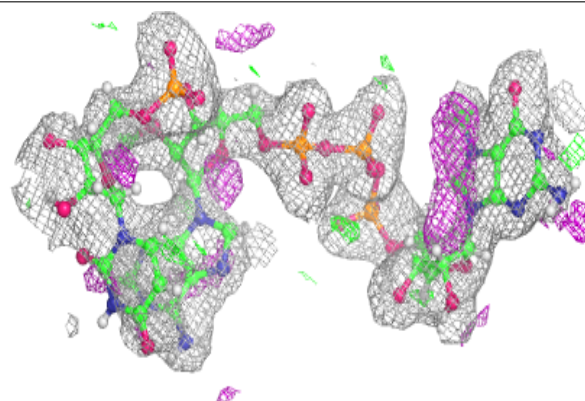
The following is a graphical depiction of the model fit to experimental electron density of all instances of the Ligand of Interest. In addition, ligands with molecular weight > 250 and outliers as shown on the geometry validation Tables will also be included. Each fit is shown from different orientation to approximate a three-dimensional view.

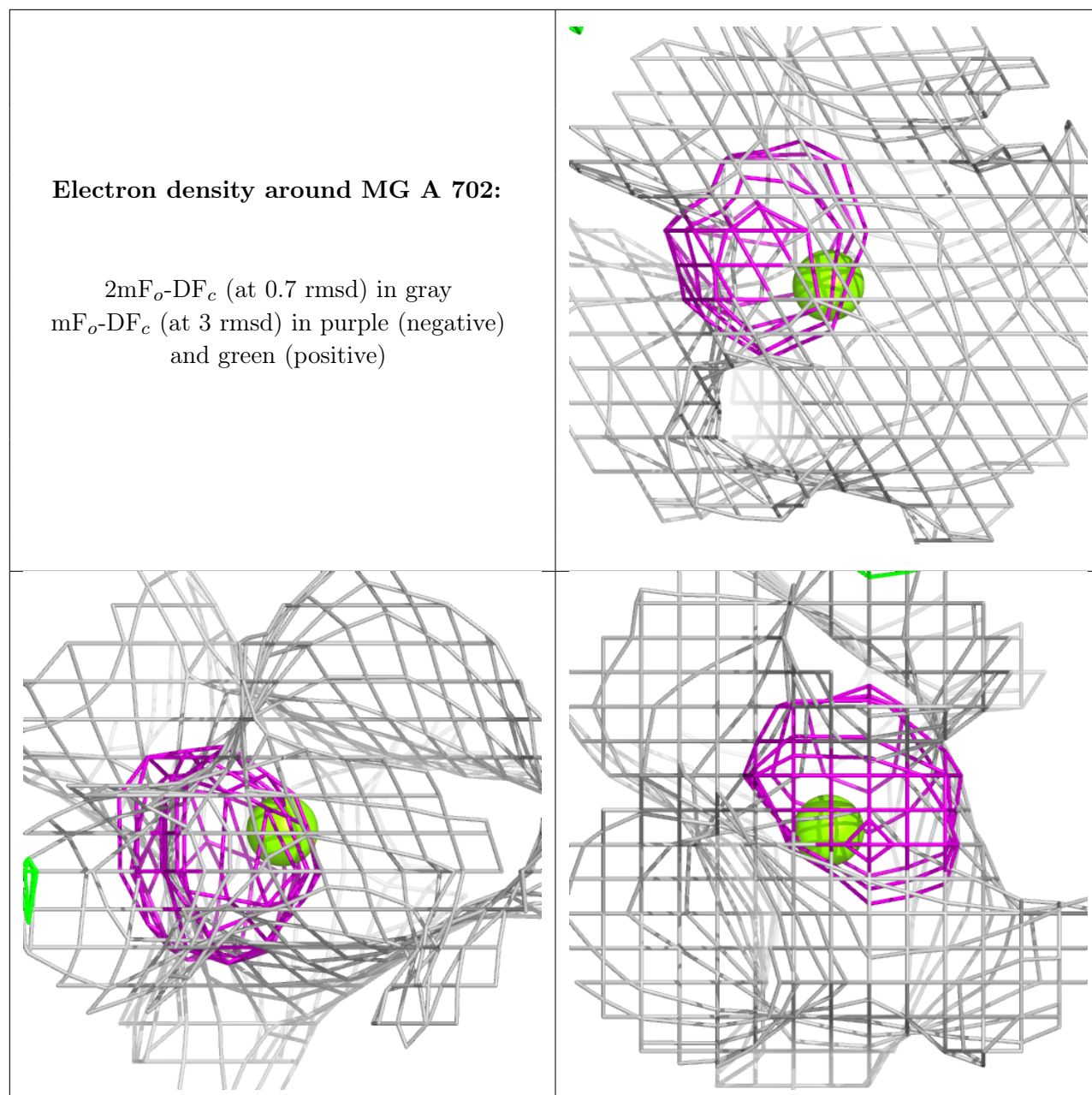
Electron density around SAH A 703:

$2mF_o-DF_c$ (at 0.7 rmsd) in gray
 mF_o-DF_c (at 3 rmsd) in purple (negative)
and green (positive)

**Electron density around YG4 A 704:**

$2mF_o-DF_c$ (at 0.7 rmsd) in gray
 mF_o-DF_c (at 3 rmsd) in purple (negative)
and green (positive)





6.5 Other polymers [i](#)

There are no such residues in this entry.