



Full wwPDB X-ray Structure Validation Report ⓘ

Oct 9, 2023 – 11:28 PM EDT

PDB ID : 7LPQ
Title : Crystal structure of *Cryptococcus neoformans* sterylglucosidase 1 with hit 9
Authors : Pereira de Sa, N.; Del Poeta, M.; Airola, M.V.
Deposited on : 2021-02-12
Resolution : 2.32 Å(reported)

This is a Full wwPDB X-ray Structure Validation Report for a publicly released PDB entry.

We welcome your comments at validation@mail.wwpdb.org

A user guide is available at

<https://www.wwpdb.org/validation/2017/XrayValidationReportHelp>

with specific help available everywhere you see the ⓘ symbol.

The types of validation reports are described at

<http://www.wwpdb.org/validation/2017/FAQs#types>.

The following versions of software and data (see [references ⓘ](#)) were used in the production of this report:

MolProbity : 4.02b-467
Mogul : 1.8.5 (274361), CSD as541be (2020)
Xtriage (Phenix) : 1.13
EDS : 2.35.1
buster-report : 1.1.7 (2018)
Percentile statistics : 20191225.v01 (using entries in the PDB archive December 25th 2019)
Refmac : 5.8.0158
CCP4 : 7.0.044 (Gargrove)
Ideal geometry (proteins) : Engh & Huber (2001)
Ideal geometry (DNA, RNA) : Parkinson et al. (1996)
Validation Pipeline (wwPDB-VP) : 2.35.1

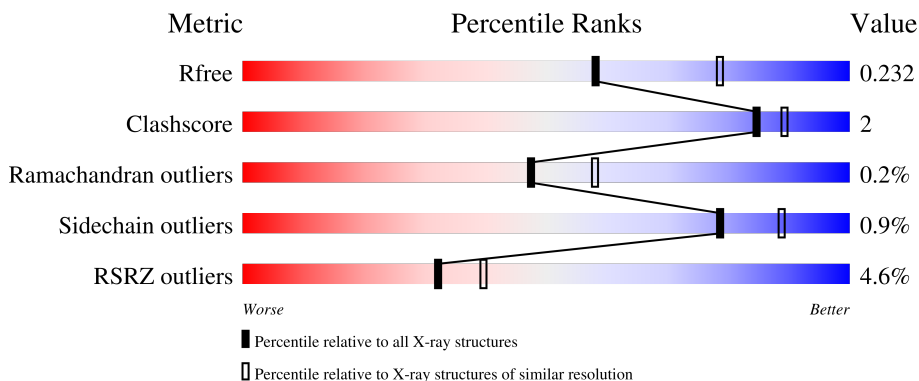
1 Overall quality at a glance i

The following experimental techniques were used to determine the structure:

X-RAY DIFFRACTION

The reported resolution of this entry is 2.32 Å.

Percentile scores (ranging between 0-100) for global validation metrics of the entry are shown in the following graphic. The table shows the number of entries on which the scores are based.



Metric	Whole archive (#Entries)	Similar resolution (#Entries, resolution range(Å))
R_{free}	130704	5974 (2.34-2.30)
Clashscore	141614	6604 (2.34-2.30)
Ramachandran outliers	138981	6523 (2.34-2.30)
Sidechain outliers	138945	6523 (2.34-2.30)
RSRZ outliers	127900	5855 (2.34-2.30)

The table below summarises the geometric issues observed across the polymeric chains and their fit to the electron density. The red, orange, yellow and green segments of the lower bar indicate the fraction of residues that contain outliers for ≥ 3 , 2, 1 and 0 types of geometric quality criteria respectively. A grey segment represents the fraction of residues that are not modelled. The numeric value for each fraction is indicated below the corresponding segment, with a dot representing fractions $\leq 5\%$. The upper red bar (where present) indicates the fraction of residues that have poor fit to the electron density. The numeric value is given above the bar.

Mol	Chain	Length	Quality of chain
1	A	797	 3% 86% 5% 9%
1	B	797	 4% 86% 6% 9%
1	C	797	 6% 85% 6% 9%
1	D	797	 4% 85% 6% • 9%

2 Entry composition

There are 5 unique types of molecules in this entry. The entry contains 47213 atoms, of which 22225 are hydrogens and 0 are deuteriums.

In the tables below, the ZeroOcc column contains the number of atoms modelled with zero occupancy, the AltConf column contains the number of residues with at least one atom in alternate conformation and the Trace column contains the number of residues modelled with at most 2 atoms.

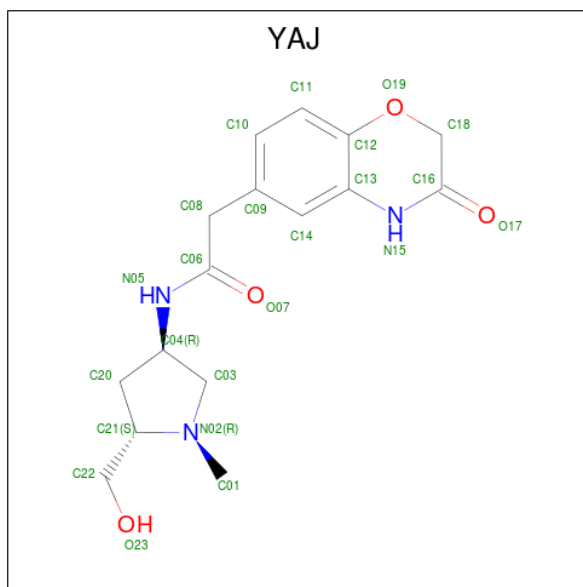
- Molecule 1 is a protein called Cytoplasmic protein.

Mol	Chain	Residues	Atoms						ZeroOcc	AltConf	Trace
			Total	C	H	N	O	S			
1	A	725	11278	3692	5517	983	1062	24	0	1	0
1	B	728	11317	3704	5534	989	1067	23	0	1	0
1	C	727	11311	3702	5532	990	1064	23	0	1	0
1	D	726	11285	3694	5518	986	1064	23	0	1	0

There are 4 discrepancies between the modelled and reference sequences:

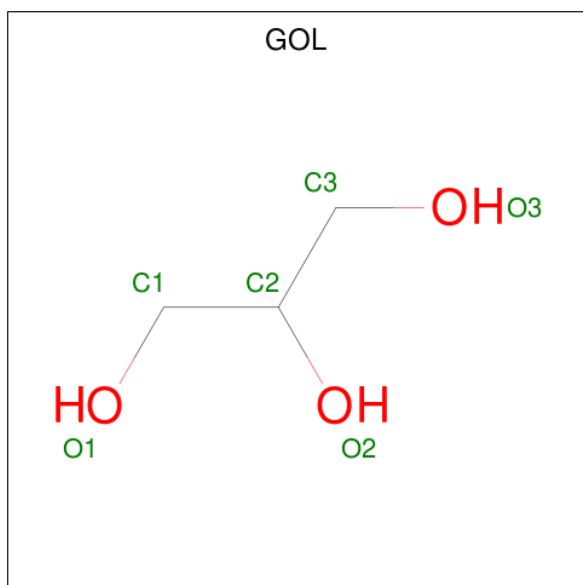
Chain	Residue	Modelled	Actual	Comment	Reference
A	0	SER	-	expression tag	UNP J9W473
B	0	SER	-	expression tag	UNP J9W473
C	0	SER	-	expression tag	UNP J9W473
D	0	SER	-	expression tag	UNP J9W473

- Molecule 2 is {N}-[(3 {R},5 {S})-5-(hydroxymethyl)-1-methyl-pyrrolidin-3-yl]-2-(3-oxidanylidene-4 {H}-1,4-benzoxazin-6-yl)ethanamide (three-letter code: YAJ) (formula: C₁₆H₂₁N₃O₄) (labeled as "Ligand of Interest" by depositor).



Mol	Chain	Residues	Atoms					ZeroOcc	AltConf
			Total	C	H	N	O		
2	A	1	Total	C	H	N	O	0	0
			44	16	21	3	4		
2	B	1	Total	C	H	N	O	0	0
			44	16	21	3	4		
2	C	1	Total	C	H	N	O	0	0
			44	16	21	3	4		
2	D	1	Total	C	H	N	O	0	0
			44	16	21	3	4		

- Molecule 3 is GLYCEROL (three-letter code: GOL) (formula: $C_3H_8O_3$).



Mol	Chain	Residues	Atoms				ZeroOcc	AltConf
3	A	1	Total	C	H	O	0	0
			14	3	8	3		
3	A	1	Total	C	H	O	0	0
			14	3	8	3		
3	B	1	Total	C	H	O	0	0
			14	3	8	3		
3	B	1	Total	C	H	O	0	0
			14	3	8	3		
3	D	1	Total	C	H	O	0	0
			14	3	8	3		

- Molecule 4 is MAGNESIUM ION (three-letter code: MG) (formula: Mg).

Mol	Chain	Residues	Atoms		ZeroOcc	AltConf
4	A	1	Total	Mg	0	0
			1	1		

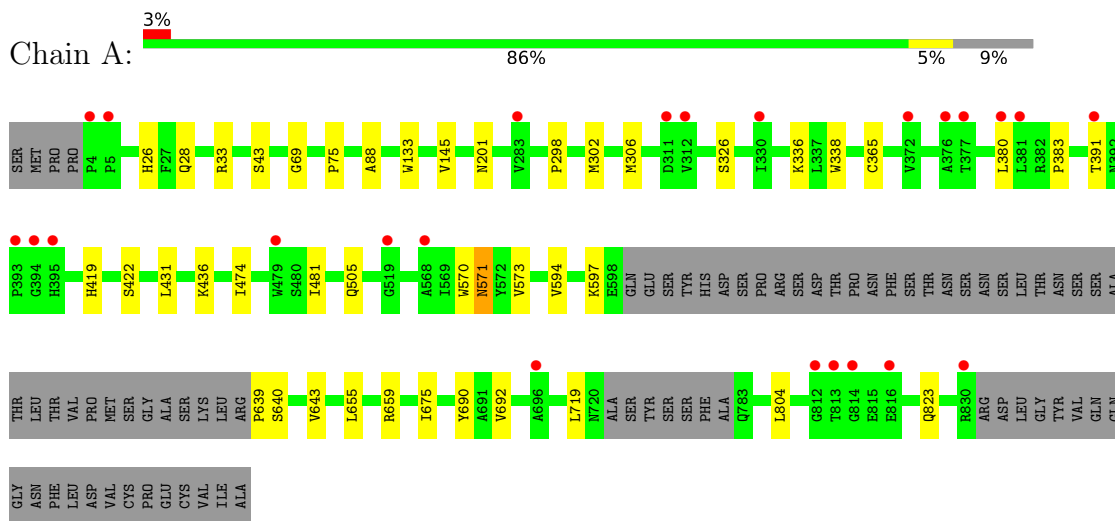
- Molecule 5 is water.

Mol	Chain	Residues	Atoms		ZeroOcc	AltConf
5	A	504	Total	O	0	0
			504	504		
5	B	456	Total	O	0	0
			456	456		
5	C	383	Total	O	0	0
			383	383		
5	D	432	Total	O	0	0
			432	432		

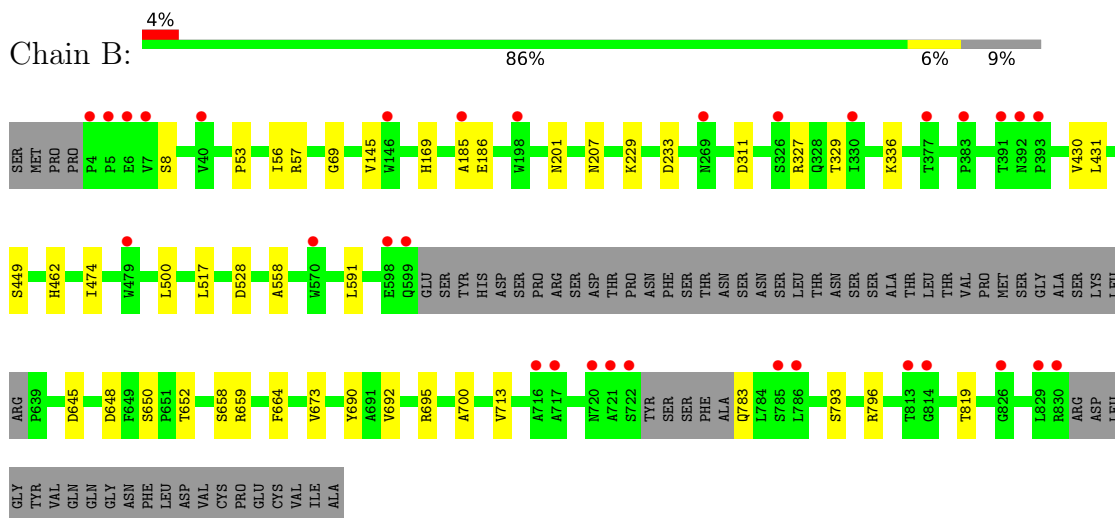
3 Residue-property plots [i](#)

These plots are drawn for all protein, RNA, DNA and oligosaccharide chains in the entry. The first graphic for a chain summarises the proportions of the various outlier classes displayed in the second graphic. The second graphic shows the sequence view annotated by issues in geometry and electron density. Residues are color-coded according to the number of geometric quality criteria for which they contain at least one outlier: green = 0, yellow = 1, orange = 2 and red = 3 or more. A red dot above a residue indicates a poor fit to the electron density ($RSRZ > 2$). Stretches of 2 or more consecutive residues without any outlier are shown as a green connector. Residues present in the sample, but not in the model, are shown in grey.

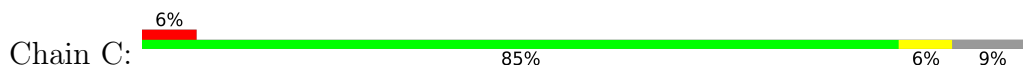
- Molecule 1: Cytoplasmic protein

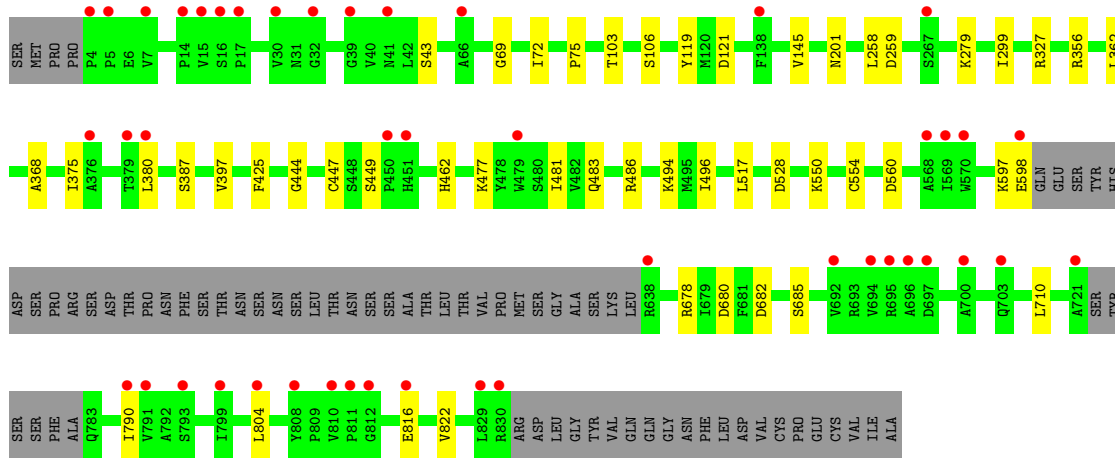


- Molecule 1: Cytoplasmic protein

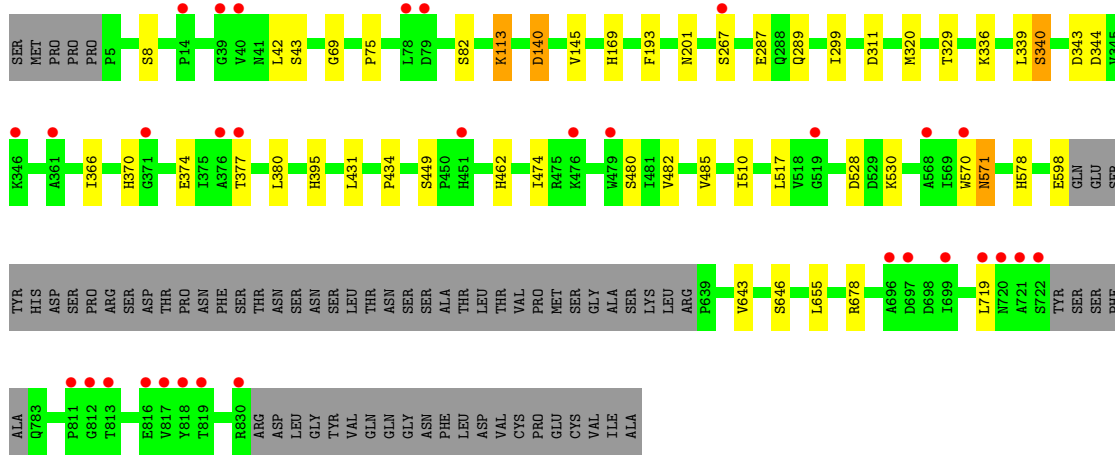
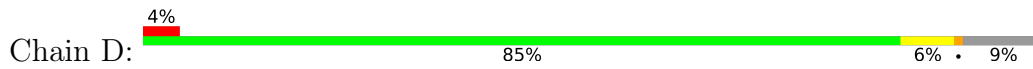


- Molecule 1: Cytoplasmic protein





• Molecule 1: Cytoplasmic protein



4 Data and refinement statistics

Property	Value	Source
Space group	P 1 21 1	Depositor
Cell constants a, b, c, α , β , γ	98.42Å 133.31Å 130.30Å 90.00° 94.54° 90.00°	Depositor
Resolution (Å)	43.30 – 2.32 43.30 – 2.32	Depositor EDS
% Data completeness (in resolution range)	95.0 (43.30-2.32) 94.9 (43.30-2.32)	Depositor EDS
R_{merge}	0.15	Depositor
R_{sym}	(Not available)	Depositor
$\langle I/\sigma(I) \rangle$ ¹	1.79 (at 2.32Å)	Xtrriage
Refinement program	PHENIX 1.17.1-3660	Depositor
R, R_{free}	0.181 , 0.232 0.181 , 0.232	Depositor DCC
R_{free} test set	6957 reflections (4.82%)	wwPDB-VP
Wilson B-factor (Å ²)	25.9	Xtrriage
Anisotropy	0.920	Xtrriage
Bulk solvent k_{sol} (e/Å ³), B_{sol} (Å ²)	0.43 , 51.2	EDS
L-test for twinning ²	$\langle L \rangle = 0.49$, $\langle L^2 \rangle = 0.32$	Xtrriage
Estimated twinning fraction	No twinning to report.	Xtrriage
F_o, F_c correlation	0.95	EDS
Total number of atoms	47213	wwPDB-VP
Average B, all atoms (Å ²)	38.0	wwPDB-VP

Xtrriage's analysis on translational NCS is as follows: *The largest off-origin peak in the Patterson function is 3.10% of the height of the origin peak. No significant pseudotranslation is detected.*

¹Intensities estimated from amplitudes.

²Theoretical values of $\langle |L| \rangle$, $\langle L^2 \rangle$ for acentric reflections are 0.5, 0.333 respectively for untwinned datasets, and 0.375, 0.2 for perfectly twinned datasets.

5 Model quality [i](#)

5.1 Standard geometry [i](#)

Bond lengths and bond angles in the following residue types are not validated in this section: GOL, YAJ, MG

The Z score for a bond length (or angle) is the number of standard deviations the observed value is removed from the expected value. A bond length (or angle) with $|Z| > 5$ is considered an outlier worth inspection. RMSZ is the root-mean-square of all Z scores of the bond lengths (or angles).

Mol	Chain	Bond lengths		Bond angles	
		RMSZ	# Z >5	RMSZ	# Z >5
1	A	0.31	0/5946	0.46	0/8104
1	B	0.31	0/5969	0.45	0/8136
1	C	0.30	0/5965	0.46	0/8131
1	D	0.30	0/5952	0.45	0/8112
All	All	0.30	0/23832	0.45	0/32483

There are no bond length outliers.

There are no bond angle outliers.

There are no chirality outliers.

There are no planarity outliers.

5.2 Too-close contacts [i](#)

In the following table, the Non-H and H(model) columns list the number of non-hydrogen atoms and hydrogen atoms in the chain respectively. The H(added) column lists the number of hydrogen atoms added and optimized by MolProbity. The Clashes column lists the number of clashes within the asymmetric unit, whereas Symm-Clashes lists symmetry-related clashes.

Mol	Chain	Non-H	H(model)	H(added)	Clashes	Symm-Clashes
1	A	5761	5517	5516	27	1
1	B	5783	5534	5532	23	0
1	C	5779	5532	5531	28	0
1	D	5767	5518	5517	28	0
2	A	23	21	0	0	0
2	B	23	21	0	0	0
2	C	23	21	0	0	0
2	D	23	21	0	0	0
3	A	12	16	16	0	0

Continued on next page...

Continued from previous page...

Mol	Chain	Non-H	H(model)	H(added)	Clashes	Symm-Clashes
3	B	12	16	16	0	0
3	D	6	8	8	0	0
4	A	1	0	0	0	0
5	A	504	0	0	4	1
5	B	456	0	0	2	1
5	C	383	0	0	7	1
5	D	432	0	0	4	2
All	All	24988	22225	22136	106	3

The all-atom clashscore is defined as the number of clashes found per 1000 atoms (including hydrogen atoms). The all-atom clashscore for this structure is 2.

All (106) close contacts within the same asymmetric unit are listed below, sorted by their clash magnitude.

Atom-1	Atom-2	Interatomic distance (Å)	Clash overlap (Å)
1:C:597:LYS:NZ	5:C:1001:HOH:O	2.10	0.85
1:D:340:SER:OG	1:D:343:ASP:N	2.10	0.85
1:D:643:VAL:O	1:D:646:SER:OG	1.97	0.83
1:D:480:SER:HB2	1:D:482:VAL:HG12	1.62	0.80
1:B:311:ASP:OD1	1:B:329:THR:OG1	2.01	0.78
1:D:320:MET:HE1	1:D:485:VAL:HG22	1.66	0.77
1:D:145:VAL:HG11	1:D:201:ASN:HB2	1.68	0.75
1:B:658:SER:OG	5:B:1001:HOH:O	1.99	0.72
1:B:431:LEU:HD13	1:B:474:ILE:CD1	2.22	0.69
1:C:550:LYS:NZ	5:C:1007:HOH:O	2.29	0.66
1:D:193:PHE:O	5:D:1001:HOH:O	2.14	0.66
1:C:121:ASP:OD2	5:C:1002:HOH:O	2.13	0.65
1:D:113:LYS:NZ	5:D:1004:HOH:O	2.28	0.65
1:D:42:LEU:HD12	1:D:43:SER:HB2	1.79	0.65
1:B:648:ASP:OD1	1:B:783:GLN:NE2	2.30	0.64
1:B:431:LEU:HD13	1:B:474:ILE:HD11	1.82	0.61
1:B:57:ARG:HH12	1:B:185:ALA:HB1	1.66	0.60
1:D:140:ASP:OD1	5:D:1002:HOH:O	2.16	0.60
1:D:462[A]:HIS:ND1	1:D:528:ASP:OD1	2.32	0.58
1:D:287:GLU:O	1:D:289:GLN:NE2	2.36	0.58
1:A:391:THR:OG1	5:A:1001:HOH:O	2.17	0.58
1:B:650:SER:OG	1:B:652:THR:HG22	2.03	0.57
1:B:145:VAL:HG11	1:B:201:ASN:HB2	1.87	0.57
1:B:690:TYR:CZ	1:B:692:VAL:HG22	2.41	0.56
1:C:816:GLU:OE2	5:C:1003:HOH:O	2.18	0.56
1:B:430:VAL:HG12	1:B:431:LEU:HG	1.89	0.54

Continued on next page...

Continued from previous page...

Atom-1	Atom-2	Interatomic distance (Å)	Clash overlap (Å)
1:D:374:GLU:OE1	1:D:377:THR:HG21	2.08	0.54
1:A:145:VAL:HG11	1:A:201:ASN:HB2	1.88	0.54
1:A:655:LEU:HD11	1:A:719:LEU:HD13	1.90	0.54
1:D:320:MET:CE	1:D:485:VAL:HG22	2.36	0.54
1:C:145:VAL:HG11	1:C:201:ASN:HB2	1.88	0.53
1:D:678:ARG:NH1	5:D:1009:HOH:O	2.39	0.53
1:C:444:GLY:O	5:C:1004:HOH:O	2.19	0.52
1:B:57:ARG:NH1	1:B:185:ALA:HB1	2.26	0.51
1:C:496:ILE:HD12	1:C:554:CYS:SG	2.50	0.51
1:A:481:ILE:HD12	1:A:481:ILE:H	1.76	0.50
1:B:186:GLU:N	1:B:186:GLU:OE1	2.44	0.50
1:B:500:LEU:HD23	1:B:558:ALA:HB1	1.94	0.50
1:C:790:ILE:HG12	1:C:822:VAL:HG22	1.92	0.50
1:C:387:SER:O	1:C:397:VAL:HG22	2.12	0.50
1:B:713:VAL:HG23	5:B:1071:HOH:O	2.12	0.50
1:A:431:LEU:HD22	1:A:474:ILE:HD12	1.93	0.49
1:D:43:SER:HB3	1:D:75:PRO:HB3	1.94	0.49
1:D:374:GLU:OE1	1:D:377:THR:CG2	2.60	0.49
1:D:655:LEU:HD11	1:D:719:LEU:HD13	1.94	0.49
1:A:570:TRP:CD2	1:A:571:ASN:HB3	2.49	0.48
1:A:823:GLN:NE2	5:A:1023:HOH:O	2.46	0.48
1:B:169:HIS:ND1	1:B:336:LYS:O	2.45	0.47
1:D:311:ASP:OD2	1:D:329:THR:OG1	2.32	0.47
1:A:380:LEU:HD21	1:A:383:PRO:HB3	1.98	0.46
1:D:530:LYS:HE2	1:D:578:HIS:O	2.16	0.46
1:A:570:TRP:CG	1:A:571:ASN:HB3	2.51	0.46
1:C:449:SER:HA	1:C:517:LEU:O	2.16	0.46
1:C:356:ARG:HD2	1:C:362:LEU:HD11	1.98	0.46
1:A:26:HIS:CE1	1:A:675:ILE:HG23	2.51	0.45
1:C:368:ALA:HB3	1:C:375:ILE:HD11	1.96	0.45
1:C:481:ILE:HD12	1:C:481:ILE:N	2.31	0.45
1:C:299:ILE:HD13	1:C:380:LEU:HD13	1.97	0.45
1:A:419:HIS:CG	1:A:422:SER:HB2	2.52	0.45
1:B:53:PRO:HG2	1:B:56:ILE:HD12	1.99	0.45
1:C:425:PHE:HA	1:C:447:CYS:O	2.17	0.45
1:B:793:SER:HB2	1:B:819:THR:H	1.81	0.45
1:A:804:LEU:C	1:A:804:LEU:HD23	2.37	0.45
1:C:72:ILE:HD13	1:C:119:TYR:HD1	1.82	0.45
1:A:571:ASN:OD1	1:A:573:VAL:CG2	2.65	0.44
1:C:598:GLU:HA	1:C:598:GLU:OE1	2.18	0.44
1:B:462[A]:HIS:ND1	1:B:528:ASP:OD1	2.40	0.44

Continued on next page...

Continued from previous page...

Atom-1	Atom-2	Interatomic distance (Å)	Clash overlap (Å)
1:C:710:LEU:HD11	1:C:804:LEU:HD12	2.00	0.44
1:A:594:VAL:HG23	1:A:597:LYS:HD3	2.00	0.43
1:C:279:LYS:NZ	5:C:1022:HOH:O	2.50	0.43
1:A:571:ASN:OD1	1:A:573:VAL:HG23	2.18	0.43
1:A:640:SER:O	1:A:643:VAL:HG22	2.19	0.43
1:B:229:LYS:HD2	1:B:233:ASP:HB3	2.01	0.43
1:B:591:LEU:HD13	1:B:664:PHE:CD1	2.53	0.43
1:C:43:SER:HB3	1:C:75:PRO:HB3	2.01	0.43
1:A:43:SER:HB3	1:A:75:PRO:HB3	2.00	0.43
1:B:449:SER:HA	1:B:517:LEU:O	2.18	0.43
1:D:340:SER:OG	1:D:343:ASP:HB2	2.19	0.43
1:D:169:HIS:ND1	1:D:336:LYS:O	2.51	0.42
1:A:640:SER:OG	1:A:643:VAL:HG13	2.18	0.42
1:A:481:ILE:HD12	1:A:481:ILE:N	2.35	0.42
1:D:431:LEU:HD22	1:D:474:ILE:HD13	2.01	0.42
1:A:338:TRP:CE2	1:A:365:CYS:HA	2.55	0.42
1:D:449:SER:HA	1:D:517:LEU:O	2.19	0.42
1:C:103:THR:O	1:C:106:SER:OG	2.21	0.42
1:C:368:ALA:CB	1:C:375:ILE:HD11	2.50	0.42
1:A:391:THR:HB	5:A:1196:HOH:O	2.19	0.42
1:A:639:PRO:HB2	5:A:1187:HOH:O	2.20	0.42
1:B:201:ASN:O	1:B:207:ASN:HB2	2.19	0.42
1:C:486:ARG:CD	5:C:1036:HOH:O	2.67	0.42
1:A:88:ALA:HB2	1:A:133:TRP:CH2	2.56	0.41
1:C:682:ASP:OD2	1:C:685:SER:HB3	2.19	0.41
1:D:434:PRO:O	1:D:510:ILE:HG21	2.20	0.41
1:A:690:TYR:CZ	1:A:692:VAL:HG22	2.55	0.41
1:C:462[A]:HIS:ND1	1:C:528:ASP:OD1	2.50	0.41
1:C:682:ASP:OD2	1:C:685:SER:CB	2.69	0.41
1:D:570:TRP:CG	1:D:571:ASN:HB3	2.56	0.41
1:B:673:VAL:HG11	1:B:700:ALA:HB2	2.02	0.41
1:A:28:GLN:HA	1:A:33:ARG:O	2.21	0.40
1:A:298:PRO:O	1:A:302:MET:HG3	2.21	0.40
1:A:306:MET:CE	1:A:336:LYS:HE2	2.51	0.40
1:C:258:LEU:O	1:C:259:ASP:HB2	2.20	0.40
1:D:299:ILE:HD13	1:D:380:LEU:HD13	2.03	0.40
1:D:366:ILE:HD11	1:D:370:HIS:HE1	1.87	0.40
1:C:678:ARG:NE	1:C:680:ASP:OD2	2.47	0.40
1:D:339:LEU:HD21	1:D:344:ASP:HA	2.04	0.40

All (3) symmetry-related close contacts are listed below. The label for Atom-2 includes the symmetry operator and encoded unit-cell translations to be applied.

Atom-1	Atom-2	Interatomic distance (Å)	Clash overlap (Å)
5:B:1447:HOH:O	5:C:1370:HOH:O[1_455]	2.03	0.17
1:A:505:GLN:OE1	5:D:1207:HOH:O[2_545]	2.15	0.05
5:A:1420:HOH:O	5:D:1404:HOH:O[2_545]	2.15	0.05

5.3 Torsion angles [i](#)

5.3.1 Protein backbone [i](#)

In the following table, the Percentiles column shows the percent Ramachandran outliers of the chain as a percentile score with respect to all X-ray entries followed by that with respect to entries of similar resolution.

The Analysed column shows the number of residues for which the backbone conformation was analysed, and the total number of residues.

Mol	Chain	Analysed	Favoured	Allowed	Outliers	Percentiles
1	A	720/797 (90%)	694 (96%)	25 (4%)	1 (0%)	51 63
1	B	723/797 (91%)	696 (96%)	26 (4%)	1 (0%)	51 63
1	C	722/797 (91%)	695 (96%)	25 (4%)	2 (0%)	41 50
1	D	721/797 (90%)	696 (96%)	23 (3%)	2 (0%)	41 50
All	All	2886/3188 (90%)	2781 (96%)	99 (3%)	6 (0%)	47 58

All (6) Ramachandran outliers are listed below:

Mol	Chain	Res	Type
1	D	340	SER
1	C	560	ASP
1	B	69	GLY
1	D	69	GLY
1	A	69	GLY
1	C	69	GLY

5.3.2 Protein sidechains [i](#)

In the following table, the Percentiles column shows the percent sidechain outliers of the chain as a percentile score with respect to all X-ray entries followed by that with respect to entries of similar resolution.

The Analysed column shows the number of residues for which the sidechain conformation was analysed, and the total number of residues.

Mol	Chain	Analysed	Rotameric	Outliers	Percentiles	
1	A	607/670 (91%)	603 (99%)	4 (1%)	84	92
1	B	609/670 (91%)	603 (99%)	6 (1%)	76	87
1	C	608/670 (91%)	604 (99%)	4 (1%)	84	92
1	D	607/670 (91%)	599 (99%)	8 (1%)	69	81
All	All	2431/2680 (91%)	2409 (99%)	22 (1%)	78	89

All (22) residues with a non-rotameric sidechain are listed below:

Mol	Chain	Res	Type
1	A	326	SER
1	A	436	LYS
1	A	571	ASN
1	A	659	ARG
1	B	8	SER
1	B	327	ARG
1	B	645	ASP
1	B	659	ARG
1	B	695	ARG
1	B	796	ARG
1	C	327	ARG
1	C	477	LYS
1	C	483	GLN
1	C	494	LYS
1	D	8	SER
1	D	82	SER
1	D	113	LYS
1	D	140	ASP
1	D	267	SER
1	D	395	HIS
1	D	571	ASN
1	D	598	GLU

Sometimes sidechains can be flipped to improve hydrogen bonding and reduce clashes. All (1) such sidechains are listed below:

Mol	Chain	Res	Type
1	A	823	GLN

5.3.3 RNA

There are no RNA molecules in this entry.

5.4 Non-standard residues in protein, DNA, RNA chains [i](#)

There are no non-standard protein/DNA/RNA residues in this entry.

5.5 Carbohydrates [i](#)

There are no monosaccharides in this entry.

5.6 Ligand geometry [i](#)

Of 10 ligands modelled in this entry, 1 is monoatomic - leaving 9 for Mogul analysis.

In the following table, the Counts columns list the number of bonds (or angles) for which Mogul statistics could be retrieved, the number of bonds (or angles) that are observed in the model and the number of bonds (or angles) that are defined in the Chemical Component Dictionary. The Link column lists molecule types, if any, to which the group is linked. The Z score for a bond length (or angle) is the number of standard deviations the observed value is removed from the expected value. A bond length (or angle) with $|Z| > 2$ is considered an outlier worth inspection. RMSZ is the root-mean-square of all Z scores of the bond lengths (or angles).

Mol	Type	Chain	Res	Link	Bond lengths			Bond angles		
					Counts	RMSZ	# Z > 2	Counts	RMSZ	# Z > 2
3	GOL	B	903	-	5,5,5	0.77	0	5,5,5	0.96	0
2	YAJ	B	901	-	24,25,25	2.28	12 (50%)	29,35,35	2.32	9 (31%)
2	YAJ	A	901	-	24,25,25	1.93	7 (29%)	29,35,35	2.31	9 (31%)
3	GOL	A	902	-	5,5,5	0.88	0	5,5,5	1.06	0
3	GOL	D	902	-	5,5,5	0.84	0	5,5,5	1.02	0
3	GOL	B	902	-	5,5,5	0.81	0	5,5,5	1.03	0
2	YAJ	D	901	-	24,25,25	1.94	6 (25%)	29,35,35	2.33	9 (31%)
2	YAJ	C	901	-	24,25,25	2.33	8 (33%)	29,35,35	2.42	11 (37%)
3	GOL	A	903	-	5,5,5	0.91	0	5,5,5	1.00	0

In the following table, the Chirals column lists the number of chiral outliers, the number of chiral centers analysed, the number of these observed in the model and the number defined in the Chemical Component Dictionary. Similar counts are reported in the Torsion and Rings columns. '-' means no outliers of that kind were identified.

Mol	Type	Chain	Res	Link	Chirals	Torsions	Rings
3	GOL	B	903	-	-	3/4/4/4	-
2	YAJ	B	901	-	-	2/10/31/31	0/3/3/3
2	YAJ	A	901	-	-	0/10/31/31	0/3/3/3
3	GOL	A	902	-	-	0/4/4/4	-
3	GOL	D	902	-	-	0/4/4/4	-

Continued on next page...

Continued from previous page...

Mol	Type	Chain	Res	Link	Chirals	Torsions	Rings
3	GOL	B	902	-	-	2/4/4/4	-
2	YAJ	D	901	-	-	1/10/31/31	0/3/3/3
2	YAJ	C	901	-	-	3/10/31/31	0/3/3/3
3	GOL	A	903	-	-	0/4/4/4	-

All (33) bond length outliers are listed below:

Mol	Chain	Res	Type	Atoms	Z	Observed(Å)	Ideal(Å)
2	C	901	YAJ	C20-C21	-6.50	1.43	1.53
2	B	901	YAJ	C20-C21	-5.81	1.44	1.53
2	D	901	YAJ	C20-C21	-5.34	1.45	1.53
2	C	901	YAJ	C16-N15	5.14	1.40	1.35
2	A	901	YAJ	C20-C21	-4.00	1.47	1.53
2	D	901	YAJ	C03-C04	3.92	1.60	1.53
2	B	901	YAJ	C16-N15	3.91	1.39	1.35
2	B	901	YAJ	C03-C04	3.71	1.60	1.53
2	A	901	YAJ	C03-C04	3.69	1.60	1.53
2	D	901	YAJ	O19-C12	-3.29	1.34	1.37
2	A	901	YAJ	C13-N15	3.15	1.45	1.39
2	C	901	YAJ	C03-C04	3.09	1.59	1.53
2	B	901	YAJ	C08-C09	3.07	1.56	1.51
2	D	901	YAJ	C16-N15	2.97	1.38	1.35
2	C	901	YAJ	C13-N15	2.87	1.44	1.39
2	A	901	YAJ	C08-C09	2.85	1.56	1.51
2	B	901	YAJ	C21-N02	2.82	1.52	1.48
2	A	901	YAJ	C16-N15	2.81	1.38	1.35
2	A	901	YAJ	O19-C18	2.61	1.49	1.43
2	C	901	YAJ	C08-C09	2.59	1.55	1.51
2	B	901	YAJ	O19-C18	2.51	1.49	1.43
2	A	901	YAJ	C14-C13	2.42	1.43	1.39
2	B	901	YAJ	C01-N02	2.35	1.51	1.46
2	B	901	YAJ	C14-C13	2.31	1.43	1.39
2	D	901	YAJ	C13-N15	2.19	1.43	1.39
2	D	901	YAJ	C20-C04	2.15	1.57	1.53
2	B	901	YAJ	C13-N15	2.08	1.43	1.39
2	C	901	YAJ	O19-C12	-2.08	1.35	1.37
2	C	901	YAJ	C20-C04	2.06	1.57	1.53
2	B	901	YAJ	C11-C12	2.06	1.43	1.39
2	B	901	YAJ	C20-C04	2.03	1.57	1.53
2	B	901	YAJ	C11-C10	2.02	1.42	1.38
2	C	901	YAJ	C01-N02	2.02	1.50	1.46

All (38) bond angle outliers are listed below:

Mol	Chain	Res	Type	Atoms	Z	Observed(°)	Ideal(°)
2	B	901	YAJ	C08-C06-N05	7.41	127.82	115.88
2	C	901	YAJ	C08-C06-N05	7.02	127.19	115.88
2	D	901	YAJ	C08-C06-N05	6.93	127.05	115.88
2	A	901	YAJ	C08-C06-N05	6.85	126.91	115.88
2	C	901	YAJ	C20-C21-C22	4.47	120.29	113.36
2	B	901	YAJ	O07-C06-N05	-4.10	116.04	122.95
2	A	901	YAJ	O07-C06-N05	-4.08	116.07	122.95
2	C	901	YAJ	O07-C06-N05	-3.85	116.45	122.95
2	D	901	YAJ	C20-C21-C22	3.81	119.26	113.36
2	A	901	YAJ	C03-C04-N05	3.68	120.55	112.69
2	D	901	YAJ	O07-C06-N05	-3.66	116.78	122.95
2	D	901	YAJ	O19-C12-C11	3.66	122.72	116.85
2	A	901	YAJ	C04-N05-C06	3.63	128.26	122.92
2	A	901	YAJ	C01-N02-C03	-3.60	107.57	112.45
2	C	901	YAJ	C04-N05-C06	3.59	128.21	122.92
2	C	901	YAJ	O19-C12-C11	3.41	122.33	116.85
2	D	901	YAJ	C03-C04-N05	3.25	119.64	112.69
2	B	901	YAJ	C01-N02-C03	-3.23	108.07	112.45
2	B	901	YAJ	C20-C21-C22	3.16	118.26	113.36
2	A	901	YAJ	O19-C12-C11	3.16	121.91	116.85
2	D	901	YAJ	C04-N05-C06	3.07	127.44	122.92
2	B	901	YAJ	C04-N05-C06	3.04	127.40	122.92
2	B	901	YAJ	O19-C12-C11	2.84	121.41	116.85
2	D	901	YAJ	C13-N15-C16	-2.75	121.09	124.49
2	B	901	YAJ	C03-C04-N05	2.74	118.53	112.69
2	C	901	YAJ	C03-C04-N05	2.71	118.48	112.69
2	C	901	YAJ	C01-N02-C03	-2.67	108.83	112.45
2	A	901	YAJ	C09-C08-C06	2.59	120.25	112.57
2	B	901	YAJ	O07-C06-C08	-2.59	116.14	122.03
2	D	901	YAJ	O07-C06-C08	-2.57	116.17	122.03
2	C	901	YAJ	C09-C08-C06	2.51	120.00	112.57
2	B	901	YAJ	C11-C12-C13	-2.50	116.98	120.37
2	C	901	YAJ	O07-C06-C08	-2.50	116.35	122.03
2	C	901	YAJ	C13-N15-C16	-2.39	121.53	124.49
2	A	901	YAJ	C11-C12-C13	-2.23	117.35	120.37
2	A	901	YAJ	O07-C06-C08	-2.20	117.02	122.03
2	C	901	YAJ	C14-C13-N15	2.09	123.62	119.84
2	D	901	YAJ	C11-C12-C13	-2.00	117.66	120.37

There are no chirality outliers.

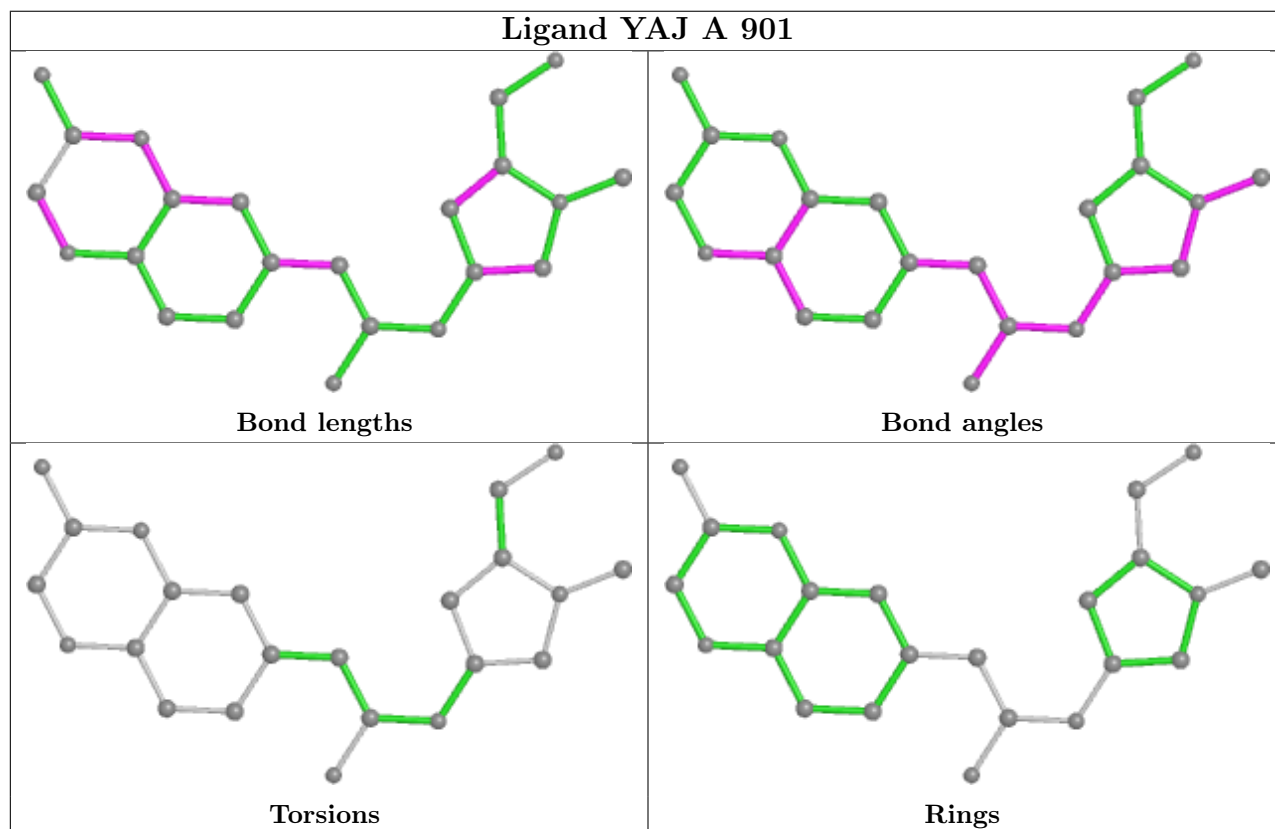
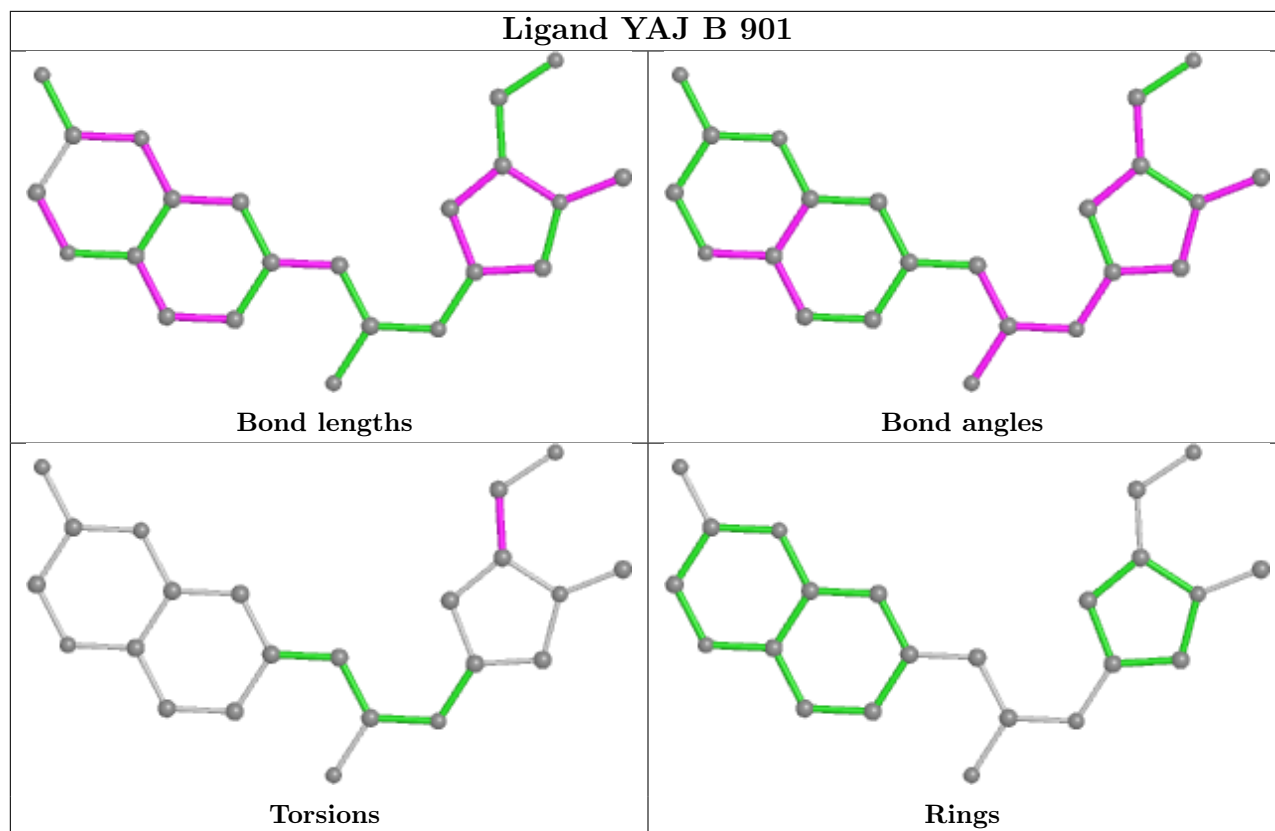
All (11) torsion outliers are listed below:

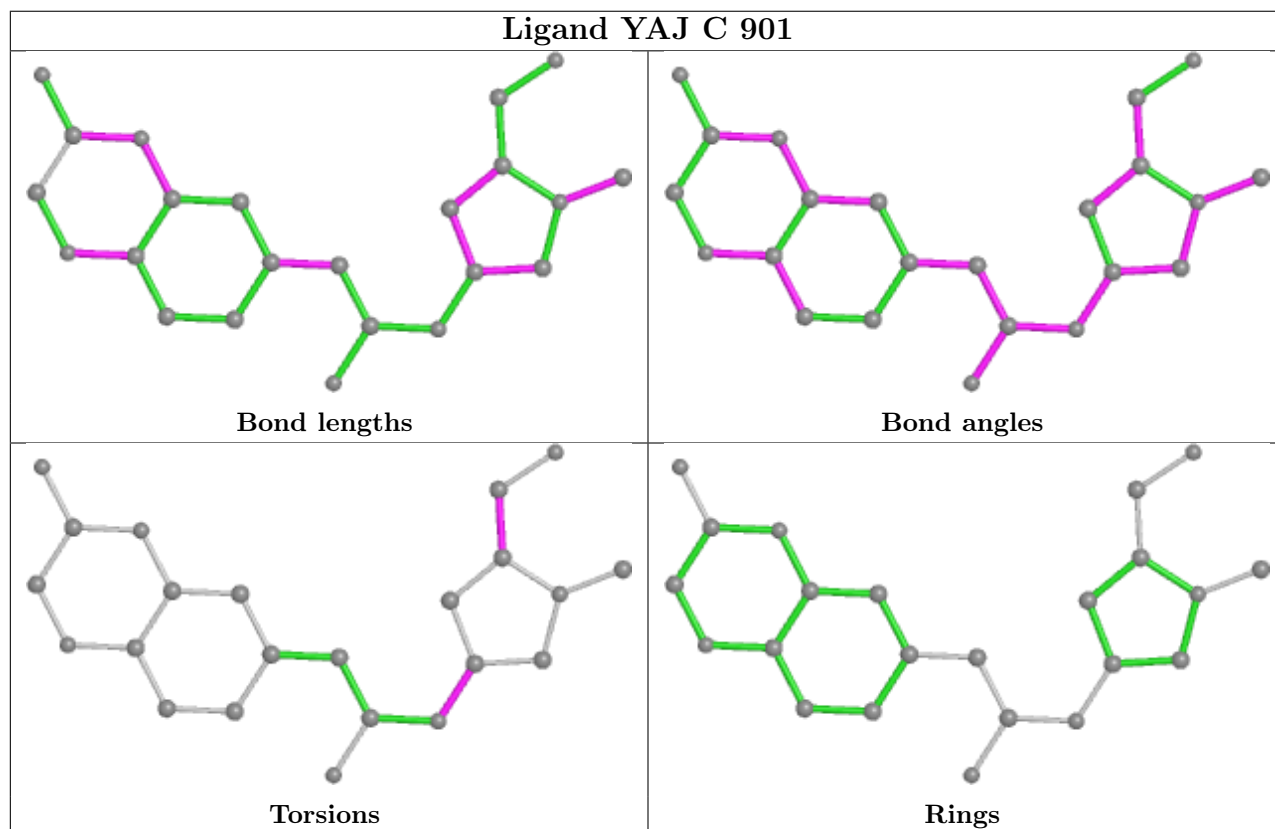
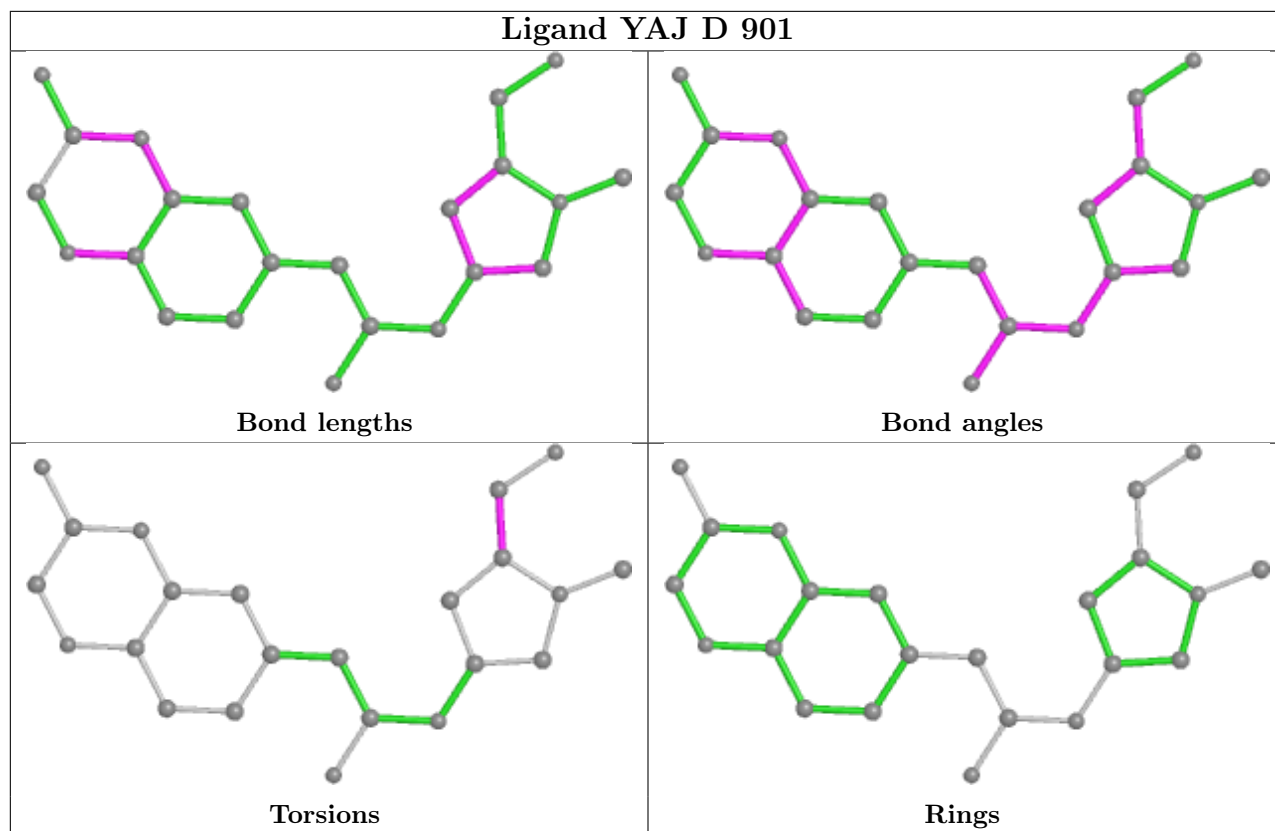
Mol	Chain	Res	Type	Atoms
3	B	902	GOL	O1-C1-C2-C3
3	B	902	GOL	O1-C1-C2-O2
3	B	903	GOL	O1-C1-C2-O2
3	B	903	GOL	O2-C2-C3-O3
2	B	901	YAJ	C20-C21-C22-O23
2	C	901	YAJ	C20-C21-C22-O23
2	B	901	YAJ	N02-C21-C22-O23
2	C	901	YAJ	N02-C21-C22-O23
2	D	901	YAJ	C20-C21-C22-O23
3	B	903	GOL	O1-C1-C2-C3
2	C	901	YAJ	C03-C04-N05-C06

There are no ring outliers.

No monomer is involved in short contacts.

The following is a two-dimensional graphical depiction of Mogul quality analysis of bond lengths, bond angles, torsion angles, and ring geometry for all instances of the Ligand of Interest. In addition, ligands with molecular weight > 250 and outliers as shown on the validation Tables will also be included. For torsion angles, if less than 5% of the Mogul distribution of torsion angles is within 10 degrees of the torsion angle in question, then that torsion angle is considered an outlier. Any bond that is central to one or more torsion angles identified as an outlier by Mogul will be highlighted in the graph. For rings, the root-mean-square deviation (RMSD) between the ring in question and similar rings identified by Mogul is calculated over all ring torsion angles. If the average RMSD is greater than 60 degrees and the minimal RMSD between the ring in question and any Mogul-identified rings is also greater than 60 degrees, then that ring is considered an outlier. The outliers are highlighted in purple. The color gray indicates Mogul did not find sufficient equivalents in the CSD to analyse the geometry.





5.7 Other polymers [i](#)

There are no such residues in this entry.

5.8 Polymer linkage issues [i](#)

There are no chain breaks in this entry.

6 Fit of model and data

6.1 Protein, DNA and RNA chains

In the following table, the column labelled ‘#RSRZ > 2’ contains the number (and percentage) of RSRZ outliers, followed by percent RSRZ outliers for the chain as percentile scores relative to all X-ray entries and entries of similar resolution. The OWAB column contains the minimum, median, 95th percentile and maximum values of the occupancy-weighted average B-factor per residue. The column labelled ‘Q < 0.9’ lists the number of (and percentage) of residues with an average occupancy less than 0.9.

Mol	Chain	Analysed	<RSRZ>	#RSRZ>2	OWAB(Å ²)	Q<0.9
1	A	725/797 (90%)	0.09	24 (3%) 46 53	18, 29, 50, 83	0
1	B	728/797 (91%)	0.23	32 (4%) 34 41	18, 31, 56, 109	0
1	C	727/797 (91%)	0.32	45 (6%) 20 26	19, 34, 64, 103	0
1	D	726/797 (91%)	0.21	32 (4%) 34 41	20, 34, 56, 105	0
All	All	2906/3188 (91%)	0.21	133 (4%) 32 40	18, 32, 57, 109	0

All (133) RSRZ outliers are listed below:

Mol	Chain	Res	Type	RSRZ
1	D	479	TRP	9.1
1	C	479	TRP	8.4
1	B	722	SER	7.0
1	D	722	SER	5.8
1	B	721	ALA	5.0
1	A	813	THR	4.9
1	C	5	PRO	4.8
1	B	826	GLY	4.7
1	B	5	PRO	4.6
1	B	599	GLN	4.6
1	D	811	PRO	4.4
1	B	479	TRP	4.4
1	A	376	ALA	4.4
1	C	4	PRO	4.2
1	D	721	ALA	4.1
1	B	720	ASN	4.1
1	A	391	THR	3.9
1	B	392	ASN	3.8
1	C	14	PRO	3.8
1	B	7	VAL	3.7
1	A	479	TRP	3.7

Continued on next page...

Continued from previous page...

Mol	Chain	Res	Type	RSRZ
1	B	717	ALA	3.7
1	D	719	LEU	3.6
1	D	720	ASN	3.6
1	B	4	PRO	3.5
1	A	394	GLY	3.5
1	C	790	ILE	3.5
1	C	804	LEU	3.4
1	C	570	TRP	3.4
1	C	812	GLY	3.4
1	C	568	ALA	3.4
1	B	830	ARG	3.4
1	B	393	PRO	3.3
1	B	829	LEU	3.3
1	D	78	LEU	3.2
1	C	376	ALA	3.2
1	B	813	THR	3.2
1	C	830	ARG	3.1
1	D	830	ARG	3.1
1	C	7	VAL	3.1
1	D	696	ALA	3.1
1	C	692	VAL	3.0
1	C	811	PRO	3.0
1	D	813	THR	3.0
1	C	30	VAL	3.0
1	D	699	ILE	3.0
1	C	694	VAL	2.9
1	D	568	ALA	2.9
1	C	799	ILE	2.9
1	C	66	ALA	2.9
1	A	814	GLY	2.8
1	B	391	THR	2.8
1	C	808	TYR	2.8
1	D	697	ASP	2.8
1	C	16	SER	2.7
1	A	312	VAL	2.7
1	B	570	TRP	2.7
1	A	4	PRO	2.6
1	C	703	GLN	2.6
1	D	14	PRO	2.6
1	C	15	VAL	2.6
1	A	380	LEU	2.6
1	A	393	PRO	2.5

Continued on next page...

Continued from previous page...

Mol	Chain	Res	Type	RSRZ
1	C	450	PRO	2.5
1	C	721	ALA	2.5
1	C	638	ARG	2.5
1	C	451	HIS	2.4
1	C	700	ALA	2.4
1	B	326	SER	2.4
1	D	361	ALA	2.4
1	C	810	VAL	2.4
1	A	377	THR	2.4
1	D	812	GLY	2.4
1	B	6	GLU	2.4
1	D	377	THR	2.4
1	C	39	GLY	2.4
1	A	330	ILE	2.3
1	A	519	GLY	2.3
1	A	381	LEU	2.3
1	B	598	GLU	2.3
1	B	40	VAL	2.3
1	D	371	GLY	2.3
1	B	146	TRP	2.3
1	C	41	ASN	2.3
1	C	816	GLU	2.3
1	D	816	GLU	2.3
1	A	5	PRO	2.3
1	D	376	ALA	2.3
1	D	819	THR	2.3
1	A	812	GLY	2.3
1	A	830	ARG	2.3
1	D	570	TRP	2.3
1	B	383	PRO	2.3
1	D	476	LYS	2.3
1	A	311	ASP	2.2
1	C	696	ALA	2.2
1	C	379	THR	2.2
1	C	380	LEU	2.2
1	D	39	GLY	2.2
1	B	786	LEU	2.2
1	C	697	ASP	2.2
1	A	696	ALA	2.2
1	A	372	VAL	2.2
1	C	791	VAL	2.2
1	B	269	ASN	2.1

Continued on next page...

Continued from previous page...

Mol	Chain	Res	Type	RSRZ
1	A	395	HIS	2.1
1	B	785	SER	2.1
1	C	793	SER	2.1
1	D	818	TYR	2.1
1	C	267	SER	2.1
1	B	716	ALA	2.1
1	A	816	GLU	2.1
1	C	569	ILE	2.1
1	D	346	LYS	2.1
1	D	79	ASP	2.1
1	D	40	VAL	2.1
1	D	817	VAL	2.1
1	D	519	GLY	2.1
1	D	451	HIS	2.1
1	B	198	TRP	2.1
1	D	267	SER	2.1
1	B	377	THR	2.1
1	A	283	VAL	2.1
1	B	814	GLY	2.1
1	C	32	GLY	2.1
1	C	138	PHE	2.1
1	C	695	ARG	2.0
1	C	829	LEU	2.0
1	B	330	ILE	2.0
1	C	598	GLU	2.0
1	A	568	ALA	2.0
1	C	17	PRO	2.0
1	B	185	ALA	2.0

6.2 Non-standard residues in protein, DNA, RNA chains [i](#)

There are no non-standard protein/DNA/RNA residues in this entry.

6.3 Carbohydrates [i](#)

There are no monosaccharides in this entry.

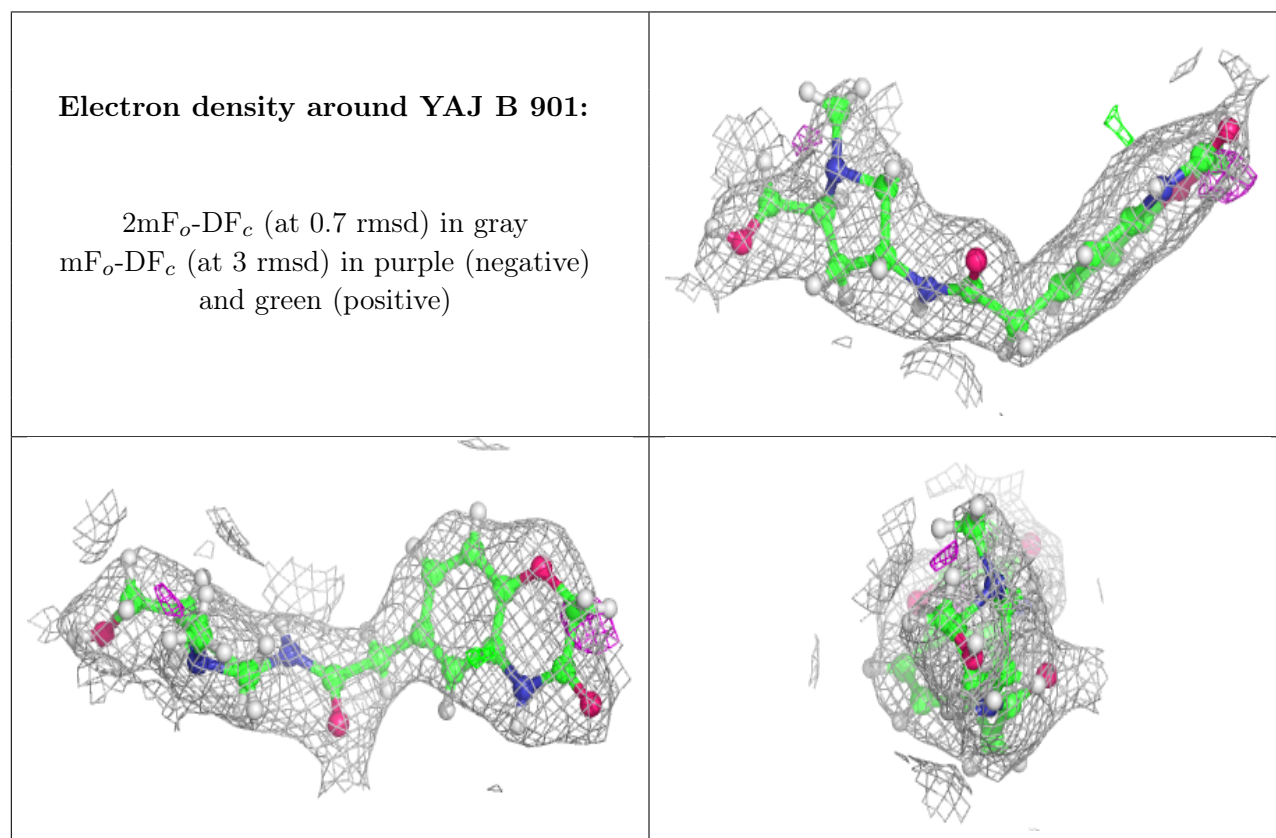
6.4 Ligands [i](#)

In the following table, the Atoms column lists the number of modelled atoms in the group and the number defined in the chemical component dictionary. The B-factors column lists the minimum,

median, 95th percentile and maximum values of B factors of atoms in the group. The column labelled 'Q< 0.9' lists the number of atoms with occupancy less than 0.9.

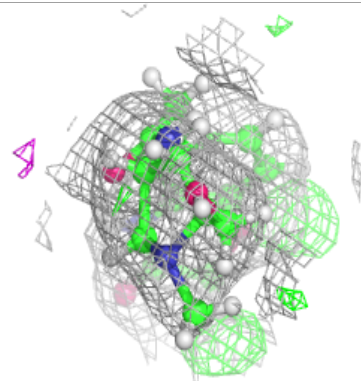
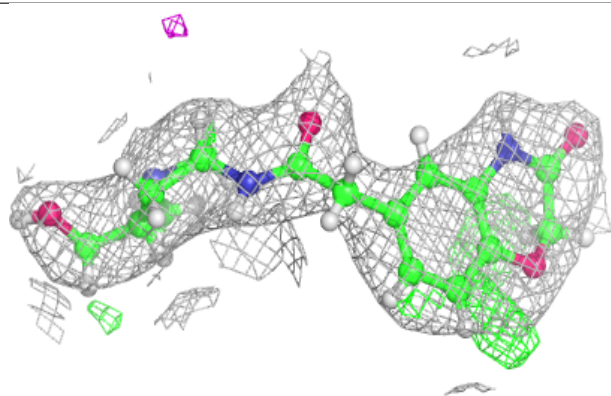
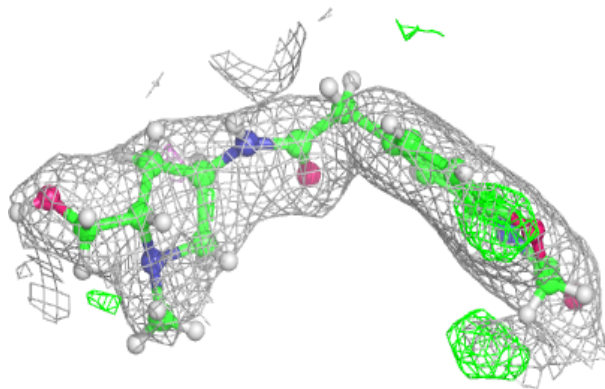
Mol	Type	Chain	Res	Atoms	RSCC	RSR	B-factors(Å ²)	Q<0.9
3	GOL	B	902	6/6	0.87	0.14	58,70,72,72	0
3	GOL	D	902	6/6	0.89	0.17	49,59,63,64	0
2	YAJ	B	901	23/23	0.90	0.25	27,33,36,40	0
2	YAJ	C	901	23/23	0.90	0.29	29,35,42,49	0
2	YAJ	D	901	23/23	0.91	0.25	32,40,47,52	0
2	YAJ	A	901	23/23	0.93	0.25	28,36,42,48	0
3	GOL	A	903	6/6	0.93	0.24	49,59,61,62	0
3	GOL	B	903	6/6	0.94	0.25	39,46,48,48	0
3	GOL	A	902	6/6	0.97	0.18	38,45,47,48	0
4	MG	A	904	1/1	0.97	0.12	24,24,24,24	0

The following is a graphical depiction of the model fit to experimental electron density of all instances of the Ligand of Interest. In addition, ligands with molecular weight > 250 and outliers as shown on the geometry validation Tables will also be included. Each fit is shown from different orientation to approximate a three-dimensional view.

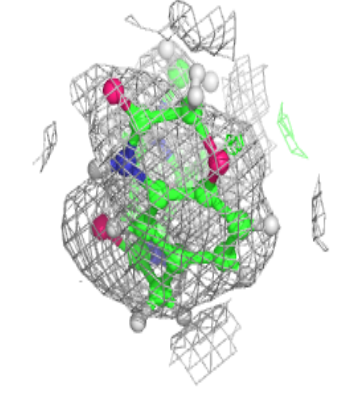
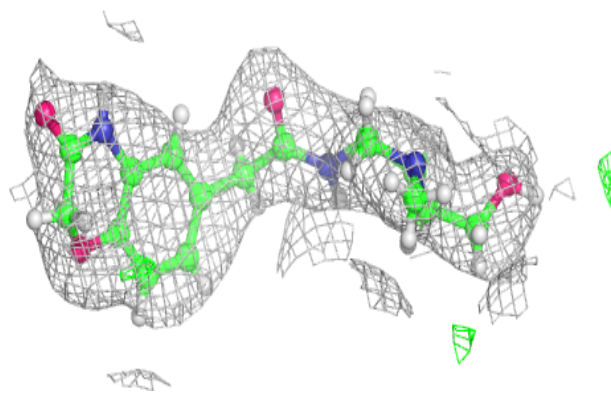
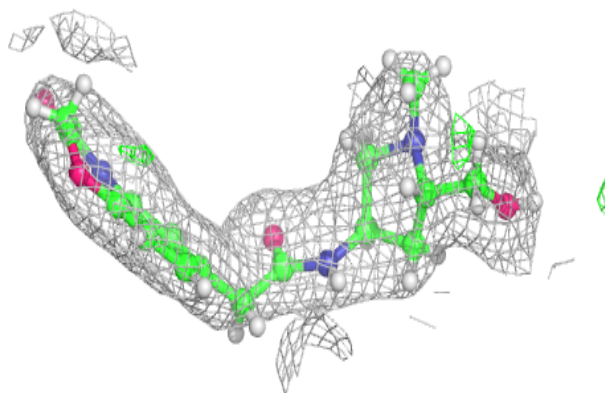


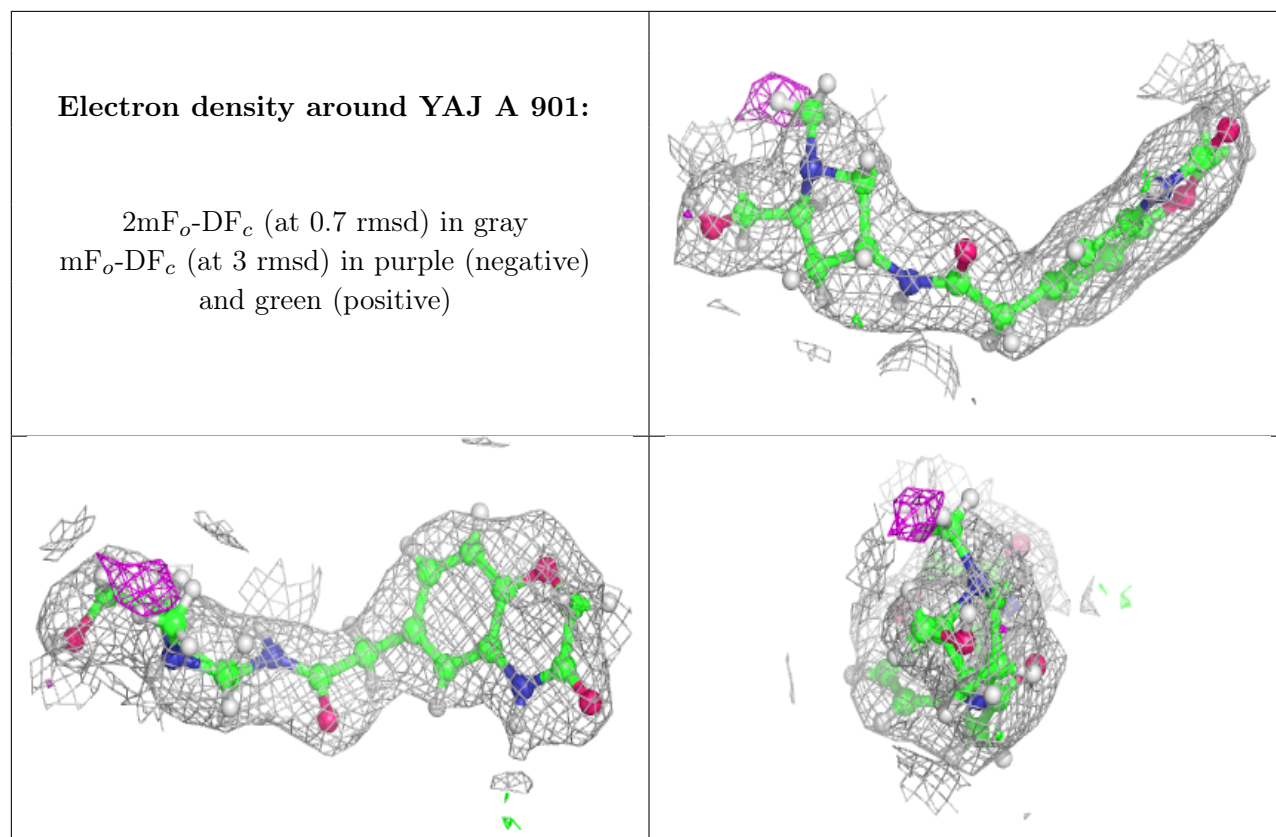
Electron density around YAJ C 901:

$2mF_o-DF_c$ (at 0.7 rmsd) in gray
 mF_o-DF_c (at 3 rmsd) in purple (negative)
and green (positive)

**Electron density around YAJ D 901:**

$2mF_o-DF_c$ (at 0.7 rmsd) in gray
 mF_o-DF_c (at 3 rmsd) in purple (negative)
and green (positive)





6.5 Other polymers [i](#)

There are no such residues in this entry.