



# Full wwPDB X-ray Structure Validation Report ⓘ

May 29, 2024 – 06:49 PM EDT

PDB ID : 7INS  
Title : STRUCTURE OF PORCINE INSULIN COCRYSTALLIZED WITH CLUPEINE Z  
Authors : Balschmidt, P.; Hansen, F.B.; Dodson, E.; Dodson, G.; Korber, F.  
Deposited on : 1991-09-03  
Resolution : 2.00 Å(reported)

This is a Full wwPDB X-ray Structure Validation Report for a publicly released PDB entry.

We welcome your comments at [validation@mail.wwpdb.org](mailto:validation@mail.wwpdb.org)

A user guide is available at

<https://www.wwpdb.org/validation/2017/XrayValidationReportHelp>

with specific help available everywhere you see the ⓘ symbol.

The types of validation reports are described at

<http://www.wwpdb.org/validation/2017/FAQs#types>.

---

The following versions of software and data (see [references ⓘ](#)) were used in the production of this report:

MolProbity : 4.02b-467  
Mogul : 1.8.5 (274361), CSD as541be (2020)  
Xtriage (Phenix) : 1.13  
EDS : 2.36.2  
Percentile statistics : 20191225.v01 (using entries in the PDB archive December 25th 2019)  
Refmac : 5.8.0158  
CCP4 : 7.0.044 (Gargrove)  
Ideal geometry (proteins) : Engh & Huber (2001)  
Ideal geometry (DNA, RNA) : Parkinson et al. (1996)  
Validation Pipeline (wwPDB-VP) : 2.36.2

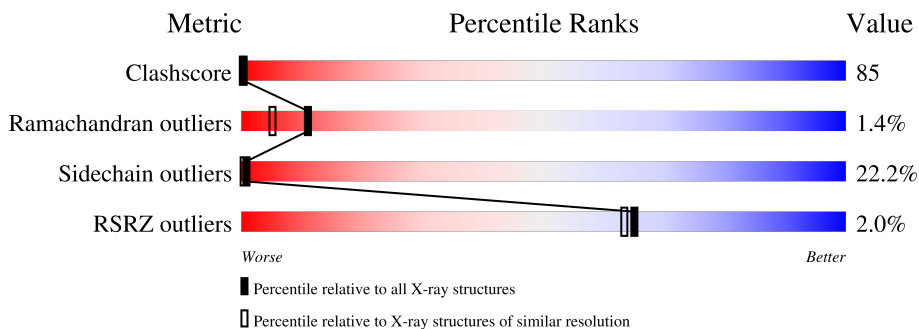
# 1 Overall quality at a glance

The following experimental techniques were used to determine the structure:

*X-RAY DIFFRACTION*

The reported resolution of this entry is 2.00 Å.

Percentile scores (ranging between 0-100) for global validation metrics of the entry are shown in the following graphic. The table shows the number of entries on which the scores are based.



Metric	Whole archive (#Entries)	Similar resolution (#Entries, resolution range(Å))
Clashscore	141614	9178 (2.00-2.00)
Ramachandran outliers	138981	9054 (2.00-2.00)
Sidechain outliers	138945	9053 (2.00-2.00)
RSRZ outliers	127900	7900 (2.00-2.00)

The table below summarises the geometric issues observed across the polymeric chains and their fit to the electron density. The red, orange, yellow and green segments of the lower bar indicate the fraction of residues that contain outliers for  $\geq 3$ , 2, 1 and 0 types of geometric quality criteria respectively. A grey segment represents the fraction of residues that are not modelled. The numeric value for each fraction is indicated below the corresponding segment, with a dot representing fractions  $\leq 5\%$ . The upper red bar (where present) indicates the fraction of residues that have poor fit to the electron density. The numeric value is given above the bar.

Mol	Chain	Length	Quality of chain
1	A	21	
1	C	21	
1	E	21	
2	B	30	
2	D	30	
2	F	30	
3	G	16	

## 2 Entry composition [i](#)

There are 7 unique types of molecules in this entry. The entry contains 1492 atoms, of which 0 are hydrogens and 0 are deuteriums.

In the tables below, the ZeroOcc column contains the number of atoms modelled with zero occupancy, the AltConf column contains the number of residues with at least one atom in alternate conformation and the Trace column contains the number of residues modelled with at most 2 atoms.

- Molecule 1 is a protein called INSULIN (CHAIN A).

Mol	Chain	Residues	Atoms					ZeroOcc	AltConf	Trace
			Total	C	N	O	S			
1	A	21	167	101	25	37	4	3	1	0
1	C	21	163	99	25	35	4	0	0	0
1	E	21	163	99	25	35	4	0	0	0

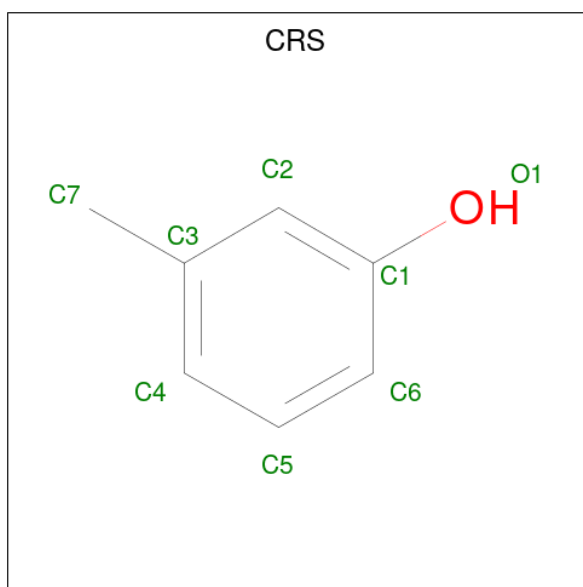
- Molecule 2 is a protein called INSULIN (CHAIN B).

Mol	Chain	Residues	Atoms					ZeroOcc	AltConf	Trace
			Total	C	N	O	S			
2	B	30	246	163	40	41	2	0	1	0
2	D	30	240	157	40	41	2	4	0	0
2	F	30	240	157	40	41	2	0	0	0

- Molecule 3 is a protein called GENERAL PROTAMINE CHAIN.

Mol	Chain	Residues	Atoms				ZeroOcc	AltConf	Trace
			Total	C	N	O			
3	G	16	124	69	39	16	15	0	0

- Molecule 4 is M-CRESOL (three-letter code: CRS) (formula: C<sub>7</sub>H<sub>8</sub>O).



Mol	Chain	Residues	Atoms			ZeroOcc	AltConf
4	A	1	Total	C	O	0	1
			15	13	2		
4	C	1	Total	C	O	0	0
			7	6	1		
4	E	1	Total	C	O	0	0
			7	6	1		

- Molecule 5 is ZINC ION (three-letter code: ZN) (formula: Zn).

Mol	Chain	Residues	Atoms		ZeroOcc	AltConf
5	D	1	Total	Zn	0	0
			1	1		

- Molecule 6 is UNKNOWN (three-letter code: UNK) (formula: C<sub>4</sub>H<sub>9</sub>NO<sub>2</sub>).

Mol	Chain	Residues	Atoms			ZeroOcc	AltConf
6	D	2	Total	C	N	0	0
			10	4	6		

- Molecule 7 is water.

Mol	Chain	Residues	Atoms		ZeroOcc	AltConf
7	A	17	Total	O	0	0
			17	17		
7	B	19	Total	O	0	0
			19	19		

*Continued on next page...*

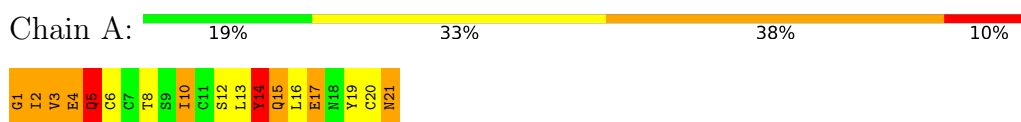
*Continued from previous page...*

Mol	Chain	Residues	Atoms	ZeroOcc	AltConf
7	C	5	Total O 5 5	0	0
7	D	31	Total O 31 31	0	0
7	E	15	Total O 15 15	0	0
7	F	13	Total O 13 13	0	0
7	G	9	Total O 9 9	0	0

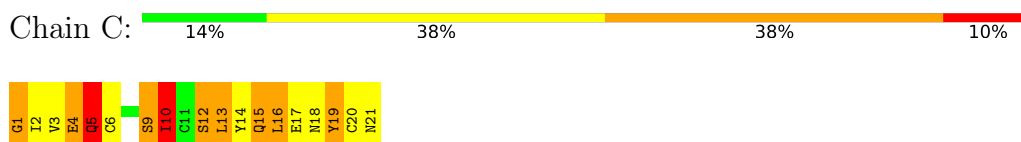
### 3 Residue-property plots [i](#)

These plots are drawn for all protein, RNA, DNA and oligosaccharide chains in the entry. The first graphic for a chain summarises the proportions of the various outlier classes displayed in the second graphic. The second graphic shows the sequence view annotated by issues in geometry and electron density. Residues are color-coded according to the number of geometric quality criteria for which they contain at least one outlier: green = 0, yellow = 1, orange = 2 and red = 3 or more. A red dot above a residue indicates a poor fit to the electron density ( $RSRZ > 2$ ). Stretches of 2 or more consecutive residues without any outlier are shown as a green connector. Residues present in the sample, but not in the model, are shown in grey.

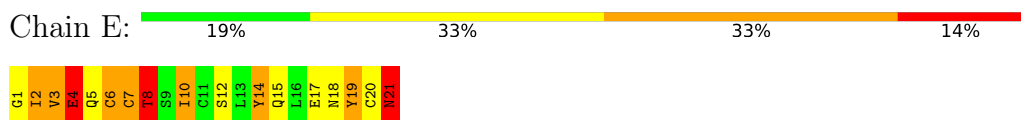
- Molecule 1: INSULIN (CHAIN A)



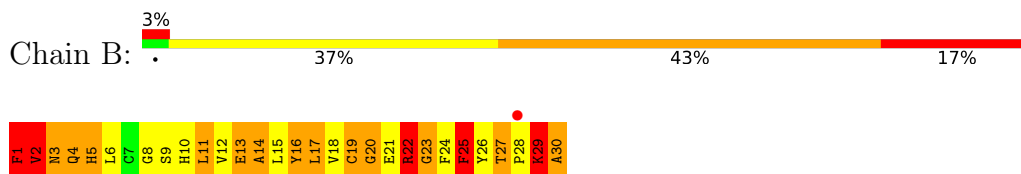
- Molecule 1: INSULIN (CHAIN A)



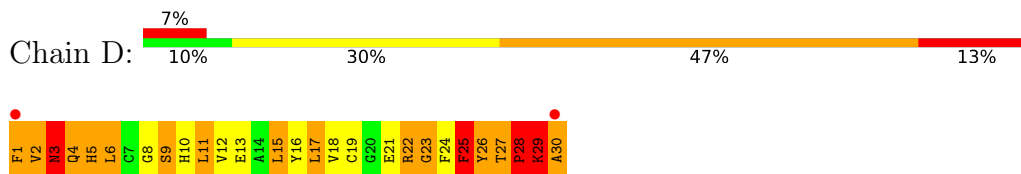
- Molecule 1: INSULIN (CHAIN A)



- Molecule 2: INSULIN (CHAIN B)



- Molecule 2: INSULIN (CHAIN B)



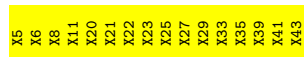
- Molecule 2: INSULIN (CHAIN B)





- Molecule 3: GENERAL PROTAMINE CHAIN

Chain G:  100%



## 4 Data and refinement statistics

Property	Value	Source
Space group	P 43 21 2	Depositor
Cell constants a, b, c, $\alpha$ , $\beta$ , $\gamma$	62.90Å 62.90Å 85.90Å 90.00° 90.00° 90.00°	Depositor
Resolution (Å)	(Not available) – 2.00 26.73 – 2.00	Depositor EDS
% Data completeness (in resolution range)	(Not available) ((Not available)-2.00) 82.1 (26.73-2.00)	Depositor EDS
$R_{merge}$	(Not available)	Depositor
$R_{sym}$	(Not available)	Depositor
$\langle I/\sigma(I) \rangle$ <sup>1</sup>	5.33 (at 1.99Å)	Xtrriage
Refinement program	PROLSQ	Depositor
R, $R_{free}$	0.194 , (Not available) 0.182 , (Not available)	Depositor DCC
$R_{free}$ test set	No test flags present.	wwPDB-VP
Wilson B-factor (Å <sup>2</sup> )	22.5	Xtrriage
Anisotropy	0.222	Xtrriage
Bulk solvent $k_{sol}$ (e/Å <sup>3</sup> ), $B_{sol}$ (Å <sup>2</sup> )	0.36 , 239.9	EDS
L-test for twinning <sup>2</sup>	$\langle  L  \rangle = 0.48$ , $\langle L^2 \rangle = 0.31$	Xtrriage
Estimated twinning fraction	No twinning to report.	Xtrriage
$F_o, F_c$ correlation	0.95	EDS
Total number of atoms	1492	wwPDB-VP
Average B, all atoms (Å <sup>2</sup> )	32.0	wwPDB-VP

Xtrriage's analysis on translational NCS is as follows: *The largest off-origin peak in the Patterson function is 10.35% of the height of the origin peak. No significant pseudotranslation is detected.*

<sup>1</sup>Intensities estimated from amplitudes.

<sup>2</sup>Theoretical values of  $\langle |L| \rangle$ ,  $\langle L^2 \rangle$  for acentric reflections are 0.5, 0.333 respectively for untwinned datasets, and 0.375, 0.2 for perfectly twinned datasets.



## 5 Model quality [i](#)

### 5.1 Standard geometry [i](#)

Bond lengths and bond angles in the following residue types are not validated in this section: CRS, ZN

The Z score for a bond length (or angle) is the number of standard deviations the observed value is removed from the expected value. A bond length (or angle) with  $|Z| > 5$  is considered an outlier worth inspection. RMSZ is the root-mean-square of all Z scores of the bond lengths (or angles).

Mol	Chain	Bond lengths		Bond angles	
		RMSZ	# Z  >5	RMSZ	# Z  >5
1	A	1.43	1/173 (0.6%)	3.49	30/232 (12.9%)
1	C	1.32	0/164	3.39	24/220 (10.9%)
1	E	1.41	0/164	3.04	23/220 (10.5%)
2	B	1.42	1/259 (0.4%)	3.24	41/348 (11.8%)
2	D	1.66	3/247 (1.2%)	3.83	48/332 (14.5%)
2	F	1.39	1/247 (0.4%)	3.50	42/332 (12.7%)
All	All	1.45	6/1254 (0.5%)	3.44	208/1684 (12.4%)

Chiral center outliers are detected by calculating the chiral volume of a chiral center and verifying if the center is modelled as a planar moiety or with the opposite hand. A planarity outlier is detected by checking planarity of atoms in a peptide group, atoms in a mainchain group or atoms of a sidechain that are expected to be planar.

Mol	Chain	#Chirality outliers	#Planarity outliers
2	B	0	2
3	G	0	1
All	All	0	3

All (6) bond length outliers are listed below:

Mol	Chain	Res	Type	Atoms	Z	Observed(Å)	Ideal(Å)
2	D	29	LYS	CB-CG	-11.41	1.21	1.52
2	B	21	GLU	CD-OE2	5.60	1.31	1.25
1	A	10	ILE	CB-CG1	-5.58	1.38	1.54
2	D	16	TYR	CE1-CZ	5.46	1.45	1.38
2	F	7	CYS	CB-SG	-5.37	1.73	1.81
2	D	9	SER	CB-OG	-5.06	1.35	1.42

All (208) bond angle outliers are listed below:

Mol	Chain	Res	Type	Atoms	Z	Observed(°)	Ideal(°)
2	D	29	LYS	CA-CB-CG	22.62	163.17	113.40
2	D	28	PRO	C-N-CA	18.57	168.14	121.70
2	F	1	PHE	CA-CB-CG	16.18	152.72	113.90
2	F	21	GLU	OE1-CD-OE2	15.41	141.79	123.30
2	D	29	LYS	N-CA-CB	15.04	137.68	110.60
1	C	14	TYR	CB-CG-CD1	-14.33	112.40	121.00
1	C	14	TYR	CB-CG-CD2	14.15	129.49	121.00
1	E	17	GLU	CA-CB-CG	14.12	144.45	113.40
1	C	19	TYR	CB-CG-CD1	-13.83	112.70	121.00
2	D	22	ARG	NE-CZ-NH2	-13.44	113.58	120.30
1	A	5	GLN	CA-CB-CG	12.89	141.76	113.40
2	D	1	PHE	CA-C-O	11.88	145.05	120.10
1	A	19	TYR	CB-CG-CD2	11.82	128.09	121.00
2	B	1	PHE	O-C-N	11.67	141.38	122.70
1	C	19	TYR	CB-CG-CD2	11.67	128.00	121.00
2	B	30	ALA	CB-CA-C	11.64	127.56	110.10
1	C	15	GLN	CG-CD-OE1	11.30	144.21	121.60
2	D	29	LYS	CB-CG-CD	-11.29	82.25	111.60
2	F	7	CYS	CA-CB-SG	10.65	133.17	114.00
2	F	25	PHE	N-CA-CB	10.61	129.69	110.60
2	D	1	PHE	CA-C-N	-10.33	94.48	117.20
1	E	14	TYR	CB-CG-CD1	-10.05	114.97	121.00
2	F	22	ARG	NE-CZ-NH1	-9.80	115.40	120.30
2	B	21	GLU	CB-CG-CD	9.68	140.34	114.20
2	B	24	PHE	O-C-N	9.19	137.41	122.70
2	F	16	TYR	CB-CG-CD2	-9.18	115.49	121.00
2	D	3	ASN	CB-CG-ND2	9.13	138.62	116.70
1	A	8	THR	O-C-N	8.88	136.91	122.70
1	E	17	GLU	CG-CD-OE1	8.85	135.99	118.30
2	F	10	HIS	CA-CB-CG	-8.85	98.56	113.60
2	B	13	GLU	CG-CD-OE2	-8.77	100.77	118.30
2	B	1	PHE	N-CA-CB	8.76	126.36	110.60
1	A	14	TYR	CB-CG-CD2	-8.72	115.77	121.00
2	B	26	TYR	CB-CG-CD1	8.63	126.18	121.00
2	F	21	GLU	N-CA-CB	8.56	126.00	110.60
2	B	22	ARG	CD-NE-CZ	-8.48	111.73	123.60
2	D	18	VAL	CG1-CB-CG2	-8.34	97.55	110.90
1	E	14	TYR	CA-CB-CG	8.33	129.23	113.40
2	B	4	GLN	N-CA-CB	-8.33	95.61	110.60
2	F	4	GLN	CG-CD-OE1	8.20	138.00	121.60
2	F	21	GLU	CG-CD-OE2	-8.19	101.93	118.30
1	A	14	TYR	CA-CB-CG	-8.12	97.96	113.40
1	A	17	GLU	OE1-CD-OE2	8.12	133.05	123.30

*Continued on next page...*

*Continued from previous page...*

Mol	Chain	Res	Type	Atoms	Z	Observed(°)	Ideal(°)
2	D	3	ASN	N-CA-CB	8.07	125.12	110.60
2	D	25	PHE	CB-CA-C	8.06	126.53	110.40
1	C	21	ASN	CA-CB-CG	8.04	131.09	113.40
1	A	13	LEU	CB-CA-C	8.03	125.46	110.20
2	D	12	VAL	O-C-N	7.88	135.30	122.70
1	A	4[A]	GLU	CB-CA-C	7.73	125.86	110.40
1	A	4[B]	GLU	CB-CA-C	7.73	125.86	110.40
1	C	12	SER	CA-C-O	7.72	136.31	120.10
2	F	13	GLU	CG-CD-OE2	7.68	133.66	118.30
2	F	3	ASN	CA-C-N	7.66	134.04	117.20
1	A	4[A]	GLU	OE1-CD-OE2	7.64	132.47	123.30
1	A	4[B]	GLU	OE1-CD-OE2	7.64	132.47	123.30
2	B	26	TYR	CB-CG-CD2	-7.58	116.45	121.00
1	E	4	GLU	CG-CD-OE2	7.55	133.41	118.30
2	F	3	ASN	CA-C-O	-7.49	104.36	120.10
2	B	13	GLU	CG-CD-OE1	7.46	133.22	118.30
1	C	4	GLU	OE1-CD-OE2	7.46	132.25	123.30
2	D	24	PHE	CA-C-O	7.41	135.65	120.10
2	D	3	ASN	OD1-CG-ND2	-7.39	104.90	121.90
1	A	10	ILE	CB-CG1-CD1	-7.35	93.33	113.90
1	C	10	ILE	CB-CA-C	7.29	126.19	111.60
2	D	16	TYR	CB-CG-CD1	-7.28	116.63	121.00
2	B	29	LYS	CA-CB-CG	7.23	129.30	113.40
1	A	2	ILE	CA-C-O	7.22	135.27	120.10
2	D	22	ARG	NH1-CZ-NH2	7.20	127.32	119.40
1	E	17	GLU	CG-CD-OE2	-7.20	103.91	118.30
2	D	12	VAL	CA-CB-CG2	7.15	121.63	110.90
2	B	8	GLY	CA-C-O	-7.11	107.80	120.60
2	D	26	TYR	CA-C-N	-7.10	101.58	117.20
2	B	9	SER	N-CA-CB	7.03	121.04	110.50
2	F	9	SER	N-CA-CB	-7.01	99.98	110.50
2	B	15	LEU	CB-CG-CD1	-7.00	99.11	111.00
2	D	3	ASN	CA-CB-CG	6.99	128.78	113.40
2	B	1	PHE	CA-C-N	-6.98	101.84	117.20
2	F	13	GLU	OE1-CD-OE2	-6.98	114.92	123.30
2	D	26	TYR	CB-CG-CD2	-6.94	116.84	121.00
2	B	24	PHE	CD1-CE1-CZ	-6.93	111.78	120.10
1	A	3	VAL	CG1-CB-CG2	6.91	121.95	110.90
2	F	24	PHE	CA-C-O	6.90	134.59	120.10
2	F	26	TYR	O-C-N	6.90	133.73	122.70
2	D	25	PHE	CA-C-N	-6.87	102.09	117.20
2	F	4	GLN	CB-CA-C	6.82	124.03	110.40

*Continued on next page...*

*Continued from previous page...*

Mol	Chain	Res	Type	Atoms	Z	Observed(°)	Ideal(°)
1	A	2	ILE	CA-C-N	-6.80	102.24	117.20
2	D	22	ARG	CA-CB-CG	-6.80	98.44	113.40
1	A	21	ASN	OD1-CG-ND2	6.78	137.50	121.90
2	B	23	GLY	O-C-N	6.78	133.54	122.70
2	B	22	ARG	CA-CB-CG	-6.70	98.66	113.40
2	F	21	GLU	CB-CG-CD	-6.69	96.13	114.20
1	E	7	CYS	CB-CA-C	6.69	123.78	110.40
1	E	19	TYR	CB-CG-CD2	6.68	125.01	121.00
1	C	6	CYS	CA-CB-SG	-6.68	101.98	114.00
1	C	19	TYR	N-CA-CB	6.67	122.61	110.60
1	A	17	GLU	CG-CD-OE1	-6.64	105.02	118.30
2	D	17	LEU	N-CA-CB	-6.61	97.19	110.40
1	E	14	TYR	CB-CG-CD2	6.60	124.96	121.00
2	D	24	PHE	CA-C-N	-6.60	102.68	117.20
2	B	29	LYS	CA-C-N	-6.58	102.72	117.20
2	B	30	ALA	N-CA-C	-6.56	93.28	111.00
2	F	22	ARG	CG-CD-NE	6.55	125.56	111.80
2	D	3	ASN	O-C-N	6.51	133.11	122.70
1	E	19	TYR	O-C-N	-6.50	112.31	122.70
2	F	7	CYS	CA-C-O	-6.49	106.47	120.10
2	D	29	LYS	N-CA-C	-6.45	93.59	111.00
1	A	16	LEU	CB-CG-CD1	-6.44	100.06	111.00
1	E	3	VAL	CB-CA-C	6.43	123.62	111.40
2	D	6	LEU	CB-CG-CD1	-6.42	100.08	111.00
1	C	15	GLN	CG-CD-NE2	-6.42	101.29	116.70
2	B	19	CYS	CA-CB-SG	-6.39	102.50	114.00
2	F	29	LYS	O-C-N	6.38	132.91	122.70
2	B	5	HIS	CA-CB-CG	-6.37	102.77	113.60
2	B	3	ASN	CB-CG-OD1	6.36	134.33	121.60
2	B	16	TYR	CB-CG-CD1	-6.33	117.20	121.00
1	A	6	CYS	CA-CB-SG	-6.30	102.66	114.00
2	D	5	HIS	O-C-N	-6.23	112.73	122.70
2	D	23	GLY	N-CA-C	-6.22	97.54	113.10
1	E	6	CYS	O-C-N	6.22	132.66	122.70
2	B	27	THR	CB-CA-C	6.19	128.32	111.60
1	A	10	ILE	CG1-CB-CG2	6.19	125.02	111.40
2	F	7	CYS	CB-CA-C	-6.17	98.05	110.40
1	C	5	GLN	CG-CD-OE1	6.12	133.84	121.60
2	D	12	VAL	CA-CB-CG1	-6.11	101.73	110.90
2	F	26	TYR	CB-CG-CD1	-6.09	117.34	121.00
2	F	1	PHE	N-CA-CB	6.08	121.55	110.60
1	E	21	ASN	CA-CB-CG	-6.08	100.04	113.40

*Continued on next page...*

*Continued from previous page...*

Mol	Chain	Res	Type	Atoms	Z	Observed(°)	Ideal(°)
2	B	11	LEU	CA-CB-CG	6.07	129.27	115.30
2	F	10	HIS	CB-CG-ND1	-6.07	108.03	123.20
2	D	11	LEU	CA-CB-CG	6.04	129.20	115.30
2	F	7	CYS	N-CA-CB	6.01	121.42	110.60
2	F	26	TYR	CB-CA-C	-6.00	98.39	110.40
1	A	15	GLN	CG-CD-OE1	5.98	133.56	121.60
2	B	26	TYR	CA-C-N	-5.97	104.06	117.20
1	C	5	GLN	CB-CG-CD	5.96	127.10	111.60
1	A	21	ASN	CB-CA-C	-5.96	98.49	110.40
1	A	13	LEU	CB-CG-CD1	5.96	121.12	111.00
2	D	13	GLU	O-C-N	-5.92	113.23	122.70
2	B	25[A]	PHE	N-CA-C	-5.89	95.09	111.00
2	B	25[B]	PHE	N-CA-C	-5.89	95.09	111.00
1	C	16	LEU	O-C-N	-5.86	113.32	122.70
2	D	13	GLU	CB-CA-C	5.83	122.07	110.40
2	F	13	GLU	CB-CG-CD	5.83	129.94	114.20
2	D	30	ALA	N-CA-C	5.78	126.61	111.00
2	B	21	GLU	CG-CD-OE1	5.72	129.75	118.30
1	A	13	LEU	O-C-N	5.71	131.84	122.70
2	D	13	GLU	CG-CD-OE1	-5.71	106.88	118.30
1	E	3	VAL	N-CA-CB	-5.70	98.96	111.50
2	D	2	VAL	CB-CA-C	5.68	122.19	111.40
1	E	4	GLU	OE1-CD-OE2	-5.68	116.49	123.30
2	F	26	TYR	N-CA-CB	5.67	120.81	110.60
2	D	13	GLU	C-N-CA	5.66	135.86	121.70
2	F	24	PHE	CB-CA-C	5.66	121.72	110.40
2	F	16	TYR	CD1-CE1-CZ	-5.62	114.74	119.80
2	D	22	ARG	CB-CA-C	-5.52	99.35	110.40
1	A	14	TYR	CA-C-O	-5.52	108.51	120.10
2	B	5	HIS	CA-C-N	5.51	129.33	117.20
1	A	20	CYS	CA-CB-SG	5.50	123.90	114.00
2	B	11	LEU	CB-CG-CD2	-5.50	101.65	111.00
2	D	15	LEU	CB-CG-CD2	-5.43	101.77	111.00
2	B	5	HIS	O-C-N	-5.42	114.03	122.70
2	B	12	VAL	CA-CB-CG2	-5.41	102.78	110.90
1	E	6	CYS	N-CA-C	5.39	125.55	111.00
1	C	9	SER	CA-C-O	-5.38	108.80	120.10
2	D	17	LEU	CB-CG-CD2	-5.35	101.90	111.00
1	E	18	ASN	CA-C-O	-5.35	108.86	120.10
2	F	28	PRO	O-C-N	-5.34	114.15	122.70
2	F	26	TYR	CD1-CE1-CZ	-5.32	115.01	119.80
1	A	14	TYR	CB-CG-CD1	5.32	124.19	121.00

*Continued on next page...*

Continued from previous page...

Mol	Chain	Res	Type	Atoms	Z	Observed(°)	Ideal(°)
1	C	19	TYR	O-C-N	5.32	131.21	122.70
1	E	20	CYS	CA-C-N	5.30	128.86	117.20
2	D	22	ARG	O-C-N	5.30	132.20	123.20
1	E	10	ILE	CA-C-O	5.29	131.21	120.10
2	D	4	GLN	CG-CD-OE1	-5.28	111.03	121.60
2	D	17	LEU	O-C-N	5.27	131.13	122.70
2	F	25	PHE	CB-CG-CD1	-5.26	117.11	120.80
1	E	17	GLU	N-CA-CB	5.26	120.06	110.60
2	B	22	ARG	NE-CZ-NH1	-5.25	117.67	120.30
1	E	21	ASN	OD1-CG-ND2	5.25	133.97	121.90
2	D	4	GLN	O-C-N	5.24	131.09	122.70
2	D	13	GLU	OE1-CD-OE2	5.24	129.59	123.30
1	A	6	CYS	CA-C-N	5.23	128.71	117.20
1	C	16	LEU	CB-CG-CD2	-5.23	102.11	111.00
1	C	9	SER	CB-CA-C	5.19	119.96	110.10
1	A	10	ILE	CA-CB-CG2	-5.19	100.52	110.90
1	C	13	LEU	CA-CB-CG	-5.18	103.39	115.30
1	E	8	THR	CA-CB-CG2	-5.17	105.17	112.40
2	F	16	TYR	C-N-CA	5.16	134.60	121.70
1	C	21	ASN	CB-CG-ND2	5.15	129.06	116.70
2	F	13	GLU	CA-CB-CG	5.15	124.72	113.40
2	B	23	GLY	CA-C-N	-5.14	105.89	117.20
1	E	6	CYS	CA-C-O	-5.14	109.31	120.10
2	B	14	ALA	CB-CA-C	5.12	117.78	110.10
2	F	22	ARG	NE-CZ-NH2	5.12	122.86	120.30
2	B	20	GLY	CA-C-N	-5.11	105.95	117.20
1	C	1	GLY	N-CA-C	-5.08	100.41	113.10
2	F	11	LEU	CA-C-O	-5.08	109.44	120.10
2	F	7	CYS	C-N-CA	-5.05	111.69	122.30
1	C	5	GLN	OE1-CD-NE2	-5.04	110.30	121.90
1	A	1	GLY	C-N-CA	-5.04	109.10	121.70
2	D	3	ASN	CA-C-O	-5.04	109.52	120.10
2	F	16	TYR	CZ-CE2-CD2	-5.03	115.27	119.80
1	C	12	SER	CA-C-N	-5.03	106.14	117.20
2	D	1	PHE	CA-CB-CG	-5.03	101.83	113.90
2	F	4	GLN	CG-CD-NE2	-5.03	104.63	116.70
2	B	2	VAL	CA-CB-CG2	5.03	118.44	110.90
2	B	21	GLU	CG-CD-OE2	-5.01	108.27	118.30
2	D	2	VAL	N-CA-CB	-5.01	100.47	111.50

There are no chirality outliers.

All (3) planarity outliers are listed below:

Mol	Chain	Res	Type	Group
2	B	25[A]	PHE	Sidechain
2	B	25[B]	PHE	Sidechain
3	G	20	UNK	Mainchain

CLOSE-CONTACTS INFOmissingINFO

## 5.2 Torsion angles [i](#)

### 5.2.1 Protein backbone [i](#)

In the following table, the Percentiles column shows the percent Ramachandran outliers of the chain as a percentile score with respect to all X-ray entries followed by that with respect to entries of similar resolution.

The Analysed column shows the number of residues for which the backbone conformation was analysed, and the total number of residues.

Mol	Chain	Analysed	Favoured	Allowed	Outliers	Percentiles	
1	A	20/21 (95%)	20 (100%)	0	0	100	100
1	C	19/21 (90%)	19 (100%)	0	0	100	100
1	E	19/21 (90%)	19 (100%)	0	0	100	100
2	B	29/30 (97%)	28 (97%)	1 (3%)	0	100	100
2	D	28/30 (93%)	26 (93%)	1 (4%)	1 (4%)	3	1
2	F	28/30 (93%)	26 (93%)	1 (4%)	1 (4%)	3	1
All	All	143/153 (94%)	138 (96%)	3 (2%)	2 (1%)	11	5

All (2) Ramachandran outliers are listed below:

Mol	Chain	Res	Type
2	D	28	PRO
2	F	29	LYS

### 5.2.2 Protein sidechains [i](#)

In the following table, the Percentiles column shows the percent sidechain outliers of the chain as a percentile score with respect to all X-ray entries followed by that with respect to entries of similar resolution.

The Analysed column shows the number of residues for which the sidechain conformation was analysed, and the total number of residues.

Mol	Chain	Analysed	Rotameric	Outliers	Percentiles	
1	A	21/20 (105%)	18 (86%)	3 (14%)	3	1
1	C	20/20 (100%)	16 (80%)	4 (20%)	1	0
1	E	20/20 (100%)	14 (70%)	6 (30%)	0	0
2	B	26/25 (104%)	19 (73%)	7 (27%)	0	0
2	D	25/25 (100%)	19 (76%)	6 (24%)	0	0
2	F	25/25 (100%)	20 (80%)	5 (20%)	1	0
All	All	137/135 (102%)	106 (77%)	31 (23%)	1	0

All (31) residues with a non-rotameric sidechain are listed below:

Mol	Chain	Res	Type
1	A	5	GLN
1	A	10	ILE
1	A	14	TYR
2	B	1	PHE
2	B	2	VAL
2	B	17	LEU
2	B	22	ARG
2	B	25[A]	PHE
2	B	25[B]	PHE
2	B	29	LYS
1	C	5	GLN
1	C	9	SER
1	C	10	ILE
1	C	13	LEU
2	D	3	ASN
2	D	17	LEU
2	D	21	GLU
2	D	25	PHE
2	D	27	THR
2	D	29	LYS
1	E	2	ILE
1	E	4	GLU
1	E	8	THR
1	E	14	TYR
1	E	15	GLN
1	E	21	ASN
2	F	1	PHE
2	F	3	ASN
2	F	4	GLN
2	F	13	GLU

*Continued on next page...*



*Continued from previous page...*

Mol	Chain	Res	Type
2	F	29	LYS

Sometimes sidechains can be flipped to improve hydrogen bonding and reduce clashes. All (6) such sidechains are listed below:

Mol	Chain	Res	Type
1	A	15	GLN
2	B	3	ASN
1	C	21	ASN
2	D	3	ASN
1	E	5	GLN
1	E	21	ASN

### 5.2.3 RNA [i](#)

There are no RNA molecules in this entry.

### 5.3 Non-standard residues in protein, DNA, RNA chains [i](#)

There are no non-standard protein/DNA/RNA residues in this entry.

### 5.4 Carbohydrates [i](#)

There are no monosaccharides in this entry.

### 5.5 Ligand geometry [i](#)

Of 7 ligands modelled in this entry, 1 is monoatomic and 2 are unknown - leaving 4 for Mogul analysis.

In the following table, the Counts columns list the number of bonds (or angles) for which Mogul statistics could be retrieved, the number of bonds (or angles) that are observed in the model and the number of bonds (or angles) that are defined in the Chemical Component Dictionary. The Link column lists molecule types, if any, to which the group is linked. The Z score for a bond length (or angle) is the number of standard deviations the observed value is removed from the expected value. A bond length (or angle) with  $|Z| > 2$  is considered an outlier worth inspection. RMSZ is the root-mean-square of all Z scores of the bond lengths (or angles).

Mol	Type	Chain	Res	Link	Bond lengths			Bond angles		
					Counts	RMSZ	$\# Z  > 2$	Counts	RMSZ	$\# Z  > 2$
4	CRS	A	22[A]	-	8,8,8	2.37	1 (12%)	10,10,10	1.38	2 (20%)

Mol	Type	Chain	Res	Link	Bond lengths			Bond angles		
					Counts	RMSZ	# Z  > 2	Counts	RMSZ	# Z  > 2
4	CRS	C	22	-	7,7,8	0.84	0	8,8,10	1.46	2 (25%)
4	CRS	A	22[B]	-	8,8,8	9.96	1 (12%)	10,10,10	11.21	5 (50%)
4	CRS	E	22	-	7,7,8	0.45	0	8,8,10	1.37	1 (12%)

In the following table, the Chirals column lists the number of chiral outliers, the number of chiral centers analysed, the number of these observed in the model and the number defined in the Chemical Component Dictionary. Similar counts are reported in the Torsion and Rings columns. '-' means no outliers of that kind were identified.

Mol	Type	Chain	Res	Link	Chirals	Torsions	Rings
4	CRS	A	22[A]	-	-	-	0/1/1/1
4	CRS	C	22	-	-	-	0/1/1/1
4	CRS	A	22[B]	-	-	-	0/1/1/1
4	CRS	E	22	-	-	-	0/1/1/1

All (2) bond length outliers are listed below:

Mol	Chain	Res	Type	Atoms	Z	Observed(Å)	Ideal(Å)
4	A	22[B]	CRS	C7-C3	28.11	2.51	1.51
4	A	22[A]	CRS	O1-C1	6.32	1.51	1.37

All (10) bond angle outliers are listed below:

Mol	Chain	Res	Type	Atoms	Z	Observed(°)	Ideal(°)
4	A	22[B]	CRS	C7-C3-C4	-28.85	30.76	120.94
4	A	22[B]	CRS	C7-C3-C2	19.96	150.48	120.94
4	A	22[B]	CRS	C6-C5-C4	3.33	124.97	120.25
4	A	22[A]	CRS	C6-C5-C4	-3.20	115.70	120.25
4	A	22[B]	CRS	C5-C6-C1	-2.55	115.70	119.31
4	C	22	CRS	O1-C1-C2	2.50	127.15	120.02
4	E	22	CRS	C4-C5-C6	-2.37	116.58	120.19
4	A	22[A]	CRS	C5-C6-C1	2.26	122.50	119.31
4	A	22[B]	CRS	C6-C1-C2	2.13	122.50	120.17
4	C	22	CRS	O1-C1-C6	-2.12	113.98	120.02

There are no chirality outliers.

There are no torsion outliers.

There are no ring outliers.

1 monomer is involved in 3 short contacts:

Mol	Chain	Res	Type	Clashes	Symm-Clashes
4	C	22	CRS	3	0

## 5.6 Other polymers [i](#)

There are no such residues in this entry.

## 5.7 Polymer linkage issues [i](#)

The following chains have linkage breaks:

Mol	Chain	Number of breaks
3	G	14

All chain breaks are listed below:

Model	Chain	Residue-1	Atom-1	Residue-2	Atom-2	Distance (Å)
1	G	27:UNK	C	29:UNK	N	36.83
1	G	25:UNK	C	27:UNK	N	35.11
1	G	29:UNK	C	33:UNK	N	25.47
1	G	23:UNK	C	25:UNK	N	21.39
1	G	39:UNK	C	41:UNK	N	17.94
1	G	11:UNK	C	20:UNK	N	16.02
1	G	8:UNK	C	11:UNK	N	15.90
1	G	6:UNK	C	8:UNK	N	15.81
1	G	35:UNK	C	39:UNK	N	10.13
1	G	41:UNK	C	43:UNK	N	3.88
1	G	33:UNK	C	35:UNK	N	2.27
1	G	21:UNK	C	22:UNK	N	1.86
1	G	20:UNK	C	21:UNK	N	0.89
1	G	22:UNK	C	23:UNK	N	0.75

## 6 Fit of model and data [i](#)

### 6.1 Protein, DNA and RNA chains [i](#)

In the following table, the column labelled '#RSRZ > 2' contains the number (and percentage) of RSRZ outliers, followed by percent RSRZ outliers for the chain as percentile scores relative to all X-ray entries and entries of similar resolution. The OWAB column contains the minimum, median, 95<sup>th</sup> percentile and maximum values of the occupancy-weighted average B-factor per residue. The column labelled 'Q < 0.9' lists the number of (and percentage) of residues with an average occupancy less than 0.9.

Mol	Chain	Analysed	<RSRZ>	#RSRZ > 2		OWAB(Å <sup>2</sup> )	Q < 0.9
1	A	21/21 (100%)	-0.57	0	100   100	18, 29, 45, 47	2 (9%)
1	C	21/21 (100%)	-0.83	0	100   100	17, 25, 36, 41	1 (4%)
1	E	21/21 (100%)	-0.47	0	100   100	20, 34, 40, 54	1 (4%)
2	B	30/30 (100%)	-0.20	1 (3%)	46   45	9, 22, 53, 63	0
2	D	30/30 (100%)	-0.09	2 (6%)	17   17	10, 24, 50, 66	2 (6%)
2	F	30/30 (100%)	-0.35	0	100   100	11, 25, 60, 61	2 (6%)
3	G	0/16	-	-	-	-	-
All	All	153/169 (90%)	-0.38	3 (1%)	65   63	9, 27, 54, 66	8 (5%)

All (3) RSRZ outliers are listed below:

Mol	Chain	Res	Type	RSRZ
2	D	1	PHE	5.4
2	D	30	ALA	3.5
2	B	28	PRO	2.1

### 6.2 Non-standard residues in protein, DNA, RNA chains [i](#)

There are no non-standard protein/DNA/RNA residues in this entry.

### 6.3 Carbohydrates [i](#)

There are no monosaccharides in this entry.

### 6.4 Ligands [i](#)

In the following table, the Atoms column lists the number of modelled atoms in the group and the number defined in the chemical component dictionary. The B-factors column lists the minimum,

median, 95<sup>th</sup> percentile and maximum values of B factors of atoms in the group. The column labelled 'Q< 0.9' lists the number of atoms with occupancy less than 0.9.

Mol	Type	Chain	Res	Atoms	RSCC	RSR	B-factors(Å <sup>2</sup> )	Q<0.9
6	UNK	D	47	6/-	0.79	0.32	27,46,49,50	6
6	UNK	D	45	4/-	0.84	0.48	21,23,39,41	4
4	CRS	C	22	7/8	0.94	0.11	20,28,39,64	0
4	CRS	A	22[A]	8/8	0.94	0.14	12,21,25,32	7
4	CRS	A	22[B]	8/8	0.94	0.14	12,21,24,32	7
4	CRS	E	22	7/8	0.98	0.08	17,17,25,30	0
5	ZN	D	31	1/1	1.00	0.06	12,12,12,12	0

## 6.5 Other polymers [i](#)

There are no such residues in this entry.