



# Full wwPDB X-ray Structure Validation Report ⓘ

Dec 12, 2024 – 07:59 PM EST

PDB ID : 7G6U  
Title : Crystal Structure of rat Autotaxin in complex with N-cyclopentyl-4-[3-[2-[(3,4-dichlorophenyl)methylamino]-2-oxoethyl]-4-oxoquinazolin-6-yl]piperazine-1-carboxamide, i.e. SMILES c1(ccc(c(c1)Cl)Cl)CNC(=O)CN1C(=O)c2cc(ccc2N=C1)N1CCN(CC1)C(=O)NC1CCCC1 with IC50=0.0215151 microM  
Authors : Stihle, M.; Benz, J.; Hunziker, D.; Martin-Rainer, E.; Rudolph, M.G.  
Deposited on : 2023-06-05  
Resolution : 1.53 Å(reported)

This is a Full wwPDB X-ray Structure Validation Report for a publicly released PDB entry.

We welcome your comments at [validation@mail.wwpdb.org](mailto:validation@mail.wwpdb.org)

A user guide is available at

<https://www.wwpdb.org/validation/2017/XrayValidationReportHelp>

with specific help available everywhere you see the ⓘ symbol.

The types of validation reports are described at

<http://www.wwpdb.org/validation/2017/FAQs#types>.

---

The following versions of software and data (see [references](#) ①) were used in the production of this report:

MolProbity : 4.02b-467  
Mogul : 2022.3.0, CSD as543be (2022)  
Xtrriage (Phenix) : 1.21  
EDS : 3.0  
buster-report : 1.1.7 (2018)  
Percentile statistics : 20231227.v01 (using entries in the PDB archive December 27th 2023)  
CCP4 : 9.0.004 (Gargrove)  
Density-Fitness : 1.0.11  
Ideal geometry (proteins) : Engh & Huber (2001)  
Ideal geometry (DNA, RNA) : Parkinson et al. (1996)  
Validation Pipeline (wwPDB-VP) : 2.40

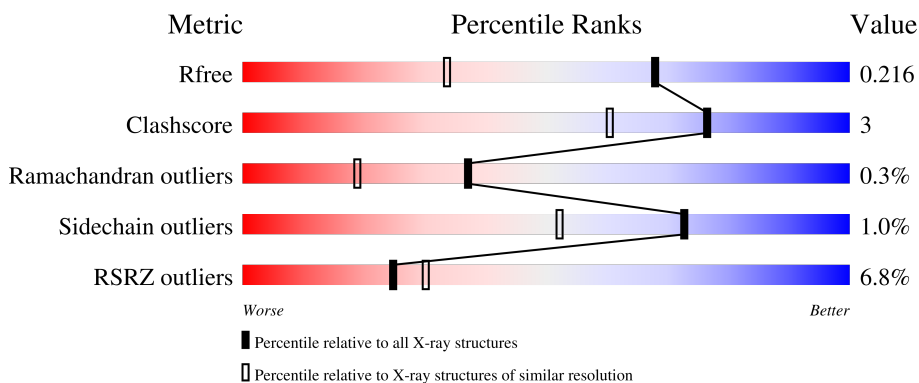
# 1 Overall quality at a glance

The following experimental techniques were used to determine the structure:

*X-RAY DIFFRACTION*

The reported resolution of this entry is 1.53 Å.

Percentile scores (ranging between 0-100) for global validation metrics of the entry are shown in the following graphic. The table shows the number of entries on which the scores are based.



Metric	Whole archive (#Entries)	Similar resolution (#Entries, resolution range(Å))
$R_{free}$	164625	3511 (1.56-1.52)
Clashscore	180529	3784 (1.56-1.52)
Ramachandran outliers	177936	3720 (1.56-1.52)
Sidechain outliers	177891	3717 (1.56-1.52)
RSRZ outliers	164620	3510 (1.56-1.52)

The table below summarises the geometric issues observed across the polymeric chains and their fit to the electron density. The red, orange, yellow and green segments of the lower bar indicate the fraction of residues that contain outliers for  $\geq 3$ , 2, 1 and 0 types of geometric quality criteria respectively. A grey segment represents the fraction of residues that are not modelled. The numeric value for each fraction is indicated below the corresponding segment, with a dot representing fractions  $\leq 5\%$ . The upper red bar (where present) indicates the fraction of residues that have poor fit to the electron density. The numeric value is given above the bar.

Mol	Chain	Length	Quality of chain
1	A	846	
2	B	8	

## 2 Entry composition [i](#)

There are 9 unique types of molecules in this entry. The entry contains 7370 atoms, of which 0 are hydrogens and 0 are deuteriums.

In the tables below, the ZeroOcc column contains the number of atoms modelled with zero occupancy, the AltConf column contains the number of residues with at least one atom in alternate conformation and the Trace column contains the number of residues modelled with at most 2 atoms.

- Molecule 1 is a protein called Isoform 2 of Ectonucleotide pyrophosphatase/phosphodiesterase family member 2.

Mol	Chain	Residues	Atoms					ZeroOcc	AltConf	Trace
			Total	C	N	O	S			
1	A	805	6632	4217	1136	1225	54	0	25	0

There are 14 discrepancies between the modelled and reference sequences:

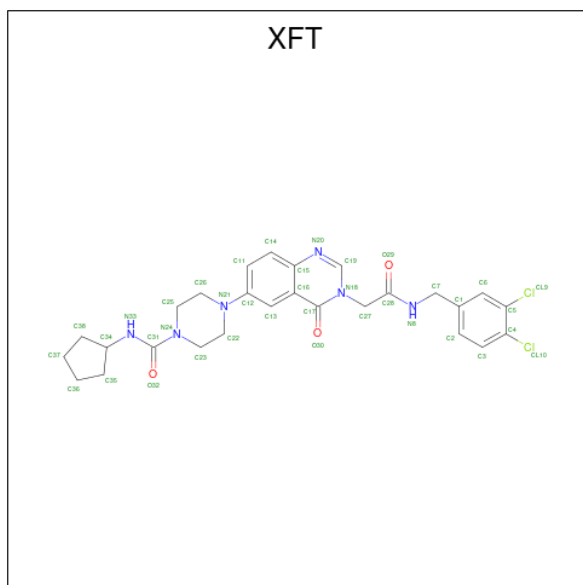
Chain	Residue	Modelled	Actual	Comment	Reference
A	53	ALA	ASN	engineered mutation	UNP Q64610
A	410	ALA	ASN	engineered mutation	UNP Q64610
A	591	THR	ARG	engineered mutation	UNP Q64610
A	863	GLY	-	expression tag	UNP Q64610
A	864	GLY	-	expression tag	UNP Q64610
A	865	ARG	-	expression tag	UNP Q64610
A	866	HIS	-	expression tag	UNP Q64610
A	867	HIS	-	expression tag	UNP Q64610
A	868	HIS	-	expression tag	UNP Q64610
A	869	HIS	-	expression tag	UNP Q64610
A	870	HIS	-	expression tag	UNP Q64610
A	871	HIS	-	expression tag	UNP Q64610
A	872	HIS	-	expression tag	UNP Q64610
A	873	HIS	-	expression tag	UNP Q64610

- Molecule 2 is an oligosaccharide called alpha-D-mannopyranose-(1-2)-alpha-D-mannopyranose-(1-3)-alpha-D-mannopyranose-(1-6)-[alpha-D-mannopyranose-(1-2)-alpha-D-mannopyranose-(1-3)]beta-D-mannopyranose-(1-4)-2-acetamido-2-deoxy-beta-D-glucopyranose-(1-4)-2-acetamido-2-deoxy-beta-D-glucopyranose.



Mol	Chain	Residues	Atoms				ZeroOcc	AltConf	Trace
			Total	C	N	O			
2	B	8	94	52	2	40	0	0	0

- Molecule 3 is N-cyclopentyl-4-[3-(2-[[[(3,4-dichlorophenyl)methyl]amino]-2-oxoethyl)-4-oxo-3,4-dihydroquinazolin-6-yl]piperazine-1-carboxamide (three-letter code: XFT) (formula: C<sub>27</sub>H<sub>30</sub>Cl<sub>2</sub>N<sub>6</sub>O<sub>3</sub>) (labeled as "Ligand of Interest" by depositor).



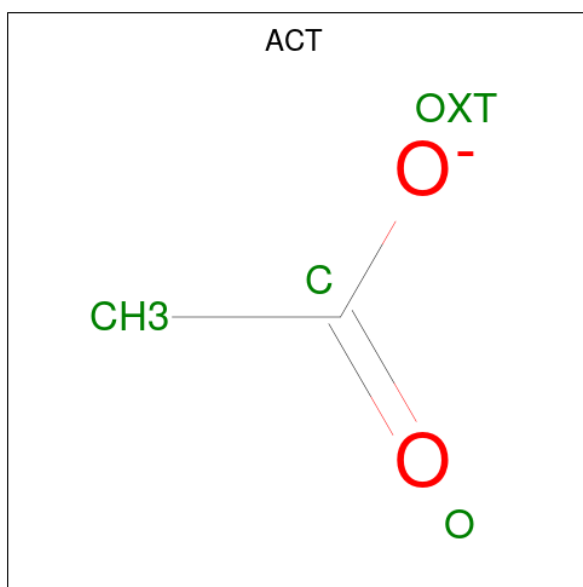
Mol	Chain	Residues	Atoms				ZeroOcc	AltConf	
			Total	C	Cl	N			O
3	A	1	38	27	2	6	3	0	0

- Molecule 4 is 2-(N-MORPHOLINO)-ETHANESULFONIC ACID (three-letter code: MES) (formula: C<sub>6</sub>H<sub>13</sub>NO<sub>4</sub>S).



Mol	Chain	Residues	Atoms					ZeroOcc	AltConf
			Total	C	N	O	S		
4	A	1	Total	C	N	O	S	0	0
			12	6	1	4	1		
4	A	1	Total	C	N	O	S	0	0
			12	6	1	4	1		
4	A	1	Total	C	N	O	S	0	0
			12	6	1	4	1		

- Molecule 5 is ACETATE ION (three-letter code: ACT) (formula: C<sub>2</sub>H<sub>3</sub>O<sub>2</sub>).



Mol	Chain	Residues	Atoms		ZeroOcc	AltConf
			Total	C O		
5	A	1	Total	C O	0	0
			4	2 2		

- Molecule 6 is CALCIUM ION (three-letter code: CA) (formula: Ca).

Mol	Chain	Residues	Atoms		ZeroOcc	AltConf
6	A	2	Total	Ca	0	0
			2	2		

- Molecule 7 is ZINC ION (three-letter code: ZN) (formula: Zn).

Mol	Chain	Residues	Atoms		ZeroOcc	AltConf
7	A	1	Total	Zn	0	0
			1	1		

- Molecule 8 is SODIUM ION (three-letter code: NA) (formula: Na).

Mol	Chain	Residues	Atoms		ZeroOcc	AltConf
8	A	2	Total	Na	0	0
			2	2		

- Molecule 9 is water.

Mol	Chain	Residues	Atoms		ZeroOcc	AltConf
9	A	561	Total	O	0	0
			561	561		





## 4 Data and refinement statistics

Property	Value	Source
Space group	P 21 21 21	Depositor
Cell constants a, b, c, $\alpha$ , $\beta$ , $\gamma$	83.70Å 91.41Å 119.21Å 90.00° 90.00° 90.00°	Depositor
Resolution (Å)	45.70 – 1.53 45.70 – 1.53	Depositor EDS
% Data completeness (in resolution range)	96.1 (45.70-1.53) 96.1 (45.70-1.53)	Depositor EDS
$R_{merge}$	0.07	Depositor
$R_{sym}$	(Not available)	Depositor
$\langle I/\sigma(I) \rangle$ <sup>1</sup>	1.12 (at 1.53Å)	Xtrriage
Refinement program	REFMAC 5.8.0048	Depositor
R, $R_{free}$	0.185 , 0.216 0.184 , 0.216	Depositor DCC
$R_{free}$ test set	6926 reflections (5.00%)	wwPDB-VP
Wilson B-factor (Å <sup>2</sup> )	20.0	Xtrriage
Anisotropy	0.158	Xtrriage
Bulk solvent $k_{sol}$ (e/Å <sup>3</sup> ), $B_{sol}$ (Å <sup>2</sup> )	0.33 , 27.7	EDS
L-test for twinning <sup>2</sup>	$\langle  L  \rangle = 0.49$ , $\langle L^2 \rangle = 0.32$	Xtrriage
Estimated twinning fraction	No twinning to report.	Xtrriage
$F_o, F_c$ correlation	0.97	EDS
Total number of atoms	7370	wwPDB-VP
Average B, all atoms (Å <sup>2</sup> )	27.0	wwPDB-VP

Xtrriage's analysis on translational NCS is as follows: *The largest off-origin peak in the Patterson function is 3.75% of the height of the origin peak. No significant pseudotranslation is detected.*

<sup>1</sup>Intensities estimated from amplitudes.

<sup>2</sup>Theoretical values of  $\langle |L| \rangle$ ,  $\langle L^2 \rangle$  for acentric reflections are 0.5, 0.333 respectively for untwinned datasets, and 0.375, 0.2 for perfectly twinned datasets.

## 5 Model quality

### 5.1 Standard geometry

Bond lengths and bond angles in the following residue types are not validated in this section: MAN, CA, ZN, NA, XFT, ACT, NAG, BMA, MES

The Z score for a bond length (or angle) is the number of standard deviations the observed value is removed from the expected value. A bond length (or angle) with  $|Z| > 5$  is considered an outlier worth inspection. RMSZ is the root-mean-square of all Z scores of the bond lengths (or angles).

Mol	Chain	Bond lengths		Bond angles	
		RMSZ	# $ Z  > 5$	RMSZ	# $ Z  > 5$
1	A	0.79	2/6878 (0.0%)	0.88	8/9320 (0.1%)

All (2) bond length outliers are listed below:

Mol	Chain	Res	Type	Atoms	Z	Observed(Å)	Ideal(Å)
1	A	273	PHE	N-CA	5.67	1.57	1.46
1	A	546	GLU	CD-OE1	5.63	1.31	1.25

All (8) bond angle outliers are listed below:

Mol	Chain	Res	Type	Atoms	Z	Observed(°)	Ideal(°)
1	A	839	ARG	NE-CZ-NH1	-8.76	115.92	120.30
1	A	148[A]	CYS	CA-CB-SG	-6.51	102.28	114.00
1	A	148[B]	CYS	CA-CB-SG	-6.51	102.28	114.00
1	A	202	ARG	NE-CZ-NH2	-6.29	117.16	120.30
1	A	393	ARG	NE-CZ-NH1	6.03	123.32	120.30
1	A	825	ARG	NE-CZ-NH2	-5.74	117.43	120.30
1	A	827	ARG	CG-CD-NE	-5.24	100.81	111.80
1	A	273	PHE	CB-CA-C	-5.03	100.34	110.40

There are no chirality outliers.

There are no planarity outliers.

### 5.2 Too-close contacts

In the following table, the Non-H and H(model) columns list the number of non-hydrogen atoms and hydrogen atoms in the chain respectively. The H(added) column lists the number of hydrogen atoms added and optimized by MolProbity. The Clashes column lists the number of clashes within the asymmetric unit, whereas Symm-Clashes lists symmetry-related clashes.

Mol	Chain	Non-H	H(model)	H(added)	Clashes	Symm-Clashes
1	A	6632	0	6451	38	0
2	B	94	0	79	0	0
3	A	38	0	0	0	0
4	A	36	0	39	0	0
5	A	4	0	3	0	0
6	A	2	0	0	1	0
7	A	1	0	0	0	0
8	A	2	0	0	0	0
9	A	561	0	0	3	0
All	All	7370	0	6572	38	0

The all-atom clashscore is defined as the number of clashes found per 1000 atoms (including hydrogen atoms). The all-atom clashscore for this structure is 3.

All (38) close contacts within the same asymmetric unit are listed below, sorted by their clash magnitude.

Atom-1	Atom-2	Interatomic distance (Å)	Clash overlap (Å)
1:A:594:ARG:HH21	1:A:594:ARG:HG2	1.21	1.01
1:A:594:ARG:HH21	1:A:594:ARG:CG	1.98	0.75
1:A:749:GLU:HG3	9:A:1411:HOH:O	1.95	0.66
1:A:539:PHE:O	1:A:541:PRO:HD3	1.97	0.65
1:A:134:GLN:NE2	9:A:1001:HOH:O	2.17	0.64
1:A:580:GLU:HB3	1:A:584:ARG:HH21	1.62	0.63
1:A:856:HIS:HD2	1:A:858[A]:TYR:CE1	2.18	0.61
1:A:171:ASP:OD1	6:A:906:CA:CA	1.78	0.61
1:A:856:HIS:HD2	1:A:858[A]:TYR:CZ	2.20	0.60
1:A:54:THR:HA	1:A:73:CYS:HB3	1.84	0.58
1:A:269:ARG:HB3	1:A:300:PRO:HA	1.86	0.57
1:A:594:ARG:CG	1:A:594:ARG:NH2	2.64	0.56
1:A:199:PRO:HG3	1:A:499[B]:LYS:HE2	1.88	0.56
1:A:594:ARG:HG2	1:A:594:ARG:NH2	2.01	0.55
1:A:570:ASP:C	1:A:572:VAL:H	2.10	0.54
1:A:222:PRO:HA	1:A:225:HIS:CE1	2.43	0.53
1:A:371:PHE:CE1	1:A:457:PRO:HA	2.44	0.53
1:A:856:HIS:CD2	1:A:858[A]:TYR:CE1	2.97	0.52
1:A:163:PRO:HB3	1:A:350:CYS:O	2.10	0.52
1:A:596:LEU:HD21	1:A:600:ARG:HB3	1.95	0.49
1:A:342:LEU:HD13	1:A:351[B]:VAL:HG21	1.95	0.48
1:A:179:LYS:HE3	1:A:179:LYS:HB2	1.50	0.48
1:A:594:ARG:HH11	1:A:636:SER:HB3	1.78	0.48
1:A:252:ARG:NH1	9:A:1003:HOH:O	2.33	0.47
1:A:148[B]:CYS:SG	1:A:496:TYR:HE1	2.39	0.46

*Continued on next page...*

Continued from previous page...

Atom-1	Atom-2	Interatomic distance (Å)	Clash overlap (Å)
1:A:682:PRO:HB3	1:A:716:GLN:HB3	1.97	0.46
1:A:269:ARG:CZ	1:A:269:ARG:HB2	2.46	0.45
1:A:455:ARG:NH2	1:A:456[A]:LYS:HE2	2.34	0.43
1:A:589:GLY:O	1:A:592:LYS:HG2	2.19	0.43
1:A:112:ASN:HB3	1:A:115:ASN:ND2	2.36	0.41
1:A:128:ASP:HB3	1:A:290:GLN:OE1	2.20	0.41
1:A:461:TYR:CD1	1:A:462:LYS:HG2	2.55	0.41
1:A:535:ARG:HG2	1:A:536:THR:HG23	2.03	0.41
1:A:540:ARG:HD3	1:A:540:ARG:HA	1.83	0.41
1:A:206:PRO:HD3	1:A:434:TYR:CE1	2.56	0.41
1:A:737:ILE:HB	1:A:766:HIS:HB2	2.04	0.40
1:A:848:ILE:HD13	1:A:848:ILE:HA	1.93	0.40
1:A:403:ASP:HA	1:A:404:PRO:HD2	1.95	0.40

There are no symmetry-related clashes.

## 5.3 Torsion angles [i](#)

### 5.3.1 Protein backbone [i](#)

In the following table, the Percentiles column shows the percent Ramachandran outliers of the chain as a percentile score with respect to all X-ray entries followed by that with respect to entries of similar resolution.

The Analysed column shows the number of residues for which the backbone conformation was analysed, and the total number of residues.

Mol	Chain	Analysed	Favoured	Allowed	Outliers	Percentiles
1	A	824/846 (97%)	803 (98%)	19 (2%)	2 (0%)	44 25

All (2) Ramachandran outliers are listed below:

Mol	Chain	Res	Type
1	A	571	LYS
1	A	109	GLU

### 5.3.2 Protein sidechains [i](#)

In the following table, the Percentiles column shows the percent sidechain outliers of the chain as a percentile score with respect to all X-ray entries followed by that with respect to entries of similar

resolution.

The Analysed column shows the number of residues for which the sidechain conformation was analysed, and the total number of residues.

Mol	Chain	Analysed	Rotameric	Outliers	Percentiles	
1	A	753/765 (98%)	746 (99%)	7 (1%)	75	56

All (7) residues with a non-rotameric sidechain are listed below:

Mol	Chain	Res	Type
1	A	389	LEU
1	A	401	LYS
1	A	469	PHE
1	A	580	GLU
1	A	593	GLU
1	A	594	ARG
1	A	736	PRO

Sometimes sidechains can be flipped to improve hydrogen bonding and reduce clashes. All (5) such sidechains are listed below:

Mol	Chain	Res	Type
1	A	118	HIS
1	A	398	ASN
1	A	436	ASN
1	A	586	HIS
1	A	856	HIS

### 5.3.3 RNA [i](#)

There are no RNA molecules in this entry.

## 5.4 Non-standard residues in protein, DNA, RNA chains [i](#)

There are no non-standard protein/DNA/RNA residues in this entry.

## 5.5 Carbohydrates [i](#)

8 monosaccharides are modelled in this entry.

In the following table, the Counts columns list the number of bonds (or angles) for which Mogul statistics could be retrieved, the number of bonds (or angles) that are observed in the model and

the number of bonds (or angles) that are defined in the Chemical Component Dictionary. The Link column lists molecule types, if any, to which the group is linked. The Z score for a bond length (or angle) is the number of standard deviations the observed value is removed from the expected value. A bond length (or angle) with  $|Z| > 2$  is considered an outlier worth inspection. RMSZ is the root-mean-square of all Z scores of the bond lengths (or angles).

Mol	Type	Chain	Res	Link	Bond lengths			Bond angles		
					Counts	RMSZ	# Z  > 2	Counts	RMSZ	# Z  > 2
2	NAG	B	1	2,1	14,14,15	0.78	0	17,19,21	1.08	2 (11%)
2	NAG	B	2	2	14,14,15	0.98	0	17,19,21	2.18	5 (29%)
2	BMA	B	3	2	11,11,12	0.78	0	15,15,17	1.32	3 (20%)
2	MAN	B	4	2	11,11,12	0.99	1 (9%)	15,15,17	1.40	2 (13%)
2	MAN	B	5	2	11,11,12	0.80	1 (9%)	15,15,17	1.68	2 (13%)
2	MAN	B	6	2	11,11,12	0.67	0	15,15,17	0.90	1 (6%)
2	MAN	B	7	2	11,11,12	0.75	0	15,15,17	1.36	2 (13%)
2	MAN	B	8	2	11,11,12	0.83	0	15,15,17	1.03	2 (13%)

In the following table, the Chirals column lists the number of chiral outliers, the number of chiral centers analysed, the number of these observed in the model and the number defined in the Chemical Component Dictionary. Similar counts are reported in the Torsion and Rings columns. '-' means no outliers of that kind were identified.

Mol	Type	Chain	Res	Link	Chirals	Torsions	Rings
2	NAG	B	1	2,1	-	0/6/23/26	0/1/1/1
2	NAG	B	2	2	-	2/6/23/26	0/1/1/1
2	BMA	B	3	2	-	0/2/19/22	0/1/1/1
2	MAN	B	4	2	-	0/2/19/22	0/1/1/1
2	MAN	B	5	2	-	2/2/19/22	0/1/1/1
2	MAN	B	6	2	-	0/2/19/22	0/1/1/1
2	MAN	B	7	2	-	2/2/19/22	0/1/1/1
2	MAN	B	8	2	-	0/2/19/22	0/1/1/1

All (2) bond length outliers are listed below:

Mol	Chain	Res	Type	Atoms	Z	Observed(Å)	Ideal(Å)
2	B	4	MAN	C2-C3	2.36	1.56	1.52
2	B	5	MAN	C2-C3	2.16	1.55	1.52

All (19) bond angle outliers are listed below:

Mol	Chain	Res	Type	Atoms	Z	Observed(°)	Ideal(°)
2	B	2	NAG	C1-O5-C5	6.01	120.24	112.19

*Continued on next page...*

*Continued from previous page...*

Mol	Chain	Res	Type	Atoms	Z	Observed(°)	Ideal(°)
2	B	5	MAN	C1-O5-C5	4.19	117.81	112.19
2	B	7	MAN	O5-C5-C6	3.74	114.94	107.66
2	B	4	MAN	C1-O5-C5	3.51	116.89	112.19
2	B	2	NAG	O7-C7-C8	-3.26	116.25	122.05
2	B	2	NAG	C3-C4-C5	2.79	115.29	110.23
2	B	3	BMA	O6-C6-C5	-2.75	101.96	111.33
2	B	4	MAN	O3-C3-C2	2.65	115.47	110.05
2	B	3	BMA	C1-O5-C5	2.64	115.72	112.19
2	B	7	MAN	C1-C2-C3	2.58	113.40	109.64
2	B	2	NAG	O7-C7-N2	2.43	126.28	121.98
2	B	8	MAN	O3-C3-C2	2.39	114.93	110.05
2	B	3	BMA	C1-C2-C3	2.37	113.09	109.64
2	B	1	NAG	O5-C1-C2	-2.34	107.67	111.29
2	B	2	NAG	C6-C5-C4	-2.17	107.68	113.02
2	B	1	NAG	O4-C4-C5	-2.17	103.98	109.32
2	B	5	MAN	O3-C3-C4	-2.16	105.29	110.38
2	B	8	MAN	C1-O5-C5	2.03	114.91	112.19
2	B	6	MAN	C1-O5-C5	2.01	114.87	112.19

There are no chirality outliers.

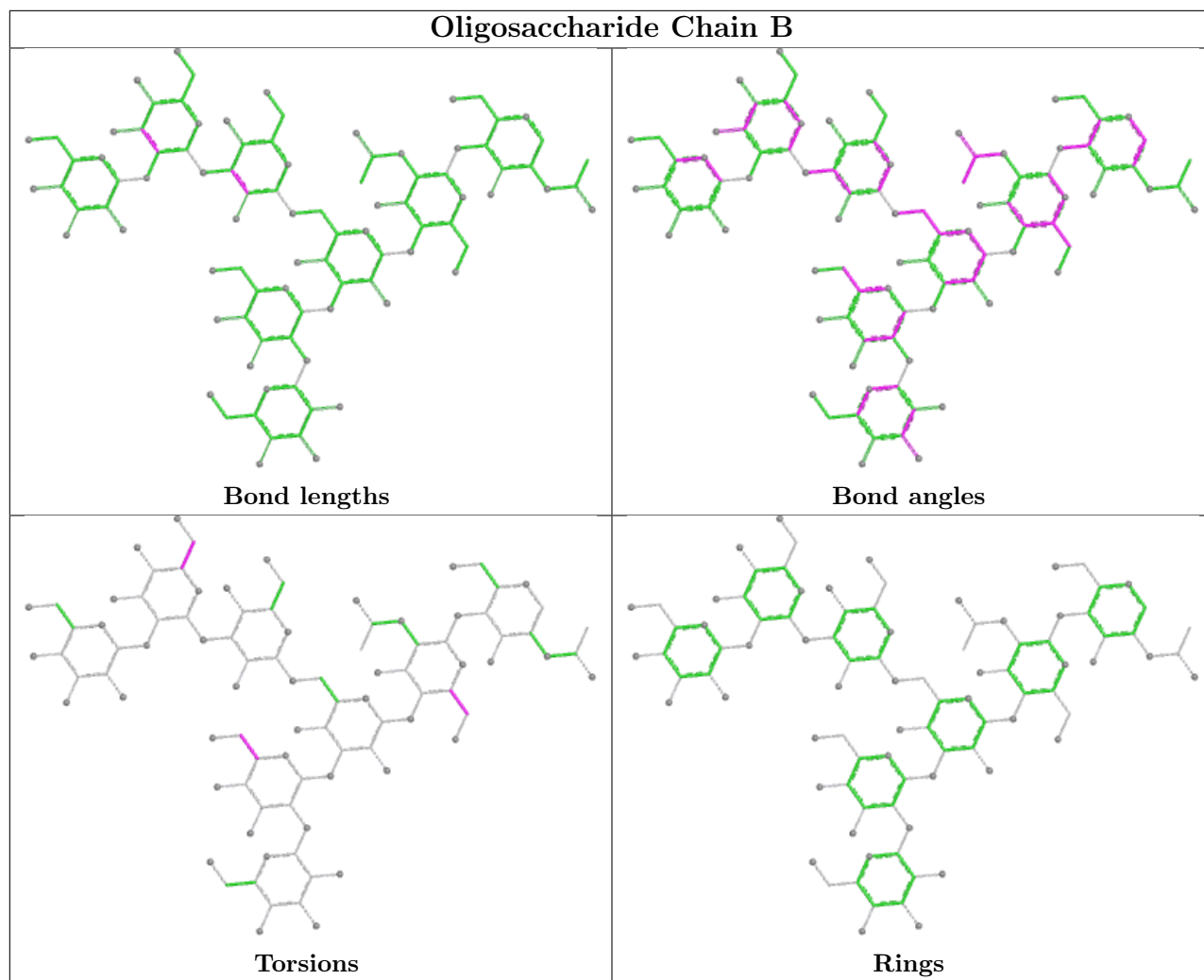
All (6) torsion outliers are listed below:

Mol	Chain	Res	Type	Atoms
2	B	7	MAN	O5-C5-C6-O6
2	B	5	MAN	C4-C5-C6-O6
2	B	7	MAN	C4-C5-C6-O6
2	B	5	MAN	O5-C5-C6-O6
2	B	2	NAG	O5-C5-C6-O6
2	B	2	NAG	C4-C5-C6-O6

There are no ring outliers.

No monomer is involved in short contacts.

The following is a two-dimensional graphical depiction of Mogul quality analysis of bond lengths, bond angles, torsion angles, and ring geometry for oligosaccharide.



## 5.6 Ligand geometry [i](#)

Of 10 ligands modelled in this entry, 5 are monoatomic - leaving 5 for Mogul analysis.

In the following table, the Counts columns list the number of bonds (or angles) for which Mogul statistics could be retrieved, the number of bonds (or angles) that are observed in the model and the number of bonds (or angles) that are defined in the Chemical Component Dictionary. The Link column lists molecule types, if any, to which the group is linked. The Z score for a bond length (or angle) is the number of standard deviations the observed value is removed from the expected value. A bond length (or angle) with  $|Z| > 2$  is considered an outlier worth inspection. RMSZ is the root-mean-square of all Z scores of the bond lengths (or angles).

Mol	Type	Chain	Res	Link	Bond lengths			Bond angles		
					Counts	RMSZ	$\# Z  > 2$	Counts	RMSZ	$\# Z  > 2$
5	ACT	A	905	-	3,3,3	1.09	0	3,3,3	0.59	0
4	MES	A	903	-	12,12,12	2.24	3 (25%)	15,16,16	1.59	4 (26%)
3	XFT	A	901	-	42,42,42	2.10	12 (28%)	58,59,59	1.48	9 (15%)
4	MES	A	902	-	12,12,12	1.72	1 (8%)	15,16,16	1.09	1 (6%)



Mol	Type	Chain	Res	Link	Bond lengths			Bond angles		
					Counts	RMSZ	# Z  > 2	Counts	RMSZ	# Z  > 2
4	MES	A	904	-	12,12,12	1.89	1 (8%)	15,16,16	1.50	2 (13%)

In the following table, the Chirals column lists the number of chiral outliers, the number of chiral centers analysed, the number of these observed in the model and the number defined in the Chemical Component Dictionary. Similar counts are reported in the Torsion and Rings columns. '-' means no outliers of that kind were identified.

Mol	Type	Chain	Res	Link	Chirals	Torsions	Rings
4	MES	A	902	-	-	0/6/14/14	0/1/1/1
4	MES	A	903	-	-	0/6/14/14	0/1/1/1
4	MES	A	904	-	-	3/6/14/14	0/1/1/1
3	XFT	A	901	-	-	3/21/38/38	0/5/5/5

All (17) bond length outliers are listed below:

Mol	Chain	Res	Type	Atoms	Z	Observed(Å)	Ideal(Å)
4	A	903	MES	C8-S	-6.55	1.68	1.77
4	A	904	MES	C8-S	-5.44	1.70	1.77
4	A	902	MES	C8-S	-5.10	1.70	1.77
3	A	901	XFT	C17-N18	4.92	1.45	1.39
3	A	901	XFT	C19-N18	4.78	1.43	1.36
3	A	901	XFT	C26-N21	4.52	1.54	1.46
3	A	901	XFT	C31-N24	4.46	1.44	1.36
3	A	901	XFT	C31-N33	3.43	1.42	1.35
4	A	903	MES	O1S-S	2.76	1.52	1.45
3	A	901	XFT	C28-N8	2.72	1.39	1.33
3	A	901	XFT	C2-C1	2.55	1.43	1.38
3	A	901	XFT	C6-C1	2.51	1.43	1.39
3	A	901	XFT	O29-C28	2.32	1.27	1.23
4	A	903	MES	O2S-S	2.20	1.51	1.45
3	A	901	XFT	C15-N20	2.09	1.43	1.40
3	A	901	XFT	C35-C34	2.06	1.58	1.52
3	A	901	XFT	C16-C15	2.00	1.43	1.40

All (16) bond angle outliers are listed below:

Mol	Chain	Res	Type	Atoms	Z	Observed(°)	Ideal(°)
3	A	901	XFT	C5-C6-C1	-5.09	117.17	120.46
4	A	904	MES	O3S-S-C8	3.91	113.65	106.00
3	A	901	XFT	N18-C19-N20	-3.70	123.23	126.31
4	A	903	MES	O1S-S-C8	3.21	111.58	106.73

*Continued on next page...*

Continued from previous page...

Mol	Chain	Res	Type	Atoms	Z	Observed(°)	Ideal(°)
3	A	901	XFT	C7-N8-C28	-3.21	117.21	122.42
3	A	901	XFT	C16-C17-N18	3.07	115.58	113.76
3	A	901	XFT	C15-N20-C19	2.77	119.51	116.69
3	A	901	XFT	C27-N18-C19	-2.73	116.86	119.55
4	A	903	MES	O2S-S-C8	-2.56	102.86	106.73
4	A	903	MES	O3S-S-C8	2.53	110.95	106.00
3	A	901	XFT	C13-C12-N21	-2.37	118.77	121.33
4	A	904	MES	O3S-S-O1S	-2.35	105.52	111.40
3	A	901	XFT	C2-C1-C6	2.22	121.61	118.55
4	A	902	MES	C6-C5-N4	2.19	113.45	110.12
4	A	903	MES	O3S-S-O1S	-2.19	105.93	111.40
3	A	901	XFT	C23-C22-N21	-2.17	106.22	110.78

There are no chirality outliers.

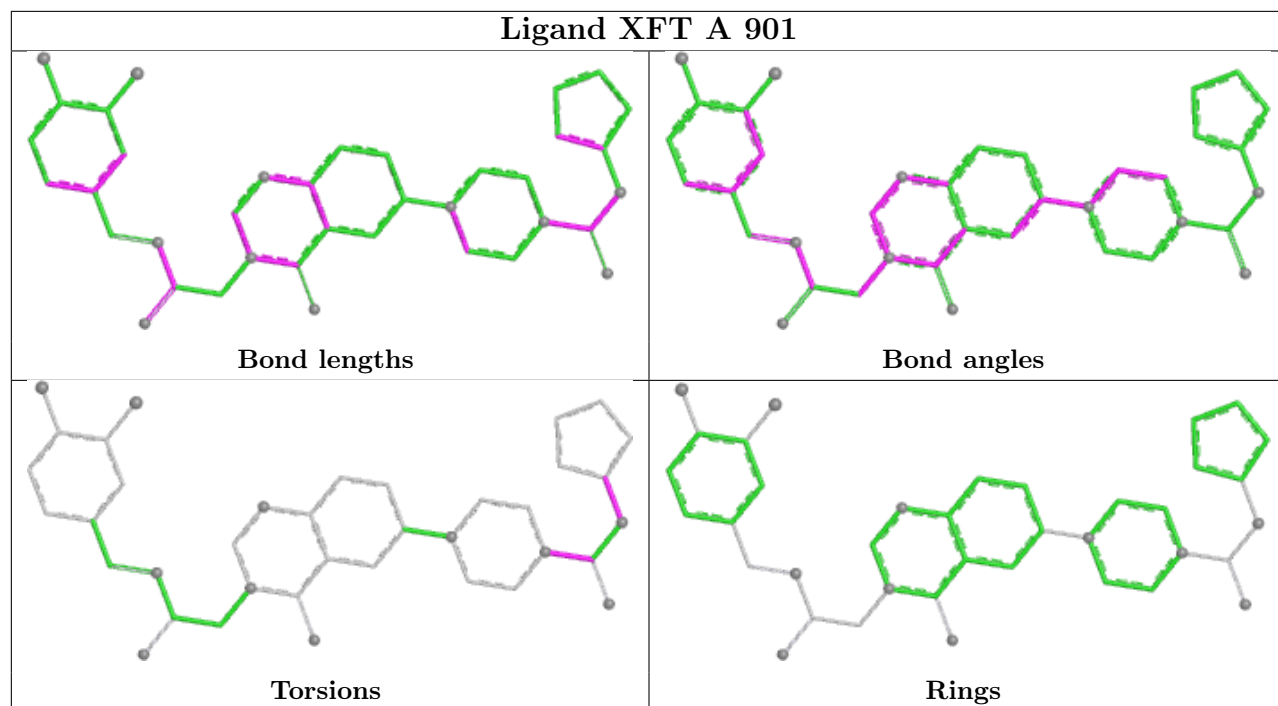
All (6) torsion outliers are listed below:

Mol	Chain	Res	Type	Atoms
3	A	901	XFT	C35-C34-N33-C31
4	A	904	MES	C8-C7-N4-C3
4	A	904	MES	C8-C7-N4-C5
3	A	901	XFT	O32-C31-N24-C25
3	A	901	XFT	N33-C31-N24-C25
4	A	904	MES	C7-C8-S-O1S

There are no ring outliers.

No monomer is involved in short contacts.

The following is a two-dimensional graphical depiction of Mogul quality analysis of bond lengths, bond angles, torsion angles, and ring geometry for all instances of the Ligand of Interest. In addition, ligands with molecular weight > 250 and outliers as shown on the validation Tables will also be included. For torsion angles, if less than 5% of the Mogul distribution of torsion angles is within 10 degrees of the torsion angle in question, then that torsion angle is considered an outlier. Any bond that is central to one or more torsion angles identified as an outlier by Mogul will be highlighted in the graph. For rings, the root-mean-square deviation (RMSD) between the ring in question and similar rings identified by Mogul is calculated over all ring torsion angles. If the average RMSD is greater than 60 degrees and the minimal RMSD between the ring in question and any Mogul-identified rings is also greater than 60 degrees, then that ring is considered an outlier. The outliers are highlighted in purple. The color gray indicates Mogul did not find sufficient equivalents in the CSD to analyse the geometry.



## 5.7 Other polymers [i](#)

There are no such residues in this entry.

## 5.8 Polymer linkage issues [i](#)

There are no chain breaks in this entry.

## 6 Fit of model and data

### 6.1 Protein, DNA and RNA chains

In the following table, the column labelled ‘#RSRZ> 2’ contains the number (and percentage) of RSRZ outliers, followed by percent RSRZ outliers for the chain as percentile scores relative to all X-ray entries and entries of similar resolution. The OWAB column contains the minimum, median, 95<sup>th</sup> percentile and maximum values of the occupancy-weighted average B-factor per residue. The column labelled ‘Q< 0.9’ lists the number of (and percentage) of residues with an average occupancy less than 0.9.

Mol	Chain	Analysed	<RSRZ>	#RSRZ>2	OWAB(Å <sup>2</sup> )	Q<0.9
1	A	805/846 (95%)	0.21	55 (6%) <span style="border: 1px solid red; padding: 2px;">25</span> <span style="border: 1px solid red; padding: 2px;">30</span>	10, 22, 53, 80	25 (3%)

All (55) RSRZ outliers are listed below:

Mol	Chain	Res	Type	RSRZ
1	A	578	LEU	7.9
1	A	469	PHE	7.4
1	A	51	TRP	7.3
1	A	468	CYS	7.2
1	A	572	VAL	5.7
1	A	243	LEU	4.9
1	A	461	TYR	4.6
1	A	272	THR	4.6
1	A	271	GLY	4.4
1	A	366	CYS	4.2
1	A	70	PRO	4.1
1	A	581	LEU	4.1
1	A	71	PRO	4.0
1	A	249	PHE	3.9
1	A	54	THR	3.6
1	A	463	LYS	3.5
1	A	237	PHE	3.5
1	A	397	ILE	3.5
1	A	68	VAL	3.4
1	A	585	LEU	3.3
1	A	161	VAL	3.3
1	A	462	LYS	3.2
1	A	860	SER	3.1
1	A	274	PHE	3.1
1	A	53	ALA	3.0
1	A	571	LYS	3.0
1	A	55	SER	3.0

*Continued on next page...*

*Continued from previous page...*

Mol	Chain	Res	Type	RSRZ
1	A	110	VAL	3.0
1	A	60	GLY	2.9
1	A	273	PHE	2.9
1	A	576	ASN	2.8
1	A	52	THR	2.8
1	A	577	LYS	2.8
1	A	124	LEU	2.6
1	A	378	ASN	2.6
1	A	573	GLU	2.6
1	A	56	GLY	2.5
1	A	584	ARG	2.5
1	A	377	THR	2.4
1	A	861	GLU	2.4
1	A	72	ASP	2.3
1	A	379	VAL	2.3
1	A	536	THR	2.2
1	A	579	GLU	2.2
1	A	270	ALA	2.2
1	A	246	ARG	2.2
1	A	69	GLY	2.2
1	A	582	ASN	2.2
1	A	416	PRO	2.1
1	A	538	THR	2.1
1	A	460	VAL	2.1
1	A	402	TYR	2.1
1	A	583	LYS	2.0
1	A	566	CYS	2.0
1	A	242	HIS	2.0

## 6.2 Non-standard residues in protein, DNA, RNA chains [i](#)

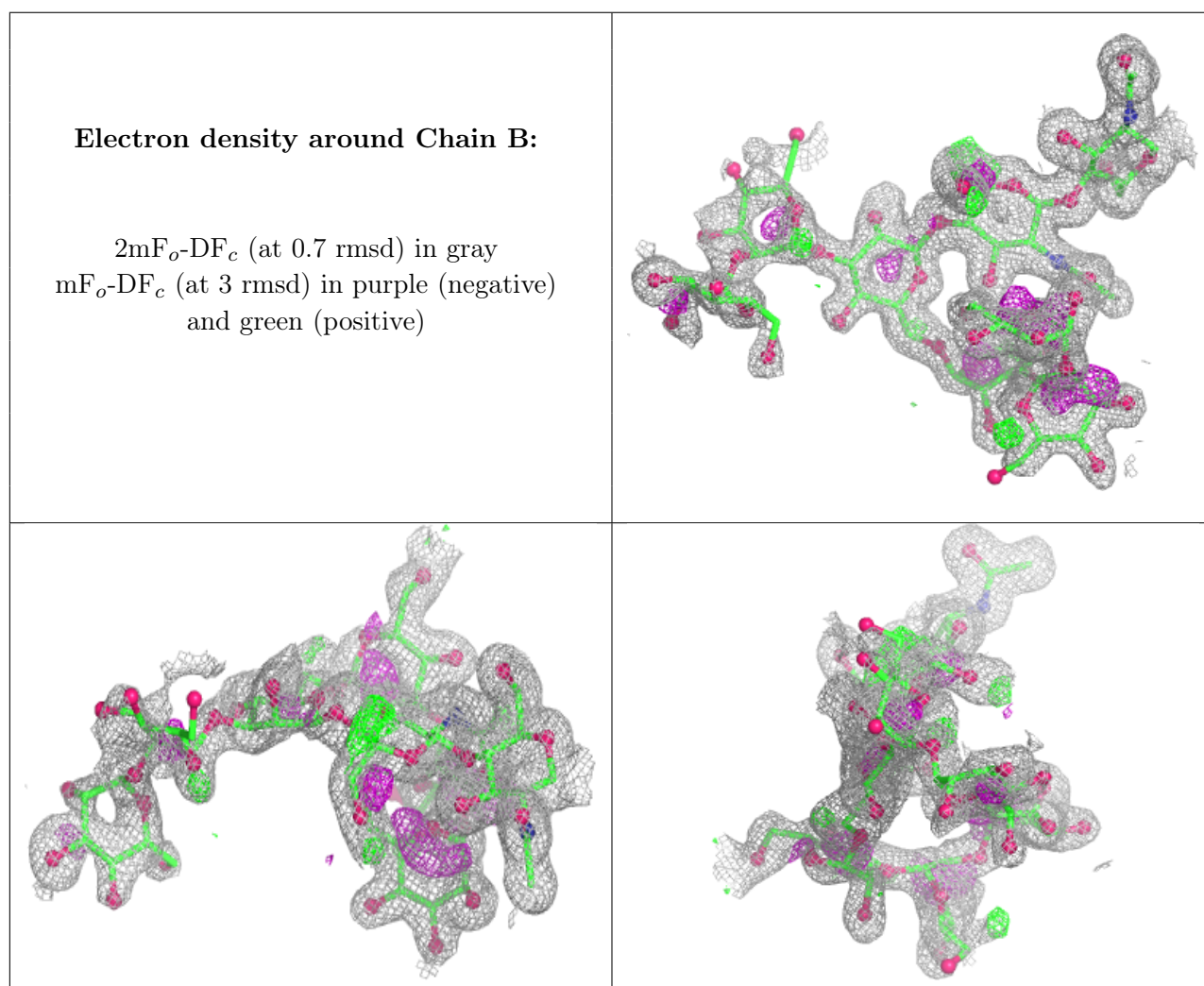
There are no non-standard protein/DNA/RNA residues in this entry.

## 6.3 Carbohydrates [i](#)

In the following table, the Atoms column lists the number of modelled atoms in the group and the number defined in the chemical component dictionary. The B-factors column lists the minimum, median, 95<sup>th</sup> percentile and maximum values of B factors of atoms in the group. The column labelled 'Q< 0.9' lists the number of atoms with occupancy less than 0.9.

Mol	Type	Chain	Res	Atoms	RSCC	RSR	B-factors( $\text{\AA}^2$ )	Q<0.9
2	MAN	B	7	11/12	0.44	0.17	73,80,80,80	0
2	BMA	B	3	11/12	0.68	0.14	52,56,65,70	0
2	MAN	B	8	11/12	0.70	0.15	40,62,69,69	0
2	MAN	B	4	11/12	0.73	0.13	45,51,56,57	0
2	MAN	B	5	11/12	0.76	0.15	36,47,55,69	0
2	NAG	B	2	14/15	0.85	0.12	23,27,38,45	0
2	MAN	B	6	11/12	0.87	0.13	30,41,46,46	0
2	NAG	B	1	14/15	0.97	0.06	14,16,19,20	0

The following is a graphical depiction of the model fit to experimental electron density for oligosaccharide. Each fit is shown from different orientation to approximate a three-dimensional view.



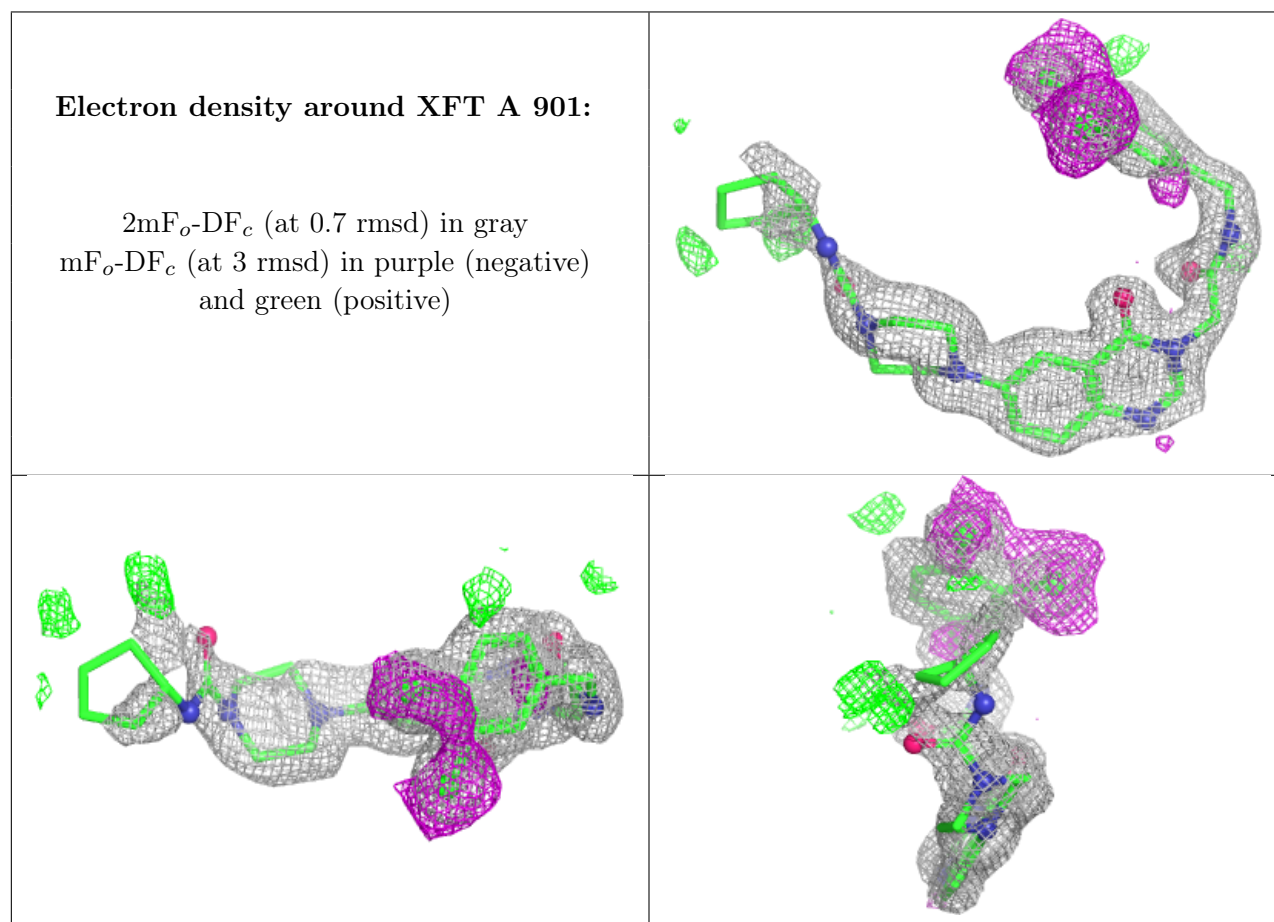
## 6.4 Ligands [i](#)

In the following table, the Atoms column lists the number of modelled atoms in the group and the number defined in the chemical component dictionary. The B-factors column lists the minimum,

median, 95<sup>th</sup> percentile and maximum values of B factors of atoms in the group. The column labelled 'Q< 0.9' lists the number of atoms with occupancy less than 0.9.

Mol	Type	Chain	Res	Atoms	RSCC	RSR	B-factors(Å <sup>2</sup> )	Q<0.9
4	MES	A	903	12/12	0.76	0.23	38,78,80,80	0
4	MES	A	904	12/12	0.76	0.22	41,51,65,66	0
3	XFT	A	901	38/38	0.84	0.17	34,40,75,78	0
4	MES	A	902	12/12	0.88	0.19	37,57,68,68	0
5	ACT	A	905	4/4	0.90	0.10	27,29,34,34	0
6	CA	A	906	1/1	0.95	0.26	37,37,37,37	0
8	NA	A	908	1/1	0.95	0.07	24,24,24,24	0
8	NA	A	910	1/1	0.96	0.06	25,25,25,25	0
6	CA	A	909	1/1	0.99	0.02	16,16,16,16	0
7	ZN	A	907	1/1	1.00	0.03	19,19,19,19	0

The following is a graphical depiction of the model fit to experimental electron density of all instances of the Ligand of Interest. In addition, ligands with molecular weight > 250 and outliers as shown on the geometry validation Tables will also be included. Each fit is shown from different orientation to approximate a three-dimensional view.



## 6.5 Other polymers [i](#)

There are no such residues in this entry.