



# Full wwPDB X-ray Structure Validation Report ⓘ

Feb 15, 2024 – 12:35 PM EST

PDB ID : 7FTG  
Title : Crystal Structure of human cyclic GMP-AMP synthase in complex with cGAMP  
Authors : Leibrock, L.; Benz, J.; Groebke-Zbinden, K.; Rudolph, M.G.  
Deposited on : 2023-02-08  
Resolution : 1.73 Å(reported)

This is a Full wwPDB X-ray Structure Validation Report for a publicly released PDB entry.

We welcome your comments at [validation@mail.wwpdb.org](mailto:validation@mail.wwpdb.org)

A user guide is available at

<https://www.wwpdb.org/validation/2017/XrayValidationReportHelp>

with specific help available everywhere you see the ⓘ symbol.

The types of validation reports are described at

<http://www.wwpdb.org/validation/2017/FAQs#types>.

---

The following versions of software and data (see [references ⓘ](#)) were used in the production of this report:

MolProbity : 4.02b-467  
Mogul : 1.8.5 (274361), CSD as541be (2020)  
Xtriage (Phenix) : 1.13  
EDS : 2.36  
buster-report : 1.1.7 (2018)  
Percentile statistics : 20191225.v01 (using entries in the PDB archive December 25th 2019)  
Refmac : 5.8.0158  
CCP4 : 7.0.044 (Gargrove)  
Ideal geometry (proteins) : Engh & Huber (2001)  
Ideal geometry (DNA, RNA) : Parkinson et al. (1996)  
Validation Pipeline (wwPDB-VP) : 2.36

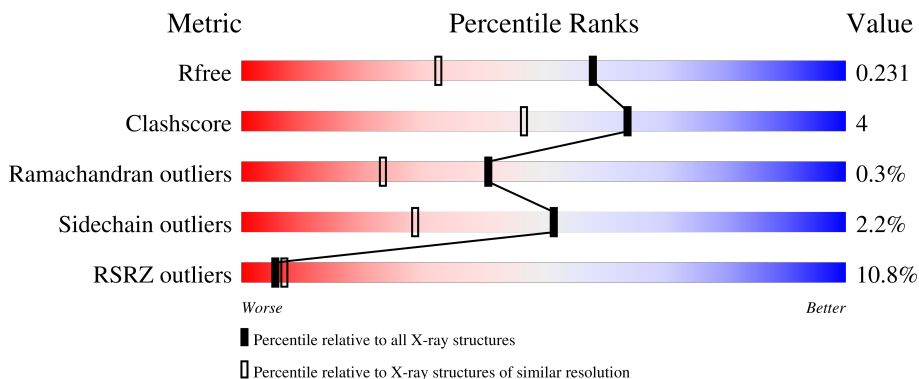
# 1 Overall quality at a glance

The following experimental techniques were used to determine the structure:

*X-RAY DIFFRACTION*

The reported resolution of this entry is 1.73 Å.

Percentile scores (ranging between 0-100) for global validation metrics of the entry are shown in the following graphic. The table shows the number of entries on which the scores are based.



Metric	Whole archive (#Entries)	Similar resolution (#Entries, resolution range(Å))
$R_{free}$	130704	3764 (1.76-1.72)
Clashscore	141614	3923 (1.76-1.72)
Ramachandran outliers	138981	3878 (1.76-1.72)
Sidechain outliers	138945	3878 (1.76-1.72)
RSRZ outliers	127900	3705 (1.76-1.72)

The table below summarises the geometric issues observed across the polymeric chains and their fit to the electron density. The red, orange, yellow and green segments of the lower bar indicate the fraction of residues that contain outliers for  $\geq 3$ , 2, 1 and 0 types of geometric quality criteria respectively. A grey segment represents the fraction of residues that are not modelled. The numeric value for each fraction is indicated below the corresponding segment, with a dot representing fractions  $\leq 5\%$ . The upper red bar (where present) indicates the fraction of residues that have poor fit to the electron density. The numeric value is given above the bar.

Mol	Chain	Length	Quality of chain
1	A	362	
1	B	362	

## 2 Entry composition [i](#)

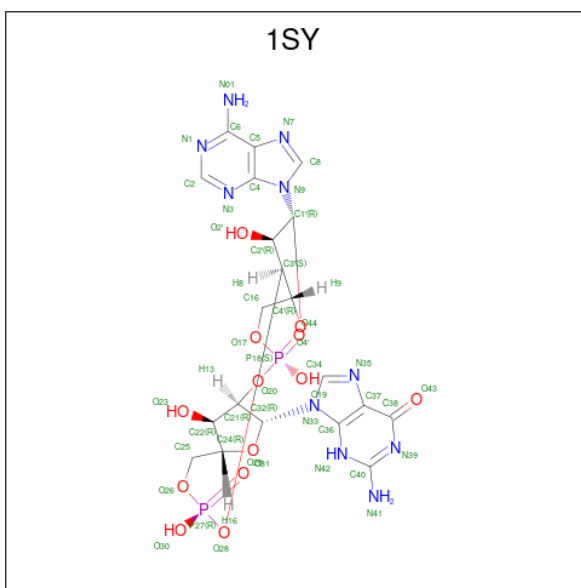
There are 4 unique types of molecules in this entry. The entry contains 6286 atoms, of which 0 are hydrogens and 0 are deuteriums.

In the tables below, the ZeroOcc column contains the number of atoms modelled with zero occupancy, the AltConf column contains the number of residues with at least one atom in alternate conformation and the Trace column contains the number of residues modelled with at most 2 atoms.

- Molecule 1 is a protein called Cyclic GMP-AMP synthase.

Mol	Chain	Residues	Atoms					ZeroOcc	AltConf	Trace
			Total	C	N	O	S			
1	A	352	Total	C	N	O	S	0	1	0
			2897	1855	495	531	16			
1	B	353	Total	C	N	O	S	0	1	0
			2908	1861	500	531	16			

- Molecule 2 is cGAMP (three-letter code: 1SY) (formula: C<sub>20</sub>H<sub>24</sub>N<sub>10</sub>O<sub>13</sub>P<sub>2</sub>) (labeled as "Ligand of Interest" by depositor).



Mol	Chain	Residues	Atoms					ZeroOcc	AltConf
			Total	C	N	O	P		
2	A	1	Total	C	N	O	P	0	0
			45	20	10	13	2		
2	B	1	Total	C	N	O	P	0	0
			45	20	10	13	2		

- Molecule 3 is ZINC ION (three-letter code: ZN) (formula: Zn).

Mol	Chain	Residues	Atoms		ZeroOcc	AltConf
3	A	1	Total 1	Zn 1	0	0
3	B	1	Total 1	Zn 1	0	0

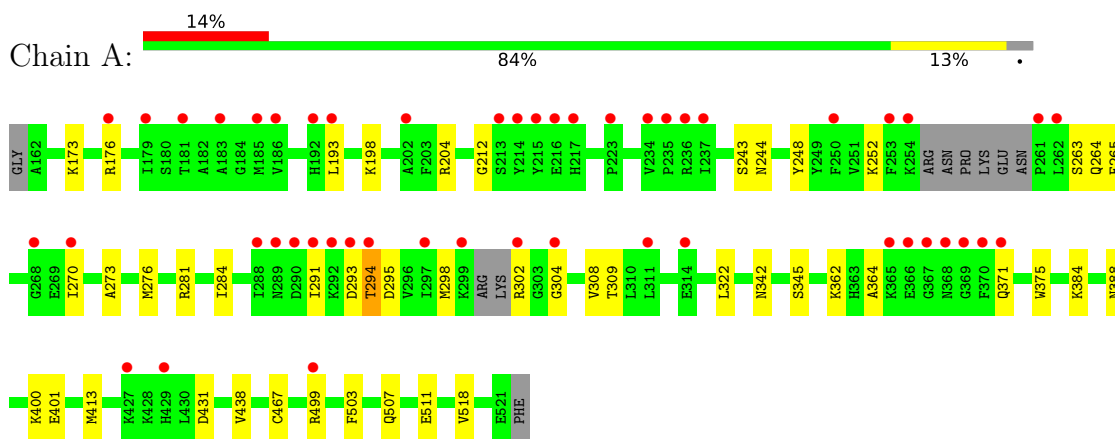
- Molecule 4 is water.

Mol	Chain	Residues	Atoms		ZeroOcc	AltConf
4	A	190	Total 190	O 190	0	0
4	B	199	Total 199	O 199	0	0

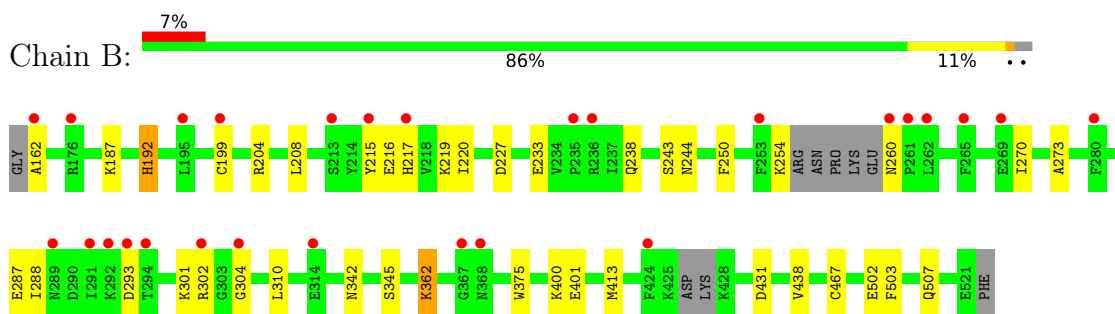
### 3 Residue-property plots [i](#)

These plots are drawn for all protein, RNA, DNA and oligosaccharide chains in the entry. The first graphic for a chain summarises the proportions of the various outlier classes displayed in the second graphic. The second graphic shows the sequence view annotated by issues in geometry and electron density. Residues are color-coded according to the number of geometric quality criteria for which they contain at least one outlier: green = 0, yellow = 1, orange = 2 and red = 3 or more. A red dot above a residue indicates a poor fit to the electron density ( $RSRZ > 2$ ). Stretches of 2 or more consecutive residues without any outlier are shown as a green connector. Residues present in the sample, but not in the model, are shown in grey.

- Molecule 1: Cyclic GMP-AMP synthase



- Molecule 1: Cyclic GMP-AMP synthase



## 4 Data and refinement statistics

Property	Value	Source
Space group	P 21 21 21	Depositor
Cell constants a, b, c, $\alpha$ , $\beta$ , $\gamma$	48.09Å 118.34Å 125.15Å 90.00° 90.00° 90.00°	Depositor
Resolution (Å)	44.89 – 1.73 44.89 – 1.73	Depositor EDS
% Data completeness (in resolution range)	99.9 (44.89-1.73) 96.3 (44.89-1.73)	Depositor EDS
$R_{merge}$	0.06	Depositor
$R_{sym}$	0.06	Depositor
$\langle I/\sigma(I) \rangle$ <sup>1</sup>	1.10 (at 1.73Å)	Xtrriage
Refinement program	PHENIX 1.11_2558	Depositor
R, $R_{free}$	0.192 , 0.230 0.194 , 0.231	Depositor DCC
$R_{free}$ test set	3659 reflections (4.85%)	wwPDB-VP
Wilson B-factor (Å <sup>2</sup> )	31.5	Xtrriage
Anisotropy	0.071	Xtrriage
Bulk solvent $k_{sol}$ (e/Å <sup>3</sup> ), $B_{sol}$ (Å <sup>2</sup> )	0.32 , 47.7	EDS
L-test for twinning <sup>2</sup>	$\langle  L  \rangle = 0.49$ , $\langle L^2 \rangle = 0.33$	Xtrriage
Estimated twinning fraction	No twinning to report.	Xtrriage
$F_o, F_c$ correlation	0.97	EDS
Total number of atoms	6286	wwPDB-VP
Average B, all atoms (Å <sup>2</sup> )	53.0	wwPDB-VP

Xtrriage's analysis on translational NCS is as follows: *The analyses of the Patterson function reveals a significant off-origin peak that is 73.50 % of the origin peak, indicating pseudo-translational symmetry. The chance of finding a peak of this or larger height randomly in a structure without pseudo-translational symmetry is equal to 1.8186e-06. The detected translational NCS is most likely also responsible for the elevated intensity ratio.*

<sup>1</sup>Intensities estimated from amplitudes.

<sup>2</sup>Theoretical values of  $\langle |L| \rangle$ ,  $\langle L^2 \rangle$  for acentric reflections are 0.5, 0.333 respectively for untwinned datasets, and 0.375, 0.2 for perfectly twinned datasets.

## 5 Model quality

### 5.1 Standard geometry

Bond lengths and bond angles in the following residue types are not validated in this section: 1SY, ZN

The Z score for a bond length (or angle) is the number of standard deviations the observed value is removed from the expected value. A bond length (or angle) with  $|Z| > 5$  is considered an outlier worth inspection. RMSZ is the root-mean-square of all Z scores of the bond lengths (or angles).

Mol	Chain	Bond lengths		Bond angles	
		RMSZ	# Z  >5	RMSZ	# Z  >5
1	A	0.36	0/2956	0.51	0/3961
1	B	0.37	0/2967	0.52	0/3976
All	All	0.37	0/5923	0.52	0/7937

There are no bond length outliers.

There are no bond angle outliers.

There are no chirality outliers.

There are no planarity outliers.

### 5.2 Too-close contacts

In the following table, the Non-H and H(model) columns list the number of non-hydrogen atoms and hydrogen atoms in the chain respectively. The H(added) column lists the number of hydrogen atoms added and optimized by MolProbity. The Clashes column lists the number of clashes within the asymmetric unit, whereas Symm-Clashes lists symmetry-related clashes.

Mol	Chain	Non-H	H(model)	H(added)	Clashes	Symm-Clashes
1	A	2897	0	2937	26	0
1	B	2908	0	2951	24	0
2	A	45	0	22	0	0
2	B	45	0	22	0	0
3	A	1	0	0	0	0
3	B	1	0	0	0	0
4	A	190	0	0	3	0
4	B	199	0	0	3	0
All	All	6286	0	5932	50	0

The all-atom clashscore is defined as the number of clashes found per 1000 atoms (including hydrogen atoms). The all-atom clashscore for this structure is 4.

All (50) close contacts within the same asymmetric unit are listed below, sorted by their clash magnitude.

Atom-1	Atom-2	Interatomic distance (Å)	Clash overlap (Å)
1:B:302:ARG:HH22	1:B:431:ASP:HB3	1.24	1.01
1:A:243:SER:OG	1:A:244:ASN:N	2.18	0.77
1:B:243:SER:OG	1:B:244:ASN:N	2.16	0.75
1:B:288:ILE:HD11	1:B:310:LEU:HD22	1.68	0.74
1:B:238:GLN:HG3	1:B:254:LYS:HB3	1.71	0.73
1:A:212:GLY:O	1:A:384:LYS:NZ	2.22	0.71
1:A:413[B]:MET:HE2	1:A:438:VAL:HG13	1.73	0.69
1:A:400:LYS:NZ	1:A:401:GLU:OE1	2.26	0.68
1:A:276:MET:HE2	1:A:322:LEU:HD21	1.81	0.63
1:A:302:ARG:NH2	1:A:431:ASP:O	2.35	0.60
1:A:198:LYS:HA	1:A:204:ARG:HA	1.88	0.55
1:B:215:TYR:HD1	1:B:216:GLU:H	1.57	0.52
1:B:162:ALA:N	4:B:1206:HOH:O	2.42	0.52
1:B:502:GLU:OE1	4:B:1201:HOH:O	2.18	0.52
1:A:503:PHE:O	1:A:507:GLN:HG2	2.10	0.51
1:A:265:PHE:CD2	1:A:276:MET:HG2	2.46	0.50
1:B:400:LYS:NZ	1:B:401:GLU:OE1	2.40	0.49
1:A:248:TYR:CG	1:A:364:ALA:HB2	2.48	0.48
1:A:511:GLU:OE2	1:A:518:VAL:HG13	2.14	0.48
1:B:342:ASN:HB2	4:B:1219:HOH:O	2.13	0.48
1:A:248:TYR:HE2	1:A:362:LYS:HG3	1.79	0.48
1:B:187:LYS:HE2	1:B:217:HIS:HD2	1.79	0.48
1:A:413[B]:MET:SD	1:A:467:CYS:HB3	2.54	0.47
1:B:192:HIS:HB3	1:B:287:GLU:OE2	2.14	0.47
1:B:413[B]:MET:HB3	1:B:438:VAL:HG13	1.96	0.47
1:B:208:LEU:HD12	1:B:217:HIS:HB3	1.97	0.47
1:B:250:PHE:HB3	1:B:270:ILE:HD12	1.97	0.47
1:A:173:LYS:HD2	1:A:176:ARG:HH11	1.78	0.47
1:A:294:THR:HG22	1:A:295:ASP:H	1.81	0.46
1:A:264:GLN:NE2	4:A:705:HOH:O	2.36	0.46
1:A:304:GLY:O	1:A:362:LYS:HD2	2.15	0.45
1:A:252:LYS:HG2	1:A:270:ILE:HD13	1.99	0.45
1:B:413[B]:MET:SD	1:B:467:CYS:HB3	2.56	0.45
1:B:302:ARG:H	1:B:302:ARG:HG3	1.48	0.45
1:B:413[B]:MET:HB3	1:B:438:VAL:CG1	2.48	0.44
1:B:219:LYS:HB3	1:B:227:ASP:HB3	2.00	0.44
1:A:413[B]:MET:HB3	1:A:438:VAL:HG13	2.01	0.43
1:B:413[B]:MET:HE1	1:B:438:VAL:O	2.18	0.43
1:B:288:ILE:HD11	1:B:310:LEU:CD2	2.42	0.42
1:B:304:GLY:O	1:B:362:LYS:HD2	2.19	0.42

*Continued on next page...*



Continued from previous page...

Atom-1	Atom-2	Interatomic distance (Å)	Clash overlap (Å)
1:A:499:ARG:HG3	4:A:853:HOH:O	2.19	0.42
1:B:273:ALA:HA	1:B:375:TRP:CZ2	2.55	0.42
1:B:503:PHE:O	1:B:507:GLN:HG2	2.20	0.42
1:A:273:ALA:HA	1:A:375:TRP:CZ2	2.55	0.42
1:A:281:ARG:HH11	1:A:308:VAL:HG22	1.84	0.41
1:A:384:LYS:HE3	1:A:388:ASN:ND2	2.35	0.41
1:A:291:ILE:HG12	1:A:293:ASP:H	1.86	0.41
1:B:187:LYS:HE3	1:B:215:TYR:CD2	2.56	0.41
1:A:193:LEU:HD21	1:A:284:ILE:HG23	2.03	0.41
1:A:342:ASN:HB2	4:A:721:HOH:O	2.20	0.41

There are no symmetry-related clashes.

## 5.3 Torsion angles [i](#)

### 5.3.1 Protein backbone [i](#)

In the following table, the Percentiles column shows the percent Ramachandran outliers of the chain as a percentile score with respect to all X-ray entries followed by that with respect to entries of similar resolution.

The Analysed column shows the number of residues for which the backbone conformation was analysed, and the total number of residues.

Mol	Chain	Analysed	Favoured	Allowed	Outliers	Percentiles	
1	A	347/362 (96%)	333 (96%)	13 (4%)	1 (0%)	41	23
1	B	348/362 (96%)	335 (96%)	12 (3%)	1 (0%)	41	23
All	All	695/724 (96%)	668 (96%)	25 (4%)	2 (0%)	41	23

All (2) Ramachandran outliers are listed below:

Mol	Chain	Res	Type
1	A	345	SER
1	B	345	SER

### 5.3.2 Protein sidechains [i](#)

In the following table, the Percentiles column shows the percent sidechain outliers of the chain as a percentile score with respect to all X-ray entries followed by that with respect to entries of similar resolution.

The Analysed column shows the number of residues for which the sidechain conformation was analysed, and the total number of residues.

Mol	Chain	Analysed	Rotameric	Outliers	Percentiles	
1	A	326/334 (98%)	321 (98%)	5 (2%)	65	47
1	B	327/334 (98%)	318 (97%)	9 (3%)	43	19
All	All	653/668 (98%)	639 (98%)	14 (2%)	52	30

All (14) residues with a non-rotameric sidechain are listed below:

Mol	Chain	Res	Type
1	A	263	SER
1	A	294	THR
1	A	298	MET
1	A	309	THR
1	A	371	GLN
1	B	192	HIS
1	B	199	CYS
1	B	204	ARG
1	B	220	ILE
1	B	233	GLU
1	B	260	ASN
1	B	293	ASP
1	B	301	LYS
1	B	362	LYS

Sometimes sidechains can be flipped to improve hydrogen bonding and reduce clashes. All (2) such sidechains are listed below:

Mol	Chain	Res	Type
1	A	264	GLN
1	B	217	HIS

### 5.3.3 RNA [i](#)

There are no RNA molecules in this entry.

## 5.4 Non-standard residues in protein, DNA, RNA chains [i](#)

There are no non-standard protein/DNA/RNA residues in this entry.

## 5.5 Carbohydrates [i](#)

There are no monosaccharides in this entry.

## 5.6 Ligand geometry [i](#)

Of 4 ligands modelled in this entry, 2 are monoatomic - leaving 2 for Mogul analysis.

In the following table, the Counts columns list the number of bonds (or angles) for which Mogul statistics could be retrieved, the number of bonds (or angles) that are observed in the model and the number of bonds (or angles) that are defined in the Chemical Component Dictionary. The Link column lists molecule types, if any, to which the group is linked. The Z score for a bond length (or angle) is the number of standard deviations the observed value is removed from the expected value. A bond length (or angle) with  $|Z| > 2$  is considered an outlier worth inspection. RMSZ is the root-mean-square of all Z scores of the bond lengths (or angles).

Mol	Type	Chain	Res	Link	Bond lengths			Bond angles		
					Counts	RMSZ	# Z  > 2	Counts	RMSZ	# Z  > 2
2	1SY	B	1101	-	41,51,51	2.44	16 (39%)	51,80,80	1.40	6 (11%)
2	1SY	A	601	-	41,51,51	2.50	16 (39%)	51,80,80	1.56	8 (15%)

In the following table, the Chirals column lists the number of chiral outliers, the number of chiral centers analysed, the number of these observed in the model and the number defined in the Chemical Component Dictionary. Similar counts are reported in the Torsion and Rings columns. '-' means no outliers of that kind were identified.

Mol	Type	Chain	Res	Link	Chirals	Torsions	Rings
2	1SY	B	1101	-	-	6/22/62/62	0/6/7/7
2	1SY	A	601	-	-	7/22/62/62	0/6/7/7

All (32) bond length outliers are listed below:

Mol	Chain	Res	Type	Atoms	Z	Observed(Å)	Ideal(Å)
2	A	601	1SY	C40-N41	5.74	1.47	1.34
2	B	1101	1SY	C40-N41	5.50	1.47	1.34
2	A	601	1SY	P18-O20	5.38	1.74	1.60
2	B	1101	1SY	P18-O20	5.11	1.73	1.60
2	A	601	1SY	O31-C32	4.96	1.48	1.41
2	B	1101	1SY	O31-C32	4.83	1.47	1.41
2	A	601	1SY	P27-O28	4.42	1.72	1.60
2	B	1101	1SY	P27-O28	4.28	1.71	1.60
2	B	1101	1SY	C40-N39	4.15	1.43	1.33
2	B	1101	1SY	C6-N01	4.14	1.49	1.34

*Continued on next page...*

Continued from previous page...

Mol	Chain	Res	Type	Atoms	Z	Observed(Å)	Ideal(Å)
2	A	601	1SY	C6-N01	4.02	1.48	1.34
2	A	601	1SY	C40-N39	3.87	1.42	1.33
2	A	601	1SY	C3'-C4'	-3.86	1.42	1.52
2	A	601	1SY	P18-O17	3.84	1.74	1.59
2	B	1101	1SY	C3'-C4'	-3.75	1.42	1.52
2	B	1101	1SY	P18-O17	3.37	1.73	1.59
2	B	1101	1SY	C38-N39	3.32	1.45	1.39
2	A	601	1SY	C38-N39	3.23	1.45	1.39
2	B	1101	1SY	C2-N3	2.91	1.36	1.32
2	A	601	1SY	C40-N42	2.82	1.44	1.37
2	A	601	1SY	C37-C38	2.69	1.52	1.47
2	B	1101	1SY	C40-N42	2.65	1.44	1.37
2	A	601	1SY	P27-O26	2.63	1.70	1.59
2	A	601	1SY	C2-N3	2.63	1.36	1.32
2	B	1101	1SY	P27-O26	2.63	1.69	1.59
2	A	601	1SY	C2'-C1'	-2.61	1.49	1.53
2	B	1101	1SY	C2'-C1'	-2.47	1.50	1.53
2	A	601	1SY	C22-C21	-2.36	1.47	1.52
2	B	1101	1SY	C22-C21	-2.27	1.47	1.52
2	B	1101	1SY	C37-C38	2.15	1.51	1.47
2	A	601	1SY	C5-C4	-2.11	1.35	1.40
2	B	1101	1SY	C6-C5	-2.04	1.35	1.43

All (14) bond angle outliers are listed below:

Mol	Chain	Res	Type	Atoms	Z	Observed(°)	Ideal(°)
2	A	601	1SY	N3-C2-N1	-6.00	119.31	128.68
2	B	1101	1SY	N3-C2-N1	-5.69	119.79	128.68
2	A	601	1SY	P18-O20-C21	-3.14	107.99	119.41
2	B	1101	1SY	P18-O20-C21	-3.02	108.43	119.41
2	A	601	1SY	C34-N35-C37	2.81	108.35	102.99
2	A	601	1SY	C3'-C2'-C1'	2.71	105.90	99.89
2	A	601	1SY	C1'-N9-C4	-2.67	121.95	126.64
2	A	601	1SY	O30-P27-O28	2.62	117.12	106.78
2	B	1101	1SY	C1'-N9-C4	-2.59	122.09	126.64
2	B	1101	1SY	C34-N35-C37	2.58	107.91	102.99
2	B	1101	1SY	C3'-C2'-C1'	2.34	105.07	99.89
2	A	601	1SY	O31-C32-C21	2.18	110.37	106.59
2	B	1101	1SY	O30-P27-O28	2.15	115.28	106.78
2	A	601	1SY	N42-C40-N39	-2.13	119.36	123.32

There are no chirality outliers.

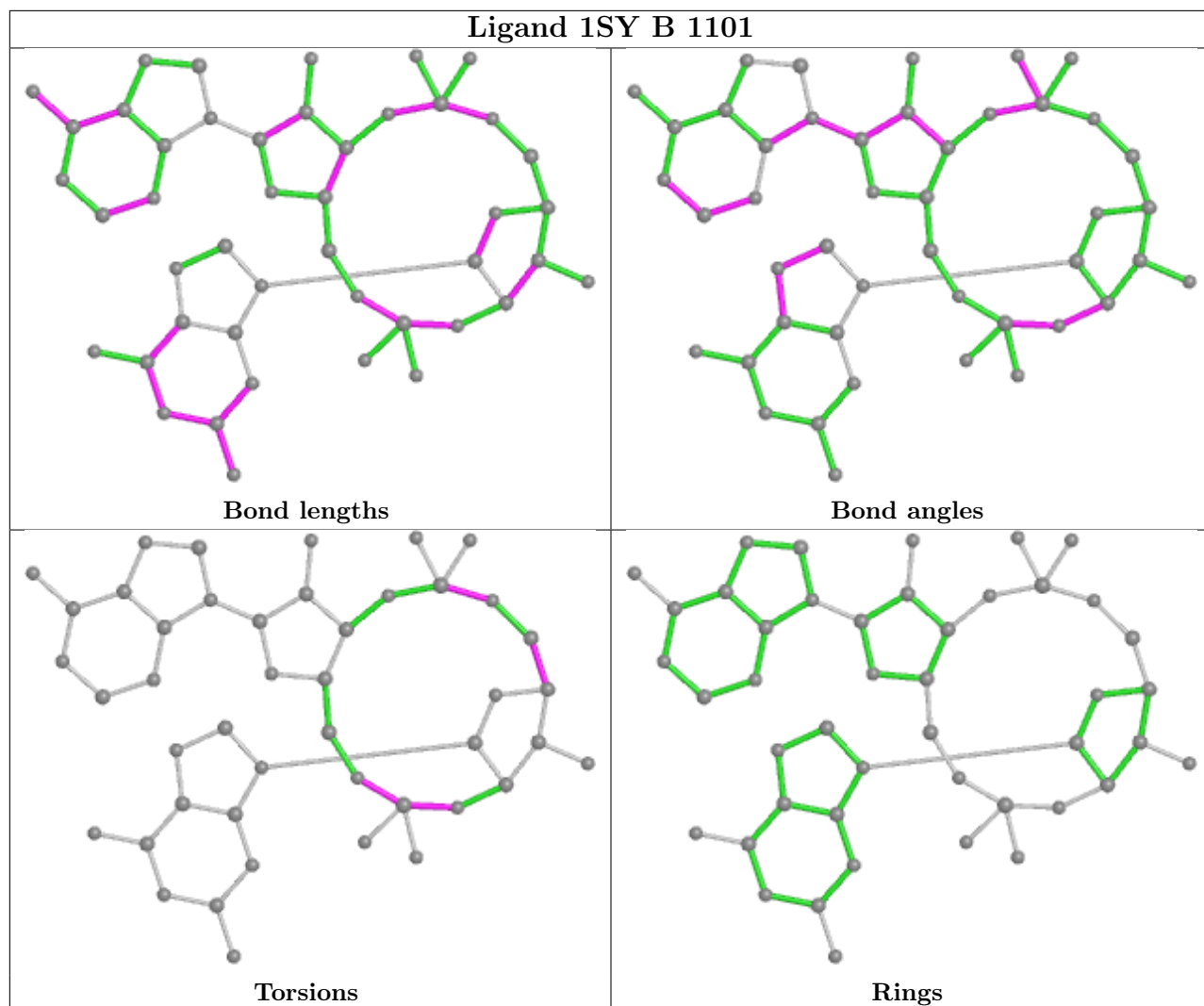
All (13) torsion outliers are listed below:

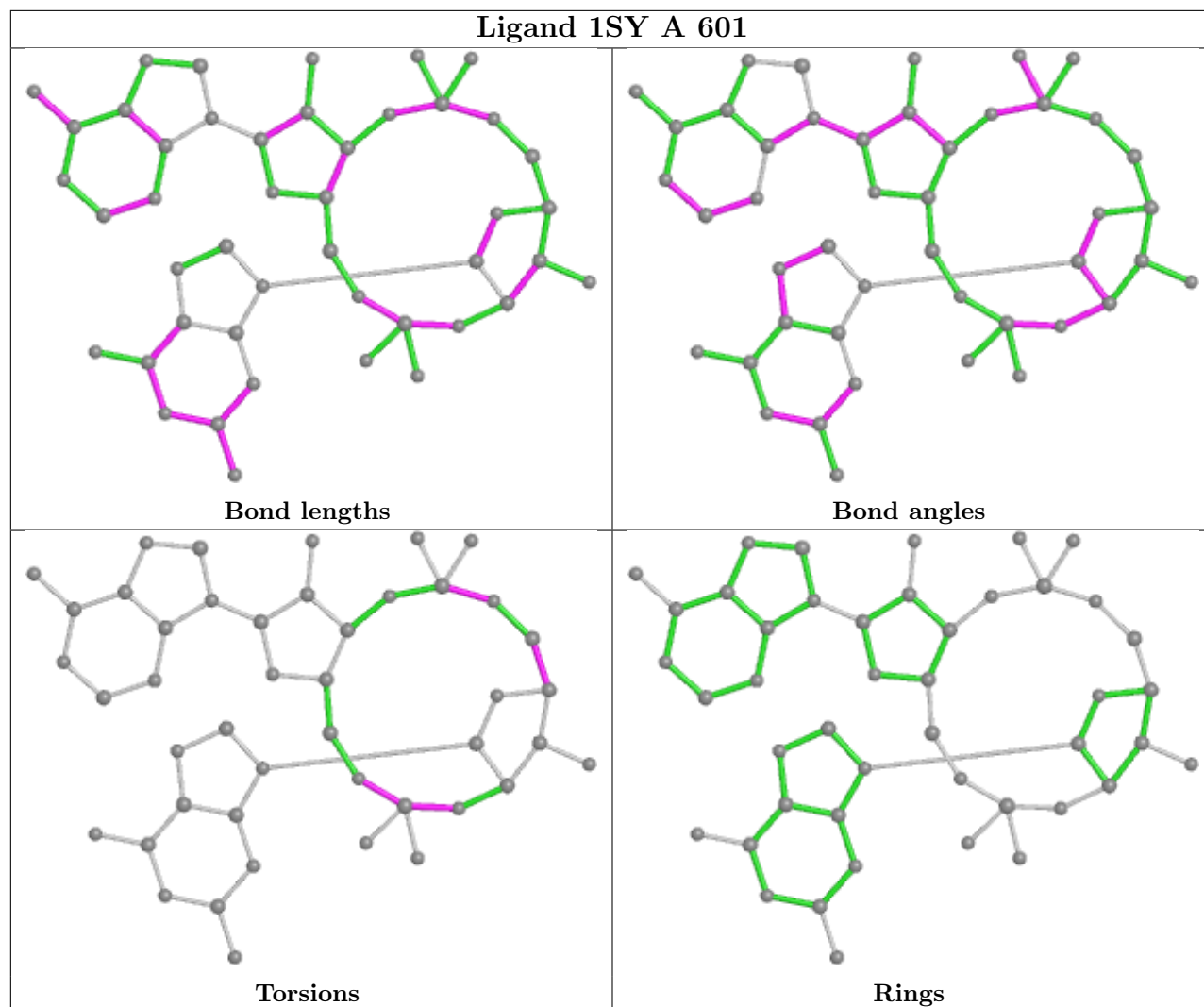
Mol	Chain	Res	Type	Atoms
2	A	601	1SY	C16-O17-P18-O19
2	A	601	1SY	C16-O17-P18-O44
2	A	601	1SY	C21-O20-P18-O17
2	B	1101	1SY	C16-O17-P18-O19
2	B	1101	1SY	C16-O17-P18-O20
2	B	1101	1SY	C16-O17-P18-O44
2	A	601	1SY	C16-O17-P18-O20
2	B	1101	1SY	C21-O20-P18-O17
2	A	601	1SY	C22-C24-C25-O26
2	A	601	1SY	O31-C24-C25-O26
2	A	601	1SY	C25-O26-P27-O28
2	B	1101	1SY	C25-O26-P27-O28
2	B	1101	1SY	C22-C24-C25-O26

There are no ring outliers.

No monomer is involved in short contacts.

The following is a two-dimensional graphical depiction of Mogul quality analysis of bond lengths, bond angles, torsion angles, and ring geometry for all instances of the Ligand of Interest. In addition, ligands with molecular weight > 250 and outliers as shown on the validation Tables will also be included. For torsion angles, if less than 5% of the Mogul distribution of torsion angles is within 10 degrees of the torsion angle in question, then that torsion angle is considered an outlier. Any bond that is central to one or more torsion angles identified as an outlier by Mogul will be highlighted in the graph. For rings, the root-mean-square deviation (RMSD) between the ring in question and similar rings identified by Mogul is calculated over all ring torsion angles. If the average RMSD is greater than 60 degrees and the minimal RMSD between the ring in question and any Mogul-identified rings is also greater than 60 degrees, then that ring is considered an outlier. The outliers are highlighted in purple. The color gray indicates Mogul did not find sufficient equivalents in the CSD to analyse the geometry.





## 5.7 Other polymers [i](#)

There are no such residues in this entry.

## 5.8 Polymer linkage issues [i](#)

There are no chain breaks in this entry.

## 6 Fit of model and data

### 6.1 Protein, DNA and RNA chains

In the following table, the column labelled ‘#RSRZ > 2’ contains the number (and percentage) of RSRZ outliers, followed by percent RSRZ outliers for the chain as percentile scores relative to all X-ray entries and entries of similar resolution. The OWAB column contains the minimum, median, 95<sup>th</sup> percentile and maximum values of the occupancy-weighted average B-factor per residue. The column labelled ‘Q < 0.9’ lists the number of (and percentage) of residues with an average occupancy less than 0.9.

Mol	Chain	Analysed	<RSRZ>	#RSRZ>2	OWAB(Å <sup>2</sup> )	Q<0.9
1	A	352/362 (97%)	0.70	49 (13%) <b>2</b> <b>3</b>	23, 50, 112, 160	0
1	B	353/362 (97%)	0.39	27 (7%) <b>13</b> <b>18</b>	24, 45, 90, 148	0
All	All	705/724 (97%)	0.55	76 (10%) <b>5</b> <b>7</b>	23, 47, 104, 160	0

All (76) RSRZ outliers are listed below:

Mol	Chain	Res	Type	RSRZ
1	A	215	TYR	18.1
1	B	215	TYR	11.8
1	A	289	ASN	8.2
1	A	292	LYS	6.6
1	B	261	PRO	6.5
1	B	293	ASP	5.8
1	A	185	MET	5.5
1	A	288	ILE	5.5
1	B	302	ARG	5.5
1	B	260	ASN	5.0
1	A	368	ASN	4.9
1	A	293	ASP	4.9
1	A	262	LEU	4.8
1	A	202	ALA	4.6
1	A	236	ARG	4.5
1	A	193	LEU	4.3
1	A	367	GLY	4.3
1	B	292	LYS	4.2
1	B	368	ASN	4.1
1	B	291	ILE	4.1
1	A	253	PHE	4.0
1	B	314	GLU	3.9
1	A	302	ARG	3.9
1	A	297	ILE	3.8

*Continued on next page...*



*Continued from previous page...*

<b>Mol</b>	<b>Chain</b>	<b>Res</b>	<b>Type</b>	<b>RSRZ</b>
1	B	236	ARG	3.7
1	A	294	THR	3.7
1	A	234	VAL	3.6
1	B	294	THR	3.5
1	A	216	GLU	3.5
1	A	291	ILE	3.5
1	A	299	LYS	3.5
1	B	195	LEU	3.4
1	A	186	VAL	3.3
1	A	365	LYS	3.2
1	A	314	GLU	3.2
1	B	213	SER	3.2
1	A	183	ALA	3.1
1	B	262	LEU	3.1
1	B	269	GLU	3.1
1	A	250	PHE	3.0
1	B	162	ALA	3.0
1	A	217	HIS	3.0
1	B	176	ARG	3.0
1	A	369	GLY	3.0
1	A	311	LEU	2.9
1	A	366	GLU	2.9
1	A	304	GLY	2.8
1	A	370	PHE	2.8
1	A	223	PRO	2.8
1	B	289	ASN	2.8
1	A	176	ARG	2.7
1	A	179	ILE	2.7
1	A	499	ARG	2.6
1	A	429	HIS	2.6
1	A	192	HIS	2.6
1	B	367	GLY	2.5
1	A	181	THR	2.5
1	A	254	LYS	2.5
1	A	371	GLN	2.5
1	B	253	PHE	2.5
1	B	424	PHE	2.5
1	A	261	PRO	2.4
1	B	265	PHE	2.4
1	A	214	TYR	2.4
1	A	268	GLY	2.4
1	B	235	PRO	2.4

*Continued on next page...*

*Continued from previous page...*

Mol	Chain	Res	Type	RSRZ
1	A	427	LYS	2.3
1	A	237	ILE	2.3
1	B	280	PHE	2.3
1	B	199	CYS	2.2
1	A	270	ILE	2.2
1	A	235	PRO	2.2
1	B	217	HIS	2.1
1	B	304	GLY	2.1
1	A	213	SER	2.1
1	A	290	ASP	2.0

## 6.2 Non-standard residues in protein, DNA, RNA chains [i](#)

There are no non-standard protein/DNA/RNA residues in this entry.

## 6.3 Carbohydrates [i](#)

There are no monosaccharides in this entry.

## 6.4 Ligands [i](#)

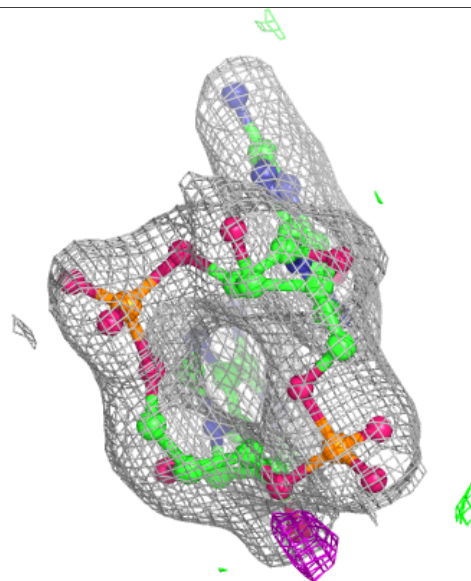
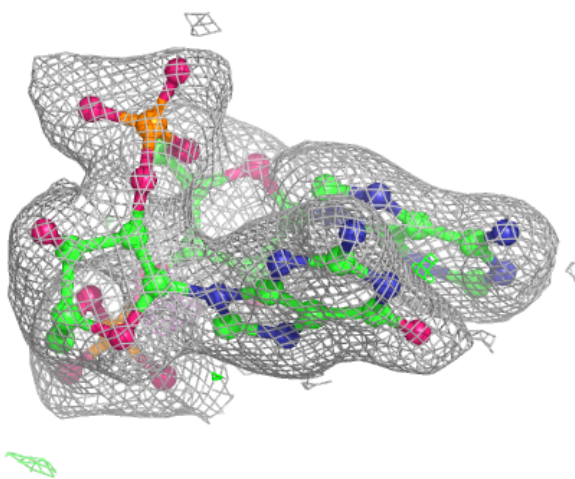
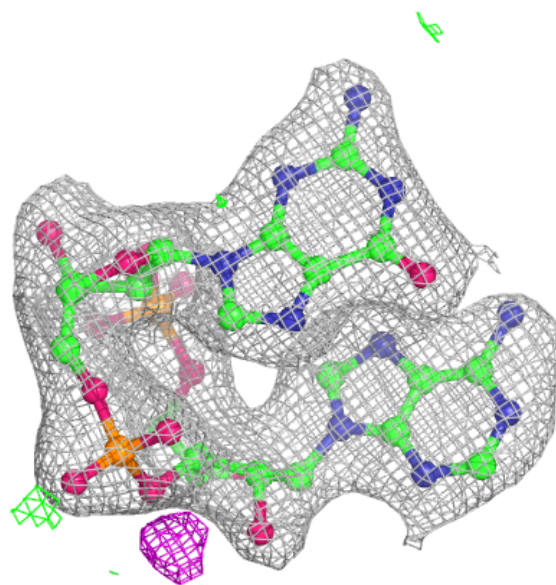
In the following table, the Atoms column lists the number of modelled atoms in the group and the number defined in the chemical component dictionary. The B-factors column lists the minimum, median, 95<sup>th</sup> percentile and maximum values of B factors of atoms in the group. The column labelled 'Q< 0.9' lists the number of atoms with occupancy less than 0.9.

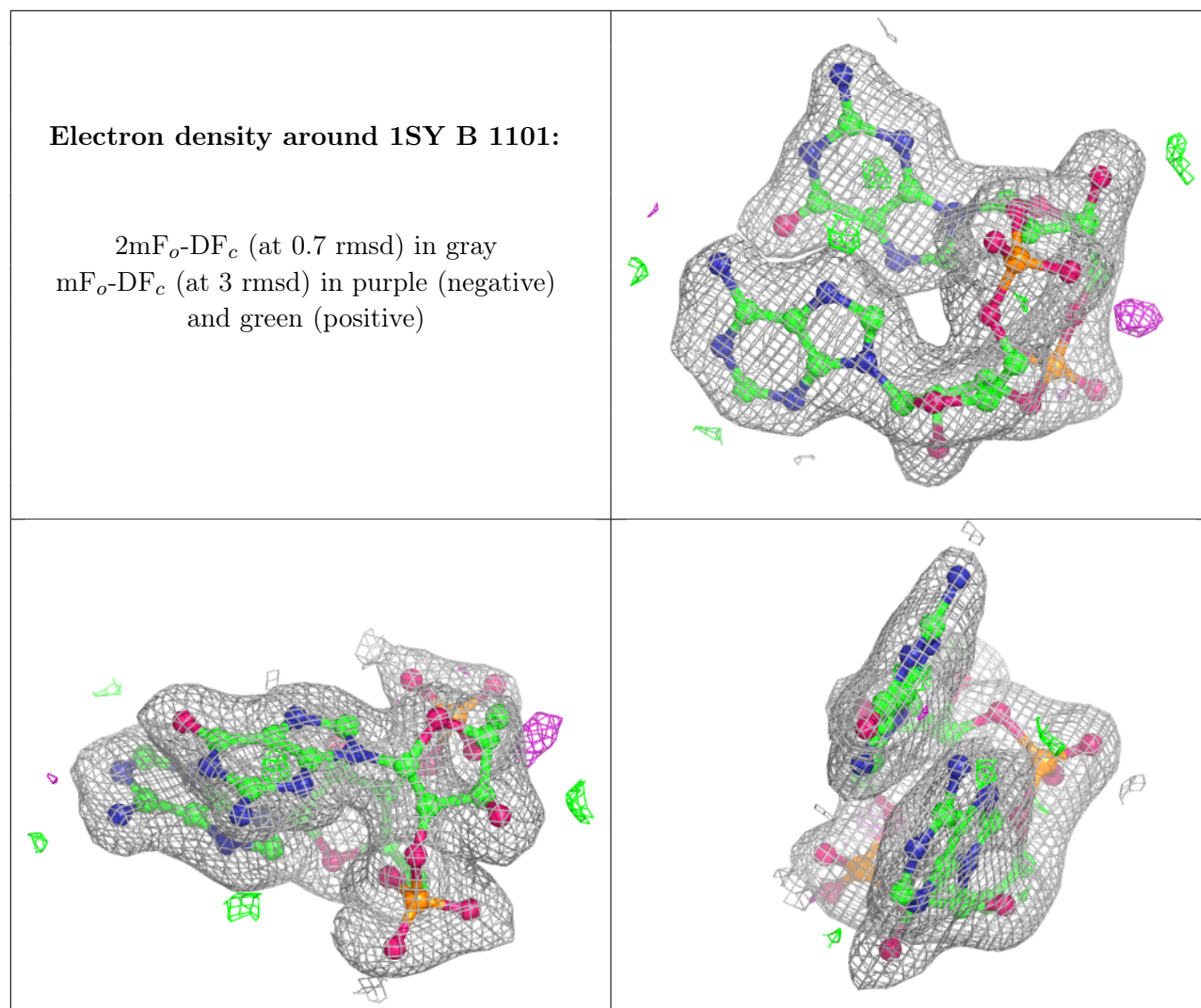
Mol	Type	Chain	Res	Atoms	RSCC	RSR	B-factors( $\text{\AA}^2$ )	Q<0.9
2	1SY	A	601	45/45	0.93	0.08	34,49,65,72	0
2	1SY	B	1101	45/45	0.94	0.10	31,40,48,54	0
3	ZN	A	602	1/1	1.00	0.09	28,28,28,28	0
3	ZN	B	1102	1/1	1.00	0.10	27,27,27,27	0

The following is a graphical depiction of the model fit to experimental electron density of all instances of the Ligand of Interest. In addition, ligands with molecular weight > 250 and outliers as shown on the geometry validation Tables will also be included. Each fit is shown from different orientation to approximate a three-dimensional view.

**Electron density around 1SY A 601:**

$2mF_o-DF_c$  (at 0.7 rmsd) in gray  
 $mF_o-DF_c$  (at 3 rmsd) in purple (negative)  
and green (positive)





## 6.5 Other polymers [i](#)

There are no such residues in this entry.