



## Full wwPDB EM Validation Report ⓘ

Jul 3, 2024 – 01:25 am BST

PDB ID : 7AAP  
EMDB ID : EMD-11692  
Title : Nsp7-Nsp8-Nsp12 SARS-CoV2 RNA-dependent RNA polymerase in complex with template:primer dsRNA and favipiravir-RTP  
Authors : Naydenova, K.; Muir, K.W.; Wu, L.F.; Zhang, Z.; Coscia, F.; Peet, M.; Castro-Hartman, P.; Qian, P.; Sader, K.; Dent, K.; Kimanius, D.; Sutherland, J.D.; Lowe, J.; Barford, D.; Russo, C.J.  
Deposited on : 2020-09-04  
Resolution : 2.50 Å(reported)  
Based on initial model : 7BV2

This is a Full wwPDB EM Validation Report for a publicly released PDB entry.

We welcome your comments at [validation@mail.wwpdb.org](mailto:validation@mail.wwpdb.org)

A user guide is available at

<https://www.wwpdb.org/validation/2017/EMValidationReportHelp>

with specific help available everywhere you see the ⓘ symbol.

The types of validation reports are described at

<http://www.wwpdb.org/validation/2017/FAQs#types>.

---

The following versions of software and data (see [references ⓘ](#)) were used in the production of this report:

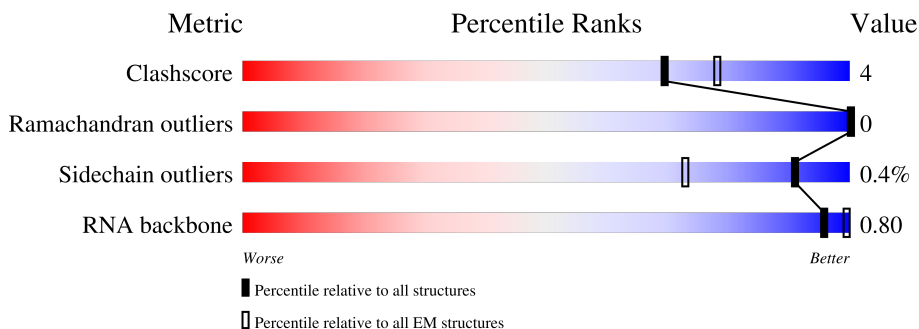
EMDB validation analysis : 0.0.1.dev92  
Mogul : 1.8.4, CSD as541be (2020)  
MolProbity : 4.02b-467  
buster-report : 1.1.7 (2018)  
Percentile statistics : 20191225.v01 (using entries in the PDB archive December 25th 2019)  
MapQ : 1.9.13  
Ideal geometry (proteins) : Engh & Huber (2001)  
Ideal geometry (DNA, RNA) : Parkinson et al. (1996)  
Validation Pipeline (wwPDB-VP) : 2.37.1

# 1 Overall quality at a glance

The following experimental techniques were used to determine the structure:  
*ELECTRON MICROSCOPY*

The reported resolution of this entry is 2.50 Å.

Percentile scores (ranging between 0-100) for global validation metrics of the entry are shown in the following graphic. The table shows the number of entries on which the scores are based.



Metric	Whole archive (#Entries)	EM structures (#Entries)
Clashscore	158937	4297
Ramachandran outliers	154571	4023
Sidechain outliers	154315	3826
RNA backbone	4643	859

The table below summarises the geometric issues observed across the polymeric chains and their fit to the map. The red, orange, yellow and green segments of the bar indicate the fraction of residues that contain outliers for  $\geq 3$ , 2, 1 and 0 types of geometric quality criteria respectively. A grey segment represents the fraction of residues that are not modelled. The numeric value for each fraction is indicated below the corresponding segment, with a dot representing fractions  $\leq 5\%$ . The upper red bar (where present) indicates the fraction of residues that have poor fit to the EM map (all-atom inclusion  $< 40\%$ ). The numeric value is given above the bar.

Mol	Chain	Length	Quality of chain
1	A	967	 86% 8% 6%
2	B	198	 53% 5% 42%
2	D	198	 14% 86% 11%
3	C	83	 72% 8% 19%
4	P	24	 25% 12% 63%
5	T	30	 33% 7% 60%

## 2 Entry composition i

There are 9 unique types of molecules in this entry. The entry contains 9446 atoms, of which 0 are hydrogens and 0 are deuteriums.

In the tables below, the AltConf column contains the number of residues with at least one atom in alternate conformation and the Trace column contains the number of residues modelled with at most 2 atoms.

- Molecule 1 is a protein called Non-structural protein 12.

Mol	Chain	Residues	Atoms					AltConf	Trace
			Total	C	N	O	S		
1	A	911	7345	4694	1234	1366	51	0	0

There are 35 discrepancies between the modelled and reference sequences:

Chain	Residue	Modelled	Actual	Comment	Reference
A	933	GLU	-	expression tag	UNP P0DTD1
A	934	ASN	-	expression tag	UNP P0DTD1
A	935	LEU	-	expression tag	UNP P0DTD1
A	936	TYR	-	expression tag	UNP P0DTD1
A	937	PHE	-	expression tag	UNP P0DTD1
A	938	GLN	-	expression tag	UNP P0DTD1
A	939	SER	-	expression tag	UNP P0DTD1
A	940	TRP	-	expression tag	UNP P0DTD1
A	941	SER	-	expression tag	UNP P0DTD1
A	942	HIS	-	expression tag	UNP P0DTD1
A	943	PRO	-	expression tag	UNP P0DTD1
A	944	GLN	-	expression tag	UNP P0DTD1
A	945	PHE	-	expression tag	UNP P0DTD1
A	946	GLU	-	expression tag	UNP P0DTD1
A	947	LYS	-	expression tag	UNP P0DTD1
A	948	GLY	-	expression tag	UNP P0DTD1
A	949	GLY	-	expression tag	UNP P0DTD1
A	950	GLY	-	expression tag	UNP P0DTD1
A	951	SER	-	expression tag	UNP P0DTD1
A	952	GLY	-	expression tag	UNP P0DTD1
A	953	GLY	-	expression tag	UNP P0DTD1
A	954	GLY	-	expression tag	UNP P0DTD1
A	955	SER	-	expression tag	UNP P0DTD1
A	956	GLY	-	expression tag	UNP P0DTD1
A	957	GLY	-	expression tag	UNP P0DTD1
A	958	GLY	-	expression tag	UNP P0DTD1
A	959	SER	-	expression tag	UNP P0DTD1

*Continued on next page...*

Continued from previous page...

Chain	Residue	Modelled	Actual	Comment	Reference
A	960	TRP	-	expression tag	UNP P0DTD1
A	961	SER	-	expression tag	UNP P0DTD1
A	962	HIS	-	expression tag	UNP P0DTD1
A	963	PRO	-	expression tag	UNP P0DTD1
A	964	GLN	-	expression tag	UNP P0DTD1
A	965	PHE	-	expression tag	UNP P0DTD1
A	966	GLU	-	expression tag	UNP P0DTD1
A	967	LYS	-	expression tag	UNP P0DTD1

- Molecule 2 is a protein called Non-structural protein 8.

Mol	Chain	Residues	Atoms					AltConf	Trace
			Total	C	N	O	S		
2	B	114	882	557	148	170	7	0	0
2	D	28	221	135	41	42	3	0	0

- Molecule 3 is a protein called Non-structural protein 7.

Mol	Chain	Residues	Atoms					AltConf	Trace
			Total	C	N	O	S		
3	C	67	513	325	84	99	5	0	0

- Molecule 4 is a RNA chain called RNA (5'-R(P\*UP\*UP\*AP\*AP\*GP\*UP\*UP\*AP\*U)-3').

Mol	Chain	Residues	Atoms					AltConf	Trace
			Total	C	N	O	P		
4	P	9	189	85	30	65	9	0	0

- Molecule 5 is a RNA chain called RNA (5'-R(P\*UP\*UP\*CP\*AP\*UP\*AP\*AP\*CP\*UP\*UP\*AP\*A)-3').

Mol	Chain	Residues	Atoms					AltConf	Trace
			Total	C	N	O	P		
5	T	12	250	113	41	84	12	0	0

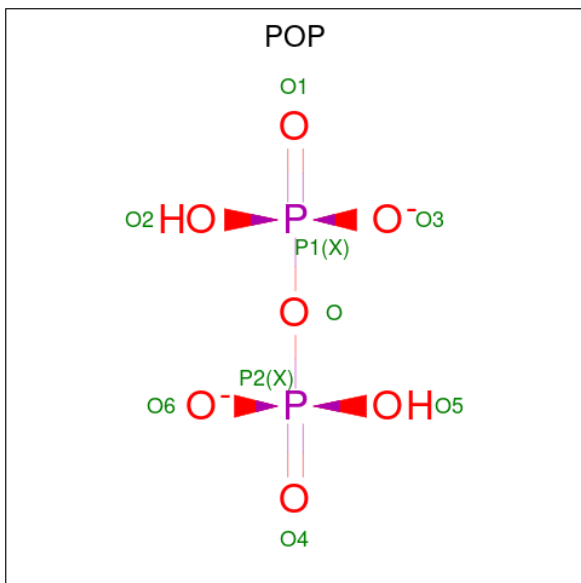
- Molecule 6 is ZINC ION (three-letter code: ZN) (formula: Zn).

Mol	Chain	Residues	Atoms		AltConf
			Total	Zn	
6	A	2	2	2	0

- Molecule 7 is MAGNESIUM ION (three-letter code: MG) (formula: Mg).

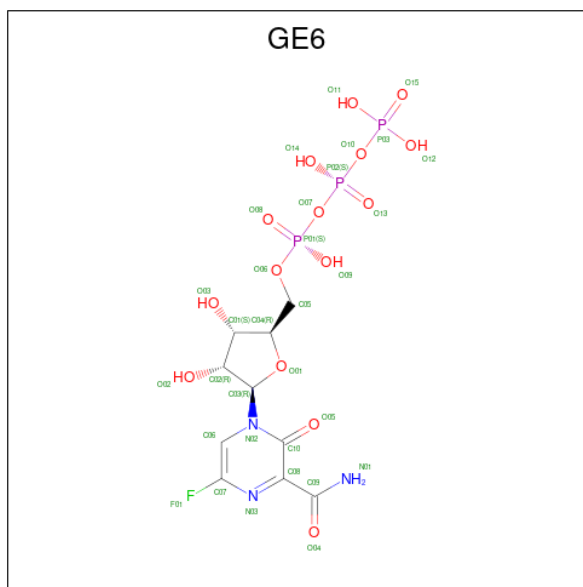
Mol	Chain	Residues	Atoms		AltConf
7	A	2	Total	Mg	0
			2	2	
7	P	1	Total	Mg	0
			1	1	

- Molecule 8 is PYROPHOSPHATE 2- (three-letter code: POP) (formula: H<sub>2</sub>O<sub>7</sub>P<sub>2</sub>).



Mol	Chain	Residues	Atoms			AltConf
8	A	1	Total	O	P	0
			9	7	2	

- Molecule 9 is [[[2 {R},3 {S},4 {R},5 {R}]-5-(3-aminocarbonyl-5-fluoranyl-2-oxidanylidene-pyrazin-1-yl)-3,4-bis(oxidanyl)oxolan-2-yl]methoxy-oxidanyl-phosphoryl] phosphono hydrogen phosphate (three-letter code: GE6) (formula: C<sub>10</sub>H<sub>15</sub>FN<sub>3</sub>O<sub>15</sub>P<sub>3</sub>) (labeled as "Ligand of Interest" by depositor).



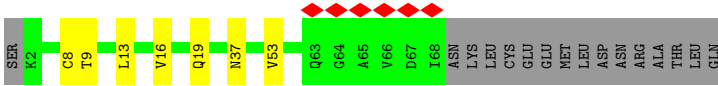
Mol	Chain	Residues	Atoms					AltConf	
			Total	C	F	N	O		P
9	T	1	32	10	1	3	15	3	0



PRO LEU THR THR ALA LYS LEU MET VAL ILE PRO ASP TYR ASN TYR THR LYS ASN THR CYS ASP GLY THR THR PHE THR TYR ALA SER ALA TRP GLU ILE GLN VAL VAL ASP ASP SER LYS ILE VAL GLN LEU SER GLU ILE SER MET ASP ASN SER PRO ASN LEU

ALA TRP PRO LEU ILE VAL THR ALA LEU ARG ALA ASN SER ALA VAL LYS LEU LEU GLN

● Molecule 3: Non-structural protein 7



● Molecule 4: RNA (5'-R(P\*UP\*UP\*AP\*AP\*GP\*UP\*UP\*AP\*U)-3')



● Molecule 5: RNA (5'-R(P\*UP\*UP\*CP\*AP\*UP\*AP\*AP\*CP\*UP\*UP\*AP\*A)-3')





## 4 Experimental information

Property	Value	Source
EM reconstruction method	SINGLE PARTICLE	Depositor
Imposed symmetry	POINT, Not provided	
Number of particles used	40828	Depositor
Resolution determination method	FSC 0.143 CUT-OFF	Depositor
CTF correction method	PHASE FLIPPING AND AMPLITUDE CORRECTION	Depositor
Microscope	TFS KRIOS	Depositor
Voltage (kV)	300	Depositor
Electron dose ( $e^-/\text{\AA}^2$ )	24.72	Depositor
Minimum defocus (nm)	Not provided	
Maximum defocus (nm)	Not provided	
Magnification	Not provided	
Image detector	FEI FALCON IV (4k x 4k)	Depositor
Maximum map value	0.115	Depositor
Minimum map value	-0.047	Depositor
Average map value	0.000	Depositor
Map value standard deviation	0.003	Depositor
Recommended contour level	0.01	Depositor
Map size (Å)	208.0, 208.0, 208.0	wwPDB
Map dimensions	320, 320, 320	wwPDB
Map angles (°)	90.0, 90.0, 90.0	wwPDB
Pixel spacing (Å)	0.65, 0.65, 0.65	Depositor

## 5 Model quality [i](#)

### 5.1 Standard geometry [i](#)

Bond lengths and bond angles in the following residue types are not validated in this section: MG, GE6, ZN, POP

The Z score for a bond length (or angle) is the number of standard deviations the observed value is removed from the expected value. A bond length (or angle) with  $|Z| > 5$  is considered an outlier worth inspection. RMSZ is the root-mean-square of all Z scores of the bond lengths (or angles).

Mol	Chain	Bond lengths		Bond angles	
		RMSZ	# Z  >5	RMSZ	# Z  >5
1	A	0.25	0/7531	0.40	0/10219
2	B	0.24	0/895	0.45	0/1221
2	D	0.23	0/221	0.37	0/296
3	C	0.23	0/516	0.42	0/696
4	P	0.27	0/210	0.67	0/324
5	T	0.20	0/278	0.65	0/429
All	All	0.25	0/9651	0.42	0/13185

There are no bond length outliers.

There are no bond angle outliers.

There are no chirality outliers.

There are no planarity outliers.

### 5.2 Too-close contacts [i](#)

In the following table, the Non-H and H(model) columns list the number of non-hydrogen atoms and hydrogen atoms in the chain respectively. The H(added) column lists the number of hydrogen atoms added and optimized by MolProbity. The Clashes column lists the number of clashes within the asymmetric unit, whereas Symm-Clashes lists symmetry-related clashes.

Mol	Chain	Non-H	H(model)	H(added)	Clashes	Symm-Clashes
1	A	7345	0	7091	51	0
2	B	882	0	900	6	0
2	D	221	0	227	10	0
3	C	513	0	544	12	0
4	P	189	0	95	3	0
5	T	250	0	128	2	0
6	A	2	0	0	0	0

*Continued on next page...*

*Continued from previous page...*

Mol	Chain	Non-H	H(model)	H(added)	Clashes	Symm-Clashes
7	A	2	0	0	0	0
7	P	1	0	0	0	0
8	A	9	0	0	0	0
9	T	32	0	0	0	0
All	All	9446	0	8985	68	0

The all-atom clashscore is defined as the number of clashes found per 1000 atoms (including hydrogen atoms). The all-atom clashscore for this structure is 4.

All (68) close contacts within the same asymmetric unit are listed below, sorted by their clash magnitude.

Atom-1	Atom-2	Interatomic distance (Å)	Clash overlap (Å)
3:C:13:LEU:HD13	2:D:91:LEU:HD21	1.65	0.77
3:C:13:LEU:HA	2:D:91:LEU:HD11	1.71	0.72
1:A:758:LEU:HD23	1:A:759:SER:H	1.52	0.71
3:C:53:VAL:HG12	2:D:103:LEU:HD23	1.74	0.68
1:A:614:LEU:HB2	1:A:802:GLU:HB3	1.76	0.68
1:A:849:LYS:NZ	4:P:17:U:OP1	2.29	0.64
1:A:856:ILE:HD11	1:A:888:ILE:HG23	1.81	0.62
1:A:415:PHE:CZ	3:C:8:CYS:SG	2.94	0.61
3:C:9:THR:HG22	2:D:94:MET:HB3	1.83	0.61
1:A:576:LEU:HD11	1:A:686:THR:HG22	1.85	0.58
1:A:211:ASP:OD1	1:A:212:LEU:N	2.36	0.58
2:D:100:ASN:HB3	2:D:103:LEU:HB2	1.86	0.58
1:A:103:LYS:HG2	1:A:112:PRO:HA	1.88	0.56
1:A:388:LEU:HD23	1:A:397:SER:HB3	1.87	0.56
1:A:758:LEU:HD23	1:A:759:SER:N	2.23	0.53
1:A:507:ASN:ND2	1:A:541:GLN:OE1	2.42	0.53
1:A:858:ARG:HG3	4:P:17:U:H5'	1.90	0.52
2:B:132:ILE:HG21	2:B:138:TYR:HB2	1.92	0.52
1:A:837:ILE:O	1:A:884:TYR:OH	2.28	0.51
1:A:720:VAL:HG11	1:A:775:LEU:HG	1.92	0.51
1:A:371:LEU:HG	2:B:87:MET:HE3	1.94	0.50
4:P:18:U:O2'	4:P:19:A:H5'	2.12	0.49
1:A:56:PHE:HB2	1:A:70:PHE:HB2	1.94	0.49
1:A:454:ASP:OD2	1:A:457:ARG:NH1	2.45	0.49
2:D:101:ASP:OD1	2:D:102:ALA:N	2.44	0.49
1:A:69:TYR:N	1:A:119:LEU:O	2.43	0.48
3:C:53:VAL:HG12	2:D:103:LEU:CD2	2.43	0.48
1:A:824:ASP:N	1:A:824:ASP:OD1	2.46	0.48
1:A:88:ASN:HA	1:A:91:LYS:HE3	1.96	0.47

*Continued on next page...*

*Continued from previous page...*

Atom-1	Atom-2	Interatomic distance (Å)	Clash overlap (Å)
1:A:100:ASP:OD1	1:A:117:GLN:NE2	2.48	0.47
1:A:916:TRP:O	1:A:917:GLU:HG2	2.15	0.47
3:C:13:LEU:CD1	2:D:91:LEU:HD21	2.40	0.46
1:A:623:ASP:OD1	1:A:623:ASP:N	2.48	0.46
1:A:631:ARG:HG2	1:A:663:LEU:HD13	1.98	0.46
1:A:358:ASP:OD1	1:A:533:ARG:NH2	2.49	0.45
1:A:396:PHE:HB3	1:A:675:VAL:HB	1.98	0.45
2:B:96:ARG:HG3	2:B:97:LYS:HG2	1.98	0.45
1:A:388:LEU:HD22	1:A:672:SER:HB3	1.98	0.45
1:A:755:MET:HB3	1:A:764:VAL:HG22	1.99	0.45
1:A:116:ARG:HG2	1:A:217:TYR:HB2	1.98	0.45
3:C:16:VAL:HA	3:C:19:GLN:HE22	1.82	0.45
1:A:388:LEU:HD13	1:A:400:ALA:HB2	1.98	0.44
1:A:553:ARG:HE	1:A:553:ARG:HB2	1.55	0.44
3:C:13:LEU:HD12	2:D:91:LEU:HD11	2.00	0.44
1:A:552:ASN:HD21	3:C:37:ASN:ND2	2.16	0.43
1:A:515:TYR:O	1:A:519:MET:HG3	2.18	0.43
1:A:164:ASP:HB3	1:A:167:GLU:HB2	2.01	0.43
3:C:16:VAL:O	3:C:19:GLN:NE2	2.53	0.42
1:A:613:HIS:CE1	1:A:803:THR:HG23	2.54	0.42
1:A:917:GLU:O	1:A:919:GLU:N	2.53	0.42
1:A:341:VAL:HB	2:B:98:LEU:HD11	2.02	0.41
1:A:530:TYR:HD2	1:A:536:ILE:HD11	1.85	0.41
1:A:851:ASP:OD2	1:A:853:THR:OG1	2.29	0.41
3:C:9:THR:CG2	2:D:94:MET:HB3	2.48	0.41
1:A:378:PRO:HA	1:A:539:ILE:HD11	2.03	0.41
1:A:60:ASP:CG	1:A:61:GLU:H	2.24	0.41
1:A:340:PHE:HE1	2:B:95:LEU:HD21	1.85	0.41
5:T:13:A:H2'	5:T:14:A:C8	2.56	0.41
1:A:238:TYR:O	1:A:242:MET:HG3	2.20	0.41
1:A:469:LEU:O	1:A:473:VAL:HG13	2.21	0.41
1:A:322:PRO:HA	1:A:323:PRO:HD3	1.95	0.41
1:A:746:TYR:OH	1:A:750:ARG:NH1	2.53	0.41
1:A:811:GLU:OE2	1:A:814:SER:HA	2.21	0.40
1:A:506:PHE:HB3	1:A:515:TYR:CZ	2.56	0.40
1:A:576:LEU:HD22	1:A:689:TYR:CG	2.56	0.40
1:A:444:GLN:HB3	1:A:448:ALA:HB2	2.02	0.40
1:A:590:GLY:HA2	5:T:13:A:O2'	2.20	0.40
2:B:166:ILE:HD12	2:B:166:ILE:H	1.86	0.40

There are no symmetry-related clashes.

## 5.3 Torsion angles [i](#)

### 5.3.1 Protein backbone [i](#)

In the following table, the Percentiles column shows the percent Ramachandran outliers of the chain as a percentile score with respect to all PDB entries followed by that with respect to all EM entries.

The Analysed column shows the number of residues for which the backbone conformation was analysed, and the total number of residues.

Mol	Chain	Analysed	Favoured	Allowed	Outliers	Percentiles	
1	A	907/967 (94%)	890 (98%)	17 (2%)	0	100	100
2	B	112/198 (57%)	112 (100%)	0	0	100	100
2	D	26/198 (13%)	26 (100%)	0	0	100	100
3	C	65/83 (78%)	65 (100%)	0	0	100	100
All	All	1110/1446 (77%)	1093 (98%)	17 (2%)	0	100	100

There are no Ramachandran outliers to report.

### 5.3.2 Protein sidechains [i](#)

In the following table, the Percentiles column shows the percent sidechain outliers of the chain as a percentile score with respect to all PDB entries followed by that with respect to all EM entries.

The Analysed column shows the number of residues for which the sidechain conformation was analysed, and the total number of residues.

Mol	Chain	Analysed	Rotameric	Outliers	Percentiles	
1	A	804/849 (95%)	801 (100%)	3 (0%)	91	97
2	B	100/167 (60%)	99 (99%)	1 (1%)	76	90
2	D	25/167 (15%)	25 (100%)	0	100	100
3	C	62/77 (80%)	62 (100%)	0	100	100
All	All	991/1260 (79%)	987 (100%)	4 (0%)	91	97

All (4) residues with a non-rotameric sidechain are listed below:

Mol	Chain	Res	Type
1	A	116	ARG
1	A	552	ASN

*Continued on next page...*

*Continued from previous page...*

Mol	Chain	Res	Type
1	A	553	ARG
2	B	111	ARG

Sometimes sidechains can be flipped to improve hydrogen bonding and reduce clashes. All (3) such sidechains are listed below:

Mol	Chain	Res	Type
1	A	507	ASN
1	A	541	GLN
1	A	552	ASN

### 5.3.3 RNA [i](#)

Mol	Chain	Analysed	Backbone Outliers	Pucker Outliers
4	P	8/24 (33%)	0	0
5	T	11/30 (36%)	0	0
All	All	19/54 (35%)	0	0

There are no RNA backbone outliers to report.

There are no RNA pucker outliers to report.

## 5.4 Non-standard residues in protein, DNA, RNA chains [i](#)

There are no non-standard protein/DNA/RNA residues in this entry.

## 5.5 Carbohydrates [i](#)

There are no monosaccharides in this entry.

## 5.6 Ligand geometry [i](#)

Of 7 ligands modelled in this entry, 5 are monoatomic - leaving 2 for Mogul analysis.

In the following table, the Counts columns list the number of bonds (or angles) for which Mogul statistics could be retrieved, the number of bonds (or angles) that are observed in the model and the number of bonds (or angles) that are defined in the Chemical Component Dictionary. The Link column lists molecule types, if any, to which the group is linked. The Z score for a bond length (or angle) is the number of standard deviations the observed value is removed from the

expected value. A bond length (or angle) with  $|Z| > 2$  is considered an outlier worth inspection. RMSZ is the root-mean-square of all Z scores of the bond lengths (or angles).

Mol	Type	Chain	Res	Link	Bond lengths			Bond angles		
					Counts	RMSZ	# Z  > 2	Counts	RMSZ	# Z  > 2
8	POP	A	1005	7	6,8,8	0.75	0	13,13,13	1.15	1 (7%)
9	GE6	T	1601	7	28,33,33	0.96	2 (7%)	37,52,52	0.92	1 (2%)

In the following table, the Chirals column lists the number of chiral outliers, the number of chiral centers analysed, the number of these observed in the model and the number defined in the Chemical Component Dictionary. Similar counts are reported in the Torsion and Rings columns. '-' means no outliers of that kind were identified.

Mol	Type	Chain	Res	Link	Chirals	Torsions	Rings
8	POP	A	1005	7	-	0/6/6/6	-
9	GE6	T	1601	7	-	2/24/42/42	0/2/2/2

All (2) bond length outliers are listed below:

Mol	Chain	Res	Type	Atoms	Z	Observed(Å)	Ideal(Å)
9	T	1601	GE6	C07-N03	-3.13	1.31	1.36
9	T	1601	GE6	C08-C10	-2.50	1.39	1.45

All (2) bond angle outliers are listed below:

Mol	Chain	Res	Type	Atoms	Z	Observed(°)	Ideal(°)
8	A	1005	POP	P2-O-P1	-2.48	124.31	132.83
9	T	1601	GE6	C02-C01-C04	-2.26	98.25	102.64

There are no chirality outliers.

All (2) torsion outliers are listed below:

Mol	Chain	Res	Type	Atoms
9	T	1601	GE6	C05-O06-P01-O08
9	T	1601	GE6	C05-O06-P01-O07

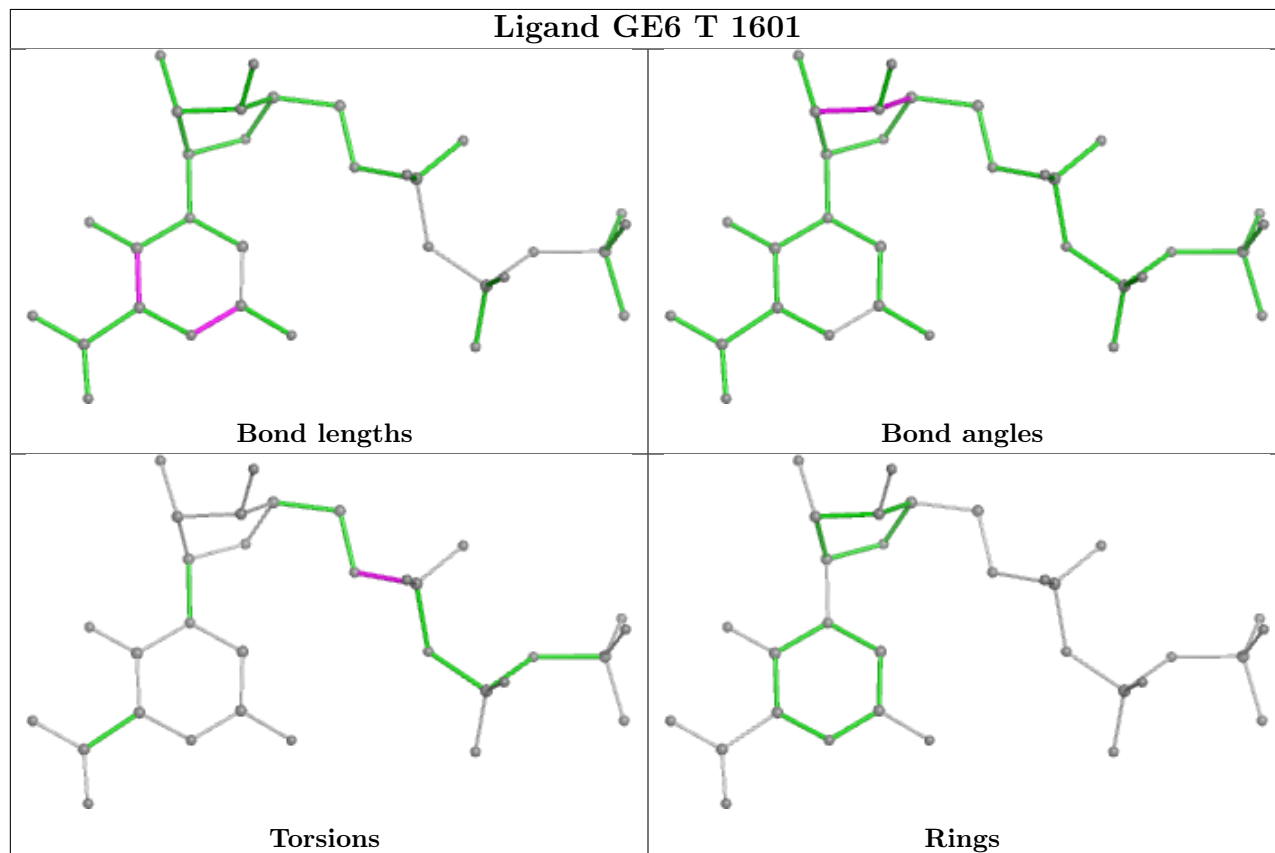
There are no ring outliers.

No monomer is involved in short contacts.

The following is a two-dimensional graphical depiction of Mogul quality analysis of bond lengths, bond angles, torsion angles, and ring geometry for all instances of the Ligand of Interest. In addition, ligands with molecular weight > 250 and outliers as shown on the validation Tables will also be included. For torsion angles, if less than 5% of the Mogul distribution of torsion angles is within 10 degrees of the torsion angle in question, then that torsion angle is considered an outlier. Any bond that is central to one or more torsion angles identified as an outlier by Mogul will be highlighted in the graph. For rings, the root-mean-square deviation (RMSD) between the ring



in question and similar rings identified by Mogul is calculated over all ring torsion angles. If the average RMSD is greater than 60 degrees and the minimal RMSD between the ring in question and any Mogul-identified rings is also greater than 60 degrees, then that ring is considered an outlier. The outliers are highlighted in purple. The color gray indicates Mogul did not find sufficient equivalents in the CSD to analyse the geometry.



## 5.7 Other polymers [i](#)

There are no such residues in this entry.

## 5.8 Polymer linkage issues [i](#)

There are no chain breaks in this entry.

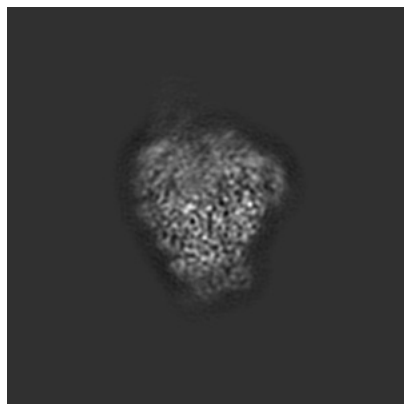
## 6 Map visualisation [i](#)

This section contains visualisations of the EMDB entry EMD-11692. These allow visual inspection of the internal detail of the map and identification of artifacts.

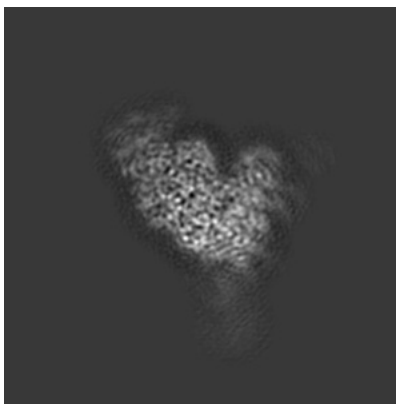
Images derived from a raw map, generated by summing the deposited half-maps, are presented below the corresponding image components of the primary map to allow further visual inspection and comparison with those of the primary map.

### 6.1 Orthogonal projections [i](#)

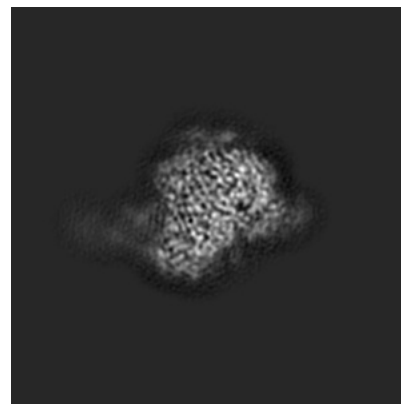
#### 6.1.1 Primary map



X

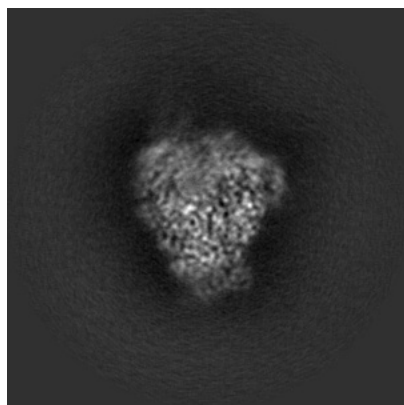


Y

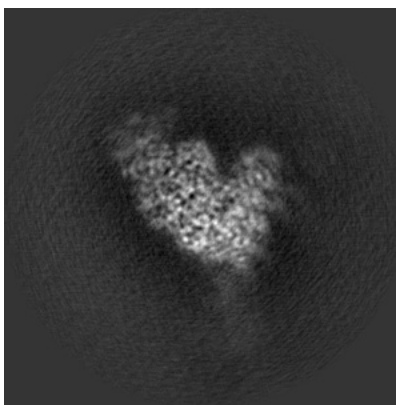


Z

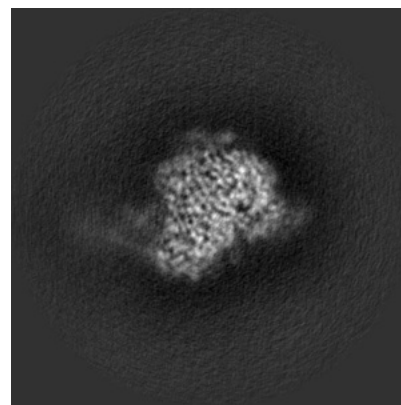
#### 6.1.2 Raw map



X



Y

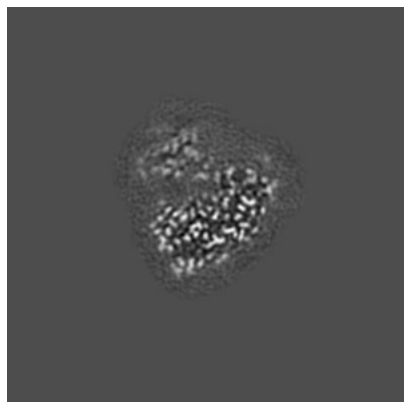


Z

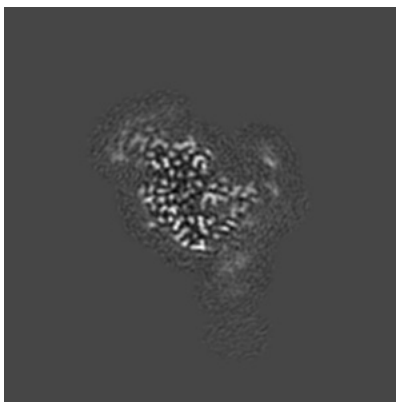
The images above show the map projected in three orthogonal directions.

## 6.2 Central slices [i](#)

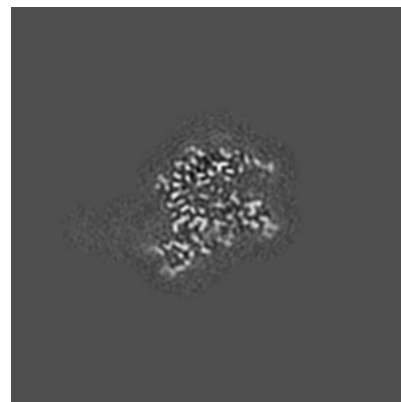
### 6.2.1 Primary map



X Index: 160

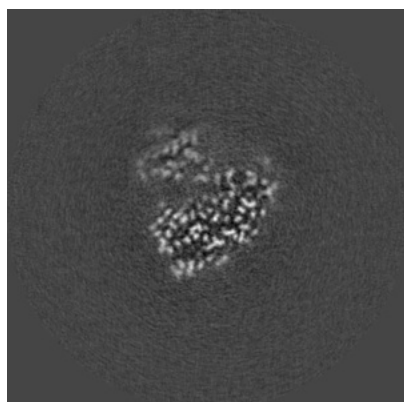


Y Index: 160

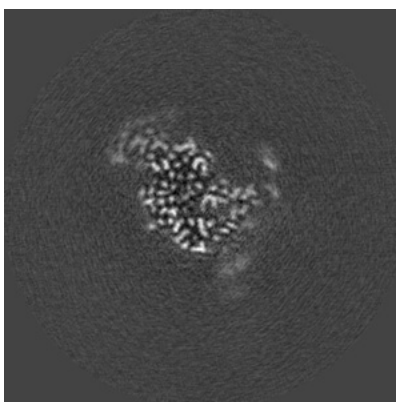


Z Index: 160

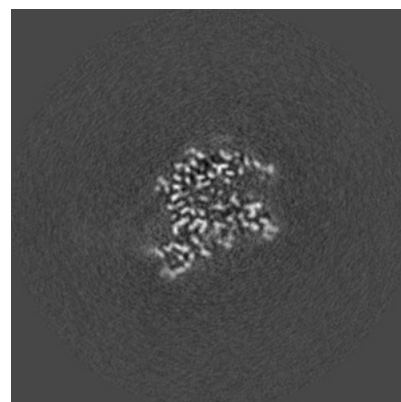
### 6.2.2 Raw map



X Index: 160



Y Index: 160

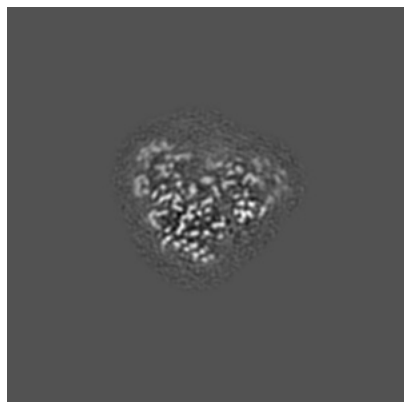


Z Index: 160

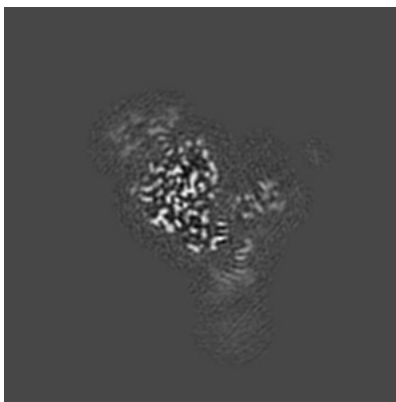
The images above show central slices of the map in three orthogonal directions.

## 6.3 Largest variance slices [i](#)

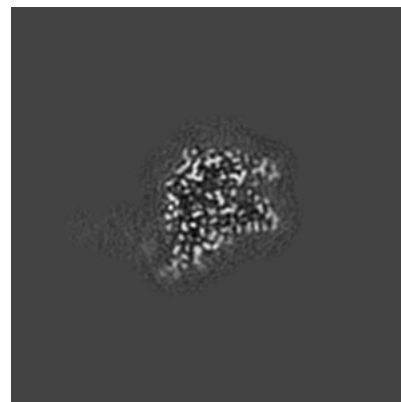
### 6.3.1 Primary map



X Index: 147

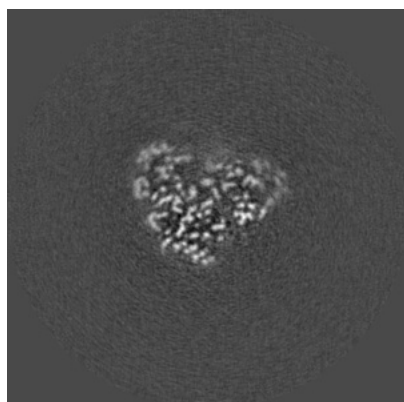


Y Index: 150

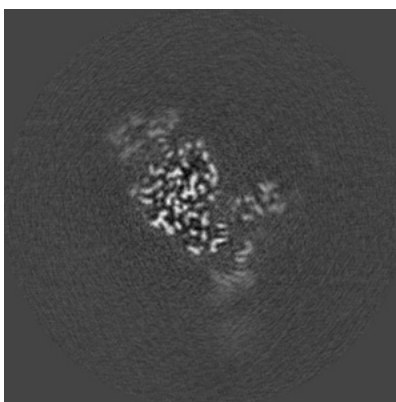


Z Index: 155

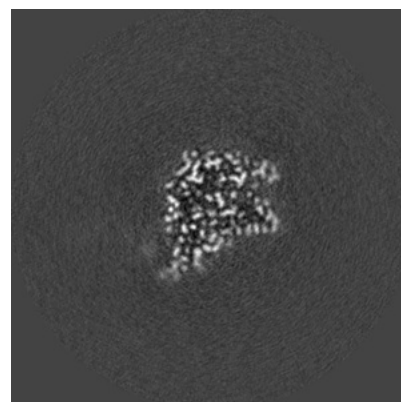
### 6.3.2 Raw map



X Index: 147



Y Index: 150

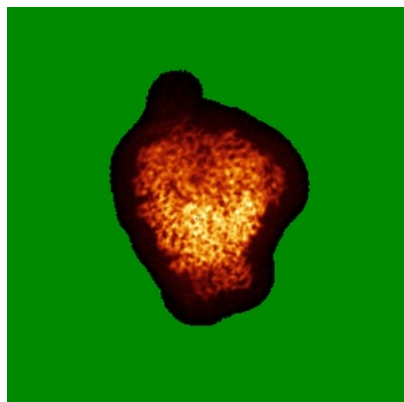


Z Index: 155

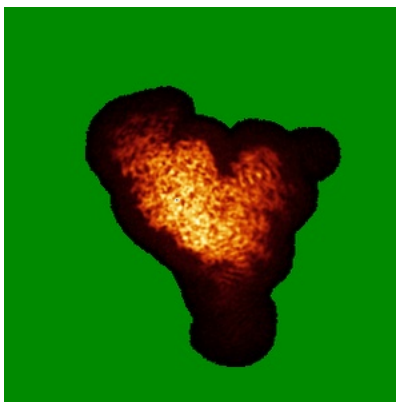
The images above show the largest variance slices of the map in three orthogonal directions.

## 6.4 Orthogonal standard-deviation projections (False-color) [i](#)

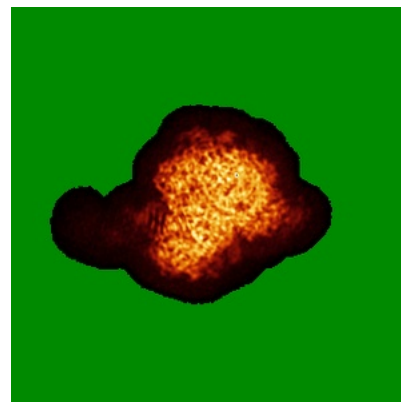
### 6.4.1 Primary map



X

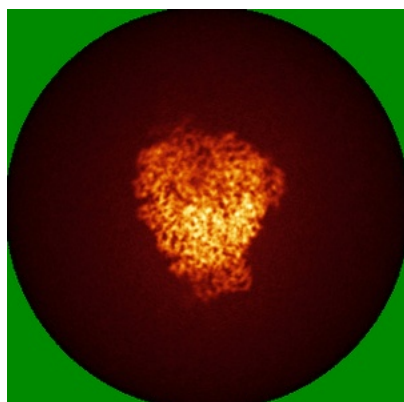


Y

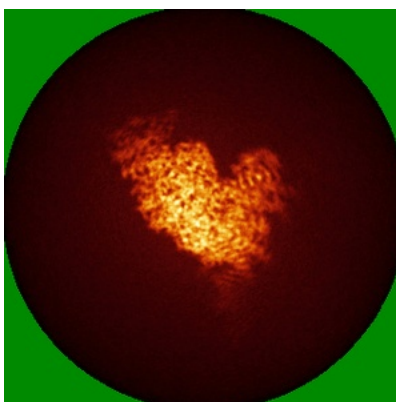


Z

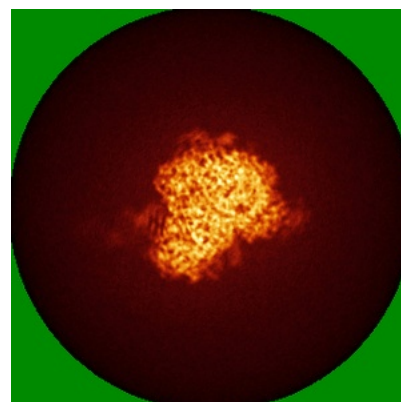
### 6.4.2 Raw map



X



Y



Z

The images above show the map standard deviation projections with false color in three orthogonal directions. Minimum values are shown in green, max in blue, and dark to light orange shades represent small to large values respectively.

## 6.5 Orthogonal surface views [i](#)

### 6.5.1 Primary map



X



Y



Z

The images above show the 3D surface view of the map at the recommended contour level 0.01. These images, in conjunction with the slice images, may facilitate assessment of whether an appropriate contour level has been provided.

### 6.5.2 Raw map



X



Y



Z

These images show the 3D surface of the raw map. The raw map's contour level was selected so that its surface encloses the same volume as the primary map does at its recommended contour level.

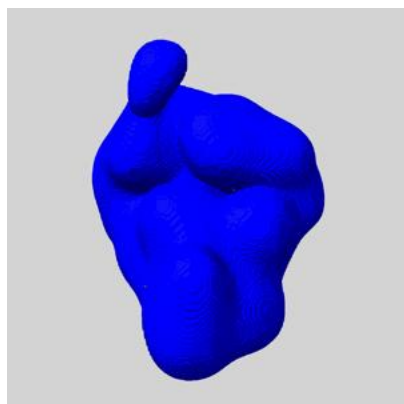
## 6.6 Mask visualisation [i](#)

This section shows the 3D surface view of the primary map at 50% transparency overlaid with the specified mask at 0% transparency

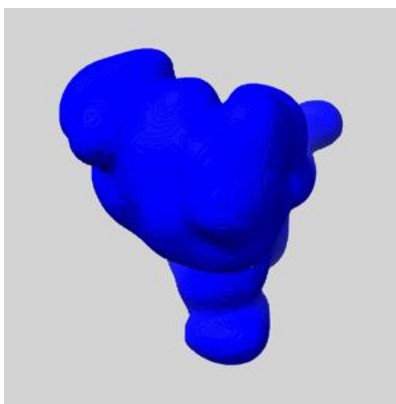
A mask typically either:

- Encompasses the whole structure
- Separates out a domain, a functional unit, a monomer or an area of interest from a larger structure

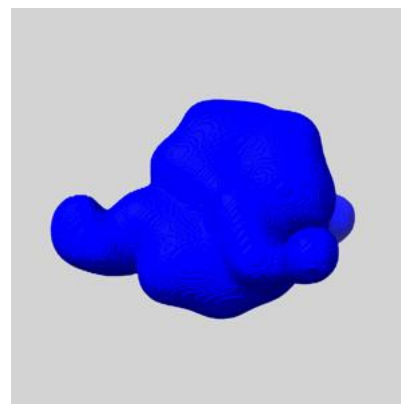
### 6.6.1 emd\_11692\_msk\_1.map [i](#)



X



Y

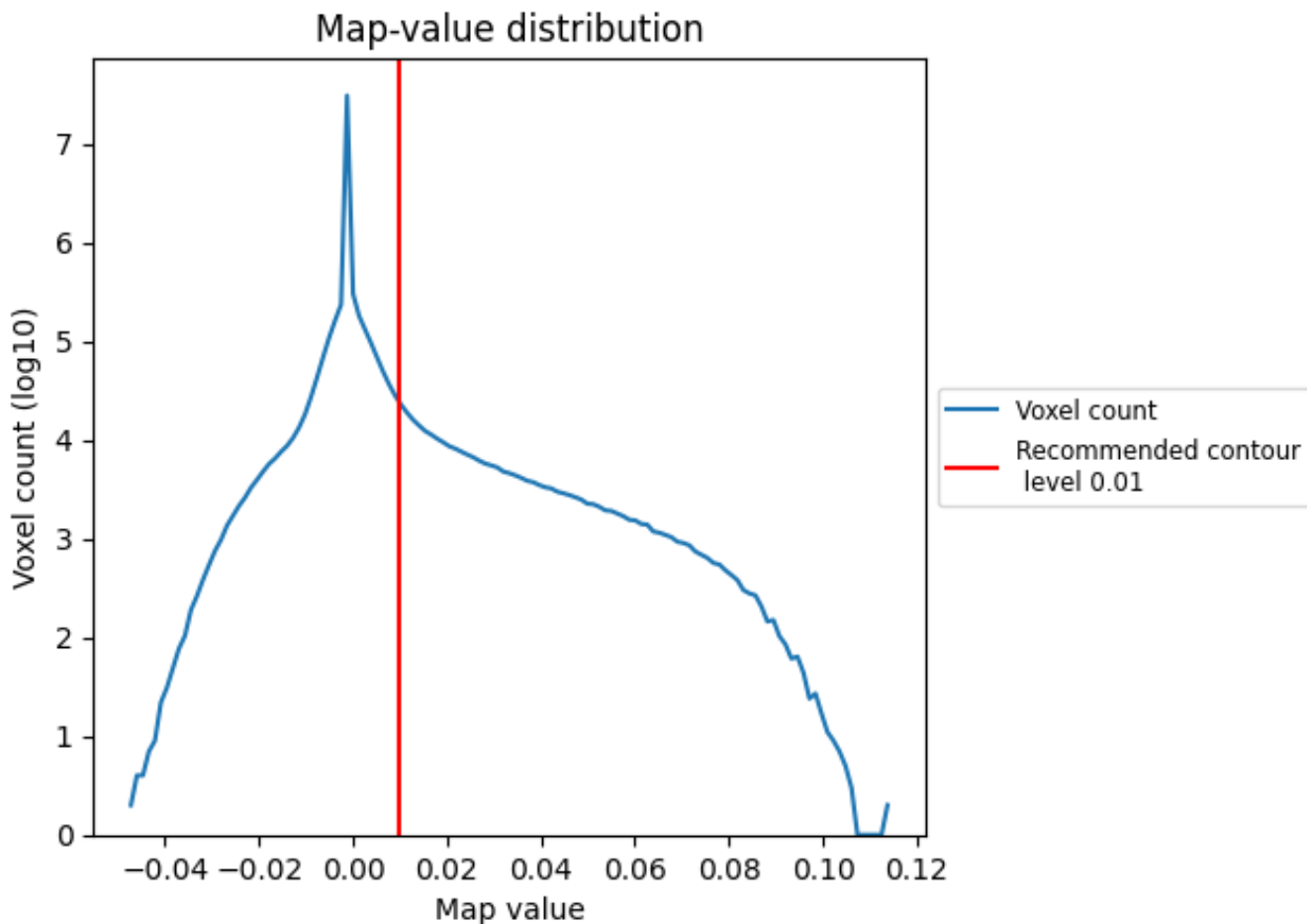


Z

## 7 Map analysis [i](#)

This section contains the results of statistical analysis of the map.

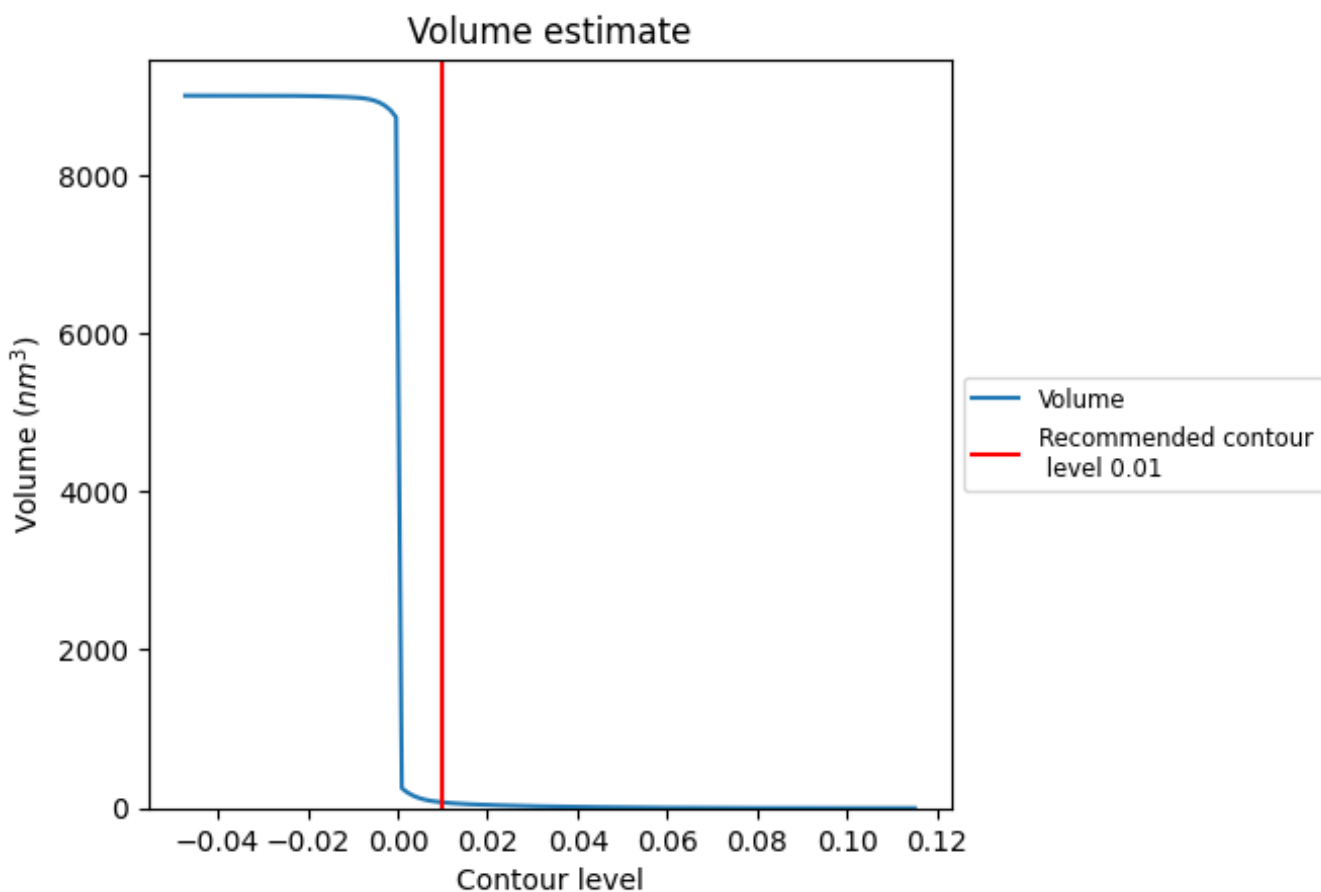
### 7.1 Map-value distribution [i](#)



The map-value distribution is plotted in 128 intervals along the x-axis. The y-axis is logarithmic. A spike in this graph at zero usually indicates that the volume has been masked.



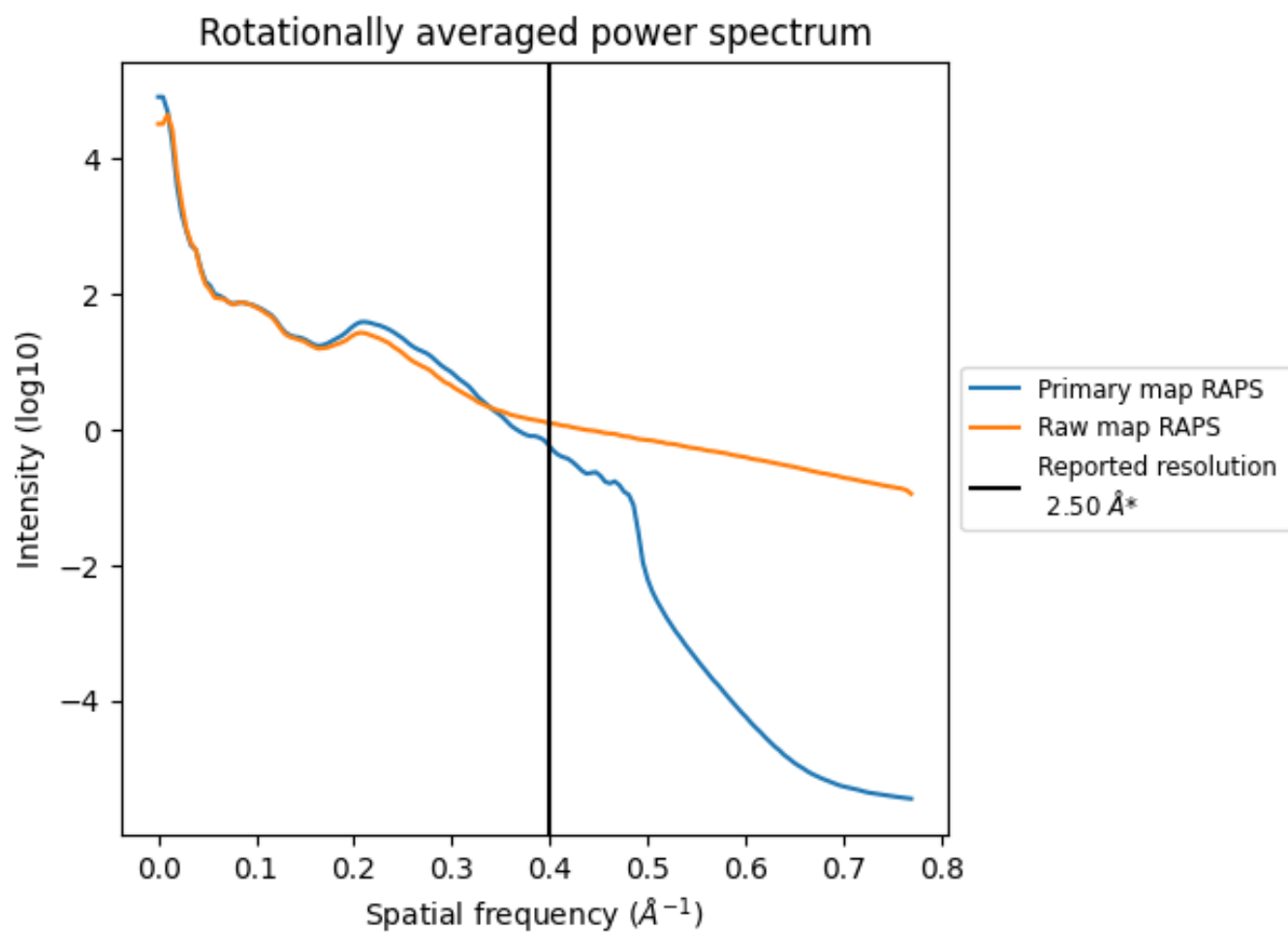
## 7.2 Volume estimate [i](#)



The volume at the recommended contour level is 73  $\text{nm}^3$ ; this corresponds to an approximate mass of 66 kDa.

The volume estimate graph shows how the enclosed volume varies with the contour level. The recommended contour level is shown as a vertical line and the intersection between the line and the curve gives the volume of the enclosed surface at the given level.

### 7.3 Rotationally averaged power spectrum i

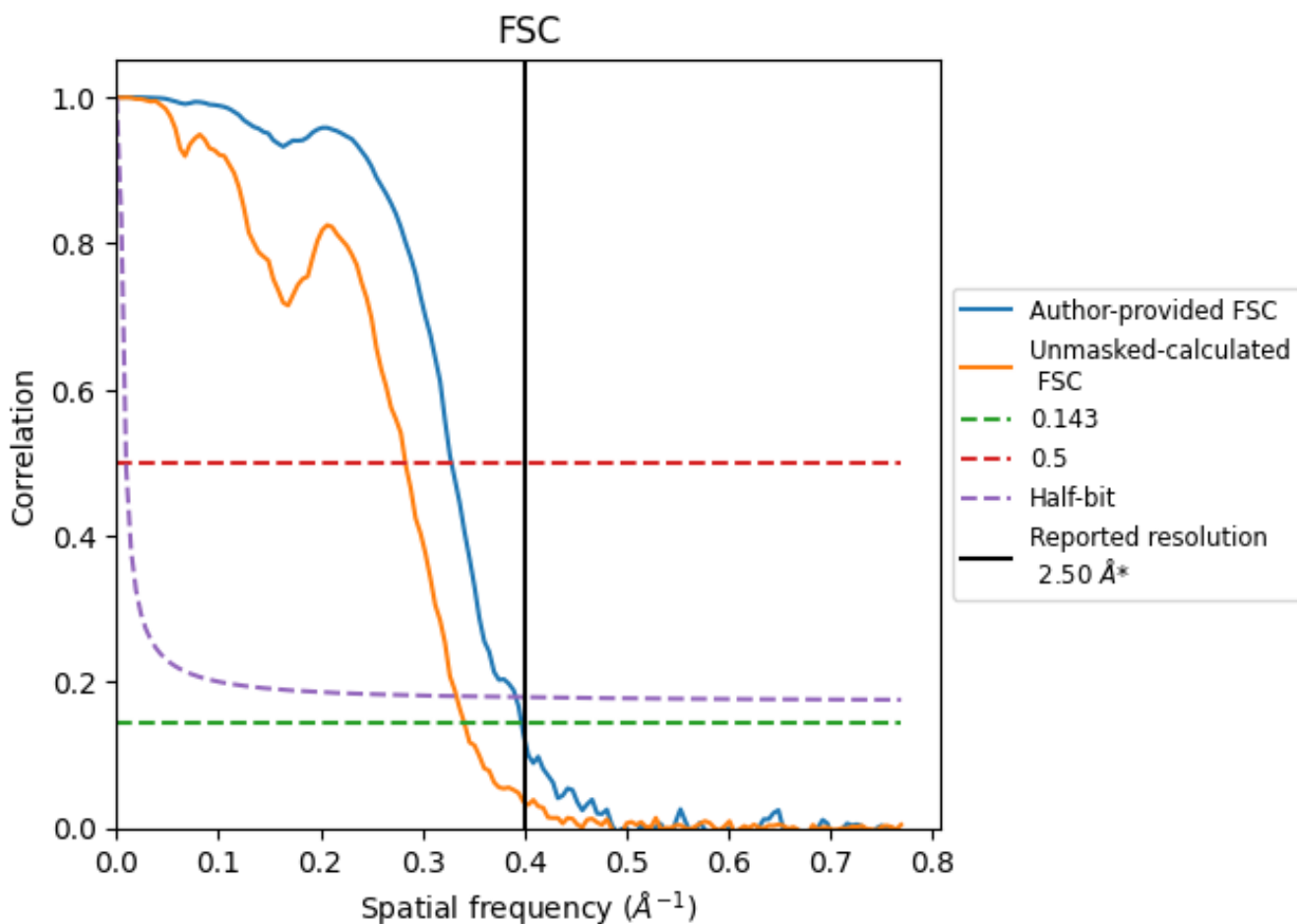


\*Reported resolution corresponds to spatial frequency of 0.400 Å<sup>-1</sup>

## 8 Fourier-Shell correlation [i](#)

Fourier-Shell Correlation (FSC) is the most commonly used method to estimate the resolution of single-particle and subtomogram-averaged maps. The shape of the curve depends on the imposed symmetry, mask and whether or not the two 3D reconstructions used were processed from a common reference. The reported resolution is shown as a black line. A curve is displayed for the half-bit criterion in addition to lines showing the 0.143 gold standard cut-off and 0.5 cut-off.

### 8.1 FSC [i](#)



\*Reported resolution corresponds to spatial frequency of 0.400 Å<sup>-1</sup>

## 8.2 Resolution estimates [i](#)

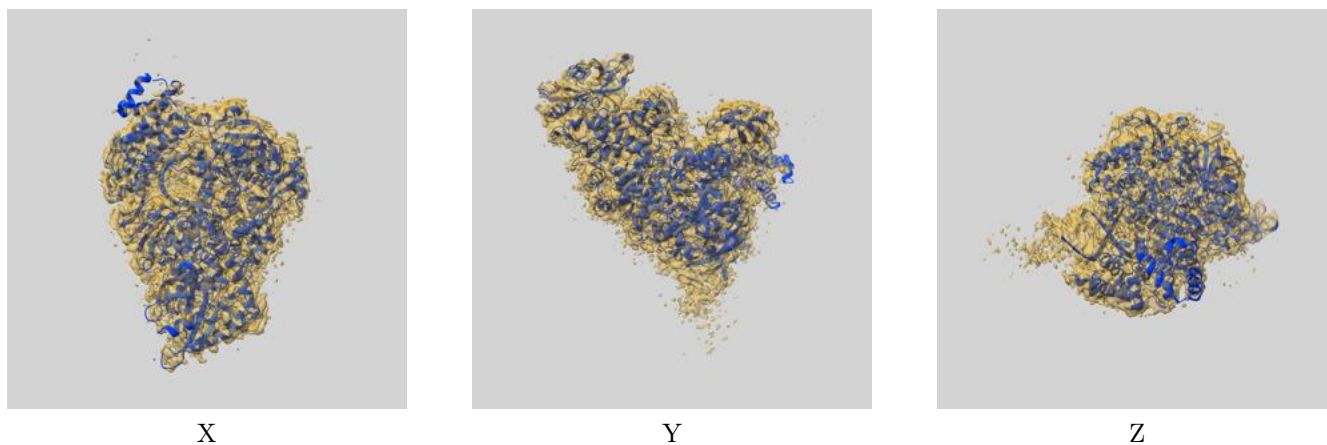
Resolution estimate (Å)	Estimation criterion (FSC cut-off)		
	0.143	0.5	Half-bit
Reported by author	2.50	-	-
Author-provided FSC curve	2.52	3.05	2.55
Unmasked-calculated*	2.93	3.53	3.00

\*Resolution estimate based on FSC curve calculated by comparison of deposited half-maps. The value from deposited half-maps intersecting FSC 0.143 CUT-OFF 2.93 differs from the reported value 2.5 by more than 10 %

## 9 Map-model fit [i](#)

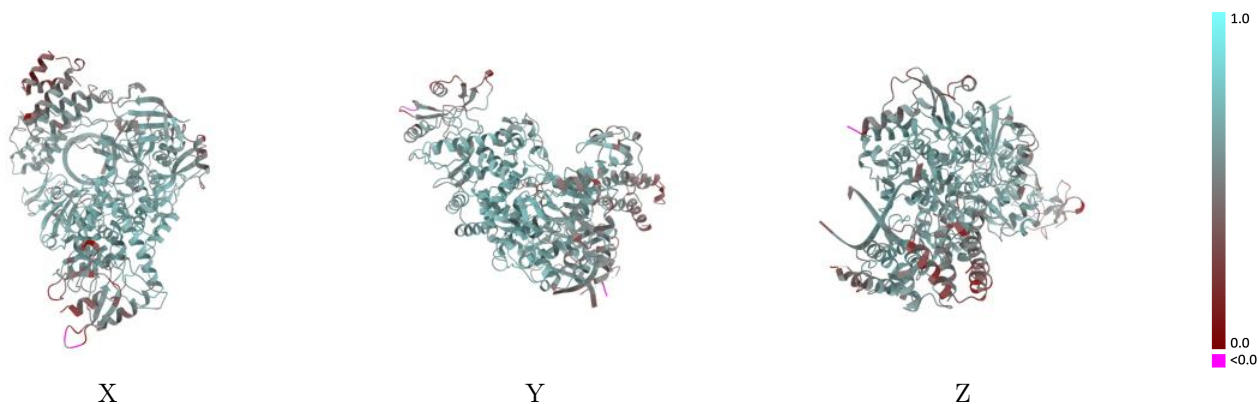
This section contains information regarding the fit between EMDB map EMD-11692 and PDB model 7AAP. Per-residue inclusion information can be found in section 3 on page 7.

### 9.1 Map-model overlay [i](#)



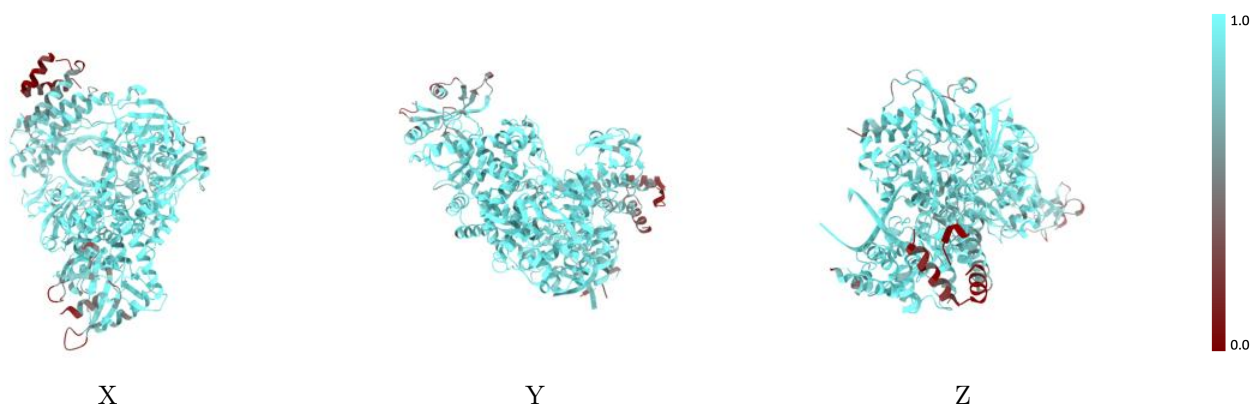
The images above show the 3D surface view of the map at the recommended contour level 0.01 at 50% transparency in yellow overlaid with a ribbon representation of the model coloured in blue. These images allow for the visual assessment of the quality of fit between the atomic model and the map.

## 9.2 Q-score mapped to coordinate model [i](#)



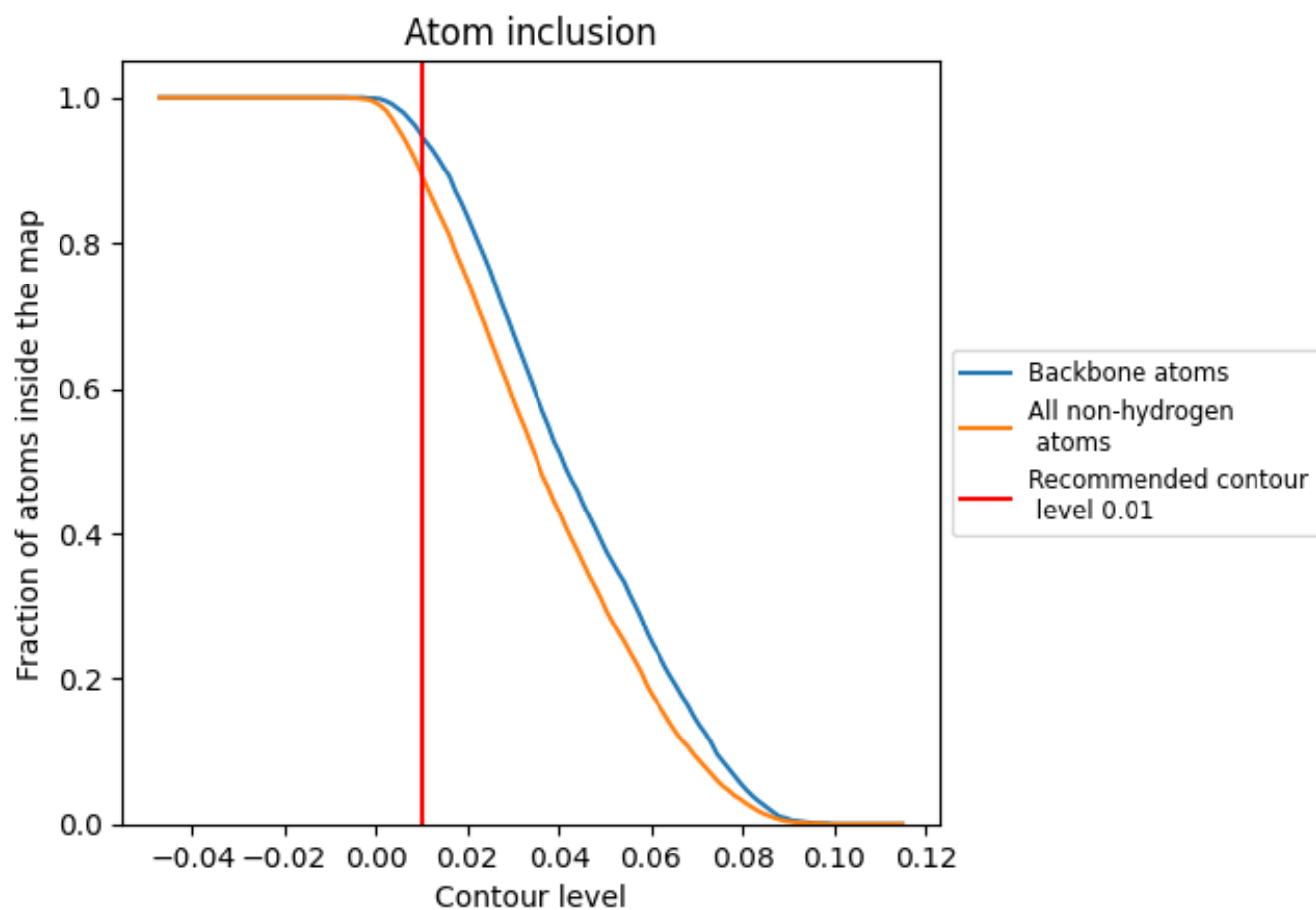
The images above show the model with each residue coloured according to its Q-score. This shows their resolvability in the map with higher Q-score values reflecting better resolvability. Please note: Q-score is calculating the resolvability of atoms, and thus high values are only expected at resolutions at which atoms can be resolved. Low Q-score values may therefore be expected for many entries.

## 9.3 Atom inclusion mapped to coordinate model [i](#)



The images above show the model with each residue coloured according to its atom inclusion. This shows to what extent they are inside the map at the recommended contour level (0.01).















## 9.4 Atom inclusion [i](#)



At the recommended contour level, 95% of all backbone atoms, 89% of all non-hydrogen atoms, are inside the map.

## 9.5 Map-model fit summary

The table lists the average atom inclusion at the recommended contour level (0.01) and Q-score for the entire model and for each chain.

Chain	Atom inclusion	Q-score
All	 0.8940	 0.5710
A	 0.9290	 0.5960
B	 0.8830	 0.5090
C	 0.7200	 0.4640
D	 0.1340	 0.2830
P	 0.9420	 0.5580
T	 0.9080	 0.5470

