



Full wwPDB X-ray Structure Validation Report ⓘ

Sep 18, 2024 – 01:42 pm BST

PDB ID : 6ZP6
Title : Yeast 20S proteasome in complex with glidobactin-like natural product HB334
Authors : Zhao, L.; Le Chapelain, C.; Brachmann, A.O.; Kaiser, M.; Groll, M.; Bode, H.B.
Deposited on : 2020-07-08
Resolution : 2.80 Å(reported)

This is a Full wwPDB X-ray Structure Validation Report for a publicly released PDB entry.

We welcome your comments at validation@mail.wwpdb.org

A user guide is available at

<https://www.wwpdb.org/validation/2017/XrayValidationReportHelp>

with specific help available everywhere you see the ⓘ symbol.

The types of validation reports are described at

<http://www.wwpdb.org/validation/2017/FAQs#types>.

The following versions of software and data (see [references ⓘ](#)) were used in the production of this report:

MolProbity : 4.02b-467
Mogul : 1.8.4, CSD as541be (2020)
Xtriage (Phenix) : 1.13
EDS : 3.0
buster-report : 1.1.7 (2018)
Percentile statistics : 20231227.v01 (using entries in the PDB archive December 27th 2023)
CCP4 : 9.0.002 (Gargrove)
Density-Fitness : 1.0.11
Ideal geometry (proteins) : Engh & Huber (2001)
Ideal geometry (DNA, RNA) : Parkinson et al. (1996)
Validation Pipeline (wwPDB-VP) : 2.38.2

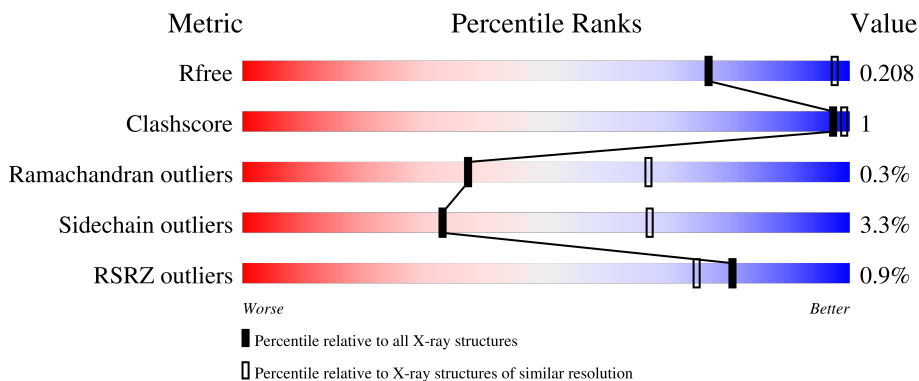
1 Overall quality at a glance

The following experimental techniques were used to determine the structure:

X-RAY DIFFRACTION

The reported resolution of this entry is 2.80 Å.

Percentile scores (ranging between 0-100) for global validation metrics of the entry are shown in the following graphic. The table shows the number of entries on which the scores are based.



Metric	Whole archive (#Entries)	Similar resolution (#Entries, resolution range(Å))
R_{free}	164625	3657 (2.80-2.80)
Clashscore	180529	4123 (2.80-2.80)
Ramachandran outliers	177936	4071 (2.80-2.80)
Sidechain outliers	177891	4073 (2.80-2.80)
RSRZ outliers	164620	3659 (2.80-2.80)

The table below summarises the geometric issues observed across the polymeric chains and their fit to the electron density. The red, orange, yellow and green segments of the lower bar indicate the fraction of residues that contain outliers for ≥ 3 , 2, 1 and 0 types of geometric quality criteria respectively. A grey segment represents the fraction of residues that are not modelled. The numeric value for each fraction is indicated below the corresponding segment, with a dot representing fractions $\leq 5\%$. The upper red bar (where present) indicates the fraction of residues that have poor fit to the electron density. The numeric value is given above the bar.

Mol	Chain	Length	Quality of chain
1	A	250	98%
1	O	250	98%
2	B	258	2% 89% 6% 5%
2	P	258	% 89% 6% 5%
3	C	254	2% 87% 6% 6%

Continued on next page...

Continued from previous page...

Mol	Chain	Length	Quality of chain
3	Q	254	4% 89% 5% • 6%
4	D	260	% 86% • 10%
4	R	260	% 86% • 10%
5	E	234	93% 6% •
5	S	234	4% 94% 5% •
6	F	288	% 80% • 16%
6	T	288	% 80% • 16%
7	G	252	% 90% 5% •
7	U	252	91% 5% •
8	H	232	94% • •
8	V	232	% 94% • • •
9	I	205	95% 5%
9	W	205	95% 5%
10	J	198	% 93% 5% • •
10	X	198	% 94% • • •
11	K	212	94% 6%
11	Y	212	94% 6%
12	L	222	% 96% •
12	Z	222	% 96% •
13	M	246	90% • 7%
13	a	246	91% • 6%
14	N	196	95% 5% •
14	b	196	97% •

2 Entry composition

There are 18 unique types of molecules in this entry. The entry contains 49843 atoms, of which 0 are hydrogens and 0 are deuteriums.

In the tables below, the ZeroOcc column contains the number of atoms modelled with zero occupancy, the AltConf column contains the number of residues with at least one atom in alternate conformation and the Trace column contains the number of residues modelled with at most 2 atoms.

- Molecule 1 is a protein called Proteasome subunit alpha type-2.

Mol	Chain	Residues	Atoms					ZeroOcc	AltConf	Trace
			Total	C	N	O	S			
1	A	250	Total 1915	C 1219	N 315	O 377	S 4	0	0	0
1	O	250	Total 1915	C 1219	N 315	O 377	S 4	0	0	0

- Molecule 2 is a protein called Proteasome subunit alpha type-3.

Mol	Chain	Residues	Atoms					ZeroOcc	AltConf	Trace
			Total	C	N	O	S			
2	B	244	Total 1904	C 1201	N 321	O 379	S 3	0	0	0
2	P	244	Total 1904	C 1201	N 321	O 379	S 3	0	0	0

- Molecule 3 is a protein called Proteasome subunit alpha type-4.

Mol	Chain	Residues	Atoms					ZeroOcc	AltConf	Trace
			Total	C	N	O	S			
3	C	240	Total 1881	C 1176	N 329	O 372	S 4	0	0	0
3	Q	240	Total 1881	C 1176	N 329	O 372	S 4	0	0	0

- Molecule 4 is a protein called Proteasome subunit alpha type-5.

Mol	Chain	Residues	Atoms					ZeroOcc	AltConf	Trace
			Total	C	N	O	S			
4	D	235	Total 1813	C 1136	N 304	O 366	S 7	0	0	0
4	R	235	Total 1813	C 1136	N 304	O 366	S 7	0	0	0

- Molecule 5 is a protein called Proteasome subunit alpha type-6.

Mol	Chain	Residues	Atoms					ZeroOcc	AltConf	Trace
5	E	231	Total	C	N	O	S	0	0	0
			1773	1114	307	348	4			
5	S	231	Total	C	N	O	S	0	0	0
			1773	1114	307	348	4			

- Molecule 6 is a protein called Probable proteasome subunit alpha type-7.

Mol	Chain	Residues	Atoms					ZeroOcc	AltConf	Trace
6	F	243	Total	C	N	O	S	0	0	0
			1892	1203	329	356	4			
6	T	243	Total	C	N	O	S	0	0	0
			1892	1203	329	356	4			

- Molecule 7 is a protein called Proteasome subunit alpha type-1.

Mol	Chain	Residues	Atoms					ZeroOcc	AltConf	Trace
7	G	241	Total	C	N	O	S	0	0	0
			1907	1214	320	365	8			
7	U	241	Total	C	N	O	S	0	0	0
			1907	1214	320	365	8			

- Molecule 8 is a protein called Proteasome subunit beta type-2.

Mol	Chain	Residues	Atoms					ZeroOcc	AltConf	Trace
8	H	226	Total	C	N	O	S	0	0	0
			1719	1082	298	332	7			
8	V	226	Total	C	N	O	S	0	0	0
			1719	1082	298	332	7			

- Molecule 9 is a protein called Proteasome subunit beta type-3.

Mol	Chain	Residues	Atoms					ZeroOcc	AltConf	Trace
9	I	204	Total	C	N	O	S	0	0	0
			1581	1010	258	305	8			
9	W	204	Total	C	N	O	S	0	0	0
			1581	1010	258	305	8			

- Molecule 10 is a protein called Proteasome subunit beta type-4.

Mol	Chain	Residues	Atoms					ZeroOcc	AltConf	Trace
10	J	195	Total	C	N	O	S	0	0	0
			1561	992	264	299	6			

Continued on next page...

Continued from previous page...

Mol	Chain	Residues	Atoms					ZeroOcc	AltConf	Trace
			Total	C	N	O	S			
10	X	195	1561	992	264	299	6	0	0	0

- Molecule 11 is a protein called Proteasome subunit beta type-5.

Mol	Chain	Residues	Atoms					ZeroOcc	AltConf	Trace
			Total	C	N	O	S			
11	K	212	1644	1045	280	312	7	0	0	0
11	Y	212	1644	1045	280	312	7	0	0	0

- Molecule 12 is a protein called Proteasome subunit beta type-6.

Mol	Chain	Residues	Atoms					ZeroOcc	AltConf	Trace
			Total	C	N	O	S			
12	L	222	1757	1115	303	335	4	0	0	0
12	Z	222	1757	1115	303	335	4	0	0	0

- Molecule 13 is a protein called Proteasome subunit beta type-7.

Mol	Chain	Residues	Atoms					ZeroOcc	AltConf	Trace
			Total	C	N	O	S			
13	M	229	1790	1133	306	344	7	0	0	0
13	a	232	1815	1148	311	349	7	0	0	0

- Molecule 14 is a protein called Proteasome subunit beta type-1.

Mol	Chain	Residues	Atoms					ZeroOcc	AltConf	Trace
			Total	C	N	O	S			
14	N	196	1512	955	250	300	7	0	0	0
14	b	196	1512	955	250	300	7	0	0	0

- Molecule 15 is MAGNESIUM ION (three-letter code: MG) (formula: Mg).

Mol	Chain	Residues	Atoms		ZeroOcc	AltConf
15	G	1	Total	Mg	0	0
			1	1		
15	I	1	Total	Mg	0	0
			1	1		

Continued on next page...

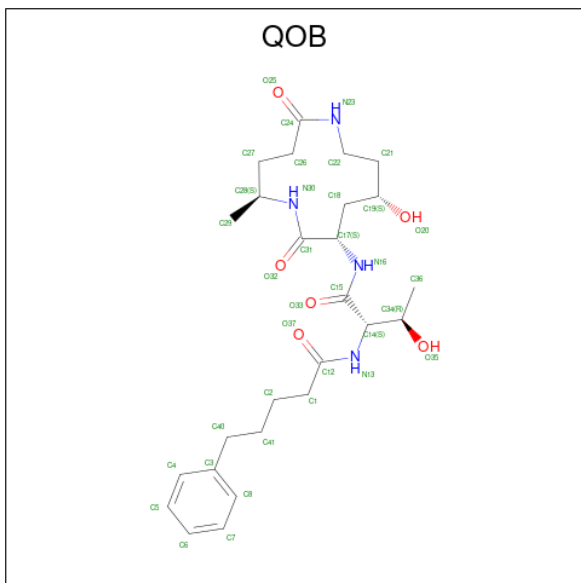
Continued from previous page...

Mol	Chain	Residues	Atoms	ZeroOcc	AltConf
15	K	1	Total Mg 1 1	0	0
15	N	1	Total Mg 1 1	0	0
15	V	1	Total Mg 1 1	0	0
15	W	1	Total Mg 1 1	0	0
15	Y	1	Total Mg 1 1	0	0
15	Z	1	Total Mg 1 1	0	0

- Molecule 16 is CHLORIDE ION (three-letter code: CL) (formula: Cl).

Mol	Chain	Residues	Atoms	ZeroOcc	AltConf
16	G	1	Total Cl 1 1	0	0
16	U	1	Total Cl 1 1	0	0

- Molecule 17 is {N}-(2 {S},3 {R})-1-[[5 {S},8 {S},10 {S}]-5-methyl-10-oxidanyl-2,7-bis(oxidanylidene)-1,6-diazacyclododec-8-yl]amino]-3-oxidanyl-1-oxidanylidene-butan-2-yl]-5-phenyl-pentanamide (three-letter code: QOB) (formula: C₂₆H₄₀N₄O₆) (labeled as "Ligand of Interest" by depositor).



Mol	Chain	Residues	Atoms				ZeroOcc	AltConf
17	H	1	Total	C	N	O	0	0
			36	26	4	6		
17	K	1	Total	C	N	O	0	0
			36	26	4	6		
17	V	1	Total	C	N	O	0	0
			36	26	4	6		
17	Y	1	Total	C	N	O	0	0
			36	26	4	6		

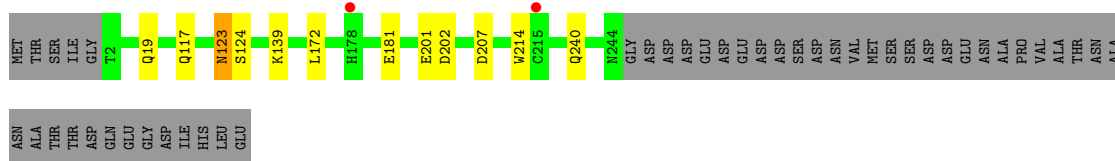
- Molecule 18 is water.

Mol	Chain	Residues	Atoms		ZeroOcc	AltConf
18	A	10	Total	O	0	0
			10	10		
18	B	16	Total	O	0	0
			16	16		
18	C	14	Total	O	0	0
			14	14		
18	D	8	Total	O	0	0
			8	8		
18	E	12	Total	O	0	0
			12	12		
18	F	13	Total	O	0	0
			13	13		
18	G	17	Total	O	0	0
			17	17		
18	H	17	Total	O	0	0
			17	17		
18	I	4	Total	O	0	0
			4	4		
18	J	22	Total	O	0	0
			22	22		
18	K	11	Total	O	0	0
			11	11		
18	L	18	Total	O	0	0
			18	18		
18	M	19	Total	O	0	0
			19	19		
18	N	11	Total	O	0	0
			11	11		
18	O	3	Total	O	0	0
			3	3		
18	P	18	Total	O	0	0
			18	18		

Continued on next page...

Continued from previous page...

Mol	Chain	Residues	Atoms	ZeroOcc	AltConf
18	Q	7	Total O 7 7	0	0
18	R	13	Total O 13 13	0	0
18	S	8	Total O 8 8	0	0
18	T	14	Total O 14 14	0	0
18	U	13	Total O 13 13	0	0
18	V	17	Total O 17 17	0	0
18	W	8	Total O 8 8	0	0
18	X	14	Total O 14 14	0	0
18	Y	15	Total O 15 15	0	0
18	Z	13	Total O 13 13	0	0
18	a	20	Total O 20 20	0	0
18	b	11	Total O 11 11	0	0



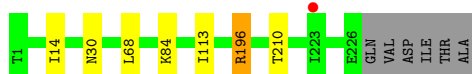
• Molecule 7: Proteasome subunit alpha type-1



• Molecule 7: Proteasome subunit alpha type-1



• Molecule 8: Proteasome subunit beta type-2



• Molecule 8: Proteasome subunit beta type-2



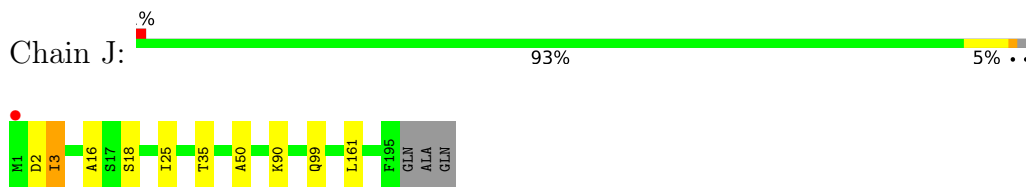
• Molecule 9: Proteasome subunit beta type-3



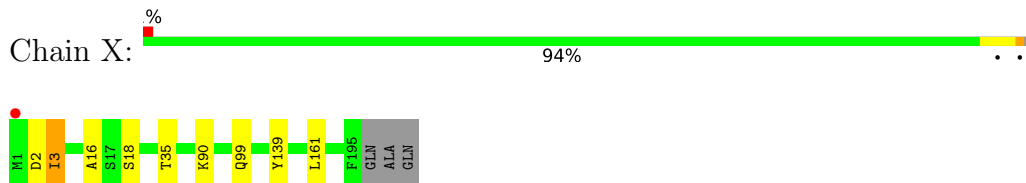
• Molecule 9: Proteasome subunit beta type-3



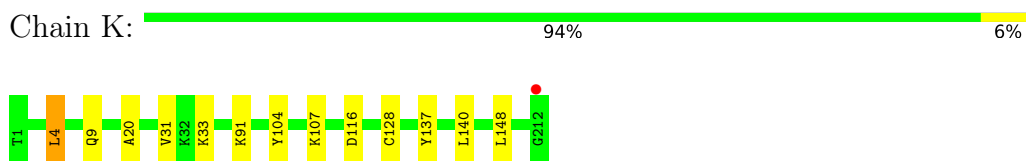
- Molecule 10: Proteasome subunit beta type-4



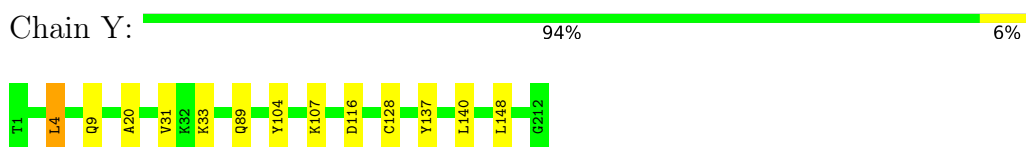
- Molecule 10: Proteasome subunit beta type-4



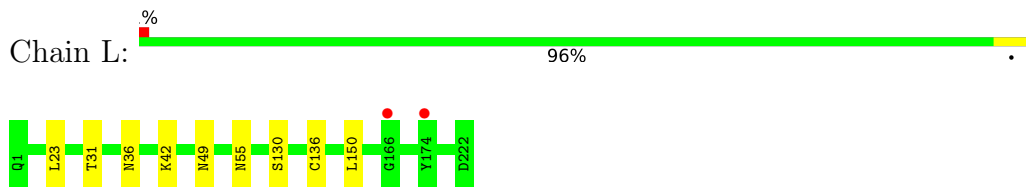
- Molecule 11: Proteasome subunit beta type-5



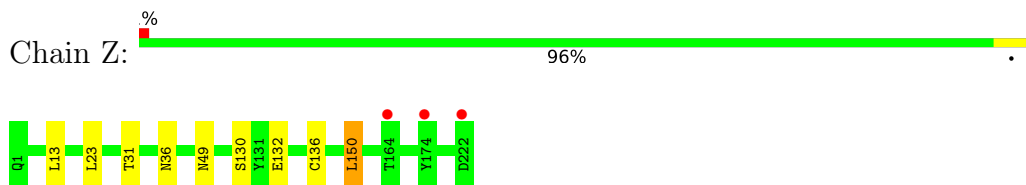
- Molecule 11: Proteasome subunit beta type-5



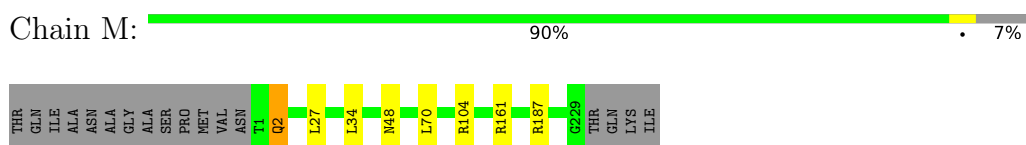
- Molecule 12: Proteasome subunit beta type-6



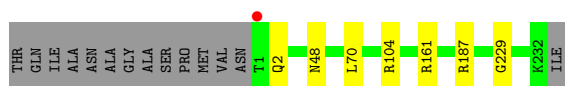
- Molecule 12: Proteasome subunit beta type-6



- Molecule 13: Proteasome subunit beta type-7



• Molecule 13: Proteasome subunit beta type-7

Chain a:  91% • 6%

• Molecule 14: Proteasome subunit beta type-1

Chain N:  95% • 5%

• Molecule 14: Proteasome subunit beta type-1

Chain b:  97% •

4 Data and refinement statistics

Property	Value	Source
Space group	P 1 21 1	Depositor
Cell constants a, b, c, α , β , γ	135.72Å 301.64Å 144.36Å 90.00° 113.08° 90.00°	Depositor
Resolution (Å)	15.00 – 2.80 15.00 – 2.80	Depositor EDS
% Data completeness (in resolution range)	97.0 (15.00-2.80) 97.0 (15.00-2.80)	Depositor EDS
R_{merge}	0.06	Depositor
R_{sym}	(Not available)	Depositor
$\langle I/\sigma(I) \rangle$ ¹	2.67 (at 2.81Å)	Xtrriage
Refinement program	REFMAC 5.8.0158	Depositor
R, R_{free}	0.174 , 0.202 0.182 , 0.208	Depositor DCC
R_{free} test set	12674 reflections (5.00%)	wwPDB-VP
Wilson B-factor (Å ²)	68.5	Xtrriage
Anisotropy	0.181	Xtrriage
Bulk solvent k_{sol} (e/Å ³), B_{sol} (Å ²)	0.30 , 42.1	EDS
L-test for twinning ²	$\langle L \rangle = 0.50$, $\langle L^2 \rangle = 0.34$	Xtrriage
Estimated twinning fraction	No twinning to report.	Xtrriage
F_o, F_c correlation	0.95	EDS
Total number of atoms	49843	wwPDB-VP
Average B, all atoms (Å ²)	81.0	wwPDB-VP

Xtrriage's analysis on translational NCS is as follows: *The largest off-origin peak in the Patterson function is 2.75% of the height of the origin peak. No significant pseudotranslation is detected.*

¹Intensities estimated from amplitudes.

²Theoretical values of $\langle |L| \rangle$, $\langle L^2 \rangle$ for acentric reflections are 0.5, 0.333 respectively for untwinned datasets, and 0.375, 0.2 for perfectly twinned datasets.

5 Model quality

5.1 Standard geometry

Bond lengths and bond angles in the following residue types are not validated in this section: MG, QOB, CL

The Z score for a bond length (or angle) is the number of standard deviations the observed value is removed from the expected value. A bond length (or angle) with $|Z| > 5$ is considered an outlier worth inspection. RMSZ is the root-mean-square of all Z scores of the bond lengths (or angles).

Mol	Chain	Bond lengths		Bond angles	
		RMSZ	# Z >5	RMSZ	# Z >5
1	A	0.35	0/1952	0.57	0/2642
1	O	0.35	0/1952	0.57	0/2642
2	B	0.36	0/1934	0.61	0/2618
2	P	0.36	0/1934	0.62	0/2618
3	C	0.35	0/1910	0.63	0/2586
3	Q	0.36	0/1910	0.63	0/2586
4	D	0.34	0/1837	0.59	0/2475
4	R	0.34	0/1837	0.59	0/2475
5	E	0.34	0/1800	0.59	0/2433
5	S	0.34	0/1800	0.59	0/2433
6	F	0.35	0/1932	0.57	0/2609
6	T	0.34	0/1932	0.56	0/2609
7	G	0.36	0/1945	0.58	0/2634
7	U	0.36	0/1945	0.58	0/2634
8	H	0.34	0/1750	0.60	1/2373 (0.0%)
8	V	0.34	0/1750	0.59	1/2373 (0.0%)
9	I	0.35	0/1611	0.59	0/2174
9	W	0.35	0/1611	0.60	0/2174
10	J	0.35	0/1589	0.61	0/2142
10	X	0.35	0/1589	0.61	0/2142
11	K	0.36	0/1681	0.62	1/2274 (0.0%)
11	Y	0.36	0/1681	0.62	1/2274 (0.0%)
12	L	0.35	0/1795	0.60	0/2420
12	Z	0.35	0/1795	0.60	0/2420
13	M	0.36	0/1821	0.64	0/2470
13	a	0.36	0/1846	0.64	0/2503
14	N	0.33	0/1541	0.60	0/2087
14	b	0.33	0/1541	0.59	0/2087
All	All	0.35	0/50221	0.60	4/67907 (0.0%)

There are no bond length outliers.

All (4) bond angle outliers are listed below:

Mol	Chain	Res	Type	Atoms	Z	Observed(°)	Ideal(°)
8	V	196	ARG	NE-CZ-NH1	5.57	123.09	120.30
11	Y	4	LEU	CA-CB-CG	5.57	128.10	115.30
11	K	4	LEU	CA-CB-CG	5.55	128.06	115.30
8	H	196	ARG	NE-CZ-NH1	5.44	123.02	120.30

There are no chirality outliers.

There are no planarity outliers.

5.2 Too-close contacts [i](#)

In the following table, the Non-H and H(model) columns list the number of non-hydrogen atoms and hydrogen atoms in the chain respectively. The H(added) column lists the number of hydrogen atoms added and optimized by MolProbity. The Clashes column lists the number of clashes within the asymmetric unit, whereas Symm-Clashes lists symmetry-related clashes.

Mol	Chain	Non-H	H(model)	H(added)	Clashes	Symm-Clashes
1	A	1915	0	1929	1	0
1	O	1915	0	1929	1	0
2	B	1904	0	1904	4	0
2	P	1904	0	1904	4	0
3	C	1881	0	1895	5	0
3	Q	1881	0	1895	3	0
4	D	1813	0	1797	3	0
4	R	1813	0	1797	3	0
5	E	1773	0	1775	3	0
5	S	1773	0	1775	2	0
6	F	1892	0	1883	4	0
6	T	1892	0	1883	3	0
7	G	1907	0	1901	4	0
7	U	1907	0	1901	2	0
8	H	1719	0	1718	2	0
8	V	1719	0	1718	3	0
9	I	1581	0	1574	5	0
9	W	1581	0	1574	5	0
10	J	1561	0	1569	4	0
10	X	1561	0	1569	3	0
11	K	1644	0	1594	5	0
11	Y	1644	0	1594	5	0
12	L	1757	0	1711	3	0
12	Z	1757	0	1711	4	0

Continued on next page...

Continued from previous page...

Mol	Chain	Non-H	H(model)	H(added)	Clashes	Symm-Clashes
13	M	1790	0	1793	2	0
13	a	1815	0	1821	0	0
14	N	1512	0	1481	4	0
14	b	1512	0	1481	0	0
15	G	1	0	0	0	0
15	I	1	0	0	0	0
15	K	1	0	0	0	0
15	N	1	0	0	0	0
15	V	1	0	0	0	0
15	W	1	0	0	0	0
15	Y	1	0	0	0	0
15	Z	1	0	0	0	0
16	G	1	0	0	0	0
16	U	1	0	0	0	0
17	H	36	0	0	0	0
17	K	36	0	0	1	0
17	V	36	0	0	1	0
17	Y	36	0	0	1	0
18	A	10	0	0	0	0
18	B	16	0	0	1	0
18	C	14	0	0	0	0
18	D	8	0	0	0	0
18	E	12	0	0	0	0
18	F	13	0	0	0	0
18	G	17	0	0	1	0
18	H	17	0	0	0	0
18	I	4	0	0	0	0
18	J	22	0	0	0	0
18	K	11	0	0	0	0
18	L	18	0	0	0	0
18	M	19	0	0	1	0
18	N	11	0	0	0	0
18	O	3	0	0	0	0
18	P	18	0	0	1	0
18	Q	7	0	0	0	0
18	R	13	0	0	0	0
18	S	8	0	0	0	0
18	T	14	0	0	0	0
18	U	13	0	0	0	0
18	V	17	0	0	0	0
18	W	8	0	0	0	0
18	X	14	0	0	0	0

Continued on next page...

Continued from previous page...

Mol	Chain	Non-H	H(model)	H(added)	Clashes	Symm-Clashes
18	Y	15	0	0	1	0
18	Z	13	0	0	0	0
18	a	20	0	0	0	0
18	b	11	0	0	0	0
All	All	49843	0	49076	75	0

The all-atom clashscore is defined as the number of clashes found per 1000 atoms (including hydrogen atoms). The all-atom clashscore for this structure is 1.

All (75) close contacts within the same asymmetric unit are listed below, sorted by their clash magnitude.

Atom-1	Atom-2	Interatomic distance (Å)	Clash overlap (Å)
3:Q:160:GLN:HE21	3:Q:160:GLN:HA	1.59	0.67
3:C:160:GLN:HE21	3:C:160:GLN:HA	1.59	0.67
2:P:93:HIS:HB3	18:P:301:HOH:O	2.03	0.58
12:Z:31:THR:HG23	12:Z:36:ASN:HD21	1.70	0.56
12:L:31:THR:HG23	12:L:36:ASN:HD21	1.70	0.56
10:J:16:ALA:HB2	10:J:161:LEU:HD21	1.90	0.54
10:X:16:ALA:HB2	10:X:161:LEU:HD21	1.90	0.53
7:G:23:PHE:O	7:G:26:THR:HB	2.11	0.51
5:S:12:PHE:H	6:T:19:GLN:HE22	1.59	0.51
2:B:12:PHE:H	3:C:17:GLN:HE22	1.59	0.50
2:B:93:HIS:HB3	18:B:301:HOH:O	2.09	0.50
7:U:23:PHE:O	7:U:26:THR:HB	2.12	0.50
5:S:87:LEU:HD21	5:S:107:ALA:HB1	1.93	0.50
6:T:123:ASN:HD22	6:T:124:SER:N	2.10	0.49
6:T:123:ASN:HD22	6:T:123:ASN:C	2.16	0.49
11:K:20:ALA:HB2	11:K:31:VAL:HG21	1.95	0.49
6:F:123:ASN:HD22	6:F:124:SER:N	2.10	0.49
7:G:68:ARG:HH12	14:N:36:ARG:HH22	1.59	0.49
5:E:87:LEU:HD21	5:E:107:ALA:HB1	1.94	0.49
6:F:123:ASN:HD22	6:F:123:ASN:C	2.17	0.48
2:B:95:GLN:HE22	9:I:71:ASN:HD22	1.61	0.48
8:V:80:LEU:HD13	8:V:119:THR:HG21	1.95	0.48
1:O:12:PHE:H	2:P:20:GLN:HE22	1.61	0.47
11:Y:20:ALA:HB2	11:Y:31:VAL:HG21	1.95	0.47
11:Y:31:VAL:HA	12:Z:132:GLU:OE2	2.15	0.47
8:V:84:LYS:HA	8:V:113:ILE:HD11	1.97	0.46
11:K:128:CYS:HB2	11:K:137:TYR:CZ	2.50	0.46
8:H:84:LYS:HA	8:H:113:ILE:HD11	1.97	0.46
9:I:9:GLY:HA3	9:I:41:LYS:HE2	1.98	0.46

Continued on next page...

Continued from previous page...

Atom-1	Atom-2	Interatomic distance (Å)	Clash overlap (Å)
8:V:210:THR:HG21	9:W:167:SER:HB3	1.98	0.46
5:E:12:PHE:H	6:F:19:GLN:HE22	1.63	0.45
10:X:3:ILE:HG23	10:X:18:SER:HB3	1.98	0.45
4:R:160:ASN:HB3	4:R:179:TRP:CE2	2.52	0.45
10:J:3:ILE:HG23	10:J:18:SER:HB3	1.98	0.45
2:P:95:GLN:HE22	9:W:71:ASN:HD22	1.64	0.45
11:Y:128:CYS:HB2	11:Y:137:TYR:CZ	2.52	0.45
10:J:25:ILE:O	10:X:139:TYR:OH	2.35	0.44
9:I:141:ALA:HB2	9:I:177:ASP:HB2	2.00	0.44
2:P:47:ALA:HB1	2:P:64:LYS:HD2	2.00	0.44
4:D:160:ASN:HB3	4:D:179:TRP:CE2	2.53	0.44
7:G:122:ARG:HD2	18:G:412:HOH:O	2.19	0.43
2:B:47:ALA:HB1	2:B:64:LYS:HD2	2.00	0.43
12:Z:31:THR:CG2	12:Z:36:ASN:HD21	2.31	0.43
1:A:1:MET:HG3	6:F:122:TYR:CZ	2.54	0.43
9:W:10:ILE:HG21	9:W:141:ALA:HB3	2.01	0.43
7:G:73:VAL:HG12	7:G:133:THR:HB	2.00	0.43
9:W:9:GLY:HA3	9:W:41:LYS:HE2	2.00	0.43
12:L:31:THR:CG2	12:L:36:ASN:HD21	2.32	0.42
4:R:88:ALA:HA	4:R:99:ILE:HG21	2.01	0.42
11:Y:33:LYS:HE2	17:Y:901:QOB:C29	2.49	0.42
3:C:201:VAL:O	3:C:202:GLN:CB	2.67	0.42
3:C:35:LYS:HG2	3:C:158:SER:O	2.20	0.42
3:Q:51:LYS:O	3:Q:52:LEU:HB2	2.18	0.42
4:D:88:ALA:HA	4:D:99:ILE:HG21	2.01	0.42
7:U:73:VAL:HG12	7:U:133:THR:HB	2.01	0.42
10:J:50:ALA:O	11:K:91:LYS:NZ	2.53	0.42
9:W:141:ALA:HB2	9:W:177:ASP:HB2	2.02	0.42
3:C:51:LYS:O	3:C:52:LEU:HB2	2.18	0.41
11:K:128:CYS:HB2	11:K:137:TYR:CE2	2.55	0.41
14:N:35:THR:HG21	14:N:45:ARG:HE	1.86	0.41
9:I:10:ILE:HG21	9:I:141:ALA:HB3	2.03	0.41
12:Z:13:LEU:HD11	12:Z:150:LEU:HD21	2.03	0.41
5:E:118:ASN:HD22	5:E:118:ASN:N	2.18	0.41
3:Q:201:VAL:O	3:Q:202:GLN:CB	2.68	0.41
8:H:210:THR:HG21	9:I:167:SER:HB3	2.03	0.41
11:Y:89:GLN:HG2	18:Y:1008:HOH:O	2.21	0.41
13:M:2:GLN:NE2	18:M:301:HOH:O	2.52	0.41
13:M:27:LEU:HD21	13:M:34:LEU:HD22	2.03	0.41
14:N:83:LYS:HG3	14:N:119:VAL:CG2	2.51	0.40
4:R:91:HIS:CD2	4:R:99:ILE:HG22	2.56	0.40

Continued on next page...

Continued from previous page...

Atom-1	Atom-2	Interatomic distance (Å)	Clash overlap (Å)
4:D:91:HIS:HB3	4:D:99:ILE:CG2	2.52	0.40
11:K:33:LYS:HE2	17:K:901:QOB:C29	2.51	0.40
17:V:901:QOB:O37	17:V:901:QOB:C15	2.70	0.40
12:L:42:LYS:HD2	12:L:55:ASN:HD22	1.87	0.40
14:N:36:ARG:HG3	14:N:42:TRP:CE2	2.56	0.40

There are no symmetry-related clashes.

5.3 Torsion angles [i](#)

5.3.1 Protein backbone [i](#)

In the following table, the Percentiles column shows the percent Ramachandran outliers of the chain as a percentile score with respect to all X-ray entries followed by that with respect to entries of similar resolution.

The Analysed column shows the number of residues for which the backbone conformation was analysed, and the total number of residues.

Mol	Chain	Analysed	Favoured	Allowed	Outliers	Percentiles	
1	A	248/250 (99%)	239 (96%)	8 (3%)	1 (0%)	30	61
1	O	248/250 (99%)	239 (96%)	8 (3%)	1 (0%)	30	61
2	B	242/258 (94%)	233 (96%)	5 (2%)	4 (2%)	7	26
2	P	242/258 (94%)	233 (96%)	5 (2%)	4 (2%)	7	26
3	C	238/254 (94%)	233 (98%)	2 (1%)	3 (1%)	10	32
3	Q	238/254 (94%)	233 (98%)	2 (1%)	3 (1%)	10	32
4	D	231/260 (89%)	227 (98%)	4 (2%)	0	100	100
4	R	231/260 (89%)	227 (98%)	4 (2%)	0	100	100
5	E	229/234 (98%)	222 (97%)	7 (3%)	0	100	100
5	S	229/234 (98%)	222 (97%)	7 (3%)	0	100	100
6	F	241/288 (84%)	238 (99%)	3 (1%)	0	100	100
6	T	241/288 (84%)	239 (99%)	2 (1%)	0	100	100
7	G	239/252 (95%)	239 (100%)	0	0	100	100
7	U	239/252 (95%)	238 (100%)	1 (0%)	0	100	100
8	H	224/232 (97%)	219 (98%)	5 (2%)	0	100	100
8	V	224/232 (97%)	219 (98%)	5 (2%)	0	100	100

Continued on next page...

Continued from previous page...

Mol	Chain	Analysed	Favoured	Allowed	Outliers	Percentiles	
9	I	202/205 (98%)	195 (96%)	7 (4%)	0	100	100
9	W	202/205 (98%)	196 (97%)	6 (3%)	0	100	100
10	J	193/198 (98%)	189 (98%)	4 (2%)	0	100	100
10	X	193/198 (98%)	189 (98%)	4 (2%)	0	100	100
11	K	210/212 (99%)	208 (99%)	2 (1%)	0	100	100
11	Y	210/212 (99%)	208 (99%)	2 (1%)	0	100	100
12	L	220/222 (99%)	215 (98%)	5 (2%)	0	100	100
12	Z	220/222 (99%)	215 (98%)	5 (2%)	0	100	100
13	M	227/246 (92%)	220 (97%)	7 (3%)	0	100	100
13	a	230/246 (94%)	222 (96%)	7 (3%)	1 (0%)	30	61
14	N	194/196 (99%)	190 (98%)	4 (2%)	0	100	100
14	b	194/196 (99%)	190 (98%)	4 (2%)	0	100	100
All	All	6279/6614 (95%)	6137 (98%)	125 (2%)	17 (0%)	37	67

All (17) Ramachandran outliers are listed below:

Mol	Chain	Res	Type
1	A	2	THR
2	B	51	VAL
2	B	221	ASP
3	C	202	GLN
1	O	2	THR
2	P	51	VAL
2	P	221	ASP
3	Q	202	GLN
2	B	218	GLY
2	B	220	ASN
2	P	218	GLY
2	P	220	ASN
3	C	205	ALA
3	Q	205	ALA
3	Q	183	PRO
13	a	229	GLY
3	C	183	PRO

5.3.2 Protein sidechains [i](#)

In the following table, the Percentiles column shows the percent sidechain outliers of the chain as a percentile score with respect to all X-ray entries followed by that with respect to entries of similar resolution.

The Analysed column shows the number of residues for which the sidechain conformation was analysed, and the total number of residues.

Mol	Chain	Analysed	Rotameric	Outliers	Percentiles	
1	A	209/209 (100%)	206 (99%)	3 (1%)	62	87
1	O	209/209 (100%)	206 (99%)	3 (1%)	62	87
2	B	203/216 (94%)	197 (97%)	6 (3%)	36	70
2	P	203/216 (94%)	197 (97%)	6 (3%)	36	70
3	C	212/226 (94%)	202 (95%)	10 (5%)	22	54
3	Q	212/226 (94%)	202 (95%)	10 (5%)	22	54
4	D	194/215 (90%)	187 (96%)	7 (4%)	30	64
4	R	194/215 (90%)	187 (96%)	7 (4%)	30	64
5	E	190/193 (98%)	181 (95%)	9 (5%)	22	54
5	S	190/193 (98%)	181 (95%)	9 (5%)	22	54
6	F	201/239 (84%)	191 (95%)	10 (5%)	20	51
6	T	201/239 (84%)	191 (95%)	10 (5%)	20	51
7	G	206/210 (98%)	198 (96%)	8 (4%)	27	61
7	U	206/210 (98%)	198 (96%)	8 (4%)	27	61
8	H	185/190 (97%)	181 (98%)	4 (2%)	47	79
8	V	185/190 (97%)	180 (97%)	5 (3%)	40	74
9	I	172/173 (99%)	169 (98%)	3 (2%)	56	84
9	W	172/173 (99%)	169 (98%)	3 (2%)	56	84
10	J	173/175 (99%)	168 (97%)	5 (3%)	37	71
10	X	173/175 (99%)	168 (97%)	5 (3%)	37	71
11	K	169/169 (100%)	162 (96%)	7 (4%)	26	59
11	Y	169/169 (100%)	162 (96%)	7 (4%)	26	59
12	L	185/185 (100%)	180 (97%)	5 (3%)	40	74
12	Z	185/185 (100%)	180 (97%)	5 (3%)	40	74
13	M	195/208 (94%)	189 (97%)	6 (3%)	35	69
13	a	198/208 (95%)	192 (97%)	6 (3%)	36	70

Continued on next page...

Continued from previous page...

Mol	Chain	Analysed	Rotameric	Outliers	Percentiles	
14	N	162/162 (100%)	157 (97%)	5 (3%)	35	69
14	b	162/162 (100%)	157 (97%)	5 (3%)	35	69
All	All	5315/5540 (96%)	5138 (97%)	177 (3%)	33	67

All (177) residues with a non-rotameric sidechain are listed below:

Mol	Chain	Res	Type
1	A	122	THR
1	A	157	PHE
1	A	250	LEU
2	B	50	LYS
2	B	55	LEU
2	B	113	ARG
2	B	119	GLN
2	B	191	LEU
2	B	238	LEU
3	C	4	ARG
3	C	38	ASN
3	C	49	THR
3	C	51	LYS
3	C	147	GLN
3	C	160	GLN
3	C	169	VAL
3	C	180	LYS
3	C	206	LYS
3	C	240	GLU
4	D	99	ILE
4	D	176	LEU
4	D	193	LEU
4	D	214	ILE
4	D	235	LEU
4	D	236	LYS
4	D	242	GLU
5	E	9	THR
5	E	29	LYS
5	E	55	LEU
5	E	71	LEU
5	E	116	GLN
5	E	184	ASN
5	E	188	LEU
5	E	202	ASP

Continued on next page...

Continued from previous page...

Mol	Chain	Res	Type
5	E	231	LYS
6	F	117	GLN
6	F	123	ASN
6	F	139	LYS
6	F	172	LEU
6	F	181	GLU
6	F	201	GLU
6	F	202	ASP
6	F	207	ASP
6	F	214	TRP
6	F	240	GLN
7	G	83	ASN
7	G	115	LEU
7	G	117	GLN
7	G	122	ARG
7	G	125	MET
7	G	208	GLU
7	G	235	ARG
7	G	236	LEU
8	H	14	ILE
8	H	30	ASN
8	H	68	LEU
8	H	196	ARG
9	I	37	ASN
9	I	171	LEU
9	I	182	TRP
10	J	2	ASP
10	J	3	ILE
10	J	35	THR
10	J	90	LYS
10	J	99	GLN
11	K	4	LEU
11	K	9	GLN
11	K	104	TYR
11	K	107	LYS
11	K	116	ASP
11	K	140	LEU
11	K	148	LEU
12	L	23	LEU
12	L	49	ASN
12	L	130	SER
12	L	136	CYS

Continued on next page...

Continued from previous page...

Mol	Chain	Res	Type
12	L	150	LEU
13	M	2	GLN
13	M	48	ASN
13	M	70	LEU
13	M	104	ARG
13	M	161	ARG
13	M	187	ARG
14	N	9	LYS
14	N	39	ASP
14	N	83	LYS
14	N	104	ASP
14	N	107	LYS
1	O	122	THR
1	O	157	PHE
1	O	250	LEU
2	P	50	LYS
2	P	55	LEU
2	P	113	ARG
2	P	119	GLN
2	P	191	LEU
2	P	238	LEU
3	Q	4	ARG
3	Q	38	ASN
3	Q	49	THR
3	Q	51	LYS
3	Q	147	GLN
3	Q	160	GLN
3	Q	169	VAL
3	Q	180	LYS
3	Q	206	LYS
3	Q	240	GLU
4	R	99	ILE
4	R	176	LEU
4	R	193	LEU
4	R	214	ILE
4	R	235	LEU
4	R	236	LYS
4	R	242	GLU
5	S	9	THR
5	S	29	LYS
5	S	55	LEU
5	S	71	LEU

Continued on next page...

Continued from previous page...

Mol	Chain	Res	Type
5	S	116	GLN
5	S	184	ASN
5	S	188	LEU
5	S	202	ASP
5	S	231	LYS
6	T	117	GLN
6	T	123	ASN
6	T	139	LYS
6	T	172	LEU
6	T	181	GLU
6	T	201	GLU
6	T	202	ASP
6	T	207	ASP
6	T	214	TRP
6	T	240	GLN
7	U	83	ASN
7	U	115	LEU
7	U	117	GLN
7	U	122	ARG
7	U	125	MET
7	U	208	GLU
7	U	235	ARG
7	U	236	LEU
8	V	14	ILE
8	V	30	ASN
8	V	68	LEU
8	V	80	LEU
8	V	196	ARG
9	W	37	ASN
9	W	171	LEU
9	W	182	TRP
10	X	2	ASP
10	X	3	ILE
10	X	35	THR
10	X	90	LYS
10	X	99	GLN
11	Y	4	LEU
11	Y	9	GLN
11	Y	104	TYR
11	Y	107	LYS
11	Y	116	ASP
11	Y	140	LEU

Continued on next page...

Continued from previous page...

Mol	Chain	Res	Type
11	Y	148	LEU
12	Z	23	LEU
12	Z	49	ASN
12	Z	130	SER
12	Z	136	CYS
12	Z	150	LEU
13	a	2	GLN
13	a	48	ASN
13	a	70	LEU
13	a	104	ARG
13	a	161	ARG
13	a	187	ARG
14	b	9	LYS
14	b	39	ASP
14	b	83	LYS
14	b	104	ASP
14	b	107	LYS

Sometimes sidechains can be flipped to improve hydrogen bonding and reduce clashes. All (118) such sidechains are listed below:

Mol	Chain	Res	Type
1	A	94	HIS
2	B	20	GLN
2	B	58	GLN
2	B	95	GLN
2	B	119	GLN
2	B	123	GLN
2	B	155	ASN
2	B	176	GLN
3	C	17	GLN
3	C	38	ASN
3	C	77	ASN
3	C	147	GLN
3	C	160	GLN
4	D	15	GLN
4	D	91	HIS
4	D	100	ASN
4	D	225	ASN
5	E	68	HIS
5	E	92	ASN
5	E	99	ASN
5	E	116	GLN

Continued on next page...

Continued from previous page...

Mol	Chain	Res	Type
5	E	118	ASN
5	E	120	GLN
5	E	151	ASN
5	E	184	ASN
6	F	19	GLN
6	F	86	ASN
6	F	117	GLN
6	F	123	ASN
6	F	191	GLN
6	F	240	GLN
7	G	30	ASN
7	G	83	ASN
7	G	114	ASN
7	G	117	GLN
7	G	121	GLN
7	G	166	GLN
7	G	167	GLN
7	G	175	ASN
8	H	30	ASN
8	H	66	HIS
8	H	165	ASN
8	H	172	ASN
8	H	189	ASN
9	I	37	ASN
10	J	55	GLN
11	K	85	ASN
11	K	176	ASN
12	L	3	ASN
12	L	49	ASN
12	L	55	ASN
12	L	70	ASN
12	L	158	ASN
13	M	18	ASN
13	M	48	ASN
13	M	102	GLN
13	M	179	ASN
13	M	194	ASN
13	M	213	GLN
14	N	161	GLN
1	O	94	HIS
2	P	20	GLN
2	P	58	GLN

Continued on next page...

Continued from previous page...

Mol	Chain	Res	Type
2	P	95	GLN
2	P	119	GLN
2	P	123	GLN
2	P	176	GLN
3	Q	17	GLN
3	Q	38	ASN
3	Q	77	ASN
3	Q	147	GLN
3	Q	160	GLN
4	R	15	GLN
4	R	91	HIS
4	R	100	ASN
4	R	225	ASN
5	S	68	HIS
5	S	92	ASN
5	S	99	ASN
5	S	116	GLN
5	S	118	ASN
5	S	120	GLN
5	S	151	ASN
5	S	184	ASN
6	T	19	GLN
6	T	86	ASN
6	T	117	GLN
6	T	123	ASN
6	T	191	GLN
6	T	240	GLN
7	U	30	ASN
7	U	83	ASN
7	U	114	ASN
7	U	117	GLN
7	U	121	GLN
7	U	166	GLN
7	U	167	GLN
7	U	175	ASN
8	V	30	ASN
8	V	172	ASN
8	V	189	ASN
9	W	37	ASN
10	X	55	GLN
11	Y	85	ASN
11	Y	176	ASN

Continued on next page...

Continued from previous page...

Mol	Chain	Res	Type
11	Y	208	ASN
12	Z	3	ASN
12	Z	49	ASN
12	Z	55	ASN
12	Z	70	ASN
12	Z	158	ASN
13	a	18	ASN
13	a	48	ASN
13	a	102	GLN
13	a	179	ASN
13	a	194	ASN
13	a	213	GLN
14	b	161	GLN

5.3.3 RNA [i](#)

There are no RNA molecules in this entry.

5.4 Non-standard residues in protein, DNA, RNA chains [i](#)

There are no non-standard protein/DNA/RNA residues in this entry.

5.5 Carbohydrates [i](#)

There are no oligosaccharides in this entry.

5.6 Ligand geometry [i](#)

Of 14 ligands modelled in this entry, 10 are monoatomic - leaving 4 for Mogul analysis.

In the following table, the Counts columns list the number of bonds (or angles) for which Mogul statistics could be retrieved, the number of bonds (or angles) that are observed in the model and the number of bonds (or angles) that are defined in the Chemical Component Dictionary. The Link column lists molecule types, if any, to which the group is linked. The Z score for a bond length (or angle) is the number of standard deviations the observed value is removed from the expected value. A bond length (or angle) with $|Z| > 2$ is considered an outlier worth inspection. RMSZ is the root-mean-square of all Z scores of the bond lengths (or angles).

Mol	Type	Chain	Res	Link	Bond lengths			Bond angles		
					Counts	RMSZ	# Z > 2	Counts	RMSZ	# Z > 2
17	QOB	H	901	8	37,37,37	2.10	5 (13%)	46,48,48	1.12	2 (4%)

Mol	Type	Chain	Res	Link	Bond lengths			Bond angles		
					Counts	RMSZ	# Z > 2	Counts	RMSZ	# Z > 2
17	QOB	V	901	8	37,37,37	2.17	4 (10%)	46,48,48	1.25	5 (10%)
17	QOB	K	901	11	37,37,37	2.24	5 (13%)	46,48,48	1.33	6 (13%)
17	QOB	Y	901	11	37,37,37	2.23	8 (21%)	46,48,48	1.35	6 (13%)

In the following table, the Chirals column lists the number of chiral outliers, the number of chiral centers analysed, the number of these observed in the model and the number defined in the Chemical Component Dictionary. Similar counts are reported in the Torsion and Rings columns. '-' means no outliers of that kind were identified.

Mol	Type	Chain	Res	Link	Chirals	Torsions	Rings
17	QOB	H	901	8	-	8/46/46/46	0/1/2/2
17	QOB	V	901	8	-	8/46/46/46	0/1/2/2
17	QOB	K	901	11	-	12/46/46/46	0/1/2/2
17	QOB	Y	901	11	-	11/46/46/46	0/1/2/2

All (22) bond length outliers are listed below:

Mol	Chain	Res	Type	Atoms	Z	Observed(Å)	Ideal(Å)
17	K	901	QOB	C26-C24	-8.30	1.35	1.51
17	V	901	QOB	C26-C24	-8.13	1.36	1.51
17	H	901	QOB	C26-C24	-7.81	1.36	1.51
17	Y	901	QOB	C26-C24	-7.61	1.37	1.51
17	Y	901	QOB	C17-C31	-6.89	1.34	1.52
17	H	901	QOB	C17-C31	-6.64	1.35	1.52
17	K	901	QOB	C17-C31	-6.50	1.35	1.52
17	V	901	QOB	C17-C31	-6.34	1.36	1.52
17	Y	901	QOB	C40-C3	-4.95	1.37	1.51
17	V	901	QOB	C40-C3	-4.82	1.37	1.51
17	H	901	QOB	C40-C3	-4.67	1.38	1.51
17	K	901	QOB	C40-C3	-4.59	1.38	1.51
17	V	901	QOB	C27-C28	-3.60	1.47	1.53
17	K	901	QOB	C27-C28	-3.51	1.47	1.53
17	Y	901	QOB	C27-C28	-3.29	1.47	1.53
17	Y	901	QOB	C18-C19	-2.21	1.47	1.52
17	Y	901	QOB	C14-C15	-2.16	1.47	1.52
17	K	901	QOB	C21-C19	-2.13	1.45	1.52
17	Y	901	QOB	O20-C19	-2.12	1.37	1.43
17	Y	901	QOB	O35-C34	-2.08	1.37	1.43
17	H	901	QOB	C27-C28	-2.06	1.49	1.53
17	H	901	QOB	O20-C19	-2.00	1.37	1.43

All (19) bond angle outliers are listed below:

Mol	Chain	Res	Type	Atoms	Z	Observed(°)	Ideal(°)
17	K	901	QOB	C26-C27-C28	-4.22	107.52	114.02
17	V	901	QOB	C34-C14-N13	-3.70	102.25	111.72
17	V	901	QOB	C26-C27-C28	-3.63	108.44	114.02
17	Y	901	QOB	C26-C27-C28	-3.46	108.70	114.02
17	H	901	QOB	C26-C27-C28	-3.39	108.81	114.02
17	H	901	QOB	C34-C14-N13	-3.18	103.58	111.72
17	K	901	QOB	O35-C34-C14	-3.12	102.87	109.13
17	Y	901	QOB	O35-C34-C14	-3.06	102.99	109.13
17	K	901	QOB	C18-C19-C21	-2.68	106.76	112.51
17	K	901	QOB	C36-C34-C14	-2.60	107.03	112.29
17	V	901	QOB	O35-C34-C14	-2.30	104.53	109.13
17	K	901	QOB	C34-C14-N13	-2.29	105.86	111.72
17	V	901	QOB	C29-C28-C27	-2.27	107.17	111.47
17	Y	901	QOB	C29-C28-C27	-2.20	107.31	111.47
17	V	901	QOB	C18-C19-C21	-2.18	107.83	112.51
17	Y	901	QOB	C36-C34-C14	-2.07	108.10	112.29
17	Y	901	QOB	C31-C17-N16	-2.07	105.51	111.16
17	Y	901	QOB	C34-C14-N13	-2.02	106.56	111.72
17	K	901	QOB	C31-C17-N16	-2.01	105.69	111.16

There are no chirality outliers.

All (39) torsion outliers are listed below:

Mol	Chain	Res	Type	Atoms
17	H	901	QOB	N16-C17-C18-C19
17	H	901	QOB	O20-C19-C21-C22
17	H	901	QOB	C24-C26-C27-C28
17	K	901	QOB	N16-C17-C18-C19
17	K	901	QOB	O20-C19-C21-C22
17	K	901	QOB	C15-C14-C34-C36
17	K	901	QOB	C15-C14-C34-O35
17	K	901	QOB	N13-C14-C34-C36
17	K	901	QOB	N13-C14-C34-O35
17	V	901	QOB	N16-C17-C18-C19
17	Y	901	QOB	N16-C17-C18-C19
17	Y	901	QOB	C15-C14-C34-O35
17	Y	901	QOB	N13-C14-C34-O35
17	H	901	QOB	C31-C17-C18-C19
17	K	901	QOB	C31-C17-C18-C19
17	Y	901	QOB	C31-C17-C18-C19
17	V	901	QOB	C31-C17-C18-C19

Continued on next page...

Continued from previous page...

Mol	Chain	Res	Type	Atoms
17	H	901	QOB	C15-C14-N13-C12
17	V	901	QOB	C24-C26-C27-C28
17	K	901	QOB	C18-C19-C21-C22
17	K	901	QOB	C24-C26-C27-C28
17	H	901	QOB	C18-C19-C21-C22
17	V	901	QOB	C18-C19-C21-C22
17	Y	901	QOB	N13-C14-C34-C36
17	Y	901	QOB	C24-C26-C27-C28
17	V	901	QOB	O20-C19-C21-C22
17	Y	901	QOB	O20-C19-C21-C22
17	Y	901	QOB	C18-C19-C21-C22
17	V	901	QOB	C15-C14-N13-C12
17	Y	901	QOB	C15-C14-C34-C36
17	V	901	QOB	N16-C17-C31-O32
17	Y	901	QOB	C8-C3-C40-C41
17	Y	901	QOB	C4-C3-C40-C41
17	V	901	QOB	N16-C17-C31-N30
17	H	901	QOB	N16-C17-C31-O32
17	K	901	QOB	C4-C3-C40-C41
17	K	901	QOB	C8-C3-C40-C41
17	K	901	QOB	N16-C17-C31-O32
17	H	901	QOB	N16-C17-C31-N30

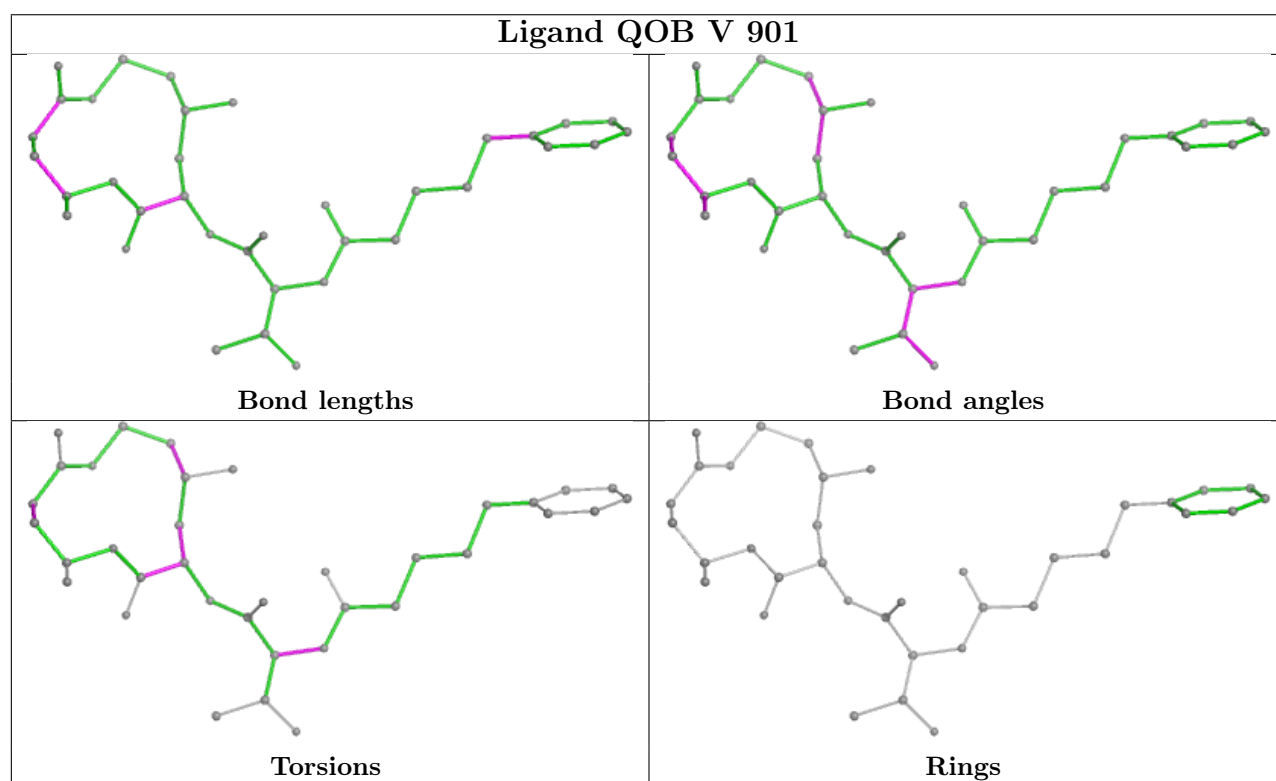
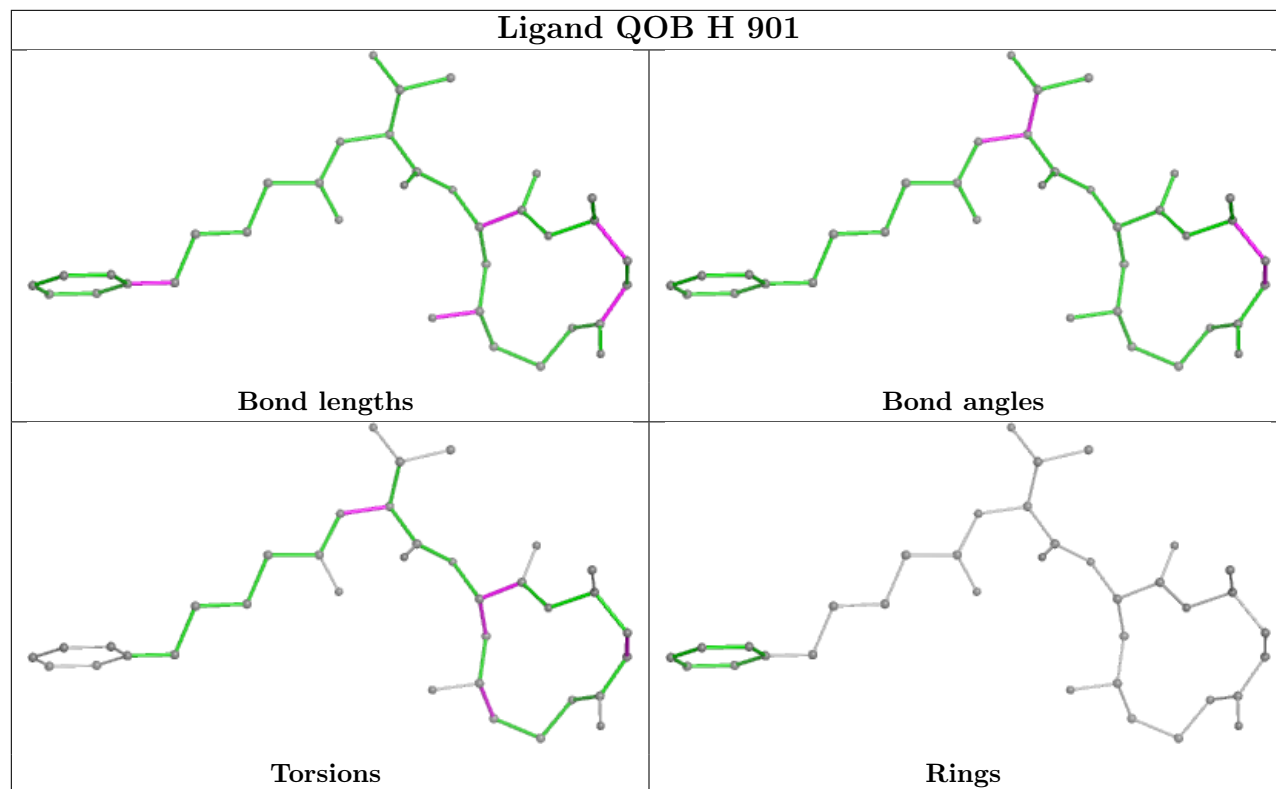
There are no ring outliers.

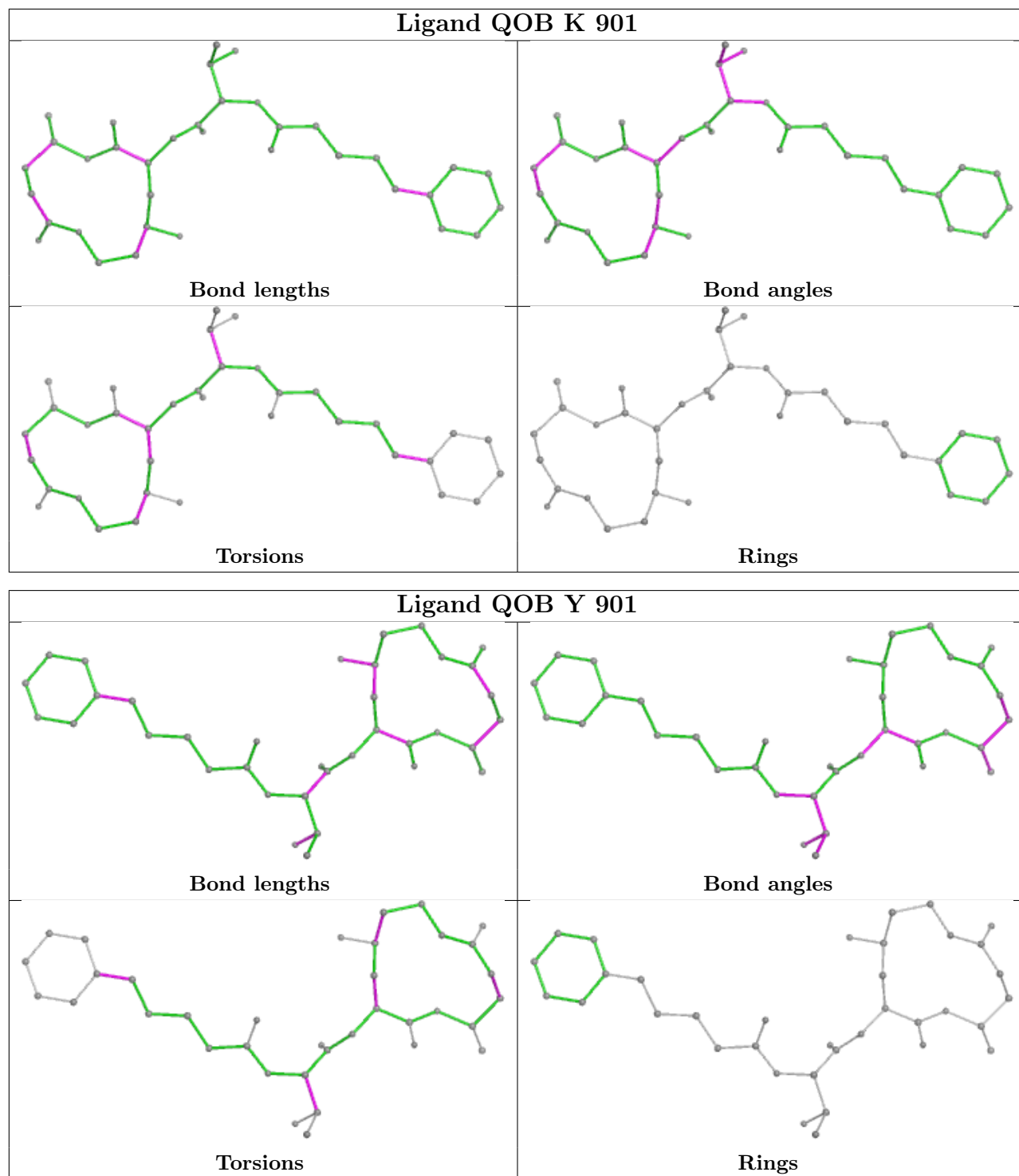
3 monomers are involved in 3 short contacts:

Mol	Chain	Res	Type	Clashes	Symm-Clashes
17	V	901	QOB	1	0
17	K	901	QOB	1	0
17	Y	901	QOB	1	0

The following is a two-dimensional graphical depiction of Mogul quality analysis of bond lengths, bond angles, torsion angles, and ring geometry for all instances of the Ligand of Interest. In addition, ligands with molecular weight > 250 and outliers as shown on the validation Tables will also be included. For torsion angles, if less than 5% of the Mogul distribution of torsion angles is within 10 degrees of the torsion angle in question, then that torsion angle is considered an outlier. Any bond that is central to one or more torsion angles identified as an outlier by Mogul will be highlighted in the graph. For rings, the root-mean-square deviation (RMSD) between the ring in question and similar rings identified by Mogul is calculated over all ring torsion angles. If the average RMSD is greater than 60 degrees and the minimal RMSD between the ring in question and any Mogul-identified rings is also greater than 60 degrees, then that ring is considered an outlier. The outliers are highlighted in purple. The color gray indicates Mogul did not find sufficient

equivalents in the CSD to analyse the geometry.





5.7 Other polymers [i](#)

There are no such residues in this entry.

5.8 Polymer linkage issues

There are no chain breaks in this entry.

6 Fit of model and data [i](#)

6.1 Protein, DNA and RNA chains [i](#)

In the following table, the column labelled ‘#RSRZ> 2’ contains the number (and percentage) of RSRZ outliers, followed by percent RSRZ outliers for the chain as percentile scores relative to all X-ray entries and entries of similar resolution. The OWAB column contains the minimum, median, 95th percentile and maximum values of the occupancy-weighted average B-factor per residue. The column labelled ‘Q< 0.9’ lists the number of (and percentage) of residues with an average occupancy less than 0.9.

Mol	Chain	Analysed	<RSRZ>	#RSRZ>2	OWAB(Å ²)	Q<0.9
1	A	250/250 (100%)	-0.31	1 (0%) 89 85	54, 72, 114, 157	0
1	O	250/250 (100%)	-0.25	1 (0%) 89 85	58, 79, 124, 160	0
2	B	244/258 (94%)	-0.16	5 (2%) 64 56	54, 77, 131, 186	0
2	P	244/258 (94%)	-0.12	3 (1%) 76 69	60, 81, 128, 183	0
3	C	240/254 (94%)	-0.19	4 (1%) 69 61	55, 80, 144, 171	0
3	Q	240/254 (94%)	0.19	9 (3%) 44 36	64, 93, 177, 205	0
4	D	235/260 (90%)	-0.05	3 (1%) 74 67	62, 84, 117, 156	0
4	R	235/260 (90%)	0.13	2 (0%) 81 75	67, 90, 132, 168	0
5	E	231/234 (98%)	-0.06	0 100 100	63, 86, 128, 170	0
5	S	231/234 (98%)	0.32	9 (3%) 44 36	64, 94, 146, 186	0
6	F	243/288 (84%)	-0.11	2 (0%) 82 77	56, 79, 135, 160	0
6	T	243/288 (84%)	0.17	2 (0%) 82 77	58, 85, 145, 178	0
7	G	241/252 (95%)	-0.25	2 (0%) 82 77	53, 73, 112, 162	0
7	U	241/252 (95%)	-0.16	0 100 100	56, 75, 114, 167	0
8	H	226/232 (97%)	-0.31	1 (0%) 89 85	50, 67, 112, 186	0
8	V	226/232 (97%)	-0.33	2 (0%) 81 75	53, 69, 108, 196	0
9	I	204/205 (99%)	-0.50	1 (0%) 87 83	50, 68, 103, 128	0
9	W	204/205 (99%)	-0.42	1 (0%) 87 83	51, 69, 106, 137	0
10	J	195/198 (98%)	-0.46	1 (0%) 87 83	50, 69, 97, 149	0
10	X	195/198 (98%)	-0.37	1 (0%) 87 83	52, 70, 98, 160	0
11	K	212/212 (100%)	-0.20	1 (0%) 87 83	53, 72, 102, 124	0
11	Y	212/212 (100%)	-0.36	0 100 100	55, 72, 106, 127	0
12	L	222/222 (100%)	-0.15	2 (0%) 81 75	54, 73, 119, 153	0
12	Z	222/222 (100%)	-0.29	3 (1%) 73 66	53, 71, 119, 151	0

Continued on next page...

Continued from previous page...

Mol	Chain	Analysed	<RSRZ>	#RSRZ>2	OWAB(Å ²)	Q<0.9
13	M	229/246 (93%)	-0.41	0 100 100	48, 70, 97, 116	0
13	a	232/246 (94%)	-0.41	1 (0%) 89 85	49, 68, 98, 114	0
14	N	196/196 (100%)	-0.43	0 100 100	50, 63, 97, 124	0
14	b	196/196 (100%)	-0.43	0 100 100	50, 65, 99, 133	0
All	All	6339/6614 (95%)	-0.20	57 (0%) 81 75	48, 75, 126, 205	0

All (57) RSRZ outliers are listed below:

Mol	Chain	Res	Type	RSRZ
10	X	1	MET	5.8
8	H	223	ILE	5.5
3	Q	50	LEU	5.0
8	V	223	ILE	4.7
10	J	1	MET	4.4
2	P	219	ALA	3.8
4	D	241	ALA	3.7
12	L	166	GLY	3.6
1	A	2	THR	3.5
4	D	240	ALA	3.5
2	B	219	ALA	3.4
6	T	178	HIS	3.3
3	Q	52	LEU	3.3
13	a	1	THR	3.2
6	F	215	CYS	3.1
3	Q	184	ALA	3.0
2	B	218	GLY	3.0
3	Q	183	PRO	3.0
2	B	1	GLY	2.9
9	I	130	ASP	2.9
2	B	52	THR	2.8
4	R	214	ILE	2.8
5	S	209	ASN	2.7
2	B	51	VAL	2.7
5	S	178	PHE	2.7
8	V	224	GLN	2.7
9	W	130	ASP	2.7
12	L	174	TYR	2.5
7	G	68	ARG	2.5
12	Z	174	TYR	2.4
2	P	218	GLY	2.4
3	Q	49	THR	2.4

Continued on next page...

Continued from previous page...

Mol	Chain	Res	Type	RSRZ
5	S	211	SER	2.4
5	S	207	VAL	2.4
1	O	2	THR	2.3
3	Q	189	CYS	2.3
4	D	231	LEU	2.3
12	Z	164	THR	2.3
5	S	58	TYR	2.3
2	P	1	GLY	2.3
4	R	99	ILE	2.3
5	S	52	ALA	2.3
6	T	215	CYS	2.2
3	C	240	GLU	2.2
3	Q	205	ALA	2.2
3	C	206	LYS	2.2
3	Q	231	VAL	2.1
3	C	204	GLY	2.1
3	C	201	VAL	2.1
3	Q	204	GLY	2.1
5	S	30	GLN	2.0
7	G	40	ASP	2.0
12	Z	222	ASP	2.0
6	F	176	VAL	2.0
11	K	212	GLY	2.0
5	S	55	LEU	2.0
5	S	171	LEU	2.0

6.2 Non-standard residues in protein, DNA, RNA chains [i](#)

There are no non-standard protein/DNA/RNA residues in this entry.

6.3 Carbohydrates [i](#)

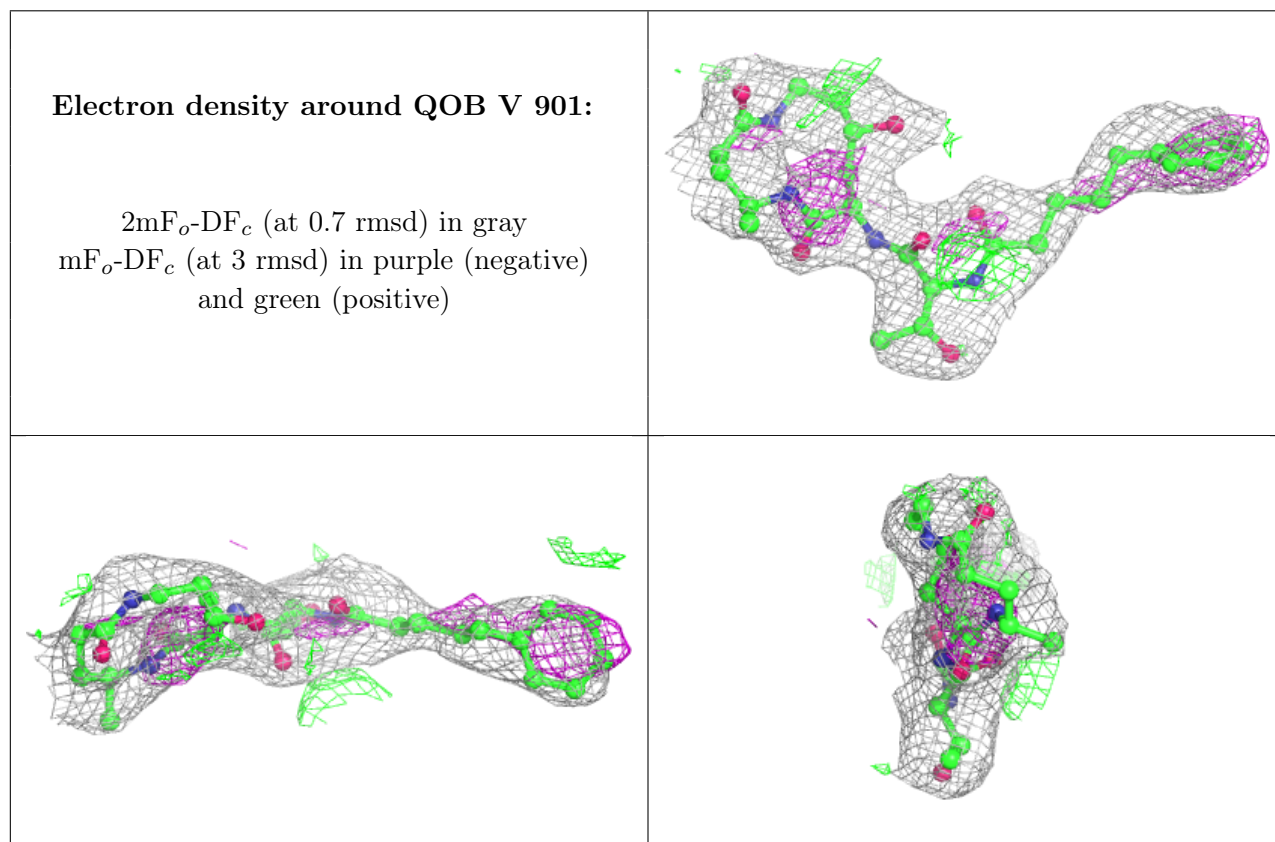
There are no monosaccharides in this entry.

6.4 Ligands [i](#)

In the following table, the Atoms column lists the number of modelled atoms in the group and the number defined in the chemical component dictionary. The B-factors column lists the minimum, median, 95th percentile and maximum values of B factors of atoms in the group. The column labelled 'Q < 0.9' lists the number of atoms with occupancy less than 0.9.

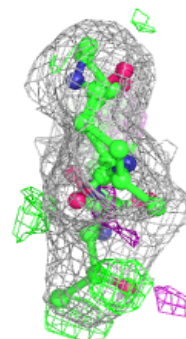
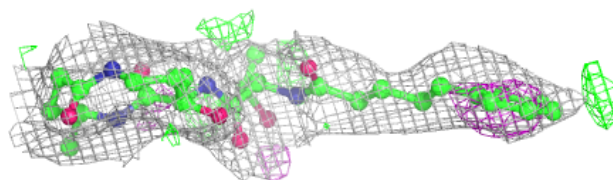
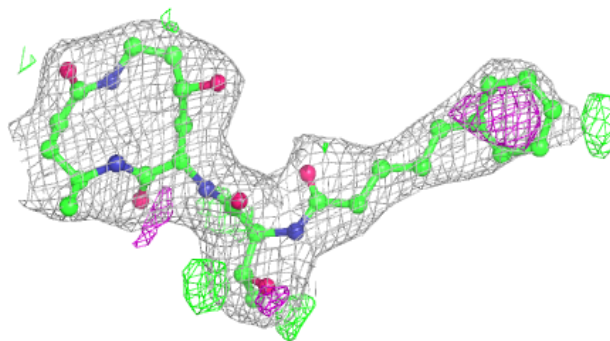
Mol	Type	Chain	Res	Atoms	RSCC	RSR	B-factors(\AA^2)	Q<0.9
15	MG	V	902	1/1	0.82	0.16	97,97,97,97	0
15	MG	Y	902	1/1	0.85	0.10	82,82,82,82	0
15	MG	W	301	1/1	0.89	0.18	88,88,88,88	0
15	MG	I	301	1/1	0.89	0.17	78,78,78,78	0
17	QOB	V	901	36/36	0.89	0.10	50,58,69,71	0
17	QOB	Y	901	36/36	0.89	0.10	59,65,81,83	0
17	QOB	K	901	36/36	0.91	0.09	62,69,88,89	0
15	MG	K	902	1/1	0.91	0.07	66,66,66,66	0
17	QOB	H	901	36/36	0.91	0.10	51,58,66,67	0
15	MG	Z	301	1/1	0.92	0.10	62,62,62,62	0
15	MG	N	201	1/1	0.94	0.08	47,47,47,47	0
15	MG	G	301	1/1	0.96	0.04	56,56,56,56	0
16	CL	G	302	1/1	0.97	0.07	54,54,54,54	0
16	CL	U	301	1/1	0.98	0.09	61,61,61,61	0

The following is a graphical depiction of the model fit to experimental electron density of all instances of the Ligand of Interest. In addition, ligands with molecular weight > 250 and outliers as shown on the geometry validation Tables will also be included. Each fit is shown from different orientation to approximate a three-dimensional view.

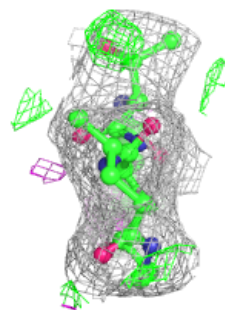
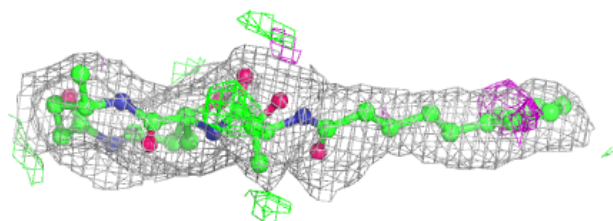
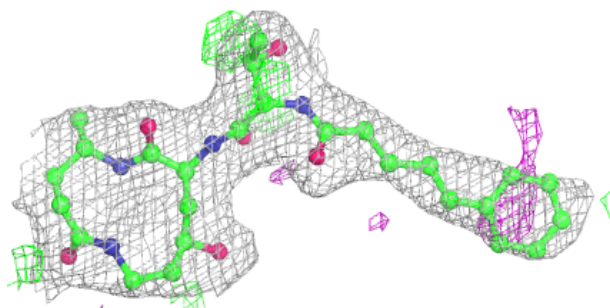


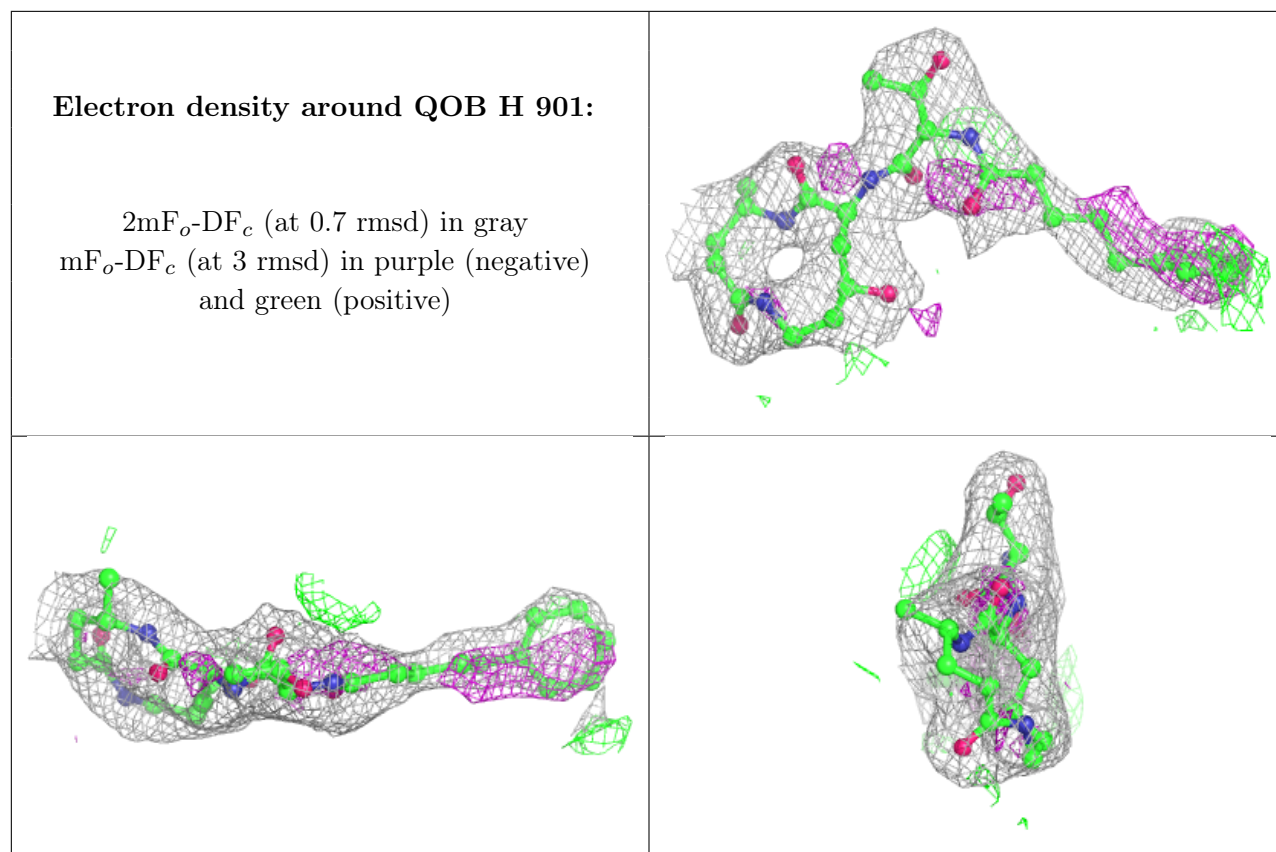
Electron density around QOB Y 901:

$2mF_o-DF_c$ (at 0.7 rmsd) in gray
 mF_o-DF_c (at 3 rmsd) in purple (negative)
and green (positive)

**Electron density around QOB K 901:**

$2mF_o-DF_c$ (at 0.7 rmsd) in gray
 mF_o-DF_c (at 3 rmsd) in purple (negative)
and green (positive)





6.5 Other polymers [i](#)

There are no such residues in this entry.