



Full wwPDB EM Validation Report ⓘ

Dec 17, 2022 – 04:13 pm GMT

PDB ID : 6ZG0
EMDB ID : EMD-11190
Title : SARM1 SAM1-2 domains
Authors : Sporny, M.; Guez-Haddad, J.; Khazma, T.; Yaron, A.; Dessau, M.; Mim, C.;
Isupov, M.N.; Zalk, R.; Hons, M.; Opatowsky, Y.
Deposited on : 2020-06-18
Resolution : 7.70 Å(reported)

This is a Full wwPDB EM Validation Report for a publicly released PDB entry.

We welcome your comments at validation@mail.wwpdb.org

A user guide is available at

<https://www.wwpdb.org/validation/2017/EMValidationReportHelp>

with specific help available everywhere you see the ⓘ symbol.

The types of validation reports are described at

<http://www.wwpdb.org/validation/2017/FAQs#types>.

The following versions of software and data (see [references ⓘ](#)) were used in the production of this report:

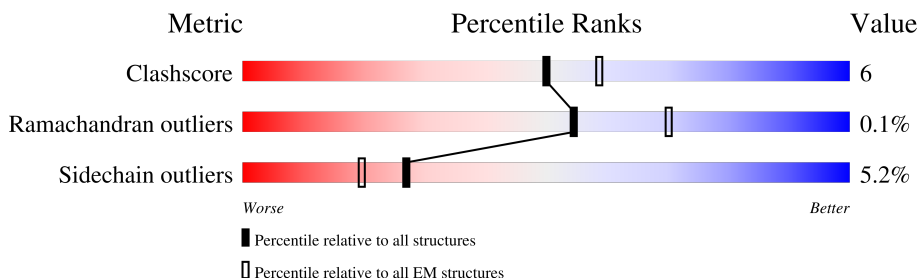
EMDB validation analysis : 0.0.1.dev43
Mogul : 1.8.4, CSD as541be (2020)
MolProbity : 4.02b-467
Percentile statistics : 20191225.v01 (using entries in the PDB archive December 25th 2019)
MapQ : 1.9.9
Ideal geometry (proteins) : Engh & Huber (2001)
Ideal geometry (DNA, RNA) : Parkinson et al. (1996)
Validation Pipeline (wwPDB-VP) : 2.31.3

1 Overall quality at a glance

The following experimental techniques were used to determine the structure:
ELECTRON MICROSCOPY

The reported resolution of this entry is 7.70 Å.

Percentile scores (ranging between 0-100) for global validation metrics of the entry are shown in the following graphic. The table shows the number of entries on which the scores are based.



Metric	Whole archive (#Entries)	EM structures (#Entries)
Clashscore	158937	4297
Ramachandran outliers	154571	4023
Sidechain outliers	154315	3826

The table below summarises the geometric issues observed across the polymeric chains and their fit to the map. The red, orange, yellow and green segments of the bar indicate the fraction of residues that contain outliers for ≥ 3 , 2, 1 and 0 types of geometric quality criteria respectively. A grey segment represents the fraction of residues that are not modelled. The numeric value for each fraction is indicated below the corresponding segment, with a dot representing fractions $\leq 5\%$. The upper red bar (where present) indicates the fraction of residues that have poor fit to the EM map (all-atom inclusion $< 40\%$). The numeric value is given above the bar.

Mol	Chain	Length	Quality of chain
1	A	726	
1	B	726	
1	C	726	
1	D	726	
1	E	726	
1	F	726	
1	G	726	
1	H	726	

The following table lists non-polymeric compounds, carbohydrate monomers and non-standard residues in protein, DNA, RNA chains that are outliers for geometric or electron-density-fit criteria:

Mol	Type	Chain	Res	Chirality	Geometry	Clashes	Electron density
2	EDO	D	808	-	-	X	-
2	EDO	E	801	-	-	X	-
3	BME	D	803	-	-	X	-
3	BME	E	802	-	-	X	-
3	BME	H	801	-	-	X	-
4	PEG	D	802	-	-	X	-
5	PGE	B	805	-	-	X	-

2 Entry composition [i](#)

There are 5 unique types of molecules in this entry. The entry contains 9927 atoms, of which 0 are hydrogens and 0 are deuteriums.

In the tables below, the AltConf column contains the number of residues with at least one atom in alternate conformation and the Trace column contains the number of residues modelled with at most 2 atoms.

- Molecule 1 is a protein called NAD(+) hydrolase SARM1.

Mol	Chain	Residues	Atoms					AltConf	Trace
			Total	C	N	O	S		
1	A	143	Total 1211	C 763	N 220	O 221	S 7	7	0
1	B	157	Total 1323	C 832	N 241	O 243	S 7	8	0
1	C	148	Total 1231	C 775	N 221	O 228	S 7	5	0
1	D	146	Total 1203	C 756	N 215	O 225	S 7	3	0
1	E	146	Total 1209	C 761	N 219	O 222	S 7	3	0
1	F	144	Total 1211	C 762	N 219	O 223	S 7	7	0
1	G	145	Total 1205	C 758	N 217	O 223	S 7	5	0
1	H	146	Total 1210	C 761	N 217	O 225	S 7	4	0

There are 224 discrepancies between the modelled and reference sequences:

Chain	Residue	Modelled	Actual	Comment	Reference
A	-1	MET	-	initiating methionine	UNP Q6SZW1
A	0	SER	-	expression tag	UNP Q6SZW1
A	1	TYR	-	expression tag	UNP Q6SZW1
A	2	HIS	-	expression tag	UNP Q6SZW1
A	3	HIS	-	expression tag	UNP Q6SZW1
A	4	HIS	-	expression tag	UNP Q6SZW1
A	5	HIS	-	expression tag	UNP Q6SZW1
A	6	HIS	-	expression tag	UNP Q6SZW1
A	7	HIS	-	expression tag	UNP Q6SZW1
A	8	ASP	-	expression tag	UNP Q6SZW1
A	9	TYR	-	expression tag	UNP Q6SZW1
A	10	ASP	-	expression tag	UNP Q6SZW1
A	11	ILE	-	expression tag	UNP Q6SZW1
A	12	PRO	-	expression tag	UNP Q6SZW1

Continued on next page...

Continued from previous page...

Chain	Residue	Modelled	Actual	Comment	Reference
A	13	THR	-	expression tag	UNP Q6SZW1
A	14	THR	-	expression tag	UNP Q6SZW1
A	15	GLU	-	expression tag	UNP Q6SZW1
A	16	ASN	-	expression tag	UNP Q6SZW1
A	17	LEU	-	expression tag	UNP Q6SZW1
A	18	TYR	-	expression tag	UNP Q6SZW1
A	19	PHE	-	expression tag	UNP Q6SZW1
A	20	GLN	-	expression tag	UNP Q6SZW1
A	21	GLY	-	expression tag	UNP Q6SZW1
A	22	ALA	-	expression tag	UNP Q6SZW1
A	23	MET	-	expression tag	UNP Q6SZW1
A	24	GLY	-	expression tag	UNP Q6SZW1
A	25	SER	-	expression tag	UNP Q6SZW1
A	642	GLN	GLU	conflict	UNP Q6SZW1
B	-1	MET	-	initiating methionine	UNP Q6SZW1
B	0	SER	-	expression tag	UNP Q6SZW1
B	1	TYR	-	expression tag	UNP Q6SZW1
B	2	HIS	-	expression tag	UNP Q6SZW1
B	3	HIS	-	expression tag	UNP Q6SZW1
B	4	HIS	-	expression tag	UNP Q6SZW1
B	5	HIS	-	expression tag	UNP Q6SZW1
B	6	HIS	-	expression tag	UNP Q6SZW1
B	7	HIS	-	expression tag	UNP Q6SZW1
B	8	ASP	-	expression tag	UNP Q6SZW1
B	9	TYR	-	expression tag	UNP Q6SZW1
B	10	ASP	-	expression tag	UNP Q6SZW1
B	11	ILE	-	expression tag	UNP Q6SZW1
B	12	PRO	-	expression tag	UNP Q6SZW1
B	13	THR	-	expression tag	UNP Q6SZW1
B	14	THR	-	expression tag	UNP Q6SZW1
B	15	GLU	-	expression tag	UNP Q6SZW1
B	16	ASN	-	expression tag	UNP Q6SZW1
B	17	LEU	-	expression tag	UNP Q6SZW1
B	18	TYR	-	expression tag	UNP Q6SZW1
B	19	PHE	-	expression tag	UNP Q6SZW1
B	20	GLN	-	expression tag	UNP Q6SZW1
B	21	GLY	-	expression tag	UNP Q6SZW1
B	22	ALA	-	expression tag	UNP Q6SZW1
B	23	MET	-	expression tag	UNP Q6SZW1
B	24	GLY	-	expression tag	UNP Q6SZW1
B	25	SER	-	expression tag	UNP Q6SZW1
B	642	GLN	GLU	conflict	UNP Q6SZW1

Continued on next page...

Continued from previous page...

Chain	Residue	Modelled	Actual	Comment	Reference
C	-1	MET	-	initiating methionine	UNP Q6SZW1
C	0	SER	-	expression tag	UNP Q6SZW1
C	1	TYR	-	expression tag	UNP Q6SZW1
C	2	HIS	-	expression tag	UNP Q6SZW1
C	3	HIS	-	expression tag	UNP Q6SZW1
C	4	HIS	-	expression tag	UNP Q6SZW1
C	5	HIS	-	expression tag	UNP Q6SZW1
C	6	HIS	-	expression tag	UNP Q6SZW1
C	7	HIS	-	expression tag	UNP Q6SZW1
C	8	ASP	-	expression tag	UNP Q6SZW1
C	9	TYR	-	expression tag	UNP Q6SZW1
C	10	ASP	-	expression tag	UNP Q6SZW1
C	11	ILE	-	expression tag	UNP Q6SZW1
C	12	PRO	-	expression tag	UNP Q6SZW1
C	13	THR	-	expression tag	UNP Q6SZW1
C	14	THR	-	expression tag	UNP Q6SZW1
C	15	GLU	-	expression tag	UNP Q6SZW1
C	16	ASN	-	expression tag	UNP Q6SZW1
C	17	LEU	-	expression tag	UNP Q6SZW1
C	18	TYR	-	expression tag	UNP Q6SZW1
C	19	PHE	-	expression tag	UNP Q6SZW1
C	20	GLN	-	expression tag	UNP Q6SZW1
C	21	GLY	-	expression tag	UNP Q6SZW1
C	22	ALA	-	expression tag	UNP Q6SZW1
C	23	MET	-	expression tag	UNP Q6SZW1
C	24	GLY	-	expression tag	UNP Q6SZW1
C	25	SER	-	expression tag	UNP Q6SZW1
C	642	GLN	GLU	conflict	UNP Q6SZW1
D	-1	MET	-	initiating methionine	UNP Q6SZW1
D	0	SER	-	expression tag	UNP Q6SZW1
D	1	TYR	-	expression tag	UNP Q6SZW1
D	2	HIS	-	expression tag	UNP Q6SZW1
D	3	HIS	-	expression tag	UNP Q6SZW1
D	4	HIS	-	expression tag	UNP Q6SZW1
D	5	HIS	-	expression tag	UNP Q6SZW1
D	6	HIS	-	expression tag	UNP Q6SZW1
D	7	HIS	-	expression tag	UNP Q6SZW1
D	8	ASP	-	expression tag	UNP Q6SZW1
D	9	TYR	-	expression tag	UNP Q6SZW1
D	10	ASP	-	expression tag	UNP Q6SZW1
D	11	ILE	-	expression tag	UNP Q6SZW1
D	12	PRO	-	expression tag	UNP Q6SZW1

Continued on next page...

Continued from previous page...

Chain	Residue	Modelled	Actual	Comment	Reference
D	13	THR	-	expression tag	UNP Q6SZW1
D	14	THR	-	expression tag	UNP Q6SZW1
D	15	GLU	-	expression tag	UNP Q6SZW1
D	16	ASN	-	expression tag	UNP Q6SZW1
D	17	LEU	-	expression tag	UNP Q6SZW1
D	18	TYR	-	expression tag	UNP Q6SZW1
D	19	PHE	-	expression tag	UNP Q6SZW1
D	20	GLN	-	expression tag	UNP Q6SZW1
D	21	GLY	-	expression tag	UNP Q6SZW1
D	22	ALA	-	expression tag	UNP Q6SZW1
D	23	MET	-	expression tag	UNP Q6SZW1
D	24	GLY	-	expression tag	UNP Q6SZW1
D	25	SER	-	expression tag	UNP Q6SZW1
D	642	GLN	GLU	conflict	UNP Q6SZW1
E	-1	MET	-	initiating methionine	UNP Q6SZW1
E	0	SER	-	expression tag	UNP Q6SZW1
E	1	TYR	-	expression tag	UNP Q6SZW1
E	2	HIS	-	expression tag	UNP Q6SZW1
E	3	HIS	-	expression tag	UNP Q6SZW1
E	4	HIS	-	expression tag	UNP Q6SZW1
E	5	HIS	-	expression tag	UNP Q6SZW1
E	6	HIS	-	expression tag	UNP Q6SZW1
E	7	HIS	-	expression tag	UNP Q6SZW1
E	8	ASP	-	expression tag	UNP Q6SZW1
E	9	TYR	-	expression tag	UNP Q6SZW1
E	10	ASP	-	expression tag	UNP Q6SZW1
E	11	ILE	-	expression tag	UNP Q6SZW1
E	12	PRO	-	expression tag	UNP Q6SZW1
E	13	THR	-	expression tag	UNP Q6SZW1
E	14	THR	-	expression tag	UNP Q6SZW1
E	15	GLU	-	expression tag	UNP Q6SZW1
E	16	ASN	-	expression tag	UNP Q6SZW1
E	17	LEU	-	expression tag	UNP Q6SZW1
E	18	TYR	-	expression tag	UNP Q6SZW1
E	19	PHE	-	expression tag	UNP Q6SZW1
E	20	GLN	-	expression tag	UNP Q6SZW1
E	21	GLY	-	expression tag	UNP Q6SZW1
E	22	ALA	-	expression tag	UNP Q6SZW1
E	23	MET	-	expression tag	UNP Q6SZW1
E	24	GLY	-	expression tag	UNP Q6SZW1
E	25	SER	-	expression tag	UNP Q6SZW1
E	642	GLN	GLU	conflict	UNP Q6SZW1

Continued on next page...

Continued from previous page...

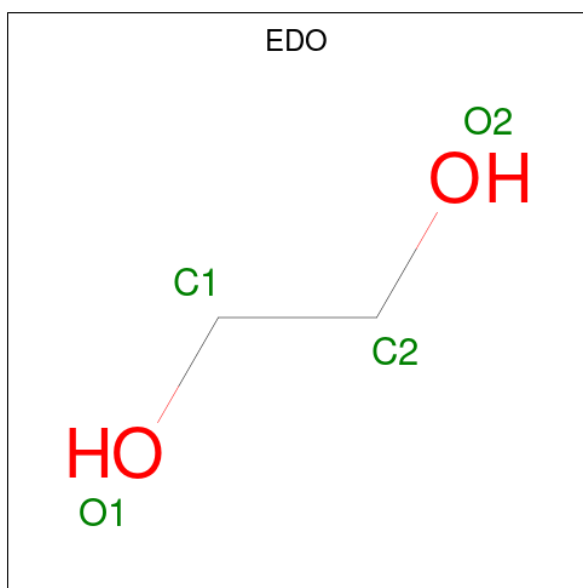
Chain	Residue	Modelled	Actual	Comment	Reference
F	-1	MET	-	initiating methionine	UNP Q6SZW1
F	0	SER	-	expression tag	UNP Q6SZW1
F	1	TYR	-	expression tag	UNP Q6SZW1
F	2	HIS	-	expression tag	UNP Q6SZW1
F	3	HIS	-	expression tag	UNP Q6SZW1
F	4	HIS	-	expression tag	UNP Q6SZW1
F	5	HIS	-	expression tag	UNP Q6SZW1
F	6	HIS	-	expression tag	UNP Q6SZW1
F	7	HIS	-	expression tag	UNP Q6SZW1
F	8	ASP	-	expression tag	UNP Q6SZW1
F	9	TYR	-	expression tag	UNP Q6SZW1
F	10	ASP	-	expression tag	UNP Q6SZW1
F	11	ILE	-	expression tag	UNP Q6SZW1
F	12	PRO	-	expression tag	UNP Q6SZW1
F	13	THR	-	expression tag	UNP Q6SZW1
F	14	THR	-	expression tag	UNP Q6SZW1
F	15	GLU	-	expression tag	UNP Q6SZW1
F	16	ASN	-	expression tag	UNP Q6SZW1
F	17	LEU	-	expression tag	UNP Q6SZW1
F	18	TYR	-	expression tag	UNP Q6SZW1
F	19	PHE	-	expression tag	UNP Q6SZW1
F	20	GLN	-	expression tag	UNP Q6SZW1
F	21	GLY	-	expression tag	UNP Q6SZW1
F	22	ALA	-	expression tag	UNP Q6SZW1
F	23	MET	-	expression tag	UNP Q6SZW1
F	24	GLY	-	expression tag	UNP Q6SZW1
F	25	SER	-	expression tag	UNP Q6SZW1
F	642	GLN	GLU	conflict	UNP Q6SZW1
G	-1	MET	-	initiating methionine	UNP Q6SZW1
G	0	SER	-	expression tag	UNP Q6SZW1
G	1	TYR	-	expression tag	UNP Q6SZW1
G	2	HIS	-	expression tag	UNP Q6SZW1
G	3	HIS	-	expression tag	UNP Q6SZW1
G	4	HIS	-	expression tag	UNP Q6SZW1
G	5	HIS	-	expression tag	UNP Q6SZW1
G	6	HIS	-	expression tag	UNP Q6SZW1
G	7	HIS	-	expression tag	UNP Q6SZW1
G	8	ASP	-	expression tag	UNP Q6SZW1
G	9	TYR	-	expression tag	UNP Q6SZW1
G	10	ASP	-	expression tag	UNP Q6SZW1
G	11	ILE	-	expression tag	UNP Q6SZW1
G	12	PRO	-	expression tag	UNP Q6SZW1

Continued on next page...

Continued from previous page...

Chain	Residue	Modelled	Actual	Comment	Reference
G	13	THR	-	expression tag	UNP Q6SZW1
G	14	THR	-	expression tag	UNP Q6SZW1
G	15	GLU	-	expression tag	UNP Q6SZW1
G	16	ASN	-	expression tag	UNP Q6SZW1
G	17	LEU	-	expression tag	UNP Q6SZW1
G	18	TYR	-	expression tag	UNP Q6SZW1
G	19	PHE	-	expression tag	UNP Q6SZW1
G	20	GLN	-	expression tag	UNP Q6SZW1
G	21	GLY	-	expression tag	UNP Q6SZW1
G	22	ALA	-	expression tag	UNP Q6SZW1
G	23	MET	-	expression tag	UNP Q6SZW1
G	24	GLY	-	expression tag	UNP Q6SZW1
G	25	SER	-	expression tag	UNP Q6SZW1
G	642	GLN	GLU	conflict	UNP Q6SZW1
H	-1	MET	-	initiating methionine	UNP Q6SZW1
H	0	SER	-	expression tag	UNP Q6SZW1
H	1	TYR	-	expression tag	UNP Q6SZW1
H	2	HIS	-	expression tag	UNP Q6SZW1
H	3	HIS	-	expression tag	UNP Q6SZW1
H	4	HIS	-	expression tag	UNP Q6SZW1
H	5	HIS	-	expression tag	UNP Q6SZW1
H	6	HIS	-	expression tag	UNP Q6SZW1
H	7	HIS	-	expression tag	UNP Q6SZW1
H	8	ASP	-	expression tag	UNP Q6SZW1
H	9	TYR	-	expression tag	UNP Q6SZW1
H	10	ASP	-	expression tag	UNP Q6SZW1
H	11	ILE	-	expression tag	UNP Q6SZW1
H	12	PRO	-	expression tag	UNP Q6SZW1
H	13	THR	-	expression tag	UNP Q6SZW1
H	14	THR	-	expression tag	UNP Q6SZW1
H	15	GLU	-	expression tag	UNP Q6SZW1
H	16	ASN	-	expression tag	UNP Q6SZW1
H	17	LEU	-	expression tag	UNP Q6SZW1
H	18	TYR	-	expression tag	UNP Q6SZW1
H	19	PHE	-	expression tag	UNP Q6SZW1
H	20	GLN	-	expression tag	UNP Q6SZW1
H	21	GLY	-	expression tag	UNP Q6SZW1
H	22	ALA	-	expression tag	UNP Q6SZW1
H	23	MET	-	expression tag	UNP Q6SZW1
H	24	GLY	-	expression tag	UNP Q6SZW1
H	25	SER	-	expression tag	UNP Q6SZW1
H	642	GLN	GLU	conflict	UNP Q6SZW1

- Molecule 2 is 1,2-ETHANEDIOL (three-letter code: EDO) (formula: C₂H₆O₂).



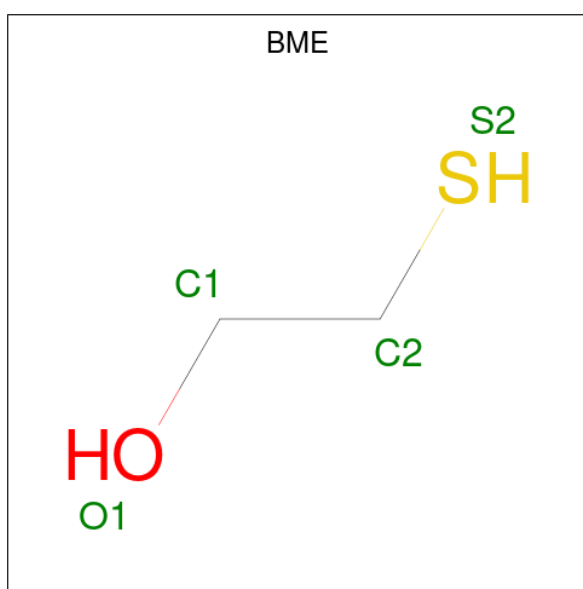
Mol	Chain	Residues	Atoms			AltConf
2	A	1	Total	C	O	0
			8	4	4	
2	A	1	Total	C	O	0
			8	4	4	
2	B	1	Total	C	O	0
			16	8	8	
2	B	1	Total	C	O	0
			16	8	8	
2	B	1	Total	C	O	0
			16	8	8	
2	B	1	Total	C	O	0
			16	8	8	
2	C	1	Total	C	O	0
			12	6	6	
2	C	1	Total	C	O	0
			12	6	6	
2	C	1	Total	C	O	0
			12	6	6	
2	D	1	Total	C	O	0
			24	12	12	
2	D	1	Total	C	O	0
			24	12	12	
2	D	1	Total	C	O	0
			24	12	12	
2	D	1	Total	C	O	0
			24	12	12	

Continued on next page...

Continued from previous page...

Mol	Chain	Residues	Atoms			AltConf
			Total	C	O	
2	D	1	24	12	12	0
2	D	1	24	12	12	0
2	E	1	4	2	2	0
2	F	1	4	2	2	0

- Molecule 3 is BETA-MERCAPTOETHANOL (three-letter code: BME) (formula: C₂H₆OS).



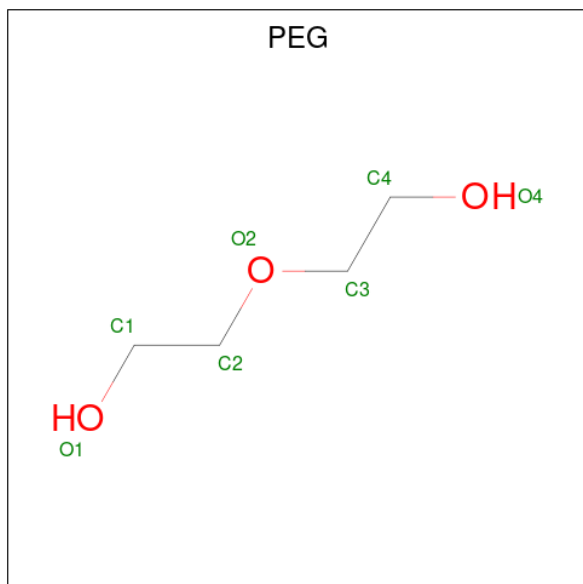
Mol	Chain	Residues	Atoms				AltConf
			Total	C	O	S	
3	A	1	4	2	1	1	0
3	B	1	4	2	1	1	0
3	C	1	4	2	1	1	0
3	D	1	4	2	1	1	0
3	E	1	4	2	1	1	0
3	F	1	4	2	1	1	0
3	G	1	4	2	1	1	0

Continued on next page...

Continued from previous page...

Mol	Chain	Residues	Atoms			AltConf	
			Total	C	O		S
3	H	1	4	2	1	1	0

- Molecule 4 is DI(HYDROXYETHYL)ETHER (three-letter code: PEG) (formula: $C_4H_{10}O_3$).



Mol	Chain	Residues	Atoms			AltConf
			Total	C	O	
4	B	1	7	4	3	0
4	D	1	7	4	3	0

- Molecule 5 is TRIETHYLENE GLYCOL (three-letter code: PGE) (formula: $C_6H_{14}O_4$).

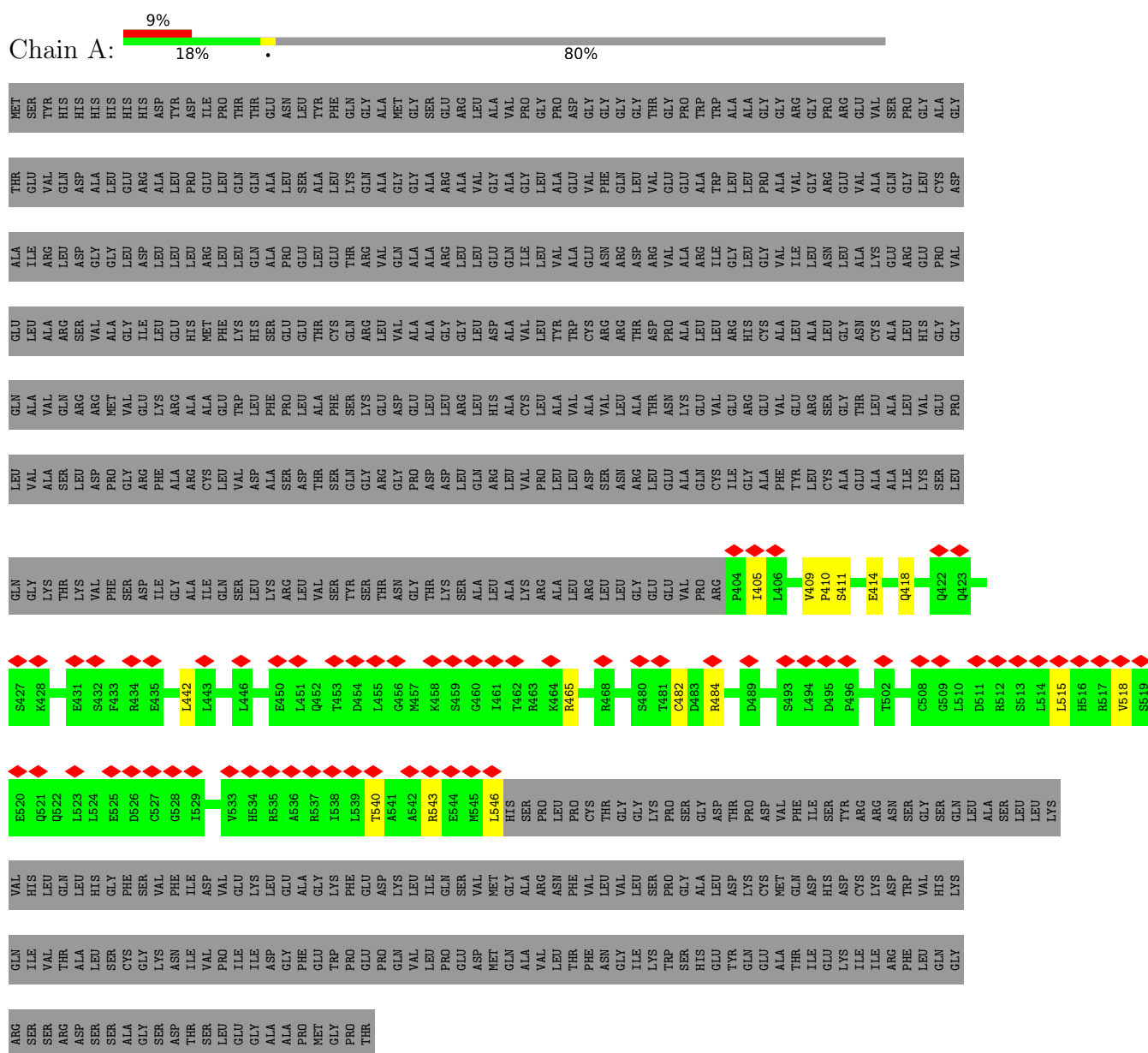


Mol	Chain	Residues	Atoms			AltConf
5	B	1	Total	C	O	0
			10	6	4	

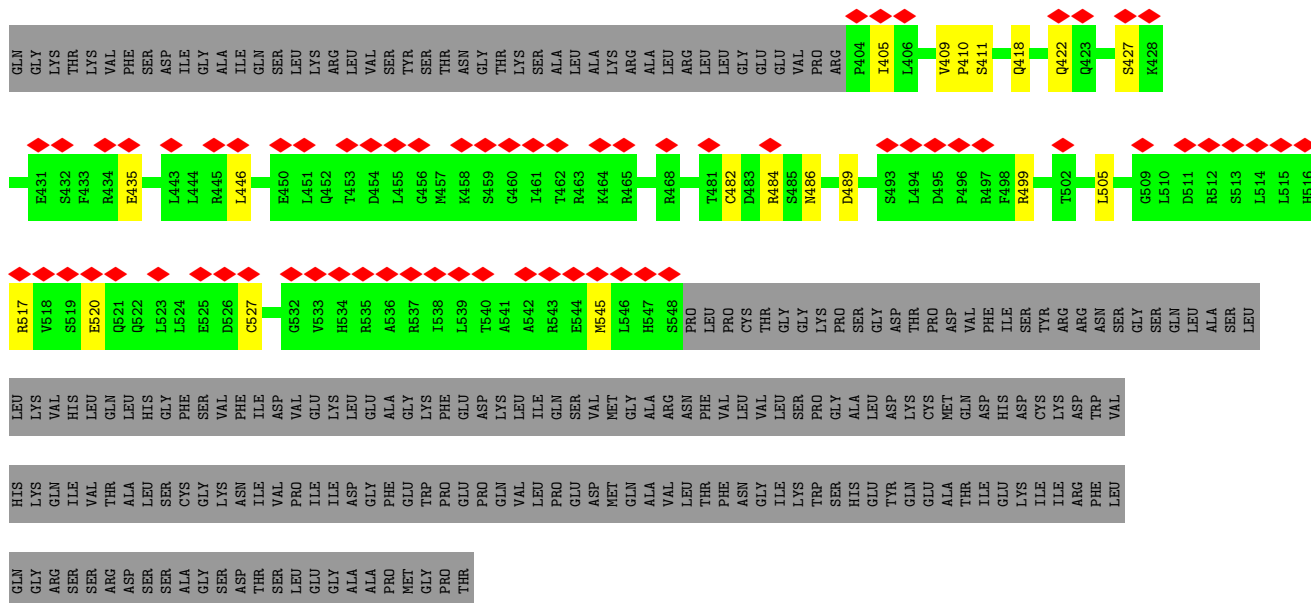
3 Residue-property plots i

These plots are drawn for all protein, RNA, DNA and oligosaccharide chains in the entry. The first graphic for a chain summarises the proportions of the various outlier classes displayed in the second graphic. The second graphic shows the sequence view annotated by issues in geometry and atom inclusion in map density. Residues are color-coded according to the number of geometric quality criteria for which they contain at least one outlier: green = 0, yellow = 1, orange = 2 and red = 3 or more. A red diamond above a residue indicates a poor fit to the EM map for this residue (all-atom inclusion $< 40\%$). Stretches of 2 or more consecutive residues without any outlier are shown as a green connector. Residues present in the sample, but not in the model, are shown in grey.

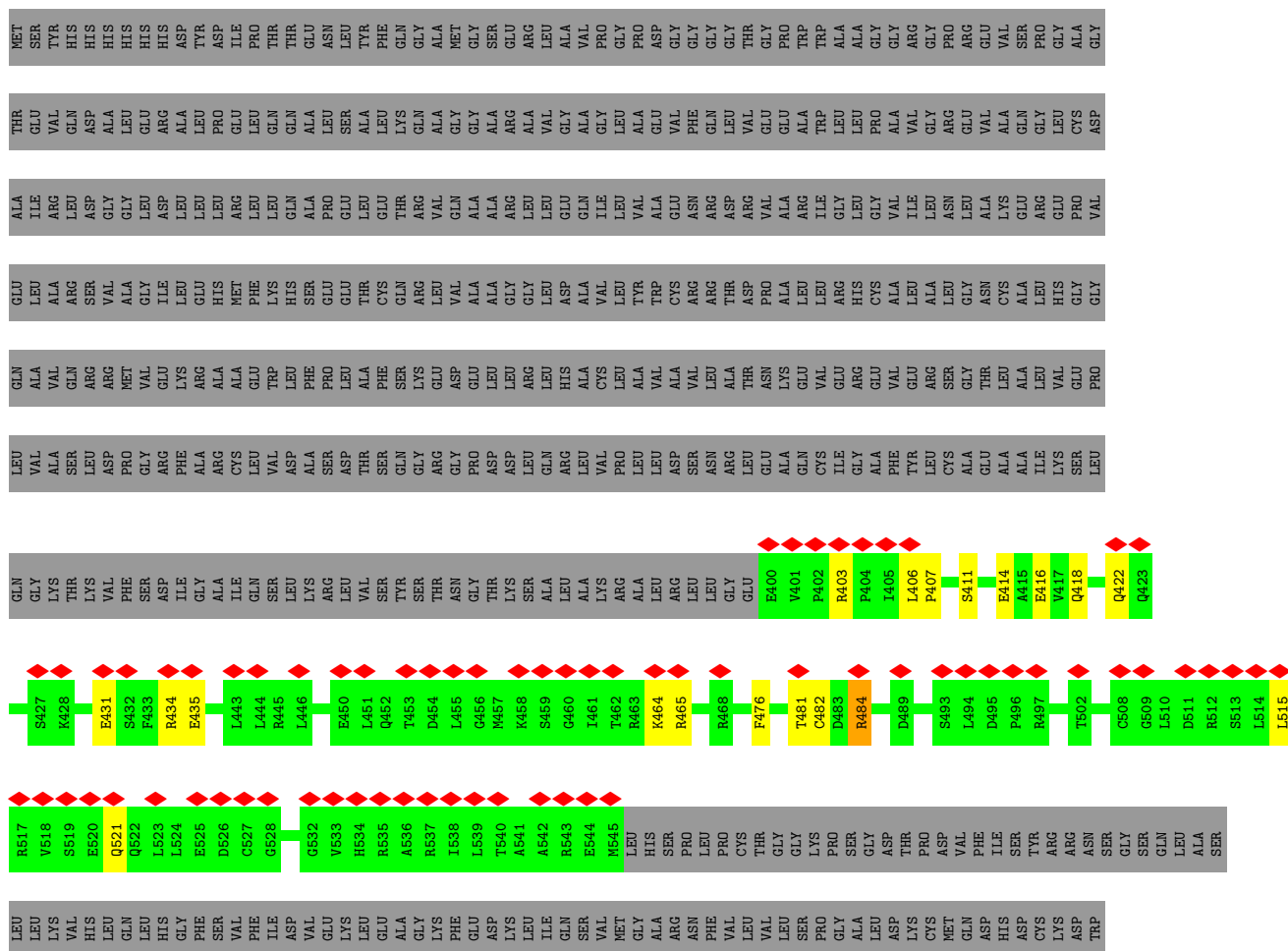
- Molecule 1: NAD(+) hydrolase SARM1



- Molecule 1: NAD(+) hydrolase SARM1



• Molecule 1: NAD(+) hydrolase SARM1



VAL
HIS
LYS
GLN
ILE
SER
VAL
THR
ALA
LEU
SER
SER
CYS
GLY
LYS
ASN
ILE
VAL
PRO
LEU
ILE
ILE
ASP
GLY
PHE
GLU
TRP
PRO
GLU
PRO
GLN
VAL
LEU
PRO
PRO
GLU
ASP
MET
GLN
ALA
VAL
LEU
THR
PHE
ASN
GLY
ILE
LYS
TRP
SER
HIS
GLU
TYR
GLN
GLU
ALA
THR
ILE
GLU
LYS
ILE
ILE
ARG
PHE

LEU
GLN
GLY
ARG
SER
SER
ARG
ASP
SER
SER
ALA
GLY
SER
ASP
THR
SER
LEU
GLU
GLY
ALA
ALA
PRO
MET
GLY
PRO
THR

4 Experimental information

Property	Value	Source
EM reconstruction method	SINGLE PARTICLE	Depositor
Imposed symmetry	POINT, Not provided	
Number of particles used	5410	Depositor
Resolution determination method	FSC 0.143 CUT-OFF	Depositor
CTF correction method	PHASE FLIPPING AND AMPLITUDE CORRECTION	Depositor
Microscope	FEI POLARA 300	Depositor
Voltage (kV)	300	Depositor
Electron dose ($e^-/\text{\AA}^2$)	80	Depositor
Minimum defocus (nm)	Not provided	
Maximum defocus (nm)	Not provided	
Magnification	Not provided	
Image detector	GATAN K2 SUMMIT (4k x 4k)	Depositor
Maximum map value	0.813	Depositor
Minimum map value	-0.413	Depositor
Average map value	0.005	Depositor
Map value standard deviation	0.041	Depositor
Recommended contour level	0.35	Depositor
Map size (Å)	281.6, 281.6, 281.6	wwPDB
Map dimensions	256, 256, 256	wwPDB
Map angles (°)	90.0, 90.0, 90.0	wwPDB
Pixel spacing (Å)	1.1, 1.1, 1.1	Depositor

5 Model quality [i](#)

5.1 Standard geometry [i](#)

Bond lengths and bond angles in the following residue types are not validated in this section: BME, PGE, EDO, PEG

The Z score for a bond length (or angle) is the number of standard deviations the observed value is removed from the expected value. A bond length (or angle) with $|Z| > 5$ is considered an outlier worth inspection. RMSZ is the root-mean-square of all Z scores of the bond lengths (or angles).

Mol	Chain	Bond lengths		Bond angles	
		RMSZ	# Z >5	RMSZ	# Z >5
1	A	0.38	0/1254	0.69	0/1687
1	B	0.45	0/1371	0.80	1/1846 (0.1%)
1	C	0.46	0/1270	0.77	0/1713
1	D	0.47	0/1235	0.79	1/1665 (0.1%)
1	E	0.44	0/1242	0.72	0/1674
1	F	0.38	0/1256	0.73	1/1692 (0.1%)
1	G	0.39	0/1243	0.78	2/1674 (0.1%)
1	H	0.43	0/1245	0.72	0/1679
All	All	0.43	0/10116	0.75	5/13630 (0.0%)

There are no bond length outliers.

All (5) bond angle outliers are listed below:

Mol	Chain	Res	Type	Atoms	Z	Observed(°)	Ideal(°)
1	B	508	CYS	CB-CA-C	-7.05	96.30	110.40
1	D	414	GLU	CB-CG-CD	6.17	130.85	114.20
1	F	484	ARG	CG-CD-NE	-5.39	100.47	111.80
1	G	499[A]	ARG	NE-CZ-NH2	-5.34	117.63	120.30
1	G	499[B]	ARG	NE-CZ-NH2	-5.34	117.63	120.30

There are no chirality outliers.

There are no planarity outliers.

5.2 Too-close contacts [i](#)

In the following table, the Non-H and H(model) columns list the number of non-hydrogen atoms and hydrogen atoms in the chain respectively. The H(added) column lists the number of hydrogen atoms added and optimized by MolProbity. The Clashes column lists the number of clashes within the asymmetric unit, whereas Symm-Clashes lists symmetry-related clashes.

Mol	Chain	Non-H	H(model)	H(added)	Clashes	Symm-Clashes
1	A	1211	0	1225	14	0
1	B	1323	0	1339	20	0
1	C	1231	0	1231	14	0
1	D	1203	0	1194	28	0
1	E	1209	0	1207	18	0
1	F	1211	0	1215	13	0
1	G	1205	0	1207	7	0
1	H	1210	0	1208	18	0
2	A	8	0	12	3	0
2	B	16	0	24	1	0
2	C	12	0	18	2	0
2	D	24	0	36	9	0
2	E	4	0	6	5	0
2	F	4	0	6	0	0
3	A	4	0	5	3	0
3	B	4	0	5	1	0
3	C	4	0	5	3	0
3	D	4	0	5	5	0
3	E	4	0	5	5	0
3	F	4	0	5	2	0
3	G	4	0	5	2	0
3	H	4	0	5	4	0
4	B	7	0	10	1	0
4	D	7	0	10	8	0
5	B	10	0	14	6	0
All	All	9927	0	10002	120	0

The all-atom clashscore is defined as the number of clashes found per 1000 atoms (including hydrogen atoms). The all-atom clashscore for this structure is 6.

All (120) close contacts within the same asymmetric unit are listed below, sorted by their clash magnitude.

Atom-1	Atom-2	Interatomic distance (Å)	Clash overlap (Å)
1:D:482[A]:CYS:HB3	3:D:803:BME:S2	2.06	0.96
1:B:402:PRO:HB2	5:B:805:PGE:H32	1.52	0.91
1:D:482[A]:CYS:CB	3:D:803:BME:S2	2.61	0.87
1:A:465[A]:ARG:HH12	2:A:803:EDO:H21	1.38	0.86
1:G:486:ASN:OD1	1:G:489:ASP:HB2	1.76	0.83
1:C:482[A]:CYS:HB3	3:C:801:BME:S2	2.19	0.83
1:D:465:ARG:HD2	2:D:808:EDO:H22	1.64	0.79
1:F:482[A]:CYS:HB3	3:F:802:BME:S2	2.23	0.79
1:C:497:ARG:HH12	3:D:803:BME:H11	1.51	0.76

Continued on next page...

Continued from previous page...

Atom-1	Atom-2	Interatomic distance (Å)	Clash overlap (Å)
1:H:521[B]:GLN:HA	1:H:521[B]:GLN:OE1	1.85	0.76
1:B:404:PRO:HD2	5:B:805:PGE:H6	1.68	0.75
1:E:522:GLN:HG3	2:E:801:EDO:H22	1.71	0.73
1:B:465[A]:ARG:HG2	1:C:442:LEU:HD11	1.71	0.72
1:A:482[A]:CYS:CB	3:A:802:BME:S2	2.77	0.72
1:A:482[A]:CYS:HB3	3:A:802:BME:S2	2.29	0.72
1:D:413:LYS:HG3	1:D:416:GLU:OE2	1.89	0.71
1:B:482[A]:CYS:HB3	3:B:804:BME:S2	2.31	0.71
1:A:465[A]:ARG:HH12	2:A:803:EDO:C2	2.05	0.69
1:B:465[A]:ARG:CG	1:C:442:LEU:HD11	2.23	0.67
1:E:482[A]:CYS:HB3	3:E:802:BME:S2	2.33	0.67
1:D:465:ARG:CD	2:D:808:EDO:H22	2.25	0.66
1:G:482[A]:CYS:HB3	3:G:801:BME:S2	2.35	0.66
1:E:522:GLN:CG	2:E:801:EDO:H22	2.25	0.66
1:B:412:TRP:CH2	5:B:805:PGE:H52	2.30	0.65
1:C:482[A]:CYS:CB	3:C:801:BME:S2	2.80	0.65
1:A:482[A]:CYS:HB2	3:A:802:BME:S2	2.37	0.63
1:D:482[A]:CYS:HB2	3:D:803:BME:S2	2.33	0.63
1:D:463:ARG:HH12	2:D:807:EDO:H11	1.65	0.61
1:B:404:PRO:O	5:B:805:PGE:H4	2.00	0.60
1:D:497:ARG:HH12	1:E:509:GLY:HA2	1.66	0.60
1:D:479:TYR:HB2	4:D:802:PEG:C2	2.32	0.60
1:E:482[A]:CYS:CB	3:E:802:BME:S2	2.90	0.60
1:A:540:THR:O	1:A:543[B]:ARG:HG3	2.02	0.59
1:D:465:ARG:HD2	2:D:808:EDO:C2	2.31	0.59
1:C:401:VAL:N	1:C:402:PRO:CD	2.65	0.59
1:H:406:LEU:N	1:H:407:PRO:HD3	2.18	0.57
1:F:516[A]:HIS:HD2	1:F:517[A]:ARG:CZ	2.18	0.57
1:H:482[A]:CYS:HB2	3:H:801:BME:H12	1.87	0.57
1:G:482[A]:CYS:CB	3:G:801:BME:S2	2.92	0.56
1:H:482[A]:CYS:HB3	3:H:801:BME:S2	2.45	0.56
1:C:520:GLU:HB2	1:C:539:LEU:HD11	1.87	0.56
1:D:465:ARG:HH11	2:D:808:EDO:H11	1.69	0.56
1:D:468:ARG:HH21	2:D:808:EDO:H12	1.70	0.55
1:D:468:ARG:NH2	2:D:808:EDO:H12	2.22	0.55
1:D:512:ARG:HH12	2:D:804:EDO:H22	1.72	0.55
1:B:406:LEU:N	1:B:407:PRO:HD3	2.21	0.54
1:D:480:SER:HA	4:D:802:PEG:C3	2.37	0.54
1:A:442:LEU:HD11	1:H:465[A]:ARG:CG	2.38	0.54
1:H:482[B]:CYS:HB3	3:H:801:BME:H12	1.89	0.54
1:E:465:ARG:CG	1:F:442:LEU:HD11	2.38	0.53

Continued on next page...

Continued from previous page...

Atom-1	Atom-2	Interatomic distance (Å)	Clash overlap (Å)
1:D:540:THR:HG21	1:E:517[A]:ARG:NH2	2.23	0.53
1:E:516:HIS:CE1	1:E:517[A]:ARG:HD2	2.44	0.52
1:C:546:LEU:HB3	2:C:802:EDO:H22	1.92	0.52
1:D:479:TYR:HB2	4:D:802:PEG:H21	1.92	0.52
1:D:480:SER:HA	4:D:802:PEG:H31	1.90	0.52
1:E:482[A]:CYS:HB2	3:E:802:BME:H21	1.91	0.52
1:B:479:TYR:HB2	2:B:802:EDO:H21	1.91	0.51
1:F:482[A]:CYS:CB	3:F:802:BME:S2	2.93	0.51
1:D:479:TYR:HB2	4:D:802:PEG:H22	1.91	0.51
1:F:516[A]:HIS:CD2	1:F:517[A]:ARG:CZ	2.94	0.51
1:A:442:LEU:HD11	1:H:465[B]:ARG:HG2	1.92	0.51
1:B:500:GLN:HE22	4:B:803:PEG:H42	1.74	0.50
1:B:406:LEU:N	1:B:407:PRO:CD	2.75	0.49
1:H:406:LEU:N	1:H:407:PRO:CD	2.76	0.49
1:E:465:ARG:HG3	1:F:442:LEU:HD11	1.95	0.49
1:E:521:GLN:NE2	2:E:801:EDO:H21	2.28	0.49
1:B:414:GLU:O	1:B:418:GLN:HG2	2.13	0.49
1:C:540:THR:O	1:C:543:ARG:HG2	2.12	0.49
1:A:442:LEU:HD11	1:H:465[B]:ARG:CG	2.44	0.48
1:E:521:GLN:HE21	2:E:801:EDO:H21	1.77	0.48
1:C:420:TRP:HE1	2:C:804:EDO:H12	1.78	0.48
1:B:402:PRO:HD2	5:B:805:PGE:H12	1.94	0.48
1:A:465[A]:ARG:NH1	2:A:803:EDO:H21	2.16	0.47
1:A:409:VAL:N	1:A:410:PRO:CD	2.78	0.47
1:H:431:GLU:HG3	1:H:434:ARG:HH22	1.80	0.47
1:H:482[A]:CYS:CB	3:H:801:BME:S2	3.03	0.47
1:D:499:ARG:NH2	4:D:802:PEG:H12	2.30	0.46
1:H:521[B]:GLN:OE1	1:H:521[B]:GLN:CA	2.57	0.46
1:B:515:LEU:O	1:B:518:VAL:HG12	2.14	0.46
1:H:406:LEU:HA	1:H:476:PHE:O	2.16	0.46
1:C:401:VAL:N	1:C:402:PRO:HD2	2.31	0.46
1:C:482[A]:CYS:HB2	3:C:801:BME:S2	2.53	0.45
1:F:516[A]:HIS:CD2	1:F:517[A]:ARG:NH2	2.84	0.45
1:D:540:THR:HG21	1:E:517[A]:ARG:HH22	1.80	0.45
1:B:403:ARG:H	1:B:403:ARG:HG2	1.68	0.45
1:E:484:ARG:HD3	1:E:484:ARG:HA	1.64	0.45
1:C:484:ARG:HD3	1:C:484:ARG:HA	1.63	0.45
1:F:403:ARG:N	1:F:403:ARG:CD	2.80	0.44
1:F:403:ARG:CD	1:F:403:ARG:H	2.29	0.44
1:H:431:GLU:HG3	1:H:434:ARG:NH2	2.33	0.44
1:A:442:LEU:HD11	1:H:465[A]:ARG:HG2	2.00	0.44

Continued on next page...

Continued from previous page...

Atom-1	Atom-2	Interatomic distance (Å)	Clash overlap (Å)
1:H:481:THR:O	1:H:484:ARG:NH1	2.50	0.44
1:D:426:PHE:HA	2:D:801:EDO:H11	1.99	0.44
1:G:409:VAL:N	1:G:410:PRO:CD	2.80	0.44
1:F:403:ARG:H	1:F:403:ARG:HD3	1.82	0.44
1:E:482[A]:CYS:HB2	3:E:802:BME:C2	2.48	0.43
1:E:522:GLN:HG2	2:E:801:EDO:H22	2.00	0.43
1:F:505:LEU:HD23	1:F:527:CYS:SG	2.58	0.43
1:B:420:TRP:HB2	5:B:805:PGE:H5	2.01	0.43
1:B:392:ARG:HG2	1:B:394:LEU:HD12	2.00	0.43
1:G:505:LEU:HD23	1:G:527:CYS:SG	2.59	0.43
1:D:494:LEU:HD12	1:D:494:LEU:HA	1.91	0.42
1:B:465[A]:ARG:HG3	1:C:442:LEU:HD11	2.01	0.42
1:D:482[A]:CYS:HB2	3:D:803:BME:C2	2.49	0.42
1:D:478:ASN:HA	4:D:802:PEG:O1	2.19	0.41
1:B:540:THR:O	1:B:543[B]:ARG:HG2	2.20	0.41
1:D:483:ASP:O	4:D:802:PEG:H42	2.20	0.41
1:E:482[A]:CYS:HB2	3:E:802:BME:S2	2.58	0.41
1:G:446:LEU:HD12	1:G:446:LEU:HA	1.94	0.41
1:H:515:LEU:HD12	1:H:515:LEU:HA	1.94	0.41
1:B:547:HIS:O	1:B:548:SER:HB2	2.20	0.41
1:E:409:VAL:N	1:E:410:PRO:CD	2.84	0.41
1:D:409:VAL:N	1:D:410:PRO:CD	2.84	0.41
1:A:414:GLU:O	1:A:418:GLN:HG2	2.21	0.40
1:F:409:VAL:N	1:F:410:PRO:CD	2.84	0.40
1:A:515:LEU:O	1:A:518:VAL:HG12	2.22	0.40
1:H:414:GLU:O	1:H:418:GLN:HG2	2.22	0.40
1:D:491:LEU:HD11	1:D:505:LEU:HD12	2.03	0.40
1:F:402:PRO:HB3	1:F:403:ARG:HD3	2.02	0.40
1:G:486:ASN:OD1	1:G:489:ASP:CB	2.60	0.40

There are no symmetry-related clashes.

5.3 Torsion angles

5.3.1 Protein backbone

In the following table, the Percentiles column shows the percent Ramachandran outliers of the chain as a percentile score with respect to all PDB entries followed by that with respect to all EM entries.

The Analysed column shows the number of residues for which the backbone conformation was analysed, and the total number of residues.

Mol	Chain	Analysed	Favoured	Allowed	Outliers	Percentiles	
1	A	148/726 (20%)	146 (99%)	2 (1%)	0	100	100
1	B	163/726 (22%)	159 (98%)	4 (2%)	0	100	100
1	C	151/726 (21%)	147 (97%)	3 (2%)	1 (1%)	22	63
1	D	147/726 (20%)	145 (99%)	2 (1%)	0	100	100
1	E	147/726 (20%)	144 (98%)	3 (2%)	0	100	100
1	F	149/726 (20%)	147 (99%)	2 (1%)	0	100	100
1	G	148/726 (20%)	145 (98%)	3 (2%)	0	100	100
1	H	148/726 (20%)	144 (97%)	4 (3%)	0	100	100
All	All	1201/5808 (21%)	1177 (98%)	23 (2%)	1 (0%)	54	86

All (1) Ramachandran outliers are listed below:

Mol	Chain	Res	Type
1	C	402	PRO

5.3.2 Protein sidechains [i](#)

In the following table, the Percentiles column shows the percent sidechain outliers of the chain as a percentile score with respect to all PDB entries followed by that with respect to all EM entries.

The Analysed column shows the number of residues for which the sidechain conformation was analysed, and the total number of residues.

Mol	Chain	Analysed	Rotameric	Outliers	Percentiles	
1	A	135/594 (23%)	131 (97%)	4 (3%)	41	63
1	B	148/594 (25%)	138 (93%)	10 (7%)	16	41
1	C	138/594 (23%)	130 (94%)	8 (6%)	20	45
1	D	134/594 (23%)	126 (94%)	8 (6%)	19	44
1	E	134/594 (23%)	127 (95%)	7 (5%)	23	48
1	F	136/594 (23%)	131 (96%)	5 (4%)	34	58
1	G	135/594 (23%)	124 (92%)	11 (8%)	11	35
1	H	135/594 (23%)	127 (94%)	8 (6%)	19	45
All	All	1095/4752 (23%)	1034 (94%)	61 (6%)	27	46

All (61) residues with a non-rotameric sidechain are listed below:

Mol	Chain	Res	Type
1	A	405	ILE
1	A	411	SER
1	A	484	ARG
1	A	546	LEU
1	B	395	ARG
1	B	400	GLU
1	B	403	ARG
1	B	411	SER
1	B	422	GLN
1	B	427[A]	SER
1	B	427[B]	SER
1	B	434[A]	ARG
1	B	434[B]	ARG
1	B	484	ARG
1	C	411[A]	SER
1	C	411[B]	SER
1	C	422	GLN
1	C	431	GLU
1	C	435	GLU
1	C	484	ARG
1	C	517	ARG
1	C	543	ARG
1	D	411	SER
1	D	413	LYS
1	D	446	LEU
1	D	458	LYS
1	D	484	ARG
1	D	520	GLU
1	D	543	ARG
1	D	548	SER
1	E	411	SER
1	E	422	GLN
1	E	427	SER
1	E	515	LEU
1	E	517[A]	ARG
1	E	517[B]	ARG
1	E	546	LEU
1	F	403	ARG
1	F	418	GLN
1	F	435	GLU
1	F	484	ARG
1	F	543	ARG
1	G	405	ILE

Continued on next page...

Continued from previous page...

Mol	Chain	Res	Type
1	G	411	SER
1	G	418	GLN
1	G	422	GLN
1	G	427[A]	SER
1	G	427[B]	SER
1	G	435	GLU
1	G	484	ARG
1	G	517	ARG
1	G	520	GLU
1	G	545	MET
1	H	403	ARG
1	H	411[A]	SER
1	H	411[B]	SER
1	H	416	GLU
1	H	422	GLN
1	H	435	GLU
1	H	464	LYS
1	H	484	ARG

Sometimes sidechains can be flipped to improve hydrogen bonding and reduce clashes. All (9) such sidechains are listed below:

Mol	Chain	Res	Type
1	A	437	GLN
1	B	500	GLN
1	C	418	GLN
1	D	418	GLN
1	E	500	GLN
1	E	521	GLN
1	F	423	GLN
1	G	436	GLN
1	H	423	GLN

5.3.3 RNA [i](#)

There are no RNA molecules in this entry.

5.4 Non-standard residues in protein, DNA, RNA chains [i](#)

There are no non-standard protein/DNA/RNA residues in this entry.

5.5 Carbohydrates [i](#)

There are no monosaccharides in this entry.

5.6 Ligand geometry [i](#)

28 ligands are modelled in this entry.

In the following table, the Counts columns list the number of bonds (or angles) for which Mogul statistics could be retrieved, the number of bonds (or angles) that are observed in the model and the number of bonds (or angles) that are defined in the Chemical Component Dictionary. The Link column lists molecule types, if any, to which the group is linked. The Z score for a bond length (or angle) is the number of standard deviations the observed value is removed from the expected value. A bond length (or angle) with $|Z| > 2$ is considered an outlier worth inspection. RMSZ is the root-mean-square of all Z scores of the bond lengths (or angles).

Mol	Type	Chain	Res	Link	Bond lengths			Bond angles		
					Counts	RMSZ	$\# Z > 2$	Counts	RMSZ	$\# Z > 2$
5	PGE	B	805	-	9,9,9	0.30	0	8,8,8	0.36	0
3	BME	C	801	1	3,3,3	0.30	0	1,2,2	0.36	0
2	EDO	D	806	-	3,3,3	0.27	0	2,2,2	0.44	0
3	BME	A	802	1	3,3,3	0.24	0	1,2,2	0.91	0
2	EDO	C	804	-	3,3,3	0.17	0	2,2,2	0.01	0
2	EDO	B	807	-	3,3,3	0.07	0	2,2,2	0.25	0
2	EDO	D	805	-	3,3,3	0.20	0	2,2,2	0.13	0
2	EDO	A	803	-	3,3,3	0.18	0	2,2,2	0.24	0
2	EDO	D	801	-	3,3,3	0.30	0	2,2,2	0.79	0
3	BME	B	804	1	3,3,3	0.42	0	1,2,2	0.67	0
3	BME	G	801	1	3,3,3	0.23	0	1,2,2	0.63	0
3	BME	F	802	1	3,3,3	0.14	0	1,2,2	0.47	0
4	PEG	B	803	-	6,6,6	0.16	0	5,5,5	0.12	0
2	EDO	F	801	-	3,3,3	0.06	0	2,2,2	0.04	0
2	EDO	B	801	-	3,3,3	0.50	0	2,2,2	0.74	0
2	EDO	D	807	-	3,3,3	0.10	0	2,2,2	0.32	0
2	EDO	D	808	-	3,3,3	0.34	0	2,2,2	0.65	0
3	BME	D	803	1	3,3,3	0.25	0	1,2,2	1.59	0
2	EDO	B	802	-	3,3,3	0.22	0	2,2,2	0.28	0
2	EDO	D	804	-	3,3,3	0.18	0	2,2,2	0.07	0
2	EDO	A	801	-	3,3,3	0.06	0	2,2,2	0.26	0
4	PEG	D	802	-	6,6,6	0.33	0	5,5,5	0.38	0
3	BME	H	801	1	3,3,3	0.22	0	1,2,2	0.01	0
2	EDO	C	802	-	3,3,3	0.34	0	2,2,2	0.88	0
2	EDO	E	801	-	3,3,3	0.18	0	2,2,2	0.77	0
2	EDO	C	803	-	3,3,3	0.17	0	2,2,2	0.20	0
3	BME	E	802	1	3,3,3	0.33	0	1,2,2	0.94	0

Mol	Type	Chain	Res	Link	Bond lengths			Bond angles		
					Counts	RMSZ	# Z > 2	Counts	RMSZ	# Z > 2
2	EDO	B	806	-	3,3,3	0.18	0	2,2,2	0.31	0

In the following table, the Chirals column lists the number of chiral outliers, the number of chiral centers analysed, the number of these observed in the model and the number defined in the Chemical Component Dictionary. Similar counts are reported in the Torsion and Rings columns. '-' means no outliers of that kind were identified.

Mol	Type	Chain	Res	Link	Chirals	Torsions	Rings
5	PGE	B	805	-	-	6/7/7/7	-
3	BME	C	801	1	-	1/1/1/1	-
2	EDO	D	806	-	-	0/1/1/1	-
3	BME	A	802	1	-	0/1/1/1	-
2	EDO	C	804	-	-	1/1/1/1	-
2	EDO	B	807	-	-	0/1/1/1	-
2	EDO	D	805	-	-	1/1/1/1	-
2	EDO	A	803	-	-	1/1/1/1	-
2	EDO	D	801	-	-	1/1/1/1	-
3	BME	B	804	1	-	0/1/1/1	-
3	BME	G	801	1	-	0/1/1/1	-
3	BME	F	802	1	-	1/1/1/1	-
4	PEG	B	803	-	-	0/4/4/4	-
2	EDO	F	801	-	-	1/1/1/1	-
2	EDO	B	801	-	-	1/1/1/1	-
2	EDO	D	807	-	-	1/1/1/1	-
2	EDO	D	808	-	-	1/1/1/1	-
3	BME	D	803	1	-	1/1/1/1	-
2	EDO	B	802	-	-	1/1/1/1	-
2	EDO	D	804	-	-	0/1/1/1	-
2	EDO	A	801	-	-	0/1/1/1	-
4	PEG	D	802	-	-	3/4/4/4	-
3	BME	H	801	1	-	1/1/1/1	-
2	EDO	C	802	-	-	0/1/1/1	-
2	EDO	E	801	-	-	1/1/1/1	-
2	EDO	C	803	-	-	0/1/1/1	-
3	BME	E	802	1	-	0/1/1/1	-
2	EDO	B	806	-	-	1/1/1/1	-

There are no bond length outliers.

There are no bond angle outliers.

There are no chirality outliers.

All (24) torsion outliers are listed below:

Mol	Chain	Res	Type	Atoms
3	C	801	BME	O1-C1-C2-S2
5	B	805	PGE	O2-C3-C4-O3
2	B	806	EDO	O1-C1-C2-O2
5	B	805	PGE	C1-C2-O2-C3
4	D	802	PEG	O1-C1-C2-O2
2	D	805	EDO	O1-C1-C2-O2
2	D	807	EDO	O1-C1-C2-O2
2	E	801	EDO	O1-C1-C2-O2
3	D	803	BME	O1-C1-C2-S2
3	F	802	BME	O1-C1-C2-S2
5	B	805	PGE	O3-C5-C6-O4
2	C	804	EDO	O1-C1-C2-O2
5	B	805	PGE	O1-C1-C2-O2
5	B	805	PGE	C3-C4-O3-C5
4	D	802	PEG	O2-C3-C4-O4
2	D	808	EDO	O1-C1-C2-O2
5	B	805	PGE	C6-C5-O3-C4
2	B	802	EDO	O1-C1-C2-O2
3	H	801	BME	O1-C1-C2-S2
2	A	803	EDO	O1-C1-C2-O2
4	D	802	PEG	C1-C2-O2-C3
2	B	801	EDO	O1-C1-C2-O2
2	D	801	EDO	O1-C1-C2-O2
2	F	801	EDO	O1-C1-C2-O2

There are no ring outliers.

20 monomers are involved in 60 short contacts:

Mol	Chain	Res	Type	Clashes	Symm-Clashes
5	B	805	PGE	6	0
3	C	801	BME	3	0
3	A	802	BME	3	0
2	C	804	EDO	1	0
2	A	803	EDO	3	0
2	D	801	EDO	1	0
3	B	804	BME	1	0
3	G	801	BME	2	0
3	F	802	BME	2	0
4	B	803	PEG	1	0
2	D	807	EDO	1	0
2	D	808	EDO	6	0
3	D	803	BME	5	0
2	B	802	EDO	1	0

Continued on next page...

Continued from previous page...

Mol	Chain	Res	Type	Clashes	Symm-Clashes
2	D	804	EDO	1	0
4	D	802	PEG	8	0
3	H	801	BME	4	0
2	C	802	EDO	1	0
2	E	801	EDO	5	0
3	E	802	BME	5	0

5.7 Other polymers [i](#)

There are no such residues in this entry.

5.8 Polymer linkage issues [i](#)

There are no chain breaks in this entry.

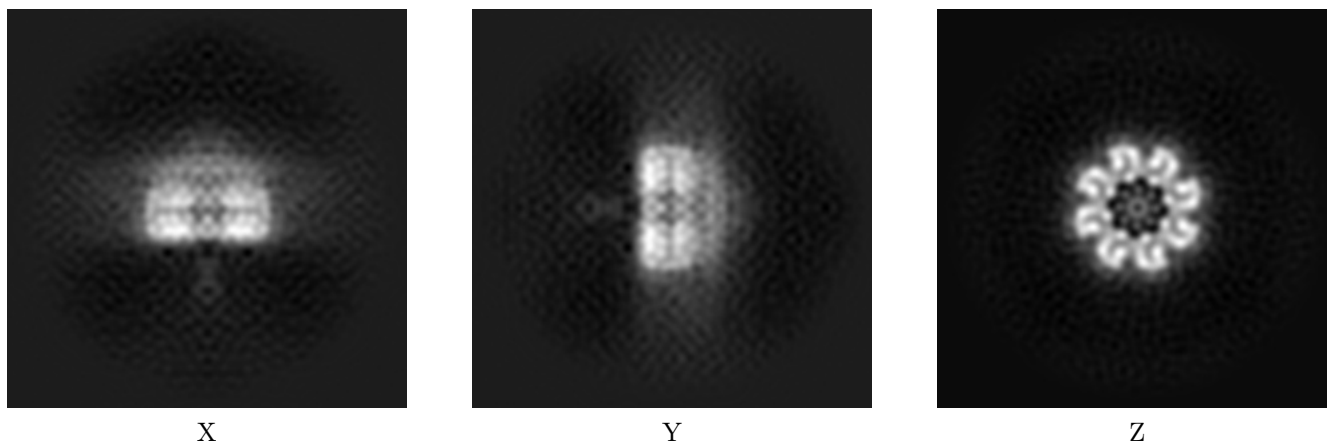
6 Map visualisation [i](#)

This section contains visualisations of the EMDB entry EMD-11190. These allow visual inspection of the internal detail of the map and identification of artifacts.

No raw map or half-maps were deposited for this entry and therefore no images, graphs, etc. pertaining to the raw map can be shown.

6.1 Orthogonal projections [i](#)

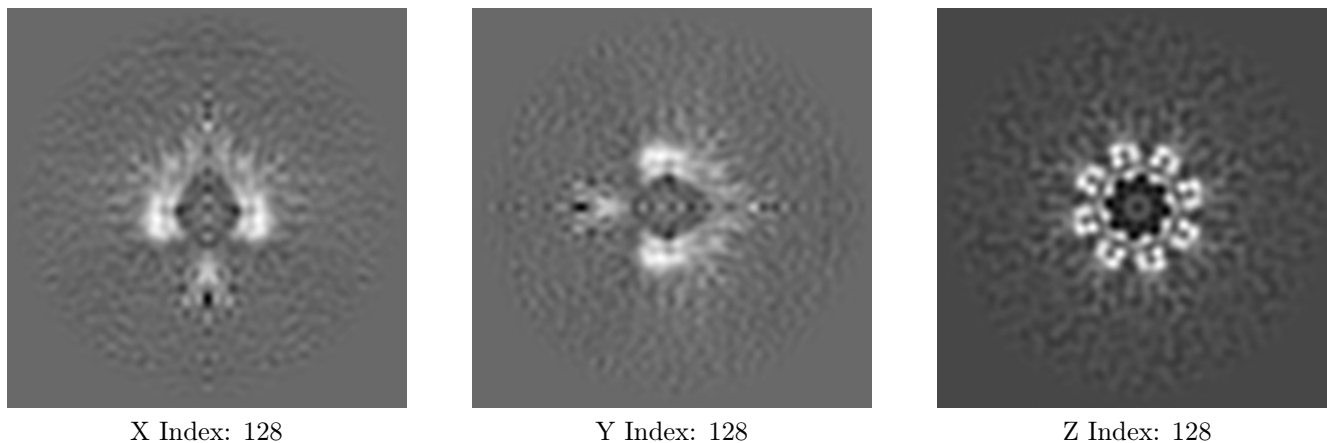
6.1.1 Primary map



The images above show the map projected in three orthogonal directions.

6.2 Central slices [i](#)

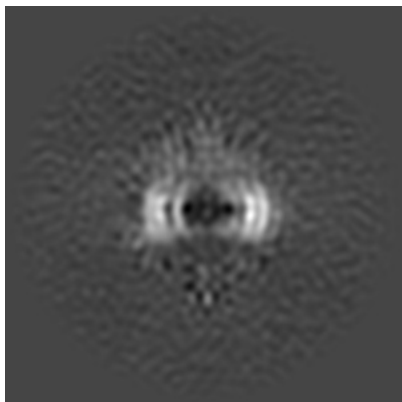
6.2.1 Primary map



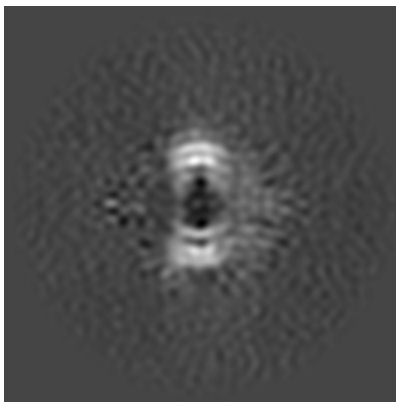
The images above show central slices of the map in three orthogonal directions.

6.3 Largest variance slices [i](#)

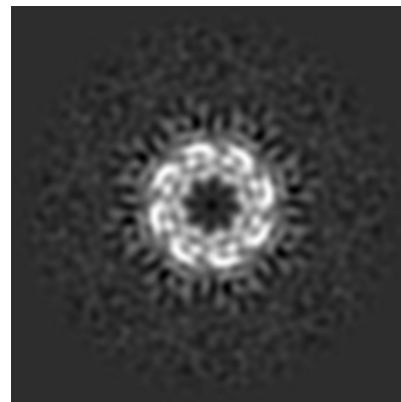
6.3.1 Primary map



X Index: 115



Y Index: 141

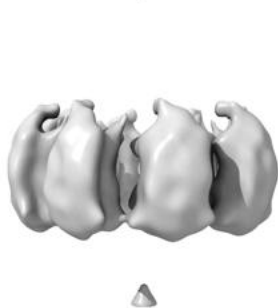


Z Index: 114

The images above show the largest variance slices of the map in three orthogonal directions.

6.4 Orthogonal surface views [i](#)

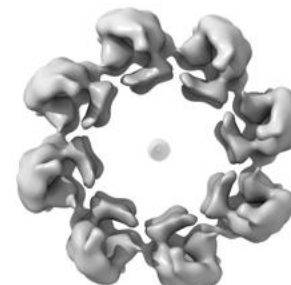
6.4.1 Primary map



X



Y



Z

The images above show the 3D surface view of the map at the recommended contour level 0.35. These images, in conjunction with the slice images, may facilitate assessment of whether an appropriate contour level has been provided.

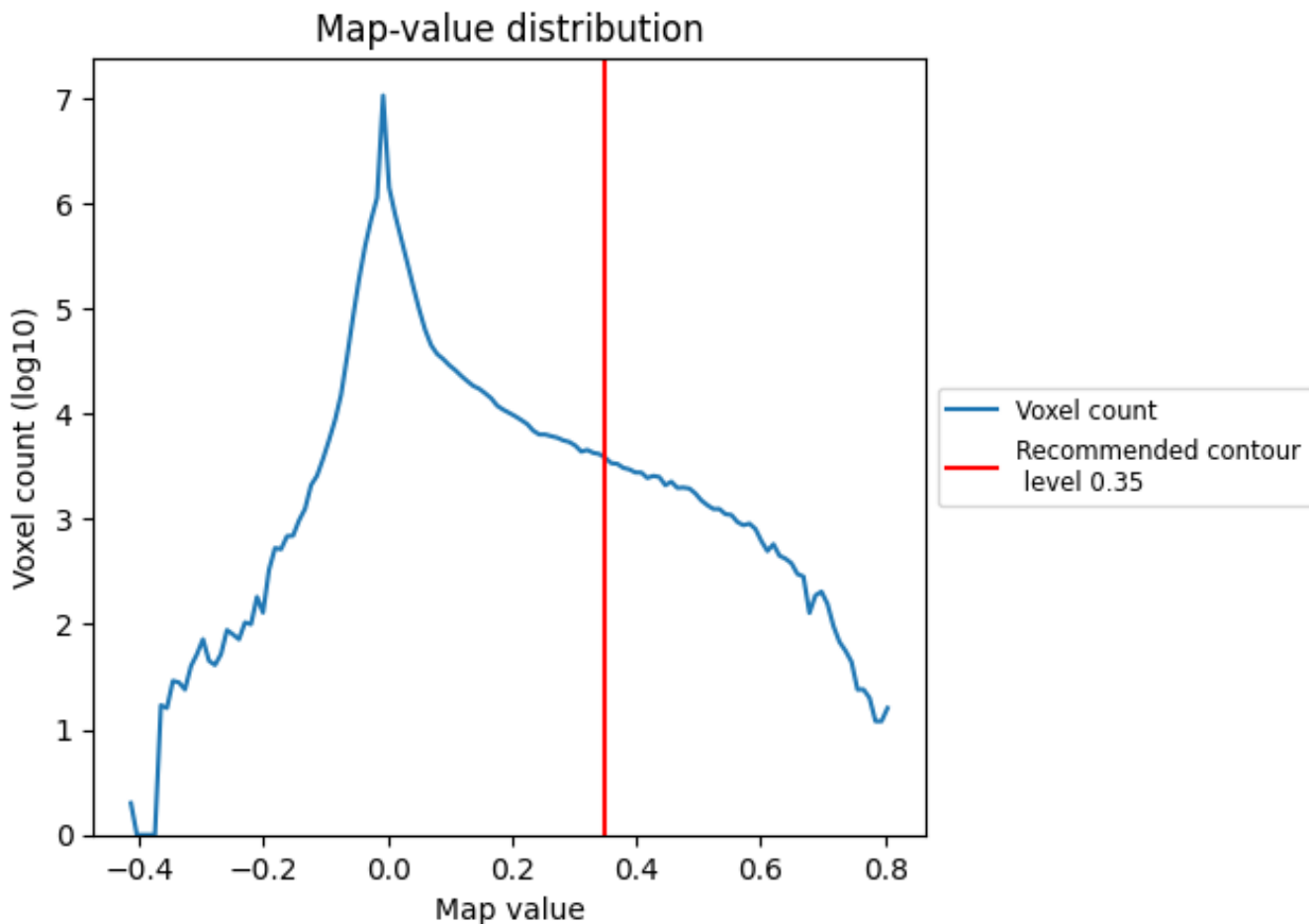
6.5 Mask visualisation

This section was not generated. No masks/segmentation were deposited.

7 Map analysis [i](#)

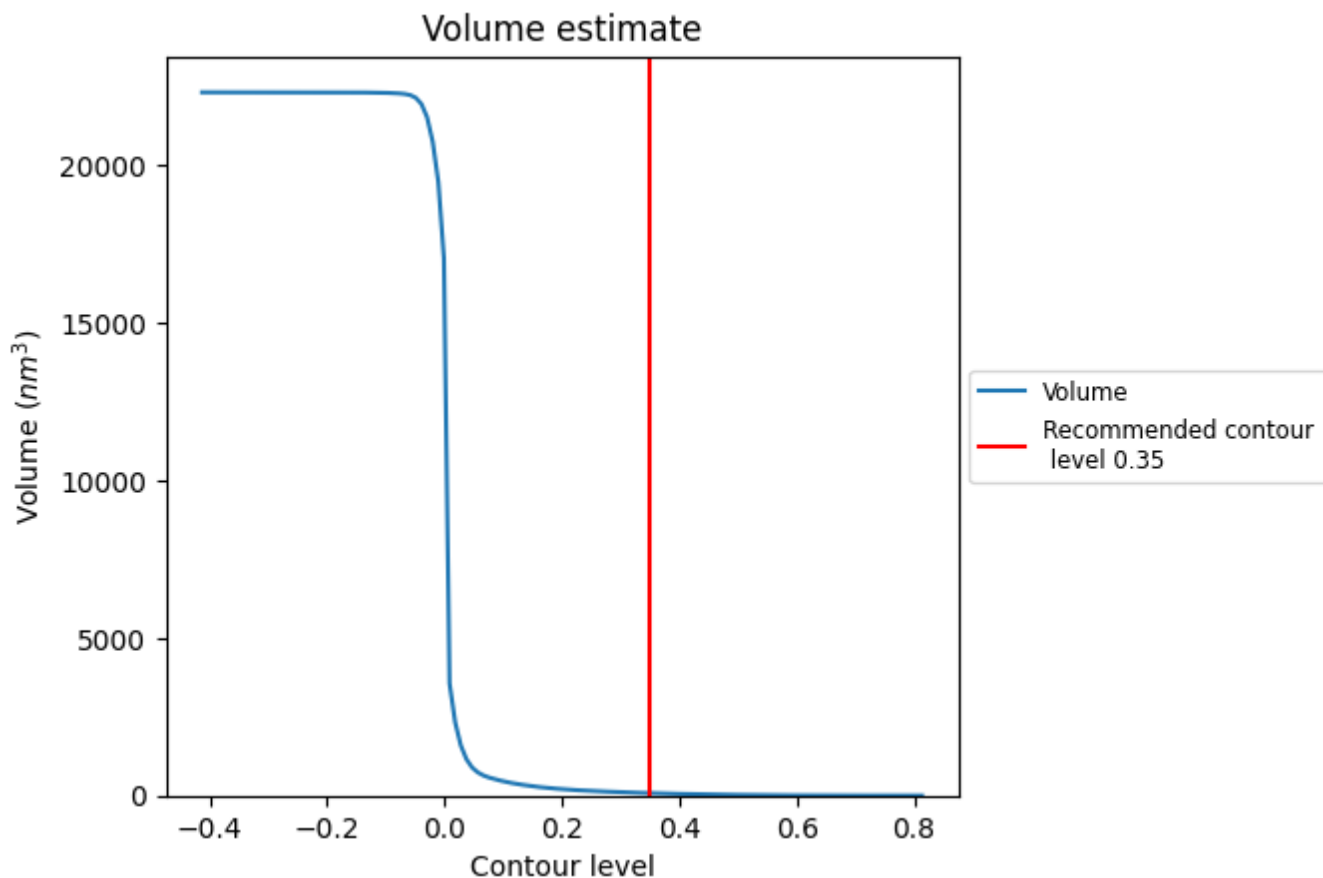
This section contains the results of statistical analysis of the map.

7.1 Map-value distribution [i](#)



The map-value distribution is plotted in 128 intervals along the x-axis. The y-axis is logarithmic. A spike in this graph at zero usually indicates that the volume has been masked.

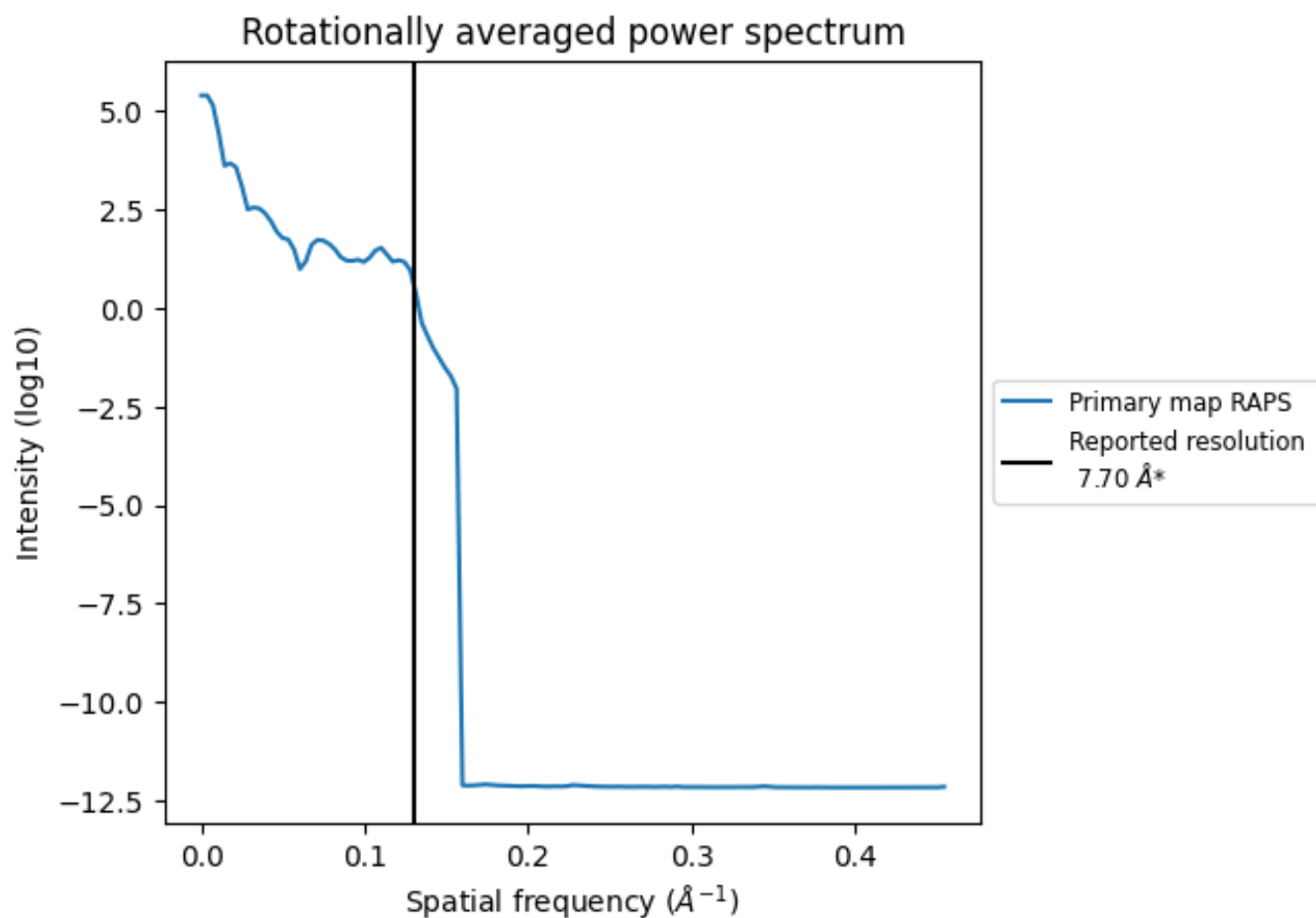
7.2 Volume estimate [i](#)



The volume at the recommended contour level is 76 nm³; this corresponds to an approximate mass of 69 kDa.

The volume estimate graph shows how the enclosed volume varies with the contour level. The recommended contour level is shown as a vertical line and the intersection between the line and the curve gives the volume of the enclosed surface at the given level.

7.3 Rotationally averaged power spectrum [i](#)



*Reported resolution corresponds to spatial frequency of 0.130 Å⁻¹

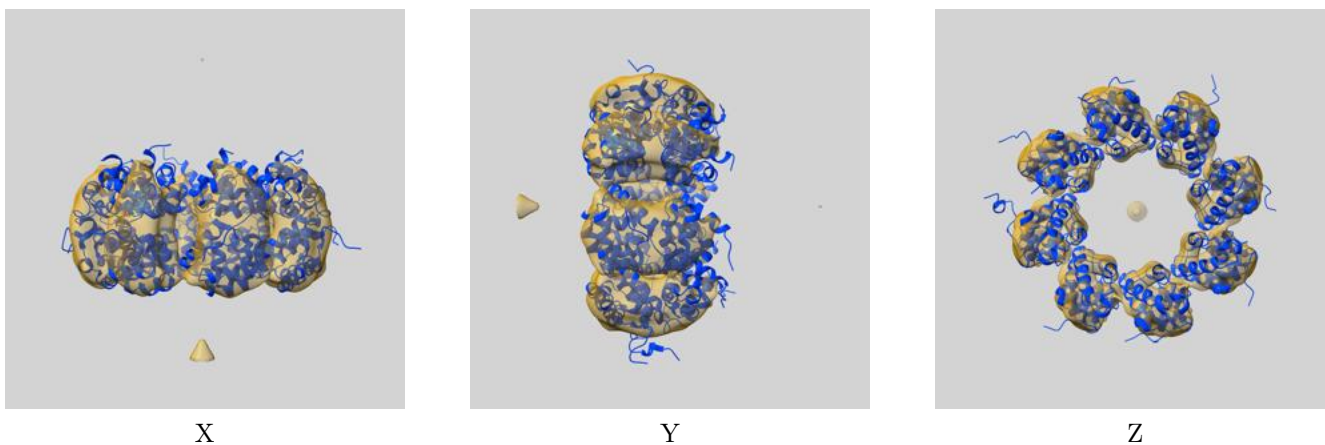
8 Fourier-Shell correlation

This section was not generated. No FSC curve or half-maps provided.

9 Map-model fit [i](#)

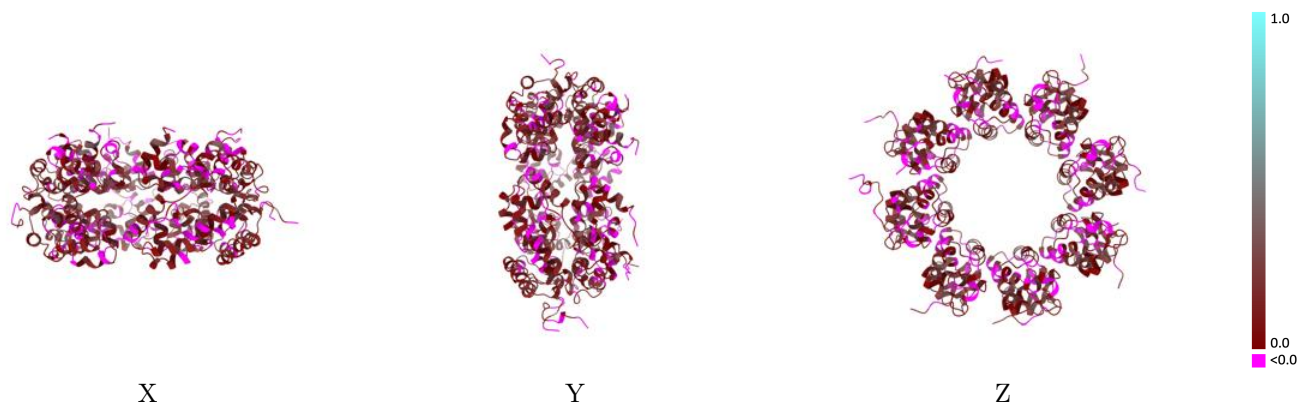
This section contains information regarding the fit between EMDB map EMD-11190 and PDB model 6ZG0. Per-residue inclusion information can be found in section 3 on page 14.

9.1 Map-model overlay [i](#)



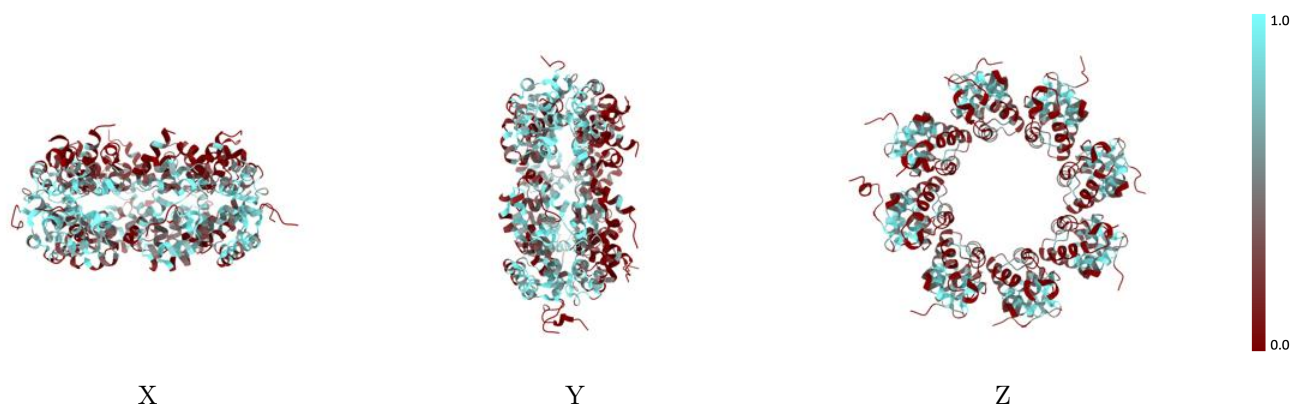
The images above show the 3D surface view of the map at the recommended contour level 0.35 at 50% transparency in yellow overlaid with a ribbon representation of the model coloured in blue. These images allow for the visual assessment of the quality of fit between the atomic model and the map.

9.2 Q-score mapped to coordinate model [i](#)



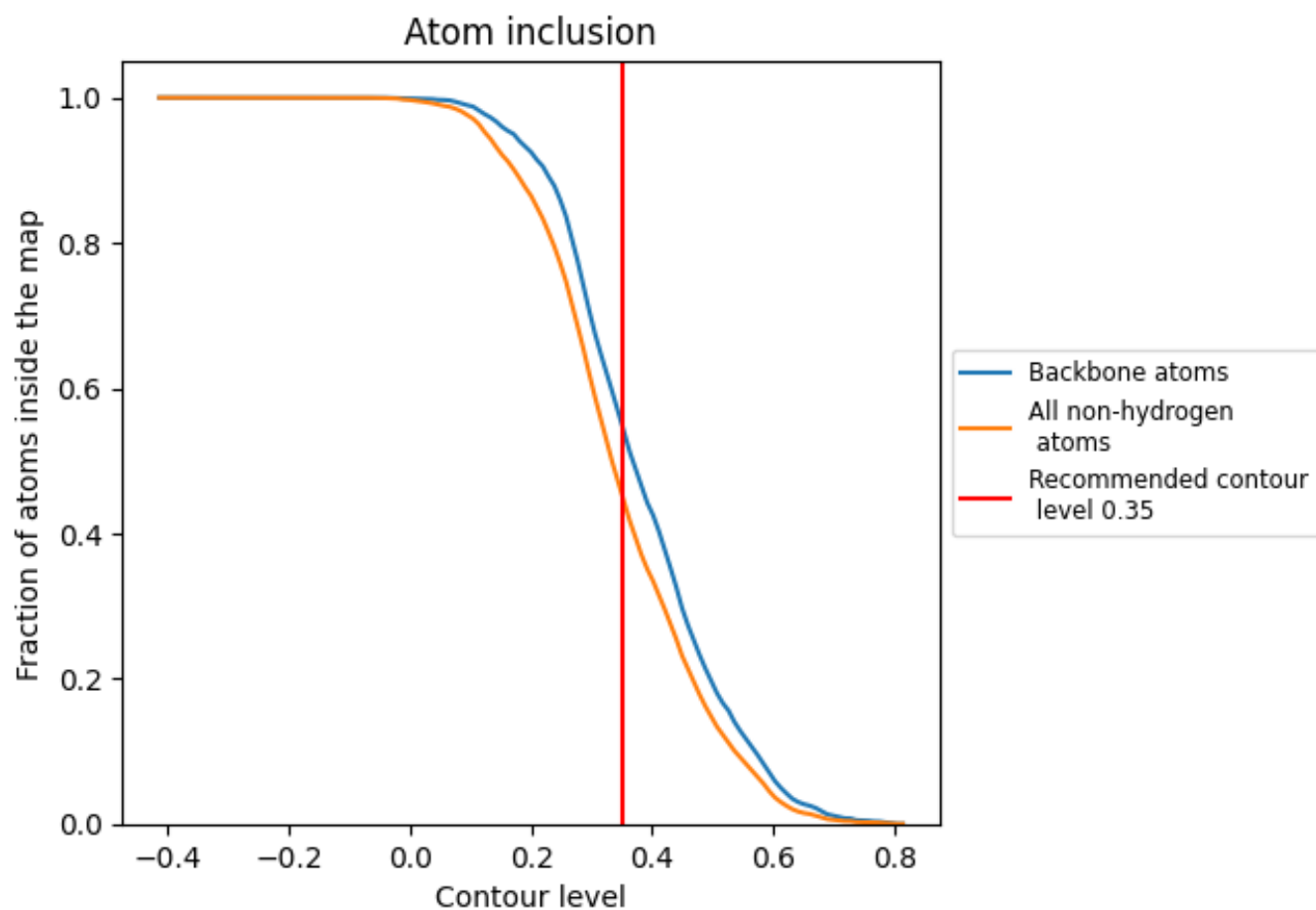
The images above show the model with each residue coloured according to its Q-score. This shows their resolvability in the map with higher Q-score values reflecting better resolvability. Please note: Q-score is calculating the resolvability of atoms, and thus high values are only expected at resolutions at which atoms can be resolved. Low Q-score values may therefore be expected for many entries.

9.3 Atom inclusion mapped to coordinate model [i](#)



The images above show the model with each residue coloured according to its atom inclusion. This shows to what extent they are inside the map at the recommended contour level (0.35).

9.4 Atom inclusion [i](#)



At the recommended contour level, 55% of all backbone atoms, 45% of all non-hydrogen atoms, are inside the map.

9.5 Map-model fit summary [i](#)

The table lists the average atom inclusion at the recommended contour level (0.35) and Q-score for the entire model and for each chain.

Chain	Atom inclusion	Q-score
All	█ 0.4538	█ 0.0910
A	█ 0.4681	█ 0.0910
B	█ 0.4263	█ 0.0770
C	█ 0.4553	█ 0.0930
D	█ 0.4568	█ 0.0920
E	█ 0.4506	█ 0.0960
F	█ 0.4595	█ 0.0910
G	█ 0.4605	█ 0.0960
H	█ 0.4564	█ 0.0920

