



Full wwPDB X-ray Structure Validation Report ⓘ

Aug 9, 2022 – 04:24 pm BST

PDB ID : 6Z2N
Title : Crystal structure of the ferric enterobactin receptor (PfeA) in complex with BCV-L6
Authors : Naismith, J.H.; Moynie, L.M.
Deposited on : 2020-05-18
Resolution : 3.03 Å(reported)

This is a Full wwPDB X-ray Structure Validation Report for a publicly released PDB entry.

We welcome your comments at validation@mail.wwpdb.org

A user guide is available at

<https://www.wwpdb.org/validation/2017/XrayValidationReportHelp>

with specific help available everywhere you see the ⓘ symbol.

The types of validation reports are described at <http://www.wwpdb.org/validation/2017/FAQs#types>.

The following versions of software and data (see [references ⓘ](#)) were used in the production of this report:

MolProbity : 4.02b-467
Mogul : 1.8.4, CSD as541be (2020)
Xtriage (Phenix) : 1.13
EDS : 2.29
buster-report : 1.1.7 (2018)
Percentile statistics : 20191225.v01 (using entries in the PDB archive December 25th 2019)
Refmac : 5.8.0267
CCP4 : 7.1.010 (Gargrove)
Ideal geometry (proteins) : Engh & Huber (2001)
Ideal geometry (DNA, RNA) : Parkinson et al. (1996)
Validation Pipeline (wwPDB-VP) : 2.29

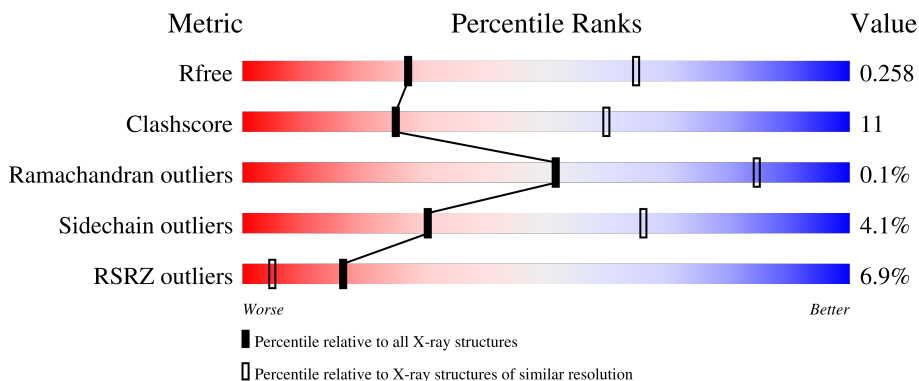
1 Overall quality at a glance

The following experimental techniques were used to determine the structure:

X-RAY DIFFRACTION

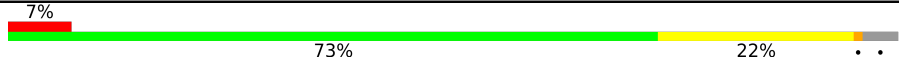
The reported resolution of this entry is 3.03 Å.

Percentile scores (ranging between 0-100) for global validation metrics of the entry are shown in the following graphic. The table shows the number of entries on which the scores are based.



Metric	Whole archive (#Entries)	Similar resolution (#Entries, resolution range(Å))
R_{free}	130704	2399 (3.04-3.00)
Clashscore	141614	2734 (3.04-3.00)
Ramachandran outliers	138981	2640 (3.04-3.00)
Sidechain outliers	138945	2643 (3.04-3.00)
RSRZ outliers	127900	2287 (3.04-3.00)

The table below summarises the geometric issues observed across the polymeric chains and their fit to the electron density. The red, orange, yellow and green segments of the lower bar indicate the fraction of residues that contain outliers for ≥ 3 , 2, 1 and 0 types of geometric quality criteria respectively. A grey segment represents the fraction of residues that are not modelled. The numeric value for each fraction is indicated below the corresponding segment, with a dot representing fractions $\leq 5\%$. The upper red bar (where present) indicates the fraction of residues that have poor fit to the electron density. The numeric value is given above the bar.

Mol	Chain	Length	Quality of chain
1	AAA	724	

2 Entry composition [i](#)

There are 4 unique types of molecules in this entry. The entry contains 5405 atoms, of which 0 are hydrogens and 0 are deuteriums.

In the tables below, the ZeroOcc column contains the number of atoms modelled with zero occupancy, the AltConf column contains the number of residues with at least one atom in alternate conformation and the Trace column contains the number of residues modelled with at most 2 atoms.

- Molecule 1 is a protein called Ferric enterobactin receptor.

Mol	Chain	Residues	Atoms					ZeroOcc	AltConf	Trace
			Total	C	N	O	S			
1	AAA	698	5370	3322	963	1074	11	0	0	0

There are 3 discrepancies between the modelled and reference sequences:

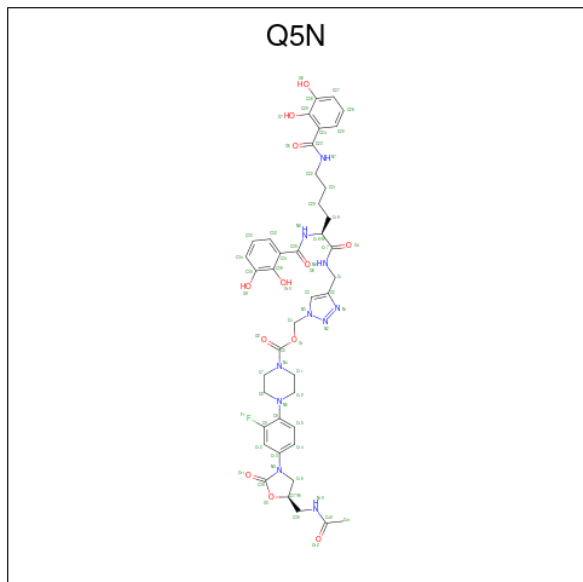
Chain	Residue	Modelled	Actual	Comment	Reference
AAA	-2	GLY	-	expression tag	UNP Q05098
AAA	-1	ALA	-	expression tag	UNP Q05098
AAA	0	MET	-	expression tag	UNP Q05098

- Molecule 2 is 1,2-ETHANEDIOL (three-letter code: EDO) (formula: C₂H₆O₂).



Mol	Chain	Residues	Atoms			ZeroOcc	AltConf
			Total	C	O		
2	AAA	1	4	2	2	0	0

- Molecule 3 is BCV-L6 (three-letter code: Q5N) (formula: $C_{41}H_{47}FN_{10}O_{12}$) (labeled as "Ligand of Interest" by depositor).



Mol	Chain	Residues	Atoms				ZeroOcc	AltConf
			Total	C	N	O		
3	AAA	1	30	20	3	7	0	0

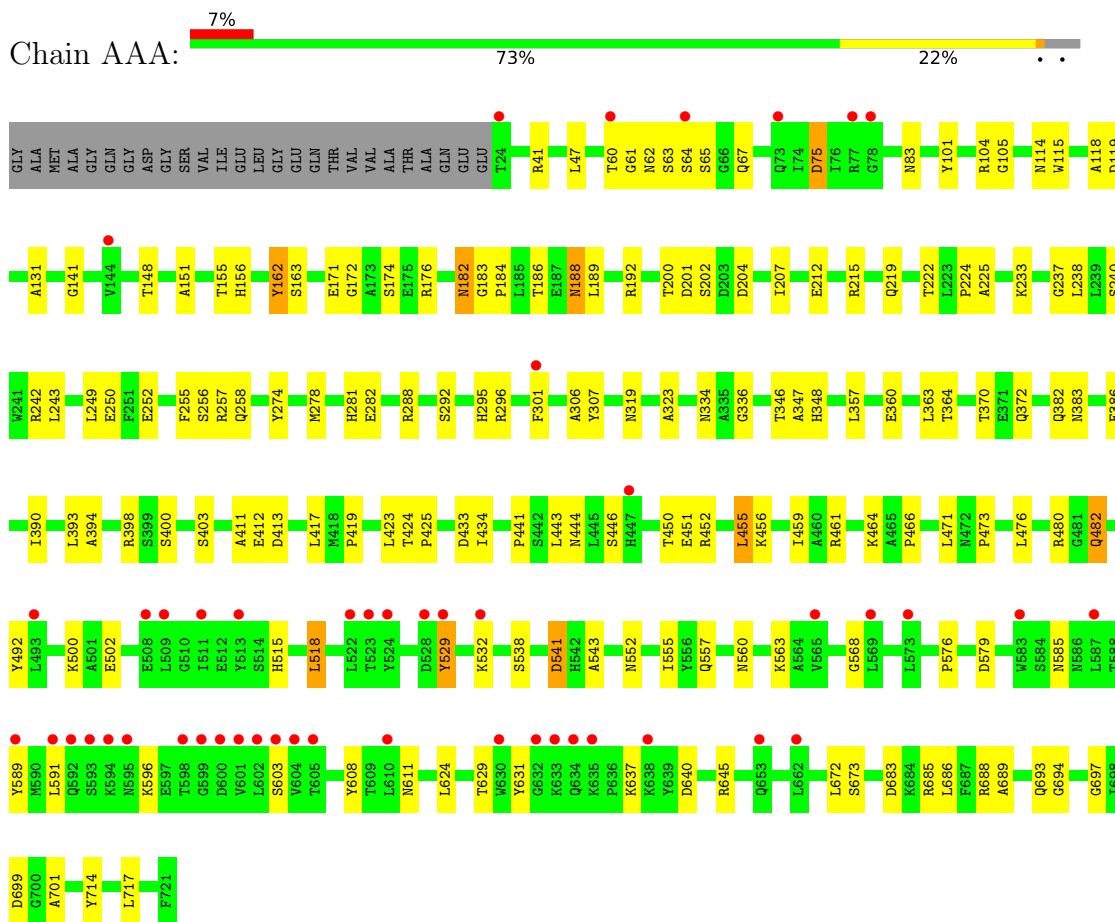
- Molecule 4 is FE (III) ION (three-letter code: FE) (formula: Fe).

Mol	Chain	Residues	Atoms		ZeroOcc	AltConf
			Total	Fe		
4	AAA	1	1	1	0	0

3 Residue-property plots

These plots are drawn for all protein, RNA, DNA and oligosaccharide chains in the entry. The first graphic for a chain summarises the proportions of the various outlier classes displayed in the second graphic. The second graphic shows the sequence view annotated by issues in geometry and electron density. Residues are color-coded according to the number of geometric quality criteria for which they contain at least one outlier: green = 0, yellow = 1, orange = 2 and red = 3 or more. A red dot above a residue indicates a poor fit to the electron density ($RSRZ > 2$). Stretches of 2 or more consecutive residues without any outlier are shown as a green connector. Residues present in the sample, but not in the model, are shown in grey.

- Molecule 1: Ferric enterobactin receptor



4 Data and refinement statistics

Property	Value	Source
Space group	P 21 21 2	Depositor
Cell constants a, b, c, α , β , γ	86.24Å 156.62Å 77.49Å 90.00° 90.00° 90.00°	Depositor
Resolution (Å)	75.66 – 3.03 75.55 – 3.03	Depositor EDS
% Data completeness (in resolution range)	99.8 (75.66-3.03) 99.8 (75.55-3.03)	Depositor EDS
R_{merge}	0.07	Depositor
R_{sym}	(Not available)	Depositor
$\langle I/\sigma(I) \rangle$ ¹	1.29 (at 3.01Å)	Xtriage
Refinement program	REFMAC 5.8.0258	Depositor
R, R_{free}	0.221 , 0.262 0.219 , 0.258	Depositor DCC
R_{free} test set	1031 reflections (4.89%)	wwPDB-VP
Wilson B-factor (Å ²)	112.7	Xtriage
Anisotropy	0.302	Xtriage
Bulk solvent k_{sol} (e/Å ³), B_{sol} (Å ²)	(Not available) , (Not available)	EDS
L-test for twinning ²	$\langle L \rangle = 0.49$, $\langle L^2 \rangle = 0.33$	Xtriage
Estimated twinning fraction	No twinning to report.	Xtriage
F_o, F_c correlation	0.91	EDS
Total number of atoms	5405	wwPDB-VP
Average B, all atoms (Å ²)	134.0	wwPDB-VP

Xtriage's analysis on translational NCS is as follows: *The largest off-origin peak in the Patterson function is 4.86% of the height of the origin peak. No significant pseudotranslation is detected.*

¹Intensities estimated from amplitudes.

²Theoretical values of $\langle |L| \rangle$, $\langle L^2 \rangle$ for acentric reflections are 0.5, 0.333 respectively for untwinned datasets, and 0.375, 0.2 for perfectly twinned datasets.

5 Model quality [i](#)

5.1 Standard geometry [i](#)

Bond lengths and bond angles in the following residue types are not validated in this section: EDO, Q5N, FE

The Z score for a bond length (or angle) is the number of standard deviations the observed value is removed from the expected value. A bond length (or angle) with $|Z| > 5$ is considered an outlier worth inspection. RMSZ is the root-mean-square of all Z scores of the bond lengths (or angles).

Mol	Chain	Bond lengths		Bond angles	
		RMSZ	# Z >5	RMSZ	# Z >5
1	AAA	0.59	0/5481	0.65	0/7434

There are no bond length outliers.

There are no bond angle outliers.

There are no chirality outliers.

There are no planarity outliers.

5.2 Too-close contacts [i](#)

In the following table, the Non-H and H(model) columns list the number of non-hydrogen atoms and hydrogen atoms in the chain respectively. The H(added) column lists the number of hydrogen atoms added and optimized by MolProbity. The Clashes column lists the number of clashes within the asymmetric unit, whereas Symm-Clashes lists symmetry-related clashes.

Mol	Chain	Non-H	H(model)	H(added)	Clashes	Symm-Clashes
1	AAA	5370	0	5153	113	0
2	AAA	4	0	4	0	0
3	AAA	30	0	0	5	0
4	AAA	1	0	0	0	0
All	All	5405	0	5157	113	0

The all-atom clashscore is defined as the number of clashes found per 1000 atoms (including hydrogen atoms). The all-atom clashscore for this structure is 11.

All (113) close contacts within the same asymmetric unit are listed below, sorted by their clash magnitude.

Atom-1	Atom-2	Interatomic distance (Å)	Clash overlap (Å)
1:AAA:446:SER:HB2	1:AAA:456:LYS:HE3	1.54	0.88
1:AAA:394:ALA:O	1:AAA:398:ARG:HD3	1.76	0.85
1:AAA:464:LYS:HB3	1:AAA:502:GLU:HB2	1.63	0.79
1:AAA:480:ARG:NH1	3:AAA:802:Q5N:C32	2.48	0.77
1:AAA:257:ARG:NH1	1:AAA:282:GLU:OE2	2.18	0.77
1:AAA:64:SER:HB2	1:AAA:637:LYS:HB3	1.67	0.75
1:AAA:480:ARG:HG3	3:AAA:802:Q5N:C34	2.18	0.73
1:AAA:151:ALA:HA	1:AAA:182:ASN:HB2	1.72	0.72
1:AAA:693:GLN:NE2	1:AAA:694:GLY:O	2.23	0.71
1:AAA:334:ASN:O	1:AAA:334:ASN:OD1	2.10	0.69
1:AAA:172:GLY:HA3	1:AAA:201:ASP:O	1.92	0.69
1:AAA:480:ARG:HG3	3:AAA:802:Q5N:C35	2.22	0.69
1:AAA:243:LEU:HD12	1:AAA:243:LEU:N	2.08	0.68
1:AAA:306:ALA:HA	1:AAA:348:HIS:O	1.94	0.67
1:AAA:423:LEU:HD11	1:AAA:443:LEU:HD11	1.76	0.67
1:AAA:60:THR:HG22	1:AAA:75:ASP:HB2	1.79	0.64
1:AAA:672:LEU:HD11	1:AAA:717:LEU:HD11	1.80	0.63
1:AAA:568:GLY:HA2	1:AAA:591:LEU:HG	1.81	0.63
1:AAA:482:GLN:HB3	3:AAA:802:Q5N:C28	2.29	0.62
1:AAA:480:ARG:NH1	3:AAA:802:Q5N:C31	2.63	0.60
1:AAA:174:SER:OG	1:AAA:200:THR:HG23	2.01	0.60
1:AAA:60:THR:HG23	1:AAA:61:GLY:O	2.02	0.60
1:AAA:65:SER:HB2	1:AAA:67:GLN:HG3	1.84	0.59
1:AAA:225:ALA:O	1:AAA:688:ARG:HD3	2.03	0.58
1:AAA:148:THR:OG1	1:AAA:192:ARG:NH2	2.36	0.57
1:AAA:446:SER:HB2	1:AAA:456:LYS:CE	2.33	0.57
1:AAA:452:ARG:HD3	1:AAA:515:HIS:CG	2.39	0.57
1:AAA:455:LEU:C	1:AAA:455:LEU:HD23	2.25	0.57
1:AAA:188:ASN:O	1:AAA:242:ARG:HG2	2.06	0.56
1:AAA:383:ASN:OD1	1:AAA:383:ASN:C	2.43	0.56
1:AAA:393:LEU:HD12	1:AAA:473:PRO:O	2.06	0.56
1:AAA:250:GLU:CD	1:AAA:296:ARG:HH12	2.10	0.56
1:AAA:186:THR:OG1	1:AAA:189:LEU:N	2.37	0.55
1:AAA:476:LEU:HD11	1:AAA:492:TYR:HB3	1.88	0.55
1:AAA:394:ALA:O	1:AAA:398:ARG:CD	2.54	0.54
1:AAA:466:PRO:HB2	1:AAA:471:LEU:HD13	1.90	0.53
1:AAA:357:LEU:O	1:AAA:357:LEU:HG	2.08	0.53
1:AAA:640:ASP:HB2	1:AAA:693:GLN:OE1	2.10	0.52
1:AAA:212:GLU:O	1:AAA:212:GLU:HG2	2.10	0.52
1:AAA:278:MET:O	1:AAA:281:HIS:HB2	2.09	0.52
1:AAA:188:ASN:N	1:AAA:188:ASN:OD1	2.43	0.51
1:AAA:689:ALA:HB3	1:AAA:701:ALA:HB1	1.92	0.51

Continued on next page...

Continued from previous page...

Atom-1	Atom-2	Interatomic distance (Å)	Clash overlap (Å)
1:AAA:518:LEU:HD22	1:AAA:576:PRO:HD2	1.93	0.51
1:AAA:60:THR:HG22	1:AAA:75:ASP:CB	2.40	0.51
1:AAA:115:TRP:CE2	1:AAA:288:ARG:HD2	2.46	0.51
1:AAA:450:THR:HG22	1:AAA:451:GLU:N	2.27	0.50
1:AAA:446:SER:CB	1:AAA:456:LYS:HE3	2.34	0.50
1:AAA:162:TYR:C	1:AAA:162:TYR:CD1	2.84	0.50
1:AAA:243:LEU:N	1:AAA:243:LEU:CD1	2.74	0.50
1:AAA:155:THR:HG22	1:AAA:184:PRO:HD2	1.93	0.50
1:AAA:459:ILE:O	1:AAA:459:ILE:HG23	2.12	0.50
1:AAA:114:ASN:HB3	1:AAA:258:GLN:HE22	1.77	0.49
1:AAA:413:ASP:O	1:AAA:425:PRO:HD2	2.12	0.49
1:AAA:364:THR:O	1:AAA:411:ALA:HA	2.13	0.49
1:AAA:306:ALA:CA	1:AAA:348:HIS:O	2.58	0.49
1:AAA:629:THR:HG21	1:AAA:631:TYR:CZ	2.47	0.49
1:AAA:685:ARG:C	1:AAA:686:LEU:HD12	2.33	0.49
1:AAA:645:ARG:HH11	1:AAA:645:ARG:HG3	1.76	0.48
1:AAA:83:ASN:HB3	1:AAA:141:GLY:H	1.79	0.48
1:AAA:237:GLY:O	1:AAA:252:GLU:HB2	2.14	0.48
1:AAA:423:LEU:CD1	1:AAA:443:LEU:HD11	2.43	0.48
1:AAA:433:ASP:OD1	1:AAA:434:ILE:HG13	2.13	0.48
1:AAA:390:ILE:HD11	1:AAA:492:TYR:CD2	2.48	0.48
1:AAA:238:LEU:HD21	1:AAA:240:SER:OG	2.14	0.48
1:AAA:543:ALA:O	1:AAA:552:ASN:HA	2.13	0.47
1:AAA:243:LEU:HD12	1:AAA:243:LEU:H	1.79	0.47
1:AAA:417:LEU:HD11	1:AAA:423:LEU:HB2	1.95	0.47
1:AAA:119:ASP:OD2	1:AAA:176:ARG:NH1	2.46	0.47
1:AAA:563:LYS:O	1:AAA:596:LYS:HB2	2.14	0.47
1:AAA:101:TYR:CZ	1:AAA:105:GLY:HA2	2.49	0.47
1:AAA:204:ASP:O	1:AAA:207:ILE:HG22	2.15	0.47
1:AAA:131:ALA:HA	1:AAA:444:ASN:HD21	1.80	0.47
1:AAA:307:TYR:O	1:AAA:347:ALA:HA	2.15	0.47
1:AAA:518:LEU:CD2	1:AAA:576:PRO:HD2	2.45	0.47
1:AAA:372:GLN:O	1:AAA:403:SER:HA	2.15	0.46
1:AAA:233:LYS:O	1:AAA:256:SER:HA	2.16	0.46
1:AAA:114:ASN:HB3	1:AAA:258:GLN:NE2	2.31	0.45
1:AAA:323:ALA:HB2	1:AAA:382:GLN:NE2	2.32	0.45
1:AAA:459:ILE:O	1:AAA:459:ILE:CG2	2.64	0.45
1:AAA:683:ASP:O	1:AAA:685:ARG:HG3	2.15	0.45
1:AAA:249:LEU:HD12	1:AAA:295:HIS:HB2	1.99	0.45
1:AAA:446:SER:CB	1:AAA:456:LYS:CE	2.93	0.45
1:AAA:346:THR:HG23	1:AAA:370:THR:HG22	1.99	0.45

Continued on next page...

Continued from previous page...

Atom-1	Atom-2	Interatomic distance (Å)	Clash overlap (Å)
1:AAA:162:TYR:CE2	1:AAA:714:TYR:HB2	2.52	0.44
1:AAA:645:ARG:HG3	1:AAA:645:ARG:NH1	2.31	0.44
1:AAA:390:ILE:HG12	1:AAA:555:ILE:HD11	1.98	0.44
1:AAA:171:GLU:OE2	1:AAA:685:ARG:NH2	2.38	0.44
1:AAA:500:LYS:O	1:AAA:560:ASN:ND2	2.48	0.43
1:AAA:363:LEU:HD12	1:AAA:412:GLU:O	2.18	0.43
1:AAA:243:LEU:CD1	1:AAA:243:LEU:H	2.29	0.43
1:AAA:386:GLU:O	1:AAA:386:GLU:CG	2.66	0.43
1:AAA:433:ASP:OD1	1:AAA:433:ASP:C	2.56	0.43
1:AAA:319:ASN:ND2	1:AAA:336:GLY:O	2.48	0.43
1:AAA:224:PRO:HG3	1:AAA:689:ALA:C	2.39	0.43
1:AAA:215:ARG:HA	1:AAA:697:GLY:O	2.18	0.43
1:AAA:62:ASN:HB3	1:AAA:105:GLY:O	2.20	0.42
1:AAA:585:ASN:HA	1:AAA:611:ASN:O	2.20	0.42
1:AAA:47:LEU:HD21	1:AAA:118:ALA:HA	2.02	0.42
1:AAA:219:GLN:O	1:AAA:222:THR:HG23	2.19	0.41
1:AAA:529:TYR:CZ	1:AAA:532:LYS:HG3	2.55	0.41
1:AAA:155:THR:HG22	1:AAA:183:GLY:HA3	2.01	0.41
1:AAA:589:TYR:CD2	1:AAA:608:TYR:HB3	2.55	0.41
1:AAA:672:LEU:HD12	1:AAA:672:LEU:HA	1.86	0.41
1:AAA:63:SER:CB	1:AAA:104:ARG:O	2.69	0.41
1:AAA:156:HIS:HB2	1:AAA:182:ASN:OD1	2.20	0.41
1:AAA:155:THR:CG2	1:AAA:184:PRO:HD2	2.51	0.41
1:AAA:252:GLU:HG2	1:AAA:292:SER:OG	2.21	0.41
1:AAA:541:ASP:HB3	1:AAA:555:ILE:HD12	2.02	0.41
1:AAA:624:LEU:HD23	1:AAA:624:LEU:HA	1.92	0.41
1:AAA:441:PRO:HD2	1:AAA:461:ARG:HB3	2.03	0.40
1:AAA:413:ASP:O	1:AAA:424:THR:HA	2.21	0.40
1:AAA:60:THR:CG2	1:AAA:75:ASP:HB2	2.48	0.40
1:AAA:75:ASP:OD1	1:AAA:75:ASP:C	2.60	0.40

There are no symmetry-related clashes.

5.3 Torsion angles [\(i\)](#)

5.3.1 Protein backbone [\(i\)](#)

In the following table, the Percentiles column shows the percent Ramachandran outliers of the chain as a percentile score with respect to all X-ray entries followed by that with respect to entries of similar resolution.

The Analysed column shows the number of residues for which the backbone conformation was analysed, and the total number of residues.

Mol	Chain	Analysed	Favoured	Allowed	Outliers	Percentiles
1	AAA	696/724 (96%)	671 (96%)	24 (3%)	1 (0%)	51 85

All (1) Ramachandran outliers are listed below:

Mol	Chain	Res	Type
1	AAA	419	PRO

5.3.2 Protein sidechains [i](#)

In the following table, the Percentiles column shows the percent sidechain outliers of the chain as a percentile score with respect to all X-ray entries followed by that with respect to entries of similar resolution.

The Analysed column shows the number of residues for which the sidechain conformation was analysed, and the total number of residues.

Mol	Chain	Analysed	Rotameric	Outliers	Percentiles
1	AAA	567/584 (97%)	544 (96%)	23 (4%)	30 66

All (23) residues with a non-rotameric sidechain are listed below:

Mol	Chain	Res	Type
1	AAA	41	ARG
1	AAA	75	ASP
1	AAA	162	TYR
1	AAA	163	SER
1	AAA	182	ASN
1	AAA	188	ASN
1	AAA	202	SER
1	AAA	255	PHE
1	AAA	274	TYR
1	AAA	301	PHE
1	AAA	360	GLU
1	AAA	400	SER
1	AAA	455	LEU
1	AAA	482	GLN
1	AAA	518	LEU
1	AAA	529	TYR
1	AAA	538	SER
1	AAA	541	ASP

Continued on next page...

Continued from previous page...

Mol	Chain	Res	Type
1	AAA	557	GLN
1	AAA	579	ASP
1	AAA	603	SER
1	AAA	673	SER
1	AAA	699	ASP

Sometimes sidechains can be flipped to improve hydrogen bonding and reduce clashes. There are no such sidechains identified.

5.3.3 RNA [i](#)

There are no RNA molecules in this entry.

5.4 Non-standard residues in protein, DNA, RNA chains [i](#)

There are no non-standard protein/DNA/RNA residues in this entry.

5.5 Carbohydrates [i](#)

There are no monosaccharides in this entry.

5.6 Ligand geometry [i](#)

Of 3 ligands modelled in this entry, 1 is monoatomic - leaving 2 for Mogul analysis.

In the following table, the Counts columns list the number of bonds (or angles) for which Mogul statistics could be retrieved, the number of bonds (or angles) that are observed in the model and the number of bonds (or angles) that are defined in the Chemical Component Dictionary. The Link column lists molecule types, if any, to which the group is linked. The Z score for a bond length (or angle) is the number of standard deviations the observed value is removed from the expected value. A bond length (or angle) with $|Z| > 2$ is considered an outlier worth inspection. RMSZ is the root-mean-square of all Z scores of the bond lengths (or angles).

Mol	Type	Chain	Res	Link	Bond lengths			Bond angles		
					Counts	RMSZ	$\# Z > 2$	Counts	RMSZ	$\# Z > 2$
2	EDO	AAA	801	4	3,3,3	0.06	0	2,2,2	0.05	0
3	Q5N	AAA	802	4	31,31,69	0.71	0	42,42,96	0.91	2 (4%)

In the following table, the Chirals column lists the number of chiral outliers, the number of chiral centers analysed, the number of these observed in the model and the number defined in the

Chemical Component Dictionary. Similar counts are reported in the Torsion and Rings columns. '-' means no outliers of that kind were identified.

Mol	Type	Chain	Res	Link	Chirals	Torsions	Rings
2	EDO	AAA	801	4	-	1/1/1/1	-
3	Q5N	AAA	802	4	-	3/24/24/73	0/2/2/6

There are no bond length outliers.

All (2) bond angle outliers are listed below:

Mol	Chain	Res	Type	Atoms	Z	Observed($^{\circ}$)	Ideal($^{\circ}$)
3	AAA	802	Q5N	C19-C18-N8	2.72	116.38	110.88
3	AAA	802	Q5N	C17-C18-N8	-2.52	104.08	110.18

There are no chirality outliers.

All (4) torsion outliers are listed below:

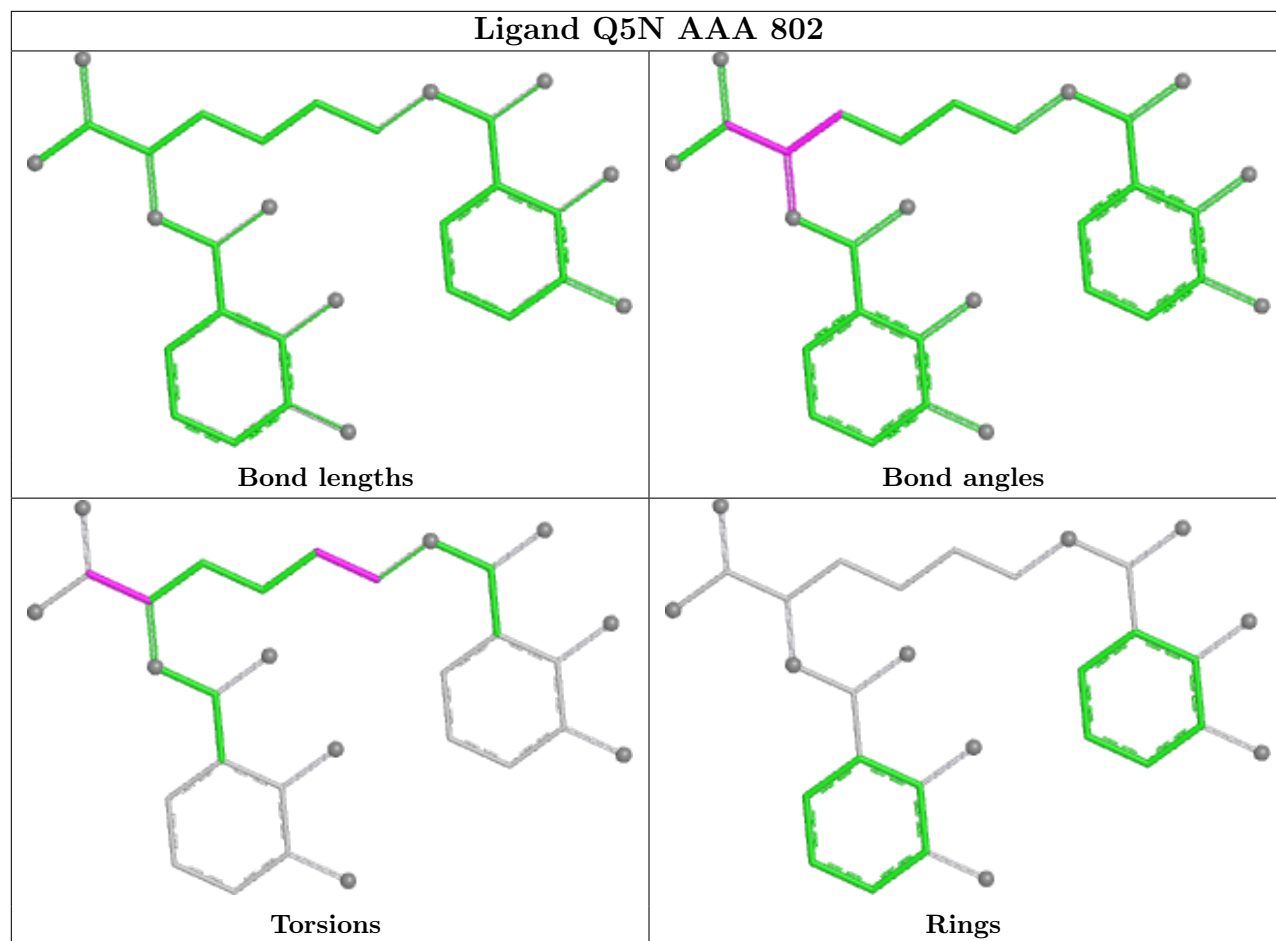
Mol	Chain	Res	Type	Atoms
3	AAA	802	Q5N	N6-C17-C18-C19
3	AAA	802	Q5N	O4-C17-C18-C19
2	AAA	801	EDO	O1-C1-C2-O2
3	AAA	802	Q5N	C20-C21-C22-N7

There are no ring outliers.

1 monomer is involved in 5 short contacts:

Mol	Chain	Res	Type	Clashes	Symm-Clashes
3	AAA	802	Q5N	5	0

The following is a two-dimensional graphical depiction of Mogul quality analysis of bond lengths, bond angles, torsion angles, and ring geometry for all instances of the Ligand of Interest. In addition, ligands with molecular weight > 250 and outliers as shown on the validation Tables will also be included. For torsion angles, if less than 5% of the Mogul distribution of torsion angles is within 10 degrees of the torsion angle in question, then that torsion angle is considered an outlier. Any bond that is central to one or more torsion angles identified as an outlier by Mogul will be highlighted in the graph. For rings, the root-mean-square deviation (RMSD) between the ring in question and similar rings identified by Mogul is calculated over all ring torsion angles. If the average RMSD is greater than 60 degrees and the minimal RMSD between the ring in question and any Mogul-identified rings is also greater than 60 degrees, then that ring is considered an outlier. The outliers are highlighted in purple. The color gray indicates Mogul did not find sufficient equivalents in the CSD to analyse the geometry.



5.7 Other polymers [\(i\)](#)

There are no such residues in this entry.

5.8 Polymer linkage issues [\(i\)](#)

There are no chain breaks in this entry.

6 Fit of model and data

6.1 Protein, DNA and RNA chains

In the following table, the column labelled ‘#RSRZ> 2’ contains the number (and percentage) of RSRZ outliers, followed by percent RSRZ outliers for the chain as percentile scores relative to all X-ray entries and entries of similar resolution. The OWAB column contains the minimum, median, 95th percentile and maximum values of the occupancy-weighted average B-factor per residue. The column labelled ‘Q< 0.9’ lists the number of (and percentage) of residues with an average occupancy less than 0.9.

Mol	Chain	Analysed	<RSRZ>	#RSRZ>2	OWAB(Å ²)	Q<0.9
1	AAA	698/724 (96%)	0.39	48 (6%) 16 5	88, 132, 179, 234	0

All (48) RSRZ outliers are listed below:

Mol	Chain	Res	Type	RSRZ
1	AAA	594	LYS	5.2
1	AAA	591	LEU	4.6
1	AAA	592	GLN	4.3
1	AAA	522	LEU	4.2
1	AAA	599	GLY	4.0
1	AAA	595	ASN	3.9
1	AAA	509	LEU	3.7
1	AAA	635	LYS	3.6
1	AAA	593	SER	3.4
1	AAA	569	LEU	3.4
1	AAA	301	PHE	3.2
1	AAA	24	THR	3.0
1	AAA	603	SER	2.9
1	AAA	638	LYS	2.9
1	AAA	633	LYS	2.9
1	AAA	602	LEU	2.8
1	AAA	523	THR	2.8
1	AAA	605	THR	2.8
1	AAA	573	LEU	2.7
1	AAA	600	ASP	2.6
1	AAA	565	VAL	2.6
1	AAA	511	ILE	2.6
1	AAA	662	LEU	2.6
1	AAA	508	GLU	2.6
1	AAA	144	VAL	2.5
1	AAA	524	TYR	2.5
1	AAA	447	HIS	2.5

Continued on next page...

Continued from previous page...

Mol	Chain	Res	Type	RSRZ
1	AAA	78	GLY	2.5
1	AAA	64	SER	2.4
1	AAA	583	TRP	2.4
1	AAA	60	THR	2.4
1	AAA	630	TRP	2.3
1	AAA	634	GLN	2.3
1	AAA	528	ASP	2.3
1	AAA	587	LEU	2.2
1	AAA	529	TYR	2.2
1	AAA	610	LEU	2.2
1	AAA	632	GLY	2.2
1	AAA	598	THR	2.2
1	AAA	513	TYR	2.2
1	AAA	77	ARG	2.1
1	AAA	589	TYR	2.1
1	AAA	653	GLN	2.1
1	AAA	532	LYS	2.1
1	AAA	601	VAL	2.1
1	AAA	493	LEU	2.1
1	AAA	604	VAL	2.0
1	AAA	73	GLN	2.0

6.2 Non-standard residues in protein, DNA, RNA chains [i](#)

There are no non-standard protein/DNA/RNA residues in this entry.

6.3 Carbohydrates [i](#)

There are no monosaccharides in this entry.

6.4 Ligands [i](#)

In the following table, the Atoms column lists the number of modelled atoms in the group and the number defined in the chemical component dictionary. The B-factors column lists the minimum, median, 95th percentile and maximum values of B factors of atoms in the group. The column labelled 'Q< 0.9' lists the number of atoms with occupancy less than 0.9.

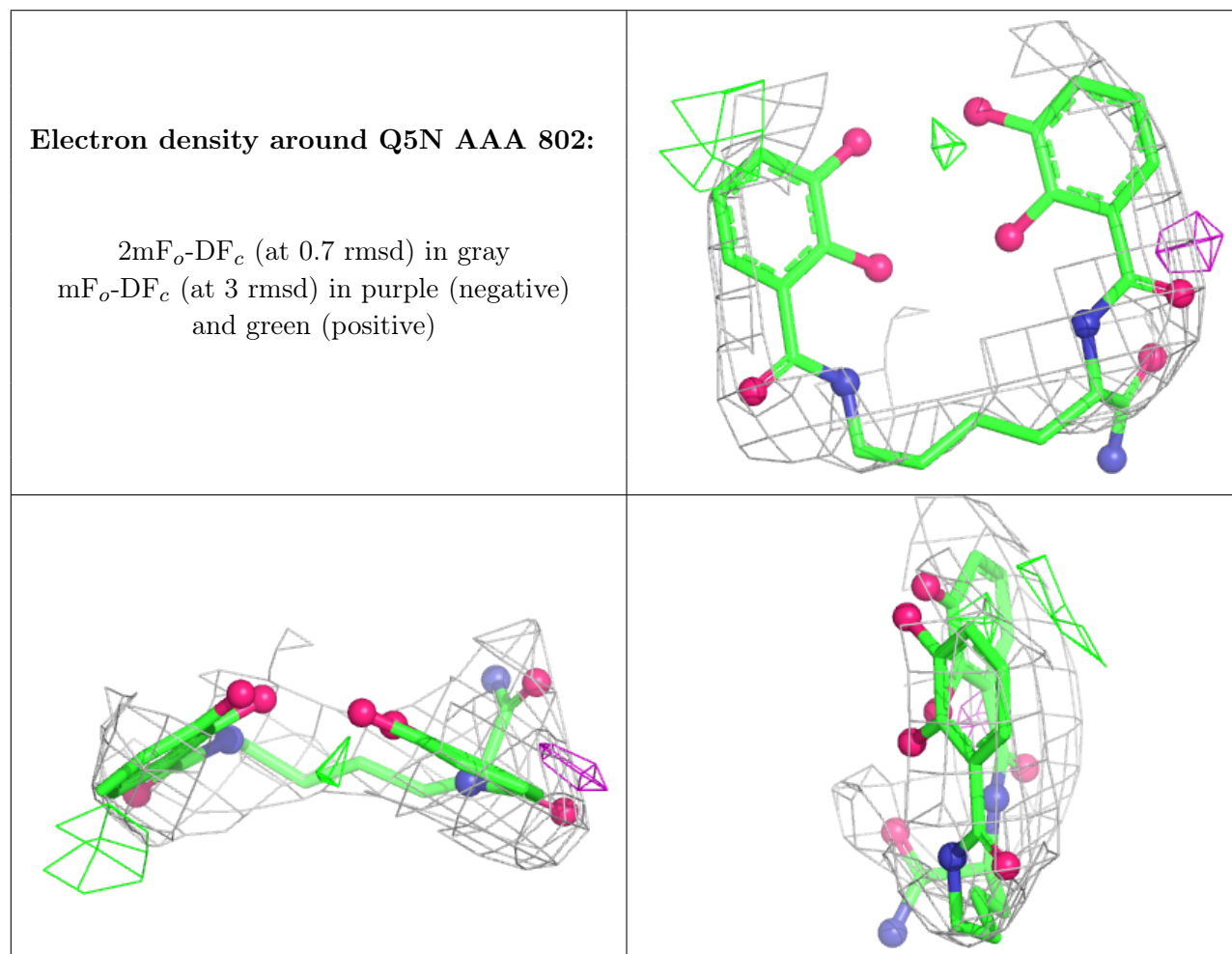
Mol	Type	Chain	Res	Atoms	RSCC	RSR	B-factors(Å ²)	Q<0.9
3	Q5N	AAA	802	30/64	0.94	0.25	121,146,164,178	0
4	FE	AAA	803	1/1	0.94	0.20	157,157,157,157	0

Continued on next page...

Continued from previous page...

Mol	Type	Chain	Res	Atoms	RSCC	RSR	B-factors(\AA^2)	Q<0.9
2	EDO	AAA	801	4/4	0.98	0.14	177,181,184,195	0

The following is a graphical depiction of the model fit to experimental electron density of all instances of the Ligand of Interest. In addition, ligands with molecular weight > 250 and outliers as shown on the geometry validation Tables will also be included. Each fit is shown from different orientation to approximate a three-dimensional view.



6.5 Other polymers [\(i\)](#)

There are no such residues in this entry.