



Full wwPDB X-ray Structure Validation Report ⓘ

Jun 25, 2024 – 02:05 AM EDT

PDB ID : 6YIJ
Title : Crystal structure of the CREBBP bromodomain in complex with a benzodiazepine ligand
Authors : Picaud, S.; Brand, M.; Tobias, K.; von Delft, F.; Arrowsmith, C.H.; Edwards, A.M.; Bountra, C.; Conway, S.; Filippakopoulos, P.
Deposited on : 2020-04-01
Resolution : 2.20 Å(reported)

This is a Full wwPDB X-ray Structure Validation Report for a publicly released PDB entry.

We welcome your comments at validation@mail.wwpdb.org

A user guide is available at

<https://www.wwpdb.org/validation/2017/XrayValidationReportHelp>

with specific help available everywhere you see the ⓘ symbol.

The types of validation reports are described at

<http://www.wwpdb.org/validation/2017/FAQs#types>.

The following versions of software and data (see [references ⓘ](#)) were used in the production of this report:

MolProbity : 4.02b-467
Mogul : 2022.3.0, CSD as543be (2022)
Xtriage (Phenix) : 1.20.1
EDS : 2.37.1
buster-report : 1.1.7 (2018)
Percentile statistics : 20191225.v01 (using entries in the PDB archive December 25th 2019)
Refmac : 5.8.0158
CCP4 : 7.0.044 (Gargrove)
Ideal geometry (proteins) : Engh & Huber (2001)
Ideal geometry (DNA, RNA) : Parkinson et al. (1996)
Validation Pipeline (wwPDB-VP) : 2.37.1

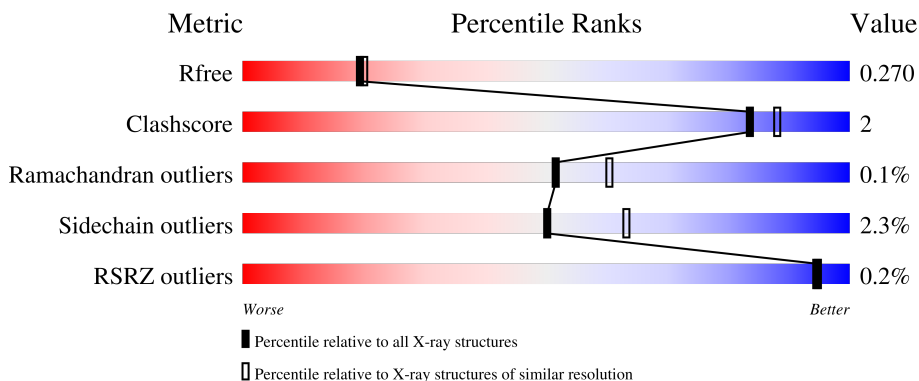
1 Overall quality at a glance

The following experimental techniques were used to determine the structure:

X-RAY DIFFRACTION


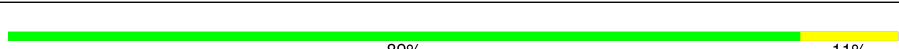
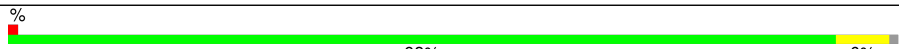
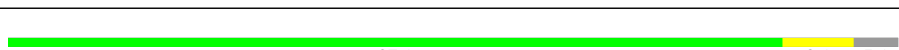
The reported resolution of this entry is 2.20 Å.

Percentile scores (ranging between 0-100) for global validation metrics of the entry are shown in the following graphic. The table shows the number of entries on which the scores are based.






Metric	Whole archive (#Entries)	Similar resolution (#Entries, resolution range(Å))
R_{free}	130704	4898 (2.20-2.20)
Clashscore	141614	5594 (2.20-2.20)
Ramachandran outliers	138981	5503 (2.20-2.20)
Sidechain outliers	138945	5504 (2.20-2.20)
RSRZ outliers	127900	4800 (2.20-2.20)

The table below summarises the geometric issues observed across the polymeric chains and their fit to the electron density. The red, orange, yellow and green segments of the lower bar indicate the fraction of residues that contain outliers for ≥ 3 , 2, 1 and 0 types of geometric quality criteria respectively. A grey segment represents the fraction of residues that are not modelled. The numeric value for each fraction is indicated below the corresponding segment, with a dot representing fractions $\leq 5\%$. The upper red bar (where present) indicates the fraction of residues that have poor fit to the electron density. The numeric value is given above the bar.

Mol	Chain	Length	Quality of chain
1	A	119	
1	B	119	
1	C	119	
1	D	119	

Continued on next page...

Continued from previous page...

Mol	Chain	Length	Quality of chain
1	E	119	
1	F	119	
1	G	119	

2 Entry composition

There are 3 unique types of molecules in this entry. The entry contains 7177 atoms, of which 0 are hydrogens and 0 are deuteriums.

In the tables below, the ZeroOcc column contains the number of atoms modelled with zero occupancy, the AltConf column contains the number of residues with at least one atom in alternate conformation and the Trace column contains the number of residues modelled with at most 2 atoms.

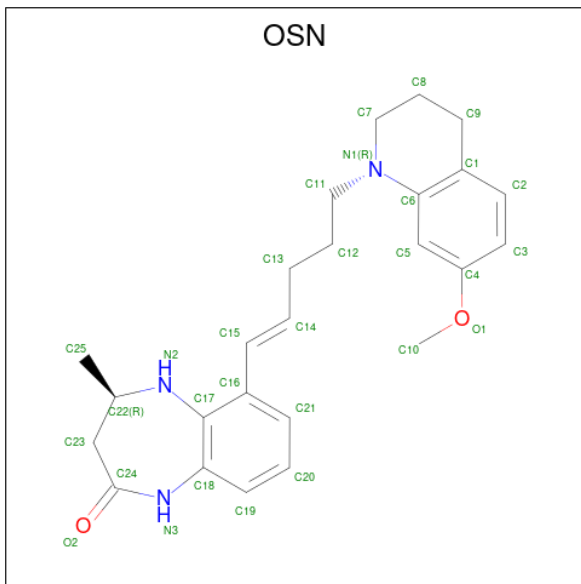
- Molecule 1 is a protein called CREBBP.

Mol	Chain	Residues	Atoms					ZeroOcc	AltConf	Trace
			Total	C	N	O	S			
1	A	119	991	644	164	177	6	0	0	0
1	B	119	1005	654	165	180	6	0	1	0
1	C	118	973	632	160	176	5	0	0	0
1	D	113	937	605	153	174	5	0	0	0
1	E	114	948	616	154	173	5	0	0	0
1	F	118	966	628	156	176	6	0	0	0
1	G	112	923	597	151	170	5	0	0	0

There are 14 discrepancies between the modelled and reference sequences:

Chain	Residue	Modelled	Actual	Comment	Reference
A	1079	SER	-	expression tag	UNP Q92793
A	1080	MET	-	expression tag	UNP Q92793
B	1079	SER	-	expression tag	UNP Q92793
B	1080	MET	-	expression tag	UNP Q92793
C	1079	SER	-	expression tag	UNP Q92793
C	1080	MET	-	expression tag	UNP Q92793
D	1079	SER	-	expression tag	UNP Q92793
D	1080	MET	-	expression tag	UNP Q92793
E	1079	SER	-	expression tag	UNP Q92793
E	1080	MET	-	expression tag	UNP Q92793
F	1079	SER	-	expression tag	UNP Q92793
F	1080	MET	-	expression tag	UNP Q92793
G	1079	SER	-	expression tag	UNP Q92793
G	1080	MET	-	expression tag	UNP Q92793

- Molecule 2 is (4 {R})-6-[({E})-5-(7-methoxy-3,4-dihydro-2 {H}-quinolin-1-yl)pent-1-enyl]-4-methyl-1,3,4,5-tetrahydro-1,5-benzodiazepin-2-one (three-letter code: OSN) (formula: C₂₅H₃₁N₃O₂) (labeled as "Ligand of Interest" by depositor).



Mol	Chain	Residues	Atoms				ZeroOcc	AltConf
			Total	C	N	O		
2	A	1	Total	C	N	O	0	0
			30	25	3	2		
2	B	1	Total	C	N	O	0	0
			30	25	3	2		
2	C	1	Total	C	N	O	0	0
			30	25	3	2		
2	D	1	Total	C	N	O	0	0
			30	25	3	2		
2	E	1	Total	C	N	O	0	0
			30	25	3	2		
2	F	1	Total	C	N	O	0	0
			30	25	3	2		
2	G	1	Total	C	N	O	0	0
			30	25	3	2		

- Molecule 3 is water.

Mol	Chain	Residues	Atoms		ZeroOcc	AltConf
3	A	25	Total	O	0	0
			25	25		
3	B	50	Total	O	0	0
			50	50		
3	C	39	Total	O	0	0
			39	39		

Continued on next page...


Continued from previous page...

Mol	Chain	Residues	Atoms		ZeroOcc	AltConf
3	D	26	Total 26	O 26	0	0
3	E	34	Total 34	O 34	0	0
3	F	21	Total 21	O 21	0	0
3	G	29	Total 29	O 29	0	0

3 Residue-property plots [i](#)

These plots are drawn for all protein, RNA, DNA and oligosaccharide chains in the entry. The first graphic for a chain summarises the proportions of the various outlier classes displayed in the second graphic. The second graphic shows the sequence view annotated by issues in geometry and electron density. Residues are color-coded according to the number of geometric quality criteria for which they contain at least one outlier: green = 0, yellow = 1, orange = 2 and red = 3 or more. A red dot above a residue indicates a poor fit to the electron density ($RSRZ > 2$). Stretches of 2 or more consecutive residues without any outlier are shown as a green connector. Residues present in the sample, but not in the model, are shown in grey.

- Molecule 1: CREBBP

Chain A:  87% 13%



- Molecule 1: CREBBP

Chain B:  89% 11%




- Molecule 1: CREBBP

Chain C:  % 93% 6%




- Molecule 1: CREBBP

Chain D:  87% 8% 5%




- Molecule 1: CREBBP

Chain E:  % 88% 7%




- Molecule 1: CREBBP

Chain F:  88% 10% ..



• Molecule 1: CREBBP

Chain G:  83% 10% • 6%



4 Data and refinement statistics

Property	Value	Source
Space group	P 43 21 2	Depositor
Cell constants a, b, c, α , β , γ	96.69Å 96.69Å 251.71Å 90.00° 90.00° 90.00°	Depositor
Resolution (Å)	47.50 – 2.20 47.48 – 2.20	Depositor EDS
% Data completeness (in resolution range)	99.9 (47.50-2.20) 99.9 (47.48-2.20)	Depositor EDS
R_{merge}	(Not available)	Depositor
R_{sym}	0.16	Depositor
$\langle I/\sigma(I) \rangle$ ¹	1.99 (at 2.20Å)	Xtrriage
Refinement program	REFMAC 5.8.0258	Depositor
R, R_{free}	0.202 , 0.269 0.208 , 0.270	Depositor DCC
R_{free} test set	2003 reflections (3.26%)	wwPDB-VP
Wilson B-factor (Å ²)	39.3	Xtrriage
Anisotropy	0.152	Xtrriage
Bulk solvent k_{sol} (e/Å ³), B_{sol} (Å ²)	0.31 , 30.1	EDS
L-test for twinning ²	$\langle L \rangle = 0.51$, $\langle L^2 \rangle = 0.35$	Xtrriage
Estimated twinning fraction	No twinning to report.	Xtrriage
F_o, F_c correlation	0.96	EDS
Total number of atoms	7177	wwPDB-VP
Average B, all atoms (Å ²)	48.0	wwPDB-VP

Xtrriage's analysis on translational NCS is as follows: *The analyses of the Patterson function reveals a significant off-origin peak that is 36.49 % of the origin peak, indicating pseudo-translational symmetry. The chance of finding a peak of this or larger height randomly in a structure without pseudo-translational symmetry is equal to 4.9610e-04. The detected translational NCS is most likely also responsible for the elevated intensity ratio.*

¹Intensities estimated from amplitudes.

²Theoretical values of $\langle |L| \rangle$, $\langle L^2 \rangle$ for acentric reflections are 0.5, 0.333 respectively for untwinned datasets, and 0.375, 0.2 for perfectly twinned datasets.

5 Model quality i

5.1 Standard geometry i

Bond lengths and bond angles in the following residue types are not validated in this section: OSN

The Z score for a bond length (or angle) is the number of standard deviations the observed value is removed from the expected value. A bond length (or angle) with $|Z| > 5$ is considered an outlier worth inspection. RMSZ is the root-mean-square of all Z scores of the bond lengths (or angles).

Mol	Chain	Bond lengths		Bond angles	
		RMSZ	# Z >5	RMSZ	# Z >5
1	A	0.85	0/1018	1.08	2/1379 (0.1%)
1	B	0.99	1/1037 (0.1%)	1.15	1/1407 (0.1%)
1	C	0.92	0/1000	1.11	1/1359 (0.1%)
1	D	0.94	0/963	1.11	1/1310 (0.1%)
1	E	0.89	0/975	1.10	3/1325 (0.2%)
1	F	0.91	0/993	1.08	2/1350 (0.1%)
1	G	0.94	1/949 (0.1%)	1.07	1/1294 (0.1%)
All	All	0.92	2/6935 (0.0%)	1.10	11/9424 (0.1%)

Chiral center outliers are detected by calculating the chiral volume of a chiral center and verifying if the center is modelled as a planar moiety or with the opposite hand. A planarity outlier is detected by checking planarity of atoms in a peptide group, atoms in a mainchain group or atoms of a sidechain that are expected to be planar.

Mol	Chain	#Chirality outliers	#Planarity outliers
1	E	0	1

All (2) bond length outliers are listed below:

Mol	Chain	Res	Type	Atoms	Z	Observed(Å)	Ideal(Å)
1	G	1107	GLU	CD-OE1	5.46	1.31	1.25
1	B	1173	ARG	C-O	5.06	1.32	1.23

All (11) bond angle outliers are listed below:

Mol	Chain	Res	Type	Atoms	Z	Observed(°)	Ideal(°)
1	B	1091	ARG	NE-CZ-NH2	10.45	125.53	120.30
1	A	1194	GLN	CB-CA-C	-7.16	96.09	110.40
1	G	1173	ARG	NE-CZ-NH2	-6.53	117.04	120.30
1	E	1091	ARG	NE-CZ-NH2	5.93	123.26	120.30

Continued on next page...

Continued from previous page...

Mol	Chain	Res	Type	Atoms	Z	Observed(°)	Ideal(°)
1	F	1156	ASP	CB-CG-OD2	-5.89	113.00	118.30
1	E	1091	ARG	NE-CZ-NH1	-5.67	117.46	120.30
1	E	1197	GLY	CA-C-O	-5.54	110.63	120.60
1	C	1133	MET	CG-SD-CE	5.38	108.81	100.20
1	D	1103	ARG	NE-CZ-NH1	5.20	122.90	120.30
1	F	1106	PRO	N-CA-CB	-5.17	96.91	102.60
1	A	1106	PRO	N-CA-C	5.05	125.22	112.10

There are no chirality outliers.

All (1) planarity outliers are listed below:

Mol	Chain	Res	Type	Group
1	E	1196	LEU	Peptide

5.2 Too-close contacts [i](#)

In the following table, the Non-H and H(model) columns list the number of non-hydrogen atoms and hydrogen atoms in the chain respectively. The H(added) column lists the number of hydrogen atoms added and optimized by MolProbity. The Clashes column lists the number of clashes within the asymmetric unit, whereas Symm-Clashes lists symmetry-related clashes.

Mol	Chain	Non-H	H(model)	H(added)	Clashes	Symm-Clashes
1	A	991	0	985	7	0
1	B	1005	0	992	4	0
1	C	973	0	951	3	0
1	D	937	0	906	5	0
1	E	948	0	925	4	0
1	F	966	0	933	4	0
1	G	923	0	889	5	0
2	A	30	0	0	0	0
2	B	30	0	0	0	0
2	C	30	0	0	0	0
2	D	30	0	0	0	0
2	E	30	0	0	0	0
2	F	30	0	0	0	0
2	G	30	0	0	0	0
3	A	25	0	0	0	0
3	B	50	0	0	0	0
3	C	39	0	0	1	0
3	D	26	0	0	0	0
3	E	34	0	0	0	0

Continued on next page...

Continued from previous page...

Mol	Chain	Non-H	H(model)	H(added)	Clashes	Symm-Clashes
3	F	21	0	0	0	0
3	G	29	0	0	0	0
All	All	7177	0	6581	32	0

The all-atom clashscore is defined as the number of clashes found per 1000 atoms (including hydrogen atoms). The all-atom clashscore for this structure is 2.

All (32) close contacts within the same asymmetric unit are listed below, sorted by their clash magnitude.

Atom-1	Atom-2	Interatomic distance (Å)	Clash overlap (Å)
1:A:1190:ASP:N	1:A:1191:PRO:HD2	2.14	0.62
1:F:1190:ASP:N	1:F:1191:PRO:HD2	2.17	0.59
1:A:1097:THR:HG22	1:A:1188:GLU:HB3	1.87	0.55
1:A:1107:GLU:HA	1:A:1177:PHE:CD2	2.44	0.52
1:A:1095:MET:HB3	1:A:1096:PRO:HD3	1.91	0.51
1:B:1109:LEU:N	1:B:1110:PRO:CD	2.74	0.51
1:D:1173:ARG:HH11	1:D:1173:ARG:HG3	1.75	0.50
1:F:1109:LEU:N	1:F:1110:PRO:CD	2.74	0.50
1:B:1107:GLU:HA	1:B:1177:PHE:CD2	2.48	0.48
1:F:1088:GLU:O	1:F:1092:GLN:HG2	2.14	0.48
1:C:1095:MET:N	1:C:1096:PRO:CD	2.77	0.47
1:G:1116:ASP:OD2	1:G:1119:LEU:HD12	2.14	0.47
1:G:1109:LEU:N	1:G:1110:PRO:CD	2.77	0.47
1:A:1109:LEU:N	1:A:1110:PRO:CD	2.78	0.47
1:B:1172:SER:O	1:B:1176:LYS:HG2	2.14	0.47
1:C:1109:LEU:N	1:C:1110:PRO:CD	2.78	0.46
1:G:1191:PRO:O	1:G:1195:SER:OG	2.34	0.45
1:C:1131:ASN:ND2	3:C:1301:HOH:O	2.31	0.44
1:E:1181:LEU:HD23	1:E:1181:LEU:HA	1.74	0.44
1:D:1161:PHE:CE2	1:D:1182:ALA:HA	2.52	0.44
1:D:1109:LEU:N	1:D:1110:PRO:CD	2.80	0.44
1:B:1190:ASP:N	1:B:1191:PRO:HD2	2.32	0.44
1:F:1107:GLU:HA	1:F:1177:PHE:CD2	2.52	0.44
1:D:1170:LYS:HA	1:D:1175:TYR:CG	2.53	0.43
1:A:1190:ASP:N	1:A:1191:PRO:CD	2.82	0.43
1:E:1122:ILE:O	1:E:1122:ILE:HG13	2.19	0.42
1:G:1105:ASP:HA	1:G:1106:PRO:HA	1.84	0.42
1:E:1090:LEU:HD12	1:E:1090:LEU:HA	1.82	0.41
1:A:1084:ILE:HG23	1:A:1148:GLN:HB3	2.03	0.41
1:G:1119:LEU:HD23	1:G:1119:LEU:HA	1.96	0.41
1:D:1170:LYS:HA	1:D:1175:TYR:CD2	2.56	0.41

Continued on next page...

Continued from previous page...

Atom-1	Atom-2	Interatomic distance (Å)	Clash overlap (Å)
1:E:1161:PHE:CE2	1:E:1182:ALA:HA	2.57	0.40

There are no symmetry-related clashes.

5.3 Torsion angles [i](#)

5.3.1 Protein backbone [i](#)

In the following table, the Percentiles column shows the percent Ramachandran outliers of the chain as a percentile score with respect to all X-ray entries followed by that with respect to entries of similar resolution.

The Analysed column shows the number of residues for which the backbone conformation was analysed, and the total number of residues.

Mol	Chain	Analysed	Favoured	Allowed	Outliers	Percentiles	
1	A	117/119 (98%)	117 (100%)	0	0	100	100
1	B	118/119 (99%)	118 (100%)	0	0	100	100
1	C	116/119 (98%)	116 (100%)	0	0	100	100
1	D	111/119 (93%)	110 (99%)	1 (1%)	0	100	100
1	E	112/119 (94%)	112 (100%)	0	0	100	100
1	F	116/119 (98%)	112 (97%)	3 (3%)	1 (1%)	17	16
1	G	110/119 (92%)	110 (100%)	0	0	100	100
All	All	800/833 (96%)	795 (99%)	4 (0%)	1 (0%)	51	60

All (1) Ramachandran outliers are listed below:

Mol	Chain	Res	Type
1	F	1087	PRO

5.3.2 Protein sidechains [i](#)

In the following table, the Percentiles column shows the percent sidechain outliers of the chain as a percentile score with respect to all X-ray entries followed by that with respect to entries of similar resolution.

The Analysed column shows the number of residues for which the sidechain conformation was analysed, and the total number of residues.

Mol	Chain	Analysed	Rotameric	Outliers	Percentiles	
1	A	109/112 (97%)	107 (98%)	2 (2%)	59	72
1	B	111/112 (99%)	108 (97%)	3 (3%)	44	57
1	C	106/112 (95%)	105 (99%)	1 (1%)	78	88
1	D	103/112 (92%)	101 (98%)	2 (2%)	57	71
1	E	104/112 (93%)	102 (98%)	2 (2%)	57	71
1	F	104/112 (93%)	101 (97%)	3 (3%)	42	54
1	G	101/112 (90%)	97 (96%)	4 (4%)	31	40
All	All	738/784 (94%)	721 (98%)	17 (2%)	50	63

All (17) residues with a non-rotameric sidechain are listed below:

Mol	Chain	Res	Type
1	A	1149	GLU
1	A	1187	GLN
1	B	1103	ARG
1	B	1148	GLN
1	B	1169	ARG
1	C	1195	SER
1	D	1090	LEU
1	D	1140	ARG
1	E	1149	GLU
1	E	1196	LEU
1	F	1083	LYS
1	F	1106	PRO
1	F	1148	GLN
1	G	1088	GLU
1	G	1092	GLN
1	G	1095	MET
1	G	1195	SER

Sometimes sidechains can be flipped to improve hydrogen bonding and reduce clashes. All (2) such sidechains are listed below:

Mol	Chain	Res	Type
1	F	1146	GLN
1	G	1092	GLN

5.3.3 RNA [i](#)

There are no RNA molecules in this entry.

5.4 Non-standard residues in protein, DNA, RNA chains [i](#)

There are no non-standard protein/DNA/RNA residues in this entry.

5.5 Carbohydrates [i](#)

There are no monosaccharides in this entry.

5.6 Ligand geometry [i](#)

7 ligands are modelled in this entry.

In the following table, the Counts columns list the number of bonds (or angles) for which Mogul statistics could be retrieved, the number of bonds (or angles) that are observed in the model and the number of bonds (or angles) that are defined in the Chemical Component Dictionary. The Link column lists molecule types, if any, to which the group is linked. The Z score for a bond length (or angle) is the number of standard deviations the observed value is removed from the expected value. A bond length (or angle) with $|Z| > 2$ is considered an outlier worth inspection. RMSZ is the root-mean-square of all Z scores of the bond lengths (or angles).

Mol	Type	Chain	Res	Link	Bond lengths			Bond angles		
					Counts	RMSZ	# Z > 2	Counts	RMSZ	# Z > 2
2	OSN	G	1201	-	31,33,33	1.84	6 (19%)	39,45,45	3.53	14 (35%)
2	OSN	E	1201	-	31,33,33	1.75	5 (16%)	39,45,45	3.11	12 (30%)
2	OSN	C	1201	-	31,33,33	1.73	6 (19%)	39,45,45	2.46	11 (28%)
2	OSN	D	1201	-	31,33,33	2.15	5 (16%)	39,45,45	3.22	11 (28%)
2	OSN	A	1201	-	31,33,33	2.27	3 (9%)	39,45,45	1.74	13 (33%)
2	OSN	B	1201	-	31,33,33	1.89	5 (16%)	39,45,45	1.83	10 (25%)
2	OSN	F	1201	-	31,33,33	1.98	5 (16%)	39,45,45	1.47	5 (12%)

In the following table, the Chirals column lists the number of chiral outliers, the number of chiral centers analysed, the number of these observed in the model and the number defined in the Chemical Component Dictionary. Similar counts are reported in the Torsion and Rings columns. '-' means no outliers of that kind were identified.

Mol	Type	Chain	Res	Link	Chirals	Torsions	Rings
2	OSN	G	1201	-	-	4/10/32/32	0/4/4/4
2	OSN	E	1201	-	-	3/10/32/32	0/4/4/4
2	OSN	C	1201	-	-	6/10/32/32	0/4/4/4
2	OSN	D	1201	-	-	6/10/32/32	0/4/4/4
2	OSN	A	1201	-	-	1/10/32/32	0/4/4/4

Continued on next page...

Continued from previous page...

Mol	Type	Chain	Res	Link	Chirals	Torsions	Rings
2	OSN	B	1201	-	-	1/10/32/32	0/4/4/4
2	OSN	F	1201	-	-	3/10/32/32	0/4/4/4

All (35) bond length outliers are listed below:

Mol	Chain	Res	Type	Atoms	Z	Observed(Å)	Ideal(Å)
2	A	1201	OSN	C24-N3	9.50	1.45	1.35
2	B	1201	OSN	C24-N3	7.84	1.44	1.35
2	D	1201	OSN	C24-N3	7.73	1.44	1.35
2	F	1201	OSN	C24-N3	7.43	1.43	1.35
2	A	1201	OSN	C18-N3	6.47	1.50	1.42
2	C	1201	OSN	C24-N3	5.37	1.41	1.35
2	D	1201	OSN	C7-N1	5.25	1.55	1.46
2	E	1201	OSN	C18-N3	4.86	1.48	1.42
2	G	1201	OSN	C24-N3	4.57	1.40	1.35
2	G	1201	OSN	C7-N1	4.49	1.54	1.46
2	G	1201	OSN	C22-N2	-4.25	1.42	1.47
2	E	1201	OSN	C7-N1	4.24	1.54	1.46
2	D	1201	OSN	C22-N2	-4.21	1.42	1.47
2	C	1201	OSN	C7-N1	4.03	1.53	1.46
2	E	1201	OSN	C24-N3	3.89	1.39	1.35
2	D	1201	OSN	C18-N3	3.70	1.46	1.42
2	B	1201	OSN	C7-N1	3.66	1.53	1.46
2	G	1201	OSN	C6-N1	3.45	1.52	1.43
2	E	1201	OSN	C22-N2	-3.43	1.43	1.47
2	A	1201	OSN	C7-N1	3.36	1.52	1.46
2	F	1201	OSN	C18-N3	3.15	1.46	1.42
2	C	1201	OSN	C17-C18	-3.08	1.37	1.40
2	F	1201	OSN	C21-C16	-3.00	1.35	1.41
2	F	1201	OSN	C7-N1	2.97	1.51	1.46
2	F	1201	OSN	C22-N2	-2.90	1.43	1.47
2	E	1201	OSN	C6-N1	2.87	1.51	1.43
2	B	1201	OSN	C18-N3	2.74	1.45	1.42
2	G	1201	OSN	C18-N3	2.58	1.45	1.42
2	D	1201	OSN	C6-N1	2.53	1.50	1.43
2	C	1201	OSN	C6-C1	-2.50	1.36	1.40
2	G	1201	OSN	C2-C3	2.47	1.42	1.38
2	C	1201	OSN	C22-N2	-2.40	1.44	1.47
2	B	1201	OSN	C6-N1	2.25	1.49	1.43
2	C	1201	OSN	C3-C4	-2.16	1.34	1.38
2	B	1201	OSN	C16-C17	-2.12	1.38	1.41

All (76) bond angle outliers are listed below:

Mol	Chain	Res	Type	Atoms	Z	Observed(°)	Ideal(°)
2	D	1201	OSN	C11-N1-C6	-14.32	100.86	121.89
2	E	1201	OSN	C11-N1-C6	-11.80	104.56	121.89
2	G	1201	OSN	C11-N1-C6	-11.14	105.53	121.89
2	G	1201	OSN	C1-C6-N1	9.62	129.01	121.60
2	E	1201	OSN	C1-C6-N1	8.79	128.37	121.60
2	G	1201	OSN	C10-O1-C4	8.78	136.34	117.50
2	D	1201	OSN	C10-O1-C4	7.92	134.49	117.50
2	C	1201	OSN	C10-O1-C4	7.14	132.81	117.50
2	C	1201	OSN	C1-C6-N1	-6.20	116.83	121.60
2	G	1201	OSN	O2-C24-N3	-5.91	115.33	121.10
2	G	1201	OSN	C11-N1-C7	-5.90	103.98	116.92
2	D	1201	OSN	C1-C6-N1	5.56	125.88	121.60
2	E	1201	OSN	O2-C24-N3	-5.32	115.90	121.10
2	C	1201	OSN	O2-C24-N3	-5.16	116.06	121.10
2	G	1201	OSN	C16-C15-C14	-5.13	114.72	125.55
2	D	1201	OSN	C11-N1-C7	-5.05	105.84	116.92
2	E	1201	OSN	O2-C24-C23	4.91	128.69	121.05
2	E	1201	OSN	C11-N1-C7	-4.83	106.33	116.92
2	F	1201	OSN	C13-C14-C15	-4.74	114.97	125.48
2	E	1201	OSN	C16-C15-C14	-4.65	115.73	125.55
2	G	1201	OSN	O2-C24-C23	4.58	128.18	121.05
2	C	1201	OSN	C7-N1-C6	-4.35	102.72	117.99
2	B	1201	OSN	C1-C6-N1	4.27	124.89	121.60
2	C	1201	OSN	C11-N1-C6	-4.17	115.76	121.89
2	B	1201	OSN	C16-C15-C14	-4.13	116.83	125.55
2	C	1201	OSN	O2-C24-C23	3.88	127.09	121.05
2	D	1201	OSN	C16-C15-C14	-3.88	117.37	125.55
2	A	1201	OSN	C1-C6-N1	3.88	124.59	121.60
2	F	1201	OSN	C10-O1-C4	3.83	125.71	117.50
2	A	1201	OSN	C11-N1-C6	-3.81	116.29	121.89
2	B	1201	OSN	C19-C18-C17	3.60	121.86	117.55
2	D	1201	OSN	C19-C18-C17	3.50	121.74	117.55
2	G	1201	OSN	C19-C18-C17	3.48	121.71	117.55
2	C	1201	OSN	C5-C6-N1	3.35	125.47	119.01
2	B	1201	OSN	C13-C14-C15	-3.31	118.15	125.48
2	B	1201	OSN	C11-N1-C6	-3.25	117.12	121.89
2	C	1201	OSN	C19-C18-C17	3.21	121.39	117.55
2	A	1201	OSN	C16-C15-C14	-3.19	118.81	125.55
2	A	1201	OSN	C10-O1-C4	3.17	124.29	117.50
2	E	1201	OSN	C10-O1-C4	3.13	124.21	117.50
2	C	1201	OSN	C16-C15-C14	-3.08	119.05	125.55
2	B	1201	OSN	C8-C7-N1	-2.99	105.42	111.06

Continued on next page...

Continued from previous page...

Mol	Chain	Res	Type	Atoms	Z	Observed(°)	Ideal(°)
2	A	1201	OSN	C13-C14-C15	-2.93	118.98	125.48
2	G	1201	OSN	C6-C5-C4	2.93	124.00	118.02
2	C	1201	OSN	C13-C14-C15	-2.89	119.07	125.48
2	B	1201	OSN	C7-N1-C6	-2.87	107.91	117.99
2	E	1201	OSN	C5-C6-N1	-2.73	113.75	119.01
2	C	1201	OSN	C2-C1-C6	2.64	121.76	118.27
2	D	1201	OSN	O2-C24-N3	-2.58	118.59	121.10
2	G	1201	OSN	C5-C6-N1	-2.58	114.04	119.01
2	A	1201	OSN	C7-N1-C6	-2.57	108.96	117.99
2	D	1201	OSN	O2-C24-C23	2.56	125.04	121.05
2	E	1201	OSN	C6-C5-C4	2.49	123.10	118.02
2	F	1201	OSN	C8-C9-C1	-2.46	106.57	112.43
2	B	1201	OSN	C10-O1-C4	2.43	122.71	117.50
2	A	1201	OSN	C19-C18-C17	2.41	120.43	117.55
2	A	1201	OSN	C11-N1-C7	-2.37	111.72	116.92
2	A	1201	OSN	C21-C16-C15	-2.33	116.48	121.13
2	F	1201	OSN	C19-C18-C17	2.33	120.34	117.55
2	E	1201	OSN	C19-C18-C17	2.33	120.34	117.55
2	G	1201	OSN	C8-C7-N1	2.29	115.38	111.06
2	B	1201	OSN	C2-C1-C6	2.28	121.27	118.27
2	G	1201	OSN	C18-C17-N2	2.24	124.88	121.42
2	G	1201	OSN	C7-N1-C6	-2.24	110.14	117.99
2	A	1201	OSN	C8-C7-N1	-2.22	106.86	111.06
2	E	1201	OSN	C18-N3-C24	-2.18	121.70	126.72
2	E	1201	OSN	C7-N1-C6	-2.18	110.32	117.99
2	D	1201	OSN	C8-C9-C1	-2.18	107.23	112.43
2	D	1201	OSN	C2-C1-C6	2.16	121.12	118.27
2	D	1201	OSN	C18-N3-C24	-2.13	121.82	126.72
2	G	1201	OSN	C5-C6-C1	-2.13	116.94	120.00
2	A	1201	OSN	C18-N3-C24	-2.13	121.83	126.72
2	F	1201	OSN	C2-C3-C4	2.09	122.12	119.73
2	A	1201	OSN	O2-C24-C23	2.06	124.25	121.05
2	A	1201	OSN	O2-C24-N3	-2.06	119.10	121.10
2	B	1201	OSN	O2-C24-N3	-2.00	119.15	121.10

There are no chirality outliers.

All (24) torsion outliers are listed below:

Mol	Chain	Res	Type	Atoms
2	C	1201	OSN	C12-C11-N1-C7
2	C	1201	OSN	C11-C12-C13-C14
2	D	1201	OSN	C13-C14-C15-C16

Continued on next page...

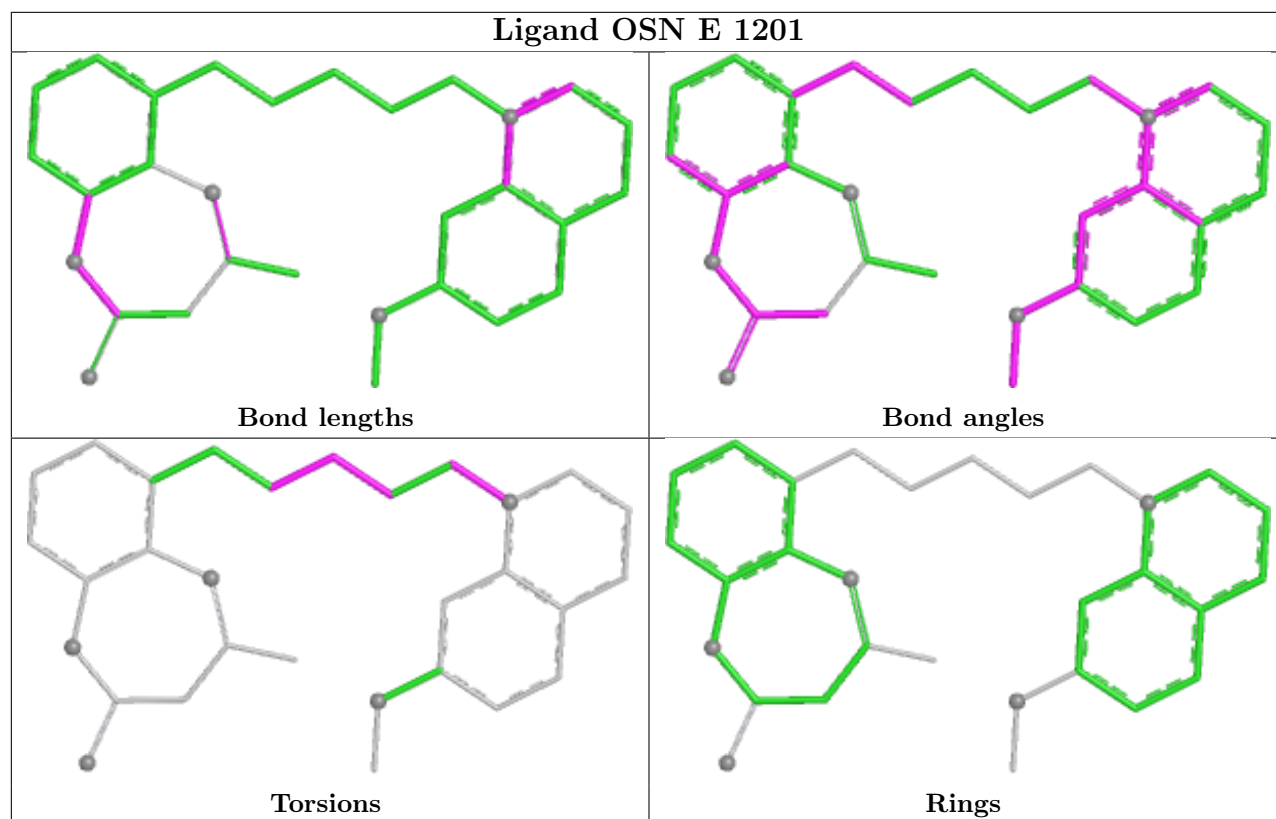
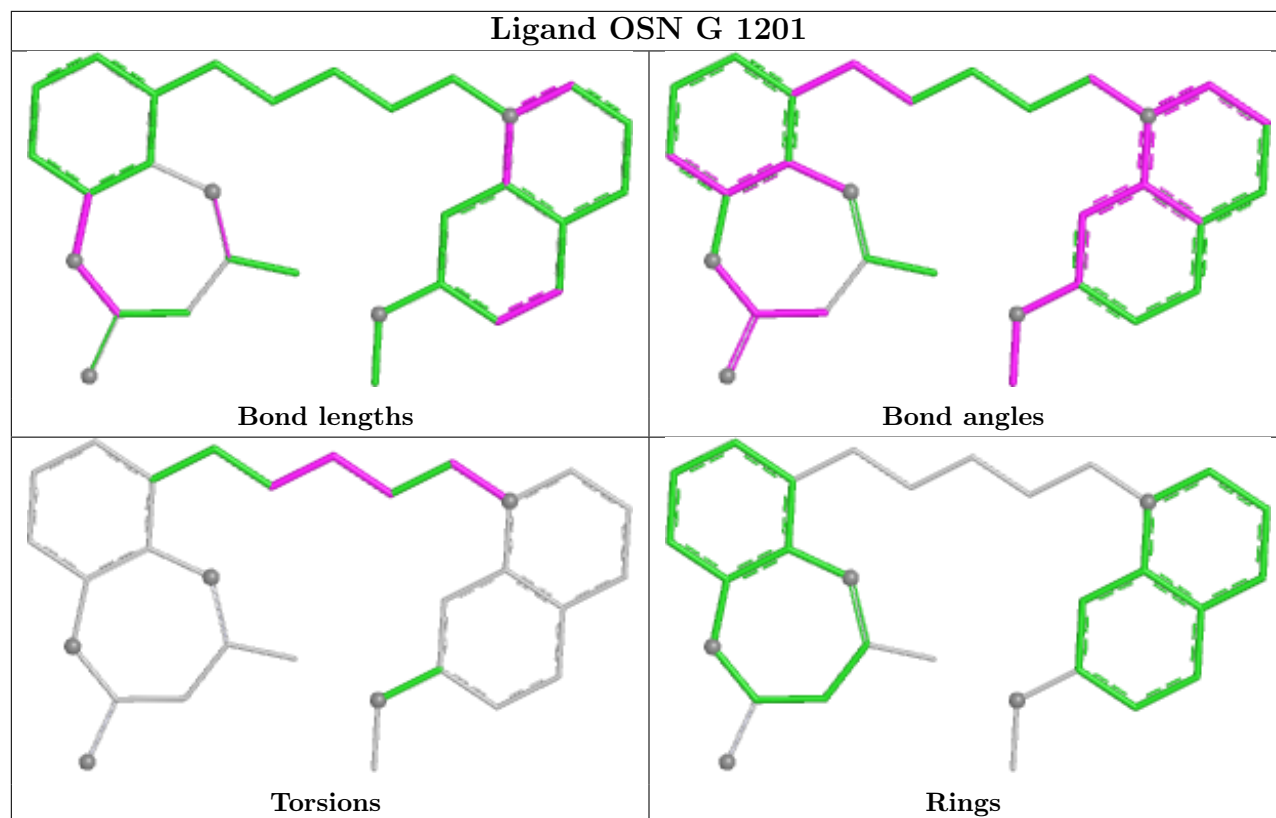
Continued from previous page...

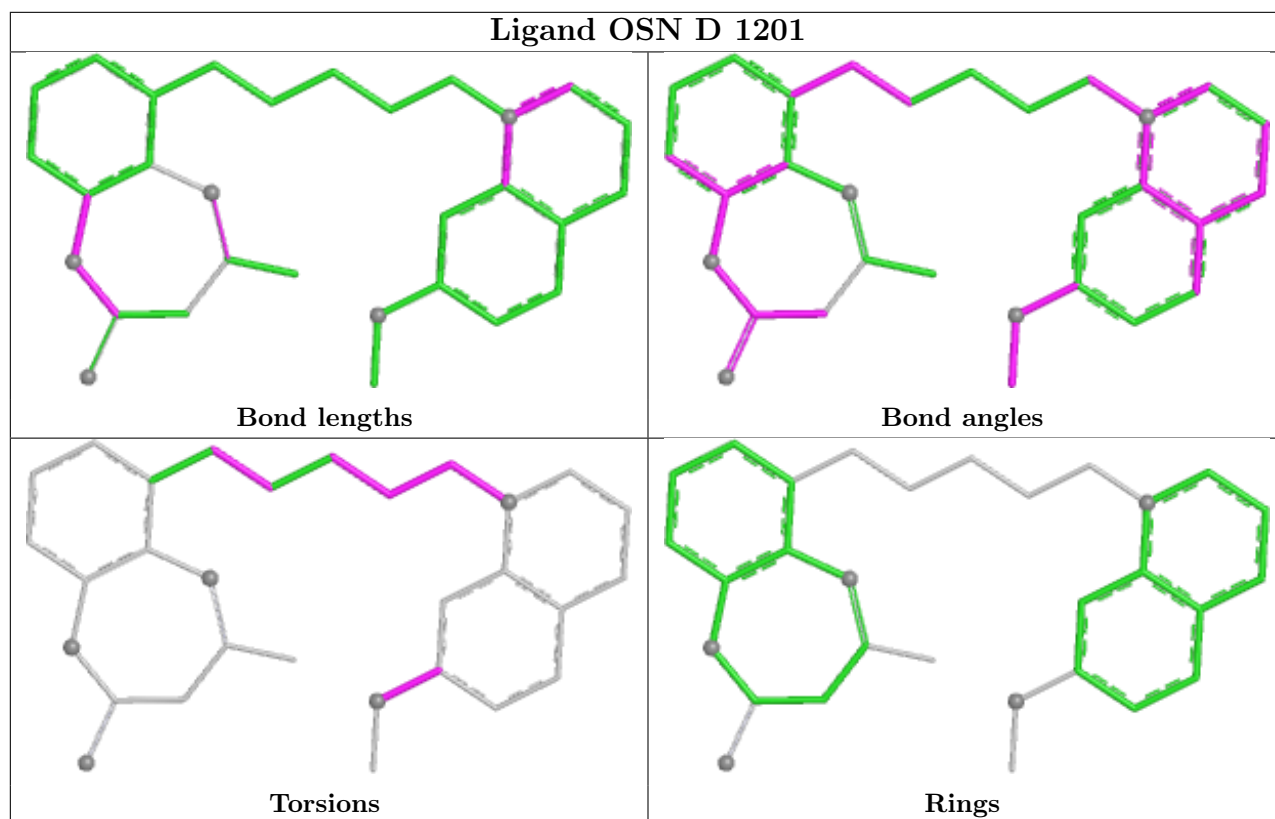
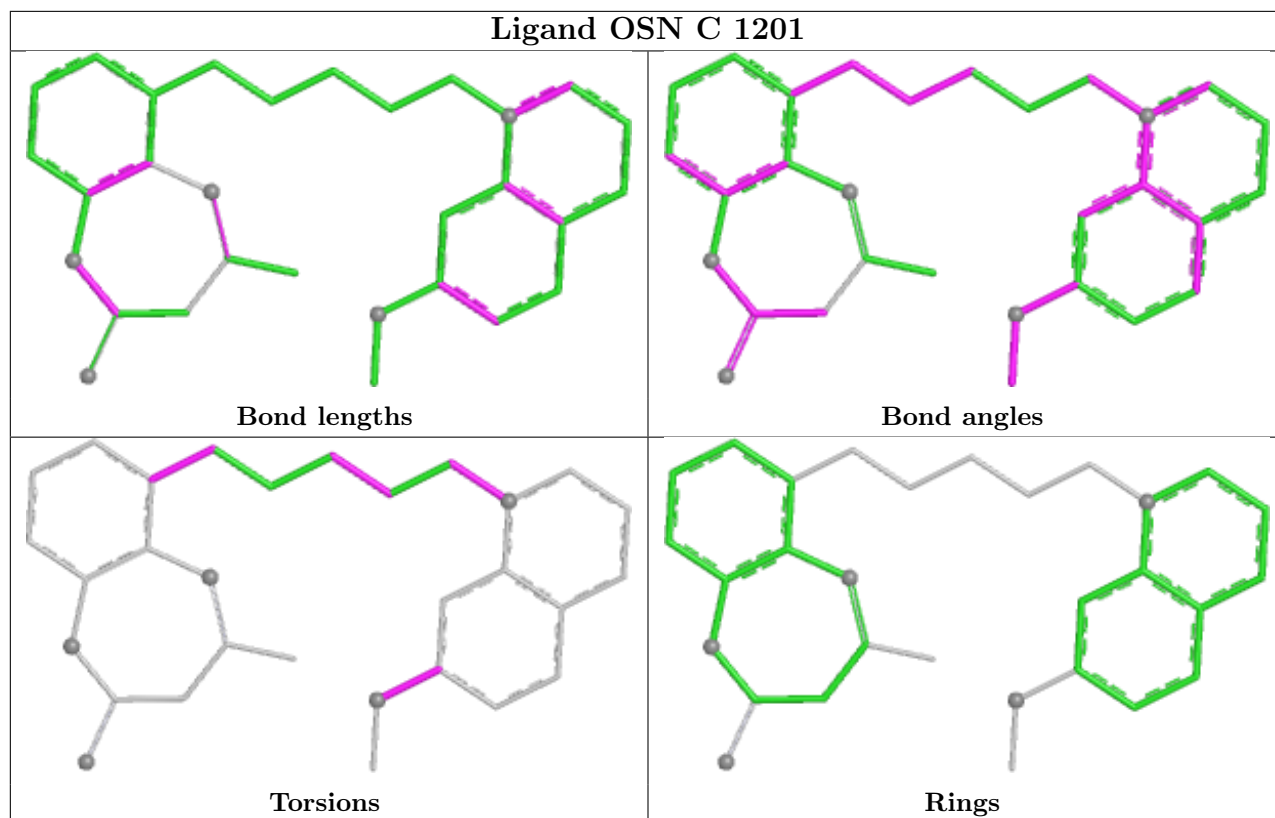
Mol	Chain	Res	Type	Atoms
2	F	1201	OSN	C13-C14-C15-C16
2	G	1201	OSN	C11-C12-C13-C14
2	C	1201	OSN	C3-C4-O1-C10
2	C	1201	OSN	C5-C4-O1-C10
2	F	1201	OSN	N1-C11-C12-C13
2	D	1201	OSN	N1-C11-C12-C13
2	D	1201	OSN	C11-C12-C13-C14
2	E	1201	OSN	C11-C12-C13-C14
2	D	1201	OSN	C12-C11-N1-C6
2	E	1201	OSN	C12-C11-N1-C6
2	G	1201	OSN	C12-C11-N1-C6
2	D	1201	OSN	C5-C4-O1-C10
2	D	1201	OSN	C3-C4-O1-C10
2	C	1201	OSN	C14-C15-C16-C17
2	G	1201	OSN	C12-C13-C14-C15
2	B	1201	OSN	C14-C15-C16-C17
2	A	1201	OSN	C12-C11-N1-C6
2	F	1201	OSN	C12-C13-C14-C15
2	E	1201	OSN	C12-C13-C14-C15
2	C	1201	OSN	C14-C15-C16-C21
2	G	1201	OSN	C12-C11-N1-C7

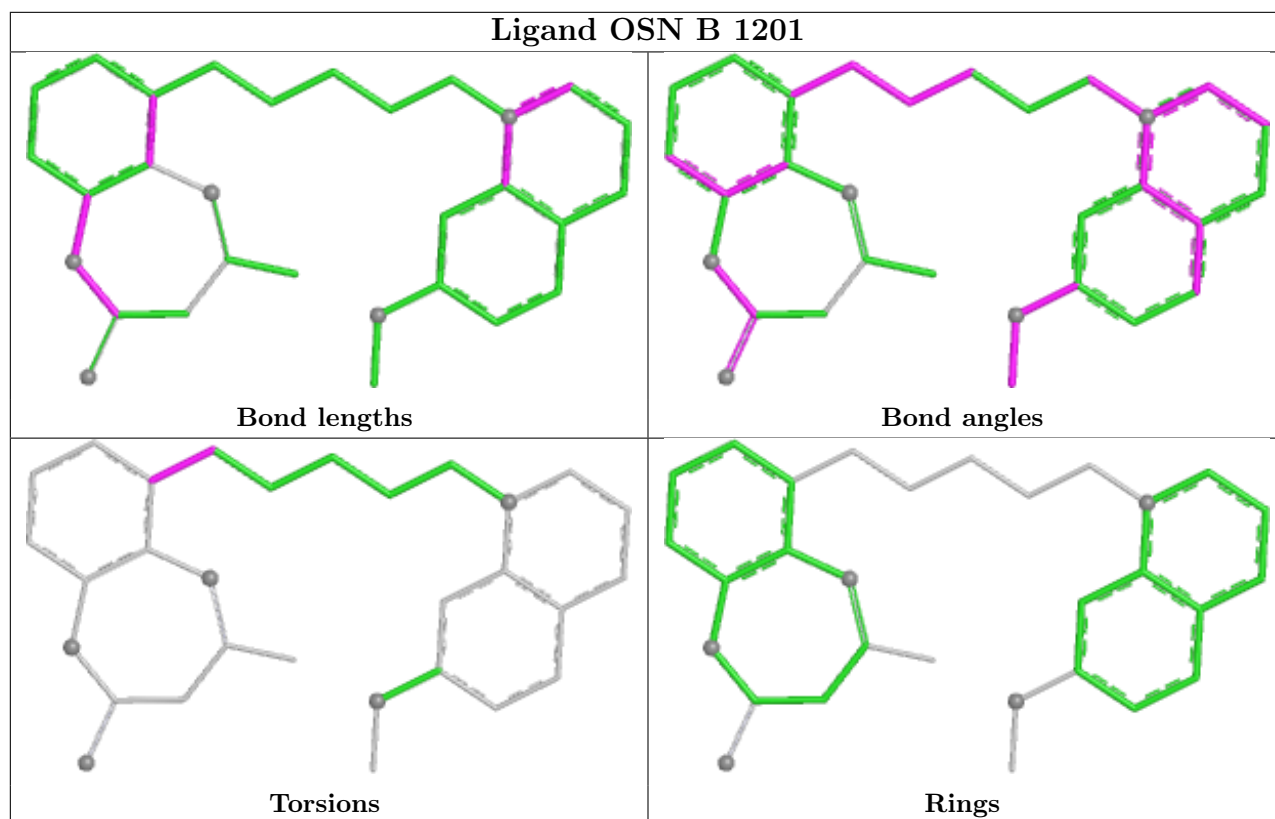
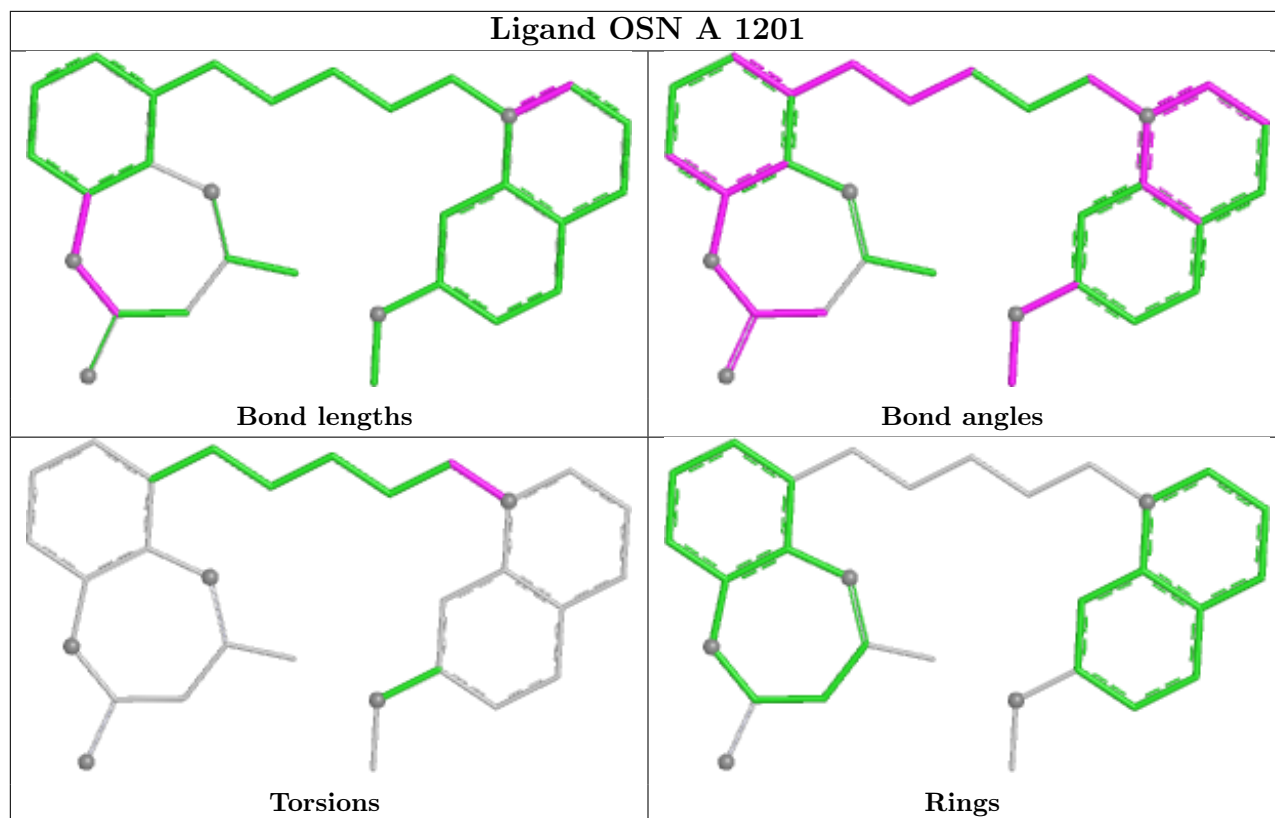
There are no ring outliers.

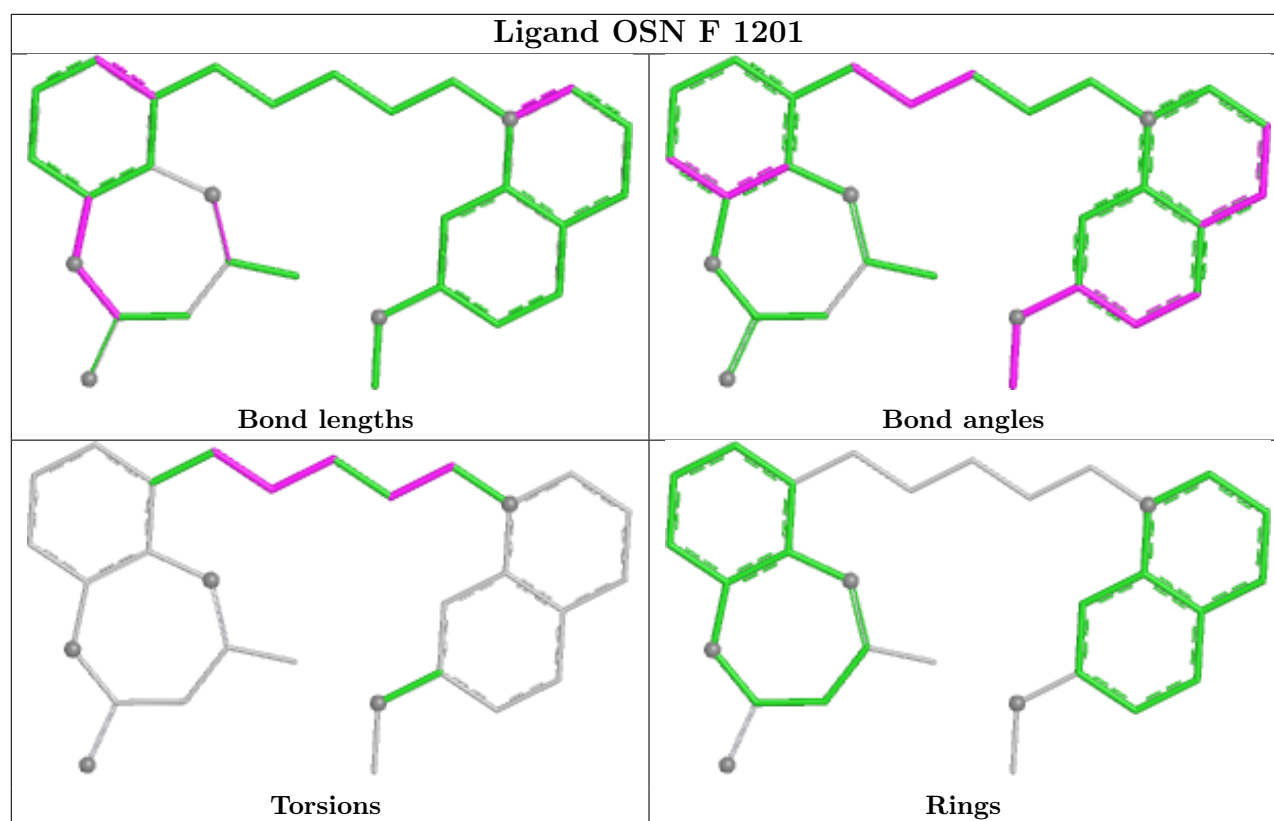
No monomer is involved in short contacts.

The following is a two-dimensional graphical depiction of Mogul quality analysis of bond lengths, bond angles, torsion angles, and ring geometry for all instances of the Ligand of Interest. In addition, ligands with molecular weight > 250 and outliers as shown on the validation Tables will also be included. For torsion angles, if less than 5% of the Mogul distribution of torsion angles is within 10 degrees of the torsion angle in question, then that torsion angle is considered an outlier. Any bond that is central to one or more torsion angles identified as an outlier by Mogul will be highlighted in the graph. For rings, the root-mean-square deviation (RMSD) between the ring in question and similar rings identified by Mogul is calculated over all ring torsion angles. If the average RMSD is greater than 60 degrees and the minimal RMSD between the ring in question and any Mogul-identified rings is also greater than 60 degrees, then that ring is considered an outlier. The outliers are highlighted in purple. The color gray indicates Mogul did not find sufficient equivalents in the CSD to analyse the geometry.









5.7 Other polymers [i](#)

There are no such residues in this entry.

5.8 Polymer linkage issues [i](#)

There are no chain breaks in this entry.

6 Fit of model and data [i](#)

6.1 Protein, DNA and RNA chains [i](#)

In the following table, the column labelled '#RSRZ > 2' contains the number (and percentage) of RSRZ outliers, followed by percent RSRZ outliers for the chain as percentile scores relative to all X-ray entries and entries of similar resolution. The OWAB column contains the minimum, median, 95th percentile and maximum values of the occupancy-weighted average B-factor per residue. The column labelled 'Q < 0.9' lists the number of (and percentage) of residues with an average occupancy less than 0.9.

Mol	Chain	Analysed	<RSRZ>	#RSRZ>2	OWAB(Å ²)	Q<0.9
1	A	119/119 (100%)	-0.44	0 100 100	32, 49, 77, 86	0
1	B	119/119 (100%)	-0.58	0 100 100	27, 37, 64, 74	0
1	C	118/119 (99%)	-0.47	1 (0%) 86 85	26, 40, 74, 102	0
1	D	113/119 (94%)	-0.39	0 100 100	37, 51, 74, 89	0
1	E	114/119 (95%)	-0.45	1 (0%) 84 83	30, 42, 69, 93	0
1	F	118/119 (99%)	-0.28	0 100 100	30, 50, 83, 104	0
1	G	112/119 (94%)	-0.46	0 100 100	33, 43, 75, 84	0
All	All	813/833 (97%)	-0.44	2 (0%) 95 94	26, 45, 77, 104	0

All (2) RSRZ outliers are listed below:

Mol	Chain	Res	Type	RSRZ
1	E	1197	GLY	3.1
1	C	1080	MET	3.1

6.2 Non-standard residues in protein, DNA, RNA chains [i](#)

There are no non-standard protein/DNA/RNA residues in this entry.

6.3 Carbohydrates [i](#)

There are no monosaccharides in this entry.

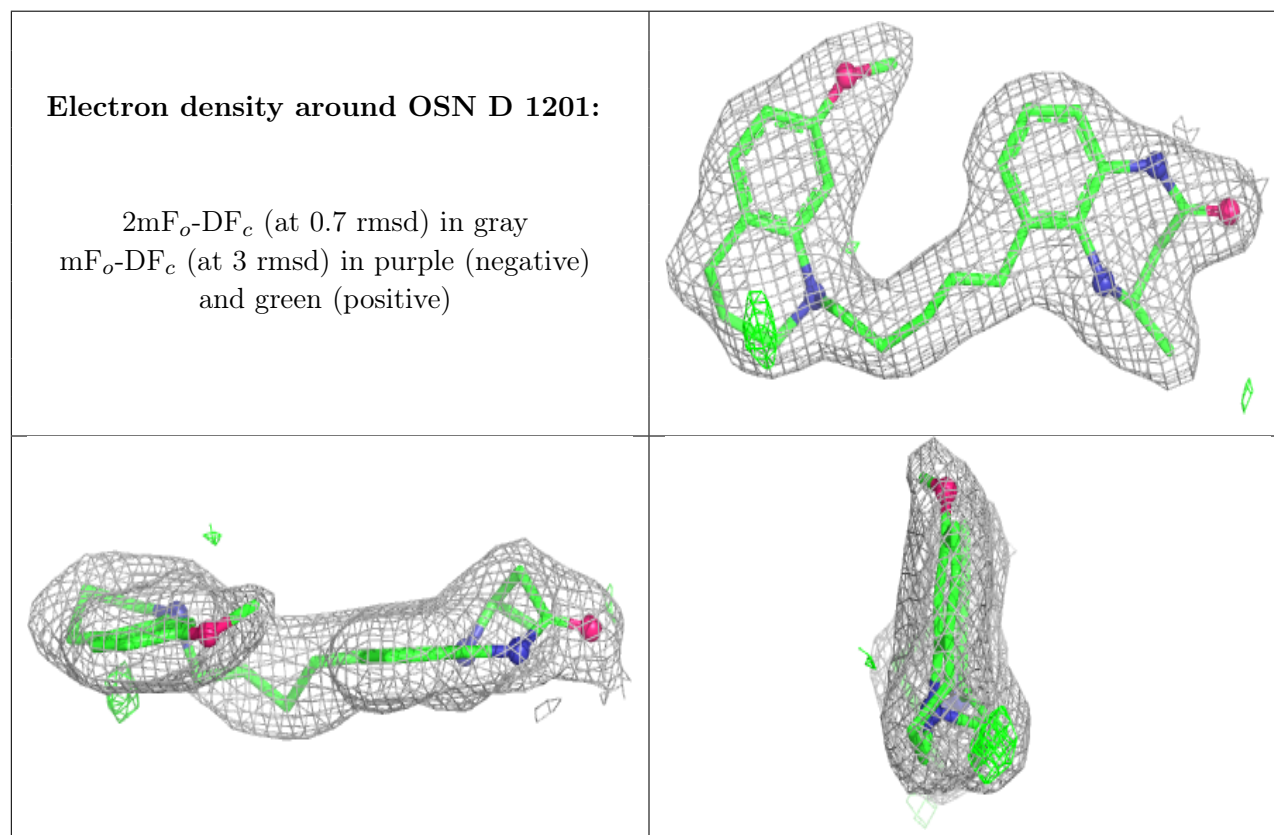
6.4 Ligands [i](#)

In the following table, the Atoms column lists the number of modelled atoms in the group and the number defined in the chemical component dictionary. The B-factors column lists the minimum,

median, 95th percentile and maximum values of B factors of atoms in the group. The column labelled 'Q < 0.9' lists the number of atoms with occupancy less than 0.9.

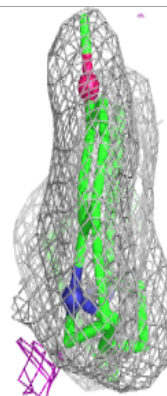
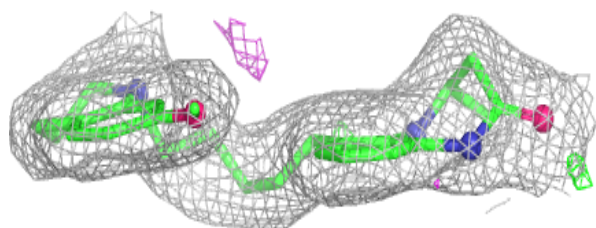
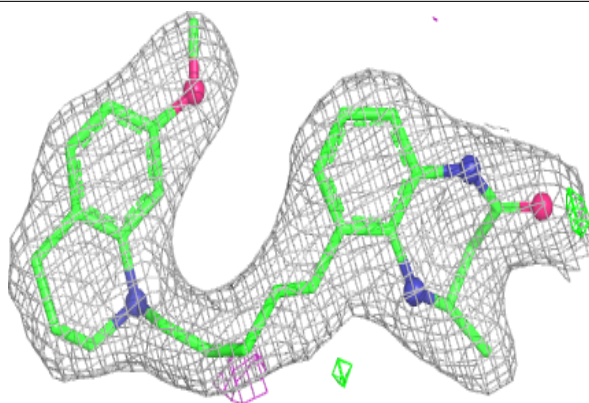
Mol	Type	Chain	Res	Atoms	RSCC	RSR	B-factors(Å ²)	Q<0.9
2	OSN	D	1201	30/30	0.93	0.13	32,45,67,89	0
2	OSN	E	1201	30/30	0.95	0.14	25,38,52,66	0
2	OSN	G	1201	30/30	0.95	0.15	25,36,51,78	0
2	OSN	C	1201	30/30	0.96	0.11	24,38,92,111	0
2	OSN	F	1201	30/30	0.96	0.14	28,37,52,78	0
2	OSN	A	1201	30/30	0.96	0.14	26,39,58,60	0
2	OSN	B	1201	30/30	0.97	0.13	22,33,46,74	0

The following is a graphical depiction of the model fit to experimental electron density of all instances of the Ligand of Interest. In addition, ligands with molecular weight > 250 and outliers as shown on the geometry validation Tables will also be included. Each fit is shown from different orientation to approximate a three-dimensional view.

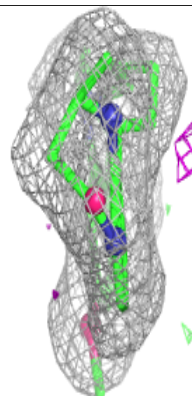
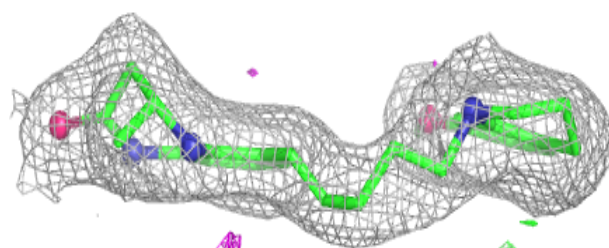
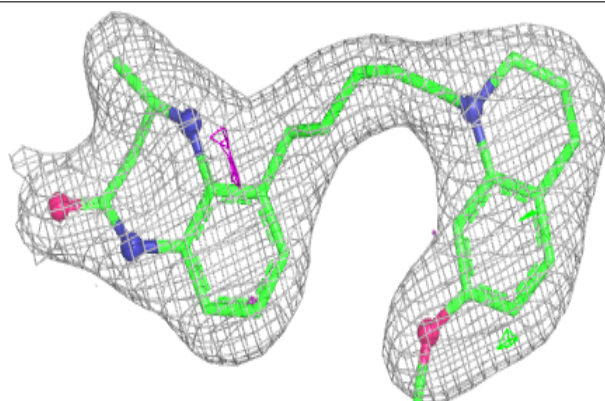


Electron density around OSN E 1201:

$2mF_o-DF_c$ (at 0.7 rmsd) in gray
 mF_o-DF_c (at 3 rmsd) in purple (negative)
and green (positive)

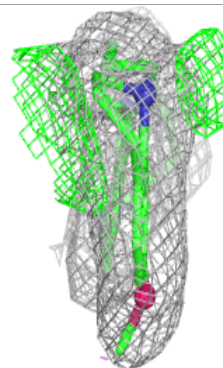
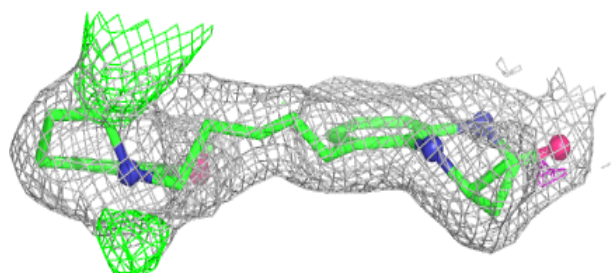
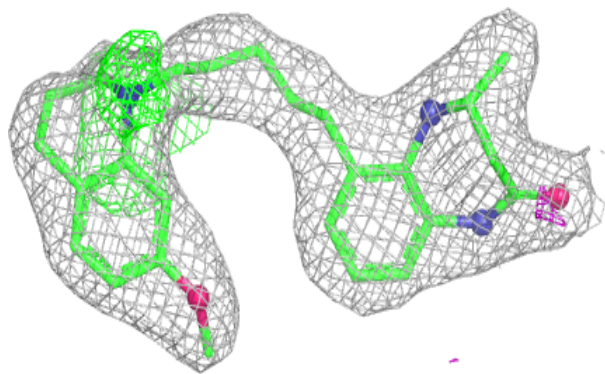
**Electron density around OSN G 1201:**

$2mF_o-DF_c$ (at 0.7 rmsd) in gray
 mF_o-DF_c (at 3 rmsd) in purple (negative)
and green (positive)

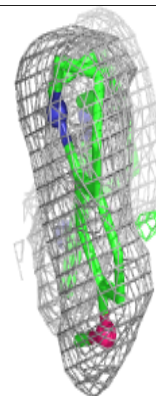
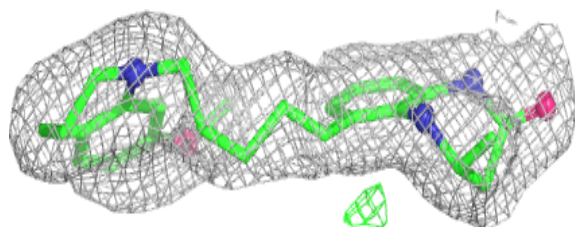
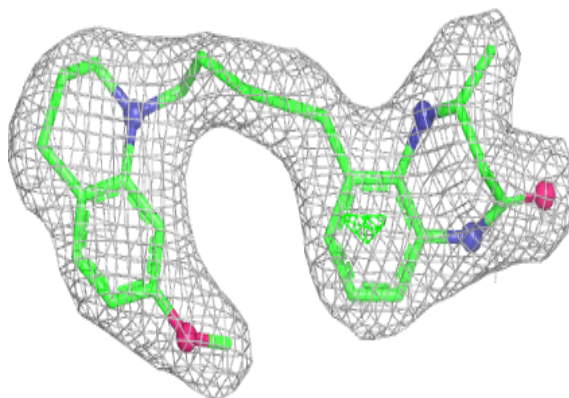


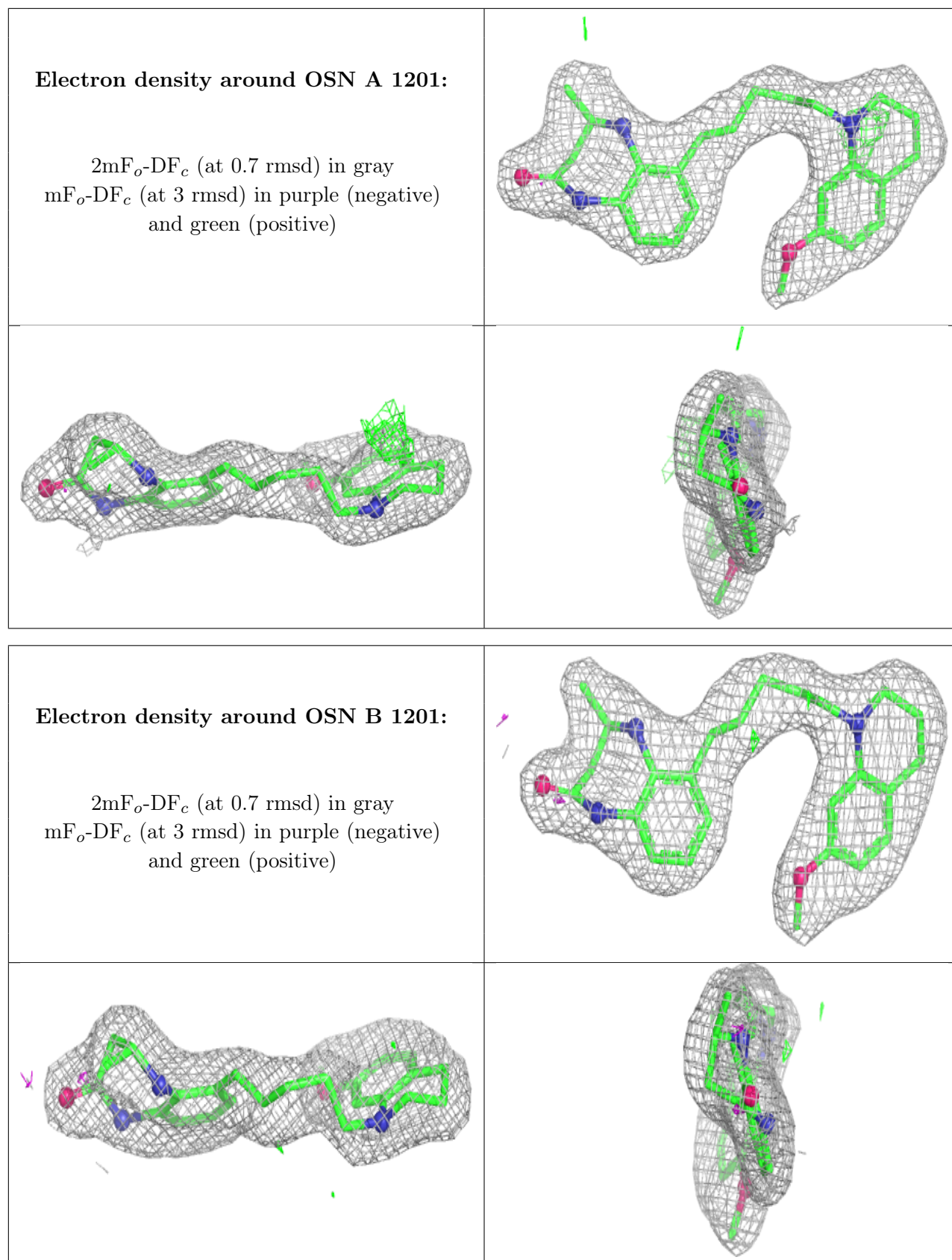
Electron density around OSN C 1201:

$2mF_o-DF_c$ (at 0.7 rmsd) in gray
 mF_o-DF_c (at 3 rmsd) in purple (negative)
and green (positive)

**Electron density around OSN F 1201:**

$2mF_o-DF_c$ (at 0.7 rmsd) in gray
 mF_o-DF_c (at 3 rmsd) in purple (negative)
and green (positive)





6.5 Other polymers [i](#)

There are no such residues in this entry.