



# Full wwPDB X-ray Structure Validation Report ⓘ

Nov 2, 2024 – 10:50 pm GMT

PDB ID : 6Y2G  
Title : Crystal structure (orthorhombic form) of the complex resulting from the reaction between SARS-CoV-2 (2019-nCoV) main protease and tert-butyl (1-((S)-1-(((S)-4-(benzylamino)-3,4-dioxo-1-((S)-2-oxopyrrolidin-3-yl)butan-2-yl)amino)-3-cyclopropyl-1-oxopropan-2-yl)-2-oxo-1,2-dihydropyridin-3-yl)carbamate (alpha-ketoamide 13b)  
Authors : Zhang, L.; Lin, D.; Sun, X.; Hilgenfeld, R.  
Deposited on : 2020-02-15  
Resolution : 2.20 Å (reported)

This is a Full wwPDB X-ray Structure Validation Report for a publicly released PDB entry.

We welcome your comments at [validation@mail.wwpdb.org](mailto:validation@mail.wwpdb.org)

A user guide is available at

<https://www.wwpdb.org/validation/2017/XrayValidationReportHelp>

with specific help available everywhere you see the ⓘ symbol.

The types of validation reports are described at

<http://www.wwpdb.org/validation/2017/FAQs#types>.

---

The following versions of software and data (see [references ⓘ](#)) were used in the production of this report:

MolProbity : 4.02b-467  
Mogul : 1.8.4, CSD as541be (2020)  
Xtriage (Phenix) : 1.13  
EDS : 3.0  
buster-report : 1.1.7 (2018)  
Percentile statistics : 20231227.v01 (using entries in the PDB archive December 27th 2023)  
CCP4 : 9.0.003 (Gargrove)  
Density-Fitness : 1.0.11  
Ideal geometry (proteins) : Engh & Huber (2001)

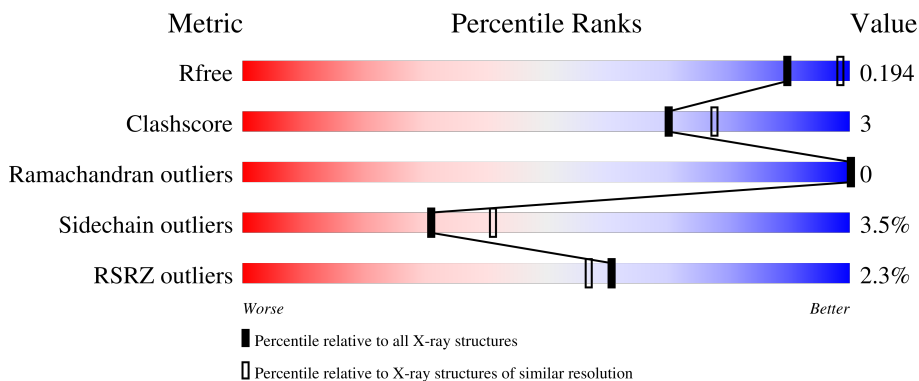
# 1 Overall quality at a glance

The following experimental techniques were used to determine the structure:

*X-RAY DIFFRACTION*

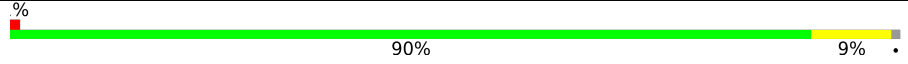
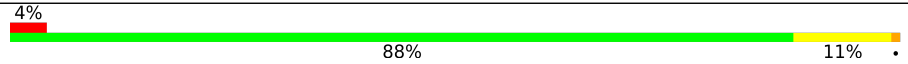
The reported resolution of this entry is 2.20 Å.

Percentile scores (ranging between 0-100) for global validation metrics of the entry are shown in the following graphic. The table shows the number of entries on which the scores are based.



Metric	Whole archive (#Entries)	Similar resolution (#Entries, resolution range(Å))
$R_{free}$	164625	5791 (2.20-2.20)
Clashscore	180529	6634 (2.20-2.20)
Ramachandran outliers	177936	6560 (2.20-2.20)
Sidechain outliers	177891	6561 (2.20-2.20)
RSRZ outliers	164620	5791 (2.20-2.20)

The table below summarises the geometric issues observed across the polymeric chains and their fit to the electron density. The red, orange, yellow and green segments of the lower bar indicate the fraction of residues that contain outliers for  $\geq 3$ , 2, 1 and 0 types of geometric quality criteria respectively. A grey segment represents the fraction of residues that are not modelled. The numeric value for each fraction is indicated below the corresponding segment, with a dot representing fractions  $\leq 5\%$ . The upper red bar (where present) indicates the fraction of residues that have poor fit to the electron density. The numeric value is given above the bar.

Mol	Chain	Length	Quality of chain
1	A	303	 90% 9%
1	B	303	 88% 11%

Ideal geometry (DNA, RNA) : Parkinson et al. (1996)  
 Validation Pipeline (wwPDB-VP) : 2.39

## 2 Entry composition i

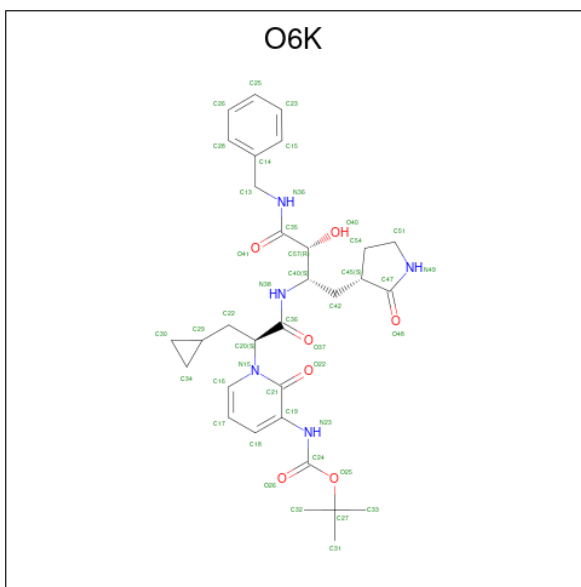
There are 3 unique types of molecules in this entry. The entry contains 5038 atoms, of which 0 are hydrogens and 0 are deuteriums.

In the tables below, the ZeroOcc column contains the number of atoms modelled with zero occupancy, the AltConf column contains the number of residues with at least one atom in alternate conformation and the Trace column contains the number of residues modelled with at most 2 atoms.

- Molecule 1 is a protein called 3C-like proteinase nsp5.

Mol	Chain	Residues	Atoms					ZeroOcc	AltConf	Trace
			Total	C	N	O	S			
1	A	301	Total 2329	C 1474	N 396	O 437	S 22	0	0	0
1	B	303	Total 2340	C 1481	N 398	O 439	S 22	0	0	0

- Molecule 2 is {tert}-butyl {N}-[1-[(2 {S})-3-cyclopropyl-1-oxidanylidene-1-[[[(2 {S}),3 {R})-3-oxidanyl-4-oxidanylidene-1-[(3 {S})-2-oxidanylidene-pyrrolidin-3-yl]-4-[(phenylmethyl)amino]butan-2-yl]amino]propan-2-yl]-2-oxidanylidene-pyridin-3-yl]carbamate (three-letter code: O6K) (formula: C<sub>31</sub>H<sub>41</sub>N<sub>5</sub>O<sub>7</sub>) (labeled as "Ligand of Interest" by depositor).



Mol	Chain	Residues	Atoms				ZeroOcc	AltConf
			Total	C	N	O		
2	A	1	Total 43	C 31	N 5	O 7	0	0
2	B	1	Total 43	C 31	N 5	O 7	0	0

- Molecule 3 is water.

<b>Mol</b>	<b>Chain</b>	<b>Residues</b>	<b>Atoms</b>		<b>ZeroOcc</b>	<b>AltConf</b>
3	A	177	Total 177	O 177	0	0
3	B	106	Total 106	O 106	0	0

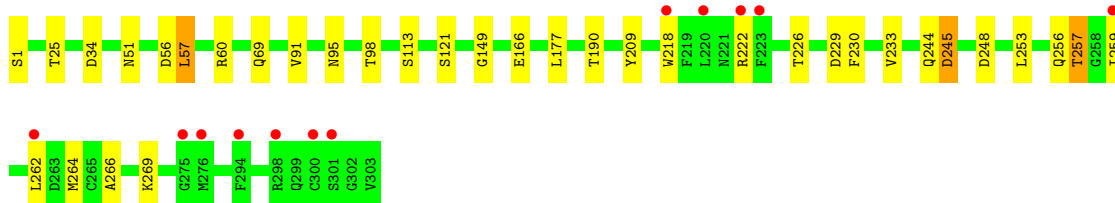
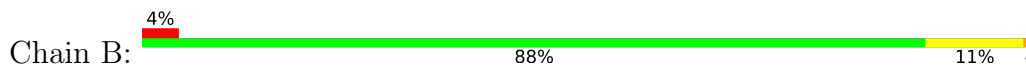
### 3 Residue-property plots [i](#)

These plots are drawn for all protein, RNA, DNA and oligosaccharide chains in the entry. The first graphic for a chain summarises the proportions of the various outlier classes displayed in the second graphic. The second graphic shows the sequence view annotated by issues in geometry and electron density. Residues are color-coded according to the number of geometric quality criteria for which they contain at least one outlier: green = 0, yellow = 1, orange = 2 and red = 3 or more. A red dot above a residue indicates a poor fit to the electron density ( $RSRZ > 2$ ). Stretches of 2 or more consecutive residues without any outlier are shown as a green connector. Residues present in the sample, but not in the model, are shown in grey.

- Molecule 1: 3C-like proteinase nsp5



- Molecule 1: 3C-like proteinase nsp5



## 4 Data and refinement statistics i

Property	Value	Source
Space group	P 21 21 21	Depositor
Cell constants a, b, c, $\alpha$ , $\beta$ , $\gamma$	68.57Å 101.60Å 103.70Å 90.00° 90.00° 90.00°	Depositor
Resolution (Å)	41.35 – 2.20 41.35 – 2.20	Depositor EDS
% Data completeness (in resolution range)	99.9 (41.35-2.20) 99.9 (41.35-2.20)	Depositor EDS
$R_{merge}$	0.17	Depositor
$R_{sym}$	(Not available)	Depositor
$\langle I/\sigma(I) \rangle$ <sup>1</sup>	2.22 (at 2.20Å)	Xtrriage
Refinement program	REFMAC 5.8.0419	Depositor
R, $R_{free}$	0.189 , 0.234 0.196 , 0.194	Depositor DCC
$R_{free}$ test set	1898 reflections (5.07%)	wwPDB-VP
Wilson B-factor (Å <sup>2</sup> )	35.5	Xtrriage
Anisotropy	0.529	Xtrriage
Bulk solvent $k_{sol}$ (e/Å <sup>3</sup> ), $B_{sol}$ (Å <sup>2</sup> )	0.35 , 39.4	EDS
L-test for twinning <sup>2</sup>	$\langle  L  \rangle = 0.49$ , $\langle L^2 \rangle = 0.33$	Xtrriage
Estimated twinning fraction	0.015 for -h,l,k	Xtrriage
$F_o, F_c$ correlation	0.96	EDS
Total number of atoms	5038	wwPDB-VP
Average B, all atoms (Å <sup>2</sup> )	43.0	wwPDB-VP

Xtrriage's analysis on translational NCS is as follows: *The largest off-origin peak in the Patterson function is 4.20% of the height of the origin peak. No significant pseudotranslation is detected.*

<sup>1</sup>Intensities estimated from amplitudes.

<sup>2</sup>Theoretical values of  $\langle |L| \rangle$ ,  $\langle L^2 \rangle$  for acentric reflections are 0.5, 0.333 respectively for untwinned datasets, and 0.375, 0.2 for perfectly twinned datasets.

## 5 Model quality [i](#)

### 5.1 Standard geometry [i](#)

Bond lengths and bond angles in the following residue types are not validated in this section: O6K

The Z score for a bond length (or angle) is the number of standard deviations the observed value is removed from the expected value. A bond length (or angle) with  $|Z| > 5$  is considered an outlier worth inspection. RMSZ is the root-mean-square of all Z scores of the bond lengths (or angles).

Mol	Chain	Bond lengths		Bond angles	
		RMSZ	# $ Z  > 5$	RMSZ	# $ Z  > 5$
1	A	0.50	1/2381 (0.0%)	0.82	1/3236 (0.0%)
1	B	0.48	0/2392	0.82	0/3251
All	All	0.49	1/4773 (0.0%)	0.82	1/6487 (0.0%)

Chiral center outliers are detected by calculating the chiral volume of a chiral center and verifying if the center is modelled as a planar moiety or with the opposite hand. A planarity outlier is detected by checking planarity of atoms in a peptide group, atoms in a mainchain group or atoms of a sidechain that are expected to be planar.

Mol	Chain	#Chirality outliers	#Planarity outliers
1	A	0	1

All (1) bond length outliers are listed below:

Mol	Chain	Res	Type	Atoms	Z	Observed(Å)	Ideal(Å)
1	A	290	GLU	CD-OE2	5.23	1.31	1.25

All (1) bond angle outliers are listed below:

Mol	Chain	Res	Type	Atoms	Z	Observed(°)	Ideal(°)
1	A	127	GLN	CB-CA-C	-5.71	98.97	110.40

There are no chirality outliers.

All (1) planarity outliers are listed below:

Mol	Chain	Res	Type	Group
1	A	4	ARG	Sidechain

## 5.2 Too-close contacts [i](#)

In the following table, the Non-H and H(model) columns list the number of non-hydrogen atoms and hydrogen atoms in the chain respectively. The H(added) column lists the number of hydrogen atoms added and optimized by MolProbity. The Clashes column lists the number of clashes within the asymmetric unit, whereas Symm-Clashes lists symmetry-related clashes.

Mol	Chain	Non-H	H(model)	H(added)	Clashes	Symm-Clashes
1	A	2329	0	2277	12	0
1	B	2340	0	2289	22	0
2	A	43	0	0	0	0
2	B	43	0	0	0	0
3	A	177	0	0	1	0
3	B	106	0	0	1	0
All	All	5038	0	4566	31	0

The all-atom clashscore is defined as the number of clashes found per 1000 atoms (including hydrogen atoms). The all-atom clashscore for this structure is 3.

All (31) close contacts within the same asymmetric unit are listed below, sorted by their clash magnitude.

Atom-1	Atom-2	Interatomic distance (Å)	Clash overlap (Å)
1:A:1:SER:HA	1:B:166:GLU:OE1	1.82	0.80
1:A:189:GLN:O	1:A:189:GLN:HG2	1.82	0.79
1:B:218:TRP:O	1:B:218:TRP:CD2	2.42	0.73
1:B:218:TRP:O	1:B:218:TRP:CE3	2.44	0.69
1:B:257:THR:HG23	1:B:259:ILE:HD13	1.78	0.65
1:B:253:LEU:O	1:B:257:THR:HB	2.00	0.61
1:B:218:TRP:O	1:B:218:TRP:CG	2.58	0.57
1:B:257:THR:CG2	1:B:259:ILE:HB	2.37	0.55
1:A:1:SER:CA	1:B:166:GLU:OE1	2.55	0.52
1:A:140:PHE:O	1:B:1:SER:N	2.32	0.51
1:A:22:CYS:SG	1:A:61:LYS:HE3	2.53	0.49
1:A:31:TRP:CE2	1:A:95:ASN:HB2	2.48	0.48
1:A:113:SER:O	1:A:149:GLY:HA2	2.14	0.47
1:B:113:SER:O	1:B:149:GLY:HA2	2.16	0.46
1:B:244:GLN:NE2	1:B:248:ASP:OD1	2.49	0.46
1:A:233:VAL:HG11	1:A:269:LYS:HG3	1.97	0.45
1:A:40:ARG:HD3	1:A:85:CYS:HA	1.97	0.45
1:B:262:LEU:H	1:B:262:LEU:HD12	1.80	0.45
1:B:257:THR:HG22	1:B:259:ILE:H	1.80	0.45
1:B:230:PHE:O	1:B:233:VAL:HG12	2.16	0.44
1:A:279:ARG:HD3	3:A:668:HOH:O	2.16	0.44

*Continued on next page...*



Continued from previous page...

Atom-1	Atom-2	Interatomic distance (Å)	Clash overlap (Å)
1:B:56:ASP:O	1:B:60:ARG:HG2	2.18	0.43
1:A:48:ASP:O	1:A:52:PRO:HB3	2.18	0.43
1:B:95:ASN:HB3	1:B:98:THR:OG1	2.18	0.42
1:B:226:THR:OG1	1:B:229:ASP:OD2	2.35	0.42
1:B:245:ASP:HB2	3:B:581:HOH:O	2.20	0.42
1:B:266:ALA:HA	1:B:269:LYS:HB3	2.02	0.42
1:B:209:TYR:CE1	1:B:264:MET:HE2	2.55	0.41
1:B:34:ASP:O	1:B:91:VAL:HG22	2.21	0.41
1:B:57:LEU:HD13	1:B:57:LEU:HA	1.93	0.40
1:A:121:SER:HA	1:A:122:PRO:HD3	1.82	0.40

There are no symmetry-related clashes.

## 5.3 Torsion angles [i](#)

### 5.3.1 Protein backbone [i](#)

In the following table, the Percentiles column shows the percent Ramachandran outliers of the chain as a percentile score with respect to all X-ray entries followed by that with respect to entries of similar resolution.

The Analysed column shows the number of residues for which the backbone conformation was analysed, and the total number of residues.

Mol	Chain	Analysed	Favoured	Allowed	Outliers	Percentiles	
1	A	299/303 (99%)	290 (97%)	9 (3%)	0	100	100
1	B	301/303 (99%)	287 (95%)	14 (5%)	0	100	100
All	All	600/606 (99%)	577 (96%)	23 (4%)	0	100	100

There are no Ramachandran outliers to report.

### 5.3.2 Protein sidechains [i](#)

In the following table, the Percentiles column shows the percent sidechain outliers of the chain as a percentile score with respect to all X-ray entries followed by that with respect to entries of similar resolution.

The Analysed column shows the number of residues for which the sidechain conformation was analysed, and the total number of residues.

Mol	Chain	Analysed	Rotameric	Outliers	Percentiles	
1	A	259/260 (100%)	252 (97%)	7 (3%)	40	53
1	B	260/260 (100%)	249 (96%)	11 (4%)	25	33
All	All	519/520 (100%)	501 (96%)	18 (4%)	31	41

All (18) residues with a non-rotameric sidechain are listed below:

Mol	Chain	Res	Type
1	A	24	THR
1	A	45	THR
1	A	49	MET
1	A	59	ILE
1	A	169	THR
1	A	235	MET
1	A	238	ASN
1	B	25	THR
1	B	51	ASN
1	B	57	LEU
1	B	69	GLN
1	B	121	SER
1	B	177	LEU
1	B	190	THR
1	B	222	ARG
1	B	245	ASP
1	B	256	GLN
1	B	257	THR

Sometimes sidechains can be flipped to improve hydrogen bonding and reduce clashes. All (4) such sidechains are listed below:

Mol	Chain	Res	Type
1	A	238	ASN
1	A	277	ASN
1	B	74	GLN
1	B	244	GLN

### 5.3.3 RNA

There are no RNA molecules in this entry.

## 5.4 Non-standard residues in protein, DNA, RNA chains [i](#)

There are no non-standard protein/DNA/RNA residues in this entry.

## 5.5 Carbohydrates [i](#)

There are no oligosaccharides in this entry.

## 5.6 Ligand geometry [i](#)

2 ligands are modelled in this entry.

In the following table, the Counts columns list the number of bonds (or angles) for which Mogul statistics could be retrieved, the number of bonds (or angles) that are observed in the model and the number of bonds (or angles) that are defined in the Chemical Component Dictionary. The Link column lists molecule types, if any, to which the group is linked. The Z score for a bond length (or angle) is the number of standard deviations the observed value is removed from the expected value. A bond length (or angle) with  $|Z| > 2$  is considered an outlier worth inspection. RMSZ is the root-mean-square of all Z scores of the bond lengths (or angles).

Mol	Type	Chain	Res	Link	Bond lengths			Bond angles		
					Counts	RMSZ	# Z  > 2	Counts	RMSZ	# Z  > 2
2	O6K	A	694	1	46,46,46	2.27	18 (39%)	57,65,65	1.71	17 (29%)
2	O6K	B	621	1	46,46,46	2.21	10 (21%)	57,65,65	1.95	12 (21%)

In the following table, the Chirals column lists the number of chiral outliers, the number of chiral centers analysed, the number of these observed in the model and the number defined in the Chemical Component Dictionary. Similar counts are reported in the Torsion and Rings columns. '-' means no outliers of that kind were identified.

Mol	Type	Chain	Res	Link	Chirals	Torsions	Rings
2	O6K	A	694	1	-	10/42/54/54	0/4/4/4
2	O6K	B	621	1	-	11/42/54/54	0/4/4/4

All (28) bond length outliers are listed below:

Mol	Chain	Res	Type	Atoms	Z	Observed(Å)	Ideal(Å)
2	B	621	O6K	C57-C40	10.23	1.66	1.54
2	A	694	O6K	C40-N38	6.72	1.57	1.46
2	B	621	O6K	C47-N49	5.54	1.39	1.33
2	A	694	O6K	C47-N49	5.03	1.39	1.33
2	B	621	O6K	O25-C27	-4.53	1.40	1.48
2	A	694	O6K	O25-C27	-4.39	1.40	1.48

*Continued on next page...*

Continued from previous page...

Mol	Chain	Res	Type	Atoms	Z	Observed(Å)	Ideal(Å)
2	B	621	O6K	C42-C40	4.33	1.59	1.52
2	A	694	O6K	C20-N15	-3.98	1.40	1.47
2	A	694	O6K	C35-N36	3.54	1.41	1.33
2	A	694	O6K	C57-C35	-3.49	1.45	1.52
2	A	694	O6K	C54-C51	3.24	1.58	1.53
2	A	694	O6K	O40-C57	3.17	1.48	1.42
2	B	621	O6K	C36-N38	2.89	1.40	1.34
2	A	694	O6K	C15-C14	2.73	1.44	1.38
2	A	694	O6K	C26-C28	2.55	1.44	1.38
2	A	694	O6K	O37-C36	2.37	1.28	1.23
2	A	694	O6K	O22-C21	2.27	1.27	1.23
2	A	694	O6K	C32-C27	2.24	1.58	1.51
2	A	694	O6K	C51-N49	2.24	1.50	1.46
2	A	694	O6K	C19-N23	-2.23	1.35	1.41
2	B	621	O6K	C35-N36	2.22	1.38	1.33
2	B	621	O6K	C20-N15	2.16	1.50	1.47
2	A	694	O6K	C22-C20	2.14	1.58	1.53
2	B	621	O6K	C32-C27	2.12	1.57	1.51
2	A	694	O6K	C24-N23	-2.09	1.34	1.37
2	A	694	O6K	O26-C24	2.06	1.25	1.21
2	B	621	O6K	C22-C29	-2.04	1.49	1.53
2	B	621	O6K	O26-C24	2.01	1.25	1.21

All (29) bond angle outliers are listed below:

Mol	Chain	Res	Type	Atoms	Z	Observed(°)	Ideal(°)
2	B	621	O6K	C42-C40-N38	7.92	120.42	110.18
2	B	621	O6K	O40-C57-C40	5.47	124.06	108.54
2	B	621	O6K	C57-C40-N38	-4.90	100.80	110.03
2	A	694	O6K	C57-C40-N38	-4.31	101.93	110.03
2	A	694	O6K	O40-C57-C35	-3.78	102.48	110.63
2	A	694	O6K	O22-C21-C19	3.50	126.37	122.29
2	B	621	O6K	C57-C35-N36	-3.21	109.97	116.66
2	A	694	O6K	O41-C35-N36	3.15	129.76	122.99
2	A	694	O6K	C36-C20-N15	-3.14	105.98	111.87
2	B	621	O6K	C40-N38-C36	-3.02	117.73	123.07
2	A	694	O6K	C21-C19-N23	3.01	115.05	112.30
2	B	621	O6K	O25-C24-N23	2.99	113.42	108.78
2	A	694	O6K	C42-C40-N38	2.95	113.99	110.18
2	A	694	O6K	C57-C35-N36	-2.86	110.70	116.66
2	B	621	O6K	O41-C35-N36	2.86	129.13	122.99
2	B	621	O6K	C16-N15-C21	-2.65	120.27	122.24

Continued on next page...

*Continued from previous page...*

Mol	Chain	Res	Type	Atoms	Z	Observed(°)	Ideal(°)
2	B	621	O6K	C36-C20-N15	-2.64	106.91	111.87
2	B	621	O6K	C27-O25-C24	2.62	125.02	120.99
2	B	621	O6K	O22-C21-N15	-2.49	117.28	122.43
2	A	694	O6K	C18-C19-N23	-2.47	123.86	127.20
2	A	694	O6K	C54-C45-C47	2.43	106.04	102.88
2	A	694	O6K	O40-C57-C40	2.38	115.30	108.54
2	A	694	O6K	C13-N36-C35	2.34	125.70	122.34
2	A	694	O6K	C29-C22-C20	-2.25	111.57	114.54
2	A	694	O6K	O26-C24-N23	-2.19	122.45	125.44
2	A	694	O6K	O25-C24-N23	2.13	112.08	108.78
2	B	621	O6K	C21-C19-N23	2.08	114.20	112.30
2	A	694	O6K	C20-C36-N38	-2.08	111.95	116.58
2	A	694	O6K	C27-O25-C24	2.06	124.16	120.99

There are no chirality outliers.

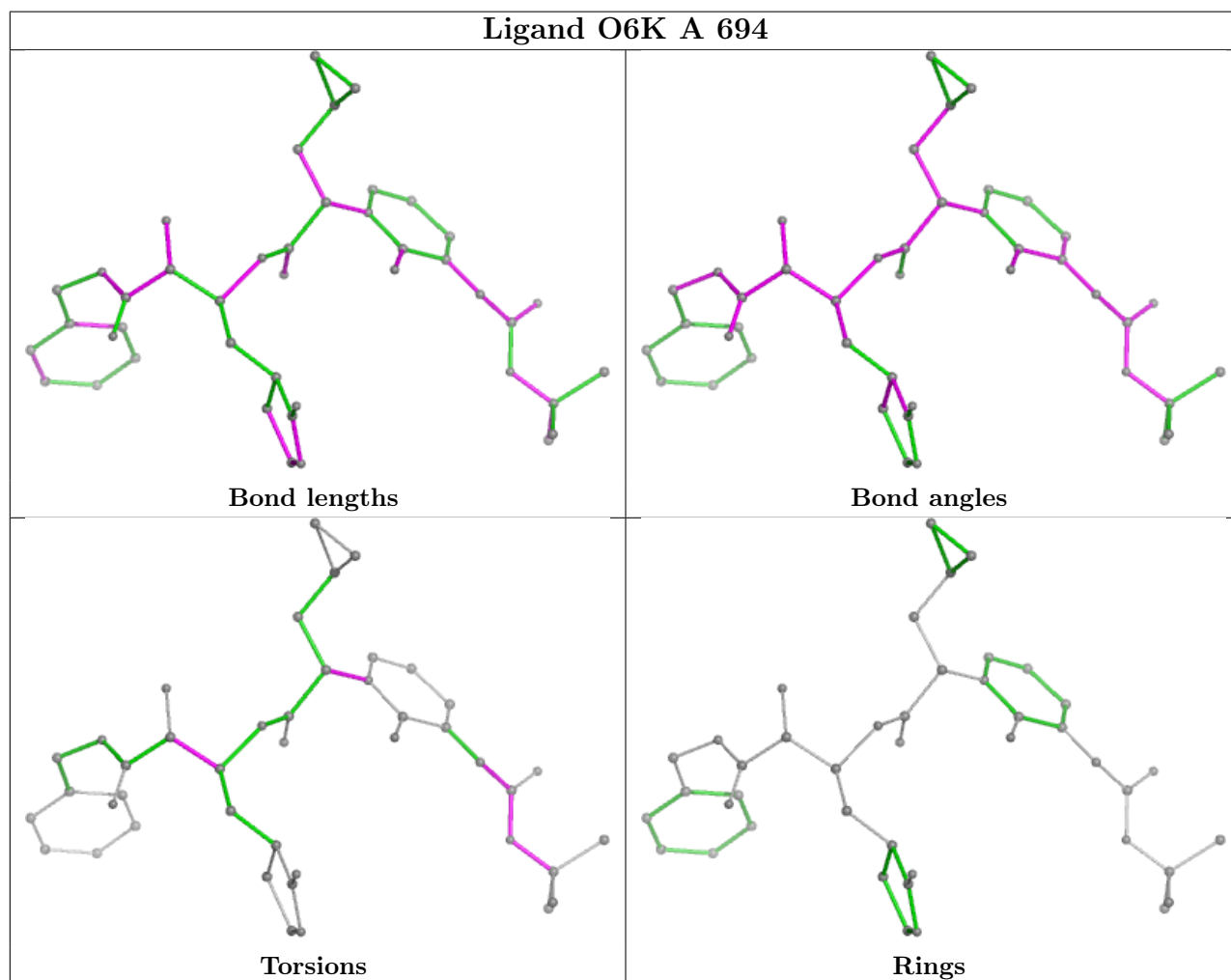
All (21) torsion outliers are listed below:

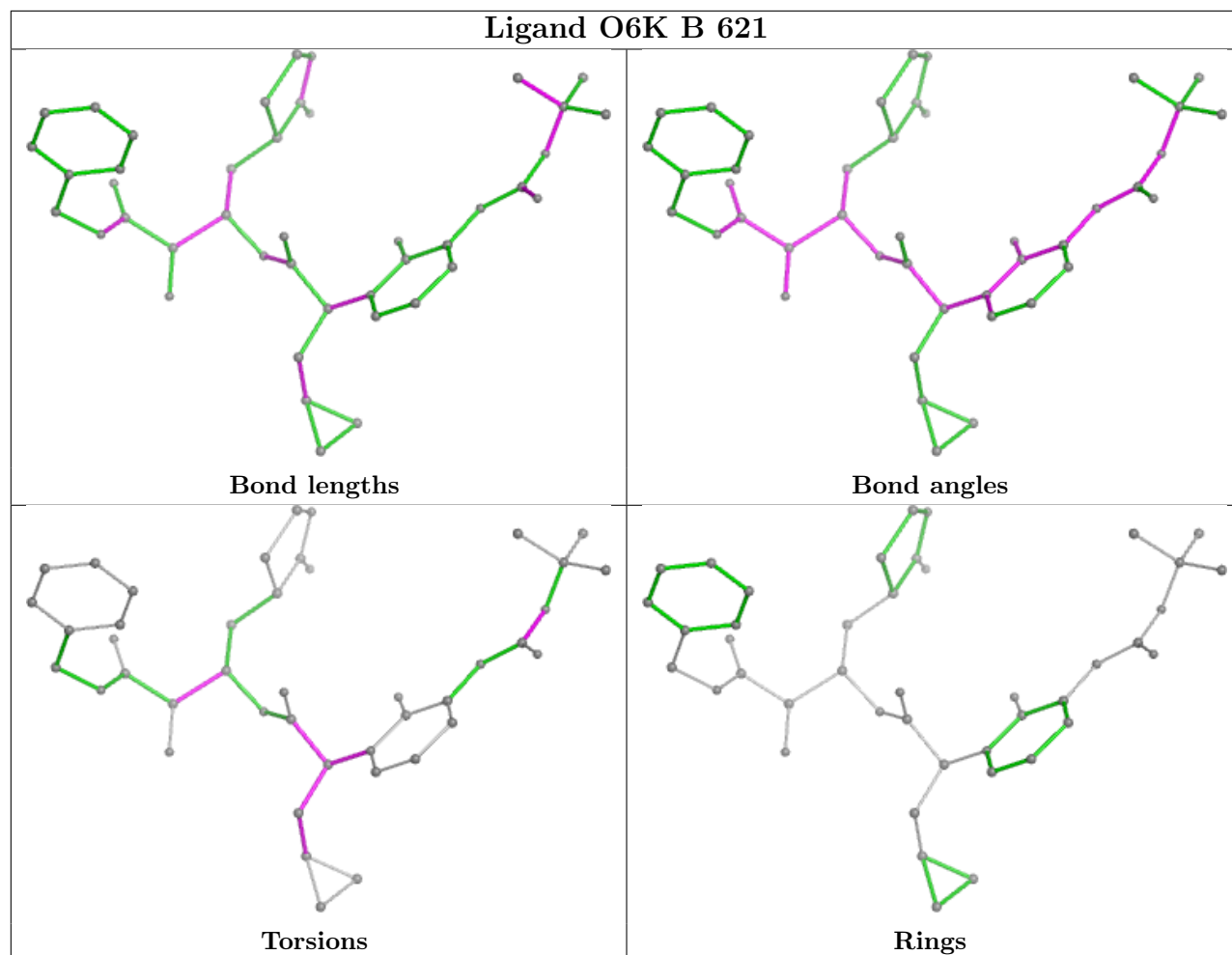
Mol	Chain	Res	Type	Atoms
2	A	694	O6K	O26-C24-N23-C19
2	A	694	O6K	O25-C24-N23-C19
2	A	694	O6K	C22-C20-N15-C16
2	B	621	O6K	C22-C20-N15-C21
2	B	621	O6K	C36-C20-C22-C29
2	B	621	O6K	C20-C22-C29-C30
2	A	694	O6K	C31-C27-O25-C24
2	A	694	O6K	C32-C27-O25-C24
2	A	694	O6K	C33-C27-O25-C24
2	B	621	O6K	O26-C24-O25-C27
2	B	621	O6K	N23-C24-O25-C27
2	A	694	O6K	N23-C24-O25-C27
2	B	621	O6K	N15-C20-C22-C29
2	A	694	O6K	O26-C24-O25-C27
2	A	694	O6K	C22-C20-N15-C21
2	A	694	O6K	N38-C40-C57-C35
2	B	621	O6K	N38-C40-C57-O40
2	B	621	O6K	C22-C20-N15-C16
2	B	621	O6K	C20-C22-C29-C34
2	B	621	O6K	N15-C20-C36-O37
2	B	621	O6K	N15-C20-C36-N38

There are no ring outliers.

No monomer is involved in short contacts.

The following is a two-dimensional graphical depiction of Mogul quality analysis of bond lengths, bond angles, torsion angles, and ring geometry for all instances of the Ligand of Interest. In addition, ligands with molecular weight > 250 and outliers as shown on the validation Tables will also be included. For torsion angles, if less than 5% of the Mogul distribution of torsion angles is within 10 degrees of the torsion angle in question, then that torsion angle is considered an outlier. Any bond that is central to one or more torsion angles identified as an outlier by Mogul will be highlighted in the graph. For rings, the root-mean-square deviation (RMSD) between the ring in question and similar rings identified by Mogul is calculated over all ring torsion angles. If the average RMSD is greater than 60 degrees and the minimal RMSD between the ring in question and any Mogul-identified rings is also greater than 60 degrees, then that ring is considered an outlier. The outliers are highlighted in purple. The color gray indicates Mogul did not find sufficient equivalents in the CSD to analyse the geometry.





## 5.7 Other polymers [i](#)

There are no such residues in this entry.

## 5.8 Polymer linkage issues [i](#)

There are no chain breaks in this entry.

## 6 Fit of model and data [i](#)

### 6.1 Protein, DNA and RNA chains [i](#)

In the following table, the column labelled ‘#RSRZ > 2’ contains the number (and percentage) of RSRZ outliers, followed by percent RSRZ outliers for the chain as percentile scores relative to all X-ray entries and entries of similar resolution. The OWAB column contains the minimum, median, 95<sup>th</sup> percentile and maximum values of the occupancy-weighted average B-factor per residue. The column labelled ‘Q < 0.9’ lists the number of (and percentage) of residues with an average occupancy less than 0.9.

Mol	Chain	Analysed	<RSRZ>	#RSRZ>2	OWAB(Å <sup>2</sup> )	Q<0.9
1	A	301/303 (99%)	-0.39	2 (0%) 84 82	23, 37, 61, 97	0
1	B	303/303 (100%)	0.03	12 (3%) 43 39	23, 45, 77, 96	0
All	All	604/606 (99%)	-0.18	14 (2%) 61 57	23, 39, 74, 97	0

All (14) RSRZ outliers are listed below:

Mol	Chain	Res	Type	RSRZ
1	B	223	PHE	3.5
1	B	294	PHE	3.4
1	B	262	LEU	2.8
1	B	218	TRP	2.8
1	A	154	TYR	2.7
1	B	259	ILE	2.6
1	B	222	ARG	2.6
1	B	275	GLY	2.3
1	B	276	MET	2.3
1	A	45	THR	2.2
1	B	298	ARG	2.1
1	B	301	SER	2.1
1	B	300	CYS	2.0
1	B	220	LEU	2.0

### 6.2 Non-standard residues in protein, DNA, RNA chains [i](#)

There are no non-standard protein/DNA/RNA residues in this entry.

### 6.3 Carbohydrates [i](#)

There are no monosaccharides in this entry.

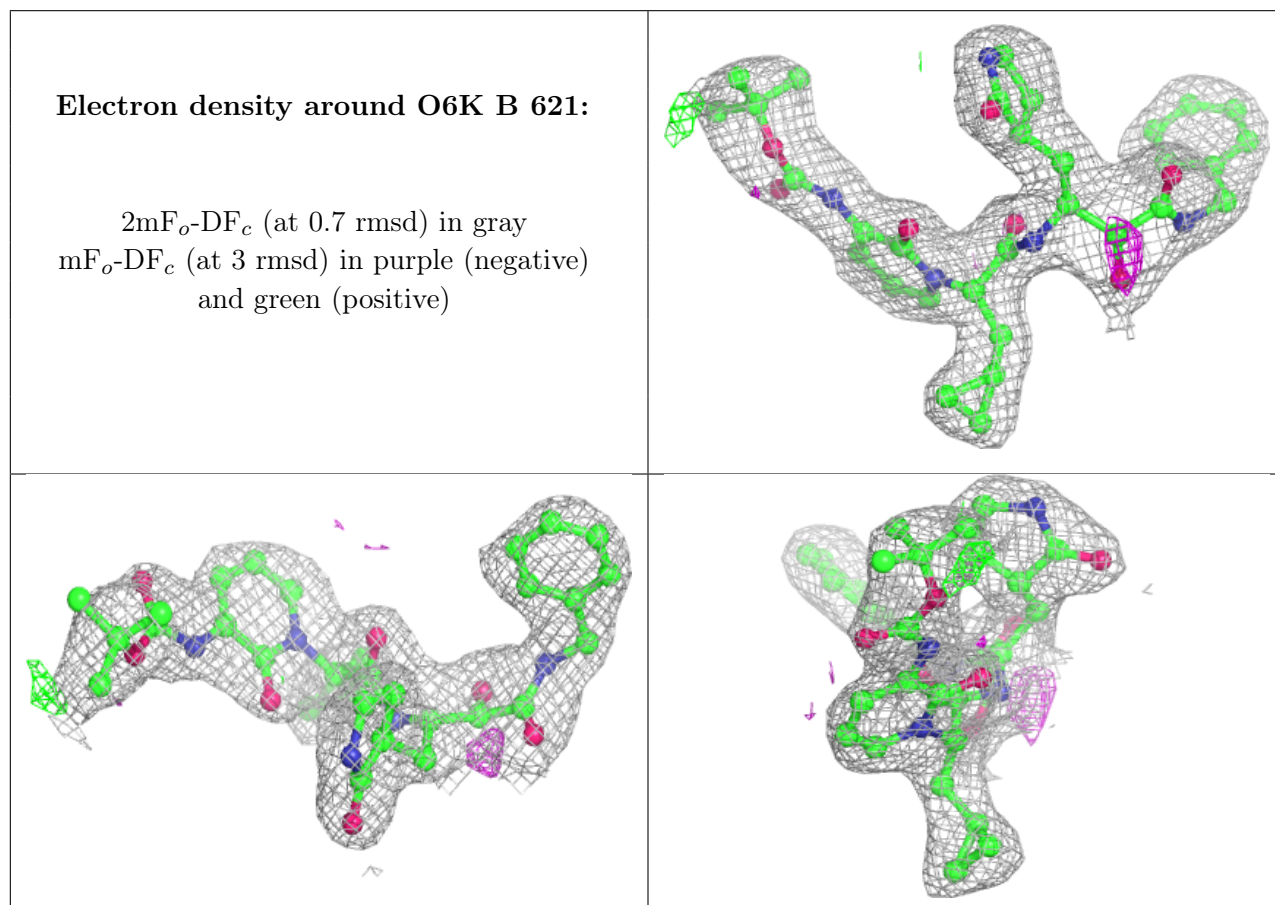


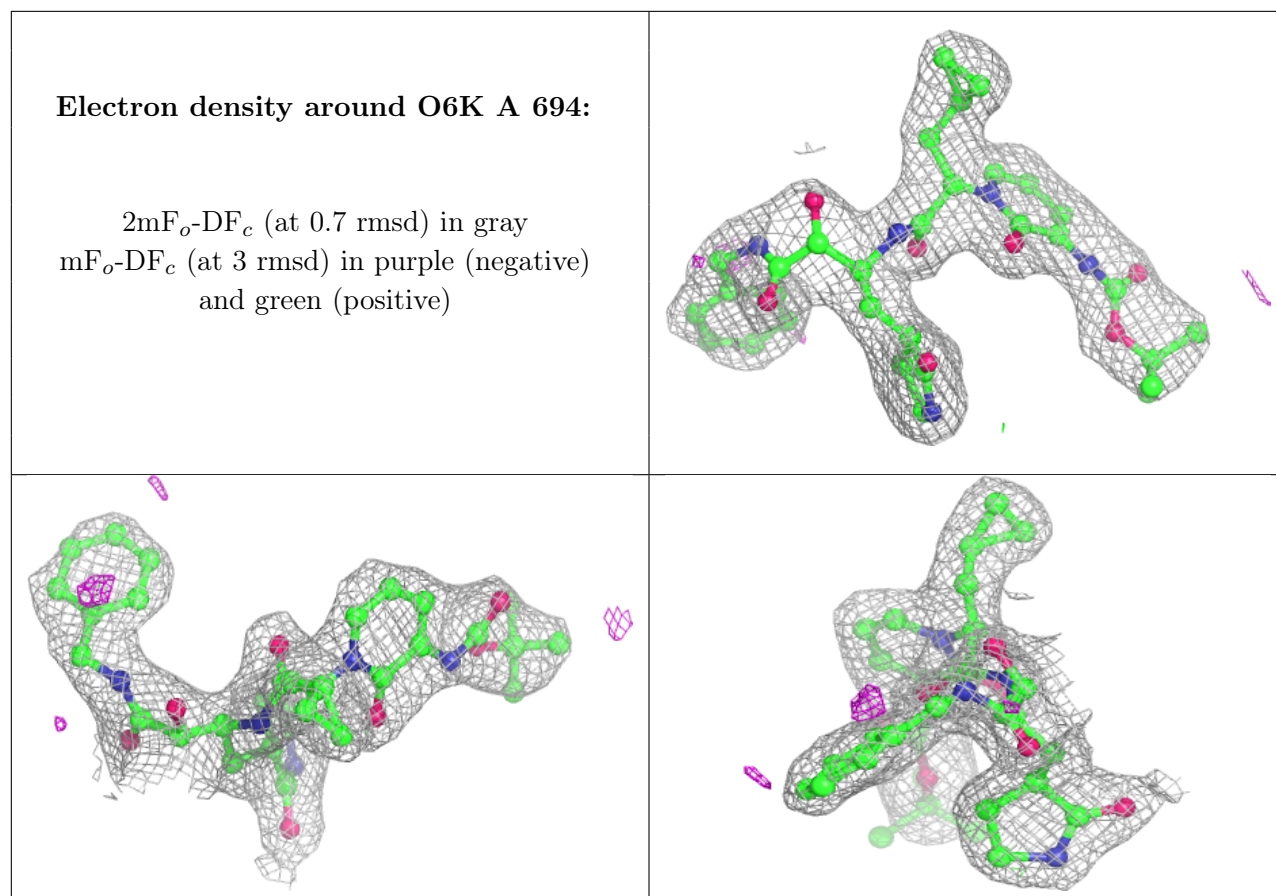
## 6.4 Ligands [i](#)

In the following table, the Atoms column lists the number of modelled atoms in the group and the number defined in the chemical component dictionary. The B-factors column lists the minimum, median, 95<sup>th</sup> percentile and maximum values of B factors of atoms in the group. The column labelled 'Q<0.9' lists the number of atoms with occupancy less than 0.9.

Mol	Type	Chain	Res	Atoms	RSCC	RSR	B-factors(Å <sup>2</sup> )	Q<0.9
2	O6K	B	621	43/43	0.92	0.09	36,47,68,73	0
2	O6K	A	694	43/43	0.94	0.09	33,39,70,78	0

The following is a graphical depiction of the model fit to experimental electron density of all instances of the Ligand of Interest. In addition, ligands with molecular weight > 250 and outliers as shown on the geometry validation Tables will also be included. Each fit is shown from different orientation to approximate a three-dimensional view.





## 6.5 Other polymers [i](#)

There are no such residues in this entry.