



Full wwPDB X-ray Structure Validation Report ⓘ

Oct 9, 2023 – 04:42 AM EDT

PDB ID : 6XSR
Title : Crystal structure of GluA2 AMPA receptor in complex with trans-4-butylcyclohexane carboxylic acid (4-BCCA) inhibitor
Authors : Yelshanskaya, M.V.; Singh, A.K.; Sobolevsky, A.I.
Deposited on : 2020-07-16
Resolution : 4.25 Å(reported)

This is a Full wwPDB X-ray Structure Validation Report for a publicly released PDB entry.

We welcome your comments at validation@mail.wwpdb.org

A user guide is available at

<https://www.wwpdb.org/validation/2017/XrayValidationReportHelp>

with specific help available everywhere you see the ⓘ symbol.

The types of validation reports are described at

<http://www.wwpdb.org/validation/2017/FAQs#types>.

The following versions of software and data (see [references ⓘ](#)) were used in the production of this report:

MolProbity : 4.02b-467
Mogul : 1.8.5 (274361), CSD as541be (2020)
Xtriage (Phenix) : 1.13
EDS : 2.35.1
buster-report : 1.1.7 (2018)
Percentile statistics : 20191225.v01 (using entries in the PDB archive December 25th 2019)
Refmac : 5.8.0158
CCP4 : 7.0.044 (Gargrove)
Ideal geometry (proteins) : Engh & Huber (2001)
Ideal geometry (DNA, RNA) : Parkinson et al. (1996)
Validation Pipeline (wwPDB-VP) : 2.35.1

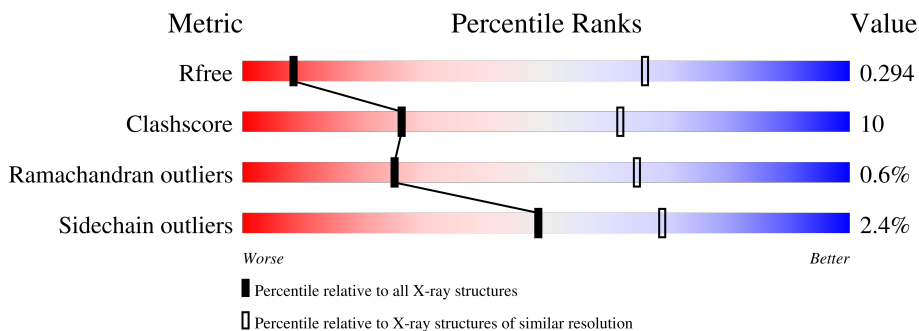
1 Overall quality at a glance

The following experimental techniques were used to determine the structure:

X-RAY DIFFRACTION

The reported resolution of this entry is 4.25 Å.

Percentile scores (ranging between 0-100) for global validation metrics of the entry are shown in the following graphic. The table shows the number of entries on which the scores are based.



Metric	Whole archive (#Entries)	Similar resolution (#Entries, resolution range(Å))
R_{free}	130704	1017 (4.72-3.78)
Clashscore	141614	1059 (4.72-3.80)
Ramachandran outliers	138981	1014 (4.72-3.80)
Sidechain outliers	138945	1018 (4.72-3.78)

The table below summarises the geometric issues observed across the polymeric chains and their fit to the electron density. The red, orange, yellow and green segments of the lower bar indicate the fraction of residues that contain outliers for ≥ 3 , 2, 1 and 0 types of geometric quality criteria respectively. A grey segment represents the fraction of residues that are not modelled. The numeric value for each fraction is indicated below the corresponding segment, with a dot representing fractions $\leq 5\%$.

Mol	Chain	Length	Quality of chain
1	A	808	
1	B	808	
1	C	808	
1	D	808	

The following table lists non-polymeric compounds, carbohydrate monomers and non-standard residues in protein, DNA, RNA chains that are outliers for geometric or electron-density-fit criteria:

Mol	Type	Chain	Res	Chirality	Geometry	Clashes	Electron density
2	NAG	B	901	-	-	X	-
3	V8G	A	902	-	-	X	-
3	V8G	C	902	-	-	X	-

2 Entry composition [i](#)

There are 3 unique types of molecules in this entry. The entry contains 23775 atoms, of which 0 are hydrogens and 0 are deuteriums.

In the tables below, the ZeroOcc column contains the number of atoms modelled with zero occupancy, the AltConf column contains the number of residues with at least one atom in alternate conformation and the Trace column contains the number of residues modelled with at most 2 atoms.

- Molecule 1 is a protein called Glutamate receptor 2.

Mol	Chain	Residues	Atoms					ZeroOcc	AltConf	Trace
			Total	C	N	O	S			
1	A	770	5912	3793	984	1108	27	0	0	0
1	B	772	5954	3815	987	1124	28	0	0	0
1	C	774	5918	3796	985	1111	26	0	0	0
1	D	772	5909	3788	985	1110	26	0	0	0

There are 44 discrepancies between the modelled and reference sequences:

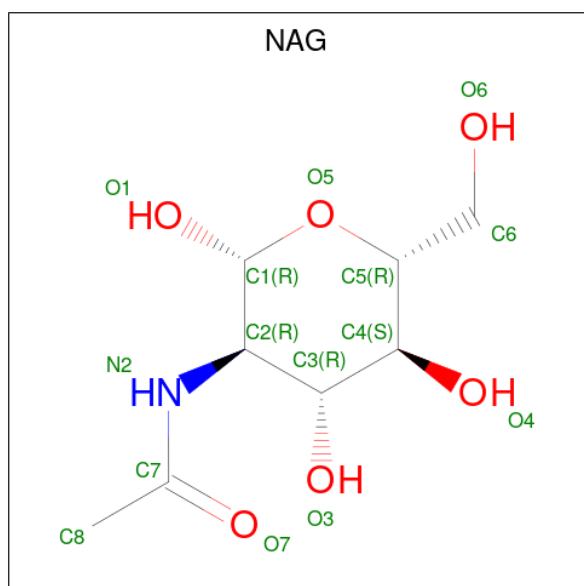
Chain	Residue	Modelled	Actual	Comment	Reference
A	241	GLU	ASN	conflict	UNP P19491
A	382	LEU	VAL	conflict	UNP P19491
A	?	-	LEU	deletion	UNP P19491
A	?	-	THR	deletion	UNP P19491
A	?	-	GLU	deletion	UNP P19491
A	?	-	LEU	deletion	UNP P19491
A	?	-	PRO	deletion	UNP P19491
A	?	-	SER	deletion	UNP P19491
A	384	GLU	GLY	conflict	UNP P19491
A	385	ASP	ASN	conflict	UNP P19491
A	392	GLN	ASN	conflict	UNP P19491
B	241	GLU	ASN	conflict	UNP P19491
B	382	LEU	VAL	conflict	UNP P19491
B	?	-	LEU	deletion	UNP P19491
B	?	-	THR	deletion	UNP P19491
B	?	-	GLU	deletion	UNP P19491
B	?	-	LEU	deletion	UNP P19491
B	?	-	PRO	deletion	UNP P19491
B	?	-	SER	deletion	UNP P19491
B	384	GLU	GLY	conflict	UNP P19491
B	385	ASP	ASN	conflict	UNP P19491

Continued on next page...

Continued from previous page...

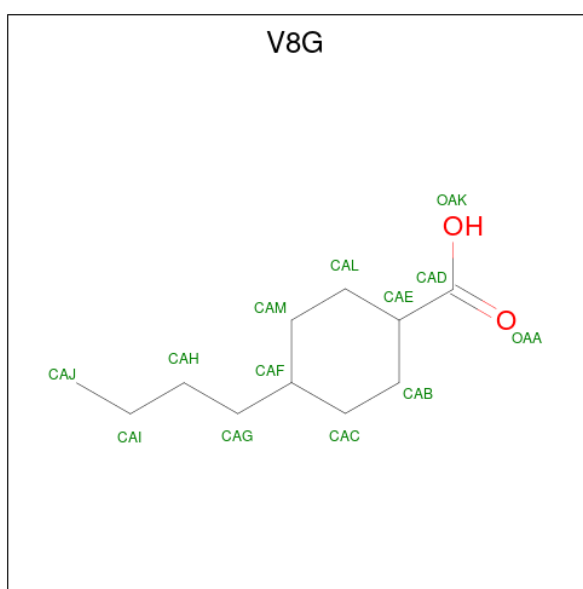
Chain	Residue	Modelled	Actual	Comment	Reference
B	392	GLN	ASN	conflict	UNP P19491
C	241	GLU	ASN	conflict	UNP P19491
C	382	LEU	VAL	conflict	UNP P19491
C	?	-	LEU	deletion	UNP P19491
C	?	-	THR	deletion	UNP P19491
C	?	-	GLU	deletion	UNP P19491
C	?	-	LEU	deletion	UNP P19491
C	?	-	PRO	deletion	UNP P19491
C	?	-	SER	deletion	UNP P19491
C	384	GLU	GLY	conflict	UNP P19491
C	385	ASP	ASN	conflict	UNP P19491
C	392	GLN	ASN	conflict	UNP P19491
D	241	GLU	ASN	conflict	UNP P19491
D	382	LEU	VAL	conflict	UNP P19491
D	?	-	LEU	deletion	UNP P19491
D	?	-	THR	deletion	UNP P19491
D	?	-	GLU	deletion	UNP P19491
D	?	-	LEU	deletion	UNP P19491
D	?	-	PRO	deletion	UNP P19491
D	?	-	SER	deletion	UNP P19491
D	384	GLU	GLY	conflict	UNP P19491
D	385	ASP	ASN	conflict	UNP P19491
D	392	GLN	ASN	conflict	UNP P19491

- Molecule 2 is 2-acetamido-2-deoxy-beta-D-glucopyranose (three-letter code: NAG) (formula: $C_8H_{15}NO_6$).



Mol	Chain	Residues	Atoms				ZeroOcc	AltConf
2	A	1	Total	C	N	O	0	0
			14	8	1	5		
2	B	1	Total	C	N	O	0	0
			14	8	1	5		
2	C	1	Total	C	N	O	0	0
			14	8	1	5		
2	D	1	Total	C	N	O	0	0
			14	8	1	5		

- Molecule 3 is trans-4-butylcyclohexane-1-carboxylic acid (three-letter code: V8G) (formula: C₁₁H₂₀O₂) (labeled as "Ligand of Interest" by depositor).

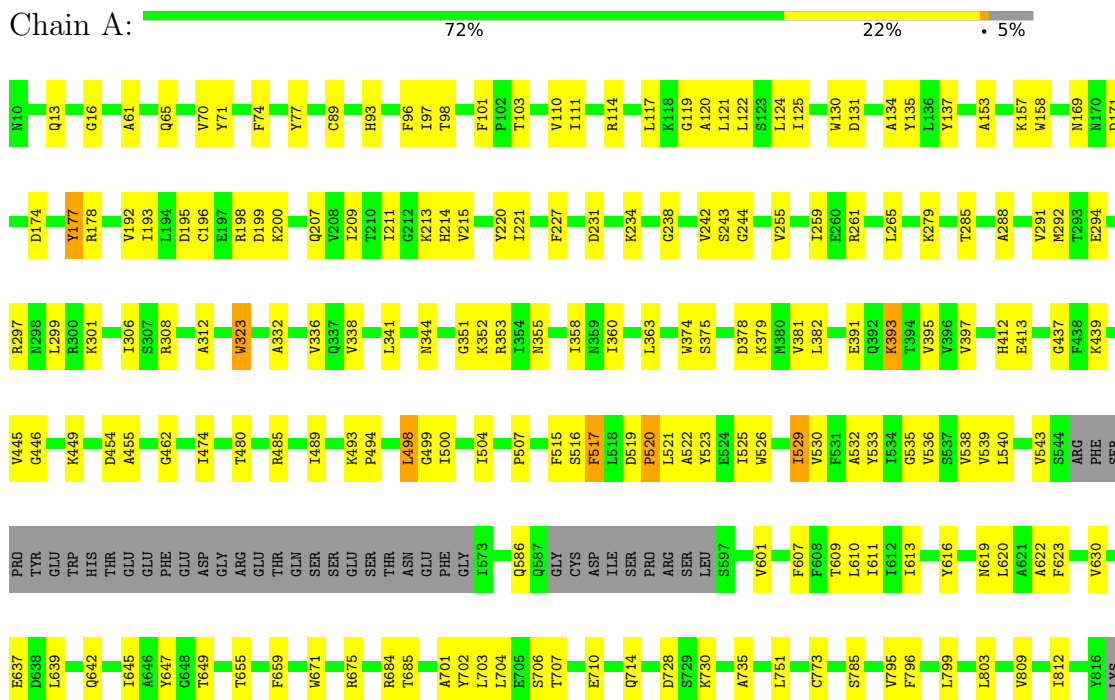


Mol	Chain	Residues	Atoms			ZeroOcc	AltConf
3	A	1	Total	C	O	0	0
			13	11	2		
3	C	1	Total	C	O	0	0
			13	11	2		

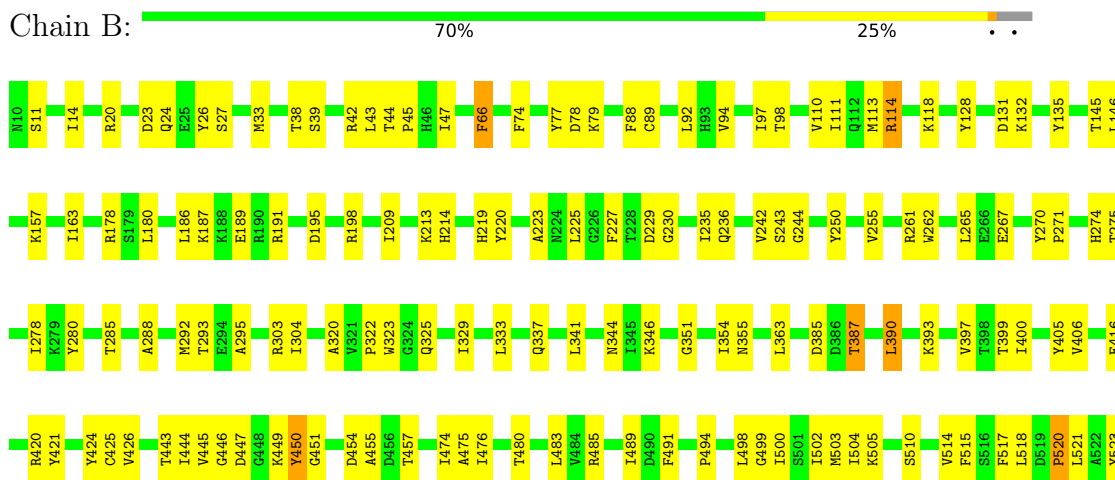
3 Residue-property plots

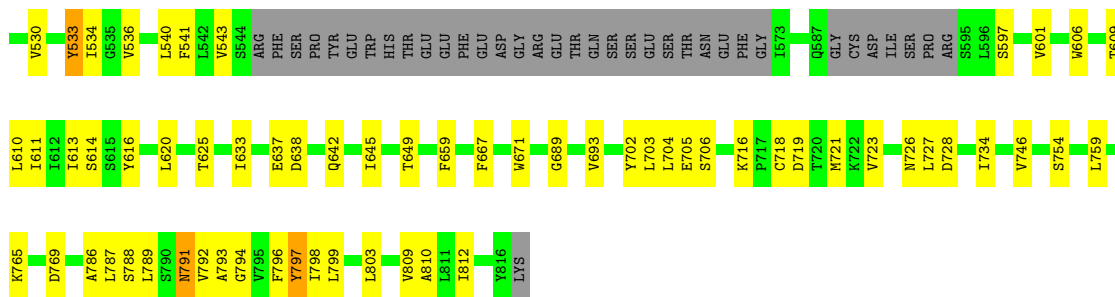
These plots are drawn for all protein, RNA, DNA and oligosaccharide chains in the entry. The first graphic for a chain summarises the proportions of the various outlier classes displayed in the second graphic. The second graphic shows the sequence view annotated by issues in geometry. Residues are color-coded according to the number of geometric quality criteria for which they contain at least one outlier: green = 0, yellow = 1, orange = 2 and red = 3 or more. Stretches of 2 or more consecutive residues without any outlier are shown as a green connector. Residues present in the sample, but not in the model, are shown in grey.

- Molecule 1: Glutamate receptor 2

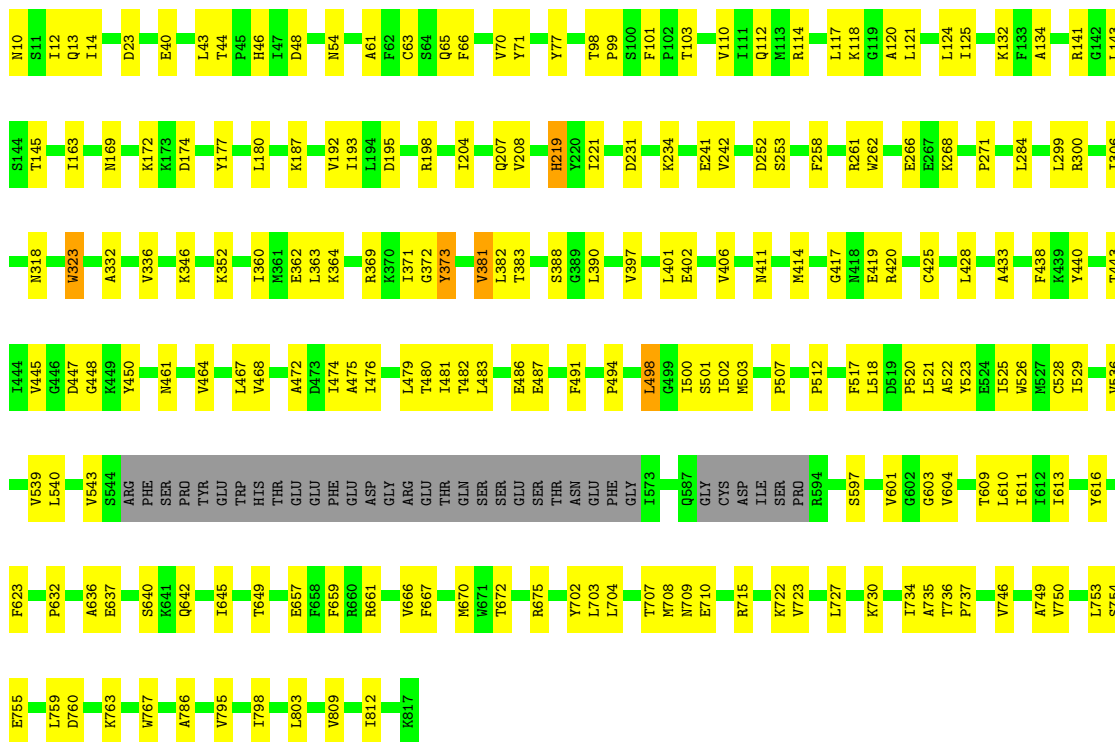


- Molecule 1: Glutamate receptor 2

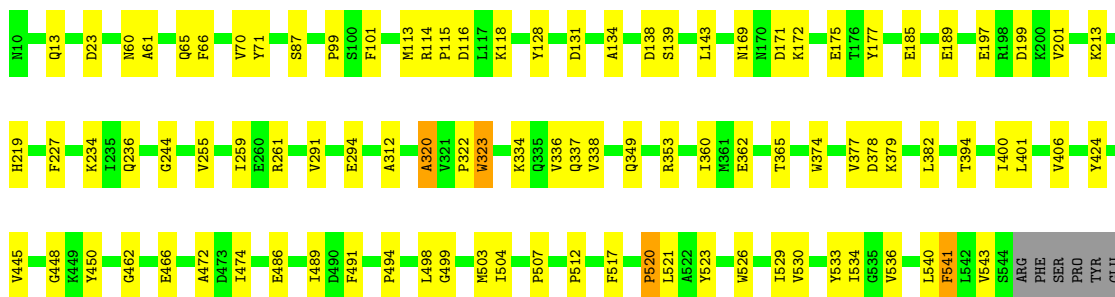
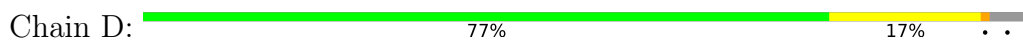


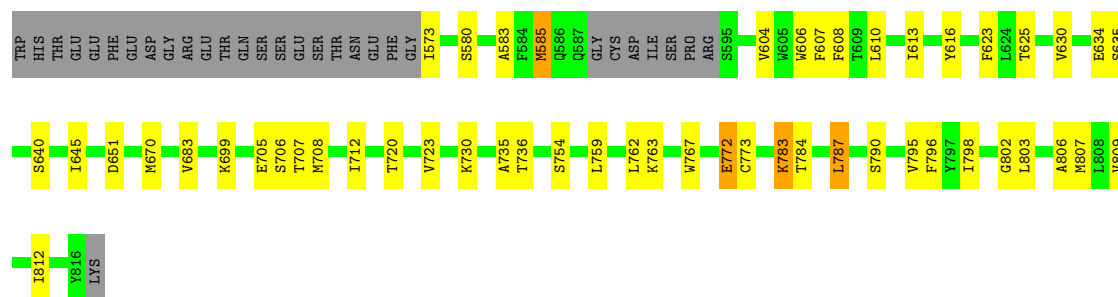


• Molecule 1: Glutamate receptor 2



• Molecule 1: Glutamate receptor 2





4 Data and refinement statistics

Property	Value	Source
Space group	P 21 21 21	Depositor
Cell constants a, b, c, α , β , γ	92.79Å 110.40Å 600.14Å 90.00° 90.00° 90.00°	Depositor
Resolution (Å)	48.91 – 4.25 48.91 – 4.25	Depositor EDS
% Data completeness (in resolution range)	99.7 (48.91-4.25) 99.6 (48.91-4.25)	Depositor EDS
R_{merge}	0.45	Depositor
R_{sym}	(Not available)	Depositor
$\langle I/\sigma(I) \rangle$ ¹	1.89 (at 4.29Å)	Xtrriage
Refinement program	PHENIX (1.16_3549)	Depositor
R, R_{free}	0.260 , 0.296 0.262 , 0.294	Depositor DCC
R_{free} test set	2226 reflections (5.00%)	wwPDB-VP
Wilson B-factor (Å ²)	217.9	Xtrriage
Anisotropy	0.169	Xtrriage
Bulk solvent k_{sol} (e/Å ³), B_{sol} (Å ²)	0.22 , 167.6	EDS
L-test for twinning ²	$\langle L \rangle = 0.41$, $\langle L^2 \rangle = 0.23$	Xtrriage
Estimated twinning fraction	No twinning to report.	Xtrriage
F_o, F_c correlation	0.86	EDS
Total number of atoms	23775	wwPDB-VP
Average B, all atoms (Å ²)	259.0	wwPDB-VP

Xtrriage's analysis on translational NCS is as follows: *The largest off-origin peak in the Patterson function is 2.30% of the height of the origin peak. No significant pseudotranslation is detected.*

¹Intensities estimated from amplitudes.

²Theoretical values of $\langle |L| \rangle$, $\langle L^2 \rangle$ for acentric reflections are 0.5, 0.333 respectively for untwinned datasets, and 0.375, 0.2 for perfectly twinned datasets.

5 Model quality [i](#)

5.1 Standard geometry [i](#)

Bond lengths and bond angles in the following residue types are not validated in this section: V8G, NAG

The Z score for a bond length (or angle) is the number of standard deviations the observed value is removed from the expected value. A bond length (or angle) with $|Z| > 5$ is considered an outlier worth inspection. RMSZ is the root-mean-square of all Z scores of the bond lengths (or angles).

Mol	Chain	Bond lengths		Bond angles	
		RMSZ	# Z >5	RMSZ	# Z >5
1	A	0.27	0/6031	0.43	0/8167
1	B	0.28	0/6073	0.45	1/8221 (0.0%)
1	C	0.26	0/6037	0.42	0/8180
1	D	0.28	0/6028	0.44	0/8165
All	All	0.27	0/24169	0.44	1/32733 (0.0%)

Chiral center outliers are detected by calculating the chiral volume of a chiral center and verifying if the center is modelled as a planar moiety or with the opposite hand. A planarity outlier is detected by checking planarity of atoms in a peptide group, atoms in a mainchain group or atoms of a sidechain that are expected to be planar.

Mol	Chain	#Chirality outliers	#Planarity outliers
1	B	0	1

There are no bond length outliers.

All (1) bond angle outliers are listed below:

Mol	Chain	Res	Type	Atoms	Z	Observed($^{\circ}$)	Ideal($^{\circ}$)
1	B	450	TYR	N-CA-C	5.12	124.82	111.00

There are no chirality outliers.

All (1) planarity outliers are listed below:

Mol	Chain	Res	Type	Group
1	B	449	LYS	Mainchain

5.2 Too-close contacts

In the following table, the Non-H and H(model) columns list the number of non-hydrogen atoms and hydrogen atoms in the chain respectively. The H(added) column lists the number of hydrogen atoms added and optimized by MolProbity. The Clashes column lists the number of clashes within the asymmetric unit, whereas Symm-Clashes lists symmetry-related clashes.

Mol	Chain	Non-H	H(model)	H(added)	Clashes	Symm-Clashes
1	A	5912	0	5783	135	0
1	B	5954	0	5844	156	1
1	C	5918	0	5758	141	1
1	D	5909	0	5755	108	0
2	A	14	0	13	2	0
2	B	14	0	13	15	0
2	C	14	0	13	0	0
2	D	14	0	13	1	0
3	A	13	0	0	12	0
3	C	13	0	0	9	0
All	All	23775	0	23192	489	1

The all-atom clashscore is defined as the number of clashes found per 1000 atoms (including hydrogen atoms). The all-atom clashscore for this structure is 10.

All (489) close contacts within the same asymmetric unit are listed below, sorted by their clash magnitude.

Atom-1	Atom-2	Interatomic distance (Å)	Clash overlap (Å)
1:B:355:ASN:HD21	2:B:901:NAG:C1	1.06	1.60
1:A:355:ASN:HD21	2:A:901:NAG:C1	1.03	1.58
3:A:902:V8G:CAI	1:D:610:LEU:HD12	1.47	1.45
1:B:355:ASN:ND2	2:B:901:NAG:C1	1.73	1.44
1:A:355:ASN:ND2	2:A:901:NAG:C1	1.88	1.35
3:A:902:V8G:CAI	1:D:610:LEU:CD1	2.32	1.07
1:B:337:GLN:NE2	2:B:901:NAG:O7	1.87	1.07
3:A:902:V8G:CAJ	1:D:610:LEU:HD12	1.83	1.07
3:A:902:V8G:CAJ	1:D:610:LEU:CD1	2.36	1.04
1:B:451:GLY:HA3	1:B:485:ARG:HH21	1.19	1.04
1:A:613:ILE:HG22	3:A:902:V8G:CAB	1.94	0.96
1:B:344:ASN:ND2	2:B:901:NAG:O5	1.97	0.96
1:A:525:ILE:O	1:A:529:ILE:HG22	1.65	0.96
1:A:449:LYS:HB3	1:A:462:GLY:HA2	1.45	0.96
1:B:610:LEU:HD23	3:C:902:V8G:CAL	1.97	0.94
1:B:610:LEU:CD2	3:C:902:V8G:CAL	2.50	0.89
1:C:539:VAL:HG21	1:D:803:LEU:HB3	1.58	0.85

Continued on next page...

Continued from previous page...

Atom-1	Atom-2	Interatomic distance (Å)	Clash overlap (Å)
1:A:521:LEU:HD13	1:A:616:TYR:HD1	1.44	0.81
1:B:344:ASN:HD21	2:B:901:NAG:H2	1.44	0.81
1:B:346:LYS:HG3	1:B:354:ILE:HG13	1.64	0.79
1:C:613:ILE:HG22	3:C:902:V8G:CAM	2.13	0.78
1:A:525:ILE:HG13	1:B:789:LEU:HD12	1.66	0.78
1:C:318:ASN:HB2	1:D:60:ASN:HD21	1.51	0.76
1:B:498:LEU:HD12	1:B:705:GLU:HB2	1.68	0.76
1:A:611:ILE:HG12	1:B:517:PHE:HE1	1.50	0.75
1:B:344:ASN:ND2	2:B:901:NAG:C1	2.50	0.75
1:A:516:SER:HA	1:A:519:ASP:HB2	1.69	0.73
1:B:451:GLY:HA3	1:B:485:ARG:NH2	2.01	0.72
1:A:103:THR:O	1:A:352:LYS:NZ	2.23	0.72
1:B:649:THR:HG22	1:B:703:LEU:HB2	1.72	0.71
1:D:337:GLN:NE2	2:D:901:NAG:O7	2.21	0.71
1:A:358:ILE:HD12	1:A:374:TRP:HE1	1.54	0.71
1:C:402:GLU:OE1	1:C:450:TYR:OH	2.08	0.71
1:A:642:GLN:HE22	1:A:645:ILE:HB	1.55	0.71
1:B:614:SER:HB2	3:C:902:V8G:OAK	1.91	0.70
1:C:616:TYR:CD1	3:C:902:V8G:OAA	2.43	0.70
1:B:610:LEU:HD12	1:B:613:ILE:HD11	1.73	0.70
1:C:498:LEU:HB3	1:C:707:THR:HG23	1.72	0.69
1:C:360:ILE:HB	1:C:372:GLY:HA3	1.74	0.69
1:C:12:ILE:HG23	1:C:71:TYR:HD2	1.58	0.69
1:C:642:GLN:HE22	1:C:645:ILE:HB	1.57	0.69
1:B:494:PRO:HG3	1:C:494:PRO:HG3	1.75	0.69
1:B:611:ILE:HG21	1:C:795:VAL:HG21	1.74	0.69
1:C:498:LEU:HG	1:C:730:LYS:HG3	1.75	0.68
1:D:645:ILE:HG12	1:D:699:LYS:HA	1.76	0.68
1:D:377:VAL:HG23	1:D:378:ASP:H	1.58	0.68
1:A:659:PHE:HB3	1:A:671:TRP:HB2	1.74	0.68
1:C:177:TYR:HB3	1:C:207:GLN:HG2	1.76	0.68
1:C:521:LEU:CD2	3:C:902:V8G:CAJ	2.72	0.68
1:C:640:SER:HB3	1:C:670:MET:HG2	1.75	0.68
1:A:529:ILE:HG13	3:A:902:V8G:OAA	1.94	0.67
1:B:267:GLU:HB2	1:B:274:HIS:HB2	1.76	0.67
1:B:483:LEU:N	1:C:755:GLU:OE2	2.27	0.67
1:A:157:LYS:HD2	1:B:187:LYS:HE3	1.77	0.67
1:A:714:GLN:HA	1:A:773:CYS:HB2	1.76	0.67
1:C:603:GLY:HA2	1:D:585:MET:HA	1.77	0.66
1:C:649:THR:HG22	1:C:703:LEU:HB2	1.76	0.66
1:C:474:ILE:HG13	1:C:736:THR:HG22	1.75	0.66

Continued on next page...

Continued from previous page...

Atom-1	Atom-2	Interatomic distance (Å)	Clash overlap (Å)
1:A:611:ILE:HG12	1:B:517:PHE:CE1	2.30	0.66
1:D:334:LYS:NZ	1:D:349:GLN:O	2.26	0.66
1:D:498:LEU:HD12	1:D:705:GLU:HB2	1.78	0.66
1:C:71:TYR:HA	1:C:323:TRP:HH2	1.61	0.65
1:D:498:LEU:HG	1:D:730:LYS:HG3	1.77	0.65
1:B:344:ASN:HD22	2:B:901:NAG:C5	2.09	0.65
1:C:371:ILE:HA	1:C:382:LEU:HD22	1.79	0.65
1:D:294:GLU:HG3	1:D:338:VAL:HG11	1.78	0.65
1:C:143:LEU:HG	1:D:143:LEU:HD11	1.79	0.65
1:A:124:LEU:HD13	1:A:360:ILE:HD13	1.79	0.65
1:A:374:TRP:HB2	1:A:379:LYS:HE3	1.79	0.65
1:C:754:SER:HB2	1:C:759:LEU:HD12	1.77	0.65
1:C:10:ASN:HB3	1:C:300:ARG:HH22	1.62	0.64
1:D:101:PHE:HA	1:D:114:ARG:HD2	1.78	0.64
1:B:642:GLN:HE22	1:B:645:ILE:HB	1.63	0.64
1:B:521:LEU:HD13	1:B:616:TYR:HD1	1.61	0.64
1:B:344:ASN:ND2	2:B:901:NAG:H2	2.13	0.63
1:C:521:LEU:HD13	1:C:616:TYR:HD2	1.63	0.63
1:D:185:GLU:OE1	1:D:213:LYS:NZ	2.27	0.63
1:B:145:THR:OG1	1:B:195:ASP:OD2	2.17	0.62
1:B:235:ILE:HD12	1:B:242:VAL:HG21	1.80	0.62
3:A:902:V8G:CAJ	1:D:610:LEU:HD13	2.27	0.62
1:B:536:VAL:HG22	1:C:803:LEU:HD21	1.79	0.62
1:B:236:GLN:HG3	1:B:363:LEU:HD11	1.81	0.62
1:C:134:ALA:HB3	1:C:192:VAL:HG22	1.81	0.62
1:D:498:LEU:HB3	1:D:707:THR:HG23	1.82	0.62
1:A:299:LEU:HD13	1:A:306:ILE:HG21	1.81	0.62
1:D:634:GLU:HA	1:D:723:VAL:HB	1.81	0.62
1:C:411:ASN:HB2	1:C:414:MET:HE2	1.80	0.62
1:C:417:GLY:O	1:C:420:ARG:NE	2.33	0.62
1:C:475:ALA:HB3	1:C:735:ALA:HB3	1.80	0.62
1:B:734:ILE:HG21	1:B:746:VAL:HG11	1.80	0.61
1:B:400:ILE:HG21	1:B:450:TYR:HE2	1.65	0.61
1:B:754:SER:HB2	1:B:759:LEU:HD12	1.82	0.61
1:C:299:LEU:HD13	1:C:306:ILE:HG21	1.83	0.61
1:C:540:LEU:HA	1:C:543:VAL:HG22	1.80	0.61
1:D:754:SER:HB2	1:D:759:LEU:HD12	1.82	0.61
1:A:121:LEU:HD21	1:A:193:ILE:HG21	1.82	0.60
1:B:236:GLN:HA	1:B:363:LEU:HD21	1.83	0.60
1:A:209:ILE:HA	1:A:214:HIS:CD2	2.36	0.60
1:A:613:ILE:HB	3:A:902:V8G:CAJ	2.31	0.60

Continued on next page...

Continued from previous page...

Atom-1	Atom-2	Interatomic distance (Å)	Clash overlap (Å)
1:A:649:THR:HG22	1:A:703:LEU:HB2	1.83	0.59
1:C:501:SER:N	1:C:704:LEU:O	2.31	0.59
1:C:48:ASP:OD1	1:C:65:GLN:NE2	2.35	0.58
1:B:611:ILE:HD12	1:C:517:PHE:HE1	1.69	0.58
1:B:229:ASP:OD2	1:B:280:TYR:N	2.36	0.58
1:C:174:ASP:OD1	1:C:207:GLN:NE2	2.36	0.58
1:D:466:GLU:O	1:D:472:ALA:N	2.36	0.58
1:B:304:ILE:HD12	1:B:304:ILE:O	2.03	0.58
1:B:667:PHE:HE1	1:B:727:LEU:HD13	1.69	0.57
1:A:198:ARG:HD3	1:A:279:LYS:HD2	1.85	0.57
1:B:344:ASN:ND2	2:B:901:NAG:C2	2.67	0.57
1:B:502:ILE:HB	1:B:723:VAL:HG23	1.87	0.57
1:D:115:PRO:HA	1:D:353:ARG:HB2	1.85	0.57
1:D:134:ALA:HB2	1:D:189:GLU:HG2	1.86	0.57
1:D:540:LEU:HA	1:D:543:VAL:HG22	1.87	0.57
1:B:355:ASN:CG	2:B:901:NAG:C1	2.68	0.56
1:C:14:ILE:HD13	1:C:43:LEU:HD23	1.87	0.56
1:C:521:LEU:HD23	3:C:902:V8G:CAJ	2.35	0.56
1:C:13:GLN:HA	1:C:44:THR:HB	1.87	0.56
1:C:242:VAL:HB	1:C:363:LEU:HB3	1.87	0.56
1:C:362:GLU:HG3	1:C:371:ILE:HG21	1.87	0.56
1:B:518:LEU:H	1:B:518:LEU:HD23	1.71	0.56
1:D:143:LEU:H	1:D:143:LEU:HD23	1.71	0.56
1:C:502:ILE:O	1:C:709:ASN:ND2	2.32	0.56
1:C:518:LEU:O	1:C:526:TRP:NE1	2.39	0.56
1:B:43:LEU:HD21	1:B:293:THR:HG22	1.88	0.56
1:B:499:GLY:HA3	1:B:726:ASN:HB3	1.86	0.55
1:A:809:VAL:HG13	1:A:812:ILE:HD11	1.88	0.55
1:B:480:THR:O	1:B:485:ARG:NH1	2.39	0.55
1:C:382:LEU:HG	1:C:383:THR:N	2.22	0.55
1:C:702:TYR:CE2	1:C:704:LEU:HB3	2.42	0.55
1:A:101:PHE:HA	1:A:114:ARG:HD2	1.88	0.55
1:C:397:VAL:O	1:C:443:THR:OG1	2.24	0.55
1:C:141:ARG:NH2	1:C:195:ASP:OD1	2.40	0.54
1:A:613:ILE:CG2	3:A:902:V8G:CAB	2.78	0.54
1:B:614:SER:CB	3:C:902:V8G:OAK	2.55	0.54
1:C:623:PHE:HE1	1:D:784:THR:HA	1.72	0.54
1:A:120:ALA:HA	1:A:379:LYS:NZ	2.23	0.54
1:B:787:LEU:HG	1:B:788:SER:N	2.21	0.54
1:A:498:LEU:HB3	1:A:707:THR:HG23	1.90	0.54
1:D:640:SER:HB3	1:D:670:MET:HG2	1.90	0.54

Continued on next page...

Continued from previous page...

Atom-1	Atom-2	Interatomic distance (Å)	Clash overlap (Å)
1:C:23:ASP:HB3	1:C:271:PRO:HG2	1.90	0.53
1:C:373:TYR:HB3	1:C:381:VAL:O	2.08	0.53
1:D:169:ASN:ND2	1:D:171:ASP:OD1	2.41	0.53
1:A:494:PRO:HG3	1:D:494:PRO:HG3	1.90	0.53
1:C:522:ALA:H	1:D:787:LEU:HD12	1.73	0.53
1:B:198:ARG:HE	1:B:230:GLY:HA2	1.73	0.53
1:A:622:ALA:HA	1:B:625:THR:HG22	1.91	0.53
1:B:500:ILE:HB	1:B:727:LEU:HB2	1.89	0.53
1:C:117:LEU:HD12	1:C:120:ALA:HB3	1.90	0.53
1:B:132:LYS:NZ	1:B:189:GLU:OE2	2.40	0.53
1:C:710:GLU:HG3	1:C:722:LYS:HD2	1.91	0.53
1:D:607:PHE:HA	1:D:610:LEU:HD23	1.91	0.53
1:A:135:TYR:CE2	1:A:137:TYR:HB3	2.44	0.53
1:A:521:LEU:HB3	1:A:526:TRP:NE1	2.23	0.53
1:A:517:PHE:CE1	1:A:795:VAL:HG22	2.44	0.53
1:A:803:LEU:HD11	1:D:536:VAL:HG22	1.91	0.53
1:B:416:GLU:HA	1:B:420:ARG:HD3	1.89	0.53
1:A:521:LEU:HD12	1:B:787:LEU:HD22	1.91	0.52
1:B:344:ASN:HD21	2:B:901:NAG:C2	2.18	0.52
1:D:541:PHE:CZ	1:D:573:ILE:HA	2.44	0.52
1:A:13:GLN:HG2	1:A:70:VAL:HG12	1.90	0.52
1:B:765:LYS:HA	1:B:769:ASP:HB2	1.91	0.52
1:C:522:ALA:HB3	1:C:525:ILE:HD13	1.90	0.52
1:D:521:LEU:HB2	1:D:526:TRP:CE2	2.45	0.52
1:A:525:ILE:HD11	1:B:789:LEU:HB2	1.92	0.52
1:B:23:ASP:HB3	1:B:271:PRO:HG2	1.91	0.52
1:B:799:LEU:O	1:B:803:LEU:N	2.40	0.52
1:B:250:TYR:OH	1:B:278:ILE:N	2.36	0.52
1:C:61:ALA:O	1:C:65:GLN:HG2	2.10	0.52
1:A:529:ILE:O	1:A:529:ILE:HG12	2.10	0.51
1:A:586:GLN:HA	1:D:606:TRP:CD2	2.46	0.51
1:D:255:VAL:O	1:D:259:ILE:N	2.35	0.51
1:A:131:ASP:N	1:A:131:ASP:OD1	2.44	0.51
1:B:131:ASP:OD1	1:B:132:LYS:N	2.43	0.51
1:D:71:TYR:HA	1:D:323:TRP:HH2	1.75	0.51
1:A:110:VAL:O	1:A:351:GLY:HA3	2.09	0.51
1:C:101:PHE:HA	1:C:114:ARG:HD2	1.92	0.51
1:B:26:TYR:HE2	1:B:47:ILE:HG12	1.75	0.51
1:C:99:PRO:HB3	1:C:284:LEU:HB2	1.93	0.51
1:C:112:GLN:HE22	1:C:352:LYS:HD3	1.75	0.51
1:B:540:LEU:HA	1:B:543:VAL:HG22	1.93	0.51

Continued on next page...

Continued from previous page...

Atom-1	Atom-2	Interatomic distance (Å)	Clash overlap (Å)
1:A:89:CYS:SG	1:A:96:PHE:HB2	2.51	0.50
1:A:134:ALA:HB3	1:A:192:VAL:HG13	1.91	0.50
1:A:543:VAL:HG12	1:B:810:ALA:HB2	1.91	0.50
1:B:474:ILE:HG12	1:B:475:ALA:H	1.76	0.50
1:A:169:ASN:ND2	1:A:171:ASP:OD1	2.44	0.50
1:B:195:ASP:HA	1:B:223:ALA:HB3	1.94	0.50
1:A:607:PHE:HA	1:A:610:LEU:HB3	1.93	0.50
1:A:613:ILE:HB	3:A:902:V8G:CAI	2.41	0.50
1:A:539:VAL:HG21	1:B:803:LEU:HB3	1.94	0.50
1:A:231:ASP:HB3	1:A:234:LYS:HE2	1.93	0.50
1:B:118:LYS:HB3	1:B:145:THR:HG22	1.93	0.50
1:D:291:VAL:HA	1:D:336:VAL:HG11	1.94	0.50
1:D:450:TYR:HA	1:D:462:GLY:HA3	1.92	0.50
1:D:66:PHE:CE2	1:D:312:ALA:HB1	2.47	0.50
1:A:96:PHE:O	1:A:111:ILE:N	2.37	0.50
1:B:702:TYR:CE2	1:B:704:LEU:HB3	2.47	0.50
1:B:97:ILE:HD11	1:B:333:LEU:HD22	1.94	0.49
1:B:346:LYS:HE3	1:B:355:ASN:HD22	1.77	0.49
1:B:610:LEU:HD21	3:C:902:V8G:CAL	2.38	0.49
1:D:606:TRP:C	1:D:610:LEU:HD23	2.32	0.49
1:A:532:ALA:HB2	1:B:796:PHE:CE1	2.47	0.49
1:C:604:VAL:HG21	1:D:802:GLY:HA3	1.94	0.49
1:C:609:THR:O	1:C:613:ILE:HG23	2.13	0.49
1:A:297:ARG:HG2	1:A:301:LYS:HE3	1.94	0.49
1:C:110:VAL:HG12	1:C:112:GLN:HG3	1.93	0.49
1:A:96:PHE:CE2	1:A:98:THR:HB	2.47	0.49
1:C:193:ILE:HG12	1:C:221:ILE:HB	1.93	0.49
1:B:597:SER:HB2	1:C:809:VAL:HG12	1.94	0.49
1:A:493:LYS:HG3	1:A:751:LEU:HD21	1.93	0.49
1:A:530:VAL:HA	1:A:533:TYR:HB3	1.94	0.49
1:B:227:PHE:CD1	1:B:244:GLY:HA3	2.48	0.49
1:B:728:ASP:HA	1:C:760:ASP:OD2	2.12	0.49
1:D:507:PRO:HG2	1:D:630:VAL:HA	1.95	0.49
1:D:61:ALA:O	1:D:65:GLN:HG2	2.13	0.49
1:A:242:VAL:HB	1:A:363:LEU:HB3	1.93	0.49
1:C:611:ILE:HG21	1:D:517:PHE:HE1	1.77	0.49
1:A:358:ILE:HB	1:A:374:TRP:CD1	2.47	0.49
1:B:809:VAL:O	1:B:812:ILE:HG12	2.12	0.49
1:A:125:ILE:HG23	1:A:130:TRP:HB2	1.95	0.49
1:A:255:VAL:O	1:A:259:ILE:HG12	2.13	0.48
1:B:503:MET:HA	1:B:721:MET:O	2.13	0.48

Continued on next page...

Continued from previous page...

Atom-1	Atom-2	Interatomic distance (Å)	Clash overlap (Å)
1:C:54:ASN:OD1	1:D:87:SER:OG	2.30	0.48
1:D:763:LYS:O	1:D:767:TRP:HB2	2.13	0.48
1:B:128:TYR:OH	1:B:243:SER:OG	2.19	0.48
1:C:476:ILE:HG12	1:C:734:ILE:HG23	1.94	0.48
1:C:636:ALA:CB	1:C:727:LEU:HD21	2.44	0.48
1:B:38:THR:OG1	1:B:39:SER:N	2.47	0.48
1:D:360:ILE:HD11	1:D:374:TRP:HB2	1.96	0.48
1:A:480:THR:O	1:A:485:ARG:NH1	2.46	0.48
1:A:521:LEU:HA	1:B:787:LEU:HD22	1.96	0.48
1:A:799:LEU:HA	1:D:604:VAL:HG12	1.95	0.48
1:B:476:ILE:HG22	1:B:734:ILE:HG23	1.94	0.48
1:C:666:VAL:O	1:C:670:MET:HG3	2.14	0.48
1:C:543:VAL:HG11	1:D:806:ALA:HB1	1.95	0.48
1:D:651:ASP:HB2	1:D:683:VAL:O	2.14	0.48
1:C:657:GLU:HB3	1:C:661:ARG:HH12	1.78	0.48
1:D:131:ASP:N	1:D:131:ASP:OD1	2.43	0.48
1:D:504:ILE:HD11	1:D:723:VAL:HG11	1.94	0.48
1:A:120:ALA:HB2	1:A:374:TRP:NE1	2.28	0.48
1:C:163:ILE:HG21	1:C:180:LEU:HD13	1.94	0.48
1:B:791:ASN:O	1:B:791:ASN:ND2	2.46	0.48
1:C:500:ILE:HB	1:C:727:LEU:HB2	1.96	0.48
1:B:14:ILE:O	1:B:45:PRO:HA	2.14	0.47
1:C:517:PHE:CE1	1:C:795:VAL:HG22	2.49	0.47
1:A:611:ILE:HD11	1:B:616:TYR:CZ	2.49	0.47
1:A:543:VAL:HA	1:B:810:ALA:HB1	1.96	0.47
1:B:346:LYS:NZ	2:B:901:NAG:H82	2.29	0.47
1:D:382:LEU:H	1:D:382:LEU:HD23	1.78	0.47
1:D:499:GLY:O	1:D:706:SER:N	2.48	0.47
1:A:449:LYS:CB	1:A:462:GLY:HA2	2.32	0.47
1:B:337:GLN:HE22	2:B:901:NAG:C7	2.24	0.47
1:C:252:ASP:OD1	1:C:253:SER:N	2.47	0.47
1:C:749:ALA:O	1:C:753:LEU:HG	2.14	0.47
1:A:255:VAL:HG22	1:A:341:LEU:HA	1.95	0.47
3:A:902:V8G:CAM	1:D:610:LEU:HG	2.45	0.47
1:C:318:ASN:HB2	1:D:60:ASN:ND2	2.25	0.47
1:A:196:CYS:HB3	1:A:200:LYS:HB2	1.96	0.47
1:A:520:PRO:HG3	1:A:620:LEU:HD13	1.96	0.47
1:B:209:ILE:HG23	1:B:214:HIS:NE2	2.30	0.47
1:B:261:ARG:O	1:B:265:LEU:HG	2.15	0.47
1:B:504:ILE:HD13	1:B:633:ILE:HD12	1.95	0.47
1:C:125:ILE:HG12	1:C:193:ILE:HD11	1.97	0.47

Continued on next page...

Continued from previous page...

Atom-1	Atom-2	Interatomic distance (Å)	Clash overlap (Å)
1:C:597:SER:O	1:C:601:VAL:HG23	2.14	0.47
1:D:172:LYS:NZ	1:D:175:GLU:OE1	2.47	0.47
1:B:97:ILE:HG12	1:B:111:ILE:HB	1.96	0.47
1:D:503:MET:HG3	1:D:720:THR:HB	1.96	0.47
1:A:137:TYR:HA	1:A:195:ASP:HB3	1.96	0.47
1:B:514:VAL:HG23	1:B:794:GLY:HA2	1.96	0.47
1:B:262:TRP:HD1	1:B:275:THR:O	1.98	0.47
1:C:401:LEU:HD23	1:C:406:VAL:HG12	1.97	0.47
1:A:71:TYR:HA	1:A:323:TRP:HH2	1.79	0.46
1:A:157:LYS:HD3	1:B:186:LEU:HB3	1.98	0.46
1:B:135:TYR:CD1	1:B:146:LEU:HD13	2.50	0.46
1:A:291:VAL:HA	1:A:336:VAL:HG11	1.96	0.46
1:A:684:ARG:HG2	1:A:685:THR:HG23	1.96	0.46
1:B:74:PHE:HA	1:B:97:ILE:O	2.14	0.46
1:D:772:GLU:H	1:D:772:GLU:HG2	1.49	0.46
1:B:77:TYR:CE2	1:B:98:THR:HG21	2.50	0.46
1:B:255:VAL:HG22	1:B:341:LEU:HD22	1.98	0.46
1:C:518:LEU:HD23	1:C:518:LEU:H	1.80	0.46
1:B:454:ASP:HB3	1:B:457:THR:HB	1.97	0.46
1:C:657:GLU:HB3	1:C:661:ARG:NH1	2.30	0.46
1:D:580:SER:HA	1:D:583:ALA:HB3	1.98	0.46
1:B:27:SER:HB3	1:B:270:TYR:HB3	1.97	0.46
1:B:499:GLY:O	1:B:706:SER:N	2.49	0.46
1:C:118:LYS:HG2	1:C:145:THR:HG22	1.97	0.46
1:C:481:ILE:HA	1:C:491:PHE:CE2	2.50	0.46
1:A:119:GLY:O	1:A:379:LYS:NZ	2.48	0.46
1:B:213:LYS:O	1:B:220:TYR:OH	2.21	0.46
1:D:489:ILE:HD13	1:D:735:ALA:HB1	1.98	0.46
1:D:517:PHE:O	1:D:520:PRO:HD2	2.16	0.46
1:A:221:ILE:HG12	1:A:243:SER:HB2	1.98	0.46
1:A:227:PHE:CD1	1:A:244:GLY:HA3	2.51	0.46
1:A:613:ILE:HG22	3:A:902:V8G:CAI	2.46	0.46
1:C:521:LEU:HD13	1:C:616:TYR:CD2	2.47	0.46
1:A:525:ILE:O	1:A:529:ILE:CG2	2.52	0.46
1:C:438:PHE:CE1	1:C:440:TYR:HB3	2.50	0.46
1:A:785:SER:HA	1:D:623:PHE:CZ	2.51	0.46
1:B:295:ALA:HB2	1:B:333:LEU:HD23	1.97	0.46
1:B:444:ILE:HG22	1:B:446:GLY:H	1.79	0.46
1:C:397:VAL:HG13	1:C:474:ILE:HG23	1.97	0.46
1:A:344:ASN:O	1:A:353:ARG:NH2	2.49	0.46
1:C:169:ASN:HD21	1:C:172:LYS:HD3	1.81	0.46

Continued on next page...

Continued from previous page...

Atom-1	Atom-2	Interatomic distance (Å)	Clash overlap (Å)
1:C:231:ASP:HB3	1:C:234:LYS:HE2	1.98	0.46
1:C:447:ASP:OD1	1:C:447:ASP:N	2.49	0.46
1:C:479:LEU:HD23	1:C:735:ALA:HB2	1.97	0.46
1:B:400:ILE:HG21	1:B:450:TYR:CE2	2.47	0.45
1:C:177:TYR:CB	1:C:207:GLN:HG2	2.46	0.45
1:D:227:PHE:CD1	1:D:244:GLY:HA3	2.51	0.45
1:A:499:GLY:O	1:A:706:SER:N	2.49	0.45
1:D:400:ILE:HG21	1:D:450:TYR:CE2	2.51	0.45
1:A:308:ARG:NE	1:A:312:ALA:HB2	2.31	0.45
1:A:375:SER:N	1:A:378:ASP:O	2.48	0.45
1:A:500:ILE:HD13	1:A:655:THR:HG23	1.98	0.45
1:C:483:LEU:O	1:C:487:GLU:HG3	2.17	0.45
1:C:536:VAL:HG22	1:D:803:LEU:HD21	1.97	0.45
1:D:401:LEU:HD23	1:D:406:VAL:HG12	1.98	0.45
1:D:424:TYR:CE1	1:D:762:LEU:HB3	2.51	0.45
1:B:520:PRO:HG3	1:B:620:LEU:HD13	1.99	0.45
1:C:124:LEU:HD13	1:C:360:ILE:HD13	1.97	0.45
1:C:464:VAL:O	1:C:468:VAL:HG23	2.17	0.45
1:C:502:ILE:HB	1:C:723:VAL:HG23	1.99	0.45
1:C:809:VAL:HA	1:C:812:ILE:HG12	1.99	0.45
1:D:474:ILE:HG13	1:D:736:THR:HG22	1.98	0.45
1:A:540:LEU:HG	1:A:601:VAL:HG11	1.99	0.45
1:B:261:ARG:HD2	1:B:261:ARG:HA	1.70	0.45
1:B:530:VAL:O	1:B:534:ILE:HG12	2.16	0.45
1:B:793:ALA:O	1:B:797:TYR:N	2.46	0.45
1:C:369:ARG:HD2	1:C:388:SER:H	1.82	0.45
1:A:397:VAL:HG13	1:A:474:ILE:HG23	1.99	0.45
1:B:113:MET:HG3	1:B:288:ALA:HB2	1.98	0.45
1:A:485:ARG:O	1:A:489:ILE:HG13	2.17	0.45
1:B:114:ARG:HD2	1:B:280:TYR:HE2	1.82	0.45
1:C:438:PHE:CD1	1:C:440:TYR:HB3	2.52	0.45
1:B:789:LEU:HG	1:B:792:VAL:HB	1.98	0.44
1:C:121:LEU:O	1:C:125:ILE:HG13	2.17	0.44
1:C:299:LEU:HD13	1:C:306:ILE:HD13	1.98	0.44
1:D:512:PRO:HB2	1:D:790:SER:CB	2.47	0.44
1:A:671:TRP:CZ2	1:A:675:ARG:HD3	2.53	0.44
1:B:689:GLY:O	1:B:693:VAL:HG23	2.17	0.44
1:C:332:ALA:O	1:C:336:VAL:HG23	2.18	0.44
1:D:517:PHE:CE1	1:D:795:VAL:HG22	2.53	0.44
1:D:809:VAL:HA	1:D:812:ILE:HG12	1.98	0.44
1:C:467:LEU:HD22	1:C:737:PRO:HG3	1.99	0.44

Continued on next page...

Continued from previous page...

Atom-1	Atom-2	Interatomic distance (Å)	Clash overlap (Å)
1:B:485:ARG:O	1:B:489:ILE:HG13	2.18	0.44
1:D:13:GLN:HG3	1:D:70:VAL:HG12	2.00	0.44
1:A:177:TYR:CD2	1:A:207:GLN:HG3	2.53	0.44
1:B:33:MET:SD	1:B:45:PRO:HG3	2.58	0.44
1:B:242:VAL:O	1:B:363:LEU:N	2.51	0.44
1:A:117:LEU:HD12	1:A:120:ALA:HB3	2.00	0.43
1:B:517:PHE:HB2	1:B:791:ASN:ND2	2.32	0.43
1:B:606:TRP:HA	1:B:609:THR:HG22	2.00	0.43
1:D:197:GLU:O	1:D:201:VAL:HG23	2.18	0.43
1:A:70:VAL:O	1:A:308:ARG:NH1	2.51	0.43
1:B:421:TYR:O	1:B:426:VAL:HG11	2.18	0.43
1:C:63:CYS:HA	1:C:66:PHE:HB3	2.00	0.43
1:C:103:THR:O	1:C:352:LYS:NZ	2.51	0.43
1:D:66:PHE:CZ	1:D:312:ALA:HB1	2.53	0.43
1:D:795:VAL:O	1:D:798:ILE:HG22	2.18	0.43
1:A:261:ARG:O	1:A:265:LEU:HG	2.18	0.43
1:A:521:LEU:HA	1:B:787:LEU:CD2	2.47	0.43
1:A:639:LEU:HD21	1:A:647:TYR:CD2	2.54	0.43
1:C:258:PHE:O	1:C:262:TRP:N	2.51	0.43
1:A:122:LEU:HD23	1:A:122:LEU:HA	1.90	0.43
1:A:211:ILE:HG13	1:A:213:LYS:HG3	1.99	0.43
1:A:521:LEU:HD12	1:B:787:LEU:CD2	2.48	0.43
1:B:320:ALA:O	1:B:322:PRO:HD3	2.18	0.43
1:B:716:LYS:HA	1:B:718:CYS:N	2.34	0.43
1:C:529:ILE:HA	1:D:796:PHE:CZ	2.54	0.43
1:C:364:LYS:HG3	1:C:369:ARG:NH2	2.33	0.43
1:A:702:TYR:HE2	1:A:704:LEU:HD13	1.84	0.43
1:C:204:ILE:O	1:C:208:VAL:HG23	2.19	0.43
1:C:503:MET:HE3	1:C:704:LEU:HD21	1.99	0.43
1:D:606:TRP:CE3	1:D:610:LEU:HD21	2.54	0.43
1:A:522:ALA:H	1:B:787:LEU:HD23	1.83	0.43
1:A:288:ALA:O	1:A:292:MET:HG3	2.19	0.43
1:A:710:GLU:O	1:A:714:GLN:HG2	2.19	0.43
1:B:346:LYS:HZ1	2:B:901:NAG:H82	1.83	0.43
1:B:514:VAL:HG21	1:B:797:TYR:CD2	2.53	0.43
1:D:234:LYS:H	1:D:234:LYS:HG2	1.63	0.43
1:A:391:GLU:HA	1:A:393:LYS:HE2	2.01	0.43
1:A:445:VAL:HG22	1:A:446:GLY:H	1.84	0.43
1:C:667:PHE:HE1	1:C:727:LEU:HD13	1.83	0.43
1:D:530:VAL:O	1:D:534:ILE:HG12	2.19	0.43
1:B:225:LEU:HB2	1:B:280:TYR:CD2	2.54	0.42

Continued on next page...

Continued from previous page...

Atom-1	Atom-2	Interatomic distance (Å)	Clash overlap (Å)
1:B:454:ASP:OD1	1:B:455:ALA:N	2.46	0.42
1:D:169:ASN:OD1	1:D:169:ASN:N	2.47	0.42
1:A:153:ALA:HA	1:A:158:TRP:HB2	2.01	0.42
1:A:637:GLU:H	1:A:637:GLU:CD	2.23	0.42
1:B:719:ASP:OD1	1:B:719:ASP:N	2.53	0.42
1:C:13:GLN:HG2	1:C:70:VAL:HG12	2.01	0.42
1:D:606:TRP:O	1:D:610:LEU:HD23	2.20	0.42
1:D:708:MET:O	1:D:712:ILE:HG12	2.18	0.42
1:D:783:LYS:HB2	1:D:783:LYS:HE3	1.43	0.42
1:A:299:LEU:HD13	1:A:306:ILE:HD13	2.01	0.42
1:A:543:VAL:HG21	1:A:601:VAL:HG21	2.00	0.42
1:A:623:PHE:HZ	1:B:786:ALA:HA	1.83	0.42
1:B:337:GLN:NE2	2:B:901:NAG:C7	2.75	0.42
1:C:445:VAL:HG22	1:C:448:GLY:H	1.85	0.42
1:C:610:LEU:HD21	1:D:613:ILE:HG22	2.00	0.42
1:C:704:LEU:HD12	1:C:708:MET:HB3	2.00	0.42
1:D:128:TYR:OH	1:D:362:GLU:OE2	2.29	0.42
1:D:138:ASP:OD1	1:D:139:SER:N	2.53	0.42
1:D:606:TRP:CD2	1:D:610:LEU:HD21	2.54	0.42
1:A:215:VAL:HA	1:A:238:GLY:O	2.19	0.42
1:A:795:VAL:HG12	1:D:608:PHE:HD1	1.85	0.42
1:B:89:CYS:HB3	1:B:94:VAL:O	2.19	0.42
1:C:659:PHE:CE2	1:C:667:PHE:HD1	2.38	0.42
1:A:74:PHE:CZ	1:A:285:THR:HG23	2.54	0.42
1:B:74:PHE:CZ	1:B:285:THR:HG23	2.54	0.42
1:B:387:THR:O	1:B:390:LEU:HB2	2.19	0.42
1:A:61:ALA:O	1:A:65:GLN:HG2	2.20	0.42
1:B:77:TYR:HE2	1:B:98:THR:HG21	1.85	0.42
1:B:606:TRP:O	1:B:610:LEU:HB2	2.20	0.42
1:D:261:ARG:HD2	1:D:261:ARG:HA	1.82	0.42
1:B:11:SER:OG	1:B:44:THR:OG1	2.37	0.42
1:B:405:TYR:HA	1:B:424:TYR:HB3	2.00	0.42
1:C:10:ASN:ND2	1:C:40:GLU:O	2.44	0.42
1:D:116:ASP:OD1	1:D:118:LYS:HE3	2.20	0.42
1:D:521:LEU:HD13	1:D:616:TYR:HD1	1.84	0.42
1:A:489:ILE:HD13	1:A:735:ALA:HB1	2.02	0.42
1:D:787:LEU:HD22	1:D:787:LEU:HA	1.77	0.42
1:A:412:HIS:CE1	1:A:413:GLU:HG3	2.55	0.42
1:A:174:ASP:O	1:A:178:ARG:HG3	2.20	0.42
1:A:504:ILE:HG22	1:A:701:ALA:HB2	2.02	0.42
1:C:763:LYS:O	1:C:767:TRP:HB2	2.20	0.42

Continued on next page...

Continued from previous page...

Atom-1	Atom-2	Interatomic distance (Å)	Clash overlap (Å)
1:D:236:GLN:NE2	1:D:365:THR:O	2.41	0.42
1:A:358:ILE:HB	1:A:374:TRP:NE1	2.34	0.41
1:C:425:CYS:HA	1:C:428:LEU:HB3	2.02	0.41
1:D:803:LEU:O	1:D:807:MET:HG2	2.20	0.41
1:A:454:ASP:OD1	1:A:455:ALA:N	2.53	0.41
1:A:535:GLY:O	1:A:538:VAL:HG12	2.20	0.41
1:B:406:VAL:HG23	1:B:425:CYS:HB2	2.02	0.41
1:D:541:PHE:HD1	1:D:541:PHE:O	2.04	0.41
1:A:16:GLY:HA2	1:A:74:PHE:O	2.20	0.41
1:B:325:GLN:O	1:B:329:ILE:HG13	2.21	0.41
1:C:77:TYR:HE2	1:C:98:THR:HG21	1.85	0.41
1:C:132:LYS:HZ1	1:C:187:LYS:HB3	1.84	0.41
1:C:219:HIS:ND1	1:C:241:GLU:O	2.52	0.41
1:C:486:GLU:OE2	1:C:491:PHE:HB2	2.19	0.41
1:C:521:LEU:HA	1:D:787:LEU:HG	2.03	0.41
1:A:642:GLN:NE2	1:A:645:ILE:HB	2.30	0.41
1:B:110:VAL:O	1:B:351:GLY:HA3	2.20	0.41
1:C:419:GLU:N	1:C:419:GLU:OE1	2.54	0.41
1:C:715:ARG:HD3	1:C:715:ARG:HA	1.89	0.41
1:C:746:VAL:O	1:C:750:VAL:HG23	2.20	0.41
1:D:486:GLU:OE1	1:D:491:PHE:HB2	2.19	0.41
1:A:728:ASP:OD2	1:A:730:LYS:HE3	2.20	0.41
1:B:66:PHE:CE2	1:B:92:LEU:HD13	2.56	0.41
1:B:78:ASP:OD1	1:B:79:LYS:N	2.54	0.41
1:B:288:ALA:O	1:B:292:MET:HG3	2.20	0.41
1:B:597:SER:O	1:B:601:VAL:HG23	2.21	0.41
1:C:447:ASP:OD2	1:C:461:ASN:HB2	2.20	0.41
1:A:294:GLU:HG3	1:A:338:VAL:HG11	2.02	0.41
1:A:607:PHE:HD1	1:A:610:LEU:HD23	1.86	0.41
1:A:619:ASN:CG	1:B:787:LEU:HB2	2.41	0.41
1:B:24:GLN:HG3	1:B:262:TRP:HZ2	1.86	0.41
1:B:163:ILE:HG21	1:B:180:LEU:HD13	2.01	0.41
1:B:637:GLU:OE1	1:B:637:GLU:N	2.47	0.41
1:C:261:ARG:HA	1:C:261:ARG:HD2	1.91	0.41
1:C:433:ALA:HA	1:C:438:PHE:CE2	2.56	0.41
1:C:529:ILE:HA	1:D:796:PHE:CE2	2.55	0.41
1:D:177:TYR:HD1	1:D:177:TYR:HA	1.77	0.41
1:C:672:THR:HG22	1:C:675:ARG:NH2	2.36	0.41
1:D:99:PRO:HA	1:D:113:MET:HB2	2.03	0.41
1:C:795:VAL:O	1:C:798:ILE:HG22	2.20	0.41
1:A:213:LYS:O	1:A:220:TYR:OH	2.33	0.41

Continued on next page...

Continued from previous page...

Atom-1	Atom-2	Interatomic distance (Å)	Clash overlap (Å)
1:A:299:LEU:HD21	1:A:332:ALA:HB2	2.02	0.41
1:B:390:LEU:HD13	1:B:390:LEU:HA	1.78	0.41
1:B:397:VAL:O	1:B:443:THR:OG1	2.27	0.41
1:C:480:THR:O	1:C:482:THR:HG23	2.21	0.41
1:D:504:ILE:O	1:D:720:THR:HA	2.21	0.41
1:A:609:THR:O	1:A:613:ILE:HG23	2.21	0.41
1:B:399:THR:HG21	1:B:406:VAL:HG21	2.03	0.41
1:A:395:VAL:N	1:A:439:LYS:O	2.53	0.40
1:A:536:VAL:HG22	1:B:803:LEU:HD21	2.03	0.40
1:B:611:ILE:HD12	1:C:517:PHE:CE1	2.51	0.40
1:D:171:ASP:OD1	1:D:172:LYS:N	2.53	0.40
1:D:445:VAL:HG13	1:D:448:GLY:HA2	2.02	0.40
1:A:796:PHE:HZ	1:D:529:ILE:HA	1.87	0.40
1:C:23:ASP:HB3	1:C:271:PRO:CG	2.50	0.40
1:C:467:LEU:HD23	1:C:472:ALA:HB3	2.03	0.40
1:C:525:ILE:HA	1:C:528:CYS:HB3	2.03	0.40
1:A:74:PHE:HA	1:A:97:ILE:O	2.22	0.40
1:B:659:PHE:HB3	1:B:671:TRP:HB2	2.02	0.40
1:C:266:GLU:HG2	1:C:268:LYS:H	1.86	0.40
1:D:320:ALA:O	1:D:322:PRO:HD3	2.21	0.40
1:C:637:GLU:O	1:C:640:SER:OG	2.36	0.40

All (1) symmetry-related close contacts are listed below. The label for Atom-2 includes the symmetry operator and encoded unit-cell translations to be applied.

Atom-1	Atom-2	Interatomic distance (Å)	Clash overlap (Å)
1:B:303:ARG:NH2	1:C:346:LYS:NZ[3_545]	1.53	0.67

5.3 Torsion angles [\(i\)](#)

5.3.1 Protein backbone [\(i\)](#)

In the following table, the Percentiles column shows the percent Ramachandran outliers of the chain as a percentile score with respect to all X-ray entries followed by that with respect to entries of similar resolution.

The Analysed column shows the number of residues for which the backbone conformation was analysed, and the total number of residues.

Mol	Chain	Analysed	Favoured	Allowed	Outliers	Percentiles	
1	A	764/808 (95%)	706 (92%)	54 (7%)	4 (0%)	29	68
1	B	766/808 (95%)	704 (92%)	58 (8%)	4 (0%)	29	68
1	C	768/808 (95%)	703 (92%)	58 (8%)	7 (1%)	17	56
1	D	766/808 (95%)	708 (92%)	54 (7%)	4 (0%)	29	68
All	All	3064/3232 (95%)	2821 (92%)	224 (7%)	19 (1%)	25	65

All (19) Ramachandran outliers are listed below:

Mol	Chain	Res	Type
1	C	632	PRO
1	C	512	PRO
1	D	585	MET
1	A	507	PRO
1	B	798	ILE
1	D	320	ALA
1	D	379	LYS
1	D	520	PRO
1	B	520	PRO
1	B	797	TYR
1	C	373	TYR
1	A	437	GLY
1	B	533	TYR
1	C	786	ALA
1	A	630	VAL
1	C	520	PRO
1	C	381	VAL
1	A	520	PRO
1	C	507	PRO

5.3.2 Protein sidechains [i](#)

In the following table, the Percentiles column shows the percent sidechain outliers of the chain as a percentile score with respect to all X-ray entries followed by that with respect to entries of similar resolution.

The Analysed column shows the number of residues for which the sidechain conformation was analysed, and the total number of residues.

Mol	Chain	Analysed	Rotameric	Outliers	Percentiles	
1	A	613/691 (89%)	600 (98%)	13 (2%)	53	72
1	B	625/691 (90%)	600 (96%)	25 (4%)	31	57

Continued on next page...

Continued from previous page...

Mol	Chain	Analysed	Rotameric	Outliers	Percentiles	
1	C	609/691 (88%)	602 (99%)	7 (1%)	73	85
1	D	609/691 (88%)	595 (98%)	14 (2%)	50	70
All	All	2456/2764 (89%)	2397 (98%)	59 (2%)	49	69

All (59) residues with a non-rotameric sidechain are listed below:

Mol	Chain	Res	Type
1	A	77	TYR
1	A	93	HIS
1	A	177	TYR
1	A	199	ASP
1	A	323	TRP
1	A	381	VAL
1	A	382	LEU
1	A	393	LYS
1	A	498	LEU
1	A	515	PHE
1	A	517	PHE
1	A	523	TYR
1	A	529	ILE
1	B	20	ARG
1	B	42	ARG
1	B	66	PHE
1	B	88	PHE
1	B	114	ARG
1	B	157	LYS
1	B	178	ARG
1	B	191	ARG
1	B	219	HIS
1	B	323	TRP
1	B	385	ASP
1	B	387	THR
1	B	390	LEU
1	B	393	LYS
1	B	445	VAL
1	B	447	ASP
1	B	491	PHE
1	B	505	LYS
1	B	510	SER
1	B	515	PHE
1	B	523	TYR

Continued on next page...

Continued from previous page...

Mol	Chain	Res	Type
1	B	533	TYR
1	B	541	PHE
1	B	638	ASP
1	B	791	ASN
1	C	46	HIS
1	C	198	ARG
1	C	219	HIS
1	C	323	TRP
1	C	390	LEU
1	C	498	LEU
1	C	523	TYR
1	D	23	ASP
1	D	199	ASP
1	D	219	HIS
1	D	323	TRP
1	D	394	THR
1	D	523	TYR
1	D	533	TYR
1	D	541	PHE
1	D	625	THR
1	D	635	SER
1	D	772	GLU
1	D	773	CYS
1	D	783	LYS
1	D	787	LEU

Sometimes sidechains can be flipped to improve hydrogen bonding and reduce clashes. All (6) such sidechains are listed below:

Mol	Chain	Res	Type
1	A	355	ASN
1	B	24	GLN
1	B	344	ASN
1	B	355	ASN
1	C	337	GLN
1	D	60	ASN

5.3.3 RNA [i](#)

There are no RNA molecules in this entry.

5.4 Non-standard residues in protein, DNA, RNA chains [i](#)

There are no non-standard protein/DNA/RNA residues in this entry.

5.5 Carbohydrates [i](#)

There are no monosaccharides in this entry.

5.6 Ligand geometry [i](#)

6 ligands are modelled in this entry.

In the following table, the Counts columns list the number of bonds (or angles) for which Mogul statistics could be retrieved, the number of bonds (or angles) that are observed in the model and the number of bonds (or angles) that are defined in the Chemical Component Dictionary. The Link column lists molecule types, if any, to which the group is linked. The Z score for a bond length (or angle) is the number of standard deviations the observed value is removed from the expected value. A bond length (or angle) with $|Z| > 2$ is considered an outlier worth inspection. RMSZ is the root-mean-square of all Z scores of the bond lengths (or angles).

Mol	Type	Chain	Res	Link	Bond lengths			Bond angles		
					Counts	RMSZ	# Z > 2	Counts	RMSZ	# Z > 2
3	V8G	A	902	-	13,13,13	0.71	0	16,16,16	1.11	1 (6%)
2	NAG	B	901	-	14,14,15	0.34	0	17,19,21	0.52	0
2	NAG	D	901	1	14,14,15	0.35	0	17,19,21	0.51	0
3	V8G	C	902	-	13,13,13	0.72	0	16,16,16	1.11	1 (6%)
2	NAG	A	901	-	14,14,15	0.48	0	17,19,21	0.50	0
2	NAG	C	901	-	14,14,15	0.29	0	17,19,21	0.59	1 (5%)

In the following table, the Chirals column lists the number of chiral outliers, the number of chiral centers analysed, the number of these observed in the model and the number defined in the Chemical Component Dictionary. Similar counts are reported in the Torsion and Rings columns. '-' means no outliers of that kind were identified.

Mol	Type	Chain	Res	Link	Chirals	Torsions	Rings
3	V8G	A	902	-	-	3/8/18/18	0/1/1/1
2	NAG	B	901	-	-	0/6/23/26	0/1/1/1
2	NAG	D	901	1	-	0/6/23/26	0/1/1/1
3	V8G	C	902	-	-	3/8/18/18	0/1/1/1
2	NAG	A	901	-	-	0/6/23/26	0/1/1/1
2	NAG	C	901	-	-	0/6/23/26	0/1/1/1

There are no bond length outliers.

All (3) bond angle outliers are listed below:

Mol	Chain	Res	Type	Atoms	Z	Observed(°)	Ideal(°)
3	A	902	V8G	OAK-CAD-CAE	2.22	120.03	114.21
3	C	902	V8G	OAK-CAD-CAE	2.20	119.95	114.21
2	C	901	NAG	C1-O5-C5	2.02	114.93	112.19

There are no chirality outliers.

All (6) torsion outliers are listed below:

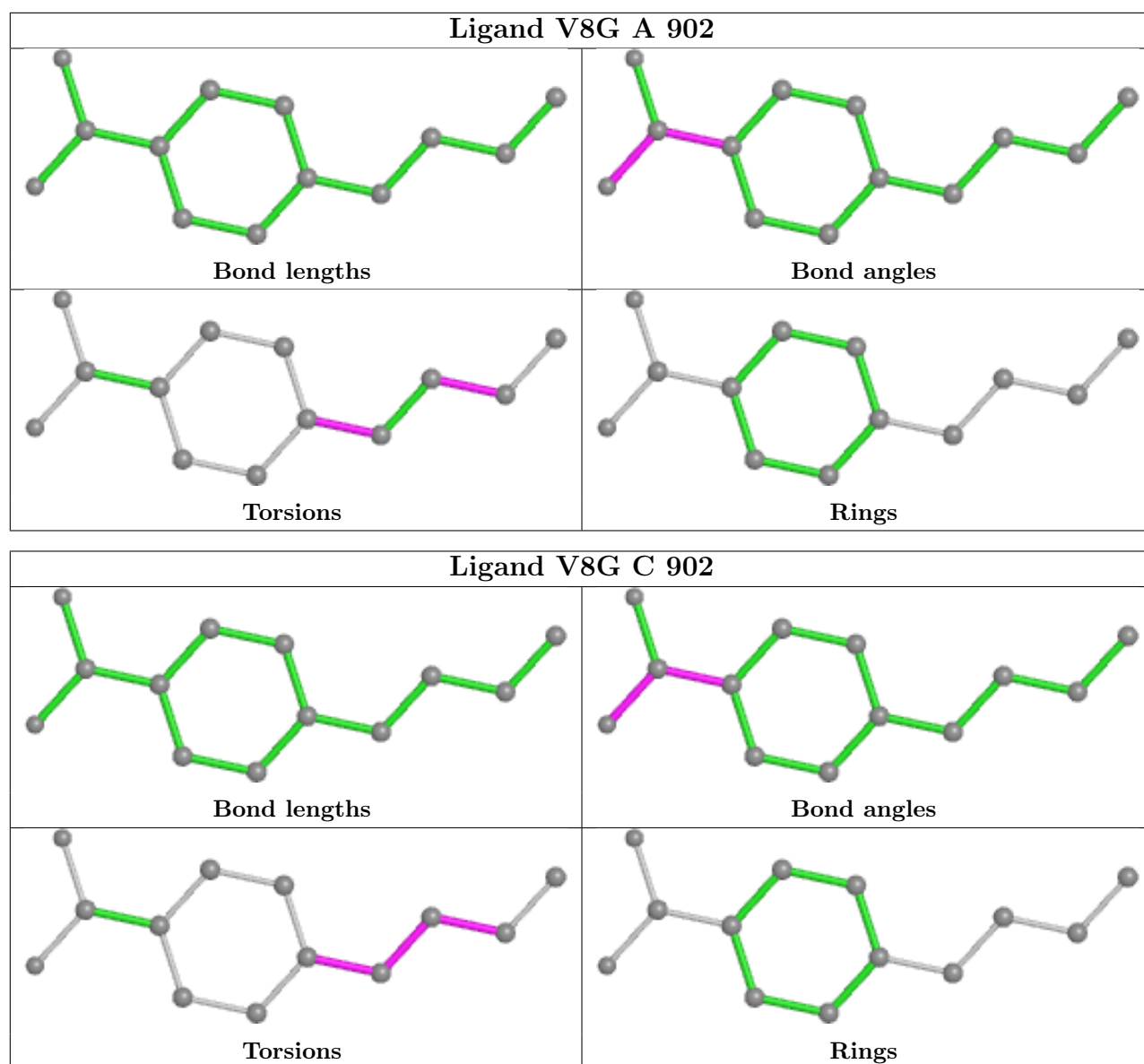
Mol	Chain	Res	Type	Atoms
3	A	902	V8G	CAC-CAF-CAG-CAH
3	C	902	V8G	CAC-CAF-CAG-CAH
3	A	902	V8G	CAG-CAH-CAI-CAJ
3	C	902	V8G	CAG-CAH-CAI-CAJ
3	A	902	V8G	CAM-CAF-CAG-CAH
3	C	902	V8G	CAF-CAG-CAH-CAI

There are no ring outliers.

5 monomers are involved in 39 short contacts:

Mol	Chain	Res	Type	Clashes	Symm-Clashes
3	A	902	V8G	12	0
2	B	901	NAG	15	0
2	D	901	NAG	1	0
3	C	902	V8G	9	0
2	A	901	NAG	2	0

The following is a two-dimensional graphical depiction of Mogul quality analysis of bond lengths, bond angles, torsion angles, and ring geometry for all instances of the Ligand of Interest. In addition, ligands with molecular weight > 250 and outliers as shown on the validation Tables will also be included. For torsion angles, if less than 5% of the Mogul distribution of torsion angles is within 10 degrees of the torsion angle in question, then that torsion angle is considered an outlier. Any bond that is central to one or more torsion angles identified as an outlier by Mogul will be highlighted in the graph. For rings, the root-mean-square deviation (RMSD) between the ring in question and similar rings identified by Mogul is calculated over all ring torsion angles. If the average RMSD is greater than 60 degrees and the minimal RMSD between the ring in question and any Mogul-identified rings is also greater than 60 degrees, then that ring is considered an outlier. The outliers are highlighted in purple. The color gray indicates Mogul did not find sufficient equivalents in the CSD to analyse the geometry.



5.7 Other polymers [i](#)

There are no such residues in this entry.

5.8 Polymer linkage issues [i](#)

There are no chain breaks in this entry.

6 Fit of model and data [i](#)

6.1 Protein, DNA and RNA chains [i](#)

Unable to reproduce the depositors R factor - this section is therefore empty.

6.2 Non-standard residues in protein, DNA, RNA chains [i](#)

Unable to reproduce the depositors R factor - this section is therefore empty.

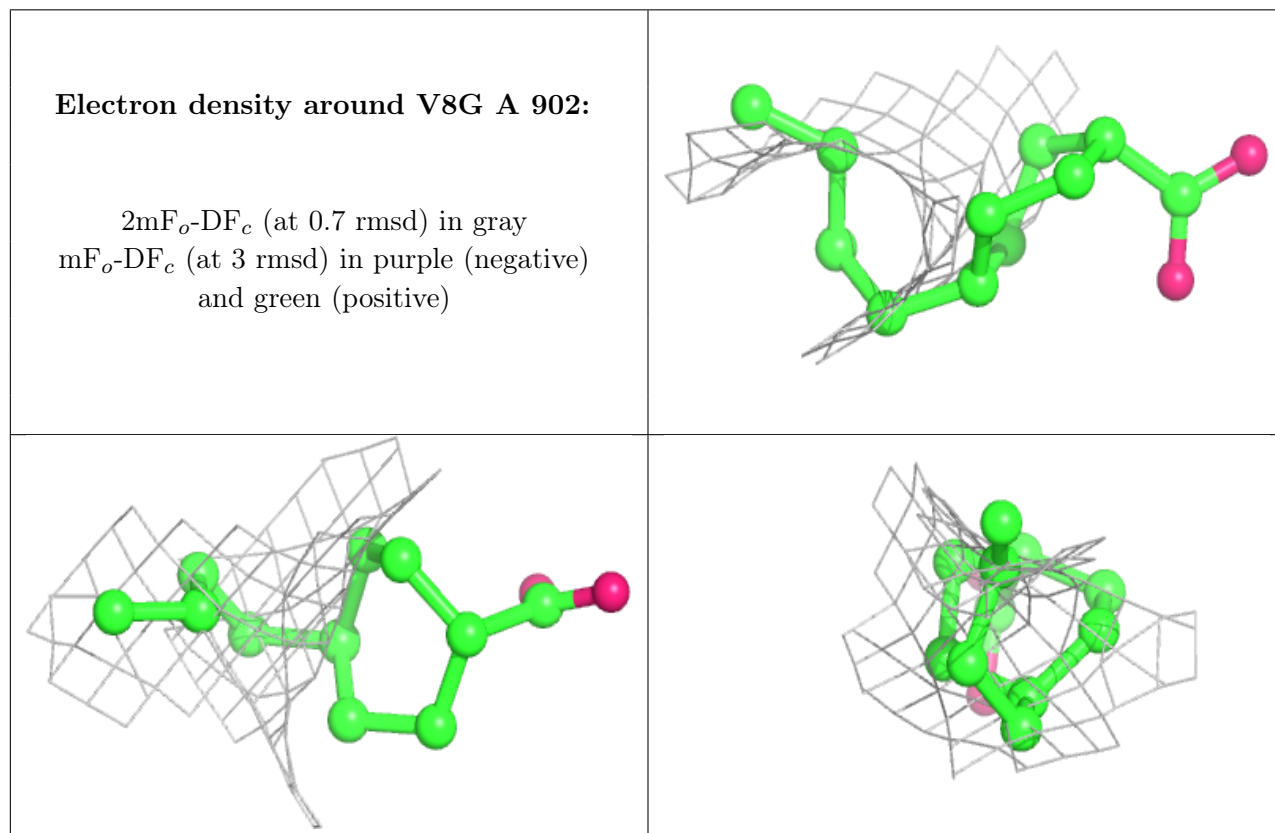
6.3 Carbohydrates [i](#)

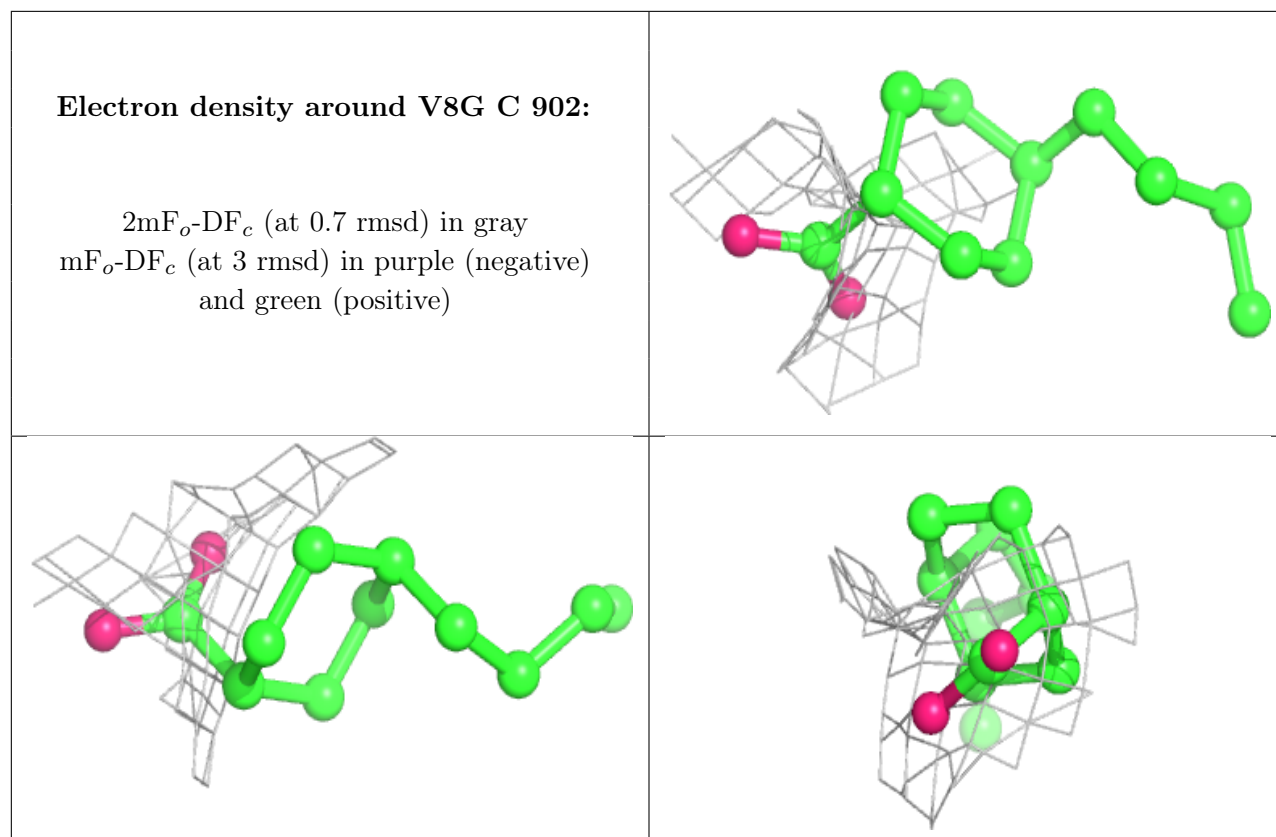
Unable to reproduce the depositors R factor - this section is therefore empty.

6.4 Ligands [i](#)

Unable to reproduce the depositors R factor - this section is therefore empty.

The following is a graphical depiction of the model fit to experimental electron density of all instances of the Ligand of Interest. In addition, ligands with molecular weight > 250 and outliers as shown on the geometry validation Tables will also be included. Each fit is shown from different orientation to approximate a three-dimensional view.





6.5 Other polymers [i](#)

Unable to reproduce the depositors R factor - this section is therefore empty.