



Full wwPDB X-ray Structure Validation Report ⓘ

Jun 25, 2024 – 08:32 PM EDT

PDB ID : 6UMH
Title : Crystal structure of erenumab Fab-a
Authors : Mohr, C.
Deposited on : 2019-10-09
Resolution : 2.15 Å(reported)

This is a Full wwPDB X-ray Structure Validation Report for a publicly released PDB entry.

We welcome your comments at validation@mail.wwpdb.org

A user guide is available at

<https://www.wwpdb.org/validation/2017/XrayValidationReportHelp>

with specific help available everywhere you see the ⓘ symbol.

The types of validation reports are described at

<http://www.wwpdb.org/validation/2017/FAQs#types>.

The following versions of software and data (see [references ⓘ](#)) were used in the production of this report:

MolProbity : 4.02b-467
Mogul : 1.8.5 (274361), CSD as541be (2020)
Xtrriage (Phenix) : 1.13
EDS : 2.37.1
Percentile statistics : 20191225.v01 (using entries in the PDB archive December 25th 2019)
Refmac : 5.8.0158
CCP4 : 7.0.044 (Gargrove)
Ideal geometry (proteins) : Engh & Huber (2001)
Ideal geometry (DNA, RNA) : Parkinson et al. (1996)
Validation Pipeline (wwPDB-VP) : 2.37.1

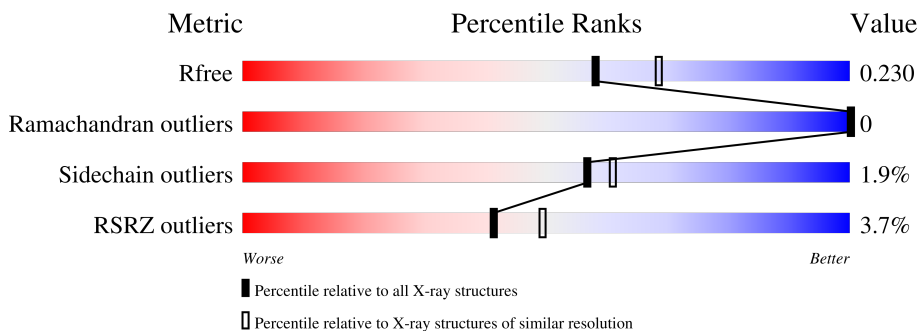
1 Overall quality at a glance

The following experimental techniques were used to determine the structure:

X-RAY DIFFRACTION

The reported resolution of this entry is 2.15 Å.

Percentile scores (ranging between 0-100) for global validation metrics of the entry are shown in the following graphic. The table shows the number of entries on which the scores are based.



Metric	Whole archive (#Entries)	Similar resolution (#Entries, resolution range(Å))
R_{free}	130704	1479 (2.16-2.16)
Ramachandran outliers	138981	1560 (2.16-2.16)
Sidechain outliers	138945	1559 (2.16-2.16)
RSRZ outliers	127900	1456 (2.16-2.16)

The table below summarises the geometric issues observed across the polymeric chains and their fit to the electron density. The red, orange, yellow and green segments of the lower bar indicate the fraction of residues that contain outliers for ≥ 3 , 2, 1 and 0 types of geometric quality criteria respectively. A grey segment represents the fraction of residues that are not modelled. The numeric value for each fraction is indicated below the corresponding segment, with a dot representing fractions $\leq 5\%$. The upper red bar (where present) indicates the fraction of residues that have poor fit to the electron density. The numeric value is given above the bar.

Mol	Chain	Length	Quality of chain
1	H	237	 3% 96%
1	h	237	 5% 96%
2	L	216	 % 98%
2	l	216	 5% 98%

2 Entry composition [i](#)

There are 6 unique types of molecules in this entry. The entry contains 7055 atoms, of which 0 are hydrogens and 0 are deuteriums.

In the tables below, the ZeroOcc column contains the number of atoms modelled with zero occupancy, the AltConf column contains the number of residues with at least one atom in alternate conformation and the Trace column contains the number of residues modelled with at most 2 atoms.

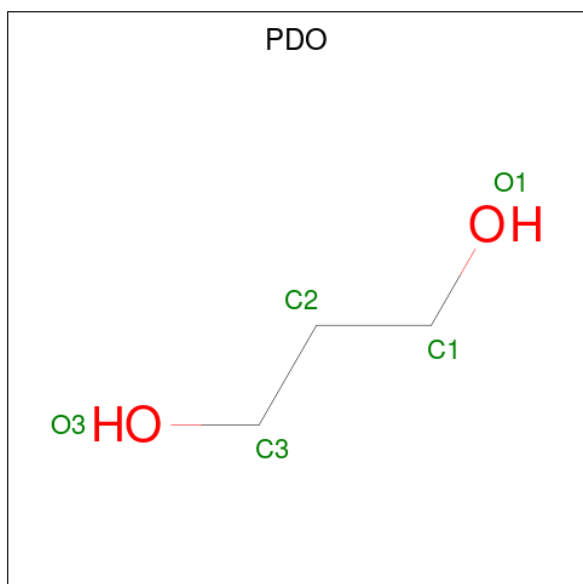
- Molecule 1 is a protein called erenumab Fab heavy chain, IgG1.

Mol	Chain	Residues	Atoms					ZeroOcc	AltConf	Trace
			Total	C	N	O	S			
1	H	232	Total 1754	C 1110	N 297	O 340	S 7	0	0	0
1	h	232	Total 1754	C 1110	N 297	O 340	S 7	0	0	0

- Molecule 2 is a protein called erenumab Fab light chain, IgG1.

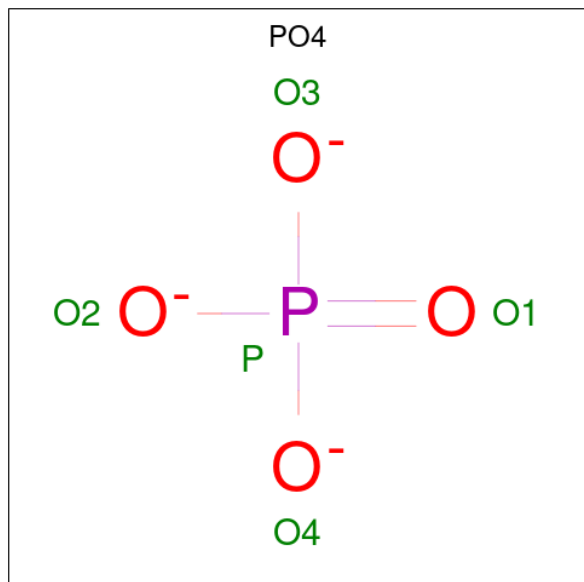
Mol	Chain	Residues	Atoms					ZeroOcc	AltConf	Trace
			Total	C	N	O	S			
2	L	214	Total 1592	C 996	N 268	O 324	S 4	0	0	0
2	l	213	Total 1583	C 991	N 266	O 322	S 4	0	0	0

- Molecule 3 is 1,3-PROPANDIOL (three-letter code: PDO) (formula: C₃H₈O₂).



Mol	Chain	Residues	Atoms	ZeroOcc	AltConf
3	H	1	Total C O 5 3 2	0	0
3	H	1	Total C O 5 3 2	0	0
3	L	1	Total C O 5 3 2	0	0
3	h	1	Total C O 5 3 2	0	0
3	h	1	Total C O 5 3 2	0	0
3	l	1	Total C O 5 3 2	0	0

- Molecule 4 is PHOSPHATE ION (three-letter code: PO4) (formula: O₄P).



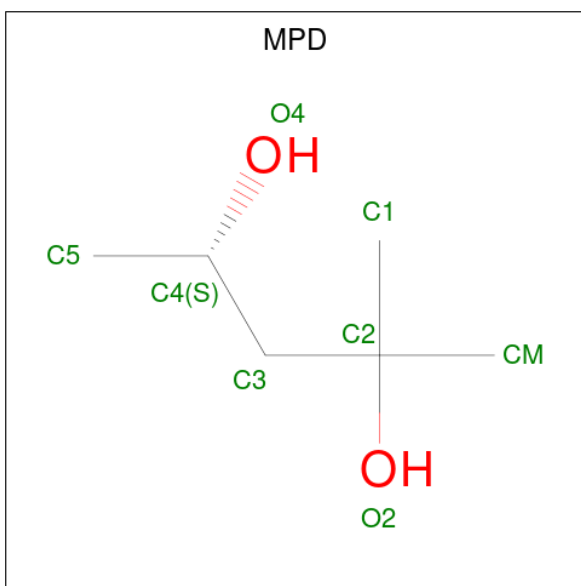
Mol	Chain	Residues	Atoms	ZeroOcc	AltConf
4	H	1	Total O P 5 4 1	0	0
4	H	1	Total O P 5 4 1	0	0
4	L	1	Total O P 5 4 1	0	0
4	L	1	Total O P 5 4 1	0	0
4	L	1	Total O P 5 4 1	0	0
4	L	1	Total O P 5 4 1	0	0

Continued on next page...

Continued from previous page...

Mol	Chain	Residues	Atoms			ZeroOcc	AltConf
4	h	1	Total	O	P	0	0
			5	4	1		
4	h	1	Total	O	P	0	0
			5	4	1		
4	l	1	Total	O	P	0	0
			5	4	1		
4	l	1	Total	O	P	0	0
			5	4	1		

- Molecule 5 is (4S)-2-METHYL-2,4-PENTANEDIOL (three-letter code: MPD) (formula: C₆H₁₄O₂).



Mol	Chain	Residues	Atoms			ZeroOcc	AltConf
5	L	1	Total	C	O	0	0
			8	6	2		
5	l	1	Total	C	O	0	0
			8	6	2		

- Molecule 6 is water.

Mol	Chain	Residues	Atoms		ZeroOcc	AltConf
6	H	91	Total	O	0	0
			91	91		
6	L	76	Total	O	0	0
			76	76		
6	h	68	Total	O	0	0
			68	68		

Continued on next page...

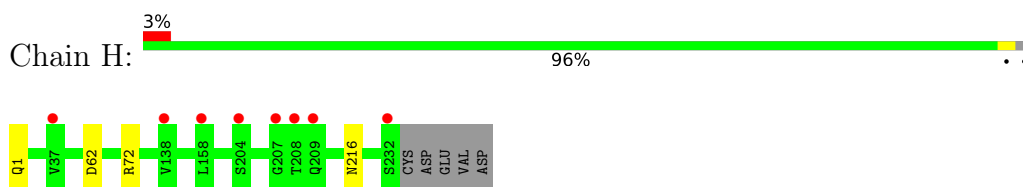
Continued from previous page...

Mol	Chain	Residues	Atoms		ZeroOcc	AltConf
6	1	41	Total	O	0	0
			41	41		

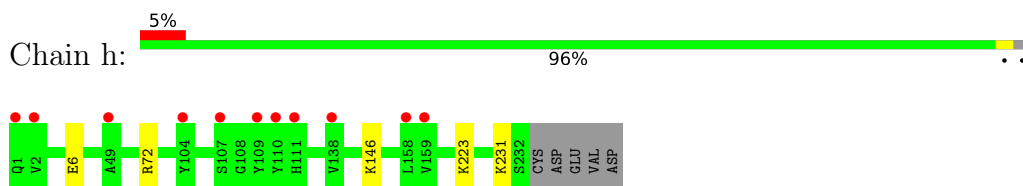
3 Residue-property plots [i](#)

These plots are drawn for all protein, RNA, DNA and oligosaccharide chains in the entry. The first graphic for a chain summarises the proportions of the various outlier classes displayed in the second graphic. The second graphic shows the sequence view annotated by issues in geometry and electron density. Residues are color-coded according to the number of geometric quality criteria for which they contain at least one outlier: green = 0, yellow = 1, orange = 2 and red = 3 or more. A red dot above a residue indicates a poor fit to the electron density ($RSRZ > 2$). Stretches of 2 or more consecutive residues without any outlier are shown as a green connector. Residues present in the sample, but not in the model, are shown in grey.

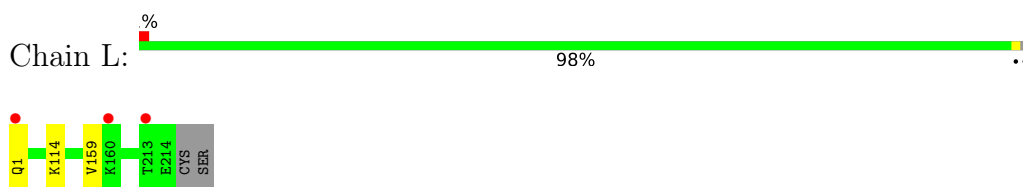
- Molecule 1: erenumab Fab heavy chain, IgG1



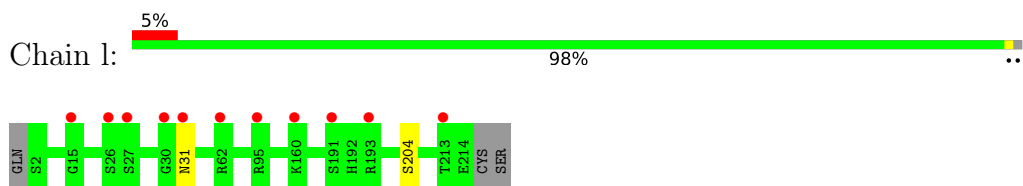
- Molecule 1: erenumab Fab heavy chain, IgG1



- Molecule 2: erenumab Fab light chain, IgG1



- Molecule 2: erenumab Fab light chain, IgG1



4 Data and refinement statistics

Property	Value	Source
Space group	C 1 2 1	Depositor
Cell constants a, b, c, α , β , γ	124.27Å 55.91Å 170.09Å 90.00° 110.93° 90.00°	Depositor
Resolution (Å)	30.00 – 2.15 29.57 – 2.15	Depositor EDS
% Data completeness (in resolution range)	97.7 (30.00-2.15) 97.7 (29.57-2.15)	Depositor EDS
R_{merge}	0.07	Depositor
R_{sym}	(Not available)	Depositor
$\langle I/\sigma(I) \rangle$ ¹	2.47 (at 2.16Å)	Xtrriage
Refinement program	REFMAC 5.8.0073	Depositor
R, R_{free}	0.185 , 0.224 0.192 , 0.230	Depositor DCC
R_{free} test set	2846 reflections (4.88%)	wwPDB-VP
Wilson B-factor (Å ²)	39.6	Xtrriage
Anisotropy	0.425	Xtrriage
Bulk solvent k_{sol} (e/Å ³), B_{sol} (Å ²)	0.32 , 40.1	EDS
L-test for twinning ²	$\langle L \rangle = 0.49$, $\langle L^2 \rangle = 0.32$	Xtrriage
Estimated twinning fraction	0.013 for h,-k,-h-l	Xtrriage
F_o, F_c correlation	0.96	EDS
Total number of atoms	7055	wwPDB-VP
Average B, all atoms (Å ²)	46.0	wwPDB-VP

Xtrriage's analysis on translational NCS is as follows: *The largest off-origin peak in the Patterson function is 4.65% of the height of the origin peak. No significant pseudotranslation is detected.*

¹Intensities estimated from amplitudes.

²Theoretical values of $\langle |L| \rangle$, $\langle L^2 \rangle$ for acentric reflections are 0.5, 0.333 respectively for untwinned datasets, and 0.375, 0.2 for perfectly twinned datasets.

5 Model quality [i](#)

5.1 Standard geometry [i](#)

Bond lengths and bond angles in the following residue types are not validated in this section: PDO, MPD, PO4

The Z score for a bond length (or angle) is the number of standard deviations the observed value is removed from the expected value. A bond length (or angle) with $|Z| > 5$ is considered an outlier worth inspection. RMSZ is the root-mean-square of all Z scores of the bond lengths (or angles).

Mol	Chain	Bond lengths		Bond angles	
		RMSZ	# Z >5	RMSZ	# Z >5
1	H	0.42	0/1798	0.62	0/2444
1	h	0.39	0/1798	0.59	0/2444
2	L	0.44	0/1630	0.60	0/2226
2	l	0.39	0/1621	0.61	0/2214
All	All	0.41	0/6847	0.60	0/9328

There are no bond length outliers.

There are no bond angle outliers.

There are no chirality outliers.

There are no planarity outliers.

5.2 Too-close contacts [i](#)

Due to software issues we are unable to calculate clashes - this section is therefore empty.

5.3 Torsion angles [i](#)

5.3.1 Protein backbone [i](#)

In the following table, the Percentiles column shows the percent Ramachandran outliers of the chain as a percentile score with respect to all X-ray entries followed by that with respect to entries of similar resolution.

The Analysed column shows the number of residues for which the backbone conformation was analysed, and the total number of residues.

Mol	Chain	Analysed	Favoured	Allowed	Outliers	Percentiles
1	H	230/237 (97%)	225 (98%)	5 (2%)	0	100 100

Continued on next page...

Continued from previous page...

Mol	Chain	Analysed	Favoured	Allowed	Outliers	Percentiles	
1	h	230/237 (97%)	225 (98%)	5 (2%)	0	100	100
2	L	212/216 (98%)	209 (99%)	3 (1%)	0	100	100
2	l	211/216 (98%)	206 (98%)	5 (2%)	0	100	100
All	All	883/906 (98%)	865 (98%)	18 (2%)	0	100	100

There are no Ramachandran outliers to report.

5.3.2 Protein sidechains [i](#)

In the following table, the Percentiles column shows the percent sidechain outliers of the chain as a percentile score with respect to all X-ray entries followed by that with respect to entries of similar resolution.

The Analysed column shows the number of residues for which the sidechain conformation was analysed, and the total number of residues.

Mol	Chain	Analysed	Rotameric	Outliers	Percentiles	
1	H	196/201 (98%)	192 (98%)	4 (2%)	55	59
1	h	196/201 (98%)	191 (97%)	5 (3%)	46	47
2	L	180/182 (99%)	177 (98%)	3 (2%)	60	65
2	l	179/182 (98%)	177 (99%)	2 (1%)	73	78
All	All	751/766 (98%)	737 (98%)	14 (2%)	57	61

All (14) residues with a non-rotameric sidechain are listed below:

Mol	Chain	Res	Type
1	H	1	GLN
1	H	62	ASP
1	H	72	ARG
1	H	216	ASN
2	L	1	GLN
2	L	114	LYS
2	L	159	VAL
1	h	6	GLU
1	h	72	ARG
1	h	146	LYS
1	h	223	LYS
1	h	231	LYS
2	l	31	ASN

Continued on next page...

Continued from previous page...

Mol	Chain	Res	Type
2	1	204	SER

Sometimes sidechains can be flipped to improve hydrogen bonding and reduce clashes. All (7) such sidechains are listed below:

Mol	Chain	Res	Type
1	H	1	GLN
1	H	3	GLN
1	H	209	GLN
1	h	1	GLN
2	1	31	ASN
2	1	32	ASN
2	1	112	GLN

5.3.3 RNA [i](#)

There are no RNA molecules in this entry.

5.4 Non-standard residues in protein, DNA, RNA chains [i](#)

There are no non-standard protein/DNA/RNA residues in this entry.

5.5 Carbohydrates [i](#)

There are no monosaccharides in this entry.

5.6 Ligand geometry [i](#)

18 ligands are modelled in this entry.

In the following table, the Counts columns list the number of bonds (or angles) for which Mogul statistics could be retrieved, the number of bonds (or angles) that are observed in the model and the number of bonds (or angles) that are defined in the Chemical Component Dictionary. The Link column lists molecule types, if any, to which the group is linked. The Z score for a bond length (or angle) is the number of standard deviations the observed value is removed from the expected value. A bond length (or angle) with $|Z| > 2$ is considered an outlier worth inspection. RMSZ is the root-mean-square of all Z scores of the bond lengths (or angles).

Mol	Type	Chain	Res	Link	Bond lengths			Bond angles		
					Counts	RMSZ	$\# Z > 2$	Counts	RMSZ	$\# Z > 2$
4	PO4	H	304	-	4,4,4	0.81	0	6,6,6	0.53	0

Mol	Type	Chain	Res	Link	Bond lengths			Bond angles		
					Counts	RMSZ	# Z > 2	Counts	RMSZ	# Z > 2
4	PO4	L	305	-	4,4,4	1.28	0	6,6,6	0.53	0
5	MPD	l	301	-	7,7,7	0.33	0	9,10,10	0.20	0
4	PO4	L	304	-	4,4,4	0.77	0	6,6,6	0.35	0
3	PDO	h	301	-	4,4,4	0.20	0	3,3,3	0.40	0
3	PDO	h	302	-	4,4,4	0.39	0	3,3,3	0.40	0
3	PDO	H	302	-	4,4,4	0.24	0	3,3,3	0.62	0
4	PO4	H	303	-	4,4,4	0.79	0	6,6,6	0.48	0
4	PO4	h	303	-	4,4,4	0.82	0	6,6,6	0.52	0
5	MPD	L	301	-	7,7,7	0.22	0	9,10,10	0.25	0
3	PDO	H	301	-	4,4,4	0.30	0	3,3,3	0.39	0
4	PO4	L	303	-	4,4,4	0.82	0	6,6,6	0.77	0
4	PO4	L	306	-	4,4,4	0.73	0	6,6,6	0.53	0
3	PDO	l	302	-	4,4,4	0.34	0	3,3,3	0.36	0
4	PO4	l	304	-	4,4,4	0.71	0	6,6,6	0.65	0
3	PDO	L	302	-	4,4,4	0.38	0	3,3,3	0.36	0
4	PO4	h	304	-	4,4,4	0.91	0	6,6,6	0.37	0
4	PO4	l	303	-	4,4,4	1.00	0	6,6,6	0.70	0

In the following table, the Chirals column lists the number of chiral outliers, the number of chiral centers analysed, the number of these observed in the model and the number defined in the Chemical Component Dictionary. Similar counts are reported in the Torsion and Rings columns. '-' means no outliers of that kind were identified.

Mol	Type	Chain	Res	Link	Chirals	Torsions	Rings
5	MPD	l	301	-	-	0/5/5/5	-
3	PDO	h	301	-	-	1/2/2/2	-
3	PDO	h	302	-	-	2/2/2/2	-
3	PDO	H	302	-	-	0/2/2/2	-
5	MPD	L	301	-	-	0/5/5/5	-
3	PDO	H	301	-	-	2/2/2/2	-
3	PDO	l	302	-	-	1/2/2/2	-
3	PDO	L	302	-	-	0/2/2/2	-

There are no bond length outliers.

There are no bond angle outliers.

There are no chirality outliers.

All (6) torsion outliers are listed below:

Mol	Chain	Res	Type	Atoms
3	h	301	PDO	O1-C1-C2-C3

Continued on next page...

Continued from previous page...

Mol	Chain	Res	Type	Atoms
3	h	302	PDO	O1-C1-C2-C3
3	l	302	PDO	C1-C2-C3-O3
3	H	301	PDO	C1-C2-C3-O3
3	H	301	PDO	O1-C1-C2-C3
3	h	302	PDO	C1-C2-C3-O3

There are no ring outliers.

No monomer is involved in short contacts.

5.7 Other polymers [i](#)

There are no such residues in this entry.

5.8 Polymer linkage issues [i](#)

There are no chain breaks in this entry.

6 Fit of model and data

6.1 Protein, DNA and RNA chains

In the following table, the column labelled ‘#RSRZ> 2’ contains the number (and percentage) of RSRZ outliers, followed by percent RSRZ outliers for the chain as percentile scores relative to all X-ray entries and entries of similar resolution. The OWAB column contains the minimum, median, 95th percentile and maximum values of the occupancy-weighted average B-factor per residue. The column labelled ‘Q< 0.9’ lists the number of (and percentage) of residues with an average occupancy less than 0.9.

Mol	Chain	Analysed	<RSRZ>	#RSRZ>2	OWAB(Å ²)	Q<0.9
1	H	232/237 (97%)	0.12	8 (3%) 45 53	28, 40, 64, 79	0
1	h	232/237 (97%)	0.22	11 (4%) 31 41	31, 45, 67, 96	0
2	L	214/216 (99%)	0.01	3 (1%) 75 80	28, 40, 58, 86	0
2	l	213/216 (98%)	0.24	11 (5%) 27 35	31, 52, 79, 89	0
All	All	891/906 (98%)	0.15	33 (3%) 41 49	28, 44, 70, 96	0

All (33) RSRZ outliers are listed below:

Mol	Chain	Res	Type	RSRZ
1	h	110	TYR	8.8
2	L	1	GLN	5.3
2	l	26	SER	4.3
2	L	160	LYS	4.0
2	l	30	GLY	3.8
2	l	160	LYS	3.7
1	H	208	THR	3.5
1	h	104	TYR	3.3
1	h	138	VAL	3.2
1	H	158	LEU	3.1
1	h	1	GLN	3.0
1	H	207	GLY	2.9
2	L	213	THR	2.9
1	h	107	SER	2.9
1	h	109	TYR	2.8
1	H	204	SER	2.6
1	h	2	VAL	2.6
2	l	193	ARG	2.5
2	l	191	SER	2.4
1	H	209	GLN	2.4
2	l	15	GLY	2.4

Continued on next page...

Continued from previous page...

Mol	Chain	Res	Type	RSRZ
2	l	213	THR	2.3
2	l	62	ARG	2.3
2	l	31	ASN	2.2
1	h	158	LEU	2.2
1	H	37	VAL	2.2
1	h	111	HIS	2.1
1	H	138	VAL	2.1
1	H	232	SER	2.1
1	h	49	ALA	2.1
2	l	27	SER	2.0
1	h	159	VAL	2.0
2	l	95	ARG	2.0

6.2 Non-standard residues in protein, DNA, RNA chains [i](#)

There are no non-standard protein/DNA/RNA residues in this entry.

6.3 Carbohydrates [i](#)

There are no monosaccharides in this entry.

6.4 Ligands [i](#)

In the following table, the Atoms column lists the number of modelled atoms in the group and the number defined in the chemical component dictionary. The B-factors column lists the minimum, median, 95th percentile and maximum values of B factors of atoms in the group. The column labelled 'Q< 0.9' lists the number of atoms with occupancy less than 0.9.

Mol	Type	Chain	Res	Atoms	RSCC	RSR	B-factors(Å ²)	Q<0.9
4	PO4	h	304	5/5	0.57	0.28	85,87,97,99	0
3	PDO	h	302	5/5	0.74	0.19	57,58,63,63	0
4	PO4	l	304	5/5	0.80	0.19	71,73,80,86	0
3	PDO	H	301	5/5	0.82	0.54	57,61,67,71	0
3	PDO	L	302	5/5	0.86	0.32	47,54,58,61	0
4	PO4	L	306	5/5	0.88	0.22	77,79,84,90	0
4	PO4	L	305	5/5	0.89	0.31	90,93,96,97	0
3	PDO	l	302	5/5	0.89	0.32	62,65,65,67	0
4	PO4	L	304	5/5	0.91	0.16	55,58,60,66	0
5	MPD	L	301	8/8	0.92	0.18	50,52,53,53	0
4	PO4	H	304	5/5	0.93	0.32	86,92,94,95	0

Continued on next page...

Continued from previous page...

Mol	Type	Chain	Res	Atoms	RSCC	RSR	B-factors(\AA^2)	Q<0.9
5	MPD	l	301	8/8	0.95	0.14	40,40,43,45	0
3	PDO	H	302	5/5	0.96	0.15	37,37,38,40	0
3	PDO	h	301	5/5	0.96	0.17	40,40,43,44	0
4	PO4	l	303	5/5	0.97	0.09	47,49,51,51	0
4	PO4	h	303	5/5	0.97	0.10	50,54,58,59	0
4	PO4	H	303	5/5	0.98	0.09	46,52,53,54	0
4	PO4	L	303	5/5	0.99	0.10	40,41,43,44	0

6.5 Other polymers [i](#)

There are no such residues in this entry.