



Full wwPDB X-ray Structure Validation Report ⓘ

Jun 26, 2024 – 10:14 AM EDT

PDB ID : 6SRE
Title : Crystal Structure of Human Prolidase S202F variant expressed in the presence of chaperones
Authors : Wator, E.; Rutkiewicz, M.; Wilk, P.
Deposited on : 2019-09-05
Resolution : 1.39 Å(reported)

This is a Full wwPDB X-ray Structure Validation Report for a publicly released PDB entry.

We welcome your comments at validation@mail.wwpdb.org

A user guide is available at

<https://www.wwpdb.org/validation/2017/XrayValidationReportHelp>

with specific help available everywhere you see the ⓘ symbol.

The types of validation reports are described at

<http://www.wwpdb.org/validation/2017/FAQs#types>.

The following versions of software and data (see [references ⓘ](#)) were used in the production of this report:

MolProbity : 4.02b-467
Mogul : 1.8.5 (274361), CSD as541be (2020)
Xtriage (Phenix) : 1.13
EDS : 2.37.1
Percentile statistics : 20191225.v01 (using entries in the PDB archive December 25th 2019)
Refmac : 5.8.0158
CCP4 : 7.0.044 (Gargrove)
Ideal geometry (proteins) : Engh & Huber (2001)
Ideal geometry (DNA, RNA) : Parkinson et al. (1996)
Validation Pipeline (wwPDB-VP) : 2.37.1

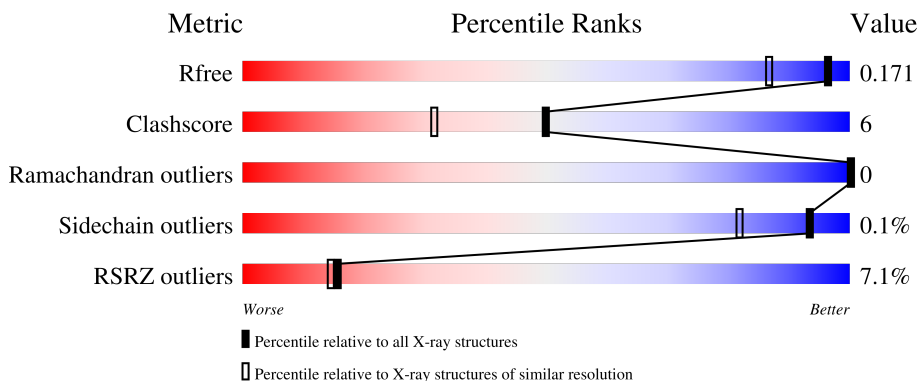
1 Overall quality at a glance

The following experimental techniques were used to determine the structure:

X-RAY DIFFRACTION

The reported resolution of this entry is 1.39 Å.

Percentile scores (ranging between 0-100) for global validation metrics of the entry are shown in the following graphic. The table shows the number of entries on which the scores are based.



Metric	Whole archive (#Entries)	Similar resolution (#Entries, resolution range(Å))
R_{free}	130704	1714 (1.40-1.40)
Clashscore	141614	1812 (1.40-1.40)
Ramachandran outliers	138981	1763 (1.40-1.40)
Sidechain outliers	138945	1762 (1.40-1.40)
RSRZ outliers	127900	1674 (1.40-1.40)

The table below summarises the geometric issues observed across the polymeric chains and their fit to the electron density. The red, orange, yellow and green segments of the lower bar indicate the fraction of residues that contain outliers for ≥ 3 , 2, 1 and 0 types of geometric quality criteria respectively. A grey segment represents the fraction of residues that are not modelled. The numeric value for each fraction is indicated below the corresponding segment, with a dot representing fractions $\leq 5\%$. The upper red bar (where present) indicates the fraction of residues that have poor fit to the electron density. The numeric value is given above the bar.

Mol	Chain	Length	Quality of chain
1	A	484	 9% 93% 7%
1	B	484	 6% 93% 7%

The following table lists non-polymeric compounds, carbohydrate monomers and non-standard residues in protein, DNA, RNA chains that are outliers for geometric or electron-density-fit criteria:

Mol	Type	Chain	Res	Chirality	Geometry	Clashes	Electron density
2	MN	A	501	-	-	-	X
3	GOL	A	505	-	-	X	-
3	GOL	B	505	-	-	X	-
4	MH2	B	502	-	-	X	-

2 Entry composition

There are 7 unique types of molecules in this entry. The entry contains 16623 atoms, of which 7672 are hydrogens and 0 are deuteriums.

In the tables below, the ZeroOcc column contains the number of atoms modelled with zero occupancy, the AltConf column contains the number of residues with at least one atom in alternate conformation and the Trace column contains the number of residues modelled with at most 2 atoms.

- Molecule 1 is a protein called Xaa-Pro dipeptidase.

Mol	Chain	Residues	Atoms						ZeroOcc	AltConf	Trace
			Total	C	H	N	O	S			
1	A	484	7670	2450	3805	668	714	33	0	19	0
1	B	483	7611	2430	3770	667	713	31	0	14	0

There are 2 discrepancies between the modelled and reference sequences:

Chain	Residue	Modelled	Actual	Comment	Reference
A	202	PHE	SER	engineered mutation	UNP P12955
B	202	PHE	SER	engineered mutation	UNP P12955

- Molecule 2 is MANGANESE (II) ION (three-letter code: MN) (formula: Mn).

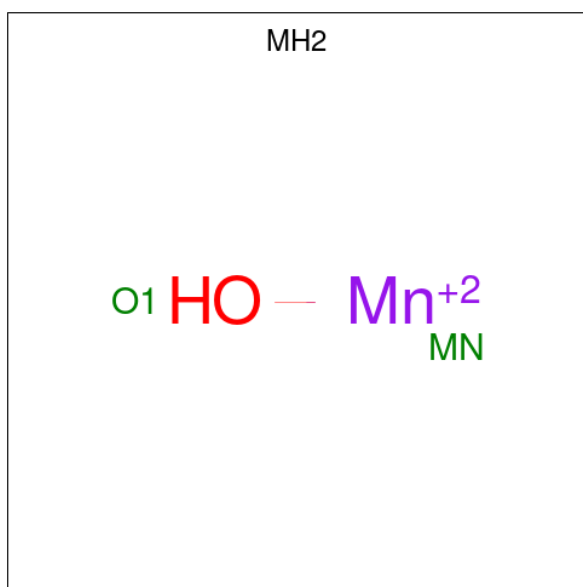
Mol	Chain	Residues	Atoms		ZeroOcc	AltConf
2	A	1	Total	Mn	0	0
			1	1		
2	B	1	Total	Mn	0	0
			1	1		

- Molecule 3 is GLYCEROL (three-letter code: GOL) (formula: C₃H₈O₃).



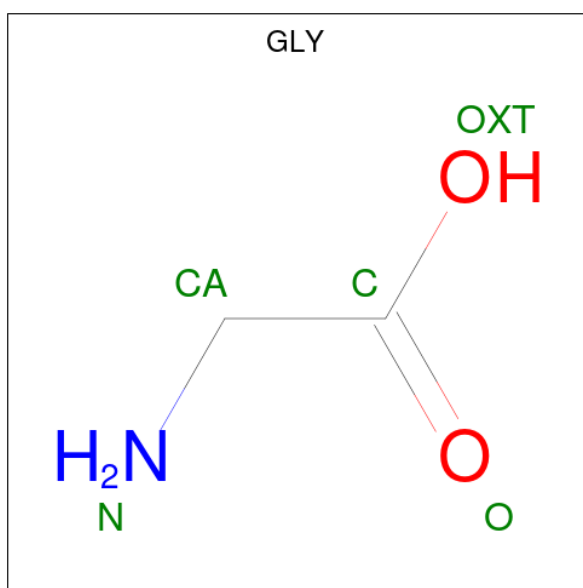
Mol	Chain	Residues	Atoms				ZeroOcc	AltConf
			Total	C	H	O		
3	A	1	14	3	8	3	0	0
3	A	1	14	3	8	3	0	0
3	A	1	14	3	8	3	0	0
3	A	1	13	3	7	3	0	0
3	B	1	14	3	8	3	0	0
3	B	1	14	3	8	3	0	0
3	B	1	14	3	8	3	0	0
3	B	1	14	3	8	3	0	0
3	B	1	14	3	8	3	0	0

- Molecule 4 is MANGANESE ION, 1 HYDROXYL COORDINATED (three-letter code: MH2) (formula: HMnO).



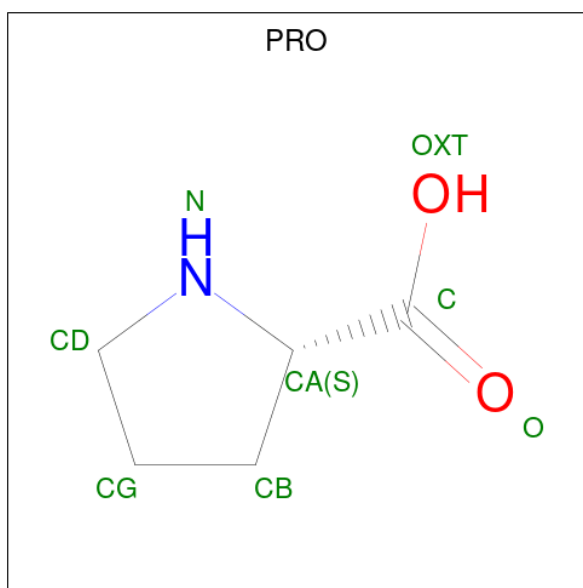
Mol	Chain	Residues	Atoms				ZeroOcc	AltConf
			Total	H	Mn	O		
4	A	1	3	1	1	1	0	0
4	B	1	3	1	1	1	0	0

- Molecule 5 is GLYCINE (three-letter code: GLY) (formula: C₂H₅NO₂).



Mol	Chain	Residues	Atoms				ZeroOcc	AltConf	
			Total	C	H	N			O
5	A	1	9	2	5	1	1	0	0
5	B	1	9	2	5	1	1	0	0

- Molecule 6 is PROLINE (three-letter code: PRO) (formula: $C_5H_9NO_2$).



Mol	Chain	Residues	Atoms					ZeroOcc	AltConf
			Total	C	H	N	O		
6	A	1	15	5	7	1	2	0	0
6	B	1	15	5	7	1	2	0	0

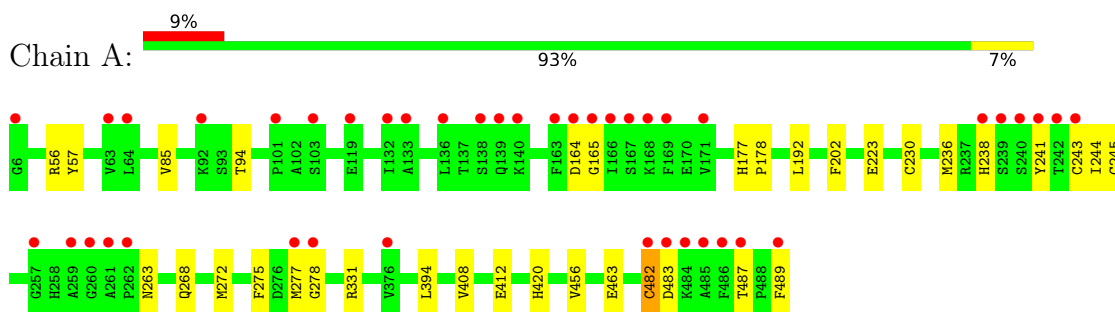
- Molecule 7 is water.

Mol	Chain	Residues	Atoms		ZeroOcc	AltConf
			Total	O		
7	A	552	552	552	0	0
7	B	609	609	609	0	0

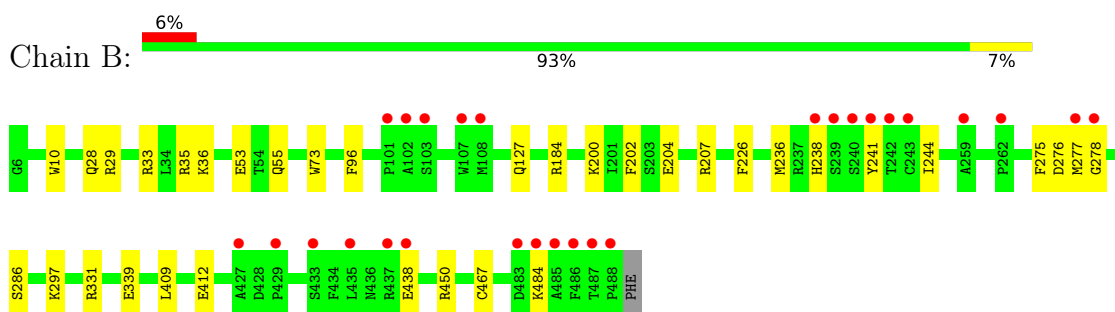
3 Residue-property plots [i](#)

These plots are drawn for all protein, RNA, DNA and oligosaccharide chains in the entry. The first graphic for a chain summarises the proportions of the various outlier classes displayed in the second graphic. The second graphic shows the sequence view annotated by issues in geometry and electron density. Residues are color-coded according to the number of geometric quality criteria for which they contain at least one outlier: green = 0, yellow = 1, orange = 2 and red = 3 or more. A red dot above a residue indicates a poor fit to the electron density ($RSRZ > 2$). Stretches of 2 or more consecutive residues without any outlier are shown as a green connector. Residues present in the sample, but not in the model, are shown in grey.

- Molecule 1: Xaa-Pro dipeptidase



- Molecule 1: Xaa-Pro dipeptidase



4 Data and refinement statistics

Property	Value	Source
Space group	C 2 2 21	Depositor
Cell constants a, b, c, α , β , γ	103.72Å 106.86Å 216.32Å 90.00° 90.00° 90.00°	Depositor
Resolution (Å)	46.77 – 1.39 47.90 – 1.39	Depositor EDS
% Data completeness (in resolution range)	99.8 (46.77-1.39) 99.8 (47.90-1.39)	Depositor EDS
R_{merge}	(Not available)	Depositor
R_{sym}	(Not available)	Depositor
$\langle I/\sigma(I) \rangle$ ¹	1.00 (at 1.39Å)	Xtrriage
Refinement program	PHENIX	Depositor
R, R_{free}	0.150 , 0.172 0.148 , 0.171	Depositor DCC
R_{free} test set	2512 reflections (1.05%)	wwPDB-VP
Wilson B-factor (Å ²)	20.6	Xtrriage
Anisotropy	0.337	Xtrriage
Bulk solvent k_{sol} (e/Å ³), B_{sol} (Å ²)	0.44 , 49.2	EDS
L-test for twinning ²	$\langle L \rangle = 0.50$, $\langle L^2 \rangle = 0.33$	Xtrriage
Estimated twinning fraction	0.022 for -k,-h,-l	Xtrriage
F_o, F_c correlation	0.98	EDS
Total number of atoms	16623	wwPDB-VP
Average B, all atoms (Å ²)	31.0	wwPDB-VP

Xtrriage's analysis on translational NCS is as follows: *The largest off-origin peak in the Patterson function is 4.27% of the height of the origin peak. No significant pseudotranslation is detected.*

¹Intensities estimated from amplitudes.

²Theoretical values of $\langle |L| \rangle$, $\langle L^2 \rangle$ for acentric reflections are 0.5, 0.333 respectively for untwinned datasets, and 0.375, 0.2 for perfectly twinned datasets.

5 Model quality

5.1 Standard geometry

Bond lengths and bond angles in the following residue types are not validated in this section: GOL, MH2, MN

The Z score for a bond length (or angle) is the number of standard deviations the observed value is removed from the expected value. A bond length (or angle) with $|Z| > 5$ is considered an outlier worth inspection. RMSZ is the root-mean-square of all Z scores of the bond lengths (or angles).

Mol	Chain	Bond lengths		Bond angles	
		RMSZ	# Z >5	RMSZ	# Z >5
1	A	0.58	2/4014 (0.0%)	0.70	3/5426 (0.1%)
1	B	0.50	0/3965	0.68	3/5361 (0.1%)
All	All	0.54	2/7979 (0.0%)	0.69	6/10787 (0.1%)

Chiral center outliers are detected by calculating the chiral volume of a chiral center and verifying if the center is modelled as a planar moiety or with the opposite hand. A planarity outlier is detected by checking planarity of atoms in a peptide group, atoms in a mainchain group or atoms of a sidechain that are expected to be planar.

Mol	Chain	#Chirality outliers	#Planarity outliers
1	A	0	1
1	B	0	1
All	All	0	2

All (2) bond length outliers are listed below:

Mol	Chain	Res	Type	Atoms	Z	Observed(Å)	Ideal(Å)
1	A	483	ASP	C-N	-18.13	0.92	1.34
1	A	482	CYS	C-N	-12.56	1.05	1.34

All (6) bond angle outliers are listed below:

Mol	Chain	Res	Type	Atoms	Z	Observed($^{\circ}$)	Ideal($^{\circ}$)
1	A	482	CYS	O-C-N	-12.17	103.23	122.70
1	A	482	CYS	CA-C-N	7.67	134.09	117.20
1	A	482	CYS	C-N-CA	6.72	138.50	121.70
1	B	450	ARG	NE-CZ-NH1	5.43	123.01	120.30
1	B	33	ARG	CG-CD-NE	-5.38	100.50	111.80
1	B	409	LEU	CA-CB-CG	5.00	126.80	115.30

There are no chirality outliers.

All (2) planarity outliers are listed below:

Mol	Chain	Res	Type	Group
1	A	482	CYS	Mainchain
1	B	286	SER	Mainchain

5.2 Too-close contacts [i](#)

In the following table, the Non-H and H(model) columns list the number of non-hydrogen atoms and hydrogen atoms in the chain respectively. The H(added) column lists the number of hydrogen atoms added and optimized by MolProbity. The Clashes column lists the number of clashes within the asymmetric unit, whereas Symm-Clashes lists symmetry-related clashes.

Mol	Chain	Non-H	H(model)	H(added)	Clashes	Symm-Clashes
1	A	3865	3805	3783	44	0
1	B	3841	3770	3761	43	0
2	A	1	0	0	0	0
2	B	1	0	0	0	0
3	A	24	31	31	5	0
3	B	30	40	40	11	0
4	A	2	1	0	1	0
4	B	2	1	0	2	0
5	A	4	5	2	0	0
5	B	4	5	2	1	0
6	A	8	7	7	0	0
6	B	8	7	7	0	0
7	A	552	0	0	14	2
7	B	609	0	0	11	2
All	All	8951	7672	7633	89	2

The all-atom clashscore is defined as the number of clashes found per 1000 atoms (including hydrogen atoms). The all-atom clashscore for this structure is 6.

All (89) close contacts within the same asymmetric unit are listed below, sorted by their clash magnitude.

Atom-1	Atom-2	Interatomic distance (Å)	Clash overlap (Å)
1:A:243:CYS:SG	1:A:277[B]:MET:HE2	1.69	1.30
1:A:165:GLY:N	3:A:505:GOL:O3	1.59	1.30
1:A:243:CYS:SG	1:A:277[B]:MET:CE	2.35	1.12
1:B:467:CYS:HB3	7:B:1069:HOH:O	1.54	1.06
1:B:202[B]:PHE:CZ	1:B:236:MET:CE	2.44	1.00

Continued on next page...

Continued from previous page...

Atom-1	Atom-2	Interatomic distance (Å)	Clash overlap (Å)
1:B:202[B]:PHE:CZ	1:B:236:MET:HE2	2.05	0.90
1:B:28[B]:GLN:NE2	7:B:602:HOH:O	2.05	0.88
1:B:202[B]:PHE:CE2	1:B:236:MET:HE1	2.10	0.87
1:A:243:CYS:SG	7:A:717:HOH:O	2.33	0.86
1:B:202[B]:PHE:CZ	1:B:236:MET:HE1	2.09	0.85
1:B:36[B]:LYS:NZ	7:B:603:HOH:O	2.13	0.82
1:A:238:HIS:O	7:A:601:HOH:O	1.96	0.82
1:B:339:GLU:OE2	3:B:505:GOL:H31	1.79	0.81
1:B:339:GLU:OE2	3:B:505:GOL:C3	2.30	0.80
1:B:238:HIS:O	7:B:601:HOH:O	1.99	0.79
3:B:505:GOL:O3	3:B:505:GOL:O1	1.98	0.79
1:A:331[A]:ARG:HD2	7:A:1005:HOH:O	1.83	0.78
1:A:331[A]:ARG:NH2	7:A:603:HOH:O	2.15	0.78
1:A:241:TYR:HH	1:A:278[C]:GLY:N	1.84	0.76
1:A:456[B]:VAL:HG22	1:A:463:GLU:HB3	1.70	0.74
1:B:202[B]:PHE:HZ	1:B:236:MET:HE2	1.49	0.73
1:A:243:CYS:CB	1:A:277[B]:MET:CE	2.66	0.73
1:B:331[A]:ARG:NH2	7:B:605:HOH:O	2.22	0.72
1:A:243:CYS:CB	1:A:277[B]:MET:HE3	2.21	0.70
1:A:223:GLU:OE1	7:A:602:HOH:O	2.11	0.68
1:B:438:GLU:HG3	7:B:1120:HOH:O	1.94	0.67
1:A:243:CYS:HB3	1:A:277[B]:MET:CE	2.26	0.66
1:B:241:TYR:OH	1:B:276:ASP:OD1	2.12	0.66
1:A:263:ASN:ND2	7:A:608:HOH:O	2.28	0.66
1:B:55[A]:GLN:NE2	7:B:607:HOH:O	2.33	0.62
1:A:243:CYS:SG	1:A:277[B]:MET:HE3	2.39	0.61
1:A:243:CYS:CB	1:A:277[B]:MET:HE2	2.28	0.59
1:B:202[A]:PHE:CE2	1:B:278[A]:GLY:C	2.76	0.59
1:B:339:GLU:OE2	3:B:505:GOL:H32	2.03	0.59
1:B:244:ILE:HB	1:B:276:ASP:HB3	1.83	0.58
1:B:53:GLU:OE2	7:B:604:HOH:O	2.17	0.57
1:B:297:LYS:HE2	3:B:506:GOL:H11	1.86	0.57
1:A:192:LEU:HD22	1:A:456[B]:VAL:HG11	1.88	0.56
1:A:275[B]:PHE:CZ	1:A:277[B]:MET:SD	2.99	0.56
1:A:487:THR:HG23	1:A:487:THR:O	2.06	0.55
1:B:29:ARG:HH21	3:B:507:GOL:H2	1.72	0.55
1:B:207:ARG:CD	1:B:484:LYS:HE2	2.38	0.54
1:B:241:TYR:CE1	1:B:278[B]:GLY:HA3	2.43	0.53
1:A:164[A]:ASP:HA	3:A:505:GOL:O3	2.09	0.53
1:B:202[A]:PHE:HE2	1:B:278[A]:GLY:CA	2.21	0.53
1:B:29:ARG:NH2	3:B:507:GOL:H2	2.23	0.53

Continued on next page...

Continued from previous page...

Atom-1	Atom-2	Interatomic distance (Å)	Clash overlap (Å)
1:B:202[A]:PHE:CE2	1:B:278[A]:GLY:CA	2.92	0.53
1:B:297:LYS:CE	3:B:506:GOL:H11	2.39	0.53
1:B:35:ARG:NH1	7:B:602:HOH:O	2.32	0.53
1:A:164[B]:ASP:HA	3:A:505:GOL:O3	2.09	0.52
1:A:456[B]:VAL:CG2	1:A:463:GLU:HB3	2.40	0.52
1:A:412:GLU:OE1	4:A:506:MH2:O1	2.27	0.51
1:A:243:CYS:HB3	1:A:277[B]:MET:HE3	1.87	0.51
1:B:202[A]:PHE:CE2	1:B:278[A]:GLY:HA2	2.46	0.51
1:B:412:GLU:OE1	4:B:502:MH2:O1	2.29	0.50
1:A:272[B]:MET:HG3	7:A:747:HOH:O	2.11	0.50
1:B:331[B]:ARG:HG2	7:B:1078:HOH:O	2.11	0.50
1:B:339:GLU:CD	3:B:505:GOL:H32	2.32	0.50
1:B:29:ARG:HH21	3:B:507:GOL:C2	2.25	0.50
1:A:268:GLN:OE1	7:A:604:HOH:O	2.20	0.49
1:B:204:GLU:HG2	1:B:484:LYS:HZ1	1.78	0.49
1:B:202[A]:PHE:HE2	1:B:278[A]:GLY:C	2.14	0.48
1:A:272[B]:MET:CG	7:A:747:HOH:O	2.61	0.48
1:B:202[A]:PHE:CD2	1:B:226:PHE:HZ	2.32	0.48
1:A:202:PHE:CZ	1:A:236:MET:CE	2.97	0.47
4:B:502:MH2:O1	5:B:508:GLY:C	2.52	0.47
3:A:504:GOL:H11	1:B:10:TRP:H	1.79	0.46
1:B:275:PHE:HB3	1:B:277[A]:MET:HE2	1.98	0.46
1:A:223:GLU:HG3	1:A:277[B]:MET:HE3	1.99	0.45
1:A:420:HIS:ND1	7:A:613:HOH:O	2.36	0.45
1:A:56:ARG:O	1:A:57:TYR:C	2.55	0.44
1:A:223:GLU:HB2	7:A:608:HOH:O	2.17	0.43
1:B:297:LYS:HE2	3:B:506:GOL:C1	2.48	0.43
1:B:73:TRP:CD1	1:B:184:ARG:HG2	2.54	0.43
1:A:331[B]:ARG:CZ	1:A:394:LEU:HG	2.49	0.43
1:A:241:TYR:CZ	1:A:278[C]:GLY:N	2.88	0.42
1:A:408:VAL:HG22	1:A:456[B]:VAL:HG12	2.00	0.42
1:B:241:TYR:CD1	1:B:278[B]:GLY:HA3	2.54	0.42
1:A:177:HIS:HB3	1:A:178:PRO:HD3	2.01	0.42
1:A:164[A]:ASP:CA	3:A:505:GOL:O3	2.67	0.42
1:A:331[A]:ARG:NE	7:A:605:HOH:O	2.21	0.41
1:A:202:PHE:HD1	1:A:230:CYS:HG	1.65	0.41
1:B:200:LYS:NZ	7:B:622:HOH:O	2.54	0.41
1:A:245:CYS:SG	7:A:608:HOH:O	2.62	0.40
1:A:272[B]:MET:SD	7:A:747:HOH:O	2.63	0.40
1:B:96:PHE:HA	1:B:127:GLN:O	2.20	0.40
1:A:85:VAL:HG22	1:A:94:THR:HB	2.03	0.40

Continued on next page...

Continued from previous page...

Atom-1	Atom-2	Interatomic distance (Å)	Clash overlap (Å)
1:A:192:LEU:HD22	1:A:456[A]:VAL:HG21	2.03	0.40

All (2) symmetry-related close contacts are listed below. The label for Atom-2 includes the symmetry operator and encoded unit-cell translations to be applied.

Atom-1	Atom-2	Interatomic distance (Å)	Clash overlap (Å)
7:A:1041:HOH:O	7:B:603:HOH:O[5_445]	2.05	0.15
7:A:864:HOH:O	7:B:1130:HOH:O[5_445]	2.19	0.01

5.3 Torsion angles [i](#)

5.3.1 Protein backbone [i](#)

In the following table, the Percentiles column shows the percent Ramachandran outliers of the chain as a percentile score with respect to all X-ray entries followed by that with respect to entries of similar resolution.

The Analysed column shows the number of residues for which the backbone conformation was analysed, and the total number of residues.

Mol	Chain	Analysed	Favoured	Allowed	Outliers	Percentiles	
1	A	501/484 (104%)	489 (98%)	12 (2%)	0	100	100
1	B	495/484 (102%)	486 (98%)	9 (2%)	0	100	100
All	All	996/968 (103%)	975 (98%)	21 (2%)	0	100	100

There are no Ramachandran outliers to report.

5.3.2 Protein sidechains [i](#)

In the following table, the Percentiles column shows the percent sidechain outliers of the chain as a percentile score with respect to all X-ray entries followed by that with respect to entries of similar resolution.

The Analysed column shows the number of residues for which the sidechain conformation was analysed, and the total number of residues.

Mol	Chain	Analysed	Rotameric	Outliers	Percentiles	
1	A	422/405 (104%)	421 (100%)	1 (0%)	93	82

Continued on next page...

Continued from previous page...

Mol	Chain	Analysed	Rotameric	Outliers	Percentiles	
1	B	416/405 (103%)	416 (100%)	0	100	100
All	All	838/810 (104%)	837 (100%)	1 (0%)	93	82

All (1) residues with a non-rotameric sidechain are listed below:

Mol	Chain	Res	Type
1	A	489	PHE

Sometimes sidechains can be flipped to improve hydrogen bonding and reduce clashes. All (1) such sidechains are listed below:

Mol	Chain	Res	Type
1	B	343	HIS

5.3.3 RNA [i](#)

There are no RNA molecules in this entry.

5.4 Non-standard residues in protein, DNA, RNA chains [i](#)

There are no non-standard protein/DNA/RNA residues in this entry.

5.5 Carbohydrates [i](#)

There are no monosaccharides in this entry.

5.6 Ligand geometry [i](#)

Of 17 ligands modelled in this entry, 2 are monoatomic - leaving 15 for Mogul analysis.

In the following table, the Counts columns list the number of bonds (or angles) for which Mogul statistics could be retrieved, the number of bonds (or angles) that are observed in the model and the number of bonds (or angles) that are defined in the Chemical Component Dictionary. The Link column lists molecule types, if any, to which the group is linked. The Z score for a bond length (or angle) is the number of standard deviations the observed value is removed from the expected value. A bond length (or angle) with $|Z| > 2$ is considered an outlier worth inspection. RMSZ is the root-mean-square of all Z scores of the bond lengths (or angles).

Mol	Type	Chain	Res	Link	Bond lengths			Bond angles		
					Counts	RMSZ	# Z > 2	Counts	RMSZ	# Z > 2
3	GOL	B	504	-	5,5,5	0.26	0	5,5,5	0.50	0
3	GOL	B	505	-	5,5,5	0.18	0	5,5,5	0.29	0
4	MH2	B	502	5,2,1	0,1,1	-	-	-	-	-
3	GOL	A	505	-	5,5,5	0.13	0	5,5,5	0.50	0
6	PRO	B	509	-	8,8,8	0.99	0	10,10,10	1.17	0
3	GOL	A	502	-	5,5,5	0.09	0	5,5,5	0.25	0
3	GOL	B	503	-	5,5,5	0.10	0	5,5,5	0.32	0
3	GOL	A	504	-	5,5,5	0.09	0	5,5,5	0.29	0
3	GOL	B	507	-	5,5,5	0.19	0	5,5,5	0.51	0
3	GOL	A	503	-	5,5,5	0.09	0	5,5,5	0.27	0
4	MH2	A	506	5,2,1	0,1,1	-	-	-	-	-
3	GOL	B	506	-	5,5,5	0.18	0	5,5,5	0.48	0
6	PRO	A	508	-	8,8,8	1.07	1 (12%)	10,10,10	1.33	1 (10%)
5	GLY	A	507	4,2	3,3,4	0.76	0	0,2,4	-	-
5	GLY	B	508	4,2	3,3,4	0.84	0	0,2,4	-	-

In the following table, the Chirals column lists the number of chiral outliers, the number of chiral centers analysed, the number of these observed in the model and the number defined in the Chemical Component Dictionary. Similar counts are reported in the Torsion and Rings columns. '-' means no outliers of that kind were identified.

Mol	Type	Chain	Res	Link	Chirals	Torsions	Rings
3	GOL	B	504	-	-	2/4/4/4	-
3	GOL	B	505	-	-	4/4/4/4	-
3	GOL	A	505	-	-	2/4/4/4	-
6	PRO	B	509	-	-	1/4/11/11	0/1/1/1
3	GOL	A	502	-	-	0/4/4/4	-
3	GOL	B	503	-	-	2/4/4/4	-
3	GOL	A	504	-	-	2/4/4/4	-
3	GOL	B	507	-	-	3/4/4/4	-
3	GOL	A	503	-	-	0/4/4/4	-
6	PRO	A	508	-	-	2/4/11/11	0/1/1/1
3	GOL	B	506	-	-	4/4/4/4	-
5	GLY	A	507	4,2	-	0/0/1/2	-
5	GLY	B	508	4,2	-	0/0/1/2	-

All (1) bond length outliers are listed below:

Mol	Chain	Res	Type	Atoms	Z	Observed(Å)	Ideal(Å)
6	A	508	PRO	OXT-C	-2.07	1.23	1.30

All (1) bond angle outliers are listed below:

Mol	Chain	Res	Type	Atoms	Z	Observed(°)	Ideal(°)
6	A	508	PRO	OXT-C-O	-2.35	118.74	124.09

There are no chirality outliers.

All (22) torsion outliers are listed below:

Mol	Chain	Res	Type	Atoms
3	A	504	GOL	O1-C1-C2-O2
3	A	504	GOL	O1-C1-C2-C3
3	B	504	GOL	O1-C1-C2-C3
3	B	505	GOL	O1-C1-C2-C3
3	B	505	GOL	C1-C2-C3-O3
3	B	505	GOL	O2-C2-C3-O3
3	B	506	GOL	O1-C1-C2-C3
3	B	506	GOL	C1-C2-C3-O3
3	B	506	GOL	O2-C2-C3-O3
3	A	505	GOL	C1-C2-C3-O3
3	B	503	GOL	O1-C1-C2-C3
3	B	507	GOL	O1-C1-C2-C3
3	B	504	GOL	O1-C1-C2-O2
3	B	505	GOL	O1-C1-C2-O2
3	B	506	GOL	O1-C1-C2-O2
3	B	503	GOL	O1-C1-C2-O2
3	B	507	GOL	O1-C1-C2-O2
3	B	507	GOL	O2-C2-C3-O3
6	A	508	PRO	O-C-CA-CB
3	A	505	GOL	O2-C2-C3-O3
6	B	509	PRO	OXT-C-CA-N
6	A	508	PRO	OXT-C-CA-CB

There are no ring outliers.

8 monomers are involved in 19 short contacts:

Mol	Chain	Res	Type	Clashes	Symm-Clashes
3	B	505	GOL	5	0
4	B	502	MH2	2	0
3	A	505	GOL	4	0
3	A	504	GOL	1	0
3	B	507	GOL	3	0
4	A	506	MH2	1	0
3	B	506	GOL	3	0
5	B	508	GLY	1	0

5.7 Other polymers [i](#)

There are no such residues in this entry.

5.8 Polymer linkage issues [i](#)

The following chains have linkage breaks:

Mol	Chain	Number of breaks
1	A	2

All chain breaks are listed below:

Model	Chain	Residue-1	Atom-1	Residue-2	Atom-2	Distance (Å)
1	A	482:CYS	C	483:ASP	N	1.05
1	A	483:ASP	C	484:LYS	N	0.92

6 Fit of model and data [i](#)

6.1 Protein, DNA and RNA chains [i](#)

In the following table, the column labelled ‘#RSRZ > 2’ contains the number (and percentage) of RSRZ outliers, followed by percent RSRZ outliers for the chain as percentile scores relative to all X-ray entries and entries of similar resolution. The OWAB column contains the minimum, median, 95th percentile and maximum values of the occupancy-weighted average B-factor per residue. The column labelled ‘Q < 0.9’ lists the number of (and percentage) of residues with an average occupancy less than 0.9.

Mol	Chain	Analysed	<RSRZ>	#RSRZ>2	OWAB(Å ²)	Q<0.9
1	A	484/484 (100%)	0.34	42 (8%) 10 9	15, 24, 47, 111	2 (0%)
1	B	483/484 (99%)	0.06	27 (5%) 24 22	15, 24, 45, 88	0
All	All	967/968 (99%)	0.20	69 (7%) 16 14	15, 24, 46, 111	2 (0%)

All (69) RSRZ outliers are listed below:

Mol	Chain	Res	Type	RSRZ
1	A	485	ALA	15.2
1	A	241	TYR	12.4
1	B	241	TYR	12.4
1	A	484	LYS	9.4
1	B	487	THR	8.3
1	A	487	THR	7.1
1	A	483	ASP	6.8
1	A	242	THR	6.8
1	B	242	THR	6.8
1	B	240	SER	6.7
1	A	486	PHE	6.3
1	B	485	ALA	6.1
1	A	278[A]	GLY	6.0
1	B	486	PHE	6.0
1	A	489	PHE	5.9
1	A	239	SER	5.4
1	B	484	LYS	5.2
1	A	240	SER	5.0
1	A	168	LYS	4.5
1	A	482	CYS	4.3
1	B	101	PRO	4.2
1	A	164[A]	ASP	4.2
1	A	165	GLY	4.0
1	A	243	CYS	3.9

Continued on next page...

Continued from previous page...

Mol	Chain	Res	Type	RSRZ
1	B	243	CYS	3.9
1	A	167	SER	3.8
1	B	239	SER	3.5
1	B	278[A]	GLY	3.5
1	A	166	ILE	3.3
1	A	6	GLY	3.3
1	A	277[A]	MET	3.2
1	B	427	ALA	3.0
1	A	119	GLU	3.0
1	A	163	PHE	3.0
1	A	238	HIS	3.0
1	B	238	HIS	3.0
1	A	259	ALA	2.9
1	B	259	ALA	2.8
1	A	376	VAL	2.8
1	A	257	GLY	2.8
1	A	169	PHE	2.7
1	B	102	ALA	2.7
1	A	101	PRO	2.7
1	A	132	ILE	2.6
1	B	103	SER	2.5
1	B	438	GLU	2.5
1	A	140	LYS	2.4
1	A	261	ALA	2.4
1	A	262	PRO	2.4
1	A	92[A]	LYS	2.4
1	B	429	PRO	2.4
1	A	171	VAL	2.3
1	A	139	GLN	2.3
1	A	63	VAL	2.2
1	A	136	LEU	2.2
1	B	433	SER	2.2
1	B	437	ARG	2.2
1	B	108	MET	2.1
1	A	133	ALA	2.1
1	A	260	GLY	2.1
1	A	138[A]	SER	2.1
1	B	483	ASP	2.1
1	B	488	PRO	2.1
1	B	107	TRP	2.0
1	A	103	SER	2.0
1	A	64	LEU	2.0

Continued on next page...

Continued from previous page...

Mol	Chain	Res	Type	RSRZ
1	B	435	LEU	2.0
1	B	262	PRO	2.0
1	B	277[A]	MET	2.0

6.2 Non-standard residues in protein, DNA, RNA chains [i](#)

There are no non-standard protein/DNA/RNA residues in this entry.

6.3 Carbohydrates [i](#)

There are no monosaccharides in this entry.

6.4 Ligands [i](#)

In the following table, the Atoms column lists the number of modelled atoms in the group and the number defined in the chemical component dictionary. The B-factors column lists the minimum, median, 95th percentile and maximum values of B factors of atoms in the group. The column labelled 'Q< 0.9' lists the number of atoms with occupancy less than 0.9.

Mol	Type	Chain	Res	Atoms	RSCC	RSR	B-factors(Å ²)	Q<0.9
2	MN	A	501	1/1	0.22	0.81	145,145,145,145	0
4	MH2	A	506	2/2	0.61	0.22	17,17,20,36	3
3	GOL	B	507	6/6	0.75	0.15	28,42,53,53	14
3	GOL	A	505	6/6	0.81	0.33	52,80,99,128	0
3	GOL	B	506	6/6	0.81	0.22	51,64,77,85	14
4	MH2	B	502	2/2	0.81	0.19	18,18,21,30	3
3	GOL	B	504	6/6	0.83	0.14	28,46,60,60	14
3	GOL	A	502	6/6	0.86	0.31	65,84,108,108	0
3	GOL	B	505	6/6	0.86	0.20	55,69,87,90	0
5	GLY	A	507	4/5	0.87	0.15	36,39,47,47	0
3	GOL	B	503	6/6	0.88	0.17	35,50,77,78	0
5	GLY	B	508	4/5	0.90	0.18	29,36,44,44	0
3	GOL	A	504	6/6	0.93	0.15	31,47,109,130	0
3	GOL	A	503	6/6	0.94	0.14	31,46,95,114	0
6	PRO	A	508	8/8	0.94	0.09	28,40,50,50	0
6	PRO	B	509	8/8	0.95	0.08	26,31,39,39	0
2	MN	B	501	1/1	1.00	0.07	20,20,20,20	1

6.5 Other polymers [i](#)

There are no such residues in this entry.