



# Full wwPDB X-ray Structure Validation Report ⓘ

Jun 23, 2024 – 10:49 PM EDT

PDB ID : 6Q9K  
Title : Crystal structure of reduced Aquifex aeolicus NADH-quinone oxidoreductase subunits NuoE and NuoF S96M bound to NADH  
Authors : Wohlwend, D.; Gerhardt, S.; Gnannt, E.; Friedrich, T.  
Deposited on : 2018-12-18  
Resolution : 1.99 Å(reported)

This is a Full wwPDB X-ray Structure Validation Report for a publicly released PDB entry.

We welcome your comments at [validation@mail.wwpdb.org](mailto:validation@mail.wwpdb.org)

A user guide is available at

<https://www.wwpdb.org/validation/2017/XrayValidationReportHelp>

with specific help available everywhere you see the ⓘ symbol.

The types of validation reports are described at

<http://www.wwpdb.org/validation/2017/FAQs#types>.

---

The following versions of software and data (see [references ⓘ](#)) were used in the production of this report:

MolProbity : 4.02b-467  
Mogul : 2022.3.0, CSD as543be (2022)  
Xtriage (Phenix) : 1.20.1  
EDS : 2.37.1  
buster-report : 1.1.7 (2018)  
Percentile statistics : 20191225.v01 (using entries in the PDB archive December 25th 2019)  
Refmac : 5.8.0158  
CCP4 : 7.0.044 (Gargrove)  
Ideal geometry (proteins) : Engh & Huber (2001)  
Ideal geometry (DNA, RNA) : Parkinson et al. (1996)  
Validation Pipeline (wwPDB-VP) : 2.37.1

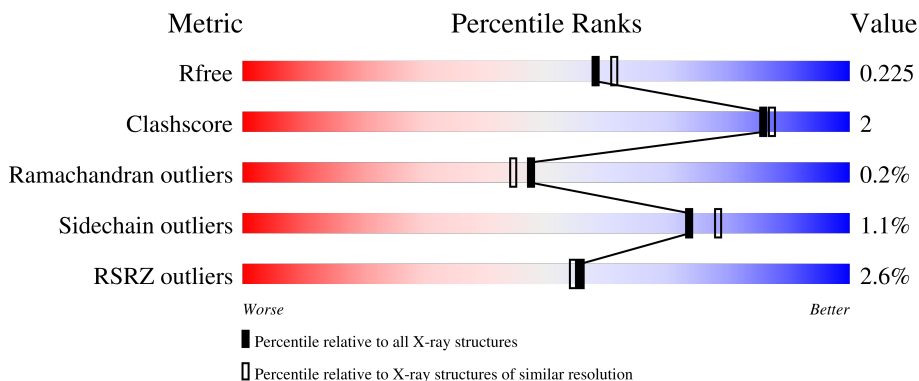
# 1 Overall quality at a glance

The following experimental techniques were used to determine the structure:

*X-RAY DIFFRACTION*

The reported resolution of this entry is 1.99 Å.

Percentile scores (ranging between 0-100) for global validation metrics of the entry are shown in the following graphic. The table shows the number of entries on which the scores are based.



Metric	Whole archive (#Entries)	Similar resolution (#Entries, resolution range(Å))
$R_{free}$	130704	8085 (2.00-2.00)
Clashscore	141614	9178 (2.00-2.00)
Ramachandran outliers	138981	9054 (2.00-2.00)
Sidechain outliers	138945	9053 (2.00-2.00)
RSRZ outliers	127900	7900 (2.00-2.00)

The table below summarises the geometric issues observed across the polymeric chains and their fit to the electron density. The red, orange, yellow and green segments of the lower bar indicate the fraction of residues that contain outliers for  $\geq 3$ , 2, 1 and 0 types of geometric quality criteria respectively. A grey segment represents the fraction of residues that are not modelled. The numeric value for each fraction is indicated below the corresponding segment, with a dot representing fractions  $\leq 5\%$ . The upper red bar (where present) indicates the fraction of residues that have poor fit to the electron density. The numeric value is given above the bar.

Mol	Chain	Length	Quality of chain
1	A	155	 5% 97% 6%
1	C	155	 6% 94% 6%
2	B	418	 % 93% 7%
2	D	418	 2% 93% 7%

## 2 Entry composition

There are 10 unique types of molecules in this entry. The entry contains 10338 atoms, of which 0 are hydrogens and 0 are deuteriums.

In the tables below, the ZeroOcc column contains the number of atoms modelled with zero occupancy, the AltConf column contains the number of residues with at least one atom in alternate conformation and the Trace column contains the number of residues modelled with at most 2 atoms.

- Molecule 1 is a protein called NADH-quinone oxidoreductase subunit E.

Mol	Chain	Residues	Atoms					ZeroOcc	AltConf	Trace
			Total	C	N	O	S			
1	A	155	1259	816	203	231	9	0	0	0
1	C	155	1259	816	203	231	9	0	0	0

- Molecule 2 is a protein called NADH-quinone oxidoreductase subunit F.

Mol	Chain	Residues	Atoms					ZeroOcc	AltConf	Trace
			Total	C	N	O	S			
2	B	418	3311	2128	553	616	14	0	2	0
2	D	418	3322	2135	554	619	14	0	3	0

There are 2 discrepancies between the modelled and reference sequences:

Chain	Residue	Modelled	Actual	Comment	Reference
B	96	MET	SER	engineered mutation	UNP O66841
D	96	MET	SER	engineered mutation	UNP O66841

- Molecule 3 is FE2/S2 (INORGANIC) CLUSTER (three-letter code: FES) (formula: Fe<sub>2</sub>S<sub>2</sub>).



Mol	Chain	Residues	Atoms			ZeroOcc	AltConf
3	A	1	Total	Fe	S	0	0
			4	2	2		
3	C	1	Total	Fe	S	0	0
			4	2	2		

- Molecule 4 is SULFATE ION (three-letter code: SO4) (formula: O<sub>4</sub>S).



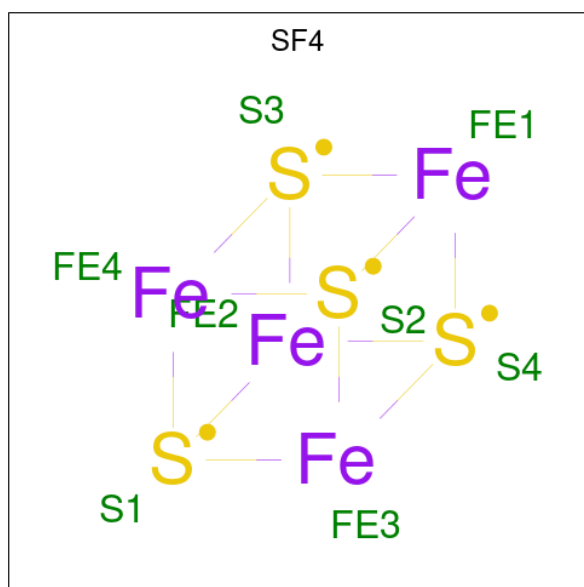
Mol	Chain	Residues	Atoms			ZeroOcc	AltConf
4	A	1	Total	O	S	0	0
			5	4	1		
4	A	1	Total	O	S	0	0
			5	4	1		

*Continued on next page...*

Continued from previous page...

Mol	Chain	Residues	Atoms	ZeroOcc	AltConf
4	C	1	Total O S 5 4 1	0	0
4	C	1	Total O S 5 4 1	0	0
4	D	1	Total O S 5 4 1	0	0

- Molecule 5 is IRON/SULFUR CLUSTER (three-letter code: SF4) (formula: Fe<sub>4</sub>S<sub>4</sub>).



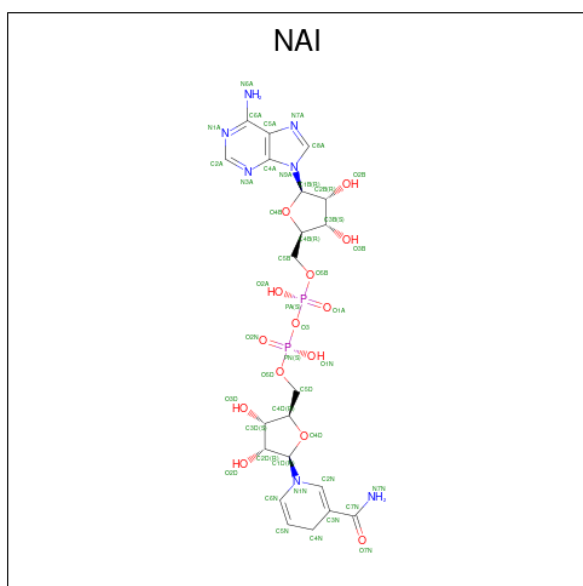
Mol	Chain	Residues	Atoms	ZeroOcc	AltConf
5	B	1	Total Fe S 8 4 4	0	0
5	D	1	Total Fe S 8 4 4	0	0

- Molecule 6 is FLAVIN MONONUCLEOTIDE (three-letter code: FMN) (formula: C<sub>17</sub>H<sub>21</sub>N<sub>4</sub>O<sub>9</sub>P).



Mol	Chain	Residues	Atoms					ZeroOcc	AltConf
6	B	1	Total	C	N	O	P	0	0
			31	17	4	9	1		
6	D	1	Total	C	N	O	P	0	0
			31	17	4	9	1		

- Molecule 7 is 1,4-DIHYDRONICOTINAMIDE ADENINE DINUCLEOTIDE (three-letter code: NAI) (formula:  $C_{21}H_{29}N_7O_{14}P_2$ ).



Mol	Chain	Residues	Atoms					ZeroOcc	AltConf
7	B	1	Total	C	N	O	P	0	0
			44	21	7	14	2		

*Continued on next page...*

Continued from previous page...

Mol	Chain	Residues	Atoms					ZeroOcc	AltConf
			Total	C	N	O	P		
7	D	1	44	21	7	14	2	0	0

- Molecule 8 is GLYCEROL (three-letter code: GOL) (formula: C<sub>3</sub>H<sub>8</sub>O<sub>3</sub>).



Mol	Chain	Residues	Atoms			ZeroOcc	AltConf
			Total	C	O		
8	B	1	6	3	3	0	0
8	B	1	6	3	3	0	0
8	B	1	6	3	3	0	0
8	D	1	6	3	3	0	0

- Molecule 9 is SODIUM ION (three-letter code: NA) (formula: Na).

Mol	Chain	Residues	Atoms		ZeroOcc	AltConf
			Total	Na		
9	B	2	2	2	0	0
9	D	3	3	3	0	0

- Molecule 10 is water.

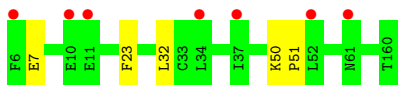
<b>Mol</b>	<b>Chain</b>	<b>Residues</b>	<b>Atoms</b>		<b>ZeroOcc</b>	<b>AltConf</b>
10	A	131	Total 131	O 131	0	0
10	B	370	Total 370	O 370	0	0
10	C	116	Total 116	O 116	0	0
10	D	342	Total 342	O 342	0	0



### 3 Residue-property plots [i](#)

These plots are drawn for all protein, RNA, DNA and oligosaccharide chains in the entry. The first graphic for a chain summarises the proportions of the various outlier classes displayed in the second graphic. The second graphic shows the sequence view annotated by issues in geometry and electron density. Residues are color-coded according to the number of geometric quality criteria for which they contain at least one outlier: green = 0, yellow = 1, orange = 2 and red = 3 or more. A red dot above a residue indicates a poor fit to the electron density ( $RSRZ > 2$ ). Stretches of 2 or more consecutive residues without any outlier are shown as a green connector. Residues present in the sample, but not in the model, are shown in grey.

- Molecule 1: NADH-quinone oxidoreductase subunit E



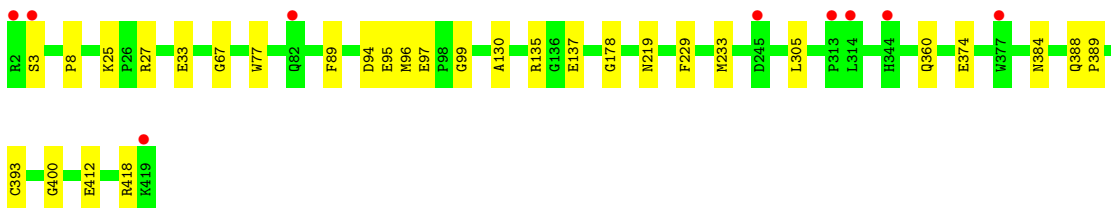
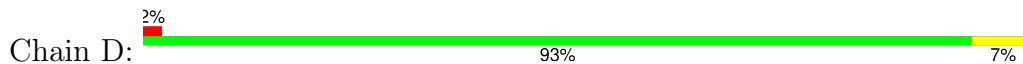
- Molecule 1: NADH-quinone oxidoreductase subunit E



- Molecule 2: NADH-quinone oxidoreductase subunit F



- Molecule 2: NADH-quinone oxidoreductase subunit F



## 4 Data and refinement statistics i

Property	Value	Source
Space group	P 21 21 21	Depositor
Cell constants a, b, c, $\alpha$ , $\beta$ , $\gamma$	63.38Å 115.94Å 189.97Å 90.00° 90.00° 90.00°	Depositor
Resolution (Å)	21.26 – 1.99 21.25 – 1.99	Depositor EDS
% Data completeness (in resolution range)	99.7 (21.26-1.99) 99.9 (21.25-1.99)	Depositor EDS
$R_{merge}$	0.18	Depositor
$R_{sym}$	(Not available)	Depositor
$\langle I/\sigma(I) \rangle$ <sup>1</sup>	2.05 (at 1.99Å)	Xtrriage
Refinement program	REFMAC	Depositor
R, $R_{free}$	0.188 , 0.219 0.195 , 0.225	Depositor DCC
$R_{free}$ test set	4988 reflections (5.16%)	wwPDB-VP
Wilson B-factor (Å <sup>2</sup> )	18.6	Xtrriage
Anisotropy	0.599	Xtrriage
Bulk solvent $k_{sol}$ (e/Å <sup>3</sup> ), $B_{sol}$ (Å <sup>2</sup> )	0.38 , 42.4	EDS
L-test for twinning <sup>2</sup>	$\langle  L  \rangle = 0.49$ , $\langle L^2 \rangle = 0.32$	Xtrriage
Estimated twinning fraction	No twinning to report.	Xtrriage
$F_o, F_c$ correlation	0.95	EDS
Total number of atoms	10338	wwPDB-VP
Average B, all atoms (Å <sup>2</sup> )	23.0	wwPDB-VP

Xtrriage's analysis on translational NCS is as follows: *The analyses of the Patterson function reveals a significant off-origin peak that is 44.05 % of the origin peak, indicating pseudo-translational symmetry. The chance of finding a peak of this or larger height randomly in a structure without pseudo-translational symmetry is equal to 1.6149e-04. The detected translational NCS is most likely also responsible for the elevated intensity ratio.*

<sup>1</sup>Intensities estimated from amplitudes.

<sup>2</sup>Theoretical values of  $\langle |L| \rangle$ ,  $\langle L^2 \rangle$  for acentric reflections are 0.5, 0.333 respectively for untwinned datasets, and 0.375, 0.2 for perfectly twinned datasets.

## 5 Model quality [i](#)

### 5.1 Standard geometry [i](#)

Bond lengths and bond angles in the following residue types are not validated in this section: FES, GOL, FMN, SO4, NA, SF4, NAI

The Z score for a bond length (or angle) is the number of standard deviations the observed value is removed from the expected value. A bond length (or angle) with  $|Z| > 5$  is considered an outlier worth inspection. RMSZ is the root-mean-square of all Z scores of the bond lengths (or angles).

Mol	Chain	Bond lengths		Bond angles	
		RMSZ	# Z  >5	RMSZ	# Z  >5
1	A	0.63	0/1288	0.70	0/1740
1	C	0.63	0/1288	0.69	0/1740
2	B	0.64	0/3393	0.71	0/4589
2	D	0.64	0/3403	0.71	0/4602
All	All	0.64	0/9372	0.71	0/12671

There are no bond length outliers.

There are no bond angle outliers.

There are no chirality outliers.

There are no planarity outliers.

### 5.2 Too-close contacts [i](#)

In the following table, the Non-H and H(model) columns list the number of non-hydrogen atoms and hydrogen atoms in the chain respectively. The H(added) column lists the number of hydrogen atoms added and optimized by MolProbity. The Clashes column lists the number of clashes within the asymmetric unit, whereas Symm-Clashes lists symmetry-related clashes.

Mol	Chain	Non-H	H(model)	H(added)	Clashes	Symm-Clashes
1	A	1259	0	1263	2	0
1	C	1259	0	1263	5	0
2	B	3311	0	3284	14	0
2	D	3322	0	3299	21	0
3	A	4	0	0	0	0
3	C	4	0	0	0	0
4	A	10	0	0	0	0
4	C	10	0	0	0	0
4	D	5	0	0	0	0

*Continued on next page...*

Continued from previous page...

Mol	Chain	Non-H	H(model)	H(added)	Clashes	Symm-Clashes
5	B	8	0	0	0	0
5	D	8	0	0	0	0
6	B	31	0	19	0	0
6	D	31	0	19	1	0
7	B	44	0	27	2	0
7	D	44	0	27	3	0
8	B	18	0	24	2	0
8	D	6	0	8	0	0
9	B	2	0	0	0	0
9	D	3	0	0	0	0
10	A	131	0	0	0	0
10	B	370	0	0	0	0
10	C	116	0	0	0	0
10	D	342	0	0	2	0
All	All	10338	0	9233	41	0

The all-atom clashscore is defined as the number of clashes found per 1000 atoms (including hydrogen atoms). The all-atom clashscore for this structure is 2.

All (41) close contacts within the same asymmetric unit are listed below, sorted by their clash magnitude.

Atom-1	Atom-2	Interatomic distance (Å)	Clash overlap (Å)
2:D:360:GLN:NE2	2:D:384:ASN:HD22	2.01	0.57
2:B:360:GLN:NE2	2:B:384:ASN:HD22	2.01	0.57
2:D:77:TRP:HE1	2:D:219:ASN:HD21	1.55	0.55
2:D:77:TRP:HE1	2:D:219:ASN:ND2	2.09	0.50
1:A:50:LYS:HB3	1:A:51:PRO:HD3	1.94	0.49
2:B:97:GLU:HB2	7:B:503:NAI:H42N	1.94	0.49
2:D:229:PHE:O	2:D:233:MET:HG2	2.12	0.49
1:C:133:GLU:HG3	2:D:8:PRO:HB2	1.95	0.49
2:D:94:ASP:O	2:D:96:MET:HG3	2.13	0.48
2:D:97:GLU:HB2	7:D:503:NAI:H42N	1.96	0.48
2:B:96:MET:HG2	2:B:135:ARG:CZ	2.44	0.47
2:B:94:ASP:O	2:B:96:MET:HG3	2.15	0.47
2:B:137:GLU:OE2	2:B:178:GLY:HA2	2.15	0.47
2:D:374:GLU:OE2	2:D:418:ARG:NH1	2.48	0.46
2:D:89:PHE:O	2:D:130:ALA:HA	2.15	0.46
2:B:89:PHE:O	2:B:130:ALA:HA	2.16	0.46
2:D:388[B]:GLN:N	2:D:389:PRO:CD	2.79	0.46
2:D:33[A]:GLU:HG3	10:D:808:HOH:O	2.15	0.45
2:D:388[A]:GLN:N	2:D:389:PRO:CD	2.79	0.45

Continued on next page...

Continued from previous page...

Atom-1	Atom-2	Interatomic distance (Å)	Clash overlap (Å)
1:C:43:TYR:O	1:C:45:PRO:HD3	2.17	0.44
2:D:412:GLU:OE2	10:D:601:HOH:O	2.21	0.44
1:C:131:CYS:SG	2:D:99:GLY:HA2	2.57	0.44
2:D:67:GLY:O	7:D:503:NAI:H2N	2.17	0.44
6:D:502:FMN:N5	7:D:503:NAI:H4N	2.33	0.43
2:D:137:GLU:OE2	2:D:178:GLY:HA2	2.18	0.43
2:B:67:GLY:O	7:B:503:NAI:H2N	2.18	0.43
2:D:360:GLN:HE22	2:D:400:GLY:HA2	1.84	0.43
1:C:91:CYS:HA	1:C:134:ALA:HB1	2.01	0.43
2:B:360:GLN:HE22	2:B:400:GLY:HA2	1.84	0.43
2:B:239:ARG:NH1	2:B:244:SER:HB2	2.34	0.43
2:B:18:MET:SD	2:B:241:ILE:HD13	2.60	0.42
2:B:377:TRP:CZ2	2:B:418:ARG:HA	2.55	0.42
8:B:505:GOL:C3	2:D:27:ARG:HH11	2.33	0.42
2:B:79:PHE:O	2:B:82:GLN:HG2	2.20	0.42
2:D:96:MET:HG2	2:D:135:ARG:CZ	2.49	0.42
2:B:388:GLN:N	2:B:389:PRO:CD	2.83	0.41
8:B:505:GOL:H31	2:D:27:ARG:HH11	1.85	0.41
2:B:56:ASP:OD2	2:B:60:LYS:HE2	2.20	0.41
1:A:23:PHE:HE2	1:A:32:LEU:HD12	1.85	0.41
1:C:138:MET:HA	1:C:142:ASP:O	2.21	0.40
2:D:360:GLN:HE21	2:D:384:ASN:HD22	1.69	0.40

There are no symmetry-related clashes.

## 5.3 Torsion angles [i](#)

### 5.3.1 Protein backbone [i](#)

In the following table, the Percentiles column shows the percent Ramachandran outliers of the chain as a percentile score with respect to all X-ray entries followed by that with respect to entries of similar resolution.

The Analysed column shows the number of residues for which the backbone conformation was analysed, and the total number of residues.

Mol	Chain	Analysed	Favoured	Allowed	Outliers	Percentiles
1	A	153/155 (99%)	147 (96%)	6 (4%)	0	100 100
1	C	153/155 (99%)	149 (97%)	4 (3%)	0	100 100
2	B	418/418 (100%)	408 (98%)	9 (2%)	1 (0%)	47 44

Continued on next page...

Continued from previous page...

Mol	Chain	Analysed	Favoured	Allowed	Outliers	Percentiles	
2	D	419/418 (100%)	410 (98%)	8 (2%)	1 (0%)	47	44
All	All	1143/1146 (100%)	1114 (98%)	27 (2%)	2 (0%)	47	44

All (2) Ramachandran outliers are listed below:

Mol	Chain	Res	Type
2	B	95	GLU
2	D	95	GLU

### 5.3.2 Protein sidechains [i](#)

In the following table, the Percentiles column shows the percent sidechain outliers of the chain as a percentile score with respect to all X-ray entries followed by that with respect to entries of similar resolution.

The Analysed column shows the number of residues for which the sidechain conformation was analysed, and the total number of residues.

Mol	Chain	Analysed	Rotameric	Outliers	Percentiles	
1	A	141/141 (100%)	140 (99%)	1 (1%)	84	88
1	C	141/141 (100%)	140 (99%)	1 (1%)	84	88
2	B	346/344 (101%)	341 (99%)	5 (1%)	67	72
2	D	347/344 (101%)	343 (99%)	4 (1%)	71	76
All	All	975/970 (100%)	964 (99%)	11 (1%)	73	78

All (11) residues with a non-rotameric sidechain are listed below:

Mol	Chain	Res	Type
1	A	7	GLU
2	B	9	ARG
2	B	154	LYS
2	B	239	ARG
2	B	393	CYS
2	B	412	GLU
1	C	7	GLU
2	D	3	SER
2	D	25	LYS
2	D	305	LEU
2	D	393	CYS

Sometimes sidechains can be flipped to improve hydrogen bonding and reduce clashes. All (6) such sidechains are listed below:

Mol	Chain	Res	Type
1	A	97	ASN
2	B	360	GLN
1	C	97	ASN
2	D	208	GLN
2	D	219	ASN
2	D	360	GLN

### 5.3.3 RNA [i](#)

There are no RNA molecules in this entry.

### 5.4 Non-standard residues in protein, DNA, RNA chains [i](#)

There are no non-standard protein/DNA/RNA residues in this entry.

### 5.5 Carbohydrates [i](#)

There are no monosaccharides in this entry.

### 5.6 Ligand geometry [i](#)

Of 22 ligands modelled in this entry, 5 are monoatomic - leaving 17 for Mogul analysis.

In the following table, the Counts columns list the number of bonds (or angles) for which Mogul statistics could be retrieved, the number of bonds (or angles) that are observed in the model and the number of bonds (or angles) that are defined in the Chemical Component Dictionary. The Link column lists molecule types, if any, to which the group is linked. The Z score for a bond length (or angle) is the number of standard deviations the observed value is removed from the expected value. A bond length (or angle) with  $|Z| > 2$  is considered an outlier worth inspection. RMSZ is the root-mean-square of all Z scores of the bond lengths (or angles).

Mol	Type	Chain	Res	Link	Bond lengths			Bond angles		
					Counts	RMSZ	$\# Z  > 2$	Counts	RMSZ	$\# Z  > 2$
5	SF4	B	501	2	0,12,12	-	-	-		
8	GOL	B	504	-	5,5,5	0.08	0	5,5,5	0.22	0
4	SO4	C	202	-	4,4,4	0.34	0	6,6,6	0.08	0
3	FES	A	201	1	0,4,4	-	-	-		
8	GOL	B	506	-	5,5,5	0.10	0	5,5,5	0.27	0
4	SO4	A	203	-	4,4,4	0.35	0	6,6,6	0.10	0

Mol	Type	Chain	Res	Link	Bond lengths			Bond angles		
					Counts	RMSZ	# Z  > 2	Counts	RMSZ	# Z  > 2
4	SO4	C	203	-	4,4,4	0.34	0	6,6,6	0.08	0
4	SO4	D	505	-	4,4,4	0.33	0	6,6,6	0.09	0
3	FES	C	201	1	0,4,4	-	-	-		
7	NAI	B	503	-	43,48,48	0.58	0	50,73,73	0.67	1 (2%)
7	NAI	D	503	-	43,48,48	0.60	0	50,73,73	0.69	1 (2%)
5	SF4	D	501	2	0,12,12	-	-	-		
6	FMN	D	502	-	33,33,33	0.30	0	48,50,50	0.46	0
8	GOL	B	505	-	5,5,5	0.08	0	5,5,5	0.34	0
8	GOL	D	504	-	5,5,5	0.08	0	5,5,5	0.24	0
4	SO4	A	202	-	4,4,4	0.35	0	6,6,6	0.08	0
6	FMN	B	502	-	33,33,33	0.29	0	48,50,50	0.45	0

In the following table, the Chirals column lists the number of chiral outliers, the number of chiral centers analysed, the number of these observed in the model and the number defined in the Chemical Component Dictionary. Similar counts are reported in the Torsion and Rings columns. '-' means no outliers of that kind were identified.

Mol	Type	Chain	Res	Link	Chirals	Torsions	Rings
5	SF4	B	501	2	-	-	0/6/5/5
8	GOL	B	504	-	-	0/4/4/4	-
3	FES	A	201	1	-	-	0/1/1/1
8	GOL	B	506	-	-	2/4/4/4	-
7	NAI	D	503	-	-	1/25/72/72	0/5/5/5
3	FES	C	201	1	-	-	0/1/1/1
5	SF4	D	501	2	-	-	0/6/5/5
6	FMN	D	502	-	-	2/18/18/18	0/3/3/3
8	GOL	B	505	-	-	2/4/4/4	-
8	GOL	D	504	-	-	0/4/4/4	-
7	NAI	B	503	-	-	2/25/72/72	0/5/5/5
6	FMN	B	502	-	-	2/18/18/18	0/3/3/3

There are no bond length outliers.

All (2) bond angle outliers are listed below:

Mol	Chain	Res	Type	Atoms	Z	Observed(°)	Ideal(°)
7	D	503	NAI	C5A-C6A-N6A	2.32	123.85	120.31
7	B	503	NAI	C5A-C6A-N6A	2.29	123.80	120.31

There are no chirality outliers.

All (11) torsion outliers are listed below:



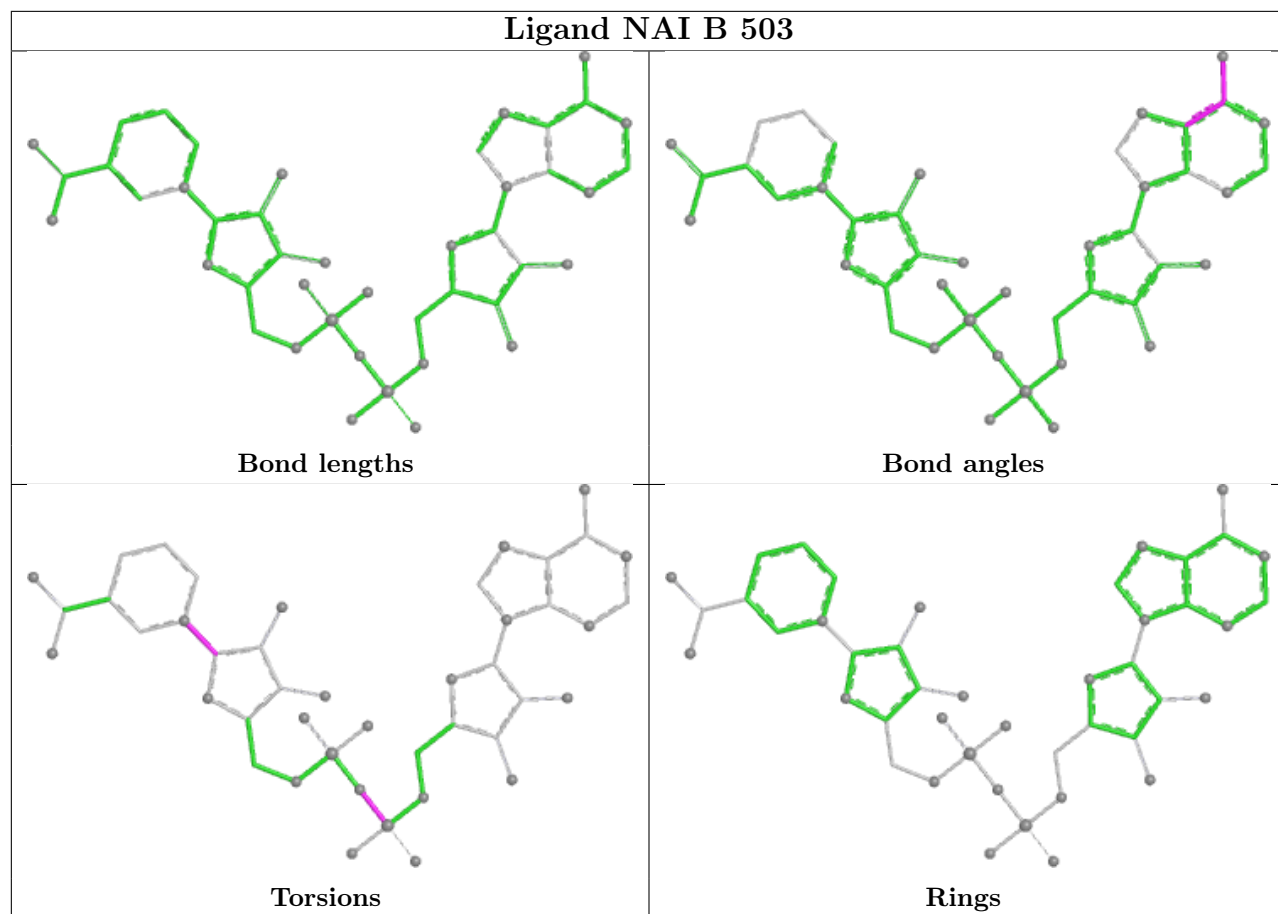
Mol	Chain	Res	Type	Atoms
8	B	506	GOL	O1-C1-C2-C3
8	B	505	GOL	O1-C1-C2-C3
7	B	503	NAI	O4D-C1D-N1N-C2N
7	D	503	NAI	O4D-C1D-N1N-C2N
7	B	503	NAI	PN-O3-PA-O5B
8	B	506	GOL	O1-C1-C2-O2
8	B	505	GOL	O1-C1-C2-O2
6	B	502	FMN	C5'-O5'-P-O1P
6	D	502	FMN	C5'-O5'-P-O1P
6	D	502	FMN	C4'-C5'-O5'-P
6	B	502	FMN	C4'-C5'-O5'-P

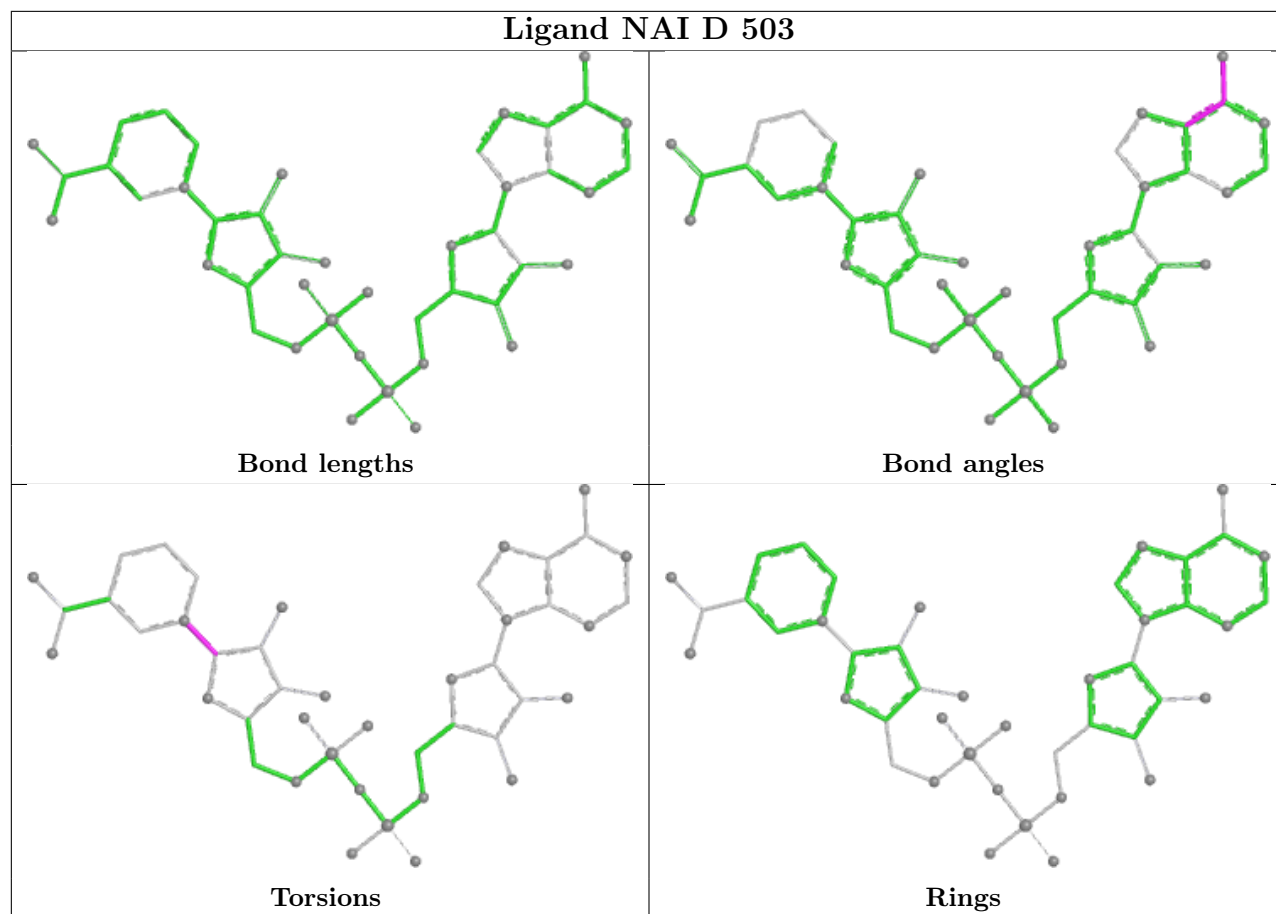
There are no ring outliers.

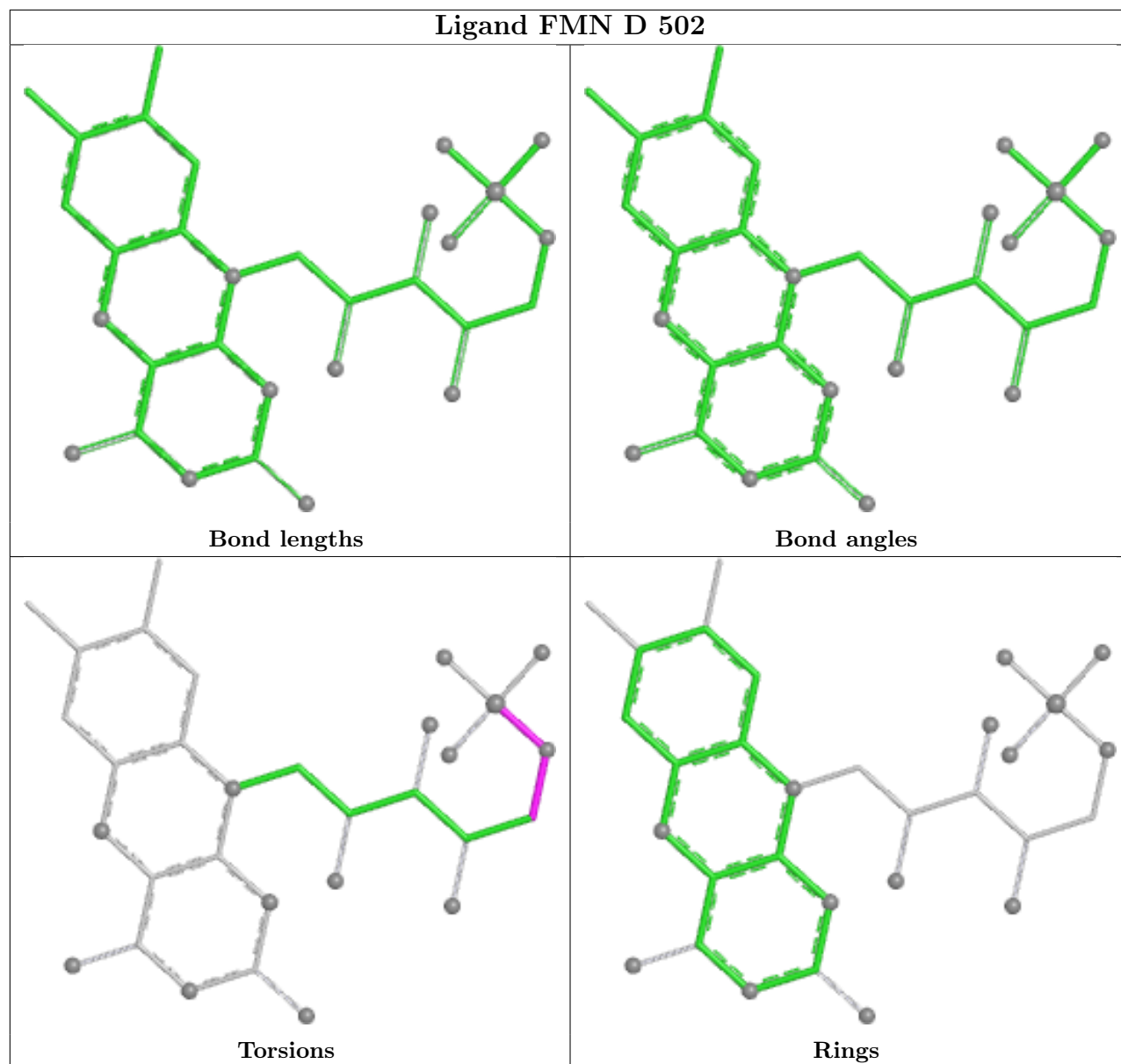
4 monomers are involved in 7 short contacts:

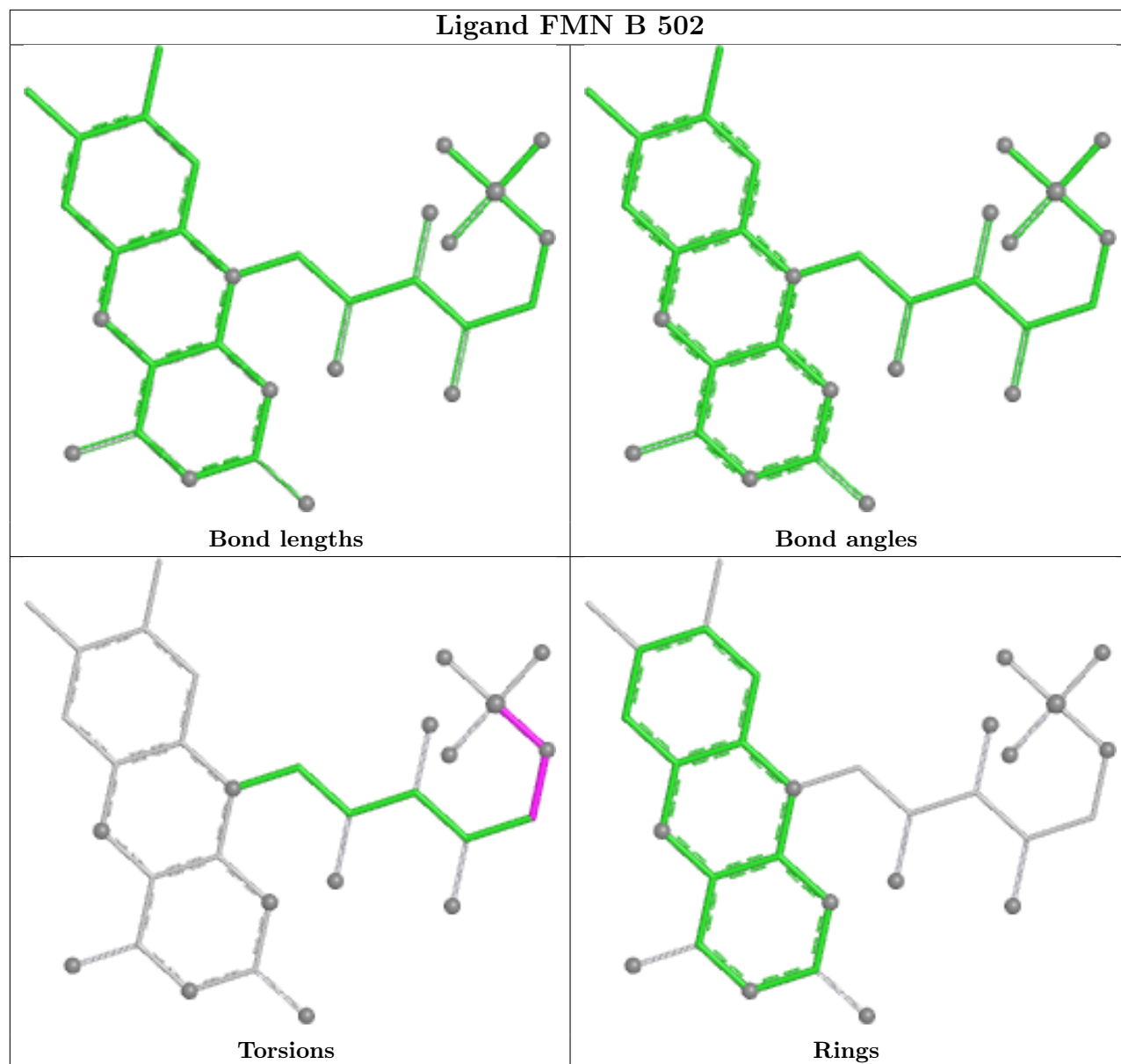
Mol	Chain	Res	Type	Clashes	Symm-Clashes
7	B	503	NAI	2	0
7	D	503	NAI	3	0
6	D	502	FMN	1	0
8	B	505	GOL	2	0

The following is a two-dimensional graphical depiction of Mogul quality analysis of bond lengths, bond angles, torsion angles, and ring geometry for all instances of the Ligand of Interest. In addition, ligands with molecular weight > 250 and outliers as shown on the validation Tables will also be included. For torsion angles, if less than 5% of the Mogul distribution of torsion angles is within 10 degrees of the torsion angle in question, then that torsion angle is considered an outlier. Any bond that is central to one or more torsion angles identified as an outlier by Mogul will be highlighted in the graph. For rings, the root-mean-square deviation (RMSD) between the ring in question and similar rings identified by Mogul is calculated over all ring torsion angles. If the average RMSD is greater than 60 degrees and the minimal RMSD between the ring in question and any Mogul-identified rings is also greater than 60 degrees, then that ring is considered an outlier. The outliers are highlighted in purple. The color gray indicates Mogul did not find sufficient equivalents in the CSD to analyse the geometry.









## 5.7 Other polymers [i](#)

There are no such residues in this entry.

## 5.8 Polymer linkage issues [i](#)

There are no chain breaks in this entry.

## 6 Fit of model and data

### 6.1 Protein, DNA and RNA chains

In the following table, the column labelled ‘#RSRZ > 2’ contains the number (and percentage) of RSRZ outliers, followed by percent RSRZ outliers for the chain as percentile scores relative to all X-ray entries and entries of similar resolution. The OWAB column contains the minimum, median, 95<sup>th</sup> percentile and maximum values of the occupancy-weighted average B-factor per residue. The column labelled ‘Q < 0.9’ lists the number of (and percentage) of residues with an average occupancy less than 0.9.

Mol	Chain	Analysed	<RSRZ>	#RSRZ>2	OWAB(Å <sup>2</sup> )	Q<0.9
1	A	155/155 (100%)	0.37	7 (4%) 33 32	16, 26, 40, 48	0
1	C	155/155 (100%)	0.42	9 (5%) 23 22	16, 29, 42, 53	0
2	B	418/418 (100%)	0.07	5 (1%) 79 78	11, 19, 29, 54	0
2	D	418/418 (100%)	0.10	9 (2%) 62 60	11, 21, 33, 52	0
All	All	1146/1146 (100%)	0.17	30 (2%) 56 54	11, 21, 37, 54	0

All (30) RSRZ outliers are listed below:

Mol	Chain	Res	Type	RSRZ
2	B	419	LYS	4.5
2	B	2	ARG	4.4
1	C	6	PHE	3.7
2	D	419	LYS	3.7
2	D	245	ASP	3.4
2	D	314	LEU	3.4
2	D	3	SER	3.3
1	A	34	LEU	3.1
2	D	2	ARG	3.0
2	D	82	GLN	2.9
1	C	160	THR	2.8
1	A	11	GLU	2.7
2	B	3	SER	2.6
1	C	116	PRO	2.6
2	B	416	LYS	2.4
1	C	30	ILE	2.4
1	A	6	PHE	2.3
1	C	61	ASN	2.3
1	A	37	ILE	2.3
2	B	418	ARG	2.3
2	D	344	HIS	2.2

*Continued on next page...*

*Continued from previous page...*

Mol	Chain	Res	Type	RSRZ
2	D	313	PRO	2.2
1	C	52	LEU	2.1
1	A	61	ASN	2.1
1	A	10	GLU	2.1
1	C	10	GLU	2.1
1	C	83	ILE	2.1
1	C	56	LEU	2.1
2	D	377	TRP	2.1
1	A	52	LEU	2.1

## 6.2 Non-standard residues in protein, DNA, RNA chains [i](#)

There are no non-standard protein/DNA/RNA residues in this entry.

## 6.3 Carbohydrates [i](#)

There are no monosaccharides in this entry.

## 6.4 Ligands [i](#)

In the following table, the Atoms column lists the number of modelled atoms in the group and the number defined in the chemical component dictionary. The B-factors column lists the minimum, median, 95<sup>th</sup> percentile and maximum values of B factors of atoms in the group. The column labelled 'Q< 0.9' lists the number of atoms with occupancy less than 0.9.

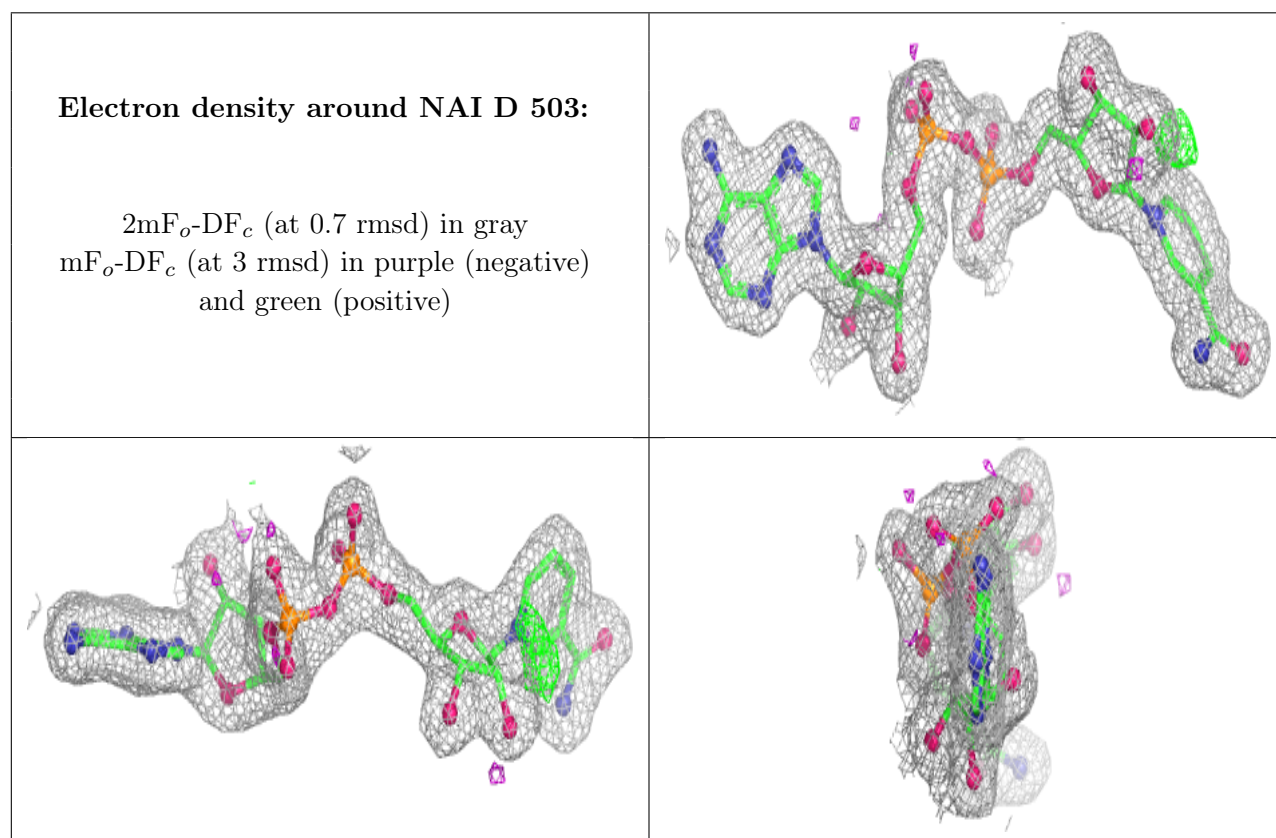
Mol	Type	Chain	Res	Atoms	RSCC	RSR	B-factors(Å <sup>2</sup> )	Q<0.9
9	NA	D	507	1/1	0.65	0.32	47,47,47,47	0
8	GOL	B	506	6/6	0.70	0.22	44,46,47,47	0
8	GOL	B	505	6/6	0.72	0.25	35,39,40,44	0
9	NA	D	506	1/1	0.79	0.17	36,36,36,36	0
9	NA	B	507	1/1	0.82	0.29	58,58,58,58	0
4	SO4	A	203	5/5	0.90	0.20	24,25,26,26	5
4	SO4	D	505	5/5	0.91	0.18	44,45,48,49	0
8	GOL	D	504	6/6	0.92	0.15	23,23,24,24	0
4	SO4	C	202	5/5	0.92	0.18	22,23,23,24	5
8	GOL	B	504	6/6	0.93	0.12	23,24,24,24	0
9	NA	B	508	1/1	0.93	0.20	38,38,38,38	0
9	NA	D	508	1/1	0.93	0.12	33,33,33,33	0
4	SO4	A	202	5/5	0.94	0.14	23,23,23,24	5
4	SO4	C	203	5/5	0.94	0.34	66,66,67,67	0

*Continued on next page...*

Continued from previous page...

Mol	Type	Chain	Res	Atoms	RSCC	RSR	B-factors( $\text{\AA}^2$ )	Q<0.9
7	NAI	D	503	44/44	0.97	0.09	17,18,20,21	0
6	FMN	B	502	31/31	0.97	0.09	11,13,13,13	0
3	FES	A	201	4/4	0.98	0.05	14,14,14,14	0
5	SF4	B	501	8/8	0.98	0.05	12,12,13,13	0
3	FES	C	201	4/4	0.98	0.05	13,13,14,14	0
6	FMN	D	502	31/31	0.98	0.08	12,13,14,14	0
7	NAI	B	503	44/44	0.98	0.08	15,16,18,19	0
5	SF4	D	501	8/8	0.99	0.04	12,12,12,13	0

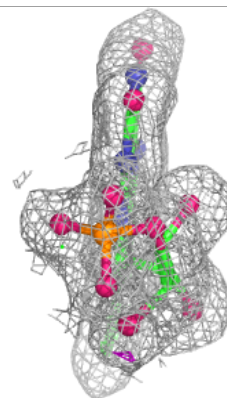
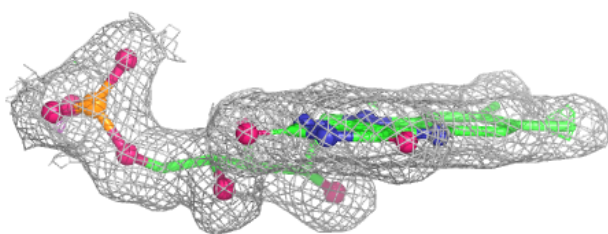
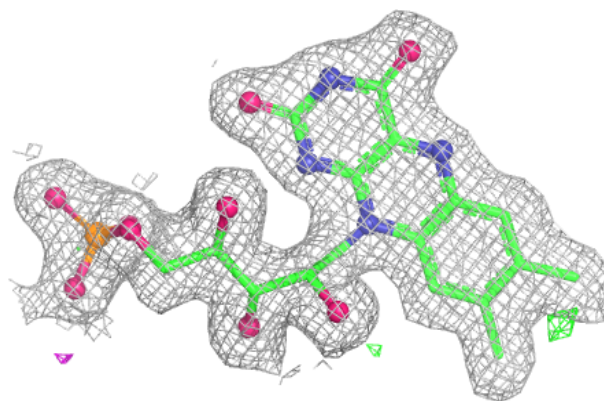
The following is a graphical depiction of the model fit to experimental electron density of all instances of the Ligand of Interest. In addition, ligands with molecular weight > 250 and outliers as shown on the geometry validation Tables will also be included. Each fit is shown from different orientation to approximate a three-dimensional view.



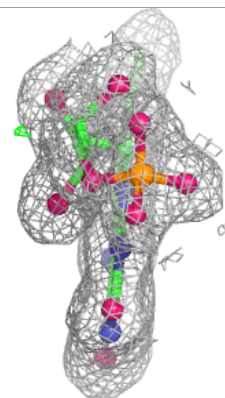
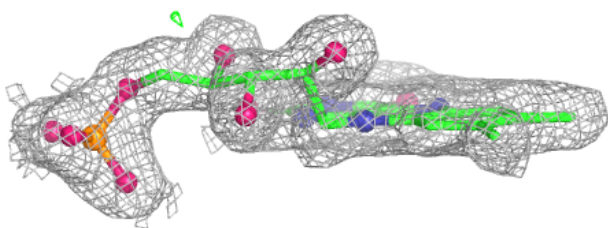
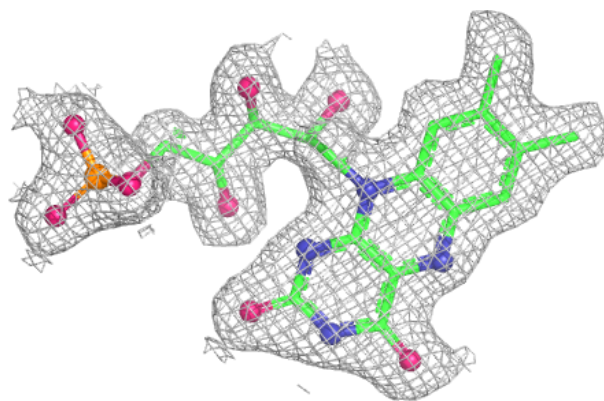


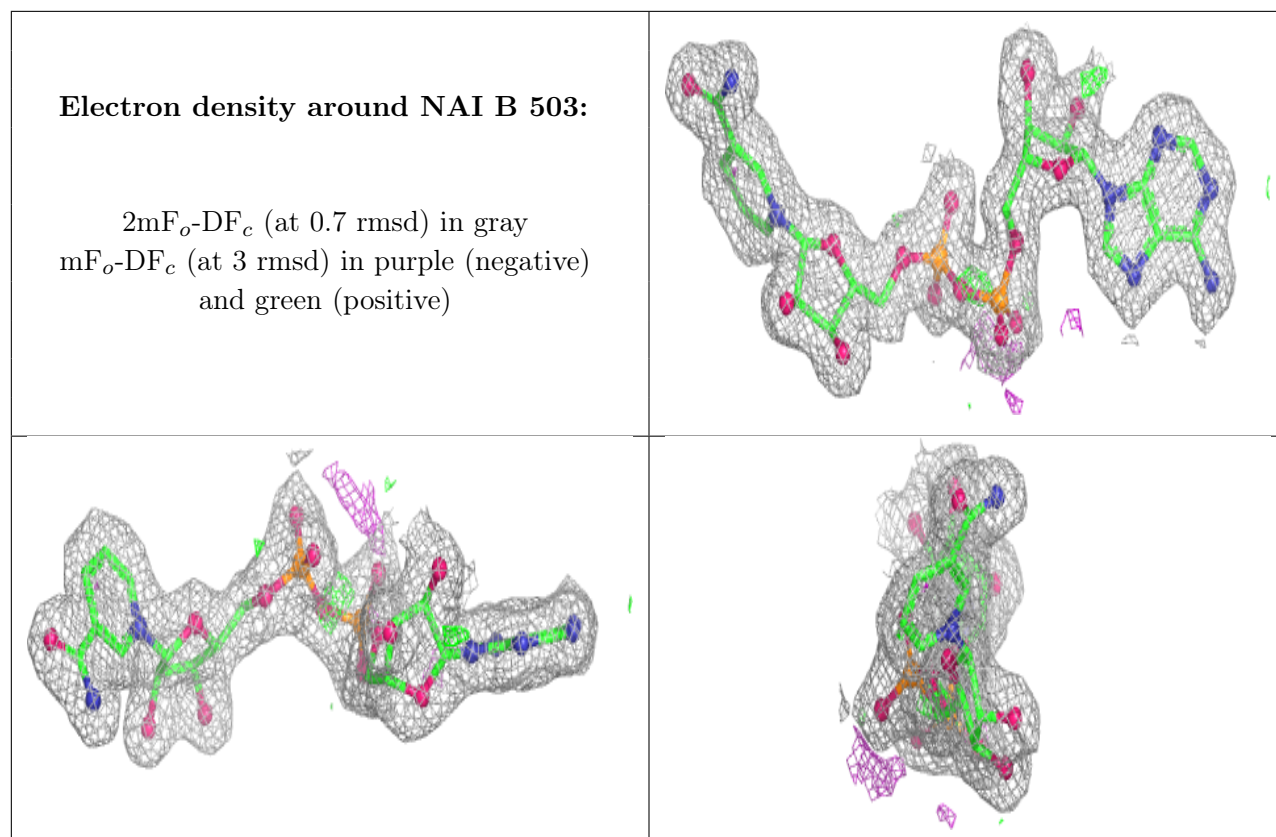
**Electron density around FMN B 502:**

$2mF_o-DF_c$  (at 0.7 rmsd) in gray  
 $mF_o-DF_c$  (at 3 rmsd) in purple (negative)  
and green (positive)

**Electron density around FMN D 502:**

$2mF_o-DF_c$  (at 0.7 rmsd) in gray  
 $mF_o-DF_c$  (at 3 rmsd) in purple (negative)  
and green (positive)





## 6.5 Other polymers [i](#)

There are no such residues in this entry.