



# Full wwPDB X-ray Structure Validation Report ⓘ

Nov 9, 2024 – 12:36 PM EST

PDB ID : 6PXX  
Title : Class D beta-lactamase in complex with beta-lactam antibiotic  
Authors : van den Akker, F.; Kumar, V.  
Deposited on : 2019-07-28  
Resolution : 1.50 Å(reported)

This is a Full wwPDB X-ray Structure Validation Report for a publicly released PDB entry.

We welcome your comments at [validation@mail.wwpdb.org](mailto:validation@mail.wwpdb.org)

A user guide is available at

<https://www.wwpdb.org/validation/2017/XrayValidationReportHelp>

with specific help available everywhere you see the ⓘ symbol.

The types of validation reports are described at

<http://www.wwpdb.org/validation/2017/FAQs#types>.

---

The following versions of software and data (see [references ⓘ](#)) were used in the production of this report:

MolProbity : 4.02b-467  
Mogul : 2022.3.0, CSD as543be (2022)  
Xtriage (Phenix) : 1.20.1  
EDS : 3.0  
buster-report : 1.1.7 (2018)  
Percentile statistics : 20231227.v01 (using entries in the PDB archive December 27th 2023)  
CCP4 : 9.0.003 (Gargrove)  
Density-Fitness : 1.0.11  
Ideal geometry (proteins) : Engh & Huber (2001)  
Ideal geometry (DNA, RNA) : Parkinson et al. (1996)  
Validation Pipeline (wwPDB-VP) : 2.39

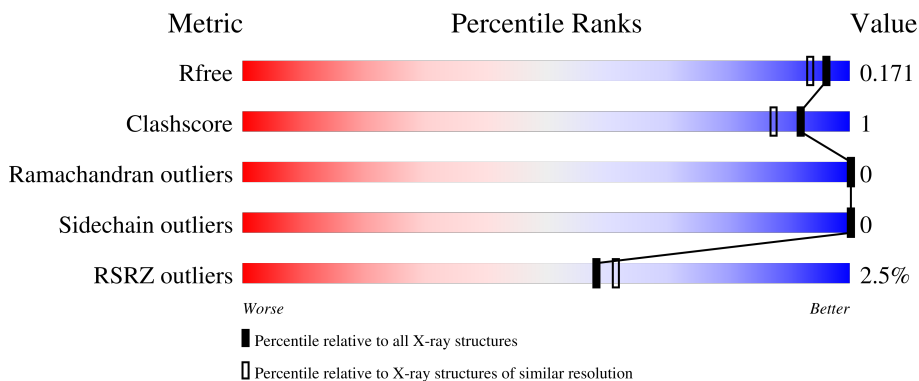
# 1 Overall quality at a glance

The following experimental techniques were used to determine the structure:

*X-RAY DIFFRACTION*

The reported resolution of this entry is 1.50 Å.

Percentile scores (ranging between 0-100) for global validation metrics of the entry are shown in the following graphic. The table shows the number of entries on which the scores are based.



Metric	Whole archive (#Entries)	Similar resolution (#Entries, resolution range(Å))
$R_{free}$	164625	3717 (1.50-1.50)
Clashscore	180529	4048 (1.50-1.50)
Ramachandran outliers	177936	3970 (1.50-1.50)
Sidechain outliers	177891	3967 (1.50-1.50)
RSRZ outliers	164620	3718 (1.50-1.50)

The table below summarises the geometric issues observed across the polymeric chains and their fit to the electron density. The red, orange, yellow and green segments of the lower bar indicate the fraction of residues that contain outliers for  $\geq 3$ , 2, 1 and 0 types of geometric quality criteria respectively. A grey segment represents the fraction of residues that are not modelled. The numeric value for each fraction is indicated below the corresponding segment, with a dot representing fractions  $\leq 5\%$ . The upper red bar (where present) indicates the fraction of residues that have poor fit to the electron density. The numeric value is given above the bar.

Mol	Chain	Length	Quality of chain
1	A	265	 2% 89% 9%
1	B	265	 2% 89% 8%

The following table lists non-polymeric compounds, carbohydrate monomers and non-standard residues in protein, DNA, RNA chains that are outliers for geometric or electron-density-fit criteria:

Mol	Type	Chain	Res	Chirality	Geometry	Clashes	Electron density
2	5R7	B	301[A]	X	-	-	-
2	5R7	B	301[B]	X	-	-	-

## 2 Entry composition [i](#)

There are 6 unique types of molecules in this entry. The entry contains 4737 atoms, of which 0 are hydrogens and 0 are deuteriums.

In the tables below, the ZeroOcc column contains the number of atoms modelled with zero occupancy, the AltConf column contains the number of residues with at least one atom in alternate conformation and the Trace column contains the number of residues modelled with at most 2 atoms.

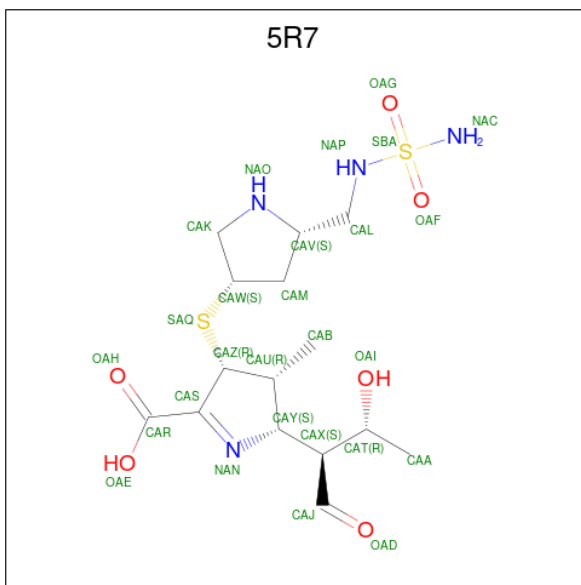
- Molecule 1 is a protein called Beta-lactamase.

Mol	Chain	Residues	Atoms					ZeroOcc	AltConf	Trace
			Total	C	N	O	S			
1	A	242	Total	C	N	O	S	0	5	0
			2003	1276	350	368	9			
1	B	244	Total	C	N	O	S	0	7	0
			2025	1291	353	373	8			

There are 2 discrepancies between the modelled and reference sequences:

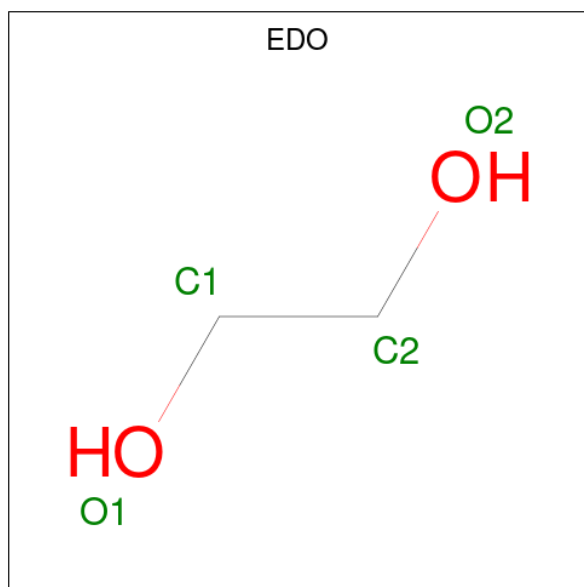
Chain	Residue	Modelled	Actual	Comment	Reference
A	73	ALA	LYS	engineered mutation	UNP Q6XEC0
B	73	ALA	LYS	engineered mutation	UNP Q6XEC0

- Molecule 2 is (2 {S},3 {R})-3-methyl-2-[(2 {S},3 {R})-3-oxidanyl-1-oxidanylidene-butan-2-yl]-4-[(3 {S},5 {S})-5-[(sulfamoylamino)methyl]pyrrolidin-3-yl]sulfanyl-3,4-dihydro-2 {H}-pyrrole-5-carboxylic acid (three-letter code: 5R7) (formula: C<sub>15</sub>H<sub>26</sub>N<sub>4</sub>O<sub>6</sub>S<sub>2</sub>) (labeled as "Ligand of Interest" by depositor).



Mol	Chain	Residues	Atoms					ZeroOcc	AltConf
2	A	1	Total	C	N	O	S	0	1
			31	15	5	8	3		
2	B	1	Total	C	N	O	S	0	1
			39	20	7	8	4		

- Molecule 3 is 1,2-ETHANEDIOL (three-letter code: EDO) (formula: C<sub>2</sub>H<sub>6</sub>O<sub>2</sub>).

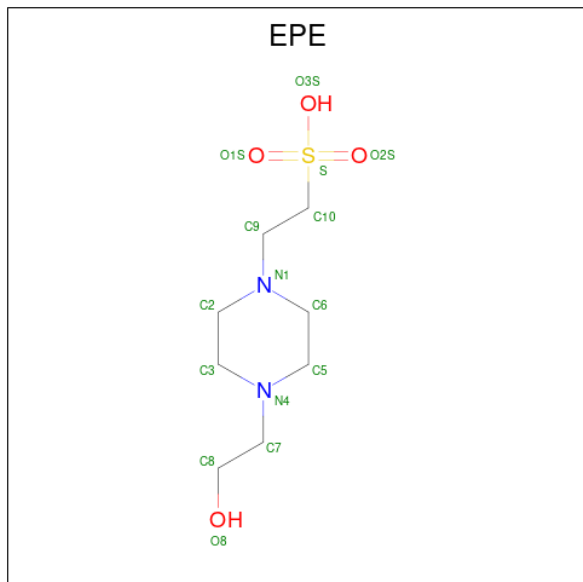


Mol	Chain	Residues	Atoms			ZeroOcc	AltConf
3	A	1	Total	C	O	0	0
			4	2	2		
3	A	1	Total	C	O	0	0
			4	2	2		
3	A	1	Total	C	O	0	1
			4	2	2		
3	A	1	Total	C	O	0	0
			4	2	2		
3	B	1	Total	C	O	0	0
			4	2	2		

- Molecule 4 is CHLORIDE ION (three-letter code: CL) (formula: Cl).

Mol	Chain	Residues	Atoms		ZeroOcc	AltConf
4	A	1	Total	Cl	0	0
			1	1		
4	B	1	Total	Cl	0	0
			1	1		

- Molecule 5 is 4-(2-HYDROXYETHYL)-1-PIPERAZINE ETHANESULFONIC ACID (three-letter code: EPE) (formula: C<sub>8</sub>H<sub>18</sub>N<sub>2</sub>O<sub>4</sub>S).



Mol	Chain	Residues	Atoms					ZeroOcc	AltConf
			Total	C	N	O	S		
5	B	1	15	8	2	4	1	0	0

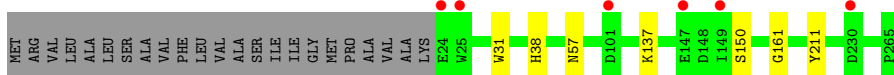
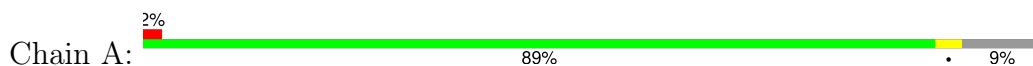
- Molecule 6 is water.

Mol	Chain	Residues	Atoms		ZeroOcc	AltConf
6	A	307	Total	O	0	0
			307	307		
6	B	295	Total	O	0	0
			295	295		

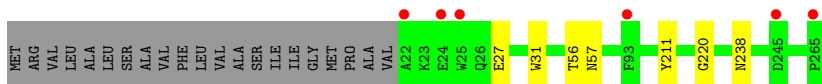
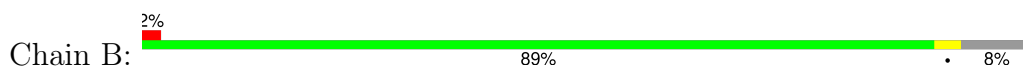
### 3 Residue-property plots [i](#)

These plots are drawn for all protein, RNA, DNA and oligosaccharide chains in the entry. The first graphic for a chain summarises the proportions of the various outlier classes displayed in the second graphic. The second graphic shows the sequence view annotated by issues in geometry and electron density. Residues are color-coded according to the number of geometric quality criteria for which they contain at least one outlier: green = 0, yellow = 1, orange = 2 and red = 3 or more. A red dot above a residue indicates a poor fit to the electron density ( $RSRZ > 2$ ). Stretches of 2 or more consecutive residues without any outlier are shown as a green connector. Residues present in the sample, but not in the model, are shown in grey.

- Molecule 1: Beta-lactamase



- Molecule 1: Beta-lactamase



## 4 Data and refinement statistics

Property	Value	Source
Space group	P 21 21 2	Depositor
Cell constants a, b, c, $\alpha$ , $\beta$ , $\gamma$	105.77Å 125.09Å 45.12Å 90.00° 90.00° 90.00°	Depositor
Resolution (Å)	40.00 – 1.50 40.00 – 1.50	Depositor EDS
% Data completeness (in resolution range)	99.7 (40.00-1.50) 99.7 (40.00-1.50)	Depositor EDS
$R_{merge}$	0.08	Depositor
$R_{sym}$	(Not available)	Depositor
$\langle I/\sigma(I) \rangle$ <sup>1</sup>	3.29 (at 1.50Å)	Xtrriage
Refinement program	REFMAC 5.8.0253	Depositor
R, $R_{free}$	0.151 , 0.172 0.151 , 0.171	Depositor DCC
$R_{free}$ test set	4867 reflections (5.03%)	wwPDB-VP
Wilson B-factor (Å <sup>2</sup> )	13.4	Xtrriage
Anisotropy	0.035	Xtrriage
Bulk solvent $k_{sol}$ (e/Å <sup>3</sup> ), $B_{sol}$ (Å <sup>2</sup> )	0.32 , 33.5	EDS
L-test for twinning <sup>2</sup>	$\langle  L  \rangle = 0.49$ , $\langle L^2 \rangle = 0.33$	Xtrriage
Estimated twinning fraction	No twinning to report.	Xtrriage
$F_o, F_c$ correlation	0.97	EDS
Total number of atoms	4737	wwPDB-VP
Average B, all atoms (Å <sup>2</sup> )	17.0	wwPDB-VP

Xtrriage's analysis on translational NCS is as follows: *The largest off-origin peak in the Patterson function is 14.17% of the height of the origin peak. No significant pseudotranslation is detected.*

<sup>1</sup>Intensities estimated from amplitudes.

<sup>2</sup>Theoretical values of  $\langle |L| \rangle$ ,  $\langle L^2 \rangle$  for acentric reflections are 0.5, 0.333 respectively for untwinned datasets, and 0.375, 0.2 for perfectly twinned datasets.



## 5 Model quality i

### 5.1 Standard geometry i

Bond lengths and bond angles in the following residue types are not validated in this section: EPE, CL, EDO, 5R7

The Z score for a bond length (or angle) is the number of standard deviations the observed value is removed from the expected value. A bond length (or angle) with  $|Z| > 5$  is considered an outlier worth inspection. RMSZ is the root-mean-square of all Z scores of the bond lengths (or angles).

Mol	Chain	Bond lengths		Bond angles	
		RMSZ	# Z  >5	RMSZ	# Z  >5
1	A	0.69	0/2067	0.84	1/2795 (0.0%)
1	B	0.68	0/2093	0.84	1/2830 (0.0%)
All	All	0.69	0/4160	0.84	2/5625 (0.0%)

There are no bond length outliers.

All (2) bond angle outliers are listed below:

Mol	Chain	Res	Type	Atoms	Z	Observed(°)	Ideal(°)
1	B	211	TYR	CB-CG-CD2	-6.75	116.95	121.00
1	A	211	TYR	CB-CG-CD2	-6.40	117.16	121.00

There are no chirality outliers.

There are no planarity outliers.

### 5.2 Too-close contacts i

In the following table, the Non-H and H(model) columns list the number of non-hydrogen atoms and hydrogen atoms in the chain respectively. The H(added) column lists the number of hydrogen atoms added and optimized by MolProbity. The Clashes column lists the number of clashes within the asymmetric unit, whereas Symm-Clashes lists symmetry-related clashes.

Mol	Chain	Non-H	H(model)	H(added)	Clashes	Symm-Clashes
1	A	2003	0	1961	4	0
1	B	2025	0	1986	3	0
2	A	31	0	6	0	0
2	B	39	0	26	4	0
3	A	16	0	24	0	0
3	B	4	0	6	0	0
4	A	1	0	0	0	0

*Continued on next page...*

Continued from previous page...

Mol	Chain	Non-H	H(model)	H(added)	Clashes	Symm-Clashes
4	B	1	0	0	0	0
5	B	15	0	18	0	0
6	A	307	0	0	2	0
6	B	295	0	0	3	0
All	All	4737	0	4027	11	0

The all-atom clashscore is defined as the number of clashes found per 1000 atoms (including hydrogen atoms). The all-atom clashscore for this structure is 1.

All (11) close contacts within the same asymmetric unit are listed below, sorted by their clash magnitude.

Atom-1	Atom-2	Interatomic distance (Å)	Clash overlap (Å)
2:B:301[B]:5R7:H26	6:B:401:HOH:O	1.44	1.17
2:B:301[B]:5R7:CAV	6:B:401:HOH:O	1.93	1.13
2:B:301[B]:5R7:NAO	6:B:401:HOH:O	1.85	1.04
1:A:38:HIS:HD2	6:A:682:HOH:O	1.87	0.58
2:B:301[A]:5R7:NAO	2:B:301[A]:5R7:SBA	2.88	0.46
1:A:31:TRP:HB2	1:A:57:ASN:HB3	1.97	0.45
1:B:31:TRP:HB2	1:B:57:ASN:HB3	1.98	0.45
1:A:137:LYS:HG3	6:A:474:HOH:O	2.18	0.44
1:A:150:SER:O	1:A:161:GLY:HA3	2.18	0.43
1:B:27:GLU:HA	1:B:56:THR:O	2.20	0.41
1:B:220:GLY:O	1:B:238:ASN:HA	2.21	0.41

There are no symmetry-related clashes.

## 5.3 Torsion angles [i](#)

### 5.3.1 Protein backbone [i](#)

In the following table, the Percentiles column shows the percent Ramachandran outliers of the chain as a percentile score with respect to all X-ray entries followed by that with respect to entries of similar resolution.

The Analysed column shows the number of residues for which the backbone conformation was analysed, and the total number of residues.

Mol	Chain	Analysed	Favoured	Allowed	Outliers	Percentiles	
1	A	246/265 (93%)	242 (98%)	4 (2%)	0	100	100
1	B	249/265 (94%)	245 (98%)	4 (2%)	0	100	100

Continued on next page...

*Continued from previous page...*

Mol	Chain	Analysed	Favoured	Allowed	Outliers	Percentiles	
All	All	495/530 (93%)	487 (98%)	8 (2%)	0	100	100

There are no Ramachandran outliers to report.

### 5.3.2 Protein sidechains [i](#)

In the following table, the Percentiles column shows the percent sidechain outliers of the chain as a percentile score with respect to all X-ray entries followed by that with respect to entries of similar resolution.

The Analysed column shows the number of residues for which the sidechain conformation was analysed, and the total number of residues.

Mol	Chain	Analysed	Rotameric	Outliers	Percentiles	
1	A	216/227 (95%)	216 (100%)	0	100	100
1	B	218/227 (96%)	218 (100%)	0	100	100
All	All	434/454 (96%)	434 (100%)	0	100	100

There are no protein residues with a non-rotameric sidechain to report.

Sometimes sidechains can be flipped to improve hydrogen bonding and reduce clashes. All (3) such sidechains are listed below:

Mol	Chain	Res	Type
1	A	38	HIS
1	A	182	HIS
1	B	26	GLN

### 5.3.3 RNA [i](#)

There are no RNA molecules in this entry.

## 5.4 Non-standard residues in protein, DNA, RNA chains [i](#)

There are no non-standard protein/DNA/RNA residues in this entry.

### 5.5 Carbohydrates [i](#)

There are no oligosaccharides in this entry.

## 5.6 Ligand geometry

Of 12 ligands modelled in this entry, 2 are monoatomic - leaving 10 for Mogul analysis.

In the following table, the Counts columns list the number of bonds (or angles) for which Mogul statistics could be retrieved, the number of bonds (or angles) that are observed in the model and the number of bonds (or angles) that are defined in the Chemical Component Dictionary. The Link column lists molecule types, if any, to which the group is linked. The Z score for a bond length (or angle) is the number of standard deviations the observed value is removed from the expected value. A bond length (or angle) with  $|Z| > 2$  is considered an outlier worth inspection. RMSZ is the root-mean-square of all Z scores of the bond lengths (or angles).

Mol	Type	Chain	Res	Link	Bond lengths			Bond angles		
					Counts	RMSZ	# Z  > 2	Counts	RMSZ	# Z  > 2
3	EDO	A	303	-	3,3,3	0.19	0	2,2,2	0.27	0
2	5R7	B	301[A]	-	24,28,28	6.60	13 (54%)	13,41,41	1.80	5 (38%)
3	EDO	A	302	-	3,3,3	0.13	0	2,2,2	0.38	0
2	5R7	A	301[A]	-	24,28,28	5.23	13 (54%)	13,41,41	1.73	5 (38%)
2	5R7	B	301[B]	-	24,28,28	6.55	13 (54%)	13,41,41	1.72	4 (30%)
3	EDO	A	305	-	3,3,3	0.43	0	2,2,2	0.07	0
2	5R7	A	301[B]	-	24,28,28	5.24	13 (54%)	13,41,41	1.56	4 (30%)
3	EDO	A	304[A]	-	3,3,3	0.21	0	2,2,2	0.19	0
3	EDO	B	303	-	3,3,3	0.13	0	2,2,2	0.25	0
5	EPE	B	302	-	15,15,15	1.28	2 (13%)	19,20,20	2.21	4 (21%)

In the following table, the Chirals column lists the number of chiral outliers, the number of chiral centers analysed, the number of these observed in the model and the number defined in the Chemical Component Dictionary. Similar counts are reported in the Torsion and Rings columns. '-' means no outliers of that kind were identified.

Mol	Type	Chain	Res	Link	Chirals	Torsions	Rings
3	EDO	A	303	-	-	0/1/1/1	-
2	5R7	B	301[A]	-	1/1/10/13	5/19/49/49	0/2/2/2
3	EDO	A	302	-	-	0/1/1/1	-
2	5R7	A	301[A]	-	-	5/19/49/49	0/2/2/2
2	5R7	B	301[B]	-	1/1/10/13	4/19/49/49	0/2/2/2
3	EDO	A	305	-	-	0/1/1/1	-
2	5R7	A	301[B]	-	-	6/19/49/49	0/2/2/2
3	EDO	A	304[A]	-	-	0/1/1/1	-
3	EDO	B	303	-	-	1/1/1/1	-
5	EPE	B	302	-	-	2/9/19/19	0/1/1/1

All (54) bond length outliers are listed below:

Mol	Chain	Res	Type	Atoms	Z	Observed(Å)	Ideal(Å)
2	B	301[A]	5R7	CAS-NAN	28.25	1.50	1.28
2	B	301[B]	5R7	CAS-NAN	28.25	1.50	1.28
2	A	301[A]	5R7	CAS-NAN	20.25	1.43	1.28
2	A	301[B]	5R7	CAS-NAN	20.25	1.43	1.28
2	A	301[A]	5R7	CAY-NAN	-9.66	1.37	1.47
2	A	301[B]	5R7	CAY-NAN	-9.66	1.37	1.47
2	B	301[A]	5R7	CAY-NAN	-7.78	1.39	1.47
2	B	301[B]	5R7	CAY-NAN	-7.78	1.39	1.47
2	A	301[A]	5R7	CAZ-CAU	-6.36	1.50	1.55
2	A	301[B]	5R7	CAZ-CAU	-6.36	1.50	1.55
2	B	301[A]	5R7	CAW-SAQ	6.09	1.93	1.82
2	B	301[A]	5R7	CAU-CAY	5.81	1.68	1.54
2	B	301[B]	5R7	CAU-CAY	5.81	1.68	1.54
2	B	301[B]	5R7	CAK-NAO	5.58	1.66	1.47
2	B	301[A]	5R7	CAK-NAO	5.33	1.65	1.47
2	A	301[A]	5R7	CAU-CAY	5.21	1.67	1.54
2	A	301[B]	5R7	CAU-CAY	5.21	1.67	1.54
2	B	301[A]	5R7	CAB-CAU	-5.14	1.42	1.53
2	B	301[B]	5R7	CAB-CAU	-5.14	1.42	1.53
2	B	301[B]	5R7	CAW-SAQ	4.87	1.91	1.82
2	A	301[A]	5R7	CAK-NAO	4.84	1.63	1.47
2	A	301[B]	5R7	CAK-NAO	4.84	1.63	1.47
5	B	302	EPE	C10-S	3.46	1.82	1.77
2	B	301[A]	5R7	CAR-CAS	3.37	1.54	1.48
2	B	301[B]	5R7	CAR-CAS	3.37	1.54	1.48
2	A	301[A]	5R7	CAB-CAU	-3.19	1.46	1.53
2	A	301[B]	5R7	CAB-CAU	-3.19	1.46	1.53
2	B	301[A]	5R7	CAV-NAO	-3.10	1.34	1.50
2	B	301[B]	5R7	CAV-NAO	-3.01	1.35	1.50
2	A	301[A]	5R7	CAV-NAO	-3.00	1.35	1.50
2	A	301[B]	5R7	CAV-NAO	-3.00	1.35	1.50
2	A	301[B]	5R7	SBA-NAP	2.92	1.73	1.62
2	B	301[A]	5R7	CAZ-SAQ	2.88	1.91	1.84
2	A	301[A]	5R7	CAW-SAQ	2.83	1.87	1.82
2	A	301[B]	5R7	CAW-SAQ	2.83	1.87	1.82
2	B	301[B]	5R7	CAZ-SAQ	2.79	1.91	1.84
2	B	301[A]	5R7	SBA-NAP	2.59	1.71	1.62
2	A	301[A]	5R7	CAM-CAW	2.51	1.59	1.52
2	A	301[B]	5R7	CAM-CAW	2.51	1.59	1.52
2	B	301[B]	5R7	SBA-NAP	2.49	1.71	1.62
2	B	301[A]	5R7	CAM-CAW	2.44	1.59	1.52
2	A	301[A]	5R7	CAZ-SAQ	2.39	1.90	1.84
2	A	301[B]	5R7	CAZ-SAQ	2.39	1.90	1.84

*Continued on next page...*

Continued from previous page...

Mol	Chain	Res	Type	Atoms	Z	Observed(Å)	Ideal(Å)
2	A	301[A]	5R7	OAE-CAR	-2.39	1.24	1.30
2	A	301[B]	5R7	OAE-CAR	-2.39	1.24	1.30
2	A	301[A]	5R7	SBA-NAP	2.28	1.70	1.62
2	B	301[B]	5R7	CAM-CAW	2.21	1.58	1.52
5	B	302	EPE	O1S-S	2.14	1.51	1.45
2	B	301[A]	5R7	CAX-CAJ	2.12	1.53	1.50
2	B	301[B]	5R7	CAX-CAJ	2.12	1.53	1.50
2	B	301[A]	5R7	CAX-CAY	-2.03	1.50	1.53
2	B	301[B]	5R7	CAX-CAY	-2.03	1.50	1.53
2	A	301[A]	5R7	CAM-CAV	2.02	1.56	1.53
2	A	301[B]	5R7	CAM-CAV	2.02	1.56	1.53

All (22) bond angle outliers are listed below:

Mol	Chain	Res	Type	Atoms	Z	Observed(°)	Ideal(°)
5	B	302	EPE	O1S-S-C10	6.09	115.93	106.73
5	B	302	EPE	O2S-S-O1S	-4.67	98.64	113.82
5	B	302	EPE	O2S-S-C10	3.56	112.10	106.73
2	A	301[A]	5R7	CAL-NAP-SBA	-3.00	107.63	118.67
2	A	301[B]	5R7	OAF-SBA-NAP	2.94	113.60	106.64
2	A	301[A]	5R7	OAH-CAR-CAS	-2.86	117.28	121.13
2	A	301[B]	5R7	OAH-CAR-CAS	-2.86	117.28	121.13
2	B	301[A]	5R7	OAD-CAJ-CAX	-2.83	118.52	125.27
2	B	301[B]	5R7	OAD-CAJ-CAX	-2.83	118.52	125.27
5	B	302	EPE	O3S-S-O2S	2.76	118.30	111.40
2	A	301[A]	5R7	OAF-SBA-NAP	2.53	112.64	106.64
2	B	301[A]	5R7	OAF-SBA-NAP	2.52	112.61	106.64
2	B	301[A]	5R7	OAE-CAR-CAS	2.50	120.52	115.73
2	B	301[B]	5R7	OAE-CAR-CAS	2.50	120.52	115.73
2	B	301[A]	5R7	OAE-CAR-OAH	-2.50	117.95	123.90
2	B	301[B]	5R7	OAE-CAR-OAH	-2.50	117.95	123.90
2	B	301[A]	5R7	CAB-CAU-CAZ	2.50	117.82	113.38
2	B	301[B]	5R7	CAB-CAU-CAZ	2.50	117.82	113.38
2	A	301[A]	5R7	OAF-SBA-NAC	2.46	113.46	108.29
2	A	301[B]	5R7	OAG-SBA-NAP	2.31	112.12	106.64
2	A	301[A]	5R7	OAE-CAR-CAS	2.12	119.80	115.73
2	A	301[B]	5R7	OAE-CAR-CAS	2.12	119.80	115.73

All (2) chirality outliers are listed below:

Mol	Chain	Res	Type	Atom
2	B	301[A]	5R7	CAZ

Continued on next page...

*Continued from previous page...*

Mol	Chain	Res	Type	Atom
2	B	301[B]	5R7	CAZ

All (23) torsion outliers are listed below:

Mol	Chain	Res	Type	Atoms
2	A	301[A]	5R7	OAE-CAR-CAS-NAN
2	A	301[A]	5R7	OAE-CAR-CAS-CAZ
2	A	301[A]	5R7	OAH-CAR-CAS-NAN
2	A	301[A]	5R7	OAH-CAR-CAS-CAZ
2	A	301[B]	5R7	CAL-NAP-SBA-OAF
2	A	301[B]	5R7	OAE-CAR-CAS-NAN
2	A	301[B]	5R7	OAE-CAR-CAS-CAZ
2	A	301[B]	5R7	OAH-CAR-CAS-NAN
2	A	301[B]	5R7	OAH-CAR-CAS-CAZ
2	B	301[A]	5R7	CAV-CAL-NAP-SBA
2	B	301[A]	5R7	CAK-CAW-SAQ-CAZ
2	B	301[A]	5R7	CAU-CAZ-SAQ-CAW
2	B	301[B]	5R7	NAP-CAL-CAV-CAM
2	B	301[B]	5R7	NAP-CAL-CAV-NAO
2	B	301[B]	5R7	CAM-CAW-SAQ-CAZ
2	B	301[B]	5R7	CAU-CAZ-SAQ-CAW
5	B	302	EPE	C10-C9-N1-C6
2	B	301[A]	5R7	CAL-NAP-SBA-OAG
2	B	301[A]	5R7	CAL-NAP-SBA-OAF
2	A	301[A]	5R7	CAU-CAZ-SAQ-CAW
2	A	301[B]	5R7	CAU-CAZ-SAQ-CAW
5	B	302	EPE	C10-C9-N1-C2
3	B	303	EDO	O1-C1-C2-O2

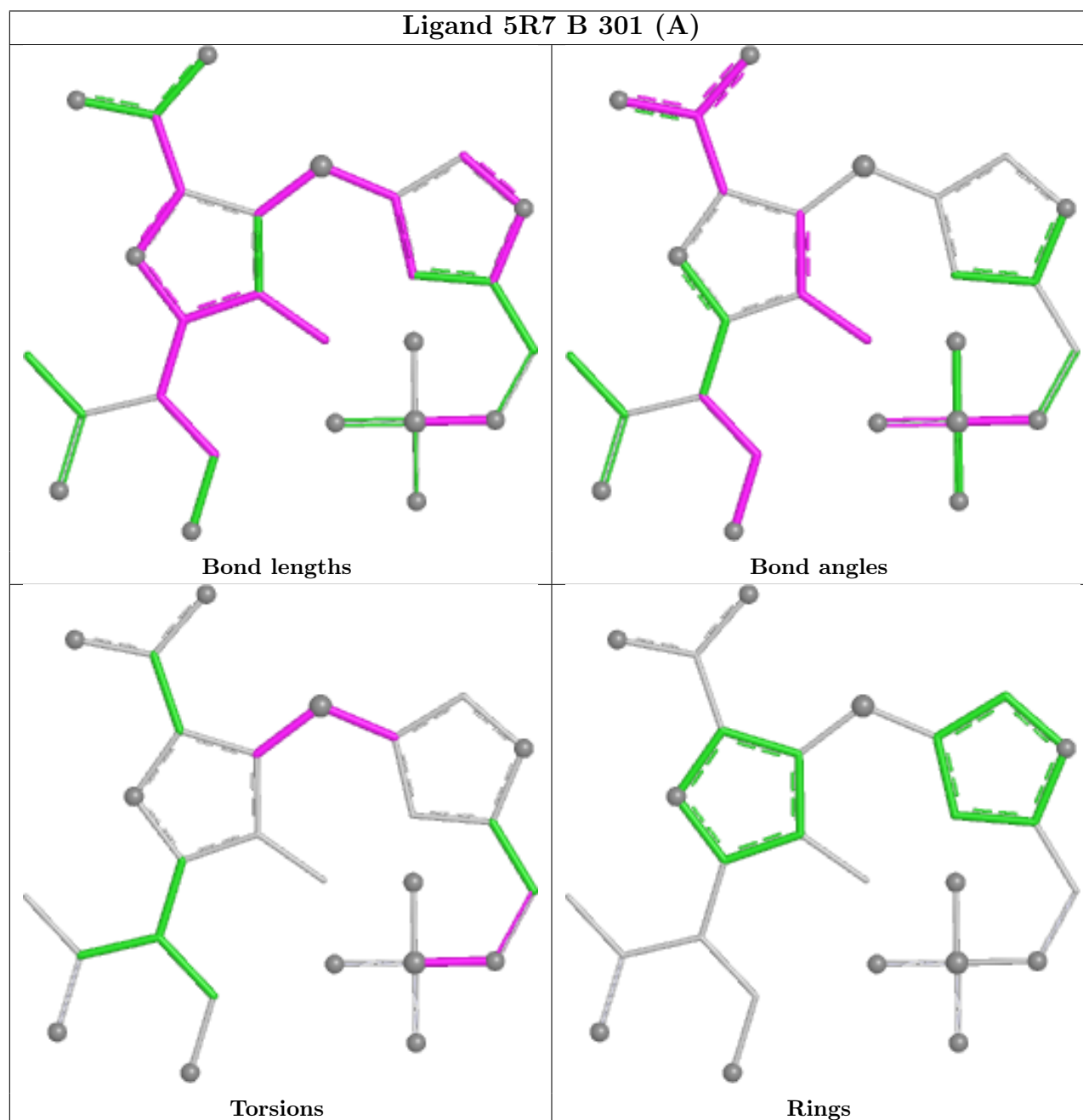
There are no ring outliers.

2 monomers are involved in 4 short contacts:

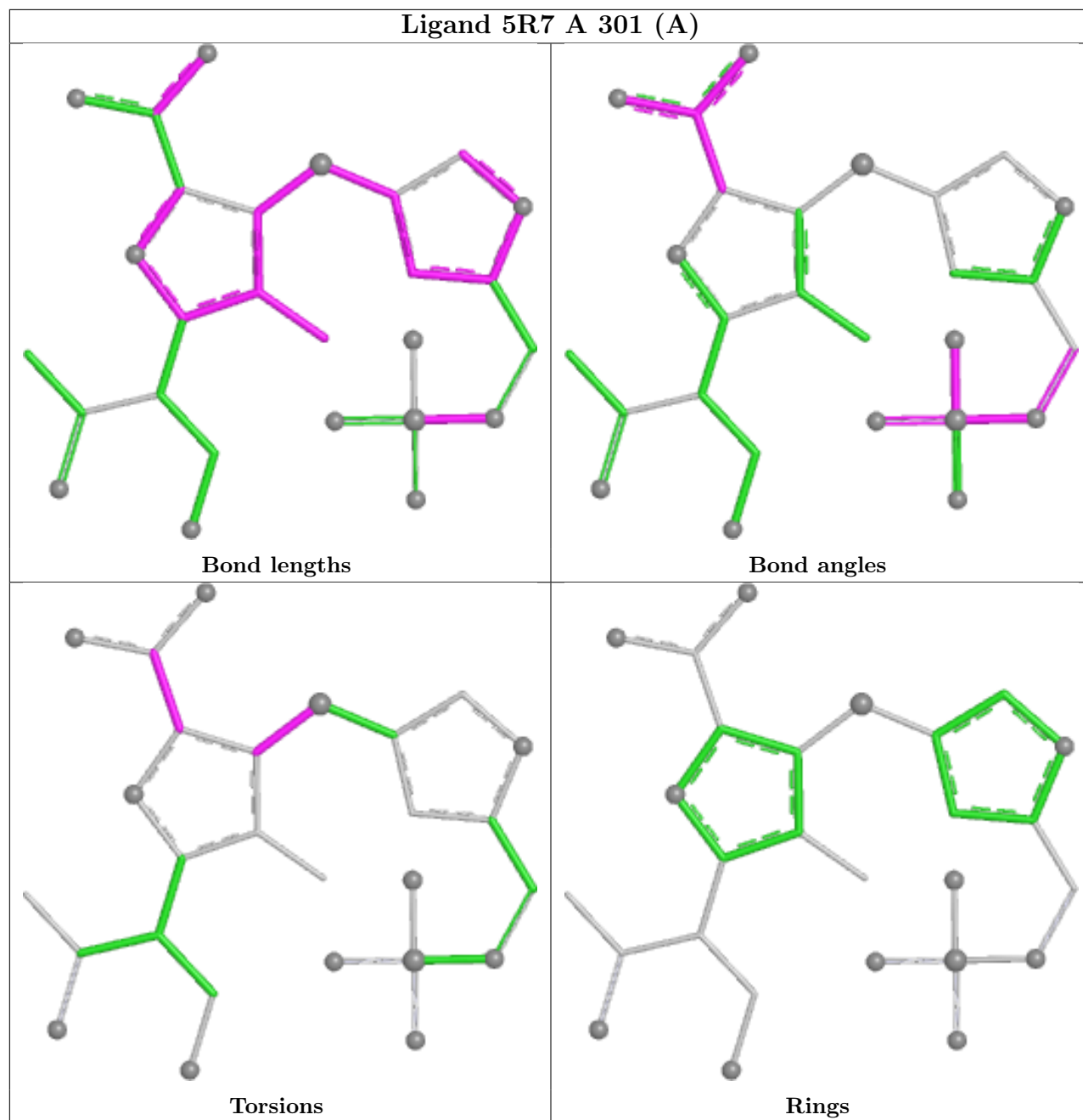
Mol	Chain	Res	Type	Clashes	Symm-Clashes
2	B	301[A]	5R7	1	0
2	B	301[B]	5R7	3	0

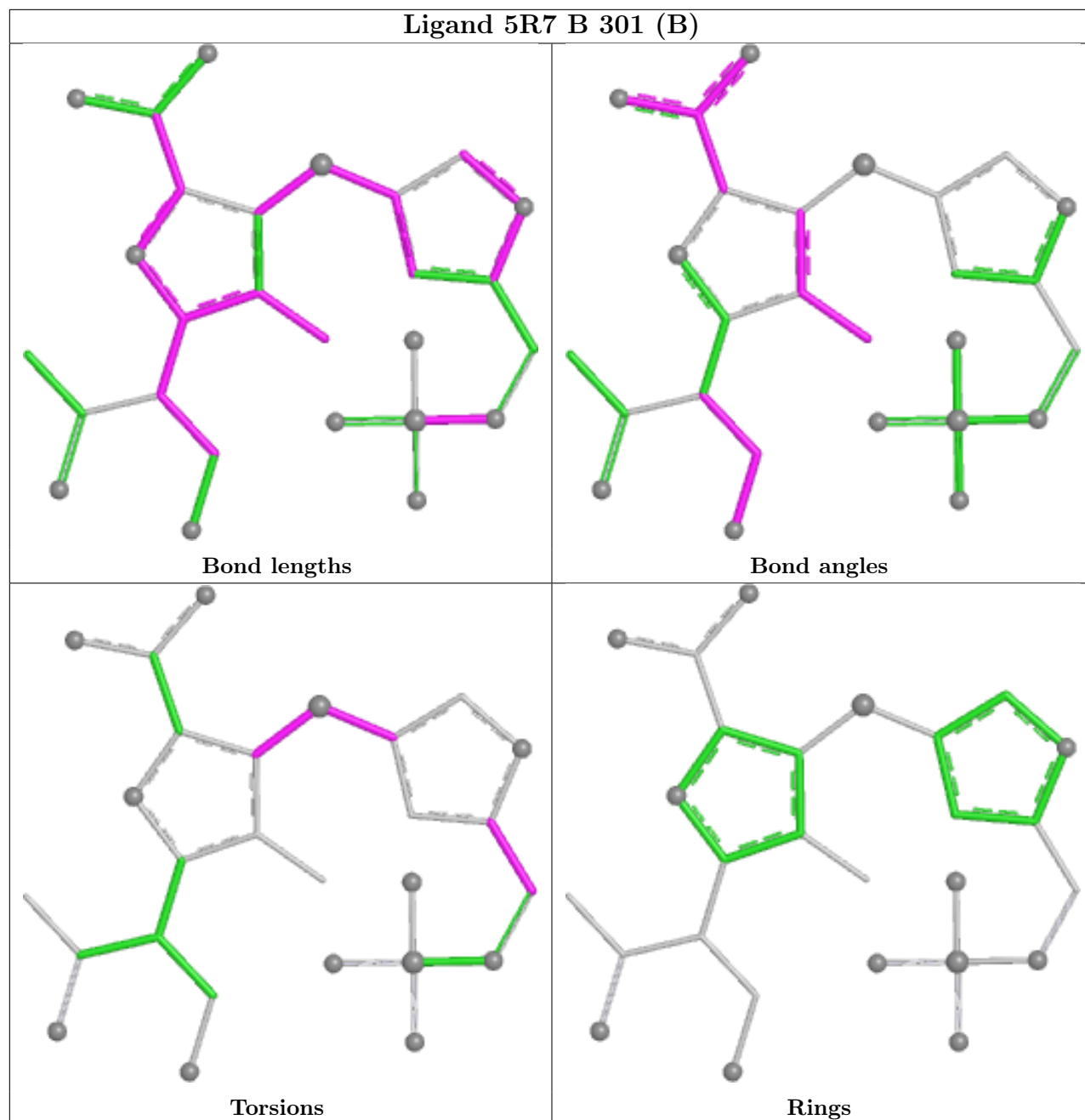
The following is a two-dimensional graphical depiction of Mogul quality analysis of bond lengths, bond angles, torsion angles, and ring geometry for all instances of the Ligand of Interest. In addition, ligands with molecular weight > 250 and outliers as shown on the validation Tables will also be included. For torsion angles, if less than 5% of the Mogul distribution of torsion angles is within 10 degrees of the torsion angle in question, then that torsion angle is considered an outlier. Any bond that is central to one or more torsion angles identified as an outlier by Mogul will be

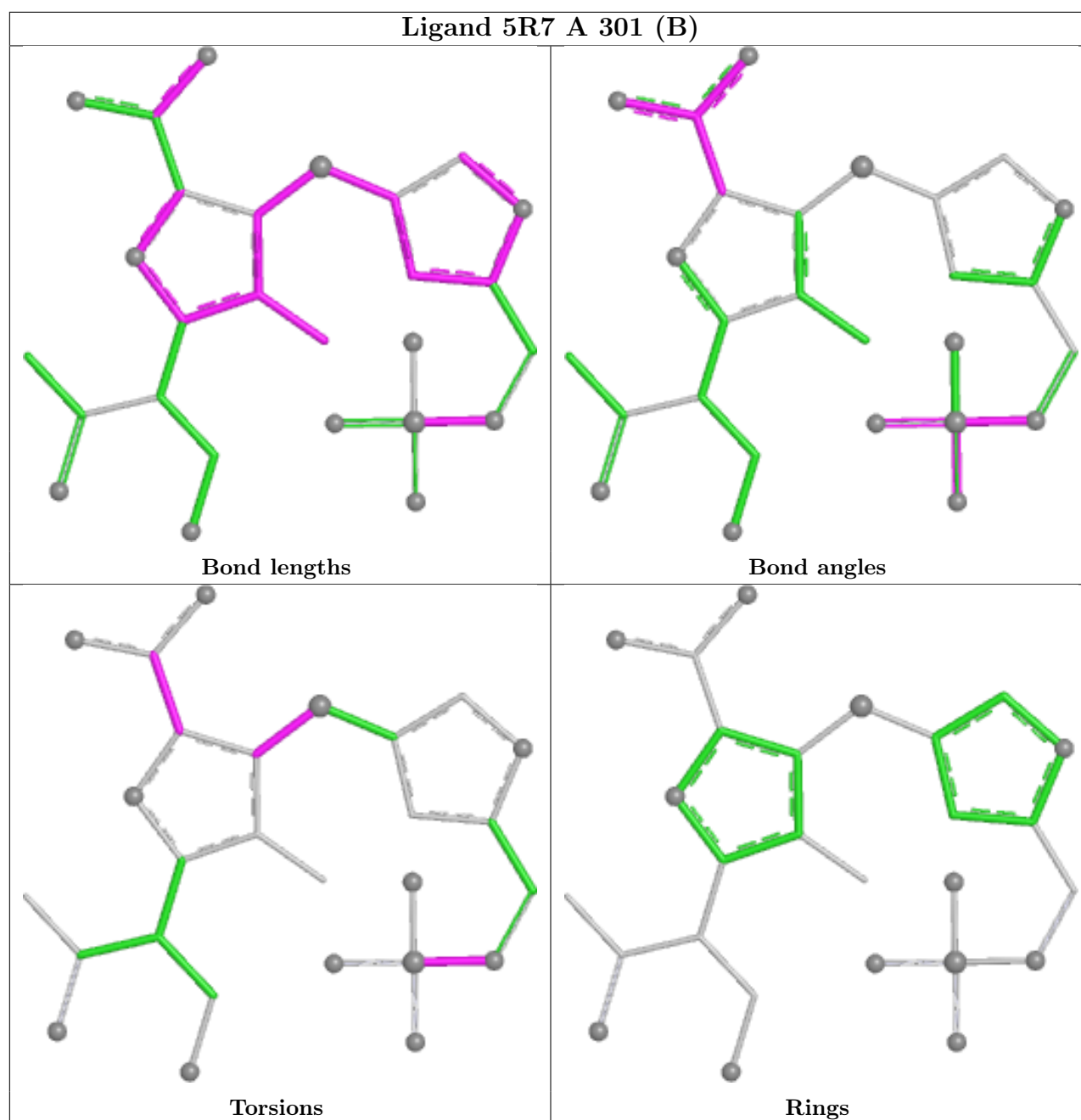
highlighted in the graph. For rings, the root-mean-square deviation (RMSD) between the ring in question and similar rings identified by Mogul is calculated over all ring torsion angles. If the average RMSD is greater than 60 degrees and the minimal RMSD between the ring in question and any Mogul-identified rings is also greater than 60 degrees, then that ring is considered an outlier. The outliers are highlighted in purple. The color gray indicates Mogul did not find sufficient equivalents in the CSD to analyse the geometry.











## 5.7 Other polymers [i](#)

There are no such residues in this entry.

## 5.8 Polymer linkage issues [i](#)

There are no chain breaks in this entry.

## 6 Fit of model and data [i](#)

### 6.1 Protein, DNA and RNA chains [i](#)

In the following table, the column labelled ‘#RSRZ > 2’ contains the number (and percentage) of RSRZ outliers, followed by percent RSRZ outliers for the chain as percentile scores relative to all X-ray entries and entries of similar resolution. The OWAB column contains the minimum, median, 95<sup>th</sup> percentile and maximum values of the occupancy-weighted average B-factor per residue. The column labelled ‘Q < 0.9’ lists the number of (and percentage) of residues with an average occupancy less than 0.9.

Mol	Chain	Analysed	<RSRZ>	#RSRZ>2	OWAB(Å <sup>2</sup> )	Q<0.9
1	A	242/265 (91%)	-0.26	6 (2%) 58 61	5, 12, 30, 55	5 (2%)
1	B	244/265 (92%)	-0.25	6 (2%) 58 61	6, 12, 27, 67	7 (2%)
All	All	486/530 (91%)	-0.26	12 (2%) 58 61	5, 12, 30, 67	12 (2%)

All (12) RSRZ outliers are listed below:

Mol	Chain	Res	Type	RSRZ
1	B	22	ALA	4.8
1	A	25	TRP	3.1
1	B	25	TRP	3.1
1	B	24	GLU	2.9
1	A	149	ILE	2.7
1	A	101	ASP	2.5
1	A	147	GLU	2.3
1	A	24	GLU	2.2
1	B	245	ASP	2.1
1	B	265	PRO	2.0
1	B	93	PHE	2.0
1	A	230	ASP	2.0

### 6.2 Non-standard residues in protein, DNA, RNA chains [i](#)

There are no non-standard protein/DNA/RNA residues in this entry.

### 6.3 Carbohydrates [i](#)

There are no monosaccharides in this entry.

## 6.4 Ligands

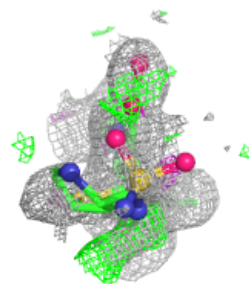
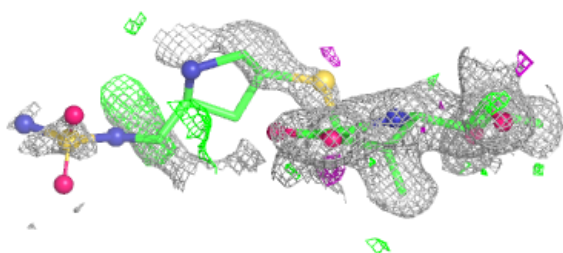
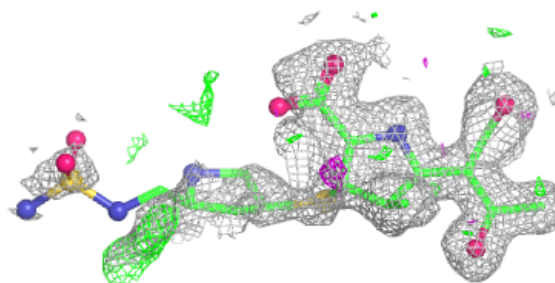
In the following table, the Atoms column lists the number of modelled atoms in the group and the number defined in the chemical component dictionary. The B-factors column lists the minimum, median, 95<sup>th</sup> percentile and maximum values of B factors of atoms in the group. The column labelled 'Q<0.9' lists the number of atoms with occupancy less than 0.9.

Mol	Type	Chain	Res	Atoms	RSCC	RSR	B-factors(Å <sup>2</sup> )	Q<0.9
3	EDO	A	303	4/4	0.88	0.12	30,33,37,43	0
2	5R7	B	301[B]	27/27	0.90	0.17	14,28,41,70	12
2	5R7	B	301[A]	27/27	0.90	0.17	14,37,97,109	12
5	EPE	B	302	15/15	0.90	0.16	26,42,80,85	0
3	EDO	B	303	4/4	0.92	0.11	21,24,27,29	0
3	EDO	A	302	4/4	0.94	0.14	21,23,25,26	0
3	EDO	A	305	4/4	0.95	0.10	20,20,21,24	0
2	5R7	A	301[B]	27/27	0.96	0.10	9,19,53,55	4
2	5R7	A	301[A]	27/27	0.96	0.10	9,19,55,56	4
3	EDO	A	304[A]	4/4	0.98	0.09	17,18,18,20	4
4	CL	B	304	1/1	0.99	0.07	18,18,18,18	0
4	CL	A	306	1/1	0.99	0.04	12,12,12,12	0

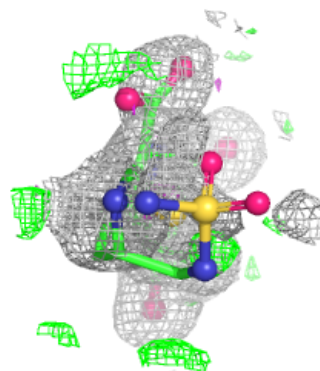
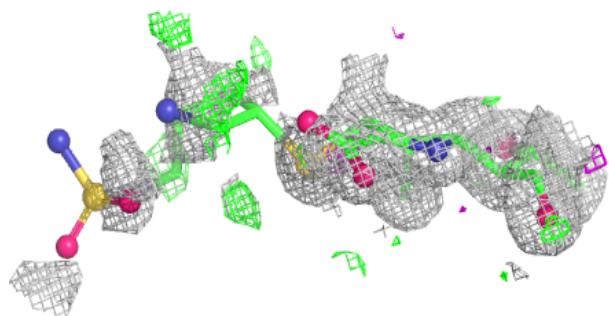
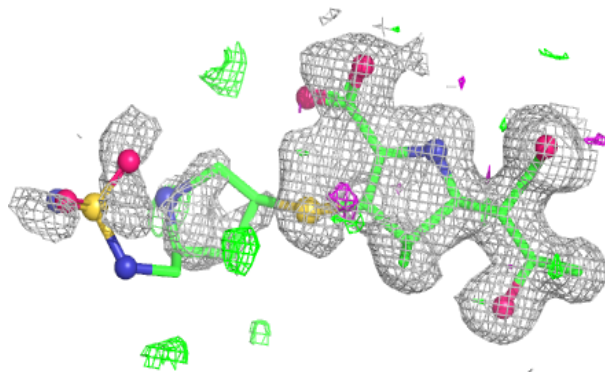
The following is a graphical depiction of the model fit to experimental electron density of all instances of the Ligand of Interest. In addition, ligands with molecular weight > 250 and outliers as shown on the geometry validation Tables will also be included. Each fit is shown from different orientation to approximate a three-dimensional view.

**Electron density around 5R7 B 301 (B):**

$2mF_o-DF_c$  (at 0.7 rmsd) in gray  
 $mF_o-DF_c$  (at 3 rmsd) in purple (negative)  
and green (positive)

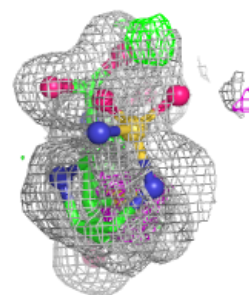
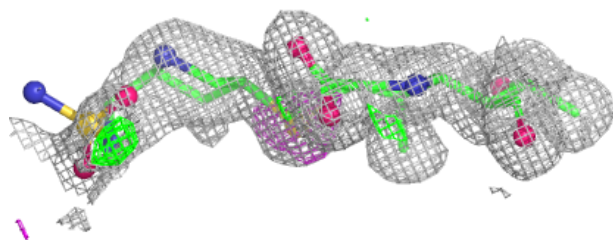
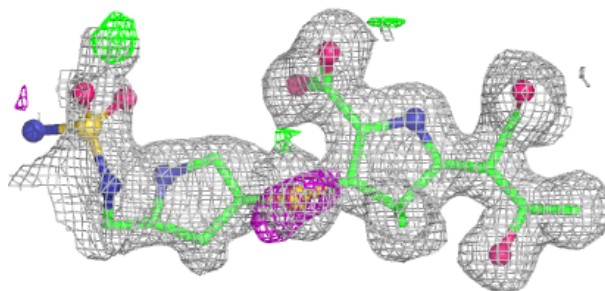
**Electron density around 5R7 B 301 (A):**

$2mF_o-DF_c$  (at 0.7 rmsd) in gray  
 $mF_o-DF_c$  (at 3 rmsd) in purple (negative)  
and green (positive)

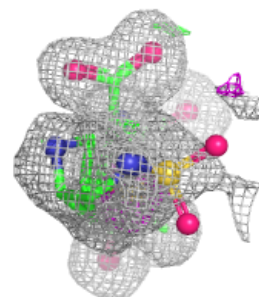
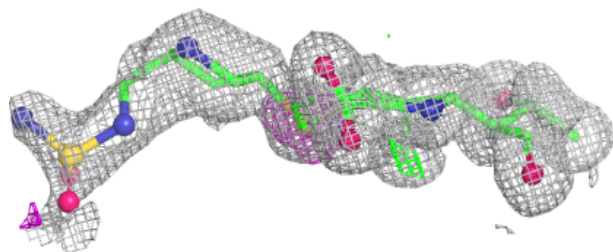
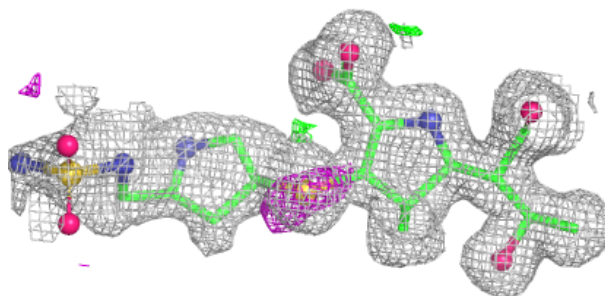


**Electron density around 5R7 A 301 (B):**

$2mF_o-DF_c$  (at 0.7 rmsd) in gray  
 $mF_o-DF_c$  (at 3 rmsd) in purple (negative)  
and green (positive)

**Electron density around 5R7 A 301 (A):**

$2mF_o-DF_c$  (at 0.7 rmsd) in gray  
 $mF_o-DF_c$  (at 3 rmsd) in purple (negative)  
and green (positive)



## 6.5 Other polymers [i](#)

There are no such residues in this entry.