



Full wwPDB EM Validation Report ⓘ

Mar 10, 2024 – 06:36 PM EDT

PDB ID : 6PVM
EMDB ID : EMD-20493
Title : Cryo-EM structure of mouse TRPV3 in putative sensitized state at 42 degrees Celsius
Authors : Singh, A.K.; McGoldrick, L.L.; Sobolevsky, A.I.
Deposited on : 2019-07-21
Resolution : 4.50 Å(reported)

This is a Full wwPDB EM Validation Report for a publicly released PDB entry.

We welcome your comments at validation@mail.wwpdb.org

A user guide is available at

<https://www.wwpdb.org/validation/2017/EMValidationReportHelp>

with specific help available everywhere you see the ⓘ symbol.

The types of validation reports are described at

<http://www.wwpdb.org/validation/2017/FAQs#types>.

The following versions of software and data (see [references ⓘ](#)) were used in the production of this report:

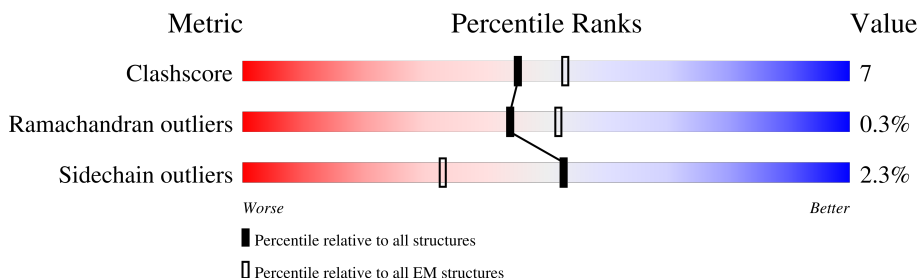
EMDB validation analysis : 0.0.1.dev70
MolProbity : 4.02b-467
Percentile statistics : 20191225.v01 (using entries in the PDB archive December 25th 2019)
MapQ : 1.9.13
Ideal geometry (proteins) : Engh & Huber (2001)
Ideal geometry (DNA, RNA) : Parkinson et al. (1996)
Validation Pipeline (wwPDB-VP) : 2.36

1 Overall quality at a glance

The following experimental techniques were used to determine the structure:
ELECTRON MICROSCOPY

The reported resolution of this entry is 4.50 Å.

Percentile scores (ranging between 0-100) for global validation metrics of the entry are shown in the following graphic. The table shows the number of entries on which the scores are based.



Metric	Whole archive (#Entries)	EM structures (#Entries)
Clashscore	158937	4297
Ramachandran outliers	154571	4023
Sidechain outliers	154315	3826

The table below summarises the geometric issues observed across the polymeric chains and their fit to the map. The red, orange, yellow and green segments of the bar indicate the fraction of residues that contain outliers for ≥ 3 , 2, 1 and 0 types of geometric quality criteria respectively. A grey segment represents the fraction of residues that are not modelled. The numeric value for each fraction is indicated below the corresponding segment, with a dot representing fractions $\leq 5\%$. The upper red bar (where present) indicates the fraction of residues that have poor fit to the EM map (all-atom inclusion $< 40\%$). The numeric value is given above the bar.

Mol	Chain	Length	Quality of chain
1	A	808	
1	B	808	
1	C	808	
1	D	808	

2 Entry composition i

There are 2 unique types of molecules in this entry. The entry contains 21006 atoms, of which 0 are hydrogens and 0 are deuteriums.

In the tables below, the AltConf column contains the number of residues with at least one atom in alternate conformation and the Trace column contains the number of residues modelled with at most 2 atoms.

- Molecule 1 is a protein called Transient receptor potential cation channel subfamily V member 3.

Mol	Chain	Residues	Atoms					AltConf	Trace
			Total	C	N	O	S		
1	A	644	5251	3412	870	938	31	0	0
1	B	644	5251	3412	870	938	31	0	0
1	C	644	5251	3412	870	938	31	0	0
1	D	644	5251	3412	870	938	31	0	0

There are 68 discrepancies between the modelled and reference sequences:

Chain	Residue	Modelled	Actual	Comment	Reference
A	792	LEU	-	expression tag	UNP Q8K424
A	793	VAL	-	expression tag	UNP Q8K424
A	794	PRO	-	expression tag	UNP Q8K424
A	795	ARG	-	expression tag	UNP Q8K424
A	796	GLY	-	expression tag	UNP Q8K424
A	797	SER	-	expression tag	UNP Q8K424
A	798	ALA	-	expression tag	UNP Q8K424
A	799	ALA	-	expression tag	UNP Q8K424
A	800	ALA	-	expression tag	UNP Q8K424
A	801	TRP	-	expression tag	UNP Q8K424
A	802	SER	-	expression tag	UNP Q8K424
A	803	HIS	-	expression tag	UNP Q8K424
A	804	PRO	-	expression tag	UNP Q8K424
A	805	GLN	-	expression tag	UNP Q8K424
A	806	PHE	-	expression tag	UNP Q8K424
A	807	GLU	-	expression tag	UNP Q8K424
A	808	LYS	-	expression tag	UNP Q8K424
B	792	LEU	-	expression tag	UNP Q8K424
B	793	VAL	-	expression tag	UNP Q8K424
B	794	PRO	-	expression tag	UNP Q8K424
B	795	ARG	-	expression tag	UNP Q8K424

Continued on next page...

Continued from previous page...

Chain	Residue	Modelled	Actual	Comment	Reference
B	796	GLY	-	expression tag	UNP Q8K424
B	797	SER	-	expression tag	UNP Q8K424
B	798	ALA	-	expression tag	UNP Q8K424
B	799	ALA	-	expression tag	UNP Q8K424
B	800	ALA	-	expression tag	UNP Q8K424
B	801	TRP	-	expression tag	UNP Q8K424
B	802	SER	-	expression tag	UNP Q8K424
B	803	HIS	-	expression tag	UNP Q8K424
B	804	PRO	-	expression tag	UNP Q8K424
B	805	GLN	-	expression tag	UNP Q8K424
B	806	PHE	-	expression tag	UNP Q8K424
B	807	GLU	-	expression tag	UNP Q8K424
B	808	LYS	-	expression tag	UNP Q8K424
C	792	LEU	-	expression tag	UNP Q8K424
C	793	VAL	-	expression tag	UNP Q8K424
C	794	PRO	-	expression tag	UNP Q8K424
C	795	ARG	-	expression tag	UNP Q8K424
C	796	GLY	-	expression tag	UNP Q8K424
C	797	SER	-	expression tag	UNP Q8K424
C	798	ALA	-	expression tag	UNP Q8K424
C	799	ALA	-	expression tag	UNP Q8K424
C	800	ALA	-	expression tag	UNP Q8K424
C	801	TRP	-	expression tag	UNP Q8K424
C	802	SER	-	expression tag	UNP Q8K424
C	803	HIS	-	expression tag	UNP Q8K424
C	804	PRO	-	expression tag	UNP Q8K424
C	805	GLN	-	expression tag	UNP Q8K424
C	806	PHE	-	expression tag	UNP Q8K424
C	807	GLU	-	expression tag	UNP Q8K424
C	808	LYS	-	expression tag	UNP Q8K424
D	792	LEU	-	expression tag	UNP Q8K424
D	793	VAL	-	expression tag	UNP Q8K424
D	794	PRO	-	expression tag	UNP Q8K424
D	795	ARG	-	expression tag	UNP Q8K424
D	796	GLY	-	expression tag	UNP Q8K424
D	797	SER	-	expression tag	UNP Q8K424
D	798	ALA	-	expression tag	UNP Q8K424
D	799	ALA	-	expression tag	UNP Q8K424
D	800	ALA	-	expression tag	UNP Q8K424
D	801	TRP	-	expression tag	UNP Q8K424
D	802	SER	-	expression tag	UNP Q8K424
D	803	HIS	-	expression tag	UNP Q8K424

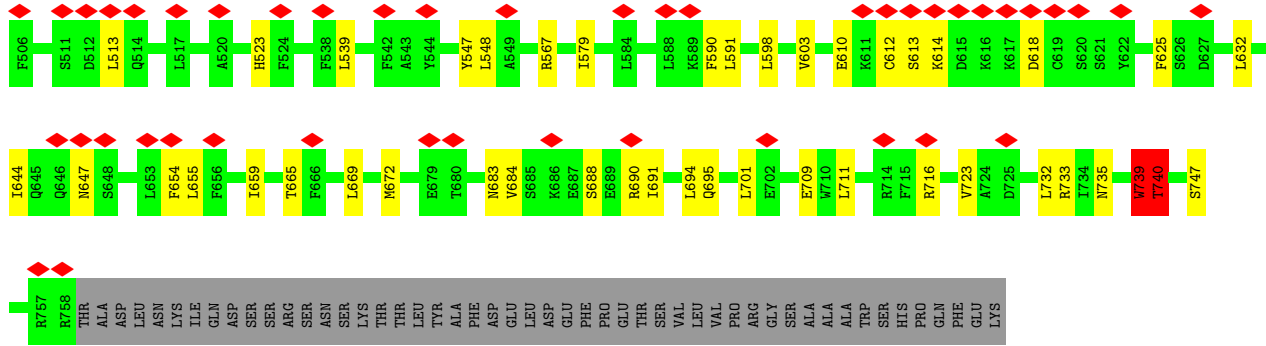
Continued on next page...

Continued from previous page...

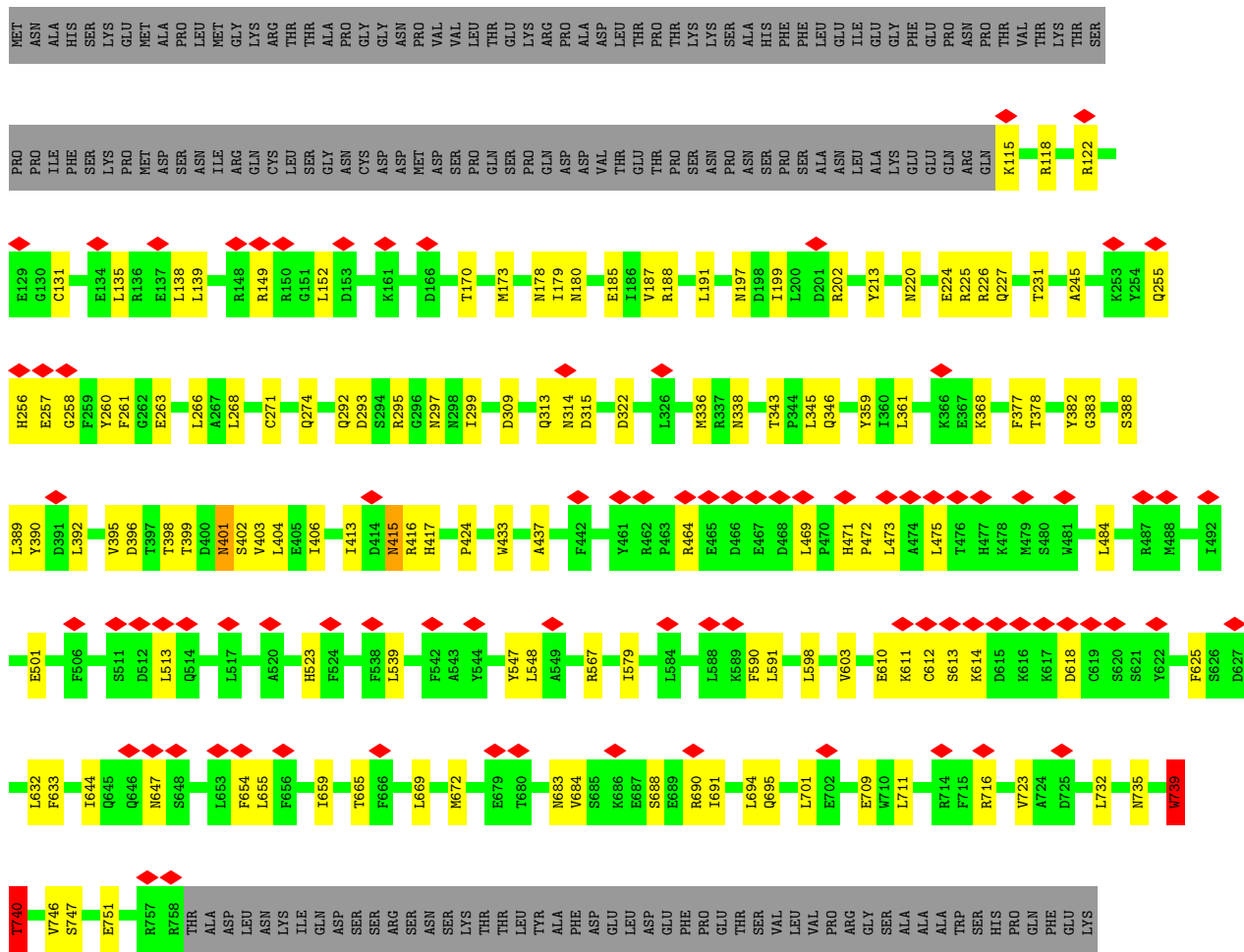
Chain	Residue	Modelled	Actual	Comment	Reference
D	804	PRO	-	expression tag	UNP Q8K424
D	805	GLN	-	expression tag	UNP Q8K424
D	806	PHE	-	expression tag	UNP Q8K424
D	807	GLU	-	expression tag	UNP Q8K424
D	808	LYS	-	expression tag	UNP Q8K424

- Molecule 2 is SODIUM ION (three-letter code: NA) (formula: Na) (labeled as "Ligand of Interest" by depositor).

Mol	Chain	Residues	Atoms	AltConf
2	A	1	Total Na 1 1	0
2	C	1	Total Na 1 1	0



• Molecule 1: Transient receptor potential cation channel subfamily V member 3



4 Experimental information

Property	Value	Source
EM reconstruction method	SINGLE PARTICLE	Depositor
Imposed symmetry	POINT, Not provided	
Number of particles used	50647	Depositor
Resolution determination method	FSC 0.143 CUT-OFF	Depositor
CTF correction method	PHASE FLIPPING AND AMPLITUDE CORRECTION	Depositor
Microscope	FEI TITAN KRIOS	Depositor
Voltage (kV)	300	Depositor
Electron dose ($e^-/\text{\AA}^2$)	57.0	Depositor
Minimum defocus (nm)	Not provided	
Maximum defocus (nm)	Not provided	
Magnification	Not provided	
Image detector	GATAN K2 SUMMIT (4k x 4k)	Depositor
Maximum map value	2.515	Depositor
Minimum map value	-2.779	Depositor
Average map value	0.011	Depositor
Map value standard deviation	0.247	Depositor
Recommended contour level	0.47	Depositor
Map size (Å)	233.19998, 233.19998, 233.19998	wwPDB
Map dimensions	220, 220, 220	wwPDB
Map angles (°)	90.0, 90.0, 90.0	wwPDB
Pixel spacing (Å)	1.06, 1.06, 1.06	Depositor

5 Model quality [i](#)

5.1 Standard geometry [i](#)

Bond lengths and bond angles in the following residue types are not validated in this section: NA

The Z score for a bond length (or angle) is the number of standard deviations the observed value is removed from the expected value. A bond length (or angle) with $|Z| > 5$ is considered an outlier worth inspection. RMSZ is the root-mean-square of all Z scores of the bond lengths (or angles).

Mol	Chain	Bond lengths		Bond angles	
		RMSZ	# Z >5	RMSZ	# Z >5
1	A	0.33	0/5365	0.63	2/7258 (0.0%)
1	B	0.33	0/5365	0.63	2/7258 (0.0%)
1	C	0.33	0/5365	0.63	2/7258 (0.0%)
1	D	0.33	0/5365	0.63	2/7258 (0.0%)
All	All	0.33	0/21460	0.63	8/29032 (0.0%)

Chiral center outliers are detected by calculating the chiral volume of a chiral center and verifying if the center is modelled as a planar moiety or with the opposite hand. A planarity outlier is detected by checking planarity of atoms in a peptide group, atoms in a mainchain group or atoms of a sidechain that are expected to be planar.

Mol	Chain	#Chirality outliers	#Planarity outliers
1	A	0	4
1	B	0	4
1	C	0	4
1	D	0	4
All	All	0	16

There are no bond length outliers.

All (8) bond angle outliers are listed below:

Mol	Chain	Res	Type	Atoms	Z	Observed(°)	Ideal(°)
1	A	469	LEU	CA-CB-CG	6.85	131.06	115.30
1	C	469	LEU	CA-CB-CG	6.85	131.05	115.30
1	B	469	LEU	CA-CB-CG	6.83	131.02	115.30
1	D	469	LEU	CA-CB-CG	6.83	131.02	115.30
1	B	513	LEU	CA-CB-CG	5.12	127.08	115.30
1	D	513	LEU	CA-CB-CG	5.11	127.06	115.30
1	C	513	LEU	CA-CB-CG	5.11	127.05	115.30
1	A	513	LEU	CA-CB-CG	5.10	127.04	115.30

There are no chirality outliers.

All (16) planarity outliers are listed below:

Mol	Chain	Res	Type	Group
1	A	256	HIS	Peptide
1	A	309	ASP	Peptide
1	A	739	TRP	Peptide
1	A	740	THR	Peptide
1	B	256	HIS	Peptide
1	B	309	ASP	Peptide
1	B	739	TRP	Peptide
1	B	740	THR	Peptide
1	C	256	HIS	Peptide
1	C	309	ASP	Peptide
1	C	739	TRP	Peptide
1	C	740	THR	Peptide
1	D	256	HIS	Peptide
1	D	309	ASP	Peptide
1	D	739	TRP	Peptide
1	D	740	THR	Peptide

5.2 Too-close contacts [i](#)

In the following table, the Non-H and H(model) columns list the number of non-hydrogen atoms and hydrogen atoms in the chain respectively. The H(added) column lists the number of hydrogen atoms added and optimized by MolProbity. The Clashes column lists the number of clashes within the asymmetric unit, whereas Symm-Clashes lists symmetry-related clashes.

Mol	Chain	Non-H	H(model)	H(added)	Clashes	Symm-Clashes
1	A	5251	0	5334	79	0
1	B	5251	0	5334	72	0
1	C	5251	0	5334	74	0
1	D	5251	0	5334	78	0
2	A	1	0	0	0	0
2	C	1	0	0	0	0
All	All	21006	0	21336	282	0

The all-atom clashscore is defined as the number of clashes found per 1000 atoms (including hydrogen atoms). The all-atom clashscore for this structure is 7.

All (282) close contacts within the same asymmetric unit are listed below, sorted by their clash magnitude.

Atom-1	Atom-2	Interatomic distance (Å)	Clash overlap (Å)
1:B:433:TRP:HA	1:B:437:ALA:HB3	1.74	0.69
1:C:433:TRP:HA	1:C:437:ALA:HB3	1.74	0.69
1:D:433:TRP:HA	1:D:437:ALA:HB3	1.74	0.69
1:A:433:TRP:HA	1:A:437:ALA:HB3	1.74	0.68
1:A:672:MET:HG3	1:B:579:ILE:HG22	1.78	0.65
1:A:416:ARG:HE	1:A:694:LEU:HD11	1.62	0.65
1:B:416:ARG:HE	1:B:694:LEU:HD11	1.62	0.65
1:C:416:ARG:HE	1:C:694:LEU:HD11	1.62	0.65
1:D:416:ARG:HE	1:D:694:LEU:HD11	1.62	0.65
1:D:709:GLU:HG3	1:D:711:LEU:H	1.62	0.65
1:C:709:GLU:HG3	1:C:711:LEU:H	1.62	0.65
1:A:709:GLU:HG3	1:A:711:LEU:H	1.62	0.64
1:B:709:GLU:HG3	1:B:711:LEU:H	1.62	0.64
1:A:313:GLN:HG2	1:A:315:ASP:H	1.64	0.63
1:C:131:CYS:SG	1:C:180:ASN:ND2	2.72	0.63
1:B:131:CYS:SG	1:B:180:ASN:ND2	2.72	0.62
1:B:313:GLN:HG2	1:B:315:ASP:H	1.64	0.62
1:A:131:CYS:SG	1:A:180:ASN:ND2	2.72	0.62
1:D:131:CYS:SG	1:D:180:ASN:ND2	2.72	0.62
1:A:612:CYS:SG	1:A:613:SER:N	2.71	0.62
1:C:313:GLN:HG2	1:C:315:ASP:H	1.64	0.62
1:D:313:GLN:HG2	1:D:315:ASP:H	1.64	0.61
1:B:612:CYS:SG	1:B:613:SER:N	2.71	0.61
1:D:612:CYS:SG	1:D:613:SER:N	2.71	0.60
1:A:751:GLU:OE1	1:D:213:TYR:OH	2.15	0.60
1:B:672:MET:HG3	1:C:579:ILE:HG22	1.85	0.59
1:C:610:GLU:HA	1:C:614:LYS:HD3	1.84	0.59
1:D:610:GLU:HA	1:D:614:LYS:HD3	1.84	0.59
1:C:392:LEU:HD11	1:C:396:ASP:HB2	1.85	0.59
1:B:610:GLU:HA	1:B:614:LYS:HD3	1.84	0.58
1:D:392:LEU:HD11	1:D:396:ASP:HB2	1.85	0.58
1:C:612:CYS:SG	1:C:613:SER:N	2.71	0.58
1:A:610:GLU:HA	1:A:614:LYS:HD3	1.84	0.58
1:A:392:LEU:HD11	1:A:396:ASP:HB2	1.85	0.57
1:B:392:LEU:HD11	1:B:396:ASP:HB2	1.85	0.57
1:B:567:ARG:NH2	1:B:695:GLN:OE1	2.37	0.57
1:C:567:ARG:NH2	1:C:695:GLN:OE1	2.37	0.57
1:B:644:ILE:HG21	1:B:655:LEU:HD21	1.87	0.57
1:D:644:ILE:HG21	1:D:655:LEU:HD21	1.87	0.57
1:A:149:ARG:HB2	1:A:152:LEU:HD22	1.87	0.57
1:A:644:ILE:HG21	1:A:655:LEU:HD21	1.87	0.57
1:B:149:ARG:HB2	1:B:152:LEU:HD22	1.86	0.57

Continued on next page...

Continued from previous page...

Atom-1	Atom-2	Interatomic distance (Å)	Clash overlap (Å)
1:C:644:ILE:HG21	1:C:655:LEU:HD21	1.87	0.57
1:B:475:LEU:HD13	1:B:484:LEU:HD22	1.87	0.57
1:A:413:ILE:HG22	1:A:415:ASN:H	1.70	0.57
1:C:417:HIS:HB2	1:C:690:ARG:HB3	1.86	0.56
1:A:567:ARG:NH2	1:A:695:GLN:OE1	2.37	0.56
1:D:567:ARG:NH2	1:D:695:GLN:OE1	2.37	0.56
1:D:413:ILE:HG22	1:D:415:ASN:H	1.70	0.56
1:A:417:HIS:HB2	1:A:690:ARG:HB3	1.87	0.56
1:A:475:LEU:HD13	1:A:484:LEU:HD22	1.87	0.56
1:A:611:LYS:NZ	1:B:468:ASP:OD2	2.32	0.56
1:C:475:LEU:HD13	1:C:484:LEU:HD22	1.87	0.56
1:B:413:ILE:HG22	1:B:415:ASN:H	1.70	0.56
1:D:417:HIS:HB2	1:D:690:ARG:HB3	1.86	0.56
1:D:149:ARG:HB2	1:D:152:LEU:HD22	1.87	0.56
1:C:149:ARG:HB2	1:C:152:LEU:HD22	1.87	0.55
1:B:417:HIS:HB2	1:B:690:ARG:HB3	1.87	0.55
1:B:185:GLU:OE1	1:B:188:ARG:NH1	2.40	0.55
1:C:185:GLU:OE1	1:C:188:ARG:NH1	2.40	0.55
1:D:475:LEU:HD13	1:D:484:LEU:HD22	1.87	0.55
1:A:185:GLU:OE1	1:A:188:ARG:NH1	2.40	0.55
1:A:266:LEU:HG	1:A:299:ILE:HD12	1.89	0.55
1:C:266:LEU:HG	1:C:299:ILE:HD12	1.89	0.54
1:C:413:ILE:HG22	1:C:415:ASN:H	1.70	0.54
1:C:224:GLU:OE2	1:D:383:GLY:N	2.39	0.54
1:D:266:LEU:HG	1:D:299:ILE:HD12	1.89	0.54
1:A:392:LEU:HD12	1:A:395:VAL:HB	1.89	0.54
1:B:392:LEU:HD12	1:B:395:VAL:HB	1.90	0.54
1:B:266:LEU:HG	1:B:299:ILE:HD12	1.89	0.54
1:C:260:TYR:OH	1:C:297:ASN:ND2	2.33	0.54
1:B:224:GLU:OE2	1:C:383:GLY:N	2.40	0.54
1:D:185:GLU:OE1	1:D:188:ARG:NH1	2.40	0.54
1:D:392:LEU:HD12	1:D:395:VAL:HB	1.89	0.54
1:A:579:ILE:HG22	1:D:672:MET:HG3	1.89	0.53
1:B:292:GLN:NE2	1:B:336:MET:SD	2.80	0.53
1:A:395:VAL:HA	1:A:403:VAL:HG22	1.91	0.53
1:B:395:VAL:HA	1:B:403:VAL:HG22	1.91	0.53
1:C:213:TYR:OH	1:D:751:GLU:OE1	2.23	0.53
1:D:395:VAL:HA	1:D:403:VAL:HG22	1.91	0.53
1:C:392:LEU:HD12	1:C:395:VAL:HB	1.90	0.53
1:D:297:ASN:OD1	1:D:338:ASN:ND2	2.40	0.53
1:B:377:PHE:HB2	1:B:389:LEU:HD22	1.92	0.52

Continued on next page...

Continued from previous page...

Atom-1	Atom-2	Interatomic distance (Å)	Clash overlap (Å)
1:A:297:ASN:OD1	1:A:338:ASN:ND2	2.40	0.52
1:A:377:PHE:HB2	1:A:389:LEU:HD22	1.92	0.52
1:C:377:PHE:HB2	1:C:389:LEU:HD22	1.92	0.52
1:D:377:PHE:HB2	1:D:389:LEU:HD22	1.92	0.52
1:B:464:ARG:HH12	1:B:548:LEU:HG	1.75	0.52
1:C:395:VAL:HA	1:C:403:VAL:HG22	1.91	0.52
1:B:260:TYR:OH	1:B:297:ASN:ND2	2.33	0.52
1:A:292:GLN:NE2	1:A:336:MET:SD	2.80	0.52
1:C:149:ARG:HG3	1:C:152:LEU:HD13	1.92	0.52
1:D:260:TYR:OH	1:D:297:ASN:ND2	2.33	0.51
1:C:464:ARG:HH12	1:C:548:LEU:HG	1.75	0.51
1:C:292:GLN:NE2	1:C:336:MET:SD	2.80	0.51
1:D:464:ARG:HH12	1:D:548:LEU:HG	1.75	0.51
1:A:464:ARG:HH12	1:A:548:LEU:HG	1.75	0.51
1:B:388:SER:HB2	1:B:735:ASN:HB2	1.93	0.51
1:D:149:ARG:HG3	1:D:152:LEU:HD13	1.92	0.51
1:C:170:THR:H	1:C:173:MET:HE2	1.76	0.51
1:D:388:SER:HB2	1:D:735:ASN:HB2	1.93	0.51
1:B:170:THR:H	1:B:173:MET:HE2	1.76	0.50
1:A:213:TYR:OH	1:B:751:GLU:OE1	2.25	0.50
1:A:388:SER:HB2	1:A:735:ASN:HB2	1.93	0.50
1:B:149:ARG:HG3	1:B:152:LEU:HD13	1.92	0.50
1:A:260:TYR:OH	1:A:297:ASN:ND2	2.33	0.50
1:A:598:LEU:HD12	1:A:632:LEU:HD23	1.94	0.50
1:C:389:LEU:HD21	1:C:732:LEU:HD13	1.94	0.50
1:A:170:THR:H	1:A:173:MET:HE2	1.76	0.50
1:B:684:VAL:O	1:B:688:SER:N	2.45	0.50
1:C:388:SER:HB2	1:C:735:ASN:HB2	1.93	0.50
1:B:688:SER:HA	1:B:691:ILE:HG12	1.94	0.50
1:A:149:ARG:HG3	1:A:152:LEU:HD13	1.92	0.49
1:C:688:SER:HA	1:C:691:ILE:HG12	1.94	0.49
1:B:389:LEU:HD21	1:B:732:LEU:HD13	1.94	0.49
1:D:389:LEU:HD21	1:D:732:LEU:HD13	1.94	0.49
1:C:297:ASN:OD1	1:C:338:ASN:ND2	2.40	0.49
1:C:684:VAL:O	1:C:688:SER:N	2.45	0.49
1:A:431:THR:HG1	1:A:733:ARG:HH22	1.59	0.49
1:A:688:SER:HA	1:A:691:ILE:HG12	1.94	0.49
1:D:170:THR:H	1:D:173:MET:HE2	1.76	0.49
1:A:389:LEU:HD21	1:A:732:LEU:HD13	1.94	0.49
1:C:672:MET:HG3	1:D:579:ILE:HG22	1.94	0.49
1:B:297:ASN:OD1	1:B:338:ASN:ND2	2.40	0.49

Continued on next page...

Continued from previous page...

Atom-1	Atom-2	Interatomic distance (Å)	Clash overlap (Å)
1:D:292:GLN:NE2	1:D:336:MET:SD	2.80	0.49
1:D:598:LEU:HD12	1:D:632:LEU:HD23	1.94	0.49
1:A:684:VAL:O	1:A:688:SER:N	2.45	0.49
1:C:598:LEU:HD12	1:C:632:LEU:HD23	1.94	0.48
1:D:684:VAL:O	1:D:688:SER:N	2.45	0.48
1:A:224:GLU:OE2	1:B:383:GLY:N	2.45	0.48
1:A:402:SER:OG	1:A:403:VAL:N	2.47	0.48
1:C:346:GLN:NE2	1:C:401:ASN:O	2.47	0.48
1:B:598:LEU:HD12	1:B:632:LEU:HD23	1.94	0.48
1:A:383:GLY:N	1:D:224:GLU:OE2	2.46	0.48
1:A:346:GLN:NE2	1:A:401:ASN:O	2.47	0.48
1:D:402:SER:OG	1:D:403:VAL:N	2.47	0.48
1:B:402:SER:OG	1:B:403:VAL:N	2.47	0.47
1:D:644:ILE:HD11	1:D:654:PHE:HE2	1.80	0.47
1:D:688:SER:HA	1:D:691:ILE:HG12	1.94	0.47
1:A:644:ILE:HD11	1:A:654:PHE:HE2	1.80	0.47
1:B:346:GLN:NE2	1:B:401:ASN:O	2.47	0.47
1:B:644:ILE:HD11	1:B:654:PHE:HE2	1.80	0.47
1:C:644:ILE:HD11	1:C:654:PHE:HE2	1.79	0.47
1:D:346:GLN:NE2	1:D:401:ASN:O	2.47	0.47
1:C:199:ILE:HD11	1:C:202:ARG:HD3	1.97	0.47
1:A:501:GLU:OE1	1:A:523:HIS:ND1	2.39	0.47
1:B:199:ILE:HD11	1:B:202:ARG:HD3	1.97	0.47
1:C:402:SER:OG	1:C:403:VAL:N	2.47	0.47
1:D:199:ILE:HD11	1:D:202:ARG:HD3	1.97	0.47
1:D:361:LEU:HB3	1:D:424:PRO:HG2	1.97	0.47
1:B:361:LEU:HB3	1:B:424:PRO:HG2	1.97	0.46
1:B:611:LYS:NZ	1:C:468:ASP:OD2	2.43	0.46
1:A:260:TYR:CZ	1:A:295:ARG:HD2	2.51	0.46
1:B:260:TYR:CZ	1:B:295:ARG:HD2	2.51	0.46
1:C:260:TYR:CZ	1:C:295:ARG:HD2	2.51	0.46
1:A:199:ILE:HD11	1:A:202:ARG:HD3	1.97	0.46
1:A:361:LEU:HB3	1:A:424:PRO:HG2	1.97	0.46
1:B:268:LEU:HA	1:B:271:CYS:HB3	1.98	0.46
1:B:539:LEU:HD13	1:B:547:TYR:HA	1.98	0.45
1:C:343:THR:HG22	1:C:345:LEU:H	1.80	0.45
1:A:268:LEU:HA	1:A:271:CYS:HB3	1.98	0.45
1:C:539:LEU:HD13	1:C:547:TYR:HA	1.98	0.45
1:C:361:LEU:HB3	1:C:424:PRO:HG2	1.97	0.45
1:D:260:TYR:CZ	1:D:295:ARG:HD2	2.51	0.45
1:D:268:LEU:HA	1:D:271:CYS:HB3	1.98	0.45

Continued on next page...

Continued from previous page...

Atom-1	Atom-2	Interatomic distance (Å)	Clash overlap (Å)
1:B:343:THR:HG22	1:B:345:LEU:H	1.80	0.45
1:C:659:ILE:HD12	1:D:633:PHE:CE2	2.51	0.45
1:D:343:THR:HG22	1:D:345:LEU:H	1.80	0.45
1:D:378:THR:OG1	1:D:747:SER:O	2.35	0.45
1:A:343:THR:HG22	1:A:345:LEU:H	1.81	0.45
1:A:739:TRP:HB3	1:A:740:THR:H	1.57	0.45
1:B:216:GLN:HE22	1:C:382:TYR:HE1	1.65	0.45
1:B:378:THR:OG1	1:B:747:SER:O	2.35	0.45
1:C:268:LEU:HA	1:C:271:CYS:HB3	1.98	0.45
1:A:539:LEU:HD13	1:A:547:TYR:HA	1.98	0.45
1:C:216:GLN:HE22	1:D:382:TYR:HE1	1.65	0.44
1:D:501:GLU:OE1	1:D:523:HIS:ND1	2.39	0.44
1:D:539:LEU:HD13	1:D:547:TYR:HA	1.98	0.44
1:B:261:PHE:CD2	1:B:268:LEU:HB3	2.53	0.44
1:D:261:PHE:CD2	1:D:268:LEU:HB3	2.53	0.44
1:D:322:ASP:OD1	1:D:359:TYR:OH	2.35	0.44
1:A:261:PHE:CD2	1:A:268:LEU:HB3	2.53	0.44
1:A:378:THR:OG1	1:A:747:SER:O	2.35	0.44
1:A:746:VAL:HG22	1:D:179:ILE:HD11	1.99	0.44
1:A:307:ALA:H	1:A:353:LYS:HZ1	1.66	0.44
1:A:322:ASP:OD1	1:A:359:TYR:OH	2.35	0.44
1:B:293:ASP:HB2	1:B:297:ASN:H	1.83	0.44
1:C:322:ASP:OD1	1:C:359:TYR:OH	2.35	0.44
1:A:293:ASP:HB2	1:A:297:ASN:H	1.83	0.43
1:C:343:THR:HB	1:C:346:GLN:HG2	2.00	0.43
1:C:378:THR:OG1	1:C:747:SER:O	2.35	0.43
1:B:226:ARG:NE	1:B:274:GLN:OE1	2.51	0.43
1:B:245:ALA:H	1:B:263:GLU:HB2	1.83	0.43
1:B:322:ASP:OD1	1:B:359:TYR:OH	2.35	0.43
1:D:226:ARG:NE	1:D:274:GLN:OE1	2.51	0.43
1:A:245:ALA:H	1:A:263:GLU:HB2	1.83	0.43
1:A:633:PHE:CE2	1:D:659:ILE:HD12	2.53	0.43
1:B:473:LEU:HD13	1:B:475:LEU:H	1.84	0.43
1:C:226:ARG:NE	1:C:274:GLN:OE1	2.51	0.43
1:C:665:THR:HG22	1:C:669:LEU:HB2	2.01	0.43
1:C:739:TRP:HB3	1:C:740:THR:H	1.57	0.43
1:A:343:THR:HB	1:A:346:GLN:HG2	2.00	0.43
1:B:343:THR:HB	1:B:346:GLN:HG2	2.00	0.43
1:D:665:THR:HG22	1:D:669:LEU:HB2	2.01	0.43
1:A:226:ARG:NE	1:A:274:GLN:OE1	2.51	0.43
1:B:212:ALA:O	1:B:248:VAL:N	2.43	0.43

Continued on next page...

Continued from previous page...

Atom-1	Atom-2	Interatomic distance (Å)	Clash overlap (Å)
1:A:404:LEU:HG	1:A:701:LEU:HD11	2.01	0.43
1:A:135:LEU:O	1:A:139:LEU:N	2.52	0.43
1:A:473:LEU:HD13	1:A:475:LEU:H	1.84	0.43
1:B:665:THR:HG22	1:B:669:LEU:HB2	2.01	0.43
1:C:135:LEU:O	1:C:139:LEU:N	2.52	0.43
1:A:665:THR:HG22	1:A:669:LEU:HB2	2.01	0.43
1:A:736:GLU:HG3	1:D:255:GLN:HA	2.01	0.43
1:C:473:LEU:HD13	1:C:475:LEU:H	1.84	0.43
1:C:261:PHE:CD2	1:C:268:LEU:HB3	2.53	0.43
1:C:245:ALA:H	1:C:263:GLU:HB2	1.83	0.42
1:C:404:LEU:HG	1:C:701:LEU:HD11	2.00	0.42
1:D:343:THR:HB	1:D:346:GLN:HG2	2.00	0.42
1:B:403:VAL:HA	1:B:406:ILE:HG22	2.02	0.42
1:B:307:ALA:H	1:B:353:LYS:HZ1	1.67	0.42
1:D:403:VAL:HA	1:D:406:ILE:HG22	2.01	0.42
1:B:431:THR:HG1	1:B:733:ARG:HH22	1.58	0.42
1:A:187:VAL:O	1:A:191:LEU:N	2.51	0.42
1:A:471:HIS:CD2	1:A:472:PRO:HD2	2.55	0.42
1:B:404:LEU:HG	1:B:701:LEU:HD11	2.00	0.42
1:C:293:ASP:HB2	1:C:297:ASN:H	1.83	0.42
1:C:501:GLU:OE1	1:C:523:HIS:ND1	2.39	0.42
1:D:473:LEU:HD13	1:D:475:LEU:H	1.84	0.42
1:B:471:HIS:CD2	1:B:472:PRO:HD2	2.55	0.42
1:C:257:GLU:HG2	1:C:258:GLY:H	1.85	0.42
1:D:245:ALA:H	1:D:263:GLU:HB2	1.83	0.42
1:A:212:ALA:O	1:A:248:VAL:N	2.43	0.42
1:A:257:GLU:HG2	1:A:258:GLY:H	1.85	0.42
1:B:257:GLU:HG2	1:B:258:GLY:H	1.85	0.42
1:B:501:GLU:OE1	1:B:523:HIS:ND1	2.39	0.42
1:C:122:ARG:HD3	1:C:138:LEU:HD13	2.02	0.42
1:D:404:LEU:HG	1:D:701:LEU:HD11	2.00	0.42
1:B:613:SER:HA	1:B:618:ASP:HB3	2.02	0.42
1:D:293:ASP:HB2	1:D:297:ASN:H	1.83	0.42
1:A:603:VAL:HA	1:A:625:PHE:HE1	1.86	0.41
1:D:135:LEU:O	1:D:139:LEU:N	2.52	0.41
1:D:471:HIS:CD2	1:D:472:PRO:HD2	2.55	0.41
1:A:403:VAL:HA	1:A:406:ILE:HG22	2.02	0.41
1:C:590:PHE:HD2	1:C:591:LEU:HD22	1.86	0.41
1:C:613:SER:HA	1:C:618:ASP:HB3	2.02	0.41
1:D:603:VAL:HA	1:D:625:PHE:HE1	1.86	0.41
1:A:473:LEU:HD22	1:A:475:LEU:HD23	2.03	0.41

Continued on next page...

Continued from previous page...

Atom-1	Atom-2	Interatomic distance (Å)	Clash overlap (Å)
1:B:122:ARG:HD3	1:B:138:LEU:HD13	2.02	0.41
1:D:590:PHE:HD2	1:D:591:LEU:HD22	1.85	0.41
1:A:122:ARG:HD3	1:A:138:LEU:HD13	2.02	0.41
1:A:199:ILE:HD12	1:A:199:ILE:HA	1.95	0.41
1:D:739:TRP:HB3	1:D:740:THR:H	1.57	0.41
1:B:590:PHE:HD2	1:B:591:LEU:HD22	1.86	0.41
1:C:431:THR:HG1	1:C:733:ARG:HH22	1.61	0.41
1:B:473:LEU:HD22	1:B:475:LEU:HD23	2.03	0.41
1:B:603:VAL:HA	1:B:625:PHE:HE1	1.85	0.41
1:C:471:HIS:CD2	1:C:472:PRO:HD2	2.55	0.41
1:D:473:LEU:HD22	1:D:475:LEU:HD23	2.03	0.41
1:A:468:ASP:OD2	1:D:611:LYS:NZ	2.51	0.41
1:A:590:PHE:HD2	1:A:591:LEU:HD22	1.86	0.41
1:C:179:ILE:HD11	1:D:746:VAL:HG22	2.03	0.41
1:C:403:VAL:HA	1:C:406:ILE:HG22	2.02	0.41
1:A:176:LEU:HD23	1:A:176:LEU:HA	1.89	0.41
1:C:390:TYR:CG	1:C:424:PRO:HG3	2.56	0.41
1:C:603:VAL:HA	1:C:625:PHE:HE1	1.86	0.41
1:D:122:ARG:HD3	1:D:138:LEU:HD13	2.02	0.41
1:D:613:SER:HA	1:D:618:ASP:HB3	2.02	0.41
1:B:650:TYR:HA	1:B:651:PRO:HD3	1.94	0.40
1:A:398:THR:HG23	1:A:399:THR:HG23	2.04	0.40
1:A:613:SER:HA	1:A:618:ASP:HB3	2.02	0.40
1:B:398:THR:HG23	1:B:399:THR:HG23	2.04	0.40
1:C:224:GLU:OE1	1:C:225:ARG:NH2	2.54	0.40
1:C:398:THR:HG23	1:C:399:THR:HG23	2.04	0.40
1:C:473:LEU:HD22	1:C:475:LEU:HD23	2.03	0.40
1:D:227:GLN:O	1:D:231:THR:OG1	2.31	0.40
1:D:390:TYR:CG	1:D:424:PRO:HG3	2.56	0.40
1:A:224:GLU:OE1	1:A:225:ARG:NH2	2.54	0.40
1:B:426:HIS:HE1	1:B:693:ARG:HH22	1.69	0.40
1:D:187:VAL:O	1:D:191:LEU:N	2.51	0.40
1:D:224:GLU:OE1	1:D:225:ARG:NH2	2.54	0.40
1:D:257:GLU:HG2	1:D:258:GLY:H	1.85	0.40
1:D:398:THR:HG23	1:D:399:THR:HG23	2.04	0.40

There are no symmetry-related clashes.

5.3 Torsion angles [i](#)

5.3.1 Protein backbone [i](#)

In the following table, the Percentiles column shows the percent Ramachandran outliers of the chain as a percentile score with respect to all PDB entries followed by that with respect to all EM entries.

The Analysed column shows the number of residues for which the backbone conformation was analysed, and the total number of residues.

Mol	Chain	Analysed	Favoured	Allowed	Outliers	Percentiles	
1	A	642/808 (80%)	540 (84%)	100 (16%)	2 (0%)	41	76
1	B	642/808 (80%)	540 (84%)	100 (16%)	2 (0%)	41	76
1	C	642/808 (80%)	540 (84%)	100 (16%)	2 (0%)	41	76
1	D	642/808 (80%)	539 (84%)	101 (16%)	2 (0%)	41	76
All	All	2568/3232 (80%)	2159 (84%)	401 (16%)	8 (0%)	44	76

All (8) Ramachandran outliers are listed below:

Mol	Chain	Res	Type
1	A	740	THR
1	B	740	THR
1	C	740	THR
1	D	740	THR
1	A	739	TRP
1	B	739	TRP
1	C	739	TRP
1	D	739	TRP

5.3.2 Protein sidechains [i](#)

In the following table, the Percentiles column shows the percent sidechain outliers of the chain as a percentile score with respect to all PDB entries followed by that with respect to all EM entries.

The Analysed column shows the number of residues for which the sidechain conformation was analysed, and the total number of residues.

Mol	Chain	Analysed	Rotameric	Outliers	Percentiles	
1	A	575/721 (80%)	562 (98%)	13 (2%)	50	70
1	B	575/721 (80%)	562 (98%)	13 (2%)	50	70

Continued on next page...

Continued from previous page...

Mol	Chain	Analysed	Rotameric	Outliers	Percentiles	
1	C	575/721 (80%)	562 (98%)	13 (2%)	50	70
1	D	575/721 (80%)	562 (98%)	13 (2%)	50	70
All	All	2300/2884 (80%)	2248 (98%)	52 (2%)	53	70

All (52) residues with a non-rotameric sidechain are listed below:

Mol	Chain	Res	Type
1	A	115	LYS
1	A	118	ARG
1	A	178	ASN
1	A	197	ASN
1	A	220	ASN
1	A	314	ASN
1	A	368	LYS
1	A	401	ASN
1	A	415	ASN
1	A	647	ASN
1	A	683	ASN
1	A	716	ARG
1	A	723	VAL
1	B	115	LYS
1	B	118	ARG
1	B	178	ASN
1	B	197	ASN
1	B	220	ASN
1	B	314	ASN
1	B	368	LYS
1	B	401	ASN
1	B	415	ASN
1	B	647	ASN
1	B	683	ASN
1	B	716	ARG
1	B	723	VAL
1	C	115	LYS
1	C	118	ARG
1	C	178	ASN
1	C	197	ASN
1	C	220	ASN
1	C	314	ASN
1	C	368	LYS
1	C	401	ASN

Continued on next page...

Continued from previous page...

Mol	Chain	Res	Type
1	C	415	ASN
1	C	647	ASN
1	C	683	ASN
1	C	716	ARG
1	C	723	VAL
1	D	115	LYS
1	D	118	ARG
1	D	178	ASN
1	D	197	ASN
1	D	220	ASN
1	D	314	ASN
1	D	368	LYS
1	D	401	ASN
1	D	415	ASN
1	D	647	ASN
1	D	683	ASN
1	D	716	ARG
1	D	723	VAL

Sometimes sidechains can be flipped to improve hydrogen bonding and reduce clashes. All (40) such sidechains are listed below:

Mol	Chain	Res	Type
1	A	178	ASN
1	A	220	ASN
1	A	301	HIS
1	A	314	ASN
1	A	401	ASN
1	A	415	ASN
1	A	426	HIS
1	A	452	ASN
1	A	683	ASN
1	B	178	ASN
1	B	216	GLN
1	B	220	ASN
1	B	301	HIS
1	B	314	ASN
1	B	401	ASN
1	B	415	ASN
1	B	426	HIS
1	B	452	ASN
1	B	580	GLN
1	B	683	ASN

Continued on next page...

Continued from previous page...

Mol	Chain	Res	Type
1	C	178	ASN
1	C	216	GLN
1	C	220	ASN
1	C	301	HIS
1	C	314	ASN
1	C	401	ASN
1	C	415	ASN
1	C	426	HIS
1	C	452	ASN
1	C	580	GLN
1	C	683	ASN
1	D	178	ASN
1	D	220	ASN
1	D	301	HIS
1	D	314	ASN
1	D	401	ASN
1	D	415	ASN
1	D	426	HIS
1	D	452	ASN
1	D	683	ASN

5.3.3 RNA [i](#)

There are no RNA molecules in this entry.

5.4 Non-standard residues in protein, DNA, RNA chains [i](#)

There are no non-standard protein/DNA/RNA residues in this entry.

5.5 Carbohydrates [i](#)

There are no monosaccharides in this entry.

5.6 Ligand geometry [i](#)

Of 2 ligands modelled in this entry, 2 are monoatomic - leaving 0 for Mogul analysis.

There are no bond length outliers.

There are no bond angle outliers.

There are no chirality outliers.

There are no torsion outliers.

There are no ring outliers.

No monomer is involved in short contacts.

5.7 Other polymers [i](#)

There are no such residues in this entry.

5.8 Polymer linkage issues [i](#)

There are no chain breaks in this entry.

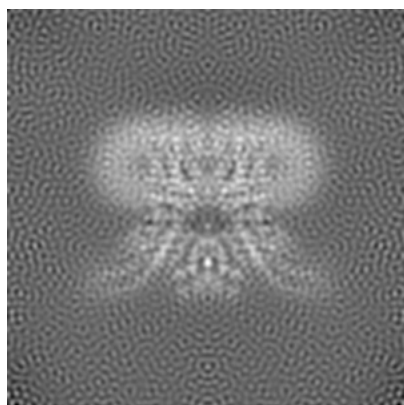
6 Map visualisation [i](#)

This section contains visualisations of the EMDB entry EMD-20493. These allow visual inspection of the internal detail of the map and identification of artifacts.

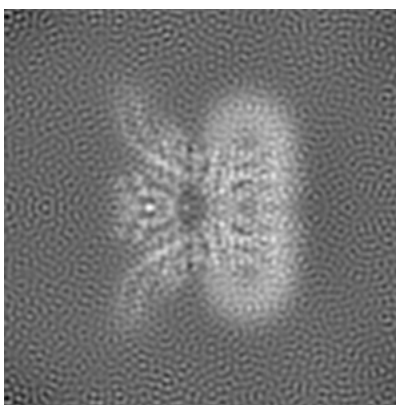
No raw map or half-maps were deposited for this entry and therefore no images, graphs, etc. pertaining to the raw map can be shown.

6.1 Orthogonal projections [i](#)

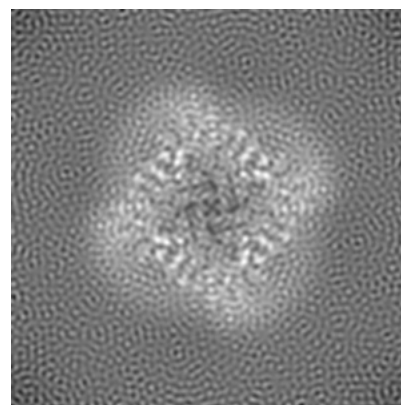
6.1.1 Primary map



X



Y

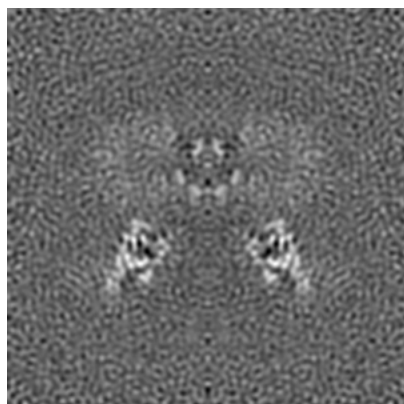


Z

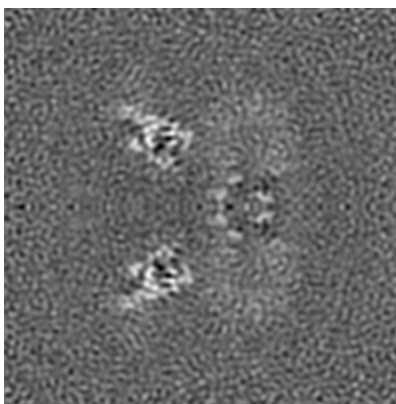
The images above show the map projected in three orthogonal directions.

6.2 Central slices [i](#)

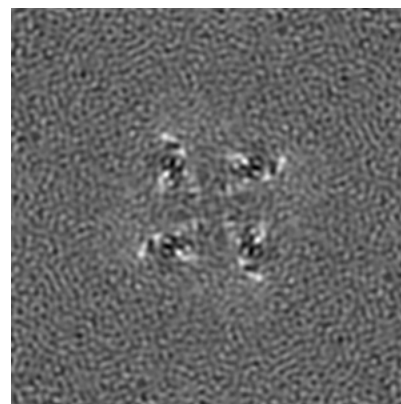
6.2.1 Primary map



X Index: 110



Y Index: 110

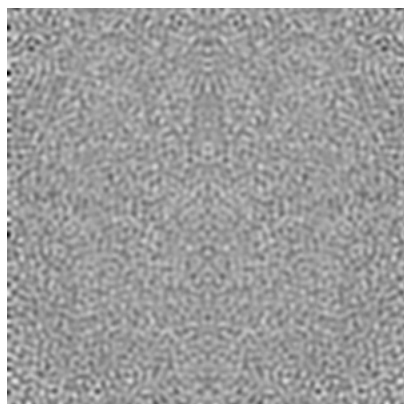


Z Index: 110

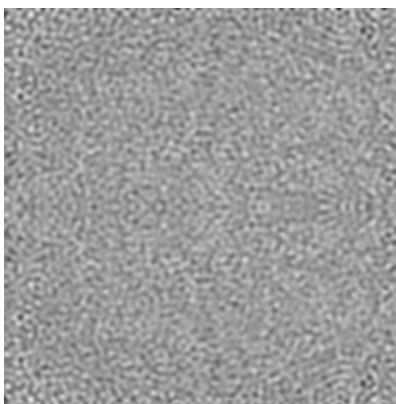
The images above show central slices of the map in three orthogonal directions.

6.3 Largest variance slices [i](#)

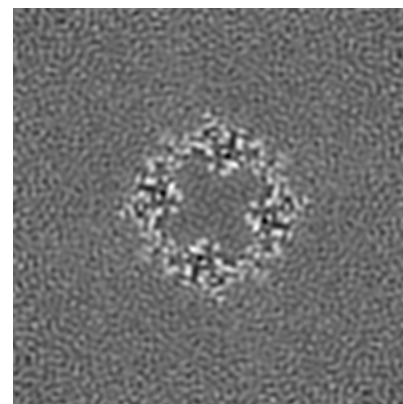
6.3.1 Primary map



X Index: 0



Y Index: 0

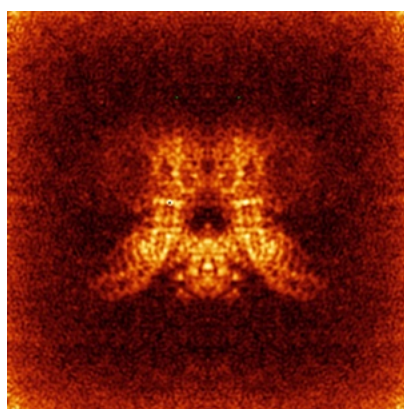


Z Index: 88

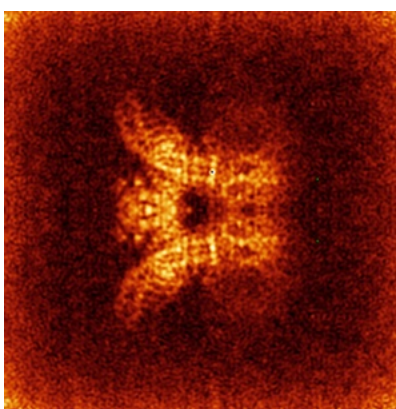
The images above show the largest variance slices of the map in three orthogonal directions.

6.4 Orthogonal standard-deviation projections (False-color) [i](#)

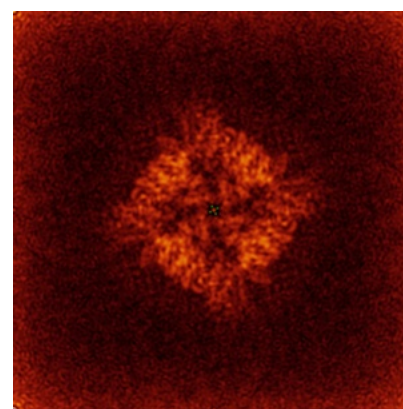
6.4.1 Primary map



X



Y

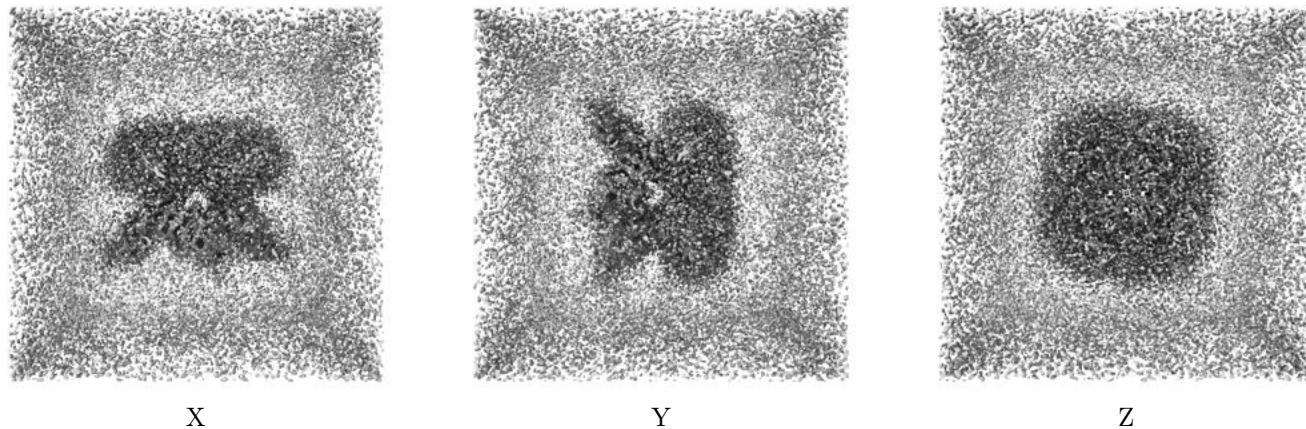


Z

The images above show the map standard deviation projections with false color in three orthogonal directions. Minimum values are shown in green, max in blue, and dark to light orange shades represent small to large values respectively.

6.5 Orthogonal surface views [i](#)

6.5.1 Primary map



The images above show the 3D surface view of the map at the recommended contour level 0.47. These images, in conjunction with the slice images, may facilitate assessment of whether an appropriate contour level has been provided.

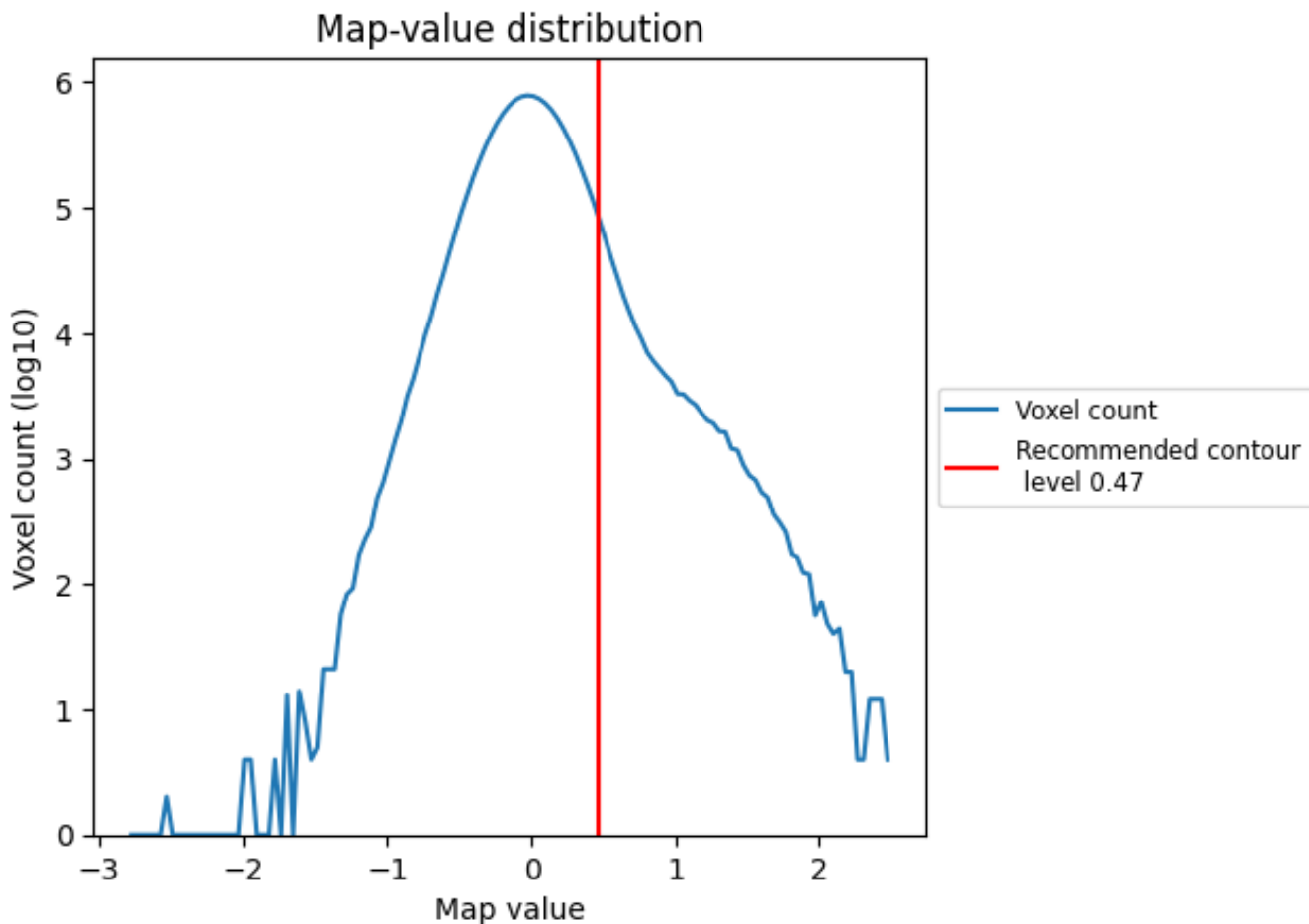
6.6 Mask visualisation [i](#)

This section was not generated. No masks/segmentation were deposited.

7 Map analysis [i](#)

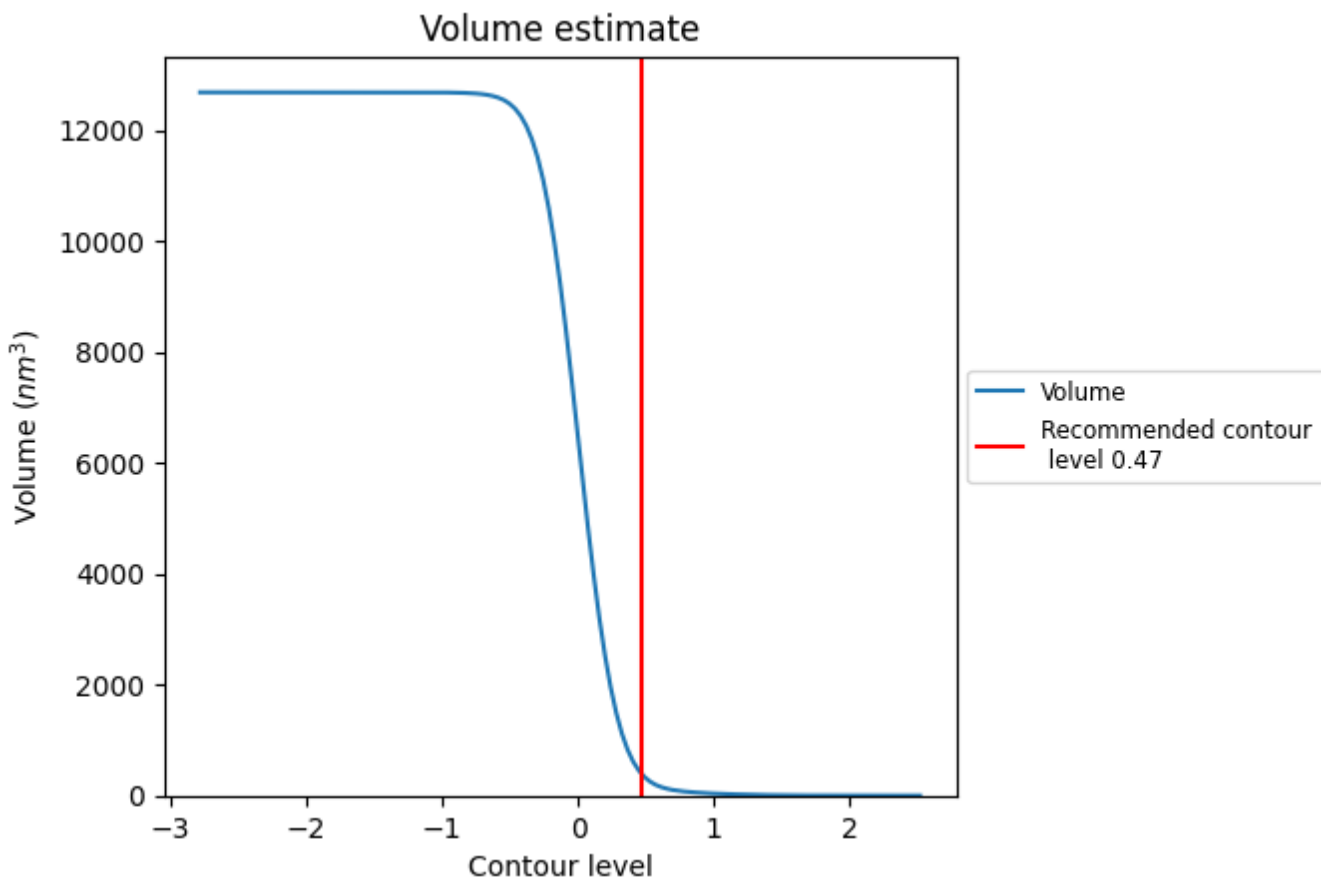
This section contains the results of statistical analysis of the map.

7.1 Map-value distribution [i](#)



The map-value distribution is plotted in 128 intervals along the x-axis. The y-axis is logarithmic. A spike in this graph at zero usually indicates that the volume has been masked.

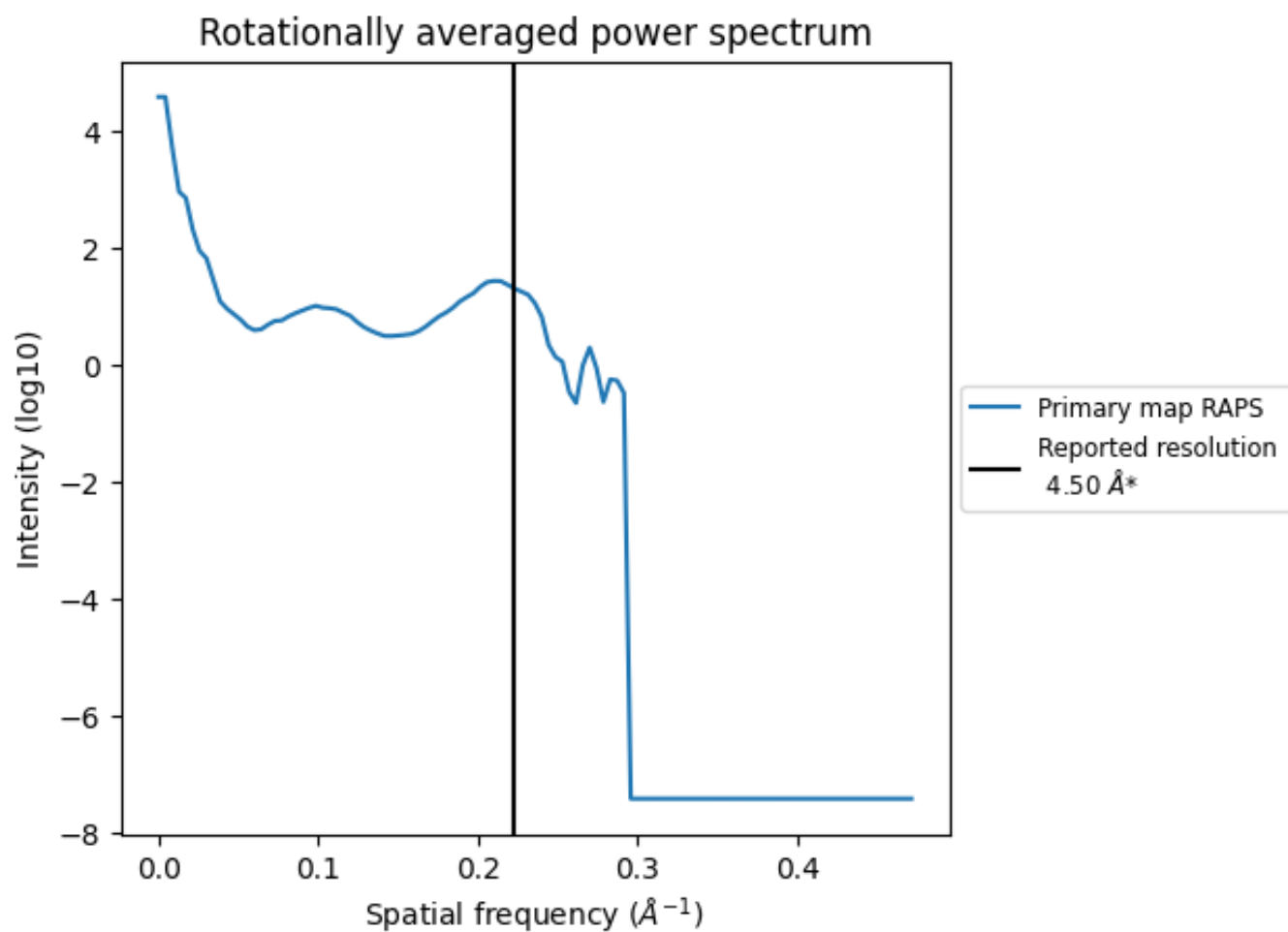
7.2 Volume estimate [i](#)



The volume at the recommended contour level is 389 nm³; this corresponds to an approximate mass of 351 kDa.

The volume estimate graph shows how the enclosed volume varies with the contour level. The recommended contour level is shown as a vertical line and the intersection between the line and the curve gives the volume of the enclosed surface at the given level.

7.3 Rotationally averaged power spectrum [i](#)



*Reported resolution corresponds to spatial frequency of 0.222\AA^{-1}

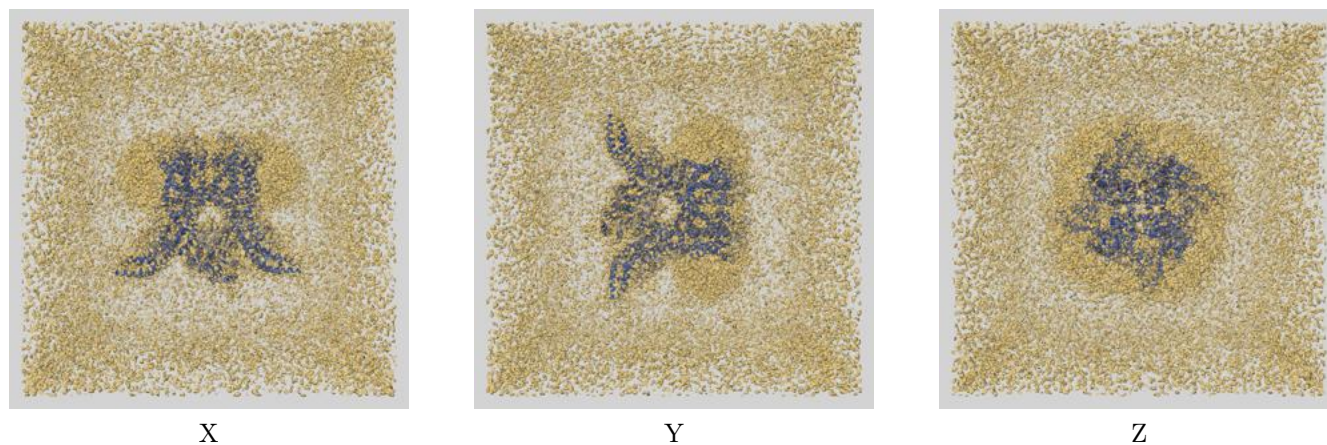
8 Fourier-Shell correlation

This section was not generated. No FSC curve or half-maps provided.

9 Map-model fit [i](#)

This section contains information regarding the fit between EMDB map EMD-20493 and PDB model 6PVM. Per-residue inclusion information can be found in section [3](#) on page [6](#).

9.1 Map-model overlay [i](#)



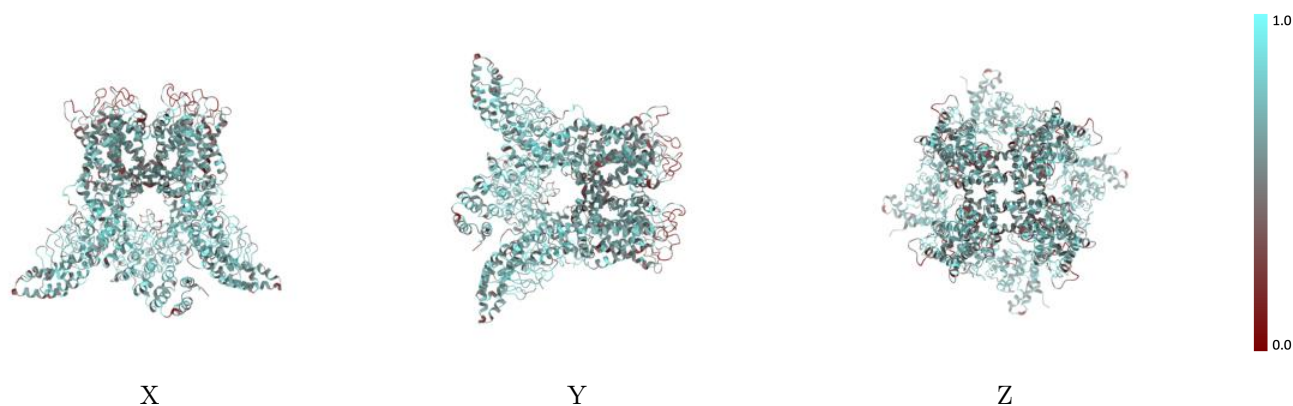
The images above show the 3D surface view of the map at the recommended contour level 0.47 at 50% transparency in yellow overlaid with a ribbon representation of the model coloured in blue. These images allow for the visual assessment of the quality of fit between the atomic model and the map.

9.2 Q-score mapped to coordinate model [i](#)



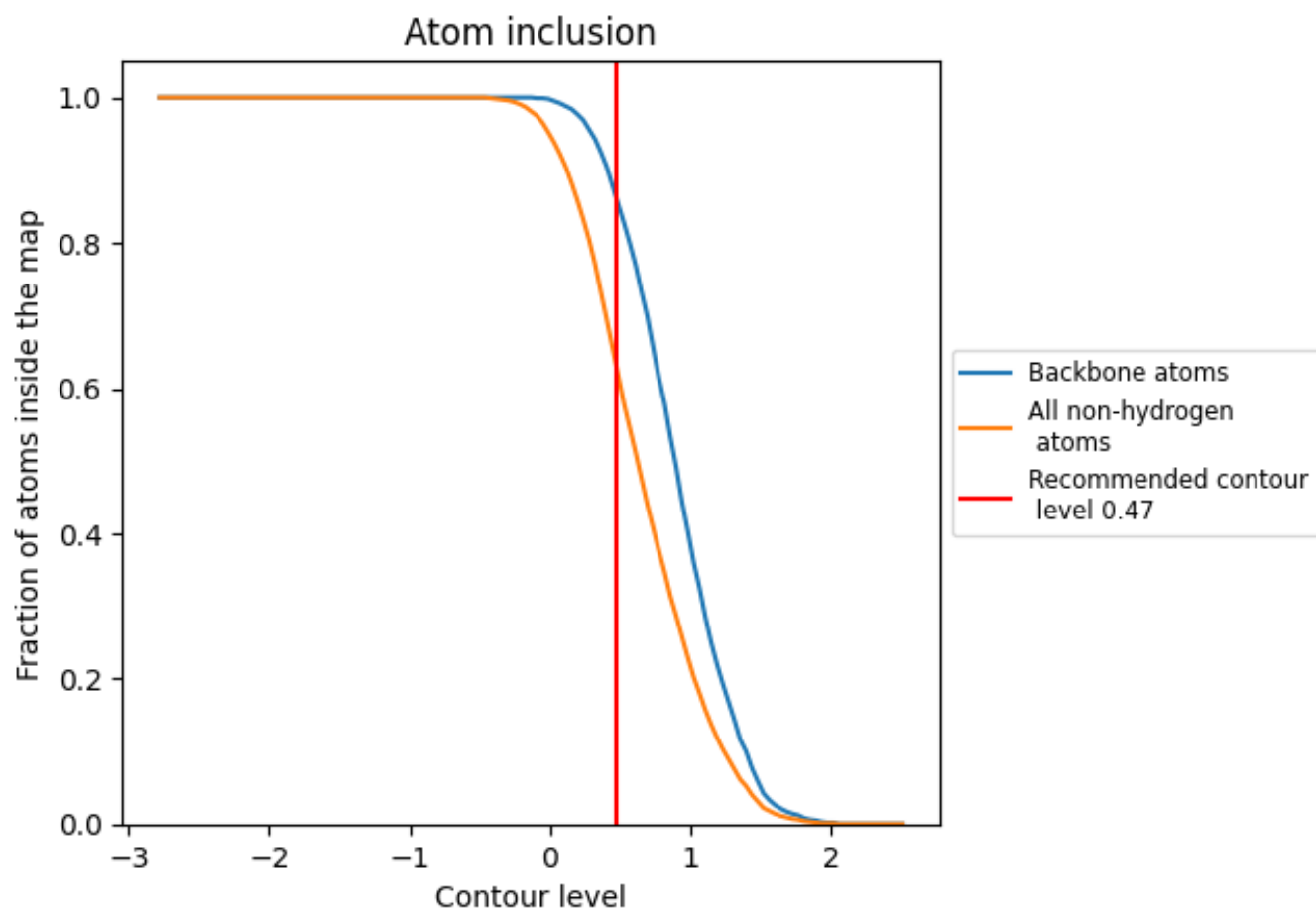
The images above show the model with each residue coloured according to its Q-score. This shows their resolvability in the map with higher Q-score values reflecting better resolvability. Please note: Q-score is calculating the resolvability of atoms, and thus high values are only expected at resolutions at which atoms can be resolved. Low Q-score values may therefore be expected for many entries.

9.3 Atom inclusion mapped to coordinate model [i](#)



The images above show the model with each residue coloured according to its atom inclusion. This shows to what extent they are inside the map at the recommended contour level (0.47).











9.4 Atom inclusion [i](#)



At the recommended contour level, 86% of all backbone atoms, 63% of all non-hydrogen atoms, are inside the map.

9.5 Map-model fit summary [i](#)

The table lists the average atom inclusion at the recommended contour level (0.47) and Q-score for the entire model and for each chain.

Chain	Atom inclusion	Q-score
All	 0.6340	 0.3410
A	 0.6330	 0.3420
B	 0.6340	 0.3410
C	 0.6330	 0.3410
D	 0.6340	 0.3410

