



Full wwPDB EM Validation Report ⓘ

Oct 5, 2024 – 11:22 PM EDT

PDB ID : 6ODY
EMDB ID : EMD-20024
Title : Cryo-EM structure of Helicobacter pylori VacA hexamer
Authors : Erwin, A.L.; Cover, T.L.; Ohi, M.D.
Deposited on : 2019-03-27
Resolution : 3.80 Å (reported)

This is a Full wwPDB EM Validation Report for a publicly released PDB entry.

We welcome your comments at validation@mail.wwpdb.org

A user guide is available at

<https://www.wwpdb.org/validation/2017/EMValidationReportHelp>

with specific help available everywhere you see the ⓘ symbol.

The types of validation reports are described at

<http://www.wwpdb.org/validation/2017/FAQs#types>.

The following versions of software and data (see [references ⓘ](#)) were used in the production of this report:

EMDB validation analysis : 0.0.1.dev113
MolProbity : 4.02b-467
Percentile statistics : 20231227.v01 (using entries in the PDB archive December 27th 2023)
MapQ : 1.9.13
Ideal geometry (proteins) : Engh & Huber (2001)
Ideal geometry (DNA, RNA) : Parkinson et al. (1996)
Validation Pipeline (wwPDB-VP) : 2.39

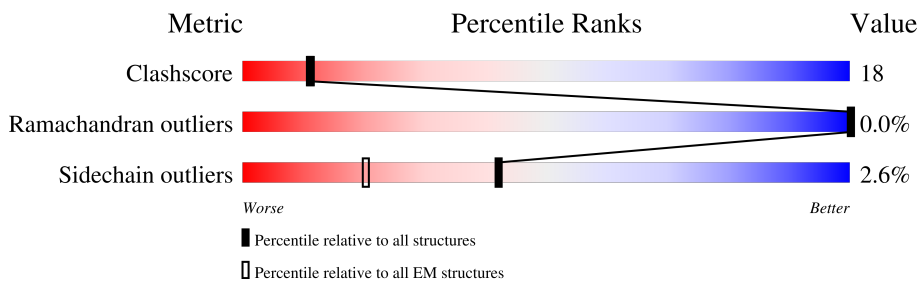
1 Overall quality at a glance i

The following experimental techniques were used to determine the structure:

ELECTRON MICROSCOPY

The reported resolution of this entry is 3.80 Å.

Percentile scores (ranging between 0-100) for global validation metrics of the entry are shown in the following graphic. The table shows the number of entries on which the scores are based.



Metric	Whole archive (#Entries)	EM structures (#Entries)
Clashscore	210492	15764
Ramachandran outliers	207382	16835
Sidechain outliers	206894	16415

The table below summarises the geometric issues observed across the polymeric chains and their fit to the map. The red, orange, yellow and green segments of the bar indicate the fraction of residues that contain outliers for ≥ 3 , 2, 1 and 0 types of geometric quality criteria respectively. A grey segment represents the fraction of residues that are not modelled. The numeric value for each fraction is indicated below the corresponding segment, with a dot representing fractions $\leq 5\%$. The upper red bar (where present) indicates the fraction of residues that have poor fit to the EM map (all-atom inclusion $< 40\%$). The numeric value is given above the bar.

Mol	Chain	Length	Quality of chain
1	A	701	<div style="display: flex; justify-content: space-between;"> 17% 68% 30% </div>
1	B	701	<div style="display: flex; justify-content: space-between;"> 18% 67% 30% </div>
1	C	701	<div style="display: flex; justify-content: space-between;"> 18% 66% 31% </div>
1	D	701	<div style="display: flex; justify-content: space-between;"> 17% 68% 29% </div>
1	E	701	<div style="display: flex; justify-content: space-between;"> 18% 67% 30% </div>
1	F	701	<div style="display: flex; justify-content: space-between;"> 18% 67% 30% </div>

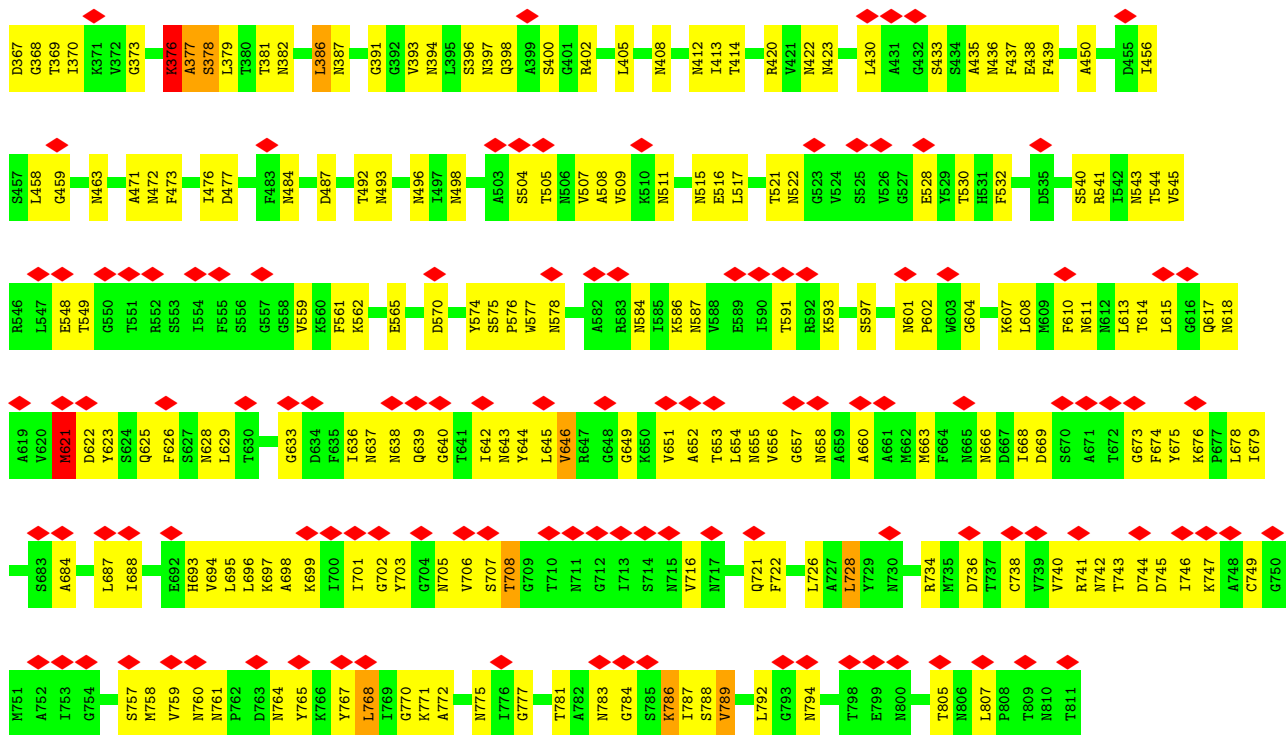
2 Entry composition

There is only 1 type of molecule in this entry. The entry contains 28116 atoms, of which 0 are hydrogens and 0 are deuteriums.

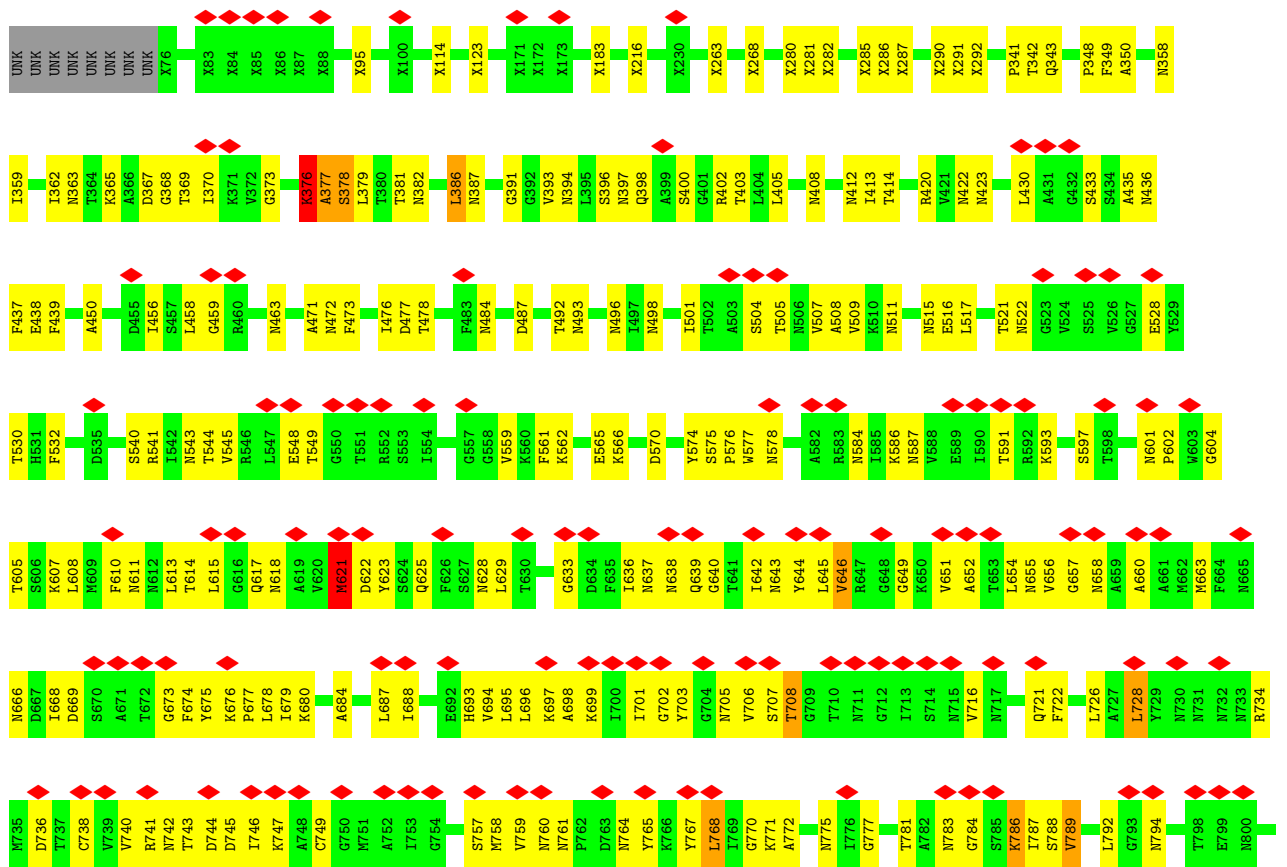
In the tables below, the AltConf column contains the number of residues with at least one atom in alternate conformation and the Trace column contains the number of residues modelled with at most 2 atoms.

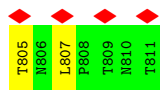
- Molecule 1 is a protein called Vacuolating cytotoxin autotransporter.

Mol	Chain	Residues	Atoms					AltConf	Trace
			Total	C	N	O	S		
1	A	693	Total 4686	C 2896	N 851	O 930	S 9	0	0
1	B	693	Total 4686	C 2896	N 851	O 930	S 9	0	0
1	C	693	Total 4686	C 2896	N 851	O 930	S 9	0	0
1	D	693	Total 4686	C 2896	N 851	O 930	S 9	0	0
1	E	693	Total 4686	C 2896	N 851	O 930	S 9	0	0
1	F	693	Total 4686	C 2896	N 851	O 930	S 9	0	0

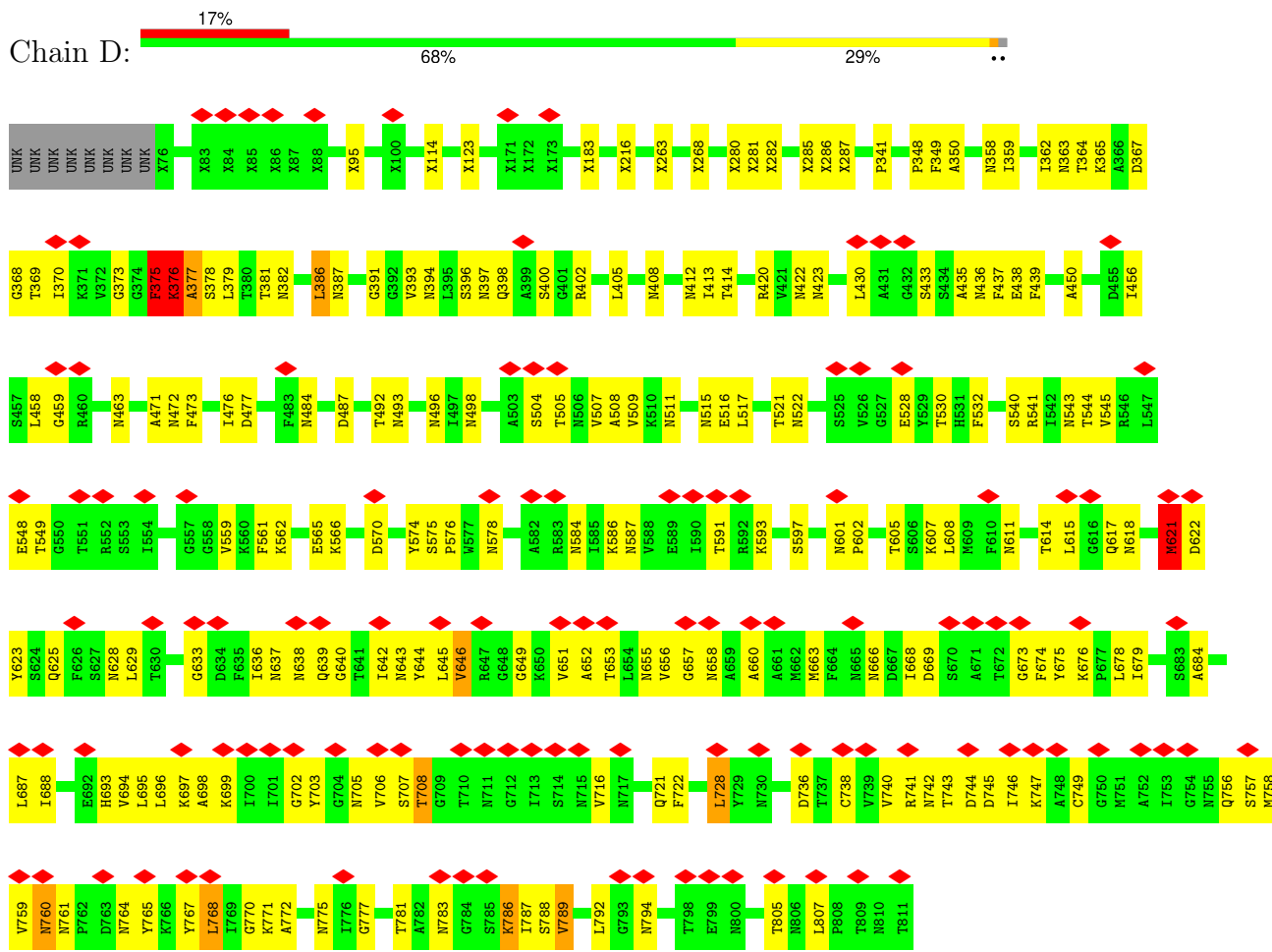


• Molecule 1: Vacuolating cytotoxin autotransporter

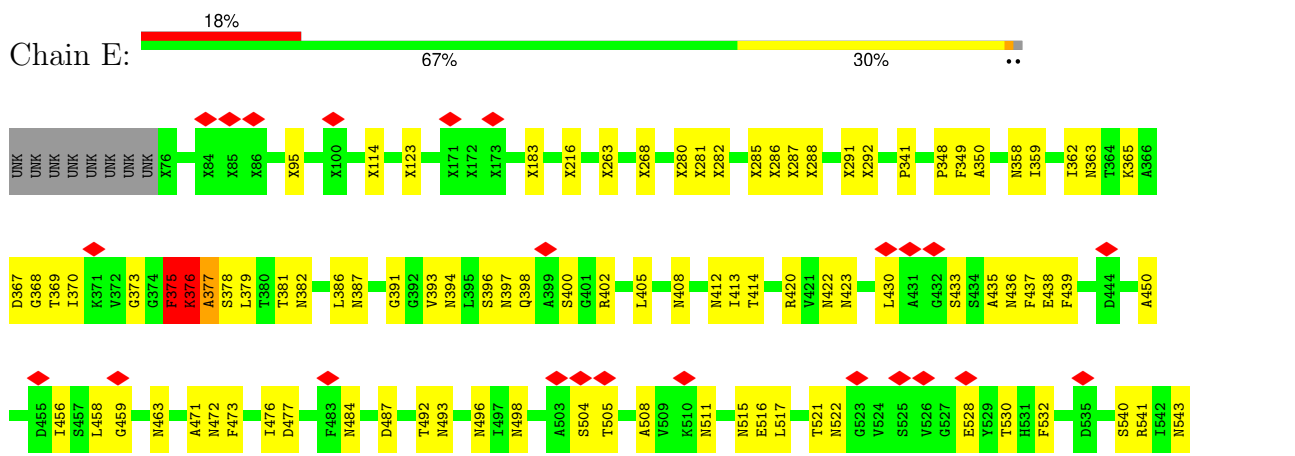


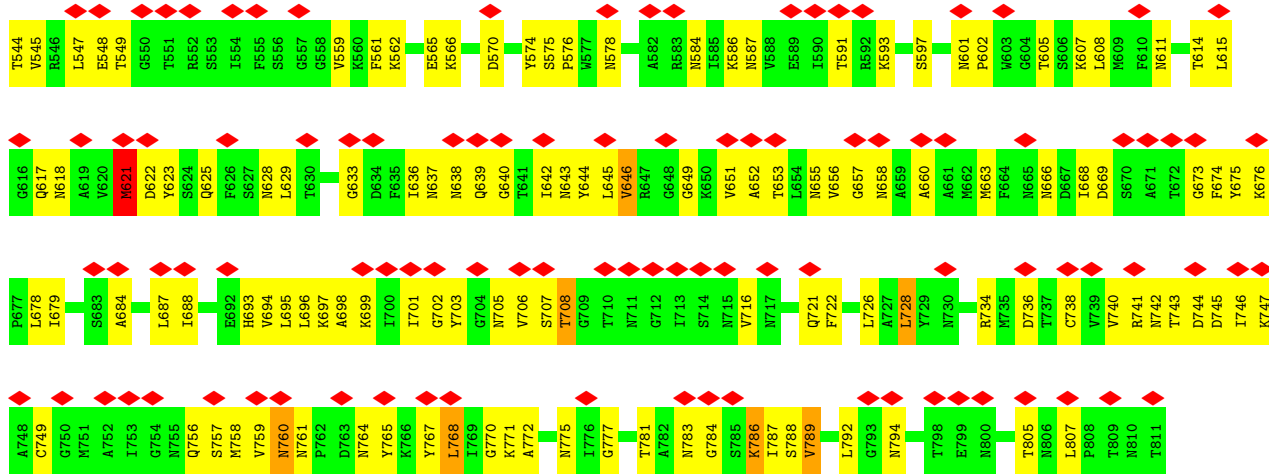


• Molecule 1: Vacuolating cytotoxin autotransporter

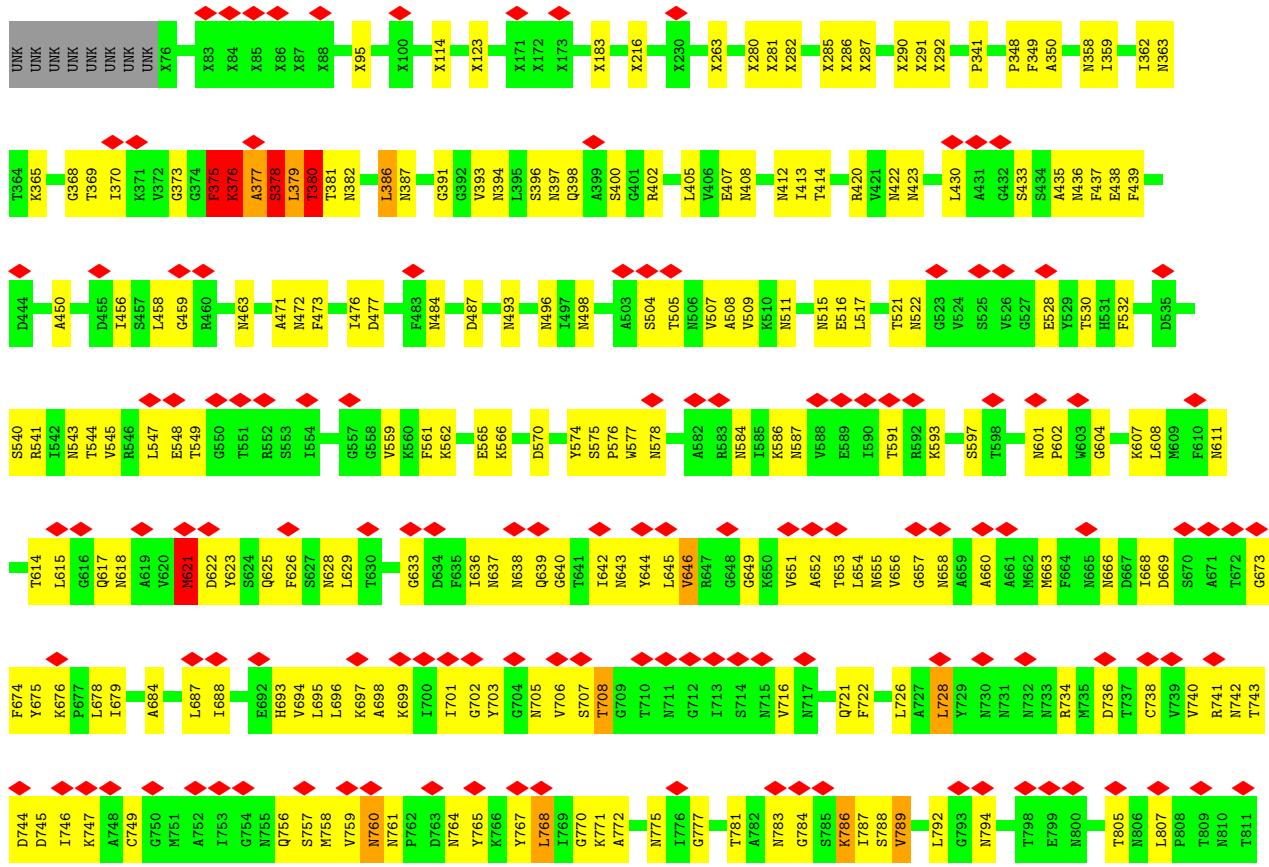


• Molecule 1: Vacuolating cytotoxin autotransporter





● Molecule 1: Vacuolating cytotoxin autotransporter



4 Experimental information

Property	Value	Source
EM reconstruction method	SINGLE PARTICLE	Depositor
Imposed symmetry	POINT, Not provided	
Number of particles used	133827	Depositor
Resolution determination method	FSC 0.143 CUT-OFF	Depositor
CTF correction method	PHASE FLIPPING AND AMPLITUDE CORRECTION	Depositor
Microscope	FEI TITAN KRIOS	Depositor
Voltage (kV)	300	Depositor
Electron dose ($e^-/\text{\AA}^2$)	48	Depositor
Minimum defocus (nm)	Not provided	
Maximum defocus (nm)	Not provided	
Magnification	Not provided	
Image detector	GATAN K2 SUMMIT (4k x 4k)	Depositor
Maximum map value	19.006	Depositor
Minimum map value	-5.540	Depositor
Average map value	0.003	Depositor
Map value standard deviation	0.916	Depositor
Recommended contour level	4.33	Depositor
Map size (Å)	400.0, 400.0, 400.0	wwPDB
Map dimensions	320, 320, 320	wwPDB
Map angles (°)	90.0, 90.0, 90.0	wwPDB
Pixel spacing (Å)	1.25, 1.25, 1.25	Depositor

5 Model quality [i](#)

5.1 Standard geometry [i](#)

The Z score for a bond length (or angle) is the number of standard deviations the observed value is removed from the expected value. A bond length (or angle) with $|Z| > 5$ is considered an outlier worth inspection. RMSZ is the root-mean-square of all Z scores of the bond lengths (or angles).

Mol	Chain	Bond lengths		Bond angles	
		RMSZ	# Z >5	RMSZ	# Z >5
1	A	0.52	0/3636	0.82	11/4925 (0.2%)
1	B	0.53	0/3636	0.83	12/4925 (0.2%)
1	C	0.52	0/3636	0.83	13/4925 (0.3%)
1	D	0.53	0/3636	0.82	12/4925 (0.2%)
1	E	0.53	0/3636	0.80	11/4925 (0.2%)
1	F	0.53	0/3636	0.90	17/4925 (0.3%)
All	All	0.53	0/21816	0.83	76/29550 (0.3%)

Chiral center outliers are detected by calculating the chiral volume of a chiral center and verifying if the center is modelled as a planar moiety or with the opposite hand. A planarity outlier is detected by checking planarity of atoms in a peptide group, atoms in a mainchain group or atoms of a sidechain that are expected to be planar.

Mol	Chain	#Chirality outliers	#Planarity outliers
1	A	1	9
1	B	1	10
1	C	0	9
1	D	1	9
1	E	1	9
1	F	2	9
All	All	6	55

There are no bond length outliers.

All (76) bond angle outliers are listed below:

Mol	Chain	Res	Type	Atoms	Z	Observed(°)	Ideal(°)
1	F	379	LEU	CB-CA-C	21.97	151.94	110.20
1	B	377	ALA	CB-CA-C	-17.79	83.41	110.10
1	C	377	ALA	CB-CA-C	-17.73	83.50	110.10
1	D	377	ALA	CB-CA-C	-17.40	84.00	110.10
1	A	377	ALA	CB-CA-C	-15.81	86.38	110.10
1	A	376	LYS	N-CA-C	13.76	148.14	111.00

Continued on next page...

Continued from previous page...

Mol	Chain	Res	Type	Atoms	Z	Observed(°)	Ideal(°)
1	E	376	LYS	N-CA-C	12.65	145.15	111.00
1	F	378	SER	N-CA-C	12.62	145.08	111.00
1	F	378	SER	CB-CA-C	-12.20	86.91	110.10
1	B	376	LYS	N-CA-C	12.08	143.60	111.00
1	F	380	THR	N-CA-CB	11.65	132.43	110.30
1	F	376	LYS	N-CA-C	10.57	139.53	111.00
1	D	376	LYS	N-CA-C	10.31	138.84	111.00
1	C	378	SER	N-CA-CB	-10.27	95.10	110.50
1	D	375	PHE	CB-CA-C	-9.10	92.19	110.40
1	E	375	PHE	CB-CA-C	-8.96	92.48	110.40
1	B	378	SER	N-CA-CB	-8.29	98.06	110.50
1	C	376	LYS	C-N-CA	7.68	140.89	121.70
1	A	378	SER	N-CA-CB	-7.53	99.21	110.50
1	E	377	ALA	C-N-CA	7.46	140.34	121.70
1	C	377	ALA	N-CA-C	-7.17	91.64	111.00
1	F	378	SER	C-N-CA	7.02	139.25	121.70
1	D	377	ALA	C-N-CA	6.73	138.53	121.70
1	B	621	MET	CB-CG-SD	6.68	132.45	112.40
1	C	621	MET	CB-CG-SD	6.68	132.45	112.40
1	F	621	MET	CB-CG-SD	6.67	132.42	112.40
1	D	621	MET	CB-CG-SD	6.67	132.42	112.40
1	A	621	MET	CB-CG-SD	6.67	132.41	112.40
1	E	621	MET	CB-CG-SD	6.66	132.39	112.40
1	F	375	PHE	CB-CA-C	-6.39	97.61	110.40
1	F	379	LEU	N-CA-C	-6.34	93.88	111.00
1	D	645	LEU	CA-CB-CG	6.28	129.73	115.30
1	C	645	LEU	CA-CB-CG	6.27	129.73	115.30
1	A	645	LEU	CA-CB-CG	6.27	129.71	115.30
1	E	645	LEU	CA-CB-CG	6.26	129.71	115.30
1	F	645	LEU	CA-CB-CG	6.26	129.70	115.30
1	B	645	LEU	CA-CB-CG	6.26	129.69	115.30
1	B	738	CYS	CA-CB-SG	6.25	125.24	114.00
1	C	738	CYS	CA-CB-SG	6.23	125.21	114.00
1	E	738	CYS	CA-CB-SG	6.22	125.20	114.00
1	A	738	CYS	CA-CB-SG	6.21	125.18	114.00
1	F	738	CYS	CA-CB-SG	6.21	125.17	114.00
1	D	738	CYS	CA-CB-SG	6.20	125.16	114.00
1	B	749	CYS	CA-CB-SG	6.11	125.00	114.00
1	A	749	CYS	CA-CB-SG	6.10	124.99	114.00
1	F	749	CYS	CA-CB-SG	6.10	124.98	114.00
1	C	749	CYS	CA-CB-SG	6.09	124.97	114.00
1	D	749	CYS	CA-CB-SG	6.08	124.95	114.00

Continued on next page...

Continued from previous page...

Mol	Chain	Res	Type	Atoms	Z	Observed(°)	Ideal(°)
1	E	749	CYS	CA-CB-SG	6.08	124.94	114.00
1	F	768	LEU	CA-CB-CG	5.83	128.71	115.30
1	D	386	LEU	CA-CB-CG	-5.82	101.91	115.30
1	F	386	LEU	CA-CB-CG	-5.82	101.91	115.30
1	A	768	LEU	CA-CB-CG	5.81	128.67	115.30
1	E	768	LEU	CA-CB-CG	5.81	128.67	115.30
1	B	386	LEU	CA-CB-CG	-5.81	101.94	115.30
1	E	386	LEU	CA-CB-CG	-5.81	101.94	115.30
1	B	768	LEU	CA-CB-CG	5.80	128.63	115.30
1	A	386	LEU	CA-CB-CG	-5.79	101.97	115.30
1	C	386	LEU	CA-CB-CG	-5.79	101.98	115.30
1	C	768	LEU	CA-CB-CG	5.79	128.62	115.30
1	D	768	LEU	CA-CB-CG	5.79	128.61	115.30
1	E	621	MET	CA-CB-CG	5.77	123.11	113.30
1	A	621	MET	CA-CB-CG	5.76	123.10	113.30
1	D	621	MET	CA-CB-CG	5.76	123.10	113.30
1	B	621	MET	CA-CB-CG	5.76	123.09	113.30
1	F	621	MET	CA-CB-CG	5.76	123.09	113.30
1	C	621	MET	CA-CB-CG	5.75	123.08	113.30
1	C	376	LYS	CA-C-N	-5.43	105.25	117.20
1	F	377	ALA	C-N-CA	5.26	134.85	121.70
1	B	359	ILE	CG1-CB-CG2	-5.08	100.23	111.40
1	E	359	ILE	CG1-CB-CG2	-5.07	100.24	111.40
1	D	359	ILE	CG1-CB-CG2	-5.07	100.25	111.40
1	C	359	ILE	CG1-CB-CG2	-5.06	100.27	111.40
1	A	359	ILE	CG1-CB-CG2	-5.06	100.28	111.40
1	F	359	ILE	CG1-CB-CG2	-5.06	100.28	111.40
1	B	377	ALA	C-N-CA	5.05	134.34	121.70

All (6) chirality outliers are listed below:

Mol	Chain	Res	Type	Atom
1	A	376	LYS	CA
1	B	376	LYS	CA
1	D	376	LYS	CA
1	E	376	LYS	CA
1	F	376	LYS	CA
1	F	379	LEU	CA

All (55) planarity outliers are listed below:

Mol	Chain	Res	Type	Group
1	A	183	UNK	Peptide
1	A	216	UNK	Peptide
1	A	263	UNK	Peptide
1	A	286	UNK	Peptide
1	A	348	PRO	Peptide
1	A	601	ASN	Peptide
1	A	757	SER	Peptide
1	A	760	ASN	Peptide
1	A	789	VAL	Peptide
1	B	183	UNK	Peptide
1	B	216	UNK	Peptide
1	B	263	UNK	Peptide
1	B	286	UNK	Peptide
1	B	348	PRO	Peptide
1	B	376	LYS	Mainchain
1	B	601	ASN	Peptide
1	B	757	SER	Peptide
1	B	760	ASN	Peptide
1	B	789	VAL	Peptide
1	C	183	UNK	Peptide
1	C	216	UNK	Peptide
1	C	263	UNK	Peptide
1	C	286	UNK	Peptide
1	C	348	PRO	Peptide
1	C	601	ASN	Peptide
1	C	757	SER	Peptide
1	C	760	ASN	Peptide
1	C	789	VAL	Peptide
1	D	183	UNK	Peptide
1	D	216	UNK	Peptide
1	D	263	UNK	Peptide
1	D	286	UNK	Peptide
1	D	348	PRO	Peptide
1	D	601	ASN	Peptide
1	D	757	SER	Peptide
1	D	760	ASN	Peptide
1	D	789	VAL	Peptide
1	E	183	UNK	Peptide
1	E	216	UNK	Peptide
1	E	263	UNK	Peptide
1	E	286	UNK	Peptide
1	E	348	PRO	Peptide
1	E	601	ASN	Peptide

Continued on next page...

Continued from previous page...

Mol	Chain	Res	Type	Group
1	E	757	SER	Peptide
1	E	760	ASN	Peptide
1	E	789	VAL	Peptide
1	F	183	UNK	Peptide
1	F	216	UNK	Peptide
1	F	263	UNK	Peptide
1	F	286	UNK	Peptide
1	F	348	PRO	Peptide
1	F	601	ASN	Peptide
1	F	757	SER	Peptide
1	F	760	ASN	Peptide
1	F	789	VAL	Peptide

5.2 Too-close contacts [i](#)

In the following table, the Non-H and H(model) columns list the number of non-hydrogen atoms and hydrogen atoms in the chain respectively. The H(added) column lists the number of hydrogen atoms added and optimized by MolProbity. The Clashes column lists the number of clashes within the asymmetric unit, whereas Symm-Clashes lists symmetry-related clashes.

Mol	Chain	Non-H	H(model)	H(added)	Clashes	Symm-Clashes
1	A	4686	0	3821	145	0
1	B	4686	0	3819	153	0
1	C	4686	0	3820	155	0
1	D	4686	0	3820	149	0
1	E	4686	0	3820	158	0
1	F	4686	0	3821	159	0
All	All	28116	0	22921	913	0

The all-atom clashscore is defined as the number of clashes found per 1000 atoms (including hydrogen atoms). The all-atom clashscore for this structure is 18.

All (913) close contacts within the same asymmetric unit are listed below, sorted by their clash magnitude.

Atom-1	Atom-2	Interatomic distance (Å)	Clash overlap (Å)
1:F:287:UNK:O	1:F:377:ALA:CA	1.81	1.25
1:C:287:UNK:O	1:C:377:ALA:HA	1.37	1.21
1:B:287:UNK:O	1:B:377:ALA:CA	1.88	1.21
1:C:287:UNK:O	1:C:377:ALA:CA	1.89	1.20
1:B:287:UNK:O	1:B:377:ALA:HA	1.36	1.19

Continued on next page...

Continued from previous page...

Atom-1	Atom-2	Interatomic distance (Å)	Clash overlap (Å)
1:F:287:UNK:O	1:F:377:ALA:HA	0.98	1.16
1:D:287:UNK:O	1:D:377:ALA:HA	1.44	1.14
1:E:287:UNK:O	1:E:377:ALA:HA	1.49	1.11
1:D:287:UNK:O	1:D:377:ALA:CA	2.02	1.06
1:F:373:GLY:O	1:F:402:ARG:NH1	1.91	1.04
1:D:375:PHE:CZ	1:D:400:SER:HB3	1.98	0.99
1:A:287:UNK:O	1:A:377:ALA:CB	2.13	0.96
1:E:287:UNK:O	1:E:377:ALA:CA	2.13	0.96
1:A:287:UNK:O	1:A:377:ALA:CA	2.14	0.96
1:E:375:PHE:CZ	1:E:400:SER:HB3	2.01	0.96
1:F:291:UNK:HA	1:F:378:SER:HB3	1.44	0.95
1:B:287:UNK:O	1:B:377:ALA:CB	2.16	0.94
1:C:287:UNK:O	1:C:377:ALA:CB	2.19	0.89
1:B:291:UNK:HA	1:B:378:SER:O	1.73	0.88
1:F:292:UNK:O	1:F:379:LEU:O	1.90	0.88
1:C:376:LYS:HG3	1:C:403:THR:O	1.76	0.85
1:F:291:UNK:CA	1:F:378:SER:HB3	2.08	0.83
1:E:375:PHE:CE2	1:E:400:SER:HB3	2.14	0.82
1:A:287:UNK:O	1:A:377:ALA:HB2	1.77	0.82
1:E:287:UNK:O	1:E:377:ALA:CB	2.29	0.81
1:A:287:UNK:O	1:A:377:ALA:HA	1.80	0.81
1:C:291:UNK:HA	1:C:378:SER:O	1.81	0.81
1:E:291:UNK:HA	1:E:378:SER:O	1.83	0.79
1:D:375:PHE:CE2	1:D:400:SER:HB3	2.18	0.78
1:E:646:VAL:HG23	1:E:649:GLY:H	1.50	0.77
1:F:291:UNK:CB	1:F:378:SER:HB3	2.15	0.76
1:F:646:VAL:HG23	1:F:649:GLY:H	1.50	0.76
1:D:646:VAL:HG23	1:D:649:GLY:H	1.50	0.76
1:B:646:VAL:HG23	1:B:649:GLY:H	1.50	0.76
1:C:646:VAL:HG23	1:C:649:GLY:H	1.51	0.76
1:A:646:VAL:HG23	1:A:649:GLY:H	1.50	0.75
1:F:291:UNK:HA	1:F:378:SER:CB	2.16	0.73
1:E:376:LYS:O	1:E:377:ALA:C	2.28	0.72
1:B:291:UNK:CA	1:B:378:SER:O	2.39	0.70
1:D:375:PHE:CZ	1:D:400:SER:CB	2.73	0.70
1:C:291:UNK:CA	1:C:378:SER:O	2.40	0.68
1:F:287:UNK:O	1:F:377:ALA:CB	2.41	0.68
1:B:365:LYS:NZ	1:B:369:THR:OG1	2.27	0.68
1:F:380:THR:HG22	1:F:407:GLU:HB2	1.76	0.68
1:E:291:UNK:CA	1:E:378:SER:O	2.42	0.67
1:C:365:LYS:NZ	1:C:369:THR:OG1	2.27	0.67

Continued on next page...

Continued from previous page...

Atom-1	Atom-2	Interatomic distance (Å)	Clash overlap (Å)
1:A:365:LYS:NZ	1:A:369:THR:OG1	2.27	0.67
1:D:365:LYS:NZ	1:D:369:THR:OG1	2.28	0.67
1:E:365:LYS:NZ	1:E:369:THR:OG1	2.27	0.67
1:F:365:LYS:NZ	1:F:369:THR:OG1	2.27	0.67
1:E:287:UNK:O	1:E:377:ALA:HB2	1.95	0.67
1:A:608:LEU:HB2	1:A:629:LEU:HA	1.78	0.66
1:E:381:THR:OG1	1:E:382:ASN:N	2.29	0.66
1:A:381:THR:OG1	1:A:382:ASN:N	2.29	0.65
1:F:608:LEU:HB2	1:F:629:LEU:HA	1.78	0.65
1:B:608:LEU:HB2	1:B:629:LEU:HA	1.78	0.65
1:F:292:UNK:CB	1:F:379:LEU:HD12	2.26	0.65
1:A:696:LEU:HB3	1:A:787:ILE:HD13	1.79	0.65
1:D:608:LEU:HB2	1:D:629:LEU:HA	1.78	0.64
1:B:381:THR:OG1	1:B:382:ASN:N	2.29	0.64
1:E:375:PHE:CZ	1:E:400:SER:CB	2.77	0.64
1:C:608:LEU:HB2	1:C:629:LEU:HA	1.78	0.64
1:E:608:LEU:HB2	1:E:629:LEU:HA	1.78	0.64
1:E:696:LEU:HB3	1:E:787:ILE:HD13	1.79	0.64
1:F:614:THR:HA	1:F:636:ILE:HB	1.80	0.64
1:C:696:LEU:HB3	1:C:787:ILE:HD13	1.79	0.63
1:B:614:THR:HA	1:B:636:ILE:HB	1.81	0.63
1:C:614:THR:HA	1:C:636:ILE:HB	1.80	0.63
1:F:696:LEU:HB3	1:F:787:ILE:HD13	1.79	0.63
1:E:614:THR:HA	1:E:636:ILE:HB	1.81	0.63
1:A:614:THR:HA	1:A:636:ILE:HB	1.80	0.63
1:D:696:LEU:HB3	1:D:787:ILE:HD13	1.79	0.63
1:C:381:THR:OG1	1:C:382:ASN:N	2.29	0.63
1:D:614:THR:HA	1:D:636:ILE:HB	1.80	0.63
1:D:365:LYS:NZ	1:D:369:THR:HG1	1.97	0.63
1:B:696:LEU:HB3	1:B:787:ILE:HD13	1.79	0.62
1:D:381:THR:OG1	1:D:382:ASN:N	2.29	0.62
1:C:767:TYR:O	1:C:771:LYS:NZ	2.32	0.62
1:A:767:TYR:O	1:A:771:LYS:NZ	2.32	0.62
1:D:287:UNK:O	1:D:377:ALA:CB	2.47	0.62
1:C:456:ILE:HB	1:C:476:ILE:HG23	1.82	0.62
1:D:767:TYR:O	1:D:771:LYS:NZ	2.32	0.62
1:B:767:TYR:O	1:B:771:LYS:NZ	2.32	0.61
1:E:456:ILE:HB	1:E:476:ILE:HG23	1.82	0.61
1:B:456:ILE:HB	1:B:476:ILE:HG23	1.82	0.61
1:D:456:ILE:HB	1:D:476:ILE:HG23	1.82	0.61
1:E:767:TYR:O	1:E:771:LYS:NZ	2.32	0.61

Continued on next page...

Continued from previous page...

Atom-1	Atom-2	Interatomic distance (Å)	Clash overlap (Å)
1:F:515:ASN:HA	1:F:543:ASN:HB2	1.83	0.61
1:B:365:LYS:NZ	1:B:369:THR:HG1	1.99	0.61
1:F:456:ILE:HB	1:F:476:ILE:HG23	1.82	0.61
1:B:515:ASN:HA	1:B:543:ASN:HB2	1.83	0.61
1:C:493:ASN:O	1:C:511:ASN:ND2	2.34	0.61
1:C:515:ASN:HA	1:C:543:ASN:HB2	1.83	0.61
1:A:493:ASN:O	1:A:511:ASN:ND2	2.34	0.61
1:F:767:TYR:O	1:F:771:LYS:NZ	2.32	0.61
1:E:493:ASN:O	1:E:511:ASN:ND2	2.34	0.60
1:E:515:ASN:HA	1:E:543:ASN:HB2	1.83	0.60
1:A:456:ILE:HB	1:A:476:ILE:HG23	1.82	0.60
1:E:365:LYS:NZ	1:E:369:THR:HG1	1.98	0.60
1:F:380:THR:CG2	1:F:407:GLU:HB2	2.32	0.60
1:F:493:ASN:O	1:F:511:ASN:ND2	2.34	0.60
1:C:716:VAL:O	1:C:721:GLN:NE2	2.35	0.60
1:E:716:VAL:O	1:E:721:GLN:NE2	2.35	0.60
1:F:382:ASN:OD1	1:F:382:ASN:N	2.34	0.60
1:F:394:ASN:HD21	1:F:423:ASN:HA	1.67	0.60
1:C:394:ASN:HD21	1:C:423:ASN:HA	1.67	0.60
1:F:515:ASN:ND2	1:F:543:ASN:OD1	2.35	0.60
1:A:515:ASN:ND2	1:A:543:ASN:OD1	2.35	0.60
1:F:688:ILE:O	1:F:693:HIS:NE2	2.35	0.60
1:B:515:ASN:ND2	1:B:543:ASN:OD1	2.35	0.59
1:E:515:ASN:ND2	1:E:543:ASN:OD1	2.35	0.59
1:A:515:ASN:HA	1:A:543:ASN:HB2	1.83	0.59
1:B:394:ASN:HD21	1:B:423:ASN:HA	1.67	0.59
1:D:493:ASN:O	1:D:511:ASN:ND2	2.34	0.59
1:A:394:ASN:HD21	1:A:423:ASN:HA	1.67	0.59
1:E:394:ASN:HD21	1:E:423:ASN:HA	1.67	0.59
1:F:375:PHE:CZ	1:F:400:SER:HB3	2.37	0.59
1:A:373:GLY:O	1:A:402:ARG:NH1	2.35	0.59
1:B:493:ASN:O	1:B:511:ASN:ND2	2.34	0.59
1:C:373:GLY:O	1:C:402:ARG:NH1	2.35	0.59
1:C:515:ASN:ND2	1:C:543:ASN:OD1	2.35	0.59
1:D:373:GLY:O	1:D:402:ARG:NH1	2.35	0.59
1:D:515:ASN:ND2	1:D:543:ASN:OD1	2.35	0.59
1:E:373:GLY:O	1:E:402:ARG:NH1	2.35	0.59
1:D:515:ASN:HA	1:D:543:ASN:HB2	1.83	0.59
1:D:688:ILE:O	1:D:693:HIS:NE2	2.34	0.59
1:D:375:PHE:HZ	1:D:400:SER:CB	2.16	0.59
1:D:394:ASN:HD21	1:D:423:ASN:HA	1.67	0.59

Continued on next page...

Continued from previous page...

Atom-1	Atom-2	Interatomic distance (Å)	Clash overlap (Å)
1:F:291:UNK:CB	1:F:378:SER:CB	2.80	0.59
1:D:716:VAL:O	1:D:721:GLN:NE2	2.35	0.59
1:E:688:ILE:O	1:E:693:HIS:NE2	2.34	0.59
1:B:716:VAL:O	1:B:721:GLN:NE2	2.35	0.58
1:D:736:ASP:N	1:D:736:ASP:OD1	2.34	0.58
1:A:625:GLN:HG3	1:A:652:ALA:HB2	1.86	0.58
1:E:625:GLN:HG3	1:E:652:ALA:HB2	1.86	0.58
1:F:380:THR:HG22	1:F:407:GLU:CB	2.33	0.58
1:F:625:GLN:HG3	1:F:652:ALA:HB2	1.86	0.58
1:A:684:ALA:HA	1:A:687:LEU:HD23	1.86	0.58
1:B:684:ALA:HA	1:B:687:LEU:HD23	1.86	0.58
1:E:565:GLU:OE2	1:E:587:ASN:ND2	2.32	0.58
1:E:684:ALA:HA	1:E:687:LEU:HD23	1.86	0.58
1:F:684:ALA:HA	1:F:687:LEU:HD23	1.86	0.58
1:F:716:VAL:O	1:F:721:GLN:NE2	2.35	0.58
1:C:365:LYS:NZ	1:C:368:GLY:O	2.36	0.58
1:D:684:ALA:HA	1:D:687:LEU:HD23	1.86	0.58
1:D:565:GLU:OE2	1:D:587:ASN:ND2	2.32	0.58
1:A:716:VAL:O	1:A:721:GLN:NE2	2.35	0.58
1:D:625:GLN:HG3	1:D:652:ALA:HB2	1.86	0.58
1:B:362:ILE:HD12	1:B:379:LEU:HD11	1.86	0.57
1:C:705:ASN:HB3	1:C:708:THR:HG23	1.86	0.57
1:B:373:GLY:O	1:B:402:ARG:NH1	2.35	0.57
1:B:705:ASN:HB3	1:B:708:THR:HG23	1.87	0.57
1:C:684:ALA:HA	1:C:687:LEU:HD23	1.86	0.57
1:D:705:ASN:HB3	1:D:708:THR:HG23	1.87	0.57
1:A:705:ASN:HB3	1:A:708:THR:HG23	1.86	0.57
1:B:625:GLN:HG3	1:B:652:ALA:HB2	1.86	0.57
1:B:673:GLY:O	1:B:741:ARG:NH1	2.38	0.57
1:F:736:ASP:OD1	1:F:736:ASP:N	2.34	0.57
1:A:673:GLY:O	1:A:741:ARG:NH1	2.38	0.57
1:C:114:UNK:O	1:C:123:UNK:N	2.38	0.57
1:C:673:GLY:O	1:C:741:ARG:NH1	2.38	0.57
1:C:740:VAL:HG13	1:C:745:ASP:HB2	1.87	0.57
1:E:705:ASN:HB3	1:E:708:THR:HG23	1.87	0.57
1:F:114:UNK:O	1:F:123:UNK:N	2.38	0.57
1:B:114:UNK:O	1:B:123:UNK:N	2.38	0.57
1:C:362:ILE:HD12	1:C:379:LEU:HD11	1.86	0.57
1:C:625:GLN:HG3	1:C:652:ALA:HB2	1.86	0.57
1:D:740:VAL:HG13	1:D:745:ASP:HB2	1.87	0.57
1:E:740:VAL:HG13	1:E:745:ASP:HB2	1.87	0.57

Continued on next page...

Continued from previous page...

Atom-1	Atom-2	Interatomic distance (Å)	Clash overlap (Å)
1:B:382:ASN:N	1:B:382:ASN:OD1	2.38	0.57
1:A:365:LYS:NZ	1:A:368:GLY:O	2.36	0.57
1:B:740:VAL:HG13	1:B:745:ASP:HB2	1.87	0.57
1:E:673:GLY:O	1:E:741:ARG:NH1	2.38	0.57
1:F:705:ASN:HB3	1:F:708:THR:HG23	1.87	0.57
1:D:114:UNK:O	1:D:123:UNK:N	2.38	0.56
1:D:408:ASN:ND2	1:D:412:ASN:O	2.35	0.56
1:D:437:PHE:HB3	1:D:439:PHE:HE1	1.70	0.56
1:F:673:GLY:O	1:F:741:ARG:NH1	2.38	0.56
1:D:673:GLY:O	1:D:741:ARG:NH1	2.38	0.56
1:E:437:PHE:HB3	1:E:439:PHE:HE1	1.70	0.56
1:A:736:ASP:OD1	1:A:736:ASP:N	2.34	0.56
1:C:391:GLY:O	1:C:420:ARG:NH2	2.39	0.56
1:B:391:GLY:O	1:B:420:ARG:NH2	2.39	0.56
1:C:437:PHE:HB3	1:C:439:PHE:HE1	1.70	0.56
1:B:376:LYS:O	1:B:377:ALA:C	2.43	0.56
1:C:382:ASN:N	1:C:382:ASN:OD1	2.38	0.56
1:F:740:VAL:HG13	1:F:745:ASP:HB2	1.87	0.56
1:A:114:UNK:O	1:A:123:UNK:N	2.38	0.56
1:A:740:VAL:HG13	1:A:745:ASP:HB2	1.87	0.56
1:A:743:THR:OG1	1:A:744:ASP:OD1	2.24	0.56
1:D:391:GLY:O	1:D:420:ARG:NH2	2.39	0.56
1:B:743:THR:OG1	1:B:744:ASP:OD1	2.24	0.56
1:C:521:THR:OG1	1:C:548:GLU:O	2.24	0.56
1:E:114:UNK:O	1:E:123:UNK:N	2.38	0.56
1:A:521:THR:OG1	1:A:548:GLU:O	2.24	0.56
1:D:783:ASN:OD1	1:D:786:LYS:N	2.38	0.56
1:A:655:ASN:N	1:A:655:ASN:OD1	2.39	0.56
1:C:617:GLN:HG3	1:C:639:GLN:HG3	1.88	0.56
1:D:521:THR:OG1	1:D:548:GLU:O	2.24	0.56
1:C:565:GLU:OE2	1:C:587:ASN:ND2	2.32	0.56
1:F:521:THR:OG1	1:F:548:GLU:O	2.24	0.56
1:F:765:TYR:HB3	1:F:768:LEU:HB3	1.88	0.56
1:B:437:PHE:HB3	1:B:439:PHE:HE1	1.70	0.55
1:C:736:ASP:OD1	1:C:736:ASP:N	2.34	0.55
1:D:617:GLN:HG3	1:D:639:GLN:HG3	1.88	0.55
1:E:736:ASP:OD1	1:E:736:ASP:N	2.34	0.55
1:A:391:GLY:O	1:A:420:ARG:NH2	2.39	0.55
1:E:521:THR:OG1	1:E:548:GLU:O	2.24	0.55
1:F:437:PHE:HB3	1:F:439:PHE:HE1	1.71	0.55
1:E:391:GLY:O	1:E:420:ARG:NH2	2.39	0.55

Continued on next page...

Continued from previous page...

Atom-1	Atom-2	Interatomic distance (Å)	Clash overlap (Å)
1:B:521:THR:OG1	1:B:548:GLU:O	2.24	0.55
1:B:772:ALA:HB3	1:B:805:THR:HB	1.89	0.55
1:E:743:THR:OG1	1:E:744:ASP:OD1	2.24	0.55
1:A:656:VAL:HB	1:A:698:ALA:HB2	1.88	0.55
1:C:765:TYR:HB3	1:C:768:LEU:HB3	1.88	0.55
1:E:617:GLN:HG3	1:E:639:GLN:HG3	1.88	0.55
1:A:459:GLY:O	1:A:484:ASN:ND2	2.36	0.55
1:C:655:ASN:OD1	1:C:655:ASN:N	2.39	0.55
1:E:765:TYR:HB3	1:E:768:LEU:HB3	1.88	0.55
1:E:783:ASN:OD1	1:E:786:LYS:N	2.38	0.55
1:F:365:LYS:NZ	1:F:368:GLY:O	2.36	0.55
1:F:656:VAL:HB	1:F:698:ALA:HB2	1.88	0.55
1:A:437:PHE:HB3	1:A:439:PHE:HE1	1.70	0.55
1:A:705:ASN:ND2	1:A:707:SER:OG	2.37	0.55
1:B:548:GLU:H	1:B:578:ASN:HD22	1.55	0.55
1:D:656:VAL:HB	1:D:698:ALA:HB2	1.88	0.55
1:F:391:GLY:O	1:F:420:ARG:NH2	2.39	0.55
1:F:743:THR:OG1	1:F:744:ASP:OD1	2.24	0.55
1:F:783:ASN:OD1	1:F:786:LYS:N	2.38	0.55
1:A:765:TYR:HB3	1:A:768:LEU:HB3	1.88	0.55
1:A:783:ASN:OD1	1:A:786:LYS:N	2.38	0.55
1:B:617:GLN:HG3	1:B:639:GLN:HG3	1.88	0.55
1:C:656:VAL:HB	1:C:698:ALA:HB2	1.88	0.55
1:E:362:ILE:HD12	1:E:379:LEU:HD11	1.87	0.55
1:A:548:GLU:H	1:A:578:ASN:HD22	1.55	0.55
1:C:772:ALA:HB3	1:C:805:THR:HB	1.89	0.55
1:D:378:SER:O	1:D:378:SER:OG	2.18	0.55
1:D:743:THR:OG1	1:D:744:ASP:OD1	2.24	0.55
1:E:287:UNK:C	1:E:377:ALA:HB2	2.37	0.55
1:E:548:GLU:H	1:E:578:ASN:HD22	1.55	0.55
1:E:705:ASN:ND2	1:E:707:SER:OG	2.37	0.55
1:B:656:VAL:HB	1:B:698:ALA:HB2	1.88	0.55
1:C:688:ILE:O	1:C:693:HIS:NE2	2.35	0.55
1:C:548:GLU:H	1:C:578:ASN:HD22	1.55	0.54
1:B:765:TYR:HB3	1:B:768:LEU:HB3	1.88	0.54
1:C:743:THR:OG1	1:C:744:ASP:OD1	2.24	0.54
1:D:382:ASN:N	1:D:382:ASN:OD1	2.38	0.54
1:D:548:GLU:H	1:D:578:ASN:HD22	1.55	0.54
1:F:565:GLU:OE2	1:F:587:ASN:ND2	2.32	0.54
1:F:666:ASN:ND2	1:F:707:SER:O	2.27	0.54
1:B:290:UNK:O	1:B:378:SER:N	2.40	0.54

Continued on next page...

Continued from previous page...

Atom-1	Atom-2	Interatomic distance (Å)	Clash overlap (Å)
1:B:783:ASN:OD1	1:B:786:LYS:N	2.38	0.54
1:E:772:ALA:HB3	1:E:805:THR:HB	1.89	0.54
1:E:656:VAL:HB	1:E:698:ALA:HB2	1.88	0.54
1:D:765:TYR:HB3	1:D:768:LEU:HB3	1.88	0.54
1:F:548:GLU:H	1:F:578:ASN:HD22	1.55	0.54
1:A:617:GLN:HG3	1:A:639:GLN:HG3	1.88	0.54
1:D:615:LEU:HB3	1:D:637:ASN:HA	1.90	0.54
1:F:375:PHE:CE2	1:F:400:SER:HB3	2.42	0.54
1:F:617:GLN:HG3	1:F:639:GLN:HG3	1.88	0.54
1:A:382:ASN:N	1:A:382:ASN:OD1	2.38	0.54
1:A:772:ALA:HB3	1:A:805:THR:HB	1.89	0.54
1:A:408:ASN:ND2	1:A:412:ASN:O	2.35	0.54
1:B:688:ILE:O	1:B:693:HIS:NE2	2.35	0.54
1:C:376:LYS:CG	1:C:403:THR:O	2.52	0.54
1:C:376:LYS:HD3	1:C:403:THR:OG1	2.08	0.54
1:D:772:ALA:HB3	1:D:805:THR:HB	1.89	0.54
1:B:370:ILE:O	1:B:400:SER:OG	2.23	0.54
1:C:783:ASN:OD1	1:C:786:LYS:N	2.38	0.54
1:E:382:ASN:N	1:E:382:ASN:OD1	2.38	0.54
1:E:459:GLY:O	1:E:484:ASN:ND2	2.36	0.54
1:C:615:LEU:HB3	1:C:637:ASN:HA	1.90	0.54
1:C:370:ILE:O	1:C:400:SER:OG	2.23	0.53
1:E:615:LEU:HB3	1:E:637:ASN:HA	1.90	0.53
1:A:405:LEU:HA	1:A:438:GLU:HB2	1.90	0.53
1:B:615:LEU:HB3	1:B:637:ASN:HA	1.90	0.53
1:C:623:TYR:N	1:C:643:ASN:O	2.41	0.53
1:D:623:TYR:N	1:D:643:ASN:O	2.41	0.53
1:A:688:ILE:O	1:A:693:HIS:NE2	2.34	0.53
1:B:405:LEU:HA	1:B:438:GLU:HB2	1.91	0.53
1:B:565:GLU:OE2	1:B:587:ASN:ND2	2.32	0.53
1:B:408:ASN:ND2	1:B:412:ASN:O	2.35	0.53
1:F:623:TYR:N	1:F:643:ASN:O	2.41	0.53
1:F:772:ALA:HB3	1:F:805:THR:HB	1.89	0.53
1:F:657:GLY:O	1:F:699:LYS:NZ	2.41	0.53
1:A:623:TYR:N	1:A:643:ASN:O	2.41	0.53
1:B:705:ASN:ND2	1:B:707:SER:OG	2.37	0.53
1:D:459:GLY:O	1:D:484:ASN:ND2	2.36	0.53
1:D:657:GLY:O	1:D:699:LYS:NZ	2.42	0.53
1:F:380:THR:HG22	1:F:407:GLU:CG	2.38	0.53
1:B:623:TYR:N	1:B:643:ASN:O	2.41	0.53
1:E:408:ASN:ND2	1:E:412:ASN:O	2.35	0.53

Continued on next page...

Continued from previous page...

Atom-1	Atom-2	Interatomic distance (Å)	Clash overlap (Å)
1:A:413:ILE:HG22	1:A:450:ALA:HA	1.91	0.53
1:A:565:GLU:OE2	1:A:587:ASN:ND2	2.32	0.53
1:B:413:ILE:HG22	1:B:450:ALA:HA	1.91	0.53
1:B:655:ASN:OD1	1:B:655:ASN:N	2.39	0.53
1:A:287:UNK:C	1:A:377:ALA:HB2	2.38	0.53
1:E:365:LYS:NZ	1:E:368:GLY:O	2.36	0.52
1:E:405:LEU:HA	1:E:438:GLU:HB2	1.90	0.52
1:E:623:TYR:N	1:E:643:ASN:O	2.41	0.52
1:A:615:LEU:HB3	1:A:637:ASN:HA	1.90	0.52
1:B:549:THR:OG1	1:B:575:SER:OG	2.26	0.52
1:B:646:VAL:HG23	1:B:649:GLY:N	2.23	0.52
1:D:646:VAL:HG23	1:D:649:GLY:N	2.23	0.52
1:A:657:GLY:O	1:A:699:LYS:NZ	2.41	0.52
1:C:290:UNK:O	1:C:378:SER:N	2.30	0.52
1:F:459:GLY:O	1:F:484:ASN:ND2	2.36	0.52
1:F:615:LEU:HB3	1:F:637:ASN:HA	1.90	0.52
1:B:657:GLY:O	1:B:699:LYS:NZ	2.42	0.52
1:B:736:ASP:OD1	1:B:736:ASP:N	2.34	0.52
1:D:655:ASN:N	1:D:655:ASN:OD1	2.39	0.52
1:E:657:GLY:O	1:E:699:LYS:NZ	2.41	0.52
1:D:370:ILE:O	1:D:400:SER:OG	2.23	0.52
1:D:405:LEU:HA	1:D:438:GLU:HB2	1.90	0.52
1:E:655:ASN:OD1	1:E:655:ASN:N	2.39	0.52
1:F:405:LEU:HA	1:F:438:GLU:HB2	1.91	0.52
1:A:370:ILE:O	1:A:400:SER:OG	2.23	0.52
1:B:287:UNK:O	1:B:377:ALA:HB2	2.07	0.52
1:B:574:TYR:O	1:B:597:SER:N	2.37	0.52
1:C:549:THR:OG1	1:C:575:SER:OG	2.26	0.52
1:F:290:UNK:O	1:F:377:ALA:C	2.48	0.52
1:D:742:ASN:OD1	1:D:742:ASN:N	2.43	0.51
1:E:666:ASN:ND2	1:E:707:SER:O	2.27	0.51
1:D:413:ILE:HG22	1:D:450:ALA:HA	1.91	0.51
1:F:655:ASN:OD1	1:F:655:ASN:N	2.39	0.51
1:D:705:ASN:ND2	1:D:707:SER:OG	2.37	0.51
1:C:405:LEU:HA	1:C:438:GLU:HB2	1.90	0.51
1:E:413:ILE:HG22	1:E:450:ALA:HA	1.91	0.51
1:E:543:ASN:ND2	1:E:570:ASP:OD1	2.44	0.51
1:F:413:ILE:HG22	1:F:450:ALA:HA	1.91	0.51
1:B:570:ASP:HA	1:B:591:THR:HG22	1.93	0.51
1:D:705:ASN:HD21	1:D:707:SER:HG	1.55	0.51
1:F:532:PHE:O	1:F:562:LYS:N	2.44	0.51

Continued on next page...

Continued from previous page...

Atom-1	Atom-2	Interatomic distance (Å)	Clash overlap (Å)
1:A:607:LYS:HA	1:A:628:ASN:HD22	1.76	0.51
1:E:607:LYS:HA	1:E:628:ASN:HD22	1.76	0.51
1:F:570:ASP:HA	1:F:591:THR:HG22	1.93	0.51
1:F:639:GLN:H	1:F:663:MET:HB2	1.76	0.51
1:A:639:GLN:H	1:A:663:MET:HB2	1.76	0.51
1:D:543:ASN:ND2	1:D:570:ASP:OD1	2.44	0.51
1:C:378:SER:O	1:C:378:SER:OG	2.28	0.51
1:C:413:ILE:HG22	1:C:450:ALA:HA	1.91	0.51
1:C:543:ASN:ND2	1:C:570:ASP:OD1	2.44	0.51
1:C:570:ASP:HA	1:C:591:THR:HG22	1.93	0.51
1:E:570:ASP:HA	1:E:591:THR:HG22	1.93	0.51
1:F:607:LYS:HA	1:F:628:ASN:HD22	1.76	0.51
1:A:614:THR:HG22	1:A:636:ILE:HD13	1.93	0.51
1:B:607:LYS:HA	1:B:628:ASN:HD22	1.76	0.51
1:C:657:GLY:O	1:C:699:LYS:NZ	2.42	0.51
1:E:436:ASN:HA	1:E:463:ASN:HB2	1.93	0.51
1:A:532:PHE:O	1:A:562:LYS:N	2.44	0.51
1:C:459:GLY:O	1:C:484:ASN:ND2	2.36	0.51
1:C:742:ASN:OD1	1:C:742:ASN:N	2.43	0.51
1:B:436:ASN:HA	1:B:463:ASN:HB2	1.93	0.50
1:B:614:THR:HG22	1:B:636:ILE:HD13	1.93	0.50
1:B:742:ASN:N	1:B:742:ASN:OD1	2.43	0.50
1:C:436:ASN:HA	1:C:463:ASN:HB2	1.93	0.50
1:D:570:ASP:HA	1:D:591:THR:HG22	1.93	0.50
1:E:742:ASN:N	1:E:742:ASN:OD1	2.43	0.50
1:D:436:ASN:HA	1:D:463:ASN:HB2	1.93	0.50
1:D:666:ASN:ND2	1:D:707:SER:O	2.27	0.50
1:F:543:ASN:ND2	1:F:570:ASP:OD1	2.44	0.50
1:A:570:ASP:HA	1:A:591:THR:HG22	1.93	0.50
1:B:459:GLY:O	1:B:484:ASN:ND2	2.36	0.50
1:B:543:ASN:ND2	1:B:570:ASP:OD1	2.44	0.50
1:E:288:UNK:HA	1:E:377:ALA:HB2	1.93	0.50
1:E:639:GLN:H	1:E:663:MET:HB2	1.76	0.50
1:F:381:THR:OG1	1:F:382:ASN:N	2.43	0.50
1:B:639:GLN:H	1:B:663:MET:HB2	1.76	0.50
1:D:607:LYS:HA	1:D:628:ASN:HD22	1.76	0.50
1:F:436:ASN:HA	1:F:463:ASN:HB2	1.93	0.50
1:E:375:PHE:HZ	1:E:400:SER:CB	2.23	0.50
1:E:593:LYS:NZ	1:E:622:ASP:OD2	2.42	0.50
1:A:436:ASN:HA	1:A:463:ASN:HB2	1.93	0.50
1:A:543:ASN:ND2	1:A:570:ASP:OD1	2.44	0.50

Continued on next page...

Continued from previous page...

Atom-1	Atom-2	Interatomic distance (Å)	Clash overlap (Å)
1:A:660:ALA:O	1:A:702:GLY:N	2.45	0.50
1:B:532:PHE:O	1:B:562:LYS:N	2.44	0.50
1:C:705:ASN:ND2	1:C:707:SER:OG	2.37	0.50
1:E:522:ASN:HB3	1:E:528:GLU:HB3	1.94	0.50
1:E:574:TYR:O	1:E:597:SER:N	2.37	0.50
1:A:646:VAL:HG23	1:A:649:GLY:N	2.23	0.50
1:E:618:ASN:OD1	1:E:676:LYS:NZ	2.45	0.50
1:A:362:ILE:HB	1:A:393:VAL:HG13	1.94	0.50
1:B:666:ASN:ND2	1:B:707:SER:O	2.27	0.50
1:C:532:PHE:O	1:C:562:LYS:N	2.44	0.50
1:E:341:PRO:HD2	1:F:95:UNK:HA	1.94	0.49
1:F:705:ASN:ND2	1:F:707:SER:OG	2.37	0.49
1:F:742:ASN:OD1	1:F:742:ASN:N	2.43	0.49
1:C:666:ASN:ND2	1:C:707:SER:O	2.27	0.49
1:D:285:UNK:O	1:D:363:ASN:N	2.45	0.49
1:D:549:THR:OG1	1:D:575:SER:OG	2.26	0.49
1:D:614:THR:HG22	1:D:636:ILE:HD13	1.93	0.49
1:E:285:UNK:O	1:E:363:ASN:N	2.45	0.49
1:E:370:ILE:O	1:E:400:SER:OG	2.23	0.49
1:E:532:PHE:O	1:E:562:LYS:N	2.44	0.49
1:F:522:ASN:HB3	1:F:528:GLU:HB3	1.94	0.49
1:A:95:UNK:HA	1:F:341:PRO:HD2	1.95	0.49
1:B:362:ILE:HB	1:B:393:VAL:HG13	1.94	0.49
1:C:607:LYS:HA	1:C:628:ASN:HD22	1.76	0.49
1:D:522:ASN:HB3	1:D:528:GLU:HB3	1.94	0.49
1:F:380:THR:HG22	1:F:407:GLU:HG3	1.95	0.49
1:F:614:THR:HG22	1:F:636:ILE:HD13	1.93	0.49
1:E:660:ALA:O	1:E:702:GLY:N	2.45	0.49
1:F:362:ILE:HB	1:F:393:VAL:HG13	1.94	0.49
1:C:408:ASN:ND2	1:C:412:ASN:O	2.35	0.49
1:D:435:ALA:O	1:D:463:ASN:N	2.39	0.49
1:F:370:ILE:O	1:F:400:SER:OG	2.23	0.49
1:C:362:ILE:HB	1:C:393:VAL:HG13	1.94	0.49
1:C:398:GLN:NE2	1:C:433:SER:OG	2.46	0.49
1:C:646:VAL:HG23	1:C:649:GLY:N	2.23	0.49
1:D:639:GLN:H	1:D:663:MET:HB2	1.76	0.49
1:A:398:GLN:NE2	1:A:433:SER:OG	2.46	0.49
1:D:398:GLN:NE2	1:D:433:SER:OG	2.46	0.49
1:D:660:ALA:O	1:D:702:GLY:N	2.45	0.49
1:A:522:ASN:HB3	1:A:528:GLU:HB3	1.94	0.49
1:B:280:UNK:O	1:B:282:UNK:N	2.46	0.49

Continued on next page...

Continued from previous page...

Atom-1	Atom-2	Interatomic distance (Å)	Clash overlap (Å)
1:C:285:UNK:O	1:C:363:ASN:N	2.45	0.49
1:D:341:PRO:HD2	1:E:95:UNK:HA	1.95	0.49
1:D:532:PHE:O	1:D:562:LYS:N	2.44	0.49
1:E:487:ASP:HA	1:E:508:ALA:HB3	1.95	0.49
1:E:614:THR:HG22	1:E:636:ILE:HD13	1.93	0.49
1:B:365:LYS:NZ	1:B:368:GLY:O	2.36	0.49
1:B:396:SER:O	1:B:422:ASN:ND2	2.46	0.49
1:B:398:GLN:NE2	1:B:433:SER:OG	2.46	0.49
1:B:487:ASP:HA	1:B:508:ALA:HB3	1.95	0.49
1:C:341:PRO:HD2	1:D:95:UNK:HA	1.95	0.49
1:C:660:ALA:O	1:C:702:GLY:N	2.45	0.49
1:D:365:LYS:NZ	1:D:368:GLY:O	2.36	0.49
1:F:637:ASN:ND2	1:F:640:GLY:O	2.31	0.49
1:A:280:UNK:O	1:A:282:UNK:N	2.46	0.48
1:A:742:ASN:OD1	1:A:742:ASN:N	2.43	0.48
1:C:623:TYR:HE1	1:C:629:LEU:HB3	1.78	0.48
1:C:639:GLN:H	1:C:663:MET:HB2	1.76	0.48
1:E:623:TYR:HE1	1:E:629:LEU:HB3	1.79	0.48
1:F:285:UNK:O	1:F:363:ASN:N	2.45	0.48
1:F:408:ASN:ND2	1:F:412:ASN:O	2.35	0.48
1:F:561:PHE:O	1:F:584:ASN:ND2	2.46	0.48
1:F:646:VAL:HG23	1:F:649:GLY:N	2.23	0.48
1:A:285:UNK:O	1:A:363:ASN:N	2.45	0.48
1:B:285:UNK:O	1:B:363:ASN:N	2.45	0.48
1:C:522:ASN:HB3	1:C:528:GLU:HB3	1.94	0.48
1:C:561:PHE:O	1:C:584:ASN:ND2	2.47	0.48
1:C:614:THR:HG22	1:C:636:ILE:HD13	1.93	0.48
1:D:396:SER:O	1:D:422:ASN:ND2	2.46	0.48
1:F:396:SER:O	1:F:422:ASN:ND2	2.46	0.48
1:A:694:VAL:HA	1:A:788:SER:HA	1.95	0.48
1:A:775:ASN:HD21	1:A:794:ASN:HA	1.79	0.48
1:B:522:ASN:HB3	1:B:528:GLU:HB3	1.94	0.48
1:B:561:PHE:O	1:B:584:ASN:ND2	2.46	0.48
1:D:376:LYS:O	1:D:377:ALA:C	2.51	0.48
1:D:623:TYR:HE1	1:D:629:LEU:HB3	1.78	0.48
1:E:396:SER:O	1:E:422:ASN:ND2	2.46	0.48
1:A:396:SER:O	1:A:422:ASN:ND2	2.46	0.48
1:B:649:GLY:HA3	1:B:687:LEU:HA	1.95	0.48
1:C:280:UNK:O	1:C:282:UNK:N	2.46	0.48
1:D:362:ILE:HB	1:D:393:VAL:HG13	1.94	0.48
1:E:561:PHE:O	1:E:584:ASN:ND2	2.46	0.48

Continued on next page...

Continued from previous page...

Atom-1	Atom-2	Interatomic distance (Å)	Clash overlap (Å)
1:A:618:ASN:OD1	1:A:676:LYS:NZ	2.45	0.48
1:A:623:TYR:HE1	1:A:629:LEU:HB3	1.79	0.48
1:B:549:THR:HG1	1:B:575:SER:HG	1.60	0.48
1:B:623:TYR:HE1	1:B:629:LEU:HB3	1.79	0.48
1:B:660:ALA:O	1:B:702:GLY:N	2.45	0.48
1:C:726:LEU:O	1:C:734:ARG:NH2	2.31	0.48
1:E:362:ILE:HD12	1:E:379:LEU:CD1	2.43	0.48
1:F:549:THR:HG1	1:F:575:SER:HG	1.56	0.48
1:F:623:TYR:HE1	1:F:629:LEU:HB3	1.78	0.48
1:F:775:ASN:HD21	1:F:794:ASN:HA	1.79	0.48
1:A:341:PRO:HD2	1:B:95:UNK:HA	1.95	0.48
1:D:280:UNK:O	1:D:282:UNK:N	2.46	0.48
1:D:637:ASN:ND2	1:D:640:GLY:O	2.31	0.48
1:F:471:ALA:HB1	1:F:473:PHE:HE1	1.79	0.48
1:A:487:ASP:HA	1:A:508:ALA:HB3	1.95	0.48
1:E:362:ILE:HB	1:E:393:VAL:HG13	1.94	0.48
1:F:280:UNK:O	1:F:282:UNK:N	2.46	0.48
1:F:398:GLN:NE2	1:F:433:SER:OG	2.46	0.48
1:F:487:ASP:HA	1:F:508:ALA:HB3	1.95	0.48
1:A:561:PHE:O	1:A:584:ASN:ND2	2.46	0.48
1:B:726:LEU:O	1:B:734:ARG:NH2	2.31	0.48
1:C:396:SER:O	1:C:422:ASN:ND2	2.46	0.48
1:D:487:ASP:HA	1:D:508:ALA:HB3	1.95	0.48
1:E:280:UNK:O	1:E:282:UNK:N	2.46	0.48
1:E:775:ASN:HD21	1:E:794:ASN:HA	1.79	0.48
1:B:341:PRO:HD2	1:C:95:UNK:HA	1.96	0.48
1:B:637:ASN:ND2	1:B:640:GLY:O	2.31	0.48
1:B:775:ASN:HD21	1:B:794:ASN:HA	1.79	0.48
1:C:775:ASN:HD21	1:C:794:ASN:HA	1.78	0.48
1:E:398:GLN:NE2	1:E:433:SER:OG	2.46	0.48
1:C:362:ILE:HD12	1:C:379:LEU:CD1	2.44	0.48
1:C:435:ALA:O	1:C:463:ASN:N	2.39	0.48
1:C:618:ASN:OD1	1:C:676:LYS:NZ	2.45	0.48
1:D:561:PHE:O	1:D:584:ASN:ND2	2.46	0.48
1:D:775:ASN:HD21	1:D:794:ASN:HA	1.79	0.48
1:F:375:PHE:N	1:F:375:PHE:CD2	2.82	0.48
1:F:660:ALA:O	1:F:702:GLY:N	2.45	0.48
1:A:471:ALA:HB1	1:A:473:PHE:HE1	1.79	0.47
1:B:362:ILE:HD12	1:B:379:LEU:CD1	2.44	0.47
1:D:471:ALA:HB1	1:D:473:PHE:HE1	1.79	0.47
1:D:530:THR:HG23	1:D:559:VAL:HG13	1.96	0.47

Continued on next page...

Continued from previous page...

Atom-1	Atom-2	Interatomic distance (Å)	Clash overlap (Å)
1:F:694:VAL:HA	1:F:788:SER:HA	1.95	0.47
1:B:694:VAL:HA	1:B:788:SER:HA	1.95	0.47
1:C:292:UNK:N	1:C:378:SER:O	2.47	0.47
1:C:487:ASP:HA	1:C:508:ALA:HB3	1.95	0.47
1:E:649:GLY:HA3	1:E:687:LEU:HA	1.95	0.47
1:F:649:GLY:HA3	1:F:687:LEU:HA	1.95	0.47
1:B:618:ASN:OD1	1:B:676:LYS:NZ	2.45	0.47
1:C:530:THR:HG23	1:C:559:VAL:HG13	1.96	0.47
1:E:435:ALA:O	1:E:463:ASN:N	2.39	0.47
1:A:530:THR:HG23	1:A:559:VAL:HG13	1.96	0.47
1:A:649:GLY:HA3	1:A:687:LEU:HA	1.95	0.47
1:B:471:ALA:HB1	1:B:473:PHE:HE1	1.79	0.47
1:C:694:VAL:HA	1:C:788:SER:HA	1.95	0.47
1:D:649:GLY:HA3	1:D:687:LEU:HA	1.95	0.47
1:D:694:VAL:HA	1:D:788:SER:HA	1.95	0.47
1:F:376:LYS:HB2	1:F:376:LYS:HE2	1.55	0.47
1:F:574:TYR:O	1:F:597:SER:N	2.37	0.47
1:F:530:THR:HG23	1:F:559:VAL:HG13	1.96	0.47
1:A:761:ASN:HB3	1:A:764:ASN:HB2	1.96	0.47
1:B:430:LEU:HD12	1:B:433:SER:HB3	1.97	0.47
1:B:530:THR:HG23	1:B:559:VAL:HG13	1.96	0.47
1:C:574:TYR:O	1:C:597:SER:N	2.37	0.47
1:F:642:ILE:O	1:F:643:ASN:ND2	2.48	0.47
1:F:761:ASN:HB3	1:F:764:ASN:HB2	1.96	0.47
1:C:430:LEU:HD12	1:C:433:SER:HB3	1.97	0.47
1:D:498:ASN:O	1:D:516:GLU:N	2.43	0.47
1:E:471:ALA:HB1	1:E:473:PHE:HE1	1.79	0.47
1:E:694:VAL:HA	1:E:788:SER:HA	1.95	0.47
1:A:574:TYR:O	1:A:597:SER:N	2.37	0.47
1:B:498:ASN:HA	1:B:515:ASN:HB2	1.97	0.47
1:B:761:ASN:HB3	1:B:764:ASN:HB2	1.96	0.47
1:C:287:UNK:O	1:C:377:ALA:HB2	2.09	0.47
1:C:649:GLY:HA3	1:C:687:LEU:HA	1.95	0.47
1:D:593:LYS:NZ	1:D:622:ASP:OD2	2.42	0.47
1:E:530:THR:HG23	1:E:559:VAL:HG13	1.96	0.47
1:E:646:VAL:HG23	1:E:649:GLY:N	2.23	0.47
1:F:291:UNK:CA	1:F:378:SER:CB	2.87	0.47
1:F:380:THR:HG21	1:F:407:GLU:OE1	2.15	0.47
1:D:281:UNK:HA	1:D:358:ASN:HB2	1.97	0.46
1:D:430:LEU:HD12	1:D:433:SER:HB3	1.97	0.46
1:E:498:ASN:HA	1:E:515:ASN:HB2	1.97	0.46

Continued on next page...

Continued from previous page...

Atom-1	Atom-2	Interatomic distance (Å)	Clash overlap (Å)
1:A:472:ASN:ND2	1:A:496:ASN:OD1	2.49	0.46
1:A:498:ASN:HA	1:A:515:ASN:HB2	1.97	0.46
1:E:378:SER:O	1:E:378:SER:OG	2.31	0.46
1:E:761:ASN:HB3	1:E:764:ASN:HB2	1.96	0.46
1:F:430:LEU:HD12	1:F:433:SER:HB3	1.97	0.46
1:F:623:TYR:HB2	1:F:642:ILE:HD11	1.97	0.46
1:A:642:ILE:O	1:A:643:ASN:ND2	2.48	0.46
1:B:472:ASN:ND2	1:B:496:ASN:OD1	2.49	0.46
1:C:471:ALA:HB1	1:C:473:PHE:HE1	1.79	0.46
1:A:498:ASN:O	1:A:516:GLU:N	2.43	0.46
1:D:498:ASN:HA	1:D:515:ASN:HB2	1.97	0.46
1:D:642:ILE:O	1:D:643:ASN:ND2	2.48	0.46
1:D:761:ASN:HB3	1:D:764:ASN:HB2	1.96	0.46
1:A:623:TYR:HB2	1:A:642:ILE:HD11	1.97	0.46
1:A:772:ALA:H	1:A:805:THR:H	1.63	0.46
1:B:642:ILE:O	1:B:643:ASN:ND2	2.48	0.46
1:C:498:ASN:HA	1:C:515:ASN:HB2	1.97	0.46
1:C:637:ASN:ND2	1:C:640:GLY:O	2.31	0.46
1:C:761:ASN:HB3	1:C:764:ASN:HB2	1.96	0.46
1:E:517:LEU:N	1:E:544:THR:O	2.40	0.46
1:E:642:ILE:O	1:E:643:ASN:ND2	2.48	0.46
1:F:472:ASN:ND2	1:F:496:ASN:OD1	2.49	0.46
1:F:772:ALA:H	1:F:805:THR:H	1.63	0.46
1:A:517:LEU:N	1:A:544:THR:O	2.40	0.46
1:E:281:UNK:HA	1:E:358:ASN:HB2	1.98	0.46
1:E:772:ALA:H	1:E:805:THR:H	1.63	0.46
1:A:492:THR:OG1	1:A:493:ASN:OD1	2.27	0.46
1:B:291:UNK:C	1:B:378:SER:O	2.64	0.46
1:C:281:UNK:HA	1:C:358:ASN:HB2	1.98	0.46
1:A:764:ASN:OD1	1:A:767:TYR:OH	2.22	0.46
1:D:362:ILE:HD12	1:D:379:LEU:CD1	2.46	0.46
1:D:376:LYS:HB2	1:D:376:LYS:HE2	1.39	0.46
1:F:498:ASN:HA	1:F:515:ASN:HB2	1.97	0.46
1:F:549:THR:OG1	1:F:575:SER:OG	2.26	0.46
1:C:566:LYS:HD2	1:C:566:LYS:HA	1.83	0.46
1:E:430:LEU:HD12	1:E:433:SER:HB3	1.97	0.46
1:E:669:ASP:N	1:E:674:PHE:O	2.44	0.46
1:A:593:LYS:HA	1:A:593:LYS:HD2	1.81	0.46
1:B:654:LEU:HD23	1:B:654:LEU:HA	1.85	0.46
1:D:703:TYR:OH	1:D:783:ASN:O	2.34	0.46
1:E:292:UNK:N	1:E:378:SER:O	2.49	0.46

Continued on next page...

Continued from previous page...

Atom-1	Atom-2	Interatomic distance (Å)	Clash overlap (Å)
1:E:623:TYR:HB2	1:E:642:ILE:HD11	1.97	0.46
1:A:450:ALA:HB3	1:A:471:ALA:HA	1.98	0.45
1:C:642:ILE:O	1:C:643:ASN:ND2	2.48	0.45
1:D:472:ASN:ND2	1:D:496:ASN:OD1	2.49	0.45
1:E:472:ASN:ND2	1:E:496:ASN:OD1	2.49	0.45
1:F:281:UNK:HA	1:F:358:ASN:HB2	1.97	0.45
1:F:450:ALA:HB3	1:F:471:ALA:HA	1.99	0.45
1:F:618:ASN:OD1	1:F:676:LYS:NZ	2.45	0.45
1:A:430:LEU:HD12	1:A:433:SER:HB3	1.97	0.45
1:C:472:ASN:ND2	1:C:496:ASN:OD1	2.49	0.45
1:E:703:TYR:OH	1:E:783:ASN:O	2.34	0.45
1:A:420:ARG:HE	1:A:420:ARG:HB2	1.68	0.45
1:A:653:THR:OG1	1:A:694:VAL:O	2.31	0.45
1:B:517:LEU:HD23	1:B:545:VAL:HG13	1.98	0.45
1:C:623:TYR:HB2	1:C:642:ILE:HD11	1.97	0.45
1:E:740:VAL:HG11	1:E:746:ILE:HG13	1.99	0.45
1:F:435:ALA:O	1:F:463:ASN:N	2.39	0.45
1:A:378:SER:HB2	1:A:405:LEU:HD23	1.98	0.45
1:B:450:ALA:HB3	1:B:471:ALA:HA	1.99	0.45
1:B:669:ASP:N	1:B:674:PHE:O	2.43	0.45
1:C:450:ALA:HB3	1:C:471:ALA:HA	1.99	0.45
1:E:566:LYS:HA	1:E:566:LYS:HD2	1.83	0.45
1:A:517:LEU:HD23	1:A:545:VAL:HG13	1.98	0.45
1:B:281:UNK:HA	1:B:358:ASN:HB2	1.97	0.45
1:C:517:LEU:HD23	1:C:545:VAL:HG13	1.98	0.45
1:D:450:ALA:HB3	1:D:471:ALA:HA	1.98	0.45
1:D:772:ALA:H	1:D:805:THR:H	1.63	0.45
1:E:492:THR:OG1	1:E:493:ASN:OD1	2.28	0.45
1:F:726:LEU:O	1:F:734:ARG:NH2	2.31	0.45
1:A:781:THR:N	1:A:788:SER:O	2.49	0.45
1:B:623:TYR:HB2	1:B:642:ILE:HD11	1.97	0.45
1:C:772:ALA:H	1:C:805:THR:H	1.63	0.45
1:E:375:PHE:CD2	1:E:375:PHE:N	2.85	0.45
1:E:781:THR:N	1:E:788:SER:O	2.49	0.45
1:B:516:GLU:HA	1:B:544:THR:HB	1.98	0.45
1:C:703:TYR:OH	1:C:783:ASN:O	2.34	0.45
1:D:516:GLU:HA	1:D:544:THR:HB	1.98	0.45
1:D:618:ASN:OD1	1:D:676:LYS:NZ	2.45	0.45
1:D:747:LYS:HG2	1:D:759:VAL:HG22	1.99	0.45
1:F:701:ILE:N	1:F:784:GLY:O	2.43	0.45
1:A:281:UNK:HA	1:A:358:ASN:HB2	1.97	0.45

Continued on next page...

Continued from previous page...

Atom-1	Atom-2	Interatomic distance (Å)	Clash overlap (Å)
1:B:576:PRO:HG3	1:B:602:PRO:HB2	1.99	0.45
1:C:576:PRO:HG3	1:C:602:PRO:HB2	1.99	0.45
1:C:605:THR:OG1	1:C:607:LYS:NZ	2.47	0.45
1:E:450:ALA:HB3	1:E:471:ALA:HA	1.99	0.45
1:F:764:ASN:OD1	1:F:767:TYR:OH	2.22	0.45
1:A:387:ASN:HA	1:A:414:THR:HB	1.99	0.45
1:A:516:GLU:HA	1:A:544:THR:HB	1.98	0.45
1:B:387:ASN:HA	1:B:414:THR:HB	1.99	0.45
1:B:772:ALA:H	1:B:805:THR:H	1.63	0.45
1:D:740:VAL:HG11	1:D:746:ILE:HG13	1.99	0.45
1:D:781:THR:N	1:D:788:SER:O	2.49	0.45
1:D:623:TYR:HB2	1:D:642:ILE:HD11	1.97	0.45
1:E:287:UNK:C	1:E:377:ALA:CB	2.95	0.45
1:E:387:ASN:HA	1:E:414:THR:HB	1.99	0.45
1:E:517:LEU:HD23	1:E:545:VAL:HG13	1.98	0.45
1:E:605:THR:OG1	1:E:607:LYS:NZ	2.48	0.45
1:F:669:ASP:N	1:F:674:PHE:O	2.44	0.45
1:B:498:ASN:O	1:B:516:GLU:N	2.43	0.44
1:C:387:ASN:HA	1:C:414:THR:HB	1.99	0.44
1:D:387:ASN:HA	1:D:414:THR:HB	1.99	0.44
1:D:517:LEU:N	1:D:544:THR:O	2.40	0.44
1:E:540:SER:OG	1:E:541:ARG:N	2.51	0.44
1:F:747:LYS:HG2	1:F:759:VAL:HG22	1.99	0.44
1:F:777:GLY:O	1:F:792:LEU:N	2.50	0.44
1:A:666:ASN:ND2	1:A:707:SER:O	2.27	0.44
1:B:435:ALA:O	1:B:463:ASN:N	2.39	0.44
1:D:576:PRO:HG3	1:D:602:PRO:HB2	1.99	0.44
1:D:651:VAL:HG21	1:D:695:LEU:HD22	1.99	0.44
1:F:387:ASN:HA	1:F:414:THR:HB	1.99	0.44
1:A:576:PRO:HG3	1:A:602:PRO:HB2	1.99	0.44
1:A:740:VAL:HG11	1:A:746:ILE:HG13	1.99	0.44
1:B:586:LYS:HA	1:B:611:ASN:HD22	1.83	0.44
1:C:586:LYS:HA	1:C:611:ASN:HD22	1.83	0.44
1:C:593:LYS:NZ	1:C:622:ASP:OD2	2.42	0.44
1:D:517:LEU:HD23	1:D:545:VAL:HG13	1.98	0.44
1:D:586:LYS:HA	1:D:611:ASN:HD22	1.83	0.44
1:F:517:LEU:HD23	1:F:545:VAL:HG13	1.98	0.44
1:F:540:SER:OG	1:F:541:ARG:N	2.51	0.44
1:F:566:LYS:HD2	1:F:566:LYS:HA	1.83	0.44
1:F:740:VAL:HG11	1:F:746:ILE:HG13	1.99	0.44
1:D:540:SER:OG	1:D:541:ARG:N	2.51	0.44

Continued on next page...

Continued from previous page...

Atom-1	Atom-2	Interatomic distance (Å)	Clash overlap (Å)
1:D:566:LYS:HA	1:D:566:LYS:HD2	1.83	0.44
1:E:516:GLU:HA	1:E:544:THR:HB	1.98	0.44
1:E:586:LYS:HA	1:E:611:ASN:HD22	1.83	0.44
1:F:498:ASN:O	1:F:516:GLU:N	2.43	0.44
1:F:703:TYR:OH	1:F:783:ASN:O	2.34	0.44
1:F:781:THR:N	1:F:788:SER:O	2.49	0.44
1:A:703:TYR:OH	1:A:783:ASN:O	2.34	0.44
1:C:386:LEU:HA	1:C:386:LEU:HD12	1.79	0.44
1:C:478:THR:N	1:C:501:ILE:O	2.39	0.44
1:C:777:GLY:O	1:C:792:LEU:N	2.50	0.44
1:A:637:ASN:ND2	1:A:640:GLY:O	2.31	0.44
1:B:740:VAL:HG11	1:B:746:ILE:HG13	1.98	0.44
1:C:651:VAL:HG21	1:C:695:LEU:HD22	1.99	0.44
1:C:740:VAL:HG11	1:C:746:ILE:HG13	1.98	0.44
1:D:574:TYR:O	1:D:597:SER:N	2.37	0.44
1:F:517:LEU:N	1:F:544:THR:O	2.40	0.44
1:F:586:LYS:HA	1:F:611:ASN:HD22	1.83	0.44
1:A:540:SER:OG	1:A:541:ARG:N	2.50	0.44
1:A:586:LYS:HA	1:A:611:ASN:HD22	1.83	0.44
1:F:623:TYR:CE1	1:F:629:LEU:HB3	2.53	0.44
1:A:637:ASN:OD1	1:A:638:ASN:N	2.51	0.44
1:B:637:ASN:OD1	1:B:638:ASN:N	2.51	0.44
1:B:651:VAL:HG21	1:B:695:LEU:HD22	1.99	0.44
1:C:516:GLU:HA	1:C:544:THR:HB	1.99	0.44
1:D:669:ASP:N	1:D:674:PHE:O	2.43	0.44
1:E:777:GLY:O	1:E:792:LEU:N	2.50	0.44
1:A:677:PRO:O	1:A:680:LYS:NZ	2.42	0.44
1:A:747:LYS:HG2	1:A:759:VAL:HG22	1.99	0.44
1:E:726:LEU:O	1:E:734:ARG:NH2	2.31	0.43
1:E:764:ASN:OD1	1:E:767:TYR:OH	2.22	0.43
1:F:576:PRO:HG3	1:F:602:PRO:HB2	1.99	0.43
1:F:593:LYS:NZ	1:F:622:ASP:OD2	2.42	0.43
1:F:654:LEU:HA	1:F:654:LEU:HD23	1.84	0.43
1:F:756:GLN:NE2	1:F:760:ASN:OD1	2.47	0.43
1:C:397:ASN:HA	1:C:422:ASN:HD21	1.83	0.43
1:C:669:ASP:N	1:C:674:PHE:O	2.43	0.43
1:C:747:LYS:HG2	1:C:759:VAL:HG22	1.99	0.43
1:C:781:THR:N	1:C:788:SER:O	2.49	0.43
1:E:623:TYR:CE1	1:E:629:LEU:HB3	2.53	0.43
1:E:747:LYS:HG2	1:E:759:VAL:HG22	1.99	0.43
1:F:516:GLU:HA	1:F:544:THR:HB	1.98	0.43

Continued on next page...

Continued from previous page...

Atom-1	Atom-2	Interatomic distance (Å)	Clash overlap (Å)
1:A:605:THR:OG1	1:A:607:LYS:NZ	2.48	0.43
1:A:623:TYR:CE1	1:A:629:LEU:HB3	2.53	0.43
1:A:777:GLY:O	1:A:792:LEU:N	2.50	0.43
1:E:576:PRO:HG3	1:E:602:PRO:HB2	1.99	0.43
1:E:651:VAL:HG21	1:E:695:LEU:HD22	1.99	0.43
1:B:777:GLY:O	1:B:792:LEU:N	2.50	0.43
1:E:668:ILE:HG13	1:E:675:TYR:CE1	2.54	0.43
1:F:397:ASN:HA	1:F:422:ASN:HD21	1.83	0.43
1:F:637:ASN:OD1	1:F:638:ASN:N	2.51	0.43
1:F:684:ALA:HB1	1:F:728:LEU:HD23	2.01	0.43
1:B:492:THR:OG1	1:B:493:ASN:OD1	2.28	0.43
1:B:781:THR:N	1:B:788:SER:O	2.49	0.43
1:C:517:LEU:N	1:C:544:THR:O	2.40	0.43
1:D:386:LEU:HD12	1:D:386:LEU:HA	1.79	0.43
1:D:623:TYR:CE1	1:D:629:LEU:HB3	2.53	0.43
1:D:637:ASN:OD1	1:D:638:ASN:N	2.51	0.43
1:D:684:ALA:HB1	1:D:728:LEU:HD23	2.01	0.43
1:D:770:GLY:HA2	1:D:807:LEU:HD11	2.01	0.43
1:E:637:ASN:OD1	1:E:638:ASN:N	2.51	0.43
1:E:770:GLY:HA2	1:E:807:LEU:HD11	2.01	0.43
1:F:668:ILE:HG13	1:F:675:TYR:CE1	2.54	0.43
1:F:693:HIS:H	1:F:789:VAL:HG12	1.84	0.43
1:F:770:GLY:HA2	1:F:807:LEU:HD11	2.01	0.43
1:B:701:ILE:N	1:B:784:GLY:O	2.43	0.43
1:B:746:ILE:HG23	1:B:758:MET:HB3	2.00	0.43
1:C:668:ILE:HG13	1:C:675:TYR:CE1	2.54	0.43
1:E:498:ASN:O	1:E:516:GLU:N	2.43	0.43
1:A:684:ALA:HB1	1:A:728:LEU:HD23	2.01	0.43
1:B:668:ILE:HG13	1:B:675:TYR:CE1	2.54	0.43
1:B:747:LYS:HG2	1:B:759:VAL:HG22	1.99	0.43
1:C:540:SER:OG	1:C:541:ARG:N	2.51	0.43
1:E:420:ARG:HE	1:E:420:ARG:HB2	1.68	0.43
1:E:693:HIS:H	1:E:789:VAL:HG12	1.84	0.43
1:B:703:TYR:OH	1:B:783:ASN:O	2.34	0.43
1:C:684:ALA:HB1	1:C:728:LEU:HD23	2.01	0.43
1:C:705:ASN:HD21	1:C:707:SER:HG	1.62	0.43
1:D:593:LYS:HD2	1:D:593:LYS:HA	1.81	0.43
1:D:746:ILE:HG23	1:D:758:MET:HB3	2.00	0.43
1:A:651:VAL:HG21	1:A:695:LEU:HD22	1.99	0.43
1:B:615:LEU:O	1:B:638:ASN:N	2.52	0.43
1:B:623:TYR:CE1	1:B:629:LEU:HB3	2.53	0.43

Continued on next page...

Continued from previous page...

Atom-1	Atom-2	Interatomic distance (Å)	Clash overlap (Å)
1:C:376:LYS:HE2	1:C:376:LYS:HB2	1.52	0.43
1:C:637:ASN:OD1	1:C:638:ASN:N	2.51	0.43
1:C:770:GLY:HA2	1:C:807:LEU:HD11	2.01	0.43
1:D:397:ASN:HA	1:D:422:ASN:HD21	1.84	0.43
1:F:651:VAL:HG21	1:F:695:LEU:HD22	1.99	0.43
1:A:746:ILE:HG23	1:A:758:MET:HB3	2.00	0.43
1:F:746:ILE:HG23	1:F:758:MET:HB3	2.00	0.43
1:A:397:ASN:HA	1:A:422:ASN:HD21	1.84	0.42
1:A:478:THR:N	1:A:501:ILE:O	2.39	0.42
1:D:693:HIS:H	1:D:789:VAL:HG12	1.84	0.42
1:E:376:LYS:HB2	1:E:376:LYS:HE2	1.54	0.42
1:E:653:THR:OG1	1:E:694:VAL:O	2.31	0.42
1:E:746:ILE:HG23	1:E:758:MET:HB3	2.00	0.42
1:A:615:LEU:O	1:A:638:ASN:N	2.52	0.42
1:A:693:HIS:H	1:A:789:VAL:HG12	1.84	0.42
1:B:386:LEU:HD12	1:B:386:LEU:HA	1.79	0.42
1:B:770:GLY:HA2	1:B:807:LEU:HD11	2.01	0.42
1:C:623:TYR:CE1	1:C:629:LEU:HB3	2.53	0.42
1:D:492:THR:OG1	1:D:493:ASN:OD1	2.28	0.42
1:F:678:LEU:HD22	1:F:722:PHE:HE1	1.84	0.42
1:A:644:TYR:HD1	1:A:679:ILE:HD11	1.85	0.42
1:A:654:LEU:HA	1:A:654:LEU:HD23	1.84	0.42
1:A:668:ILE:HG13	1:A:675:TYR:CE1	2.54	0.42
1:D:777:GLY:O	1:D:792:LEU:N	2.50	0.42
1:E:740:VAL:HG12	1:E:742:ASN:H	1.85	0.42
1:F:653:THR:OG1	1:F:694:VAL:O	2.31	0.42
1:A:386:LEU:HD12	1:A:386:LEU:HA	1.79	0.42
1:B:397:ASN:HA	1:B:422:ASN:HD21	1.84	0.42
1:B:644:TYR:HD1	1:B:679:ILE:HD11	1.85	0.42
1:A:290:UNK:O	1:A:377:ALA:HA	2.19	0.42
1:A:593:LYS:NZ	1:A:622:ASP:OD2	2.42	0.42
1:A:770:GLY:HA2	1:A:807:LEU:HD11	2.01	0.42
1:D:438:GLU:N	1:D:438:GLU:OE1	2.53	0.42
1:D:668:ILE:HG13	1:D:675:TYR:CE1	2.54	0.42
1:D:756:GLN:NE2	1:D:760:ASN:OD1	2.47	0.42
1:E:701:ILE:N	1:E:784:GLY:O	2.43	0.42
1:B:684:ALA:HB1	1:B:728:LEU:HD23	2.01	0.42
1:B:740:VAL:HG12	1:B:742:ASN:H	1.85	0.42
1:C:438:GLU:N	1:C:438:GLU:OE1	2.53	0.42
1:C:746:ILE:HG23	1:C:758:MET:HB3	2.00	0.42
1:F:386:LEU:HA	1:F:386:LEU:HD12	1.79	0.42

Continued on next page...

Continued from previous page...

Atom-1	Atom-2	Interatomic distance (Å)	Clash overlap (Å)
1:F:626:PHE:HD1	1:F:626:PHE:HA	1.76	0.42
1:A:402:ARG:HB3	1:A:435:ALA:HA	2.02	0.42
1:B:540:SER:OG	1:B:541:ARG:N	2.51	0.42
1:D:402:ARG:HB3	1:D:435:ALA:HA	2.02	0.42
1:F:615:LEU:O	1:F:638:ASN:N	2.52	0.42
1:F:740:VAL:HG12	1:F:742:ASN:H	1.85	0.42
1:A:350:ALA:HA	1:A:382:ASN:HD22	1.85	0.42
1:A:726:LEU:O	1:A:734:ARG:NH2	2.31	0.42
1:B:350:ALA:HA	1:B:382:ASN:HD22	1.85	0.42
1:B:548:GLU:H	1:B:578:ASN:ND2	2.18	0.42
1:B:693:HIS:H	1:B:789:VAL:HG12	1.84	0.42
1:B:705:ASN:OD1	1:B:706:VAL:N	2.53	0.42
1:C:402:ARG:HB3	1:C:435:ALA:HA	2.02	0.42
1:C:644:TYR:HD1	1:C:679:ILE:HD11	1.85	0.42
1:C:678:LEU:HD22	1:C:722:PHE:HE1	1.84	0.42
1:C:693:HIS:H	1:C:789:VAL:HG12	1.84	0.42
1:D:705:ASN:OD1	1:D:706:VAL:N	2.53	0.42
1:A:669:ASP:N	1:A:674:PHE:O	2.44	0.42
1:B:517:LEU:N	1:B:544:THR:O	2.40	0.42
1:B:593:LYS:HA	1:B:593:LYS:HD2	1.81	0.42
1:B:593:LYS:NZ	1:B:622:ASP:OD2	2.42	0.42
1:E:438:GLU:OE1	1:E:438:GLU:N	2.53	0.42
1:F:350:ALA:HA	1:F:382:ASN:HD22	1.85	0.42
1:F:402:ARG:HB3	1:F:435:ALA:HA	2.02	0.42
1:F:644:TYR:HD1	1:F:679:ILE:HD11	1.85	0.42
1:A:626:PHE:HD1	1:A:626:PHE:HA	1.76	0.42
1:A:678:LEU:HD22	1:A:722:PHE:HE1	1.85	0.42
1:A:740:VAL:HG12	1:A:742:ASN:H	1.85	0.42
1:C:654:LEU:HA	1:C:654:LEU:HD23	1.84	0.42
1:D:615:LEU:O	1:D:638:ASN:N	2.52	0.42
1:E:684:ALA:HB1	1:E:728:LEU:HD23	2.01	0.42
1:E:756:GLN:NE2	1:E:760:ASN:OD1	2.47	0.42
1:A:608:LEU:N	1:A:628:ASN:O	2.45	0.41
1:A:656:VAL:N	1:A:697:LYS:O	2.53	0.41
1:B:402:ARG:HB3	1:B:435:ALA:HA	2.02	0.41
1:C:350:ALA:HA	1:C:382:ASN:HD22	1.85	0.41
1:C:492:THR:OG1	1:C:493:ASN:OD1	2.28	0.41
1:C:740:VAL:HG12	1:C:742:ASN:H	1.85	0.41
1:D:740:VAL:HG12	1:D:742:ASN:H	1.85	0.41
1:E:397:ASN:HA	1:E:422:ASN:HD21	1.83	0.41
1:E:548:GLU:H	1:E:578:ASN:ND2	2.18	0.41

Continued on next page...

Continued from previous page...

Atom-1	Atom-2	Interatomic distance (Å)	Clash overlap (Å)
1:E:615:LEU:O	1:E:638:ASN:N	2.52	0.41
1:E:633:GLY:O	1:E:658:ASN:N	2.53	0.41
1:B:438:GLU:OE1	1:B:438:GLU:N	2.53	0.41
1:B:633:GLY:O	1:B:658:ASN:N	2.54	0.41
1:C:705:ASN:OD1	1:C:706:VAL:N	2.53	0.41
1:E:678:LEU:HD22	1:E:722:PHE:HE1	1.85	0.41
1:B:621:MET:HB2	1:B:642:ILE:HD12	2.03	0.41
1:B:764:ASN:OD1	1:B:767:TYR:OH	2.22	0.41
1:C:291:UNK:C	1:C:378:SER:O	2.67	0.41
1:E:350:ALA:HA	1:E:382:ASN:HD22	1.85	0.41
1:F:621:MET:HB2	1:F:642:ILE:HD12	2.03	0.41
1:A:438:GLU:N	1:A:438:GLU:OE1	2.53	0.41
1:A:549:THR:OG1	1:A:575:SER:OG	2.26	0.41
1:B:678:LEU:HD22	1:B:722:PHE:HE1	1.85	0.41
1:C:764:ASN:OD1	1:C:767:TYR:OH	2.22	0.41
1:E:644:TYR:HD1	1:E:679:ILE:HD11	1.84	0.41
1:E:705:ASN:OD1	1:E:706:VAL:N	2.53	0.41
1:A:705:ASN:OD1	1:A:706:VAL:N	2.53	0.41
1:A:756:GLN:NE2	1:A:760:ASN:OD1	2.47	0.41
1:D:644:TYR:HD1	1:D:679:ILE:HD11	1.85	0.41
1:D:678:LEU:HD22	1:D:722:PHE:HE1	1.84	0.41
1:E:402:ARG:HB3	1:E:435:ALA:HA	2.02	0.41
1:E:549:THR:OG1	1:E:575:SER:OG	2.26	0.41
1:F:705:ASN:OD1	1:F:706:VAL:N	2.53	0.41
1:A:621:MET:HB2	1:A:642:ILE:HD12	2.03	0.41
1:B:504:SER:HB2	1:B:528:GLU:HG2	2.03	0.41
1:B:656:VAL:N	1:B:697:LYS:O	2.53	0.41
1:C:633:GLY:O	1:C:658:ASN:N	2.53	0.41
1:D:364:THR:HB	1:D:365:LYS:H	1.74	0.41
1:D:656:VAL:N	1:D:697:LYS:O	2.53	0.41
1:E:637:ASN:ND2	1:E:640:GLY:O	2.31	0.41
1:E:656:VAL:N	1:E:697:LYS:O	2.53	0.41
1:F:438:GLU:N	1:F:438:GLU:OE1	2.53	0.41
1:A:435:ALA:O	1:A:463:ASN:N	2.39	0.41
1:A:507:VAL:HG12	1:A:509:VAL:HB	2.02	0.41
1:B:292:UNK:N	1:B:378:SER:O	2.53	0.41
1:C:268:UNK:HA	1:C:367:ASP:HB2	2.03	0.41
1:C:615:LEU:O	1:C:638:ASN:N	2.52	0.41
1:D:268:UNK:HA	1:D:367:ASP:HB2	2.03	0.41
1:D:350:ALA:HA	1:D:382:ASN:HD22	1.85	0.41
1:D:608:LEU:N	1:D:628:ASN:O	2.45	0.41

Continued on next page...

Continued from previous page...

Atom-1	Atom-2	Interatomic distance (Å)	Clash overlap (Å)
1:E:621:MET:HB2	1:E:642:ILE:HD12	2.03	0.41
1:F:376:LYS:O	1:F:377:ALA:HB3	2.21	0.41
1:A:378:SER:O	1:A:378:SER:OG	2.38	0.41
1:B:507:VAL:HG12	1:B:509:VAL:HB	2.03	0.41
1:B:626:PHE:HD1	1:B:626:PHE:HA	1.76	0.41
1:C:621:MET:HB2	1:C:642:ILE:HD12	2.03	0.41
1:D:548:GLU:H	1:D:578:ASN:ND2	2.18	0.41
1:D:633:GLY:O	1:D:658:ASN:N	2.53	0.41
1:E:268:UNK:HA	1:E:367:ASP:HB2	2.03	0.41
1:A:504:SER:HB2	1:A:528:GLU:HG2	2.03	0.41
1:B:287:UNK:C	1:B:377:ALA:CB	2.97	0.41
1:B:653:THR:OG1	1:B:694:VAL:O	2.31	0.41
1:C:504:SER:HB2	1:C:528:GLU:HG2	2.03	0.41
1:C:507:VAL:HG12	1:C:509:VAL:HB	2.03	0.41
1:D:532:PHE:HB2	1:D:561:PHE:HD1	1.86	0.41
1:E:532:PHE:HB2	1:E:561:PHE:HD1	1.86	0.41
1:F:633:GLY:O	1:F:658:ASN:N	2.53	0.41
1:F:656:VAL:N	1:F:697:LYS:O	2.53	0.41
1:B:610:PHE:HB2	1:B:613:LEU:HD11	2.03	0.41
1:C:677:PRO:O	1:C:680:LYS:NZ	2.42	0.41
1:C:701:ILE:N	1:C:784:GLY:O	2.43	0.41
1:D:507:VAL:HG12	1:D:509:VAL:HB	2.03	0.41
1:D:621:MET:HB2	1:D:642:ILE:HD12	2.03	0.41
1:F:504:SER:HB2	1:F:528:GLU:HG2	2.03	0.41
1:F:548:GLU:H	1:F:578:ASN:ND2	2.18	0.41
1:A:610:PHE:HB2	1:A:613:LEU:HD11	2.03	0.40
1:B:378:SER:O	1:B:378:SER:OG	2.38	0.40
1:C:656:VAL:N	1:C:697:LYS:O	2.53	0.40
1:D:504:SER:HB2	1:D:528:GLU:HG2	2.03	0.40
1:F:547:LEU:HD12	1:F:574:TYR:HA	2.04	0.40
1:B:268:UNK:HA	1:B:367:ASP:HB2	2.03	0.40
1:C:498:ASN:O	1:C:516:GLU:N	2.43	0.40
1:D:375:PHE:HZ	1:D:400:SER:HB2	1.86	0.40
1:E:504:SER:HB2	1:E:528:GLU:HG2	2.03	0.40
1:B:397:ASN:OD1	1:B:398:GLN:N	2.55	0.40
1:B:577:TRP:CZ2	1:B:604:GLY:HA3	2.57	0.40
1:C:532:PHE:HB2	1:C:561:PHE:HD1	1.86	0.40
1:D:605:THR:OG1	1:D:607:LYS:NZ	2.48	0.40
1:D:653:THR:OG1	1:D:694:VAL:O	2.31	0.40
1:F:507:VAL:HG12	1:F:509:VAL:HB	2.03	0.40
1:C:342:THR:OG1	1:C:343:GLN:N	2.55	0.40

Continued on next page...

Continued from previous page...

Atom-1	Atom-2	Interatomic distance (Å)	Clash overlap (Å)
1:C:610:PHE:HB2	1:C:613:LEU:HD11	2.03	0.40
1:E:376:LYS:O	1:E:377:ALA:O	2.39	0.40
1:F:577:TRP:CZ2	1:F:604:GLY:HA3	2.57	0.40
1:C:577:TRP:CZ2	1:C:604:GLY:HA3	2.57	0.40
1:E:397:ASN:OD1	1:E:398:GLN:N	2.55	0.40
1:E:547:LEU:HD12	1:E:574:TYR:HA	2.04	0.40

There are no symmetry-related clashes.

5.3 Torsion angles [i](#)

5.3.1 Protein backbone [i](#)

In the following table, the Percentiles column shows the percent Ramachandran outliers of the chain as a percentile score with respect to all PDB entries followed by that with respect to all EM entries.

The Analysed column shows the number of residues for which the backbone conformation was analysed, and the total number of residues.

Mol	Chain	Analysed	Favoured	Allowed	Outliers	Percentiles	
1	A	470/701 (67%)	391 (83%)	79 (17%)	0	100	100
1	B	470/701 (67%)	391 (83%)	79 (17%)	0	100	100
1	C	470/701 (67%)	394 (84%)	76 (16%)	0	100	100
1	D	470/701 (67%)	391 (83%)	79 (17%)	0	100	100
1	E	470/701 (67%)	392 (83%)	78 (17%)	0	100	100
1	F	470/701 (67%)	391 (83%)	78 (17%)	1 (0%)	44	74
All	All	2820/4206 (67%)	2350 (83%)	469 (17%)	1 (0%)	100	100

All (1) Ramachandran outliers are listed below:

Mol	Chain	Res	Type
1	F	380	THR

5.3.2 Protein sidechains [i](#)

In the following table, the Percentiles column shows the percent sidechain outliers of the chain as a percentile score with respect to all PDB entries followed by that with respect to all EM

entries.

The Analysed column shows the number of residues for which the sidechain conformation was analysed, and the total number of residues.

Mol	Chain	Analysed	Rotameric	Outliers	Percentiles	
1	A	392/392 (100%)	383 (98%)	9 (2%)	45	63
1	B	392/392 (100%)	383 (98%)	9 (2%)	45	63
1	C	392/392 (100%)	382 (97%)	10 (3%)	41	61
1	D	392/392 (100%)	381 (97%)	11 (3%)	38	59
1	E	392/392 (100%)	381 (97%)	11 (3%)	38	59
1	F	392/392 (100%)	380 (97%)	12 (3%)	35	56
All	All	2352/2352 (100%)	2290 (97%)	62 (3%)	42	61

All (62) residues with a non-rotameric sidechain are listed below:

Mol	Chain	Res	Type
1	A	349	PHE
1	A	458	LEU
1	A	477	ASP
1	A	505	THR
1	A	621	MET
1	A	646	VAL
1	A	708	THR
1	A	728	LEU
1	A	786	LYS
1	B	349	PHE
1	B	458	LEU
1	B	477	ASP
1	B	505	THR
1	B	621	MET
1	B	646	VAL
1	B	708	THR
1	B	728	LEU
1	B	786	LYS
1	C	349	PHE
1	C	376	LYS
1	C	458	LEU
1	C	477	ASP
1	C	505	THR
1	C	621	MET
1	C	646	VAL
1	C	708	THR

Continued on next page...

Continued from previous page...

Mol	Chain	Res	Type
1	C	728	LEU
1	C	786	LYS
1	D	349	PHE
1	D	375	PHE
1	D	376	LYS
1	D	458	LEU
1	D	477	ASP
1	D	505	THR
1	D	621	MET
1	D	646	VAL
1	D	708	THR
1	D	728	LEU
1	D	786	LYS
1	E	349	PHE
1	E	375	PHE
1	E	376	LYS
1	E	458	LEU
1	E	477	ASP
1	E	505	THR
1	E	621	MET
1	E	646	VAL
1	E	708	THR
1	E	728	LEU
1	E	786	LYS
1	F	349	PHE
1	F	375	PHE
1	F	376	LYS
1	F	378	SER
1	F	458	LEU
1	F	477	ASP
1	F	505	THR
1	F	621	MET
1	F	646	VAL
1	F	708	THR
1	F	728	LEU
1	F	786	LYS

Sometimes sidechains can be flipped to improve hydrogen bonding and reduce clashes. All (84) such sidechains are listed below:

Mol	Chain	Res	Type
1	A	387	ASN
1	A	398	GLN

Continued on next page...

Continued from previous page...

Mol	Chain	Res	Type
1	A	422	ASN
1	A	463	ASN
1	A	472	ASN
1	A	498	ASN
1	A	506	ASN
1	A	515	ASN
1	A	543	ASN
1	A	578	ASN
1	A	584	ASN
1	A	628	ASN
1	A	643	ASN
1	A	775	ASN
1	B	387	ASN
1	B	398	GLN
1	B	422	ASN
1	B	463	ASN
1	B	472	ASN
1	B	498	ASN
1	B	506	ASN
1	B	515	ASN
1	B	543	ASN
1	B	578	ASN
1	B	584	ASN
1	B	628	ASN
1	B	643	ASN
1	B	775	ASN
1	C	387	ASN
1	C	398	GLN
1	C	422	ASN
1	C	463	ASN
1	C	472	ASN
1	C	498	ASN
1	C	506	ASN
1	C	515	ASN
1	C	543	ASN
1	C	578	ASN
1	C	584	ASN
1	C	628	ASN
1	C	643	ASN
1	C	775	ASN
1	D	387	ASN
1	D	398	GLN

Continued on next page...

Continued from previous page...

Mol	Chain	Res	Type
1	D	422	ASN
1	D	463	ASN
1	D	472	ASN
1	D	498	ASN
1	D	506	ASN
1	D	515	ASN
1	D	543	ASN
1	D	578	ASN
1	D	584	ASN
1	D	628	ASN
1	D	643	ASN
1	D	775	ASN
1	E	387	ASN
1	E	398	GLN
1	E	422	ASN
1	E	463	ASN
1	E	472	ASN
1	E	498	ASN
1	E	506	ASN
1	E	515	ASN
1	E	543	ASN
1	E	578	ASN
1	E	584	ASN
1	E	628	ASN
1	E	643	ASN
1	E	775	ASN
1	F	387	ASN
1	F	398	GLN
1	F	422	ASN
1	F	463	ASN
1	F	472	ASN
1	F	498	ASN
1	F	506	ASN
1	F	515	ASN
1	F	543	ASN
1	F	578	ASN
1	F	584	ASN
1	F	628	ASN
1	F	643	ASN
1	F	775	ASN

5.3.3 RNA [i](#)

There are no RNA molecules in this entry.

5.4 Non-standard residues in protein, DNA, RNA chains [i](#)

There are no non-standard protein/DNA/RNA residues in this entry.

5.5 Carbohydrates [i](#)

There are no oligosaccharides in this entry.

5.6 Ligand geometry [i](#)

There are no ligands in this entry.

5.7 Other polymers [i](#)

There are no such residues in this entry.

5.8 Polymer linkage issues [i](#)

The following chains have linkage breaks:

Mol	Chain	Number of breaks
1	A	2
1	B	2
1	C	2
1	D	2
1	E	2
1	F	2

All chain breaks are listed below:

Model	Chain	Residue-1	Atom-1	Residue-2	Atom-2	Distance (Å)
1	A	300:UNK	C	340:GLN	N	26.32
1	B	300:UNK	C	340:GLN	N	26.32
1	C	300:UNK	C	340:GLN	N	26.32
1	D	300:UNK	C	340:GLN	N	26.32
1	E	300:UNK	C	340:GLN	N	26.32
1	F	300:UNK	C	340:GLN	N	26.32

Continued on next page...

Continued from previous page...

Model	Chain	Residue-1	Atom-1	Residue-2	Atom-2	Distance (Å)
1	A	90:UNK	C	93:UNK	N	4.99
1	B	90:UNK	C	93:UNK	N	4.99
1	C	90:UNK	C	93:UNK	N	4.99
1	D	90:UNK	C	93:UNK	N	4.99
1	E	90:UNK	C	93:UNK	N	4.99
1	F	90:UNK	C	93:UNK	N	4.99

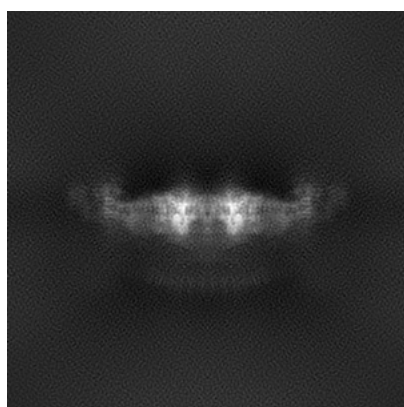
6 Map visualisation [i](#)

This section contains visualisations of the EMDB entry EMD-20024. These allow visual inspection of the internal detail of the map and identification of artifacts.

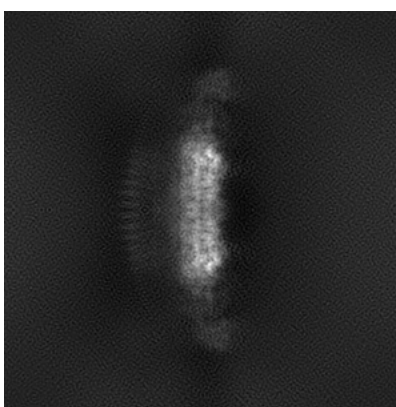
No raw map or half-maps were deposited for this entry and therefore no images, graphs, etc. pertaining to the raw map can be shown.

6.1 Orthogonal projections [i](#)

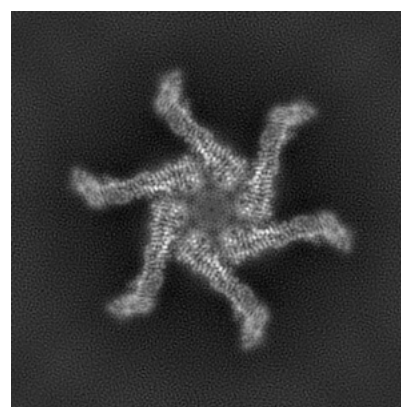
6.1.1 Primary map



X



Y

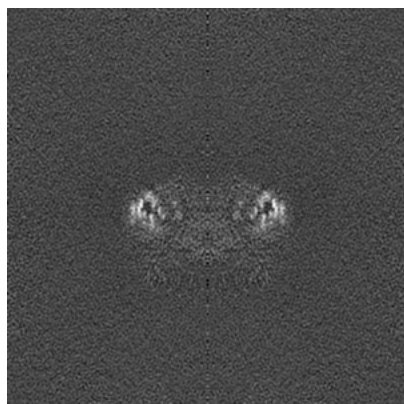


Z

The images above show the map projected in three orthogonal directions.

6.2 Central slices [i](#)

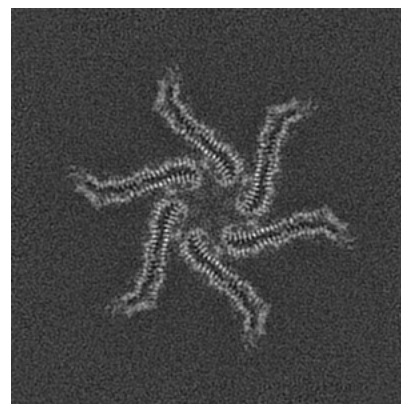
6.2.1 Primary map



X Index: 160



Y Index: 160

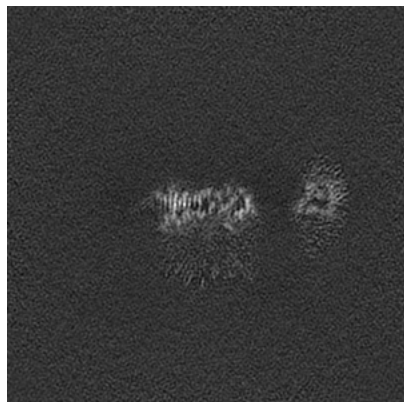


Z Index: 160

The images above show central slices of the map in three orthogonal directions.

6.3 Largest variance slices [\(i\)](#)

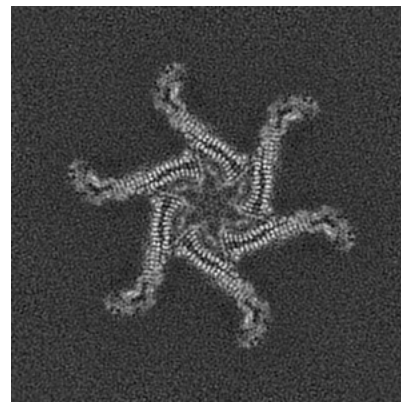
6.3.1 Primary map



X Index: 124



Y Index: 142

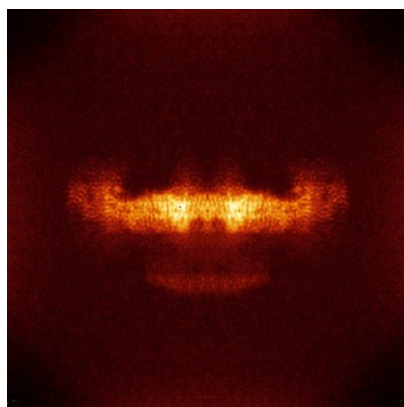


Z Index: 164

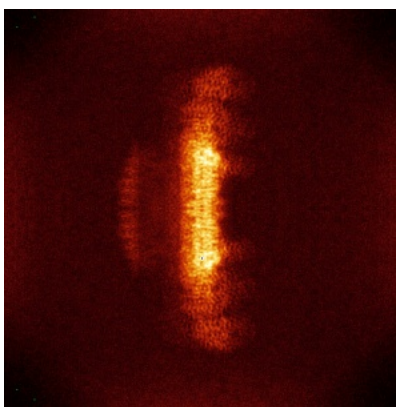
The images above show the largest variance slices of the map in three orthogonal directions.

6.4 Orthogonal standard-deviation projections (False-color) [\(i\)](#)

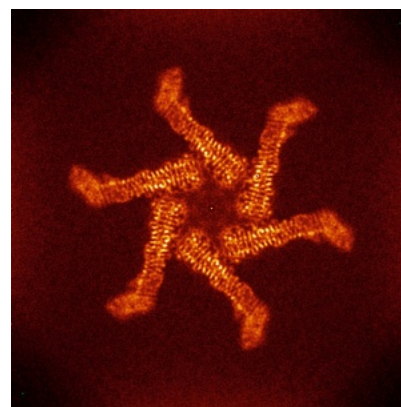
6.4.1 Primary map



X



Y



Z

The images above show the map standard deviation projections with false color in three orthogonal directions. Minimum values are shown in green, max in blue, and dark to light orange shades represent small to large values respectively.

6.5 Orthogonal surface views [i](#)

6.5.1 Primary map



The images above show the 3D surface view of the map at the recommended contour level 4.33. These images, in conjunction with the slice images, may facilitate assessment of whether an appropriate contour level has been provided.

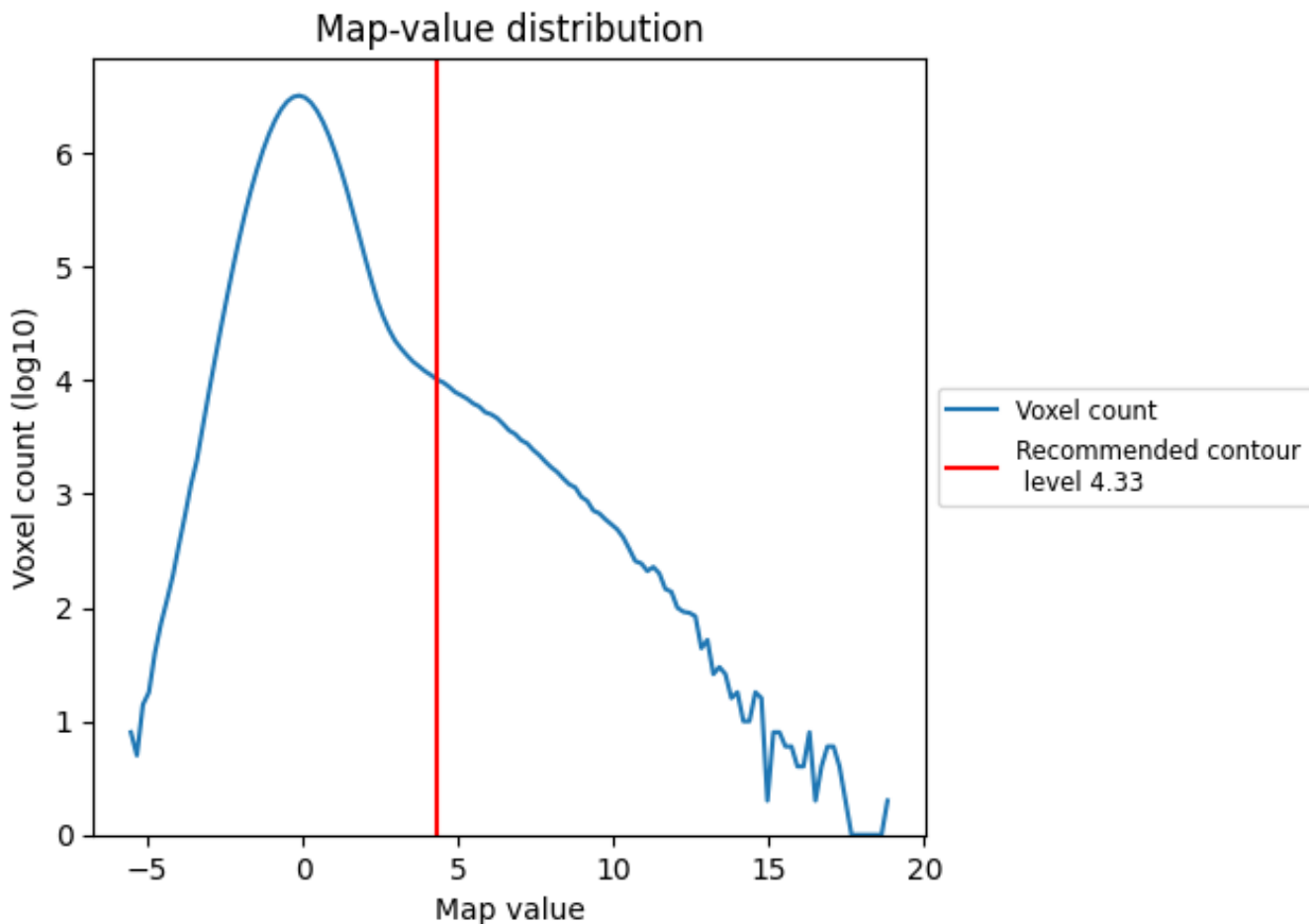
6.6 Mask visualisation [i](#)

This section was not generated. No masks/segmentation were deposited.

7 Map analysis [i](#)

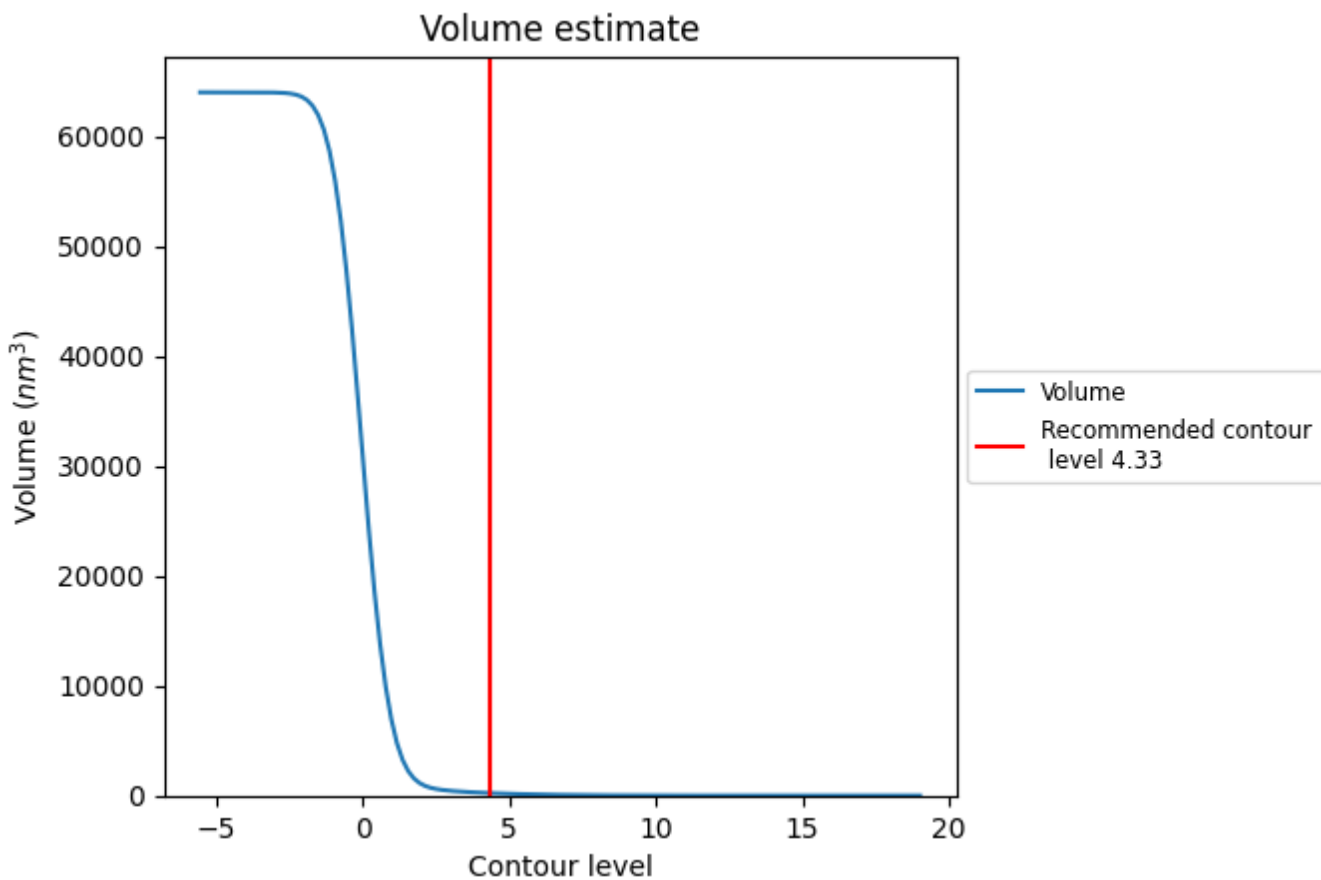
This section contains the results of statistical analysis of the map.

7.1 Map-value distribution [i](#)



The map-value distribution is plotted in 128 intervals along the x-axis. The y-axis is logarithmic. A spike in this graph at zero usually indicates that the volume has been masked.

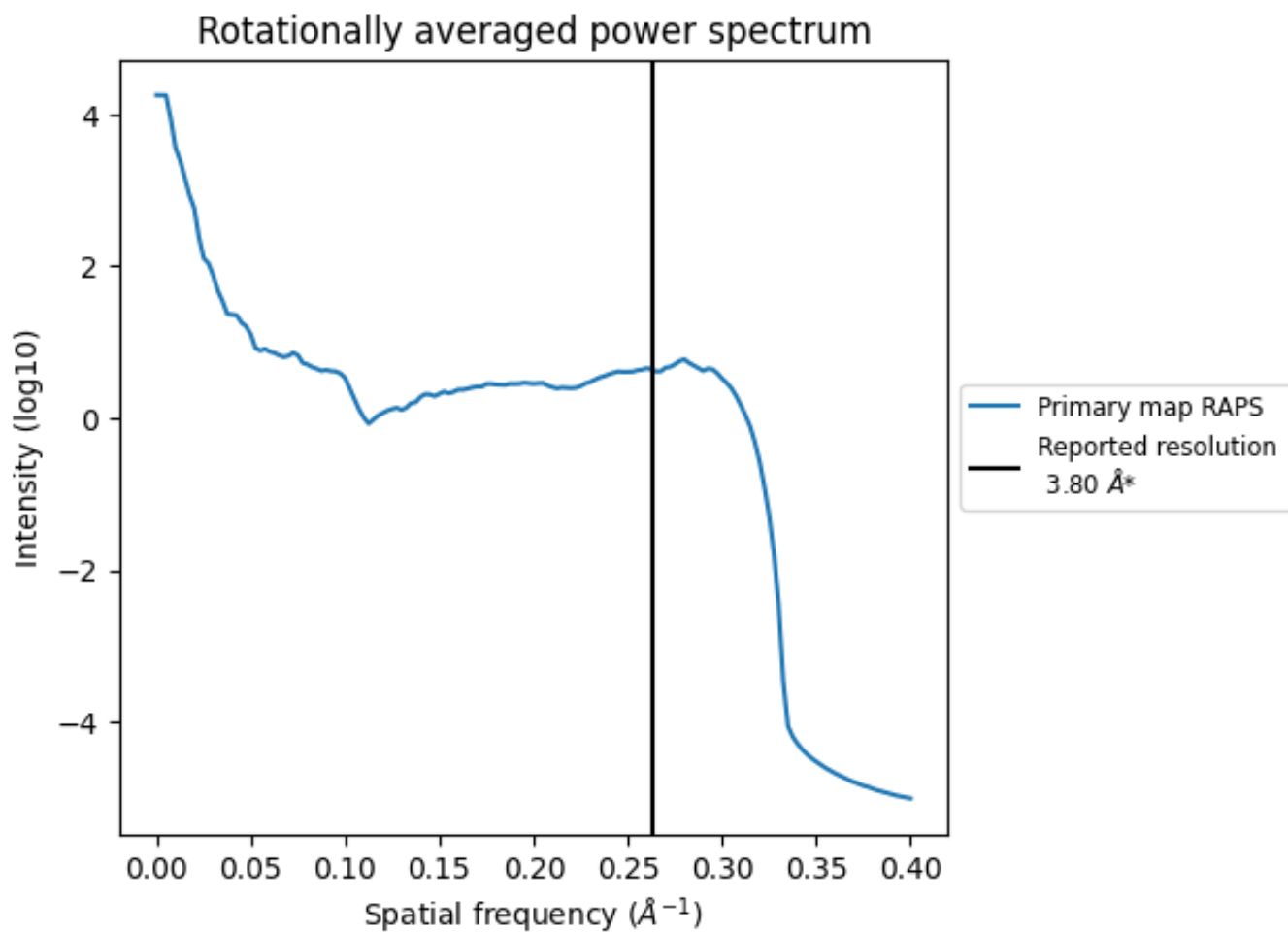
7.2 Volume estimate [i](#)



The volume at the recommended contour level is 225 nm³; this corresponds to an approximate mass of 204 kDa.

The volume estimate graph shows how the enclosed volume varies with the contour level. The recommended contour level is shown as a vertical line and the intersection between the line and the curve gives the volume of the enclosed surface at the given level.

7.3 Rotationally averaged power spectrum [i](#)



*Reported resolution corresponds to spatial frequency of 0.263 Å⁻¹

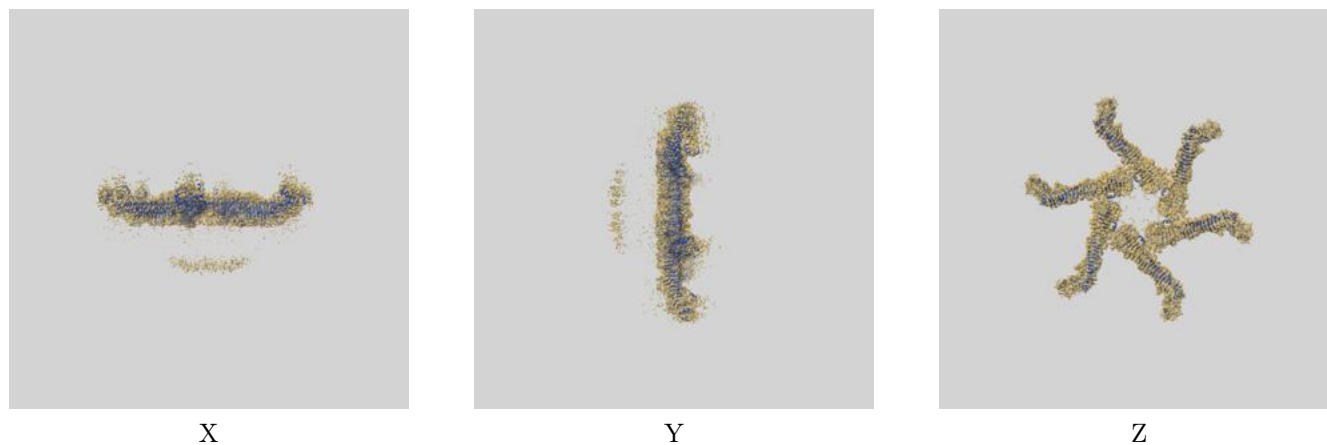
8 Fourier-Shell correlation

This section was not generated. No FSC curve or half-maps provided.

9 Map-model fit [i](#)

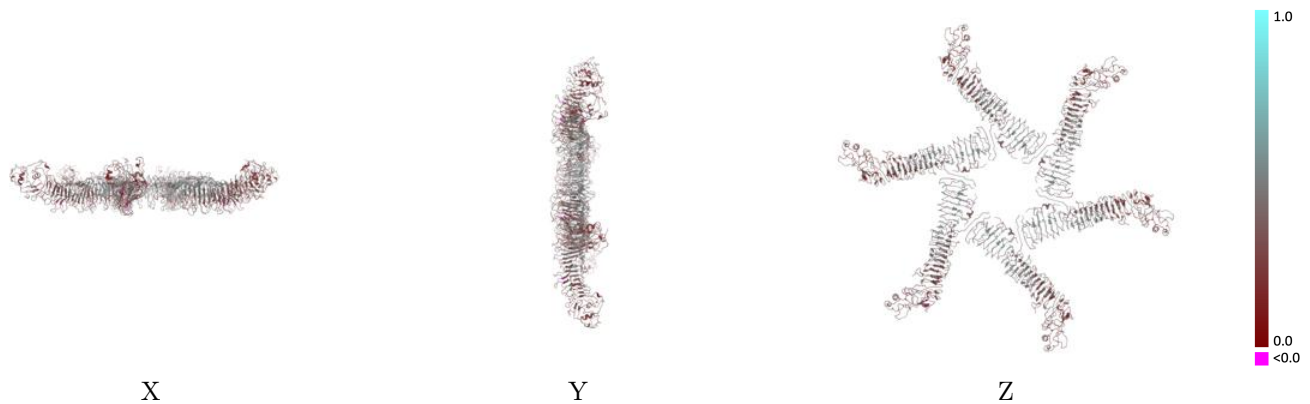
This section contains information regarding the fit between EMDB map EMD-20024 and PDB model 6ODY. Per-residue inclusion information can be found in section [3](#) on page [4](#).

9.1 Map-model overlay [i](#)



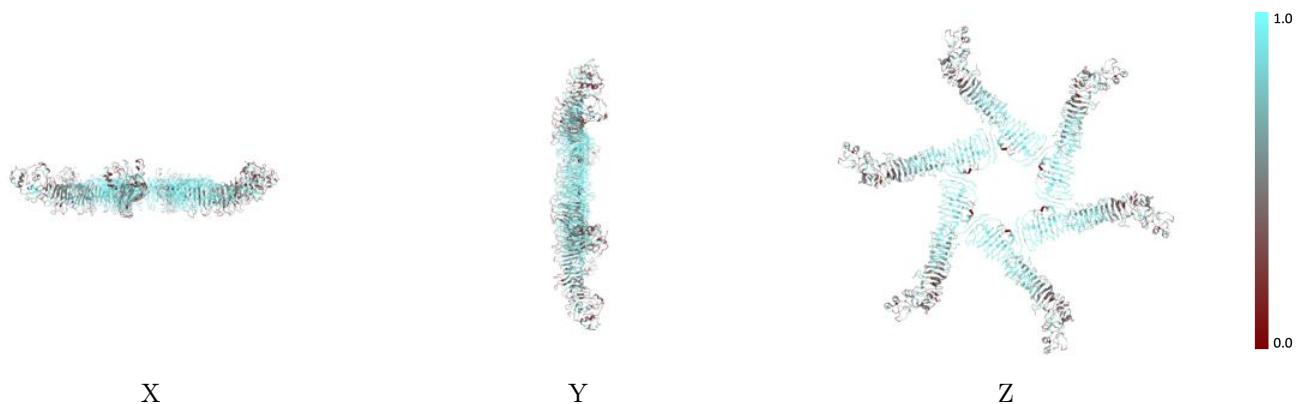
The images above show the 3D surface view of the map at the recommended contour level 4.33 at 50% transparency in yellow overlaid with a ribbon representation of the model coloured in blue. These images allow for the visual assessment of the quality of fit between the atomic model and the map.

9.2 Q-score mapped to coordinate model [i](#)



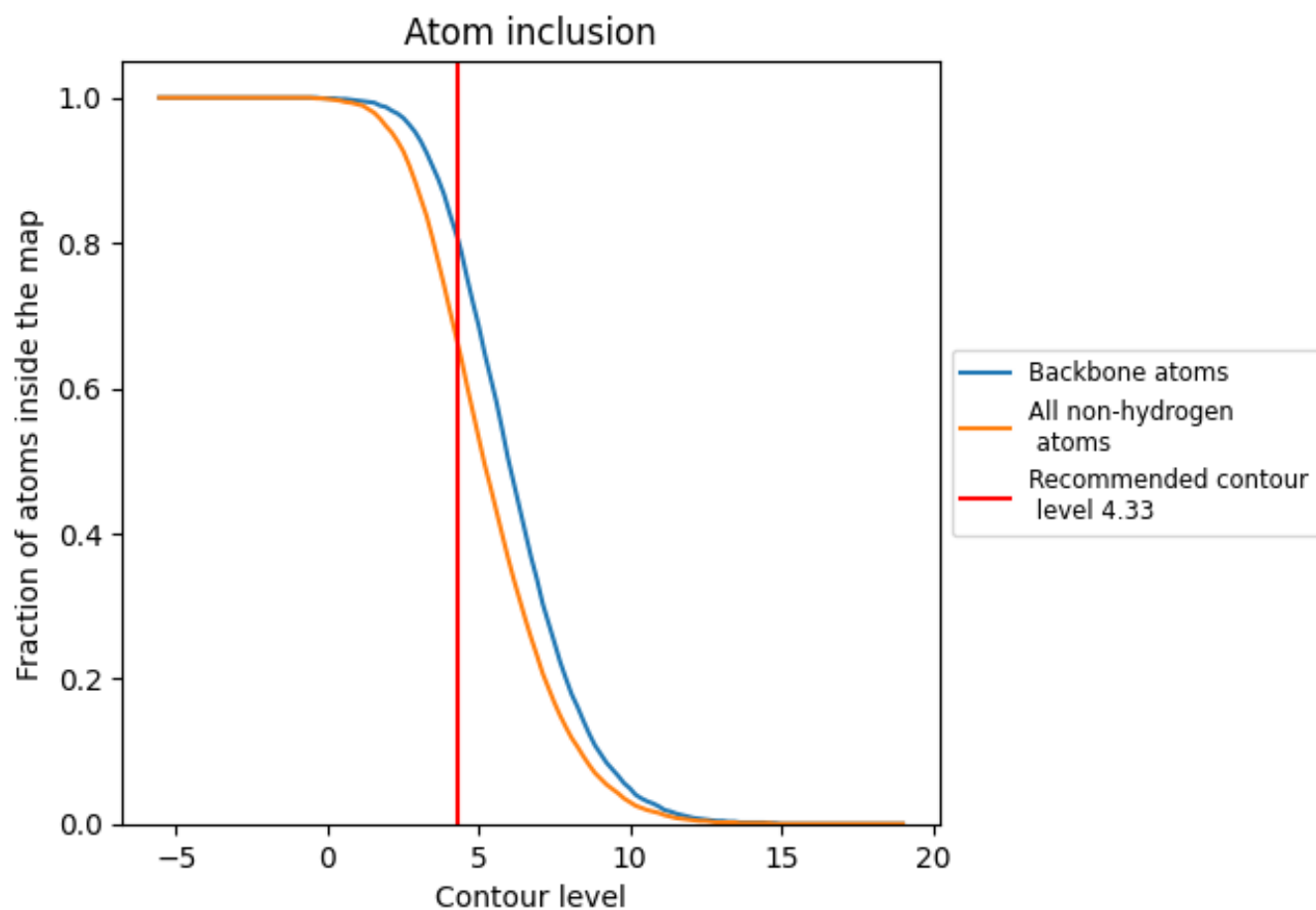
The images above show the model with each residue coloured according to its Q-score. This shows their resolvability in the map with higher Q-score values reflecting better resolvability. Please note: Q-score is calculating the resolvability of atoms, and thus high values are only expected at resolutions at which atoms can be resolved. Low Q-score values may therefore be expected for many entries.

9.3 Atom inclusion mapped to coordinate model [i](#)



The images above show the model with each residue coloured according to its atom inclusion. This shows to what extent they are inside the map at the recommended contour level (4.33).















9.4 Atom inclusion [i](#)



At the recommended contour level, 80% of all backbone atoms, 66% of all non-hydrogen atoms, are inside the map.

9.5 Map-model fit summary

The table lists the average atom inclusion at the recommended contour level (4.33) and Q-score for the entire model and for each chain.

Chain	Atom inclusion	Q-score
All	 0.6570	 0.3820
A	 0.6590	 0.3830
B	 0.6580	 0.3830
C	 0.6560	 0.3810
D	 0.6580	 0.3830
E	 0.6570	 0.3830
F	 0.6540	 0.3810

