



# Full wwPDB X-ray Structure Validation Report ⓘ

Oct 4, 2023 – 06:25 AM EDT

PDB ID : 6ODB  
Title : Crystal structure of HDAC8 in complex with compound 3  
Authors : Zheng, X.; Conti, C.; Caravella, J.; Zablocki, M.-M.; Bair, K.; Barczak, N.; Han, B.; Lancia Jr., D.; Liu, C.; Martin, M.; Ng, P.Y.; Rudnitskaya, A.; Thomason, J.J.; Garcia-Dancey, R.; Hardy, C.; Lahdenranta, J.; Leng, C.; Li, P.; Pardo, E.; Saldahna, A.; Tan, T.; Toms, A.V.; Yao, L.; Zhang, C.  
Deposited on : 2019-03-26  
Resolution : 2.70 Å(reported)

This is a Full wwPDB X-ray Structure Validation Report for a publicly released PDB entry.

We welcome your comments at [validation@mail.wwpdb.org](mailto:validation@mail.wwpdb.org)

A user guide is available at

<https://www.wwpdb.org/validation/2017/XrayValidationReportHelp>

with specific help available everywhere you see the ⓘ symbol.

The types of validation reports are described at

<http://www.wwpdb.org/validation/2017/FAQs#types>.

---

The following versions of software and data (see [references](#) ①) were used in the production of this report:

MolProbity : 4.02b-467  
Mogul : 1.8.5 (274361), CSD as541be (2020)  
Xtrriage (Phenix) : 1.13  
EDS : 2.35.1  
buster-report : 1.1.7 (2018)  
Percentile statistics : 20191225.v01 (using entries in the PDB archive December 25th 2019)  
Refmac : 5.8.0158  
CCP4 : 7.0.044 (Gargrove)  
Ideal geometry (proteins) : Engh & Huber (2001)  
Ideal geometry (DNA, RNA) : Parkinson et al. (1996)  
Validation Pipeline (wwPDB-VP) : 2.35.1

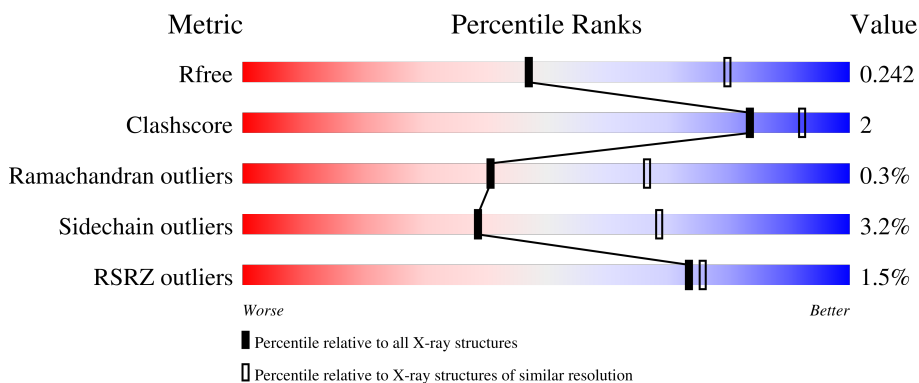
# 1 Overall quality at a glance

The following experimental techniques were used to determine the structure:

*X-RAY DIFFRACTION*

The reported resolution of this entry is 2.70 Å.

Percentile scores (ranging between 0-100) for global validation metrics of the entry are shown in the following graphic. The table shows the number of entries on which the scores are based.



Metric	Whole archive (#Entries)	Similar resolution (#Entries, resolution range(Å))
$R_{free}$	130704	2808 (2.70-2.70)
Clashscore	141614	3122 (2.70-2.70)
Ramachandran outliers	138981	3069 (2.70-2.70)
Sidechain outliers	138945	3069 (2.70-2.70)
RSRZ outliers	127900	2737 (2.70-2.70)

The table below summarises the geometric issues observed across the polymeric chains and their fit to the electron density. The red, orange, yellow and green segments of the lower bar indicate the fraction of residues that contain outliers for  $\geq 3$ , 2, 1 and 0 types of geometric quality criteria respectively. A grey segment represents the fraction of residues that are not modelled. The numeric value for each fraction is indicated below the corresponding segment, with a dot representing fractions  $\leq 5\%$ . The upper red bar (where present) indicates the fraction of residues that have poor fit to the electron density. The numeric value is given above the bar.

Mol	Chain	Length	Quality of chain
1	A	413	 81% 7% 12%
1	B	413	 % 82% 6% 12%
1	C	413	 3% 77% 8% 15%

## 2 Entry composition

There are 6 unique types of molecules in this entry. The entry contains 8647 atoms, of which 0 are hydrogens and 0 are deuteriums.

In the tables below, the ZeroOcc column contains the number of atoms modelled with zero occupancy, the AltConf column contains the number of residues with at least one atom in alternate conformation and the Trace column contains the number of residues modelled with at most 2 atoms.

- Molecule 1 is a protein called Histone deacetylase 8.

Mol	Chain	Residues	Atoms					ZeroOcc	AltConf	Trace
			Total	C	N	O	S			
1	A	365	Total 2845	C 1822	N 473	O 531	S 19	0	0	0
1	B	364	Total 2839	C 1819	N 472	O 529	S 19	0	0	0
1	C	353	Total 2756	C 1771	N 459	O 507	S 19	0	0	0

There are 108 discrepancies between the modelled and reference sequences:

Chain	Residue	Modelled	Actual	Comment	Reference
A	-23	MET	-	expression tag	UNP Q9BY41
A	-22	HIS	-	expression tag	UNP Q9BY41
A	-21	HIS	-	expression tag	UNP Q9BY41
A	-20	HIS	-	expression tag	UNP Q9BY41
A	-19	HIS	-	expression tag	UNP Q9BY41
A	-18	HIS	-	expression tag	UNP Q9BY41
A	-17	HIS	-	expression tag	UNP Q9BY41
A	-16	SER	-	expression tag	UNP Q9BY41
A	-15	SER	-	expression tag	UNP Q9BY41
A	-14	GLY	-	expression tag	UNP Q9BY41
A	-13	VAL	-	expression tag	UNP Q9BY41
A	-12	ASP	-	expression tag	UNP Q9BY41
A	-11	LEU	-	expression tag	UNP Q9BY41
A	-10	GLY	-	expression tag	UNP Q9BY41
A	-9	THR	-	expression tag	UNP Q9BY41
A	-8	GLU	-	expression tag	UNP Q9BY41
A	-7	ASN	-	expression tag	UNP Q9BY41
A	-6	LEU	-	expression tag	UNP Q9BY41
A	-5	TYR	-	expression tag	UNP Q9BY41
A	-4	PHE	-	expression tag	UNP Q9BY41
A	-3	GLN	-	expression tag	UNP Q9BY41
A	-2	SER	-	expression tag	UNP Q9BY41
A	-1	ASN	-	expression tag	UNP Q9BY41

*Continued on next page...*

*Continued from previous page...*

Chain	Residue	Modelled	Actual	Comment	Reference
A	0	ALA	-	expression tag	UNP Q9BY41
A	378	ILE	-	expression tag	UNP Q9BY41
A	379	GLU	-	expression tag	UNP Q9BY41
A	380	GLY	-	expression tag	UNP Q9BY41
A	381	ARG	-	expression tag	UNP Q9BY41
A	382	GLY	-	expression tag	UNP Q9BY41
A	383	SER	-	expression tag	UNP Q9BY41
A	384	HIS	-	expression tag	UNP Q9BY41
A	385	HIS	-	expression tag	UNP Q9BY41
A	386	HIS	-	expression tag	UNP Q9BY41
A	387	HIS	-	expression tag	UNP Q9BY41
A	388	HIS	-	expression tag	UNP Q9BY41
A	389	HIS	-	expression tag	UNP Q9BY41
B	-23	MET	-	expression tag	UNP Q9BY41
B	-22	HIS	-	expression tag	UNP Q9BY41
B	-21	HIS	-	expression tag	UNP Q9BY41
B	-20	HIS	-	expression tag	UNP Q9BY41
B	-19	HIS	-	expression tag	UNP Q9BY41
B	-18	HIS	-	expression tag	UNP Q9BY41
B	-17	HIS	-	expression tag	UNP Q9BY41
B	-16	SER	-	expression tag	UNP Q9BY41
B	-15	SER	-	expression tag	UNP Q9BY41
B	-14	GLY	-	expression tag	UNP Q9BY41
B	-13	VAL	-	expression tag	UNP Q9BY41
B	-12	ASP	-	expression tag	UNP Q9BY41
B	-11	LEU	-	expression tag	UNP Q9BY41
B	-10	GLY	-	expression tag	UNP Q9BY41
B	-9	THR	-	expression tag	UNP Q9BY41
B	-8	GLU	-	expression tag	UNP Q9BY41
B	-7	ASN	-	expression tag	UNP Q9BY41
B	-6	LEU	-	expression tag	UNP Q9BY41
B	-5	TYR	-	expression tag	UNP Q9BY41
B	-4	PHE	-	expression tag	UNP Q9BY41
B	-3	GLN	-	expression tag	UNP Q9BY41
B	-2	SER	-	expression tag	UNP Q9BY41
B	-1	ASN	-	expression tag	UNP Q9BY41
B	0	ALA	-	expression tag	UNP Q9BY41
B	378	ILE	-	expression tag	UNP Q9BY41
B	379	GLU	-	expression tag	UNP Q9BY41
B	380	GLY	-	expression tag	UNP Q9BY41
B	381	ARG	-	expression tag	UNP Q9BY41
B	382	GLY	-	expression tag	UNP Q9BY41

*Continued on next page...*

*Continued from previous page...*

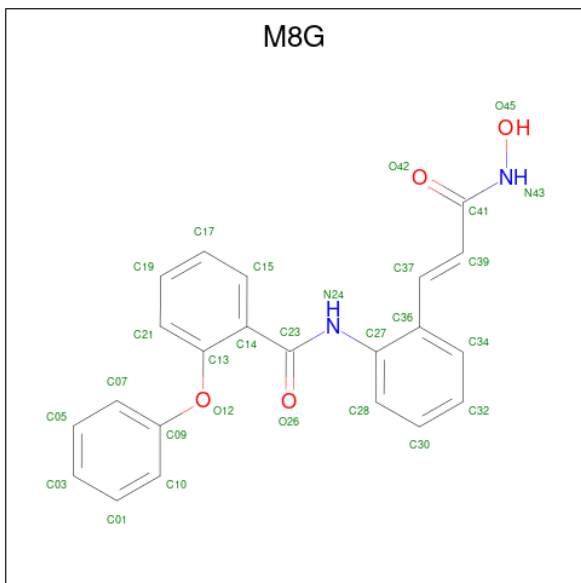
Chain	Residue	Modelled	Actual	Comment	Reference
B	383	SER	-	expression tag	UNP Q9BY41
B	384	HIS	-	expression tag	UNP Q9BY41
B	385	HIS	-	expression tag	UNP Q9BY41
B	386	HIS	-	expression tag	UNP Q9BY41
B	387	HIS	-	expression tag	UNP Q9BY41
B	388	HIS	-	expression tag	UNP Q9BY41
B	389	HIS	-	expression tag	UNP Q9BY41
C	-23	MET	-	expression tag	UNP Q9BY41
C	-22	HIS	-	expression tag	UNP Q9BY41
C	-21	HIS	-	expression tag	UNP Q9BY41
C	-20	HIS	-	expression tag	UNP Q9BY41
C	-19	HIS	-	expression tag	UNP Q9BY41
C	-18	HIS	-	expression tag	UNP Q9BY41
C	-17	HIS	-	expression tag	UNP Q9BY41
C	-16	SER	-	expression tag	UNP Q9BY41
C	-15	SER	-	expression tag	UNP Q9BY41
C	-14	GLY	-	expression tag	UNP Q9BY41
C	-13	VAL	-	expression tag	UNP Q9BY41
C	-12	ASP	-	expression tag	UNP Q9BY41
C	-11	LEU	-	expression tag	UNP Q9BY41
C	-10	GLY	-	expression tag	UNP Q9BY41
C	-9	THR	-	expression tag	UNP Q9BY41
C	-8	GLU	-	expression tag	UNP Q9BY41
C	-7	ASN	-	expression tag	UNP Q9BY41
C	-6	LEU	-	expression tag	UNP Q9BY41
C	-5	TYR	-	expression tag	UNP Q9BY41
C	-4	PHE	-	expression tag	UNP Q9BY41
C	-3	GLN	-	expression tag	UNP Q9BY41
C	-2	SER	-	expression tag	UNP Q9BY41
C	-1	ASN	-	expression tag	UNP Q9BY41
C	0	ALA	-	expression tag	UNP Q9BY41
C	378	ILE	-	expression tag	UNP Q9BY41
C	379	GLU	-	expression tag	UNP Q9BY41
C	380	GLY	-	expression tag	UNP Q9BY41
C	381	ARG	-	expression tag	UNP Q9BY41
C	382	GLY	-	expression tag	UNP Q9BY41
C	383	SER	-	expression tag	UNP Q9BY41
C	384	HIS	-	expression tag	UNP Q9BY41
C	385	HIS	-	expression tag	UNP Q9BY41
C	386	HIS	-	expression tag	UNP Q9BY41
C	387	HIS	-	expression tag	UNP Q9BY41
C	388	HIS	-	expression tag	UNP Q9BY41

*Continued on next page...*

Continued from previous page...

Chain	Residue	Modelled	Actual	Comment	Reference
C	389	HIS	-	expression tag	UNP Q9BY41

- Molecule 2 is N-{2-[(1E)-3-(hydroxyamino)-3-oxoprop-1-en-1-yl]phenyl}-2-phenoxybenzamide (three-letter code: M8G) (formula: C<sub>22</sub>H<sub>18</sub>N<sub>2</sub>O<sub>4</sub>) (labeled as "Ligand of Interest" by depositor).



Mol	Chain	Residues	Atoms				ZeroOcc	AltConf
			Total	C	N	O		
2	A	1	28	22	2	4	0	0
2	B	1	28	22	2	4	0	0
2	C	1	28	22	2	4	0	0

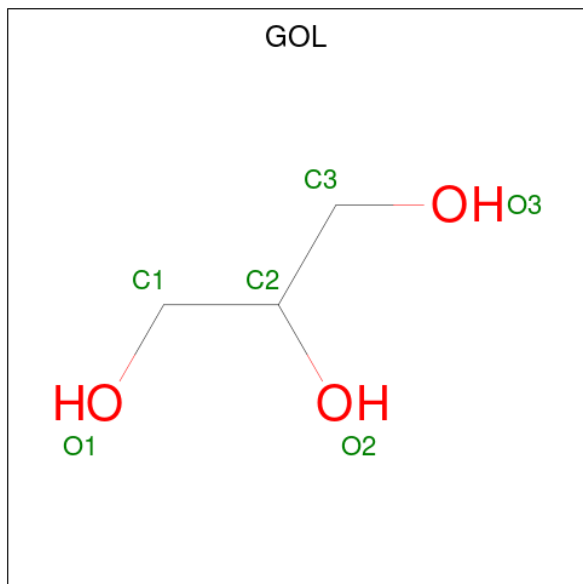
- Molecule 3 is ZINC ION (three-letter code: ZN) (formula: Zn).

Mol	Chain	Residues	Atoms		ZeroOcc	AltConf
			Total	Zn		
3	A	1	1	1	0	0
3	B	1	1	1	0	0
3	C	1	1	1	0	0

- Molecule 4 is POTASSIUM ION (three-letter code: K) (formula: K).

Mol	Chain	Residues	Atoms	ZeroOcc	AltConf
4	A	2	Total K 2 2	0	0
4	B	2	Total K 2 2	0	0
4	C	2	Total K 2 2	0	0

- Molecule 5 is GLYCEROL (three-letter code: GOL) (formula:  $C_3H_8O_3$ ).



Mol	Chain	Residues	Atoms	ZeroOcc	AltConf
5	A	1	Total C O 6 3 3	0	0
5	A	1	Total C O 6 3 3	0	0
5	A	1	Total C O 6 3 3	0	0
5	B	1	Total C O 6 3 3	0	0

- Molecule 6 is water.

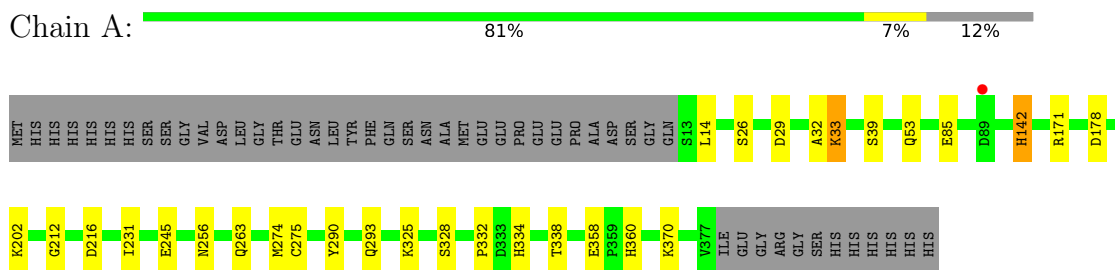
Mol	Chain	Residues	Atoms	ZeroOcc	AltConf
6	A	51	Total O 51 51	0	0
6	B	25	Total O 25 25	0	0
6	C	14	Total O 14 14	0	0



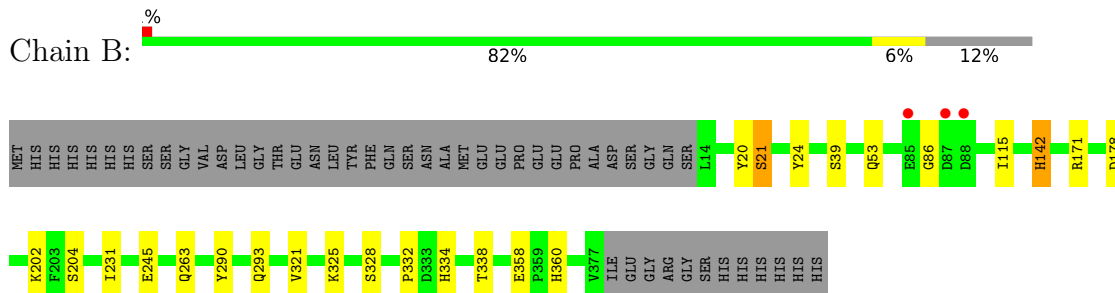
### 3 Residue-property plots [i](#)

These plots are drawn for all protein, RNA, DNA and oligosaccharide chains in the entry. The first graphic for a chain summarises the proportions of the various outlier classes displayed in the second graphic. The second graphic shows the sequence view annotated by issues in geometry and electron density. Residues are color-coded according to the number of geometric quality criteria for which they contain at least one outlier: green = 0, yellow = 1, orange = 2 and red = 3 or more. A red dot above a residue indicates a poor fit to the electron density ( $RSRZ > 2$ ). Stretches of 2 or more consecutive residues without any outlier are shown as a green connector. Residues present in the sample, but not in the model, are shown in grey.

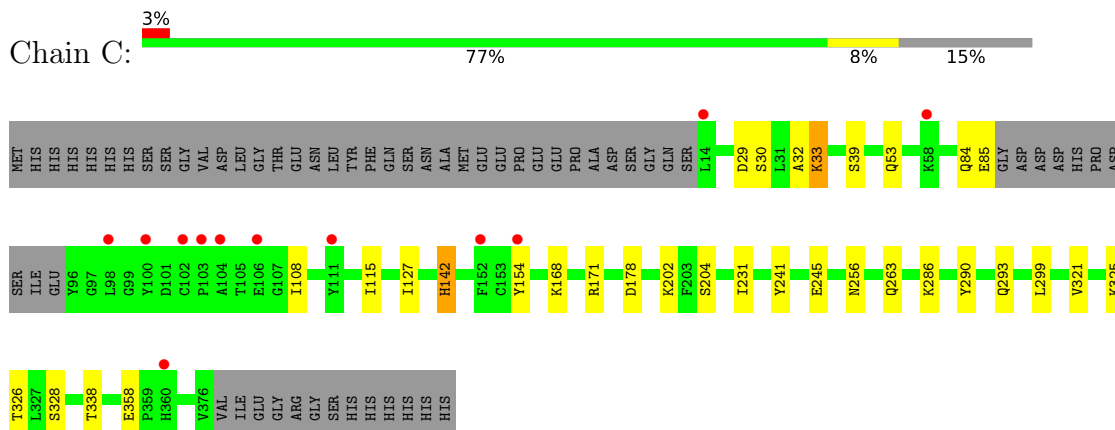
- Molecule 1: Histone deacetylase 8



- Molecule 1: Histone deacetylase 8



- Molecule 1: Histone deacetylase 8



## 4 Data and refinement statistics

Property	Value	Source
Space group	P 1 21 1	Depositor
Cell constants a, b, c, $\alpha$ , $\beta$ , $\gamma$	87.92Å 90.95Å 93.07Å 90.00° 94.10° 90.00°	Depositor
Resolution (Å)	50.00 – 2.70 46.41 – 2.70	Depositor EDS
% Data completeness (in resolution range)	99.4 (50.00-2.70) 99.4 (46.41-2.70)	Depositor EDS
$R_{merge}$	0.10	Depositor
$R_{sym}$	(Not available)	Depositor
$\langle I/\sigma(I) \rangle$ <sup>1</sup>	2.56 (at 2.69Å)	Xtrriage
Refinement program	REFMAC 5.8.0073	Depositor
R, $R_{free}$	0.195 , 0.241 0.198 , 0.242	Depositor DCC
$R_{free}$ test set	2017 reflections (5.01%)	wwPDB-VP
Wilson B-factor (Å <sup>2</sup> )	50.1	Xtrriage
Anisotropy	0.078	Xtrriage
Bulk solvent $k_{sol}$ (e/Å <sup>3</sup> ), $B_{sol}$ (Å <sup>2</sup> )	0.34 , 36.9	EDS
L-test for twinning <sup>2</sup>	$\langle  L  \rangle = 0.50$ , $\langle L^2 \rangle = 0.33$	Xtrriage
Estimated twinning fraction	No twinning to report.	Xtrriage
$F_o, F_c$ correlation	0.94	EDS
Total number of atoms	8647	wwPDB-VP
Average B, all atoms (Å <sup>2</sup> )	55.0	wwPDB-VP

Xtrriage's analysis on translational NCS is as follows: *The largest off-origin peak in the Patterson function is 4.35% of the height of the origin peak. No significant pseudotranslation is detected.*

<sup>1</sup>Intensities estimated from amplitudes.

<sup>2</sup>Theoretical values of  $\langle |L| \rangle$ ,  $\langle L^2 \rangle$  for acentric reflections are 0.5, 0.333 respectively for untwinned datasets, and 0.375, 0.2 for perfectly twinned datasets.

## 5 Model quality [i](#)

### 5.1 Standard geometry [i](#)

Bond lengths and bond angles in the following residue types are not validated in this section: ZN, GOL, K, M8G

The Z score for a bond length (or angle) is the number of standard deviations the observed value is removed from the expected value. A bond length (or angle) with  $|Z| > 5$  is considered an outlier worth inspection. RMSZ is the root-mean-square of all Z scores of the bond lengths (or angles).

Mol	Chain	Bond lengths		Bond angles	
		RMSZ	# Z  >5	RMSZ	# Z  >5
1	A	0.51	0/2916	0.66	0/3957
1	B	0.47	0/2910	0.65	0/3949
1	C	0.44	0/2824	0.64	0/3829
All	All	0.48	0/8650	0.65	0/11735

There are no bond length outliers.

There are no bond angle outliers.

There are no chirality outliers.

There are no planarity outliers.

### 5.2 Too-close contacts [i](#)

In the following table, the Non-H and H(model) columns list the number of non-hydrogen atoms and hydrogen atoms in the chain respectively. The H(added) column lists the number of hydrogen atoms added and optimized by MolProbity. The Clashes column lists the number of clashes within the asymmetric unit, whereas Symm-Clashes lists symmetry-related clashes.

Mol	Chain	Non-H	H(model)	H(added)	Clashes	Symm-Clashes
1	A	2845	0	2792	14	0
1	B	2839	0	2787	10	0
1	C	2756	0	2722	16	0
2	A	28	0	0	0	0
2	B	28	0	0	0	0
2	C	28	0	0	0	0
3	A	1	0	0	0	0
3	B	1	0	0	0	0
3	C	1	0	0	0	0
4	A	2	0	0	0	0

*Continued on next page...*

*Continued from previous page...*

Mol	Chain	Non-H	H(model)	H(added)	Clashes	Symm-Clashes
4	B	2	0	0	0	0
4	C	2	0	0	0	0
5	A	18	0	24	3	0
5	B	6	0	8	0	0
6	A	51	0	0	0	0
6	B	25	0	0	0	0
6	C	14	0	0	0	0
All	All	8647	0	8333	40	0

The all-atom clashscore is defined as the number of clashes found per 1000 atoms (including hydrogen atoms). The all-atom clashscore for this structure is 2.

All (40) close contacts within the same asymmetric unit are listed below, sorted by their clash magnitude.

Atom-1	Atom-2	Interatomic distance (Å)	Clash overlap (Å)
1:C:171:ARG:NH1	1:C:256:ASN:O	2.13	0.81
1:A:171:ARG:NH1	1:A:256:ASN:O	2.12	0.81
1:A:358:GLU:OE1	1:A:360:HIS:HB2	1.96	0.66
1:B:358:GLU:OE1	1:B:360:HIS:HB2	1.97	0.65
1:A:212:GLY:H	5:A:407:GOL:H32	1.63	0.63
1:A:212:GLY:H	5:A:407:GOL:C3	2.21	0.53
1:B:332:PRO:O	1:B:334:HIS:HD2	1.93	0.52
1:C:127:ILE:HD12	1:C:168:LYS:CB	2.39	0.52
1:A:332:PRO:O	1:A:334:HIS:HD2	1.93	0.52
1:B:53:GLN:OE1	1:B:325:LYS:HE2	2.10	0.51
1:A:53:GLN:OE1	1:A:325:LYS:HE2	2.10	0.51
1:B:20:TYR:C	1:B:20:TYR:CD1	2.84	0.51
1:B:178:ASP:HB2	1:B:263:GLN:OE1	2.11	0.51
1:C:29:ASP:O	1:C:30:SER:CB	2.57	0.51
1:C:178:ASP:HB2	1:C:263:GLN:OE1	2.11	0.51
1:C:53:GLN:OE1	1:C:325:LYS:HE2	2.12	0.50
1:A:178:ASP:HB2	1:A:263:GLN:OE1	2.12	0.50
1:C:290:TYR:O	1:C:293:GLN:HG3	2.14	0.48
1:C:127:ILE:HD12	1:C:168:LYS:HB3	1.95	0.47
1:C:108:ILE:HD11	1:C:154:TYR:CE2	2.49	0.47
1:B:290:TYR:O	1:B:293:GLN:HG3	2.15	0.47
1:A:142:HIS:H	1:A:142:HIS:CD2	2.33	0.46
1:A:290:TYR:O	1:A:293:GLN:HG3	2.15	0.46
1:B:202:LYS:HA	1:B:231:ILE:O	2.14	0.46
1:A:29:ASP:OD2	1:A:39:SER:HB2	2.16	0.46
1:C:241:TYR:CD2	1:C:286:LYS:HB3	2.51	0.46

*Continued on next page...*

Continued from previous page...

Atom-1	Atom-2	Interatomic distance (Å)	Clash overlap (Å)
1:A:32:ALA:O	1:A:33:LYS:CB	2.64	0.45
1:C:108:ILE:HD11	1:C:154:TYR:CD2	2.52	0.45
1:C:84:GLN:O	1:C:85:GLU:HB2	2.17	0.45
1:C:202:LYS:HA	1:C:231:ILE:O	2.17	0.44
1:C:127:ILE:HD12	1:C:168:LYS:HB2	2.00	0.44
1:C:32:ALA:O	1:C:33:LYS:CB	2.67	0.42
1:A:202:LYS:HA	1:A:231:ILE:O	2.18	0.42
1:A:216:ASP:HB2	5:A:407:GOL:H31	2.02	0.42
1:B:142:HIS:H	1:B:142:HIS:CD2	2.36	0.42
1:C:127:ILE:CD1	1:C:168:LYS:HB3	2.50	0.42
1:C:142:HIS:CD2	1:C:142:HIS:H	2.38	0.42
1:B:21:SER:HB2	1:B:24:TYR:CB	2.50	0.41
1:A:274:MET:O	1:A:275:CYS:C	2.59	0.41
1:B:21:SER:HB2	1:B:24:TYR:HB3	2.03	0.40

There are no symmetry-related clashes.

## 5.3 Torsion angles [i](#)

### 5.3.1 Protein backbone [i](#)

In the following table, the Percentiles column shows the percent Ramachandran outliers of the chain as a percentile score with respect to all X-ray entries followed by that with respect to entries of similar resolution.

The Analysed column shows the number of residues for which the backbone conformation was analysed, and the total number of residues.

Mol	Chain	Analysed	Favoured	Allowed	Outliers	Percentiles
1	A	363/413 (88%)	355 (98%)	7 (2%)	1 (0%)	41 66
1	B	362/413 (88%)	353 (98%)	8 (2%)	1 (0%)	41 66
1	C	349/413 (84%)	341 (98%)	7 (2%)	1 (0%)	41 66
All	All	1074/1239 (87%)	1049 (98%)	22 (2%)	3 (0%)	41 66

All (3) Ramachandran outliers are listed below:

Mol	Chain	Res	Type
1	B	86	GLY
1	A	33	LYS
1	C	33	LYS

### 5.3.2 Protein sidechains [i](#)

In the following table, the Percentiles column shows the percent sidechain outliers of the chain as a percentile score with respect to all X-ray entries followed by that with respect to entries of similar resolution.

The Analysed column shows the number of residues for which the sidechain conformation was analysed, and the total number of residues.

Mol	Chain	Analysed	Rotameric	Outliers	Percentiles	
1	A	306/347 (88%)	298 (97%)	8 (3%)	46	75
1	B	305/347 (88%)	295 (97%)	10 (3%)	38	67
1	C	295/347 (85%)	284 (96%)	11 (4%)	34	63
All	All	906/1041 (87%)	877 (97%)	29 (3%)	39	68

All (29) residues with a non-rotameric sidechain are listed below:

Mol	Chain	Res	Type
1	A	14	LEU
1	A	26	SER
1	A	85	GLU
1	A	142	HIS
1	A	245	GLU
1	A	328	SER
1	A	338	THR
1	A	370	LYS
1	B	21	SER
1	B	39	SER
1	B	115	ILE
1	B	142	HIS
1	B	171	ARG
1	B	204	SER
1	B	245	GLU
1	B	321	VAL
1	B	328	SER
1	B	338	THR
1	C	39	SER
1	C	115	ILE
1	C	142	HIS
1	C	204	SER
1	C	245	GLU
1	C	299	LEU
1	C	321	VAL
1	C	326	THR

*Continued on next page...*

*Continued from previous page...*

Mol	Chain	Res	Type
1	C	328	SER
1	C	338	THR
1	C	358	GLU

Sometimes sidechains can be flipped to improve hydrogen bonding and reduce clashes. All (3) such sidechains are listed below:

Mol	Chain	Res	Type
1	A	334	HIS
1	B	334	HIS
1	C	360	HIS

### 5.3.3 RNA [i](#)

There are no RNA molecules in this entry.

## 5.4 Non-standard residues in protein, DNA, RNA chains [i](#)

There are no non-standard protein/DNA/RNA residues in this entry.

## 5.5 Carbohydrates [i](#)

There are no monosaccharides in this entry.

## 5.6 Ligand geometry [i](#)

Of 16 ligands modelled in this entry, 9 are monoatomic - leaving 7 for Mogul analysis.

In the following table, the Counts columns list the number of bonds (or angles) for which Mogul statistics could be retrieved, the number of bonds (or angles) that are observed in the model and the number of bonds (or angles) that are defined in the Chemical Component Dictionary. The Link column lists molecule types, if any, to which the group is linked. The Z score for a bond length (or angle) is the number of standard deviations the observed value is removed from the expected value. A bond length (or angle) with  $|Z| > 2$  is considered an outlier worth inspection. RMSZ is the root-mean-square of all Z scores of the bond lengths (or angles).

Mol	Type	Chain	Res	Link	Bond lengths			Bond angles		
					Counts	RMSZ	# Z  > 2	Counts	RMSZ	# Z  > 2
2	M8G	A	401	3	30,30,30	0.85	1 (3%)	39,39,39	2.06	6 (15%)
2	M8G	C	401	3	30,30,30	0.94	1 (3%)	39,39,39	2.69	11 (28%)

Mol	Type	Chain	Res	Link	Bond lengths			Bond angles		
					Counts	RMSZ	# Z  > 2	Counts	RMSZ	# Z  > 2
5	GOL	B	405	-	5,5,5	0.45	0	5,5,5	0.89	0
2	M8G	B	401	3	30,30,30	1.10	2 (6%)	39,39,39	2.32	11 (28%)
5	GOL	A	407	-	5,5,5	0.33	0	5,5,5	0.56	0
5	GOL	A	405	-	5,5,5	0.18	0	5,5,5	0.52	0
5	GOL	A	406	-	5,5,5	0.30	0	5,5,5	0.56	0

In the following table, the Chirals column lists the number of chiral outliers, the number of chiral centers analysed, the number of these observed in the model and the number defined in the Chemical Component Dictionary. Similar counts are reported in the Torsion and Rings columns. '-' means no outliers of that kind were identified.

Mol	Type	Chain	Res	Link	Chirals	Torsions	Rings
2	M8G	A	401	3	-	2/19/19/19	0/3/3/3
2	M8G	C	401	3	-	4/19/19/19	0/3/3/3
5	GOL	B	405	-	-	4/4/4/4	-
2	M8G	B	401	3	-	0/19/19/19	0/3/3/3
5	GOL	A	407	-	-	4/4/4/4	-
5	GOL	A	405	-	-	2/4/4/4	-
5	GOL	A	406	-	-	2/4/4/4	-

All (4) bond length outliers are listed below:

Mol	Chain	Res	Type	Atoms	Z	Observed(Å)	Ideal(Å)
2	B	401	M8G	C07-C09	2.52	1.43	1.38
2	C	401	M8G	C41-N43	2.06	1.37	1.33
2	B	401	M8G	C15-C14	2.03	1.43	1.39
2	A	401	M8G	C07-C09	2.00	1.42	1.38

All (28) bond angle outliers are listed below:

Mol	Chain	Res	Type	Atoms	Z	Observed(°)	Ideal(°)
2	C	401	M8G	C36-C27-N24	11.24	131.32	118.51
2	B	401	M8G	C36-C27-N24	8.89	128.65	118.51
2	A	401	M8G	C36-C27-N24	8.60	128.31	118.51
2	C	401	M8G	C27-C36-C37	7.02	129.97	121.00
2	B	401	M8G	C27-C36-C37	5.62	128.18	121.00
2	C	401	M8G	C28-C27-N24	-4.99	110.22	121.80
2	B	401	M8G	C28-C27-N24	-4.66	111.00	121.80
2	A	401	M8G	C28-C27-N24	-4.54	111.27	121.80
2	A	401	M8G	C27-C36-C37	4.44	126.68	121.00

*Continued on next page...*



*Continued from previous page...*

Mol	Chain	Res	Type	Atoms	Z	Observed(°)	Ideal(°)
2	C	401	M8G	C34-C36-C37	-4.22	112.80	121.12
2	B	401	M8G	O42-C41-N43	-3.13	117.10	122.89
2	A	401	M8G	O42-C41-C39	3.04	129.96	123.03
2	A	401	M8G	O42-C41-N43	-2.98	117.38	122.89
2	B	401	M8G	O12-C13-C14	2.94	125.61	118.81
2	B	401	M8G	C34-C36-C37	-2.87	115.47	121.12
2	C	401	M8G	O26-C23-C14	-2.82	115.85	121.01
2	C	401	M8G	O42-C41-N43	-2.81	117.70	122.89
2	B	401	M8G	O42-C41-C39	2.77	129.34	123.03
2	C	401	M8G	C37-C39-C41	-2.73	116.22	121.56
2	C	401	M8G	O45-N43-C41	-2.61	113.33	119.62
2	C	401	M8G	C14-C23-N24	2.43	120.71	116.06
2	B	401	M8G	O12-C13-C21	-2.30	114.58	120.73
2	B	401	M8G	O45-N43-C41	-2.22	114.26	119.62
2	A	401	M8G	C34-C36-C27	-2.21	116.07	118.55
2	C	401	M8G	O42-C41-C39	2.16	127.95	123.03
2	B	401	M8G	C34-C36-C27	-2.08	116.21	118.55
2	B	401	M8G	C15-C14-C23	-2.08	112.88	118.43
2	C	401	M8G	C30-C28-C27	2.01	122.79	118.62

There are no chirality outliers.

All (18) torsion outliers are listed below:

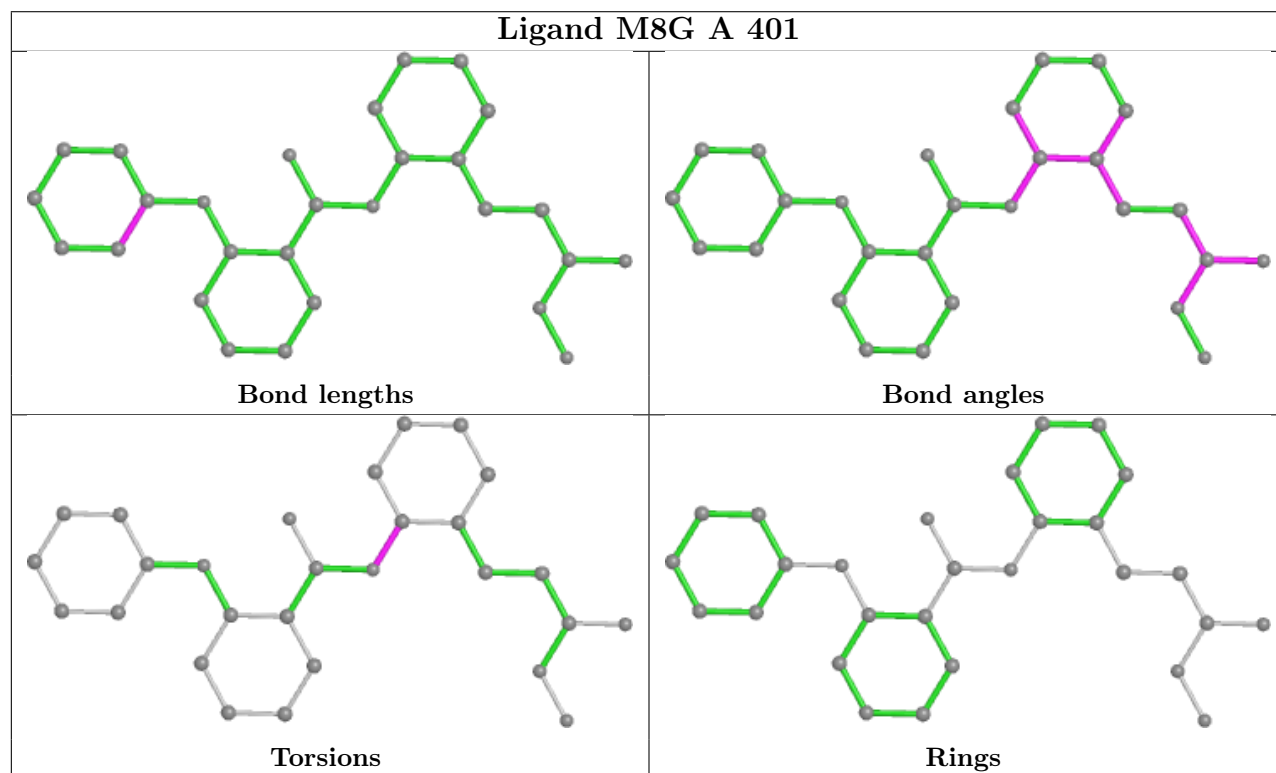
Mol	Chain	Res	Type	Atoms
2	C	401	M8G	C27-C36-C37-C39
2	C	401	M8G	C37-C39-C41-N43
5	A	405	GOL	O1-C1-C2-C3
5	A	406	GOL	O1-C1-C2-C3
5	A	407	GOL	C1-C2-C3-O3
5	A	407	GOL	O2-C2-C3-O3
5	B	405	GOL	O1-C1-C2-C3
5	B	405	GOL	C1-C2-C3-O3
2	C	401	M8G	C37-C39-C41-O42
5	A	405	GOL	O1-C1-C2-O2
5	A	407	GOL	O1-C1-C2-O2
5	B	405	GOL	O2-C2-C3-O3
5	A	407	GOL	O1-C1-C2-C3
5	A	406	GOL	O1-C1-C2-O2
5	B	405	GOL	O1-C1-C2-O2
2	C	401	M8G	C34-C36-C37-C39
2	A	401	M8G	C36-C27-N24-C23
2	A	401	M8G	C28-C27-N24-C23

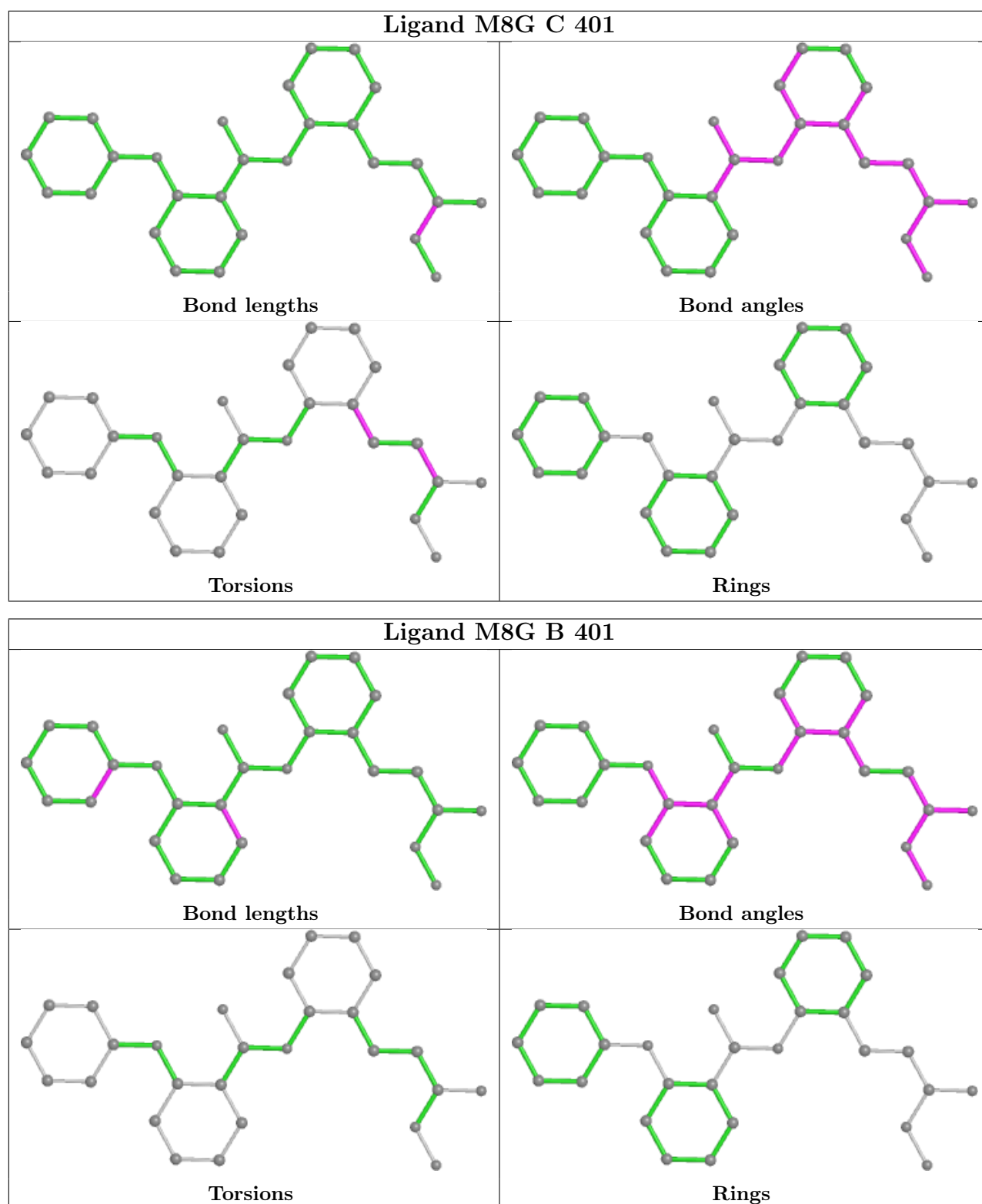
There are no ring outliers.

1 monomer is involved in 3 short contacts:

Mol	Chain	Res	Type	Clashes	Symm-Clashes
5	A	407	GOL	3	0

The following is a two-dimensional graphical depiction of Mogul quality analysis of bond lengths, bond angles, torsion angles, and ring geometry for all instances of the Ligand of Interest. In addition, ligands with molecular weight > 250 and outliers as shown on the validation Tables will also be included. For torsion angles, if less than 5% of the Mogul distribution of torsion angles is within 10 degrees of the torsion angle in question, then that torsion angle is considered an outlier. Any bond that is central to one or more torsion angles identified as an outlier by Mogul will be highlighted in the graph. For rings, the root-mean-square deviation (RMSD) between the ring in question and similar rings identified by Mogul is calculated over all ring torsion angles. If the average RMSD is greater than 60 degrees and the minimal RMSD between the ring in question and any Mogul-identified rings is also greater than 60 degrees, then that ring is considered an outlier. The outliers are highlighted in purple. The color gray indicates Mogul did not find sufficient equivalents in the CSD to analyse the geometry.





## 5.7 Other polymers [\(i\)](#)

There are no such residues in this entry.

## 5.8 Polymer linkage issues

There are no chain breaks in this entry.

## 6 Fit of model and data [i](#)

### 6.1 Protein, DNA and RNA chains [i](#)

In the following table, the column labelled ‘#RSRZ > 2’ contains the number (and percentage) of RSRZ outliers, followed by percent RSRZ outliers for the chain as percentile scores relative to all X-ray entries and entries of similar resolution. The OWAB column contains the minimum, median, 95<sup>th</sup> percentile and maximum values of the occupancy-weighted average B-factor per residue. The column labelled ‘Q < 0.9’ lists the number of (and percentage) of residues with an average occupancy less than 0.9.

Mol	Chain	Analysed	<RSRZ>	#RSRZ>2	OWAB(Å <sup>2</sup> )	Q<0.9
1	A	365/413 (88%)	-0.26	1 (0%) 94 95	26, 42, 72, 116	0
1	B	364/413 (88%)	-0.14	3 (0%) 86 87	32, 51, 76, 129	0
1	C	353/413 (85%)	0.10	12 (3%) 45 45	38, 61, 95, 146	0
All	All	1082/1239 (87%)	-0.10	16 (1%) 73 76	26, 53, 84, 146	0

All (16) RSRZ outliers are listed below:

Mol	Chain	Res	Type	RSRZ
1	C	100	TYR	4.8
1	C	103	PRO	3.9
1	C	104	ALA	3.9
1	B	87	ASP	3.4
1	C	152	PHE	3.1
1	C	106	GLU	3.1
1	B	88	ASP	2.9
1	B	85	GLU	2.8
1	C	14	LEU	2.5
1	C	102	CYS	2.5
1	C	98	LEU	2.4
1	C	111	TYR	2.3
1	C	154	TYR	2.3
1	C	58	LYS	2.1
1	C	360	HIS	2.1
1	A	89	ASP	2.1

### 6.2 Non-standard residues in protein, DNA, RNA chains [i](#)

There are no non-standard protein/DNA/RNA residues in this entry.

### 6.3 Carbohydrates [i](#)

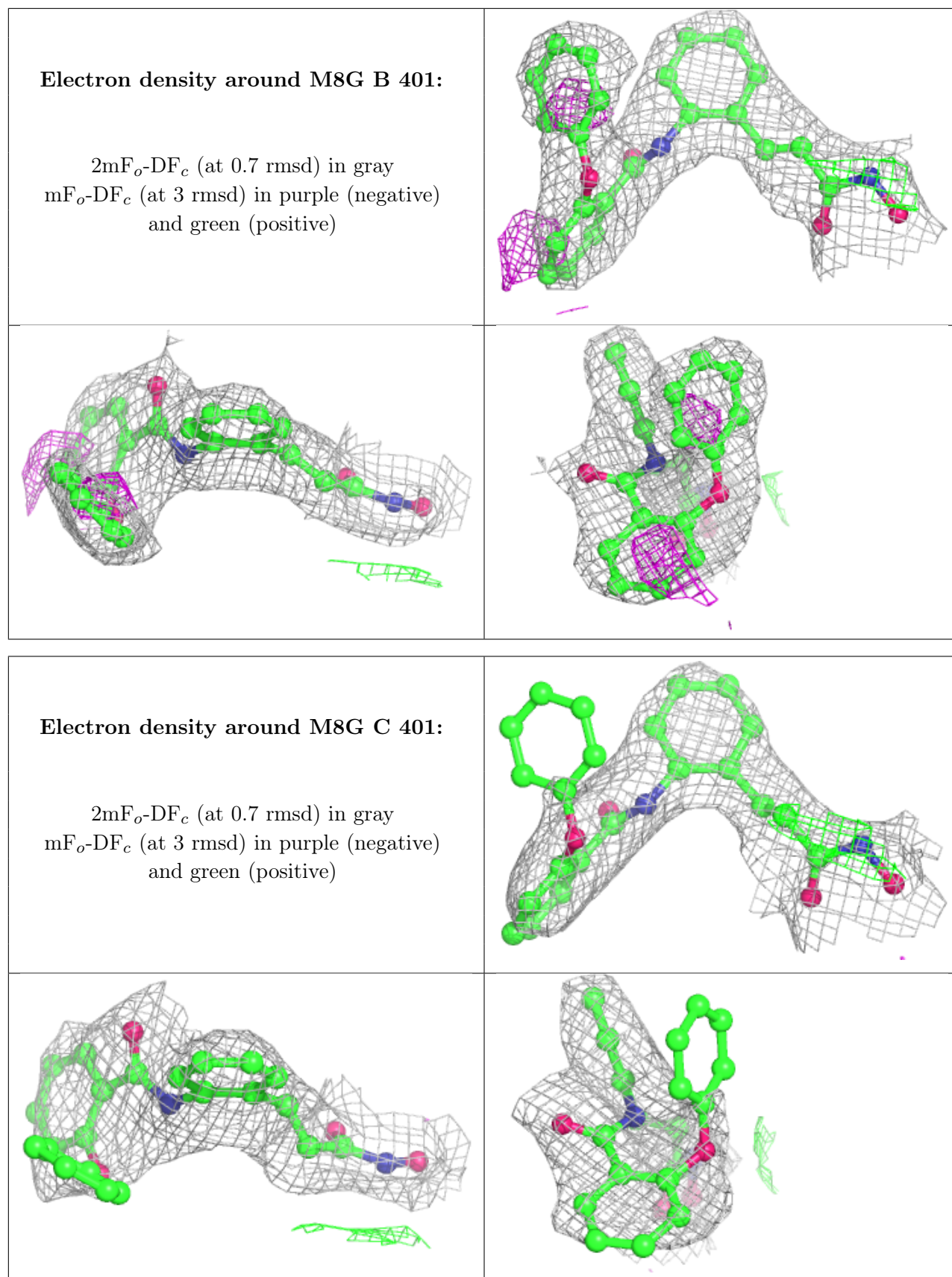
There are no monosaccharides in this entry.

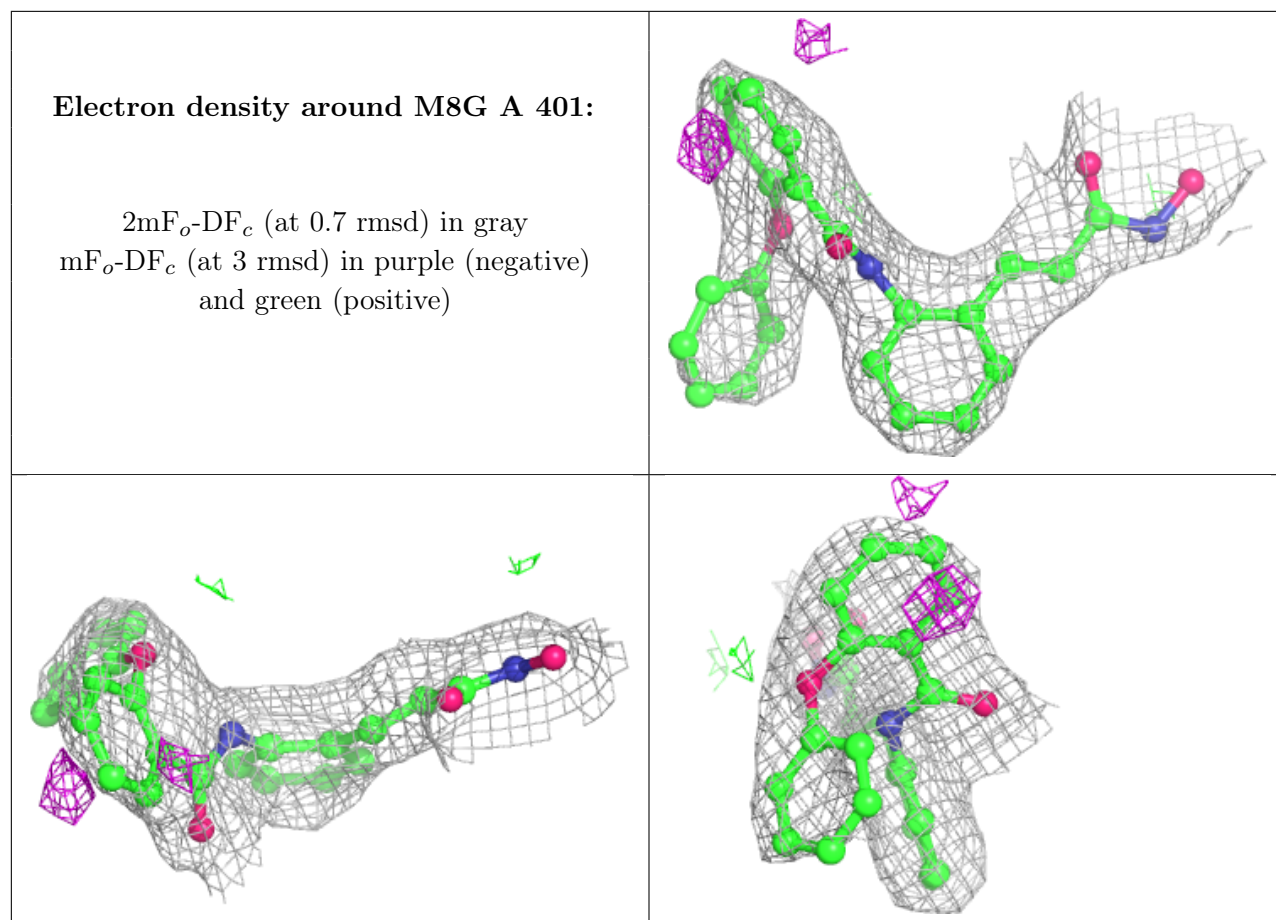
### 6.4 Ligands [i](#)

In the following table, the Atoms column lists the number of modelled atoms in the group and the number defined in the chemical component dictionary. The B-factors column lists the minimum, median, 95<sup>th</sup> percentile and maximum values of B factors of atoms in the group. The column labelled 'Q< 0.9' lists the number of atoms with occupancy less than 0.9.

Mol	Type	Chain	Res	Atoms	RSCC	RSR	B-factors(Å <sup>2</sup> )	Q<0.9
5	GOL	A	407	6/6	0.87	0.27	56,65,71,78	0
5	GOL	A	406	6/6	0.90	0.21	66,69,73,74	0
5	GOL	A	405	6/6	0.92	0.17	60,64,69,77	0
4	K	B	403	1/1	0.94	0.12	47,47,47,47	0
2	M8G	B	401	28/28	0.95	0.18	43,50,64,66	0
2	M8G	C	401	28/28	0.95	0.23	63,81,135,138	0
5	GOL	B	405	6/6	0.95	0.20	47,48,51,57	0
4	K	C	403	1/1	0.96	0.08	59,59,59,59	0
2	M8G	A	401	28/28	0.97	0.19	42,50,75,79	0
4	K	A	404	1/1	0.98	0.10	29,29,29,29	0
3	ZN	C	402	1/1	0.98	0.09	53,53,53,53	0
4	K	A	403	1/1	0.98	0.06	38,38,38,38	0
4	K	C	404	1/1	0.98	0.08	49,49,49,49	0
3	ZN	B	402	1/1	0.99	0.12	40,40,40,40	0
4	K	B	404	1/1	0.99	0.07	33,33,33,33	0
3	ZN	A	402	1/1	1.00	0.11	36,36,36,36	0

The following is a graphical depiction of the model fit to experimental electron density of all instances of the Ligand of Interest. In addition, ligands with molecular weight > 250 and outliers as shown on the geometry validation Tables will also be included. Each fit is shown from different orientation to approximate a three-dimensional view.





## 6.5 Other polymers [i](#)

There are no such residues in this entry.