



# Full wwPDB X-ray Structure Validation Report ⓘ

Oct 2, 2023 – 11:40 PM EDT

PDB ID : 6OBA  
Title : The beta2 adrenergic receptor bound to a negative allosteric modulator  
Authors : Liu, X.; Stobel, A.; Kaindl, J.; Dengler, D.; Clark, M.; Mahoney, J.; Korczynska, M.; Matt, R.A.; Hubner, H.; Xu, X.; Stanek, M.; Hirata, K.; Shoichet, B.; Sunahara, R.; Gmeiner, R.; Kobilka, B.K.  
Deposited on : 2019-03-20  
Resolution : 3.10 Å(reported)

This is a Full wwPDB X-ray Structure Validation Report for a publicly released PDB entry.

We welcome your comments at [validation@mail.wwpdb.org](mailto:validation@mail.wwpdb.org)

A user guide is available at

<https://www.wwpdb.org/validation/2017/XrayValidationReportHelp>

with specific help available everywhere you see the ⓘ symbol.

The types of validation reports are described at

<http://www.wwpdb.org/validation/2017/FAQs#types>.

---

The following versions of software and data (see [references ⓘ](#)) were used in the production of this report:

MolProbity : **FAILED**  
Mogul : 1.8.5 (274361), CSD as541be (2020)  
Xtriage (Phenix) : 1.13  
EDS : **FAILED**  
buster-report : 1.1.7 (2018)  
Percentile statistics : 20191225.v01 (using entries in the PDB archive December 25th 2019)  
Ideal geometry (proteins) : Engh & Huber (2001)  
Ideal geometry (DNA, RNA) : Parkinson et al. (1996)  
Validation Pipeline (wwPDB-VP) : 2.35.1

## 1 Overall quality at a glance

The following experimental techniques were used to determine the structure:

*X-RAY DIFFRACTION*

The reported resolution of this entry is 3.10 Å.

There are no overall percentile quality scores available for this entry.

MolProbity and EDS failed to run properly - the sequence quality summary graphics cannot be shown.

## 2 Entry composition

There are 4 unique types of molecules in this entry. The entry contains 3616 atoms, of which 0 are hydrogens and 0 are deuteriums.

In the tables below, the ZeroOcc column contains the number of atoms modelled with zero occupancy, the AltConf column contains the number of residues with at least one atom in alternate conformation and the Trace column contains the number of residues modelled with at most 2 atoms.

- Molecule 1 is a protein called Beta-2 adrenergic receptor, Lysozyme, Beta-2 adrenergic receptor.

Mol	Chain	Residues	Atoms					ZeroOcc	AltConf	Trace
			Total	C	N	O	S			
1	A	440	3523	2304	585	610	24	0	0	0

There are 12 discrepancies between the modelled and reference sequences:

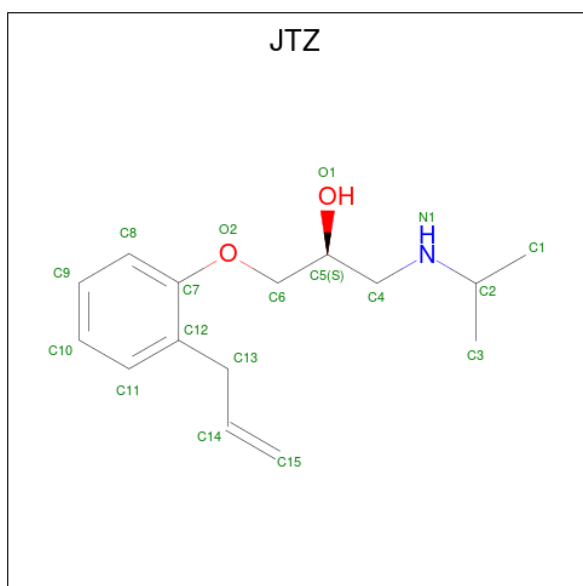
Chain	Residue	Modelled	Actual	Comment	Reference
A	-6	ASP	-	expression tag	UNP P07550
A	-5	TYR	-	expression tag	UNP P07550
A	-4	LYS	-	expression tag	UNP P07550
A	-3	ASP	-	expression tag	UNP P07550
A	-2	ASP	-	expression tag	UNP P07550
A	-1	ASP	-	expression tag	UNP P07550
A	0	ALA	-	expression tag	UNP P07550
A	16	ARG	GLY	variant	UNP P07550
A	27	GLN	GLU	variant	UNP P07550
A	187	GLU	ASN	engineered mutation	UNP P07550
A	1054	THR	CYS	engineered mutation	UNP D9IEF7
A	1097	ALA	CYS	engineered mutation	UNP D9IEF7

- Molecule 2 is CHOLESTEROL (three-letter code: CLR) (formula: C<sub>27</sub>H<sub>46</sub>O).



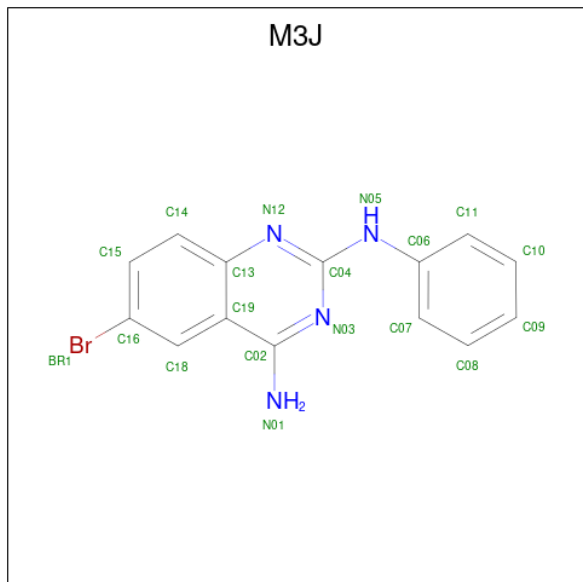
Mol	Chain	Residues	Atoms			ZeroOcc	AltConf
2	A	1	Total	C	O	0	0
			28	27	1		
2	A	1	Total	C	O	0	0
			28	27	1		

- Molecule 3 is (2S)-1-[(1-methylethyl)amino]-3-(2-prop-2-en-1-ylphenoxy)propan-2-ol (three-letter code: JTZ) (formula: C<sub>15</sub>H<sub>23</sub>NO<sub>2</sub>).



Mol	Chain	Residues	Atoms				ZeroOcc	AltConf
3	A	1	Total	C	N	O	0	0
			18	15	1	2		

- Molecule 4 is 6-bromo-N 2 -phenylquinazoline-2,4-diamine (three-letter code: M3J) (formula:  $C_{14}H_{11}BrN_4$ ) (labeled as "Ligand of Interest" by depositor).



Mol	Chain	Residues	Atoms				ZeroOcc	AltConf
			Total	Br	C	N		
4	A	1	19	1	14	4	0	0

MolProbity and EDS failed to run properly - this section is therefore empty.

### 3 Data and refinement statistics

EDS failed to run properly - this section is therefore incomplete.

Property	Value	Source
Space group	P 21 21 21	Depositor
Cell constants a, b, c, $\alpha$ , $\beta$ , $\gamma$	40.46Å 75.71Å 173.41Å 90.00° 90.00° 90.00°	Depositor
Resolution (Å)	19.98 – 3.10	Depositor
% Data completeness (in resolution range)	99.1 (19.98-3.10)	Depositor
$R_{merge}$	(Not available)	Depositor
$R_{sym}$	(Not available)	Depositor
$\langle I/\sigma(I) \rangle$ <sup>1</sup>	1.51 (at 3.12Å)	Xtrriage
Refinement program	PHENIX (1.12_2829: ???)	Depositor
R, $R_{free}$	0.251 , 0.277	Depositor
Wilson B-factor (Å <sup>2</sup> )	86.5	Xtrriage
Anisotropy	0.606	Xtrriage
L-test for twinning <sup>2</sup>	$\langle  L  \rangle = 0.45$ , $\langle L^2 \rangle = 0.28$	Xtrriage
Estimated twinning fraction	No twinning to report.	Xtrriage
Total number of atoms	3616	wwPDB-VP
Average B, all atoms (Å <sup>2</sup> )	90.0	wwPDB-VP

Xtrriage's analysis on translational NCS is as follows: *The largest off-origin peak in the Patterson function is 7.29% of the height of the origin peak. No significant pseudotranslation is detected.*

<sup>1</sup>Intensities estimated from amplitudes.

<sup>2</sup>Theoretical values of  $\langle |L| \rangle$ ,  $\langle L^2 \rangle$  for acentric reflections are 0.5, 0.333 respectively for untwinned datasets, and 0.375, 0.2 for perfectly twinned datasets.

## 4 Model quality [i](#)

### 4.1 Standard geometry [i](#)

MolProbity failed to run properly - this section is therefore empty.

### 4.2 Too-close contacts [i](#)

MolProbity failed to run properly - this section is therefore empty.

### 4.3 Torsion angles [i](#)

#### 4.3.1 Protein backbone [i](#)

MolProbity failed to run properly - this section is therefore empty.

#### 4.3.2 Protein sidechains [i](#)

MolProbity failed to run properly - this section is therefore empty.

#### 4.3.3 RNA [i](#)

MolProbity failed to run properly - this section is therefore empty.

### 4.4 Non-standard residues in protein, DNA, RNA chains [i](#)

There are no non-standard protein/DNA/RNA residues in this entry.

### 4.5 Carbohydrates [i](#)

There are no monosaccharides in this entry.

### 4.6 Ligand geometry [i](#)

4 ligands are modelled in this entry.

In the following table, the Counts columns list the number of bonds (or angles) for which Mogul statistics could be retrieved, the number of bonds (or angles) that are observed in the model and the number of bonds (or angles) that are defined in the Chemical Component Dictionary. The Link column lists molecule types, if any, to which the group is linked. The Z score for a bond

length (or angle) is the number of standard deviations the observed value is removed from the expected value. A bond length (or angle) with  $|Z| > 2$  is considered an outlier worth inspection. RMSZ is the root-mean-square of all Z scores of the bond lengths (or angles).

Mol	Type	Chain	Res	Link	Bond lengths			Bond angles		
					Counts	RMSZ	# Z  > 2	Counts	RMSZ	# Z  > 2
3	JTZ	A	1203	-	18,18,18	1.10	1 (5%)	22,22,22	1.04	1 (4%)
2	CLR	A	1201	-	31,31,31	1.70	1 (3%)	48,48,48	2.28	10 (20%)
4	M3J	A	1204	-	21,21,21	1.73	5 (23%)	28,29,29	1.57	7 (25%)
2	CLR	A	1202	-	31,31,31	1.78	1 (3%)	48,48,48	2.03	6 (12%)

In the following table, the Chirals column lists the number of chiral outliers, the number of chiral centers analysed, the number of these observed in the model and the number defined in the Chemical Component Dictionary. Similar counts are reported in the Torsion and Rings columns. '-' means no outliers of that kind were identified.

Mol	Type	Chain	Res	Link	Chirals	Torsions	Rings
3	JTZ	A	1203	-	-	4/13/13/13	0/1/1/1
2	CLR	A	1201	-	-	8/10/68/68	0/4/4/4
4	M3J	A	1204	-	-	2/4/4/4	0/3/3/3
2	CLR	A	1202	-	-	3/10/68/68	0/4/4/4

All (8) bond length outliers are listed below:

Mol	Chain	Res	Type	Atoms	Z	Observed(Å)	Ideal(Å)
2	A	1202	CLR	C6-C5	9.42	1.53	1.33
2	A	1201	CLR	C6-C5	8.88	1.52	1.33
4	A	1204	M3J	C04-N05	4.37	1.45	1.36
3	A	1203	JTZ	C15-C14	3.64	1.53	1.28
4	A	1204	M3J	C19-C13	-3.45	1.36	1.42
4	A	1204	M3J	C02-N01	3.18	1.45	1.34
4	A	1204	M3J	C02-C19	-2.32	1.43	1.45
4	A	1204	M3J	C06-N05	2.26	1.45	1.40

All (24) bond angle outliers are listed below:

Mol	Chain	Res	Type	Atoms	Z	Observed(°)	Ideal(°)
2	A	1201	CLR	C7-C6-C5	-8.48	109.41	125.06
2	A	1202	CLR	C7-C6-C5	-8.27	109.81	125.06
2	A	1201	CLR	C10-C5-C6	-6.82	112.46	122.90
2	A	1201	CLR	C4-C5-C6	-6.81	110.79	120.61
2	A	1202	CLR	C4-C5-C6	-6.75	110.88	120.61

*Continued on next page...*



*Continued from previous page...*

Mol	Chain	Res	Type	Atoms	Z	Observed(°)	Ideal(°)
2	A	1202	CLR	C10-C5-C6	-6.33	113.22	122.90
2	A	1201	CLR	C21-C20-C17	-3.46	107.62	112.92
4	A	1204	M3J	C19-C13-N12	-3.44	119.16	122.81
4	A	1204	M3J	C04-N12-C13	3.41	121.16	115.60
2	A	1202	CLR	C4-C5-C10	-3.32	112.01	116.42
2	A	1201	CLR	C1-C2-C3	3.19	114.56	110.47
4	A	1204	M3J	N12-C04-N03	-3.15	121.24	126.23
2	A	1201	CLR	C16-C17-C20	3.12	116.97	112.15
2	A	1201	CLR	C22-C20-C17	3.11	116.71	110.28
3	A	1203	JTZ	O2-C7-C12	2.88	119.55	115.78
4	A	1204	M3J	C18-C19-C02	-2.82	121.91	124.76
4	A	1204	M3J	C06-N05-C04	-2.77	121.19	129.23
4	A	1204	M3J	C19-C02-N03	-2.57	119.26	121.93
2	A	1201	CLR	C4-C5-C10	-2.54	113.04	116.42
2	A	1201	CLR	C13-C17-C20	-2.42	115.70	119.49
2	A	1201	CLR	C3-C4-C5	-2.19	108.31	112.03
4	A	1204	M3J	C04-N03-C02	2.16	120.95	116.52
2	A	1202	CLR	C19-C10-C5	2.14	111.81	108.34
2	A	1202	CLR	C8-C7-C6	-2.00	109.85	112.73

There are no chirality outliers.

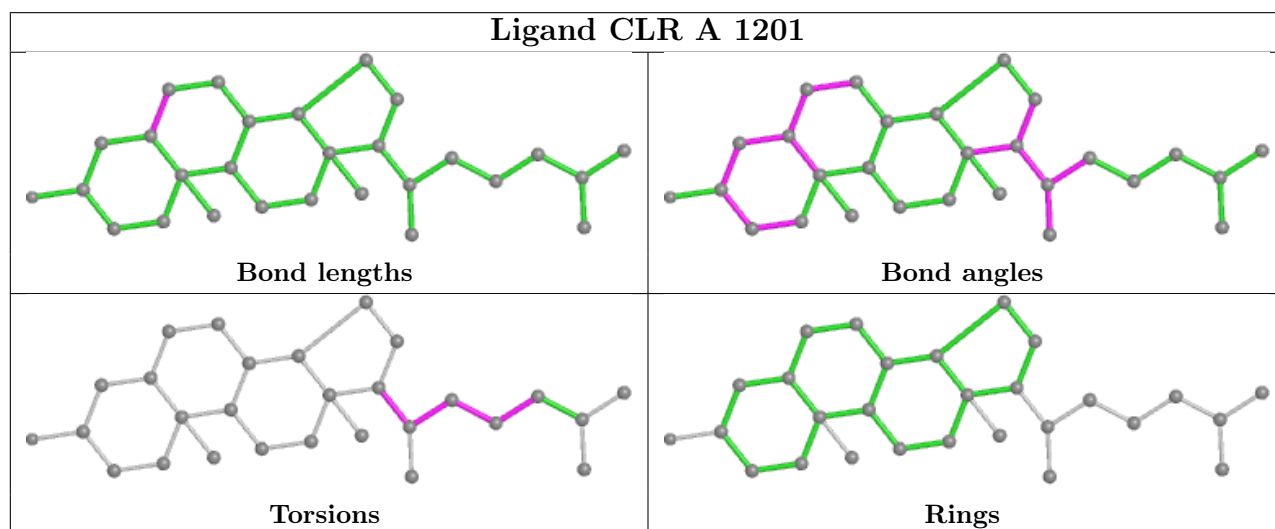
All (17) torsion outliers are listed below:

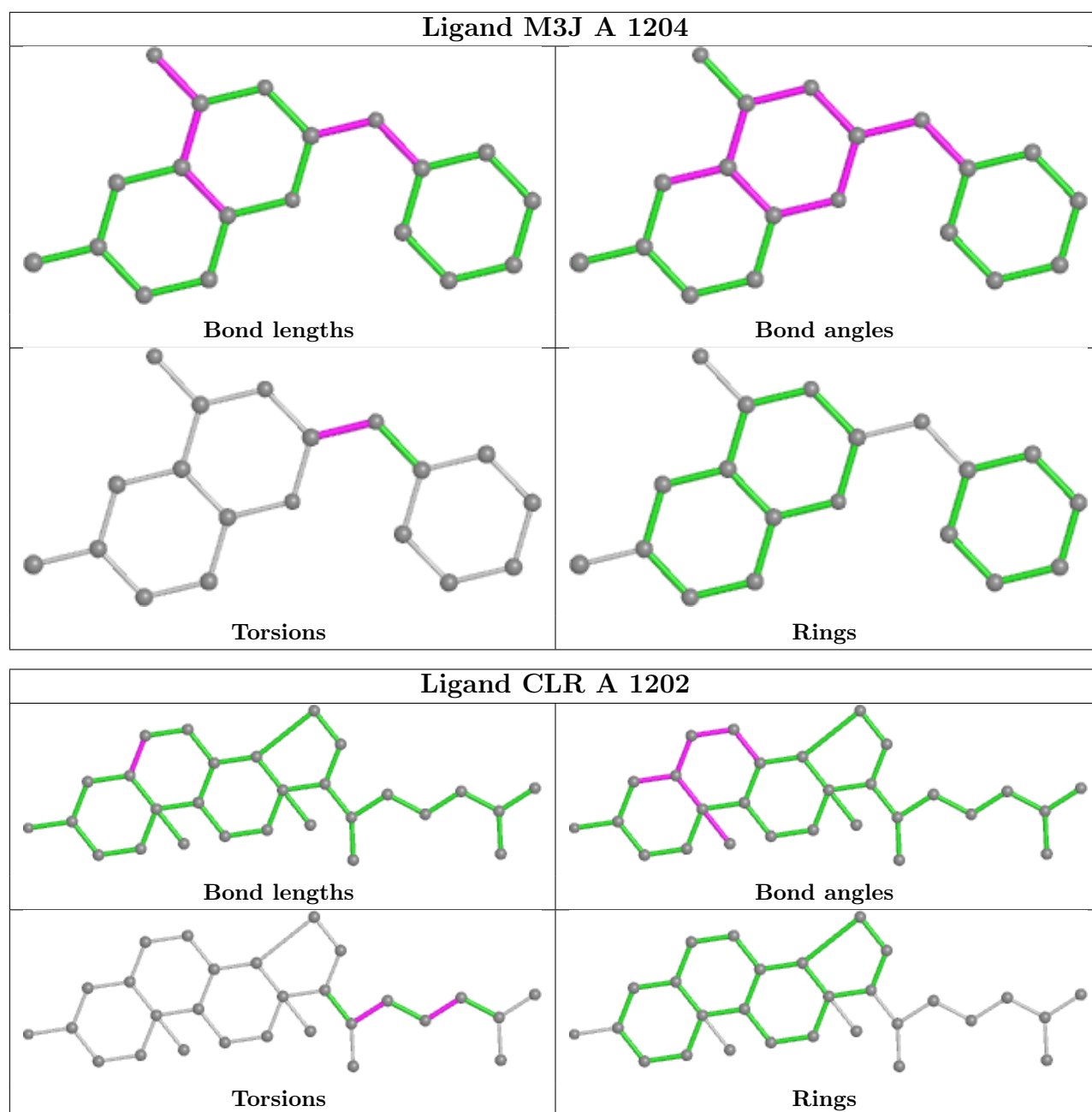
Mol	Chain	Res	Type	Atoms
3	A	1203	JTZ	C1-C2-N1-C4
3	A	1203	JTZ	N1-C4-C5-C6
2	A	1201	CLR	C13-C17-C20-C21
2	A	1201	CLR	C16-C17-C20-C21
2	A	1201	CLR	C16-C17-C20-C22
2	A	1201	CLR	C13-C17-C20-C22
2	A	1201	CLR	C17-C20-C22-C23
2	A	1202	CLR	C22-C23-C24-C25
2	A	1201	CLR	C20-C22-C23-C24
2	A	1201	CLR	C22-C23-C24-C25
2	A	1201	CLR	C21-C20-C22-C23
3	A	1203	JTZ	C3-C2-N1-C4
3	A	1203	JTZ	N1-C4-C5-O1
4	A	1204	M3J	N03-C04-N05-C06
2	A	1202	CLR	C17-C20-C22-C23
2	A	1202	CLR	C21-C20-C22-C23
4	A	1204	M3J	N12-C04-N05-C06

There are no ring outliers.

No monomer is involved in short contacts.

The following is a two-dimensional graphical depiction of Mogul quality analysis of bond lengths, bond angles, torsion angles, and ring geometry for all instances of the Ligand of Interest. In addition, ligands with molecular weight > 250 and outliers as shown on the validation Tables will also be included. For torsion angles, if less than 5% of the Mogul distribution of torsion angles is within 10 degrees of the torsion angle in question, then that torsion angle is considered an outlier. Any bond that is central to one or more torsion angles identified as an outlier by Mogul will be highlighted in the graph. For rings, the root-mean-square deviation (RMSD) between the ring in question and similar rings identified by Mogul is calculated over all ring torsion angles. If the average RMSD is greater than 60 degrees and the minimal RMSD between the ring in question and any Mogul-identified rings is also greater than 60 degrees, then that ring is considered an outlier. The outliers are highlighted in purple. The color gray indicates Mogul did not find sufficient equivalents in the CSD to analyse the geometry.





#### 4.7 Other polymers [i](#)

There are no such residues in this entry.

#### 4.8 Polymer linkage issues [i](#)

There are no chain breaks in this entry.

## 5 Fit of model and data

### 5.1 Protein, DNA and RNA chains

EDS failed to run properly - this section is therefore empty.

### 5.2 Non-standard residues in protein, DNA, RNA chains

EDS failed to run properly - this section is therefore empty.

### 5.3 Carbohydrates

EDS failed to run properly - this section is therefore empty.

### 5.4 Ligands

EDS failed to run properly - this section is therefore empty.

### 5.5 Other polymers

EDS failed to run properly - this section is therefore empty.