



# Full wwPDB X-ray Structure Validation Report ⓘ

Nov 5, 2023 – 03:22 AM EST

PDB ID : 6NK0  
Title : EphA2 LBD in complex with bA-WLA-Yam peptide  
Authors : Lechtenberg, B.C.; Pasquale, E.B.  
Deposited on : 2019-01-04  
Resolution : 1.53 Å(reported)

This is a Full wwPDB X-ray Structure Validation Report for a publicly released PDB entry.

We welcome your comments at [validation@mail.wwpdb.org](mailto:validation@mail.wwpdb.org)

A user guide is available at

<https://www.wwpdb.org/validation/2017/XrayValidationReportHelp>

with specific help available everywhere you see the ⓘ symbol.

The types of validation reports are described at

<http://www.wwpdb.org/validation/2017/FAQs#types>.

---

The following versions of software and data (see [references ⓘ](#)) were used in the production of this report:

MolProbity : 4.02b-467  
Mogul : 1.8.5 (274361), CSD as541be (2020)  
Xtriage (Phenix) : 1.13  
EDS : 2.36  
Percentile statistics : 20191225.v01 (using entries in the PDB archive December 25th 2019)  
Refmac : 5.8.0158  
CCP4 : 7.0.044 (Gargrove)  
Ideal geometry (proteins) : Engh & Huber (2001)  
Ideal geometry (DNA, RNA) : Parkinson et al. (1996)  
Validation Pipeline (wwPDB-VP) : 2.36

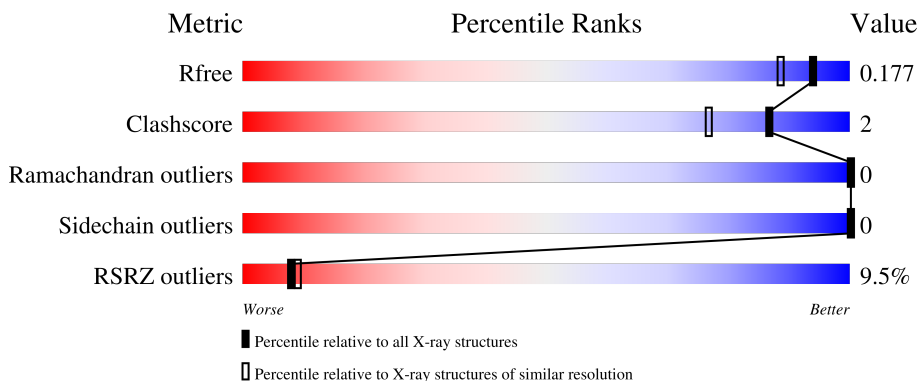
# 1 Overall quality at a glance

The following experimental techniques were used to determine the structure:

*X-RAY DIFFRACTION*

The reported resolution of this entry is 1.53 Å.

Percentile scores (ranging between 0-100) for global validation metrics of the entry are shown in the following graphic. The table shows the number of entries on which the scores are based.



Metric	Whole archive (#Entries)	Similar resolution (#Entries, resolution range(Å))
$R_{free}$	130704	2556 (1.56-1.52)
Clashscore	141614	2634 (1.56-1.52)
Ramachandran outliers	138981	2580 (1.56-1.52)
Sidechain outliers	138945	2577 (1.56-1.52)
RSRZ outliers	127900	2524 (1.56-1.52)

The table below summarises the geometric issues observed across the polymeric chains and their fit to the electron density. The red, orange, yellow and green segments of the lower bar indicate the fraction of residues that contain outliers for  $\geq 3$ , 2, 1 and 0 types of geometric quality criteria respectively. A grey segment represents the fraction of residues that are not modelled. The numeric value for each fraction is indicated below the corresponding segment, with a dot representing fractions  $\leq 5\%$ . The upper red bar (where present) indicates the fraction of residues that have poor fit to the electron density. The numeric value is given above the bar.

Mol	Chain	Length	Quality of chain
1	A	187	 7% 91% 5%
1	B	187	 11% 89% 7%
2	C	12	 8% 100%
2	D	12	 92% 8%

## 2 Entry composition i

There are 7 unique types of molecules in this entry. The entry contains 6720 atoms, of which 3094 are hydrogens and 0 are deuteriums.

In the tables below, the ZeroOcc column contains the number of atoms modelled with zero occupancy, the AltConf column contains the number of residues with at least one atom in alternate conformation and the Trace column contains the number of residues modelled with at most 2 atoms.

- Molecule 1 is a protein called Ephrin type-A receptor 2.

Mol	Chain	Residues	Atoms						ZeroOcc	AltConf	Trace
			Total	C	H	N	O	S			
1	A	178	2944	959	1437	258	278	12	0	12	0
1	B	181	2931	955	1433	257	276	10	0	7	0

There are 28 discrepancies between the modelled and reference sequences:

Chain	Residue	Modelled	Actual	Comment	Reference
A	21	MET	-	expression tag	UNP P29317
A	22	ALA	-	expression tag	UNP P29317
A	23	SER	-	expression tag	UNP P29317
A	24	GLN	-	expression tag	UNP P29317
A	25	GLY	-	expression tag	UNP P29317
A	26	PRO	-	expression tag	UNP P29317
A	27	GLY	-	expression tag	UNP P29317
A	201	ALA	-	expression tag	UNP P29317
A	202	HIS	-	expression tag	UNP P29317
A	203	HIS	-	expression tag	UNP P29317
A	204	HIS	-	expression tag	UNP P29317
A	205	HIS	-	expression tag	UNP P29317
A	206	HIS	-	expression tag	UNP P29317
A	207	HIS	-	expression tag	UNP P29317
B	21	MET	-	expression tag	UNP P29317
B	22	ALA	-	expression tag	UNP P29317
B	23	SER	-	expression tag	UNP P29317
B	24	GLN	-	expression tag	UNP P29317
B	25	GLY	-	expression tag	UNP P29317
B	26	PRO	-	expression tag	UNP P29317
B	27	GLY	-	expression tag	UNP P29317
B	201	ALA	-	expression tag	UNP P29317
B	202	HIS	-	expression tag	UNP P29317
B	203	HIS	-	expression tag	UNP P29317
B	204	HIS	-	expression tag	UNP P29317

*Continued on next page...*

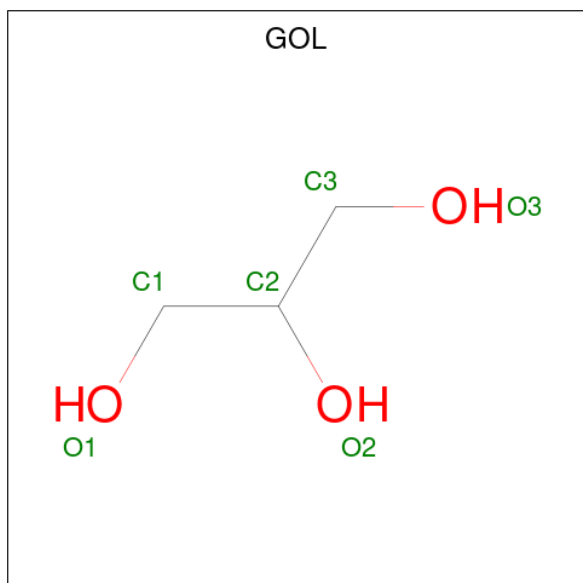
Continued from previous page...

Chain	Residue	Modelled	Actual	Comment	Reference
B	205	HIS	-	expression tag	UNP P29317
B	206	HIS	-	expression tag	UNP P29317
B	207	HIS	-	expression tag	UNP P29317

- Molecule 2 is a protein called bA-WLA-Yam.

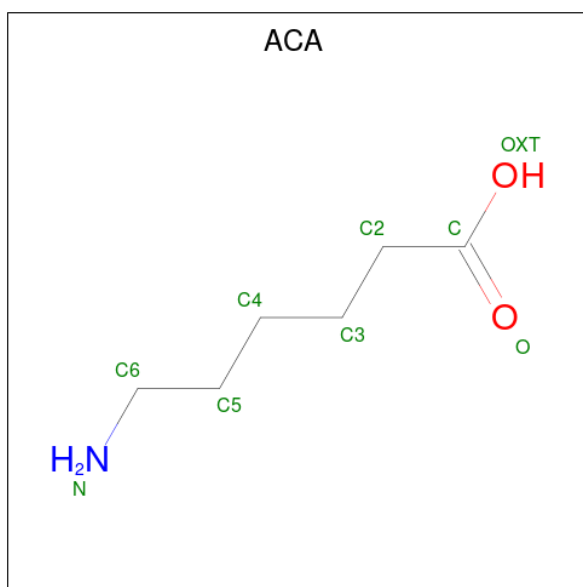
Mol	Chain	Residues	Atoms					ZeroOcc	AltConf	Trace
2	C	12	Total	C	H	N	O	0	0	1
			176	63	84	13	16			
2	D	12	Total	C	H	N	O	0	0	1
			176	63	84	13	16			

- Molecule 3 is GLYCEROL (three-letter code: GOL) (formula: C<sub>3</sub>H<sub>8</sub>O<sub>3</sub>).



Mol	Chain	Residues	Atoms				ZeroOcc	AltConf
3	A	1	Total	C	H	O	0	0
			13	3	7	3		
3	A	1	Total	C	H	O	0	0
			12	3	6	3		
3	B	1	Total	C	H	O	0	0
			14	3	8	3		

- Molecule 4 is 6-AMINOHEXANOIC ACID (three-letter code: ACA) (formula: C<sub>6</sub>H<sub>13</sub>NO<sub>2</sub>).



Mol	Chain	Residues	Atoms				ZeroOcc	AltConf	
			Total	C	H	N			O
4	A	1	22	6	13	1	2	0	0

- Molecule 5 is 1,2-ETHANEDIOL (three-letter code: EDO) (formula: C<sub>2</sub>H<sub>6</sub>O<sub>2</sub>).



Mol	Chain	Residues	Atoms				ZeroOcc	AltConf
			Total	C	H	O		
5	A	1	10	2	6	2	0	0
5	B	1	10	2	6	2	0	0

- Molecule 6 is DI(HYDROXYETHYL)ETHER (three-letter code: PEG) (formula: C<sub>4</sub>H<sub>10</sub>O<sub>3</sub>).



Mol	Chain	Residues	Atoms				ZeroOcc	AltConf
			Total	C	H	O		
6	B	1	17	4	10	3	0	0

- Molecule 7 is water.

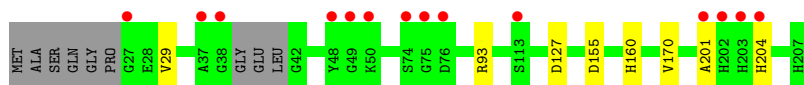
Mol	Chain	Residues	Atoms		ZeroOcc	AltConf
7	A	189	Total	O	0	0
			189	189		
7	B	165	Total	O	0	0
			165	165		
7	C	18	Total	O	0	0
			18	18		
7	D	23	Total	O	0	0
			23	23		

### 3 Residue-property plots [i](#)

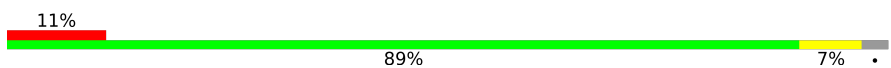
These plots are drawn for all protein, RNA, DNA and oligosaccharide chains in the entry. The first graphic for a chain summarises the proportions of the various outlier classes displayed in the second graphic. The second graphic shows the sequence view annotated by issues in geometry and electron density. Residues are color-coded according to the number of geometric quality criteria for which they contain at least one outlier: green = 0, yellow = 1, orange = 2 and red = 3 or more. A red dot above a residue indicates a poor fit to the electron density ( $RSRZ > 2$ ). Stretches of 2 or more consecutive residues without any outlier are shown as a green connector. Residues present in the sample, but not in the model, are shown in grey.

- Molecule 1: Ephrin type-A receptor 2

Chain A: 



- Molecule 1: Ephrin type-A receptor 2

Chain B: 



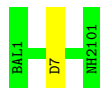
- Molecule 2: bA-WLA-Yam

Chain C: 



- Molecule 2: bA-WLA-Yam

Chain D: 



## 4 Data and refinement statistics

Property	Value	Source
Space group	P 1 21 1	Depositor
Cell constants a, b, c, $\alpha$ , $\beta$ , $\gamma$	46.80Å 78.06Å 58.34Å 90.00° 98.77° 90.00°	Depositor
Resolution (Å)	28.83 – 1.53 28.83 – 1.53	Depositor EDS
% Data completeness (in resolution range)	98.0 (28.83-1.53) 93.9 (28.83-1.53)	Depositor EDS
$R_{merge}$	0.04	Depositor
$R_{sym}$	(Not available)	Depositor
$\langle I/\sigma(I) \rangle$ <sup>1</sup>	0.94 (at 1.52Å)	Xtrriage
Refinement program	PHENIX 1.14rc2-3191	Depositor
R, $R_{free}$	0.151 , 0.177 0.151 , 0.177	Depositor DCC
$R_{free}$ test set	3088 reflections (5.00%)	wwPDB-VP
Wilson B-factor (Å <sup>2</sup> )	15.0	Xtrriage
Anisotropy	0.183	Xtrriage
Bulk solvent $k_{sol}$ (e/Å <sup>3</sup> ), $B_{sol}$ (Å <sup>2</sup> )	0.40 , 50.0	EDS
L-test for twinning <sup>2</sup>	$\langle  L  \rangle = 0.50$ , $\langle L^2 \rangle = 0.34$	Xtrriage
Estimated twinning fraction	No twinning to report.	Xtrriage
$F_o, F_c$ correlation	0.97	EDS
Total number of atoms	6720	wwPDB-VP
Average B, all atoms (Å <sup>2</sup> )	26.0	wwPDB-VP

Xtrriage's analysis on translational NCS is as follows: *The analyses of the Patterson function reveals a significant off-origin peak that is 39.50 % of the origin peak, indicating pseudo-translational symmetry. The chance of finding a peak of this or larger height randomly in a structure without pseudo-translational symmetry is equal to 3.1466e-04. The detected translational NCS is most likely also responsible for the elevated intensity ratio.*

<sup>1</sup>Intensities estimated from amplitudes.

<sup>2</sup>Theoretical values of  $\langle |L| \rangle$ ,  $\langle L^2 \rangle$  for acentric reflections are 0.5, 0.333 respectively for untwinned datasets, and 0.375, 0.2 for perfectly twinned datasets.



## 5 Model quality [i](#)

### 5.1 Standard geometry [i](#)

Bond lengths and bond angles in the following residue types are not validated in this section: BAL, EDO, ACA, NH2, PEG, GOL

The Z score for a bond length (or angle) is the number of standard deviations the observed value is removed from the expected value. A bond length (or angle) with  $|Z| > 5$  is considered an outlier worth inspection. RMSZ is the root-mean-square of all Z scores of the bond lengths (or angles).

Mol	Chain	Bond lengths		Bond angles	
		RMSZ	# Z  >5	RMSZ	# Z  >5
1	A	0.67	0/1571	0.84	1/2124 (0.0%)
1	B	0.64	0/1557	0.82	4/2106 (0.2%)
2	C	0.72	0/91	0.68	0/127
2	D	0.65	0/91	0.61	0/127
All	All	0.66	0/3310	0.82	5/4484 (0.1%)

There are no bond length outliers.

All (5) bond angle outliers are listed below:

Mol	Chain	Res	Type	Atoms	Z	Observed(°)	Ideal(°)
1	B	41	LEU	CB-CG-CD1	7.60	123.92	111.00
1	B	104	ASP	CB-CG-OD1	6.67	124.31	118.30
1	B	129	ASP	CB-CG-OD1	6.57	124.21	118.30
1	A	127	ASP	CB-CG-OD1	5.32	123.08	118.30
1	B	104	ASP	CB-CG-OD2	-5.07	113.74	118.30

There are no chirality outliers.

There are no planarity outliers.

### 5.2 Too-close contacts [i](#)

In the following table, the Non-H and H(model) columns list the number of non-hydrogen atoms and hydrogen atoms in the chain respectively. The H(added) column lists the number of hydrogen atoms added and optimized by MolProbity. The Clashes column lists the number of clashes within the asymmetric unit, whereas Symm-Clashes lists symmetry-related clashes.

Mol	Chain	Non-H	H(model)	H(added)	Clashes	Symm-Clashes
1	A	1507	1437	1406	4	0
1	B	1498	1433	1412	6	0

*Continued on next page...*

Continued from previous page...

Mol	Chain	Non-H	H(model)	H(added)	Clashes	Symm-Clashes
2	C	92	84	82	0	0
2	D	92	84	82	1	0
3	A	12	13	16	0	0
3	B	6	8	6	1	0
4	A	9	13	6	1	0
5	A	4	6	6	0	0
5	B	4	6	6	0	0
6	B	7	10	10	1	0
7	A	189	0	0	1	0
7	B	165	0	0	1	1
7	C	18	0	0	0	0
7	D	23	0	0	0	0
All	All	3626	3094	3032	13	1

The all-atom clashscore is defined as the number of clashes found per 1000 atoms (including hydrogen atoms). The all-atom clashscore for this structure is 2.

All (13) close contacts within the same asymmetric unit are listed below, sorted by their clash magnitude.

Atom-1	Atom-2	Interatomic distance (Å)	Clash overlap (Å)
3:B:403:GOL:O1	3:B:403:GOL:O3	1.57	0.86
1:A:29:VAL:HG21	1:A:201:ALA:CB	2.38	0.54
4:A:302:ACA:H51	7:A:547:HOH:O	2.12	0.48
1:B:159:ARG:HG2	2:D:7:ASP:OD2	2.16	0.46
1:A:155:ASP:HB3	1:A:160:HIS:O	2.17	0.44
1:A:201:ALA:HA	1:A:204:HIS:HD2	1.83	0.43
1:B:135:GLN:HG3	1:B:137:ARG:NH2	2.33	0.43
1:B:27:GLY:O	1:B:200:LYS:HG3	2.20	0.42
6:B:401:PEG:H41	7:B:545:HOH:O	2.20	0.41
1:B:99:LYS:HA	1:B:164:ASN:O	2.21	0.41
1:A:93:ARG:HG3	1:A:170[A]:VAL:O	2.21	0.40
1:B:202:HIS:O	1:B:203:HIS:C	2.59	0.40
1:B:102:VAL:HG22	1:B:189[A]:VAL:HG22	2.03	0.40

All (1) symmetry-related close contacts are listed below. The label for Atom-2 includes the symmetry operator and encoded unit-cell translations to be applied.

Atom-1	Atom-2	Interatomic distance (Å)	Clash overlap (Å)
7:B:599:HOH:O	7:B:602:HOH:O[2_545]	2.19	0.01

## 5.3 Torsion angles [i](#)

### 5.3.1 Protein backbone [i](#)

In the following table, the Percentiles column shows the percent Ramachandran outliers of the chain as a percentile score with respect to all X-ray entries followed by that with respect to entries of similar resolution.

The Analysed column shows the number of residues for which the backbone conformation was analysed, and the total number of residues.

Mol	Chain	Analysed	Favoured	Allowed	Outliers	Percentiles	
1	A	186/187 (100%)	180 (97%)	6 (3%)	0	100	100
1	B	186/187 (100%)	181 (97%)	5 (3%)	0	100	100
2	C	10/12 (83%)	10 (100%)	0	0	100	100
2	D	10/12 (83%)	10 (100%)	0	0	100	100
All	All	392/398 (98%)	381 (97%)	11 (3%)	0	100	100

There are no Ramachandran outliers to report.

### 5.3.2 Protein sidechains [i](#)

In the following table, the Percentiles column shows the percent sidechain outliers of the chain as a percentile score with respect to all X-ray entries followed by that with respect to entries of similar resolution.

The Analysed column shows the number of residues for which the sidechain conformation was analysed, and the total number of residues.

Mol	Chain	Analysed	Rotameric	Outliers	Percentiles	
1	A	163/159 (102%)	163 (100%)	0	100	100
1	B	162/159 (102%)	162 (100%)	0	100	100
2	C	9/9 (100%)	9 (100%)	0	100	100
2	D	9/9 (100%)	9 (100%)	0	100	100
All	All	343/336 (102%)	343 (100%)	0	100	100

There are no protein residues with a non-rotameric sidechain to report.

Sometimes sidechains can be flipped to improve hydrogen bonding and reduce clashes. All (1) such sidechains are listed below:

Mol	Chain	Res	Type
1	A	204	HIS

### 5.3.3 RNA [i](#)

There are no RNA molecules in this entry.

## 5.4 Non-standard residues in protein, DNA, RNA chains [i](#)

2 non-standard protein/DNA/RNA residues are modelled in this entry.

In the following table, the Counts columns list the number of bonds (or angles) for which Mogul statistics could be retrieved, the number of bonds (or angles) that are observed in the model and the number of bonds (or angles) that are defined in the Chemical Component Dictionary. The Link column lists molecule types, if any, to which the group is linked. The Z score for a bond length (or angle) is the number of standard deviations the observed value is removed from the expected value. A bond length (or angle) with  $|Z| > 2$  is considered an outlier worth inspection. RMSZ is the root-mean-square of all Z scores of the bond lengths (or angles).

Mol	Type	Chain	Res	Link	Bond lengths			Bond angles		
					Counts	RMSZ	$\# Z  > 2$	Counts	RMSZ	$\# Z  > 2$
2	BAL	D	1	2	4,4,5	0.62	0	3,3,5	0.96	0
2	BAL	C	1	2	4,4,5	0.48	0	3,3,5	0.89	0

In the following table, the Chirals column lists the number of chiral outliers, the number of chiral centers analysed, the number of these observed in the model and the number defined in the Chemical Component Dictionary. Similar counts are reported in the Torsion and Rings columns. '-' means no outliers of that kind were identified.

Mol	Type	Chain	Res	Link	Chirals	Torsions	Rings
2	BAL	D	1	2	-	0/1/2/3	-
2	BAL	C	1	2	-	0/1/2/3	-

There are no bond length outliers.

There are no bond angle outliers.

There are no chirality outliers.

There are no torsion outliers.

There are no ring outliers.

No monomer is involved in short contacts.

## 5.5 Carbohydrates [i](#)

There are no monosaccharides in this entry.

## 5.6 Ligand geometry [i](#)

7 ligands are modelled in this entry.

In the following table, the Counts columns list the number of bonds (or angles) for which Mogul statistics could be retrieved, the number of bonds (or angles) that are observed in the model and the number of bonds (or angles) that are defined in the Chemical Component Dictionary. The Link column lists molecule types, if any, to which the group is linked. The Z score for a bond length (or angle) is the number of standard deviations the observed value is removed from the expected value. A bond length (or angle) with  $|Z| > 2$  is considered an outlier worth inspection. RMSZ is the root-mean-square of all Z scores of the bond lengths (or angles).

Mol	Type	Chain	Res	Link	Bond lengths			Bond angles		
					Counts	RMSZ	# Z  > 2	Counts	RMSZ	# Z  > 2
5	EDO	A	303	-	3,3,3	0.42	0	2,2,2	0.43	0
4	ACA	A	302	-	8,8,8	0.33	0	8,8,8	0.34	0
3	GOL	A	301	-	5,5,5	1.11	1 (20%)	5,5,5	1.16	0
3	GOL	A	304	-	5,5,5	0.91	0	5,5,5	0.86	0
5	EDO	B	402	-	3,3,3	0.46	0	2,2,2	0.30	0
6	PEG	B	401	-	6,6,6	0.25	0	5,5,5	0.18	0
3	GOL	B	403	-	5,5,5	1.01	0	5,5,5	1.63	1 (20%)

In the following table, the Chirals column lists the number of chiral outliers, the number of chiral centers analysed, the number of these observed in the model and the number defined in the Chemical Component Dictionary. Similar counts are reported in the Torsion and Rings columns. '2' means no outliers of that kind were identified.

Mol	Type	Chain	Res	Link	Chirals	Torsions	Rings
5	EDO	A	303	-	-	0/1/1/1	-
4	ACA	A	302	-	-	5/6/6/6	-
3	GOL	A	301	-	-	2/4/4/4	-
3	GOL	A	304	-	-	0/4/4/4	-
5	EDO	B	402	-	-	0/1/1/1	-
6	PEG	B	401	-	-	2/4/4/4	-
3	GOL	B	403	-	-	2/4/4/4	-

All (1) bond length outliers are listed below:

Mol	Chain	Res	Type	Atoms	Z	Observed(Å)	Ideal(Å)
3	A	301	GOL	O2-C2	-2.13	1.37	1.43

All (1) bond angle outliers are listed below:

Mol	Chain	Res	Type	Atoms	Z	Observed( $^{\circ}$ )	Ideal( $^{\circ}$ )
3	B	403	GOL	C3-C2-C1	-2.74	101.05	111.70

There are no chirality outliers.

All (11) torsion outliers are listed below:

Mol	Chain	Res	Type	Atoms
3	B	403	GOL	C1-C2-C3-O3
3	B	403	GOL	O2-C2-C3-O3
4	A	302	ACA	C-C2-C3-C4
3	A	301	GOL	C1-C2-C3-O3
6	B	401	PEG	O2-C3-C4-O4
3	A	301	GOL	O2-C2-C3-O3
4	A	302	ACA	C3-C4-C5-C6
4	A	302	ACA	O-C-C2-C3
4	A	302	ACA	OXT-C-C2-C3
4	A	302	ACA	C4-C5-C6-N
6	B	401	PEG	C1-C2-O2-C3

There are no ring outliers.

3 monomers are involved in 3 short contacts:

Mol	Chain	Res	Type	Clashes	Symm-Clashes
4	A	302	ACA	1	0
6	B	401	PEG	1	0
3	B	403	GOL	1	0

## 5.7 Other polymers [i](#)

There are no such residues in this entry.

## 5.8 Polymer linkage issues [i](#)

There are no chain breaks in this entry.

## 6 Fit of model and data

### 6.1 Protein, DNA and RNA chains

In the following table, the column labelled ‘#RSRZ > 2’ contains the number (and percentage) of RSRZ outliers, followed by percent RSRZ outliers for the chain as percentile scores relative to all X-ray entries and entries of similar resolution. The OWAB column contains the minimum, median, 95<sup>th</sup> percentile and maximum values of the occupancy-weighted average B-factor per residue. The column labelled ‘Q < 0.9’ lists the number of (and percentage) of residues with an average occupancy less than 0.9.

Mol	Chain	Analysed	<RSRZ>	#RSRZ>2	OWAB(Å <sup>2</sup> )	Q<0.9
1	A	178/187 (95%)	0.10	14 (7%) <b>12</b> <b>14</b>	10, 17, 50, 80	0
1	B	181/187 (96%)	0.35	21 (11%) <b>4</b> <b>4</b>	11, 20, 66, 99	0
2	C	10/12 (83%)	-0.03	1 (10%) <b>7</b> <b>7</b>	11, 15, 21, 42	0
2	D	10/12 (83%)	-0.39	0 <b>100</b> <b>100</b>	15, 18, 22, 28	0
All	All	379/398 (95%)	0.20	36 (9%) <b>8</b> <b>9</b>	10, 18, 60, 99	0

All (36) RSRZ outliers are listed below:

Mol	Chain	Res	Type	RSRZ
1	A	48	TYR	9.6
1	B	48	TYR	7.9
1	B	112	ALA	7.5
1	B	75	GLY	6.8
1	B	203	HIS	5.8
1	B	109	PRO	5.6
1	B	202	HIS	4.9
1	A	37	ALA	4.7
1	B	111	GLY	4.4
1	A	75	GLY	4.3
1	A	201	ALA	4.2
1	B	201	ALA	4.1
1	B	74	SER	4.1
1	A	203	HIS	4.1
1	A	202	HIS	4.0
1	B	137	ARG	3.9
1	A	49	GLY	3.6
1	B	49	GLY	3.4
2	C	11	TYR	3.2
1	A	38	GLY	3.1
1	B	50	LYS	3.0

*Continued on next page...*

*Continued from previous page...*

Mol	Chain	Res	Type	RSRZ
1	B	62	MET	3.0
1	A	27	GLY	3.0
1	A	113	SER	2.8
1	A	50	LYS	2.8
1	B	73	MET	2.8
1	A	204	HIS	2.6
1	B	27	GLY	2.6
1	B	61	ASP	2.5
1	B	113	SER	2.5
1	B	114	SER	2.5
1	B	76	ASP	2.5
1	B	90	GLU	2.3
1	B	60	ASN	2.3
1	A	74	SER	2.2
1	A	76	ASP	2.2

## 6.2 Non-standard residues in protein, DNA, RNA chains [i](#)

In the following table, the Atoms column lists the number of modelled atoms in the group and the number defined in the chemical component dictionary. The B-factors column lists the minimum, median, 95<sup>th</sup> percentile and maximum values of B factors of atoms in the group. The column labelled 'Q< 0.9' lists the number of atoms with occupancy less than 0.9.

Mol	Type	Chain	Res	Atoms	RSCC	RSR	B-factors(Å <sup>2</sup> )	Q<0.9
2	BAL	C	1	5/6	0.97	0.11	18,26,65,65	0
2	BAL	D	1	5/6	0.97	0.08	19,22,27,27	0

## 6.3 Carbohydrates [i](#)

There are no monosaccharides in this entry.

## 6.4 Ligands [i](#)

In the following table, the Atoms column lists the number of modelled atoms in the group and the number defined in the chemical component dictionary. The B-factors column lists the minimum, median, 95<sup>th</sup> percentile and maximum values of B factors of atoms in the group. The column labelled 'Q< 0.9' lists the number of atoms with occupancy less than 0.9.

Mol	Type	Chain	Res	Atoms	RSCC	RSR	B-factors(Å <sup>2</sup> )	Q<0.9
5	EDO	B	402	4/4	0.62	0.20	68,81,87,89	0

*Continued on next page...*



*Continued from previous page...*

Mol	Type	Chain	Res	Atoms	RSCC	RSR	B-factors( $\text{\AA}^2$ )	Q<0.9
5	EDO	A	303	4/4	0.85	0.24	55,66,71,77	0
4	ACA	A	302	9/9	0.87	0.23	24,57,67,84	0
3	GOL	A	301	6/6	0.88	0.13	30,44,56,66	0
3	GOL	A	304	6/6	0.92	0.16	20,44,53,55	0
3	GOL	B	403	6/6	0.94	0.15	31,51,62,64	0
6	PEG	B	401	7/7	0.94	0.14	22,56,72,72	0

## 6.5 Other polymers [i](#)

There are no such residues in this entry.