



Full wwPDB X-ray Structure Validation Report ⓘ

Oct 26, 2024 – 12:32 PM EDT

PDB ID : 6MSS
Title : Diversity in the type II Natural Killer T cell receptor repertoire and antigen specificity leads to differing CD1d docking strategies
Authors : Sundararaj, S.; Le Nours, J.; Praveena, T.; Rossjohn, J.
Deposited on : 2018-10-18
Resolution : 3.00 Å(reported)

This is a Full wwPDB X-ray Structure Validation Report for a publicly released PDB entry.

We welcome your comments at validation@mail.wwpdb.org

A user guide is available at

<https://www.wwpdb.org/validation/2017/XrayValidationReportHelp>

with specific help available everywhere you see the ⓘ symbol.

The types of validation reports are described at

<http://www.wwpdb.org/validation/2017/FAQs#types>.

The following versions of software and data (see [references ⓘ](#)) were used in the production of this report:

MolProbity : 4.02b-467
Mogul : 2022.3.0, CSD as543be (2022)
Xtriage (Phenix) : 1.20.1
EDS : 3.0
buster-report : 1.1.7 (2018)
Percentile statistics : 20231227.v01 (using entries in the PDB archive December 27th 2023)
CCP4 : 9.0.003 (Gargrove)
Density-Fitness : 1.0.11
Ideal geometry (proteins) : Engh & Huber (2001)
Ideal geometry (DNA, RNA) : Parkinson et al. (1996)
Validation Pipeline (wwPDB-VP) : 2.39

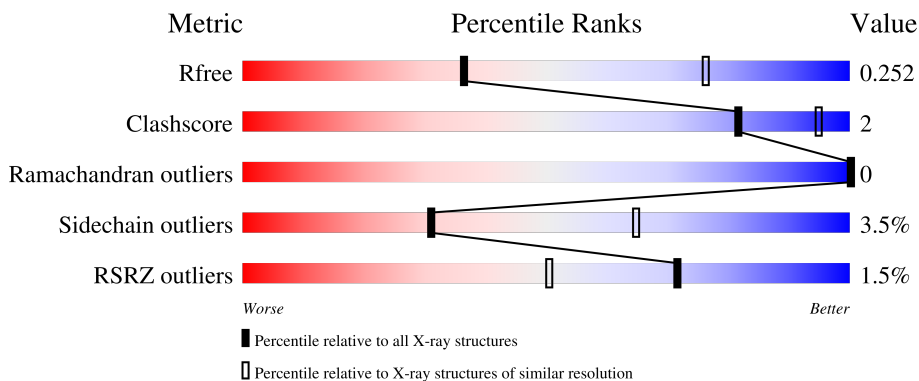
1 Overall quality at a glance

The following experimental techniques were used to determine the structure:

X-RAY DIFFRACTION

The reported resolution of this entry is 3.00 Å.

Percentile scores (ranging between 0-100) for global validation metrics of the entry are shown in the following graphic. The table shows the number of entries on which the scores are based.



Metric	Whole archive (#Entries)	Similar resolution (#Entries, resolution range(Å))
R_{free}	164625	2511 (3.00-3.00)
Clashscore	180529	2866 (3.00-3.00)
Ramachandran outliers	177936	2778 (3.00-3.00)
Sidechain outliers	177891	2781 (3.00-3.00)
RSRZ outliers	164620	2523 (3.00-3.00)

The table below summarises the geometric issues observed across the polymeric chains and their fit to the electron density. The red, orange, yellow and green segments of the lower bar indicate the fraction of residues that contain outliers for ≥ 3 , 2, 1 and 0 types of geometric quality criteria respectively. A grey segment represents the fraction of residues that are not modelled. The numeric value for each fraction is indicated below the corresponding segment, with a dot representing fractions $\leq 5\%$. The upper red bar (where present) indicates the fraction of residues that have poor fit to the electron density. The numeric value is given above the bar.

Mol	Chain	Length	Quality of chain
1	A	203	 4% 84% 5% 11%
2	B	245	 91% 7% ..
3	C	302	 % 78% 12% 11%
4	D	99	 89% 9% ..
5	E	2	 100%

2 Entry composition

There are 8 unique types of molecules in this entry. The entry contains 6304 atoms, of which 0 are hydrogens and 0 are deuteriums.

In the tables below, the ZeroOcc column contains the number of atoms modelled with zero occupancy, the AltConf column contains the number of residues with at least one atom in alternate conformation and the Trace column contains the number of residues modelled with at most 2 atoms.

- Molecule 1 is a protein called A11B8.2 NKT TCR alpha-chain.

Mol	Chain	Residues	Atoms					ZeroOcc	AltConf	Trace
			Total	C	N	O	S			
1	A	181	1384	869	234	271	10	0	2	0

- Molecule 2 is a protein called A11B8.2 NKT TCR beta-chain.

Mol	Chain	Residues	Atoms					ZeroOcc	AltConf	Trace
			Total	C	N	O	S			
2	B	241	1850	1164	324	356	6	0	0	0

- Molecule 3 is a protein called Antigen-presenting glycoprotein CD1d1.

Mol	Chain	Residues	Atoms					ZeroOcc	AltConf	Trace
			Total	C	N	O	S			
3	C	270	2134	1365	366	390	13	0	0	0

There are 24 discrepancies between the modelled and reference sequences:

Chain	Residue	Modelled	Actual	Comment	Reference
C	201	HIS	ASP	conflict	UNP P11609
C	280	GLY	-	expression tag	UNP P11609
C	281	SER	-	expression tag	UNP P11609
C	282	LEU	-	expression tag	UNP P11609
C	283	HIS	-	expression tag	UNP P11609
C	284	HIS	-	expression tag	UNP P11609
C	285	ILE	-	expression tag	UNP P11609
C	286	LEU	-	expression tag	UNP P11609
C	287	ASP	-	expression tag	UNP P11609
C	288	ALA	-	expression tag	UNP P11609
C	289	GLN	-	expression tag	UNP P11609
C	290	LYS	-	expression tag	UNP P11609
C	291	MET	-	expression tag	UNP P11609
C	292	VAL	-	expression tag	UNP P11609

Continued on next page...

Continued from previous page...

Chain	Residue	Modelled	Actual	Comment	Reference
C	293	TRP	-	expression tag	UNP P11609
C	294	ASN	-	expression tag	UNP P11609
C	295	HIS	-	expression tag	UNP P11609
C	296	ARG	-	expression tag	UNP P11609
C	297	HIS	-	expression tag	UNP P11609
C	298	HIS	-	expression tag	UNP P11609
C	299	HIS	-	expression tag	UNP P11609
C	300	HIS	-	expression tag	UNP P11609
C	301	HIS	-	expression tag	UNP P11609
C	302	HIS	-	expression tag	UNP P11609

- Molecule 4 is a protein called Beta-2-microglobulin.

Mol	Chain	Residues	Atoms					ZeroOcc	AltConf	Trace
			Total	C	N	O	S			
4	D	98	800	512	137	144	7	0	1	0

- Molecule 5 is an oligosaccharide called 2-acetamido-2-deoxy-beta-D-glucopyranose-(1-4)-2-acetamido-2-deoxy-beta-D-glucopyranose.



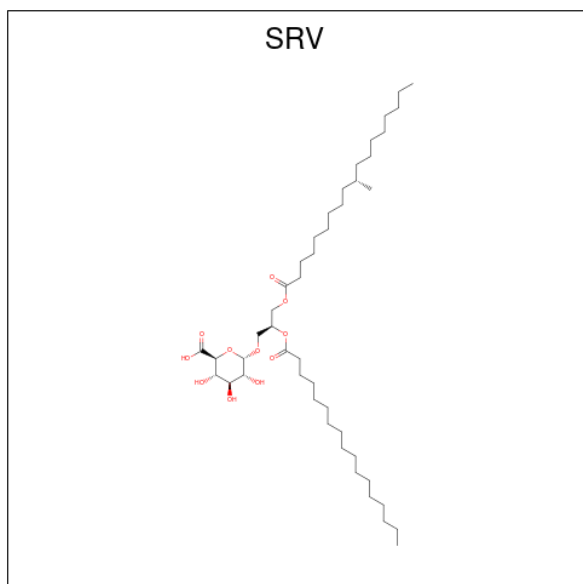
Mol	Chain	Residues	Atoms				ZeroOcc	AltConf	Trace
			Total	C	N	O			
5	E	2	28	16	2	10	0	0	0

- Molecule 6 is 2-acetamido-2-deoxy-beta-D-glucopyranose (three-letter code: NAG) (formula: C₈H₁₅NO₆).



Mol	Chain	Residues	Atoms			ZeroOcc	AltConf	
6	C	1	Total	C	N	O	0	0
			14	8	1	5		
6	C	1	Total	C	N	O	0	0
			14	8	1	5		

- Molecule 7 is (2S)-2-(heptadecanoyloxy)-3-[[[(10S)-10-methyloctadecanoyl]oxy]propyl] alpha-D-glucopyranosiduronic acid (three-letter code: SRV) (formula: C₄₅H₈₄O₁₁).



Mol	Chain	Residues	Atoms			ZeroOcc	AltConf
7	C	1	Total	C	O	0	0
			56	45	11		

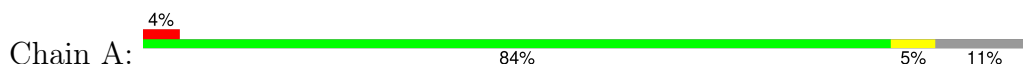
- Molecule 8 is water.

Mol	Chain	Residues	Atoms	ZeroOcc	AltConf
8	A	9	Total O 9 9	0	0
8	B	4	Total O 4 4	0	0
8	C	8	Total O 8 8	0	0
8	D	3	Total O 3 3	0	0

3 Residue-property plots [i](#)

These plots are drawn for all protein, RNA, DNA and oligosaccharide chains in the entry. The first graphic for a chain summarises the proportions of the various outlier classes displayed in the second graphic. The second graphic shows the sequence view annotated by issues in geometry and electron density. Residues are color-coded according to the number of geometric quality criteria for which they contain at least one outlier: green = 0, yellow = 1, orange = 2 and red = 3 or more. A red dot above a residue indicates a poor fit to the electron density ($RSRZ > 2$). Stretches of 2 or more consecutive residues without any outlier are shown as a green connector. Residues present in the sample, but not in the model, are shown in grey.

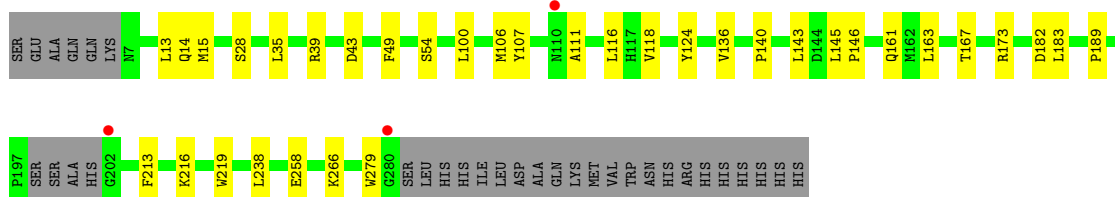
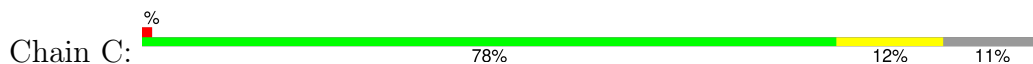
- Molecule 1: A11B8.2 NKT TCR alpha-chain



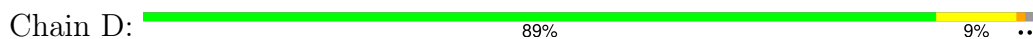
- Molecule 2: A11B8.2 NKT TCR beta-chain



- Molecule 3: Antigen-presenting glycoprotein CD1d1



- Molecule 4: Beta-2-microglobulin



- Molecule 5: 2-acetamido-2-deoxy-beta-D-glucopyranose-(1-4)-2-acetamido-2-deoxy-beta-D-glucopyranose



MAG1
MAG2

4 Data and refinement statistics

Property	Value	Source
Space group	P 21 21 21	Depositor
Cell constants a, b, c, α , β , γ	42.58Å 141.26Å 170.67Å 90.00° 90.00° 90.00°	Depositor
Resolution (Å)	65.26 – 3.00 65.26 – 3.00	Depositor EDS
% Data completeness (in resolution range)	100.0 (65.26-3.00) 100.0 (65.26-3.00)	Depositor EDS
R_{merge}	(Not available)	Depositor
R_{sym}	(Not available)	Depositor
$\langle I/\sigma(I) \rangle$ ¹	2.14 (at 3.01Å)	Xtrriage
Refinement program	BUSTER 2.10.3	Depositor
R, R_{free}	0.183 , 0.242 0.194 , 0.252	Depositor DCC
R_{free} test set	1102 reflections (5.13%)	wwPDB-VP
Wilson B-factor (Å ²)	42.2	Xtrriage
Anisotropy	0.349	Xtrriage
Bulk solvent k_{sol} (e/Å ³), B_{sol} (Å ²)	0.30 , 49.0	EDS
L-test for twinning ²	$\langle L \rangle = 0.48$, $\langle L^2 \rangle = 0.31$	Xtrriage
Estimated twinning fraction	No twinning to report.	Xtrriage
F_o, F_c correlation	0.91	EDS
Total number of atoms	6304	wwPDB-VP
Average B, all atoms (Å ²)	40.0	wwPDB-VP

Xtrriage's analysis on translational NCS is as follows: *The largest off-origin peak in the Patterson function is 3.87% of the height of the origin peak. No significant pseudotranslation is detected.*

¹Intensities estimated from amplitudes.

²Theoretical values of $\langle |L| \rangle$, $\langle L^2 \rangle$ for acentric reflections are 0.5, 0.333 respectively for untwinned datasets, and 0.375, 0.2 for perfectly twinned datasets.

5 Model quality [i](#)

5.1 Standard geometry [i](#)

Bond lengths and bond angles in the following residue types are not validated in this section: SRV, NAG

The Z score for a bond length (or angle) is the number of standard deviations the observed value is removed from the expected value. A bond length (or angle) with $|Z| > 5$ is considered an outlier worth inspection. RMSZ is the root-mean-square of all Z scores of the bond lengths (or angles).

Mol	Chain	Bond lengths		Bond angles	
		RMSZ	# Z >5	RMSZ	# Z >5
1	A	0.47	0/1417	0.64	0/1919
2	B	0.43	0/1903	0.63	0/2604
3	C	0.47	0/2197	0.66	0/2991
4	D	0.46	0/830	0.68	0/1130
All	All	0.46	0/6347	0.65	0/8644

There are no bond length outliers.

There are no bond angle outliers.

There are no chirality outliers.

There are no planarity outliers.

5.2 Too-close contacts [i](#)

In the following table, the Non-H and H(model) columns list the number of non-hydrogen atoms and hydrogen atoms in the chain respectively. The H(added) column lists the number of hydrogen atoms added and optimized by MolProbity. The Clashes column lists the number of clashes within the asymmetric unit, whereas Symm-Clashes lists symmetry-related clashes.

Mol	Chain	Non-H	H(model)	H(added)	Clashes	Symm-Clashes
1	A	1384	0	1297	2	0
2	B	1850	0	1702	7	0
3	C	2134	0	2019	16	0
4	D	800	0	760	5	0
5	E	28	0	25	1	0
6	C	28	0	26	0	0
7	C	56	0	0	0	0
8	A	9	0	0	0	0
8	B	4	0	0	0	0

Continued on next page...

Continued from previous page...

Mol	Chain	Non-H	H(model)	H(added)	Clashes	Symm-Clashes
8	C	8	0	0	0	0
8	D	3	0	0	0	0
All	All	6304	0	5829	29	0

The all-atom clashscore is defined as the number of clashes found per 1000 atoms (including hydrogen atoms). The all-atom clashscore for this structure is 2.

All (29) close contacts within the same asymmetric unit are listed below, sorted by their clash magnitude.

Atom-1	Atom-2	Interatomic distance (Å)	Clash overlap (Å)
3:C:189:PRO:HB3	3:C:213:PHE:HB3	1.72	0.71
3:C:219:TRP:HB3	3:C:266:LYS:HB2	1.79	0.64
3:C:163:LEU:HA	3:C:167:THR:HB	1.85	0.59
2:B:87:THR:HG23	2:B:113:THR:HA	1.84	0.58
3:C:35:LEU:HD12	3:C:183:LEU:HD23	1.88	0.55
3:C:107:TYR:HB2	3:C:111:ALA:HB3	1.88	0.54
3:C:124:TYR:CZ	3:C:136:VAL:HG11	2.43	0.53
3:C:106:MET:HE1	3:C:173:ARG:HE	1.74	0.52
4:D:96:ASP:HB3	4:D:99:MET:HG3	1.92	0.51
2:B:136:ILE:HG23	2:B:199:ALA:HB1	1.93	0.50
3:C:49:PHE:HB3	3:C:54:SER:HB2	1.95	0.49
4:D:37:ILE:HG12	4:D:82:VAL:HG22	1.95	0.49
1:A:109:PRO:HG3	1:A:167:LYS:HB3	1.96	0.48
3:C:100:LEU:HD23	3:C:116:LEU:HD21	1.96	0.48
3:C:100:LEU:HG	3:C:118:VAL:HG22	1.96	0.46
3:C:140:PRO:HD2	3:C:143:LEU:HD12	1.95	0.46
2:B:15:VAL:HG13	2:B:118:LEU:HG	1.96	0.46
3:C:161:GLN:HB3	5:E:1:NAG:H82	1.97	0.46
4:D:24:ASN:HB3	4:D:65:LEU:HD11	1.98	0.45
2:B:30:HIS:CD2	2:B:96:ASP:HB2	2.51	0.45
1:A:152:TYR:O	1:A:173:ALA:HA	2.17	0.45
3:C:14:GLN:HB3	3:C:100:LEU:HB2	2.00	0.44
3:C:258:GLU:HB3	3:C:279:TRP:CD1	2.53	0.44
2:B:205:PRO:HA	2:B:242:GLY:O	2.17	0.44
3:C:145:LEU:HB3	3:C:146:PRO:HD3	1.99	0.43
4:D:40:LEU:HD11	4:D:81:ARG:HB2	2.00	0.42
2:B:22:LEU:HD22	2:B:110:THR:HG21	2.01	0.42
2:B:194:ARG:HD3	2:B:194:ARG:N	2.34	0.41
3:C:15:MET:HG2	4:D:62:PHE:CE1	2.56	0.41

There are no symmetry-related clashes.

5.3 Torsion angles [i](#)

5.3.1 Protein backbone [i](#)

In the following table, the Percentiles column shows the percent Ramachandran outliers of the chain as a percentile score with respect to all X-ray entries followed by that with respect to entries of similar resolution.

The Analysed column shows the number of residues for which the backbone conformation was analysed, and the total number of residues.

Mol	Chain	Analysed	Favoured	Allowed	Outliers	Percentiles	
1	A	177/203 (87%)	166 (94%)	11 (6%)	0	100	100
2	B	239/245 (98%)	231 (97%)	8 (3%)	0	100	100
3	C	266/302 (88%)	263 (99%)	3 (1%)	0	100	100
4	D	97/99 (98%)	95 (98%)	2 (2%)	0	100	100
All	All	779/849 (92%)	755 (97%)	24 (3%)	0	100	100

There are no Ramachandran outliers to report.

5.3.2 Protein sidechains [i](#)

In the following table, the Percentiles column shows the percent sidechain outliers of the chain as a percentile score with respect to all X-ray entries followed by that with respect to entries of similar resolution.

The Analysed column shows the number of residues for which the sidechain conformation was analysed, and the total number of residues.

Mol	Chain	Analysed	Rotameric	Outliers	Percentiles	
1	A	150/181 (83%)	144 (96%)	6 (4%)	27	61
2	B	194/210 (92%)	186 (96%)	8 (4%)	26	60
3	C	226/264 (86%)	219 (97%)	7 (3%)	35	68
4	D	89/93 (96%)	87 (98%)	2 (2%)	47	76
All	All	659/748 (88%)	636 (96%)	23 (4%)	31	65

All (23) residues with a non-rotameric sidechain are listed below:

Mol	Chain	Res	Type
1	A	3	MET
1	A	14	LEU

Continued on next page...

Continued from previous page...

Mol	Chain	Res	Type
1	A	24	CYS
1	A	29	THR
1	A	45	ILE
1	A	105	LEU
2	B	15	VAL
2	B	39	ASP
2	B	85	SER
2	B	149	THR
2	B	156	VAL
2	B	158	LEU
2	B	188	ARG
2	B	194	ARG
3	C	13	LEU
3	C	28	SER
3	C	39	ARG
3	C	43	ASP
3	C	182	ASP
3	C	216	LYS
3	C	238	LEU
4	D	40	LEU
4	D	57	SER

Sometimes sidechains can be flipped to improve hydrogen bonding and reduce clashes. All (1) such sidechains are listed below:

Mol	Chain	Res	Type
2	B	29	ASN

5.3.3 RNA [i](#)

There are no RNA molecules in this entry.

5.4 Non-standard residues in protein, DNA, RNA chains [i](#)

There are no non-standard protein/DNA/RNA residues in this entry.

5.5 Carbohydrates [i](#)

2 monosaccharides are modelled in this entry.

In the following table, the Counts columns list the number of bonds (or angles) for which Mogul statistics could be retrieved, the number of bonds (or angles) that are observed in the model and the number of bonds (or angles) that are defined in the Chemical Component Dictionary. The Link column lists molecule types, if any, to which the group is linked. The Z score for a bond length (or angle) is the number of standard deviations the observed value is removed from the expected value. A bond length (or angle) with $|Z| > 2$ is considered an outlier worth inspection. RMSZ is the root-mean-square of all Z scores of the bond lengths (or angles).

Mol	Type	Chain	Res	Link	Bond lengths			Bond angles		
					Counts	RMSZ	$\# Z > 2$	Counts	RMSZ	$\# Z > 2$
5	NAG	E	1	5,3	14,14,15	0.31	0	17,19,21	0.67	0
5	NAG	E	2	5	14,14,15	0.33	0	17,19,21	1.06	2 (11%)

In the following table, the Chirals column lists the number of chiral outliers, the number of chiral centers analysed, the number of these observed in the model and the number defined in the Chemical Component Dictionary. Similar counts are reported in the Torsion and Rings columns. '-' means no outliers of that kind were identified.

Mol	Type	Chain	Res	Link	Chirals	Torsions	Rings
5	NAG	E	1	5,3	-	2/6/23/26	0/1/1/1
5	NAG	E	2	5	-	2/6/23/26	0/1/1/1

There are no bond length outliers.

All (2) bond angle outliers are listed below:

Mol	Chain	Res	Type	Atoms	Z	Observed(°)	Ideal(°)
5	E	2	NAG	C1-O5-C5	3.39	116.73	112.19
5	E	2	NAG	O5-C1-C2	-2.31	107.71	111.29

There are no chirality outliers.

All (4) torsion outliers are listed below:

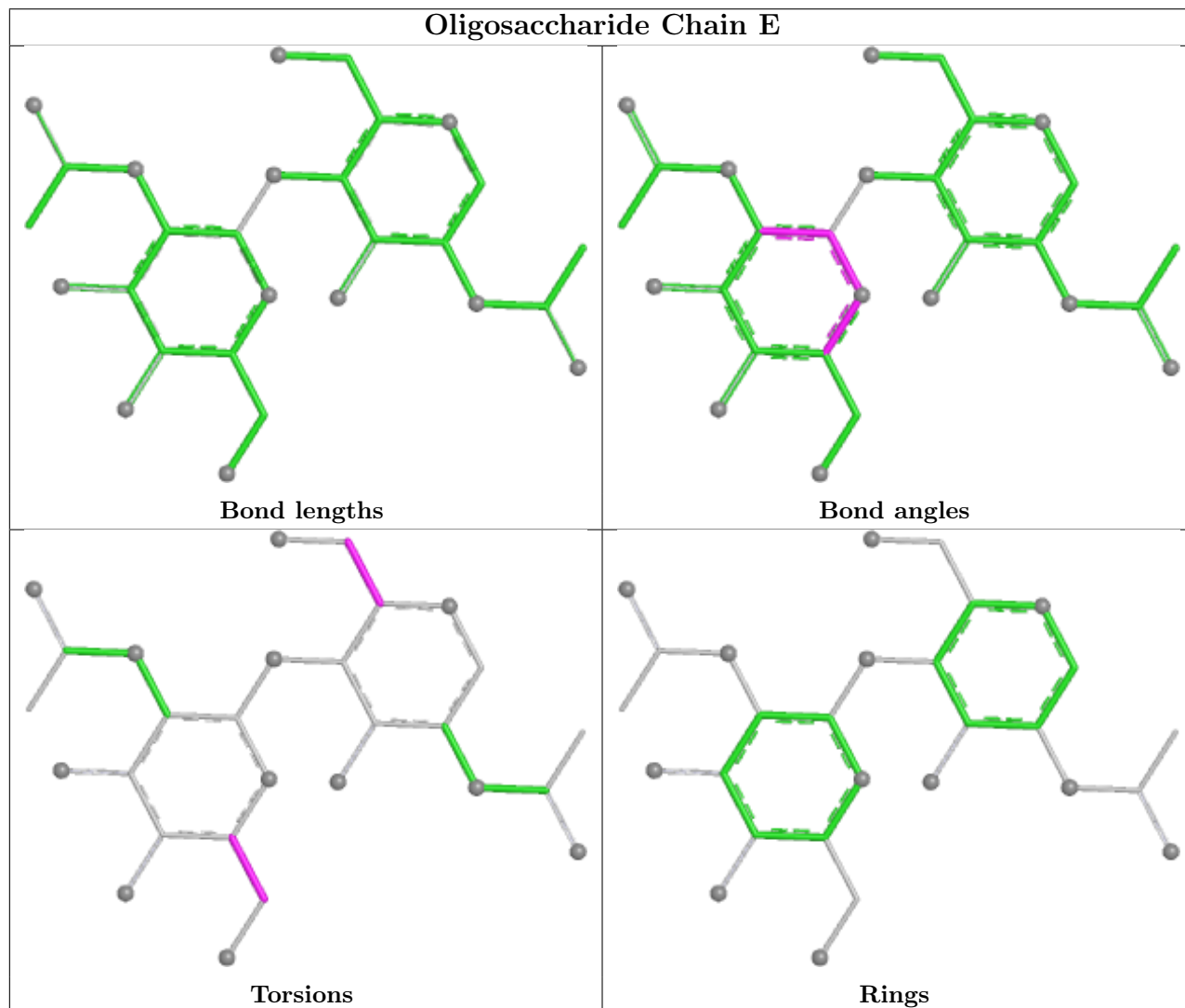
Mol	Chain	Res	Type	Atoms
5	E	1	NAG	C4-C5-C6-O6
5	E	2	NAG	C4-C5-C6-O6
5	E	2	NAG	O5-C5-C6-O6
5	E	1	NAG	O5-C5-C6-O6

There are no ring outliers.

1 monomer is involved in 1 short contact:

Mol	Chain	Res	Type	Clashes	Symm-Clashes
5	E	1	NAG	1	0

The following is a two-dimensional graphical depiction of Mogul quality analysis of bond lengths, bond angles, torsion angles, and ring geometry for oligosaccharide.



5.6 Ligand geometry [i](#)

3 ligands are modelled in this entry.

In the following table, the Counts columns list the number of bonds (or angles) for which Mogul statistics could be retrieved, the number of bonds (or angles) that are observed in the model and the number of bonds (or angles) that are defined in the Chemical Component Dictionary. The Link column lists molecule types, if any, to which the group is linked. The Z score for a bond length (or angle) is the number of standard deviations the observed value is removed from the expected value. A bond length (or angle) with $|Z| > 2$ is considered an outlier worth inspection. RMSZ is the root-mean-square of all Z scores of the bond lengths (or angles).

Mol	Type	Chain	Res	Link	Bond lengths			Bond angles		
					Counts	RMSZ	# Z > 2	Counts	RMSZ	# Z > 2
6	NAG	C	401	3	14,14,15	0.32	0	17,19,21	1.09	1 (5%)
7	SRV	C	405	-	56,56,56	0.77	0	65,66,66	0.96	2 (3%)
6	NAG	C	402	3	14,14,15	0.35	0	17,19,21	0.98	2 (11%)

In the following table, the Chirals column lists the number of chiral outliers, the number of chiral centers analysed, the number of these observed in the model and the number defined in the Chemical Component Dictionary. Similar counts are reported in the Torsion and Rings columns. '-' means no outliers of that kind were identified.

Mol	Type	Chain	Res	Link	Chirals	Torsions	Rings
6	NAG	C	401	3	-	2/6/23/26	0/1/1/1
7	SRV	C	405	-	-	29/53/73/73	0/1/1/1
6	NAG	C	402	3	-	1/6/23/26	0/1/1/1

There are no bond length outliers.

All (5) bond angle outliers are listed below:

Mol	Chain	Res	Type	Atoms	Z	Observed(°)	Ideal(°)
6	C	401	NAG	C1-O5-C5	3.99	117.54	112.19
6	C	402	NAG	C1-O5-C5	2.56	115.62	112.19
7	C	405	SRV	C8-O8-C26	-2.51	111.78	117.80
7	C	405	SRV	C2-C3-C4	-2.26	106.87	110.83
6	C	402	NAG	C1-C2-N2	2.05	113.66	110.43

There are no chirality outliers.

All (32) torsion outliers are listed below:

Mol	Chain	Res	Type	Atoms
7	C	405	SRV	C27-C26-O8-C8
7	C	405	SRV	O9-C26-O8-C8
7	C	405	SRV	O10-C10-O7-C9
7	C	405	SRV	C11-C10-O7-C9
7	C	405	SRV	C16-C17-C18-C19
7	C	405	SRV	C28-C29-C30-C31
7	C	405	SRV	C12-C13-C14-C15
7	C	405	SRV	C23-C24-C25-C44
7	C	405	SRV	C14-C15-C16-C17
7	C	405	SRV	C33-C34-C35-C36
7	C	405	SRV	C36-C37-C38-C39
7	C	405	SRV	C20-C21-C22-C23

Continued on next page...

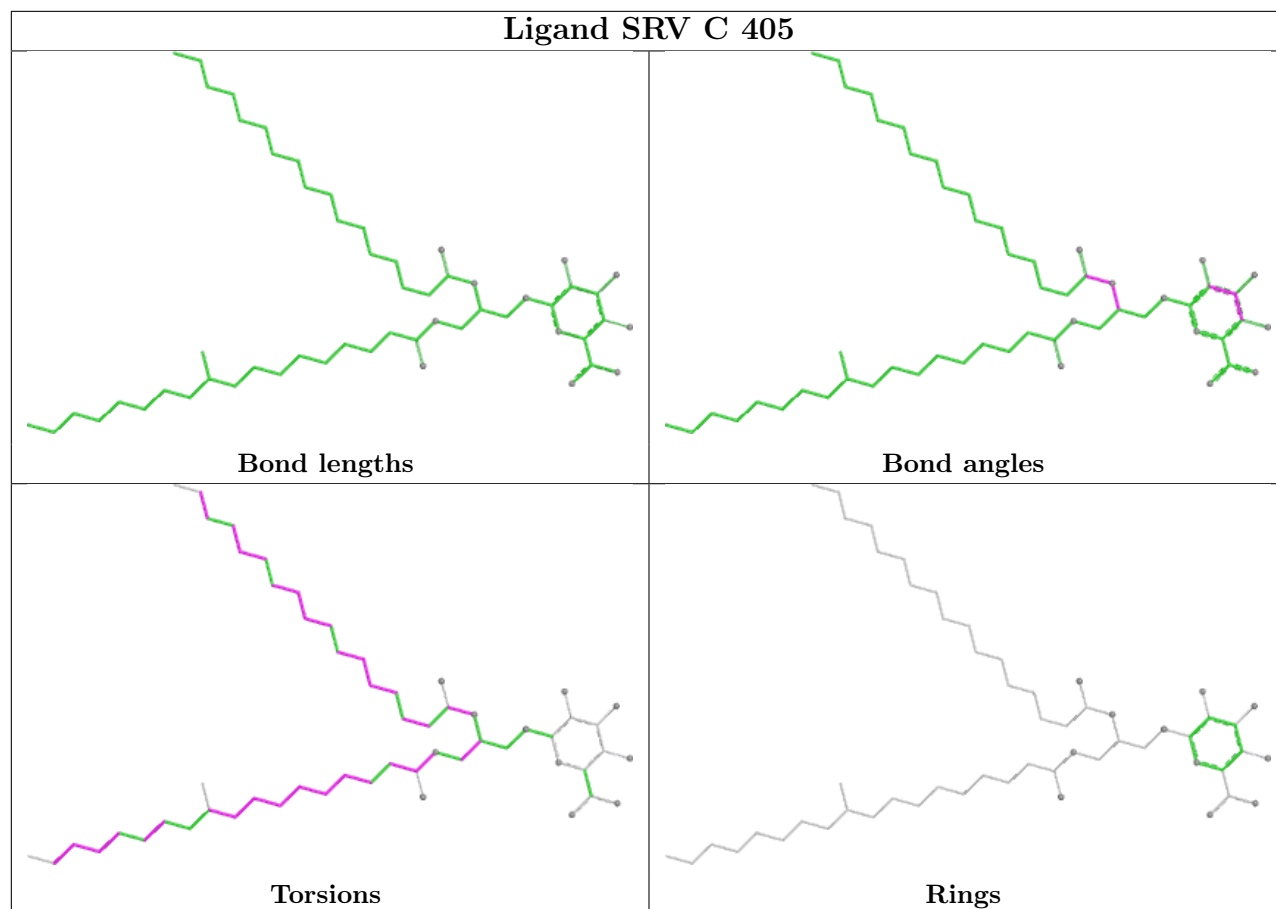
Continued from previous page...

Mol	Chain	Res	Type	Atoms
7	C	405	SRV	C15-C16-C17-C18
7	C	405	SRV	C34-C35-C36-C37
6	C	402	NAG	O5-C5-C6-O6
7	C	405	SRV	C13-C14-C15-C16
7	C	405	SRV	C22-C23-C24-C25
7	C	405	SRV	C30-C31-C32-C33
7	C	405	SRV	C26-C27-C28-C29
7	C	405	SRV	C24-C25-C44-C43
7	C	405	SRV	C17-C18-C19-C45
7	C	405	SRV	C17-C18-C19-C20
7	C	405	SRV	C39-C40-C41-C42
7	C	405	SRV	C29-C30-C31-C32
7	C	405	SRV	C7-C8-C9-O7
7	C	405	SRV	O8-C8-C9-O7
7	C	405	SRV	C32-C33-C34-C35
6	C	401	NAG	C1-C2-N2-C7
7	C	405	SRV	C37-C38-C39-C40
7	C	405	SRV	C11-C12-C13-C14
6	C	401	NAG	C4-C5-C6-O6
7	C	405	SRV	O7-C10-C11-C12

There are no ring outliers.

No monomer is involved in short contacts.

The following is a two-dimensional graphical depiction of Mogul quality analysis of bond lengths, bond angles, torsion angles, and ring geometry for all instances of the Ligand of Interest. In addition, ligands with molecular weight > 250 and outliers as shown on the validation Tables will also be included. For torsion angles, if less than 5% of the Mogul distribution of torsion angles is within 10 degrees of the torsion angle in question, then that torsion angle is considered an outlier. Any bond that is central to one or more torsion angles identified as an outlier by Mogul will be highlighted in the graph. For rings, the root-mean-square deviation (RMSD) between the ring in question and similar rings identified by Mogul is calculated over all ring torsion angles. If the average RMSD is greater than 60 degrees and the minimal RMSD between the ring in question and any Mogul-identified rings is also greater than 60 degrees, then that ring is considered an outlier. The outliers are highlighted in purple. The color gray indicates Mogul did not find sufficient equivalents in the CSD to analyse the geometry.



5.7 Other polymers [i](#)

There are no such residues in this entry.

5.8 Polymer linkage issues [i](#)

There are no chain breaks in this entry.

6 Fit of model and data [i](#)

6.1 Protein, DNA and RNA chains [i](#)

In the following table, the column labelled ‘#RSRZ > 2’ contains the number (and percentage) of RSRZ outliers, followed by percent RSRZ outliers for the chain as percentile scores relative to all X-ray entries and entries of similar resolution. The OWAB column contains the minimum, median, 95th percentile and maximum values of the occupancy-weighted average B-factor per residue. The column labelled ‘Q < 0.9’ lists the number of (and percentage) of residues with an average occupancy less than 0.9.

Mol	Chain	Analysed	<RSRZ>	#RSRZ>2	OWAB(Å ²)	Q<0.9
1	A	181/203 (89%)	-0.03	8 (4%) 39 23	20, 43, 83, 107	2 (1%)
2	B	241/245 (98%)	-0.26	1 (0%) 89 77	21, 43, 62, 93	0
3	C	270/302 (89%)	-0.29	3 (1%) 77 58	12, 32, 70, 92	0
4	D	98/99 (98%)	-0.56	0 100 100	12, 33, 54, 81	1 (1%)
All	All	790/849 (93%)	-0.25	12 (1%) 71 50	12, 39, 70, 107	3 (0%)

All (12) RSRZ outliers are listed below:

Mol	Chain	Res	Type	RSRZ
1	A	187	ASN	3.0
3	C	110	ASN	2.8
1	A	178	SER	2.7
1	A	184	ASN	2.5
2	B	185	ASN	2.4
1	A	146	SER	2.3
1	A	126	SER	2.3
3	C	280	GLY	2.2
1	A	149	SER	2.2
1	A	179	ASP	2.2
3	C	202	GLY	2.1
1	A	183	ALA	2.0

6.2 Non-standard residues in protein, DNA, RNA chains [i](#)

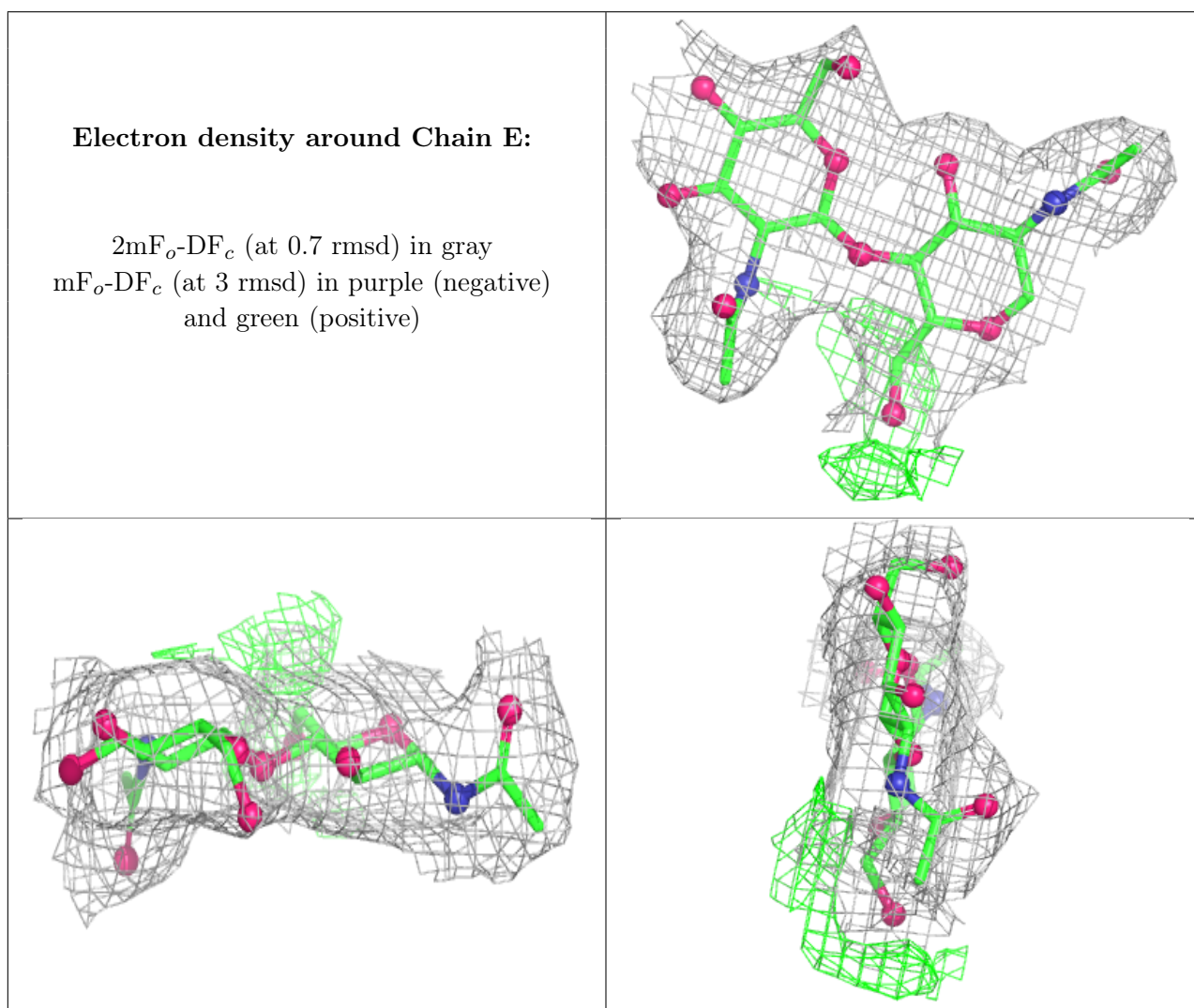
There are no non-standard protein/DNA/RNA residues in this entry.

6.3 Carbohydrates [i](#)

In the following table, the Atoms column lists the number of modelled atoms in the group and the number defined in the chemical component dictionary. The B-factors column lists the minimum, median, 95th percentile and maximum values of B factors of atoms in the group. The column labelled 'Q<0.9' lists the number of atoms with occupancy less than 0.9.

Mol	Type	Chain	Res	Atoms	RSCC	RSR	B-factors(Å ²)	Q<0.9
5	NAG	E	2	14/15	0.86	0.10	47,59,64,64	0
5	NAG	E	1	14/15	0.87	0.10	38,45,49,53	0

The following is a graphical depiction of the model fit to experimental electron density for oligosaccharide. Each fit is shown from different orientation to approximate a three-dimensional view.

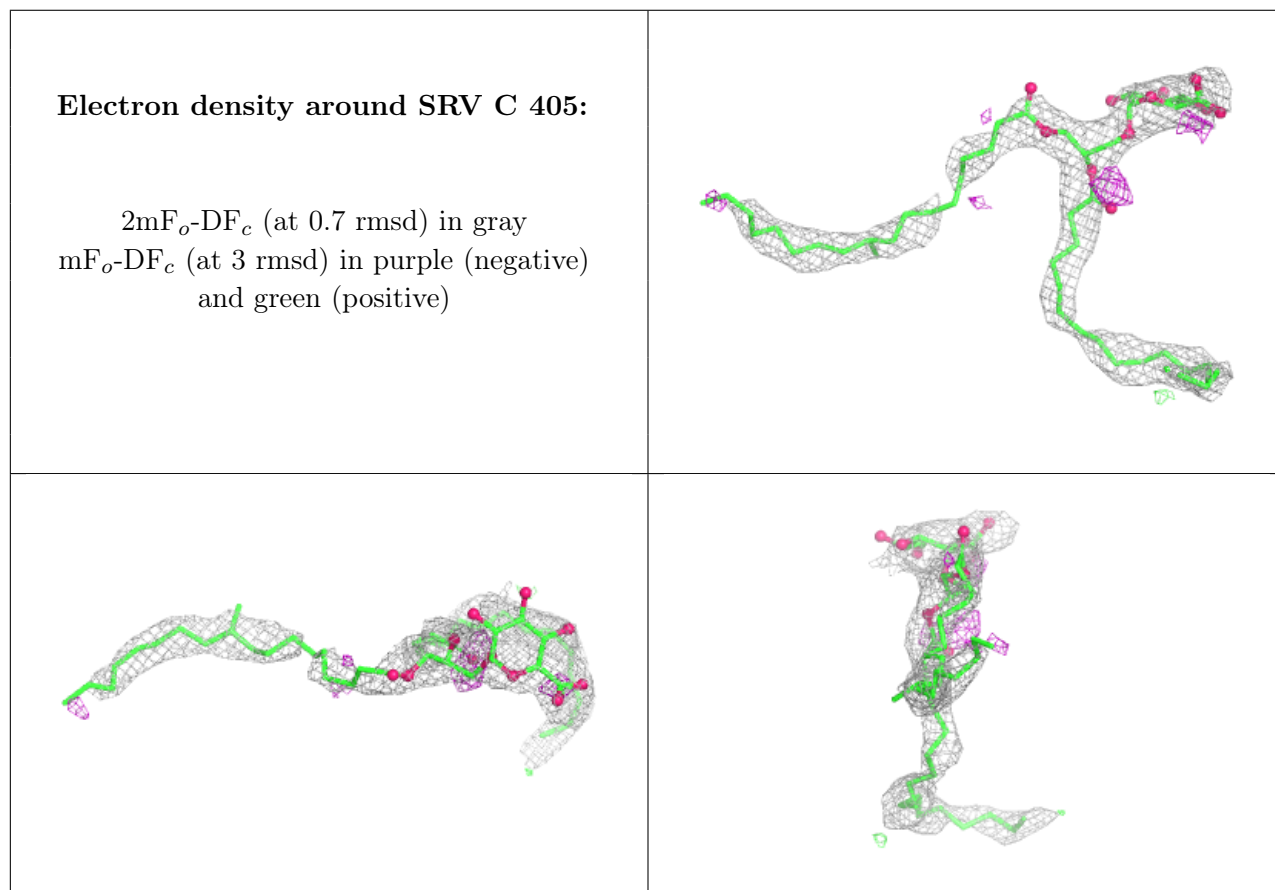


6.4 Ligands [i](#)

In the following table, the Atoms column lists the number of modelled atoms in the group and the number defined in the chemical component dictionary. The B-factors column lists the minimum, median, 95th percentile and maximum values of B factors of atoms in the group. The column labelled 'Q<0.9' lists the number of atoms with occupancy less than 0.9.

Mol	Type	Chain	Res	Atoms	RSCC	RSR	B-factors(Å ²)	Q<0.9
6	NAG	C	402	14/15	0.83	0.12	45,49,58,64	0
6	NAG	C	401	14/15	0.87	0.09	45,55,60,62	0
7	SRV	C	405	56/56	0.88	0.17	31,50,70,75	0

The following is a graphical depiction of the model fit to experimental electron density of all instances of the Ligand of Interest. In addition, ligands with molecular weight > 250 and outliers as shown on the geometry validation Tables will also be included. Each fit is shown from different orientation to approximate a three-dimensional view.



6.5 Other polymers [i](#)

There are no such residues in this entry.