



Full wwPDB X-ray Structure Validation Report ⓘ

Nov 16, 2023 – 10:30 AM JST

PDB ID : 6LN2
Title : Crystal structure of full length human GLP1 receptor in complex with Fab fragment (Fab7F38)
Authors : Wu, F.; Yang, L.; Hang, K.; Laursen, M.; Wu, L.; Han, G.W.; Ren, Q.; Roed, N.K.; Lin, G.; Hanson, M.; Jiang, H.; Wang, M.; Reedtz-Runge, S.; Song, G.; Stevens, R.C.
Deposited on : 2019-12-28
Resolution : 3.20 Å(reported)

This is a Full wwPDB X-ray Structure Validation Report for a publicly released PDB entry.

We welcome your comments at validation@mail.wwpdb.org

A user guide is available at

<https://www.wwpdb.org/validation/2017/XrayValidationReportHelp>

with specific help available everywhere you see the ⓘ symbol.

The types of validation reports are described at

<http://www.wwpdb.org/validation/2017/FAQs#types>.

The following versions of software and data (see [references](#) ①) were used in the production of this report:

MolProbity : 4.02b-467
Mogul : 1.8.5 (274361), CSD as541be (2020)
Xtrriage (Phenix) : 1.13
EDS : 2.36
buster-report : 1.1.7 (2018)
Percentile statistics : 20191225.v01 (using entries in the PDB archive December 25th 2019)
Refmac : 5.8.0158
CCP4 : 7.0.044 (Gargrove)
Ideal geometry (proteins) : Engh & Huber (2001)
Ideal geometry (DNA, RNA) : Parkinson et al. (1996)
Validation Pipeline (wwPDB-VP) : 2.36

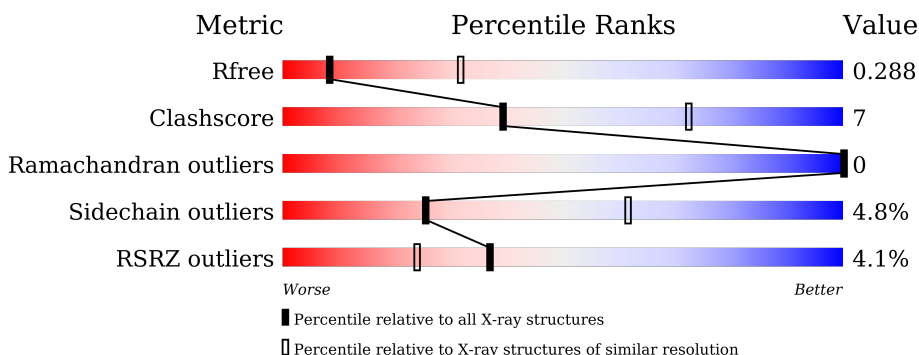
1 Overall quality at a glance

The following experimental techniques were used to determine the structure:

X-RAY DIFFRACTION

The reported resolution of this entry is 3.20 Å.

Percentile scores (ranging between 0-100) for global validation metrics of the entry are shown in the following graphic. The table shows the number of entries on which the scores are based.



Metric	Whole archive (#Entries)	Similar resolution (#Entries, resolution range(Å))
R_{free}	130704	1133 (3.20-3.20)
Clashscore	141614	1253 (3.20-3.20)
Ramachandran outliers	138981	1234 (3.20-3.20)
Sidechain outliers	138945	1233 (3.20-3.20)
RSRZ outliers	127900	1095 (3.20-3.20)

The table below summarises the geometric issues observed across the polymeric chains and their fit to the electron density. The red, orange, yellow and green segments of the lower bar indicate the fraction of residues that contain outliers for ≥ 3 , 2, 1 and 0 types of geometric quality criteria respectively. A grey segment represents the fraction of residues that are not modelled. The numeric value for each fraction is indicated below the corresponding segment, with a dot representing fractions $\leq 5\%$. The upper red bar (where present) indicates the fraction of residues that have poor fit to the electron density. The numeric value is given above the bar.

Mol	Chain	Length	Quality of chain
1	A	469	 6% 77% 16% 7%
2	B	213	 82% 17%
3	C	226	 3% 78% 22%

2 Entry composition

There are 6 unique types of molecules in this entry. The entry contains 6524 atoms, of which 0 are hydrogens and 0 are deuteriums.

In the tables below, the ZeroOcc column contains the number of atoms modelled with zero occupancy, the AltConf column contains the number of residues with at least one atom in alternate conformation and the Trace column contains the number of residues modelled with at most 2 atoms.

- Molecule 1 is a protein called Glucagon-like peptide 1 receptor,Rubredoxin,Glucagon-like peptide 1 receptor.

Mol	Chain	Residues	Atoms					ZeroOcc	AltConf	Trace
			Total	C	N	O	S			
1	A	437	3178	2083	508	564	23	0	0	0

There are 11 discrepancies between the modelled and reference sequences:

Chain	Residue	Modelled	Actual	Comment	Reference
A	193	CYS	SER	engineered mutation	UNP P43220
A	196	PHE	ILE	engineered mutation	UNP P43220
A	225	ALA	SER	engineered mutation	UNP P43220
A	233	CYS	MET	engineered mutation	UNP P43220
A	271	ALA	SER	engineered mutation	UNP P43220
A	317	CYS	ILE	engineered mutation	UNP P43220
A	318	ILE	GLY	engineered mutation	UNP P43220
A	346	ALA	LYS	engineered mutation	UNP P43220
A	347	PHE	CYS	engineered mutation	UNP P43220
A	361	CYS	GLY	engineered mutation	UNP P43220
A	387	ASP	GLU	engineered mutation	UNP P43220

- Molecule 2 is a protein called Fab7F38_light chain.

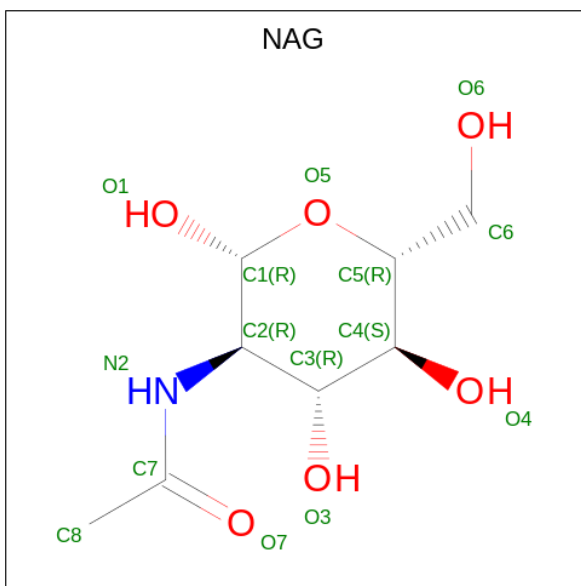
Mol	Chain	Residues	Atoms					ZeroOcc	AltConf	Trace
			Total	C	N	O	S			
2	B	213	1628	1025	266	329	8	0	0	0

- Molecule 3 is a protein called Fab7F38_heavy chain.

Mol	Chain	Residues	Atoms					ZeroOcc	AltConf	Trace
			Total	C	N	O	S			
3	C	226	1666	1056	266	337	7	0	0	0

- Molecule 4 is 2-acetamido-2-deoxy-beta-D-glucopyranose (three-letter code: NAG) (formula:

C₈H₁₅NO₆) (labeled as "Ligand of Interest" by depositor).

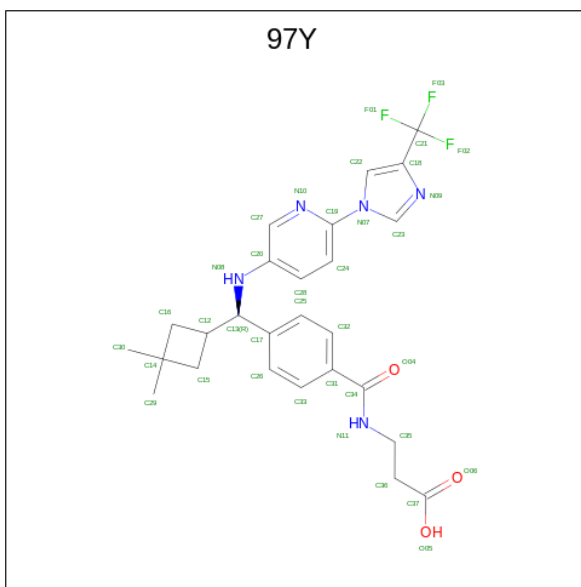


Mol	Chain	Residues	Atoms				ZeroOcc	AltConf
			Total	C	N	O		
4	A	1	14	8	1	5	0	0

- Molecule 5 is ZINC ION (three-letter code: ZN) (formula: Zn) (labeled as "Ligand of Interest" by depositor).

Mol	Chain	Residues	Atoms		ZeroOcc	AltConf
			Total	Zn		
5	A	1	1	1	0	0

- Molecule 6 is N-{4-[(R)-(3,3-dimethylcyclobutyl)](6-[4-(trifluoromethyl)-1H-imidazol-1-yl]pyridin-3-yl)amino)methyl]benzene-1-carbonyl}-beta-alanine (three-letter code: 97Y) (formula: C₂₆H₂₈F₃N₅O₃) (labeled as "Ligand of Interest" by depositor).

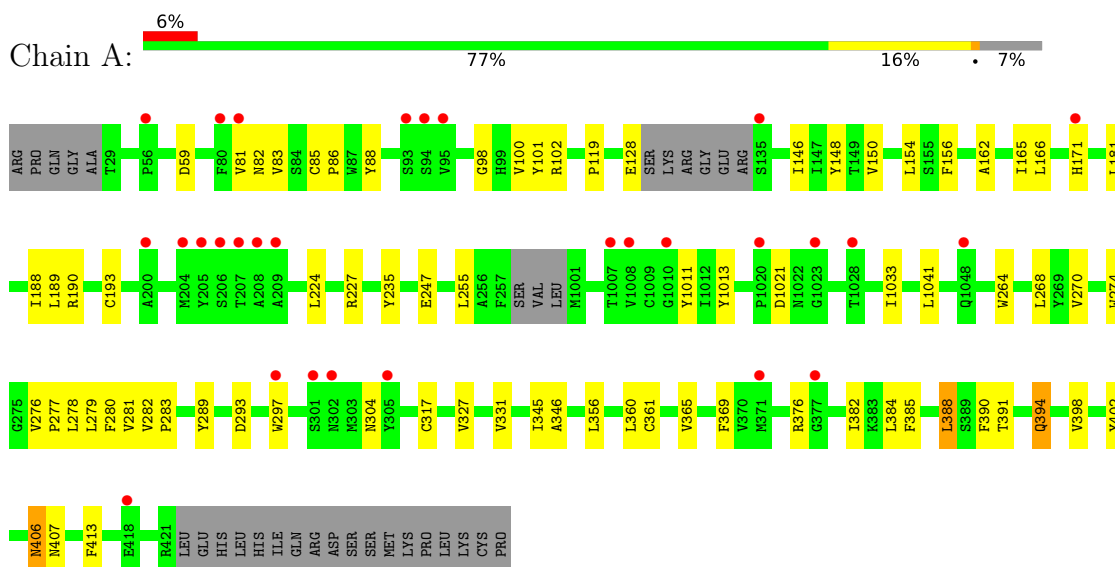


Mol	Chain	Residues	Atoms					ZeroOcc	AltConf
			Total	C	F	N	O		
6	A	1	37	26	3	5	3	0	0

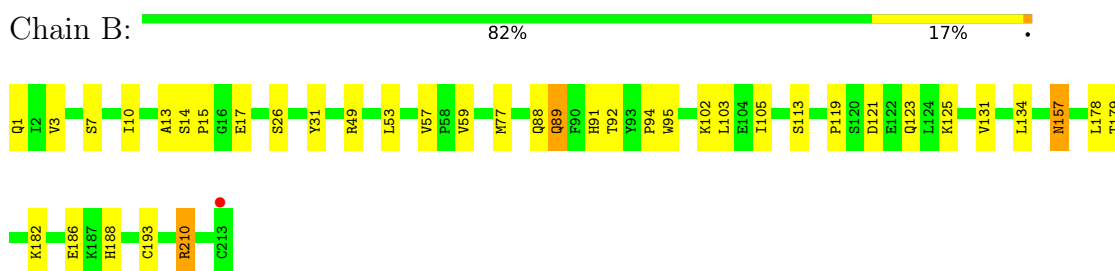
3 Residue-property plots [i](#)

These plots are drawn for all protein, RNA, DNA and oligosaccharide chains in the entry. The first graphic for a chain summarises the proportions of the various outlier classes displayed in the second graphic. The second graphic shows the sequence view annotated by issues in geometry and electron density. Residues are color-coded according to the number of geometric quality criteria for which they contain at least one outlier: green = 0, yellow = 1, orange = 2 and red = 3 or more. A red dot above a residue indicates a poor fit to the electron density ($RSRZ > 2$). Stretches of 2 or more consecutive residues without any outlier are shown as a green connector. Residues present in the sample, but not in the model, are shown in grey.

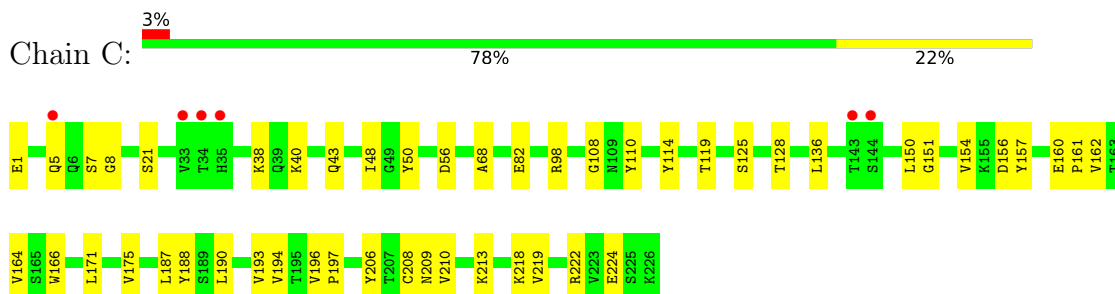
- Molecule 1: Glucagon-like peptide 1 receptor,Rubredoxin,Glucagon-like peptide 1 receptor



- Molecule 2: Fab7F38_light chain



- Molecule 3: Fab7F38_heavy chain



4 Data and refinement statistics

Property	Value	Source
Space group	P 21 21 21	Depositor
Cell constants a, b, c, α , β , γ	63.04Å 64.66Å 322.40Å 90.00° 90.00° 90.00°	Depositor
Resolution (Å)	30.00 – 3.20 29.36 – 3.20	Depositor EDS
% Data completeness (in resolution range)	97.0 (30.00-3.20) 97.0 (29.36-3.20)	Depositor EDS
R_{merge}	0.12	Depositor
R_{sym}	(Not available)	Depositor
$\langle I/\sigma(I) \rangle$ ¹	1.71 (at 3.18Å)	Xtrriage
Refinement program	BUSTER 2.10.2	Depositor
R, R_{free}	0.213 , 0.262 0.232 , 0.288	Depositor DCC
R_{free} test set	1098 reflections (4.99%)	wwPDB-VP
Wilson B-factor (Å ²)	112.7	Xtrriage
Anisotropy	0.314	Xtrriage
Bulk solvent k_{sol} (e/Å ³), B_{sol} (Å ²)	0.27 , 103.0	EDS
L-test for twinning ²	$\langle L \rangle = 0.43$, $\langle L^2 \rangle = 0.26$	Xtrriage
Estimated twinning fraction	0.054 for k,h,-l	Xtrriage
F_o, F_c correlation	0.93	EDS
Total number of atoms	6524	wwPDB-VP
Average B, all atoms (Å ²)	136.0	wwPDB-VP

Xtrriage's analysis on translational NCS is as follows: *The largest off-origin peak in the Patterson function is 4.17% of the height of the origin peak. No significant pseudotranslation is detected.*

¹Intensities estimated from amplitudes.

²Theoretical values of $\langle |L| \rangle$, $\langle L^2 \rangle$ for acentric reflections are 0.5, 0.333 respectively for untwinned datasets, and 0.375, 0.2 for perfectly twinned datasets.

5 Model quality

5.1 Standard geometry

Bond lengths and bond angles in the following residue types are not validated in this section: ZN, 97Y, NAG

The Z score for a bond length (or angle) is the number of standard deviations the observed value is removed from the expected value. A bond length (or angle) with $|Z| > 5$ is considered an outlier worth inspection. RMSZ is the root-mean-square of all Z scores of the bond lengths (or angles).

Mol	Chain	Bond lengths		Bond angles	
		RMSZ	# Z >5	RMSZ	# Z >5
1	A	0.44	0/3276	0.48	0/4518
2	B	0.64	0/1669	0.67	0/2270
3	C	0.55	0/1710	0.61	0/2340
All	All	0.53	0/6655	0.57	0/9128

There are no bond length outliers.

There are no bond angle outliers.

There are no chirality outliers.

There are no planarity outliers.

5.2 Too-close contacts

In the following table, the Non-H and H(model) columns list the number of non-hydrogen atoms and hydrogen atoms in the chain respectively. The H(added) column lists the number of hydrogen atoms added and optimized by MolProbity. The Clashes column lists the number of clashes within the asymmetric unit, whereas Symm-Clashes lists symmetry-related clashes.

Mol	Chain	Non-H	H(model)	H(added)	Clashes	Symm-Clashes
1	A	3178	0	2715	44	0
2	B	1628	0	1558	23	0
3	C	1666	0	1556	26	0
4	A	14	0	13	0	0
5	A	1	0	0	0	0
6	A	37	0	0	0	0
All	All	6524	0	5842	91	0

The all-atom clashscore is defined as the number of clashes found per 1000 atoms (including hydrogen atoms). The all-atom clashscore for this structure is 7.

All (91) close contacts within the same asymmetric unit are listed below, sorted by their clash magnitude.

Atom-1	Atom-2	Interatomic distance (Å)	Clash overlap (Å)
1:A:360:LEU:HD21	1:A:394:GLN:HG3	1.48	0.93
1:A:82:ASN:OD1	1:A:101:TYR:CD1	2.32	0.83
2:B:31:TYR:CD2	2:B:49:ARG:HG2	2.20	0.76
2:B:157:ASN:ND2	2:B:178:LEU:HD12	2.06	0.70
1:A:224:LEU:HA	1:A:227:ARG:HE	1.62	0.64
1:A:1011:TYR:HB2	1:A:1041:LEU:HD12	1.84	0.60
3:C:136:LEU:O	3:C:150:LEU:HA	2.02	0.60
3:C:171:LEU:HD21	3:C:194:VAL:HG21	1.83	0.59
3:C:154:VAL:HG11	3:C:162:VAL:HG11	1.85	0.57
1:A:289:TYR:HA	1:A:293:ASP:HB3	1.88	0.56
3:C:151:GLY:HA2	3:C:166:TRP:CZ2	2.42	0.55
1:A:384:LEU:O	1:A:388:LEU:HD22	2.07	0.55
3:C:222:ARG:NH1	3:C:224:GLU:HB3	2.22	0.54
1:A:317:CYS:HB3	1:A:365:VAL:HG13	1.91	0.53
2:B:119:PRO:HD3	2:B:131:VAL:HG22	1.91	0.52
1:A:1013:TYR:CZ	1:A:1033:ILE:HD11	2.45	0.52
2:B:3:VAL:H	2:B:26:SER:HB3	1.74	0.52
3:C:160:GLU:HG3	3:C:161:PRO:HA	1.91	0.51
3:C:171:LEU:CD2	3:C:194:VAL:HG21	2.41	0.51
1:A:82:ASN:OD1	1:A:101:TYR:CE1	2.64	0.50
1:A:235:TYR:HA	1:A:281:VAL:HG21	1.93	0.50
3:C:210:VAL:HB	3:C:219:VAL:HG23	1.93	0.50
2:B:31:TYR:CE2	2:B:49:ARG:HG2	2.45	0.50
1:A:345:ILE:HD12	1:A:346:ALA:H	1.76	0.50
1:A:264:TRP:HZ3	1:A:268:LEU:HD11	1.76	0.50
2:B:134:LEU:HD22	3:C:193:VAL:HG21	1.94	0.50
3:C:98:ARG:HB3	3:C:114:TYR:HB2	1.92	0.50
2:B:123:GLN:C	2:B:125:LYS:H	2.15	0.49
1:A:297:TRP:N	1:A:297:TRP:CD1	2.81	0.49
1:A:83:VAL:HG23	1:A:100:VAL:HG13	1.94	0.48
2:B:15:PRO:HG3	2:B:105:ILE:HD11	1.95	0.48
1:A:102:ARG:HH11	1:A:119:PRO:HG2	1.79	0.48
2:B:89:GLN:HG2	2:B:91:HIS:H	1.79	0.48
3:C:164:VAL:HG21	3:C:190:LEU:HD11	1.96	0.48
1:A:327:VAL:O	1:A:331:VAL:HG23	2.15	0.47
3:C:40:LYS:HB3	3:C:43:GLN:HB2	1.96	0.47
3:C:68:ALA:HA	3:C:82:GLU:O	2.14	0.47
1:A:360:LEU:HD21	1:A:394:GLN:CG	2.33	0.47
1:A:150:VAL:O	1:A:154:LEU:HB2	2.15	0.47
1:A:385:PHE:HA	1:A:388:LEU:HD22	1.97	0.47

Continued on next page...

Continued from previous page...

Atom-1	Atom-2	Interatomic distance (Å)	Clash overlap (Å)
2:B:89:GLN:NE2	2:B:92:THR:O	2.47	0.47
1:A:166:LEU:HB2	1:A:181:LEU:HD21	1.97	0.47
1:A:162:ALA:HA	1:A:165:ILE:HD12	1.98	0.46
2:B:210:ARG:HH21	2:B:210:ARG:HG3	1.78	0.46
1:A:85:CYS:H	1:A:98:GLY:HA3	1.80	0.46
1:A:282:VAL:CG2	1:A:283:PRO:HD3	2.46	0.46
1:A:345:ILE:HD12	1:A:346:ALA:N	2.31	0.45
3:C:151:GLY:HA2	3:C:166:TRP:HZ2	1.81	0.45
1:A:235:TYR:HB2	1:A:281:VAL:HG11	1.99	0.45
3:C:7:SER:HB3	3:C:21:SER:H	1.82	0.45
1:A:277:PRO:HA	1:A:280:PHE:CE2	2.52	0.44
1:A:146:ILE:O	1:A:150:VAL:HG22	2.16	0.44
2:B:53:LEU:HD12	2:B:57:VAL:CG1	2.47	0.44
2:B:13:ALA:O	2:B:105:ILE:HA	2.18	0.44
1:A:190:ARG:HH12	1:A:394:GLN:CD	2.21	0.44
1:A:406:ASN:HD22	1:A:407:ASN:N	2.15	0.44
1:A:255:LEU:HD21	1:A:331:VAL:HG22	1.99	0.44
1:A:86:PRO:HB3	1:A:88:TYR:CE2	2.52	0.44
2:B:10:ILE:HG22	2:B:102:LYS:HB3	1.99	0.44
3:C:38:LYS:HB2	3:C:48:ILE:HD11	2.00	0.44
2:B:88:GLN:HG2	2:B:89:GLN:N	2.33	0.43
2:B:92:THR:O	2:B:95:TRP:HD1	2.01	0.43
1:A:391:THR:O	1:A:391:THR:HG22	2.19	0.43
2:B:14:SER:OG	2:B:17:GLU:HG3	2.19	0.43
2:B:157:ASN:ND2	2:B:178:LEU:CD1	2.80	0.43
2:B:188:HIS:O	2:B:210:ARG:NH2	2.52	0.42
3:C:157:TYR:CE1	3:C:188:TYR:HB2	2.54	0.42
1:A:394:GLN:O	1:A:394:GLN:HG2	2.20	0.42
3:C:50:TYR:CD1	3:C:50:TYR:C	2.93	0.42
3:C:171:LEU:HD21	3:C:194:VAL:CG2	2.49	0.42
1:A:81:VAL:O	1:A:81:VAL:HG13	2.19	0.42
1:A:356:LEU:HD21	1:A:398:VAL:HG22	2.02	0.42
3:C:166:TRP:CH2	3:C:208:CYS:HB2	2.55	0.42
2:B:1:GLN:HB2	2:B:94:PRO:HD2	2.02	0.42
3:C:196:VAL:HG11	3:C:206:TYR:CE1	2.55	0.42
2:B:77:MET:CE	2:B:103:LEU:HD21	2.49	0.41
1:A:270:VAL:HG13	1:A:274:TRP:HD1	1.85	0.41
1:A:280:PHE:C	1:A:283:PRO:HD2	2.40	0.41
1:A:156:PHE:CE1	1:A:188:ILE:HG23	2.55	0.41
3:C:196:VAL:HB	3:C:197:PRO:HD2	2.02	0.41
3:C:8:GLY:O	3:C:119:THR:HG23	2.19	0.41

Continued on next page...

Continued from previous page...

Atom-1	Atom-2	Interatomic distance (Å)	Clash overlap (Å)
1:A:59:ASP:HB3	2:B:92:THR:HG22	2.03	0.41
1:A:356:LEU:CD2	1:A:398:VAL:HG22	2.51	0.41
2:B:182:LYS:HE3	2:B:186:GLU:OE1	2.20	0.41
1:A:276:VAL:HA	1:A:279:LEU:HD12	2.03	0.40
3:C:156:ASP:HB3	3:C:187:LEU:HD13	2.03	0.40
1:A:247:GLU:HG2	1:A:402:TYR:OH	2.20	0.40
3:C:108:GLY:HA2	3:C:110:TYR:CE2	2.56	0.40
3:C:171:LEU:CD2	3:C:175:VAL:HG22	2.51	0.40
1:A:189:LEU:O	1:A:193:CYS:HB2	2.22	0.40
1:A:235:TYR:CE1	1:A:278:LEU:HG	2.57	0.40

There are no symmetry-related clashes.

5.3 Torsion angles [i](#)

5.3.1 Protein backbone [i](#)

In the following table, the Percentiles column shows the percent Ramachandran outliers of the chain as a percentile score with respect to all X-ray entries followed by that with respect to entries of similar resolution.

The Analysed column shows the number of residues for which the backbone conformation was analysed, and the total number of residues.

Mol	Chain	Analysed	Favoured	Allowed	Outliers	Percentiles	
1	A	431/469 (92%)	396 (92%)	35 (8%)	0	100	100
2	B	211/213 (99%)	192 (91%)	19 (9%)	0	100	100
3	C	224/226 (99%)	202 (90%)	22 (10%)	0	100	100
All	All	866/908 (95%)	790 (91%)	76 (9%)	0	100	100

There are no Ramachandran outliers to report.

5.3.2 Protein sidechains [i](#)

In the following table, the Percentiles column shows the percent sidechain outliers of the chain as a percentile score with respect to all X-ray entries followed by that with respect to entries of similar resolution.

The Analysed column shows the number of residues for which the sidechain conformation was analysed, and the total number of residues.

Mol	Chain	Analysed	Rotameric	Outliers	Percentiles	
1	A	282/420 (67%)	268 (95%)	14 (5%)	24	60
2	B	183/186 (98%)	174 (95%)	9 (5%)	25	61
3	C	179/196 (91%)	171 (96%)	8 (4%)	27	63
All	All	644/802 (80%)	613 (95%)	31 (5%)	25	61

All (31) residues with a non-rotameric sidechain are listed below:

Mol	Chain	Res	Type
1	A	128	GLU
1	A	148	TYR
1	A	171	HIS
1	A	1021	ASP
1	A	304	ASN
1	A	361	CYS
1	A	369	PHE
1	A	376	ARG
1	A	382	ILE
1	A	388	LEU
1	A	390	PHE
1	A	394	GLN
1	A	406	ASN
1	A	413	PHE
2	B	7	SER
2	B	59	VAL
2	B	89	GLN
2	B	113	SER
2	B	121	ASP
2	B	157	ASN
2	B	179	THR
2	B	193	CYS
2	B	210	ARG
3	C	1	GLU
3	C	5	GLN
3	C	56	ASP
3	C	125	SER
3	C	128	THR
3	C	209	ASN
3	C	213	LYS
3	C	218	LYS

Sometimes sidechains can be flipped to improve hydrogen bonding and reduce clashes. There are no such sidechains identified.

5.3.3 RNA [i](#)

There are no RNA molecules in this entry.

5.4 Non-standard residues in protein, DNA, RNA chains [i](#)

There are no non-standard protein/DNA/RNA residues in this entry.

5.5 Carbohydrates [i](#)

There are no monosaccharides in this entry.

5.6 Ligand geometry [i](#)

Of 3 ligands modelled in this entry, 1 is monoatomic - leaving 2 for Mogul analysis.

In the following table, the Counts columns list the number of bonds (or angles) for which Mogul statistics could be retrieved, the number of bonds (or angles) that are observed in the model and the number of bonds (or angles) that are defined in the Chemical Component Dictionary. The Link column lists molecule types, if any, to which the group is linked. The Z score for a bond length (or angle) is the number of standard deviations the observed value is removed from the expected value. A bond length (or angle) with $|Z| > 2$ is considered an outlier worth inspection. RMSZ is the root-mean-square of all Z scores of the bond lengths (or angles).

Mol	Type	Chain	Res	Link	Bond lengths			Bond angles		
					Counts	RMSZ	# Z > 2	Counts	RMSZ	# Z > 2
6	97Y	A	503	-	39,40,40	2.23	11 (28%)	50,59,59	1.80	8 (16%)
4	NAG	A	501	1	14,14,15	0.42	0	17,19,21	0.67	1 (5%)

In the following table, the Chirals column lists the number of chiral outliers, the number of chiral centers analysed, the number of these observed in the model and the number defined in the Chemical Component Dictionary. Similar counts are reported in the Torsion and Rings columns. '-' means no outliers of that kind were identified.

Mol	Type	Chain	Res	Link	Chirals	Torsions	Rings
6	97Y	A	503	-	-	2/30/42/42	0/4/4/4
4	NAG	A	501	1	-	2/6/23/26	0/1/1/1

All (11) bond length outliers are listed below:

Mol	Chain	Res	Type	Atoms	Z	Observed(Å)	Ideal(Å)
6	A	503	97Y	C22-N07	-6.77	1.32	1.39

Continued on next page...

Continued from previous page...

Mol	Chain	Res	Type	Atoms	Z	Observed(Å)	Ideal(Å)
6	A	503	97Y	C34-N11	6.05	1.47	1.33
6	A	503	97Y	C20-N08	3.62	1.46	1.39
6	A	503	97Y	C15-C12	-3.46	1.51	1.55
6	A	503	97Y	C23-N07	-3.42	1.33	1.36
6	A	503	97Y	C12-C13	-3.11	1.48	1.53
6	A	503	97Y	C16-C14	-3.04	1.51	1.55
6	A	503	97Y	C16-C12	-2.93	1.51	1.55
6	A	503	97Y	C15-C14	-2.89	1.51	1.55
6	A	503	97Y	C17-C13	2.72	1.55	1.52
6	A	503	97Y	C22-C18	2.03	1.39	1.36

All (9) bond angle outliers are listed below:

Mol	Chain	Res	Type	Atoms	Z	Observed(°)	Ideal(°)
6	A	503	97Y	C17-C13-C12	-5.63	106.59	112.15
6	A	503	97Y	C21-C18-N09	5.34	126.04	119.76
6	A	503	97Y	C20-C27-N10	-4.20	120.36	124.13
6	A	503	97Y	C24-C19-N10	-4.15	120.13	125.48
6	A	503	97Y	C30-C14-C29	3.03	115.66	110.10
6	A	503	97Y	C27-N10-C19	2.67	122.09	117.29
6	A	503	97Y	C28-C24-C19	2.37	119.84	116.66
4	A	501	NAG	O5-C1-C2	-2.28	107.69	111.29
6	A	503	97Y	F02-C21-C18	-2.26	108.61	112.47

There are no chirality outliers.

All (4) torsion outliers are listed below:

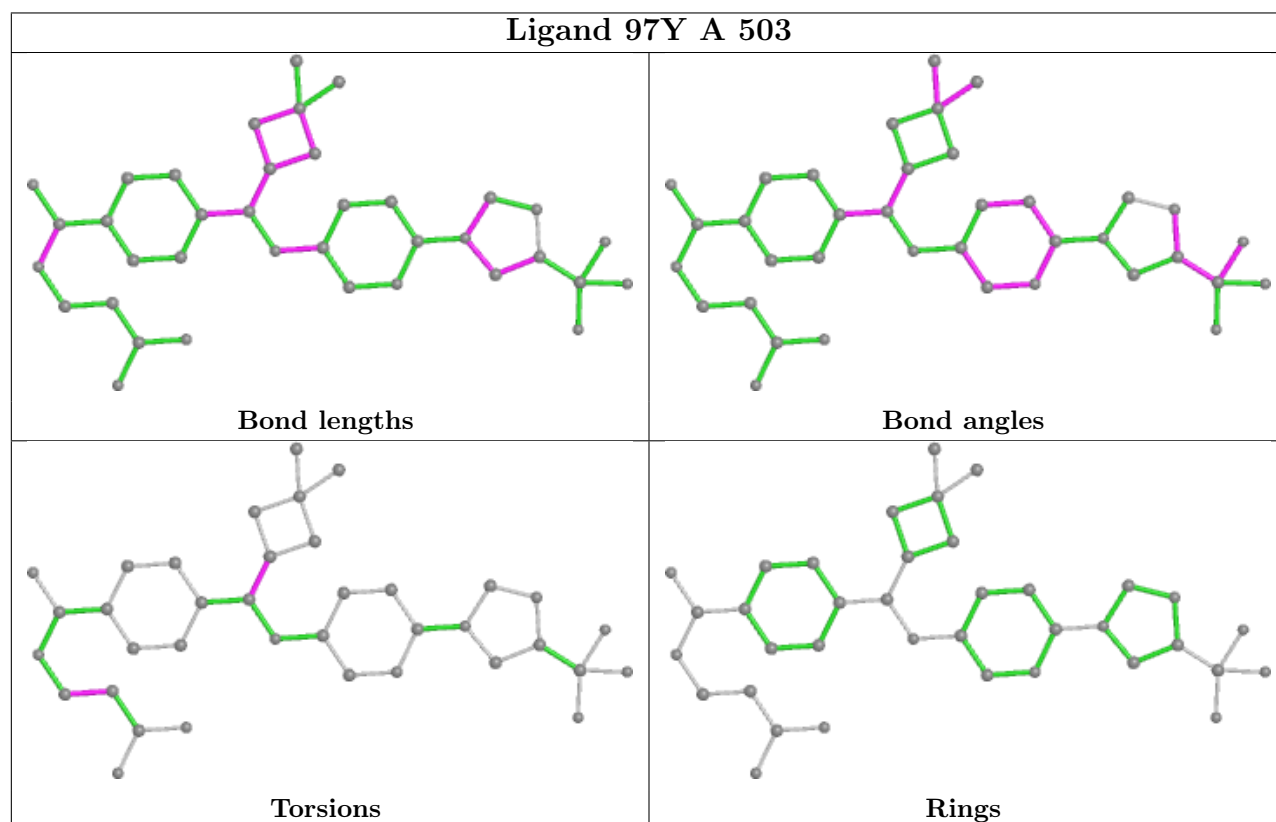
Mol	Chain	Res	Type	Atoms
6	A	503	97Y	C15-C12-C13-C17
4	A	501	NAG	C8-C7-N2-C2
4	A	501	NAG	O7-C7-N2-C2
6	A	503	97Y	N11-C35-C36-C37

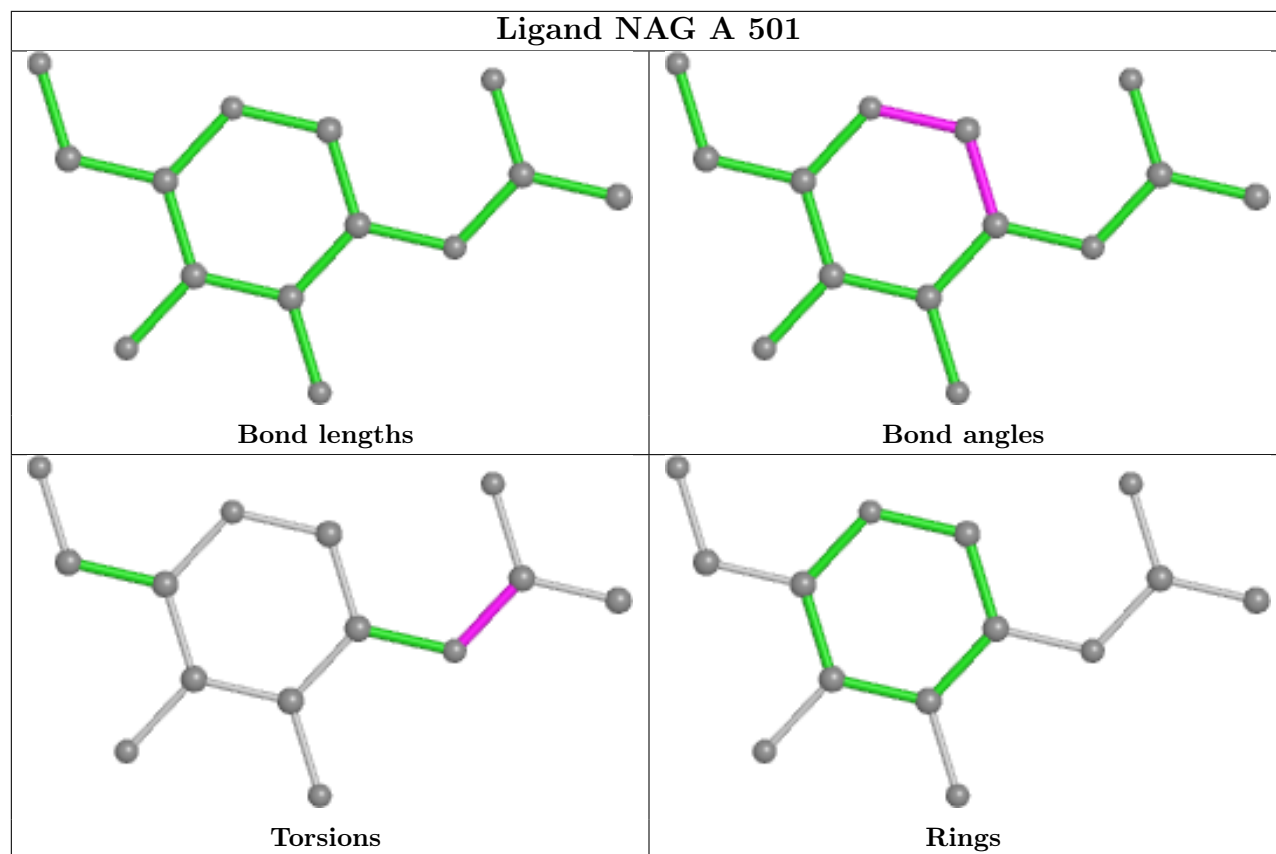
There are no ring outliers.

No monomer is involved in short contacts.

The following is a two-dimensional graphical depiction of Mogul quality analysis of bond lengths, bond angles, torsion angles, and ring geometry for all instances of the Ligand of Interest. In addition, ligands with molecular weight > 250 and outliers as shown on the validation Tables will also be included. For torsion angles, if less than 5% of the Mogul distribution of torsion angles is within 10 degrees of the torsion angle in question, then that torsion angle is considered an outlier. Any bond that is central to one or more torsion angles identified as an outlier by Mogul will be

highlighted in the graph. For rings, the root-mean-square deviation (RMSD) between the ring in question and similar rings identified by Mogul is calculated over all ring torsion angles. If the average RMSD is greater than 60 degrees and the minimal RMSD between the ring in question and any Mogul-identified rings is also greater than 60 degrees, then that ring is considered an outlier. The outliers are highlighted in purple. The color gray indicates Mogul did not find sufficient equivalents in the CSD to analyse the geometry.





5.7 Other polymers [i](#)

There are no such residues in this entry.

5.8 Polymer linkage issues [i](#)

There are no chain breaks in this entry.

6 Fit of model and data

6.1 Protein, DNA and RNA chains

In the following table, the column labelled ‘#RSRZ > 2’ contains the number (and percentage) of RSRZ outliers, followed by percent RSRZ outliers for the chain as percentile scores relative to all X-ray entries and entries of similar resolution. The OWAB column contains the minimum, median, 95th percentile and maximum values of the occupancy-weighted average B-factor per residue. The column labelled ‘Q < 0.9’ lists the number of (and percentage) of residues with an average occupancy less than 0.9.

Mol	Chain	Analysed	<RSRZ>	#RSRZ>2	OWAB(Å ²)	Q<0.9
1	A	437/469 (93%)	0.09	29 (6%) 18 11	124, 161, 211, 244	0
2	B	213/213 (100%)	-0.25	1 (0%) 91 86	80, 101, 122, 161	0
3	C	226/226 (100%)	-0.08	6 (2%) 54 39	78, 114, 161, 180	0
All	All	876/908 (96%)	-0.04	36 (4%) 37 24	78, 137, 198, 244	0

All (36) RSRZ outliers are listed below:

Mol	Chain	Res	Type	RSRZ
1	A	301	SER	4.8
1	A	302	ASN	4.8
1	A	1007	THR	4.3
1	A	371	MET	4.2
1	A	1010	GLY	3.8
1	A	207	THR	3.6
1	A	205	TYR	3.6
1	A	135	SER	3.3
1	A	171	HIS	3.2
1	A	95	VAL	3.2
1	A	305	TYR	2.9
1	A	208	ALA	2.8
3	C	144	SER	2.8
3	C	35	HIS	2.7
1	A	1020	PRO	2.6
1	A	94	SER	2.6
1	A	209	ALA	2.5
1	A	200	ALA	2.4
1	A	1028	THR	2.4
1	A	56	PRO	2.4
3	C	5	GLN	2.3
1	A	93	SER	2.3
1	A	80	PHE	2.3

Continued on next page...

Continued from previous page...

Mol	Chain	Res	Type	RSRZ
1	A	204	MET	2.3
1	A	1008	VAL	2.2
1	A	418	GLU	2.2
1	A	1023	GLY	2.2
1	A	81	VAL	2.2
1	A	377	GLY	2.1
3	C	143	THR	2.1
3	C	33	VAL	2.1
3	C	34	THR	2.1
1	A	1048	GLN	2.1
1	A	206	SER	2.0
1	A	297	TRP	2.0
2	B	213	CYS	2.0

6.2 Non-standard residues in protein, DNA, RNA chains [i](#)

There are no non-standard protein/DNA/RNA residues in this entry.

6.3 Carbohydrates [i](#)

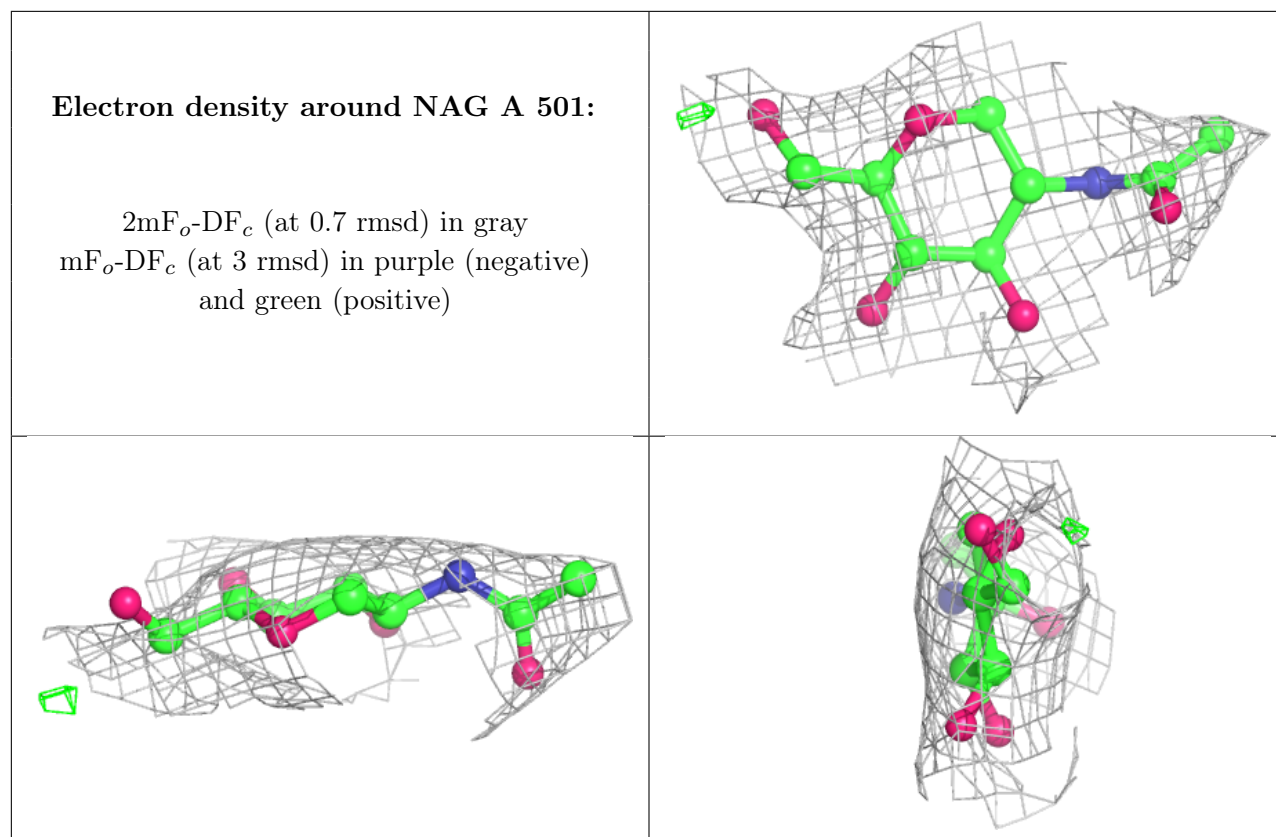
There are no monosaccharides in this entry.

6.4 Ligands [i](#)

In the following table, the Atoms column lists the number of modelled atoms in the group and the number defined in the chemical component dictionary. The B-factors column lists the minimum, median, 95th percentile and maximum values of B factors of atoms in the group. The column labelled 'Q< 0.9' lists the number of atoms with occupancy less than 0.9.

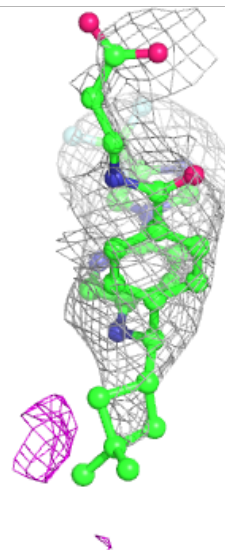
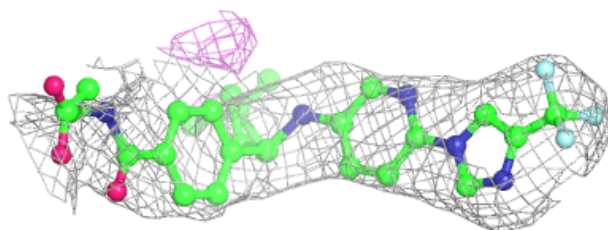
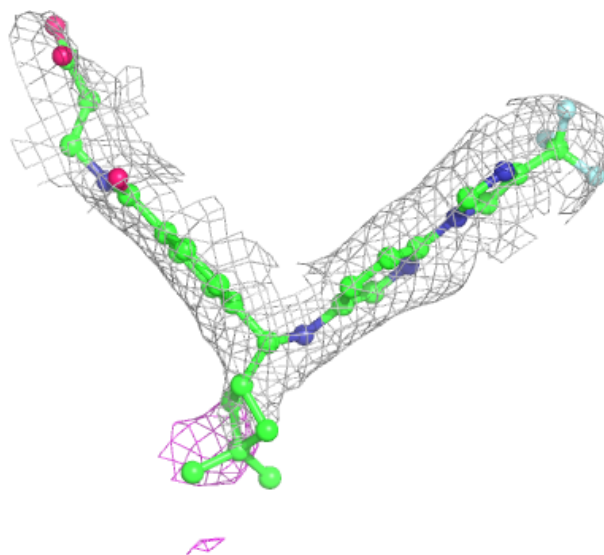
Mol	Type	Chain	Res	Atoms	RSCC	RSR	B-factors(\AA^2)	Q<0.9
4	NAG	A	501	14/15	0.76	0.28	170,177,181,182	0
6	97Y	A	503	37/37	0.81	0.31	126,149,185,186	0
5	ZN	A	502	1/1	0.98	0.02	175,175,175,175	0

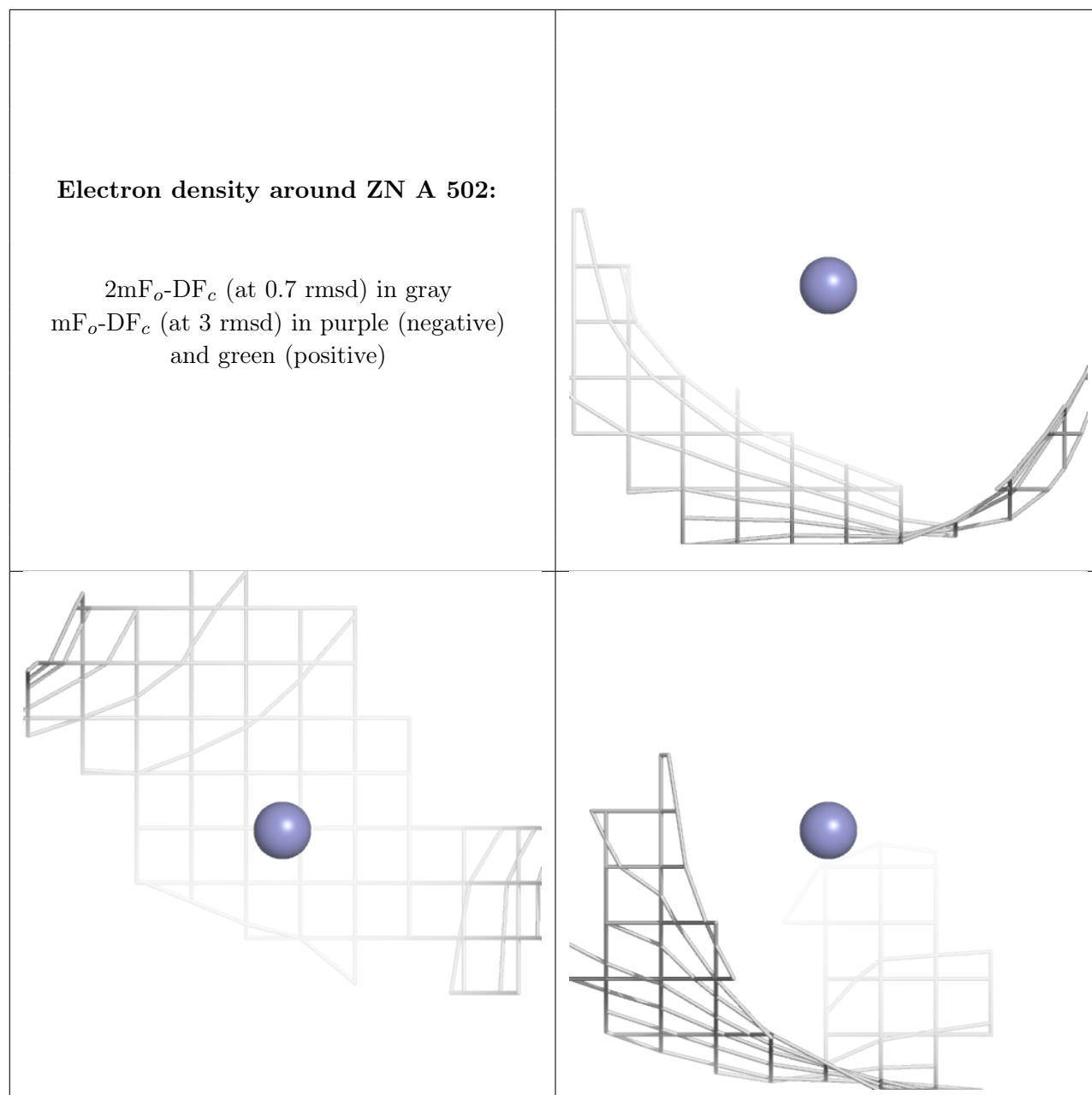
The following is a graphical depiction of the model fit to experimental electron density of all instances of the Ligand of Interest. In addition, ligands with molecular weight > 250 and outliers as shown on the geometry validation Tables will also be included. Each fit is shown from different orientation to approximate a three-dimensional view.



Electron density around 97Y A 503:

$2mF_o-DF_c$ (at 0.7 rmsd) in gray
 mF_o-DF_c (at 3 rmsd) in purple (negative)
and green (positive)





6.5 Other polymers [i](#)

There are no such residues in this entry.